

HEISEY *news*

OFFICIAL PUBLICATION HEISEY COLLECTORS OF AMERICA
© Heisey Collectors of America, Inc.
All Rights Reserved 1988

VOLUME XVII NO. 11

NOVEMBER, 1988 ISSN 0731-8014



HEISEY NEWS

P.O. Box 4367, Newark, OH 43055

CLUB OFFICERS:

President - Bob Rarey (614) 279-0390
Vice President - Dick Smith (614) 366-5163
Secretary - Liz Stickle (614) 323-2250
Treasurer - Mary McWilliams (614) 345-4380
Curator - Louise Ream

Editor: Louise Ream

P.O. Box 4367, Newark, Ohio 43055

PH: (614) 345-2932

Assistant Editor: Neila Bredehoft

P.O. Box 4367, Newark, Ohio 43055

PH: (614) 345-2932

Published in Newark, Ohio, Printed in Newark, Ohio.

\$15.00 per year - \$1.25 per copy

Back Issues - Each Volume (12 issues) year - \$9.00

Volume V, VIII, IX, X, XI, XII, XIII, XIV, XV, XVI

Heisey Collectors of America, Inc. is a non-profit corporation with tax exempt status. Owners and operators of National Heisey Glass Museum, 6th and Church Streets, Newark, Ohio.

Open daily 1-4 p.m. except holidays. Other hours by appointment. Members admitted free.

HEISEY NEWS

Heisey Collectors of America, Inc.

All Rights Reserved 1988 - ISSN 0731-8014

Published monthly by Heisey Collectors of America, Inc., Newark, OH 43055. Second Class postage paid, Newark, Ohio 43055. Club membership (includes 12 issues of Heisey News and participation in all club activities) \$15.00 per year plus \$2.50 for each additional family member in same household who wishes a membership card. For Voting Membership add \$25.00 one time only fee.

POSTMASTER: Send address change to:

HCA, P.O. Box 4367, Newark, OH 43055

When requesting information, please enclose a self-addressed, stamped envelope (SASE).

ADVERTISING - Send all ads to: HCA - Advertising
P.O. Box 4367
Newark, Ohio 43055

DOUBLE SPACE ALL ADS

Rates:

CLASSIFIED: 15¢ per word. \$1.50 minimum.

ABBREVIATIONS AND INITIALS COUNT AS WORDS

DEALER DIRECTORY: \$25 per year.

Display:	Members:	Non-Members:
1/8 page (9 items)	\$20.00	\$ 30.00
1/4 page (20 items)	30.00	45.00
1/2 page (20 items) Hor.	45.00	67.00
1/2 page (50 items) Vert.	60.00	90.00
1 page (50 items)	75.00	112.50

Personal ads limited to 1/8 space.

ALL ADS MUST BE PREPAID. Ad copy must be received by the 5th of the month preceding the publication date-i.e. April 5th for May issue. Ads containing reproductions will not knowingly be accepted unless clearly stated (i.e. Heisey by Imperial, etc.). HEISEY NEWS assumes no responsibility for false advertising or misleading information. In the event of typographical error, the incorrect portion of the ad will be run in the following issue, but HEISEY NEWS assumes no further liability.

The opinions expressed in articles in HEISEY NEWS are those of the authors and not necessarily those of the organization. The Editorial Staff reserves the right to edit or refuse any material submitted for publication. When requesting information, please enclose a self-addressed stamped envelope (SASE).

"GOODIES" TO BE SOLD AT THE DECEMBER DINNER

THE FOLLOWING TWELVE ITEMS, MOST OF WHICH WERE PURCHASED BY HCA AT THE IMPERIAL FACTORY AFTER IT WENT BANKRUPT, WILL BE AUCTIONED AT THE CHRISTMAS DINNER ON DECEMBER 3. SEE PAGE 24 FOR DINNER INFORMATION.

Amber Flying Mare

Mother Rabbit, Ultra Blue

Head Up Bunny, Ultra Blue

Head Down Bunny, Ultra Blue

Slag Bunny

Black Cygnet

2 Verde Fish Bookends (to be sold separately)

1987 Oscar, base frosted

1987 Oscar, frosted

1988 Large elephant with blue cast
Black Scotty

THIS IS AN OPPORTUNITY TO BUY SOME RARE ITEMS - PLEASE ATTEND!

* * * * *

IN MEMORIAM

BERNARD C. BOYD

August 5, 1988

Bernard Boyd was a prominent glass manufacturer and owner of Boyd's Crystal Art Glass, Cambridge, Ohio. Mr. Boyd was 80 years of age. Our sincere sympathy is hereby expressed to his wife Louise, their entire family and many friends.

WILLIAM HEACOCK

August, 1988

William Heacock was the author of several books on Fen-ton and other glassware. Born in Texas, in August 1947, he has recently made his home in Pennsylvania. This young man was loved by those of us involved in the world of glass collecting, and will be greatly missed. Our deepest sympathy is hereby extended to his family and friends alike.

Courtesy of Imperial Glass Club

FROM YOUR PRESIDENT

DEAR HCA MEMBERS,

The September quarterly meeting and Mini-Show was very successful. Dealers reported good sales and for the first time, the Souvenir (Clover Rope Mug in Ruby) was a sellout. This Heisey by Fenton piece will be offered again next year in a different color, yet to be decided. As Louise reported, the souvenir was beautiful, as are the Ruby elephant handled baby cups that are available in the gift shop.

The quarterly Board of Directors Meeting was held during the Mini-Show. It was mainly a report of the various committees that had met that morning. Two items of new business will be of interest to members. One was a proposal that the Club had received, relative to a second computer for desk top publishing. Jack Metcalf presented the proposal and led the discussion relative to the workings of the proposed equipment. Further discussion is to be given the proposal at the December Meeting. The second item of new business was the announcement that the property (house) on Church Street next to the HCA office was being offered for sale. This was referred to a committee for a report at the December Meeting.

It is hoped that members give a good response to the December quarterly meeting. This will be a good time for those attending to bring their glass to the museum for the March Benefit Auction. Bob Ryan and his committee are working on some new ideas for this very important fund raiser. January 1, 1989, is the deadline for getting glass in the sale list which will appear in the February issue of the Heisey News.

A report to the many friends of Ray Ziegler, a former Board Member and HCA Treasurer, is very encouraging. Ray is recovering from a stroke he suffered on July 1 of this year. He is still hospitalized at Dodd Hall of the Ohio State University Medical Complex, where he is receiving regular therapy. Although still suffering paralysis on the right side, he is now able to take a few steps with the help of a cane. He is to be released from Dodd Hall shortly and will be moved to Riverside Hospital for further therapy. Address correspondence for Ray to the HCA office, or refer to the Dealer Directory for his address.

HCA is grateful and appreciative to the Bay State and Southeastern Mass Clubs for the sales and goodwill they generated at their shows this year. A final report received from Ann Montague reveals that sales of Heisey Books and gift shop items totaled about \$3,100 from the two shows sponsored by these clubs. In addition, the interest and goodwill dispensed has encouraged these clubs to want to do a repeat performance next year. We look forward to cooperating with these clubs in the coming years. Until next month, Happy Collecting.

ABOUT THE COVER

VARIOUS STYLES OF HEISEY EPERGNES

A HEISEY FACTORY PHOTO

FROM THE DESK OF THE EDITOR

LOUISE REAM

Some explanations are in order concerning the October issue. In the first place, Bob and I do not look like a candy jar and somehow the printer transferred us to page 6, where the other picture belonged. We apologize to Tom Felt for the poor quality of his explanatory pictures about picture taking. The printer did a poor job with these. Sometimes these things happen and by the time we see them it is too late. Our apologies to all of you.

Secondly, the reference to the goblet, - "after 50 years the cutting now has a name" referred to the fact that it was made Ca. 1939, not that it had been in the museum that long. Of course, you all knew that, but you probably wondered what it did mean. Of course, it did say above that it was on a 1939 goblet.

In further looking over the newsletter, I discovered that there is no cordial listed with the #6091 Cabochon pattern. These were made, however, and Russ and I have two in our collection; one with no design and one with Debutante cutting. There is a cordial listed with the #5086 Plantation Ivy stem but it was not shortened as was the goblet, so it looks just like the regular Oxford cordial. I hope that you were able to identify some of your cuttings from those pictures.

.....

I have had calls from people who went out and found some "Zodiac" pieces since they saw the picture and the list on page 2. Most Heisey Zodiac is marked. On coasters and ash trays the mark is almost hidden in the stippling on the bottom, but it is usually there at the heel of Jupiter Pluvius.

We have been busy at the museum with many tours and lots of visitors. We need an additional docent for Monday and Tuesday. Of course, we always would like to have more on the weekends. When Vivian Moore leaves for Florida we'll need another person on Friday. We always hate to see her go because she has been so faithful for the entire 14 years since we opened.

.....

Please read the Christmas Dinner announcement on page 23 and get your dinner reservations in early. We hope to have a record crowd. You will have an opportunity to bid on the animals listed on page two and there will be other entertainment.

Also, read Bob Ryan's announcement of the Auction dates and all of the rules, then get your glass together and send it in as soon as you can. We have listed it as a two day affair but, if we don't get more glass than we did last year, it may be only one day. Support HCA by sending good glass.

.....

We are still working with the glass, putting accession numbers on everything and cleaning the glass and cabinets as we go. This takes a lot of time and we can only work mornings when the museum is closed.

I have been asked countless times how my husband Russ is doing. He is about the same and still is not able to walk alone. He is getting good care and I continued on page 8. . . .



diamonds are forever

More of Starling Burgess and his Marblehead Aeroplane plant: He was the first outside civilian pilot trained by the Wright Brothers, and he opened his own aviation school. One of his extraordinary students was Harry Atwood, from a neighboring town, who gained headlines for Burgess-Wright by swooping over the Harvard-Yale boat race; racing trains and, ultimately, landing on the White House lawn in his Burgess built plane. Burgess designed planes for the Navy and as the war became imminent aeroplane manufacture grew rapidly. The U.S. Army, Navy and Canadian Aviation Corps placed orders, and Great Britain described the plane wanted and it was designed, built, tested and sold in twenty-one days by Burgess who called it "Model O" or later "Burgess-Gunbus". In 1917 Burgess was ordered to the Navy Department in Washington to supervise aeroplane design and construction.

In World War I the Eastern Yacht Club became the station for training seventy-five Naval Reserves in subchasing. Our town backed the war effort with half our young men at war and one and a half million in Liberty Bonds. Scores of planes were turned out for the British and over 400 seaplanes for the U.S.N.. Burgess also produced the cab section for the dirigibles.

The night of the "false armistice" November 7, 1918, a fire broke out at the Burgess factory and, fed by combustible materials, soon devoured the entire plant. Four days later at 4:00 a.m. fire whistles and church bells rang to report the real peace. That fire marked the end of the Marblehead Burgess Aeroplane Factory.

If I could hop a Burgess plane and go to the West coast to see "Mountain Grandma" I might be told about a few nice pieces of Heisey namely; six (6) #1404 Old Sandwich individual ash trays; the #351 Priscilla mustard with lid and spoon (or paddle); a #1503 Crystolite 9½" Leaf relish; a creamer that she reports is double marked on the base, but the mark is overlapping as if it had been double struck; and lastly a choice piece, the very courtly and graceful #1183 Revere 12" Japanese Garden tray, heavily etched with Dragon Flies, Frogs, Waterlilies, etc. I'm sure it is very impressive, plus it has a good home! (Note - we have one of these in the museum.)

From the "Garden State" (nj) "The Scribe" after taking a short respite from her Heisey Hunting was back on the trail, with much 'gusto' and lots of good fortune. Found were an abundance of things, a

few of which I will tell you about this month, with more at a later time. The #1184 Yeoman hotel sugar, covered, in moongleam and diamond optic was discovered in excellent condition. She already has the cream and sugar in flamingo so now has something to search for in the moongleam creamer. Good luck. Yours truly has found, over the years, that if you have patience and fortitude the piece you seek will be found. Maybe not today, this week, or next month but, never fear, it will appear in the least expected place. The second find I'll tell you about is the #1519 Waverly footed creamer and sugar with the Orchid etch - mint!!

"The Felicitous Flamingo Hunter" took a little sojourn out of the Bay State (ma) to attend a learning seminar; she didn't have time while there to do any Heisey hunting as her schedule was hectic. On the way home, while waiting for her plane, she had a little time to spare; a small gift shop was spotted and she went in to browse. Most of the items were the typical gift shop things, writing paper, T-shirts, jewelry, etc., but over on one side was a small section where a few things were placed on consignment, glass and china items.

Among all this was one piece that caught her eye and upon holding it and looking carefully she discovered a small diamond. Of course, the lady didn't know anything about Heisey, because she didn't say a word while wrapping up the #367 Prism Band 1 pint decanter, etched, in crystal with the right stopper. She hasn't found anything for a while so this sort of made up for slim pickins.

"The Buckeye Belles" (oh) came up with a pair of #21 candlesticks and a pair of #1428 Warwick individual candlesticks.

While "Little Colleen" also from the Buckeye state, reports finding the #1540 Lariat sherbet, marked.

"Ole and Minnie" want to say hi! with the #1519 Orchid etch wines, seven (7) of them and, in #1509, also Orchid etch, twelve (12), count them, cups and saucers. Where they find all this Orchid I haven't the slightest, good luck! Vell Ole and Minnie, drop me a line or two, I'll be waiting!

"The Pottery Man" reports finding two (2) #3380 Old Dominion 10oz water goblets with Orchid etch. What is all this with the Orchid; is it everywhere this month?

"My Sharp eyed friend" came up with the Puntzy Band Cruet and the #1295 Beaded Swag sugar and creamer.

That "High Steppin Couple" from the Bay State (ma) have a #500 Octagon sugar in Marigold.

"The Wiz" is up to his old tricks; I wonder if he has a magic wand or maybe a tall black silk hat that he pulls Heisey from? #3389 Duquesne stem with the Chintz etch and a #433 Greek Key Claret. Hmmm very nice!

"A Friend in deed" told me about the #3390 Carcassone cigarette holder in, ready, Cobalt and the #5041 Athena coaster. That's pretty nice also.

As for Yours Truly, perhaps I could scout up a pair of #1 Georgian 11" candlesticks, a #1404 Old Sandwich Cobalt tumbler, the #1503 crystolite mustard and a quite lovely #1469 Ridgeleigh perfume, in mint condition.

Please won't you all drop me a short line, in care of HCA or even to me personally if you wish. Your input is desperately needed. Health, Happiness and good Hunting -- Janet Caswell

HEISEY BY IMPERIAL - NO. 1519 WAVERLY
EPERGNETTES

BY TOM FELT

Back when Imperial was in the process of selling out their glass archives, just prior to going into final bankruptcy, we made a number of trips to Bellaire and each time we found some real surprises, things that we had not previously known that Imperial had made. Since none of these items are in the book, Heisey by Imperial, I thought it might be interesting to start sharing some of them and to encourage the rest of you to let me know about some of your own finds in this particular area of collecting. As you may already know (or suspect) Heisey by Imperial is rapidly gaining in popularity, especially in the case of the animals, though by and large it is still quite affordable, even in the case of items which were sometimes in production for a far shorter period than their original Heisey counterparts.

The Waverly epergnettes pictured are not in themselves, of course, particularly remarkable. The 5" epergnette was not only made by Heisey from 1949 to 1957, but was reissued by Imperial from 1957 to 1976 -- almost 27 years of continual production, which makes them pretty easy to find. The fact that at least one of the examples pictured is not marked, also means that, ordinarily it would be impossible to tell which of the two factories made them, since the quality of Imperial's glass in the 1960's and 1970's was easily comparable to Heisey's in the 1950's. Even the fact that the other two epergnettes are faintly marked with the Diamond H isn't proof positive of anything, since Imperial continued to make pieces which were marked as late as January 1, 1968. So how can we be sure that there are Imperial?

Well, to begin with, we bought them at Imperial. But, of course, that isn't conclusive, since Imperial had a lot of original Heisey pieces in their archives, including a complete line of samples from the final catalogue.

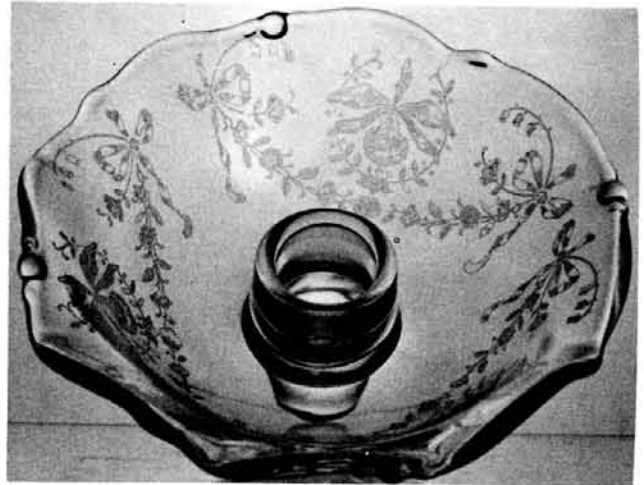
Actually, what proves them to be Imperial is also what makes them of special interest; the fact that all three epergnettes are etched. Though again, if you look only at the first two photographs, even that would not necessarily be absolute proof. According to available records, we have no evidence that Heisey ever offered any epergnettes with an etching, but that does not preclude their having experimented with either of the two very popular etchings shown, the No. 507 Orchid and No. 515 Heisey Rose Etchings. Other epergnettes (including the 5½" deep epergnette) have been reported etched and one is pictured with Heisey Rose etching in Gene Florence's recent book, Very Rare Glassware of the Depression Years. In the absence of any conclusive proof one way or the other, one can only assume that they were in fact experimental or non-production pieces produced by Heisey.

In the case of the trio of epergnettes pictured, however, one additional argument can be raised and those of you who are familiar with glassware produced by companies other than Heisey or Imperial have probably already figured out what it is; the third epergnette, which was purchased at the same time and which also has an etching, is decorated with Cambridge's highly popular Rose Point etching! As you may know, Cambridge went out of business in 1954 and in 1960 Imperial purchased their molds, etching plates, etc.

much as they had done a couple of years earlier with Heisey. It was probably sometime between 1960 and 1962 that the epergnettes in question were made, most likely as feasibility items, since we have no indication that they ever went into production.

So, if you see an epergnette with Heisey Rose or Orchid etching, how can you be sure what you are buying? The answer is that you probably can't, but more importantly, that you probably don't need to worry about it. You will have a highly unusual addition to your collection and, whichever factory made it, a fine piece of glassware.

1



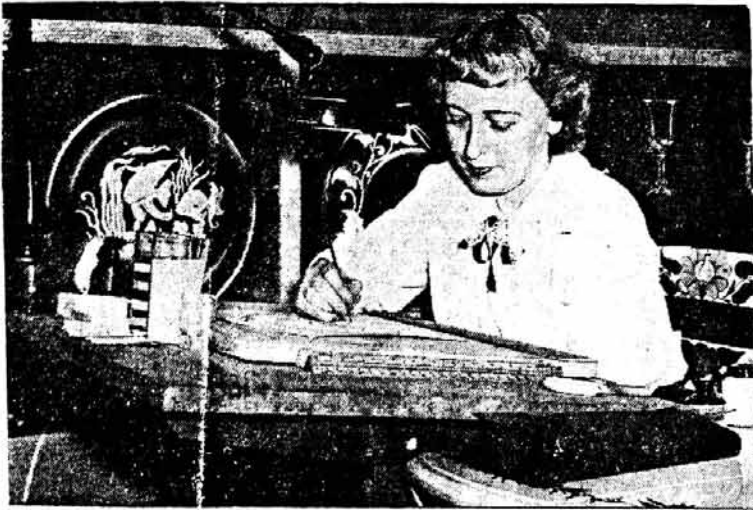
2



3



Mrs. Phillips, Newark, Wins National Attention With Her Design For China



515 HEISEY ROSE



MRS. PHILLIPS, NEWARK, WINS NATIONAL ATTENTION WITH HER DESIGN FOR CHINA

THE NEWARK (O.) ADVOCATE AND AMERICAN TRIBUTE
WEDNESDAY, FEBRUARY 9, 1949

BY HAZEL KIRK

GRAY-LURE, a new, modern dinnerware designed by a Newark woman has won her national attention.

Mrs. Jane Phillips, 501 Moull Street, set the recent Gift Show in Pittsburgh, agog with her exhibit of an original design in dinnerware. It is intended for the use of Newly married couples, living on a budget and the dishes conform to the modern streamlined homes.

After the show opened, Mrs. Phillips was deluged with publicity and orders from manufacturers anxious to secure her future work.

So engulging were the results of the show that Mrs. Phillips has resigned her position as a designer for A. H. Heisey and Company and is beginning work as an independent artist.

The new dinnerware, which is being ordered now by most of the retail stores in the country, will not be ready for delivery until May.

When asked about Gray-lure Mrs. Phillips said it was of a soft gray porcelain, with applied decorations suggestive of handpainting. It has an embossed edge. She made the original design for the eye-catching new contours and also designed one of

the decorative patterns. Two others were decals. At the show seven patterns of decorations were exhibited including the gardenias, and wildroses.

Trying to describe the plates Mrs. Phillips said "they are an optical illusion. I took a square, rounded it and imposed a circle." Cups are large and graceful and all strive for the modern look. Twenty piece starter sets will retail for less than \$10 and 52 piece sets will be under \$30.

Mrs. Phillips, her mother and her young son, Douglas, came to Newark three years ago from Wheeling, W. Virginia. She was a designer for the Fostoria Glass Company in Moundsville and came to Newark to take a similar position with the Heisey Company. At the recent show in Chicago, Heisey displayed for the first time a new pattern by Mrs. Phillips, called the rose pattern. (Heisey Rose).

In her spare time she did some designing for the Crooksville China Company and to meet a need they had found existed she designed Gray-lure for them. It proved a sensation at the Gift Show.

The creator was interviewed by Mademoiselle for Living, a quarterly publication by Mademoiselle on interior decorating and by the Retail Daily Trade.

Mrs. Phillips is a graduate of Ohio University in Athens, the Parsons, N.Y. School of Fine and Applied Arts and the Paris Fine Arts School, where she remained for one year.

She will continue to design for glass as well as china but finds that work for china is much more flexible as the production restrictions are fewer.

HEISEY DESIGNERS

WALTER VON NESSEN
JANE PHILLIPS
HENRY DREYFUS
ROYAL HICKMAN
RAY COBEL
SASHA BRASTOFF
WALTER PFEIFFER

CARL COBEL
JOSEF O. BALDA
ANDREW J. SANFORD
RODNEY C. IRWIN
CLYDE S. WHIPPLE
NED NEWMAN
HORACE KING*

* HORACE'S NAME WAS OMITTED
LAST MONTH

Nov. 5, 6	All Glass Show Connecticut HCC	Natl. Guard Armory Southington, CT
Dec. 3	HCA Christmas Dinner	Best Western Inn Newark, OH
Dec. 4	Open House	Museum Newark, OH
March 10, 11	Museum Benefit All Heisey Auction	Apple Tree Auction Center Newark, OH
June 15 - 18 1989	19th. Heisey Convention	Heisey Collectors of America Newark, OH

CLUB NOTES

BAY STATE HCC

This is your Bay State reporter from the Minute Man city in Massachusetts. I am reporting on all the news that went on during the first meeting of the new season.

The meeting was called to order at 7:45 p.m. by President D. Young with five guests present. Two of the guests were all the way from Florida and they were Eileen and Raphael Wise. What a surprise, we really have missed them!

The topic of the evening was our glass show that was held in April and May with various reports given. Gary Olson is the new show manager for our next show. Good Luck Gary.

The program for the evening was "Bring and Brag", those finds that were bought over the long hot summer. The glass that was brought ranged from very early to the glass which is being made today. All in all, there were 50 to 60 pieces shown by David Steer, our own show and teller, as always he did a very good job.

The refreshments for the evening were provided by Mary Emma Foster, who did a great job.

As always when it comes to show and tell, our members are all a class of knowledgeable collectors and dealers. We always come up with some pretty good finds. Keep it up, you Bay Staters!

George Gleason, Scribe

HEISEY COLLECTORS OF TEXAS

September found the Heisey Collectors of Texas in their bimonthly meeting at the home of Roger and Erma Hulslander in Mesquite, Texas. Before the meeting was called to order, members were ooh-ing and ah-ing as they inspected two beautiful china cabinets recently added to the Hulslander's home. One cabinet was a large and lovely English model made of light Oak with recessed lighting and wide bevelled glass in the doors and sides. All of the glass shelves were completely filled with Heisey glass of every description. The other cabinet was built-in covering one wall from ceiling to floor. It was, again, light oak with three sets of double doors. The center section had antique leaded stained glass doors. The two side sections had clear glass doors. (The better to view the many Heisey pieces that filled the glass shelves.) This case was well lighted and had small cabinets in the base for storing copies of the Heisey News and the many books on Heisey and Imperial owned by the Hulslanders.

Before the business meeting began, two new members were welcomed into HCT. They were Chevy and E.G. Crandell of Dallas. During the business meeting, members heard the Hulslander's plans to present an educational display of Heisey glass at the Metroplex Depression Glass Show in Arlington, Texas. The educational display will feature all the colors of glassware Heisey produced. Later in September, there will be a Fostoria Show in Rio Vista, Texas. Several HCT members will either be helping with the show or have a sale booth. The Hulslanders will maintain an information table along with their sale booth. The information table will have pamphlets about Heisey Collectors of America and the Heisey Museum. It will also have fliers inviting inter-

* ested people to join Heisey Collectors of Texas. A display of special pieces of Heisey glass in crystal will be on the table to help stimulate interest.

* Following the business meeting, the program was a very good movie on Heisey glass. The overall coverage refreshed our memories on many technical points to look for when shopping for our Heisey treasures.

* The Show n' Tell session of the meeting found us viewing a 5" oval lemon dish of the Yeoman pattern. It had a lovely basket cutting. We were then dazzled by a dolphin footed Empress nappy in Alexandrite.

* A covered dish dinner, using Heisey glassware, was served to the seventeen attending members. This brought an end to a most enjoyable Happy Heisey Day.
* Madeline Sullivan

YANKEE HEISEY CLUB

* The September meeting of the Yankee Heisey Collectors was held at the Bean home in Milford, Massachusetts. New officers were elected for the 1988-1989 year.

- * President - Betty Bean
- * Vice President - Donald Bean
- * Secretary - Phyllis Zona
- * Treasurer - Dr. Edward Morin

* Plans were made for distributing cards to local shows and dealers shops, inviting people to become members of any of the Massachusetts Heisey Clubs. The invitations will be coordinated by Charles Horsfall, past president of the Yankee Heisey Club.

* With donations of glass, we held an in-club auction and the proceeds will be donated to HCA. Dr. Morin was our auctioneer and did a fine job in extracting money from the membership. (Dr. Morin is a dentist!)

Don Bean, Reporter

GATEWAY HEISEY COLLECTORS CLUB OF PITTSBURG PENNSYLVANIA

* On the beautiful Sunday afternoon of September 17, 1988, the Gateway Heisey Collectors Club brought covered dishes to the home of Earl and Joanne Autenreith for our summer picnic. The Autenreiths' garden and porch were a perfect place for our picnic.


* Guests for the picnic were Phyllis Mae and Jack Habbert, Bob and Marge Wright, and Robbie Stoll, who enjoyed watching the gold fish in the garden pond. Amy Autenreith helped her parents with the picnic preparations.

* We all enjoyed the beautiful pieces of Heisey which were brought to show and tell.

* Before we knew it we were watching show and tell at the home of Phyllis and Harry Freier on October 1, 1988, at our regular October meeting. The Gateway Heiseytes like to eat, so a chicken dinner was enjoyed by those present.

* We have several of our members on the injured list. Bob and Mary Hallborg were in an automobile accident a few hours before our meeting. Mary spent several days in the hospital. Phyllis Goldstein had a bad fall this summer, when the elevator stopped 8" to 10" above the floor. Eleanor Larkin is not really on the healthy list either. Joe and Laverne Lokay's son is battling Leukemia. Earl Autenreith, our president, is on the improving list. Our members do have their problems.
* continued on next page

CLUB NOTES, CONTINUED

The display committee, Marv Hallborg and Margaret Reed, was commended on the clubs' display, "Opening Ceremonies", at the Heisey Collectors of America Convention in June. A vote of appreciation was also given to Bob Hallborg for the bleachers and  sign he made for the display. Rick Stoll's Heisey Games Flag was also appreciated by the club. Everyone was proud of our display.

A program on Heisey candleblocks was presented by Phyllis Freier. A lengthy discussion ensued. A jumbled word quiz kept the members present busy for a while. Margaret Reed and Rick Stoll were the winners.

A good time was had by all at the picnic and the October meeting. We're all looking forward to the November meeting. If you are in the Pittsburg, Pennsylvania area, and would like to join us, please contact us via the Heisey Collectors of America in Newark, Ohio.

Phyllis Freier

HEISEY COLLECTORS OF CENTRAL INDIANA

The first meeting of Heisey Collectors of Central Indiana was held September 24, 1988 in the Warren Library of Indianapolis. During this first meeting several people expressed interest in joining the National Club, enclosed you will find the names and checks of the people wanting to join HCA.

At this first meeting there were 29 people present. A motion and second was made that we become affiliated with Heisey Collectors of America, Inc., and the vote was 29 for and none against.

If you have any comments or suggestions about our next meeting please write me at the above address or call 1-758-5767 after 6:30 weekdays or anytime on the weekends.

Kim Carlisle

LETTERS, WE GET LETTERS

Just a short note, don't want to take too much of your time if it's like mine, the days aren't long enough.

Last Friday everything I touched turned out like what makes the grass grow green. Then, when the Heisey News came in the mail, I stopped making a mess of things and read the "news".

Your column really helped me out of the doldrums. About a #300 Peerless punch cup in Flamingo; as it happens I had just found one about three weeks ago, the first punch cup I've been able to add to the collecting since 1986. I now have 58 different ones.

To your knowledge, are there many punch cup collectors? I would like to get in touch with them if possible.

Again, thanks a lot for making my day.

Don Pope
Florida

If any punch cup collectors want to get in touch with Don, send a letter to him C/O HCA and we will forward it. LR



300 Peerless

This is the punch cup mentioned in the letter.

Dear Members,

About twelve or fifteen years ago, or whenever The Sheraton Inn opened, I went to the management and made arrangements for The Sheraton Inn to be H.C.A. Convention headquarters, and I also reserved a block of one hundred rooms. I have made reservations for our members coming to the convention each year since that time. I'm happy to say there has never been one single foul up. We have had a few complaints, like from people who are on the second floor hearing music from the bar below, but for the most part, everything has gone very well -- until this year.

We got one letter from a member who complained about the quality of the show and Convention, and the way reservations were handled.

As a result of this one letter of complaint, the Executive Board voted that no more room reservations will be made for our members. I think it is a shame that one person can cause this convenience to be taken away from our membership.

I would be very happy to continue making reservations if so desired and if you feel that it was a service and would like it continued, please write to our President, Bob Rarey, and voice your concern. Please do this immediately since I start making reservations in January.

Bob McClain

continued from page 3.

visit him every day. My sister, Ruth, is also doing well now. Thank all of you for your concern about both of them.

Christmas is coming too fast. Next month we'll have a list of items for sale so that you can order gifts from us.

Louise

DECEMBER DUES REMINDER

Since we have so many December renewals, you could save HCA a lot of expense by mailing your dues early, before I notify you the last of November.

Check your membership card and send your renewal payment soon.

Thank you,
Mary Holland
Membership



MAIL EARLY, AVOID THE RUSH

LOWER ROSES: FROM 6 to 60

DECATUR DAILY DEMOCRAT, DECATUR, INDIANA
THURSDAY, JUNE 9, 1988

By MELANIE McCULLOUGH

The rose garden at First United Methodist Church on Monroe St. only fills a small corner, but it is a corner that overflows with splashes of bright reds, yellows and pinks.

Despite the busy street nearby, the garden seems tranquil with the lacy-white lawn furniture sitting against a background of multi-colored roses. The man responsible for this scene is 84-year-old Joe Lower.

Lower said he has always loved roses and enjoyed keeping busy during the summer by tending the garden he began 15 years ago at the Methodist church.

He started growing the garden after he and his wife returned to Decatur. "My parents were originally from here," Lower said. "I came home on vacations throughout the years. I kept in touch with Decatur."

"My wife has lived in Decatur and Bluffton. We had attachments here and after we retired, we moved back."

Growing roses was a hobby for Lower, one he said he didn't know much about at first. "It was a hobby," he said. "I didn't know anything about it. We lived in New York for many years and I didn't have anywhere to grow roses."

In New York, Lower worked 40 years as a manager for the Heisey Imperial Glass Company. But when he moved to Decatur after his retirement, Lower found a place to grow the flowers he loved most - in his own yard.

Lower said his interest in roses grew out of his wife's love for flowers.

His wife, Mary Lower, said she liked flowers because "they're beautiful. I like flowers of any kind. After we were married, Mr. Lower kept (giving) me roses and so, he started growing them and he's been pretty successful at it."

Lower said he learned how to care for roses by reading books and magazines, and of course, by trial and error. "You learn the hard way in some cases," he said. "You make some mistakes, --(but) it's a lot easier now."

Lower said he lived next to a parsonage. After his roses began growing, the pastor noticed them one day and was so impressed, he asked Lower to grow a rose garden for the church.

Lower started the garden with only six roses. Now, it has grown to include 60. When he first began the garden, Lower said he practically had to grow the roses from scratch with only the roots and the stems. Now, any new roses he plants are potted, complete with blossoms.

His favorite flowers in the garden include the Tiffany rose, which is a soft pink color, and the Double Delight rose, which is a white flower with its petals outlined in bright red-violet.

Lower's garden also includes three pieces of lacy-white cast-iron lawn furniture, which was his wife's idea.

"People have taken a lot of pictures there - wedding pictures," his wife said. "They take their children there (too)." Lower said some people have even come to meditate.

Lower begins work on the garden each year in May and tends to it until November. "They (roses) require a lot of care," he said. But Lower doesn't mind the time it takes to care for the garden.

"It's a release and a challenge," he said. "I have roses at home, so between the two I keep busy in the summer."

Bill Moon, pastor at First Methodist Church for three years, said that in the past Lower would spend every day working in the garden, some times as much as 10 hours a week.

Moon described Lower as "a gentle, caring, committed, Christian man," and said his character was revealed through his work with the rose garden.

Lower said he looked back on his work as an enjoyable experience and would not soon tire of it. "It's been very pleasant," he said. "I'll never get bored with it. It's interesting."

Ed. Note: Joe Lower was in charge of Heisey's New York office for many years. After Heisey closed he stayed there for Imperial. Bea Bowers, a member, sent us this article and we found it interesting.



**84-year-old Joe Lower in rose 'corner'...
...It's been pleasant; will never get bored'**

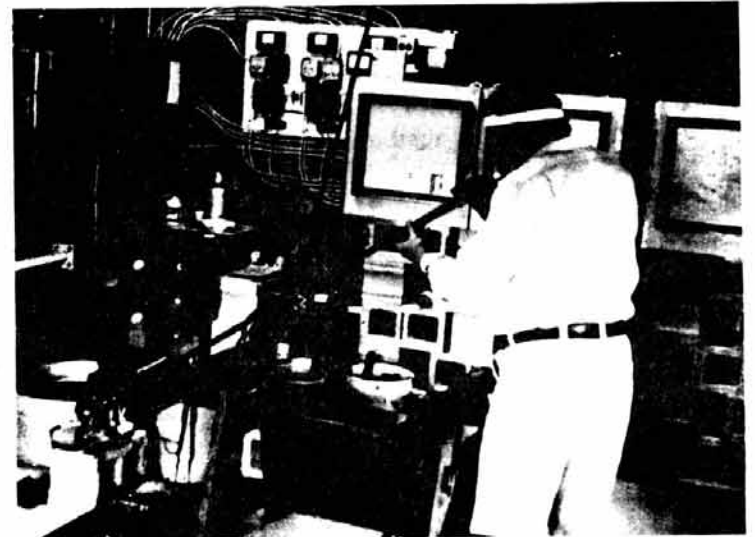
IN MEMORIAM

James (Jim) Speelman of Newark, Ohio, died on September 15 after a long illness. He was a voting member of HCA and had served as chairman of the Warehouse Committee. He was also a member of the Far East HCC. He is survived by his wife, Virginia, and several children and stepchildren. Our sympathy to Virginia and the family.

Several months ago HCA member, Charlotte Linda-mood of Bellbrook, Ohio, died. Somehow this has not formerly been mentioned in Heisey News. Charlotte was a longtime dealer in Heisey Glass and well known throughout the Heisey Collecting world in this part of the country. Our sympathy goes to her husband and the rest of the family as well as to her host of friends.

W. E. PORTER

"ONE OF A KIND" MOUTHBLOWN ART GLASS AND GLASS PAPER WEIGHTS



W. E. Porter is a former A. H. Heisey glass-worker. Born and raised in Newark, Ohio, he first worked at the Heisey glass factory at age 15 in 1943. After service in the U. S. Navy, he again worked at Heisey's from 1946 until 1951. He has been handcrafting mouthblown art glass and paperweights since 1975 at "Story Book Crafts Gallery" in Enon, Ohio.

The glass (consisting of sand, soda ash, calcium, sodium nitrate, borax and other ingredients) is melted in a furnace at 2,000 degrees to 2,300 degrees.

When the glass is of a consistency similar to very hot, runny taffy, it is "gathered" out of the furnace by using either a metal blowpipe or a metal rod. This molten glass

is worked to the desired shape by blowing and by using various metal and wooden hand tools. Repeated heatings in the furnace to shape the glass are necessary since the glass cools and hardens quickly. No molds are used. All color is melted glass, worked into the base piece.

When the item is completed, it is tempered in an annealing oven by a process of gradual heating and cooling.

The bottom of each piece is then ground smooth. On some pieces part of the "punty" or "pontil" mark is left to further indicate a hand made item.

Each piece has engraved on it: "WE.PORTER" and the year made.

We have just received a new supply of beautiful paperweights and vases from Mr. Porter. It is hard to buy these without seeing them and, since there are no two alike, pictures do not help much in mail ordering. If you are in the area stop by and see them. They make lovely gifts.

AUCTION LIST FORM

Lot#	Item#	Pattern#	Pattern Name	Size	Item Description	Cutting/Etch	Color	# In Lot	◇	Damage

BLOWN GLASS - UNMARKED EXCEPT AS NOTED



516/1 - 7" Moongleam, Flamingo & Hawthorne.



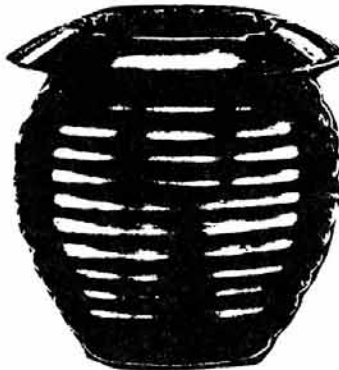
2517 Teardrop, 9½" & 12" Moongleam, Flamingo & Hawthorne.



3355 Fairacre, Crystal with Moongleam or Flamingo stem and foot, Marked.



516/2 - 6" Moongleam, Flamingo, & Hawthorne.



3559 Plateau, Crystal, Moongleam, Flamingo, Hawthorne & Marigold.

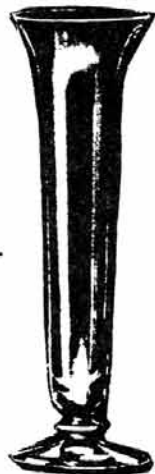


4216 Octagon, 9" Crystal, Moongleam, Flamingo, Sahara, Alexandrite.



516/3 - 9" Moongleam, Flamingo.

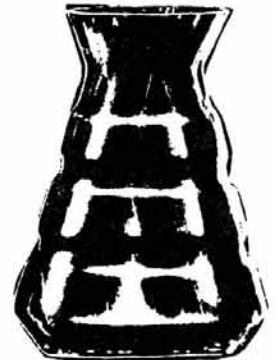
The three above vases were all made in the same mould.



4202 Bamboo, 6", Crystal, Moongleam, Flamingo.



4191 Olympia, Crystal, Moongleam, Crystal w/Moongleam base - Sizes 4", 6", 8", 10", 12", Marked.



4217 Frances, Crystal, Moongleam, Flamingo, Marigold.



4157 Steele, Rose bowl, 8", Crystal, Moongleam, Flamingo, Hawthorne, Sahara. Also known in Tangerine Slag, Tangerine w/yellow rim.



4162/1 Genie in Moongleam & Flamingo



4162/2 Genie in Moongleam & Flamingo



4162/3 Genie in Moongleam & Flamingo



4162/4 Genie in Moongleam & Flamingo

All Four of these were made from the same mould.



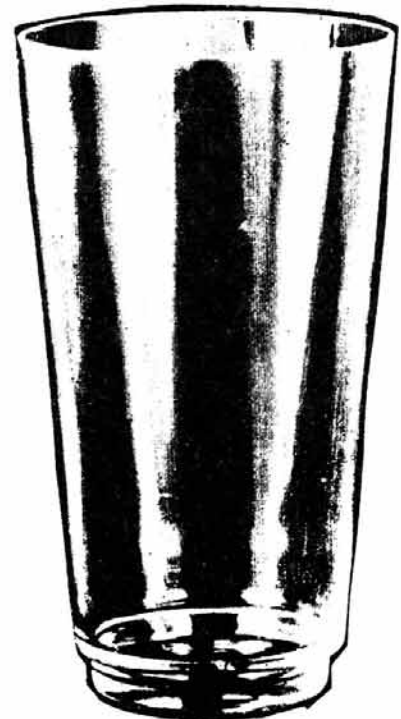
4159/1 Classic, 9" Moongleam & Flamingo.



4160 Ellen, Moongleam & Flamingo.



4196 Rhoda, 10" Flamingo, Moongleam (Marked).



#4057 Cecilia, plain 10" and 12", Crystal only, comes with many beautiful cuttings. Made in Zircon with S/O, clear and Zircon. In later years a smaller size was made in Amber and Dawn.



4203 Emogene, Crystal, Moongleam, Flamingo & Hawthorne.



4204 Joyce, 9" Crystal, Moongleam, Flamingo, Hawthorne & Marigold.



4205 Valli, 8" Crystal, Moongleam, Flamingo, Hawthorne, Marigold.



4206 Optic Tooth, 8", 10" & 12", Crystal, Flamingo, Hawthorne, Marigold, Crystal w/Moongleam foot, Hawthorne & Moongleam base.



4207 Moderne, Crystal, Moongleam, Flamingo, Marigold.



4209 Oval, 9" Crystal, Moongleam, Flamingo, Marigold, Sahara.



4209 Oval with #1 Sports Etching. Crystal, Moongleam, Marigold & Sahara.



4211 Lilac, 8½" Crystal, Moongleam, Flamingo, & Marigold.



4214 Elaine, 7" Crystal, Moongleam, Flamingo & Sahara.



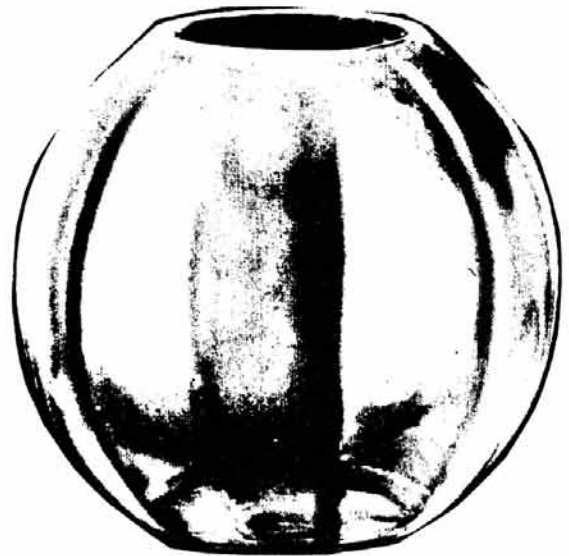
4215 Dorothy, Crystal, Moongleam, Flamingo, Marigold.



4218 Marilyn, 9½" Crystal, Moongleam, Flamingo.



4219 Lucile, 8½" Crystal, Moongleam, & Flamingo.



4045 Ball, sizes 2", 4", 6", 7", 9", 12", Crystal, Moongleam, Flamingo, Sahara, Cobalt, Alexandrite, & Zircon. Made in Wide Optic and Crystal and Zircon in Saturn Optic.



4220 Janice, Crystal, Moongleam, Flamingo, Sahara, Alexandrite, size 4½" & 7".



4222 Horseshoe, 6" Crystal, Moongleam, Sahara.



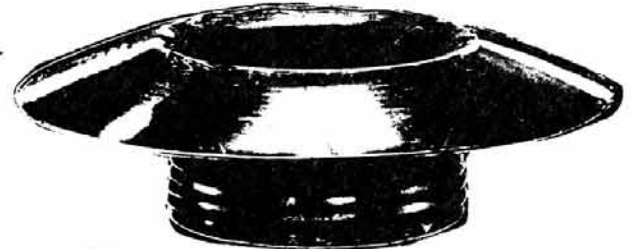
3480 Koors, 7" Moongleam, Flamingo, Hawthorne. Blown Floral Bowl



4223 Swirl, 12" Crystal, Moongleam, Flamingo, Sahara, Cobalt.



4224 Ivy, Crystal, Moongleam, Flamingo, Sahara, Cobalt & Tangerine.



2516 Circle Pair, Crystal, Moongleam, & Flamingo. Blown Floral Bowl



2517 Teardrop Floral Bowl, Moongleam, Flamingo & Hawthorne.



Favor vases are made in Crystal, Moongleam, Flamingo, Sahara, Cobalt and Tangerine. Be sure these are Diamond Optic, although a few Crystal ones have been found in Spiral Optic.



#1183 Yeoman 12" Celery, #729 Fairfield Cutting.



#1020 Phyllis Cream & Sugar. #724 Daffodil Cutting. Comes in Crystal, early Moongleam, Moongleam, Flamingo & Vaseline



#1185 - 10½" Handled Sandwich Plate, cut #729, Fairfield Cutting.



#1185 - 10½" Handled Sandwich Plate, #725 Eldorado Cutting



#11 Floral Plateau and Block with #741 Chantilly Cutting.



#362 - 7 oz Syrup Cut #729, Fairfield



#485 - 4 3/4 oz. Cologne, Cut #730, Hexagon stem.

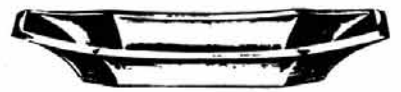
#468 Octagon with Rim - Patent No. 47118 - All Have Ground Bottoms and are Marked.



4½" Nappy



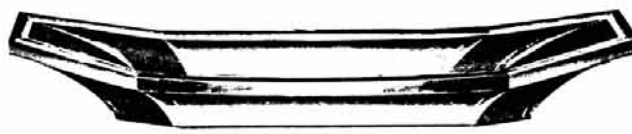
9" Celery Tray



7" Pickle Tray



8" Nappy



12" Celery Tray

HEISEY COLLECTORS OF AMERICA, INC.

MARCH 10 - 11

ALL HEISEY - Benefit Auction



The Museum Benefit Auction will be held March 10 - 11, and again will be at the Appletree Auction Center which has been completely remodeled and is larger, and finer in every respect. All that we need for a very successful benefit auction is for everyone of you to send, as a donation, just one piece of good Heisey glass for this auction. Can you imagine what a tremendous success it would be if we had a 100% participation? We will gladly accept all donations of Heisey Glass for the auction, and each family may consign 12 lots. All glass should be damage free and clean. Please deliver your glass or ship it to the Heisey Museum clearly marked for the March Auction. Include a list of the items in the box and keep a copy of the list for your records. All glass that is not Heisey will be returned to you. Please, no Verlys or Imperial glass for this auction. Verlys by Heisey is acceptable, of course.

A sample form is in this issue for your use in listing your glass on Page 10. Please note the information as listed on the sheet.

We will again have absentee bidding. Please, everyone participate either by supplying glass for the auction, or bidding, or do both. Everyone had a good time last year as there were a few surprises as promised. I don't know about the surprises for this year, but you know me, you can never tell what I am going to do. Come and see what's happening; there will be laughs and some great glass, that I can assure you.

Don't hold back, send great items like last year. We really had some beautiful and rare pieces and there were plenty of bargains and some real profitable items. There are always record prices for Heisey at this auction so don't miss out. Get your consignments and donations in early. I'll bet if you all really tried we could have at least fifty donations at the Museum by the Christmas Dinner.

Please use the consignment sheet. As for those items that you want to donate, just mark them donation, and put them at the bottom of your listing, if you are consigning items also.

Remember, this is your club; you are the only ones who can make the club's activities successful - participate!!

Glass will be sold in the order it is received.

If you'd like to help at the auction, let me know. We'll have assigned hours for helpers so no one gets overworked.

Bob Ryan, Chairman 513-433-6289
C/O HCA
P.O. Box 4367
Newark, OH 43055

REMEMBER THE FOLLOWING:

The same policy as the last few years will again be followed. LIMIT IS (12) LOTS PER FAMILY (excluding donations). Items such as 8 goblets or 12 plates together would constitute one lot. Any consignments OVER 12 lots will be considered as donations. The consignment fee remains at 20% with a \$5.00 MINIMUM per lot. HCA receives the 20% selling fee. Please consign only Heisey or Verlys by Heisey. NO IMPERIAL, PLEASE.

The Annual Christmas Dinner and Quarterly Meeting on December 3 would be a good time to bring your consignments to the Museum in the afternoon, or after the dinner, and avoid the Christmas rush. DEADLINE FOR GLASS IS JANUARY 1, 1989.

1. Donations - Full value tax deductible.
2. Consignment - You receive a check for 80%. The HCA, Inc. receives 20%. These proceeds support your museum.
3. Glass must be in our possession by JANUARY 1ST.
 - a. Ship your glass NOW to:
HEISEY COLLECTORS OF AMERICA, INC., 169 West Church St., Newark, OH 43055



See Form on Page 10.

JEAN & DON PARRETT
4995 MAPLE DALE ROAD
JACKSON, MI 49201

PH: 517-784-7319
& RECORDER
P & I EXTRA

1469	Ridgeleigh 6" square plates (8) . ea	\$ 28.00
1469	Ridgeleigh 7" square plates (6) . ea	30.00
1469	Ridgeleigh 8" sq. plates rare, #602 Simplex etching (9) ea	40.00
1469	Ridgeleigh ½ gal ice jug, straight	215.00
1469	Ridgeleigh Ind. salt, square (12) ea	12.00
1469	Ridgeleigh Bridge ash trays set of 4	45.00
1469	Ridgeleigh Triangle jelly, 3 hdl'd	38.00
1469	Ridgeleigh Ind. oval jelly (6) . ea	12.00
1469	Ridgeleigh cruet & stpr, 3 oz . . .	38.00
1469	Ridgeleigh large round punch bowl	195.00
1469	Ridgeleigh round punch cup (14) . ea	12.00
1469	Ridgeleigh 1½ oz bar (3) ea	22.50
1469	Ridgeleigh cov'd marmalade	75.00
1469	Ridgeleigh cone beverage cup (14) ea	12.00
1469	Ridgeleigh cov'd mustard	45.00
1469	Ridgeleigh cone salt & pepper, chrome tops, (2 pr) ea	37.50
1469	Ridgeleigh large creamer	17.50
1469	(Ridgeleigh bk. #167) cov'd cigarette holder, round, rare	135.00
1469	(Ridgeleigh bk. #20) 14" floral bwl	75.00
1469	Ridgeleigh low ft'd 8" compote . . .	50.00
1503	Crystolite 4" coaster (8) ea	9.00
1503	Crystolite cov'd shell candy	35.00
1503	Crystolite hurricane candle hldr base pr	45.00
1503	Crystolite cruet	37.50
1503	Crystolite 8" condiment tray	35.00
1503	Crystolite 10" low flared floral bwl	32.50
1503	Crystolite 5" hg 2 end lipped compote	45.00
1503	Crystolite 3 lt candle hldr	25.00
1540	Lariat 8" ftd vase, floral decor . . .	37.50
1540	(Lariat bk. #26) 10" (loops up) demi torte plate	45.00
1540	(Lariat bk. #57) 10½" salad bowl . . .	50.00
300	Peerless toothpick	40.00
1280	Winged Scroll toothpick, Custard . . .	120.00
1404	Old Sandwich bar glass, Flamingo . . .	85.00
1485	Saturn toothpick (4) ea	25.00
1225	Plain Band ind. small decanter (2)ea	20.00
300	Peerless molasses, good top	55.00
300	Peerless punch cups (2) ea	10.00
300	Peerless finger bwl (2)-plate (1) all	35.00
1201	Fandango 5" nappy, (very good) (6)ea	12.00
341	Puritan ind. salt, scalloped tp(6)ea	10.00
341	Puritan master salt, plain top	40.00
352	Flat Panel 1½ oz cov'd lavender jar	50.00
393	Narrow Flute cov'd mustard	37.50
1235	Beaded Panel & Sunburst 2 oz cruet/stpr	42.50
1235	Beaded Panel & Sunburst 4 oz cruet/stpr	37.50
1485	Saturn 3 oz cruet & stpr	40.00
300½	Peerless 4 oz punch cup (8)	12.00
407	Coarse Rib low compote, Flamingo . . .	28.00
354	Wide Panel ftd cr/sug, Flamingo . . .	40.00
1485	Saturn cr/sug, ball handles, Crys pr	75.00
393	Narrow Flute cov'd sugar, Crystal . . .	25.00
1401	Empress cr/sug, Sahara pr	50.00
300½	Peerless sugar ftd, Crystal	17.50
4044	New Era 5 oz parfait, ftd (5) ea	17.50
4044	New Era 6 oz champagne (6) ea	12.00
3304	Universal 3 oz wine, #462 Fox Chase Etch (4) ea	65.00
3368	Albemarle sherbet #867 Chateau cut	32.50
1184	Yeoman 9 oz goblet, D/O	10.00

1401	Empress 13" celery w/cutting, Mnglm	32.50
1425	Victorian 12" celery	35.00
4044	New Era 11" 5 comp. relish	35.00
1401	Empress 8" sq. plate, Sahara (8) . . . ea	15.00
341	Williamsburg 11" dinner plate, some scratches	15.00
341	Williamsburg 15" ice cream tray, oval	95.00
341	Williamsburg 6" diam. handled ice tub	48.00
1519	Waverly 14" ftd cake plate	75.00
1506	Whirlpool 12" floral bowl	48.00
1506	Whirlpool 3 lt candle holder pr	70.00
1489	Puritan 1 lt candle blk, polished . . . pr	40.00
4044	New Era 2 lt candle hldr, no bobs . . . pr	48.00
114	Pluto 1 lt candle hldr, Flamingo . . . pr	38.00
301	Williamsburg 2 lt #342 Flower eperg- nions, low base 4" C prsm candelabra (1)	155.00
301	Williamsburg 2 lt #342 Flower epergnions, Hawkes sterling low base candelabra, 4" triangle spearhead prisms (1)	225.00
17	Classic 1 lt 8" C prisms candelabra, 16" hg. pr	495.00
300-1	Williamsburg 1 lt 6" C prisms candela- bra, 12" hg. pr	325.00
300-2	Williamsburg 2 lt 6½" C prisms candela- abra, 16" high (1)	350.00
1405	Ipswich 1 lt 4" A prisms with candle cups pr	225.00
341	Williamsburg 4 oz cov'd horseradish . .	60.00
341	Williamsburg cov'd butter	85.00
1200	Cut Block cov'd butter	95.00
8044	Zeisel 16 oz rd. decanter w/stpr, "EBR" Mono	65.00
1425	Victorian ½ lb. cov'd butter	75.00
300	Peerless 10 oz catsup & stpr bottle . .	100.00
341	Williamsburg 6 oz cherry jar & stpr. . .	75.00
417	Double Rib 8" hg basket, Crystal	65.00
3344	Carolina 9 oz goblet #160 Osage etch (2) ea	15.00
305	Punty & Diam. Point small souvenir pit- cher, "freeport", custard (1)	30.00

* * * * *

PRICES REALIZED FROM SOUVENIR DINNER AUCTION

* 1988 Souvenir Ruby Mug - Frosted Hnd	\$130.00
* Amber Flying Mare - On bust off	327.50
* Amber Flying Mare - lots of damage	65.00
* Set of Amber Colts	175.00
* Large Elephant "Tired", Flat Back	150.00
* Amber Tiger	160.00
* Light Blue Elephant	105.00
* Pink Rooster	105.00
* Pink Minuet Girl	75.00
* Verde Green Sparrow	40.00
* Black Cygnet	50.00
* Frosted 1987 Oscar	37.50
* Frosted 1987 Oscar (base only)	30.00

* These animals came from Imperial when they went bankrupt. The #1426 mug handle was frosted to see how it would look if we had any left over - which we didn't. The elephant was "tired" when it came from Fenton. The Oscars were frosted to see how the Opalescent glass would look frosted. The Minuet girl was purchased the year Imperial was sold to Arthur Lorch and was the last time the L.I.G. was used. A limited amount were made and we acquired the ones which were left over.

GLASS RESTORATION

CHIP REMOVAL GRINDING POLISHING

LEROY CARTER, JR.

125 MAPLE AVENUE
UTICA, OHIO 43080

TELEPHONE
614-892-2775

EVENINGS & WEEKENDS

FOREVER HEISEY 614-344-5955
NORM & JAN THРАН
1663 LONDONDALE PKWY.
NEWARK, OHIO 43055

SEE YOU AT THE FOLLOWING SHOWS

October 28, 29 & 30	Will Rogers Coll.	Ft. Worth, TX
November 4, 5 & 6	Fairgrounds	Tulsa, OK
November 11, 12, 13	Palmer Aud.	Austin, TX
November 18, 19 & 20	Market Hall	Dallas, TX

OVER 2,000 PIECES OF HEISEY IN STOCK AT ALL TIMES. ALL SASE INQUIRIES ANSWERED. SEND WANT LIST - WE SEARCH. HAVE LOTS OF STEMWARE AND UNUSUAL HEISEY, IN ALL COLORS.

WILLEY'S ANTIQUES PH: 614-828-2557
11110 CANNON ROAD
FRAZEYSBURG, OHIO 43822

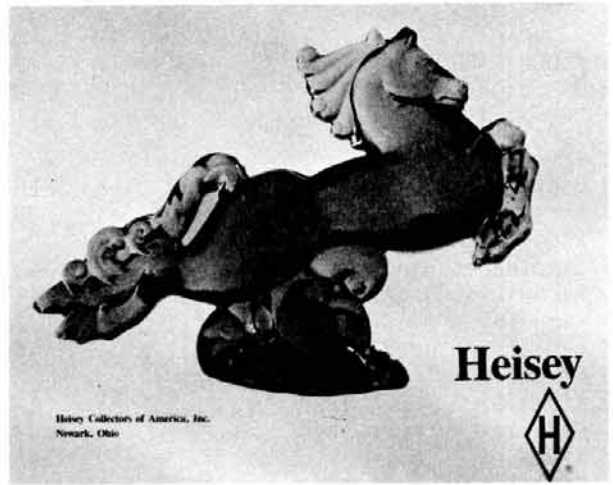
Over 2,000 pieces of Heisey for sale. Stemware and dinnerware matching service. Lots of colors, etchings and cuttings. Send want list and SASE. All letters answered if a SASE is enclosed.

SHOW DATES

October 28, 29, 30	Will Rogers Coll.	Ft. Worth, Texas
November 4, 5, 6	Fairgrounds	Tulsa, OK
November 11, 12, 13	Palmer Aud.	Austin, TX
November 18, 19, 20	Market Hall	Dallas, TX

HOPE TO SEE YOU AT THE SHOWS.

Mildred & Harold
Willey



17 x 22 Color Poster
AMBER FLYING MARE
Limited Edition of 1000
Signed and Numbered
\$8.00 Each
Available Three Places

Chamber of Commerce
50 W. Locust
Newark, Ohio 43055

Bill Cost, Jr., Photography
786 W. Main Street
Newark, Ohio 43055

National Heisey Glass Museum
P.O. Box 4367
Newark, Ohio 43055

This is a gorgeous photograph of an Amber Flying Mare, and the color is perfect. It is a project of these three: The Photographer, Chamber of Commerce, and HCA. Each of us will have 1/3 of the 1000, with HCA having #1. It is done on very shiny white poster board with the Heisey Logo done in blue; and, is complete, with the registry mark. It is an outstanding item.

If you live away from this area you can order now for later pickup as we hesitate to mail these or send them UPS for fear of them being damaged.

The cost is \$8.48 with tax. Come to the museum, send a check to hold your poster until the December Dinner, March Auction, or June Convention, or pick up at the museum anytime. It will make a great gift.

Send orders to: HCA Poster
P.O. Box 4367
Newark, OH 43055



DONALD P. BEAN
36 HARDING STREET
MILFORD, MA 01757

PH: 508-473-0561
SHIPPING EXTRA
* = MARKED

1295 Bead Swag Opal 1/2 gallon jug, good rose
and gold decor \$125.00
99 Little Squatter candle, Moongleam (1) 15.00
134 Trident 2 lite candle, Moongleam
foot (1) 70.00
21 candles* 7 1/2" frosted & worn enamel
decor pr 35.00
1559 Columbia 1 lite sticks, crimped ft pr 45.00
1503 Crystolite Rosette candle blocks . pr 20.00
1540 Lariat 1 lite candle blocks . . . pr 25.00
1405 Ipswich 4 oz oyster cocktails (6) all 48.00
1483 Stanhope 9" vase*, red knobs 45.00

365 Early Queen Ann ftd sherbets* (9). ea 21.00
352 Drainer* only, for 10" strawberry
plate 12.50
1506 Provincial 2 1/2 oz wines (6) ea 10.00
1541 Athena 11" crimped bowl 15.00
1425 Victorian cream* and sugar* . . . set 45.00
1425 Victorian 2 oz bar* 20.00
603 Optic soda* 14oz 15.00
300 1/2 Peerless 2 oz bars* flared (2) . . ea 12.50
1489 Puritan salt shakers*, chrome top . 15.00
300 Peerless toothpick*, good gold trim 35.00

STILL NEED COVER FOR LARGE 1205
POT POURRI JAR!

NANCY'S ANTIQUES
906 44th. Street N.W.
Canton, OH 44709

PH: 216-492-2595
SHIPPING EXTRA
* MARKED

Ring Neck Pheasant \$145.00
479 Petal Hotel Creamer*,Flamingo . . . 25.00
1184 Yeoman sherbet* D/O, Flamingo (5) ea 12.00
1184 Yeoman Goblet 8 oz D/O, Flamingo . 25.00
1184 Yeoman baker* oval 9", Flamingo (2)ea 25.00
1184 Yeoman Cruet D/O, Flamingo with Crys-
tal stopper 45.00

1401 Empress plate, rd 7 1/2", Flamingo (6) 15.00
1401 Empress cream & sugar*, Flamingo set 70.00
1469 Ridgeleigh candle w/prism, bobe . . 80.00
1495 Fern platter 15" 45.00
1503 Crystolite cups & saucers* . . . set 18.00
1503 Crystolite plates 8 1/2" (4) ea 12.00
1506 Whirlpool 2 lite candle* 50.00

1509 Queen Ann candle w/prisms & bobe . 40.00
1540 Lariat bowl, mayo 20.00
1540 Lariat relish*, 3 part div 32.00

3366 Trojan goblets* 8oz, D/O, Flamingo
(6) ea 40.00
3366 Trojan sherbets*, Flamingo D/O 5oz
(2) ea 25.00
3481 Glenford goblets 5oz, Flamingo D/O
footed, (5) ea 22.00
4163 Whaley jug 54 oz Pied Piper etch 175.00

* JIM GARTNER
* 4 - FISHERMANS CIRCLE, APT. 1
* ORMOND BEACH, FLORIDA 32074
PH: 904-677-7415
UPS & INS, EXTRA
* MARKED

* 433 Greek Key 4 1/2 oz flared sherbet (6) ea \$ 14.50
* 1202 Rolled Edge Floral bowl* 11" seperate
base*,floral cutting, Flamingo . . . 62.50
* 1401 Empress D.F. candy box* w/cover, Mnglm 130.00
* 1626 Lodestar 1qt pitcher* Dawn 225.00
* 417 Double Rib & Panel 6" basket, Hawthrn 225.00
* 1404 Old Sandwich 6" candlestick, Sahara pr 170.00
* 1404 Old Sandwich 6 1/2 oz toddy*,Sahara(2) ea 22.50
* 1404 Old Sandwich 8 oz tumbler*,ground bot-
tom, straight, Sahara (3). ea 25.00
* 1404 Old Sandwich 8" sq. plate*,Sah. (4) ea 17.00
* 1404 Old Sandwich 3 oz ck'tl*, Sah. (3) ea 27.50

* 1404 Old Sandwich 5 oz ice tea*,ground bottom,
Sahara (6) ea 22.50
* 1404 Old Sandwich 10 oz low footed tumbler*,
Sahara (2) ea 35.00
* 1404 Old Sandwich 10 oz low footed goblet*,
Sahara (5) ea 35.00
* 1404 Old Sandwich 4 oz oyster cocktail*,
Sahara (7) ea 18.00
* 1404 Old Sandwich 8" sq. plate*, Mnglm(6)ea 18.00
* 1404 Old Sandwich 1 1/2 oz bar glass*, ground
bottom, Cobalt 95.00
* 1404 Old Sandwich oval creamer*, Flmngo 40.00
* 1404 Old Sandwich 12 oz ice tea*,straight
ground bottom, Sahara (2) ea 35.00
* 1404 Old Sandwich round creamer*, Crystal 38.00
* 1401 Empress 6 1/2" lemon dsh w/cov,fl Dec. 42.50

* DON & TAFFY POPE
* 1442 PALMETTO STREET
* CLEARWATER, FLORIDA 34615
PH: 813-447-7427
UPS EXTRA
* MARKED

* 135 Empress 6" candlestick, Sahara . . pr \$110.00
* 1509 Empress oil bottle w/stpr, slight stain
Sahara 75.00
* 1252 Twist 13" celery tray*, Sahara . . 32.00
* 1252 Twist 2-h'dld relish* 2 compartment,
Flamingo 65.00
* 1229 Mayo, footed, 5 1/2" D/O, Flamingo . 17.00
* 3362 Charter Oak goblet 8 oz Flamingo (3)ea 22.00
* 1509 Queen Ann sug/cr ind., Crystal*. . pr 25.00
* 1184 Yeoman Fr dressing boat, plate and
ladle, Flaminto* 55.00
* 1509 Queen Ann 7 compartment Hors d' oeuvre
tray*, Crystal 25.00
* 600 Square h'dld candlesticks* pr 50.00
* 469 Reverse Hartman candy jar*,unk cut 85.00
* 1632 Satellite fluted bowl, frst, star base 35.00
* 1519 Waverly candy jar*,seahorse handles 95.00
* 1239 Beaded Panel & Sunburst cracker jar
with cover 95.00
* 350 Pin Wheel & Fan 8" bowl* 55.00
* 1255 Pineapple & Fan 5 1/2" cracker jar no/lid 50.00
* 3404 Spanish Stem 12 oz soda, Cobalt . 60.00
* 447 Narrow Flute combination relish* Mnglm 60.00
* 3390 Carcassone flagon, Crystal 15.00
* 135 Empress candlesticks & nasturtium bowl*
Old Colony Etch 225.00

WANTED - COLORED CUSTARD CUPS.

MOSTLY HEISEY
RHODA CURLEY
16 CLAYTON PLACE
ALBANY, NY 12209

PH: 518-482-6272
UPS EXTRA

1205 Fancy Loop cologne, clear, mint . . . \$395.00
433 Greek Key jug, clear, 3pts. 185.00
1632 Lodestar 7½" bowl, Dawn (2) ea 80.00
1637 Town & Country 14" plate, Dawn (2) ea 80.00
1404 Old Sandwich cdl'st, bwl & frog, Sah 295.00
1401 Empress Sahara, sq or rd center handled
either 95.00
1252 Twist, Marigold, stems: sherbets (11),
ice teas (7), goblets (3), ea 35.00
1252 Twist plates 6", 7" & 8", Marigold . ea 20.00
1245 Ring Band toothpick holder, custard 125.00
1220 Punt Band tumblers, custard, 1 Decorated
and 1 Souvenir, either 70.00
1245 Star & Zipper bwl 9", Emerald 175.00
1205 Fancy Loop toothpick hldr, Emerald . 150.00
1401 Empress 6" cdl'st, Flamingo, D/F . pr 200.00
129 Tricorn 3 lt cdl'st, Flamingo . . . pr 195.00
1252 Twist ice bucket w/h'dl & tongs,
Alexandrite pr 350.00
4044 New Era cocktails, Alexandrite (12) ea 50.00
1184 Flower bwls, Hawthrn, 1-11", 1-12",
Diamond Optic ea 75.00
411 Cheese & mint 6" 2 h'dl, Hawthrn . ea 30.00
1495 Fern 6" cheese, tid bit, mint, Zir ea 75.00
3368 Albemarle bicolor, Haw & Mnglm variant
saucer champagnes (6) ea 350.00

IF YOU BUY ANY ITEM FROM THIS LIST WE WILL SEND YOU
FREE A HEISEY BUTTER TRAY IN THE ORIGINAL HEISEY
TISSUE.

WATERSEdge ANTIQUES
DON & NORENE WALZER
644 GALLUP ROAD
SPENCERPORT, NY 14559

PH: 716-352-1853
P & I EXTRA
* MARKED

1469 Ridgeleigh candle 2 lt w/bobehe &
prisms pr \$110.00
1503 Crystolite candle 3 lt w/vases . . pr 75.00
5 Toy candlesticks* pr 80.00
31 Jack Be Nimble candles* pr 75.00
4164 Jug with Renaissance etch 90.00
1286 Cupid & Psyche ash tray, Crystal . . 30.00
1286 Cupid & Psyche ash tray, Flamingo . 50.00
1286 Cupid & Psyche ash tray, Moongleam . 60.00
5003 Crystolite goblet 10 oz (6) . . . ea 18.00
5003 Crystolite sherbet 6 oz (6) . . . ea 12.00
5003 Crystolite cocktail 3½ oz (10) . . ea 22.00
4225 Cobel ck'tl shaker w/rooster hd stpr 85.00
Rooster stem cocktails (6) ea 50.00
Bull* 1150.00
Giraffe, head back* 175.00
Cygnet 165.00
Pony Standing 70.00
Pony Kicking 110.00
Pony Bulking 165.00
Sparrow 80.00

* H & R DIAMOND H
* HELEN - BOB RAREY
* 1450 WHITE ASH DR.
* COLUMBUS, OH 43204

PH: 614-279-0390
AFTER 5:30 PM
UPS & INS EXTRA
* MARKED

* Elephant, large \$295.00
* Elephant, medium 275.00
* Elephant, small 225.00
* Scottie Dog (2) ea 75.00
* Pony, balking (2) ea 165.00
* Pony, standing (2) ea 75.00
* Horsehead stopper, small 75.00
* Sparrow 70.00
* Goose, wings half 85.00
* Goose, wings down 450.00
* Mallard*, wings up 195.00
* Donkey 225.00
* Pouter Pigeon* 650.00
* Giraffe, Head rear 175.00
* Asiatic Pheasant* 310.00
* Hen 275.00
* Swan Master Nut 55.00
* Heisey by Imperial Amber Filly 250.00
* Heisey by Imperial Set (3) Amber Colts . 325.00
* Heisey by Imperial Frosted Filly 125.00

* R. L. DINKEL
* 6058 E. ENCANTO
* MESA, AZ 85205

PH: 602-985-5520
P & I EXTRA

* 417 Basket, Moongleam \$125.00
* 417 Basket, Flamingo 145.00
* 433 Greek Key nut dish (4) ea 19.00
* 433 Greek Key goblets 9 oz (6) ea 120.00
* 433 Greek Key plates 10" (2) ea 75.00
* 433 Greek Key banana boats, ftd. (6). . ea 25.00
* 433 Greek Key french roll 125.00
* 433 Greek Key sherbets (9) 12.00
* 444 Vase 3 h'dl, rare 575.00
* 1401 Empress 10½" plates, Sahara (4) . . ea 80.00
* 1401 Empress cup & saucer, Sahara (4). . ea 29.50
* 1401 Empress D/F pitcher, Sahara 125.00
* 1401 Empress 8½" plate, cup/saucer, Sahara
with Bird of Paradise etch (4sets) ea 85.00
* 1567 Plantation goblet 9oz (12) ea 25.00
* 1567 Plantation 8" covered candy 100.00
* 1567 Plantation ½lb. covered butter . . . 65.00
* 3380 Old Dominion opt goblet, Sahara (8) ea 27.50
* 3404 Spanish cocktail, Cobalt (2) . . . ea 90.00
* 5087 Plantation Ivy goblets (12) ea 27.50

Classified Ads

FOR SALE: #5072 Rose goblet, 2 ea \$23; #1519 Waverly goblet \$23; #4055 Park Lane goblet, Nomad cut, 10 ea \$25; #3350 Wabash handled ice tea, Pied Piper etch*, 4 ea \$35; #3350 Wabash sherbet, Pied Piper etch*, 8 ea \$15; #5025 Tyrolean low goblet, Orchid etch, 2 ea \$40; #5010 Symphone low goblet, Minuet etch, 17 ea \$25; #4083 Stanhope 10 oz low goblet, 10 each \$15; #150 Banded Flute champagne*, 4 ea \$20; #150 Banded Flute sugar w/lid* \$50; #150 Banded Flute Hotel sugar no lid* \$30; #3408 Jamestown sherbet, Barcelona cut, 5 ea \$15; #300½ Peerless 2½ oz shot glass, Flamingo* \$50; #1184 Yeoman finger bowl, D/O*, 7 ea \$6; #3359 Portsmouth goblet, Moongleam base, 6 ea \$15; #3335 Lady Leg goblet, Zodiac etch, 9 ea \$15; #3408 Jamestown goblet, Barcelona cut, 4 ea \$20.00. Ed & Arlene Crafts, 187 N. Pioneer Avenue, Shavertown, PA 18708. PH: 717-675-8553 after 6 pm. * Marked.

WANTED: Stopper for #1519 Waverly cruet. Michael Krumme, P.O. Box 5542, Santa Monica, CA 90405.

FOR SALE: Imperial Animals. Send SASE for price list. Animals, 10023 Wright Road, Canal Winchester, Ohio 43110.

FOR SALE: Heisey Glass Collection, Victoria Pattern - 54 pieces. Please call 404-998-5635.

WANTED: FAVOR VASES. Write or call after 6 pm. Jack Grenzebach, 10534 Valencia Road, Seminole, Florida 34642. PH: 813-391-5184.

WANTED: Amber and Alexandrite Heisey, Amber Imperial. Send price lists. Collector, P.O. Box 1115, Newark, Ohio 43055.

BUYING: Caprice blue or Rosepoint by Cambridge; Rose or Orchid by Heisey; American, June Fairfax, Versailles, Trojan, etc., by Fostoria; and Depression Glass in Crystal or colors. NADINE PANKOW, 206 S. Oakwood, Willow Springs, IL 60480. PH: 312-839-5231.

WANTED: Heisey #3408 Jamestown goblet with #941 Barcelona cutting. Grace H. Rhodes, 1706 Nottingham Court, Wichita, KS 67204. PH: 316-838-7282.

WESTMORELAND, DEPRESSION GLASS, ETC., ETC., HEISEY, DUNCAN,

7TH ANNUAL ALL GLASS SHOW & SALE

Sponsored by the
Connecticut Heisey Collectors Club

BENEFIT OF THE NATIONAL
HEISEY MUSEUM

SATURDAY

SUNDAY

10:00 a.m. to 5:00 p.m.
Nov. 5, 1988

10:00 a.m. to 4:00 p.m.
Nov. 6, 1988

National Guard Armory
590 Woodruff Street
Southington, CT

ADMISSION — \$2.50
with this Ad — 2.00
I-84 to Exit 32 South (Rt. 10)
To Hobart Street — Right on to Pleasant St. —
Left to Armory

CARNIVAL GLASS, CAMBRIDGE, IMPERIAL, FENTON, FOSTORIA, NEW MARTINSVILLE

J & R COLLECTIBLES
P. O. BOX 1030
NEWARK, OHIO 43055

PH: 614-344-9719
P & I EXTRA
* MARKED

- | | | |
|--|-----|----------|
| 134 Trident 2 lt c'stk, Minuet etch . | pr | \$125.00 |
| Small Horsehead cocktail stpr . . . | | 55.00 |
| 1485 Saturn 8½" vase, flared, limelight* | | 175.00 |
| 1503 Crystolite 9" 4 comp cl leaf relish | | 32.00 |
| 1509 Queen Anne 8" plate, Minuet et (6) ea | | 17.50 |
| 5025 Tyrolean 1 oz cordial, Orchid* (2)ea | | 115.00 |
| 4163 Whaley 16 oz mug, Fox Chase et* | | 135.00 |
| 1401 Empress cov mustard w/#5 spoon, Flam* | | 95.00 |
| 1509 Queen Anne cup/rd saucer, Orchid* (6) | set | 45.00 |
| 1503 Crystolite coaster, Zircon* (2) | ea | 47.00 |
| 2401 soda 12 oz, Polo Player etch (2) | ea | 60.00 |
| 1519 Waverly 14½" center h'dl plate . . | | 55.00 |
| 1519 Waverly cream & sugar, Orchid et* | pr | 50.00 |
| 1540 Lariat swing vase 12" | | 55.00 |
| 1567 Plantation salt & pepper* | pr | 52.50 |
| 1503 Crystolite master swan nut | | 32.00 |
| 397 Colonial Cupped Scalloped spooner* | | 48.00 |
| 1255 Pineapple & Fan 4½" nappy (6) . . | ea | 8.50 |
| 3386 Diamond Rose 12 oz pilsner* | | 72.50 |
| 1489 Puritan horsehead 6" cigarette box | | 48.00 |
| 517 1 qt hospital jug w/tumbler* . . . set | | 75.00 |
| 4090 Coventry 10 oz goblet, Belvedere etch (4) | ea | 55.00 |
| 1401 Empress 4½" nappy, Sahara* (6) . . | ea | 17.00 |
| 5072 Rose 9 oz goblet, Rose etch* (6) . | ea | 40.00 |
| 1519 Waverly 7" oval seahorse ftd compote | | 45.00 |
| 1567 Plantation 2 lt candlesticks . . . pr | | 125.00 |
| 4054 Coronation 30 oz ice tankard . . . | | 32.00 |
| 1469 Ridgeleigh ind salts* (8) each \$9.00 | | |
| or | set | 60.00 |
| 4091 Kimberly tall saucer champagne, Dolly | | |
| Madison Rose cut* (4) | ea | 40.00 |
| 4052 National 1½ oz bar, Tally Ho Etch (4) | ea | 26.00 |
| Baby Pigs, standing (2) | ea | 65.00 |
| Sparrows (2) | ea | 55.00 |
| 1567 Plantation punch cups* (10) . . . | ea | 15.00 |
| 3368 Albemarle 1 oz cordial, Chateau cut | | 95.00 |
| 3368 Albemarle goblets, Chateau cut (4) ea | | 55.00 |
| 500 Octagon frozen dessert, moonglm(4) ea | | 15.00 |
| 3333 Old Glory goblet, Windsor cut* (4) ea | | 35.00 |
| 1632 Lodestar 7" bowl, Dawn* | | 55.00 |
| 1205 Fancy Loop water bottle (mint) . . . | | 75.00 |
| 3380 Old Dominion 10 oz tall goblet D/O, Alexandrite (2) | ea | 165.00 |
| 305 Punt & Dia Point Perfume, Sterl top | | 95.00 |
| 1404 Old Sandwich 12 oz mug Sahara* . . | | 110.00 |
| 160 Locket on Chain wine | | 95.00 |
| 3350 Wabash 3 pt tankard Pied Piper etch | | 165.00 |
| 3350 Wabash 10 oz goblet Pied Pip * (5) ea | | 17.50 |
| 343 Sunburst 5" ftd jelly* | | 42.50 |
| 341 Puritan ice tub w/drainer* | | 95.00 |
| 5077 Legionnaire cordial Arcadia cut* . . | | 55.00 |
| 5031 oil & vinegar btl 8 oz Orchid etch | | 160.00 |
| 433 Greek Key 4 oz cruet | | 85.00 |

LAYAWAYS WELCOME. PURCHASES MADE PRIOR TO DECEMBER 1ST. SHIPPED BY DECEMBER 15TH. MERRY CHRISTMAS! THANK YOU FOR SHOPPING J & R COLLECTIBLES.

<p>A.W. PARKER Heisey & Pattern Glass Shows or Appointment Magalia, CA 95954 PH: (916) 873-2326</p>	<p>GLASS WITH CLASS Lenore A Shelley, GGHCC 1336 Lincoln Avenue San Jose, CA 95125 PH: (408) 286-8098</p>	<p>OLDE LOVED THINGS 900 Ridgewood Ave. (Holly Hill) Daytona Beach, FL 32017 (904) 252-7960 Hours: Sat., Sun., & Mon., 10-4</p>
<p>ALL HEISEY AUCTION Consignments Welcome Apple Tree Auction Center 1616 W. Church, Newark, OH 43055 PH: (614) 344-9449</p>	<p>GREEN ACRES FARMS Antiques, Crystal Glass & Collectibles 2678 Hazelton-Etna Rd., SW (S.R. 310-N) Pataskala, OH 43062 Sat. or Sun. PM or call (614) 927-1882</p>	<p>OUR PLACE AND MEMORY LANE ANTIQUES 1234 Newark Rd., Granville, Ohio 43023 (614) 587-4601, Open every day 12-5 Heisey, general line of antiques and collectibles</p>
<p>ALFA I CARRIAGE HOUSE ANTIQUES Featuring Depression & Elegant Glassware Al & Faye Maness 508 E. Cary Street Richmond, VA 23219 PH: (804) 788-1630</p>	<p>H & R DIAMOND H Helen & Robert Rarey 1450 White Ash Dr. Columbus, OH 43204 PH: (614) 279-0390 after 5:30</p>	<p>PARRETT'S ANTIQUES Heisey 4994 Mapledale Rd. OR 1215 Greenwood Ave. Jackson, Mich. 49201 PH: (517) 784-7319 OR (517) 783-3289</p>
<p>ANTIQUES - THE SHULTZES 206-208 East Main St. Newmanstown, PA 17073 15 Miles West of Reading, PA PH: (215) 589-2819</p>	<p>"HAPPINESS IS" - THE STULTZS 3106 Warren Court, Glen Allen, VA 23060 Shows and Mail Order PH: (804) 262-1273 GLASS CIRCA 1890-1960</p>	<p>PATTON HOUSE Heisey & Duncan Miller Rocky's Mall, 1-81 & US 11 Weyer's Cave, VA 24486 PH: (703) 967-1181</p>
<p>C & J ANTIQUES Cole & Jean Miesner Box 45, 72 Whig St. Newark Valley, NY 13811 PH: (607) 642-9905</p>	<p>HARRALSON'S HEISEY HUNTERS Sponsor: S.W. MO's Antique Shows 78 Quality Dealers From 14 States 1989 Dates: Apr. 28-30 & Oct. 27-29 Info: 1426 W. Highland, Springfield, MO 65807 PH: (417) 883-2449</p>	<p>EAGLES REST ANTIQUES Carl and Mary A. Evans Heisey - China - Pottery, etc. Shows or Appointment PH: (614) 522-2035</p>
<p>C.E. HIGGINS (S.F. Bay Area) Shows and Mail Order P.O. Box 2723 Menlo Park, CA 94025 PH: (415) 322-0192 Evenings</p>	<p>HELEN & JIM KENNON Heisey, Cambridge, Fostoria, Duncan, Imperial, Fenton, Tiffin P.O. Box 114 Brookville, OH 45309 PH: (513) 833-5406 SHOWS ONLY</p>	<p>R & L ANTIQUES-SAN FRANCISCO Members of the Golden Gate Heisey Club 3690 Bodega Ave. Petaluma, CA 94952 PH: Petaluma (707) 762-2494 PH: San Francisco (415) 621-6693</p>
<p>CHARLES & MILDRED FISHER Heisey, Degenhart, Imperial, Antiques, Collectibles, General Line 991 Idlewilde, Newark, OH 43055 PH: (614) 522-5398</p>	<p>J.J. & BOB MC KEE Pottery Glassware Collectibles 334 W. 75th St. Kansas City, MO 64114 Wed.-Sun. 10-5 PH: (816) 361-8719</p>	<p>RAY ZIEGLER Glass Repair 185 County Line Westerville, OH 43081 PH: (614) 891-9796</p>
<p>DAVE'S ANTIQUES Specializing in Heisey Shows & Mail Order 1403 E. Knollwood St. Tampa, Fl. 33604 (813) 237-5550</p>	<p>THE PURPLE PLACE Featuring Heisey & Other Fine Glass Martha & Harold Earp 1940 Suwanee, Ft. Myers, FL 33901 PH: (813) 936-1572 Anytime</p>	<p>SCHWAN'S ANTIQUES SHOWS & MAILORDER 77 Lagos del Norte Ft. Pierce, FL 34951 PH: (407) 461-5940</p>
<p>DIAMOND H PLUS Mail Orders & Shows George & Eileen Schamel Rt. 3, Box 171, Boonsboro, MD 21713 PH: (301) 432-6285</p>	<p>J. & R. COLLECTIBLES Shows, SASE, Mail Order list June & Ray Lukasko P.O. Box 1030, Newark, OH 43055 PH: (614) 344-9719</p>	<p>SHOW AND TELL ANTIQUES Art, Cut, Heisey and Pattern Glass 1525 Morrow Ave., Waco, TX 76707 Tues-Sat 10:30-4:30 PH: (817) 752-5372 Also: Mail Order and Shows Member NADA</p>
<p>ETTELMAN'S DISCONTINUED CHINA & CRYSTAL HEISEY a SPECIALTY P.O. Box 6491-HN Corpus Christi, TX 78411 PH: (512) 888-8391 Include SASE</p>	<p>MOSTLY HEISEY Rhoda Curley 16 Clayton PL, Albany, NY 12209 Shop and Mail Order PH: (518) 482-6272</p>	<p>SINGLETREE ANTIQUES Cut, Pattern & Heisey Glass 10717 Staples Mill Rd. Glenn Allen, VA 23060 Chance or appointment PH: (804) 266-3795</p>
<p>FOREVER HEISEY Jan & Norm Thran Mail Order, Shows, Appraisal Service 1663 Londondale Pkwy., Newark, OH 43055 PH: (614) 344-5955</p>	<p>MOUND BUILDERS ANTIQUES Heisey & Animals, General Antiques Irene Rauck 1138 Moundview, Newark, OH 43055 PH: (614) 344-6043</p>	<p>WILEY'S ANTIQUES & MUSEUM Specializing in Heisey 11110 Cannon Rd., Frazeyburg, OH 43822 16 miles east of Newark, OH PH: (614) 828-2557</p>
<p>GERT'S GLASS Heisey & Duncan Gertrude & Russell Swetnam 1926 Saratoga Dr., Adelphi, MD 20783 PH: (301) 434-5113</p>	<p>THE MUTED SWAN ANTIQUES 5486 Peachtree Rd., Chamblee, GA 30341 Heart of Chamblee Antique Row Specializing in Heisey & Cambridge Bill & Pat Miller PH: (404) 451-7620</p>	<p>THE WOODEN SHOE Antiques & Collectibles Jim & Sheri VanEs by Appt. 810 Elden, Herndon, VA 22070 PH: (703) 435-9045</p>
<p>GLASS 'N' GLASS Virginia & Odell Johnson 6909 10th Ave. West Bradenton, FL 33529 PH: (813) 792-0604</p>	<p>NANCY'S ANTIQUES Heisey, Cambridge, Fostoria, Fenton Mail Order 906 44th St. NW, Canton, OH 44709 216-492-2595. Shop Union Station Antiques 12622 Cleveland Ave., Uniontown, OH Daily</p>	<p>JAMES S. HARRIS ANTIQUES/APPRISALS Box 672 Richmond, KY 40475-0672 PH: (606) 623-9100 Buying and Selling by Mail</p>



Season's Greetings

ANNUAL CHRISTMAS DINNER

SATURDAY, DECEMBER 3, 1988

BEST WESTERN INN
SECOND AND CHURCH STS.
NEWARK, OHIO

COCKTAIL HOUR 6:30
DINNER 7:00
OPEN CASH BAR



SEND RESERVATIONS TO:
HCA CHRISTMAS DINNER
PO BOX 4367
NEWARK, OH 43055

\$15.00 INCLUDES TAX AND TIP

ENTERTAINMENT

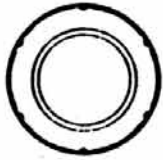
DEADLINE FOR RESERVATIONS Nov. 30th.
(If you order late, please call
614-345-2932)

NAMES:	ADDRESS:	AMOUNT PER PERSON
_____	_____	_____
_____	_____	_____
_____	_____	_____

Please list all names so that name tags may be made out properly.

Total \$ _____

SEE ITEMS TO BE AUCTIONED ON PAGE 2.



REPLACEMENTS, LTD.

302 Gallimore Dairy Road, #HN
Greensboro, NC 27409-9723
(919) 668-2064
Fax # (919) 668-2064

Discontinued China & Crystal

WORLD'S LARGEST INVENTORY!

Over a million pieces of bone china, earthenware, and crystal.
Call or write today . . . (SASE please).
BUY AND SELL

Pattern Name _____
 Company Name _____
 Pattern Number _____ Pattern Color _____
 Pieces Desired _____
 Name _____
 Street Address _____
 City _____ State _____ Zip _____
 Home Phone () _____



ALL HEISEY AUCTION

SAT OCT 29 9:00 A.M.

APPLE TREE AUCTION CENTER
1616 W. CHURCH STREET
NEWARK, OHIO 43055

AN OUTSTANDING SALE WITH OVER 750 LOTS
OF HEISEY AND HEISEY BY IMPERIAL.
DON'T MISS THIS SALE!

YOU ARE CORDIALLY INVITED TO OUR

"PREVIEW OPEN HOUSE"

FOR THE HEISEY AUCTION AND

OUR **NEW** FACILITY

REFRESHMENTS WILL BE SERVED

8 - 10 P.M.

FRIDAY OCTOBER 28TH

National Heisey Glass Museum

Eight rooms and
complete lower level
displaying the
beautiful hand made
glass produced in Newark by the A.H. Heisey and Co.
from 1896-1957. Corner of West Church & North Sixth Streets
Newark, Ohio 43055



Phone: (614) 345-2932

Hours: Daily 1pm-4pm Closed Holidays



Membership Renewal Notice

The date above your name and address
is your renewal date. This is your last
issue of the Heisey News if it reads
11-30-88

PLEASE DISREGARD THIS NOTICE IF YOU HAVE
RECENTLY PAID YOUR DUES.

POSTMASTER SEND FORM 3579 TO:



SECOND CLASS