

HEISEY *news*

OFFICIAL PUBLICATION HEISEY COLLECTORS OF AMERICA

© Heisey Collectors of America, Inc.

All Rights Reserved 1988

VOLUME XVII NO. 10

OCTOBER, 1988 ISSN 0731-8014



HEISEY NEWS

P.O. Box 4367, Newark, OH 43055

CLUB OFFICERS:

President - Bob Rarey (614) 279-0390
 Vice President - Dick Smith (614) 366-5163
 Secretary - Liz Stickle (614) 323-2250
 Treasurer - Mary McWilliams (614) 345-4380
 Curator - Louise Ream

Editor: Louise Ream

P.O. Box 4367, Newark, Ohio 43055

PH: (614) 345-2932

Assistant Editor: Neila Bredehoff

P.O. Box 4367, Newark, Ohio 43055

PH: (614) 345-2932

Published in Newark, Ohio, Printed in Newark, Ohio.

\$15.00 per year - \$1.25 per copy

Back Issues - Each Volume (12 issues) year - \$9.00

Volume V, VIII, IX, X, XI, XII, XIII, XIV, XV, XVI

Heisey Collectors of America, Inc. is a non-profit corporation with tax exempt status. Owners and operators of National Heisey Glass Museum, 6th and Church Streets, Newark, Ohio.

Open daily 1-4 p.m. except holidays. Other hours by appointment. Members admitted free.

HEISEY NEWS

Heisey Collectors of America, Inc.

All Rights Reserved 1988 - ISSN 0731-8014

Published monthly by Heisey Collectors of America, Inc., Newark, OH 43055. Second Class postage paid, Newark, Ohio 43055. Club membership (includes 12 issues of Heisey News and participation in all club activities) \$15.00 per year plus \$2.50 for each additional family member in same household who wishes a membership card. For Voting Membership add \$25.00 one time only fee.

POSTMASTER: Send address change to:

HCA, P.O. Box 4367, Newark, OH 43055

When requesting information, please enclose a self-addressed, stamped envelope (SASE).

ADVERTISING - Send all ads to: HCA - Advertising
 P.O. Box 4367
 Newark, Ohio 43055

DOUBLE SPACE ALL ADS

Rates:

CLASSIFIED: 15¢ per word. \$1.50 minimum.

ABBREVIATIONS AND INITIALS COUNT AS WORDS

DEALER DIRECTORY: \$25 per year.

Display:	Members:	Non-Members:
1/8 page (9 items)	\$20.00	\$ 30.00
1/4 page (20 items)	30.00	45.00
1/2 page (20 items) Hor.	45.00	67.00
1/2 page (50 items) Vert.	60.00	90.00
1 page (50 items)	75.00	112.50

Personal ads limited to 1/8 space.

ALL ADS MUST BE PREPAID. Ad copy must be received by the 5th of the month preceding the publication date-i.e. April 5th for May issue. Ads containing reproductions will not knowingly be accepted unless clearly stated (i.e. Heisey by Imperial, etc.). HEISEY NEWS assumes no responsibility for false advertising or misleading information. In the event of typographical error, the incorrect portion of the ad will be run in the following issue, but HEISEY NEWS assumes no further liability.

The opinions expressed in articles in HEISEY NEWS are those of the authors and not necessarily those of the organization. The Editorial Staff reserves the right to edit or refuse any material submitted for publication. When requesting information, please enclose a self-addressed stamped envelope (SASE).

ZODIAC

No. 1590 Pattern



No.	Size	Item	Price Doz. Crystal
Stemware			
1590	10	oz. Goblet	\$ 8.40
1590	5	oz. Saucer Champagne	8.40
1590	5	oz. Sherbet	8.40
1590	4	oz. Claret	8.40
1590	3½	oz. Cocktail	8.40
1590	4	oz. Oyster Cocktail	8.40
1590	5	oz. Footed Juice	8.40
1590	12	oz. Footed Ice Tea	8.40
1590	5	oz. Tapered Soda	4.20
1590	12	oz. Tapered Soda	6.00
1590		Coaster	4.20
Plates, Miscellaneous			
1590	8	in. Plate	\$13.20
1590	13	in. Sandwich Plate	48.00
1590	13	in. Salver	48.00
1590	11	in. Flower Bowl, 12 Sided.....	42.00
1590	2	lt. Candlestick	28.80
1590	8	in. Relish, 4-Compartment	34.80
1590	10	in. Oval Relish, 2-Compartment.....	24.00
1590	6	in. Compot	19.20
1590		Footed Sugar	10.80
1590		Footed Cream	10.80
1590		Salt Bottle and No. 57 Chrome-Plated Top.....	8.40
1590	4½	in. Nappy	4.80
1590	3½	in. Square Ash Tray.....	4.80
1590		Footed Candy Jar and Cover.....	42.00

ZODIAC FROM THE 1949 CATALOG. The pattern, designed by Horace King, was not a success and did not appear in the 1950 Catalog. It was usually marked. The pattern did not show up well on the cover last month so I have added more information this month. Imperial reissued Zodiac and again it must not have been successful because it only was made from 1/1/69 to 12/31/70. Heisey made it only in Crystal and Imperial made it in several colors. For more information see page 16.

ABOUT THE COVER

STORE DISPLAY OF
 HEISEY ORCHID

FROM YOUR PRESIDENT

Dear HCA Members,

The September quarterly meeting and Mini Show will be history when you receive this issue of the Heisey News.

Registrations received for the dinner and souvenir Clover Rope Mug in Ruby indicate another successful event "under the Big Top" on the Museum lawn. Again this year the buffet was prepared by Eleanor Jackson. Several Heisey by Imperial animals were offered at auction following the banquet. A report of the Board of Directors Meeting will follow in next months letter to you.

The limited edition (1000) posters of the Heisey Amber Flying Mare was given the go-ahead by the Executive Committee after viewing a sample of the poster in color. The project was given Board approval at their June meeting. This is a joint project of HCA, the Licking County (Newark) Visitors and Convention Bureau and Cost Photo Studio of Newark, the producer. Each participating sponsor will share equally in the posters, which will be signed and numbered, HCA to receive No. 1 copy. I'm sure you will be delighted with the poster when you see it. They will be available by the December meeting. Further details will appear in the Heisey News.

Heisey Collectors of America was honored on September 11, 1988, at the Buckeye Tree Celebration sponsored by the Dager Family, the makers of Velvet Ice Cream. This event is held in the Buckeye Grove at Ye Olde Mill on State Rt. 13, Utica, Ohio. This family affair is held annually, honoring Ohio's Official Tree, the Buckeye. Louise and I attended and are grateful for the honor given the Club and to have represented all HCA members at this all day event.

It will soon be time to select your items for the Museum Benefit Auction to be held in March, 1989. We will need your donations and consignments of glass by January 1. Bob Ryan has agreed to again be Chairman of the Auction Committee, for which I am grateful. Bring your glass to the December meeting if possible.

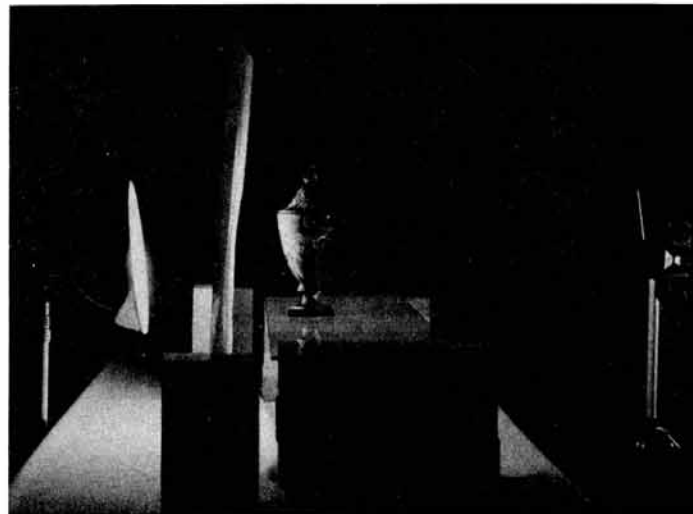
The December Quarterly Meeting is scheduled for December 3, 1988, dinner at the Best Western followed by entertainment and auction of some "Heisey by Imperial" limited pieces. In the future, we will list in advance, the pieces to be offered so all members will be afforded the opportunity to purchase these pieces. Also, from time to time, these very limited production pieces will be offered to members at auction, by lottery or raffle.

I would like to express my personal "Thanks" to Lynda and Dave Dickerson of Iowa who recently donated a #1488 Kohinoor two-light candelabrum in Zircon.

I had the pleasure of appearing as a guest at the August meeting of the Tiffin Glass Club in Tiffin, Ohio. I thoroughly enjoyed the opportunity to talk about Heisey glass and HCA. Their "Show and Tell" part of the program contained three lovely Heisey items; a #459 7" basket with all-over cutting, including the handle; a #350 Pinwheel & Fan 8" bowl in Moongleam; and a pair of #1401 Empress 3 toed candleholders in Alexandrite. We especially thank them for their donation to our Endowment Fund.

Until next month, Happy Collecting.

Bob Rarey



"BUCKEYES" TALK BUCKEYES. Louise Ream, curator, Robert Rarey, president, Heisey Collectors of America --- both "buckeyes" talk about the newly named cutting-design on a 1939 Shasta Heisey goblet. The cutting, featuring five leaves, symbolic of buckeye tree leaves, was named "Ye Olde Mill Buckeye Tree Celebration" recognizing the September 11th. event at Ye Olde Mille, Utica, Ohio, when the Heisey Collectors of America were honored for their contribution in bringing recognition to the Buckeye State.

The goblet is a #5019 Shasta pattern recently donated by Helen Rea of South Carolina in memory of her husband, Robert L. Rea.

The Reas, formerly of Westerville, Ohio, purchased this goblet when the factory closed and it has been displayed in the museum since it first opened. The cutting was known only as #10 experimental cutting. After about 50 years the cutting now has a name.

A plaque was given to us on September 11 at the Celebration, and another has been attached to a millstone in the Buckeye Grove at Ye Olde Mill along with plaques for the recipients of this honor for the past three years. Others who have been honored are Woody Hayes, former Coach of the Ohio State Buckeyes, William Henry Harrison, former U.S. President who came from Ohio and Dawes Arboretum which is located on Rte. 13 south of Newark, a very fine local attraction. The plaque reads as follows:

VELVET ICE CREAM CO.
YE OLDE MILL

HONORS
HEISEY COLLECTORS OF AMERICA

WHO BY THEIR COMMITMENT AND
SERVICE IN PERSERVING FINE
GLASS OF THE A.H. HEISEY & CO.
HAVE MADE OHIO A BETTER PLACE

BUCKEYE TREE CELEBRATION
SEPTEMBER 11, 1988
UTICA, OHIO

From the Desk of Louise Ream, Editor

I have had many comments about Liz's story of the ghost in the last issue. Most people do not believe in ghosts but some tend to think it could be true.

Maybe I should not have been so hasty in saying that I didn't believe in ghosts. The lower drawer of my secretary's desk, (right next to the doorway where the door used to close) keeps sliding out to its full length on its own every day. (Pat says it is because the floor is uneven.) The two doors in my apartment keep going shut when I want them to be open. Could it have anything to do with the fact that I sprayed them heavily with W.D. 40 so that they would stop squeaking? Or, could it be that Auntie Clara is trying to get even with me? What do you think?

I have had a report of Lafayette etch on a moon- gleam ice bucket. I don't remember seeing the etching on Moongleam but our etching book does say it was made. Also reported to me was a 300 Peerless punch cup in flamingo. Now that would be rare!

The 1426 Clover Rope mug made by Fenton in Ruby for our September dinner is absolutely beautiful. Fenton did a great job with it. All were sold which is the first time for several years that we have had a sellout for this event. They will be made again next year in another beautiful color.

While making the mugs, Fenton also made some Ruby elephant handled baby cups which are also beautiful. They sell for \$16.00 each and are available in the gift shop or by mail order.

The dinner, catered by Eleanor Jackson, our favorite cook, was delicious as usual and as they usually do, the Heisey Collectors gobbled up the hors d' oeuvres in nothing flat. Somehow Heisey Collectors love to eat.

The Mini-Show was small but a large quantity of Heisey glass was available for purchase. Most of the dealers appeared to be doing well.

The McClains had a guest from England who attended the dinner. Others came from as far away as Massachusetts, Texas, Maryland and California. Everyone had a lot of fun. Frank Frye, present with his sledge hammer, as usual was disappointed not to be able to break more glass. He was only able to break one bad mug as all of the other mugs were sold.

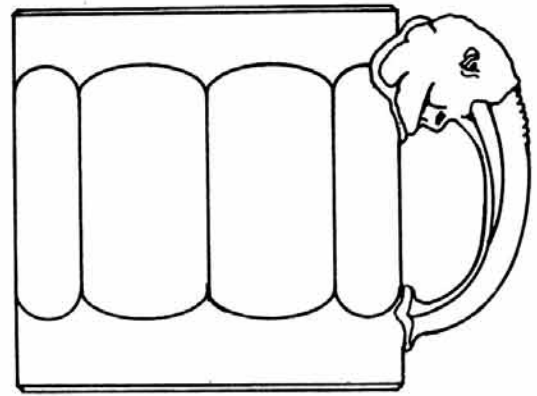
Please note the two New England shows advertised in this issue, one by the Southeastern Massachusetts HCC and the other by the Connecticut HCC. Since the Massachusetts show is on October 1 and 2, it may be over when you get this. If so, we hope it was a great success. At least it was well advertised in Heisey News. The Connecticut show on November 5 and 6 is advertised in this issue. Remember both of these shows help to support HCA.

Miriam Pringle came to visit us recently and

brought a lot of candlesticks and other items to donate to the museum. We have been too busy to get all of these catalogued and out so we will list them in a newsletter soon. HCA really is happy to receive these lovely items and we thank Miriam very much for her generosity. We have had other donations recently as well which we will also list later on.

We have placed the gold encrusted glass in Cabinet 3 of room 8 temporarily, so that everyone who comes can see it. Most of our other new items have not yet been placed because we want to finish marking all of the glass already in the cases before we put in the new glass.

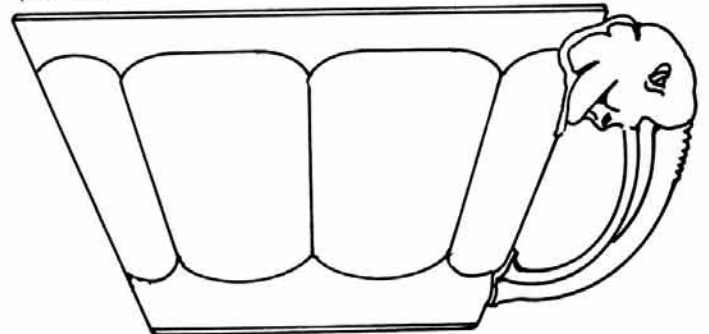
Louise



CHILD'S CUP H King 4-6-'46

THIS MUG WAS MADE BY HEISEY IN CRYSTAL, BY IMPERIAL IN MANY COLORS INCLUDING LIGHT BLUE, PINK AND YELLOW FOR HCA.

THE MOST RECENT USE IS THE RUBY CUPS MADE LAST WEEK BY FENTON. ON SALE NOW IN THE GIFT SHOP FOR \$16.00.



B PANEL CHILD'S BOWL TO GO WITH CHILD'S CUP OF 4-6-'46 H King 9-5-'46

BOTH OF THE ABOVE WERE DESIGNED BY HORACE KING. THE CHILD'S BOWL WAS NEVER ADOPTED FOR PRODUCTION.

PHOTOGRAPHING GLASS

by Tom Felt

Several years ago, when I started work on the Candlestick Book, I decided it would be nice to do the whole thing -- not only to write the text, but to do the photography as well. What could be simpler? All that would be necessary would be to invest in a good camera, right? Little did I know .



PHOTO 1

One expensive camera and two or three hundred photographs later, I realized there was more to it than I had guessed. I tried a white background, then a black one, bought spotlights, experimented with a flash instead, even went outside in the hope that natural sunlight might do the trick -- and months later, I still hadn't managed to produce a single decent photograph. There were a number of times when I was ready to give up, but I kept experimenting, and finally hit upon the "secret" that resulted in most of the photographs used in the book being of a quality that I'm rather proud of. (In a way, I'm almost more pleased when complimented on them than on the rest of the book, simply because of the effort that went into learning to do them well.)

Duane Bailey, a club member from Massachusetts, wrote a few months ago suggesting that I share my hints on photography in an article, which I will herewith attempt to do. I have to emphasize that what follows are just my more-or-less accidental discoveries and I would appreciate hearing further from any of you who either have greater knowledge of photography and/or who have made similar discoveries yourselves.

However, I don't apologize too much for my amateur status. I was delighted by a quote Mr. Bailey sent from a book entitled Photographing Your Craft-

work: A Hands-On Guide for Craftspeople by Steve Meltzer, which includes a short chapter on photographing glass beginning: "Honestly, I grit my teeth every time a craftsperson calls and asks me to shoot glasswork. After nearly ten years of photographing crafts I still find glass to be the greatest challenge and the greatest frustration." It really made me feel better to hear that from a professional!

So, let me start by letting you in on my "secret" for black and white photography -- it's simply making sure that you have lots of light behind the piece being photographed. There are a few other things to be considered, such as trying to avoid an overly noticeable "horizon" line or an otherwise distracting background, but they are secondary. Note the accompanying photograph #1 of the Ipswich candy jar. The pattern shows up clearly and the object itself appears sharp and well defined. How this is accomplished can be seen in photographs #2 and #3.

My own setup is somewhat along "Rube Goldberg" lines. I use a glass shelf, raised on wood blocks. Using a transparent shelf and raising it lessens the noticeability of the "horizon". I also find it helpful being able to adjust the height of the shelf, which is why I use the wood blocks; instead of three on each side, as in the accompanying pictures, I sometimes use only two, when dealing with taller items. However, anything that happens to be available will serve fine to prop up the shelf.

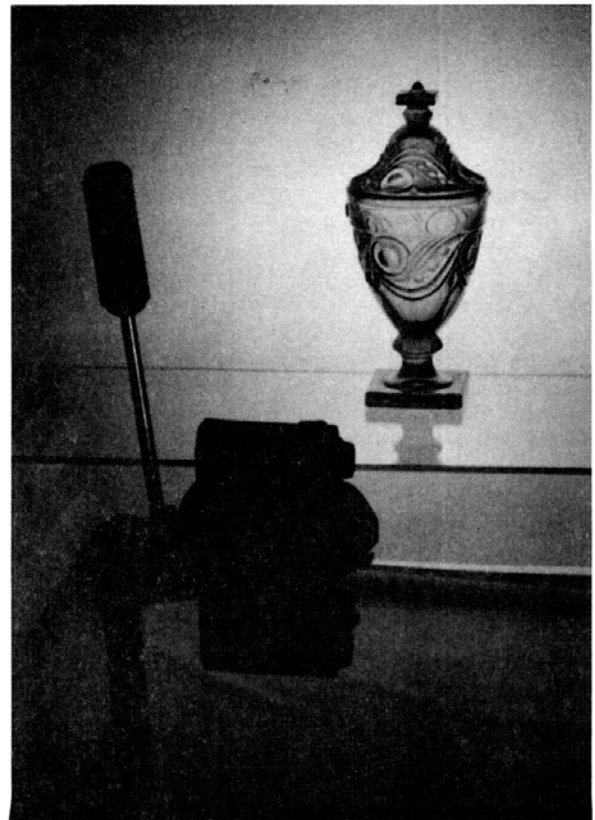


PHOTO 2

The backdrop is a plastic reflector, the kind used in fluorescent lights. They're relatively inexpensive and available in any hardware store. Be sure to get one with a smooth surface, since a pebbled or rough surface will show up in the photograph. The reflector is held upright with bricks.



PHOTO 3

For those who are clever with their hands, a much more sophisticated version of this setup can be made from plexiglas, or some similar material, which can be placed in a frame and curved so that the glass shelf is not necessary. The piece of glassware is then placed directly on the bottom curve of the plexiglas and can be lighted both from behind and underneath, if so desired. This has obvious advantages (the horizon is eliminated entirely), but is much more bulky to transport or store.

The more light you can provide, the better. The one I use is on an adjustable tripod (a useful consideration) and was purchased at a camera store. If you're going to do much photography of glass, it's worth the investment. The bulb is 500 watts and should be placed four to five inches from the back of the plastic reflector. (Warning: a 500 watt bulb generates a lot of heat and will eventually melt the plastic and leave a depression.) The piece being photographed should also be placed within a few inches of the backdrop with the light centered behind it. (It's extra work, but if you take the time to adjust the light whenever you begin working with a different sized piece, you'll be more pleased with the results; when looking through the camera lens you should see a halo effect.) You can experiment by moving the piece slightly forward or back until it appears in the lens with maximum definition and detail.

I also strongly recommend a tripod for the camera and a set of close up lenses for smaller items. Try to fill the frame as completely as possible with the piece being photographed. (Prints, of course, can be cropped as necessary; slides, however, will really benefit from following this advice.) I've used both a 35 mm. Pentax, which required manual setting, and more recently, a Canon T-70, which does everything automatically except focus, and the results were successful with both. So I won't try to explain f-stops and depth of field and all that sort of stuff -- I'm not entirely convinced I understand them myself. To avoid too much grain, use a "slow" film (one with a low ASA number) such as Panatomic-X or Tri-X Pan. (A slow film generally cannot be used with a hand-held camera, which is why a tripod is

necessary.) There is also a newer generation of T-MAX film which is faster, but with very little grain.

The next problem can be with the developing. Because you are shooting an object which appears against a very bright light in the center of the print, it often will be surrounded by a very dark border, which most commercial developers (including those who do their black and white work by hand) will assume you don't want. Instead, they will try to "even out" the whole print, which will result in the center of the picture appearing overexposed. If this happens, look at the negative. If you can see detail in the negative which does not appear in the print, take it back and have it done over again.

Most of the above deals with black and white photography. Working in color is a whole other problem and one I don't feel I have entirely licked myself. Depending on the color of the piece being photographed, placing a very bright light behind may work quite well (e.g., with red or some shades of green); in a lot of cases, however, it will oversaturate the color and the result will not be true. As a compromise, placing a pair of lights on either side of the piece will sometimes result in acceptably capturing the color, but can also cause too much reflection. (Bouncing the light from a white or silvered surface will reputedly help prevent this.) Some colors -- notably flamingo (pink) and hawthorne (lavender) are almost impossible to catch accurately.

If you use a spotlight like the one in the picture accompanying this article, which has a tungsten bulb, you are pretty limited in your choice of film, since color films are very sensitive to the kind of light available. Most are "balanced" to daylight and/or to a flash; there is only one tungsten-balanced slide film on the market.

I hope some of this will be useful to those of you who would like to try photographing your own collections. I would also be grateful if you would share your own hints on how to do it better, particularly in the case of color photography. The results can be great when they turn out the way you want them to -- but getting there can be a difficult and frustrating trip!



MADE BY DUNCAN GLASS CO. NOT HEISEY "PILLOWS".



#308 BLOCK BY DUNCAN. NOT HEISEY'S "VICTORIAN".

LETTERS, WE GET LETTERS

OPEN LETTER TO THE HEISEY COLLECTORS OF TEXAS -

As much as I enjoy the HCA Convention, I enjoy even more the months leading up to that "main event" every June; the saving, the planning, the dreaming and ANTICIPATION. However, the anticipation factor was way down last winter. During those long dark months, North Dakota became more and more isolated. As I sat and stared bleakly out at an even bleaker landscape it was hard not to recall all the planning we HCT'ers (Texas) were happily and noisily making just one year ago for our first en masse trek to Newark. As a matter of fact, y'all were probably going through the happy process in warm sunny Texas (75 degree weather) as I reminisced, feeling very alone and forgotten. Was it worth even attending the convention this year knowing, as a former HCT member, I wouldn't be a part of that giddy and excited group?

Well, tradition prevailed. I went. It was worth it. It was a delight to see Jan and Charlie Baird and Caroline and Colin McSween. But most touching of all was the plaque presented to me by Charlie (on behalf of the HCT) naming me an honorary member of the HCT. I hadn't been forgotten! What a sweet moment in time I shall always cherish!

There is a moral to this story - you all have to understand how much it meant to me to belong to the club. The location of Chuck's assignments had not afforded me the privilege of belonging to a club, so to finally join my first one - the HCT - was a milestone in my "career" as a Heisey Collector. Collecting is fun and can be done anywhere (or at least attempted) but, the coming together of people of dissimilar backgrounds with the forming of a club to share a common interest is the best part. The worst part was knowing I'd be leaving soon. However, with hearts as big as Texas you found a way to make sure I will always feel welcome there as Chuck's globe-trotting days continue. It is heartwarming to know I will always have a home to go back to. Many thanks, HCT.

And so, all you Heisey people out there in the D/ FW area who do not belong to the HCT, I urge you to contact the HCA to get the date and name of the person hosting the next bimonthly meeting. And then go! Join! Enjoy the many benefits of a local club which in turn contributes to insuring a strong national organization. Besides, much as I love this club, I do have to admit that they need help. There are never enough people to over-indulge themselves with all the gourmet delights always in tempting presence at each gathering. More people also need to be there to add substance to their show and tell sessions. The best these people can come up with are Hawthorne duck floral blocks, Cobalt vases, Sahara Creole goblets - you get the idea. However, it is true Texas style and this merry band of patriots await the participation of more Texas recruits. Rise up! Return to Newark! I'll be waiting.

Amy Jo Jones

Dear Editor - Louise Ream,

After visiting the Heisey Museum last April, enjoying the collection immensely, and studying the many books I purchased there; my enthusiasm and my

collection has grown tremendously. I have added many animals (I now have ten) - the latest is the bunny family, the larger rabbit and two little bunnies.

I also enjoyed reading the August issue of Heisey News concerning the beautiful #1255 Pineapple & Fan pattern, as I have recently added to my collection the covered sugar, creamer, spooner, and covered butter with perfect gold trim. These, along with my 6 oz. Crystal oil cruet, three ½ pint tankards in Custard, and my Emerald tumbler with gold trim give me quite a good start on this beautiful pattern.

Don Friedemann
The Teacher from Wisconsin

QUESTIONS & ANSWERS

Q

Dear Louise,

I am sending you two pictures of a piece of glass we bought. It has the Heisey mark on the outside on the bottom. This is a beautiful piece of glass. The quality of the workmanship is excellent. By the color, it must have been made by Imperial. It does not have any waves or lines like some Imperial. Could you tell me if this glass was made as a production item or was it made by some worker for himself?

John Willoughby

A

Dear Mr. Willoughby:

What you have is the footed pecan bowl with a crimped top, made from the bottom of the #1405 Ipswich candy jar. It was made by Imperial Glass Co. 1/1/62 to 1/1/65, but never made by Heisey.

We have one of these on display in the museum. There is information on this in the Heisey by Imperial book and it is also pictured on the color chart which comes with it. It was made in Heather and Amber.

Louise Ream

Ed. Note: Anyone who collects Heisey should have the book Heisey by Imperial. Not only does it clear up doubts which you may have but much of the glass is collectible today.



SULTANA COLOR (AMBER)

SULTANA PATIO—Pattern No. 1624



(NEW)				
No.	Size	Item	Price Doz.	Sultana
1624	10 oz.	Tumbler	\$ 9.60
1624	6 oz.	Sherbet	9.60
1624	5 oz.	Juice	9.60

Miscellaneous Pressed Items

No.	Size	Item	Price Doz.	Sultana
1		Horse Head Book End	\$99.00
1		Elephant (Large)	65.40
2		Elephant (Middle Size)	52.80
3		Elephant (Small)	39.00
1		Giraffe (Head Turned)	45.00
2		Giraffe	45.00
1		Flying Horse	360.00
1593	4½ in.	Ash Tray, Full Grd.	150.00

SUEZ—Pattern No. 5057

(Crystal Bowl, Sultana Stem, Crystal Foot)

No.	Size	Item	Price Doz.
5057	9 oz.	Low Goblet \$16.20
5057	6 oz.	Sherbet 16.20
5057	4 oz.	Claret 16.20
5057	3 oz.	Wine 16.20
5057	1 oz.	Cordial 16.20
5057	4 oz.	Cocktail 16.20
5057	4½ oz.	Oyst. Cockt'l. 16.20
5057	5 oz.	Ftd. Juice 16.20
5057	12 oz.	Ftd. Ice Tea 16.20
1609	8 in.	Plate, Sultana 14.40



LEGIONNAIRE—Pattern No. 5077

(Crystal Bowl, Sultana Stem, Crystal Foot)

No.	Size	Item	Price Doz.
5077	10 oz.	Goblet \$16.20
5077	6 oz.	Sherbet 16.20
5077	3½ oz.	Claret 16.20
5077	1 oz.	Cordial 16.20
5077	3½ oz.	Cocktail 16.20
5077	3½ oz.	Oyst. Cockt'l. 16.20
5077	5 oz.	Ftd. Juice 16.20
5077	12 oz.	Ftd. Ice Tea 16.20
1609	8 in.	Plate, Sultana 14.40



CABOCHON SODAS—No. 6092

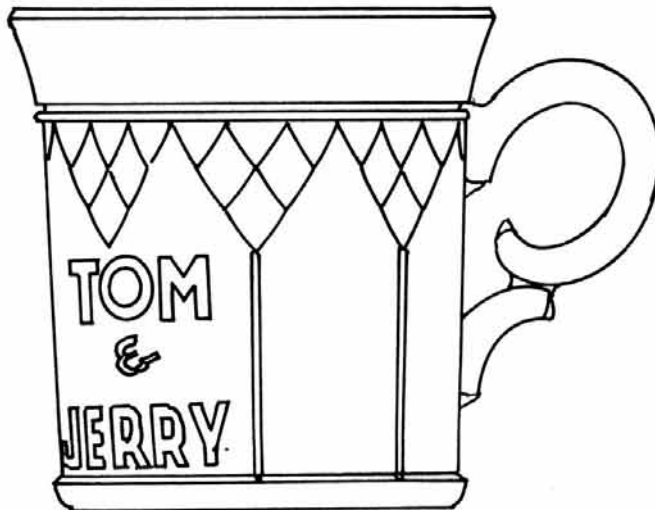
(Crystal Bowls, Sultana Bases Only)
(See Page 20 for Style of Soda)

No.	Size	Item	Price Doz.
6092	14 oz.	Soda \$16.20
6092	12 oz.	Ice Tea 16.20
6092	10 oz.	Beverage 16.20
6092	10 oz.	Tumbler 16.20
6092	6 oz.	Sherbet 16.20
6092	5 oz.	Juice 16.20
1591	8 in.	Plate, Sultana 14.40

Miscellaneous Blown Items

No.	Size	Item	Price Doz.
5048	10½ in.	Vase, S/O (4057), Sultana \$99.00
5012	10 in.	Sq. Ftd. Bud Vase, Crystal Bowl, Sultana Base 25.00
5013	5 in.	Sultana Vase for Epergne 11.80
5048	3½ oz.	Rooster Head Cocktail, Crystal Bowl, Sultana Stem, Crystal Foot 16.20
5074	4 oz.	Sea Horse Cocktail, Crystal Bowl, Sultana Stem, Crystal Foot 16.20

From 1953 Price List
Made Crystal and Sultana (Amber)



1434 TOM AND JERRY MUG
DRAWING BY HORACE KING,
A HEISEY DESIGNER.

TREASURER'S REPORT

AUGUST 31, 1988

CASH BALANCE MAY 31, 1988	\$ 9,011.80
CASH RECEIVED	76,100.14
CASH PAID OUT	76,138.75
CASH BALANCE AUG. 31, 1988	\$ 8,973.19
BALANCE ON LOAN AT BANCOHIO	\$42,000.00
PAID ON LOAN THIS QUARTER	\$ 6,000.00
PAID TO ENDOWMENT FUND	\$ 4,635.00

NOTE: \$4,300.00 was taken in at the
September 10th. dinner. This includes
mugs sold that night and other items
auctioned off and is not a report of
the whole project.

WESTMORELAND, DEPRESSION GLASS, ETC., ETC., HEISEY, DUNCAN.

7TH ANNUAL ALL GLASS SHOW & SALE

Sponsored by the
Connecticut Heisey Collectors Club

BENEFIT OF THE NATIONAL
HEISEY MUSEUM

SATURDAY

SUNDAY

10:00 a.m. to 5:00 p.m.
Nov. 5, 1988

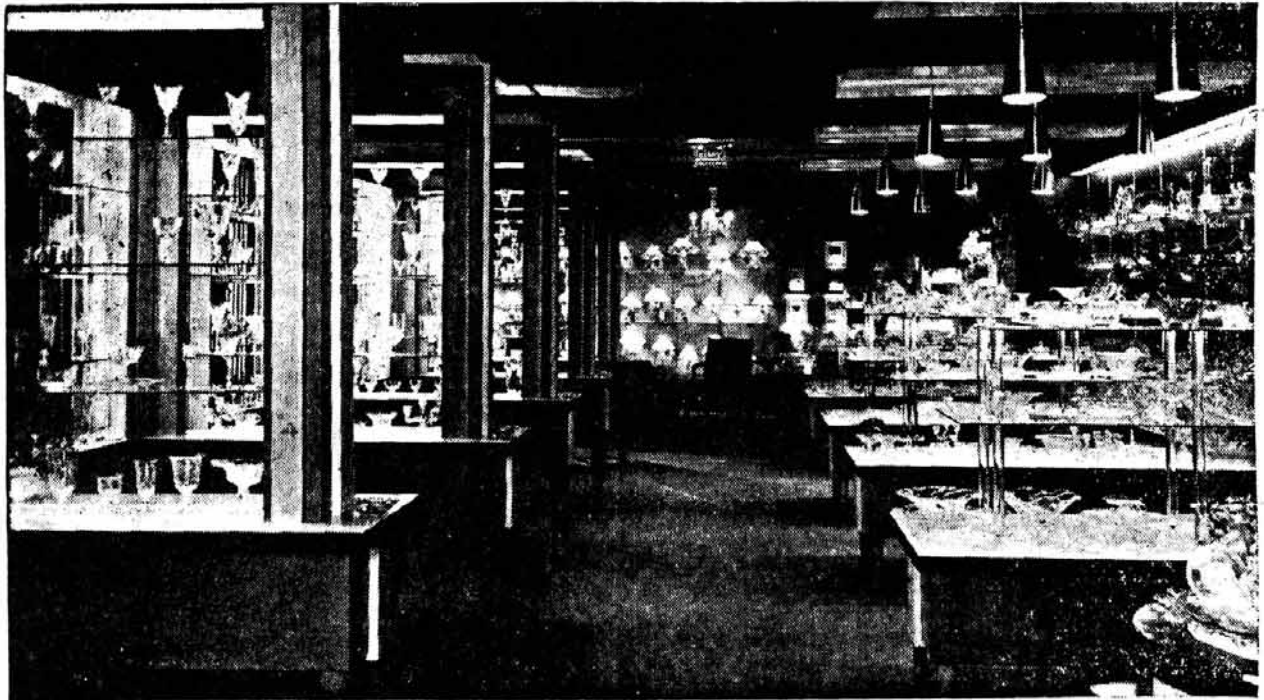
10:00 a.m. to 4:00 p.m.
Nov. 6, 1988

National Guard Armory
590 Woodruff Street
Southington, CT

ADMISSION — \$2.50
with this Ad — 2.00
I-84 to Exit 32 South (Rt. 10)
To Hobart Street — Right on to Pleasant St. —
Left to Armory

CARNIVAL GLASS, CAMBRIDGE, IMPERIAL, FENTON, FOSTORIA, NEW MARTINSVILLE

Heisey Opens Ultra-Modern Glassware Sales Showroom In Dallas, Tex.



A. H. Heisey & Co. has opened one of the most modern glassware sales offices in the country at Dallas, Texas, it was announced Tuesday by T. Clarence Heisey, president of the Newark firm producing hand-wrought crystal.

The new unit, pictured above, features a large display room, in addition to a reception office and lounge, and serves as a wholesale buying center for stores in the Southwest, as well as permanent headquarters for Heisey representatives assigned to that territory. It is another major step, the company feels, in stimulating sales of Newark-made glassware, and maintaining Heisey leadership throughout the country.

The Dallas headquarters was designed by Horace King, professor of art at Denison University and Heisey consultant designer,

who did special research on the best way to display and dramatize glassware. Prof. King also designed the new china and glass department at Haynes Brothers Jewelers in Newark.

Emphasizing the quality and beauty of Heisey crystal, the show room combines modern lighting, fixtures and appointments, with the harmonizing color scheme using tope carpeting, midnight blue ceiling and plate-glass backgrounds of gun-metal, blue, burgandy and grey.

In addition to the new Dallas quarters, located in the second unit of the Santa Fe building, Heisey has sales offices and display rooms in Portland, Ore.; New York, N. Y.; Seattle, Wash.; Los Angeles, Calif.; Chicago, Ill.; and Honolulu, Hawaii.

R. C. Irwin is the Heisey sales manager. The James V. Thomas Company operates the Dallas show room for the Heisey Co.

MADE CRYSTAL, MOONGLEAM & FLAMINGO



4028 - 30 - oz.
DIAMOND OPTIC
WITH NO. 81 PRESSED STOPPER
ALSO FITTED WITH NO. 48 CUT STOPPER

BLOWN AND NOT MARKED



#4182 PLATE - MADE IN 5,6,7,8,9,12" IN MOST COLORS OF THIS PERIOD. GROUND AND POLISHED WITH BOTTOM NOT MARKED. PLAIN, WIDE OPTIC OR DIAMOND OPTIC.

CLUB NOTES

NORTH CAROLINA HEISEY STUDY CLUB

The North Carolina Heisey Study Club began the 1988 year with a new slate of officers, and a change from four to six meetings a year. A concerted effort has been made this year to have meetings coincide with local events that may be of interest to our members. We have had lunch at a historic inn in seaside Beaufort and attended the Tarheel Depression Glass Club Show in Durham. Upcoming events will include a tour of a candlestick museum in Kernersville, and a day at the gigantic flea market in Charlotte.

Our fund raising project this year has gotten off to a good start. Our royal blue tee shirts with the white logo "I'm Hooked on Heisey" were a big success at the convention, where Jerry Lecky literally sold the last one off of his back! We have plans to order more and will soon be taking mail orders. We are proud of the fact that our fund raising efforts enabled us to purchase a Moongleam Tulip vase to donate to the Heisey Museum in Newark.

Our membership is continually growing and we welcome all those in the North Carolina area who would be interested in joining us.

Linda Haskell

Editor's Note: Hugh Lecky's address was in the ad on the back of the September issue concerning the "Tee" shirts. You may contact him if you are interested in joining this club. LR

* * * * *

THE GULF COAST HEISEY CLUB (FLORIDA)

INVITES

MEMBERS & SNOW BIRDS TO ATTEND:

Regular Meeting - November 12, 1988

at the home of

Peg and Ken Norris

498 Dover Dr. So.

Englewood, FL 34223

PH: (813) 474-7879

TIME: 11:30 AM until "late afternoon"

EVENTS: Visiting, Lunch Out, Program "Heisey Toothpick Holders" by Ralph Higdon, and more!

PLEASE CALL OR WRITE IF PLANNING TO ATTEND.

DIRECTIONS MAP WILL BE SENT IF REQUESTED.



* HEISEY COLLECTORS OF THE ROCHESTER AREA

* The July meeting and picnic were held at the home of Adele and John Pardee at their beautiful home on Conesus Lake. The weather was perfect, all the flowers in front of the cottages were breathtaking, although the homes in this part of the lake can hardly be called cottages.

* The word must have gotten around about this great area; Heisey guests from all over showed up for the event. Cole and his Amish wife Jean arrived with Helen Sparacio. There was a strange man with Helen but we never got his name. He seemed to know a lot about stemware, but you never know. Funny looking guy too! Cole and Jean looked well after their Ohio accident; Cole was still getting prices, some from as far away as California. Then another beautiful lady arrived with her husband, a famous TV personality. Of course, they were none other than Rhoda and David Curley. Dave spends most of his time looking for candle parts, any candle parts. If you have any for sale give him a call, his number is in the Heisey News dealer list.

* Our Prez, Bruce Schwendy, called the meeting to order at 4:30. Since there was beer being served, I'm surprised he remembered. The meeting was brief, with the Convention being the main topic of note. The number of accidents during and after the show was amazing. Since this meeting is more of a fun thing, than anything else, there wasn't much glass discussion. Bruce did raffle off a few things that the members donated. They included four original Heisey convention posters designed and donated by Sharon Orienter. She did a fantastic job, as usual. She also brought a bag of cookie mix made with raw sugar from Hawaii; at least she said it was from Hawaii. The proceeds from the raffle went to our depleted treasury.

* After the meeting, a great show and tell was held with the following items shown: a small basket made from a jug; two Heisey Bibles, each with different cuttings; a book "Elements of Glass Making" signed by Clarence Heisey; a Jewel Band nappy and several other interesting items. During the show and tell, Dave Curley was seen poking the cakes looking for candle parts.

* Adele and John then served a great picnic; our local "White Hots" were a hit with our guests. They appear to be special to this area, although a person in New Jersey claims they are made there under a different name, which I cannot pronounce. He also claims to have seen the Heisey Museum Ghost.

* The antique shows in this area continue to multiply, however little good Heisey is to be found. There was a nice Daisey and Leaves basket at a show South of here, but the price was out of this world. We saw some Arch tumblers at the Clarence Expo in Cobalt, but again the price was too high.

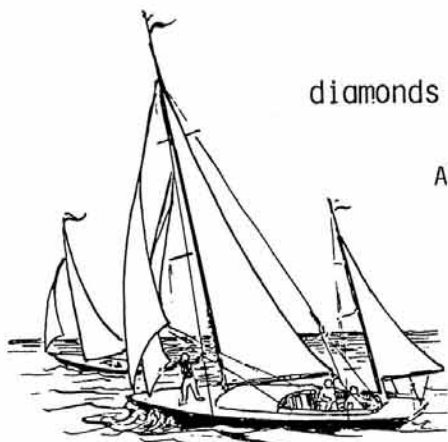
* Well, I for one, am not unhappy to see this "hot" summer end. The "Greenhouse Effect" was about to do us all in at this address.

* We would like to offer our thanks to Bob Rarey for the great job he is doing as our President; keep up the good work, Bob.

* Our quote for the month - "Most of the shadows of this life are caused by standing in one's own shadow". (RWE)

George Reynolds

diamonds are forever . .



Although Starling Burgess designed and built boats he was obsessed with air flight. Burgess's inventiveness brought Augustus H. Herring, an aviation entrepreneur, to Marblehead where the

two of them built the first Herring - Burgess biplane which was exhibited at the first aero show in Boston. Even though it had never been off the ground it was, nevertheless, considered the most impressive plane displayed. February 28, 1910, seven years after the Kitty Hawk flight, the "Flying Fish" was taken in pieces from the Yachting Center to Chebacco Lake in Hamilton where the frozen lake acted as a runway for the tiny plane balanced on three skids. Herring was ready to take off, and did, 30 feet into the air for a distance of 120 feet and a near crash landing. Nevermind, a man from Kansas immediately bought the plane.

Starling Burgess was an eccentric man who continually redesigned his planes with the advise of many, now famous, aviation buffs who came to the Marblehead Plant. In the next aero meet, the second place Burgess plane was praised for outstanding workmanship done by Marblehead craftsmen. This factor clinched the Burgess franchise to build Wright planes. One of the first recorded parachute jumps was made by Rodman Law (nicknamed in the Yachting Center the "Human Fly") from a Burgess plane into our Harbor.

Perhaps I'm mistaken but I always thought that the Yachting Center was "God's Country" but not according to "Ole & Minnie", they say "Wisconsin is God's Country", oh Vell, to each his own. Let me list 'Vot' they found. Eleven (11) goblets and six (6) sherbets all in Tyrolean, and Eighteen (18) 10½" service plates in #1519 Waverly - all of the above are Orchid Etch and very beautiful.

This month I received a nice letter from the "Show Me State" (MO). It is delightful to hear from a new contributor to 'diamonds are forever', this is what is needed to keep the column going. The "Pottery Man" is his name and, (even though he collects some Roseville, Weller, Hull art pottery, carnival glass and Fenton), Heisey is his #1 game! At a local estate sale he confiscated the #1540 Lariat cream and sugar; a #1401 Empress 6" Dolphin footed bowl in Sahara; and a #1541 Athena bon-bon dish with the original paper label. This last item was sold as Fostoria, "hmm, little did that dealer know!"

At the Convention in June the "Cruet Man" from Cal was fortunate to add the 6oz #357 Prison Stripe Cruet to his almost complete collection. This is an elusive one and quite difficult to find. Good for you!

The "Compassionate Beaver" from Oregon, wrote to brag about four (4) Saturn 8" plates and a Crystalite dinner plate. Oh, I'm sorry, did I forget to inform you regarding the color of the Saturn plates? Silly me! They were ZIRCON!! What a find, it really is

something to brag about.

The weather here in the Yachting Center has been just brutal the last week or ten days, hovering very close to the 100 degree mark. The air is steamy like Florida or maybe even Hawaii. Perhaps if I close my eyes I could picture the breeze wafting through the palm trees and the surf pounding onto the sand. Forget those dreams, I can go down to my own Chandler Hovey Park and sit beneath the lighthouse and relax, watching the sloops sailing back and forth at the mouth of the harbor, enjoying the gentle breeze. I feel cooler already. It is much too warm to do much outside Heisey hunting but "Yours Truly" did, even so, manage to come across a couple of #419 Sussex cocktails, one in Moongleam (on the yellow side) and the other in Flamingo; the #1280 Winged Scroll covered butter in Custard with good gold; and the #1184 Yeoman oval baker in Marigold.

The "Felicitous Flamingo Hunter" is enjoying a lovely #4159/1 9" Classic vase in Hawthorne; the #1010 Decagon handled dish in Flamingo plus, a #54 salt and pepper in Marigold. The Hunter will be off and running most of this month, perhaps she'll find something else exciting in her travels.

The "Cardinal" has several #1425 Victorian 2½oz wines to chirp about along with a #1415 Twentieth Century 5oz footed soda in Dawn. He has expressed a definite like for the color Zircon and the pattern Saturn. We'll see what develops as time goes by. That is a lovely pattern, to be sure, and a soft relaxing color.

"Mountain Grandma" reports the #1447 Rococo Land of Legend plate 1973 in Verde green.

"Two Guys" (conn) came up with a few choice things; #1170 Pleat and Panel Flamingo cruet; the #417 Rib and Panel basket in Moongleam; a #1229 Octagon jelly in Flamingo; and the #1469 Ridgeleigh pint decanter with stopper, along with five (5) 2½oz bar glasses.

The "South Jersey Troops" came across the #1405 Ipswich oil bottle, while one of the "Lucky Seven" (Lone Star State) found a few nappies; #381 Heisey Quilt 4" nappy, #355 Quator square nappy and a #462 Nail square nappy; in #1231 Ribbed Octagon four (4) cups and saucers were discovered in Moongleam. These were among a heap of tarnished dirty silver plate that was in great need of being thrown away. That just goes to show that you never know what you will find where!!

During the terrible heat wave my thoughts turned to the "Farmer" and I've wondered just how his crops are doing, if indeed they are! Nevertheless, Heisey he did reap, a Plaid Stalactite gas globe; and a #1201 Fandango Water Bottle.

It's much too warm to type any longer so I'll stop for this month. Please write and share with me and others - I need you all.

Happy Hunting! I hope you all find lots of pretty Heisey, and when you do write and let me know.

Janet Caswell

Note: We were all happy to see Janet at the September board meeting. She came on a bus as she is afraid to fly and didn't want to drive down alone. It was good to see her again.

HEISEY CLUB OF SOUTHEASTERN MASSACHUSETTS

As the end of the summer approaches, families begin to think of going back to school. Children shop for new clothes, and college students start to pack for their dorm rooms. The Heisey Club of Southeastern Massachusetts decided to beat the rush. Yes, we decided to go back to school in August! Off we went! Spanky, Alfalfa, and the Heisey gang attended an evening at the Red School House in Scituate for the August meeting.

Irene Walton, program chairperson, received an "A" for planning this meeting. The Red School House, built in 1893, serves as headquarters for the Scituate Historical Society. Among antique desks, books, chests, portraits, and other treasures, our gang was treated to a lecture by Mrs. Laidlaw, president of the Scituate Historical Society. As the teacher, she had no disciplinary problems, for the entire class sat at attention in straight backed chairs while she guided us through the history of this seaside town. She mesmerized us with animated stories and a slide presentation. It was in the midst of the August heat wave, the quarters were close, the air was still and stuffy, yet we sat hypnotized as Mrs. Laidlaw recited the poem, "The Old Oaken Bucket", by Samuel Woodworth, who was born in Scituate in 1785. Her mellow voice beat musically, first slowly, expectantly, then quickly, excitedly. The gang could taste the cool, wet, glistening water ladled from "the old oaken bucket, the iron bound bucket, the moss covered bucket that hangs in the well". What we would have given for a frosty Heisey glass filled with ice cold water at that moment! Mrs. Laidlaw inspired such enthusiasm that Helen and Ted Mead and Jackie and Bill Thran were overheard to say that they would return for a leisurely tour of the town. A special "thanks" goes to Mr. William Thomes who assisted Mrs. Laidlaw that evening.

The trip back to the "good old golden rule days" would not be complete without "recess". Michael Moss, host for the evening, delighted us with homemade lemonade, nuts, cake, crackers, and dip. Michael received an "A", also. This is his first year with the Heisey gang and he helped make the club's July yard sale a success.

Our class officers are making plans for the annual New England Lobster festival to be held at the Banck's studio. By the time this is published, the "gang" will be cracking lobster claws and slurping clam chowder. Mary Williams is famous for her secret recipe for clam chowder. If you happen to see her at our Third Annual All Glass Show in Auburn, Massachusetts, on October 1 and 2, you may be able to "steal" the secret from her. Spanky, Alfalfa, and the Heisey gang, hope to see many of you there.

Mary Neckes

HEISEY CUTTINGS FROM 1951

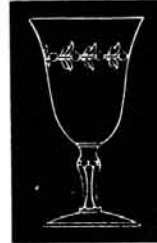
The following cuttings are taken from a Catalog Supplement and price list from 1951. Some of these were short lived. Several of them are on the 5086 stem which is the later and shorter version of 5024 Oxford. We hope you can find some of these at the prices listed.

MAYTIME – Cutting No. 1034



No.	Size	Item	Price Doz.	Crystal
5082	10 oz.	Goblet	27.00	\$27.00
5082	5½ oz.	Sherbet	27.00	27.00
5082	4 oz.	Claret	27.00	27.00
5082	4½ oz.	Cocktail	27.00	27.00
5082	5 oz.	Ftd. Juice	27.00	27.00
5082	12 oz.	Ftd. Ice Tea	27.00	27.00
1609	8 in.	Plate	30.00	30.00

LAUREL – Cutting No. 1044



No.	Size	Item	Price Doz.	Crystal
5057	9 oz.	Low Goblet	33.00	\$33.00
5057	6 oz.	Low Sherbet	33.00	33.00
5057	4 oz.	Claret	33.00	33.00
5057	1 oz.	Cordial	33.00	33.00
5057	4 oz.	Cocktail	33.00	33.00
5057	4½ oz.	Oyster Cocktail	33.00	33.00
5057	5 oz.	Ftd. Juice	33.00	33.00
5057	12 oz.	Ftd. Ice Tea	33.00	33.00
1609	8 in.	Plate	36.00	36.00

SKYLINE – Cutting No. 1050

No.	Size	Item	Price Doz.	Crystal
5082	10 oz.	Goblet	27.00	\$27.00
5082	4 oz.	Claret	27.00	27.00
5082	4½ oz.	Cocktail	27.00	27.00
5082	5½ oz.	Sherbet	27.00	27.00
5082	5 oz.	Ftd. Juice	27.00	27.00
5082	12 oz.	Ftd. Ice Tea	27.00	27.00
1609	8 in.	Plate	30.00	30.00



SILVER IRIS – Cutting No. 1052

No.	Size	Item	Price Doz.	Crystal
6091	10 oz.	Goblet	39.00	\$39.00
6091	3 oz.	Wine	39.00	39.00
6091	5½ oz.	Sherbet	39.00	39.00
6091	4 oz.	Cocktail	39.00	39.00
6091	4 oz.	Oyst. Cockt'l.	39.00	39.00
6091	5 oz.	Ftd. Juice	39.00	39.00
6091	12 oz.	Ftd. Ice Tea	39.00	39.00
1609	8 in.	Plate	39.00	39.00



CAT-TAIL – Cutting No. 1053



No.	Size	Item	Price Doz.	Crystal
6091	10 oz.	Goblet	27.00	\$27.00
6091	3 oz.	Wine	27.00	27.00
6091	5½ oz.	Sherbet	27.00	27.00
6091	4 oz.	Cocktail	27.00	27.00
6091	4 oz.	Oyst. Cockt'l.	27.00	27.00
6091	5 oz.	Ftd. Juice	27.00	27.00
6091	12 oz.	Ftd. Ice Tea	27.00	27.00
1951	8 in.	Plate	30.00	30.00

WESTMINSTER – Cutting No. 1055



No.	Size	Item	Price Doz.	Crystal
5024	11 oz.	Goblet	48.00	\$48.00
5024	4½ oz.	Claret	48.00	48.00
5024	3 oz.	Wine	48.00	48.00
5024	6½ oz.	S. Champ.	48.00	48.00
5024	3½ oz.	Cocktail	48.00	48.00
5024	1 oz.	Cordial	48.00	48.00
5024	4 oz.	Oyst. Cockt'l.	48.00	48.00
5024	5 oz.	Ftd. Juice	48.00	48.00
5024	12 oz.	Ftd. Ice Tea	48.00	48.00
1184	8 in.	Plate	48.00	48.00

MIDWEST – Cutting No. 1059

No.	Size	Item	Price Doz. Crystal
5057	9 oz.	Low Goblet	\$30.00
5057	4 oz.	Claret	30.00
5057	3 oz.	Wine	30.00
5057	4 oz.	Cocktail	30.00
5057	1 oz.	Cordial	30.00
5057	6 oz.	Sherbet	30.00
5057	4½ oz.	Oyst. Cockt'l.	30.00
5057	5 oz.	Ftd. Juice	30.00
5057	12 oz.	Ftd. Ice Tea	30.00
1609	8 in.	Plate	36.00



STARLIGHT – Cutting No. 1060

No.	Size	Item	Price Doz. Crystal
6091	10 oz.	Goblet	\$39.00
6091	3 oz.	Wine	39.00
6091	5½ oz.	Sherbet	39.00
6091	4 oz.	Cocktail	39.00
6091	4 oz.	Oyst. Cockt'l.	39.00
6091	5 oz.	Ftd. Juice	39.00
6091	12 oz.	Ftd. Ice Tea	39.00
1951	8 in.	Plate	45.00



PRIMROSE – Cutting No. 1061



No.	Size	Item	Price Doz. Crystal
5057	9 oz.	Low Goblet	\$39.00
5057	6 oz.	Sherbet	39.00
5057	4 oz.	Claret	39.00
5057	3 oz.	Wine	39.00
5057	1 oz.	Cordial	39.00
5057	4 oz.	Cocktail	39.00
5057	4½ oz.	Oyst. Cockt'l.	39.00
5057	5 oz.	Ftd. Juice	39.00
5057	12 oz.	Ftd. Ice Tea	39.00
1609	8 in.	Plate	42.00

BRIDAL LACE – Cutting No. 1062

No.	Size	Item	Price Doz. Crystal
5089	10 oz.	Goblet	\$36.00
5089	5½ oz.	S. Champ.	36.00
5089	4 oz.	Claret	36.00
5089	2½ oz.	Wine	36.00
5089	1 oz.	Cordial	36.00
5089	3½ oz.	Cocktail	36.00
5089	2½ oz.	Oyst. Cockt'l.	36.00
5089	5 oz.	Ftd. Juice	36.00
5089	12 oz.	Ftd. Ice Tea	36.00
1609	8 in.	Plate	42.00



WOOD VIOLET – Cutting No. 1063



No.	Size	Item	Price Doz. Crystal
5089	10 oz.	Goblet	\$33.00
5089	5½ oz.	S. Champ.	33.00
5089	4 oz.	Claret	33.00
5089	2½ oz.	Wine	33.00
5089	1 oz.	Cordial	33.00
5089	3½ oz.	Cocktail	33.00
5089	2½ oz.	Oyst. Cockt'l.	33.00
5089	5 oz.	Ftd. Juice	33.00
5089	12 oz.	Ftd. Ice Tea	33.00
1609	8 in.	Plate	36.00

PROVINCIAL WREATH – Cutting No. 1064

No.	Size	Item	Price Doz. Crystal
5089	10 oz.	Goblet	\$33.00
5089	5½ oz.	S. Champ.	33.00
5089	4 oz.	Claret	33.00
5089	2½ oz.	Wine	33.00
5089	1 oz.	Cordial	33.00
5089	3½ oz.	Cocktail	33.00
5089	2½ oz.	Oyst. Cockt'l.	33.00
5089	5 oz.	Ftd. Juice	33.00
5089	12 oz.	Ftd. Ice Tea	33.00
1609	8 in.	Plate	33.00



BARONESS – Cutting No. 1065



No.	Size	Item	Price Doz. Crystal
6091	10 oz.	Goblet	\$36.00
6091	5½ oz.	Sherbet	36.00
6091	3 oz.	Wine	36.00
6091	4 oz.	Cocktail	36.00
6091	3 oz.	Oyst. Cockt'l.	36.00
6091	5 oz.	Ftd. Juice	36.00
6091	12 oz.	Ftd. Ice Tea	36.00
1609	8 in.	Plate	42.00

DEBUTANTE – Cutting No. 1066

No.	Size	Item	Price Doz. Crystal
6091	10 oz.	Goblet	\$36.00
6091	5½ oz.	Sherbet	36.00
6091	3 oz.	Wine	36.00
6091	4 oz.	Cocktail	36.00
6091	3 oz.	Oyst. Cockt'l.	36.00
6091	5 oz.	Ftd. Juice	36.00
6091	12 oz.	Ftd. Ice Tea	36.00
1609	8 in.	Plate	39.00



YORKTOWN – Cutting No. 1067



No.	Size	Item	Price Doz. Crystal
5086	10 oz.	Goblet	\$30.00
5086	6 oz.	S. Champ.	30.00
5086	4½ oz.	Claret	30.00
5086	2½ oz.	Wine	30.00
5086	1 oz.	Cordial	30.00
5086	3½ oz.	Cocktail	30.00
5086	2½ oz.	Oyst. Cockt'l.	30.00
5086	5 oz.	Ftd. Juice	30.00
5086	12 oz.	Ftd. Ice Tea	30.00
1609	8 in.	Plate	33.00

VICTORIA – Cutting No. 1068

No.	Size	Item	Price Doz. Crystal
5086	10 oz.	Goblet	\$33.00
5086	6 oz.	S. Champ.	33.00
5086	4½ oz.	Claret	33.00
5086	2½ oz.	Wine	33.00
5086	1 oz.	Cordial	33.00
5086	3½ oz.	Cocktail	33.00
5086	2½ oz.	Oyst. Cockt'l.	33.00
5086	5 oz.	Ftd. Juice	33.00
5086	12 oz.	Ftd. Ice Tea	33.00
1609	8 in.	Plate	36.00



LILYVALE – Cutting No. 1069



No.	Size	Item	Price Doz. Crystal
5086	10 oz.	Goblet	\$27.00
5086	6 oz.	S. Champ.	27.00
5086	4½ oz.	Claret	27.00
5086	2½ oz.	Wine	27.00
5086	1 oz.	Cordial	27.00
5086	3½ oz.	Cocktail	27.00
5086	2½ oz.	Oyst. Cockt'l.	27.00
5086	5 oz.	Ftd. Juice	27.00
5086	12 oz.	Ftd. Ice Tea	27.00
1609	8 in.	Plate	27.00

NEW PLANTATION IVY STEMWARE Etching No. 516

NO.	SIZE	ITEM	DOZEN	PRICE CRYSTAL
5086	10 oz.	Goblet		\$21.00
5086	6 oz.	S. Champ.		21.00
5086	4½ oz.	Claret		21.00
5086	2½ oz.	Wine		21.00
5086	1 oz.	Cordial		21.00
5086	3½ oz.	Cocktail		21.00
5086	2½ oz.	Oyst. Cockt'l.		21.00
5086	5 oz.	Ftd. Juice		21.00
5086	12 oz.	Ftd. Ice Tea		21.00





#9090 TRAILING BLOSSOMS
Plate Etching

On 4054 CORONATION soda.



#407 MORNING GLORY
Plate Etching

Introduced in 1917
Discontinued by 1919

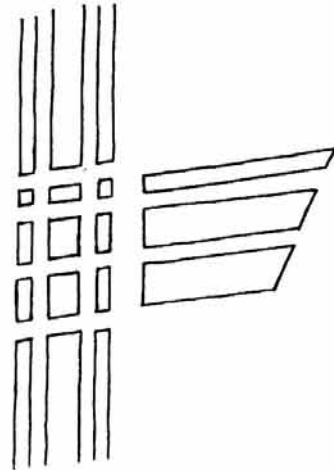
- 3317 DRAKE
- 8 oz. Goblet
 - 6 oz. Champagne
 - 6 oz. Saucer champagne
 - 6 oz. Sundae, footed
 - 5 oz. Sherbet, footed
 - 4½ oz. Claret
 - 3 ¾ oz. Port
 - 3 oz. Burgundy
 - 2 ¾ oz. Cocktail
 - 2½ oz. Sherry
 - 2¼ oz. Cocktail
 - 2 oz. Creme de Mint
 - 2 oz. Wine
 - 1 oz. Cordial
 - ¾ oz. Pousse cafe



#9086 GRAPHIC WEAVE *
Carving

This piece of glass was also formerly
owned by a former Heisey employee.

1485 SATURN
Small bowl



#9079 DAY LILY*
Plate Etching

1632 LODESTAR
8 in. Bowl



#154 BRUNSWICK
Pantograph Etching

Introduced in 1921
Discontinued by 1924

3334 SEXTON

10 oz. Goblet
6 oz. Saucer champagne
6 oz. Sundae, footed
5 oz. Parfait
Finger bowl

2351

8 oz. Soda
0 oz. Soda
2 oz. Soda

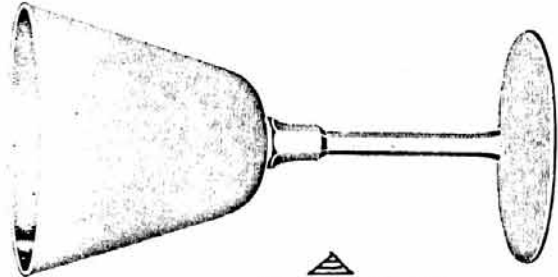
2930 PLAIN & FANCY
10 oz. Tumbler

4167

$\frac{1}{2}$ gal. Jug

4182

6 in. Plate



#158 BARCELONIA
Pantograph Etching

Introduced in 1921
Discontinued by 1924

3321 BRIGHTON

10 oz. Goblet
6 oz. Saucer champagne
6 oz. Sherbet, footed
Finger bowl

2351

8 oz. Soda
10 oz. Soda
12 oz. Soda

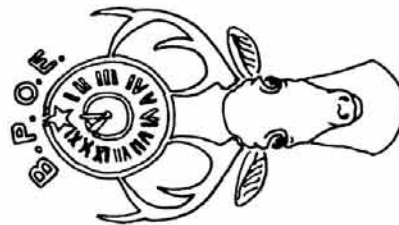
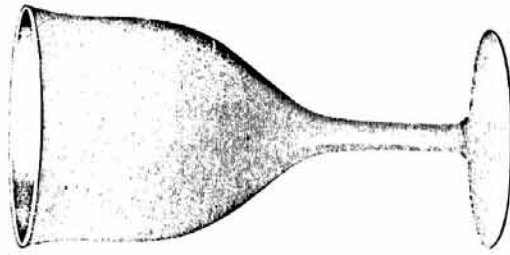
2930 PLAIN & FANCY
10 oz. Tumbler

4156

$\frac{1}{2}$ gal. Jug

4182

6 in. Plate

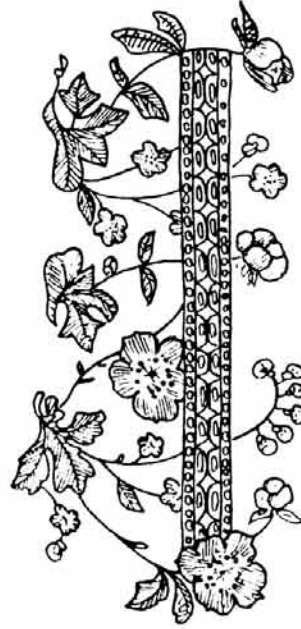


#9080 ELKS

Another Elks etching.

4002 AQUA CALIENTE
Cocktail

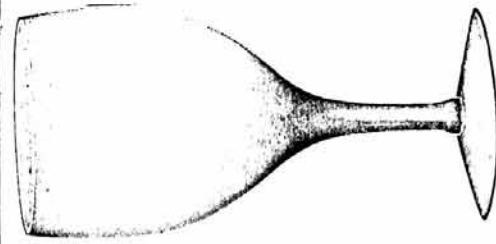
Cocktail shaker or Decanter



#9089 PRIMROSE *

Plate Etching

On 1495 FERN tid bit, handled



#406 DUQUESNE
Plate Etching

Introduced in 1917
Discontinued by 1919

10 oz. Goblet
6 oz. Saucer champagne
5 1/2 oz. Sherbet, footed
4 1/2 oz. Claret
3 oz. Burgundy
2 3/4 oz. Cocktail

3316 BILTMORE



#1590 ZODIAC BY IMPERIAL

Made from 1/1/69 to 12/31/70.
Heisey made Zodiac only in crystal.
Usually marked IG.
Imperial added the pattern to the
foot of the candy jar.

- 10 OZ. GOBLET
 - 7. crystal
 - 8. amberglo
 - 9. verde
- 5 OZ. SHERBET
 - 10. crystal
 - 11. amberglo
 - 12. verde
- 5 OZ. FOOTED JUICE
 - 13. crystal
 - 14. amberglo
 - 15. verde
- 12 OZ. FOOTED ICE TEA
 - 16. crystal
 - 17. amberglo
 - 18. verde
- 5 OZ. TUMBLER
 - 19. crystal
 - 20. amberglo
 - 21. verde
- 8 OZ. TUMBLER
 - 22. crystal
 - 23. amberglo
 - 24. verde
- 12 OZ. TUMBLER
 - 25. crystal
 - 26. amberglo
 - 27. verde



- 4½ IN. ASH TRAY
 - 57. crystal
 - 58. amberglo
 - 59. verde

- 11 IN. FOOTED BOWL
 - 60. crystal
 - 61. amberglo
 - 62. verde

- FOOTED CANDY JAR & COVER
 - 63. crystal 1969-74
 - 64. amberglo 1969-73
 - 65. verde 1969-74
 - 66. azure blue (iridized) 1969-71
 - 67. antique blue 1972
 - 68. rubigold carnival 1972; 1974
 - 69. peacock carnival 1971; 1974
 - 70. white carnival 1973-74
 - 71. sunshine yellow 1974



- 4½ IN. FRUIT NAPPY
 - 28. crystal
 - 29. amberglo
 - 30. verde

- 8 IN. PLATE
 - 31. crystal
 - 32. amberglo
 - 33. verde

- 13 IN. PLATE
 - 34. crystal
 - 35. amberglo
 - 36. verde

- FOOTED CREAM & SUGAR
 - 37. crystal
 - 38. amberglo
 - 39. verde

- 5½ IN. COMPOTE
 - 40. crystal
 - 41. amberglo
 - 42. verde
 - 43. rubigold carnival 1972-74
 - 44. peacock carnival 1972-74

- 8 IN. 4-PART RELISH
 - 45. crystal
 - 46. amberglo
 - 47. verde

- 3½ IN. COASTER
 - 48. crystal
 - 49. amberglo
 - 50. verde

- SALT & PEPPER
 - 51. crystal
 - 52. amberglo
 - 53. verde

- 2 LT. CANDLEHOLDER
 - 54. crystal
 - 55. amberglo
 - 56. verde



4121 GLENN MARMALADE & COVER



4266 - 5 OZ
CUSTARD



3806 - 3½ IN.
MUSHROOM COVER

BLOWN ITEMS
CA. 1930
NONE ARE
MARKED



4041 - 8 OZ OIL



4042 REYNOLDS OIL
CRYSTAL, FLAMINGO,
AND MOONGLEAM



4057 - 8 OZ OIL



4056 - 8 OZ OIL

ALL OF THESE HAVE
#62 STOPPER

Heisey Glass Moulds Will Move to Bellaire

NEWARK, OHIO, APRIL 30, 1958, (Special)--Moulds,

tools and etching plates of the A. H. Heisey Co., glass company here, will be moved to the Imperial Glass Corp. plant at Bellaire under an agreement announced yesterday.

Clarence Heisey, president and Thomas C. Heisey, executive vice president of the Newark firm, and Carl W. Gustkey, president, and J. Thomas Ball, vice president of Imperial, negotiated the agreement between the two companies.

THE TERMS of the agreement were not disclosed. Both parties indicated they were mutually satisfactory. Longtime Heisey retail accounts are already indicating satisfaction with this move.

The Heisey firm said that they do not know if Imperial will attempt to secure experienced Newark glassworkers but that there is a possibility of such effort after the physical move takes place.

All present Heisey customers will be immediately notified of this agreement by Imperial.

To Produce Ware Under Heisey Name

New York Interest Reported Trying To Buy Stock Control

The A. H. Heisey Co., Oakwood Ave., one of America's oldest quality glass producers, has transferred part of its assets to a Bellaire firm which will manufacture glassware under the Heisey name.

An agreement reached Tuesday gave Imperial Glass Corp., of Bellaire, Heisey moulds, tools, and etching plates. These were to be removed to Bellaire where the manufacture of Heisey glassware will begin as soon as possible, Imperial Corp. officials said.

The agreement was negotiated by T. Clarence Heisey, president of the Newark firm, and Thomas C. Heisey, executive vice president, with Carl W. Gustkey, president, and Thomas Ball, vice president of the Bellaire firm.

Patents Included

Terms of the agreement were not disclosed. Thomas Heisey said Wednesday that the transfer includes patents and copyrights which will permit Imperial to manufacture the Heisey products.

Heisey said Wednesday that the agreement "meets with the approval" of a majority of the Heisey stockholders.

The Heisey company plant has been closed this year and operated last year with 190 to 250 employees. In previous years, employment has gone above 500 at the 63-year-old firm.

Imperial Corp. officials indicated that it may attempt to secure some of the experienced Newark glassworkers.

Stock Changes Hands

Reports of the sale of the wellknown Newark company have been circulating for some time. Some 1,210

shares of the company's 5,000 shares of stock were transferred last month to a New York man.

Andrew G. Doukas, who has offices in New York City, secured a power of attorney over the 1,210 shares of stock owner Louise Adkins, 420 Washington Street.

Doukas was reported to be attempting to purchase the entire stock in the plant. Thomas Heisey would comment only that such sale "did not materialize" when questioned by reporters about it.

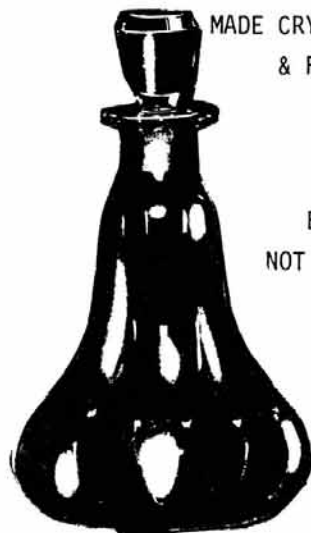
Doukas was in Newark Wednesday morning. He was registered at the Warden Hotel but had left for Columbus to return sometime in the afternoon.

Miss Adkins said that Doukas power of attorney over her shares of stock, which gives the New York man the right to act as owner of the stock, will remain in effect. The power of attorney was signed for a three-month period.

Plant Needed Here

Miss Adkins said that she was personally opposed to the transfer of the company assets. She expressed a desire to keep the plant going, "If Newark ever needed that plant, it needs it now," she declared.

When asked if the sale of part of the company's assets meant a dissolution of the firm, the younger Heisey told a reporter "you will have to draw your own conclusions about that. He said that he did not know what disposition will be made of the company property."



MADE CRYSTAL, MOONGLEAM
& FLAMINGO

BLOWN,
NOT MARKED

4026 - 16 - oz
DIAMOND OPTIC
WITH NO. 73
PRESSED STOPPER
ALSO MADE PLAIN



4027 CHRISTOS 32oz DECANTER,
PLAIN OR DIAMOND OPTIC WITH
#48 CUT STOPPER. MADE IN →
CRYSTAL, MOONGLEAM, FLAMINGO,
SAHARA, COBALT AND ALEXANDRITE.
ALSO, CRYSTAL WITH MOONGLEAM
FOOT AND STOPPER. MANY ETCH-
INGS AND CUTTINGS APPEAR ON
THE PLAIN CRYSTAL DECANTER.

CHARLES & MILDRED FISHER
991 IDLEWILDE AVENUE
NEWARK, OHIO 43055

PH: 614-522-5398
UPS 5% EXTRA
MARKED*

WILLEYS ANTIQUES
11110 CANNON ROAD
FRAZEYSBURG, OHIO 43822

PH: 614-828-2557

Scottie (2)	ea	\$100.00
Plug Horse		115.00
Goose, Wings Half		95.00
Pheasant, Asiatic		310.00
Clysdale (2)	ea	410.00
Rooster		525.00
Hen		325.00
Giraffe, Head Back (2)	ea	195.00
Sparrow (2)	ea	95.00
Elephant, small (2)	ea	225.00
Elephant, medium		250.00
Donkey (2)	ea	375.00
Mallard, Wings Up (2)	ea	165.00
Rabbit, Paperweight (2)	ea	165.00
Horsehead, toy (2)	ea	40.00
Cygnets * (2)	ea	250.00
Cygnets		230.00
Scottie Dog, painted - black & gld spt'd		135.00
Filly #1, Head Forward, Amber		200.00
Tiger Paperweight, Amber		250.00
Sow w/Piglets, standing&Sitting,Amber,set		300.00
Scottie, Black		250.00
Hen, Charcoal - Satin		150.00

The Last Five Items are Imperial.

Over 2,000 pieces of Heisey for sale. Stemware and dinnerware matching service. Lots of colors, etchings and cuttings. Send want list and SASE. All letters answered if a SASE is enclosed.

SHOW DATES

October 28, 29, 30	Will Rogers Coll.	Ft. Worth, TX
November 4, 5, 6	Fairgrounds	Tulsa, OK
November 11, 12, 13	Palmer Aud.	Austin, TX
November 18, 19, 20	Market Hall	Dallas, TX

Hope to see you at the shows.

Mildred & Harold

FOREVER HEISEY
NORM & JAN THRAN
1663 LONDONDALE PKWY.
NEWARK, OHIO 43055

PH: 614-344-5955
SHIPPING & INS.
EXTRA

DONALD P. BEAN
36 HARDING STREET
MILFORD, MA 01757

PH: 508-473-0561
SHIPPING EXTRA
* = MARKED

1401 Empress cup & saucer H. 6 sets	ea	\$ 17.50
1401 Empress D.F. ice bucket		42.50
133 Swan Hd'l'd candlestick, crystal with blue stain base & candle cup,	pr	250.00
150 Banded Flute goblet H. 6	ea	22.50
3404 Spanish Champagne, cobalt 5	ea	85.00
1401 Empress 9" D.F. Vase, Sahara H.		95.00
407 Coarse Rib ice tub, Flamingo H. (rare)		195.00
1252 Twist 9" plate, Marigold H. 7	ea	22.50
1469 Ridgeleigh 14" oblong swan hd'l'd floral bowl		225.00
Mike Owens Bust, frosted		55.00

1469 Ridgeleigh 2 rd. cig hldrs* plus 4 ashtrays*	6 pcs. set	\$25.00
1295 Bead Swag Opal 8oz tumb rose decor		25.00
341½ Puritan 1 qt Bulbous jug*		55.00
473 N/Flute w/Rim 6" baked apple*	4 ea	15.00
339 Continental Toothpick*		60.00
1205 Fancy Loop Toothpick		48.00
352 Puritan Horseradish & stpr *		26.00
433 Grecian Border 5" ftd Almond*		32.00
1405 Ipswich 1lb. covered candy*		60.00

WANTED - COVER FOR LG 1205 POT POURRI JAR

SHOW DATES

Oct. 1, 2	Yankee Drummer Inn S.E. Mass. Club Show	Auburn, MA
Oct. 28, 29, 30	Will Rogers Coll.	Ft. Worth, TX
Nov. 4, 5, 6	Fairgrounds	Tulsa, OK
Nov. 11, 12, 13	Palmer Aud.	Austin, TX
Nov. 18, 19, 20	Market Hall	Dallas, TX

EDD & ELOISE SAWICKI
P.O. BOX 153
DUNELLEN, NJ 08812

PH: 201-752-5632
AFTER 6 PM
UPS EXTRA
* MARKED

HOME AFTER S.E. MASS. SHOW OCT. 4TH. PLEASE CALL THEN. OVER 2,000 PC'S OF HEISEY IN STOCK. ALL SASE inquiries answered. SEND WANT LISTS - WE SEARCH. SEE YOU ALL AT THE UPCOMING SHOWS.

Warwick 9" Crystal vases*	pr	\$ 75.00
Greek Key Sherbets* (4)	ea	12.00
Three lite candlesticks, sterling trim	pr	115.00
Custard Ring Band Pitcher, 8 Tumblers*	set	875.00
Ridgeleigh one lite candle blocks	pr	30.00
Flamingo Twist bowl*		30.00
Crystalite sugar & creamer*	set	25.00
Sahara Pickle dish		30.00
Crystalite pickle/carrot dish*		30.00

ALL ITEMS MINT. OTHER ITEMS IN ABOVE PATTERNS AVAILABLE. WRITE WANTS IN ALL PATTERNS. CAMB & FOST ALSO.

JAMES S. HARRIS
ANTIQUES/APPRAISALS
BOX 672
RICHMOND, KY 40475

PH: 606-623-9100
UPS & INS EXTRA
H = MARKED

* H & R DIAMOND H
* HELEN - BOB RAREY
* 1450 WHITE ASH DRIVE
* COLUMBUS, OHIO 43204
* PH: 614-279-0390
* AFTER 5:30 PM
* UPS & INS EXTRA
* MARKED

- 118 Miss Muffett Mglm. 3" 1 lt candle, H . \$ 15.00
- 300 Peerless claret jug 47.50
- 300 Peerless 1½ oz wine 11.00
- 300 Peerless 1oz cordial, H (5). ea 32.50
- 331 Colonial water bottle, H 47.50
- 333 Hotel Line Waldorf Astoria 20oz decanter
with pressed stopper 75.00
- 341 Puritan 8" plate, ground btm. H 12.50
- 341 Puritan tall water bottle 50.00
- 343 Sunburst 9" oval relish, H 47.50
- 350 Pinwheel & Fan 8" nappy, H 37.50
- 359 N/O sherbet, H (4) all 60.00
- 373 Old Williamsburg cordial, H (2) . . all 75.00
- 393 Narrow Flute 4½oz hollow stem champagne
str. (2) ea 21.50
- 400 Colonial water bottle, H/H 27.50
- 400 Colonial 1 qt. jug, H 115.00
- 407 Coarse Rib, Fmgo 7½" plate, H (6) . . all 42.00
- 413 Tudor 6oz oil w/stpr, H 42.50
- 433 Greek Key 4½oz low ftd. sherbet, H (3)ea 32.50
- 468 Octagon w/Rim, Mglm 12" celery, H . . 40.00
- 1170 Pleat & Panel Fmgo 3oz oil 57.50
- 1170 Pleat & Panel Mglm 3oz oil 75.00
- 1170 Pleat & Panel Fmgo 7½oz luncheon gob-
lets (7) all 210.00
- 1183 Revere 11" plate, H 12.50
- 1184 Yeoman Fmgo cup & saucer, H (10) . . ea 22.50
- 1184 Yeoman Mglm 5" saucer for demi cup, H
(3). all 15.00
- 1184 Yeoman Fmgo D/O 7½" plate (6). . . all 48.00
- 1184 Yeoman Mglm 5" compote, H 37.50
- 1229 Octagon Fmgo ind. almond, H (2) . . all 32.00
- 1252 Twist Mglid 7" hldd. cheese plate, H . 32.50
- 1252 Twist Mglid 13" celery tray, H 35.00
- 1252 Twist Mglm ind. nut, H 16.00
- 1252 Twist Fmgo 7" pickle, H 27.50
- 1401 Empress Mglm D/F mint dish, H 37.50
- 1401 Empress Sahara 6" plate, H (6) . . . all 36.00
- 1401 Empress Sahara D/F ind. nut 20.00
- 1404 Old Sandwich ind. ash tray, H (2). . all 17.50
- 1447 Rococo 12" plate frosted decor, H . . . 40.00
- 1503 Crystolite 13" relish 3-comp oval, H . 22.50
- 1533 Wampum 1 lite candle pr 52.50
- 1575 gardenia bowl 11", H. 37.50
- 1615 Flame 2 lite candlestick 92.50
- 3333 Old Glory 2oz wine w/#31 needle cut
(3) ea 50.00
- 3355 Fairacre D/O 10oz gob w/170 Cleopatra
cutting 27.50
- 3542 Hazelwood oyster cocktail w/etching, H
(4) all 37.50
- 4083 Stanhope w/1485 Saturn bowl 10oz gob . 32.50

BUYING INDIVIDUAL PIECES, COLLECTIONS, LIDS, TOPS
AND ADVERTISING ITEMS. WRITE AND DESCRIBE FOR
PROMPT REPLY.



- * # 507 Orchid Etch
- * 112 Mercury 1 lite candleholder pr \$ 85.00
- * 134 Trident 2 lite candleholder pr 110.00
- * 142 Cascade 3 lite candleholder pr 145.00
- * 1519 Waverly 2 lite candleholder pr 125.00
- * 1519 Waverly cov'd candy*, bow tie finial 165.00
- * 1519 Waverly 6" cov'd candy*, Seahorse hld. 175.00
- * 1519 Waverly cup* & saucer* (4 sets) . set 60.00
- * 1519 Waverly 7" oval comport* 140.00
- * 1519 Waverly cov'd butter 160.00
- * 1519 Waverly cr* & sugar* set 55.00
- * 5025 Tyrolean Stemware - SASE for list
- * #515 Rose Etch
- * 1519 Waverly 7" salad plate (12) ea 20.00
- * 1519 Waverly 8" luncheon plate (12). . . ea 25.00
- * 1519 Waverly cov'd butter 170.00
- * 1519 Waverly salt & pepper 72.50
- * 1519 Waverly cr* & sugar* 65.00
- * 5072 Rose 9oz goblet (6) ea 37.50
- * 5072 Rose 6oz sherbet (4) ea 27.50
- * 5072 Rose 4oz cocktail (3) ea 52.50

SASE - WE HAVE OTHER PIECES OF ROSE & ORCHID ETCH.

* * * * *

- * CLASSIQUE GLASS COMPANY
* BOX 52572
* TULSA, OK 74152
* PH: 918-744-5409
* MOST ITEMS MARKED
* UPS EXTRA, MINT
- * 325 Pillows cov'd sugar, gld trim on lid \$ 67.00
- * 416/109 Herringbone/ Petticoat dolphin
compote 135.00
- * 1170 Pleat & Panel, Flamingo 8" bowl . . . 40.00
- * 1184 Yeoman D/O Moongleam 12oz tumbler (3). 30.00
- * 1206 Swirl & Raindrop, Moonglm 12" flor bwl 70.00
- * 1220 Punt Band Custard tumbler souvenir . 55.00
- * 1295 Opal Bead Swag tumbler, cornflowers, . 60.00
- * 1295 Opal Bead Swag cov. sug/crm worn
cornflower 160.00
- * 1401 Empress Sahara dolphin ftd 11" bowl . 85.00
- * 1401½ Empress Sahara cup/saucer (3) . . . 28.00
- * 1401 Empress Moonglm dolphin ftd 11' bowl 95.00
- * 1401 Empress Cry 8" vase Antarctica etch . 135.00
- * 1425 Victorian Sahara Sherbet (3) 45.00
- * 5072 Heisey Rose Etch sherbet (6) 38.00
- * 5072 Heisey Rose Etch 5oz ftd juice (6) . 38.00
- * 5072 Heisey Rose Etch std. sug/crm 60.00

- * Child's Toy Horsehead - very scarce! 75.00
- * 109 Candlestick Petticoat Dolphin Flamg 6" 165.00
- * 135 Empress Candlesticks Sahara 6" . . pr 165.00
- * 1205 Raindrops Moongleam 2" pr 50.00

* WANTED FOR RESALE! OLD GLORY/RENAISSANCE ETCH
* PARFAITS, 2 OZ WINES, BURGUNDIES.

THE COLLECTOR'S STOP
12018 SUELLEN CIRCLE
WEST PALM BEACH, FL 33414

PH: 407-793-0986
SHIPPING & INS.
EXTRA
* MARKED

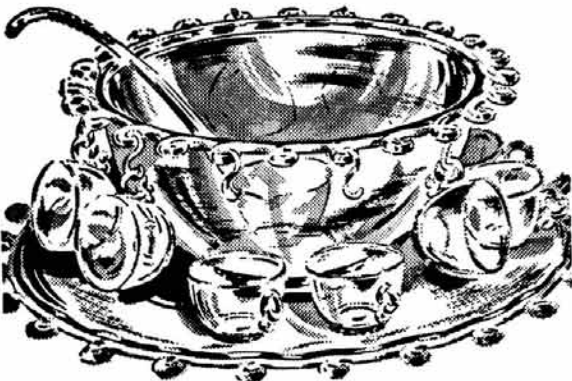
- 1401 Empress Alexandrite D/F Cr & Sug* \$ 575.00
- 341½ Puritan 1 pint Pitcher* 125.00
- 433 Greek Key 13"x10" oblong tray* . . . 175.00
- 3390 Alexandrite Carcassone 2oz Bar Glass 115.00
- 353 Colonial 2oz oil #8 stopper* 32.50
- 352 Flat Panel Mustard & Cover* 45.00
- 150 Banded Flute Spooner (mint)* 55.00
- 6 Mayo Ladle* 20.00
- 4036½ Decanter w/Krall cutting 395.00
- 353 2 quart sanitary crushed fruit* . . . 295.00
- 343 Sunburst ½ gallon jug* 195.00
- 354 Snack Set cr & sugar, butter* 50.00
- 354 Domino Sugar 45.00
- Pair Fish Bookends 195.00
- 1415 Twentieth Century Cobalt 9oz tumbler*
(4) ea 90.00
- 1405 Ipswich Cobalt candlevases* with
Cobalt candleholders, rare . . . pr 1050.00
- 1428 Warwick Sahara 9" Horn of Plenty* 175.00
- 465 Recessed Panel 3lb candy & cover* 160.00
- 1401 Empress Flamingo D/F cr & sug* . . . 80.00
- 343 Sunburst toothpick* 145.00
- Giraffe - Head Back 160.00
- Giraffe - Head Side 160.00
- 21 Aristocrat 15" sticks, rare . . . pr 675.00
- 16 Classic 11" sticks pr 265.00
- 517 Tumble Up 1 qt w/cutting* 175.00
- 4057 Orchid 10½" Flip vase w/sticker . . . 295.00
- 150 Banded Flute Punch bwl, base, 10 cups* 285.00
- 1401 Empress Flamingo 10½" din plates*5 ea 90.00

BABS KENT
554 AMHERST DRIVE
WOODMERE, NY 11598

PH: 516-374-4719
POSTAGE EXTRA

- 71 Oval, 10" candlestick, cutting . . pr \$210.00
- 4 Essex, 9" candlestick pr 150.00
- 1540 Lariat basket 10", ftd, hldd. 100.00
- 433 Greek Key 3pt. jug 145.00
- 407 Coarse Rib 12" oval celery, flamingo 25.00
- 1231 Ribbed Octagon 10½" sandwich plate,
center hldd., Hawthorne 30.00
- 3359 Plateau 6" Rose bowl, Hawthorne . . . 50.00
- 1252 Twist 2 oz cruet, Moongleam 75.00
- 459 Basket, Crysanthemum etch 230.00

LARIAT—Pattern No. 1540

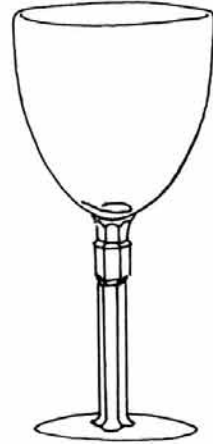


- * JEAN & DON PARRETT
* 4995 MAPLE DALE ROAD
* JACKSON, MI 49201
* PH: 517-784-7319 &
* RECORDER
* P & I EXTRA
- * 1536 Military Cap ash tray 30.00
- * 53 3" Salt & Pep - Glasstops, Mnglm pr 35.00
- * 150 Banded Flute ftd. sherbet (4) . . ea 18.00
- * 356 Banded Flute ash tray w/match hldr 35.00
- * 407 Coarse Rib cov'd pickle jar 35.00
- * 433 Greek Key tall ftd sherbet or Champ
(3) ea 25.00
- * 1245 Ring Band toothpick, little gld, Cust. 49.00
- * 1255 Pineapple & Fan 6½" hg. vase, little-
gld., Emerald 30.00
- * 1405 Ipswich low ftd oyster cocktail, Fla-
mingo, rare 95.00
- * 1425 Victorian ash tray, mono "ETB" . . . 20.00
- * 1469 Ridgeleigh cone salt & pep, chr tp pr 35.00
- * 1295 Beaded Swag Opal cr, gd gld, red flwrs 70.00
- * 1503 Crystalite 8" hg. Round basket . . . 110.00
- * 1489 Puritan 8"x10" Gardenia bowl . . . 95.00
- * 1489 Puritan 1 lite polished candl blk pr 50.00
- * 1519 Waverly Heisey Rose 13" fruit bowl,
center candle hldr, rare 225.00
- * 1540 Lariat 4oz cologne & stpr 65.00
- * 1567 Plantation 8" hg. cov'd candy, gold
& deco matte 110.00
- * 1567 Plantation 9oz tall goblets (4) . . . 27.50
- * 5067 Plantation 6oz champagne (2) . . . 25.00
- * 1951 Cabachon 12½ ctr hdl sandwich server,
Moonglo cutting 125.00
- * 1295 Beaded Swag opal cov'd sugar, good gld
& red flowers 70.00
- * 1295 Beaded Swag spnr, gd gld, red flwrs 60.00
- * FLASH - CHECK OUR AD IN SEPT.88 HEISEY NEWS FOR OTHER
* GOODS YOU NEED.

#3332 SIX SIDE

Production years: ca 1920

Items: 3 oz. cocktail; 4 oz. sherbet,
grapejuice; 5 oz. sundae; 5½ oz. cham-
pagne; 6 oz. parfait, champagne; 8 oz.
goblet; 9 oz. goblet.



WANTED

- #3332 Six Side Goblet
- #3381 Albermarle Goblet, Cryst-
tal Bowl, Moongleam foot
and stem, Trojan Etch
preferred.

Contact - National Heisey Glass
Museum
Louise Ream, Curator
P.O. Box 4367
Newark, OH 43055

Or call - 614-345-2932 and ask
for Louise.

Classified Ads

BUYING: Caprice blue or Rosepoint by Cambridge; Rose or Orchid by Heisey; American, June Fairfax, Versailles, Trojan, etc., by Fostoria; and Depression Glass in Crystal or colors. NADINE PANKOW, 206 S. Oakwood, Willow Springs, IL 60480. PH: 312-839-5231.

WANTED: Amber & Alexandrite Heisey, Amber Imperial. Send price lists. Collector, P.O. Box 1115, Newark, Ohio 43055.

WANTED: #3355 Fairacre ice teas w/handles, (4) clear. Call collect - Ms. Harrison, 912-252-5254.

WANTED: #3366 Trojan, clear (2) ice teas and (1) parfait. Rev. Bill Carner, 7901 2nd. Ave., South, Birmingham, AL 35206.

FOR SALE: BEST OFFER/TRADE FOR CRYSTOLITE - all signed - #341 Colonial 4 1/2 oz custards (7); #352 Colonial 6 1/2 in Cantaloupe plate, etched; #353 Colonial 4 1/2 in Mushroom Cover with plate; #1469 Ridgeleigh 2 bridge ashtrays with carrier. Johnsons, 2173 17th. St. N.E., Rochester, MN 55904 PH: 507-280-9462.

WANTED: #1503 cruet stopper. See address directly above this ad.

WANTED: Stopper for #1519 Waverly cruet. Michael Krumme, P.O. Box 5542, Santa Monica, CA 90405.

FOR SALE: #1637A Town & Country 11" Salad bowl*, \$30; #5057 Suez Goblet, Belvedere Cut* (8) each, \$20; #5057 Suez Ftd. Ice Tea, Belvedere cut* (8) each, \$20; #1609 8" Plate with Belvedere cut (8) each, \$10; #3389 Duquesne Goblet, Normandie etch (2) each, \$23; #3389 Duquesne Cocktail, Normandie etch (5) each, \$20; #3389 Duquesne Goblet, Chintz etch (7) each, \$20; #3362 Charter Oak 8oz Goblet, Moongleam (6) each, \$20; #3368 Albemarle 2 1/2 oz Wine D/O* (2) each, \$20; #353 Medium Flat Panel Individual Almond, Hawthorne* (3) each, \$25; #10 Floral Block in Flamingo 5" \$40; #4 Floral Block 5 1/2" \$30; #9 Floral Block 4" \$20; #1401 Empress DF Pitcher in Flamingo \$140. Arlene & Ed Crafts, 187 N. Pioneer Ave., Shavertown, PA 18708. PH: 717-675-8553 after 6p.m.

WANTED: Top for 2 lb. candy jar, #465 Recessed Panel, no trim. Bill Lake, 7520 Russell Ct., St. Leonard, MD 20685. PH: 301-586-1534.

FOR SALE: #351 Priscilla 6 1/2" flared sweetmeat \$25; #341 Puritan 8" compote \$30; #341 5" compote \$20; #300 Colonial 9" nappy, flared \$25; #347 Fifth Ave. 6 - 4oz. sherbets \$5 ea. - \$30. All Marked, UPS Extra. Mildred Lee, 217-428-3106.

WANTED: FAVOR VASES - Write or Call after 6 P.M. Jack Grenzabach, 10534 Valencia Road, Seminole, FL 34642. PH: 813-391-5184

HEISEY DESIGNERS

Walter Von Nessen	Carl Cobel
Jane Phillips	Josef O. Balda
Henry Dreyfus	Andrew J. Sanford
Royal Hickman	Rodney C. Irwin
Ray Cobel	Clyde S. Whipple
Sasha Brastoff	Ned Newman
Walter Pfeiffer	

NANCY'S ANTIQUES
906 44TH. STREET, N.W.
CANTON, OHIO 44709

PH: 216-492-2595
SHIPPING EXTRA
* MARKED



Scotty Dog	\$145.00
46 Cheshire Flamingo salt & Pepper* . . .	50.00
118 Miss Muffet 3" candle, Flamingo D/O (1)	25.00
500 Octagon Cr & Sug Cry/Moonglm * . . .	70.00
1200 Cut Block Custard souv Sugar	60.00
1184 Yeoman Sherbet, Flam* (4) ea	12.00
1229 Octagon 8" Plates, Flam (4). . . . ea	20.00
1252 Twist 10" Celery, Flam *	30.00
1425 Victorian Punch cups * (12) ea	12.00
1425 Victorian Cruet.	45.00
1469 Ridgeleigh 3" Coasters (8) ea	10.00
1503 Crystolite Ind. cr & sug * pr	30.00
1503 Crystolite Candle 1 lite pr	30.00
1506 Provincial Sherbet 5oz * (12). . . . ea	18.00
1540 Lariat 5 1/2oz Sherbets (8) ea	10.00
1540 Lariat 10" shallow Nappy (2) ea	25.00
1951 Cabochon Candlette 1 lite pr	50.00
3390 Carcassonne Sherbet Alex/bwl	90.00
3408 Koors Pitcher, Moonglm ftd & hdl'd .	175.00
5072 Rose Stem & Etch Champagnes* (5) . ea	42.00

J & R COLLECTIBLES PH: 614-344-9719
P. O. BOX 1030 P & I EXTRA
NEWARK, OHIO 43055 * MARKED

1483 Stanhope 9" vase, ivory knobs * . .	\$ 55.00
1540 Lariat 2 lt. candlesticks pr	45.00
1506 Whirlpool cr & sug, limelight*. . pr	155.00
1519 Waverly 5" cov candy ftd, seahorse handles, Rose etch *	275.00
Same without etch *	65.00
1469 Ridgeleigh pint decanter	165.00
1540 Lariat Ashtrays (3) ea	11.00
1503 Crystolite 7" shell praline	32.50
4163 16oz mug Club Drinking Scene * . .	145.00
5025 Tyrolean tall sau cham Orchid (4) ea	27.00
5025 Tyrolean tall ftd gob Orchid (6) ea	32.00
1401 Empress 12" rd sand 2 hdl'd Sahara*	52.50
4225 Cobel 2qt ckt'l shaker Chintz etch.	165.00
3389 Duquesne 3oz ckt'l Chintz etch (6)ea	16.00
1433 Thumbprint & Panel 11" Floral Bowl in Cobalt	210.00
1205 Fancy Loop tall celery	45.00
1401 Empress ice bk Everglade cut . . .	95.00
1511 Toujours ft mayo Minuet etch . . .	65.00
5074 Seahorse 4oz cocktail *	110.00
THIS MONTH - SPECIAL:	
Imperial kicking colts ultra blue ea	22.50

Items available most Major Patterns. Send SASE for your needs. Holiday layaways accepted.

ALL HEISEY AUCTION

SAT OCT 29 9:00 A.M.



APPLE TREE AUCTION CENTER
1616 W. CHURCH ST.
NEWARK, OH. 43055

THIS WILL BE AN OUTSTANDING SALE WITH ABOUT 750 LOTS OF HEISEY AND HEISEY BY IMPERIAL BEING OFFERED FOR YOUR BIDDING PLEASURE.

THIS SALE WILL FEATURE 25 DIFFERENT FAVOR VASES - 6 COBALT, 6 CRYSTAL, 5 MOONGLEAM, TANGERINE & FLAMINGO. OTHER CHOICE GOODIES INCL TRIAL BLUE IND CREAMER, 20 CORDIALS INCL GREEK KEY, STANHOPE, DOUBLE LARIAT W/MOONGLO CUT, BARBARA FRITCHIE IN ALEXANDRITE & COBALT, PRINCESS ORCHID ETCH & OTHER SCARCE ONES; LOTS OF BAR GLASSES & ALMOND DISHES; SEV TOOTHPICKS & A CUSTARD WING SCROLL PIN TRAY.

11 DIFFERENT SPANISH GOBLETS INCL TANGERINE (RED SIDE) & SEV WITH GOOD CUTTINGS; RARE AMBER SPANISH CHAMPAGNE; SPANISH COCKTAILS INCL RARE SAHARA & CRYSTAL, TANGERINE, & COBALT W/SILVER OVERLAY. OTHER STEMS & SODAS INCL ALEXANDRITE COLONIAL COCKTAIL, DAWN SPIRAL OPTIC FTD SODA (EX. PAUL FAIRALL COLLECTION).

THIS SALE OFFERS OVER 120 PCS OF PLANTATION. THIS IS THE LARGEST COLLECTION OF THIS PATTERN WE HAVE SOLD. MANY GOOD SERVING PCS INCL PITCHER, TALL & SHORT COV CANDY JARS, STEMMED CAKE STAND, COV BUTTER, RELISHES, CRUET, GOBLETS, CUPS & SAUCERS, PLATES ETC.. ALSO SOME PLANTATION W/IVY ETCH.

OTHER PATTERNS IN QUANTITY ARE APPROX 100 PCS RIDGELEIGH & 70 PCS CRYSTOLITE. THE SELECTION OF ORCHID ETCH WILL FEATURE OYSTER COCKTAILS, LOW GOBLETS, 8 IN PLATES, WAVERLY CANDY JAR & SEA HORSE FTD FLORAL BOWL. AMONG THE ROSE ETCH ARE A CAKE STAND & CRUET.

ABOUT 50 ANIMALS INCL AMBER COLT, POUTER PIGEON, FROSTED LRG RABBIT, HEN, ROOSTER, CLYDESDALES, HORSEHEAD BOOKENDS & MANY OTHERS. ANIMAL RELATED ITEMS INCL FROSTED GOOSE STEM CORDIAL, HORSEHEAD COCKTAIL, NURSERY RHYME CUP WITH ELEPHANT HANDLE.

OTHER INTERESTING ITEMS INCL MANY NAPPIES (SOME RARE PATTERNS & VERY DESIRABLE); CRUETS INCL DAWN SATURN; BEADED PANEL & SUNBURST COV CRACKER JAR; EMPRESS CANDLESTICKS IN COBALT & SAHARA. LOTS MORE QUALITY W/MUCH GOOD COLOR.

IMPERIAL: A GREAT COLLECTION OF IMPERIAL ANIMALS WILL INCL - AMBER & SUNSHINE YELLOW FLYING MARES, AMBERINA FISH BOOKEND; PINK SOW; SCOTTIES IN BLACK, AMBER, LT BLUE & YELLOW; CLYDESDALES IN BLACK & VERDE GREEN; VERDE GREEN FILLY, HEAD BACK; BLACK FILLY, HEAD FORWARD; YELLOW LRG RABBIT; AMBER GIRAFFES; BLACK GAZELLE SIGNED H & LOTS OF OTHERS. LION TRINKET BOXES IN AMBER & CRYSTAL.

DON'T MISS THIS OUTSTANDING SALE! IT WILL BE OUR FIRST ALL HEISEY AUCTION IN OUR BRAND NEW BUILDING. WE HOPE YOU WILL BE HERE WITH US BUT IF NOT WE WILL BE HAPPY TO MAIL BID FOR YOU. THIS WILL PROBABLY BE OUR LAST ALL HEISEY SALE THIS YEAR. ITEMIZED LISTS AVAILABLE FOR \$2.00.

SAM SCHNAIDT & TIM HUGHES - AUCTIONEERS (614) 344 - 4282
FRANK FRYE - MANAGER

DATES TO REMEMBER

OCTOBER 1, 2	ALL GLASS SHOW HEISEY CLUB OF SOUTHEASTERN MASS.	YANKEE DRUMMER INN AUBURN, MASSACHUSETTS
NOVEMBER 5, 6	ALL GLASS SHOW CONNECTICUT HEISEY COLLECTORS CLUB	NATIONAL GUARD ARMORY SOUTHINGTON, CT.
DECEMBER 3	HCA ANNUAL CHRISTMAS DINNER	BEST WESTERN INN NEWARK, OHIO
JUNE 15 - 18, 1989	19TH. ANNUAL CONVENTION	HEISEY COLLECTORS OF AM. NEWARK, OHIO

<p>A.W. PARKER Heisey & Pattern Glass Shows or Appointment Magalia, CA 95954 PH: (916) 873-2326</p>	<p>GLASS WITH CLASS Lenore A Shelley, GGCC 1336 Lincoln Avenue San Jose, CA 95125 PH: (408) 286-8098</p>	<p>OLDE LOVED THINGS 900 Ridgewood Ave. (Holly Hill) Daytona Beach, FL 32017 (904) 252-7960 Hours: Sat., Sun., & Mon., 10-4</p>
<p>ALL HEISEY AUCTION Consignments Welcome Apple Tree Auction Center 1616 W. Church, Newark, OH 43055 PH: (614) 344-9449</p>	<p>GREEN ACRES FARMS Antiques, Crystal Glass & Collectibles 2678 Hazelton-Etna Rd., SW (S.R. 310-N) Pataskala, OH 43062 Sat. or Sun. PM or call (614) 927-1882</p>	<p>OUR PLACE AND MEMORY LANE ANTIQUES 1234 Newark Rd., Granville, Ohio 43023 (614) 587-4601, Open every day 12-5 Heisey, general line of antiques and collectibles</p>
<p>ALFA I CARRIAGE HOUSE ANTIQUES Featuring Depression & Elegant Glassware Al & Faye Maness 508 E. Cary Street Richmond, VA 23219 PH: (804) 788-1630</p>	<p>H & R DIAMOND H Helen & Robert Rarey 1450 White Ash Dr. Columbus, OH 43204 PH: (614) 279-0390 after 5:30</p>	<p>PARRETT'S ANTIQUES Heisey 4994 Mapledale Rd. OR 1215 Greenwood Ave. Jackson, Mich. 49201 PH: (517) 784-7319 OR (517) 783-3289</p>
<p>ANTIQUES - THE SHULTZES 206-208 East Main St. Newmanstown, PA 17073 15 Miles West of Reading, PA PH: (215) 589-2819</p>	<p>"HAPPINESS IS" - THE STULTZS 3106 Warren Court, Glen Allen, VA 23060 Shows and Mail Order PH: (804) 262-1273 GLASS CIRCA 1890-1960</p>	<p>PATTON HOUSE Heisey & Duncan Miller Rocky's Mall, 1-81 & US 11 Weyer's Cave, VA 24486 PH: (703) 967-1181</p>
<p>C & J ANTIQUES Cole & Jean Miesner Box 45, 72 Whig St. Newark Valley, NY 13811 PH: (607) 642-9905</p>	<p>HARRALSON'S HEISEY HUNTERS Sponsor: S.W. MO's Antique Shows 78 Quality Dealers From 14 States 1988 Dates: May 13-15 & Oct. 28-30 Info: 1426 W. Highland, Springfield, MO 65807 PH: (417) 883-2449</p>	<p>EAGLES REST ANTIQUES Carl and Mary A. Evans Heisey - China - Pottery, etc. Shows or Appointment PH: (614) 522-2035</p>
<p>C.E. HIGGINS (S.F. Bay Area) Shows and Mail Order P.O. Box 2723 Menlo Park, CA 94025 PH: (415) 322-0192 Evenings</p>	<p>HELEN & JIM KENNON Heisey, Cambridge, Fostoria, Duncan, Imperial, Fenton, Tiffin P.O. Box 114 Brookville, OH 45309 PH: (513) 833-5406 SHOWS ONLY</p>	<p>R & L ANTIQUES-SAN FRANCISCO Members of the Golden Gate Heisey Club 3690 Bodega Ave. Petaluma, CA 94952 PH: Petaluma (707) 762-2494 PH: San Francisco (415) 621-6693</p>
<p>CHARLES & MILDRED FISHER Heisey, Degenhart, Imperial, Antiques, Collectibles, General Line 991 Idlewilde, Newark, OH 43055 PH: (614) 522-5398</p>	<p>J.J. & BOB MC KEE Pottery Glassware Collectibles 334 W. 75th St. Kansas City, MO 64114 Wed.-Sun. 10-5 PH: (816) 361-8719</p>	<p>RAY ZIEGLER Glass Repair 185 County Line Westerville, OH 43081 PH: (614) 891-9796</p>
<p>DAVE'S ANTIQUES Specializing in Heisey Shows & Mail Order 1403 E. Knollwood St. Tampa, Fl. 33604 (813) 237-5550</p>	<p>J. & M. WALTER ANTIQUES Heisey, Duncan, Cambridge, other glass c/o Sir Speedy, 431 Main St. Woburn, MA 01801, Mail order-SASE PH: (617) 245-2532 after 7:30 dys-wknds</p>	<p>SCHWAN'S ANTIQUES SHOWS & MAILORDER 77 Lagos del Norte Ft. Pierce, FL 34951 PH: (407) 461-5940</p>
<p>DIAMOND H PLUS Mail Orders & Shows George & Eileen Schamel Rt. 3, Box 171, Boonsboro, MD 21713 PH: (301) 432-6285</p>	<p>J. & R. COLLECTIBLES Shows, SASE, Mail Order list June & Ray Lukasko P.O. Box 1030, Newark, OH 43055 PH: (614) 344-9719</p>	<p>SHOW AND TELL ANTIQUES Art, Cut, Heisey and Pattern Glass 1525 Morrow Ave., Waco, TX 76707 Tues-Sat 10:30-4:30 PH: (817) 752-5372 Also: Mail Order and Shows Member NADA</p>
<p>ETTELMAN'S DISCONTINUED CHINA & CRYSTAL HEISEY a SPECIALTY P.O. Box 6491-HN Corpus Christi, TX 78411 PH: (512) 888-8391 Include SASE</p>	<p>MOSTLY HEISEY Rhoda Curley 16 Clayton PL, Albany, NY 12209 Shop and Mail Order PH: (518) 482-6272</p>	<p>SINGLETREE ANTIQUES Cut, Pattern & Heisey Glass 10717 Staples Mill Rd. Glenn Allen, VA 23060 Chance or appointment PH: (804) 266-3795</p>
<p>FOREVER HEISEY Jan & Norm Thran Mail Order, Shows, Appraisal Service 1663 Londondale Pkwy., Newark, OH 43055 PH: (614) 344-5955</p>	<p>MOUND BUILDERS ANTIQUES Heisey & Animals, General Antiques Irene Rauck 1138 Moundview, Newark, OH 43055 PH: (614) 344-6043</p>	<p>WILLEY'S ANTIQUES & MUSEUM Specializing in Heisey 11110 Cannon Rd., Frazeyburg, OH 43822 16 miles east of Newark, OH PH: (614) 828-2557</p>
<p>GERT'S GLASS Heisey & Duncan Gertrude & Russell Swetnam 1926 Saratoga Dr., Adelphi, MD 20783 PH: (301) 434-5113</p>	<p>THE MUTED SWAN ANTIQUES 5486 Peachtree Rd., Chamblee, GA 30341 Heart of Chamblee Antique Row Specializing in Heisey & Cambridge Bill & Pat Miller PH: (404) 451-7620</p>	<p>THE WOODEN SHOE Antiques & Collectibles Jim & Sheri VanEs by Appt. 810 Eiden, Herndon, VA 22070 PH: (703) 435-9045</p>
<p>GLASS 'N' GLASS Virginia & Odell Johnson Rt. 1, Box 1324 Hayward, WI 54843 PH: (715) 462-3753</p>	<p>NANCY'S ANTIQUES Heisey, Cambridge, Fostoria, Fenton Mail Order 906 44th St. NW, Canton, OH 44709 216-492-2595. Shop Union Station Antiques 12622 Cleveland Ave., Uniontown, OH Daily</p>	<p>JAMES S. HARRIS ANTIQUES/APPRAISALS Box 672 Richmond, KY 40475-0672 PH: (606) 623-9100 Buying and Selling by Mail</p>

Have More Fun Collecting Glass - Join a National Glass Club Become More Knowledgeable About Your Collectable Glass

The national glass collecting clubs listed below have each been organized to serve you, the collector. Each club is dedicated to the education of the collector, and the preservation of their particular type or manufacture of glassware. Each would appreciate the opportunity to help you achieve more satisfaction from your collection.

If you are interested in membership in any of these organizations, check the list below. The appropriate club(s) will acknowledge your application with either a membership card (if remittance is enclosed) or additional information as required. MAIL TO:

**NATIONAL GLASS CLUBS
P.O. BOX 416
CAMBRIDGE, OH 43725**

My Name is _____

Address _____

City _____ State _____ Zip Code _____

I am interested in the following club(s) —

- | | |
|---|---------|
| <input type="checkbox"/> Fenton Art Glass Collectors of America, Inc. | \$15.00 |
| <input type="checkbox"/> Fostoria Glass Society of America, Inc. | \$10.00 |
| <input type="checkbox"/> Heisey Collectors of America, Inc. | \$15.00 |
| <input type="checkbox"/> National Cambridge Collectors, Inc. | \$13.00 |
| <input type="checkbox"/> National Depression Glass Association, Inc. | \$10.00 |
| <input type="checkbox"/> National Imperial Glass Collectors Society | \$10.00 |
| <input type="checkbox"/> National Duncan Glass Society | \$10.00 |
| <input type="checkbox"/> Tiffin Glass Collectors Club | \$10.00 |

Please make check payable to the name of the organization you wish to join.

National Heisey Glass Museum

Eight rooms and complete lower level displaying the beautiful hand made glass produced in Newark by the A.H. Heisey and Co. from 1896-1957. Corner of West Church & North Sixth Streets Newark, Ohio 43055



Phone: (614) 345-2932

Hours: Daily 1pm-4pm Closed Holidays

OHIO
the heart of it all! SM

Membership Renewal Notice

The date above your name and address is your renewal date. This is your last issue of the Heisey News if it reads 10-31-88

PLEASE DISREGARD THIS NOTICE IF YOU HAVE RECENTLY PAID YOUR DUES.

POSTMASTER SEND FORM 3579 TO:



SECOND CLASS