

HEISEY *news*

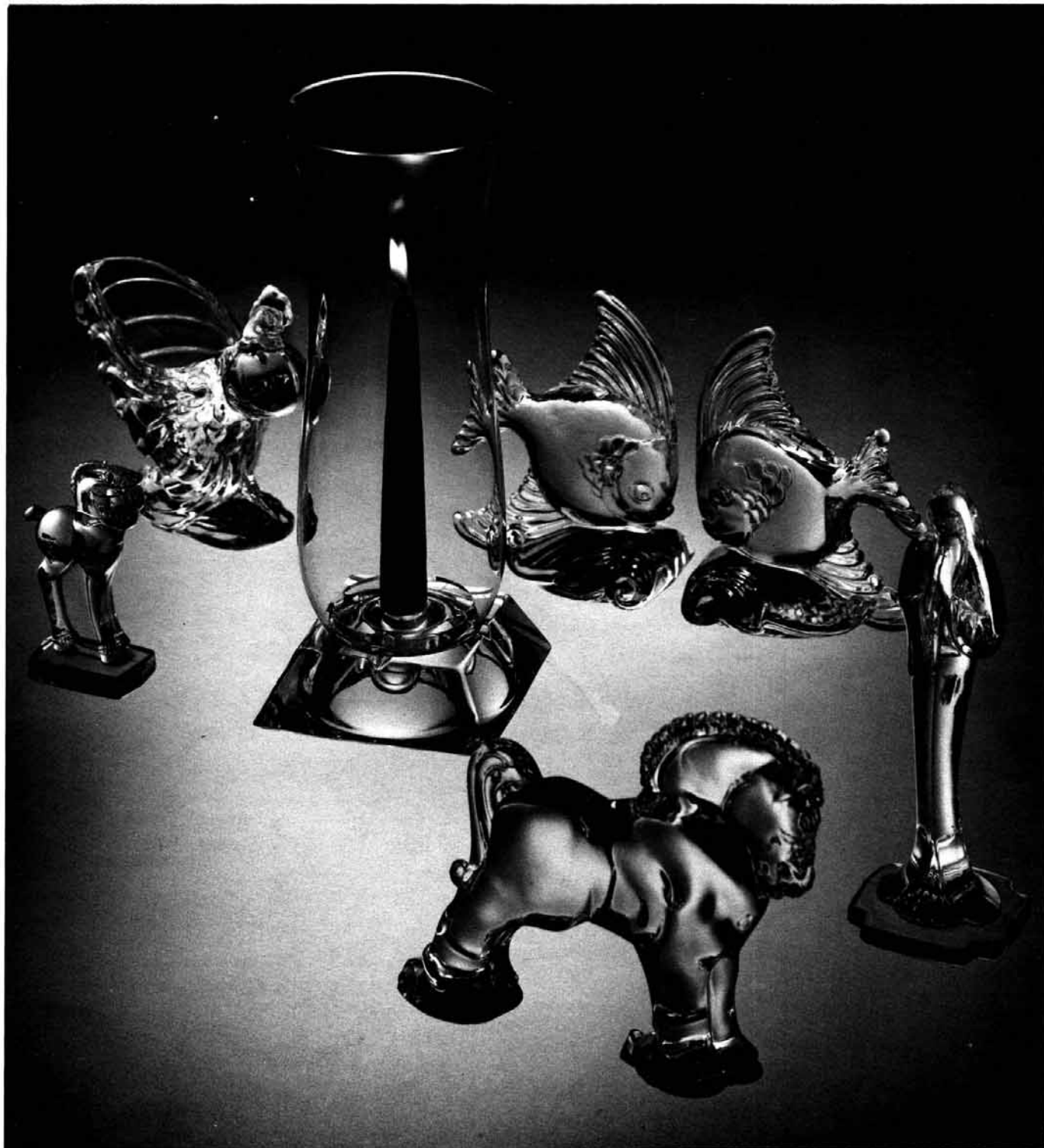
OFFICIAL PUBLICATION HEISEY COLLECTORS OF AMERICA

©Heisey Collectors of America, Inc.

All Rights Reserved 1987

VOLUME XVII NO. 4

APRIL, 1988 ISSN 0731-8014



HEISEY NEWS

P.O. BOX 4367, NEWARK, OH 43055

CLUB OFFICERS:

President - Bob Rarey (614) 279-0390
Vice President - George Schamel (301) 432-6285
Secretary - Liz Stickle (614) 323-2250
Treasurer - Mary McWilliams (614) 345-4380

Curator - Louise Ream

Editor: Louise Ream

P.O. Box 4367, Newark, Ohio 43055
PH: (614) 345-2932

Assistant Editor: Neila Bredehoft

P.O. Box 4367, Newark, OH 43055
PH: (614) 345-2932

Published in Newark, Ohio, Printed in Mt. Vernon, Ohio.

\$15.00 per year - \$1.25 per copy

Back Issues - Each Volume (12 issues) year - \$9.00.

Volume, V, VIII, IX, X, XI, XII, XIII, XIV, XV, XVI

Heisey Collectors of America, Inc. is a non-profit corporation with tax exempt status. Owners and operators of National Heisey Glass Museum, 6th and Church Streets, Newark, Ohio.

Open daily 1-4 p.m. except holidays. Other hours by appointment. Members admitted free.

HEISEY NEWS

Heisey Collectors of America, Inc.

All Rights Reserved 1987 - ISSN 0731-8014

Published monthly by Heisey Collectors of America, Inc., Newark, OH. 43055. Second Class postage paid, Newark, Ohio 43055. Club membership (includes 12 issues of Heisey News and participation in all club activities) \$15.00 per year plus \$2.50 for each additional family member in same household who wishes a membership card. For Voting Membership add \$25.00 one time only fee.

POSTMASTER: Send address changes to:

HCA, P.O. Box 4367, Newark, OH 43055

When requesting information, please enclose a self-addressed, stamped envelope (SASE).

ADVERTISING - Send all ads to:

HCA - Advertising
P.O. Box 4367
Newark, Ohio 43055

DOUBLE SPACE ALL ADS.

RATES:

CLASSIFIED: 15¢ per word. \$1.50 minimum.

ABBREVIATIONS AND INITIALS COUNT AS WORDS

DEALER DIRECTORY: \$25 per year.

DISPLAY:	MEMBERS:	NON-MEMBERS:
1/8 Page (9 items)	\$20.00	\$ 30.00
1/4 Page (20 items)	30.00	45.00
1/2 Page (20 items) Hor.	45.00	67.00
1/2 Page (50 items) Vert.	60.00	90.00
1 Page (50 items)	75.00	112.50

Personal ads limited to 1/8 space.

ALL ADS MUST BE PREPAID. Ad copy must be received by the 5th of the month preceding the publication date-i.e. April 5th for May issue. Ads containing reproductions will not knowingly be accepted unless clearly stated (i.e. Heisey by Imperial, etc.). HEISEY NEWS assumes no responsibility for false advertising or misleading information. In the event of typographical error, the incorrect portion of the ad will be run in the following issue, but HEISEY NEWS assumes no further liability.

The opinions expressed in articles in HEISEY NEWS are those of the authors and not necessarily those of the organization. The Editorial Staff reserves the right to edit or refuse any material submitted for publication. When requesting information, please enclose a self addressed stamped envelope. (SASE).



Heisey Games

The theme of this year's convention will be "Heisey Games". This seems to be a good title to work with and some very clever booth names have been submitted.

If you belong to a study club, encourage the members to plan a booth, or if you have a nice personal collection of something that you would like to display, let Janice Caswell know as soon as possible. Unless you already have her address, write her in care of HCA.

The name was inspired, of course, by this being the year of the Olympic Games. However, the word Olympics cannot be used and neither can there be use of the Olympic rings, as such.

Sharon Orienter of the Rochester Club is doing our poster again this year.

Call For Cookies

Emogene Shomaker, Museum Hospitality Chairman for this committee will be needing lots of cookies again this year for the museum lounge. This has become a real tradition. Chris Maskaleris, Dairyland Heisey Club and Northern Illinois Club will again be manning the lounge. We will expect the delicious Wisconsin cheese which we have had for the last several years, always furnished by the Dairyland Club. You can contact Emogene through HCA.

About The Cover

Standing Colt, Rooster Vase, #1489 Puritan Hurricane Lamp, Fish Bookends, Madonna and Clydesdale. Copy of Original Heisey Company photo.



FROM YOUR PRESIDENT

Dear HCA Members,

When these comments reach you, the March Museum Benefit Auction will be history. It takes many people working together to make such events successful. On behalf of all HCA members, I offer our sincere "thanks" to Bob Ryan (Auction Chairman) and his committee and all volunteers for the splendid job they did with this years Auction. Our "thanks" also to Loren Yeakley (Mailman), auctioneers Sam Schnaidt, Tim Hughes, Larry Stickle and Craig Connelly who donated their services and to Apple Tree Auction for the use of their building and services. Finally, "thanks" to the bidders and consignors. Without you, there would be no auction. This is one of our largest fundraisers of the year.

A little over a year ago, then President Charlie Wade issued a plea for donations to fund some special projects that the Board had approved. As a result of your response the fire alarm system is in place, the computer is operating and the Museum painting and restoration is in progress. In addition, a new telephone system is installed. We are current with our payments on the bank loan. Now I am asking for your support in purchasing of the 1988 Oscar and the set of three elephants and the donkey, all marked HCA 88. These gift shop items and another insurance premium have created a cash flow problem. I know I can count on your support.

Later this year, with the approval of the Board, we hope to add a second computer to be used in newsletter and book publishing. With this in place, the long delayed cutting book could possibly be a reality by the end of the year. Contributions for this or any other project will be gratefully accepted.

I have recently had correspondence and phone conversations with some members of the Bay State Heisey Club regarding HCA assistance in promoting their Club Show in Waltham, MA on April 30 and May 1 of this year. They are planning some special displays for this show and hope to attract new members. This show is held for the benefit of HCA and I have assured them of our cooperation and help in putting on a successful show. This cooperative spirit must apply to all Clubs. HCA needs new active, participating members and it is everyone's responsibility. If HCA is to endure, this cooperative spirit must prevail.

The "200" dinner is scheduled for April 23. If you have never attended, but are interested, contact Secretary Liz Stickle at the HCA office. Ticket sales are limited to 200 persons so early contact is advised. Funds derived from this project help retire the debt on the Mould Building.

HCA's annual audit of financial operations is underway. Floyd Mason, a Columbus CPA, is doing the yearly audit as he has for the past two years. When completed, a summary will appear in the HEISEY NEWS.

The Golden Gate HCC Show in San Mateo, CA and the All-Heisey Show sponsored by the National Capital HCC, Silver Spring, MD are now history. These two Club Shows are for the benefit of HCA; they have been loyal supporters over the years. We thank them and are grateful for their continuing support.

We must all remember, the future of HCA and the Heisey Museum lies squarely in our hands. Through all our combined efforts, working together, we can succeed. I personally thank you for all your help and support.

Happy Collecting.

Bob Rary

DESK OF THE EDITOR

The March 12 Auction was a great success. Preliminary figures for the total sales were \$44,820.50. Of course, HCA will get 20% of this except for the donations, etc. which are 100% for HCA. In any case, we will make a very nice sum of money on the event. Everyone did a fine job.

Virginia Yeakley was also of great service to us as a volunteer for this Auction. She put most of it in the computer and also worked as cashier the whole day of the sale, among many other things.

In the next issue there will be the profiles of the candidates for the board who will be elected in June. Voting members, read these carefully and send for your ballots if you can't be here. Exercise your right to vote!

I am very sorry to have been lax last fall in omitting any mention of the death of Grace Coyle, mother of Bob Coyle, one of our loyal dealers and supporters. Many of you knew this lovely lady who often sat in Bob's booth at our annual show. Mrs. Coyle died on October 27 after having broken her hip and spending a short time in a nursing home. She is survived by her son, Bob, a Newark area resident, and a daughter and several grandchildren.

Olga Heath, another lovely lady, also died last fall. She was a member of the Bay State HCC. If you ever attended the Bay State Show and visited their hospitality room you would remember Olga. She was the person who made all of the wonderful canapes and hors d'oeuvres. She contributed much to their club.

Milton Brown of Pataskala, Ohio, another loyal member of HCA, died recently. He is survived by his mother and his wife, Jane. Jane is the person who keeps all of our scrapbooks up-to-date.

HCA extends its sympathy to all of these families.

In this issue you will find the 1987 index to the Heisey News. Joe Lokay has done this service for us for many, many years.

We now have all three of the elephants in the French opalescent color made by Fenton. They are beautiful and sell very well here in the museum. Order yours today. They are listed on page 16, bottom right.

Continued on page 15.

By Tom Felt

NO. 1225 PLAIN BAND

As a follow up to No. 1201 Fandango, which had come out in the fall of 1896 and which was an imitation of cut glass, Heisey introduced two new patterns in 1897, both very similar to one another and both in marked contrast to the earlier line. Where Fandango is "busy," with elements of its design covering nearly the entire surface of its pieces, No. 1220 Puntty Band and No. 1225 Plain Band are much simpler. This seems to have been a deliberate marketing strategy adopted by Heisey right from the beginning (and followed by many other companies of the time), of offering both an imitation cut glass pattern and a plainer one which would be suitable for decorating.

The individual pieces in the No. 1220 and 1225 patterns are identical, except that the former has a row of punties on the lower, bulbous portion of each item and a similar row on the lids of the covered pieces. For some reason, No. 1220 was not advertised in the trade journals. The only mention, in the January 13, 1897 issue of CHINA, GLASS AND LAMPS, describes it as "finished so as to give it a blown shape, which lends it additional attractiveness, and puts it out of the reach of cheap imitation by competitors."

No. 1225, on the other hand, appeared in two full page ads, the first in the April 28th issue, which illustrates the pint tankard, the ½ gallon jug, the 13 oz molasses can, and two styles of the 7 inch bowl (plain and crimped) and a later one in June featuring the table set. In the April 21st issue, CHINA, GLASS AND LAMPS reported that Heisey had "stuck [sic] it rich in their new plain tableware set, and now a whole field full of imitators may be expected to come tumbling after." In July, the same journal touted the line once again, saying "We do not know of any more graceful pattern in the market and dealers seem to share in that opinion if we are to judge by the way they are ordering it."

The same report announced that Heisey was also offering the pattern decorated:

"A. H. Heisey & Co., of Newark, O., are getting out some very elegant gold edge decorations on their 1225 ware. They have other decorations too, but those we call attention to are among the finest that can be found anywhere and are fully up to the best French goods which are generally regarded by the trade as the top-most. The firm is making a strong bid for favor in the decorating line and the 1225 pattern is one which affords large scope for exertion in this direction. The outlines of the design are principally plain, but at the edges there is room for the introduction of an ornamentative feature and their decorator has availed himself of it to the fullest extent."

Several decorations on 1225 are listed in

early factory records:

- #15 - Decorated gold bead
- #16 - Green on ball ("ball" apparently refers to the bulbous portion of the pattern)
- #17 - Bronze on ball
- #18 - Pink on ball
- #21 - Ruby ball
- #33 - no description
- #34 - Gold

Orange is also listed and pieces have been seen with lavender and a light amber color. In addition, it is known that the Oriental Glass Company also decorated pieces in this line, probably with ruby stain. An invoice in the HCA archives mentions the toy table set as having been sold to Oriental. (Heacock's RUBY-STAINED GLASS FROM A TO Z pictures the toy butter with a souvenir inscription.) There are also records that Heisey offered No. 1225 with at least two engravings, #28 and #30.

Curiously, although Plain Band was a very large line, only one piece seems to have ever been made in ivorina verde (custard). This was the handleless sherbet (which looks like the toothpick, except that it has a smooth rim instead of a beaded one). This seems to have been a popular souvenir item, often seen with inscriptions such as that shown on the example in the Yeakeys' HEISEY GLASS IN COLOR, Book II, Plate 4.

A report in the December, 1976 HEISEY NEWS also mentions that Plain Band is sometimes found with mountings from other companies, indicating that it was popular with many different kinds of decorating firms.

That this was one of Heisey's most successful early patterns is evidenced by the size of the line. The catalog pages reproduced in Book 4 of Vogel's series illustrate 87 pieces and other early price lists offer more than a hundred. (The same catalog mentioned above pictures only 69 pieces in Puntty Band; besides being smaller, the latter pattern seems not to have remained in production as long as Plain Band, which is seen more often marked with the Diamond H, indicating manufacture after 1900.) By 1905, there were only 14 pieces of Plain Band still being offered in the catalog, including four of the pieces most desirable to collectors today, the toy table set. (The spoon holder in this set is identical to the toothpick and the sugar, without the cover, is the same as the handleless sherbet.)

As mentioned above, because this pattern was introduced prior to 1900, when the Diamond H trademark was first used it is often found unmarked.

Several months after it came out, in November 1897, Heisey filed for patents for the spoon holder and cream in Plain Band. They were approved on January 18, 1898, as Nos. 28,180 and 28,181, thus becoming the first design patents assigned to the new company. A few days later, an application was also filed for a patent in England, making this one of only three patterns for which it is known that such protection was sought. The patent was granted on December 16, 1897. Occasionally, the 2½ oz wine is found with the British registry mark impressed on its foot: Rd No 310924.

CHINA, GLASS AND LAMPS.

A. H. HEISEY & CO., NEWARK, OHIO. No. 1225 WARE.

49140
CHINA, GLASS AND LAMPS.

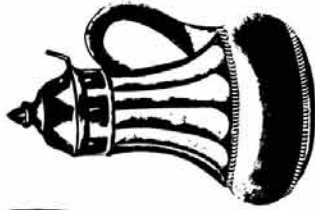
A. H. HEISEY & CO., NEWARK, OHIO. No. 1225 WARE.



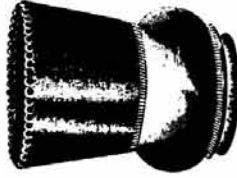
Pint Tankard.



1/2 Gal. Jug.



18 oz. Molasses Can.



7 inch Bowl.



7 inch Bowl, Crimped.

REPRESENTATIVES.
West, W. B. Lindsay. East, A. A. Gresser. New England and Penna., Jos. Tomkinson. New York Office, Marter & Parmola.
Baltimore Office, Green & Seaman. Pacific Coast, C. D. Helwig.

REPRESENTATIVES.
West, W. B. Lindsay. East, A. A. Gresser. New England and Penna., Jos. Tomkinson. New York Office, Marter & Parmola.
Baltimore Office, Green & Seaman. Pacific Coast, C. D. Helwig.

REPRESENTATIVES.
West, W. B. Lindsay. East, A. A. Gresser. New England and Penna., Jos. Tomkinson. New York Office, Marter & Parmola.
Baltimore Office, Green & Seaman. Pacific Coast, C. D. Helwig.

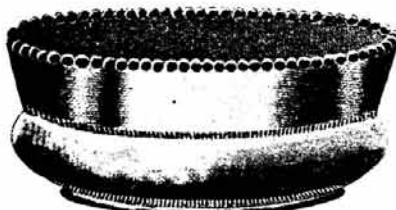
REPRESENTATIVES.
West, W. B. Lindsay. East, A. A. Gresser. New England and Penna., Jos. Tomkinson. New York Office, Marter & Parmola.
Baltimore Office, Green & Seaman. Pacific Coast, C. D. Helwig.

1225 Plain Band

Pattern #1225 - First production in 1897 and through 1905. A popular pattern and although it is an old one it is not hard to find. Was made in Crystal and souvenir pieces in Ivorina Verde (Custard). Usually signed.

Bon-bon, #1
 Bon-bon, #2
 Bon-bon, #3
 Bowl, Berry, square, 8''
 Bowl, high footed, 5''
Bowl, high footed, 6''
 Bowl, high footed, 7''
 Bowl, high footed, 8''
 Bowl, high footed, crimped, 5''
 Bowl, high footed, crimped, 6''
Bowl, high footed, crimped, 7''
 Bowl, high footed, crimped, 8''
 Bowl, high footed, shallow, 6''
 Bowl, high footed, shallow, 8''
 Bowl, high footed, shallow, 9''
Bowl, high footed, shallow, 10''
 Bowl, high footed, covered, 5''
 Bowl, high footed, covered, 6''
 Bowl, high footed, covered, 7''
 Bowl, high footed, covered, 8''
Butter, covered
 Butter, covered toy
 Cake Basket, footed, 9''
 Cake Basket, footed, 10''
 Celery, tall
Cheese, covered
 Comport, straight, 4''
 Comport, straight, 4½''
 Comport, straight, 6''
 Comport, straight, 7''
Comport, straight, 8''
 Comport, crimped, 4''
 Comport, crimped, 4½''
 Comport, crimped, 6''
 Comport, crimped, 7''
Comport, crimped, 8''
 Comport, covered, 6''
 Comport, covered, 7''
 Comport, covered, 8''
 Comport, shallow, 5''
Comport, shallow, 6''
 Comport, shallow, 8''
 Comport, shallow, 9''
 Comport, shallow, 10''
 Creamer, regular
Creamer, toy
 Creamer, hotel
 Creamer, individual
 Decanter, individual
 Dish, oblong, 8''
Jelly, handled, 5½''
 Jelly, handled, 5½'', 3-cornered
 Molasses Can, 13 oz.
 Molasses Can, hotel
 Mustard, covered
Nappy, square, 4''
 Nappy, square, 4½''
 Nappy, square, 7''
 Oil, 4 oz.
 Oil, 6 oz.
Pickle, 6''
 Pitcher, half gallon
 Plate, 5''
 Plate, 6''

Plate, 9''
Plate, 10''
 Plate, 11''
 Salt, #1, #2 or #4
 Salt, master table
 Salt, individual
Salver, footed, 9''
 Salver, 10''
 Sherbet
 Spooner, regular
 Spooner, toy
Spoon Tray
 Sugar, covered
 Sugar, hotel
 Sugar, toy, covered
 Sugar, individual
Tankard, half pint
 Tankard, one pint
 Tankard, one quart
 Tankard, half gallon
 Toothpick
Tumbler, 8½ oz.
 Wine



#12 Double Row Slash and Panel

Pattern #12 - Identical to pattern #9 in number of pieces, the difference being as indicated by the number of rows. Crystal only and dated from 1896 to 1905.

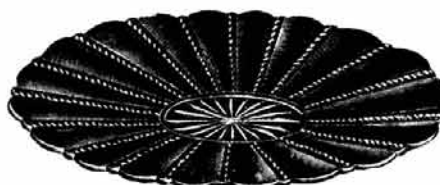
Bowl, Rose, 6''
 Bowl, Lily
 Nappy, 4''
 Nappy, 4½''
 Nappy, crimped, 8''
Nappy, flared, 8''
 Nappy, shallow, 10''
 Pitcher, 3 pint
 Plate, 11''



Pattern #9 - A short pattern and an old one dating from 1896 to 1905 in Crystal only.

Bowl, Lily
 Bowl, Rose, 6''
 Nappy, 4''
 Nappy, 4½''
 Nappy, crimped, 8''
Nappy, flared, 8''
 Nappy, shallow, 10''
 Pitcher, 3 pint
 Plate, 11''

#9 Single Row Slash and Panel



PUNTY BAND

Pattern #1220 - Popular with collectors and most often found in Ivorina Verde (Custard) or Opal (Milk Glass). Crystal with red flashing as souvenirs. Date of production 1896 - 1905.

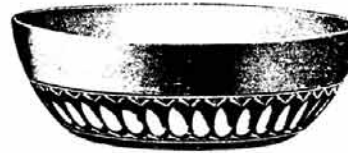
- Bon-bon, #1
- Bon-bon, #2
- Bon-bon, #3
- Bowl, footed, 5"
- Bowl, footed, 6"
- Bowl, footed, 7"
- Bowl, footed, 8"
- Bowl, footed, crimped, 5"
- Bowl, footed, crimped, 6"
- Bowl, footed, crimped, 7"
- Bowl, footed, crimped, 8"
- Bowl, footed, shallow, 6"
- Bowl, footed, shallow, 8"
- Bowl, footed, shallow, 9"
- Bowl, footed, shallow, 10"
- Bowl, footed, covered, 5"
- Bowl, footed, covered, 6"
- Bowl, footed, covered, 7"
- Bowl, footed, covered, 8"
- Butter, covered
- Cake Basket, 9"
- Cake Basket, 10"
- Celery, tall
- Comport, 4"
- Comport, 4 1/2"
- Comport, 6"
- Comport, 7"
- Comport, 8"
- Comport, crimped, 4"
- Comport, crimped, 4 1/2"
- Comport, crimped, 6"
- Comport, crimped, 7"
- Comport, crimped, 8"
- Comport, shallow, 5"
- Comport, shallow, 6"
- Comport, shallow, 8"
- Comport, shallow, 9"
- Comport, shallow, 10"
- Comport, covered, 6"
- Comport, covered, 7"
- Comport, covered, 8"
- Creamer, regular
- Creamer, hotel
- Creamer, individual
- Dish, oblong, 5"
- Jelly, 5 1/2", handled
- Jelly, 5 1/2", handled, 3-cornered
- Molasses Can, 13 oz.
- Mug, souvenir
- Oil, 6 oz.
- Perfume, silver top
- Pickle, 6"
- Pitcher, half gallon
- Plate, 5"
- Plate, 6"
- Plate, 9"
- Plate, 10"
- Plate, 11"
- Salt, #1 or #3
- Salt, master table
- Salt, individual
- Salver, 10"
- Salver, footed, 9"
- Spooner
- Spoon Tray
- Sugar, covered
- Sugar, hotel
- Sugar, individual
- Toothpick
- Tumbler, 8 oz.



PUNTY ROW

Pattern #464 - Also scarce and shown only in nappies. Crystal and signed. Production in 1914.

- Nappy, 4 1/2"
- Nappy, 8"

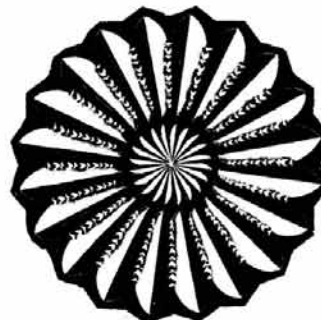


GROOVE AND SLASH [Zipper]

Pattern #1250 - This pattern is known among many collectors as "Zipper" and is found both signed and unsigned. It is a short pattern and was produced for about twelve years from 1897 to 1909. It is an old pattern but not too difficult to locate. It was made in Crystal only.

- Bon-bon
- Bowl, high footed, 9"
- Bowl, Nappy, 4"
- Bowl, Nappy, 4 1/2"
- Bowl, Nappy, 7"
- Bowl, Nappy, 8"
- Bowl, Nappy, shallow, 5"
- Bowl, Nappy, shallow, 6"
- Bowl, Nappy, shallow, 8"
- Bowl, Nappy, shallow, 9"
- Bowl, Rose, 4"
- Bowl, Rose, 5"

- Bowl, Rose, 7"
- Bowl, Salad, 8"
- Bowl, Salad, 9"
- Butter, covered
- Celery, tall
- Creamer
- Hair Receiver
- Jar, Condensed Milk, covered
- Jar, Cracker, covered
- Jar, Pickle, covered
- Jar, Pickle, knob-covered
- Jug, half gallon
- Oil, 6 oz.
- Pitcher, half gallon
- Plate, 5"
- Plate, 6"
- Salt, #3
- Spooner
- Sugar, covered
- Tankard, one quart
- Tankard, half gallon
- Tumbler, 8 1/2 oz.



MINUTES OF THE HEISEY SALES CONVENTION

JUNE 29th., JUNE 30th., JULY 1st., - 1941
Continued from last issue.

It was suggested that the factory use the names of all patterns on the invoices instead of the decoration number.

Quite some time was spent at this point with each salesman telling the other about certain ideas and items that sold well for him in his territory.

NEW ITEMS

New items which are wanted as soon as possible:

1. A small 11" Torte Plate in Crystolite.
2. A 2 Handled Sandwich Plate in #1503.
3. A 10" Square Vase on foot in #1506.
4. #1503 Hurricane Lamp - 12" shade on the candleblock base to be etched with Orchid.
5. A footed Candy Box in #1503.
6. A Hurricane Base in #1489 with 12" Plain Shade. Have draft.
7. A deviled egg plate in #1503.
8. #4025 1 Qt. Shaker Rock Crystal Cut to retail at \$6.00 in mitres and punts.
9. A new 3 Lt. candlestick with a center candleholder higher in the middle.
10. A new two light candleholder which will be as popular as the #134 2 Lt. candlestick to decorate.
11. A new water jug, lipped and light weight is wanted.
12. A highball is wanted which will have an etching on it in graduated form reading from bottom to top in the following dimensions: The first line from the bottom should be marked "Ladies". The second line a little higher up from the first should be marked "Gentlemen". The third line near the top of the glass should be etched "Portland Men". However, let it be pointed out that Portland is merely an indication of the city. This idea submitted by Mr. Berni should be worked up as a set of eight or 12 in the set, preferably 12 and the price set so that it would include the cost of inserting the name of any city or university on the top line.
13. A new salt and pepper is wanted for etching and cutting purposes.
14. A new pressed pattern is wanted for January 1st..
15. A new floral etching line comparable to Orchid etching is wanted for January 1st..
16. The new star candleblock shown in model form is wanted at once.
17. A new staple, blown stemware line is wanted for January.
18. Some glass figures are wanted; for example, a swan in three sizes; and a glass hand flower holder.
19. We need now as desperately as before a good-looking pair of book-ends to retail at \$5.00 a pair. Everyone believes big volume could be had on this item.

20. It was suggested that religious glass figures to retail at \$1.00 to \$2.00 might be important.

COLORS

Color was the last topic of conversation and it was decided after a thorough analysis and discussion that we should bring out some dainty colored items in blown ware as soon as possible: Zircon, Alexandrite and a light blue would be very acceptable. The items to be made in any color should include bowls, blown vases, a few stemware pieces such as in the new spot optic line, the #1489 and possibly #1503 cigarette sets.

The No. 7 and No. 9 ladles which are now priced at \$3.60 per dozen list should be made \$3.00 list if at all possible. This is important, and was brought out by every man present as the retail of the mayonnaise sets is thrown out of line by our 30¢ ladle.

The handle of the #1503 Shell Candy Box is too small and hurts the sale of this item. It should be made larger even if that means making a new lid as the item is a good \$1.00 retailer if made right.

A one-pint cocktail shaker might be a good item to bring out for fall selling.

MONDAY - JUNE 30th.

The morning session opened with a lot of discussion regarding cuttings which are pretty well covered in the report of Sunday.

Mr. Irwin said that the best way out of the present difficulties is to advise our trade to add 10% to the present list price as the retail for each item in our line. Later on there will be a new price list printed with new list prices but not until such time as the factory believes prices will be stable.

There was no objection on the part of the men and they all believed the trade would not object to the proposal of the factory to change our discounts from 50% and 50 & 10% to 50% and 50 & 5% off the lists.

The 50 & 5% maximum discount should be more jealously guarded by both the factory and the men in determining who will receive it and who will not.

An interesting topic of discussion took place at this point, viz., whether or not to sell the Class A Stores of Montgomery Ward and Sears, Roebuck & Co.. This all became very involved and almost everyone had something to say including Mr. R. A. Eichelberger who gave an outside opinion on the subject. It was interesting, for the records at least, to see the reactions of the various men. Naturally, no decision of any importance was reached, but an open mind on this subject was suggested as being the policy to follow if retail trends of the day would warrant the adoption of such a policy. The future of not

only the men's jobs but of the factory was pointed out pro and con, and as the discussion closed we all felt that the management and the owners were well posted on the trends and would keep so to our mutual benefit.

Mr. Irwin brought up the very important fact that more effort should be put on solving the problem of confining our lines in the various towns, versus plastering our line. Concentration of patterns and of dealerships is vital and this message was pounded home by him in a concise manner with good force. He also, injected here the warning that we as salesmen, and as individuals, should be aware of our Company's welfare. Their line can succeed only if we maintain a high standard of salesmanship.

A very interesting article was read by Mr. Bosworth on Buyers' Opinions of Factory Representatives and what some of the big buyers in the country think of sales methods as presented by the big factories through their men. It was a very timely and well written article which will benefit every man.

ADDRESS BY MR. T. C. HEISEY

Mr. T. C. Heisey, Vice President of the firm next was presented to the group. A complete copy of his talk is attached to these Minutes. The impression gathered by the men from his remarks was one of a sincere desire on the part of the factory to go ahead and maintain our rightful place in the glassware industry. His tribute to the various personnel was generous and it reviewed for us all the fact that the success is one of cooperation and faith in each other, to do the one job in which we are all interested, viz., keeping and making Heisey the outstanding line in the country.

Mr. Heisey then presented the three prizes to the men sending in the greatest amount of business during the month of June. Mr. J. J. Lower of New York City received the first prize; Mr. E. Lee Beardshear of Chicago the second and George Granville of Boston the third. These cash awards were in addition to the regular Diamond H Club Awards.

ADDRESS BY MR. R. M. COLLETT

After lunch a talk was made by Mr. Robert Collette of the J. Norace Lytle Advertising Agency. He gave us a complete story of the advertising efforts which the firm is putting forth for our Fall selling campaign. The men were impressed and grateful for the program as laid out very ably and interestingly by Mr. Collett. The brochure showing the Advertising Program was enthusiastically received by all the men. There is no doubt but what it will prove a very valuable tool and aid in our selling for this Fall. "Kotchems" remarks were not only well placed but interspersed with good, sound analysis of the picture as he saw it and its relation to advertising. Illustrated and factually presented, the boys were all convinced that we really have some good backing by our advertising.

TABLE TALK PUBLICATIONS SHOULD BE REVIVED was the opinion of the men at this point.

ADDRESS BY MR. R. A. EICHELBERGER

Mr. Robert A. Eichelberger of the Ladies Home Journal Magazine was presented and he gave the group a story regarding the Ladies Home Journal's advertising and editorial campaigns for the next six months which very definitely tie in with Heisey Glassware for the future. It is hard to believe that such a broad and fine campaign and of such national scope could be brought into being in a way that it will have so much commercial value as well as the moral and social value it has. For the sake of brevity in report, the tremendous impression that this talk made, let it be said that the importance of the dining room in the American home covers the story as briefly as possible. Of course, the dining room has in it glassware and, we as glassware salesmen, have only to tell the story and tie it in with our product which makes it important to us, doubly so. The sincerity of this crusade of reviving the importance of the dining room in the American home as believed by Mr. Eichelberger was one of the highlights of the Convention and if facts and figures have not convinced each man present of the importance of the Ladies Home Journal in the advertising scheme, then certainly Mr. Eichelberger's enthusiasm and sincerity of purpose in aiding us would convince any thinking person of the true value of this publication.

Mr. Eichelberger certainly rang the bell and from that moment on was included in the spirit of the meeting which predominated and that was "how best to serve The House of Heisey".

Next on the program was a talk by Mr. Wilson of the Stevens-Davis Company of Chicago who proposed a plan of sending each man a special publication called The Voice which deals with salesmen's problems as they arise with individual types of buyers. It was well presented by Mr. Wilson and enjoyed, but as to the merits of the publication and its value as it may apply to each man individually, it is one for future consideration based on cost versus value to our group.

Mr. Irwin expressed at this time a gratitude to the three preceding speakers for their time and effort and voiced the opinion of each man that it was time well spent.

Ed. Note, the second part of the Minutes of the 1941 Sales Convention is above. Some of the glass items which are mentioned were made and many were not. A deviled egg plate was made in Lariat but not in Crystolite. The #1489 Puritan Hurricane Lamp was also made. No doubt the "star" candleblock refers to the #1543 Satellite which was made as early as 1941 and later became part of the #1632 Satellite and Lodestar line. They also did make the swan but only one type of cygnet. Further research will let us know what else on this list was made.

DIAMONDS ARE FOREVER.....

By Janet Caswell

Legend has it that Sir Harry Frankland brought the first lilacs to the Yachting Center. In Sir Harry's diary he records time and time again his interest in botany. His Marblehead sponsor, the Reverend Edward Holyoke, had an avid interest in "growing things" and it is very probable that these two men exchanged plants. Frankland went everywhere to find seeds of unusual plants and took countless cuttings of shrubs and bushes. Many exotic seeds have traveled here with settlers arriving on ships from other lands. Plant pests such as "poison ivy, ragweed, stickle burrs" etc. were brought here by the feathered folk carrying the seeds since Marblehead is a natural flyway. Along the seashore is found an abundance of plants peculiar to the region of salt water marshes and beaches. A rare discovery was the Cinquefoil, *Potentilla-tridentata*, previously recorded only at the Isle of Shoals and on Mt. Washington. For more than fifty years, classes in seaside botany have been conducted by Harvard University and Boston University along the shores of Marblehead.

With Spring just around the corner and outdoor "Fleas" opening, our avid collectors have been out and about, such as "the Hanging Judge." I heard that he was going to give a "furlough" to a few pieces of Heisey, but just for the weekend, such as a beautiful #4164 Gallagher 73 oz ice jug with Orchid etch; the #1425 Victorian condiment set - consisting of the tray, salt and pepper, mustard with cover and paddle; he also found a couple of other interesting items - the first was a lazy susan made from the 13½" top of the Waverly cake plate (the base wasn't used). This was fastened to a silver plated base which had "ball bearings" in it making it easy and smooth to rotate. The other piece was also quite unusual; it was a #1540 Lariat 3 part relish, 11" long - this piece is completely frosted - on the underneath side it is painted with red roses and green leaves with enamel; when you look thru from the top the flowers blend into the frosted glass and gives the effect of a beautiful painting. It truly seems that I can always depend on the Judge to arrest and hold something different.

"The Wiz" (MA) told me about a #150 Banded Flute shot glass (real cute) and his greatest and most exciting find ever was the prized #160 Locket on Chain toothpick, ruby stain, in great condition (Ed. Was it a bar or a toothpick holder?)

From "The Point" a very appealing cologne was reported with beautifully simple lines and very heavy glass. It is the #1183 Revere cologne, and it holds between 11 and 12 ounces and has a cut Daisy-type decoration, marked twice, once on either side of the neck. This cologne was pictured in just one catalog. I did have the pleasure of seeing this and holding it in my hands; it is truly lovely. The February issue of the HEISEY NEWS has a line drawing and a bit of information on this piece.

"Mr. 1469" reports a place setting in Ridgeleigh, while "Busy Bee" has a #353 Medium Flat Panel 4 oz oil.

"Orchid Passion" took time from her busy schedule to go out, find, and bring home a #1401 Empress cream and sugar in moongleam; a crystal cup and saucer, Orchid etch; an Orchid etch wine and the #1519 Waverly salt and pepper with Orchid etch.

"The Magnanimous Chieftain" reports several impressive pieces of Heisey; the #1401 Empress 8" square plate and the 8" round plate, both in Cobalt.

"The Amicable Stroller" has picked up a couple of real treasures of late: a #3350 Wabash stem in hawthorne and a 'wee' Carcassonne #3390 cordial in sahara with a Lotus Co. etch, an absolute little gem !!

Speaking of #3390 Carcassonne a "Knowledgeable educator" from the Bay State (MA) has two goblets in the elusive alexandrite, along with a small #1401 Empress plate, also alexandrite; a #305 Punt and Diamond Point tankard and the 5 oz syrup. The tankard is a sumptuous piece of glass.

Now for the "energetic Countess" - ready - #1205 Fancy Loop bar tumbler (variant) in emerald; #1205 Fancy Loop 4" rose bowl, crystal; a #4035 Seven Octagon cologne with #77 flamingo Duck stopper; the #406 Coarse Rib plate in moon-gleam and lastly a #1401 Empress 8" square plate in tangerine.

From the South Shore (MA) I heard of a flamingo 8" #1232 Spoke palte, and from the North Shore (MA) a #4044 New Era 2-lite candlestick; the #1483 Stanhope champagne; a #354 Wide Flat Panel sugar and in #1951 Cabochon the 1-light candlestick plus a #6091 tumbler with an amber foot.

"The Scribe" (NJ), after ten years of hunting finally found the #1229 Octagon 6" mint in crystal; she has every other color made; also the #1540 Lariat 13" celery.

The "Arizona Heisey-holic" arrived at a Depression show so early she had to wait forever in line to get inside, but it was more than worth the wait. Old Sandwich, #1404, was the fare for the day: a 12" oval floral bowl in sahara; the 18 oz beer mug in crystal and one 10 oz straight soda in crystal; in #500 Octagon was a cream and sugar in crystal with moongleam handles.

As for "Yours Truly" just a couple things I thought you might be interested in: the #1776 Kalonyal mustard bottom; a #100 Centennial 6" candlestick, cut; a pair of #1559 Columbia candlesticks - scalloped base; and the small #353 Medium Flat Panel ash tray, there are three in a set and they nest together - small, medium, large - and they are eight sided.

"The Cardinal" says "little things" are special and he added the #3480 Koors 1½ oz footed bar, d/o, in flamingo to his growing collection.

"The Arizona Preachers" chose "Heisey Rose" as their wedding crystal and began replacing their damaged pieces about three years ago and consequently were bitten by that Heisey bug, which is so difficult to cure, and have branched out to some of the old patterns such as Fandango,

Fancy Loop, Peerless, Williamsburg and Narrow Flute. On their day off the "Heavenly Honda" is put into service and found were the following: Two standing colts (I understand that was a great deal); #1205 Fancy Loop individual sugar in crystal and the Narrow Flute diced sugar tray (dated) and lastly, at least for this month, two (2) Fair-acre wines, all crystal. After a good bath they really sparkled!

On that note I'll stop for now, so until next month, Happy Hunting, and again I ask you all for your letters, input is needed from all my friends, old and new.

Ed. Note: You may have noticed that Jan has picked up some different collectors lately, judging from the new names. I counted seven. L. R.

SPARKLING EXHIBIT TO HIGHLIGHT HEISEY GLASS SHOW

"The grandeur of glass - - the Heisey Era" will be exhibited at Waltham Senior High School, Waltham, MA as part of the 10th annual show and sale sponsored by the Bay State Heisey Collectors Club. This special display, on loan from leading collectors, will cover the entire production span of A. H. Heisey & Company from 1896 to 1957. Heisey glass, renowned as some of America's best handmade table ware, is one of the best documented collectibles today.

In addition to the display a select group of dealers will be offering a wide variety of glass, china, pottery, antiques and collectibles for every taste. This non-profit show and sale on behalf of the National Heisey Glass Museum, Newark, Ohio, will be held on April 30, 1988 from 10-5 and May 1, 1988 from 10-4.

Everyone is invited to attend.

CLUB NOTES

SOUTHEASTERN MASS HEISEY CLUB

The Southeastern Mass Heisey Club began the new year with a formal affair at the January meeting: "Place Settings by Heisey." Irene Walton, the program chairperson, presented the program to the delight of all the members. Suddenly, the Banck studio was transformed into a ballroom at the Marble House Mansion in Newport. One could imagine that the gentlemen were attired in black ties and tuxedos and the ladies were draped in the finest long silk dresses. The place settings of Heisey inspired an air of elegance and sophistication of "by-gone" years. All the members contributed glass pieces for this inspirational evening. Upon the linen clad table, the following place settings awaited the presentation of some imaginative gourmet delight:

- Empress, moongleam
- Empress, sahara with Carcassonne goblet

- Empress, cobalt with Spanish stems
- Empress, tangerine with Gascony oyster cocktail
- Empress, alexandrite with Carcassonne goblet
- Old Sandwich, flamingo
- Twist, flamingo with Old Dominion goblet
- Ridgeleigh
- Orchid etch, with Tyrolean stems
- Twist, marigold
- Yeoman, marigold with Old Dominion goblet
- Yeoman, moongleam
- Yeoman, hawthorne with Wabash stem

Just as dessert follows a sumptuous dinner, so were the members treated to a display of "Show and Tell" by Janet Caswell. Such treasures as an 1185 center handled sandwich plate with painted gold and green decoration and a Fancy Loop bar glass in emerald were among the items to enhance the beauty of the "ballroom."

To insure that memories of this evening could be recalled easily, Maria Martell distributed diagrams of correct formal place settings. These diagrams indicated the proper placement of open salts, individual sugars and creamers, water goblets, white and red wines, champagnes, cordials, etc.

Two new members, Donald Macomber of Salem and Michael Mass of Marshfield, joined the festivities of the evening and contributed selections from their Heisey collections to the place settings on display.

Rick and Maria Martell served as host and hostess and displayed some refreshments on Heisey Orchid etch plates. Swirling red punch was scooped from Wade Banck's Banded Flute punch bowl. Ah, yes, surely the Great Gatsby himself would have enjoyed this evening just as the Southeastern Mass Heisey club members did. President, Mary Williams, broke the spell of the evening with her words, "Meeting adjourned," and the crowd spilled out of the studio into the cold January evening, knowing that they had just been to a most formal affair.

- Mary Neckes

HEISEY CLUB OF CALIFORNIA

The Heisey Club of California met on 28 February, 2 PM in the home of Linda and Chuck Fowler (Pres). After a short business meeting, a program on Etching & Carvings was introduced to the 27 assembled members and guests. Many members may travel 40 to 50 miles to a meeting, some as far as 100 miles, one way. The program included the display of approximately 25 of the wide variety of Heisey etchings and carvings, plus a crossword puzzle 'contrived' by our President. From the results, it is obvious that further study is required.

Our club meets 4th Sunday (2pm), each month, alternating at the members' homes, letting the Club enjoy the beauty of each member's "museum." Many Heisey collectors are invariably involved with other collections, be it dolls, buttons,

CLUB NOTES, continued

teddies, clocks, etc., so visits in the different homes have many added benefits.

After the business meeting, programs can cover a wide variety of Heisey subject matter, then Show & Tell, and followed by refreshments. Most members are back on the freeway by 5pm, or shortly after.

HCA members sojourning in the greater Los Angeles area are invited to visit our meetings. Contact may be made by phoning Chuck Fowler (Pres) 213-421-9261; Betty Wanser (Editor) 714-776-0175; or the undersigned at 714-688-8364.

- Roy T. Boggs
Corresponding Sec'y

Ed. Note: We are very pleased to have a club report from this very active club. We welcome reports from all clubs. If you are tired of reading reports from only a very few clubs, it is time to send yours. We may get so many that we'll have to assign months to the various groups. That would be great!

L.R.

HEISEY COLLECTORS OF THE ROCHESTER AREA

The meeting was held on the 21st at the home of Jerry and Lynn Mantione. They have a very beautiful collection of Depression Glass with even a little Heisey thrown in. Among their rare pieces were, a pink Cameo water pitcher, the only one known, a green Cameo center handled serving piece and a rare green ring saucer. Their display of Cambridge Crown Tuscan was breathtaking with a lot of unusual pieces shown. Lynn is the President of the Rochester Depression Glass Club and does a wonderful job with her organization. This group donated to the purchase of the Heisey molds in a very generous way, as well; we are all indebted to them for this action.

The Mantiones had prepared a lovely selection of snacks; this was especially appreciated since Lynn was not feeling that well.

Our meeting was called to order at 3:30 pm by Prez Bruce Schwendy. No old business was discussed. Bruce read a letter from the HCA Convention display chairman requesting help with a display. No one in attendance showed any interest. Sharon Orienter, who was not present, has already indicated that she will be furnishing the Waverly non-etched glass for the center table display.

Bruce welcomed the guests for the meeting - Bob & Georgie Mayer and Ann Phillips. It was a pleasure to have them and we do hope they learned a few things about Heisey Glass.

The host and hostess donated several things for a raffle, a nice #1191 olive and pickle in moonbeam and two small depression era oil lamps. Bill Heron won the drawing for the pickle, Edith Bockes won one of the oil lamps.

The Prez held a very good candlestick quiz, there were twenty questions with three answers for each - pattern number, pattern name and colors that it came in. George Reynolds ended up

with the prize, a nice oil lamp (Joy Lite) with original box, although there was some question as to whether he won or not. Since the "Joy Lite" uses a perfumed oil, some felt that Bill Heron should have won the quiz.

The show and tell produced a few things. Jerry Gillette found a very nice Heisey booklet "Gifts of Glass" circa 1937 and two "Table Talk" catalogs dated September, 1937 and July-August, 1937. Donna Schwendy found a great King Arthur flamingo sherbet.

Now that the season has opened in this area there have been a few good local shows with a lot more scheduled. The Genesee Country Antique Dealers' Association held their annual show with an excellent turnout. On February 27th a great show was held at the Monroe Country Dome Arena. Sharon Orienter and her mother, Betty Evans, were set up along with Marge Gillette. Both their booths were beautiful with a great selection of Heisey Glass. Among the other dealers a few pieces of good Heisey appeared, among them a sahara Lion Head bowl and a Puritan crystal mayonnaise. The Puritan piece tempted us but was somewhat discolored. We also spotted a nice pair of Mt. Washington dolphin footed candles; they are very similar to the Heisey and Sandwich candles.

Spring is just around the corner now; we'll end with this quote.

"Owning a home is like managing a museum, no matter where you sit you are looking at something you should be doing."

- George J. Reynolds

BAY STATE HCC

The Bay State Heisey Collectors Club held its regular monthly meeting on Feb. 9 at the Follen Community Church with President D. Young at the helm.

D. Young provided the program for the evening. The program title "Needle & Pantograph Etching", a very interesting and informative program. We really learned a lot.

Show and Tell by David Steer was equally informative. Here is a list brought:

- #5 Patrician stick 5"
- #5 Patrician 8" stick
- #5 Patrician 11" stick
- Ivy vase, tangering a goodie
- #135 sahara stick
- #1184 Bowtie Yeoman ash tray
- #4 favor vase diamond optic in flamingo
- 4 #1170 Pleat and Panel stems and sherbets in flamingo

Refreshments were provided by Beverly Berberian and Jeffry Lucope. They were out of this world.

Don't forget our glass show on April 31 and May 1 in Lexington, Mass. Come one, come all - it is really a great event not to be missed.

- George Gleason

Prices Realized from Benefit Auction.

(✓ Indicates chipped or damaged pieces.)

1 .	7.50	59 .	20.00	117 .	15.00	175 .	35.00	233 .	50.00	290 .	70.00
2 .	12.50	60 .	30.00	118 .	150.00	176 .	55.00	234 .	85.00	291 .	30.00
3 .	10.00	61 .	22.50	119 .	80.00	177 .	42.50	235 .	52.50	292 .	55.00
4 .	17.50	62 .	25.00	120 .	60.00	178 .	75.00	236 .	60.00	293 .	35.00
5 .	20.00	63 .	60.00	121 .	170.00	179 .	17.50	237 .	50.00	294 .	62.50
6 .	27.50	64 .	25.00	122 .	180.00	180 .	55.00	238 .	45.00	295 .	95.00
7 .	60.00	65 .	125.00	123 .	115.00	181 .	320.00	239 .	130.00	296 .	105.00
✓ 8 .	55.00	66 .	25.00	✓ 124 .	85.00	182 .	30.00	240 .	130.00	297 .	105.00
9 .	40.00	67 .	40.00	125 .	20.00	183 .	15.00	241 .	15.00	298 .	20.00
10 .	17.50	68 .	67.50	126 .	65.00	184 .	37.50	242 .	50.00	299 .	7.50
11 .	70.00	69 .	27.50	127 .	17.50	185 .	62.50	243 .	20.00	300 .	140.00
12 .	55.00	70 .	65.00	128 .	30.00	186 .	25.00	244 .	45.00	301 .	35.00
13 .	80.00	71 .	45.00	129 .	40.00	187 .	50.00	244A.	55.00	302 .	40.00
14 .	5.00	72 .	40.00	130 .	55.00	188 .	45.00	245 .	45.00	303 .	275.00
15 .	45.00	73 .	60.00	131 .	15.00	189 .	20.00	246 .	20.00	304 .	210.00
16 .	30.00	74 .	80.00	132 .	22.50	190 .	25.00	247 .	135.00	305 .	110.00
✓ 17 .	150.00	75 .	95.00	133 .	40.00	✓ 191 .	25.00	248 .	22.50	306 .	100.00
18 .	275.00	76 .	85.00	134 .	60.00	192 .	145.00	249 .	50.00	307 .	60.00
✓ 19 .	190.00	77 .	45.00	135 .	150.00	193 .	70.00	250 .	55.00	308 .	150.00
20 .	320.00	78 .	20.00	136 .	15.00	194 .	25.00	251 .	20.00	309 .	160.00
21 .	130.00	79 .	25.00	137 .	25.00	195 .	45.00	252 .	45.00	310 .	100.00
22 .	20.00	80 .	35.00	138 .	50.00	196 .	52.50	253 .	70.00	✓ 311 .	65.00
23 .	95.00	81 .	25.00	139 .	20.00	197 .	65.00	✓ 254 .	7.50	312 .	60.00
24 .	105.00	82 .	100.00	140 .	112.50	198 .	52.50	255 .	35.00	313 .	55.00
25 .	160.00	83 .	130.00	141 .	40.00	199 .	275.00	256 .	35.00	314 .	110.00
26 .	95.00	84 .	40.00	142 .	25.00	200 .	85.00	257 .	15.00	315 .	25.00
27 .	35.00	85 .	80.00	143 .	100.00	201 .	255.00	258 .	55.00	316 .	280.00
28 .	17.50	86 .	350.00	144 .	55.00	202 .	250.00	259 .	12.50	317 .	0.00
29 .	10.00	87 .	22.50	145 .	52.50	203 .	90.00	260 .	12.50	318 .	35.00
30 .	100.00	88 .	50.00	146 .	25.00	204 .	55.00	261 .	40.00	319 .	55.00
✓ 31 .	30.00	89 .	65.00	147 .	25.00	205 .	10.00	262 .	90.00	320 .	85.00
32 .	15.00	90 .	75.00	148 .	140.00	206 .	40.00	263 .	30.00	321 .	130.00
33 .	115.00	91 .	80.00	149 .	85.00	207 .	50.00	264 .	22.50	322 .	150.00
34 .	12.00	92 .	85.00	✓ 150 .	125.00	208 .	30.00	265 .	60.00	323 .	195.00
35 .	175.00	93 .	80.00	151 .	45.00	209 .	50.00	266 .	35.00	324 .	20.00
✓ 36 .	25.00	94 .	70.00	152 .	12.50	210 .	35.00	267 .	280.00	325 .	85.00
37 .	310.00	95 .	40.00	153 .	35.00	211 .	30.00	268 .	60.00	326 .	50.00
38 .	27.50	96 .	30.00	154 .	32.50	212 .	25.00	269 .	20.00	327 .	150.00
39 .	90.00	97 .	20.00	155 .	35.00	213 .	32.50	270 .	52.50	328 .	60.00
40 .	8.00	98 .	7.00	156 .	35.00	214 .	47.50	271 .	475.00	329 .	60.00
41 .	45.00	99 .	20.00	157 .	80.00	215 .	45.00	272 .	40.00	330 .	60.00
✓ 42 .	120.00	100 .	22.50	158 .	10.00	216 .	22.50	273 .	17.50	331 .	15.00
43 .	20.00	101 .	7.50	159 .	35.00	217 .	22.50	274 .	40.00	332 .	55.00
44 .	150.00	102 .	50.00	160 .	30.00	218 .	65.00	275 .	22.50	333 .	25.00
45 .	225.00	103 .	15.00	161 .	25.00	219 .	55.00	276 .	45.00	334 .	50.00
46 .	110.00	104 .	20.00	162 .	65.00	220 .	40.00	277 .	80.00	335 .	27.50
47 .	95.00	105 .	37.50	163 .	57.50	221 .	22.50	✓ 278 .	10.00	336 .	50.00
48 .	55.00	106 .	50.00	164 .	220.00	222 .	50.00	279 .	60.00	337 .	20.00
49 .	160.00	107 .	17.50	165 .	15.00	223 .	25.00	280 .	50.00	338 .	20.00
50 .	100.00	108 .	11.00	166 .	22.50	224 .	35.00	281 .	90.00	339 .	25.00
51 .	92.50	109 .	15.00	167 .	20.00	225 .	17.50	282 .	55.00	340 .	120.00
52 .	65.00	110 .	20.00	168 .	17.50	226 .	22.50	283 .	40.00	341 .	35.00
53 .	60.00	111 .	90.00	169 .	35.00	227 .	52.50	284 .	55.00	342 .	60.00
54 .	45.00	112 .	35.00	170 .	40.00	228 .	155.00	285 .	95.00	343 .	25.00
55 .	35.00	✓ 113 .	35.00	171 .	180.00	229 .	230.00	286 .	87.50	344 .	32.50
56 .	50.00	114 .	27.50	172 .	100.00	230 .	30.00	287 .	85.00	345 .	95.00
57 .	30.00	115 .	60.00	173 .	115.00	231 .	55.00	288 .	65.00	346 .	35.00
58 .	30.00	116 .	55.00	174 .	47.50	232 .	60.00	289 .	50.00	347 .	35.00

continued on next page

Prices Realized from Benefit Auction.

(✓ Indicates chipped or damaged pieces.)

348 . 50.00	406 . 17.50	464 . 300.00	522 . 45.00	579 . 20.00	637 . 30.00
349 . 40.00	407 . 5.00	465 . 85.00	523 . 25.00	580 . 35.00	638 . 27.50
350 . 40.00	408 . 65.00	✓466 . 40.00	524 . 22.50	581 . 55.00	639 . 30.00
351 . 32.50	409 . 12.50	467 . 50.00	525 . 75.00	582 . 120.00	640 . 37.50
352 . 32.50	410 . 70.00	468 . 75.00	526 . 60.00	583 . 20.00	641 . 160.00
353 . 85.00	411 . 85.00	469 . 32.50	527 . 80.00	584 . 55.00	642 . 15.00
354 . 35.00	412 . 190.00	470 . 60.00	528 . 27.50	✓585 . 25.00	643 . 17.50
355 . 80.00	413 . 325.00	471 . 105.00	529 . 30.00	586 . 20.00	644 . 17.50
356 . 35.00	414 . 60.00	472 . 55.00	530 . 70.00	587 . 80.00	645 . 17.50
357 . 140.00	415 . 70.00	473 . 85.00	531 . 275.00	588 . 50.00	646 . 20.00
358 . 110.00	416 . 250.00	474 . 45.00	532 . 60.00	589 . 35.00	647 . 5.00
359 . 60.00	417 . 225.00	475 . 15.00	533 . 25.00	590 . 15.00	648 . 12.50
360 . 70.00	418 . 15.00	✓476 . 27.50	534 . 45.00	591 . 52.50	649 . 10.00
361 . 120.00	419 . 15.00	477 . 125.00	535 . 45.00	592 . 155.00	650 . 20.00
362 . 40.00	420 . 10.00	478 . 105.00	536 . 80.00	593 . 55.00	651 . 55.00
363 . 15.00	421 . 50.00	479 . 25.00	537 . 40.00	594 . 10.00	652 . 105.00
364 . 45.00	422 . 30.00	480 . 30.00	538 . 105.00	595 . 7.50	653 . 260.00
365 . 30.00	423 . 22.50	481 . 130.00	539 . 45.00	596 . 45.00	654 . 40.00
366 . 10.00	424 . 5.00	482 . 37.50	540 . 80.00	597 . 50.00	655 . 25.00
367 . 17.50	425 . 40.00	483 . 40.00	541 . 32.50	598 . 105.00	656 . 7.50
368 . 20.00	426 . 70.00	484 . 20.00	542 . 72.50	599 . 45.00	657 . 22.50
369 . 7.50	427 . 55.00	485 . 90.00	543 . 30.00	600 . 20.00	658 . 115.00
370 . 50.00	428 . 50.00	486 . 17.50	544 . 35.00	601 . 25.00	659 . 15.00
371 . 110.00	429 . 80.00	487 . 5.00	✓545 . 75.00	602 . 15.00	660 . 15.00
372 . 12.50	430 . 75.00	488 . 20.00	546 . 90.00	603 . 105.00	661 . 35.00
373 . 97.50	431 . 50.00	489 . 20.00	547 . 60.00	604 . 17.50	662 . 30.00
374 . 10.00	432 . 85.00	✓490 . 20.00	548 . 60.00	✓605 . 45.00	663 . 37.50
375 . 140.00	433 . 210.00	491 . 17.50	549 . 25.00	606 . 60.00	664 . 45.00
✓376 . 25.00	434 . 120.00	492 . 25.00	550 . 110.00	607 . 30.00	665 . 0.00
377 . 27.50	435 . 130.00	493 . 40.00	551 . 65.00	608 . 20.00	666 . 27.50
378 . 32.50	436 . 60.00	494 . 47.50	552 . 3.00	609 . 30.00	667 . 22.50
379 . 170.00	437 . 40.00	495 . 90.00	553 . 90.00	610 . 55.00	668 . 25.00
380 . 190.00	438 . 155.00	496 . 45.00	554 . 25.00	611 . 5.00	669 . 20.00
381 . 55.00	439 . 50.00	497 . 30.00	555 . 105.00	612 . 120.00	670 . 40.00
382 . 60.00	440 . 95.00	498 . 25.00	556 . 20.00	613 . 17.50	671 . 17.50
383 . 55.00	441 . 10.00	499 . 110.00	557 . 12.50	614 . 25.00	672 . 70.00
384 . 37.50	442 . 130.00	500 . 65.00	558 . 15.00	615 . 55.00	673 . 20.00
385 . 70.00	443 . 35.00	501 . 45.00	559 . 20.00	616 . 10.00	674 . 12.50
386 . 40.00	444 . 20.00	502 . 45.00	560 . 25.00	617 . 20.00	675 . 20.00
387 . 20.00	445 . 27.50	503 . 80.00	561 . 35.00	618 . 12.50	676 . 35.00
388 . 5.00	446 . 35.00	504 . 30.00	562 . 30.00	619 . 35.00	677 . 22.50
389 . 525.00	447 . 32.50	505 . 20.00	563 . 7.50	620 . 12.50	678 . 5.00
390 . 95.00	448 . 135.00	506 . 245.00	564 . 27.50	621 . 10.00	679 . 75.00
391 . 50.00	449 . 10.00	507 . 80.00	565 . 30.00	✓622 . 7.50	680 . 5.00
392 . 92.50	450 . 115.00	508 . 42.50	566 . 17.50	623 . 25.00	681 . 5.00
393 . 55.00	451 . 130.00	509 . 25.00	567 . 42.50	624 . 25.00	682 . 12.50
394 . 675.00	✓452 . 27.50	510 . 45.00	568 . 7.00	625 . 10.00	683 . 10.00
395 . 27.50	453 . 27.50	✓511 . 25.00	✓569 . 20.00	626 . 10.00	684 . 15.00
396 . 75.00	454 . 12.50	512 . 22.50	570 . 10.00	627 . 30.00	685 . 35.00
397 . 12.50	455 . 15.00	513 . 27.50	570A . 7.50	628 . 5.00	686 . 17.50
398 . 110.00	456 . 45.00	514 . 62.50	571 . 17.50	629 . 35.00	687 . 85.00
✓399 . 25.00	457 . 22.50	515 . 45.00	572 . 105.00	630 . 70.00	688 . 130.00
400 . 60.00	458 . 7.50	516 . 32.50	573 . 40.00	631 . 65.00	689 . 47.50
401 . 85.00	459 . 40.00	517 . 47.50	574 . 42.50	632 . 60.00	690 . 50.00
402 . 10.00	460 . 100.00	518 . 30.00	575 . 35.00	633 . 37.50	691 . 30.00
403 . 65.00	461 . 15.00	519 . 65.00	576 . 25.00	634 . 20.00	692 . 25.00
404 . 50.00	462 . 160.00	520 . 55.00	577 . 80.00	635 . 42.50	693 . 25.00
405 . 20.00	463 . 17.50	521 . 30.00	578 . 47.50	636 . 80.00	693A . 25.00

continued on next page

DATING THE HEISEY ANIMALS

694 .	525.00	*
695 .	55.00	*
696 .	85.00	*
697 .	350.00	*
698 .	90.00	*
699 .	95.00	*
700 .	165.00	*
701 .	40.00	*
702 .	82.50	*
703 .	82.50	*
704 .	35.00	*
705 .	50.00	*
706 .	12.50	*
707 .	15.00	*
708 .	5.00	*
709 .	5.00	*
710 .	15.00	*
711 .	25.00	*
712 .	15.00	*
713 .	20.00	*
714 .	5.00	*
715 .	27.50	*
716 .	20.00	*
717 .	5.00	*
718 .	35.00	*
719 .	110.00	*
720 .	40.00	*
721 .	15.00	*
722 .	15.00	*
723 .	10.00	*
724 .	35.00	*
725 .	12.50	*
726 .	5.00	*
727 .	17.50	*
728 .	12.50	*
729 .	25.00	*
730 .	5.00	*
731 .	35.00	*
732 .	10.00	*
733 .	7.50	*
734 .	25.00	*
735 .	20.00	*
736 .	37.50	*
737 .	15.00	*
738 .	120.00	*
739 .	5.00	*
740 .	5.00	*
741 .	65.00	*
742 .	17.50	*

NO.	ITEM NAME	YEARS	NO.	ITEM NAME	YEARS
1	Horse Head Bookend	1937-1955	12	Mallard Wings up	1947-1955
1	Elephant Large	1944-1953	20	Wood Duck	1947-1949
2	Elephant Middle	1944-1955	21	Wood Duckling Resting	1947-1949
3	Elephant Small	1944-1953	22	Wood Duckling Walking	1947-1949
1	Goose Wings Down	1942-1953	100	Pheasant Tail up (Asiatic)	1945-1955
2	Goose Wings ½ way	1942-1953	101	Tropical Fish	1948-1949
3	Goose Wings Up	1942-1953	1	Tropical Fish, Frosted	1948-1949
1	Giraffe Head back	1942-1952	103	Tiger Paperweight	1949
2	Giraffe Head turned	1942-1952	104	Gazelle	1947-1949
1	Pheasant-ringneck	1942-1953	1522	Colt Standing	1940-1952
1	Donkey	1944-1953	1527	Colt Kicking	1941-1945
1	Rooster (Chicken Family)	1948-1949	1529	Colt Balking	1941-1945
1	Sow	1948-1949	1538	Rabbit Paperweight	1941-1946
1	Airedale	1948-1949	1540	Oscar (Sparky)	1941-1946
1	Pouter Pigeon	1947-1949	1541	Sealyham (Scottie)	1941-1946
1	Bull	1949-1952	1550	Dolphin Vase	1941-1946
1	Flying Mare	1951-1952	1550	Dolphin Cigarette	1944-1946
1	Filly	1948-1949	1550	Dolphin Candlestick	1941-1948
2	Filly Head back	1948-1949	1553	Sparrow, 1, 2, 3	1942-1945
2	Clydedale	1942-1948	1554	Fish Bookend	1942-1952
1	Mother Rabbit	1948-1952	1557	Chanticleer Rooster	1940-1946
2	Bunny Head down (eating)	1948-1952	12 or 1557	Chanticleer Vase	1939-1948
3	Bunny Head up	1948-1949		Doe Head Bookend	Unknown
2	Piglet Walking	1948-1949		Rearing Horse Bookend	Unknown
3	Piglet sitting	1948-1949	1	Madonna	1942-1956
2	Hen	1948-1949	1	Madonna Frosted	1942-1956
3	Chick Head up	1948-1949	1	Madonna Turquoise Frosted	1956
4	Chick Head down	1948-1949	2	Madonna Frosted	1945-1952
4	Swan	1947-1953	1560	Victorian Bell	1944-1948
5	Cygnnet	1947-1949	1	Toy or Small Horse Head	1944-1945
5	Show Horse	1948-1949		Lariot	
10	Mallard Wings down	1947-1955		Horse Head Candy Box	
11	Mallard Wings ½ way	1947-1955		"New Horse Head"	1948
				Bantam Rooster (Stem)	1949

Continued from page 3.

Museum visitors have not been too plentiful lately but the tourist season will soon begin. All of the mirrors are finally in and Room 5 now has a more attractive display. That particular room had sort of grown like Topsy. If you come in be sure to visit the second floor.

Please note, on page 23, that we are again having a drawing for an item which was a mistake. These elephants are very nice and very limited. It has been a long time since we had the last "mistake" animal to offer.

Auction realized prices are on pages 13, 14 and 15. The Convention registration will be in the May issue.

Louise Ream Editor and Curator



Classified Ads

NATIONAL 6 highball 7.50; SOUTHWIND on Cabochon stem, ice tea, 5 goblets, 3 juices, 2 champ 20.00. SKYLINE on Cabochon stem, 2 ice tea 20.00. PLANTATION IVY ftd gardenia bowl 7 1/2" t x 9 1/2" dia 95.00. HEISEY ROSE 8 goblet 37.50, 8 champ 35.00, 3 claret 90.00, 9 cocktail 62.50. MILBRA'S CRYSTAL MATCHING PO Box 363, Rio Vista, TX 76093 (817) 645-6066 or (817) 373-2468.

FOR SALE Heisey by Imperial Baby mug (Storybook mug) Fern Green marked with Heisey & IG \$65.00; Ultra Blue marked with Heisey & IG \$65.00. MADONNA WOODWARD, 2050 SE Fenton Rd, Port Orchard, WA 98366. PH 206-876-3521.

WANTED: Clear Twist (1252) ice teas and tall tumblers 10 oz. Have 6 cups & saucers clear Twist (1252) would trade. MAX H. WOLFE, 1992 N. Gerrard, Speedway, IN 46224. PH: 317-243-3927.

FOR SALE: Pair #110 10" Dolphin candlesticks in amber. Superbly mint!! \$1500.00 post paid. PLUNDER FROM THE PAST, PO Box 7981, Rocky Mount, NC 27804. (919) 446-4718 5-9 PM ET.

FOR SALE: 8 tall stemmed Orchid etched Tyrolean goblets \$320 & 8 same pattern saucer champagnes \$300. 13" Orchid etched Waverly gardenia bowl \$50 & 5 1/2" ftd Orchid Waverly mint \$38. 2 8 oz Coleport sodas \$120 & 2 2 oz bars \$150, Club, heart, & spade Ridgeleigh ashtrays \$120 pr. 9" #100 candlesticks w/cutting, 1 w/small repairable chip on base \$50. Flat Panel 2 qt crushed fruit jar \$120. SASE for latest list. ELIZABETH B. CASON, 401 32nd St. W., Bradenton, FL 34205. 813-748-8051.

WANTED: 1983 Ruby Oscar !! If you have one and would want to sell it, send me your price. G. W. DYE, Box 121, Wildwood, NJ 08260.

BUYING: Caprice blue or Rosepoint by Cambridge; Rose or Orchid by Heisey; American, June, Fairfax, Versailles, Trojan, etc., by Fostoria; and Depression Glass in crystal or colors. NADINE PANKOW, 206 S. Oakwood, Willow Springs, IL 60480 312-839-5231.

WANTED: Any glassware containing #463 EQUESTRIAN or #481 LANCASTER silhouette etchings (showhorse with rider.) SCOTT SMITH, 810 S. St Paul at Cadiz, Dallas, Texas 75201. 214-747-1546.

DATES TO REMEMBER

- April 23 200 Dinner, Newark Maennerchor sponsored by HCA. Write us about this.
 - April 30 - May 1 Antique Show & Sale. Waltham High School, Waltham, MA. Bay State HCC.
 - June 11 - 12 Flea Market On the Square. Newark, OH HCA
 - June 16 - 19 Convention. Newark, OH.
 - June 18 - 19 Flea Market on the Square. Newark, OH.
- All Benefit The National Heisey Glass Museum.

FOREVER HEISEY
JANICE THRAN
1663 LONDONDALE PKWY
NEWARK, OH 43055

PH: 614-344-5955
POSTAGE & INS EXTRA
H = MARKED

- 112 MERCURY 1 lite candlestick, . . . pr \$ 25.00
- 3324 DELAWARE goblet, flamingo d/o (4) ea 20.00
- 1428 WARWICK 9" vase, cobalt H . . . pr 450.00
- 3394 SAXONY low goblet sahara, floral cut(4). ea 27.50
- 1509 Queen ANN cup & saucer, Orchid etch H. . .(4 sets). ea 42.50
- 6060 COUNTRY CLUB 10 oz soda (8) . . .ea 6.00
- 3350 WABASH goblet, hawthorne d/o w/ Frontenac etch H. . . .(2). . . . 55.00
- 2323 NAVY 2 oz bar, full sham, cobalt base 85.00

1988 EIGHTH ANNUAL

Fostoria Glass Society

Convention Show & Sale
of Fostoria & other fine Glassware
Delf Norona Museum
Eighth Street & Jefferson Avenue
Moundsville, West Virginia

FRIDAY, JUNE 3 -- 6:00-9:00 P.M.
Premiere Admission \$3.00
SATURDAY, JUNE 4 -- 11:00-5:00
Annual Meeting - 9:00 A.M.
AUCTION - 6:00 P.M.
SUNDAY, JUNE 5 -- 11:00-4:00
General Admission
Sat.-and-or Sun.- \$1.50

Lectures Door Prizes Films

For information call: (304) 845-0362
or (304) 845-6388
Write: P.O. Box 826, Moundsville, WV 26041

FLEA MARKET
SUNDAY, JUNE 5 -- 10:00-4:00
Delf Norona Museum
(near Courtyard)
FREE ADMISSION
Early entry fee -- \$15.00 each

ORDER NOW

French Opalescent Animals - all marked HCA - 88

- Baby Elephant - \$20.00
- Medium Elephant - 22.50
- Large Elephant - 25.00
- Donkey - 20.00

10% discount on \$50.00 or more purchase - 6% sales tax in Ohio. \$3.00 handling plus 10% shipping.

Send Order To:

HCA Sales
P.O. Box 4367
Newark, Ohio 43055



H & R DIAMOND H
HELEN - BOB RAREY
1450 WHITE ASH DR.
COLUMBUS, OH 43204

PH: 614-279-0390
AFTER 5:30 PM
UPS & INS EXTRA
* MARKED

NANCY'S ANTIQUES
906 44th STREET N.W.
CANTON, OH 44709

PH: 216-492-2595
SHIPPING EXTRA
* MARKED

ALL RIDGELEIGH

1469 3 1/2" coaster/ash tray (4).....ea	\$ 9.50
1469 3 oz cruet, no stopper.....	17.50
1469 8" centerpiece bowl.....	37.50
1469 ind cream & sugar *	27.50
1469 6" jelly, 2 compartment *	32.50
1469 3" rd ashtray *(2).....ea.	9.50
1469 salt & pepper, metal tops.....pr.	29.50
1469 oval cig holder/ashtray.....	45.00
1469 beverage cup, cone*.....	15.00
1469 punch cup/custard.....(6).....ea.	12.50
1469 5" mayo on metal tray.....	17.50
1469 bridge set-heart, diamond,spade,club*	55.00
1469 10" star relish*.....	60.00
1469 cup & saucer.....(5 sets).....ea..	29.50
1469 13 1/2" torte plate*.....	47.50
1469 9" sq nappy*.....	75.00
1469 5" sq nappy*.....(4).....ea.	22.50
1469 8" sq plate*.....(4).....ea.	35.00
1469 1 lite candelabra, A Prisms, pair	185.00

300 PEERLESS flared bar* (3).....ea	\$ 15.00
353 comport 4 1/2" low ftd* (2).....ea	30.00
407 COARSE RIB 7" plates, flam* (8) ea	10.00
901 COLONIAL 4 oz champs * (6)....ea	15.00
1220 PUNTY BAND souv tumbler ruby....	45.00
1225 R & S plate 10" mirrored*.....	25.00
1229 OCTAGON 8" plates d/p flam (4) ea	20.00
1252 TWIST 2 part relish flam*.....	55.00
1401 EMPRESS 3 pt relish, sahara.....	60.00
1401 EMPRESS ice bucket DF w/silver*	65.00
1425 VICTORIAN sherbets* (4).....ea	15.00
1425 VICTORIAN punch cups* (12)....ea	12.00
1472 PARALLEL 1 lt candles.....pr	
with King House etch, crystal..	45.00
1503 CRYSTOLITE 3 part div candy....	22.00
1509 QUEEN ANN celery 13" Belle-le-	
Rose etch.....	25.00
1519 WAVERLY relish 10" 4 part*.....	35.00
1540 LARIAT fan vase w/silver dec...	45.00
3408 JAMESTOWN Barcelona goblet* (7) ea	30.00
7000 SUNFLOWER candles w/silver...pr	75.00

TODD PEASE
552 CARRIAGE DR.
BATAVIA, IL 60510

PH: 312-879-8569
After 6:30 pm CST
SHIPPING EXTRA * MARKED

LITTLE HOUSE COLLECTIBLES
SUZANNE DURYEE
6731 SW 63 AVE
MIAMI, FL 33143

PH: 305-661-6770
P & I EXTRA
* SIGNED

1503 CRYSTOLITE 3 lite candlesticks...pr	\$ 30.00
1504 REGENCY 2 lite candlesticks.....pr	40.00
1503 CRYSTOLITE cruet w/stopper.....	36.00
1519 WAVERLY deep candle epergnette(3)* ea	12.50
1401 EMPRESS 11" DF floral bowl.....	32.00
1469 1/2 RIDGELEIGH 2 compartment jelly....	18.00
1469 RIDGELEIGH bridge ash tray (5) *...ea	10.00
1469 RIDGELEIGH oval cream & sugar...pr	40.00
1295 BEAD SWAG 4" nappies, opal (4)*....ea	25.00
1295 BEAD SWAG salt shaker, opal as is...	55.00
1295 BEAD SWAG toothpick souv. opal.....	175.00
1220 PUNTY BAND hldd mug souv. opal as is*	75.00
1540 LARIAT 8 1/2" basket.....	150.00
1428 WARWICK 7" horn of plenty vases pr..	65.00
1404 OLD SANDWICH indiv ash tray cobalt*	32.00
411 TUDOR 4 1/2" nut bowl*.....	25.00
1540 LARIAT fan vase.....	30.00
1540 LARIAT 3 part round relish.....	30.00
479 PETAL creamer, flamingo.....	25.00
479 PETAL creamer & sugar, flamingo.....	50.00

1503 CRYSTOLITE 2" candleblock.....pr	\$ 20.00
1540 LARIAT 2 lt candlestick.....pr	40.00
1504 REGENCY candlestick 2 lt 1 only	25.00
1469 RIDGELEIGH 6" candle vases (2) ea	20.00
1533 WAMPUM candlestick, 1 lt 1 only..	25.00
1428 WARWICK candlestick, 2 lt 1 only..	35.00
1503 CRYSTOLITE cr & sug, oval*....pr.	30.00
1503 CRYSTOLITE comport, shallow.....	30.00
1503 CRYSTOLITE 6" jelly, 3 cnr spider	17.50
1401 EMPRESS 13" celery tray.....	15.00
1401 EMPRESS 10" celery tray*.....	12.00
1405 IPSWICH 8" plate(7)* sl wear....	13.00
1540 LARIAT 13" oval floral bowl.....	27.00
1540 LARIAT 11" oblong relish.....	20.00
1231 OCTAGON cup Moongleam*.....	20.00
1404 OLD SANDWICH, Sahara 6 1/2 oz toddy	
(5)*.....	20.00
341 PURITAN punch cup (3)*.....ea.	10.00
1469 RIDGELEIGH ind salt, sq (4)*...ea.	12.00
1485 SATURN optic mayonnaise.....	17.50
1506 WHIRLPOOL punch cup (2)*.....ea.	10.00

*** WANTED: Lid (6" dia.) for 352 Crushed Fruit

JEAN & DON PARRETT
 4995 MAPLE DALE RD.
 JACKSON, MI 49201

P & I EXTRA
 PH: 517-784-7319

PUBLIC AUCTION
 APRIL 23, 1988
 10:00 AM

- 1509 QUEEN ANN Orchid 12" 2 hdl sand pl \$ 95.00
- 1519 WAVERLY Orchid 6" low ftd compote . . 40.00
- 1519 WAVERLY Orchid sq hrs hd butter cover 52.00
- 1519 WAVERLY Rose 13" gardenia bowl . . . 90.00
- 1509 QUEEN ANN #9014 Rose of Peace 16" 4
 compartment relish tray, crystal . 75.00
- 1519 WAVERLY 10½" dinner plate (8) . . ea 57.50
- 1519 WAVERLY center hdl 14" sandwich plate 75.00
- 1567 PLANTATION 14" sandwich plate 60.00
- 1454 DIA POINT 14" sandwich plate. . . . 50.00
- 1401 EMPRESS 10½" rd dinner plate, flamingo 50.00
- 1229 OCTAGON 12" hdl d/o sandwich pl sahara 55.00
- 1519 WAVERLY 15" oblong egg plate, rare . 125.00
- 1252 TWIST 8½" 2 comp candy, sahara 48.00
- 393 NARROW FLUTE ftd ind almond, sah (2)ea 24.00
- 1183 REVERE ftd juice or punch bowl 100.00
- 1201 FANDANGO 10" shallow nappy 38.00
- 1200 SQ IN DIA POINT &" bonbon plate as is
 rare 18.00
- 1590 ZODIAC 8" 4 comp master nut or relish 32.50
- 1590 ZODIAC 10" hd covd ftd candy jar. . . . 75.00
- 5012 URN 7" hg ftd vase. (2) ea . 45.00
- 1489 PURITAN 3" sq ashtray in chrome rack
 (4) 5 piece set 48.00
- 1489 PURITAN sq bitters bottle 40.00
- 1295 BEAD SWAG red flash souv mug "Mary" . . 24.00
- 343 SUNBURST club party dish mite flake . . 27.50
- 411 RIB & PANEL cruet stopper mite flake 27.50
- 305 PUNTY & DIA POINT perfume, sterling t 125.00
- 150 BANDED FLUTE ring hdl chamber candle 30.00
- 301 OLD WMSBRG 15" 3 lt candelabra A prsms 185.00
- 300 OLD WMSBRG 21" 4 lt candelabra A prsms 295.00
- 301 OLD WMSBRG 1 lt candle deco base, cut
 hurricane globe (2) pr 250.00
- 1503 CRYSTOLITE cocktail shaker, complete 165.00
- 1503 CRYSTOLITE 9" 4 comp clover relish . 45.00
- 1503 CRYSTOLITE 2 sect ctr hndl candy . . 38.00
- 1503 CRYSTOLITE 3 sect relish 35.00
- 1503 CRYSTOLITE 5" loop hdl candy rare . 50.00
- 1503 CRYSTOLITE sm cr/sug/tray. 3 pc . . 42.00
- 1503 CRYSTOLITE salt & pepper (2 pr) pr . 30.00
- 1540 LARIAT ftd covd candy 38.00
- 1540 LARIAT mayo & plate 2 pc. . . 48.00
- 1567 PLANTATION ftd cocktail (8) . . . ea 18.00
- 417 DBL RIB & PANEL covd mustard. 30.00
- 1184 YEOMAN hnd sm nut or candy 22.50
- 515 no optic 7" perfume 61 stopper . . . 65.00
- 1469 RIDGELEIGH sq perfume & stopper . . 125.00
- 6010 FINESSE 9 oz no optic goblet (4) ea 15.00
- 6010 FINESSE 5 oz no optic champ (3) ea . 10.00
- 1503 CRYSTOLITE 12 oz lunch goblet(6) ea 25.00
- 5010 SYMPHONE goblet Minuet etch 25.00
- 5010 SYMPHONE champagne Minuet etch(3)ea 18.00
- 5010 SYMPHONE cocktail Minuet etch (2)ea 25.00
- 5010 SYMPHONE low ftd gob, Minuet et(3)ea 25.00
- 3357 KING ARTHUR tall goblet d/o flam(7)ea 18.00
- 3357 KING ARTHUR sherbet d/o flamingo(5)ea 14.00
- 3360 PENN CHARTER goblet checker op flam(5)ea 25.00
- 3312 GAYOSO goblet d/o flam (6). . . . ea 20.00
- 3312 GAYOSO cocktail d/o flam (6). . . ea 18.00
- 5024 OXFORD champagne 12.00
- 1405 IPSWICH ftd goblet 12.00

IF INTERESTED IN 1469 RIDGELEIGH, PLEASE WRITE
 FOR NEW LIST

52 PIECES OF HEISEY GLASS CRYSTOLITE PATTERN
 included in this Auction:

12 13" dessert plates, 12 9 oz goblets,
 12 sherbet glasses, oval sugar and creamer,
 2 3 light candelabra, 2 vases, cake platter,
 unusual shell platter, diamond relish tray,
 2 candy dishes, salt and pepper shakers,
 mayonnaise bowl, plate and ladle.

Partial list of other items includes faint-
 ing couch; glass door cupboard; 4 section fold-
 ing screen; 6 drawer 118 year chest; 7 piece
 bowl set; shop tools; the home and 1 acre lot.

Public Auction Sale of:

JESSE B. HOOVER
 Elkhart County, Indiana
 Co. Rd. 46, 1 Mi. West of New Paris, Ind.
 on State Road 15

DONALD P. BEAN PH: 617-473-0561
36 HARDING ST. * = MARKED
MILFORD, MA 01757 SHIP/INS EXTRA

- 352 Drainer only for 10" strawberry plate*\$ 12.50
- 5 6¼" ctr post only for epergne* 12.50
- 4 5" ctr post only for epergne*. 12.50
- 1295 BEAD SWAG opal ½ gal jug excellent
 Rose decor & gold trim 150.00
- 365 EARLY QUEEN ANNE oblong spoon tray*
 some wear on bottom 35.00
- 1540 LARIAT cr* sug* & tray. set 35.00
- 417 DBL RIB & PANEL flam basket * 120.00
- 4163 WHALEY 16 oz mug* Fox Chase etch . . 105.00
- 343 SUNBURST TP* fair/good gold trim . . 85.00

WANTED-COVER FOR LG #1205 POT POTPOURRI JAR

WILLIS F. COOPER PH: 501-855-9430
3 SALFORD LANE P & I EXTRA
BELLA VISTA, AR 72714 Check must accompany order

- 112 MERCURY 3" candle 1 pr crys; 1 pr flam
 1 pr sahara per pr\$ 42.50
- 31 JACK BE NIMBLE toy candles . . pr 55.00
- 4225 COBEL 1 qt cocktail shaker, complete 50.00
- 300 PEERLESS 8" berry/4" nappy H 6 set 120.00
- 351 PRISCILLA hi ftd sherbet H (4) ea . 10.00
- 331 COLONIAL PANEL saucer ftd sherbet . 15.00
- 1183 REVERE 12" sandwich plate H 50.00
- 1489 PURITAN horsehead lid for cig box 25.00
- 1509 QUEEN ANN 12" plate Hawkes cut/silver
 overlay (fish scale design) 147.50

INDEX FOR HEISEY NEWS

VOLUME XVI 1987

HEISEY DECORATIONS	VOLUME, PAGE	HEISEY PATTERNS, continued	VOLUME, PAGE
480 Normandie etching	2, p8	6091 Cabochon	8, p17
507 Orchid etching	8, p15	6092 Cabochon	8, p17
516 Ivy etching	8, p15	8079 Joshua (new pattern)	7, p11
602 Simplex etching	1, p1		
781 St. Anne cutting	1, p7	INDIVIDUAL HEISEY ITEMS	
793 Monterrey cutting	1, p7	31 Toy candlestick	11, p3
794 Riviere cutting	1, p7	160 Locket on Chain, Misc. Pieces	5, p15
795 Will O' the Wisp cutting	1, p7	371 Syrup	4, p14
797 Killarney cutting	1, p7	394 Jug-type cruet	11, p6
799 Manhattan cutting	1, p7	1183 Revere 2 hldd candy jar	1, p17
800 Greystone cutting	1, p7	1201 Fandango, Misc. Pieces	5, p16
809 Calcutta cutting	1, p17	1205 Fancy Loop Stemware	3, p7
812 Sweet Briar cutting	1, p7	1205 Fancy Loop, Misc. Pieces	5, p9
813 Pyramids cutting	1, p7	1216 Horseradish Jar	9, p13
814 Laredo cutting	1, p7	1405 Ipswich by Imperial	5, p10
815 Japanese Boat Scene cutting	1, p7	1469 Ridgeleigh Punch Set, 1936 Ad	1, p13
816 Palmetto cutting	1, p7	1469 Ridgeleigh Candelabra, 1936 Ad	6, p16
826 Venus cutting	1, p7	1485 Saturn pieces, 1937 Ad	1, p15
828 Stardust cutting	1, p7	1485 Saturn Marmalade Set	4, p1
830 California cutting	1, p8	1485 Saturn Oil Bottles	4, p1
831 Valencia cutting	1, p8	1567 Plantation 5 Compartment Relish	4, p1
832 Continental cutting	1, pp 7, 8	1567 Plantation Coupe Plate	5, p8
833 Bavaria cutting	1, p8	1567 Plantation, Misc. Pieces	5, p5
867 Chateau cutting	7, p18	1951 Cabochon Mayonnaise Set	4, p1
921 Danish Princess cutting	7, p18	3390 Carcassonne Stemware	7, p3
941 Barcelona cutting	7, p18	4085 Kohinoor Stemware	6, p4
944 Courtship cutting	7, p18	4090 Coventry Stemware	7, p9
964 Maryland cutting	7, p19	4091 Kimberly Stemware	6, p4
965 Narcissus cutting	7, p17	5013 Shasta Stemware	6, p4
980 Moonglo cutting	7, p19; 8, p15	5023 Continental Stemware	7, p17
985 Sheffield cutting	7, p19	5024 Oxford Stemware	7, p17
1015 Dolly Madison cutting	7, p16	7000 Sunflower Sandwich Plate	3, p9
1016 Botticelli cutting	7, p16	6009 Roundelay	9, p10
1017 Peachtree cutting	7, p16	Ash Trays	3, p16
1018 Belvidere cutting	7, p16	Compotes	3, p16
1025 Arcadia cutting	8, p17	Electro Portable Lamps	9, p14
1061 Primrose cutting	5, p14; 8, p16	Electro Portable Shades	9, p16
1062 Bridal Lace cutting	5, p14; 8, p16	Fingerbowls	3, p15
1063 Wood Violet cutting	5, p14; 8, p16	Jug	8, p8
1064 Provincial Wreath cutting	5, p14; 8, p16	Mahabar	12, p3
1065 Baroness cutting	5, p14	Marmalades	3, p16
1066 Debutante cutting	5, p14; 8, p16	Pitcher (new find)	4, p14
1067 Yorktown cutting	5, p14; 8, p16	Shades	11, p12
1068 Victoria cutting	5, p14; 8, p16		
1069 Lilyvale cutting	5, p14; 8, p16		
5003 Nimrod carving	12, p5	ARTICLES, GENERAL	
9016 Poppy etching	8, p17	Acquisitions by HCA	11, p17
		Animal Production Dates	5, p15
HEISEY PATTERNS		Chaconas, Gary - Engraver	11, p10
341 Old Williamsburg	8, p18	Chronology, AH Heisey & Co - Part 8	1, p4
1200 Cut Block	11, p8	Chronology, AH Heisey & Co - Part 9	2, p4
1201 Fandango	12, p6	Chronology, AH Heisey & Co - Part 10	3, p4
1401 Empress	7, p5	Chronology, AH Heisey & Co - Part 11	4, p6
1405 Ipswich	8, p16	Chronology, AH Heisey & Co - Part 12	5, p4
1503 Crystolite	6, p8	Chronology, AH Heisey & Co - Part 13	6, p14
1509 Queen Ann	7, p5	Colors by Viking Glass	6, p12
1567 Plantation	6, p11	Crossword Puzzle	1, p17
1590 Zodiac	7, p10	Donations 1987	10, p10
2323 Navy	1, p12	Donations	11, p17
5057 Suez	8, p16	Factory, Picture of Heisey	3, p1

Financial Report - Assets & Liab.	4, p9
Financial Report - 1986	4, p10
Fogg and Thran	9, p4
Heisey, Thomas C.	10, p3
Heisey, T C, Speech by	11, p4
Hickman, Royal, Letter by	8, p7
Holophane and Heisey	7, p12
Holophane	11, p11
Index 1986	3, p22
Irwin, Rod, 1952 Letter	8, p14
Letter to Trade on Price Increase 1948	3, p13
Lewis & Neblett Catalog, Items from	5, p15
Lotus Catalog Pages, Heisey Blanks	1, p16
Newspaper articles - 1952	8, p9
Oscar, What Is It?	2, p18
Prices Realized, HCA Benefit Suction	4, p15
Puzzle, Words	11, p14
Questions and Answers	12, p11
Salesman, Heisey - Pictures of 1953	7, p15
Sick Glass	7, p6
Voting Members, List of	2, p17
Zeisel, Eva Part 1	8, p4
Zeisel, Eva Part 2	9, p7
Zeisel, Eva Part 3	10, p7

Ellen Weber hosted the March meeting of the Moundbuilders HCC.

Plans are underway for the June Convention. The theme was discussed and the club's annual project of Convention badges is in the planning stage.

Officers were elected for the coming year. New officers are: Leonard Tipton, President; Ellen Weber, Vice President; Margaret Weber, Secretary; Randy Tipton, Treasurer.

Louise Ream reminded us that docents are still needed at the Museum.

The members enjoyed the slide presentation, "Museum Owned Glass." The slide shows the Museum offers are favorite educational-type programs with this club.

Ellen served delicious refreshments to the twelve members and one guest present.

The April 5th meeting will be hosted by Mary McWilliams.

- Jeannine Cullison
Secretary

*Bay State Heisey Collectors
Present Their Tenth Annual*

ANTIQUÉ SHOW AND SALE

Featuring

*and other collectible glass, pottery,
china and collectibles from all periods*

*Plus a Heisey Glass Display
and Books on Heisey and other glass
from the National Heisey Museum*

**Waltham High School
Lexington Street
Waltham, MA**

Exit 27A off Route 128/1-95

Totten Pond Road to Lexington Street

Follow Our Signs

Saturday, April 30 10a.m. - 5p.m.

Sunday, May 1 10a.m. - 4p.m.

Donation - \$2.50 With Card - \$2.00

Sponsored by Bay State Heisey Collectors for the benefit of the National Heisey Museum.
*Heisey and the Heisey trademarks are the property of Heisey Collectors of America, Inc.



**12th ANNUAL
NATIONAL
IMPERIAL GLASS
COLLECTORS'
SOCIETY CONVENTION**

McLure Hotel • Wheeling, WV

SHOW & SALE

Saturday, June 11 1:00 p.m. to 5:00 p.m.
Sunday, June 12 11:00 a.m. to 4:00 p.m.
Donation

SEMINAR

Cathay by Richard Lancione
Saturday, June 11 9:00 a.m. to 10:00 a.m.
OPEN TO PUBLIC • FREE ADMISSION

BANQUET

Saturday, June 11 7:00 p.m.
OPEN TO PUBLIC • BY RESERVATION

FOR INFORMATION, WRITE:
National Imperial Glass Collectors' Society
P.O. Box 534 • Bellaire, OH 43906
or Phone (614) 676-2422 • (614) 676-9827



IMPORTANT ALL HEISEY AUCTION
 SAT. APRIL 23RD 1988
 APPLE TREE AUCTION CENTER
 1616 WEST CHURCH ST.
 NEWARK, OHIO

This sale will include many pieces from the estates of Anne and Tim Heisey. At this writing the Heisey family is making the final selection for keeping, so we do not have an exact listing or know the number of items, but we can tell you there will be many interesting pieces.

We already have a number of items consigned to include 2 tangerine favor vases, optic mugs w/ tangerine and cobalt handles, deep plate etchings, several animals, and nice pieces in color just to name a few.

You will not want to miss this sale. We have not yet set a starting time for we do not know for sure the total number of pieces in the sale. If you subscribe to our catalog you will be receiving it soon. If not a subscriber send \$1.00 for complete listing. This will be your opportunity to own glass from the Heisey family home. The antique furnishings from these estates will be sold at Apple Tree, Friday and Sat., April 8th & 9th. This will also be an interesting sale. For more information call (614) 344-4282.

Frank Frye - Manager
 SAM SCHNAIDT AND TIM HUGHES - AUCTIONEERS

MOTELS IN THE NEWARK AREA

(THE NEWARK INN IS FULL)

The following is a list of motels in the Newark Area which still have rooms available during Convention Week. Those not listed are full. There is another major event going on in this area at the same time so be sure to call or write to these motels at once.

IMPORTANT NOTICE

<u>FACILITY</u>	<u>LOCATION</u>	<u>UNITS</u>	<u>RATES</u>
ARBORGATE INN NEW MOTEL	1266 Hebron Road Heath, OH 43056 (614) 522-6112 Call Collect Senior Discounts	20 Rooms Left Kitchenettes available	S (1) - \$27.95 + Tax D (1) - 29.95 S (2) - 33.95 D (2) - 35.95 Ex. per. 3.00
HOLIDAY INN OF AMERICA	733 Hebron Road Rt. 79, Heath, OH 43056 (614) 522-1165	65 Rooms Left	S - \$72.00 + Tax D (2) - 80.00
HOWARD JOHNSON'S MOTOR LODGE	755 Hebron Road Rt. 79, Heath, OH 43056 (614) 522-3191	67	S - \$44.00 + Tax D - 54.00
KELLER MOTEL	I-70 Keller Road Hebron, OH 43025 (614) 927-8011	24 - No Doubles Left	S - \$28.00 + Tax Ex. per. 3.00
STAR LITE MOTEL	Route 79, South 1342 Hebron Road Heath, OH 43056 (614) 522-3207	19	S - \$21.00 + Tax D - 22.89 D2 - 28.32

ALL OTHER MOTELS/HOTELS ARE FULL IN THE NEWARK AREA. MOST MAJOR MOTELS CAN BE FOUND IN EAST COLUMBUS, WORTHINGTON, REYNOLDSBURG AND ZANESVILLE - ALL WITHIN 30 - 35 MILES OF NEWARK.

<p>A.W. PARKER Heisey & Pattern Glass Shows or Appointment Magalia, CA 95954 PH: (916) 873-2326</p>	<p>GLASS WITH CLASS Lenore A Shelley, GGHC 1336 Lincoln Avenue San Jose, CA 95125 PH: (408) 286-8098</p>	<p>OLDE LOVED THINGS 900 Ridgewood Ave. (Holly Hill) Daytona Beach, FL 32017 (904) 252-7960 Hours: Sat., Sun., & Mon., 10-4</p>
<p>ALL HEISEY AUCTION Consignments Welcome Apple Tree Auction Center 1616 W. Church, Newark, OH 43055 PH: (614) 344-9449</p>	<p>GREEN ACRES FARMS Antiques, Crystal Glass & Collectibles 2678 Hazelton-Etna Rd., SW (S.R. 310-N) Pataskala, OH 43062 Sat. or Sun. PM or call (614) 927-1882</p>	<p>OUR PLACE AND MEMORY LANE ANTIQUES 1234 Newark Rd., Granville, Ohio 43023 (614) 587-4601, Open every day 12-5 Heisey, general line of antiques and collectibles</p>
<p>ALFA I CARRIAGE HOUSE ANTIQUES Featuring Depression & Elegant Glassware Al & Faye Maness 508 E. Cary Street Richmond, VA 23219 PH: (804) 788-1630</p>	<p>H & R DIAMOND H Helen & Robert Rarey 1450 White Ash Dr. Columbus, OH 43204 PH: (614) 279-0390 after 5:30</p>	<p>PARRETT'S ANTIQUES Heisey 4994 Mapledale Rd. OR 1215 Greenwood Ave. Jackson, Mich. 49201 PH: (517) 784-7319 OR (517) 783-3289</p>
<p>ANTIQUES - THE SHULTZES 206-208 East Main St. Newmanstown, PA 17073 15 Miles West of Reading, PA PH: (215) 589-2819</p>	<p>"HAPPINESS IS" - THE STULTZS 3106 Warren Court, Glen Allen VA 23060 Shows and Mail (Richmond Area) PH: (804)262-1273 GLASS CIRCA 1890-1960</p>	<p>PATTON HOUSE Heisey & Duncan Miller Rocky's Mall, 1-81 & US 11 Weyer's Cave, VA 24486 PH: (703) 967-1181</p>
<p>C & J ANTIQUES Cole & Jean Miesner Box 45, 72 Whig St. Newark Valley, NY 13811 PH: (607) 642-9905</p>	<p>HARRALSON'S HEISEY HUNTERS Sponsor: S.W. MO's Antique Shows 78 Quality Dealers From 14 States 1988 Dates: May 13-15 & Oct. 28-30 Info: 1426 W. Highland, Springfield, MO 65807 PH: (417) 883-2449</p>	<p>THE PURPLE PLACE Featuring Heisey & Other Fine Glass Martha & Harold Earp 1940 Suwanee, Ft. Myers, FL 33901 PH: (813) 936-1572 Anytime</p>
<p>C.E. HIGGINS (S.F. Bay Area) Shows and Mail Order P.O. Box 2723 Menlo Park, CA 94025 PH: (415) 322-0192 Evenings</p>	<p>HELEN & JIM KENNON Heisey, Cambridge, Fostoria, Duncan, Imperial, Fenton, Tiffin P.O. Box 114 Brookville, OH 45309 PH: (513) 833-5406 SHOWS ONLY</p>	<p>R & L ANTIQUES-SAN FRANCISCO Members of the Golden Gate Heisey Club 3690 Bodega Ave. Petaluma, CA 94952 PH: Petaluma (707) 762-2494 PH: San Francisco (415) 621-6693</p>
<p>CHARLES & MILDRED FISHER Heisey, Degenhart, Imperial, Antiques, Collectibles, General Line 991 Idlewilde, Newark, OH 43055 PH: (614) 522-5398</p>	<p>J.J. & BOB MC KEE Pottery Glassware Collectibles 334 W. 75th St. Kansas City, MO 64114 Wed.-Sun. 10-5 PH: (816) 361-8719</p>	<p>RAY ZIEGLER Glass Repair 185 County Line Westerville, OH 43081 PH: (614) 891-9796</p>
<p>DAVE'S ANTIQUES Specializing in Heisey Shows & Mail Order 1403 E. Knollwood St. Tampa, Fl. 33604 (813) 237-5550</p>	<p>J. & M. WALTER ANTIQUES Heisey, Duncan, Cambridge, other glass c/o Sir Speedy, 431 Main St. Woburn, MA 01801, Mail order-SASE PH: (617) 245-2532 after 7:30 dys-wknds</p>	<p>SCHWAN'S ANTIQUES SHOWS & MAILORDER 77 Lagos del Norte Ft. Pierce, FL 33451 PH: (305) 461-5940</p>
<p>DIAMOND H PLUS Mail Orders & Shows George & Eileen Schamel Rt. 3, Box 171, Boonsboro, MD 21713 PH: (301) 432-6285</p>	<p>J. & R. COLLECTIBLES Shows, SASE, Mail Order list June & Ray Lukasko P.O. Box 1030, Newark, OH 43055 PH: (614) 344-9719</p>	<p>SHOW AND TELL ANTIQUES Art, Cut, Heisey and Pattern Glass 1525 Morrow Ave., Wavo TX 76707 Tues-Sat 10:30-4:30 PH: (817) 752-5372 Also: Mail Order and Shows Member NADA</p>
<p>ETTELMAN'S DISCONTINUED CHINA & CRYSTAL HEISEY a SPECIALTY P.O. Box 6491-HN Corpus Christi, TX 78411 PH: (512) 888-8391 Include SASE</p>	<p>MOSTLY HEISEY Rhoda Curley 16 Clayton PL, Albany, NY 12209 Shop and Mail Order PH: (518) 482-6272</p>	<p>SINGLETREE ANTIQUES Cut, Pattern & Heisey Glass 10717 Staples Mill Rd. Glenn Allen, VA 23060 Chance or appointment PH: (804) 266-3795</p>
<p>FOREVER HEISEY Jan & Norm Thran Mail Order, Shows, Appraisal Service 1663 Londondale Pkwy., Newark, OH 43055 PH: (614) 344-5955</p>	<p>MOUND BUILDERS ANTIQUES Heisey & Animals, General Antiques Irene Rauck 1138 Moundview, Newark, OH 43055 PH: (614) 344-6043</p>	<p>WILLEY'S ANTIQUES & MUSEUM Specializing in Heisey 11110 Cannon Rd., Frazeyburg, OH 43822 16 miles east of Newark, OH PH: (614) 828-2557</p>
<p>GERT'S GLASS Heisey & Duncan Gertrude & Russell Swetnam 1926 Saratoga Dr., Adelphi, MD 20783 PH: (301) 434-5113</p>	<p>THE MUTED SWAN ANTIQUES 5486 Peachtree Rd., Chamblee, GA 30341 Heart of Chamblee Antique Row Specializing in Heisey & Cambridge Bill & Pat Miller PH: (404) 451-7620</p>	<p>THE WOODEN SHOE Antiques & Collectibles Jim & Sheri VanEs by Appt. 810 Elden, Herndon, VA 22070 PH: (703) 435-9045</p>
<p>GLASS 'N' GLASS Virginia & Odell Johnson 6909 10th Ave. West Bradenton, FL 33529 PH: (813) 792-0604</p>	<p>NANCY'S ANTIQUES Heisey, Cambridge, Fostoria, Fenton Elegant Glassware of the Depression Era 906 44th NW Canton, OH 44709 shows only PH: (216) 492-2595 After 6 p.m.</p>	<p>JAMES S. HARRIS ANTIQUES/APPRISALS Box 672 Richmond, KY 40475-0672 PH: (606) 623-9100 Buying and Selling by Mail</p>

A FENTON MISTAKE - YOUR GAIN !

When Fenton was making the first turn of the Middle Elephant, disaster struck. Not only did they overlook the ALIG in the mould, but they added the F for Fenton and the HCA 88 which was supposed to be added to the mould, making a triple logo. Not only did this happen but when they mixed the batch for the opalescent glass, an ingredient which was supposed to be a decolorizer didn't perform the way it should have and the glass had a light blue cast rather than the crystal look of the madonna, donkey and the other two elephants. It has opalescence the same as they do but would not make a matched set with the other two. One hundred eighty were made. Frank Fenton called to tell us about this disaster and to find out what we wanted to do with them.

At the next executive meeting it was decided to go ahead and buy these since they were offered at a very good price. It was proposed that since they were so limited, the only fair way they could be sold would be a computer drawing as was done with several earlier mistakes by glass companies. The Executive Committee made a recommendation to the Board to sell these in this manner. On March 12, the Board of Directors voted to offer these to members, the offer to be printed in the April Heisey News.

Many times mistakes, being more limited, are worth more than the ones done right.

We recommend you use your Mastercard or Visa to order these to cut down on paperwork for the bookkeeper. Of course, we will also accept your checks if that is more convenient. After the drawing all of you who didn't get an elephant will have your checks returned.



MEDIUM ELEPHANT



PLUG HORSE

TRIPLE LOGO PALE BLUE OPALESCENT MIDDLE ELEPHANTS 1988

We have a very limited number of triple logo pale blue opalescent middle elephants. Please order only the number you are willing to pay for if you win. Send separate checks for each name. Include an SASE for return of your checks. See the article explaining details in the newsletter. Deadline is May 14 1988 and the drawing will be May 20 1988. Hurry with your orders and good luck!

PLEASE READ VERY CAREFULLY BEFORE FILLING OUT FORM

Middle Elephants are pale blue opalescent and marked ALIG, F (for Fenton) and HCA 1988. Only 180 are available to members for \$35 each. You may order ONE per member. This means ANY member who has a membership card regardless of class of membership.

Please list all names as they will be checked. Everyone living in Ohio ordering for pick-up in Ohio must pay \$2.10 sales tax per elephant. Shipping charges will be \$3.50 each. Be sure your dues are currently paid.

DO NOT SEND DUES, BOOK ORDERS, ETC. WITH YOUR ORDER

_____ Number of Elephants at \$35 \$ _____ only one per member

Sales Tax \$2.10 each..... _____ ALL OHIO RESIDENTS AND PICK-UPS IN NEWARK

Postage \$3.50 each..... _____ Check one: ___ Please mail my Elephant(s)

TOTAL sent with order..... _____ ___ I will pick up my Elephant(s)

NAME(S) _____ Make check payable to HCA, Inc. at the Museum

ADDRESS _____

CITY _____ STATE _____ ZIP _____



Mail to: HCA ELEPHANTS
PO BOX 4367
NEWARK, OH 43055

MASTERCARD _____

VISA _____

EXPIRATION DATE REQUIRED Mo _____ Year _____

12TH ANNUAL SOUVENIR OSCAR FORM

PLEASE READ VERY CAREFULLY BEFORE FILLING OUT

THE OSCARS ARE OPEL (GLOSSY OFF-WHITE) AND ARE MADE BY FENTON, MARKED HCA 88.

They will be offered to members only for \$22.00 prior to Convention. If any are left by June 16, they will be offered to the general public for \$25.00 each.

You may order ONE per member. This means ANY member who has a membership card regardless of class of membership. Please list all names as they WILL be checked. Everyone living in Ohio ordering for pick-up in Ohio, must pay \$1.32 sales tax per Oscar. Shipping charges will be \$2.00.

DO NOT SEND DUES, BOOK ORDERS, ETC. WITH YOUR OSCAR ORDER.

Please keep this part for a reference and clip and mail the form below the line. Be sure your dues are currently paid. This is the 12th of a series of souvenir Oscars.

OSCAR IS HERE

_____ Number of OSCARS at \$22.00 each \$ _____ Only one per member.
 Sales Tax \$1.32 each _____ All Ohio Residents and Pick-Ups
 Postage \$2.00 each _____ in Newark
 Check one: _____ Please mail my Oscar
 _____ I will pick up my Oscar
 at Convention or Museum after the
 Convention. CIRCLE ONE.
 TOTAL SENT WITH ORDER. \$ _____
 PHONE ORDERS - CREDIT CARD ONLY


NAME(S) _____
 ADDRESS _____ CITY _____ STATE _____ ZIP _____

Make check payable to HCA, Inc. and
 mail to: HCA OSCAR SALES
 PO BOX 4367
 NEWARK, OH 43055



MASTERCARD
 VISA
 EXPIRATION DATE REQUIRED Mo _____ Year _____

National Heisey Glass Museum
Eight rooms and complete lower level displaying the beautiful hand made glass produced in Newark by the A.H. Heisey and Co. from 1896-1957. Corner of West Church & North Sixth Streets Newark, Ohio 43055



Phone: (614) 345-2932
 Hours: Daily 1pm-4pm Closed Holidays



Membership Renewal Notice
 The date above your name and address is your renewal date. This is your last issue of the Heisey News if it reads 4-30-88

PLEASE DISREGARD THIS NOTICE IF YOU HAVE RECENTLY PAID YOUR DUES.

POSTMASTER SEND FORM 3579 TO:



SECOND CLASS