



OFFICIAL PUBLICATION HEISEY COLLECTORS OF AMERICA

© Heisey Collectors of America, Inc. 1984  
All Rights Reserved

NEWS

VOLUME XIII

NO. 12

DECEMBER, 1984

ISSN 0731-8014

POTTERY AND GLASS

Sep 1909

# DIAMOND GLASSWARE

AS WELL AS

TRADE



MARK

THE CELEBRATED  
DIAMOND "H"



IS A PRODUCT

OF OUR FACTORY AND BEARS OUR  
TRADE MARK

WE GUARANTEE THIS WARE TO LAST  
TWICE AS LONG

UNDER SAME CONDITIONS AS THE  
ORDINARY PRODUCT

WRITE FOR CATALOGUE

A. H. HEISEY & CO., Inc.  
NEWARK, OHIO

Sale Rooms:

NEW YORK CITY, 25 West Broadway,  
BALTIMORE, 122 West Baltimore St.,  
PHILADELPHIA, Denckla Bldg., Market & 11th Sts.

BOSTON, 144 Congress Street,  
PORTLAND, ORE., 451 Sherlock Bldg.,

President Tom Bredehoft 614-745-1014  
 Vice President George Schamel, III 301-432-6285  
 Secretary Ray Ziegler 614-471-6446  
 Treasurer Dick Marsh 614-366-5608  
 Exec. Dir. Louise Ream 614-345-2932

HEISEY NEWS - P.O. BOX 27, NEWARK, OH 43055

Editor: Louise Ream  
 P.O. Box 27, Newark, OH 43055  
 PH: 614-345-2932  
 Assistant Editor: Neila Bredehoft  
 P.O. Box 27, Newark, OH 43055  
 PH: 614-345-2932

Published monthly and mailed from Reynoldsburg, Ohio 43068.

\$15.00 per year - \$1.25 per copy

Back Issues - Each Volume (12 issues) year - \$9.00  
 Volume V, VI, VIII, IX, X, XI & XII Available

Heisey Collectors of America, Inc. is a non-profit corporation with tax exempt status. Owners and operators of National Heisey Glass Museum, 6th and Church Streets, Newark, Ohio. Open Daily 1 - 4 p.m. except Mondays & Holidays. Other hours by appointment. Members admitted free.

Club membership (includes 12 issues of HEISEY NEWS and participation in all club activities) \$15.00 per year plus \$2.50 for each additional family member in same household who wishes a membership card. For VOTING MEMBERSHIP, add \$25.00 one time only fee.

When requesting information, please enclose a self-addressed, stamped envelope (SASE).

ADVERTISING - Send all ads to:  
 Advertising  
 c/o Janice Thran  
 P.O. Box 27  
 Newark, OH 43055

RATES:  
**DEALERS' DIRECTORY** - 5 lines - \$20.00  
**Extra Line** - \$2.00 - Change during year \$2.00 per line.  
**CLASSIFIED** - 12¢/Word - \$1.20 Minimum. Abbreviations & initials count as words.

DISPLAY:	MEMBERS	NON-MEMBERS
1/8 pg (9 items)	\$15.00	\$25.00
1/4 pg (20 items)	24.00	35.00
1/2 pg (20 items)	40.00	50.00
1/2 pg (50 items) Vertical	50.00	60.00
1 pg (50 items)	65.00	80.00

Extra lines will be billed at \$1.00 per line. We cannot double-column ads. ALL ADS MUST BE PREPAID. Ad copy must be received by the 5th of the month to be included in that month's NEWS. Ads containing reproductions will not knowingly be accepted unless clearly stated (i.e. Heisey by Imperial, etc). HEISEY News assumes no responsibility for false advertising or misleading information. In the event of typographical error, the incorrect portion of the ad will be run in the following issue, but HEISEY NEWS assumes no further liability.



NOTES FROM YOUR PRESIDENT.....

I have been reminded that I am remiss in acknowledging receipt of donations for the mould purchase fund, especially in the case of donations from organizations and persons not members of the HCA.

There has been no attempt to ignore these donations, there has been, however, an attempt to shepherd our funds as closely as possible and this has included reducing expenditures by eliminating unnecessary postage. Our initial mailing requesting donations cost in excess of \$540 just for postage, with no thought to the printing of the letter or preparation of the mailing. With some of the donations being in the neighborhood of \$10 (with no intent to diminish these donations, it was all donors felt they could afford) it does not seem reasonable to spend a considerable percentage of the donation to acknowledge their receipt when the possibility exists that we will have to spend an equal amount or more returning the donation in the event we are unsuccessful in our attempt to purchase the moulds.

When there is a final decision, we all will either celebrate or commiserate together, at which time all receipts will be acknowledged with gratitude. Until such time, this public thanks will have to be all that is offered, limited as it is.

The Board and I wish to express to everyone who has made a donation our thanks for their support in this project.



SEASON'S GREETINGS

Opinions expressed in articles are those of the authors and not necessarily those of HCA. Editorial Staff reserves the right to edit or refuse any material submitted for publication. Send all letters and articles to the EDITOR. Letters to columnists should be sent to the club address and will be forwarded.



## DESK OF THE DIRECTOR...

As we prepare this issue of Heisey News, the news from Imperial is that their will be a hearing on November 20 at the Bankruptcy Court in Columbus, Ohio. Offers received for the company will be reviewed by the judge and probably some decision will be made. We do not know who all has made bids but we do know about Consolidated Stores as was mentioned last month. Viking and the Bellaire "Save Imperial Committee," probably has submitted a bid as well - and there are possibly others. We plan to attend.

If there is any chance of us obtaining some or all of the Heisey moulds, a mailing will be sent out at once to all members.

Since the last issue went out we have learned that Westmoreland has been selling its moulds. Seneca Glass Co., makers of fine crystal and beautiful cuttings, has been closed for some time and they had an auction on November 1. These companies are going fast! Treasure the handmade American glass which you have. In this country it seems to be a dying art.

### 1985 OSCAR

This year while Imperial was still in Chapter 11 Bankruptcy we approached them about making our 1985 Oscar. In discussing colors, Mike Nocera said that they were going to make some Antique Blue, a long discontinued color. We agreed to use it for the Oscar.

Some weeks later Mike contacted me to say that they were not going to be able to make the quantity of these that we had ordered because the glass was not working well. They had only been able to get 450 in the time they were working on them. We then decided to go with a solid black Oscar which turned out very well and we will start offering these in your January issue of Heisey News. They will be \$21.00 each.

In the meantime, we were able to obtain 446 of the Antique Blue ones, which are dated 1985. We are offering these on a first come, first served basis and the form is on Page 23 of this issue. The cost is \$20 each and they are limited to one per member. While they are not of top quality, they will be very desirable additions to your Oscar collections. Honest, we don't plan all of these goofs!

Order soon as these probably won't last long.

\* \* \* \* \*

Incidentally, the books which Bob Rarey was kind enough to have bound for us are just beautiful. I had all of mine done for the first eleven years and am so proud of these fine books. The cover is hard bound, dark blue, and of library quality; the pages have been trimmed, they are "sewn" so they won't come apart and the covers are stamped in gold. At \$17 each, they were a real bargain. Bob plans to handle this project again for your 1983-84 newsletters. Hopefully, more of

you will want it done.

Some of you wanted yours bound before but you failed to send them in time. When he starts taking the 83-84 newsletters, it would be a good time to have these earlier sets done too. Bob did this as a service only - not a money-making project for himself. Watch for the announcement! *Loise*

### W. E. PORTER AND HIS GLASS

W. E. Porter of the Dayton, Ohio area, has been making handcrafted blown art glass vases, paperweights, etc., since 1974 in a Gallery in Ohio. Porter is a former Heisey employee who learned the art of blowing glass under the tutelage of Arthur Kessmeier, Heisey's best glass blower.

For nearly two years, we have been selling his fine art glass vases and paperweights in our gift shop. Each one is different and each is signed and dated. We have not yet attempted to sell these by mail because of the difficulty of describing them to you. One member who had read about these, ordered one which we selected for her and she was extremely pleased with it. If you want to order one or more of these, let us know whether you want "floral" or "Tiffany type." Vases are in several sizes from 3" to 7½" tall. Give us some idea of your color preference. If you are not pleased with our selection you may return for exchange or credit. These unusual items will make lovely Christmas gifts and we believe that they are moderately priced. All paperweights are \$25 and all vases are \$30. Please add 10% for shipping, add tax in Ohio. Order from:

HCA Sales, Dept. F  
P.O. Box 27  
Newark, OH 43055

Mastercard and Visa welcome. Send number and expiration date.

**May Your  
Christmas and New Year  
Be Joyful and Happy with  
Peace and Prosperity in  
Bountiful Share**

*Louise Ream, Exec. Dir.*

*Wanda Lybarger, Bookkeeper*

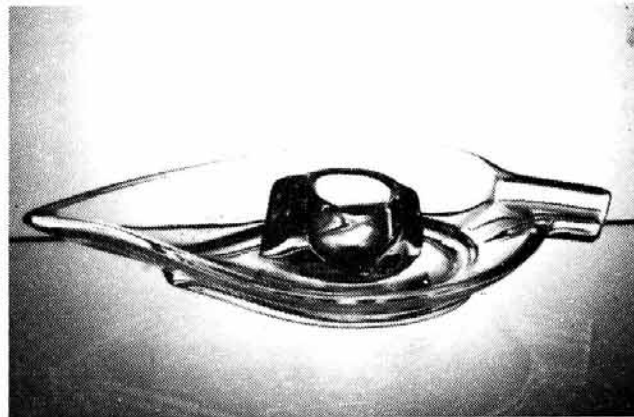
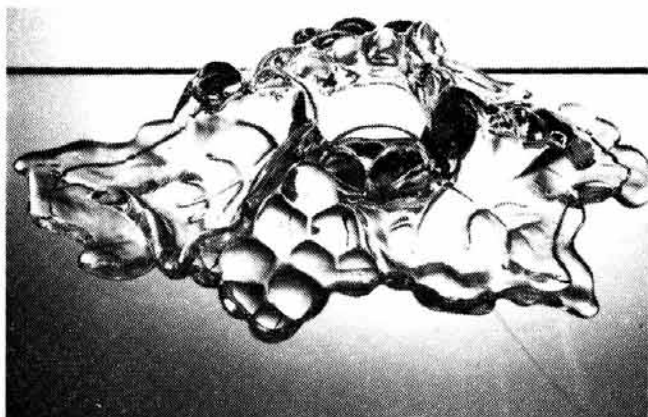
*Margaret Weber, Shipping*

*Rose Marx, Cleaning*

*Merrell Strawn, Membership*

**HEISEY CANDLESTICKS** NO. 125, LEAF DESIGN  
NO. 1565, LEAF

By Tom Felt



Over the years, Heisey made a number of candlesticks with plant or leaf motifs, including no. 116 Oak Leaf, no. 129 Tricorn, no. 130 Acorn, no. 1445 Grape and no. 1552 Four Leaf (all of which have been written on previously in the Heisey News in the February 1981, December 1977, December 1978 and August 1976 issues, respectively). This month we will look at two more, very disparate in style, but both with discernible leaf design.

The first, no. 125 (picture #1) is a most unusual candleblock, consisting of an irregular cluster of leaves and berries with a candleholder more or less in the center. "Leaf design," the name by which this candleblock is now known, is actually the descriptive term which appeared in the catalogue, probably added because the appearance of the candleblock is very difficult to distinguish in a photograph.

Despite its unique appearance, the no. 125 candleblock has its place in the overall development of candlestick styles during the 1920's. As mentioned above, a natural form had been used on the no. 116 candlestick, with its oak leaf motif, and this candleblock continues that trend, but in a much more naturalistic way. In the next year or so, this would be followed by the no. 129 and no. 130 candlesticks, with their acorn motifs, and later by a variety of candlesticks embodying animal or vegetable forms.

The Leaf Design candleblocks were probably first issued around 1928 or sometime in 1929 and then discontinued again within the next year or so. At any rate, they were definitely out of production by 1933. They were reintroduced again around 1939, but once again were only in production for about a year or so. Due to these brief production periods, the no. 125 Leaf candleblocks are fairly scarce today, an indication that they must not have been very popular. To my knowledge, they are not marked and this would also contribute to their not being recognized as Heisey. They are most often seen in flamingo or moongleam and even more rarely in crystal.

From a later period, the no. 1565 Leaf Candlestick (photo #2) also embodies a leaf design, but in a much more stylized way.

This was the third candlestick to be designed for Heisey by Royal Hickman, the noted ceramic designer. The first two candlesticks created by him, no. 1550 Dolphin and no. 1552 Four-Leaf, both came out in 1942. Mr. Hickman continued to design for Heisey on a free-lance basis in the following years, when he created most of the well-known animals, but it wasn't until sometime around 1947 that the no. 1565 Leaf candlestick was added to the Heisey line.

The candlestick is in the form of a leaf-shaped bowl with a candleholder in the center. It is 6-3/4 inches from tip to stem and slightly over 1 inch high. The candleholder element is pointed on both ends, echoing the shape of the leaf bowl. The "stem" is indented and probably was meant to be used to rest a cigarette on, allowing the candlestick to double as an ash tray. It was made in crystal only.

Among the "table settings" designed by Royal Hickman and advertised extensively in 1947 and 1948 was the no. 5 set, which consisted of a pair of the no. 1565 Leaf candlesticks, along with no. 1575 12 inch floral bowl and a gazelle sitting in its center.

The candlestick continued to be made up through August 1949. They seem to have been produced in fairly large quantities and should be relatively easy to find today, but are not often recognized as Heisey because they are not marked.

Neither the no. 125 Leaf Design candleblock nor the no. 1565 Leaf candlestick were ever re-issued by Imperial.





## CANDLESTICK BOOK REVIEW

REPRINTED FROM PRINCE GEORGES JOURNAL  
WASHINGTON, D.C. AREA

By Orva Heissenbuttel

"Edna," otherwise known as No. 141, is a Heisey glass candlestick designed to hold a candle that burns at both ends. This unique candlestick is just one of more than 300 Heisey glass candlesticks and candelabra known to have been made by the A. H. Heisey & Co. of Newark, Ohio, between 1896 and 1957, in various styles, sizes and colors.

This information has been researched and collected by Alexandria residents Tom Felt and Bob O'Grady and is now available to Heisey glass collectors and dealers and the general public in their superb new book "Heisey Candlesticks, Candelabra and Lamps."

This important new book adds immense lustre to the status of Heisey glass among glass collectors the world over, and to Heisey Collectors of America, the publisher, and the local Heisey club, the National Capital Heisey Collectors Club, of which both Felt and O'Grady are members.

A reputation for glass of clear crystal quality, vibrant colors and widely divergent designs enhanced with more than a thousand different cuttings and etchings was established during Heisey's 61 years of producing hand-finished glasswares. The company's proclivity for marking most of their wares with their famous "Diamond H" trademark (an H within a diamond) made their wares readily identifiable by customers then and collectors now.

The average collector could not begin to comprehend the vast amount of glass made by Heisey, so many depend on buying only those items marked with the trademark. Unfortunately, two things happen; they eliminate both the earliest unmarked Heisey and the later rare unmarked pieces from their collection and they become prey to the dealer selling the fakes which have unfortunately been produced by several firms since Heisey's closing.

However, absolute documentation is possible through research in old catalogs and factory records and the company's ads in trade journals and magazines of the period. This arduous task was the method used by Felt and O'Grady, utilizing the vast resources of the Patent Office and the Library of Congress. In Newark, they were assisted at the National Heisey Glass Museum by Jack Metcalf, and other members of H.C.A.

Most of the illustrations are Tom Felt's excellent photographs, and most were taken of the authors' own collection of more than 280 pairs, certainly the world's largest collection of Heisey candlesticks. They range in size from the two-inch toys to the elaborate multi-branched candelabra two feet high.

The illustrations are supplemented by copies of the original patents in the back of the book, and as every good book should have, there is an extensive glossary, bibliography and general index. Eight pages are in color, including "Edna's" unique U-shape. (This was not really a good design, since the glass cracked when the candle burned down that far.)

Possibly the Heisey "Candlestick Book" tells

more than some few may want to know, but for the Heisey collector, there can never be too much to know. More than 20 publications have been devoted to some aspect of Heisey glass, but the subject is so immense it would be impossible to fit it into a single volume. Thus, there are already in print publications devoted to a single item, such as stems, salt shakers, toothpick holders, animals, etchings, etc., in addition to many reprints of original catalogs.

For Felt and O'Grady, the "Candlestick Book" was a labor of love, since all the proceeds will benefit the National Heisey Glass Museum. Of course they never dreamed that they would later write the definitive book on the subject when they purchased their first pair of Heisey candlesticks in 1977. Their natural curiosity led them to research the ones in their collection and then it went on from there. Certainly they will continue to seek --- and find --- candlesticks and more information. And all we Heisey collectors will benefit.

Destined to be known simply as the "Candlestick Book," the 436-page volume is the result of the prodigious efforts of Felt and O'Grady, and will benefit every collector, dealer and curator who has an interest in glass, and specifically Heisey glass. A short history of the company is given, followed by a chronology of the years of Heisey's candlestick production which they have organized in three sections -- Early, Middle and Late Years. As expected, many of the designs followed those currently popular during those years, ranging from Colonial to Art Deco to Modern.

Heisey had a numbering system, though not always consistent, which has been followed by Felt and O'Grady. Each entry gives the number, pattern name, size and production period, colors, cuttings, (if any) other decorations, and the location of the trademark, if it is marked. The authors estimate that only 25 to 50 percent of Heisey candlesticks will be found with a mark, thus the obvious importance of their book for identifying those unmarked.

The Heisey trademark first appeared on their glass in 1900, the year that they produced their first candlestick which is known as No. 1, "Georgian." This is reminiscent of an earlier design made by Mount Washington in the 1880's but if Heisey copied, they were also copied. There are a number of Heisey "look-alikes" and these are also described with the entry for that candlestick, and how one may be able to tell the difference.

Heisey Collectors of America was founded in 1971, and now has some 5,000 members worldwide, who receive the monthly "Heisey News." More importantly, they established the National Heisey Glass Museum in 1974 where more than 3,000 examples are on display. For membership information, a listing of their publications, etc., send a long SASE to H.C.A., Box 27, Newark, Ohio 43055. Membership dues are \$15 per year.

To order "Heisey Candlesticks, Candelabra and Lamps," send a check for \$24.95 plus \$2.50 for mailing to H.C.A., Box 27, Newark, Ohio 43055. A price guide is available for \$2.50 with prices for each listing in the book. Prices range from \$50 to \$2,000 per pair.

Continued on Page 6.

# HEISEY'S LITTLE THINGS

By Louise Ream

Thanks to Ed and Kay Berg for the information they have given you on individual and master salts. We hope that it has been of help to you. This month, they have done a little article on the #1489 Puritan salt, a hard one to know when you see it. Using Ed's guidelines, you should have little trouble with it. While their last month's "Salty Comments" was really written for salt dish collectors in general, I felt it would also be interesting to many of you as well.

We are in a period of short line patterns which have very little to offer an HLT collector. Pattern #439 Raised Loop from the 1911 period, is of heavy pressed glass of excellent quality with the items ground and polished on the bottom. This is rather an elusive pattern and highly desirable. The oil or cruet is extremely difficult to obtain. With the exception of the cruet, all pieces observed have been marked. The only items small enough for our collections are the salt and pepper; with the usual choices of four tops, the punch cup and, if you don't think it is too large, the 5 oz. footed egg cup in both straight and cupped.

If you have not seen this pattern you might think that the area inside of the loop is concave. However, it is really raised, the reason that Vogel assigned the name, Raised Loop. Another company made a similar pattern with concave loops.

No. 451 Cross Lined Flute is a very beautiful pattern, very good glass and well finished. The only items which are small are the salt and pepper with, this time, a choice of five tops.

No. 350 Pinwheel and Fan is a particularly lovely pattern and is very different from the Colonial period which I have been covering. Again, we can claim only the punch cup as an HLT. We can add a little color if we are lucky enough to find one in moon-bleam. Even though the large bowl was made in moon-bleam, flamingo, marigold, and vase-line, as well as crystal, only crystal and moon-bleam cups are known.

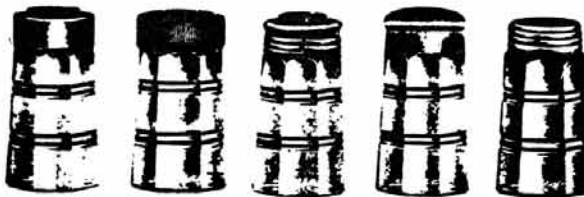
There are two sizes of powder jars and if you like, you can try to find one of the smaller ones. These usually have a silver lid. Only the larger jar is pictured in the catalog but two sizes are known. As you can see, Pinwheel and Fan is heavy pressed glass and many people think it is cut. Heisey was well known for its sharp pressed patterns which closely resembled cut glass.



#439 Raised Loop



#350 Pinwheel & Fan



#451 Cross Lined Flute

## DEALERS

Anyone wanting to be on the waiting list for our June Show should write to Jerry Robinson, Show Chairman.

c/o HCA  
P.O. Box 27  
Newark, OH 43055

## FLEA MARKET ON THE SQUARE

We'll be sponsoring the "Flea Market on The Square" next June.

Get on the list now for contracts. Write to:

HCA Flea Market  
P.O. Box 27  
Newark, OH 43055

## IN MEMORIAM

The Heisey Community was saddened again this month by the death of Dr. Harold W. Long of Columbus, Ohio, on November 6th. A long time member of HCA, he and his wife, Marilyn, attended most of our social events and were very supportive of our organization. Dr. Long is survived by his wife and three children.

## Book Review Continued

I am particularly proud that Tom Felt and Bob O'Grady are valued members of the National Capital Heisey Collectors Club which I organized in 1972. Felt is now serving his second term as president of the club, and O'Grady serves on the National Board of H.C.A. and also on the Research and Archives Committee.

## Editor's Note:

Orva writes a weekly column in the Prince George's Journal which has a circulation of 150,000. This article is reprinted with her permission. H.C.A. thanks her for her excellent review for this wonderful new book. L.R.

# CLUB NEWS

## BAY STATE HEISEY COLLECTORS CLUB

The Bay State Club held its regular monthly meeting at the Follen Church in Lexington on Oct. 9th with President Caswell presiding.

The program took a little switch from Heisey. The program for the evening was Steuben Glass. A Mr. James Thurston, a retired salesman of Steuben, came all the way from New York to give us one of the best lectures on glass that I have ever heard. You could tell by the way he talked that he was very proud of the glass and company he represented. He brought some examples of the glass and a film of how the glass is made. Members, brought glass for identification as to whether it was Steuben or not, and some were rather surprised to find out that they had, in fact, a piece of Steuben. The program was very interesting and we thank Dan Cherney for calling and asking Mr. Thurston to come.

Irene Walton gave her show report on our recent glass show, and by all accounts we had a pretty good show. Thanks again to Irene and her committees. Speaking of the show, it was nice to see Louise & Russ Ream at our show. It is always nice to see both of them.

Refreshments were provided by Betty Bean & Elsa Philcrantz, and a cake from Lloyd & Janet. Olga Heath provided a variety of tid bits that were mouth watering. All in all, they were very good.

See you next month.

George Gleason

\*\*\*\*\*

## HEISEY COLLECTORS CLUB OF MICHIGAN

Starting off our new year of activities with an election of officers, we coerced Curt Guilmette into taking the presidency and Sue Kilgore the secretarial position.

Our first meeting was held at the home of Gil and Boots Sholen. The project committee reported several ideas for fund raisers and even more ways to spend the possible funds raised. Of course the museum would be the sole recipient of any and all hard earned funds. The meeting was highlighted by an indepth report and visual presentation by Don Parrett on toothpick holders. He had an example of all the styles except: Pillows, Colonial Panel, Colonial Scallop Top, Locket-On-Chain, Punt and Diamond Point and Touraine. He gave us the color variations and prices.

Our October meeting was held at the home of Cal and Dorothy Meyers. Our fund raising project is becoming a closer reality and we have narrowed the possibilities down to five or so. One good one is getting a lot of attention and information. We will keep you posted.

We would be happy as a club to help get other branches started in the Michigan area and guests are always welcome to attend our meetings. We do feel we want to keep our club small enough to be able to meet in each others homes, thus we want to keep the membership to sixteen.

The meeting featured a pop quiz and a favorite's display. A good time was had by all, as usual.

Sue Kilgore

\*\*\*\*\*

## HEISEY CLUB OF SOUTHEASTERN MASSACHUSETTS

An organization for Heisey Glass Collectors is starting to meet once a month in the Rockland, Massachusetts Area. Anyone interested in joining should contact the membership chairperson:

Helen Mead  
P.O. Box 771  
Marion, MA 02738  
or Call (617) 748-2240 for further information.

### Editor's Note:

This will be the third study club in Massachusetts. Good Luck to the HCSMI

\*\*\*\*\*

## HEISEY COLLECTORS OF THE ROCHESTER AREA

The meeting was held at the glass filled home of Marge & Jerry Gillette.

Marv Jacob described a project that he has put many hours into for the benefit of HCA. We are all very enthused about it and I am sure it will be a great success. In his quiet way, he has done many things that go un-noticed, but that greatly benefit our club and HCA and he is a credit to us all. I'm sure he gets his energy from his great (Dutch) wife, Lois, she even has beautiful blue eyes.

For the past several years our club has always had its Christmas meeting at Gert and Art Costello's home, for which Gert went to a great deal of work preparing a lovely dinner. The club members voted this year to have our meeting at a lovely old local Inn called the "Spring House" which is very similar to the "Granville Inn" but much older. Our intent is to give Gert a much needed rest and hopefully a relaxing time. The Christmas dinner will also include a raffle for the club's barren treasury.

Marge outdid herself and served many delicious snacks along with Angel food cake for me.

The subject of the meeting was "Console Sets". Marge and our President, Sharon Orientor, set up a beautiful display of all the various sets. They were truly spectacular.

Since our attendance was down at this meeting, our show and tell was quite brief, but included the following: Edith Boches found a great Moongleam #352 Humidor with a pipe rack to boot. Arlene Reynolds - a Petal Pedestal flamingo, Hotel Sugar & Cream. Marge Gillette - a Rococo Creamer in crystal 1447 - 1512.

Well by the time this is printed, the election should be over - listening to the candidates. I'm reminded of Henry David Thoreau's quotation - "I went to the store the other day to buy a bolt for our front door, for as I told the storekeeper,

Rochester Area Club Cont'd. on Page 8.



# LETTERS, we get letters....

Dear Heisey Friends,

I just opened my Art Institute of Chicago bulletin to discover there will be a special exhibit of Eva Zeisel's work from December 8 through January 20. I would like to quote from the bulletin.

"Hungarian designer Eva Zeisel has made a considerable contribution to the shaping of modern aesthetic in both decorative and utilitarian pottery. Her early work which won honorable mention at the 1926 Philadelphia Sesquicentennial evolved from sophisticated folk art motifs to highly stylized ornamental wares that were mass produced by German factories.

In the 1930's Zeisel became a designer for, and eventually the director of the china and glass works in the Republic of Russia. She emigrated to the United States in 1937 and established herself here as a designer and educator. Her work continued to win the highest honors and her mass-produced porcelain dinnerware was selected by the Museum of Modern Art as an example of good contemporary design. Over the years she has accepted numerous international commissions for designs which were produced in glass, metal, and plastics as well as ceramics.

Organized by the Musée-des Arts Décoratifs in Montreal and the Smithsonian Traveling Exhibition Service, the exhibition contains more than 100 examples of Zeisel's work. A fully illustrated catalog accompanies the exhibition."

As we all know, the Heisey Company commissioned Zeisel to design for them and it will be interesting to see if a piece or two of Heisey will appear at this show. If you plan to be in the "Windy City" I think a trip to our wonderful Art Institute would be well worth your time.

Dorothy Leviton, Chicago

Ed. Note:

Heisey's #1637A Town and Country pattern was designed by Zeisel and won the "Good Design" award in 1955. She also designed #6009A Roundley pattern and several cutting designs among other things.

\*\*\*\*\*

The candlestick book is one of the best reference books I've ever seen. What an asset for our club for years to come. We've started a library and this is a must. It is so well done words can't describe it. So many thanks for a beautiful job.

Thank you,  
Northwest Heisey Collectors  
Club Member

\*\*\*\*\*

This is my 3rd. order to HCA and I would like to take this opportunity to compliment you on prompt handling and careful packing. The first two orders were received within seven days of mailing my order.

With thanks,  
Denis Castelli, NY

# IDENTIFYING THE LATE PURITAN SALT DISH

By Ed Berg

The Late Puritan pattern was introduced in 1937, so it might be more available than some of the older ones. When it comes to the individual salt dish, however, there aren't many around. There are also similar shapes in antique shops and flea markets that confuse the picture.

The #1489 Puritan (Late) Individual Table Salt is shown quite clearly on the catalog page accompanying the HLT column, Sept. 1984. It can be separated from the two more common look-alikes by its dimensions. I use metric (millimeters) because it is much easier than measuring to 1/32 inch which would otherwise be necessary. The comparative measurements are:

	WIDTH		Height
	Top	Bottom	
Heisey #1489	46mm.	31mm.	24mm.
Dish A	52	27	23
Dish B	44	27	22

We found our dish by tracing around a genuine one which Louise Ream kindly showed us. We found many that did not fit the tracing, but when the right one came along it fit perfectly. As the dimensions show, the genuine one is slightly higher with steeper sides, and has the high-quality look of Heisey glass. This is easy to see if you have the dishes to compare. You can also draw profiles using the above table and get a good idea of the difference.

If the dish is ground and polished, the dimensions must of course be smaller. We do not have one like this to measure. The slope of the sides, and of course the quality of the glass, should still be a good guide in selecting the real Heisey.

We have seen the look-alikes in both crystal and forest green. The latter was a set in the original box, with silver-plated spoons, marked "Open Salts by Saben." We are still trying to find out who Saben was.

All the open salts which we have seen in this pattern are unmarked. Probably they were sold with a sticker. Perhaps one day some lucky person will find a marked one.

Editor's Note:

To find one of these marked would be very unusual. Most items in this pattern are not marked. Those which are include some of the card suit ash trays and some cigarette boxes. The latter are marked under the outside edge of the rim. At least one has been seen marked in the underside of the middle of the lid and one in the center inside bottom.

Louise Ream

Club Notes Continued

the Governor was coming here. "Aye" said he, and the legislature too. "Then I will take two bolts" said I. He said that there had been a steady demand for bolts and locks of the late, for our protectors are coming." Seems quite appropriate for our times too, wouldn't you say.

Merry Christmas To All!

George J. Reynolds, Secy.





diamonds are forever.....

By Janet M. Caswell

It was a cold Saturday late in November, the time was 10:00 a.m., the place, Front Street Landing in the Yachting Center. The Landing is where all the fishing boats dock to unload their day's or week's catch. The dock was filled with children, laughing and excited, bundled in "down" coats, hats and mittens. They were waiting anxiously with their moms and dads, yes, for a boat but not a fishing boat. Across the harbor a small motor boat glides slowly thru the water heading for the dock. Shouts of "here he comes, there he is" are heard from first one then another of the children. Within minutes the small boat pulls up to the landing and docks. Out jumps a round, jolly man with snow white hair and beard, sporting a bright red suit with black boots. "Ooh and Aaah" shout the children; "Merry Christmas" answers the jolly man..... Santa has again arrived in the Yachting Center.

Yours truly was at the landing and I'll pass along what mail he brought me: the "two ducklings" from the Old Dominion State (VA) found two (2) #1229 Barnum egg cups (pg 77 in the stem book)

"The Spirit" (PA) came up with two (2) more Favor vases in cobalt, #4227 and 4228. Yours truly has never found even one favor vase in any color, including crystal. This now makes four (4) for "the spirit" in that many months. She also has a Spanish stem juice in cobalt plus several Old Williamsburg wines, thus adding to her stemware.

"Grampa W" hasn't done much of any Heisey hunting this fall, he has been traveling around the New England States taking in all the "Country Fairs." At one such fair he picked up a #150 Banded Flute 8 oz. tumbler and the #407 Coarse Rib Creamer. This was found at a small flea market sponsored by the "Boosters Club."

This past fall the Bay State held its annual All Glass Show at Sturbridge and Yours Truly decided to take one last look around before packing. I found the #1404 round (rare) Old Sandwich sugar. I have a complete set plus one, would this one make another set? I couldn't remember if I needed a cream or sugar. The first thing, needless to say, when I walked in the house was to go to the cabinet to see if my odd one was a cream. Oooh it was!! I now boast two sets.... Also found was the #339 Continental Water Bottle and a #393 Hotel Ice Tub.

"My Good English Buddy" (MA) has the Emerald

#1255 Pineapple & Fan toothpick; #1235 Beaded Panel & Sunburst toothpick; a pair of #1401 Empress 7" oval comports; #433 Greek Key Cream & Sugar; a pair of #1401 Empress 6" toed candlesticks in Sahara and a second pair of Empress 6" toed candlesticks in Flamingo!

Mass. has a new contributor this month who called to brag about her finds; (and brag she should!) Puntly and Diamond Point 4" Gas Shade; large Beehive Plate in Moongleam plus six (6) 7" Beehive plates also in moongleam, these pieces were sold as a cake set; #1401 Empress Moongleam D/F Punch Bowl with eight (8) cups. The bowl is cracked but never-the-less beautiful (when does anyone ever find one of these out for sale?) How lucky to be in the right place at the right time; #335 Prince of Wales Toothpick/ruby flash; and lastly a #379 Urn syrup/no cover

The Mr. brought home a lovely pair of #134 Trident Candlesticks in Sahara along with a #134 14" Oval Floral Bowl to match plus a pair of #51 Salt and Pepper shakers in Flamingo. Was I ever excited, they must take the place of honor for awhile on the Dining-table.

My "Rebel Cousins" (KY) report the 1 quart #1183 Revere Cocktail Shaker in Cobalt - nice find!

The "La Pelican" found, in a garage sale, twelve (12) #1252 Twist Individual Nut Dishes in Crystal. And such a super buy!

From the Buckeye State (OH) in the #341 Pavilion Pattern is the 4-1/2" Nappy and 4 oz. cruet; in #1540 Lariat an Ice Tub and the cup (no saucer) and in #1503 Crystolite is a 13" 3-compartment oval relish and a 9" #416 plate in moongleam.

"The Tipper" is very excited with a #1191 Pickle and Olive in Flamingo; #1220 Puntly Band ruby stain Salt/initials D.B.M. Old Orchid 1906; a pair of #1252 Twist 2" Candlesticks in crystal; #150 Painted Oval and Diamond Point Creamer; #1205 Fancy Loop Nappy; and a pair of #100 9" Centennial Candlesticks, etched; plus one Sunday he found the #352 Flat Panel Hotel covered sugar and the very next Sunday (at another place) the #352 Hotel Creamer.

From Maine comes #3362 Egyptian Stem in Moongleam.

From "the Two Guys" (CT) a #1202 Floral Bowl (no base) in Moongleam and #1229 two handled 8" desert Bowl also Moongleam.

It's time now for yours truly to make out her Christmas list, a favor vase in flamingo is at the top; maybe the Mr. will put one in my stocking Christmas morning.

From the Yachting Center the Mr. wants to join me in wishing each and every one a Happy Holiday. Hope "Kris Kringle" is good to all of our Heisey Friends.

Janet Caswell



# THIS 'N' THAT

By Louise Ream

## MORE ON THE "FLYING BIRD"

The bird shown on Page 3 of last month's issue is now known to have been made currently by L. E. Smith Glass Co., Henry J. Opperman, President of L. E. Smith Glass Co., said that it has been made in several colors and finishes over the years. It is currently available in crystal, pink and blue satin. In 1980, it was made in a slag called "Almond Nouveau." Apparently it was also recently made in a color they called Heisey Alexandrite which is a pretty lavender but does not turn blue under fluorescent light.

We have discovered that the sunshine yellow colts in our price list last month were described improperly. It is a set of all three colts - Standing, Rearing and Kicking.

\* \* \* \* \*

Heisey seems to be the "thing" these days on T.V. On the October 6 Alfred Hitchcock show in "Annabel and the Capricious Chemist" there was a #367 Williamsburg decanter and a #5012 Urn vase.

The following Saturday, Oct. 13, again on the Hitchcock show, "Life Among the Intellectuals" there was a set of shelves filled with animals - part of them being Heisey.

Since most of these shows are reruns, the Heisey factory was probably still in business when they were first made. The producers had a taste for good glass.

\* \* \* \* \*

In a catalog received from a local Hallmark shop, there is a 7-Piece etched wine set which was imported from Romania by Toscano. The decanter looks almost exactly like Heisey's #4036½. It seems a little taller and slimmer in the picture but it does have the tear drop stopper. Imitation is the sincerest form of flattery. The wines look nothing like Heisey, just plain pulled stems.

\* \* \* \* \*

More and more pieces of Heisey Glass are showing up in magazines in ads or other illustrations. One, advertising a "Gourmet Recipe Collector" shows a stack of #1225 plates. This was sent by Mildred Wortman, Calif.

Anne Hampton sent an ad from a House Beautiful, 1976 which shows a #1506 Whirlpool (Provincial) punch bowl and cups, apparently containing egg nog - a Christmas ad.

In Family Circle, 12-6-83, there is a crimped punch bowl in #1205 Fancy Loop. It is surrounded by a Christmas wreath and flanked by crystal candlesticks - not Heisey. I don't remember who sent this one. It is not an ad but is with suggestions for Christmas decorating.

In Good Housekeeping, November 1982, on a

page of suggestions for holiday entertaining, a large #1540 Lariat bowl is filled with mashed potatoes and cabbage. (Ugh!) A Lariat plate holds sliced tomatoes and cucumbers. A large plate holds Cornish Game hens. It looks similar to #1235 Beaded Panel and Sunburst but it doesn't have the panels.

From the October 1980 magazine Cuisine comes a page featuring a large Lariat plate. This is another food article. Sorry, I can't identify the food on the plate but it is easy to recognize the Lariat.

The New York Times Magazine "Home Entertaining" for October 24, 1982 had #341 Old Williamsburg goblets on the cover.

On 9-26-82, the same magazine section had a full page ad for Leslie Fay dresses. On a table were four #21 Aristocrat candlesticks in four different heights.

I am sorry not to know who sent most of these. The first two had put their names on them. In the future if you send such articles or ads, please put your name on them so that we can give you credit.



NOTICE!

To those of you who are kind enough to send you Membership Dues in early, don't forget that membership is \$15.00 for Associate Member and \$2.50 for each additional Household Member.

Thanks,  
Merrell, Membership

*To you and yours we  
extend best wishes for a  
Joyous Christmas and a  
Bountiful New Year.*

From Jan Thran  
& Neila Bredehoft



We have moved the slide and movie rentals back to the home office and will be sending them out from here from now on. For many years, Dick Spencer and the Southern Illinois Diamond H Seekers have handled this big job for us.

Most of these slides were prepared by individual members who spent a good bit of time and money in doing so. They are excellent material for your club meetings, showing to other groups and for personal viewing.

Rental fee is \$15.00 for each slide set. This includes the shipping cost to send them to you. You pay the return cost.

We have a few new slide sets since the last list was published.

<u>Set</u>	<u>Number of 33mm Slides</u>
1. Heisey Animals	75
2. Heisey Toothpicks	72
3. Heisey by Imperial	120
4. Heisey Syrups	95
5. Fakes and Misleading Items	58
6. Heisey Handled Jellies	83
7. Heisey Cuttings #1	72
8. Heisey Cuttings #2	73
9. Heisey Candlesticks #1 - 60 Years of Heisey Candlesticks	121
10. Heisey's Later Candlesticks #2 - 1937 - 1957	88
11. A. H. Heisey & Company - An Overview	80
12. Heisey Colognes	69
13. Heisey Cruets	96
14. Heisey Advertising	90
15. <u>This is Your Life HCA</u> - This requires special equipment to show. Write for more information.	
16. Museum Owned Glass	81
17. <u>The Heisey Glass Story</u> - A fine professionally made 28 min., 16mm sound movie covering the Heisey history, aspects of glass making, the glass, the Museum and HCA. You'll love it. It requires a \$25.00 deposit; upon return of the film, the cost of shipping to you is subtracted and the rest will be refunded.	

When ordering the movie or slides, order by name and number and specify an alternate date if possible. Give a second choice for slide sets. Your order will be confirmed.

PLEASE RETURN THE RENTED MATERIAL IMMEDIATELY AFTER SHOWING SO THAT OTHERS MAY HAVE THE OPPORTUNITY TO USE IT.

Make checks payable to HCA, Inc. Direct all inquiries, reservations and orders to:

HCA SLIDES & FILMS  
P.O. BOX 27  
NEWARK, OHIO 43055

PH: (614) 345-2932

The slide sets and the movie are also available for purchase. Write for details.





# Heisey Collectors of America ALL HEISEY - Benefit Auction

MARCH 8 AND 9, 1985

It is time to prepare for our Eleventh Annual All-Heisey Museum Benefit Auction. The Auction will again be held at the Apple Tree Auction Center. It will, as usual, be held in conjunction with the Quarterly Meeting.

The Annual Christmas Dinner and Quarterly Meeting on December 7th would be a good time to bring your consignments to the Museum in the afternoon, or after the dinner, and omit the Christmas rush. Deadline for glass is January 1, 1985.

The same policy as the last few years will again be followed. Limit your glass to 10 lots per family (excluding donations). Items such as 8 goblets or 12 plates together would constitute one lot. Any consignments OVER 10 lots will be considered as donations. The consignment fee remains at 20% with a \$5 minimum per lot. HCA receives the 20% selling fee. Please consign only Heisey or Verlys by Heisey. No Imperial Please.

Be sure to include a list (including pattern number, name, color, etc., if possible) along with your name and address. Arrange the list in desired lots and identify which lots are consignments and which are donations. Don't forget to make a duplicate copy for your records.

The Benefit Auction is one of the major fund raising projects of the year and all proceeds go for support of your Museum. There is very little expense associated with the Auction. You can help by donating items for the Auction. Remember, donations are full value tax deductible. The consignment fees are also tax deductible. So, get your glass in early and plan to be at The Apple Tree Auction Center on March 8 and 9.

Glass will be sold in the order it is received.

Ray Ziegler, Chairman

1. Donations - Full value tax deductible.
2. Consignment - You receive a check for 80% - The Heisey Collectors of America, Inc. receive 20% - These proceeds support your Museum.
3. Glass must be in our possession by January 1.

a. Mail your glass now to:

Heisey Collectors of America, Inc.  
169 West Church Street  
Newark, OH 43055

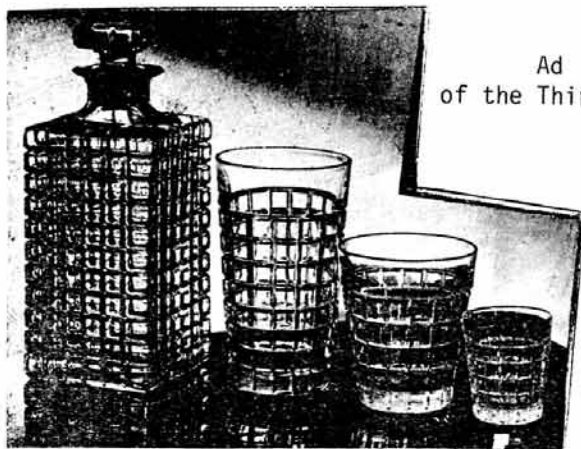
b. Visit the Museum and leave your glass there.



#4092 Kenilworth  
Brambleberry Cutting



#5011 Yorktown  
Huguenot Cutting



Ad  
of the Thirties.

#1425 Victorian



HEISEY MUSEUM

OPEN DAILY 1 TO 4 P.M. UNTIL CHRISTMAS

Visit our Gift Gallery for unusual gifts that last.



# DATA ON HEISEY IPSWICH, #1405

By Neila M. Bredchoft

Recently one of my friends in HCA told me that when I wrote articles on Heisey I should include everything about a pattern, no matter how seemingly insignificant ... that there were some people who liked to know about "everything."

This column is an attempt to put everything now known about Ipswich in a format which is easy to read and consult when collectors have questions. We'll see how successful it is and if it is realistic to try to do this for more patterns in the future. You might let me know if you like this type of information.

Heisey introduced Ipswich in 1931 and at that time called it Early American Scroll or simply Scroll. Within a few months or weeks, it was changed to Ipswich, the original company name which is now used by collectors. Ipswich is a copy (in modern shapes) of the Old Sandwich Comet pattern.

The introduction of Ipswich fell between the publication of Heisey catalogs #109 (1929) and #210 (1933) so our earliest reference in a Heisey price list is the one in 1933. By this time, the pattern had been in production for over a year - probably about a year and a half. We do not have the original listing of the pattern so we can only make inferences from a few scattered references as to which pieces were originally introduced and which were added before 1933. In the first ad available (which was published in CHINA, GLASS & LAMPS and also in CROCKERY & GLASS JOURNAL in 1932) the list was of a goblet, saucer champagne, sherbet, 5, 10 and 12 ounce footed sodas plus photographs of all these pieces. Another early ad shows one of the plates. Another trade journal account from August 1932 states that the centerpiece, footed fruit bowl, footed oil and sauce dish (possibly the finger bowl) were new and added to the line. This seems to indicate that these pieces were not in the original offering. Thus, by late 1932, we have at least 10 items in the line. While colors are mentioned in ads showing Ipswich, often they are not specific about the pattern itself, but are simply mentions about the colors Heisey was then making.

Eventually the pattern was to include at least 25 items (not counting variations in the straight or cupped tumbler and counting the centerpiece and vase as one item). Ipswich was shown in catalogs from 1933 to 1944. It was reintroduced in December, 1951 and discontinued in July, 1952 in crystal only.

## IPSWICH:

1. 6" finger bowl plate - 1933-1944+
2. 7" sq. plate - 1931 (?) - 1944+; 1951-1952
3. 8" square plate - 1931(?) - 1944+; 1951-1952
4. 10 oz. goblet - 1931-1944+; 1951-1952
5. 4 oz. saucer champagne 1931-1944+; 1951-1952
6. 4 oz. sherbet - 1931-1944+; 1951-1952
7. 4 oz. oyster cocktail - 1933-1944+; 1951-1952
8. 5 oz. footed soda - 1931-1944+; 1951-1952
9. 8 oz. footed soda - 1933-1939
10. 10 oz. footed soda - 1931-1944+

11. 12 oz. footed soda - 1931-1944+; 1951-1952
12. 10 oz. tumbler, straight or cupped - 1933-1944+; 1951-1952
13. 12 oz. schoppen (no foot) - 1933-1937; 1951-1952 - listed as regular ice tea
14. 2 oz. oil, #86 pressed stopper - 1932-1939; 1951-1952
15. &
16. sugar & cream - 1933-1937; 1951-1952
17. 3 oz. cologne, #91, pressed stopper Ca. 1940-1944
18. 11 in. floral bowl, ftd. 1932-1944+
19. centerpiece & vase with A prisms - 1932-1944+\*
20. 6 in. candlestick - 1932-1937
21. 1/4 lb. candy jar & cover - 1933-1937
22. 1/2 lb. candy jar & cover - 1933-1937
23. 1 qt. cocktail shaker - 1933-1937
24. finger bowl - 1932-1944+; 1951-1952 - listed as 4-1/2 in. nappy.
25. 1/2 gal. jug - 1933-1935

\* In 1941, A and H prisms were offered; in 1944, A, H, or P prisms were available.

## NOTE:

Dates are given from first known listing or photograph to date of first catalog in which the item did not appear.

In the 1933 catalog, all items except the cocktail shaker were listed in crystal, moongleam, flamingo and sahara. The floral bowl and centerpiece and vase were also listed in "blue" (cobalt). In 1935, the entire line was available only in crystal and sahara with the same two items as above available in cobalt.

After this period, no colors were listed at all, only crystal. As you can see from this, it is very unlikely that the cocktail shaker would be found in moongleam, flamingo or cobalt -- but what a find if it were! Also, the cologne was introduced into the line long after Ipswich was being made only in crystal (at least 3 years later). It is extremely unlikely that the cologne was ever made in anything but crystal. A little aside here, the cologne was available in 1939 at \$12 a dozen!

Looking at the color information in more detail, you can see that moongleam and flamingo items were available only from 1931 to 1935 and that sahara items were available from 1931 to 1937. Now it becomes more apparent why any colored items in Ipswich are difficult to find. A goblet is known in alexandrite, but this was certainly only an experimental item. Another item known in crystal is a medium sized square nappy. This is certainly made from the plate mold, rather, this is how a plate comes from the mold before it is flattened into a plate shape. This is more of an oddity, not a rarity.

A few other tidbits, the finger bowl plate is round rather than square as are the other plates. The oil is sometimes found with a Maltese Cross stopper. This apparently was done when Heisey supplied these for churches. The cologne stopper is a large, octagonal pressed stopper - much like stoppers seen in imported European colognes from

DATA ON HEISEY IPSWICH, #1405 Cont'd.

the twenties and thirties.

Ipswich enjoyed a short revival from December 1951 to July of 1952. Apparently it was not a success and was quickly dropped from the line. Only crystal was made at this time.

Imperial Glass produced some items from the old Ipswich molds. These items may or may not be marked with the Diamond H. They made the candy jar and cover in amber, heather, verde, antique blue and milk glass. The candy box (made from a footed tumbler with a plain Cambridge lid) was made in mandarin gold and moonlight blue. The 11 in. footed bowl was made in amber, heather and verde. The footed pecan bowl (made from a candy jar base with a widely flared top with many close crimps) was made in heather and amber. This particular shape was never made by Heisey. Most of these items were made in varying periods in the early to mid sixties.



## HEISEY'S GLASSWARE OF DISTINCTION

By Mary Louise Burns

1983 EDITION



Condensed and updated! Contains all major tableware patterns with pictures for easy identification.

Current Price List Included

Order direct from author  
\$11.95 pp  
MARY LOUISE BURNS  
P.O. Box 1931  
Grants Pass, OR 97527



Individual price lists available for Heisey's Orchid Etch, Rose Etch., Animals & Verly's @ \$1.50 each plus large SASE.

## Classified Ads

**WANTED:** Buying Caprice blue or Rosepoint by Cambridge, Rose or Orchid by Heisey, and American, June, Fairfax, Versailles, Trojan, etc by Fostoria. NADINE PANKOW, 207 S. Oakwood, Willow Springs, IL 60480 PH: 312-839-5231.

**HEISEY SALE:** Including choice miniatures - New list each Jan., May & Sept. - L SASE Please. CLIFF HARRALSON, 1426 W. Highland, Springfield, MO 65807

**FOR SALE:** Having a tough time finding Heisey? Why not let us help you. We have many Creams & Sugars, Compotes, Stems Galore, Animals, Candlesticks, Bowls, Vases, Tobacco Items, Punch Cups, Cups & Saucers, Nut Dishes, Etched Ware, Etc. SASE - MOSTLY HEISEY, Rhoda Curley, 16 Clayton Place, Albany, NY 12209 PH: 518-482-6272.

**FOR SALE:** Hundreds of Heisey pieces. Send #10 S.A.S.E. for list. M & J WALTER ANTIQUES, c/o Sir Speedy, 431 Main St., Woburn, MA 01801.

**WANTED:** Heisey Cruet Stoppers. Need 1 each #1 (2 oz.); 1 each #1 (4 oz.); 1 each #1 (6 oz.); 1 each #2 (2 oz.); 1 each #3 (2 oz.) Interested in other Stoppers & Cruets. Need underplate for Large Lariat Flat Punch Bowl #1540. Send SASE with your needs. LA CASA del SOL, R.R. #2, Box 272, Keystone Heights, FL 32656 - TOM ADAMS & CON WOLFE - PH: 904-475-2076.

**FOR SALE:** Gazelle electrified lamp attached to ceramic base, 21" high. - \$350.00 - Call 617-948-2815.

**FOR SALE:** Heisey, one Spanish Stem, Cobalt Water Goblet - \$90.00 - One, same, professional ground - \$75.00. Cambridge, Caprice 300 Stem, Pistachio, 5 - 9 oz. Goblets - \$45.00 ea, 1 - 6 oz. Sherbet - \$45.00. J. ROBERTS, JR., 3998 Sullivan St., Madison, AL 35758 PH: 205-772-0209.

**FOR SALE:** #301 Williamsburg Hurricane Lamps, 5080 Globe - Beautiful Engraving by Emil Krall, Formerly owned by Lou Adkins. Like those on mantel in Heisey Museum. Base also cut. - \$900. PH: 614-344-6864.

**WANTED:** #5057 Suez tall goblet - Any Cutting - Prefer Peach Tree. MRS. A. HEITMANN, 1241 Howell Drive, Newark, OH. PH: 614-366-1711.

**FOR SALE:** Tyrolean, Orchid Etch, 4 oz. Oyster Cocktails - Rare - Have 10. PH: 1-614-221-9358.

**FOR SALE:** Send SASE (Bus. size) for Heisey Mail List, over 200 items, or send needs plus SASE. J. & R. COLLECTIBLES, P.O. Box 1030, Newark, OH 43055.

**WANTED:** Stemware, Southwind #1072 cutting on Cabochon line #6091. Water goblets, iced teas, sherbets, wines. Must be mint. Number available, price to: F. WUELLNER, 18915 Bedford, Brimingham, Michigan 48009.



C. R. DELANEY  
659 CANTERBURY COURT  
NEWARK, OH 43055



PH: 614-366-3741  
UPS & INS. EXTRA  
\* Marked

ROBERT H. DONOVAN  
P.O. BOX 4103  
ORMOND BEACH, FL 32075



PH: 904-677-1732  
Tue. & Thurs 9-5  
Mon-Wed-Fri. Eve.  
UPS EXTRA

- #5072 ROSE Sherbet\* W/Rose Etch (8) ea...\$ 23.00 \*
- #1519 WAVERLY 8" Plate W/Rose Etch (8)ea. 23.00 \*
- #1519 WAVERLY Seahorse Handled Candy & Cover\* With Rose Etch..... 175.00 \*
- #1519 WAVERLY Butter Dish & Cover With Orchid Etch..... 160.00 \*
- #1503 CRYSTOLITE Syrup (Black Handle).... 48.00 \*
- #1503 CRYSTOLITE Punch Cup\* (12) ea..... 7.50 \*
- #5003 CRYSTOLITE Goblet (8) ...ea..... 16.00 \*
- #1295 BEAD SWAG Tumbler (Opal) W/Rose Decoration..... 60.00 \*
- #1295 BEAD SWAG Salt & Pepper (Opal) W/Floral Deco. (Not Orig. Tops) Pr. 125.00 \*
- #5012 URN 9" Vase\* W/Planiagenet Cut (2).....Pr..... 300.00 \*
- #4054 CORONATION 2-1/2 oz. Bar W/Tavern Etch..... 120.00 \*
- # 352 MEDIUM FLAT PANEL Ftd. Soda\*, Amber (Harvey House)..... 50.00 \*
- #1540 LARIAT Cruet\*..... 58.00 \*
- #1252 TWIST Luncheon Set (4 Cups\*, 4 Saucers\*, 4 - 8" Plates\*) Marigold Set..... 130.00 \*
- #1184 YEOMAN 10-1/2" Dinner Plates W/447 Empress Etch, Flamingo (6)....ea... 37.50 \*
- #1401 EMPRESS Lionhead Bowl\*, Moongleam VICTORIAN BELLE BELL W/Clapper, Frosted..... 85.00 \*
- GOOSE, Wings Down..... 210.00 \*
- FISHBOWL..... 395.00 \*
- HEISEY BY IMPERIAL Caramel Slag Animals (Set of 12)....Set..... 750.00 \*

W. JOANNE VOELLER  
P.O. BOX 7751  
SALEM, OR 97303



PH: 503-585-6827 Eve.  
S & I EXTRA  
\* Marked

- # 2 MADONNA, 11", Frosted (Bust).....\$2700.00 \*
- #1567 PLANTATION Cake Plate\* VB4P12#59.. 125.00 \*
- #1567 PLANTATION Cream & Sugar\*..Pr..... 38.00 \*
- #1503 CRYSTOLITE Center Hdld. Double Bowl Relish\*, Gold Iridized, (Carnival)..... 65.00 \*
- #1503 LARGE SELECTION, CALL OR WRITE, SASE PLEASE \*
- #1519 WAVERLY Square Covered Butter..... 85.00 \*
- #5019 WAVERLY Goblets, 10 oz. (3) ea.... 22.00 \*
- # 433 GREEK KEY - All Marked: \*
- 3 Pt. Tankard..... 335.00 \*
- 3 Pt. Jug..... 335.00 \*
- 1 Pt. Jug (Top of Handle As Is)... 65.00 \*
- 5" Handled Nappy..... 35.00 \*
- High Foot For Large Punch Bowl.... 65.00 \*
- 8-1/2" x 3-1/2" Bowl, Inner Rim \*
- Wear With Tiny Chip..... 90.00 \*
- 5-1/2" 12 oz. Straight Soda (2)ea. 90.00 \*
- 3-3/4 8 oz. Straight Tumbler(3)ea. 48.00 \*
- 6 oz. Cupped Low Ft. Sherb.(3) ea. 27.00 \*
- 4-1/2 oz. Cupped Low Ft. Sherbet, (2) ea..... 22.00 \*
- #3390 CARCASSONE 11 oz. Short Stem Goblets\*, Sahara (5) ea..... 25.00 \*
- #1252 TWIST Ice Bucket\*, Marigold With Usual Problems No Handle..... 65.00 \*

- #1560 VICTORIAN BELLE\*, Frosted.....\$ 110.00 \*
- RINGNECK PHEASANT.....Pr.... 200.00 \*
- ROOSTER VASE..... 95.00 \*
- SET OF MALLARDS (3)...Set..... 395.00 \*
- GAZELLE..... 1150.00 \*
- #1401 EMPRESS Cake Set\* Old Colony Etch, Sahara - 1 10" Plate, 6 - 6" Plates.....All..... 88.50 \*
- # 357 PRISON STRIPE Punch Bowl\* & Base, 8 Cups.....Set..... 385.00 \*
- # 110 DOLPHIN CANDLESTICKS, Flamingo..Pr 395.00 \*
- # 351 PRISCILLA 6" Oval Vase, Flared\*... 28.00 \*
- #1590 ZODIAC 12 oz. Ice Tea\*(2) ea..... 18.00 \*
- #3390 CARCASSONE 6 oz. Sherbet, Lafayette Etch (6) All..... 59.00 \*
- # 393 NARROW FLUTE Individual Almond\*, Silver Overlay (8) All..... 79.00 \*
- #1295 BEAD SWAG Handled Mug, Red Stain - Souvenir "Pan-Am-Expo Buffalo 1907" \*
- #1252 TWIST 6" 2-Hdld Cheese\*, Marigold (6) All..... 75.00 \*
- #5067 PLANTATION 10 oz. Goblet, Ivy Etch Str. Side (9) ea..... 18.00 \*
- #5067 PLANTATION 5 oz. Claret, Paper Label (8) ea..... 20.00 \*
- #5067 PLANTATION 3-1/2 oz. Cocktail, Ivy Etch (6) ea..... 20.00 \*
- ROOSTER STEM Cocktail 3 1/2 oz.(6)ea. 45.00 \*
- #1505 PROVINCIAL 12 oz. Ftd. Soda, Limelight (4) ea..... 28.00 \*
- #1536 MILITARY CAP Ash Tray (2) ea..... 30.00 \*
- CARNATION VASE\* 6" Base, 13" High. 95.00 \*

WANTED:

- #6 Stopper For Cruet
- Cover for #352 Flat Panel Puff Box
- #1469 RIDGELEIGH Ash Tray, Diamond & Heart
- #1401 Empress Cup, Sahara
- #1509 QUEEN ANN Sugar, D/F With Chintz Etch
- #1445 Grape Cluster Floral Bowl
- CHROME TOP for #1567 Plantation Syrup
- Cover for anything in Greek Key
- #1567 PLANTATION Marmalade Jar cover
- # 111 CHERUB CANDLESTICK in Flamingo



ALL ITEMS IN GREEK KEY

- FOR SALE: Correction from last month.
- #3389 DUQUESNE 5 oz. Sherbet, Tangerine (2) ea.....\$145.00 \*
- #1506 PROVINCIAL 5 oz. Soda, Footed, Limelight.....ea..... 28.00 \*



MOSTLY HEISEY  
RHODA CURLEY  
16 CLAYTON PLACE  
ALBANY, NY 12209



# Seasons Greetings



PH: 518-482-6272  
UPS EXTRA  
PLEASE  
Shop OPEN BY APPT.

What better gift to give than Heisey. It sparkles, it glows, it shimmers (the prisms), it shines, it reflects, it radiates, it's brilliant. We have listed below several suggestions for last minute gift giving.

## FOR MOM

#1183	REVERE Covered Candy Jar 9" H - The cutting adds to its beauty.....	\$ 60.00
# 305	PUNTY & DIAMOND POINT Sugar Shaker, Sterling Lid.....	65.00
#1469	RIDGELEIGH Ball Vase 7".....	75.00
# 462	BASKET With very nice Flower Cutting, "H" 11" to top of handle.....	150.00
# 459	BASKET 7" Tall 13" to top of handle.....	140.00
#1225-109	PETTICOAT DOLPHIN Footed Compotier with beautiful gold decoration in Bird Motif, Excellent gold.... Pair.....	425.00
#1252	TWIST Cruet, Flamingo.....	90.00

## FOR DAD

#1184	YEOMAN Bridge Smoking Set 4 Ash Trays & Container, Flamingo.....	95.00
#7069	FOUR HORSE HEAD Ash Tray, Sahara.....	95.00
#1401	EMPRESS Ice Bucket, Crystal, D/F.....	100.00
# 361	SMOKING SET - Ash Tray & Cigarette Container, Flamingo.....	125.00
# 385	GRID & SQUARE Water Pitcher - This is one of Heisey's best.....	250.00
# 393	NARROW FLUTE Water Pitcher.....	145.00

## FOR SIS

#1184	BOWTIE Candy Dish, Middle Size, Moongleam (2) each.....	45.00
#1184	BOWTIE Candy Dish, Middle Size, Crystal.....	45.00
#1503	CRYSTOLITE Powder Jar With Lid.....	45.00
#4204	BUD VASE - 9-1/2" High, Flamingo (3) each.....	45.00
# 411	RIB & PANEL 2-Handled Mint, Hawthorne 6".....	40.00
# 411	RIB & PANEL 2-Handled Mint, Moongleam 6".....	40.00
#1184	YEOMAN Compote, Moongleam Stem & Foot, Crystal Bowl.....	45.00
#1401	EMPRESS Cream and Sugar, D/F in Sahara or Flamingo - Either Set.....	75.00

## FOR BROTHER

#4065	MERMAID 6" Ball Vase.....	250.00
#4225	COCKTAIL SHAKER, Fisherman Etch.....	245.00
#1506	WHIRLPOOL 3" Ball Candlesticks, Pair.....	45.00
#5048	ROOSTER HEAD Cocktail Stems (7) each.....	45.00
# 6	MUDDLER, Crystal.....	20.00
	PHEASANT.....	125.00
#1590	ZODIAC Ice Teas, Mint Condition (11) each.....	25.00

## STOCKING STUFFERS

INDIVIDUAL NUTS: #394 Narrow Flute Crystal, have 2, \$11.00 each; Flamingo, have 5, \$15.00 each; Moongleam, have 4, \$25.00 each; Octagon 2-Handled, have 8, \$9.00 each; Flamingo, have 4, \$13.00 each; Twist Flamingo, have 4, \$16.00 each; Empress Crystal D/F, have 3, \$15.00 each; Flamingo, have 2, \$19.00 each; Sahara, have 4, \$23.00 each; Creek Key \$25.00; Narrow Flute, have 4, \$18.00 each; Narrow Flute With Rim #473 - \$18.00 each.

SALT & PEPPERS: Whirlpool - \$25.00; Ridgeleigh - \$25.00 set; Pineapple & Fan, Sterling Tops - \$35.00 set; No. 24s - \$20.00 set.

INDIVIDUAL SALTS: Sunburst & Panel - \$20.00; Ridgeleigh - \$8.00 each; Fandango - \$19.00; Fancy Loop - \$15.00 each; Revere - \$14.00 each; Plain Panel - \$25.00.

OUR SHOP: WORTH A TRIP FROM ANYWHERE BY APPOINTMENT

H & R DIAMOND H  
HELEN & BOB RAREY  
1450 WHITE ASH DRIVE  
COLUMBUS, OH 43204



PH: 614-279-0390  
After 5:30 P.M.  
S & I EXTRA  
\* Marked

**PUNCH CUPS:**

# 300	PEERLESS* 4 oz. (8) ea.....	\$ 12.00
#300½	COLONIAL* 4 oz. (2) ea.....	12.00
# 335	PRINCE OF WALES PLUMES* (1).....	15.00
# 337	TOURAIN* 5 oz. (8) ea.....	9.50
# 339	CONTINENTAL* 4 oz. (2) ea.....	12.50
# 341	COLONIAL* 4-1/2 oz. (1).....	12.50
# 400	COLONIAL* 3-1/2 oz. (1).....	11.00
# 407	COARSE RIB (6) ea.....	12.50
# 411	TUDOR* (Rib & Panel) 4-1/2 oz. (8) ea.....	10.50
# 429	PLAIN PANEL RECESS* 4 oz. (3) ea.....	12.00
# 451	CROSS LINED FLUTE* 4-1/2 oz. (5)ea	15.00
#1401	EMPRESS* (7) ea.....	17.50
#1425	VICTORIAN* 5 oz. (12) ea.....	9.00
#1469	RIDGELEIGH* Round (6) ea.....	12.00
#1503	CRYSTOLITE* (9) ea.....	9.50
#1506	WHIRLPOOL* (4) ea.....	12.50
#1567	PLANTATION* (12) ea.....	15.00
# 393	NARROW FLUTE 14" Punch Bowl With High Foot*.....	175.00

SEASONS GREETINGS TO ALL OUR HEISEY FRIENDS

\*\*\*\*\*  
VIRGINIA & ODELL JOHNSON PH: 813-792-0604  
GLASS 'N' GLASS P & I EXTRA  
6909 - 10TH AVE., W  
BRADENTON, FL 33529 \* Marked

# 16	CANDLESTICKS, 7-1/2"...Pr.....	\$ 80.00
# 28	CANDLESTICKS, Cut 10" High, Pr....	110.00
#1469	RIDGELEIGH Sq. Block Cdlhdrs..Pr..	30.00
	EMPRESS Candlesticks...Pr.....	75.00
#1519	WAVERLY Ft. Violet Vase, Heisey Rose Etch 4".....	90.00
#1425	VICTORIAN Wines (7)....ea.....	22.50
#3350	WABASH Wines, W/O (4) ea.....	12.00
# 16	PUFF BOX.....	50.00
#1503	CRYSTOLITE Cup/Saucer (9).Per Set..	15.00
#1503	CRYSTOLITE 2-Comp. Hld. Relish, 2 Spoons.....	35.00
#1503	CRYSTOLITE 3-Comp. Relish 12".....	20.00
#1503	CRYSTOLITE Div.Candy Box/Cover....	30.00
#1503	CRYSTOLITE Leaf Shaped Ind. Nut Dishes (8) ea.....	5.00
#1503	CRYSTOLITE 14" Party/Torte Plate..	25.00
#1428	WARWICK Horn of Plenty 11" Bowl, Cobalt.....	295.00
#4026	OPTIC TOOTH Vase, D/O, Crystal, Moongleam Foot.....	65.00
#4054	CORONATION Soda, Lanc.Etch (2) ea.	75.00
#4225	COBEL Cktl. Shaker, 1 Qt., Polo E.	195.00
# 413	RIB & PANEL 3 Pt. Pitcher*, 4 Goblets....Set.....	90.00
	THUMBPRINT & PANEL Candleholders, Pr. & Floral Bowl.....	60.00



\* CLYDE COOK, JR.  
\* 569 MAPLEVIEW LANE  
\* CIRCLEVILLE, OH 43113  
\* PH: 614-474-4555  
\* After 5 P.M.  
\* P & I EXTRA



\* MARKED

* WOOD DUCK.....	\$ 495.00
* AIRESDALE.....	550.00
* SCOTTY.....	145.00
* BUNNY, Head Down.....	165.00
* STANDING PONY.....	95.00
* SET OF 3 MALLARDS, Wings Up*, Wings Down* and Wings Half*.....	575.00
* SET OF 3 ELEPHANTS, Small, Medium and Large.....	695.00
* SET OF 3 GEESE, Wings Down, Wings Up & Wings Half.....	550.00
* ROOSTER VASE.....	85.00
* GIRAFFE*, Head Turned.....	175.00
* RINGNECK PHEASANTS, Pair.....	225.00
* HEN.....	300.00
* ROOSTER.....	325.00
* SWAN.....	650.00
* GAZELLE*.....	1,495.00
* CLYDESDALE.....	395.00
* FISH BOOKENDS...Pair.....	245.00



\*\*\*\*\*  
\* NEIGHBOR'S ANTIQUES PH: 419-289-6613  
\* 1113 THOMAS DRIVE P & I EXTRA  
\* ASHLAND, OH 44805 \* Marked

* #4091	KIMBERLY Clarets* (12) ea.....	\$ 12.00
* #1295	BEADED SWAG Custard Goblet, Rose Decoration (2) ea.....	100.00
* #1425	VICTORIAN Sherbets.....	8.50
* #1425	VICTORIAN Low Goblets.....	14.00
* #1170	PLEAT & PANEL Handled Soup, Moongleam*...(8) ea.....	17.50
* #1252	TWIST Cup & Saucer, Moongleam* (4)ea	22.50
* #3350	WABASH Goblets, Pied Piper Etch* (10) ea.....	22.00
* #1225	RING BAND Toothpick.....	29.00
* #1250	GROOVE & SLASH 8" Ftd. Compote.....	80.00
* # 350	PINWHEEL & FAN Bowl* 8".....	55.00
* #3404	SPANISH Goblet, Killarney Cut (2) ea	39.00
* #3389	DUQUESNE Goblet, Sahara Bowl (3) ea.	33.00
* #4225	COBEL Cocktail Shaker, 1 Qt., Tally Ho Etch.....	130.00
* #2401	12 oz. Soda, Tally Ho Etch (3) ea...	33.00
* # 300	PEERLESS Cordials* (6) ea.....	25.00
* #1225	SAWTOOTH BAND* Wine (3) ea.....	33.00
* #1559	COLUMBIA Candlestick, Crimped Base, Pr.....	39.00
* #5057	SUEZ Goblet* (5) ea.....	15.00
* #5057	SUEZ Cocktail* (4) ea.....	10.00
	HCA Souvenir Plate 1972, 73, 74, 75, 76 ea.....	10.00

MERRY CHRISTMAS



KARL KOLTER  
305 W. ADAMS  
DECATUR, IN 46733



PH: 219-724-4672 \*  
P & I EXTRA \*  
\* Marked

YESTERYEAR ANTIQUES

PH: 616-372-3136

STEWART & CATHY  
P.O. BOX 55  
OSHTMO, MI 49077



P & I EXTRA

- # 341 PURITAN Cups\*, 3 oz. Mint, Set of 6.....\$ 30.00 \*
- #1101 CUSTARDS\*, Mint, Set of 10..... 35.00 \*
- #1503 CRYSTOLITE Comport\*, Low Footed..... 16.00 \*
- #1503 CRYSTOLITE Comport, High Footed..... 18.00 \*
- #1503 CRYSTOLITE Cigarette Box\* W/Cover... 22.00 \*
- #1401 EMPRESS Bowl 11", Crystal, with #941 Barcelona Cutting, Footed..... 40.00 \*
- #1632 LODESTAR, Dawn, Candleholders\*..Pr.. 60.00 \*
- #1469 RIDGELEIGH Celery Tray\*..... 26.00 \*
- # 9 FLORAL BOWL\*, Crystal Base, Gold Flashed Roll..... 22.00 \*
- # 406 COARSE Rib Plates\* 7-1/2", Flamingo, (12) ea. \$6.00 ALL..... 60.00 \*
- # 406 COARSE RIB Plates\*, 7-1/2", Crystal, (12) ea. \$4.50 ALL..... 42.00 \*
- # 349 COLONIAL Sherbets\*, Scallop Tops, Mint, Set of 8 - Ea. \$16.00 ALL..... 112.00 \*
- # 393 NARROW FLUTE Cream & Sugar\*..Pr.... 35.00 \*
- ROOSTER TAIL Cocktail Glass, Monogram "W", Pair 1 Perfect, 1 Repairable, Chip on Foot, Both..... 40.00 \*
- GAZELLE\* Mint & Marked..... 800.00 \*
- #1567 PLANTATION Sherbet..... 15.00 \*
- #1425 VICTORIAN Goblets - 1 9 oz. Low. Ft\* 18.00 \*
- 2 9 oz. Hi. Ft. 16.00 \*
- # 339 CONTINENTAL Sherbet\* 4 oz. Lg.Mark.. 14.00 \*

\*\*\*\*\*

- #5074 SEAHORSE STEM Cocktail (8) ea.....\$165.00 \*
- SCOTTY (Sealyham)..... 120.00 \*
- DONKEY..... 265.00 \*
- COLT, STANDING..... 110.00 \*
- CLYDESDALE (Slight mold roughness on rear foot)..... 350.00 \*
- FLOATING DUCKLING..... 145.00 \*
- SPARKIE - Plug Horse - Amber..... 645.00 \*
- ASIATIC PHEASANT..... 345.00 \*
- GOOSE, WINGS HALF..... 99.00 \*
- GOOSE, WINGS UP..... 99.00 \*
- # 357 DUCK ASH TRAY, Flamingo..... 175.00 \*
- #3404 SPANISH Saucer Champagne, 5-1/2 oz. Cobalt (3) each..... 110.00 \*
- #3404 SPANISH Cocktails, 3 oz. Cobalt, (6) each..... 140.00 \*
- #3404 SPANISH Oyster Cktl., Cobalt (8) ea 65.00 \*
- #1413 CATHEDRAL Vase, Flared - Cobalt.... 445.00 \*
- #1519 WAVERLY 8" Plates, Orchid Etch, (14) each..... 19.00 \*
- #5025 TYROLEAN 6 oz. Saucer Champagne, Orchid Etch (6) ea..... 30.00 \*
- #5025 TYROLEAN 10 oz. Water Goblet, Orchid Etch (10) ea..... 40.00 \*
- #5025 TYROLEAN 12 oz. Ice Tea, Footed, Orchid Etch..... 45.00 \*
- #1519 WAVERLY 7" Plates, Orchid Et.(2)ea. 17.00 \*
- #3484 DONNA 12 oz. Soda, Orchid Et.(4)ea. 58.00 \*
- #5072 CORDIAL, Rose Etch..... 165.00 \*
- #5072 LOW SHERBET, Rose Etch (2) ea..... 34.00 \*
- #1519 WAVERLY 5-1/2" Mayo., Ftd.Rose Et.. 70.00 \*
- #1401 EMPRESS 8" Sq. Plates, "Tangerine" (2) ea..... 149.00 \*
- #1255 PINEAPPLE & FAN 1/2 Pt. Tankard, Custard..... 125.00 \*
- #1280 WINGED SCROLL Toothpick, Custard... 140.00 \*
- #4157 ROSE BOWL, 5-1/2", "Hawthorne"..... 125.00 \*
- #1405 IPSWICH Candle Vase W/Cry. Insert & Prisms - Sahara...Pair..... 440.00 \*
- #1231 RIBBED OCTAGON Cup/Saucer, Flamingo (8 sets) ea..... 15.00 \*
- #1231 RIBBED OCTAGON 10-1/2" Center Hdld. Sandwich Plate, Flamingo..... 32.00 \*
- #1503 CRYSTOLITE Cordial (2) ea..... 75.00 \*
- #1503 CRYSTOLITE Ind. Hdld. Nuts (6) ea.. 15.00 \*
- #1503 CRYSTOLITE 12" Bowl, Round & Flared 40.00 \*
- #1503 CRYSTOLITE Ind. Swan Nuts (4) ea... 18.00 \*
- #1503 CRYSTOLITE Tray & Ind. Sug.&Crmr... 57.50 \*
- #1503 CRYSTOLITE 5-Part Relish Tray..... 40.00 \*
- #1503 CRYSTOLITE 3-Lite Candlesticks, Pair 75.00 \*
- #1401 EMPRESS 8" Sq. Plates, "Alexandrite" (4) ea..... 70.00 \*
- # 134 TRIDENT 2-Lite Candles, Sahara, Pr. 159.00 \*
- #1495 FERN 2-Lite Candles, Floral Et.,Pr. 97.00 \*
- #3390 CARCASSONE 11 oz. Ftd. Goblets, Sahara (15) ea..... 28.00 \*
- #1401 EMPRESS Cup/Saucer, Sq., Sahara, (10 sets) ea..... 37.50 \*
- #1401 EMPRESS Plate 8" Rd., Sah. (7) ea.. 18.00 \*
- #1401 EMPRESS Plate 8" Sq., Sah. (6) ea.. 18.00 \*
- #1401 EMPRESS D/F 3-Pt. Jug, Sahara..... 160.00 \*
- #1401 EMPRESS D/F Cr./Sug, Sahara..Pr.... 70.00 \*
- #1401 CELERY TRAY 12", Flamingo..... 25.00 \*

WE MAINTAIN A SEARCH SERVICE - CONTACT US ABOUT YOUR NEEDS "WE ALSO BUY."

SCHWANS ANTIQUES

RT. 1, BOX 175B  
WILLIAMSBURG, VA 23185

PH: 804-229-7873  
P & I EXTRA

- #3397 GASCONY Tomato Juice, Old Colony Etch, Crystal.....\$ 75.00 \*
- #1420 TULIP VASE, Crystal..... 85.00 \*
- # 433 GREEK KEY Water Bottle..... 175.00 \*
- # 335 PRINCE OF WALES PLUMES Butter, Excellent Gold..... 125.00 \*
- # 335 PRINCE OF WALES PLUMES Tumblers, Excellent Gold (6) ea..... 25.00 \*
- # 335 PRINCE OF WALES PLUMES Spooner, Excellent Gold..... 85.00 \*
- #1776 KALONYAL Cake Salver..... 95.00 \*
- #1626 LODESTAR Pitcher, Dawn..... 110.00 \*
- #1519 WAVERLY Orchid Vase 4"..... 95.00 \*
- #1519 WAVERLY 9" 4-Section Relish, Orchid Etch..... 60.00 \*
- # 142 CASCADE Candles, Orchid Etch..Pr.... 135.00 \*
- #1540 LARIAT Cologne..... 45.00 \*
- #1401 EMPRESS D/F Vase, Sahara..... 115.00 \*
- # 343 SUNBURST Compote 5"..... 50.00 \*
- # 101 9" CANDLES.....Pr..... 125.00 \*
- # 22 7" CANDLES.....Pr..... 95.00 \*
- # 325 PILLOWS 7" Rose Bowl, Wear on Bottom 95.00 \*
- # 407 COARSE RIB Ice Tub, Flamingo..... 75.00 \*
- #1229 BARNUM Egg Cups (2) ea..... 45.00 \*



**JIM GARTNER**

444 GIRARD STREET #103  
GAITHERSBURG, MD 20877



PH: 301-869-5306  
P & I EXTRA  
\* Marked

- # 459 BASKET 8" Colonial Type\*.....\$130.00
- # 459 BASKET 7" Colonial Type\*..... 115.00
- # 341 PURITAN Covered Compote 7"..... 135.00
- # 352 FLAT PANEL Fruit Jar & Cover,  
46 oz. - Dated\*..... 125.00
- #3355 FAIRACRE Pitcher 54 oz. Crystal\*  
Moongleam Base & Handle..... 145.00
- #1404 OLD SANDWICH 1/2 Gal. Jug, Sahara\* 110.00
- #1489 PURITAN Horse Head Ash Tray 4 1/2" Sq. 60.00
- #1489 PURITAN Horse Head Cig. Box, 6-1/4  
x 4"..... 60.00
- #1401 EMPRESS Mustard & Cover\*..... 25.00
- #1401 EMPRESS 5" D/F Compote, Flamingo\*. 195.00
- #1401 EMPRESS Cruet, Flamingo..... 125.00
- #1401 EMPRESS Cruet, Sahara..... 125.00
- #1401 EMPRESS Salt & Pepper, Sahara.Set. 100.00
- #1401 EMPRESS D/F Nut Cups, Sahara  
(4) ea..... 16.00
- #1519 WAVERLY 3-Piece Mayonnaise Set,  
Rose Etch..... 85.00
- # 201 WINDSOR Candle Lamps, 1 Pr. With  
Cord\*..... 220.00
- #1021 HOTEL Cream & Sugar With Top,  
Daisy Cutting\*..... 65.00
- # 357 PRISON STRIPE Berry Bowl & 5  
Nappies - Gold Fair..... 55.00
- # 433 GREEK KEY Water Bottle..... 140.00
- #4220 JANICE 4-1/2" Spiral Optic Vase,  
Sahara..... 55.00

\*\*\*\*\*

**SANDRA HANDLER**

11 SAGEWOOD DRIVE  
DON MILLS, ONTARIO  
CANADA M3B 1T5



PH: 416-441-2251  
PRICES U.S. \$  
P & I EXTRA  
\* Mkd. \*\* 2 Mks.

- # 135 CANDLE 6-3/4" Cry/Silver Deposit\*.\$ 45.00
- # 355 QUATOR Footed Cream, Crystal\*..... 30.00
- # 393 NARROW FLUTE 6 oz. 5" Sherbet,  
Crystal\* (3) ea..... 18.00
- # 411 RIB & PANEL 9-1/2" Trumpet Vase,  
Crystal\*..... 28.00
- #1170 PLEAT & PANEL Pitcher, Flamingo\*.. 50.00
- #1170 P.&P. 4-3/4" 2-H Jelly, Mglm.\*.... 20.00
- #1170 P. & P. Oil w/stopper, Crystal\*... 25.00
- #1184 YEOMAN D/O 6-1/2" Deep Comp.,  
Crystal/Moongleam\*\*..... 65.00
- #1280 WINGED SCROLL 1/2 Gal. Jug,  
Emerald..... 200.00
- #1280 WINGED SCROLL Tumbler, Iv. Verde.. 55.00
- #1280 WINGED SCROLL 4" Pin Tray, Iv. V.. 200.00
- #1401 EMPRESS 9" Rd. Plt, Mglm.\* (8) ea. 45.00
- #1401 EMPRESS Mustard With Lid, Sahara\*. 65.00
- #1401 EMPRESS Candle 1w 4-ft 2-h, Sah.\*. 40.00
- #1401 EMPRESS 7" Flat Oval Sauce, Sah.\*. 25.00
- #1401 EMPRESS #448 Old Colony Etch,  
7" Square Plate, Sahara\* (4) ea... 22.00
- #1428 WARWICK 7" Cornucopia Vase,  
Cobalt\*..... 225.00
- #1428 WARWICK Candle 2-light, Sahara\*... 80.00
- #1428 WARWICK 2-1/2" Cornucopia Vase,  
Cobalt\*..... 65.00
- #3350 WABASH #440 Frontenac Etch, Low  
Sherbet, Hawthorne\* (4) ea..... 50.00

**PEGGY'S ANTIQUES**

P.O. BOX 367  
SPAVINAW, OK 74366



PH: 918-589-2859 aft. 7PM  
Send Wants With SASE  
Shipments over \$100  
prepaid; under \$100  
P & I Extra.

- \* \* Marked
- \* MERRY CHRISTMAS AND A HEISEY NEW YEAR!!!  
\* Give a rare stem for Christmas.
- \* # 901 9 oz. Goblet\*(Seldom seen, Ryan's  
stem book).....\$ 75.00
- \* # 417 7 oz. Goblet\*(very few collections) 45.00
- \* # 413 8 oz. Goblet (some collections)  
Original Sticker..... 35.00
- \* # 354 Grapefruit, Plate attached, cut  
unknown\*..... 100.00
- \* #6003 TEMPO 10 oz. Goblet\*, (7) ea..... 20.00
- \* #6004 CLASSIC 12 oz. Goblet\* (7) rim  
nicks, ea..... 20.00
- \* #1405 IPSWICH 9 oz. Goblet (8) set..... 160.00
- \* #1486 COLEPORT Tumblers\* (7) set..... 120.00
- \* #1486 COLEPORT 2 oz. Bar\* (5) set..... 75.00
- \* WAVERLY 3-1/2 oz. Cocktail\*(13) ea. 20.00
- \* PEERLESS 1-1/2 oz. Sherry\* (7),  
Some have patent no..... 109.00
- \* #5077 LEGIONNAIRE 3-1/2 oz. Cocktail,  
Crystal Bowl, Amber Stem..... 45.00
- \* # 359 CORDIAL\* 3/4 oz..... 40.00
- \* #5024 OXFORD\* 3-1/2 oz. Cocktail..... 35.00
- \* #5024 OXFORD 4-1/2 oz. Claret..... 35.00
- \* #3368 ALBEMARLE\* 8 oz. Tall Stem, Cutting  
unknown..... 45.00
- \* #3368 ALBEMARLE 5 oz. Champagne, Same  
Cutting..... 45.00

\*\*\*\*\*

**DONALD P. BEAN**

36 HARDING STREET  
MILFORD, MA 01757



PH: 617-473-0561  
P & I EXTRA  
\* Marked

- \* # 134 TRIDENT 2-Lite Candle, Sahara (1)..\$ 39.00
- \* # 16 9" CANDLESTICK\* - 1 only..... 39.00
- \* #1533 WAMPUM Candlestick...Pair..... 34.00
- \* #1170 PLEAT & PANEL 10" Rd. Spice Tray\*.. 27.50
- \* # 10 MUDDLER, Paper Label (2) ea..... 12.00
- \* # 354 WIDE FLAT PANEL Oval Sugar, Mglm.\*. 18.00
- \* #1503 CRYSTOLITE 9" Clover Leaf, 4-Part  
Relish..... 10.00
- \* #1184 YEOMAN 8-1/2" D/O Fruit Bowl\*, Sah. 17.00
- \* #1252 TWIST Moongleam 2-Handled Bon Bon\*  
(2) ea..... 17.50

\*\*\*\*\*

**JESS W. MONEY**

12484 HWY 285  
CONIFER, CO 80433



PH: 303-838-6803  
P & I EXTRA  
\* Marked

- \* # 160 LOCKET ON CHAIN Spooner, Emerald  
Green.....\$135.00
- \* # 433 GREEK KEY 2 oz. Wine\* Crystal (3)ea 150.00
- \* #1295 BEAD SWAG Wine, Opal, Floral Decor.  
(Not souvenir)..... 250.00
- \* #1404 OLD SANDWICH\* 18 oz. Hdld. Mug,  
Sahara (8) ea..... 150.00
- \* #1415 TWENTIETH CENTURY\* 5 oz. Juice,  
Dawn (10) ea..... 32.50
- \* #1417 ARCH Tumbler, Sahara (6) ea..... 50.00
- \* #3404 SPANISH STEM 2-1/2 oz. Wine,  
Springtime Etch..... 50.00
- \* #5048 RSTR. HEAD CKTL.Amber Head (3) ea.. 500.00
- \* STANDING PONY.....(2) ea..... 85.00

**HERMAN & JOYCE FRANCIS** PH: 404-483-7506  
 J & H MEMORY COLLECTORS P & I EXTRA  
 5289 EAST SHORE DRIVE  
 CONYERS, GA 30208 \* Marked



- #1401 EMPRESS 8" Sq. Plates\*, Alexandrite, (12) ea.....\$ 45.00
- #1401 EMPRESS Cups/Saucer\*, Alexandrite, (5 sets) ea..... 110.00
- #3390 CARCASSONE Tall Goblets\*, Alexandrite, Wide Optic (8) ea..... 80.00
- #3390 CARCASSONE Short Sherbets\*, Alexandrite, W/O (8) ea..... 80.00
- #3390 CARCASSONE 2½ oz. Ftd. Wines, Alexandrite, W/O (8) ea..... 95.00
- #3480 KOORS 12 oz. Ftd. Sodas, D/O With Moongleam foot (8) ea..... 45.00
- #3481 GLENFORD 3 oz. Footed Cocktails, D/O W/Moongleam Foot (8) ea..... 45.00
- #3357 KING ARTHUR Goblets\*, D/O With Moongleam Foot & Stem (8) ea..... 35.00
- #3357 KING ARTHUR Saucer Champagne\*, D/O W/Moongleam Foot & Stem (8) ea..... 35.00



\*\*\*\*\*

**JAY C. MARTIN** PH: 212-912-0697 P.M.  
 375-24L SOUTH END AVE. All Items Exc. Cond.  
 NYC, NY 10280 Otherwise Stated  
 \* Marked P & I EXTRA



Offers Considered

- # 300 PEERLESS Cordials (4), \*3.....\$ 80.00
- # 353 MEDIUM FLAT PANEL Butter W/Cover,\*2 100.00
- #1229 OCTAGON Mglm. Tricorner Mint\*..... 35.00
- #1252 TWIST 3 Saucers - Faint \*..... 10.00
- #1469 RIDGELEIGH Ind. Cr./Sug. W/Tray \*3. 42.00
- #3404 SPANISH Cobalt 3-1/2 oz. Cocktail.. 110.00
- #3404 SPANISH Cobalt 3-1/2 oz. Cktl. 3f. 95.00
- TOY HORSEHEAD..... 25.00



\*\*\*\*\*

**PATTON HOUSE ANTIQUES** PH: 703-967-1181  
 P.O. BOX 547 After 6 P.M.  
 LOUISA, VA 23093 P & I EXTRA  
 \* Marked



- #3480 KOORS "29" 12 oz. Sodas (8) ea.....\$ 8.00
- All..... 60.00
- #1472 PARALLEL QUARTER C.Sticks...Pair... 36.50
- # 150 BANDED FLUTE Goblets (2) ea..... 25.00
- # 5 CANDLESTICKS...Pair\*..... 85.00
- # 479 PETAL (Hotel) Cr./Sug., Flamingo... 45.00
- # 466 PANEL & DOUBLE PLEAT Bowl\* 9"..... 35.00
- # 411 TUDOR Goblets\* (2)...ea..... 16.50
- # 406 COARSE RIB Goblet.....
- #1404 OLD SANDWICH Pitcher & 8 Tall Sodas Sahara..... 400.00

\* **BOSTON HOUSE ANTIQUES** PH: 617-471-2723

\* P.O. BOX 94 After 6 P.M.  
 \* WOLLASTON, MA 02170 P & I EXTRA



- \* HEISEY GLASSWARE: 15-1/2" GREEK KEY
- \* Punch Bowl & Base + 12 Cups.....\$525.00
- \* Candlesticks:
- \* Reference: Tom Felt & Bob O'Grady Heisey Candlesticks Candelabra & Lamps, 1984.
- \* # 2 OLD WILLIAMSBURG 7"...Pr.....\$ 85.00
- \* # 2 OLD WILLIAMSBURG 9"...Pr..... 110.00
- \* # 5 7-3/4" Single..... 35.00
- \* 8" Single..... 35.00
- \* 6-1/2" Single..... 35.00
- \* 9"...Pair..... 90.00
- \* # 21 ARISTOCRAT 7-1/2" With Cutting, Single (rep.)..... 25.00
- \* # 22 WINDSOR Single 7-1/2"..... 40.00
- \* # 113 MARS, Flamingo (rep.)...Pr..... 35.00
- \* #1405 IPSWICH Candlevases W/Inserts and Center Bowl..... 210.00
- \* #300-1 12" Candelabra (not perfect) call
- \* #300-4 4-Light Candelabra (not perfect) call
- \* #1433 THUMBPRINT & PANEL, Sahara..Pr..... 125.00
- \* Goblets:
- \* #3350 WABASH (4) Moongleam Stem...ea..... 35.00
- \* Cruets:
- \* # 433 GREEK KEY..... 45.00
- \* # 341 PURITAN..... 25.00
- \* #1404 Catsup Bottle & #3 p/s (Vg.III,P169) 65.00
- \* # 393 NARROW FLUTE Oil #10 Stopper..... 45.00
- \* Nappies:
- \* # 350 PINWHEEL & FAN 5-1/2" (3) ea..... 18.00
- \* #1205 FANCY LOOP 4-3/4"..... 18.00
- \* Lemon Dishes:
- \* DOLPHIN FINIAL, Sah., Empress Etch. 85.00
- \* DOLPHIN FINIAL, Cry., Cut. - In
- \* Stainless Steel Holder W/Knife..... 55.00
- \* Misc:
- \* # 341 Footed Celery..... 55.00

ALL ITEMS MINT UNLESS OTHERWISE NOTED.

\*\*\*\*\*



\*\*\*\*\*

\* **CLASSIQUE GLASS CO.** PH: 918-585-3203  
 \* BOX 52572 Mint. Unless  
 \* TULSA, OK 74152 Noted. P & I EXTRA  
 \* \* Marked



- \* #1205 FANCY LOOP 7-Pc. Berry Set.....\$185.00
- \* #1205 FANCY LOOP Mustard - Less Lid..... 30.00
- \* #1401 EMPRESS:
- \* Dolphin Ftd. Vase\*, 9", Alexandrite 675.00
- \* Dolphin Ftd. Floral bowl\*, 11"Mglm. 110.00
- \* Dolphin Ftd. Vase\* 9", Moongleam... 95.00
- \* Dolphin Ftd. 3-Hdld. Sugar\*, Sahara 40.00
- \* Dolphin Ftd. Creamer\*, Flamingo.... 40.00
- \* #1404 OLD SANDWICH:
- \* Beer Mug\*, 18 oz., Sahara..... 240.00
- \* Oval Crm/Sugar\*, Sahara....Set..... 75.00



JEAN & DON PARRETT  
4995 MAPLE DALE ROAD  
JACKSON, MI 49201

PH: 517-784-7319  
P & I EXTRA

- RARE - BEAUTIFUL - RARE
- #4036½ AMBER 20 OZ. DECANTER - TAKING BIDS UNTIL  
DECEMBER 30, 1984. PLEASE, ALL SERIOUS BIDDERS  
ONLY.
- #5012 URN 9" Vase, Orchid Etch.....\$190.00  
#1519 WAVERLY 14" Ftd. Salver, Orchid Etch 220.00  
#1519 WAVERLY Dolphin Compote, Orchid Etch 175.00  
# 485 SANDWICH TRAY 14", Orchid Etch..... 75.00  
#3484 DONNA Pitcher, Orchid Etch (Hd1.  
Check)..... 110.00  
#5025 ORCHID Champagne (2) ea..... 24.00  
#5025 ORCHID Sherbet..... 22.00  
# 341 DECANTER, Steeple Str., Moongleam.. 190.00  
#4004 IMPROMPTU 20 oz. Decanter..... 120.00  
#4036 ROOSTER STP'R. 1 qt. Decanter &  
#5048 ROOSTER Cocktails (4)...Set..... 240.00  
#5038 ROOSTER TAIL Tall Cocktails (4) ea.. 45.00  
#4002 TALLY HO Etch Cocktails (6) ea..... 27.50  
#4044 VENUS Cutting Oyster Cocktail..... 25.00  
#3365 SEA NYMTH Etch Cry. Champ. (3) ea... 22.00  
#5009 QUEEN ANN Everglade Cut Goblet (6)ea 22.00  
#3408 JAMESTOWN Barcelona Cut Goblet (6)ea 22.00  
#3408 JAMESTOWN Narcissus Cut Goblet (5)ea 30.00  
#3404 SPANISH Champ., Cobalt (3) ea..... 80.00  
#1540 LARIAT "R" Mono. Goblet (11) ea..... 7.00  
#1540 LARIAT "R" Mono Champagne (8) ea.... 5.00  
#1540 LARIAT "R" Mono Juice (4) ea..... 4.00  
#1519 WAVERLY Sw. Pony Hd1. Butter..... 60.00  
#1467 RIDGELEIGH Covered Puff Box..... 65.00  
#1184 YEOMAN Puff Box, 3 Pc., Flamingo.... 85.00  
#1280 WINGED SCROLL Trinket Box, Opal..... 45.00  
#1280 WINGED SCROLL Sugar, Emerald & Gold. 65.00\*  
#1951 CABOCHON Cream/Sugar, Dawn...Pr..... 85.00\*  
#1567 PLANTATION Cry. Cream/Sugar..Pr..... 50.00\*  
#1467 RIDGELEIGH Sm. Cr./Sug. & Tray..Set. 40.00\*  
# 479 HOTEL Sugar, Moongleam..... 17.00\*  
#1485 SATURN Sugar, Crystal..... 7.00\*  
# 341 COLONIAL Creamer, Crystal..... 10.00\*  
#1503 CRYSTOLITE Epergne, 10" & 14"..... 75.00\*  
#1503 CRYSTOLITE Compote 6" High..... 15.00\*  
#1503 CRYSTOLITE Swan Nut Dish, Large..... 27.00\*  
#1503 CRYSTOLITE Pitcher With Ice Lip..... 75.00\*  
#1485 SATURN Ball Vase 8", Ground..... 70.00\*  
#4157 FLARED Vase, Moongleam, D/O..... 35.00\*  
#1205 RAINDROP Bowl, Moongleam, D/O..... 50.00\*  
#1220 PUNTY BAND Berry 9", Red Flashed in  
Silver Brides Basket and  
#1220 PUNTY BAND Berry Set, Red Flash 4½"  
7 Piece Set..... 200.00\*  
# 515 PERFUME, Moongleam, D/O..... 125.00\*  
#300½ PEERLESS Bulbous 70 oz. Pitcher.... 85.00\*  
#3480 KOORS Pitcher, Moongleam, D/O..... 120.00\*  
# 500 OCTAGON Handled Ice Bucket, Marigold 145.00\*  
#1252 TWIST Handled Ice Bucket, Moongleam. 125.00\*  
#1295 BEADED SWAG Spooner, Opal, Large  
Flower..... 70.00\*  
#1295 BEADED SWAG, Covered Sugar, Opal,  
Small Flower..... 75.00\*  
#1295 BEADED SWAG Creamer, Opal, Small  
Flower..... 70.00\*

C H R I S T M A S G O O D I E S

- #1280 WINGED SCROLL, Berry 8", Custard &  
Gold (Straw Mark).....135.00\*

- #1280 WINGED SCROLL Jelly 5", Custard &  
Gold.....\$ 40.00  
#1280 WINGED SCROLL Berry 4-1/2",  
Custard (5) ea..... 30.00  
#1245 RING BAND Pitcher, Custard & Gold.. 295.00  
# 301 CANDELABRUM 2-Lite "A" Prisms..Pr.. 225.00  
# 142 CASCADE Candleholder, Heisey Rose.. 75.00  
#1511 TOUJOURS Candleholder, 2-Lite, "A"  
Prism..... 75.00  
#1467 RIDGELEIGH Candleholder, 1-Lite  
# 5 CANDLESTICK 1-Lite, Crystal..Pr.... 75.00  
# 300 4-Lite "A" Prisms 15" High, "Hawks"  
Sterline Silver Base..... 350.00  
# 402 GOTHIC 2-Lite Candelabra "C"  
Prisms...Pr..... 295.00  
# 99 SQUAT 1-Lite Candleholder, Marigold 40.00  
ELEPHANT, Small (1)..... 145.00  
RING NECK PHEASANT (2)...ea..... 125.00  
CLYDESDALE (1)..... 290.00  
FIGHTING ROOSTER (1)..... 120.00  
GIRAFFE (1)..... 150.00  
# 473 6" COMPOTE, Footed..... 37.50  
#1489 PURITAN Square Horse Head Ash Tray. 75.00



\*\*\*\*\*  
THE COLLECTOR'S STOP PH: 617-921-0115 Aft.6PM  
512 BROUGHTON DRIVE All Items In Excellent  
BEVERLY, MA 01915 Condition Otherwise  
\*Marked Stated - P & I EXTRA

XMAS GIFT IDEAS

- #341½ OLD WILLIAMSBURG 1-Pint Pitcher\*...\$125.00  
#1401 EMPRESS Vase 9", D/F, Moongleam\*... 185.00  
# 433 GREEK KEY 1/2 Gal. Jug\*..... 175.00  
# 355 DOUBLE DOMINO Sugar\*..... 50.00  
#1488 KOHINOOR Zircon Ash Tray (4)\* ea... 80.00  
#1489 PURITAN 5" Deep Square Ash Tray.... 25.00  
#4036 SHERRY BOTTLE, Silver Stopper,  
Maryland Cut..... 85.00  
#1404 OLD SANDWICH Oval Bowl\*, Moongleam. 100.00  
# 31 TOY CANDLESTICK\*..... 27.50  
#1108 EGG CUP, 5 oz. Saucer Footed (2)\*ea 15.00  
# 413 RIB & PANEL Cigarette Box\*, Mglm... 55.00  
# 150 BANDED FLUTE Match Box & Cover\*.... 45.00  
# 354 SYRUP\*, 16 oz..... 38.00  
# 353 SYRUP, 5 oz., Moongleam\*..... 45.00  
# 353 SYRUP, 5 oz., Flamingo\*..... 48.00  
# 2 WILLIAMSBURG 11" Candlesticks..Pair 185.00  
#1469½ RIDGELEIGH 8" Vase\*, Zircon..... 185.00  
# 433 GREEK KEY Cheese & Cracker\*..... 110.00  
#1404 OLD SANDWICH Salt & Pepper, Sah.\*.. 85.00  
#1428 WARWICK Candlesticks, Sahara..Pair. 100.00  
#1428 WARWICK Horn of Plenty Bowl\*, 11",  
Sahara..... 110.00

ALL ITEMS SUBJECT TO PRIOR SALE  
WE WILL PURCHASE HEISEY, ONE PIECE OR A COLLECTION



**5 LINES / 12 MONTHS / \$20.00**

**DEALERS DIRECTORY**

**THE COLLECTOR**  
 Heisey, Fostoria, Cambridge, Linens,  
 Lace & Primitives  
 Mary Weaver, 209 Cortez Rd., E.  
 (44th Ave., E.), Bradenton, Fl 33505  
 Mon., Wed., Fri., - 11-4  
 PH: (813) 729-2324 - Evenings

We assume no responsibility for errors in these ads after the first printing....Editor.

For changes in ads during the year, please send \$2.00 per line.

<p><b>A DOOR ANTIQUES</b>                      Heisey My Specialty                      4241 Bayard Road                      South Euclid, Oh. 44121                      PH: (216) 381-3008</p>	<p><b>GERT'S GLASS</b>                      Heisey &amp; Duncan                      Gertrude &amp; Russell Swetnam                      1926 Saratoga Dr., Adelphi, Md. 20783                      PH: (301) 434-5113</p>	<p><b>MOSTLY HEISEY</b>                      Rhoda Curley                      16 Clayton Place                      Albany, NY 12209                      By Appointment, PH: (518) 482-6272</p>
<p><b>ALL HEISEY AUCTION</b>                      Consignments Welcome                      Apple Tree Auction Center                      1616 W. Church, Newark, Oh. 43055                      PH: (614) 344-9449</p>	<p><b>GLASS 'N' GLASS</b>                      Virginia &amp; Odell Johnson                      6909 10th Ave. W.                      Bradenton, Fl. 33529                      PH: (813) 729-0604</p>	<p><b>MOUND BUILDERS ANTIQUES</b>                      Heisey &amp; Animals, General Antiques                      Irene Rauck                      1138 Moundview, Newark, Oh. 43055                      PH: (614) 344-6043</p>
<p><b>ANN'S GIFTS &amp; ANTIQUES</b>                      105 W. Main St., Hebron, Oh. 43025                      Intersection of Rts. 40 &amp; 79                      Next door to Daisy Queen                      Daily 10:30 to 5:30</p>	<p><b>GLASS WITH CLASS</b>                      Lenore A Shelley, GGHCC                      1336 Lincoln Avenue                      San Jose, Ca. 95125                      PH: (408) 286-8098</p>	<p><b>PATTON HOUSE</b>                      Heisey &amp; Duncan Miller                      Rocky's Mall, I-81 &amp; US 11                      Weyer's Cave, Va. 24486                      PH: (703) 967-1181</p>
<p><b>ANTIQUES - THE SHULTZES</b>                      206-208 East Main St.                      Newmanstown, Pa. 17073                      15 Miles West of Reading, Pa.                      PH: (215) 589-2819</p>	<p><b>GREEN ACRES FARMS</b>                      Antiques, Crystal Glass &amp; Collectibles                      2678 Hazelton-Etna Rd., SW (S.R. 310-N)                      Pataskala, Oh. 43062                      Sat. or Sun. PM or call (614) 927-1882</p>	<p><b>R &amp; L ANTIQUES - SAN FRANCISCO</b>                      Shows only - Always lots of Heisey                      Member of Golden Gate Heisey Club                      P.O. Box 3614, Daly City, Ca. 94015                      PH: (415) 621-6693</p>
<p><b>AVERY'S QUALITY ANTIQUES</b>                      Specializing in Heisey                      Shows or by Appointment                      2112 First St., Jackson, Mi. 49203                      PH: (517) 783-4075</p>	<p><b>H &amp; R DIAMOND H</b>                      Helen &amp; Robert Rarey                      1450 White Ash Dr.                      Columbus, Oh. 43204                      PH: (614) 279-0390 after 5:30</p>	<p><b>RAMBLING LANE ANTIQUES</b>                      Featuring Heisey &amp; Other fine glass                      Keith &amp; Evelyn Hoover                      Rt. 4, Box 1005, Rhineland, Wi.                      54501 - PH: (715) 282-5019</p>
<p><b>B &amp; B HEISEY &amp; COLLECTIBLES</b>                      B. Whaley                      300 International Dr.                      Pataskala, Oh. 43062                      By Appointment, PH: (614) 927-1557</p>	<p><b>CHARLOTTE'S GLASS REFLECTIONS</b>                      Glass, China, Crystal                      Including Heisey                      6816 14th St. W., Bradenton, Fl. 33507                      PH: (813) 756-4143</p>	<p><b>RAY ZIEGLER</b>                      Glass repair                      2265 Innis Rd.                      Columbus, Oh. 43224                      PH: (614) 882-8446</p>
<p><b>C. E. HIGGINS (S. F. Bay Area)</b>                      Shows and Mail Order                      P. O. Box 2723                      Menlo Park, Ca. 94025                      PH: (415) 322-0192 Evenings</p>	<p><b>HAPPY HEISEY HUNTERS</b>                      Miniatures &amp; other- LSASE for list                      New list Jan. 1, May 1, &amp; Sept. 1                      1426 W. Highland, Springfield, Mo. 65807                      PH: (417) 883-2449</p>	<p><b>SCHWAN'S ANTIQUES</b>                      Shop &amp; Shows                      Rt. 1, Box 175-B, John Tyler Highway                      Williamsburg, Va. 23185                      PH: (804) 229-7873</p>
<p><b>C &amp; J ANTIQUES</b>                      Cole &amp; Jean Miesner                      Box 45, 72 Whig St.                      Newark Valley, NY 13811                      PH: (607) 642-9905</p>	<p><b>HARRISON'S ANTIQUES</b>                      Heisey, Cambridge, Duncan                      Shows, Mail, by Appointment                      26 Johnston's Lane, Mercersburg, Pa. 17236                      PH: (717) 328-2451</p>	<p><b>SUM OF LIFE</b>                      Elaine &amp; Frank Husted                      P.O. Box 102                      Phoenixville, Pa. 19460                      PH: (215) 935-2962</p>
<p><b>CHARLES &amp; MILDRED FISHER</b>                      Heisey, Degenhart, Imperial, Antiques,                      Collectibles, General Line                      991 Idlewild, Newark, Oh. 43055                      PH: (614) 522-5398</p>	<p><b>HEISEY GLASS NEWSCASTER</b>                      Sample copy 70¢, 32 pg. All-Heisey Quarterly                      \$6.00 (1984) Back Issues \$4.00 yr. 1977-1978-1979-                      1980-1981-1982-1983.                      Box 102, Plymouth, Oh. 44865</p>	<p><b>T &amp; S ANTIQUES</b>                      Specializing in Heisey                      Tom Martin &amp; Steve Roderick                      New Rochelle, NY 10805                      PH: (914) 235-9632</p>
<p><b>DAVE'S ANTIQUES</b>                      Specializing in Heisey                      Shows &amp; Appointments                      Tampa, Fl. 33600                      PH: (813) 876-0580</p>	<p><b>HEISEY PUBLICATIONS</b>                      All heisey Books I-II-III-IV- Heisey                      Newscaster, 32 pg. Quarterly - \$6.00                      Back Issues - \$4.00                      Box 102, Plymouth, Oh. 44865</p>	<p><b>THE GLASS CONNECTION</b>                      Specializing in Heisey                      Shows &amp; Mail Order                      Box 526, Collegeville, Pa. 19426                      PH: (215) 489-0139</p>
<p><b>DIAMOND H PLUS</b>                      Appointment or Mail Order                      George &amp; Eileen Schamel                      Rt. 3, Box 419, Boonsboro, Md. 21713                      PH: (301) 432-6285</p>	<p><b>J &amp; R COLLECTIBLES</b>                      Shows, SASE, Mail Order list                      June &amp; Ray Lukasko                      1032 Fairlawn, Newark, Oh. 43055                      PH: (614) 344-9719</p>	<p><b>TRUDY MILLER ANTIQUES</b>                      China &amp; Crystal Matching                      Heisey A Specialty                      P.O. Box 740548, Dallas, Tx. 75374                      PH: (214) 783-9920</p>
<p><b>ELLIZABETH BASSETT CASON</b>                      401 32nd St., W.                      Bradenton, Fl. 33505                      Mail Order - List                      PH: (813) 748-0851</p>	<p><b>JOYCE'S ANTIQUES</b>                      Specializing in Heisey, Cambridge, Verly's &amp;                      American Glass                      P.O. Box 114, Albertson, NY 11507                      PH: (516) 499-3396</p>	<p><b>WILLEY'S ANTIQUES &amp; MUSEUM</b>                      Specializing in Heisey                      11110 Cannon Rd., Frazeyburg, Oh. 43822                      16 miles east of Newark, Oh.                      PH: (614) 828-2557</p>
<p><b>FOREVER HEISEY</b>                      Shows and Mail Order                      Janice Thran                      1663 Londondale Pkwy., Newark, Oh. 43055                      PH: (614) 344-5955</p>	<p><b>JUDY'S DIAMOND H ANTIQUES</b>                      Specializing in Heisey - Buy &amp; Sell                      Star Rt. 3, Box 2556                      Lake Isabella, Ca. 93240                      PH: (619) 378-2176 by Appointment</p>	<p><b>GOLDSBERRY'S ANTIQUES</b>                      Heisey a Specialty                      Shows Only - Buy &amp; Sell                      Kalamazoo, MI 49000                      PH: (616) 381-3013</p>
<p><b>DIE KUNST GALLERIES &amp; ANTIQUES</b>                      Specializing in Heisey                      Vel &amp; Andy Andress                      Box 329, 725 Front Street                      Leavenworth, Wa. 98826                      PH: (509) 548-7856</p>	<p><b>PEGGY'S ANTIQUES</b>                      2000 pcs. of Heisey in stock                      Ernie &amp; Peggy Cox                      P.O. Box 367, Spavinaw, Ok. 74366                      By Appointment or by Chance                      PH: (918) 589-2859</p>	<p><b>THE WOODEN SHOE</b>                      Antiques &amp; Collectibles- Buy &amp; Sell                      Glass, Furniture, Estates                      Jim &amp; Sheri Van Es, By Appointment                      810 Elden, Herndon, Va. 22070                      PH: (703) 435-9045</p>



A. H. Heisey Co. is showing a rye bottle, a bitters bottle, and an old-fashioned glass in the popular Ridgeleigh pattern (see above). Just in time for summer entertaining, their tailored lines should appeal to masculine taste.

#1405 Ipswich  
How do you like this price?



*Field's Standard*  
**BEAUTIFUL GLASS CONSOLE SET OF SPARKLING CRYSTAL:**  
round cut bowl, 2 candlesticks with removable tops (they may be used as small vases when tops are removed). **\$7.50 set.**

Ads of the Thirties



**BLUE OSCAR**

PLEASE READ VERY CAREFULLY BEFORE FILLING OUT  
SEE PAGE 3 FOR EXPLANATION

This special issue of Oscars is marked I.G. and was made by Imperial in Antique Blue, dated 1985. A limited number (446) are available. They are being offered to members at \$20.00 each until sold out. You may order one per member; this means Voting, Associate, or Family Member. Please list all names for checking. Everyone living in Ohio or ordering for pick-up in Ohio, must pay \$1.20 tax. Shipping is \$1.50. Oscars will be shipped immediately as orders arrive. First come, first served!

Please keep this part of this form for reference. Clip and mail the bottom part. Be sure your dues are currently paid.

Do not confuse this special Oscar with the black one to be offered, beginning in January issue.

This is the only time this form will be in the newsletter.

Number of OSCARS AT \$20.00..... \_\_\_\_\_  
Sales Tax \$1.20 each..... \_\_\_\_\_  
Postage \$1.50 each..... \_\_\_\_\_  
TOTAL sent with order..... \_\_\_\_\_

Only one per member  
All Ohio Residents and Pick-Ups in Newark  
Check one:  Please ship my oscar.  
 I will pick up my oscar.



NAME (s) \_\_\_\_\_

List all names \_\_\_\_\_

ADDRESS \_\_\_\_\_ CITY \_\_\_\_\_ STATE \_\_\_\_\_ ZIP \_\_\_\_\_

Make check payable to HCA, INC.  
and mail to: HCA BLUE OSCAR  
P.O. BOX 27  
NEWARK, OH 43055

MASTER CARD  VISA

CREDIT CARD NUMBER  
\_\_\_\_\_  
Expiration Date Required Mo. \_\_\_\_\_ Year \_\_\_\_\_

HOW YOU CAN SUPPORT HCA AND  
THE NATIONAL HEISEY GLASS MUSEUM

YOU SHOULD CONTACT YOUR ATTORNEY CONCERNING THIS BUT THE FOLLOWING LANGUAGE IS SUGGESTED FOR USE:

You can support Heisey Collectors of America, Inc., owner of The National Heisey Glass Museum in Newark, Ohio, through any of the following means:

GIFTS IN YOUR LIFETIME

Gifts in cash, securities, or real or personal property (such as Heisey Glass) provide immediate support for general purposes. In addition, such gifts can be given for acquisition of Heisey Glass for the museum, Endowment Fund or any special project.

- Special event gift: To recognize a special occasion.
- Gift of thanks: To honor a volunteer or other person.
- Memorial Gift: To commemorate a special relative or friend.



WHEN THERE IS A WILL

By means of a simple codicil, a bequest to The Heisey Collectors of America, Inc., owners of The National Heisey Glass Museum may be added to an executed will. It is recommended that when making bequests or planned gifts that you consult an attorney who can advise you on the tax advantages of the gift. HCA is a Non-Profit Tax Exempt organization with a 501 (c 3) Educational Status.

The following basic clause is suggested in making your bequest:

Form of Bequest

I give (devise) and bequeath to Heisey Collectors of America, Inc., a Non-Profit Corporation, chartered by The State of Ohio with an IRS 501 (c 3) Educational Status, having its office at 169 West Church Street, Newark, Ohio 43055 the sum of \$ \_\_\_\_\_ (amount) or all of my Heisey Glassware, or, the following items of my Heisey Glassware, or \_\_\_\_\_ % ( \_\_\_\_\_ percent) of my residual estate to be used or disposed of at the discretion of The National Board of Directors of Heisey Collectors of America, Inc.

THE ABOVE IS IN RESPONSE TO REQUESTS FOR THIS TYPE OF INFORMATION.



The GLASS REVIEW Magazine is for everyone who studies, collects or sells glass. Whether your glass interests lean toward the early 1900's -- or the depression era-- or with today's limited glass items, the GLASS REVIEW covers it all!

Articles -- price reports -- original catalog documentation -- shop directory -- research and reproduction news -- trademark information -- glass book releases -- what's new on the market -- a large variety of glass ads (on both old and new glass) -- plus much more.

Enclose payment and mail to:  
GLASS REVIEW, P.O. BOX 542, MARIETTA,  
OH 45750

10 'big' yearly issues

68 pages or more

\$12.50--one year



FIRST CLASS MAIL  
U.S. POSTAGE  
PAID  
PERMIT 34  
Reynoldsburg, Ohio 43068

