



VOLUME XIII

NO. 4

APRIL, 1984

ISSN 0731-8014

ONE DOLLAR

Int. Cl.: 21

Prior U.S. Cls.: 2, 33 and 50

Reg. No. 1,265,757

Registered Jan. 31, 1984

United States Patent and Trademark Office

**TRADEMARK**  
Principal Register



Heisey Collectors of America, Inc. (Ohio corporation)  
P.O. Box 27  
Newark, Ohio 43055

For: GLASS BEVERAGEWARE AND FIGURINES, in CLASS 21 (U.S. Cls. 2, 33 and 50).  
First use Jun. 1974; in commerce Jun. 1974.

Ser. No. 394,188, filed Sep. 29, 1982.

STEVEN L. CATALANO, Examining Attorney

## IN MEMORIAM

HARLEY BETHEL - 1922 - 1984

Harley Bethel, our printer since 1980, and a long time friend, died on February 19th after a prolonged illness. HCA members who have attended conventions will remember him as the Chairman of the Convention Display for two years and Co-Chairman with Mary McWilliams after that. He was a voting member, dedicated to the club and always most generous with both time and money. He also was a member and former president of the Reynoldsburg HCC.

His wife, Marcella, who died in March, 1980, was our very first printer. Assisted by Harley, she continued to print the Heisey News until just prior to her death after open heart surgery. Harley printed it until sometime last year when his health was deteriorating. At that time, his son, Gary, took over the business and continues to be our printer.

Harley is survived by his daughter, Shirley Bagford, also a dedicated voting member of HCA, his son Gary, and three grandchildren, Mary Jo Bagford and Trent and Trevor Bethel. Aside from an association with Harley in HCA, Russ and I were close friends of the Bethels for twenty-five years. Along with other members of HCA, we'll miss him very much.

Louise Ream

## MEMBER SPEAKS AT SANDWICH MUSEUM

On February 13, 1984, The Sandwich Glass Museum was fortunate enough to have Mr. Frank Maloney, your New England Authentication Representative, lecture on Heisey Glass at our Winter Lecture Series.

His informative lecture on one of the nation's fastest growing collectibles attracted a considerable audience and elicited a most favorable response from them. Mr. Maloney brought with him a great many pieces of Heisey glass from his own collection. His ability to illustrate patterns and particularly the range of kaleidoscopic colors in which the glass was made with the actual pieces of glass contributed greatly to the education (and pleasure) of the audience.

We appreciated the excellence of his presentation and thought you might like to know of Mr. Maloney's contribution to your goal of educating the American public about Heisey glass.

Barbara J. Bishop, Director  
Sandwich Glass Museum

\*\*\*\*\*

Opinions expressed in articles are those of the authors and not necessarily those of HCA. Editorial Staff reserves the right to edit or refuse any material submitted for publication. Send all letters and articles to the EDITOR. Letters to columnists should be sent to the club address and will be forwarded.

\*\*\*\*\* -2-

## HCA OFFICERS

* President	Tom Bredehoff	614-745-1014
* Vice President	Jim Kennon	216-282-7711
* Secretary	Ray Ziegler	614-471-6446
* Treasurer	Dick Marsh	614-366-5608
* Exec. Dir.	Louise Ream	614-345-2932

\* HEISEY NEWS - P.O. BOX 27, NEWARK, OH 43055

\* Editor: Louise Ream  
\* P.O. Box 27, Newark, OH 43055  
\* PH: 614-345-2932

\* Assistant Editor: Neila Bredehoff  
\* P.O. Box 27, Newark, OH 43055  
\* PH: 614-345-2932

\* Published monthly and mailed from Reynoldsburg, Ohio 43068.

\* \$15.00 per year - \$1.25 per copy

\* Back Issues - Each Volume (12 issues) year - \$9.00  
\* Volume V, VI, VIII, IX, X, XI & XII Available

\* Heisey Collectors of America, Inc. is a non-profit corporation with tax exempt status.  
\* Owners and operators of National Heisey Glass Museum, 6th and Church Streets, Newark, Ohio.  
\* Open Daily 1 - 4 p.m. except Mondays & Holidays.  
\* Other hours by appointment. Members admitted free.

\* Club membership (includes 12 issues of HEISEY NEWS and participation in all club activities)  
\* \$15.00 per year plus \$2.50 for each additional family member in same household who wishes a membership card. For VOTING MEMBERSHIP, add \$25.00 one time only fee.

\* When requesting information, please enclose a self-addressed, stamped envelope (SASE).

\* ADVERTISING - Send all ads to:  
\* Advertising  
\* c/o Janice Thran  
\* P.O. Box 27  
\* Newark, OH 43055

\* RATES:  
\* DEALERS' DIRECTORY - 5 lines - \$20.00  
\* Extra Line - \$2.00 - Change during year \$2.00 per line.

\* CLASSIFIED - 12¢/Word - \$1.20 Minimum.  
\* Abbreviations & initials count as words.

* DISPLAY:	MEMBERS	NON-MEMBERS
* 1/8 pg (9 items)	\$15.00	\$25.00
* 1/4 pg (20 items)	24.00	35.00
* 1/2 pg (20 items)	40.00	50.00
* 1/2 pg (50 items) Vertical	50.00	60.00
* 1 pg (50 items)	65.00	80.00

\* Extra lines will be billed at \$1.00 per line.

\* We cannot double-column ads.  
\* ALL ADS MUST BE PREPAID. Ad copy must be received by the 5th of the month to be included in that month's NEWS. Ads containing reproductions will not knowingly be accepted unless clearly stated (i.e. Heisey by Imperial, etc). HEISEY News assumes no responsibility for false advertising or misleading information. In the event of typographical error, the incorrect portion of the ad will be run in the following issue, but HEISEY NEWS assumes no further liability.

## NOTES FROM YOUR PRESIDENT.....

Several months ago, I was thrilled to be able to report that the HCA had been instrumental in having a confusing mark removed from glassware. This month, I am proud to report that the HCA now owns the registration of the DIAMOND H on GLASS. Not just as a collectible mark, but a real trademark on the item and on shipping labels and invoices. We received notification that as of January 31, 1984, the "Diamond H" figure was duly registered in the United States Patent and Trademark Office. A lot of us have been waiting a long time for this.

### ENDOWMENT FUND

With a donation from the Bay State Heisey Collectors, our Endowment Fund passed the \$10,000 mark last month. This Fund, or rather the income from this fund, will be used solely for the preservation and maintenance of the Museum. Not that we need it now, but we're trying to protect the future.

### AUCTION

This is being written before the auction (lead time being what it is), but there are some unsung heroes we have to honor. Norman and Janice Thran and Dick and Marilyn Smith almost singlehandedly (eight-handedly) catalogued the glass for the auction. I daresay they learned something about the glass, too. Liz Stickle has done all of the typing that goes with the job, the lists of glass, the lot slips, the donation forms, and all that.

### HOSPITALITY

Don't forget, while in Newark for the convention, stop by the Hospitality Room in the lower level of the Museum. There will always be someone there to talk Heisey with, and also some goodies to munch on.

### REGISTRATION

This year, in order to preserve peace between us and Phyllis McClain, the registration for the convention will be held in the Docent's lounge of the Museum. No matter when you arrive in Newark, (business hours) you will be able to register at the Museum. But you thought you had done that through the mail...NOOOO...that was pre-registration. You are not registered until you pick up your packet from the Docent's lounge. And if you are coming only for the Banquet on Friday night, you will have to have your banquet tickets. They will not be available at the door.

### FORMER EMPLOYEE RECEPTION

Let me recommend to you the Former Employees reception. The speaker will be W. E. Porter, a former Heisey Employee (glass blower), who is currently making art glass, supplying the Museum with paper weights and vases which we have for sale in the Gift Shop. He will be speaking on his experiences at Heisey and on the making of glass in general. This is one of the events of the Convention which we tend to gloss over, but these people, the former employees, were the people responsible for making this stuff we all slave for.

Every now and again, this column is used to notify you, the members, of needs we have at the

Museum. Several years ago, it was decided to install mirrors behind the glass in the Museum. We got most of the cabinets on the lower level done, but ran out of money for that purpose before any of the cases upstairs were mirrored. Now is your opportunity to give a large quantity of glass to the Museum. This applies to Study Clubs as well as individuals. Please write before you send the mirrors, there is a possibility of duplication.



## MIRRORS! WE NEED MIRRORS!!

Room #1	- Main Floor	- 14 Pcs. Mirror	- \$250.00
Room #2	- Main Floor	- 18 Pcs. Mirror	- 336.00
Gift Shop	- Main Floor	- 18 Pcs. Mirror	- 300.00
Room #4	- Upstairs	- 35 Pcs. Mirror	- 605.00
Room #5	- Upstairs	- 34 Pcs. Mirror	- 585.00
Room #6	- Upstairs	- 36 Pcs. Mirror	- 670.00

ABOVE PRICES ARE INSTALLED.

## BENEFIT AUCTION

The Benefit Auction is now history with total sales of \$35,083.50 for 702 lots.

HCA receives 20% of the selling price, less all expenses, and plus the full amount of the donated glass. A few people donated an extra 5% to the Endowment Fund.

The Auction would not have been possible without the help of all of the people who donated their time. Auctioneers - Sam Schnaidt, Larry Stickle, Tim Hughes and Craig Connelly; Norm and Jan Thran, Dick and Marilyn Smith, Louise Ream and Wanda Lybarger for identifying the glass and making the list; Liz Stickle for typing lot slips and sales slips; Lynette and Curt Parmer and their crew from Lynn's office for their work in Mail Bids; Merrell Strawn for typing the list for Heisey News; cashiers, Heidi Schnaidt and Loren and Virginia Yeakley; Delores Ziegler, Delores Good, Kathy Good and Alicia Miller for their work in processing all of the checks and paper work for consignors; Betty Wanser and Loren Yeakley for clerking; The 76'ers Study Club and all of the many other people for helping set up glass before the auction; and all those, too numerous to name, who helped before, during and after the auction.

We also thank Sam and Heidi for the use of their Auction Center.

Thanks also to Margaret Weber and those who assisted her in shipping the mail bid glass. With all of the above mentioned help it was again a pleasure to chair the auction.

Thank you,  
Ray Ziegler

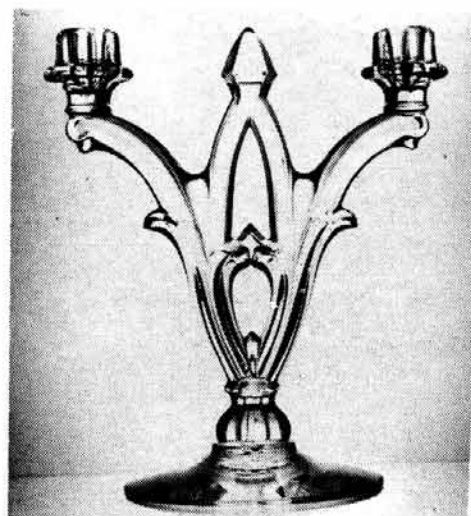
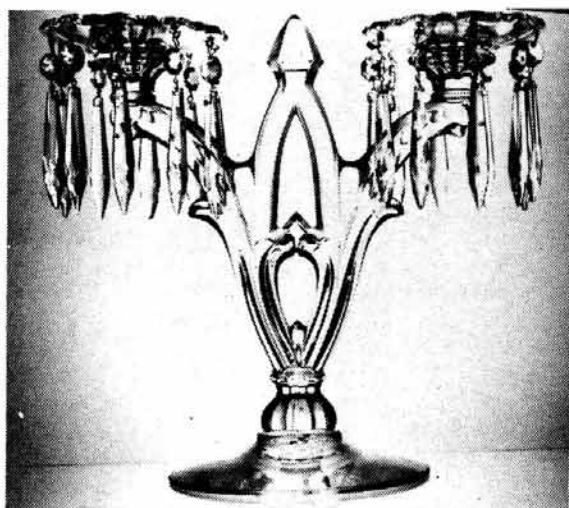
### ADDITIONAL PATRONS FOR AUCTION LIST:

Mr. & Mrs. John Willoughby  
John and Marjorie Deppong  
James J. Lukasko  
76'ers Study Club



## NO. 402 GOTHIC CANDLESTICK

By Bob O'Grady



Although the Gothic candlestick did not seem to be very popular when it was introduced, it is truly one of the most classic designs ever produced by Heisey. My reaction, when I first saw this candlestick several years ago was that it was somewhat grotesque. However, having the opportunity to live with it and compare it to many of Heisey's other designs as well as other companies, has changed my opinion decidedly. Although I believe it comes off much better as a candelabrum than a candlestick (i.e. without bobeche and prisms).

Heisey did not assign a name, only a pattern number to this candlestick. The name "Gothic" was assigned by a collector and is truly appropriate as descriptive of the elegant arches and points which make up its design. It has occasionally been called "Cathedral" by collectors which is also very appropriate.

The candlestick was first produced in December of 1932 and was last made in September of 1935 giving it almost three years of production. However, it was still offered in a 1936 price list and judging from the relative scarcity of these today, not too many were made over the three year period.

For the time of its production, the pattern number assigned to this candlestick was unusual. One would expect that the Gothic would have a pattern number in the 130s or 140s since the other candlesticks introduced in the same time period which did not belong to a pattern group were numbered in this range. The assignment of a 400 number may have had something to do with the fact that all the candlesticks in the 130s and 140s were sold without bobeche and prisms, whereas the Gothic was sold as a candelabrum with removable bobeche and prisms.

The candlestick was made in crystal (and

is more common in this color), sahara and cobalt (colors which are rare). When made up in cobalt the foot and bobeche were left crystal. However when made in sahara, both foot and bobeche were also sahara. An unusual pair of these candelabra have been on display in the HCA museum with a cobalt foot only and the rest in crystal. This was probably experimental or a special order.

This candlestick is one of the tallest made in this period, standing eleven inches tall with an arm spread of nine inches (twelve inches when bobeche are added). It has an applied foot and when offered as a candelabrum could be purchased with "A" or "C" prisms. The removable bobeche which is a separate piece, merely rests over a rim on the candleholder. And as was not uncommon, Heisey used the bobeche (pattern number 402 also) on the two light no. 301 hurricane lamp.

Shortly before it was discontinued, it was offered with a matte etching or an overall satin finish. It is usually marked with the Diamond H at the bottom of the pointed finial topping off the center of the candlestick. It was not re-issued by Imperial.

### MEMBERSHIP UPDATE!!!!

PLEASE NOTE THAT IF YOUR DUES ARE DUE  
AFTER APRIL 1, 1984, YOU PAY THE NEW RATE  
OF \$15.00 ASSOCIATE MEMBER, \$2.50 PER  
PERSON FOR EACH ADDITIONAL HOUSEHOLD MEM-  
BER DESIRING A MEMBERSHIP CARD.

# THOUGHTS ON HEISEY'S #4220 VASE

By Edward Noyes,  
Emeritus Professor of History  
University of Wisconsin-Oshkosh

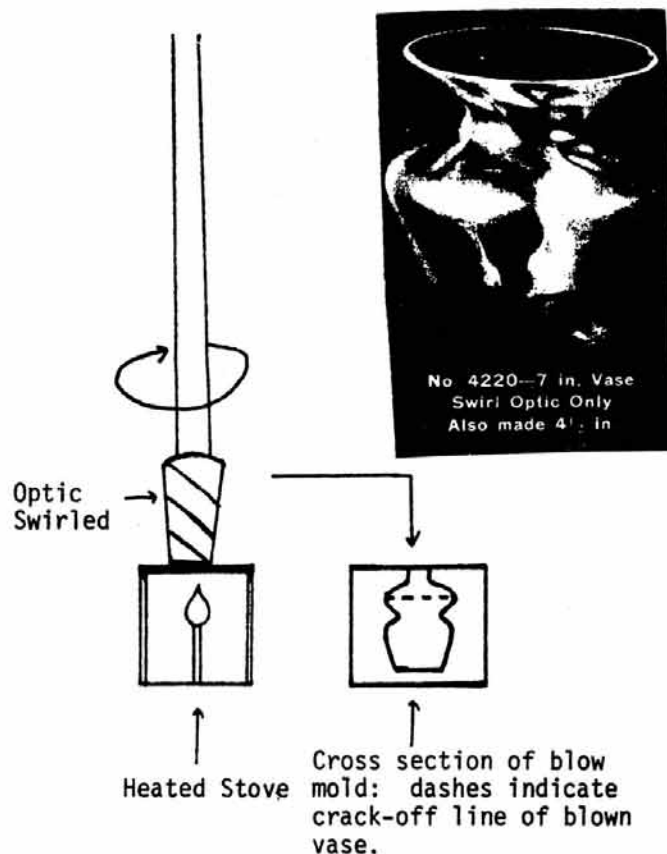
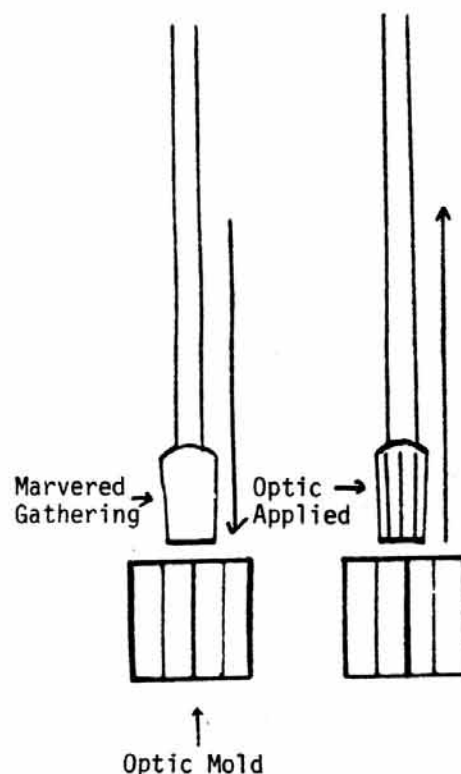
When advertisements of the #4220 vase appeared in recent issues of *Heisey News*, they brought back to the writer memories of more than fifty years ago when he worked in the shop of Arthur Kessmeier who specialized in blowing a variety of bottles, decanters, jugs, salts, and vases.

Blown in a paste mold and ornamented by a swirled optic, the #4220 vase came in two sizes: seven inches and four and one-half inches. Of the two, the smaller was the more difficult to make. Because of the vase's tucked-in "waiste" separating its lower and upper parts, and because of the proportion of bulk in the glass to that waist, painstaking care was required in the marvering process distributing the weight of the hot metal prior to blowing.

Equally exacting was the operation of swirling the optic at precisely the correct angle. After dipping the marvered gathering into the optic mold and then removing it, the blower touched the end of the gathering ever so gently to a heated plate of iron where it hung; next, with what amounted to a "sleight of hand" performance, he turned the blowpipe just enough to have the optic take the proper degree of swirl: for, if the pipe were turned too much, the optic would appear in flattened rings; if not enough, it would appear too perpendicularly on the finished piece. Once this operation was done--and it took only the twinkling of an eye--the gathering was blown in the mold. Usually, the vase carried on its bottom a small circular roughness marking the place where the glass had hung on the heated plate when the optic was swirled.

Although the process described was dependent on immeasurable skill for accuracy, when the working turn was over, each vase was just like its fellows, and all were as nearly perfect as the human hand could fashion them.

Displaying a characteristically high polish from being blown in a paste mold, and with its graceful contours enhancing the swirled optic, the #4220 vase is a joy to the eye. In addition to crystal, it came in colors: those in Alexandrite exhibit an intensely brilliant coloration which is truly delightful. Like fine jewelry, this little vase possesses an excellence all of its own.



Note: While piece is blown, the pressure against the inside of the mold forces the optic from the outside to the inside of the object leaving a smooth external surface.

## DIAMONDS ARE FOREVER.....

By Janet M. Caswell

In 1872, a man called Benjamin Abbot left a sum of money to erect a building for the benefit of the inhabitants. Construction was started in 1877 and is a fine example of a romantic Romanesque building made of face brick, unusual Calendonia free-stone carving, stained-glass windows with a large tower which houses a bell and clock. The bell is still used to ring the nine o'clock curfew. The building stands on one of the highest points of land and is sixty feet above sea level. Abbot Hall was the focal point of our town government and it stood silhouetted against the blue sky of day or brilliantly illuminated against the blackness of night saying "Welcome Home" to every townsman, fisherman, or sailor returning from a days sail.

As I told you last month, I was headed for the South Shore but much to my great dismay came home empty handed, but not all here on the North Shore came up thus. My spies tell me the Bay State can brag about all sorts of good things; #15 Duck in Flamingo; a beautiful Rooster Vase; a perfectly lovely #2401 Old Fashioned with the #462 Fox Chase etch. Elsewhere in the Bay State, there was a #1567 Plantation covered lemon, #343 Sunburst Hotel Creamer (those are so pretty), #353 Shaving mug, etched. (that was a real little beauty) Yours truly also found one, but mine was not etched and was sick. I didn't have one and the price was right.... The #469 1/2# Candy jar also appeared in Bean-town along with the #393 3-Pt. Tankard; #1205 Fancy Loop Water bottle; #1483 Stanhope 2-Lite Candlestick and a cute little #21 Desk Candlestick. Others in the same area wanted to brag about a #42 Regal 7" candlestick; #25 Sanford 9-3/4" stick, #600 Chamberstick and the #492 King House etch on a #1472 Parallel Quarter Stick. This was the month for candlesticks. Leaving the candlesticks behind, there was a lovely #1252 Twist Oil & Vinegar in Moongleam and a crystal Cruet marked on the handle; #1183 Salt in Flamingo; #1205 Fancy Loop toothpick in Emerald, #4085 Kohinoor 4-1/2 oz Claret in Zircon & Saturn Optic, #343 Sunburst Tumbler & #1280 Winged Scroll 11-7/8" high Swung Vase in Custard (moongleam with envy)

My "Evergreen Friends" have finally come out of hiding (possibly it was too cold up North to go out, who knows) and they brought with them a #4044 New Era Candelabra/prisms, #1201 Fandango Toothpick, #1503 Crystolite 9" four-part Clover Leaf Relish and a #1235 Chrysanthemum (Beaded Panel & Sunburst) Punch Bowl, Base and eleven cups. This, I understand, was a real find.

"My First Convention Heisey Friends" found seven (7) Lancaster Etched #4002 Aqua Caliente Cocktails.

After driving over 300 miles one day and finding nothing, the Mr. and myself were tired and disappointed. Stopping at just one more place, we met "Grampa W." a real sweet gentlemen who, believe it or not, was just beginning to discover the joys of Heisey. How excited can one person be, he had just found, and purchased,

a #1205 Fancy Loop 9" Ice-Tub in perfect condition and a couple of Victorian wines. We got to talking and he promised to keep me informed of his finds. Even though we didn't come up with anything at that stop, it was not in vain, we found another Heisey friend!

My "English Buddy" has been running between "Here & there" and there was no end to his list of things to make me envious: #1420 9" Tulip Vase, #1401 Empress 9" Footed Vase in Moongleam, a Sea-Horse Handled Candy Jar in mint condition; a pair of #1401 Empress 6" Toed Candlesticks in Flamingo and another pair just like them only in Sahara, #3368 Albemarle compote D/O, Sahara, Old Colony Etch, #1184 Yeoman Cream and Sugar, etched and a #354 6 oz. Cologne, silver top. Not bad for a days work.

"The Tipper" told me once that he just gets in the car and goes wherever it takes him. We should all have his luck: #1201 Fandango covered Butter (hmmm); two Baskets the #458 8" with a wheel-cut and a lovely #1183 with wheel-cut (both of which he is going to keep) He says the #1183 is without a doubt the most beautiful he has ever seen. Added to his "little things" was a #351 Priscilla Butter Pat in Flamingo; also found was a #354 Wide Flat Panel Cream & Sugar in crystal and a few pieces of Crystolite #1503, namely the 6" Shell Covered Candy, the five (5) compartment round relish and the 12" 3-compartment relish. He says he is waiting for warm weather and out-door flea markets. I guess we all are anxious for that, if only to get warm. It has been minus 10° for the past few days here in the Yachting Center.

OK "Mountain Gal" here goes: #500 Octagon sugar in Flamingo, #1486 Coleport 8" Bowl, #150 Banded Flute salt & pepper/#3 Sanitary top, #411 Rib & Panel 2-hdld. jelly/floral cut, #1252 Twist 7" Pickle dish in Flamingo, #407 Coarse Rib 6" plates (2) and three 8-1/2" plates all in moon-gleam, #1295 Beaded Swag toothpick in Opal, Heisey Goose wings half-way, two of them, Ridgeleigh 2" 1-lite candlestick, #1170 Pleat & Panel 10" Spice tray (5-comp) in flamingo/gold floral rim, and lastly the #7052 Diamond Grid Puff Box/sterling lid.

The Mr. and I run every-which-way and sometimes come up with something, sometimes not. Last week I found a #1404 Old Sandwich 1-2 Gal. Ice Jug in Sahara; #1205 Fancy Loop 4 oz Claret and a 3 oz Wine; #394 Narrow Flute Pickle Jar/cover; #121 2" Candlestick in Hawthorne and a #433 Greek Key Individual Ice-Tub/Underplate. Cute! Love it.

This month we have two new contributors "two guys from Connecticut" they found six (6) #3481 8-1/2 oz Footed Sodas in Crystal. Lets hear from you again!

The "Land of Lincoln" has long been absent. I miss you when you don't write to me. The silence has been broken with the #4027 Tall Decanter with Moongleam Foot and Moongleam Steeple stopper in perfect condition and sleeping. The Sitting Pony, #1280 Winged Scroll crystal covered butter/gold decoration, a Lariat 15-piece punch set and a #1503 Crystolite 10" round Vase.

All of you that I haven't heard from for a long time, please drop me a line and tell me about your finds.



## HEISEY'S LITTLE THINGS

I have been neglecting those of you who collect little things the past two months but I have only recently been able to write again after having shattered my right wrist in a fall January 6th.

There were many H.L.T.'s in the Benefit Auction and they seemed, for the most part, to bring good prices. An 1183 Revere salt dip, like the one which sold last year for \$110, sold for \$140 this year. This continues to be the "top of the heap" as far as salt dips are concerned. This is an unmarked item so someday someone will probably come up with a bunch of them at a real sleeper price. Colored nut dishes brought good prices as did most small items.

Number 357 Prison Stripe is the next pattern in line which has a few H.L.T.'s. This pattern shape is definitely copied from 300 Peerless with the addition of horizontal ridges all around the body of every piece. Vogel gave the pattern its name. Made first in 1906, it was not a long line and when I first began to collect, very little of it could be found. The first time a toothpick ever sold at auction, it brought well over \$200. However, Heisey Toothpick Holders by Nancy and David Jones, lists it at \$140. I believe if one showed up in an All Heisey Auction today it would probably bring more than that.

The only other pieces which are H.L.T.'s are the salts and peppers and the custard (Punch Cup). The glass is beautiful clear crystal, well finished and most pieces are marked, delightful additions to your collection. So far, I have none of these three pieces.

Number 365 Old Queen Ann is another interesting pattern from about the same period as Prison Stripe. The shield shaped ornamentation is quite attractive and Queen Ann is a great favorite among the old patterns, again of excellent quality, and usually marked.

The 4 oz sherbet, custard, toothpick, #2 and #3 salts and peppers and 2 oz wine are the pieces which fit our collection.

There is also a late Queen Ann pattern which bears no resemblance to #365.

Louise Ream

#357 Prison Stripe



6 Oz. Custard  
Also Made 3-1/2 oz.

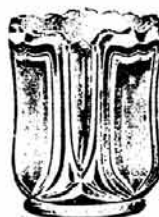


No. 3 Salt or  
Pepper  
Nickle Top



Toothpick

#365 Queen Ann



TOOTHPICK



CUSTARD



NO. 2 SALT OR  
PEPPER  
No. 60 Top



2 OZ. WINE



NO. 3 SALT OR  
PEPPER  
NICKLE TOP



4 OZ. FOOTED SHERBET

## FLEA MARKET ON THE SQUARE NEWARK, OHIO

H.C.A. will once again sponsor the Flea Market, managed by Buckeye and Heisey Hunters Study Clubs. The dates for the Flea Market are June 9, 10, 16, and 17. The price is \$10.00 per space, per day, in advance. All monies benefit The National Heisey Glass Museum. For more info write: H.C.A. FLEA MARKET  
P.O. BOX 27  
NEWARK, OHIO 43055

JANICE THRAN

CO-CHAIRMAN

LIZ STICKLE

DEALERS WANTED

PRICES REALIZED AT THE ALL HEISEY BENEFIT AUCTION - MARCH 9 & 10, 1984  
PRICES ARE FOR ENTIRE LOT

1	\$ 25.00	68	\$ 35.00	134A	\$ 6.00	201	\$ 15.00	267	\$ 35.00	334	\$ 40.00	401	\$ 85.00	465	\$155.00	533	\$ 25.00	601	\$155.00	669	\$ 50.00
2	55.00	69	40.00	135	14.00	202	20.00	268	17.50	335	47.50	402	85.00	466	20.00	534	30.00	602	17.50	670	15.00
3	40.00	70	35.00	136	25.00	203	30.00	269	27.50	336	47.50	403	85.00	467	20.00	535	20.00	603	36.00	671	15.00
4	34.00	71	35.00	137	25.00	204	35.00	270	40.00	337	40.00	404	55.00	468	12.50	536	75.00	604	6.00	672	60.00
5	28.00	72	32.50	138	62.00	205	85.00	271	70.00	338	12.50	405	155.00	469	105.00	537	65.00	605	4.00	673	45.00
6	40.00	73	37.50	139	37.50	206	22.50	272	50.00	339	34.00	406	52.50	470	235.00	538	12.50	606	5.00	674	20.00
7	25.00	74	45.00	140	65.00	207	15.00	273	65.00	340	75.00	407	25.00	471	130.00	539	140.00	607	14.00	675	12.50
8	22.50	75	20.00	141	50.00	208	7.50	274	65.00	341	5.00	408	60.00	472	35.00	540	66.00	608	72.00	676	100.00
9	35.00	76	22.50	142	40.00	209	10.00	275	65.00	342	50.00	409	30.00	473	150.00	541	70.00	609	35.00	677	100.00
10	25.00	77	45.00	143	12.50	210	15.00	276	50.00	343	67.50	410	420.00	474	63.00	542	24.00	610	10.00	678	100.00
11	30.00	78	50.00	144	30.00	211	45.00	277	45.00	344	97.50	411	120.00	475	45.00	543	110.00	611	10.00	679	10.00
12	27.50	79	30.00	145	36.00	212	30.00	278	25.00	345	115.00	412	165.00	476	40.00	544	65.00	612	63.00	680	20.00
13	11.00	80	15.00	146	15.00	213	12.50	279	80.00	346	5.00	413	60.00	477	40.00	545	5.00	613	12.00	681	47.00
14	45.00	81	12.50	147	65.00	214	47.50	280	80.00	347	7.50	414	100.00	478	22.50	546	22.50	614	16.00	682	40.00
15	25.00	82	9.00	148	40.00	215	10.00	281	40.00	348	2.00	415	50.00	479	45.00	547	22.50	615	20.00	683	20.00
16	40.00	83	35.00	149	50.00	216	10.00	282	60.00	349	45.00	416	160.00	480	45.00	548	95.00	616	7.00	684	25.00
17	17.50	84	20.00	150	40.00	217	30.00	283	65.00	350	35.00	417	120.00	481	5.00	549	65.00	617	44.00	685	47.50
18	25.00	85	27.50	151	25.00	218	60.00	284	50.00	351	150.00	418	100.00	482	20.00	550	80.00	618	10.00	686	25.00
19	20.00	86	140.00	152	67.50	219	7.50	285	20.00	352	190.00	419	125.00	483	40.00	551	20.00	619	13.00	687	25.00
20	20.00	87	90.00	153	12.50	220	40.00	286	32.50	353	35.00	420	80.00	484	80.00	552	30.00	620	30.00	688	35.00
21	35.00	88	50.00	154	45.00	221	90.00	287	25.00	354	110.00	421	25.00	485	80.00	553	30.00	621	2.00	689	35.00
22	140.00	89	100.00	155	105.00	222	45.00	288	15.00	355	90.00	422	55.00	486	22.50	554	25.00	622	30.00	690	24.00
23	60.00	90	65.00	156	50.00	223	20.00	289	12.50	356	85.00	423	45.00	487	55.00	555	10.00	623	27.00	691	10.00
24	20.00	91	100.00	157	45.00	224	30.00	290	16.00	357	35.00	424	95.00	488	55.00	556	10.00	624	27.50	692	5.00
25	14.00	92	100.00	158	32.50	225	48.00	291	12.50	358	30.00	425	145.00	489	48.00	557	54.00	625	200.00	693	10.00
26	24.00	93	85.00	159	30.00	226	31.50	292	30.00	359	60.00	426	35.00	490	18.00	558	18.00	626	24.00	694	5.00
27	60.00	94	85.00	160	145.00	227	25.00	293	110.00	360	60.00	427	30.00	491	18.00	559	7.00	627	24.00	695	12.50
28	20.00	95	190.00	161	40.00	228	30.00	294	90.00	361	105.00	428	45.00	492	16.00	560	15.00	628	80.00	696	18.00
29	30.00	96	22.50	162	80.00	229	95.00	295	37.50	362	105.00	429	30.00	493	9.00	561	65.00	629	24.00	697	2.00
30	20.00	97	40.00	163	42.50	230	15.00	296	95.00	363	160.00	430	60.00	494	25.00	562	375.00	630	22.50	698	10.00
31	30.00	98	50.00	164	27.50	231	60.00	297	25.00	364	40.00	431	25.00	495	20.00	563	50.00	631	22.50	699	10.00
32	31.00	99	100.00	165	25.00	232	30.00	298	25.00	365	37.50	432	25.00	496	55.00	564	50.00	632	15.00	700	12.50
33	31.00	100	40.00	166	70.00	233	9.00	299	40.00	366	165.00	433	25.00	497	80.00	565	75.00	633	15.00	701	15.00
34	70.00	101	275.00	167	30.00	234	24.00	300	84.00	367	415.00	434	105.00	498	25.00	566	115.00	634	20.00	702	6.00
35	22.50	102	2.00	168	45.00	235	12.00	301	84.00	368	325.00	435	55.00	499	90.00	567	95.00	635	25.00		
36	50.00	103	7.00	169	55.00	236	6.00	302	60.00	369	60.00	436	100.00	500	275.00	568	65.00	636	20.00		
37	30.00	104	5.00	170	30.00	237	24.00	303	60.00	370	30.00	437	55.00	501	12.50	569	20.00	637	5.00		
38	300.00	105	10.00	171	130.00	237A	140.00	304	35.00	371	96.00	438	45.00	502	21.00	570	37.50	638	10.00		
39	85.00	106	40.00	172	30.00	238	20.00	305	110.00	372	48.00	439	50.00	503	45.00	571	36.00	639	15.00		
40	27.50	107	30.00	173	85.00	239	10.00	306	25.00	373	25.00	440	57.50	504	42.00	572	65.00	640	40.00		
41	10.00	108	320.00	174	50.00	240	20.00	307	80.00	374	60.00	441	100.00	505	7.00	573	25.00	641	25.00		
42	35.00	109	320.00	175	32.50	241	30.00	308	35.00	375	120.00	442	65.00	506	24.00	574	90.00	642	15.00		
43	25.00	110	35.00	176	40.00	242	20.00	309	35.00	376	36.00	443	50.00	507	12.50	575	26.00	643	15.00		
44	15.00	111	150.00	177	80.00	243	17.50	310	105.00	377	36.00	444	45.00	508	15.00	576	15.00	644	30.00		
45	17.50	112	55.00	178	47.50	244	12.50	311	60.00	378	27.50	444A	85.00	509	30.00	577	40.00	645	15.00		
46	100.00	113	35.00	179	20.00	245	50.00	312	35.00	379	50.00	444B	140.00	510	110.00	578	26.00	646	15.00		
47	30.00	114	45.00	180	15.00	246	20.00	313	37.50	380	35.00	445	10.00	511	90.00	579	30.00	647	15.00		
48	27.50	115	15.00	181	22.50	247	24.00	314	38.1	381	85.00	446	7.50	512	45.00	580	10.00	648	15.00		
49	17.50	116	30.00	182	15.00	248	10.00	315	12.50	382	25.00	447	35.00	513	45.00	581	5.00	649	15.00		
50	55.00	117	17.50	183	22.50	249	24.00	316	15.00	383	45.00	448	25.00	514	45.00	582	12.50	650	17.50		
51	30.00	118	40.00	184	75.00	250	20.00	317	20.00	384	45.00	449	35.00	515	45.00	583	10.00	651	12.50		
52	30.00	119	40.00	185	25.00	251	50.00	318	30.00	385	15.00	450	40.00	516	45.00	584	18.00	652	10.00		
53	40.00	120	22.50	186	40.00	252	20.00	319	25.00	386	45.00	451	32.50	517	40.00	585	18.00	653	5.00		
54	27.50	121	27.50	187	30.00	253	25.00	320	75.00	387	55.00	451	32.50	518	35.00	586	18.00	654	22.50		
55	20.00	122	17.50	188	40.00	254	20.00	321	20.00	388	40.00	452	60.00	519	40.00	587	18.00	655	10.00		
56	20.00	123	17.50	189	45.00	255	20.00	322	30.00	389	42.50	453	60.00	520	40.00	588	18.00	656	5.00		
57	30.00	124	55.00	190	55.00	256	7.50	323	36.00	390	10.00	454	15.00	521	27.50	589	12.50	657	5.00		
58	25.00	125	60.00	191	65.00	257	30.00	324	70.00	391	9.00	455	10.00	522	20.00	590	12.50	658	Not Sold		
59	45.00	126	60.00	192	25.00	258	12.50	325	165.00	392	27.50	457	20.00	523	35.00	591	22.50	659	9.00		
60	75.00	127	12.00	193	40.00	259	20.00	326	40.00	393	27.50	457	20.00	524	35.00	592	140.00	660	310.00		
61	95.00	128	27.50	194	10.00	260	25.00	327	14.00	394	65.00	458	20.00	525	17.50	593	22.50	661	240.00		
62	25.00	129	15.00	195	15.00	261	30.00	328	30.00	395	25.00	459	16.00	526	12.50	594	25.00	662	150.00		
63	52.00	130	15.00</																		





1616 W. CHURCH ST.  
NEWARK, OHIO 43055  
(614) 344-9449

THE MOST IMPORTANT  
ALL HEISEY AUCTION  
EVER HELD

2 DAYS

FRI. APRIL 27, 1984 6:30 P.M.  
SAT. APRIL 28, 1984 9:30 A.M.

SAM SCHNAIDT, AUCTIONEER  
614 - 344 - 9449

FRANK FRYE, MANAGER  
614 - 345 - 4001

This sale includes the balance of the Paul Fairall collection, the Heisey from the estate of Henry BOOTS Gebhart, a Pennsylvania collection and other items from Newark homes. A few of the exciting items in this sale include 2 pieces of RUBY GOLD (3 known), Tangerine 4157 Rose Bowl (one of 2 known), Cobalt Dolphin candlesticks, Cobalt and Amber Sparkies, several elaborate cuttings including KRALL cut Hurricane Lamps. Pieces in every color, many small items. There are great pieces in both sessions. This sale will be worth your time. If you liked our January sale, you will love this one. Over 700 lots to be sold.

DOORS OPEN: 5:00 P.M. ON FRI. & 8:30 A.M. ON SAT.

We have tried to inspect the glass closely and will use the following code to better describe the condition. A small letter indicates the damage or flaw is minimal. It would be our opinion that the value would be affected 5 - 20%. A capital letter indicates more significant damage affecting 20 - 40%. Anything damaged more than this is in our opinion, will be marked with an X.

f F = Flake

c C = Crack

b B = Bruise

m M = Mold Flaw

r R = Repaired

x X = Major Damage

1	1504	REGENCY 2 Lt. Candlestick, Pr.	36	1401	EMPRESS Sahara 3 Hdl. 8" Floral bowl H
2	1567	PLANTATION 3 Lt. Candelabra, Pr.	37	1202	9" Mnglm. Floral bowl & base H
3	21	9" Candle, Pr. Etched MOTHER	38	1252	TWIST Marigold 8" Low Ftd. bowl H
4	134	TRIDENT 2 Lt. Candle Pr.	39	393	NARROW FLUTE 8" Nappy H Dtd. shows wear
5	4044	NEW ERA 2 Lt. Candelabra, bobèche & prisms, Pr.	40	1540	LARIAT 11" Crimped Floral bowl
6	1205	2" 1 Lt. Flam. Candle, Pr.	41	1252	TWIST Sahara 12" Flared Floral bowl H
7	1205	12" Flam. Floral bowl	42	1252	TWIST Flam. 12" Flared Floral bowl H f
8	1231	2" Flam. 1 Lt. Candle, Pr. H	43	421	PRISM BLOCK 8" Nappy H
9		Pr. Colonial & Metal 1 Lt. Candles made from Candelabra parts H	44	1567	PLANTATION 12" Flared Floral bowl
10	1540	LARIAT 1 Lt. Candle, Pr. not grnd.	45	1567	PLANTATION 14" Torte Plate
11	1567	PLANTATION 5" Frosted Epergne Candleholder H	46	1567	PLANTATION 6½" Ftd. Honey, Cupped H
12	1488	KOHINOOR Zircon 2 Lt. Candelabra W/bobèche & prisms Pr.	47	1567	PLANTATION 7" Ftd. Compote H
13	1488	KOHINOOR Zircon Floral Bowl H r	48	1567	PLANTATION Mayo & 7" Underplate H
14		Colonial 4 Lt. Candelabra on 16" tall base, bobèche & C prisms	49	1567	PLANTATION ½ Gal. Ice Lip Jug H
15	300	Colonial Candle Lamp, Cut shades & Cut prisms Pr.	50	1567	PLANTATION 14" Sandwich Plate
16	1	11" 1 Lt. Candle, Pr. Overcut 9" & 9½"	51	1567	PLANTATION 6½" Ftd. Honey, Cupped H
17	1445	GRAPE CLUSTER 2 Lt. Candle H	52	1567	PLANTATION 10 oz. Goblet 4 ea.
18	1445	GRAPE CLUSTER 1 Lt. Candle H	53	1567	PLANTATION 12 oz. Ftd. Ice Tea 7 ea.
19	1951	CABOCHON 2 Lt. Candle Pr. H	54	1567	PLANTATION 5 oz. Sherb. or Champ 8 ea. H
20	2	9" 1 Lt. Candle	55	1567	PLANTATION 5" Ftd. Vase Flared 2 ea.
21	2	9" 1 Lt. Candle	56	1567	PLANTATION Syrup Bottle w/drip cut top
22	136	Mnglm. 3 Lt. Candle H	57	1567	PLANTATION Punch Set, Bowl, 18" Buffet plate, Ladle & 12 Cups H
23	1405	IPSWICH Center Vase, no insert	58	1567	PLANTATION Punch Cup 12 ea. H
24	2506	7 oz. Plain Blown Tumbler W O 8 ea.	59	1567	PLANTATION 11" 3 Comp. Relish H
25	2351	12 oz. Plain Blown Soda W O 7 ea.	60	3390	CARCASSONNE Cobalt Sherbet 5 ea.
26	2852	12 oz. Plain Blown Soda, Flared W O 6 ea.	61	1183	REVERE Cobalt 8" plate 6 ea.
27	135	8 oz. Tumbler W O Cupped 8 ea H	62	407	COARSE RIB 7" plate 12 ea. H
28	4004	IMPROMPTU 9 oz. Old Fashion 6 ea.	63	1184	YEOMAN Sahara 8" plate DO 5 ea.
29	1486	COLEPORT 5 oz. Juice 7 ea. H	64	4182	Mnglm. 8" plate DO 4 ea.
30	412	TUDOR 8 oz. Tumbler 5 ea. H	65	1951	CABOCHON 8" plate w/Starlight Cut 7 ea.
31	1404	OLD SANDWICH 12 oz. Ftd. Ice Tea 2ea.	66	1951	CABOCHON 8" plate 2 plain 1 etched
32	1506	PROVINCIAL 12 oz. Ftd. Ice Tea 2 H 1f	67	1483	STANHOPE 7" Coupe plate Frosty Dawn
33	2401	8 oz. Soda 6 ea 2 f	68	1509	QUEEN ANN 7½" Rnd. plate Chintz 14 ea.
34		Misc. Lot of 5 Sodas 2 f	69	1401	EMPRESS Tangerine 8" Sq. plate 2 H
35	1486	COLEPORT Dawn 12 oz. Soda 9 ea. H m	70	3389	DUQUESNE Tangerine sherbet W O
			71	3389	DUQUESNE Tangerine Cocktail W O
			72	4091	KIMBERLY 3 oz. Cocktail Unk. Cut 6 ea.
			73	4091	KIMBERLY 4½ oz. Claret, Dolly Madison Rose Cut 12 ea. H
			74		Hollow Stem Champagne 5 ea.
			75	5025	TYROLEAN 4 oz. Cocktail, Orchid etch 8 ea.

76	1519	WAVERLY Saucer, Orchid etch 2 ea H	134	4055	PARK LANE Champ. Cohasset Cut 6 ea.
77	1519	WAVERLY 7" plate, Orchid etch 4 ea.	135	4055	PARK LANE Cocktail Cohasset 6 ea.
78	1519	WAVERLY Cr. & Sug. Orchid etch H	136	1184	YEOMAN 8" plate Cohasset Cut 6 ea.
79	1519	WAVERLY 11" 3 Comp. oblong Relish Orchid etch H	137	1425	VICTORIAN Low Gob. 3 ea. H
			138	1425	VICTORIAN Low Gob. 5 ea. H 1f
80	1519	WAVERLY 3 oz. Oil Orchid etch C	139	1425	VICTORIAN Sherb. 6 ea. H
81	1519	WAVERLY 3 oz. Oil Orchid etch R	140	1425	VICTORIAN Cocktail 8 ea. H
82	1519	WAVERLY 3 oz. Oil Narcissus Cut	141	1425	VICTORIAN Wine 6 ea. H
83	1404	OLD SANDWICH Catsup Bottle & stopper	142	1425	VICTORIAN 8" plate 7 ea. H
84	5031	FRENCH DRESSING BOTTLE Narcissus Cut cloudy	143	1425	VICTORIAN Soda H
			144	1425	VICTORIAN Cr. & Sug. H
85	5031	FRENCH DRESSING Bottle elaborate Cut	145	1425	VICTORIAN 27 oz. Rye Bottle Frosted
86	1489	PURITAN Vinegar & Oil Bottle wrong stopper	146	1489	PURITAN 24 oz. Rye Bottle, Abraham Lincoln Engraving
			147	3397	GASCONY 1 Pt. Decanter Cut
87	500	OCTAGON Flam. Ice Tub no handle H	148	4225	COBEL 1 Qt. Cocktail Shaker, Rafia Dec., Rooster Stopper
88	461	7" BASKET H			
89	458	8" BASKET H			
90	458	8" BASKET Floral Cut H	149	4225	COBEL 1 Qt. Cocktail Shaker Tally Ho
91	465	RECESSED PANEL 7" Basket H	150	2052	2½ oz. Bar Tally Ho etch
92	417	DOUBLE RIB & PANEL 6" Basket H	151	6060	COUNTRY CLUB Soda Winchester 73 etch
93	352	FLAT PANEL 1 Qt. Cr. Fruit H F	152	6060	COUNTRY CLUB Cocktail same etch 4 3f
94	354	WIDE FLAT PANEL 27 oz. Lavendar JarH	153	IMP. Souv. H C A Decanter 1977	
95	465	RECESSED PANEL 1# Cndy. Jar Gld.dech	154	IMP. Souv. H C A Claret 1974	
96	465	RECESSED PANEL ½# Cndy Jar Gld. decH	155	IMP. Souv. H C A Claret 1975	
97	1183	REVERE ¼# Candy Jar, Gold dec. H	156	IMP. Museum Dedication Paperweight #200	
98	300	PEERLESS 16" Vase H cloudy m	157	H C A Cobalt Blue Ash tray f	
99	338	15" Carnation Vase H f	158	IMP. set of H C A Souv. Plates 1971 - 1976	
100	338	15" Carnation Vase H f	159	IMP. H C ASouv. plate 1974	
101	338	14" Carnation Vase H RARE GOLD RUBY	160	IMP. Amber Zodiac Candy Jar	
102	1489	PURITAN Lg. Cig. Box Dorothy Thorpe dec. signed H & DTC	161	IMP. Steigel Green Puritan Jelly Compote	
			162	IMP. Steigel Green Puritan Jelly Compote	
103	1508	Card Case/ash tray	163	IMP. Pink Satin Small Elephant	
104	1503	CRYSTOLITE (Mahabar) Sahara Cig boxH	164	IMP. Set of 3 Lt. Blue Colts	
105	1503	CRYSTOLITE 4" Cig. box H f	165	VERLYS 13" Poppies bowl f	
106	1503	CRYSTOLITE 4½" Sq. ash tray H f	166	VERLYS Pinecone bowl, not finished	
107	1503	CRYSTOLITE 3" Sq. ash tray H f 5 ea.	167	VERLYS Lovebirds vase, not finished	
108	1503	CRYSTOLITE 3" Sq. ash tray Dawn H	168	1503 CRYSTOLITE 6" Ftd. Mint H	
109	1469	RIDGELEIGH Bridge Set, Heart, Spade, Club & Dia. ash tray H	169	1503 CRYSTOLITE 6" Ftd. Jelly	
			170	1503 CRYSTOLITE 4 Comp. Clover Relish	
110		4½" X 7" Ash tray	171	1503 CRYSTOLITE 3 Comp. Relish	
111		2½" X 4½" Oblong Ash tray	172	1503 CRYSTOLITE 12" Celery tray H	
112	1510	Sq. on Rnd. 6" Ash tray f	173	1503 CRYSTOLITE 6" Hdl. Bon Bon H	
113	1626	LODESTAR Dawn 5" Ash tray H	174	1503 CRYSTOLITE 6" Hdl. Bon Bon H	
114	1632	SATTELITE 5" Ash tray H	175	1503 CRYSTOLITE 5" Round Hdl. Nut	
115	381	QUILT Ash tray H	176	1503 CRYSTOLITE 12" Round Flared bowl	
116	1536	MILITARY CAP Ash tray	177	1503 CRYSTOLITE Ind. Hdl. Mint or Nut 6 ea.	
117	600	Ash tray & Match stand	178	1503 CRYSTOLITE Ind. Hdl. Mint or Nut 1 H	
118	1489	PURITAN 2½" Sq. Ash tray f	179	1503 CRYSTOLITE Ftd. Shell Mayo.	
119	1489	PURITAN 8" Sq. Ash tray	180	1503 CRYSTOLITE 10" Sq. Gardenia Bowl	
120	3386	DIAMOND ROSE Cobalt Pilsner 12 oz. H	181	1503 CRYSTOLITE 6" Candy w/metal lid H	
121	3386	DIAMOND ROSE Gob. Mnglm. bowl DO H	182	1503 CRYSTOLITE 4" Cov. Cig. Box H	
122	3386	DIAMOND ROSE Gob. Marigold bowl Empress etch DO H C	183	5003 CRYSTOLITE Ice Lip Jug m	
			184	341½ PURITAN ½ Gal. Squat Jug H	
123	3320	RITZ Gob. Mnglm. Ft. Oakleaf etch 2f	185	341½ PURITAN 3 Pt. Squat Jug H f	
124	3360	PENN CHARTER Hawthorne Gob. Checker Optic H	186	417 DOUBLE RIB & PANEL ½ Gal Jug H	
			187	411 TUDOR ½ Gal. Jug H	
125	3409	PLYMOUTH Gob. W O	188	1280 WINGED SCROLL Opal Cov. Powder	
126	3418	SAVOY PLAZA Gob. H f	189	1280 WINGED SCROLL Opal Cov. Trinket box	
127	3389	DUQUESNE Gob. Spec. Cut	190	Lg. Blown Powd. Jar w/Sterling Lid, Cut	
128	3324	DELAWARE Flam. Gob. f	191	Med. Blown Powd. Jar w/Sterling Lid, Cut	
129	3334	SEXTON Gob. Unkn. Cut H	192	1504 REGENCY Puff Box & Cov. H	
130	3312	GAYOSO Flam. Gob.	193	341 PURITAN 9½" Hi Ft. Compote H	
131	8029	PRINCESS LILY Gob.	194	160 LOCKET ON CHAIN Compote 8½"	
132	3373	MORNING GLORY Luncheon Gob. Mnglm. Ft. D O H	195	400 COLONIAL 10" Salver H	
			196	341 PURITAN 14" Flared Punch Bowl no base H	
133	4055	PARK LANE Gob., Cohasset Cut 6 ea.			

197	7000	SUNFLOWER 12" Floral bowl H	263	CABOCHON PRINTING PLATE
198	1401	EMPRESS 11" Ftd Floral bowl, Old Colony etch	264	IPSWICH PRINTING PLATE
199	365	OLD QUEEN ANN 14" Oblong Fruit tray H	265	ROSALIE PRINTING PLATE
200	1489	PURITAN Camellia bowl Spec. Cut	266	ORIGINAL 1956 HEISEY CATALOG
201	Swan f		267	TRADE CATALOG, T. D. TURNER & CO, W/Heisey item
202	Ringneck Pheasant H		268	Misc. Lot, IMP. Catalog 1972, & 5 Heisey Env.
203	Ringneck Pheasant H		269	9 Flower block & Crys. flower block
204	Goose, Wings Down		270	1519 WAVERLY 5" Crimped Epergnette 4ea H
205	Goose, Wings Half Up		271	Colonial 4 Pt. Relish, not Heisey
206	Goose, Wings Up H		272	4291 Candy Jar bottom only, Liberty Cut H f
207	Elephant Small		273	1202 Floral bowl 5½" baseonly, Mnglm. H
208	Donkey		274	1425 VICTORIAN 6" Cig. Box bottom only H
209	Giraffe, Head Turned, Frosted		275	LIDS ONLY - 429 Plain Panel Recessed Sug. & 1183 Revere 5" Sahara Lemon dish D O
210	Giraffe Head Back		*****	
211	Horsehead Bookend Frosted		START SATURDAY SESSION	
212	Horsehead Bookend Frosted m		276	300 PEERLESS Hotel Cr. & Sug. Gold dec. H
213	Fish Bookend		277	1951 CABOCHON Cr. & Sug. Cut H
214	Fish Bookend		278	1401 EMPRESS Alexandrite Ftd. Cr. & Sug. H Sug. F
215	Rabbit Paperweight		279	1540 LARIAT Cr. & Sug. H
216	Colt, Rearing or balking		280	1540 LARIAT Cr. & Sug. H
217	Colt, Rearing or balking		281	1231 RIBBED OCTAGON Flam. Cr. & Sug. H
218	Colt, Standing		282	1469 RIDGELIGH Ind. Cr., Sug. & tray H
219	Colt, Standing, Frosted		283	341 OLD WMSBURG. Cr. & Sug H
220	Sparrow, Frosted		284	337 TOURAINE Table Set, Cov. Butter & Sug., Cr. & Spooner Eng. & dtd. 1904 H
221	1503 CRYSTOLITE Ind. Swan Nut 4 ea.		285	1567 PLANTATION ¼# Stick Butter H f
222	1560 VICTORIAN GIRL BELL, Frosted H		286	160 LOCKET ON CHAIN Emerald Spooner
223	Madonna Frosted		287	341½ PURITAN Squat Spooner H m
224	1489 PURITAN 4" Horsehead Cig. Box f		288	310 RING BAND Custard Cov. Sug. Floral dec H
225	7002 RAMSHEAD Cocktail Shaker Stopper			411 TUDOR Sug. Dispenser Met. Pourer H
226	PENGUIN Decanter Stopper		290	1255 PINEAPPLE & FAN Custard ½ Pt. Pit. H
227	5038 ROOSTER STEM Cocktail, Frosted stem		291	8047 CANE & BAR Custard ½ Pt. Pitcher H
228	5038 ROOSTER STEM Cocktail 5 ea.		292	1509 QUEEN ANN Ind. Cr. Rosalie etch H
229	341 PURITAN Gob. H		293	1519 WAVERLY Ind. Sug. Orchid etch
230	351 PRISCILLA Gob. H		294	406 COARSE RIB Flam. Cr. H
231	300 PEERLESS 7 oz Gob. 6 ea H		295	Misc. Lot of Ridgeleigh Sug., Crystolite Sug. & Wide Flat Panel Ind. Sug. all H
232	300 PEERLESS Lo Ft. Sherb. 6 ea. H		296	Misc. Lot of Plantation Sug., Narrow Flute Hotel Cr., Old Wmsburg. Cr. & Cabochon Cr. all H
233	300 PEERLESS Wine 6 ea. H		297	1401 EMPRESS 8" Cindiment tray for Ind. Cr. & Sug.
234	1226 5½ oz. Lo Ft. Sherb. 7 ea 1f		298	1540 LARIAT tray for Ind. Cr. & Sug.
235	1226 5½ oz. Lo Ft. Sherb 4 ea. H		299	1503 CRYSTOLITE tray for Ind. Cr. & Sug.
236	52 Ind. Flam. Salt & Pepper H		300	411 TUDOR 12" Celery tray H
237	12 Salt & Pepper, Sanitary Glass Tops		301	1425 VICTORIAN 12" Celery tray H
238	10 Salt & Pepper Sanitary Glass Tops		302	1252 TWIST Mnglm. 12" Celery tray H
239	1519 WAVERLY Ftd. Salt & Pepper Dolly Madison Rose Cut		303	4044 NEW ERA 12" Celery tray Chintz etch
240	57 Salt & Pepper, Cohasset Cut Cl.		304	1401 EMPRESS 12" Celery tray H
241	10 Salt, Flam top		305	473 NARROW FLUTE W/RIM 12" Celery tray H F
242	53 Ind. Salt Mnglm. Cyrs. top		306	407 COARSE RIB 9" Celery tray H
243	57 Salt Cohasset Cut & #18 Salt H		307	407 COARSE RIB Mnglm. 12" Celery tray H
244	52 Ind. Sahara Salt Crys. top		308	407 COARSE RIB 12" Celery tray, Marigold stain H
245	52 Ind. Flam. Salt H		309	407 COARSE RIB 12" Celery tray H
246	1401 EMPRESS Sahara Salt on bust off		310	393 NARROWFLUTE 9" Celery tray H
247	1469 RIDGELEIGH Ind. Salt Dip H		311	1567 PLANTATION 3 Lt. Candelabra Pr.
248	1489 PURITAN Ind. Salt 2 ea.		312	142 CASCADE 3 Lt. Candle Pr.
249	31 TOY 1 Lt. Candle Pr. H		313	134 TRIDENT Sahara 2 Lt. Candle Pr.
250	352 FLAT PANEL Knife Rest H		314	1495 FERN 2 Lt. Candle, Orchid etch Pr.
251	1506 PROVINCIAL Ind. Nut H		315	1495 FERN 2 Lt. Candle, Floral etch Pr.
252	1469 RIDGELEIGH Oval Nut H		316	1503 CRYSTOLITE 3 Lt. Candle Pr.
253	1469 RIDGELEIGH Hdl. Almond 3 ea. H		317	301 HURRICAIN LIGHTS, 5080 CUT GLOBES, ELABORATE KRALL CUTTING W/BIRDS, PAIR
254	1229 OCTAGON Mnglm. Ind. Almond 6 ea H		318	17 1 Lt. Candelabra, bobèche, & C Prisms Pr. H
255	1229 OCTAGON Flam. Ind. Almond 6 ea. H			
256	1404 OLD SANDWICH Cobalt Ind. Ash trayHf			
257	1404 OLD SANDWICH Ind. Ash tray H			
258	433 GREEK KEY Ind. Butter H			
259	354 WIDE FLAT PANEL Ind. Butter 6 ea H			
260	Misc. Lot of 12 Salt Shaker tops			
261	Guernsey Glass Fake Toothpick AHHeisey 1896			
262	2 Pc. Lot Flower Frog & 6" plate			



319	PR. ELEC. HURRICANE LAMPS made from Crystolite parts, cut globes	371	341	OLD WMSBURG. 5" Hdl. Jelly H
320	1445 GRAPE CLUSTER 1 Lt. Candle, bobèche & prisms, Pr. H	372	1540	LARIAT 7" Hdl. nappy
321	300 1 Lt. Candelabra, bobèche & Prisms Pr	373	1495	FERN 6" Hdl. Mint Waterford Cut
322	110 COBALT DOLPHIN CANDLESTICK PAIR	374	1253	TWIST Tri Cor. Flam. Mint H
323	1405 IPSWICH Sahara Candle Vase w/crys. insert & prisms Pr. H	375	1509	QUEEN ANN 6" Jelly Ftd. Hdl. Orchid H
324	111 CHERUB CANDLESTICK, Frosted	376	1183	REVERE 5" Lemon Dish & Cov. Gray Cut H
325	111 CHERUB CANDLESTICK, Mnglm., Frosted	377	353	MED. FLAT PANEL 5" Lo Ftd. Comport H
326	1503 CRYSTOLITE Sq. Hurricane bases, Pr.	378	1229	OCTAGON Mnglm. 5½" Ftd. Mayo & Ladle H
327	1252 TWIST Marigold 1 Lt. Candle Pr.	379	1509	QUEEN ANN 7" Comb. Dressing bowl H
328	112 MERCURY 1 Lt. Flam. Candle Pr.	380	1184	YEOMAN Ftd. Bouillon & 6" plate Cut H
329	1472 PARALLEL QUARTER 1 Lt. Candle Pr.	381	3404	SPANISH Tangerine Finger bowl WO
330	1469 RIDGELEIGH Sahara 6" Candle Vase	382	3381	CREOLE Alexandrite Finger bowl f
331	1503 CRYSTOLITE 3 Lt. Candle	383	341	OLD WMSBURG. 4 oz. Oil #2 stopper H
332	1425 VICTORIAN 2 Lt. Candle H	384	351	PRISCILLA Mustard & Cov. H
333	1540 LARIAT 3 Lt. Candle	385	363	7 oz. Sanitary Syrup H
334	1428 WARWICK Sahara 2 Lt. Candle H	386	372	7 oz. Mnglm. Sanitary Syrup
335	1503 CRYSTOLITE Mellon Candleblock	387	372	5 oz. Sanitary Syrup Minuet Etch H
336	1951 CABOCHON Hurricane Globes cut to 8½", Frosted, Cut stars Pr.	388	10	Sal & Pepper Minuet Etch
337	12" Globe, Cut, Frosted	389	1511	TOUJOURS Cr. & Sug. Minuet Etch H
338	Lot of C Prisms, 6 - 6", 8 - 5", 11 buttons, some chips	390	1509	QUEEN ANN 3 Comp. Relish Minuet Etch H
339	Lot of approx. 50 A Prisms	391		3 Part Round Relish, Elaborate Cut
340	Lot of approx. 28 C Prisms	392	1511	TOUJOURS Apple Marmalade Elaborate Cut
341	Lot of Prisms, approx 17	393	1519	WAVERLY 6" Bow Tie Candy Box, Spec. Cut
342	2351 10 oz. Beverage, 12 ea.	394	1519	WAVERLY 5" Hi Ft. Candy & Cov. Elks H
343	2351 10 oz. Beverage, Maryland cut 3ea.	395	1519	WAVERLY Amber 5" Hi Ft. Candy & Cov. H
344	2351 10 oz. Beverage Sabrina etch 3ea.	396	358	27 oz. Lavendar Jar H
345	2351 8 oz. Beverage Zodiac etch 4 ea.	397	356	24 oz. Lavendar Jar, Windsor Cut H
346	393 NARROW FLUTE 13 oz. Soda H	398	352	FLAT PANEL Horseradish Jar H
347	429 PLAIN PANEL RECESSED 12 oz. Ice Tea H f	399	3335	LADY LEG 5 oz. Saucer Champ. 4 ea. 3f H
348	353 MEDIUM FLAT PANEL Ftd. Soda, Fred Harvey Amber 6 ea. 1 C	400	1540	LARIAT 6 oz. Saucer Champ. Carolina Cut
349	2351 6 oz. Soda, Floral cut	401	4083	STANHOPE 5½ oz. Saucer Champ. Kings Ransom Cut H
350	5087 COMET 8 oz. Soda Mono S J S	402	5019	WAVERLY 5½ oz. Sherb. Burgundy Cut H
351	1280 WINGED SCROLL Custard Tumbler f	403	3366	TROJAN 5 oz. Sherb. Unkn. Cut
352	1487 COLEPORT Dawn 10 oz. Tumbler H	404	5077	LEGIONNAIRE 6 oz. Sherb. Arcadia Cut H
353	1485 SATURN Zircon 9 oz. Luncheon Tumbler H	405	5057	SUEZ 6 oz. Sherb. Laurel Cut H
354	1485 SATURN Zircon 9 oz. Luncheon Tumbler 2 ea. H	406	341	PURITAN 4½ oz. Saucer Champ. 4 ea. H
355	1485 SATURN Zircon 5" Whipped Cream 3 ea. H	407	1540	LARIAT 6 oz. Saucer Champ. 4 ea. H
356	1485 SATURN Zircon Mayonnaise H	408	407	COARSE RIB 5½ oz. Saucer Champ. 9ea H
357	1485 SATURN Zircon Tid Bit tray H	409	3397	GASCONY 6 oz. Sherb. or Finger bowl Tangerine, Red side, 2 ea.
358	1485 SATURN Zircon Saucer 4 ea. H	410	6092	CABOCHON 6 oz. Sherb. Amber base 3 1H
359	1485 SATURN Zircon 7" Plate 4 ea.	411	300	PEERLESS 14" Punch Bowl & Base H(bubble)
360	1485 SATURN Zircon 8" Plate 2 ea	412	341	OLD WMSBURG. 4 oz. Punch cup 8 ea 1X
361	1485 SATURN Zircon Marmalade W/crys Lid	413	1401½	EMPRESS Cup, Gray Floral Cut H
362	1485 SATURN Tumbler in Manning Bowman Marmalade holder H	414	339	CONTINENTAL Punch cup H
363	393 NARROW FLUTE Marmalade Jar & Cov H	415	1231	RIBBED OCTAGON Flam. Cup & Saucer 9 sets, H
364	1567 PLANTATION Marmalade & Cov. H	416	1186	YEOMAN Flam. Cup & Sauc. DO 3 cups, 2 saucers H
365	1000 ALEXANDRITE Marmalade & Cov. H	417	300	PEERLESS Sm. Loving Cup (3 Cracked Hdls)
366	1469½ RIDGELEIGH 6" Jelly 2 Comp.	418	1469	RIDGELEIGH 5" Nappies 6 ea. H
367	1469½ RIDGELEIGH 6" Jelly 2 Comp.	419	1469	RIDGELEIGH 9" Flared Nappy H
368	1469 RIDGELEIGH 6" Jelly in Chrome Holder H	420	393½	NARROW FLUTE 8½ " Nappy & (4) 4" nappies H
369	1252 TWIST Flam. 6" 2 Hdl. Mint	421	1252	TWIST Floral bowl 12" H
370	1252 TWIST Marigold 6" 2 Hdl. Cheese, Sugary H	422	1469	RIDGELEIGH 12" Floral bowl H
		423	341	PURITAN 8½" Shallow nappy H
		423A	1235	BEADED PANEL & SUNBURST 7½" nappy, Frosted panels
		424	393½	NARROW FLUTE Nappy, shows wear H Pat.
		425	135	Floral Bowl Sahara H
		426	1252	TWIST Sahara 8" Nasturtium bowl H
		427	1632	LODESTAR 8" Bowl Dawn
		428	150	BANDED FLUTE 8" Nappy (chip) H

429	1280	WINGED SCROLL VASELINE (CANARY)	494	1401	EMPRESS Flam. 7" Triplex Relish H
		8½" Nappy	495	1231	RIBBED OCTAGON 10½" Flam. Center Hdl.
430	1575	12" Floral bowl H w/ #3 Flower frogx			Sand. Plate H
431	1509	QUEEN ANN D F 8" Nappy H	496	397	COLONIAL CURPED SCALLOP Candy tray Hf
432	1519	WAVERLY 5½" Ftd. Mayo Heisey Rose H	497	1401	EMPRESS Sahara D F 8" Flat bowl H
433	5072	ROSE SHERBET w/Heisey Rose etch 6eaH	498	1205	FANCY LOOP 8" Plate
434	5072	ROSE GOB. w/Heisey Rose etch 7ea H	499	1205	FANCY LOOP 4" Sq. nappies 12 ea. 3F
435	3350	WABASH Gob. Pied Piper etch 9ea 1x	500		ROOSTER
436	3357	KING ARTHUR Gob. Mnglm. stem 5ea 1x	501		HEN
437	1423	SWEET AD-O-LINE 12 oz. Goblet H	502		LARGE ELEPHANT
438	3404	SPANISH Gob. Cobalt bowl H	503		SMALL ELEPHANT R H
439	3404	SPANISH Gob. Engraved & Cut	504		DONKEY
		"ABMc" Mono	505		RABBIT PAPERWEIGHT
440	3404	SPANISH Gob. DaVinci Spec. Engr. m	506		SCOTTY
441	3404	SPANISH Gob. Special Cut	507		SCOTTY
442	3404	SPANISH Gob. Unkn. Spec. Cut	508		COLT, KICKING
443	3411	MONTE CRISTO Gob. Ice Capades Cut	509		COLT, BALKING (SITTING) R - L ear
444	3408	JAMESTOWN GOB. Spec. Cut H	510		COLT, STANDING H
445	3362	CHARTER OAK Hawthorne Gob. DO	511		OSCAR, COBALT
446	7043	PANEL & DIA. POINT GOB. H	512		OSCAR, AMBER
447	4044	NEW ERA Gob. Cobalt bowl	513		OSCAR H
448	8032	CAPITAL Goblet	513A		OSCAR f - ear
449	300	PEERLESS Ftd. Gob. H	513B		CSCAR, No Tail
450	6091	CABOCHON Gob. W O	514		RINGNECK PHEASANT m
451	1405	IPSWICH Goblet 6 ea. H	515		RINGNECK PHEASANT
452	1405	IPSWICH GOBLET ALEXANDRITE RARE H	516		RINGNECK PHEASANT
453	1306	COMET LEAF GOBLET ALEXANDRITE RARE H	517		GOOSE, WINGS DOWN
454	1540	LARIAT Ftd. Ice Tea Gray Cut	518		GOOSE, WINGS HALF
455	3390	CARCASSONNE Ftd. Ice Tea WO Cobalt	519		GOOSE, WINGS UP H
456	1508	CARD BOX	520		GOOSE, WINGS HALF (WINGS FROSTED) H
457	1496	MAHABAR Cov. Cig. Box Sahara H	521		CYGNET H
458	1503	CRYSTOLITE Cig. Box H	522		GIRAFFE HEAD BACK
459	361	ASHTRAY/Cig. Box & Cov. Sahara H	523		GIRAFFE 2 ea. Both X
460	3390	CARCASSONNE Cig. Holder Cobalt	524		HORSEHEAD BOOKEND
461	1488	KOHINOOR Cig. Holder Zircon H	525		HORSEHEAD BOOKEND
462	1488	KOHINOOR Ash tray 4ea H Zircon	525A		WOOD DUCK
463	1632	LODESTAR 5" Ash tray Dawn H	525B		TIGER PAPERWEIGHT F
464	1469	RIDGELEIGH Bridge Ash tray 6ea H	526	15	DUCK FLOWER BLOCK & FROG Flam.
465	1590	ZODIAC Ohio Sesqui Ash tray 2ea.	527	14	KINGFISHER FLOWER BLOCK H
466	1533	WAMPUM Ash tray 2ea. H	528	7056	ELEPHANT HDL. MUG H
467	1503	CRYSTOLITE 3" Sq. Ash tray 2ea H	528A	1591	CHILDS MUG H
468	1536	MILITARY CAP Ash tray	529		YOU, ME & US COCKTAIL SET, Rooster Stopper
469	1469	RIDGELEIGH 2½" Sq. Ash tray 2 H	530	5065	STANDING COLT STEM COCKTAIL
470	1469	RIDGELEIGH 2½" Sq. Ash tray H	531	5066	HORSEHEAD COCKTAIL
471	1469	RIDGELEIGH Club Ash tray H F	532	5058	GOOSE STEM CORDIAL 9 ea.
472	1469	RIDGELEIGH Club Ash tray H	533	357	DUCK ASH TRAY Mnglm. H
473	1469	RIDGELEIGH Heart Ash tray H	534	1503	CRYSTOLITE Ind. Swan Nut 11 ea.
474	1186	YEOMAN Ind. Ash tray AMBER RARE	535	1503	CRYSTOLITE Ind. Swan Nut
475	1186	YEOMAN Ind. Ash tray SAHARA	536		IMP. CARMEL SLAG MED. ELEPHANT IG
476	1286	CUPID & PSYCHE Ash tray Mnglm.	537		IMP. CARMEL SLAG WOOD DUCK IG
477	1286	CUPID & PSYCHE Ash tray Flam.	538		IMP. CARMEL SLAG STANDING COLT IG
478	1286	CUPID & PSYCHE Ash tray	539		IMP. CARMEL SLAG STANDING COLT
479	1186	YEOMAN Ind. Ash tray Mono BFM 2ea	540		IMP. SOUV. OSCAR 1977 Green (x bubble base)
480	458	8" Basket H	541		IMP. SOUV. OSCAR 1977 Green (bubble tail)
481	458	8" Basket H	542		IMP. SOUV. OSCAR 1977 Green 2 ea. 1-bubbletail
482	458	8" Basket H Sprig Cut	543		IMP. SOUV. OSCAR 1978 Pink (bubble tail)
483	458	8" Basket H Bl. & Gold Dec.	544		IMP. SOUV. OSCAR 1978 Pink (bubble tail) 2ea.
484	459	8" Rd. Colonial Basket Mums etch H	545		IMP. SOUV. OSCAR 1978 Pink 2 ea.
485	460	PINWHEEL Basket H	546		IMP. SOUV. OSCAR 1979 Yellow
486	465	RECESSED PANEL 8" Basket H	547		IMP. SOUV. OSCAR 1979 Yellow (bubble tail) 2ea.
487	1540	LARIAT 8½" Ftd. Hdl. Basket	548		IMP. SOUV. OSCAR 1980 Amethyst (bubble tail)
488	1951	CABOCHON 9" 3 Comp. Relish H	549		IMP. SOUV. OSCAR 1980 Amethyst 2 ea.
489	500	OCTAGON 12" Variety Tray Olympiad H	550		IMP. SOUV. OSCAR 1981 Lt. Blue (bubble tail)
490	1503	CRYSTOLITE 4 Pt. Cloverleaf Relish	551		IMP. SOUV. OSCAR 1982 Dk. Green
491	1503	CRYSTOLITE 4 Pt. Cloverleaf Relish	552		IMP. CHILDS MUG Lt. Blue Irrd.
492	1469	RIDGELEIGH Star 5 Pt. Relish H	553		IMP. CHILDS MUG Lt. Green Irrd.
493	1506	PROVINCIAL 10" 4 Comp. Relish	554		IMP. GLASS DISPLAY SIGN

555	4225	COBEL 1 Qt. Cocktail Shaker	614	1518	CUT MITRE Vase, Cut
556	4225	COBEL 1 Qt. Cocktail Shaker Tally Ho	615	3381	CREOLE 12 oz. Ftd. Soda Alexand. 3 ea.
557	4027	32 oz. Decanter Fisherman Etch	616	3397	GASCONY 14 oz. Ftd. Soda Tangerine Red side 2 ea.
558	4002	AQUA CALIENTE Cocktail Fisherman 8 ea.	617	1590	ZODIAC Oyster Cocktail 2 ea. H
559	2401	16 oz. Decanter Sportsman (cloudy)	618	3350	WABASH 5 oz. Parfait DO Marigold bowl
560	3397	GASCONY 2½ oz. Wine Sportsman etch 7 ea. 2 f	619	6004	CLASSIC 5 oz. Ftd. Jc. Forget-Me-Not Cutting 5 ea.
561	2052	1½ oz. Bar Sportsman etch 9 ea.	620	300	PEERLESS 6 oz. Champagne H
562	2052	1½ oz. Bar Foxchase etch 2 ea.	621	3359	PLATEAU 6 oz. Sherbet DO Cobalt bowl, crystal foot
563	2052	1½ oz. Bar Tally Ho etch 6 ea. 1f	622	3381	CREOLE Ftd. Grapefrt. Alexandrite bowl, crys. stem & foot
563A	4052	1½ oz. Bar Tally Ho etch 5 ea. 1f	623	3404	SPANISH 3 oz. Cocktail Tangerine
564	6060	COUNTRY CLUB Sodas. Winchester 73 6ea.	624	3404	SPANISH 3 oz. Cocktail Cobalt 6 ea.
565	6060	COUNTRY CLUB 13 oz. Old Fashion Winchester 73 etch 6 ea.	625	341	PURITAN Cocktail 3 oz. H
566	4002	AQUA CALIENTE Antarctic etch H	626	5079	PAN AMERICAN 4 oz. Cocktail Cut H
567	353	MED. FLAT PANEL Vase 18" H	627	4091	KIMBERLY Cocktail Spec. Cut
568	353	MED. FLAT PANEL Vase 15" H	628	3368	ALBEMARLE Cocktail Spec. Cut H
569	353	MED. FLAT PANEL Vase 12" H	629	3368	ALBEMARLE Cocktail Chateau Cut H
570	412	TUDOR 10" Vase Crimped H	630	3411	MONTE CRISTO Cocktail Pairpoint Cut
571	4057	10½" Vase Elaborate Cutting	631	4091	KIMBERLY Wine Courtship Cut H f
572	4057	9" Vase Spec. Cut & Sand Blast	632	3408	JAMESTOWN Wine 6 ea. 1f
573	4057	5 3/4" Flip Vase, Spec. Cutting for Metropolitan Museum	633	300	PEERLESS 2½ oz. Wine 4 ea. H
574	1485	SATURN 9" Ftd. Vase H	634	5024	OXFORD 1 oz. Cordial tall stem 6ea H 1f
575	1205	FANCY LOOP 8" #1 Vase	635	3408	JAMESTOWN 1 oz. Cordial 5 ea. H
576	4205	Vase Marigold DO Empress etch Pr.	635A	5003	CRYSTOLITE Cordial 2 ea. H
577	1519	WAVERLY 7" Ftd. Vase 2ea. H	636	5072	ROSE STEM Cordial H
578	1540	LARIAT 7" Ftd. Fan Vase #2 H	637	3350	WABASH Cordial H
579	1540	LARIAT Round Vase	638	3380	OLD DOMINION Sahara DO Cordial H
580	1540	LARIAT 8" Ftd. Fan Base #2 M	639	5067	PLANTATION Cordial H R
581	1540	LARIAT 7" Ftd. Fan Vase #2 Gray Cut	640	1205	FANCY LOOP Toothpick f
582	1503	CRYSTOLITE Vase 6"	641	351	PRISCILLA Toothpick H
583	1469	RIDGELEIGH 6" Candle Vase H	642	1280	WINGED SCROLL Toothpick Custard
584	300	PEERLESS 5" Orchid Vase cut top	643		DOORKNOB Salt Shaker, cut star
585	1575	LILY 7" Cupped bowl H	644	52	IND. Salt & Pepper, Sahara, crys. tops H
586	1555	10" Cornucopia Vase	645	52	IND. SALT & PEPPER Mnglm. H
587	1569	12½" Shallow bowl Ftd. H	646	52	IND. SALT & PEPPER Flam. H
588	1558	6½" Vase H	647	52	IND. SALT & PEPPER HAWTHORNE H
589	1485	SATURN 10½" Vase	648	1280	WINGED SCROLL 5" Pin tray Emerald
590	4045	6" BALL VASE WO Sahara	649	1184	YEOMAN Marigold DO Egg cup H
591	3335	Whimsey Vase from finger bowl on bubble Cobalt WO	650	1229	OCTAGON Hdl. Ind. Nut Sahara DO H
592	4220	4½" VASE WO EXPERIMENTAL GOLD RUBY	651	1229	OCTAGON Hdl. Ind. Nut Hawthorne H
593	4157	5½" ROSE BOWL DO Tangerine EXP. W/Opaque top rim	652	1229	OCTAGON Hdl. Ind. Nut Mnglm. H
594	4157	5½" ROSE BOWL DO Hawthorne	653	1229	OCTAGON Hdl. Ind. Nut Mnglm. DO H
595	4157	5½" ROSE BOWL DO Mnglm.	654	1229	OCTAGON Hdl. Ind. Nut Marigold H
596	4157	5½" ROSE BOWL DO Sahara	655	1229	OCTAGON Hdl. Ind. Nut Flam. H
597	1404	OLD SANDWICH 8" plate 8 ea H	656	1252	TWIST Hdl. Ind. Nut Flam. H
598	1404	OLD SANDWICH 6" plate 4 ea H	657	1252	TWIST Hdl. Ind. Nut Mnglm. H
599	8016	JEWEL BAND 7½" plate 3 ea.	658	1252	TWIST Hdl. Ind. Nut Crystal H
600		7" Sq. Plate Cut signed HAWKES	659	1252	TWIST Hdl. Ind. Nut Marigold H
601	1238	8" Beehive plate	660	1401	EMPRESS Ind. Nut DF Mnglm. SeaH
602	1238	5" Beehive plate Zircon	661	353	MED. FLAT PANEL Ind. Nut 6ea
603	4159	Sm. Ice Lip Jug	662	411	TUDOR Ind. Nut H
604	6060	COUNTRY CLUB ½ Gal. Ice Lip Jug	663	3316	BILTMORE Ind. Almond DO Mnglm Ft.
605	4206	OPTIC TOOTH 3 pt. Jug DO Mnglm Ft. & Hdl.	664	1469	RIDGELEIGH Hdl. Ind. Nut 2 Comp. H
606	2516	CIRCLE PAIR ½ Gal. Jug DO MnglmHdl.	665	1469	RIDGELEIGH Hdl. Ind. Nut H
607	4166	40 oz. Ftd. Jug & (8) 3476 Temple Hdl. Ice Teas Cloister Cut	666	1506	PROVINCIAL Ind. Nut or jelly 12eaH
608	1632	LODESTAR 1 Qt. Pitcher Dawn H	667	1503	CRYSTOLITE Ind. Leaf Nut 3 ea.
609	1632	LODESTAR 6 oz. Cocktail DawnH6ea.	668	1535	OVAL DIA. POINT Ind. jelly H
610	1632	LODESTAR 6 oz. Cocktail DawnH6ea.	669	1454	DIA. POINT Ind. jelly H
611	4085	32 oz. Jug Zircon SO & 1485 Saturn Zircon 5 oz. Juice 6 ea. H	670	1454	DIA. POINT Ind. jelly 12 ea. H
612	1205	FANCY LOOP 10" #2 Vase	671	1535	OVAL DIA. POINT Ind. Ash tray H
613	442	8" Vase H	672	1454	DIA. POINT Ind. Ash tray H
			673	1404	OLD SANDWICH Cobalt Ind. Ash tray 4 ea. 1f h



674	351	PRISCILLA Butter Pat 4 ea. H	706	3	ICE TEA SPOONS 6 ea. H
675	4045	2" BALL VASE COBALT WO	707	305	PUNTY & DIA. POINT Elec. Shade
676	3397	GASCONY Tangerine 2½ oz. Wine	708		Sahara Pendant & Chain H
677	1469	RIDGELEIGH Mustard & Cov. H	709		Zircon Pendant & Chain made from Saturn Cup Hdl.
678	1503	CYRSTOLITE Cov. Mustard H	710	393½	NARROW FLUTE 4½" Nappy 4 ea. H
679	516	FAIRACRE Flam. 1 oz. Cologne DO H	711	1252	TWIST Flam. 8" Nappy H
680	4231	COBALT FAVOR VASE DO	712	1186	YEOMAN Puff Box & Cov. H
681	4231	COBALT FAVOR VASE DO	713	1540	LARIAT Coaster 9 ea.
682		Solid Glass - Rest 1 3/4" X 2"	714	9	FLOWER FROG
683	50	CABOCHON ADV. SIGN	715	4225	COBEL 1 Qt. Cocktail Shaker, no strainer or stopper, Moonglo Cut 6" Sq. Candy Trays 9 ea.
684	4052	NATIONAL 1 oz. Bar Moonglo Cut 3 ea.	715A		
685	5060	WASH. SQUARE 2 oz. Bar 2 ea. f	716	473	NARROW FLUTE W/RIM bottom to Griddle Cake Set H
686	5087	COMET 2 oz. Bar 2 ea.	717		MISC. LOT - 4 Pcs.
687	2401	1 oz. Bar 3 ea.	718		MISC. LOT - 4 Pcs.
688	4054	CORONATION 1 oz. Bar 2 ea.	719		MISC. LOT - 4 Pcs.
689	2351	1 oz. Bar Maryland Cut	720		Stopper for Puritan Rye Bottle b
690	2355	CLOVERLEAF 2 oz. Bar	721		Whimsey Glass Boot made for Boots Gebhart
691	300½	PEERLESS 2 oz. Bar straight H	722		Glass Parade Cane
692	53	Whimsey Vase made from Mnglm Ind. Salt Shaker	723		Glass Parade Cane, Hollow
693		TOY ALEXANDRITE CANDLESTICK CUT	724		Whimsey Paperweight, Elaborately Cut
694		Whimsey TOY GLASS BIBLE CUT b	725		Glass Paperweight, Multi Colors C
695		Whimsey Alex. Paperweight cut from #48 Stopper	726		Glass Paperweight, Orange & White w/bubbles
696		Whimsey Amber Seahorse Stem H	727		Glass Paperweight, Purple w/yellow & orange Flowers
697		Whimsey Amber Seahorse Stem H	728		Glass Paperweight, Lg. w/Lg. bubbles & Multi colored
698		Whimsey Colt Stem	729		Glass Paperweight, Multi Colored stones
699		Whimsey Goose Stem Frosted	730		Glass Paperweight, Aqua w/white Flower
700		Whimsey Paperweight made from finial from 1401 Lemon dish Cov. 2 ea.	731		Glass Paperweight, w/multi colored sunbrst.
701		Whimsey Paperweight from Rooster Stem 2 ea.	732		Glass Paperweight, Multi & blue & wht flowe
702		TOY Horsehead 2 ea.	733		Heisey Glass in Color Bk II w/82-83 PG
703		Milk Bottle Cap from Kimberly stem	734		Animal Book I & II w/83-84 PG
704		Milk Bottle Cap from Kimberly & Monte Cristo stem 2 ea.	735		2 Books - Heisey Glass. of Dist./ Burns & Heisey's Orchid - HCA
705		Cyrstal Mayo Ladle H			

#### MAIL BID INSTRUCTIONS

Mail bids accepted with checks for maximum amount. Mail bids are handled competitively and any difference refunded. Condition of items for mail bids handled at the discretion of auctioneer. In some cases where damage is found to be minimal, we may execute your bid up to 70% to 80% of maximum. Please add \$8.00 per carton for postage and handling, \$10.00 west of Rocky Mountains. Checks should be made to: SAM SCHNAIDT, AUCTIONEER and mailed to:

APPLE TREE AUCTION CENTER  
1616 WEST CHURCH STREET  
NEWARK, OHIO 43055

LIST OF PRICES, REALIZED, AVAILABLE AFTER THE AUCTION FOR \$1.00 or 1984 PRICE LIST SUBSCRIPTION (PRICES ONLY) \$5.00.

For more information call:  
Sam Schnaidt - 614-344-944  
Heisey Museum - 614-345-293

### ALL HEISEY AUCTION TO BE HELD IN JUNE

There will be an auction again this June during the convention. However, this year HCA will be a Co-sponsor and will share in the profits. The auction will be an added attraction for the convention.

The auction will be held on Saturday, June 16th, at the Apple Tree Auction Center and will be limited to 400 lots. The selling fee will be \$10 per lot regardless of the selling price. A lot can be one item or a combination of items as you choose. No limit on number of lots. If you wish to reserve numbers for a certain number of lots, contact either the HCA or the Auction Center as soon as possible.

Items received by April 28 will be listed in the June newsletter which goes out the end of May. Glass may be brought to the museum or the auction house anytime. (The April 28th auction would be a good time.)

There will be a preview of the glass on Friday, June 15 after the banquet. Selling will start promptly at 9 a.m. on Saturday. Since the Flea Market begins early in the morning, you can visit it before going to the auction. The show will be open until 8 p.m. on Saturday. You will be paid almost as soon as your glass is sold and then you'll have more money to spend at the Show and Flea Market.

Mail bids will be accepted.

You cannot bid on your own glass.

## PAUL'S COLLECTABLES

140 HILL AVENUE  
BIRDSBORO, PA 19508

\* Marked

PH: 215-385-3170

SHIPPING AND  
INSURANCE EXTRA  
PA Residents - 6%  
Sales Tax

## \* BRIARWOOD GLASS

\* PAT FRIEDMAN  
\* 29 GREENWOOD ST.  
\* NEWTON CTR., MA 02159

\* \* Marked

PH: 617-527-5443

P & I EXTRA  
MINT & PRICES EA.  
UNLESS NOTED

#1184	YEOMAN Low Footed Compotes (2)	
	Diamond Optic, Flamingo* ..ea.....	\$ 25.00
# 300	COLONIAL 10 oz. Goblet, Crystal*..	15.00
#1401	EMPRESS Dolphin Footed Ind. Nut	
	Dishes, Sahara (4) ea.....	25.00
# 473	NARROW FLUTE, Plain Rim Oil	
	Bottle, #8 Stopper, Crystal*.....	50.00
#1469	RIDGELEIGH 3 oz. Oil Bottle With	
	#103 P.S., Crystal, Sm. flake on	
	stopper.....	40.00
# 393	NARROW FLUTE Mustard, Crystal*	
	Minor flake on lid.....	25.00
# 341	PURITAN 2 oz. Wines, Crystal, Old	
	Williamsburg (2) ea.....	12.00
# 338	#6 12" High Carnation Vase,	
	Crystal, Old Large Mark.....	45.00
#1183	REVERE 5" Lemon Dish, Crystal,	
	Daisy Cut*.....	22.00
#1252	TWIST 12" Oval Floral Bowl,	
	Moongleam*.....	45.00
# 5	9" Candlesticks, Crystal, Pair....	65.00
#1519	WAVERLY Epergnettes, Crystal*	
	(3) ea.....	10.00
# 341	PURITAN Oval Celery, Crystal* 9"	
	(2) ea.....	15.00
	STANDING COLT, Crystal.....	85.00
	VERLYS of America Rose Bowl,	
	Crystal, Frosted, Script Mark.....	60.00
	HOLOPHANE Ash Tray, Crystal,	
	Frosted, Slightly chipped.....	18.00
# 150	BANDED FLUTE 4 oz. Oil, Crystal*..	40.00
#1170	PLEAT AND PANEL 5" Two Handled	
	Jelly, Crystal*.....	18.00
	CAMBRIDGE Sea Gull Flower Frog,	
	Crystal.....	95.00
	NATIONAL GEOGRAPHIC MAGAZINES WITH	
	FULL PAGE HEISEY ADS:	
	September 1927.....	5.00
	November 1927.....	5.00
	September 1930.....	5.00
	November 1930.....	5.00

\* \* \* \* \*

## JOYCE ROHDE

RT. 2, BOX 18  
ECHO, OR 97826

PH: 503-276-3402

UPS EXTRA

#1404	OLD SANDWICH Cups & Saucers (12)	
	Per Set.....	\$ 20.00
#1404	OLD SANDWICH 1/2 Gal. Jug, Sahara.	125.00
#1401	EMPRESS 3-Pt. Jug, Flamingo.....	125.00
#1401	EMPRESS 3-Pt. Jug, Sahara.....	125.00
#1567	PLANTATION Water Jug.....	175.00
#1567	PLANTATION 3-Lite Candelabra, Ivy	
	Etch.....	65.00
#1503	CRYSTOLITE Dinner Plates (15) ea..	45.00
#1503	CRYSTOLITE Water Pitcher.....	75.00
	GOOSE - WINGS DOWN.....	250.00

# 54	STAND LAMP, #11 Ctr. Bobeche,	
	12 5-1/2" "C" Prisms (some new),	
	Electrified*.....	\$400.00
# 150	BANDED FLUTE 10" Tray.....	30.00
	7 oz. SCHOEPPEN (5)*.....	18.00
	PUNCH CUP (3)*.....	6.00
# 372	5 oz. SANITARY SYRUP N.P. Top,	
	Sahara*.....	70.00
# 462	BASKET, Floral Engraving*..8".....	145.00
# 500	OCTAGON Ice Tub, Floral Cutting,	
	Silver Plate Handle Worn*.....	90.00
#1205	FANCY LOOP 13 oz. Molasses Can,	
	Glass Lip, Metal Top, few small	
	ruff spots on loops.....	95.00
#1252	TWIST 2" Candles, Marigold..Pr....	55.00
#1405	IPSWICH Candle Vases, Prisms &	
	Inserts - Pr.....	150.00
#1509	QUEEN ANN, Orchid Etch, 6" Footed	
	2-Handled Jelly*.....	32.00
#1776	KALONYAL 4 oz. Cruet O/S, Sl/Cldy.	45.00
	5 oz. Flared Sherbet*.....	15.00
	14" Flared Punch Bowl Only*.....	135.00
#3404	SPANISH 12 oz Soda, Cobalt (4)....	90.00
	2-1/2 oz Wine, Cobalt.....	125.00
#3480	D.O. 3-Pint Jug, Flamingo.....	70.00

\* \* \* \* \*

## \* BETTY KENNEDY

\* 13 HAWTHORNE STREET  
\* WOBURN, MA 01801

PH: 617-933-3584

SHIPPING EXTRA

# 433	GREEK KEY 5 oz. Soda (2) ea.....	\$ 12.00
# 433	GREEK KEY Oval Sugar.....	30.00
# 433	GREEK KEY 4 oz Cruet.....	55.00
#1205	FANCY LOOP Punch Cups (6) ea.....	14.00
# 305	PUNTY & DIAMOND POINT Punch Cups	
	(11) ea.....	12.00
# 350	PINWHEEL & FAN Punch Cups,	
	Moongleam (4) ea.....	25.00
#4044	NEW ERA Candelabra - Bobeches -	
	Prisms...Pair.....	90.00
#1404	OLD SANDWICH Catsup Bottle O.S....	40.00
# 365	QUEEN ANN Punch Bowl Foot (2) ea..	35.00
#1425	VICTORIAN Cruet O.S.....	35.00
#3389	DUQUESNE 5 oz. Parfait, Chintz	
	Etch (5) ea.....	12.00
#3389	DUQUESNE 9 oz Goblet, Chintz Etch.	15.00
#1245	RING BAND Toothpick, Custard/Gold	
	Souv.....	50.00
#1280	WINGED SCROLL Toothpick, Custard..	90.00
#1220	PUNTY BAND Toothpick, Ruby Stain,	
	Boston 1903.....	35.00
#1225	SAWTOOTH BAND (Plain Band) Tooth-	
	pick, Crystal W/Engraving.....	35.00
#1519	WAVERLY 6" Low Ftd. Comp, Orchid	
	Etch.....	35.00
#1401	EMPRESS 3-Pt. Jug, D/F.....	90.00
#1401	EMPRESS 8 oz. Tumbler, D/F..(2) ea	55.00
# 150	BANDED FLUTE 5-1/2 oz Oyster	
	Cocktail (5) ea.....	12.00

# CLASSIQUE GLASS CO.

BOX 52572  
TULSA, OK 74152

PH: 918-585-3203

- # 335 PRINCE OF WALES Creamer, Some Gold.....\$49.50
- # 515 HEISEY ROSE 7" Plate (10) ea..... 18.00
- #1184 YEOMAN D/O, Flamingo:  
Cup/Saucer (7) ea..... 17.00  
7-1/4" Plates (7) ea..... 8.50  
Cup Only (1)..... 12.50
- #1405 IPSWICH 4 oz. Champagnes (10) ea.. 12.75
- #1425 VICTORIAN Wine (2) ea..... 26.00
- #1425 VICTORIAN 8" Plate..... 11.00
- #1220 PUNTY BAND Custard Tumbler, Rose Decor, Souv..... 70.00
- #3333 OLD GLORY With #413 Renaissance:  
3 oz. Burgundy (2) ea..... 23.00  
12 oz. Soda (3) ea..... 17.00  
3 oz. Cocktail..... 21.00  
9 oz. Goblet (3) ea..... 27.50  
4 oz. (Unidentified) (5) ea..... 18.00  
5 oz Champagne (2) ea..... 20.00  
6" Diameter Plate..... 12.00

P & I EXTRA - MINT UNLESS NOTED

MOST ARE MARKED



## THE COLLECTOR'S STOP

512 BROUGHTON DRIVE  
BEVERLY, MA 01915  
\* Marked

PH: 617-921-0115  
All Items In Excel-  
lent Cond, Otherwise  
Stated - S & I EXTRA

Subject To Prior Sale

- # 419 SUSSEX Flam. 5 oz. Soda\* Set of 6.\$ 95.00
- #5072 ROSE STEM, Rose Etch 9 oz Goblets (5) ea..... 25.00
- #5072 ROSE STEM, Rose Etch 6 oz Champ. (7) ea..... 25.00
- #5072 ROSE STEM, Rose Etch 4 oz Cock-tails (5) ea..... 25.00
- #1467 RIDGELEIGH Coasters, Zircon, Set of 6 135.00
- # 16 CANDLESTICKS 5-1/2" Pair..... 55.00
- ROSE ETCH 3 oz. Ftd. Oil #122 Strpr. 135.00
- #1401 Triplex Relish\*, Flamingo..... 30.00
- #1253 Mint & Cover, Sahara (Perfect).... 35.00

WE WILL BE AT THE EASTERN STATES ANTIQUES SHOW  
APRIL 14-15, 1984 WITH LOTS OF HEISEY, BOOTH #89  
SPRINGFIELD, MA

ALL HEISEY AUCTION

SATURDAY, JUNE 16

HCA IS A CO-SPONSOR

SEE BOTTOM OF PAGE 17 FOR DETAILS

## DONALD P. BEAN

36 HARDING STREET  
MILFORD, MA 01757

PH: 617-473-0561

P & I EXTRA  
\* Marked

- #1509 QUEEN ANN D/F 10" Floral Bowl....\$ 25.00
- #1509 QUEEN ANN 1-Lite Stick W/Prisms.. 38.00
- #1533 WAMPUM 12" Floral Bowl & Pr. 1-Lite Sticks...Set..... 80.00
- # 469 HARTMAN 1/2# Candy\*, No Cover,Cut 24.00
- #1469 RIDGELEIGH Oval Base 2-Lite Stick W/Bobeche & Prisms..... 40.00
- #1405 IPSWICH Sauc.Champ.\* (8) each.... 8.00
- #1405 IPSWICH 10" Ftd. Flo. Bowl\*..... 35.00
- #1454 DIA. PT. Ind. Jelly\* (6) for..... 39.00
- # 465 RECESS PANEL 8" Vase\*, Flared Top Irrid. Pale Yellow, Crystal Base. 35.00

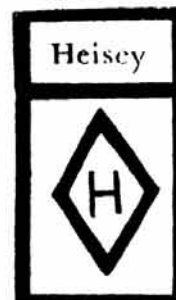
## MOSTLY HEISEY

PH: 518-482-6272

RHODA CURLEY  
16 CLAYTON PLACE  
ALBANY, N.Y. 12209

TRAVELING?

IF YOU PLAN TO ATTEND SHOWS AT DUANESBURG, N.Y.  
MAY 4-5, JULY 6-7, SEPT. 7-8, WHY NOT STOP AND  
SEE US - WE ARE ONLY 20 MILES AWAY. WE HAVE  
MANY PIECES OF HEISEY AND CAMBRIDGE - ALL PRICED  
RIGHT. BY APPOINTMENT.



1983 EDITION!

HEISEY'S GLASSWARE  
OF DISTINCTION

By Mary Louise Burns

Condensed and updated!  
Contains all major tableware  
patterns with pictures for  
easy identification.

\*Current price list included

Order direct from author  
\$11.95 pp  
MARY LOUISE BURNS  
P.O. Box 1931  
Grants Pass, OR 97527

Individual price lists  
available for Heisey's  
Orchid Etch, Rose Etch.  
Animals & Verlys @ \$1.50 ea.  
plus large SASE.



# DEALERS DIRECTORY

5 LINES / 12 MONTHS / \$20.00

We assume no responsibility for errors in these ads after the first printing...Editor. For changes in ads during the year, please send \$2.00 per line.

## A DOOR ANTIQUES

Heisey My Specialty  
South Euclid, OH 44121  
PH: (216) 381-3008

## ALL HEISEY AUCTION

Consignments Welcome  
Apple Tree Auction Center  
1616 W. Church, Newark, OH 43055  
PH: (614) 344-9449

## ANN'S GIFTS & ANTIQUES

105 W. Main St., Hebron, OH 43025  
Intersection of Rts. 40 & 79  
Next Door to Daisy Queen  
Daily 10:30 - 5:30 - Closed Thursday

## ANTIQUE JUNCTION

540 N.E. "E." St. (off I-5)  
Grants Pass, OR 97526  
PH: (503) 479-8575 or (503) 582-4067  
Hours: Wed-Sat 11 to 5

## ANTIQUES - THE SHULTZES

206-208 East Main St.  
Newmanstown, PA 17073  
15 Miles West of Reading, PA.  
PH: (215) 589-2819

## AVERY'S QUALITY ANTIQUES

Heisey, Other Glass & China  
Shows or by Appointment  
2112 First St., Jackson, MI 49203  
PH: (517) 783-4075

## B & B HEISEY & COLLECTIBLES

B. Whaley  
300 International Dr.  
Pataskala, OH 43062  
By Appointment; PH: (614) 927-1557

## C. E. HIGGINS (S.F. Bay Area)

Shows and Mail Order  
P.O. Box 2723  
Menlo Park, CA 94025  
PH: (415) 322-0192 Evenings

## C & J ANTIQUES

Cole & Jean Miesner  
Box 45, 72 Whig Street  
Newark, Valley, NY 13811  
PH: (607) 642-9905

## CHARLES & MILDRED FISHER

Heisey, Degenhart, Imperial, Antiques,  
Collectibles, General Line  
991 Idlewild, Newark, OH 43055  
PH: (614) 522-5398

## DAVE'S ANTIQUES

Specializing In Heisey  
Shows & Appointments  
Tampa, FL 33600  
PH: (813) 876-0580

## DEL'S DOINGS

Heisey - Cambridge Glass  
Furniture & Jewelry  
Box 188, 10327 Main,  
Richmond, IL 60071

## DIAMOND H PLUS

Appointment or Mail Order  
George & Eileen Schamel  
Rt. 3, Box 419, Boonsboro, MD 21713  
PH: (301) 432-6285

## DIE KUNST GALLERIES & ANTIQUES

Specializing In Heisey  
Vel & Andy Andress  
Box 329, 725 Front St.  
Leavenworth, WA 98826  
PH: (509) 548-7856

## ELIZABETH BASSETT CASON

401 32nd St., W.  
Bradenton, FL 33505  
Mail Order-List  
PH: (813) 748-0851

## FOREVER HEISEY

Shows and Mail Order  
Janice Thrane  
1663 Londondale Pwy., Newark, OH 43055  
PH: (614) 344-5955

## GERT'S GLASS

Heisey & Duncan  
Gertrude & Russell Swetnam  
1926 Saratoga Dr., Adelphi, MD 20783  
PH: (301) 434-5113

## GLASS WITH CLASS

Lenore A. Shelley GGHCC  
1336 Lincoln Avenue  
San Jose, CA 95125  
PH: (408) 286-8098

## GOLDSBERRY'S ANTIQUES

Heisey A Specialty  
Shows Only - Buy & Sell  
Kalamazoo, MI 49000  
PH: (616) 381-3013

## GREEN ACRES FARMS

Antiques, Crystal Glass & Collectibles  
2678 Hazelton-Etna Rd., SW (S.R. 310-N)  
Pataskala, OH 43062  
Sat or Sun P.M. or call (614) 927-1882

## H & R DIAMOND H

Helen & Robert Rarey  
1450 White Ash Drive  
Columbus, OH 43204  
PH: (614) 279-0390 After 5:30

## HAPPY HAVEN ANTIQUES

Mary Dumke  
41319 Rattlesnake Road  
Grass Valley, CA 95945  
PH: (916) 237-9450

## HAPPY HEISEY HUNTERS

Miniatures - L SASE for List  
Cliff & Helen Harralson  
1426 W. Highland, Springfield, MO 65807  
PH: (717) 328-2451

## HARRISON'S ANTIQUES

Heisey, Cambridge, Duncan  
Shows, Mail, by Appt.  
26 Johnston's Lane, Mercersburg, PA 17236  
PH: (717) 328-2451

## HEISEY CLASS NEWSCASTER

Sample Copy 70¢, 32 Pg. All-Heisey Quarterly  
\$6.00 (1984) Back Issues \$4.00 yr. 1977-1978-  
1979-1980-1981-1982-1983.  
Box 102 Plymouth, Ohio 44865

## HEISEY PUBLICATIONS

All Heisey Books I-II-III-IV - Heisey  
Newscaster 32 Pg. Quarterly - \$6.00  
Back Issues - \$4.00  
Box 102, Plymouth, OH 44865

## JOYCE'S ANTIQUES

Specializing In Heisey, Cambridge, Verly's  
& American Glass  
P.O. Box 114, Albertson, NY 11507  
PH: (516) 499-3396

## J. & R. COLLECTIBLES

Shows, SASE Mail Order List  
June & Ray Lukasko  
1032 Fairlawn, Newark, OH 43055  
PH: (614) 344-9719

## LAST CHANCE ANTIQUES

Mail Orders - Matching Service  
Send Us Your Want Lists  
P.O. Box 502, Dania, FL 33004  
PH: (305) 467-6356 Day or Evening

## LYNNE & ART'S GLASS HOUSE

Heisey Our Specialty  
P.O. Box 54-6014, Miami Beach, FL 33154  
PH: (305) 861-7700 or (305) 895-5666 or  
Rt. 202, Lahaska, PA 18931  
PH: (215) 794-7800

## MOSTLY HEISEY

Rhoda Curley  
16 Clayton Place  
Albany, NY 12209  
By Appt., PH: (518) 482-6272

## MOUND BUILDERS ANTIQUES

Heisey & Animals, General Antiques  
Irene Rauck  
1138 Moundview, Newark, OH 43055  
PH: (614) 344-6043

## OX YOKE ANTIQUES

General Line & Heisey  
Don & Noreen Walzer  
675 Ogden-Parma Tl. Rd.  
Spencerport, NY 14559  
PH: (716) 352-3959

## PATTON HOUSE

Heisey & Duncan Miller  
Rocky's Mall, I-81 & US 11  
Weyer's Cave, VA 24486  
PH: (703) 967-1181

## PEGGY'S ANTIQUES

2000 Pcs. of Heisey In Stock  
Ernie & Peggy Cox  
P.O. Box 367, Spavinaw, OK 74366  
By Appt. or by Chance  
PH: (918) 589-2859

## R & L ANTIQUES - SAN FRANCISCO

Shows Only - Always Lots of Heisey  
Member of Golden Gate Heisey Club  
P.O. Box 3614, Daly City, CA 94015  
PH: (415) 621-6693

## RAMBLING LANE ANTIQUES

Featuring Heisey & Other Fine Glass  
Keith & Evelyn Hoover  
Rt. #4, Box 1005, Rhineland, WI 54501 - PH: (715) 282-5019

## RAY ZIEGLER

Glass Repair  
2265 Innis Road  
Columbus, OH 43224  
PH: (614) 882-8446

## SCHWAN'S ANTIQUES

Shop & Shows  
Rt. 1, Box 175B, John Tyler Highway  
Williamsburg, VA 23185  
PH: (804) 229-7873

## SUM OF LIFE

Elaine & Frank Husted  
P.O. Box 102  
Phoenixville, PA 19460  
PH: (215) 935-2962

## T & S ANTIQUES

Specializing In Heisey  
Tom Martin & Steve Roderick  
New Rochelle, NY 10805  
PH: (914) 235-9632

## THE WOODEN SHOE

Antiques & Collectables - Buy & Sell  
Glass, Furniture, Estates  
Jim & Sheri Van Es, By Appointment  
810 Elden, Herndon, VA 22070  
PH: (703) 435-9045

## TRUDY MILLER ANTIQUES

China & Crystal Matching  
Heisey A Specialty  
P.O. Box 740548, Dallas, TX 75374  
PH: (214) 783-9920

## WILLEY'S ANTIQUES & MUSEUM

Specializing In Heisey  
11110 Cannon Rd., Frazeyburg, OH  
43822 - 16 Miles East of Newark  
PH: (614) 828-2557

# HEISEY REFERENCE PUBLICATIONS

Please order by Item and Number.  
 Make Checks payable to H.C.A., Inc.  
 Add 10% for Shipping & Handling (\$1.50 Min.  
 on Glass Items except Cup Plates) \*See  
 Page 4.  
 Ohio Residents add 6% Sales Tax.  
 All Prices Payable in U.S. Funds.

PLEASE KEEP THIS FOR FUTURE REFERENCE

1. THE HEISEY ANIMALS, by James McDermott.....\$ 3.00  
 Pictures all 56 animals produced by Heisey. States size of each animal.
2. THE HEISEY ANIMALS, ETC. BOOK II, by Robert Coyle, Lynne Bloch, Art Hartman.....\$ 3.50  
 Pictures items using the animal figure as stem, stopper, handle, flower frog, ash tray,  
 etc.
3. COMBINATION PRICE GUIDE FOR ANIMAL BOOK I & II, by the authors.....\$ 1.50
4. HEISEY'S GLASSWARE OF DISTINCTION, by Mary Louise Burns. Condensed and updated!.....\$ 11.95  
 Includes price guide - Contains all major tableware patterns with pictures for easy  
 identification.
7. HEISEY GLASS IN COLOR, BOOK 2, by Loren & Virginia Yeakley. More than 750 items.....\$ 12.50  
 pictured in color. Comprehensive discussion of each. Includes value and rarity guide,  
 60 pages. Includes price guide.
- 7A. PRICE GUIDE FOR COLOR BOOK ONLY.....\$ 2.50
- 8A. FORTY PAGE ADDENDUM TO ETCHINGS AND CARVINGS BOOK by Ream and Bredehoft.....\$ 3.50
15. HEISEY CATALOG AND FACTORY PRICE LIST, by Antiques Research Publications. Catalog.....\$ 6.95  
 reprint #33, dated June 1, 1956. Last catalog published by the company. Complete  
 listings of patterns offered by Heisey when they discontinued operations in 1957.
16. HEISEY'S LEAD BLOWN GLASSWARE - Some Pressed - Reprint of 1929 Catalog 14B by.....\$ 9.95  
 L. W. Promotions - 80 Pages - Includes price guide.
22. HEISEY STEMS, by Bradley, Ryan and Ryan. Comprehensive book on more than 350 pressed..\$ 20.00  
 and blown stems. A must for the stem collector - 240 pages.
26. CATALOG & PRICE LIST #32, Complete reprint of 1953 catalog. Added information and.....\$ 9.95  
 price guide. The best book on late production.
55. HEISEY'S CUT HANDMADE GLASSWARE, by Harold E. Willey. Reprint of old catalogs.....\$ 5.95  
 showing some of the many cuttings by Heisey, mostly on stemware. Good clear pictures.
61. SALTS AND PEPPERS CATALOG, by Columbia HC. Reprint of 1910 catalog - 30 pages.....\$ 3.00  
 Includes comprehensive price guide by Research and Archives.
68. HEISEY BY IMPERIAL, by Newark Heisey Collectors Club - Second Edition - Updated and....\$ 6.95  
 added pages. Soft Bound - Includes price trends and color plate. Every piece of every  
 pattern made by Imperial is listed and priced in all colors used for the pattern. All  
 items are dated. A must for the collector or dealer specializing in Heisey or Imperial  
 glass. Many items are already collectible.
77. COLOR GLASSWARE OF THE DEPRESSION ERA 2, by Hazel Marie Weatherman - 1000 patterns...\$ 25.00  
 from 43 glass companies which were operating during the depression era. Includes both  
 machine and hand made glass - 400 pages.
- 77A. SUPPLEMENT & PRICE TRENDS for above book, 304 pages - 100 pages of new information.....\$ 10.50
79. HEISEY GLASSWARE, by Heisey Collectors of America, Inc. - Reprint of Catalog 76, the...\$ 6.95  
 1915 supplement to Catalog 75 - Soft bound - Includes price trends - 58 pages. Many  
 items never shown in books or catalogs. Includes all the kerosene lamps and many  
 electric lamps - An interesting catalog.
88. HEISEY TOOTHPICK HOLDERS, by Nancy & David Jones, published by H.C.A. - Complete.....\$ 4.95  
 information on all Heisey toothpick holders. Contains photographs of each - Section on  
 confusing items and fakes - 8-1/2 X 5-1/2 - Soft Bound - Includes price trends.

92. HEISEY'S ORCHID ETCH by Neila Bredehoft, published by H.C.A. - 24 Page booklet with....\$ 4.95  
price guide - Soft bound - A new booklet devoted entirely to Orchid Etching - Heisey's  
most popular etching - 230 pieces listed and dated individually - Well illustrated -  
Includes a history of the etching and many early ads.
93. ELEGANT GLASSWARE OF THE DEPRESSION ERA by Gene Florence - Fostoria, Cambridge, Heisey \$ 17.95  
and others - Illustrated in FULL COLOR with current values.
99. HEISEY'S ROSE ETCH by Neila Bredehoft, published by H.C.A. - 24 Page booklet with.....\$ 4.95  
price guide - Soft bound - All known pieces listed and dated - Well illustrated -  
Includes history and many copies of ads.
101. HEISEY CANDLESTICKS, CANDELABRA AND LAMPS by Tom Felt and Bob O'Grady assisted by.....\$ 24.95  
Jack Metcalf - A definitive survey of the history and manufacture of candlesticks and  
other lighting devices made by A. H. Heisey & Co. from 1896 - 1957 with over 350  
illustrations of all known candlesticks, including 25 in full color.
- 101A. COMPLETE PRICE TRENDS FOR HEISEY CANDLESTICKS.....\$ 2.50
106. COLLECTORS GUIDE TO HEISEY'S GLASSWARE by L. W. Promotions - Excerpts from Heisey.....\$ 17.95  
Catalogs 75, 109, 212-17. 372 Pages of Illustrations - Includes Price Guide.

### ANIMALS AND MISCELLANEOUS ITEMS FOR SALE

30. COLOR POST CARDS OF THE HEISEY MUSEUM (outside) Minimum Order 12.....\$ 1.50
31. BLACK AND WHITE POST CARDS OF THE FACTORY (outside) - Minimum Order 12.....\$ 1.50
33. SOUVENIR PENS, National Heisey Glass Museum.....3 for.....\$ 1.00
34. LEADED GLASS DIAMOND H WINDOW ORNAMENT with hanger.....\$ 7.50
36. BUTTONS with sayings, "I Live in Heiseyland U.S.A.", "Heisey Keeps Me Poor, But ea...\$ .75  
Happy!", Picture of Heisey Museum - "I Belong to H.C.A." & Heisey Collectors of America
39. BACK ISSUES OF THE HEISEY NEWS - Each Volume Contains 12 issues - Each Volume.....\$ 9.00  
Volume V, VI, VIII, IX, X, XI & XII available - Reprints of issues of Heisey News in  
their entirety - Much valuable information in each issue - A must for the beginner.
40. IMPERIAL REISSUE OF #1 HEISEY MADONNA - Frosted - Marked ALIG.....\$ 19.00
41. IMPERIAL ELEPHANT HANDLED FAIRY TALE MUG - Marked LIG or ALIG - Crystal.....\$ 9.00  
Pink, New Issue, February 1984 - Made for H.C.A.....\$ 16.00
45. HEN - Available in Milk Glass - Limited edition of 1999 - Made in original Heisey.....\$ 7.00  
molds by Imperial Glass Corp. exclusively for Heisey Collectors of America, Inc.  
4-1/4" High - Marked IG - SECONDS ONLY AVAILABLE.
46. CHICKS, Head Up and Head Down - Available in Milk Glass - Limited edition of 3292 Head.\$ 3.00  
Down Chick and 2866 Head Up Chick - Made in original Heisey molds by Imperial Glass  
Corp. exclusively for Heisey Collectors of America, Inc - 1" High - Price is for Both.  
Marked IG - SECONDS ONLY AVAILABLE.
47. ROOSTER - Available in Milk Glass - Limited edition of 1457 - Made in original Heisey..\$ 15.00  
molds by Imperial Glass Corp. exclusively for Heisey Collectors of America, Inc.  
5-5/8" High - Marked IG - SECONDS ONLY AVAILABLE.
48. NO. 1560 VICTORIAN GIRL BELLE - Available in Milk Glass, Sunshine Yellow, Light Blue,..\$ 8.00  
and Light Green - Plain  
Light Blue, Rose Pink, Sunshine Yellow and Light Green - Frosted.....\$ 9.00  
Marked IG - Made in original Heisey molds by Imperial Glass Corp. exclusively for  
Heisey Collectors of America, Inc. - 4-1/4" High.
- 48A. NO. 1560 VICTORIAN GIRL BELLE - Made in the original Heisey molds by Viking Glass  
exclusively for Heisey Collectors of America, Inc - 4-1/4" High.  
RUBY Plain.....\$ 11.50



48A.	NO. 1560 VICTORIAN GIRL BELLE CONT'D.		
	RUBY SATIN.....	\$	13.00
	LILAC PLAIN.....	\$	9.50
	LILAC SATIN.....	\$	11.00
	ORANGE PLAIN.....	\$	11.50
	ORANGE SATIN.....	\$	13.00
49.	SCOTTIE, Available in Milk Glass - Limited edition of 1617 - Made in original Heisey... molds by Imperial Glass Corp. exclusively for Heisey Collectors of America, Inc. 3-1/2" High - Marked IG - SECONDS ONLY AVAILABLE.	\$	5.00
50.	PLATE HANGERS for 8" plates to hang in a series from one nail - Ideal for.....each.... Souvenir Plates. (6 for \$4.50)	\$	.85
50B.	PLATE HANGERS for cup plates to hang in a series - 4" Brass...(6 for \$4.50)...each....	\$	.85
*58.	PAIRPOINT CUP PLATE, Pressed copy of Lancaster Etching - Crystal and also Vaseline.....	\$	6.00*
58B.	PAIRPOINT CUP PLATE, Fandango Pitcher - Crystal and also Vaseline - Limited to 1000....	\$	6.00
58C.	PAIRPOINT CUP PLATE, Fandango Pitcher, Crystal with a 3-size scallop (New Border).....	\$	6.00
58D.	PAIRPOINT CUP PLATE, Horse and Rider, Amber with Double/Single scallop - Limited 595...	\$	6.00
58E.	PAIRPOINT CUP PLATE, Horse and Rider, Crystal with a 3-size scallop (New Border).....	\$	6.00
58F.	PAIRPOINT CUP PLATE, Heisey Museum, Light Green, D/S scallop (New Border) Limited 520..	\$	6.00
58H.	PAIRPOINT CUP PLATE, No. 1, Wood Ducks - Royal Hickman Series - Crystal...Limited 627..	\$	6.50
58I.	PAIRPOINT CUP PLATE, No. 1, Wood Ducks - Royal Hickman Series - Emerald Blue - Limited Edition 226.....	\$	6.50
60.	OLD WILLIAMSBURG SALT & PEPPER SET, Ultra Blue, Nut Brown, Verde, Rose Pink, Amber..... And Sunshine Yellow	\$	10.00
65.	WINGS-UP MALLARD, Light Blue - Limited edition of 1466 - Made in the original Heisey Molds by Imperial Glass Corp. exclusively for Heisey Collectors of America, Inc. 6-3/4" High - Marked IG PLAIN.....	\$	13.00
	SATIN, Limited edition of 345.....	\$	14.00
66.	WINGS-HALF MALLARD, Light Blue - Limited edition of 1548 - Made in the original Heisey molds by Imperial Glass Corp. exclusively for Heisey Collectors of America, Inc. 5" High - Marked IG. PLAIN.....	\$	13.00
	SATIN, Limited edition of 345.....	\$	14.00
67.	PLAYING CARDS With picture of Museum - Red or Blue Border - Double decks have one of each - Prices include shipping (Shipped U.P.S.) - Single Deck.....	\$	3.45
	Double Deck in Plastic Box.....	\$	5.75
	With other orders \$2.20 & \$4.50		
70.	WINGS-DOWN MALLARD, Light Blue - Limited edition of 971 - Made in original Heisey molds by Imperial Glass Corp. exclusively for Heisey Collectors of America, Inc. - Marked IG. 4-1/2" High PLAIN.....	\$	13.00
	SATIN, Limited edition of 345.....	\$	14.00
71.	CYGNET, Light Blue - Limited edition of 1040 - Made in original Heisey molds by Imperial Glass Corp. exclusively for Heisey Collectors of America, Inc. - Marked IG. PLAIN.....	\$	13.25
	SATIN, Limited edition of 240.....	\$	14.00
72.	STANDING DUCKLING, Sunshine Yellow - Limited edition of 1150 Plain and Satin - Made ... in original Heisey molds by Imperial Glass Corp. exclusively for Heisey Collectors of America, Inc. - Marked IG - 2-5/8" High.	\$	14.00
73.	FLOATING DUCKLING, Sunshine Yellow - Limited edition of 1035 - Plain and 340 Satin..... Made in the original Heisey molds by Imperial Glass Corp. exclusively for Heisey Collectors of America, Inc. - Marked IG - 2-1/4" High.	\$	14.00
74.	MOTHER WOOD DUCK - Sunshine Yellow - Made in original Heisey molds by Imperial Glass Corp. exclusively for Heisey Collectors of America, Inc - Marked IG 4-1/2" High. PLAIN, Limited edition of 317.....	\$	25.00
	SATIN, Limited edition of 375.....	\$	29.95

- 22-**





NEW ITEMS:

**Heisey Collectors of America, Inc.**

H. C. A. SALES  
P.O. BOX 27 — DEPT. F.  
NEWARK, OH 43055

- 41. Pink Elephant Handled  
Mug - \$16.00
- 100. Colts, Sunshine Yellow  
\$60.00 - The Set.
- \*101. Candlestick Book -  
Special Price \$19.95  
(Preorder) until June 17th.  
(No further discount at  
this price).
- 101A. Price Guide for Candle-  
stick Book - \$2.50.
- 102. Toy Candlestick - Ultra  
Blue - \$11.00.
- 106. Collectors Guide To  
Heisey's Glassware -  
\$17.95.

[illegible]

\*This is a \$5.00 savings on the Candlestick Book which we expect to receive by convention.

READ YOUR REFERENCE PUBLICATION  
CAREFULLY - MAKE OUT YOUR ORDER -  
AND WE WILL SHIP PROMPTLY.

DON'T FORGET SHIPPING - \$10%, AND OHIO RESIDENTS 6% SALES TAX.

**PRINT CLEARLY**

NAME:	
ADDRESS:	
CITY:	
STATE:	ZIP:
PHONE:	
SIGNATURE:	

CHARGE MY

☐ BankAmericard/  
Visa☐ **Mastercharge**

TOTAL

DISCOUNT (IF ANY):

SALES TAX (OHIO ONLY)

**POSTAGE AND HANDLING**

**GRAND TOTAL**

NOTICE!!

THE CANDLESTICK BOOK WILL NOT BE AVAILABLE UNTIL MID JUNE

THE \$5.00 DISCOUNT APPLIES TO PRE-PUBLICATION ORDERS

NEW MUSEUM HOURS - OPEN DAILY 1 - 4 P.M. EVERY DAY OF THE YEAR, EXCEPT MONDAYS AND HOLIDAYS - ANYTIME BY APPOINTMENT.



return to:  
**HEISEY NEWS**  
Box 27  
Newark, Oh 43055

**FIRST-CLASS MAIL**

FIRST CLASS MAIL  
U S POSTAGE  
PAID  
PERMIT 34  
Cincinnati Ohio 45202