

HEISEY®

NEWS

© Heisey Collectors of America, Inc. 1983
All Rights Reserved

VOLUME XIII

NO. 1


JANUARY, 1984

ONE DOLLAR

For Every Day of the New Year



Heisey's Glassware

LIKE thousands of other good dealers you will discover that because of its better style and quality, greater variety and durability, Heisey's  Glassware is the most profitable year-round line of table glassware you can stock.



A. H. HEISEY & COMPANY



FROM YOUR PRESIDENT

I guess I'm the one to be the bearer of bad tidings. The club has been putting this off for some time, but we can no longer afford to put off an increase in membership rates. Our printer raised his rates for the first time in several years a few months ago and there will soon be a postal increase. So.... if your membership is due before March 31, 1984, you may renew your membership (one year at a time, please) for the current rate (\$12 and \$2 per household member). If your renewal date is after April 1, you will be billed at the new rate of \$15 and \$2.50 per household member. We regret this increase, but it is necessary.

In a somewhat lighter vein, I want to thank W. Alwyn Miller of Shelbyville, Kentucky and the State of Kentucky for the honor they bestowed upon me as a Kentucky Colonel.

Through the efforts of Tom Felt, Bob O'Grady and Jack Metcalf, 580 pages (type-written), 240 black and white photos and 32 color photos have come together and will be published by convention time as the Heisey Candlestick Book. Details will be available in the future as to prices and more correct dates. This is a tremendous project and those involved are due thanks from all HCA members for the amount of work they have donated for the benefit of HCA.

By now your donations to the March Benefit Auction should be in the hands of the Auction Committee. From the glass we've seen, it's going to be another great auction.

I hope the New Year finds you just a little bit better than you were last year and that everything continues to improve for you.

Note:

The heading for this article was designed by Broc Smith, a member from California.

Pres. TOM BREDEHOFT 614-745-1014
 Vice Pres. JIM KENNON 216-282-7711
 Secy. RAY ZIEGLER 614-471-6446
 Treas. DICK MARSH 614-366-5608

Exec. Dir. LOUISE REAM 614-344-2377

HEISEY NEWS--P.O. BOX 27--NEWARK, OHIO 43065

Editor: LOUISE REAM

Box 27 Newark, Oh. 43065 614-345-2932

Ass't Editor: Neila Bredehoft

Box 27 Newark, Oh. 43065 614-345-2932

Published monthly and mailed from Reynoldsburg, Ohio 43068.

\$12.00 per year - \$1.00 per copy.

Back issues Each Volume - \$9.00
 year (12 issues).

Volume V, VI, VIII, IX, X, XI, & XII.

Heisey Collectors of America, Inc. is a non-profit corporation with tax exempt status. Owners and operators of National Heisey Glass Museum, 6th. and Church Streets, Newark, Oh. Open daily 1-4p.m. March through December except Mondays and holidays. January and February - Wednesday, Saturday and Sunday 1-4 p.m. Other times by appointment. Members admitted free.

Club membership (includes 12 issues of HEISEY NEWS and participation in all club activities) \$12.00 per year plus \$2.00 each for additional family members in same household who wish a membership card. For VOTING MEMBERSHIP add \$25.00 one time only fee.

When requesting information, please enclose a self-addressed stamped envelope (SASE).

ADVERTISING - Send all ads to: Advertising
 c/o Janice Thran
 P.O. Box 27
 Newark, Oh. 43055

RATES:

DEALERS' DIRECTORY - 5 lines - \$20.00
 CLASSIFIED - 12¢/word. \$1.20 Minimum.
 Abbreviations & initials count as words.

DISPLAY:	MEMBERS	NON-MEMBERS
1/8 pg (9 items)	\$15.00	\$25.00
1/4 pg (20 items)	24.00	35.00
1/2 pg (20 items)	40.00	50.00
1 pg (50 items)	65.00	80.00

We cannot double-column ads. No VERTICAL 1/2 pg. ads. ALL ADS MUST BE PREPAID. Ad copy must be received by the 5th. of the month to be included in that month's NEWS. Ads containing reproduction will not knowingly be accepted unless clearly stated (i.e. Heisey by Imperial, etc.) HEISEY News assumes no responsibility for false advertising or misleading information. In the event of typographical error, the incorrect portion of the ad will be run in the following issue, but HEISEY NEWS assumes no further liability.

Opinions expressed in articles are those of the authors and not necessarily those of HCA. Editorial Staff reserves the right to edit or refuse any material submitted for publication. Send all letters and articles to the EDITOR. Letters to columnists should be sent to the club address and will be forwarded.



By the time you receive this newsletter it probably will be 1984. This is our 13th Volume of Heisey News. Everyone was too busy to write this month so we have lots of Heisey History. I hope your Christmas was Merry and that Santa left you a lot of Heisey.

Many of you ordered gift items from HCA and we thank you all. We depend a lot on mail sales to keep the club and museum going, so think of us for your gifts.

If you live close enough, come in to the museum to see the lovely hand blown paperweights and vases made by a former Heisey employee, William E. Porter. They are really lovely and sell very well. We hesitate to offer them by mail because there are no two alike and they are hard to describe. Some of the weights are floral and others are Tiffany type with beautiful colors and iridescence. Most of the pieces sell for \$25 to \$32.

Auction glass has been arriving daily. We hope it has all arrived by January 1 so that we can get the list out early. There are some nice things already unpacked and we believe it will be a good auction. Save the dates March 9 and 10th to come to Newark for a great time.

You probably saw the notice last month for the new dealer directory to be prepared by the Diamond H Study Club of Newark. No matter where you live, if you sell Heisey you should be in the directory. People come from all over the U.S. and we give them all the directory. Also we send it out to anyone who sends inquiries to us about glass and you might get customers from it. There is a small ad this month on the back page.

The convention theme this year is "Our Impossible Dream" since it is the 10th Anniversary of the museum. Clubs planning booths can work with this theme. Write to Mary McWilliams if you plan to have a booth this year. Write her at the club address.

Barbara Bowling of Newark had very serious surgery recently and is apparently recovering nicely. The Bowlings are members of the Happy Heisey Hunters.

Charles Hartzell who used to do all of HCA's shipping died this past week, after having been seriously ill for some time. He is survived by his son, Charles and a granddaughter. He will be greatly missed by his friends.

Note the ads for all of the shows and flea markets coming up and make your plans now to attend the big March Auction.

The December dinner at the Granville Inn was excellent. Afterward guests went back to the museum to socialize and see all of the lovely decorations.

On Page 23 you will find two Oscar order forms. One is for the Ruby Frosted Oscars, dated 1984. These are so limited that they are being offered the same way as the 1983 mistake, by computer drawing. Any member can order one, whether voting, associate or family members. Please send your bank card number or a check for

the number you will take if you are lucky enough to get more than one. Do not order more than you are willing to take and be sure the order is accompanied by full payment - whether by check or bank card. All overage will be promptly returned. This creates problems for you in tying up your money and problems for us in having to return money but it seems the fairest way to do it since so many people want these. We will accept orders until February 1 and the drawing will be held on February 3.

Also note that the regular 1984 Ruby Oscars can be ordered now and they will be shipped as orders arrive.

Both of these are beautiful as anyone who got the "mistakes" can attest.

Isn't it great news that we will have a comprehensive candlestick book next summer? A lot of intense research has gone into this book and it will be a wonderful addition to your library.

Sheraton Inn is again the headquarters for the convention and a form for room reservations is on Page 24. You may have to xerox the form since there is one on the other side which you might want to use for the satin Oscar. Remember the Sheraton fills up fast so don't put it off.

You probably have noticed that Neila has been writing for Depression Glass Daze for about two years. I am now writing a column for the Glass Review.

The amendment to the By-Laws as sent to all voting members, passed unanimously at the December meeting.

Note that ad rates have raised, for the first time in several years. See Pages 2 and 11 for new rates.

I hope you all have a pleasant and very profitable New Year.

Louise Rose



HCA ADMINISTRATIVE OFFICES

HEISEY'S LITTLE THINGS

By Louise Ream

Moving along with the Colonial patterns, the next in line is #354 Wide Flat Panel. This is a name applied by researchers for purposes of identification. In the 1913 Catalog, patterns #300, 300-1/2, 331, 341, 341-1/2, 351, 352, 353, 354 and 400 were called only Colonial. It is much easier to think of each one as having a different name even though they were applied after the fact.

No. 354 Wide Flat Panel is a rather short line. Like its immediate predecessors, it is made of excellent quality, heavy glass and is very well finished. Most pieces will be found marked.

Like 352 and 353, there is a line of seven lavender jars in #354. These are footed and are sometimes found with enamel or silver decorations done by other companies. The 1, 2-1/2 and 4-1/2 oz sizes are very nice for our HLT's. These are marked.

There is also a butter pat and individual creams and sugars. The cream and sugar are sometimes used as a stack set with the butter pat on top of the creamer. Another individual match stand completes the little things in #354.

No. 355, named Quator by a researcher, is a strange line of unrelated items. These include a small square ash tray with a star bottom. At least one of these is known in the light experimental blue - very rare. This ash tray later was made without the star and was widely used for Orchid and Heisey Rosé etch. The cream and sugar in Quator are almost square with squared handles on two corners. These usually carry a patent date, 1/9/12, around the Diamond H. All items are marked.

No. 369 Hartman is another pattern of the period and usually the glass is superb. Items were made plain or with narrow optic. It is mainly limited to various nappies, plates, bar glasses, many tumblers and nine stems. The bars, in six styles, run from 1-1/2 to 3 oz in both flared and straight. The 1 oz cordial and 2 oz wines are also very nice additions. There is a custard (punch cup) but no punch bowl.

The above patterns were made as early as 1906 or 1907 but all of them are shown in the 1913 catalog.

I hope many of you received some nice "little things" for Christmas, and that your New Year is happy and filled with Heisey!



Custard



2 oz. Wine



1 oz. Cordial



Narrow Optic
1 oz. Cordial
2 oz. Wine

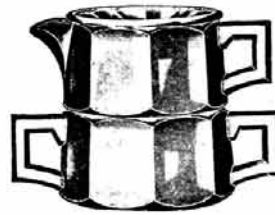


Ind. Cream



Ind. Sugar

No. 354



Stack Set



Butter Pat



Match Stand



Lavendar Jars
1, 2-1/2, and 4-1/2 oz.

No. 355



Ind. Ash Tray



Cream and Sugar

No. 369 PATTERN



1-1/4 Bar Shams
Flared



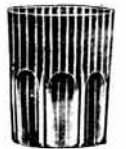
2 oz. Bar Shams



3 oz Bars
Flared



3 oz Bars



2 oz. Bar
Flared



2 oz. Bars



HEISEY CANDLESTICKS NO. 132, SUNBURST*

By Tom Felt

The no. 132 candlestick seems to have come out in 1929 and may have been part of a console set, since there is an oval floral bowl known which is somewhat similar in appearance to the upper, scalloped portion of the candlestick. In addition, the three candlesticks which immediately followed it -- no. 133 Swan-Handled*, no. 134 Trident* and no. 135 Empress** - - were all from small patterns which consisted of console sets only.

The no. 132 candlestick (photograph #1) has a 3-3/4 inch square base surmounted by a 3-1/2 inch round candleholder, with a short, thick column, about 3/4's of an inch high, in between. Both the base and the candleholder portions are decorated with a series of lines radiating out from the center, with the length of the rays on the top portion being slightly different so that the edge of the candleholder is irregular. These lines are molded in the candlestick on the underside of the candleholder and the bottom of the base, respectively. Original catalog pictures of this candlestick, such as that in catalog 109, which has been reprinted, do not show these lines on the base clearly, apparently due to the poor quality of the photograph used. It will generally be found marked under the candleholder, on the top portion of the column.

This candlestick was in production for a relatively long period of time and is not too difficult to find today. Unlike some of the others from this period, it is probably most common in crystal, but can also be found in moon-bleam and flamingo. It was offered in one price list in marigold, but is rare in that color.

This candlestick probably was deleted from the line sometime in 1936; at about this time (either in 1935 or early in 1936) it was also re-designed to become the no. 1469 Ridgeleigh square footed candlestick (photograph #2). Original factory records indicate that the no. 132 was made for the last time in October 1935, though it was still being offered in price list 211-16 which probably dates to 1936. It may be that the mold was recut at about this time; however, it is also possible that the no. 132 was merely used as a model and that a separate mold was cut for the Ridgeleigh candlestick sometime earlier in 1935. At any rate, it is unlikely that the mold is still in existence today and it has not been reissued by Imperial.

*Name supplied by researchers.

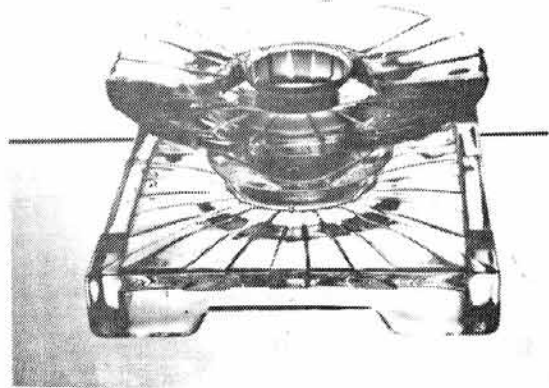
**Although not originally issued as part of the Empress pattern, the no. 135 candlestick was generally identified with the no. 1401 line throughout most of its production life.

Ed. Note: At an All-Heisey Auction held sometime this year in Newark, there were two #132 Candlesticks. One was flamingo, the other moonbleam. One of them had the lines radiating out, as Tom mentioned, on both the top and bottom. The other had the lines on the top but not

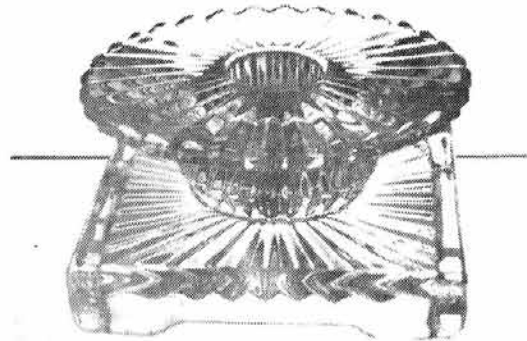
on the base. Foolishly, we did not bid on it even though I mentioned that it was unusual. Since there are no lines on the one pictured in the 109 catalog, perhaps the one with lines was either earlier or later.

I have compared the #132 candlestick to the oval bowl which we call "Gondola" and it seems to be an excellent match. Since we don't have the real number and name for the Gondola, it is very possible that it is a #132.

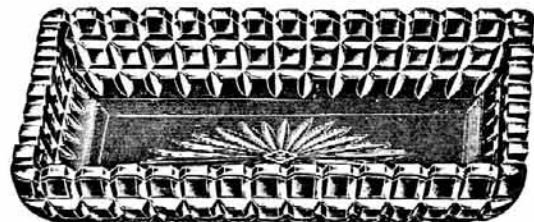
Louise Ream



#132 Sunburst



#1469 Ridgeleigh



No. 471
7 IN. PICKLE TRAY
CUT TOP AND BOTTOM

DIAMONDS ARE FOREVER.....

By Janet M. Caswell

By the time you read this the Holidays will be over in the Yachting Center but not the memories, I can still smell the fragrance of the Hot Cider and Donuts that wafted from the shops during our annual "Christmas Walk" and feel the friendliness of all the people as they went in and out of all the brightly decorated shops seeking that certain special something for that certain special someone. This is, to say the least, a delightful time of year!

Do you suppose "the Mountain gal" and her "Mountain truck" could possibly wind her way through the narrow streets of my town? Perhaps, but anyway, here goes with some nice things that she found during the last month: #1509 Queen Ann Individual Cream, Sugar & Tray; #1951 Cabochon Sugar & Cream/Wheat Cutting; #1567 Plantation 13" Celery; #1186 Yeoman High-footed Comport, plain and in Moongleam. This piece is dark in color, almost Emerald; #393 Narrow Flute French Dressing Boat and the Oval footed Sugar, marked; #341 Puritan 3 oz Low-footed Sherbet in Flamingo, marked; #1280 Winged Scroll 4-1/2" Nappies in Custard/no decoration, two (2) of them; also found a #393 Narrow Flute 5" Plate which is being used under her French Dressing Boat, just for now; and lastly a Crystal Scotty to watch over all the rest.

"Sharp Eyes" has a #1280 Winged Scroll, Custard Swung Vase and a Sunburst Tumbler to brag about.

If I listen real hard and concentrate twice as hard, I can just make out what that "Funny-Talking Couple" from the Badger State are trying to tell me; #335 Prince of Wales Plumes 4-1/2" Footed Jelly; a #341 Puritan 6" Footed Bowl; #1401 Empress Nut Cup in Alexandrite and a signed #1183 Revere 11-1/2" Cake Salver. (Oh - La La)

Let's see just what the "Keeper" wants to keep this month. A measuring cup!! I'm sure that we would all want to keep that one.

From the "Golden State" come great tales of "Great Glass"; #400 Bitters Bottle; a single Whirlpool Candlestick and five (5) 8" and four (4) 7" Crystolite Plates; #3381 Creole Goblet with a Sahara Bowl; #414 Tudor Covered Sugar and #300 1-1/2 oz Sherry (eight (8) of them) with the British registry.

"The Bay State" went out in force and reported back to Yours Truly; #1245 Star and Zipper 9" Berry Bowl in Emerald; Papa Elephant; #1201 Fandango Sugar; #1184 Yeoman French Dressing Boat, d/o Crystal; #469 Hartman Candy Jar; #343 Sunburst Egg Cup; a pair of #101 9" Candlesticks in Crystal; #1503 Crystolite Cigarette Lighter made from the candleblock; #351 Pilsner, cut around the top & #4205 Moongleam d/o Bud Vase.

"Twinkle Toes" has a Pineapple & Fan Toothpick, good gold, and the #393 Hotel Ice Tub in perfect condition was found by the "shy gal" from the Bay State.

"My Good English Buddy" has some #451 Cross Lined Flute, the 12" and 9" Celery, an 8 oz Tumbler, Nappy, Jelly and a Sherbet; also a pair

of Sahara Dolphin footed Candlesticks. Good Show! "Curly" on the other hand came up with the #429 Flat Panel Recess 1/2 Gal Jug, while the "Double Stepping Couple" reports a beautiful #1235 Beaded Panel & Sunburst Water Jug.

So that "Yours Truly" wouldn't feel left out by all these people and their water jugs, I went out and found a perfect 1/2 Gal #357 Prison Stripe Water Jug. It was sort of dusty when discovered but when given a real good bath it is a gorgeous piece of glass and does it ever sparkle in the sunlight; #351 5" Vase; a pair of #134 Trident Candlesticks/Tea Rose Etch and a #1511 Toujours Apple Marmalade (signed) with a ladle (also signed) and two individual little Apple Jellies.

(Where are you "Eagle Eye"? I miss you!!)

"The Studious one" from the Empire State of the South hasn't been hunting very much lately but never-the-less a pair of #111 Cherub Candlesticks were found, sort of napping, in Flamingo and frosted. These were worth waiting for I'm sure.

The "Evergreen State" went into the back-woods and came walking out with a pair of #1559 Saucer Foot Candlesticks.

"Felicitous Flamingo Hunter" came across a Sunburst Punch Bowl and six Cups but left them, the price was right but no room in the "Inn." Never mind, she did get five (5) #500 Frozen Deserts in Flamingo and a #1495 Fern Whipped Cream or Handled Mayonnaise. Two Standing Ponies were found in a little out of the way book shop that she stopped at during her lunch hour. Nice way to spend your lunch hour. She said she went back to work and bragged to all the girls.

"The Tipper" has a couple pieces of #1567 Plantation; the Three Part Relish and a lovely pair of Single Candlesticks; these are now in the place of honor on his table; #1280 Winged Scroll Covered Sugar in Emerald and the #1252 Twist Ice Bucket in Flamingo. Must not forget to mention the #433 Greek Key #1 Puff and the Individual Ice-tub; (that is a little cutie) has the little 5" Plate to sit it on. Enough said for now!

Let me start the New Year with a little poem written in the year 1846 by the famous poet Henry Wadsworth Longfellow in which he describes my quaint little town:

"Not far away we saw the port,
the strange, old fashioned town,
The lighthouse, the deserted fort
The wooden houses, quaint and brown."

From the Yachting Center of the World, Happy New Year everyone, Happy Hunting and Good Health.

Janet Caswell



COLORED GLASS TO STAY?

CHINA, GLASS & LAMPS - June 18, 1928

Inquiries Among Manufacturers and Importers as Well as Large Retailers Indicate That Demand Promises Not Only to Continue But to Increase Indefinitely.

By W. H. Nicholas*

WHAT is the future for colored glass? For some unaccountable reason this question has been bobbing up from time to time in many quarters during the last few months. And it has been earnestly discussed on all sides, with an interest that apparently seems to be unwarranted. People today who are interested in politics would not spend an hour and a half attempting to explain the chances of the candidate of the Workers' Party for the Presidency because they know that hopes for his election are absolutely futile. And by the same token, one who considers the subject of the prospective passing of colored glass is either finding time hanging woefully on his hands and has nothing else to do, or else he is laboring under a distinct misapprehension. At all events, anyone who questions 10 or 15 wholesalers of glassware in the New York market comes to this inevitable conclusion. And when, for good measure, he interrogates a few department store buyers he is more than ever of the opinion that colored glass will continue to gain in popularity, which is saying a good bit.

The age of color is here. At a meeting of newsprint manufacturers the other day a sober article was read upon the subject of manufacturing newsprint in a certain shade of blue since it has been proven that an attractive tint of paper makes a newspaper more attractive and hence more salable than unattractive paper. The gentleman who presented the paper at this meeting called attention to the fact that no one will pick up an old, faded, yellow paper and read it, even though it is off the press only a few hours. Once the paper becomes soiled and faded by exposure to the hot sun, it loses its appeal.

Now when sober newsprint manufacturers contemplate the value of a tinted newspaper stock, not from the standpoint of the old yellow sheet with green type which was obviously sensational, but from the standpoint of making a newspaper attractive and of pleasing appearance, it should be sufficient to cause any one to realize that we are living in an age in which color has reached an ascendancy in the scheme of things not hitherto dreamed of.

Now that cannisters for the kitchen are to be had in bright colors, now that can-openers have colored handles and brooms have colored handles, and now that the housewife has a kitchen as colorful and as pleasant to be in as her living room, does one believe that color in the home is merely a fad that will die out, and

that the housewife soon will go back to a drab kitchen with its unpromising and cheerless and colorless equipment of the olden days?

So everyone is becoming color conscious. And womens clubs and schools everywhere are taking up the subject of color harmony--the proper blending of tones. Of course the women started with proper color harmony in their attire first, but they have passed that stage now and are matching lamp shades with drapes, and they are matching glassware with china, all according to definite color schemes. The effects they are attaining are beautiful and are undoubtedly a decided improvement over the old order of things. That shows the trend of the times and it provides a back-ground which one must consider if he contemplates the subject of colored glass.

But that is not all. The colored glass era has not yet reached its heights. Despite the fact that some beautiful shades have been presented by the importers and manufacturers, even finer shades are to come. Just this year some new shades which were superior to anything heretofore shown were brought out. For example, one need only look at the blue attained by the Fostoria Glass Co. and the Economy Glass Co., or the lovely pink that is presented by the New Martinsville Glass Mfg. Co., or some of the exquisite shades to be seen from the productions of A. H. Heisey & Co. or the color tones achieved by half a dozen other companies.

In these columns recently appeared an article on colored glasswares from the viewpoint of the manufacturer. As an amplification of the idea developed in this article, to the effect that the manufacturers are bending all their efforts toward the making of colored glass, to the detriment of crystal in many respects, the following letter sent out to the trade by A. H. Heisey & Company a short time ago is well worth reading.

The letter:

"As a keen merchandiser you have watched with interest the current craving for color in everything. Not only in automobiles and wall-paper but refrigerators, stoves, kettles, sinks, and bathtubs, are being regaled in tints that rival the flowers in grandmother's garden.

"When people want color, sell it to them. Feature glassware in colors. Play up strong this spring and summer the wonderful color of Heisey's glassware--the enchanting tints of Flamingo, Hawthorne and Moon Gleam. Make displays of them. Show them in your windows. Bring home to your customers their rich beauty and quality and how they harmonize with individual decorative ideas."

Here is one of the outstanding glassware manufacturers in America urging colored glass as strongly as possible, upon those who perhaps may have been thus far unaware of the present tendencies. It is not likely that A. H. Heisey & Company would urge colored glassware in this fashion if it had not gone into the subject deeply first and noted the signs of the times.

"Table Talk," the little illustrated publication of A. H. Heisey & Company, also stresses

colored glass, in much detail.

And A. H. Heisey & Company are by no means the only factory doing this. It seems everyone is doing it, and with good reason.

There are a few things to be said from the standpoint of the few who still cling to the idea of crystal, of course. One cannot doubt the surpassing beauty of a fine engraving or cutting on the highest grade of rock crystal. It has stood in a class by itself for many years and will continue to stand in a class by itself. Its beauty is recognized everywhere. But the highest grade of rock crystal with its beautiful engraving or cutting is beyond the reach of the masses. In plain English, it costs too much to reach the bulk of trade.

Crystal in a good lead glass of moderate price also is of transcendent beauty, but it certainly is a moot question as to whether it is more attractive than colored glass of the same quality, and as a matter of fact, the colored glass gets all the better of the comparison in some shades and tints.

In lower priced glass, the colored glass seems to be far ahead of crystal from the standpoint of beauty, in the opinion of unbiased observers, for here the outstanding features of crystal--its metallic glow, its sparkling clearness, are to a great extent missing and the color makes up for it bountifully.

Another argument advanced by those who prefer to think of the returning reign of crystal as something imminent is the criticism that manufacturers are foisting colored glass on the market because colors cover a multitude of sins that show up in the crystal. While it may be true that the number of pieces discarded in colored glass is smaller than in the case of crystal, due to the failure of imperfections to show so readily in colored glass at the same time this would seem to be more than offset by the difficulty in obtaining a good color batch on the part of the manufacturer. In the opinion of most people with whom the writer has talked, there is little advantage gained one way or another.

So apparently colored glass is here to stay and will remain very much in evidence, to the detriment of crystal, except in the very highest grades of rock crystal.

FASCINATING INSIGHTS INTO EARLY HEISEY

HISTORY - TAKEN FROM EARLY TRADE JOURNAL REPORTS

CROCKERY & GLASS JOURNAL - Oct. 1931

A. H. Heisey & Co., Newark, Ohio, has introduced some most unusual offerings this fall. Realizing the necessity of producing sales stimuli that would overwhelm the wall of sales resistance that is proving so stubborn this year, Heisey directed their efforts to creating items that were genuinely original and different. One has only to see the new Heisey presentations to re-

alize how successful their efforts have been. A few of the most outstanding of these new Heisey offerings are presented here. The complete Heisey line including these outstanding items can be seen at the permanent Heisey showroom, 1560-61 Merchandise Mart, Chicago, and 200 Fifth Ave., New York.

For those who get as much pleasure from the art as from the act of drinking the new Heisey set illustrated at the bottom of the page is something they will not want to be without. The set gives such grace and distinction to the mixing and drinking of a cocktail that even some of our rabid Volsteadists will turn envious. The set consists of a 16 ounce cocktail mixer and six 3-ounce cocktail glasses. The outstanding characteristic of the set is, of course, the base which takes the appearance of an inverted cup. The crystal etched foot carries the Heisey hunting decoration No. 4224, and has an effective mat finish. The shape of the bowl balances the weight of the base. The base is in crystal, and the bowl may be had in either Sahara or green.

The many who delight in more formal glassware appeal will be captured by one of the new Heisey plate etchings. Known as etching 450 it is adopted from the French provincial period. This etching carries out the theme of French chintz designs, an entirely new departure in deep plate etchings. This getting away from the stereotyped styles of etching marks a genuine forward step in decoration, and one that will be more than welcomed by the discriminating public. This should carry an appeal to the exclusive trade that is rarely equaled.

In similar vein in this 451 etching of Heisey. Even more unusual than the French chintz design this plate etching almost defied description and naming. It is one of those rare bits of originality of creation that needs no assistance from sales argument to bring it to popularity and is illustrated at the top of this page. To see this etching means to marvel at it. The longer one admires it the more one sees in it to admire. It prompts us to predict that this 451 etching opens up a new phase of glassware decoration just as outstanding as the French chintz etching. The etching as shown by the illustrations of the goblet and sherbet consists of vertical rows of figures. To the average designer it would have been a sufficient show of originality to merely create one figure and duplicate it in vertical rows. Not so in this case and in this exception lies the bewitchery of the etching. The vertical rows of figures gives a distinct Chinese effect, and that is just what was intended as the figures are of Chinese life and modes. Here are temples, junks with their lazy sails, weird birds quaint rickshas with their coolie bearers, roosters, Chinese maidens, and so on. The interest created at a dinner in finding and admiring these various clever figures on the table glassware can be imagined. The goblets and sherbets illustrated are from the 3390 line.

CROCKERY & GLASS JOURNAL - April, 1932

New Vases by Heisey

To meet the demand always so imperative in the spring, for flower vases, the Heisey Company are offering two new designs--one a tall vase cupped at the top and the other a graceful flare. These may both be had either in crystal or Sahara. W. S. Redfield, Chicago representative of this company, is also showing a new plate--really a salad plate, but could be used for an odd plate or any number of things. This comes either square or round and is decorated with heavy embossed fleur de lis.

CROCKERY AND GLASS JOURNAL - May, 1932

Heisey Horse Wins Takes Top Honors

Rexanna H. Peavine, the bay mare owned by T. Clarence Heisey, president of A. H. Heisey & Co., Newark, O., scored an upset at the Atlantic City Horse Show April 16 when she walked off with the \$1,000 championship stake under the nose of Rhododendron, long the reigning easter queen. A sensation was created in the presence of 14,000 spectators when Rex Peavine was crowned queen in the five-gaited saddle horse grouping and her rival went down to defeat. The mare is eight years old, stands 15.2 hands and the show was her first.

CROCKERY & GLASS JOURNAL - June 1932

Sat. Eve. Post for Heisey Week

"Quality" was the keynote of the Heisey Week campaign (May 1 to 7) promoted by the A. H. Heisey Co., Newark, O. A full page advertisement was run in the May 7 issue of the Saturday Evening Post, illustrating their Tomato Juice Cocktail Set including a tankard and eight 5-ounce glasses. Special prices were in effect until June 15, to intensify retail interest in Heisey Week.

CROCKERY & GLASS JOURNAL - August, 1932

A GREAT POINT is made of a new color at Heisey's that's as startling a departure as you could want--Tangerine--a clear, yet deep shade that's very gay and appetizing--just the tone to offer a good color harmony with much of the new dinnerware and the new linens. You may have this at present in two ranges--a tall stem line, No. 3389, the one with the hexagonal slightly tapered stem and the slightly cupped-in flared optic-type bowl and the low-footed No. 3397 line that has the hexagonal base--just the bowls are colored in both style ranges. You may retail goblets around \$7.00 a dozen. In a little while you'll be able to have this new color in bridge sets, candlesticks, vases, bowls and other decorative pieces...19-piece bridge sets will retail for \$9.00.

Not content with a new color, these people have brought out what they call the Arctic

etched series of decorative pieces--these are done in a frosted-iced effect with indefinite scattered motifs of clear crystal--the whole looking as though Jack Frost got in some good art work. The piece that I particularly liked was the footed ice bucket with a white metal handle in a hammered effect that may retail around \$24.00 a dozen. Aside from this there are cocktail shakers and glasses, beverage sets, vases, bowls, candlesticks and the like.

Then they've also added quite a few pieces to the Early American Scroll line...new center-pieces, lovely footed fruit bowls, some footed oils that look like miniature lipped-and-handled lines with ground glass stoppers--and a sauce dish with excellent line.

CROCKERY & GLASS JOURNAL - Feb. 1932

Every hostess who is a tomato-juice-cocktail addict (and who isn't?) and every host who is the other-kind-of-cocktail-addict (and once again who isn't?) are going to give three loud cheers for two new gadgets in the Heisey line. The boon to tomato-juicers is a two-lipped server--an excellent thought for buffet suppers, and informal serving--which is a member of that new line No. 3397, which does many things in a different way all its own... hexagonal bases, with just a row of beading takes the place of the stem on most pieces and a triple row of beading for the higher stem goblets ... most everything made in the very low way, including the servers, cocktails, sherbets, tumblers, goblets, wines and all the rest, as well as a larger blown glass bowl with cast foot, and candlesticks to match ... the server, in plain crystal, may be retailed around \$3.00, but everything may be had in Sahara, Moon Gleam and Flamingo, as well as crystal, plain or etched in that nice OLD COLONY design.

For real cocktails there's a shaker that's guaranteed absolutely non-leakable, and it's all glass, every bit of it, with perforated strainer and mushroom stopper--all interlocking parts heavily ground to insure no leakage ... a very good-looking affair, too, that may retail for \$4.00 for the plain crystal ... also available in colors and cuttings. There's a cocktail glass which ensembles smartly with this, and don't laugh--it is called of all things, AQUA Caliente. This, just to be different, is footed and has a medium height stem, in addition to a nicely modeled bowl.

*Editor's Note: Early American Scroll was an early name for Ipswich.



#3397
Gascony
Tomato
Juice
Pitcher



#4225
Cobel
Cocktail
Shaker

CROCKERY AND GLASS JOURNAL FOR DECEMBER, 1936

CHICAGO CHINA, GLASS & POTTERY MARKET
JANUARY 4 TO 16 AT MERCHANDISE MART

Glass, Pottery and Giftwares Association sponsors china and glass market, while housewares - lamp markets are to be held simultaneously.

With the dates for the China, Glass & Pottery market set for January 4 to 16 in the Merchandise Mart, Chicago, the manufacturers and manufacturers' representatives are all co-operating in perfecting plans which will assure the buyers an unusual variety of new merchandise and make their marketing trip as comfortable and profitable as possible.

With buyers facing depleted stocks it is estimated that there will be from twenty-five to fifty per cent more buyers in the market this January, than a year ago.

Also in the Merchandise Mart at the same time will be held five other markets and many of the buyers are interested in more than one for they buy for more than one department. The other markets include Housewares & Major Appliance Market, Furniture Market, Lamp Market, Floor Covering Market, Curtain & Drapery Market.

The Glass, Pottery & Giftwares Association of Chicago is in charge of the China, Glass & Pottery Market. And this organization has gained a splendid reputation for its promotion of worth while shows.

PRESIDENT BAUMGARDNER TALKS OF CHICAGO AS MARKET CITY

A. W. Baumgardner, of the Cambridge Glass Company, president of the Glass, Pottery and Giftwares Association, in speaking of what Chicago and the January market hold in store for the buyers, said: ---

"Reports came to us from all over the nation that business is good and most departments will have very little left for January sales. This sounds good--like old times.

"It also means that our Chicago visitors will be expecting to find here an abundance of new lines and items at favorable prices. From the markets in other industries which have just been held in Chicago we have learned that the one great demand of buyers is, 'what can you give us for immediate delivery or promise for very quick shipments.'

"Anticipating these needs the Chicago association is ready to promise buyers that they will not be disappointed in the quantity and quality of the new merchandise which will be awaiting them. All the members have been for some time working on lines for the largest and most lavish displays ever shown in Chicago. Also our members have advised their respective factories of the need for quick

deliveries and we are already getting set to give this service.

"The Chicago Market is permanent not a temporary show. If any buyers happen to get here a little late this market does not close on Friday night: it is open all year. It is never necessary for a buyer to report back to the merchandise man that he did not have time enough to compare and check every line. He can take all the time he wants in Chicago.

"And the market is concentrated. Ninety-five per cent of the American glasswares lines and nearly as high a percentage of the American pottery lines are represented in Chicago, most of them along one corridor. This affords a splendid opportunity for checking and comparing. Sometimes it is difficult to carry in one's mind exact distinctions of quality, sizes and so forth in making comparisons of value, especially if a few days elapse between the time of comparison. But here a comparison can be quickly made and if the buyer is still in doubt as to comparative values, the lines or items can be as quickly rechecked. There is no excuse for not getting the best 'buy' on the market for your particular trade. A line has to be good to stand the quick comparisons which the buyer can easily make on this three-blocks long corridor. Lines overpriced or substandard can be quickly discerned when placed in such close proximity to their competitors.

"We are advised by buyers who have visited all the Marts of the world that this is the largest concentration of lines to be found anywhere.

"And while I am on the topic of ease in buying I might also mention the facilities for reaching Chicago. It is centrally located, being the largest railroad center in the world and also more trunk line highways converge at Chicago than any other city in the United States. We have ample hotel accommodations for all, and a Buyers Bureau to take care of accommodations for the buyers.

"Our interest in the buyers extends beyond the money they spend as we have demonstrated before by the many educational and entertainment features we always provide. We try to make the buyers feel at home in Chicago and carry away a memory of hospitality and feeling of good will we have for our friends who come to this market."

"At this time," said E. Lee Beardshear of A. H. Heisey Company, Secretary of the organization and Chairman of the Show and Publicity Committee, "the efforts of our group are pretty well tied up in solving the problem of giving to the January buyer the complete show of merchandise and service which he has come to expect of the Chicago market.

"With attendance growing as rapidly as it has, and a greater number of buyers looking to Chicago as their preferred buying center, we are making doubly sure that their wants, needs and comforts will be taken care of satisfactorily.

"The Show Committee is working with each

CHICAGO SHOW - JANUARY 4-16 CONT'D.

representative and factory to make sure that all new items and specials are here prior to January 4th, the opening date of the show. Advance information from all sources has been very encouraging, that every one will have a more complete line and display of many more new items than has ever before been shown to a January group of buyers. Extra sales people have been engaged and road salesmen have been called in to assist at the show so the buyers may be taken care of quickly and efficiently."

"The Show and Publicity Committee is composed of the following:--

E. Lee Beardshear, A. H. Heisey Co., Chairman, Virginia Hall, president, W. C. Owen Co.; George Kelly, Kelly & Reasner; George Bratt, Edwin M. Knowles China Co.; Harry Dalzell, Fostoria Glass Co.; L. Feuchtwanger, Homer Laughlin Co.; Leroy Larson, Ira Jones Co.; Elmer Saunders, Turner & Saunders.

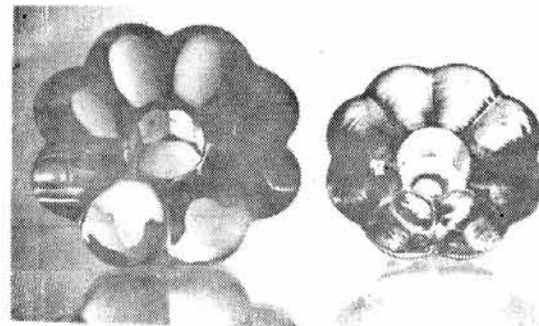
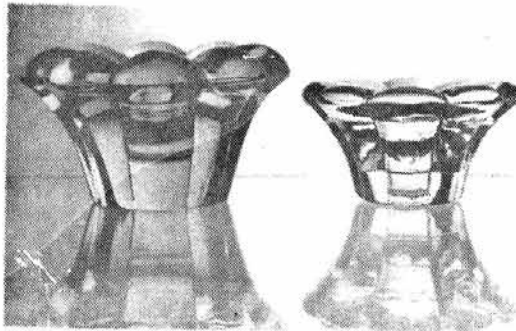
NOW YOU'VE HEARD EVERYTHING!!

During the "Up to Parr" Glass Show in San Francisco in October two ladies entered Lenore Shelley's booth. After looking around the booth one lady asked Lenore if it was all depression glass. Lenore tried to explain that most of her merchandise was "hand made glass" and she proceeded to discuss the difference. Then the lady asked, "If this is hand made glass, did you make it by hand yourself?"

REPRINTED FROM "GOLDEN GATE" NEWSLETTER OF GOLDEN GATE HCC.

WHO'S MAKING "CRYSTOLITE" NOW?

By Tom Felt



Those of you who received the Christmas catalog put out by Lillian Vernon, of Mount Vernon, N.Y., last year might have been surprised to discover a half dozen candleblocks being sold as an "exclusive" boxed set for \$8.98 on p. 45 in a pattern that looked suspiciously like Heisey's no. 1503 Crystolite. No, it was not Imperial putting them back in

3389 DUQUESNE

451 Lafayette

3390 CARCASSONE

448 Old Colony

4225 COBEL 900^o Arctic

4002 AQUA CALIENTE 4 oz. Cocktail

IMPORTANT NOTICE

Due to an increase in Printing Cost and Postal Rates, we are forced to raise our Advertising Rates. The rates are as follows:

DEALERS' DIRECTORY - 5 lines - \$20.00
 CLASSIFIED - 12¢/word. \$1.20 Minimum.
 Abbreviations & initials count as words

DISPLAY:	MEMBERS	NON-MEMBERS
1/8 pg (9 items)	\$15.00	\$25.00
1/4 pg (20 items)	24.00	35.00
1/2 pg (20 items)	40.00	50.00
1 pg (50 items)	65.00	80.00

J. G. Thron

production -- these candleblocks, it turns out, are being made in Taiwan and, as the accompanying photographs illustrate, they are miniature versions of the rosette candleblocks, about one third again smaller than the Heisey originals. The quality of the Taiwanese candleblocks is quite poor, so it should not be possible to confuse them with their bigger Heisey cousins.

I was much suprised, when I saw a piece of crystal, with a sticker "Heisey by Imperial." Also the crystal had the Heisey logo .
Mr. & Mrs. Stark, PA

Most Heisey Collectors already know that Imperial used the Heisey molds from 1958 to January 1968 before the Heisey mark was removed, having bought the existing molds in April of 1958. Not all of the items which they made were marked with the Diamond H nor were all that Heisey made. When Imperial learned that people were confused about the mark they voluntarily removed it from all molds which they used and none of their glass has been marked with it since 1968. They used a paper label "Heisey by Imperial," which you mention, on much of the glass for a while afterward. However, since we have been buying from them for sale in our gift shop (since 1974), they have never used that label.

Now that they are in a bankruptcy situation at Imperial and selling out the old stock they do have some glass marked with the Diamond H or with the Heisey by Imperial label, and people have come from all over to buy it as they did when Heisey sold out. It took Heisey two or three years to sell the old stock.

The only items which they have made since the Chapter 11 Bankruptcy on which they are using this old label are the animals made in Heisey molds. With one or two exceptions these are also marked ALIG, IG, or NI which are all Imperial's own marks. N.I. stands for New Imperial.

Heisey Collectors of America, Inc., has published a book on "Heisey by Imperial," (cost \$6.95 plus 10% shipping) which lists nearly everything Imperial had made in Heisey molds, prior to the bankruptcy. Every item is dated and listed in colors made - also information on whether an item did, or might have, the Diamond H. It also has a color plate and price trends.

This book would be very helpful to any Heisey Collector. Accurate information is a great tool for collectors or dealers, as you know.

You may rest assured that at this time no new glass is being made at Imperial with the Diamond H trademark.

Our book Heisey by Imperial should clear this up for you.

Louise Ream

Classified Ads

FOR SALE: #301 Hurricane Lamps with #5080 12" Globes. Formerly used in the Heisey Office. Beautiful cutting like a pair in the Museum. \$1,300.00 for the pair. 614-344-6864 - Were shown in a Heisey Ad.

FOR SALE: Heisey Crystolite dinnerware setting for 12 with 3 pieces missing - 122 pieces offered at \$1400, plus shipping & insurance. JOY NELSON, 361 E. Airline Hwy., Waterloo, IA 50703. PH: 319-233-5944.



ORDER YOUR BUMPER STICKER AS SHOWN ABOVE - SIZE IS 3" X 11-1/2" - COLOR: BLUE ON WHITE. THIS CAN ALSO BE USED ON YOUR NOTE BOOK BY CUTTING THE ENDS OFF. PRICE \$1.70 - 2 For \$3.70 - 4 For \$6.60 - Includes Postage.

MAKE CHECKS PAYABLE TO HEISEY HUNTERS STUDY CLUB, AND ORDER FROM:

Merrell Strawn,
Secy. Treas of
Heisey Hunters
c/o HCA
P.O. Box 27
Newark, OH 43055

Classified Ads

WANTED: Buying Cambridge Rosepoint, Heisey Rose & Orchid, Fostoria etched dinnerware and Depression Glass. Also glass figures and unusual glass pieces. NADINE PANKOW, 207 South Oakwood, Willow Springs, IL 60480
PH: 312-839-5231

FOR SALE: Most Colors, Most Patterns, 2000 pieces of Heisey to choose from. S.A.S.E. Please. No list available, Write wants. PEGGY'S ANTIQUES, Box 367, Spavinaw, OK 74366
PH: 918-589-2859

FOR SALE: Heisey, selling choice miniatures. New list each Quarter. Large double S.A.S.E., Please. CLIFF HARRALSON, 1426 W. Highland, Springfield, MO 65807

WANTED: Four (4) Eight Inch Round Empress Plates in Sahara for resale. No Chips or Scratches. WENDELL S. AVERY, 2112 First St., Jackson, MI 49203 - PH: 517-783-4075.

WANTED: Ipswich or Old Sandwich in Moongleam. Need cream & sugar in either pattern, also interested in any other items in these patterns. B. WHALEY, 300 International Dr., Pataskala, OH 43062 PH: 614-927-1557.

FOR SALE: Winged Scroll - rare pin tray - custard (gold traces, slight stain) - \$500.00. U. S. Dollars. SANDRA HANDLER, 11 Sagewood Dr. Don Mills, Ontario, Canada M3B 1T5
PH: 416-441-2251.

WANTED: VICTORIAN #1425 ACCESSORY PIECES: Celery dish, sandwich plate (12"), rye bottles, rose bowl, floral bowl, water pitcher, berry bowl, buffet platter, etc. VIRGINIA BLODGETT, 99 Prescott St., Reading, MA 01867
PH: 617-944-2957.

FOR SALE: Best Offer - All #1401 Empress, Sahara - 12 Plates, 7-1/2", 12 Plates 9", Bowl 10", 3" deep, Bowl 8", Bowl 8", footed-handled and Desserts 4-1/2", 2" deep. A. E. GLECKLER, 3022 Third St., Wyandotte, MI 48192.

IMPORTANT ALL HEISEY AUCTION
SAT. JAN. 28, 1984 10:00 A.M. DOORS OPEN 9:00 A.M.
APPLE TREE AUCTION CENTER
1616 W. CHURCH ST.
NEWARK, OHIO 43055

This sale features part I of the collection of the late PAUL FAIRALL. Paul was a Heisey employee for over 40 yrs. and in charge of the shipping dept. for many of those years. His knowledge on Heisey glass was superb. This sale features many great Krall cuttings, a Ruby Gold Pitcher and lots of good color. Also in this sale are many hard to find animals and good deep plates as well as lots of Orchid Etch. This will be worth your time. The Paul Fairall Collection starts with item #238 and continues through the end of sale. The second half of the Fairall Collection will be sold in April.

We have tried to inspect the glass closely and will use the following code to better describe the condition. A small letter indicates the damage or flaw is minimal. It would be our opinion that the value would be affected 5 - 20%. A capital letter indicates more significant damage affecting 20 - 40%. Anything damaged more than this is in our opinion, will be marked with an X. We hope this will better aid in your mail bidding.

f F = Flake
c C = Crack

b B = Bruise
m M = Mold Flaw

r R = Repaired
x X = Major Damage

SAM SCHNAIDT, AUCTIONEER
614-344-9449

FRANK FRYE, MANAGER
614-345-4001

___1	1503	CRYSTOLITE 5" Shell Hdl. Preserve	___25	3386	DIAMOND ROSE 12 oz. Pilsner WO H
___2	1503	CRYSTOLITE Lrg. Cig. Box & Cov. H	___26	4054	CORONATION 13 oz. Soda 4 ea.
___3	1503	CRYSTOLITE Ftd. Cig. Holder H			Mono. R A C
___4	1503	CRYSTOLITE Swan Master Nut Dish	___27		Saucer Champagne, Thistle Etch
___5	1503	CRYSTOLITE 3 Part Relish			2 ea. 1f
___6	1428	WARWICK 7" Vase Pr. H	___28	3350	WABASH Saucer Champagne Mngl.
___7	1428	WARWICK 5" Vase Pr. H			Ft. & Stem Frontenac Etch 4 ea.
___8	1503	CRYSTOLITE Pr. Boudior Lamps made from Hurricane bases	___29	4091	KIMBERLY Saucer Champagne Dolly Madison Rose Cut 2 ea. H
___9	1503	CRYSTOLITE Pr. 1 Lt. Candle Block	___30	3355	FAIRACRE Saucer Champagne Cleopatra Etch H
___10	1503	CRYSTOLITE Hi. Ft. Jelly Compote H			
___11	1503	CRYSTOLITE 5½" Ftd. Cheese	___31	3330	HANOVER Saucer Champagne Hermitage Etch H
___12	1503	CRYSTOLITE Leaf Pickle Tray H			
___13	1503	CRYSTOLITE 10" Rd. Shallow Floral Bowl	___32	5010	SYMPHONE Saucer Champagne Danish Princess Cut 2 ea.
___14	5003	CRYSTOLITE Goblet 4 ea. H	___33	5067	PLANTATION 10 oz. Gob. Ivy Etch
___15	5003	CRYSTOLITE Ftd. Juice 3 ea. H	___34	1425	VICTORIAN Sahara Lo Ft. Gob. H
___16	1503	CRYSTOLITE Punch Cup 2 ea. H	___35	4091	KIMBERLY Gob. Dolly Madison Rose Cut 3 ea. H
___17	1503	CRYSTOLITE Punch Cup 18 ea. H & 1 non Heisey punch cup	___36	4085	KOHINOOR Sauc. Champ. Churchill Cut
___18	1425	VICTORIAN Punch Cup 8 ea. H			
___19	1235	BEADED PANEL & SUNBURST Punch CupH	___37	5025	TYROLEAN Gob. Orchid Etch 12 ea H
___20	1401	EMPRESS Sahara Bouillon, Old Colony Etch 6 ea. 1c	___38	5025	TYROLEAN Sauc. Champ. Orchid Etch 12 ea.
___21	3411	MONTE CRISTO 12 oz. Ftd. Soda, Olympiad Etch 3 ea. 1f	___39	5025	TYROLEAN Ftd. Juice Orchid Etch 11 ea. H
___22	3404	SPANISH 12 oz. Ftd. Soda Olympiad Etch 4 ea 1f	___40	1519	WAVERLY 11" Plate Orchid Etch 5 ea.
___23	1405	IPSWICH 12 oz. Ftd. Soda	___41	1509	QUEEN ANN 11" Plate Orchid Etch 7 ea.
___24	5072	ROSE STEM 12 oz. Ftd. Ice Tea, Heisey Rose Etch			

PAID ADVERTISEMENT

PAID ADVERTISEMENT

42	1519	WAVERLY 8" Salad Plate Orchid Etch 11 ea.	90	2401	12 oz. Soda Tally Ho Etch 2 ea.
43	1519	WAVERLY 7" Dessert Plate Orchid Etch 11 ea.	91	6060	COUNTRY CLUB 14 oz. Beverage Winchester 73 Etch
44	3309	6½" Underplate for Finger Bowl Orchid Etch 12 ea.	92	6060	COUNTRY CLUB 13 oz. Old Fash. Winchester 73 Etch F
45	1509	QUEEN ANN Cup & Saucer (11 cups & 12 saucers) Orchid Etch H	93	6060	COUNTRY CLUB 4 oz. Cocktail Winchester 73 Etch 4 ea.
46	1519	WAVERLY Cr. & Sug. Orch. Etch H	94	2351	12 oz. Soda, Experimental ScrOP
47	4057	10½" Vase Orchid Etch	95	6060	COUNTRY CLUB Dawn 10 oz. Bev. Screen Optic 6 ea 2 f
48	1509	QUEEN ANN 11" Ftd. Floral Bowl Etched f.	96	1112	SPARTA 3½ oz. Ftd. Oyster Cocktail N O, 4 ea.
49	1401	EMPRESS 11" Ftd. Floral Bowl	97	341	PURITAN 3 oz. Low Ft. Sherb. 6 ea. H
50	1485?	11" Salad Bowl	98	4074	4½" Finger Bowl D O 3 ea. 1f
51	1472	PARALLEL QUARTER 11" Floral BowlHm	99	1425	VICTORIAN Saucer Champ. 3 ea.
52	341	OLD WMSBRG. 8" Nappy H	100	4085	KOHINOOR Cocktail Churchill Cut
53	352	COLONIAL 8" Nappy H f	101	4091	KIMBERLY Cocktail Dolly Madison Rose Cut 2 ea. H
54	1509	QUEEN ANN 9½" Gardenia Bowl	102	4091	KIMBERLY Cock. 3 ea. H 1f
55	1567	PLANTATION 13" Celery Tray R	103	5057	SUEZ 4 oz. Claret H
56	1189	13" Oval Relish, Gold Dec. H	104	4036½	27 oz. Decanter Winchester 73
57	1509	QUEEN ANN 5o'clock 3 pt. Relish H	105	4091½	KIMBERLY 5 oz. Soda 2 ea.
58	1401	EMPRESS 7" Triplec Relish	106	4091	KIMBERLY Claret 9 ea. H
59	1191	8½" Flam. Pickle & Olive dish	107	4091	KIMBERLY 5 oz. Ftd. Jc. Dolly Madison Rose Cut 6 ea.
60	1193	INSIDE SCALLOP Flam. 7" Conserve H	108	1519	WAVERLY 5" Candy, no lid 5 ea H
61	1495	FERN 6" Ftd. Tid Bit Tray Gold Dec.	109	341½	PURITAN COLONIAL 4 Pc. TableSet Cov. Butter & Sug., Cr. & Spoon H
62	1541	ATHENA 8" Bon Bon	110	1519	WAVERLY Cr. & Sug. H
63	1401	EMPRESS 12" Sq. 2 Hdl. Sand.Tray H	111	393	NARROW FLUTE Fr. Drsg. Boat & PLH
64	1590	ZODIAC 13" Sandwich Plate H	112	352	COLONIAL Vinegar & Oil Bottle
65	1238	BEEHIVE Plate 8"	113	1951	CABOCHON Dawn Cov. Candy H
66	1401	EMPRESS Alexandrite 7½" Rd. Plate 2 ea. H	114	341	PURITAN Hi Ft. Jelly H
67	407	COARSE RIB Hawthorne 6" Rd. PlateH	115	1401	EMPRESS Sahara Ftd. Mayo.
68	1567	PLANTATION 8½" Rd. Plate Ivy Etch 2 ea. shows wear	116		GIRAFFE, HEAD BACK
69	1609	8" Plain Plate 26 ea.	117		GIRAFFE, HEAD BACK
70	1401	EMPRESS Tangerine 6" Sq. Plate H	118		GIRAFFE, HEAD BACK
71	1183	REVERE Cobalt 7" Plate 6 ea.	119		GIRAFFE, HEAD BACK
72	1609	8" Plate, Dolly Madison Rose Cut f	120		CLYDESDALE, Amber, on Bust-off, M
73	1485	KOHINOOR 8" Plate Churchill Cut	121		ELEPHANT, SMALL
74	1637A	TOWN & COUNTRY 6½" BLACK Experimental Plate	122		ELEPHANT, MIDDLE
75	516/3	Flamingo 9" Vase D O	123		ELEPHANT, LARGE
76	4045	7" Alexandrite Ball Vase W O f	124		RINGNECK PHEASANT
77	1503	CRYSTOLITE Cornucopia Vase	125		RINGNECK PHEASANT H
78		VERLYS Cupidon Bowl	126		GOOSE, WINGS DOWN
79		VERLYS 14" Water Lily Bowl	127		GOOSE, WINGS UP m
80	1567	PLANTATION 3 Lt Candle w/eperg.	128		GOOSE, WINGS UP
81	126	1 Lt. Flam. Candle H	129		SPARROW
82	4167	Pitcher Cut	130		SEALYHAM TERRIER (SCOTTY)
83	1486	COLEPORT 7 oz. Old Fashion 6 ea.	131		SEALYHAM TERRIER (SCOTTY)
84	1486	COLEPORT 8 oz. Soda 5 ea.	132		OSCAR HORSE (SPARKY)
85	1486	COLEPORT 5 oz. Juice or Soda 7 ea.	133		OSCAR HORSE (SPARKY)
86	1486	COLEPORT 13 oz. Soda 2 ea.	134		OSCAR HORSE (SPARKY)
87	4054	CORONATION 4 oz. Ftd. Cock. R A C	135		COLT, STANDING
88	4054	CORONATION 8 oz. Old Fash. 4 ea. Mono R A C 1f	136		COLT, STANDING
89	6060	COUNTRY CLUB 18 oz. Soda Winchester 73 Etch 4 ea.	137		COLT, STANDING
			138		COLT, STANDING

___139	DONKEY H	___197	393	NARROW FLUTE Sahara Ind. Almond
___140	AIREDALE TERRIER			2 ea.
___141	SOW	___198	52	Flamingo Ind. Salt & Pepper
___142	PIGLET, SITTING	___199	10	Salt & Pepper
___143	PIGLET, STANDING	___200	1951	CABOCHON Salt & Pepper, Dolly
___144	PIGLET, STANDING			Madison Rose Cut
___145	ROOSTER VASE	___201	4054	CORONATION 2½ oz Bar Mono RAC 2
___146	HEN	___202	2401	2 oz. Bar Orchid Etch
___147	HEN	___203	2401	2 oz. Bar Renaissance Etch
___148	FISH CANDLEHOLDER f	___204	6060	COUNTRY CLUB 2 oz. Bar
___149	FLOATING DUCKLING			Winchester 73 Etch
___150	SWAN H	___205	1469	RIDGELEIGH NUT CUP 2 ea. H
___151	CYGNET H	___206	473	NARROW FLUTE W/RIM Ind. Almond
___152	POUTER PIGEON H			3 ea. H
___153	GAZELLE H	___207	1229	OCTAGON Mnglm Ind. Nut 2 ea.
___154	HORSEHEAD BOOKEND	___208	1229	OCTAGON Flam. Ind. Nut 2 ea H
___155	HORSEHEAD BOOKEND	___209	1252	TWIST Flam. Ind Nut 2 ea. H
___156	HORSEHEAD BOOKEND	___210	500	OCTAGON Flam. Frozen Dessert 4
___157	HORSEHEAD BOOKEND m	___211		IMP Oxford 1978 Souv. Cordial Orchid f
___158	BULL H f	___212		IMP Oxford 1978 Souv. Cordial Orchid
___159	IMPERIAL CARAMEL SLAG MIDDLE ELEPHANT	___213		IMP Oxford 1979 Souv. Cordial Rose
___160	IMP. CAR. SL. MALLARD, Wings Half	___214		IMP Oxford 1981 Souv. Cordial Olympiad
___161	IMP CAR SL Standing Colt	___215		IMP Oxford 1980 Souv. Cordial Old Colony
___162	IMP GREEN 1977 Souv. Sparky	___216		IMP Souv. Dedication Paperweight
___163	IMP PINK 1978 Souv. Sparky	___217		PAIRPOINT CUP PLATE, HEISEY DUCKS
___164	IMP YELLOW 1979 Souv. Sparky	___218	150	OVAL IN DIA POINT Spooner
___165	IMP AMETHYST 1980 Souv. Sparky	___219		BOX LOT OF 10 Stoppers, 1 Flam.
___166	IMP BLUE 1981 Souv. Sparky	___220		BOX LOT OF 11 Stoppers, 1 Green Duck,
___167	IMP GREEN 1982 Souv. Sparky			1 Flam. Decanter
___168	IMP TANGELO 1983 Souv. Sparky	___221		BOX LOT 8 Stoppers, 1 Mnglm Twist
___169	IMP LT BLUE Set of 3 Colts	___222		BOX LOT OF 35 YELLOW PLASTIC Punch
___170	IMP LT BLUE Set of 3 Mallards			Cup Hooks
___171	IMP ULTRA BLUE Kicking Colt	___223		BOX LOT OF 15 RED PLASTIC Punch Cup
___172	IMP ULTRA BLUE Kicking Colt			Hooks
___173	IMP ULTRA BLUE Rearing Colt	___224		BOX LOT OF 15 RED PLASTIC Punch Cup
___174	IMP ULTRA BLUE Rearing Colt			Hooks
___175	IMP SUNSHINE YELLOW Wood Duck f	___225		BOX LOT OF 15 RED PLASTIC Punch Cup
___176	IMP NUT BROWN Wood Duck			Hooks
___177	IMP MILK GLASS SCOTTY	___226		SET OF 5 IMP Land Of Leg. Souvenir
___178	IMP MILK GLASS HEN			Plates, 1972 - 1976
___179	IMP MILK GLASS ROOSTER	___227	3397	GASCONY Cobalt Bowl, Crys ft.X
___180	IMP MILK GLASS CHICK, HEAD UP 2 ea.			(2 pieces) base cracked
___181	IMP MILK GLASS CHICK, HEAD DOWN 2 ea.	___228	3389	DUQUESNE Sherbet, Chintz Etch
___182	IMP MILK GLASS RABBIT PAPERWEIGHT			12 ea.
___183	IMP MILK GLASS RABBIT	___229	1401	EMPRESS 7" Plates Chintz Etch
___184	IMP MILK GLASS BUNNY, HEAD DOWN			12 ea. H
___185	IMP MILK GLASS BUNNY HEAD UP	___230	3312	GAYOSO Ftd. Sundae, Salem Etch
___186	1489 PURITAN Lrg. Horsehead Cig Box			9 ea. 3 f
___187	437 Ash Tray H	___231	2451	Blown Tumbler 10 oz. Cloister Cut
___188	1536 MILITARY CAP Ash Tray			4 ea. all f
___189	1404 OLD SANDWICH Cobalt Ind. Ash	___232	1503	CRYSTOLITE Ftd. Cig. holder H
	Tray 3 ea. H	___233	1575	CUPPED LILLY 7" Bowl H
___190	3390 CARCASSONNE Cobalt Cig Holder	___234	1401	EMPRESS Cobalt D F 7" Cov.CandyH
___191	4085 KOHINOOR Wine, Churchill Cut	___235	1503	CRYSTOLITE Cruet
___192	3408 JAMESTOWN Cordial, NarcissusCutH	___236	1483	STANHOPE 9" Vase, Red hdls.
___193	4044 NEW ERA Cordial H f			Frosty Dawn Etch H f
___194	5019 WAVERLY Cordial 2 ea.	___237	301	4 BRANCH CANDELABRUM H
___195	3 Blown Pousse Cafe W O 3 ea.	___238	5	CANDELABRUM 12" 1 Lt. Moongleam
___196	1201 FANDANGO Toothpick f			Base and Candles, fancy cut prisms
				Pr. H

PAID ADVERTISEMENT

PAID ADVERTISEMENT

239	21	12" ELECTRO PORTABLE LAMP, Glass spider H, non-Heisey shade	273	3381	CREOLE Alexandrite finger bowl D O 6 ea.
240	21	9" ELECTRO PORTABLE LAMP, Flamingo, w/wire shade holder H	274	1401	EMPRESS Alexandrite 8" Rd. Plate 6 ea.
241	4225	COBEL 1 Qt. Cocktail Shaker Mono PCF (c strainer), & 4 ea. 2401 full sham ftd. whiskey Mono PCF	275	3408	JAMESTOWN Bell, Narcissus Cut H
242	4057	10½" Limelight Vase, S O	276	7 Pc.	JUICE SET, 6" Hdd Jug & 6ea. 5 oz. Juice, FLORAL CUT
243	1518	CUT MITRE 7" Vase	277	1184	YEOMAN Small Pitcher, Cut
244		EXPERIMENTAL Tangerine Vase, W O 3½" high	278	4301	POWDER DISH, GLASS LID, BLOWN, BEAUFIFULLY CUT
245		EXPERIMENTAL Marigold Vase, applied ring, 5" high	279	4043	COLOGNE BOTTLES, BEAUTIFULLY CUT, Pair
246	1485	SATURN Zircon 8" Plate 6 ea.	280	3366	TROJAN Gob. Beautiful exp. cut
247	1485	SATURN Zircon 5" nappy 6 ea. H	281	3404	SPANISH Gob. Beautiful exp. cut
248	1485	SATURN Zircon 5" Whipped Cream bowl 2 ea. H	282	3404	SPANISH Gob. Beautiful exp. cut
249	1485	SATURN Zircon Cup & Saucer, 6 Sets, H	283	3404	SPANISH Gob. Beautiful exp. cutR Square Cut Plate, Signed HAWKES
250	1485	SATURN Zircon 5 oz. Soda H	284	4184	10" Rd. Plate Cut H
251	4055	PARKLANE Gob. #859 Cohasset Cut 6 ea.	285	3362	CHARTER OAK Marigold Cock. 4 ea.H
252	4055	PARKLANE Champ. Cohasset Cut 6 ea.	286	4083	STANHOPE Zircon Goblet, S O 6 ea.
253	4055	PARKLANE Cocktail, Cohasset Cut 6 ea.	287	1186	ASH TRAY w/elephant
254	1184	YEOMAN 8" Plate, Cohasset Cut 6 ea.	288	1386	ASH TRAY, Mnglm., Irish Setter
255	485	9" Beverage Bowl Cohasset Cut	289	1386	ASH TRAY, Flam., Irish Setter
256	341	OLD WMSBRG. COBALT 12 Oz. ftd. Ice Tea	290	1386	ASH TRAY, Irish Setter
257	419	SUSSEX Cobalt Goblet H	291	441	GRAPE LEAF SQ. Ash Tray, Mnglm.
258	3390	CARCASSONNE Cobalt 12 oz. ftd. soda, 6 ea.	292	441	GRAPE LEAF SQ. Ash Tray
259	3390	CARCASSONNE Cobalt 6 oz. Sherbet 6 ea.	293	441	GRAPE LEAF SQ. Ash Tray, Flam.
260	3390	CARCASSONNE Cobalt 3 oz. Cock. 4 ea.	294	1489	PURITAN LIMELIGHT 7" Sq. Ash Tray, Fully Ground
261	3404	SPANISH Cobalt Cocktail 2 ea.	295	1489	4½" Sq. Ash Tray, Cut, init. F
262	1183	REVERE Cobalt 8" Rd. Plate 6 ea.	296	310	RING BAND Custard Cruet, Gold Dec.
263	325	PILLOWS High Stemmed Jelly H m	297	1220	PUNTY BAND Custard, Ind. Cream H f
264	325	PILLOWN Berry Set, 9" nappy & 6 ea. 4" nappies H minor roughness	298	433	GREEK KEY Cherry Jar
265	350	PINWHEEL & FAN Berry Set, 7½" nappy & 6 ea 4" nappies H Min. rough.	299	3390	CARCASSONNE Cig. Holder Mono PCF
266	3390	CARCASSONNE WATER JUG, EXPERIMENTAL GOLD RUBY W O	300		WATER SET cut by Mark Pickeral(not on Heisey Black), Pitcher & 8 Gobs.
267		EXPERIMENTAL TANGERINE DECANter, BULBOUS W/NARROW NECK	301	1227	MAHARG Sherbet 12 ea. H
267A		EXPERIMENTAL CRYSTAL & BLUE DECANter	302	335	PRINCE OF WALES PLUMES Celery Vase H
268	3397	GASCONY 18 oz. Tangerine Soda, Red Side 4 ea.	303	393	NARROW Flute Cov. Stemmed Candy Enamel Decor. H
269	3397	GASCONY 6 oz. Tangerine Sherb. Red Side 4 ea.	304	1	LIMELIGHT MADONNA H
270	6060	COUNTRY CLUB Dawn 18 oz. soda Screen Optic	305		LADY HEAD COCKTAIL STOPPER, FROSTED
271	373	COLONIAL ALEXANDRITE GOBLET H	306		ROOSTER HEAD COCKTAIL STOPPER, FROSTED
272	3381	CREOLE Alexandrite 13 oz. ftd. soda D O 6 ea.	307		AMBER STANDING COLT
			308	1489	PURITAN Camelia Bowl, United States Crest, Acid Cut
			309	1183	REVERE 10" Plate Washington Bust, Acid Cut
			310	5038	ROOSTER STEM COCKTAIL, Victory Etch
			311	1236	EAGLE PLATE
			312	1510	Sq. on Rd. Ash Tray f
			313	363	Ind. Ash Tray, Marigold
			314	1489	PURITAN Oblong Ash Tray, Fully Ground
			315	1489	PURITAN Octagon Ash Tray 6" Fully Ground
			316	1567	OHIO SESQUI ASH TRAY
			317		

139	DONKEY H	197	393	NARROW FLUTE Sahara Ind. Almond
140	AIREDALE TERRIER			2 ea.
141	SOW	198	52	Flamingo Ind. Salt & Pepper
142	PIGLET, SITTING	199	10	Salt & Pepper
143	PIGLET, STANDING	200	1951	CABOCHON Salt & Pepper, Dolly
144	PIGLET, STANDING			Madison Rose Cut
145	ROOSTER VASE	201	4054	CORONATION 2½ oz Bar Mono RAC 2
146	HEN	202	2401	2 oz. Bar Orchid Etch
147	HEN	203	2401	2 oz. Bar Renaissance Etch
148	FISH CANDLEHOLDER f	204	6060	COUNTRY CLUB 2 oz. Bar
149	FLOATING DUCKLING			Winchester 73 Etch
150	SWAN H	205	1469	RIDGELEIGH NUT CUP 2 ea. H
151	CYGNET H	206	473	NARROW FLUTE W/RIM Ind. Almond
152	POUTER PIGEON H			3 ea. H
153	GAZELLE H	207	1229	OCTAGON Mnglm Ind. Nut 2 ea.
154	HORSEHEAD BOOKEND	208	1229	OCTAGON Flam. Ind. Nut 2 ea H
155	HORSEHEAD BOOKEND	209	1252	TWIST Flam. Ind Nut 2 ea. H
156	HORSEHEAD BOOKEND	210	500	OCTAGON Flam. Frozen Dessert 4
157	HORSEHEAD BOOKEND m	211		IMP Oxford 1978 Souv. Cordial Orchid f
158	BULL H f	212		IMP Oxford 1978 Souv. Cordial Orchid
159	IMPERIAL CARAMEL SLAG MIDDLE ELEPHANT	213		IMP Oxford 1979 Souv. Cordial Rose
160	IMP. CAR. SL. MALLARD, Wings Half	214		IMP Oxford 1981 Souv. Cordial Olympiad
161	IMP CAR SL Standing Colt	215		IMP Oxford 1980 Souv. Cordial Old Colony
162	IMP GREEN 1977 Souv. Sparky	216		IMP Souv. Dedication Paperweight
163	IMP PINK 1978 Souv. Sparky	217		PAIRPOINT CUP PLATE, HEISEY DUCKS
164	IMP YELLOW 1979 Souv. Sparky	218	150	OVAL IN DIA POINT Spooner
165	IMP AMETHYST 1980 Souv. Sparky	219		BOX LOT OF 10 Stoppers, 1 Flam.
166	IMP BLUE 1981 Souv. Sparky	220		BOX LOT OF 11 Stoppers, 1 Green Duck,
167	IMP GREEN 1982 Souv. Sparky			1 Flam. Decanter
168	IMP TANGELO 1983 Souv. Sparky	221		BOX LOT 8 Stoppers, 1 Mnglm Twist
169	IMP LT BLUE Set of 3 Colts	222		BOX LOT OF 35 YELLOW PLASTIC Punch
170	IMP LT BLUE Set of 3 Mallards			Cup Hooks
171	IMP ULTRA BLUE Kicking Colt	223		BOX LOT OF 15 RED PLASTIC Punch Cup
172	IMP ULTRA BLUE Kicking Colt			Hooks
173	IMP ULTRA BLUE Rearing Colt	224		BOX LOT OF 15 RED PLASTIC Punch Cup
174	IMP ULTRA BLUE Rearing Colt			Hooks
175	IMP SUNSHINE YELLOW Wood Duck f	225		BOX LOT OF 15 RED PLASTIC Punch Cup
176	IMP NUT BROWN Wood Duck			Hooks
177	IMP MILK GLASS SCOTTY	226		SET OF 5 IMP Land Of Leg. Souvenir
178	IMP MILK GLASS HEN			Plates, 1972 - 1976
179	IMP MILK GLASS ROOSTER	227		3397 GASCONY Cobalt Bowl, Crys ft.X
180	IMP MILK GLASS CHICK, HEAD UP 2 ea.			(2 pieces) base cracked
181	IMP MILK GLASS CHICK, HEAD DOWN 2 ea.	228		3389 DUQUESNE Sherbet, Chintz Etch
182	IMP MILK GLASS RABBIT PAPERWEIGHT			12 ea.
183	IMP MILK GLASS RABBIT	229		1401 EMPRESS 7" Plates Chintz Etch
184	IMP MILK GLASS BUNNY, HEAD DOWN			12 ea. H
185	IMP MILK GLASS BUNNY HEAD UP	230		3312 GAYOSO Ftd. Sundae, Salem Etch
186	1489 PURITAN Lrg. Horsehead Cig Box			9 ea. 3 f
187	437 Ash Tray H	231		2451 Blown Tumbler 10 oz. Cloister Cut
188	1536 MILITARY CAP Ash Tray			4 ea. all f
189	1404 OLD SANDWICH Cobalt Ind. Ash	232		1503 CRYSTOLITE Ftd. Cig. holder H
	Tray 3 ea. H	233		1575 CUPPED LILLY 7" Bowl H
190	3390 CARCASSONNE Cobalt Cig Holder	234		1401 EMPRESS Cobalt D F 7" Cov.CandyH
191	4085 KOHINOOR Wine, Churchill Cut	235		1503 CRYSTOLITE Cruet
192	3408 JAMESTOWN Cordial, NarcissusCutH	236		1483 STANHOPE 9" Vase, Red hdl.
193	4044 NEW ERA Cordial H f			Frosty Dawn Etch H f
194	5019 WAVERLY Cordial 2 ea.	237		301 4 BRANCH CANDELABRUM H
195	3 Blown Pousse Cafe W O 3 ea.	238		5 CANDELABRUM 12" 1 Lt. Moongleam
196	1201 FANDANGO Toothpick f			Base and Candles, fancy cut prisms
				Pr. H

PAID ADVERTISEMENT

PAID ADVERTISEMENT

239	21	12" ELECTRO PORTABLE LAMP, Glass spider H, non-Heisey shade	273	3381	CREOLE Alexandrite finger bowl D O 6 ea.
240	21	9" ELECTRO PORTABLE LAMP, Flamingo, w/wire shade holder H	274	1401	EMPRESS Alexandrite 8" Rd. Plate 6 ea.
241	4225	COBEL 1 Qt. Cocktail Shaker Mono PCF (c strainer), & 4 ea. 2401 full sham ftd. whiskey Mono PCF	275	3408	JAMESTOWN Bell, Narcissus Cut H 7 Pc. JUICE SET, 6" Hldd Jug & 6ea. 5 oz. Juice, FLORAL CUT
242	4057	10½" Limelight Vase, S O	276	1184	YEOMAN Small Pitcher, Cut
243	1518	CUT MITRE 7" Vase	277	4301	POWDER DISH, GLASS LID, BLOWN, BEAUFIFULLY CUT
244		EXPERIMENTAL Tangerine Vase, W O 3½" high	278	4043	COLOGNE BOTTLES, BEAUTIFULLY CUT, Pair
245		EXPERIMENTAL Marigold Vase, applied ring, 5" high	279	3366	TROJAN Gob. Beautiful exp. cut
246	1485	SATURN Zircon 8" Plate 6 ea.	280	3404	SPANISH Gob. Beautiful exp. cut
247	1485	SATURN Zircon 5" nappy 6 ea. H	281	3404	SPANISH Gob. Beautiful exp. cut
248	1485	SATURN Zircon 5" Whipped Cream bowl 2 ea. H	282	3404	SPANISH Gob. Beautiful exp. cut
249	1485	SATURN Zircon Cup & Saucer, 6 Sets, H	283		Square Cut Plate, Signed HAWKES
250	1485	SATURN Zircon 5 oz. Soda H	284	4184	10" Rd. Plate Cut H
251	4055	PARKLANE Gob. #859 Cohasset Cut 6 ea.	285	3362	CHARTER OAK Marigold Cock. 4 ea.H
252	4055	PARKLANE Champ. Cohasset Cut 6 ea.	286	4083	STANHOPE Zircon Goblet, S O 6 ea.
253	4055	PARKLANE Cocktail, Cohasset Cut 6 ea.	287	1186	ASH TRAY w/elephant
254	1184	YEOMAN 8" Plate, Cohasset Cut 6 ea.	288	1386	ASH TRAY, Mnglm., Irish Setter
255	485	9" Beverage Bowl Cohasset Cut	289	1386	ASH TRAY, Flam., Irish Setter
256	341	OLD WMSBRG. COBALT 12 Oz. ftd. Ice Tea	290	1386	ASH TRAY, Irish Setter
257	419	SUSSEX Cobalt Goblet H	291	441	GRAPE LEAF SQ. Ash Tray, Mnglm.
258	3390	CARCASSONNE Cobalt 12 oz. ftd. soda, 6 ea.	292	441	GRAPE LEAF SQ. Ash Tray
259	3390	CARCASSONNE Cobalt 6 oz. Sherbet 6 ea.	293	441	GRAPE LEAF SQ. Ash Tray, Flam.
260	3390	CARCASSONNE Cobalt 3 oz. Cock. 4 ea.	294	1489	PURITAN LIMELIGHT 7" Sq. Ash Tray, Fully Ground
261	3404	SPANISH Cobalt Cocktail 2 ea.	295	1489	4½" Sq. Ash Tray, Cut, init. F
262	1183	REVERE Cobalt 8" Rd. Plate 6 ea.	296	310	RING BAND Custard Cruet, Gold Dec.
263	325	PILLOWS High Stemmed Jelly H m	297	1220	PUNTY BAND Custard, Ind. Cream H f
264	325	PILLOWN Berry Set, 9" nappy & 6 ea. 4" nappies H minor roughness	298	433	GREEK KEY Cherry Jar
265	350	PINWHEEL & FAN Berry Set, 7½" nappy & 6 ea 4" nappies H Min. rough.	299	3390	CARCASSONNE Cig. Holder Mono PCF WATER SET cut by Mark Pickeral(not on Heisey Black), Pitcher & 8 Gobs.
266	3390	CARCASSONNE WATER JUG, EXPERIMENTAL GOLD RUBY W O	300	1227	MAHARG Sherbet 12 ea. H
267		EXPERIMENTAL TANGERINE DECANTER, BULBOUS W/NARROW NECK	301	335	PRINCE OF WALES PLUMES Celery Vase H
267A		EXPERIMENTAL CRYSTAL & BLUE DECANTER	302	393	NARROW Flute Cov. Stemmed Candy Enamel Decor. H
268	3397	GASCONY 18 oz. Tangerine Soda, Red Side 4 ea.	303	1	LIMELIGHT MADONNA H
269	3397	GASCONY 6 oz. Tangerine Sherb. Red Side 4 ea.	304		LADY HEAD COCKTAIL STOPPER, FROSTED ROOSTER HEAD COCKTAIL STOPPER, FROSTED AMBER STANDING COLT
270	6060	COUNTRY CLUB Dawn 18 oz. soda Screen Optic	305	1489	PURITAN Camelia Bowl, United States Crest, Acid Cut
271	373	COLONIAL ALEXANDRITE GOBLET H	306	1183	REVERE 10" Plate Washington Bust, Acid Cut
272	3381	CREOLE Alexandrite 13 oz. ftd. soda D O 6 ea.	307	5038	ROOSTER STEM COCKTAIL, Victory Etch
			308	1236	EAGLE PLATE
			309	1510	Sq. on Rd. Ash Tray f
			310	363	Ind. Ash Tray, Marigold
			311	1489	PURITAN Oblong Ash Tray, Fully Ground
			312	1489	PURITAN Octagon Ash Tray 6" Fully Ground
			313	1567	OHIO SESQUI ASH TRAY
			314		
			315		
			316		
			317		

TWELFTH ANNUAL
STARLIGHT FLEA MARKET
SUNDAY, MARCH 11, 1984

STARLIGHT SCHOOL
116 N. 22nd Street
North of West Main Street
Newark, Ohio

9:00 A.M. - 4:00 P.M. (firm times)

FOR FURTHER INFORMATION WRITE:

Dick Smith
225 Upson Downs Road
Newark, Ohio 43055
PH: 614-366-5163 Evenings

ANTIQUES - HEISEY GLASS - POTTERY - CRAFTS
Something For Everyone

Managed by: Land of Legend Heisey Study Club

Benefit of The National Heisey Glass Museum

Food Available

Donation \$1.00



1983 EDITION!

HEISEY'S GLASSWARE
OF DISTINCTION

By Mary Louise Burns

Condensed and updated!
Contains all major tableware
patterns with pictures for
easy identification.

Current price list included

Order direct from author
\$11.95 pp
MARY LOUISE BURNS
P.O. Box 1931
Grants Pass, OR 97527

Individual price lists
available for Heisey's
Orchid Etch, Rose Etch.
Animals & Verlys @ \$1.50 ea.
plus large SASE.

GLASS[®] review

ESTABLISHED 1971

The GLASS REVIEW Magazine is for every-
one who studies, collects or sells glass.
Whether your glass interests lean toward
the early 1900's -- or the depression era--
or with today's limited glass items, the
GLASS REVIEW covers it all !

Articles -- price reports -- original
catalog documentation -- shop directory --
research and reproduction news -- trademark
information -- glass book releases -- what's
new on the market -- a large variety of
glass ads (on both old and new glass) --
plus much more.

Enclose payment and mail to:
GLASS REVIEW, P.O. BOX 542, MARIETTA,
OH 45750

10 'big' yearly issues

68 pages or more

\$12.50 - one year

THE NATIONAL CAPITAL HEISEY COLLECTORS CLUB
Presents the Twelfth Annual
"ALL-HEISEY GLASS SHOW AND SALE"
For the benefit of the Heisey Museum

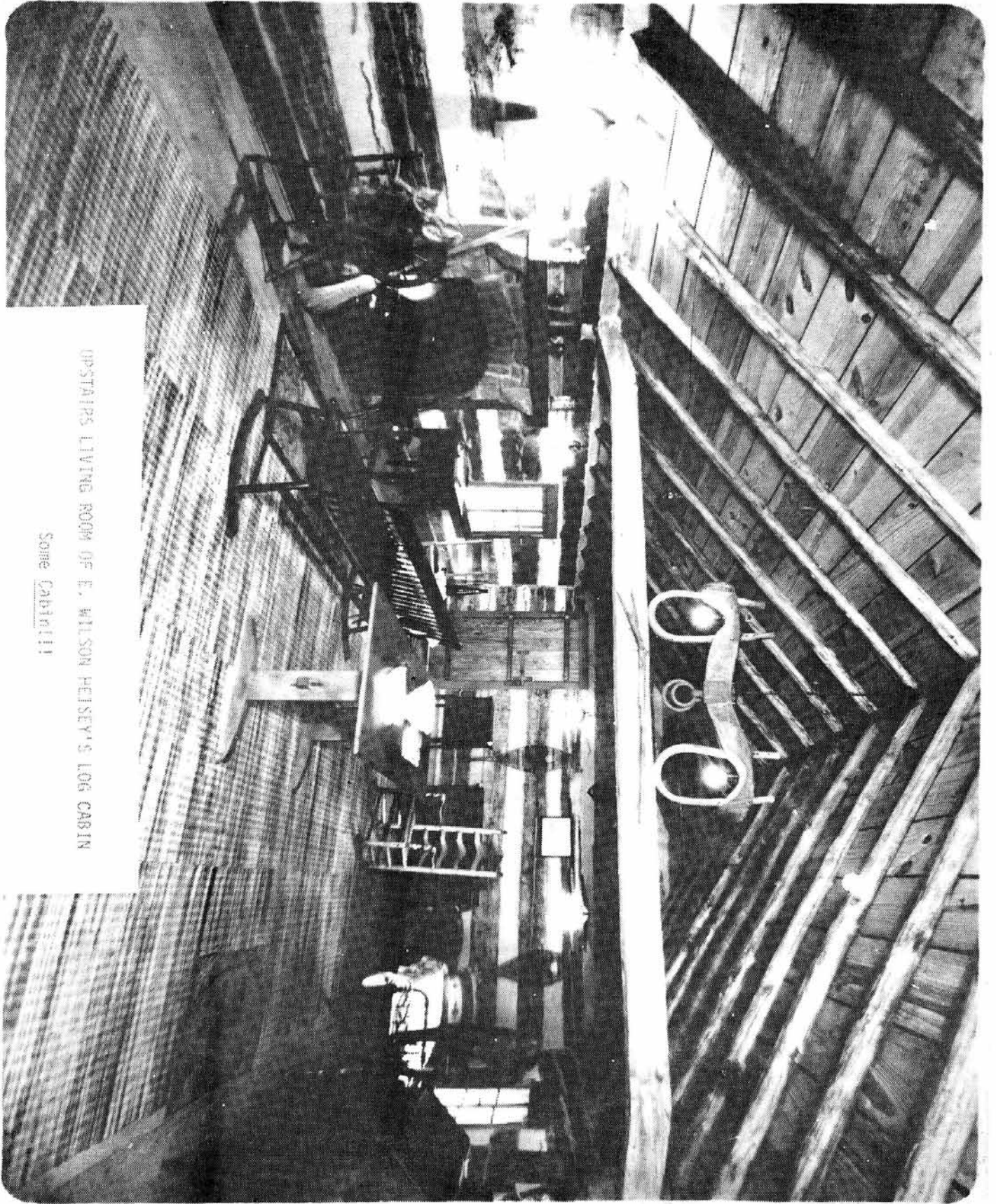
SAT, MAR 24, 1984
11 AM to 8 PM

SUN, MAR 25, 1984
11 AM to 5 PM

ARMORY PLACE
Wayne & Fenton Silver Spring, MD
DOOR PRIZE

HEISEY GLASS IDENTIFICATION - 1 to 3 PM, each day - Cer-
tificate of authenticity from HCA - small fee for each
item.

Admission \$2.00
With This Ad \$1.50



UPSTAIRS LIVING ROOM OF E. WILSON HEISEY'S LOG CABIN

Some Cabin!!!

C RON BAKER
4811 N. HANLEY ROAD
BERKELEY, MO 63134

I Will Pay P & I
Return Guarantee

- #3404 SPANISH 10 oz. Goblet, Cobalt Bowl
Crystal Stem (8) - Mint Cond..ea..\$75.00
- #3404 SPANISH 5-1/2 oz Saucer Champagne,
Cobalt Bowl, Crystal Stem (6) -
Mint Cond...each..... 60.00
- #1405 IPSWICH Clear 10 oz Tumbler, (9)
Mint Cond..each..... 10.00
- #1405 IPSWICH clear 5 oz Saucer Champs.
(8) Mint Cond.each..... 10.00

I STILL WANT TO BUY AN EMERALD GREEN LOCKET ON
CHAIN TOOTHPICK HOLDER. IN RUBY STAIN TOO.

PATTON HOUSE ANTIQUES
P.O. BOX 547
LOUISA, VA 23093

PH: 703-967-1181
P & I Extra
* Signed

- #1567 PLANTATION (Blown) Goblets (10)
each.....\$ 14.00
- #1567 PLANTATION (Blown) Sherbets (9)ea 12.00
- #1567 PLANTATION (Blown) Wines (7) ea.. 18.00
- # 150 BANDED FLUTE Tall Sherbets(5)*ea. 12.00
- # 394 NARROW FLUTE 9 oz. Goblets (4)*ea 28.00
- # 325 PILLOWS 2 Qt. Pitcher*..... 160.00
- # 142 CASCADE Orchid Etch Candlesticks,
Pair..... 150.00
- # 343 SUNBURST Berry Set - 5 Pcs.*..... 65.00
- DUNCAN MILLER 13" Torte Plate, Canterbury 15.00

D & W COLLECTIBLES PH: 203-525-2028
626 ASYLUM AVENUE
HARTFORD, CT 06105 P.I.X.; * Marked

RIBBED OCTAGON:

- #1231 Mglm 10-1/2" Plate.....\$30.00
- #1231 Mglm Crmr* & Sug*, Set..... 45.00
- #1229 Mglm Nut Dish*, (4) each..... 15.00
- #1229 Mglm Cheese Dish, (2) each..... 10.00
- #1231 Flam. Cup* & Saucer (2) each..... 25.00
- #507 ORCHID ETCH:
- #1519 WAVERLY 7" Oval Nut comport..... 95.00
- #1519 WAVERLY 2 lt. Candle..... 45.00
- # 112 MERCURY Candles, Pair..... 75.00
- # 134 TRIDENT 2 lt. Candle..... 45.00

APPLE TREE AUCTION CENTER

1616 WEST CHURCH STREET
NEWARK, OHIO 43055

We are offering a subscription for price lists
for all of our All-Heisey Auctions for 1984. -
\$5.00 per year. You will automatically receive
these lists after every auction.

This does not include HCA's March Auction.
Send \$5.00 to the above address.

SCHWANS ANTIQUES PH: 804-229-7873
ROUTE 1, BOX 175B
WILLIAMSBURG, VA 23185 P & I Extra

- #1001 Creamer & Sugar Sifter, Flam.D/O.\$ 70.00
- # 393 NARROW FLUTE Ind. Butter, Flam... 20.00
- # 107 Candlestick, 10 inch..... 65.00
- #1425 VICTORIAN 3 oz Cocktail, Sah(6)ea 75.00
- # 134 TRIDENT Candlesticks, Olympiad
Etch...Pair..... 60.00
- # 343 SUNBURST Egg Cups (4) each..... 35.00
- # 343 SUNBURST Egg Nog Bowl (?) &
Pedestal..... 140.00
- #3411 MONTE CRISTO Water, Olympiad Etch
(6) each..... 35.00
- #3411 MONTE CRISTO 5 oz Soda (2) each... 28.00
- #5072 Rose Etch Water, (10) each..... 35.00
- #5072 Rose Etch Champagne (5) each..... 30.00
- #5072 Rose Etch Juice (5) each..... 40.00
- # 305 PUNTY & DIAMOND POINT Sugar
Sifter, Plated Top..... 75.00
- #1541 ATHENA 13" Torte Tray..... 35.00
- #1205 FANCY LOOP Cake Salver..... 125.00
- #1170 PLEAT & PANEL Tall Compote With
Cover, Moongleam..... 85.00

MANY OTHER PIECES -- WRITE OR CALL WANTS

DONALD P. BEAN
36 HARDING STREET
MILFORD, MA 01757

PH: 617-473-0561
P & I EXTRA
* Marked

- #1183 REVERE 6" Covered Candy* All Over
Cut.....\$32.50
- #1469 RIDGELEIGH 3 oz Oil W/#103 Strpr.. 37.50
- # 433 GREEK KEY 5" Handled Jelly*..... 35.00
- #1428 WARWICK 2-Lite Sticks*..Pair..... 45.00
- # 417 DBL RIB & PANEL BASKET* Flamingo. 90.00
- #1295 BEAD SWAG Wine, Custard, Good
Gold, Rose Bud Decor. Souv..... 80.00
- #1519 WAVERLY Ftd. Cr. & Sug*, Orchid
Etch..... 55.00
- # 451 CROSS LINE FLUTE 7" Vase*Flam.... 65.00
- # 419 SUSSEX Champs* Mglm. Crystal Stem
& Ft. (2) each..... 25.00

**DATES TO
REMEMBER**

- MARCH 3 & 4, 1984 - GLASS, CHINA & POTTERY SHOW
SAN MATEO, CA. FAIRGROUNDS
- MARCH 9 & 10, 1984 - BENEFIT AUCTION, NEWARK, OH
- MARCH 11, 1984 - FLEA MARKET - STARLIGHT
SCHOOL, NEWARK, OHIO
- MARCH 24 & 25, 1984 - ALL HEISEY GLASS SHOW
SILVER SPRINGS, MD.
- JUNE 14 - 17, 1984 - CONVENTION

DEALERS DIRECTORY

5 LINES / 12 MONTHS / \$18.00

We assume no responsibility for errors in these ads after the first printing...Editor. For changes in ads during the year, please send \$1.00 per line.

A DOOR ANTIQUES

Heisey My Specialty
South Euclid, OH 44121
PH: (216) 381-3008

ALL HEISEY AUCTION

Consignments Welcome
Apple Tree Auction Center
1616 W. Church; Newark, OH 43055

ANN'S GIFTS & ANTIQUES

105 W. Main St.; Hebron, OH 43025
Intersection of Rts. 40 & 79
Next Door to Daisy Queen
Daily 10:30 - 5:30; Closed Thursday

ANTIQUÉ JUNCTION

540 N.E. 'E' St. (off I-5)
Grants Pass, OR 97526
PH: (503) 479-8575 or (503) 582-4067
Hours: Wed-Sat 11 to 5

ANTIQUES- THE SHULTZES

206-208 East Main St.
Newmanstown, PA 17073
15 Miles West of Reading, PA.
PH: (215) 589-2819

AVERY'S QUALITY ANTIQUES

Heisey, Other Glass & China
Shows or by Appointment
2112 First St.; Jackson, MI 49203
PH: (517) 783-4075

B & B HEISEY & COLLECTIBLES

B. Whaley
300 International Dr.
Pataskala, OH 43062
By Appointment; PH: (614) 927-1557

C & J ANTIQUES

Cole & Jean Miesner
Box 45; 75 Whig St.
Newark Valley, NY 13811
PH: (607) 642-9905

CHARLES & MILDRED FISHER

Heisey, Degenhart, Imperial, Antiques
Collectibles, General Line
991 Idlewilde; Newark, OH 43055
PH: (614) 522-5398

DAVE'S ANTIQUES

Specializing in Heisey
Shows & by Appointments
Tampa, FL 33600
PH: (813) 876-0580

DEL'S DOINGS

Heisey- Cambridge Glass
Furniture & Jewelry
Box 188; 10327 Main
Richmond, IL 60071

DIAMOND H PLUS

Appointment or Mail Order
George & Eileen Schamel
Rt. 3; Box 419; Boonsboro, MD 21713
PH: (301) 432-6285

DIE KUNST GALLERIES & ANTIQUES

Vel & Andy Andress
Specializing in Heisey; Victorian
Crystal; U.S. Glass; Cambridge; Fostoria;
D. Miller; Depression & Candlesticks
Box 329; 725 Front St.; Leavenworth, WA
98826 - PH: (509) 548-7856

ELIZABETH BASSETT CASON

401 32nd St., W.
Bradenton, FL 33505
Mail Order- List
PH: (813) 748-0851

FOREVER HEISEY

Shows & Mail Order
Janice Thrane
1663 Londondale Pkwy.; Newark, OH 43055
PH: (614) 344-5955

GERT'S GLASS

Heisey & Duncan
Gertrude & Russell Swetnam
1926 Saratoga Dr.; Adelphi, MD 20783
PH: (301) 434-5113

GOLDSBERRY'S ANTIQUES

Heisey A Specialty
Shows Only- Buy & Sell
Kalamazoo, MI 49000
PH: (616) 381-3013

GREEN ACRES FARMS

Antiques, Crystal Glass & Collectibles
2678 Hazelton-Etna Rd., SW (S.R. 310-N)
Pataskala, OH 43062
Sat or Sun P.M. or call (614) 927-1882

H & R DIAMOND H

Helen & Robert Rarey
1450 White Ash Dr.
Columbus, OH 43204
PH: (614) 279-0390 after 5:30

HAPPY HAVEN ANTIQUES

Mary Dumke
41319 Rattlesnake Road
Grass Valley, CA 95945
PH: (916) 273-9450

HAPPY HEISEY HUNTERS

Miniatures- Dbl. SASE for List
Cliff & Helen Harralson
1426 W. Highland; Springfield, MO 65807
PH: (417) 883-2449

HARRISON'S ANTIQUES

Heisey, Cambridge, Duncan
Shows, Mail, by Appt.
26 Johnston's Lane; Mercersburg, PA 17236
PH: (717) 328-2451

HEISEY PUBLICATIONS

All Heisey Books I-II-III-IV- Heisey
Newscaster 32 Pg. Quarterly- \$6.00
Back Issues- \$4.00
Box 102; Plymouth, OH 44865

JOYCE'S ANTIQUES

Specializing in Heisey, Cambridge, Verly's
& American Glass
P.O. Box 114; Alburtson, NY 11507
PH: (516) 499-3396

LAST CHANCE ANTIQUES

Mail Orders- Matching Service
Send Us Your Want Lists
P.O. Box 502; Dania, FL 33004
PH: (305) 467-6356 Day or Evening

LYNNE & ART'S GLASS HOUSE

Heisey Our Specialty
P.O. Box 54-6014; Miami Beach, FL 33154
PH: (305) 861-7700 or (305) 895-5666 or
Rt. 202; Lahaska, PA 18931
PH: (215) 794-7800

MOSTLY HEISEY

Rhoda Curley
16 Clayton Place
Albany, NY 12209
By Appt.; PH: (518) 482-6272

MOUNDBUILDERS ANTIQUES

Heisey & Animals, General Antiques
Irene Rauck
1138 Moundview; Newark, OH 43055
PH: (614) 344-6043

OX YOKE ANTIQUES

General Line & Heisey
Don & Norene Walzer
675 Ogden-Parma Tl. Rd.
Spencerport, NY 14559
PH: (716) 352-3959

PATTON HOUSE

Heisey & Duncan Miller
Rocky's Mail; I-81 & US 11
Weyer's Cave, VA 24486
PH: (703) 967-1181

PEGGY'S ANTIQUES

2000 Pcs. of Heisey in Stock
Ernie & Peggy Cox
P.O. Box 367; Spavinaw, OK 74366
By Appt. or by Chance
PH: (918) 589-2859

R & L ANTIQUES- SAN FRANCISCO

Shows Only- Always Lots of Heisey
Member of Golden Gate Heisey Club
P.O. Box 3614; Daly City, CA 94015
PH: (415) 621-6693 Russ & Lee

RAMLING LANE ANTIQUES

Featuring Heisey & Other Fine Glass
Keith & Evelyn Hoover
Rt. #4; Box 1005; Rhineland, WI 54501- PH: (715) 282-5019

RAY ZIEGLER

Glass Repair
2265 Innis Road
Columbus, OH 43224
PH: (614) 882-8446

SCHWAN'S ANTIQUES

Shop & Shows
Rt. 1; Box 175B; John Tyler Highway
Williamsburg, VA 23185
PH: (804) 229-7873

SUM OF LIFE

Elaine & Frank Husted
P.O. Box 102
Phoenixville, PA 19460
PH: (215) 935-2962

T & S ANTIQUES

Specializing in Heisey
Tom Martin & Steve Roderick
New Rochelle, NY 10805
PH: (914) 235-9632

THE WOODEN SHOE

Antiques & Collectibles- Buy & Sell
Glass, Furniture, Estates
Jim & Sheri Van Es, By Appointment
810 Elden; Herndon, VA 22070
PH: (703) 435-9045

TRUDY MILLER ANTIQUES

China & Crystal Matching
Heisey A Specialty
P.O. Box 740548; Dallas, TX 75374
PH: (214) 783-9920

WILLEY'S ANTIQUES & MUSEUM

Specializing in Heisey
11110 Cannon Rd.; Frazeyburg, OH
43822- 16 Miles East of Newark
PH: (614) 828-2557

FROSTED RUBY OSCARS 1984

We have a very limited number of frosted Oscars. Please order only the number you are willing to pay for if you win. Send separate check for each name. Include an SASE for return of checks. See Page 3 for further explanation. Deadline is February 1, 1984 so hurry! Drawing will be February 3, 1984.

PLEASE READ VERY CAREFULLY BEFORE FILLING OUT

Oscars are Ruby frosted, marked "HCA 1984" and "IG". A limited edition of 190 to be offered to members at \$22.00 each. You may order ONE per member. This means ANY member who has a membership card regardless of class of membership. Please list all names as they will be checked. Everyone living in Ohio

ordering for pick-up in Ohio, must pay \$1.32 Sales Tax per Oscar. Shipping charges will be \$1.50 each.

DO NOT SEND DUES, BOOK ORDERS, ETC. WITH YOUR OSCAR ORDER. Be sure your dues are currently paid.

_____ Number of Oscars at \$22.00..... _____ Sales Tax \$1.32 each..... _____ Postage \$1.50 each..... _____ TOTAL sent with order.....	ONLY ONE PER MEMBER ALL OHIO RESIDENTS AND PICK-UPS IN NEWARK Check one: _____ Please mail my Oscar(s) _____ I will pick up my Oscar(s) at the Museum.
--	--

NAME(s) _____

List all names _____

ADDRESS _____ CITY _____ STATE _____ ZIP _____

Make check payable to HCA, Inc.
and mail to: HCA FROSTED OSCAR
 P.O. BOX 27
 NEWARK, OH 43055



<input type="checkbox"/> BankAmericard/Visa		<table border="1" style="width: 100%; height: 20px;"> <tr><td> </td><td> </td><td> </td><td> </td><td> </td><td> </td><td> </td><td> </td><td> </td><td> </td><td> </td></tr> </table>											
<input type="checkbox"/> Mastercharge													

1984 SOUVENIR OSCAR FORM

PLEASE READ VERY CAREFULLY BEFORE FILLING OUT

Oscars are Ruby, marked "HCA '84" and "IG." A limited edition of approximately 2164 to be offered to members at \$21.00 until May 31st. None will be sold between that date and the first day of the Convention, June 14th, when they will be sold for \$24.00 if any are left. You may order ONE per member. This means ANY member who has a membership card regardless of class of membership. Please list all names as they WILL be checked. Everyone living in Ohio ordering for

pick-up in Ohio, must pay \$1.26 Sales Tax per Oscar. Shipping charges will be \$1.50. The Oscars will be shipped as soon as orders are received. DO NOT SEND DUES, BOOK ORDERS, ETC. WITH YOUR OSCAR ORDER. Please keep this part for a reference and clip and mail the form below the line. Be sure your dues are currently paid. This is the 8th of a series of souvenir Oscars.

_____ Number of OSCARS AT \$21.00..... _____ Sales Tax \$1.26 each _____ Postage \$1.50 each _____ TOTAL sent with order	Only one per member All Ohio Residents and Pick-Ups in Newark Check one: _____ Please mail my Oscar (s) _____ I will pick up my Oscar (s) at Convention or Museum after the Convention. Circle one.
---	--

NAME (s) _____

List all names _____

ADDRESS _____ CITY _____ STATE _____ ZIP _____

Make check payable to HCA, Inc.
and mail to: HCA OSCAR SALES
 P.O. BOX 27
 NEWARK, OH 43055

<input type="checkbox"/> BankAmericard/Visa		<table border="1" style="width: 100%; height: 20px;"> <tr><td> </td><td> </td><td> </td><td> </td><td> </td><td> </td><td> </td><td> </td><td> </td><td> </td><td> </td></tr> </table>											
<input type="checkbox"/> Mastercharge													

Make your reservations now..... CONVENTION 1984..... June 14-15-16-17, 1984

The rate given us is ONE PERSON - \$36.00 - TWO PEOPLE - \$41.00, Queen Size ONE PERSON \$37.00 - TWO PEOPLE \$42.00. The queen size rooms all have steam baths. NO ADDITIONAL CHARGE FOR CHILDREN UNDER 18 YEARS OF AGE AND NO ADVANCE DEPOSIT IS NEEDED. There is a \$5.00 charge per night for a rollaway bed.

The SHERATON INN will once again be our convention headquarters for 1983, and they have given a special room rate for all H.C.A. members. All activities will be held there with the exception of the SHOW AND DISPLAY. Please make your reservations early because last year they were all taken by the first of March.

SHERATON INN RESERVATION REQUEST

Name _____

Address _____

City _____ State _____ Zip _____

Phone _____

All rooms have two double beds.

Arrive _____

Single room requested (one person) \$36.00

Depart _____

Double room requested (two people) \$41.00

Please make your reservation by clipping the attached form

Queen size requested (one person) \$37.00

Queen size requested (two people) \$42.00

Mail to: ROBERT McCLAIN
156 W. SHIELDS ST.
NEWARK, OHIO 43055
Phone: (614) 345-8061

Rollaway bed _____ \$ 5.00

P L E A S E

The Newark Diamond H Club is revising the Sales Directory of dealers and individuals who have Heisey glass for sale or services to offer. Our present supply will last until late spring, so our new printing will be in effect from June 1984 to June 1985. The updated directory will be printed and given to museum visitors and mail requests.

The work for this project is being done as a club effort by the Newark Diamond H Club. The printed Directories will be donated to H. C. A..

This is a great opportunity for anyone who has Heisey glass to sell or a service to offer --- to let others know.

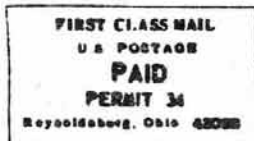
The cost is \$10.00 for 5 lines for one year. We suggest you specify the type of business you desire or offer, such as - Open Shop, Chance or Call or Hours & Days Open, Shows Only, Flea Markets, Mail Order, Buy & Sell, Glass Repair, Auction Service or Dispersal.

Checks should be made out to: Newark Diamond H Club. Information (5 Line copy) and payment should be mailed to:

Diamond H Directory
P O Box 27
Newark, Ohio 43055

A prompt response will be appreciated, we need all information and monies by April 1st, 1984.

Linda Barnes, V. Pres. & Virginia Yeakley, Chr.



FIRST CLASS MAIL