

# HEISEY

# news

OFFICIAL PUBLICATION HEISEY COLLECTORS OF AMERICA

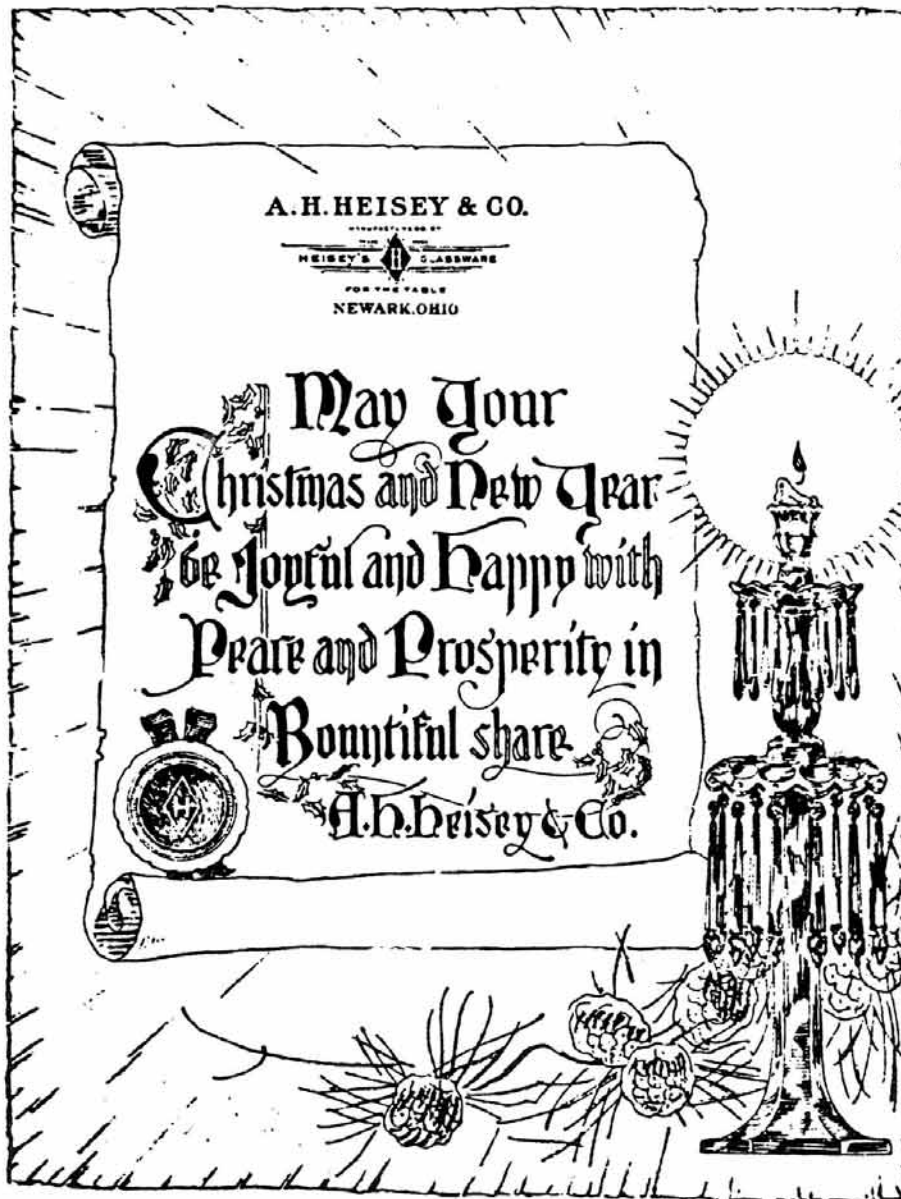
©Heisey Collectors of America, Inc. 1982  
All Rights Reserved

VOLUME XI NO. 11

NOVEMBER - DECEMBER, 1982

ISSN 0731-8014

ONE DOLLAR



FROM: CROCKERY AND GLASS JOURNAL 1924

READ ABOUT THE MARCH AUCTION ON PAGE 23.

## FROM THE DESK OF YOUR PRESIDENT.....

HEISEY NEWS---P.O. BOX 27---NEWARK, OHIO 43055

Editor LOUISE REAM  
Box 27, Newark, OH 43055 614-345-2932  
Ass't Editor NEILA BREDEHOFT  
Box 27, Newark, OH 43055 614-345-2932

Published monthly and mailed from Reynoldsburg,  
Ohio 43068

\$12.00 per year - \$1.00 per copy  
Back issues 1972/1980 (except 1974) \$9.00 per  
year (12 issues)

### CLUB OFFICERS

President	BOB McCLAIN	614-345-8061
Vice President	TOM BREDEHOFT	614-745-1014
Secretary	R. T. MARSHALL	614-866-4522
Treasurer	DICK MARSH	614-366-5608
Exec. Director	LOUISE REAM	614-344-2377

Heisey Collectors of America, Inc. is a non-profit corporation with tax exempt status. Owners and operators of National Heisey Glass Museum, 6th & Church Sts, Newark, OH. Open Daily 1-4 pm March through December except Mondays and holidays. January & February-Wednesday, Saturday, & Sunday 1-4pm. Other times by appointment. Members admitted free.

Club membership (includes 12 issues of HEISEY NEWS and participation in all club activities) \$12.00/year plus \$2.00 each for additional family members in same household who wish a membership card. For VOTING MEMBERSHIP add \$25.00, one time only fee.

When requesting information, please enclose a self-addressed stamped envelope (SASE).

ADVERTISING - Send all ads to: NEILA BREDEHOFT  
Box 27  
Newark, OH 43055

### RATES:

DEALERS' DIRECTORY - 5 lines-\$18.00/year

CLASSIFIED - 10¢/word. \$1.00 minimum. Abbreviations and initials count as words.

DISPLAY:	MEMBERS	NON-MEMBERS
1/8 pg (9 items)	\$12.00	\$20.00
1/4 pg (20 items)	20.00	30.00
1/2 pg (20 items)	35.00	45.00
1 pg (50 items)	60.00	75.00

We cannot double-column ads. No VERTICAL 1/2 pg. ads. ALL ADS MUST BE PREPAID. Ad copy must be received by the 5th of the month to be included in that month's NEWS. Ads containing reproductions will not knowingly be accepted unless clearly stated (i.e. Heisey by Imperial, etc.) HEISEY NEWS assumes no responsibility for false advertising or misleading information. In the event of typographical error, the incorrect portion of the ad will be run in the following issue, but HEISEY NEWS assumes no further liability.

Opinions expressed in articles are those of the authors and not necessarily those of HCA. Editorial Staff reserves the right to edit or refuse any material submitted for publication. Send all letters & articles to be published to the EDITOR. Letters to columnists should be sent to the club address and will be forwarded.

Last month I told you the future of Imperial Glass Company was uncertain, and at this time, it has not improved. Some of their key employees have found other employment, such as Lucile Kennedy, who is now the Assistant to the President at Viking Glass Company. When a person like Lucile leaves, that is a good indication to me what the future of Imperial might be. This is only my opinion and since I am no expert, take it for what it is worth.

On October 4th, Robert Stahl filed for Chapter 11 Bankruptcy, which will allow the company time to reorganize. A federal bankruptcy court ruled on October 29th that 40% of the sales of the Imperial Glass Company had to be put in an escrow account for Lenox Crystal, the former owner. In sixty days there is to be a review of the escrow account Lenox claims that no payment has been made on two promissory notes worth \$1.8 million dollars. Robert Stahl said he hoped to resume limited production some time in November. He did not know how many employees would be recalled.

The developments at Imperial has caused their glass to become even more collectible, especially the figurines. Since the last issue of Heisey News, I have never seen so much mail order business. Many people realize these are an excellent investment and are taking advantage of the opportunity. Please get your order in while we have a good supply of stock. Since the holidays are just around the corner, why not give a gift of Heisey by Imperial for Christmas.

Don't forget to send your reservation in for the Christmas Dinner at Granville Inn. These reservations will have to be in by November 30th so we can notify the restaurant. I hope to see many of you there. If you haven't made your reservation and there isn't time to write, give us a call at the museum. I wish everyone a very nice Thanksgiving.

Seasons Greetings,  
Bob



# MERRY CHRISTMAS

FROM  
THE STAFF OF HEISEY NEWS

## FROM THE DESK OF THE EDITOR:

At the time I write this, orders have been pouring in for the black tigers, frosted fillies and everything else which was in our catalog in the October Heisey News. All of you out there are just great!

We don't know yet as of November 12th, whether we will still have the filly and tiger on hand by the time you receive this, but it won't hurt to check if you missed the November 15th date. We gave you all first chance before offering any to the public, but they will be sold to the public after the 15th.

The Museum will be decorated by the Newark Heisey Collectors Club on November 30th, so we hope many of you in this area will be able to visit us. It always looks so festive with the lovely decorations.

Things have changed a little at Imperial. They are working four days this week with a skeleton crew and it is still difficult to tell how successful it will be.

Lucile Kennedy accepted the position of Assistant to the President of Viking Glass Co. in New Martinsville, West Virginia, and started working for them on November 2nd.

If your orders are slow in arriving, please be patient as the girls are very busy (practically swamped) at the moment.

So many people write to ask why they receive the newsletter so late. It seems late to you because many of you do not realize that we started in January 1971, and since we were brand new at this we couldn't get the newsletter out until the 25th of that month. We have used that mailing date ever since. So if it is mailed the slightest bit late, it probably is not delivered until early in the following month. I have tried before to get better dating on it to avoid so many letters of inquiry. This month I am dating the newsletter as NOVEMBER, DECEMBER 1982. Therefore the issue which will be MAILED in DECEMBER will be the JANUARY issue. Let's hope this clears this up rather than becoming even more confusing.

Don't forget to get your glass in for the Auction. The deadline is January 10th. Ray Ziegler is again the Chairman.

Virginia Yeakley hopes that more of you will send in your listing for the new Dealer Directory to give out at the Museum and to send to anyone who wants to know where to buy Heisey.

The Newark Diamond H Club is providing a great service in preparing this.

We wish you all the Merriest Christmas and Happiest New Year ever. If everyone has high hopes, maybe next year things will be better for all of us.

**MERRY CHRISTMAS  
and a  
happy new year**

*Louise Bean*

## ATTENTION STUDY CLUBS

Many clubs plan projects to make money to help support HCA. These are always welcomed. However, in order to assure that no club projects are duplicated, we ask that you mail a description of your project to Dan Glenn, Project Coordinator.

Dan will coordinate the projects with you and let you know if there are any problems.

Please mail to:

Dan Glenn  
221 Delane  
Groveport, Ohio 43125

Your cooperation will be appreciated.

Dick Smith  
Project Committee Chairman

## HEISEY GLASS DISPLAY

The Long Island Heisey Collectors' Club will present a Display of Heisey Glass at the Antique Show and Sale to be held at the Nassau Coliseum on December 10, 11 and 12, 1982.

If you are interested in joining or forming a Chartered Heisey Collectors' Club, please inquire at the display.

## ABOUT DISCOUNTS

The 10% discount on all merchandise \$50.00 and over is now permanent. This discount is allowed to members only which is an advantage of being a member. Book Dealers, write for quantity discounts on HCA published books.

## FILLIES & TIGERS

These purchases were NOT limited to one per member. If you didn't realize this and still want more, please check with us. We may still have some left, though we can't tell at this point. They are selling very well.

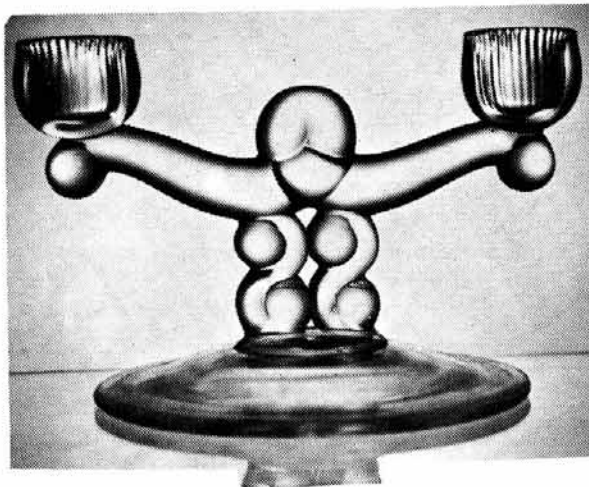


FISH CANDLESTICK  
5" high

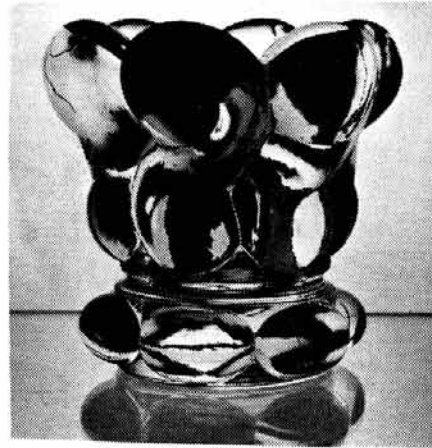
There may be a short delay on the frosted fish candlesticks. They have not yet come back from the company which is frosting them for us.

NO. 1541 ATHENA

BY: Tom Felt



#1



#2

The No. 1541 candlesticks are unique in a number of respects and not least that they were made exclusively to be sold by another company (or rather companies, as will become apparent in a moment). It has been generally known for a long time that this pattern was created exclusively for Montgomery Ward, although it was only about seven (7) years ago that the correct pattern name and number were discovered. There are some other details relating to the candlesticks, however, that are not so generally well known and are even downright perplexing at times, so it may be useful to briefly recapitulate the history of the pattern first.

(Much of this information is based on having gone through a complete set of Montgomery Ward catalogs for the Chicago area. It is known, however, that this pattern does not appear in all catalogs for the same period which were distributed in other areas, so it is impossible to say for sure that this data is absolutely reliable. Athena may have been sold at slightly earlier or later dates, or possibly not at all, in other parts of the country.)

The first appearance of this pattern was as a blown stemware line in the fall-winter issue of the Montgomery Ward catalog of 1942-1943. Those of you who recall that this pattern was once known as Reverse Ess (before the correct pattern number and name became known) may be interested to learn that, in fact, Athena was not the ORIGINAL name for this pattern either. From 1942 to 1944, both the No. 5041 stemware and the initial pieces in the No. 1541 pressed line (including the 2-light candlesticks) were marketed under the name of "Imperial." There then followed a brief period, from 1944 to 1945, three years after the pattern was introduced, that it finally began to appear under the name of Athena.

The pattern remained strictly a blown stemware line up through the fall-winter 1943-1944 catalog. We know from original factory records, however, that production of pressed items in this line began in the fall of 1943, although they did not appear in the catalogs until spring of the following year. Among the first of these items was included the 2-light candlestick, which was first mentioned in a list dated 8-25-43. At this time, however, it is likely that only feasibility items had been produced, since other records indicate that the first real production of the 2-light candlestick did not occur until November 1943.

The Athena pattern was designed by Roy Larsen, who worked for Montgomery Ward's Bureau of Design, and it is likely that the 2-light candlestick was one of his original designs. Many of the later pieces in the Athena pattern bear a close resemblance to pieces which were already in existence as part of Heisey's Lariat pattern (or, occasionally, pieces from other patterns of the period), but this is not true of the 2-light candlestick. (According to one published report, Mr. Larsen only worked for Montgomery Ward up until 1943, so it is possible that some of the later pieces were adapted by Heisey to match pieces previously designed by him; or, of course, someone else at Montgomery Ward could have selected pieces already in production by Heisey and made the adaptation themselves.)

At any rate, the 2-light candlestick stayed in production for the remainder of the period during which Montgomery Ward continued to sell the pattern, with its last appearance being in the spring-summer 1947 catalog. By fall of that year, however, Athena seems to have been dropped by Montgomery Ward. (Somewhere between 6,000 and 11,000 of this candlestick has been made by that time. We do not have complete production infor-

mation for this period, so it is impossible to give more than a rough estimate.) This was not, curiously, the end of Athena, however. Approximately six (6) months later, the 2-light candlestick went back into production, this time as an exclusive design for the Susquehanna Glass Company, a decorating firm. From May through December 1948, approximately 800 additional 2-light candlesticks were produced for Susquehanna. Again, factory records from this period of time are not always complete, but it seems likely that this eight month period of production constituted the total period during which Heisey maintained this relationship with Susquehanna. Therefore, it is again rather curious that it wasn't until the very end of this period, in December 1948, that an announcement appeared in CHINA, GLASS AND DECORATIVE ACCESSORIES, one of the trade journals, to the effect that Susquehanna Glass Company "will introduce a series of new cuttings, including a line of 18 popular pieces in Athena, hand-wrought by Heisey, all hand cut by Susquehanna."

The hurricane base pictured above right has a cutting which can be attributed to Susquehanna. (For that matter, it is probably safe to assume that any cutting found on a piece of Athena was done by this company, since it is not known that any pieces were ever cut by anyone else.) But this is where discussion of the Athena candlesticks becomes a bit problematical. In the Chicago area Montgomery Ward catalogs referred to above, the hurricane base does not appear at all and, in fact, the only mention we have of it in original factory records is in a list dated 11-15-48 with the heading, "Susquehanna Glass Company." It appears, therefore, that this hurricane base must have been designed EXCLUSIVELY for Susquehanna and that it was, in fact, never sold by Montgomery Ward. If that is the case, it is probably a safe assumption that no more than a single turn or two of these were likely to have ever been made. The pair in the Museum, which were donated in 1976 by Betty Regan of California, are the only pair of these hurricane bases which have been reported to date. According to the list mentioned above, this base would have been used with the 10" No. 4061 hurricane shade, the same one used on the square Crystolite hurricane block and the Puritan hurricane block.

The candleblock pictured above presents even more of a problem, despite the fact that we do have very specific data on it. We know, from factory records, that in November 1948, 296 Athena candleblocks were produced and that no further ones were apparently ever made. The date makes it appear obvious that this candleblock was not made for Montgomery Ward, since, as was mentioned above, Montgomery Ward was no longer selling this pattern in the fall of that year. But, on the other hand, it also seems a little strange that this candleblock would have been especially designed, like the hurricane base, for use by Susquehanna Glass Company,



#3

since it has no surfaces suitable for cutting. One supposition is that the company may have desired another pair of small candleholders to sell as part of a console set which would then include a cut floral bowl. Or, it may even have been that Heisey was simply trying to develop a new candleblock for their own use, since this was a period when candleblocks seem to have been very popular. (It is particularly striking to note the similarity in design between the Athena candleblock and the No. 1566 Banded Crystolite candleblock, which had first been made in February of the previous year.) At any rate, we will probably never know the complete story of Athena.

None of the pieces in this pattern were ever marked with the Diamond H, probably as part of Heisey's contractual arrangement with Montgomery Ward and, later, with the Susquehanna Glass Company. It should be noted, however, that both companies did emphasize that this glassware was made by Heisey and pieces can be found with paper labels, "Athena by Heisey" and "Heisey Made Athena, Susquehanna Cut."

For further information on Athena, please see the February 25, 1975, issue of the HEISEY NEWS, Page 5, and the February 25, 1978 issue, Page 6-7.

No pieces in this pattern have ever been re-issued by Imperial.

---

### DATING THE HEISEY NEWS

Note that this issue is dated November-December. The next one will be dated January. You WILL RECEIVE just as MANY NEWSLETTERS AS EVER, but the first 1983 issue will be mailed in December 1983, the same way that magazines are mailed.



# HEISEY'S LITTLE THINGS

BY: Louise Ream

Moving along in 1899, the first ad appears in September in THE HOUSE FURNISHER; CHINA, GLASS & POTTERY REVIEW for the ubiquitous #300 pattern. The first ad says only "Our New 300 Line is complete in every particular, comprising 150 pieces." It was not until some time later that it was advertised as "The Pattern Without a Peer" which eventually led to the name we now use, "Peerless."

No. 300 Peerless, therefore, was the first of a long line of colonial patterns made by the Heisey Company and also, overall, the most popular. After Mr. Heisey resurrected colonial designs, everyone in the glass trade followed his lead, as usual. It is interesting to note that at least a few items of this pattern, including the cream and sugar in two sizes (one being the individual), and the No. 2 candlestick were still used in the later Old Williamsburg pattern until Heisey's demise, and have continued to be used by Imperial ever since Heisey closed.

One hundred and fifty (150) pieces made a very large line to introduce at once, and the making of the molds must have taken a long period of time. Mold makers earn around \$20 an hour today. I wonder what they made then.

Peerless is my favorite colonial pattern and I find the little slashes around the base of most pieces extremely attractive. These were abandoned in the later years. This is the only colonial pattern which can be found both marked and unmarked since it pre-dated the mark by a year or so.

The first catalog which we have for Peerless is a small one showing ONLY this pattern. The advertising said "150 pieces" but this catalog shows far fewer pieces than that. HLT's in the catalog include the mustard and cover, two different salt shakers, the toothpick, small sherbet and the cordial. Note that this is the first cordial listed in a pattern group. In a catalog, Ca. 1901, the individual cream and sugar appear; also 3/4 oz cordial with sham which appears to be the same as the earlier cordial but with a large sham. A #4 hotel salt shaker is shown as well as an individual decanter, both with and without a stopper. While most items in Peerless eventually were marked, these little decanters usually were not, though I've seen one in AMBER which was marked on the side near the top.

It seems strange that in such a large pattern group they made so few little things - with no salt dip or butter pat. It probably won't take you long to find this small number of items to add to your "fun" collection.

No. 1250 Groove and Slash is the next pattern shown in the trade journals with the first listing in the same trade paper as Peerless, but two months later in the November issue. This is another pattern which may be found both marked and unmarked. As far as I can discover only the salt and pepper in this pattern are available for our HLT's.

This reminds me that I have not mentioned nor pictured some of the early miscellaneous items which are hard to recognize but some of them ARE little. Of these pictured, the #1121 salt is easiest to find and may be marked or unmarked. It can be found in the individual size as well as the larger table salt.

The only item I have added to my "Little Things" since last time is a pair of No. 51 salts and peppers in flamingo, shown in catalog 109. These are very nice and are unsigned. Neila looks at these with disdain since she has had a pair for many years, but then she's a salt shaker collector and I am a HLT'er.

## No. 300 Pattern.



See Page 14.

ROYAL HICKMAN  
 DESIGNS  
 THE *Dolphin* GROUP  
 FOR HEISEY



Here's big news! Royal Hickman, the famous ceramic designer, has found another outlet for his genius. Now he is working with crystal—Heisey Crystal—and the group illustrated above is an example of his master touch in designing.

The playful dolphin candlesticks and the flower bowl offer your customers delightfully NEW possibilities for their

table decorations. Put them on *your* display tables and watch the women who come in "just to look around" find them to be just what they were *hoping* to find. This dolphin group—and many other exciting Hickman "figurines" to be announced later—

will make the cash register jingle for you. Why not stock up on them NOW? A. H. Heisey & Co., Newark, Ohio.



HAND-WROUGHT CRYSTAL

The ad is from 1941. The Dolphin Candlesticks we are offering from our gift shop were made in the original molds by Imperial Glass Corporation.

# HEISEY DECORATIONS

BY NEILA BREDEHOFT

- #9074 U S NAVAL ACADEMY \*
- #9075 FORT WILLIAM HENRY
- #9076 HILDA\*
- #9077 PERCIVAL\* PLATE ETCHING
- #9078 PATRICIA\* COMBINATION CUTTING AND ETCHING

Continuing with more etchings in the Addendum. The following are again from the section entitled "Unlisted Etchings on Heisey."

#9074 appears to have been a special etching done for the U S Naval Academy and bears an insignia which is small and difficult to copy. In the six small banners surrounding the insignia the following words appear in the order in which they are placed here:

U. S.  
Naval Academy  
Ex Tridens  
Scientia

Not surprisingly, this was found in the Washington D. C. area on a #4225 (bel cocktail shaker. I would expect that other pieces were probably made - almost certainly bar glasses or cocktails to accompany the shaker.



Next the #9075 Fort William Henry etching which has been shown in the past in the Heisey News. To our best knowledge, this was done for the Fort William Henry hotel, near Lake George. Since this seems to be the case, it seems very likely that many other items might be around with this etching. It has been seen on a #351 Priscilla pilsner, #352 Flat Panel individual cream & sugar and #353 Medium Flat Panel tumbler. The banner says Fort William Henry.



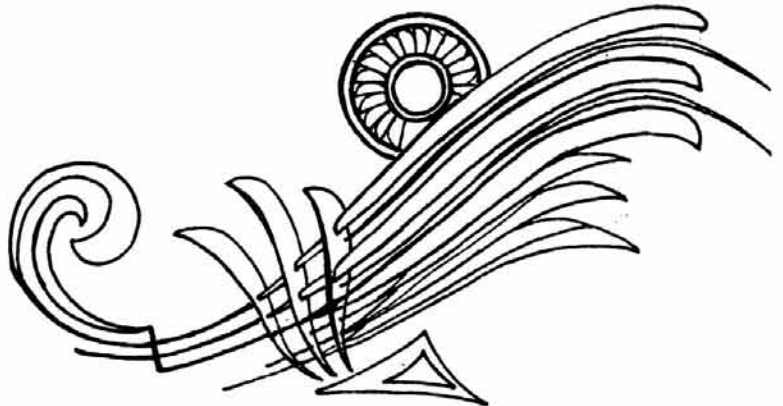
#9076 Hilda\* was found on a #1183 Revere triangular ash tray. It seems typical of the very early Heisey etchings and resembles several so we feel that it was done at Heisey's.



#9077 Percival\* is a badge-type etching found on a small 2351 soda. Many of these small sodas were purchased from the Heisey factory after it had closed. It is a plate etching. There is no way of knowing if this was a special order or just a regular line etching. There appears to be a fanciful "H" in the middle so possibly it was meant to be a monogram etching.



#9078 Patricia\* is again documented because several were at the Heisey factory after the company went out of business. It is quite unusual in that it is a combination cutting and etching and that combination is quite attractive. It is found on a 2401 old fashion.



The numbers are assigned for reference and the names which have asterisks after them were given by us.



# DIAMONDS ARE FOREVER.....

By: Janet Caswell



Whales!! Did you ever go "Whale Watching"? We Did. It was a nice warm Sunday in Early September. We took our lunch and headed out to sea with our daughter's family, in their beautiful thirty-four foot Sail Boat. We were traveling 5 knots, under full sail, there were others that had the same idea, sailing lazily beside us, this would be one of the last warm week-ends of the season. Enjoy!! When we were about eight miles from shore, "A Whale" shouted the youngest Grandchild. We looked in her direction and there were several Whales, and what a show they were putting on. Did you ever watch a Dolphin show at the aquarium? Exactly what they looked like, only larger, four in a row, what a thrill to see them come out of the water and dive straight down again and again. A day to remember.....

A friend I met while in Ohio at the September show can also remember a day....

Dolphins!! Yes, Dolphins, a pair of Dolphin Candlesticks in Flamingo. What excitement and what a buy. They could hardly believe their good fortune....."Eagle Eye" from Heiseyland is alive and well, very well. He has become the proud owner of the #3947 Comport in Experimental Gold!! (this is like the one found in Tangerine awhile ago) A former Heisey Chemist feels this piece was made during the period the company was trying to develop Mari-gold. How did he ever manage to stay calm enough to pay the dealer? Wow!!....."Curley" called me the other day and informed me he had to dig deep in his pocket for a #353 Match Stand ash tray and a #393 Narrow Flute Banana Split. Would \$.75 sound like a fair price? He also managed to bring home the #358 Cream & Sugar, now that's a goodie!.....There is news that a collector from the "Keystone State", while on vacation in the "Garden State", found a couple treasures; a Cobalt Thumbprint and Panel Floral Bowl and a real nice #465 Recessed Panel, 1 lb Candy Jar. Good for you...From "the Old Line State" comes a report of a #4229 Favor Vase in Sahara along with two pieces of Locket-on-Chain in crystal, the Toothpick Holder and a 6" Plate..... The first Heisey friend I ever met, at my very first Convention, oh, so long ago, found some real nice things, a #305 Punt and Diamond Point Tankard, twelve (12) Lancaster Etch, 8 oz Old Fashions, four (4) Equestrian Etch diamond optic tumblers (ohhh!), a Waverly candy dish with Seahorse handles and the Heisey Rose Etch, also three (3) Flamingo, Optic Tooth tumblers and a 2 quart Crushed Fruit Jar. Did you ever!!!..... From the "Pine Tree State" comes news of a Double Rib & Panel Basket in Hawthorne..... and the "Bay State" must not be left out - #150 13" tray for a bedroom set and the #411 2 handled jelly in Hawthorne. Another "Bay Stater" tells about a #1469 Ridgeleigh Round Cigarette holder and a 6" 2 compartment jelly, 3 #1483 Stanhope saucers, #1503 5-1/2" crystal footed cheese and the #1 Coaster with star bottom

(VII - 144).... speaking of #1483 Stanhope, there was this person who recently spotted the Stanhope Sugar & Creamer and 3 cups on a table. The dealer explained that the saucers might be home, she wasn't all unpacked yet. The person agreed to go once more around the show and stop back to purchase all. Upon arriving back for the glass, the dealer said "I have bad news, not only did I leave the saucers home, but I dropped the creamer when I took it from the table to pack it for you"... How tragic!..... the "Point" was again heard from and she told me that the #369 Hartman bar glass found its way into her sack, along with the #433 Greek Key individual butter.... the "Tipper" has a #1519 4-1/2" Waverly Vase and a #1150 Star & Panel 7" plate with silver overlay (15¢) O.K. "Tipper"..... The "Tar Heels" report 3 #3480 Koors footed sodas in moongleam, #473 Narrow Flute with Rim Dice sugar & cream, and a #3362 Charter Oak Parfait in Flamingo.....as for "Yours Truly", I added the Sparky to my animals and the #1295 Beaded Swag Goblet, in Custard, souvenir Sussex, NJ, to my stems.....Let me share an experience with you, as told to me, from the Buckeye State "for several years I have heard that if one wanted to find Heisey, one must journey to Newark. It didn't exist elsewhere. I now know better. In late summer, I was driving in the capital district of New York, when my navigator spotted a flea market. Stop! It was late so - "hurry before they put it away", then, "pay the lady, I'm going to the next table". Forty-five minutes later we had purchased a #351 8 oz pilsner, #352 Vinegar & oil, no stopper, #1489 Puritan 2-1/2" deep ash tray, #1210 relish in moongleam, and a sugar & cream with Lewis & Neblett cutting, as yet undetermined, all the above for under \$20.00. Left behind was a signed #300 Berry Bowl and a Ridgeleigh large vase, priced according to the Diamond H they held. I thought there were no more bargains like that in Central Ohio, until ...going to a once a year flea market a few miles from Heiseyland, we found four #3304 Universal Cordials, then a moongleam #125 Leaf Candleblock for less than a "Reagan school lunch", and a #1250 Grove & Slash cruet, mint, for less than a "Ho Jo's" dinner. So, you see, bargains are there if you are willing to buy Heisey without the Diamond H..... Well, I guess so. We should all be so lucky..... 2 Victorian cruets; a #433 Greek Key wine and a #1590 Zodiac juice, slight damage, were found in the "Garden State" ..... another collector tells me he was at a church fair and on the "white elephant" table were a pair of Crystalite 3 light candlesticks and a Lady Leg wine. Needless to say they are now on his table.

Now from the Yachting Center of the World comes my best wishes that your Thanksgiving was Bountiful and shared with loved ones and friends. Remember the best way to say I love you, for the Holidays, is with a gift of Heisey. Send your finds to me in care of HCA, let me hear from all of you. Lets see how many states I can include next month. Best Wishes,  
Janet Caswell



**FASCINATING INSIGHTS INTO EARLY HEISEY HISTORY** - TAKEN FROM EARLY TRADE JOURNAL REPORTS

CROCKERY AND GLASS JOURNAL - Mar 27, 1902

Business at A. H. Heisey & Co.'s factory, Newark, O., is reported to have been better this month than March, 1901. They are running full capacity and are finding a market for their output as manufactured. Their two new table lines this year, figured and plain, are meeting excellent success in both crystal and decorated patterns, while their vases, candelabra and fancy specialties seem to have struck a popular chord in the market.

+++++

Buyers who are in search of table glassware that meets to the fullest extent the demand of the public for artistic shapes and decorations will find what they are in quest of in A. H. Heisey & Co.'s offerings for Fall. Their figured pattern No. 335, which includes every article that goes to make up a complete line of table glassware, is one which the best dealers in the country are handling successfully, and which any merchant can take with full confidence that it will sell rapidly. The plain Touraine line, No. 337, which has maintained its popularity for several seasons, and which is now more complete in point of variety of articles made in it, is a line which finds appreciative purchasers in all parts of the country. On these two classes of goods the factory has not only been able to do a heavy business in the United States, but has won a firm place in the English markets. In this issue they show cuts of the Touraine and No. 335 patterns which are sufficiently illustrative of the character of the lines to aid buyers in estimating their attractiveness. On application they will send complete catalogues of their wares.

+++++

CROCKERY AND GLASS JOURNAL - Jan 8, 1903

Last year the A. H. Heisey Co., of Newark, O., distributed \$5,000 among their employes as a reward for efficient work. The money was divided in accordance with credit marks for fine work and steady service, and but one shop in the company's plant failed to benefit by the firm's generosity. The experiment proved very satisfactory both to the employes and the employers, and we understand that this year \$10,000 will be distributed under similar conditions.--National Glass Budget.

+++++

CROCKERY AND GLASS JOURNAL - Jan 29, 1903

A. H. Heisey & Co.'s "Continental" line is fully maintaining their reputation for high

grade ware. It is in the purest metal, highly polished, and has a rich cut glass effect. They are also showing a unique line of beautiful stemware, the "Puritan," that is attracting special attention for its beauty and originality of design. A new candle lamp is a decided novelty. It is a glass candlestick with pendants, having a unique-shaped decorated chimney over the candle, and will prove a popular parlor ornament for occasional use. Mr. Cassel reports business good.

+++++

THE HOUSE FURNISHER: CHINA, GLASS & POTTERY REVIEW - Feb 1903

With C. G. Cassell, in room 110. Are out with their new No. 339 Continental pattern, a more graceful shape and much lighter than the old design. They have a new line of stemware, a large line of vases of all sizes, a new novelty in a candle lamp, candelabra and new patterns in finger bowls.

+++++

CROCKERY AND GLASS JOURNAL - Mar 5, 1903

Samples of A. H. Heisey & Co.'s "Continental" line of glassware are being exhibited at C. B. Marter's showrooms. It can be obtained either in a plain finish or with gold ornamentation on the edge and base of the pieces. The design is of a ribbed character, shown to advantage on the unusually good metal of which the goods are made. In the "Puritan", line every conceivable shape in stemware is displayed, including oyster cocktails, sherries, brandies, sodas, etc.

+++++

CROCKERY AND GLASS JOURNAL - Mar 19, 1903

The display of Heisey's glass at the ware-rooms of C. B. Marter, 42 West Broadway, is worth going to see, the flower-holders, in all sizes and a variety of graceful shapes, being especially striking. A. H. Heisey & Co. have certainly set the pace in pressed glassware.

+++++

CROCKERY AND GLASS JOURNAL - Jun 23, 1903

A. H. Heisey & Co. are reported to have arranged to add another furnace to their plant during the summer vacation.

+++++

CROCKERY AND GLASS JOURNAL - Jul 14, 1904

A. H. Heisey has had the very great compliment paid him of being asked to accept a nomination as Congressman from the Newark, Ohio, district. He courteously but firmly declined to have his name put forth for the honorable pos-

FASCINATING INSIGHTS INTO EARLY HEISEY HISTORY CONT'D.

ition because he was not only a busy man, but had no liking for political life.

+++++

CROCKERY AND GLASS JOURNAL - Aug 11, 1904

A. H. Heisey & Co., are building a new generative furnace at Newark, O. They expect to have it ready for work in October.

+++++

CROCKERY AND GLASS JOURNAL - Sep 8, 1904

The new addition to the A. H. Heisey Co.'s glass factory in East Newark, O., is about completed. Because of the new buildings the concern's capacity will be doubled.

+++++

THE HOUSE FURNISHER: CHINA, GLASS & POTTERY REVIEW - Oct 1904

A. H. Heisey & Co., Newark, O., have doubled the capacity of their plant, which necessitated an increase of 300 employees.

+++++

CROCKERY AND GLASS JOURNAL - Oct 27, 1904

The demands made upon A. H. Heisey & Co. have been such the past few years that they have felt it necessary to materially enlarge their facilities for production. They have under construction a new sixteen-pot furnace, which they expect to put in fire very soon. It is a regenerative furnace, but will have a regular, old style stack to make the plant more comfortable for the workers, it is said. Business is reported moving satisfactorily with them this fall.

+++++

CROCKERY & GLASS JOURNAL - Jan 26, 1905

A. H. Heisey spent a day with Mr. Cassell the past week. He is cheerful over having secured a great abundance of gas for his factory with a surplus to sell to the town. His wells are said to have 800-pound pressure.

+++++

CROCKERY & GLASS JOURNAL - Sep 28, 1905

The crown of the new furnace put in operation this year at A. H. Heisey & Co's factory collapsed last week. Repairs are being pushed forward as rapidly as possible, but it will be a few weeks before their full capacity is restored.

NO. 393 WHISKEY JUG  
NO. 394 OIL

BY: Neila Bredehoft



These two items are some of the more attractive items -- and definitely some of the most interesting in the Narrow Flute Pattern. I've always admired their unusual "Southern Belle" skirted shapes and found them unusual.

Until I found the oil some time ago, at a flea market, I had not realized how unusual they were by reason of their method of manufacture. About this time, a good friend also reported he had found the whiskey jug (393) and he confirmed that it had been made in the same manner as the oil (394).

To understand how these items are different, first we need to look at how glass is pressed in a mold. A large glob of hot glass is held over the mold and cut off so that it drops into the mold. A plunger is then inserted to form the inside of the item, forcing the glass against all portions of the mold giving the piece its final shape and decoration (panels, etc.) Logic will tell you the size of the plunger determines the diameter of the interior. Items such as oils and water bottles cannot have a plunger forced down the narrow neck, expand to form the sides, and then be removed.

By knowing these things, imagine my surprise when I found the oil to be marked on the inside bottom! How had the mark been put in such an impossible place? Needless to say, I bought the oil and took it home for study. Being able to examine the piece at leisure, Tom and I were able to determine that it had been made in two pieces, not pressed in a mold and cut shut as most oils are. The body of the oil was formed in a mold, the plunger inserted in the bottom so the oil was pressed upside down. The small bottom plate was made separately, making it easy to locate the mark on the center interior as on most other Heisey pieces. While the two pieces were still hot they were put together (after each was pressed separately). Upon close inspection of the oil, you can see the area of attachment.

Anyway, to make a long story short, these are the only two items made by Heisey that I know were made in this manner. By doing it this way, the bottoms are unusual for an oil since the mark is located on the interior, the outside has a large star and the entire bottom is ground and polished.

## THE NOS. 394 & 475 SALTED NUT DISHES

BY: Joseph D. Lokay

On November 3, 1915, A. J. Sanford filed an application for a design patent for a new, original, ornamental dish. The drawing with the application showed a bowl that was oval in shape with a typical Heisey star in the bottom. There were narrow flutes around the outer surface of the bowl that started from the bottom and went about half way up the side. In the plain surface above the flutes, there were two simulated cut lines that circled the bowl. There was a thumb print-like indentation at each end of the bowl to aid when picking it up. On February 22, 1916, about three and one half months after the application date, design patent #48,612 was granted and assigned to the A. H. Heisey Company of Newark, Ohio. The patented bowl design was produced by Heisey in a series of six sizes. The series of six oval bowls was added to the #394 pattern line named "Narrow Flute" by Vogel. This article will look at only the smallest of the sizes, namely, the three and one half inch salted nut dish.

On November 19, 1915, A. J. Sanford filed another application for a design patent that was similar to the one he had filed just 16 days earlier. This oval bowl design contained many more narrow flutes around the outer surface than did the first design. Similarly, the flutes went only about half way up the side. However, this time the plain surface above the flutes was left plain, that is, no simulated cut lines. Again, there was a thumb print-like indentation at each end to aid in picking up the bowl. On February 22, 1916, design patent #48,614 was granted and assigned to the A. H. Heisey Company. This patented bowl design was also produced by Heisey in a series of five sizes. This series was added to the #473 pattern line named "Narrow Flute with Rim" by Vogel. To differentiate these oval bowls from other bowls in the 473 pattern, the series of five bowls was given stock #475. As before, this article will look only at the smallest of the sizes, again called three and one half inch salted nut dish.

For comparative information, the other oval dishes in the two series, in order of increasing size, were called chow chow, lemon, preserve and fruit dishes.

The first reference to show the #394 three and one half inch salted nut dish was price list #179 (circa 1-1-17). The 394 oval dish series was not pictured in catalog #76 or in the pages that were added to catalog #76. The last reference to show the 394 salted nut dish were price list #209 and catalog #109 (both circa 1929). Thus, the production period for the 394 salted nut is estimated at 1915 to 1930, or about 15 years. The 394 nut dish is signed with a diamond H on the inside bottom. The patent date of 2-22-16 may be included in the mark around the outside of the diamond H. The 394 nut dish was made in crystal only.

The #475 three and one half inch salted

nut dish was first pictured in the extra pages that were added to catalog #76. The date for the extra pages is circa 1916. The life of the #475 salted nut was much longer than that of the #394 salted nut dish as the last reference to show the 475 nut was price list #217-22 (circa 1944). The production period for the 475 salted nut in crystal is estimated at 1915 to 1945 or about 30 years. It was also made in flamingo, moongleam and hawthorne. The 475 nut is signed with a diamond H on the inside bottom. The outside bottom may contain a typical Heisey star with a full polished bottom or may be a plain bottom with a polished bottom rim. The patent date of 2-22-16 may also appear around the diamond H. Small item collector, take note of the two types of bottoms if you want to include variations in your collection.

The oval dish series in the Narrow Flute with Rim pattern was given pattern number 475 in 1916. The numbers 472, 473 and 474 were also used with the pattern. Around 1928, the pattern number for the three and one half inch salted nut dish was changed from 475 to 473. The number 473 was then used for the salted nut dish till its end in 1945. I don't know why the number was changed but perhaps it was to consolidate all the remaining Narrow Flute with Rim pattern items into one number as there were only a few left by this time.

The three and one half inch salted nut dishes on display in the HCA Museum are the 394 in crystal and the 475 in crystal with and without a star bottom, flamingo with a star bottom, moon-gleam with and without a star bottom, hawthorne with a star bottom and iridized crystal with a star bottom.

There exists a non-Heisey dish that looks very close to the Heisey three and one half inch salted nut dishes. It looks like the 394 with its wider panels but does not have a simulated cut line around it like the 475. The one I saw had a star in the bottom. (This is on display in the Museum).

Heisey produced a third series of oval shaped bowls. They were very plain and were included in the #1186 Yeoman pattern line. This series had only the three larger sizes as the nut and chow chow size dishes were not included. These were also patented by Heisey. An application was filed on February 16, 1917, and design patent #50,666 was granted on April 24, 1917.

### Editor's Note:

Some items in #473 were made in vaseline. So far we've never seen a vaseline nut cup, but wouldn't that be a find? There are also two sizes of footed nut cups in #473.



3 1/2-IN. SALTED NUT DISH  
PATENT NO. 48612



No. 475—3 1/2-IN. SALTED NUT DISH  
GROUND BOTTOM  
PATENT NO. 48614

## CLUB NOTES:

### VIRGINIA HEISEY CLUB

BY: Dot Clark, Secy.

The Heisey Club of Virginia was formed in February, 1982, by persons interested in becoming more knowledgeable about Heisey glass in the Richmond, Williamsburg, Hampton and Virginia Beach area. Dick and Lee Schwan, of Williamsburg, provided the catalyst in organizing the Club.

Officers were elected as follows:

President - Lee Schwan  
Vice. Pres.- Jessie Hopkins  
Secretary - Dot Clark  
Treasurer - Ernie Clark

Our HCA Charter was presented to Lee Schwan at the National Convention in June.

Our programs have been varied, educational and most interesting.

A project is now being undertaken to have members donate Heisey glass to be turned over to the HCA for its March auction to benefit the Museum.

We would like to take this opportunity to invite any regional Virginia collectors to join our little group. Simply call Lee Schwan, PH. 804-229-7873 for details.

To our friends out in "Heiseyland", may we extend a pleasant coming Holiday Season and simply say, see you in June.

### HEISEY COLLECTORS OF THE ROCHESTER AREA

BY: Sharon E. Orienter, Secy.

At our last meeting the Heisey Collectors of the Rochester Area voted to make a donation from our treasury to the Trust Fund. We also held a small raffle to add to the voted amount. Please accept the enclosed cashier's check in the amount of eighty dollars (\$80) as a contribution by our study group to the HCA Museum Trust Fund. The Museum is a very beautiful accomplishment and one all members must do their best to support. We are a small group but feel we must do as much as possible to contribute to this very worthwhile endeavor.

### SOUTHERN ILLINOIS DIAMOND H SEEKERS

We have decided to send one piece of glass per family to the March Auction. We challenge each family in HCA to do the same. This is to help support the Heisey Museum in the event that glass will no longer be available for the gift shop.

In 1983, we will be sponsoring our first show at the fairgrounds in Belleville, Illinois. The dates are August 27 and 28. Anyone interested in having a contract should contact Dick Spencer, 1203 N. Yale, O'Fallon, Ill. 62269. PH: (618) 632-9067

### EDITOR'S NOTE:

Several other clubs have decided to send glass for the auction. It is a great idea!

### BAY STATE HEISEY COLLECTORS CLUB

The Bay State meeting opened with somewhat good news that Imperial had been sold, and that it won't go out of business as had originally been told.

We are all set with our All Glass Show in Sturbridge, Mass. When this is read, the show will be all over and we hope it was a huge success for everyone concerned.

Lloyd showed slides of the Convention this past June. For those of us who didn't go, we really missed a good one this year. (Louise you look good as ever).

Barbara McTige hosted our program on "Toothpicks". Herewith are some that were shown: No. 325 Pillows, No. 379 Urn, #1776 Kalonyal, No. 1295 Beaded Swag, No. 357 Prison Stripe, No. 1201 Fandango, No. 1205 Fancy Loop in Emerald and No. 315 Paneled Cane. There were a lot more. Barbara did a great job.

Our resident "Show & Teller" David Steer, did this latter. People are still finding that golden diamond H in these parts. Some brought: No. 1428 Warwick Match Holder, No. 1469-1/2 Ridgeleigh Triangular Vase, No. 2930 Plain and Fancy Tumbler, No. 1255 Pineapple and Fan Mug with ruby stain, No. 397 and a No. 397 Colonial Cupped, Scalloped Butter Dish.

The meeting over, we had coffee and pastry hosted by Carol Jablou and Betty Bean.

See you next month, Geo. Gleason

### HEISEY COLLECTORS OF COLUMBUS

BY: Marie Rehbeck, Secy.

"Greetings from the Heisey Collectors of Columbus!" We are a busy club of 13 happy, Heisey hunters reporting on our activities.

Our newly elected officers for the year 1982-1983 are:

Bill Rehbeck - President  
Steve Bradley - Vice Pres.  
Marie Rehbeck - Secy.Treas.

The past Summer was a productive one for our members as they traveled from Alaska to Florida, from Hawaii to Canada and states in between .. still not missing the opportunity to search for those "sleepers" along the way. We have decided to present the Museum with a piece of Heisey each as our contribution in the March Auction. It certainly is difficult to decide which piece to give up as each new piece becomes a member of our family.

We served as docents at the Museum on August 29th and again on October 31st and, as always, enjoyed not only the visitors, but the opportunity to view all the "pretties" while we were there. During the October duty we noticed a large volume of sales in the gift shop, stocking up for the Holidays, perhaps or just speculating on Imperial?

All of our fellow Heisey collectors are wished a joyous Christmas and many exciting glass finds in the New Year.

# IMPERIAL FUNDS ORDERED INTO ESCROW

Taken From: THE INTELLIGENCER  
Wheeling, WV 10-30-82

A federal bankruptcy court judge ruled Friday that 40 percent of the sales at the Imperial Glass Co. be put in an escrow account for Lenox Crystal, the former owner of the now idle Bellaire plant.

Nick Cavaleri, lawyer for Imperial, explained that court's ruling Friday will allow Imperial to regroup in an effort to once again start operation at the facility. He said it was his opinion that both sides, Lenox and Imperial, were satisfied with the decision on a short term basis.

Judge Wayne Kelleher also granted Lenox a lien on "general intangibles" of Imperial and lifted a limit that had been placed on the amount of sales Imperial could make.

Lenox sold Imperial to Arthur Lorch two years ago and filed for foreclosure after Lorch sold Imperial to Minneapolis businessman Robert Stahl September 21.

Lenox claimed Lorch had failed to make any payments on two promissory notes he had signed worth \$1.8 million.

Stahl then filed for bankruptcy on behalf of the plant in an effort to pay off outstanding bills.

Kelleher's decision on the escrow account will be subject to review in 60 days.

Kelleher explained that the hearing Friday was to determine whether Imperial could continue using the collateral of a secured creditor.

The next scheduled court appearance for Imperial under Chapter 11 bankruptcy proceedings will be November 17 in the same court. That hearing to be a "341 meeting" or a chance for Imperial's creditors to file objections to the company's request for reorganizing.

Imperial had been in business for nearly 80 years, but foreign imports and rising energy costs had sent the business into financial trouble.

Imperial's recent trouble began when the 180 members of the American Flint Glassworkers union struck the plant Sept. 14 after their contract expired.

The plant has been closed since then, but Imperial officials said earlier this week they hoped to resume limited production sometime in November. Stahl confirmed that statement Friday. He said he did not know how many workers would be recalled.

Imperial is Bellaire's largest employer and city Finance Director A. G. DeMarco has estimated that between \$30,000 and \$40,000 in taxes could be lost to Bellaire should it be closed permanently.

Cavaleri did say that Imperial officials may need fresh financing for the plant in the near future and indicated the company might apply to state or local agencies for assistance. Lorch had applied to the Ohio Department

of Economic and Community Development for a loan before he sold the plant to Stahl. Lorch failed to supply state officials with needed information, however, thus the loan never was processed.

State officials have indicated the application could be processed once again, however, under new management at the facility.

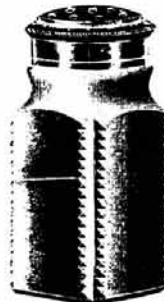
## EDITOR'S NOTE:

The sale of Imperial to Arthur Lorch was in June, 1981, not TWO years ago. They now have at least one day tank operating and are making Nut Brown, presumably in Old Williamsburg. This production started earlier this week. No one knows how successful this operation will be.

Ten or eleven people are now working in production. This is one shop.

Louise Ream

From a 1905 Catalog - Only the individual salt can ever be found marked.



NO. 4 SQUARE SALT OR PEPPER  
BEST SILVER-PLATED TOP



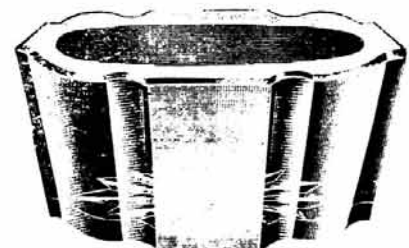
NO. 6 SALT OR PEPPER  
BEST SILVER-PLATED TOP



NO. 3 SALT OR PEPPER  
BEST SILVER-PLATED TOP



NO. 8 SALT OR PEPPER  
BEST SILVER-PLATED TOP



NO. 1121 INDIVIDUAL SALT



NO. 5 SALT OR PEPPER  
BEST SILVER-PLATED TOP



NO. 1 SALT OR PEPPER  
BEST SILVER-PLATED TOP



NO. 617 1-oz.  
TOY BEER MUG



NO. 2 SALT OR PEPPER  
BEST SILVER-PLATED TOP

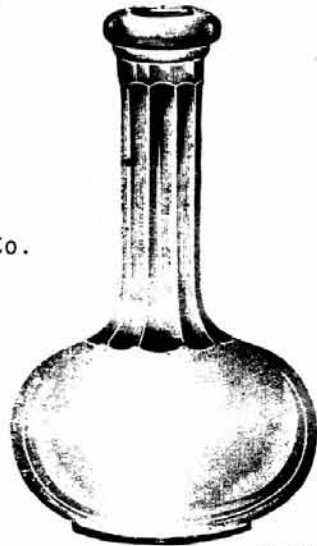


NO. 616 3/4-oz.  
TOY BEER MUG

## CUT GLASS COMPANIES IN 1916

In a Heisey record book, dated 1916, which listed all customers for the year, I found the following cutting companies which purchased Heisey blanks for cutting. Since this is only from ONE year, is it any wonder we can't identify all of your cuttings?

1. S. Herbert Cut Glass Co.
2. Twin City Cut Glass Co.
3. T. B. Clark\*
4. Ebenezer Cut Glass Co.
5. Crystal Cut Glass Co.
6. Pope Cut Glass Co.
7. Hope Glass Works
8. Frizler Cut Glass Co.
9. Dominion Cut Glass Co.
10. Newton Cut Glass Co.
11. Didio Bros. Cut Glass Co.
12. Royal Cut Glass Co.
13. Kent Cut Glass Co.
14. Midland Cut Glass Co.
15. Century Cut Glass Co.
16. Lotus Cut Glass Co.
17. Empire Cut Glass Co.
18. Western Cut Glass Co.
19. Wickham Cut Glass Co
20. Dorflinger\*
21. Central Cut Glass
22. Lewis & Neblett Co.
23. Corona Cut Glass Co.
24. Crescent Cut Glass Co.
25. Sterling Cut Glass Co.
26. Jewel Cut Glass Co.
27. Barbour Cut Glass Co.
28. Liberty Cut Glass Co.
29. Newark Cut Glass Co.
30. Pitkin and Brooks
31. Genessee Cut Glass Co.
32. Ideal Cut Glass Co.
33. Camden City Cut Glass Co.
34. Quaker City Cut Glass Co.
35. Pioneer Cut Glass Co.
36. Susquehanna Cut Glass Co.
37. T. G. Hawkes\*
38. W. H. Manson Cut Glass Co.
39. Bronx Cut Glass Co.
40. Old Colony Cut Glass Co.
41. McKanna Cut Glass Co.
42. Tuthill Cut Glass Co.\*
43. Hunt Glass Co.\*
44. Quality Cut Glass Co.
45. Sunshine Cut Glass Co.
46. Standard Eng. Cut Glass Co.
47. Burley and Sons
48. Wayne Cut Glass Co.
49. Royal Cut Glass Co.
50. Walker Cut Glass Co.
51. Allen Cut Glass Co.
52. Potomac Cut Glass Co.
53. Irving Cut Glass Co.
54. Royal Art Cut Glass Co.
55. Washington Cut Glass Co.
56. Fisher Cut Glass Co.
57. Laurel Cut Glass Co.
58. J. Hoare and Co.\*



NO. 115 BUTTER BOTTLE. BLOWN

ITEMS PICTURED ARE FROM  
1905 CATALOG - USUALLY  
UNMARKED



NO. 17 HANDLED DECANTER  
DROP OR PRESSED STOPPER

59. Penn Cut Glass Co.
60. Special Light Ware & Cut Glass Co.
61. J. R. Libby Co. (?)
62. McCarter Cut Glass Co.

In addition to the cutting companies, I found reference to the following silver companies which used Heisey blanks to decorate or to add lids, bases, etc.

1. International Silver Co.
2. Barbour Silver Co.
3. National Silver Deposit
4. Deposee Silver Co.
5. Colonial Silver Co.
6. Mt. Vernon Silver Co.
7. Barton
8. Wallace
9. Rockwell
10. Knickerbocker Silver Co.
11. Reed and Barton
12. Florence Silver Plate

Other companies using Heisey for various purposes included Manning Bowman, Wheeling Decorating Co., Honesdale Decorating Co., Picard, and Fisher Bruce. Among the customers were Pennsylvania Railroad and Fred Harvey.

There were many more companies which bought Heisey glass, including lamp companies. I am sure I have missed many cutting companies because unless I recognized the well known cutting companies, I only listed the ones which said "Cut Glass Co" after the name.

Is it any wonder we get confused, and the more we research, the more confused we become? Remember this was only one year's records!

Louise Ream

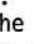


NO. 4 PUFF AND GLASS COVER  
GROUND BOTTOM



NO. 5 PUFF AND GLASS COVER  
GROUND BOTTOM

LETTERS, WE GET LETTERS.....

Q. I am very interested in obtaining information about my pair of swan covered dishes, approximate size of each, 6" wide, 5-1/2" high, 3-1/2" depth, which I found in a little shop here. I have been told by a local antiques' dealer that they are made from PINK Heisey glass and that Heisey Glass Manufacturers did not make very many animal covered dishes. The mark on each of the bases is , and the swans are a beautiful orangeish color, in excellent condition.

A. I am sorry to have to tell you that the animal covered dishes you purchased are very recent fakes put on the market within the past 6 months. I advise you to take them back to the dealer from whom you purchased them if they were represented as true Heisey (unless you like them for what they are). They are probably imported and are being marketed to the gift shop trade by A. A. Importing. Heisey did not make true animal covered dishes. They did make a few covered dishes or containers with animal finials (handles). None of these were made in pink (flamingo) except for a dolphin finial lemon dish in #1401 Empress.

Neila Bredehoft

Thanks to all for another great Heisey Year.

Can't wait to see next year's News.  
Joanne Voeller - Oregon

As a money making project for the museum had you thought of selling stationery with different patterns of Heisey on the front page of the notes?

Mrs. Henry Mach - Nebraska

Editor's Note:

The Nassau, Long Island Heisey Club has furnished us with notepaper with the Heisey Rose and Orchid. It is very pretty, but since it necessarily has to be fairly expensive, it does not sell readily except at Convention time. Then, too, we do not have enough of it to advertise in Heisey News.

Thank you for the idea, however. It might work if we could order larger quantities to get a lower price.

Greetings!

Just wanted to say that the Heisey News is a most welcome sight once a month way up here in the last frontier.

There isn't much Heisey to be had up here, nor are there many folks who are even interested in it.

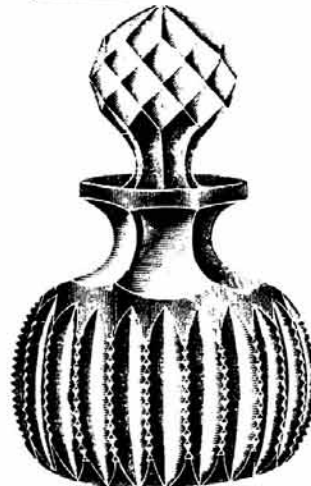
Can't wait until we get back down to the lower-forty-eight!

Charlene M. Miller - Alaska



PATRONIZE OUR ADVERTISERS

Please enroll me as an Associate Member.  
I need help with this "addiction"!  
Ms. Karyl Crook, CA



No. 10 COLOGNE

FROM 1905 CATALOG  
UNMARKED



No. 4 4-oz. SQUARE OIL  
BOTTLE

**HURRY! HURRY!**  
DEADLINE IS DECEMBER 10TH.  
HELP US HELP THE MUSEUM!

The Newark Diamond H Club is assembling a Sales Directory to aid interested parties in locating the people and places where Heisey glass can be purchased.

As guests walk through the Museum enjoying the beautiful glass, many want to know where they can purchase Heisey glass. Typically we hear, "but I live in San Diego - Does anyone out there sell Heisey?"

Since most of the visitors do not live in the immediate area, it is important that they be made aware of where they can find the glass in other parts of the country, as well as in the Newark and Central Ohio area.

We would like to hear from any member who has Heisey to sell - shop owners, dealers who do shows, or mail orders should all take advantage of this opportunity.

Glass repair services are also needed all over the country.

Our directory charge will be: Five (5) lines for \$10.00 for a one year listing. The printed directory will be given to everyone who visits the museum, along with the regular brochure. This list will be revised annually.

Please let us hear from you. All proceed not needed for the printing of the directory, if any, will be used in some other way to benefit the Heisey Museum.


Send your five (5) line listing as soon as possible with payment payable to Diamond H Club and mail to:

Diamond H. Club Directory  
P.O. Box 27  
Newark, OH 43055

Virginia Yeakley



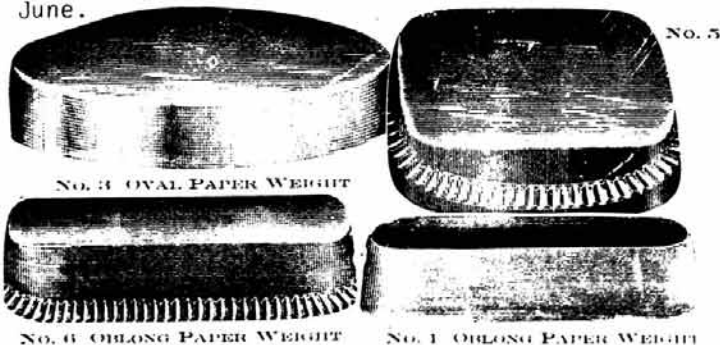
RECENT DONATIONS:

1. #1110 Iceland Sherbet - Mr. & Mrs. Talmadge Miller.
2. #1528 Oak Leaf Relish - Russ & Louise Ream.
3. #8060 Barber Pole Tumbler - Russell L. Nicholas.
4. Complete Book of McKee Glass - Tom Felt & Bob O'Grady.
5. Glass Candlestick, Book I & II, 1000 Individual Open Salts, 650 More Individual Salts and Third Book of Individual Open Salts. All fine books for our library, Betty and Herb Wanser.
6. #353 Medium Flat Panel 2 Qt. Crushed Fruit Mr. & Mrs. James Funkhouser.
7. #1951 Cabochon Nappy - Claude Higgins.
8. #1469 Ridgeleigh Ash Tray "Huntington National Bank of Columbus" etching - James and Helen Kennon.
9. \$444.16 Cash from now defunct Houston Club (Omitted from July list)
10. #1007 Mitchell Catawba 4-1/2 oz. Wine and #5060 Washington Square Soda - Mr. & Mrs. Larry Masterson.
11. One Heppenstall Desk Set W/large Diamond H. NOT HEISEY. Donated by Joe Lokay (for our misleading display)
12. #1469 Ridgeleigh Salt & Pepper - Yellow Marked  for Bryce Glass Co. Bryce purchased the Heisey salt blowing machine. Rich Stoll.
13. #3368 Albarle 2 parfais, Champlain Cutting - Mrs. Esther Downs.
14. #1253 Twist Tri-Corner Mint With Cover, Flamingo - Harriet C. Camp.
15. #1567 Plantation, four ash trays, Plantation Lid (with pineapple finial) for large Puritan Cigarette Box. (Does anyone have the bottom? We need it for this lovely lid). #1503 Crystalite Ash Tray, #1536 Military Cap Ash Tray and #1183 Revere Individual Creamer - Mrs. Doris Dennis, in memory of her sister, Mildred Oldaker.

RECENT ACQUISITIONS:

1. Plaid Vase 55"
2. #3479 Pleat and Panel, Moongleam Cream/Sugar
3. #3479 Cone Stem with Rose Cutting
4. #3394 Saxony 1 oz. Cordial
5. Pipe Wrench, Marked A. H. Heisey

A few other items have been purchased but the fund was reimbursed for them by clubs, so they will be listed with club donations next June.



FOR SALE: Most Colors, Most Patterns, 2000 Pieces of Heisey to choose from. S.A.S.E. Please. No list available. Write wants: PEGGY'S ANTIQUES, Box 367, Spavinaw, OK 74366 Phone: (918) 589-2859.

WANTED: Buying Heisey Rose and Orchid, Cambridge Rosepoint, Fostoria etched dinnerware and Depression Glass. Also glass figures and unusual glass pieces. NADINE PANKOW, 207 S. Oakwood, Willow Springs, IL 60480 Phone: (312) 839-5231.

WANTED: Will pay up to \$200.00 for Straw Holders with glass lids, or #353 that lays down. Also, want crushed fruit jars. Also want #433 Soda Fountain Glassware. GEORGE HANEY, Box 538, Spencer, OK 74084.

WANTED: Any marked pieces in Fifth Avenue - Colonial #347, Colonial Cupped #348, Colonial #349, Colonial #363. Also want Heisey marked Ink-Well. HAROLD HODGES, 3739 Plaza Drive, Topeka, KS 66609

FOR SALE: Over 2,000 pieces, Heisey Animals, Cut, etched, color, Colonials, Orchid, Rose, Minuet, Old Pattern Glass, Chintz and Old Colony. Dinner matching service. Write for what you need. All SASE answered. Heisey Deep Plate Etching Book #1. P.P....\$4.00. Heisey Cut Glass Book #2..P.P...\$6.50. Both of these books by Harold Willey. MRS. HAROLD WILLEY, 11110 Cannon Road, Frazeyburg, Ohio 43822 Phone: (614) 828-2557.

FOR SALE: 151 Items (or sets) - All Heisey. To be sold in one lot. Send stamped, self-addressed envelope for complete list. JOHN THEISS, P.O. Box 29334, St. Louis, MO 63126

WANTED: Heisey goblets and candle holder. "Waverly" pattern. MRS. JOHN T. SMITH, Rt. #1, Ursa, IL 62376

FOR SALE: Eight #1401 Empress Tangerine Plates 8" (marked) In excellent condition -\$135.00 each. GARY FITZMAURICE, 5307 30th Ave. So. Gulfport, FL 33707 PH: 813-321-9345

FOR SALE: Ten (10) Lariat Punch Cups \$50.00 Post Paid. Merry Christmas And A Happy New Year to all. JIM LA MOREAUX, Box 30083 Columbus, OH 43230.

WANTED: Narrow Flute Pattern 5 oz Boston Egg Cup or Footed Sherbet. See Vogel Book II, Page 86, (#394). C. ELLEN, 349 Thanksgiving Avenue, Port St. Lucie, FL 33452 or (305) 878-6575.

JEAN E. STACK PH: 312-778-3096  
6522 S. WASHTENAW UPS, P & I EXTRA  
CHICAGO, IL 60629 H Indicates Signed

- # 300 PEERLESS 1 oz Cordial H..(5).ea.\$ 22.00
- # 411 RIB & PANEL Champagne H..(2).ea. 15.00
- # 451 CROSS LINED FLUTE Champ. H(2)ea. 20.00
- # 451 CROSS LINED FLUTE Goblet H..... 24.00
- # 473 NARROW FLUTE W/Rim Ind.Creamer H 15.00
- #1252 TWIST EXPERIMENTAL AMBERINA 6" Plate, Yeakley 2, #531, Call In Bid
- #1405 IPSWICH 5 oz. Ftd. Soda..... 17.00
- #1405 IPSWICH 1/2 lb. Candy Jar, Verde Heisey by Imperial..... 40.00



LYNNE



ART'S

GLASS-HOUSE  
INC.

P.O. BOX 54-8014  
MIAMI BEACH, FL 33154  
(305) 861-7700  
(305) 895-5666

*Dear Heisey Collector and Dealer,*

*We'll be heading your way*

SANFORD, FLA

CIVIC CENTER

JAN 28, 29 - 30

*and we'll be home  
for the Holidays. All of us at Lynne - Art's Glass  
House, want to wish all of you A Warm and Won-  
derful Christmas and A Very Happy New Year.*

Lynne, Art, Mom, Ed, Moon and Charlie, too

CLASSIFIED ADS

WANTED: Any piece of 9025 Chicken Chase Etching. Call: (614) 392-4286 after 6:00 P.M.

WANTED: #341 Puritan Punch Bowl Base (VI, P. 45). JACK SUTHERLAND, 2325 McNeill, Victoria, B.C., Canada - Phone: (604) 598-4033 after 5 P.M. PST.

WANTED: Any pieces of Banded Flute #150 KEN MacDONALD, 4510 Alexander Ct., Norman, OK 73069 PH: 405-329-2226.



NOTICE !!!!!!!

ALL SLAG ANIMALS ARE SOLD OUT, INCLUDING THE MINUET GIRL.

**GLASS**  
review

ESTABLISHED 1971

The GLASS REVIEW Magazine is for every-  
one who studies, collects or sells glass.  
Whether your glass interests lean toward  
the early 1900's -- or the depression era--  
or with today's limited glass items, the  
GLASS REVIEW covers it all !

Articles -- price reports -- original  
catalog documentation -- shop directory --  
research and reproduction news -- trademark  
information -- glass book releases -- what's  
new on the market -- a large variety of  
glass ads (on both old and new glass) --  
plus much more.

Enclose payment and mail to:  
GLASS REVIEW, P.O. BOX 542, MARIETTA,  
OH 45750

10 'big' yearly issues

68 pages or more

\$12.50 - one year

MILDRED WILLEY PH: 614-828-2557  
 11110 CANNON ROAD P & I Extra  
 FRAZEYSBURG, OH 43822 \* = Signed

- #1404 OLD SAND.18 oz. Beer Mug Sahara\*..\$150.00
- #3360 PENN CHARTER,Hawth.9oz Gob.C/O\*... 40.00
- #3360 PENN CHARTER,Hawth.Champ.C/O\*(2)ea 30.00
- GIRAFFE - Head Forward..... 125.00
- RINGNECK PHEASANT..(2).....ea 120.00
- # 300 COLONIAL 15" Vase\*..... 55.00
- #1180 Ash Tray, Crystal With Cutting\*... 45.00
- # 358 Ash Tray, Flamingo\*..... 40.00
- #1401 EMPRESS,10-1/2"Dinner Plate,Sah.\*. 65.00
- #1401 EMPRESS,10-1/2" Dinner PlateCry.\*. 60.00
- #1503 CRYSTOLITE Sq. Covered Cig. Box\*.. 38.00
- #1533 WAMPUM Ash Tray\*..... 45.00
- #1428 WARWICK Horn of Plenty Single  
Candlestick, Sahara\*..... 75.00
- # 15 Duck Floral Block 5", 2 piece,Mg1m 250.00
- # 135 Candlesticks, 7" Moongleam..Pr.... 150.00
- # 135 Floral Bowl, 12-1/2" Moongleam\*... 95.00
- # 135 Candlesticks, 7", Sahara....Pr.... 110.00
- #1401 EMPRESS Footed Salt Shaker with  
Metal Top, Sahara..... 25.00
- #1295 BEADED SWAG 1/2 Gal. Tankard and  
6 Tumblers, Milk Glass, No decor-  
ation, looks like it was never  
used.....set.. 395.00
- #1180 Ash Tray, Crystal\*..... 38.00

DONALD P. BEAN Add 10% P & I (\$3.Min.)  
 36 HARDING STREET Excess Refunded  
 MILFORD, MA 01757 5 Day Return Priv.  
 PH: 617-473-0561 \* = Marked

- #1405 IPSWICH 4" Finger Bowl\* (2) ea.....\$11.00
  - #1220 PUNTY BAND 9"Shallow Comport\*V4P94. 45.00
  - #1220 PUNTY BAND Bead Top Toothpick\*.....  
Red Stain Souv. "Robert-1904"..... 38.00
  - # 433 GREEK KEY 4-1/2 oz Sherb.\*-Flar.(4) 38.00
  - #1252 TWIST Fla. 13" Celery\*..... 28.00
  - #1252 TWIST Fla. 7" Pickle\*..... 14.00
  - #1252 TWIST Fla. 8" Nappy\*..... 30.00
  - #1252 TWIST Fla. 4" Nappy\* (6).....ea..... 15.00
  - #1229 OCTAGON Fla. 10" Muffin..... 35.00
- HAPPY HOLIDAYS TO ALL - BETTY & DON

R. C. MOREAU PH: 312-355-6176  
 1220 FIELD CT. After 7:00 P.M.  
 NAPERVILLE, IL 60540 P. & I. Extra

- #1184 HAWTHORNE YEOMAN LUNCHEON SET D/O
- 6 7" Octagon Plates.....ea.....\$ 10.00
- 6 8" Round Plates.....ea..... 12.00
- 6 6-1/2" Grapefruit Bowls H.ea.. 15.00
- 5 Cups & Saucers H.....ea.. 20.00  
(Slight nick one cup)
- 1 9" Oval Bake H..... 25.00
- 1 12" Oval Platter..... 30.00
- AVAILABLE AS ONE LOT..... 325.00
- # 369 HARTMAN Optic Tumb. 12 oz.(4)ea. 20.00
- # 300 4 Light Candelabra - Tall Base  
Excellent Condition - Make Bid By Mail

WENDELL S. AVERY PH: 517-783-4075  
 2112 FIRST STREET P & I EXTRA  
 JACKSON, MI 49203 \* = Marked

- #3344 CAROLINA Stem Gob. (Rare)  
W/#160 Osage Etch\* (6)....ea.....\$ 35.00
- #5025 TYROLEAN 6 oz. Saucer Champagne  
6-1/4" High, Orchid Etch..(1)... 37.00
- #5025 TYROLEAN Cocktail 5-1/2" High  
Orchid Etch.....(1)... 35.00
- #5072 ROSE STEM, Tall Sherbets 4-5/8"  
High\*.....(3).....ea.... 38.00

BEVERLY SULLIVAN PH: 617-563-2500  
 12 POND VIEW CIRCLE Anytime  
 HATCHVILLE, MA 02536 P & I EXTRA

- # 150 BANDED FLUTE Sherbet (14).ea....\$ 8.00
- # 341 COLONIAL 5" Shallow Ftd. Jelly.. 15.00
- # 353 COLONIAL Cruet #8 Stopper..... 22.00
- # 433 GREEK KEY 4-1/2" Plates (5)....ea. 12.50
- # 473 NARROW FLUTE Creamer, Amber Rim. 20.00
- # 500 OCTAGON Sugar/Creamer, Flamingo. 24.00
- #1401 EMPRESS D/F Sugar/Creamer,  
Tangerine..... 1200.00
- #1405 IPSWICH 6" Finger Bowl..... 12.00
- #1519 WAVERLY Sugar, Orchid Etch..... 20.00

H & R DIAMOND H PH: 614-279-0390  
 HELEN - BOB RAREY After 5:30  
 1450 WHITE ASH DR. Shipping and  
 COLUMBUS, OH 43204 Insurance Extra

- ORCHID ETCH. ITEMS
- # 142 3 lite Candlesticks - Pair.....\$125.00
  - #1509 QUEEN ANN 8" Ftd. Bowl..... 42.50
  - #1519 WAVERLY 14" Torte Plate..... 37.50
  - #1519 WAVERLY 11" Floral Bowl..... 37.50
  - #1519 WAVERLY 3 piece Mayonnaise..... 49.50
  - #1519 WAVERLY 11" Oval Relish..... 35.00
  - #1519 WAVERLY 8" Plates (8)....ea..... 15.00
  - #5025 TYROLEAN Short Goblets (8)..ea.. 22.50
  - #5025 TYROLEAN Sherbets (8)....ea..... 17.50

Other Orchid Stemware Available - SASE for list.

HEISEY BY IMPERIAL CARAMEL SLAG ANIMALS:  
 Elephant - \$37.50; Sparkie - \$27.50; Std.  
 Pony - \$17.50; Kicking Pony - \$145.00; Aire-  
 dale - \$105.00; Mallard, Wings Up or 1/2 -  
 \$27.50; Wood Duck - \$35.00; Donkey - \$37.50  
 Set of 3 Ultra Blue Ponies - \$125.00; HCA  
 Oscars '77 - \$65.00; '78 - \$45.00; '79 \$40.00;  
 '80 - \$35.00; '81 - \$35.00; '79 Heather Frosted  
 - \$45.00; '80 Heather Frosted - \$45.00

Other Animals Available - SASE for list.

JANICE THRAN  
1663 LONDONDALE PKWY,  
NEWARK, OH 43055

PH: 614-344-5955  
P & I Extra  
\* = Signed

- # 300 One Light Candelabrum\*...pr.....\$150.00
- #1205 FANCY LOOP Toothpick..... 60.00
- # 341 PURITAN, Cordial\*..... 25.00
- #4091 KIMBERLY 2 oz Wine, Laurel  
Wreath Cut...(6).....ea.. 20.00
- #4091-1/2 KIMBERLY 12 oz Ftd. Soda,  
Laurel Wreath Cut...(7)....ea.. 12.50
- #5038 3-1/2 oz RoosterStemCocktail(4)ea 45.00
- #4163 16 oz Mug, Fox Chase Etch\*(4).ea. 110.00
- #3350 WABASH Goblet, Moongleam Stem  
& Foot - #400 Frontenac Etch\*6ea 25.00
- #3350 WABASH 6 oz. Saucer Champ.Mg1m.  
Stem&Ft.\*#400 Frontenac Etch(8)ea 20.00
- # 350 PINWHEEL & FAN 14" P.Bowl & Base\* 210.00
- # 394 NARROW FLUTE, DominoSugarTray,Fla\* 35.00
- #1506 PROVINCIAL 9oz Tumb.Limelight\*.. 55.00
- #3366 TROJAN, 7" Comp.Flam. D/O\*..... 25.00
- #3368 ALBEMARLE 7" Comp.Flam. D/O\*.... 35.00
- #1170 PLEAT & PANEL Comp.FlamCov.5"... 65.00
- #4052 NATIONAL 10oz.Soda, Moonglo Cut  
(3).....ea.... 12.50
- #5067 PLANTATION Gob. Ivy Etch (4) ea. 22.50
- #1567 PLANTATION Cups,Ivy Etch (2) ea. 15.00
- #5067 PLANTATION Goblet.....(3) ea. 17.50
- #5067 PLANTATION Sherbet..(3)....ea... 12.50



C. R. DELANEY  
659 CANTERBURY CT,  
NEWARK, OH 43055

PH: 614-366-3741  
P & I EXTRA  
\* Marked

Satisfaction Guaranteed

- #5072 ROSE Goblet\* W/Rose Etch.(8).ea.\$ 37.50
- #5072 ROSE Sherbet\* W/Rose Etch(8).ea. 27.50
- #5072 ROSE Sherbet\*W/Rose Etch (6).ea. 27.50
- #1519 WAVERLY 8" Plate W/Rose Etch  
(10).....ea.. 25.00
- #5067 PLANTATION Goblet (6).....ea. 18.00
- #5067 PLANTATION Juice (6).....ea. 14.00
- #1567 PLANTATION Oil\*..... 75.00
- # 352 MEDIUM FLAT PANEL Ftd. Soda  
Amber (Harvey House)..... 60.00
- # 305 PUNTY & DIAMOND POINT Water Btl. 65.00
- # 305 PUNTY & DIAMOND POINT 8"Compote. 85.00
- #1236 EAGLE PLATE Moongleam..... 85.00
- #4054 CORONATION 2-1/2 oz Bar W/Tavern  
Etch..... 120.00
- #1401 EMPRESS\* Lionhead Bowl, Mglm.... 495.00
- #1280 WINGED SCROLL 8" Bowl, Custard  
Very Good Gold..... 125.00
- #1415 TWENTIETH CENTURY\* 9 oz Footed  
Tumbler, Flamingo..... 25.00
- # 517 TUMBLE-UP\*..... 45.00
- # 350 PINWHEEL & FAN 3 Pt. Jug\*..... 85.00
- #4225 COCKTAIL SHAKER 1 Qt. W/ Skier  
Etch EC..... 160.00
- #1200 CUT BLOCK 3" Creamer (Red Stain)  
"E. Wright"..... 27.50
- #1220 PUNTY BAND 4" Creamer (Red Stain)  
"Street Fair 1899"..... 27.50

JIM KENNON  
P.O. BOX 251  
AMHERST, OH 44001

PH: 216-282-7711  
UPS EXTRA  
\* = Marked

- # 160 LOCKET ON CHAIN Wine.....\$110.00
- # 160 LOCKET ON CHAIN Punch Cup..... 85.00
- #1205 FANCY LOOP Punch Cup, Emerald... 35.00
- #1280 WINGED SCROLL Cruet, Emerald.... 225.00
- #1469 RIDGELEIGH 8" Vase\*, Sahara..... 90.00
- #1236 EAGLE PLATE, Moongleam..... 65.00
- #1433 THUMBPRINT & PANEL 2 lt. Candle-  
sticks, Sahara.....pr.... 100.00
- # 150 BANDED FLUTE Saucer Foot  
Candlestick\*..... 65.00
- #1255 PINEAPPLE & FAN 4-1/2" Plate,  
Emerald..... 35.00
- #1519 WAVERLY Ftd. Sugar & Creamer\*,  
Rose Etch.....pr..... 55.00
- #1519 WAVERLY 14" Party Plate, Rose  
Etch..... 65.00
- # 134 TRIDENT 2 lt. Candlesticks,  
Orchid Etch.....pr..... 65.00
- #1519 WAVERLY Oval Ftd. Compote\*,  
Orchid Etch..... 60.00
- #5087 COMET Bar Glass..... 22.50
- #5060 WASHINGTON SQUARE Bar Glass..... 35.00
- #6091 CABOCHON 3 oz. Wine..... 12.50
- #1540 LARIAT Basket..... 70.00
- #1447 ROCOCO 2 lt. Candlestick\*..... 95.00
- SPARROW..... 60.00
- FISH BOOKEND..... 85.00
- #1540 LARIAT 2 lt. Candlesticks..pr... 45.00
- #1504 REGENCY Covered Candy Dish..... 45.00
- #1250 GROOVE & SLASH Cruet..... 35.00
- # 429 PLAIN PANEL Ind. Ftd. Salt..... 11.00
- #4045 BALL VASE 6" W/O - Sahara..... 65.00



CAROLINE K. ANDERSON  
P.O. BOX 316  
LUNENBURG, MA 01462

PH: 617-582-7851  
P & I EXTRA

- #1205 FANCY LOOP Punch Cups (2)..ea...\$ 15.00
- # 350 PINWHEEL & FAN Punch Cups (2)ea. 12.00
- #1229 OCTAGON Flam. Nuts (4).....ea. 12.00
- #1404 OLD SANDWICH Butter Pat (5)..ea. 6.00
- # 411 RIB & PANEL Flat Handled Candy.. 15.00
- # 341 PURITAN Handled Candy..... 30.00
- #1201 FANDANGO Nappy..... 18.00
- #1252 TWIST Marigold Plate 8"..... 18.00
- #1231 CUP & SAUCER, Flamingo (2)...ea. 15.00
- # 407 COARSE RIB Punch Cup (2).....ea. 5.00
- # 343 SUNBURST Nappy..... 15.00
- # 393 NARROW FLUTE Oval Relish 9"..... 10.00
- #1469 RIDGELEIGH Ind. Cream & Sugar... 15.00
- #1401 EMPRESS Alexandrite Plate 6".... 30.00
- #1401 EMPRESS Alexandrite Plate 7".... 30.00
- #1252 TWIST Ftd. Grapefruit Marigold.. 35.00
- # 341 OLD WILLIAMSBURG Vase 6" High  
5-1/2" Wide..... 30.00
- #4159 HAWTHORNE D/O Vase 9"..... 55.00
- #1503 CRYSTOLITE Cruet..... 22.00
- #7027 NEWARK Platter..... 47.50
- #1469 RIDGELEIGH Ind. Salt Dip..... 6.00
- #1235 CHRYSANTHEMUM Nappy..... 8.00
- # 393 NARROW FLUTE Punch Cup..... 8.00

THE COLLECTOR'S STOP  
4 BROOKVALE DRIVE  
DANVERS, MA 01923

All Items Marked And  
In Excellent Cond.  
Otherwise Stated

PH: 617-774-1139 - Shipping Extra - \* All  
Items subject to prior sale.

# 433 GREEK KEY 3 Pint Tankard.....\$130.00  
# 433-1/2 GREEK KEY 3 Pint Jug..... 165.00  
# 433 GREEK KEY 5" Hdld. Jelly (3).ea. 30.00  
# 433 GREEK KEY 4 oz Oil #6 Stopper  
Not Marked..... 75.00  
# 433 GREEK KEY Sherbets 6 oz (11).ea. 20.00  
# 433 GREEK KEY 12-1/2" French Roll  
Tray..... 75.00  
# 433 GREEK KEY 12" Celery Tray..... 48.00  
# 433 GREEK KEY Small Ice Tub..... 75.00  
# 355 QUATOR Db1. Domino Sug. Holder.. 48.00  
#1252 TWIST Flamingo Ice Tub..... 85.00  
# 353 COLONIAL 12" Vase (2).....ea.... 65.00  
# 353 COLONIAL 15" Vase..... 85.00  
# 136 Sahara Candelabra, 3 light..pr.. 250.00  
#1401 EMPRESS Ftd. Bowl Orchid..... 32.50  
#1401 EMPRESS Moongleam 12" Cake Plate 55.00

#301 PAIR 10-1/2" ALEXANDRITE TWO  
LIGHT CANDELABRUM (Clear Bobeche)  
BEST OFFER OVER \$1,750.00 ( Not  
Marked)

MARY & BILL STICH  
3449 MOONRIDGE DRIVE  
CINCINNATI, OH 45211

PH: 513-574-0579  
P & I Extra  
\* = Marked

#1401 EMPRESS Comport, Sah., cut\*.....\$ 42.00  
#1252 TWIST French dressing, cry.,  
Moongleam stopper..... 26.00  
#1220 PUNTY BAND Tbl. Salt,2-1/2" out-  
side Dia., (4)\*.....ea.... 12.00  
#1503 CRYSTOLITE Salt & Pepper..... 15.00  
# 379 URN 4 oz. Cruet..... 65.00  
#1295 BEAD SWAG 9" Cake Salver..... 56.00  
#1540 3 Light Candlesticks, pair..... 25.00  
# 520 Candelamp, Cut\*..... 65.00  
#1509 QUEEN ANN Ice Bucket, no handle. 20.00  
#1401 EMPRESS Ftd. Mint,SilverOverlay\* 45.00  
#1184/109 Dolphin Comport, flamingo,cut  
Bowl, pair.....ea..... 150.00  
# 300 PEERLESS 2 oz. Cruet..... 27.50  
#1503 CRYSTOLITE Candleblocks, pair... 12.00  
#1503 CRYSTOLITE Master swan nut..... 18.00  
#1225 PLAIN BAND 9" Cake Salver..... 35.00  
#1295 BEAD SWAG Mug, Red Flash..... 25.00  
# 341 PURITAN 12 oz. Ice Tea\*..... 9.00  
# 335 PRINCE OF WALES Punch Cup\*..... 10.00  
#1503 CRYSTOLITE Cruet..... 18.00  
#1503 CRYSTOLITE Cup/Saucer,11 sets.ea 17.00  
#1503 CRYSTOLITE 8" Plate (11) ea..... 8.00



LAWRENCE E. MURPHY PH: 515-377-2929  
302 SECOND STREET UPS - P & I EXTRA  
COLO, IOWA 50056 \* = MARKED

CRYSTOLITE:

#1503 Punch Bowl\* & 16 Cups\* .....\$225.00  
#1503 Cup & Saucers - Cups\* Saucers  
no/set (12 sets).....ea.... 17.50

TANGERINE:

#1401 EMPRESS 7-1/4 Sq. Plate\*..... 150.00

COBALT:

#1183 REVERE 8" Rd. Plates\*(6) ea..... 30.00  
#342-1/2 SUNBURST Punch Bowl & 12 Cups\*  
(14 Pieces)..... 350.00

FLAMINGO, CHARTER OAK:

#3362 6-Low Ftd. Luncheon Goblets-All. 75.00  
#3362 6-Tall Goblets\*.....all.. 95.00  
#3362 6-Parfaits\*.....all.. 95.00  
#3362 6-Champagnes.....all.. 75.00  
#3362 5 Wines\*.....all.. 95.00

SAHARA:

#1401 EMPRESS D/F Console bowl #448  
Old Colony Etching..... 60.00  
#1401 EMPRESS Cup/Saucers - 6 sets  
#448 Old Colony Etching..set.... 20.00  
#3380 D/O Goblets 8 ea..Some \*...ea.. 17.50  
#3380 D/O Champagnes 5 ea..no \*...ea.. 12.50  
#3390 CARCASSONE W/O 6 oz. Sherbet.ea. 12.50  
#3390 CARCASSONE W/O Saucer Champ.1 ea 15.00  
#1404 OLD SANDWICH 4 oz Sherbets..3  
One has very slight nick on edge  
each..... 15.00

VIRGINIA & ODELL JOHNSON P & I EXTRA  
GLASS'N'GLASS \* = Marked  
6909 - 10TH AVE., W.  
BRADENTON, FL 33529 PH: 813-792-0604

WARWICK Horn of Plenty Candleholders,  
Crystal\*.....pr.....\$ 35.00  
WARWICK Horn of Plenty Candleholders,  
SAHARA\*.....pr..... 50.00  
CRYSTOLITE 2" Candleblocks...pr..... 12.00  
EMPRESS Candlesticks 8".....pr..... 80.00  
QUEEN ANN one lt. Candelabra & Prisms,  
pr..... 150.00  
#1 Candlesticks, 9".....pr..... 90.00  
#16 Candlesticks 7-1/2".....pr..... 80.00  
#301 Three Lite Candelabra (complete),  
One..... 110.00  
IPSWICH Vase for center piece..... 17.50  
EMPRESS Miniature Cream & Sugar, Spring  
Time Etch\*.....RARE..... 60.00  
WAVERLY Large Cream/Sug.,Orchid Etch... 45.00  
RIDGELEIGH Large Cream & Sugar\*..... 22.50  
GREEK KEY Large Cream/Sugar (no lid)\*.. 80.00  
RIBBED OCTAGON Sugar, Flamingo\*..... 8.00  
PLAIN PANEL Hotel Sugar (no lid)\*..... 28.00  
NARROW FLUTE Hotel Sugar (no lid)\*..... 12.00  
YEOMAN Cream/Sugar (rough on bottoms)\*. 10.00  
PARK LANE STEM, NOMAD Cutting 10 oz.  
Goblet (stem bk,p.150)..6...ea..... 35.00  
EMPRESS ALEXANDRITE Mayonnaise Bowl and  
Ladle\*..... 175.00  
YEOMAN Candy Dish 6"\*..Starred Bottom... 60.00

We assume no responsibility for errors in these ads after the first printing...Editor  
For changes in ads during the year, please send \$1.00 per line.

**MOSTLY HEISEY**

RHODA CURLEY  
16 Clayton Place  
Albany, New York 12209  
By Appointment (518)482-6272

**LAST CHANCE ANTIQUES**

P.O. Box 502, Dania, Fl. 33004  
Mail Orders - Matching Service  
Send us your want lists  
(305)467-6356 Day or Evening

**GOLDSBERRY'S ANTIQUES**

Kalamazoo, Michigan  
Shows Only - Buy & Sell  
HEISEY A Speciality  
Phone (616)381-3013

**SCHWAN'S ANTIQUES**

Route 1, Box 175B  
John Tyler Highway  
Williamsburg, Va. 23185  
(804)229-7873 Shop and Shows

**GREEN ACRES FARMS**

Antiques, Crystal Glass & Collectibles  
2678 Hazelton Etna Road, S.W.  
(S.R.310N.)Pataskala, Oh. 43062  
Sat. & Sun. P.M. or Call (614)927-1882

**THE WOODEN SHOE**

Antiques & Collectables - Buy & Sell  
Glass, Furniture, Estates  
Jim & Sheri Van Es, By Appointment  
810 Elden, Herndon, Va. 22070 Ph.(703)435-9045

**ANTIQUES -THE SHULTZES**

206-208 E. Main Street  
Newmanstown, Pa. 17073  
15 Mi. West of Reading Pa.  
Phone (215)589-2819

**T & S ANTIQUES**

Tom Martin Steve Roderick  
Specializing in HEISEY  
New Rochelle, N.Y.  
(914)235-9632

**ANTIQUE JUNCTION**

'In Old Town'-342 S.W. 'G' St.  
Grants Pass, Or. 97526  
(503)479-8575 or 582-4067  
Hours: Wed., Sat., 11 to 5

**ELIZABETH BASSETT CASON**

401 32nd. Street, W.  
Bradenton, Fl. 33505  
Mail Order - List  
(813) 748-0851

**GLASS REPAIR**

**LITTLE ANTIQUES & GIFTS**  
110 Marshall St. Pigeon Forge, Tn. 37863  
Ph: (615) 453-6922  
Quality removal of chips, polishing and reshaping of  
pitchers. Shipped UPS.

**RAMBLING LANE ANTIQUES**

KEITH & EVELYN HOOVER  
Featuring HEISEY and Other Fine Glass  
Rt. 4 Box 1005 Rhinelander, Wi. 54501  
Phone: (715)282-5019

**ALL-HEISEY AUCTIONS**

Consignments Welcome  
OFF-BROADWAY ANTIQUES 121 S. Prospect St.  
Granville, Ohio 43023  
Sam Schnaidt (614)587-2083 Shop, (614)587-0052 Res.

**LYNNE & ART'S GLASS HOUSE, INC.**

'HEISEY OUR SPECIALTY'  
Miami Beach, Fl. 33154  
P.O. Box 54-6014  
(305)861-7700 or 895-5666

**AVERY'S QUALITY ANTIQUES**

2112 First St., Jackson, Mi. 49203  
Ph: (517)783-4075  
Heisey, Other Glass & China  
Shows or By Appointment

**PEGGY'S ANTIQUES**

ERNIE & PEGGY COX  
2000 pcs. Heisey in stock  
P.O. Box 367, Spavinaw, Ok. 74366  
(918)589-2859 By Appt or by chance

**DIAMOND H PLUS**

GEORGE & EILEEN SCHAMEL  
Rt. 3 Box 419 Boonsboro, Md. 21713  
Appointment or Mail Order  
Phone:(301)432-6285

**RECOLLECTIONS**

THERESA WERT  
Lahaska Antique Center  
Route 202, Lahaska, Pa.  
Phone:(215)794-8667

**ANN'S GIFTS & ANTIQUES**

105 W. Main St., Hebron, Oh. 43025  
Intersection Rt's 40 & 79  
Next Door to Daisy Queen  
Daily 11:30 - 5:30 Closed Thursday

**HEISEY PUBLICATIONS**

Box 102, Plymouth, Oh. 44865  
All Heisey Books I-II-III-IV  
Heisey Newscaster 32 pg. Quarterly  
\$6.00, Back issues \$4.00

**PATTON HOUSE**

HEISEY - DUNCAN MILLER  
ROCKY'S MALL - I-81 & US 11  
Weyers Cave, Va. 24486  
Phone: (703) 967-1181

**LITTLE'S ANTIQUES**

Heisey and General Antiques  
Ph: (216) 282-2242  
Lorain, Ohio  
Shows and by Appointment

**MOUNDBUILDERS ANTIQUES**

RENE RAUCK  
1138 Moundview, Newark, Oh. 43055  
Phone:(614)344-6043  
Heisey & Animals General Antiques

**HAPPY HAVEN ANTIQUES**

MARY DUMKE  
14319 Rattlesnake Road  
Grass Valley, Ca. 95945  
Phone:(916)273-9450

**THE PURPLE PLACE**

Martha & Harold Earp  
Art Glass, Heisey, Cambridge  
Shows, Appointment, Mail Order  
Fort Myers, Fl. 33901 (813)934-1672

**C & J ANTIQUES**

COLE & JEAN MIESNER  
Box 45, 72 Whig St.  
Newark Valley, N.Y. 13811  
Phone:(607)642-9905

**GEORGE HOFFMAN ANTIQUES**

G.W. HOFFMAN - J.H. DENNIS  
129 S. 4th. Street  
Newark, Oh. 43055  
Phone:(614)345-8021

**CHARLES & MILDRED FISHER**

HEISEY, DEGENHART, IMPERIAL  
Antiques & Collectibles, General Line  
991 Idlewild, Newark, Oh. 43055  
Phone:(614)522-5398

**HARRISON'S ANTIQUES**

HEISEY, CAMBRIDGE, DUNCAN  
26 Johnston's Lane  
Mercersburg, Pa. 17236  
Shows, Mail, By Appt. (717)328-2451

**RAY ZIEGLER**

GLASS REPAIR  
2265 Innis Road  
Columbus, Ohio 43224  
(614)882-8448

**H and R DIAMOND - H**

HELEN & ROBERT RAREY  
1450 White Ash Drive  
Columbus, Oh. 43204  
(614) 279-0390 after 5:30

**JOYCE'S ANTIQUES**

Specializing in HEISEY  
Cambridge, Verlys, American Glass  
P.O. Box 114, Albertson, N.Y. 11507  
Phone:(516)499-3396

# Heisey Collectors of America ALL HEISEY - Benefit Auction



MARCH 11 - 12, 1983

RAY ZIEGLER, CHAIRMAN

It is time to begin preparations for our Tenth Annual All Heisey Museum Benefit Auction. The Auction will, as usual, be held in conjunction with the Quarterly Meeting in March. The location will be announced later.

The Annual Christmas Meeting and Dinner, to be held on December 3rd, would be a good time to bring your glass to the museum, either in the afternoon or after the dinner when there will be the usual OPEN HOUSE. That way you can avoid the Christmas rush.

The same policy as in the past years will again be followed. Please limit your glass to ten (10) lots per family (excluding donations). Any consignments over 10 lots will be considered as donations. The consignment selling fee remains at 20% with a \$5.00 minimum per lot. It is greatly to your advantage to send ONLY items or lots which will sell for a minimum of \$25.00 each because of this minimum charge. HCA receives the 20% consignment fee since all of the auctioneers donate their services.

Please consign only Heisey or Verlys by Heisey. No Imperial please! This is not because there is anything wrong with Imperial glass, but it does not bring the prices it should in this auction.

Be as generous as you can with your donations this year. As this is written, we do

not know how good a source we will have for glass to sell in the museum in 1983. The Benefit Auction is one of our major fund-raising programs of the year and all proceeds go for the support of your museum. Donations are fully tax deductible. The consignment fees are also tax deductible.

Be sure to use the accompanying form to list your glass. This is in the proper order for our list and will greatly facilitate our work here at the museum. Don't worry unnecessarily if you don't know the proper name or number. Knowledgeable people will be working with the glass and will catch any errors in the list. Add your donations at the bottom.

Please try to send glass as nearly perfect as possible. It will bring a better price and mail bidders are more apt to bid if an item is not marked X.

We are looking forward to receiving some beautiful Heisey Glass from you.

Deadline is JANUARY 10, 1983.

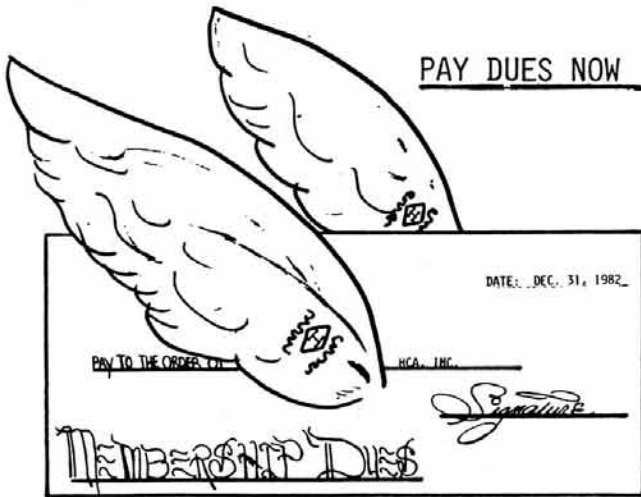
Send your glass by mail or UPS. Please use the following address. THIS IS VERY IMPORTANT.

HCA AUCTION  
169 WEST CHURCH STREET  
NEWARK, OHIO 43055



IF YOU DON'T USE THIS FORM, PLEASE USE THIS FORMAT

LOT #	ITEM	PATTERN	PATTERN NAME	SIZE	ITEM DESCRIPTION	CUT/ ETCH	COLOR	# IN LOT	# H	DAMAGE



PAY DUES NOW

DATE: DEC. 31, 1982

PAY TO THE ORDER OF HCA, INC.

*[Signature]*

MEMBERSHIP DUES

OOPS!! I should have said those Members Due in December!!! - Please pay early - You see I have over a thousand people due at that time and this isn't on computer. Thanks to everyone who has been so considerate. You are ALL NICE PEOPLE.

A GIRL NAMED "MERRELL" Membership

THE AMOUNT NOW IN THE ENDOWMENT FUND IS \$1590.52.

DARK BLUE CANVAS TOTE BAG



12" High X 14" Wide, Bottom Width 5"

(Handle will be longer than pictured.)

Ideal for carrying your Heisey books and purchases.

If you want a bag before Christmas - ORDER NOW!! Pre Paid - All the money will go into the Endowment Fund. Order before December 15th. \$7.95 each - Add \$1.50 for Shipping

Your first and last name can be added in script for \$1.50 a word. Ohio residents must pay 5-1/2% Sales Tax.

Make checks payable to: HEISEY HUNTERS  
P.O. BOX 27  
NEWARK, OH 43055



THE 1983 CONVENTION WILL BE JUNE 16TH THRU 19TH.



return to:  
HEISEY NEWS  
Box 27  
Newark, Oh 43055

FIRST CLASS MAIL  
U.S. POSTAGE  
PAID  
PERMIT 34  
Reynoldsburg, Ohio 43068

FIRST CLASS MAIL