

# HEISEY *news*

OFFICIAL PUBLICATION HEISEY COLLECTORS OF AMERICA

©Heisey Collectors of America, Inc. 1982  
All Rights Reserved

VOLUME XI

NO. 8

AUGUST, 1982

ISSN 0731-8014

ONE DOLLAR



1.



2.

## HEISEY GOES HOLLYWOOD



3.



4.

SEE PAGE TWO FOR CAPTIONS

See Tom Felt's article on Page 6 and 7.

**Original Sandwich Glass Models Shown by Heisey**

A prized possession of A. H. Heisey & Co. is a valuable collection of original mahogany models of Sandwich glass, probably the only one of its kind. It was made available to its possessors through the efforts of one of the company's former salesmen, who was related to the owners of the Sandwich Glass Co.

Among the many pieces in the collection are nappies, decanters, goblets, clarets, wines, salt cellars, candle sticks, sugar bowls and cup plates. A number of typical pieces are being shown in the Heisey exhibit on the fifteenth floor of The Merchandise Mart, Chicago.

These models are estimated to be approximately 100 years old, as this type of model was discontinued about 1845. They were carefully and accurately made of mahogany and from them templates or patterns were formed, from which in turn the actual molds were produced.

In addition to their historical significance, the models gain unusual interest due to the noteworthiness of Sandwich glass. During the past few years, the popularity of early period patterns having again come to the fore, some of the models have been used by Heisey for turning out authentic Sandwich reproductions. Others have functioned as an inspiration to their artists in creating the new Early American patterns.

**SANDWICH MODELS 100 YEARS OLD**

These two mahogany models were used a century ago in casting goblets and wine glasses in Sandwich, Mass. At the left, beside the goblet model, is a footed tea glass bearing a pattern reproduced from the model. At the right is a wine glass model with a modern parfait inspired by it.

**PICTURES ON FRONT PAGE**

1. Table of Hawthorne, Trojan Stemware and Yeoman Cups, Saucers and Plates.
2. Betty Wanser, Heisey Club of California, presents Rare Swirl Optic Vase in Tangerine.
3. Bob accepts unusual Koors Vase (note handles) from Raymond Larson, a gift of the Southern Illinois Diamond H Seekers.
4. "Halloween", Dawn, Black and Tangerine. Booth included a very rare 12" 4045 Ball Vase in Tangerine and several pieces of experimental Black. Newark HCC. Heisey Hunters' of Newark "20,000 Leagues Under The Sea" at right.



No. 1405 Ipswich

No. 1404 Old Sandwich

**HEISEY NEWS—P.O. BOX 27—NEWARK, OHIO 43056**

Editor LOUISE REAM  
 Box 27, Newark, OH 43055 614-345-2932  
 Ass't Editor NEILA BREDEHOFT  
 Box 27, Newark, OH 43055 614-345-2932  
 Published monthly and mailed from Reynoldsburg, Ohio 43068

\$12.00 per year - \$1.00 per copy  
 Back issues 1972/1980 (except 1974) \$9.00 per year (12 issues).

**CLUB OFFICERS**

President	BOB McCLAIN	614-345-8061
Vice President	TOM BREDEHOFT	614-745-1014
Secretary	R. T. MARSHALL	614-866-4522
Treasurer	DICK MARSH	614-366-5608
Exec. Director	LOUISE REAM	614-344-2377

Heisey Collectors of America, Inc. is a non-profit corporation with tax exempt status. Owners and operators of National Heisey Glass Museum, 6th & Church Sts, Newark, OH. Open Daily 1-4 pm March through December except Mondays and holidays. January & February-Wednesday, Saturday, & Sunday 1-4pm. Other times by appointment. Members admitted free.

Club membership (includes 12 issues of HEISEY NEWS and participation in all club activities) \$12.00/year plus \$2.00 each for additional family members in same household who wish a membership card. For VOTING MEMBERSHIP add \$25.00, one time only fee.

When requesting information, please enclose a self-addressed stamped envelope (SASE).

ADVERTISING - Send all ads to: Advertising  
 c/o NEILA BREDEHOFT  
 P. O. Box 27  
 Newark, OH 43055

**RATES:**  
 DEALERS' DIRECTORY - 5 lines-\$18.00/year  
 CLASSIFIED - 10¢/word. \$1.00 minimum. Abbreviations and initials count as words.

DISPLAY:	MEMBERS	NON-MEMBERS
1/8 pg (9 items)	\$12.00	\$20.00
1/4 pg (20 items)	20.00	30.00
1/2 pg (20 items)	35.00	45.00
1 pg (50 items)	60.00	75.00

We cannot double-column ads. No VERTICAL 1/2 pg. ads. ALL ADS MUST BE PREPAID. Ad copy must be received by the 5th of the month to be included in that month's NEWS. Ads containing reproductions will not knowingly be accepted unless clearly stated (i.e. Heisey by Imperial, etc.) HEISEY NEWS assumes no responsibility for false advertising or misleading information. In the event of typographical error, the incorrect portion of the ad will be run in the following issue, but HEISEY NEWS assumes no further liability.

Opinions expressed in articles are those of the authors and not necessarily those of HCA. Editorial Staff reserves the right to edit or refuse any material submitted for publication. Send all letters & articles to be published to the EDITOR. Letters to columnists should be sent to the club address and will be forwarded.

## FROM THE DESK OF YOUR PRESIDENT.....

In my last article of the "Heisey News", I mentioned briefly that we had created "The Five Year Plan". To me, this is the most exciting idea that we have had in several years.

At our last Board of Directors Meeting, Dick Spencer made what I, and the rest of the Board thought was an excellent suggestion regarding a course of direction for Heisey Collectors of America, Inc. Dick suggested that we create a five year plan. Although not binding, it would offer a definite course of direction and something to work toward, rather than going from year to year.

When we acquired the house for the museum, we were offered a challenge, and the membership responded with all kinds of support, manual labor, ideas, financial contributions, material donations --- we were unified because of a common goal. We need to rekindle that unity. I don't mean to say that we have to be in debt to be unified because there are many goals, not involving a financial commitment, that we can set and together achieve. Long term goals should be set up to five years in advance.

The Board of Directors voted to have me appoint a "five year" committee to formulate plans which will serve as guidance to the Board in plotting our future. I have appointed Dick Spencer to serve as chairman of this committee and fifteen other people from all parts of the United States to serve on this committee.

I am asking each and every member of our organization to give us ideas and become involved in this important project. Please submit your suggestions in sufficient detail so that a consolidated list can be put together and returned to the committee for establishing priorities. If a suggestion requires a significant financial requirement, please include suggestions as to a means of raising the required capital. Consider 1983 as year one of the five year plan. Submit your suggestions to:

Dick Spencer  
1203 North Yale  
O'Fallon, Illinois 62269

It was announced in the July issue of the "Heisey News" on Page 14, that a Trust Fund account had been established at one of our local banks for the purpose of depositing money for the Endowment Fund. Those of you who wish to donate to this fund, please refer to that issue for more details. The committee has been working on the Endowment Fund for over a year. The reason it has taken so long is because many questions had to be answered since this is a new venture and we want to know what we are doing. The Board has been criticized for not acting more rapidly, but we did not want to jump into it not knowing all the facts. I want everyone to know that the Board is behind this project 100% and it is hopeful that it can be approved at the September Meeting.

I hope that you have marked your calendars for September 11th, so you won't forget the Mini-Show at Newark Catholic High School and the Souvenir Dinner at the beautiful Moundbuilders Country Club in Newark. This is a fun day so be sure you have sent in your reservations.

Happy Hunting,  
Bob

## CHARTER MEMBER DIES

One of our Charter Voting Members, Bill Loss, of Wantagh, New York, died suddenly of a heart attack on Sunday, August 1st. Bill was a member of the Long Island Heisey Collectors and a former president of that club. HCA expresses its sympathy to his widow, Esther.

Bill collected Heisey long before the HCA was born and was a member of the old California based club.

## NEW BOOK AVAILABLE FROM HCA . . .

### HEISEY TOOTHPICK HOLDERS

Nancy & David Jones of McLean, VA have been working on a toothpick holder book for the benefit of HCA for the past year or more. After extensive research and good photography, the book is now available. Each toothpick holder is shown on a page by itself with pertinent information also on that page. There is a comprehensive section on fakes and misleading items. All color information and decorations are included.

A comprehensive price guide accompanies the book. Prices were received from collectors and dealers from all parts of the country.

HCA owes a debt of gratitude to the Jones for all their work. The manuscript and photographs were donated to HCA and all proceeds go to HCA.

Be sure to order your copy from the list in the newsletter!

Al Miller, who underwent triple bypass surgery a few months ago, is feeling good and plans to be at the September Dinner. This is very good news.

Jim Oliver, an Indiana member and long time dealer at both our June show and September Mini-Show, had a heart attack and was unable to do the June show. A note from him says he is improving. We hope to see him back next year.

Q. What does the mark "CG" in a circle mean? I saw it on a pink cathedral vase.

A. See your August and December 1981, issue of Heisey News or "Heisey by Imperial" second edition, Page 35. Imperial made 6 items for a company called "Collectors Guild" which sends out a mail order catalog and also sells through several book clubs. This vase is one of those items. It does not look too much like the Heisey vase.

"CG" in a circle is for Collector's Guild.

## HEISEY'S LITTLE THINGS

BY: Louise Ream

Several people have written to tell me that they are enjoying my article on "Little Things" which pleases me, of course. I had to leave out this column last month because of lack of space.

Neila Bredehoft told me that she has the Fancy Loop mustard in emerald. Now, I am SURE I have seen it but perhaps it just blended in with the rest of their extensive collection of emerald. I know it is beautiful because even the crystal one is.

No. 1220 Puntty Band and #1225 Plain Band are very closely related, the only difference being the oval punties (oval indentations resembling thumb prints) added to the bulging band in the #1220 line.

Some people refer to #1225 as "Sawtooth Band", but since it was named "Plain Band" long before, and since both patterns have the band of sawtooth above and below the bulge, Plain Band does seem to be the more appropriate name. When you read in the price lists about the decorations on the pattern, it becomes clear that the reference to the "band" or "ball" refers to the bulging area.

### No. 1225 Plain Band

It seems strange that even if Puntty Band has the lower number, so must have been designed first, again, like Fandango and Cut Block, the higher numbered pattern was made first.

We have several early catalogs showing these two patterns, in the museum. No. 1225 was first pictured in "China, Glass and Lamps" on April 28, 1897. On July 14 of the same year, the following appeared:

CHINA, GLASS AND LAMPS      July 14, 1897

A. H. HEISEY & CO.

"A. H. Heisey & Co., of Newark, O., are getting out some very elegant gold edge decorations on their 1225 ware. They have other decorations too, but those we call attention to are among the finest that can be found anywhere and are fully up to the best French goods which are generally regarded by the trade as the topmost. The firm is making a strong bid for favor in the decorating line and the 1225 pattern is one which affords large scope for exertion in this direction. The outlines of the design are principally plain, but at the edges there is room for the introduction of an ornamentative feature and their decorator has availed himself of it to the fullest extent. We do not know of any more graceful pattern in the market and dealers seem to share in that opinion if we are to judge by the way they are ordering it."

No. 1225 was a long pattern line of over eighty different items. Those which fit our Category best are pictured on the opposite page. The most desirable of all of these is the four piece toy table set. Made in crystal only, it can be found with a variety of decorations including the two shallow engravings

pictured here. Some sets are ruby stained and some are souvenirs with names, dates, etc. Mine says "Helen - 1899".

The toy sugar and mustard are the same except for the different lids. The handleless sherbet is about the same but is a little larger and flares more at the top. All three could be confused with the toothpick except it has beads around the top. The toothpick does double as the toy spooner. The sherbet is often seen in custard but the toothpick is in crystal only - so far as I know.

Decorations on #1225 include #15 gold on the beads and green, pink or bronze on the ball (band), #34 gold (?) and #28 and #30 engravings. There are possibly several others and some could have been done by decorating companies.

The cordial and the two small wines are very cute, especially when decorated with ruby stain. The shape sometimes varies from that pictured. Mine flares out more above the band.

The individual cream and sugar are not as small as some but are very attractive. You could also use the toy sugar and creamer from the table set. Three sizes of salt and peppers have a variety of tops. Though the individual and table salts are shown with beads around the top, I have never seen a piece with the beads. Have you?

The individual decanter and the #4 salt are the only two pieces I know of which do not have a band of sawtooth both above and below the bulge. The decanter is often seen with a stopper which makes a very nice cologne. One in the Museum has a star cutting.

Since this pattern was made both before and after 1900, it may be found both marked and unmarked.

### No. 1220 Puntty Band

The first ad seen for 1220 was on November 1, 1899, more than two years after #1225 was introduced. With its oval punties on the band, I find it the more attractive of the two. There were only about seventy pieces in this line.

There is a small creamer, similar to the one in the #1225 toy table set, which comes in opal and custard. One in the Museum is opal and inscribed "Merry Christmas" in red. This pitcher is not shown in #1220 in the catalog which we have.

Decorations include #15 gold bead, #21 ruby ball, #22 amber ball, and #28 and 30 engravings. Custard toothpicks and creamers often have floral decorations in color, probably the work of decorating companies including ORIENTAL GLASS in Pittsburgh.

Toothpicks in the pattern may have either beads or small scallops around the top. Be careful in buying toothpicks without the beads on the top. They were very prone to chipping and may have been ground off.

My wine in this pattern is also more flared than the one pictured here.

It would not surprise me to find other pieces of these patterns in opal or custard. While it is nice to have catalogs with pictures, it is from price lists that the most information is gleaned as to color, decorations, etc. Since

Cont'd. On Page 5

# No.1225 Pattern



Mustard.



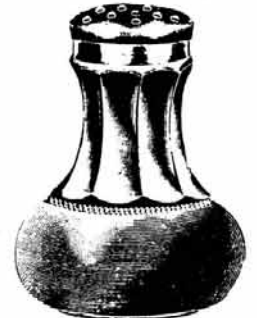
Individual Cream & Sugar



No. 2 Salt & Pepper, N. T.



No. 1 Salt & Pepper, P. T.



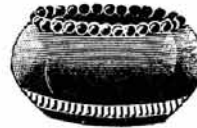
No. 4 Salt & Pepper, P. T.



Cordial.

2 oz. Wine.

2 1/2 oz. Wine.



Individual Salt



Tooth Pick.



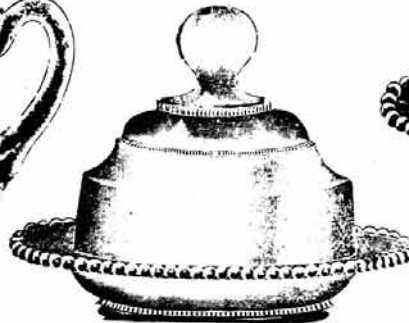
Individual Decanter.



Table Salt.

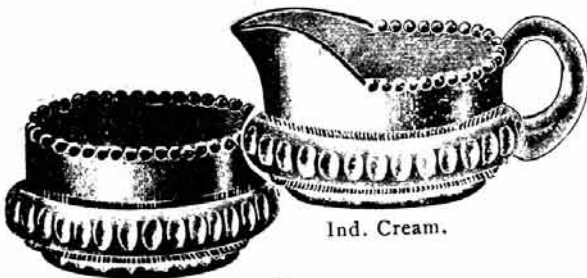


Toy Set



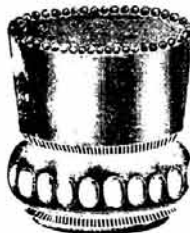
Sherbet and Plate

## No. 1220



Ind. Cream.

Ind. Sugar.



Tooth Pick.



Cordial.



2 oz. Wine.



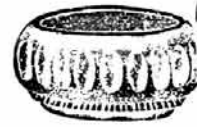
2 1/2 oz. Wine.



No. 3 Salt and Pepper, N. T.



Salt & Pen'r. P. T



Ind. Salt.



Table Salt.

Continued On Page 6

HEISEY'S LITTLE THINGS CONT'D.

we have most of these in our library at the Museum, all of our columnists research them and it takes a lot of research to be factual.

If you use other sources than ours, you should update your references with the correct information.

The Salt Dip

Many young people today have never heard of "individual and table" salts. Since the screw top was not invented until the mid 1800's, salt was always placed on the table in a small open container. Of course by the time A. H. opened his factory, regular salt shakers were being made but tradition was strong and many people still desired the open salt. The small ones were placed by each table setting and it was very handy to dip an onion, radish, celery, etc., into the salt - thus the name - salt dip. Sometimes a little spoon was used with these. When I was small I remember visiting older people who passed the larger "table salt" around and took the salt on a knife or spoon to sprinkle on the food.

Placing individual salt dips on the table survived for many years since they apparently were still being used into the 1930's when Ridgeleigh was being made.

Write and tell us about your "miniature" collection!



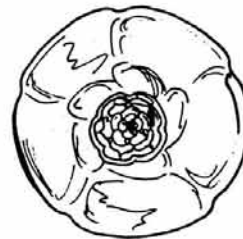
Sugar.

ENGRAVED NO. 28



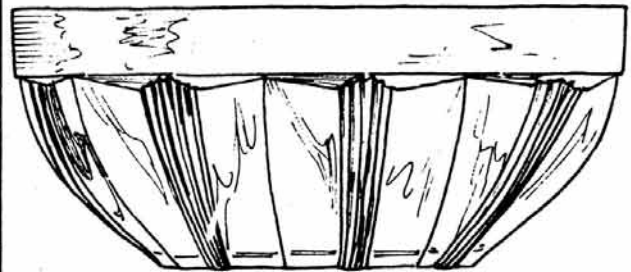
Spoon.

ENGRAVED NO. 30



#8056 MAGNOLIA

Under the picture of the plate donated by the Golden Gate Club, in last month's Heisey News, we inadvertently called the pattern #8056 Gardenia. We actually had named it "Magnolia." Please change this in your newsletter.



#8052 NORTHPORT 8" nappy

Another previously unknown. Number and name assigned by HCA. This is a Museum acquisition.



NO. 8061 LODI

A cream and sugar seen fairly often but not pictured in catalogs. Marked. Seen with cuttings and etchings. Number and name assigned by HCA.



#8053 LABROAD 10" colonial nappy

Previously an unknown. On loan to the Museum. Number and name assigned by HCA.

## RECENT FINDS

BY: Janet M. Caswell

DIAMONDS ARE FOREVER.....

The Yachting Center has been drenched with rain for over a month now with no apparent let up in sight. For the past seven weekends we have been rained out. This makes it next to impossible for the dealers to set up their wares. Most of us here in this pretty sea-coast town have lost our tans but not our enthusiasm and joy in Heisey Hunting. Last Sunday the sun shone down upon us, giving us just the boost we needed, at last a beautiful day! Hoping to work on my tan and also get in a little Heisey Hunting we started up the Motorcycle and headed out of Massachusetts for New Hampshire. The dealers were out in numbers with lots of bargains on their tables. We purchased quite a few things and kept putting sack after sack of glass into the side bags of the motorcycle until nothing more would fit and I just knew that it would be necessary to hold our coats and rain-gear in my lap on the ride home. This didn't matter at all, to me it was certainly worth the inconvenience. Upon arriving at home base we took stock of our purchases. It was, really, a beautiful day!.....#113 Candlestick in Flamingo (the dealer told me this was depression glass); a #134 Trident 5" Candlestick with the Heisey Rose Etch, in Crystal; (both of these pieces were REAL sleepers) 2 #1223 7" crystal plates; and a #1229 Octagon Bon-bon in the elusive Hawthorne; Thinking that we had found all there was to be had that day we headed toward the parking lot, on the way to the lot, I spied a piece of glass on an out of the way table that I thought might possibly be Heisey. Needless to say I had to go and look - sure enough, there was a #1567 Plantation 6-1/2" 2 handled jelly with Gold Overlay. That one just had to come home with us...

From Beantown there comes a report from that terrific lady that a #1495 Fern 6" handled cheese dish was found in Zircon! Boy! things are still out there, all you have to do is look. Another friend from the Carolinas happened to stumble upon a Flea Market and thought she would, for something to do, go in and take a quick look around. Much to her delight she came away with a #300 Pickle Tray & a Covered Butter; a couple tables over, sitting amid some old pressed glass, was an 8" square #462 Nail nappy, I'm sure we would all like to find that one; she also saw but did not purchase the #1445 Grape Cluster single Candlestick and a #1280 Winged Scroll Trinket Box in Emerald.....The Convention was a thing of beauty and even though this was our ninth year, we still wonder at all the Rare pieces we see there every year. My other half went to the Convention with a few things in mind that he would like to add to our collection. Each year we try to acquire at least one pattern we don't already have. This year he came home the proud possessor of an Urn #379

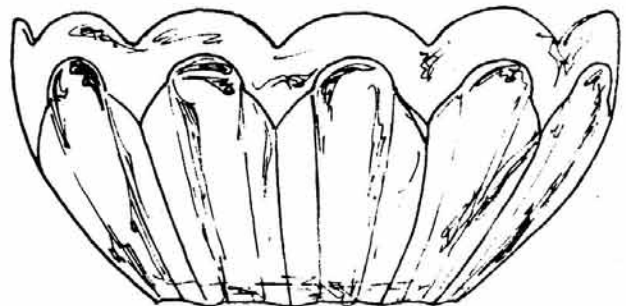
4" nappy; a #419 Sussex 2-1/2 oz wine and a #1180 Moongleam ash-tray. This he has wanted to purchase for several years.....Several Animals or animal related items were added to my collection, namely the Mother (med) Elephant; the Goose with the wings up, the Sparrow (which I have wanted for a long time) and the #1489-1/2 Puritan cigarette box/Horse head, perfect condition. Old Sandwich was the pattern that I hoped to find a lot of this year. That is exactly what I happened to do. My collection of Old Sandwich grew by many nice things; the cigarette holder and the Catsup Bottle/stopper; also 6 desserts or finger bowls (cranberry stained around the top); 2 10 oz cupped sodas or ice teas in Sahara; 1 5 oz cupped soda in Sahara; 2 12 oz ice teas in the elusive Flamingo; a 6 oz sundae and a 10 oz low footed tumbler in crystal.....The cover for our #352 Flat panel ind. sugar was purchased along with the Domino sugar tray in Sahara; It seems that stems have also become of great interest to us and we added the #3416 Barbara Fritchie 2-1/2 oz wine with the #468 Chateau Etch and the Coleport 3 oz wine to our list. Also not to be left out was 2 #1590 Zodiac juice glasses and a 6 oz #1255 Pineapple and Fan ruby stained mug and an 8 oz Root Beer mug beautifully marked looking as if it had never been used.....a #U8008 Hairpin 8-1/2" nappy will be greatly enjoyed by the proud new owner. I understand this piece is going to be used not just looked at.....

Fourth of July arrived here in the Yachting Center with all the excitement and splendor. The "Arts Festival" and the "Festival in the Street" for children of all ages. Singers, clowns and magicians entertained us all. We topped our weekend off with a four hour cruise out around our Harbor to an adjoining city and into their Harbor for a spectacular display of Fireworks that lasted a full half-hour with "Pinwheels and Sunburs.s" exploding all over the sky. A concert staged on top of one of our pretty parks overlooking our Harbor brought the Weekend to a delightful close.....Let me hear from all of you good people so that I may share your finds with everyone. Write to me in care of HCA.

---

#8051 FLUTE WITHIN FLUTE 8" nappy

Previously unknown, the number and name given by HCA. On display in the Museum.



## HEISEY DECORATIONS

BY NEILA BREDEHOFT

## #521B SCROLL

## #522B COCKTAIL PARTY

In 1954, Eva Zeisel, a free-lance designer, began working for the Heisey Co. In addition to designing several modern patterns such as Town & Country and Roundelay for Heisey she also designed a series of etchings. These etchings were all followed by the letter "B", probably this was used to indicate that these were Zeisel designs just like the "A" is used with the Town & Country number. It may have been that she received a royalty on pieces sold and this was a way of managing record keeping.

We were very happy to find the lists, but we were also very disappointed to find no illustrations accompanying them. However, several of the names are very descriptive and if anyone ever sees a piece, they will probably be able to identify the etching. In the case of Cocktail Party, we have seen two different pieces and the designs are different, much like the similar but different designs appearing in the Winchester '73 etching. Possibly others may also have these differing designs to accommodate different shaped pieces of glass. On the Country Club soda with Cocktail Party, there are two different motifs on the piece, one side depicts three men in conversation, while the other side depicts three women. On the Plantation Ivy cocktail with Cocktail Party, only the heads of the three women appear on one side, while the heads of the three men appear on the other.

The Scroll etching is a very elaborate and entwined scroll design. It appears on a line of 6060 Country Club pieces.

Both of these etchings are quite attractive and only whet the appetite to know what the others might be. These etchings were probably not made for any long period of time since they have never appeared in a Heisey catalog or price list. Unfortunately, they were probably not readily accepted by buyers.

Other etchings listed are #520B Leaf, #523B Steed, #524B Classic, #525B Chintz, #526B Pennsylvania Dutch and #527B Ponies. All of these except #520B Leaf are listed on #6007A line consisting of a 7 oz. juice or cocktail, 9 oz. sherbet, 12 oz. tumbler or old fashion and a 14 oz. ice tea or hiball. The presence of the "A" again probably means that Eva Zeisel designed the line. Leaf etching is listed on #6091 Cabochon stemware and 1951 Cabochon pieces and a #112 candlestick with a few other plain items.



#521B SCROLL



## HEISEY IN THE JESSE JAMES MUSEUM

Recently visitors to the Museum from the Pittsburgh area who were vacationing in the west reported to us that there is a crystal Bead Swag toothpick in the Jesse James Museum in St. Joseph, MO. It is identified as a salt cellar. This was apparently part of the property of the mother of Jesse James since her belongings were used to furnish the museum.

## ERRORS, WE MAKE ERRORS

(not our fault this time!)

1. The Mini-Show is of course, on Sept. 11, NOT the seventh.
2. The Bay State Show dates were printed wrong on their show cards which we used for the ad. The show is really October 23 & 24.



20TH. CENTURY - 1415

BY: Tom Bredehoft

When the line was introduced in 1933, the tumbler cost \$2.50/doz. in all colors except sahara, which cost \$3.10/doz. In Catalog #33, in dawn only, remember, it cost \$10.80/doz.



9 oz. Footed Tumbler

Period: Middle 1933 - 1937  
 (Late 1955 thru 1957 Dawn only.)

Colors: Crystal, Moongleam  
 Flamingo, Sahara & Dawn

Variety: None known

Decorations: None known

Comments: Generally signed on the bottom, but since the bottom is tooled, the mark may be fire polished away.

No. 1415 was introduced without any fanfare in the trade papers sometime before June, 1933. That is the date of the first Heisey price list in which it occurs. This price list illustrates the one (1) pint milk pitcher and lists the 9 oz footed tumbler, the 5 and 12 oz footed sodas, sherbet, cereal bowl and 7" cereal bowl plate in crystal and three colors; moongleam, flamingo and sahara.

When the next price list came out, sometime in 1935, moongleam and flamingo had been discontinued, but the entire six piece line was still in production. One of the price lists we have for Catalog #211 was used in the preparation of the #212 Price List and 20th Century - No. 1415 is marked "discontinued" so we can assume that the line was discontinued by 1937. This would give us at most a four year production for the early period.

The tumblers are also known in cobalt, although I could not find them listed in a price list.

In the second production period the line was shortened to five pieces, the milk pitcher, (listed as 18 oz.), the 12 oz. footed soda, now called an ice tea, the 5 oz. juice, the tumbler and the sherbet. These pieces were only produced in dawn, no crystal. These five pieces were still in production in the last catalog. No. 33, (June, '56) and we must assume that they were still making them when the plant closed in December, 1957. This would give three years for the late period.

OTHER ITEMS IN #1415 TWENTIETH CENTURY



1 pt. Milk Pitcher



12 oz. Footed Soda  
Also made 5 oz.



Sherbet



Cereal Bowl & 7 in. Plate

HEISEY CANDLESTICKS -- NO. 1404  
OLD SANDWICH

By: Tom Felt

The article in June on the No. 1405 Ipswich candlesticks, focussed on one of the two "early American" designs which were brought out by Heisey in mid--1931. A companion line also came out at that same time, No. 1404. It was featured in one of the trade journals as early as June 1931, and was advertised extensively later that year. An ad in the CROCKERY AND GLASS JOURNAL, dated September 1931, was headlined:

"Expressing Fine Traditions In Early  
American Glass"

Simple lines and delightful sturdiness are carried out with true craftsmanship in recent Early American glass by Heisey. In this glass is expressed the many fine traditions of the period.

An example of this is the new 1404 line, the Thumb Print pattern. The charm of its design was inspired by the famous Sandwich glass, of which the Heiseys own the original models.

(Two of these models were later pictured in the September 1933 issue of the CROCKERY AND GLASS JOURNAL, one for a goblet in the Comet pattern, which served as an inspiration for Ipswich, and the other for the goblet which inspired the "Thumb Print" pattern, better known today as Heisey's Old Sandwich. See the article on Page 4 and 5 of the June issue of Heisey News for more information on these original mahogany models.

Early American designs seem to have been enjoying a real vogue at this time and Heisey's advertising campaign reflects that fact. One ad, which appeared in all the major trade publications, stated that "People are thinking Early American, Fashion has swung back to Early American glass.... the vogue for Colonial interiors creates a demand for it. To be in the current of the times, it will pay you to feature the outstanding Early American designs achieved by Heisey." And, in the Saturday Evening Post, another advertisement, dated October 10, 1931, pictured several pieces of Old Sandwich and proclaimed: "Here is glass that sings of romantic years when stages wound over mountain roads and clipper ships skimmed the oceans with sails a-swelling. Fashion of nowadays calls for such glass at this--Early American designs that enrich modern living with traditions of great-grandfather's time."

A major selling point was also made of the fact that 1932 was the bicentennial of George Washington's birth, with many stores planning to do special displays which could be enhanced by the inclusion of Early American glassware. As the TABLE TALK for January, 1932, stated, "The fact that Washington appreciated and bought the finest glassware available in his day gives particular interest to these efforts."

At any rate, Heisey's No. 1404, Old Sandwich pattern, does seem to have been issued at a time when there was a real interest in adaptation of old pressed glass designs. The pattern upon which No. 1404, Old Sandwich, was based seems to



have been one known to collectors of early American glass as Pillar. According to Ruth Webb Lee, fragments of this pattern were found at Sandwich, and she refers to the extant models, presumably those which were in the possession of Heisey at the time she was writing. She states also, however, that his pattern appeared in an early catalogue of Bakewell, Pears & Company, under the name Pillar. So it seems likely that it was, in fact, made by more than one early company.

Heisey's version of this pattern, however, was only loosely based on it. The original Pillar goblet, for instance, has four "thumbprints", or punties, of equal size on the panels, whereas Heisey's goblet had only three punties, of graduated size. And there were other minor variations, as well, making this more a case of "inspiration" rather than actual reproduction. Several of the pieces, in fact, were entirely new designs, and this includes the candlestick, since there was none, to our knowledge, in the original Pillar pattern.

Heisey's Old Sandwich candlestick was first advertised, along with the oval flower bowl and flower frog, in the September, 1932, issue of CHINA, GLASS & LAMPS, as an addition to the line. "Again stating that "Fashion swings back to early American glass because it goes so alluringly with interiors of the period." In fact, however, the candlestick had already been in production for a full year at that time, since we know from the original factory turn books \*that they were made for the first time during the week ending September 12, 1931. We also know from that same source that they were made in crystal, flamingo, moongleam and sahara right from the very beginning. (In addition, they were also made in cobalt at a somewhat later date.) They remained in production until sometime in 1937, but had definitely been discon-

tinued by April, 1938, when price list 213-18 came out. Despite this relatively brief production period, they are not too difficult to find today in crystal, with Sahara probably being the easiest color to find. None of the colors are all that common, however.

The candlestick is just 6" tall. There are six panels on the candleholder and column, with a series of punties of graduated size on each alternate panel. The largest punity appears at the top of the candleholder, with a second smaller one underneath; there is a third punity on the collar and a series of four more on the column with one more under that on the band just above the skirt.

Then the six panels flare out to become twelve, with two panels with pairs of punties alternating with two plain panels on the skirt. The size of the punties on the base also reverses in order, with the small ones being at the top of the skirt and the larger ones at the bottom.

This candlestick is usually marked, with the diamond H appearing on the underside in the center of the base.

Although some pieces \*\* in this pattern were in production as late as 1953, and were also reissued by Imperial, the candlestick was not among them.

#### Editor's Note:

\* Reference to "Turn Books" used often recently by our columnists means the actual day to day production records which HCA owns. We have these for many years though, unfortunately, many more years are missing.

\*\* Fifteen (15) items were made by Imperial from 1-1-59 - 1-1-62. These included only stemmed items, tumblers and a 4-1/2" nappy.

### WARNING!!!

DO NOT BUY ANY ANIMAL COVERED DISHES, marked with a poor Diamond H. These recently came on the market, probably from Taiwan, and are NOT Heisey. They are distributed by AA Importing Company. The mark is more squarish than Heisey's mark. Heisey DID make the cigarette box with the Horse Head on the lid and the Waverly Lion trinket box in Crystal (only). Imperial made this trinket box for Collectors Guild in Amber and it is signed CG in a circle.

See Heisey News, June issue, Page 12, (Letters - We-Get) for more about the covered dishes.  
L.R.

#### HEISEY COLLECTORS OF TEXAS Affiliate HCA - Chapter 16

WANTED: MEMBERS OF HCA LIVING IN DALLAS/FT WORTH AREA TO JOIN US - HEISEY COLLECTORS OF TEXAS (HCT)! WE MEET ONCE A MONTH IN A MEMBER'S HOME AND TALK, STUDY AND SHOW OUR GREAT LOVE (HEISEY)! EIGHT OR EIGHTEEN, WE HAVE A FUN EVENING - INTERESTED????????? CALL OUR PRESIDENT, GEORGE BUCHANAN - 492-2775 OR OUR SECRETARY, ERMA HULSLANDER --279-0018.

Erma Hulslander  
Secy/Treas.

### NOTE OF THANKS

I would like to thank Tim Heisey for accepting the role of speaker at the Former Heisey Employees' Reunion, (Original Cast), at this years Convention.

Tim expertly involved Employees as well as the H.C.A. Members and made it so very interesting for everyone present.

Carl Cobel was present as a guest. He was called on to answer some questions. He was a designer of Etching Patterns for Heisey.

This is also a belated Thank You to Carl Cobel who was the speaker and host for a talk show at the Retirement Party during the 1981 Convention.

A panel of five men from different departments at the Factory gave their versions of their work:

Harold Dunham -- Office  
Harry Gebhart -- Lehrs  
Raymond Lukasko -- Mold Maker  
Charles Holman -- Hot Metal  
Walter Gray -- Cutting Shop

I selected the panel, but all the work, planning, and great idea of a Panel Show credit goes to Carl Cobel.

This was a very successful meeting and will be remembered as a "first of a kind" program which was very much appreciated. To everyone on the panel, A Big Thank You.

Helen Pallagi, former employee,  
Chairman for the Reunion

### DATING FOR

#### HEISEY'S PRODUCTION COLORS

\*ALEXANDRITE - 1930 - 1935 - Lively lavender with tinges of red. Turns blue under fluorescent light.

AMBER - Both light and dark - Made over a long period of time. Exact dates unknown.

CANARY - 1897 - Vaseline - greenish yellow. Made again in lighter shade in early 1920's.

\*COBALT - 1932 - 1941 - Intense deep blue.

\*DAWN - 1955 - 1957 - Smoke color.

EMERALD - 1896 - early 1920's - Dark green.

\*FLAMINGO - Late 1925 - 1935 - Rose pink.

\*HAWTHORNE - 1927 - 1928 - A light purple.

IVORY and IVORINA VERDE - 1897 - early 1900's.

Ivory is light yellow opaque. Ivorina Verde is a deeper shade of yellow opaque. Popularly known as custard glass.

LIMELIGHT - 1956 - 1957 - Blue green. Same as Zircon.

\*MARGOLD - 1929 - 1930 - Deep brassy yellow showing green around edges.

\*MOONGLEAM - 1925 - 1935 - Soft green of meadows.

OPAL - 1889 - early 1900's - Opalescent milk glass.

\*SAHARA - 1930 - 1937 - Pale to sunny yellow.

SULTANA - 1951 - Dark amber.

TANGERINE - 1932 - 1935 - Varies from light orange to almost true red.

ZIRCON - 1936 - 1939 - Blue green. Same as Limelight.

\* Colors which were etched or cut.

## NO. 394 COTTAGE CHEESE DISH

By: Joseph D. Lokay

Have you ever asked yourself the question, "Should I use my Heisey glassware or not?" The most likely answer is, "Depending on which piece." Most people would not use a very scarce or fragile piece for fear of chipping or breaking it. But, a heavy, more common piece; yes, I would use it, perhaps not for everyday use, but for entertainment, special occasions, local Heisey club meetings, etc. One such piece that is used at my home reasonably often is the 9" cottage cheese dish in the #394 Narrow Flute pattern.

The 9" cottage cheese is by no means a common piece as it is not easy to find. To me, it is a very utilitarian piece because of its unique shape and design. Its use is not limited to cottage cheese as its name may imply. It was named by the Heisey Company back in the early 1920's perhaps specifically at that time for cottage cheese when placed on the table in the home or restaurant. But, a bowl is a bowl, and it can be used to hold anything put into it.

The style of the 9" cottage cheese piece is colonial. Its design is a shallow bowl with a wide horizontal flange type rim around it. The bowl is essentially rectangular in shape with large rounded-off corners. The inside of the bowl at the top measures 4-1/4" wide by 6-3/4" long. The bowl wall tapers in slightly to a full flat bottom that is slightly smaller than the top. The wall is fluted or paneled, and there are 32 panels around the outside of the bowl.

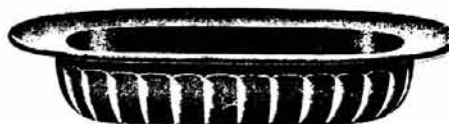
The bowl is shallow in that its overall height is only 1-3/4". The flange around the bowl is quite big in that it is 1-1/8" wide by about 1/4 of an inch thick. The overall dimensions of the bowl and flange are 6-1/2" wide by 9" long. The 9" dimension used in the name of the piece refers to the largest overall dimension that was mentioned in the previous sentence.

The #394 cottage cheese dish is a heavy piece. I am using the word "heavy" in relationship to the relatively thick glass that occurs throughout the piece rather than to the physical weight of the item. This is a common use for the word heavy when talking about pieces of glassware. The outside bottom is fully polished and contains a typical Heisey star. Because of the rectangular shape of the bowl, the 36 point star in the bottom is also rectangular in shape. The piece is signed with a large diamond H in the center of the inside bottom.

The Narrow Flute pattern has two pattern numbers, 393 and 394. It appears that two numbers were used to distinguish between similar items in the same pattern. Production of the items with a 394 pattern number started in about 1909. The first item was a 9 oz goblet. There were 28 items numbered 394 in the 1917 price lists. Over its life, the total number of items offered in 394 was 30. Many of the

394 items are pictured in Vogel book two, pages 85 and 86. The 9" cottage cheese was added to the 394 pattern in about 1921 as it first appeared in price list #206 (circa 1922). The last price list to offer the 9" cottage cheese was #209 (circa 1929). The estimated production period for the cottage cheese is 1921 to 1931, or 10 years. The cottage cheese was made in crystal only.

There is one other piece in the 394 pattern that has a wide horizontal flange. It's the covered mustard. Was there a functional purpose for the horizontal flange? Perhaps to catch the drippings from full spoons as the contents are removed. Any suggestions, or was the designer thinking of the planet Saturn when he sketched the mustard?



Cottage Cheese Dish



No. 394 Mustard

---

### Heisey Heritage Society 6th Annual Show

On October 8th through October 10th, 1982, The Wheaton Museum of American Glass in Millville, New Jersey, will host the Sixth Annual "Delaware Valley Glass Collectibles Show" sponsored by The Heisey Heritage Society.


The show will feature the hand-crafted glassware made by the A. H. Heisey Company of Newark, Ohio. The Heisey Company was in existence between 1897 and 1957. The Trademark of this company was the now famous letter "H" inside a diamond which was permanently impressed on many of Heisey's products. Several pieces of Heisey Glass are part of the Wheaton Museum's permanent collection.

In addition to Heisey Glass, dealers will be exhibiting other collectible glass of the Victorian era and the 20th century including art glass, Brilliant Period Cut Glass, pattern glass, porcelain, pottery, and some china.

Manufacturers represented in addition to Heisey will include Cambridge, Imperial, Fostoria, Fenton, Westmoreland, and many other companies. (Several dealers also plan to show a limited quantity of antique silver, jewelry, and objects of vertu.)

The Heisey Heritage Society is a glass collectors club whose members are drawn from the Mid-Atlantic Region. The club is affiliated with the Heisey Collectors of America, Inc.

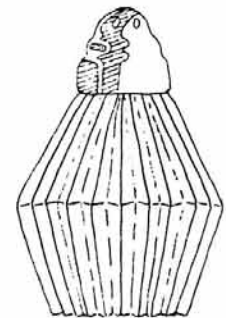
## PERSONAL DONATIONS

1. John R. (Russ) Thomas: No. 300 Peerless Cordial; #1503 Cigarette Lighter, Crystolite; #1503 Candy Box w/Candleblock Flower, Crystolite; #1469 Ridgeleigh Shot; #1504 Double Candle, Lariat; #7020 Hair Receiver; #300 Peerless Goblet; Custard, Empress; #1506 Floral Plateau, Whirlpool; #1567 Plantation Floral Bowl, Ivy Etch.; #350 Pinwheel & Fan, SP Top Puff Box; #393 Individual Cream & Sugar; #1220 Puntty Band, Salt, Souvenir; #353 Sanitary Syrup, 8 oz., #353 Sanitary Syrup, 32 oz.; #1503 Crystolite Preserve Handled, w/cover; Covered Sugar, Touraine; #1220 Souvenir Tumbler and #1503 Crystolite Sugar
2. No. 372 Narrow Flute w/Rim 11" Sandwich Plate, Lucille and Miriam Pringle.
3. No. 1401 Empress Dolphin Ftd. Tumbler, Sahara, Joyce and Al Colangelo.
4. No. 1489 Puritan Cigarette Box, 1939 World's Fair Etch. And #473 Narrow Flute w/Rim, 2 piece vase, Norman Alford.
5. Look-A-Like for 394 Almond Dish - NOT HEISEY- For misleading items display, Mr. & Mrs. Chris Maskaleris.
6. No. 1194 Yeoman 5" Relish, #2401 Tumbler with cutting, #121 Candlestick, Hawthorne. Tom Martin
7. Strawberry and Thistle - Fake Toothpick, Marked with Diamond H. - Cobalt, Ron and Ginny Pratt.
8. No. 3350 Wabash Goblet and No. 3368 Albe-marle Champagne both with very beautiful unknown cuttings (probably done by Heisey).
9. No. 201 Tumbler, Harvey Amber, Marjorie and Robert Berry.
10. No. 56 Novelty Match holder, opal, Anthony Tomazin, Pres. of National Duncan Glass Society.
11. All back issues of Heisey News, 2 books - The Collectors Guide-to Depression Glass, and American Pressed Glass and Figure Bottles, Family of Margaret Matesich.
12. No. 1428 Warwick Floral Bowl in Heather, by Imperial, Tom Felt and Bob O'Grady.
13. Five (5) Look-A-Likes For #1486 Coleport Pattern, Jim Earnshaw
14. Material for Display Posters (which she made) Maureen Kovacs.
15. No. 353 Medium Flat Panel set of three (3) Nesting Ash Trays, Amber Stain w/cutting, and \$27.50 Check, Mr. & Mrs. Manuel Klawans.
16. No. 3440 Portsmouth Sherbet, Flamingo, Bob and Ginny Marotto.
17. No. 1222 Plate, Crystal, Pictured in #109 Catalog, Mary Little.
18. Fifty Dollars Cash (\$50.), F & R Lazarus Store, Columbus, Ohio.
19. No. 4220 Vase, Drape Optic, Light Pink by Imperial, #5025 Tyrolean Low Goblet, Bill Clifford
20. Gulf Oil Company, \$1750.50 Check, Matching Funds for Joseph Lokay's contributions.\*
21. No. 4083 Stanhope Cordial, "Friends of HCA".
22. No. 3373 Morning Glory Goblet, Crystal and Moongleam and Old Pressed Goblet - Look-A-Like for "Diamond Grid", R. G. Albright.
23. Eight (8) Metal File Boxes (3 X 5) and ten sets of Alphabet Cards, R. H. Brown.
24. Top For a Water Lamp, Clare Nelson
25. No. 1469 Ridgeleigh Ash Tray in Metal Holder (3 elephants) and #470 Intercepted Flute 4-1/2" Plate, Mr. & Mrs. Ralph Phillips.
26. No. 4085 Kohinoor, Low Footed Goblet, Mr. and Mrs. Edwin Penney
27. No. 3416 Barbara Fritchie Goblet, Unknown Cutting, Donated by Mr. & Mrs. Norman Thran.
28. No. 3333 Old Glory Cordial - Unknown cutting, Jerry Gallagher
29. Check for \$30 for Endowment Fund - Mr. & Mrs. Manuel Klawans.
30. No. 1469 Ridgeleigh Salt and Pepper, Amber, Rare, Elizabeth (Bette) Johnston. 



No. 56 Match holder, Opal

This is marked with a Diamond H and the Number 56. One of these was donated during Convention by Anthony Tomazin, President of The National Duncan Glass Society - A Very nice gift.



#1469 Ridgeleigh Salt  
See No. 30 above.

3373 Morning Glory Goblet - A rare item.  
See No. 22 above.

\* (two-for-one dollar basis)

ELIZABETH CASON 813-748-0851  
 401 32nd St, West After 8/26 - P & I Extra  
 Bradenton, FL 33505 \* Marked - SASE For List

- #1401 EMPRESS ALEXANDRITE rd. plates  
(4) 7" & (4) 8" \*.....ea.....\$ 45.00
- #1536 MILITARY CAP ASHTRAY.....\$ 20.00
- GOOSE - Wings Down.....\$215.00
- #1404 OLD SAND. MGLM 2-1/2 oz Wines.ea.\$ 35.00
- #1469 RIDGELEIGH Sau.Champ.\*.....ea.....\$ 15.00
- 2 large knife rests\*.....ea.....\$ 30.00
- #1184 YEOMAN Flam. Goblets\*.....ea.....\$ 15.00
- #1469 RIDGELEIGH Cruets (2).....ea.....\$ 24.00
- #1425 VICTORIAN Punch Cups\*.....ea.....\$ 7.50
- #1425 VICTORIAN Dressing bt1\*(more1425)\$ 22.00
- # 417 DBL. RIB & PANEL Sm.Cruet\*.....\$ 30.00
- # 10 HAWTHORNE d.o.Floral Bowl\*.....\$ 52.00
- #1540 LARIAT Sm. basket.....\$ 55.00
- # 351 PRISCILLA ind. btr. pats\* ea.....\$ 5.50
- #1567 PLANTATION Div,Oval dresg.Bowl\*..\$ 35.00
- # 335 PRINCE OF WALES PLUMES tumblers  
with worn gold trim\*(4)....ea....\$ 25.00
- # 343 SUNBURST Punch Cups (2) \*..ea....\$ 15.00
- #1503 CRYSTOLITE Cruets.....ea.....\$ 20.00
- # 300 PEERLESS 2-1/2oz Bar Gls.(4)\*ea..\$ 12.00
- #1519 WAVERLY Orchid etch, cruet-paper  
label, very tiny chip on stopper  
top.....\$ 65.00
- @1229 FLAMINGO ftd. may.-unm & ladle\*..\$ 30.00
- #1509 Q.A. ORCHID etch dol.Ftd. Jelly..\$ 28.00

H & R DIAMOND H PH: (614) 279-0390  
 HELEN - BOB RAREY After 5:30 PM  
 1450 WHITE ASH DRIVE Shipping & Insurance  
 COLUMBUS, OH 43204 Extra  
 \*Signed Items

- #1E92 OMEGA 5 oz.Juice\*,Waltz Cut(6) ea.\$17.50
- #2-30C 1 LITE CANDLESTICK, pair.....\$75.00
- # 112 1 LITE CANDLESTICK, Moongleam..pr.\$37.50
- # 150 BANDED FLUTE Covered Butter\*.....\$55.00
- # 300 PEERLESS PUNCH CUP\* (8) ea.....\$12.00
- # 393 NARROW FLUTE Ind. Salt Tub\*(2).ea.\$ 9.50
- # 393 NARROW FLUTE 5" Hld. Jelly\*.....\$27.50
- #1401 FANDANGO Ind. Butter Pat (3) ea...\$27.50
- #1503 CRYSTOLITE 3" Cigarette Box\*(2)ea.\$17.50
- #1503 CRYSTOLITE 5 part round Relish\*...\$45.00
- #1503 CRYSTOLITE 6" Hld. Jelly\*.....\$15.00
- #1567 PLANTATION 3 part, Oval Relish\*...\$47.50
- #3368 ALBERMARLE Ice Tea, Chateau Cut...\$15.00
- #3390 CARCASSONNE Short Goblet, Old  
Colony (2) each.....\$12.50
- #3408 JAMESTOWN Goblet\* Barcelona Cut  
(8) each.....\$22.50
- #4002 AQUA CALIENTE Cocktail, Fox Chase  
(4) each.....\$42.50
- #5002 GRACEFUL OYSTER COCK., Harvester  
Cut (3) each.....\$17.50
- #7000 SUNFLOWER Tumbler\*.....\$15.00
- #5067 PLANTATION 3 oz Wine (4) each....\$27.50
- #5057 SUEZ 9 oz Goblet\* (8) each.....\$12.50

THE COLLECTORS STOP All items marked.  
 4 Brookvale Drive In excellent Cond.  
 Danvers, MA 01923 Otherwise stated.  
 PH: 617-774-1139 Shipping Extra.

- \*All items subject to prior sale.
- # 515 1/4 oz. Flam. Cologne Diam. Optic.\$ 90.00
  - #1183 REVERE Mglm. 6" Comp. Swirl Optic.\$ 38.00
  - # 433 GREEK KEY 9" Nappy.....\$ 95.00
  - #1401 ORCHID Etched 7-1/2" Ftd. Nappy...\$ 32.50
  - # 16 CANDLESTICKS - Pair - 11".....\$110.00
  - # 137 FLARED 8 FLUTE 7 oz tumb...doz....\$ 85.00
  - #343-1/2 14" SUNBURST Punch Bowl(NoStand)\$ 75.00
  - # 465 CANDY JAR/COVER 1 lb. Etched(2)ea.\$ 35.00
  - # 71 CANDLESTICKS W/Cutting....Pair....\$275.00

SEPTEMBER 11, MINI-SHOW AT  
 NEWARK CATHOLIC HIGH SCHOOL

Thought a quick article would be appropriate just as a reminder that the Annual September Flea Market and Mini-Show is back in Newark this year. In fact, the show will be at the Newark Catholic High School where it has been held a couple of times before.

We plan on having a good time along with having lots of fine Heisey and other collectibles for sale.

Show time is Saturday, September 11th, from 9 AM to 4 PM.

FOR INFORMATION CONTACT:

JACK METCALF  
 Box 396  
 Utica, Ohio 43080

LATE FLASH

Imperial is now offering the following animals in Crystal and Onyx:

Tiger, Elephant, Donkey, Airedale, Giraffe, Gazelle and Pig.  
 We haven't seen them but assume they are marked ALIG.

See March issue, Bob's column on Page 2, for mention of these crystal animals.

ORDER CORDIAL NOW

Don't forget to order your Cordial at once. The deadline for dinner orders is the 29th. Cordials can be ordered until the 11th of September or until sold out. Remember this is a major fund-raising event for HCA. Call: (614) 345-2932 if you have missed the deadline and wish to come. Bank Americard and Mastercard welcome.

CLUB NAME

You DO NOT belong to the National Heisey Collectors Club. You DO belong to Heisey Collectors of America, Inc. (H.C.A.) We own the National Heisey Glass Museum.

CLASSIFIED ADS.

CHARLES & MILDRED FISHER (614) 522-5398  
 991 IDLEWILDE AVENUE UPS P & I 5% Extra  
 NEWARK, OHIO 43055 \* MARKED

MADONNA*		\$125.00
#1404	OLD SANDWICH DECANTER.....	125.00
	COCKTAIL SHAKER, W/Rooster Stopper..	75.00
	CANDLESTICKS, Dolphin Ftd., Flamingo*	350.00
	ELEPHANT, Small.....	175.00
#1503	CRYSTOLITE, Cream & Sugar, (Min.)	
	W/tray*.....	50.00
#1488	KOHINOOR, Round ASH TRAY, ZIRCON*...	60.00
#1519	WAVERLY, ORCHID ETCH, Gardenia Bowl*	60.00
	WAVERLY, ORCHID ETCH, Candlesticks,	
	Single, Pr.....	45.00
	WAVERLY, ORCHID ETCH, Water Goblets,	
	7* each.....	35.00
	WAVERLY, ORCHID ETCH, Sandwich Tray,	
	Handled.....	65.00
	WAVERLY, ORCHID ETCH, Relish, Round,	
	3 part divided 8".....	50.00
	WAVERLY, ORCHID ETCH, Plates, Round,	
	Lunch or bread & butter 8" each....	25.00
#1567	PLANTATION, Water Pitcher.....	175.00
	PLANTATION Cups & Saucers 6 ea. Set..	40.00
	PLANTATION Vases, Large, 9"....2..ea.	150.00
	PLANTATION Cream & Sugar.....	60.00
	PLANTATION Syrup.....	50.00
	PLANTATION Candy Dish, 7-1/2" high	
	Covered.....	75.00
	IMPERIAL SLAG ANIMALS - Donkey, Standing	
	Colt, Plug Horse, Mallard W/Wings 1/2 and	
	up, .....	25.00
	MALLARD W/Wings down.....	225.00
	COLT, Balking.....	200.00
	SCOTTIE.....	200.00

SIXTH ANNUAL DELAWARE VALLEY GLASS SHOW

FEATURING HEISEY  
 and including other  
 Collectible Glass of the Late 19th & the 20th  
 Centuries

At The  
 WHEATON MUSEUM OF AMERICAN GLASS  
 10th & "G" Sts.  
 Millville, N.J.  
 Near Rts. 47, 49 & 55

Sponsored by: Friday, Oct. 8  
 the 7-10 p.m.  
 HEISEY HERITAGE Wine & Cheese Preview  
 SOCIETY \$15.00

FOLLOW THE SIGNS TO:



Saturday, Oct. 9 Sunday, Oct. 10  
 10:a.m. - 8 p.m. 10 a.m. - 5 p.m.

DONATION \$3.50  
 With Ad \$2.50

Benefit Of National Heisey Glass Museum

**FOR SALE:** Most Colors, Most Patterns, 2000 Pieces of Heisey to choose from. S.A.S.E. Please. No list available. Write wants. PEGGY'S ANTIQUES, Box 367, Spavinaw, OK 74366 Phone: (918) 589-2859

**WANTED:** Buying Heisey Rose and Orchid, Cambridge Rosepoint, Fostoria etched dinnerware and Depression Glass. Also glass figures and unusual glass pieces. NADINE PANKOW, 207 S. Oakwood, Willow Springs, Ill. 60480 - Phone: (312) 839-5231.

**WANTED:** Will pay up to \$200.00 for Straw Holders with glass lids, or #353 that lays down. Also, want crushed fruit jars. Also want #433 Soda Fountain Glassware. GEORGE HANEY, Box 538, Spencer, OK 73084

**WANTED:** Baskets #460, 463, 467, 466, 473, 1503, DAVID JORDAN, Box 387, North Salem, IN 46165

**WANTED -** Am still building on the #1401 Empress Moonglam party setting that I displayed at the 1981 Convention. Will buy Punch Cups (esp.), 12" Square Sandwich Tray, 2 Handled Muffin Plate, 10" Square Salad Bowl, most Comports, Marmalade and Cover, Oil Bottle with Stopper, Pair of single Dolphin Candlesticks, Floral Bowl, 6" Covered Candy (come on now, Ann Arbor, turn loose), Need most all Relishes, Buffet Plates, Hors d'Oeuvre Serving Trays, and Compartmented items, "T" Handled as well, Nasturtium Bowl and a pair of 3 Handled Vases. Will buy or Trade for these items. Also wanted, any and All Minerva Pattern glass items. All Heisey Marked, please. JERRY BAKER, P. O. Box 13081, St. Petersburg, FL 33733.

**WANTED:** One (1) #300, 3-light Candelabrum arm. See H. N. Vol. 8, front cover for style needed. RALPH JUPPE, 90 Sunnymead Rd., NJ 08876

**FOR SALE:** Heisey Barcelona cut, Jamestown stem, 9 Goblets \$38.00, 10 Sherbets \$35 ea; Cambridge Glass: 2 Cambridge Arms, 2 low pedestal, 3 peg vases, 4 peg nappies \$125 pr. MRS ARTHUR FEENEY, 1786 Sawgrass Dr., Quail Hollow Condominiums, Reynoldsburg, OH 43068, 614-866-4903.

**WANTED:** Base for Pillows Punch Bowl, Punch Cups; Old Glory Wines with #657 Cutting. COUNTRY PEDLAR, P. O. Box 3528, Salinas, CA 93912 408-449-5207

**WANTED:** Stoppers for Old Sand. & Ridgeleigh cruets. Lids for Ridgeleigh, Crystolite, & FLAMINGO Twist mustards. #300 bobache. ELIZABETH CASON, 401 32nd St. W. Bradenton, FL 33505. SASE for list.

**FOR SALE:** No. 109 Flamingo Petticoat Dolphin Candlesticks. Perfect Condition - MICHELE CIARCIA, 13 Deerpath Road, Branford, CT 06405 Phone: (203) 488-0711

**FOR SALE:** Goose Wings Down \$300, Goose Wings Up \$80, Heisey's Filly head forward with a small chip at base \$800, Standing Pony \$60. MIKE CROGHAN, 3219 Cross Bill Rd., Louisville, KY 41213. 502-637-8238.

**HEISEY BY IMPERIAL:** Caramel Slag: Elephant \$35, Donkey \$30, Sparky \$27, Mallards \$25, and Balking Colt \$160 All IG. THOMAS TUTTLE, 1444 Bolenhill Ave., Columbus OH 43229

VIRGINIA & ODELL JOHNSON Postage and  
 GLASS "N" GLASS Handling Extra  
 Rt. 1, Box 207 \* Marked  
 Hayward, WI 54843 Phone: 715-462-3753

- #1252 TWIST Cup/Saucer/8" Plate,  
MOONGLEAM\* ea. set.....\$ 35.00
- # 406 COARSE RIB crm/sgr.MOONGLEAM\*set...\$ 60.00
- # 500 OCTAGON basket 5" FLAMINGO\*.....\$ 90.00
- # 480 Fruit Basket, VB2, P.155\*.....\$150.00
- #1433 THUMBPRINT & PANEL candleholders  
pr. SAHARA.....\$ 95.00
- # 134 TRIDENT candleholders, pr. SAHARA..\$ 80.00
- #1401 EMPRESS floral bowl, Old Colony  
Etch, SAHARA.....\$ 45.00
- # 134 Candleholders & #1401 floral bowl,  
Rosalie etch..set.....\$ 80.00
- #1503 CRYSTOLITE ice tub, handle\*.....\$ 75.00
- #1503 WHIRLPOOL min. crm/sug\*.....\$ 30.00
- #1504 ATHENA footed cheese, cover.....\$ 25.00
- # 394 NARROW FLUTE 10 oz. soda, handled\*  
(2)....each.....\$ 25.00
- #1567 PLANTATION Pineapple shape candle-  
holders, pr.....\$ 60.00
- # 393 NARROW FLUTE 1 qt. covered fruit or  
candy jar\*.....\$ 95.00
- #4044 NEW ERA candlesticks, bobeches,  
prisms pr.....\$ 90.00
- # 22 Candlesticks 11", pr.....\$100.00
- #1567 PLANTATION sugar (\$25), Goblets (2) ea.  
(\$25), Sherbets (3) ea. (\$15), oyster  
cocktail (2) ea (\$22)
- # 433 GREEK KEY soda, 12 oz. 5-1/2 3/8"  
tall\*.....\$30.00
- #1404 YEOMAN 2 oz. Cruet.....\$20.00

REBECCA GILBERT 215-659-2249  
 237 Fitzwatertown Rd. P & I Extra  
 Willow Grove, PA 19090 \* Marked

Call After August 22nd.

- #1485 SATURN 3" Violet Vase, Limelight\*...\$75.00
- # 300 COLONIAL Tankard, Pint Size\*.....\$65.00
- #1170 PLEAT & PANEL Cruet, 3 oz, Flamingo.\$50.00
- #1401 EMPRESS 11" Console bowl, dolphin  
footed, Sahara.....\$55.00
- #1401 EMPRESS mayonnaise, dolphin footed,  
Sahara\*.....\$35.00
- #1428 WARWICK single candle, pair,SAHARA\*.\$75.00
- #7024 DECAGON Mint Dish, Moongleam\*.....\$28.00
- # 150 BANDED FLUTE Saucer Ft. Candle(2),  
One Marked.....each.....\$40.00
- # 15 FLOWER FROG HOLDER for Duck or Can-  
dle Insert.....\$25.00
- #1567 PLANTATION 2 pt. Salad Dres. Bowl\*..\$25.00
- # 350 PINWHEEL & FAN 8" Bowl\*.....\$43.00
- #1495 FERN 3 pt. relish w/Rosalie etch...\$33.00
- #1185 YEOMAN crm/sug w/unlk flr. cut.\* Set.\$48.00
- #3408 JAMESTOWN 1-1/2 oz sherry with  
barcelona cut (6)\* each.....\$25.00
- #3408 JAMESTOWN 2 oz wine w/olympiad etch  
(9).....each.....\$18.00
- #4054 CORONATION Iced Tea Glasses (4) ea..\$22.00
- #5072 ROSE STEM GOBLETS, no etch (8)\*.ea..\$19.00
- # 433 GREEK KEY low ftd. sherbets,flar\*ea.\$17.00
- #1533 WAMPUM Candlesticks, pair.....\$35.00
- #1506 WHIRLPOOL Bon Bon\*.....\$15.00

MRS. LOWELL BAILET 419-756-6269  
 584 EDGEWOOD ROAD  
 MANSFIELD, OH 44907

SAHARA:  
 # 301 Two 10-1/2" Candelabra  
 #1425 Five Victorian 9 oz. High Footed Goblets

ALEXANDRITE:  
 #4045 7" Ball Vase  
 #1401 Twentythree Empress 8" Round Plates  
 #3381 One Creole 11 oz. Tall Stem Goblet  
 Ten Creole 11 oz. Tall Goblets  
 (Crystal Stem & Foot)  
 Eleven Creole Parfaits  
 (Crystal Stem & Foot)

COBALT:  
 One 3-1/2" Ball Vase

CRYSTAL:  
 #1557 Two Chantaclear Fighting Roosters  
 Eleven 11" Square Empress Plates  
 Eighteen Victorian 9 oz. High Footed  
 Goblets  
 Six Victorian 3-1/2 oz. Footed Sherbets

ASSORTED ASHTRAYS, CANDLE HOLDERS, ONE CREAMER  
 AND SUGAR.

Catalogue Prices, Pictures Available.

MICHAEL MYERS \* Marked  
 P.O. BOX 223832 5 Day Return  
 DALLAS, TX 75222 Postage Extra  
 214-943-1621 Evening

- -- CARVING KNIFE REST w/cutting\*...\$ 55.00
- #2 8" COLONIAL Candlesticks...pr....\$ 60.00
- #7 MAYONNAISE LADLE, Flamingo\*.....\$ 25.00
- #7 MAYONNAISE LADEL, Hawthorne\*.....\$ 35.00
- #10 MUDDLER.....\$ 12.00
- #16 CANDELABRA 16" tall "C" Prism.pr.\$375.00
- #135 EMPRESS, 3 pc consol set SAHARA\*  
Set.....\$250.00
- #353 COLONIAL trumpet vase 18" tall...\$ 95.00
- #433 GRECIAN BORDER 5" ftd. jelly\*....\$ 60.00
- #433 GRECIAN BORDER covered pickle\*...\$125.00
- #433 GRECIAN BORDER Salt & Pepper  
W/ #5 Sanitary top.....\$150.00
- #459 7" FLOWER BASKET\*.....\$100.00
- #1401 EMPRESS hdld. fruit bowl\*Flam....\$ 65.00
- #1401 EMPRESS 10" Triple Relish\*  
W/Mariemont cutting.....\$ 75.00
- #1401 EMPRESS 7" Compote, Sahara\*.....\$ 45.00
- #1445 GRAPE 1 lite candlesticks\*..pr...\$175.00
- #1447 ROCOCO 8" Handled Nappy\*.....\$ 95.00
- #1472 PARALLEL QUARTER Floral Bowl\*....\$ 25.00
- #1503 CRYSTOLITE 3 lite candlestick.pr.\$ 35.00
- #3338 HANOVER 11 oz. Goblet W/Sahara  
Flash\*.....\$ 40.00



Y.W.C.A.  
6th & W. Church Sts.,  
Newark, Ohio 43055

# ALL HEISEY AUCTION

Sunday, September 12, 1982  
Doors Open - - - 9:00 A.M.  
Sale Starts - - 10:00 A.M.

This outstanding Heisey Auction will be held on Sunday at 10:00 A.M. following the HCA annual September dinner. We hope you will be able to come to Newark and spend the weekend for all the events. We plan to have the auction over by 3:00 PM so that you will have plenty of time to get home. Included in this fine sale are approximately 50 animals including many of the hard to find ones such as the Gazelle, Filly, Flying Mare, Tiger Paperweight, Show Horse, Bull and large Rabbit. Also included are approximately 100 pieces of Orchid Etch including dinner plates, bulbous tumblers and blown finger bowls, all in excellent condition. If color is your thing we have a beautiful set in Sahara with Old Colony Etch, also in excellent condition and a great collection of mugs with all colors in Old Sandwich and lots of unusual deep plate etched items. Lots of good small items and stems. You won't be disappointed in the quality of this sale.

Please note the following condition codes to better aid in your mail bidding.

f F - Flake                      b B - Bruise                      r R - Repaired  
c C - Crack                      m M - Mold Flaw                      x X - Major Damage

- |  |  |
|--|--|
| 1 1567 PLANTATION Cream & Sugar                          | 37 333 HOTEL WALDORF ASTORIA Water Bottle                                    |
| 1A1567 PLANTATION Cream & Sugar, Ivy Etch                | 38 353 WIDE FLAT PANEL Water Bottle  |
| 1B1540 LARIAT Cream & Sugar                              | 39 333 HOTEL WALDORF ASTORIA Water Bottle                                    |
| 2 355 QUATOR Indiv. Cream & Sugar H                      | 40 341 PURITAN Water Bottle  |
| 3 1469 RIDGELEIGH Indiv Cream & Sugar on TrayH           | 41 1469 RIDGELEIGH 1 Lt Candelabra, Alexandrite Bobeche, #301 Candle Sockets |
| 4 1235 BEADED PANEL & SUNBURST Cream, Gold Dec           | 42 301 COLONIAL 3 Lt Candelabra, Low Base, Pr                                |
| 5 354 WIDE FLAT PANEL Moongleam Cream H                  | 43 301 COLONIAL 3 Lt Candelabra, Low Base                                    |
| 6 1540 LARIAT Cream, Cut H                               | 44 22 Electro Portable Light, Pr H   |
| 7 1231 RIBBED OCTAGON Flamingo Cream H                   | 45 Five light electric chandelier made with some Heisey parts                |
| 8 1511 TOU JOURS Cream, Daisy Cut X                      | 46 5024 OXFORD Goblet, Laurel Cut  |
| 9 1485 SATURN Sugar H                                    | 46A1540 LARIAT Goblet, Moonbeam Cut, 2 Ea                                    |
| 10 393 NARROW FLUTE Indiv Domino Sugar H                 | 47 5067 PLANTATION Goblet, Plantation Ivy Etch, Platinum Rim                 |
| 11 1495 FERN Footed 2 Hd1 3 Compartment Relish           | 48 1567 PLANTATION Goblet, 1st Design, Rare, H                               |
| 12 1185 YEOMAN Flamingo Celery Tray                      | 49 363 COLONIAL Goblet H   |
| 13 1506 PROVINCIAL 1/4 Pd Butter Dish H                  | 50 1295 BEAD SWAG Custard Goblet, Souvenir, Amherst Junction, Wisconsin      |
| 14 150 BANDED FLUTE Handled Chamberstick H               | 51 1295 BEAD SWAG Custard Goblet, Souvenir Sussex, New Jersey                |
| 15 1951 CABOCHON 1 Lt Nappy Candle, Pr H                 | 52 3312 GAYOSO Goblet, #19 Double Loop Etch                                  |
| 16 1401 EMPRESS Sahara 1 Lt Ftd Candle, Pr H             | 53 3312 GAYOSO Goblet, #418, Accropolis Etch                                 |
| 17 1540 LARIAT 2 Lt Candle, Pr., Moonglo Cut             | 54 818 FIFTH AVE Goblet, Rare H  |
| 17A4044 NEW ERA 2 Lt Candle, Pr, No Bobeche or Prisms    | 55 1540 LARIAT Goblet, Wheat Cut, Warsaw Cut Glass Co label, H               |
| 17B1503 CRYSTOLITE 1 Lt Candle Block, Pr                 | 56 5003 CRYSTOLITE 12 Oz Ftd Ice Tea, 3 Ea                                   |
| 17C1540 LARIAT 13" Plate, Moonglo Cut                    | 57 1404 OLD SANDWICH Goblet  |
| 17D1540 LARIAT 15" Oval Platter, Moonglo Cut x           | 58 1170 PLEAT & PANEL Moongleam Luncheon Goblet H                            |
| 18 5040 LARIAT Goblet, Moonglo Cut, 5 Ea H               | 59 1184 YEOMAN Sahara Goblet H   |
| 19 5040 LARIAT Ftd Ice Tea, Moonglo Cut, 3 Ea H          | 60 1401 EMPRESS Sahara 10" Round Plate, Old Colony Etch 7 Ea H               |
| 20 5040 LARIAT Sherbet, Moonglo Cut, 2 Ea H              | 61 1401 EMPRESS Sahara 8" Round Plate, Old Colony Etch 7 Ea H                |
| 21 5040 LARIAT Juice, Moonglo Cut, H                     | 62 1401 EMPRESS Sahara 3 Cups & 7 Round Saucers, Old Colony Etch H           |
| 22 1183 REVERE 8" Round Plate, Moonglo Cut, 2 Ea         | 63 3380 OLD DOMINION Sahara Goblet, Old Colony Etch, 7 Ea                    |
| 23 1235 BEADED PANEL & SUNBURST Handled Jelly            | 64 3380 OLD DOMINION Sahara Saucer Champagne, Old Colony Etch, 6 Ea H        |
| 24 1252 TWIST Flamingo Ftd Grapefruit                    | 65 3380 OLD DOMINION Sahara Wine, Old Colony Etch, 5 Ea H                    |
| 25 3362 CHARTER OAK Flamingo 7" High Ftd Comp.           | 66 3380 OLD DOMINION Sahara 12 Oz Ftd Soda, Old Colony Etch, 7 Ea            |
| 25A1567 PLANTATION 5" Round Covered Butter, Ivy Etch     | 67 1401 EMPRESS Sahara Ftd Cream & Sugar, Old Colony Etch H                  |
| 25B1567 PLANTATION Salt & Pepper, Ivy Etch               | 68 1401 EMPRESS Sahara Salt & Pepper, Old Colony Etch                        |
| 26 1186 YEOMAN Hawthorne 7" Hi Ft. Shallow Compote, DO H |  |
| 27 3967-1245 Flamingo Compote H                          |  |
| 28 160 LOCKET ON CHAIN Cruet                             |  |
| 29 150 BANDED FLUTE 4 Oz Oil, Wrong Stopper, H, C        |  |
| 30 1519 WAVERLY Cruet, Wrong Stopper                     |  |
| 31 1489 PURITAN Vinegar & Oil Bottle                     |  |
| 32 1489 PURITAN Vinegar & Oil Bottle                     |  |
| 33 300 PEERLESS Bitters Bottle                           |  |
| 34 300 PEERLESS Pint Handled Decanter                    |  |
| 35 4035 32oz Decanter                                    |  |
| 35A1404 OLD SANDWICH Decanter, Plain Stopper             |  |
| 36 150 BANDED FLUTE Water Bottle                         |  |

69	1401	EMPRESS Sahara 13", 2 Hd1 Tray, Old Colony Etch H	122	411	RIB & PANEL Sahara Mug, Applied Handle H
70	1401	EMPRESS Sahara 13" Oval Platter, Old Colony Etch H	123	4225	COBEL 2 Qt Cocktail Shaker, Tally Ho Etch
71	1401	EMPRESS Sahara 7½" Ftd Nappy, Old Colony Etch H	124	4002	AQUA CALIENTE, Skier Etch, 2 Ea
72	1401	EMPRESS Sahara 6" Ftd Mint Dish, Old Colony Etch H	125	4002	AQUA CALIENTE, Tally Ho Etch
73	1401	EMPRESS Sahara 13" Pickle & Olive Tray, Old Colony Etch	126	4002	AQUA CALIENTE, Sportsman Etch
74	1401	EMPRESS Sahara 13" Celery Tray, Old Colony Etch H	127	3405	ALIBI Cocktail, Chicken Chase Etch
75	1401	EMPRESS Sahara 10" Olive Tray, Old Colony Etch H	128	3405	ALIBI Cocktail, Sportsman Etch
75A		COLONIAL 8" Round Nappy, Unknown Etch H	129	1115	6 Oz Bitters Bottle, Tally Ho Etch
76	310	RING BAND Custard Tumbler H	130	2401	8 Oz Old Fashion, Sportsman Etch
77	1205	FANCY LOOP Emerald Tumbler, Gold Dec R	131	2401	8 Oz Old Fashion, Equestrian Etch
78	1255	PINEAPPLE & FAN Emerald Tumbler, Souv.	132	2401	12 Oz Soda, Nimrod Etch
79	1417	ARCH Cobalt Tumbler H	133	603	12 Oz Soda, Golf Scene Etch
80	4051	NATIONAL Double Old Fashion, Cut	134	2401	12 Oz Soda, Fisherman Etch
81	1415	TWENTIETH CENTURY Cobalt 9 Oz Ftd Tumbler H	135	4052	NATIONAL 12 Oz Soda, Tally Ho Etch, 2 Ea
82	4206	OPTIC TOOTH 12 Oz Soda, Moongleam Ft, Sterling Decor & Cut	136	2401	7 Oz Soda, Tally Ho Etch
83	1295	BEAD SWAG Opal Tankard Pitcher & 4 Ea Tumbler, Rose Decor & Souv	137	4052	NATIONAL Old Fashion, Victory Etch
84	459	8" Flower Basket H	138	1495	FERN 14" Party Plate, Skier Etch
85	417	DOUBLE RIB & PANEL Flamingo 6" Basket H	139	4182	12" Mah Jongg Plate H
86	341½	OLD WILLIAMSBURG ½ Gal Jug H	140	1184	YEOMAN 8" Plate, Sailboat Carving
87	351	COLONIAL 1 Qt Jug X	141	1184	YEOMAN 16" Buffet Plate, Nimrod Carving
88	341	PURITAN ½ Gal Ftd Jug H	142	1503	CRYSTOLITE Shell Covered Candy x
89	1637A	TOWN & COUNTRY Dawn 9" Shallow Nappy	143	1503	CRYSTOLITE Shell Covered Candy x
90	1182	YEOMAN Vaseline 9" Oyster Bowl H	144	1503	CRYSTOLITE 6" Round Covered Candy H
91	1637A	TOWN & COUNTRY Dawn 14" Party Plate	144A	1428	WARWICK Moongleam 9" Horn of Plenty Vase f
92	150	BANDED FLUTE 10" Round Tray H	145	1428	WARWICK 9" Horn of Plenty Vase, 2 Ea H
93	1540	LARIAT 12" Round Party Plate	146	352	FLAT PANEL 2 Lb Candy or Cracker Jar H
94	1567	PLANTATION 8" Salad Plate	147	393	NARROW FLUTE Marmalade Jar H
95	1183	REVERE Amber 8" Plate H	148	4224	Cobalt Ivy Vase, WO
96	1229	OCTAGON 8" Flamingo Plate, 3 Ea	149	14	Plaid Swung Vase, 55" H
97	1401	EMPRESS Tangerine 6" Square Plate H	150	1503	CRYSTOLITE Spider Hd1 Jelly
98	1503	CRYSTOLITE 7" Shell Plate	150A	1540	LARIAT Punch Bowl, Ladle & 9 Cups H
99	1509	QUEEN ANN Ftd Ice Bucket, Tally Ho Etch	150B		Metal Round Candy Box w/Metal Lid w/ Crystolite Candle Block Finial
99A	353	MEDIUM FLAT PANEL Measuring Cup H	150C	1401	EMPRESS 6" Mint Dish, Chintz Etch
100	1404	OLD SANDWICH Moongleam 16 Oz Mug H	151	1503	PROVINCIAL Limelight Mayonnaise H
101	1404	OLD SANDWICH Flamingo 16 Oz Mug H	152	1295	BEAD SWAG Opal 8" Nappy, Floral Dec X
102	1404	OLD SANDWICH Sahara 16 Oz Mug H	153	1280	WINGED SCROLL Custard 8" Nappy, Good Gold
103	1404	OLD SANDWICH Amber 16oz Mug H	154	1483	STANHOPE Covered Cigarette Box, Red Knob
104	1404	OLD SANDWICH Cobalt 16 Oz Mug H	155	413	RIB & PANEL Hawthorne Cigarette Holder & Cover H
105	1404	OLD SANDWICH 12 Oz Mug H	156	1425	VICTORIAN Covered Cigarette Box H
106	1591A	12 Oz Mug, Elephant Handle H	156A	4045	Sahara 7" Ball Vase, WO
107	1591	Childs Fairy Tale Mug, Elephant Hd1 H	157	1567	Ohio Sesqui Ash Tray
108	4163	12 Oz Mug, Fisherman Etch H	158	1469	RIDGELEIGH Sahara 2" Square Ashtray, 3 Ea H X
109	3408	JAMESTOWN 12 Oz Mug, Amherst German Club Etch	159	1503	CRYSTOLITE Punch Cup, 10 Ea H
110	3408	JAMESTOWN 12 Oz Mug, Amherst Crest Etch	160	1153	Punch Cup, 3 Ea & 1184 YEOMAN Saucer, 3 Ea H
111	4163	16 oz Mug, Club Drinking Scene Etch H	161		COLONIAL Hd1 Punch Cup, 3 Ea
112	4163	16 Oz Mug, Fox Chase Etch H	162	1776	KALONYAL Punch Cup H
113	4163	16 Oz Mug, Sportsman Etch H	163	4055	PARK LANE Goblet, 4 Ea
114	4163	16 Oz Mug, Antarctic Etch H	164	3312	GAYOSO Flamingo Goblet, 6 Ea
115	585	COLONIAL Mug, Applied Handle H	165	3308	BOB WHITE Goblet, Peacock Etch
116	1426	CLOVER ROPE Handled Mug H	166	3320	RITZ Goblet, Mt Vernon Etch
117		COLONIAL Beer Mug, Thumb Rest Handle H	167	3330	HANOVER Goblet, Leaf Cut H
118	4163	16 Oz Mug, Cobalt Handle H	168	3340	ESQUIRE Goblet, Etched
119		Blown Mug, Moongleam Handle	169	393	NARROW FLUTE Goblet, Rosette Band Etch H
120	393	NARROW FLUTE Mug, Applied Handle H	170	3389	DUQUESNE Goblet, Continental Cut
121	393	NARROW FLUTE Mug, Applied Handle H	171	4091	KIMBERLY Goblet, Sungate Cut
			172	3324	DELAWARE Flamingo Goblet
			173	3350	WABASH Goblet, Royal York Cut
			174	1486	COLEPORT Goblet H
			175	3311	VELVEDERE Goblet, Lacy Band Etch

## PAID ADVERTISEMENT

176	3440	PORTSMOUTH Flamingo Goblet, 3 Ea	229
177	373	COLONIAL Ice Tea	230
178	1483	STANHOPE Ice Tea, Frosty Dawn Etch H	231
179	3479	CONE 10 Oz Soda, Rose Cut H r	232
180	1519	WAVERLY 10" Plate, Orchid Etch, 8 Ea	233
181	1519	WAVERLY 8" Plate, Orchid Etch, 11 Ea	234
182	1519	WAVERLY 7" Plate, Orchid Etch, 14 Ea	235
182A1519		WAVERLY 7" Plate, Orchid Etch, 12 Ea	236
183	1519	WAVERLY 7" Mayonnaise Underplate, Orchid Etch	236A
184	3309	Finger Bowl, Orchid Etch, 12 Ea	237
185	1509	QUEEN ANN 7" Lily Bowl, Orchid Etch	238
186	1519	WAVERLY 10" Gardenia Bowl, Orchid Etch	239
187	5025	TYROLEAN Tall Stem Goblet, Orchid Etch	240
187A5025		TYROLEAN Tall Stem Goblet, Orchid Etch	241
188	5025	TYROLEAN Saucer Champagne, Orchid Etch, 2 Ea	242
188A5025		TYROLEAN Saucer Champagne, Orchid Etch, 11 Ea	243
189	3484	DONNA 12 Oz Soda, Orchid Etch, 9 Ea	244
190	2052	2 Oz Bar, Orchid Etch	245
191	1519	WAVERLY Salt Shaker, Orchid Etch	246
192	1519	WAVERLY Cream & Sugar, Orchid Etch H	247
192A1519		WAVERLY Cream & Sugar, Orchid Etch H	248
193	1519	WAVERLY Square Covered Butter, Orchid Etch	249
193A1519		WAVERLY Mayonnaise, Underplate & Ladle, Orchid Etch	1560
194	1519	WAVERLY Mayonnaise, Orchid Etch H	5058
194A1401		EMPRESS Triplex Relish, 7" Orchid Etch	
194B1519		WAVERLY 12" Celery Tray, Orchid Etch	
195	1519	WAVERLY Seahorse Covered Candy, Orchid Etch H	251
195A	134	TRIDENT 2 Lt Candle, Orchid Etch, Pr.	252
196	5025	TYROLEAN Bell, Orchid Etch	253
197	3408	JAMESTOWN Bell, Minuet Etch	254
197A5013		SHASTA Bell, Barcelona Cut	255
198	1235	BEADED PANEL & SUNBURST 4" Nappy	255A1503
199	1252	TWIST, Flamingo 4 " Nappy H	255B1503
200		CLYDESDALE Horse	256
201		AIREDALE Terrier	257
202		DONKEY	258
203		HEN	259
204		CHICK, Head Down	260
205		CHICK, Head Up	261
206		SWAN H C	262
207		POUTER PIGEON H	263
208		CYGNET	264
209		SOW, Mold Flaw	265
210		PIGLET, Standing H	266
211		PIGLET, Standing H	267
212		PIGLET, Sitting	268
213		RABBIT, Large	269
214		BUNNY, Head Up	300
215		BUNNY, Head Down R	393
216		BULL H	393
217		TIGER PAPERWEIGHT	301
218		SEALYHAM Terrier	4
219		RABBIT PAPERWEIGHT	352
220		RABBIT PAPERWEIGHT	2930
221		OSCAR Horse (Sparky)	6 Ea
222		COLT, Standing	275
223		COLT, Kicking R	4054
224		DUCKLING, Standing	2352
225		DUCKLING, Standing Mold Flaw	7 Oz Soda, Park Plaza Etch
226		DUCKLING, Floating	2352
227		MALLARD, Wings Up H	8 Oz Soda, Fred Harvey Etch
228		MALLARD, Wings Half Up	2352
			7 Oz Soda, Crest Etch
			2351
			12 Oz Soda, Frontenac Etch
			280
			2351
			12 Oz Soda, Windsor Cut, 2 Ea
			281
			3480
			KOORS "29" 12 Oz Flamingo Soda, DO. 6 Ea 1-X
			282
			5013
			SHASTA Cocktail, 4 Ea
			283
			1590
			ZODIAC Ftd Juice H
			284
			3355
			FAIRACRE Oyster Cocktail, Sheffield Cut
			285
			3350
			WABASH Parfait, Delicate Cut H
			286
			3350
			WABASH Parfait, Hawthorne, DO, Unk Cut H
			287
			3311
			VELVEDERE Sherry, Wreath Cut
			288
			351
			PRISCILLA 10 Oz Pilsner H
			289
			439
			RAISED LOOP Egg Cup H

PAID ADVERTISEMENT

## PAID ADVERTISEMENT

229		RINGNECK PHEASANT
230		RINGNECK PHEASANT H
231		ASIATIC PHEASANT R
232		FISH CANDLESTICK
233		FISH MATCH HOLDER R
234		FLYING MARE R
235		LARGE ELEPHANT H
236		MIDDLE ELPEHANT
236A		LARGE ELEPHANT
237		HORSEHEAD BOOKEND
238		HORSEHEAD BOOKEND
239		GAZELLE, Frosted on Wood Base
240		SHOW HORSE
241		FILLY HORSE, Head Back
242		GOOSE, Wings Down
243		SPARROW
244		FIGHTING ROOSTER
245		ROOSTER VASE
246		FISH BOOKEND
247		FISH BOOKEND
248	1489	PURITAN Small Horsehead Cigarette Box
249	1560	VICTORIAN Girl Bell, Frosted
250	5058	GOOSE STEM Cordial R
251		LARGE HORSEHEAD Stopper
252		SMALL HORSEHEAD Stopper
253		ROOSTER Head Stopper
254		ROOSTER Head Stopper, Frosted R
255		PENGUIN Stopper
255A1503		CRYSTOLITE Large Swan Nut Dish
255B1503		CRYSTOLITE Small Indiv Swan Nut Dish, 19 Ea
256		IMPERIAL Caramel Slag Scotty
257		IMPERIAL Caramel Slag Wood Duck
258		IMPERIAL Caramel Slag Wood Duck
259		IMPERIAL Caramel Slag Airedale
260		IMPERIAL Caramel Slag Middle Elephant
261		IMPERIAL Caramel Slag Middle Elephant
262		IMPERIAL Caramel Slag Rearing Colt
263		IMPERIAL Caramel Slag Kicking Colt
264		IMPERIAL Souv HCA 77 Sparky, Fern Green
265		IMPERIAL Souv HCA 78 Sparky, Pink
266		IMPERIAL Souv HCA 79 Sparky, Sunshine Yellow
267		IMPERIAL Souv HCA 80 Sparky, Heather
268		IMPERIAL Sour HCA 81 Sparky, Horizon Blue
269	300	PEERLESS 12 Oz Schoepfen, 2 Ea H
270	393	NARROW FLUTE 12 Oz Ice Tea H
271	393	NARROW FLUTE 5 Oz Soda, 5 Ea H
272	301	4 Oz Flared Soda, 4 Ea H
273	352	FLAT PANEL Tumbler, 6 Ea H
274	2930	PLAIN & FANCY Tumbler, Monticello Etch, 6 Ea
275	4054	CORONATION Old Fashion, Bandelino Etch
276	2352	7 Oz Soda, Park Plaza Etch
277	2352	8 Oz Soda, Fred Harvey Etch
278	2352	7 Oz Soda, Crest Etch
279	2351	12 Oz Soda, Frontenac Etch
280	2351	12 Oz Soda, Windsor Cut, 2 Ea
281	3480	KOORS "29" 12 Oz Flamingo Soda, DO. 6 Ea 1-X
282	5013	SHASTA Cocktail, 4 Ea
283	1590	ZODIAC Ftd Juice H
284	3355	FAIRACRE Oyster Cocktail, Sheffield Cut
285	3350	WABASH Parfait, Delicate Cut H
286	3350	WABASH Parfait, Hawthorne, DO, Unk Cut H
287	3311	VELVEDERE Sherry, Wreath Cut
288	351	PRISCILLA 10 Oz Pilsner H
289	439	RAISED LOOP Egg Cup H

PAID ADVERTISEMENT

- 290 1E92 OMEGA Champagne, Starflower Cut H
- 291 3362 CHARTER OAK Flamingo Champagne H
- 292 6010 FINESSE Champagne, Rose Cut
- 293 300 PEERLESS Egg Cup, Gold Dec, Souv. H
- 294 1E92 OMEGA Champagne, Silver Leaves Cut
- 295 1295 PINEAPPLE & FAN Emerald Salt & Pepper, Good Gold Decor
- 295A1519 WAVERLY Salt & Pepper, Narcissus Cut, Cloudy
- 296 393 NARROW FLUTE Salt & Pepper, 2 Pr b
- 297 1469 RIDGELEIGH Salt & Pepper b
- 298 1503 CRYSTOLITE Salt & Pepper, Cloudy
- 299 417 DOUBLE RIB & PANEL Flamingo Mustard H
- 300 1469 RIDGELEIGH Mustard H
- 301 417 DOUBLE RIB & PANEL Mustard H
- 302 1252 TWIST Moongleam Mustard H
- 303 1201 FANDANGO Mustard
- 304 300 PEERLESS Mustard H
- 305 1183 YEOMAN Sugar Pourer, Reed & Barton Silver Top
- 306 1567 PLANTATION Pineapple Marmalade
- 307 393 NARROW FLUTE Covered Lemon Dish H
- 308 1280 WINGED SCROLL Clambroth Trinket Box, Souvenir
- 309 400 Salt Shaker, Sun purpled H
- 310 1201 FANDANGO Salt Dip
- 310A 393 NARROW FLUTE Tub Salt Dip, 3 Ea H
- 311 1454 DIAMOND POINT, Ind Ash Tray & Indiv Marmalade H
- 312 1225 PLAIN BAND Custard Handless Sherbet, Souv H
- 313 1220 PUNTY BAND Custard Toothpick, Beaded Top, Souv H
- 313A 352 FLAT PANEL Toothpick
- 314 393 NARROW FLUTE Indiv Almond
- 315 1401 EMPRESS Sahara Ind Ftd Nut, 2 Ea
- 316 472 NARROW FLUTE w/Rim Flamingo Indiv Almond H
- 317 1229 OCTAGON Moongleam Ind Nut H
- 318 2341 1 Oz Bar, Sweet Briar Cut
- 319 417 DOUBLE RIB & PANEL 1 Oz Bar, 2 Ea H
- 320 1404 OLD SANDWICH 1 oz Bar H
- 321 300½ PEERLESS 2 Oz Bar, 2 Ea H

GOOD FOOD AVAIALBLE

- 322 COLONIAL 2 Oz Bar H
- 323 369 HARTMAN 2 Oz Bar, Narrow Optic H
- 324 2401 1 Oz Bar, Tally Ho Etch
- 325 2401 1½ Oz Bar, Normandie Etch
- 326 1205 FANCY LOOP Emerald Bar
- 327 4004 IMPROMPTU 2 Oz Bar
- 328 1404 OLD SANDWICH Cobalt 1 Oz Bar H
- 329 3480 KOORS "29" Flamingo 3 Oz Bar
- 330 3481 GLENFORD 3 Oz Bar, Moongleam Foot
- 331 3404 SPANISH Oyster Cocktail, Florentine Cut
- 332 1401 EMPRESS Flamingo Oyster Cocktail, 2 Ea H
- 333 3308 BOB WHITE 2 Oz Wine, Peacock Etch
- 334 588 COLONIAL 3 Oz Amber Soda H
- 335 1055 ASTOR Wine
- 336 1235 BEADED PANEL & SUNBURST WINE, Gold Dec H
- 337 1205 FANCY LOOP Punch Glass
- 338 3402 3 Oz Cocktail Grasshopper
- 339 3542 HAZELWOOD 4 Oz Sherbet
- 340 3317 DRAKE Creme de Menthe, Floral Cut
- 341 337 TOURAINE Saucer Ft Ice Cream H
- 342 4055 PARK LANE Champagne, 3 Ea
- 343 351 PRISCILLA 5 Oz Egg Cup, 5 Ea H
- 344 3408 JAMESTOWN Cocktail
- 345 3389 DUQUESNE Wine, Normandie Etch
- 346 3380 OLD DOMINION Sahara Wine H
- 347 1252 TWIST Flamingo Wine H
- 348 3404 SPANISH Cobalt Cocktail, Silver Overlay
- 349 5079 PARK AVENUE Long Stem Cocktail H
- 350 5019 WAVERLY Cordial
- 350A5067 PLANTATION 1 Oz Cordial H
- 351 6010 FINESSE 1 Oz Cordial
- 352 5086 PLANTATION IVY 1 Oz Cordial H
- 353 5013 SHASTA 1 Oz Cordial, Daisy Cut
- 354 112 1 Lt Candle, Moongleam
- 355 Imperial Set of 6 Land of Legend Souvenir Plates
- 356 Colonial Bowl H, Mayonnaise UnderplateH, Ridgeleigh Cigarette Bottom H
- 357 Flower Frog in Silver Holder
- 358 341 Epergne w/Old Heisey Label
- 359 Heisey by Imperial Puritan Souv Decanter
- 360 Heisey by Imperial 1973 Souv Claret
- 361 Heisey by Imperial 1973 Souv Claret
- 362 Heisey by Imperial 1974 Souv Claret
- 363 Heisey by Imperial 1975 Souv Claret
- 364 Heisey by Imperial 1976 Souv Claret
- 365 Box Lot of (11) Stoppers

PLEASE NOTE MAIL BIDDING INSTRUCTIONS AS FOLLOWS:

Mail bids accepted with checks for the maximum amount of the bid. Mail bids are handled competitively and any difference is refunded after postage & handling. Only items in mint condition will be subjected to mail bids unless specifically requested otherwise. Please add \$8.00 per carton for postage and handling, \$10.00 west of Rocky Mountains. We regret we have had to increase postage and handling charges but we are only attempting to cover our expenses on this. Checks should be made to Sam Schnaidt, Auctioneer and mailed to:

Sam Schnaidt, Auctioneer  
 P. O. Box 84  
 Granville, Ohio 43023

LIST OF PRICES REALIZED, AVAILABLE AFTER THE AUCTION, FOR \$1.00

SAM SCHNAIDT, AUCTIONEER  
 (614) 587-0052

FRANK FRYE, MANAGER  
 (614) 344-9847

LYNNE  ART'S  
**GLASS-HOUSE**  
INC.

P.O. BOX 54-6014  
MIAMI BEACH, FL 33154  
(305) 861-7700  
(305) 895-5666

## *Dear Heisey Collector and Dealer,*

We will be at our home in Lahaska through Thanksgiving.

By Chance Or Appointment  
We Suggest A Call:  
215-794-7800  
ROUTE 202 - P.O. BOX 242  
LAHASKA, PA 18931

We will also be at the following show:

October 8, 9, 10      Wheaton Village      Millville, NJ

*Heisey animals,  
lovely old patterns, and a rainbow of colors*

COME SEE US,      *Lynne and Art*

**HEISEY'S  
GLASSWARE of DISTINCTION**

FOR SALE: Comprehensive reference book on Heisey's major patterns of tableware, animals & some stemware, etchings, cuttings, & Verlys by Heisey.

Details of each pattern clearly shown by photo or illus. Double indexed by pattern name & number. \$11.95 p.p.

Current price guide for above book, \$5.95 p.p.

6 books or more - 40% off.

Send check or M.O. to:

Mary Louise Burns  
P.O. Box 1931  
Grants Pass, OR 97526



## **GLASS** review

ESTABLISHED 1971

The GLASS REVIEW Magazine is for everyone who studies, collects or sells glass. Whether your glass interests lean toward the early 1900's -- or the depression era-- or with today's limited glass items, the GLASS REVIEW covers it all!

Articles -- price reports -- original catalog documentation -- shop directory -- research and reproduction news -- trademark information -- glass book releases -- what's new on the market -- a large variety of glass ads (on both old and new glass) -- plus much more.

Enclose payment and mail to:  
GLASS REVIEW, P.O. BOX 542, MARIETTA,  
OH 45750

10 'big' yearly issues

68 pages or more

\$12.50 -- one year

10TH ANNUAL MINI-SHOW  
AND FLEA MARKET  
SEPTEMBER 11, 1982

9 - 4 PM

75¢ ADMISSION

NEWARK CATHOLIC HIGH SCHOOL  
855 WEST CHURCH STREET  
NEWARK, OHIO

FOR DEALER SPACE CONTACT: Land of Legend HCC  
c/o Dick Smith or: Jack Metcalf  
225 Upson Downs Box 396  
Newark, OH 43055 Utica, OH 43080  
(614) 366-5163

BENEFIT: NATIONAL HEISEY GLASS MUSEUM

## Conn. Heisey Club

First Annual Show

&

SALE

Sat. Nov 6, 10am - 5pm

Sun. Nov. 7, 11am - 5pm

**K of C Hall**

Hobart St. off Route 10

Southington, CT. adm. \$1.25

FOR

The Benefit Of The

National Heisey Glass

**MUSEUM**

exit 32 so. off I-84 to rte. 10

**FIFTH ANNUAL**

## *All Glass Show and Sale*

**Sheraton - Sturbridge Inn  
Rte. 20 - Sturbridge, Mass.**

Oct. 23

Oct. 24

Sat. - 10:30 am-5:30 pm Sun. - 10 am-4 pm

## *All Glass of All Periods*

SPONSOR

**BAY STATE HEISEY COLLECTORS CLUB**

**DONATION \$1.75 — with card \$1.50**

**Benefit—Heisey Glass Museum**

We assume no responsibility for errors in these ads after the first printing...Editor  
For changes in ads during the year, please send \$1.00 per line.

**MOSTLY HEISEY**

RHODA CURLEY  
16 Clayton Place  
Albany, New York 12209  
By Appointment (518)482-6272

**LAST CHANCE ANTIQUES**

P.O. Box 502, Dania, Fl. 33004  
Mail Orders - Matching Service  
Send us your want lists  
(305)467-6356 Day or Evening

**GOLDSBERRY'S ANTIQUES**

Kalamazoo, Michigan  
Shows Only - Buy & Sell  
HEISEY A Speciality  
Phone (616)381-3013

**SCHWAN'S ANTIQUES**

Route 1, Box 175B  
John Tyler Highway  
Williamsburg, Va. 23185  
(804)229-7873 Shop and Shows

**GREEN ACRES FARMS**

Antiques, Crystal Glass & Collectibles  
2678 Hazelton Etna Road, S.W.  
(S.R.310N.)Pataskala, Oh. 43062  
Sat. & Sun. P.M. or Call (614)927-1882

**THE WOODEN SHOE**

Antiques & Collectables - Buy & Sell  
Glass, Furniture, Estates  
Jim & Sheri Van Es, By Appointment  
810 Eiden, Herndon, Va. 22070 Ph.(703)435-9045

**ANTIQUES -THE SHULTZES**

206-208 E. Main Street  
Newmanstown, Pa. 17073  
15 Mi. West of Reading Pa.  
Phone (215)589-2819

**T & S ANTIQUES**

Tom Martin Steve Roderick  
Specializing in HEISEY  
New Rochelle, N.Y.  
(914)235-9632

**ANTIQUE JUNCTION**

'In Old Town'-342 S.W. 'G' St.  
Grants Pass, Or. 97526  
(503)479-8575 or 582-4067  
Hours: Wed. - Sat. 11 to 5

**ELIZABETH BASSETT CASON**

401 32nd. Street, W.  
Bradenton, Fl. 33505  
Mail Order - List  
(813) 748-0851

**RAMBLING LANE ANTIQUES**

KEITH & EVELYN HOOVER  
Featuring HEISEY and Other Fine Glass  
Rt. 4 Box 1005 Rhinelander, Wi. 54501  
Phone: (715)282-5019

**ALL-HEISEY AUCTIONS**

Consignments Welcome  
OFF-BROADWAY ANTIQUES 121 S. Prospect St. 1138 Moundview, Newark, Oh. 43055  
Granville, Ohio 43023  
Phone:(614)344-6043  
Sam Schnaidt (614)587-2083 Shop, (614)587-0052 Res.  
Heisey & Animals General Antiques

**LYNNE & ART'S GLASS HOUSE, INC.**

'HEISEY OUR SPECIALTY'  
Miami Beach, Fl. 33154  
P.O. Box 54-6014  
(305)861-7700 or 895-5666

YOUR AD COULD BE IN  
THIS SPACE

**PEGGY'S ANTIQUES**

ERNIE & PEGGY COX  
2000 pcs. Heisey in stock  
P.O. Box 367, Spavinaw, Ok. 74366  
(918)589-2859 By Appt or by chance

**DIAMOND H PLUS**

GEORGE & EILEEN SCHAMEL  
Rt. 3 Box 419 Boonsboro, Md. 21713  
Appointment or Mail Order  
Phone:(301)432-8285

**HEIDI-HO ANTIQUES, INC.**

HEISEY and GENERAL ANTIQUES  
838 S. High St., Columbus, Oh. 43206  
Phone:(614)444-5774  
Hours: Wed-Sat 11-5, Sun 1-5

**RECOLLECTIONS**

THERESA WERT  
Lahaska Antique Center  
Route 202, Lahaska, Pa.  
Phone:(215)794-8667

**ANN'S GIFTS & ANTIQUES**

105 W. Main St., Hebron, Oh. 43025  
Intersection Rt's 40 & 79  
Next Door to Daisy Queen  
Daily 11:30 - 5:30 Closed Thursday

**SUM OF LIFE**

ELAINE & FRANK HUSTED  
P.O. Box 102  
Phoenixville, Pa. 19460  
Phone:(215)935-2962

**HEISEY PUBLICATIONS**

Box 102, Plymouth, Oh. 44865  
All Heisey Books I-II-III-IV  
Heisey Newscaster 32 pg. Quarterly  
\$6.00, Back issues \$4.00

**LITTLE'S ANTIQUES**

Heisey and General Antiques  
Ph: (216) 282-2242  
Lorain, Ohio  
Shows and by Appointment

**MOUNDBUILDERS ANTIQUES**

IRENE RAUCK  
1138 Moundview, Newark, Oh. 43055  
Phone:(614)344-6043  
Heisey & Animals General Antiques

**HAPPY HAVEN ANTIQUES**

MARY DUMKE  
14319 Rattlesnake Road  
Grass Valley, Ca. 95945  
Phone:(916)273-9450

**THE PURPLE PLACE**

Martha & Harold Earp  
Art Glass, Heisey, Cambridge  
Shows, Appointment, Mail Order  
Fort Myers, Fl. 33901 (813)936-1572

**C & J ANTIQUES**

COLE & JEAN MIESNER  
Box 45, 72 Whig St.  
Newark Valley, N.Y. 13811  
Phone:(607)642-9905

**GEORGE HOFFMAN ANTIQUES**

G.W. HOFFMAN - J.H. DENNIS  
129 S. 4th. Street  
Newark, Oh. 43055  
Phone:(614)345-8021

**CHARLES & MILDRED FISHER**

HEISEY, DEGENHART, IMPERIAL  
Antiques & Collectibles, General Line  
991 Idlewilde, Newark, Oh. 43055  
Phone:(614)522-5398

**HARRISON'S ANTIQUES**

HEISEY, CAMBRIDGE, DUNCAN  
26 Johnston's Lane  
Mercersburg, Pa. 17236  
Shows, Mail, By Appt. (717)328-2451

**RAY ZIEGLER**

GLASS REPAIR  
2265 Innis Road  
Columbus, Ohio 43224  
(614)882-8446

**H and R DIAMOND H**

HELEN & ROBERT RAREY  
1450 White Ash Drive  
Columbus, Oh. 43204  
(614) 279-0390 after 5:30

**JOYCE'S ANTIQUES**

Specializing in HEISEY  
Cambridge, Verlys, American Glass  
P.O. Box 114, Albertson, N.Y. 11507  
Phone:(516)499-3396

Send Orders To: HCA SALES, DEPT. F, P.O. BOX 27, NEWARK, OH 43055  
The Usual Discounts Apply

- 68. HEISEY BY IMPERIAL, by Newark Heisey Collectors Club.....\$ 6.95  
Update and added pages. Soft Bound - Includes price trends and color plate. Every piece of every pattern made by Imperial is listed and priced in all colors used for the pattern. All items are dated. A must for the collector or dealer specializing in Heisey or Imperial glass. Many items are already collectible.
- 77. COLORED GLASSWARE OF THE DEPRESSION ERA 2, by Hazel Marie Weatherman, 1000 patterns from..\$ 25.00  
43 glass companies which were operating during the depression era. Includes both machine and hand made glass. 400 pages.
- 79. HEISEY GLASSWARE by Heisey Collectors of America, Inc. Reprint of Catalog 76, the 1915.... 6.95  
supplement to Catalog 75. Soft bound with price trends. 58 pages. Many items never shown in books or catalogs. Includes all the kerosene lamps and many electric lamps. An interesting catalog.
- 88. HEISEY TOOTHPICK HOLDERS by Nancy & David Jones, published by HCA. Complete information on 4.95  
all Heisey toothpick holders. Contains photographs of each. Section on confusing items and fakes. 8-1/2 X 5-1/2 soft bound. Includes price trends.
- 78. FISH MATCH HOLDER, Plain - Limited Edition of 483. Made in the Original Heisey Molds by.\$ 12.50  
Imperial Glass Corporation, exclusively for Heisey Collectors of America, Inc. Marked IG. Sunshine Yellow  
FISH MATCH HOLDER, Satin - Limited Edition of 382. Sunshine Yellow .....\$ 14.00
- 80. HEADS DOWN BUNNY, Marked ALIG, Caramel Slag - NOT LIMITED.....\$ 6.00
- 81. CYGNET, Marked ALIG.. Caramel Slag - NOT LIMITED.....\$ 6.00
- 82. MINUET GIRL, Marked ALIG, Caramel Slag - NOT LIMITED.....\$ 10.00
- 83. TIGER PAPERWEIGHT, Marked ALIG..Caramel Slag - NOT LIMITED.....\$ 12.00
- 84. SMALL ELEPHANT, Marked ALIG..Caramel Slag - NOT LIMITED.....\$ 12.50
- 85. NO. 31 TOY CHAMBERSTICK, Marked ALIG...Crystal..NOT LIMITED.....\$ 5.00
- 86. NO. 32 5" HANDLED CANDLEHOLDER, Marked ALIG...Crystal..NOT LIMITED.....\$ 7.50
- 87. NO. 33 TOY CANDLEHOLDER, Marked ALIG...Crystal...NOT LIMITED.....\$ 5.00

If your order totals \$50 - \$250 you may deduct 10%.  
25% Discount on orders \$250 and over.  
(No hand selection at this price.)  
Please add 10% for Shipping & Handling.



Ohio Residents add 5-1/2% Sales Tax.  
All prices payable in U.S. Funds.  
Visa/Mastercharge - Please include your card number and expiration date with order.

10TH ANNUAL  
ANTIQUe SHOW AND FLEA MARKET  
Oct. 31, 1982 - 9 to 5  
Reynoldsburg High School  
Reynoldsburg, OH  
Sponsored by: R.H.C.C.  
For Dealer Space, Contact:  
**SHIRLEY BAGFORD**  
1290 Hilton Drive  
Reynoldsburg, Ohio 43068  
Phone: (614) 866-0032



FIRST CLASS MAIL  
U.S. POSTAGE  
PAID  
PERMIT 34  
Reynoldsburg, Ohio 43068

**FIRST CLASS MAIL**