

HEISEY

news

OFFICIAL PUBLICATION HEISEY COLLECTORS OF AMERICA

©Heisey Collectors of America, Inc. 1982
All Rights Reserved

VOLUME XI

NO. 4

APRIL, 1982

ONE DOLLAR



HEISEY NEWS---P.O. BOX 27---NEWARK, OHIO 43055

Editor LOUISE REAM
Box 27, Newark, OH 43055 614-345-2932
Ass't Editor NEILA BREDEHOFT
Box 27, Newark, OH 43055 614-345-2932

Published monthly and mailed from Reynoldsburg,
Ohio 43068

\$12.00 per year - \$1.00 per copy
Back issues 1972/1980 (except 1974) \$9.00 per
year (12 issues).

CLUB OFFICERS
President BOB McCLAIN 614-345-8061
Vice President JACK METCALF 614-892-2664
Secretary MARY McWILLIAMS 614-345-4380
Treasurer DICK MARSH 614-366-5608
Exec. Director LOUISE REAM 614-344-2377

Heisey Collectors of America, Inc. is a non-profit corporation with tax exempt status. Owners and operators of National Heisey Glass Museum, 6th & Church Sts, Newark, OH. Open Daily 1-4 pm March through December except Mondays and holidays. January & February-Wednesday, Saturday, & Sunday 1-4pm. Other times by appointment. Members admitted free.

Club membership (includes 12 issues of HEISEY NEWS and participation in all club activities) \$12.00/year plus \$2.00 each for additional family members in same household who wish a membership card. For VOTING MEMBERSHIP add \$25.00, one time only fee.

When requesting information, please enclose a self-addressed stamped envelope (SASE).

ADVERTISING - Send all ads to: NEILA BREDEHOFT
Box 27
Newark, OH 43055

RATES:
DEALERS' DIRECTORY - 5 lines-\$18.00/year
CLASSIFIED - 10¢/word. \$1.00 minimum. Abbreviations and initials count as words.

DISPLAY:	MEMBERS	NON-MEMBERS
1/8 pg (9 items)	\$12.00	\$20.00
1/4 pg (20 items)	20.00	30.00
1/2 pg (20 items)	35.00	45.00
1 pg (50 items)	60.00	75.00

We cannot double-column ads. No VERTICAL 1/2 pg. ads. ALL ADS MUST BE PREPAID. Ad copy must be received by the 5th of the month to be included in that month's NEWS. Ads containing reproductions will not knowingly be accepted unless clearly stated (i.e. Heisey by Imperial, etc.) HEISEY NEWS assumes no responsibility for false advertising or misleading information. In the event of typographical error, the incorrect portion of the ad will be run in the following issue, but HEISEY NEWS assumes no further liability.

Opinions expressed in articles are those of the authors and not necessarily those of HCA. Editorial Staff reserves the right to edit or refuse any material submitted for publication. Send all letters & articles to be published to the EDITOR. Letters to columnists should be sent to the club address and will be forwarded.

VOTING MEMBERS PLEASE NOTE

Voting Members be sure to send in for your Absentee Ballot at least Thirty (30) days prior to the election.

ORDER OSCARS NOW!!!

Many of you who usually order Oscars are putting it off this year. We know the economy is not too good but we hope that you will still be able to order this year's Oscar, the last of the series. All are marked I.G. and dated 1982.

He is a beautiful dark green plug horse which looks well with the rest of your set. Some new people probably do not know about Oscar, but he has been our Convention souvenir since 1977 and has been made in six different colors. Back year's Oscars are often available in the newsletter or at shows.

The Oscar sales are the biggest museum fund raiser of the year and the money is needed to help maintain your museum. Club dues barely pay for Heisey News, and admissions to the museum would scarcely pay the utilities. The club depends on sales to keep this club, museum and office going and the Oscar is a great part of that income.

The Convention Form has taken the place usually used for the Oscar but look at Page 23 of every issue since December to find the order form.

CONVENTION EVENTS

Be sure to register for the "World Premiere", the Champagne Preview of the show. This was acclaimed last year as an outstanding event. There was a lavish table of canapes, hors d'oeuvres, finger sandwiches and other goodies - plus plenty of champagne. Be sure to note that the preview on Thursday is the opening of the show which is a little shorter this year.

Also last year the meeting with the former employees was a highlight of the convention. We hope you attend it this year.

MEMBER WINS AWARD

Louise White of Michigan recently submitted an essay on a National D.A.R. Contest for the American Heritage Art Competition and she won an award which will be presented to her at the American Heritage Round Table on Tuesday, April 20th at 10 - 11:30 in the Banquet Hall of Memorial Continental Hall in Washington.

Mrs. White sent us a copy of her essay which was a well written history of A. H. Heisey and Co. and was accompanied by a beautiful picture of a Locket On Chain cake basket.

We congratulate her on winning an award on an essay about Heisey, our favorite collectible!

L.R.

FROM THE DESK OF YOUR PRESIDENT.....

I want to apologize because both Louise and I forgot last month to mention about some of our members who were in the hospital. Mrs. Chris Maskaleris, Mary McWilliams and Harley Bethel all had operations and Russell Ream had some heart problems. Harley, however, went in the hospital after the article was written last month. All are home now and doing fine. Chris came to the Washington Show for a little while on Sunday. I saw Russell at an Antique Show, Mary was to a meeting at the museum, and Harley is going to be best man at a wedding. So it looks like they are doing well.

I got a call today from Joe Lokay who told me that Al Miller had a heart attack yesterday, April 6th, and is in the Intensive Care Unit in a Louisville, Kentucky hospital. I am sure he would appreciate a card if you would send him one in care of HCA, P.O. Box 27, Newark, OH 43055, and we will forward it. We understand that he will be having bypass surgery. We all hope that you have a speedy recovery, Al, and are back with us soon.

Several of us from Newark went to the Washington Show sponsored by the National Capital Club. It was truly beautiful and the most successful one that they have ever put on. They moved to a new location which added much to the beauty of the show and attracted many more people. The attendance was three times larger than the past year. If you have never gone, you should plan to go sometime, because this club does a great job and all the benefits go to the museum.

It was with deep regret that the Board accepted the resignation of Sam Schnaidt from the Board of Directors on March 14th. Sam has been a dedicated member of HCA since the beginning and was the Chairman of the Museum Committee at the time of the search for a building and during the construction. He also has served on many committees and has been the main auctioneer at all HCA Benefit Auctions. He will be missed.

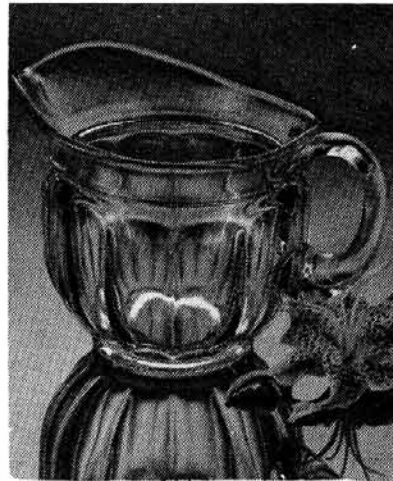
Virginia Yeakley, former Board Member and Club Treasurer, was elected by the Board to fill Sam's unexpired term of one year.

At the March Quarterly Meeting, ten people were nominated to fill the five vacancies on the Board of Directors. The candidates are: Lloyd Caswell, Chauncey Delaney, Phyllis Frier, Odell Johnson, Mrs. Chris Maskaleris, Dick Marsh, Al Miller, Ray Ziegler, Jay Barker and Charles (Sonny) Larson.

All Voting Members will receive a picture and a resume of each candidate. The election is June 20th at the Quarterly Meeting. This is the first year for absentee voting, so if you cannot be here, you may request an absentee ballot from the secretary at least thirty (30) days prior to the election; and it must be returned to the secretary postmarked not less than fifteen (15) days prior to the election. I am glad to see absentee voting because this gives the people who can't be here a chance to be heard and to feel more a part of the club.

The Registration Form for the Convention is in the back of this issue. Please get your reservation in early so that much of the work can be done before the deadline. It is a tremendous job preparing all the packets, and it will help so much if you get your reservation in as soon as possible.

Bob



K. POUR ME A...
Glass of sangria from our quart size Heisey pitcher. #2908 Reg. 35.00 27.50.
Gifts, 6th Floor, New York. And all our stores except Scarsdale.

Q. A club member brought this ad to my attention - It was in a Bloomingdales Dept. Store Catalog for the Holidays.

What do you think of it? And is it proper for them to use the name of Heisey?

Is it an Imperial Pitcher? Babs Kent, N.Y.
A. Several people sent in this ad. Bloomingdales sold Heisey for countless years and apparently has sold Imperial ever since. I am sure they did not realize it would cause an uproar if they called this a Heisey pitcher.

Since they probably are not collectors, they have no idea that they would upset people by calling something "Heisey" when it was made in a Heisey mold by the company which owns the original molds. I would see no real impropriety about them calling it "Heisey". It would, of course, have been better if they had said "Heisey by Imperial" and then people would be less confused about it. L.R.

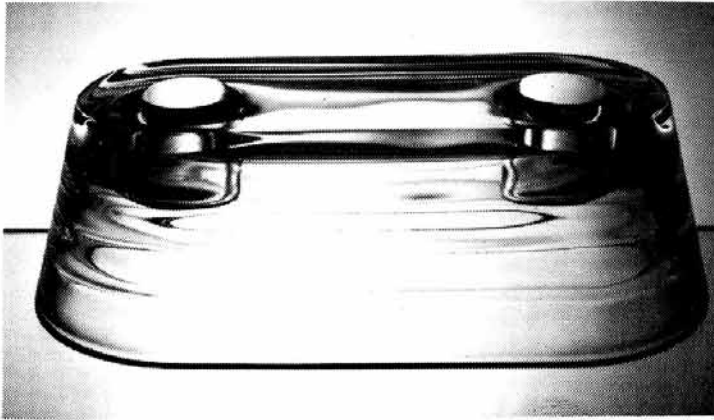


TOOTH PICK
GROUND/BOTTOM

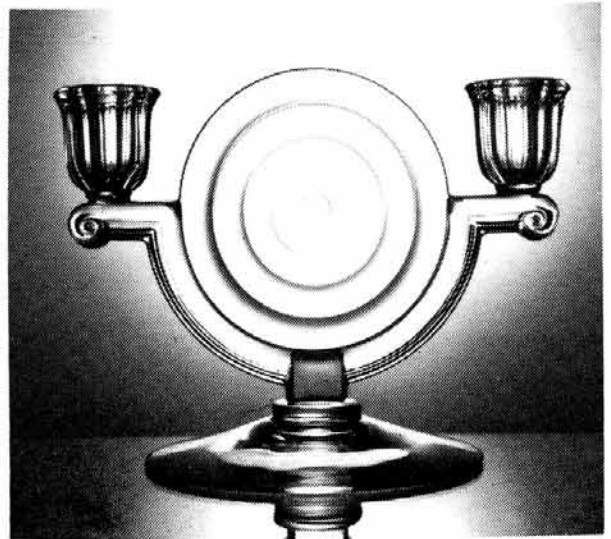
KALONYAL

THE NO. 1485 SATURN CANDLESTICK LINE

By: Bob O'Grady



Picture #1



Picture #2

In keeping with the last two articles on Stanhope (no. 1483) and Kohinoor (no. 1488) candelabra, another in the series of art deco patterns introduced in the second half of the 1930s is being examined this month.

The February 1937 issue of the trade publication CROCKERY AND GLASS JOURNAL carried a full page ad announcing Heisey's new "Saturn" pattern stating... "Truly has Heisey taken inspiration from the stars for this exquisite new design, appropriately called Saturn, like the great planet itself, it has encircling rings, which give a subtle alluring beauty to this chastely simple pattern." There were three different candlesticks offered at different times with this pattern and each had rather unusual production periods.

The first was the two lite candleblock (photo #1) which we know from the factory production ledgers was initially pressed in the last week of December 1936 and quickly marketed. A pair were pictured with the Saturn floral bowl as a console set in the February 1937 issue of the CROCKERY AND GLASS JOURNAL referred to above. At first all items in Saturn were made only in crystal. However, zircon, the color we normally associate so closely with this pattern, was brought out in April of 1937, three months after Saturn was introduced. The April 1937 edition of TABLE TALK, Heisey's own publication to the trade, announced their subtle new color "Zircon" describing it as a blue-green pastel tint for the glass. The two lite candleblock was offered in crystal from January of 1937 until sometime in the summer of 1938 and in zircon from April of 1937 until the summer of 1938 when it was discontinued altogether. Strangely it was offered with at least five different cuttings -

the no. 888 Madeira, the no. 889 Sheffield, the no. 890 Churchill, the no. 891 Pembroke and the no. 892 Berkeley Square. This candleblock is more "interesting" than attractive. It is 2-1/2 inches high and 7-1/2 inches long at the base. It is hollow with the optic "Saturn" rings pressed on the inside and as one would expect is heavy, clear glass. The top surface is ground and polished flat. It was most probably never marked with the Diamond H. Several years ago an antique dealer who did not realize it was a candleholder sold one as "a very old double inkwell."

Then in the May 1937 edition of TABLE TALK the two light candelabrum (photo #2) was introduced as available in both crystal and zircon. Two months later in July of 1937 a full page ad appeared in the CROCKERY AND GLASS JOURNAL which pictured this candelabrum with the floral bowl and described it as the latest addition to an already extensive line available in both crystal and zircon. This was evidently considered one of the items for Heisey's new Fall lines for 1937 since it was scheduled for its first official showing at the New York Housewares Show in July of 1937. Another trade journal China, Glass and Lamps in July of 1937 also referred to the two lite candelabrum as new in Heisey's Fall line.

It was six inches high and composed of a vertical flat wafer of four concentric rings with the two candle holding cups extended on each side supported by a fifth semicircular "ring." This was the only candelabrum which used the so called "E" round ball drop type prism which was one inch in diameter and came in crystal only, even when used on zircon. It was suspended by a triangular wire beneath each

candle cup and was most likely imported from Europe. The candle cups themselves each consisting of ten vertical panels were reminiscent of the colonial styles. The no. 493 Coronation etching and the no. 892 Berkeley Square cutting were offered on this candelabrum during its first production period. It was also soon discontinued, probably in the first half of 1938, making it somewhat scarce today in zircon.

In September of 1947, it was put back into production again and offered until 1953, but this time as a candlestick only (without the ball drop prism) and in crystal only. The CROCKERY AND GLASS JOURNAL of January 1948 pictured this candlestick with the Saturn floral bowl describing it as the famous saturn optic, pre-war favorite back in production. Considering the length of its second production period one would expect it to be more common today. However, since it was a late production item most are probably yet to come onto the collectors market.

The third candlestick in the Saturn line (photo #3) was the short one-lite composed of five graduated rings in a conical shape. This first appeared in price list 28 dated September 1947 and was carried in each price list and catalog through January 1953 and was available in clear (unfrosted) crystal only. Since it does not appear in the next catalog of January 1955, it must have been discontinued sometime during this two year period. In 1956, it was reissued as part of the Verlys line and this time it was available in frosted crystal or turquoise. Turquoise was the name given to the limelight color in the Verlys line. Then in August of 1957, the Verlys line was discontinued and with it the one lite Saturn candlestick. And four months later in December, Heisey closed its doors for good.

In summary, of the three candlesticks offered with the Saturn line, the first had one short production period while the second and third each had two separate production periods. They are found only in a few collections today, and none have been reissued by Imperial.



Picture #3

MARCH AUCTION MAIL BID REPORT

The mail bidders were really active this year with a record number of bidders, bidding on a record number of lots. A total of 89 bidders submitted 574 bids on 315 lots, 46% of the auction. They were successful on 88 lots, with a total value of nearly \$5400. Again, they were "back bidders" on many lots that they didn't win.

Many thanks to Danny Glenn for being assistant bidder, giving me a breather occasionally, and coping with other miscellaneous chores.

Bob Johnson
"The Mailman"

HISTORIC OPERA HOUSE LOST BY FIRE

The 133 year old Granville Opera House was destroyed by a fast-moving fire on Wednesday, April 7th. The cause is believed to be an electrical malfunction. The building was built in 1849 as a Baptist Church. It had been moved to the present site in 1882.

There were 2 antique shops and an office housed in the first floor but the large theater room on the 2nd floor had been vacant for 3-1/2 years. I'm sure this area which formerly housed Opera House Antiques Shop, owners Sam Schnaidt and Frank Frye, retains many fond memories for HCA members and supporters. Who could forget the banquet during Convention 1974 and the welcome retreat we all made to the Opera House from our inadequate quarters in Newark - to hear the guest speaker for the evening - Clarence Vogel. The annual benefit auctions of 1977, 1978, and 1979 - were gratefully held there (free of charge to HCA!) through the generosity of Sam and Frank.

The Opera House had been accepted for the National Register of Historic Buildings and was to be appraised for restoration this spring.

Virginia Yeakley

IN MEMORIUM

We have just learned of the death of our member, Truman (Jack) Johnson, of Oak Ridge, Tennessee. All of his many friends express their sympathy to his widow, Elise.

1982 EVENTS OF HCA

- June 17th thru 20th - Convention
- September 11th - Dinner
- December 11th - Christmas Dinner

#1020 HOTEL CREAM & SUGAR

By: Joseph D. Lokay

On November 18, 1920, Andrew J. Sanford applied for a patent for a new design in a sugar bowl. He was granted design patent #58,832 on August 30, 1921, which he assigned to A. H. Heisey & Co. of Newark, Ohio. That sugar bowl along with a cream pitcher of similar design was given pattern or stock number 1020 and was listed under hotel cream and sugar sets. The design drawings that were included with the patent are shown with this article.

There is one characteristic in the 1020 design that makes the cream and sugar easy to identify. Specifically, it's the placement of the handles. Note their position so that the top part of the handles are well above the top surface of the bowl. The bowl part of the cream and sugar are round with a simple plain surface. The glass in both pieces is very thick thus giving a relatively heavy feeling to each piece. The bottoms are ground and contain a typical Heisey star. Both the cream and sugar are signed with the Diamond H located in the center of the inside bottom.

The first listing I could find for the 1020, Cr/S was in Heisey price List #206, dated January 1, 1922. They were listed under the category - hotel cream and sugar. Heisey catalog #102, circa 1923, pictured the two items also under the hotel Cr/S category. Page 121 in Vogel Book 2 is a copy of that catalog page. To help in establishing a beginning date for #1020, price list #205 dated June 15, 1919, did not list 1020. A Heisey advertisement which appeared in at least three places, the March 1921 issue of Good Housekeeping, the April 1921 issue of Ladies Home Journal and the April 1921 issue of Woman's Home Companion, pictured a 1020 Cr/S set with a Daffodil cutting on them. Considering the patent date, the price list dates and the ad date, my estimate is that Heisey began producing the 1020 Cr/S set in 1920.

This means that there was about one year of production of 1020 before the patent date of 8-30-21 was established. This becomes apparent when you examine the Diamond H marks on the 1020 Cr/S as some are just the Diamond H and some have Pat. 8-30-21 around the Diamond H.

I could not find any information in the Heisey documents in the HCA library on color production for the 1020 Cr/S. Besides crystal, I have seen them in vaseline, flamingo and two shades of moongleam. The two shades are dark moongleam that looks similar to emerald and normal moongleam. The dark moongleam is what some have classified as "early" moongleam. The thick, heavy glass structure of the 1020 pieces amplifies the darker shade. The cream and sugar in vaseline and the sugar in dark moongleam are on display in the HCA museum.

So far, the 1020 items I have seen in crystal and vaseline do not have the patent date 8-30-21 around the Diamond H while the flamingo and moongleam pieces do have the patent date. This is reasonable since flamingo and moongleam color production did not start till about 1925.

DESIGN.

A. J. SANFORD.

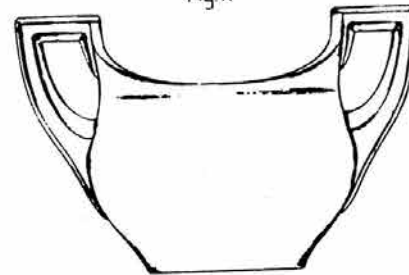
BOWL.

APPLICATION FILED NOV. 18, 1920.

Patented Aug. 30, 1921.

58,832.

Fig. 1.



Price list #209, circa 1928, and catalog #109, circa 1928, were the last references to show the 1020 Cr/S. The color supplement to price list #209 did not list the 1020 Cr/S in color.

My estimate of production periods are: crystal for 1920 to 1930, vaseline for 1922 to 1924, flamingo and moongleam for 1925 to 1927.

It is possible that the 1020 Cr/S might have been made in marigold or hawthorne as their production existed over these two color periods. I found no evidence to support production in these two colors; so I will assume there was none. You know what this means? As soon as this is printed, someone will turn up one in one of these colors.

Price list #209 makes reference to patent no. 58,832 in the listing while price list #208, circa 1924, does not. I feel the patent date was added to the mold for the 1020 Cr/S when new molds were made around about 1925.

Price lists 206, 208 and 209 offered the crystal Cr/S in plain and optic. The optic design is vertical panel. The panels are about one inch wide. In P.L. #206, the optic pieces were listed under miscellaneous items, while in #208 and #209, both plain and optic were listed under hotel Cr/S. There is no information available to clarify if the colored pieces were offered in optic or not. I have seen the vaseline and early moongleam colors with optic. Have not seen flamingo with optic.

Questions I have for the reader are: Have you seen a 1020 Cr/S in vaseline or crystal with Pat. 8-30-21 around the Diamond H? Or, have you seen a 1020 Cr/S in flamingo or moongleam without Pat. 8-30-21 around the Diamond H? Have you seen a 1020 Cr/S in flamingo with an optic? I would be very happy to find a set in vaseline at the local flea market. Yes, I hear you, me too.

DITOR'S NOTE: The early moongleam and most of

the vaseline sets have the heavy optic and I've seen some in flamingo which do, as well. The early moongleam set in the museum does have the patent dates. While this set is pretty without the optic it becomes, perhaps, Heisey's most beautiful cream and sugar with the addition of the heavy inside optic which refracts the light. The vaseline and the dark green are especially outstanding and in vaseline it sells very high.
L.R.

COMPARISON OF #1225 TOY SUGAR & MUSTARD

By: Joseph D. Lokay

Along with a full size four piece table set, Heisey also produced a toy four piece table set in the #1225 Plain Band pattern. Comments have suggested that the toy covered sugar is the covered mustard without the slot in the cover for the spoon. In this article, we will examine the two items. The handleless sherbet will also be examined. The pictures are from the pre 1901 Catalog in the museum.

First, a look at the toy sugar. The sugar bowl itself is 3-3/8" high and has a 2-5/8" diameter at the top. The plain band is 7/8" wide and the bottom is 1-3/4" in diameter and contains a 20 ray star. The overall height with the cover on is 4-1/4". Both the bowl and the cover are signed on the toy sugar I have. On the bowl, the Diamond H is in the center of the inside bottom, and for the cover it is on the inside in the center.

Preliminary comparison indicates that the mustard is larger than the covered toy sugar. Interchanging of the covers finds the toy sugar cover too small for the mustard bowl and the mustard cover too large for the toy sugar bowl. The mustard bowl measures 2-5/8" high and has a 2-7/8" diameter at the top. The plain band is 1" wide and the bottom is 2" in diameter and contains a 20 ray star. The overall height with the cover on is 4-1/2". Neither the bowl or the cover of the mustard that I have are signed. The dimensions show that the mustard is bigger by about 1/4" in diameter and 1/4" in height.

I measured a Plain Band handleless sherbet for comparison to the mustard bowl and the toy sugar bowl. The sherbet was a souvenir item in custard color signed with a Diamond H in the center of the inside bottom. The handleless sherbet was found to be identical to the toy sugar bowl.

One can identify the toothpick holder or the toy spooner by the small beads around the top edge. Since the toy sugar bowl and the mustard are meant to receive covers, there are no small beads around the top edge. The handleless sherbet also has a plain top edge, that is, no beads. Perhaps there was concern that the use of a spoon in the sherbet might break-off a bead.

There is a four piece toy table set in the #1225 pattern on display in the HCA museum. I examined it and some pieces are signed and some are not.

Editors Note: Since 1225 was made both BEFORE and after 1901, most pieces can be found both marked and unmarked.



Mustard.



Toy Spoon.



Toy Butter.



Toy Sugar and Cover.



Toy Cream.

Q. Incidentally, today I found a sugar in #1506 Whirlpool or Provincial. It is in what I take to be amber (dark reddish brown) and signed on the bottom. I cannot find any information in my books that "Whirlpool" was made in amber. Possibly it was made by Imperial. Is there any difference between Whirlpool and Provincial?

Also would be interested to know more about the Yeoman line. I have a Yeoman #1189 sugar and creamer in moongleam which according to the Yeakley book is rare (at least in Sahara).

As a fairly new collector I find that the more you learn, the more there is to learn. I enjoy your paper very much.

Dorothy Brown, WA

A. As you have probably learned by now, your cream and sugar are Imperial made before the mark was removed from the mold. All Provincial is out of production now. There is no difference in Whirlpool and Provincial but the name was changed to Provincial in the late years. Heisey made this pattern only in crystal and limelight (Blue green).

The little Yeoman set is not plentiful.

L.R.

"FISH CANDLESTICK"

by DICK MARSH

"FISH MATCH HOLDER"



FISH CANDLESTICK
5" high

The fish candlestick is known to come in crystal only and is never found marked with the Diamond H. It is 5" tall, 2 1/4" across and 4" long.

As with the fish bowl, the fish candlestick starts with a series of curls to look like waves. But with this one the tail fin also starts at the bottom on the right side with eight raised sections that taper in size to the body. The body curves to the back and down to the right side where it disappears into the waves. As the body leaves the waves, again it is rising upward and swells in size with the back side appearing to be leaning back. There is a raised area at the back of it's head. The eyes are located in deep recesses and are large raised ovals with round indentations to the top side. There are four raised sections to represent gills. The candle opening is the mouth, with a lip which curls over on the lower and upper jaw.

If you have not frozen out during the last month, we'll spend a little more time fishing through that hole in the ice. There are two more fish we should catch before going home.

As with the fish candlestick the match holder is known in crystal only and is unmarked.



FISH MATCH HOLDER
3" high

It is only 3" tall, 2 1/4" across and 3/4" long. This item rises from the bottom the same as the candlestick but there is little or no body shown above the waves. The gills are shown by two raised areas. The eyes are the same as the candlestick only smaller. The mouth has a lip and it is a holder for a box of matches. (When this was made pocket matches still came in small boxes.)

The above Article was reprinted from "Heisey News" Vol. V, No. 2 (1976). The fish matchholder is our newest item from Imperial which is on sale in our Gift Shop. These are in sunshine yellow, both plain and satin. They were listed in your March newsletter on Page 21, Item #77. They are \$12.50 plain and \$14.00 in satin, plus 10% Shipping and 4-1/2% Tax in Ohio. These have been made but as of April 8, we have not yet received them so be patient if you have ordered them. Approximately 1000 were to be made but we do not have the exact count as yet.

The Fish Candlestick will be our fall item in both plain and satin, sunshine yellow. These will be marked "IG" for Imperial Glass.

► Campgrounds

Camp & Motel Fairview
Located On US Rte 40
5 Mi East Of Jacksontown
11833 National SE Thornville 323-3983
Crawford's Mkt & Campgrounds
7968 E National South Vienna 568-4266

HAPPY VALLEY CAMPGROUND

2131 DAYTON RD
APPROX - 2 MILES NORTH OF US. RT. 16 E
(Formerly T's Ponderosa)

FISHING - CAMPING
SWIMMING - HIKING - PARTIES
NIGHTLY OR SEASONAL TICKETS.
CAMPGROUND OFFICE - 345-8066

180 Wilson Newark 345-0756

Klamfoth Dick Honda Hills
10214 Honda Hills SE Thornville 323-3766

LAZY R CAMP GROUND THE

Water & Electric Hook-Ups
Recreation Hall - Shelter House
Sanitary Dumping Station

2340 Dry Creek Rd NE Granville 366-4385

National Trail Park Gratiot 787-2860
Walnut Acres Campgrounds & Canoe Livery
3207 Brownsville SE Newark 763-2383

CURLEY TAPE TO BE SHOWN AT CONVENTION

David Curley's tape with George Michael's PBS "On Antiques" show will be shown during the Convention at Hopewell Hall. Bill Clifford has offered to bring his video-tape player. Everyone should take time to see this tape. Hours to be announced.

A WEEK-END BEHIND THE SCENES WITH HEISEY
GLASS - NATIONAL CAPITAL HCC ALL HEISEY
SHOW

It is about dawn, Saturday 3-20-82, and some of the biggest and most prominent Heisey Glass dealers in the U.S.A. are preparing to show their wares at the 10th Annual All Heisey Glass Show at Armory Place in Silver Spring, Maryland. The air is racing with anticipation as even the "old pros" probably carry spurts of puzzlement and wonder as to how things will go? Will the new facility attract the crowds and buyers? Will someone unwrap a piece they have been "wanting" for quite some time, and can they afford to buy its possession for the time being?

As the morning light enters the large armory hall, tables are being beautifully laid out with choice pieces and multi-color arrangements of Heisey glass. The show before the show is about to begin...I am informed that it is time to "wander" about the premises for a multitude of purpose. What do THEY have on that bowl we are going to try to sell in our own booth? Oh God, a set of #1488 Kohinoor candlesticks in zircon.. this is not going to be easy..I wonder if my mouth appears to be hanging? What pieces am I going to take back home with me and how long should I wait to attempt to purchase them?..... I might never see some of these things again, and yet I could run into them for a tenth of the display cost in the New England field next week... the opening approaches and I have showed tremendous resistance and restraint from purchases.... the lines are beginning to form in the hall and customers and collectors are waiting impatiently to enter and scour this beautifully constructed mini-Heisey glass land...I take a seat in front of the "Berkley Antiques" booth and my mind begins to return to the reality of the principles of this gathering of dealers....It's time to sell some glass to our fellow collectors and buyers!

The morning soon turns to afternoon and the numbers keep coming...we are informed that the show will break all attendance records this year and smiles continue on most of the dealers' faces. The approach of dinner allows the "old friends" to renew their business and social relationships as many of the dealers have been doing this "business" together for oh so many years.. I am introduced to the Marshall's, the Harrison's, the Freeman's, and Dick and Ginny Marsh. I chat with Carl Sparacio, Virginia Yeakle, Bob O'Grady and Valli Feldman. These people had only been words and stories to my mind up until this very moment. I am not at all disappointed or disturbed...they are all truly wonderful and warm individuals. And finally, a short woman, who in a funny way reminded me of my wife's great aunt from West Virginia, walks by our booth and the warm smile and steady presence tell me that this is Louise Ream and; the introductions to the members of Heiseyland is now complete. Louise is very kind and lingers shortly to greet us and carry on the spirit of all that is taking place

under this armory roof.

The afternoon grows into evening and many have been on their feet for over 16 hours...it has been a successful day for Heisey lovers and enthusiasts. Much was sold, and much remains for others to look at, examine, admire, and even take home to a personal collection. I am physically and mentally tired. I have learned much about the glass, the "business", the people, and even a little bit about myself. Now it's off to sleep and ponder the purchase possibilities of the morrow and discuss the actions of the day.

Sunday comes into existence with the dream of glass dropping from my hands to breakage on the floor. A quiet laugh from behind tells me that "these things" happen to all young and eager entries in the game of glass. I turn to look from where the noise comes..but, alas I awaken to the Maryland rain and realize that another entertaining Heisey day is about to unfold. We are greeted at the hall as the dealers trickle in to take their place. I do some scattered thinking and then put my feet to motion for some purchases and bargaining. I buy a Rib and Panel pitcher and then move to the Jones' booth to gobble up a set of #113 sticks in moongleam, passing up a pair of beautiful crystal sticks that keep shouting "buy me" as I move slowly away with my ears covered. I better get back to my seat before control is lost to shopping desires.

I make it back as the second day's group of shoppers enters the armory and the show is again officially underway.

Sunday is a quieter day and the after-church group livens the action in and around the booths. A buyer wants to know if we have an elephant, are these pieces marked anywhere, do we have any _____, in such and such a color? People are friendly and inquisitive... some buy and some chat as they move around the show. Buyers compare prices and display to appeal to their sense of purchase. Money changes hands and all parties are pleased. There is a piece of Heisey glass for 99% of those present in the search and exchange.

We have come and we have "celebrated", as the theme of the show rings true to form. The close of the show approaches and the boxes fill with hidden goodies to move on to the next gathering of glass and friends. Good-byes are said and meetings are planned among friends and allies. The tags are returned to the proper place and the boxes are loaded into the trucks and vans. I say good-bye to the many that are in sight and to our host and hostess. Jim and Butch Jones. Finally, I walk to the HCA display booth and shake hands with the warm and smiling Louise to thank her; I guess, just for her presence and dedication. She asks if I was the one who was interested in getting young people into the group of Heisey study and followings? I nod in the affirmative and she wishes me luck saying that in Ohio, many young people are working hard along those lines. I feel somewhat more confident and leave thinking

NATIONAL CAPITAL HCC ALL-HEISEY SHOW
CONT'D.

that there is a way to make my plans come to pass in time. Night takes us in as we head to Boston and back to the Bay State Heisey land where it all started for me some time ago. Tonight I will sleep well and the glass in my dream will not slip so easily from my grasp.... especially knowing more of what that Diamond H has done for so many warm and wonderful people..

Good hunting
Dan Cherney

EDITOR'S NOTE: We were happy to meet the YOUNG, enthusiastic and perfectly charming Dan and we hope to see him again and often. A great Aunt? Well, it could be possible. L.R.

BAY STATE HCC

The Bay State HCC met at the Follen Community Church for our annual meeting with President Lloyd Caswell at the helm. The officers of our club remain the same for another year due to a change in our by-laws:

President:	Lloyd Caswell
Vice President:	George Fogg
Treasurer:	Janet Macomber
Secretary:	Ann Montague

The program for the evening was Creamers and Sugars. This program was really a knock out. We had at least a hundred and ten different types, sizes and colors represented by the various members who brought the items to show from their collections.

Dotty Banck, the moderator of the program, was awed by the array of glass that was brought, as well as the members themselves. Herewith are some of the creams and sugars shown:

Beaded Swag in Opal; Prince of Wales, Plumes, Half Circle in Flamingo; #102 sugar in Crystal; Punt Band in Custard; Pineapple & Fan in Custard; Ring Band in Custard; #1533 Wampum in Crystal; #7000 Sunflower; Flat Panel in Crystal; Imperial Verde Green, Zodiac; #1206 Quator Ribbed; #1485 Saturn Creamer; #1401 in Moongleam and Sahara; #150 Pointed Oval in Diamond Point in Emerald and Crystal; #325 Pillows; #1201 Cream and Sugar, 2 sizes; #357 Prison Stripe; #1469, 2 sizes; #1205 Fancy Loop; #1951 Dawn Cabochon; and #354 Flat Panel stack set in Flamingo.

As you can see by my list we really out did ourselves. Dotty really did an excellent job.

Show and Tell was no slouch either. Everyone is really doing a fine job in finding great finds. Here again is what was shown:

Twist Salt & Pepper with glass tops; #1469 Floral Bowl in Zircon; #150 Pointed Oval and Diamond Point Cream & Sugar and covered butter; #1184 Yeoman, 3 part relish in Flamingo; #417 Couble Rib & Panel mustard with spoon; #1567 Plantation vase with Ivy Etch.

David Steer, again a job well done.

The meeting adjourned for coffee and goodies provided by Bobbie Klein & Janet Macomber. The cheese cake and sandwiches were really good

and my diet went away again this night.

What is going to happen to the original glass animals made by Heisey now that Imperial is reproducing them? What is the feeling in Ohio about this? I guess what I am trying to say is the value and the beauty of the original.

George Gleason

EDITOR'S NOTE: Imperial is only reissuing the two fillies in lead crystal at this time, in a limited number, all marked and numbered. See Bob McClain's "Desk Of" for more on this. The beauty of the originals will remain as always and Imperial's Animals will suffer greatly by comparison.

LETTERS, WE GET LETTERS

Dear Joe,

Read your article on Cross Line Flute. I climbed to the top shelves to bring down all the pieces I own in this pattern.

My jug is Pat. 3-24-14, The 7" nappy, Pat. 3-8-16, The 5" flared vase has a large Diamond H, but no Pat. and my 9" nappy has the large Diamond H but NO Patent mark that I can see.

I hope this helps your research.
Louise White, MI

EDITOR'S NOTE: We also received a phone call about nappies in this pattern not having the patent dates.

I've enjoyed the newsletter each month and though I haven't been to the museum yet the newsletter keeps me posted on current events along with our monthly meetings of Rochester Chapter.

We have a very loyal, dedicated group which with their interest and knowledge, leadership, they have updated and upgraded our club.

Roberta June Zimmer, N.Y.

I loved the blue cygnet you sent me - A niece is getting married and I included it in the box I sent. The "Something Blue" - Thank you - so now I'd like another to keep.

Betty Buckman, CA

Odele and I recently had the pleasure of showing the film "The Heisey Glass Story" with a display of Heisey glass and a Question and Answer period at two seminar type programs in Florida. I am enclosing a copy of the publicity in several of the newspapers and also a letter of thank you from the Manatee County Public Library System, Bradenton, Florida for the first one we did on March 6th. The second one was for the women at our St. Armands Key Lutheran Church in Sarasota, Florida, on March 10th (we did have 4 men present). We had about 50 attending at the Library and 70 at the church. "Cookie" Cason shared some of her Heisey with us for the displays. It was really fun. We have many winter visitors from Ohio and also transplanted residents from Ohio. A number of them had Heisey, the most popular pattern being Crystalite. All

LETTERS, WE GET LETTERS CONT'D.

enjoyed the film and we had complimentary remarks about the accompanying music. We, of course, told our viewers about the "Heisey Collectors of America" Club and the beautiful Museum in Newark and enjoyed sharing our love of Heisey and sharing some of our collections. (Percy and Vivian Moore are coming to have dinner with us Tuesday - looking forward to that.)

Virginia and Odell Johnson, FL

RECENT FINDS

By: Janet M. Macomber

Everyone enjoys finding a treasure, but when you find one in your very own pattern it is doubly exciting. This is just what happened to one of our East Coast collectors, and not too far from his home town. Here he found an Oval Ridgeleigh Floral Bowl in Zircon - Ridgeleigh collectors, Eat your heart out!!

We also added to our prize collection by marrying our Gascony sugar with an equally beautiful Gascony (#3397) creamer. - Sometimes you can go from one place to another and come home empty handed time and time again. All of a sudden you strike it rich and come up with a #300 Colonial 6" plate and a #1252 Twist 7" pickle boat in Flamingo. Then just across the aisle sitting on a little round shelf all mixed in with all sorts of punch cups was a #1295 Beaded Swag handled custard, Ruby Stained, souvenir Walpole, N.H.

Climbing back into the car we headed down the road a few miles and here we found several real nice "little things" - a #1229 Octagon nut dish in Flamingo and a #352 Flat Panel Ind. creamer and sugar - Our last stop for the day added another stem to our collection and a very nice one at that - a #400 11 oz. Goblet. We could hardly wait to get home and look that one up in the stem Book. While looking over a table just full of old toys, etc., I found sort of half hidden a #15 Flower Block in Moongleam. How lucky can you get!! On the way out of this building was a table tucked away in a corner, out in the entranceway, I wasn't even going to look, figuring we had found enough for one day, but who can resist.. We were glad we did look because on the table were two (2) #1404 Old Sandwich (my pattern) 2-1/2 oz. oil cruets in crystal. What a super last find of a terrific week-end.

MORE RECENT FINDS

Recent finds in the Newark Area have also been reported. One local man found 8 of the seldom seen 5092 Empress Lily parfais at a bargain price. There was more of this stem pattern in the March Auction than ever seen before in one place. That was because the consignor was a BIG buyer at the factory when it closed. The same person who found these really found the snoozer of all time - a rare #3964 Compote in tangerine. This is a very plain compote and wouldn't attract attention, or probably even be recognized, unless it had a Heisey etching but it is just beautiful in tangerine. It

must have been made when the company was experimenting with the color, because the comport is an earlier pattern than the production period for tangerine.

From Illinois came a report of a great find - a Zircon Kohinoor floral bowl and a pair of candelabra in Zircon, (see last month's candlestick article), AND a pair of Saturn oval candleblocks, also in Zircon. He's striving to become a Zircon king, we do believe. Same person found a 4" ball vase in Alexandrite for less than \$25.00 on the way home from seeing two of them sell for \$180 each at a Newark Auction. He also found a Goose decanter and six sherries at a recent show in his area and almost fell over a dolly loaded with someone's show stock to snatch up this super bargain.

One of his pals found a Tropical Fish Piece and many other goodies up Chicago way. If you have the time to look it is still out there waiting for you.

Write about your finds and send them to Janet Caswell in care of HCA and we'll forward them on to her. She has written a couple of finds columns and enjoys it so let's keep her busy. (Her name will be Janet Caswell by the time you receive this newsletter.) L.R.

HEISEY CLUB OF CALIFORNIA

The HCC held their meeting March 27, 1982, at the home of Betty & Tony Regan in Rialto. There was some discussion on the color book price guide that we will be helping on. There was a reminder to all present to be sure and attend and/or support our Annual Silent Auction in April. All proceeds of this fund raising auction will go to the Heisey Museum. Several of our members reported on the show in San Mateo sponsored by the Northern Calif. Heisey Club. Our program this month was on #1201 Fandango and our Hostess Betty has a very nice collection of this pattern. Other members brought items which she did not have, so we were able to see and discuss quite a few items in this popular old pattern.

We had a contest on uses of the nappy and member Lula Heise won the contest with over 40 uses. Her prize (donated by our hostess) a #1201 Fandango celery tray and #1401 Empress d/f nut dish. Our Show and Tell brought out several goodies and if I had known I was going to write this article I would have taken notes. I do remember a #353 covered soap dish. It had a beautiful Intaglio cutting. There was a pair of #1951 Cabachon, two lite candleholders. Fantastic! I remember a Flamingo Petticoat Dolphin compote and a #341 2 oz. cruet in Flamingo. A very special find for one of our members a #4033 decanter with a #5007 Rye carving. Everyone then enjoyed the bountiful buffet prepared by our Host & Hostess. As always we enjoyed seeing their large, well displayed collection of Heisey glass.

Betty Wanser

Classified

WANTED: Baskets #460, 463, 467, 466, 473, 1503, DAVID JORDON, Box 387, North Salem, IN 46165

FOR SALE: Alexandrite--1401 Empress--Round server w/handles 13", 7 - 10" square plates, 8 ea. cups and saucers, square 6" and 8" plates. B. D. SNYDER, R.R. 12, Box 8, Muncie, IN 47302. Phone (317) 284-6571.

FOR SALE: Antique Heisey Geese in Flight - Flawless Retail Covell 14th edition \$325 each Will sacrifice \$500 pair (805) 466-8633

FOR SALE: Hundreds of Heisey pieces. Send S.A.S.E. for list. M & J WALTER ANTIQUES c/o Sir Speedy, 431 Main Street., Woburn, MA 01801.

WANTED: Buying Heisey Rose and Orchid, Cambridge Rosepoint, Fostoria etched dinnerware and Depression Glass. Also glass figures and unusual glass pieces. NADINE PANKOW, 207 S. Oakwood, Willow Springs, IL 60480 - Phone: 312-839-5231.

WANTED: Will pay up to \$200.00 for Straw Holders with glass lids, or #353 that lays down. Also, want crushed fruit jars. Also want #433 Soda Fountain Glassware. GEORGE HANEY, Box 538, Spencer, OK 73084

WANTED: Any items in Colonial #363, Fifth Avenue Colonial #347, Colonial Cupped #348. Also want Heisey marked ink-well. HAROLD HODGES, 3739 Plaza Drive, Topeka, KS 66609

FOR SALE: Most Colors, Most Patterns, 2000 pieces of Heisey to choose from. S.A.S.E Please. No list available. Write Wants. PEGGY'S ANTIQUES, Box 367, Spavinaw, OK 74366 PH: 918-589-2859

FOR SALE: Heisey Advertising sign, measures 3 X 3-1/2 inches, frosted glass, Cabochon shape, and has a Diamond H on it. Excellent condition. Price, \$100.00 plus \$3.00 packing and shipping charges. MISS CARYL OLSON, P. O. Box 475, Newman Grove, NE 68758

WANTED: Any piece rare or unusual Winged Scroll, Any color/especially clear, green, opal, vaseline. LINDA HEMBERGER, 764 Fairmount, St Paul, MN 55105.

NATIONAL CAMBRIDGE COLLECTORS

FLEA MARKET

Saturday - June 26th

6AM - 5PM

GUERNSEY COUNTY FAIRGROUNDS

OLD WASHINGTON, OHIO

(one mile East of I-70, Exit #186, on Old U.S. 40)

DEALER SPACE AVAILABLE

For information or Contract write: Larry Hughes, Chrm., P.O. Box 416, Cambridge, OH 43725

H & R DIAMOND H PHONE 614-279-0390
After 5:30 P.M.

Helen - Bob Rarey

1450 White Ash Drive

Columbus, OH 43204

Shipping &
Insurance Extra

*Signed

300 PEERLESS Ind. Decanter (4)....ea....	\$ 17.50
351 PRISCILLA 5" Hld. Jelly*.....	29.50
393 NARROW FLUTE Mustard & Cover*.....	27.50
393 NARROW FLUTE Ind. Almond* (4)..ea....	15.00
393 NARROW FLUTE Ind. Almond* Silver Dec. (4).....ea....	22.50
406 COARSE RIB Mayo* & Underplate*.....	21.00
1184 YEOMAN Cream and Sugar* Cut.....	47.50
1255 PINEAPPLE & FAN 6" Vase.....	31.50
1495 FERN 11" Oval Ft. Bowl.....	29.50
1489 PURITAN Sq. Candleblock - Pair.....	25.00
1469 RIDGELEIGH 2-1/2" Rd. Ash Tray*(3) ea.....	12.50
1503 CRYSTOLITE Divided Relish*.....	32.50
1509 QUEEN ANN 12" Hld. Cake Plate*.....	27.50
1E92 OMEGA 5 oz. Juice*, 1100 Waltz Cut (6) ea.....	17.50
3480 KOORS "29" 12 oz. Soda, Flamingo (10) ea.....	22.50
5022 GRACEFUL 4 oz. Oyster Cocktail, 942 Harvester Cut (3) ..ea.....	17.50

GLASS review

ESTABLISHED 1971

The GLASS REVIEW Magazine is for everyone who studies, collects or sells glass. Whether your glass interests lean toward the early 1900's -- or the depression era-- or with today's limited glass items, the GLASS REVIEW covers it all!

Articles -- price reports -- original catalog documentation -- shop directory -- research and reproduction news -- trademark information -- glass book releases -- what's new on the market -- a large variety of glass ads (on both old and new glass) -- plus much more.

Enclose payment and mail to:
GLASS REVIEW, P.O. BOX 542, MARIETTA,
OH 45750

10 'big' yearly issues

68 pages or more

\$12.50 -- one year

Granville, Ohio's Land of Legend 10th Annual Show & Flea Market

GRANVILLE HIGH SCHOOL --- Rt. 661 N.
OVER 50 DEALERS including Virgil Harp (repairing glassware)
Clarence Vogel (author of Heisey books)
Glassware, China, Brass, Furniture, Copper, Iron, Crafts, Primitives, Books,
Pottery, lots of misc. (over 2000 pieces of Heisey to be offered for sale).

Wed. - June 16 - 5:00 P.M. - 8:00 P.M.
Thurs. - June 17 - 9:00 A.M. - 8:00 P.M.
Fri. - June 18 - 10:00 A.M. - 8:00 P.M.
Sat. - June 19 - 10:00 A.M. - 4:00 P.M.

HOME COOKED FOOD

FREE ADMISSION

PLENTY OF PARKING

Inside and outside dealers:

For info:

MRS. BETTY MORRISON

127 E. Elm St., Granville, Ohio 43023

Ph: (614) 587-1062 or 349-7934

No reservations needed for outside space

Sponsors: GRANVILLE ATHLETIC BOOSTERS

OVER 50 DEALERS - OUTSIDE FLEA MARKET THURS, - FRI, - SAT.
(FROM DAWN TO DUSK)

RAFFLE

DRAWING SATURDAY, JUNE 19, 1982 @3:00 p.m.

at Granville High School

DONATION \$1.00

- 1st. Prize - Heisey Locket on Chain Compote
- 2nd. Prize - Heisey 8" Eagle Plate - Emerald green
- 3rd. Prize - Early Blue Spongeware Spittoon

BENEFIT GRANVILLE ATHLETIC BOOSTERS

NEED NOT BE PRESENT TO WIN

Tickets Available by calling - 587-1062 or
349-7934 or During Show.

(This offer invalid in states where prohibited by
law.)

Q. I recently purchased a set of 10 salt dips with Heisey Markings on the bottom, and am seeking information.

They are in a white and silver box with no markings on the box. Each salt is divided by cardboard.

The salts are clear, square on the outside with a circular center. See tracing at bottom for idea of how they look from the top.

I was most excited to add this set to my growing collection and would like to find out approximate issue date and cost if at all possible.

Also, in trying to gather info on my other salts, can you tell me if all Heisey is marked?

Some of the salts have no markings, and someone told me all glass is not marked even if it is of a well known brand.

A. Your salt dips are 1469 Ridgeleigh and are the only ones, as far as we know, which were ever gift boxed in that manner. We have a set on loan at the museum. They were made in about the mid-thirties.

No, all Heisey is NOT marked. In fact a lot of the better things are not marked. Also the mark may be very faint on some pieces or in very odd places. You have to look closely, sometimes, to discover it. Very little old glass of other companies is marked. L.R.

JIM KENNON PHONE 216-934-4515
 P.O. BOX 251 Shipping & Insurance
 AMHERST, OHIO 44001 Extra - *Signed

* JIM GARTNER 301-869-5306
 * 444 GIRARD ST - #103 P & I EXTRA
 * GAITHERSBURG, MD Signed *

- 5072 ROSE STEM, ROSE ETCH 9 oz Goblets* ea. \$ 35.00
- 5072 ROSE STEM, ROSE ETCH 6 oz Champagne Tall Sherbet*..... ea. 27.50
- 1519 WAVERLY 14" Party Plate, Rose Etch... 75.00
- 1519 WAVERLY FTD Cream & Sugar, ROSE ETCH* 70.00
- 1519 WAVERLY 6-1/2" FTD Compote, ROSE ETCH 40.00
- 1519 WAVERLY 11" Seahorse FTD Bowl, ROSE ETCH*..... 90.00
- 112 1 LT. CANDLESTICK, ROSE ETCH.....pr. 50.00
- 134 TRIDENT 2 LT CANDLESTICK, ROSE ETCH.pr. 90.00
- 1433 THUMBPRINT & PANEL 2 LT CANDLESTICKS, SAHARA.....pr. 100.00
- 1433 THUMBPRINT & PANEL 2 LT CANDLESTICKS pr..... 65.00
- 1236 EAGLE PLATE, MOONGLEAM..... 65.00
- 1295 BEAD SWAG OPAL TOOTHPICK, SOUVENIR... 65.00
- 1205 FANCY LOOP PUNCH CUP, EMERALD..... 45.00
- 160 LOCKET ON CHAIN PUNCH CUP..... 95.00

- * 20877
- * 3381 CREOLE Goblets, Alexandrite 7 - ea. \$ 95.00
- * 3381 CREOLE Champagnes, Alexandrite 7- ea. 95.00
- * 3381 CREOLE 8 oz. FTD Sodas, Alexandrite 6 - ea..... 60.00
- * 335 PRINCE OF WALES PLUMES Covered Butter Dish*, Good Gold 1 ea..... 160.00
- * 1401 EMPRESS Water Goblet, Flamingo*..ea. 50.00
- * 1401 EMPRESS 7" sq. Plates, Sahara* 3 ea. 15.00
- * 1401 EMPRESS 8-1/2" sq. Plates, Sahara* 6 ea..... 20.00
- * 1401 EMPRESS Cup & Sq. Saucer, Sahara* 6 ea - Set..... 30.00
- * 1401 EMPRESS RD Saucer, Alexandrite* 6 ea 20.00
- * 1401 EMPRESS RD Cream Soup Underplate* Alexandrite.....1 ea.. 20.00
- * 1519 WAVERLY Sq. Cov. Butter Dish, sea horse finial, orchid etch..1 ea..... 95.00
- * 1220 PUNTY BAND Ruby Stain Pitcher (To Martha 1901).....1 ea..... 55.00
- * 1295 BEADED SWAG, Ruby Stain Wine, Waterloo1 ea..... 50.00
- * 1295 BEADED SWAG, Ruby Stain Toothpick Holder (Scotland S.D.)1 ea..... 50.00
- * 1205 FANCY LOOP Punch Cups.....2 ea..... 15.00
- * 1252 TWIST, Footed Mayo., Marigold..1 ea. 55.00

WANTED:

ITEMS IN #160 LOCKET ON CHAIN



Olde Loved Things
 Antiques & Collectibles

PHONE: (904) 252-7960
 After 4:00 P.M.

900 RIDGEWOOD AVE.
 HOLLY HILL, FL 32017

POSTAGE & INSURANCE EXTRA

- 129 FLAMINGO TRIPLEX CANDLESTICK..... \$ 95.00
- SCOTTIE..... 85.00
- PLUG HORSE..... 75.00
- 1170 FLAMINGO "PLEAT & PANEL" TALL COVERED COMPORT..... 85.00
- 1280 EMERALD "WINGED SCROLL" SPOONER..... 95.00
- 1405 IPSWICH CHAMPAGNES (3)..... Each.. 17.50
- 1415 COBALT 20TH CENTURY 9 OZ. TUMBLER..... 95.00
- 1469 RIDGELEIGH PITCHER..... 165.00
- 1483 STANHOPE COVERED CANDY WITH SWINGTIME ETCHING..... 85.00
- 1519 WAVERLY HEISEY ROSE TALL CANDY WITH SEAHORSE HANDLES..... 165.00
- 1540 LARIAT WITH MOONGLO CUTTING:
 - GOBLETS (10)..... Each.. 22.50
 - SHERBETS (7)..... Each.. 18.00
- 1567 PLANTATION FLARED BOWL..... 45.00
- 1632 DAWN LODESTAR CANDLESTICKS & 8" BOWL..... Set.. 225.00
- 3362 EGYPTIAN FLAMINGO:
 - GOBLETS (5)..... Each.. 15.00
 - SAUCER CHAMPAGNE (2)..... Each.. 15.00
- 3408 JAMESTOWN GOBLETS WITH ROSALIE ETCHING (4)..... Each.. 15.00
- 4225 ONE (1) QUART HORSEHEAD DECANTER..... 195.00
- 5003 CRYSTOLITE PITCHER - MINT..... 155.00
- 5003 CRYSTOLITE GOBLETS.....(6)..... Each.. 18.00
- SHERBETS (5)..... Each.. 12.00
- 6060 "MOONGLO" TUMBLERS (6)..... Each.. 15.00

**HEISEY'S
GLASSWARE of DISTINCTION**

FOR SALE: Comprehensive reference book on Heisey's major patterns of tableware, animals & some stemware, etchings, cuttings, & Verleys by Heisey. Details of each pattern clearly shown by photo or illus. Double indexed by pattern name & number. \$11.95 pp. Current price guide for above book, \$5.95 pp.

6 books or more - 40% off.

Send check or M.O. to:

Mary Louise Burns
P.O. Box 1931
Grants Pass, OR 97526



MARY LOUISE BURNS Please send ample
P. O. BOX 1931 Postage & Ins.
GRANTS PASS, OR 97526 Excess refunded.
SASE for refunds.
Checks 2 wks. for
clearance.

Marked Heisey:
Basket #459, unknown cutting of flowers & leaves on panels and cut notched hndl. 13-1/2" high, 6-1/2" diameter.....\$150.00
ATHENA: 13-1/2" Plate..... 40.00
CRYSTOLITE: 10-1/2" Flared Bowl..... 8.00
Round Cig. Holder -\$10.00 Tumbler.... 15.00
PILLOWS: Large Jug, Few scratches Btm. 60.00
NARROW FLUTE: Tumbler, Sun colored... 10.00
PRINCE OF WALES PLUMES: Large jug, fair gold decor..... 100.00
Covered butter, fair gold decor..... 90.00
Spoooner, fair gold decor..... 50.00
LARIAT: Small Cream and Sugar..... 30.00
COLONIAL: Egg cup, amberish stained, English registry mark, chip on rim... 25.00
OLD SANDWICH: Cobalt butter pats, 4 for..... 100.00
Unmarked Heisey:
Cornucopia #1555 Flower Bowl..... 15.00
LOCKET ON CHAIN: Comport..... 125.00
FANDANGO: Small Creamer..... 35.00
FANCY LOOP: Custard or Punch Cup, Rim sanded 10.00
Heisey Museum Land of Legend Plates:
1973 - Verde Green - 1974 Nut Brown ea. 15.00
1975 - Ultra Blue..... 20.00

FAMILY TREE ANTIQUES PH: 219-728-2880
618 W. ADAMS STREET POST PAID
DECATUR, IN 46733 * Marked

1255 PINEAPPLE AND FAN Sugar W/Lid.....\$ 38.00
Creamer..... 32.00
Mug, Gold Trim... 29.00
1503 CRYSTOLITE Cigarette Box* W/Lid.... 22.00
Same as above w/4 Ash Trays*..... 42.00
6" Pickle*, Oval V3 P119..... 18.00
12" Torte Plate*, Rd..... 25.00
7" Snack Plate*, 2 HDL..... 22.00
2 Lite Candlestick, Bobeches,
10 "D" Prisms.....Pair..... 125.00
1469 RIDGELEIGH Celery Tray* V3 P104.... 25.00
Plates* 6-1/2"....(3).....ALL..... 15.00
Ash Tray* 4" Sq..... 8.00
407 COARSE RIB Plates*, 7-1/2" FLA.(12)
EA...\$8.00.....ALL..... 84.00
Plates*, 7-1/2" CL..(16)..ea.\$6.00
ALL..... 80.00
1513 CANDELABRUM..V4 P31 #5.....1 ONLY.. 32.00
1280 WINGED SCROLL Custard 5 pc. Berry
Set..... 300.00
300 COLONIAL Punch Bowl Base* Lg. Mk... 35.00
MIKE OWENS BUST, frosted..... 75.00
MADONNA..... 80.00
FINGER BOWL PLATES..D.O. FLA..(8)..
EA..\$14.00.....ALL..... 90.00

BENEFIT RAFFLE

SPONSORED BY:

The Buckeye Heisey Collectors Club

FIRST PRIZE: #811-3/4 Hoffman House 17 oz. Goblet W/#462 Fox Chase Silhouette Etching.
SECOND PRIZE: #21 Desk Candlesticks (Pair)
THIRD PRIZE: #1632 Lodestar Relish (Dawn)
FOURTH PRIZE: #3440 Portsmouth Goblet (Flamingo)
DONATION: 50¢ Per Ticket or 5 Tickets for \$2.00.
DRAWING: Quarterly Meeting, June 20, 1982.

Tickets will be on sale all week of Convention, June 17 - 20, 1982. Pick up your Lucky Number on one of these days. For those of you not able to attend the Convention, send your check payable to the: Buckeye Heisey CC
659 Canterbury Court
Newark, OH 43055

We will enter your tickets for you and mail your prize if you are a winner. Remember!!!! You need not be present to win but your check must be received before June 20, 1982.

ALL PROCEEDS BENEFIT THE HEISEY MUSEUM

(This offer invalid in states where raffles are prohibited)

We assume no responsibility for errors in these ads after the first printing...Editor
For changes in ads during the year, please send \$1.00 per line.

MOSTLY HEISEY

RHODA CURLEY
16 Clayton Place
Albany, New York 12209
By Appointment (518)482-6272

LAST CHANCE ANTIQUES

P.O. Box 502, Dania, Fl. 33004
Mail Orders - Matching Service
Send us your want lists
(305)467-6356 Day or Evening

GOLDSBERRY'S ANTIQUES

Kalamazoo, Michigan
Shows Only - Buy & Sell
HEISEY A Speciality
Phone (616)381-3013

SCHWAN'S ANTIQUES

Route 1, Box 175B
John Tyler Highway
Williamsburg, Va. 23185
(804)229-7873 Shop and Shows

GREEN ACRES FARMS

Antiques, Crystal Glass & Collectibles
2678 Hazelton Etna Road, S.W.
(S.R.310N.)Pataskala, Oh. 43062
Sat. & Sun. P.M. or Call (614)927-1882

BERT'S BUDGET SHOP

General Line Antiques
403 W. Main St., Newark, Oh. 43055
Phone (614)349-8045
At your service

THE WOODEN SHOE

Antiques & Collectables - Buy & Sell
Glass, Furniture, Estates
Jim & Sheri Vanes, By Appointment
Herndon, Va. 22070 Ph:435-9045

CURIOSITY NOOK

'Where Friends Meet To Antique'
3300 S. 8th. Ave. Westward Village
Barney & Jody Barnicle
Yuma, Ar. 85364 (602)726-6730 Or 726-8070

ANTIQUES -THE SHULTZES

206-208 E. Main Street
Newmanstown, Pa. 17073
15 Mi. West of Reading Pa.
Phone (215)589-2819

T & S ANTIQUES

Tom Martin Steve Roderick
Specializing in HEISEY
New Rochelle, N.Y.
(914)235-9632

YOUR ADD COULD BE IN
THIS SPACE

RAMBLING LANE ANTIQUES

KEITH & EVELYN HOOVER
Featuring HEISEY and Other Fine Glass
Rt. 4 Box 1005 Rhinelander, Wi. 54501
Phone: (715)282-5019

OFF-BROADWAY ANTIQUES

HEISEY GLASS & GENERAL ANTIQUES
121 S. Prospect St., Granville, Oh. 43023
Open 7 Days A Week, 12 - 5 P.M.
Shop(614)587-2083 Sam 587-0052

LYNNE & ART'S GLASS HOUSE, INC.

'HEISEY OUR SPECIALTY'
Miami Beach, Fl. 33154
P.O. Box 54-6014
(305)861-7700 or 895-5666

CRYSTAL PALACE ANTIQUITIES

Cut Glass, Heisey, China, etc.
116 S. Taylor St., Hemet, Ca.
Mon-Fri 10:00 a.m. - 5:00 p.m.
Weekdays by adv. appt. (714)652-1307

PEGGY'S ANTIQUES

ERNIE & PEGGY COX
2000 pcs. Heisey in stock
P.O. Box 367, Spavinaw, Ok. 74366
(918)589-2859 By Appt or by chance

DIAMOND H PLUS

GEORGE & EILEEN SCHAMEL
Rt. 3 Box 419 Boonsboro, Md. 21713
Appointment or Mail Order
Phone:(301)432-6285

HEIDI-HO ANTIQUES, INC.

HEISEY and GENERAL ANTIQUES
838 S. High St., Columbus, Oh. 43206
Phone:(614)444-5774
Hours: Wed-Sat 11-5, Sun 1-5

RECOLLECTIONS

THERESA WERT
Lahaska Antique Center
Route 202, Lahaska, Pa.
Phone:(215)794-8667

ANN'S GIFTS & ANTIQUES

105 W. Main St., Hebron, Oh. 43025
Intersection Rt's 40 & 79
Next Door to Daisy Queen
Daily 11:30 - 5:30 Closed Thursday

SUM OF LIFE

ELAINE & FRANK HUSTED
P.O. Box 102
Phoenixville, Pa. 19460
Phone:(215)935-2962

HEISEY PUBLICATIONS

Box 102, Plymouth, Oh. 44865
All Heisey Books I-II-III-IV
Heisey Newscaster 32 pg. Quarterly
\$6.00, Back issues \$4.00

THE 'FINDERS' ANTIQUES

DAVID & SHIRLEY ROSE
513 E. Main Street
Newark, Oh. 43055
Phone:(614)349-7934

MOUNDBUILDERS ANTIQUES

IRENE RAUCK
1138 Moundview, Newark, Oh. 43055
Phone:(614)344-6043
Heisey & Animals General Antiques

HAPPY HAVEN ANTIQUES

MARY DUMKE
14319 Rattlesnake Road
Grass Valley, Ca. 95945
Phone:(916)273-9450

THE PURPLE PLACE

MARTHA & HAROLD EARP
Art Glass, Heisey, Cambridge
3093 Cleveland (U.S. 41)
Fort Myers, Fl. 33901 (813)936-1572

C & J ANTIQUES

COLE & JEAN MIESNER
Box 45, 72 Whig St.
Newark Valley, N.Y. 13811
Phone:(607)642-9905

GEORGE HOFFMAN ANTIQUES

G.W. HOFFMAN - J.H. DENNIS
129 S. 4th. Street
Newark, Oh. 43055
Phone:(614)345-8021

CHARLES & MILDRED FISHER

HEISEY, DEGENHART, IMPERIAL
Antiques & Collectibles, General Line
991 Idlewilde, Newark, Oh. 43055
Phone:(614)522-5398

HARRISON'S ANTIQUES

HEISEY, CAMBRIDGE, DUNCAN
26 Johnston's Lane
Mercersburg, Pa. 17236
Shows, Mail, By Appt. (717)328-2451

RAY ZIEGLER

GLASS REPAIR
2265 Innis Road
Columbus, Ohio 43224
(614)882-8446

H and R DIAMOND H

HELEN & ROBERT RAREY
1450 White Ash Drive
Columbus, Oh. 43204
(614) 279-0390 after 5:30

JOYCE'S ANTIQUES

Specializing in HEISEY
Cambridge, Verlyns, American Glass
P.O. Box 114, Albertson, N.Y. 11507
Phone:(516)499-3396

Y. W. C. A.
6th & W. Church Sts.,
Newark, Ohio 43055

**OUTSTANDING
ALL HEISEY AUCTION**

Saturday, May 15, 1982
Doors Open - - - 8:30 A.M.
Sale Starts - - 10:00 A.M.

Once again we offer a very fine selection of Heisey Glass for your bidding pleasure. Featured items in this sale include a beautiful and choice custard ring tree, large and small pairs of Warwick vases in Sahara as well as Empress luncheon service for eight in Sahara. Animal items include a very nice Show Horse, Goose with wings down, set of 3 Elephants and a mint Goose decanter with eight cordials. Also included in this sale is a very nice selection of smoking items. We have some very unusual items in Crystolite including a 6" Basket and a chip and dip bowl. This sale contains nice quality with something for both collectors and dealers--just in time for the June shows and flea markets.

We have tried to inspect the glass closely and will use the following code to better describe the condition. A small letter indicates the damage or flaw is minimal. It would be our opinion that the value would be affected 5-20%. A capital letter indicates more significant damage affecting 20-40%. Anything damaged more than this in our opinion will be marked with an X. We hope this will be a better aid in your mail bidding.

f F - Flake b B - Bruise r R - Repaired
c C - Crack m M - Mold Flaw x X - Major Damage

- | | | | | |
|----|---|-------|----|--|
| 1 | 407 COARSE RIB Moongleam Cream & Sugar | H | 44 | 1184 YEOMAN Champagne, 2 Ea |
| 2 | 1404 OLD SANDWICH Oval Cream & Sugar | H | 45 | 1238 14" Moongleam Beehive Plate, very
small chip on rim. |
| 3 | 1506 PROVINCIAL Cream & Sugar | H | 46 | 1509 QUEEN ANN 15" Party Plate |
| 4 | 1506 PROVINCIAL Cream & Sugar | H | 47 | 1519 WAVERLY 15" Party Plate, Floral
Carving |
| 5 | 1506 PROVINCIAL Cream & Sugar | H | 48 | 1280 WINGED SCROLL 13" Opal Dresser Tray,
Gold Decor |
| 6 | 350 PINWHEEL & FAN Cream & Sugar | H b | 49 | 1233 PRESSED DIAMOND 7" Hawthorne Plate |
| 7 | 411 RIB & PANEL Cream & Sugar | H | 50 | 1447 ROCOCO 7" Plate |
| 8 | 429 Flamingo Hotel Creamer, 2 Ea | | 51 | 1425 VICTORIAN 7" Plate, 2 Ea |
| 9 | 1425 VICTORIAN Creamer | H | 52 | 1401 EMPRESS 8" Plate |
| 10 | 1252 TWIST Sahara Creamer | H | 53 | 1519 WAVERLY 8" Plate |
| 11 | 392 NARROW FLUTE Hotel Sugar | H | 54 | 1404 OLD SANDWICH Sahara 8 1/2" Square Plate |
| 12 | 1405 IPSWICH Sugar | | 55 | 1401 EMPRESS 3 Part Round Relish, Orchid
Etch |
| 13 | 1540 LARIAT Sugar | H | 56 | 1540 LARIAT 12" Pickle & Olive Tray |
| 14 | 1184 YEOMAN Sugar, Silver Overlay, No Lid | H | 57 | 1252 TWIST Moongleam Relish Tray |
| 15 | 352 FLAT PANEL Sugar, No Lid | | 58 | 1184 YEOMAN 3 Part Relish, DO |
| 16 | 352 FLAT PANEL Horseradish Jar | H | 59 | 150 BANDED FLUTE Punch Bowl, Base & 10
Punch Cups |
| 17 | 1489 PURITAN Vinegar & Oil Bottle | | 60 | 350 PINWHEEL & FAN Punch Cup, 4 Ea |
| 18 | 354 COLONIAL 2oz Oil, Silver Overlay, 2 Ea
on Tray w Silver Overlay, H x-stopper | | 61 | 1567 PLANTATION Punch Cup, 3 Ea |
| 19 | 1201 FANDANGO 4 oz Oil | | 62 | 1252 TWIST Flamingo Cup, 2 Ea |
| 20 | 1184 YEOMAN Moongleam 4 Oz Oil, DO | H | 63 | 1231 OCTAGON Moongleam Cup & Saucer |
| 21 | 1489 PURITAN Cologne Bottle | | 64 | 1184 YEOMAN Marigold Cup, 2 Ea, DO |
| 22 | 1469 RIDGELEIGH Cologne Bottle | | 65 | 1252 TWIST Marigold Saucer, 2 Ea |
| 23 | 1540 LARIAT Oval Cologne Bottle | | 66 | 301 1 Lt Candelabra, 2 Ea |
| 24 | 489 2 Oz Cologne Bottle, 2 Ea | H | 67 | 134 TRIDENT 2 Lt Candle, Olympiad Etch, 2 Ea |
| 25 | 516 Flamingo 1 Oz Cologne Bottle | H | 68 | 71 10" Oval Candle, Cut, Pair |
| 26 | 520 Candle Lamp | H | 69 | 1509 QUEEN ANN 1 Lt Candle w/Prisms, Pr |
| 27 | 5072 ROSE STEM Ice Tea, 5 Ea | 1-x | 70 | 301 3 Lt Candelabra, Short Base, Pair |
| 28 | 1E92 OMEGA Ftd Ice Tea, 10 Ea | H | 71 | 113 Flamingo 1 Lt Candle, Pr |
| 29 | 5024 OXFORD Ftd Ice Tea, 3 Ea | | 72 | 114 Flamingo 1 Lt Candle, Pr |
| 30 | 6003 TEMPO Ftd Ice Tea, 2 Ea | H | 73 | 1503 CRYSTOLITE 1 Lt Candle Block, 4 Ea |
| 31 | 5010 SYMPHONY Ftd Ice Tea, 5 Ea | | 74 | 100 6" Candle, Cut |
| 32 | 5040 LARIAT Ftd Ice Tea | | 75 | 5 9" Candle |
| 33 | 5019 WAVERLY Ftd Ice Tea | | 76 | 135 Flamingo 1 Lt Candle, Pair |
| 34 | 1252 TWIST MARI GOLD Ftd Soda, 2 Ea | H 1-X | 77 | 1433 THUMBPRINT & PANEL Cobalt 2 Lt, Candle.
Pair |
| 35 | 3350 WABASH Ftd Soda, Pied Piper Etch | H | 78 | 1433 THUMBPRINT & PANEL Cobalt 11" Floral
Bowl |
| 36 | 3308 BOB WHITE Goblet, Peacock Etch, 6 Ea | 2-x | 79 | 350 PINWHEEL & FAN Berry Set, 8" Nappy &
8 ea 4" Nappies |
| 37 | 3308 BOB WHITE Champagne, Peacock Etch, 6 Ea | | | |
| 38 | 1590 ZODIAC Champagne, 11 Ea | H | | |
| 39 | 5019 WAVERLY Sherbet, 11 Ea | | | |
| 40 | 5024 OXFORD Champagne, 7 Ea | | | |
| 41 | 1540 LARIAT Champagne, 2 Ea | | | |
| 42 | 6091 GABOCHON Sherbet, 3 Ea | | | |
| 43 | 6003 TEMPO Sherbet, 2 Ea | | | |

80	350	PINWHEEL & FAN 8" Nappy H	131	1503	CRYSTOLITE 6" Ftd Candy & Cover H
81	1511	TOURJOURS 10" Salad Bowl, Marked Sample	132	1503	CRYSTOLITE 7" Candy Box & Cover H
82	7000	SUNFLOWER 12" Floral Bowl	133	1503	CRYSTOLITE 7", 3 Comp, Round Candy Box w/Metal Cover
83	1184	YEOMAN Flamingo 12" Flip Floral Bowl, DO	134	1503½	CRYSTOLITE Cream & Sugar H
84	466	PANEL & DOUPLE PLEAT 9" Nappy H	135	1503	CRYSTOLITE Oval Cream & Sugar H
85	1401	EMPRESS 11" Ftd Floral Bowl, Normandie Etch	136	1503	CRYSTOLITE Indiv Oval Cream & Sugar on Tray H
86	1401	EMPRESS Alexandrite 11" Ftd Floral Bowl	137	1503	CRYSTOLITE Indiv Oval Cream & Sugar on Tray H
87	1445	GRAPE CLUSTER Sahara 12" Oval Floral Bowl H	138	1503½	CRYSTOLITE 7" Oval Tray
88	1401	EMPRESS Moongleam 7½" Ftd Nasturtium Bowl	139	1503	CRYSTOLITE 6" 2 Hd1 Jelly, 2 Comp H
89	1401	EMPRESS Flamingo 7½" Ftd Nasturtium Bowl	140	1503	CRYSTOLITE 6" 2 Hd1 Jelly, 2 Comp H
90	1183	REVERE 10" Cake Salver, Cut H	141	1503	CRYSTOLITE 8" 2 Comp Handled Conserve H
91	1205	FANCY LOOP 7" Ftd Comport	142	1503	CRYSTOLITE Oval Mayonnaise, 2 Hd1 & 8" Oval Underplate H
92	4054	CORONATION Slim Jim, 2 Ea	143	1503	CRYSTOLITE 6" 2 Hd1 Jelly H
93	4054	CORONATION 8 Oz Soda, 4 Ea	144	1503	CRYSTOLITE 5" 1000 Island Dressing Bowl
94	1637	ATOWN & COUNTRY Dawn Soda H	145	1503	CRYSTOLITE 5" 1000 Island Dressing Bowl, Crimped
95	1295	BEAD SWAG Opal Tumbler, Souvenir of Reinbeck, Iowa	146	1503	CRYSTOLITE Mustard, Cover & Paddle H
96	1404	OLD SANDWICH 8 Oz Soda H	147	1503	CRYSTOLITE 2 Oz Oil Bottle
97	1951	CABOCHON 8 Oz Soda, Not finished H	148	1503	CRYSTOLITE 4 Oz Cologne
98	5087	COMET 14 Oz Soda, 2 Ea M	149	1503	CRYSTOLITE Cigarette Box & Cover
99	1404	OLD SANDWICH Toddy, 2 Ea	150	1503	CRYSTOLITE Cigarette Box & Cover
100	5003	CRYSTOLITE Goblet, 8 Ea	151	1503	CRYSTOLITE Cigarette Box & Cover
101	5003	CRYSTOLITE Sherbet, 4 Ea	152	1503	CRYSTOLITE Ftd Cigarette Holder
102	1503	CRYSTOLITE Cup & Saucer, 4 Ea H	153	1503	CRYSTOLITE Ftd Cigarette Holder
103	1503	CRYSTOLITE Cup & Saucer	154	1503	CRYSTOLITE Oval Cigarette Holder
104	1503	CRYSTOLITE 5 Cups & 2 Saucers H	155	1503	CRYSTOLITE 5" Square Ash Tray & 2 Ea 3" Square Ash Tray H
105	1503	CRYSTOLITE 12" Seashell 15 Part Relish	156	1503	CRYSTOLITE Coaster, 2 Ea
106	1503	CRYSTOLITE 12" Seashell Party Plate	157	1503	CRYSTOLITE 3" Round Ash Tray, 4 Ea H
107	1503	CRYSTOLITE 12" Oval 3 Part Relish	158	1503	CRYSTOLITE Tumbler, 2 Ea H
108	1503	CRYSTOLITE 10" Round 5 Part Relish	159	1503	CRYSTOLITE Tumbler H
109	1503	CRYSTOLITE 8" 3 Compartment Relish	160	5003	CRYSTOLITE Tumbler
110	1503	CRYSTOLITE 8" 3 Compartment Relish	161	1509	QUEEN ANN Ftd Ice Tub, Floral Silver Overlay, w/Tongs
111	1503	CRYSTOLITE 12" Celery Tray H	162	462	8" Basket H
112	1503½	CRYSTOLITE 12" Celery Tray H	163	459	7" Basket H
113	1503	CRYSTOLITE 9" 4 Comp Clover Leaf Relish	164	341½	OLD WILLIAMSBURG ½ Gal Jug H
114	1503½	CRYSTOLITE 12" 3 Compartment Relish	165	1170	PLEAT & PANEL Flamingo Jug H
115	1503	CRYSTOLITE 10" Shell Chip & Dip Bowl	166	3480	KOORS "29" Vase, Moongleam Ft & Handles, DO
116	1503	CRYSTOLITE 12" Oval 3 Comp Relish H	167	465	RECESSED PANEL 1 Lb Vase, Sterling Rim & Cut
117	1503	CRYSTOLITE 12" Oval Tray H x	168	1549	LARIAT Fan Vase, Moonglo Cut H
118	1503	CRYSTOLITE 12" Oval Shallow Gardenia Bowl H	169	300	PEERLESS 13" Vase H
119	1503	CRYSTOLITE 12" Oval Shallow Gardenia Bowl H	170	4	CARNATION 8" Vase
120	1503	CRYSTOLITE 12" Oval Shallow Gardenia Bowl H	171	1184	YEOMAN Flamingo 6" Round Candy Box & Cover, Empress Etch, DO H
121	1503	CRYSTOLITE 12" Round Shallow Gardenia Bowl H	172	1184	YEOMAN 8" Round Candy Box & Cover, Cut H
122	1503	CRYSTOLITE 10" Round Shallow Floral Bowl	173	1519	WAVERLY Seahorse Candy, Etched Elks H
123	1503	CRYSTOLITE 10" Square Shallow Gardenia Bowl H	174		VERLYS Thistles Vase, Not Frosted, Signed
124	1503	CRYSTOLITE 11" Torte Plate & 11" Sandwich Plate	175		VERLYS Poppies Bowl, <u>Possibly Alexandrite</u>
125	1503	CRYSTOLITE 7" Salad Plate, 3 Ea H	176		VERLYS 5" Rose Bowl
126	1503	CRYSTOLITE 6" Ftd Vase, Flared	177		VERLYS Pelican Tray
127	1503	CRYSTOLITE 3" Short Stem Flower Vase H	178		VERLYS Greek Horse Ash Tray
128	1503	CRYSTOLITE 6" Basket H	179	3440	PORTSMOUTH Flamingo 9 Oz Goblet, DO 2 Ea
129	1503	CRYSTOLITE 6" Preserve & Cover, 2 Hd1 H	180	379	URN Goblet H
130	1503	CRYSTOLITE Shell Candy Box w/Cover	181	3362	CHARTER OAK Goblet, Marigold Bowl
			182	U8029	PRINCESS LILY Goblet H
			182A	U8029	PRINCESS LILY Goblet H
			183	1404	OLD SANDWICH Flamingo Goblet
			184	3362	CHARTER OAK Flamingo Goblet
			185	1590	ZODIAC Goblet, Red Stain H

PAID ADVERTISEMENT

PAID ADVERTISEMENT

186	3360	PENN CHARTER Hawthorne 9 Oz Goblet, Checker Optic H	247	5058	GOOSE Stem Cordial, Frpsted Stem
187	5019	WAVERLY Goblet H	248	5058	GOOSE Stem Cordial, Frosted Stem
188	6091	CABOCHON Goblet	249	5058	GOOSE Stem Cordial, Frosted Stem
189	1485	SATURN Goblet H	250	5058	GOOSE Stem Cordial, Frosted Stem
190	5082	MID CENTURY Soda, 2 Ea H	251	5038	Rooster Stem Cocktail, Etched Me
191	1170	PLEAT & PANEL Cream Soup & Underplate H	252	1489	PURITAN Small Horsehead Cigarette Box
192	411	RIB & PANEL Hawthorne 5" Ftd Preserve & Cover H	253	1489	PURITAN Small Horsehead Cigarette Box
193	411	RIB & PANEL Hawthorne 5" High Ft JellyH	254		Large Horsehead Stopper
194	411	RIB & PANEL Flamingo 5" Ftd Grape-fruit H	255		Large Horsehead Stopper
195	1183	REVERE Dawn Mayonnaise Bowl & 7" Round Underplate H	256		Small Horsehead Stopper
196	1519	WAVERLY Ftd Mayonnaise & Ladle H	257		Small Horsehead Stopper
197	25	Hair Receiver & Cover H	258	3350	WABASH Wine, Pied Piper Etch, 2 Ea
198	25	Puff Box & Cover H	259	4002	Aqua Caliente, Fisherman Etch
199	1567	PLANTATION Stick Butter, Ivy Etch H	260	6060	COUNTRY CLUB 14 Oz Beverage, Winchester "73" Etch
200	1519	WAVERLY Horsehead Covered Butter x	261	2401	70z Soda, Tally Ho Etch, 2 Ea
201		Giraffe, Head Back	262	1184	YEOMAN 8 Oz Soda, Wigwam Etch, Initial HPW H
202		Giraffe, Head Back C	263	3350	WABASH Champagne, Pied Piper Etch H
203		Small Elephant	264	1252	TWIST Marigold Sherbet H x
204		Middle Elephant	265	3362	CHARTER OAK Marigold Sherbet H
205		Large Elephant	266	1183	REVERE Saucer Champagne, 2 Ea H
206		Rabbit Paperweight X	267	3324	DELAWARE Hawthorne Sherbet, Checker Opt
207		Ringneck Pheasant x	268	5040	LARIAT Sherbet, 6 Ea H
208		Ringneck Pheasant X	269	5083	EL RANCHO Cocktail, 10 Ea H
209		Ringneck Pheasant, Mold Flaw H	270	5024	OXFORD Ftd Juice, 12 Ea
210		Show Horse H	271	5082	MID CENTURY Ftd Juice, 9 Ea H
211		Horsehead Bookend	272	6060	COUNTRY CLUB Claret, 12 Ea 1-C
212		Horsehead Bookend	273	6003	TEMPO Cocktail, Cut H
213		Standing Colt r	274	1E92	OMEGA Wine, 2 Ea H
214		Standing Colt, m	275	5077	LEGIONAIRE Cocktail, Arcadia Cut
215		Standing Colt, r	276	1E92	OMEGA Wine, Starflower, Cut
216		Oscar Horse (Sparky) X	277	6091	CABOCHON Cocktail, Debutante Cut
217		Sealyham Terrier	278	1776	KALONYAL Egg Cup H
218		Sealyham Terrier X	279	3360	PENN CHARTER Hawthorne Champagne, Checker Optic H
219		Sealyham Terrier X	280	3390	CARCASSONNE Ftd Soda, Alexandrite Bowl
220		Hen X	281	600	2½" Chamberstick H c
221		Goose, Wings Down	282	1508	Card Case, 2 Pc
222		Goose, Wings Up m	283	411	RIB & PANEL Moongleam Cigarette Jar & Ash Tray Cover H
223		Sparrow	284	1503	CRYSTOLITE Ftd Cigarette Holder H m
224		Standing Duckling X	285	150	BANDED FLUTE Match Box Stand H
225		Standing Piglet	286	1510	SQUARE ON ROUND 4" Ash Tray H
226		Sitting Piglet	287	1401	EMPRESS Ash Tray, Cut
227		Set of 3 Imperial Ultra Blue Colts	288	1590	Ohio 1953 Sesqui Ash Tray
228		Set of 3 Imperial Horizon Blue Colts	289	353	COLONIAL Medium Ash Tray H
229		HCA Souvenir Pink Oscar (Sparky) 1978	290	1606	4½" Square Ash Tray, Notched Corners H
230		Imperial Green Irridized Middle Elephant	291	437	Ash Tray, 3" Octagon H
231		Imperial Green Irridized Donkey	292	1611	Ash Tray, Square Scalloped H
232		Imperial Caramel Slag Donkey	293	1180	Ash Tray, Ring Stem H
233		Imperial Caramel Slag Donkey	294	359	Ash Tray and Match Stand, Pat Dtd. H
234		Imperial Caramel Slag Mallard, Wings ½	295	1286	Ash Tray, Flamingo, Cupid & Psyche Etch
235		Imperial Caramel Slag Mallard, Wings ½	296	1286	Ash Tray, Flamingo
236		Imperial Caramel Slag Mallard, Wings Up	297	1286	Ash Tray, Flamingo, Dog Etch
237		Imperial Caramel Slag Mallard, Wings Up	298	1286	Ash Tray, Dog Etch
238		Imperial Caramel Slag Oscar (Sparky)	299	1469	RIDGELEIGH 3" Round Ash Tray
239		Imperial Caramel Slag Oscar (Sparky)	300	1187	Round Covered Ash Tray, Marigold Stain, Silver Overlay H
240		Imperial Caramel Slag Oscar (Sparky)	301		RIDGELEIGH Imperial Smoke Square Ash Tray H
241		Imperial Caramel Slag Standing Colt	302	1401	OLD SANDWICH Indiv Ash Tray, 2 Ea H
242		Imperial Caramel Slag Standing Colt	303	1435	Indiv Ash Tray, Orchid Etch
243	1225-109	Flamingo Petticoat Dolphin Com- potier	304	1435	Indiv Ash Tray, Rose Etch
244	1210	6" Flamingo Frog Cheese Plate	305	1503	CRYSTOLITE Leaf Ash Tray or Nut, 2 Ea
245	5048	Rooster Head Cocktail	306	1571	Indiv Leaf Nut Dish, 2 Ea
246	5050	GOOSE Decanter w/Goose Head Stopper & 4 Ea #5058 Goose Stem Cordials, w/ Frosted Stems, Decanter is 16 Oz	307	353	COLONIAL Oval Indiv Marmalade H

PAID ADVERTISEMENT

308	1536	Military Cap Ash Tray
309	4054	CORONATION Bar, 3 Ea
310	150	BANDED FLUTE Bar Glass, Heavy Sham H
311	5087	COMET Bar Glass, Torpedo Sham
312	2052	2½ Oz Bar Glass, Orchid Etch
313		Flamingo Bar Glass, DO
314	341	PURITAN Toothpick H
315	1220	PUNTY BAND Custard Toothpick, Beaded Top, Souv. Ft. Edward N.Y. H
316	1280	WINGED SCROLL Custard Ring Tree
317	1401	EMPRESS Sahard Ftd Nut Cup
318	1503	CRYSTOLITE Swan Indiv Nut
319		Moongleam Duck Perfume Stopper
320		Moongleam Duck Perfume Stopper
321		Moongleam Duck Perfume Stopper
322		Duck Perfume Stopper
323		Duck Perfume Stopper
324		Custard Pendant H
325	1205½	FANCY LOOP Salt & Pepper
326	24	Salt & Pepper
327	52	Flamingo Indiv Salt & Pepper, Glass Top
328	1404	OLD SANDWICH Flamingo Salt & Pepper, No Tops
329	10	Salt & Pepper, No Tops
330	1540	LARIAT Salt & Pepper, No Tops
331	1519	WAVERLY Salt shaker, Sterling Top.
332	4045	3" Ball Vase, WO
333	351	PRISCILLA Mustard & Cover w/Spoon H
334	352	FLAT PANEL, 3 Oz Lavendar Jar H
335		Large Knife Rest, Cut, 3 Ea H
336	10	Small Muddler
337	1428	WARWICK Sahara 9" Horn of Plenty Vase, 2 Ea H
338	1205	FANCY LOOP 4" Square Nappy, 4 Ea
339	1428	WARWICK Sahara 5" Horn of Plenty Vase, 2 Ea H
340	1541	ATHENA 6" Round Nappy
341	1404	OLD SANDWICH Moongleam 16 Oz Mug H
342	1404	OLD SANDWICH 12 Oz Mug, 4 Ea H
343	1255	PINEAPPLE & FAN Emerald Mug, Good Gold
344	352	COLONIAL 5½" Plain Edge Nappy, 2 Ea H
345	4085	KOHINOOR Zircon 6" Ball Vase, Saturn Optic, Small Flake on inside of rim
346	1150	COLONIAL 3" Plate, 6 Ea H
347	1229	OCTAGON Flamingo 6" Mint, DO, Empress Etch
348	1509	QUEEN ANN 6" Ftd Hd1 Mint, Belle-Le-Rose Etch H
349	1495	FERN Zircon 6" Bon Bon
350	411	RIB & PANEL 6" Bon Bon H x
351	1509	QUEEN ANN 6" Ftd Hd1 Mint H
352		Colonial Mustard, Silver Overlay ?
353	1252	TWIST Marigold Ftd Juice H
354	1567	PLANTATION Ash Tray
355	1469	RIDGELEIGH Round Cigarette Holder H
356		Auto Headlamp
357		Auto Headlamp
358		Auto Headlamp, Pair
359	1183	REVERE Puff Box, No Lid, 2 Ea
360		Lot of 3 Misc Jars, No Lids
361	2	11" Plate for Epergne & Lamp Part
362	1506	PROVINCIAL Imperial Amber Juice, 4 Ea
363	3390	CARCASSONE Sahara Low Ft Goblet, 8 Ea
364	3390	CARCASSONE Sahara Sherbet, 8 Ea
365	1401	EMPRESS Sahara Ftd Nut Cup, 8 Ea
366	1401	EMPRESS Sahara 8" Round Plate, 8 Ea H
367	1401	EMPRESS Sahara 8" Round Plate, 8 Ea H

PAID ADVERTISEMENT

368	1401	EMPRESS Sahara Ftd Cream & Sugar
369	1401	EMPRESS Sahara 11" Ftd Floral Bowl H
370	1401	EMPRESS, Sahara 7" Rd. Triplex Relish
371	1401	EMPRESS, Sahara, 6" grapefruit bowl
372	21	Flamingo 6" Flower Block
373		4" Crystal Flower Block & 3 Glass Salt Shaker Tops
374	1401	OLD SANDWICH Cup, 1184 YEOMAN Bouillon, & 393 NARROW FLUTE Mustard, No Lid H
375		Lot of 5 Liners
376	1485	SATURN Zircon Whipped Dressing Bowl C
377	3366	TROJAN 3 Oz Oyster Cocktail, DO, 9 Ea
378	5083	EL RANCHO Ftd Juice, 6 Ea H
379	1E92	OMEGA Ftd Juice, 3 Ea H
380	1E92	OMEGA Ftd Juice, Moonglo Cut H
381	4044	NEW ERA Ftd Juice, 2 Ea, Monogram G
382		Misc Lot of 6 Old Fashions
383	1511	TOURJOURS Candle Vase, No Prisms X
384		Misc Lot of 2 Plain Goblets 1-H
385	1503	CRYSTOLITE 4" Square Ash Tray H X
386	5057	SUEZ Claret H
387		Blown Goblet
388	5082	MID CENTURY Cocktail H
389		Plain Cocktail
390	3408	JAMESTOWN 4 Oz Oyster Cocktail, 2 Ea
391	5040	LARIAT Wine H
392		Plain Cocktail
393	1E92	OMEGA Champagne H
394	1184	YEOMAN Sherbet, DO, Etched Rings
395		Plain Sherbet, NO H
396	1184	YEOMAN Small Sherbet, DO, 2 Ea
397	5025	TYROLEAN Sherbet, 2 Ea x
398	5040	LARIAT Sherbet H
399		Box Lot of 6 Misc Stems, small chips
400		Box Lot of 7 Grapefruit Liners
401		Box Lot of 9 Frosted Liners
402		Box Lot of 8 Misc Plain Sodas
403		Box Lot of 8 Hot or Cold Liners
404		Box Lot of 4 CRYSTOLITE Lids
405		Box Lot of 5 Ice Tub Metal Handles
406		Box Lot of 5 Misc Salt Shakers
407	1506	PROVINCIAL Goblet, 11 Ea
408	1506	PROVINCIAL Imperial Amber Goblets, 4 Ea H
409	1506	PROVINCIAL Imperial Amber 8½" Plates 4 Ea
410	1506	PROVINCIAL Imperial Amber 6" Jelly Compote H
411	1469	RIDGELEIGH 8 Pc Berry Set H
412	1469	RIDGELEIGH 6" Saucer, 6 Ea H
413	1469	RIDGELEIGH Mayonnaise w/ Underplate & Ladle H
414	1519	WAVERLY Seahorse Candy Jar, Rose Etch. No Etching on Lid
415	1509	QUEEN ANN 5-1/2" Candle, Pair H
416	465	1 lb. Candy Jar, Cut Candy Jar, Cut H
417	1252	TWIST Mustard & Cover H
418	1503	CRYSTOLITE Covered Marmalade H
419	1404	OLD SANDWICH Indiv Ash Tray, 3 Ea H
420	1509	QUEEN ANN 6" Plate, Olympiad Etch
421	1184	YEOMAN 5" Lemon Dish and Cover H
422	1184	YEOMAN Moongleam Sherbet H
423	393	NARROW FLUTE 6" Covered Candy
424	393	NARROW FLUTE Mustard H

SEE INSTRUCTIONS ON NEXT PAGE FOR MAIL BIDDING !!

PLEASE NOTE MAIL BIDDING INSTRUCTIONS AS FOLLOWS:

Mail bids accepted with checks for the maximum amount of the bid. Mail bids are handled competitively and any difference is refunded after postage and handling. Only items in mint condition will be subjected to mail bids unless specifically requested otherwise. Please add \$8.00 per carton for postage and handling, \$10.00 west of Rocky Mountains. We regret we have had to increase postage and handling charges but we are only attempting to cover our expenses on this. Checks should be made to Sam Schnaidt, Auctioneer and mailed to:

Sam Schnaidt, Auctioneer
P. O. Box 84
Granville, Ohio 43023

LIST OF PRICES REALIZED, AVAILABLE AFTER THE AUCTION, FOR \$1.00

GOOD FOOD AVAILABLE

SAM SCHNAIDT, AUCTIONEER

(614) 587-0052

FRANK FRYE, MANAGER

(614) 344-9847

Q. We would like your opinion on an item we have recently purchased, since we are aware of your long experience and expertise in the field of HEISEY, plus your knowledge of the production of HEISEY by Imperial glass!

We have acquired candlesticks which appear to us to be #1405 (Ipswich) in MOONGLEAM.

While we are aware that Imperial acquired the Ipswich molds; we are persuaded that these candlesticks are Heisey because of the quality (weight and clarity) of the glass, and the fact that the Moongleam is the exact shade of our many pieces of Moongleam.

Two additional items for your consideration - The candlesticks are marked with the small diamond on the side down near the base! Would you inform us:

1. Did I.G. ever make #1405 Candlesticks?
2. Did I.G. ever make Moongleam (or any green that could be confused with same)?

If they are indeed "Heisey" would you consider these to be rather rare! in the Moongleam. Any information you can give us, would be most welcome. Clarke & Betty Laister, FL

A. Imperial did not make 1405 Ipswich Candlesticks. In fact the only things they did make in Ipswich were the larger center bowl, the large candy jar, small candy jar with a plain Cambridge lid (they also own all of the Cambridge molds) and what they called a pecan bowl which was made from a candy jar, flared out at the top and with a ruffled edge. The only colors used were Amber,

Heather (purple), Verde (forest green) and Antique blue with the small jar being made only in Mandarin Gold (a yellow shade close to Sahara) and Moonlight Blue, both of these being Cambridge colors.

The variance in size is not unusual for handmade glass.

For specific answers to your question 1 & 2.

1. Yes, Heisey did mark 1405 Candlesticks.
2. No, Imperial did not make moongleam. They have made several greens but none look like moongleam.

The candlesticks are not common in Moongleam but I am sorry that I can not give a value on them.

A "Heisey by Imperial" book should be helpful to you. Order from HCA. L.R.



1776 Kalonya
5" Handled Jelly



HEISEY GOES HOLLYWOOD

ELEVENTH ANNUAL CONVENTION

JUNE 17, 18, 19, 20, 1982

OSU BRANCH CAMPUS
COUNTRY CLUB DRIVE

NEWARK, OHIO

DISPLAY: HOPEWELL HALL

SHOW: ADENA HALL

CALENDAR OF EVENTS

THURSDAY, June 17, 1982

1. REGISTRATION: EVERYONE MUST REGISTER. Packets may be picked up at 9:00 A.M. at OSU Branch, Hopewell Hall, when attendants will be present to answer your questions. Remember that registration badges are required for all events; they permit unlimited admission to the SHOW and DISPLAY and to all free activities. Children under 12 will be admitted free except where food is served.
ATTENTION: Oscars may be picked up at the HCA booth at Hopewell Hall only. If any are left for sale they will be at the Museum and both HCA Booths on the Campus.
2. REGISTRATION: OSU Branch, Hopewell Hall, from 9:00 A.M. to 5:00 P.M.
3. DISPLAY: Open from 9:00 A.M. to 5:00 P.M.
4. WORLD PREMIERE: Adena Hall, OSU Branch. The Antique Show opens with a champagne preview from 6:00 P.M. to 10:00 P.M. A semi-formal affair open to all members and the public. You will be served champagne and other refreshments for your enjoyment. Booths will be open for selling.
5. REGISTRATION: Adena Hall, from 5:00 P.M. to 10:00 P.M.

FRIDAY, June 18, 1982

1. REGISTRATION: Sheraton Inn from 8:00 A.M. to 11:00 A.M.
2. "SCREEN TEST": Sheraton Inn from 8:30 A.M. to 11:00 A.M. Bring your "finds" and questionable Heisey for Identification. A panel of knowledgeable individuals will be on hand to assist. A continental breakfast will be served. Introduction of Candidates for Board of Directors.
3. REGISTRATION: Hopewell Hall from 12:00 to 5:00 P.M.
4. ANTIQUE SHOW: Adena Hall from 12:00 to 5:00 P.M.
5. DISPLAY: Hopewell Hall from 12:00 to 5:00 P.M.
6. "ORIGINAL CAST": Sheraton Inn from 2:00 P.M. to 4:00 P.M. This is a reception for HCA Members and former Heisey employees. Refreshments will be served.
7. "CAVALCADE OF STARS": Convention banquet at the Sheraton Inn with social hour beginning at 6:30 P.M. and Dinner at 7:30 P.M.

SATURDAY, June 19, 1982

- 1. HCA MOVIE: "The Heisey Glass Story", a documentary produced by Jeff Briggs will be shown at the Sheraton Inn at 10:00 A.M. This is a must for every Heisey Collector. Open to the public.
- 2. REGISTRATION: At the HCA Club Booth, Hopewell Hall, 12:00 to 5:00 P.M.
- 3. ANTIQUE SHOW: Open from 12:00 to 8:00 P.M. at OSU Branch, Adena Hall.
- 4. DISPLAY: Open from 12:00 to 8:00 P.M., OSU Branch, Hopewell Hall
- 5. STUDY CLUB OFFICERS' MEETING: All officers of individual Heisey study clubs are cordially invited to meet at 1:00 P.M. at The Sheraton Inn with HCA officers who will be present to answer questions on club management or any other related problems.

*SEMINARS: ALL HELD AT THE SHERATON INN

- 6. 2:00 to 3:00 P.M. "How Sweet it Is!" An in-depth study of Heisey molasses and syrup containers of all periods. Slide lecture and examples on display. By Jim Earnshaw.
- 7. 3:15 to 4:15 P.M. "Breakfast at Tiffanys". A slide lecture of handled jellies from early to late. You'll be amazed at the variety. Helpful in identification of patterns. Examples on display. By Hugo Wenzel
- 8. 4:30 to 5:30 P.M. "Light Up Your Life". Heisey late candlesticks, 1937 - 1956. By Tom Felt and Bob O'Grady.
- 9. 8:30 to 11:00 P.M. "Negotiating The Contracts". At the Sheraton Inn for HCA members only. A trading post for Heisey Glass will be set up. Bring your duplicates or other Heisey to trade for Heisey of your choice. Each family will be permitted a maximum of 12 items on the table at any one time. These items will be for trade only. Absolutely no money will be involved in the exchange.

You will not be admitted without your badge.

SUNDAY, June 20, 1982

- 1. REGISTRATION: Sheraton Inn at 8:00 A.M.
- 2. "ACADEMY AWARDS": Sheraton Inn at 8:00 A.M. HCA Annual meeting and election of Board members. Breakfast Buffet.
- 3. ANTIQUE SHOW: Open from 12:00 P.M. to 5:00 P.M. at Adena Hall.
- 4. DISPLAY: Open from 12:00 to 4:00 P.M. at Hopewell Hall.

The Museum will open at 9:00 A.M. Daily. The Lounge will open for refreshments at 1:00 P.M. The Museum and its lounge will close at the same time as the Show and Display, except Thursday when it will close at five.

Please list all names for badges. Check all events you plan to attend.

NAME: _____
STREET: _____ CITY: _____ STATE: _____ ZIP: _____

EVENT:	COST	NO. ATTENDING	TOTAL PER ITEM
REGISTRATION.....	\$ 5.00.....	_____	\$ _____
**"WORLD PREMIERE.....	5.00.....	_____	_____
"SCREEN TEST".....	3.00.....	_____	_____
"ORIGINAL CAST".....	2.00.....	_____	_____
"CAVALCADE OF STARS".....	14.00.....	_____	_____
"ACADEMY AWARDS".....	5.00.....	_____	_____
TOTAL COST OF ALL EVENTS.....	\$34.00.....	TOTAL..	\$ _____

Make checks payable to HEISEY COLLECTORS OF AMERICA, INC.

Mail to: MRS. ROBERT McClAIN, Conv. Secy.
156 West Shields Street
Newark, Ohio 43055
Phone: 614-345-8061

- * No Pre-Registration needed for seminars.
- ** \$7.00 if not registered

LYNNE



ART'S

GLASS-HOUSE
INC.

P.O. BOX 54-6014
MIAMI BEACH, FL 33154
(305) 861-7700
(305) 895-5666

Dear Heisey Collector and Dealer,

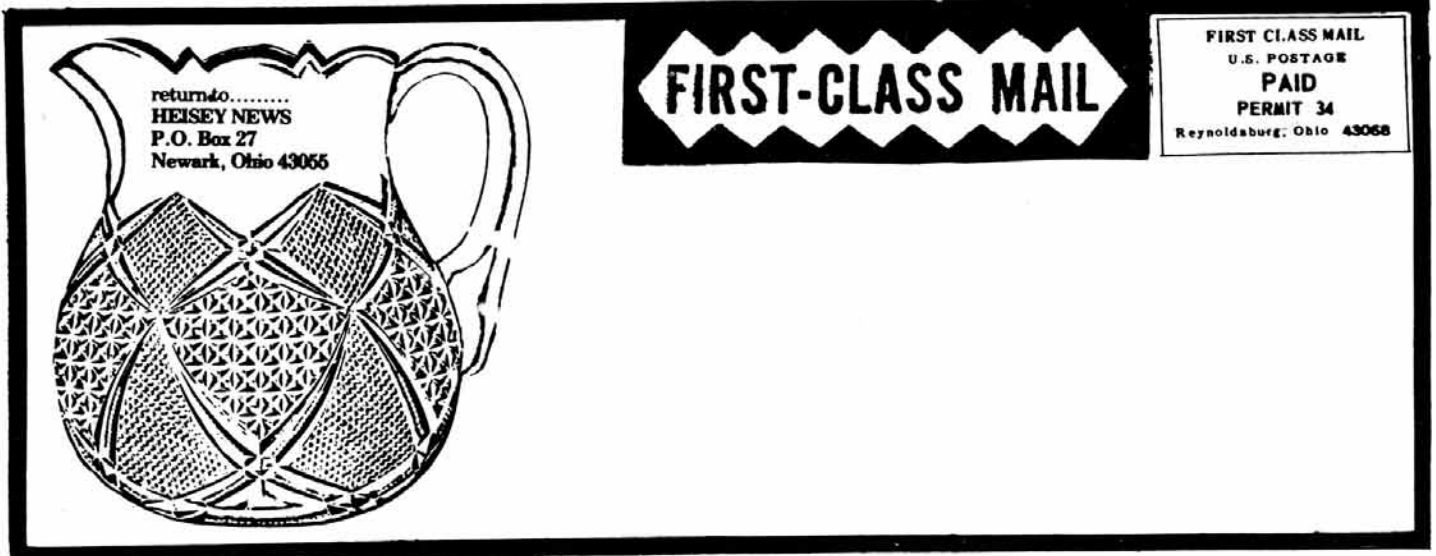
*We're heading your way! Heisey animals,
lovely old patterns, and a rainbow of colors, will
be coming along with us.*

We'll be at the following shows.

JUNE 11 - 12 - 13 - EXPO HALL, INDY STATE FAIRGROUNDS INDIANAPOLIS, IN
JUNE 17 - 20 - O.S.U. BRANCH CAMPUS NEWARK, OH

ROUTE 202 - P. O. Box 242
LAHASKA, PA 18931
215-794-7800

*See you soon,
Lynne and Art*



HCA 11TH ANNUAL CONVENTION - JUNE - 17 - 20TH