

HEISEY *news*

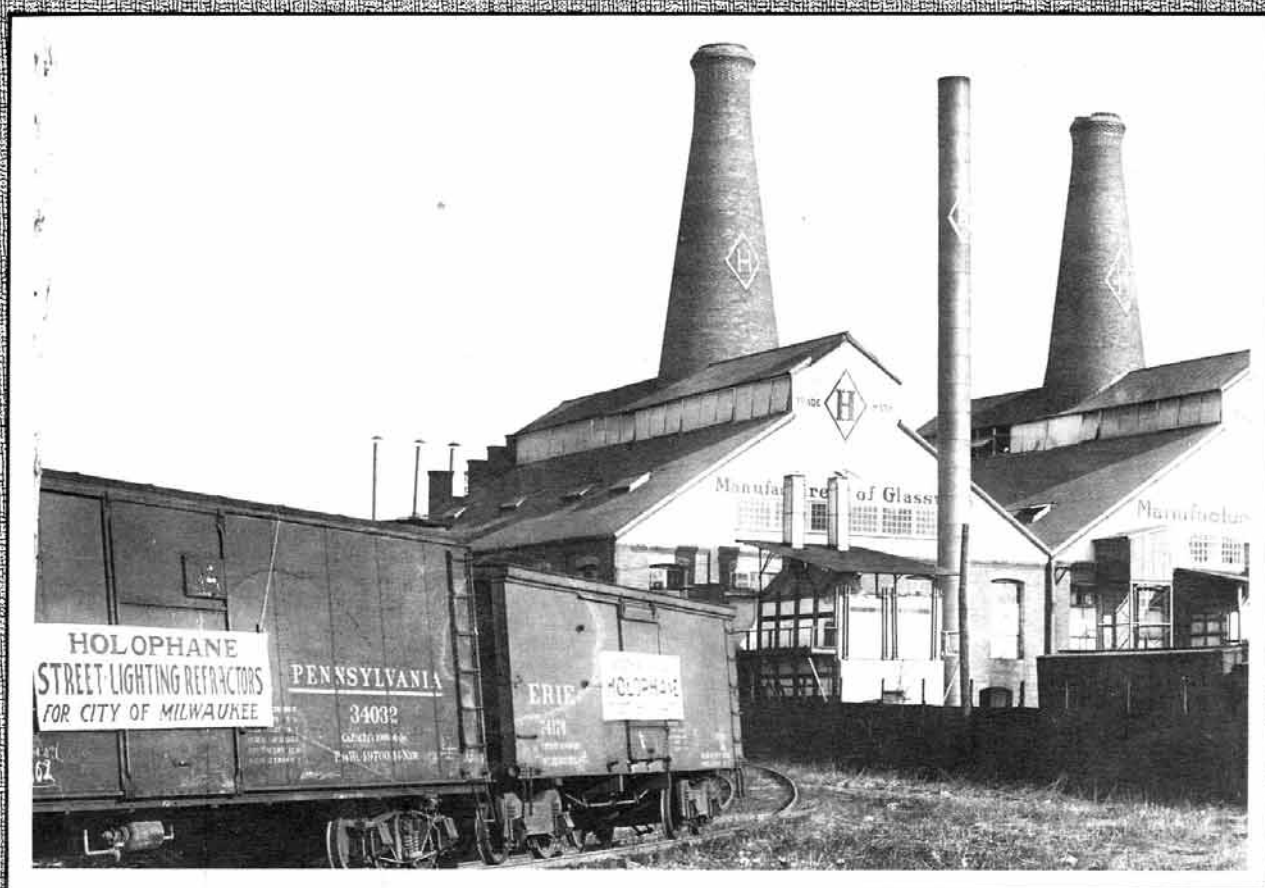
OFFICIAL PUBLICATION HEISEY COLLECTORS OF AMERICA

©Heisey Collectors of America, Inc.

All Rights Reserved 1986

VOLUME XVI NO. 7

JULY, 1987 ISSN 0731-8014



HEISEY NEWS

P.O. BOX 27, NEWARK, OH 43055

CLUB OFFICERS:

President - Bob Rarey (614) 279-0390
Vice President - George Schamel (301) 432-6285
Secretary - Liz Stickle (614) 323-2250
Treasurer - Betty Ann Barnard (614) 366-7002
Exec. Dir. - Louise Ream Off. (614) 345-2932
Res. (614) 522-3430

Editor: Louise Ream
P.O. Box 27, Newark, Ohio 43055
PH: (614) 345-2932

Assistant Editor: Neila Bredehoff
P.O. Box 27, Newark, OH 43055
PH: 614-345-2932

Published monthly and printed in Mt. Vernon, Ohio
\$15.00 per year - \$1.25 per copy
Back Issues - Each Volume (12 issues) year - \$9.00.
Volume, V, VIII, IX, X, XI, XII, XIII, XIV & XV

Heisey Collectors of America, Inc. is a non-profit corporation with tax exempt status. Owners and operators of National Heisey Glass Museum, 6th and Church Streets, Newark, Ohio.

Open daily 1-4 p.m. except holidays. Other hours by appointment. Members admitted free.

Club membership (includes 12 issues of HEISEY NEWS and participation in all club activities) \$15.00 per year plus \$2.50 for each additional family member in same household who wishes a membership card. For VOTING MEMBERSHIP, add \$25.00 one time only fee.

When requesting information, please enclose a self-addressed, stamped envelope (SASE).

ADVERTISING - Send all ads to:
HCA - Advertising
P.O. Box 27
Newark, Ohio 43055

DOUBLE SPACE ALL ADS.

RATES:

CLASSIFIED: 15¢ per word. \$1.50 minimum.
ABBREVIATIONS AND INITIALS COUNT AS WORDS
DEALER DIRECTORY: \$25 per year.

DISPLAY:	MEMBERS:	NON-MEMBERS:
1/8 Page (9 items)	\$20.00	\$25.00
1/4 Page (20 items)	30.00	37.00
1/2 Page (20 items) Hor.	45.00	55.00
1/2 Page (50 items) Vert.	60.00	65.00
1 Page (50 items)	75.00	85.00

Extra lines will be billed at \$1.00 per line. Personal ads limited to 1/8 space.

ALL ADS MUST BE PREPAID. Ad copy must be received by the 5th of the month preceding the publication date - i.e. April 5th for May issue. Ads containing reproductions will not knowingly be accepted unless clearly stated (i.e. Heisey by Imperial, etc.). HEISEY NEWS assumes no responsibility for false advertising or misleading information. In the event of typographical error, the incorrect portion of the ad will be run in the following issue, but HEISEY NEWS assumes no further liability.

The opinions expressed in articles in HEISEY NEWS are those of the authors and not necessarily those of the organization. The Editorial Staff reserves the right to edit or refuse any material submitted for publication. When requesting information, please enclose a self addressed stamped envelope. (SASE).



NOTES FROM YOUR PRESIDENT.....

By the time you read this, convention will be over and a new president will be elected from the Board of Directors. It has been an honor to serve as president of this great organization, and I thank you all for the support you have given me over the past year.

It doesn't seem like a year has passed by, but then again, it only seems like yesterday that I was standing on the corner of Sixth & Church Streets watching this old greenish-gray looking house (our museum) being moved into the park.

I am happy to report to you that the club is in great shape. We must continue to move forward, continue to grow and position the club so it can become stronger and stronger. By working together we have and can move mountains.

Keep it great!

Charlie

1987 - 88 Officers Are -

President - Bob Rarey
Vice-Pres.- George Schamel
Secretary - Liz Stickle
Treasurer - Betty Ann Barnard

About the cover

This photo of the factory was donated by William Ingler whose family was involved with the Holophane Company. These cars are on the siding at the Heisey factory back in the early 1900's.



From the Desk of the Director..

We are very sorry that this issue of Heisey News is so late. If you had been here the last few weeks you would know why. Prior to Convention there was so much confusion that it was impossible to find a peaceful spot to do the layout.

Of course some of you have been receiving your letter late for months. We are supposed to get the second class permit soon. If we have not received it by the time we mail the August newsletter it will go first class. It will then go first class until we do get the permit. This will probably make those of you who have had so many problems with it very happy.

We had time and space to add a little bit of news about the Convention but next month we'll have pictures etc.

One thing is sure--and that is that the Convention was again a huge success. All of the committees did a yeoman job and things went along like clockwork. Sales were great in our museum gift shop and our club booths at both Adena and Hopewell Halls.

Most dealers reported good sales and many scarce items brought great prices.

The parking lots were crowded with cars from many states and guests came from as far as Alaska which amazed the local people. People wearing "Aloha" badges took the town by storm. They find places that we who live here, scarcely know exist.

It was really a great and wonderful week and it goes by so fast!

Those who were elected to the board are pictured on page 4. The new officers are listed on page 2. We congratulate them all and know that they'll do a fine job.

There are three ads in this issue about upcoming shows sponsored by our member clubs and by HCA. The listing is on page 7.

Many fine pieces of glass and a lot of money was donated at the Annual meeting on the 22nd. Hopefully the list will be printed next month. We haven't had time yet to put any of the glass away as yet. Two more rooms will now be mirrored soon.

I hope you enjoy the material about Mr. Ingler and the Heisey-Holophane connection in the early days.

There will be more information in the next issue concerning the new books which are listed here. We just received all of them.

The elephant which we ordered was such a success that the whole 162 sold out. Today I ordered another turn, approximately 165, and they should be here very soon. The color of the

Oscar is actually French opalescent and the elephant and Madonna are the same--very attractive. The Oscars offered at \$24.00 are the same as you have received but since some are left anyone can order them as long as they last.

Louise Ream



No. 3390 Pattern

Square-footed stemware of wide appeal. Used with No. 1401 Lily of France design in complete table ware. Available in Sahara, Alexandrite, Flamingo, Moon Gleam and clear crystal.



And the Winners Are —



FRANK HARPER



PHYLLIS MCCLAIN



BOB RAREY



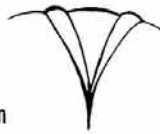
LLOYD CASWELL



BUTCH JONES

PATTERN OF THE MONTH.....
EMPRESS AND QUEEN ANNE

by Louise Ream



We are writing about these two together because they are so similar and in some cases are identical. #1401 Empress was apparently introduced early in 1930. The March issue of National Geographic Magazine shows pieces of the pattern and calls it #1401, available in crystal, Flamingo Rose, Moon-gleam green and Sahara gold and also "Heisey's new Alexandrite."

I was inclined to call the decorative motif on the edges of this pattern a partially open fan but the September issue of the Geographic of the same year describes it thus---"Lilies of France inspired this lovely glass. Alluring is this new glass by Heisey, motivated by the lilies that the Knights of France bore into battle for ladies fair".

So the design apparently was meant to represent lilies and actually they do resemble lilies as much as anything else. At any rate there is one of these designs on each side of a square item and usually six on a round piece. It is a fan-shaped design with a narrow raised area on either side of a larger raised area, usually extending an inch or more inward from the rim. (See drawing). The rest of the glass is plain.

Patent records show that T. Clarence Heisey designed at least part of the items. These include--Dolphin footed floral bowl, pat. #81, 388, March 29, 1930. Square plate, pat. #82, 887, Oct. 27, 1930. Floral bowl with two side handles, Pat. #82, 888, also on Oct. 27.

This really must have been the Heisey pattern of the year 1930 with an extensive advertising campaign since nearly every issue, if not all, of the Geographic had ads for it. Another ad spoke of the "gleaming Sahara; the fascinating Combination of crystal and moon-gleam". Another dwells on Alexandrite. "When you see this new Alexandrite by Heisey, you wonder at it's soft elusive radiance. It is tinted like some rare orchid petal. It flashes with the delicate glow of treasured gems...a dainty tantalizing purple, highly prized and long sought, and now produced for exclusive tables by Heisey".

This appears to be a very large pattern group with items to serve anything from a simple luncheon to a sumptuous banquet complete from soup to nuts, including all accessory items such as floral bowls, candlesticks, vases, punch sets and ash trays.

Some of the plates and saucers are round and some are square and these seem to be used interchangeably in sets. The dolphin foot is a special characteristic of the pattern and was used on many items, sometimes three feet and sometimes four. Some of these are on floral bowls, punch bowls, vases, cream and sugar, mayonnaise and mint dishes, ice bucket pitcher, individual nut dishes and others. Perhaps one of the most unusual is the tumbler with the four tiny dolphin feet which is apparently quite rare. A dolphin also serves as a finial on the covered lemon dish. The single candlestick with three dolphin feet is highly prized also. Most of these pieces are signed on the inside of one of the feet which leads people to believe they are not signed.

Heisey seemed to delight in hiding the mark. The triplex relish is usually signed quite near the

polished rim in one of the divisions between the sections, and is hard to find. A few pieces such as relishes and platters are signed on the side so near the polished base it is sometimes nearly polished off. This can be considered as a pattern which is usually signed.

An outstanding piece is the large floral bowl which has four lion's heads pressed around the sides and has four paws for feet. This bowl is an exception and is usually not signed so look out for it. Another especially valued collector's item, in this area at least, is a set of the diamond shaped ash trays in all of the beautiful colors. On these, as on some other similarly shaped pieces, the "lilies" extend outward from the corners to form handles. This is also true of the triplex relish and other items.

There is a line of pressed stemware not shown in any of the published reference books. As on a few other items such as demi-tasse cups and tumblers, the lilies are below a plain band at the top.

Cups in Empress sometimes have 6 lilies and others have only 4. The ones having 4 extend down further and have a row of graduated beading coming up from the base to meet them. This beading is also present on many dolphin footed items and starts at the top of the foot.

#1401 Empress was also produced in cobalt and tangerine, the latter being the scarest of all. How many items were made in these colors is not known as yet but sets were available in both. We have not seen cups and saucers in cobalt but floral bowls and plates are known. Cruets seen in a combination of clear and moon-gleam are beautiful. Judging from the amount available, largest production in color was Sahara. In colors, if etchings were used, it was usually Chintz, Old Colony or Lafayette. These were also used on clear as well, as many other etchings.

According to trade catalogs the earlier name for the pattern was #1401 Empress and it is generally believed that only Empress was made in color. For some reason at least part of the moulds were redesigned and the name in a later catalog is #1509 Queen Anne.

The most notable difference in the two is the appearance of vertical ripples inside some pieces of the latter. These show clearly in catalog 112-17. Note the floral bowls, 11 and 8 1/2" sizes, and it is also obvious on the cups and saucers. At least some of the plates are thicker and have the ripples in the glass. Some might call these waves or undulations. Pieces etched with Crinoline, Belle-le-Rose and Orchid show the ripples as do creams and sugars and nut cups. Orchid etching was first used on #1509 which pre-dates Waverly, which seems to be seen most often in orchid. A #1509 cup, saucer, cream, sugar, footed mint and a mayonnaise set were shown in the Waverly group as late as the 1956 catalog.

Perhaps, as many believe, there is no basic difference between Empress and Queen Ann. Suffice it to say, we have never seen pieces in color with the ripples in the glass. And, for whatever reason, Heisey did change the number and name of the pattern. Names had been changed before but the numbers remained the same.

Since both of these patterns came in so many colors and etchings, as well as some cuttings, they must have been very popular. For an elegant table setting any of the colors are ideal and in Alexandrite, Cobalt and Tangerine are breath-

taking. You will see them all in June at the show.

The only reissue of this pattern by Imperial includes the #1509 1 lite candlestick with prisms. (Except for the prisms this is one piece as it was at Heisey), a 5 1/2 footed mint and footed mayo set all in clear only.

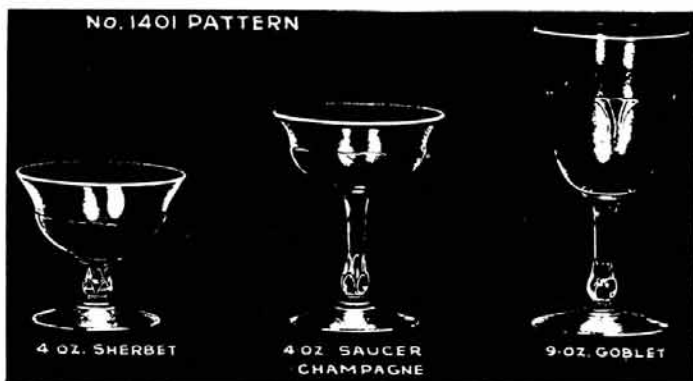
Note: This article was published in the November, 1972 newsletter. Since then we have gathered much information. We have obtained an original catalog, an addendum to #109, which pictures most or all of the 1401 Empress Pattern.

Cups and saucers have never yet been seen in Cobalt but a few are known in tangerine.

For more complete information on this pattern you should purchase The Collectors Encyclopedia of Heisey Glass, 1925-1938 by Neila Bredehoff, an HCA publication. The price is \$24.95 for the book and the price guide, add \$2.50 for shipping. This is a definitive book on the color era.

In reading this article over, I am amazed that it could be as accurate as it is.

*The picture of the pressed line of stemware is probably not very plain but these are the known pieces. L. R.



CHAIRMAN OR CHAIRPERSON????

The 20th Convention of the National Association of Parliamentarians in San Francisco passed the following resolution:

"Whereas, parliamentary law has a language all its own; and whereas, in olden times the one presiding was the only person provided with a chair, while others sat on benches, hence he was called the chairman; and whereas, since time immemorial the term 'Mister chairman' or 'Madam chairman' has been employed to differentiate between sexes; and whereas, further effort toward sex differentiation is redundant and contrived; now therefore be it resolved that organizations and parliamentarians of the National Association of Parliamentarians must use the term 'chairman' instead of 'chairperson' and be it resolved all members of the National Association of Parliamentarians habitually stress the principle the word chairman belongs to the title of the office the same as the title of president or secretary."

SICK GLASS

BY J. D. LOKAY

Perhaps you have heard the expression "sick glass". You may have even seen Heisey glassware that people have called "sick". Questions that generally arise are: What is sick glass? What causes it? Can it be corrected?

Glassware with a cloudiness on the surface is not a film of dirt that can be washed away. The cloudy appearance is permanent because it is the result of a change in the condition of the glass surface caused by chemical reactions. Since it was a chemical change, the process cannot be reversed and thus the cloudiness cannot be eliminated.

For most practical purposes, glass can be considered insoluble. The chemical inertness of glass is a valuable property and has often been emphasized when glass is compared with other materials. Common alkalis, acids, and solvents have no great affect on glass as compared to their effect on wood, plastic, and metal; and yet there is a very slight solubility which can be measured. The resistance to this attack is correctly called chemical durability.

The source of trouble is from the glass itself. The glass is composed primarily of silica, soda, calcia, along with various minor ingredients. The sodium atom is the easiest one to remove from the surface of the glass. Solutions, including water, that remain in contact with the glass surface for a long time will pick up some of this sodium but only very small amounts of the other elements. In other words, sodium from the glass surface passes into the solution that is in contact with the surface.

Sodium removal from the glass surface changes the optical characteristics so that the surface looks cloudy. Weathering similarly effects the glass surface, but at a slower rate. Weathering is primarily a long series of alternate condensations and evaporations. Whatever the cause, cloudiness meets with objection from a Heisey customer since it is visible on the glass surface without the use of laboratory instruments.

The dulling of a glass surface can also occur. It is an effect brought about by repeated hot washings. As for example, surface dulling can occur on glassware used in restaurants and bars. Usually mechanical dishwashers are used in such establishments and strongly corrosive detergents and excessive temperature can cause a dulling of the glass surface after repeated washings.

Surface cloudiness can be hidden by applying a light film of oil over it. The light reflection from the oil makes the glass surface look smooth and clear. Wash off the oil and the surface cloudiness is back. Unscrupulous dealers will put a film of oil over the cloudiness and sell you a piece of Heisey glassware as perfect. The first time you wash the piece, the cloudiness appears. You can be out-of-luck if the piece was purchased several years ago or 1000 miles away.

Heisey items most subject to having cloudiness on them are cruets, pitchers, water bottles, soap dishes or any other items that tend to have liquids in and out of them regularly.

Wendell Young entertained the Western Reserve Heisey Glass Study Club in his beautiful home in Lakewood in April. Much of the evening was spent viewing Wendell's extensive collection of Heisey and other glass. On the kitchen counter we found the beautiful Prince of Wales punch bowl and cups. Since the club will be doing an exhibit, Moonlight and Orchid, at the convention, many items of orchid etch were selected from Wendell's shelves. Much time was spent in discussion of the exhibit. Erick Andrews will be responsible for setting it up in Hopewell Hall.

The Nominating Committee presented the following slate of officers: President - Helen Marimon, Vice-President - Thelma Morningstar, Secretary - Mary Little. The slate was adopted. Eric Andrews will be the contact person for the club.

The May meeting will be held in Lorain. An auction will be held. Money realized from the auction will be used to purchase a gift for the museum.

Thelma Morningstar

LETTERS, WE GET LETTERS.....

....Just about a month 'til we see you, but I couldn't wait to tell you the "exciting news". On Saturday we were invited to dinner at 8 p.m. at a neighbor's home.

When the eight of us sat down to dinner at 9 p.m., in front of each of us was a 300 Peerless goblet. The host and hostess know nothing of the glass, other than it was a gift from the U.S.A. to one of their parents!

Virginia and Swede (Odele) Johnson

Note: The Johnsons were visiting in England in May when the above event occurred. Virginia sent us a post card. L. R.

*If you don't have a copy of this Broadway (NY) Play, wherein they broke a Heisey Animal, in each scene, in every performance, then you don't know how your Fans would Sigh.

From a GLASS LOVER!

Leonard Weinberg, NY

*The script is for The Glass Menagerie. We have placed it in the case with the Heisey animals.

Dear Heisey Friends:

We are sorry that Charlie Wade was unable to run for president of HCA for a second term; we are however, elated to have our own Bob Rarey serve as newly elected President. We believe there is no one who could better serve in this capacity. We have watched Bob educate himself in Heisey and work undaunted for the benefit of The Club.

We wish Bob luck and pledge our total and loyal support.

Stan and Kay Darling
Members of
Heisey Collectors of Columbus

Dates to Remember

- Aug. 8 and 9 - Glass and Pottery Show - Belleville, IL*
- Sept. 12 - Souvenir Dinner and Mini-Show at Heisey Museum
- Oct. 10 and 11 - All Glass Show and Sale - Auburn, MA*
- DEC 4 - Annual Christmas Party
- March - Museum Benefit Auction
March 10, 11, 1988
- MARCH 12 1988 STARLITE ANTIQUE SHOW
- June 16, 17, 18, 19 - HCA Convention

Thank You!!

The Hospitality Committee wishes to thank all of those furnishing cookies, cheese, crackers, bread, North Carolina peanuts, Texas pecans and pastel M & M's to be used in the Museum Lounge during the Convention.

Also a big thanks to all of those who spent time working in the lounge and in particular, the Wisconsin Dairyland and Northern Illinois Clubs who worked the first four days. I am very grateful to Bill Bowling of Newark who helped me on Sunday.

Emogene Shomaker
Chairman

FROM AN UNKNOWN SOURCE

Although Repley & Co. did not build their glass-house on Tenth Street until 1866, we mention the industry because it merged into that of George Duncan & Sons in 1874. The latter organization soon included a son-in-law, A. H. Heisey, father of Clarence and Wilson Heisey, present-day glass-manufacturers of Newark, Ohio. Duncan & Heisey, in the Pittsburgh days, made "complete sets; elaborated lamps; lights of all kinds; engraved, cut, etched, stained, pressed, and colored tableware." Their pressed glass "rivalled the appearance of the finest cut glass"; and they paid "particular attention to specialties, including bar goods." The ware was "finished and polished to a wonderful degree of excellence."

It may be of interest to note that one of the salesmen for the Boston and Sandwich company later acted in a like capacity for Duncan & Heisey, and that Clarence Heisey and Wilson Heisey of Newark, Ohio, now own a considerable collection of the old Sandwich mahogany mold-models, which were given to their father by this agent. These are believed to be the only models ever salvaged from Sandwich.

The name of the company was Ripley & Co. not Repley & Co. This is a copy of the original and the spelling error was theirs - not ours.

L.R.



GATEWAY HEISEY COLLECTORS' CLUB

By Phyllis Freier

The lovely home and cordial hospitality of Marge and Tom Satryan was enjoyed by the Gateway Heisey Collectors Club of Pittsburgh, PA on the cloudy evening of May 2nd, 1987.

Our President, Joe Lokay, gave a detailed report on items of interest to the club, and activities of the National Heisey Collectors Association.

Mary Alice Stoll, Chairperson, Joe Lokay and Phyllis Freier were appointed to the Display Committee. Ideas for our display at the June Convention of H. C. A. were discussed.

Marge Satryan, Ways and Means Chairperson, gave each member one dollar. Each member is to make their dollar grow, and return the harvest to the club the 1st of February, 1988.

Puff Boxes were the subjects for Marge Satryan's interesting program. Most of the Heisey Puff Boxes were represented in her display.

Among the unusual items of Show and Tell was a #73 Soda with a Winchester Etch, an Alexandrite #1000 marmalade and a Crystolite Shell Salad and Mayonnaise bowl.

We invite anyone interested in joining us to our next meeting. Please contact us via The Heisey Collectors of America, Inc.

WESTERN RESERVE HGSC

April

Wendell Young entertained the Western Reserve Heisey Glass Study Club in his beautiful home in Lakewood in April. Much of the evening was spent viewing Wendell's extensive collection of Heisey and other glass. On the kitchen counter we found the beautiful Prince of Wales punch bowl and cups. Since the club will be doing an exhibit, Moonlight and Orchid, at the convention, many items of orchid etch were selected from Wendell's shelves. Much time was spent in discussion of the exhibit. Erick Andrews will be responsible for setting it up in Hopewell Hall.

The Nominating Committee presented the following slate of officers: President - Helen Marimon, Vice-President - Thelma Morningstar, Secretary - Mary Little. The slate was adopted. Eric Andrews will be the contact person for the club.

The May meeting will be held in Lorain. An auction will be held. Money realized from the auction will be used to purchase a gift for the museum.

Thelma Morningstar



Heisey

by Cindy Gartner

H is for Heisey, the glass that's one of a kind
E is for everlasting, nothing more beautiful will
you find
I is for incredible, what an incredible work of art
S is for splendid, and splendid it is by far
E is for educating, there's so much you can learn
Y is for yesteryear, when the furnaces used to burn
Heisey, a name we speak with pride.
Heisey, a name known both far and wide
There's crystal, tangerine, limelight, amber and
cobalt too
That's not all though, that's only naming a few
The most popular pattern of many is Fandango
That's what started the era of Heisey glass many
years ago
There's even animals, Heisey has it's own zoo
There's a giraffe, gazelle, birds and horses, too
And when it comes to beautiful animals, none other
can compare
To the exquisite and most graceful flying mare
Let's not forget about the once a year Sparkies or
Oscars, you can call them by either name
They are something to treasure, no two colors are
ever the same
A. H. Heisey was a legend in his own time
No other work of art so graceful will you find
Heisey will always be a name to speak of forever
A name to treasure and a name that will always
be remembered.

GATEWAY HEISEY COLLECTORS' CLUB

By Phyllis Freier

The lovely home and cordial hospitality of Marge and Tom Satryan was enjoyed by the Gateway Heisey Collectors Club of Pittsburgh, PA on the cloudy evening of May 2nd, 1987.

Our President, Joe Lokay, gave a detailed report on items of interest to the club, and activities of the National Heisey Collectors Association.

Mary Alice Stoll, Chairperson, Joe Lokay and Phyllis Freier were appointed to the Display Committee. Ideas for our display at the June Convention of H. C. A. were discussed.

Marge Satryan, Ways and Means Chairperson, gave each member one dollar. Each member is to make their dollar grow, and return the harvest to the club the 1st of February, 1988.

Puff Boxes were the subjects for Marge Satryan's interesting program. Most of the Heisey Puff Boxes were represented in her display.

Among the unusual items of Show and Tell was a #73 Soda with a Winchester Etch, an Alexandrite #1000 Marmalade and a Crystolite Snell Salad and Mayonnaise bowl.

We invite anyone interested in joining us to our next meeting. Please contact us via The Heisey Collectors of America, Inc.

STEMS

by CARL SPARACIO

If I were forced to pick a favorite among Heisey's stems, #4090 - Coventry would undoubtedly be near the top of the list. Though I have a Coventry champagne in Zircon and a magnificent little sherry in my collection, the goblet has so far eluded me. Perhaps the fact that it has been unattainable makes it more desirable to me. No doubt that has something to do with it, but there's no denying the fact that this line was among the most regal looking of all Heisey's stemware.

You will see many stems on the market that might pass for Coventry. I can think of some I've seen which were beautifully cut and were signed "Hawkes". It's possible that these were Heisey but without Diamond H, how can you be sure? Coventry is usually not marked so you really must depend on cuttings, etchings and color to be positive of identification. Of course, many of you have a "feel" for Heisey and can be just as sure of any undecorated piece.

Coventry was only made for four years in the late thirties and early forties, which accounts for its scarcity. Why it wasn't a big seller is beyond me. Perhaps it was too elegant for its' time.

A complete stem line was offered which included a 3/4 oz. brandy, 1 oz. cordial, 2 oz. sherry, 2 1/2 oz. wine, 3 oz. cocktail, 4 1/2 oz. claret, 4 1/2 oz. oyster cocktail, 5 oz. soda, 6 oz. sherbet, 6 oz. saucer champagne, 10 oz. goblet, 10 oz. low footed goblet and a 12 oz. soda. The only color known is Zircon but I'll keep my mind open on color and you'll see why later on in this article. (See catalog reprint 212-17 for pictures of full line)

The bowl was made either plain or with Saturn optic. I suspect that the Zircon pieces will be found with the optic and the crystal pieces will be plain, though I really haven't made a study of this. It's just a thought.

The bowl of the goblet fairly begs to be decorated and though there are not too many stock etchings or cuttings known on Coventry, it must have been used extensively for custom work because many unfamiliar decorations have turned up. Etchings used on Coventry were #500 Belvedere and #507 Orchid. The "Heisey Stemware" book pictures an unusual combination of the Minuet and Belle-le-Rose etchings. A couple of pieces have turned up with an overall etching of an oriental scene and, in these instances, the etching was filled in with what appears to be a rose colored enamel. The effect was quite beautiful and it was done experimentally by Ronald Wooles who was in charge of the etching room.

Four cuttings could be had on Coven-

There appears to be several different styles of bowls which were used for this stem.



#4090 Coventry Goblet

try. They are #902 Orlando, #903 Zeus, #930 Narragansett and #934 Olive. We've seen other cuttings on Coventry but we have not been able to identify them. The most striking cuttings we've seen were on a set of three goblets. Each was intricately cut with a rose design and yet each was quite different from the other.

If you'd like to collect a set in this pattern you're probably a born optimist.

For awhile it seemed that I had something new to report about stems almost every month but its really been months since there's been something I could get excited about. Early in January I got a call from a friend - well, not really a friend unless you can call someone a friend who leaves you green with envy everytime you see him - he told me what he thought he had found and asked if I

would bring a #3440 Portsmouth goblet to the next meeting of our "study club" (there's a laugh). I snickered to myself and thought "Oh you poor boob, there's no way that piece is going to be right." To make a long story short, we met, we measured, we compared and, I'll be darned, it was right.

Had a nice letter from Ronell Lyng of Montana concerning my comments about Empress and Queen Ann. Don't despair Ronell, when it comes to crystal I'm never on firm ground either. I'm sure if we both took the time to go through the back issues of this paper, we'd find that our editor explained it very clearly somewhere. In the meantime, I'll just keep taking the easy way out and call all crystal Queen Ann. It doesn't do much for the truth in advertising I was spouting off about but then I don't really think it matters to anyone who is collecting Empress/Queen Ann in crystal.

That ought to do it for this month. I can't think of anything else to dazzle you with. "WHAT ABOUT THE PORTSMOUTH!" Who said that? Sorry, it slipped my mind. My friend's find turned out to be Portsmouth, alright, with only one slight difference from any other known piece of this stem - it was in TANGERINE. That ought to shake up the troops.

Ed. note: While most Coventry may be unmarked at least some pieces are. One purchased at the factory in 1958 and with an unknown cutting is marked at the spot indicated in the picture. In our cutting research we have found several uncatalogued cuttings and have rubbings of them but have not seen them on glass. We have a listing for a #4090 cordial with #799 cutting but no other items in the pattern were mentioned. #901 Delft Diamond came on the full line as did #908 Rondo and #936 Cathay. It is possible that only samples were cut for special orders. As far as we know only the cordial was etched with #507 Orchid. The full line was made at one time in Zircon. It was listed in an additional page of the price list for the 1937, 212 and 17 catalog, the date on the page was 7/9/37. It was marked "out" and since this particular catalog was the one used at the factory to add and delete items and was used in making the next one we must assume that it was made in Zircon for a very short time. Sahara and cobalt were the only other colors being made at this time and it was not listed in them -- but then anything is possible.

L.R.

TAKEN FROM 1949 CATALOG. THESE ARE THE ORIGINAL PRICES. IT WAS DISCONTINUED BEFORE THE 1950 CATALOG CAME OUT.

ZODIAC

No. 1590 Pattern

(Leaflets Available)



No.	Size	Item	Price Doz. Crystal
Stemware			
1590	10 oz.	Goblet	\$ 8.40
1590	5 oz.	Saucer Champagne	8.40
1590	5 oz.	Sherbet	8.40
1590	4 oz.	Claret	8.40
1590	3½ oz.	Cocktail	8.40
1590	4 oz.	Oyster Cocktail	8.40
1590	5 oz.	Footed Juice	8.40
1590	12 oz.	Footed Ice Tea	8.40
1590	5 oz.	Tapered Soda	4.20
1590	12 oz.	Tapered Soda	6.00
1590		Coaster	4.20
Plates, Miscellaneous			
1590	8 in.	Plate	\$13.20
1590	13 in.	Sandwich Plate	48.00
1590	13 in.	Salver	48.00
1590	11 in.	Flower Bowl, 12 Sided.....	42.00
1590	2 lt.	Candlestick	28.80
1590	8 in.	Relish, 4-Compartment	34.80
1590	10 in.	Oval Relish, 2-Compartment.....	24.00
1590	6 in.	Comport	19.20
1590		Footed Sugar	10.80
1590		Footed Cream	10.80
1590		Salt Bottle and	
1590		No. 57 Chrome-Plated Top.....	8.40
1590	4½ in.	Nappy	4.80
1590	3½ in.	Square Ash Tray.....	4.80
1590		Footed Candy Jar and Cover.....	42.00

HEISEY'S CLASSIC RIDGELEIGH By Jim Jones & Vince Sparacio

An 8½ x 11" soft bound book over 50 pages showing Heisey's popular Art Deco pattern, Ridgeleigh. Most pieces illustrated and dated individually. Chapters included cover the changing of moulds from other patterns to create Ridgeleigh and look alike patterns made by other companies. Decorations done by Heisey are illustrated. Ridgeleigh was one of the longest pattern lines made by Heisey. Also illustrated is the blown stemware line to accompany the pattern, called Reis-Ridgeleigh.

Includes price guide \$5.95

DIAMONDS ARE FOREVER..... By Janet Caswell

To really experience the Yachting Center you must walk thru our streets. The downtown streets are so narrow and twisting that a good view cannot be seen from a bus or automobile. If you are not on foot the excitement of discovering an ancient foot path, lane or narrow passage that turns out to be a right of way will be denied to you. Under many of our well paved streets and beside well-kept gardens, there are old highways and byways, parts of a web of paths through which the first town settlers moved. We must, and do, preserve the rights-of-way for all to use and enjoy. Once a year the town selectmen walk the byways to assure that the once well-worn thoroughfares remain accessible and unobstructed by fences, gardens or walls. This is a right of our towns people, and we intend to keep it that way.

Let's start this month with "the Keystone Cops" (pa) and see what mischief they've been up to. They find their things most anywhere, I never know what state they'll be in next. This time I wasn't told where things were found but they sure are goodies, a #325 Pillows Punch Bowl with base, a #1295 Beaded Swag Opal Tankard and four (4) tumblers with flower decoration. Quite nice!

Speaking of punch bowls, we sold the #1776 Kalonyal punch bowl base, which we had in our possession for about two years and never found the Bowl. Of course, as you have probably

already guessed a week after selling the base we came across the Kalonyal punch bowl, with ten cups, two of which were Kalonyal the other eight were Colonial. We didn't buy it, price was too high and we would have had to look for another base. Oh, well!

The "Two Guys" from CT have come up with a couple of Gems. Remember the "Rose Etch" footed cake plate they found? Well, how about these treasures - #3484 Donna Jug with Orchid Etch, plus one #114 Pluto candle in Hawthorne! When a treasure is discovered here or there, during the traveling we all engage in, it makes up for the days we come home empty handed.

"Lil ole Lamplighter" (OH) reported a #352 Roll Tray 12 1/2" x 8", while "My Evergreen Friend" (ME) has the Centennial candlestick.

It was brought to my attention, by an avid Bay State Collector, that he saw the #300-2 Old Williamsburg candelabra. This piece is a 16" 2-light made around 1901-1944. This one was in Sahara so most likely produced around the 1930's. The ferrule connecting the base to the arm was missing, otherwise all was well. Also in the same shop were eight (8) #3404 Spanish Stem 8 oz. Goblets, crystal with a Crest of some sort engraved on each. He said he was pleased that it was a crest and not initials.

"Mountain Grandma" (CA) has the Crystolite cream and sugar -- Haven't heard from you in a while. "One of the Lucky Seven" from the Lone Star State (TX) purchased six #1231 Ribbed Octagon 7" plates in moon- gleam along with six (6) cups and saucers and the 12 3/4" oval platter (all moon- gleam); the #1489 1/2 Puritan 4" cigarette box with horsehead cover; a #350 Pinwheel and Fan cream & sugar and the #394 Narrow Flute Domino Sugar tray in sahara.

The other day I received a call from "the Fel- icious Flamingo Hunter". She has been traveling back and forth from her area in MA to the Cape, visiting a friend while stopping to do a little Heisey hunting. Over the past month she has acquired a few

things she wanted me to mention. She took her friend out for lunch one noon and talked her into going to a few little shops, or whatever, just to browse and enjoy a leisure day. Four places were investigated. There were lots of things to look at; old china, dolls, post cards, jewelry plus a lot of dust and cobwebs, but no Heisey. After a couple of hours they decided to head home. There was one more shop, both girls were tired, but on a whim the Felicitous Flamingo said, "just one more"! In they went. Books, books, everywhere, except one section which was glass. There was found one Floral Block, the #14 1/2" with the Kingfisher top, in crystal, plus a Hawthorne Duck top, minus the block. She asked the lady who ran the shop if the two things belonged to the same person and was assured that they did. The Flamingo's friend in the same shop spied the Irwin #361 Ash Tray and Cigarette container in moonbeam. She thought it was an odd piece of glass and purchased it because it would make a good conversation piece. (I suppose you could say that). Perhaps we have found another Happy Heisey Hunter.

During our travels we came across the bottom only of the #361 ash-tray, which we passed up because where would we ever find a top. I suppose nothing is impossible. At this time, I can't even remember if the price was too high or not.

The "Hanging Judge" (MA) now has the #1503 Crystalite Celery Heart with sliver overlay and a #603 inside optic 12 oz. soda in his custody.

My "Sharp eyed friend" from the Bay State reports a #1506 Whirlpool cruet, while "the High Steppin Couple" brag about a #3380 Old Dominion short stem goblet in sahara and also the #3380 tall stem goblet, also sahara.

"The Social Climber" (MA) added a #354 16 oz. Lavender jar to her list of goodies. By the way she used all her Heisey when entertaining.

As for the "Mr" he found a #337 Touraine Cream and Sugar with a cutting around the top. The price was a bit steep so he left a bid with the owner of the shop, and our next time there he was informed that his offer was accepted. The #337 Cream and Sugar has now been added to his C & S collection. He also found a #305 Punt and Diamond Point 6 oz. Oil.

This month "Yours Truly" came up with one #118 Miss Muffit crystal candlestick (for a song). It is plain. I have another one that is diamond optic. The other find was a #341 Early Puritan individual salt.

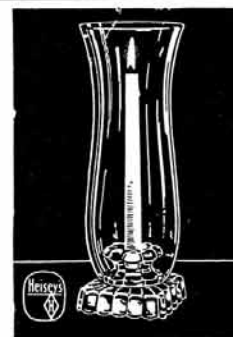
THE FOLLOWING PEOPLE DONATED GLASS FOR SALE IN THE GIFT GALLERY DURING THE LATTER PART OF 1986 and FIRST PART OF 1987

1. EVELYN LANNERS
2. WILLIAM RODERICK
3. GEORGE SCHAMEL
4. DOROTHY KEYES
5. MARY & LARRY HARRINGTON
6. RICHARD & LEE SCHWAN
7. AUDREY YERGER
8. ARLENE REYNOLDS
9. ROBERT & HELEN RAREY
10. GLEN CRISSMAN
11. REID & MARGARET MAYO
12. BILL & BETTY BARNARD
13. CALVIN & DOROTHY MEYER
14. JAY MARTIN
15. REGIS & KAY TANDARICH
16. TOM MAERTEN
17. NORTHERN IL H C C
18. DORIS KASSERA
19. EULA DE WITE
20. IRENE WALTON
21. TOM & DOTTIE MAREK
22. ESTHER LOSS
23. MARGE & JERRY GILLETTE
24. JIM & JO EARNSHAW
25. MICHAEL KILMARTIN
26. GRIFFITH & EVELYN DANIEL
27. NEILA BREDEHOFT

8079 JOSHUA PATTERN FORMERLY UNKNOWN



MAT No. 221. No. 1509 8" plate. No. 5009 saucer champagne, cocktail and goblet. All with etching 501.



MAT No. 224. No. 1503 one light Hurricane Lamp with No. 4061 12" Hurricane Globe, plain shade.

INTERESTING NOTES ON THE CONNECTION BETWEEN HEISEY AND HOLOPHANE

A few years ago Bill Ingler of Columbus loaned a blue 3324 Delaware goblet to the museum. He said that he would eventually donate it to us, which he did in late 1986.

Everyone has always wondered why Heisey did not make the Experimental Blue for production. The following two letters from Mr. Ingler shed some light on this.

Dear Mrs. Ream:

The Blue goblet was one of a dozen made by Heisey at the Holophane Company in late 1937 as a gift for my grandfather, William A. Ingler, on his 50th wedding anniversary, Dec. 1937.

He started with Holophane in 1899 as a mould maker. In fact he made moulds for Holophane in the Heisey building until the Holophane mould shop was built in 1900. He became one of the original owners of the Holophane Co. in 1926 when it was sold by the Holophane LTD, of England.

He became friends with all the Heiseys and Clarence decided to make the goblets.

My father, William J. Ingler Sr. also worked at the Holophane and was responsible for making the glass, especially the quality of the glass. He made up most of the formulas for the Holophane and supervised its making. He had helped Heisey and they had helped him with glass, especially the colored glass. In 1937, Verly's glass was being made by my father and my grandmother's favorite color was blue. Clarence Heisey had Heisey employees go across the street to the Holophane and make the goblets from a tank of blue Verlys glass. They also used the Holophane lehrs to finish them. The Heisey Co. had not had much success with blue glass so the blue you see in the Delaware 3324 goblet is Verlys Directoire Blue. I have enclosed my father's formula for blue Verlys and a picture of my grandfather making one of the first Holophane moulds at the Heisey plant. You may have both for display.

Sincerely,
Bill Ingler

.....In response to a question about the department at Heisey's where Holophane shades were made, I received the following letter -

..... I cannot add too much about the special department at Heisey that made Holophane shades, except that it lasted for several years until Holophane got their mould shop built and a building for production. The enclosed pictures show production in the Heisey building. I believe this is the Heisey factory since Holophane did not have a multi-story building, except the office building, and their windows used more panes of glass. The picture showing the two men finishing the lamp shades sure looks like the 2nd or 3rd floor of the Heisey building facing Oakwood Avenue. The arched windows also add to my opinion that it was taken at Heisey. The other two pictures might have been taken on the first floor of the main Heisey building.

The rail cars look like they are leaving from the rail siding at the west end of the Heisey plant. Why? I can't say. Maybe someone close to Heisey can date the picture.

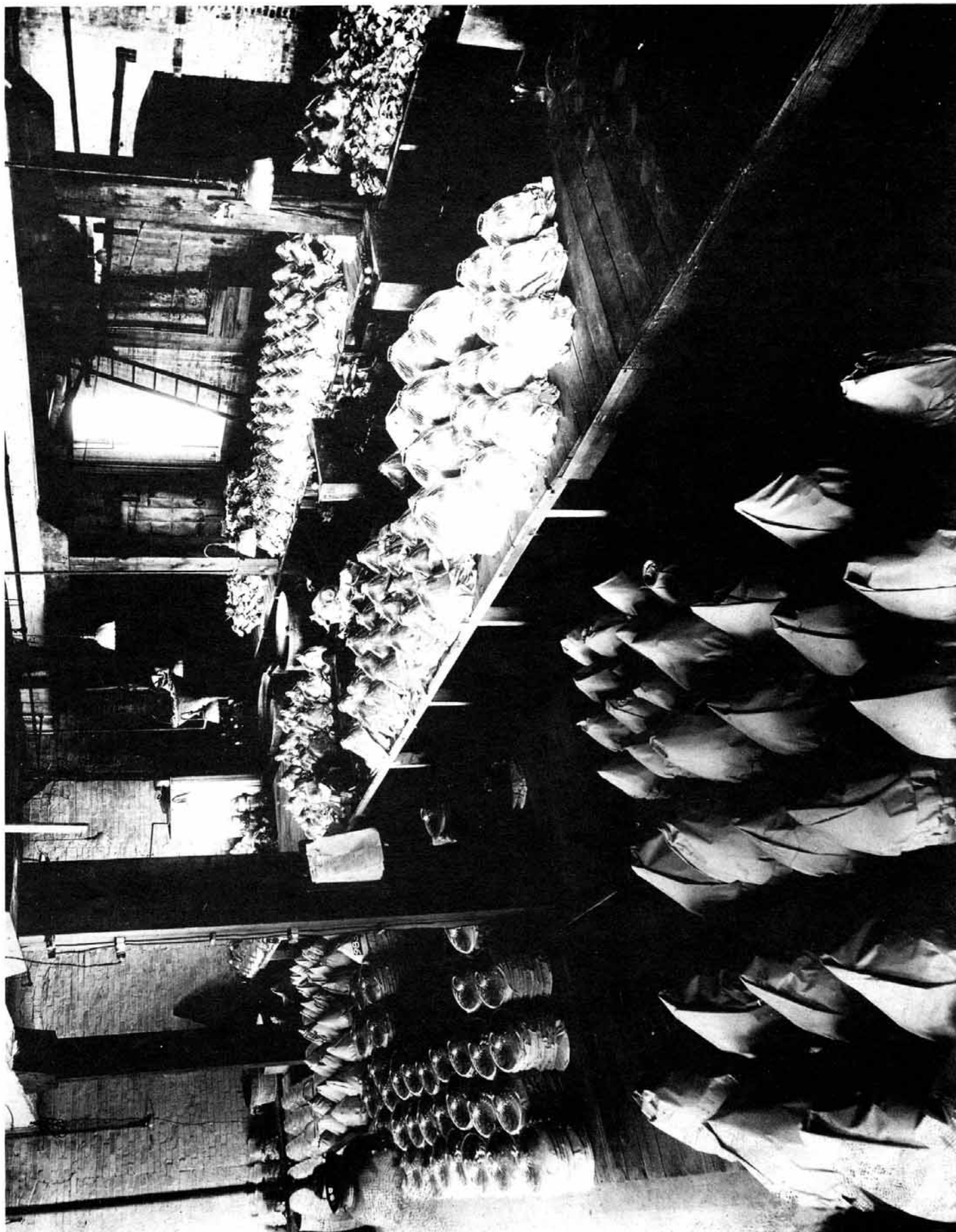
I do know that the early picture is my grandfather (on the left) helping to press a Holophane shade in the Heisey plant about 1900. I am glad to donate the pictures. I hope to find more in the future.

Sincerely,
Bill Ingler

Note: A former Heisey employee tells us that this is the Heisey factory. The first letter confirms that Heisey had trouble with the blue color which explains the various different shades of experimental blue. L. R.

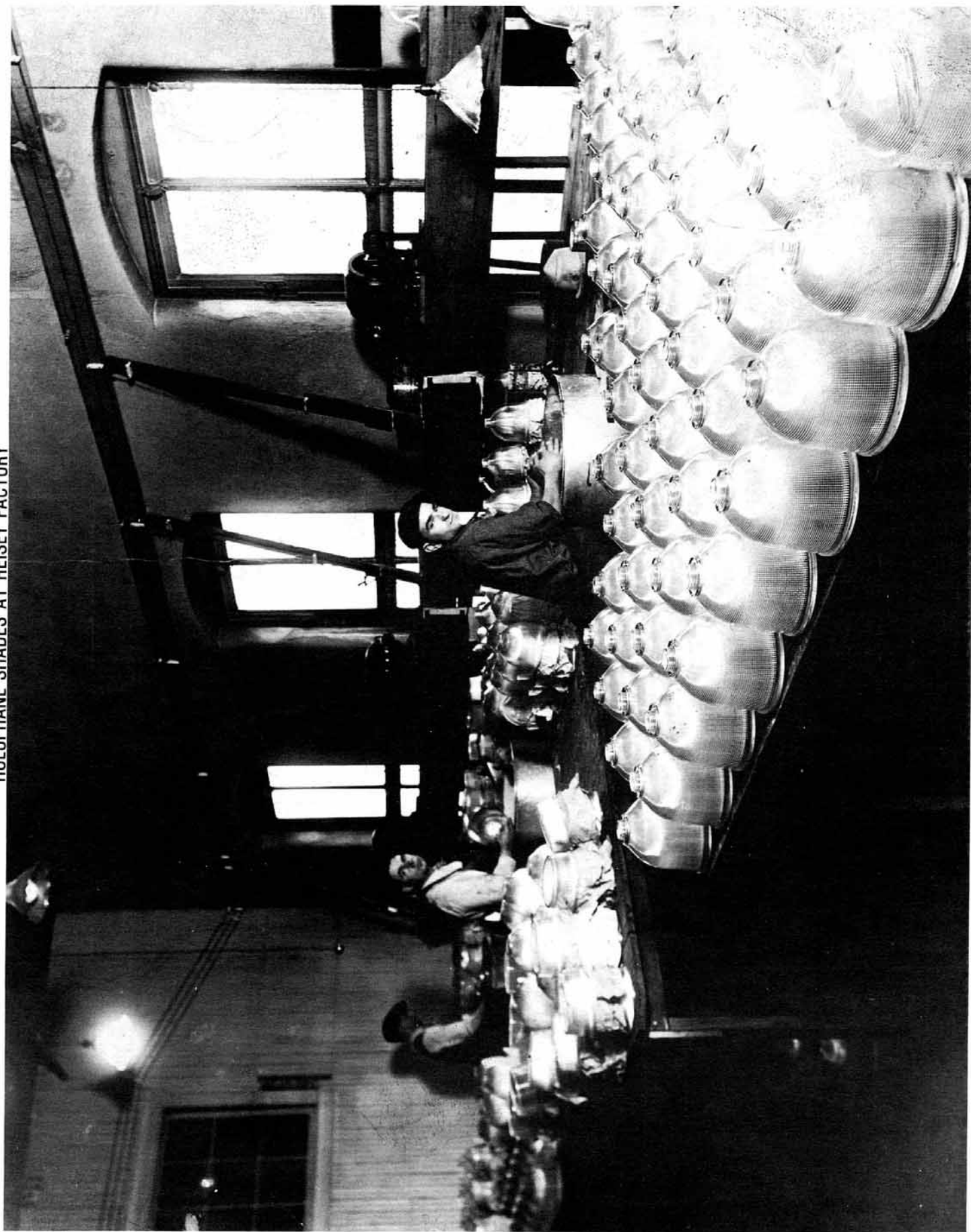
Mr. Ingler making a mould for a 2001 Hemisphere shade. This is in the Heisey factory.





HOLOPHANE SHADES BEING PACKED FOR SHIPPING AT HEISEY FACTORY (Do these remind you of the KU KLUX KLAN?)

HOLOPHANE SHADES AT HEISEY FACTORY



who's who in the "glass" of '53!

the Heisey men who serve you...

belong in the Who's Who of Selling . . . outstanding salesmen because they sell an outstanding product, Heisey Hand-Wrought Crystal. See them, meet with them at all the important shows . . . meantime—from coast to coast—they're at your call . . . ready to help you build sales through bigger and better merchandising of Heisey patterns . . . the finest in glassware, made in America by hand and nationally advertised for over fifty years. A. H. Heisey & Co., Newark, Ohio.



THOMAS C. HEISEY



HAROLD J. DUNHAM



FRED BOSWORTH



CONRAD J. WOELFEL



HOLT BERNI



ALBERT BERNI



ROBERT S. FOSTER



L. GEORGE BUNDY



GEORGE A. GRANVILLE



JOSEPH J. LOWER



EDWIN F. BOKEE



DONALD R. BURKE



CHARLES R. McGRATH



ALFRED A. PETERS



JAMES A. RYAN



JOSEPH F. SMITH

* PERMANENT DISPLAY ROOMS

Heisey 
CRYSTAL

The finest in glassware, made in America by hand and nationally advertised for more than fifty years.



JAMES V. THOMAS



WILLIAM MOORE



F. C. KLING

CUT AND ENGRAVED PRESSED AND BLOWN GLASSWARE

BOTTICELLI
Cutting No. 1016



BELVIDERE
Cutting No. 1018



No.	Size	Item	Price Doz. Crystal
4091	10	oz. Goblet	\$60.00
4091	5½	oz. Saucer Champagne	"
4091	4½	oz. Claret	"
4091	2	oz. Wine	"
4091	1	oz. Cordial	"
4091	3	oz. Cocktail	"
4091	4½	oz. Oyster Cocktail	"
4091	5	oz. Footed Juice	"
4091	12	oz. Footed Ice Tea	"
4091		Finger Bowl (3309)	"
1609	8	in. Plate, Ground Bottom	60.00

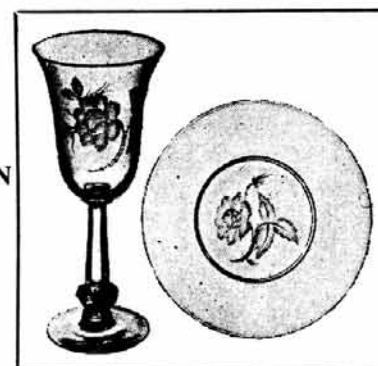
No.	Size	Item	Price Doz. Crystal M/O
5057	9	oz. Goblet	\$39.00
5057	6	oz. Saucer Champagne	"
5057	4	oz. Claret	"
5057	3	oz. Wine	"
5057	1	oz. Cordial	"
5057	4	oz. Cocktail	"
5057		Oyster Cocktail	"
5057	5	oz. Footed Juice	"
5057	12	oz. Footed Ice Tea	"
5057		Finger Bowl (3309)	"
1609	8	in. Plate, Ground Bottom	39.00

FROM 1947 PRICE LIST
PRICES ARE ORIGINAL

PEACHTREE
Cutting No. 1017



DOLLY MADISON
ROSE
Engraved
Cutting No. 1015



No.	Size	Item	Price Doz. Crystal M/O
5057	9	oz. Goblet	\$36.00
5057	6	oz. Saucer Champagne	"
5057	4	oz. Claret	"
5057	3	oz. Wine	"
5057	1	oz. Cordial	"
5057	4	oz. Cocktail	"
5057		Oyster Cocktail	"
5057	5	oz. Footed Juice	"
5057	12	oz. Footed Ice Tea	"
5057		Finger Bowl (3309)	"
1609	8	in. Plate, Ground Bottom	36.00

No.	Size	Item	Price Doz. Crystal
4091	10	oz. Goblet	\$45.00
4091	5½	oz. Saucer Champagne	"
4091	4½	oz. Claret	"
4091	2	oz. Wine	"
4091	1	oz. Cordial	"
4091	3	Cocktail	"
4091	4½	oz. Oyster Cocktail	"
4091	5	oz. Footed Juice	"
4091	12	oz. Footed Ice Tea	"
4091		Finger Bowl (3309)	"
1609	8	in. Plate, Ground Bottom	45.00



FROM 1947 PRICE LIST
PRICES ARE ORIGINAL

OXFORD
No. 5024 Pattern

No.	Size	Item	Price Doz. Crystal
5024	9	oz. Goblet	\$18.00
5024	11	oz. Goblet	18.00
5024	6½	oz. Saucer Champagne.....	18.00
5024	4½	oz. Claret	18.00
5024	3	oz. Wine	18.00
5024	1	oz. Cordial, Tall Stem.....	18.00
5024	4	oz. Cocktail	18.00
5024	6	oz. Double Cocktail.....	18.00
5024	5	oz. Ftd. Juice	18.00
5024	12	oz. Soda, Ftd. or Ice Tea.....	18.00
5024	4	oz. Oyster Cocktail.....	18.00
5024		Finger Bowl.....	9.60
5024	6	in. Compot	30.00
Accessory Pieces			
1184	7	in. Pl. Rd. Plate, Grd. Bot.....	\$ 9.60
1184	8	in. Pl. Rd. Plate, Grd. Bot.....	12.00
1184	10½	in. Pl. Rd. Plate, Grd. Bot.....	24.00

CONTINENTAL
No. 5023 Pattern



No.	Size	Item	Price Doz. Crystal
5023	11	oz. Goblet	\$12.00
5023	6	oz. Saucer Champagne.....	12.00
5023	3	oz. Wine	12.00
5023	4	oz. Claret	12.00
5023	1	oz. Cordial	12.00
5023	3½	oz. Cocktail	12.00
5023	5	oz. Footed Juice.....	12.00
5023	13	oz. Footed Ice Tea.....	12.00

COCKTAIL SHAKERS

No.	Size	Item	Price Doz. Crystal
1		Cocktail Shaker Strainer.....	\$21.00
86		Cocktail Shaker Stopper, Plain Pressed	15.00
118		Cocktail Shaker Stopper, Rooster Head	15.00
132		Cocktail Shaker Stopper, Horse Head.....	15.00
4036	1	qt. Cocktail Shaker	36.00
4036	1	qt. Cocktail Shaker, Barrel Shaped, Plain Stopper, Complete.....	72.00
4037	1	qt. Cocktail Shaker, Rooster Head, Complete.....	72.00
4038	1	qt. Cocktail Shaker, Horse Head, Complete.....	72.00
4225	1	pt. Cocktail Shaker	24.00
4225	1	pt. Cocktail Shaker, No. 86 Stopper, Complete.....	60.00
4226	1	pt. Cocktail Shaker, Rooster Head, Complete.....	60.00
4227	1	pt. Cocktail Shaker,	

NARCISSUS
Cutting No. 965



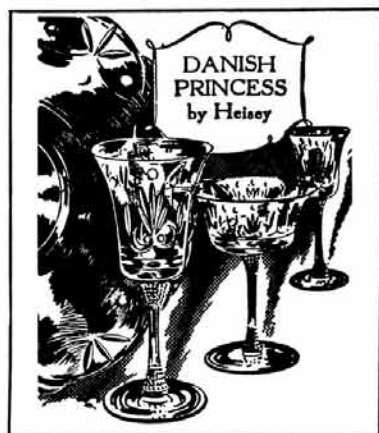
No.	Size	Item	Price Doz. Crystal W/O
3408	9	oz. Goblet	\$24.00
3408	6	oz. Saucer Champagne.....	24.00
3408	2	oz. Wine	24.00
3408	3	oz. Cocktail	24.00
3408½	5	oz. Ftd. Juice.....	24.00
3408½	12	oz. Ftd. Ice Tea.....	24.00
3408		Dinner Bell.....	33.00
1519	8	in. Plate	30.00
1519	14	in. Torte Plate.....	102.00
1519	14	in. Sandwich Plate.....	102.00
1519	14	in. Center Handled Sandwich.....	96.00
134	2	lt. Candlestick	51.00
1519	11	in. Ftd. Floral Bowl.....	102.00
1519	13	in. Gardenia Bowl.....	102.00
1519	11	in. Relish, 3 Comp.....	102.00
1519	13	in. Celery	78.00
1519	7	in. Honey Dish.....	51.00
1519		Sugar, Ftd.....	31.20
1519		Cream, Ftd.....	31.20
1519	5½	in. Mayonnaise, Ftd.....	31.20
1519	7	in. Mayonnaise Plate.....	27.00
7		Mayonnaise Ladle	6.00
1519		3-Piece Mayonnaise Set.....	64.20
1519		Ftd. Candy Box and Cover.....	90.00
1519		Low Foot Compot.....	51.00
1519	7	in. Oval Compot, Ftd.....	72.00

COCKTAIL SHAKERS

4225	1	Horse Head, Complete.....	60.00
4225	1	qt. Cocktail Shaker.....	36.00
4227	1	qt. Cocktail Shaker and Strainer No. 1 and No. 86 P/S.....	72.00
4226	1	qt. Cocktail Shaker, Complete, Horse Head.....	72.00
4226	1	qt. Cocktail Shaker, Rooster Head, Complete.....	72.00
4225	2	qt. Cocktail Shaker.....	48.00
4225	2	qt. Cocktail Shaker and Strainer No. 1 and No. 86 P/S.....	84.00
4226	2	qt. Cocktail Shaker, Complete Rooster Head.....	84.00
4227	2	qt. Cocktail Shaker, Complete, Horse Head.....	84.00
Etched Sets—"Us," "ME," "You"			
4225	1	pt. Cocktail Shaker, Etched "Us" No. 86 Stopper, Complete.....	72.00
4226	1	pt. Cocktail Shaker, Etched "Us" Rooster Head Stopper, Complete.....	72.00
4227	1	pt. Cocktail Shaker, Etched "Us" Horse Head Stopper, Complete.....	72.00
3318	3½	oz. Cocktail, Etched "Me" or "You".....	14.40
5038	3½	oz. Rooster Stem Cocktail, Etched "Me" or "You".....	18.00
5048	3½	oz. Rooster Head Cocktail, Etched "Me" or "You".....	18.00
5066	4½	oz. Horse Head Cocktail Etched "Me" or "You".....	18.00
4225-7	1	pt. Cocktail Shaker, Etched "Us," Complete, (Plain, Rooster Head or Horse Head Stop), and one each Rooster Head, Rooster Stem or Horse Head Cocktail, Etched "Me" and "You".....	108.00
4225	1	pt. Cocktail Shaker, Etched "Us," No. 86 Stop, Complete, and One Each No. 3318 3½ oz. Cocktail, Etched "Me" and "You".....	100.80

DANISH PRINCESS

Cutting No. 921



No.	Size	Item	Price Doz. Crystal M/O
5010	9	oz. Goblet	\$ 27.00
5010	6	oz. Saucer Champagne	27.00
5010	2½	oz. Wine	27.00
5010	3½	oz. Cocktail	27.00
5010	5	oz. Ftd. Juice	27.00
5010	12	oz. Ftd. Ice Tea	27.00
4225	1	qt. Cocktail Shaker, Complete	168.00
1509	8	in. Plate	36.00
1184	16	in. Buffet Plate	240.00
1509		Social Hour Tray (Torte Plate)	138.00
134	2	lt. Candlestick	63.00
142	3	lt. Candlestick	81.00
1509	11	in. Floral Bowl	132.00
1509		Mayonnaise, Ftd.	63.00
1509	7	in. Mayonnaise Plate	33.00
7		Mayonnaise Ladle	6.00
1509		3-Piece Mayonnaise Set	102.00
1509		Five o'Clock Relish, 3 Comp.	102.00
1509	6	in. Mint, Ftd.	63.00
1509		Sugar, Ftd.	45.00
1509		Cream, Ftd.	45.00

FROM 1947 PRICE LIST
PRICES ARE ORIGINAL

CHATEAU

Cutting No. 867



No.	Size	Item	Price Doz. Crystal D/O
3368	8	oz. Goblet	\$45.00
3368	5	oz. Saucer Champagne	45.00
3368	2½	oz. Wine	45.00
3368	3	oz. Cocktail	45.00
3368	5	oz. Ftd. Juice	45.00
3368	12	oz. Ftd. Ice Tea	45.00
3304		Cocktail Icer and Liner	69.00
1184	8	in. Plate	48.00
1184	16	in. Buffet Plate	264.00
134	2	lt. Candlestick	72.00
142	3	lt. Candlestick	90.00
1509	11	in. Floral Bowl, Ftd.	168.00
1509		Cream, Ftd.	45.00
1509		Sugar, Ftd.	45.00
1509	5½	in. Ftd. Mayonnaise	72.00
1509	7	in. Mayonnaise Plate	45.00
7		Mayonnaise Ladle	6.00
1509		3-Piece Mayonnaise Set	123.00
1509		Ice Tub and Silver Plated Handle	144.00

BARCELONA

Cutting No. 941



No.	Size	Item	Price Doz. Crystal W/O
3408	9	oz. Goblet	\$ 21.00
3408	6	oz. Saucer Champagne	21.00
3408	3	oz. Cocktail	21.00
3408	2	oz. Wine	21.00
3408	5	oz. Ftd. Juice	21.00
3408½	12	oz. Ftd. Ice Tea	21.00
3484		Ice Jug	108.00
3408		Dinner Bell	30.00
4036½	1	pt. Decanter and No. 101 P/S.	96.00
4036	1	qt. Cocktail Shaker	105.00
2351	1½	oz. Bar, Half Sham	12.00
2351	8	oz. Soda, Half Sham	14.40
2351	10	oz. Soda, Half Sham	15.00
2351	12	oz. Soda, Half Sham	17.40
2351	8	oz. Old Fashion, Half Sham	14.40
5031		French Dressing Bottle, No. 80 P/S.	42.00
1184	7	in. Plate	24.00
1184	8	in. Plate	27.00
1509	15	in. Social Hour Tray	96.00
112	3	in. Candlestick	24.00
134	2	lt. Candlestick	48.00
142	3	lt. Candlestick	63.00
1509	7½	in. 1 lt. Candelabra "A" Prisms	96.00
1509	11	in. Floral Bowl, Ftd.	84.00
1509	11	in. Relish, 3 Comp.	81.00
1509	7	in. Triplex Relish	51.00
1509	5½	in. Mayonnaise, Ftd.	31.20
1509	6	in. Mayonnaise Plate	21.00
7		Mayonnaise Ladle	6.00
1509		3-Piece Mayonnaise Set	58.20
1509		Combination Dressing Bowl	33.00
1509		Sugar, Ftd.	24.00
1509		Cream, Ftd.	24.00
1509	6	in. 2 Hdl. Jelly, Ftd.	27.00
1509	6	in. Mint, Ftd.	27.00

COURTSHIP

Cutting No. 944



No.	Size	Item	Price Doz. Crystal
4091	10	oz. Goblet	\$ 33.00
4091	3½	oz. Saucer Champagne	33.00
4091	4½	oz. Claret	33.00
4091	3	oz. Cocktail	33.00
4091	5	oz. Ftd. Juice	33.00
4091	12	oz. Ftd. Ice Tea	33.00
3304		Cocktail Icer and Liner	51.00
4036½	1	pt. Decanter and No. 101 P/S.	102.00
4036½	1	qt. Decanter and No. 101 P/S.	138.00
1184	8	in. Plate	36.00
1184	16	in. Buffet Plate	156.00
134	2	lt. Candlestick	66.00
134	2	lt. Candlestick	66.00
142	3	lt. Candlestick	72.00
1509	11	in. 3 Ftd. Floral Bowl	102.00

FROM 1947 PRICE LIST
PRICES ARE ORIGINAL

MOONGLO

Cutting No. 980



5040 Blown Goblet
Cut 980

No.	Size	Item	Price Doz. Crystal
1540	9	oz. Goblet (Pressed)	\$18.00
1540	6	oz. Saucer Champagne (Pressed)	18.00
1540	3 1/2	oz. Wine (Pressed)	18.00
1540	3 1/2	oz. Cocktail (Pressed)	18.00
1540	5	oz. Ftd. Juice (Pressed)	18.00
1540	12	oz. Ice Tea (Pressed)	19.80

5040	10	oz. Goblet (Blown)	24.00
5040	5 1/2	oz. Saucer Champagne (Blown)	24.00
5040	3 1/2	oz. Wine (Blown)	24.00
5040	3 1/2	oz. Cocktail (Blown)	24.00
5040	5	oz. Ftd. Juice (Blown)	24.00
5040	12	oz. Ftd. Ice Tea (Blown)	24.00
3304		Hollow Stem Champagne	30.00
3318	3 1/2	oz. Cocktail	19.80
3311	2 1/2	oz. Sherry	19.80
4052	1 1/2	oz. Bar	9.00
4052	10	oz. Sodas	12.60
4052	12	oz. Sodas	13.80
4052	14	oz. Sodas	15.00
4052	8	oz. Old Fashion	12.00
4036	1	qt. Cocktail Shaker, Comp.	105.00
4036 1/2	1	pt. Decanter, No. 101 P/S	90.00
4225	1	qt. Cocktail Shaker, Comp.	105.00
4226	1	qt. Cocktail Shaker, Comp., R.H.	105.00
4227	1	qt. Cocktail Shaker, Complete, Horse Head	105.00
5048	3 1/2	oz. Cocktail, Rooster Head	24.00
5066	4 1/2	oz. Cocktail, Horse Head	24.00
1184	7	in. Plate	19.80
1184	8	in. Plate	24.00
1540	14	in. Sandwich Tray	69.00
1540	2	lt. Candlestick	42.00
1540	3	lt. Candlestick	51.00
1540	9 1/2	in. Camelia Bowl	51.00
1540	13	in. Gardenia Bowl	69.00
1540	13	in. Oval Bowl	69.00
1540	8 1/2	in. 4-Cmpt Relish	66.00
1540	10	in. Round Relish, 3 Comp.	69.00
1540	11	in. Oblong Relish, 3 Comp.	63.00
1540	13	in. Celery	48.00
1540		Mayonnaise	36.00
1540	8	in. Mayonnaise Plate	24.00
1540	7	Mayonnaise Ladle	6.00
1540		3-Piece Mayonnaise Set	66.00
1540		Twin Dressing Bowl	54.00
1540	5	in. Small Candy Box and Cover	48.00
1540	7	in. Candy	33.00
1540	8 1/2	in. Candy Box and Cover, Horse Head	120.00
1540		Caramel and Cover	60.00
1540		Sugar	24.00
1540		Cream	24.00
1540		Sugar and Cream Tray	24.00
1540		Footed Fan Vase No. 2	33.00
1540		Footed Cheese and Cover	39.00
1540		Ftd. Compport and Cover	90.00

SHEFFIELD

Cutting No. 985



No.	Size	Item	Price Doz. Crystal W/O
3408	9	oz. Goblet	\$21.00
3408	6	oz. Saucer Champagne	21.00
3408	3	oz. Cocktail	21.00
3408	2	oz. Wine	21.00
3408 1/2	12	oz. Footed Ice Tea	21.00
3408		Dinner Bell	30.00
1184	8	in. Plate	24.00
1509	12	in. Sandwich Tray, Rd., 2 Hdl.	84.00
134	2	lt. Candlestick	42.00
1509	11	in. Floral Bowl, Ftd.	69.00
1509		Sugar, Ftd.	27.00
1509		Cream, Ftd.	27.00
1509	11	in. 5 o'Clock Relish, 3 Comp.	54.00
1509	5 1/2	in. Mayonnaise, Ftd.	33.00
1509	7	in. Mayonnaise Plate	21.00
7		Mayonnaise Ladle	6.00
1509		3-Piece Mayonnaise Set	60.00

MARYLAND

Cutting No. 964



No.	Size	Item	Price Doz. Crystal
5024	11	oz. Goblet	\$36.00
5024	6 1/2	oz. Saucer Champagne	36.00
5024		Claret	36.00
5024	3	oz. Wine	36.00
5024	1	oz. Tall Stem Cordial	36.00
5024	4	oz. Cocktail	36.00
5024	6	oz. Double Cocktail	36.00
5024	5	oz. Ftd. Juice	36.00
5024	5	oz. Ftd. Juice	36.00
5024	12	oz. Ftd. Ice Tea	36.00
5024		Finger Bowl	36.00
5031		French Dressing and Stopper	66.00
4036 1/2	1	pt. Decanter and P/S	87.00
4225	1	qt. Cocktail Shaker, Complete, No. 86 Stop	120.00
4226	1	qt. Cocktail Shaker, Complete, Rooster Head Stop	120.00
4227	1	qt. Cocktail Shaker, Complete, Horse Head Stop	120.00
2351	1 1/2	oz. Bar, Half Sham	18.00
2351	8	oz. Soda, Half Sham	24.00
2351	10	oz. Soda, Half Sham	24.00
2351	12	oz. Soda, Half Sham	27.00
2351	8	oz. Old Fashion, Half Sham	24.00
1184	8	in. Plate	39.00
1184	16	in. Buffet Plate	240.00
5024	6	in. Compport	96.00
1489	1	lt. Hurricane Block and No. 4061 10 in. Cut Globe	204.00

MAJOR FUND RAISER SCHEDULED

You are cordially invited to attend the 15th Annual Souvenir Dinner and Mini Show on September 12, 1987.

This event will, once again, be held under the huge big top on the museum grounds.

Eleanor Jackson, our favorite caterer, will once again be serving her delicious beef tenderloin dinner with an abundance of good food and plenty of hors d'oeuvres. We know that many of you will want to attend this affair as it is one time of the year that fun is the main theme.

Decorations will follow the same "Aloha" theme as the convention.

Starting at 8:30 in the morning and running until 2:30 p.m., there will be a Mini-Show in the tent. Most of the dealers will be HCA members and there will be great Heisey for sale.

The souvenir will again be the 1/2 size Horsehead paperweight which will be made by Fenton and dated 1987.

We hope that you can come or at least order the souvenir as many of you have done in the past. Since this project began it has been designed as a major fund raiser for the museum. Please support it if you can.

For contracts for the Mini-Show write the museum or call 614-345-2932 or 614-366-5163. Dick Smith is the Chairman this year.

Since all details are not yet complete your reservation form will be in the August issue of Heisey News as it always is. Watch for it and send it in as soon as possible.

★ Have More Fun Collecting Glass - Join a National Glass Club

Become More Knowledgeable About Your Collectable Glass

The national glass collecting clubs listed below have each been organized to serve you, the collector. Each club is dedicated to the education of the collector, and the preservation of their particular type or manufacture of glassware. Each would appreciate the opportunity to help you achieve more satisfaction from your collection.

If you are interested in membership in any of these organizations, check the list below. The appropriate club(s) will acknowledge your application with either a membership card (if remittance is enclosed) or additional information as required. MAIL TO:

NATIONAL GLASS CLUBS

P. O. Box 384 (NCC)
Williamstown, W. Va. 26187

My Name is _____

Address _____

City _____ State _____ Zip Code _____

I am interested in the following club(s) -

<input type="checkbox"/> Duncan Glass Society	\$10.00	Please make check payable to the name of the organization you wish to join.
<input type="checkbox"/> Fenton Art Glass Collectors of America, Inc.	\$10.00	
<input type="checkbox"/> Fostoria Glass Society of America, Inc.	\$10.00	
<input type="checkbox"/> Heisey Collectors of America, Inc.	\$15.00	
<input type="checkbox"/> National Cambridge Collectors, Inc.	\$13.00	
<input type="checkbox"/> National Depression Glass Association, Inc.	\$10.00	
<input type="checkbox"/> National Imperial Glass Collectors Society	\$10.00	

HEISEY CANDLESTICKS

HAVE YOU EVER BEEN OUT HEISEY
HUNTING, FOUND A CANDLESTICK &
WASN'T SURE IF IT WAS HEISEY?

IT WON'T HAPPEN AGAIN IF YOU
OWN THE "HEISEY CANDLESTICKS
FIELD GUIDE" AND CARRY IT IN
YOUR POCKET, PURSE OR CAR.

ALSO USE IT TO KEEP A RECORD OF
WHAT IS IN YOUR COLLECTION.

THE 4"x8" BOOKLET HAS OVER 300
PICTURES, NAMES, NUMBERS, SIZES
& COLORS THAT ARE IN HCA'S STUDY
GUIDE, "HEISEY CANDLESTICKS,
CANDELABRA AND LAMPS by TOM FELT
AND BOB O'GRADY".

FIELD GUIDE

THIS FIELD GUIDE IS ONLY \$1.95.

THE HARD COVERED STUDY GUIDE IS
\$24.95 & ITS PRICE GUIDE CAN BE
PURCHASED SEPARATELY FOR \$2.50.

GLASS AND POTTERY - SHOW & SALE Over 40 Dealers

5th Annual Depression Era Glass and Pottery Show
St. Clair Fairgrounds (Air Conditioned Building)
Belleville, Illinois

Saturday, August 8 - 10 a.m. to 5 p.m.

Sunday, August 9 - 10 a.m. to 4 p.m.

Special Guest:
Gene Florence, noted author

Special Displays: Heisey, Cambridge, Fostoria, Imperial, Fenton
Glass Repair (grinding) Available.

Door Prizes

Admission: \$1.25 (Good for Both Days)

Sponsored by: Southern Illinois Diamond H Seekers

NEW ITEMS FROM THE GIFT SHOP

NEW BOOKS

Heisey's Classic Ridgely Glassware*.....\$5.95
Heisey Candlestick Field Guide 1.95
Early Duncan Glassware*.....19.95

*Price Guides included.

NEW GLASS ITEMS

Madonna-French Opalescent made by Fenton.....21.50
Baby Elephant French Opalescent*.....20.00
1987 Oscar Crystal Opalescent by Fenton.....24.00

*We had 162 of these at Convention and they sold out.
We should have another turn of these very soon.

NO DISCOUNT ON OSCARS.

ORDER FROM: H.C.A. SALES
P.O. BOX 27
NEWARK, OH 43055

10% Discount to Members Only, Orders over \$50.00

Add 10% for Shipping & Handling

MASTER CARD ☐ VISA ☐

CREDIT CARD NUMBER

Expiration Date Required

Mo. Year

Classified Ads

CRAFTS ENTERPRISES
187 N. PIONEER AVE.
SHAVERTOWN, PA 18708

PH:717-675-8553
after 5:00 p.m.
P. I. Extra *marked

- 353 Med. Flat Panel Ind. Almond Haw. 6*ea....35.00
- 4 Crystal 5 1/2" Floral Block.....30.00
- 10 Flamingo Floral Block.....35.00
- 1401 Emp. Sahara 6" Sq. Plate Old Col E.5 ea..12.00
- 1401 Emp. Sahara 7" Sq. Plate Old Col.E.6 ea..15.00
- 3390 Carcassone Sahara Sher. Old Col. E.4 ea..20.00
- 3390 Carcassone Sahara Low Gob. Old Col.
E. 11 ea.....20.00
- 3390 Carcassone Sahara Tall Gob. Old Col.
E. 6 ea.....35.00
- 1401 Empress Sahara D. F. Creamer Old Col. E..20.00
- 3368 Albemarle 2 1/2 oz. Wine 2* ea.....25.00
- 3380 Old Dom. Ftd. Soda, Old Col. E. 4 ea.....15.00
- 3389 Duquesne Gob., Chintz E. 7 ea.....20.00
- 3335 Lady Leg Gob., Zodiac E. 9 ea.....15.00
- 3408 Jamestown 3 oz. Cocktail Barcelona Cut
2 ea.....25.00
- 3408 Jamestown Sherbet Barcelona Cut 3 ea.....15.00
- 3408 Jamestown Wine Barcelona Cut 6 ea.....30.00
- 3416 Barbara Fritchie Champ. Manhattan Cut
9 ea.....20.00
- 3390 Carcassone Sahara 12 oz. Ftd. Soda 6 ea.25.00
- 1519 Waverly Cream & Sugar Orchid E. pr.....55.00
- 362 Sanitary Syrup w/cutting*.....20.00

Heisey-Scottie \$75; Flamingo Kingfisher flower
frog \$90; Heisey by Imperial; Ultra blue kicking
pony \$15; Light Blue Mallard wings back \$25;
Cygnets \$25; ponies set of 3, \$75; Milk white
rabbit paperweight \$10; Bunnies up & down \$12
pair. HCA Oscars-'78 pink \$40, '79 yellow \$30,
'79 Heather (misdated) \$50, '80 Heather \$30,
'81 Light Blue \$30, '83 Tangelo \$30, '84 Ruby
\$30, '85 Black \$30.

Pat Gruensfelder 1143 W. Sunsetview Dr.
Akron, Ohio 44313 216-867-4751.

WANTED TO BUY: Buying Caprice blue or Rosepoint by
Cambridge. Rose or Orchid by Heisey....American,
June, Fairfax, Versailles, Trojan by Fostoria. Also
Depression Glass and all crystal or colored of that
era. NADINE PANKOW, 207 S. Oakwood, Willow Springs,
IL 60480. PH: 312-839-5231.

WANTED: Items in #160 Locket on Chain, crystal or
colors. JIM KENNON, P O Box 251, Amherst, OH 44001.

WANTED: 1503 CRYSTOLITE Rosette Candleblocks by
Imperial. Ruby. TERRY H. CRANSTON, 7055 Round Hill
Dr. A 4, Union Lake, MI 48085



H & R DIAMOND H
Helen & Bob Rarey
1450 White Ash Dr.
Columbus, OH 43204

Ph: 614-279-0390
after 5:30 p.m.
*Marked
U.P.S. & Ins. Extra

- 1590 Zodiac Newark Sesqui Ashtray.....17.50
- 1590 Zodiac Ashtray.....17.50
- 1205 Fancy Loop Ind. Cr. & Sugar, Gold Dec.42.50
- 393 Narrow Flute 5 1/2" Hld. Jelly*.....32.50
- 1469 Ridgeleigh 6" Vase* (2) ea.....22.50
- 1519 Waverly 6 1/2" Ftd. 2 part Candy.....12.50
- 1540 Lariat Coaster (6) ea. 10.50 - all 6..57.50
- 1503 Ind. Ftd. Cigarette Holder*.....21.00
- 1637A 5" Mayo* Dawn.....62.50
- 341 Puritan 5" Ftd. Jelly*.....22.50
- 356 Ashtray*.....42.50
- 300 Peerless 7 pc. Berry Set*,Gold Dec....95.00
- 1489 Puritan Oil & Vinegar, Sterling Top...27.50
- 1590 Heisey Imp. 2 lite* pair.....97.50
- 1469 Ridgeleigh Bridge Set Ind. Ashtray*
(4) Set.....45.00
- 341 1/2 Puritan Finger Bowl* (2) ea.....15.00
- 1404 Old Sandwich 1 lite, pair.....82.50
- 1519 Heisey by Imp. Caramel Slag Candy Btm.25.00

Good selection of Heisey by Imp. Caramel Slag
Animals & HCA Souvenir Oscars. SASE for list.

LETTERS, we get letters....

Dear Louise,

I do not know who makes the decision or when
the selection of the color of the yearly Oscar
is made - but having twenty one different Oscars
I would like to suggest that one be made in milk
glass - I think it would be outstanding.

We will be unable to attend the convention
this year but will be back the next year at
which time I will be celebrating my seventy
second birthday.

Heisey has made a big difference in our life-
in our declining years it has given us great
pleasure and enjoyment to go to the Glass Shows-
Conventions-Estate Sales-Auctions and shops
looking for and collecting Heisey.

Please let me know what you think of my
suggestion.

Northwestern HCC
Oliver G. Beatty

Editor's Note: We have recently had a question
as to why we don't make the Oscar in Cobalt. Of
course the reason for this is because Heisey
made this figurine in Cobalt and we have promised
our members never to make an animal in a color
which Heisey used for that animal.

I don't believe that milk glass has ever been
considered and probably because the milk glass
animals which we had made in early years did not
sell all that well. Thank you for your sugges-
tion. I'll pass it on to the project committee.

L. R.

DEALERS DIRECTORY MAX. 5 LINES/12 MONTHS/\$25.00

We assume no responsibility for error in these ads after the first printing – Editor
For Changes in ads during the year, please send \$2.00 per line.

A.W. PARKER Heisey & Pattern Glass Shows or Appointment Magalia, CA 95954 PH: (916) 873-2326	"HAPPINESS IS" –THE STULTZS 3106 Warren Court, Glen Allen VA 23060 Shows and Mail (Richmond Area) (804) 262-1273 GLASS CIRCA 1890-1960	PEGGY'S ANTIQUES Ernie & Peggy Cox P.O. Box 367, Spavinaw, OK 74366 By Appointment or Chance PH: (918) 589-2859	WILLEY'S ANTIQUES & MUSEUM Specializing in Heisey 11110 Cannon Rd., Frazzysburg, OH 43822 16 miles east of Newark, OH PH: (614) 828-2557
ALL HEISEY AUCTION Consignments Welcome Apple Tree Auction Center 1616 W. Church, Newark, OH 43055 PH: (614) 344-9449	GERT'S GLASS Heisey & Duncan Gertrude & Russell Swetnam 1926 Saratoga Dr., Adelphi, MD 20783 PH: (301) 434-5113	CRAFTS ENTERPRISES Arlene & Ed Crafts 187 N. Pioneer Ave. Shavertown, PA 18708 PH: (717) 675-8553	GOLDSBERRY'S ANTIQUES Heisey a Specialty Shows only - Buy & Sell Kalamazoo, MI 49000 PH: (616) 381-3013
ANTIQUES - THE SHULTZES 206-208 East Main St. Newmanstown, PA 17073 15 Miles West of Reading, PA PH: (215) 589-2819	GLASS 'N' GLASS Virginia & Odell Johnson Rt. 1 Box 1324 Hayward, WI 54843 Phone (715) 462-3753	EAGLES REST ANTIQUES China Heisey Antiques Mary Evans 62 Fieldpoint Rd., Heath, OH 43056 PH: (614) 522-2035	THE WOODEN SHOE Antiques & Collectibles Jim & Sheri VanEs by Appt. 810 Elden, Herndon, VA 22070 PH: (703) 435-9045
AVERY'S QUALITY ANTIQUES Specializing in Heisey Shows or by Appointment 2112 First St., Jackson, MI 49203 PH: (517) 783-4075	GLASS WITH CLASS Lenore A Shelley, GGHC 1336 Lincoln Avenue San Jose, CA 95125 PH: (408) 286-8098	MOSTLY HEISEY Rhoda Curley 16 Clayton Place Albany, NY 12209 By Appointment, PH: (518) 482-6272	J.J. & BOB MC KEE Pottery Glassware Collectibles 334 W. 75th St. Kansas City, MO 64114 wed-sun 10-5 (816) 361-8719
B & B HEISEY & COLLECTIBLES B. Whaley 300 International Dr. Pataskala, OH 43062 By Appointment PH: (614) 927-1557	GREEN ACRES FARMS Antiques, Crystal Glass & Collectibles 2678 Hazelton-Etna Rd., SW (S.R. 310-N) Pataskala, OH 43062 Sat. or Sun. PM or call (614) 927-1882	MOUND BUILDERS ANTIQUES Heisey & Animals, General Antiques Irene Rauck 1138 Moundview, Newark, OH 43055 PH: (614) 344-6043	SINGLETREE ANTIQUES Cut, Pattern & Heisey Glass 10717 Staples Mill Rd, Glen Allen, VA 23060 Chance or appointment (804) 266-3795
C & J ANTIQUES Cole & Jean Miesner Box 45, 72 Whig St. Newark Valley, NY 13811 PH: (607) 642-9905	H & R DIAMOND H Helen & Robert Rarey 1450 White Ash Dr. Columbus, OH 43204 PH: (614) 279-0390 after 5:30	HELEN & JIM KENNON Heisey, Cambridge, Fostoria, Duncan, Imperial, Fenton, Tiffin P.O. Box 114 Brookville, OH 45309 PH: (513) 833-5406 SHOWS ONLY	THE PURPLE PLACE Featuring Heisey & Other Fine Glass Martha & Harold Earp 1940 Suwanee, Ft. Myers, FL 33901 PH: (813) 936-1572 Anytime
C.E. HIGGINS (S.F. Bay Area) Shows and Mail Order P.O. Box 2723 Menlo Park, CA 94025 PH: (415) 322-0192 Evenings	CHARLOTTE'S GLASS REFLECTIONS Quality Glassware Specializing in Fostoria 6816 14th St. W., Bradenton, FL 33507 PH: (813) 756-4143	R & L ANTIQUES-SAN FRANCISCO Members of the Golden Gate Heisey Club 3690 Bodega Ave. Petaluma, CA 94952 PH: Petaluma (707) 762-2494 PH: San Francisco (415) 621-6693	TACOMA ANTIQUE GALLERY A Collectors' Mall 745 Broadway Downtown Tacoma, WA 98402
CHARLES & MILDRED FISHER Heisey, Degenhart, Imperial, Antiques, Collectibles, General Line 991 Idlewild, Newark, OH 43055 PH: (614) 522-5398	HARRALSON'S HEISEY HUNTERS Sponsor: S.W. MO's Antique Shows 78 Quality Dealers From 14 states 1987 Dates: May 29-31 & Nov. 13-15 Info: 1426 W. Highland, Springfield, MO 65807 PH: (417) 883-2449	RAMBLING LANE ANTIQUES Featuring Heisey & other fine glass Keith & Evelyn Hoover 1978 Rambling Lane, Rhinelander, WI 54501 PH: (715) 282-8444	ALFA I CARRIAGE HOUSE ANTIQUES Featuring Depression & Elegant Glassware Al & Faye Maness 508 E. Cary Street Richmond, VA 23219 PH: (804) 788-1630
DAVE'S ANTIQUES Specializing in Heisey Shows & Mail Order 1403 E. Knollwood St. Tampa, FL 33604 (813) 237-5550	HARRISON'S ANTIQUES Heisey, Cambridge, Duncan Shows, Mail, by Appointment 26 Johnston's Lane, Mercersburg, PA 17236 PH: (717) 328-2451	RAY ZIEGLER Glass Repair 185 County Line Westerville, OH 43081 PH: (614) 891-9700	THE MUTED SWAN ANTIQUES 5486 Peachtree Rd., Chamblee, GA 30341 Heart of Chamblee Antique Row Specializing in Heisey & Cambridge Bill & Pat Miller PH: (404) 451-7620
DIAMOND H PLUS Mail Orders & Shows George & Eileen Schamel Rt. 3, Box 171, Boonsboro, MD 21713 PH: (301) 432-6285	NANCY'S ANTIQUES Heisey, Cambridge, Fostoria, Fenton Elegant Glassware of the Depression Era 906 44th NW Canton, OH 44709 shows only PH: (216) 492-2595 After 6:00 PM	SCHWAN'S ANTIQUES SHOWS & MAILORDER 77 Lagos del Norte Ft. Pierce, FL 33451 PH: (305) 461-5940	SHOW AND TELL ANTIQUES Art, Cut, Heisey and Pattern Glass 1525 Morrow Ave, Waco, TX 76707 Tues-Sat 10:30-4:30 PH (817) 752-5372 Also: Mail Order and Shows Member NADA
ELLIZABETH BASSETT CASON 401 32nd St., W. Bradenton, FL 33505 Mail Order - List PH: (813) 748-0851	J. & M. WALTER ANTIQUES Heisey, Duncan, Cambridge, other glass clo Sir Speedy, 431 Main St. Woburn, MA 01801, Mail order-SASE PH: 617-245-2532 after 7:30 PM dys-wknds	SUM OF LIFE Elaine & Frank Husted P.O. Box 102 Phoenixville, PA 19460 PH: (215) 935-2962	OUR PLACE ANTIQUES 216 S. Main, Granville, O. 43023 (614) 587-4601. Open every day 12-5, Heisey, general line of antiques and collectibles, country herbs and spices.
FOREVER HEISEY Shows and Mail Order Janice Thrane 1663 Londondale Pkwy., Newark, OH 43055 PH: (614) 344-5955	J. & R. COLLECTIBLES Shows, SASE, Mail Order list June & Ray Lukasko P.O. Box 1030, Newark, OH 43055 PH: (614) 344-9719	ETTELMAN'S DISCONTINUED CHINA & CRYSTAL HEISEY a SPECIALTY P.O. Box 6491-HN Corpus Christi, TX 78411 PH: (512) 888-8391 Include SASE	
DIE KUNST GALLERIES & ANTIQUES Specializing in Heisey Vel & Andy Andress Box 329, 725 Front Street Leavenworth, WA 98826 PH: (509) 548-7856	PATTON HOUSE Heisey & Duncan Miller Rocky's Mall, 1-81 & US 11 Weyer's Cave, VA 24486 PH: (703) 967-1181	THE GLASS CONNECTION Specializing in Heisey Shows & Mail Order Box 526, Collegeville, PA 19426 PH: (215) 489-0139	
HOMETOWN TREASURES P.O. Box 1859, Jackson, MI 49204 Phone: 517-782-8955 Cal and Dot Meyer "Heisey's the Thing"	GRETA * GARBO Antiques and Collectibles Heisey, Crystal, Silver, Jewelry Unicorn Mall, 310 5th Ave., San Diego, Ca. 92101 Greta Jennings - Home (619) 582-5745	THE GLASS LADY Week-Ends Only Glass, Pottery, China Circle Shopping Center, Richmond, VA 23224 SHOP (804) 230-9239 HOME (804) 271-1555	

15th ANNUAL HEISEY MINI SHOW

SEPTEMBER 12, 1987
8:30 AM - 2:30 PM

UNDER THE BIG TOP

In tent on museum grounds
Sixth & Church street
NEWARK, OHIO

Food
Available

Heisey Glass
Antiques
Collectibles

DONATION
\$0.50

Benefits- National Heisey Glass Museum

FOR INFORMATION CALL-345-2932 OR 366-5163

GLASS[®] review

ESTABLISHED 1971

The GLASS REVIEW Magazine is for everyone who studies, collects or sells glass. Whether your glass interests lean toward the early 1900's--or the depression era--or with today's limited glass items, the GLASS REVIEW covers it all!

Articles--price reports--original catalog documentation--shop directory--research and reproduction news--trademark information--glass book releases--what's new on the market--a large variety of glass ads (on both old and new glass)--plus much more.

Enclose payment and mail to:

GLASS REVIEW, P.O. Box 542, MARIETTA,
OH 45750

**NOW 12 ISSUES
PER YEAR!**

☐ 1 Year - 12 issues - \$15.95

☐ 2 Years - 24 issues - \$29.95

2ND ANNUAL ALL GLASS SHOW AND SALE

Yankee Drummer Inn, Rte. 12N, Auburn, MA
(Exit 10, off Mass. Turnpike)

Oct. 10, 1987
Sat. 10:00 A.M. - 5:00 P.M.

Oct. 11, 1987
Sun. 10:00 A.M. - 4:00 P.M.

GLASS OF ALL PERIODS

SPONSOR

Heisey Club of Southeastern Mass.
Donation \$2.50 - with Card \$2.00
Benefit - Heisey Glass Museum

Membership Renewal Notice

This is your last issue of HEISEY NEWS
IF THE NUMBER AFTER YOUR NAME Reads 7-
Please renew now!

PLEASE DISREGARD THIS NOTICE IF YOU HAVE
RECENTLY PAID YOUR DUES.



return to:
HEISEY NEWS
Box 27
Newark, Oh 43055

BULK RATE
U.S. POSTAGE
PAID
PERMIT 741
Mt. Vernon, OH 43050