

HEISEY news

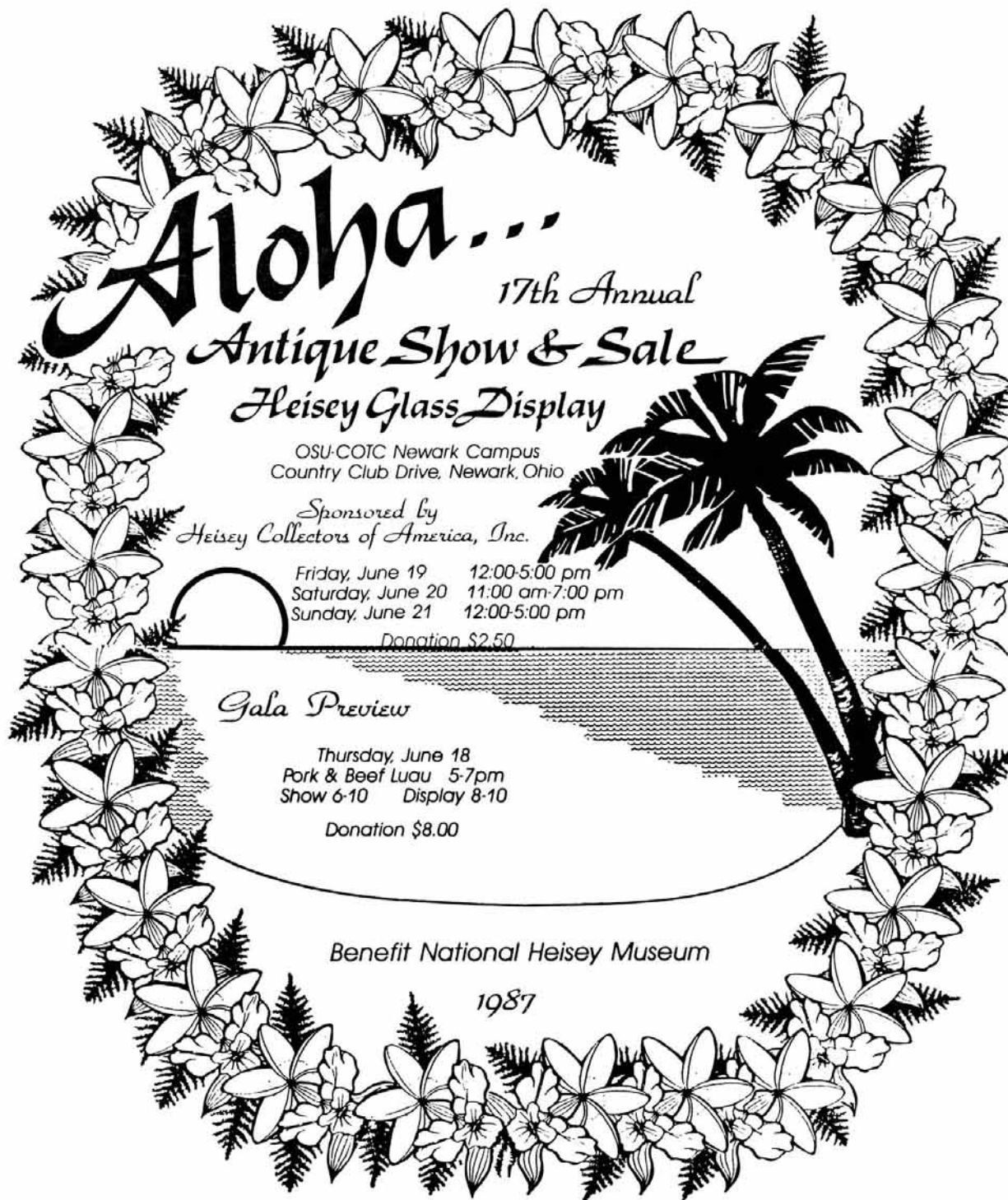
OFFICIAL PUBLICATION HEISEY COLLECTORS OF AMERICA

©Heisey Collectors of America, Inc.

All Rights Reserved 1986

VOLUME XVI NO. 6

JUNE, 1987 ISSN 0731-8014



Aloha...

*17th Annual
Antique Show & Sale
Heisey Glass Display*

OSU-COTC Newark Campus
Country Club Drive, Newark, Ohio

*Sponsored by
Heisey Collectors of America, Inc.*

Friday, June 19	12:00-5:00 pm
Saturday, June 20	11:00 am-7:00 pm
Sunday, June 21	12:00-5:00 pm

Donation \$2.50

Gala Preview

Thursday, June 18
Pork & Beef Luau 5-7pm
Show 6-10 Display 8-10

Donation \$8.00

Benefit National Heisey Museum

1987

HEISEY NEWS

P.O. BOX 27, NEWARK, OH 43055

CLUB OFFICERS:

President	— Charles Wade, Jr.	— (614) 366-6636
Vice President	— Bob Rarey	— (614) 279-0390
Secretary	— Liz Stickle	— (614) 323-2250
Treasurer	— Betty Ann Barnard	— (614) 366-7002
Exec. Dir.	— Louise Ream	Off. — (614) 345-2932 Res. (614) 522-3430

Editor: Louise Ream
P.O. Box 27, Newark, Ohio 43055
PH: (614) 345-2932

Assistant Editor: Neila Bredehoft
P.O. Box 27, Newark, OH 43055
PH: 614-345-2932

Published monthly and printed in Mt. Vernon, Ohio
\$15.00 per year - \$1.25 per copy

Back Issues - Each Volume (12 issues) year - \$9.00.

Volume, V, VIII, IX, X, XI, XII, XIII, XIV & XV

Heisey Collectors of America, Inc. is a non-profit corporation with tax exempt status. Owners and operators of National Heisey Glass Museum, 6th and Church Streets, Newark, Ohio.

Open daily 1-4 p.m. except holidays. Other hours by appointment. Members admitted free.

Club membership (includes 12 issues of HEISEY NEWS and participation in all club activities) \$15.00 per year plus \$2.50 for each additional family member in same household who wishes a membership card. For VOTING MEMBERSHIP, add \$25.00 one time only fee.

When requesting information, please enclose a self-addressed, stamped envelope (SASE).

ADVERTISING - Send all ads to:
HCA - Advertising
P.O. Box 27
Newark, Ohio 43055

DOUBLE SPACE ALL ADS.

RATES:

CLASSIFIED: 15¢ per word. \$1.50 minimum.
ABBREVIATIONS AND INITIALS COUNT AS WORDS
DEALER DIRECTORY: \$25 per year.

DISPLAY:	MEMBERS:	NON-MEMBERS:
1/8 Page (9 items)	\$20.00	\$25.00
1/4 Page (20 items)	30.00	37.00
1/2 Page (20 items) Hor.	45.00	55.00
1/2 Page (50 items) Vert.	60.00	65.00
1 Page (50 items)	75.00	85.00

Extra lines will be billed at \$1.00 per line. Personal ads limited to 1/8 space.

ALL ADS MUST BE PREPAID. Ad copy must be received by the 5th of the month preceding the publication date - i.e. April 5th for May issue. Ads containing reproductions will not knowingly be accepted unless clearly stated (i.e. Heisey by Imperial, etc.). HEISEY NEWS assumes no responsibility for false advertising or misleading information. In the event of typographical error, the incorrect portion of the ad will be run in the following issue, but HEISEY NEWS assumes no further liability.

The opinions expressed in articles in HEISEY NEWS are those of the authors and not necessarily those of the organization. The Editorial Staff reserves the right to edit or refuse any material submitted for publication. When requesting information, please enclose a self addressed stamped envelope. (SASE).

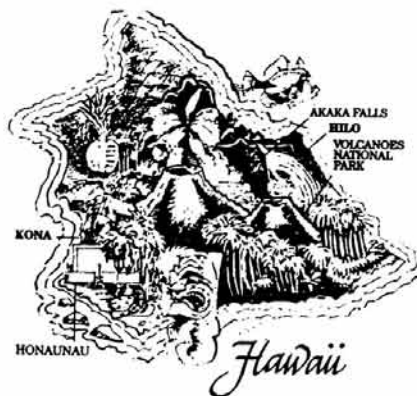


NOTES FROM YOUR PRESIDENT.....

It seems like every month I am thanking someone or a group for the contribution that you have made to the museum and club. These contributions are the blood line that continues to carry this organization on and on and on.

To John Eshelman, 200 dinner chairman; Liz Stickle and Jan Thran, ticket sales chairmen, and all who helped make the dinner a huge success, our sincere thanks. It was a very well planned event with lots of good food, and of course, lots of good people. Please remember that without your support for this project, as well as all projects, this organization would not be able to function in the same manner as it currently does.

Charlie



ABOUT THE COVER

1987 CONVENTION POSTER DESIGNED

BY SHARON ORIENTER OF
ROCHESTER H C C



By the time you receive this newsletter Convention will be almost upon us and some members from all over the U.S. will be converging on Newark, Ohio, "Heiseyland" U.S.A. Some members call this "coming home".

The enthusiasm of the Texas Club has even made us excited here and probably has caused other members to decide to come this year. Reservations are running a little slower than usual but perhaps that is because the newsletter has been reaching many of you later.

We will be chartering three new clubs at the Annual meeting--from San Diego, CA, the Florida Gulf Coast and the other one is the fourth from Massachusetts--a record for number of clubs in one state. There are already three in California, three in Illinois, and three in New York State. Of course, Ohio has the record with ten, which is to be expected.

There is still a lot to do at the museum but we hope everything will be ready by the time most of you arrive. We always have some jobs left for early arrivals.

I really need some writers for the Heisey News. Years ago people wrote about their favorite pieces of Heisey and those articles would still be appreciated. If you have an interesting story to tell please send it in.

We believe we are going to have a beautiful display this year as we always do but the Hawaiian theme seems exciting.

Sharon Orienter of the Rochester HHC designed the yearly poster, and the program covers. The poster design is used on the cover of this issue of Heisey News.

Remember, it was just a year ago at the annual meeting that the Chairman of the Mould Fund Committee, Norm Thran, announced the amount of money still needed to pay off the \$100,000 loan. He asked who would like to give a \$100 to help pay it off. Hands flew up and in a very few minutes even more money was collected than was needed.

Norm deserves great credit for spearheading the drive which brought in the \$229,150 to buy the moulds. Without his optimism and determination that the goal was possible we probably would never have had these moulds.

Jim Speelman, Warehouse Co-Chairman has been having a lot of problems lately. He has had a triple by pass and is now in the hospital again for further surgery. We all wish him the very best.

We will soon be having French Opalescent madonnas and baby elephants in the gift shop. These are being made by Fenton. Both these and the Ridgeleigh book will be advertised in the July issue. You can also purchase another Oscar after June 17th at \$24.00 each.

Remember, Hawaiian dress is optional for all events and will be very appropriate for the great dinner in the tent at the gala preview on June 18 at Adena Hall.

Pick up your registration packets at the Heisey Museum. Phyllis and her crew will be in the lower level again this year. You can also pick up your preordered Oscars in the shipping room in the lower level.

We'll see you soon!

Louise Peam

B. ALTMAN, NEW YORK, NEW YORK

HOW WOULD YOU LIKE TO BUY THESE !!!!



Fifth Avenue at 34th Street Telephone MU. 9-7000
New York store only

THE HEISEY "DIAMONDS"

By Carl Sparacio

In the depths of the depression (the BIG one, not the one we are currently enjoying), circa 1937 before the European war did its bit to bolster our economy Heisey did its bit to bolster our morale. The company brought out three stem lines which featured the king of gems - the diamond. To further enhance the image of wealth the lines were named after the most famous diamond mines of the day; Kimberly, Kohinoor and Shasta.

I have difficulty remembering which name goes with which stem even though the differences are quite apparent. But then I do not have a precise and details are a bore. Perhaps memorizing this little poem will be helpful. It's called "Where's the Diamond".

Hey diddle diddle,
The cat and the fiddle.
Shasta is up and Kimberly down
But Kohinoor's not in the middle.
Alright, so it doesn't help. You're forcing me to be more precise.

#4085 Kohinoor is the first and probably the best known. The bowl shape sets it apart from Kimberly. The Kohinoor bowls have slightly tapered straight sides and will always be found in either saturn or wide optic with saturn being the more common. The 4½ oz. cocktail and the Rhine wine are exceptions as they both were offered with round bowls. The stemware offered was the goblet, low footed goblet champagne, cocktail (both straight and round bowls), wine, claret, Rhine wine, cordial, sherbet, oyster cocktail and sodas in three sizes.

As for cuttings and etchings it is known in the 485 Polo etching and the following cuttings: 888 Madeira, 889 Sheffield, 890 Churchill, 891 Pembroke, 892 Berkely Square. It is impossible to be specific about cuttings and etchings as buyers could special order an etching or cutting they liked on a line it wasn't normally issued on as a standard catalog item.

Crystal, as usual, is the easy color in Kohinoor followed by Limelight/Zircon. The only other color made in this pattern was Trial Blue and on the Sparacio scale of 1 to 10 for elusiveness we give it a 39.

One point we might mention which could lead to confusion is the numbering of Kohinoor. The pressed items in this pattern were numbered 1488 and it would normally follow that the blown pieces would be 4088.

For some unexplained reason blown

Kohinoor was numbered 4085. Saturn, which was 1485, was not offered in a blown line, thank goodness. I'm guessing but perhaps this was done purposely so that the blown 4085 could be offered with both 1485 and 1488. It's not unreasonable since Kohinoor with saturn optic blends well with saturn.

#4091 Kimberly is Kohinoor's kissin' cousin. The only difference being the tulip shaped bowl which was offered plain only -- no optic. The Kimberly design is not as pleasing as Kohinoor's. The bowl and stem just don't make it together. I know of Kimberly in crystal only but what it lacked in color it made up for in cuttings and etchings. Some of the etchings offered were: 497 Rosalie, 496 Skier and 495 Polo. In cuttings you will find: #844½, 893 Carlton, 895 Waterford, 896 Sungate, 919 Laurel Wreath, 941 Barcelona, 943 Belfast, 944 Courtship, 945 Virginia, 949 Evelyn, 1015 Dolly Madison Rose and others.

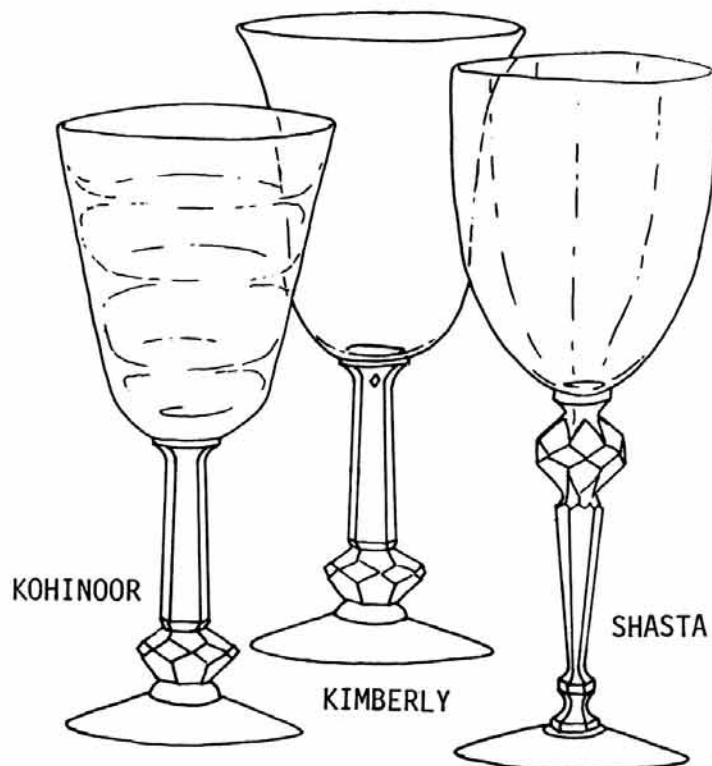
Kimberly was a stem line only and did not have related pressed pieces. The stems offered were a high and low footed goblet, champagne, claret, cocktail, wine, cordial, sherbet, and two sizes of sodas. An oyster cocktail was also offered but it really

wasn't Kimberly. It was a stock piece which was carried in the Heisey line for years.

As an extra added attraction we'll discuss 5013 Shasta also. Shasta shares the "diamond" with Kohinoor and Kimberly but nothing else. Shasta's diamond sits between the bowl and the stem rather than at the base of the stem. At first glance it appears that the Shasta stem is no more than Kohinoor/Kimberly turned upside down but there are differences. Of the three Shasta is the most elegant in appearance and when seen with the George IV cutting it is absolutely magnificent. Its amazing what turning a stem upside down will do. The only set of Shasta goblets I've seen was unusual in that the size of the diamond varied so from piece to piece. The largest diamond looked the best.

Shasta sports a cupped shaped bowl in wide optic. I've not seen it signed but Kohinoor and Kimberly will be found signed and unsigned. No color was offered in Shasta and no etchings. The known cuttings are 924 Daisy and 926 George IV. The pieces available were goblet, champagne, claret, cocktail, oyster cocktail, cordial, wine, sherbet and two sizes of footed sodas. A small comport was also made.

Reprinted from Heisey News - March 1976.



diamonds are forever.....

by Janet Caswell

Fort Sewall is situated at the harbor entrance and goes back to the mid 17th century. It was once just a rough piece of earthworks thrown up by the town against any sudden attack by sea during the French and Indian Wars. During the Revolution it was turned over to the Federal Government and was made into first class fortifications with barracks to house the garrison and underground quarters, still to be seen. It was under the protection of the fort's guns that the Frigate Constitution, fleeing from British men o'war, sought shelter here. There were Marblehead men on the Constitution. This is now a beautiful park and offers a fine view of the many harbor activities, a favorite place for tourists to visit.

Speaking of visiting, yours truly had a short visit with a fairly new collector, "The Amicable Stroller", this past weekend. She collects creams and sugars along with orchid etch. I understand three orchid etch stems were added to her collection. For the short time she has been collecting, the number of pieces of Heisey she owns is growing by leaps and bounds.

The "Eager Beaver", from the Palmetto State (SC), tells about going to a small shop, consisting of five or six different dealers. (a small co-op in comparison to the 200 dealer shops we have in this general area). It was full of anything and everything one might want, making it very difficult to pick out any special piece of glass. Therefore he spent over an hour in this shop. In one corner there was a four shelf bookcase filled with different glass animals and animal related items. These animals were made by many different companies and, by the way, very poor quality glass except two pieces. One was the Petticoat Dolphin candlesticks, in flamingo, and the other a Rooster Vase. It seems the dealer had priced the pieces on a scale of two to twenty-five dollars according to the size. An hour well spent!

"Mountain Grandma" (CA) is spending time with her grandchild but found the time to go down the mountain and bring home a #1519 Waverly 10" Floral Bowl, crimped and Rose etch along with a Waverly 6 1/2" 3 footed 2 compartment bowl; plus the #300 Peerless low footed egg cup with English registry mark.

The "Two Guys from CT" were around our area and they found a Waverly footed Cake plate with the Heisey Rose etch! That must have been quite a nice piece, I would have enjoyed seeing that one. Hopefully they took a picture.

My "Evergreen Friends" (ME) most always write me about some nice things, and I was not disappointed this month; three Rooster stems, (those will go nicely with the Rooster Cocktail shaker she found a while ago) and a #1401 Empress sahara 5 1/2" mayo.

Now "That Lil ole Lamplighter" took his biggest and brightest flashlight and discovered, lurking in a dark corner, the Imperial Swirl Crystolite Candleclock still on the Bust-off in Nut Brown. He was delighted.

I haven't heard from "the Social Climber" for a while but the wait was well worth it. She usually only purchases marked and Colonial pieces, especially serving pieces, but this time it was

Color. The night was a bad one, snow making it almost impossible to drive, but she was headed for an auction and neither rain nor snow would deter her from her appointed rounds. The auction started late because of the weather. Pieces went up one by one, finally the Heisey was held up and the "Social Climber" held her card up time after time and came away with an Octagon #1229 Bon-bon in Sahara and light #1184 Yeoman d/o 6" plates. She missed the cups and saucers, oh well, she'll have something to look for. I asked her why she bought color and not her usual crystal. Her answer, "I'm doing my living room over and the Sahara will match".

"The Farmer" brags about the #1425 Victorian cream and sugar, while "Shy Gal" found two #300 4 oz. footed sherbets.

Now "Mr. Crystolite" found a pair of #1567 Plantation three-lite candelabra and the #1509 Queen Ann Floral Bowl/tea rose etch. Well, those pieces aren't crystolite, are they? But never fear, by the time you all read this there will be a "Mrs. Crystolite" (congratulations to you both from the "Mr." and Myself") For a wedding present the new "Mrs. Crystolite" presented "Mr. Crystolite" with a piece of Heisey that he has wanted for quite a long time. The #1503 Crystolite Ice Bucket! What a lovely surprise!!

This past weekend we didn't go on our usual haunts. This section of the country, Western MA, ME, RI, has had torrential rains and bridges and roads have been washed away. The worst floods in fifty years. There was a section of a NY thruway bridge that crashed into the raging waters of Scholarie Creek. It is very scary, we travel the NY thruway on our way to Ohio. We now need lots of sunshine to dry things out.

Although we didn't go hunting last weekend, this weekend we did and the "Mr." came up with a Perfect #300 Peerless Claret Jog; a pair of #114 Pluto Moongleam Candlesticks, a pair of #25 Federal 7" Stocks, and a Lariat 9" plate. As for me I found a pair of #341 salt and peppers with #3 sanitary top; a #1000 etched marmalade; a gorgeous little #5003 Crystolite 1 oz. Cordial and two (2) #1404 Old Sandwich toddlers in crystal.

Now for "the Keystone Cops" (PA)--in the Mountain State (WV) they found the stopper for the #4037 (4036) 1 pint oval sherry bottle orchid etch, also some more flower frogs for her collection - a #10 & #11 in moongleam and a #20 in Sahara. Well worth the price, she said. Next was a #1567 Plantation cake salver and the 19" plate.

Enough for now, perhaps the sun will shine soon. See you at the Convention!!

Happy Hunting
Janet Caswell

VIKING GLASS TO REOPEN

The Viking Glass Company has been purchased by Ken Dalzell, former president of Fostoria. He plans to open it in September.

RIDGELEIGH BOOK

The book will be available in June, 52 pages, complete with price guide for \$5.95.

HEISEY CLUB OF SOUTHEASTERN MASS

Helen S. Mead

Ed Berg of Wilmington, DE gave an illustrated talk of "Open Salts" at the April meeting of the Heisey Club of Southeastern Massachusetts. The club meets on the third Wednesday of each month at the home of Mr. and Mrs. Wade Banck in Rockland. Irene Walton, program chairman, has been instrumental in arranging the fine programs, which have included talks by knowledgeable Heisey collectors from our own club as well as specialists like Mr. Berg. Mr. Berg, whose talk encompassed the early history of salt as well as salt containers, has a wealth of material from which to draw as evidenced by slides of Mrs. Kay Berg's collection. Of special interest to the club was the Berg's collection of Heisey salts -- complete except for one elusive number which has not been seen except as a catalog illustration. The Museum has dubbed this the "Berg" salt so when it is found, and no doubt it will be, it will have a name. Mr. Berg has done a great deal of research, especially since he has retired, and he is well acquainted with the material which was presented in an interesting manner. He had on display at the meeting examples of the Heisey salts. Mr. Berg has written for the Heisey News and will conduct a seminar on Open Salts at the convention in June.

At the March meeting of the club, Everett Dunbar was the genial auctioneer for the annual auction, proceeds of which benefit the Museum.

Shirley Dunbar has been named voting delegate to the June convention, with Lloyd Caswell as alternate. Lloyd and Janet Caswell will again be involved in arranging the display which is always a highlight of the convention. "Aloha" has been chosen as the theme.

Plans for the annual all-glass show and sale are being finalized. It is scheduled for October 10 and 11 at the Yankee Drummer Inn in Auburn, MA. Mr. and Mrs. Everett Dunbar, show managers, report that twenty-five dealers will participate.

At the May meeting, Jarda Cragg of Georgetown, MA will bring examples from her extensive Heisey cruet collection and give a talk on "cruets."

Officers of the club are William Thran, president; Philip Phillips, vice-president; Dorothie Banck, treasurer; Helen Mead, secretary. Maria Martell is membership chairman and Jackie Thran and Shirley Dunbar are co-editors of the club newsletter, the "Heisey Diamond of Southeastern Massachusetts." Mary Williams has graciously served as hospitality chairman since the beginning of the club. Refreshments, provided by a volunteer couple each month, have been plentiful and of great variety. Show and Tell continues to be a highlight of each meeting.



#1567 PLANTATION

HEISEY COLLECTORS OF THE ROCHESTER AREA

By Bruce Schwendy

Our April meeting was hosted by Betty Evans with fourteen members present. Her special desserts and Heisey collection were a treat to us all. She has a nice group of covered candy dishes as well as a large variety of Heisey patterns and colors.

Under new business, our club now has two Apple discs with an alphabetical and numerical listing of every pattern known by researchers in Newark. Thank you to Neila and Tom Brendehoft. We noted that Sharon Orienter is designing both the poster and the program cover for the convention in June. Also, HCA will soon be selling the candlestick field guide made up by Marvin Jacob. This is a convenient pocket sized booklet with pictures and a numerical list at the end showing heights, sizes, and colors as well as an alphabetical index.

Our topic for the meeting was colored plates and Sharon did her usual complete job on a quiz to identify thirteen plates all the way from the rare 7026 Heart and Drape to Empress which came in six colors plus crystal.

Marvin and Lois Jacob brought three flamingo plates, 1425 Spiral, Yeoman with D0, and Yeoman with the Trojan Etch. George Reynolds showed a 12 inch 1225 Ridge and Star plate in flamingo. Marge Gillette showed us a flamingo 1228 Swirl plate and a crystal Plantation sandwich plate. Art and Gertrude Costello brought flamingo 1243 Stepped Octagon, Alexandrite 1401 Empress, and square 1469 Ridgeleigh plates. Edith Bockes proudly showed her nearly complete collection of Empress square plates, 6, 7 and 8 inch in six colors, crystal, and crystal with Crinoline etch. To round this out she is looking for the 6 inch plate in crystal and cobalt, the 7 inch plate in flamingo and moongleam, and the etched 6 and 8 inch plates. Any offers? Donna Schwendy brought a 12 inch round Empress moongleam plate.

For show and tell, George and Arlene brought a pair of 71 Oval candles with the Adam cutting. This is the only candle with an oval cross section. Marge showed a pair of Queen Ann dolphin footed candles. These are about the size of the Empress individual nut dishes.

Our May meeting will be a picnic at the home of Bill and Marian Heron. Following that, we're looking forward to a great convention!

QUESTIONS AND ANSWERS

Q. I have in my possession a small jar (?) approximately 5 1/8" in height, very pale bluish-green in color and eight panelled. It would require a screw on type top. This does not appear to me to be Heisey and I can find no reference to anything of this kind in my books but on the bottom of the jar is a definite diamond with an "H" (?) inside. See enclosed tracings.

Could you tell me if this might be Heisey?
B. Egerton, NJ

A. Your small jar is not Heisey glass, unfortunately. If you look again you will see that the letter is an I and not an H. The H in the diamond is vertical in the Heisey mark as above on our letterhead. Many people make this mistake.

The Diamond I is the mark of the Illinois Glass Company, forerunner of Owens-Illinois.

NORTH CAROLINA HEISEY STUDY GROUP

Our Spring Meeting was held in Rocky Mount, North Carolina, home of HARDEE HAMBURGER, INC. and of Ed and Virginia PERVA, who with Ned and Sibyl LAVENGOOD hosted 18 members to a HARDY (no Hamburgers or Fries) Lunch. We were surrounded by HEISEY and we all felt the quality of the glass and why its so important to us. After the Noon lunch we gathered in their spacious living room, with its high ceilings and viewed the slide show - "How Well do You Know Your Heisey?".

I wouldn't want to grade our results, but it sure made us want to study harder for the next quiz!! We do recommend this slide show, but wished that after each slide, a full view of the article would be shown so that the viewer could see the piece in perspective.

Our gift to the Heisey Museum was brought out and displayed. I can't say what it is now, but if you read your March 1987 Issue of the Heisey News you would have seen a picture of the GIFT. We are proud of it and thanks to all who went to the National Capital Heisey Collector's show in March, we were able to secure it. By the way we had 12 members present at that show. All the time our meeting was going on, a silent auction was being held to raise money for the Convention next year '88. A serious discussion arose over "INSURING" your Heisey. If anyone reading this has an answer, solution or whatever, PLEASE LET US KNOW!!!

The NCHSG will meet next on AUGUST 8, 1987 at 1:00 p.m. in Charlottesville, Virginia. LINDA HASKELL and her parents will host. Lunch will be served, a Silent Auction will be held, a slide show-HEISEY BY IMPERIAL, will be shown, Heisey discussed and FUN will be HAD! If you would like to attend that meeting, wrote or call Linda at 921 Chatham Court, Charlottesville, VA, 22901. Phone 804-973-9157

Jerry Lecky

DAYTON AREA HEISEY CLUB

The Dayton Area Heisey Club #7, for many years, has used the meeting rooms of the Public Library in Downtown Dayton Ohio.

Due to remodeling our meetings were moved to the public library in Huber Heights, Ohio. This turned out to be a blessing in disguise. It is so convenient to reach, our attendance has increased.

The program for April was informative as to the value of Heisey. Each member was given a paper and pencil. The program chairman used Heisey Pressed Ware Catalogue #109 Pattern 352 pages 52-53 Pattern 500 pages 108-109. We each wrote our idea of the value of each item. Then we compared each members value. Some were high some were low. This was interesting and informative. Next month we are using Clarence Vogel's books to do the same thing on Rose, Orchid etch and Cuttings.

Respectfully,
R. Clarke West

HEISEY COLLECTORS OF TEXAS

The Heisey Collectors of Texas met last Saturday in Weatherford. At this time we held elections so the the charter club annual report reflects those results. The membership list is up to date as of the May meeting also.

At our last meeting we made final plans for our trek to Newark. We voted to provide the Museum lounge with 10 pounds of fresh and delicious Texas pecans (shelled, of course!) We will provide our own container for the pecans as well as a small card describing the origin of the Texas pecan. In addition, never being ones to pass up an opportunity to show off we respectfully request to be allowed to display our fabulous HCT scrapbook in the lounge. We are very proud of our scrapbook and would hope that displaying it would encourage other clubs to document the history of their clubs in a meaningful way.

We are all but comatose with excitement and anticipation. How we will ever survive until convention time is beyond me. We will see you then!

Impatiently yours,
Amy Jo Jones



EXTRA! EXTRA!

A party for the former Heisey workers and their families and friends - will be held at the Court Yard entrance of the YWCA on Friday, June 19th at 1:00 p.m.

The Mayor will proclaim this day Former Heisey Workers Day.

There will be MUSIC by the Heisey Ensemble, and great refreshments by Eleanor Jackson along with good fellowship with members of the Newark Community and the Heisey Collectors of America.

The \$2.00 which registrants will be paying for the meeting with former employees will cover this event at the YWCA instead of the Best Western Inn. You may also add this to your packet by paying when you pick it up at the museum. It should be a fun time for all.

Other surprises not mentioned here will also take place.

Enjoy!!

Betty Barnard, Chairman

No. 1503 CRYSTOLITE PATTERN

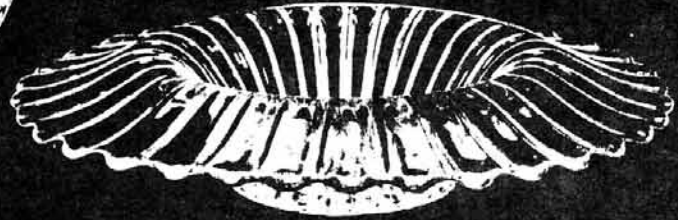
H
A
N
D
M
A
D
E

G
L
A
S
S

W
A
R
E



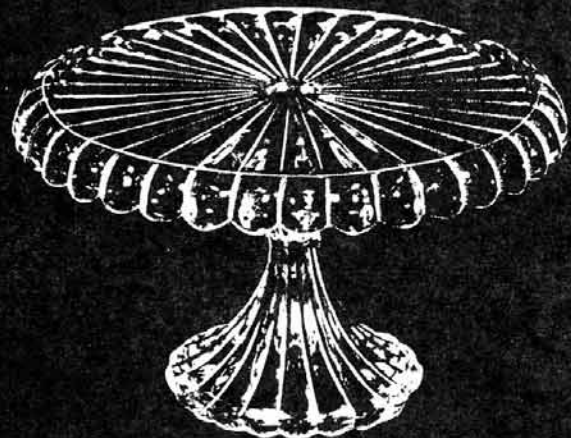
1503—12" Oval Utility Tray



1503—Gardenia Bowl



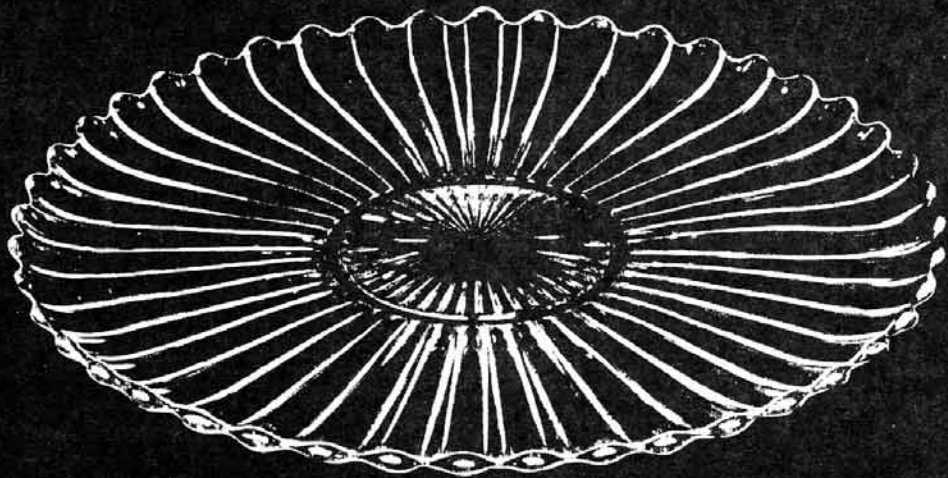
1503—11" Punch Bowl (7 1/2 qts.)



1503—11" Salver Ftd.



1503—6" Basket Mid.



1503—20" Buffet Plate

A. H. HEISEY & CO.,



NEWARK, OHIO

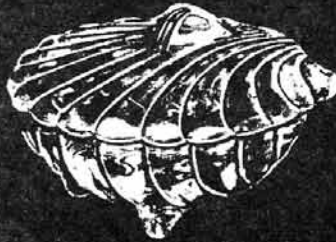
No. 1503 CRYSTOLITE PATTERN



1503—6" Shell Mayonnaise



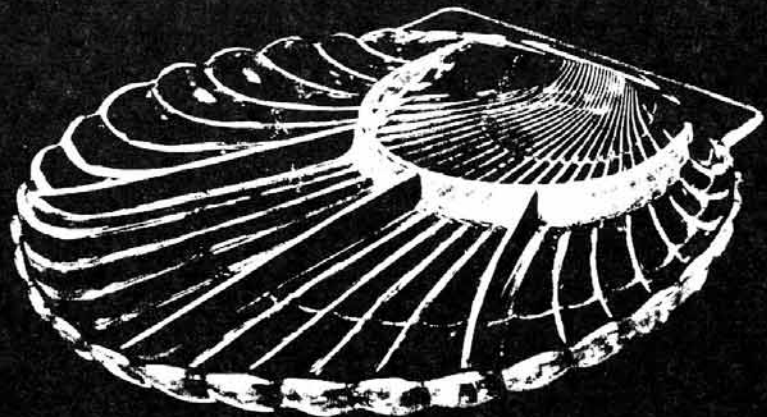
1503—7" Shell Praline



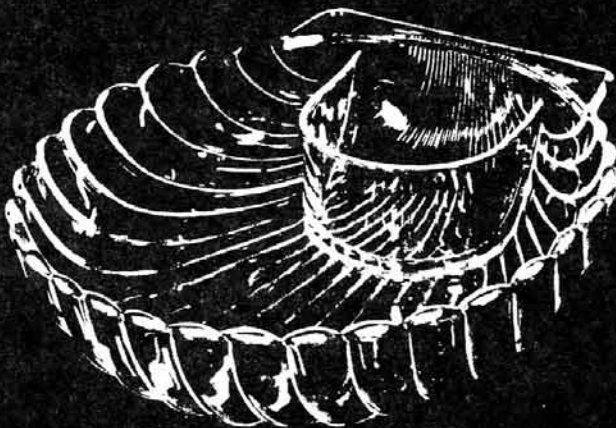
1503—6" Shell Candy Box & Cover



1503—7" Shell Plate
also made
4", 10½" and 13"



1503—13" Shell Relish
5 Compt.



1503—11" Shell Comb. Salad
& Mayonnaise Bowl



1503—11" Shell Salad Bowl

H
A
N
D
M
A
D
E

G
L
A
S
S
W
A
R
E

MISCELLANEOUS ASH TRAYS

H
A
N
D
M
A
D
E

G
L
A
S
S
W
A
R
E



No. 1469—Ash Tray,
Round



No. 1469—Ash Tray, Square



No. 600
Match Stand Ash Tray



No. 1454
Individual Ash Tray



No. 1425
Individual Cigarette
Holder & Ash Tray



No. 1500—3 1/2 in.
Ash Tray Rd.



No. 1498—2 3/4 in.
Ash Tray Sq.



No. 1469—
Bridge Ash Tray



No. 1404
Individual Ash Tray F.P.



1503—3 1/4 in.
Ash Tray Sq.



1503—3 1/4 in.
Ash Tray Rd.



1503—5 in. Ash Tray
Book Match



No. 365
Ash Tray



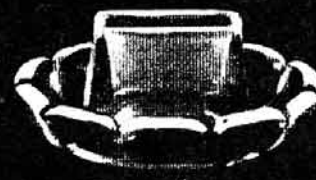
No. 1469 1/2
4 in. Ash Tray F.P.



No. 1186
Individual Ash Tray



1510—3 3/4 in.
Ash Tray Sq.



No. 359
Match Stand Ash Tray
(Bk. Match)



No. 1469—6 in. Ash Tray, Square
Also made No. 1469 1/2—with Plain Bottom



No. 1489—4 1/2 in. Ash Tray
Made Ground Top & Bottom
Full Smooth or Fire Polish



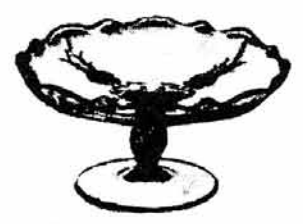
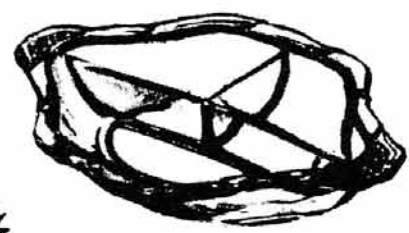
No. 1489—2 3/4 in.
Sq. Ind. Ash Tray F.P.



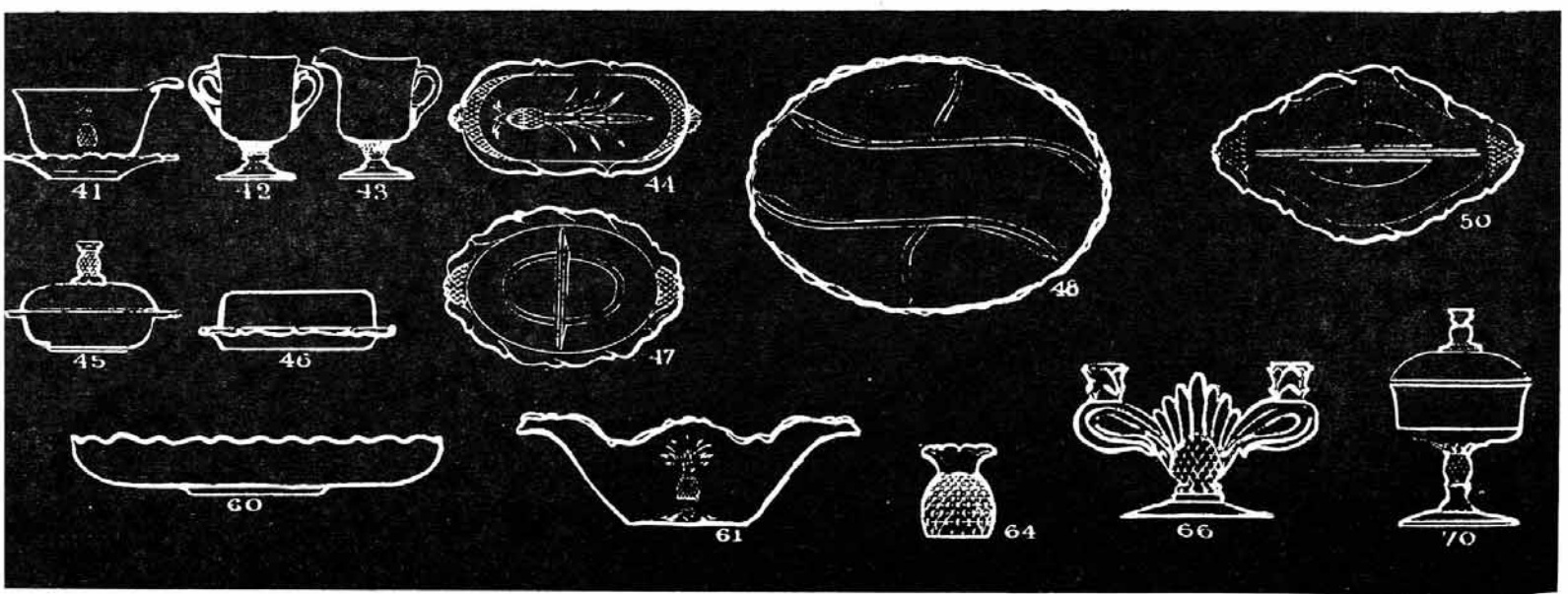
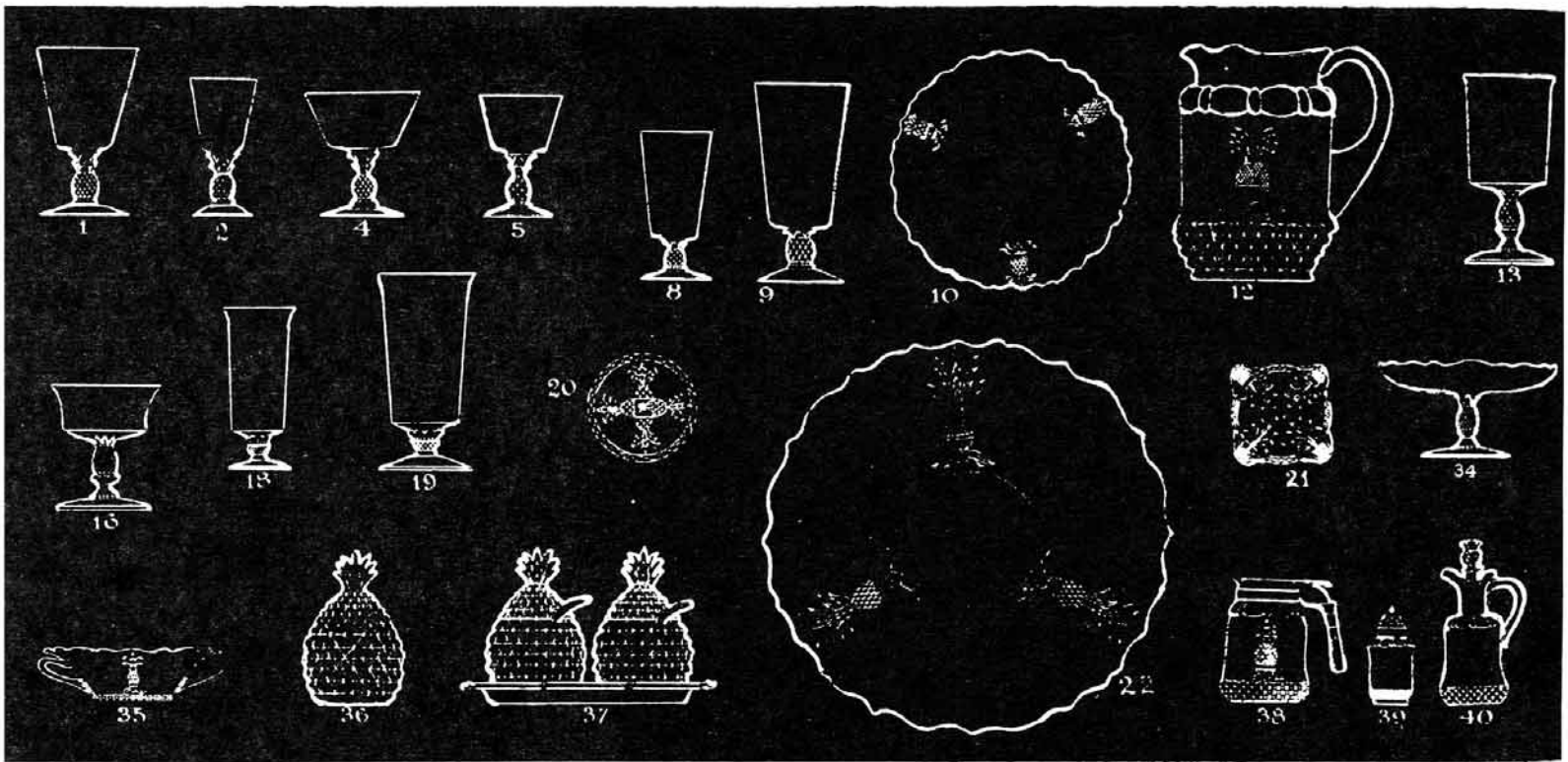
Plantation



Hand-Cast Hospitality



Charm, good will, and hospitality abound
in this smart Heisey pattern.



Beauty is Glass from **VIKING**

THE COLOR OF GLASS

The firm, clean lines of good glass are its basic beauty. Some glass gains added beauty by being colored.

The colors of glass are quite unlike other colors you may know well. The very nature of the glass itself makes the colors different. Most of the glass you are most familiar with is translucent or transparent. Light shines through it, and it reflects light.

The colors used in glassmaking must be delicate, airy, light. There's life to them. Even when they are deep colors — like cobalt blue, or ebony — there's nothing stodgy or dull about them.

The richness of some Viking colors has never been equaled. Viking ruby glass has a flashing fire. Viking green is the color you find deep in a cool evergreen forest. Amber is true amber. Sky blue is like the June heavens.

It takes a man with the skill of an artist to color glass. This may account for the saying that glass is the most temperamental product America makes.

A relatively tiny amount of color is used to color a batch of glass. It's astonishing how little color goes into the 2000-pound batch you saw go into the pot to be melted.

Chemicals color glass. This is one reason why American hand made glass colors are probably the finest in the world. American chemicals are more carefully compounded. America has remarkable machines that exactly determine the purity of all the ingredients. American chemicals are abundant. They're true-to-character.

You might never be able to tell, from seeing the color of the raw chemicals, what colors they will produce in the glass. A white chemical sometimes produces amber glass. Green sometimes comes from a silver-colored chemical. Copper color will produce ruby; and so will a gold-colored chemical. It is even possible to use uranium, and produce a glass whose color glows! Arsenic goes into glass.

No glass company tells the secrets of how its colors are produced, any more than an artist whose colors are different tells how he mixes his pigments. Viking has great secrets.

New colors are constantly being experimented with and tested. If you should visit the color room, where the chemicals are stored (the room is usually kept locked, by the way!) you would see scales of all kinds, some of them as fragile-looking as jewelers' scales. You might see a man weighing and mixing chemicals, with the utmost precision, with matchless care. This is where colors are born.



A. H. HEISEY & COMPANY - A CHRONOLOGY

Part 13, 1953-1958

by Tom Felt



- 1953 - January. Catalog 32 was issued.
February. The Domesti-Cater line was advertised as new, a collection of eight different sets made up of serving accessories, combining "fine crystal with ebonized or natural birch-and aluminum trays."
March. The No. 1076, Nonchalance cutting was shown as new in The Jewelers' Circular-Keystone.
April. 1847 Rogers Bros. began offering a "promotion magnet" for their new Heritage silverplate pattern, consisting of a 3-piece snack set in a gift box for only \$3.95. This set included a Heritage snack server, or spoon, and a fork with a No. 1519, Waverly 2-compartment round relish.¹ **
May. Howard C. Mueller, Heisey's vice president and treasurer, retired after 45 years of service. He began working at the factory as a boy out of high school and served 25 years in an executive capacity. Two new cuttings, No. 1079 Garland and No. 1080 Fern were shown in The Jewelers' Circular-Keystone on the No. 6003 Tempo stemware line.
December. The Crockery and Glass Journal announced that Eva Zeisel, the "internationally known designer and teacher," had been appointed as Heisey's art director. It was reported that she would "concentrate her efforts toward producing new concepts in glass."
A Commemorative plate was issued in 1953 for the sesquicentennial of Ohio.
Other new cuttings included: No. 1077 Fanfare and No. 1078 Bellflower.
- 1954 - January. No. 6009A Roundelay, designed by Eva Zeisel, was shown at Pittsburgh. Heisey's new color, dawn, was also introduced at the same time.² Several etchings by Eva Zeisel were also shown. Harold Dunham, advertising and sales manager, was named director of sales at this time, with coordination for all sales henceforth to be centered in the home office at Newark.
April 17. Ray C. Cöbel, foreman of the mould making department and master mechanic for the plant, died at the age of 71.³
Also new in 1954 was No. 1637A Town and Country, designed by Eva Zeisel.
One new stemware line was introduced No. 6004 Classic.
New cuttings included: No. 1083 Jungle Flower, No. 1084 Spring No. 1085 Forget-Me-Not No. 1086 American Beauty Rose and No. 1087 Comet.
- 1955 - February. Limelight, Heisey's last color, was advertised as new.⁴
June. The Verlys line was advertised by Heisey. Sixteen moulds were leased from Verlys of America, Inc., a subsidiary of the Holophane Lighting Company, Inc.
No. 1415 Twentieth Century,⁵ was reintroduced in dawn.
Eva Zeisel's design No. 1637A Town and Country, won the "Good Design" award for 1955.
T. Clarence Heisey represented the American Glassware Association at the Czechoslovakian Chamber of Commerce's Annual Fair.
- 1956 - February. The new No. 1632 pattern was shown for the first time.⁶ Pieces in crystal were known as Satellite, whereas pieces in dawn were called Lodestar.
March. A new cutting No. 1091 Wheat was shown in The Jewelers' Circular-Keystone on the "new traditional shape in stemware," No. 1E92 Omega.
June 1. Catalog 33 was issued.
July 24. Emil Krall, Sr., died at the age of 75.
New stemware lines for 1956 also included No. 6010 Finesse.
The No. 1102 Bridal Band decoration was introduced.⁷
Other new cuttings included: No. 1088 Aurora, No. 1089 Silver Leaves, No. 1090 Radiance, No. 1092, Melody, No. 1093 Flight, No. 1094 Ultronic, No. 1095 Tea Rose, No. 1096 Wreath, No. 1097 Wild Flower, No. 1098 Starflower, No. 1099 Festoon, No. 1100 Waltz, No. 1103 Hi Fi.
- 1957 - July. The Verlys line was discontinued and the moulds were returned to Holophane.
New cuttings for 1957 included No. 1083 1/2 El Dorado and No. 1104 Paradise.
Max Seidel retired this year, setting up a cutting shop in his home on Wing St. in Newark.
December. The factory closed the week before Christmas for the traditional Christmas vacation--and never opened again.
- 1958 - January. The reporter from Heisey for the American Flint wrote: "At first we were to be off for a few weeks but then during the middle of January the furnace was turned out until such a time when business would improve...On the 21st of January when our furnace was turned out, it made the first time since 1895...that all fires were completely out."
April 29. All moulds, related tools, etching plates, customer lists, production records, patents, copyrights, trademarks, and batch formulas were acquired by the Imperial Glass Corporation of



Bellaire, Ohio. The agreement between the companies was negotiated by T. Clarence Heisey, as president, and Thomas C. Heisey, Jr. (Tim Heisey), as vice president, and Carl W. Gustkey, president, and J. Thomas Ball, vice president of Imperial. Orders for glass, totaling more than \$30,000, were also transferred to Imperial and filled after a production break of 4 months, with Imperial beginning to use the Heisey moulds as early as May. July. "Heisey by Imperial" was advertised, claiming that "two good names are better than one!" The retail outlet store at the Heisey factory in Newark remained open for about 15 months after the plant was closed.

*Original pattern name unknown; named by researchers.

Note: I have attempted to gather information from as many sources as possible, to verify that information from multiple sources when available, and to include the most likely "guesses" based on our current knowledge, when the sources disagree or reliable information is not available. I would appreciate very much hearing from anyone who has additional information, or who can confirm or correct any information given above. Please contact me c/o The Heisey News, P. O. Box 27, Newark, OH 43055.

1. This piece is not listed in the 1953 catalog and may have been returned to production especially for 1847 Rogers Bros. at this time.
2. Roundelay was one of the few patterns ever produced by Heisey which seems to have been made in color only, and not in crystal.
3. An obituary in the May issue of the American Flint gives his age as 70 at the time of his death.
4. In fact, limelight is identical to Heisey's earlier color, from the 1930's zircon.
5. Originally made from 1931-1937.
6. Some of the items in this line had different pattern numbers and were, in fact, reissues of earlier pieces, particularly from the No. 1626 line, which dates originally to 1952.
7. Consisting of a platinum band applied around the edge of the pieces so decorated.

Classified Ads

FOR SALE: Back issues: 1) National Heisey Glass Collectors monthly newsletters, 15 years, '72-'86, 173 issues, 7 missing, includes many annual auction lists with prices; 2) Original first Heisey Collectors Club, Santa Monica, CA 12 or more newsletters, '69-'70; 3) Approx. 3 yrs. (36) issues, '71-'74 Clarence Vogel's News-casters. \$50 for all above, plus postage. Basket #459, unknown cutting, leaves & flowers, notched handle, 13 1/2" high, marked, \$150. Prince of Wales Plumes, marked, fair gold: large jug, \$100; covered butter, \$90; Spooner, \$50; Locket On Chain comport, \$125. Land of Legend plates: 1973 Verde Green, \$15; 1974 Nut Brown, \$15; 1975 Ultra Blue, \$20. M. L. BURNS, P. O. Box 1931, Grants Pass, OR 97526.

FOR SALE: #3362 Charter Oak, marigold bowl, crystal stem, 4 goblets (US\$55 each); 4 cocktails (US\$35 each) one chipped. #1229 Octagon moongleam hors d'oeuvre, cornflower cutting, grazed handle US\$30. P & I extra. Send list of needs. DEBORAH DUNCKER, 76 Burlingame Rd., Toronto, Ontario M8W 1Y8 (416) 255-3574

WANTED TO BUY: Buying Caprice blue or Rosepoint by Cambridge. Rose or Orchid by Heisey.... American, June, Fairfax, Versailles, Trojan by Fostoria. Also Depression Glass and all crystal or colored of that era. NADINE PANKOW, 207 S. Oakwood, Willow Springs, IL 60480. PH: 312-839-5231.

WANTED: Items in #160 Locket on Chain, crystal or colors. JIM KENNON, P O Box 251, Amherst, OH 44001.

SEE US at booth #37 in Adena Hall for specially priced Heisey at this year's Convention. Also view our Hawthorne table setting display at Hopewell Hall. HOMETOWN TREASURES. Calvin and Dorothy Meyer.

WANTED: 1503 CRYSTOLITE Rosette Candleblocks by Imperial. Ruby. TERRY H. CRANSTON, 7055 Round Hill Dr. A 4, Union Lake, MI 48085

FOR SALE: Many items in personal collection. Send S.A.S.E. for list. Shirley Bagford, 10023 Wright Rd. Canal Winchester, OH 43110



*The National Duncan
Glass Society*
Presents Its



Twelfth Annual Duncan Convention and Show
FEATURING DUNCAN, HEISEY, CAMBRIDGE,
FOSTORIA AND OTHER ELEGANT GLASS.

July 18 11:00 A.M. to 5:00 P.M. July 19 11:00 A.M. to 5:00 P.M.

HOLIDAY INN MEADOWLANDS

WASHINGTON, PENNSYLVANIA

I 79 N. of Washington, PA Racetrack Rd. Exit

Guest Author & Lecturer William Heacock

ADMISSION: \$2.50

For Information Call: 222-7637

NATIONAL CAMBRIDGE COLLECTORS

FLEA MARKET

SATURDAY, JUNE 28th

6 A.M. to 5 P.M.

DEALERS MUST REMAIN SET UP UNTIL 2 P.M.

For information or Contract write

Larry Hughes, Chrm., P.O. Box 416, Cambridge, OH 43725

GUERNSEY COUNTY FAIRGROUNDS

OLD WASHINGTON, OHIO

(one mile East of I-70. Exit #186 on old U S 40)

DEALER SPACE AVAILABLE

LETTERS, we get letters....

...Enclosed is my dues for 1987. I hope to avoid the problems of late newsletters another year and it seems better to send this along with my news for Janet for the column. I have not had an opportunity to send the list since last year and I have found some nice things. Moongleam pieces include: Twist Bon Bon, #1229 almond, #1401 Empress D/F 11" bowl, #1193 Inside Scallop cucumber dish, (This I had a hard time locating in my books) All these are marked. I found an unmarked #1229 bon bon in flamingo. "Nice pink dish," the lady said. In clear pieces I found a #353 8" vase which I have loved for the spring flowers this year. Also, #99 clear candlesticks. I am still looking for a match for my Flamingo one. The latest piece is a #1469 2 1/2 oz. bar glass. Sold as a toothpick. I picked up a nice full page color ad dated 1949 for the Plantation pattern, which is my wedding crystal.

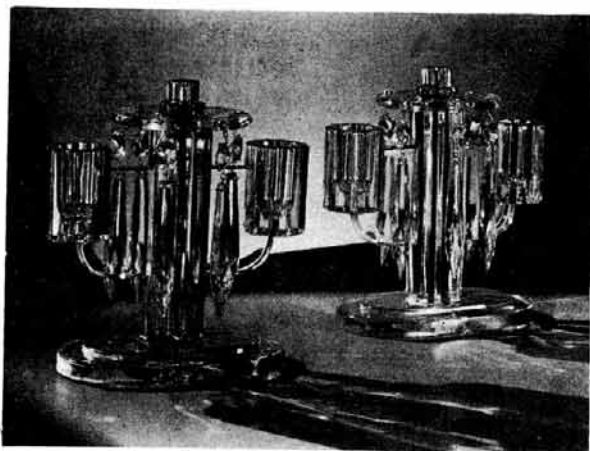
My daughter received from relatives for a wedding gift, a dozen #411 tumblers. She does not really want these and may turn them over to me to use until she does.

June is a difficult time for me to get away, but I do enjoy reading of the plans for the convention and the report later.

Sincerely,
Marion Rush

*This was too late for Janet's column so we decided to print Marion's letter. L.R.

The Ridgeleigh candelabra at A. H. Heisey Co. above will grace many a festive board this season. They retail for about \$5.50 a pair, and can be had with or without prisms.



Crockery & Glass Journal.
November 1936.

LOUISE, JEANNIE AND WANDA ON
JEANNIE'S LAST DAY AT HCA



RED HORSE INN

420 first avenue n.w.
plainview, minnesota, 55964
phone (507) 534-3511

Jerry Gallagher

#448 OLD COLONY ETCH

#3390 Carcassone tall Goblet* (6)	\$24.00
#3390 Carcassone tall Champagne* (6)	\$18.00
#1509 Queen Ann 8" square Plate* (12)	\$ 8.00
#1509 Q. Ann D.F. Nasturtium Bowl, unlisted in Etching Book, truly majestic	\$110.00
#3397 Gascony ftd. 14 oz. Soda, SAHARA	\$38.00

#447 EMPRESS ETCH

Flamingo #3380 OLD DOMINION D.O. Champagne (6)	\$18.00
Flamingo #1184 YEOMAN D.O. 8" round Plate (6)	\$ 9.00
SAHARA	
#1469 RIDGELEIGH 2 1/2" sq. Ash Tray*	\$30.00
#1403 HALF CIRCLE indiv. Cream*	\$45.00
#1428 WARWICK Cigarette/Vase* (not c/stick)	\$48.00

MISCELLANY

#1486 COLEPORT 8/9 oz. Tumbler* (6)	\$16.00
#30 TOM THUMB Toy Stick (1* mkd.), pair	\$120.00
#357 DUCK Ash Tray*	\$85.00
#1447 ROCOCO Cream*	\$28.00
#395 COLONIAL Goblet* (p. 23-STEMS) (4)	\$42.00
#400 COLONIAL Goblet* (p. 25-STEMS) (2)	\$28.00
#1503 1/2 CRYSTOLITE tall Cream*, ring handle	\$26.00
#5003 CRYSTOLITE 5 oz. flat Juice, my first(8)	\$30.00
#500 OCTAGON Ice Tub*, silverplate handle -- NYMPH-SATYR CARVING, one on each panel	\$125.00

Priced each and all items clear unless stated o/w. * = Mkd. 7-day return privilege, with stickers and markings INTACT.

Visit us in Booth #5
June 18-21, 1987
OSU-Newark Campus.

NANCY'S ANTIQUES
906 44th Street NW
Canton, OH 44709

PH: 216-492-2595
Shipping Extra
*Marked

1519 Waverly 5 1/2" ftd. Mayo. Orchid Etch*	50.00
1519 ftd. Waverly Rose Etch Creamer & Sugar*	
Set	50.00
1519 Orchid Etch 8" Plate 6 ea.	25.00
1519 Orchid Etch 14" Torte Plate Rolled Edge	75.00
1519 13" Rose Etch Floral Bowl	95.00
5072 Rose Stem Rose Etch Goblet*4 ea.	42.00
5072 Rose Stem Rose Etch Champagne*7 ea.	42.00
3480 Koors Pitcher Moongleam Handle & Foot	175.00
3357 King Arthur Moongleam Stem 6* ea.	40.00
1401 Empress Sahara Cups & Saucers 4 sets* ea.	40.00
Kicking Colt	250.00
1503 9" Crystolite Oval Tray*	25.00
1503 12" Crystolite Oblong Relish	35.00
1503 4" Crystolite Cigarette Box/Cover	20.00
1519 8" Narcissus Cutting Plate 7 ea.	25.00
1184 8" Yeoman Marigold Plate 8 ea.	25.00
3366 Trojan Etch 3 oz Cocktail Moongleam Stem*	
4 ea.	40.00
341 Colonial Cruet*	50.00
1425 Victorian Champagne* 7 ea.	15.00
5022 Tyrolean Orchid Etch Sherbet 8 ea.	35.00

OAK GROVE ANTIQUES

49 Grove Street
Ayer, MA 01432 *Marked

PH:617-772-2538
After 5 p.m.
P & I Extra

134 Trident 5" 2 lite Candlestick-orchid etch.	45.00
150 Banded Flute 7 oz. Goblets....6.....ea.	19.00
*300 Peerless 8" Footed Bowl	48.00
*310 Ring Band Custard Rose Dec. Creamer & Sug.	175.00
*341 1/2 Puritan 3 pt Squat Jug	90.00
*350 Pinwheel & Fan Punch Bowl Base	32.00
*352 Flat Panel Horseradish	38.00
*353 Med. Flat Panel 12" Candy Tray	48.00
*400 Colonial Punch Bowl Base	30.00
*1225 Plain Band Handless Sherbet Custard	50.00
So. Windham, ME	
*1225 Plain Band Handless Sherbet Custard	50.00
Dixmont, ME	
*1405 Ipswich juices 6.....ea.	8.00
*1405 Ipswich saucer champagnes.....11.....ea.	10.00
*1503 Crystolite punch cups.....11.....ea.	7.00
*1509 Queen Ann Divided Dressing Bowl-orchid Et.	48.00
*1519 Waverly Orchid Etch 8" Plates...8.....ea.	14.00
*1519 Waverly Orchid Etch 7" Ftd. jelly	35.00
1519 Waverly Orchid Etch 6 1/2 Low Ftd. Compote	40.00
1519 Waverly Orchid Etch 14" Torte Plate	50.00
5025 Tyrolean 2 oz Sherry orchid Et. 4.....ea.	75.00



LITTLE HOUSE COLLECTIBLES

6731 SW 63 Ave.
Miami, FL 33143

PH:305-661-6770
P & I Extra
*Signed

150 Banded Flute 3 oz ftd sherbets*	12.00
150 Banded Flute 4 1/2 oz hi-ftd shrbt*	15.00
150 Banded Flute 5 1/2 oz egg cup*	18.00
411 Rib and Panel 4 oz Parfait	18.00
411 Rib and Panel 8 oz Tumbler*	12.00
1404 Old Sand, SAHARA 6 1/2 oz Toddy*	20.00
1404 Old Sand. 10 oz low ftd goblets*	15.00
1404 Old Sand. 12 oz Ice Tea strght*	15.00
1405 Ipswich 8 in. plate (13)*	18.00
1469 Ridgeleigh 3 handled jelly*.....ea.	15.00
1469 Ridgeleigh 6 in. jelly, 2 hndl*	15.00
1469 Ridgeleigh 6 in. hndld cheese plt*	12.00
1469 Ridgeleigh 6 in. candle vase (2).....ea.	20.00
1469 Ridgeleigh 11 1/2 in. plate	25.00
1469 Ridgeleigh 12 in. fruit bowl*	37.50
1469 Ridgeleigh ind. salt (4).....ea.	12.00
1469 Ridgeleigh oval cigarette holder	10.00
1469 Ridgeleigh cig. holder round (2)*.....ea.	10.00
1469 Ridgeleigh cig. holder square	10.00
1485 Saturn Optic Mayonnaise	20.00

**WANTED: Crystolite Underplate for Punch Bowl

CLASSIQUE GLASS COMPANY

Box 52572
Tulsa, OK 74152

PH:918-585-3203
Shipping & Ins. Extra
*Marked

150 Banded Flute 14" Punch Bowl & Foot*	215.00
315 Paneled Cane 4 1/2" Nappy*(6) ea.	22.00
341 1/2 Puritan Jug 3 Qt.*	115.00
515 Rose Etch Rose Stem Champagne Sherb. 11 ea.	37.50
515 Rose Etch Rose Stem Goblet (2) ea.	42.50
1205 Fancy Loop Tumbler	65.00
1401 Empress Moonglm. D.F. 10 1/2" Floral Bowl*	92.50
1401 Empress Alexandrite D.F. 10 1/2" Floral Bowl*	375.00
135 Empress Candlesticks*	175.00
150 Locket on Chain Pickle Tray	42.50
1404 Old Sandwich Sahara Oval Centerpc. Bowl*	90.00
1404 Old Sandwich Sahara Catsup Orig. Stopper	210.00
1425 Victorian French Dressing Orig. Stopper	65.00
1425 Victorian 12" Relish Tray*	35.00
1425 Victorian Punch Cups (6)* ea.	12.00
1485 Saturn Cruet 5 oz. Orig. Stopper	50.00
1495 Fern 2 Lite C'sticks-Bobèche & Prisms Pr.	95.00
1540 Lariat Cologne Bottle Orig. Stopper	58.50
1567 Plantation Rd. Cov. Butter Pineapple Finial*	90.00
Giraffe Head Turned	225.00
Goose Wings Half	75.00



1616 W. CHURCH STREET
NEWARK, OHIO 43055

APPLE TREE AUCTION CENTER
PRESENTS
AN OUTSTANDING ALL HEISEY AUCTION
500 LOTS

JUNE 20, 1987
8:30 A.M.

This sale is entirely from the Clarence Vogel collection of Plymouth, Ohio. As most Heisey collectors know Mr. Vogel has been a collector of Heisey glass for over 20 years. He published four volumes that for many years served as the best reference material for researching glass. He also published a quarterly publication about Heisey for several years. His collection ranks among the finest in the country and is probably the best in variety.

Items in this sale will include table settings in early patterns, Beaded Panel & Sunburst punch bowl, water pitchers in decorated Opal Bead Swag & Wing Scroll Custard, good creams & sugars, tumblers in Emerald Locket On Chain, Flamingo & Moongleam, nice decanters, cigarette boxes & ashtrays incl VERY RARE EXPERIMENTAL BLUE ashtray matchstand & Emerald Wing Scroll, about 20 sets of salt & peppers, candy jars incl Cobalt Aristocrat, Amber Waverly & Flamingo Ipswich, lrg Warwick vases in Cobalt, Sahara & Flamingo, one of a kind Tangerine - Amberina ball vase with ruffled top, sm Alexandrite, Sahara & Zircon ball vases, Tangerine & Cobalt Ivy vases, Deep Plate etchings incl bitters bottle in Circus, Club Drinking Scene & Tally Ho, Chicken Chase cocktail, Fox Chase mug w/Cobalt handle, Sailboat soda w/Cobalt base, Victory decanter & bourbon bottle w/carving, Old Sandwich mugs in Cobalt, Amber, Flamingo & Crystal; RARE sherbet in Carcassonne w/Sahara stem and Zircon bowl, Old Williamsburg sherbet in Zircon or Experimental Blue, Experimental Black nappy, Amber Waverly creamer, early RARE OPAL trinket box & puff box - both signed H, beautiful KRALL cut cologne (originally from Paul Fairall collection), other colognes, Favor vases in Cobalt, Moongleam & Crystal, good collection of shot glasses.

Animal related items include Lrg Horsehead Lariat candy box, Duck & Kingfisher flower frogs, frosted Moongleam Cherub & pr. Flamingo dolphin candlesticks. Figural Stems include RARE Lady Leg, Full Pony, Bantam Rooster, Horsehead, Goose & Amber Seahorse. Elephant hldd mug & Swan hldd pitcher, over 20 different cordials - several scarce patterns, wines, mustards & much more.

We are pleased to have the privilege to disperse this collection at auction and cordially invite you to attend a preview of this auction on

FRIDAY EVENING JUNE 19

about 9:00 P.M. following the H. C. A. banquet. We hope you will be able to attend this sale but if not, mail bids are welcome. Catalogs are available for \$2.00 or 1987 year subscription for \$10.00.

Heisey Auction Schedule - August 6, 7, 8, 1987, 3 days, over 1500 lots will include Part II of the Vogel collection plus a few selected additions. Annual October Auction (date not set), will include Part III of the Vogel collection plus much more. November (Thanksgiving weekend). We are accepting consignments for October & November sales. Our sales this year will feature many outstanding pieces. Don't miss them!

SAM SCHNAIDT & TIM HUGHES - AUCTIONEERS PHONE (614) 344 - 4282

Inside
June 17 4-9
18 9-9
19 9-8
20 10-4

Outside
June
18 DAWN - DUSK
19 DAWN - DUSK
20 DAWN - 4 pm

Featuring: WILLIAM HEACOCK, well-known authority and author of nineteen books on antique glassware, will be appraising glassware and KENNETH FISCHER will be repairing glassware. Over 100 dealers with furniture, glassware, pottery, books, crafts, primitives and lots of misc. (over 5,000 pieces of Heisey) Vogel's books on Heisey will be for sale.

FREE ADMISSION

FOOD

PLENTY OF PARKING

No reservations needed for outside space

For info: Mrs. Betty Morrison
127 E. Elm St.

Granville, Ohio 43023

Tele: (614)587-1062 or 349-7934

Sponsors: GRANVILLE ATHLETIC BOOSTERS

12th Annual
**NATIONAL
CAMBRIDGE
COLLECTORS**
ANTIQUe SHOW & SALE

(& 14th Annual NCC Convention)

SHENANDOAH INN

INTERSTATE 70 - EXIT 186 - 7 MILES EAST OF
CAMBRIDGE, OHIO

JUNE 26, 27, 28, 1987

	HOURS	
FRIDAY, JUNE 26th		6:00-9:00
	(PREVIEW ADMISSION \$3.50)	
SATURDAY, JUNE 27th		11:00-5:30
SUNDAY, JUNE 28th		12:00-5:00
	(ADMISSION \$2.00)	

OFFERING CAMBRIDGE AND OTHER FINE GLASSWARE
ALONG WITH A GENERAL LINE OF ANTIQUES

FOOD DOOR PRIZES PARKING

**IMPE
RIAL**

**ANNUAL
NATIONAL IMPERIAL GLASS
COLLECTORS' SOCIETY
CONVENTION**

McLure Hotel - 12th & Market Streets
Wheeling, West Virginia
June 13, 14, 1987

SATURDAY - June 13th
Seminar on Imperial Carnival
9-10 AM

Show & Sale: 1-5 PM

Donation

Banquet: 7 PM Open to public by
reservation

SUNDAY, June 14th
Show & Sale: 11 AM-4 PM
Donation

For info call: (614) 676-9244,
(614) 676-2422, (614) 676-9827
Write: NIGCS, P.O. BOX 534,
Bellaire, OH 43906

FOREVER HEISEY

Janice Thran

1663 Londondale Pkwy.

Newark, OH 43055

PH: 614-344-5955

Shipping & Ins Extra

441 Grape Leaf Sq. Ash Tray, Flamingo..	\$ 55.00
130 Acorn, 1 Lite Candlestick, Flam....	115.00
1205 Fancy Loop, Cologne Bottle, X Stopper.	55.00
4044 New Era, 1 Lite Candelabra, Comp pr.	95.00
3481 Glenford, 1 1/2 oz. Ft'd Bar,	
Hawthorne Checker, Optic.....	75.00
3481 Glenford, 8 oz. Ft'd Tumbler,	
Hawthorne, Checker, Optic.....	65.00
1401 Empress, After Dinner Coffee Cup &	
Saucer H 6 sets ea.....	27.50
433 Grecian Border, 8 1/2" Bowl H.....	47.50
433 Grecian Border, 4 3/4", Shallow	
Nappy H 6 ea.....	23.00

We might just have in stock what you need if
not we search, write your wants. All SASE
inquiries answered.

1987 OSCARS

ANYONE WISHING TO ORDER EXTRA 1987 OSCARS

AFTER JUNE 21 st. MAY DO SO. THEY WILL

COST \$24.00 EACH PLUS \$1.50 SHIPPING.

CRAFT ENTERPRISES

187 N. Pioneer Av.

Shavertown, PA 18708

PH: 717-675-8553

after 5:00 pm

*P & I EXTRA

Sm. Horsehead Stopper.....	\$ 75.00
#1184 Yeoman Sahara w/Empress Et.12 oz.	
Soda (3) ea.....	35.00
#1205 Fancy Loop 9" Vase.....	50.00
#3408 Jamestown Ft. Ice Tea Barcelona	
Cut (8) ea.....	12.00
#1252 Twist Mustard, Cover, Spoon,	
Mnglm*	65.00
#3389 Duquesne Cctl.Normandie E(5) ea.	25.00
#3440 Portsmouth 9 oz. Gob. Mnglm (4) ea	20.00
#3362 Charter Oak 8 oz. Gob. Mnglm*	
(6) ea.	23.00
#1252 Twist 4" Nappy Mnglm* (4) ea.....	20.00
#407 Coarse Rib L. Ftd. Jelly Mnglm....	20.00
#406 Coarse Rib 8" Nappy Mnglm*.....	40.00
#393 Narrow Flute Hotel Sugar*.....	12.00
#300 Colonial 5 oz. soda*.....	10.00
#331 Puritan Oval Hotel Sugar*.....	14.00
#400 Colonial 8" Nappy.....	30.00
#4182 Diana Etch 8" Plates (6) ea.....	15.00
#1469 Ridgeleigh S & P Glass top pr....	25.00
#4225 Cobel 2 qt. C. S. Rooster Stop ...	95.00
#3408 Jamestown 9 oz. Gob. Barcelona cut	
(5) ea.....	23.00
#3416 Barbara Fritchie 10 oz. Gob. Man-	
hattan Cut (6) ea.....	35.00

JOHN J. TERHART

8933 Glendale Dr.

Birmingham, AL 35206

Return Privilege

Postage & Insurance

Extra

All items in good condition except where noted.

CRYSTAL

#351 Priscilla toothpick.....	\$ 25.00
Goose with wings up	50.00
#1295 Bead Swag toothpick, ruby stain..	30.00
#1295 Bead Swag Wine, ruby stain, Souv.	35.00
#1220 Punt Band, 2 bowls in metal ho-	
lder, 1 bowl is chipped, set.....	60.00
#1295 Bead Swag, berry bowls 2 ea.	20.00
#1508 Combination Cardholder & ash trays	
Holds 2 decks.....	25.00

CUSTARD

Souvenir Cup.....	\$ 30.00
#1220 Ind. Punt Band Creamer.....	30.00
#310 Ring Band tumbler, Double signed...	45.00
#310 Ring Band Berry bowl.....	25.00
#1295 Bead Swag, berry bowl.....	45.00
#1280 Winged Scroll butter, emerald	
w/gold.....	125.00
#1280 Winged Scroll tobacco jar,	
emerald/no lid.....	35.00
#1252 Twist 6" relish, marigold	25.00



1987 SEVENTH ANNUAL

Fostoria Glass
Society

Convention

Show & Sale

Delf Norona Museum

Eighth Street & Jefferson Avenue

Moundsville, West Virginia

FRIDAY, JUNE 5 — 6:00-9:00 P.M.

Auction — 6:30

Premiere Admission \$3.00

SATURDAY, JUNE 6 — 10:00-7:00

SUNDAY, JUNE 7 — 9:00-4:00

Annual Meeting — 1:00

General Admission \$1.50

Lectures Door Prizes Films

For information: Write or Call (304) 845-0362

or (304) 845-2748 evenings after 6:00

P.O. Box 826, Moundsville, West Virginia 26041

A.W. PARKER Heisey & Pattern Glass Shows or Appointment Magalia, CA 95954 PH: (916) 873-2326	"HAPPINESS IS" —THE STULTZS 3106 Warren Court, Glen Allen VA 23060 Shows and Mail (Richmond Area) (804) 262-1273 GLASS CIRCA 1890-1960	PEGGY'S ANTIQUES Ernie & Peggy Cox P.O. Box 367, Spavinaw, OK 74366 By Appointment or Chance PH: (918) 589-2859	WILLEY'S ANTIQUES & MUSEUM Specializing in Heisey 11110 Cannon Rd., Frazeyburg, OH 43822 16 miles east of Newark, OH PH: (614) 828-2557
ALL HEISEY AUCTION Consignments Welcome Apple Tree Auction Center 1616 W. Church, Newark, OH 43055 PH: (614) 344-9449	GERT'S GLASS Heisey & Duncan Gertrude & Russell Swetnam 1926 Saratoga Dr., Adelphi, MD 20783 PH: (301) 434-5113	CRAFTS ENTERPRISES Arlene & Ed Crafts 187 N. Pioneer Ave. Shavertown, PA 18708 PH: (717) 675-8553	GOLDSBERRY'S ANTIQUES Heisey a Specialty Shows only - Buy & Sell Kalamazoo, MI 49000 PH: (616) 381-3013
ANTIQUES - THE SHULTZES 206-208 East Main St. Newmanstown, PA 17073 15 Miles West of Reading, PA PH: (215) 589-2819	GLASS 'N' GLASS Virginia & Odell Johnson Rt. 1 Box 1324 Hayward, WI 54845 Phone (715) 462-3753	EAGLES REST ANTIQUES China Heisey Antiques Mary Evans 62 Fieldpoint Rd., Heath, OH 43056 PH: (614) 522-2035	THE WOODEN SHOE Antiques & Collectibles Jim & Sheri VanEs by Appt. 810 Elden, Herndon, VA 22070 PH: (703) 435-9045
AVERY'S QUALITY ANTIQUES Specializing in Heisey Shows or by Appointment 2112 First St., Jackson, MI 49203 PH: (517) 783-4075	GLASS WITH CLASS Lenore A Shelley, GGHC 1336 Lincoln Avenue San Jose, CA 95125 PH: (408) 286-8098	MOSTLY HEISEY Rhoda Curley 16 Clayton Place Albany, NY 12209 By Appointment, PH: (518) 482-6272	J.J. & BOB MC KEE Pottery Glassware Collectibles 334 W. 75th St. Kansas City, MO 64114 wed-sun 10-5 (816) 361-8719
B & B HEISEY & COLLECTIBLES B. Whaley 300 International Dr. Pataskala, OH 43062 By Appointment PH: (614) 927-1557	GREEN ACRES FARMS Antiques, Crystal Glass & Collectibles 2678 Hazelton-Etna Rd., SW (S.R. 310-N) Pataskala, OH 43062 Sat. or Sun. PM or call (614) 927-1882	MOUND BUILDERS ANTIQUES Heisey & Animals, General Antiques Irene Rauck 1138 Moundview, Newark, OH 43055 PH: (614) 344-6043	SINGLETREE ANTIQUES Cut, Pattern & Heisey Glass 10717 Staples Mill Rd, Glen Allen, VA 23060 Chance or appointment (804) 266-3795
C & J ANTIQUES Cole & Jean Miesner Box 45, 72 Whig St. Newark Valley, NY 13811 PH: (607) 642-9905	H & R DIAMOND H Helen & Robert Rarey 1450 White Ash Dr. Columbus, OH 43204 PH: (614) 279-0390 after 5:30	HELEN & JIM KENNON Heisey, Cambridge, Fostoria, Duncan, Imperial, Fenton, Tiffin P.O. Box 114 Brookville, OH 45309 PH: (513) 833-5406 SHOWS ONLY	THE PURPLE PLACE Featuring Heisey & Other Fine Glass Martha & Harold Earp 1940 Suwanee, Ft. Myers, FL 33901 PH: (813) 936-1572 Anytime
C.E. HIGGINS (S.F. Bay Area) Shows and Mail Order P.O. Box 2723 Menlo Park, CA 94025 PH: (415) 322-0192 Evenings	CHARLOTTE'S GLASS REFLECTIONS Quality Glassware Specializing in Fostoria 6816 14th St. W., Bradenton, FL 33507 PH: (813) 756-4143	R & L ANTIQUES-SAN FRANCISCO Members of the Golden Gate Heisey Club 3690 Bodega Ave. Petaluma, CA 94952 PH: Petaluma (707) 762-2494 PH: San Francisco (415) 621-6693	TACOMA ANTIQUE GALLERY A Collectors' Mall 745 Broadway Downtown Tacoma, WA 98402
CHARLES & MILDRED FISHER Heisey, Degenhart, Imperial, Antiques, Collectibles, General Line 991 Idlevilde, Newark, OH 43055 PH: (614) 522-5398	HARRALSON'S HEISEY HUNTERS Sponsor: S.W. MO's Antique Shows 78 Quality Dealers From 14 states 1987 Dates: May 29-31 & Nov. 13-15 Info: 1426 W. Highland, Springfield, MO 65807 PH: (417) 883-2449	RAMBLING LANE ANTIQUES Featuring Heisey & other fine glass Keith & Evelyn Hoover 1978 Rambling Lane, Rhinelander, WI 54501 PH: (715) 282-6444	ALFA I CARRIAGE HOUSE ANTIQUES Featuring Depression & Elegant Glassware Al & Faye Maness 508 E. Cary Street Richmond, VA 23219 PH: (804) 788-1630
DAVE'S ANTIQUES Specializing in Heisey Shows & Appointments Tampa, FL 33600 (813) 237-5550	HARRISON'S ANTIQUES Heisey, Cambridge, Duncan Shows, Mail, by Appointment 26 Johnston's Lane, Mercersburg, PA 17236 PH: (717) 328-2451	RAY ZIEGLER Glass Repair 185 County Line Westerville, OH 43081 PH: (614) 891-9700	THE MUTED SWAN ANTIQUES 5486 Peachtree Rd., Chamblee, GA 30341 Heart of Chamblee Antique Row Specializing in Heisey & Cambridge Bill & Pat Miller PH: (404) 451-7620
DIAMOND H PLUS Mail Orders & Shows George & Eileen Schamel Rt. 3, Box 171, Boonsboro, MD 21713 PH: (301) 432-6285	NANCY'S ANTIQUES Heisey, Cambridge, Fostoria, Fenton Elegant Glassware of the Depression Era 906 44th NW Canton, OH 44709 shows only PH: (216) 492-2595 After 6:00 PM	SCHWAN'S ANTIQUES SHOWS & MAILORDER 77 Lagos del Norte Ft. Pierce, FL 33451 PH: (305) 461-5940	SHOW AND TELL ANTIQUES Art, Cut, Heisey and Pattern Glass 1525 Morrow Ave, Waco, TX 76707 Tues-Sat 10:30-4:30 PH (817) 752-5372 Also: Mail Order and Shows Member NADA
ELLIZABETH BASSETT CASON 401 32nd St., W. Bradenton, FL 33505 Mail Order - List PH: (813) 748-0851	J. & M. WALTER ANTIQUES Heisey, Duncan, Cambridge, other glass c/o Sir Speedy, 431 Main St. Woburn, MA 01801, Mail order-SASE PH: 617-245-2532 after 7:30 PM dys-wknds	SUM OF LIFE Elaine & Frank Husted P.O. Box 102 Phoenixville, PA 19460 PH: (215) 935-2962	OUR PLACE ANTIQUES 216 S. Main, Granville, O. 43023 (614) 587-4601. Open every day 12-5. Heisey, general line of antiques and collectibles, country herbs and spices.
FOREVER HEISEY Shows and Mail Order Janice Thran 1663 Londondale Pkwy., Newark, OH 43055 PH: (614) 344-5955	J. & R. COLLECTIBLES Shows, SASE, Mail Order list June & Ray Lukasko P.O. Box 1030, Newark, OH 43055 PH: (614) 344-9719	ETTELMAN'S DISCONTINUED CHINA & CRYSTAL HEISEY a SPECIALTY P.O. Box 6491-HH Corpus Christi, TX 78411 PH: (512) 888-8391 Include SASE	
DIE KUNST GALLERIES & ANTIQUES Specializing in Heisey Vel & Andy Andress Box 329, 725 Front Street Leavenworth, WA 98826 PH: (509) 548-7856	PATTON HOUSE Heisey & Duncan Miller Rocky's Mall, 1-81 & US 11 Weyer's Cave, VA 24486 PH: (703) 967-1181	THE GLASS CONNECTION Specializing in Heisey Shows & Mail Order Box 526, Collegeville, PA 19426 PH: (215) 489-0139	
HOMETOWN TREASURES P.O. Box 1859, Jackson, MI 49204 Phone: 517-782-8955 Cal and Dot Meyer "Heisey's the Thing"	GRETA * GARBO Antiques and Collectibles Heisey, Crystal, Silver, Jewelry Unicorn Mall, 310 5th Ave., San Diego, Ca. 92101 Greta Jennings - Home (619) 582-5745	THE GLASS LADY Week-Ends Only Glass, Pottery, China Circle Shopping Center, Richmond, VA 23224 SHOP (804) 230-9239 HOME (804) 271-1555	



CONVENTION HEADQUARTERS

BEST WESTERN INN (FORMERLY SHERATON INN)

SECOND AND CHURCH STREETS

SIXTEENTH ANNUAL CONVENTION

JUNE 18, 19, 20, 21, 1987

DISPLAY: HOPEWELL HALL

SHOW: ADENA HALL

OSU - COTC NEWARK CAMPUS

COUNTRY CLUB DRIVE

NEWARK, OHIO

The Museum will be open at 9 A.M. daily. The lounge will open for refreshments at 1 P.M. on Wednesday, June 17. The Museum and Lounge will close at the same time as the Show and Display, except Thursday when it will close at 5 P.M. The warehouse will be open sometime during Convention. Time and dates to be announced.

CALENDAR OF EVENTS:

WEDNESDAY, June 17

1. REGISTRATION: EVERYONE MUST REGISTER. Packets may be picked up at the Museum beginning on June 17th. No matter when you arrive, the packets must be picked up at the Museum during open hours. Remember that registration badges are required for all events; they permit unlimited admission to the SHOW AND DISPLAY and to all free activities. Children under 12 will be admitted free except where food is served.

PRE-ORDERED OSCARS may be picked up at the Museum. Left over Oscars (if any) will be sold at the Museum.

THURSDAY June 18

1. REGISTRATION CONTINUES

H.C.A. MUSEUM 9 a.m. to 5 p.m.

2. "THE LUAU"



Adena Hall, OSU-COTC. Show Preview includes a Pork and Beef Barbecue under a tent from 5 to 7 p.m. Show opens from 6 to 10 p.m. Display opens at 8 p.m. HAWAIIAN dress optional.

FRIDAY, June 19

1. REGISTRATION CONTINUES

H.C.A. MUSEUM 9 a.m. to 5 p.m.

2. "BEACHCOMBERS"

Best Western from 8:30 a.m. to 11 a.m. Bring your FINDS AND QUESTIONABLE HEISEY for identification. A panel of knowledgeable individuals will be on hand to assist. A continental breakfast will be served. Introduction of Candidates for Board of Directors.

3. ANTIQUE SHOW - "TREASURE ISLAND"

Adena Hall 12 to 5 p.m.

4. DISPLAY - "PARADISE COVE"

Hopewell Hall 12 to 5 p.m.

5. "MENEHUNE" (The Settlers)

"Menehune" (The Settlers) Y W C A, Sixth and Church Sts. A Party for former employees and H C A members. Entertainment and refreshments. See Betty Barnard's announcement on page 7.

6. "NIGHT IN HAWAII"

Convention banquet at the Best Western Inn (formerly the Sheraton Inn) with social hour beginning at 6:30 p.m. and dinner at 7:30 p.m.

SATURDAY, June 20

1. FLEA MARKET
2. REGISTRATION CONTINUES
3. ANTIQUE SHOW
4. DISPLAY OPEN
5. SEMINARS - "TOURIST ATTRACTIONS"

On the Square at daylight.

HCA MUSEUM 9 till 7 p.m.

Adena Hall 11 a.m. to 7 p.m.

Hopewell Hall 11 a.m. to 7 p.m.

All at Best Western Inn

1:30 - 2:30 p.m.

Molasses Cans and Syrups An in-depth study of Heisey molasses and syrup containers of all periods. Slide lecture and examples on display, by Jim Earnshaw, Syrup Collector.

2:30 - 3:30 p.m.

Open Salts by Heisey- The evolution of salt dishes in America and the adventures encountered while trying to collect all the ones that Heisey made illustrated by slides by Ed Berg, open salt collector.

3:30 - 4:30 p.m.

#1469 Ridgeleigh Pattern A discussion of a popular mid-30s Heisey pattern illustrated with slides and "live examples". Points covered include pattern origin, mould trivia, some look-alikes and some surprises from the mould drawings, by Jim Jones, author of book on Ridgeleigh.

6. "TRADE WINDS"



At the Best Western Inn from 9 to 10:30 p.m. for members only. A trading post for Heisey Glass will be set up. Bring your duplicates or other Heisey to trade for Heisey of your choice. Each family will be permitted a maximum of 12 items on the table at any one time. These items will be for trade only. Absolutely no money will be involved in the exchange. YOU WILL NOT BE ADMITTED WITHOUT YOUR BADGE.

SUNDAY, June 21

1. FLEA MARKET

2. "TIDE'S OUT"

3. ANTIQUE SHOW

4. DISPLAY

On the Square at daylight

HCA Museum - Open 9 a.m. to 4 p.m.

Best Western Inn at 8 a.m. - HCA Annual Meeting, Election of Officers and Study Club Reports - Buffet Breakfast.

Adena Hall - 12 to 5 p.m.

Hopewell Hall 12 to 4 p.m.

EVENTS:

	<u>COST</u>	<u>NO. ATTENDING</u>	<u>TOTAL PER ITEM</u>
REGISTRATION.	\$ 6.00		
** "THE LUAU"	7.00		
"BEACHCOMBERS"	4.00		
"MENEHUNE" (THE SETTLERS)	2.00		
"NIGHT IN HAWAII"	15.50		
"TRADE WINDS"	N/C		
"TIDE'S OUT"	5.00		
TOTAL COST OF ALL EVENTS	\$39.50		

Make check payable to HEISEY COLLECTORS OF AMERICA, INC.

* No Pre-Registration needed for seminars.

** \$8.00 if not pre-registered.



Mail to:

Mrs. Robert McClain, Convention Secy.
156 West Shields Street
Newark, Ohio 43055 PH: 614-345-8061

Please list all names for badges. Check all events you plan to attend.

NAME(S) _____

STREET _____ CITY _____ STATE _____ ZIP _____

DEALERS WISHING TO ATTEND ANY OF THE
ABOVE EVENTS MUST BE REGISTERED.

17th Annual
Antique Show & Sale
Heisey Glass Display

16th ANNUAL CONVENTION
OSU - COTC Newark Campus
Country Club Drive, Newark, Ohio

Friday, June 19 12:00 p.m. to 5:00 p.m.
Saturday, June 20 11:00 a.m. to 7:00 p.m.
Sunday, June 21 12:00 p.m. to 5:00 p.m.

(DISPLAY CLOSES AT 4:00 P.M. ON SUNDAY)



Donation \$2.50
Plenty of free parking



GALA PREVIEW
Thursday, June 18, 1987

Pork and Beef Luau 5:00 p.m. to 7:00 p.m.
Show 6:00 to 10:00 p.m. Display 8:00 p.m. to 10 p.m.

Donation \$8.00

★ ★ ★ ★ ★
FLEA MARKET ON THE SQUARE
Two Weekends

Saturday, June 13 Sunday, 14
Saturday, June 20 Sunday, 21

Dawn to ?

FOR INFORMATION CALL 614-345-2932

Sponsored by
Heisey Collectors of America, Inc.
Benefit National Heisey Glass Museum.



**THIRTEENTH ANNUAL CONVENTION
SHOW AND SALE**

NEW ORLEANS / CHALMETTE

St. Bernard Parish Cultural Center
8245 W. Judge Perez Drive
Chalmette, Louisiana

JULY 11 & 12, 1987

Sat: 10 a.m. to 6 p.m. Sun: 11 a.m. to 5 p.m.

Admission: \$2.50 (good both days)

40 top quality dealers from across the United States
present an outstanding display of Depression Era Glassware
including Cambridge, Heisey, Fenton & Fostoria; china; pottery and related items of the era.
DISPLAYS! SLIDE PROGRAMS! SEMINARS! SPECIAL GUESTS!

DOOR PRIZES! GLASS IDENTIFICATION!

Information: Carolyn Hicks
1256 River Road
St. Rosa, LA 70087 (504) 466-0216

Membership Renewal Notice

This is your last issue of HEISEY NEWS
IF THE NUMBER AFTER YOUR NAME READS 6-
Please renew now!

PLEASE DISREGARD THIS NOTICE IF YOU HAVE
RECENTLY PAID YOUR DUES.



ESTABLISHED 1971

The GLASS REVIEW Magazine is for
everyone who studies, collects or sells glass.
Whether your glass interests lean toward the
early 1900's--or the depression era--or with to-
day's limited glass items, the GLASS REVIEW
covers it all!

Articles--price reports--original catalog
documentation--shop directory--research and
reproduction news--trademark information--
glass book releases--what's new on the
market--a large variety of glass ads (on both
old and new glass)--plus much more.

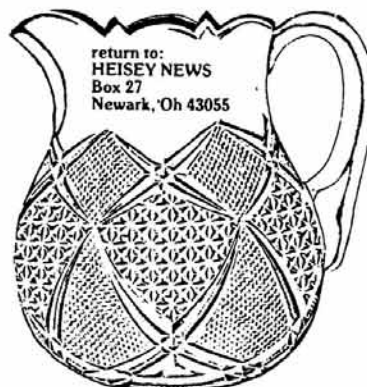
Enclose payment and mail to:

GLASS REVIEW, P.O. Box 542, MARIETTA,
OH 45750

**NOW 12 ISSUES
PER YEAR!**

☐ 1 Year — 12 issues — \$15.95

☐ 2 Years — 24 issues — \$29.95



BULK RATE
U.S. POSTAGE
PAID
PERMIT 741
Mt. Vernon, OH 43050