

HEISEY *news*

©Heisey Collectors of America, Inc. 1983
All Rights Reserved

VOLUME XII NO. 10 OCTOBER, 1983

ONE DOLLAR

#753 Trieste Cutting
Pictures from 1924 catalog.



#412 Tudor Handled
and Footed Ice Tea
and 3-Pint Tankard



#412 Tudor Handled
and Footed Ice Tea
and 3-Pint Tankard

NEW BOOK AVAILABLE - SEE BOTTOM OF
PAGE 10.

NOTES FROM YOUR PRESIDENT....



Several months ago, when I wrote about the registration of the Diamond H as a Collector's Mark, I asked those who use the mark to register its use with the HCA. We have had a gratifying response to this, but a problem has arisen; the symbol isn't always the way we registered it. When you use the Diamond H on your stationery, make sure it conforms to the one illustrated with this column. It should be twice as tall as it is wide, and the sides of the H, if extended vertically would touch the midpoint of the individual sides of the diamond. Also, because it is registered, the R within a circle should be printed with it. If we, the club members, fail to observe these conventions, we face the possibility of losing the registration. I wish I had known of these problems when I wrote the first column, but I guess it's better late than never. If your stationery does not conform, don't worry, when you run out, have it printed correctly.

Some of us breathed a great sign of relief when the weekend of the September meeting was over. Everything went well, but I've never conducted a meeting before, and I was a bit nervous. Thanks to all of you who helped me through the tight spots.

The HCA is in the process of deciding whether it should have a word processor/printer and if so, what configuration and brand. If any of you would like input into this, please write me your thoughts. If you would like to donate the equipment, by all means write or call, we can arrange something for transportation.

ATTEND THESE SHOWS
SUPPORT THE MUSEUM

OCT. 8 AND 9
WHEATON MUSEUM OF GLASS
MILLVILLE, NJ

OCT. 30 - 9 - 5
REYNOLDSBURG HIGH SCHOOL
REYNOLDSBURG HEISEY COLLECTORS CLUB

NOV. 5 AND 6
KNIGHTS OF COLUMBUS HALL, SOUTHTON, CT
CONNECTICUT HEISEY COLLECTORS CLUB

For more information see the ads in this newsletter.

Pres. TOM BREDEHOFT 614-745-1014
Vice Pres. JIM KENNON 216-282-7711
Secy. RAY ZIEGLER 614-471-6446
Treas. DICK MARSH 614-366-5608

Exec. Dir. LOUISE REAM 614-344-2377

HEISEY NEWS--P.O. BOX 27--NEWARK, OHIO 43055

Editor: LOUISE REAM

Box 27 Newark, Oh. 43055 614-345-2932

Ass't Editor: Neila Bredehoft

Box 27 Newark, Oh. 43055 614-345-2932

Published monthly and mailed from Reynoldsburg, Ohio 43068.

\$12.00 per year - \$1.00 per copy.

Back issues Each Volume - \$9.00
year (12 issues).

Volume V, VI, VIII, IX, X & XI.

Heisey Collectors of America, Inc. is a non-profit corporation with tax exempt status. Owners and operators of National Heisey Glass Museum, 8th. and Church Streets, Newark, Oh. Open daily 1-4p.m. March through December except Mondays and holidays. January and February - Wednesday, Saturday and Sunday 1-4 p.m. Other times by appointment. Members admitted free.

Club membership (includes 12 issues of HEISEY NEWS and participation in all club activities) \$12.00 per year plus \$2.00 each for additional family members in same household who wish a membership card. For VOTING MEMBERSHIP add \$25.00 one time only fee.

When requesting information, please enclose a self-addressed stamped envelope (SASE).

**ADVERTISING - Send all ads to: Advertising
c/o Janice Thran
P.O. Box 27
Newark, Oh. 43055**

RATES:

DEALERS' DIRECTORY - 5 lines-\$18.00/year

CLASSIFIED - 10¢/word. \$1.00 minimum. Abbreviations and initials count as words.

DISPLAY:	MEMBERS	NON-MEMBERS
1/8 pg (9 items)	\$12.00	\$20.00
1/4 pg (20 items)	\$20.00	\$30.00
1/2 pg (20 items)	\$35.00	\$45.00
1 pg (50 items)	\$60.00	\$75.00

We cannot double-column ads. No VERTICAL 1/2 pg. ads. ALL ADS MUST BE PREPAID. Ad copy must be received by the 5th. of the month to be included in that month's NEWS. Ads containing reproduction will not knowingly be accepted unless clearly stated (i.e. Heisey by Imperial, etc.) HEISEY News assumes no responsibility for false advertising or misleading information. In the event of typographical error, the incorrect portion of the ad will be run in the following issue, but HEISEY NEWS assumes no further liability.

.....
Opinions expressed in articles are those of the authors and not necessarily those of HCA. Editorial Staff reserves the right to edit or refuse any material submitted for publication. Send all letters and articles to the EDITOR. Letters to columnists should be sent to the club address and will be forwarded.

THE BIRTH OF A NEW PATTERN

BY FRED BOSWORTH

Who "invented" Crystolite? Or Ridgeleigh or Lariat and why?

In my years selling Heisey glassware (1937-1952) I had the good fortune to observe closely some of the problems of bringing out a new pattern.

To give a little background: I had worked in the glass and china department of Abraham and Strauss, a large department store in Brooklyn, N. Y. I started as a stock-boy in 1931 and finally became buyer of the department. A. H. Heisey and Co. had been struggling through the Depression until lightning suddenly struck when they brought out #1469 Ridgeleigh (1935). Heisey quickly became the hottest line in the market. It looked like a winner to me and I joined the company in 1937. I was pretty sure I had made a mistake when Anchor-Hocking Glass Co. came out shortly thereafter with an almost exact copy of Ridgeleigh! It was sold mostly to chain stores, (five and dime stores we called them then) and they retailed the copy for about five and dime prices. Our stores being of the better type quickly started to drop "Ridgeleigh", as the copy was very close.

At any rate Heisey didn't take this lying down. They had been searching for some time for something more difficult to copy by machine and my very first assignment for the company was to go to a famous glassware store on Fifth Avenue, New York, and purchase a certain heavy cigarette box and ash tray that they had been observing for some time.

I was sent on this mission because Messrs. Clarence Heisey, Rod Irwin and Joe Lower were already known to the prestigious store owners and I was a stranger. It was a set made in Czecho-Slovakia so apparently Heisey had no compunctions about adapting it to their line.

As I recall, this set of heavy ribbed cigarette box and four ash trays was introduced to the trade at \$2.00 retail under the name of "MAHABAR" #1496. Of course this became "CRYSTOLITE" and from this cigarette box and ash trays we quickly made scores of items and indeed, I might add, a good living for many years.

Lariat, #1540, had an even stranger beginning. Imperial Glass Company's "CANDLEWICK" hit the market and was an immediate sensation. We salesmen complained bitterly to headquarters that we were hurting as Imperial hither-to had been a second class outfit, in our opinion, and through "CANDLEWICK", was now getting into "our" stores for the first time. What to do? Obviously we had to have a pattern with beads on the edge like "CANDLEWICK" if that

was what the trade was demanding.

"LARIAT" was the answer - born from necessity, not art. Beads - we had a more earthy description - were in!

#1519 "WAVERLY" was made for etchings and cuttings and I always felt that "WAVERLY" was made by "fancying up" old #1401 Empress. Montgomery Ward came to us and wanted something with the feeling of "Candlewick" and thus was designed as #1541 which is another version of "LARIAT". *

Did we always copy or follow the trend? of course not; we hired famous name designers like Walter von Nessen and Eva Zeisel. Both being stationed in New York City. I had many contacts with them. Mr. Von Nessen designed #1483 "STANHOPE" and #1495 "FERN", neither very successful. Plastics had just come on the scene as a gift accessory and Von Nessen designed black, blue, and red buttons which fitted into the holes in the "STANHOPE" glassware. To find one of these items on sale today with the buttons would be a real discovery!

Actually some of our best selling designs were made originally at the factory by our own workmen and executives. It was very thrilling to be visiting the factory and told to "stand 'way back" while a free blown new piece was put on display and criticized and suddenly it would explode! So hot, it had come right from the furnace without being annealed. A real show! Incidentally, I always felt that Horace King was our most successful designer; the fact that he was locally based and could see his designs transferred from paper into glass often within hours must have helped both him and the factory. I believe he designed #1590 ZODIAC. There again Duncan and Miller's famous "SANDWICH" pattern was selling well and claiming a lot of retail counter space. "ZODIAC" was our answer, but it never caught on. Incidentally, Duncan's "SANDWICH" was not really a Sandwich, Mass. pattern but actually an old Baccarat, France pattern. Heisey patterns #1404 Old Sandwich and #1405 Ipswich, are from authentic Sandwich, Mass. moulds. I was told in those days that Mr. Wilson Heisey had purchased the old mahogany moulds of the defunct Sandwich factory but I don't know what happened to them or whether the whole story is apocryphal. ** It actually didn't mean much to a salesman of those times who was only interested in selling "hot" patterns and items.

Winchester '73 (that's 1873) was a motion picture we "tied in" with. Rod Irwin, the sales manager had a lot to do with such deals. We salesmen were supposed to take advantage of the tremendous advertising such a spectacle would purchase and sell the glassware to our stores who would tie-in with the local movie house when "Winchester '73" came to town. Popcorn consuming youngsters were generally not high-priced glassware buyers so "Winchester '73" was not a big mover and would be a real collector's rarity today.

THIS AND THAT

By Louise Ream

The 1983 Cordial Dinner is now a thing of the past and the Project Committee will be trying to decide what to do next for a September meeting. If you have any input, please write. This has always been a major fund raiser.

Those who attended the dinner seemed to have a good time and Sam and Heidi Schnaidt deserve a lot of thanks for allowing us to meet at the Apple Tree Auction House. Bill Tumblin played "swing" records from his collection to carry out the theme inspired by the etching on the cordial which was "Swingtime." Sam's mother, Helen Schnaidt had made clever swings decorated with old Heisey labels and a small nosegay of flowers on the seat of the swing.

The auction of the Imperial items brought \$1521.00, a big plus for HCA. We'll try to print the prices next month.

We received 528 orders for the Red Oscar mistake. Since we had only 250, more than half of you did not win. The drawing was done by computer, which was instructed to pick 250 numbers at Random from the 528. (Each person who ordered had been assigned a number.) We're sorry you all couldn't get one but you'll all have a chance at the 1984's. Watch for the first offer in the January newsletter. The ruby Oscars are really beautiful.

IN MEMORIAM

We are sorry to announce that two long-time club members have died during the last few weeks.

Joe Sedivy of Columbus was a member since 1974. He is survived by two daughters, Katherine Sirak, Great Falls, Montana, and Iлона Smith, Huron, Ohio. Joe was a collector of the Greek Key pattern.

Clyde G. Smith of Huntington Beach, CA., a member since 1973, died the weekend of the Cordial Dinner. He is survived by his wife and a son, Clyde who is also a member of HCA. The Smiths have visited the museum several times and have also loaned glass.

Our sympathy goes to the families of both of these members!

ENDOWMENT FUND UPDATE

Sept. 9th

Balance in Trust Fund \$6,305.71 (\$6,200.00 in principal and \$105.71 in Income from U. S. Government Short Term Money Fund.)

The Southern Illinois Diamond H Seekers donated \$1000 at the Sept. 10th dinner which makes a new total of \$7,305.71. There is also \$224.65 Trust Money in a savings account to be transferred to the fund.

As of September 9th, the Bob Evans Farms Stock was worth approximately \$99,022.37.

TOOTHPICKS AND CRUETS

In response to our plea for toothpick holders last month we have received four already. John R. Thomas of Maryland donated three - #1205 Fancy Loop, emerald, #333 Waldorf Astoria and #150 Banded Flute. Mary K. Coveland of Columbus, Ohio, gave the #352 Flat Panel. We have also had the promise of a #300 Peerless which has not yet arrived.

We also had a donation of a #343 Sunburst Oil (cruet) but since we already had one the donor gave it for the auction instead.

The list which was printed (September issue, p. 9, included only the items we own so that we need all other toothpicks and cruets.

We also own very few nut dishes and salt dips. Please contact us before sending any in order to avoid duplication, however. All of these gifts are fully tax deductible.



THE BIRTH OF A NEW PATTERN, cont.

Perhaps you have noticed in the valuable publications of the Heisey Collectors of America and those of Clarence W. Vogel, the overwhelming number of "horse" items in the later years - ash trays, figurines, cigarette boxes, colts, clydesdales and on and on. All of this was because Mr. T. C. Heisey was a horse enthusiast and loved to show horses in glass. In fact, etch #481 "LANCASTER" shows Tim Heisey as a very young teenager astride "Goodness Gracious", Mr. Heisey's prime show horse.

So that's how patterns come about: an owner's hobby, a need in the marketplace, a brilliant idea of a glass craftsman of the following of a stylistic trend by a designer.

Some sold well - others did not. To look back upon it all one must marvel that one small factory could produce such decorative wonders!

* #1541 Athena

** See HEISEY NEWS December, 1977 p. 13 and September, 1978 p. 10-11. The mahogany items owned by Heisey were actually the original Sandwich MODELS, not moulds. The models were used to make full-size forms for designs. The Heisey Co. also made wooden models of many of their patterns. According to verbal history, the models were being shipped west to a special exhibit and were lost - possibly in the 1930's. A great loss to American glass history.



WE STILL HAVE 1983 "SWINGTIME ETCH CORDIALS AVAILABLE at \$35 each. This is a beautiful design, one of the prettiest ever. The original Heisey design was by Carl Cobel and the etching plate for this one was made by Gary Chaconas.

ANDREW STOCK. C. W. E. MUELLER. EMIL MUELLER.
 THE NATIONAL RUBY STAINED GLASS IN AMERICA

ORIENTAL GLASS CO.

MANUFACTURERS OF THE VERY BEST

RUBY STAINED AND DECORATED GOODS.

In Opal, Ivorina-Verde, Ruby, Mat and Gold, Crystal, Mat and Gold and Ruby Engraved Souvenirs.

OFFICE AND WORKS: SOUTH EIGHTH AND SARAH STREETS PITTSBURG.

Catalogue and Price List of 1902 Furnished on Application.

HEISEY DECORATIONS

BY NEILA BREDEHOFT

"ODDS AND ENDS"

Recently while doing some research on old ads in trade journals, I found several interesting references - some related to decorations and some not.

Everyone in the Newark area who can remember has always said that the Heisey factory made the early Holophane Co. shades and it has become accepted that they did. In an early ad from October, 1901 in CHINA, GLASS AND LAMPS positive proof is given that this is true.

"Where Holophane Globes Grow

"Several improvements are being made at the A. H. Heisey & Co.'s pressed and blown ware factory at Newark, O. An addition is being made to the mold shop to make more room for the mold makers employed by that company.

"The new building is to be devoted entirely to the mold making force working on molds for the Holophane Glass Co. of New York. The Heisey Company make nearly all the ware for the Holophane Company, whose business has assumed such size that it was necessary to erect a separate building for the mold makers working on their molds.

"A patent mixer is also being put in to mix the batch. It is thought this improved mixer will add greatly to the uniformity of the glass." CHINA GLASS & LAMPS October, 1901.

Now, a little about decorations and colors. Over the years there has been some discussion as to whether the term "Ivorina Verde" as used by Heisey was the correct terminology for a color or as a name for the #1280 Winged Scroll pattern since the term was always seen in conjunction with this pattern. We have always contended that it was a color name not a pattern name as early pattern glass researchers indicated. Finally we have a quote using the term "Ivorina Verde" in conjunction with another pattern that Winged Scroll - namely #310 Ring Band. Now there seems no room for doubt that the term is definitely a color name.

"ORIENTAL GLASS CO.

"The Oriental Glass Co., whose factory and sample room is at South Eighth and Sarah streets, are rapidly getting their new dec-

orated lines in shape for this year. They have the two new lines, Nos. "50" and "51" of the Duncan & Miller Glass Co., now decorated in their famous ruby and they are beauties and no mistake. Then they have the 1295 pattern of A. H. Heisey & Co. in ruby and gold, a line that has proven a wonderful seller ever since they first put it on the market. One of the Oriental's great leaders at present is their No. "39" pattern in ruby matt and gold matt, decorations that are very pleasing and attractive and taking well with the trade.

"They are decorating their opal line in a very pretty wild rose pattern that sets it off beautifully and is commanding lots of admiration. Their No. "310" Ivorina Verde line decorated in a beautiful American beauty rose pattern is very rich and artistic. These goods are all down in new patterns, burned in, and will always retain their color and beauty. The decorations of this company always bear a strong individuality and are of the highest class. They have many other articles besides the above mentioned, and visitors will find much to interest them at their sample room." - CHINA, GLASS & LAMPS, January, 1902.

It doesn't seem clear as to whether the opal line they are referring to might be 1295 Bead Swag or not, but the decoration described certainly seems to be the pink daisy or rose which we see so often on Bead Swag opal. And of course, the rose decoration which we see on 310 Ring Band now is documented as being done by Oriental.

* * * * *

One final interesting note involves cuttings done by Heisey in its early years. The following quotation is from October, 1903 CHINA, GLASS & LAMPS:

"The new cutting shop at A. H. Heisey & Co.'s fine plant, Newark, O., is almost completed and the new mold making department, which was finished a week ago, is said to be the finest in the country, being supplied with every conceivable convenience necessary for the comfort of the men. A brisk run is

Cont'd. on Page 7.

HEISEY CANDLESTICKS

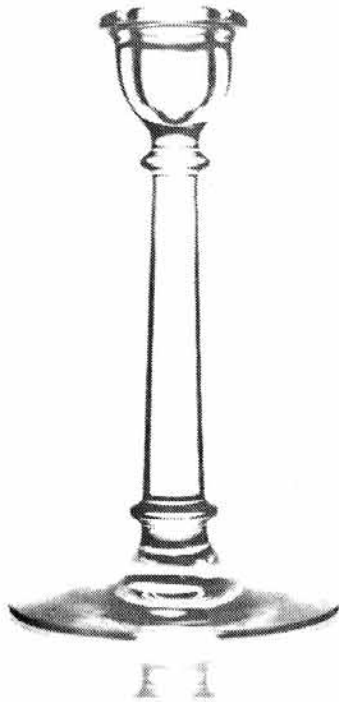
EVOLUTION OF A DESIGN - PART II

No. 105 Pembroke*

No. 106 Inverted Saucer*

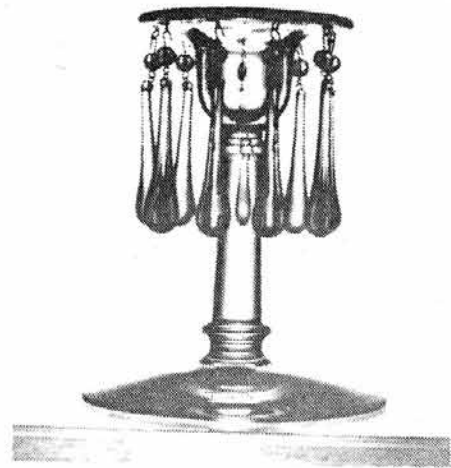
No. 108 Three-Ring*

By Tom Felt



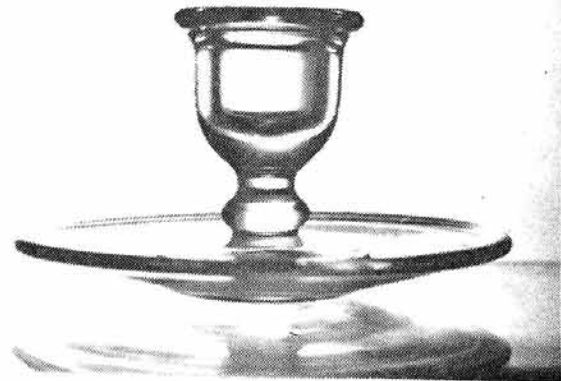
#1

#100 Centennial



#2

#105 Pembroke



#3

#103 Cupped Saucer

Last month, we began a discussion of a "family" of candlesticks which all evolved from one basic design which, with minor variations, became the inspiration for five different candlesticks. The first of these was the no. 100 (photograph #1), followed by the no. 103 saucer footed candlestick (photograph #3).

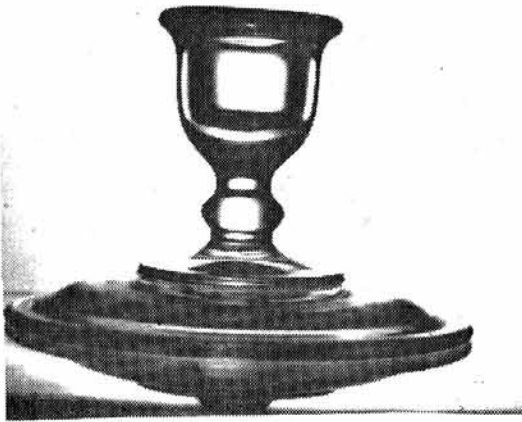
The third variation, the no. 105 candelabra (photograph #2), is basically identical to the no. 100 candlestick, but with a wide lip added. It is also rather unusual in that instead of having a removable bobèche to hold the prisms, as most of Heisey's candelabra did, it has this extra wide lip instead, from which the prisms were hung. Although generally always seen with prisms, the no. 105's were also pictured in catalog 109 as candlesticks (that is, without prisms). It is not known whether the holes for the prisms were produced in the mold, in which case the candlestick would have a series of indentations around its rim, or whether the holes were added after it was removed from the mold. If any of you have this candlestick

with a flat rim, without holes for the prisms, I would appreciate hearing from you.

The no. 105 was made first in a 9 inch size in May 1924. It wasn't until almost a year later in March 1925 that a 7 inch size was also introduced. Both sizes seem to have been quite popular and remained in production until the early thirties. However, they are not particularly easy to find today and, as was sometimes the case during these years, are a little more common in moonbeam than they are in either flamingo or crystal.

Most commonly they are found with either "A" or "C" prisms. However, in a booklet entitled Gifts of Glassware which Heisey put out around 1930, the no. 105 candelabra were shown with tear drop prisms, which were available in a choice of either amethyst, amber, blue, or crystal. The example in the accompanying photograph, which pictures the 7 inch height, has these prisms.

The no. 105 candelabra are generally marked in the constriction just underneath the candleholder.



#4

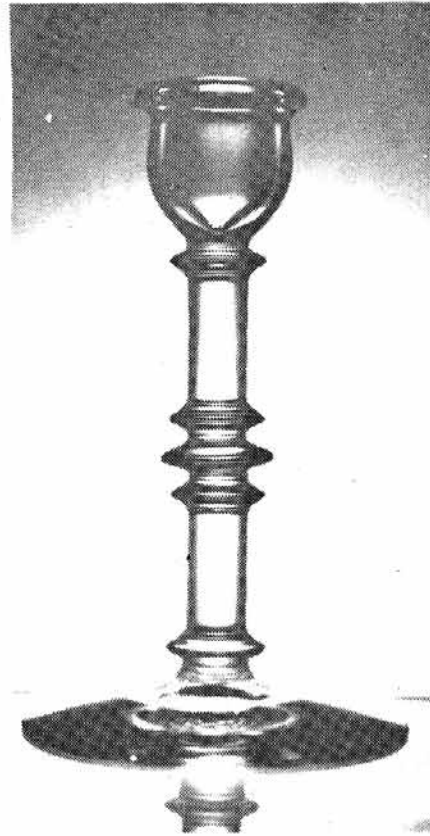
#106 Inverted Saucer

In January 1925, over 2-1/2 years after production on the no. 103 saucer candlestick (photograph #3) had commenced, it was re-designed by turning the foot down and a new pattern number was assigned to it, no. 106 (photograph #4), making it the fourth candlestick in this little "family." (There were two other instances when Heisey made the same candlestick with two different treatments to the foot -- no. 109 and no. 1559 -- but this is the only time that they actually assigned a different pattern number to the variant form. Presumably this was done for the sake of clarity in ordering, two numbers being the most reliable way of differentiating between the two styles.)

According to the available turn books, the no. 106 was made in somewhat lesser quantities than the no. 103. (For instance, only 3000 of the no. 106's were made in 1925 and 1926, compared with 6300 of the no. 103's made during the same time period.) Besides being made in crystal and flamingo, the no. 106 was also produced in moongleam, a color for which we have no listing for the no. 103.

And finally, the no. 108 candlestick (photograph #5) is yet another reworking of the no. 100 design, with three rings added to the center column. Of the five candlesticks in this little "family," the no. 108 is by far the most difficult to find and, according to the turn books, this seems to be because it was only produced in very limited quantities. (213 were made in 1925 and none at all in 1926: there are no records available for the following years, but it seems likely that very few more were made, if any, before its final listing in catalog 109 in 1929.)

Somewhat surprisingly, considering the period during which it was made, the no. 108 seems to have been produced only in crystal. Like the no. 100, it is marked at the top of the column. However, it was made in a 7 inch height only.



#5

#108 Three-Ring

All of these candlesticks were discontinued sometime after 1929, except for the no. 105's which continued to be offered until 1933 or 1934. None of them have been re-issued by Imperial, nor is it likely that any of these molds are still in existence.

*Name supplied by the HCA.

Decorations - Cont'd. from Page 5.

being made on the really handsome lines of tableware turned out, and indications point to another highly prosperous season."

As far as we know, the early cutting done at the Heisey plant was limited to things such as cut flutes, cut stars, all-over cutting on candlesticks and the like. If Heisey did other cutting at this time, we don't have any documentation for it. It is also interesting to note that the Heisey Co. was regularly listed in a list of "cut glass manufacturers" of the period. Perhaps we will be able to find out more about cutting during this early period. There are always questions to be answered.

DATES TO REMEMBER

DECEMBER 9, 1983 - CHRISTMAS DINNER
GRANVILLE INN

MARCH 9 & 10, 1984 - BENEFIT AUCTION

JUNE 14 - 17, 1984 - CONVENTION

HEISEY'S LITTLE THINGS

By Louise Ream

I have had no reports lately of any good HLT's being found. One local lady has six #1183 Cobalt salt dips which she uses on her table when she has company. She was more than a little surprised when the one sold at the Club Auction last March for \$110.00. She says she still uses them though. Let's hope all of her guests are honest!

Another of my favorite old patterns is #343 Sunburst, Ca. 1904. This pattern was shown in depth in Heisey News, Volume 8, #11, 1979 so that most of you know what it looks like. The glass is heavy, very good quality and the items are usually marked, though with the usual exceptions. There is some variation in the pattern with a few items only having the sunbursts in a single row around the body, while others have vertical rows of two or three. These include the molasses jar, table set, a jug and one of the salt shakers.

The pattern offers little for our collection but these few items. Included are the toothpick holder, two styles of salt and peppers and two different punch cups. One of these is the standard style and the other is like a little mug.

I like the egg cup also but it is probably too large for an H.L.T.

No. 150 Banded Flute from about 1907 is a utilitarian pattern and quite popular among today's collectors. It is a little thinner than Sunburst but is also very good glass. It is another colonial type pattern and has narrow vertical indented flutes with most pieces being banded by several closely spaced incised rings of glass - thus the name sometimes used - Wedding Band.

Items to look for are the toothpick which doubles as a 2 oz bar tumbler, also salt and peppers with four different type tops. There is a bar with a large sham that holds 1-1/2 oz.

The most interesting piece of the pattern is the little oval match holder with a glass lid. This little box is about 4" long and 1 1/4" high with the lid on. The bottom has the fluted pattern around the body with no bands but there is a band with two rings on the lid. Both pieces are usually marked. I like the two Chambersticks and the ash tray also but it depends on how large a space you have whether you want to add them. As you can see the larger chamberstick does not seem to have much in common with the other pieces. There is only one punch cup in #150. The 1 oz. Cordial is a real cutie and you could also add a 2 oz. wine if you like.

There is also an unusual ash tray with a place for a match box in the center.

If you find all of these before my next article you'll have given your collection a big boost. Seriously I hope that some of you have discovered this fascinating collecting field which has a lot to offer for your pleasure.

No. 343 PATTERN



TOOTHPICK.
GROUND BOTTOM



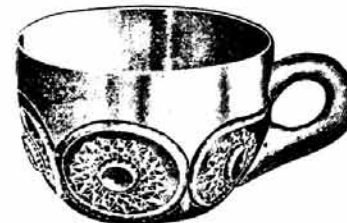
No. 3. SALT OR PEPPER
NICKLE TOP



No. 2 SALT OR PEPPER.
SILVER PLATED TOP

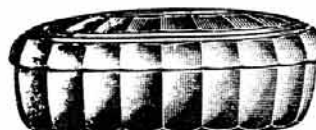


No. 1 SALT OR PEPPER.
SILVER PLATED TOP.



CUSTARD

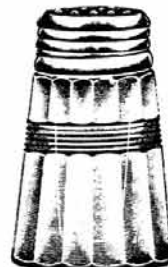
No. 150 PATTERN



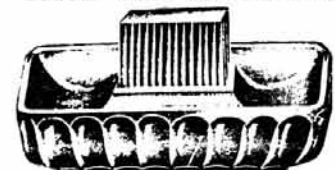
Match Box & Cover



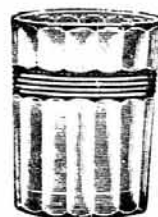
Saucer Foot Candlestick



Salt or Pepper
With Nickel Top



Match Box Stand



Toothpick
Ground Bottom



2-oz. WINE



1-oz. CORDIAL

MORE CHANGES IN THE GLASS WORLD

GLASS FIRM TAKES OVER FOSTORIA COMPANY - COLUMBUS CITIZEN JOURNAL 9-10-83

Columbus' Lancaster Colony Corp. will take control of a 100-year-old West Virginia manufacturer of fine glass in a deal valued at about \$3.8 million.

Lancaster Colony, a manufacturer of housewares, automotive and specialty foods, has agreed to buy the Fostoria Glass Co. of Moundsville.

Lancaster Colony will exchange 1.2 shares of its common stock for each of the 190,000 outstanding shares of Fostoria stock. Yesterday, Lancaster's stock was trading at between \$20.50 and \$21 on the over-the-counter market. At \$20.50, the deal would be worth \$3,895,000.

Fostoria makes fine glassware with a special emphasis on lead crystal and other glass gift items, said David Dalzell, vice president of sales for Fostoria. "We make full leaded crystal and fine glass stemware," he said. The products are sold nationwide in department stores and giftshops, he said. "We are at the high end of the glassware business."

Dalzell said he expects no changes to be made in the company. Fostoria expects to gain management and financial assistance that the larger Lancaster Colony can offer, he said. In return, Fostoria will broaden Lancaster Colony's product line, Dalzell said.

Fostoria operates five outlet stores - in Wheeling, Moundsville, Cambridge, Florida and Topeka, Kans.

The West Virginia company's sales for the fiscal year ended June 30, 1983, were about \$13.5 million.

Lancaster Colony's net sales for the year ending June 30, 1983, were \$360 million.

Ed. Note - Fostoria now makes only machine made glass. Their pressed American pattern, and possibly other pressed items, are made at another handmade glass factory.



#150 Banded Flute
Handled Candlestick



#343 Sunburst
Egg Cup



#100 9" Candlestick With
#752 Camelot Cutting



#101 9" Candlestick With
#751 Avalon Cutting

REYNOLDSBURG H.C. 9TH ANNUAL

ANTIQUESHOW & FLEA MARKET

REYNOLDSBURG HIGH SCHOOL GYM

6699 Livingston Ave., Reynoldsburg, Ohio

SUNDAY, OCTOBER 30, 1983

9:00 a.m. to 5:00 p.m.

Heisey Glass Dolls Furniture
REFRESHMENTS

Accommodations for

58 Top Quality Dealers

DONATION: \$1.00

Benefit—Heisey Glass Museum

LETTERS, we get letters....

I was so pleased to receive your very gracious and highly informative letter, of July 22nd, covering my innumerable queries.

You were so right, suggesting sending for all back copies available, of Heisey News. - Had a marvelous day feasting on them when they recently arrived.

Among a number of (to me) especially interesting items, was the one that identified my third question, concerning the so-called "Candlestick-Perfume" (as labeled by the antiques dealer). Actually it is a #520 Candle Lamp - "one of the most charming and unusual candleholders offered by Heisey." - A delightful discovery!

And another, which obviously meant much more to me was the fact that an old water bottle of my mother's (that I must shamefacedly admit to having used as a vase in past years) is in the Heisey Sunburst pattern. - Had previously attempted to convince myself that it was, but since the pieces pictured seemed to vary in pattern, I reluctantly abandoned the idea; however the Water Bottle, as shown (Nov. 1979) is identical. That was truly a thrilling surprise!

Donna Garrett
State of Washington

CLUB NOTES.....

HEISEY CLUB OF CALIFORNIA

The Heisey Club of California would like to hold a reunion of all former and present members of the Heisey Club of California. This would be a gathering of friends to celebrate the club's 10 years.

If you were at any time a member of The Heisey Club of California - and we have not contacted you, please write: Norval Heisey, 8627 Tampa Avenue, Northridge, CA 91324.

I am trying for the gathering to be sometime in March 1984, if enough response comes in. More details later.

BAY STATE HEISEY COLLECTORS CLUB

The Bay State Club held a pool party at the home of Eida Jill Belkin of Andover, Mass. Everyone brought a box lunch and desserts were provided by our hostess. They were really out of this world, a gourmet treat for the dessert palate.

The topic of the day was Heisey, i.e. finds, availability and price. People are still finding Heisey, but the availability is getting harder and harder. Also because it has the diamond H on it, the price is gold.

I forgot to mention that Eida Jill's home is beautiful and her glass collection is really an eye popper. Her main color is green and her table settings of Heisey, Cambridge and Duncan were really great.

A good time was had by all.
Your roving reporter,
Geo. Gleason

INCLUSION INTO NATIONAL REGISTER MAY GIVE IMPERIAL FINANCIAL BOOST

BELLAIRE -- The possibility that the 80-year-old Imperial Glass plant may be placed on the National Register of Historic Places may help secure the financial backing which owner Robert Stahl is seeking in his struggle to keep the plant in operation.

Inclusion of the plant on the National Register would allow potential investors to reap a 25 percent federal income tax credit on their investments.

According to General Manager Michael Nocera, investors could buy the building from Imperial for as low as \$1, then provide up to \$4 million for restoration of the structure in line with federal requirements, receiving the 25 percent tax credit on their investments. Nocera said that Imperial would have the opportunity to buy back the building over a period of 10 to 15 years.

Nocera said Imperial officials believe that the project fits the criteria for firms specializing in finding tax shelters for investors.

The restoration of the building is an integral part of Stahl's overall plan to return Imperial to a viable position in the production of marketable glass. The company presently is in Chapter 11 bankruptcy and Stahl is searching for funds to bring the firm out of that condition and back into the business of producing glassware.

The Ohio Preservation Office has recommended the Imperial plant for the National Register and OHPO's David A Simmons said that chances are good.

According to Simmons, 95 percent of the structures which the state recommends are placed on the Register by the National Park Service of the U. S. Department of Interior. Ten standards must be met in the restoration, nine of which are general in nature, but the one absolute is that the building be washed with soap and water rather than sandblasted to restore its original outward appearance.

At the time the plant was closed down and sent into bankruptcy by former owner Arthur Lorch, New York, last fall, Imperial was one of the very few, if not the only, glass plants still producing glass by the ancient handblown art, which should add to its chances of National Register status.

HCA PRESENTS..... Heisey Rose

A new booklet by Neila Bredehoft, devoted entirely to HEISEY ROSE etching ... All pieces listed and dated ... well illustrated ... With price trends ... 24 pages ... Soft Bound \$4.95 at Gift Shop - \$5.45 if Shipped. Send Orders to: HCA SALES

P.O. Box 27
Newark, OH 43055



DIAMONDS ARE FOREVER.....

By Janet M. Caswell

By the time you read this the weather should be cooler; right now we are in the middle of a major heat wave. It is 8:00 p.m. in the Yachting Center and still 90° with absolutely no sea breeze, which is unusual being right on the coast. Our town is always 15-20° cooler than neighboring towns. Even the sail boats at the mouth of the harbor are waiting for the breeze which will take them to their respective moorings; no such luck! One by one you can hear, in the stillness of the evening, the small auxiliary motors starting to assist the boats back inside the safety of the harbor for the night. Now that's hot! In fact this was the hottest July on record, and records have been kept for 112 years.

Let's see what the summer has brought from the "South Jersey Troops"; #339 Continental Hotel Sugar and Creamer and a #1255 Emerald Pineapple and Fan Hotel Creamer, and that was a real sleeper!

From the Empire State of the South "The Studious One" reports four (4) #1253 *Colonial Sherbets. Great! In the Stem Book these are circa 1909 and unseen. The Studious One wonders if this is still the case, or if others have been found.

"The Golden State" again wants to share with us all a wealth of good things: #300 2-light Candelabra with Prisms - 10-1/2" high and marked; #1401 Empress 5-1/2" Mayonnaise, Dolphin Footed, Old Colony Etch and Sahara in color; a pair of #1511 2-light Toujours Candlesticks/bobeche and "A" Prisms; #1229 Octagon Individual Nuts, two of these in Moongleam; a Lariat Parfait with original label; #335 Prince of Wales Tumbler; #1223 Baked Apple, amber stained; #1503 Crystalite covered candy; a #411 3 oz bar tumbler, straight sided, quite unusual; #341 Puritan Salt and Pepper and two (2) Mayonnaise ladles, one each in Sahara and Moongleam; and #1425-1/2 Victorian Condiment tray. Wow, Golden State! It is always so nice to hear from all of you, everyone there finds such goodies. We must go there some time.

There are a couple of "funny talking" collectors from the Badger State that wanted to brag (or rather report) no, Brag is the better word and with very good reason. Just read on and you be the judge; Lassoed, and with great ease at that were two (2) Giraffes. Not difficult to take; These two were not enough and the Fighting Rooster was also captured; now what would you say about a Lodestar Cream and Sugar (without handles) in Dawn" a #355 Domino sugar; eight (8) #3389 Duquesne goblets and seven (7) footed tumblers all with the #449 Pompeii Etch. Items with the Pompeii etching are certainly treasures. My, I'm envious, what a way to spend a day!

The "double stepping couple" mentioned a #1245 Star and Zipper 9" Berry Bowl in Emerald; 7" Pillows Rose Bowl; a #1 9" Candlestick;

#4054 Coronation Cocktail Shaker and, (are you ready) here goes; #2401 10 oz sodas with the Circus deep plate etch #471 "Rube". Now how does eight of them sound? Sounds real nice to me, and I understand that they almost didn't make that U-turn and go back.....

"The Tipper" has a #300 Peerless #2 Salt; #1184 Yeoman 10-1/2" oval two compartment tray, in Flamingo and etched; four (4) #429 Plain Panel Recess sherbets; #361 Criss Cross 4-1/2" Nappy and a #433 Greek Key 4-1/2 oz low footed sherbet, flared.

The "Felicitous Flamingo Hunter" is back on the trail again and reports two (2) #433 Greek Key Punch Cups and a pair of #5 7" Candlesticks; a couple of Ridgeleigh Square Plates and a Cream and Sugar; these were all crystal.

We went to Maine this past week end to visit a friend and help celebrate his 98th Birthday; didn't pick up any glass at all. Came home with pickling cukes and beets. Oh, well! Never-the-less I did find within the past few weeks a #354 Wide Flat Panel oval Hotel Sugar and Creamer in Sahara; #1252 Twist Individual Creamer (crystal); #1183 Revere 1lb. Candy Jar/Etching and a #465 Recessed Panel 1 lb. Candy Jar/the (raised) panels frosted, very pretty; and a #1404 Old Sandwich Candlestick in Sahara.

About the "Land of Lincoln" - two Victorian Cruets, both marked and snoozing soundly; and the #1469 Ridgeleigh Heart and Club ash tray. Another new friend from the Land of Lincoln found a #300 Peerless Pepper Shaker/"A" top, and she was thrilled, as well she should be! Also a Cross Lined Flute Oval Bowl. It is so nice to hear from new people.

Haven't heard from the "Granite State" in a long time, so here goes; six (6) #407 Coarse Rib Plates in Moongleam - plus four (4) #1186 Diamond Optic Cups and Saucers also Moongleam.

From the "Evergreens" there was rumor of a pair of Wampum Candlesticks and a #2 Candlestick; also #433 Greek Key small Spooner and, again are you ready, the Rooster Vase! You sure do come up with some pretty special things.

"Mountain Gal" I mustn't forget you; #429 Plain Panel Recess 9" and 12" Celery; pair of #4044 New Era 2-light Candelabra/bobeche and "A" prisms; #341 Puritan Ice Tub plus #341 8" Nappy; #1519 Waverly Ind. Cream and Sugar/Orchid Etch, I hear that was quite a steal!!! and the #1469 Ridgeleigh Cream and Sugar. Two in the column this month.

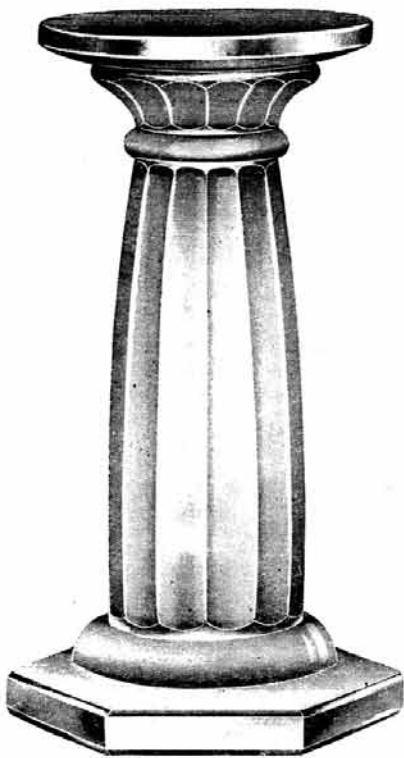
Enough running on for this month, Mr. & Mrs. Yours Truly are heading for a day in the sun. It is our own BSHCC annual summer get together (Pool Party!) Nice, huh.. So from the Yachting Center of the World best wishes for real good Hunting! HHH Janet Caswell

* It is not still unseen. In fact there is one in the Heisey Museum. Many of those unseens have been identified in member's collections since the Stem Book was published. Since the one we have was recently donated perhaps it is one of the four mentioned here.

L.R.

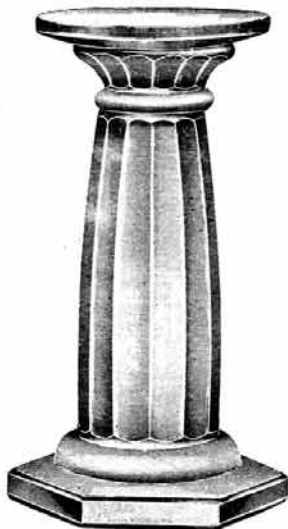


SHELF SUPPORTS

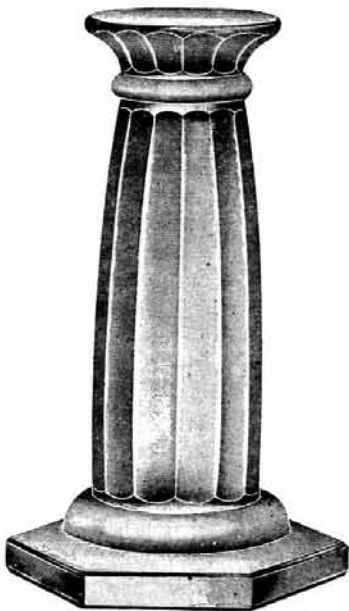


No. 100—12 in. Oval Top

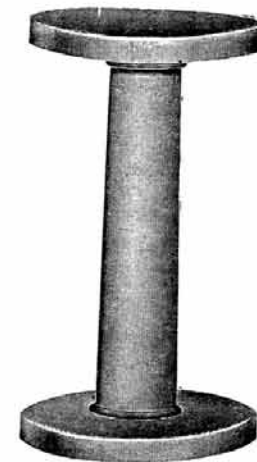
No. 100 SHELF SUPPORTS MADE WITH EITHER ROUND OR OVAL TOP AND BOTTOM PATENT No. 40753



No. 100—8 in. Oval Top



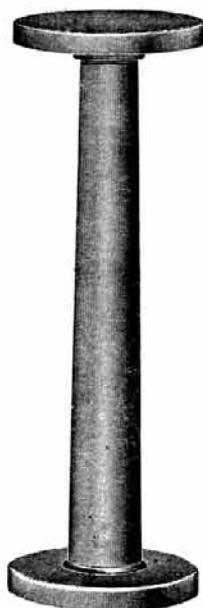
No. 100—10 in. Round Top



No. 101—7 in. Round Top



No. 101—12 in. Round Top
ALSO MAKE 15 in. HIGH



No. 101—10 in. Round Top

These are the only known shelf supports made by Heisey. The page is from a Ca. 1915 Catalog. The supports are ordinarily marked.

No. 101 SHELF SUPPORTS HAVE PUNTIED TOP AND BOTTOM

ALL HEISEY AUCTION



LIST OF PRICES REALIZED, AVAILABLE AFTER THE AUCTION \$1.00

We have tried to inspect the glass closely and will use the following code to better describe the condition. A small letter indicates the damage or flaw is minimal. It would be our opinion that the value would be affected 5 - 20%. A capital letter indicates more significant damage affecting 20 - 40%. Anything damaged more than this in our opinion will be marked with an X. We hope this will better aid in your mail bidding.

f F = Flake
c C = Crack

b B = Bruise
m M = Mold Flaw

r R = Repaired
x X = Major Damage

Sam Schnaidt, Auctioneer
614-344-9449

Frank Frye, Manager
614-344-4001

1	407 COARSE RIB Moongleam, Cr & SugH	30	1201 FANDANGO 6 oz oil wrong stopper
2	1020 HOTEL Flamingo Cr & Sug H rough	31	411 TUDOR 6 oz Oil H
3	1020 HOTEL Cr & Sug H dtd	32	429 PLAIN PANEL 6 oz Oil H f
4	1184 YEOMAN Mnglm Cr & Cov Sug H	33	400 COLONIAL 6 oz Oil H stopper f
5	411 TUDOR ftd Table Sug & Cr no lid m H	34	429 PLAIN PANEL 6 oz Oil Cut cloudy
6	300½ PEERLESS Hotel Cr & Sug H m	35	1205 FANCY LOOP 6 oz Oil wrong stopper
7	1231 RIBBED OCTAGON Mnglm Cr & SugH	36	341 PURITAN 6 oz Oil H wrong stopper
8	393 NARROW FLUTE Cr & Sug & French Dressing Boat H gold dec	37	341 PURITAN 4 oz Oil H
9	1401 EMPRESS Sahara DF Cr & Sug H	38	341 PURITAN 2 oz Oil H wrong stopper
10	1401 EMPRESS DF Cr & Sug Chintz etch	39	1485 SATURN Dawn 3 oz Cruet
11	1401 EMPRESS Alexandrite DF Cr & Sug H	40	1252 TWIST Flamingo 4 oz Oil H
12	4222 HORSESHOE Cr & Sug Mnglm hdd heat crack in handles	41	1425 VICTORIAN 2 oz Oil H
13	393 NARROW FLUTE Hotel Cr & Sug H	42	1425 VICTORIAN 2 oz Oil H
14	354 COLONIAL Combination Set Sug, Cream & Butter H	43	1425 VICTORIAN (2) 2 oz Oil in Silver Holder
15	1447 ROCOCO Sahara Cr & Sug H	44	341 PURITAN 4 oz Oil, no stopper H
16	429 HOTEL Flamingo Cr & Sug H F	45	300 5 lt. Candelabra on wrong base
17	429 HOTEL Flamingo Cr & Sug H	46	300 4 lt. Candelabra on short base
18	1519 WAVERLY Cr & Sug H	47	300 3 lt. Candelabra on short base
19	393 NARROW FLUTE Ind Cr & Sug H m	48	1483 STANHOPE 2 lt candle w/bobeches & prisms, Frosty Dawn etch Pr.
20	300 PEERLESS Ind Cr & Sug H	49	1503 CRYSTOLITE 1 lt Sq Hurricane Block w/11" globe, cut Pr.
21	473 NARROW FLUTE W/RIM 8" Loaf Sug & Cr set H	50	1503 CRYSTOLITE Elec Hurricane Lights w/9" cut globe Pr
22	1404 OLD SANDWICH Sug H	51	1503 CRYSTOLITE Elec Hurricane Lights w/11" cut globe Pr
23	1183 REVERE Creamer H	52	1503 CRYSTOLITE Elec Hurricane Lights w/9" cut globe Pr
24	352 COLONIAL Ind cream H f	53	1503 1 lt Elec Hurricane Light, 1 wired & 1 not, 1 only 9" globe
25	393 NARROW FLUTE Cr & Sug f & 341 Pitcher Lid & WAVERLY Cr	54	1503 CRYSTOLITE 1 lt Candelblock, 5 ea
26	393 NARROW FLUTE Sugar	55	1503 CRYSTOLITE 1 lt candlestick 3 ea.
27	433 GREEK KEY Round Hotel Sug H f on handle	56	1566 1 Lt. candelblock Pr
28	1295 BEAD SWAG Cov Sug Red Stain	57	1401 EMPRESS Sahara DF 1 lt candle Pr H
29	305 PUNTY & DIA POINT 6 oz Oil cloudy	58	135 1 Lt Cobalt candlestick Pr
		59	1405 IPSWICH Sahara Candle Vases w/inserts, Pr H

60	112	1	Lt MOONGLEAM Candlestick Pr.	93	142	CASCADE 3 Lt Candle Orchid Etch Pr
60A	1	9 in.	Candlesticks, Pr., H	94	4036	1 Qt Cocktail Shaker Orchid Etch
60B	1	9 in.	Candlesticks, Pr. H	95	5025	TYROLEAN Cocktail Orchid Etch 6 H
61	1513	3	Lt. Candelabras, Pr.	96	5025	TYROLEAN Sauc. Champ. Orch. Etch 4
62	1503		CRYSTOLITE 2 Lt. Candlestick	97	5025	TYROLEAN Low Gob Orch Etch 2 f
63	1184		YEOMAN Goblet, Amber Gold H, DO	98	1519	WAVERLY Orch. Dinner plate, 7"
64	407		COARSE RIB Mnglm Goblet H			Orch plate, Ftd. Mayo all f
65	3368		ALBEMARLE Flamingo Goblet H DO	98A	1509	QUEEN Anne Saucers Orch Etch
66	3380		OLD DOMINION Sahara Goblet H DO	99	5025	TYROLEAN Wine Orchid Etch
			Empress Etch	100	5025	TYROLEAN Wine Orchid Etch H f
67	3380		OLD DOMINION Sahara Goblet DO	101	1447	ROCOCO 5 Part Ftd Relish H
			Old Colony Etch	102	1183	REVERE 4 Comp Hdl Spice Tray Dec.
67A	3380		OLD DOMINION Mnglm Stem, Empress	103	1252	TWIST Sahara 2 Comp Relish H
			Etch 12 ea. 1 f, goblets	104	1401	EMPRESS Alexandrite 13" Celery Tr. H
68	3350		WABASH Goblet Mnglm Stem, Front-	105	1401	EMPRESS Mnglm 13" Celery Tray H
			enac Etch H	106	1401	EMPRESS Flamingo 13" Celery Tr H
69	3380		OLD DOMINION Goblet Mnglm bowl DO	107	1401	EMPRESS 13" Celery Tray
70	3380		OLD DOMINION Goblet Sahara 7 ea	108	1540	LARIAT 3 Comp Relish Mnglo Cut H
			DO 2 f	109	407	COARSE RIB 12" Celery Tray Amber St.
71	3366		TROJAN Flamingo Goblet 4 ea H	110	352	COLONIAL 5 Comp Relish Tray H
72	411		TUDOR Goblet Cut 4 ea H	111	1509	QUEEN ANNE 3 Comp Relish Tray
73	5010		SYMPHONE Goblet Danish Princess			Belle Le Rose Etch H
			Cut 7 ea	112	1185	YEOMAN Flamingo 12" Celery H
74	5010		SYMPHONE Saucer Champ. Danish	113	393	NARROW FLUTE 12" Celery H
			Princess Cut 6 ea	114	1401	EMPRESS Sahara 10" Celery Old
75	5010		SYMPHONE Ftd. Juice Danish Prin-			Colony Etch H
			cess Cut 4 ea	115	341	PURITAN 12" Celery Tray H
76	3350		WABASH Goblet Frontenac Etch 3ea	116	407	COARSE RIB Flamingo 9" Celery H
77	3350		WABASH 3 Goblets & 3 Saucer Champ.	117	1503	CRYSTOLITE 13" Celery Tray H
			Frontenac Etch all f	118	1252	TWIST Mnglm 9" Celery Tray H
78	3350		WABASH Saucer Champ. Frontenac	119	1231	RIBBED OCTAGON Flamingo 9"
			Etch H 2 ea			Celery Tray H
79	3350		WABASH Cocktail Frontenac Etch	120	468	9 " Celery Tray Gold Dec. H
			5 ea H	121	1185	YEOMAN Flamingo 12" Celery H
80	3350		WABASH Wine, Frontenac Etch 4 ea	122	365	OLD QUEEN ANN 8" Spoon Tray H
			H 3 f	123	1252	TWIST Flamingo 7" Pickle H
81	3404		SPANISH Cobalt Goblet 6 ea	124	1252	TWIST 2 Comp Relish Cut & Sterling
82	3404		SPANISH Cobalt 12 oz Soda 6 ea			Overlay H
			3404 SPANISH Cobalt Sherbet 6 ea	125	1469	RIDGELEIGH 5 Part Star Relish H
83A	1183		REVERE Cobalt 8 " Plate 6 ea	126	1503	CRYSTOLITE 3 Part Relish H
84	1519		WAVERLY Bow Tie Cov Candy, Or-	127	1503	CRYSTOLITE 3 Part Relish
			chid Etch H	128	341	PURITAN 9" Celery Tray & 352
85	1509		QUEEN ANNE 4½" Nappy, Orch. Etch			Colonial Ind. Cream H
			H f	129	433	GREEK KEY Punch Bowl, Base & 11
86	1509		QUEEN ANNE 8" Nappy Orch. Etch			Cups H
87	1509		QUEEN ANNE 7½" DF Nappy Orch.	130	341	OLD WMSBG. Punch Cups, 8 ea H
			Etch roughness on feet H	131	300½	Punch Cup 4 ea & 1 ea 300 Punch Cup
88	5031		8 oz Frenc Dressing Bottle	132	1509	QUEEN ANNE Cups 3 ea H
			Orchid Etch	133	1184	YEOMAN Flamingo Cup & Saucer 3ea H
88A	1519		WAVERLY Cruet Orchid Etch	134	1401	EMPRESS Sahara Tea Cup & Saucer,
88B	1519		WAVERLY Cruet Orchid Etch			Old Colony Etch H
89	1519		WAVERLY Cr & Sug Orch. Etch H	135	1401	EMPRESS Flamingo Cup 2 ea. H
90	1519		WAVERLY Cr & Sugx Orch. Etch H	136	5010	SYMPHONE Ftd Ice Tea Minuet Etch 7
90A	1519		WAVERLY Crx & Sug Orch. Etch H	137	5010	SYMPHONE Sherbet Minuet Etch 4 ea
90B	1519		WAVERLY Sug & TYROLEAN Sherbet	138	1511	TOUJOURS 8" Plate Minuet Etch 9 ea
			H both Orchid Etch	139	1509	QUEEN ANNE 3 Part Round Relish
91	1519		WAVERLY Cr & Sug Orch. Etch H			Minuet Etch H
92	1509		QUEEN ANNE 7" Comb Dressing	140	1503	CRYSTOLITE 8" Oval Plate H
			bowl Orchid Etch H			

141	1503	CRYSTOLITE	Oval	Hdl	Mayo	H	188	393	NARROW FLUTE	3 Pt	Jug	Cut on		
142	1225	OCTAGON	10"		Flamingo	Muffin Tr.						Rim Crack in Hdl H		
143	1225	OCTAGON	12"	Mnglm	Muffin	Tray Hf	189	300	PEERLESS	½ Gal	Jug	H rough		
144	1469	RIDGELEIGH	6"	Hdl	Bon Bon	in Metal Tray H	190	433	GREEK KEY	½ Gal	Jug	H		
145	411	TUDOR	6"	Hdl	Bon Bon	H	191	300½	PEERLESS	½ Gal	Jug & 4 Tumblers,	Gold Dec. H		
146	41.1	TUDOR	6"	Hdl	Cheese	Plate H c	192	419	SUSSEX	Mnglm & Crystal	Sodac	H		
147	41.1	TUDOR	6"		Hawthorne	Jelly H	193	393	NARROW FLUTE	6 oz	Soda	6ea H		
148	1225	OCTAGON			Hawthorne	6" Jelly	194	379½	URN	8 oz	Tumbler	3 ea H 1f		
149	1225	OCTAGON		Mnglm	6"	Bon Bon DO	195	300	PEERLESS	8 oz	Tumbler	plain bottom 4 ea		
150	1225	OCTAGON			Marigold	6" Mint DO m	196	200	8 oz	Wide Optic	Tumbler	12 ea		
151	1186	YEOMAN	6"	2 hdl	Jelly	cut H	197	602	8 oz	Tumbler	7 ea	H		
152	1186	YEOMAN	5"	hdl	Jelly	H	198	473	NARROW FLUTE	W/RIM	8" Tumbler	12 H		
153	1255	PINEAPPLE & FAN	hdl	Jelly	f		199	1503	CRYSTOLITE	8 oz	Tumbler	18 ea H		
154	341	OLD WMSBURG	hdl	Jelly	H		200	6060	COUNTRY CLUB	18 oz	Soda			
155	1509	QUEEN ANNE	6"	Hdl	Ftd	Jelly Rosalie Ethc H rough feet	201		COLONIAL	Amber	Ftd Soda	H		
156	1509	QUEEN ANNE	3 Pc.	Lot -	Mint Dish, Lemon Dish, Oval Platter	H	202	1506	PROVINCIAL	13 oz	Soda	H 6 ea		
157	1401	EMPRESS	8"	DF	Bowl	H	203	1506	PROVINCIAL	9 oz	Ftd Tumbler	7 H		
158	1509	QUEEN ANNE	9"	DF	Plate	Ant-arctic Etch	204	1506	PROVINCIAL	3½ oz	Oyster Cocktail	H		
159	1401	EMPRESS			Flamingo	DF Mayo, Ladle	205	1425	VICTORIAN	4 oz	Claret	13 ea H		
160	1540	LARIAT	Ftd	Mayo, Moonglo	Cut	Marked Sample 980	206		CLYDESDALE	HORSE	m			
161	1469	RIDGELEIGH			Mayo	Bowl H	207		CLYDESDALE	HORSE				
161A	300	PEERLESS	6"	Bowl	H F		208		GOOSE, WINGS	UP				
162					Lot of 3 Mayo Spoons	1H	209		GOOSE, WINGS	UP	H			
163		VERLYS	13"		Wild Duck	Bowl	210		GOOSE	WINGS	HALF			
164	V1065	VERLYS BY HEISEY			Limelight Chrysanthemum	Bowl	211		GOOSE	WINGS	HALF			
165	V8636	VERLYS BY HEISEY			Limelight Thistles	Bowl	212		FISH	BOOKEND	f			
166		VERLYS			Motif	Chinois	Bowl signed	213		FISH	BOOKEND	X		
167		VERLYS	8"		Rose	Bowl signed		214		SMALL	ELEPHANT			
168		VERLYS			Swallows	Ash	Tray	215		SMALL	ELEPHANT			
169		VERLYS			Water Lily	Candle, Pr Directorie	Blue	216		MALLARD	DUCK	WINGS	HALF	H
170		VERLYS			Pelican	Tray		217		WOOD	DUCKLING	STANDING		
171	1184	YEOMAN		Mnglm	10½"	Oval	Tray 2 Comp H Handle reglued	218		CYGNET,	r			
172	1184	YEOMAN			Flamingo	10½"	Oval	219		CYGNET				
173	300½	PEERLESS	½ Gal	Pitcher	H r			220		SEALYHAM	Terrier	(SCOTTY)		
174	411	TUDOR	1 Qt	Jug & Cov	Dec. H			221		SEALYHAM	Terrier	(SCOTTY)		
175	351	PRISCILLA	Pt	Pitcher	H worn			222		SPARROW,	TAIL	UP		
176	1404	OLD SANDWICH	Sahara	½ Gal	JugH			223		ASIATIC	PHEASANT			
177	343	SUNBURST	½ Gal	Jug	H			224		ASIATIC	PHEASANT			
178	5003	CRYSTOLITE		Jug	F			225		SPARKY (OSCAR HORSE)	f - ear			
179	150	OVAL		IN	DIA	POINT	Jug	226		SPARKY (OSCAR HORSE)	(bubble in tail)			
180	393	NARROW FLUTE	3 Pt	Hotel	Jug	Hf		227		SPARKY (OSCAR HORSE)				
181	341	PURITAN	½ Gal	Tankard	H f			228		COLT, KICKING,	2 ea. both X			
182	341	PURITAN	1 Qt	Tankard	H			229		COLT, BALKING				
183	473	NARROW FLUTE	W/RIM	½ Gal	jugH			230		COLT	STANDING			
184	341	PURITAN	3 Qt	Squat	Jug	H m		231		COLT, STANDING	f			
185	341	PURITAN	½ Gal	Squat	Jug	H Sun Purpled		232		HORSEHEAD	BOOKEND			
186	341	PURITAN	Qt	Squat	Jug	H		233		HORSEHEAD	BOOKEND			
187	393	NARROW FLUTE	½ Gal	Jug	H			234		HORSEHEAD	BOOKEND			
								235		HORSEHEAD	BOOKEND			
								235A		HORSEHEAD	BOOKEND, FROSTED,	bubble		
								236		DONKEY	H			
								237		GIRAFFE,	HEAD	BACK		
								238		RINGNECK	PHEASANT			
								239		RINGNECK	PHEASANT			
								240		ROOSTER	VASE			
								241		FIGHTING	ROOSTER			

242	CLYDESDALE HORSE X	297	IMP. CHILDS FAIRY TALE MUG RED CARNIV.
243	RINGNECK PHEASANT 3 ea. XXX(tail)	298	IMP. CHILDS FAIRY TALE MUG AMETHYST CAR.
244	RINGNECK PHEASANT 2 ea XX(tail)	299	PENGUIN STOPPER
245	RINGNECK PHEASANT 2 ea XX(tail)	300	1503 CRYSTOLITE Lg. Swan Nut
246	SPARKY - no tail 2 ea XX	301	1503 CRYSTOLITE Ind Swan Nut 6 ea
247	IMPERIAL CAMEL SLAG AIREDALE	302	1503 CRYSTOLITE Ind Swan Nut
248	IMPERIAL CAMEL SLAG STANDING COLT IG	303	5066 HORSEHEAD Cocktail (RARE)
249	IMPERIAL CAMEL SLAG MED. ELEPHANT IG	304	357 DUCK ASHTRAY Flamingo H
250	IMPERIAL CAMEL SLAG WOOD DUCK IG	305	15 5" DUCK FLOWER BLOCK, 2 Pc. Mnglm
251	IMPERIAL CAMEL SLAG WOOD DUCK IG	306	3389 DUQUESNE Champ, Tangerine(red side)
252	IMPERIAL CAMEL SLAG DONKEY IG		4 ea
253	IMPERIAL CAMEL SLAG DONKEY IG	307	1401 EMPRESS 6" Sq plates Tangerine 4 ea
254	IMPERIAL CAMEL SLAG OSCAR HORSE IG	308	3389 DUQUESNE Cocktail Tangerine 2 ea
255	IMPERIAL CAMEL SLAG OSCAR HORSE IG	309	1519 WAVERLY 14" Plate Cut
256	IMPERIAL CAMEL SLAG MALLARD WINGS 1/2	310	1238 BEEHIVE 8" Plate Flamingo
257	IMPERIAL CAMEL SLAG MALLARD WINGS 1/2	311	1238 BEEHIVE 14" Plate Flamingo
258	IMPERIAL CAMEL SLAG MALLARD WINGS UP	312	1252 NEWARK SESQUI. PLATTER 1952
259	IMPERIAL CAMEL SLAG MALLARD WINGS UP	313	353 MED. FLAT PANEL 10" Rd Tray H
260	IMP. DK BLUE COLTS, STANDING, KICKING & SITTING IG	314	1150 COLONIAL 8" Plates 6 ea. H
261	IMP. DK BLUE COLT SITTING IG	315	1404 OLD SANDWICH 8" Plates 6 ea H
262	IMP. DK BLUE COLT KICKING IG	316	1401 EMPRESS 7" Plates Sq 7 ea H
263	IMP. DK BLUE COLT KICKING IG	317	1225 6" Plate (1), 407 7 1/2" COARSE RIB Plates (3) all Moongleam H
264	IMP. LT BLUE COLTS STANDING, KICKING, SITTING IG	318	1252 TWIST Marigold 9" Plate H
265	IMP. LT BLUE COLT SITTING IG	319	1229 OCTAGON Hawthorne 8" Plates 5 ea
266	IMP. GREEN IRRID. DONKEY LIG	320	1225 7 1/2" Plates Flamingo H 8 ea
267	IMP. PINK SATIN SM ELEPHANT LIG	321	Lot of 3 Plates,
268	IMP. LT BLUE MALLARDS WINGS UP, WINGS HALF, WINGS DOWN IG	322	1519 WAVERLY 7" Plate Cut 4 ea
269	IMP. FILLY HORSE HEAD FORWARD LIG	323	1225 6" Flamingo & 1183 Revere Flam Sauc H
270	IMP. FILLY HORSE HEAD FORWARD LIG	324	1225 Hawthorne 6" & 9" Plates H
271	IMP. MILK GLASS ROOSTER IG	325	1469 RIDGELEIGH 6" Sq Plate 3 ea H
272	IMP. MILK GLASS HEN IG	326	300 PEERLESS 5 1/2" Plates 4 ea H
273	IMP. MILK GLASS CHICKS 4 ea.	327	416 7" Hawthorne Plate H
274	IMP. MILK GLASS RABBIT IG	328	1125 6" Plate 9 ea H
275	IMP. MILK GLASS BUNNY HEAD DOWN IG	329	4182 7 1/2" Flamingo Plate DO 6 ea
276	IMP. MILK GLASS BUNNY HEAD UP IG	330	U8001 FLEUR DE LIS Sahara 8" Plate H
276	IMP. MILK GLASS RABBIT PAPERWEIGHT IG	331	1184 YEOMAN 6" Amber Plate DO
278	IMP. MILK GLASS SCOTTY DOG IG	332	3350 WABASH 6" Plate, Pied Piper etch 5 ea
279	IMP. GREEN OSCAR SOUV. 1977 IG	333	1519 WAVERLY 13" Gardenia Bowl, Heisey Rose Etch
280	IMP. PINK OSCAR SOUV 1978 IG	334	134 TRIDENT 2 Lt Candle Heisey ROse Etch H
281	IMP. YELLOW OSCAR SOUV 1979 IG	335	1519 WAVERLY 5" Ftd Candy Jar & Cov. Heisey Rose Etch H
282	IMP. YELLOW OSCAR SOUV IG	336	5072 ROSE STEM GOBLET H Rose Etch 3ea H
283	IMP. HEATHER FROSTED OSCAR SOUV 1979 IG	337	1435 3" Sq. Ash Tray Heisey Rose Etch
284	IMP. HEATHER FROSTED OSCAR SOUV 1979 IG	338	5012 9" Footed Urn Vase, prob. Krall Cut
285	IMP. HEATHER FROSTED OSCAR SOUV 1979 IG	339	1540 LARIAT Fan Vase, Krall Cut
286	IMP. HEATHER OSCAR SOUV 1980 IG	340	5013 SHASTA 5" Comport, George IV Cut
287	IMP. HEATHER OSCAR SOUV 1980 IG	341	1511 TOURJOURS Apple Marmalade Daisy Cut H
288	IMP. LT. BLUE OSCAR SOUV 1981 IG	341A	1540 LARIAT Fan Vases 2 ea Cut H
289	IMP. LT BLUE OSCAR SOUV 1981 IG	342	1183 REVERE 1 Qt Cocktail Shaker Chrome Top H
290	IMP. TANGELO OSCAR SOUV 1983 IG		
291	IMP. TANGELO OSCAR SOUV 1983 IG	343	4225 COBEL 1 Qt Cocktail Shaker Equest- rian Deep Plate Etch
292	MADONNA		
293	MADONNA	344	1184 YEOMAN 10 oz Soda DO Wigam Deep Plate Etch H
294	MADONNA		
295	MADONNA, FROSTED	345	1434 TOM & JERRY Mug H
296	MADONNA, FROSTED	346	1220 PUNTY BAND Custard Mug Rose Dec., Souv Benzonia, Mich. H

347	1220	PUNTY BAND Milk Glass (opal) Mug	397	1503	CRYSTOLITE Cov. Mustard
		Souv. Wooster, O. H	398	354	COLONIAL 16 oz Sanitary Syrup H
348	4027	32 oz Flamingo Ftd. Decanter	399	359	12 oz Sanitary Syrup H
		D O Crystal Stopper	400	372	COLONIAL 5 oz Flamingo San. Syrup H
349		IMPERIAL Souv 1977 Puritan Decanter	401	353	COLONIAL 5 oz Sanitary Syrup
350		IMPERIAL Souv 1975 & 1976 Clarets	402	1184	YEOMAN Sugar Pourer w/screw top
351	3359	PLATEAU 6" Hawthorne Rose Bowl DO	403	1216	Horseradish Jar cut H
352	516/3	9" Flamingo Vase DO	404		Vinegar & Oil Bottle etched
353	1420	9" Ftd. Tulip Vase	405	1540	LARIAT Cologne w/stopper
354	1428	WARWICK 9" Vase H	406	342	Spoon Holder H
355	1428	WARWICK 7" Vase H	407	341	PURITAN 5" Hi Ftd Jelly 2 ea H
356	1503	CRYSTOLITE Horn of Plenty Vase	408	341	PURITAN 5" Hi Ftd Jelly
357	1503	CRYSTOLITE Horn of Plenty Vase	409	341	PURITAN 5" Hi Ftd Jelly, shallow H
358	1540	LARIAT Fan Vase H	410	353	COLONIAL 4½" Low Ftd Compote 11 ea H
359		11" Vase	411	480	8" Fruit Basket H f
360	1250	GROOVE & SLASH 8½" Ftd Compote	412	480	8" Fruit Basket H
361		Oval Compote on Dia. Base H 8"	413	417	DOUBLE RIB & PANEL Flamingo 6"
362		Oval Compote on Dia. Base H 8"			Basket H
363	1506	PROVINCIAL Violet Vase H	414	459	8" Flower Basket Cut H C
364	1469	RIDGELEIGH Flared Candle Vase H	415	459	7" Flower Basket Cut H
365	1255	PINEAPPLE & FAN 10" Vase	416	462	8" Flower Basket Cut H
366	1567	PLANTATION Tall Cov. Candy	417	462	8" Flower Basket Gold Dec. H
366A	1567	PLANTATION Adv. Printing Plate	418	1402	CRYSTOLITE 12" Frt bowl Strt sides H
367	465	RECESSED PANEL 1# Cov Candy Dec.	419	1503	CRYSTOLITE 11½" Rd Floral Bowl H
368	465	RECESSED PANEL ½# Cov. Candy DecH	420	1201	11" Flamingo Low Ftd Fl Bowl H
369		1# Cov Candy Dec. F	421	1202	Hawthorne 11" Rolled edge Fl Bowl
370	465	RECESSED PANEL ½# Cov Candy Dec H			& Separate Base H
371	1183	REVERE 1# Cov Candy cut & dec H	422	1202	Hawthorne 11" Fl Bowl cut H
372	1183	REVERE 1# Cov Candy Irrid H	423	341	PURITAN 11" Shallow Nappy H
373	1183	REVERE 6" Cov Candy Dec H	424	341	PURITAN 5½" Shallow Nappy H 6 ea
374	1183	REVERE 7" Cov Candy H F	424A	397	COLONIAL CUPPED SCALLOP 5½" Nappy H
375	473	NARROW FLUTE W/RIM 6" Ftd cov	425	1252	TWIST Flamingo 8" Nappy H
		candy Dec. H	426	1201	FANDANGO 10" Ruffled Edge Nappy f
376	1183	REVERE 7" Cov Candy Windsor cutfH	427	433	GREEK KEY 8½" Round Nappy H
377	1503	CRYSTOLITE Puff Box & Cov H	428	397	COLONIAL CUPPED SCALLOP 10½" Nappy H
378	1503	CRYSTOLITE Puff Boc & Cov H	429	300	PEERLESS 4" Nappy Gold Edge 6 ea H
379	1503	CRYSTOLITE 7" Rd Cov Candy metal	430	1255	PINEAPPLE & FAN 10" Oval Nappy R
		lid, Candleblock finial H	431	1205	FANCY LOOP 8" Round Nappy f
380	1503	CRYSTOLITE 7" Rd Cov Candy metal	432	350	PINWHEEL & FAN Berry Set 8" Nappy &
		lid, Glass Flower finial H			4 ea 5" Nappies 2 f H
381	1252	TWIST Sahara Ice Bucket H	433	350	PINWHEEL & FAN 8" Nappy H
382	1509	QUEEN ANNE Ice Bucket Chateau cut	434	1255	PINEAPPLE & FAN berry set 8" rd nappy
383	1401	EMPRESS Ice Bucket Daisy cut H			& 6 4½" nappies gold dec
384	1401	EMPRESS Ice Bucket H	435	1295	BEAD SWAG berry set 8" rd nappy &
385	393	NARROW FLUTE 8" Ice Tub H			5 ea 4" nappies H
386	353	COLONIAL Marmalade no lid H	436	1252	TWIST Flamingo 8" Nasturtium bowl H
387	353	COLONIAL Rd Hotel cov Sugar H	437	1183	REVERE 9½" Oval Nappy cut H
388	341	PURITAN Pickle Jar Gold Dec H	438	1401	EMPRESS Flamingo 11" Ftd Floral
389	341	PURITAN Squat Horseradish Jar ClH			Bowl Old Colony etch
390	352	COLONIAL 24 oz Lavendar Jar cut H	439	3315	POLONAISE 5 oz Parfait etched band(10)
391	352	COLONIAL 2 Qt Crush Fruit Jar	440	3335	LADY LEG 4½ oz Parfait Victory Etch
		Dtd H C			5 ea 1 f H
392	1205	FANCY LOOP Cracker Jar no lid	441	1E92	OMEGA 12 oz Ftd Ice Tea Melody cut 2H
393	433	GREEK KEY Lid for 2 Qt Cr. Frt.f	442	3404	SPANISH Claret Olympiad etch 2 ea 1f
394	353	COLONIAL Cov Mustard H	443	3389	DUQUESNE Cocktail Everglade Cut 4ea
395	393	NARROW FLUTE Cov. Mustard w/	444	3368	ALBEMARLE Wine Trojan Etch 10 ea H
		paddle H	445	3390	CARCASSONNE Ftd Soda 6 ea 1 f
396	393	NARROW FLUTE cov Mustard H	446	3390	CARCASSONNE Sherbet 2 ea.

447	5024	OXFORD Saucer Champ. Maryland	491	315	PANELLED CANE Toothpick H
448		Cut 4 ea. H	492	473	NARROW FLUTE W/RIM Ind Slmond H
448	1E92	OMEGA Wine 6 ea H Wildflower Cut	493	150	BANDED FLUTE Whimsey Min Rose BowlH
449	6003	TEMPO 12 oz Ice Tea Wedding	494	1401	EMPRESS Sahara Ftd Nut Cup ea. H
		Band Cut 6 ea H	495	1401	EMPRESS Sahara 4½" Plate 3 ea H
450	300	PEERLESS 5 oz Ftd Egg Cup 6 ea H	496	1229	OCTAGON Mnglm Ind Almond DO H
451	341	PURITAN 4½ oz Low Ftd Sherbet	497	1252	TWIST Flamingo Ind Nut 5 ea H
		12 ea H	498	1401	EMPRESS Cobalt Ash Tray H
452	433	GREEK KEY 6 oz Cupped Sherbet	499	1401	EMPRESS Moongleam Ash Tray H
		2 ea H	500	1536	MILITARY HAT Ash Tray
452A	433	GREEK KEY 4oz Cupped Sherb.H	501	1536	MILITARY HAT Ash Tray
453	359	COLONIAL 3 oz Champ 4 ea H	502	1536	MILITARY HAT Ash Tray f
454	393	NARROW FLUTE 3 oz Cocktail 5 H	503	1536	MILITARY HAT Ash Tray
455	1055	Goblet & 1184 Goblet H f	504		NEWARK SESQUIAsh Tray
456	1184	YEOMAN 4 oz ftd Cocktail 6 H 1f	505	1503	CRYSTOLITE Box Lot, 3 Sm. Cov Cig
457	3390	CARCASSONNE Sahara ftd soda 7			Boxes, 1 Sm/no lid, 1 Lrg Lid 1 f
458	3390	CARCASSONNE Sahara Saucer Champ	506	1521	QUILT Cig Box no lid, & 4 Sm Ash
		4 ea H 2 f			Trays all damaged
459	3366	TROJAN Hawthorne Saucer Champ H	507	1508	CARD CASE Cut & Mono G R f
460	3316	BILTMORE Amber Parfait	508		Colonial Ash Tray & 434 Ash TrayHworn
461	3380	OLD DOMINION Ftd Grapefrt,	509	1489	PURITAN Sm Horsehead Cig Box F
		Moongleam Bowl DO H	510	1489	PURITAN Horsehead Ash Tray F
462	3409	PLYMOUTH Sahara Saucer ChampRARE	511	1533	WAMPUM Cig box & Cov
463	4090	COVENTRY Zircon Sherbet f	512	1533	WAMPUM Ash Tray F
464	10	OAK LEAF COASTER Sahara	513	1533	WAMPUM Ash Tray H
465	10	OAK LEAF COASTER Moongleam	514	1425	VICTORIAN Cig Box & Cov H
466	10	OAK LEAF COASTER Flamingo	515	1469	RIDGELEIGH Cig Box & Cov H f
467	1540	LARIAT 4" Rd Coaster 7 ea	516	1469	RIDGELEIGH Cig Box in metal holder H
468	1469	RIDGELEIGH Coaster f	517		361 Mnglm Ash Tray & Cig Holder no lid Hf
469	341	PURITAN Ind Salt 3 ea & Narrow	518	1425	VICTORIAN Ash Tray & Match Holder H
		Flute Ind Salt	519	1469	RIDGELEIGH 3" Bridge Ash Tray 5 H
469A	341	PURITAN Ind Salt	520	1503	CRYSTOLITE Sm Cig Box & cov H &
470	1220	PUNTY BAND Ind Salt 4 ea H 2f			3 Sq Ash Tray F
471	1469	RIDGELEIGH Ind Salt 12 ea H	521	1503	CRYSTOLITE Lg Cig Box & Cov H
472		TOY HORSEHEAD f	522	1503	CRYSTOLITE Lg Cig Box & Cov &
473	500	OCTAGON Marigold Frozen Dessertf			4 Rd Ash Trays H shows wear
474	1506	PROVINCIAL Ind Marmalade H f	523	1469	RIDGELEIGH Set of Bridge Ash Trays,
475	1506	PROVINCIAL Ind Marmalade H			Club, Heart, Spade, Diamond H
476	341	PURITAN Ind Butter H	524	1469	RIDGELEIGH 3" Sq Ash Trays 8 ea H 3f
477	1435	3" Ind Ash Tray H	525	1503	CRYSTOLITE 3" Sq Ash Tray 2 ea H
478	3481	GLENFORD Flamingo 3 oz Cocktail	526	1469	RIDGELEIGH Lot 4 coasters & ash trays
		DO 6 ea 1f			H all f
479	305	PUNTY & DIA POINT Salt & Pepper	527	3333	OLD GLORY Sherb Peacock Etch 3 H f
		Sterling Tops	528	3362	CHARTER OAK Flamingo Sherb H
480	19	Sahara Salt & Pepper Sahara Gl-	529	8029	PRINCESS LILY Parfait 2 ea
		ass Tops	530	3309	Finger Bowl Pied Piper Etch 8 ea f
481	588	COLONIAL Amber 3 oz Soda H	531		341 PURITAN Flared Parfait h
482	3357	KING ARTHUR Wine Mnglm Bowl H	532		341 PURITAN Saucer Champ
483	400	COLONIAL 2 oz Wine H	533	5003	CRYSTOLITE Ftd Soda H
484	2351	NATIONAL 1 oz Bar	534		359 COLONIAL Saucer Champ H
485	2351	NATIONAL 1 oz Bar	535	3389	DUQUESNE Wine
486	4054	CORONATION Dawn Screen Optic Old	536	4002	AQUA CALIENTE Cocktail Antarctic Etch
		Fashion	537		25 Puff Box & Cov. H
487	4054	CORONATION Dawn Screen Optic Old	538		16 Hair Receiver & Puff Box Cellu. Lids F
		Fashion	539		GRID & FAN Puff Box Silver Lid H
488	1486	COLEPORT 1½ oz Bar H	540		5 Puff Box Silver Lid H
489	242	2 oz Bar H	541		5 Puff Box Metal Lid H
489A	1469	RIDGELEIGH 1 oz Bar 6 ea H	542		16 Puff Box no lid H
490	300	PEERLESS Toothpick H	542A	1509	QUEEN ANNE Tray (for ind cr & sug),
					1540 Cr Mnglo cut, & Mayo Ladle

543	69 Flamingo Dauber for Cologne	564	341 PURITAN 12" Hotel Celery Tray H
544	433 GREEK KEY 9½" Shallow nappy H	565	1295 BEAD SWAG Sugar no lid
545	1503 CRYSTOLITE 12" oval Gardenia H	566	433 GREEK KEY Rd Hotel Sug w/lid H f
546	416 8" Rd Mnglm Soup Plate 2 ea H	567	1495 FERN 15" Hdl Plate
547	1485 SATURN Baked Apple 2 ea H	568	2 Plates 6½" Revere & 7½" Pied Piper
548	Lot of 3 Colonial nappiesH	569	351 COLONIAL Mustard no lid H
549	466 PANEL & DOUBLE PLEAT 7" nappy H	570	337 TOURAINE Sherbet H
550	350 PINWHEEL & FAN 5" low nappy H	571	1184 YEOMAN Moongleam Soda H
551	1506 PROVINCIAL Limelight 4" nappy H	572	IMPERIAL Amber Victorian Soda H
552	1469 RIDGELEIGH 5" Sq nappy H	573	IMPERIAL Amber Provincial Cr & Sug H
553	393 NARROW FLUTE 5" Lemon dish 2 H	574	IMPERIAL Verde Provincial 12" Gardenia H
554	1401 EMPRESS 6" Ftd Mint 2 Hdl H	575	IMPERIAL Car Slag Waverly Ftd Candy no lid
555	411 RIB & PANEL 6" Mint Dish H	576	VERLYS Water Lily 1 Lt Candles Pr not frosted
556	1253 PRESSED DIAMOND Flamingo Baked Apple & Underplate H	577	4 Misc. Ash Trays, 3 1469 & 1 1503 allX
557	1540 LARIAT Ind Nut 2 ea 1 - H	578	Mnglm Flower Frog & Cocktail Shaker Strainer & Stopper
558	9 8" Floral Bowl Cut H	579	Misc. Box
559	1519 WAVERLY 2 Pt. Candy Tray	580	Misc. Items (3) Incl Hurrricane Lamp Base
560	341½ COLONIAL Cream	581	Misc. Box
561	429 Flamingo Hotel Cream H	582	11 Misc. Heisey Lids, 1 Flam., 1 Mnglm. & Tumbler Cover
562	1503 CRYSTOLITE 3 Lt Candle Holder		
563	123 Moongleam 1 Lt Candle Holder		

MAIL BID INSTRUCTIONS

Mail bids accepted with checks for maxium amount. Mail bids are handled competitively and any difference refunded. Only items in mint condition will be subjected to mail bids. Please add \$8.00 per carton for postage and handling, \$10.00 west of Rocky Mountains. Checks should be made to SAM SCHNAIDT, AUCTIONEER and mailed to:

APPLE TREE AUCTION CENTER

1616 W. CHURCH ST.

NEWARK, OHIO 43055

PAID ADVERTISEMENT

DOOR PRIZES ★ IDENTIFICATION BOOTH ★ SPECIAL EVENTS
**SEVENTH ANNUAL DELAWARE VALLEY
 ANTIQUE & COLLECTIBLE**

◆ **GLASS SHOW & SALE** ◆

*Featuring Heisey
 and other collectible glass of the late 19th and 20th centuries
 at the*

WHEATON MUSEUM OF AMERICAN GLASS

10th & "G" Sts., Millville, N.J. - near Rts. 47, 49, & 55

Saturday & Sunday
 October 8th & 9th
 10 a.m. to 5 p.m.

\$3.50

(\$2.50 with ad)



Wine & Cheese Preview
 Friday, October 7th
 7 p.m. to 10 p.m.

\$15.00

(free to museum members)

Sponsored by the Heisey Heritage Society

EMMA & MANNY KLAWANS PH: 301-588-2755
 2308 ASHBORO DRIVE Mint, * Marked
 CHEVY CHASE, MD 20815 P & I Extra

- #5072 ROSE Ice Tea, Rose Etch (6)* ea...\$42.50
- #5072 ROSE Goblet, Rose Etch (3)* ea... 42.50
- #5072 ROSE Sherbet, Rose Etch (1)..... 35.00
- #5072 ROSE Sherbet, No Etch (4) ea..... 20.00
- #1519 ROSE Etch Salad Plate 8" (5) ea.. 22.50
- #1540 LARIAT Punch Cups* (22) ea..... 7.00
- #1567 PLANTATION Punch Cups* (17) ea... 12.00

SASE FOR HEISEY & DUNCAN MILLER WANTS.

THE COLLECTOR'S STOP PH: 617-774-1139
 4 BROOKVALE DRIVE Exc. Cond.
 DANVERS, MASS. 01923 Otherwise
 * Marked Stated - S & I
 Extra.

- #1401 EMPRESS Mayo*5-1/2", Alexandrite.\$235.00
- #1401 EMPRESS Mayo, Sahara..... 50.00
- #1401 EMPRESS 9" Ftd. Vase, Alex*Mint. 475.00
- #3389 DUQUESNE 3 oz Cocktail Tangerine 185.00
- #3389 DUQUESNE 12 oz Ftd. Soda, Tang.. 180.00
- #3397 GASCONY 5 oz Juice, Tangerine... 195.00
- # 441 GRAPE LEAF Ash Tray, Moongleam.. 85.00
- #1506 PROVINCIAL 4-Pt.Relish, Zir. 10" 185.00
- # 160 LOCKET ON CHAIN Butter & Cover.. 165.00

ALL ITEMS SUBJECT TO PRIOR SALE

ADAMS & EVE'S ANTIQUES PH: 914-831-3612
 EVE & BILL ADAMS P & I EXTRA
 29 MAPLE STREET
 BEACON, NY 12508 * Marked

- #4085 KOHINOOR, Coronation Etch,
 Goblets (8) ea.....\$ 30.00
- #4085 KOHINOOR, Coronation Etch
 Champagnes (8) ea..... 15.00
- #4085 KOHINOOR, Coronation Etch Wines
 (8) ea..... 30.00
- #4085 KOHINOOR, Coronation Etch
 Cordials (4) ea..... 100.00
- # 305 PUNTY & DIAMOND POINT Compote,
 8-1/4" High, 8-1/2" Dia..... 85.00
- #4002 AQUA CALIENTE 4 oz. Cordial, Fox
 Chase Etch*..... 45.00
- #1252 TWIST, Marigold (Mint Cond.) 7"
 High Comport*..... 80.00
- #3060 PENN CHARTER Goblets, Checkboard
 Optic, Flamingo* (6) ea..... 25.00
- #3060 PENN CHARTER Sherbets, Check-
 board Optic, Flamingo (6) ea... 10.00
- #3390 CARCASSONE Soda, Flamingo, 8 oz,
 (5) ea..... 12.00
- #3380 OLD DOMINION Goblets, Sahara*
 (12) ea..... 25.00
- #3380 OLD DOMINION Sherbets, Sahara
 (12) ea..... 12.00
- #1184 YEOMAN Plates, Sahara, 6" (12)
 One Chipped..... 60.00

H & R DIAMOND H PH: 614-279-0390
 HELEN - BOB RAREY After 5:30 P.M.
 1450 WHITE ASH DRIVE Shipping & Ins. Extra
 COLUMBUS, OHIO 43204 * Marked

- #1183 REVERE Condiment Tray*.....\$ 17.50
- #1184 YEOMAN Cov. Sugar*, Flamingo..... 22.50
- #1255 PINEAPPLE & FAN 9" Berry Bowl,
 Gold Decor..... 67.50
- #1183 REVERE 8" Round Plate, Cobalt.... 22.50
- #1401 EMPRESS 8" Square Plate,* Sahara
 (8) ea..... 17.50
- #1401 EMPRESS 6" Square Plate*, Sahara
 (2) ea..... 12.50
- #1401 EMPRESS Cup & Sq. Saucer*, Sahara
 (8) ea..... 27.50
- #1401 EMPRESS D/F Cream & Sugar*,
 Sahara Set..... 65.00
- #1401 EMPRESS D/F 8" Vase*, Sahara..... 110.00
- #1401 EMPRESS 8" Sq. Plate*, Alexand-
 rite (4) ea..... 65.00
- #1495 FERN 2-lite, #508 Floral Etch pr. 45.00
- #1506 WHIRLPOOL Rd. Candleblock (2) ea. 12.50
- #1540 LARIAT Coaster (6) All..... 65.00
- #1559 COLUMBIA 12" Floral Bowl..... 22.50
- #3355 FAIRACRE 10" Vase*, D/O..... 52.50
- #3366 TROJAN 8 oz. Goblet*, Flamingo
 (5) ea..... 22.50
- #3381 CREOLE 6 oz. Champagne, Sahara
 Bowl..... 35.00
- #3408 JAMESTOWN 9 oz. Goblet*,
 Narcissus Cut..... 37.50
- #5024 OXFORD 1 oz. Cordial*..... 35.00
- HEISEY BY IMPERIAL - HCA '79 CORDIAL.... 45.00

FOREVER HEISEY PH: 614-344-5955
 JANICE A. THRAN Shipping & Ins. Extra
 1663 LONDONDALE PARKWAY
 NEWARK, OH 43055 * Marked

- #1401 EMPRESS Ind. Nut, Flamingo*.....\$ 22.50
- #1401 EMPRESS Ind. Nut, Sahara..... 19.00
- #2401 1-1/2 oz Shot, Tally Ho Etch 2 ea 25.00
- #2401 10 oz Soda, Tally Ho Etch (6) ea. 25.00
- #2401 10 oz Soda, Fox Chase Etch (2) ea 45.00
- #5038 ROOSTER STEM Cocktail..... 49.00
- #4225 COBEL, 1 qt. Cocktail Shaker,
 Rooster Head Stopper..... 70.00
- #1519 WAVERLY Cr/Sg, Orchid Etch* set.. 49.00
- #1519 WAVERLY Cig. Holder & Cover,
 Orchid Etch*..... 100.00
- #1447 ROCOCO 5-1/2" Ftd. Cheese, Orchid
 Etch*..... 60.00
- #5024 OXFORD 5 oz Ftd. Juice, #1055
 Westminster Cut*..... 30.00
- #3381 CREOLE, Parfait, Alex. Bowl,
 Crystal Stem & Ft. (2) ea..... 140.00
- # 301 10-1/2", 2 light, Candelabra,
 Sahara* Pair..... 695.00
- #1503 CRYSTOLITE, 4" sq. Hurricane
 Blocks (no shades)*...Pair..... 45.00
- #1567 PLANTATION, 1-light Candleblock.. 45.00
- #1503 CRYSTOLITE 7" Praline, Hld..... 30.00
- #1184 YEOMAN, French Drsg. Boat, Flam.* 40.00
- #4085 KOHINOOR Sher/Coronation Etch 2ea 12.50
- #3480 KOORS, 3 pt. jug. Flam. D/O..... 85.00
- # 341 PURITAN Cordial* (3) ea..... 22.50
- #1508 Card Box - 2 pcs. (Ash Tray)..... 45.00

ROBERT H. DONOVAN PH: 904-677-1732
 P.O. BOX 4103 P & I Extra
 ORMOND BEACH, FL 32074 S.A.S.E.

- # 300 SHAM VIPg.87, 3/4 oz* (3) ea....\$ 15.00
- #1536 Gen. Cap (2) *.....ea..... 32.50
- #1201 FANDANGO Toothpick..... 70.00
- # 31 Candlestick*....pr..... 52.50
- # 5 Candlestick*.....pr..... 45.00
- #1295 BEADED SWAG Souvenir Hld. Mug
Pan-AM Expo, Flashed..... 55.00
- # 351 Violet Vase? 7/8" H VII Pg. 71*. 12.00
- #1503 CRYSTOLITE 3-1/2 oz Cocktail*
(3) ea..... 6.00
- #1205 FANCY LOOP Punch Glass V IV pg.
79 RARE..... 60.00
- # 300 BAR* 2-1/2 oz..... 12.00
- # 300 COLONIAL Punch Cup..... 3.00
- # 150 FANDED FLUTE Toothpick or 2 oz
Bar* (2) ea..... 42.50
- #1567 PLANTATION 5 oz Saucer Champagne* 15.00
- #1567 PLANTATION 5 oz Saucer Champagne
(Short)..... 10.00
- # 300 PEERLESS 4-1/2 oz Claret*.....
- #1405 IPSWICH 5 oz Soda (4) ea..... 10.00
- # 150 BANDED FLUTE Tall Champagne*
(2) ea..... 15.00
- HEISEY DONKEY..... 170.00
- #3390 CARCASSONE ice Tea 12 oz With
#451 Etch (6) 65.00
- #3355 FAIRACRE 10 oz. Goblet Diamond
Optic, Moongloam Foot (4) ea.... 60.00
- #3411 MONTE CRISTO 9 oz Goblet With
#458 Etch (2) 35.00

GRAFTON HOUSE ANTIQUES PH: 214-943-1621
 P.O. BOX 223832 5 Day Return Priv.
 DALLAS, TEXAS 75222 10% S & I

* Marked

- #3350 WABASH 10 oz Goblet W/Pied
Piper Etch* (8) ea.....\$ 18.00
- #3350 WABASH Champagne W/Frontenac
Etch* (5) ea..... 15.00
- # 300 COLONIAL Puff/Hair Receiver,
Celluloid tops*..pr..... 60.00
- #1472 PARALLEL QUARTER Floral Bowl*... 20.00
- CARVING KNIFE REST W/Cutting*... 35.00
- #1E92 OMEGA 4 oz. Wines With Moonglo
Cutting* (8) ea..... 12.00
- #1150 COLONIAL 5" Plate W/Sterling
Rim*..... 35.00
- #1401 EMPRESS tall compote, Sahara*... 40.00
- #1509 QUEEN ANN 10" Triplex Relish*
With #872 Marimont Cutting..... 55.00
- # 10 MUDDLER..... 10.00
- #3330 HANOVER 11 oz. Goblet With
Sahara Flash* - 1 only..... 35.00
- #1401 EMPRESS Tall Compote With #3390
Stem/Foot*..... 65.00
- #1401 EMPRESS Hld. Fruit Bowl,
Flamingo*..... 65.00
- #1445 GRAPE 1-lite Candlestick 11"
Tall* Pair..... 165.00
- #1503 CRYSTOLITE 3-lite Candlestick
Pair..... 35.00
- # 433 GREEK KEY Tall Footed 5" Jelly*, 50.00

Classified Ads

WANTED: Buying Cambridge Rosepoint, Heisey Rose & Orchid, Fostoria etched dinnerware and Depression Glass. Also glass figures and unusual glass pieces. NADINE PANKOW, 207 S. Oakwood, Willow Springs, IL 60480
 PH: 312-839-5231

FOR SALE: Most Colors, Most Patterns, 2000 pieces of Heisey to choose from. S.A.S.E. Please. No list available, Write wants. PEGGY'S ANTIQUES, Box 367, Spavinaw, OK 74366
 PH: 918-589-2859

FOR SALE: Heisey Airedale, Crystal, 5-1/2" high. - \$450.00. Has small flake on base of rear foot, removable by experienced glass repairer without loss of value to figure. NICHOLSON, 3539 Crestnoll, Cincinnati, Ohio 45211. PH: 513-662-8893

FOR SALE: 12 - Heisey 2 oz. Wine #3408 Jamestown stem with #497 Rosalie etch. - \$12.00 each. TONY WANGEROW, 10530 Chaney, Downey, CA 90241 PH: 213-923-6633.

FOR SALE: Heisey, selling choice miniatures. New list each Quarter. Large double SASE, Please. CLIFF HARRALSON, 1426 W. Highland, Springfield, MO 65807

FOR SALE: Heisey - Rare Console Set With #503 Minuet Etch. #1511 Toujours 13" Bowl, Footed with 2 134 Candles - \$190 for set. Crystal #1433 Thumbprint & Panel Console set with 2 double candles and 11" bowl (small flake inside bottom) \$90. set. #339 Continental 10-1/2" nappy*, \$60. #1401 Empress 11" dolphin footed bowl w/Normandie Etch - \$52. Plus postage and Ins. WENDELL S. AVERY, 2112 First Street, Jackson, MI 49203
 PH: (517) 783-4075.

FOR SALE: HEISEY - 6 Cobalt Carcassone Cig. Holder - CAMBRIDGE - 6" Blue Db1. Candlestick, 4" Aqua Star Candlestick, Lorna Etch Fruit Bowl Pink Signed - R. ELDER, 7545 N.F. Blvd. Niagara Falls, NY 14304 PH: 716-283-0464
FOR SALE: Hundreds of Heisey pieces. Send S.A.S.E. for updated list. M & J WALTER ANTIQUES, c/o Sir Speedy, 431 Main Street, Woburn, MA 01801.

DONALD P. BEAN PH: 617-473-0561
 36 HARDING STREET P & I 10%, Excess Ref.
 MILFORD, MA 01757 * Marked

- #1401 EMPRESS Triplex Relish*
Orchid Etch..... \$ 32.50
- # 353 MEDIUM FLAT PANEL Toothpick
Tray*..... 35.00
- #1405 IPSWICH 4-1/2" Finger Bowls*
4 for..... 40.00
- #1469 RIDGELEIGH 5 CPT Star Relish*.. 25.00
- # 433 GRECIAN BORDER 12" Celery*..... 40.00
- # 16 CANDLESTICKS 9" Pr..... 110.00
- #1503 CRYSTOLITE Ftd. Cig. Holder*... 20.00
- #1252 TWIST Oil & Stpr*, Mglm. 2-1/2oz 75.00
- #1252 TWIST Oil & Stpr.* Mglm. 4 oz.. 70.00

Route 202
Lahaska, PA 18931
(215) 794-7800

LYNNE
DOLL



ART'S
HOUSE

P.O. Box 54-6014
Miami Beach, FL 33154
(305) 861-7700

"HEISEY OUR SPECIALTY"

***Dear Heisey Collector and Dealer,
We're Heading Your Way!! Heisey Animals,
Lovely Old Patterns, and a Rainbow of Colors, will
be coming along with us.
We'll be at the following shows.***

OCT. 8 & 9 - WHEATON MUSEUM - MILLVILLE, NEW JERSEY

ONLY BECAUSE OF DOCTORS ORDERS, WE ARE SELLING OUR ENTIRE HEISEY GLASS INVENTORY AND PART OF OUR PRIVATE COLLECTION, ONE PIECE OR EVERYTHING.

WE'LL BE IN OUR SHOP IN LAHASKA, PENNA., FROM NOW THROUGH NOVEMBER. BY APPOINTMENT OR BY CHANCE.

***See you soon,
Lynne and Art***



1983 EDITION!

HEISEY'S GLASSWARE
OF DISTINCTION

By Mary Louise Burns

Condensed and updated!
Contains all major tableware
patterns with pictures for
easy identification.

Current price list included

Order direct from author
\$11.95 pp
MARY LOUISE BURNS
P.O. Box 1931
Grants Pass, OR 97527

Individual price lists
available for Heisey's
Orchid Etch, Rose Etch.
Animals & Verlys @ \$1.50 ea.
plus large SASE.

GLASS
review

ESTABLISHED 1971

The GLASS REVIEW Magazine is for every-
one who studies, collects or sells glass.
Whether your glass interests lean toward
the early 1900's -- or the depression era--
or with today's limited glass items, the
GLASS REVIEW covers it all!

Articles -- price reports -- original
catalog documentation -- shop directory --
research and reproduction news -- trademark
information -- glass book releases -- what's
new on the market -- a large variety of
glass ads (on both old and new glass) --
plus much more.

Enclose payment and mail to:
GLASS REVIEW, P.O. BOX 542, MARIETTA,
OH 45750

10 'big' yearly issues

68 pages or more

\$12.50 -- one year

We assume no responsibility for errors in these ads after the first printing...Editor. For changes in ads during the year, please send \$1.00 per line.

A DOOR ANTIQUES

Phone: (216)381-3008
South Euclid, Ohio 44121
Heisey My Specialty

A DOOR ANTIQUES

Phone: (216)381-3008
South Euclid, Ohio 44121
Heisey My Specialty

ALL-HEISEY AUCTIONS

Consignments welcome
OFF-BROADWAY ANTIQUES
121 S. Prospect St.
Granville, Ohio 43023
Sam Schnaidt: (614)587-2083 shop
(614)587-0052 residence

ANN'S GIFTS & ANTIQUES

105 W. Main St. Hebron, Ohio 43025
Intersection of Rts. 40 & 79
Next door to Daisy Queen
Daily 1:30 - 5:30 Closed Thursday

ANTIQUE JUNCTION

540 N.E. 'E' St. (off I-5)
Grants Pass, Oregon 97526
(503)479-8575 or (503)582-4067
Hours: Wed-Sat 11 to 5

ANTIQUES- THE SHULTZES

206-208 East Main St.
Newmanstown, Pennsylvania 17073
15 Miles west of Reading, Pa.
Phone: (215)589-2819

AVERY'S QUALITY ANTIQUES

2112 First St.
Jackson, Michigan 49203
Phone: (517)783-4075
Heisey, Other glass & china
Shows, or by appointment

B & B HEISEY & COLLECTIBLES

B. Whaley
300 International Dr.
Pataskala, Ohio 43062
By appointment; Phone: (614)927-1557

C & J ANTIQUES

Cole & Jean Miesner
Box 45, 72 Whig St.
Newark Valley, New York 13811
Phone: (607)642-9905

CHARLES & MILDRED FISHER

Heisey, Degenhart, Imperial
Antiques, Collectibles, General Line
991 Idlewilde, Newark, Ohio 43055
Phone: (614)522-5398

DAVE'S ANTIQUES

Specializing in Heisey
Shows & appointments
Tampa, Florida
Phone: (813)876-0580

DEL'S DOING

Box 188, 10327 Main
Richmond, Illinois 60071
Heisey - Cambridge glass
Furniture & Jewelry

DIAMOND H PLUS

George & Eileen Schamel
Route 3, Box 419
Boonsboro, Maryland 21713
Appointment or mail order
Phone: (301)432-6285

DIE KUNST GALLERIES & ANTIQUES

Box 329, 725 Front St.
Leavenworth, Washington 98826
Vel & Andy Andress
Phone: (509)548-7856
Specializing in Heisey

ELIZABETH BASSETT CASON

401 32nd St. W.
Bradenton, Florida 33505
Mail order- List
Phone: (813)748-0851

FOREVER HEISEY

Janice Thran
1663 Londondale Parkway
Newark, Ohio 43055
Phone: (614)344-5955
GERT'S GLASS
Gertrude & Russell Swetnam
1926 Saratoga Dr., Adelphi, Maryland 20783
Heisey & Duncan
Phone: (301)434-5113

GOLDSBERRY'S ANTIQUES

Kalamazoo, Michigan
Shows only- Buy & Sell
Heisey a specialty
Phone: (616)381-3013

GREEN ACRES FARMS

Antiques, crystal glass & collectibles
2678 Hazelton-Etna Rd. SW. (S.R. 310-N)
Pataskala, Ohio 43062
Sat or Sun PM. or call (614)927-1882

H & R DIAMOND H

Helen & Robert Rarey
1450 White Ash Dr.
Columbus, Ohio 43204
Phone: (614)279-0390 after 5:30

HAPPY HAVEN ANTIQUES

Mary Dumke
41319 Rattlesnake Rd.
Grass Valley, California 95945
Phone: (916)273-9450

HAPPY HEISEY HUNTERS

Miniatures- Dbl.SASE for list
Cliff & Helen Harralson
1426 W. Highland, Springfield, Mo 65807
Phone: (417)883-2449

HARRISON'S ANTIQUES

Heisey, Cambridge, Duncan
26 Johnston's Lane
Mercersburg, Pennsylvania 17236
Shows, mail, by appt. Phone: (717)328-2451

HEISEY PUBLICATIONS

Box 102, Plymouth, Ohio 44865
All Heisey books I-II-III-IV
Heisey Newscaster 32 pg. quarterly
\$6.00- Back issues \$4.00

JOYCE'S ANTIQUES

Specializing in Heisey, Cambridge,
Verly's & American glass
P.O. Box 114
Albertson, New York 11507
Phone: (516)499-3396

LAST CHANCE ANTIQUES

P.O. Box 502, Dania, Florida 33004
Mail orders- Matching service
Send us your want lists
Phone: (305)467-6356 Day or Evening

LYNNE & ART'S GLASS HOUSE

Heisey our specialty
P.O. Box 54-6014
Miami Beach, Florida 33154
Phone: (305)861-7700 or (305)895-5666 or
Route 202
Lahaska, Pennsylvania 18931
Phone: (215)794-7800

MOSTLY HEISEY

Rhoda Curley
16 Clayton Place
Albany, New York 12209
By appt., Phone: (518)482-6272

MOUNDBUILDERS ANTIQUES

Irene Rauck
1138 Moundview
Newark, Ohio 43055
Phone: (614)344-6043
Heisey & animals, General antiques

OX YOKE ANTIQUES

Don & Norene Walzer
General Line & Heisey
675 Ogden-Parma Tr. Rd.
Spencerport, New York 14559
Phone: (716)352-3959

PATTON HOUSE

Heisey, Duncan Miller
Rocky's Mall, I-81 & US 11
Weyer's Cave, Virginia 24486
Phone: (703)967-1181

PEGGY'S ANTIQUES

Ernie & Peggy Cox
2000 pcs. of Heisey in stock
P.O. Box 367
Spavinaw, Oklahoma 74366
By appt. of by chance, Phone: (918)589-2859

R & L ANTIQUES-SAN FRANCISCO

Shows only, Always lots of Heisey
Member of Golden Gate Heisey Club

P.O. Box 3614
Daly City, California 94015
Phone: (415)621-6693 Russ & Lee

RAMBLING LANE ANTIQUES

Keith & Evelyn Hoover
Featuring Heisey & other fine glass
Rt. 4, Box 1005
Rhineland, Wisconsin 54501
Phone: (715)282-5019

RAY ZIEGLER

Glass repair
2265 Innis Rd.
Columbus, Ohio 43224
Phone: (614)882-8446

SCHWAN'S ANTIQUES

Rt.1, Box 175B, John Tyler Highway
Williamsburg, Virginia 23185
Phone: (804)229-7873 Shop & Shows

SUM OF LIFE

Elaine & Frank Husted
P.O. Box 102
Phoenixville, Pennsylvania 19460
Phone: (215)935-2962

T & S ANTIQUES

Tom Martin & Steve Roderick
Specializing in Heisey
New Rochelle, New York
Phone: (914)235-9632

THE WOODEN SHOE

Antiques & Collectibles
Glass furniture, Estates
Jim & Sheri Van Es, By appt.
810 Elden
Herndon, Virginia 22070
Phone: (703)435-9045

TRUDY MILLER ANTIQUES

China & crystal matching
Heisey a specialty
P.O. Box 740548, Dallas, Texas 75374
Phone: (214)783-9920

WILLEY'S ANTIQUES & MUSEUM

11110 Cannon Rd., Frazeyburg, Oh 43822
16 miles east of Newark
Specializing in glass
Phone: (614)828-2557

FIESTA FENTON PADEN CITY ART GLASS

"UP TO PARR"
PROMOTIONS
PRESENTS

THE
FIRST SAN FRANCISCO

ALL ANTIQUE & COLLECTABLE
With Elegant Glassware from the Depression Era

GLASS CHINA & POTTERY SHOW & SALE

FABULOUS
DOOR PRIZES EVERY HOUR

Sat October 22, 1983 10am-6pm
Sun October 23, 1983 10am-5pm

COME TO THE CITY & ENJOY

AT
THE HALL OF FLOWERS
GALLERY

9TH AVE & LINCOLN WAY
INSIDE GOLDEN GATE PARK
(Out of State Dealers Exhibiting)

Admission \$2.50

For Information Contact
"UP TO PARR"
592 Guerrero Street
San Francisco, Ca. 94110
(415) 552-9337

REFERENCE BOOKS AND A WHOLE LOT MORE
GOOD FOOD

MARK SCHLIESMANN
Making His West Coast Debut

HEISEY FOSTORIA CAMBRIDGE TIFFIN DEPRESSION GLASS HALL IMPERIAL MORGANTOWN

TIFFANY CARNIVAL DRESDEN MIESSEN WEDGEWOOD CRYSTAL BAUER NEW MARTINSVILLE
"DEER TRAIL ANTIQUES" MICHIGAN
Bring Your Glass for Repair by the Experts - EBERHARDT'S

HEISEY, DUNCAN, PATTERN GLASS, CARNIVAL GLASS, CAMBRIDGE,

ALL GLASS OF ALL PERIODS

2nd ANNUAL SHOW & SALE

Sponsored by the

Connecticut Heisey Collectors Club

SATURDAY
NOV. 5, 1983

SUNDAY
NOV. 6, 1983

10:00 a.m. to 5:00 p.m. 11:00 a.m. to 5:00 p.m.

BENEFIT OF THE NATIONAL

HEISEY MUSEUM

Knights of Columbus Hall

Hobart Street — Off Route 10

Southington, CT

ADMISSION — \$1.25

IMPERIAL, FENTON, FOSTORIA, NEW MARTINSVILLE, WESTMORELAND, DEPRESSION GLASS, ETC., ETC.

IMPERIAL, FENTON, FOSTORIA, NEW MARTINSVILLE, WESTMORELAND, DEPRESSION GLASS, ETC., ETC.

HEISEY, DUNCAN, PATTERN GLASS, CARNIVAL GLASS, CAMBRIDGE,

National Heisey Glass Museum

HOURS

MARCH thru DECEMBER
Tuesday thru Sunday--1 to 4 p.m.
JANUARY and FEBRUARY
Wednesday, Saturday and Sunday
1--4 p.m.

Other times by appointment
Closed Mondays and Holidays

The museum is fully air conditioned for your
summer comfort.

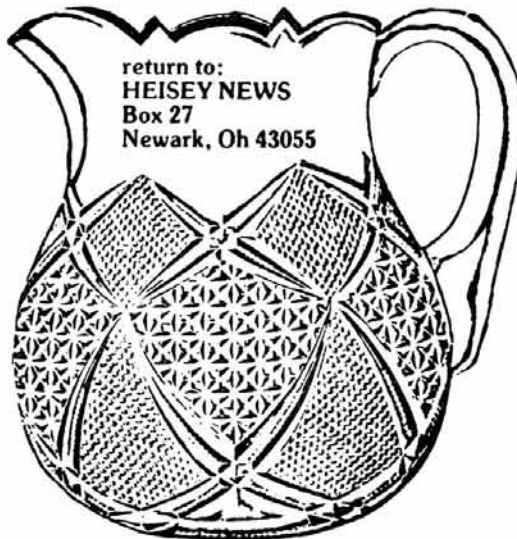
ADMISSION

Adults --- \$1.00

Children under 18 free if accompanied
by parents.

No charge for members of H.C.A.

Owned and operated by
HEISEY COLLECTORS of AMERICA, INC.
Box 27
Newark, Ohio 43055
Museum phone: (614) 345-2932



return to:
HEISEY NEWS
Box 27
Newark, Oh 43055

FIRST CLASS MAIL
U.S. POSTAGE
PAID
PERMIT 34
Reynoldsburg, Ohio 43068

FIRST-CLASS MAIL

