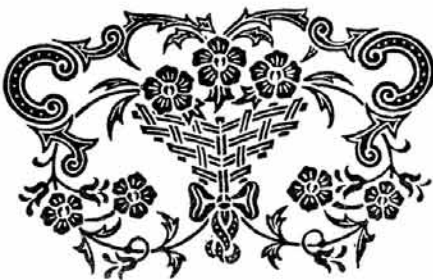


HEISEY NEWS

OFFICIAL PUBLICATION HEISEY COLLECTORS OF AMERICA
 © Heisey Collectors of America, Inc. 1983
 All Rights Reserved

VOLUME XII NO. 8 AUGUST, 1983

ISSN 0731-8014 ONE DOLLAR



No. 493 Swingtime Etching
1937 - 1938

You are cordially invited to attend HCA's 11th Annual Souvenir Dinner on September 10, 1983.

This is the fun affair of the year and a real chance to get acquainted with other members. In the beginning, the dinner was usually held in a tent either at the home of Sam and Heidi Schnaidt or at the museum. When the tent rental became so high as to be prohibitive we moved the dinner to a club in Reynoldsburg. After two years there we moved it back to Newark last year and had a very nice dinner at Moundbuilders Country Club.

Many people said they had enjoyed it much more in the tents and would like to try something to make it more informal and more "our own" again. So, this year it will be held on September 10th at Sam's "Apple Tree Auction House" with a donation bar in a tent outside to lend a little atmosphere.

The dinner will be catered. The cocktail hour will be from 6:30 to 7:30. A program is being planned to fit the theme of "Swingtime", the etching on the cordial. There will be no more than 250 of these etched.

This is the sixth and last of a set of cordials in the 5024 Oxford pattern made by Imperial. All have been marked HCA and dated. These are even nice enough to add to any cordial collection since they all have copies of real Heisey etchings. Carl Sparacio designed the first two and after the Lotus Glass Company, which etches them, lost their plate maker, Gary Chaconas, an HCA member who is an engraver for the U.S. Bureau of Engraving, has made the last four plates entirely by hand. The other five etchings are Orchid, Heisey Rose, Old Colony, Titania and Coronation, in that order, 1978-1982.

We hope you will come or at least order a cordial because this is a major fund raiser for the museum and a much needed one, especially now that we have at least partially lost our source for items to sell.

Orders should be mailed no later than August 29th to insure a dinner reservation.

There will also be a Mini-Show the same day at the Newark Catholic High School on West Church Street. There is information on this on Page 14 of this issue.

We hope to see many of you on September 10th. We know you'll have a good time.

Frank Frye & Sam Schnaidt,
Dinner Co-Chairmen
Dick Smith, Project Committee Chairman
Tom Bredehoft, President



President Bob McClain and Vice-President Tom Bredehoff burn the mortgage for the office building at the Annual Meeting. (Tom was elected president later in the day.)



Lucile Kennedy and Emcee Frank Husted chatting at the banquet head table.

Lucile is the assistant to the president of Viking Glass Company.

DATES TO REMEMBER

SEPTEMBER 10, 1983 - SOUVENIR DINNER & MINI-SHOW

DECEMBER 9, 1983 - CHRISTMAS DINNER GRANVILLE INN

MARCH 9 & 10, 1984 - BENEFIT AUCTION

JUNE 14 - 17, 1984 - CONVENTION

Pres. TOM BREDEHOFT 614-745-1014
 Vice Pres. JIM KENNON 216-282-7711
 Secy. RAY ZIEGLER 614-471-6446
 Treas. DICK MARSH 614-366-5608
 Exec. Dir. LOUISE REAM 614-344-2377

HEISEY NEWS--P.O. BOX 27--NEWARK, OHIO 43055

Editor: LOUISE REAM

Box 27 Newark, Oh. 43055 614-345-2932

Ass't Editor: Neila Bredehoff

Box 27 Newark, Oh. 43055 614-345-2932

Published monthly and mailed from Reynoldsburg, Ohio 43068.

\$12.00 per year - \$1.00 per copy.

Back issues

year (12 issues). Each Volume - \$9.00

Volume V, VI, VIII, IX, X & XI.

Heisey Collectors of America, Inc. is a non-profit corporation with tax exempt status. Owners and operators of National Heisey Glass Museum, 6th. and Church Streets, Newark, Oh. Open daily 1-4p.m. March through December except Mondays and holidays. January and February - Wednesday, Saturday and Sunday 1-4 p.m. Other times by appointment. Members admitted free.

Club membership (includes 12 issues of HEISEY NEWS and participation in all club activities) \$12.00 per year plus \$2.00 each for additional family members in same household who wish a membership card. For VOTING MEMBERSHIP add \$25.00 one time only fee.

When requesting information, please enclose a self-addressed stamped envelope (SASE).

ADVERTISING - Send all ads to: Advertising
 c/o Janice Thran
 P.O. Box 27
 Newark, Oh. 43055

RATES:

DEALERS' DIRECTORY - 5 lines-\$18.00/year

CLASSIFIED - 10¢/word. \$1.00 minimum. Abbreviations and initials count as words.

DISPLAY:	MEMBERS	NON-MEMBERS
1/8 pg (9 items)	\$12.00	\$20.00
1/4 pg (20 items)	\$20.00	\$30.00
1/2 pg (20 items)	\$35.00	\$45.00
1 pg (50 items)	\$60.00	\$75.00

We cannot double-column ads. No VERTICAL 1/2 pg. ads. ALL ADS MUST BE PREPAID. Ad copy must be received by the 5th. of the month to be included in that month's NEWS. Ads containing reproduction will not knowingly be accepted unless clearly stated (i.e. Heisey by Imperial, etc.) HEISEY News assumes no responsibility for false advertising or misleading information. In the event of typographical error, the incorrect portion of the ad will be run in the following issue, but HEISEY NEWS assumes no further liability.

Opinions expressed in articles are those of the authors and not necessarily those of HCA. Editorial Staff reserves the right to edit or refuse any material submitted for publication. Send all letters and articles to the EDITOR. Letters to columnists should be sent to the club address and will be forwarded.

NOTES FROM YOUR PRESIDENT. . .

Last month I promised a list of what Imperial has been making in the way of Heisey animals. Several people had mentioned to me at the Convention that they didn't know what Imperial was making and I realized that I didn't either. I am listing animals made in crystal, amber and ultra blue. These are the only problem colors. Many of these were feasibility studies and may exist in very limited numbers; others were production pieces. These are not all recent; some were made as long ago as 1977.

AMBER:

Ringneck pheasant
Clydesdale
Flying Mare
Show Horse
Giraffe
Lion Trinket Box (Waverly)
Hen

CRYSTAL:

Airedale
Hen
Baby Elephant
Tiger Paperweight
Lion Trinket Box (Waverly)
Dinky Do (Minuet Girl)
Filly, Head Forward
Filly, Head Back
Madonna, #2 (Large)

ULTRA BLUE:

Three Colts (Fortney)
Medium Elephant
Airedale
Donkey
Sow
Goose, Wings Half

The one pig I've seen seemed to be better blue than Imperial's ultra blue. There is talk that someone other than Imperial made them in the Heisey mold for Mirror Images. The Collectors' Guild had Imperial make for them the following items:

- #1509 dolphin footed jug in green
- #1509 dolphin footed floral bowl in yellow
- #1509 dolphin footed candlesticks in yellow
- #1413 Cathedral vase in pink
- #1503 Swan nut (master) in ultra blue
- #1519 Waverly lion trinket box in amber

These Collectors' Guild items should be marked with the concentric CG in a circle. If there is a rough or irregular area where the mark should be, beware. Along those lines, the hens Imperial made in one of their colors appear to have had the ALIG mark ground off according to some people I have spoken with. All of those seen by this individual have a silver and blue Heisey by Imperial sticker on their right side. If this sticker is removed there is found a mechanically polished area underneath it. They seem to have come from Imperial in this way.

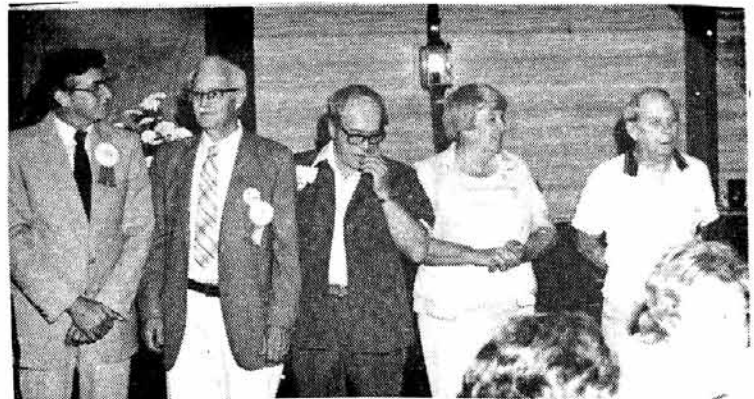
Other animals have appeared in nut brown, sunshine yellow, off-color verde, black;

red, pink, charcoal, jade, milk glass, light blue, mint green and of course, slag - both caramel and red. Since Heisey never made any animals in any of these colors, there should be no confusion between them and authentic Heisey production.

If you are considering purchasing an animal, and have some doubts about its authenticity, any reputable dealer should agree to send it to the Museum for a certificate of authenticity.

Still on Imperial glass: Last March, in the auction, a few pieces of Imperial were inadvertently included in the auction, contrary to published club policy. Between March and June, several members asked about this. Subsequently the Board of Directors reaffirmed this policy. There will be no Imperial glass in the All-Heisey Museum Benefit Auction this coming year.

Next year's Convention will be held on June 14, 15, 16 and 17. Mark your calendars, come to Newark and enjoy the "Finest in Glassware...Made in America by Hand."



Newly elected Board Members L to R. Bob McClain, Lloyd Caswell, Frank Husted, Butch Jones, and Percy Moore.

ENDOWMENT FUND UPDATE

PERSONAL DONATIONS:

Delaware Valley Dry Cleaners.....	\$ 15.00
Mrs. Dwight A. Garrett.....	25.00
Lucille Pringle.....	100.00
I. Stanley DeGroot.....	100.00
Margaret Jennings.....	100.00
Wm. Alwyn & Peggy Miller.....	25.00
William T. Clifford.....	25.00
Jim & Evelyn Jordan.....	50.00
Jay Barker.....	25.00

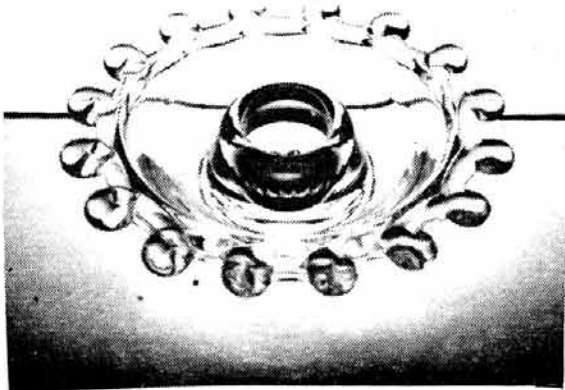
NOTE

Club Donations were listed with club reports on another page.

TOTAL DONATIONS TO DATE 7-14-83.....*\$6,234.00
*Interest Not Included

NO. 1540 LARIAT CANDLESTICKS

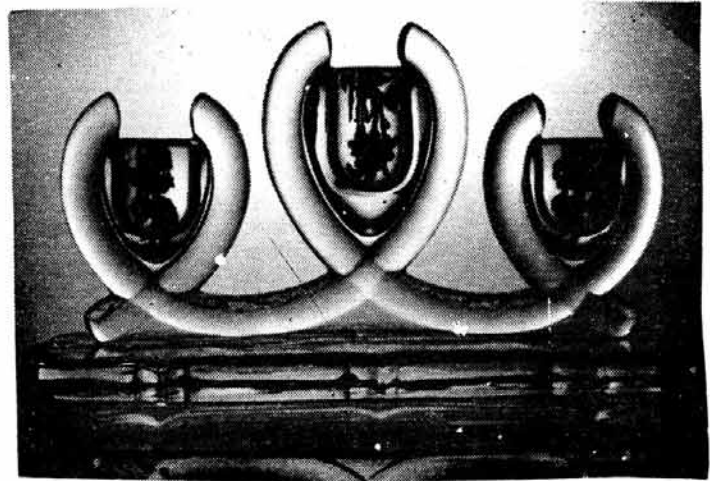
By Bob O'Grady



NO. 1

Last month we briefly discussed the Lariat pattern in general and the first two candlesticks in the pattern to be produced, the two- and three-lights. The next candlestick item to go into production was the small one-light (Photo #1). It is 1-1/2 inches high and 4-1/4 inches in diameter and is, in effect, a reduced version of one of several floral bowls in the pattern with the candle holding element added to the inside center of the bowl. It went into regular production in March of 1942 when one hundred twenty-six were first made. By the end of that year, ninety-five hundred had been produced. Heisey continued to make these on a fairly regular basis until 1953 when it was discontinued. The 1943 catalog priced them at fifty cents each. It appeared in such magazines as House Beautiful (May 1926), Guide for the Bride (Summer 1942), Bride's Magazine (Winter 1943), China, Glass and Lamps (April 1944), and Crockery and Glass Journal (April 1942 and March 1944). It was even available with the no. 980 Moonglo cutting. It was not reissued by Imperial and seems to be seldom marked with the Diamond H.

It was during the same week in March of 1942 when another candlestick was added to the Lariat pattern, the three-light candleblock (photo #2). It was numbered 1540-1/2 to distinguish it from the first three-light Lariat which went into production a month earlier. This second three-light was very similar in design to the first. As a matter of fact, by taking the candleholders (cups) of the first three-light and pushing them down into the loops, removing the foot and replacing it with

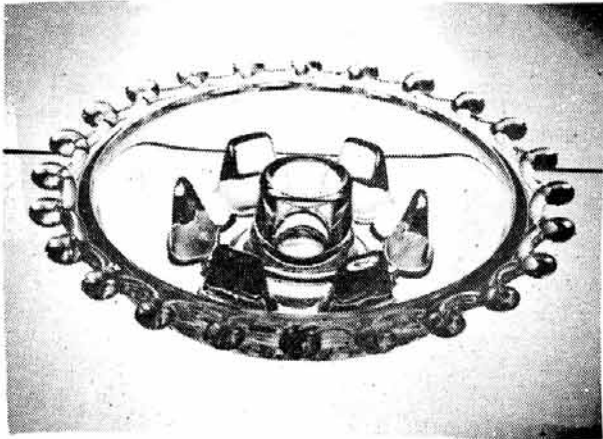


NO. 2

a flat rectangular block-type base, the 1540 three-light becomes the 1540-1/2 three-light. The one pictured here has a floral silver overlay which shows up on the candleholders. Either this was not popular or it was too difficult to make because it was only produced for one year. There were only fourteen hundred and fifty of these made. The last turn was made in April of 1943. Minutes from an executive committee meeting dated March 1942 indicate that this candleblock was probably offered with the bottom ground and polished or fire polished only. It was, of course, more expensive with the bottom ground. Judging from the number made this should not be quite as rare as believed. Since it was probably never marked with the Diamond H and since it is not pictured in any of Heisey's original catalogs which have been reproduced, it is not often recognized. Although it is now pictured in Gene Florence's Elegant Glassware of the Depression Era. It was not reissued by Imperial.

The last two candlestick items to be added to the Lariat line were small hurricane lamps. In the 1943 "Wartime Salesman" the larger of the two was listed as a candle lamp while the smaller was listed as a black out lamp. Then in 1944 price list both were called black out lamps, meaning they could be used during air raid drills when all electric lights in homes were to be turned out. It has become customary for today's collectors to refer to the larger bowl-type lamp as the Lariat hurricane lamp (photo #3) and the smaller as the black out lamp (photo #4).

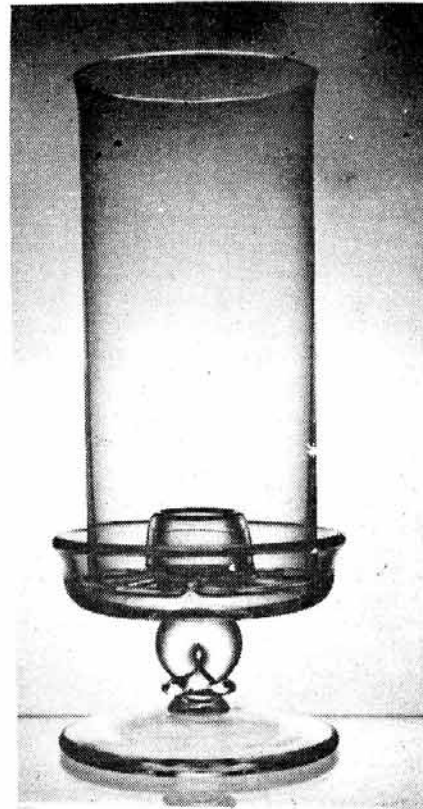
According to Heisey's factory records, the



NO. 3

hurricane lamp was first pressed in April of 1942. The mould used was actually the mould for the seven inch cereal bowl in the Lariat line. A new plunger was made in order to convert the bowl into the lamp base. The plunger produced the candle holding element surrounded by six rather heavy prongs inside the bowl. The prongs were to hold the globe in place. The base was produced both with and without a handle, which was a simple loop applied to the side of the bowl. The July 1942 issue of Crockery and Glass Journal carried a full page ad for Lariat indicating that Heisey's Lariat line was growing. It pictured items which had just been added and among them was the handled hurricane lamp with globe. The words below the picture - "Black out lamp is most timely" - referred to the lamp being produced during the war. While the base is not a difficult item to find today, it is the globe that seems to be rare. The globe, no. 5040, is really a smaller version of the no. 300 globe used on the larger hurricane lamps. This lamp was made fairly consistently until 1950. It was a popular item for some decorating company to apply enamel flowers and leaves since several of these decorated ones have been seen. It is rarely marked with the Diamond H and was not reissued by Imperial.

The small black out lamp is by far the rarer of the two hurricanes. In spite of the fact that there were at least eighteen hundred of these made, very few have turned up. It was first made in August of 1942 and was offered in price lists until 1946 although it is doubtful that many more were actually pressed after 1944. The base of this little lamp is 2-1/2 inches high, the globe is 5 inches high. The overall height is 7 inches because the globe fits down into the base about 1/2 inch. The circumference of the candle



NO. 4

holding element is smaller than standard size so it is difficult today to find a candle to fit.

The November 1943 issue of House and Garden and December 1943 House Beautiful carried the same Heisey ad which, along with their giraffes, horsehead ash tray and some other neat items, pictured this little black out lamp. Several months before this in the April 1943 House Beautiful there was an ad for Eunice Novelties, a New York city mail order firm which pictured a pair of these lamps. They could be ordered for the bride with her monogram or lily of the valley cut on the globe for \$4.75 a pair. There is some confusion about the pattern number for this globe. One price list assigns no. 5040, the same number used for the larger hurricane globe. Another source indicated the no. as 5041. The latter is probably the correct one. These were most likely never marked with the Diamond H, nor were they reissued by Imperial.

Editor's Note: No. 5041 is the number for blown Athena, however I suppose the number could have been used twice. L.R.



HEISEY DECORATIONS

By Neila Bredehoft

#5003 NIMROD CARVING



HOUNDS IN LEASH by
Hunt Dietrich

Nimrod carving was introduced in 1934 when Heisey began bringing out all their new sand blasted designs. It apparently was more popular than most as it remained in production until 1942. Even though it was listed in price lists for these eight years, it does not seem to be as available as one would expect. As with most of the carvings, most collectors are eager to add even one piece to their collections as an example of the design.

Some interesting new information has come to light through the efforts of Tom Felt. While searching for old Heisey ads and other related information, he found an article in a 1920 issue of ARTS & DECORATION describing and illustrating examples of a designer & sculptor's works. One of the pieces shown was a sculpture called "Hounds in Leash", identified as being owned by Mrs. Ralph Pulitzer. This sculpture bears a remarkable resemblance to the Nimrod design. The artist's name was Hunt Diedrich and the following is a partial quote from the article:

"Hunt Dietrich is one of the few men of talent who gives us his art in a form suitable for human nature's daily use. It was the famous men of the Italian Renaissance who last had that fashion - who submitted their talent to the beautifying of the practical.... Talent was talent; opportunity to spend it was all that was asked, and opportunity offered itself on affairs of daily use....

"This willingness of Hunt Diedrich to set aside at times the great dreams by which every sculptor is haunted, means that great talent is given us in the lesser forms that fill our homes. It places beauty within the reach of all, it surrounds us with gracious lines, with lively rhythm.



#5003 NIMROD carving

"It is for the few only to possess a life-size bronze or marble, but all men who have hearthstones and gather around them with expansive friendliness need fire-dogs and firescreens. Hunt Diedrich lets his imagination play on these...."

We actually have no conclusive proof that this sculpture was the origin of the design for Nimrod, but it seems highly probable because of the extreme similarity of design. The stance of the man is almost exact and the two dogs have relatively the same positions in both cases, although there is some slight difference. In any case, the possibility is intriguing.

.....
Nimrod was made on quite a variety of items and at least three items were found in lists after we first published the etching book. These are:

- #1184 YEOMAN 7 inch plate
 - #3318 WALDORF wine
 - #4054 CORONATION footed cocktail
- Other items made in Nimrod include:
- #500 OCTAGON variety tray
 - #1184 YEOMAN 5 items
 - #1458 8" plate with frosted band
 - #1466 STAR relish
 - #2052 bar
 - #2401 5 sodas
 - #3304 UNIVERSAL sherry
 - #3405 ALIBI cocktail
 - #3417 bitters bottle
 - #4002 AQUA CALIENTE cocktail
 - #4033 bar bottle
 - #4035, #4036 decanters
 - #4044 NEW ERA 3 stem items
 - #4056 salad bowl
 - #4057 vase
 - #4091 KIMBERLY cocktail
 - #4207 vase
 - #4225 COBEL 1 & 2 qt cocktail shakers

DIAMONDS ARE FOREVER.....

By Janet M. Caswell

The Yachting Center and Ohio are historically joined by the famous Ohio artist Archibald Willard. As has been recorded, our very own George Kelsey Devereux as a very young lad was observed, by Willard, doing military drill in a Boston Schoolyard, by this time Willard had turned his interests from decorated wagons and carriages to works of art on canvas. George Devereux stated, in his private records, that it was the natural sympathy felt toward someone young and small, competing with others larger and stronger, that impelled the Ohio artist to pick him as the model for the drummer boy in what was to be his Masterpiece painting. Willard asked the boy's father for permission to use the lad in this capacity, painting the Devereux boy into everlasting fame. General Robert Devereux, the lad's father, being a patriot and public spirited citizen, purchased the finished painting and presented it to our town. The painting being the very famous "The Spirit of Seventy-Six". It hangs in our town hall, bringing tourists from all over the country.

The #1536 Military Hat or General's Cap ash tray has turned up several times in the last couple of months with several people reporting them to me. "The Keeper" from the Land of Lincoln found two. She also became the proud possessor of five (5) Stanhope Champagnes in Zircon. Not "sleepers" but "keepers". No. 1540 Lariat was plentiful for "Curley" and all with Moonglo cutting, 6" round butter, 3 piece mayo set and a sugar & creamer; also #335 Prince of Wales Plumes Spoon Tray and the #133 large Swan Handled bowl in moongleam.

Not to be outdone by "Curley", my Good English Buddy" came up with some insignificant things of his own. Ready??? #305 Punt and Diamond Point Perfume/silver top - also the Punch Bowl and ten (10) cups; Five (5) #3390 Carcassone 8 oz. footed Sodas; (Cobalt) and six (6) #150 Banded Flute Cordials. Those are little cuties! You never seem to disappoint me "Buddy". Now his "Better Half" purchased quite a little gem. It was all covered with dust etc, but when washed, Lo & behold, there was a beautiful little Fancy Loop Toothpick with Gold edge. A Sleeper to boot!! She was so excited. Can you blame her?

A Plug Horse was found this month, for as little as a song, and a #305 Punt and Diamond Point Cruet. Courtesy of "My Sharp Eyed Friends". Where have you been keeping yourselves lately?

Did you know that "Twinkle Toes" was sashaying around the other day and came up with a #341 2 pound Candy Jar/unknown cutting, and two #1235 Beaded Panel & Sunburst Punch Cups. Pays to sashay I guess....

The #150 Flower Vase, flared and crystal, found its way into the home of "The Little

One" along with two #1404 Old Sandwich 12 oz. footed tumblers in Sahara. (sigh!) Where was I?

Bay State is always active and this is no exception; #1433 Thumbprint and Panel Console set in Cobalt, #351 Open Salt, #1183 Revere Open Salt (flamingo), #1225 Sawtooth Band Individual Sugar (ruby stain), Half Circle Cream & Sugar in Flamingo, 1 oz. #1205 Fancy Loop 1 oz. Cordial; #1425 Victorian Mustard, #1509 Queen Ann (late) 8" Plate - crystal, and a #1776 Kalonyal Spoon Tray.

The "Felicitous Flamingo Hunter" took herself to Aruba this past month so she only reported finding a #1404 Old Sandwich 12 oz. Ice Tea - in of course, flamingo and one in crystal. From what she said there were too many urchins in the ocean to swim, so she had to use the pool - not too difficult to take, glad you had a good time.

"Mr. & Mrs. Speedy" came up with a #473 Griddle Cake set without the syrup, but what matters, they already had the syrup; two crystal favor vases, one #4230 and one #4231; also the large #1503 Crystolite Swan Candy Dish. These were all found on Mothers Sunday, that was a super Mothers day. Right Mrs. Speedy?

The "Tipper" didn't find anything on Mothers Day but never-the-less there were other days; The Mallard, Wings-Up; #407 Coarse Rib 9" Celery - crystal; #1252 Twist 7" Pickle Tray, Moongleam; two pair of Candlesticks in Crystal, the #2-300 7" and #29 7"; also a very lovely #419 Sussex Wine in flamingo. I'd say you out did yourself "Tipper". But then you most always come up with some little gem.

This month I am delighted to share a couple of new contributors with you, namely the "Hi-C's" from the Empire State. They report that after quite a dry spell of seeing only common, damaged or over priced glass, they stopped at a shop that contained mostly tools and furniture. Sleeping most soundly in a cabinet of "junk" were a pair of Geese, and guess what? Both had their Wings Down! Pristine condition. We all dream of finding something like that. "Mountain Gal" from the Golden State tells about the #1252 Twist 10" Celery Tray in Amber/Sterling Overlay* (could this be Flashed or Marigold instead?); #352 Flat Panel 2 qt. Crushed Fruit, pat'd July 7, 1908; #393 Narrow Flute (pair) 9 oz footed Goblets/cutting; and two #17 Puff Boxes (no lids) one plain and one with floral cutting.

"The Studious One" from the Empire State of the South spotted two different carvings; On a fourteen inch #1184 Yeoman plate was the #5003 Nimrod Carving, mint condition; then on a set of six #4002 Aqua Caliente Cocktails was the #5011 Chevy Chase Carving. Very special pieces but real high price tags, did not purchase. Now #1567 Plantation was purchased; the 3 oz oil bottle, plus sugar and creamer with the #516 Plantation Ivy etch. Keep me informed, OK!

Yours truly walked away with a #1295 Beaded Swag Wine, ruby stain; this is a real cute little piece and was a sleeper. No. 134 Trident Candlesticks/unknown cutting; a pair of #1509 Queen Ann Candlesticks with built-in bobèche and Orchid etch and the #1511 Toujours

DIAMONDS ARE FOREVER CONT'D.....

Apple Marmalade, signed with Ladle, also signed.

My "Evergreen Friends" related a little story to me, it goes like this; "Just by change we stopped at an auction. There was only a half hour left to go. Went to see what was left to bid on and there sat a Cobalt Tulip Vase all by itself. Hurry, get a number!" The auctioneer said "who will start the bidding on this Cobalt Vase?" "Me", said Evergreen. "A man then raised my bid, I must try again." "No one raised my bid again and it was mine. What a thrill."

There was a Kingfisher Flower Frog that turned up in the Garden State along with the #1203 Floral Bowl it fits into (Hawthorne). This makes a lovely center piece for any table.

The weather is hot here in New England and we are getting ready for Race Week. The Harbor will again be filled with beautiful colored Sails and excited men, women and children. The gun goes off, the races begin. From the Yachting Center of the World, Happy Heisey Hunting (HHH).

Regards,
Janet M. Caswell

*Editor's Note: We have never seen "Flashed", (really stained) Twist. Neither have we seen or heard of Amber Twist so I feel sure it is Marigold. Any comments from the owner?
L. R.



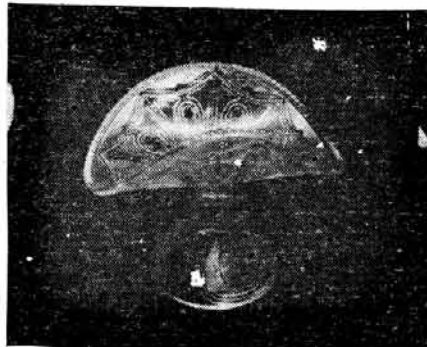
Ray Ziegler receives a "potty" in honor of his duties at the Flea Market-on-the-Square during convention. He was "keeper-of-the-key" to the courthouse rest rooms which included such things as mopping up, etc. That is what he gets for setting up by the rest rooms! Ray is the new club secretary.



#160 LOCKET ON CHAIN

This is a picture of the Locket On Chain Cake or Pastry Basket which has been mentioned in the newsletter several times. Mrs. Don White of Michigan owns this and sent the picture. We hope that it prints well. (Poloroids often do not.)

Most people refer to these as banana boats but Heisey Catalogs usually call them cake baskets.



VIKING TO MARK GLASS

Lucile Kennedy spoke briefly at the Convention banquet mostly about the uncertain future of American hand-made glass. Many companies have already gone out of business in recent past, another has gone to machine made glass and yet others are in bankruptcy situations including Imperial and Seneca. While some are still strong and are making lovely glass it is sad to think that many are gone. It makes us appreciate our own glass even more.

During her talk, Lucile announced that Viking had just made its first EVER marked item, which is:

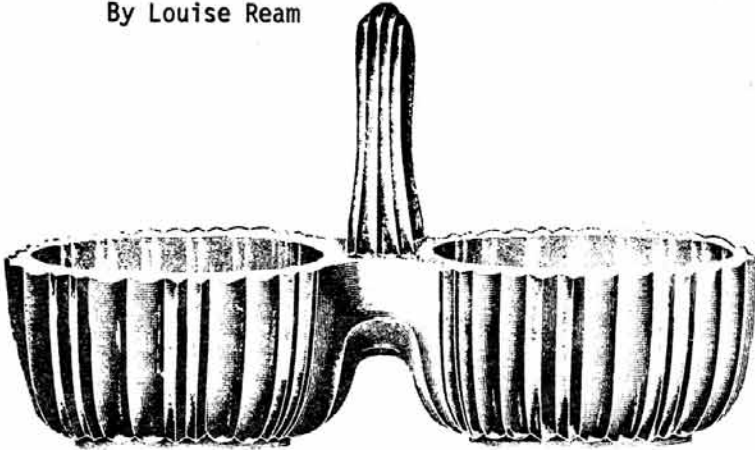
A 6" ABC Plate originally made by the Higbee Glass Company. The Higbee trademark, A bee with "H" and "G" on the wings and an "I" on the body, was retained, and a "V" was added below it. The plate is in lilac, a pale lavender, and is dated 1983.

One of the banquet dinner plates had a number placed on the bottom of it and the person who had that plate was Merrell Strawn, our office secretary. She was lucky enough to receive the very first of these marked plates. One was also given to the Heisey Museum.

HCA appreciated the honor of being the first to hear this good news. Everyone present was pleased that another company has the foresight and concern to permanently mark its glass. The marking will be gradual and will start taking place when the glass workers' traditional July vacation is over. It is a slow process, and also expensive, to stamp the mark in the moulds, but eventually much of Viking's production will be marked.

HEISEY'S LITTLE THINGS

By Louise Ream



I have neglected you for the last two months and this column will be short. I hope to do much better in the months to come. This time I want to tell you about an item which is sort of large for an "HLT" but which I would be happy to have in my collection.

For years we have been looking at the picture of an #1116 Twin salt both in Vogel's books and in our original Heisey Catalogs. Much time has also been spent in looking at salts in search of the item as well.

What did it really look like? Would we know it if we saw it. Probably we were passing it up all of the time. We printed the picture in the newsletter but no one ever wrote about it. We doubted very much that it would be marked because so much of the early glass was not.

Looking at the picture (really a drawing as all of the early illustrations were) the little salt dishes appeared to be oval and the handle seemed to be a single post type.

On Wednesday preceding the convention, our member, Russ Thomas, from Maryland brought in a Twin Salt and asked if it might be the right one. We immediately got out our catalog which showed it and sure enough, we knew at once that it was right even though the little salt dishes are round instead of oval and the handle turns out to be a loop with both ends attached to the glass between the salts. In the original catalog the caption under the salt says "full size." The picture has been reduced in this newsletter. Incidentally the piece itself is much more attractive than it appears in the picture and it looks smaller.

The width overall is 4-1/2". Each little salt section is a little over 1" high. The overall height to the top of the handle is 2-3/4".

We will expect to hear of these from all over everywhere now that you know what to look for. A few people who have seen this one, which Russ Thomas donated to us, have already found one.

The glass is not of the top quality of most Heisey glass but many of these novelty items were not. It is not marked.

SPECIAL AUCTION AT SOUVENIR DINNER

The following items made by Imperial Glass Company were on display during the 1983 Convention at Hopewell Hall. It was noted that they would be auctioned at the September 10 Souvenir Dinner. All members are being given the opportunity to bid on the items by mail. Sam Schnaidt will be the auctioneer.

Please use the guidelines at the end of the list for submitting your bids.

AUCTION ITEMS

1. #4220 4-1/2" Vase, Ultra Blue Satin*
2. #4220 4-1/2" Vase, Ultra Blue Satin*
3. #1469 Ridgeleigh Ball Vase, Ultra Blue Satin, Marked ALIG*
4. #4045 9" Ball Vase, Emerald, 18 Optics
5. #1469 RIDGELEIGH Ball Vase, Emerald. Marked ALIG*
6. ELEPHANT, Nut Brown. ALIG***
7. HEN, Sunshine Yellow, Paper Label***
8. #1519 WAVERLY, 11" Floral Bowl, Sea Horse Footed, Dark Amber ALIG
9. 1977 FERN GREEN OSCAR
10. 1978 ROSE PINK OSCAR
11. 1979 SUNSHINE YELLOW OSCAR
12. 1980 HEATHER OSCAR
13. 1981 LIGHT BLUE OSCAR
14. 1982 EMERALD GREEN OSCAR
15. CYGNET, Pink Satin - Feasibility Item - Made 1980.
16. CYGNET, Pink Satin - Feasibility Item - Made 1980
17. HEN, Charcoal, Marked IG, Feasibility Item - Made 1980.
18. MINUET GIRL (Dinky Do) Marked LIG W/Cert. of Authenticity**
19. MINUET GIRL (Dinky Do) Marked LIG W/Cert. of Authenticity
20. 1981 CORDIAL BELL, Titania Etch
21. 1981 CORDIAL BELL, Titania Etch
22. 1978 CORDIAL, Orchid Etch
23. 1979 CORDIAL, Rose Etch

* These items in this satin finish never made it to the retail market. They were purchased from Imperial just prior to their going into Chapter 11 bankruptcy.

** Limited edition of 426 made on the last day that Imperial could use the L.I.G. Mark, June 25, 1981.

*** Limited edition items made 1983 for direct sale. Never offered in a catalog. Donated by Imperial.

See "How To Bid" on Page 20.

1983 OSCARS

We have some 1983 Tangelo Oscars left. \$23.00 @ plus 10% shipping. Ohio residents pay 5½% sales tax.

INDIVIDUAL DONATIONS:

1. Tumbler With Silk Screen Copy of Fox Chase Etch for our look-alike display, Evelyn Lanners
2. #1423 Diamond Band Goblet, Donated by Esther Loss in Memory of her husband, Bill.
3. #5011 Yorktown Wine with #925 Huguenot Cutting - Tom Martin.
4. #1250 Groove & Slash Bulbous Pitcher - Lee Jones and Russ Nicholas.
5. #4291 Candy Jar With Unknown Engraving Adele H. Pardee
6. #5013 Shasta Goblet engraved by Emil Kra11 in His Own Studio - Kay & Regis Tandarich.
7. #1255 Pineapple & Fan Mug, Emerald - Dr. & Mrs. Frank Husted.
8. #1E92 Goblet with #1100 Waltz Cutting - Margaret Jennings
9. Cologne - Look-Alike for #1504 Regency, Not Heisey - Lynn DeGroot.
10. #72 Box Swirl Candlestick - Douglas Archer.
11. #1417 Arch Tumbler, Tangerine - Rare - Mr. & Mrs. Robert Berry.
12. #1248 Warwick Candlestick, Heather by Imperial - Richard Buthy.
13. #3542 Hazelwood Footed Sherbet, Unknown Cutting - George Corbin.
14. #2351 Tumbler, Marigold with Empress Etch - W. T. & Joyce Dawson.
15. #5024 Oxford Claret with resist applied for West Point Etch - Kay & Joe Feher.
16. #1541 Athena Low Candy Jar - Odell and Virginia Johnson.
17. Diamond H Lead Glass Sign - Dorothy & Herbert Leviton.
18. #3312 Gayoso Russian Coffee, Moongleam Base & Handle - Walter Ludwig.
19. #1229 6" Octagon Cheese Plate with #306 Olympus Etch - Done by Decorating Company - Robert & Virginia Marotto.
20. Indiana License Plate, HEISEY - Jim and Dot Oliver.
21. #8 Coaster, 6-1/4", Made into a Handled Bon Bon, Manning-Bowman Holder, Red Plastic Hooks for Heisey Punch Bowls (57), #1469 Ridgeleigh by Imperial, 4 pc. Cigarette Set Heather, and Candy for Lounge - Lucille Pringle
22. #1229 Octagon 6" Handled Cheese Plate Stained Handles, with cutting - Joette Siglock.
23. Dumbo Mug, Moonstone, in Imperial Mould, Made by Westmoreland and 184 ads - Tom Felt and Bob O'Grady.
24. #200 Bar Glass - Mr. & Mrs. George Schamel, III.
25. #1183 Yeoman Oyster Plates in Original Wrappers - Anna K. Todd.
26. #339-1/2 Continental 4 piece Table Set, Footed - Virgil & Mary Hauser.
27. #1116 Twin Salt, Early - John R. Thomas.
28. #301 Candelabra, Pair in Alexandrite - Mary Williams.
29. One case coffee - Cardinal Services, Inc.

30. Donna Pitcher with #507 Orchid Etch, Donated in Memory of Alfreda & Rudolph Lindemuth & Granddaughter, Dorothy Heslop Lane by Clarine M. Rogers.
31. Four books on Glass - Mildred Bourdon.
32. #3453 Magdalene Goblet with Trefoil Etch - Drs. Evelyn & Griffith Daniel, M.D.s.
33. Antique Cherry Drop Leaf Table, 49-3/4" Long, 21-3/4" Wide, Leaves 23-1/4". Purchased from Heisey home. Two banquet tables were made into one table by Gabor Pallagi, a fine furniture maker in Newark, Ohio. Donated in Memory of Thelma & Ray Davis by their daughter, Ann Baillie.
34. #5022 Graceful Goblet with #947 Enchantress Cutting - Ruth M. Worley.
35. Lumber and Jacks for remodeling back porch of office building - Diamond H Plus.
37. Cash Donation of \$20.00 - Mitchell Wolfson, Jr.
38. #411 Tudor Tumbler - Jamie VanWinkle.
39. #1506 Provincial Footed Juice, Steigel Green by Imperial - William T. Clifford.
40. #3304 Universal Cordial, Narrow Optic - Merrell Strawn.
- *41. Framed Black and White Print of the Heisey Museum - donated by the Artist, Brad Henry.

This list is complete to July 8, 1983 as far as I can determine. If anyone's donation of glass has been omitted please notify me at once.
L.R.

*Limited edition of 250. Numbered unframed copies are available at the Museum for \$15 each. Add \$1.50 for Shipping and Handling - 5-1/2% Tax in Ohio.



Bob McClain holds a print of the Heisey Museum which was presented to HCA by the artist, Brad Henry. (We have these for sale in the gift shop).

CLUB DONATIONS:

1. Newark HCC - Glass donated to auction. \$188
2. Reynoldsburg HCC - #373 Goblet, Alexandrite; #500 Octagon Basket, Marigold; #1566 Candle Blocks, #8010 Ribbon Candy Oil; #7037 Temple Oil; #356 Little Prince Oil; #1401 Empress Oil, Moongleam foot and stopper; #8062 Worthington Salad Bowl.
3. Far East HCC - Glass for auction \$157. 102 Packages of Index Cards for sale in museum, Cookies for Lounge.
4. Central Illinois HCC - \$100 for books for Louise Ream Library.
5. Bay State HCC - #142 Cascade Candlesticks, Cobalt, Crystal base; #3397 Decanter, Sahara, \$1,000 to Endowment Fund. Cookies for lounge.
6. Long Island HCC - #1489 Puritan Horse Head Cigarette Box, King size in memory of their member, Bill Loss. Cookies for lounge
8. Heisey Heritage Society - \$500 for Endowment Fund.
9. Land of Heisey Society - \$117.29 for Endowment Fund.
10. Gateway HCC - #1235 Beaded Panel and Sunburst Cracker Jar, also glass for auction and cookies for lounge.
11. Heisey Hunters Study Club of Newark - \$150 to Endowment Fund and Tote Bags sold in gift shop.
13. Heisey Collectors of California - #1235 Beaded Panel and Sunburst Punch Bowl, Emerald; #341 Puritan Pitcher, Vaseline.
14. Northern Illinois HCC - 7 Large Plates for serving food in museum lounge - Three (3) Crystolite in various sizes, #1506 Whirlpool, #1567 Plantation, #1559 Columbia and #1447 Rococo.
15. HCC of Michigan - Glass for Auction \$220.50.
16. Heisey Collectors of Texas - Cash \$160.
19. Heisey Collectors of Rochester Area - Auction Glass \$129, Large candle for Museum - Candy for lounge. \$80 for Endowment Fund.
20. Buckeye HCC - #4057 Vase, Cut by William (Butter) Groves, former head of cutting shop, and cookies for lounge.
21. Newark Diamond H Club - 5-Piece Opal Bead Swag Water Set; #1280 Winged Scroll Emerald Cruet; #1200 Block Sugar Bowl W/Lid; furnished 10,000 Dealer Directories for the Museum and \$250 for Endowment Fund - Cookies for Lounge.
22. Northwest Heisey Collectors Club - #353 Medium Flat Panel Vase, Vaseline, Cookies for Lounge and \$75 cash.
23. Heisey Collectors of Columbus - Glass for auction. \$180.50
24. Heisey Club of Western Mass. - #4026 Brandy Decanter, Moongleam.
25. 76'ers HCC - Casio Calculator for Gift Shop, Cookies for Lounge.
26. Southern Illinois Diamond H Seekers - Glass for auction; \$27 for Endowment Fund - Handle slides and films.
27. Land of Legend HCC - \$500 to Endowment Fund and a Pair of #1503 Crystolite Hurricane Lamps with Vintage Engraving on Globes and Cut Bases.
28. Western Reserve HCC - #1280 Winged Scroll Emerald Tankard, Beautiful Gold. Set of four Vogel Books.
30. Columbia HCC - \$100 for Endowment Fund
31. Nassau Long Island Study Club - Large quantity of Heisey Rose and Orchid notepaper for sale in shop.
32. Dairyland HCC - Lace Tablecloth to be used in Lounge, 35 lbs. Wisconsin Cheese, crackers to go with it and cookies for Lounge.
33. Golden Gate HCC - #1445 Grape Cluster Bowl, Experimental Zircon. \$50 for Acquisitions and a Total of \$1050 for Endowment Fund since last convention.
34. Connecticut HCC - #1430 Aristocrat Low Footed Candy Jar, Sahara and \$50 for Endowment Fund.
35. Virginia Heisey Club - #1469 Ridgeleigh Sahara Cylinder Vase, \$75.00 for Endowment Fund and glass for auction, \$138

NON-AFFILIATED CLUB:

National Capital HCC - #463 Basket, beautiful cutting; #1252 Twist Oil and Vinegar, Sahara; #1413 Cathedral Vase, Straight, Cobalt, stuck handles; #1170 Pleat and Panel Oil Bottle, Amber; #365 Old Queen Ann Water Bottle donated in memory of member, Tom Asbury; \$750 for Endowment Fund since last convention and cookies for Lounge.

Club #9 - Land of Heisey Society has dissolved.

Club #17 - Florida members still would like to have a new club. There is no club at present.

ANOTHER IMPORTANT DONATION

Norma Schweighoefer, of Missouri, a member of the Southern Illinois Diamond H Seekers has made a very useful donation to HCA. She has assembled a complete index to the first 10 years of HEISEY NEWS. All patterns, mentions of patterns in articles, all illustrations and all articles are completely indexed. Sections include Candlesticks, Animals, Former Employees, General Articles, Etchings, Tumblers & Sodas, Cuttings and many others. Items are listed in these sections in numerical order and there is an alphabetical list to the entire index.

Needless to say, HCA hopes to publish this complete reference in the near future. It will be of great help in finding patterns in your old issues of HEISEY NEWS.

CLUB NOTES

BAY STATE HEISEY COLLECTORS CLUB

The Bay State held it's monthly meeting at the Follen Church in Lexington, Mass.

The program for the evening was "Dawn & Zircon", the program being presented by Eileen and Ralph Wise. The color of Zircon was represented by a #1469 Ridgeleigh Coaster, Ash Tray, Cigarette Box, Whirlpool Nappy, Town & Country Plate and a #1488 Kohinoor Ash Tray, a goodie. The color of Dawn was represented by a Town & Country Plate, a 12 oz. Twentieth Century Soda, a Saturn Cruet and a #1469 Ash Tray made by Imperial.

The Wises did an excellent job in presenting this program.

The "Show & Tell" part of our meeting was really exciting. We had a #1469 Tankard with silver overlay, a #1404 Sahara Stick, a #305 Punt & Diamond Point Cruet, a #397 Colonial Cupped Scalloped Spooner, a #393 Narrow Flute Marmalade, a Cathedral Stick with the Simplex Etch and a #473 Narrow Flute With Rim Breakfast Set, which is seldom seen. David Steer, our resident show & teller did a superb job as usual.

The meeting over, we had coffee and sandwiches provided by Jard Cragg and Barbara McTighe. They were really good.

By the time this goes to print, the Convention will be over. I hope everyone had a good time and the finds were really exciting.

Your roving reporter, George Gleason

VIRGINIA HEISEY CLUB

The Virginia Heisey Club has been very active, with meetings held every month, despite the very long distance that some members travel. Some of us think nothing of making a 200-plus mile round trip to attend a meeting. The programs have included slide presentations and discussions on a variety of subjects: Imperial Glass, Caring for Glass, Narrow Flute With Rim, Single Handled Nappies and Old Williamsburg, to name a few.

Our Officers for the year remain the same: Lee Schwan, Jessie Hopkins, Dot Clark, Ernest Clark as President, Vice-President, Secretary and Treasurer respectively.

Our donation of glass to the March auction proved to be a great way to support the Museum. Auction receipts for the items totaled \$138.00. We expect to make additional future contributions to the Museum in this manner.

Eight of our sixteen members attended the H.C.A. Convention. Though the pace was exhausting, what with trying to attend all the special presentations and events and of course trying to visit and re-visit each booth and Flea Market, we, without exception, look forward to next years opportunity to again meet old friends and seek out that long sought after, elusive, very special piece of Heisey.

At the annual meeting on Sunday morning, our President was pleased to present a Sahara 8" Ridgeleigh Cylinder Vase, from our Club, to the Museum.

We extend a cordial invitation to all persons out there in Heiseyland to attend one or more of our monthly meetings. Should you live in our area of Virginia contact: Dot Clark (Richmond 804-233-6680), Lee Schwan (Williamsburg 804-299-7873), Jessie Hopkins (Hampton 804-722-5568) or Dot Denton (Virginia Beach 804-481-4302). The welcome mat is always out. Our August meeting will be at the home of Dot and Bob Denton in Virginia Beach.
Dot Clark, Secretary

LETTERS, we get letters....

I was saddened that I could not come to the gathering of my "Heisey Family" this year. After so many years this is a family reunion for me and a long ensuing year until the next one.

I do hope this was a MAGIC year for everyone.

Statha Allen, OK

Our recent visit to the museum was wonderful. What a thrill to see my favorite glassware so beautifully displayed! I came away with a greater appreciation of the Heisey pieces I have, and I hope to obtain more in the future.

We hope to visit the museum again and until then, I'll anxiously await Heisey News.
Kathleen Files, MO

Mrs. Dorothy Sutter of Mission has spoken to me several times about becoming a member of the Heisey Collectors of America. She knew that I have collected Heisey for some time; many of my pieces belonged to my parents, Rev. & Mrs. H. C. Heisey. We also received some as gifts when we married in 1947.

The other day Dorothy dropped several of your news publications off for me to look at ---- that did it!!!! I just have to become a member of the Heisey Collectors of America.

My goal in life is to find a set of Heisey Rabbits, I have the set that was made by Imperial but truly hope to have the "real thing" some day. I'm sure there aren't too many people in the world that were a Heisey and are now a Hare.

Helen M. Hare, TX

Let me take this brief space to express my sincere thanks to all of you across the country who supported and elected me to the Board of Directors of HCA. I will do my very best and work my hardest.

Thank You,
Lloyd Caswell

ALL HEISEY AUCTION

SATURDAY AUGUST 20, 1983
DOORS OPEN ----- 8:30 A.M.
SALE STARTS ----- 9:30



We have many nice Heisey items for your bidding pleasure including 2 HiLo vases, 1 Cobalt & 1 Moongleam, also a nice selection of Spanish Cobalt stemware, Animals, Crystolite, Orchid etched pieces, and many interesting pieces in Moongleam, Hawthorne, & Tangerine. If you are collecting Imperial we have several choice items in discontinued patterns. Study the list carefully and plan to attend this auction!

LIST OF PRICES REALIZED, AVAILABLE AFTER THE AUCTION \$1.00

We have tried to inspect the glass closely and will use the following code to better describe the condition. A small letter indicates the damage or flaw is minimal. It would be our opinion that the value would be affected 5-20%. A capital letter indicates more significant damage affecting 20-40%. Anything damaged more than this in our opinion will be marked with an X. We hope this will better aid in your mail bidding.

f F - Flake
c C - Crack

b B - Bruise
m M - Mold Flaw

r R - Repaired
x X - Major Damage

Sam Schnaidt, Auctioneer
614-344-9449

Frank Frye, Manager
614-344-9847

___ 1	1506	PROVINCIAL Ind. Cream, Sugar & Tray H	___ 36	1184	YEOMAN 14" Floral Bowl Hawthorne
___ 2	1469	RIDGELEIGH Ind. Cream, Sugar & Tray H	___ 37	1252	TWIST Floral Bowl & 3 Low Candlesticks
___ 3	1469	RIDGELEIGH Ind. Cream, Sugar & Metal Tray, f on cr. hdl. H	___ 38	1433	THUMBPRINT & PANEL 2 Lite Candle holders, Pr. Cobalt
___ 4	1401	EMPRESS Dolphin Ft. Cream & Sugar H	___ 39	1433	THUMBPRINT & PANEL Floral Bowl Cobalt
___ 5	352	FLAT PANEL Hotel Cream & Sugar, c Cr. & roughness H	___ 40	1445	GRAPE 1 Lite Candlesticks w/bobeche & prisms m Pr H
___ 6	355	QUATOR Cream & Sugar, gold dec. H,pat	___ 41	42	10" Candleabra base, bobeche & prisms H
___ 7	1567	PLANTATION Cream & Sugar, Ivy etch	___ 42	1540	LARIAT 2 Lite Candlestick
___ 8	1252	TWIST Cream & Sugar Moongleam H	___ 43	1540	LARIAT 1 Lite Candlestick Pr.
___ 9	1469	RIDGELEIGH Cream & Sugar H	___ 44	113	Candlesticks Flamingo Pr. H
___ 10	500	OCTAGON Cream & Sugar Sahara H	___ 45	1503	CRYSTOLITE 1 Lite candlestick Pr.
___ 11	411	RIB & PANEL Cream & Sugar(stress C sugar hdl) Hawthorne H	___ 46	1469	RIDGELEIGH 1 Lite Candleabra, bases only & 1 epergne H
___ 12	1280	WING SCROLL Cream & Sugar, Emerald w/gold	___ 47	300	1 Lite Candleabra no bobeche or prisms Pr. IX, Sun Colored H
___ 13	1540	LARIAT Cream, Sugar & Tray H	___ 48	1405	IPSWICH Candlevases w/inserts IX H
___ 14	1184	YEOMAN Cov. Sugar & Cream c D O Moongleam H	___ 49	1540	LARIAT 2 Lite Candleholder Silver dec.
___ 15	393	NARROW FLUTE Cov. Sugar 2 Ea. H	___ 50	112	1 Lite Candlesticks Pr. Moongleam
___ 16	353	WIDE FLAT PANEL Hotel Cov. Sugar 2 H	___ 51	1540	LARIAT 2 Lite Candlesticks Pr.
___ 17	473	NARROW FLUTE W/RIM Cov. Sugar x 2 H	___ 52	112	1 Lite Candlesticks Pr.
___ 18	341	PURITAN Creamer H	___ 53	1495	FERN 2 Lite Candlestick Floral etch
___ 19	412	RIB & PANEL Creamer Hdl. c H	___ 54	1533	WAMPUM 1 Lite Candlestick
___ 20		Creamer Cut	___ 55	1488	KOHINOOR 2 Lite Candlestick no bobeche or prisms
___ 21	150	BANDED FLUTE Creamer Hdl c base H	___ 56	1445	GRAPE 2 Lite Candlestick
___ 22	1170	PLEAT & PANEL Creamer Flamingo H	___ 57	1252	TWIST 2 Pt. Relish Moongleam H
___ 23	1231	RIBBED OCTAGON Creamer H	___ 58	1252	TWIST 10" Celery Tray H
___ 24	429	PLAIN PANEL Hotel Sugar(no lid) R H	___ 59	1252	TWIST 10" Celery Tray H
___ 25	393	NARROW FLUTE Sugar(n o lid) H	___ 60	1252	TWIST 7" Pickle Tray Flamingo H
___ 26	1425	VICTORIAN Sugar (sun colored) H	___ 61	1252	TWIST 7" Pickle Tray Flamingo H
___ 27	1540	LARIAT Sugar H	___ 62	393	NARROW FLUTE 12" Celery Tray H
___ 28	1184	YEOMAN Ind. Sugar(no lids) 1 Silver (2) H	___ 63	393	NARROW FLUTE 12" Celery Tray H
___ 29	1405	IPSWICH Sugar H	___ 64	1401	EMPRESS Triplex Relish
___ 30	1184	YEOMAN Sugar no lid D O H	___ 65	407	COARSE RIB 9" Celery Tray Flamingo H
___ 31		Sugar H	___ 66	1401	EMPRESS 10" Celery Tray Moongleam H
___ 32	429	Hotel Sugar Flamingo H	___ 67	1231	RIBBED OCTAGON 9" Celery Tray Moon gleam H
___ 33	1401	EMPRESS Dolph. Ft. Sugar Flamingo H			
___ 34	112	3" Candlesticks, Flamingo Pr.			
___ 35	114	3½" Candlesticks Hawthorne Pr. f			

PAID ADVERTISEMENT

68	1252 TWIST 7" Pickle Tray Marigold H	136
69	1401 EMPRESS 13" Celery Tray Flamingo H	137
70	VASELINE BAKE WARE 5" Deep Bowl H	138
71	339 CONTINENTAL Water Bottle	139
72	339 CONTINENTAL Water Bottle roughness	140
73	517 Qt. Jug w/tumbler top H	141
74	1404 OLD SANDWICH ½ Gal. Pitcher Sahara H	142
75	353 MEDIUM FLAT PANEL 2 Qt. Pitcher H	143
76	353 MEDIUM FLAT PANEL 2 Qt. Pitcher H	144
77	4159 21 oz. Pitcher	145
78	4161 15 oz. Pitcher	146
79	341½ PURITAN 3 Pt. Squat Pitcher H	147
80	341½ PURITAN 1 Qt. Squat Pitcher c H	148
81	341½ PURITAN 1 Pt. Squat Pitcher H	149
82	393 NARROW FLUTE 1 Pt. Pitcher H	150
83	3350 WABASH 3 Pt. Tankard W O Frontenec Etch	151
84	5031 8 oz. French Dressing Bottle	152
85	Colonial Cruet	153
86	1184 YEOMAN 4 oz. Cruet Gold & Silver dec H	154
87	411 RIB & PANEL Cruet wrong stopper H	155
88	1469 RIDGELEIGH Cruet wrong stopper	156
89	1519 WAVERLY Cruet Heisey Rose Etch	157
90	1567 PLANTATION ½# Stick Butter H	158
91	352 FLAT PANEL Marmalade w/metal top Cut H	159
92	393 NARROW FLUTE Mustard & cov.2 H	160
93	393 NARROW FLUTE Comb. Relish w/lid H	161
94	Sanitary Syrup w/metal top Windsor Cut H	162
95	1469½ RIDGELEIGH 8" Vase H	163
96	1421 HILO Vase Moongleam H	164
97	1421 HILO Vase Cobalt	165
98	516/2 6" Flip-vase D O, Flamingo	166
99	1401 EMPRESS 8" 3 Hdd. Vase Sahara H	167
100	1540 LARIAT 6" Round flared Vase H	168
101	1540 LARIAT Fan Vase H	169
102	300 5" Orchid Vase	170
103	4085 KOHINOOR 9" Ball Vase S O, Zircon	171
104	300 PEERLESS 10" Vase H	172
105	353 MEDIUM FLAT PANEL 8" Vases (2) H	173
106	1540 LARIAT 7" Round Flared Vase H	174
107	1540 LARIAT 7" Round Vase H	175
108	436 7" Vase #2 Sweet Pea H	176
109	1569 Shallow Bowl, Footed H	177
110	1428 WARWICK 9" Vase	178
111	1428 WARWICK 9" Vase H	179
112	353 MEDIUM FLAT PANEL 18" Vases (2) H	180
113	436 11" Vase #4 Carnation H	181
114	1413 CATHEDRAL Vase flared Antarctic Etch	182
115	3380 OLD DOMINION Goblets Sahara (6) (2c)	183
116	3380 OLD DOMINION Goblets Sahara (2)	184
117	3390 CARCASSONNE Goblets Alexandrite bowl 2H	185
118	5072 ROSE STEM Goblets Heisey Rose Etch (2)	186
119	3350 WABASH Goblets Pied Piper Etch 10H (3c)	187
120	3350 WABASH Goblet Pied Piper Etch H	188
121	KIMBERLY Goblet Sungate Cutting	189
122	3357 KING ARTHUR Goblet	190
123	3355 FAIR ACRE Goblet Flamingo H	191
124	3350 WABASH Goblet Royal York Cutting	192
125	3362 CHARTER OAK Goblet Flamingo	193
126	3333 OLD GLORY Goblet Cut (rough) H	194
127	1295 BEAD SWAG Goblet Souv. Custard	195
128	1425 VICTORIAN Goblet (2) H	196
129	1055 10 oz. Goblet Narrow Optic H	197
130	433 GREEK KEY Goblet Flared H	198
131	5040 LARIAT Goblet H	
132	5040 LARIAT Goblet H	
133	1540 LARIAT Goblet Star Cut	
134	1425 VICTORIAN Goblets (4) H	
135	1401 EMPRESS 6" Round Compote Flamingo H	

PAID ADVERTISEMENT

PAID ADVERTISEMENT

1447	ROCOCO Cheese Insert H	
1186	YEOMAN 6" Compote D © Flamingo H	
1590	ZODIAC 6" Compote	
407	COARSE RIB 5" Compote Flamingo	
411	RIB & PANEL 5½" Compote Hawthorne H	
1540	LARIAT 5" Footed Cheese (2)	
1184	YEOMAN 6½" Low Compote D O Flamingo	
1229	OCTAGON 5½" Ftd. Mayo. Moongleam	
101	12" Round Top Shelf Supports (2)	
1503	CRYSTOLITE 12" Gardenia Bowl H	
1503	CRYSTOLITE Cov. Mustard & Spoon H	
1503	CRYSTOLITE Round Cigarette holder H	
1503	CRYSTOLITE 3" Sq. Ash Tray (4) H	
1503	CRYSTOLITE Ftd. Cigarette Holder H	
1503	CRYSTOLITE Ftd. Cig. Holder & 2 Rd. Ash Trays H	
1503	CRYSTOLITE 12" Celery H	
1503	CRYSTOLITE 6" Rd. Candy w/metal lid & Candle Block Finial H	
1503	CRYSTOLITE 6" Rd. Candy w/metal lid & Metal Finial H	
1503	6" Rd. Candy, no lid H	
1503	CRYSTOLITE 8" 3 Part Relish H	
1503	CRYSTOLITE 8" 3 Part Relish	
1503	CRYSTOLITE 8" Oval Hdd. Plate H	
1503	CRYSTOLITE 12" Celery H	
1503	CRYSTOLITE 12" 3 Compt. Relish H	
1503	CRYSTOLITE 9" Leaf Relish H	
1503	CRYSTOLITE 13" Oval 3 Compt. Relish	
1503	CRYSTOLITE 6" Hdd. Jelly/2 Compt. H	
1503	CRYSTOLITE 4" Nappy H	
1503	CRYSTOLITE 5½" Shell Candy Box w/cov.	
1503	CRYSTOLITE 5½" Shell Candy Box w/cov.	
1503	CRYSTOLITE 3 Cor. Hdd Jelly	
1503	CRYSTOLITE Creamer H	
1503½	CRYSTOLITE Sugar H	
1503	CRYSTOLITE 5½" Ftd. Cheese	
1503	CRYSTOLITE 1 Qt. Cocktail Shaker	
1503	CRYSTOLITE 4" Cigarette box Gold Fin. H	
1503	CRYSTOLITE 4" Cigarette box no lid H	
1503	CRYSTOLITE 4" Cigarette box no lid H	
1503	CRYSTOLITE 4" Cigarette box no lid (3) H	
1503	CRYSTOLITE 4" Cigarette box Lid Dam. H	
1503	CRYSTOLITE Lids only - 4" cig. box (4)	
1503	CRYSTOLITE 3 Lite Candlesticks Pr.	
1503	CRYSTOLITE 1 Lite Candleblocks Pr.	
1503	CRYSTOLITE 1 Lite Candleblocks Pr.	
1503	CRYSTOLITE 1 Lite Candleblocks Pr.	
1405	IPSWICH 10 oz. Goblets (6) H	
1405	IPSWICH 5 oz. Sodas (4) H	
1405	IPSWICH 4 oz. Sherbet, 5 oz. Soda & 10 oz. Soda H	
1405	IPSWICH 10 Oz. Soda	
1405	IPSWICH 4 oz. Oyster Cocktail (4) H	
1405	IPSWICH 4 oz. Oyster Cocktail (3) H	
1405	IPSWICH 5 oz. Soda Moongleam (4) H 1X	
1405	IPSWICH 4 oz. Sherbet Moongleam (8) H	
1506	PROVINCIAL Oyster Cocktail (6) H	
1401	EMPRESS Tumbler (12) H	
1506	PROVINCIAL 12 oz. Ftd. Soda Limelight (3) H	
393	NARROW FLUTE 10 oz. Soda H	
325	PILLOWS 8 oz. Tumbler H	
1486	COLEPORT 13 oz. Soda Mono (12) H	
5025	TYROLEAN Low Goblets Orchid Etch (9)	
1509	QUEEN ANNE Cup & Saucer Orchid Etch 8 sets H	
1519	WAVERLY 7" Plates Orchid Etch (8)	
1519	WAVERLY Cream & Sugar Orchid Etch H	

PAID ADVERTISEMENT

PAID ADVERTISEMENT

PAID ADVERTISEMENT

199	1519 WAVERLY Ind. Cream Orchid Etch	260	1250 GROOVE & SLASH 8" Ftd. Compote
200	1519 WAVERLY Ind. Sugar Orchid Etch H	261	465 RECESSED PANEL 9" Ftd. Compote Shallow H
201	1519 WAVERLY 11" 3 Part Oval Relish Orchid Etch H	262	341 OLD WMSBURG. 9" Ftd. Compote H
202	1519 WAVERLY 6½" Ftd. Cheese Orchid Etch	263	341 OLD WMSBURG. 10" Ftd. Compote H
203	5031 8 oz. Fr. Drsg. Bottle (cloudy) Orch. Etch	264	350 PINWHEEL & FAN 8" Nappy H
204	134 TRIDENT 2 Lite Candlestick Orchid Etch	265	350 PINWHEEL & FAN 8" Nappy H
205	1519 WAVERLY 12" bowl & 142 3 Lite Candlesticks	266	350 PINWHEEL & FAN 8" Nappy H
206	465 RECESSED PANEL 1# Candy Jar w/metal Lid cut H	267	350 PINWHEEL & FAN 4" Nappies (rough) 6 H
207	465 RECESSED PANEL 1# Candy Jar & lid Gold Dec. H	268	1252 TWIST 9 oz. Luncheon Gob. r Mnglm. 2 H
208	465 RECESSED PANEL 1# Candy Jar no lid Gold Dec. & Irrid. H	269	1252 TWIST Cup & Saucer (8 sets) Moongleam H
209	1170 PLEAT & PANEL Hi. Ft. Cov. Compote Gold Dec. H	270	1252 TWIST 8" Plates Moongleam (8) H
210	1184 YEOMAN 6" Candy Box & Cov. D O Marigold	271	1252 TWIST 6" Plates Moongleam (8) PUNCH LADLE
211	LARGE ELEPHANT, FROSTED	272	1252 TWIST 6½" Underplate Moongleam (2) H
212	ROOSTER VASE	273	1252 TWIST 6" 2 Hdd. Cheese Plate Mnglm.
213	FIGHTING ROOSTER	274	1252 TWIST 9" Rolled Edge Floral Bowl Moon Gleam H
214	FISH BOOKEND X	275	1252 TWIST 4" Nappy Moongleam H
215	RINGNECK PHEASANT	276	1252 TWIST 8" Low Ftd. Bowl Moongleam H
216	RINGNECK PHEASANT	277	1252 TWIST Cr. Soup & Underplate (3 sets) Marigold H
217	GOOSE WINGS UP	278	1252 TWIST Cup & Saucer Marigold H
218	GOOSE WINGS HALF	279	1252 TWIST 6" 2 Hdd. Mint Flamingo
219	GOOSE WINGS DOWN	280	1252 TWIST Saucer Champagne (3) H
220	FISH MATCHHOLDER m	281	1252 TWIST 12" Plate Marigold H
221	STANDING COLT	282	1252 TWIST 3 oz. Oyster Cocktail Marigold Sugary (2) H
222	OSCAR HORSE (bubble in tail)	283	1503 CRYSTOLITE 7" Rd. Candy w/metal lid & Candle Block Finial H
223	SPARROW	284	285 Metal Silent Butler w/1503 Candleblock Fin. Pr. Metal Book Ends w/1503 Candleblock Fins.
224	CYGNET	285	1220 PUNTY BAND Hdd Mug Ruby Stain Souv.H
225	FLOATING WOOD DUCKLING r H	286	1295 BEAD SWAG Hdd. Mug Ruby Stain Souv.
226	SCOTTY	287	1404 OLD SANDWICH 16 oz. Mug Cobalt H
227	SCOTTY	288	5074 SEAHORSE STEM Cocktail H
228	RABBIT PAPERWEIGHT R	289	5040 LARIAT Wine Moonglo Cut H
229	SOW R H	290	3389 DUQUESNE Cocktail Pompeii Etch
230	PIGLET STANDING	291	4002 Aqua Caliente Skier Etch
231	PIGLET STANDING	292	359 2 oz. Sherry N O H
232	PIGLET STANDING	293	3357 KING ARTHUR Wine D O Mnglm. Ft. (2)
233	PIGLET SITTING	294	3389 DUQUESNE Ftd. Soda Tangerine bowl
234	PIGLET SITTING	295	1415 TWENTIETH CENTURY ftd. Soda rough Cobalt (2) H
235	PIGLET SITTING	296	3397 GASCONY Ftd. Soda Tangerine Red Side H
236	FILLY HEAD FORWARD H	297	588 COLONIAL 3 oz. Soda Amber (5) H
237	SHOW HORSE r H	298	4054 CORONATION Exp. Screen Optic Dawn Old Fashion (2)
238	CLYDESDALE r	299	3408 JAMESTOWN Cordial
239	VICTORIAN BELLE w/clapper	300	5022 GRACEFUL Cordial Orchid Etch
240	PENGUIN STOPPER	301	3333 OLD GLORY Cordial Renaissance Etch H
241	MIKE OWENS BUST FROSTED	302	5072 ROSE STEM Cordial Heisey Rose Etch H
242	1503 CRYSTOLITE Swan Master Nut	303	5072 ROSE STEM Cordial Heisey Rose Etch H
243	1503 CRYSTOLITE Swan Master Nut	304	373 COLONIAL Cordial (3) H
244	1503 CRYSTOLITE Swan Master Nut	305	1401 EMPRESS 10½" Sq. Plate Alexandrite H
245	1503 CRYSTOLITE Swan Ind. Nut (2)	306	1519 WAVERLY 10" Plate (2)
246	1503 CRYSTOLITE Swan Ind. Nut (2)	307	1183 REVERE 8" Rd. Plate Cobalt (7)
247	1 FROSTED MADONNA Clear Face	308	1401 EMPRESS 7" Rd. Plate Flamingo (5) H
248	1 FROSTED MADONNA Clear Face IMP.St.	309	1540 LARIAT 8" Plate (7)
249	4225 1 Pt. Cocktail Shaker Rooster Stopper	310	1540 LARIAT 7" Plate (6)
250	4225 1 Qt. Cocktail Shaker Plain Stopper	311	407 COARSE RIB 7" Plate Flamingo (9) H
251	4036 1 Qt. Cocktail Shaker Plain Stopper Mon.G	312	1469 RIDGELEIGH 7" Vase Irrid. H
252	COCKTAIL STRAINER & STOPPER	313	1238 BEEHIVE 8" Plate Flamingo
253	COCKTAIL STRAINER & STOPPER	314	1238 BEEHIVE 8" Plate
254	1489 PURITAN Sm. Horsehead Cig. Box	315	1401 EMPRESS 7" Underplate Moongleam (3) H
255	1489 PURITAN Lg. Horsehead Cig. Box	316	1401 EMPRESS 8½" Sq. Plate Tangerine H
256	133 Swan Hdd. Floral Bowl & Frog x Flam. H	317	1401 EMPRESS 6" Sq. Plate Tangerine (4) H
257	1183 REVERE Hdd. Cake Plate Windsor Cut H	318	7000 SUNFLOWER 12" Flared Floral Bowl H
258	341 OLD WMSBURG. 11" Ftd. Cake Plate	319	VERLYS 14" Teardrop bowl F sgnd. Verlys
259	1428 WARWICK Floral Bowl H	320	
		321	

PAID ADVERTISEMENT

322	1540 LARIAT 12" Gardenia Bowl	382
323	465 RECESSED PANEL 12" Nappy Flared H	383
324	1184 YEOMAN 12" Floral Bowl DO Flamingo	384
325	1433 THUMBPRINT & PANEL Floral Bowl	385
	w/flower Frog Sahara	386
326	1590 ZODIAC 10½" Ftd. Bowl	
327	465 RECESSED PANEL 8½" Nappy H Pat.	387
328	357 PRISON STRIPE 9" Rolled Edge Bowl H	388
329	1401 EMPRESS 11" D F Floral Bowl Sahara	389
330	1401 EMPRESS 11" D F Floral Bowl	
331	1509 QUEEN ANNE 11" D F Floral Bowl	390
332	3350 WABASH 5 oz. Parfait Hawthorne 6 H	391
333	3350 WABASH Saucer Champ. Hawthorne 7Hf	392
334	3350 WABASH 3 oz. Cocktail Hawthorne 3 H	
335	3389 DUQUESNE Saucer Champ. Cut f	393
336	1184 YEOMAN Peach Melba H	394
337	U8032 CAPITAL Goblet bubble in stem	395
338	6003 TEMPO & 5003 CRYSTOLITE Ftd. Soda2	396
339	1506 PROVINCIAL Cocktail & 1184	397
	YEOMAN Goblet H	398
340	3350 WABASH Gob. & Sauc. Champ.	399
	Frontenec Etch H	400
341	1540 LARIAT Ftd. Soda Moonglo Cut	401
342	1E92 OMEGA Ftd. Ice Tea Wildflower Cut H	
343	3404 SPANISH Goblet Cobalt Bowl (2)	402
344	1519 WAVERLY Ftd. Mint (4)	403
345	3404 SPANISH Claret Cobalt Bowl (5)	404
346	3404 SPANISH Cocktail Cobalt Bowl (2)	405
347	3404 SPANISH Sherbet Cobalt Bowl (6)	406
348	300 PEERLESS 2 oz. Bar (7) H	
349	411 TUDOR 1 oz. Bar H	407
350	248 COLONIAL 2½ oz. Flared Bar H	408
351	4051 NATIONAL 1½ oz. Bar Moonglo Cut (2)	409
352	2351 2 oz. Bar Zodiac Etch	410
353	1485 SATURN Mustard no lid H	411
354	1252 TWIST Cov. Mustard Flamingo c H	412
355	1200 CUT BLOCK Ind. Sugar Souv. Custard	413
356	1280 WING SCROLL 5½" Pin Tray Custard	414
357	1220 PUNTY BAND Ind. Cream Souv. CustHc	415
358	1220 PUNTY BAND Ind. Cream Souv. Cust. Hf	416
359	1280 WING SCROLL Trinket Box Clambroth	417
360	1428 WARWICK 1 Lite Candle Sahara Pr. H	418
361	3390 CARCASSONNE 1 oz. Cordial Old	419
	Colony Etch	420
362	3397 GASCONY 4 oz. Oyster Cocktail	
	Tangerine	421
363	3481 GLENFORD 1½ oz. Ftd. Bar Alexandrite	422
364	3481 GLENFORD 1½ oz. Ftd. Bar Alexandrite	423
365	2323 NAVY 2 oz. Bar Cobalt Ft.	
366	2323 NAVY 2 oz. Bar Cobalt Ft.	424
367	3389 DUQUESNE 5 oz. Sherbet Tangerine bowl	425
368	1415 TWENTIETH CENTURY 5" Hdd. Cereal	426
	Bowl Sahara H	427
369	394 NARROW FLUTE 12" 3 Comp. Relish	
	Flamingo H	428
370	1184 YEOMAN 13" Relish D O Sahara	
371	1252 TWIST 13" Celery Flamingo H	429
372	1184 YEOMAN 13" 3 Comp. Relish D O	
	Marigold	430
373	1252 TWIST 13" 3 Comp. Relish Mnglm. H	431
374	1540 LARIAT 12" Celery	432
375	1252 TWIST 13" Celery Flamingo H	433
376	1495 FERN 3 Comp Relish Zircon	434
377	1401 EMPRESS 13" Celery Sahara H	435
378	1184 YEOMAN 13" 3 Comp. Relish D O	
	Flamingo	436
379	300 PEERLESS 4½ oz. Hi Ftd. Sherbet	437
380	351 PRISCILLA Flared Sundae Dish (2) H	438
381	1253 COLONIAL 5 oz. Sherbet (4) H	439

PAID ADVERTISEMENT

351	PRISCILLA Saucer Champagne (2) H	
1226	COLONIAL 5½ oz. Flared Sherbet (6) Hm	
341	PURITAN 4½ oz. Saucer Champ. (9) H	
359	COLONIAL 4 oz. Saucer Champ. (2) H	
1E92	OMEGA Saucer Champ. H & 1184	
	YEOMAN Sherbet Moonglm. H	
1425	VICTORIAN Sherbet (2)	
1425	VICTORIAN Saucer Champ.	
310	RING BAND 8½" Nappy & 6 4½" Nappies	
	Custard w/Rose Dec. H (3f)	
1184	YEOMAN 9" Cov. Vegetable DO Flamingo	
451	CROSSLINED FLUTE 8½" Shallow Nappy H	
10	10" Floral Plateau w/#10 Floral Block	
	Flamingo H	
1495	FERN 11" Oval Floral Bowl H	
1401	EMPRESS 8" Nappy Moonglem H	
1401	EMPRESS 8" Nappy Moonglem H	
1401	EMPRESS 4½" Nappies Moonglem (3) H	
337	TOURAIN 6½" Nappy H	
1184	YEOMAN 9" Oval Baker Flamingo H	
1202	9" Floral Bowl & Base Moonglem H	
357	PRISON STRIPE 9" Nappy w/Gold rough H	
1255	PINEAPPLE & FAN 7½" Nappy Emerald	
	Worn Gold Dec.	
1632	LODESTAR 11" Crimped Floral Bowl DawnH	
1401	EMPRESS Ind. D F Nut Cup Alexandrite	
1229	OCTAGON Ind. Nut DO Mnglm. (3) H	
1229	OCTAGON Ind Nut Flamingo (4) H	
393	NARROW FLUTE Ind. Almond (7) H	
	4 are Cut	
1121	Ind. Salt Dip	
1205	FANCY LOOP Ind. Salt Dip	
1435	DIAMOND POINT Ind. Marmalade (11) H	
354	COLONIAL Ind. Butter Pats (6) H	
351	PRISCILLA Ind. Butter Pats (3) H	
10	MAPLE LEAF Coaster Flamingo	
	HEISEY MAIL BOX - no bracket	
1503	CRYSTOLITE Sm. Cigarette Box & Cov.H	
1469	RIDGELEIGH Oval Cig. Box & Cov.	
1469	RIDGELEIGH Sq. Cig. Box & Cov. H	
1503	CRYSTOLITE 3" Rd. Ashtray Zircon H	
1469	RIDGELEIGH 3" Rd. Ashtray rough H	
359	Match Stand Ashtray H	
1469	RIDGELEIGH Bridge Ashtrays, Spade, Club,	
	Heart & Diamond (4) H	
1186	YEOMAN Ind. Ashtrays Cut & Mono. (6)	
	Misc. Ashtrays (4) H	
1228	6" Baked Apple Dishes (6) & 7" Plates (6)	
	all Moonglem	
1469	RIDGELEIGH 8" Centerpiece H	
500	OCTAGON Frozen Dessert Moonglem (8)	
1184	YEOMAN 5" Saucer Moonglem (5) H	
1170	PLEAT & PANEL Hdd. Cr. Soup &	
	Underplate Cut Moonglem (2) H	
1170	PLEAT & PANEL Hdd. Cr. Soup Moon	
	Glem (8) H	
1404	OLD SANDWICH Salt Shakers 1 Metal Top	
	(3)	
1519	WAVERLY Low Salt & Pepper H	
1489	SATURN Shakers, 2 w/tops (4)	
1519	WAVERLY Ftd. Salt, & 4 Misc. Shakers H	
	Mayonnaise Spoon H	
10	Muddler	
411	TUDOR 2 Hdd. Mayo. & Underplate	
	Hawthorne H	
1509	QUEEN ANNE Ftd. Mint Crinoline Etch	
1401	EMPRESS D F Mayo. Flamingo	
1229	OCTAGON 6" Mint Marigold	
1229	OCTAGON 6" Mint D O Marigold	

PAID ADVERTISEMENT

- 440 1469½ RIDGELEIGH 6" Bon Bon H
- 441 1469½ RIDGELEIGH 6" Bon Bon H
- 442 1183 REVERE 6" 2 Hdd. Bon Bon Gold Dec. H
- 443 341 OLD WMSBURG. Hdd. Jelly rough H
- 444 1469 RIDGELEIGH Mayonnaise H
- 445 1495 FERN 6" Hdd. Jelly & 6" Hdd. Mint
- 446 1540 LARIAT 7½" Bon Bon
- 447 1540 LARIAT 7" Sauce Dish & Underplate
- 448 1205 FANCY LOOP 4" Nappy (2)
- 449 1295 BEAD SWAG 4" Nappy (2)
- 450 1469½ RIDGELEIGH 6" Hdd. 2 Comp Jelly
- 451 1469 RIDGELEIGH 3 Hdd Jelly H
- 452 1469½ RIDGELEIGH 6" Cheese Plate H
- 453 1229 OCTAGON 6" Cheese Plate Flamingo
- 454 1252 TWIST 3 Hdd. Mint Flamingo H
- 455 1252 TWIST 3 Hdd. Mint Moongleam (2) H 1f
- 456 1252 TWIST 3 Hdd. Mint Moongleam H
- 457 411 TUDOR Hdd Jelly & Underplate Cut H
- 458 355 QUATOR 4½" Nappies (2) H
- 459 433 GREEK KEY 2 Hdd. Jelly (Hdd. c) H
- 460 1401 EMPRESS Cup & Sq. Saucer (4 sets) H
- 461 1184 YEOMAN Cups (11)
- 462 1401 EMPRESS Cup & Rd. Saucer Sahara H
- 463 335 PRINCE OF WALES Punch Cup H
- 464 1205 FANCY LOOP Punch Cup x
- 465 341 OLD WMSBURG. Punch Cups (6) H
- 466 300 PEERLESS Punch Cups (5) H
- 467 1540 LARIAT 7" Shallow Nappy Silver Dec. (2)
- 468 15 5" Floral Block Hawthorne
- 469 1469 RIDGELEIGH Dresser Set, Brase Finish 3pc.
- 470 1184 YEOMAN Egg Cup Flamingo (2) H
- 471 12 9" Floral Plateau & Frog Flamingo H
- 472 12 9" Floral Plateau Flamingo Gold Dec. H & Crystal Frog
- 473 1184 YEOMAN 8" 3 Comp. Hdd Tray Flam. H
- 474 1469 RIDGELEIGH 3 Comp. Relish H
- 475 353 MED. FLAT PANEL 4½" Plate (4) H
- 476 393 NARROW FLUTE 4½" Plate (6) H
- 477 353 MED. FLAT PANEL 6" Plate (9) H
- 478 393 NARROW FLUTE 8" Plate Crys. H & 1243 7" Plate Flamingo H
- 479 1495 FERN (2) 8" Plates, 1 Belvedere Etch & 1 Silver Dec.
- 480 1241 8" Plate (2) H
- 481 1405 IPSWICH Saucers (4) & 8" Sq. Plate H
- 482 1170 PLEAT & PANEL 7" Underplate Flam 4 H
- 483 1401 EMPRESS 9" Rd. Plate Sahara H worn
- 484 1183 REVERE 9" Plate Vaseline H
- 485 BAKEWARE Pie Plate 8" H
- 486 VERLYS PELICAN dish 1 Frstd. 1 Plain
- 487 VERLYS CUPIDON Bowl
- 488 VERLYS SWALLOWS Ashtray Directory Bl.
- 489 VERLYS BIRDS & BEES Bowl
- 490 VERLYS SEASON VASE, Summer & Winter
- 491 1519 WAVERLY Epergnettes (2) H
- 492 341 OLD WMSBURG. 5½" Epergnettes (3) H
- 493 Powder Jar Metal Lid H
- 494 1183 REVERE 6" Candy Dish no lid H & 1184 YEOMAN Saucer Flamingo H
- 495 1485 SATURN Sherbets (2) H
- 496 1184 YEOMAN Hdd. Bouillon Cup H & 5079 PAN AMERICAN Cocktail (2) H
- 497 BOX LOT Misc. Glass
- 498 BOX LOT Misc. Glass
- 499 BOX LOT Misc. Glass
- 500 BOX LOT Misc. Glass
- 501 BOX LOT Misc. Glass
- 502 HEISEY BY IMP. Victorian Sodas Azalea (2)H

PAID ADVERTISEMENT

- 503 HEISEY BY IMP. Lodestar Crimped Floral Bowl Lt. Green H
- 504 Imp. Land of Leg. Plates '72 & '73, Holoph Souv. (2)
- 505 IMP. Land of Leg. Plates '72, '73, '74, '75, & '76
- 506 IMP. Land of Leg. Plates (2) '72, (2) '73, (2) '74, (2) '75
- 507 Imperial Prov. Cr. & Sugar Heatner H
- 508 Imp. Ind. Cr. & Sug. Amber Sug. H
- 509 Imp. Waverly 6" Compote Dolph. Stem Caramel Slag
- 510 Imp. Waverly Cov. Seahorse Candy Jar Caramel Slag w/crystal lid
- 511 Imp. Standing, Balking & Kicking Colts Lt. Blue IG
- 512 Imp. Wings Up, Half, & Down Mallards Lt. Blue IG
- 513 Imp. Wings UP, Half, & Down Mallards Lt. Blue IG
- 514 Imp. Standing, Balking, & kicking Colts Dk. Blue IG
- 515 Imp. Sm. Elephant Pink Irrid.
- 516 Imp. Lot 8 Oscars, '77, '78, '79, '79Goof, '80, '81, '82, '83 IG
- 517 Imp. Donkey Cr. Slag IG
- 518 Imp. Donkey Cr. Slag IG
- 419 Imp. Donkey Cr. Slag IG
- 520 Imp. Donkey Cr. Slag IG
- 521 Imp. Airedale Cr. Slag IG
- 522 Imp. Airedale Cr. Slag IG
- 523 Imp. Oscar Cr. Slag IG
- 524 Imp. Standing Colt Cr. Slag IG
- 525 Imp. Mallard Wings Down Cr. Slag IG
- 526 Imp. Mallard Wings Half Cr. Slag IG
- 527 Imp. Mallard Wings Up C. Slag IG
- 528 Imp. Mallard Wings Up Cr. Slag IG
- 529 Imp. Mallard Wings Up Cr. Slag IG
- 530 Imp. Woodduck Cr. Slag IG
- 531 Imp. Woodduck Cr. Slag IG
- 532 Imp. Woodduck Cr. Slag IG
- 533 Imp. Med. Elephant Cr. Slag IG
- 534 Imp. Med. Elephant Cr. Slag IG
- 535 Imp. Childs Mugs, Elephant Hdl., Crystal, Milk Glass, 2 Dk. Blue, Lt. Green, Brown, Jade Slag, Ruby Slag, & Aurora Jewels

MAIL BID INSTRUCTIONS

Mail bids accepted with checks for maximum amount. Mail bids are handled competitively and any difference refunded. Only items in mint condition will be subjected to mail bids. Please add \$8.00 per carton for postage and handling, \$10.00 west of Rocky Mts.. Checks should be made to Sam Schnaidt, Auctioneer and mailed to: APPLE TREE AUCTION CENTER 1616 West Church Street Newark, Ohio 43055

LIST OF PRICES REALIZED, AVAILABLE AFTER THE AUCTION FOR \$1.00

(Send for list to the above address)

PAID ADVERTISEMENT

1983 ACQUISITIONS

1. #4222 Horseshoe Sugar, Sahara
2. #1255 Pineapple & Fan Cream & Sugar, Emerald.
3. #1255 Pineapple & Fan Celery, Emerald
4. #1521 Quilt 8" Covered Candy
5. #4085 (4045) 3, 6 & 9" Ball Vases
6. #1280 Winged Scroll Pickle Dish, Custard
7. #429 Plain Panel Goblet
8. #1447 Rococo 5-Part Relish, Sahara
9. #8067 Ruth, Emerald Swung Vase, Perfectly Plain - Marked but pattern unknown, Similar to #449.
10. #7155 Octagon Recess Pitcher with Metal Lid - Probably an ice jug.
11. #4027 Sahara Decanter D/O. Stopper is also Sahara.
12. #8068 Eagles Rest Butter Dish. Previously unknown to us.
13. #5010 Symphone Goblet, Special Oriental Engraving.
14. #2351 Tumbler, Special Oriental Engraving.
15. #1280 Winged Scroll Cruet, Custard, Heisey Decoration #54.
16. Whimsey Potty, Special cutting by Wm. (Butter) Groves, onetime foreman of cutting shop.
17. #1430 Aristocrat Candy Jar, Etched #426 Mount Vernon (Emogene).
18. #4058 Apple Punch Bowl with #870 St. Albans Cutting (Variant) - No Lid.
19. #1170 Pleat and Panel 10" 5-Compartment Spice Tray (relish), Hawthorne.
20. Misc. Cruets - 411 Tudor, 1404 Old Sandwich French Dressing, 393 Narrow Flute, #300 Peerless Catsup, 1184 Yeoman, 1405 Ipswich, 429, Plain Panel Recess, 343 Sunburst.
21. #5029 Empress Lily Goblet, Limelight Bowl.
22. #3480 7" Floral Bowl, Flamingo
23. Heisey Printing Plate for Ad.
24. #1220 Puntty Band, Footed, Cake Basket.
25. 9 Miscellaneous Door Knobs, Lids and Stoppers.
26. #8037 Fluted Diamond Foot, 8" Oval Footed Bowl.
27. #305 Puntty and Diamond Point Sugar Shaker, Sterling Top.
28. #1235 Beaded Panel and Sunburst Cruet.
29. #354 Wide Panel Cruet
30. #1235 Bead Swag Tumbler, Emerald.
31. #1225 Plain Band Wine, Ruby Stain.
32. #1200 Cut Block Cruet
33. #1252 Twist Footed Bowl, Marigold.
34. #1200 Cut Block Cream and Sugar.
35. #1235 Beaded Panel and Sunburst Tumbler.
36. #1255 Pineapple and Fan 8-1/2" Nappy, Emerald, Gold Trim.
37. #1229 Octagon Mayonnaise, Marigold.

Harley Bethel has returned home from the hospital. He underwent surgery twice since the convention. Cards addressed to him here at the club will be forwarded.

We have no news from Jim Fraser. We are all hoping that no news is good news.

EVERYONE MAKES MISTAKES

One day back in January I picked up the phone to hear the familiar voice of Lucile Kennedy say, "Louise, everyone makes mistakes." I thoroughly agreed with that and asked, "What has happened now?"

It seems that the man in charge of production was in Europe. Most everyone had been told that the date in the mold had to be changed to 1984 before making the ruby Oscar. However, one day there was a partial batch of ruby in the pot and the men needed something to do that afternoon. They apparently forgot to read the instructions and proceeded to make 251 ruby Oscars dated 1983. So what do you do with them? If it were their own production they would sell them in their outlet shop. But for special orders? What do you do?

That was the reason for Lucile's call, to see if we could use them. Since we had purchased "mistakes" before which had sold well, the Board approved the purchase of these.

This will be a Preview of 1984. Each member can make a try to get one, since the Board felt it was fair to give everyone a chance.

These are being offered at \$20 each and one to a member, whether Voting, Associate or Household. If a drawing is necessary it will be done at the September 10th dinner.

Again we suggest the use of a bank card to avoid tying up your check for several weeks.

A form is included on the inside back cover along with the form for the souvenir cordial and dinner.

There will be 2164 clear ruby Oscars in 1984 and 208 frosted, a total of 2372, two hundred less than in 1983. The ruby ones are really beautiful. They can be ordered from the January '84 newsletter.

Louise Ream

"TICONDEROGA" CUTTING No. 929



No. 5012 — 7 oz. Vase

JIM GARTNER
444 GIRARD ST. #103
GAITHERSBURG, MD 20877

PH: 301-869-5306
P & I EXTRA
* SIGNED

#1404 OLD SANDWICH, Sah. Water Pitcher* \$145.00
#1404 OLD SANDWICH, Sah. 12 oz. Ice
Tea* (4) each..... 30.00
#1404 OLD SANDWICH Flam. 3 pc. Console
Set*..... 380.00
#1401 EMPRESS Fla. 7" Oval Compote*.... 60.00
#1401 EMPRESS Sah D.F. Cream & Sugar*.. 65.00
5 CANDLESTICKS - 1 Pair 9"..... 160.00
325 PILLOWS Cracker Jar W/Cover*..... 195.00
305 PUNTY & DIAMOND POINT Punch
Cups* (3) each..... 12.00
#1425 VICTORIAN Wines 2-1/2 oz.* (11)
each..... 18.00
#1425 VICTORIAN Clarets 4 oz. * (6) ea. 18.00
#1425 VICTORIAN Champagnes 5 oz. (8)
each..... 18.00
#1425 VICTORIAN High Footed Goblets (9)
Each..... 20.00
#1425 VICTORIAN 2 oz. Bar* (2) each.... 15.00
#1425 VICTORIAN Oil Cruet e oz.*..... 37.00
#1519 WAVERLY Cruet, Rose Etch..... 160.00
#1225/
109 PITTICOAT DOLPHIN Footed Com-
potier, Flamingo..... 195.00
459 BASKET 7"*..... 150.00
459 BASKET 8"*..... 165.00
463 BASKET 7"* Daisy Cutting..... 185.00
464 BASKET 7" Fruit Thistle Cutting*. 180.00

SIMONS ANTIQUES
PAUL & MARJORIE SIMONS
57 MAIN STREET
VINCENTOWN, NJ 08088

PH: 609-859-0440
Night 859-3360
P & I EXTRA
* Marked

335 PRINCE OF WALES Punch Cups*(13)ea\$ 23.00
339 CONTINENTAL Punch Cups* (10) each 11.00
433 GREEK KEY Punch Cups* (3) each... 22.00
#1401 EMPRESS Ice Bucket D/F Orchid
Etch W/H*..... 100.00
#1401 EMPRESS Ice Bucket, Silver
Overlay W/H*..... 65.00
#1405 IPSWICH Tall Sherbets (12) each.. 15.00
#1425 VICTORIAN Punch Cups* (8) each... 12.00
#1540 LARIAT Punch Cups* (15) each..... 9.00
#3380 OLD DOMINION 2-1/2 oz. Wine,
Sahara (6) each..... 25.00
#3389 DUQUESNE Goblet, Chintz Etch,
Sahara (8) each..... 35.00
#5019 WAVERLY Wines (13) each..... 12.00
#5025 TYROLEAN 2 oz. Wine, Orchid Etch*
(8) each..... 75.00
#5025 TYROLEAN 3 oz. Wine, Orchid Etch*
(11) each..... 75.00
#5025 TYROLEAN Goblet, Orchid Etch*
(12) each..... 35.00
#5025 TYROLEAN Sherbet, Orchid Etch*
(14) each..... 27.50
#5067 PLANTATION IVY Iced Tea (8) each. 35.00
#5067 PLANTATION IVY Claret* (6) each.. 35.00
#5067 PLANTATION IVY Juice (8) each.... 35.00

C. E. HIGGINS
P.O. Box 2723
MENLO PARK, CA 94025

PH: 415-322-0192
P & I EXTRA

300 CANDELABRA, 3-Lt. Sahara, Pr....\$1,200.00
5 TOY CANDLESTICKS, Pr..... 95.00
#1183 REVERE Salt, Cobalt..... 100.00
#3381 CREOLE Cocktail, Sahara Bowl.... 60.00
#3381 CREOLE Goblet, Sahara Bowl..... 75.00
#3381 CREOLE Champ., Sahara Bowl..... 50.00
#3381 CREOLE Champ., Alexandrite..... 110.00
#3381 CREOLE Sherbet, Alexandrite..... 75.00
#1519 WAVERLY Salt, Pepper..... 35.00
31 TOY Candle Holder..... 35.00
433 GREEK KEY Ftd. Ind. Almond..... 28.00
#1201 FANDANGO 6 oz. Cruet..... 75.00
417 RIB & PANEL Basket, Moongleam... 125.00
SODAS, 12 oz., Circus Elephant,
Camel, Clowns, Western Scene,
each..... 110.00
OLD FASHIONED, Circus Rube..... 110.00
PENGUIN DECANTER, Monogram..... 175.00
FISH BOOK-ENDS, Pair..... 200.00
160 LOCKET ON CHAIN Spooner..... 65.00
#1415 TWENTIETH CENTURY Tumbler,
Cobalt..... 85.00
429 PLAIN PANEL Cruet, Cut..... 65.00
#4054 CORONATION Soda, Modern Polo
Player Etch..... 50.00

CHARLES & MILDRED FISHER
991 IDLEWILDE AVE.
NEWARK, OH 43055

PH: 614-522-5398
UPS & INS. 5%
* Marked

MADONNA, Frosted*.....\$125.00
HOTEL CREAM & SUGAR, Moongleam..... 50.00
CANDLESTICKS, Dolphin Ftd. Flamingo*..... 350.00
#1401 OLD SANDWICH Decanter..... 125.00
#1503 CRYSTOLITE Cream & Sug. W/Tray(mini) 55.00
#1519 WAVERLY Orchid Etch Gardenia Bowl... 60.00
#1519 ORCHID Etch Water Goblets (6) ea... 35.00
#1567 PLANTATION, Compote/Candlestick
4-1/2" High..... 85.00
#1567 PLANTATION Vases - Large 9"...each. 150.00
#1567 PLANTATION Wines 3-1/2" ..each.... 35.00
#1567 PLANTATION Syrup..... 50.00
ELEPHANT, Heisey Small..... 175.00
IMPERIAL SLAG ANIMALS: Donkey, Standing
Colt, Plug Horse, Elephant, Wood Duck,
Mallards, Wings 1/2 & up...each..... 25.00
Mallard - Wings Down..... 225.00
Colt - Balking..... 200.00
Scottie..... 200.00
HCA OSCARS: 1977 Fern Green - \$75.00, 1978 Rose
Pink - \$65.00, 1979 Sunshine Yellow - \$55.00,
1980 Heather - \$45.00, 1981 Horizon Blue - \$35.00,
1980 Heather Frosted - \$40.00.
DARK BLUE: Airdale - \$50.00, Elephant, Med. -
\$45.00, Scottie - \$40.00, Donkey - \$40.00
Standing, Sitting, and Kicking Colts, Set.\$125.00

11TH ANNUAL MINI-SHOW
AND FLEA MARKET

SEPTEMBER 10, 1983

9-4 PM 75¢ ADMISSION

NEWARK CATHOLIC HIGH SCHOOL
855 WEST CHURCH STREET
NEWARK, OHIO

FOR DEALER SPACE CONTACT:
LAND OF LEGEND HCC
C/O DICK SMITH
225 UPSON DOWNS
NEWARK, OH 43055

(614) 366-5163

BENEFIT: NATIONAL HEISEY GLASS MUSEUM

25¢ OFF WITH THIS AD

H & R DIAMOND H
HELEN - BOB RAREY
1450 WHITE ASH DRIVE
COLUMBUS, OH 43204

PH: 614-279-0390
After 5:30 P.M.
P & I EXTRA
* Marked

#1255	PINEAPPLE & FAN 6" Vase.....	\$27.50
#1184	YEOMAN Cr.*Sugar* W/Cutting.....	45.00
#1193	INSIDE SCALLOP Cucumber Dish*, Flamingo.....	17.50
#1229	OCTAGON Mint, Hld., Hawthorne.....	19.00
#1229	OCTAGON Mayonnaise, Moongleam.....	31.00
#1519	Oval, Ftd. Comport, Silver Deco.....	75.00
# 393	NARROW FLUTE Mustard W/Lid*.....	29.00
# 354	FLAT PANEL Stack Set*.....	52.50
#1401	EMPRESS Ind. Cr.*, Sugar*.....	42.50
#1503	CRYSTOLITE Ind. Cr.*, Sugar*, Tray*.	49.50
# 372	Sanitary Syrup*.....	35.00
#1401	EMPRESS Cov'd. Marmalade, Ftd.*.....	45.00
#7012	SQUARE Fan Powder Jar*, No Lid.....	21.00
#1428	WARWICK 5" Vase* - Pair.....	47.50
#1951	CABOCHON 1-Lite*.....	21.00
#1540	LARIAT Fan Vase, Beautiful Cutting..	85.00
#1201	FANDANGO Sugar.....	22.50
#1504	REGENCY 2-Lite, Pair.....	75.00
#1469	RIDGELEIGH Ind. Salts (8) in Original Box.....	65.00
#1567	PLANTATION Oval Relish*.....	45.00

SASE FOR WANTS

See Page 9.

HOW YOU CAN BID

1. You may send a separate check for each lot to be bid or if bidding on two or more lots, you may list the maximum bid for each lot and send one check covering the total of your maximum bids on all lots, but in either case, include adequate shipping. Any surplus bid money or shipping charge will be refunded.
2. In lieu of sending checks for each bid lot, you may use a valid VISA/MASTER-CARD. In this case we need the type of card (Visa/Master-Card), the card number, and its expiration date.
3. A Self Addressed, Stamped Envelope (SASE) is required for return of unused checks and your letter giving the results of your bids.
4. All bids must be received in writing and have your signature.

REMEMBER, in case of duplicate bids, earliest postmark wins, so get your bids in as early as possible. Bids must be received by Sept. 3, 1983, at the following address in order to be prepared for the auction Saturday, September 10th.

HCA SEPT. AUCTION
P.O. BOX 27
NEWARK, OH 43055

MUSEUM PICTURE ON PLAYING CARDS



We just noticed that in your Reference Publication list there is no mention of the design of the back of the cards. The above picture of the museum, in either red or blue, is on them. It makes an attractive deck of cards and they are fun for a Heisey Collector to use.

Route 202
Lahaska, PA 18931
(215) 794-7800

LYNNE
DOLL



ART'S
HOUSE

P.O. Box 54-6014
Miami Beach, FL 33154
(305) 861-7700

"HEISEY OUR SPECIALTY"

***Dear Heisey Collector and Dealer,
We're Heading Your Way!! Heisey Animals,
Lovely Old Patterns, and a Rainbow of Colors, will
be coming along with us.***

We'll be at the following show

SEPT. 24 & 25 - BAY STATE HEISEY COLLECTORS CLUB - SHERATON,
STURBRIDGE, MASS.

ONLY BECAUSE OF DOCTORS ORDERS, WE ARE SELLING OUR ENTIRE HEISEY GLASS
INVENTORY AND PART OF OUR PRIVATE COLLECTION, ONE PIECE OR EVERYTHING.

WE'LL BE IN OUR SHOP IN LAHASKA, PENNA., FROM NOW THROUGH NOVEMBER. BY
APPOINTMENT OR BY CHANCE.

***See you soon,
Lynne and Art***

**SIXTH ANNUAL
*All Glass Show
and Sale***

Sheraton - Sturbridge Inn
Rte. 20 - Sturbridge, Mass.

SEPT. 24, 1983 SEPT. 25, 1983
Sat. - 10:00 am-5:00 pm Sun. - 11 am-4 pm

All Glass of All Periods

SPONSOR
BAY STATE HEISEY COLLECTORS CLUB
DONATION \$2.50 — with card \$2.00
Benefit—Heisey Glass Museum

THESE SHOWS ARE BOTH SPONSORED BY
MEMBER CLUBS FOR THE BENEFIT OF THE
NATIONAL HEISEY GLASS MUSEUM.

**Glass & Pottery
Show & Sale**

1st ANNUAL DEPRESSION ERA GLASS AND POTTERY SHOW
ST. CLAIR FAIRGROUNDS
BELLEVILLE, ILLINOIS

Glass repairman available

SPECIAL GUEST — GENE FLORENCE
SATURDAY — SUNDAY
AUGUST 27 — AUGUST 28
10:00 a.m. to 5:00 p.m. — 10:00 a.m. to 5:00 p.m.
Admission \$1.25

SPONSORED BY
SO. ILL. DIAMOND
SEEKERS

We assume no responsibility for errors in these ads after the first printing...Editor. For changes in ads during the year, please send \$1.00 per line.

ALL-HEISEY AUCTIONS

Consignments Welcome
OFF-BROADWAY ANTIQUES
121 S. Prospect Street
Granville, Ohio 43023
Sam Schnaidt: (614)587-2083 Shop
(614)587-0052 Res.

DAVE'S ANTIQUES

Specializing In Heisey
Shows And Appointments
Tampa, Florida
Phone (813)876-0580

ANTIQUE JUNCTION

540 N.E. 'E' Street (off I-5)
Grants Pass, Oregon 97526
(503)479-8575 or (503)582-4067
Hours: Wed.-Sat. 11 to 5

ANTIQUES- THE SHULTZES

206-208 East Main Street
Newmanstown, Pennsylvania 17073
15 Miles west of Reading, Pa.
Phone (215)589-2819

AVERY'S QUALITY ANTIQUES

2112 First Street
Jackson, Michigan 49203
Phone (517)783-4075
Heisey, other glass & china
Shows or By appointment

B & B HEISEY & COLLECTIBLES

B. Whaley
300 International Drive
Pataskala, Ohio 43062
By Appointment; Phone (614)927-1557

C & J ANTIQUES

Cole & Jean Miesner
Box 45, 72 Whig Street
Newark Valley, New York 13811
Phone (607)642-9905

CHARLES & MILDRED FISHER

Heisey, Degenhart, Imperial
Antiques, Collectibles, General Line
991 Idlewild, Newark, Ohio 43055
Phone (614)522-5398

DEL'S DOING

Box 188, 10327 Main
Richmond, Illinois 60071
Heisey- Cambridge glass
Furniture & Jewelry

DIAMOND H PLUS

George & Eileen Schamel
Route 3, Box 419
Boonsboro, Maryland 21713
Appointment or Mail order
Phone (301)432-6285

DIE KUNST GALLERIES & ANTIQUES

Box 329, 725 Front Street
Leavenworth, Washington 98826
Vel & Andy Andress
Phone (509)548-7858
Specializing in Heisey

GERT'S GLASS

Gertrude & Russell Swetnam
1926 Saratoga Dr., Adelphi, Maryland 20783
Heisey & Duncan
Phone (301)434-5113

ELIZABETH BASSETT CASON

401 32nd Street W.
Bradenton, Florida 33505
Mail order- List
Phone (813)748-0851

GLASS REPAIR

Little Antiques & Gifts
110 Marshall Street
Pigeon Forge, Tennessee 37863
Phone (615)453-6922
Quality removal of chips, polishing and reshaping of
pitchers. Shipped UPS.

GOLDSBERRY'S ANTIQUES

Kalamazoo, Michigan
Shows Only- Buy & Sell
HEISEY a specialty
Phone (616)381-3013

GREEN ACRES FARMS

Antiques, Crystal glass & Collectibles
2678 Hazelton-Etna Rd. SW. (S.R. 310N)
Pataskala, Ohio 43062
Sat. or Sun. P.M. or call (614)927-1882

H & R DIAMOND H

Helen & Robert Rarey
1450 White Ash 'drive
Columbus, Ohio 43204
Phone (614)279-0390 after 5:30

HAPPY HAVEN ANTIQUES

Mary Dumke
41319 Rattlesnake Road
Grass Valley, California 95945
Phone (916)273-9450

HARRISON'S ANTIQUES

Heisey, Cambridge, Duncan
26 Johnston's Lane
Mercersburg, Pennsylvania 17236
Shows, Mail, By appt. Phone (717)328-2451

HEISEY PUBLICATIONS

Box 102, Plymouth, Ohio 44865
All Heisey Books I-II-III-IV
Heisey Newscaster 32 pg. Quarterly
\$6.00- Back Issues \$4.00

JOYCE'S ANTIQUES

Specializing in Heisey, Cambridge,
Verlys & American glass
P.O. Box 114
Albertson, New York 11507
Phone (516)499-3396

LITTLE'S ANTIQUES

Heisey & General Antiques
Lorain, Ohio
Phone (216)282-2442
Shows & By appointment

LYNNE & ART'S GLASS HOUSE

'HEISEY OUR SPECIALTY'
P.O. Box 54-6014
Miami Beach, Florida 33154
Phone (305)861-7700 or (305)895-5666 OR
Route 202
Lahaska, Pennsylvania 18931
Phone (215)794-7800

LAST CHANCE ANTIQUES

P.O. Box 502, Dania, Florida 33004
Mail Orders- Matching Service
Send Us Your Want Lists
Phone (305)487-6358 Day or Evening

MOSTLY HEISEY

Rhoda Curley
16 Clayton Place
Albany, New York 12209
By appointment, Phone (518)482-6272

MOUNDBUILDERS ANTIQUES

Irene Rauck
1138 Mounview
Newark, Ohio 43055
Phone (614)344-6043
Heisey & Animals General Antiques

OX YOKE ANTIQUES

Don & Norene Walzer
General Line & Heisey
675 Ogden Parma Tl. Rd.
Spencerport, New York 14559
Phone (716)352-3959

PATTON HOUSE

Heisey- Duncan Miller
Rocky's Mall, I-81 & US 11
Weyers Cave, Virginia 24486
Phone (703)967-1181

PEGGY'S ANTIQUES

Ernie & Peggy Cox
2000 pcs. of Heisey in stock
P. O. Box 367
Spavinaw, Oklahoma 74366
By appt. or by chance Phone (918)589-2859

R & L ANTIQUES- SAN FRANCISCO

Shows only, Always lots of Heisey
Member of Golden Gate Heisey Club
P.O. Box 3614
Daly City, California 94015
Phone (415)621-6693 Russ & Lee

RAMBLING LANE ANTIQUES

Keith & Evelyn Hoover
Featuring Heisey & other fine glass
Route 4, Box 1005
Rhinelander, Wisconsin 54501
Phone (715)282-5019

RAY ZIEGLER

Glass Repair
2265 Innis Road
Columbus, Ohio 43224
Phone (614)882-8446

SCHWAN'S ANTIQUES

Rt. 1, Box 175B, John Tyler Highway
Williamsburg, Virginia 23185
Phone (804)229-7873 Shop & Shows

SUM OF LIFE

Elaine & Frank Husted
P. O. Box 102
Phoenixville, Pennsylvania 19460
Phone (215)935-2962

T & S ANTIQUES

Tom Martin & Steve Roderick
Specializing in Heisey
New Rochelle, New York
Phone (914)235-9632

THE WOODEN SHOE

Antiques & Collectibles
Glass Furniture, Estates
Jim & Sheri Van Es, By appointment
810 Elden
Herndon, Virginia 22070
Phone (703)435-9045

FOREVER HEISEY

Janice Thran
1663 Londondale Parkway
Newark, Ohio 43055
Phone (614)344-5955

CORDIAL ORDER FORM

Please complete this form and mail with check payable to H.C.A., Inc. to:
 (Do not send Oscar Order or anything else with this order.)
MAIL BY AUGUST 29, 1983.

HCA CORDIAL
 P.O. BOX 27
 NEWARK, OH 43055

	Amount Enclosed
_____ Number of Cordials without dinner, \$35.00 each.....	
_____ Number of Cordials WITH dinner, \$40.00 each.....	
_____ Extra dinner, no cordial, \$20.00 each.....	
TOTAL AMOUNT ENCLOSED....	

Name _____ Street _____

City _____ State _____ Zip _____

Extra Names _____

- _____ I will pick up my cordial(s) at the dinner.
 _____ I will pick up my cordial(s) at the Museum AFTER SEPTEMBER 10th.
 _____ Please Mail my cordial.

CHARGE MY

- BankAmericard/
 Visa
- Mastercharge



Credit Card No.

Expiration date required															MO.	Yr.				

See Page 13 For Explanation.

RUBY OSCARS DATED 1983

PLEASE READ VERY CAREFULLY BEFORE FILLING OUT

Oscars are Ruby, marked "HCA '83" and "IG".
 A limited edition of 251 to be offered to
 members at \$20.00. You may order ONE per
 member. This means ANY member who has a
 membership card regardless of class of
 membership. Please list all names as
 they will be checked. Everyone living in

Ohio ordering for pick-up in Ohio, must pay
 \$1.10 Sales Tax per Oscar. Shipping charges
 will be \$1.50 each.

DO NOT SEND DUES, BOOK ORDERS, ETC. WITH YOUR
 OSCAR ORDER.

Be sure your dues are currently paid.

_____ Number of RUBY OSCARS at \$20.00.....	ONLY ONE PER MEMBER
_____ Sales Tax \$1.10 each.....	ALL OHIO RESIDENTS AND PICK-UPS IN NEWARK
_____ Postage \$1.50 each.....	Check one: _____ Please mail my Oscar (s)
_____ TOTAL sent with order.....	_____ I will pick up my Oscar (s) at the Museum.

NAME (s) _____

List all names _____

ADDRESS _____ CITY _____ STATE _____ ZIP _____

Make check payable to HCA, Inc.

and mail to: HCA RUBY OSCAR SALES
 P.O. BOX 27
 NEWARK, OH 43055

CHARGE MY

- BankAmericard/
 Visa
- Mastercharge



Credit Card No.

Expiration date required															MO.	Yr.				

Classified Ads

WANTED: Buying Cambridge Rosepoint, Heisey Rose & Orchid, Fostoria etched dinnerware and Depression Glass. Also glass figures and unusual glass pieces. NADINE PANKOW, 207 S. Oakwood, Willow Springs, IL 60480
PH: 312-839-5231

FOR SALE: Most Colors, Most Patterns, 2000 pieces of Heisey to choose from. S.A.S.E. Please. No list available, Write wants. PEGGY'S ANTIQUES, Box 367, Spavinaw, OK 74366
PH: 918-589-2859

WANTED: #1117 Bankers Ink and Cover (Vogel IV-138) and any pieces in #348 Cupped Colonial. HAROLD HODGES, 3739 Plaza Drive, Topeka, KS 66609

WANTED: Any items of Crinoline Pattern Number 502. Preferably Stemware. R. THERING, 13246 Crane Ridge Drive, Fenton, Michigan 48430
PH: 313-629-7843.

WANTED: #407 Coarse Rib Tableware, Preferably Moonglam. Write: PENNY HATHAWAY, Box 705, Conway, NH 03818.

WANTED: Heisey Bobeche - Any color - except crystal - pairs please! JOYCE DAWSON, 2418 W. Crestview, Roseburg, OR 97470
PH: 503-672-4047.

WANTED: One #134 Double Candlestick with Minuet Etch. Call or Write: WENDELL AVERY, 2112 First Street, Jackson, MI 49203
PH: (517) 783-4075.

WANTED: Single #5 Candlestick, Approximately 8-1/4" High, Base 4-1/2" Wide, Top 2-3/4" Wide. Am also interested in a pair of #5 Candlesticks in either the 8" or 9". Write to VERA BROTHERS - 79 Cross Pky., Burlington, Vermont 05401 or Call 802-862-8014.

GLASS[®] review

ESTABLISHED 1977

10 'big' yearly issues
68 pages or more
\$12.50—one year

The GLASS REVIEW Magazine is for everyone who studies, collects or sells glass. Whether your glass interests lean toward the early 1900's—or the depression era—or with today's limited glass items, the GLASS REVIEW covers it all!

Articles—price reports—original catalog documentation—shop directory—research and reproduction news—trademark information—glass book releases—what's new on the market—a large variety of glass ads (on both old and new glass)—plus much more.

[] one year \$12.50 [] two years \$24.00 [] three years \$35

Enclose payment and mail to:
Glass Review, P.O. Box 542, Marietta, OH 45750

1983 Edition!

HEISEY'S GLASSWARE OF DISTINCTION

by Mary Louise Burns

Condensed and updated!
Contains all major tableware
patterns with pictures for
easy identification.

Current price list included

Order direct from author
\$11.95 pp
MARY LOUISE BURNS
P.O. Box 1931
Grants Pass, OR 97526

Individual price lists
available for Heisey's
Orchid Etch, Rose Etch,
Animals & Verlys @ \$1.50 ea.
plus large SASE



MUSEUM HOURS

MARCH thru DECEMBER

Tuesday thru Sunday - 1 to 4 p.m.

JANUARY and FEBRUARY

Wednesday, Saturday and Sunday - 1 to 4 p.m.

Other times by appointment

Closed Mondays and Holidays

MEMBERS ANYTIME



FIRST-CLASS MAIL

FIRST CLASS MAIL
U.S. POSTAGE
PAID
PERMIT 34
Reynoldsburg, Ohio 43068