

HEISEY

news

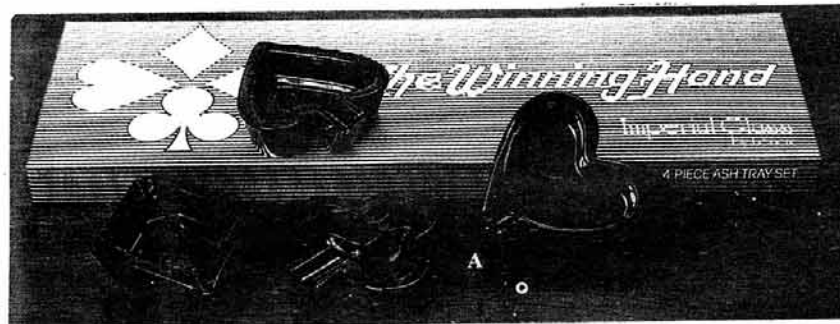
OFFICIAL PUBLICATION HEISEY COLLECTORS OF AMERICA
 ©Heisey Collectors of America, Inc. 1982
 All Rights Reserved

VOLUME VII NO. 1 JANUARY, 1983

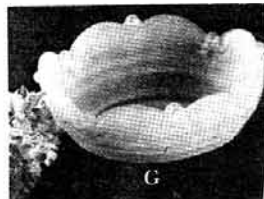
ISSN 0731-8014

ONE DOLLAR

PICTURES FROM IMPERIAL'S 1981 CATALOG



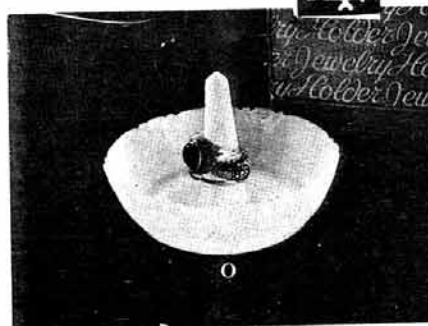
#1489 PURITAN ASH TRAYS marked LIG



Nappy
#1406



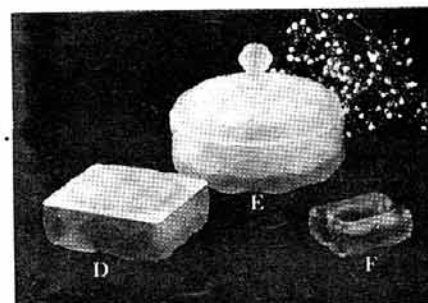
Cut Miter Vase
#1518



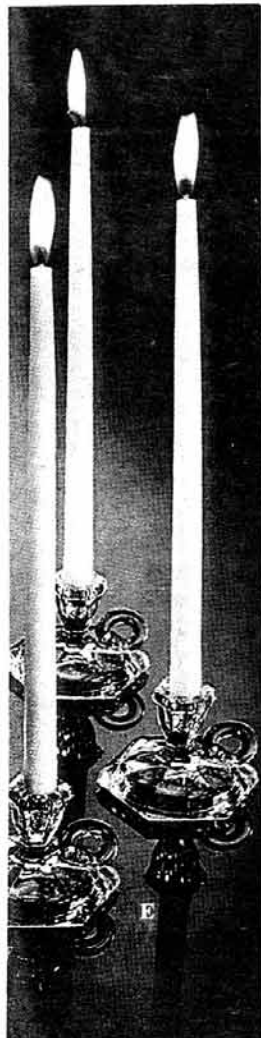
Jewelry Holder
#1401

#1401 EMPRESS

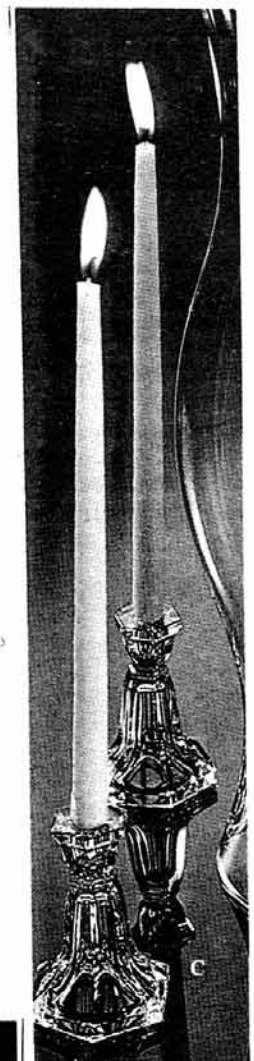
- Ring holder made from 3½ in. nappy mold.
5. Crystal satin New mid-1980-
 6. Pink satin 1981-
 7. Lemon Frost satin 1982-
 8. Sunburst Carnival 1982-
 9. Pink Carnival 1982-
- Unmarked and marked ALIG



#1533 Wampum Candy Box, marked LIG
Cigarette Box & Ash Tray



Toy Chamberstick
#31



Toy Candlestick
#33



HEISEY DECORATIONS

BY: Neila Bredehoff

SPECIAL ETCHINGS FOR ASH TRAYS

- #9058 FISH
- #9059 HUNTING SCENE
- #9060 DOG
- #9061 HORSE
- #9073 BUCKEYE STATE SHERIFFS ASSOCIATION



In our archives we have many interesting added pages to catalogs which have odd and often unrelated information. These lists sometimes contain information about extra services and items which the company was marketing or promoting and are not in the regular catalogs or price lists. One such sheet contains information on how the company decided that it could reach a large market by making the 1469-1/2 Ridgeleigh ash tray a souvenir item for special groups. These were probably used by the companies and groups using them as souvenirs, promotional items and the like.

The following is a direct quote and will give you some insight into the production of these items: dated 6-20-39:

"The following quotations apply to the Plate Etched 6 inch #1469-1/2 and the 4-1/2 inch #1469 Ash Trays.

"The prices include the Tray, the Etching and the Art Work and Plates.

"These trays can be shipped in Bulk, or packed in a Gift Box or with Gift Box inserted in a re-shipping carton.

"Send rough sketch or insignia to factory for us to submit drawing for Etching. This drawing to be approved by customer."

The company sold the #1469-1/2 Ridgeleigh 6 inch ash tray in quantities of 50 for \$1.00 each and in quantities of 1000 for 60¢. The Puritan ashtray (4-1/2") cost 80¢ in quantities of 50 and 50¢ in quantities of 1000. These prices included the ash tray, etching plate and cost of etching. Gift boxes were available at approximately 10¢ each. (Hardly seems possible does it?) This offer seems to have been in effect for many years.

The #9073 Buckeye State Sheriffs Association etching is an example of one of these custom etchings. Several others have been seen, including one for Socony vacuums. If any of you have some of these etchings and report them, we could list them in a future newsletter. It would be interesting to see how many club members could find.

In addition to the special etchings offered to groups, the Heisey Co. produced at least 4 for their regular sales. Again, we don't have illustrations of these, so if any of you have one which sounds right, we'd love to have a rubbing so we could have a drawing made to publish.

In 1955, (possibly for a time earlier and later also) the #1469-1/2 Ridgeleigh 6" ash tray was used for #9058 Fish and #9059 Hunting Scene etching.

About 1949, another list contained #9060 Dog and #9061 Horse etchings listed on both the #1469-1/2 Ridgeleigh 6 in. ash tray and the #1489 Puritan 4-1/2 in. ash tray.

Questions & Answers

Q. After reading your article on Small Things (Nov. & Dec. Issue), I once again looked at two different toothpick holders, I own.

One is a six sided #300, slashes on bottom, the other an eight sided #400, no slashes -

My question is this: What is the difference between Peerless #300 and Panel #331 (6 sided) ? - found in Vogel's Book I, Page 90 and Vogel's Book II, Page 14.

A. No. 300 Peerless has only six sides - No. 331 Colonial Panel and No. 400 Colonial Scallop are actually identical and both have EIGHT panels. In one or more Heisey catalogs the wrong picture was shown for the No. 331 line. Heisey often made mistakes in catalogs. For instance, in all of our written information for the No. 926 cutting, it is called George the VI. In catalogs this is listed as George IV. Apparently the numbers were transposed since George the VI was the king at that time.

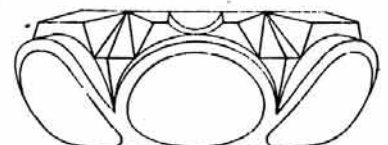
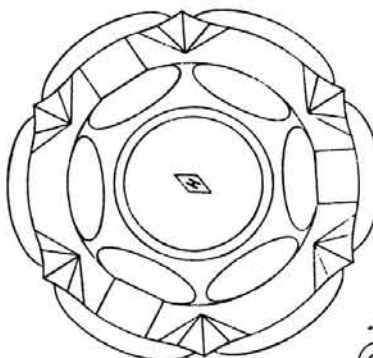
Q. We have an unusual ashtray but have not been able to identify it in any of our books or publications.

We would appreciate it if you will re-search and identify this piece for us.

Clyde Smith, CA

A. The ash tray is the #1500 which is shown in 212-17 and 211-16 catalogs. The latter is from 1935. It is not seen too often. Lots of people think it is Provincial because of the circles.

Louise Ream



HEISEY'S LITTLE THINGS

BY: Louise Ream

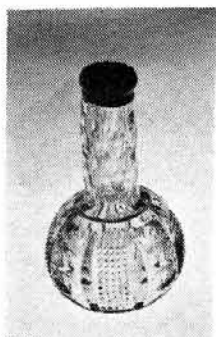
No. 305 Puntty and Diamond Point was first advertised in CHINA, GLASS AND POTTERY REVIEW on December 1, 1899. It is a very beautiful pattern of such brilliance that it appears to be cut and in at least one book on cut glass it is actually referred to as cut. The pattern is very eagerly collected and to have a nearly complete set is a great accomplishment. Items can be found both marked and unmarked, since it was made prior to 1900 and afterward.

Interesting items for the "Little Things" collector are the two different salts and peppers, the toothpick holder, punch cup, individual cream and sugar and mustard and cover.

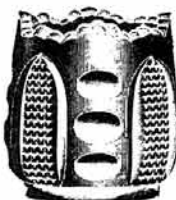
In addition to these pieces an early price list dated, ca 1902, lists as #16 the Puntty and Diamond Point long necked cologne and a mucilage, both as "ware for mounting." The mucilage or paste bottle is made from the #1 salt and has a silver top with a handle for the brush which is also silver. The long neck cologne also has a silver top. These are two unusual and lovely little pieces. In the Museum, there is a very rare pair of the #2 salt in milk glass. Any HLT collector would give their eye teeth for these.



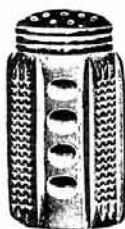
Mustard and Cover.



Cologne



Toothpick.



No. 3: Salt or Pepper.



Individual Cream.



Individual Sugar.



Custard.



No. 1 Salt or Pepper.

No. 315 PATTERN

PANELED CANE

The next pattern introduced was advertised in CHINA, GLASS AND POTTERY REVIEW in December 1900. It was referred to as a modification of the #300 pattern and indeed several of the basic shapes are very similar. In this pattern HLT's are the salt and pepper, toothpick and punch cup (or custard). The rows of cane between the indented flutes make this a most attractive pattern.



Custard.



Toothpick.



No 3 Salt or Pep.

ABOUT IMPERIAL

There is not a lot new to report about Imperial. They are presently working two or three "day tanks" making Williamsburg stemware and Collector's Crystal. They are also selling off their glass archives (once destined to be a museum) and it almost seems that everything is for sale. The company's debts total almost \$3 million. Stahl paid \$100 for the total 10,000 shares of the company and assumed the debts. He still says he will have the company out of bankruptcy by March, a noble ambition but is it possible? At a recent brief hearing the bankruptcy court cut Stahl's salary from \$2000 a week and \$1500 expenses he was paying himself to \$59,800 a year and less than \$300 a week expenses. We hope they can return to regular production again because we need them, but we are skeptical. Louise Ream

MUSEUM TRUST FUND DONATIONS

National Capital HCC.....	\$500.00
Manuel & Emma Klawans.....	30.00
Unknown.....	20.00
Golden Gate HCC.....	250.00
Southern Illinois Diamond H Seekers....	27.00
Basil & Elizabeth Regan.....	100.00
William and Marian Heron.....	50.00
Land of Legend HCC.....	500.00
Heisey Collectors of Rochester.....	80.00
Mr. & Mrs. Jerry Robinson.....	25.00
Josephine Groom,....	50.00
Lynn & Stanley DeGroote.....	100.00
Plus Interest	8.52
TOTAL as of December 13, 1982.....	\$1740.52

DIAMONDS ARE FOREVER.....

BY: Janet M. Caswell

We have our "Festival of the Arts" in Summer and in the Winter our "Christmas Walk". This consists of a complete week-end in December when all the merchants decorate their shops for the Holidays, and the people of our town and surrounding towns, young and old alike, wander thru our narrow, crooked streets entering all the Boutiques and Antique Shops along the way. It is great fun meeting old friends and congenial shop-keepers for a bit of "Cheer" Perhaps hot cider and donuts, or cheese and crackers with a smooth delicious eggnog to help keep us warm on a cold, but sunny, Sunday. The "Carolers" are also out, wandering in and out of shops, stopping here and there along the streets to entertain us. Excitement can be felt in the air! Maybe, just maybe, that certain piece of Heisey will be hiding among all the glitter and decorations of the Holiday Season.....

"All that Glitters is not Gold", or is it? Yours truly was very fortunate and found right here in the New England area, a #1252 Twist 9 oz footed soda in Experimental Gold. How about that "Eagle Eye"!... The #1776 Kalonyal Spoon tray was also added to my finds.... "Bean Town" reports several other items; #1540 Lariat Bon Bon: #1519 Waverly Mayonnaise with Orchid Etch; 3 coasters with star bottoms and the #1509 Candlesticks with prisms.....from the "Hoo-sier State" the "pickins" were thus; #1506 Whirlpool 5-1/2" nappy, six of them (Imperial Heather); 2 #3390 Carcassone 2-1/2 oz wines in Cobalt; and the #3480 Koors 8-1/2 oz soda in moonbeam;.....My happy writer from the "Tar Heel State" makes me green with envy, she is the proud owner of the #1632 Lodestar Pitcher in dawn and the #1637A Town and Country ice tea, in dawn (two of them), let's not forget to mention the #1233 Pressed Diamond 6" Baked apple in Hawthorne, and a #354 Flat Panel double domino sugar.....Now who was that very lucky fellow that found 6 #357 Prison Stripe goblets? Would they ever look nice on the shelf.....

The "Sunshine State" is certainly bright and sunny. Real sunny! A #1280 Crystal, Winged Scroll, covered butter with gold trim was found (mint); a #1469 Ridgeleigh, sahara candle vase; a red flash #1295 Beaded Swag wine; and, now pay good attention, a pair of #134 Trident candlesticks in Tangerine with crystal base!! What a find, you sure have a real "goodie" there.... I met up with my "Good English Buddy" who picked up the very nice #1503 Crystolite 2 compartment relish with the handle in the center....seen but not purchased by various collectors around the New England States were; 2 moonbeam #416 8" soup plates; #1503 Crystolite mayo and under-plate (way overpriced); 6 #3350 Wabash 6 oz sherbets with the #9001 Trefoil needle etch; #352 ice cream holder with silver overlay; #1235 Beaded Panel & Sunburst celery, cranberry stain; 5 8" clear plates; #300 Peerless toothpick (not a sleeper); and #1220 Punt Band 7" crimped

comport..... the "Empire State of the South" was heard from for the first time this month and he found a "great find" the #1225-109 Petticoat Dolphin comport in flamingo, it was sleeping quite soundly; and a #1485 Saturn cruet in crystal and eleven (count them 11) #1229 Octagon individual nut dishes in moonbeam; this same collector also saw a #310 Ring Band oil in Ivorina Verde, which value was known by the dealer and was priced accordingly. Even so, he was real happy to have recognized it, never having seen one "in the real" before. Yes, it really does pay to do one's homework! "Empire State of the South", keep those letters coming. My "Sharp Eyed Friend" came across a molasses can, no top....."My first convention Heisey friend" added to their already super collection; (seven) Aqua Caliente stems with the Lancaster etch; a Rose etch floral bowl and an Orchid etch french dressing bottle..... from "The Point" comes news of 2 Lady Leg saucer champagnes with Zodiac etching; very, very nice, keep up the good work..... "The Pine Tree State" says they have a #365 Moonbeam Ash Tray (V3 - P127). "The Tipper" doesn't want to be left out this month so here is what was told me; #439 Raised Loop 5 oz egg cup, straight; #300 Peerless egg cup, gold decoration, souvenir Columbus, Ohio - Mt Vernon No. 1; Plaid Vase and a pair of #1404 Old Sandwich Candlesticks in flamingo; #1495 Fern 6" handled mint (plain) and another with the #497 Rosalie etch; #407 Coarse Rib 9" celery in Flamingo, this was so sound asleep... another pair of #1404 Old Sandwich Candlesticks, in Flamingo, were found in "The Old Line State" plus a pair in Crystal. Must have been the month for Old Sandwich sticks..... the "Garden State" reports a #7000 Sunflower creamer and 3 Yeoman cups and saucers in crystal; and a couple of Empress small round plates in Alexandrite, nice.....

Well it is almost time to make those New Years Resolutions. How about making yours truly happy this New Year with lots and lots of letters. I just love to get letters, it makes me feel so wanted. From the Yachting Center of the World comes by best wishes for a Very Happy, Healthy, Heisey NEW YEAR!

BAY STATE NEWS

BY: George Gleason

The Bay State held its regular meeting at the Follen Church in Lexington, Mass. We welcome new members Valli Feldman and Lynn & Art.

This was our annual auction for the museum. There was glass and people a plenty. George Fogg, the auctioneer, did a fine job for the museum again this year. Our thanks to him.

With finishing touches on our Christmas Party, the meeting was adjourned for coffee and cakes provided by Don Libby, David Steer and George Gleason.

We want to extend warm BELATED Wishes that you had a Beautiful Christmas and a Happy New Year.

TUMBLER RESEARCH

BY: Tom Bredehoft

I've done a lot of belly-aching about the research that has to be done for these columns; I've tried to tell you just what is involved in it - how many sources must be searched, what different sources there are to be searched, and so on. This month, I'm going to try to tell you about one of the sources we have to work with and what in-depth research reveals.

The source I'm writing about has come to be called the "turn books". These books, compiled by the Heisey Co. daily, were the company's basis for 1. recording the production output, and 2. paying the hot metal shop employees (the men who worked with molten glass.)

The book I'm working in now starts in February, 1925. There are eighteen shops recorded for the week ending Feb. 21, (pay Feb. 28.) Two of these are blownware shops. Since most glass furnaces contain 16 pots, I'm going to guess that there were two lead pots (for blown ware) and fourteen pots of lime glass (for pressed wares.) This is a real reduction in work from eight months before when they had 48 shops in operation. Enough speculation.

Since this is a tumbler column, I only extracted the tumbler, soda, and schoppen information from the book.

In this week ending Feb. 21, 1925, Heisey's hot metal shops turned out 22,463 tumblers, sodas, etc. That's 1872 dozen or 156 gross, and that's in reduced circumstances.

The break down looks like this:

Pattern #	Item	Number Made
30	Tumbler	1116
150	Schoppen	1154
170	Plain tumbler	1098
200	Plain tumbler	1365
300	Tumbler	2213
300½	5 oz. taper champagne	758
406	8 & 12 oz sodas	1376
411	Tumbler	5007
417	8 oz soda	94
417	10 oz soda	52
417	12 oz soda	188
451	Tumbler	830
574	13 oz soda, optic	492
588	7 oz soda	1199
2401	5 oz soda	1119
2930	Tumbler	2231

This represents 35 turns of four hours work each. The 417 sodas were all made in one turn, the 2930's and the 300's in four each. The 411's were made in seven turns. Can you imagine making 830 451 Cross Lined Flute tumblers in four hours? That's 208 per hour or almost three and one half per minute. Those 830 tumblers cost the company about \$10.00 in labor, a little over a cent each. In price list #208, the price list nearest the time of this turn book, they were selling these tumblers for \$1.25/doz. in barrel lots or 10+ cents each.

Anyway, that's one week, five shops, just the tumblers. Some of these shops made other items too.

We have turn books for about sixteen years of Heisey's life. I have a feeling that when we get through going through these books, we will be older and grayer, and have a lot more respect for Heisey's glassware.

* * * * *

As to the scope of my tumbler columns, I try to write about Heisey's tumblers. Sometimes I write about Heisey's sodas, I may have written about Heisey's schoppens, I know I have written about Heisey's bar glasses.... I guess what I'm trying to say is that I'll write about what I darn well please (I think I should have said what pleases me.)

I was asked though where tumblers stopped and sodas began. Heisey, and the other glass makers called some pieces of glass, tumblers, others sodas, etc., based on their expected use and shape. A tumbler is 3 3/4" high and 2 3/4" wide at the top. A soda is taller and more slender. If it is shorter, it is an old fashion or a toddy, depending on when it was made. If it is shaped like a soda but is generally larger and pressed it might be a schoppen. The only definition I could find for schoppen said in an old dictionary "a vessel containing half a pint". Try telling that to the 16 oz schoppen in 150 Banded Flute!

I guess if I have to say what my columns are about, I'd have to say about beverage containers, but don't look for punch bowls or beer mugs. That is not to say I won't write about things other than tumblers, but if I do it will be a bonus, not the regular info in the column.

* approximate.

NEWSLETTER DATING, AGAIN

I announced last month that the dating on the newsletter was being changed so that from now on you would get your issues with more current dating. The problem lays in the fact that it is usually mailed on the 25th of the month it is dated, which seemed to cause a lot of new people confusion if it was late, and especially into the next month. I dated last issue November, December and planned to date this one simply January. However, some people were confused about that, saying they would have only 11 issues for 1982, and that they keep them in yearly notebooks. To eliminate that, I have divided this one into two parts, one dated December, the other January. You can separate them if you want to.

You WILL get 13 issues this way in 1983, but the one in next December will be for January, 1984.

Hopefully this will finally end this problem forever. I think you'll like it better when you get used to it. Please continue to send ads to reach us by the 5th of the month to be in that month's issue.

Louise Ream

TOUCH OF COLOR MAKES NEW STANHOPE PATTERN OUTSTANDING

FROM: POTTERY, GLASS & BRASS SALESMAN

It has become quite the fashion now-a-days for glass manufacturers to go outside the field in searching for new designs. With all due respect to the many capable mould makers and designers that abound in this country, they are so steeped in glassware lore that their vision is apt to become circumscribed. On the other hand, there are architects, illustrators and designers who will bring to glassware designing an entirely new thought.

It was the realization of this that prompted A. H. Heisey & Co., of Newark, Ohio, to turn to Walter Von Nessen, well-known Dutch architect and designer for ideas when they contemplated bringing out a new pattern for the fall season. Mr. Von Nessen, who has done much splendid work in other fields, attacked his new problem with enthusiasm, and brought to bear on it his wealth of broad experience, sound artistic judgment and native ability. The result was the "Stanhope" line, named for Lady Stanhope, famous court beauty in England before the Victorian era and, perhaps, best known as the owner of the great Stanhope diamond. Something of the romance that surrounded her life has been caught by Mr. Von Nessen and translated to this new pattern, which while on the fringe of the neoclassic order, is thoroughly up to date. The outstanding feature is its "touch of color", supplied in the form of handles etc., and which are not made of the glass itself, but of plascon, a resinous compound similar to a number now on the market and widely used for smokers's articles and the like. Its paramount feature is its ability to take high, rich colors to a much greater extent than any other kindred compound. The red, blue, green and other shades* (together with the black), suggest enamels of the richest sort. These plascon ornaments are attached by being screwed in, the glass being threaded for the purpose. A full line of pressed tableware is brought out in this new line together with blown stemware to match.

The pattern created a veritable furor when it was first shown in the New York China, Glass and Housewares Show in July and duplicated its success at subsequent Chicago exhibitions. It is now on display at all showrooms of the concern including the local quarters at 200 Fifth Avenue in charge of E. G. Nock.

* Yellow and Ivory



AN OPEN LETTER TO MEMBERS

Dear Fellow Heisey Collectors,

With the closing of Imperial Glass and then their reopening under circumstances which can be called doubtful at best, I feel it is time we analyzed the annual budget of the HCA from a new point of view.

Broken down on a per member basis, I find that each member (whether voting, associate or family) pays an average of \$7.86 into the HCA through his membership fees. The cost of printing and postage for the Heisey News is \$6.53 per member, which eats up all but \$1.33 of the membership fees. \$1.29 will pay the club utilities leaving \$.04 on which to run the club. Total operating expenses in 1981 came to \$63.58 per member.

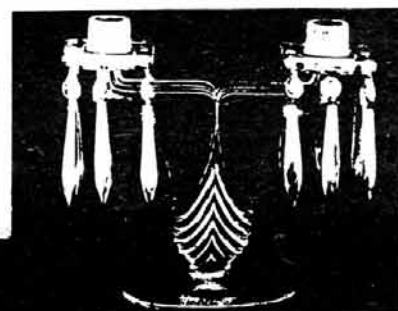
In the past, the bulk of the income of the HCA has been from the sale of goods from the sales room, averaging \$34.56 per member. Most of this was from the sale of glass made by Imperial in Heisey molds. When our inventory is exhausted, the resulting deficit will have to be made up some other way.

The executive committee has begun the search for alternate sources of income, including other suppliers of glass, but it will be difficult to supplant Imperial with their ready supply of molds.

In the near future each member, whether voting or associate will have to realize how dependent on him the HCA is and re-evaluate his commitment to the HCA and determine how best he can support our club through these difficult times.

Tom Bredehoff

No. 1483 STANHOPE PATTERN



Y. W. C. A.
6th & W. Church Sts.,
Newark, Ohio 43055

ALL HEISEY AUCTION

Saturday, January 29, 1983
Doors Open - - 11:30 A.M.
Auction Starts - -1:00 P.M.

Our January auction is always a fun time after the hustle and bustle of the Holiday season. This will be a fascinating auction for the stem collector with over 200 stems, many of them rare and unusual, ranging from cordials to goblets. Lots of other good items in most colors. Please note the later starting time to allow collectors to come from greater distances on Saturday morning.

Please note the following condition codes to better aid in your mail bidding:

f F - Flake	b B - Bruise	r R - Repaired
c C - Crack	m M - Mold Flaw	x X - Major Damage

- | | |
|--|--|
| 1 3333 OLD GLORY Goblet, Peacock Etch H | 43 354 WIDE FLAT PANEL Flamingo Cream & Sugar,
rough on handles H |
| 2 3376 ADAM Flamingo Goblet, Adam Etch | 44 1485 SATURN Sugar, Chip on handle |
| 3 5025 TYROLEAN Goblet, Orchid Etch H | 45 359 COLONIAL Goblet, NO |
| 4 3308 BOB WHITE Goblet, Thistle Etch | 46 5077 LEGIONNAIRE Goblet H |
| 5 3357 KING ARTHUR Goblet, Diana Etch H | 47 3390 CARCASSONNE Sahara Goblet H |
| 6 3314 GRANDEUR Goblet, Sabrina Etch | 48 300 PEERLESS Goblet H |
| 7 3335 LADY LEG Goblet, Zodiac Etch | 49 351 PRISCILLA Goblet H |
| 8 3411 MONTE Cristo Goblet, Olympiad Etch | 50 337 TOURAINE Goblet H |
| 9 3389 DUQUESNE Goblet, Normandie Etch | 51 337 TOURAINE Amber Goblet H |
| 10 3344 CAROLINA Goblet, Osage Etch H | 52 903 JEFFERSON Goblet H |
| 11 3312 GAYOSO Goblet, Vogel Etch | 53 370 PENNY Goblet H |
| 12 3390 CARCASSONNE Sahara Goblet, Classic
Etch by Lotus Glass Co H | 54 1486 COLEPORT Goblet H |
| 13 5019 WAVERLY Goblet, Ivy Etch H | 55 417 DOUBLE RIB & PANEL Low Goblet H |
| 14 3350 WABASH Goblet, Frontenac Etch H | 56 4052 NATIONAL Goblet |
| 15 3312 GAYOSO Goblet, Monticello Etch | 57 1469 RIDGELEIGH Goblet |
| 16 5010 SYMPHONY Goblet, Minuet Etch | 58 8028 PRINCESS LILY Goblet |
| 17 3335 LADY LEG Goblet, Victory Etch, 2 Ea H | 59 4044 NEW ERA Goblet |
| 18 3389 DUQUESNE Goblet, Ole Colony Etch | 60 3334 SEXTON Goblet H |
| 19 3368 ALBEMARLE Moongleam Goblet, Trojan
Etch H | 61 1252 TWIST Flamingo Goblet H |
| 20 3380 OLD DOMINION Goblet, Empress Etch | 62 1567 PLANTATION Goblet |
| 21 3312 GAYOSO Goblet, Augusta Etch | 63 363 COLONIAL Goblet r |
| 22 1201 FANDANGO 6 oz Oil, wrong stopper | 64 451 CROSS LINED FLUTE Goblet H |
| 23 1201 FANDANGO 4 oz Oil, wrong stopper | 65 341 PURITAN Goblet H |
| 24 343 SUNBURST 4 oz Oil | 66 818 FIFTH AVENUE Goblet H |
| 25 1252 TWIST Flamingo 4 oz Oil H | 67 1519 WAVERLY 12" Flared Floral Bowl,
Orchid Etch |
| 26 353 COLONIAL 4 oz Oil | 68 1202 FLAMINGO 11" Rolled Edge Floral Bowl |
| 27 341 PURITAN 6 oz Oil H, x on stopper | 69 1506 PROVINCIAL 12" Gardenia Bowl |
| 28 1469 RIDGELEIGH Oil, no stopper | 70 1503 CRYSTOLITE 12" Floral Bowl |
| 29 1503 CRYSTOLITE Oil Bottle, 2 Ea, wrong
stoppers | 71 1540 LARIAT 11" Flared Floral Bowl |
| 30 1170 PLEAT & PANEL Moongleam Oil Bottle | 72 4045 Sahara 6" Ball Vase, WO |
| 31 1489 PURITAN Cologne | 73 4085 SATURN 7" Ball Vase |
| 32 362 7 Oz Syrup H | 74 4045 Alexandrite 4" Ball Vase, WO |
| 33 353 COLONIAL Flamingo 5 oz Syrup, no lid | 75 4045 Alexandrite 4" Ball Vase, WO, x &
cloudy |
| 34 1540 LARIAT Cream & Sugar H | 76 1519 WAVERLY Violet Vase, H |
| 35 355 QUATOR Sahara Ftd Sugar H | 77 1469 RIDGELEIGH Candle Vase H |
| 36 1020 Hotel Vaseline Sugar H f | 78 1469 RIDGELEIGH 6" Vase H |
| 37 1184 YEOMAN Sahara Covered Sugar, DO | 79 451 CROSS LINED FLUTE 5" Vase H |
| 38 1189 YEOMAN moongleam Indiv Covered Sugar,
DO, H | 80 1428 WARWICK 7" Horn of Plenty Vase, Pr. H |
| 39 393 NARROW FLUTE Flamingo Domino Sugar
Cube Tray, Dtd H | 81 1428 WARWICK 9" Horn of Plenty Vase, Pr H |
| 40 393 NARROW FLUTE Hotel Cream & Sugar, H
flakes on handles | 82 4159/1 Moongleam 9" Vase, DO |
| 41 7023 HALF CIRCLE Sahara Indiv Cream H | 83 1255 PINEAPPLE & FAN 10" Vase |
| 42 1255 PINEAPPLE & FAN Cream, good gold | 84 1503 CRYSTOLITE 5½" Ftd Compote |
| | 85 1503 CRYSTOLITE French Dressing Boat H |
| | 86 1519 WAVERLY 6" Low Ftd Compote H |
| | 87 1567 PLANTATION 6" Low Ftd Compote H |

PAID ADVERTISEMENT

88	1186	YEOMAN 7" High Ftd Compote, Cut H
89	3366	TROJAN Flamingo 7" High Ftd Compote H
90	1405	IPSWICH Goblet H
91	379½	URN Goblet H
92	5067	PLANTATION Goblet
93	1485	SATURN Goblet
94	300	PEERLESS Flamingo Goblet
95	3357	KING ARTHUR Flamingo Goblet H
96	1590	ZODIAC Goblet H
97	417	DOUBLE RIB & PANEL Goblet H
98	150	BANDED FLUTE Goblet H
99	1483	STANHOPE Goblet
100	373	COLONIAL Goblet H
101	400	COLONIAL Goblet H
102	407	COARSE RIB Goblet, flared H
103	7047	COMET LEAF Goblet H
104	1183	REVERE Goblet, NO H
105	473	NARROW FLUTE W/RIM Goblet H
106	5085	AFRICAN-TEMPO Goblet H
107	413	RIB & PANEL Goblet H
108	379	URN Goblet H
109	3359	PLATEAU Flamingo Goblet, 2 Ea H
110	5057	SUEZ Goblet, Amber Stem H
111	1401	EMPRESS Flamingo Goblet H
112	3360	PENN CHARTER Flamingo Goblet, NO H
113	3380	OLD DOMINION Sahara Goblet, Empress Etch, 6 Ea H
114	3380	OLD DOMINION Sahara Wine, Empress Etch, 3 Ea H 2-f
115	4182	Sahara 10½" Plate, Empress Etch, 6 Ea
116	4182	Sahara 8" Plate, Empress Etch, 6 Ea
117	4182	Sahara 6" Plate, Empress Etch, 6 Ea
118	1184	YEOMAN Sahara Cup & Saucer, 4 Ea H
119	135	12" Round Sahara Floral Bowl & 1 Lt #135 Sahara Candle, Pr., Empress Etch, H 1-Candle Chip on Base
120	1401	EMPRESS Sahara Ftd Cream & Sugar, Formal Chintz Etch H
121	1504	REGENCY 7" Round Divided Candy, Metal Lid
122	1503	CRYSTOLITE Shell Covered Candy, X
123	1503	CRYSTOLITE Handled Jelly, Spider Webb Bottom
124	1540	LARIAT 7" Round Divided 2 Comp. Jelly
125	1540	LARIAT 6" Mayonnaise and Underplate
126	1519	WAVERLY 6½" Ftd Jelly, Orchid Etch H
127	1519	WAVERLY 6" Bow Tie Candy Box & Cover, Orchid Etch H
128	2401	16 oz Decanter, Sportsman Etch, Cloudy
129	2401	12 oz Soda, Tally Ho Etch, 3 Ea
130	2401	12 oz Soda, Sailboat Carving, 3 Ea
131	2401	8 oz Soda, Sailboat Carving, 2 Ea
132	2401	8 oz Old Fashion, Sailboat Carving, 3 Ea
133	2401	8 oz Old Fashion, Polo Etch
134	2401	8 oz Old Fashion, Sportsman Etch, 2 Ea
135	2401	2 oz Bar, Tally Ho Etch
136	2401	2 oz Bar, Short Sailboat Etch, 3 Ea
137	1401	EMPRESS Ftd Ice Bucket
138	333	HOTEL WALDORF ASTORIA Decanter
139	4027	32 oz Decanter, Silver Overlay, No Stopper
140	4054	CORONATION 1 Qt Cocktail Shaker, & 6 Bar Glasses on #150 Banded Flute Round Tray 1 Glass f
141	3368	ALBEMARLE Goblet, Cut
142	4091	KIMBERLY Goblet, Waterford Cut
143	3411	MONTE CRISTO Goblet, Wakiki Cut
144	5072	ROSE STEM Goblet, Cut H

PAID ADVERTISEMENT

145	3334	SEXTON goblet, Engraved H
146	1540	LARIAT Goblet, Cut
147	1E92	OMEGA Goblet, Cut H
148	3322	GAMIN Goblet, Cut H X
149	3408	JAMESTOWN Goblet, Sweet Briar Cut
150	3408	JAMESTOWN Goblet, Narcissus Cut H
151	3416	BARBARA FRITCHIE Goblet, Del Monte Cut H
152	6091	CABOCHON Goblet, Starlight Cut
153	5040	LARIAT Goblet, Moonglo Cut, 2 Ea H
154	3366	TROJAN Goblet, Moongleam Stem H
155	3366	TROJAN Flamingo Goblet
156	3370	AFRICAN Goblet, Moongleam Stem
157	3368	ALBEMARLE Flamingo Goblet H
158	3370	AFRICAN Flamingo Goblet
159	3380	OLD DOMINION Marigold Goblet, DO X
160	3365	RAMS HORN Flamingo Goblet
161	3366	TROJAN Goblet H
162	1503	CRYSTOLITE Oval 3 Part Relish H
163	1503	CRYSTOLITE 3 Part Relish
164	1469	RIDGELEIGH 11" 3 Comp Relish H
165	1519	WAVERLY 9" Round 4 Comp Relish
166	500	OCTAGON Moongleam 4 Comp Variety Tray H X
167	411	RIB & PANEL 12" Celery Tray H
168	1401	EMPRESS Shara Round 3 Comp Relish
169	468	12" Celery Tray H X
170	1185	Flamingo 12" Celery Tray H
171	393	NARROW FLUTE Flamingo 3 Comp Relish H
172	341	OLD WILLIAMSBURG 9" Celery Tray H
173	1252	TWIST Moongleam 7" Olive Tray H
174	473	NARROW FLUTE w/RIM Moongleam 6" Comb Relish, Dtd H
175	393	NAPROW FLUTE Divided 4" Round Box H
176	407	COARSE RIB Hawthorne 5" Ftd Compote
177	1519	WAVERLY Mayonnaise, Heisey Rose Etch H
178	1485	SATURN Zircon Tid Bit Tray H
179	1509	QUEEN ANN Ftd Mint, Everglades Cut
180	1401	EMPRESS Ftd Mint, Silver Overlay
181	433	GRECIAN BORDER Sherbet, 5 Ea H
182	5072	ROSE STEM Sherbet, no Etch, 4 Ea H
183	3362	CHARTER OAK Moongleam Sherbet, 2 Ea H 1-F
184	1214	MARSEILLE Hi Sherbet, 2 Ea H
185	1184	Peach Melba Optic Tall Sherbet H
186	3380	OLD DOMINION Sahara Sherbet, Empress Etch
187	7057	TRI KNOB Sherbet, Needle Etch H F
188	3370	AFRICAN Sherbet, Moongleam Stem, 2 Ea
189	3357	KING ARTHUR Sherbet, Moongleam Stem H
190	3408	JAMESTOWN Sherbet, Barcelona Cut x
191	3370	AFRICAN Sherbet, Moongleam Stem x
192	4090	COVENTRY Zircon Sherbet
193	5079	PAN AMERICAN Champagne, Etched H
194	6060	FINESSE Champagne, Cut
195	3424	ADMIRALTY Champagne H X
196	4090	COVENTRY Champagne
197	3404	SPANISH Champagne, Cut
198	3420	MILWAUKEE Pilsner
199	811	3/4 HOFFMAN HOUSE Beer Schooner H
200	3386	DIAMOND ROSE Pilsner, 2 Ea H
201		Sealyham Terrier (Scotty)
202		Oscar Horse (Sparky)
203		Oscar Horse (Sparky) Tailed glued
204		Standing Colt
205		Goose, Wings ½ Up
206		Goose, Wings Up
207		Goose, Wings Up

208	Middle Elephant
209	Middle Elephant, Frosted
210	Fish Bookend
211	Fish Match Holder
212	Fish Bowl, Red Stain
213	Rooster Vase
214	Rooster Vase
215	Ringneck Pheasant
216	Mike Owens Bust, Frosted
217	Madonna by Imperial
218	Imperial Ultra Blue Standing Colt
219	Imperial Ultra Blue Rearing Colt
220 3411	Monte Cristo Goblet, Titania Etch
221 3350	WABASH Goblet, Pied Piper Etch H
222 5009	QUEEN Ann Goblet, Belle-le-Rose Etch
223 3335	LADY LEG Goblet, Zodiac Etch
224 3333	OLD GLORY Goblet, Renaissance Etch, 2 Ea H
225 3404	SPANISH Goblet, Titania Etch
226 3350	WABASH Goblet, Mayflower Etch, 2 Ea H
227 3350	WABASH Goblet, Pied Piper Etch
228 3330	HANOVER Goblet, Elizabeth Etch c
229 3304	UNIVERSAL Goblet, Tatting needle Etch
230 3345	MARY 'N VIRG Goblet, Adam Etch H
231 3386	DIAMOND ROSE Marigold Goblet, Empress Etch H X
232 3331	STATUESQUE Goblet, Grecian Urn Etch, 2 Ea H
233 4052	NATIONAL Goblet, Fred Harvey Etch, 2 Ea
234 3408	JAMESTOWN Goblet, Rosalee Etch
235 393	NARROW FLUTE Goblet, Rim Etched H
236 3336	LADY LEG Goblet, Bead & Fan Etch H
237 3350	WABASH Goblet, Trefoil Etch, 5 Ea H
238 3389	DUQUESNE Goblet, Chintz Etch, 2 Ea
239 1252	TWIST Marigold Soda H
240 3350	WABASH Marigold Soda, H c
241 4083	STANHOPE Soda, Swingtime Etch
242 3479	CONE Soda, Cut H
243 1238	8" Beehive Plate
244 1238	Flamingo 8" Beehive Plate
245 4182	10½" Hawthorne Plate, Frontenac Etch
246 4182	8" Marigold Round Plate, Empress Etch, 4 Ea
247 1567	PLANTATION 8" Round Plate, 2 Ea
248 1447	ROCOCO 7" Round Plate H X
249 1231	RIBBED OCTAGON Flamingo 6" Plate, 6 Ea
250 1227	Hawthorne 6" Round Plate, 3 Ea H
251 1503	CRYSTOLITE 11" Party Plate
252 1401	EMPRESS Cobalt 8" Square Plate H
253 1401	OLD SANDWICH 7" Square Plate H
254 1184	YEOMAN Hawthorne 8" Plate, DO
255 1401	EMPRESS Alexandrite 6" Round Plate, 2 Ea H
256 1128	6" Moongleam Plate, DO
257 407	COARSE RIB Moongleam 7" Round Plate H
258 1185	YEOMAN 10½" Hd1 Sandwich Plate, Decor H
259 393	NARROW FLUTE 6½" Plate, Gold Decor H
260	Set of 5 Imperial Land of Legend Souv Plates 1972-1976
261 5089	PRINCESS Wine, 2 Ea H
262 5089	PRINCESS Wine H
263 5067	PLANTATION Claret, Pinecone Cut, 2 Ea H
264 5040	LARIAT WINE, Leaf Etch H
265 3311	VELVEDERE Grape Juice
266 5079	PAN AMERICAN Claret H
267 412	RIB & PANEL Goblet H
268 700	DERBY Ale
269 300	PEERLESS Claret, Eng Reg Mark H

270 1112	SPARTA Oyster Cocktail, 4 Ea
271 1228	RINGLING Egg Cup
272 3394	SAXONY Sahara Oyster Cocktail
273 4054	CORONATION Cocktail
274 4085	KOHINOOR Oyster Cocktail, Coronation Etch
275 1405	IPSWICH Oyster Cocktail
276 341	PURITAN Oyster Cocktail
277 349	COLONIAL 3 oz Low Ftd Sherbet, 6 Ea H
278 1227	MAGARG Sherbet H
279 1183	REVERE Saucer Champagne H
280 1227	MAHARG Saucer Champagne, 2 Ea H
281	Imperial Caramel Slag Donkey
282	Imperial Caramel Slag Oscar (Sparky)
283	Imperial Caramel Slag Standing Colt
284	Imperial Caramel Slag Mallard, Wings Up
285	Imperial Caramel Slag Mallard, Wings ½ Up
286	Heisey Large Horsehead Cocktail Stopper
287	Heisey Small Horsehead Cocktail Stopper
288	Heisey Moongleam Duck Cologne Stopper
289 1503	CRYSTOLITE Indiv Swan Nut
290	Victorian Girl Bell (No Clapper)
291 1210	Moongleam 6" Cheese Plate, Frog Handle
292 5074	4 oz Seahorse Stem Cocktail H
293 5038	Rooster Stem Cocktail, 5 Ea
294 5048	Rooster Head Cocktail, 4 Ea
295 4225	COBEL 1 Qt Cocktail Shaker, Rooster Head Stopper
296 4225	COBEL 1 Qt Cocktail Shaker, Rooster Head Stopper
297 4036	1 Qt Cocktail Shaker, Small Horsehead Stopper
298	Verlys Pelican Tray
299	Verlys Pinecone Bowl, 2 Ea 1-Frosted
300	Imperial Aurora Jewels Childs Fairy Tale Elephant Handled Mug
301 4091	KIMBERLY Wine, 5 Ea H
302 300	PEERLESS Wine H
303 359	COLONIAL Wine, NO
304 601	ELIZABETHAN Wine H
305 341	PURITAN Wine H, Monog M
306 373	COLONIAL Wine H
307 4092	KENILWORTH Wine, Rosalie Etch, 2 Ea H
308 1235	BEADED PANEL & SUNBURST Wine
309 1404	OLD SANDWICH Wine
310 3355	FAIRACRE Cocktail, Moongleam Stem
311 4055	PARK LANE Cocktail, 2 Ea
312 1590	ZODIAC Ftd Juice H
313 4004	JACOBAN Cocktail
314 3404	SPANISH Cocktail, Concord Etch
315 3408	JAMESTOWN COCKTAIL
316 351	COLONIAL 2½ oz Creme De Mint
317 3404	SPANISH Cocktail, Cut, 6 Ea
318 3404	SPANISH Cocktail, Cut, 6 Ea
319 1536	MILITARY CAP Ash Tray
320 1536	MILITARY CAP Ash Tray
321 1469	RIDGELEIGH Bridge Ash Trays & Square Cigarette Holder H X
322 1469	RIDGELEIGH Club Ash Tray H
323 1401	EMPRESS Ash Tray H
324 1186	YEOMAN Ash Tray, Cupid & Psyche Etch
325 1435	3" Ind Ash Tray, Orchid Etch
326 1469	RIDGELEIGH Square Cigarette Holder
327 1469	RIDGELEIGH Round Cigarette Holder H c
328 301	3 Light Candelabra, Short Base, Pr Complete H 1-X
329 300	1 Light Candelabra 10" Complete Pr
330 1519	WAVERLY 2 Lt Candelabra & 13" Gardenia Bowl, Flower Carving, 3 Pc Set

331	5	8" Candlestick, Pr	H
331A	142	3 Light Candlestick, Pr	
332	1503	CRYSTOLITE 1 Lite Candle, Pr	
333	1503	CRYSTOLITE Candle Block, Pr	
334	134	TRIDENT Candle, Pr	
335	1509	QUEEN ANN 1 Light Candle & Prisms, Pr	
336	29	8" Candle, Pr	H
337	1469	RIDGELEIGH 1 Lt Candle, Pr	
338	118	3" Flamingo Candle, Pr	
339	112	3" Flamingo Candle, Pr	
340	112	3" Flamingo Candle, Pr	
341	1540	LARIAT 1 Lt Candle, Pr	
342	1533	WAMPUM 1 Lt Candle, Pr	
343	1489	PURITAN 1 Lt Candle, Pr	
344	1513	3 Lt Candelabra Epergne w/Vase & Prisms	
345	1495	FERN 2 Lt Candle, Orchid Etch	
346	1469	RIDGELEIGH 1 Lt Candelabra	H
347	1469	RIDGELEIGH 1 Lt Candelabra Base Only	H
348	129	Triplex Candle, Moongleam	H
349	132	1 Lt Candle, 1-Moongleam & 1-Flamingo	
350	1503	CRYSTOLITE Hurricane Candle Base Only,	
351	1469	RIDGELEIGH 3" Round Candle Block	
352	99	1 Lt Candle Block, Irrid	
353	1404	OLD SANDWICH Sahara 12 Oz Ftd Soda	H
354	1415	TWENTIETH CENTURY Dawn 10 oz Tumbler	H
355	300½	PEERLESS 8 oz Tumbler	H
356	1417	ARCH Flamingo Tumbler	H
357	6092	CABOCHON Amber Base 12 Oz Ice Tea	H
358	1487	COLEPORT Dawn 10 oz Tumbler	H
359	2323	NAVY 8 Oz Soda, 2 Ea	1-X
360	5087	COMET Large Soda	
361	567	6 oz Grape Juice, NO	H
362	2351	12 oz Soda, Tatting Needle Etch, WO	
363	4054	CORONATION Soda, Cut	
364	4054	CORONATION Soda, Cut	
365	1235	BEADED PANEL & SUNBURST Punch Bowl & Base	H C
366	433	GRECIAN BORDER Punch Bowl Base Only	H
367	3350	WABASH 3 Pt Squatty Jug, Pied Piper Etch	H
368	4054	CORONATION 1 Pt Martini Pitcher & Stirer	
369	3331	STATUESQUE Goblet, Cut	H
370	5057	SUEZ Goblet, Cut	H
371	4091	KIMBERLY Goblet, Virginia Cut	
372	3411	MONTE CRISTO Goblet, Cut	f
373	4091	KIMBERLY Goblet, Courtship Cut	H
374	5024	OXFORD Goblet, Inspiration Cut	
375	3321	BIRGHTON Goblet, Cut	
376	3336	LADY LEG Goblet, Cut	H
377	5098	LOUISA GOBLET, Cut	H
378	5098	LOUISA GOBLET, Cut	H
379	3368	ALBEMARLE Goblet, 2 Ea Monog	EBB
380	3478	CONE Ftd Soda, Cut	H
381	3389	DUQUESNE Cordial	
382	363	COLONIAL Cordial	H
383	300	PEERLESS Cordial	H
384	341	PURITAN Cordial	H
385	341	PURITAN Cordial, 3 Ea	H (Monog M)
386	4044	NEW ERA CORDIAL, Waterford Cut, 7 Ea	
		Some roughness	
387	1486	COLEPORT 1 Oz Bar	
388	1425	VICTORIAN 1 oz Bar	H
389	6060	COUNTRY CLUB 1 oz Bar	
390	1469	RIDGELEIGH 1 Oz Bar	H
391	351	PRISCILLA Toothpick	H
392	300	PEERLESS 2 OZ Bar in Silver Holder	H

393	300	PEERLESS 2 oz Bar	H
394	379½	URN Cigarette Holder	
395	1401	EMPRESS Sahara Seafood Cocktail	H
396	1295	BEAD SWAG Toothpick Holder, Red Stain, Souvenir	1902
397	1225	PLAIN BAND Toothpick, Beaded Top, Souvenir	H
398	1401	EMPRESS Indiv Sugar, Gold Decor	
399	1200	CUT BLOCK Indiv Cream, Custard, Souv.	
400	1200	CUT BLOCK Indiv Sugar, Custard, Souv	c
401	1200	CUT BLOCK Indiv Sugar, Custard, Souv	Roses
402	1205	FANCY LOOP Mustard & Cover	c
403	465	RECESSED PANEL 1 Lb Candy, Moongleam, No Lid	
404	1184	YEOMAN 6½" Handled Bon Bon, Flamingo	
405	1180	YEOMAN Flamingo Indiv Nut	H
406		6" Moongleam Boat Dish, Silver Decor, DO	
407	1255	PINEAPPLE & FAN Emerald 6½" Relish, Gold Decor	
408	1280	WINGED SCROLL Clambroth Trinket Box, Souv	
409	1401	EMPRESS Moongleam 6" Grapefruit	H
410	1509	QUEEN ANN 8½" Ftd Plate, Antarctic Etch	
411	1401	EMPRESS Sahara 4½" Nappy, 6 Ea	H
412	1170	PLEAT & PANEL Hdl Boullion & 7" Underplate	H
413	1447	ROCOBO Bon Bon	H
414	4074	Finger Bowl, DO, 2 Ea	
415	1255	PINEAPPLE & FAN Emerald Cream, Gold Dec	
416	1425	VICTORIAN Stick Butter	H
417	25	Puff Box and Cover, Monog "C"	H
418	1469	RIDGELEIGH Puff Box & Cover	H
419	5	Puff Box, Metal Lid	
420	25	Puff Box, No Cover	H
421	25	Puff Box, No Cover	H
422	300	Indiv Drink Decanter	
423	300	Indiv Drink Decanter	
424	300	Indiv Drink Decanter, 2 Ea	1-x
425	1469	RIDGELEIGH Zircon Coaster	
426	150	BANDED FLUTE Match Holder, no cover	H
427	1540	LARIAT Salt & Pepper, No Lid	
428	25	Salt & Pepper, 2 Pr	H X
429	1567	PLANTATION Salt & Pepper	H
430	1225	PLAIN BAND Salt & Pepper	X
431	1405	OLD SANDWICH Flamingo Salt & Pepper, No Lids	
432	1295	BEAD SWAG Salt & Pepper, Red Stain	x
433	46	Flamingo Salt	
434	47	Flamingo Salt	
435	1469	RIDGELEIGH Ind Salt	H
436	393	NARROW FLUTE Ind Salt, 4 Ea	H
437	1404	OLD SANDWICH Indiv Ash Tray	
438	3350	WABASH Goblet	H
439	5025	TYROLEAN Goblet, Orchid Etch	
440	3312	GAYOSO Goblet, Monticello Etch	
441	5003	CRYSTOLITE Goblet, 2 Ea	
442	339	CONTINENTAL Goblet	H
443	3324	DELAWARE Flamingo Goblet	
444	337	TOURAINNE Goblet, NO	H
445	1184	YEOMAN Goblet, 3 Ea, Sahara, Flamingo & Crystal	H
446	407	COARSE RIB Goblet, 4 Ea	H 1-c
447	1170	PLEAT & PANEL Flamingo Luncheon Goblet, Gold Decor, 4 Ea	
448	1425	VICTORIAN Goblet	
449	347	FIFTH AVENUE Colonial Goblet	H
450	5003	CRYSTOLITE Goblet	

451 2516 CIRCLE PAIR Flamingo Goblet	486 1184 YEOMAN Goblet
452 1404 OLD SANDWICH Goblet	487 3362 CHARTER OAK Flamingo Goblet H
453 1170 PLEAT & PANEL Flamingo Goblet	488 5040 LARIAT Goblet H
454 3312 GAYOSO Flamingo Goblet, 2 Ea	489 1540 LARIAT Goblet
455 3440 PORTSMOUGH Goblet, Moongleaf Foot, 2 Ea	490 5024 OXFORD Goblet, Saturn Optic
456 393 NARROW FLUTE Moongleam Indiv Almond, 3 Ea	491 411 RIB & PANEL Goblet
457 393 NARROW FLUTE Moongleam Indiv Almond	492 373 COLONIAL Goblet H
458 393 NARROW FLUTE Indiv Almond H	493 341 PURITAN Goblet H
459 1252 TWIST Marigold Indiv Nut Dish H	494 393 NARROW FLUTE Goblet H
460 1229 OCTAGON Flamingo Indiv Nut Dish, 3 EaH	495 5082 MID CENTURY Goblet, 2 Ea H
461 1229 OCTAGON Moongleam Indiv Nut Dish, 5 Ea H	496 373 COLONIAL Goblet H
462 1401 EMPRESS Sahara Indiv Ftd Nut Dish	497 3386 DIAMOND ROSE Pilsner H
463 1401 EMPRESS Flamingo Indiv Ftd Nut Dish H	498 1229 OCTAGON Flamingo 6" Mint Dish
464 1401 EMPRESS Indiv Ftd Nut Dish, 6 Ea	499 300 PEERLESS 4" Nappy
465 411 RIB & PANEL Cigarette Jar, No Lid H	500 341 PURITAN Nappy, 2 Ea 1-4" & 1-5"
466 1974 Imperial Museum Souvenir Claret	501 1503 CRYSTOLITE 5" Nappy
467 1975 Imperial Museum Souvenir Claret	502 429 PLAIN PANEL 4½" Nappy H
468 1976 Imperial Museum Souvenir Claret	503 1469 RIDGELEIGH Roly Poly Base H
469 1776 KALONYAL Mustard, No Lid H	504 4026 FLAMINGO 16 oz Decanter, DO, Cloudy
470 150 POINTED OVAL IN DIAMOND POINT Spooner	505 1425 VICTORIAN Punch Cup H
471 COLONIAL Sugar, no lid H	506 1509 QUEEN ANN Cup, Formal Chintz Etch H
472 2930 PLAIN AND FANCY 10 oz Tumbler, Monticello Etch, 2 Ea 1-c	507 1509 QUEEN ANN Cup, Rosalee Etch H
473 3405 ALIBI Cocktail, Cut	508 6060 COUNTRY CLUB 14 oz Beverage, 2 Ea
474 Glass Salad Spoon	509 1485 SATURN Sugar, No Lid H
475 1205 FANCY LOOP Goblet	510 Imperial 1975 Museum Dedication Paperweight, 2 Ea Nos. 9 & 585
476 1184 YEOMAN Flamingo Goblet H	511 1489 PURITAN Horsehead Ash Tray X
477 1184 YEOMAN Flamingo Goblet, Flared H	512 1469 RIDGELEIGH 2½" Square Ash Tray, 3 Ea, 1-Red Stain H All-X
478 5089 PRINCESS Goblet H	513 1184 YEOMAN Sugar Pourer, No Top
479 1506 PROVINCIAL Goblet	514 2401 8 Oz Soda, Skier Etch, Badly Ground
480 U8005 GALAXY Flamingo Goblet H	515 Pair Candle Epergnettes
481 3357 KING ARTHUR Goblet, 2 Ea H	516 1519 WAVERLY Lid for Bow Tie Candy Box, Heisey Rose Etch
482 1401 EMPRESS Goblet H	517 1506 PROVINCIAL Zircon Lid for Candy Jar c
483 369 HARTMAN Goblet H	518 1503 CRYSTOLITE Lid for Round Candy Box
484 8035 BLAIR Goblet	519 411 RIB & PANEL Lid for Water Jug and #353 Lid for Covered Sugar
485 3390 CARCASSONNE Low Goblet	520 Btown Mushroom Cover 4½"
	521 Stopper for #5225 Cocktail Shaker

PLEASE NOTE MAIL BIDDING INSTRUCTIONS AS FOLLOWS:

Mail bids accepted with checks for the maximum amount of the bid. Mail bids are handled competitively and any difference is refunded after postage and handling. Only items in mint condition will be subjected to mail bids unless specifically requested otherwise. Please add \$8.00 per carton for postage and handling, \$10.00 west of Rocky Mountains. Checks should be made to Sam Schnaidt, Auctioneer, and mailed to:

Sam Schnaidt, Auctioneer
P. O. Box 84
Granville, Ohio 43023

LIST OF PRICES REALIZED, AVAILABLE AFTER THE AUCTION, FOR \$1.00

SAM SCHNAIDT, AUCTIONEER

(614) 587-0052

(614) 345-5073

FRANK FRYE, MANAGER

(614) 344-9847

MAKE YOUR RESERVATIONS NOW....CONVENTION 1983--JUNE 16-17-18-19, 1983

The rate given us is ONE PERSON - \$36.00 - TWO PEOPLE - \$41.00, Queen Size ONE PERSON \$37.00 - TWO PEOPLE \$42.00. The queen size rooms all have steam baths. NO ADDITIONAL CHARGE FOR CHILDREN UNDER 18 YEARS OF AGE AND NO ADVANCE DEPOSIT IS NEEDED. There is a \$5.00 charge per night for a rollaway bed.

The SHERATON INN will once again be our convention headquarters for 1983, and they have given a special room rate for all H.C.A. members. All activities will be held there with the exception of the SHOW AND DISPLAY. Please make your reservations early because last year they were all taken by the first of March.

SHERATON INN RESERVATION REQUEST

Name _____

Address _____

City _____ State _____ Zip _____

Phone _____

All rooms have two double beds.

Arrive _____

Single room requested (one person) \$36.00

Depart _____

Double room requested (two people) \$41.00

Please make your reservation by clipping the attached form

Queen size requested (one person) \$37.00

Queen size requested (two people) \$42.00

Mail to: ROBERT MCCLAIN
156 W. SHIELDS ST.
NEWARK, OHIO 43055
Phone: (614) 345-8061

Rollaway bed _____ \$ 5.00

Fostoria Glass Into Machine Age

The Fostoria Glass Co. at Moundsville, W. Va., has entered the machine age, ending nearly a century of producing glassware by hand.

The glass company decided to end its 90-year practice of making hand-blown and hand-pressed glassware, because of the high cost of the process.

While the new machinery will enable the plant to boost its output, it also means nearly half of the 425 employees will be without jobs. Fostoria is the biggest employer in Moundsville.

Fostoria Glass Co. is the nation's oldest producer of handmade glassware, and has been recognized as the best-known producer of

handcrafted glassware in the country. It has even manufactured special stemware with the Presidential seal for a quarter century, through a special White House commission.

Fostoria began operations in Fostoria, Ohio, in 1887, moving to West Virginia in 1891. It installed its first machines in 1965,

and about a third of the glassware produced at the plant — nearly 28 tons daily — has been handmade.

Company officials say that each machine, operated by one employee, can produce 6.5 pieces of glassware per minute. It takes 10 people to make four glasses a minute by hand.

kt



FIRST CLASS MAIL
U.S. POSTAGE
PAID
PERMIT 24
Newark, Ohio 43055

FIRST CLASS MAIL