

# HEISEY NEWS

The Official Publication of Heisey Collectors of America, Inc.

Volume XXVII No. 13

December 1998

ISSN 0731-8014



MADONNA CREATION BY HEISEY

TO A BETTER YEAR AHEAD

***Merry  
Christmas  
and  
Happy New  
Year to all  
from  
Heisey  
Collectors of  
America, Inc.***

## HEISEY NEWS

Heisey Collectors of America, Inc.

169 West Church Street

Newark, Ohio 43055

Phone (740) 345-2932 Fax (740) 345-9638

E-mail: heisey@infinet.com

WEB SITE: www.ahheisey.com

All Rights Reserved 1998

ISSN 0731-8014

### Curator/Editor

Molly Kaspar

### Administrator

Mary Ourant

### HCA President

Dick Smith (740) 366-5163

### HCA Vice President

Amy Jo Jones (937) 426-1567

### HCA Secretary

Ginny Marsh (740) 366-5608

### HCA Treasurer

Kenneth Rhoads (937) 275-5735

HEISEY NEWS is published and printed monthly (twice in March), by Heisey Collectors of America, Inc. Periodicals postage paid at Newark. Subscription is limited to HCA members. First class mailing is available for an extra \$13.00, due with payment of membership. If you are having difficulty receiving your newsletter, please contact the HCA Administrative office Monday through Friday 8:00 a.m. to 4:30 p.m.

The opinions expressed in articles in HEISEY NEWS are those of the authors and not necessarily those of the organization. The Editorial Staff reserves the right to edit, with or without the consent of the author, or to refuse any material submitted for publication.

### Back Issues

The following volumes are available as complete sets: V, VII, VIII, IX, X, XI, XII, XIII, XIV, XV, XVI, XVII, XVIII, XX, XXI, XXIII, XXIV, XXV, XXVI for \$15.00 each volume (12 issues, plus auction list if available).

### Advertising

Send all ads to: HCA Advertising, 169 W. Church St., Newark, OH 43055 or fax ads to (740) 345-9638, include MasterCard or Visa information. Ads are to be typed or printed on white paper with dark ink. Camera ready ads accepted, but must follow line specifications. Ads containing reproductions will not knowingly be accepted unless clearly stated (e.g. Heisey by Imperial, etc.) HEISEY NEWS accepts no further liability. See Advertising section for rates and deadlines.

### Museum

Heisey Collectors of America, Inc., a non profit corporation (tax exempt status), owns and operates The National Heisey Glass Museum in Veteran's Park, 6th and Church Streets, Newark, Ohio. Open Tuesday-Saturday 10-4, Sunday 1-4, closed holidays. Other hours by appointment. Members admitted free.

### Identification

HCA will attempt to identify unknown glass items. Please enclose a photograph with your drawings or descriptions. Other arrangements should be made in advance with the museum staff.

### Membership

To join Heisey Collectors of America or to renew your membership, contact HCA Administrative office Monday through Friday 8:00 a.m. to 4:30 p.m. Associate dues are \$22.00 plus \$5.00 for each additional household member. Voting members pay an additional one-time fee of \$25.00. Please consider supporting the Endowment Fund by joining at one of the levels listed on the back page.

### Museum Shop

There is always someone available in the shop to answer questions or take your order. When ordering by phone, please have a credit card ready. When ordering by mail, please be sure to include appropriate charges such as shipping and sales tax.

### Shipping and Receiving

Delivery is made much easier when we have a complete street address, not a PO Box. We prefer to use UPS. If you have not received a package, please call the administrative office to confirm it was sent. We will assist you in tracing it. If your package arrives damaged, please contact your local UPS representative. We insure everything.

### Donations and Loans to the Museum

If you have something you would like to share with the museum or have questions regarding items on loan, contact the assistant curator. HCA reserves the right to accept or refuse items based on current holdings.

## Calendar

HCA Holiday Meeting & Dinner	December 5
Museum Open House	December 5
Museum Open House	December 12
Silver Spring Show	March 20-21, 1999
All Heisey Benefit Auction	April 9-10, 1999
HCA Convention	June 14-20, 1999

## Features

<b>HCA Annual Holiday Dinner Reservation</b>	4
<b>I've Got What I Want for Christmas</b>	
<i>Carl Sparacio</i>	5-6
<b>News from the Shop—20% off Sale!!</b>	8-9
<b>Call to Convention 1999</b>	
<i>Amy Jo Jones</i>	10
<b>Make Your Reservations!</b>	10
<b>Spotlight on Heisey Designers: Eva Zeisel</b>	
<i>Tom Felt</i>	11-14
<b>Auction Consignor Packing List</b>	15

## Departments

<b>Message from the President, Dick Smith</b>	3
<b>Museum Happenings, Molly Kaspar</b>	4
<b>From the Archives, Don Valdes</b>	7
<b>Club Notes</b>	16-17
<b>HCA News &amp; Notes</b>	17
<b>Advertising</b>	18-27

## **MESSAGE FROM THE PRESIDENT**

DICK SMITH



The holiday season is fast approaching. I hope everyone has a happy holiday with lots of Heisey.

The Executive Committee and Board of Directors just approved a sale on selected items that have either been in stock for a long time or have not been selling well. This sale will start December 1, 1998. More details on this sale follow later in this newsletter.

**Benefit Auction:** Don't forget this is HCA's major fund-raiser of the year. We rely on your quality glass to make this a success. This is always a good time to sell your doubles and excess glass. And remember, it is tax deductible. Mike Rosenberger and crew say there is room for everybody's glass, so don't forget to send it in. The deadline is January 7, 1999.

There will be a convention meeting on December 5 at 2:00 p.m. at the museum. Amy Jo Jones has some exciting new ideas for this year. Remember, 1999 is the museum's 25th anniversary! Please make a note to attend the meeting to share your ideas and help plan the upcoming convention. Everyone is welcome.

The Board of Directors and Executive Committee are always looking for ways to make HCA a stronger organization. We are constantly looking for more ways to raise funds to enable us to fulfill our mission as a museum (Non-profit, educational museum preserving the legacy of Heisey and it's beautiful glass). We are always looking for your suggestions and comments on how to accomplish this. Call or write any officer or Board Member with your detailed suggestions.

We are working with Mosser Glass on supplying HCA with items to sell. The company works a little differently than our previous glassmakers and we are trying to work out some of the bugs.

Tom Bischoff is chairman of the 1999 Nomination Committee. If you know of anyone who wants to run for the Board of Directors contact Tom or me. We are always looking for good candidates who want to be involved.

Hope to see you at the Christmas dinner.

Til next month. ♦

*Dick*

## MUSEUM HAPPENINGS

MOLLY KASPAR

Season's Greetings from the National Heisey Glass Museum! Again this year the museum is hosting two holiday open houses, December 5 & 12, 10:00 am to 4:00 pm. Bring your holiday spirit and visit the museum. In the multi-purpose room Mary Jo and her crew of volunteers will conduct a craft workshop, using the punch cups that were generously donated by the HCA membership. **Thanks to all** who contributed to make this event possible. In addition, prism angel kits will be available. Call the Museum Shop for details.



While I'm giving thanks, I don't want to leave out those who made additions to our growing collection of A.H. Heisey and Company glassware over the past year. The museum received many fine glass donations and loans over the course of the year. Take a closer look when you visit next—you just might spot something new.

If you have something you think the collection is missing or would like to add, please contact me. With so many different Heisey patterns, colors and decorations, you might have something we'd like to display!

Now that the year is coming to a close it's time to begin thinking about the future. The Benefit Auction will soon be here, followed by an exciting 1999 Convention in June. Plans are being set for some new things in 1999, so stay tuned to your newsletters for details.

Have a safe and happy holiday season! And, I hope 1999 brings you just as many Heisey treasures as last year!!♦

### HCA ANNUAL HOLIDAY DINNER RESERVATION

Saturday, December 5, 6:30 pm at the National Heisey Glass Museum



Come and join fellow HCA members for our festive Annual Holiday Dinner, Saturday, December 5. The staff and volunteers will have the museum decked out with holiday decorations that you won't want to miss. Plus, you can always make those last minute gift purchases! Cocktails and hors d'oeuvres begin the evening at 6:30 pm, followed by a delicious dinner at 7:30. The menu includes chicken and beef, and accompanying side dishes. **Please make your reservation by Monday, November 30.♦**

**Mail:** HCA Dinner, 169 W. Church St., Newark, OH 43055, fax 740-345-9638, or call 740-345-2932  
Name: \_\_\_\_\_

Address: \_\_\_\_\_

City/State/Zip: \_\_\_\_\_

Phone: \_\_\_\_\_

Payment: Check or MasterCard/Visa: \_\_\_\_\_ Exp.: \_\_\_\_\_

Number of Dinner Reservations: \_\_\_\_\_ x \$19.00 each = \_\_\_\_\_ total

Name(s) of other attendees: \_\_\_\_\_



# ***I'VE GOT WHAT I WANT FOR CHRISTMAS***

CARL SPARACIO

What better way to finish the year than to report on an exciting find. Something I'm going to put under my Christmas tree for me. It's a once in a lifetime serendipitous event. Will I ever find another? The answer is, "not likely," but we live in hope. What we're looking at here is a Farberware five light chrome candelabrum with Cobalt Ridgeleigh candle sockets. You read right—I said COBALT RIDGELEIGH!

The interesting thing about this piece is I've seen it once before and I coveted it then. I asked about it at the time but it wasn't offered to me and I never saw it again. When I questioned the dealer as to where it ended up his answer was so vague I translated it as being none of my business. I reconciled myself to never, ever seeing it again. But, who knows, it's a small world (this is a cliché day,) the candelabrum was seen again in an antiques mall. Perhaps it may even be the same one.

I've only seen one other piece of Ridgeleigh in Cobalt and that was the round cigarette holder. I wrote about it a while back. It had a chip on one of the spines but it was beautiful none-the-less. Only Cambridge came close to a Cobalt as beautiful as Heisey's. We sold it for the owner at a Heisey show.



*Sorry, Carl's email picture didn't work; the above image is the same, except the candle sockets are crystal.*

Of course the first thought everyone has is that it's probably Ridgeleigh by Imperial. That'd be a possibility, I suppose, if Imperial ever made a real Cobalt. Perhaps in their very early years but I'm not sure they did even then. The other thing to consider is when Farberware made this particular chrome candelabrum. The only thing we learned for sure was that it pre-dates 1956 when Heisey closed its doors. Consequently, the only glassmaker who could have supplied the candleholders was Heisey.

This is all well and good but the thing that says Heisey more than anything else is the color—it is rich and sparkly and smooth and matches the color of other Heisey Cobalt pieces. To me, even the fire polishing is evident. We do know that Farberware made the same style candelabra in three light and another five light configuration (see *Heisey's Classic Ridgeleigh Glassware* by Jones and Sparacio). I wonder if Cobalt candle sockets were added to the others.

With a bit of luck a photo will be included here. I know it won't do the piece justice because it won't be in color.

It'll be a red and green and Cobalt Christmas at our house this year.

As you may remember, I reported that I have been playing on the Internet. I'm still a novice but it has been an interesting experience. I put some glass up on one of the auction sites and have been satisfied with our first results. I will say, though, that

Internet bidders make you sweat for your money. Bids go up slowly until just before the auction action is to stop (usually a piece stays on for a week) then, at the last minuet, all hell breaks loose if more than one person wants it. The bids top each other quickly and, just as at a Chinese auction, the last bid in before the clock stops is the winner. If we could get the folks at Apple Tree involved, I'll bet things would move along quicker. I'd like to see Sam prodding those Internet bidders.

For some reason, on the Internet, no one gives his right name. I don't know what it is with some folks, but perhaps they believe it would be an infraction of their first amendment rights if they let anyone in cyberspace know who they really are. And so it is with the auctions. Until a piece is successfully bid on and sold, no one knows the real identity of the buyer or seller (I'm at somewhat of a disadvantage because I let anyone who asks know what my email name is). After it's over you tell the winner's email address who you are and what your address is (if you don't you'll never see a check). Then the successful bidder lets you know his name and address (if he doesn't he'll never see what he paid for). This top secret information is kept between the seller and the buyer.

It came to pass that I went through this exercise with someone whom I can only assume is a lovely lady. Our emails were very pleasant. Then, in one she wrote, "Say, I know you—you're famous!" My assumption was that she knew the name from the *Heisey News*. OK, so I confess to being flattered. I ran upstairs and told Helen, "Here's a lady who says I'm famous!"

"She's probably thinking of another Carl Sparacio," she said.

That's what I call "bubble bursting" at its finest. She further reminded me that when our kids come to visit they usually ask her, "Where's what's-is-name?"

No matter, don't cry for me, Argentina (and don't you cry either). I've printed and framed my email and I'm going to hang it on our Christmas tree.

And to all of you out there in the real world and in cyberspace—we wish you happy holidays and a wonderful New Year. ♦

### ***All Heisey Benefit Auction April 9&10, 1999***

**The deadline for consigning glass is Friday, January 7, 1999**

Don't wait until the last minute! Get your glass in early!! Remember to consign only Heisey or Verlys by Heisey glassware. Non-Heisey or Heisey by Imperial will not be sold at this auction. It will be returned at the consignors expense or become a donation to be sold at another auction.

Please use the consignors packing list that appears in this issue of the *Heisey News*. Be certain the contract is signed and submitted with the consignment. If shipping, address to: HCA April Auction, 169 W. Church St., Newark, OH 43055. Please use adequate packing. Good glass brings more money for you and the museum.

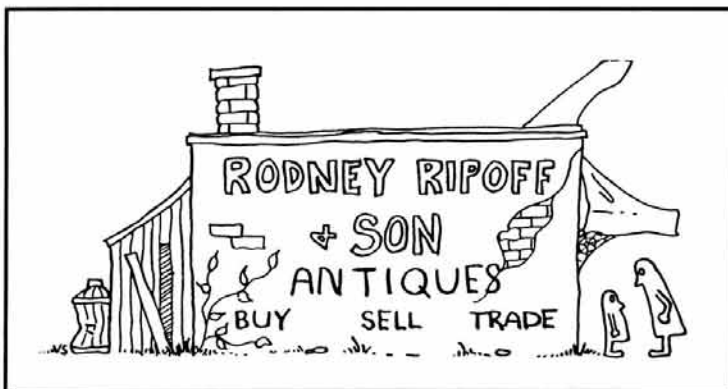
## FROM THE ARCHIVES—MORE CRAZY CARTOONS

DON VALDES

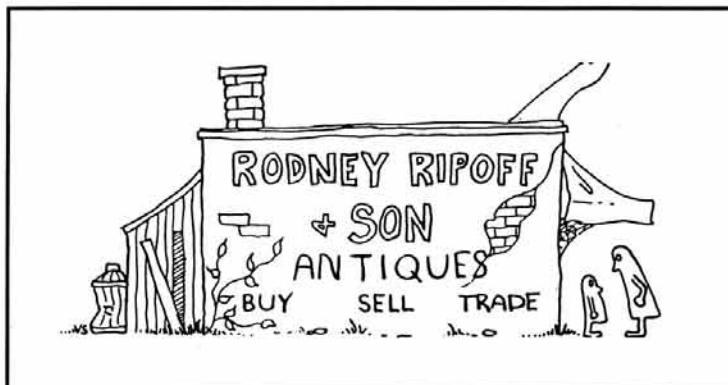
Indexing or, in this case reindexing, has turned out to be time consuming but a rather interesting project. Clearly, the interests and orientation of the persons constructing the index, usually Joe Lokay, comes through. For example, one of the categories is labeled "Articles, General." At last count I have over 1400 articles under that heading! Clearly, that category needs "cleaning up." I'm contemplating the establishment of a category "HCA museum and history," for example. That will differentiate articles about the purchase and moving of the Heisey molds from how glass is etched. And of course there will be a category "Humor." Which leads me to my promise of last month, to bring you more "collectors' humor."

It is nice to be able to keep promises. In keeping with that threat I would like to re-introduce (or introduce to those of you who have joined HCA since 1978) Rodney Ripoff. As far as my indexing indicates that we have eighteen of these delights starting in Vol. 4, 1975 and the last in Vol. VII, 1978. Unfortunately, they do not carry the name of the perpetrator. Of course, many of you know who it was, many more have pretty strong suspicions. I have presented Molly with the first ten of the cartoons with instructions to reprint as many as she would like while I take off to the Abaco Islands.

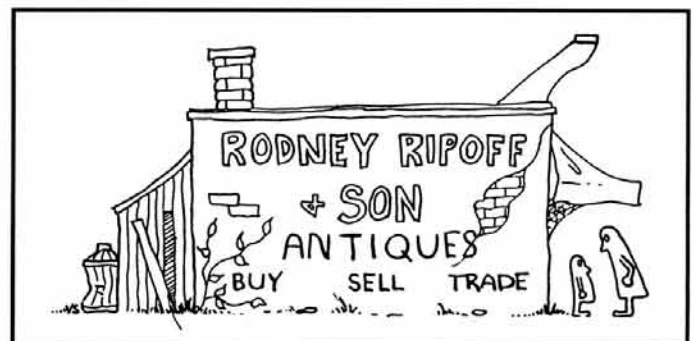
Maybe HCA should publish a cartoon collection! ♦



*Below: If they collect bar ware, Junior...it's a shot glass. If they're into miniatures...it's a toothpick.*



*Left: You've gotta be careful Junior, last time I told a customer a piece was authenticated by Clarence Vogel...turned out he was Clarence Vogel.*

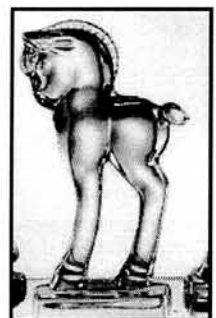
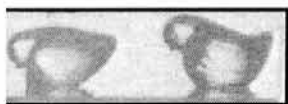


*Above: Always keep "common" Heisey at the back of the cabinets, Junior and let it gather dust...they'll pay more if they think it's a "find".*

## NEWS FROM THE SHOP—SALE ♦ SALE ♦ SALE

### Special 20% off sale on selected glassware items

Now is the perfect time to finish your holiday shopping! **Beginning December 1, 1998** the following list of items will be marked **20% off**. The HCA Board of Directors approved the sale of items which have been in stock several years and those which have not been selling well. You may call (740) 345-2932 to place an order or use the order form and mail the order with your payment. **No refunds will be given on previously purchased merchandise.**

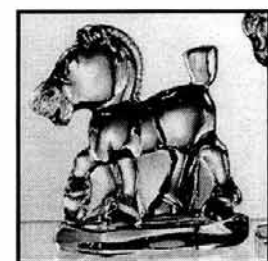
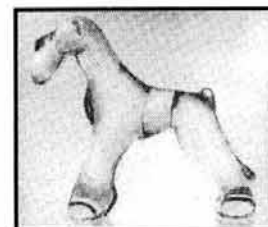
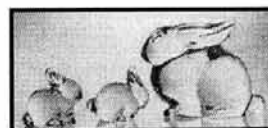


Stock	Item	Color	Maker
006A	Tropical Fish	Lavender Ice	Dalzell Viking/94
036C	Horsehead ½ size paperweight	Ruby Red frosted	Dalzell Viking/86
036D	Horsehead ½ size paperweight	Blue Haze frosted	Fenton/87
037	Double Horsehead paperweight	Lavender Ice frosted	Dalzell Viking/93
037C	Double Horsehead paperweight	Green Mist	Dalzell Viking/94
037E	Double Horsehead Paperweight	Ruby Red frosted	Dalzell Viking
044	Rooster	Peachalene	Fenton/92
044A	Rooster	Peachalene frosted	Fenton/92
045A	Hen	Rosalene frosted	Fenton/92
046A	Chick	Rosalene	Fenton/92
048A	Victorian Girl Bell	Tangelo	Imperial
049A	Victorian Girl Bell	Tangelo frosted	Imperial
049D	Victorian Girl Bell	Ruby Red frosted	Dalzell Viking
049H	Victorian Girl Bell	Horizon Blue frosted	Imperial
050	Piglet	Rosalene	Fenton/92
067C	Goose, wings half	Lavender Ice, frosted	Dalzell Viking/93
071F	Cygnets	Rosalene frosted	Fenton/92
072A	Standing Duckling	Sunshine Yellow	Imperial
072B	Standing Duckling	Sunshine Yellow frosted	Imperial
072C	Standing Duckling	Ruby Red	Dalzell Viking
072D	Standing Duckling	Rosalene frosted	Fenton/92
072E	Standing Duckling <i>Pink Blossom Painted Decor.</i>	Rosalene frosted	Fenton/92
072F	Standing Duckling <i>Violet Painted Decoration</i>	Rosalene frosted	Fenton/92
073A	Floating Duckling	Sunshine Yellow	Imperial
073C	Floating Duckling	Ruby Red	Dalzell Viking
078B	Fish match holder	Sunshine Yellow frosted	Imperial
106A	Marmalade Jar	Green Mist	Dalzell Viking/95
111C	Rococo Basket	Sea Mist Green	Fenton
116A	Kicking Colt	Rosalene frosted	Fenton
116B	Rearing Colt	Rosalene frosted	Fenton
128C	Donkey	Sea Mist Green frosted	Fenton
152D	Rabbit Paperweight	Rosalene frosted	Fenton



**20% off sale items continued**

152E	Rabbit Family, Mother, with (2) babies-head up, head down	Lavender Ice frosted	Dalzell Viking/94
155	Airedale	Rosalene frosted	Fenton
157B	Clover Rope Mug Frosted handle, clear body	Amber	Dalzell Viking/90
180A	Oscar	Emerald Green	Imperial/82
180B	Oscar	Tangelo	Imperial/83
180C	Oscar	Ruby Red	Imperial/84
180D	Oscar	Opalescent	Fenton/87
180E	Oscar	Opal	Fenton/88
180I	Oscar	Sapphire Blue Opal fr.	Fenton/91
180U	Oscar	Brown	Dalzell Viking/95



In addition to the sale items we have many other gift giving ideas. **The following items are not on sale.** New items to the shop include:

◆ Baby Mugs: We have a new Teal baby mug in stock which is very pretty. These are available in clear (#041Q), frosted (#041S) and irridized (#041R). The cost is \$13.00 each plus shipping. In addition we are still offering the mug in Vaseline (#041K, \$13.00) and irridized Hunter Green (#041L, \$13.00).

◆ Frosted Hunter Green Tiger Paperweights (018B), \$50.00

◆ Vaseline frosted Master Swan (#007A, \$25.00) and clear Individual Swan Nuts (#074, \$6.75 each)

◆ ...And, we have a great selection of items from the HCA Glass Studio and items made by Mosser Glass, including Christmas trees.

Name: \_\_\_\_\_

Address: \_\_\_\_\_

City/State/Zip: \_\_\_\_\_

Phone No.: \_\_\_\_\_ Tax No.: \_\_\_\_\_

Charge No.: \_\_\_\_\_ Exp.: \_\_\_\_\_

Stock#	Item	Color	#	Cost	Total

Are you a current HCA member?

\_\_\_\_ Yes \_\_\_\_ NO

Subtotal	_____
Freight	_____
Tax	_____
Total	_____

## CALL TO CONVENTION 1999!

AMY JO JONES

In recent years, Heisey Collectors of America have had some momentous occasions to celebrate during convention. Within the last decade alone we have observed the 20th Anniversary of HCA, the opening of the new addition to the museum, the opening of the HCA hot glass studio at IIT, the 25th anniversary of HCA and the 100th anniversary of the opening of the Heisey factory. Now there is another milestone to celebrate and that is the 25th anniversary of the National Heisey Glass Museum.

Never letting an opportunity to celebrate a momentous occasion pass them by, the convention committee has seized the opportunity to make the museum the focus of next year's HCA convention. Plans are underway to present some new activities and to bring back the old, maybe with a new twist. A sneak peak would reveal plans to bring back the Hot Dog Roast near Adena Hall, a function at the glass studio in the next phase of IIT, an annual meeting breakfast with chairs and tables and...well, you will just have to carefully read your newsletter in the next few months to be in the know.

Mark those calendars now for Tuesday, June 15 through Saturday, June 19. Help us all celebrate as we take the National Heisey Glass Museum into the next millennium. The museum is the jewel in our HCA crown and we all have a lot of which we can be very proud. What a dream, a goal, and determination will bring when everyone works together! It is a gift not only to ourselves but the community and the work to enjoy and learn. Come join us! ♦

### MAKE YOUR BENEFIT AUCTION & CONVENTION RESERVATIONS

The following is a list of area lodging provided by the Licking County Convention and Visitors Bureau. Don't forget to make your reservations for the **Benefit Auction (April 9-10)** and **Annual Convention (June 14-20)**. To receive a copy of the bureau's brochure, *Licking County Travel Guide*, contact the convention bureau at (740) 345-8224. (\*Bed and Breakfast.) ♦

*The Buxton Inn*, Granville (740) 587-0001  
*Buzz Inn*, Hebron (740) 467-2020  
*Cherry Valley Lodge*, Newark (800) 788-8008  
*Duke's Inn Motel*, Buckeye Lake 929-1015  
*Follet-Wright House\**, Granville 587-0941  
*George T. Jones House\**, Granville 587-1122  
*The Granville Inn*, Granville (740) 587-3333  
*Granville Manor\**, Granville (740) 587-4677  
*Holiday Inn*, Heath (740) 522-1165  
*Hometown Inn*, Heath (740) 522-6112  
*Howard Johnson's*, Heath (800) 446-4656  
*Motel 76*, Hebron (740) 467-2311  
*Muriel's Way\**, Newark (740) 763-4553

*Otter Fork Hills\**, Centerburg (614) 893-2467  
*Pitzer-Cooper House\**, Newark (800) 833-9436  
*Place Off the Square*, Newark (740) 322-6455  
*Porch House\**, Granville (740) 587-1995  
*Pudding House\**, Johnstown (740) 967-6060  
*Regal Inn*, Hebron (614) 927-8011  
*Super 8 Motel*, Heath (740) 788-9144  
*Star Lite Motel*, Heath (740) 522-3027  
*University Inn*, Newark (740) 344-2136  
*Wagram Motel*, Reynoldsburg (614) 927-2470  
*Welcome Inn Motel*, Hebron (740) 928-7861  
*Willow Brooke\**, Alexandria (800) 772-6372

## SPOTLIGHT ON HEISEY DESIGNERS: EVA ZEISEL

TOM FELT

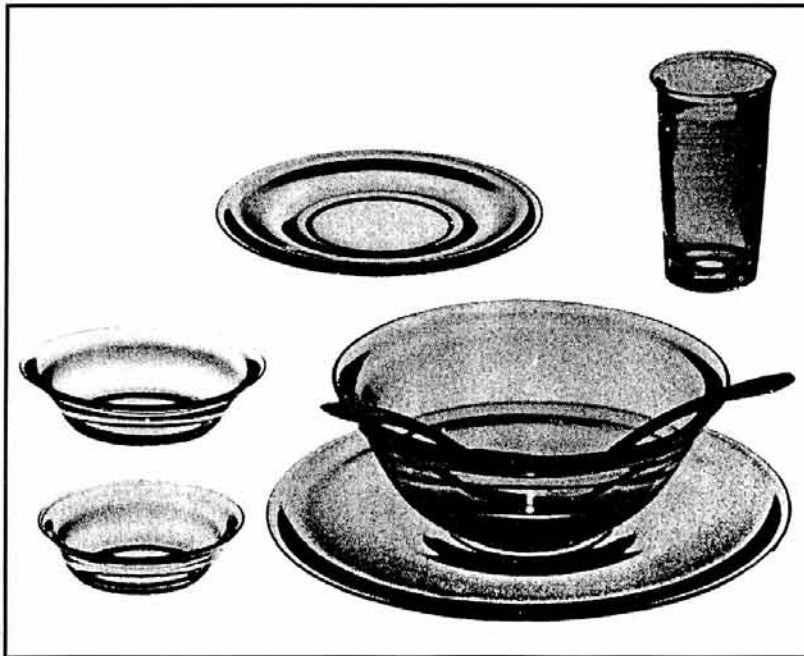
### Part III: Glassware Designs



As mentioned in the previous installments of this article, Eva Zeisel's association with glassware design actually goes back to the 1930's, during her stay in the Soviet Union, when she designed perfume bottles and was named art director of the China and Glass Industry of the Russian Republic. This experience was capitalized on in the late 1940's in this country, when she was once again called upon to design containers for perfume, but this time for such illustrious clients as Charles of the Ritz and Richard Hudnut.

*Eva at the 1993 HCA Convention*

It wasn't until 1952, however, that she created her first real line of glassware and, not surprisingly, this was an off-shoot of one of her best known ceramic commissions. An announcement appeared in the August, 1952 issue of *The Jeweler's Circular Keystone* stating that Sun-Glo Studios of New York had "entertained the press just prior to the New York China and Glass Show to introduce its new line of "silhouette" glassware designed by Eva Zeisel. The glassware, in both color and shape, was created to coordinate with the Hallcraft dinnerware line which Mrs. Zeisel also designed and which was introduced at the Pittsburgh Show last January by the Midhurst China Co." This refers, of course, to the Tomorrow's Classic line, made by the Hall China Company of East Liverpool and distributed by Midhurst, which was probably her most popular set and which was being advertised as "America's fastest selling modern dinnerware."



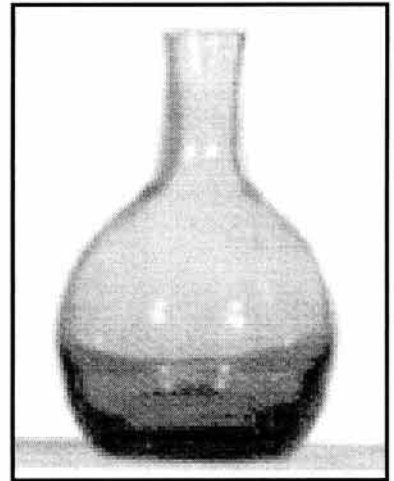
There is no additional information available on Sun-Glo Studios but, in fact, the Silhouette line was actually made by Bryce Brothers in Mount Pleasant, PA (one of the factories now owned and operated by Lenox). Colors available were amber, amethyst, smoke brown, chartreuse, green, blue and clear, all "flowing from a luminous shadow at

*Town and Country items*

the top to a deep-gleaming base," according to the October, 1952 issue of *Interiors*. Like Tomorrow's Classic, Silhouette employed slightly bulbous shapes (curved to fit the hollow of the hand) with flared rims and a much more pronounced foot than used on the ceramic pieces. The pieces were meant "to combine the traditional grace of stemware with the functional simplicity of the tumbler."

No. 8044 Zeisel Oil

Then, in December, 1953, an advertisement appeared on the back cover of the *Crockery and Glass Journal* announcing that Mrs. Zeisel had been appointed as art director for A.H. Heisey. It must be remembered that, by 1953, Heisey was already suffering from the economic difficulties that would eventually lead to the factory's closing four years later and it is clear, from the advertising copy, that they were aware of the need to find new markets if they were to survive. "The entire Heisey organization is buzzing with fresh, sparkling ideas...designed to set a series of brand new trends in the handmade glass industry... Be sure to visit the

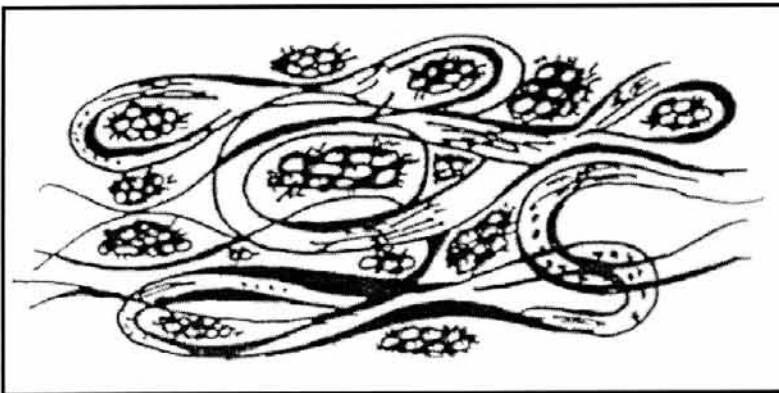


No. 521B Scroll  
etching designed by  
Eva Zeisel

Heisey exhibit at the January Pittsburgh show. There you will see unveiled for the very first time several new groups of glassware by Eva Zeisel. This revolutionary exhibit will indicate to you Heisey's competitive design plans for the future."

That this was meant to be a major change in direction for Heisey was underscored by a quotation from Eva Zeisel herself which was used in the ad: "Right now, exciting things are going on at Heisey. Whole new horizons are opening up...many original concepts

in glass design and production are being inaugurated. Such a re-birth in a respected, well-established firm is bound to stimulate sales...bound to capture new markets."

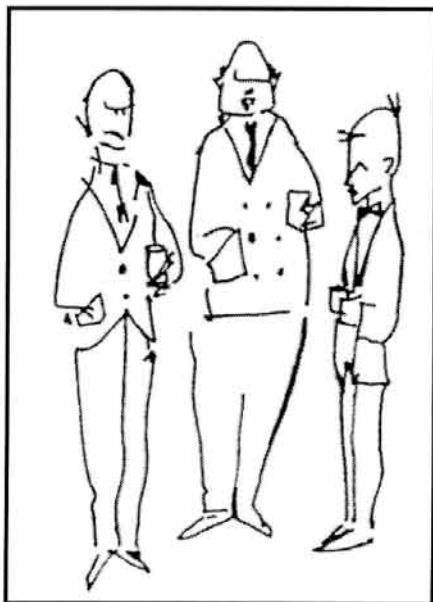


The first of the new lines was no. 6009A Roundelay and it was definitely an innovation for the company. (The "A" designation at the end of the pattern number seems to have been used to differentiate Eva Zeisel's designs from the rest of Heisey's production.) The line is entirely blown, consisting of sixteen pieces. All

of the pieces are "useful" items, except for the bud vase (which was of course, made from the oil bottle) and a console set—but, of course, even these latter pieces are intended for use on the table, thus fulfilling Mrs. Zeisel's oft stated goal of designing items which are both functional and decorative. Although some pieces have been seen in crystal, the sole price list for Roundelay offers them in Dawn only. In fact, this color was introduced at the same time as Roundelay and it is likely that both the color and the new line were simultaneously developed to complement one another (and to entice the market for "Scandinavian Modern" which was so popular in the 1950's). Roundelay, with its very plain, round shapes was given a certain allure by the color, which would naturally tend to be a lighter grey in the thinner portions (the rounded sides) and closer to charcoal at the rims or bases. Thus the color becomes integral to the decorator's intention.



(It should be mentioned that it was not unusual for Eva Zeisel to immerse herself in all aspects of production when designing a new line. As *China, Glass and Decorative Accessories* had written about her back in May, 1946, "At all times Mrs. Zeisel works closely with the factory in every aspect of producing the samples, for she believes that only by supervising every phase of production and not allowing anyone at the factory to adapt and change the drawings or sketches, can one achieve results that satisfy the designer, as well as convey his idea exactly...with the designer controlling the whole production process down to the last 1/16 of an inch.")



She also was responsible for the design of a series of very modern cuttings to be used on Roundelay. I say "modern" advisedly, however, because her fish cutting could almost have been taken from a prehistoric cave painting, it is so simple and yet evocative. Although more austere than some of her previous "natural" designs in ceramic, it nevertheless suggests the same light touch and enjoyment of whimsy that inspired them.

That Roundelay was not the change in image that Heisey required is now well known to the collector today, for whom pieces are virtually impossible to find. It was introduced in January, 1954, but can't have been in production for more than a couple of months at most, never making it into a catalog. A second line of tumblers which also came out in

*No. 522B Cocktail  
Party etching  
designed by Eva  
Zeisel*

January, no. 6007A, seems to have met with even less success. It was previously totally unknown; the molds are now in the HCA's possession (for a juice, a sherbet, a 12 oz. tumbler and a 15 oz. ice tea) but whether this will eventually enable us to identify any actual pieces from the line is problematic.

In fact, although there was still another pattern designed by Eva Zeisel introduced in 1954, it is pretty likely that her employment with the firm had already been terminated by sometime after March and did not actually last much longer than a few months altogether.

No. 1637A Town and Country, like Roundelay, was probably created primarily for production in Dawn. A pressed line, the pieces are much heavier and they are also relatively plain. However, a slight optic in the glass, similar to that used in the Saturn pattern, creates the same illusion of a variance in the color, with lighter "rings" just visible in the glass. Town and Country was more successful and, in fact, won a "Good Design"

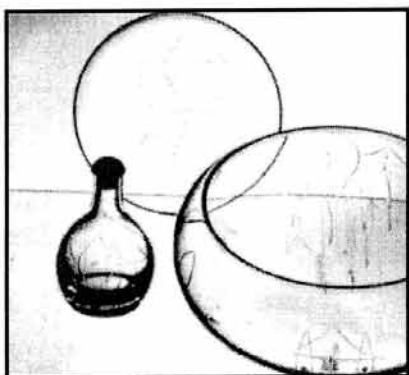
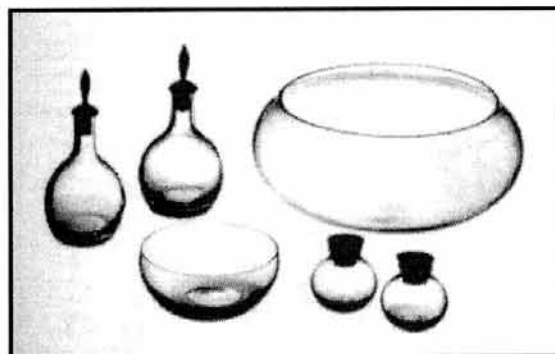


award in 1955. The pattern then remained in production until the factory

closed. Originally consisting of twelve items (all drinking or serving pieces), half of the line was still being offered in 1956 and Imperial reissued the salad set, bowl and 16" plate up until the early 1960's.

No. 6009A  
Roundelay

Although Eva Zeisel had made a pattern with the same name for Red Wing Pottery in Minnesota, it has no relationship to the later Town and Country, which is much more solid and does not demonstrate the tendency towards the grotesque displayed by the Red Wing set.



Although her association with Heisey must have ended early in 1954, this was not her last experience with the glass industry. Later that same year, she designed a line of tumblers for the Federal Glass Company in Columbus, one of the largest manufacturers of machine-made glass. Called Prestige, this line is once again characterized by its simplicity, with a false sham providing "the illusion of a very heavy bottom providing the glasses with extraordinary reflections," in Mrs. Zeisel's own words. A second line, called Stockholm, was also issued by Federal several years later.

And that completes the story of Eva Zeisel and her influence on American glassware—a footnote in the story of her adventurous and highly acclaimed life. ♦

**A.H. HEISEY & CO. — JANUARY, 1954**  
**Blown ROUNDELAY pattern #6009A in "Dawn" Glass**  
**Designed by Eva Zeisel**

Pattern No.	Size	Item in Dawn Glass	List Price/Doz.	List Price/Ea.
6009A	8"	Salad Bowl	\$95.40	\$7.95
6009A	4½"	Individual Salad Bowl	\$21.00	\$1.75
6009A	8 oz.	Oil bottle & rubber stopper	\$30.00	\$2.50
6009A		Bud vase (oil bottle, no stopper)	\$27.00	\$2.25
6009A		Salt or Pepper with chrome pl. top	\$13.50	\$1.13
6009A	Pr.	Salt and Pepper with tops	\$27.00	\$2.25
6009A		Cream Pitcher, no handle	\$39.00	\$3.25
6009A		Sugar, no cover (3" ball)	\$19.00	\$1.50
6009A		Marmalade and glass cover	\$39.00	\$3.25
6009A		Marmalade without cover	\$27.60	\$2.30
6009A		Mayonnaise and crystal ladle	\$35.40	\$2.95
6009A		Mayonnaise (4" ball)	\$27.60	\$2.30
6009A	16 oz.	Pitcher	\$54.00	\$4.50
6009A	54 oz.	Ice Lip Pitcher	\$78.00	\$6.50
6009A	54 oz.	Cocktail Shaker	\$120.00	\$10.00
6009A	5 oz.	Cocktail, ground bottom	\$15.00	\$1.25
6009A		Cigarette Holder	\$15.00	\$1.25
6009A	3"	Ashtray	\$15.00	\$1.25
6009A	10"	Gardenia bowl	\$95.40	\$7.95
6009A	6"	Candle centerpiece	\$24.00	\$2.00

Name \_\_\_\_\_  
Address \_\_\_\_\_  
City \_\_\_\_\_ St. \_\_\_\_\_ Zip \_\_\_\_\_  
Daytime phone \_\_\_\_\_

***A signed contract must accompany your auction glass***

[illegible]

Owner/Consignor \_\_\_\_\_  
Address \_\_\_\_\_  
City \_\_\_\_\_ State \_\_\_\_\_ Zip \_\_\_\_\_

HCA rep: Signature Richard P Smith  
 Consignor: Signature \_\_\_\_\_ Date \_\_\_\_\_  
 Daytime phone ( ) \_\_\_\_\_

## CLUB NOTES



### **Yankee Heisey Club**

*Pat Gibbons*

Our November meeting brought out record numbers, twenty-three members and one guest to be exact. The weather was great, hospitality of Betty Bean to match and program on Heisey stems was the planned event. Who could ask for anything more?

Last year's officers were unanimously voted in for another term at the September meeting: Ed Morin, President, Pat Gibbons, Vice President, Charles Horsfall, Treasurer and Frank Slowik as Secretary.

In lieu of the January Monday evening meeting, Jim Houghton and Tim Rector will be hosting a Christmas party at their home on Sunday, December 13 in the afternoon. Their invitation was well received since evening meetings in the month of January in New England can be pretty treacherous. We are all looking forward to the festivities and will be there with our "Holiday Bells" on! Thanks Jim and Tim!

Show and Tell was highlighted with a Pleat and Pane vase, a little different shape, Old Sandwich oval sugar and cream in Sahara, candy jars very nicely cut and a 3 pt. Ribbon Candy pitcher. The table was cleared and members moved to the dining room where there was a wonderful assortment of homemade goodies guaranteed to put the pounds on. Well, let's not think of that!

The stem program was well received and was a wonderful hands-on tool to learning. There is nothing like seeing the actual pieces and having the input of some of the veteran members. Some of the things shared were history, Heisey's habit of having the same stem in some instances with a different bowl, competitors look-a-likes, different optics, processes of manufacture, different etchings and cuttings, etc. We had over 50 wonderful examples without any repeats. It is

hard to believe that is just the tip of the iceberg. A good time was had by all.

Let us take time to wish happy holidays to everyone from the Yankee Heisey Club. ♦



### **Heisey Club of California**

Our annual Christmas party will be held Sunday, December 13, 12:00 noon at the home of Betty and Herb Wanser in Anaheim. This is a potluck and everyone is invited to bring a sumptuous dish to share. You may participate in the optional gift exchange by bringing wrapped Heisey (mint condition) with a value of \$15.00-\$25.00. We will also have the white elephant sale with Heisey hiding inside and voting for the outstanding gift wrapping. ♦



### **Dayton Area Heisey Collectors**

*Joyce Dickman*

We met October 20th at the Huber Heights Library with fifteen members and two guests in attendance. Plans for our Christmas party were finalized which will be December 12 hosted by Jim and Karen Clark.

Georgia Otten presented the evening program Heisey Animals. Flanked by a table presenting a beautiful display of animals she related informative production dates, colors, sizes, numbers etc. of animals produced by Heisey. She concluded the program by hosting a membership game of Heisey Animal Jeopardy. Thanks Georgia for the informative and fun program.

Show and Tell consisted of the following: #7 mayo spoon; #10 hair receiver; #16 puff box; #372 McGrady Sahara syrup; #456 Recessed Panel basket with cutting; #1567 Plantation footed cake plate; #465 Recessed Panel 3 lb. candy jar lid; Town and Country tumbler with Krall cutting; sterilizer jar with insert; #7000 Sunflower floral bowl; #160 Locket on Chain footed cake salver; #1201 Laverne Moongleam floral bowl; #416 Herringbone 8½" Moongleam plate; #341½ Puritan covered butter; Heisey Christmas card; #353 Medium Flat Panel cologne with cutting; and #133 Swan handled floral bowl with insert. ♦





## Golden Gate Heisey Collectors Club

The next scheduled meeting for the Golden Gate Heisey Collectors Club has been set for 1:00 pm on Sunday, January 17, 1999. We will be meeting in the home of Fran and Russ Shields in Gilroy. This will be our annual belated holiday potluck and gift exchange party so be sure to RSVP and find out what may be needed to complete the menu.

If you want to participate in the fun filled gift exchange, bring a gift wrapped piece of Heisey for which you have spent no more than \$15, of course, it can be worth much more! We will elect officers for 1999 so think about who you want to nominate. Club dues of \$5 per household will be collected. ♦



## National Capital Heisey Collectors John Martinez

It was great seeing the old gang back together again at the September meeting, especially Butch and Jim Jones, and Mr. and Mrs. Chris Maskaleris. Now stay out of Sick Bay, that's an order! We also had a few new members attend. Welcome Brian Baker and Scott Grant.

Everyone was saddened with the loss of Danny Glenn over the summer. He will be greatly missed at the All Heisey Show and our best wishes go out to his family.

On a cheerier note, next year's show is off to a good start. Everyone has their assignments and we're looking forward to another great show.

I brought up the subject of changing the meeting date to the weekend, but the club voted unanimously to keep it on the second Monday of the month. This might not be convenient to some of our members, but I still encourage you to attend. We have some interesting programs coming up in the following months, Puntty and Diamond Point and individual nuts and almonds. ♦

## HCA NEWS & NOTES

### HCA Welcomes new members for October:

Christina Courter Ealy, North Carolina  
Geraldine Eppley, South Carolina  
Mary Hawn, Ohio  
Brenda Hendrix, North Carolina  
S. L. Ledbetter and Tony Vanderlinden, NC  
Susan Mahrt, Ohio  
Michael and Sharon Matthews, Ohio  
Charles Pickering, West Virginia  
Anne and Lex Thornton, Virginia

HCA is saddened by the loss of Arthur Hartman, one of our Charter Members. Artie was an ardent Heisey lover, researcher, dealer and friend many. He will be greatly missed by all. ♦

**ATTENTION STUDY CLUBS!** Does your club have news or events to share with fellow members? Send updates BY THE FIRST OF THE MONTH to: Heisey News, 169 W. Church St., Newark, OH 43055, fax (740) 345-9638 or email: [heisey@infinet.com](mailto:heisey@infinet.com). ♦

## Coming Soon...

♦ March 20-21, 1998

Annual All-Heisey Glass Show,  
Gaithersburg, MD. Sponsored by the  
National Capital Heisey Collectors  
Club (*formerly held in Silver Spring*)

♦ April 9-10, 1998

Annual HCA All-Heisey Benefit  
Auction, Newark, OH. Benefits the  
National Heisey Glass Museum.

♦ June 15-20, 1998

Annual HCA Convention and Glass  
Show. Mark you calendar and plan to  
attend!

◆**Advertising:** Send all ads to HCA. Advertising, 169 W. Church St., Newark, OH 43055. Ads may be faxed to (740) 345-9638; please include MasterCard or VISA number for billing purposes. **All ads must be prepaid.** Ads are to be typed or printed on white paper with dark ink. Please double space. Do not abbreviate Heisey pattern names or colors. Ads which are entered in a vertical column format may contain a maximum of 65 characters per line, including spaces & punctuation.

**Classified:** 20 cents per word (members), 30 cents per word (non-members), \$.150 min., 1/8 page limit. Personal ads 1/8 page limit. Abbreviations & initials count as words.

Display Ads:	member	non
1/8 page (12 lines)	\$20.00	\$30.00
1/4 page (25 lines)	\$40.00	\$60.00
1/2 page (60 lines, <i>horizontal or vertical</i> )	\$80.00	\$120.00
Full page(120 lines)	\$160.00	\$240.00

**A charge of \$1.60 will be added for each additional line.**

*Camera ready ads must follow specifications. Ads which do not correspond to the following measurements will be sized.*

#### Camera Ready Ad Specifications:

1/8 page: 2 1/4" high by 3 1/2" wide

1/4 page: 4 1/2" high by 3 1/2" wide

1/2 page: 4 1/2" high by 7 1/2" wide OR 9" high by 3 1/2" wide

Full page: 9" high by 7 1/2" wide

**Ad copy must be received by the first of the month prior to publication.** Reproductions (i.e. Heisey by Imperial) must be indicated. *Heisey News* accepts no further liability. ♦

## Classified Ads

**WANTED:** Heisey Baskets: etched, cut, colored, unusual decorations or whimsies. Send price and description to Kim Carlisle, 28220 Lamong Rd., Sheridan, IN 46069 (317) 758-5767.

**WANTED:** New Era wine glass with frosted stem. Call Carol at (614) 621-2742.

**FOR SALE:** *Please note new phone number: (781) 862-0532.* Taking bids on lovely #1469 Ridgeleigh perfume bottles, (3) one with long dauber in filigree holder (Tantalus) with lock. Also #343 Sunburst 7 oz. goblet. Call Carol at (781) 862-0532.

**WANTED:** #341 Old Williamsburg footed cake plate. Heisey or Heisey by Imperial. Sunny Allred, HC4 Box 18G, Payson, AZ 85541 (520) 472-7932.

**WANTED:** Heisey "Fox Chase" #1509 8" square plate, #5012 7" ftd. vase, #4163 16 oz. beer mug with Red, Moongleam, Amber handle. Fred Ludwig, 300 Rt. 10, Randolph, New Jersey 07869. (973) 366-1351.

**FOR SALE:** Ruby Red Heisey Horse from Crawford Barn Raising. \$1500 each or best offer. Two available. Call Johanna (740) 849-2723 or email to leica@brihtnet.com.

**MARY BARKER**  
500 Nantucket Ave.  
Pickerington, OH 43147

**(740) 927-0918**  
**After 5:00 pm**  
**UPS & Ins. Extra**  
**H=Marked**

#### All Orchid Etch

5022	Graceful 12 oz. soda/ice tea, (6) ea.	\$85.00
5022	Graceful 5 oz. ftd. soda, (6) ea.	\$65.00
5089	Princess 10 oz. goblet, H, (6) ea.	\$125.00
5022	Graceful oyster cocktail, (6) ea.	\$55.00
5025	Tyrolean 3 oz. wine, (12) ea.	\$85.00
5025	Tyrolean 4 oz. cocktail, (12) ea.	\$40.00
5025	Tyrolean 10 oz. goblet, tall stem, (9) ea.	\$45.00
5025	Tyrolean 10 oz. goblet, low stem, (9) ea.	\$40.00
5025	Tyrolean 5 oz. ftd. soda, (10) ea.	\$50.00
1519	Waverly 9" relish, round, H	\$125.00
1519	Waverly candy, bow knot finial, H	\$225.00
1519	Waverly mayo, plate and ladle	\$85.00

**SUM OF LIFE**  
**Elaine & Frank Husted**  
**147 Barton Dr.**  
**Spring City, PA 19475-3415**

**(610) 469-1243**  
**(610) 469-1298 Fax**  
**mehusted@aol.com**

## LOAD UP YOUR CHRISTMAS SLEIGH!! Our Christmas present? We'll pay shipping!

	Swan head stopper	\$80.00
1503	Crystolite round 5-part relish	\$40.00
1503	Crystolite cigarette lighter	\$35.00
3357	King Arthur 2 1/2 oz. wine, Mnglm. stem, d/o bowl, (6) ea.	\$35.00
365	Queen Ann 3 1/2 oz. cruet (small x, rough stopper)	\$80.00
150	Banded Flute cov. butter, H	\$115.00
1201	Fandango 8 oz. cruet	\$50.00
1519	Waverly ind. cream and sugar, Orchid etch, H	\$65.00
1519	Waverly butter w/horse head finial, Orchid etch	\$145.00
1519	Waverly butter w/horse head finial, Heisey Rose etch	\$185.00
1509	Queen Ann 14" sandwich plate, center handle	\$140.00
1280	Winged Scroll Custard butter bottom w/gold trim	\$35.00
1184	Yeoman 7" plates Sahara, d/o, ea.	\$15.00
5038	Rooster stem cocktail, H, (3) ea.	\$55.00
464	Recessed Panel 1/2 lb. candy jar, gold trim, H, (2) ea.	\$60.00
1255	Pineapple and Fan 8"x8 1/2" diam. ftd. compote	\$75.00
1255	Pineapple and Fan sugar, Emerald (no lid, no gold)	\$32.00
1255	Pineapple and Fan 6" trumpet vase, worn gold	\$22.00
1256	Pineapple and Fan covered butter, good gold	\$115.00
367	Prism Band decanter, Moongleam w/clear cut stopper	\$290.00
1495	Fern 2-lite candle holder w/#598 deep plate etch,	\$160.00
4027	Christos decanter w/(6) ponies, all Tally Ho etch, set	\$360.00
1541	Athena cream and sugar with cutting, set	\$50.00
3370	African wines, Moongleam stem d/o bowl, (2) ea.	\$46.00
4035	Bethel decanter w/#48 cutting	\$110.00
407	Coarse Rib ind. almonds, H, (10) ea.	\$16.00

**"T & P" COLLECTIBLES**  
**Tom & Pat Gibbons**  
**1089 Wood St.**  
**Swansea, MA 02777**

**(508) 674-7361**  
**tomg@meganet.net**  
**Packing & UPS Extra**  
**Send SASE for latest list**  
**H = Marked**

134	Trident 2-lite candlestick, Tea Rose etch	\$26.00
305	Punty & Diamond Pt. punch set & base, H (1 + 12 pcs.)	\$425.00
393	Narrow Flute 3 pt. jug, H	\$85.00
394	Narrow Flute Dr. Johnson punch bowl, H	\$395.00
451	Cross Line Flute 5" vase	\$45.00
1205	Fancy Loop 8 1/2" plate	\$25.00
1252	Twist 12" plate, Marigold, few scratches, H	\$55.00
1255	Pineapple and Fan 10" ftd. vase	\$40.00
1295	Beaded Swag tumbler, Ivorina/Custard, corn flowers, (6)	\$195.00
1404	Old Sandwich 1/2 gal. ice lip jug, H	\$150.00
1405	Ipswich candlevase insert, H	\$65.00
1425	Victorian 10 oz. 2-ball goblet, (4)	\$85.00
1425	Victorian 10 1/2" oval 3-part relish	\$66.00
1469	Ridgeleigh 1 pt. decanter, icicle	\$300.00
1567	Plantation 12 oz. ftd. ice tea, ivy etch, (4)	\$285.00
2401	Oakwood 7 oz. soda, Tally Ho etch, (6)	\$125.00
3390	Carcassone 8 oz. ftd. soda, (4)	\$62.00
4085	Kohinoor 5 1/2 oz. champagne, (6)	\$155.00
4224	Ivy 4" vase, Tangerine, Steeple Chase etch, cloudy	\$99.00
5025	Tyrolean 12 oz. ftd. ice tea, Orchid etch, (6)	\$295.00
	Filly, frosted, Imperial, ALIG	\$80.00
	Sparrow, Verde, Imperial, sticker	\$65.00
	Tiger Paperweight, Jade, Imperial	\$110.00

**Wanted: Pretzel jar cover or complete jar**

**R & S ANTIQUES**  
**Ray & Susan Ball**  
**2560 S. Maguire Rd.**  
**Ocoee, FL 34761**

**(407) 656-5700**  
**(407) 876-9199 evenings**  
**UPS & Ins Extra**

**Holiday sale! 15% off purchases over \$500.00—20% off purchases over \$1000.00. Includes any items remaining from all R&S Heisey**

**News Ads placed in 1998—Check your back issues!!**

1401	Empress 8" round plate, Alexandrite	\$70.00
1401	Empress 12" hdl. sandwich plate, Alexandrite	\$325.00
1401	Empress 11" floral bowl, Alexandrite	\$595.00
3368	Albemarle finger bowl, Alexandrite, (4) ea.	\$150.00
3381	Creole 1 oz. ftd. bar, Alexandrite	\$300.00
3381	Creole 11 oz. short goblet, Alexandrite/crystal, (2) ea.	\$200.00
3381	Creole 11 oz. tall goblet, Alexandrite/crystal, (2) ea.	\$200.00
3381	Creole 12 oz. ftd. soda, Alexandrite/crystal, (92) ea.	\$125.00
3390	Carcassone 2½ oz. wine, Alexandrite/crystal, (93) ea.	\$250.00
3390	Carcassone 3 oz. cocktail, Alexandrite/crystal	\$110.00
3390	Carcassone 3 oz. oyster cocktail, Alexandrite/crystal	\$110.00
3390	Carcassone 5 oz. ftd. soda, Alexandrite/crystal	\$100.00
4182	Thin 6" plate, Alexandrite, (6) ea.	\$40.00
353	Medium Flat Panel 5 oz. syrup	\$40.00
393	Narrow Flute 5½" hdl. jelly	\$25.00
393	Narrow Flute 12" celery, (2) ea.	\$28.00
393	narrow Flute 4½ oz. parfait, (3) ea.	\$25.00
393	Narrow Flute 5 oz. soda, (8) ea.	\$22.00
393	Narrow Flute 8 oz. goblet, (2) ea.	\$25.00
393	Narrow Flute 12 oz. ice tea, (2) ea.	\$30.00
407	Coarse Rib 8¾" plate, (4) ea.	\$25.00
407	Coarse Rib 12" celery	\$27.50
1170	Pleat and Panel 8" plate, (9) ea.	\$12.00
1184	Yeoman cream soup, (5) ea.	\$15.00
1184	Yeoman cup and saucer, (6 sets) ea.	\$20.00
1252	Twist 4½" nappy, (6) ea.	\$12.00
1252	Twist 6" hdl. jelly	\$20.00
1252	Twist 7" plate, (4) ea.	\$12.00
1252	Twist 10" celery, (2) ea.	\$20.00
1401	Empress 4½" nappy, (6) ea.	\$12.50
1401	Empress 6" sq. plate, (6) ea.	\$12.00
1401	Empress 6" sq. comport	\$50.00
1401	Empress cup and saucer, (5 sets) ea.	\$25.00
1469	Ridgeleigh 11" 3-compartment relish	\$45.00
1503	Crystolite cup and saucer, (2 sets) ea.	\$30.00
1509	Queen Ann 6" sz. plate, (6) ea.	\$12.00
1509	Queen Ann 8" sq. plate	\$15.00
1509	Queen Ann 6" oval comport	\$45.00
1509	Queen Ann 7½" ftd. nappy	\$40.00
1509	Queen Ann 9" floral bowl	\$30.00
1509	Queen Ann lemon dish and cover	\$65.00
1509	Queen Ann mustard and cover	\$55.00
3440	Portsmouth 9 oz. goblet, Flamingo	\$35.00
3481	Glenford 8½ oz. soda, Flamingo/Moongleam	\$250.00
1184	Yeoman 8" plate, d/o Hawthorne, (5) ea.	\$22.00
2351	Newton 9 oz. soda, checker optic, Hawthorne, (10) ea.	\$45.00
1184	Yeoman 8" plate, Moongleam, (6) ea.	\$20.00
1184	Yeoman 15" oval platter, d/o Moongleam	\$58.00
1184	Yeoman cream soup, Sahara, (6) ea.	\$30.00
1401	Empress 7" triplex relish, Sahara	\$42.00
4069	Reis-Ridgeleigh 3½ oz. cocktail, cutting, (2) ea.	\$55.00
5009	Queen Ann 4 oz. oyster cocktail, (5) ea.	\$15.00

**H&R Diamond H**  
**Helen & Bob Rarey**  
**1450 White Ash Drive**  
**Columbus, OH 43204**

**(614) 279-0390**  
**After 5:30 pm**  
**UPS & Ins. Extra**  
**H=Marked**

33	Skirted Panel 3" toy candleholder, H, pr.	\$87.50
112	Mercury 1-lite candleholder, pr.	\$39.50
310	Ring Band toothpick, Custard, souvenir IA, worn gold	\$62.50
310	Ring Band tumbler, Rose dec., Custard, H	\$47.50
335	Prince of Wales Plumes table cream, worn gold, H	\$49.50
433	Greek Key 4½ oz. cupped sherbet, H, (7) ea.	\$17.50
465	Recessed Panel 8" basket, H	\$210.00
1220	Punty Band toothpick, beaded top, Custard, souvenir	\$75.00
1401	Empress mustard and cover, H	\$52.50
1469	Ridgeleigh "club" ind. ashtray, H	\$17.50
1469	Ridgeleigh star relish	\$55.00
1469	Ridgeleigh mustard and cover, H	\$67.50
1500	3½" round ashtray, H	\$29.50
1509	Queen Ann ind. cream, sugar and tray, H	\$60.00
1519	Waverly 9" round 4-part relish, H	\$49.50
1540	Lariat 12½" floral bowl	\$25.00
1567	Plantation 1-lite candleblock	\$125.00
3359	Wabash 10 oz. goblet, (8) all	\$85.00
3357	Fairacre 10 oz. goblet, (2) ea.	\$15.00
3397	Gascony 2½ oz. wine, Sahara, (6) ea.	\$65.00
3397	Gascony decanter, Sahara with crystal stopper	\$335.00
5003	Crystolite 3½ oz. cocktail, H, (8) ea.	\$25.00
5024	Oxford 1 oz. cordial, H, (6) ea.	\$22.50
5060	Washington Square 2 oz. bar glass	\$52.50
5077	Legionaire 10 oz. goblet, Arcadia cut, (7) ea.	\$15.00

### **WE CLEAN CLOUDY GLASS!** **SATISFACTION GUARANTEED**

*Yes, it is true* that we really can restore the interior of your cruet, vase, decanter and other *internally* etched items back to near original condition.

*We do not* oil, wax or cover up the sickness in any way! We actually *remove* it.

*No items are too sick to clean!* If we cannot clean an item to meet your satisfaction, the cleaning is **FREE!**

*Send no money up front.* When we return your item a bill will be enclosed for the postage and cleaning. If you are not satisfied, only the return postage is requested.

*Most items* clean in 6-8 weeks. All glass is handled and cleaned at your risk. Some very cloudy items may take several additional weeks.

Cruet	\$20.00	Cocktail Shaker	\$30.00
Vinegar & Oil	\$25.00	Salt Shaker (one)	\$25.00
Cologne	\$20.00	Salt Shaker (pair)	\$35.00
Decanter	\$30.00	Water Bottle	\$30.00
Vases (under 12")	\$25.00	Lavender Jar	\$20-\$30.00

Ship to: **Kim Carlisle & Associates**  
**28220 Lamong Road, Dept. H**  
**Sheridan, IN 46069**  
**(317) 758-5767**

# **WASHBURN'S SAN ANTONIO SHOW** **AMERICAN GLASS, CHINA & POTTERY**

**Feb. 13, 1999 9:00-5:00**

**Feb. 14, 1999 10:00-4:00**

Live Oak Civic Center  
 8101 Pat Booker Rd.  
 Live Oak (San Antonio), TX 78233

Admission \$5.00—Good Both Days  
 (\$2.00 off with this card)

**Depression, Elegant, Other Collectible Glass**  
**Fiesta, Dinnerware and Pottery**

**NEXT SHOW FEB. 12 & 13, 2000**

## For information:

Kent Washburn

210-599-0635

WashburnK@aol.com

8048 Midcrown, Ste. 26

San Antonio, TX 78218

**TRIPLE H**  
 70 Mandy Lane  
 Rochester, NY 14625

**(716) 381-6933**  
**Shipping Extra**  
**H = Marked**

1255	Pineapple and Fan 8½" vase	\$50.00
99	Little Squatter candleblocks, Moongleam, pr.	\$55.00
1401	Empress 11" dolphin ftd. floral bowl, Sahara	\$85.00
1502	Crystolite swirl candleblocks, pr.	\$40.00
1509	Queen Ann 1-lite candelabra, "A" prisms, pr.	\$160.00
2	Old Williamsburg 9" candlesticks, pr.	\$150.00
1519	Waverly 9" round 4-compartment relish, H	\$40.00
1401	Empress 10" celery tray, H	\$35.00
1401	Empress 13" celery tray, H	\$35.00
1025	Cream and covered sugar, floral cut, H/H	\$55.00
1252	Twist 6" handled cheese, Marigold, H	\$35.00
1506	Whirlpool covered candy jar, H/H	\$90.00
150	Banded Flute saucer ftd. candlestick	\$55.00
1428	Warwick 1-lite candleholder, H	\$35.00
1186	Yeoman ashtray with signed Hawkes cut	\$35.00
359	Colonial saucer champagne, H	\$12.00
300	Colonial parfait, H	\$12.00
1252	Twist 11" dinner plate, some scratches, H	\$80.00
300	Peerless 2 oz. wine, 4", H	\$12.00
Heisey by others:		
	Souvenir paperweight, opening of HCA museum 6/14/75	\$30.00
	Tiger paperweight, Jade	\$75.00
	Oscar, 1977, green	\$55.00
	Oscar, 1978, pink	\$50.00
	Oscar, 1979, yellow	\$45.00

## **BRASWELL'S COLLECTIBLE GLASS (423) 538-5760**

**380 Lowell Jones Rd.**

**Piney Flats, TN 37686**

**Shipping & Ins. Extra**

**H = Marked**

113	Mars candlestick, Flamingo, cutting	\$26.00
135	Empress candlestick, silver overlay	\$40.00
341	Puritan 4 oz. cruet with #2 stopper, H	\$36.00
394	Narrow Flute 12" 3-part relish, Flamingo, H	\$35.00
1205	Swirl raindrop floral bowl, H	\$40.00
1404	Old Sandwich 4 oz. clarets, Sahara, H, (2) ea.	\$25.00
1404	Old Sandwich oval floral bowl with frog, H	\$49.00
1425	Victorian 3 oz. cocktails, (4) ea.	\$16.00
1425	Victorian 5 oz. 2-ball champagne, (4) ea.	\$9.00
1469	Ridgeleigh 5-compartment star relish, H	\$40.00
1489½	Puritan large horse head cov. cigarette box	\$79.00
1504	Regency 2-lite candlesticks, pr.	\$79.00
1558	Droop floral bowl, H	\$30.00
1567	Plantation sugar	\$22.00
3397	Gascony 5 oz. glass, Sahara	\$20.00
5024	Oxford cocktail, juice or wine, H, (2) ea.	\$9.00

## **LINDA PARKS**

**9201 Jade Lake Rd. E.**

**Pinson, AL 35126**

**(205) 681-6219**

**S & I Extra**

**H = Marked**

10	Gibson Girl 10" floral bowl w/block, floral cut, Flm., H	\$165.00
14	Kingfisher floral block, Flamingo, H	\$320.00
14	Kingfisher floral block, Hawthorne, H	\$510.00
15	Duck insert with floral block, Moongleam	\$295.00
15	Duck insert with floral block, Hawthorne	\$385.00
15	Duck ins. w/flrl blk., #123 Merc. cdl. ins., 3 pc. Flm, H	\$475.00
300	Peerless 6" spoon tray, H	\$29.00
305	Punty & Diamond Point cologne with s.s. top	\$115.00
341	Colonial 4½" pin pickle jar, H	\$85.00
417	Double Rib and Panel basket, Flamingo, H	\$185.00
417	Double Rib and Panel basket, H	\$195.00
417	Dbl. Rib & Panel basket, Mnglm. w/satin etch panels, H	\$185.00
458	Picket 8" basket, #603 Sprig cut, H	\$265.00
459	Round Colonial 7" basket, butterfly cut, H	\$350.00
459	Round Colonial 8" basket, Susan etch, H	\$450.00
461	Banded Picket 7" basket, Moongleam, H	\$435.00
461	Banded Picket 7" basket, Flamingo, H	\$440.00
462	Plain Hexagon 8" basket, floral cut, H	\$320.00
463	Bonnet 9" basket, w/ext. cut, H	\$405.00
463	Bonnet 7" basket, Flamingo, H	\$475.00
465	Recessed Panel 8" basket, H	\$250.00
473	Nar. Fl. w/rim 5" dice sug&crm, pat. dtd., Mgl'd. stain, H	\$125.00
490	2 oz. cologne, #66 stopper, H	\$105.00
491	2 oz. cologne, #63 stopper, some wear, gold decor., H	\$135.00
1001	Caswell sugar sift/syrup set, Moongleam foot and handle silver decoration	\$195.00
1405	Ipswich cologne with long dauber, H	\$525.00
1420	Tulip vase, H	\$185.00
1469	Ridgeleigh bridge ashtray set w/4" cov/cig box, 5 pc., H	\$95.00
1503	Crystolite punch bwl, udrpl., (12) cups, H	\$425.00
1509	Queen Ann sugar and cream, #941 Barcelona cut	\$85.00
1509	Queen Ann ind. sugar & cream, floral cut, H	\$65.00
1540	Lariat punch bwl, undrpl., (12) cups, all Moonglo cut, H	\$850.00
3368	Albemarle 7" ftd. compote, #803 Hialeah cutting, H	\$110.00
	Pouter Pigeon, H	\$795.00
	Elephant, large	\$405.00
	Elephant, medium	\$395.00
	Goose wings down	\$465.00
	Goose wings half	\$75.00
	Goose wings up	\$125.00



**GLASS 'N' GLASS**  
Virginia & Odell Johnson  
6909 10th Ave. West  
Bradenton, FL 34209

(941) 792-0604  
(941) 795-6836 Fax  
email: ovjohnson@aol.com  
UPS & Ins. Extra  
H=Marked

16	Classic 5" candlesticks, H, pr.	\$125.00
21	Aristocrat 7" candlesticks, H, pr.	\$130.00
22	Windsor 7½" candlesticks, H, pr.	\$150.00
134	Trident candlesticks, Sahara, pr.	\$200.00
339	Continental punch (custard) cups, H, (8) ea.	\$15.00
411	Tudor 5" ftd. preserve/cover, Hawthorne	\$120.00
429	Plain Panel Recess 3 pt. jug	\$110.00
1184	Wigwam etch 9 oz. soda	\$110.00
1205	Fancy Loop 2 oz. bar, Emerald/gold	\$125.00
1252	Twist 12" oval ftd. floral bowl, Marigold, H	\$150.00
1425	Victorian 5 oz. tumblers, H, (4) ea.	\$25.00
1503	Crystalite 5½" spiderweb handled nappy	\$28.00
1503	Crystalite 9" 4-compartment cloverleaf relish	\$30.00
1503	Crystalite coaster, (6) ea.	\$10.00
1506	Provincial 3½ oz. cocktail, (4) ea.	\$12.00
1506	Provincial sugar/cream/tray, H	\$60.00
1506	Whirlpool/Provincial 12 oz. soda, Imp. Red, H, (11) ea.	\$25.00
1540	Lariat 5" candy box with lid, H	\$60.00
1540	Lariat 8½" 3-compartment handled relish	\$50.00
1540	Lariat 12" oval serving bowl	\$35.00
3368	Albamarle champagne, Marigold, d/o	\$100.00
5010	Symphone Danish Princess champagne, (2) ea.	\$20.00
	Asiatic Pheasant, H	\$300.00
	Ringneck Pheasant	\$135.00
	Small Elephant	\$300.00



## The Best Of Heisey Glass...

...with popular patterns like Orchid, Heisey Rose, Minuet, and hundreds more. We also carry other fine crystal and depression glass from Cambridge, Fostoria, Imperial, Duncan & Miller, and more. The world's largest supplier of discontinued and active china, crystal, flatware and collectibles, Replacements, Ltd. carries over 4,000,000 pieces in inventory in over 85,000 patterns.

If you're looking to add to your collection, or if you're looking to sell - call us toll-free.

Because even with over 4,000,000 pieces in our inventory, we're always looking for more.

## REPLACEMENTS, LTD.

China, Crystal & Flatware • Discontinued & Active  
1089 Knox Road, Greensboro, NC 27420 Dept. HS

**1-800-REPLACE (1-800-737-5223)**

**FOREVER HEISEY**  
Norm & Jan Thran  
1663 Londondale Pkwy.  
Newark, OH 43055

(740) 344-5955  
UPS & Ins. Extra  
H = Marked

	Standing Wood Duckling	\$195.00
1	Condiment/mustard spoon, H	\$30.00
6	Mayonnaise ladle, Flamingo, H	\$45.00
21	Aristocrat 11½" candlesticks, H, pr.	\$350.00
25	Federal 9½" candlestick, H	\$85.00
300	Peerless 4 oz. soda/schoppen, Flamingo, H	\$60.00
343	Sunburst 14" punch bowl, H, and stand, H	\$325.00
343	Sunburst punch cups, H, (15) ea.	\$22.50
353	Medium Flat Panel toothpick tray, H	\$70.00
393	Narrow Flute 10" cheese & cracker plate w/ctr. ring, H	\$32.50
393	Narrow Flute tall champagne, H, (2) for	\$25.00
417	Double Rib and Panel 11½" ftd. cake salver, H	\$175.00
516	Fairacre 1 oz. cologne, Flamingo, d/o, H	\$295.00
600	Square hdl. 2½" saucer ftd. candlestick	\$60.00
1170	Pleat and Panel 8" plate, Flamingo, H, (2) for	\$22.00
1170	Pleat and Panel cream and cov. sugar, Flamingo, H, pr.	\$60.00
1170	Pleat and Panel cup and saucer, Flamingo, H, (9 sets) ea.	\$28.00
1170	Pleat and Panel 4¾" 2-hdl. marmalade, Flamingo, H	\$20.00
1170	Pleat and Panel 5" hdl. jelly, Flamingo, H	\$17.50
1205	Fancy Loop 8" cheese plate	\$27.50
1252	Twist 9 oz. ftd. soda, Flamingo, H	\$45.00
1252	Twist ind. ftd. and hdl. almond, Flamingo	\$40.00
1404	Old Sandwich 2½ oz. wine, H, (3) for	\$55.00
1404	Old Sandwich 1½ oz. bar, H, (3) ea.	\$20.00
1404	Old Sandwich 6½ oz. toddy/old fashion, (4) for	\$40.00
1404	Old Sandwich ind. ashtray, Sahara, H	\$30.00
1404	Old Sand. 2½ oz. cruet, Sahara, H w/#85 Sah. stopper	\$245.00
1404	Old Sand. 2½ oz. cruet, Mnglm. H w/#85 Mnglm. strpr	\$375.00
1425	Victorian 12 oz. soda, straight, flat base, H, (5) ea.	\$35.00
1428	Warwick 2-lite candlesticks, H, pr.	\$60.00
1428	Warwick 5" horn of plenty vase, Cobalt, H, pr.	\$450.00
1469	Ridgeleigh #2 vase, H	\$35.00
1469	Ridgeleigh 13" rnd. sandwich/cookie plate, H	\$40.00
1469	Ridgeleigh 12" rnd. 2-hdl. cake plate, H	\$395.00
1503	Crystalite 5" oval ftd. nut, H	\$50.00
1504	Regency 2-lite candlestick, pr.	\$85.00
1509	Queen Ann cov. lemon dish, H, floral cut lid in Farberware holder	\$55.00
1519	Waverly 10½" dinner plates, Orchid etch, (4) ea.	\$140.00
1567	Plantation syrup w/sanitary lid and yellow hdl.	\$130.00
1571	Ind. leaf nut, original paper Heisey label	\$35.00
3389	Duquesne 5 oz. parfait/juice, Tangerine, (2) ea.	\$275.00
3390	Carcassone tall goblet, Cobalt w/o bowl, (2) ea.	\$85.00
3390	Carcassone 12 oz. ftd. soda/ice tea/ Cobalt w/o bowl	\$90.00
3390	Carcassone 2½ oz. ftd. wine, Cobalt w/o bowl, (2) ea.	\$110.00
3408	Jamestown 12 oz. beer mug, w/o w/Tangerine hdl.	\$375.00
4090	Coventry gob., experim. Orchid etch (1 of 6 known)	\$475.00
4225	Cobel 1 qt. cocktail shaker, rooster head stopper	\$85.00
4227	Favor vase, Sahara d/o	\$210.00
4227	Favor vase, Cobalt d/o	\$225.00
4228	Favor vase, Cobalt d/o	\$235.00
4229	Favor vase, Sahara d/o	\$210.00
4230	Favor vase, d/o	\$125.00
4230	Favor vase, Cobalt d/o	\$195.00
4231	Favor vase, d/o	\$125.00
4231	Favor vase, Sahara d/o	\$210.00
4232	Favor vase, Tangerine d/o	\$725.00
5025	Tyrolean 2 oz. sherry, Orchid etch, H, (2) ea.	\$145.00
5032	½ gal. ice lip tankard, Orchid etch	\$1100.00
2351	Newton 12 oz. soda, w/o with Orchid etch, (4) ea.	\$110.00
5038	Rooster Tail cocktail, (4) ea.	\$45.00
5048	Rooster Head cocktail, Amber rooster and crystal bowl	\$650.00
5065	Pony (Colt) stem cocktail	\$525.00

Our 19th Year serving the Heisey family!! Always a large inventory. Call, write or stop & visit while in Newark, open 7 days, we accept layaways.

# SANDUSKY'S COLLECTIBLES

Norm and Matt  
1754 Athens Ct.  
Claremont, CA 91711

(909) 621-1704  
Shipping and Ins. Extra  
H = Marked

	Gazelle, H	\$2500.00
	Elephant, small	\$225.00
	Fighting Rooster	\$185.00
	Mallard, wings up	\$195.00
	Rooster vase	\$110.00
	Scotty	\$135.00
	Sparrow	\$105.00
	Colt set, kicking, balking, standing	\$425.00
	Geese set, wings down, up, half	\$625.00
160	Locket on Chain cake plate	\$195.00
343	Sunburst toothpick, H	\$75.00
416	Herringbone plate set, (12) Hawthorne 7" & 9", H	\$495.00
479	Petal cream and sugar, Flamingo, pr.	\$80.00
1469	Ridgeleigh ind. vase no. 1, H, (2) ea.	\$40.00
1509	Queen Ann cream and sugar, Formal Chintz etch, H, pr.	\$85.00
1536	Military cap ashtray	\$45.00
1540	Lariat sandwich plate, ball handle	\$215.00
1541	Athena 2-lite candlesticks, pr.	\$95.00
1559	Columbia 1-lite candlesticks, pr.	\$80.00
1567	Plantation cream and sugar, pr.	\$85.00
1567	Plantation candleblocks, pr.	\$225.00
1567	Plantation ftd. cake plate	\$245.00
1567	Plantation marmalade	\$210.00
4044	New Era stem set, goblet(8), champagne(6), cordial(7)	\$375.00

## MOSTLY HEISEY

Rhoda Curley  
16 Clayton Place  
Albany, NY 12209  
[www.sony.inergy.com/mostlyheisey](http://www.sony.inergy.com/mostlyheisey)

(800) 972-2775  
(518) 482-6272  
UPS Extra  
All prices each

3404	Spanish cocktails, Cobalt bowls, (4)	\$140.00
3404	Spanish sodas, Cobalt bowls, (5)	\$125.00
1229	Octagon ctr. hdl. sq. sandwich, Sahara, Empress etch	\$105.00
134	Trident 2-lite candlesticks, Old Colony etch, pr.	\$130.00
1567	Plantation 9½" bowl, Ivy etch	\$80.00
1632	Lodestar 1-lite candle piece, Dawn, pr.	\$165.00
300	Old Wmbrg. 9" 1-lite w/pr. Old Wmb. epernette, pr.	\$195.00
464	Basket, floral cutting	\$225.00
458	Picket Fence 8" basket, leaf cutting	\$225.00
456	Basket, flower cutting	\$225.00
4163	Whaley mugs, (2) Hunt Scene, (3) Fisherman etch	\$150.00
300	Peerless parfait (2)	\$25.00
1180	Yeoman ind. nut cup, (3) Mnglm, (2) Flamingo, choice	\$25.00
1183	Revere ½ lb. candy jar, floral cutting	\$95.00
1401	Empress d/f mayo and mkd. ladle, Sahara	\$115.00
354	Wide Flat Panel 2 oz. lavender jar with etching	\$95.00
354	Wide Flat Panel ice bucket w/strainer and underplate	\$110.00
354	Wide Flat Panel ice bucket	\$95.00
1128	Warwick 9" vase horn of plenty, Sahara	\$175.00
341	Puritan cocktails, (12)	\$20.00
341	Puritan cream de menthe, (10)	\$22.00
341	Puritan waters, (12)	\$25.00
1405	Ipswich oyster cocktails, (7)	\$25.00
1405	Ipswich waters (9)	\$25.00
1405	Ipswich square plates (4)	\$30.00

# Heisey

PUBLICATIONS

PO BOX 102  
Plymouth, Ohio 44865  
Ralph & Sandra McKelvey  
(419) 935-0338



Heisey  
Books & Glass

## VOGEL BOOKS ON HEISEY

BOOK I "FIRST TEN YEARS".....\$14.00

BOOK II "COLONIAL YEARS".....\$14.00

BOOK III "ART & COLORED GLASS"...\$15.00

BOOK IV "EARLY AND LATE YEARS"..\$15.00



SET PRICE \$55.00

SHIPPING AND HANDLING

Add \$4.00 for all orders!!

RAPHAEL & EILEENE WISE  
12018 Suellen Circle  
West Palm Beach, FL 33414

(561) 793-0986  
Shipping & Ins. Extra  
H = Marked

### Just in Time for Christmas

1405	Ipswich cologne, #91 stopper, H	\$495.00
4035	Octagon cologne, Flamingo, duck stopper	\$495.00
1404	Old Sandwich salt and pepper, Flamingo, #20 tops	\$165.00
21	Aristocrat 15" candlesticks, pr., H	Please call
1503	Crystolite syrup	\$195.00
1567	Plantation candleblock sticks, pr.	\$240.00
515	2 oz. cologne, #69 stopper with cutting, H	\$225.00
515	1 ¼ oz. cologne, #64 stopper, H	\$195.00
4044	New Era Waterford cut base candlesticks, complete, pr.	\$195.00
	Large Elephant	\$395.00
	Small Elephant	\$250.00
	Horse head bookend, H	\$225.00
461	Banded Picket basket, Flamingo, H	\$525.00
500	Octagon basket, Flamingo, H	\$395.00
1401	Empress d/f nasturtium bowl, Flamingo, H	\$325.00
1413	Cathedral vase straight up, Flamingo	\$250.00
135	Empress candlesticks, Alexandrite (great color), pr.	\$1095.00
4045	6" ball vase, Alexandrite	\$695.00
1401	Empress 8 oz. d/f tumblers, H, (4) ea.	\$160.00
1401	Empress 8 oz. d/f tumblers, Sahara, (6)	Please call
	Zircon 32 oz. juice pitcher	\$795.00
134	Trident 2-lite candlesticks, Alexandrite, H	\$1295.00
316	Fairacre cologne, Flamingo, H	\$350.00
1485	Saturn 8½" flared vase, Zircon, H	\$475.00
1404	Old Sandwich 2½ oz. oil cruet, Sahara-Moongleam	Please call

**HEISEY ET CETERA** (740) 397-4591  
**Bud Moreau** UPS & Ins. Extra  
**407 E. Chestnut St.** H = Marked  
**Mount Vernon, OH 43050**

1632	Lodestar 8" bowl, 2 sm. cdlhdrs, sm. fl/1 cndl, Dawn, H	\$165.00
394	Colonial Narrow Flute 8" cubed sugar, H	\$75.00
1503	Crystolite banded candle, grd. & polished btm., pr.	\$135.00
1280	Winged Scroll Custard toothpick	\$105.00
1184	Yeoman 7" ftd. compote, Flamingo	\$85.00
1123	Yeoman set-(2) 4 oz. cruets #23 s&p, tray., gld trim, H	\$110.00
411	Rib and Panel 4 oz. cruet, H	\$40.00
	Imperial Wood Duck, Caramel Slag	\$65.00
	Imperial Colt kicking, Caramel Slag	\$125.00
	Imperial Colt standing, Caramel Slag	\$45.00
433	Greek Key 4 oz. tall flared sherbets, H, (2) ea.	\$50.00
1519	Waverly candy, seahorse hdl., Elks #391, Newark	\$110.00
	<i>See us at the Farly &amp; Moore Mall, Main St., Mt. Vernon</i>	

**ERMA HULSLANDER** (972) 289-6159  
**1427 Ridgeview St.** UPS Extra  
**Mesquite, TX 75149** heisey@flash.net

32	Skirted Panel 5" 1-lite candlestick w/handle, pr.	\$60.00
112	Mercury 1-lite candlestick, pr.	\$40.00
112	Mercury 1-lite candlestick, Flamingo, pr.	\$50.00
142	Cascade 3-lite candlestick, pr.	\$85.00
132	Sunburst 1-lite candlestick, pr.	\$45.00
113	Mars 1-lite candlestick, Flamingo, pr.	\$55.00
114	Pluto 1-lite candlestick, Hawthorne, pr.	\$125.00
114	Pluto 1-lite candlestick, pr.	\$45.00
150	4" 1-lite hdl. chamberstick, H, pr.	\$95.00
600	1-lite sq. hdl. saucer ftd. candlestick, H, pr.	\$95.00
1404	Old Sandwich 1-lite candlestick, pr.	\$90.00
1425	Victorian 2-lite candlestick, H	\$90.00
1503	Crystolite 1-lite sq. candleblock, pr.	\$40.00
1503	Crystolite 3-lite candlesticks, pr.	\$80.00
1504	Regency 2-lite candlestick, pr.	\$85.00
1506	Whirlpool 1-lite candleblock, pr.	\$55.00
1509	Queen Ann 1-lite d/f cndl. hldr., (only 1349 made) pr.	\$125.00
1519	Waverly 2-lite candlestick, Orchid etch, pr.	\$110.00
1519	Waverly 3-lite candlestick, H, pr.	\$150.00
1541	Athena 2-lite candlestick, pr.	\$100.00
1559	Columbia 1-lite crimped ftd. candlestick, pr.	\$50.00
1566	Banded Crystolite 1-lite ftd. candleblock, pr.	\$125.00
1567	Plantation 5" 1-lite candlestick, pr.	\$195.00
7000	Sunflower 1-lite candlestick, pr.	\$40.00

**DON & JEAN PARRETT** (517) 784-7319  
**4995 Mapledale Rd.** Post & Shipping extra  
**Jackson, MI 49201**

1205	Fancy Loop toothpick, gold decor.	\$155.00
351	Priscilla 2 oz. wine, H (C)	\$50.00
393	Narrow Flute 1 oz. cordial, H (C)	\$45.00
3333	Old Glory 2 oz. wine, cutting	\$50.00
3066	4 oz. cocktail, Peacock etching	\$45.00
1295	Beaded Swag 4 oz. wine, Custard	\$45.00
3318	Waldorf pony brandy, needle etching	\$35.00
1519	Waverly 2 oz. wine	\$95.00
3304	Universal 2 oz. wine, Flamingo, sticker	\$50.00
1208	Fancy Loop 3 oz. wine, Emerald with gold	\$50.00
1255	Pineapple and Fan 7" ftd. bowl	\$75.00
1170	14" cheese and cracker plate, Moongleam	\$100.00
1186	Yeoman 6 oz. cups, Moongleam d/o, (2)	\$20.00
354	Colonial 3 pc. hotel ind. cream, sugar and butter	\$156.00

**FRAN'S FANCY FINDS** (727) 391-5184  
**Fran & Jack Grenzebach** UPS & Ins. Extra  
**10534 Valencia Rd.** H = Marked

341	Puritan ice bucket, H	\$85.00
300	Peerless 9" high ftd. comport, H	\$135.00
341	Puritan 8" high ftd. bowl with cover, H	\$350.00
343	Sunburst 14" shallow bowl, H	\$75.00
350	Pinwheel and Fan 8" nappy, H	\$85.00
406	Coarse Rib cream and cov. sugar, Moongleam, H	\$85.00
517	Tumble up jug, H	\$155.00
1295	Beaded Swag 9" berry bowl, Opal	\$115.00
1401	Empress t-handle sandwich plate, Alexandrite	\$795.00
1401	Empress ashtray, Moongleam	\$350.00
1404	Old Sandwich 6 oz. toddy, Moongleam, (3) ea.	\$50.00
1425	Victorian 9 oz. low ftd. goblet, (8)	\$18.00
1425	Victorian 5 oz. sherbet, (8) ea.	\$15.00
1469	Ridgeleigh 6" candle vase, Sahara	\$75.00
1485	Saturn 10 oz. goblet, Zircon	\$135.00
1503	Crystolite swan hdl. pitcher	\$795.00
1503	Crystolite mustard w/cover and paddle, H	\$75.00
1519	Waverly 10½" dinner plate, Orchid etch, (8) ea.	\$150.00
1567	Plantation lg. covered candy	\$275.00
1915	Cabochon 6" cov. candy, Dawn, H	\$285.00
3390	Carcassone 1 pt. ftd. decanter	\$175.00
3397	Gascony tomato juice/martini pitcher, Sahara	\$185.00
3408	Jamestown 1 oz. cordial, Barcelona cut, (6) ea.	\$55.00
4225	Cobel 1 qt. cocktail shaker & (6) 2401 Oakwood old fashions, Tally Ho etch	\$280.00
	Standing Colt, champagne	\$350.00

**CAROL JEAN REED** (732) 521-3586  
**416 Grace Hill Rd.** UPS & Ins. Extra  
**Jamesburg, NJ 08831-2931** H = Marked

	Sparrow	\$95.00
341	Puritan 5" 3-cornered hdl. jelly, H	\$26.00
341	Puritan 1 oz. cordials, H, (4) ea.	\$30.00
341	Puritan 5 oz. high ftd. sherbets, H, (8) ea.	\$19.00
341	Puritan 9 oz. goblets, H, (6) ea.	\$32.00
341	Puritan 4½" high ftd. jelly, H	\$39.00
350	Pinwheel and Fan punch bowl base, H	\$59.00
372	McGrady 7 oz. syrup, nickel plt. top, sunflower etch, HH	\$85.00
393	Narrow Flute ftd. ind. domino sugar, H	\$60.00
411	Tudor 5" high ftd. jelly, Hawthorne, H	\$70.00
433	Grecian 12½" oval French roll tray, H	\$179.00
500	Octagon cream and sugar, Sahara, HH	\$70.00
501	Fogg 8"x3" floral box, Moongleam, H	\$120.00
1010	Decagon 2-hdl. relish dish, Moongleam, H	\$45.00
1170	Pleat and Panel 6" low ftd. cov. compote, Flamingo, H	\$85.00
1185	Yeoman 12" celery tray, Flamingo, H	\$48.00
1233	Pressed 6" apple, d/o Flamingo, H	\$35.00
1433	Thumbprint and Panel 2-lite candlesticks, HH, pr.	\$135.00
1469	Ridgeleigh 5" dressing bowl with underplate, HH	\$65.00
1503	Crystolite 6" 2-hld. jelly, 2-compartment, H	\$50.00
1503	Crystolite 8" oval 2-hdl. cheese plate, H	\$45.00
1503	Crystolite ice tub w/silver plate handle, H	\$117.00
1509	Queen Ann 11" 5 o'clock relish, 3-compartment, H	\$55.00
1567	Plantation covered marmalade, H	\$140.00
4225	Cobel 1 qt. Rooster head stopper cocktail shaker	\$90.00



**MARGARET HALL**  
7313 Summitview Dr.  
Irving, TX 75063  
mmhall@earthlink.net

(972) 402-8168  
(972) 401-0860 Fax  
Shipping & Ins. Extra

10	Leaf Coaster, Vogel 4 p165, (8) ea.	\$10.00
10	4½" muddler	\$25.00
300	Peerless 5" nappy, shallow, H	\$15.00
300	Peerless 4 oz. high ftd. ice water, H, (4) ea.	\$9.00
300½	Peerless 5 pc. bowl set (1-8", 4-5"), gold decor.	\$145.00
351	Priscilla 12" celery tray, H	\$25.00
352	Flat Panel 11" bowl, cutting, H	\$45.00
393	Narrow Flute 5½" 1 hdl. jelly, dtd. 7/2/12, H	\$40.00
393	Narrow Flute 8" ftd. banana split dish, H	\$20.00
393	Narrow Flute 4½" coaster plate, H, (4) ea.	\$7.00
394	Nar. Fl. 5" oval preserve or lemon dish, dtd. 2/22/16, H	\$25.00
406	Coarse Rib 4½" nappy, small bowl, H (3) ea.	\$8.00
411	Rib and Panel 4½" coaster plate, H, (2) ea.	\$20.00
600	Match stand ashtray, Vogel 3 p. 127, H	\$50.00
1105	Punch cups, flared, H, (2) ea.	\$9.00
1150	Colonial 4½" coaster plates, H, (3) ea.	\$6.00
1183	Revere 8½" bowl, #693 Cloister cut, H	\$35.00
1183	Revere 4½" coaster plates, H, (6) ea.	\$6.00
1184	Yeoman 14" flrl. bwl, #477 Empress etch, d/o, V3 p53, H	\$75.00
1184	Yeoman 8" bowl, H	\$25.00
1186	Yeoman 6" 2 hdl. jelly, cut, H	\$45.00
1201	Low ftd. 11" bowl, iridescent flashed, Vogel 3 p3, H	\$100.00
1205	Fancy Loop 10"x7½" shallow celery dish	\$75.00
1205	Fancy Loop 5" nappy (chipped on 3 scallops)	\$15.00
1225	Saw Tooth Band 9" bowl and (4) 4" berry bowls	\$155.00
1225	Saw Tooth Band covered butter	\$100.00
1225	Saw Tooth Band 5½" wide x5" hi. ftd. bowl or comport	\$65.00
1225	Saw Tooth Band toy butter lid, Vogel 1 p99	\$25.00
1255	Pineapple and Fan salt and pepper	\$60.00
1295	Beaded Swag 9" berry bowl	\$85.00
1295	Beaded Swag cov. sugar, some wear	\$35.00
1295	Beaded Swag cov. butter	\$125.00
1401	Empress ind. sugar and creamer set, H	\$50.00
1428	Warwick 7" horn of plenty vase, (3) ea.	\$60.00
1497	8" floral boat bowl, Vogel 4 p27, H	\$15.00
1503	Crystalite 3" rnd. coaster/ashtray, H, (5) ea.	\$12.00
1503	Crystalite 3" sq. ashtray, minor roughness, H	\$8.00
1503	Crystalite 2" rosette candleholder, (12) ea.	\$15.00
1503	Crystalite 14" torte plate, H	\$75.00
1511	Toujours sugar and cream, #503 Minuet etch	\$125.00
1519	Waverly sugar and cream set	\$65.00
1519	Waverly 6" divided candy dish, (2) ea.	\$18.00
1533	Wampum ashtray 3"x2¼", (1944), Vogel 4 p154	\$75.00
1533	Wampum candlesticks (pr.) and 12" bowl, set	\$175.00
1540	Lariat 2-lite candlestick, Morning Glory etch, pr.	\$85.00
1540	Lariat 7½" bowl, H	\$25.00
1540	Lariat 10" rnd. 3-part relish dish, H	\$60.00
1567	Plantation 12" celery, H	\$65.00
1776	Kalonyal 5" hdl. jelly, Vogel 1 p25B, H	\$60.00
1776	Kalonyal 6½"x3" bon bon, H	\$35.00
3390	Carcassone ftd. cigarette holder	\$45.00
4035	Urn ftd. cigarette holder	\$35.00
5019	Waverly 4-section round 9" dish	\$55.00
5041	Athena (Reverse Ess) 2-lite candlesticks, pr.	\$125.00
7000	Sunflower cndlstk (pr) and 10½" bowl, H (1938-1942)	\$160.00
1425	Victorian by Imperial ftd. stems 5"x2½", Green, (4) ea.	\$7.00
1506	Provincial by Imperial 13 oz. tumblers, Amber, (8) ea.	\$6.00
1506	Provincial by Imp. 6 oz. juice tumblers, Amber, (6) ea.	\$5.00
1506	Provincial by Imp. 8 oz. ftd. soda glasses, Amber, (6) ea.	\$8.00
1506	Provincial by Imperial ftd. sherbets, Amber, (4) ea.	\$6.00

**GARY SHARDELL**  
537 69th St.  
Holmes Beach, FL 34217

(941) 778-2167  
UPS & Ins. Extra  
H=Marked

1401	Empress mustard jar and lid, Flamingo, H	\$105.00
417	Double Rib and Panel mustard jar and lid, Flamingo	\$125.00
515	Taper ¼ oz. cologne, #69 long drip dauber, Flam., H	\$245.00
1401	Empress salt and pepper, Flamingo, metal lids	\$115.00
451	Cross Line Flute cruet and correct stopper, H	\$85.00
1469	Ridgeleigh bitters bottle, metal pour tube	\$120.00
1776	Kalonyal hotel cream and sugar, H	\$165.00
1776	Kalonyal toothpick holder, H	\$345.00
315	Paneled Cane toothpick holder, gold rim, H	\$145.00
1485	Saturn 7" vase, flared, Zircon, H	\$285.00
1252	Twist vinegar and oil, lid, all Flamingo	\$120.00
1469	Ridgeleigh square ashtray, Zircon, H	\$30.00

**WHITEWOLF LTD.**  
Jim Houghton/Tim Rector  
PO Box 933  
Sturbridge, MA 01566-0933

(508) 764-1597  
whtwlftj@aol.com  
UPS & Ins. Extra

353	Sanitary toothpick, floral cutting, H	\$100.00
352	Knife rest, double marked HH	\$90.00
1428	Warwick horn of plenty vase, Sahara, H	\$210.00
4044	New Era 13' celery tray, Normandie etch	\$35.00
341	Puritan 1 lb. candy jar, floral cutting, H	\$265.00
1235	Beaded Panel and Sunburst hdl. decanter	\$145.00
1184	Yeoman 8½" hd. bow tie candy	\$35.00
1184	Yeoman 8½" hdl. bow tie candy, Flamingo	\$35.00
367	Prism Band decanter	\$130.00
394	Narrow Flute "satellite" mustard and cover, H	\$110.00
1405	Ipswich candle vase insert, pr.	\$100.00
305	Punty and Diamond Point salt and pepper, silver tops	\$35.00
305	Punty and Diamond Point 10" vase	\$55.00
305	Punty and Diamond Point 11¾" oval bowl	\$40.00
1776	Kalonyal 6 oz. cruet, no stopper	\$150.00
1495	Fern 2-part hdl. mayo	\$35.00
16	Classic 11" candlesticks, H, pr.	\$335.00
1506	Provincial 13" gardenia bowl, H	\$80.00
	Heisey original mirror sign	\$350.00

*Please note, formerly J&T Antiques*

**CHIEFLY ANTIQUES**  
Ron & Sandy Taylor  
30982 Grandview  
Mackinaw, IL 61755

(309) 263-2311  
(309) 359-8552 after 8:30 pm  
(309) 263-2722 Fax  
UPS & Ins. Extra

134	Trident candlestick, Sahara, pr.	\$145.00
350	Pinwheel and Fan pitcher, H	\$165.00
411	Tudor 5" jelly compote, Hawthorne, H	\$60.00
436	13½" swing vase, H	\$75.00
1184	Yeoman marmalade, floral cutting, H	\$40.00
1225	6" plate, Flamingo, H, (4) ea.	\$20.00
1401	Empress rnd. cup and saucer set, Sahara, (5) ea.	\$40.00
1401	Empress 8" salad plate, Sahara, (8) ea.	\$20.00
1401	Empress 11" floral bowl, Sahara	\$70.00
1401	Empress d/f cream and sugar, Sahara, (2) pr.	\$70.00
1401	Empress d/f candlesticks, Sahara, pr.	\$275.00
1401	Empress salt or pepper shaker, Sahara	\$55.00
3368	Albemarle 7" comport, Sahara d/o	\$100.00
3380	Old Dominion tall goblet, Sahara d/o, (7) ea.	\$45.00
3380	Old Dominion tall champagne, Sahara d/o (8) ea.	\$25.00
3380	Old Dominion 12 oz. ice tea, Sahara d/o, (12) ea.	\$25.00



**CEDAR SWAMP ANTIQUES**

Doug & Judy Wynne  
PO Box 149  
East Walpole, MA 02032

**(508) 660-8982**

Before 9:00 EST pm  
Shipping & Ins. Extra  
H=Marked

10	Muddler	\$40.00
300	Peerless 1 oz. cordial, H	\$35.00
300½	Peerless 9¼" swung vase	\$30.00
352	Flat Panel French dressing bottle, pat. dtd. 10/6/14	\$40.00
354	Wide Flat Panel oval hotel cream/sugar, unk. cutting, HH	\$55.00
357	Prison Stripe 10½" shallow nappy, H, (2) ea.	\$100.00
393	Narrow Flute wine, H	\$15.00
407	Coarse Rib 5" low jelly compote, H	\$20.00
1231	Ribbed Octagon hotel cream/sugar, Flamingo, H	\$55.00
1295	Beaded Swag 8½" nappy, Opal, Rose decoration	\$110.00
1404	Old Sandwich ind. ashtray, H, (6) ea.	\$8.00
1489	Puritan oil and vinegar, mkd. sterling overlay stopper	\$65.00
1503	Crystolite 10½" low floral bowl	\$25.00
1503	Crystolite 8" 3-compartment relish	\$25.00
1503	Crystolite 4½" covered puff box, unknown cutting, H	\$75.00
1540	Lariat 5" covered candy box	\$50.00
1637	Town and Country 11½" salad bowl, Dawn	\$80.00
3335	Lady Leg parfait, #674 Adams cutting, H	\$20.00

**ONCE & FUTURE ANTIQUES**

Susan & Steve Pescatore  
9 Donna Rd.  
Chelmsford, MA 01824

**(978) 256-5418**

Ups & Ins. Extra  
H=Marked

**All Colonial**

300	Peerless ½ gal. pitcher, H	\$110.00
341	Puritan ftd. toothpick, H	\$110.00
352	Flat Panel 10" round tray, H (not 353)	
352	Flat Panel small straw jar, H	\$100.00
352	Flat Panel French roll tray, H	\$65.00
353	Medium Flat Panel 8"x12" ice cream tray, H	\$85.00
353	Medium Flat Panel cheese and cracker plate, cut, H	\$90.00
354	Wide Flat Panel oval hotel cream, #9004 Iris etch, H	\$45.00
393	Narrow Flute 1 pt. jug, H	\$85.00
393	Narrow Flute 7 pc. almond set (6" master almond, H with (6) ind. almonds, H), set	\$100.00
393	Narrow Flute 2 oz. sherry, H, (2) ea.	\$20.00
393	Narrow Flute 5 oz. claret, H	\$15.00
393	Narrow Flute punch cups, H, (6) ea.	\$15.00
393	Narrow Flute French dressing boat, H	\$25.00
393	Narrow Flute hotel sugar, H and cover	\$20.00
393	Narrow Flute nappies, H: (2) 4", (2) 4½" flated, ea.	\$9.00
429	Plain Panel Recess 8" oval, deep intaglio cut, H	\$65.00
451	Cross Line Flute goblet, H	\$30.00
451	Cross Line Flute 5" vase, gold rim, H	\$40.00
465	Recessed Panel 8" nappy, elegant lines & floral cut, H	\$50.00
602	Colonial small spoon holder, H	\$65.00
1776	Kalonyal punch cups, H, (3) ea.	\$25.00

**WALRICK ANTIQUES**

Rick Vaughan & Walter Sherman  
1070 Hillcrest  
Brighton, MI 48116

**(810) 229-5994**

wsherman@ismi.net  
UPS Extra  
H=Marked

2	Old Williamsburg 9" 1-lite candlestick, H, pr.	\$180.00
150	Banded Flute 3 oz. cocktail, H, 94) ea.	\$12.00
300½	Peerless hotel cream and sugar, H	\$37.00
341	Puritan 4 oz. cruet, H	\$37.00
352	Colonial 6½" grapefruit, H, (10) ea.	\$7.00
367	Prism Band 1 qt. decanter Flam. H, w/prsd. steeple str	\$215.00
393	Narrow Flute pint pitcher, H	\$72.00
393	Narrow Flute 5" 3-cornered hdl. jelly, H	\$28.00
393	Narrow Flute 2 oz. wine, H, (2) ea.	\$19.00
393	Narrow Flute oval ftd. hotel cream and sugar, H	\$68.00
393	Narrow Flute 9" nappy, dtd., H	\$37.00
401-1	Old Wmbrg. 13" 1-lite candelabra, sterling base, pr.	\$290.00
473	Narrow Flute with Rim 5" 2-hdl. jelly, Flamingo, H	\$53.00
1170	Pleat and Panel 3 oz. cruet, Moongleam	\$97.00
1203	Flat Paneled Octagon 12" floral bowl, Moongleam, H	\$54.00
1210	Duplex 6" confect. tray, Moongleam	\$67.00
1225	Ridge and Star 7" plate, Hawthorne, H, (6) ea.	\$23.00
1245/3970	Comport, Moongleam stem and base, H	\$90.00
1252	Twist 12" rnd. floral bowl, Marigold, H	\$97.00
1252	Twist 1-lite candles, Marigold, H, pr.	\$152.00
1401	Empress 10" salad bowl, Moongleam, H	\$97.00
1401	Empress cup and saucer, Sahara, H (8) ea.	\$40.00
1401	Empress d/f mayonnaise, Sahara	\$56.00
1401	Empress 10½" 7" rd. plate, H, (20) ea.	\$55.00
1404	Old Sandwich 7" sq. plate, H, (6) ea.	\$23.00
1425	Victorian 27 oz. rye bottle	\$138.00
1433	Thumbprint & Panel 11" floral bowl, #20 floral block, pr. 2-lite candles, Sahara	\$210.00
1469	Ridgeleigh cone beverage bowl, underplate, (12) cups, one ridge on bowl repaired	\$305.00
1469	Ridgeleigh 7" sq. plate, H, (8) ea.	\$32.00
1469	Ridgeleigh 8" sq. plate, H, (5) ea.	\$38.00
1469	Ridgeleigh ind. salts in original box, H, (8)	\$95.00
1489	Puritan 6" horse head cov. cigarette box	\$75.00
1503	Crystolite 4¼" cov. puff box, H	\$55.00
1503	Crystolite cov. jam jar w/ladle, H	\$90.00
1503	Crystolite 12" shallow floral/salad bowl, H	\$56.00
1503	Crystolite 5½" shell cov. candy	\$49.00
1503	Crystolite cov. mustard with paddle, H	\$54.00
1506	Provincial 10" 4-compartment relish, Limelight	\$184.00
1519	Waverly 8½" plate, Orchid etch, (4) ea.	\$24.00
1519	Waverly 13" gardenia bowl, Orchid etch	\$62.00
1519	Waverly 7" low ftd. compote, Orchid etch	\$52.00
1519	Waverly cov. butter, Orchid etch	\$160.00
1519	Waverly cream and sugar, Rose etch, H	\$67.00
1519	Waverly 11" oblong 3-part relish, Rose etch, H	\$72.00
1540	Lariat goblet, Moonglo cutting, H, (4) ea.	\$24.00
1567	Plantation 5 oz. pressed ftd. juice, (5) ea.	\$47.00
1567	Plantation 4 oz. pressed claret, (4) ea.	\$62.00
1567	Plantation 10 oz. pressed goblet, (8) ea.	\$47.00
1567	Plantation 13" cake salver	\$162.00
1567	Plantation 12" crimped bowl	\$98.00
3368	Albamarle goblet, d/o, Mnglm. stem and ft., H, (7) ea.	\$48.00
3370	Carcassone 11 oz. tall stem goblet, Cobalt bowl, (4) ea.	\$92.00
3380	Old Dominion 6 oz. sherbet, Sahara d/o (3) ea.	\$31.00
3380	Old Dominion 6 oz. low saucer champ., Sah. d/o, (2) ea.	\$30.00
3380	Old Dominion 10 oz. gob., short stem, Sah. d/o, (3) ea.	\$35.00
3389	Duquesne 9 oz. goblet, Tangerine bowl, (2) ea.	\$285.00
3404	Spanish cocktail, Cobalt bowl, (4) ea.	\$84.00
3480	Koors 10" flared floral bowl, Moongleam	\$83.00
4083	Stanhope 3½ oz. cocktail, Zircon bowl and ft., (2) ea.	\$107.00
5025	Tyrolean 3 oz. wine, Orchid etch, H (8) ea.	\$72.00
5072	Rose stem goblet, Rose etch, (12) (7H), ea.	\$38.00
5072	Rose stem 12 oz. ftd. ice tea, Rose etch, (3) ea.	\$58.00

**ONCE & FUTURE ANTIQUES**

Susan &amp; Steve Pescatore

9 Donna Rd.

Chelmsford, MA 01824

(978) 256-5418

Ups &amp; Ins. Extra

H = Marked

1	Georgian 9" candlesticks, pr.	\$140.00
4	Essex 9" candlesticks, pr.	\$300.00
5	Patrician 5" squat candlestick	\$65.00
5	Patrician 5" (4") toy candlestick, pr.	\$85.00
17	Handled decanter, (early), Vogel 1, p105	\$60.00
31	Jack Be Nimble Toy candlesticks, H, pr.	\$50.00
33	Skirted Panel toy candlesticks, H, pr.	\$75.00
114	Pluto 3½" candlesticks, Flamingo	\$85.00
129	Tricorn 3-lite candlestick, H	\$80.00
135	Empress 6" candlestick, Flamingo	\$85.00
150	Banded Flute 3-pint jug, H	\$165.00
150	Banded Flute water bottle	\$110.00
300-1	Old Williamsburg 12" 1-lite candelabra base, Sahara, converted into lamps, pr.	\$600.00
300-4	Old Williamsburg 20½" 4-lite candelabrum	\$500.00
305	Punty & Diamond Point water bottle	\$125.00
325	Pillows ftd. rose bowl, H	\$140.00
325	Pillows 9" oval, H	\$35.00
335	Prince of Wales Plumes 12" celery tray, H	\$65.00
341	Old Williamsburg low base 2-tier epergne, H, cut throughout (3 flakes on larger tray)	\$750.00
343	Sunburst toothpick, H	\$110.00
350	Pinwheel and Fan ½ gal. jug, H	\$175.00
401	Old Wmbrg. 13" 1-lite candelabra, #7 bobèche, pr.	\$325.00
417	Double Rib and Panel basket, Moongleam, H	\$185.00
417	Double Rib and Panel 3 oz. oil	\$50.00
462	Plain Hexagon basket, #350/1 Mums etch, H	\$325.00
486	2 oz. cologne, #66 stopper, H, (2) ea.	\$70.00
1116	Twin salt, (early) Vogel 1 p105	\$35.00
1184	Yeoman 8" low ftd. comport, Windsor cut, H, (ea.)	\$60.00
11-	(unlisted) low ftd. comport, Mngl. ft., 8"dx2"h, H, (2) ea.	\$75.00
1229	Octagon 6" bon bon (4): crys., Flam., Haw., Mnglm, set	\$100.00
1401	Empress 11" d/f floral bowl, Lafayette etch	\$110.00
1403	Half Circle cream, Flamingo, H	\$75.00
1469	Ridgeleigh 7" 1-lite candelabra, pr.	\$195.00
1469	Ridgeleigh 4 oz. cologne, #105 stopper (2): 1 @ \$95.00, other with flake on stopper	\$65.00
1469	Ridgeleigh 3 oz. oil, #103 stopper	\$35.00
1469	Ridgeleigh "spade" ashtrays, H, (4) ea.	\$9.00
1489	Late Puritan 6¾" oblong ashtray	\$45.00
1503	Crystolite 13" flat coupe torte, H	\$125.00
1503	Crystolite cups and saucers, H, (2 sets) ea. set	\$20.00
1503	Cryst. oval holland. bowl, H w/oval udrpl. & #7 ladle, set	\$75.00
1503	Crystolite punch bowl, H	\$90.00
1503	Crystolite punch cups, H, (12) all	\$100.00
1503½	Crystolite 12" oval celery tray, H	\$45.00
1506	Whirlpool ftd. candy box with cover, Limelight, H	\$550.00
1506	Whirlpool ftd. candy box with cover, H	\$50.00
1506	Whirlpool divided dressing bowl, H, underplate, set	\$65.00
1509	Queen Ann rnd. ctr. hdl. sandwich tray, Orchid	\$135.00
1509	Queen Ann 12" rnd. 2-hdl. sandwich tray, Orchid	\$100.00
1519	Waverly 14" torte plate, RE, Orchid	\$65.00
1519	Waverly ftd. mayo, H and underplate, Orchid	\$90.00
1519	Waverly 14" torte plate, RE, Rose etch	\$75.00
1519	Waverly 6" low ftd. comport, Rose etch	\$35.00
1533	Wampum 1-lite candlestick, pr.	\$50.00
1533	Wampum 14" sandwich plate	\$50.00
1951	Cabocho 4 oz. oil (2): 1 @ \$45.00, (1) small br. strpr.	\$25.00
1951	Cabocho ctr. hdl. sandwich tray	\$55.00
2401	Oakwood 5 oz. soda, Pied Piper etch, (4) ea.	\$20.00
4044	New Era rye bottles (2) ea. with monogram on one side panel & Rye or Scotch on the other, ea.	\$200.00
4225	Cobel 1 pt. cocktail shaker, complete	\$75.00
5025	Tyrolean 3 oz. wine, Orchid, (2) ea.	\$75.00

**MOUNDBUILDERS SECOND GENERATION**

Barbara Bartlett

PO Box 1931

Ponte Vedra Beach, FL 32082

(888) HEISEYS

(904) 280-0450

**Punch Bowls—Just in time for holiday entertaining**

- 325 Pillows with cups
- 365 Old Queen Ann, cups available
- 1235 Beaded Panel and Sunburst, Custard

**Baskets**

- 463 Bonnet 7" (2): (1) is plain, (1) has butterflies and flowers
- 463 Bonnet 9", ornate all-over cutting
- 480 8" Daisy and Leaves with cutting
- 1503 Crystolite
- 1540 Lariat, (2) styles

**Vases**

- 433 Greek Key 6" flared (toothpick, too)
- 480 Daisy and leaves bulbous and cream and sugar
- 1401 Empress 9" d/f Alexandrite and Moongleam
- 1469 Ridgeleigh 9" wide flare, 10" cylinder and 9" ftd.
- 1485 Saturn Zircon tidbit tray and others in Zircon
- 4227, 4231, 4232 Favors, crystal Cobalt and Moongleam
- 5012 Urn 10" with Orchid etch
- 465 Recessed Panel candy jar and cover, 5 lb. size and others
- 1201 Fandango cake basket
- 1205 Fancy Loop cracker jar and cover
- 4085 Kohinoor cordial, Zircon from T. Heisey sale
- 128 Liberty candleholder, Marigold

The holiday gift giving time is nearly here! We wanted to let you know about a few of the super items we are offering for sale. As usual we have a great selection of Orchid etched items including the ice tub, cake salver, epergne, Gallagher jug and Newton sodas to name a few. Many unique Rose etched items too. Other popular patterns include items in Ridgeleigh, Crystolite, Greek Key, Empress, Victorian, Old Sandwich and Twist in Moongleam.

If you want details and prices on any of the above items call our toll free number 1-888-HEISEYS (434-7397), or email clasyglas2@aol.com

We wish you a happy and healthy holiday season. See you in 1999!

-Barbara & Dick Bartlett

**HCA MEMBERS:**

**Don't forget to get your glass to the Museum by January 7, 1999 to be included in the April Benefit Auction!**

# DEALER DIRECTORY

Maximum 5 lines/12 months/\$35 MEMBERS ONLY

<b>HAROLD'S COLLECTABLES &amp; ANTIQUES</b> Heisey and other elegant glassware 6244 S. Cook Dr., Littleton, CO 80121 (303) 771-9432 email: harolds@uswest.net www.glasshow.com (see aisle 6)	<b>SHIRLEY EUGENIA DUNBAR</b> Heisey a Specialty Mail Order, Shows, Appraisals PO Box 7085, Port St. Lucie, FL 34985 Oct-May (407) 337-1558 PO Box 222, Naples, ME 04055 May-Oct (207) 647-5652	<b>COMPARISON LIST</b> NEW HEISEY AUCTION LIST FOR 1998 3 Year's Auction 95-96-97 Price: \$18.00 + \$3.00 Shipping Payable: B. Whaley 300 International Dr., Pataskala, OH 43062 (740) 927-1557
<b>ALL HEISEY AUCTION</b> Consignments Welcome Apple Tree Auction Center 1616 W. Church, Newark, OH 43055 (740) 344-9449	<b>GREEN ACRES FARM</b> Antiques, Crystal Glass & Collectibles 2678 Hazelton-Etna Rd., SW (S.R. 310-N) Pataskala, OH 43062 Sat. or Sun. PM or call (740) 927-1882	<b>MICHAEL KRUMME</b> Heisey and other elegant glassware PO Box 48225 http://www.glassshow.com Los Angeles, CA 90048 I search—send your want list (213) 874-GLASS (-4527) email: mkrumme@pacbell.net
<b>D &amp; B ANTIQUES—ATLANTA</b> Bob Bartholomew Members Dixieland Heisey Club PO Box 33283, Decatur, GA 30033 Shows (404) 634-2799 Mail Order	<b>H &amp; R DIAMOND H</b> Helen & Bob Rarey 1450 White Ash Dr. Columbus, OH 43204 (614) 279-0390 after 5:30	<b>JEAN &amp; DON PARRETT</b> Beautiful Heisey Layaways Accepted 4995 Maple Dale Rd. Jackson, Michigan 49201 (517) 784-7319—Recorder
<b>ANTIQUES - THE SHULTZES</b> 206-208 East Main St. Newmanstown, PA 17073 15 Miles West of Reading, PA (610) 589-2819	<b>"HAPPINESS IS" - THE STULTZS</b> 3106 Warren Court, Glen Allen, VA 23060 Shows and Mail Order (804) 672-8102	<b>PATTON HOUSE ANTIQUES</b> Specializing in Glass*Heisey*Cambridge*Fostoria*Duncan* Factory Antique Mall, Verona, VA off I-81 Exit 227 The Antique Gallery, 3140 W. Cary St., Richmond, VA Antiquers Mall, Booth 81, Rt. 29 N., Charlottesville, VA The Daniels, Box 547, Louisa, VA 23093 (540) 967-1181
<b>C&amp;J ANTIQUES</b> Cole & Jean Miesner Box 45, 72 Whig St. Newark Valley, NY 13811 (607) 642-9905	<b>GERI PINION</b> PO Box 110965 Campbell, CA 95011 (408) 370-1328 email: ibuyglass@aol.com	<b>SCHWAN'S ANTIQUES</b> SHOWS & MAILORDER 77 Lagos del Norte Ft. Pierce, FL 34951 (561) 461-5940
<b>DOXTOIS</b> Eva & Joe Hirsh Heisey & Pattern Glass 6 James St., Norwalk, CT 06850 (203) 847-3315	<b>HOOKED ON HEISEY</b> Jay C. Martin 97 Heritage Hill Rd., New Canaan, CT 06840 (203) 966-9359 24 hr. answering machine thefamilyfirm@worldnet.att.net	<b>R &amp; L ANTIQUES-SAN FRANCISCO</b> Members of the Golden Gate Heisey Club 3690 Bodega Ave., Petaluma, CA 94952 Petaluma (707) 762-2494 San Francisco (415) 621-6693
<b>CHARLES &amp; MILDRED FISHER</b> Heisey animals and Heisey By Imperial animals 991 Idlewild, Newark, OH 43055 (740) 522-5398	<b>MOUNDBUILDERS SECOND GENERATION</b> Shows, mail orders or appointment • Fifteen miles north of St. Augustine in Ponte Vedra Beach, FL. PO Box 1931, Ponte Vedra Beach, FL 32082 (888) HEISEYS (434-7397) (904) 280-0450	<b>THE SPARACIO'S</b> Carl & Helen Shows and Mail Order 28 Refy Ave., Ramsey, NJ 07446 (201) 327-2495 email: poppcarl@msn.com
<b>CRYSTAL LADY</b> Bill, Joann & Marcie Hagerty Specializing in elegant depression glassware 1817 Vinton St., Omaha, NE 68108 Shop (402) 341-0643 or Home (402) 391-6730	<b>GALAXY ANTIQUE MALL—JIM PAPPAS</b> galaxy-mall.com Email: ljp@galaxy-mall.com Glass and Pottery—Heisey & Blue Ridge a Specialty Phone: (609) 897-0345 Fax: (609) 936-0091 26 Kinglet Dr. N, Cranbury, NJ 08512	<b>YOUR AD COULD BE HERE</b> <b>Call 740-345-2932</b>
<b>FINDER'S ANTIQUE HOUSE</b> 3769 Hwy. 29 North Danville, VA 24540 Open Thursday—Saturday (804) 836-6782 Area's largest selection of Heisey and other Elegant Glassware.	<b>J. &amp; R. COLLECTIBLES</b> Shows, SASE, Mail Order list The Lukasko's PO Box 1030, Newark, OH 43058-1030 (740) 344-9719	<b>APPLE VALLEY COLLECTIBLES</b> Richard Garnett & Anne Borchert PO Box 552, Amenia, NY 12501 (914) 373-8791 Shows & Mail Order *Yesteryears Antique's—Monroe, CT (203) 459-9548*
<b>FRAN'S FANCY FINDS</b> Fran & Jack Grenzebach 10534 Valencia Rd., Seminole, FL 33772-7511 (727) 391-5184 SHOWS MAIL ORDERS	<b>MOSTLY HEISEY</b> Rhoda Curley 16 Clayton Pl., Albany, NY 12209 Shop and Mail Order (800) 972-2775 Visit our web page: www.sony.inergy.com/mostlyheisey	<b>THE WOODEN SHOE</b> 222 W. Washington St., Charles Town, WV 25414 Fri-Mon 11-5 (304) 725-1673 Email: wdnshuct@aol.com Glass—Pottery—Kerosene Lamps
<b>FOREVER HEISEY</b> Jan & Norm Thran Mail Order, Shows, Appraisal Service 1663 Londondale Pkwy., Newark, OH 43055 (740) 344-5955	<b>R &amp; S ANTIQUES AND GLASSWARE</b> Heisey—Specializing in Complete Heisey Tableservice Call or write for patterns and colors 2560 S. Maguire Rd. Ocoee, FL 34761 (407) 656-5700 or (407) 876-9199 PM	<b>WILLEY'S ANTIQUES &amp; MUSEUM</b> Specializing in Heisey 11110 Cannon Rd., Frazeyburg, OH 43822 16 miles east of Newark, OH (614) 828-2557
<b>WARREN &amp; MARY WELSH</b> Heisey & other elegant glassware 3635 Saddle Rock Rd., Colorado Springs, CO 80918 (719) 531-5866 Mail Order Shows	<b>GLORIOUS TREASURES ANTIQUE SHOPPE</b> Heisey Glass and other Fine Treasures 518 Main Street, Edmonds, WA 98020 10:00 to 6:00 Mon. thru Sat., Sun. Special events (425) 775-5753	<b>A TOUCH OF GLASS</b> Heisey—Depression—Elegant The Antique Station Case 03R 194 Thomas Johnson Dr., Frederick, MD 21709 David & Lisa Helm (410) 239-4234
<b>GLASS 'N' GLASS</b> Virginia & Odell Johnson 6909 10th Ave. W. Bradenton, FL 34209 (941) 792-0604 email: ovjohnson@aol.com	<b>G.W. ANTIQUES</b> www.sonic.net/gwant Robert Gindhart (707) 575-8706 Gary Wimmershoff Santa Rosa, CA Heisey, Wedgwood and other fine antiques	<b>HEISEY, etc.</b> Mike & Barb Rosenberger heisey@logantele.com Shows-Mail order (502) 657-8344 974 Forgy Mill Rd., Dunmor, KY 42339 Visit our web site: www.logantele.com/~heisey



---

**Museum Volunteers for  
October & November**

Frances Law  
Connie Makris  
Dick Marsh  
Phyllis & Bob McClain  
Mary McWilliams  
Mary Ourant  
Bob Wilson

---

**When Renewing Your Membership...**

Help us to reach our new goal of \$2,000,000 by the year 2002. When you renew your membership at one of the levels below, any amount beyond the regular Associate dues—\$22.00 plus \$5.00 for each additional household member—goes into the Endowment Fund.

<b>Individual Contributing</b> , one person in household	<b>\$30</b>
<b>Joint Contributing</b> , two people in one household	<b>\$40</b>
<b>Family Contributing</b> , parents and children under 18	<b>\$50</b>
<b>Patron</b>	<b>\$100</b>
<b>Sponsor</b>	<b>\$250</b>
<b>Benefactor</b>	<b>\$500</b>

Contact HCA Administrative Office at (740) 345-2932 for more information. The Endowment Committee wishes to thank those who have become Endowment Members and all of the individuals and study clubs that have so generously supported the HCA Endowment Fund. Your support will make the museum self-sustaining in the years to come. Thank you all! ♦



**Visit The  
National  
Heisey  
Glass  
Museum**

Come at your leisure to enjoy more than 4,800 pieces of glassware produced by A.H. Heisey and Company from 1896-1957. Hundreds of patterns are featured in all production colors. Rare and experimental items are included as well.

Facilities are air-conditioned and handicapped accessible. Hours are 10:00 a.m. to 4:00 p.m. Tuesday through Saturday, 1:00 to 4:00 p.m. Sunday. Members are admitted free, regular admission is \$2. Office hours are 8:00 a.m. to 4:30 p.m. weekdays.

**Membership Renewal Notice:** Check the date above your name and address on the mailing label. This is your expiration date. If it reads 1-10-99 make sure your dues are paid soon in order to receive next month's issue of Heisey News. Dues are \$22.00 per year, plus \$5.00 for each additional household member.

POSTMASTER SEND FORM 3579 TO:

HCA  
169 W. Church St.  
Newark, OH 43055



**PERIODICAL POSTAGE PAID**