

# HEISEY NEWS

The Official Publication of Heisey Collectors of America, Inc.

Volume XXVII No. 9

August 1998

ISSN 0731-8014



*Expert artisans  
hard at work—  
these gentlemen  
helped produce  
your favorite  
A.H. Heisey & Co  
glassware  
patterns.*



## HEISEY NEWS

Heisey Collectors of America, Inc.

169 West Church Street

Newark, Ohio 43055

Phone (740) 345-2932 Fax (740) 345-9638

E-mail: heisey@infinet.com

WEB SITE: www.ahheisey.com

All Rights Reserved 1998

ISSN 0731-8014

### Curator/Editor

Molly Kaspar

### Administrator

Mary Ourant

### HCA President

Dick Smith

### HCA Vice President

Amy Jo Jones

### HCA Secretary

Ginny Marsh

### HCA Treasurer

Kenneth Rhoads

HEISEY NEWS is published and printed monthly (twice in March), by Heisey Collectors of America, Inc. Periodicals postage paid at Newark. Subscription is limited to HCA members. First class mailing is available for an extra \$13.00, due with payment of membership. If you are having difficulty receiving your newsletter, please contact the HCA Administrative office Monday through Friday 8:00 a.m. to 4:30 p.m.

The opinions expressed in articles in HEISEY NEWS are those of the authors and not necessarily those of the organization. The Editorial Staff reserves the right to edit, with or without the consent of the author, or to refuse any material submitted for publication.

### Back Issues

The following volumes are available as complete sets: V, VII, VIII, IX, X, XI, XII, XIII, XIV, XV, XVI, XVII, XVIII, XX, XXI, XXIII, XXIV, XXV, XXVI for \$15.00 each volume (12 issues, plus auction list if available).

### Advertising

Send all ads to: HCA Advertising, 169 W. Church St., Newark, OH 43055 or fax ads to (740) 345-9638, include MasterCard or Visa information. Ads are to be typed or printed on white paper with dark ink. Camera ready ads accepted, but must follow line specifications. Ads containing reproductions will not knowingly be accepted unless clearly stated (e.g. Heisey by Imperial, etc.) HEISEY NEWS accepts no further liability. See Advertising section for rates and deadlines.

### Museum

Heisey Collectors of America, Inc., a non profit corporation (tax exempt status), owns and operates The National Heisey Glass Museum in Veteran's Park, 6th and Church Streets, Newark, Ohio. Open Tuesday-Saturday 10-4, Sunday 1-4, closed holidays. Other hours by appointment. Members admitted free.

### Identification

HCA will attempt to identify unknown glass items. Please enclose a photograph with your drawings or descriptions. Other arrangements should be made in advance with the museum staff.

### Membership

To join Heisey Collectors of America or to renew your membership, contact HCA Administrative office Monday through Friday 8:00 a.m. to 4:30 p.m. Associate dues are \$22.00 plus \$5.00 for each additional household member. Voting members pay an additional one-time fee of \$25.00. Please consider supporting the Endowment Fund by joining at one of the levels listed on the back page.

### Museum Shop

There is always someone available in the shop to answer questions or take your order. When ordering by phone, please have a credit card ready. When ordering by mail, please be sure to include appropriate charges such as shipping and sales tax.

### Shipping and Receiving

Delivery is made much easier when we have a complete street address, not a PO Box. We prefer to use UPS. If you have not received a package, please call the administrative office to confirm it was sent. We will assist you in tracing it. If your package arrives damaged, please contact your local UPS representative. We insure everything.

### Donations and Loans to the Museum

If you have something you would like to share with the museum or have questions regarding items on loan, contact the assistant curator. HCA reserves the right to accept or refuse items based on current holdings.

## Calendar

HCA Quarterly Meeting & Dinner      Sept. 25-26  
Corning, NY

## Features

### A Note from the Immediate Past President

*Tom Bischoff* 4

**1998 Board of Directors** 5

### Don't Hush, Sweet Charlotte

*Carl Sparacio* 6-7

### Heisey Favor Vases

*Joe Lokay & Al Miller* 10-12

### Still More about the Corning Glass Center

*Carl Sparacio* 13-14

**National Heisey Glass Museum & Longaberger** 14

**Recent Donations January-June 1998** 15-16

**1998 Endowment Membership Report** 16-18

**September Reservation Form** 19

**Original Advertisement** 20

## Departments

**Message from the President, Dick Smith** 3-4

**Museum Happenings, Molly Kaspar** 5

**From the Archives, Don Valdes** 8-9

**Club Notes** 21

**HCA News & Notes** 21-22

**Advertising** 22-27

## MESSAGE FROM THE PRESIDENT

DICK SMITH



Let me start by telling you what a privilege it is to serve as your President for a second time. With your help, we will continue to move HCA forward. A big thank you to the outgoing board members and officers for all their dedication and hard work.

I personally want to thank all those who helped make convention '98 a success. Our banquet speaker this year, Dr. James Measell, was absolutely great. His talk on the glass industry during the forties left most of us wanting to hear more. Thank you Jim!

Good luck to Molly and her new positions as curator and bride-to-be.

We are working on producing a limited edition (Ruby Clydesdale) for the Longaberger Company. They will be available only September 5 and 6, 1998 at the Longaberger manufacturing campus in Frazesburg, Ohio, at which time Longaberger will be raising the historic Crawford Barn from Newark. They expect 30,000 people for this event. This is a great opportunity for HCA, as we will be having a display of molds, etching plates and display items, along with board members and HCA members to answer questions. Plan to attend. If they do not sell out September 5 and 6, a limited number will be offered to HCA members not able to attend.

The weekend after convention, central and eastern Ohio received several severe thunderstorms. Power outages and flooding were widespread. The Cambridge convention was disrupted several times and finally canceled on June 28. Several members and volunteers went to their museum to remove glass from a few tall cases, and laid them down as a precaution in the event they got high water.

You might guess the worst happened. They had 8' of water outside their museum and 6' of water inside. Glass was floating everywhere, all paper goods were soaked and computers ruined.

I spoke with Rick Jones, President of the Cambridge Collectors and offered HCA's help. I also stopped in July 1. The water receded and volunteers were in the process of removing glass and salvaging what they could. I spoke with Lynn Welker, and again offered HCA's help. He was pretty upset—I could tell because he kept calling me Tom (sorry Tom). Most of the glass was saved, even after floating from room to room. Any support and or help you can give to the Cambridge Collectors I am sure will be appreciated.

Our condolences to the families of Robert Coyle and Dan Glen who passed away recently. Both were long time HCA members and show dealers. The Rochester Area Heisey Collectors Club reported the loss of longtime club member George Dawson Jr. HCA is also saddened by the loss of Richard Norris, one of our faithful volunteer docents. Dick and his genuine enthusiasm for Heisey glassware will be greatly missed by the museum staff.

---

### Attention members:

Due to the transition from Dalzell Viking to Mosser Glass, there have been delays on the shipment of the Minuet Girl and Tiger paperweight. We apologize for the delay and hope to receive the shipment by the time you read this.

---

And on a final note, let me remind you of our objectives as members of Heisey Collectors of America, Inc.

1. To meet together for the purpose of acquiring a broader knowledge of Heisey glass and through instruction, discussion and study of Heisey glass and associated items.
2. The primary objective is to establish and maintain a permanent museum in Newark.
3. Promote the establishment of study clubs for the purpose of encouraging growth, awareness of Heisey glass and HCA and the furtherance of the goals of HCA.

These are excerpts from our constitution and I think we all need to read these from time to time to remind us of our objectives.

See you next month! ♦

*Dick*

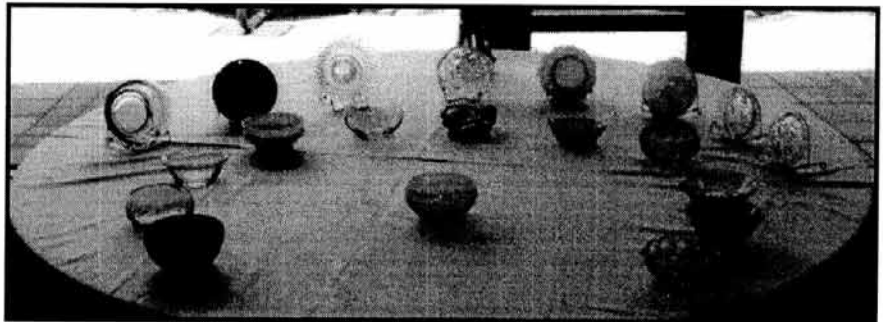
## ***A NOTE FROM THE IMMEDIATE PAST PRESIDENT***

***TOM BISCHOFF***

As usual, Carl missed the point! At this year's convention Linda and I displayed nappies (small bowls by Carl) in every color Heisey made for the purpose of showing prospective collectors the wide variety of available choices for collecting Heisey. (For this I have been named honorary color consultant to HCA). It is the seemingly inexhaustible variety which keeps us all looking. If however you have stopped (looking that is) and your heirs for some strange reason do not share your love of Heisey, please feel free to contact the museum or me.

We at HCA will be happy to provide you with general information which

may be of assistance to you and your attorney in making gift giving and estate planning decisions. HCA received some very nice gifts in the last two months as reported in the *Heisey News*. During the course of the next year of my retirement, space permitting, I hope to write a few words concerning gifts to HCA and the endowment program. ♦





## **MUSEUM HAPPENINGS**

### **MOLLY KASPAR**

Even in the aftermath of convention, I think I can safely say the staff is caught up on their work. I know Mary and I both get behind with all of the details to clear up after our busy convention week. For those of you who graciously donated and placed glass on loan, many thanks from HCA. Your forms should reach you shortly.

As President Dick Smith mentioned, it's time to begin planning HCA's future for the year 2000 and beyond. One of our primary goals is to create educational programs and activities for Licking county students. We have just a short time to begin planning these, as the 1998-99 school year is upon us.

Throughout the year we have several school groups tour the museum, but we would like to increase the number. It is wonderful to see young faces admiring A.H. Heisey and Company glassware. Better yet, it's surprising to see that so many of the students are already familiar with Heisey!

The summer months are the busiest at the museum. Don't forget to stop in the museum to see what's new when you're traveling close to Newark—remember to visit the HCA Glass Studio too! Glassmakers are on duty for demonstrations Wednesday to Sunday, noon to 4:00 pm. ♦

### **1998 BOARD OF DIRECTORS**

Thomas Bischoff  
Past President  
4-680 US Highway 24  
Liberty Center, OH 43532

Sid Edwards  
4288 Windy Gap Ct.  
Kennesaw, GA 30144

Nettys Evans  
138 Turner Dr.  
Dover, DE 19901

Carolyn Felger  
19333 Wells Dr.  
Tarzana, Ca 91356

Amy Jo Jones  
Vice President  
2849 Homeway Dr.  
Beavercreek, OH 45434

Joseph Lokay  
109 Atterbury Rd.  
Monroeville, PA 15146

Walter Ludwig  
2020 Wallace St.  
Philadelphia, PA 19130

Virginia Marsh  
Secretary  
149 Fairfield Ave.  
Newark, OH 43055

Gene Moenning  
27142 Calle Juanita  
Capistrano Bc, CA  
92624

Robert McElheney  
3310 Gallatin  
Toledo, OH 43606

Karen O'Hare  
188 Rugg Ave.  
Newark, OH 43055

Sharon Orienter  
116 Browncroft Blvd.  
Rochester, NY 14609

Virginia Pratt  
PO Box 1023  
New Canaan, CT 06840

Robert Rarey  
1450 White Ash Dr.  
Columbus, OH 43204

Kenneth Rhoads  
Treasurer  
1984 Burroughs Dr.  
Dayton, OH 45406

Mike Rosenberger  
5115 W. 78th Ln.  
Schereville, IN 46375

Frank Scott Jr.  
409 Alton St.  
Elizabeth City, NC  
27909

Dick Smith  
President  
225 Upson Downs  
Newark, OH 43055

Carl Sparacio  
28 Refy Ave.  
Ramsey, NJ 07446

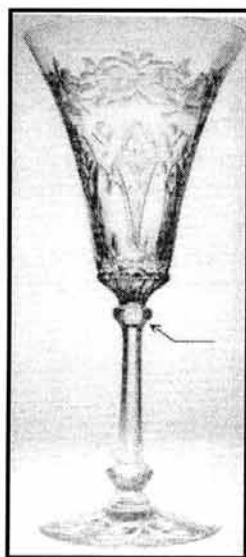
# ***DON'T HUSH, SWEET CHARLOTTE***

**CARL SPARACIO**

Last month we reported on some of the unusual Heisey seen on the show floor during convention. One of the pieces mentioned was a no. 3361 Charlotte cocktail that sported a Hawthorne bowl and a Moongleam stem and foot.

*No. 3361, no. 3368  
and no. 3380*

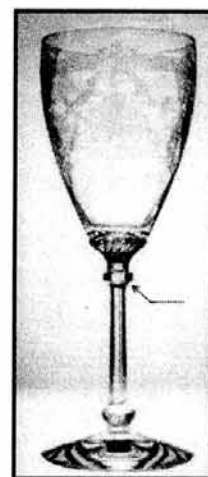
Bi-colored Heisey is unusual. We're not counting colors combined with crystal, as, apparently, anyone can do that. Crystal, it seems, is compatible with most colors. Colored glass formulas, however, sometime conflict and, depending on their formulation, a satisfactory bond between them is not always possible. Much of the small amount of Heisey bi-colored glass that is seen falls into the whimsy category. This would indicate that some Heisey workers had too much time on their hands or not enough supervision. I'm not knocking it; given the chance I would have played around with Heisey's colors too and undoubtedly would have kept the cullet bins full.



When I first saw this Hawthorne/Moongleam combination I was impressed by its rarity but that's as far as it went. I didn't think that the Hawthorne/Moongleam color combination was particularly attractive. I'm here to tell you that it does grow on you. The more I see it, the prettier it gets. Many years ago I saw a Limelight/Sahara combination—also in a cocktail glass. Who would think that two such beautiful colors could be so ugly together? Believe me, they were (but if I owned one you can bet I'd get used to it).

There is an unusual piece in the National Heisey Glass Museum, a divided dish that is a combination of Sahara and Moongleam. Now, that doesn't look bad. What is most unusual about this dish is that the colors seem to have been combined while the piece was being molded—they are not separate colored sections joined together after molding as a stem and bowl are.

No. 3361 Charlotte was originally thought to be a no. 3368 Albemarle variant because it shares the same Albemarle stem as does no. 3380 Old Dominion, which, like Albemarle, is a full stem line. Charlotte's bowl, however, has no relationship to Albemarle or Old Dominion and, even if it did, its color combination would set it apart. Eventually a Heisey assigned pattern number was found but not a Heisey name. "Charlotte" is a name given by researchers.



If your mind works in numerical order as mine does, you could assume that Charlotte preceded Albemarle and stretch that to say that Albemarle is a Charlotte variant. Then, too, noting that Charlotte's no. 3361 falls neatly between the Charter sisters (no. 3360 Penn Charter and no. 3362 Charter Oak) it might better have been named Charter *Something* or *Something* Charter. But I won't get into the numbering sequence because it'll reopen the Fandango-Cut Block wars (which came first no. 1200 or 1201?). Hey, this is what happens to folks like me who have too much time on their hands.

No. 3360 and no. 3362



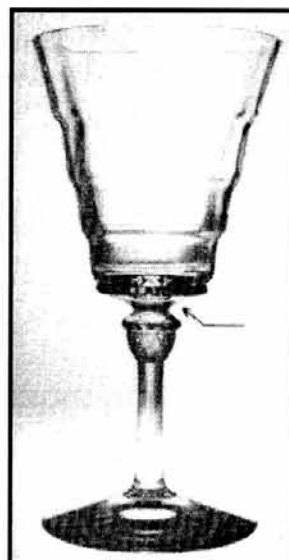
The Bredehofts report in their book, *The Collectors Encyclopedia of Heisey Glass*, of just one set being reported which contains goblets, saucer champagnes, sherbets and cocktails. The cocktails for sale at the Heisey convention indicated that there must have been more. The fact that they turned up in New Jersey also says that my belief that they were strictly an item that would be found in Ohio at the source, was dead wrong.

Anyway, Charlotte is a great find and the fact that a couple more have been found gives hope to those of use who are forever on the hunt for the unusual.

If I may, I would like to take a minute to explain something I said in last month's convention report. In mentioning the Granville show and the all Heisey auction, both of which run concurrently with the Heisey convention, I referred to them as HCA wannabee functions—this reference was meant ONLY to indicate that they are held at the same time as the HCA convention. No hidden meaning, no insult, real or imagined, was intended. I have the highest regard for Sam Schnaidt and the folks at Apple Tree and, though I don't know the principals at Granville, many of its dealers are cherished personal friends.

At least one person to date took the exception to the "HCA wannabee" reference and wrote to chastise me about it. Normally, I'd deal with criticism privately, not in an open forum but I do so now for two reasons: One, because of the great respect I have for my correspondent and two, just in case there might be others who read into a remark that which was never intended.

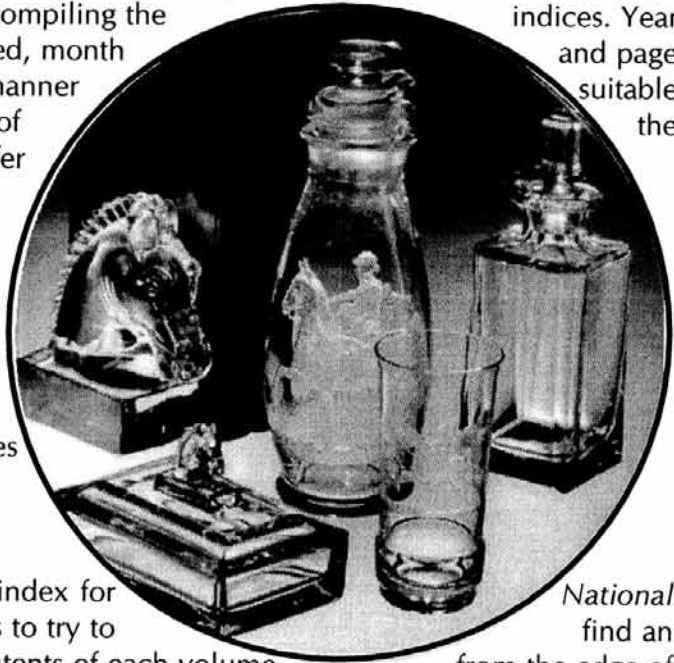
End of discussion. ♦



## ***FROM THE ARCHIVES—BITING OFF MORE THAN ONE CAN***

**DON VALDES**

Joe Lokay just sent me "26 Years of Heisey News Indexes." My admiration for the many dedicated "founding fathers and mothers" of the Heisey Collectors Association keeps growing and growing, etc.. You people amaze me. Currently the activity in the archives is centered about the newsletters and a job that easily passes unappreciated—or at least not to the extent it should be, i.e., compiling the after year the articles are summarized, month numbers listed and presented in a manner for insertion in the bound volumes of *Heisey News*. Norma Schweighoefer compiled the reference catalog that contains information on issues from January, 1952 through December, 1981 and is available in the gift shop. Joe Lokay has, if we are to believe the by-line, been tackling the task since 1988. I am sure there are other unsung heroes and heroines whose names I simply do not know.



I remember the joy with which I welcomed my first comprehensive index for *Geographic*. What a nuisance it was to try to article by attempting to read the contents of each volume of the bindings. A few minutes of holding one's head parallel to the floor while reading contents was a sure way to end up like the guy who got his Viagra tablet stuck in his throat. If one is searching for something in the *Heisey News* it isn't even that easy. An index for each volume is a part of one of the early issues of the year but one can't be sure in which issue the index is to be found. It might be as early as January (1980, '81, '82, '98) or as late as June (1991, '94). If you wish to find all the articles which have been written since 1980 about, let's say, Paul Harvey, you must find the index for each of the 195 volumes printed since 1981. That's 26 indices!

There is still another problem, one I have had to address in cataloging the contents of the archives. Briefly, what are the major categories under which any item should be listed? Libraries list books under title, author, and subject but our newsletter article catalog should, if it is to be of the maximum use to the members, list articles in a "finer" fashion. You are likely to want to search such criteria as pattern number or name, decoration number or name, or such general headings as baskets, epergnes, or candlesticks as well as many other broad categories. Previous compilers of our indices have used different systems of classifying. The following is a taste of the various categories used in the index listings in three years:



### 1972

Heisey Patterns  
Heisey Animals and Figurines  
Heisey Colors  
Former Heisey Employees  
Articles, General

### 1983

Heisey Patterns  
Tumblers  
Candlesticks  
Decorations  
Heisey's Little Things  
Individual Heisey Items  
Articles, General  
Stemware  
Cuttings Pictured

### 1997

Heisey Patterns  
Individual Heisey Items  
Articles, General

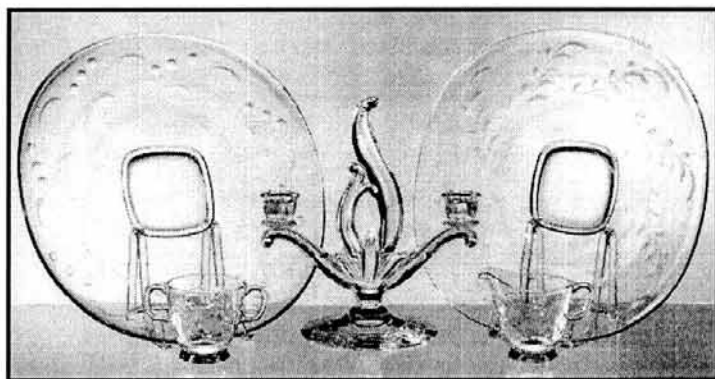


The index for early volumes typically included a list of authors. This practice was, for some reason, discontinued in 1977. Should it be reinstituted?

Further, some years are clearly more thoroughly covered than others. In 1979 there were 22 General Articles listed, in 1997

there were 90! Joe Lokay includes, under Articles, General, HCA business such as new members, Board of Directors Candidates and Study Club Directories. In 1981 very little was indexed other than glassware information. It is interesting to observe how, through compiling an index, the author's interests are revealed.

Having explained all of this I'm beginning to get cold feet. How am I going to organize the material? What major headings should I use? Should I go back and list authors? Nevertheless, what with the aid of my trusty computer, loaded with Microsoft's ACCESS, I'll take a shot at compiling a master index. Next time you want to find a reference in the Heisey News I hope it will be easier. ♦

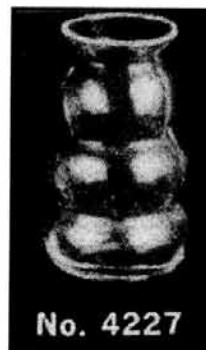


## HEISEY FAVOR VASES

JOE LOKAY AND AL MILLER

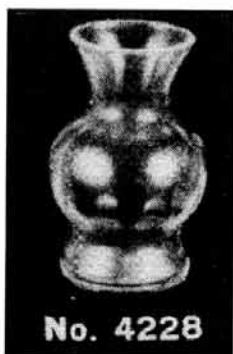
Reprinted from Vol VII No. 12 Heisey News

Heisey produced six styles of favor vases as shown in Catalog Reprint #212, page 117 and Vogel III, page 111. Each style was given a separate stock number. The six stock numbers are consecutive from #4227 to #4232. Besides Crystal, the Heisey favor vases were produced in Flamingo, Moongleam, Sahara, Cobalt and Tangerine. They were not made in Alexandrite or Hawthorne. The favor vases stand about 3 inches tall with the largest diameter being about 1 3/4 inches. They were blown and, thus, are not marked with a diamond H. Instead, paper labels were used.



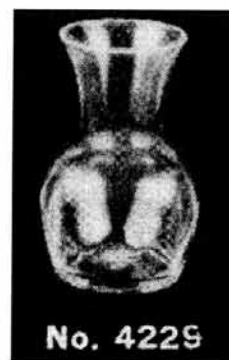
Heisey catalogs and price lists available in the Louise Ream Library were examined and analyzed for information pertaining to favor vases. The following is a summary of our findings. One must realize

this analysis was made using the materials available, and it is always possible that additional information yet to be found may come up in the future.



Heisey price list 15, circa February 2, 1933, was the first document to list favor vases. All six styles were listed. Thus, production of the favor vase started in late 1932. As well as Crystal, all six styles were offered in Flamingo, Moongleam, Sahara and Tangerine.

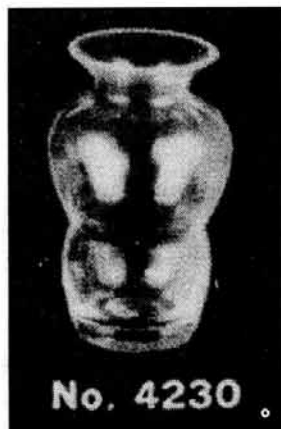
It is interesting to note how the tables of prices were organized in price list 15. To us, based on the price list organization, certain conclusions can be inferred or made. There were six vertical columns, one for each color: Crystal, Flamingo, Moongleam, Sahara, Alexandrite and Tangerine. Then there were four sub-columns for each color column. The four sub-columns were titled "P", "W/O", "D/O", and "S/O". (P=plain, W/O=wide optic, D/O=diamond optic and S/O=spiral optic.) The quoted price of \$2.00 per dozen for each style of favor vase was printed in only one of the sub-columns; namely, D/O for five of the six colors: Crystal, Flamingo, Moongleam, Sahara and Tangerine. Nothing was printed under Alexandrite. In other words, no prices were printed in any of the P, W/O and S/O sub-columns or in the D/O sub-column under Alexandrite.



From this information, the following conclusions are possible: (1) the favor vases were made in diamond optic only because of the absence of price in the P, W/O and S/O sub-columns, and (2) the favor vases were not made in Alexandrite because of the absence of prices in any of the four sub-columns under the color. One must emphasize that we are talking about commercial production and sales. Since molten Alexandrite glass was available for other production items, it is always possible that a few favor vases may have been made in Alexandrite for market testing or as whimsies by the production crew. The same holds for the possibility of some P, W/O or S/O favor vases being found. There was no mention of Cobalt at this time as Heisey had barely introduced it into their color lines. In other words, it comes later.

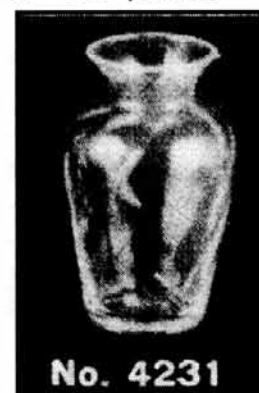
There will be no favor vases in Hawthorne as production of this color stopped about 1928 and favor vase production didn't start until 1932.

The next document concerning favor vases was Heisey catalog 211-16, circa 1935. All six vases are shown on page 145 with the words "Diamond Optic" printed underneath each style of vase. The price list for catalog 211-16 shows only Crystal, Sahara and Cobalt. The favor vase colors Flamingo, Moongleam and Tangerine were discontinued and Cobalt was added. This coincides with Heisey dropping these three colors from production. Thus, the six favor vases were produced in these three colors for about three years, 1933-1935. The appearance of Cobalt in favor vases occurred at the same time Heisey introduced that color into their line in 1933. This time, like before, the prices of \$2.45 per dozen were only printed in the D/O sub-columns. The P and W/O sub-columns were blank. There was no S/O sub-columns in this price list.

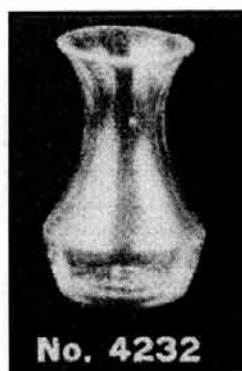


Heisey catalog 212-17, circa 1937, continued to show all six styles of favor vases. Page 117 in this catalog is the same page shown in Vogel III, page 111. Again, the words "Diamond Optic" are printed underneath each of the six vases.

Price list 214-19, circa July 15, 1939, lists all six favor vases. Besides Crystal, only one other color, Cobalt is indicated. Sahara was dropped. It mostly likely occurred when Heisey dropped Sahara from their color lines in 1937. Thus, the production period for favor vases of Sahara color was about five years, 1933 to 1937. This time, like before, the prices of \$3.00 for Crystal and \$3.30 per dozen for Cobalt were only in the D/O sub-columns. Nothing was indicated for P, W/O or S/O.



Price list 215-20, circa April 1, 1941, lists the three vases #4227, #4230 and #4231 in Crystal at \$3.60 per dozen in D/O with nothing for P, W/O or S/O.



Cobalt was dropped. Thus, the production period for Cobalt in favor vases was about seven years, 1935 to 1941. Price list 29, circa October 1948, is the last document indicating the availability of favor vases, only the #4227 style in Crystal with D/O is listed. Nothing is listed for favor vases in catalog and price list 30, circa July 1949. Thus, the #4227 D/O favor vase was produced the longest in Crystal, for a period of sixteen years, 1933-1948.

Now, on to the mystery of the plain favor vases in existence. Early, we indicated in our conclusion that the Heisey Company made only D/O favor vases. In other words, Heisey did not produce the plain vases similar in style to the Heisey favor vases that you have seen or heard about.

This conclusion is based on the following three reasons. (1) The absence of prices in the plain/no optic sub-column. (2) Comparison of the Cobalt in the D/O favor vases with the Cobalt in the plain vases shows a difference in the color hue possibly caused by slight differences in the glass batch formula. To us, the Heisey Cobalt hue is "richer" and more "royal" looking than the blue in the plain favor vases. We feel that the hue should be the same if Heisey made both of them. And (3), we believe we have found out who made the plain favor vases. We have a plain (no-optic) favor vase in blue styled like #4230 that has on it what looks like an original factory paper label. A sketch of the label is shown. The label says "Dunbar Glass Corp., Dunbar, West Virginia USA and #707 Blue". The #707 is most likely their stock number.

In July 1978, Al & Peg Miller visited the town of Dunbar in search of information about the plain favor vases. They talked with one former employee and showed her the two plain favor vases styled like #4227 and #4230. Her immediate response was that yes, she remembered Dunbar making them.

For your information, we did a brief survey of the plain favor vases. With the limited data we have, we concluded the plain vases were produced in three styles, namely like #4227, #4230 and #4232, and in only two colors, Crystal and Cobalt. Some of the Crystal ones were sprayed or decorated with color.

With this article, we hope we have, if not fully, at least partially, solved the favor vase mystery. For quick reference, we have summarized the production dates, color and style data into the table accompanying this article. Note: Although not listed in catalogs a few favor vases have been seen in "swirl" optic such as sometimes seen in blown pitchers and sodas. These have been seen in Crystal only. ♦

<b>COLOR</b>	<b>1933-35</b>	<b>1935-37</b>	<b>1938-40</b>	<b>1941</b>	<b>1941-47</b>	<b>1948</b>
<b>Crystal</b>	All 6 styles	All 6 styles	All 6 styles	#4227 4230 4231	#4227 4230 4231	#4227
<b>Flamingo</b>	All 6 styles					
<b>Moongleam</b>	All 6 styles					
<b>Sahara</b>	All 6 styles	All 6 styles				
<b>Tangerine</b>	All 6 styles					
<b>Cobalt</b>		All 6 styles	All 6 styles	#4227 4230 4231		



## ***STILL MORE ABOUT THE CORNING GLASS CENTER***

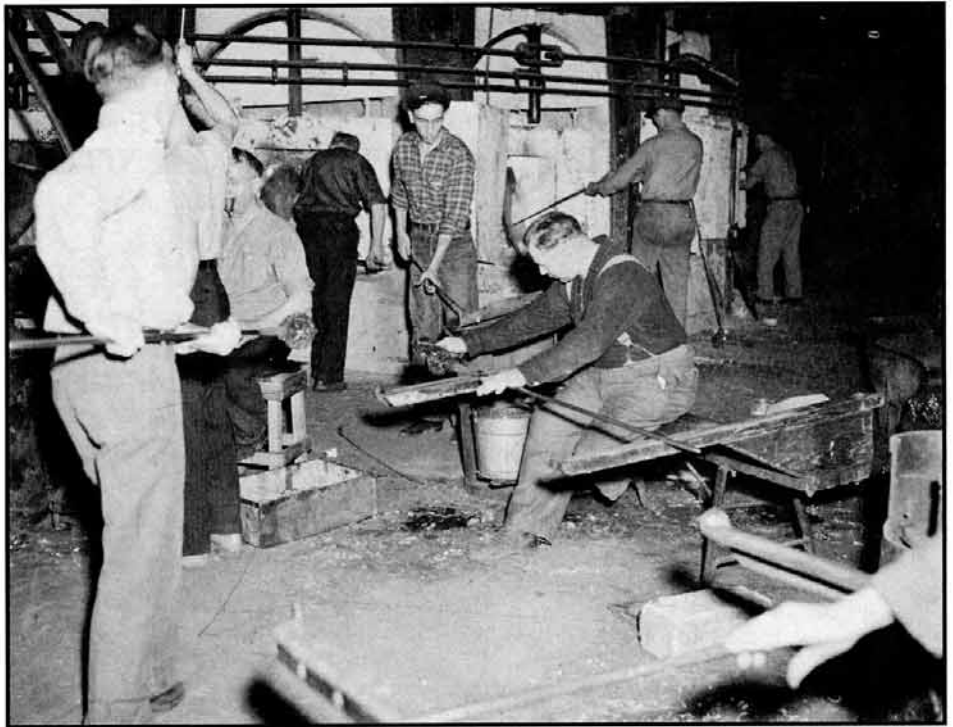
**CARL SPARACIO**

Since the Corning Glass Center is to be a focal point of our September quarterly meeting, we thought we should let you know more about the place by quoting from a feature in the local newspaper. "The Corning Glass Center comprises three separate entities: the Corning Museum of Glass, the Hall of Science and Industry, and the Steuben Factory.

"There is a good news/bad news scenario underway at the Glass Center. Corning celebrates its 150th anniversary in April 2000, and the Glass Center is having a major expansion and renovation of its facilities. But faint hearted visitors should not be deterred by the large construction barriers surrounding the center.

"The downside is that the Hall of Science and Industry is closed through April 1999, when it emerges from the ashes as the Innovation Center. In the meantime they've added a new hot glass show. The 20 minute show, held in the newly renovated Steuben Factory runs every 30 minutes starting at 9:30 am.

"A presenter describes the glassmaking process while an experienced craftsman known as a "gaffer," takes molten glass from the 2,000-plus degree F. furnace and shapes it into a vase or other handsome piece of glassware. The description uses simple language to educate in the techniques of glassmaking.



"The audio is well supplemented by an overhead bank of screens connected to video cameras positioned at strategic vantage points, including deep inside the "glory hole" of the furnace in which the gaffer works the glass piece.

"The full museum tour requires a sense of pacing as you have eight individual galleries featuring the finest collection of glass from the past 3,500 years. Informative videos about specific glass working techniques run in several of the galleries, and there are some interactive computer kiosks to draw the visitor.

"If patience, time and foot fatigue is an issue, best to limit the tour to personal favorites, such as the Venetian glass of the Renaissance and Baroque age, or the elegant crystal of the Enlightenment.

"The last gallery features a revolving display which changes periodically. Lastly, don't forget the gift shops. You can watch in awe as a lampworker creates animals from glass rods and buy one as a special keepsake or purchase any of the beautiful and unusual glass pieces at many price levels.

"Though not part of Corning Center, not far away there is the Rockwell Museum housed in the old Corning Hall, an impressive Romanesque revival. The Rockwell contains three distinct collections: the best gathering of American Western art in the east, antique toys and the exquisite colored art glass of Frederic Carder for Steuben. It is not to be missed."

There you have a brief rundown of just some of the exciting things waiting for you at HCA's September quarterly meeting. There will also be a great all-Heisey auction Saturday afternoon, the Percy and Vivian Moore Memorial Dinner Saturday evening where your table prize might just be the HCA Board of Directors who will be seated at your table.

We're looking forward to seeking you all there. ♦

## ***NATIONAL HEISEY GLASS MUSEUM & LONGABERGER®***

The Longaberger Company is pleased to announce they will team up with the National Heisey Glass Museum to create a limited edition piece made from an original Heisey mold. This piece, a ruby red Clydesdale, will be offered only during the raising of The Crawford Barn, September 5-6. Colonel Crawford was a premier horse trader in Newark between 1890 and 1915. The Crawford barn, which was originally in Newark, is being moved and rebuilt on the Longaberger Manufacturing Campus in Frazeeburg. The barn raising event, which is expected to be attended by approximately 30,000 people, will be a fantastic opportunity to expose a new group of collectors to Heisey glass. A Commemorative Longaberger Basket® will be offered for sale only during this event. The weekend is certain to attract many who are aware of the rewards of collecting. The presence of Heisey, with the interesting Newark connection, should be great exposure for the National Heisey Glass Museum.

The casting of the Clydesdale is limited to 900 pieces, limit of 2 pieces per customer. The pieces will be produced by an Ohio glass manufacturer specifically for the Longaberger Company. The Clydesdale has never been produced in this beautiful color. The ruby Clydesdale is the first in a proposed series of three. When The Longaberger Homestead™ opens in June of 1999, a proposed second color will be introduced in the Clydesdale series and produced until the year 2000. The third proposed Clydesdale will be produced from 2001-2002. To make the Longaberger/Heisey pieces instantly recognizable to collectors, a special mark will be placed in the mold which will be used on all pieces that are produced in conjunction with The Crawford Barn of The Longaberger Homestead. If there are any pieces available at the conclusion of the weekend, HCA will have an opportunity to purchase pieces before they are frosted to be sold at a later date. ♦

## RECENT DONATIONS

### JANUARY-JUNE 1998

#### Donations to the collection

##### **Heisey Collectors of Southeastern Massachusetts**

♦Frog Moongleam cheese plate. Donated in memory of Irene Walton, longtime member of HCA, Bay State HC and the HC of southeastern MA, and friend to many.

♦Fancy Loop basket. Donated in memory of Irene Walton.

##### **Newark Heisey Collectors Club**

♦Colonial oval bowl with floral cutting. Donated in memory of Vivian Moore.

##### **Newark Heisey Collectors Club & Lynn Welker**

♦Cabochon tumbler with Amber base and frontier scene etch. Donated in memory of Ann Holman.

##### **Mike & Barb Rosenberger**

♦No. 50 dessert dish, Moongleam with cutting.

##### **Mr. & Mrs. Robert Harrison**

♦No. 4211 Optic Tooth vase with Moongleam foot

♦No. 1401 Empress dolphin footed mint with sterling overlay, signed Rockwell.

##### **Jamie VanWinkle**

♦(2) No. 351 Hotel creamers. Donated in memory of Mitzie Krebs, Jeff Williamson and Father Richard Weyls, and in honor of friends.

♦Rose stem goblet with Rose etch. Donated in memory of Irene Rauck and Jeanne D. VanWinkle.

♦Colonial pickle dish. Donated in honor of Mark Edge.

##### **1998 Show Dealers**

♦No. 4160 vase, Hawthorne. Donated in memory of Marjorie Gillette.

##### **Maurice & Jean Walter**

♦No. 1401 Empress vase with Monterey cutting. Donated in memory of Marjorie Gillette.

##### **Anonymous**

♦(2) Warwick look-a-like vases

#### Acquisitions to the collection

♦433 Greek Key punch bowl and base

♦1401 Empress individual footed Alexandrite nut cup

♦3380 Old Dominion 12 oz. diamond optic footed Alexandrite soda

♦1280 Winged Scroll Custard souvenir plate (Addison, Michigan)

♦3355 Fairacre 12" vase with Moongleam stem and foot

#### Loans to the collection

#4035 Decanter with #473 etch; #1252 Twist 10" footed Moongleam utility plate; #3424 Admiralty goblet (frosted ring on bowl, frosted foot); Finesse cordial with original sticker; Cabochon footed compote with cutting; large chunk of Moongleam cullet; #1428 Warwick Trial Blue candlestick; Symphone stemware with Minuet etch—saucer champagne, claret, low footed goblet and cocktail; #201 Photo candlestick; 50 year Heisey commemorative pin; Ipswich oyster cocktail; #5 Aristocrat desk candlestick, Flamingo; Universal cordial with Tally Ho etch.

#### Endowment Donations

Rochester Area HCC	\$25.00
(In memory of Edith Bockes)	
Gulf Coast HCC	\$2000.00
Jacksontown High School Class of 1950	\$135.00
(In memory of Anna Lou Holman)	
Gerald & Emajean McCabe	\$25.00
(In memory of Anna Lou Holman)	
Donald & Betty Bean	\$25.00
(In memory of Irene Walton)	
Katharine Manchester	\$300.00
Michigan HCC	\$180.00
Phil Abrams	\$100.00
Sally Abrams	\$100.00
HCC of California	\$50.00
(In memory of Erv Heisey)	
Lynn & Mary Welker	\$30.00
(In memory of Robert Coyle)	
Loren & Virginia Yeakley	
Dick & Virginia Marsh	
Mr. & Mrs. Richard Lange	\$15.00
(In memory of Richard Norris)	
Anonymous	\$3.00
(In memory of Richard Norris)	

HCA Staff	\$70.00
<i>(In memory of Richard Norris)</i>	
Larry Broceus, Todd & Velvet	\$30.00
<i>(In memory of Richard Norris)</i>	
Terry & Wendy Broceus	
Carey & Tammy Broceus	
Northwest HCC	\$150.00
Roscoe Village Foundation	\$50.00
1998 OSU Dealers	\$300.00
<i>(In memory of Marjorie Gillette)</i>	
Florida HCC	\$100.00
Hoosier HCC	\$436.00
Buckeye HCC	\$700.00
Golden Gate HCC	\$100.00
Oregon Trails HCC	\$150.00
Oregon Trails HCC	\$100.00
<i>(In memory of Grace Nelson)</i>	
California HCC	\$3000.00
Rochester HCC	\$1300.00
<i>(In memory of Marjorie Gillette)</i>	
Bay State HCC	\$1400.00
Central Illinois HCC	\$100.00
National Capital HCC	\$1800.00
North Carolina HCC	\$400.00
Virginia HCC	\$250.00
Texas HCC	\$1050.00

## Operating Cash Donations

Northwest HCC	\$150.00
Texas HCC	\$200.00
Joe & Laverne Lokay <i>(Hospitality Room)</i>	\$10.00
North Carolina HCC <i>(Hospitality Room)</i>	\$100.00
Dairyland HCC	\$100.00
Buckeye HCC	\$300.00
Hoosier HCC	\$25.00
National Capital HCC	\$1500.00
North Carolina HCC	\$400.00
Virginia HCC <i>(Roof fund)</i>	\$250.00

## Acquisition Fund Donations

Heisey 76'ers HCC	\$100.00
-------------------	----------

## Gift Shop Donations

Leo Bevon	Hugo Wenzel
Pat Norman	Sarah Bennett
Florence Archer	Jaspar Castle
Frank & Elaine Husted	David & Judy Ahart
Edward & Elizabeth Hughes	Mr. & Mrs. Robert Harrison
Mike & Barb Rosenberger	Odell & Virginia Johnson

# 1998 ENDOWMENT MEMBERSHIP REPORT

## Benefactor—\$500

J. Sidney & Mary Edwards  
and Catherine Callaway  
Carolyn & Dan Felger  
Bruce & Marilou Logan  
Susan Moore

## Supporting—\$250

Jean Drexler  
Elizabeth & Edward Hughes  
Charles & Marquetta Mathena

## Patron—\$100

Joe Adelstein  
Janet & Mark Attix  
Thomas & Linda Bischoff  
Elio Bracco  
June Bramble  
Frances & Walter Brock  
Karen & James Clark  
Jerilyn & Bob Clayton  
Darlene, Gordon, Lee Ann,  
Teresa & Katherine Cochran  
Ella G. & C.F. Crandell

Fred Currey  
W.T. & Joyce Dawson  
Joyce Farnham  
Tom & Kathleen Files  
Isabelle Gibbs  
June A. Godden  
Robert & Betty Hefflin  
George Heisey  
Don, Jan, Dennis, Rick &  
Ron Held  
David & Lisa Helm  
Edward & Vicki Hinshaw  
Odell & Virginia Johnson  
Amy Jo & Charles Jones  
Margaret Jones  
Dr. James & Frances Kennedy  
Mr. & Mrs. James Lucas &  
Adam Lucas  
Walter Ludwig  
Katharine Manchester  
Gene & Joyce Lentz Moenning  
Chris Moore  
Peggy & Joseph Noll  
Mary Ourant  
John & Adele Pardee

Betty Lee, Frederick, Anne M.  
& Amy Elizabeth Pease  
Ronald & Virginia Pratt  
William & Adelaide Prior  
Sara Pritchard  
Robert & Helen Rarey  
Margaret Reed  
William & Dorothy Roderick  
Lloyd & B. Marie Rohrer  
Pamela & Kenneth Rose  
Aaron & Rosamarie Rubay  
Frances Sanderson  
George & Eileen Schamel  
Mary Frances, Philip &  
Stephen Shannon  
Terry Smith  
Richard Turkiewicz  
Sarah Tuttle  
Caron & Bruce Ulmer  
Betsy Walker  
Herbert, Betty &  
Kathryn Wanser  
Donald & Glenna Wehmeyer  
Jean & John Will Jr.

## Family—\$50

Phil & Sally Abrams  
Marion & Lucile Barker  
Kendal & Maxine Bartlett  
Leo & Anne Odell Bevon  
Jaspar & Jewell Castle  
Kay & Warren Chapman  
Donald, June & Joyce Clark  
Marion Clark  
Timothy & Connie Dall  
Rebecca & Randall Denny  
Edward, Barbara, Samantha &  
Jonathan Draley  
Jon Dunham  
Gerald Easterla  
Pete & Jo Fitch  
Rebecca Gernhart  
Don & Betsy Hanna  
Barbara Huston & Laura Means  
Richard Jenevein  
Robert Jones  
Malcolm & Willa Kalman  
Elizabeth & Francis Patrick Kennedy  
Karl, Elizabeth, Michael &  
Sharon Kolter



Jerry Laitinen  
 Ned & Sibyl Lavengood  
 Christos & Chris Maskaleris  
 Robert & Phyllis McClain  
 Patricia & Charles Nesbit  
 Mark, Cindy, Lauren &  
 Roen Ourant  
 Ginny Priest, Ric Lahmers &  
 Larry Jones  
 Agnes & Paul Pringle  
 Roberta, Fred, Todd & Holly  
 Lance Pryor  
 Michael, Toni, Melissa &  
 Paul Schirmer  
 John & Sandy Schneeman  
 Joe & Penny Shreffler  
 Yvonne & Blaine Sickels  
 Phyllis Sneed & John Bryant  
 Linda Sullivan  
 William & Charlotte Sutman  
 Charles & Susan Vystrcil  
 Maezene & Jack Walker  
 Steve, Brenda & Brock Wilson  
 D. Albert & Esther Young

#### **Joint—\$40**

David & Judy Ahart  
 John & Margie Allen  
 Jerry & Clara Ashcraft  
 Norma & Robert Askeland  
 Nancy Werner Azarski  
 Linda Barnes  
 James & Nadine Bartell  
 George Bennett Jr. &  
 Lamar Birckbichler  
 Deborah & Rachel Berman  
 Mary & Leon Bernard  
 Marjorie & Robert Berry  
 James & Shirley Bliss  
 Billy & Marcia Booth  
 Rebecca & Raymond Boyd  
 Lula & Sidney Brown  
 Jane & David Brubaker  
 Gerald & Mary Buchanan  
 Mr. & Mrs. Tom Bumpus  
 June & William Burke  
 Joan & Alden Butler  
 Jay Byrne & Ed Steckley  
 Stanley Carey & Rudy Haas  
 David & Shirley Carlson  
 Cathy Chapman  
 Harry & Joyce Clemings  
 David & Lee Ann Close  
 Robert Colliver &  
 George Dexter  
 Clyde & Elaine Cook Jr.  
 James & L. Polly Cree  
 Ed & Connie Cumberworth  
 Stephanie Danaher &

J.B. Gibson  
 Joyce & Donald Deany  
 Harriet & Russell Decatur  
 Chauncey & Helen Delaney  
 John & Marjorie Deppong  
 Wilma & Kenneth Doane  
 Frederick & Lucille Huhm  
 Shirley & Everett Dunbar  
 Charles & Opal Earhart  
 James & Karen Edwards  
 Anita & J.D. Elliott  
 John & Gerry Eshelman Jr.  
 Nick & Maggie Foster  
 Franklin & Phyllis Frye  
 Rita & Joseph Germano  
 Loren & Mary Jane Giblin  
 Marjorie & Jerry Gillette  
 Dewaine Joesph &  
 Bonnie Glyda  
 Alton & Donna Hale  
 Margaret & Milton Hall  
 Loleta & Harold Hammontree  
 Marjorie & Francis Harper  
 Robert & Patricia Harrison  
 Bill & Libby Hedinger  
 Lloyd & Joyce Heisey  
 Marty & Bonnie Heisey  
 Norval Heisey & Gordon Clark  
 Kurt Herbst  
 Brad & Kimberly Riedel Hess  
 Shoko & Seigo Hidaka  
 Tim & Betty Hilderbrand  
 John & Susan Hill  
 Bill & Colleen Hilleary  
 Alice & Carl Hinger  
 Eva & Joseph Hirsh  
 Robert & Kathryn Huber  
 Roger & Erma Hulslander  
 Linda Hustad & Roberta Zink  
 Elaine & Frank Hubsted  
 Patricia & Rex Lucke  
 Thomas & Dorothy Marek  
 R.E. & Bonnie Markley  
 Dick & Virginia Marsh  
 Maria & Richard Martell  
 Jay Martin & Richard Nicholson  
 Hugh & Nancy McCreery  
 Linda Sue &  
 Joeseeph McDermott  
 Joyce & David Middleton  
 Jean & Cole Miesner  
 Claude & Marsha Moore  
 Jeff & Paula Fabbri Morrow  
 Violet & John Mueller  
 Lucinda & James Nemeth  
 Leland & Bette Nichols  
 Amy & Jeff North  
 Park & Diane Noyes  
 Carolyn & Arthur Patton  
 Mary Ann & Michael Petrick

Victoria Phillips & Eric Fahle  
 Shirley & Fred Reesbeck  
 Marie & William Rehbeck  
 Kenneth & Judith Rhoads  
 Lester & Virginia Riley  
 Mike & Mary Riley  
 Martha & James Rivers  
 Marvin & Eleanor Robbins  
 Mr. & Mrs. Harold Roberts Jr.  
 William & Margaret Rossel  
 Betty & Howard Roxborough  
 Roger & Margaret Rydin  
 W. David & Vessie Saylor  
 Carolyn & Benjamin Schmick  
 Sam & Heisey Schnaidt  
 Herman Schornstein &  
 Eric Love  
 Frank & Michele Scott Jr.  
 Gerard & Roselyn Shondell  
 James & Janice Short  
 Jean & Matthew Simi  
 Blanche & Robert Smith  
 Cynthia & Daniel Smith  
 Richard & Marilyn Smith  
 Carl & Helen Sparacio  
 Edward & Judy Staats  
 Bill & Laura Stafford  
 Frealyn & Pearl Stark Jr.  
 Pauline & Yovan Stiko  
 Joan & Franklin Stone  
 Jerry Stougard &  
 Tara MacArthur  
 Joan & Sue Suwalsky  
 Robert & Diane Sweigard  
 Sara & Peter Tascione  
 Kathy & Frank Taylor  
 Junior & Sherron Thiry  
 Ronald & Vicki Travis Sr.  
 Rick Vaughn  
 Mr. & Mrs. Joseph Virostko  
 Dan & Barbara Weakley  
 Thomas & Debbie Wiggins  
 Janet & Lynn Wilcox  
 Mary Beth Will &  
 Peggy Leonard  
 Lawrence & Rebecca Williams  
 Wallace & Sharon Wilson  
 Richard & Judy Young  
 Russell & Barbara Young

#### **Individual—\$30**

David Akridge  
 Karen Anderson  
 Marlene Anderson  
 Warren Anderson  
 Mary Ellen Andrews  
 Robert Annatone  
 Barbara Anstine  
 Yvonne Arbuckle

Chris Argys  
 Albert Bacon Jr.  
 Lynn Baillon  
 Harvey Bair  
 Charles Baird  
 Carolyn Bardonner  
 Nancy Brunner Barta  
 Barbara Rauck Bartlett  
 Sylvia Baxter  
 Sarah Bennett  
 David Bergquist  
 Carol Billington  
 Julie Binkley  
 Ronald Blake  
 James Blau  
 Pollie Bland  
 David Boling  
 Martha Booth  
 Helen Hudson Boyt  
 Mary Brodeur  
 Douglas Brown  
 Bette Burrell  
 Dale Caldwell  
 Margaret Camicia  
 Dorothy Caputo  
 Laurel Caruthers  
 Janet Caswell  
 Sheila Chesney  
 J.R. Chilton  
 Constance Christie  
 Ruth Cline  
 Elaine Cobel  
 Nancy Codner  
 Marilyn Coleman  
 Helen Cook  
 Jill Cooper  
 Frederica Cornett  
 Norma Cortese  
 Maryann Crescenzo  
 Jean Cushman  
 Evelyn Daniel  
 Nancy Daniel  
 Ava Davis  
 Barbara Davis  
 Phyllis Deal  
 Barbara DeBerry  
 K.K. Deibel  
 Barbara DeNiro  
 Marcia Dion  
 Patricia Dixon  
 Dallas Dollase  
 Hilda Douthitt  
 Jo De Doyle  
 Nancy Doyle  
 Marcia Duncan  
 Suzanne Duryee  
 J.E. Eaves Jr.  
 Mary Evans  
 Robert Fausnaugh  
 Bari Fauss

Libby Flashner	Shelley Killen	Marcella O'Hare	Louise Smith
Doug Gray	Paul Kistler	Alice Orr	Mrs. Carroll Snider
Judy Green	Manuel Klawans	Mary Oursler	Dennis Stark
Richard Green	James Klingler	Mrs. E.J. Page	Catharine Startzman
Jack Grenzebach	Carl Knittel	Jackie Payne	Bernice Stein
Ginny Griffith	Louise Knittel	Mary Payne	Deborah Stein
Dan Guckien	Rodney Knowles	Arvena Pearson	Robert Steinback
Helene Guski	Mary Knox	Ellen Peterson	Donna Sterneberg
Susan Guss	Thomas Krenek	Sharon Petrytus	Barbara Stewart
Judith Hardardt	Harriet Kuferberg	E. Jill Pollock	Mary Stewart
Doris Harraman	Shellie Kuziora	Sue Price	Marcia Stoskopf
Arlene Hartman	Beverly Lafferty	Jeanne Rachal	George Swan
Richard Hartman	Stan Langley	Carol Jean Reed	Charles Swing
William Hasley	Frances LeBlanc	Betty Regan	Darcel Tanquary
Mary Heflich	Genny Lege	Elaine Reynolds	Julia Taylor
Leroy Heisey	Dorothy Leviton	Diana Roche	Ethel Tilton
Jean Henson	William Line	Marjorie Rogers	Anna Todd
Gordon Herbst	Carol Lundstrom	Paul Russell	Phoebe Tuttle
Janice Hermann	Ralph Lusher	Karyn Sanford	James VanWinkle Jr.
Barbara Hervey	Maureen MacKenzie	Marjorie Satryan	Janice Wallace
Phyllis Hess	Donald Macomber	Bobbi Saunders	Patricia Wanner
Mary Hibbard	Patricia Mahar	Emilie Savage	Harold Watsky
Sheila Hollander	Greg Mahle	Fred Schaefer	Annette Waugh
Patsy Holman	Terri Markland	Donna Schellenberger	Jean Whims
Ruth Horwitz	Richard Marshall	Wendy Schuler	Priscilla Whitford
Sally Howarth	Betty Martin	Thomas Seibold	Kim Whitworth
James Howe	Harriett Martin	Jessica Ann Shaub	Max Wiese
Hummingbird Antiques	Alice Jean Matuszak	William Shaw	Jane Williams
Joyce Ingram	Cliff McCaslin	Lenore Shelley	Alicia Wilson
Sandra Jacks	Virginia McColm	James Shindler Jr.	Kathleen Wood
Robert Jillson	Zelda McDonald	Harriett Slear	Tom Woodward
Leslie Johnson	Martha McGill	Miriam Slemmons	W. Ruffin Woody Jr.
Kathryn Karjala	F.J. McGinn	Deni Smith	Fred Workman
Dale Keith	Lori McGurer	Derek Smith	Cameron Wright
Anne Keller	Helen McKetta	Jimmy Smith	

## NEWS FROM THE SHOP

**NEW PUBLICATIONS IN THE MUSEUM SHOP!** The Museum Shop is offering three new publications. Call (740) 345-2932 for further information, or to place an order.

***Index of Heisey Glassware***, revised and prepared by Gene Moenning and members of the Heisey Club of California. For those of you who always wanted to learn your pattern numbers—glass, etching and cuttings—then this book is for you! Patterns are listed both alphabetically and numerically. (#156, \$9.95 plus shipping.)

***Stemware of the 20th Century: The Top 200 Patterns***, by Harry L. Rinker. Many of your favorite glassware patterns are listed, including A.H. Heisey and Company stemware. Stemware patterns are listed alphabetically by manufacturer and then by name. Included are many photographs and a price guide. (#155, \$24.95 plus shipping)

***Crystal Stemware Identification Guide***, from Replacements, Ltd., by Bob Page and Dale Frederiksen. More than 4,000 patterns are listed in this publication, including additional information on Heisey stem patterns. There are thousands of helpful illustrations in this book. (#154, \$18.95 plus shipping.)♦

**Heisey Collectors of America, Inc.**  
September Quarterly Meeting  
**Seventh Annual Vivian & Percy Moore Dinner**  
& Heisey Benefit Auction  
**September 25th & 26th, 1998**

Featuring a complimentary Corning Glass Museum Tour

To be held at the

Radisson Hotel Corning, 125 Denison Parkway East, Corning, N.Y.

Telephone: 1-607-962-5000 (Reservations)

Reserve for the **Heisey Glass Weekend** when calling

(Special nightly rate \$86.00 plus 10% tax thru September 1st, 1998; \$110.00 per night thereafter)

---

**REGISTRATION FORM**

(early registration incentive: by 8/1/98, 2 free raffle tickets; by 8/15/98, 1 free raffle ticket)

---

Name(s) to appear on badges \_\_\_\_\_

---

Address: City, State, Zip Code \_\_\_\_\_

(   )

---

Telephone \_\_\_\_\_

I/We will be attending the September Quarterly Meeting. Number in Party \_\_\_\_\_

Hotel Reservations have been made for the following dates \_\_\_\_\_

(All activities will be held at the Radisson Hotel except the Corning tours)

Please complete the following for our planning committee—indicate number attending each event:

Friday afternoon Corning tour \_\_\_\_\_ (no charge)

Friday night welcoming reception \_\_\_\_\_ (no charge)

Saturday morning Corning tour \_\_\_\_\_ (no charge)

Saturday Benefit Auction \_\_\_\_\_ (no charge)

Dinner(s) and Souvenir(s)—Vaseline Crystolite Master Swan \_\_\_\_\_ @ \$45.00 each = \$ \_\_\_\_\_

Dinner only \_\_\_\_\_ @ \$25.00 each = \$ \_\_\_\_\_

Please indicate total dinner selection(s)

\_\_\_\_\_ Angus Prime Rib of Beef    \_\_\_\_\_ Sesame Chicken    \_\_\_\_\_ Pasta Primavera

**MAKE CHECKS PAYABLE TO: Heisey Collectors of America, Inc.**

**Mail this form to: HCA Souvenir Dinner, 169 W. Church St., Newark, OH 43055**



Rock and Rye Bottle and Cordial Glasses, Modern Pattern (No. 4044) with Cutting 831.

## *A Captivating Creation* *in Heisey's MODERN LINE*

Let patrons first discover this exquisite cordial set . . . in your store. Watch a gratifying sales performance. Heisey's now famous Modern Line has received widespread and enthusiastic approval: it's an established glassware success! Now come Modern cordial glasses and bottle with a fascinating cutting . . . a feature to enliven your showings of glass and give a *lift* to sales. The design is shown in a comprehensive line of stemware, flat ware and other pieces. To see not only this but other new and engaging things in fine Heisey Glassware, get in touch with your nearest representative. A. H. Heisey & Company, Newark, Ohio.

**Heisey's**  
GLASSWARE  *for your table*

### HEISEY REPRESENTATIVES

- E. G. NOCK, 200 Fifth Ave. Bldg., New York
- W. S. REDFIELD, 1561 Merchandise Mart, Chicago
- SHEARMAN J. WILCOX, 1561 Merchandise Mart, Chicago
- H. S. BOKEE, 122 W. Baltimore St., Baltimore
- H. M. BORTZ, 218 Sedgwick St., Philadelphia
- G. A. GRANVILLE, 111 Summer St., Boston
- R. E. PHILLIPS, 129 Putnam Ave., Zanesville, Ohio
- C. S. WHIPPLE, 622 S. Westlake Ave., Los Angeles
- GEO. L. DAVIS, 5950 W. 38th Ave., Denver
- HAL M. COPELAND, 3608 Springdale Ave., Baltimore
- E. F. REDFIELD, 6436 Oak St., Kansas City
- W. E. BABCOCK, Andover, Ohio



## CLUB NOTES



### **Bay State Heisey Collectors Club #5** *Susan Pescatore*

The Bay State Heisey Club met on Tuesday June 8, 1998, in Lexington, Massachusetts. After the business meeting in which the principle agenda was the club's contributions to HCA at convention, Steve Pescatore begged to do Show and Tell, primarily so that he would be the only person to handle his newest acquisition: the rare #325 Pillows tankard in Rose (pink). For those unfamiliar with the history of the Rose color, certain "pink" items began to turn up a few years ago in patterns which were made during times in which Heisey was not producing color at all, among them some in Pillows (1901-1910). At first it was thought that the molds had been resurrected and these pieces produced in Flamingo after that color had been introduced. However, a factory inventory was discovered for the years 1901-1902, showing a large number of pieces of Pillows designated as Rose on hand at the factory. Theories ranged from experimental to special order, but it is still not known precisely why this color existed at this time.

Very few examples of Rose Pillows have surfaced at this point, although the #339 Continental water bottle (pattern introduced in 1903) is now thought to be Rose, and some colonial items may be Rose rather than Flamingo depending on the pattern's production dates. A most interesting item is the #310 Ring Band spooner (ca. 1897), in Rose, in the museum.

For a much better explanation of all this, see Neila Bredehoft's article in the November, 1989 issue of the *Heisey News*.

Show and Tell did not end there, however—#1506 Whirlpool 18" platter; #1252 Twist Marigold floral bowl; #29 Sanford candlestick; two #1567 Plantation cordial; #305 Punt & Diamond Point 10" oval bowl; #367 Prism Band decanter in Moongleam; two examples of #394 Narrow Flute—6" vase and the mustard resembling Saturn (the planet).

The evening's program addressed toy glass table sets, as well as individual creams and sugars. Along with the #1225 Sawtooth Band toy table set (the only one Heisey ever made), members brought a large number of similar sets from other companies—this was a very popular item around the turn of the century.

If possible, the collection of individual creams and sugars was even more impressive, ranging through Heisey's entire production and containing examples from virtually every pattern which offered an individual cream and sugar. ♦



### **Buckeye Heisey Collectors Club #20** *Mary Holmquist*

Winners of the club raffle held during the HCA annual meeting:

- ♦1st Prize: #300-3 Old Williamsburg tall base 3-lite candelabra, cutting on base—Ned Lavengood
- ♦2nd Prize: 1401 Empress Sahara dolphin footed floral bowl, Formal Chintz Etch—Linda Bischoff
- ♦3rd. Prize: #160 Locket on Chain #8 footed compote—Tom and Kathleen Files
- ♦4th Prize: #1252½ Twist Moongleam handled bon bon—George Gleason

Thanks to everyone who supported our raffle! ♦

## **HCA NEWS & NOTES**

### **HCA Welcomes 31 new members for June:**

Christine Allison, Oregon  
Sherry F. Baer, Virginia  
Paul & Kathleen Bash, Pennsylvania  
David Beadnell, Ohio  
Ellen Becvar, Iowa  
Karen & Ronald Boyer, Minnesota  
Nancy Daniel, Washington  
Pam Ensely, Kansas  
Patti Hearn, Kentucky  
Dale & Louise Hoover, Washington  
Rodney L. Knowles, Minnesota  
Marcia & Ralph Kohl, Massachusetts  
Ellen Lawrence, Pennsylvania  
Roberta P. Lawrence, California  
Wynona & Carl Lawson, West Virginia  
Cindy Lyon, Florida  
Mary Jane O'Neal, Ohio  
Patricia Rogers, New Jersey  
Herman Schornstein & Eric Love, Michigan

Karl Schornstein, New Hampshire  
 Richard Schornstein, Michigan  
 Steve & Brenda Wilson, Missouri  
 Russell & Barbara Young, Ohio

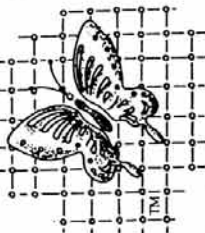
The Fred Harvey Museum in Leavenworth Kansas is currently being formed to preserve and illustrate the history of the Fred Harvey Family and development of the Fred Harvey Company. The museum is looking for glassware made by Heisey for Fred Harvey, in several of the colonial patterns and any in amber. They need many pieces to make their collection complete. Please contact David Smith, PO Box 41421, Mesa, Arizona 85274. ♦

Our condolences go to the family and friends of George H. Dawson who passed away in February. He and his wife were members of HCA and the Rochester Heisey Study Club. ♦

**ATTENTION STUDY CLUBS!** Does your club have news or events to share with fellow members? Send updates BY THE FIRST OF THE MONTH to: Heisey News, 169 W. Church St., Newark, OH 43055, fax (740) 345-9638 or email: heisey@infinet.com. ♦

## FENTON ART GLASS COLLECTORS OF

AMERICA, INC.



22nd. Annual Convention

August 4, 5, 6, & 7th. 1998

Holiday Inn, Parkersburg, West Virginia 26105

Glass Display room and Seminars - Public Invited  
 Banquet, Annual Meeting, Special meetings, Special factory tour - members only

Fun for the entire family. Visit the Flea Markets, Glass Sales by Members, tours of the Glass Factory, ride the Paddle Wheel on the Ohio River.

For further information call: 1-304-375-6196 Monday thru Wednesday 7:30 A.M. to 1 P.M.

► **Advertising:** Send all ads to HCA Advertising, 169 W. Church St., Newark, OH 43055. Ads may be faxed to (740) 345-9638; please include MasterCard or VISA number for billing purposes. **All ads must be prepaid.** Ads are to be typed or printed on white paper with dark ink. Please double space. Do not abbreviate Heisey pattern names or colors. Ads which are entered in a vertical column format may contain a maximum of 65 characters per line, including spaces & punctuation.

**Classified:** 20 cents per word (members), 30 cents per word (non-members), \$1.50 min., 1/8 page limit. Personal ads 1/8 page limit. Abbreviations & initials count as words.

Display Ads:	member	non
1/8 page (12 lines)	\$20.00	\$30.00
1/4 page (25 lines)	\$40.00	\$60.00
1/2 page (60 lines, <i>horizontal or vertical</i> )	\$80.00	\$120.00
Full page (120 lines)	\$160.00	\$240.00

**A charge of \$1.60 will be added for each additional line.**

Camera ready ads must follow specifications. Ads which do not correspond to the following measurements will be sized.

### Camera Ready Ad Specifications:

- 1/8 page: 2 1/4" high by 3 1/2" wide
- 1/4 page: 4 1/2" high by 3 1/2" wide
- 1/2 page: 4 1/2" high by 7 1/2" wide OR 9" high by 3 1/2" wide
- Full page: 9" high by 7 1/2" wide

**Ad copy must be received by the first of the month prior to publication.** Reproductions (i.e. Heisey by Imperial) must be indicated. Heisey News accepts no further liability.

## Classified Ads

**FOR SALE:** Collection for sale due to serious illness. Send SASE for list of specifics. Ex: "candles". 22019-7th St. Abita Springs, LA 70420.

**WANTED:** Heisey Baskets: etched, cut, colored, unusual decorations or whimsies. Send price and description to Kim Carlisle, 28220 Lamong Rd., Sheridan, IN 46069 (317) 758-5767.

**FOR SALE:** Heisey Collectors of 30 years down sizing collection! Many super items including candleholders, most colors; Dawn, Marigold, Alexandrite, Moongleam, Flamingo to name a few. Interesting sets: Empress ashtrays all colors. Old Sandwich 18 oz. beer mugs, all colors. Great assortment of stems including rare cuttings. Ridgeleigh, Orchid, etc. Something for everyone! please call (904) 280-0450 with your wish list and for more information.

**WANTED:** Buyer (6) Rose water outside Granville call (937) 298-2598.

**FOR SALE:** Looking for that hard to find piece in Zircon, Cobalt or Alexandrite? Also colored decanters, colognes, cruets and toothpicks. Call (941) 778-2167.

**WANTED:** Heisey Scottie champ in the following colors, satin or clear Rosalene, Lavender Ice, Azure Blue. Call Lesley Connor (610) 791-1185

**WANTED:** Any glassware containing #463 Equestrian or #481 Lancaster silhouette etching (show horse with rider). Mike Smith, 2612 Manana Dr., Dallas, TX 75220 (214) 352-3939.

**WANTED:** Heisey "Fox Chase" #1509 8" square plate, #5012 7" ftd. vase, #4163 16 oz. beer mug with Red, Moongleam, Amber handle. Fred Ludwig, 300 Rt. 10, Randolph, New Jersey 07869. (201) 366-1351.

**WANTED:** Heisey baskets: etched, cut, colored, unusual decorations or whimsies. Send price and description to Christine Allison, 2727 SE 154th, Portland, OR 97236. (503) 761-3398.

**CHARLOTTE BERRY**  
**PO Box 416**  
**Echo, OR 97826**

**(541) 376-8509**  
**UPS & Ins. Extra**  
**H=Marked**

1503	Crystolite ind. sugar, cream and tray, H	\$45.00
1503	Crystolite hdl. hollandaise boat w/hdl. oval udr. plate, H	\$45.00
1503	Crystolite hdl. mayo w/hdl. oval underplate, H	\$45.00
1503	Crystolite 1,000 island drsg. bowl w/underplate, H	\$45.00
1503	Crystolite salt and pepper shakers, metal tops, H	\$20.00
1503	Crystolite jam jar and cover, H	\$45.00
1503	Crystolite rosette candleblocks	\$18.00
1503	Crystolite 4" 1-lite ftd. candleholder	\$12.00
1503	Crystolite 4½" dessert or nappy, H, (4) ea.	\$10.00
1503	Crystolite 11" plate, cupped edge, plain bottom, (2) ea.	\$18.00
1503	Crystolite 13½" plate, star bottom, H	\$25.00
5003	Crystolite cocktail, w/o, H	\$15.00
5003	Crystolite oyster cocktail, w/o, (8) ea.	\$15.00
325	Pillows water bottle	\$125.00
325	Pillows covered sugar, H	\$85.00
325	Pillows spooner, H	\$65.00
353	Low ftd. compote, H	\$25.00
300½	Hotel sugar, ftd., H	\$15.00
393	Narrow Flute lemon dish, no cover, H	\$15.00
411	Rib and panel 12" celery, H	\$18.00
479	Petal cream, Flamingo, cutting	\$25.00
341	Puritan ½ gal. tankard, H	\$85.00
1184	Yeoman 5" ftd. compote, Moongleam foot	\$30.00
1184	Yeoman hotel cream and sugar, no lid, Hawthorne, H	\$80.00
1001	Caswell sugar sifter & syrup, d/o, Flamingo, silver metal	\$155.00
1231	Octagon hotel cream and sugar, Moongleam, H	\$50.00
1252	Twist 7" hdl. bowl, Moongleam	\$18.00
1252	Twist hdl. plate, Moongleam	\$17.00
1252	Twist ftd. nasturtium bowl, Flamingo, H	\$125.00
1413	Cathedral vase, flared, cutting	\$125.00
1401	Empress cvd. mustard, udr. plate, 3 pc. set, Mnglm, H	\$95.00
1401	Empress hdl. oval compote, Moongleam, H	\$65.00
1401	Empress d/f ind. nut cup, Sahara, (2) ea.	\$25.00
1401	Empress d/f ice tub, cutting, metal handle	\$65.00
1509	Queen Ann 13" low floral bowl	\$45.00
1519	Small cornucopia vase, (2) ea.	\$20.00
1506	Whirlpool cvd. ftd. candy, Zircon, H	\$500.00
1540	Lariat ftd. compote, water lily cover	\$45.00
1540	Lariat 11"x5" deep	\$40.00
1540	Lariat ftd. bon bon, H	\$18.00
1540	Lariat double lite, Moonglo cutting	\$30.00
1567	Plantation 7½" salad plate, (9) ea.	\$22.00
1567	Plantation cruet with stopper	\$125.00
5007	12 oz. ice teas, (5) ea.	\$12.00
	Elephant, small	\$295.00
	Goose, wings half	\$50.00
	Madonna, with partial label	\$75.00
	Ladle, curved handle Flamingo, H	\$45.00
1252	Twist 1-lite candleholder, Moongleam, (2)	\$50.00
112	Mercury candleholder, cutting	\$18.00
112	Mercury candleholder, Moongleam	\$23.00
122	Zig Zag candleholder, Flamingo	\$20.00
1445	Grape candleholder, H	\$85.00
1472	Parallel Quarter candleholder	\$10.00
416	Oakleaf candleholder, Flamingo	\$35.00
1255	Pineapple and Fan 8" wide comport	\$85.00

## **WE CLEAN CLOUDY GLASS!** **SATISFACTION GUARANTEED**

*Yes, it is true* that we really can restore the interior of your cruet, vase, decanter and other *internally* etched items back to near original condition.

*We do not* oil, wax or cover up the sickness in any way! We actually *remove* it.

*No items are too sick to clean!* If we cannot clean an item to meet your satisfaction, the cleaning is **FREE!**

*Send no money up front.* When we return your item a bill will be enclosed for the postage and cleaning. If you are not satisfied, only the return postage is requested.

*Most items* clean in 6-8 weeks. All glass is handled and cleaned at your risk. Some very cloudy items may take several additional weeks.

Cruet	\$20.00	Cocktail Shaker	\$30.00
Vinegar & Oil	\$25.00	Salt Shaker (one)	\$25.00
Cologne	\$20.00	Salt Shaker (pair)	\$35.00
Decanter	\$30.00	Water Bottle	\$30.00
Vases (under 12")	\$25.00	Lavender Jar	\$20-\$30.00

Ship to: **Kim Carlisle & Associates**  
 28220 Lamong Road, Dept. H  
 Sheridan, IN 46069  
 (317) 758-5767

**DON & JEAN PARRETT**  
**4995 Maple Dale Rd.**  
**Jackson, MI 49201**

**(517) 784-7319 & recorder**  
**Post & Ship Extra**

341	Puritan rock and rye bottle, no stopper	\$85.00
351	Priscilla 1 qt. decanter and stopper	\$195.00
367	Prism Band 1 pt. decanter, Flamingo, stopper	\$345.00
1485	Saturn 8" flared vase	\$95.00
352	Flat Panel 1 qt. crusted fruit and cover	\$225.00
353	Medium Flat Panel 2 qt. tobacco jar and cover	\$295.00
1252	Twist 3 pt. pitcher, Flamingo	\$250.00
117	Bamboo candlesticks, green candle cup and ft., pr.	\$1495.00
2323	Navy 10 oz. soda, Cobalt ft., (2) ea.	\$60.00
2323	Navy 13 oz. pilsner, Cobalt ft., (2) ea.	\$100.00
1469	Ridgeleigh 3 oz. sq. cologne and stopper, (2) ea.	\$125.00
150	Banded Flute toothpick	\$110.00
6060	Country Club 1½ oz. bar, Moonglo cut	\$50.00
5060	Washington Square 2 oz. bar-mono	\$75.00
489	Colonial 1½ oz. perfume, lg. dauber	\$145.00
491	Colonial 1½ oz. perfume, stopper	\$110.00
515	Taper 2 oz. cologne, lg. stopper	\$175.00
485	1 oz. Cologne, long dauber	\$115.00
486	1 oz. Cologne, stopper, cut	\$95.00
486	1 oz. Cologne, pump spray, gold dec.	\$125.00
6091	Cabochon 1 oz. cordial, (4) ea.	\$40.00
6003	Tempo 1 oz. cordial	\$75.00
3416	Barbara Fritchie ¼ oz. brandy, (4) ea.	\$75.00
359	Colonial/very Narrow Flute ¼ oz. pusse	\$75.00
3350	Wabash 1 oz. cordial, #440 Frontenac etch	\$75.00
348	Colonial 1 oz. cordial	\$50.00

**RALPH & EILEENE WISE** (561) 793-0986  
**12018 Suellen Circle** UPS & Ins. Extra  
**West Palm Beach, FL 33414** H = Marked

515	Taper 1 oz. cologne, cutting, #69 long dbr, H, (2) ea.	\$225.00
133	Swan candlesticks, Flamingo, pr.	\$425.00
1401	Empress d/f candlesticks, Moongleam, H, pr.	\$495.00
1401	Empress d/f candlesticks, Flamingo, H, pr.	\$350.00
1401	Empress d/f tumblers, H, (5) ea.	\$150.00
1403	Half Circle cream and sugar, Moongleam, H	\$195.00
1425	Victorian ½ gal. pitcher, H	\$495.00
417	Rib and Panel basket, Moongleam, H	\$185.00
461	Convex Circle #4 candy jar and cover, two H marks	\$325.00
4045	6" Ball vase, Alexandrite	\$595.00
133	Swan handle bowl, cutting	\$195.00
350	Pinwheel and Fan 8" bowl, Flamingo, H	\$325.00

**J&T ANTIQUES** (508) 764-1597  
**Jim Houghton & Tim Rector** (508) 764-1014 (fax)  
**PO Box 933** Shipping & Ins. Extra  
**Sturbridge, MA 01566-0933** H = Marked

1503	Blown vase	\$465.00
1541	Athena goblets, H, (5) ea.	\$20.00
1541	Athena champagne, H, (6) ea.	\$15.00
343	Sunburst water bottle	\$110.00
1428	Warwick 9" vase, Sahara, H	\$210.00
1183	Revere ¼ lb. candy jar, H	\$110.00
1503	Crystolite ice tub with metal handle, H	\$125.00
1483	Stanhope cocktails, (8) all	\$100.00
1511	Toujour sugar and creamer, Minuet etch, H, pr.	\$105.00
411	Tudor punch set, bowl, base, ladle, (15) cups, H	\$750.00
1466	Star relish, Normandie etch, H	\$55.00
1401	Empress ctr. hdl. tray, Fuscina cutting, H	\$65.00
333	Waldorf Astoria toothpick, H	\$125.00
305	Punty and Diamond Point salt and pepper	\$65.00
305	Punty and Diamond Point 10" vase	\$85.00
17	Decanter and stopper	\$75.00
1401	Empress 2 hdl. candlesticks, H, pr.	\$75.00
465	Recessed Panel ¼ lb. candy jar, gold decor., H	\$110.00
1503	Crystolite cigarette lighter	\$25.00
114	Pluto candlesticks, Hawthorne, pr.	\$125.00
160	Locket on Chain pickle tray	\$80.00

**T&P COLLECTIBLES** (508) 674-7361  
**Tom & Pat Gibbons** Packing & UPS Extra  
**1089 Wood St.** H = Marked  
**Swansea, MA 02777**

1401	Empress 7" square plates, Sahara, H, (4)	\$45.00
1401	Empress 8" plates, some scratches, Tangerine, (6)	\$450.00
1401	Empress 11" d/f bowl, Moongleam, H	\$210.00
1425	Victorian 5 oz. straight soda, (4)	\$55.00
1425	Victorian 9 oz. 2-ball goblet, (4)	\$85.00
1469	Ridgeleigh 4½" oval cvd. cigarette box, f	\$65.00
1469	Ridgeleigh 8" vase, H	\$90.00
1483	Stanhope 11" floral bowl, blue knob, H	\$55.00
3481	Glenford 8½ oz. soda, checker optic, Hawthorne, (3)	\$190.00

*WANTED: Pretzel cover or complete jar*

**FOREVER HEISEY** (740) 344-5955  
**Norm & Jan Thran** UPS & Ins. Extra  
**1663 Londondale Pkwy.** H = Marked  
**Newark, OH 43055**

2	Old Williamsburg 9" 1-lite candlestick, pr.	\$125.00
2	Old Williamsburg 24" tall 5-lite candelabra complete with #5 bobèche, candle cups and hemisphere	\$1500.00
5	Patrician 21½" tall 4-lite candelabra, complete with #5 bobèche and candle cups	\$750.00
134	Trident 2-lite candlestick, Chintz etch, pr.	\$70.00
134	Trident 2-lite candlestick, Orchid etch, pr.	\$100.00
300	Peerless ftd. sundae, crimped, H, (4) for	\$85.00
300	Peerless 4½ oz. claret wines, H, (4) for	\$60.00
300	Peerless ftd. parfait, H	\$25.00
300	Peerless 1½ oz. sherry, H, (2) for	\$40.00
429	Plain Panel Recess 6 oz. cruet, floral cut, orig. strpr cut, H	\$70.00
479	Petal hotel creamer, Flamingo, H	\$22.50
1001	Caswell sugar sifter, Flamingo d/o, crystal sanitary lid	\$85.00
1184	Yeoman demitasse cup and saucer, Sahara d/o, H	\$60.00
1194	Pentagon ind. nut, Moongleam or Flamingo, choice ea.	\$35.00
1469	Ridgeleigh 2-lite candelabra arm	\$25.00
1485	Saturn cruet with original stopper	\$40.00
1489	Puritan late 10"x8" oblong carmelin tray (bowl)	\$25.00
1238	Beehive 8" plate, Mnglm., (1) ea. dark or light, choice	\$35.00
1238	Beehive 8" plate, Flamingo or Crystal, choice	\$25.00
1503	Crystolite punch bowl, H & (11) punch cups, H, (12 pcs.)	\$140.00
4163	Whaley 16 oz. mug, Fisherman etch, H	\$210.00
4163	Whaley 16 oz. mug, Club Drinking Scene, H	\$165.00

19th year serving the Heisey Family!! 10% off items left in May & June ads

# Heisey

## PUBLICATIONS

PO BOX 102

Plymouth, Ohio 44865

Ralph & Sandra McKelvey

(419) 935-0338



**Heisey**

**Books & Glass**

## VOGEL BOOKS ON HEISEY

**BOOK I "FIRST TEN YEARS".....\$14.00**

**BOOK II "COLONIAL YEARS".....\$14.00**

**BOOK III "ART & COLORED GLASS"....\$15.00**

**BOOK IV "EARLY AND LATE YEARS"..\$15.00**



**SET PRICE \$55.00**

## SHIPPING AND HANDLING

**Add \$4.00 for all orders!!**



**H&R DIAMOND H**  
**Helen & Bob Rarey**  
**1450 White Ash Dr.**  
**Columbus, OH 43204**

**(614) 279-0390**  
**After 5:30 pm**  
**UPS & Ins. Extra**  
**H=Marked**

372	McGrady 7 oz. syrup, H	\$57.50
411	Tudor 2 hdl. jelly, Hawthorne, H, (2) ea.	\$57.50
483	Narrow Flute with Rim 6" div. hdl. relish, Flamingo	\$29.50
1229	Octagon 5½" hdl. ftd. mayo, Flamingo	\$31.50
1184	Yeoman d/o demi cup and saucer, Flamingo, H	\$67.50
1184	Yeoman demi cup and saucer, Moongleam, H, (2) ea.	\$65.00
1252	Twist 7" pickle, H	\$35.00
1252	Twist 7" pickle, Flamingo, (2) ea.	\$37.50
1252	Twist 7" pickle, Moongleam, H	\$45.00
1252	Twist 7" pickle, Marigold, H	\$75.00
1252	Twist 10" celery, Flamingo, H	\$37.50
1252	Twist 13" celery, Flamingo, H	\$39.50
1252	Twist 6" hdl. bowl, Flamingo, H	\$32.50
1401	Empress 13" celery, Antarctic etch, H	\$45.00
1401	Empress 13" celery, Moongleam, H	\$40.00
1401	Empress 13" pickle and olive, Moongleam, H	\$40.00
1401	Empress 13" celery, Alexandrite, H	\$250.00
1401	Empress 8" d/f mint, Flamingo, H	\$85.00
1401	Empress 8" d/f mint, Sahara, H	\$85.00
1401	Empress d/f ind. nut dish, Flamingo, H, (2) ea.	\$45.00
1401	Empress d/f ind. nut dish, Alexandrite	\$225.00
1401	Empress d/f 6" mint dish, Alexandrite	\$275.00
1401	Empress 7" square plate, Alexandrite, H, (4) ea.	\$70.00
1401	Empress 8" square plate, Alexandrite, H, (4) ea.	\$80.00
1435	Thumbprint and Panel 8" vase, Cobalt, H	\$350.00

**PAUL SIMONS**  
**130 Travellers Ln.**  
**Aiken, SC 29803**

**(803) 648-2524**  
**Shipping & Ins. Extra**  
**H=Marked**

123	Mercury candlesticks, pr.	\$100.00
134	Trident candleholders, pr.	\$165.00
	Old fashion bar glass, H, (4) ea.	\$48.00
	McGrady 4 oz. syrup, H	\$115.00
1252	Twist hotel sugar	\$65.00
1401	Empress cruet and stopper	\$155.00
1401	Empress 8 oz. tumblers, H, (2) ea.	\$68.00
1401	Empress tall champagne, H	\$55.00
1401	Empress 12 oz. tumbler, H	\$75.00
1401	Empress ice bucket, d/f, no handle, H	\$195.00
1401	Empress id. sugar, H	\$55.00
1401	Empress d/f floral bowl	\$85.00
1401	Empress 8" rnd. plates, H, (8) ea.	\$30.00
1401	Empress tall compote, H	\$85.00
1401	Empress 10½" round dinner plate, H	\$125.00
1401	Empress 10½" sq. dinner plates, H, (2) ea.	\$135.00
1401	Empress 5" d/f dish, H	\$45.00
1401	Empress variant cream and sugar, H, (2) ea.	\$40.00
1401	Empress 8" sq. plates, H, (4) ea.	\$30.00
1404	Old Sandwich cream and sugar, oval, H	\$125.00
1404	Old Sandwich 8" plate, H	\$35.00
1404	Old Sandwich salt and pepper	\$95.00
1405	Ipswich ftd. soda, (12) ea., H	\$85.00
1428	Floral bowl, H	\$110.00
1432	Floral bowl,	\$85.00



## The Best Of Heisey Glass...

...with popular patterns like Orchid, Heisey Rose, Minuet, and hundreds more. We also carry other fine crystal and depression glass from Cambridge, Fostoria, Imperial, Duncan & Miller, and more. The world's largest supplier of discontinued and active china, crystal, flatware and collectibles, Replacements, Ltd. carries over 4,000,000 pieces in inventory in over 85,000 patterns.

If you're looking to add to your collection, or if you're looking to sell - call us toll-free. Because even with over 4,000,000 pieces in our inventory, we're always looking for more.

## REPLACEMENTS, LTD.

China, Crystal & Flatware • Discontinued & Active  
 1089 Knox Road, Greensboro, NC 27420 Dept. HS

**1-800-REPLACE (1-800-737-5223)**

**R&S ANTIQUES**  
**Ray & Susan Ball**  
**2560 S. Maguire Rd.**  
**Ocoee, FL 34761**

**(407) 656-5700**  
**(407) 298-5980 evenings**  
**UPS & Ins. Extra**

1401	Empress 6" square plate, Alexandrite, (4) ea.	\$35.00
1401	Empress 7" square plate, Alexandrite, (9) ea.	\$50.00
1401	Empress 8" square plate, Alexandrite, (4) ea.	\$70.00
1401	Empress salt and pepper, Alexandrite	\$675.00
3390	Carcassone 5 oz. ftd. soda, Alexandrite	\$90.00
1	Mustard spoon	\$40.00
2	Mustard spoon	\$40.00
5	Mustard spoon	\$40.00
300	Peerless salt and pepper #4	\$60.00
393	Narrow Flute ½ gal. hotel jug	\$85.00
395	Condiment set #1 (tray, 2 cruets, salt and pepper)	\$170.00
1509	Queen Ann candlestick, pr.	\$125.00
1951	Cabochon butter dish and lid	\$30.00
1565	6¾" jelly, Dawn	\$30.00
1252	Twist 8 oz. soda, Flamingo	\$28.00
1170	Pleat and Panel 5 oz. champagne, Flamingo, (5) ea.	\$25.00
1231	Ribbed Octagon 12" celery, Flamingo	\$38.00
1184	Yeoman cream soup & udrplt., Hawthorne, (6 sets) ea.	\$50.00
1233	Pressed Diamond bkd apple & udrplt., Hwthrn., (4) ea.	\$75.00
394	Narrow Flute domino sugar tray, Moongleam	\$50.00
473	Narrow Flute with Rim 3½" salted nut, Moongleam	\$30.00
1184	Yeoman cream soup & udrplt., Moongleam, (6 sets) ea.	\$32.00
394	Narrow Flute domino sugar tray, Sahara	\$100.00
1401	Empress 5½" mayo, Sahara	\$40.00
1401 ½	Empress cup and saucer, Sahara, (6 sets) ea.	\$35.00

**HIS & HER ANTIQUES**  
Cynthia Veilleux  
121 East St.  
Wrentham, MA 02093

(508) 384-3894  
UPS & Ins. Extra  
H=Marked

1	Georgian 9" candlesticks, pr.	\$175.00
16	Classic 7½" candlesticks, H, pr.	\$110.00
21	Aristocrat 7¼" candlesticks, etched, H, pr.	\$145.00
1405	Ipswich cntr. piece sticks and vases, "A" prisms, H, pr.	\$335.00
1506	Provincial 4½" low candleholder, ground base, pr.	\$35.00
1541	Athena 2-lite candlesticks, H, pr.	\$85.00
401	Old Williamsburg 13" 1-lite cndlabra, "C" prsm, H, pr.	\$250.00
300-4	20½" 4-lite cndlabra, "A" prsm. (line in top holder)	\$450.00
394	Narrow Flute wines 5½", H, (6) ea.	\$14.00
394	Narrow Flute ftd. hdl. soda 5¼", H, (2) ea.	\$38.00
300	Peerless wines 4½", H, (4) ea.	\$20.00
4044	New Era wines, rectangular foot, (3) ea.	\$18.00
331	Colonial strawholder, no top	\$90.00
333	Waldorf Astoria water bottle 9¾", (2) ea.	\$110.00
341	Colonial hi-fty. jelly compotes 5½x4¾", H, (2) ea.	\$24.00
352	Colonial cantaloupe plate, original wrapper, H	\$25.00
352	Colonial hollow cover/grnd base sanitary fruit, dtd., H	\$175.00
351	Colonial 4" violet vase, ground base	\$32.00
341½	Colonial small star finger bowls, ground, H, (9) ea.	\$20.00
350	Pinwheel & Fan hair rcvr & drsr jar, slvr pltd tops H pr.	\$135.00
380	5¼" nappies, H, (12) ea.	\$10.00
300	Peerless 5½" plates, H, (7) ea.	\$12.00
1280	Winged Scroll ½ gal. tankard, Custard	\$240.00
3390	Carcassone 8 oz. Cobalt stems, low ft., (10) ea.	\$48.00
3390	Carcassone 6 oz. Cobalt stems, low ft., (12) ea.	\$38.00
1503	Crystolite punch cups, H, (12) ea.	\$10.00
1503	Crystolite covered box 4x3½x2 1/8, H	\$38.00

**Wanted: wires for "H" prisms 1939-1945—call with price**

**DONNA McLENDON**  
304 Martin Rd.  
Greenville, GA 30222

(706) 672-4779  
Shipping & Ins. Extra  
H=Marked

142	Cascade 3-lite candlesticks, Orchid etch, pr.	\$175.00
153	8 oz. tumblers, plain, hexagonal, H, (8) ea.	\$15.00
359	Colonial ftd. sherbets, H, (8) ea.	\$12.00
429	Plain Panel 12" celery tray, H	\$45.00
1401	Empress tray for ind. cream and sugar, Rosalie etch	\$37.50
1435	3" Ashtray, Orchid etch, with labels, (4) ea.	\$30.00
1509	Queen Ann 10½" dinner plates, Orchid etch, (5) ea.	\$145.00
1519	Waverly covered butter, Orchid etch	\$135.00
1519	Waverly 6½" round, two-section	\$22.00
1519	Waverly 3 pc. mayo set, Orchid etch	\$85.00
1519	Waverly ind. sugar and cream, Orchid etch	\$75.00
1519	Waverly bowtie, cov'd candy, Orchid etch	\$195.00
1519	Waverly 13" floral bowl, Orchid etch	\$95.00
1540	Lariat 7" #2 fan vase, Orchid etch	\$135.00
1540	Lariat 4" coaster, plain, (4) ea.	\$10.00
1540	Lariat 4" ashtray, plain	\$10.00
5025	Tyrolean 6 oz. tall champagne, Orchid etch, (12) ea.	\$26.00
5025	Tyrolean 10 oz. tall goblet, Orchid etch, (7) ea.	\$40.00
5025	Tyrolean 12 oz. ftd. ice teas, Orchid etch, (8) ea.	\$65.00
	Puritan ftd. ice tea, H, (4) ea.	\$32.00
	Oscar HCA 1977 Fern Green	\$45.00
	Oscar HCA 1979 (misdated) purple, frosted	\$45.00
	Oscar HCA 1995 brown	\$25.00
	Greek Key toothpick/2½ oz. bar, H	\$495.00

**Wanted: one 1509 1-lite candelabra with prisms, Orchid etch**

**SUM OF LIFE**  
Elaine & Frank Husted  
147 Barton Dr.  
Spring City, PA 19475-3415

(610) 469-1243  
(610) 469-1298 (fax)  
H=Marked

**Looking for an eligible single? Check these out!!!**

21	Aristocrat candleholder	\$50.00
31	Jack-be-Nimble toy candleholder	\$40.00
1540	Lariat small saucer candle holder, H	\$15.00
112	Mercury 3" candleholder, Moongleam	\$35.00
4044	New Era after dinner cup, matte finish	\$35.00
2	Old Williamsburg 11" candleholder	\$145.00
401	Old Williamsburg candle with bobeches & "C" prisms	\$140.00
479	Petals creamer, Flamingo	\$35.00
	Mallard wings up, H	\$125.00
	Goose wings half	\$75.00
114	Pluto candleholder	\$25.00
305	Punty and Diamond Point sugar	\$75.00
1489	Puritan candle full cut block	\$35.00
1501	Queen Ann candle with "A" prisms	\$70.00
1504	Regency banded candle block	\$50.00
1183	Revere underplate 7"x6" oval Moongleam, H	\$25.00
1469	Ridgeleigh 7" candle holder, H	\$95.00
1519	Waverly creamer, Orchid etch	\$33.00
1184	Yeoman after dinner cup, Hawthorne	\$50.00
1	Georgian 9" candleholder	\$60.00

*When you call, please leave your name, address and telephone number (or fax number). Add \$5.00 to each order for minimum postage. If more, the honor system prevails.*

**ERMA HULSLANDER**  
1427 Ridgeview St.  
Mesquite, TX 75149

(972) 289-6159  
UPS Extra  
heisey@flash.net

17	Classic 1-lite 16" candelabra, 5½" "C" prisms, #5 bobèche and candlesocket	\$195.00
300	Colonial 1-lite 9½" candelabra, "A" prisms, pr.	\$185.00
301	Colonial 2-lite candelabra, (p. 78 Candle. bk.), pr.	\$300.00
351	Priscilla cov. mustard, H, #1 Heisey spoon, H	\$90.00
351	Priscilla cov. mustard, H, #5 Heisey spoon, H	\$90.00
352	Flat Panel cov. (H) mustard with handles, H	\$55.00
353	Medium Flat Panel cov. (H) mustard, H	\$35.00
1401	Empress cov. mustard, Everglad cutting, H	\$85.00
1425	Victorian cov. mustard, H, #10 paddle	\$80.00
1469	Ridgeleigh cov. (H) mustard, H, #10 paddle	\$95.00
1485	Saturn cov. (H) mustard, H	\$40.00



**Advertise with the  
Heisey News!**

# DEALER DIRECTORY

Maximum 5 lines/12 months/\$35 MEMBERS ONLY

<b>MARJORIE GILLETTE</b> Rochester, New York Glassware Specialty Heisey Mail Orders & Shows (716) 225-4678	<b>SHIRLEY EUGENIA DUNBAR</b> Heisey a Specialty Mail Order, Shows, Appraisals PO Box 7085, Port St. Lucie, FL 34985 Oct-May (407) 337-1558 PO Box 222, Naples, ME 04055 May-Oct (207) 647-5652	<b>COMPARISON LIST</b> NEW HEISEY AUCTION LIST FOR 1998 3 Year's Auction 95-96-97 Price: \$18.00 + \$3.00 Shipping Payable: B. Whaley 300 International Dr., Pataskala, OH 43062 (614) 927-1557
<b>ALL HEISEY AUCTION</b> Consignments Welcome Apple Tree Auction Center 1616 W. Church, Newark, OH 43055 (740) 344-9449	<b>GREEN ACRES FARM</b> Antiques, Crystal Glass & Collectibles 2678 Hazelton-Etna Rd., SW (S.R. 310-N) Pataskala, OH 43062 Sat. or Sun. PM or call (740) 927-1882	<b>MICHAEL KRUMME</b> Heisey and other elegant glassware PO Box 48225 <a href="http://www.glassshow.com">http://www.glassshow.com</a> Los Angeles, CA 90048 I search—send your want list (213) 874-GLASS (-4527) email: mkrumme@pacbell.net
<b>D &amp; B ANTIQUES—ATLANTA</b> Bob Bartholomew Members Dixieland Heisey Club PO Box 33283, Decatur, GA 30033 Shows (404) 634-2799 Mail Order	<b>H &amp; R DIAMOND H</b> Helen & Bob Rarey 1450 White Ash Dr. Columbus, OH 43204 (614) 279-0390 after 5:30	<b>JEAN &amp; DON PARRETT</b> Beautiful Heisey Layaways Accepted 4995 Maple Dale Rd. Jackson, Michigan 49201 (517) 784-7319—Recorder
<b>ANTIQUES - THE SHULTZES</b> 206-208 East Main St. Newmanstown, PA 17073 15 Miles West of Reading, PA (610) 589-2819	<b>"HAPPINESS IS" - THE STULTZS</b> 3106 Warren Court, Glen Allen, VA 23060 Shows and Mail Order (804) 672-8102	<b>PATTON HOUSE ANTIQUES</b> Specializing in Glass*Heisey*Cambridge*Fostoria*Duncan* Factory Antique Mall, Verona, VA off I-81 Exit 227 The Antique Gallery, 3140 W. Cary St., Richmond, VA Antiquers Mall, Booth 81, Rt. 29 N., Charlottesville, VA The Daniels, Box 547, Louisa, VA 23093 (540) 967-1181
<b>C&amp;J ANTIQUES</b> Cole & Jean Miesner Box 45, 72 Whig St. Newark Valley, NY 13811 (607) 642-9905	<b>GERI PINION</b> PO Box 110965 Campbell, CA 95011 (408) 370-1328 email: ibuyglass@aol.com	<b>SCHWAN'S ANTIQUES</b> SHOWS & MAILORDER 77 Lagos del Norte Ft. Pierce, FL 34951 (561) 461-5940
<b>DOXTOIS</b> Eva & Joe Hirsh Heisey & Pattern Glass 6 James St., Norwalk, CT 06850 (203) 847-3315	<b>HOOKE ON HEISEY</b> Jay C. Martin 97 Heritage Hill Rd., New Canaan, CT 06840 (203) 966-9359 24 hr. answering machine Mail Orders & Shows	<b>R &amp; L ANTIQUES-SAN FRANCISCO</b> Members of the Golden Gate Heisey Club 3690 Bodega Ave., Petaluma, CA 94952 Petaluma (707) 762-2494 San Francisco (415) 621-6693
<b>CHARLES &amp; MILDRED FISHER</b> Heisey animals and Heisey By Imperial animals 991 Idlewilde, Newark, OH 43055 (614) 522-5398	<b>MOUNDBUILDERS SECOND GENERATION</b> Shows, mail orders or appointment • Fifteen miles north of St. Augustine in Ponte Vedra Beach, FL. PO Box 1931, Ponta Vedra Beach, FL 32082 (800) 366-4347 (904) 280-0450	<b>THE SPARACIO'S</b> Carl & Helen Shows and Mail Order 28 Refy Ave., Ramsey, NJ 07446 (201) 327-2495 email: poppicarl@msn.com
<b>CRYSTAL LADY</b> Joann Hagerty Specializing in elegant depression glassware 1817 Vinton St., Omaha, NE 68108 Shop (402) 341-0643 or Home (402) 391-6730	<b>GALAXY ANTIQUE MALL—JIM PAPPAS</b> galaxy-mall.com Email: jlp@galaxy-mall.com Glass and Pottery—Heisey & Blue Ridge a Specialty Phone: (609) 897-0345 Fax: (609) 936-0091 26 Kinglet Dr. N, Cranbury, NJ 08512	<b>MY DAUGHTER'S INHERITANCE</b> Heisey - Crystal - Porcelain Antique Village - 3750 Howard Ave. Kensington, MD 20895 (301) 933-4618 Maggi Smith
<b>FINDER'S ANTIQUE HOUSE</b> 3769 Hwy. 29 North Danville, VA 24540 Open Thursday—Saturday (804) 836-6782 Area's largest selection of Heisey and other Elegant Glassware.	<b>J. &amp; R. COLLECTIBLES</b> Shows, SASE, Mail Order list The Lukasko's PO Box 1030, Newark, OH 43058-1030 (740) 344-9719	<b>APPLE VALLEY COLLECTIBLES</b> Richard Garnett & Anne Borchert PO Box 552, Amenia, NY 12501 (914) 373-8791 Shows & Mail Order *Yesteryears Antique's—Monroe, CT (203) 459-9548*
<b>FRAN'S FANCY FINDS</b> Fran & Jack Grenzbach 10534 Valencia Rd., Seminole, FL 33772-7511 (813) 391-5184 SHOWS MAIL ORDERS	<b>MOSTLY HEISEY</b> Rhoda Curley 16 Clayton Pl., Albany, NY 12209 Shop and Mail Order (800) 972-2775	<b>THE WOODEN SHOE</b> 222 W. Washington St., Charles Town, WV 25414 Fri-Mon 11-5 (304) 725-1673 Email: wdnshuct@aol.com Glass—Pottery—Kerosene Lamps
<b>FOREVER HEISEY</b> Jan & Norm Thran Mail Order, Shows, Appraisal Service 1663 Londondale Pkwy., Newark, OH 43055 (740) 344-5955	<b>R &amp; S ANTIQUES AND GLASSWARE</b> Heisey—Specializing in Complete Heisey Tableservice Call or write for patterns and colors 2560 S. Maguire Rd. Ocoee, FL 34761 (407) 656-5700 or (407) 298-5980 PM	<b>WILLEY'S ANTIQUES &amp; MUSEUM</b> Specializing in Heisey 11110 Cannon Rd., Frazeeburg, OH 43822 16 miles east of Newark, OH (614) 828-2557
<b>WARREN &amp; MARY WELSH</b> Heisey & other elegant glassware 3635 Saddle Rock Rd., Colorado Springs, CO 80918 (719) 531-5866 Mail Order Shows	<b>GLORIOUS TREASURES ANTIQUE SHOPPE</b> Heisey Glass and other Fine Treasures 518 Main Street, Edmonds, WA 98020 10:00 to 6:00 Mon. thru Sat., Sun. Special events (425) 775-5753	<b>A TOUCH OF GLASS</b> Heisey—Depression—Elegant The Antique Station Case 03R 194 Thomas Johnson Dr., Frederick, MD 21709 David & Lisa Helm (410) 239-4234
<b>GLASS 'N' GLASS</b> Virginia & Odell Johnson 6909 10th Ave. W. Bradenton, FL 34209 (941) 792-0604	<b>G.W. ANTIQUES</b> <a href="http://www.sonic.net/~gwant">http://www.sonic.net/~gwant</a> Robert Gindhart (707) 575-8706 Gary Wimmershoff Santa Rosa, CA Heisey, Wedgwood and other fine antiques	<b>HEISEY, etc.</b> Mike & Barb Rosenberger Shows-Mail order (219) 864-1704 5115 W. 78th Ln., Schererville, IN 46375 Visit our web site: <a href="http://www.jorsm.com/elegantglass">www.jorsm.com/elegantglass</a>



## When Renewing Your Membership...

Help us to reach our new goal of \$2,000,000 by the year 2002. When you renew your membership at one of the levels below, any amount beyond the regular Associate dues—\$22.00 plus \$5.00 for each additional household member—goes into the Endowment Fund.

---

### Museum Volunteers for June & July

Connie Makris  
Dick Marsh  
Phyllis McClain  
Mary McWilliams

---

<b>Individual Contributing</b> , <i>one person in household</i>	<b>\$30</b>
<b>Joint Contributing</b> , <i>two people in one household</i>	<b>\$40</b>
<b>Family Contributing</b> , <i>parents and children under 18</i>	<b>\$50</b>
<b>Patron</b>	<b>\$100</b>
<b>Sponsor</b>	<b>\$250</b>
<b>Benefactor</b>	<b>\$500</b>

Contact HCA Administrative Office at (740) 345-2932 for more information. The Endowment Committee wishes to thank those who have become Endowment Members and all of the individuals and study clubs that have so generously supported the HCA Endowment Fund. Your support will make the museum self-sustaining in the years to come. Thank you all! ♦



### Visit The National Heisey Glass Museum

Come at your leisure to enjoy more than 4,800 pieces of glassware produced by A.H. Heisey and Company from 1896-1957. Hundreds of patterns are featured in all production colors. Rare and experimental items are included as well.

Facilities are air-conditioned and handicapped accessible. Hours are 10:00 a.m. to 4:00 p.m. Tuesday through Saturday, 1:00 to 4:00 p.m. Sunday. Members are admitted free, regular admission is \$2. Office hours are 8:00 a.m. to 4:30 p.m. weekdays.

**Membership Renewal Notice:** Check the date above your name and address on the mailing label. This is your expiration date. If it reads 9-10-98 make sure your dues are paid soon in order to receive next month's issue of Heisey News. Dues are \$22.00 per year, plus \$5.00 for each additional household member.

POSTMASTER SEND FORM 3579 TO:

HCA  
169 W. Church St.  
Newark, OH 43055



**PERIODICAL POSTAGE PAID**