

# HEISEY NEWS

The Official Publication of Heisey Collectors of America, Inc.

Volume XXVII No. 2

February 1998

ISSN 0731-8014



© Heisey Collectors of America, Inc.

All rights reserved 1998

## ***Catch Up On Crystolite This Month!***

*This table display, created by Miss Mary Doyle, was exhibited at Marshall Field & Co. See the Crystolite War Time Salesman on pages 18-20 for more information.*

## HEISEY NEWS

Heisey Collectors of America, Inc.  
169 West Church Street  
Newark, Ohio 43055  
Phone (740) 345-2932 Fax (740) 345-9638  
E-mail: heisey@infinet.com  
WEB SITE: www.ahheisey.com  
All Rights Reserved 1998  
ISSN 0731-8014

### Editor

Molly Kaspar

### Administrator

Mary Ourant

### HCA President

Tom Bischoff, (419) 533-7431

### HCA Vice President

Bob Rarey, (614) 279-0390

### HCA Secretary

Ginny Marsh, (740) 366-5608

### HCA Treasurer

Bob McElheney, (419) 537-6890

HEISEY NEWS is published and printed monthly (twice in March), by Heisey Collectors of America, Inc. Periodicals postage paid at Newark. Subscription is limited to HCA members. First class mailing is available for an extra \$13.00, due with payment of membership. If you are having difficulty receiving your newsletter, please contact the HCA Administrative office Monday through Friday 8:00 a.m. to 4:30 p.m.

The opinions expressed in articles in HEISEY NEWS are those of the authors and not necessarily those of the organization. The Editorial Staff reserves the right to edit, with or without the consent of the author, or to refuse any material submitted for publication.

### Back Issues

The following volumes are available as complete sets: V, VII, VIII, IX, X, XI, XII, XIII, XIV, XV, XVI, XVII, XVIII, XX, XXI, XXIII, XXIV, XXV, XXVI for \$15.00 each volume (12 issues, plus auction list if available).

### Advertising

Send all ads to: HCA Advertising, 169 W. Church St., Newark, OH 43055 or fax ads to (740) 345-9638, include MasterCard or Visa information. Ads are to be typed or printed on white paper with dark ink. Camera ready ads accepted, but must follow line specifications. Ads containing reproductions will not knowingly be accepted unless clearly stated (e.g. Heisey by Imperial, etc.) HEISEY NEWS accepts no further liability. See Advertising section for rates and deadlines.

### Museum

Heisey Collectors of America, Inc., a non profit corporation (tax exempt status), owns and operates The National Heisey Glass Museum in Veteran's Park, 6th and Church Streets, Newark, Ohio. Open Tuesday-Saturday 10-4, Sunday 1-4, closed holidays. Other hours by appointment. Members admitted free.

### Identification

HCA will attempt to identify unknown glass items. Please enclose a photograph with your drawings or descriptions. Other arrangements should be made in advance with the museum staff.

### Membership

To join Heisey Collectors of America or to renew your membership, contact HCA Administrative office Monday through Friday 8:00 a.m. to 4:30 p.m. Associate dues are \$22.00 plus \$5.00 for each additional household member. Voting members pay an additional one-time fee of \$25.00. Please consider supporting the Endowment Fund by joining at one of the levels listed on the back page.

### Museum Shop

There is always someone available in the shop to answer questions or take your order. When ordering by phone, please have a credit card ready. When ordering by mail, please be sure to include appropriate charges such as shipping and sales tax.

### Shipping and Receiving

Delivery is made much easier when we have a complete street address, not a PO Box. We prefer to use UPS. If you have not received a package, please call the administrative office to confirm it was sent. We will assist you in tracing it. If your package arrives damaged, please contact your local UPS representative. We insure everything.

### Donations and Loans to the Museum

If you have something you would like to share with the museum or have questions regarding items on loan, contact the assistant curator. HCA reserves the right to accept or refuse items based on current holdings.

## Calendar

All-Heisey Glass Show	March 21-22
<i>Sponsored by the NCHC, Silver Spring, MD</i>	
1998 HCA Benefit Auction	April 3-4
Bay State Club Glass Show & Sale	April 25-26
1998 HCA Convention & Glass Sale	June 16-20

## Features

<b>Treasurers Quarterly Report &amp; Budget and Endowment Fund Update</b>	4
<b>Convention 1998—Something New</b>	
<i>Dick Smith</i>	5
<b>A Nappy, A Stem and A New Addict</b>	
<i>Carl Sparacio</i>	7-8
<b>Tiger Paperweight Order Form</b>	9
<b>HCA Benefit Auction Update</b>	
<i>Bob Rarey</i>	10
<b>Opera House Auction Action</b>	
<i>Bill Heron</i>	11-13
<b>Studio News—Paperweight Days</b>	
<i>Molly Kaspar</i>	13
<b>Recent Donations—July to December 1997</b>	14
<b>Endowment Membership Report</b>	15-17
<b>Make Your Reservations</b>	17
<b>Crystolite and the War Time Salesman</b>	
<i>Molly Kaspar</i>	18-20

## Departments

<b>President's Discourse, Tom Bischoff</b>	3
<b>Museum Happenings, Molly Kaspar</b>	5
<b>From the Archives, Don Valdes</b>	8-9
<b>Club Notes</b>	21-22
<b>HCA News &amp; Notes</b>	22
<b>Advertising</b>	22-27

## THE PRESIDENT'S DISCOURSE

TOM BISCHOFF

The committees in charge of such things have come up with an interesting Benefit Auction weekend. The board meeting will be at 10:00 am at the National Heisey Glass Museum followed by a preview of the auction merchandise at 1:00 pm, all on Friday, April 3, 1998. The auction will start at 3:00 pm at Apple Tree Auction Center—the facility has



once again been generously donated to HCA by Sam Schnaidt. He may even participate in the auction! The quarterly meeting of HCA will be at Apple Tree on Saturday, April 4, 1998 commencing at 9:30 am. Saturday preview will start at 8:30 am and the Saturday portion of the auction will start at 10:00 am.

*Making a few final selections at the Benefit Auction.*

Staff advised they are working on finding new items for the Museum Shop; some glass and some Heisey related. Shipping and

handling prices have been increased due to the added expenses of UPS and other sources of shipping. The new pricing schedule is as follows: first glass item shipped (special sales not included), \$6.00, each item thereafter \$2.00. Some of the larger books have increased to \$4.00 or \$5.00, while the others remain the same.

During convention week there will be a mini-auction held to benefit HCA's endowment fund, selling some of the glassware from various donations to the museum. It will be held in the multi-purpose room of the museum on Saturday, June 20, tentatively at 7:00 pm. Watch for further details.

Please do not forget the 26th Annual All-Heisey Glass Show sponsored by The National Capital Heisey Study Club being held March 21-22 in Silver Spring, Maryland. This club is a strong supporter of HCA, using the profits from the show for our benefit. ♦





**1997 Quarterly Report 10/31/97-12/31/97****Income**

IIT Education	\$240.00
Membership Fees	\$13,894.20
Newsletter Advertising	\$2,952.90
Money Donations	\$10.00
Endowment Donations	\$9,718.05
Special Money Donations	\$323.68
IIT Gift Shop Income	\$1,054.88
Non-Taxable Sales	\$4,106.91
Taxable Sales	\$11,265.81
Shipping and Handling	\$513.38
Rental Fees	\$165.00
Museum Admission Fees	\$1,330.00
Royalties	\$998.75
Interest Inc. Reg. Checking	\$124.55
Interest Inc. Auction Account	\$3.65
Christmas Dinner	\$843.50
IIT Studio Rent	\$480.00
<b>TOTAL</b>	<b>\$48,025.26</b>

**Expenses**

Accounting Expenses	\$259.92
Off Supp/Post/Comp.Expen.	\$1,396.01
Repairs/Lawn Maintenance	\$2,616.29
IIT Utilities	\$1,060.69
IIT Glass Makers	\$927.50
IIT Expense General	\$1,128.14
Miscellaneous Expenses	\$129.21
Utilities	\$3,411.87
Museum Expense	\$284.26
Dues & Subscription/Curator	\$250.00
Insurance Expense	\$4,066.00
Newsletter/Print & Post	\$8,244.75
Cost of Sales	\$1,662.72
Cost of Merchandise Sold	\$5,051.99
Advertising Expense	\$1,133.75
Salaries	\$16,474.42
Taxes-Payroll and Other	\$1,260.29
Warehouse Expense	\$1,017.48
Bank Charges	\$287.00
Acquisition Expense	\$280.00
Board Meetings/Seminars	\$78.80
Auction Expense	\$500.00
Convention Expense	\$12.56
Convention Show Expense	\$200.00
Christmas Dinner	\$934.60
Employee Relations	\$1,442.00
Employee Insurance	\$568.58
<b>TOTAL</b>	<b>\$54,678.83</b>

**1998 HCA Operating Budget****Income**

Contributions (not Endowment)	\$20,000.00
Members Dues	\$55,000.00
Sales Less Costs	\$100,000.00
Special Projects	\$25,000.00
Convention	\$8,000.00
Auction	\$20,000.00
Dinners	\$450.00
Royalties	\$800.00
Investment Income	\$2,000.00
News Advertising	\$9,000.00
Admission Fees	\$6,500.00
IIT Income	\$6,500.00
<b>TOTAL</b>	<b>\$253,250.00</b>

**Expense**

Salaries	\$100,000.00
Employment Taxes	\$15,425.00
Employee Benefits	\$10,000.00
Occupancy	\$37,000.00
Printing and Publications	\$38,500.00
Office and Related	\$12,000.00
Advertising	\$7,600.00
Warehouse	\$1,300.00
Bank Charges	\$3,100.00
Meetings	\$3,300.00
Professional Services	\$7,000.00
Dues	\$825.00
IIT Expenses	\$13,000.00
Misc.	\$4,200.00
<b>TOTAL</b>	<b>\$253,250.00</b>

**Endowment Program Update 12/4/97**

Bradbury Fund	10,817.90 Shares
Bob Evans Farms, Inc.	\$235,613.86
Klawans Fund	19.6337 Shares
USF&G Stock	\$418.20
Schoenfeldt Fund	500 Shares
Deluxe Corp.	\$17,955.00
Rarey Fund	101.5465 Shares
Deere and Company	\$5,940.47
Licking Co. Endowment Fund	
Park National Bank	\$557,512.44
<b>TOTAL</b>	<b>\$817,439.97</b>

# MUSEUM HAPPENINGS

MOLLY KASPAR

Winter finally hit Newark, turning our unseasonable fifty degree rainy weather into ice and wind-chill factors. It may be freezing outside, but the Heisey Museum is the perfect place to warm up. We're going to make a few changes in the collection and rotate some of the glassware. The next time you're in I'm certain you will see something new. Of course, even after two and a half years of peeking in our cases I still find new things. In addition to recent donations and loans, items that were hiding in storage will also be on display.

This month I've run several goodies in the *News* for you. Included are the annual budget and semi-annual glass and endowment donation lists. The endowment membership list also appears; thank you to all HCA members who support the fund. Refresh your memory with a short history of the Benefit Auction, and, returning by popular demand is the wartime salesman featuring Crystolite. Enjoy!♦

---

## Museum Volunteers for December & January

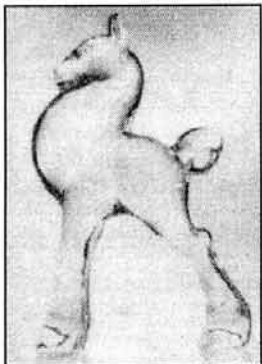
Beth & Jay Barker  
Mary Holmquist  
Frances Law  
Connie Makris  
Dick Marsh  
Bob & Phyllis McClain  
Mary McWilliams  
Dick & Marilyn Norris  
Mary Ourant  
Bob & Helen Rarey  
Bob Wilson

---

## CONVENTION 1998—SOMETHING NEW

DICK SMITH, CO-CHAIRMAN

Something we are going to try this year to encourage early registration is to have a door prize. With each pre-paid registration received by the deadline (to be set), you will receive a registration number on your badge. This will be your lucky number. You need not be present to win. If you are a family of four and each of you register, each person will have their own number. We will announce at a later date as to which convention event we will draw the winning number.



The prize: One beautiful Forest Green Filly marked "sample". This is one of two samples made by Dalzell Viking. Plan on registering early. This really helps HCA. Some members might want to register just to have a chance at this beautiful animal.

We will have more on this in future newsletters, along with the registration forms. Start planning now—see you in June. ♦

### Convention Schedule (look for a detailed schedule in future *News* issues!)

<b>Tuesday, June 16</b>	Board Meeting	<b>Friday, June 19</b>	Glass Class (8:00 am)
<b>Wednesday, June 17</b>	Glass Class (tentative-8:00 am)		Annual Meeting (morning)
	Show & Display Preview		Show and Display (Noon-5 pm)
<b>Thursday, June 18</b>	Glass Class (8:00 am)		Seminar (2:00-3:00 pm)
	Identification Session (morning)		Banquet (evening)
	Show & Display (Noon-5 pm)	<b>Saturday, June 20</b>	Flea Market (dawn)
	Seminar (2:00-3:00 pm)		Glass Class (tentative-8:00 am)
	Swap & Silent Auction (evening)		Tentative Mini-Auction (7:00 pm)

# ***A NAPPY, A STEM & A NEW ADDICT***

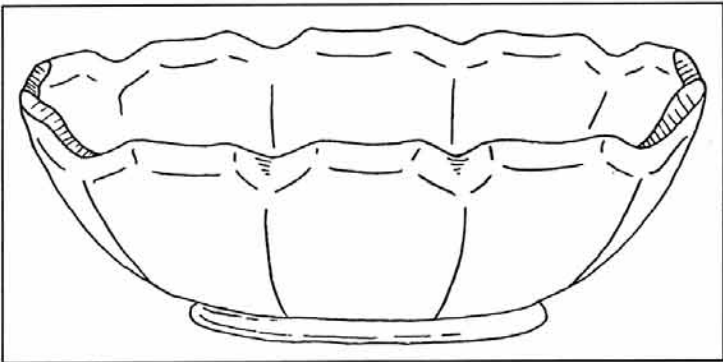
**CARL SPARACIO**

GOTCHA!

Okay, you guys passed the test. I knew what the nappy I showed last month was—I just wanted to see if anybody was paying attention (if you believe that, I have a Tangerine Gazelle I'll sell you for a buck and a half).

Last month, the picture I billed as a previously "unseen" Heisey nappy should have noted that, "I have never seen it but you can bet everyone else in this universe has." Calls and faxes and letters and e-mails came from the four corners of the globe (my globe has sharp angles) advising me that my mystery nappy can be found in Vogel Book II on page 156—and sure enough, there it was, pattern no. 421! In my defense I will note that that's not a very big picture of it on page 156.

It amazes me that so many people have photographic memories and can remember seeing that little nappy in Vogel's (any other explanation would make me whimper). My wife was very solicitous because I felt embarrassed at having jeopardized my "expert" credentials—she said I have a photographic memory, too, but added that mine just hasn't been developed yet.



It was also noted by the notifiers that no. 421 is listed in Mary Louise Burns' book on page 43 where it is given a very descriptive name: "Prism Block with Angular Scallop" ("Agnes" would have been prettier).

I heard from folks from Maryland, New Jersey, Ohio, Tennessee and Texas all of whom were anxious to say "Nyah, Nayh, Na Nyah, Nyah!" Of course this didn't help my marshmallow ego. Rather than list everyone who cared enough to get in touch, I'll just name the one who reached me first.

And the winner is—Loleta Hammontree of Tennessee! Loleta called before Christmas and all other responses were received soon after. I find these early calls very interesting because, as I write this, it's January 10th and I have yet to receive my copy of the January *Heisey News* (I suspect favoritism in the HCA mailroom).

For the required educational portion of this section I'm going to say a few words about pattern no. 419 Sussex, mostly because there are very few words that can be said about Sussex.

Sussex is unique in that it does not look like what we've come to expect in a Heisey pressed stem. Furthermore, it is the only pressed stem I can think of which was

produced in a crystal and color combination (if I get e-mail disputing this I'll never admit I made that statement). Although it had a production span of almost 20 years (ending in 1944), it is difficult to find. It was made in both 8 and 10 oz. goblets and the line also included a champagne, sherbet and a cocktail. A cordial would have been cute

but the Depression was not a cute time in this country. That, or the designer lacked vision. Either way, none were made.



Its color story makes this stem line special. It was produced all in crystal as well as with a crystal foot and stem with bowls in Moongleam, Flamingo, Sahara and Cobalt. I know of none completely colored. Moongleam is the color seen most often and Cobalt is the most desirable though I'd snap my garters for a goblet with a Sahara bowl. A peek in Bradley, Ryan and Ryan's *Heisey Stemware* will show that the crystal bowl sometimes wore a cutting.

I have seen the goblet in a green and crystal combination but the ridge around the middle of the bowl was applied rather than pressed as an integral part of the piece. I suspect Steuben as the perp (as they say on TV cop shows) but I haven't enough evidence to take the case to court—Judge Judy would throw it out.

As I said before, no. 419 Sussex is unique. That reason alone should send Heisey people scurrying for it. Good luck, Sussex is a tough find but worth the effort.

I have taken steps to upgrade my Heisey education. Just a few hours ago my computer went on line for the first time and the first place I headed for was the National Heisey Glass Museum's web page. What a neat place to visit ([www.ahheisey.com](http://www.ahheisey.com))—it beats computer solitaire any day. I think I'm addicted. Anyone who feels a need can reach me at [poppicarl@msn.com](mailto:poppicarl@msn.com). The strange e-mail address was designed to be easy for grandkids to remember.

It may seem early but I'm going to take this opportunity to begin promoting the HCA September Quarterly Meeting. This year's September meeting, along with the annual Percy and Vivian Moore Memorial Dinner, will be held in Corning, New York. Why Corning? you may ask. Only because it is arguably the center of American glass, that's why. The Corning Glass Company with its manufacturing facilities and Steuben Art Glass Studio as well as it's magnificent glass museum housing one of the best libraries on glass anywhere, is a glass lover's dream. (I think I deserve a prize for using the word glass five times in one sentence—six if you count this one.)

You can bet Corning glass will be a big part of our September meeting on Saturday, the 19th. It's not too early to plan for it—save those vacation days. More details will be forthcoming. ♦

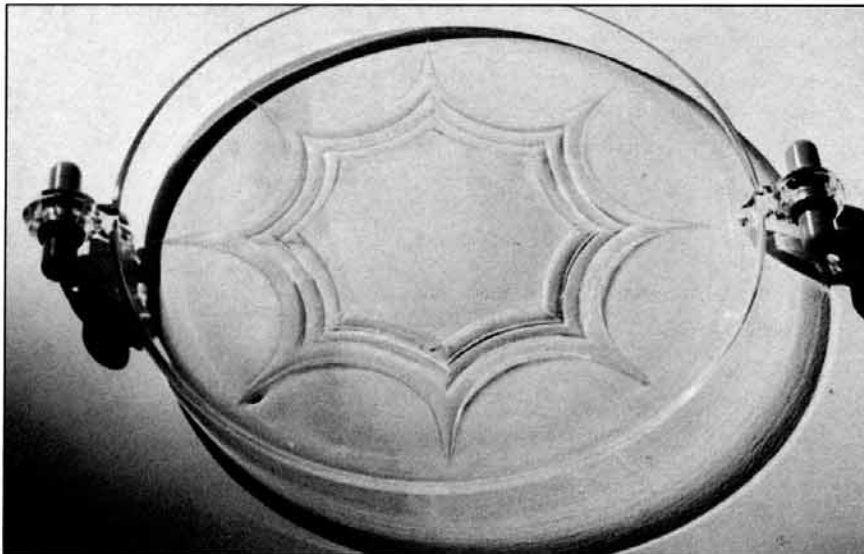
## **FROM THE ARCHIVES—WALTER VON NESSON AND HIS BUDDY, ART DECO**

DON VALDES

A few days ago I came across a box I long ago had labeled "Patterns and Decorations." While the label was partially accurate it didn't indicate that there were included many photographs of store displays. My most recent project has been to sort and catalog both types of photographs. Of course that gets tricky. A folder some previous sorter had labeled "Cristolite" contained photos of both Cristolite pieces, usually in clusters of 4 or 5, and store displays featuring Cristolite. Trying to figure out what to call each piece in a picture (remember, my knowledge of Heisey glass is still very limited) was ever so time consuming. Jay, where were you when I needed you?

*Stanhope two handled plate.*

Then I hit upon something I thought I might use for this month's discovery, a group of eight pictures of store displays (actually they are table and store displays in the Chicago Merchandise Mart) featuring the Stanhope pattern and five close up pictures of Stanhope



ware. I have a particular interest in Stanhope in that, way back when I was going through T.C. Heisey's correspondence, I came across letters referring to the plastic the correspondence was all about. Karen Kneisley helped me over that hurdle. (No pun intended.) So, armed with catalogs and price lists for 1936 and 1937, I went about describing the articles included in each photo. In the midst of these was one picture of a large two handled plate. The interesting part to me was that I could find no references to a large plastic handled plate in the catalogues. In *Heisey on Parade*, Sandra Stout

includes a Stanhope torte dish but without handles. I went next to the previous issues of the *Heisey News*. On the reverse of one of the photographs was the notation that the picture had been printed in the *Heisey News* back in May of '78. Sure enough, there was the picture as well as some six or so articles about Stanhope, but nothing about the torte plate with plastic handles. By this time I again found myself confronted with temptation. Shoving archiving aside I dipped my toe into the icy waters of research. Rather than my usual single topic columns I have decided to do a series on the development of Stanhope.

In early March of 1936 the New York sales rep for Heisey, E. G. Nock, reported to the home office that he had "just returned from Walter Von Nesson's studio and went over the different drawings, which he is sending you." It is in this letter that the use of "catalin material" for handles is first employed. I have attempted to find the source of the word "catalin" but with not much luck. Clipped to the letter, whether by someone



in the Newark office or by Nock, I do not know, is a page proof for an ad appearing in *Product Engineering*, January 1935. The ad was run by the Bakelite Corporation of New York. One of the two photographs featured in the add shows a "...modern Continental Coffee Service, designed by Walter Von Nesson (by curtesy Chase Brass & Copper Co." I assume, therefore, that "catalin" refers to bakelite. So much for the material of which the knobs were made.

Ed Nock went on to discuss ideas regarding the design and the knobs and pointed out that secrecy is of the greatest importance. "In fact I do not think that even the majority of the workmen should know about it, as they have so many friends in different factories that it would be out before we made a decision to use this material."

I can't resist concluding this episode one with a portion of T.C.'s response. Just three days after Nock's letter was typed Mr. Heisey replied. (The postal service was better then.) His concluding paragraph is typical of the Clarence Heisey I have come to enjoy.

Who knows, between now and tomorrow you might discover something like this stuff when you are shaving as through error you might put your gin in your shaving cup, of shellac in your cocktail. Who knows, you might be a great inventor. Anyway, here's hoping that the new line will be a knock-out.

There will be more on the Stanhope saga next month. ♦

## LIMITED EDITION PINK TIGER PAPERWEIGHT

HCA offers the Tiger Paperweight, third in a limited edition series of four, during the 30-day sale dates of **February 1 to March 2, 1998**. The 1998 edition will be produced in **Pink** by Dalzell Viking. This piece will look perfect sitting next to your Ice Blue and Yellow Mist Tiger Paperweights! **This sale is open to everyone.** The cost is \$50 each plus \$5 for shipping. Ohio residents must pay sales tax. ♦



**Mail to: Tiger, 169 W. Church St., Newark, OH 43055. Call (740) 345-2932.**

Name: \_\_\_\_\_

Address: \_\_\_\_\_

City/State/Zip: \_\_\_\_\_

Phone: \_\_\_\_\_ OH Tax ID#: \_\_\_\_\_

Payment: Check or MasterCard/VISA: \_\_\_\_\_ exp.: \_\_\_\_\_

Quantity: \_\_\_\_\_ x \$50.00 = \_\_\_\_\_

Tax (OH only) \_\_\_\_\_ x \$3.00 = \_\_\_\_\_

Shipping (EACH) \_\_\_\_\_ x \$5.00 = \_\_\_\_\_

**TOTAL** \_\_\_\_\_ = \_\_\_\_\_

**Please Circle**

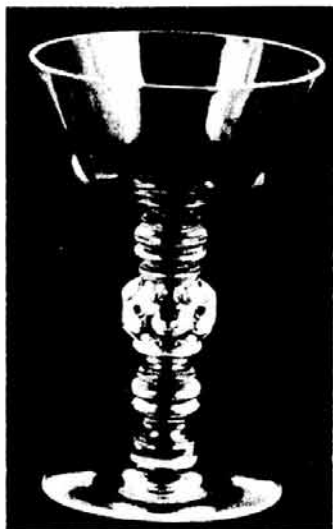
SHIP

PICKUP

# HCA BENEFIT AUCTION UPDATE

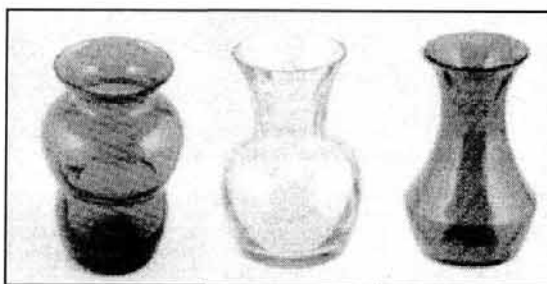
BOB RAREY, AUCTION COMMITTEE

The Auction Committee is pleased to report that the glass to be offered in the Benefit Auction this year is again outstanding. At this writing, the committee has examined and listed over 700 lots, with another 200 lots on hand to be catalogued. All production colors are represented as well as two pieces in Trial Blue. In addition, a good selection of patterns, pieces, animals, etchings and cuttings will be offered.



For the first time, a broad and varied collection of no. 150 Banded Flute is offered as well as a good selection of Alexandrite, Cobalt, Zircon and Limelight which includes a frosted Madonna. Several unusual small items will again be on

display at Apple Tree Auction Center, the site of the auction, about thirty days prior to the sale. These include favor vases, Goose stems, Bantam Rooster cocktails, a Spanish champagne in Amber, nut cups, beautiful cordials, toothpicks and other surprises.



Absentee bids will again be accepted and bid competitively. The details will appear in the next issue of the *Heisey News* and the auction catalog. New this year, you will be given the opportunity to bid on sample and feasibility items made for HCA in Heisey molds. One will be offered every 100 lots during the sale and will be included in the auction listing. ♦

**Remember the dates—Mark your calendars—April 3 & 4, 1998**

*Friday, April 3—Auction Preview 1:00, Auction Starts 3:00*

*Saturday, April 4—Auction Preview 8:30 am, Auction Starts 10:00*

*(Auction Catalogs available around March 1)*

# OPERA HOUSE AUCTION ACTION

BILL HERON

Some time during the early 70's Bob Ryan conceived the idea of an auction to raise money for HCA. Subsequently Bob was the chairperson for the first auction, held at the YWCA in Newark in March of 1974. Old timers recall that glass consigned to this auction was cataloged at the home of Russ and Louise Ream. No one knew whether or not the auction would be successful, but when the results were totaled, HCA had reaped about \$8,000, a big success by anyone's standards. The concept is still going



strong and in April of this year the twenty-fifth annual HCA Benefit Auction will take place.

Since 1983, the auction has been held at Sam Schnaidt's Apple Tree Auction Center. In fact the connection between the auction and Apple Tree is so strong that some people may have forgotten that the auction actually has had four venues. Having started at the YWCA, it moved to what then was called the

*Photograph from the 1974 Heisey Glass Auction.*

Sheraton Hotel (now The Place Off the Square) for 1976. Then, for three years, 1980-1982, the Newark Campus of OSU was the auction's site.

The other place that hosted the auction was the Opera House in Granville, 1977-1979. During those years Frank Frye and Sam Schnaidt leased the Opera House and conducted their business there. Generously, they made the Opera House available for the HCA event. I enjoyed going to the auction at the Opera House and perhaps you will enjoy reminiscing a bit about those days.

The Opera House had been built in 1849 as a Baptist church. It was originally located across the street at the southwest corner of Broadway and Main in Granville. In 1882 the structure was moved to the southeast corner of Broadway and Main so that the Baptists could put up the large gray stone structure you will find today on the Opera House's original site. At the time of the move a new ground floor was constructed and the old church was placed on top of it, creating a new/old building considerably grander than the original had been.

Inside the Opera House, patrons could choose from seating on the main floor or in the balcony. The stage was elevated and that is where the auctioneers presided. To the rear of the stage, Frank and Sam installed shelves for the display of items to be auctioned. They also had a sales area where they offered Heisey glass for sale.

The Opera House was a fun place for an auction. It had character, history and ambiance even though the heating system had only two possibilities, too hot or too cold. For some time the drama department of Denison University used the Opera House for student productions. Hal Holbrook, now quite well-known for his portrayal of Mark Twain, studied at Denison and had "trode the boards" at the Opera House at that time. I have been assured that the Opera House was not haunted, although inside it looked like the kind of place that might have been. (I've been told that anyone looking for a haunted building ought to check out the Buxton Inn on Broadway, east of the Opera House site.)

It is an HCA Benefit Auction tradition to have a little fun as the day wears on. One of my fondest memories of the Opera House goes back to a beautiful, warm St. Patrick's day. A Country Club cocktail pitcher went on the block, an item I wouldn't have been very interested in, except that this one was filled with cold, green beer. I was the successful bidder and shared the liquid with my sons Jon and Scott. I still have that pitcher—lots of sentimental value. After I got mine, green beer was served to all. Sam Schnaidt personally had colored it even though "Schnaidt" doesn't strike me as an Irish name.

Another bit of jollity took place at the auction at the Sheraton. An "extra" item was put on the block, a Lariat plate in experimental Black. That surely produced a lot of excitement and bidding. The spell was broken quickly when the piece slipped from the hands of its holder, fell to the floor and broke into several pieces. Sam allowed as how the lot now would bring more because he could sell it "by the piece". When the moaning stopped, the hoax was confessed. The plate wasn't really experimental Black, but an ordinary Lariat plate that had been doctored.

At the Opera House, as elsewhere, it was the custom for the glass to be brought to the successful bidder right after the word sold. This led to some interesting, and sad,

circumstances. Once in a while a glass runner fumbled his or her load and the agonizing sound of breaking glass could be heard. Carrying glass to bidders in the balcony was a particularly hazardous job. Also, if someone bought in quantity, a great hoard of glass would accumulate under the seat, between seats, in the aisle and maybe even in someone's lap. Some bidders looked as if they were inside a small fort made of cardboard boxes.

*Virginia Yeakley, Louise Ream and Frank Frye prepare for the auction at Opera House Antiques.*



Another great moment at the Opera House was the day that the Granville fire siren sounded. Sam Schnaidt was a volunteer and when he heard the call he leaped off the



platform and ran up the aisle. If you know anything about volunteer firemen you know that being among the first to arrive at the scene is considered very important. In fact when the Opera House was destroyed by fire in 1982, three years after Sam and Frank had moved their operations to another location, Sam claims he was the first one in. He looks as if he still could make a good race of it, but after 23 years service he retired.

Right from the first Benefit Auction, 1974, the auction has been HCA's single largest money raiser as well as being very popular with much of the membership. The original auction offered 267 lots of glass. By 1989, the lots totaled 833, and at the 1997 auction more than 1300 lots changed hands.



Number of lots isn't the only thing that has gone up. Some prices at the 1974 auction were: Medium Elephant \$70, Cobalt Tulip Vase \$175, Clydesdale \$120, Fandango sanitary syrup \$17.50 and a Plantation quarter pound butter dish also \$17.50. Can you match these today? No, but wouldn't you like to do so. All the more reason to bid early and bid often when the hammer goes down this year April 13 and 14 at Apple Tree. ♦

*A view of the Opera House Antiques Heisey auction.*

## **STUDIO NEWS—PAPERWEIGHT DAYS**

**MOLLY KASPAR**

HCA will offer paperweight making classes at our glass studio again this year, in conjunction with the 1998 Convention. Classes are tentatively scheduled for each day, Wednesday through Saturday, all at 8:00 am. Space is limited to 8 students for each class, so remember to register early!

Classes are held on a monthly basis as well, so if you're going to be in the area sometime other than June, please call ahead for the class schedule. The fee is \$40 per person, which includes instruction, materials, grinding and polishing costs.

All of the 1997 Convention participants really seemed to enjoy the experience. Take a break from the show and other festivities, and try your hand at glassmaking. You'll have a whole new appreciation for that beautiful Heisey piece you just purchased at the glass show and sale! ♦



*Instructor Cathy Tietz-Boring assists 1997 participant.*

## **RECENT DONATIONS JULY-DECEMBER 1997**

### **DONATIONS TO THE NATIONAL HEISEY GLASS MUSEUM COLLECTION**

#### **Ronald Holdbrook**

◆ #4192½ 9" cut vase with special cutting for a Heisey employee

#### **Evelyn Daniel**

◆ Look a like colonial candlestick

#### **Joe Lokay**

◆ Look a like Victorian nappy.

◆ Reference books for the library

#### **Annonymous**

◆ Colonial water bottle

◆ Look a like Ridgely oval covered box

◆ Look a like cream and nappy

◆ #341 Puritan ice tub

#### **Tom & Marian McCollough**

◆ #465 Recessed Panel nappy

#### **Stephen Fritchle**

◆ #1170 Pleat and Panel footed ice tea with flower cutting

◆ #1229 Octagon Flamingo handled candy

#### **Keith Belk**

◆ Octagon Hawthorne 2-handled muffin plate

#### **Mr. & Mrs. Charles Crump**

◆ Narrow Flute goblet, in honor of Mr. and Mrs. Richard W. Mann

### **LOANS**

#438 Ashtray; #5003 Crystolite footed compote; #1519 Waverly gardenia bowl with Orchid etch; #1509 Queen Ann sandwich platter with Orchid etch; #142 Cascade 3-lite candlestick with Orchid etch; #5025 Tyrolean ice tea with Orchid etch; Unusual shoe stand with metal foot and shoe holder; #112 Mercury 4" candlestick with Peacock etch; #1504 Regency 6" candy box and lid; #1540 Lariat goblet and sherbet with Moonglo cutting; Revere plate with Moonglo cutting; #6 Doric 4-light candelabra.

### **ACQUISITIONS**

◆ #1432 Cactus Cobalt 8" plate

### **MUSEUM CASH DONATIONS**

Dana & Sara Connolly \$200.00

### **ENDOWMENT DONATIONS**

Hoechst Celanese Foundation, \$100.00

Matching Gift Fund (*Phil & Sally Abrams*)

Jess & Linda Kinser \$20.00

(*In Memory of Frank Friel*)

Cigna Foundation, Matching Gifts \$100.00

Fund (*Phil & Sally Abrams*)

Central Illinois HCC \$238.00

Northwest HCC \$4,113.50

Fran and Walter Brock \$100.00

### **MUSEUM SHOP DONATIONS**

Virginia & Odell Johnson

Mr. & Mrs. Robert Harrison

Mike & Barbara Rosenberger

Edward & Elizabeth Hughes

Mrs. Florence Archer

Sarah Bennett

Pat Norman

Hugo Wenzel

Leo Bevon

### **Members Don't Forget!**

The Museum Shop can always use your unwanted Heisey items. Pieces valued under \$50 are generously accepted for resale. All donations profit the Museum's Operating Fund.

You would be surprised how many visitors want to take home a souvenir from the National Heisey Glass Museum bearing the genuine A.H. Heisey and Company trademark!

# 1997 ENDOWMENT MEMBERSHIP REPORT

## BENEFACTOR—\$500

Bruce & Marilou Logan  
Susan Moore

## SUPPORTING—\$250

Jean Drexler  
Elizabeth & Edward Hughes Jr.  
Charles & Marquetta Mathena

## PATRON—\$100

Joe Adelstein  
Janet & Mark Attix  
Thomas & Linda Bischoff  
Elio Bracco  
June Bramble  
Frances & Walter Brock  
Karen & James Clark  
Jerilyn & Bob Clayton  
Darlene & Gordon Cochran  
Ella & C.F. Crandell  
Fred Currey  
W.T. & Joyce Dawson  
J. Sidney & Mary Edwards  
Joyce Farnham  
Carolyn Felger  
Tom & Kathleen Files  
Mrs. Dwight Garrett  
Isabelle Gibbs  
June Godden  
Robert & Betty Hefflin  
David & Lisa Helm  
Edward & Vicki Hinshaw  
Odell & Virginia Johnson  
Margaret Jones  
Amy Jo & Charles Jones  
Dr. James & Frances Kennedy  
Walter Ludwig  
Katharine Manchester  
Gene & Joyce Lentz Moenning  
Chris Moore  
Peggy & Joeseeph Noll  
Mary Ourant  
John & Adele Pardee  
Betty Lee & Frederick Pease  
Ronald & Virginia Pratt  
William & Adelaide Prior  
Sara Pritchard  
Robert & Helen Rarey  
Margaret Reed  
Dr. William & Dorothy  
Roderick  
Lloyd & Marie Rohrer

Pamela & Kenneth Rose  
Frances Sanderson  
George & Eileen Schamel  
Marilyn Schoenfeldt  
Mary Frances & Philip Shannon  
Terry Smith  
Richard Turkiewicz  
Charles & Susan Vystcil  
Herbert & Betty Wanser  
Donald & Glenna Wehmeyer  
Mark West  
Jean & John Will Jr.

## FAMILY—\$50

Phil & Sally Abrams  
Duane & Mary Bailey  
Marion & Lucile Barker  
Kendal & Maxine Bartlett  
Leo and Anne Odell Bevon  
Lula & Sidney Brown  
Jasper & Jewell Castle  
Kay & Warren Chapman  
Marion Clark  
Donald, June & Joyce Clark  
Timothy & Connie Dall  
Edward, Barbara, Samantha &  
Jonathan Draley  
Jon Dunham  
Gerald Easterla  
Bruce & Elyse Flack  
Harry & Phyllis Freier  
Rebecca Gernhart  
Dr. Richard & Florence Gorlin  
Don & Besty Hanna  
George Heisey  
Robert & Kathryn Huber  
Richard Jenevein  
Frederic & Mary Jones  
Robert Jones  
Malcolm & Willa Kalman  
Karl, Elizabeth, Michael &  
Sharon Kolter  
Lorraine & Paul Krich  
Ned & Sibyl Lavengood  
James Lucas Jr.  
Maria & Richard Martell  
Christos & Chris Maskaleris  
Robert & Phyllis McLain  
Joyce & David Middleton  
Patricia & Charles Nesbit  
Mark, Cindy, Lauren & Roen  
Ourant  
Stephen & Susan Pescatore  
Agnes & Paul Pringle  
Roberta, Fred, Todd &

Holly Lance Pryor  
Michael, Toni, Melissa & Paul  
Schirmer  
John & Sandy Schneeman  
Joe & Penny Shreffler  
Phylis Sneed & John Bryant  
William & Charlotte Sutman  
Maezene & Jack Walker  
Cameron Wright  
D. Albert & Esther Young

## JOINT—\$40

David & Judy Ahart  
Suzanne & David Akers  
Jerry & Betty Ashcraft  
Norma & Robert Askeland  
Bette & Robert Asplund  
Nancy Werner Azarski  
George Bennett Jr. & Lamar  
Birckbichler  
Deborah & Rachel Berman  
Mary & Leon Bernard  
Marjorie & Robert Berry  
Carol & Robert Billington  
James & Shirley Bliss  
Billy & Marcia Booth  
Jane & David Brubaker  
Gerald & Mary Buchanan  
Mr. & Mrs. Tom Bumpus  
June & William Burke  
Joan & Alden Butler  
Jay Byrne & Ed Steckley  
David & Shirley Carlson  
Cathy Chapman  
Harry & Joyce Clemings  
Robert Colliver & George  
Dexter  
Clyde & Elaine Cook Jr.  
James & Polly Cree  
Ed & Connie Cumberworth  
Michael & Amanda Curran  
Stephanie Danaher & J.B.  
Gibson  
Harriet & Russell Decatur  
Chauncey & Helen Delaney  
Rebecca & Randall Denny  
John & Marjorie Deppong  
James & Karen Diehl  
Wilma & Kenneth Doane  
Mr. & Mrs. Frederick Duhm  
Shirley & Everett Dunbar  
Donald Eager & Linda Kyle  
Charles & Opal Earhart  
Mary Jo Earnshaw

Anita & J.D. Elliott  
John & Gerry Eshelman Jr.  
Nick & Maggie Foster  
Frank & Phyllis Frye  
Rita Fuerst & William Heim  
Loren & Mary Jane Giblin  
Marjorie & Jerry Gillette  
Dewaine Joseph & Bonnie Glyda  
Alton & Donna Hale  
Loleta & Harold Hammontree  
Marjorie & Francis Harper  
Robert & Patricia Harrison  
Bill & Libby Hedinger  
Marty & Bonnie Heisey  
Shoko & Seigo Hidaka  
Tim & Betty Hilderbrand  
Eva & Joseph Hirsh  
Janet & Burgess Holt  
David & Becky Hopkins  
Roger & Erma Hulslander  
Elaine & Frank Husted  
Barbara Huston & Laura Means  
Joyce Ingram  
Charlie & Clarice Jestice  
Mr. & Mrs. Robert Johnson  
Gordon & Laurel Johnson  
James & Butch Jones  
Lillian & Thomas Kern  
Patricia & Franklin Keys  
Mary & Robert Kreimer  
Maria & John Laughlin  
Barbara & Charles LeBlond  
Charles & Deena Levy  
Rosemarie & Philippa Lewis  
Thomas & Dorothy Marek  
R.E. & Bonnie Markley  
Dick & Virginia Marsh  
Jay Martin & Richard Nicholson  
Sherry & Frank McClain  
Hugh & Nancy McCreery  
Linda Sue & Joseph McDermott  
James & Joanne McMillin  
Jean & Cole Miesner  
Howard & Virginia Mitchell  
Claude & Marsha Moore  
Paula Fabbri & Jeffery Morrow  
Violet & John Mueller  
Richard & Marjorie Nase  
Lucinda & James Nemeth  
Leland & Bette Nichols  
George & Linda Norris  
Amy & Jeff North  
Roberta & George Parrott  
Carolyn & Arthur Patton  
Janet & Steven Pepe  
Gail & William Pierce

Shirley & Fred Reesbeck  
 Marie & William Rehbeck  
 Kenneth & Judith Rhoads  
 Mike & Mary Riley  
 Lester & Virginia Riley  
 Martha & James Rivers  
 Mr. & Mrs. Harold Roberts Jr.  
 William & Margaret Rossel  
 Betty & Howard Roxborough  
 W. David & Vessie Saylor  
 Carolyn & Benjamin Schmick  
 Sam & Heidi Schnaidt  
 Frank & Michele Scott Jr.  
 Mrs. Chevy & Manny  
 Shimanowitz  
 Gerard & Roselyn Shondell  
 James & Janice Short  
 Yvonne & Blaine Sickles  
 Cynthia & Daniel Smith  
 Richard & Marilyn Smith  
 Blanche & Robert Smith  
 Carl & Helen Sparacio  
 Edward & Judy Staats  
 Bill & Laura Stafford  
 Frealyn & Pearl Stark Jr.  
 Pauline & Yovan Stiko  
 Joan & Franklin Stone  
 Jerry Stougard & Tara  
 MacArthur  
 Robert & Diana Sweigard  
 Sara & Peter Tascione  
 Dr. Charles & Sandy Tatum  
 Kathy & Frank Taylor  
 Ronald & Vicki Travis Sr.  
 Rick Vaughan  
 Dan & Barbara Weakley  
 Thomas & Debbie Wiggins  
 Janet & Lynn Wilcox  
 Mary Beth Will & Peggy  
 Leonard  
 Robert & Betty Williams  
 Lawrence & Rebecca Williams  
 Wallace & Sharon Wilson  
 Diane & Bill Worthington  
 Richard & Judy Young  
 Wilbur & Martha Zeiher

### INDIVIDUAL—\$30

Catherine K. Adkins  
 David Akridge  
 Beverly Ales  
 Joseph Ammon  
 Warren C. Anderson  
 Marlene N. Anderson  
 Karen Anderson  
 Mary Ellen Andrews  
 Barbara Anstine  
 Yvonne P. Arbuckle

Chris Argys  
 Lisa Armour  
 Albert H. Bacon Jr.  
 Karla B. Baer  
 Lynn Baillon  
 Harvey W. Bair  
 Charles N. Baird  
 Carolyn R. Bardonner  
 Linda L. Barnes  
 Nancy Brunner Barta  
 James Bartell  
 Barabara Rauck Bartlett  
 Sarah Bennett  
 David Bergquist  
 Julie Binkley  
 Marilyn Blackstone  
 Ronald A. Blake  
 James Blan  
 Pollie V. Bland  
 Douglas R. Bolin  
 Lenora Boor  
 Martha F. Booth  
 Helen Hudson Boyt  
 Sue Bratton  
 Barbara M. Bregel  
 Pamela Bridge  
 Leslie Phillip Brodacki  
 Mary G. Brodeur  
 Douglas A. Brown  
 Wilmer U. Bryan  
 Mary Buchholz  
 Frank L. Burge Jr.  
 Bette Burrell  
 Lisa K. Burud  
 Dale Caldwell  
 Margaret C. Camicia  
 Stanley O. Carey  
 Billie Carr  
 George S. Carter  
 Mrs. Laurel G. Caruthers  
 Janet Caswell  
 Sheila M. Chesney  
 J.R. Chilton  
 Constance E. Christie  
 Ruth A. Cline  
 Elaine W. Cobel  
 Nancy M. Codner  
 Marilyn M. Coleman  
 Frederica Cornett  
 Norma S. Cortese  
 Mary Ann Crescenzo  
 Janet Cronin  
 Kenneth B. Dalzell  
 Evelyn P. Daniel  
 Ava L. Davis  
 Barbara Davis  
 Phyllis Deal  
 K.K. Deibel  
 Barbara A. DeNiro  
 Marcia A. Dion

Nancy Dix  
 Mary Lou Dixon  
 Patricia T. Dixon  
 Dallas A. Dollase  
 Hilda Douthitt  
 Jo De Doyle  
 Doria Ann Dumas  
 Marcia Duncan  
 Suzanne Duryee  
 J.E. Eaves Jr.  
 Betty Edwards  
 Mary A. Evans  
 Bari A. Fauss  
 Patricia Feaster  
 William Fisher  
 William H. Freeman Jr.  
 Robert P. Frick  
 J. Michael Fried  
 M. Kathleen Friedlander  
 Jack E. Frost  
 Jeannie Fullen  
 Mary I. Funkhouser  
 Kenneth Gall  
 Bob Gersch  
 Kathryn Glick  
 Phyllis S. Goldstein  
 Richard G. Goodwin  
 Norma J. Gorsuch  
 M. Ann Gosnell  
 Arthur M. Gray  
 Doug Gray  
 Richard H. Green  
 Judy Green  
 John E. Grenchik  
 Jack Grenzebach  
 Judith Grivas  
 Dan Guckien  
 Helen Gusk  
 Susan Guss  
 Margaret B. Hall  
 Judith Hardardt  
 Doris Harraman  
 Anne Heisey Harris  
 Arlene E. Hartman  
 Richard Hartman  
 William T. Hasley  
 Jean M. Hawkins  
 Jane R. Hayes  
 Mary Heflich  
 Leroy R. Heisey  
 Lloyd R. Heisey  
 Lois Ann Heisey  
 William J. Hephill  
 Jean H. Henson  
 Gordon H. Herbst  
 Janice K. Hermann  
 Barbara Hervey  
 Phyllis Hess  
 Mary Hibbard  
 Elizabeth Horne

Charlotte S. Horvath  
 Ruth E. Horwitz  
 Sally Howarth  
 James Howe  
 Leah L. Hranilovich  
 A. Hummingbird  
 Sandra S. Jacks  
 Robert Jillson  
 Leslie Johnson  
 Bette Johnston  
 Kathryn E. Karjala  
 Elaine Keeler  
 Dale E. Keith  
 Anne Keller  
 Elizabeth Kennedy  
 Shelley A. Killen  
 Mary E. King  
 Manuel S. Klawans  
 Carl Knittel  
 Louise Knittel  
 Lynn Knize  
 Mary Knox  
 Thomas E. Krenek  
 Harriet Kupferberg  
 Shellie A. Kuziora  
 Beverly Lafferty  
 Jerry Laitinen  
 Ronald C. Lamping  
 Stan Langley  
 John Lape  
 Charles R. Larson  
 Frances LeBlanc  
 Dorothy S. Leviton  
 William D. Line  
 Rosemary Logan  
 Thelma Heisey Loomis  
 Linda Lowe  
 Debbie Lower  
 Carol Lundstrom  
 Ralph H. Lusher  
 Marilyn Lynch  
 Maureen MacKenzie  
 Donald W. Macomber  
 Patricia Mahar  
 Greg Mahle  
 Thomas Manley  
 Terri L. Markland  
 Richard T. Marshall  
 Harriett A. Martin  
 Betty J. Martin  
 Donald W. Mathews  
 Alice Jean Matuszak  
 Cliff McCaslin  
 Virginia E. McColm  
 Zelda McDonald  
 Martha L. McGill  
 F.J. McGinn  
 Bette L. Mead  
 Douglas J. Meister  
 Marianne Melena



Dolores Shelfoon Mellette  
 Charlene M. Miller  
 Patricia L. Miller  
 Kathryn B. Moffett  
 Andrew Monisera  
 John E. Moore  
 Karen Moore  
 Donna Moss  
 Phyllis Moyer  
 Alice Moyer  
 Roxie Munoz  
 Paul J. Myers  
 Emily Nietering  
 Janet North  
 Connie O'Connor  
 Karen O'Hare  
 Alice Orr  
 Mary A. Oursler  
 Mrs. E.J. Page  
 Joan Palmer  
 Philip W. Parker  
 Mary A. Payne  
 Jackie Payne

Debbie Peters  
 Sharon Petrytus  
 Kathryn R. Poe  
 E. Jill Pollock  
 Sue Price  
 Jeanne G. Rachal  
 Dorothy R. Rairigh  
 Betty Regan  
 Elaine Reynolds  
 Richard R. Rietz  
 Carol S. Roberts  
 Diana Roche  
 Jennifer Romick  
 Janet E. Rosner  
 Paul L. Russell  
 Marjorie A. Satryan  
 Bobbi Saunders  
 Emilie B. Savage  
 Judith M. Scarrett  
 C. Fred Schaefer  
 Donna Schellenberger  
 Gary Schulte  
 Thomas Seibold

Jessica Ann Shaub  
 Lenore A. Shelley  
 Janice Shimoda  
 James Shindler Jr.  
 Harriett H. Slear  
 Deni Smith  
 Jimmy D. Smith  
 Louise Smith  
 Dennis E. Stark  
 Catharine E. Startzman  
 Bernice J. Stein  
 Deborah A. Stein  
 Barbara C. Stewart  
 Marcia Stoskopf  
 Linda Sullivan  
 George Swan  
 Charles Swing  
 John E. Tebbetts  
 Floyd Templeton  
 Ethel K. Tilton  
 Anna K. Todd  
 Beverly D. Trytten  
 Phoebe A. Tuttle

Richard D. Van Horn  
 James G. Van Winkle Jr.  
 Joyce T. Virostko  
 Marie L. Wade  
 Janice Wallace  
 Janice Walter  
 Harold Watsky  
 Annette Waugh  
 Jean L. Whims  
 Kaye E. White  
 Ethel Whitehouse  
 Prsiclla Whitford  
 Max G. Wiese  
 Alicia L. Wilson  
 Robert Wilson  
 David Witt  
 Debra Wolf  
 La Verne Wolfer  
 Kathleen M. Wood  
 Ellen W. Wright  
 Michael Yarka  
 Donna M. Zubert

## ***MAKE YOUR BENEFIT AUCTION & CONVENTION RESERVATIONS***

The following is a list of area lodging provided by the Licking County Convention and Visitors Bureau. Don't forget to make your reservations for the Benefit Auction and Annual Convention. To receive a copy of the bureau's brochure, *Licking County Travel Guide*, contact the convention bureau at (740) 345-8224. (\*Bed and Breakfast.) ♦

*The Buxton Inn*, Granville (740) 587-0001  
*Buzz Inn*, Hebron (740) 467-2020  
*Cherry Valley Lodge*, Newark (800) 788-8008  
*Duke's Inn Motel*, Buckeye Lake 929-1015  
*Follet-Wright House\**, Granville 587-0941  
*George T. Jones House\**, Granville 587-1122  
*The Granville Inn*, Granville (740) 587-3333  
*Granville Manor\**, Granville (740) 587-4677  
*Holiday Inn*, Heath (740) 522-1165  
*Hometown Inn*, Heath (740) 522-6112  
*Howard Johnson's*, Heath (800) 446-4656  
*Motel 76*, Hebron (740) 467-2311  
*Muriel's Way\**, Newark (614) 763-4553

*Otter Fork Hills\**, Centerburg (614) 893-2467  
*Pitzer-Cooper House\**, Newark (800) 833-9436  
*Place Off the Square*, Newark (740) 322-6455  
*Porch House\**, Granville (740) 587-1995  
*Pudding House\**, Johnstown (740) 967-6060  
*Regal Inn*, Hebron (614) 927-8011  
*Super 8 Motel*, Heath (740) 788-9144  
*Star Lite Motel*, Heath (740) 522-3027  
*University Inn*, Newark (740) 344-2136  
*Wagram Motel*, Reynoldsburg (614) 927-2470  
*Welcome Inn Motel*, Hebron (740) 928-7861  
*Willow Brooke\**, Alexandria (800) 772-6372

# CRYSTOLITE AND THE WAR TIME SALESMAN

MOLLY KASPAR

## THIS WARTIME SALESMAN FOR YOUR...

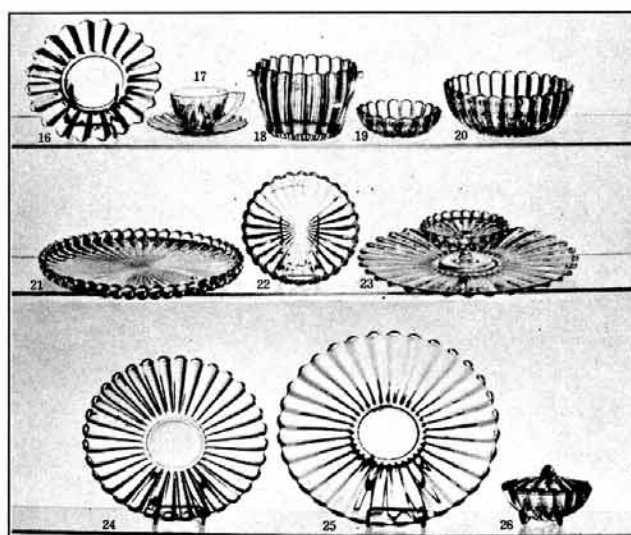
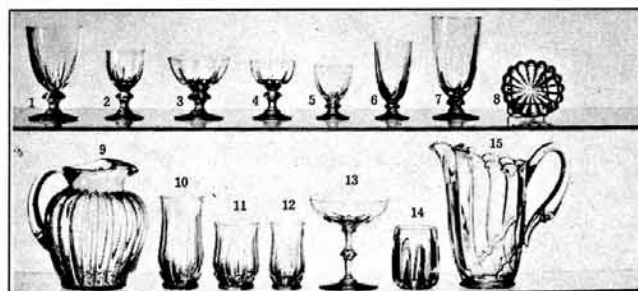


### PATTERN

USE IT AND SAVE TIME  
AND TROUBLE IN  
CHECKING YOUR  
CRYSTOLITE STOCK  
AND FOR RE-ORDERING

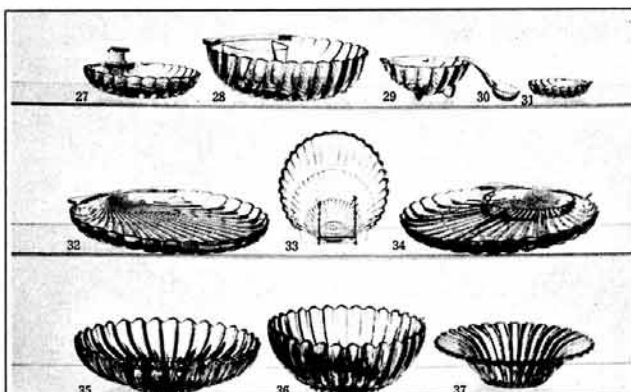
Back by popular request! It seems that the Orchid Etch War Time Salesman created such a stir with the membership that we need to print the remaining three war time brochures. This month Crystolite is in the spotlight. Look for Lariat and Gifts and Decorations in the coming months. ♦

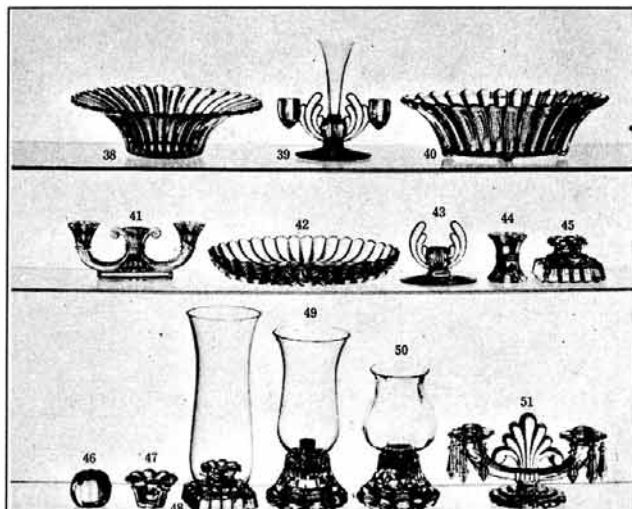
NO.	SIZE	STEMWARE
1	10 oz.	Goblet (blown)
2	3½ oz.	Claret (blown)
3	6 oz.	Sherbet (blown)
4	3½ oz.	Cocktail (blown)
	1 oz.	Cordial
5	3½ oz.	Oyster or Fruit Cocktail (blown)
6	5 oz.	Juice ftd. (blown)
7	12 oz.	Ice Tea ftd. (blown)
8	4"	Coaster (stemware)
9	2 qt.	Ice Lip Jug
10	12 oz.	Ice Tea (blown)
11	10 oz.	Tumbler (blown)
12	5 oz.	Juice (blown)
13	5"	Comport (blown)
14	10 oz.	Tumbler
15	2 qt.	Swan Ice Lip Jug



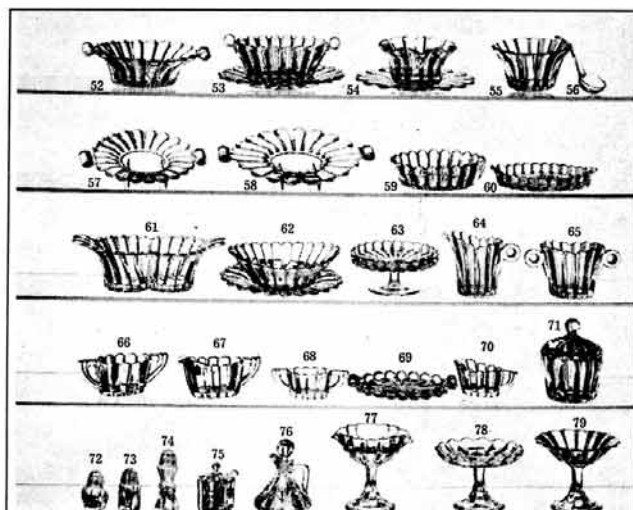
41		2-Lite Stick 1504
42	12"	Oval Shallow Bowl
43	4"	1-Lite Stick
44	3"	1-Lite Block 1504 Grd. T.&B.
45	3"	1-Lite Hurricane Blk.
46	2"	1-Lite Mellon Blk.
47	2"	1-Lite Rosette Blk.
48		Hurricane Block 10" Shade
49		Hurricane Lamp 9" Shade

		BOWLS & STICKS
35	12"	Shallow Flower or Flower Bowl
36	10"	Salad Bowl
37	10"	Fld. Bowl
38	11½"	Fld. Bowl
39		3-Lite Stick & 5" Vase
39		3-Lite Stick, no Vase
40	13"	Oval Bowl Deep



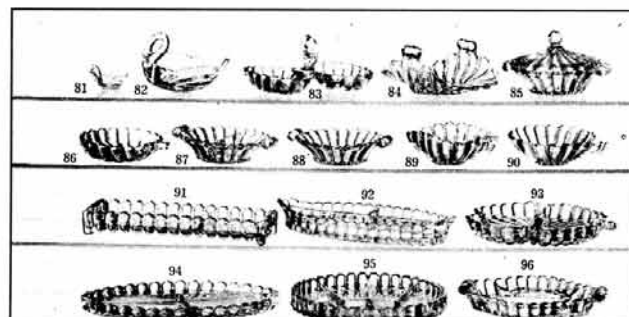


49		Same Hurricane Lamp 12" Shade
50		Same Hurricane Lamp 6" Shade
51		Candelabra J Prism Fire Pol.
52		2-Lite Candlestick No Prism
		SALTS, OILS, COMPORTS
71		Jam Jar and Cover
72		Salt/Pepper, glass /plastic top
73		Salt/Pepper, glass/plastic top 1503½
74		Salt/Pepper, glass /plastic top 1504
75		Mustard and Cover
76		Oil Bottle 3 oz.
77	5 lb.	Oval Nut, ftd.
78	5 lb.	Chocolate ftd.
79	5 lb.	Jelly



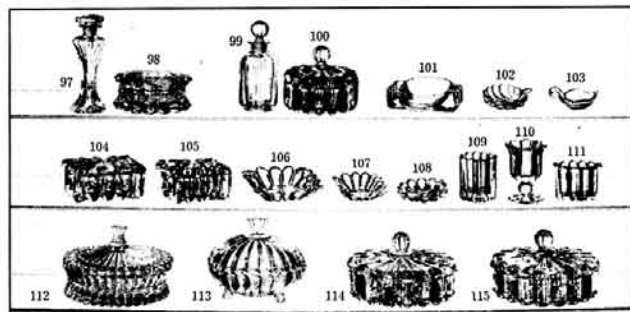
		PLATES, ETC.
16	7"	Plate (Tea)
16	8"	Plate (Salad)
17		Cup or Saucer
18		Ice Tub, no Hdle.
	4½"	Nappy, Fruit

19	5½"	Nappy, Cereal
20	8"	Nappy
21	13"	Flat Coup. Torte
22	7½"	Coup. Plate (Salad)
23	14"	Cheese and Cracker
23	5½"	Ftd. Cheese
23	14"	Cracker or Sandwich Plate only
24	12"	Sandwich Plate
	11"	Torte Plate R.E.
25	14"	Torte Plate R.E.
	20"	Buffet or Punch Bowl Plate
26	6"	Shell Candy Box and Cover
27	7"	Shell Praline
28	11"	Shell Comb. Salad and Mayo.
or	11"	Shell Salad Bowl, no Comp.
29	6"	Shell Mayonnaise
30		Mayonnaise Ladle No. 7
31	4"	Shell Coaster or Ash Tray
32	13"	Shell Torte Flat
33	7"	Shell Salad Plate
34	13"	Shell 5 Comp. Relish



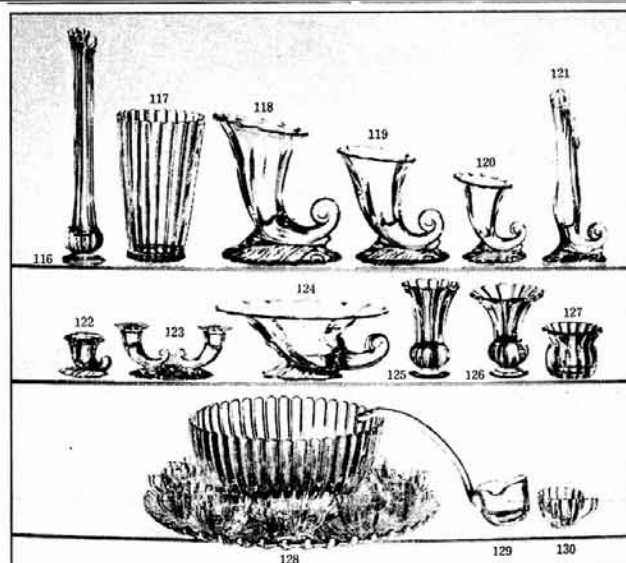
		DRESSING & CONDIMENTS
52		Hollandaise Oval
53		Mayonnaise Oval
53	8"	Plate for above two
54		1000 Island Crimp.
55		1000 Island Fld.
54	7"	Plate for above two
56		Mayonnaise Ladle No. 7
57	7"	2 Hd. Snack Plate Rd.
58		2 Hd. Cheese Plate Oval
59	6"	Oval Pickle
60	7"	Oval Pickle 1503½
61		Twin Mayonnaise
62	7"	Preserve Oval
62	7"	Preserve Plate Oval
63	5½"	Ft. Cheese
64		Cream Rd. 1503½
65		Sugar Rd. 1503½
66		Sugar Oval
67		Cream Oval
68		Indv. Sugar Oval

70		Indv. Cream Oval
69		Indv. Sugar and Cream Tray
b		JELLIES—RELISHES
81		Swan Nut or Ash
82	6"	Swan Jelly or Relish
83	6"	2 Comp. Hld. Conserve
84	7"	2 Hld. Bon Bon
85	6"	2 Hld. Preserve and Cover
86	6"	Hld. Breakfast Pres.
87	6"	2 Comp. Hld. Jelly
88	6"	2 Hld. Jelly
89	5"	3 Corner Hld. Jelly
90	5"	Rd. Hld. Jelly
91	12"	Celery and Olive 2 Comp.
91	12"	Celery Above Shape
92	12"	Celery or 3 Comp. Relish 1503½
93	9"	4 Comp. Clover Relish
94	13"	3 Comp. Oval Relish
	13"	Oval Tray Above Shape
95	10"	5 Comp. Rd. Relish
96	8"	3 Comp. Oblong Relish



		COLOGNES—ASH TRAYS
97		Perfume Drop St. 1504
98		Powder Box 1504
99		Cologne Drip Stop
100		Puff or Candy Box
101		Book Match Ash Tray
102		Leaf Ash Tray
103		Swan Ash Tray
128		15 piece Punch Set
129		Punch Ladle
130		Punch Cups
128		Punch Bowl only
128	20	Punch Bowl Plate

		SMOKE SETS
104	4½"	King Size Cig. Box
105	4"	Reg. Size Cig. Box
106	4½"	Square Ash Tray
107	3½"	Square Ash Tray
108		Round Ash Tray
109		Round Cigarette Holder
110		Round Ftd. Cigarette Holder
111		Oval Cigarette Holder
		CANDY BOXES—VASES
112	7"	Candy Box 1504
112	7"	Candy Box 2 Comp. 1504
113	6"	Candy Box 3 ftd.
114	7"	Candy Box
115	7"	Candy Box 3 Comp.
116	12-15"	Swing Vase
116	10-12"	Swing Vase
117	9"	Calendula Vase Str.
117	9"	Lily Vase Cupped
117	9"	Aster Vase Flared
118	9"	Horn-O-Plenty Vase (1428)
119	7"	Horn-O-Plenty Vase (1428)
120	5"	Horn-O-Plenty Vase (1428)
121	8-10"	Horn-O-Plenty Swing Vase (1428)
122		Horn-O-Plenty Stick (1428)
123		Horn-O-Plenty 2-lite Stick (1428)
124	11"	Horn-O-Plenty Bowl (1428)
125	6"	Ftd. Vase Straight
125	9"	Ftd. Vase
	15-18"	Ftd. Swing Vase (Shape as above)
	18-21"	Ftd. Swing Vase
126	6"	Ft. Vase Flared
127	3"	Short Stem Vase





## CLUB NOTES



### Heisey Heritage Society #8

Vince Sparacio

On November 9th, 23 members met for dinner at Peroni's Waterfront Inn in Trenton, NJ to celebrate our group's 25th Anniversary. It was a group ready to party that gathered for fruit, cheese and crackers in the Inn's Garden Room. The Anniversary Committee, Vince and Grace Sparacio and Carl and Helen Sparacio had filled the room with star shaped blue and silver helium balloons. A cut-out diamond H symbol, also in silver and blue, hung from each balloon. President Joyce Farnham donated a large floral centerpiece which was later raffled off for the club's benefit.

A brief but none too serious business meeting was held prior to the more serious business of eating. Salad and ziti preceded the family style servings of beef, chicken and veal. These were accompanied by roasted bliss potatoes and mixed vegetables. The desert was a beautifully decorated anniversary cake, each slice was served with a big scoop of ice cream.

During desert, Carl delivered an hysterical history of our club. He reminded us that this was the same speech he gave at our 10th Anniversary affair but now expanded and updated. The Awards Committee, Joyce and Vince, presented a few awards that were on the light side. Joyce then surprised Carl with a special award, a specially cut and engraved crystal plate to express the members appreciation for his being our founder and first President. The Greek Key pattern was cut for the border and the club's appreciation was engraved in the center. This beautiful work was done by Pepi Hermann of New Hampshire, a craftsman schooled in the old European traditions. Vince presented Helen with a framed paper sculpture called "Queen of Diamonds" that commemorated her position as our First Lady and First Hostess.

Review of an overflowing Show and Tell table was supposed to end the celebration, but most members stayed on to stretch the festivities just a little more before heading home. All in all, it was a memorable day. (Pictured are board members Walter Ludwig, Nettye Evans and Carl Sparacio at the 25th Anniversary party.)♦



### North Carolina Heisey Study Group #38

Michele Scott

The NCHSG tried something new this year—a December-Christmas party meeting. With so many members in attendance, it proved to be quite successful. Punch, served in Old Queen Ann and Sunburst and Panel punch bowls, held red and green punch. We had our choice of Heisey punch cups to use from Isabelle's extensive collection. Members brought delicious foods served, of course, from beautiful Heisey dishes and platters. One knew it was a festive occasion upon entering the door.

A few business items were covered including an overview from the most recent HCA Board meeting and holiday dinner held in Newark, discussion on the next NCHSG fundraiser, and date of the next meeting which will be held in March.

A silent auction was held, with Ed and Virginia Perva in charge. Members were most generous with items donated for this club fundraiser, and were delighted to be the new owner of a "goodie."

Karen Taylo and Derick Smith surprised our hostess with a very nice "thank you" gift—an Old Dominion champagne, complete with Alexandrite bowl! Gee, why didn't I volunteer!♦



### Yankee Heisey Club #41

Frank Slowik

The Yankee Heisey Study Club met at Betty Bean's on Monday, January 5th. An enthusiastic meeting with 15 members ensued.

Highlights of the meeting included the discussion of a collaborative function with other local Heisey clubs. Stay tuned for details.

After Show and Tell presented by Tom Gibbons, his wife Pat gave an excellent presentation on Heisey Victorian pattern no. 1425. Many pieces were displayed including a not often seen ½ gal. pitcher.♦



### Dixieland Heisey Study Club #48

Lamar Birckbichler

Our annual Christmas in January meeting was held on Saturday, January 10th, 1998 at the home of Helena and Olen Freeman. Twenty-nine members attended and fun was had by all during the Heisey gift exchange.

The club continued discussions for the Elegant Glass Show scheduled to occur in late July, 1998 to benefit

HCA. The club hopes to complete plans for the show during our March club meeting.

Club members were treated to an extensive collection of Heisey glass at the Freeman's home. Dick and Lee Schwan were made lifetime members for all of their help to the Dixieland Study Club.

The clubs prior meetings were hosted by our Athens members at the homes of Glen Gall in September and Sid and Mary Edwards in November. The March meeting is scheduled at the home of George Bennett and Lamar Birckbichler on March 14th at 6:30 pm.

For more information contact Sid Edwards at (770) 928-3774. ♦

## HCA NEWS & NOTES

### HCA Welcomes new members for December:

Karla Abplanalp, Wisconsin  
Ron Agee, Kentucky  
Suzanne Church, Colorado  
Darlene & Ralph Carbaugh, Pennsylvania  
Sam Currier, Tennessee  
Mary Ann Czechowski, Pennsylvania  
Dorine Demers, Rhode Island  
Lydia Gallardo, California  
Linda J. Goodman & Nancy O. Sherman, Ohio  
Vivian & Gary Griffiths, Washington  
Nancy Halsey, Ohio  
Kendall Heisey, California  
Vera V. Horowitz, North Carolina  
Wallace & Arlene Horton, Ohio  
Ralph Hubner Jr., Ohio  
Carol C. Jonic, Connecticut  
Lynn & Gayle King, Georgia  
Mary Lee, Arizona  
James Marks, Wisconsin  
Claude & Marsha Moore, Ohio  
Lucil Nigh, Wisconsin  
Sharon S. Osbourne, South Carolina  
Paul A. Root, Vermont  
Gussie Smith, Alabama  
Ron Taylor, Illinois  
Carrie J. Stasch, Kansas

The Heisey Collectors Club of the Rochester Area is sad to report the loss of Edith Bockes, a long time member of the club chapter and HCA.

**To all Florida HCA members:** There is interest in starting a new study club in Florida. Contact Betty and Howard Roxborough, 600 Biltmore Way Apt. 104, Coral Gables, FL 33134. Call (305) 461-9121. ♦

**ATTENTION STUDY CLUBS!** Does your club have news or events to share with fellow members? Send updates BY THE FIRST OF THE MONTH to: Heisey News, 169 W. Church St., Newark, OH 43055, fax (740) 345-9638 or email: [heisey@infinet.com](mailto:heisey@infinet.com). ♦

► **Advertising:** Send all ads to HCA Advertising, 169 W. Church St., Newark, OH 43055. Ads may be faxed to (614) 345-9638; please include MasterCard or VISA number for billing purposes. All ads must be prepaid. Ads are to be typed or printed on white paper with dark ink. Please double space. Do not abbreviate Heisey pattern names or colors. Ads which are entered in a vertical column format may contain a maximum of 65 characters per line, including spaces and punctuation.

**Classified:** 20 cents per word (members), 30 cents per word (non members), \$1.50 minimum, 1/8 page limit. Personal ads 1/8 page limit. Abbreviations and initials count as words.

Display Ads:	member	non
1/8 page (12 lines)	\$20.00	\$30.00
1/4 page (25 lines)	\$40.00	\$60.00
1/2 page (60 lines, <i>horizontal or vertical</i> )	\$80.00	\$120.00
Full page (120 lines)	\$160.00	\$240.00

**A charge of \$1.60 will be added for each additional line.**

*Camera ready ads must follow specifications. Ads which do not correspond to the following measurements will be sized to fit.*

### Camera Ready Ad Specifications:

- 1/8 page: 2¼" high by 3½" wide
- 1/4 page: 4½" high by 3½" wide
- 1/2 page: 4½" high by 7½" wide OR 9" high by 3½" wide
- Full page: 9" high by 7½" wide

**Ad copy must be received by the first of the month prior to publication (e.g. April 1 for May issue).** Reproductions (i.e. Heisey by Imperial) must be clearly indicated. *Heisey News* accepts no further liability.

## Classified Ads

**WANTED:** Heisey Baskets: etched, cut, colored, unusual decorations or whimsies. Send price and description to Kim Carlisle, 28220 Lamong Rd., Sheridan, IN 46069 (317) 758-5767.

**WANTED:** 10½" Dinner plates, #1401 Empress Sahara, Formal Chintz etch. Other pieces in same pattern, color and etch? Dick Goodwin, 7603 S.E. 76th St., Mercer Island, WA 98040. (206) 232-7215.

**WANTED:** Heisey "Fox Chase" #1509 8" square plate, #5012 7" ftd. vase, #4163 16 oz. beer mug with Red, Moongleam, Amber handle. Fred Ludwig, 300 Rt. 10, Randolph, New Jersey 07869. (201) 366-1351


**WANTED:** Any glassware containing #463 Equestrian or #481 Lancaster silhouette etchings (show horse w/rider). Mike Smith, 2612 Manana, Dallas, TX 75220. (214) 352-3939.

# ADVERTISE IN THE HEISEY NEWS!



*The National Capital Heisey Study Club with  
The National Capital Heisey Collector's Club  
Present The Twenty-Sixth Annual*

# *All-Heisey Glass Show*



*Sat., March 21, 1998      Sun., March 22, 1998*  
*10am to 6pm                      11am to 4pm*

*Armory Place                      Admission \$3.50*  
*Wayne Ave. and Fenton St.      (With Ad \$3.00)*  
*Silver Spring, Md                  All Proceeds to Benefit*  
*The Heisey Museum*

**H&R DIAMOND H**  
**Helen & Bob Rarey**  
**1450 White Ash Dr.**  
**Columbus, OH 43204**

**(614) 279-0390**  
**After 5:30 pm**  
**UPS & Ins. Extra**  
**H = Marked**

433	Greek Key oval cream and sugar, H	\$125.00
433	Greek Key 9 oz. goblet, (2) ea.	\$145.00
433	Greek Key 4½ oz. sherbet, H, (8 cupped, 2 flared) ea.	\$18.50
433	Greek Key 5" hdl. jelly, H	\$45.00
433	Greek Key ½ gal. tankard pitcher, H	\$285.00
1201	Fandango 8½" deep bowl	\$65.00
1201	Fandango 3 cornered hdl. jelly	\$29.50
1201	Fandango mustard, no lid, worn gold dec.	\$25.00
1401	Empress 10" combination 3-part relish, H	\$35.00
1447	Rococo 13" celery, H	\$75.00
1469	Ridgeleigh mustard and cover, H	\$75.00
1509	Queen Ann cup and saucer, Minuet etch, H, (6) sets, ea.	\$42.50
1567	Plantation 8" round 4-part relish, H	\$95.00
1567	Plantation 11" hdl. 3-part relish, H	\$75.00
1567	Plantation ftd. cream and sugar	\$85.00
1567	Plantation 1-lite candle block, (2) ea.	\$110.00
1567	Plantation 13" celery, H	\$45.00
1626	Satellite 6 oz. juice, H, (4) ea.	\$15.00
1626	Satellite rnd. ashtray, H (not frosted)	\$15.00
5003	Crystolite 10 oz. goblet, H, (10) ea.	\$21.00
5003	Crystolite 3½ oz. cocktail, (10) ea.	\$17.50
5003	Crystolite 12 oz. tumbler/soda, (8) ea.	\$42.50
5009	Queen Ann 10 oz. goblet, Everglade cut, (4) ea.	\$25.00
5009	Queen Ann 6 oz. champagne, Everglade cut, (6) ea.	\$20.00
2	Heisey glass salad fork, H	\$32.50

**D&W COLLECTIBLES**  
**41 Old Avon Village**  
**Avon, CT 06001**

**(860) 676-2180**  
**UPS & Ins. Extra**

1401	Empress ashtray	\$45.00
1401	Empress 16" 4-part buffet relish	\$65.00
1401	Empress 10" celery	\$25.00
1401	Empress center hdl. server, round cut	\$55.00
1401	Empress 10" combination 3-part relish	\$35.00
1401	Empress 12" combination 4-part relish	\$55.00
1401	Empress compotier, oval	\$45.00
1401	Empress covered oval lemon dish, cut	\$45.00
1401	Empress cup, round sauce, (6) sets, ea.	\$18.00
1401	Empress round saucer	\$5.00
1401	Empress ftd. cream, 3 hdl. ftd. sugar, set	\$65.00
1401	Empress ftd. mayo	\$25.00
1401	Empress ftd. nappy	\$35.00
1401	Empress ftd. nasturtium bowl	\$75.00
1401	Empress 10" 7-part hors d'oeuvre	\$35.00
1401	Empress ind. cream, sugar, condiment tray	\$55.00
1401	Empress ind. nut dish, (7) ea.	\$12.00
1401	Empress 13" 2-part pickle and olive	\$35.00
1401	Empress 6" round plate	\$5.00
1401	Empress 8" square plate, (5) ea.	\$18.00
1401	Empress salt shaker	\$25.00
1401	Empress 2 hdl. sandwich platter	\$45.00
1401	Empress 8" vase, flared	\$65.00

## 20-30-40 SOCIETY INC CHICAGOLAND'S 26TH ANNUAL DEPRESSION ERA GLASS SHOW & SALE

March 14 & 15, 1998  
 Saturday 10-5 Sunday 11-4  
 INLAND MEETING & EXPO CENTER  
 400 E. Ogden Ave. - Westmont, IL

### SHOW THEME "SUNRISE - SUNSET"

**Glass Identification    Glass Repair**  
**Bookseller    Reference Library**  
**Door Prizes    American Pottery**  
**Special Guest: Gene Florence**

**Admission: \$5.00 per person**  
**\$4.00 With This Card - Limit 2**

**Free Parking**

HEISEY \* FOSTORIA \* CAMBRIDGE \* IMPERIAL  
 DUNCAN MILLER \* FENTON \* TIFFIN \* PADEN CITY



**PAUL SIMONS**  
130 Travellers Ln.  
Aiken, SC 29803

**(803) 648-2524**  
Shipping & Ins. Extra  
H=Marked

150	Banded Flute match holder, chips under lid, H	\$130.00
335	Prince of Wales 5" ftd. jelly	\$88.00
339	Continental sherbets, H, (18) ea.	\$12.00
341	Colonial 4 oz. wines, H, (8)	\$18.00
1193	Conserve dish, Flamingo, H	\$48.00
1252	Twist 11" dinner plates, Flamingo, H, (4) ea.	\$75.00
1252	Twist 9" plates, Flamingo, H, (7) ea.	\$30.00
1252	Twist 8" plates, Flamingo, H, (7) ea.	\$22.00
1401	Empress tumblers, Moongleam, H, (2) ea.	\$58.00
1401	Empress ind. sugar and creamer, Moongleam, H	\$95.00
1401	Empress D/F sugar, Moongleam, H	\$45.00
1401	Empress 4½" sauce dishes, Moongleam, H, (8) ea.	\$22.00
1483	Stanhope 3 oz. wine, Frosty Dawn etch	\$68.00
1503	Crystolite coasters, H, (3) ea.	\$8.00
1503	Crystolite sherbets, (6) ea.	\$12.00
1511	Toujours apple marmalade, H	\$58.00
1519	Waverly deep epergne, pr.	\$58.00
1540	Lariat punch cups, (12) ea.	\$8.00
1567	Plantation ice tea, Ivy etch, (8) ea.	\$35.00
1567	Plantation 5 oz. wine, Ivy etch, (5) ea.	\$35.00
1567	Plantation 5 oz. wine, Ivy etch, cone shape, (7) ea.	\$35.00
1567	Plantation sherbet, Ivy etch, (2) ea.	\$24.00
3408	Jamestown goblet, Olympiad etch, (4) ea.	\$35.00
3408	Jamestown sherbet, Olympiad etch, (5) ea.	\$25.00
3408	Jamestown 2 oz. wine, Olympiad etch, (7) ea.	\$38.00
6003	Tempo 3 oz. wine, H, (11) ea.	\$12.00

**DON & JEAN PARRETT**  
4995 Maple Dale Rd.  
Jackson, MI 49201

**(517) 784-7319 Recorder**  
Post & Ins. Extra  
H=Marked

3330	Hanover 1½ oz. cordial, #19 Double Loop etch	\$75.00
3318	Waldorf 1 oz. cordial, #33 Tatting etch	\$65.00
363	Colonial 1 oz. cordial	\$75.00
373	Colonial 1 oz. cordial	\$65.00
3350	Wabash 1 oz. cordial, #440 Frontenac etch, optic	\$75.00
3368	Albamarle 1 oz. cordial, #867 Chateau cut, optic	\$85.00
359	Colonial 1 oz. cordial, narrow optic	\$75.00
3312	Gayoso 1 oz. cordial, #31 Roman Key etch	\$50.00
3318	Waldorf 1½ oz. pony brandy or wine, unknown etch	\$50.00
3308	Bob White 1 oz. cordial, #430 Thistle	\$65.00
300	Peerless 1 oz. cordial	\$23.00
5077	Legionnaire 1 oz. cordial, #1025 Arcadia cut	\$65.00
4083	Stanhope 1 oz. cordial	\$75.00
6091	Cabocho 1 oz. cordial, (7) ea.	\$45.00
1252	Twist 3 oz. cocktail, Sahara	\$35.00
1404	Old Sandwich 3 oz. cocktail, Moongleam	\$45.00
4044	New Era 4 oz. oyster cocktail, #826 Venus cut	\$75.00
2401	10 oz. soda, #465 Golf Scene etching	\$100.00
2401	10 oz. soda, #3 Motor Boat and Sail Boat etch	\$100.00
3379	Pyramid 4½ oz. champagne, Flamingo	\$100.00
	Fish bookends, pr.	\$165.00
	Ringneck Pheasant	\$165.00
134	Trident 2-lite candle holders, Moongleam, pr.	\$250.00
300-1	Williamsburg 1-lite candelabra, "A" prisms, Sahara, pr.	\$350.00
335	Quator match holder and ashtray	\$65.00

**NOTE:** All cordials left in December 1997 ad are 20% off (#433 cordials are not available.)

**FOREVER HEISEY**  
Norm & Jan Thran  
1663 Londondale Pkwy.  
Newark, OH 43055

**(614) 344-5955**  
UPS & Ins. Extra  
H=Marked

305	Punty and Diamond Point punch bowl and base, H	\$295.00
1417	Arch tumbler, Sahara, (3) ea.	\$55.00
1469	Ridgeleigh oil and vinegar bottle, H	\$75.00
1469	Ridgeleigh heart ashtray, H	\$17.50
1469	Ridgeleigh ind. cream and sugar and tray, H, (3) pc. set	\$57.50
1495	Fern 6" tid bit tray, Zircon	\$115.00
1495	Fern 2-lite candlestick	\$40.00
1506	Provincial 1 lb. covered butter, H	\$85.00
1567	Plantation 3½ oz. cocktail, H, (3) ea.	\$55.00
1567	Plantation champagne flared, some, H, (7) ea.	\$30.00
1567	Plantation 5" footed vase	\$70.00
1567	Plantation ftd. cream and sugar, pr.	\$65.00
1567	Plantation cruet with Plantation stopper	\$110.00
1567	Plantation punch cup, H, (8) ea.	\$24.00
3357	King Arthur goblet with Diana the Huntress etch	\$35.00
3370	African tall water goblet, D/O	\$35.00
3404	Spanish water goblet, Cobalt W/O bowl, (7) ea.	\$145.00
4054	Coronation 27 oz. hdl. pitcher, (5) 5 oz. sodas, (6) pc. set	\$85.00
4054	Coronation 10 oz. soda, (16) ea.	\$9.00
4054	Coronation 12 oz. & 14 oz. slim jim sodas, choice, (3) ea.	\$20.00
4083	Stanhope goblet, Zircon bowl and ft., (3) ea.	\$135.00
4083	Stanhope champagne, Zircon bowl and ft., (2) ea.	\$115.00
4085	Kohinoor goblet, Zircon S/O bowl	\$175.00
4090	Coventry champagne, all Zircon, (2) ea.	\$115.00
4163	Whaley 16 oz. mug with Club Drinking Scene, H	\$165.00

# Heisey

**PUBLICATIONS**

**PO BOX 102**

**Plymouth, Ohio 44865**

**Ralph & Sandra McKelvey**

**(419) 935-0338**



**Heisey**

**Books & Glass**

## VOGEL BOOKS ON HEISEY

**BOOK I "FIRST TEN YEARS".....\$14.00**

**BOOK II "COLONIAL YEARS".....\$14.00**

**BOOK III "ART & COLORED GLASS"....\$15.00**

**BOOK IV "EARLY AND LATE YEARS"....\$15.00**



**SET PRICE \$55.00**

**SHIPPING AND HANDLING**

**Add \$4.00 for all orders!!**



## WE CLEAN CLOUDY GLASS! SATISFACTION GUARANTEED

*Yes, it is true* that we really can restore the interior of your cruet, vase, decanter and other *internally* etched items back to near original condition.

*We do not* oil, wax or cover up the sickness in any way! We actually *remove* it.

*No items are too sick to clean!* If we cannot clean an item to meet your satisfaction, the cleaning is **FREE!**

*Send no money up front.* When we return your item a bill will be enclosed for the postage and cleaning. If you are not satisfied, only the return postage is requested.

*Most items* clean in 6-8 weeks. All glass is handled and cleaned at your risk. Some very cloudy items may take several additional weeks.

Cruet	\$20.00	Cocktail Shaker	\$30.00
Vinegar & Oil	\$25.00	Salt Shaker (one)	\$25.00
Cologne	\$20.00	Salt Shaker (pair)	\$35.00
Decanter	\$30.00	Water Bottle	\$30.00
Vases (under 12")	\$25.00	Lavender Jar	\$20-\$30.00

Ship to: **Kim Carlisle & Associates**  
28220 Lamong Road, Dept. H  
Sheridan, IN 46069  
(317) 758-5767

**J&R COLLECTIBLES** (740) 344-9719  
**PO Box 1030** UPS & Ins. Extra  
**Newark, OH 43058-1030** H=Marked

9	Single Row Slash 3 pt. jug with scalloped edges	\$195.00
142	Cascade 3-lite candlestick, Minuet etch, pr.	\$265.00
300	Peerless 12 oz. schoppen, straight, Flamingo, H, (2) ea.	\$95.00
1506	Whirlpool 10" 4-part relish, Limelight	\$195.00
1519	Waverly 7" salad plates, Orchid etch, (8) ea.	\$16.00
1540	Lariat 7" fan vase, Orchid etch, #2	\$110.00
3381	Creole 7 oz. tall saucer chmpge, Alexan. bowl, (2) ea.	\$110.00
4085	Kohinoor 9 oz. goblet, Saturn optic, Zircon bowl, (2) ea.	\$175.00
4225	Cobel 1 qt. cocktail shaker, Orchid etch	\$175.00
5058	Goose 27 oz. decanter, Goose stopper	\$425.00
	Fish bookend, Imp., Horizon Blue or Verde Green, ea.	\$200.00
	Rearing Horse bookend, Imp., Black frosted, (1 of 12)	\$650.00
	Tiger paperweight, Imperial	\$200.00

**THE COLLECTORS STOP** (561) 793-0986  
**Ralph & Eileene Wise** UPS & Ins. Extra  
**12018 Suellen Circle** H=Marked  
**Wellington, FL 33414**

1252	Twist Flamingo cruet	\$125.00
	Fish Bookends, pr.	\$235.00
	Donkey	\$195.00
	Dolphin fish candlestick	\$140.00
1255	Pineapple & Fan cream and sugar, Emerald, exel. gold	\$125.00
357	Prison Stripe cake salver, H	\$295.00
1401	Empress d/f nasturtium bowl, Flamingo	\$315.00
343	Sunburst ½ gal. pitcher, H	\$195.00
433	Greek Key 1 qt. tankard, H	\$295.00
433	Greek Key tall celery, H	\$195.00
477	Hairpin 9" flower basket, H	CALL
343	Sunburst 3 pt. pitcher, H	\$195.00

**LADY ROSE ANTIQUE GLASS** (812) 944-2171  
**Don & Betty Smith** bsmith@venus.net  
**1814 Cliffwood Ct.** UPS & Ins Extra  
**New Albany, IN 47150** H=Marked

	Kicking Pony	\$195.00
351	Colonial 4 oz. pilsner, (8) all	\$150.00
1170	Pleat & Panel 5 oz. scr. champagne, Flamingo, H, (3) ea.	\$22.00
1425	Victorian 5 oz. custard/punch cup, H, (5) ea.	\$12.00
1469	Ridgeleigh bridge set with sq. cigarette holder, H	\$100.00
1558	8" floral bowl	\$35.00
1567	Plantation celery, H	\$75.00
1567	Plantation 12" crimped bowl	\$95.00
1567	Plantation sugar and creamer	\$85.00
1567	Plantation punch cup, H, (4) ea.	\$25.00
5019	Waverly 6" plate, Orchid etch, (6) ea.	\$22.50
5025	Tyrolean champagne, Orchid etch, H, (6) ea.	\$38.00

**GARY SHARDELL** (941) 778-2167  
**537 69th St.** UPS & Ins. Extra  
**Holmes Beach, FL 34217** H=Marked

417	Double Rib & Panel basket, Hawthorne, H	\$385.00
1252	Twist 1-lite candles, Marigold, H, pr.	\$145.00
1191	Lobe 9" ctr. hdl. spice dish, Hawth. & Mnglm, bi-color	CALL
4225	Cobel 3 pc. cocktail shaker, all Sahara	\$465.00
1503	Crystolite 3 pc. cocktail shaker	\$365.00
473	Narrow Flute with Rim 5" dice sugar & creamer, Chintz etch, Moongleam, H	\$255.00
1425	Victorian 2 oz. shot glass, Sahara, H	\$145.00
1404	Old Sandwich 1½ oz. shot glass, Cobalt, H	\$140.00
394	Narrow Flute domino sugar tray, Sahara, H	\$155.00
394	Narrow Flute domino sugar tray, Flamingo, H	\$90.00

**MOSTLY HEISEY** (800) 972-2775  
**Rhoda Curley** (518) 482-6272  
**16 Clayton Pl.** UPS Extra  
**Albany, NY 12209** All Prices Each

1447	Rococo 12" serving plate or tray	\$95.00
1533	Wampum 12½" by 2½" bowl	\$60.00
305	Punty and Diamond Point 8½" bowl	\$75.00
1401	Empress cruet, Orchid etch	\$145.00
1405	Ipswich cruet	\$105.00
3404	Spanish stem saucer champagne, Cobalt bowl, (7)	\$125.00
1425	Victorian 9 oz. water, 1-ball, (6)	\$25.00
1425	Victorian flat bottom tumbler, (7)	\$25.00
305	Pinwheel and Fan 3 pt. pitcher	\$195.00
465	Recessed Panel 3 lb. candy jar, beautiful cutting	\$295.00
2401	12 oz. sodas, Fisherman etch, (7)	\$100.00
1184	Yeoman 11" hdl. 3-compartment tray, Flamingo	\$60.00



## The Best Of Heisey Glass...

... with popular patterns like Orchid, Heisey Rose, Minuet, and hundreds more. We also carry other fine crystal and depression glass from Cambridge, Fostoria, Imperial, Duncan & Miller, and more. The world's largest supplier of discontinued and active china, crystal, flatware and collectibles, Replacements, Ltd. carries over 4,000,000 pieces in inventory in over 85,000 patterns.

If you're looking to add to your collection, or if you're looking to sell - call us toll-free. Because even with over 4,000,000 pieces in our inventory, we're always looking for more.

## REPLACEMENTS, LTD.

China, Crystal & Flatware • Discontinued & Active

1089 Knox Road, Greensboro, NC 27420 Dept. HS

**1-800-REPLACE (1-800-737-5223)**

GLASS 'N' GLASS  
Virginia & Odell Johnson  
6909 Tenth Ave. West  
Bradenton, FL 34209

(941) 792-0604  
UPS & Ins. Extra  
H = Marked

52	Salt/pepper, Flamingo, H, each set	\$70.00
52	Salt/pepper, Sahara, H (one top Sahara, one top Crystal)	\$70.00
150	Banded Flute horseradish/mustard jar/top	\$75.00
341	Old Williamsburg 5½" epernette, H, (2) ea.	\$12.50
1184	Yeoman 2½ oz. bar, flared, D/O, Sahara, H, (2) ea.	\$25.00
1252	Twist 12" oval ftd. floral bowl, Marigold, H	\$150.00
1252	Twist cup/saucer, Flamingo, H	\$30.00
1252	Twist 4 oz. oil bottle with #78 stopper, Moongleam	\$95.00
1401	Empress 8" plates, Sahara, H, (5) ea.	\$16.00
1404	Old Sandwich 8 oz. tumbler, Flamingo, H	\$50.00
1404	Old Sandwich ftd. compote, H	\$50.00
1404	Old Sandwich cigarette holder, H	\$130.00
1405	Ipswich candle vase with inserts (one with bruise), pr.	\$260.00
1405	Ipswich 11" center floral bowl, H	\$110.00
1469	Ridgeleigh 1½ oz. bar, H, (8) ea.	\$35.00
1469	Ridgeleigh 5 oz. soda, H	\$30.00
1469	Ridgeleigh ind. cream, sugar and tray, H	\$60.00
1469	Ridgeleigh vase #1, H, (2) ea.	\$40.00
1533	Wampum candlestick, pr.	\$60.00
1567	Plantation 3 oz. oil bottle, #125 stopper	\$95.00
500	Octagon cream and sugar, Sahara, H	\$60.00
1404	Old Sandwich 10 oz. ftd. tumbler, H, (2) ea.	\$22.00
1425	Victorian 9 oz. high ftd. goblets, (7) ea.	\$22.00
1519	Waverly Heisey Rose 8" plates, (7) ea.	\$25.00
1519	Waverly Heisey Rose 14" torte plate	\$95.00

ERMA HULSLANDER  
1427 Ridgeview St.  
Mesquite, TX 75149

(972) 289-6159  
UPS Extra  
heisey@flash.net

1567	Plantation pressed goblet	\$25.00
3333	Old Glory goblet, Renaissance etch, H	\$25.00
3390	Carcassone 12 oz. ftd. soda, Sahara	\$18.00
3404	Spanish goblet, Cobalt bowl	\$100.00
3408	Jamestown 2½ oz. wine, (7) ea.	\$6.00
3408	Jamestown goblet, Barcelona cut, H	\$25.00
3408	Jamestown goblet, unknown cut, H, (7) ea.	\$18.00
3408	Jamestown ice tea, unknown cut, (6) ea.	\$13.00
3408	Jamestown saucer champagne, unknown cut, H, (6) ea.	\$13.00
4044	New Era 4 oz. wine, Cobalt bowl, (2) ea.	\$170.00
4083	Stanhope 3½ oz. cocktail, Zircon bowl and foot, (4) ea.	\$160.00
4085	Kohinoor S/O goblet, (6) ea.	\$14.00
4085	Kohinoor S/O saucer champagne, (3) ea.	\$11.00
4085	Kohinoor S/O 4 oz. cocktail, (3) ea.	\$13.00
4085	Kohinoor S/O sherbet, (2) ea.	\$8.00
4085	Kohinoor S/O 2½ oz. wine	\$14.00
4091	Kimberly goblet, (4) ea.	\$15.00
4091	Kimberly goblet, Laurel Wreath cut, (4) ea.	\$20.00
5072	Rose stem goblet, Heisey Rose etch, (4) ea.	\$40.00
6004	Classic goblet, Wheat etch	\$12.00
1404	Old Sandwich 1½ oz. bar, Sahara	\$95.00
1433	Thumbprint and Panel 8½" straight vase, H	\$80.00
1519	Waverly 6" ftd. compote, Heisey Rose	\$130.00
7020	Grid hair receiver with metal lid, H	\$70.00
	Zodiac Imperial goblet, (3) ea.	\$13.00

## HEISEY COLLECTORS OF AMERICA, INC.

### 27th Annual National Convention

"THE GLASS WORLD"  
Featuring the 28th Annual

### PREMIERE GLASS SHOW

50 prominent dealers from across the U.S.

June 17-20, 1998

—Special Preview—

Wednesday, June 17

5-8 p.m.

—\$20 admission—

♦ ♦ ♦

Friday, June 19

Noon - 5 p.m.

—\$4 admission—

Thursday, June 18

Noon - 5 p.m.

—\$4 admission—

♦ ♦ ♦

Saturday, June 20

Noon - 5 p.m.

—Free admission—

Visit the free  
**HEISEY GLASS DISPLAY**  
Hopewell Hall

OSUN-COTC Campus, Country Club Drive, Newark, OH  
30 miles east of Columbus off Ohio St. Rt. 16  
For more information call (614) 345-2932

*Proceeds benefit the National Heisey Glass Museum*

## DEALER DIRECTORY

Maximum 5 lines/12 months/\$35 MEMBERS ONLY

<b>MARJORIE GILLETTE</b> Rochester, New York Glassware Specialty Heisey Mail Orders & Shows (716) 225-4678	<b>SHIRLEY EUGENIA DUNBAR</b> Heisey a Specialty Mail Order, Shows, Appraisals PO Box 7085, Port St. Lucie, FL 34985 Oct-May (407) 337-1558 PO Box 222, Naples, ME 04055 May-Oct (207) 647-5652	<b>COMPARISON LIST</b> NEW HEISEY ACTION LIST FOR 1998 3 Year's Auction 95-96-97 Price: \$18.00 + \$3.00 Shipping Payable: B. Whaley 300 International Dr., Pataskala, OH 43062 (614) 927-1557
<b>ALL HEISEY AUCTION</b> Consignments Welcome Apple Tree Auction Center 1616 W. Church, Newark, OH 43055 (614) 344-9449	<b>GREEN ACRES FARM</b> Antiques, Crystal Glass & Collectibles 2678 Hazelton-Etna Rd., SW (S.R. 310-N) Pataskala, OH 43062 Sat. or Sun. PM or call (614) 927-1882	<b>MICHAEL KRUMME</b> Heisey and other elegant glassware PO Box 48225 <a href="http://www.glassshow.com">http://www.glassshow.com</a> Los Angeles, CA 90048      I search—send your want list (213) 874-GLASS (-4527)      email: mkrumme@pacbell.net
<b>D &amp; B ANTIQUES—ATLANTA</b> Bob Bartholomew Members Dixieland Heisey Club PO Box 33283, Decatur, GA 30033 Shows (404) 634-2799      Mail Order	<b>H &amp; R DIAMOND H</b> Helen & Bob Rarey 1450 White Ash Dr. Columbus, OH 43204 (614) 279-0390 after 5:30	<b>JEAN &amp; DON PARRETT</b> Beautiful Heisey      Layaways Accepted 4995 Maple Dale Rd. Jackson, Michigan 49201 (517) 784-7319—Recorder
<b>ANTIQUES - THE SHULTZES</b> 206-208 East Main St. Newmanstown, PA 17073 15 Miles West of Reading, PA (610) 589-2819	<b>"HAPPINESS IS" - THE STULTZS</b> 3106 Warren Court, Glen Allen, VA 23060 Shows and Mail Order (804) 672-8102	<b>PATTON HOUSE ANTIQUES</b> Specializing in Glass*Heisey*Cambridge*Fostoria*Duncan* Factory Antique Mall, Verona, VA off I-81 Exit 227 The Antique Gallery, 3140 W. Cary St., Richmond, VA Antiquers Mall, Booth 81, Rt. 29 N., Charlottesville, VA The Daniels, Box 547, Louisa, VA 23093 (540) 967-1181
<b>C&amp;J ANTIQUES</b> Cole & Jean Miesner Box 45, 72 Whig St. Newark Valley, NY 13811 (607) 642-9905	<b>MOUNDBUILDERS ANTIQUES 2ND GENERATION</b> Heisey is our specialty! Mail Order, Searching, Shows (800) 366-4347 Sorry, Buckeye Lake shop temporarily closed	<b>SCHWAN'S ANTIQUES</b> SHOWS & MAILORDER 77 Lagos del Norte Ft. Pierce, FL 34951 (561) 461-5940
<b>DOXTOIS</b> Eva & Joe Hirsh Heisey & Pattern Glass 6 James St., Norwalk, CT 06850 (203) 847-3315	<b>HOOKED ON HEISEY</b> Jay C. Martin 97 Heritage Hill Rd., New Canaan, CT 06840 (203) 966-9359 24 hr. answering machine Mail Orders & Shows	<b>R &amp; L ANTIQUES-SAN FRANCISCO</b> Members of the Golden Gate Heisey Club 3690 Bodega Ave., Petaluma, CA 94952 Petaluma (707) 762-2494 San Francisco (415) 621-6693
<b>CHARLES &amp; MILDRED FISHER</b> Heisey animals and Heisey By Imperial animals 991 Idlewild, Newark, OH 43055 (614) 522-5398	<b>HEISEY IN NORTHEASTERN FLORIDA</b> Hundreds of pieces • You won't be sorry! Call for your personal showing. Located north of St. Augustine, via I-95, Exit 101 Very easy access (904) 280-0450	<b>THE SPARACIO'S</b> Carl & Helen Shows and Mail Order 28 Refy Ave., Ramsey, NJ 07446 (201) 327-2495
<b>CRYSTAL LADY</b> Joann Hagerty Specializing in elegant depression glassware 1817 Vinton St., Omaha, NE 68108 Shop (402) 341-0643 or Home (402) 391-6730	<b>GALAXY ANTIQUE MALL—JIM PAPPAS</b> <a href="http://galaxy-mall.com">galaxy-mall.com</a> Email: <a href="mailto:ljp@galaxy-mall.com">ljp@galaxy-mall.com</a> Glass and Pottery—Heisey & Blue Ridge a Specialty Phone: (609) 897-0345      Fax: (609) 936-0091 26 Kinglet Dr. N, Cranbury, NJ 08512	<b>MY DAUGHTER'S INHERITANCE</b> Heisey - Crystal - Porcelain Antique Village - 3750 Howard Ave. Kensington, MD 20895 (301) 933-4618 Maggi Smith
<b>FINDER'S ANTIQUE HOUSE</b> 3769 Hwy. 29 North      Danville, VA 24540 Open Thursday—Saturday      (804) 836-6782 Area's largest selection of Heisey and other Elegant Glassware.	<b>J. &amp; R. COLLECTIBLES</b> Shows, SASE, Mail Order list The Lukasko's PO Box 1030, Newark, OH 43058-1030 (614) 344-9719	<b>APPLE VALLEY COLLECTIBLES</b> Richard Garnett & Anne Borchert PO Box 552, Amenia, NY 12501 (914) 373-8791      Shows & Mail Order *Yesteryears Antique's—Monroe, CT (203) 459-9548*
<b>FRAN'S FANCY FINDS</b> Fran & Jack Grenzebach 10534 Valencia Rd., Seminole, FL 33772-7511 (813) 391-5184 SHOWS      MAIL ORDERS	<b>MOSTLY HEISEY</b> Rhoda Curley 16 Clayton Pl., Albany, NY 12209 Shop and Mail Order (800) 972-2775	<b>THE WOODEN SHOE</b> 222 W. Washington St. Charles Town, WV 25414 Fri-Mon 11-5      (304) 725-1673 Glass—Pottery—Kerosene Lamps
<b>FOREVER HEISEY</b> Jan & Norm Thran Mail Order, Shows, Appraisal Service 1663 Londondale Pkwy., Newark, OH 43055 (614) 344-5955	<b>R &amp; S ANTIQUES AND GLASSWARE</b> Heisey—Specializing in Complete Heisey Tableservice Call or write for patterns and colors 2560 S. Maguire Rd.      Ocoee, FL 34761 (407) 656-5700      or      (407) 298-5980 PM	<b>WILLEY'S ANTIQUES &amp; MUSEUM</b> Specializing in Heisey 11110 Cannon Rd., Frazeyburg, OH 43822 16 miles east of Newark, OH (614) 828-2557
<b>WARREN &amp; MARY WELSH</b> Heisey & other elegant glassware 3635 Saddle Rock Rd., Colorado Springs, CO 80918 (719) 531-5866 Mail Order      Shows	<b>GLORIOUS TREASURES ANTIQUE SHOPPE</b> Heisey Glass and other Fine Treasures 518 Main Street, Edmonds, WA 98020 10:00 to 6:00 Mon. thru Sat., Sun. Special events (425) 775-5753	<b>A TOUCH OF GLASS</b> Heisey—Depression—Elegant The Antique Station Case 03R 194 Thomas Johnson Dr., Frederick, MD 21709 David & Lisa Helm (410) 239-4234
<b>GLASS 'N' GLASS</b> Virginia & Odell Johnson 6909 10th Ave. W. Bradenton, FL 34209 (941) 792-0604	<b>G.W. ANTIQUES</b> <a href="http://www.sonic.net/~gwant">http://www.sonic.net/~gwant</a> Robert Gindhart      (707) 575-8706 Gary Wimmershoff      Santa Rosa, CA Heisey, Wedgwood and other fine antiques	<b>HEISEY, etc.</b> Mike & Barb Rosenberger Shows-Mail order (219) 864-1704 5115 W. 78th Ln., Schererville, IN 46375 Visit our web site: <a href="http://www.jorsm.com/elegantglass">www.jorsm.com/elegantglass</a>



## 1998 BONNIE BUNNY CONVENTION SOUVENIR

This year HCA offers its third Bonnie Bunny Convention Souvenir in Dalzell Viking's Evergreen. The special piece is sure to look good in Dalzell's popular shade of green. Place your order now so you can pick it up during the June 16-20 convention week. The cost is only \$25.00 each, plus \$6.00 for shipping and applicable sales tax (\$1.50, Ohio residents only). The souvenir sale is for members only through June 17 at which date the exclusive sale of Bonnie becomes available to the public and the cost is raised to \$30.00. ♦



Mail to: Bonnie Bunny, 169 W. Church St., Newark, OH 43055 or call (740) 345-2932

Name: \_\_\_\_\_

Address: \_\_\_\_\_

City/State/Zip: \_\_\_\_\_

Phone: \_\_\_\_\_ OH Tax ID: \_\_\_\_\_

Payment: Check or MasterCard/Visa: \_\_\_\_\_ Exp.: \_\_\_\_\_

Quantity: \_\_\_\_\_ x \$25.00 = \_\_\_\_\_

Tax (OH only) \_\_\_\_\_ x \$1.50 = \_\_\_\_\_

Shipping (each) \_\_\_\_\_ x \$6.00 = \_\_\_\_\_

**TOTAL** \_\_\_\_\_ = \_\_\_\_\_

**PLEASE CIRCLE**

SHIP

PICK UP



**Visit The  
National  
Heisey  
Glass  
Museum**

POSTMASTER SEND FORM 3579 TO:

**HCA**

**169 W. Church St.**

**Newark, OH 43055**



Come at your leisure to enjoy more than 4,800 pieces of glassware produced by A.H. Heisey and Company from 1896-1957. Hundreds of patterns are featured in all production colors. Rare and experimental items are included as well.

**PERIODICAL POSTAGE PAID**

Facilities are air-conditioned and handicapped accessible. Hours are 10:00 a.m. to 4:00 p.m. Tuesday through Saturday, 1:00 to 4:00 p.m. Sunday. Members are admitted free, regular admission is \$2. Office hours are 8:00 a.m. to 4:30 p.m. weekdays.

**Membership Renewal Notice:** Check the date above your name and address on the mailing label. This is your expiration date. If it reads 2-10-98 make sure your dues are paid soon in order to receive next month's issue of Heisey News. Dues are \$22.00 per year, plus \$5.00 for each additional household member.