

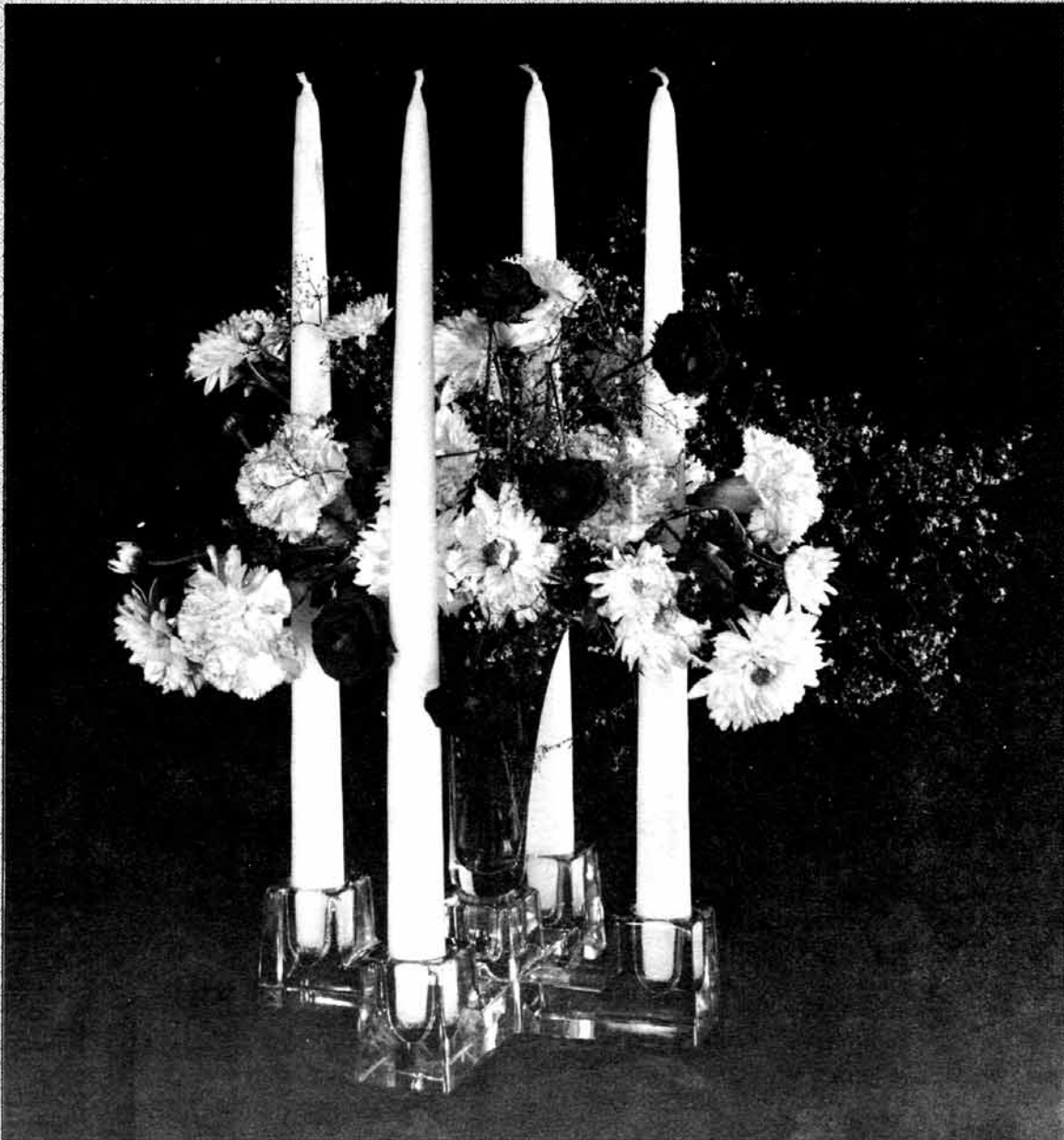
HEISEY *news*

OFFICIAL PUBLICATION HEISEY COLLECTORS OF AMERICA

©Heisey Collectors of America, Inc.
All Rights Reserved 1985

VOLUME XIV NO. 11

NOVEMBER 1985 ISSN 0731-8014



HEISEY NEWS

P.O. BOX 27, NEWARK, OH 43055

CLUB OFFICERS:

President	—	George Schamel	—	301-432-6285
Vice President	—	Bob McClain	—	614-345-8061
Secretary	—	Liz Stickle	—	614-323-2250
Treasurer	—	Ray Ziegler	—	614-471-6446
Exec. Dir.	—	Louise Ream	—	614-345-2932

Editor: Louise Ream

P.O. Box 27, Newark, OH 43055
PH: 614-345-2932

Assistant Editor: Neila Bredehoft

P.O. Box 27, Newark, OH 43055
PH: 614-345-2932

Published monthly and printed in Mt. Vernon, Ohio

\$15.00 per year - \$1.25 per copy

Back Issues - Each Volume (12 issues) year - \$9.00.

Volume V, VIII, IX, X, XI, XII & XIII

Heisey Collectors of America, Inc. is a non-profit corporation with tax exempt status. Owners and operators of National Heisey Glass Museum, 6th and Church Streets, Newark, Ohio.

Open daily 1-4 p.m. except holidays. Other hours by appointment. Members admitted free.

Club membership (includes 12 issues of HEISEY NEWS and participation in all club activities) \$15.00 per year plus \$2.50 for each additional family member in same household who wishes a membership card. For VOTING MEMBERSHIP, add \$25.00 one time only fee.

When requesting information, please enclose a self-addressed, stamped envelope (SASE).

ADVERTISING - Send all ads to:

Advertising, c/o Janice Thran
P.O. Box 27, Newark, OH 43055

DOUBLE SPACE ALL ADS.

RATES:

DEALER'S DIRECTORY - Maximum five (5) lines - \$20.00. Change during year \$2.00 per line. CLASSIFIED - 12-/word - \$1.20 minimum. Abbreviations and initials count as words.

DISPLAY:	MEMBERS	NON-MEMBERS
1/8 pg. (9 items)	\$15.00	\$25.00
1/4 pg. (20 items)	24.00	35.00
1/2 pg. (20 items)	40.00	50.00
1/2 pg. (50 items) Vertical	50.00	60.00
1 pg. (50 items)	65.00	80.00

Extra lines will be billed at \$1.00 per line. Personal ads limited to 1/8 space.

ALL ADS MUST BE PREPAID. Ad copy must be received by the 5th of the month preceding the publication date - i.e. April 5th for May issue. Ads containing reproductions will not knowingly be accepted unless clearly stated (i.e. Heisey by Imperial, etc.). HEISEY NEWS assumes no responsibility for false advertising or misleading information. In the event of typographical error, the incorrect portion of the ad will be run in the following issue, but HEISEY NEWS assumes no further liability.

The opinions expressed in articles in HEISEY NEWS are those of the authors and not necessarily those of the organization. The Editorial Staff reserves the right to edit or refuse any material submitted for publication. When requesting information, please enclose a self addressed stamped envelope. (SASE).

ABOUT YOUR EXPIRATION

If the number 11 appears to the right of your name on your mailing label followed by the number of members you have, for example 11-2, then this is your last issue of Heisey News. We will not be responsible for missed issues if renewals are not received by the 20th of this month when we have to send changes to our printer.

If you joined in the month of November you have already received 12 issues of Heisey News. However if we receive your payment by the time our extra newsletters are delivered to us by the printer, your copy will be mailed from our office. We want to treat everyone fairly but we have learned that many people in the past have received 13 or 14 newsletters before they are cut off. With costs so high we no longer can afford to do this.

If there is an error on your mailing label or if you are receiving two newsletters please notify us at once. If you have a change of address or go away for the winter send in your changes early so that they will be on the computer. The labels are put on by the printer who also mails the newsletter from Mount Vernon, Ohio.

Get your December dues in early and give Jeanie a break. Over 600 of you have dues to pay in December.

Department of the Treasury

Internal Revenue Service

550 Main St., Cincinnati, Ohio 45202

District
Director

Person to Contact:

Beatrice Eith
Telephone Number:
513-684-3863

Heisey Collectors of America
P.O. Box 27
Newark, Ohio 43055

Refer Reply to:

CSB:EO:BE

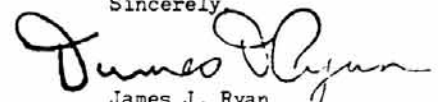
Date: DEC 11 1981

Dear Sir or Madam:

In response to your inquiry, Heisey Collectors of America, Inc is exempt from Federal income tax by virtue of an individual ruling dated December, 1972 under section 501(c)(3) of the International Revenue Code. Form 990 is your present filing requirement.

Contributions to you are deductible as provided in Section 170 of the Internal Revenue Code. Bequests, legacies, devises, transfers or gifts are deductible for Federal, estate and gift tax purposes under Sections 2055, 2106 and 2522 of the Code.

Sincerely,


James J. Ryan
District Director

Ed. Note:

Many people have asked about our IRS Status
The Letter Printed here should explain it to you.



PROFILES of FORMER HEISEY EMPLOYEES

"EMMETT E. OLSON"

by FRANCES LAW

IN MEMORIAM

Emmett Olson died in Newark, Ohio on September 20, 1985 at the age of 86. He was preceded in death by his wife Alice, who died in 1984. He is survived by a sister, Evelyn J. Olson, Milwaukee, Wisconsin.

Emmett was one of the important people working in the Heisey factory for many years. The following profile of his was first printed in Heisey News in the November, 1974 issue.

Several years ago Dick Marsh and I were able to purchase a very large quantity of Heisey catalogs, price lists, letters and day-to-day records from Emmett. These are a veritable treasury of information and of course, are priceless.

Louise Ream

REPRINTED FROM HEISEY NEWS, NOVEMBER 1974

Emmett E. Olson was born on December 10, 1898 in Eau Claire, Wisconsin where he finished high school. He was, and is, a lover of all sports and was captain of the second eighth grade football team and his four years of high school. He then attended the Normal School in Eau Claire which later became part of the Extension School of Wisconsin University.

Mr. Olson had met a Mr. Sicard, (not the Sicard of Weller fame) and his wife, through school personnel. Mr. Sicard asked him to come to work for the Central Power Co and he came to Newark on February 2, 1918 to work for this Company. He was amazed at the increase in wages for industrial workers but the salaried people had a hard time of it. He was in charge of the stock ledgers at Central Power with a beginning salary of \$75.00 per month. He was raised to \$80.00, then to \$85.00 but it became increasingly difficult to live on this salary in Newark.

After six months Mr. Olson joined the YMCA. Here he began to teach a gym class two or three times a week. The class began with eight men but soon increased to 28. Monty Beever was an instructor in Columbus and he asked Mr. Olson to become physical instructor full time at the "Y". William Greiser came to the "Y" as industrial secretary, his job being to start industries in participating in all phases of YMCA activities. The two men became very close in the entire "Y" program.

In the spring of 1919, he started a baseball league in Newark. He also "caught" for the Buckeye Rolling Mill. The "Y" objected to his extra activities in sports which he was doing to make extra money.

In September of 1919, he left the "Y" as physical instructor. He then dickered between the Heisey and the Holophane Companies to attain the best salary. Heisey won out with the lucrative offer of \$25.00 per week. They were to teach him the trade of stopper fitting. To

do this the stopper is placed in a wooden chuck and spins on a belt. Emery and water is placed in the bottle and it is ground until it fits. He finished the apprenticeship in six months.

It was then that Wilson Heisey introduced him to the area of glassmaking that was to become his first love. Wilson took him to the color room where ingredients were mixed to go into the batch to control the color.

After six months of learning about color mixtures. Mr. Olson met a Dr. Shively who was in charge of the lab at the B. F. Drakenfield Co. in Washington, PA. He invited Mr. Olson to his company, which he did. Continuing to visit the Drakerfield Lab for two or three weeks several times a year, he learned color technology, as both the lab and technical books could be used by him. He kept in touch with the Drakenfield Company until he retired. He admits to learning a great deal from Dr. Shively but says that most of his knowledge came from practical experience in the plant.

Olson said that during his early years at Heisey they were making the best lime and lead crystal in the world. They made Marigold during his years but he said it was cloudy.

During most of his time there they made amber for Fred Harvey restaurants and trains. Less amber was made in later years but they made other items besides those for the outlets mentioned above. The chemical content was changed to make amber softer and easier to handle in order to increase production.

He said that Zircon was made by adjusting the moongleam formula and control to cause the change in the color. You had to slough out the green to change the shade. As an ordinary layman it was difficult for me to understand the technical explanations. Mr. Olson was very patient with us but his explanations were beyond our writing scope.

He had made stiegel blue (cobalt) in small crucibles at the Drakenfield Co. and then talked Heisey into accepting the color. He first made a monkey pot to experiment and obtain good color. It was interesting to us to know that stiegel blue was extremely difficult to clean out of the pots so that they could be used again.

The Heisey Company never made any red to put on the market. It was experimented with but not practical to mass produce. Mr. Olson also said they experimented with cased glass. Wouldn't it be a real treasure to find a piece of this? We asked what became of the experimental pieces but he had no idea.

Tangerine, according to this color man, was first a golden yellow when melted in the pot. It was reheated in the glory hole to change the color to tangerine. This process was called "warming-in". The color was very difficult to control. If heated correctly the true color was halfway between ruby and yellow. That one variegated piece in tangerine and yellow in

Continued on next page

NOTES FROM YOUR PRESIDENT.....

MOULD INFORMATION REPORT # 215 Tumbler

While traveling between Boonsboro, MD and Newark, Ohio there is a fair amount of time to think of many things dealing with H.C.A. activities. For the past two years, the officers, Directors, Executive Director, and concerned members have had one major objective-- buy the moulds, pay for the moulds, and decide what to do with the moulds.

The moulds have been purchased (almost within 10% paid for) moved two times, and are now stored permanently in our own warehouse. We have asked members for suggestions as to use in disposition of the moulds. Most who have given opinions favor keeping the moulds and limited use for the gift shop and members.

During the trip home from the September Dinner-- it suddenly dawned on me that the vast majority of H.C.A. members have not seen a glass mould close up (I had not seen one closely until January 1985--since then I have become very familiar with those that we now own), therefore they may not know just what they are being asked to give an opinion about. We have in our possession many tons of metal parts that are not parts of specific moulds. In order to help understand what we (persons working with the moulds) are talking about--- hopefully a photograph or diagram and description of the types and parts of moulds can be presented in following issues of the HEISEY NEWS.

The last of the materials in the Wilson St. warehouse were moved on Friday October 4, 1985. This will cut our storage expenses \$800 per month. I would like to thank all of the people who helped with this move-- many of them made sacrifices of time and money to help. Forgive my not mentioning each by name; I'm sure I'd miss someone if I tried. Thank goodness that major job is finished and cleaning and research can continue.

The Project Committee Questionnaires are coming in slowly. Even if you cannot attend the September Dinners, you still have the opportunity to purchase the souvenir--your opinion is valued. Please enclose the questionnaire with your membership renewal, even if you have no strong feelings about the questions. We would like to have as large a sampling as possible.

May all your finds be "Goodies"

George

OLSON: Continued

the case at the National Heisey Museum is an experimental piece. The fact that it is opaque makes it even more unusual.

When the plant closed Mr. Olson continued to work until 1960 helping to close out and he then loafed for two years before he took another job.

One interesting thing he mentioned was that he helped set prices for years. He took the cost of manufacturing from beginning to end and applied the cost to each pound of glass in the article. The price was then set and put into catalogues and price lists.

Mr. Olson married the former Alice Schwartz in 1952. They were charming to us and generous with their time. Their attractive home certainly reflected a love of all kinds of glassware.



By Tom Bredehoft

In the early history of the HCA, at one of the quarterly meetings a member brought forth a tumbler which had the required Diamond H, but could not be identified in catalogs. The club decided to give it 8009 as a number and call it "Crossbow".

When I used to write columns for the Heisey News, I avoided writing about "Crossbow". What could I write? We had named it, it held about 12 oz., it was made out of glass and had a Diamond H in the bottom. I couldn't make a column out of that.

In the excitement of the original inventorying of the Heisey moulds, when there were a bunch of us at the warehouse, tagging the moulds so that we could know what we had, several of the moulds escaped our attention. Last month, when we were moving the moulds from small skids to standard pallets, our First Lady, Eileen, just happened across one of these untagged moulds. I was near and helped her identify the mould. It was stamped "215 12 oz. soda". I knew that we had no record of a 215 soda so I had to pry it open, and there was our old friend, "Crossbow".

The turn books from the mid-twenties had told about some new tumblers, numbered 204 through 213, starting in October 1923 and ending in October '24 of which sample runs were made. None of these ever made it to catalogs so there was no way of knowing what they looked like. (Without giving away future columns, we do have several of the moulds.) Obviously, 215 was made just after this period, either I missed the entry about 215 or we don't have that turn book. Anyway, 215 "Crossbow" must have been made about the first of 1925, but was not made in sufficient quantities to make it into the next catalog, four years later.

I hope to be writing about new information which we have gained from the moulds and from the mould drawings which Imperial saved for us. There is much to write about and it will supply subjects for a long time.

OLSON Continued

We salute this Heisey "Man of Color" and hope to see him and visit with him again soon. He didn't disclose any of his trade secrets about color and we didn't have the nerve to ask. Who knows? As active as this gentleman is he may need them again himself.



member that the minimum selling fee per lot is \$5.00 so try to make sure that each lot will bring at least \$25.00. You can make assorted lots if you wish.

We wish all of you a very Happy Thanksgiving!

Louise Ream

FROM THE EXECUTIVE DIRECTOR

As George has told you, the moulds are now at home in the HCA warehouse, stacked on metal racks donated by the Ford Motor Co. Rubeck Welding and Services, Inc., and Owens Corning loaned fork lifts (tow motors) for putting the moulds on the racks. Rockwell is also donating a fork lift to us. (Fork lifts also seem to be called tow motors and jack stackers, but what do I know about such things?) Other companies furnished the pallets.

Many people were highly visible during this work and several came from long distances to help, part of them came many different times. If we try to mention them all we will miss some, which is worse. Also, those who work here every week, silently, in the background of this club, may never get any mention so it is best to thank you all and not try to list individuals. You have to be here to know what all our "old faithfuls" do all year long.

When I began to put together a list of 1985 donations. I found that those given in late 1984 had not been listed yet. So we are printing those for both 1984 and 1985. If you have donated anything in this period - up to October 15 - that isn't listed, please let us know at once. We have not included gifts of glass to the gift shop nor mould money except that given at the Convention.

Incidentally we do need Heisey glass for the gift shop - plates and nappies are great and sell better in our shop than for dealers. All of this is fully tax deductible and tax slips are given for the price put on the items for the shop.

We are very pleased with Jeanie and Leonard, our newest employees. Leonard needs more orders to fill and Jeanie hopes that you will send in your dues promptly. Remember that December is a big month with 600 memberships due. Send them in early to insure receiving your January Heisey News.

The blue Madonnas from Viking, as listed in the latest catalog in this issue, have not arrived here as yet but they are being made (Item #40). Note particularly items 36,40,41, 100 and 102 plus the two unnumbered items at the end of the list. All of these were made in limited quantities and are very nice pieces. The little plate with Victory etching is particularly attractive and helps the mould fund as does the Cobalt Diamond H. Many of the items on this list would make nice Christmas gifts.

We hope many of you will attend our Christmas party on Friday, Dec. 6 at the Granville Inn. (See form on page 24). This is always a nice occasion.

Bring your auction glass to the museum on that day or send it by January 1. Note that you may put in 12 items this year. Try to send good glass to bring in more money for you, and the museum. Re-



"Heisey" Trademark Registered

We have just received notice that the word "Heisey" has now been registered in our name as a trademark on glass items. We will also own the letters "HCA" as a trademark since we have already received a letter apprising us that it will arrive in a few weeks.

We now own the "Diamond H" as a Collective Membership mark and the Diamond H on glass plus these two new marks. We should be very well protected.

Your officers and the board are "on the ball".

.....

MOULD FUND STATUS



By Norm Thran
Mould Fund Steering Committee

As of the 15th of October the fund stands at \$202,400. The past month realized \$700. from donations and the sale of signs and plates. As you can see from the recap shown below we are still growing but at a very slow pace. The cash received to date represents 85.75% of the goal.

	September 16	October 15
Received	\$195,700	\$196,500
Pledged	6,000	5,900
	<u>\$201,700</u>	<u>\$202,400</u>

With less than 15% of the purchase price remaining wouldn't it be nice to hear from all of our members, during the Holiday Season with a Mould Fund donation!! The moulds are now stored in the H.C.A. owned warehouse. The only major phase of this project is to pay back the money borrowed to complete the purchase of the moulds. As you all can appreciate this TASK has not been easy, however with your help to date we have accomplished a great deal. Since Jan, 14 of this year this project has raised over \$158,000. (In only 9 months)

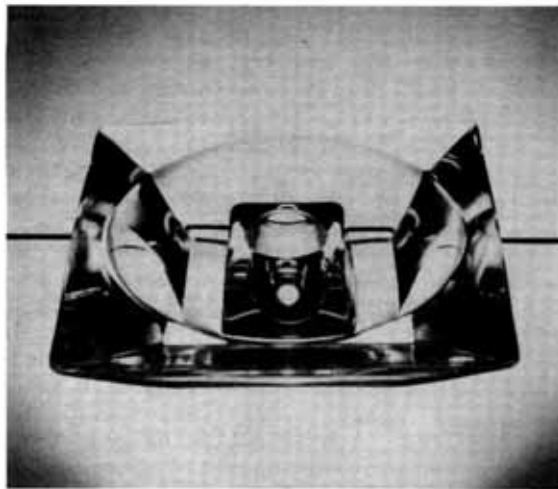
We must however continue to press forward and explore other means and ways to reduce the Mould Fund debt. All pledged money should be forwarded as soon as possible.

In addition donations and future pledges are welcomed.

HEISEY CANDLESTICKS

NO 1489, PURITAN, PART 1

BY TOM FELT



The No. 1489 Puritan pattern began in 1937 as a small smokers line with only a cigarette box and two sizes of ash tray. It was a very plain, heavy pattern which showed off the clarity of Heisey's crystal to great effect and it was to become quite popular, eventually being expanded to 25 or 30 items, including various candleholders.

This month, we'll look at the first of the candleholders to be added to the line. This was the 4 inch candleblock, which was initially made in July 1940. A pair of these are pictured along with the 11 inch square gardenia bowl in one of the illustrations accompanying a article on glass in the September 1940 issue of *House Beautiful* and again in an ad in the same magazine in December. The same console set was also featured in Marshall Field's Christmas catalog that year, but with four candleblocks surrounding the bowl. Flowers were shown floating in the gardenia bowl and also placed in the well of one of the "flower-holding candlesticks," as Marshall Field described them. The whole ensemble was advertized as being ideal "for a modern table setting."

This candleblock is listed as being 4 inches, but in fact is closer to 4½ inches square. It is essentially identical to the 4 inch ash tray in the Puritan pattern, but without the indentations to hold a cigarette and with the candleholder element added to the center of the bowl. The candleblocks were offered either fire-polished or ground smooth on both the top and bottom. Sometimes the top of the candleholder portion was also ground, and "mismatched" pairs have been seen with one of the candleholders ground and the other not. It is also possible that this candleblock may be found full-cut, with the sides ground as well.

It is known to have been decorated with Heisey's No. 5020 Lily carving and also with both the No. 941 Barcelona and No. 964 Maryland cuttings. Because its plain design would have leant itself to cutting, it is likely that others may be found on it as well.

In December 1940, there was also a single turn of 343 6 inch candleblocks made. These candleblocks are otherwise unknown, but presumably are similar in appearance to the 4 inch size, and probably were copied from the 6 inch ash tray.

The 4 inch size was made in large quantities, with almost 13,000 produced between July 1940 and July 1943, when the last ones were made. They do not seem to be too common today, but this is probably due to the fact that the design is very simple and the candleblocks are unmarked, with the result that they are not readily recognized as Heisey.

A similar candleblock was also made by another unknown company. It is smaller in size and the candleholder portion is ribbed; also, the quality of the glass and the finishing is not comparable to that of the Heisey candlestick.

This candleblock was never reissued by Imperial. Ed. Note - 1489 Puritan was considered Heisey's finest glass by Heisey employees. Once at one of our early shows an important former employee asked me why Heisey collectors thought so much of colored glass when they were so famous for their beautiful crystal. It is too bad that collectors at the present do not appreciate the pristine quality of this pattern. Most of it could rival Steuben. The original prices of 1489 were always higher than other glass. Why not take a closer look at this lovely glass?
Louise Ream

MUSEUM IS RECIPIENT OF ARCHIVES FROM CARNIVAL GLASS NEWSLETTER

The Corning Museum of Glass is the recipient of a complete collection of newsletters as well as historical data from *Carnival Glass News and Views*, a national publication about *Carnival Glass*.

The gift to the museum was announced by Dwight P. Lanmon, museum director. "The archival material is a valuable addition to the museum library's holdings on *Carnival glass*," Lanmon said.

The material includes an indexed collection of *Carnival Glass News and Views*, a publication which has been printed and distributed nationally for the past 20 years. The last issue of the Newsletter was published Aug. 10, 1983.

Also included in the material is a complete set of the feature articles about *Carnival glass* which were mailed under the title, *The Carnival Heritage Series*.

The gift to The Corning Museum of Glass was presented by O. Joe Olson, who edited the newsletter during its 20-year span. Mr. Olson is an active member of several glass organizations, and is the author of numerous articles about *Carnival glass*.

The library of The Corning Museum of Glass is open to the public; visiting hours are 9 a.m. to 5 p.m. Monday through Friday.

Happy Thanksgiving Day

FROM JIM EARNSHAW ON SYRUPS.

Dear Neila,

In answer to your query on syrups in the October NEWS, I'll tell you what I can.

Thanks so much for the article and thanks too, to the Willeys.

No, I have not seen any of the syrups shown in your article and now that we know the pattern numbers, I have a better understanding of why we haven't!

By 1910, none of the "old" patterns were in production, ie: #341 Old Williamsburg was the last produced. With the new sanitary removable metal top just patented, production switched to #353 - 5, 7, and 12 oz; #354 - 12 and 16 oz; #355 - 16, 24 and 32 oz. and lots of #357 and #359's. These were produced by the thousands, which is evidenced by their availability today. The turn books show "teams" of four making "cans" day after day. These patterns were very popular and sold well. No need for anything else thru the 1910-1918 period. Later #362 - 7 and 12 oz. and #363 - 5 and 7 oz. went into production about 1920. These two patterns became the mainstay of Heisey's production thru the 1920-1928 period. Most were sold to cutting houses throughout the country and we still see so many of them with all sorts of cuttings and etchings. Heisey cut at least three - Cloister, Fairfield and Windsor. Lewis & Neblett cut two or three. Lotus in Barnesville cut several. These two patterns sold so well for Heisey, that I doubt that they needed any other. None of those you showed, 365, 366, 369, 370 were shaped for cutting.

Then #371 with it's curved top was introduced about 1922 being patented July 23, 1923. It was cut by Heisey, Cloister and by others including Lotus.

My research in the turn books has only covered the 1900-1922 period. What I have done in the teens, so far, show mostly the #362-363's, no other production. So about 1920-1932 the patents for 365, 366, 369 and 370 were filed. But unless I find these in the turn books, I doubt that any even went into production. You can't discount the success of #362 and 363. The next move would be to color and that led to #372 with the molded handle which permitted the use of color. So about 1928, #372 went into production in Clear, Flamingo, Moongleam and Sahara. Only two Heisey syrups were made after that--Crystolite and Plantation.

You may use this letter as an article for the NEWS if you feel it has sufficient merit. It is a very profound opinion, based on research and a "gut" feeling backed by my experience.

Thanks again for the article.

Best Wishes,
"How Sweet it is"
Jim



HEISEY CLUB OF SOUTHEASTERN MASS

The Heisey Club of Southeastern Massachusetts can look back on a successful year as the members celebrate the first full year of the club's existence at a chowder party to be held later this month. The club has had regular monthly meetings at the home of Mr. and Mrs. Wade Banck on Hingham Street in Rockland, MA., with members from a wide area including Fall River, Westport and Marion to the South, extending to several towns on the Cape, and including Marshfield, Rockland, South Weymouth, Hanson, Wollaston and other area communities.

The meetings are held the third Wednesday of each month, and the club welcomes new members. The programs during the first year have included talks, exhibitions and discussions on Heisey punch-bowls, scent bottles by Heisey and other glass companies, Heisey ash trays (a near complete collection), toothpicks of all kinds with emphasis on Heisey, a Heisey identification slide show, and a fine auction which added to the club treasury as well as provided an opportunity for members to add to their individual Heisey collections.

Several members of the club attended the National Convention in Newark, Ohio, and Beverly Sullivan, official delegate, received the club's charter with Irene Walton, first president, looking on.

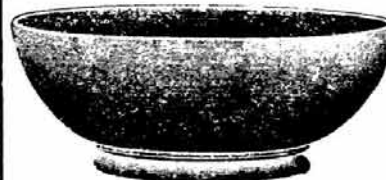
A nominating committee is preparing a slate of officers to be voted on at the annual meeting in October, and the young club is completing plans for an all-Heisey Glass Show and Sale to be held at the Sheraton Hotel in Sturbridge, MA. in May of 1986.

Anyone interested in becoming a member of this Heisey study club should contact the secretary, Dorothea Banck at 617-878-2760, or Helen Mead, membership chairperson, at 617-748-2240.

A club newsletter is in the planning stage with Shirley Dunbar as editor, assisted by Jackie Thran. They expect to have the first publication ready this Fall.

Officers guiding the club in its first year are: President, Irene Walton; Vice-President, William Thran; Secretary-Treasurer, Dorothea Banck; Publicity, Beverly Sullivan; Membership, Helen Mead; Program, Philip Phillips and Ted Mead.

No. 486 PATTERN



No. 486, 4 1/2 IN. NAPPY

From an early price list. Note that both these patterns have table sets. What do they look like?



No. 485 PATTERN

	Set	Ground Bottom			
	Spoon	" "	9 in.	" "	" "
	Cream	" "	9 in.	Celery Tray	" "
	Sugar & Cover	" "	12 in.	" "	" "
	Butter & Cover	" "	11 in.	Punch Bowl
	Nappy	" "	11 in.	" " and Foot
4 in.	Nappy	" "	8	Pint Jug, Ground Bottom
4 1/2 in.	"	" "		Pickle Jar, Knob Cover
7 in.	"	" "	6 in.	Vase
8 in.	"	" "			

Size or Capacity

Set
Spoon
Cream
Sugar & Cover
Butter & Cover
4 1/2 in. Nappy
8 in. "
3 Pint Jug
1/2 Gal. "
1/2 Gal. Tankard

diamonds are forever...By Janet M. Caswell

We have many unusual, thoroughly unique attractions here in the Yachting Center: the Lee Mansion, the Spirit of '76 Painting and the "Old Powder House". My very favorite is the Powder House. There are only three pre-revolutionary powder houses still standing in the United States, each different in structure. Ours is a curious, completely circular building, the same inside as out; it was built from brick, in 1755 shortly after the outbreak of hostilities in the French and Indian war. It was used as a storehouse for muskets and ammunition not only during the French and Indian war, but also the Revolution and the War of 1812. Time has neither marred or changed but only seemed to make the handmade bricks more lustrous. A "Keeper of the Powder House" was appointed yearly.

Powder Houses! Powder Jars! The "Pilgrims" (NH) found a pretty powder jar with a cutting (they didn't tell me which one) plus a few other real nice things: #300 Bitters Bottle: #150 Pointed Oval & Diamond Point Cream & Sugar; #1233 Pressed Diamond Baked Apple; the small 4" #1489½ Cigarette Box with Horsehead cover; #3390 Carcassone 9½ oz Sahara goblet #354 Wide Flat Panel Sugar & Cream, also Sahara; #1255 Pineapple & Fan Toothpick in Emerald and a lovely little 4" #4085 Kohinor Ball vase in Zircon, saturn optic.

The "High Steppin Couple" (MA) came up with the #1250 Groove and Slash Humidor and 16 pieces of #5072 Rose Stemware with Heisey Rose Etch; 10 oz goblets, 5 sherbets and 6 wines. Terrific find!

Also from (MA) the "Busy Bee" found a #1425 Victorian 2½ oz Wine, a #393 Crystal Nut Dish and the #1469 Ridgeleigh square Candleholder.

Now hear this! "the Hanging Judge" (MA) has this to say: one #365 Queen Ann (early) Sherbet and four 2 3/4 oz egg cups will be saved for another day!! What good news, we didn't want anything to happen to such "truly good" pieces.

From the Sunshine State (FL) "the Shadow" has been out there scouting around and captured a few pieces of #4091 Kimberly Stemware with the "Courtship Cutting": 6 goblets, 6 champagnes and 7 cordials. All signed!!

Oops, what did I hear about the #1201 Fandango Molasses Can being discovered in the Buckeye State (OH); and the "Eager Beaver" also (OH) can certainly brag, again, with a #1447 Rococo Double Candlestick in Sahara, a #3801 Grapefruit in Hawthorne (checker optic) and the #1776 Kalonyal Cruet. Oooo-Kaay!

From the Golden State (CA) "Mr Cruet" has added a couple of goodies to his collection: #1235 Beaded Panel & Sunburst 8 oz Catsup and a #1485 Saturn 2 oz Cruet in Zircon. If the #1485 cruet is late it is limelight, if early then it would be zircon.

As I told you last month "Mountain Gal" (CA) now takes her "Heisey Honda" down the mountain for a fill-up, and "fill-up" it was: #351 Priscilla 2 oz oil; #1503 Crystolite 7" handled bon-bon, 6" oval pickle and 9½" leaf relish; #112 Mercury Candlesticks (a crystal pair and one flamingo); #1472 Parallel Quarter - two pair of Candlesticks and one Floral Bowl. Things seem to be coming in pairs! Also, #341 Puritan ½ Gal Squat Jug - again Two of them; #7052 Diamond Grid Hair Receiver and a #393 Narrow Flute 9" plate with cutting.

The "Mr" is up to his old tricks, finding those special things. This time it is the "Dental Recepticle" or Hood Sterilizer #7103. It is 9" tall

and 5½" across the base. On the bottom it says: "John Hood Co., Boston - made in the U.S.A." Spaced evenly around the inside and about 5" from the bottom are three flat glass pieces on which a round insert rests, having round cut-outs to hold six or seven dental tools. This Hood Sterilizer of ours has three of the tools intact. A great find and in great condition. This was a special order item!!

As for "Yours Truly" I have acquired two more pieces of #1404 Old Sandwich to add to my collection. One, sahara, Candlestick (now I have a pair) and the other is the Floral Bowl in Crystal, but quite different. This one has Silver Overlay all around the top and bottom edges and between the panels dividing the plain panels from the panels with the thumbprints. The plain panels are also frosted! This makes for a very regal bowl. Which, by the way, has front and center on the Dining Table!!

"English Buddy" (FL) the #1567 Plantation Cruet and from "Cal Kid: (CA) also Plantation, the Salt and Pepper. Well, I guess that is the East and West of It. Right????

Let me pass on something different from the "Old Dominion State" (VA). It is rather Art Deco and unusual. The 7" Empress #1401 Compote, instead of having a foot, goes into a metal base that has three Pegasus Horses Rearing, with wings back that form a ring to hold the stem of the Compote. The compote is crystal with a nice cutting and is marked. The base is two tiered and the horses are on the second tier. Would love to see a picture.

Never, never can I forget the "two Guys" (CT) always something special to tell me: #1401 Grapefruit in Crystal; a pair of #1 Georgian 9" Candlesticks. Now, I understand that they were sleeping soundly under a "blanket" marked Fostoria. ummm! Also #300 Peerless individual Creamer and Sugar along with the #1506 Provincial Cruet in Crystal with the #1 stopper. The best for them was something they have wanted for ages and ages. Three of them were found. #380 Scalloped Octagon 5" nappies - absolutely diamond crystal clear. Worth waiting for? I guess!

The "lady who likes color" (MA) adds nice pieces every now and then: #1184 Yeoman Egg cup in Flamingo; #1295 Beaded Swag Wine in Custard - souvenir Chocorua, N. H. ; and the #1253 Tri-Cornered Mint and Cover in beautiful Marigold. What a pretty thing that is.

I think it is time to give my poor Typewriter a rest, but before I do I would like to know if you were all good to yourselves this past month. I knew you were. O.K. write and tell me your finds - share them with all of us.

HAPPY THANKSGIVING ! !



NORTHWEST HEISEY COLLECTORS CLUB

Greetings from the beautiful Pacific Northwest and the Northwest Heisey Collectors Club. We have had a nice hot summer and look forward to a mild winter so no meetings will have to be canceled because of weather.

On Jan. 5 we met at the home of Marian Belt in Seattle with Myra Harmon co-hostess. There were 27 members present. After the business meeting we had an explanation and examples of punch cups. There was also a Show and Tell of the finds the members had bought the last month.

March 2 found us at the home of Don and Paula Beatty in Lacey with 17 members present. The Feb. meeting was canceled because of the snow and ice. Imagine, in the state of Washington! The Heisey Club had a table at the Green River Depression Club Antique Show at the Doubletree Plaza Hotel in Seattle in Feb. and the committee also had a very nice table set with different place settings. There were many favorable comments as the people went into the show. Nan Alderson, Pres., showed an example of "cut shut" from the article in the HEISEY NEWS. Our program this month was on Heisey pitchers.

The April 6th meeting was held at the home of Nan Alderson in Seattle with Maxine and Lawrence Johanson, co-hosts. 22 members and 1 guest filled all available chairs. The members were urged to write their opinion on what they would like to have done on the "mould" situation. The nominating chairman proposed the same slate of officers for the coming year. This was passed unanimously by the members. Members were quoted as saying, "why change when they were all doing such a good job"? Myra Harmon and Marian Belt donated to our study club, an autographed copy of "ELEGANT GLASSWARE OF THE DEPRESSION ERA" by Gene Florence, for our library. The program was on "Open Salts" with many examples and followed by show and tell.

On May 4 there were 22 members at the home of Mervin and Evelyn King in Wapato, which is in Eastern Washington. It was snowing a little in the Pass but the sun was shining when we got there and we had a great time visiting while eating the potluck dinner. They had received a large box of fresh asparagus from the field that morning so we were able to take some home with us. Mervin had a very interesting program on their collection of "Old Sandwich" in Sahara. We also had a lesson in what we could find in a "box lot" at an auction. Marilyn Pederson had bought a Heisey Favor Vase in a box - very reasonably. It was about a 500 mile round trip for some of us but we really enjoyed the day.

On June 1 we met at the home of Kathy and Bill Eytcheson, which is built on the banks of the Green River in Auburn. There were 28 members and 3 guests present. Kathy Erickson and Gail Ells were co-hostesses. After a discussion it was decided to have a silent auction at the August meeting for the "Mould Fund". Kathy Eytcheson and Willa Carty gave a very interesting program on Imperial with many samples of items and the different colors.

The August 3 meeting was at the home of Mary and Oliver Beatty in Olympia with Joe and Betty Preston as co-hosts. Their home is built on a golf course and as we sat out on the patio, we watched many golfers lose their golf balls in the water hazard in front of their home. \$319 was raised for the "Mould Fund" at the silent auction. Oliver Beatty volunteered to be the historian for the club so any items are to be given to

him. We always have a good display for Show and Tell and a few members had bought items on the way to the meeting. There were 24 members and 1 guest present.

On September 7 we were on Whidbey Island with Lee and Betty Nichols. After a short business meeting we had a delicious potluck dinner. Our meeting was on compotes, comports or compotiers. Betty has Heisey wherever you look and it is always interesting to see where Lee has built more area for display.

October 5th was a beautiful fall day and we met at the home of Marilyn and Mike Bryan in Olympia. It is always interesting to go the different homes as we get to see other pastimes that people have. Mike makes beautiful wooden ducks as his hobby. At least, so far it is a hobby. There were 15 members and 2 guests present and one of the guests became a member that day. Welcome, Mary! Our treasurer, Maxine and her husband were still missing as Maxine hasn't been well and we really miss them. Our program was on "little things" and the people who brought items described everything they could about that item.

The Northwest Heisey Study Club meets on the first Saturday of every month in the homes of the members. If you would like to find out about our club or where we are meeting for the month, please feel free to call - in Seattle, the president, Nan at 824-7946 and the treasurer, Maxine, at 284-8472 or in Bellingham; the vice-president, Marilyn at 734-3819 and the secretary, Luvonne, at 733-1245. Or if you are visiting in the area and would like to attend a meeting we would be glad to give you any information you need as to how to get to a meeting.

Our meeting in November will be a potluck dinner in Bellingham and in December a potluck dinner in Tenino. We'd like to see YOU at our meeting.

Luvonne Nelson, Secretary

Ed. Note: It sounds as though this club way out in the Northwest is very active. Why don't more clubs send us a report once in awhile. L.R.



VIRGINIA HEISEY CLUB

The October meeting of the Virginia Heisey Club was held at the home of Bobby and Jim James in Williamsburg.

Our members have been discussing for some time, ways to raise money for the Heisey Mould Fund. As our first endeavor, we held a silent auction at our October meeting. Members had been asked to contribute glassware (Heisey or any other kind), handmade items, home baked goodies, etc. As always, the response was great.

The auction brought in \$80.00, and another \$20.00 was donated by someone who wished to remain anonymous. A check for \$100.00 was immediately dispatched to the Mould Fund.

This event proved to be so successful, that plans to hold another are in making. Also, we decided to pay for our pot-luck dinners in the future - this money going to the Mould Fund. Our next pot-luck dinner is to be held in December at the home of Jessie and Charles Hopkins in Hampton.

Betty Johnson - Secretary

1984 DONATIONS

1984 DONATIONS

1. 1425 Victorian Oil - donated by Irene Rauck in memory of Bill Cochran and 439 Individual Ash Tray, Moongleam.
2. 2 sets of Cologne slides - Dick and Virginia Marsh.
3. 4225 Cobel Cocktail Shaker, 2 qt., with #454 Antarctic etching - donated by Mr. and Mrs. Parker Reed in memory of his mother, Macille M. Reed.
4. Ruby stain toothpick holder confusing item made by Guernsey Glass Not Heisey - Betty L. Parker.
5. Items for gift shop, \$2,264.00 - Mr. and Mrs. Tom McCollough.
6. 355 Quator Domino sugar - Ione Tomasi.
7. 1632 Satellite 14" party plate; 4035 Decanter w/ Lily Carving, 3404 Spanish goblet, Cobalt, & 1503 Crystolite Cruet - John Thomas
8. Ceramic Copy of Ridgeleigh candle block (look alike) James L Kennon.
9. 5025 Tyrolean goblet, 3350 Wabash goblet and 6003 Tempo Sherbet all unfinished (overblow still attached) Jim and Jo Earnshaw.
10. 6060 Country Club Beverage Glass w/522 B Cocktail Party etch. Bob and Hilda Ryan.
11. 1184 Yeoman grapefruit, Moongleam, donated by Phillip Phillips.
12. 3073 Marblehead oval bowl. Previously unknown, Lloyd and Janet Caswell.
13. 1252 Twist Floral Bowl and flower frog. Marigold. Bill and Marian Heron.
14. 6060 Country Club soda plain and one with unusual optics. Robert M. Myers.
15. 1978 Land of Legend Ceramic pitcher w/Heisey Museum. Elizabeth King.
16. Blown glass eggs made by Arthur Kessmeier, glassblower - 1 green, 1 milk glass. Mr. Kessmeier's personal stamp made of glass, Mercury glass cane - 100 of these blown by Mr. Kessmeier for a parade in 1929, Flask cut by one of the cutters for Mr. Kessmeier (Not Heisey). Donated by his son and wife - Mr. and Mrs E. G. Kessmeier.
17. 6060 Country Club cocktail shaker - Winchester 73 etch. Donated in honor of Harriet Iona Smith by Emma Frances Mee.
18. 2401 soda, Rube Circus etching. Mr. and Mrs. Maurice Walter.
19. Shell and Tassel Compote (designed by A. H. Heisey while working for George Duncan Sons, and 1590 Zodiac Ash Tray. Drs. Evelyn and Griffith Daniels.
20. Heisey Cruets Slide Show - 96 slides. Homer Paulson.
21. 3404 Spanish goblet - special cutting by Emil J. Krall. Norman and Jan Thran.
22. 1469 Ridgeleigh Ash Tray, 2 #9 coasters, 1503 Crystolite Round ash tray. Jamie Van Winkle in honor of friends.
23. 1519 Waverly Trinket Box - Thomas and Linda Bischoff.
24. Camera ready copy for "Heisey's Orchid Etching and Heisey Rose booklets. Neila Bredehoff.
25. Camera Ready Copy for book Heisey Candlesticks, Candelabra and Lamps. Tom Felt and Bob O'Grady.
26. Owens Corning Fiberglas Corp. \$250.00 to be used for advertising.
27. Mirrors for Room 2 of museum. George and Arlene Reynolds.
28. Mirrors for Room 1. Connecticut HCC.
29. Mirrors for gift shop. Ray and Delores Ziegler.

1985 DONATIONS

* Indicates Club Donation

1. # 6060 Country Club Cocktail Shaker, Winchester 73 etch. Donated by Emma Mee in honor of Harriet Iona Smith.
2. #315 Paneled Cane Cruet and #3416 Barbara Fritchie Claret, Manhattan Cutting. Peggy and Al Miller.
3. Model of #1567 Comport stem in lead; #1404 Old Sandwich beer mug, plastic model; and #3380½ goblet plunger. All from Imperial. Donated by Bill Clifford.
4. #5074 Seahorse Cocktail, Amber Stem and #417 Double Rib and Panel Creamer. Donated by Dick and Lee Schwan.
5. #5023 Continental (late) wine. Lloyd and Jan Caswell.
6. Hen-on-Nest dish. Made in Tawian with fake Heisey mark. Orva Heissenbittel.
7. #362 7 oz. syrup. St. Luke's Commandery etch. Jim and Jo Earnshaw.
8. #300 Peerless salt and pepper.
- *9. #1425 Victorian Rye Bottle - Glass for auction - Heisey Collectors of Columbus.
10. #5074 Seahorse Cocktail, Amber Stem. Donated by Dorothy Tarquinio in memory of her husband Murphy. This is a different shade of amber.
11. V 1259 Verlys by Heisey, Water Lilies bowl. Donated by Ruth Graham in memory of Betty Jean Handel.
12. #3404 Spanish goblet. "Roosevelt Top Score" etch. Donated by Mr. and Mrs. Russell Swetnam.
13. Amber Water Bottle. Mr. and Mrs. Robert Harrison. This is being researched for authenticity.
14. #1405 Ipswich Cruet - cross stopper. Donated by Penny Madewell in memory of Margaret Matesich.
15. Several metal plates for ads. Harold and Mildred Willey.
16. #1469 Ridgeleigh Ash Tray. Donated by Jamie Van Winkle.
- *17. #4033 Bar Bottle - "Scotch" Carving. National Capital HCC.
18. #3315 Polonaise goblet, 3315 Cassandra etch. Bob and Vivian Hall.
19. Glass Catalog for library. Marjorie and Jerry Gillette.
20. #429 Plain Panel Recess goblet. Variant stem. Herman Francis.
21. #1184 Yeoman 8 oz. tumbler D/O. Tom and Marian McCollough.
22. #353 Medium Flat Panel low footed comport. Norm and Jan Thran.
23. #1183 Revere Japanese Garden Tray. "Schwan" etch. Bill and Betty Barnard.
24. #433 Grecian Border Cordial. Show dealers and friends of Tom Martin, in his memory.
- *25. #1252 Twist - 2 Part Relish. One half is Sahara, the other Moongleam. Unique. Heisey Heritage Society in memory of Tom Martin. \$650 for Mould Fund.
26. #1951 Cabochoch 8" plates, one with Cattail Cutting, one with Starlight Cutting. #339 Continental footed sherbet. Jean Camey.
27. #310 Ring Band Covered Butter. Donated by show dealers in memory of Tom Zehr. Cash also donated to Mould Fund in his memory.
- *28. #3417 Bitters bottle, #472 Lion Tamer etch. #4225 2 qt. cocktail shaker, Sahara. \$600 to Mould Fund. Had a flea market in March. Land of legend Study Club.
- *29. #423 Diamond Band and Six Tumblers, beautiful - good. Donated by Western Reserve Study Club and Wendell Young in memory of his wife, Thelma.
- *30. #1541 Athena single candleblocks. \$100 Mould Fund. Donated by Diamond H Study Club.
31. #1567 Plantation. Pair of lamps to be sold for the Mould Fund. Jim and Jo Earnshaw.

Continued on next page

Continued

32. #3801 Grapefruit, Hawthorne, Checker Optic. Norm and Jan Thran.
33. #10 Cologne, 1506 1 lb. Whirlpool Butter and #1489 Cigarette Box. Look alike for #1121 salt dip by Heisey. John R. Thomas.
34. #4182 8" plate w/9008 Sea Nymph etch and #1243 7" Stepped Octagon plate, Moongleam. Peggy and Ernie Cox.
35. #5066 Horsehead stem sherry with cutting. Donated in memory of Murphy Tarquinio by Show Dealers and friends.
- *36. \$100 Mould Fund - Newark HCC.
- *37. \$150 Mould Fund - Reynoldsburg HCC, Sponsor Show.
- *38. \$2000 to Mould Fund. Sponsor Annual Show. Bay State HCC.
- *39. Binder being sold for Vogel's books, Dayton HCC.
40. #411 Tudor - Large Moongleam bowl donated by Gateway HCC in memory of Frances Chivers, \$210 for Mould Fund.
- *41. \$100 for Mould Fund - Far East Club, donations for March auction - \$158.
- *42. \$1500 to Mould Fund - Heisey Collectors of California.
- *43. \$220 for Mould Fund. Cheese, crackers and cookies for museum lounge for five days. Cream and Sugar for lounge. Northern Illinois HCC.
- *44. Glass for auction \$349. Heisey Collectors of Michigan.
- *45. \$200 Heisey Collectors of Texas (for best place to put it).
- *46. \$900 for Mould Fund - Heisey Pursuit Game, Rochester HCC.
- *47. \$225 for Mould Fund - HC of Western Massachusetts.
- *48. #150 Banded Flute slide set - 100 slides. 76'ers of Columbus.
- *49. \$100 for Mould Fund. 50# of cheese, cookies and crackers. Dairyland Heisey Club.
- *50. \$3250 Mould Fund. \$1000 pledge for acquisition - Golden Gate HCC.
- *51. \$800 for Mould Fund - Connecticut Heisey Collectors.
- *52. \$600 for Mould Fund and glass for auction \$70. Virginia Heisey Collectors.
- *53. \$50 and helped with flea market - Heisey Hunters of Newark
- *54. #4033 Bar Bottle "Scotch etch, \$1000 for Mould Fund, \$1000 for new tables - National Capital Heisey Club.
55. #1497 Boat Dish, \$1000 for Mould Fund attached to sail. Miriam and Lucille Pringle.
56. 100 slides of history of mould purchase and moving. Bill Barnard.
57. Antique organ to be sold for Mould Fund. Kay and Regis Tandarich.
58. Heisey cocktail glass (from Imperial) Bill Smith and Willard Kolb.
59. #1476 18" Torque Plate, cutting by Emil J. Krall. Given in memory of E. Lee Bearshear and in honor of Margaret B. Armstrong, by their daughter
60. Framed photo of Andrew J. Sanford, Heisey designer. Donated by his oldest granddaughter, Dorothy Gutridge.
61. #3368 Albemarle goblet, unknown cutting. Donated by Mr. and Mrs. Frank Husted.
62. 20 "Heisey" caps to sell in gift shop. * Value \$140.00.
63. #3333 Old Glory goblet. Beautiful unknown cutting. Mr. and Mrs. Russell Swetnam.
64. #417 Double Rib and Panel tumbler (2) Bette D. Nickels.
65. #1295 Bead Swag Wine, Custard, 1220 Punt Band Wine, red stain and 1101 Cup and Saucer. Gordon L. Freeman.
66. #1229 Octagon Nut Dish, Moongleam. Donated by Jamie Van Winkle.
67. Four telephones. Ray and Delores Ziegler.
68. #3481 Glenford Ftd. Bar, Medium Optic. Unusual. Donated by Arlene Crafts.
69. Small dish with metal bottom and lid. Diamond H looks like acid stamp. Probably not Heisey. Donated by Mary Little.
70. #1229 Octagon nut. Donated by Jamie Van Winkle in honor of Lisa and Dennis Welch.
- *71. #3362 Charter Oak pitcher, Marigold, \$175 to Mould Fund. Furnished cookies. Held raffle. Helped organize flea market on the square. Buckeye HCC.
- *72. \$225 for Mould Fund - Heisey Collectors of Western Mass.
- *73. Money for tables. \$454 for Mould Fund. Held show. Illinois Diamond H Seekers.
- *74. Heisey Collectors of Southeastern Mass. New club. Planning show for next year.
- *75. \$349, Glass for auction. \$400 for Mould Fund. Heisey Collectors of Michigan.
- *76 Books for "Louise Ream Library". Central Illinois HCC.
- *77 \$300. Northwestern HCC.
- *78. \$400 for Mould Fund. Columbia HCC.
79. #3390 CARCASSONE, Tall Goblet and Champagnes, 4 ea. Classic etching by Lotus. Sahara. Donated by Homer and Martha J. Campbell in honor of their grandson Jared Scott Clark.

HEISEY TRIVIA

By George Reynolds

Arlene and I attended the September Souvenir dinner in Newark, which was well attended considering the terrible heat. It was good to see a lot of you wonderful people again.

It seems that each time we attend a Heisey affair we meet someone new. This time we met a wonderful couple from Orange, CA, Bob and Carolyn Scott. They were busy collecting plates for a special board meeting with an idea when the meeting was over. (We use paper plates). It would be hard to meet more friendly people and hope they arrived home safely to California.

George Schamel did a commendable job as emcee and Ray Ziegler gave the treasurer's report. The report was not all that encouraging since the debt for the mould fund has only decreased \$7,750 since the convention. Our membership should really make an effort to get this paid off so that other improvements can be made to the museum.

We visited the new storage building and found several members busy taking off weight the hard way, and doing a hot, filthy job of putting the moulds on the racks.

Arlene noticed a newly donated item in the museum lower level. It is a beautiful 1183 Revere Japanese Garden tray with a "Schwan" etching. The design shows a pool of water with a swan among the lily pads. (It was named Schwan because Dick Schwan of Virginia saw that there was a swan on the etching plate and so did a excellent job of cleaning the plate). The tray was donated by Betty and Bill Barnard of Newark, formerly of the Rochester Club.

We had a successful buying trip. Arlene found a Locket on Chain Cake Salver and an Alexandrite pitcher with seven tumblers. We were out shopping for cabinets today.

We received a nice letter from the Doctors Daniel (both are MD 's) of Patton House Antiques. They live in Louisa, VA and informed us that the Louisa goblet (or stem) had been named for Louise Ream. Did you know that?

It was good to see notes from the board in the Heisey News and the increase in information about our clubs financial position.

Our quote for the month: "Old people like to give good advice, as solace for no longer being able to provide bad examples." I never give advice, ha! Happy Thanksgiving to all.

* Donated by Manny Klawans

Heisey Collectors of America, Inc.

ALL HEISEY - Benefit Auction

MARCH 7 AND 8, 1986

It is time to prepare for our Twelfth Annual All-Heisey Museum Benefit Auction. The Auction will again be held at The Apple Tree Auction Center. It will, as usual, be held in conjunction with the Quarterly Meeting.

The Annual Christmas Dinner and Quarterly Meeting on December 6th would be a good time to bring your consignments to the Museum in the afternoon, or after the dinner, and avoid the Christmas rush. Deadline for glass is January 1, 1986.

The same policy as the last few years will again be followed. LIMIT HAS BEEN RAISED TO TWELVE (12) ITEMS PER FAMILY (excluding donations). Items such as 8 goblets or 12 plates together would constitute one lot. Any consignments OVER 12 lots will be considered as donations. The consignment fee remains at 20% with a \$5.00 minimum per lot. HCA receives the 20% selling fee. Please consign only Heisey or Verlys by Heisey. No Imperial Please.

Be sure to include a list (including pattern number, name, color etc., if possible) along with your name and address. Arrange the list in desired lots and identify which lots are consignments and which are donations. Don't forget to make a duplicate copy for your records.

The Benefit Auction is one of the major fund raising projects of the year and all proceeds go for support of your Museum. There is very little expense associated with the Auction. You can help by donating items for the Auction. Remember, donations are full value tax deductible. The consignment fees are also tax deductible. So, get your glass in early and plan to be at The Apple Tree Auction Center on March 7th and 8th.

Glass will be sold in the order it is received.

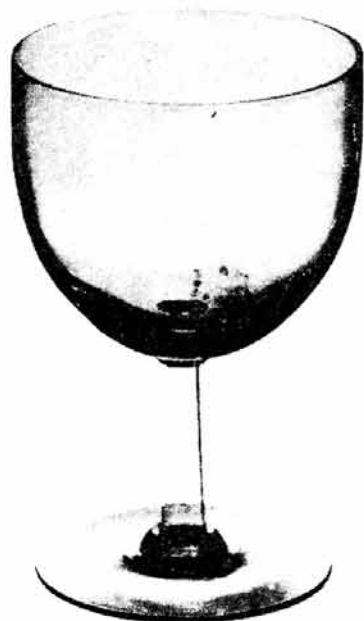
DONATIONS FOR THE MOULD FUND ARE ALSO WELCOME.

Ray Ziegler, Chairman

1. Donations - Full value tax deductible.
2. Consignment - You receive a check for 80% - The Heisey Collectors of America, Inc. receive 20% - These proceeds support your Museum.
3. Glass must be in our possession by January 1st.
 - a. Mail your glass now to:
Heisey Collectors of America, Inc.
169 West Church Street
Newark, OH 43055
 - b. Visit the Museum and leave your glass there.

Please send only good quality glass so that you can receive higher prices
It also will help HCA.

Ftd. Ice Tea Goblet Claret
 Ftd. Juice Cordial Sherbet Plate
 Cocktail



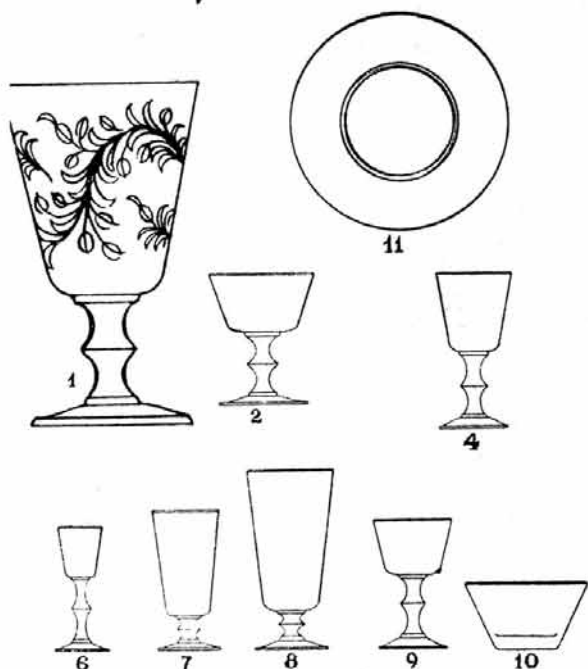
Taken from Price List #33, June 1, 1956
 Heisey's last catalog. Prices are for
 that year.

fINESSE—Plain Blown Pattern No. 6010

Heisey
 HAND-WROUGHT CRYSTAL

No.	Size	Item	Dozen	Each
6010	11 oz.	Goblet.....	\$24.00	\$2.00
6010	6 oz.	Sherbet.....	24.00	2.00
6010	5 oz.	Claret.....	24.00	2.00
6010	1 oz.	Cordial.....	24.00	2.00
6010	4 oz.	Cocktail.....	24.00	2.00
6010	5 oz.	Footed juice...	24.00	2.00
6010	12 oz.	Footed ice tea.	24.00	2.00
1609	8 in.	Plate.....	19.80	1.65

Inspiration



5024 OXFORD STEMWARE

INSPIRATION---Cutting No. 1074

No.	Size	Item	Dozen	Price Each
1-5024	11 oz.	Goblet	\$59.40	\$4.95
2-5024	6½ oz.	Sherbet (s. chmp)	59.40	4.95
4-5024	4½ oz.	Claret.....	59.40	4.95
6-5024	1 oz.	Cordial.....	59.40	4.95
7-5024	5 oz.	Footed juice....	59.40	4.95
8-5024	12 oz.	Footed ice tea..	59.40	4.95
9-5024	3½ oz.	Cocktail.....	59.40	4.95
10-5024		Finger bowl....	59.40	4.95
11-1609	8 in.	Plate.....	59.40	4.95

Heisey
 HAND-WROUGHT CRYSTAL

made in America by hand

IS IT OR ISN'T IT ? by Tom Bredehoft

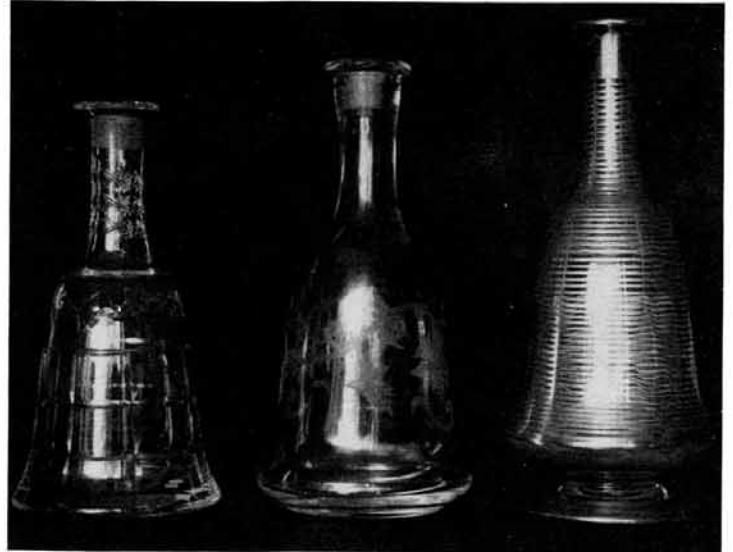
Several years ago, when the HCA received a red 4036 decanter we were thrilled to be able to say, "Yes, Heisey made red glass -- here it is." We may have been a bit hasty in our enthusiasm.

The Paden City Glass Co., of Paden City, West Virginia, made a decanter during the '30's and '40's which is very similar to Heisey's 4036 decanter. As near as we can tell from old catalog illustrations the major difference is in the bottom. Heisey's 4027 has a cast-on foot and Heisey's 4035 has a flat bottom. The Paden City decanter seems to have a smaller diameter ring beneath the bottom shoulder.

While we cannot be certain at this point, we are able to say that all the decanters which have Heisey decorations on them measure 15 1/4 inches around the bottom (circumference) while the ones which are suspect measure 15 3/4 inches around the bottom.

If any member has information about these decanters, by all means, let us know. We want facts, not wishes.

Ed. Note: The color of the decanter exactly matches the red handles on the 4163 Whaley mugs. This was one reason for believing it was Heisey. L.R.



Classified Ads

FOR SALE: Hundreds of Heisey pieces. Send # 10 SASE for list updated to 9/1/85. M & J Walter Antiques, C/O Sir Speedy, 431 Main St., Woburn, MA 01801

WANTED: Buying Caprice blue or Rosepoint by Cambridge, Rose or Orchid by Heisey, American, June, Fairfax, Versailles, Trojan, etc., by Fostoria and Depression Glass in crystal or colored. NADINE PANKOW, 207 S. Oakwood, Willow Springs, IL 60480 PH 312-839-5231.

WANTED: Items in #160 Locket on Chain, crystal or colors. JIM KENNON, PO Box 251, Amherst, OH 44001

FOR SALE: Narrow Flute Domino Sugar Tray, Moongleam - \$40. R. RIVERA, 115 Highview Ave., Stamford, CT 06907.

SPECIAL * SPECIAL * SPECIAL Send SASE (Bus. Size) for Heisey Mail Order Fall Inventory reduction list, or send your list of needs. J. & R. Collectibles, (Owned by Former Heisey Employee), P. O. Box 1030, Newark, Ohio 43055.

WANTED: #325 PILLOWS, 3 QT. PITCHER, 1/2 GAL. PITCHER OR OTHER PIECES. #411 RIB AND PANEL HOTEL CREAMER. #412 HOTEL CREAMER. #341 PURITAN PUNCH BOWL BASE. Pat Dunlap 13909 Gottschalk Rd., Plymouth, MI 48170

NEED undamaged Lariat punch cups. Pollitz, 3702 Anthony Dr., Tallahassee, FL 32308.

FOR SALE: EMERALD Pineapple & Fan spooner with mint gold trim \$100; EMERALD gold trimmed Winged Scroll tumbler \$60; EMERALD Fancy Loop variant bar glass \$45; Med elephant \$100; Crystolite ice bucket w/bail \$55*; Greek Key straw w/no lid \$90*; Medium Flat Panel toothpick tray \$30*; Fancy Loop cake plate \$90; SAHARA Victorian bar glass \$35*; crystal duck ash tray \$75*. *Marked.

Elizabeth Cason, 401 32nd St. W., Bradenton, FL 33505 813-748-0851. Send SASE for further listings.

WANTED: #1184 7 1/4 in. dia. Optic Plates (2) FLAMINGO. Mildred Lee, 115 Phillips Dr., Decatur, IL 62521.



DEALERS DIRECTORY

MAX. 5 LINES / 12 MONTHS / \$20.00

<p>EAGLES REST ANTIQUES China Heisey Antiques Mary Evans 62 Fieldpoint Rd. Heath, Oh. 43056 PH: (614) 522-2035</p>
<p>TREASURE HOUSE ANTIQUES Heisey, Cambridge Etc. 148 W. Johnstown Rd. Gahanna, Ohio 43230 Closed SUN. PH: (614) 471-2317 Daily 12-5</p>
<p>CRAFTS ENTERPRISES Arlene & Ed Craft 3908 Fauquier Ave. Richmond, Va. 23227 PH. (804) 262-2257</p>

THIS SPACE
COULD BE
YOURS



MOSTLY HEISEY
RHODA CURLEY
16 CLAYTON PLACE
ALBANY, NY 12209

PH 518-482-6272
UPS EXTRA

SASE PLEASE

During the spring, summer and fall you probably worked the garage sales, flea markets and antique shows looking for Heisey and found it was like the movie star--Slim Pickens. Some of you may not remember Slim Pickens but remember that you did not find the Heisey you were looking for. Maybe some of the Heisey below will fill your wants.

- #1533 WAMPUM GARDENIA BOWL AND PR. CANDLE 3 PCS\$95.00
- #1401 EMPRESS CTR HDL SANDWICH PLATE SAHARA .. 95.00
- #1401 EMPRESS LION'S HEAD 11" BOWL SAHARA..... 395.00
- # 136 TRIPLEX 3 LITE CANDLESTICKS SAHARA..... 195.00
- #1469 RIDGELEIGH 6" COMFORT LOW FTD & COVER... 95.00
- # 354 LAVENDAR JAR 5 1/2" HIGH..... 75.00
- #1205 FANCY LOOP TOOTHPICK EMERALD..... 149.00
- # 393 NARROW FLUTE HOLLOW STEM CHAMPAGNES(5)EA. 17.00
- #1401 EMPRESS MAYONNAISE FLAM. OR SAH. EITHER 45.00

ROBERT H. DONOVAN
 P.O. BOX 4103
 ORMOND BEACH, FL 32075

PH 904-677-1732
 AFTER 6:00 P.M.
 SHIPPING UPS \$3.50
 * MARKED

- #1235 BEADED PANEL & SUNBURST-PUNCH CUPS*(4)\$ 60.00
- #3366 TROJAN STEM W/TRO. ETCH 8OZ GOB.* (4).. 75.00
- # 357 PRISON STRIPE PUNCH BOWL & BASE/8 CUPS*395.00
- #1506 WHIRLPOOL 5 OZ PUNCH CUPS* (15)....ea... 5.00
- #1590 ZODIAC 12 OZ TCE TEA* (2)..... 35.00
- #1445 GRAPE CLUSTER 2-LITE CANDLESTICK Pr...185.00
- #1445 GRAPE CLUSTER 1-LITE CANDLESTICK* Pr...120.00
- #1445 GRAPE CLUSTER FLORAL BOWL*.....150.00
- #1567 PLANTATION 5" FTD., VASE-IVY ETCH..... 42.00
- #1488 KOHINOOR 6" BALL VASE Paper label..... 30.00
- # 110 DOLPHIN CANDLESTICKS FLAMINGO.....Pr...395.00
- # 111 CHERUB CANDLESTICKS FLAMINGO (1).....290.00
- #1205 FANCY LOOP FTD. PUNCH GLASS (6).....275.00
- # 352 FLAT PANEL CHEESE & CRACKER-CRY.& GOLD 60.00
- # 465 FLOWER BASKET*.....140.00
- # 352 FLAT PANEL PUNCH CUPS* (6)..... 36.00
- #3357 KING ARTHUR D/O SHERRY (4) MGLM FT. Ea. 25.00
- #3357 KING ARTHUR D/O CHAM. (3)MGLM. FT.FL.Ea 25.00
- #3357 KING ARTHUR D/O CHAM. (1)MGLM. FT.STR. 25.00
- #1466 STAR RELISH*..... 55.00
- #1252 TWIST NASTURTIUM BOWL* MOONGLEAM..... 140.00
- #1469 RIDGELEIGH CR & SUGAR W/TRAY*..... 45.00
- #1540 LARIAT CR. & SUGAR W/TRAY*..... 58.00
- # 354 COLONIAL CR. & SUGAR* MOONGLEAM..... 65.00
- #1401 EMPRESS D/F CR. & SUGAR* SAHARA..... 80.00
- #1210 BOW TIE BON-BON MOONGLEAM..... 42.00
- #1205 FANCY LOOP WINE V.IV PG 79..... 70.00
- # 459 BASKET 8" W/BUTTERFLY ETCH..... 225.00
- #1401 EMPRESS TOED CANDLESTICKS SAHARA...Pr. 250.00
- # 150 BANDED FLUTE 4½ OZ CHAM.*(8)\$18.ea.Set 125.00
- #5010 SYMPHONY-CHAM. W/DANISH PRINC. CUT (6) 200.00
- #5010 SYMPHONY-GOB. W/DAN. PRINC.CUT. (6)... 200.00
- # 109 DOLPHIN COMPORTIER FLAMINGO..... 325.00
- #1506 WHIRLPOOL 12 OZ SODA-SAHARA..... 28.00
- #1401 EMPRESS-COMPOTE* (2) SAHARA.....Ea. 65.00
- #1401 EMPRESS-COMPOTE (2) MOONGLEAM.....Ea. 65.00
- #1252 TWIST 10" OVAL BOWL* 30.00
- #1401 EMPRESS (1) 10" PLATE (6) 6" PLATES
 OLD COLONY ETCH* - SAHARA..... 90.00
- # 436 CARNATION VASE* 6" X 13"..... 95.00
- # 393 NARROWFLUTE IND. AIM. W/SIL. OVERLAY*8) 90.00

433 ALL GREEK KEY

4 OZ. CRUET W/STOPPER \$90.00- 8 OZ. WATER (8) SET \$500.00, 3 PT. TANKARD \$255.00, CELERY TRAY \$60.00, 3 PT. JUG \$125.00, SM. ICE TUB \$75.00, IND. ICE TUB (2) \$70.00 EA., FRENCH BREAD TRAY \$160.00, MED. ICE TUB \$110.00, HOTEL ICE TUB (NO COVER) \$295.00, ORANGE BOWL \$600.00, 3 PT. TANKARD \$225.00, NO 1 - 2 HDL., JELLY W/COVER \$225.00, NO 1 LOW FT JELLY-HANDLES & COVER \$525.00, MANY OTHER PCS., IN GREEK KEY.

WANTED: ANY COVERS IN GREEK KEY



THE GLASS LADY
 RICHMOND ANTIQUE CENTER
 BOOTHS 600 - 610
 HULL STREET & BELT BLVD.
 RICHMOND, VA 23224

PH. Shop 804-230-9239
 Home 804-271-1555
 HOURS: Fri: 5 - 9
 Sat: 12 - 9
 Sun: 12 - 7

(THE ONLY REASON WE WILL NOT OPEN IS SNOW !!)

SHOP - SHOWS - MAIL ORDER

BUY - SELL - TRADE

MASTER CHARGE - VISA - CHOICE - LAY-A-WAYS-GIFT CERT.

SEND US YOUR WANTS - WE LOVE TO PLAY BLOODHOUND!

Some Items This Month:

- # 1252 TWIST 3 PT. JUG, MOONGLEAM \$185.00
- # 1503 CRYSTOLITE 10 oz. TUMBLER 8 EA. 15.00
- # 341½ PURITAN 3 oz. HDLD. CUSTARD(PUNCH CUP) 22.00
- # 393 NARROW FLUTE FRENCH DRESSING BOAT..... 47.00
- # 393 NARROW FLUTE TUMBLER 9 EA. 15.00
- # 393 NARROW FLUTE PITCHER..... 67.00
- # 3362 CHARTER OAK GOBLET & TUMBLER, FLAM.EA. 26.00
- # 361 COMBINATION CIG. & ASHTRAY, MOONGLEAM. 120.00
- # 451 CROSS LINED FLUTE VASES PR. 125.00
- # 3480 KOORS JUG, FLAMINGO..... 195.00
- # 4206 OPTIC TOOTH VASE, MOONGLEAM BASE..... 145.00
- # 150 BANDED FLUTE 6" LAVENDER JAR..... 47.00
- # 338 CARNATION VASE, LARGE..... 95.00
- # 461 BASKET, ENAMELED FLOWERS, LOVELY..... 120.00
- # 447 EMPRESS ETCH FOOTED SODAS.....8 EA.. 16.00

We endeavor to keep a large selection of Heisey at all times - at the present time we have a nice selection of various Colonial Patterns, Minuet etch, Plantation, Ridgeleigh & more.

Also we carry a large inventory of Fostoria, Cambridge, Imperial, Duncan Miller, Teffin and other elegant glass.

In addition, we have most Depression Glass Patterns and lots of American Dinnerware and Art Pottery.

We sincerely invite you to our shop to share your knowledge, the fun of collecting and the joy of "the search"! We also hope to tempt you into becoming one of our cherished customers!

BRENDA & FRIENDS

If you are unable to visit, call or write - we love to hear from fellow collectors.



**NADINE PANKOW
207 S. OAKWOOD
WILLOW SPRINGS, IL 60480**

PHONE 312-839-5231



MINT. \$3.00 UPS. SATISFACTION
RETURN WITHIN 5 DAYS WITH LABEL
INTACT

HAPPY COLLECTING !

ORCHID ETCH

Waverly 14" torte.....	\$ 45.00
10 8½" plates.....EA	15.00
5 7½" plates.....EA	15.00
3 ashtray.....EA	29.75
3 triplex relish.....EA	30.00
2 creamer 7 sugar.....EA	37.50
1509 QUEEN ANN 2 15" flat sandwich plate....EA	75.00
Waverly 11" flat fruit bowl.....	65.00
1509 QUEEN ANN 3 5½" ftd mint dish.....EA	30.00
Cheese for cheese and cracker.....	45.00
Waverly 3 11" 3 part relish.....EA	30.00
1509 QUEEN ANN 3 6" 2 hndld jelly.....EA	30.00
2 stoppers for tall cruets.....EA	35.00
2 7" Lariat rnd crimped top vase.....EA	90.00
Lariat fan vase.....	75.00
32 short stem goblets.....EA	25.00
12 tall stem goblets.....EA	32.50
25 12 oz. ice tea/sodas.....EA	32.50
25 Champagnes.....EA	29.75
2 Clarets.....EA	95.00
Cone sherry.....	100.00
27 Cocktails.....EA	29.75
15 Wines.....EA	55.00
5 Graceful goblets.....EA	32.50

EMPRESS ALEXANDRITE

3 10½" sp. dinner plates.....EA	\$135.00
---------------------------------	----------

IPSWICH CRYSTAL

9 Goblets.....EA	\$ 8.50
------------------	---------

LARIAT

12" Bowl - low.....	\$ 25.00
3 Candle blocks.....EA	\$ 9.50
Creamer & sugar.....	\$ 18.00

MAYFLOWER ETCH

9 Goblets.....EA	\$ 10.00
------------------	----------

1611 Tour Jour MINUET ETCH, Covered Apple...	\$150.00
--	----------

PIED PIPER

7 7" Plates.....EA	\$ 7.50
15 Goblets.....EA	\$ 14.00
2 Champagnes.....EA	\$ 14.00
4 Low sherbets.....EA	\$ 12.00
6 Parfaits.....EA	\$ 14.25

HEISEY ROSE ETCH

Center handled tray.....	\$250.00
3 Goblets.....EA	\$ 32.50
9 ftd juice goblets.....EA	\$ 30.00
Claret.....	\$ 75.00
7 Wines.....EA	\$ 60.00
11" Crimped bowl.....	\$ 50.00
11" Fern oval bowl.....	\$100.00
Tall ftd Covered candy.....	\$150.00

ROSALIE

Divided dressing bowl.....	\$ 20.00
----------------------------	----------

TALLY HO

2 Cone cocktails.....EA	\$ 15.00
-------------------------	----------

TWIST CRYSTAL

1252 Twist Cruet.....	\$ 45.00
-----------------------	----------



CARCASSONE - COLORS

Sahara - lunch goblet.....	12.00
Crystal - cigarette holder.....	19.25
Cobalt - 2 cigarette holder.....EA	65.00

BEWARE

The same Madonna that was being offered in the Spencer Gift Catalog last year is in it again this year. While the picture they use is of a real Heisey Madonna, the one they send is very ugly. The face is almost chinless and the lower part of the body is hollow. There is no way that a knowledgeable person would buy it for Heisey. L.R.

H & R DIAMOND H
HELEN & BOB RAREY
1450 WHITE ASH DR.
COLUMBUS, OH 43204

PH 614-279-0390
(AFTER 5:30 PM)
* MARKED
SHIPPING & INS. EXTRA

112 MERCURY 1 LITE CANDLE, MOONGLEAM....PR. \$ 45.00
10 MAPLE LEAF COASTER, FLAMINGO..... 15.00
#1112 SPARTA 3½ OZ. SHERBET, NO (2)..... 9.00
#1185 YEOMAN 6" FTD COV'D CANDY* W/CUTTING.... 95.00
#1235 BEADED PANEL & SUNBURST WINE..... 47.50
#1252 TWIST 7" 2 HDL. PLATE* , FLAMINGO..... 9.00
#1401 EMPRESS 6" FTD.HOLD. JELLY*, SAHARA..... 32.50
#1405 IPSWICH 4 OZ. SHERBET*, SAHARA..... 35.00
#1433 THUMBPRINT & PANEL 2 LITE CANDLESTICK, PR. 65.00
#1495 FERN 2 LITE CANDLESTICK, FLORAL ETCH, PR. 45.00
#1503 *CRYSTOLITE ICE BUCKET* W/TONGS..... 95.00
#1503 CRYSTOLITE RD. 5 PART RELISH..... 30.00
#1519 WAVERLY 11" OVAL RELISH..... 22.50
#1506 WHIRLPOOL 2 LITE CANDLESTICK,PR. 160.00
#1540 LARIAT 11" OVAL BOWL, MOONGLO CUT..... 47.50
#1951 CABOCHON 5" FTD. JELLY, BEL-AIR CUT..... 37.50
#3350 WABASH 10 OZ. GOBLET, PIED PIPER ETCH.... 18.50
#1567 PLANTATION 3 OZ. CRUET..... 95.00
#3408 JAMESTOWN 9 OZ. GOBLET, MOONGLO VARIANT CUT (8) EA..... 32.50
#4085 KOHINOOR 9 OZ. GOBLET, SO..... 17.50
#4091 KIMBERLY 10 OZ. GOBLET*, UNKNOWN CUT. 6EA. 37.50
HEISEY BY IMPERIAL HCA '79 ROSE CORDIAL 35.00

JIM GARTNER
444 Girard St. # 103
Gaithersburg, MD 20877



459 BASKET 8" *..... \$ 120.00
459 BASKET 7" Rose Cutting*..... 160.00
459 BASKET 7" Daisy Cutting*..... 160.00
433 GREEK KEY PUNCH BOWL & BASE W/12 CUP\$395.00
433 GREEK KEY ½ GAL. TANKARD W/6 8 oz. TUMBLERS - SET* 395.00
341 OLD WILLIAMSBURG 7" COVERED COMPOTE* 140.00
#1401 EMPRESS 5" D.F. COMPOTE* FLAMINGO*.. 175.00
#1401 EMPRESS D.F. MAYONNAISE* SAHARA..... 42.00
357 DUCK ASH TRAY* FLAMINGO SM.FL.ON TAIL110.00
#3390 CARCASSONE 3 OZ FTD.CKTLS. SAH. OLD COLONY ETCH 5 EACH..... 22.00
301 COLONIAL, DOUBLE CANDLELABRA* 1 PR. SAH. (SEVERAL NICKS)455.00
5 CANDLESTICKS 9" 1 PR..... 65.00
#3481 GLENFORD 8 oz SODA CRY.S/D/O MGLM FT. 6 EACH..... 12.50
#1519 WAVERLY 8" SALAD PLATE ORCHID ET* 6ea.20.00
#1021 HOTEL C & S W/COVER DAISY CUTTING*.. 60.00
201 COLON. CANDLE LAMPS PR* (LESS GLOBES) 180.00
#1404 OLD SANDWICH CATSUP..... 65.00
#1404 OLD SANDWICH OVAL C & S SAH..... 80.00
#1404 OLD SANDWICH LOW FTD. GOB.* FLA..... 45.00
#1404 OLD SANDWICH 8 OZ. ICE TEA* FLA..... 35.00

PH 301-869-5306
P & I EXTRA
*Signed

CHARLES & MILDRED FISHER
991 IDLEWILDE AVE
NEWARK, OHIO 43055

614-522-5398
UPS 5% EXTRA
MARKED *

1519 WAVERLY ORCHID ETCH Gardenia Bowl..... \$ 65.00
1519 WAVERLY ORCHID ETCH Compote Low Ftd..... 55.00
1519 WAVERLY ORCHID ETCH Honey Dish..... 55.00
1519 WAVERLY ORCHID ETCH 3 Comp't Relish..... 60.00
1401 QUEEN ANN CREAM & SUGAR, Dolphin Ftd.*Fla. 75.00
1401 CANDLESTICKS Dolphin Ftd. Flamingo*..pr. 350.00
1567 PLANTATION VASE Large 9" H..... 150.00
350 PIN WHEEL and FAN PITCHER 6 Tumblers*... 250.00
412 RIB & PANEL TANKARD 3 qt. w/ #748 Cut. Vogel #3 pg. 165 *..... 175.00
1170 PLEAT & PANEL COVERED COMPOTE Flam.*..... 75.00
463 BASKET 13½" to top of handle Flam..... 225.00
1503 CRYSTOLITE COLOGNE 4 oz..... 65.00
1467 RIDGELEIGH, Ind. CREAM & SUGAR w/ tray*.. 55.00
1467 RIDGELEIGH CARD Suit Ash trays Heart, diamond, club, spade *..... 65.00
1467 RIDGELEIGH COCKTAIL SHAKER..... 235.00
1425 VICTORIAN SHOT GLASSES *(6)ea. 25.00
1404 OLD SANDWICH DECANter..... 125.00
MADONNA FROSTED*..... 125.00
SALT & PEPPER, Miniature* Flamingo..... 45.00
ELEPHANT, Small..... 210.00
Have more Heisey in Orchid and other Patterns, also have Heisey by Imperial Animals in Amber, Black, Crys. Dark Blue, Verde Green, Jade, Caramel Slag, Plus H.C.A. Oscars from 1977 to 1980. CALL OR WRITE THANK YOU.

FOREVER HEISEY
JANICE THRAN
1663 LONDONDALE PKWY.
NEWARK, OHIO 43055

PH 614-344-5955

SHIPPING & INSURANCE
EXTRA

160 LOCKET ON CHAIN, COVR'D BUTTER..... \$195.00
602 8 OZ. TUMBLER, AMBER H..... 60.00
ASIATIC PHEASANT H..... 240.00
SPARKY..... 90.00
#1506 PROVINCIAL, 9 OZ. TUMBLER, LIMELIGHT H... 50.00
#1454 DIAMOND POINT, IND. JELLY AND ASH TRAY H. (6 SETS) EA..... 15.00
#1637 A, TOWN & COUNTRY, 8" PLATE DAWN (6) EA.. 45.00
#1415 20TH CENTURY, SHERBET, DAWN, H...(5) EA.. 45.00
#1415 20TH CENTURY, 12 OZ SODA, DAWN, H (6)EA.. 50.00
#1415 20TH CENTURY, 18 OZ PITCHER, DAWN, H..... 135.00
#1415 20TH CENTURY, 5 OZ JUICE, DAWN, H..... 50.00
IND. SALTS, RIDGELEIGH, PLAIN BAND, REVERE & BEADED PANEL & SUNBURST (3) EA..... 10.00
#1401 EMPRESS 8" SQ. PLATE, TANGERINE, H.(2) EA. 150.00
#1401 EMPRESS, 7" RD. PLATE, ALEXANDRITE H (4)EA 40.00
#1567 PLANTATION, SHERBET (4) EA..... 16.00
#1401 EMPRESS, RELISH, 3 PART, S SHAPE, MGLM. H. 65.00
#1469 LARIAT, 2 LITE CANDLESTICK, MGLM. CUT PR. 55.00
#1295 BEAD SWAG, 4½ OZ NAPPY, OPAL, DAISY DECOR & GOLD (3) EA..... 35.00
#5077 LEGIONNAIRE, GOBLET, ARCADIA CUT H.(3)EA.. 35.00
#4217 4½" VASE, FLAMINGO DO..... 45.00

DONALD P. BEAN
36 HARDING ST.
MILFORD, MA 01757

* = MARKED
 PH 617-473-0561
 P & I EXTRA

- # 1469 RIDGELEIGH 2" CANDLE HLDRSPR.. \$20.00
- # 1467 RIDGELEIGH COASTERS * (4).....EA.. 6.00
- # 1226 COLONIAL 5½ oz. SHERBETS, FLARED* 4 FOR. 25.00
- # 351 PRISCILLA 3 PT JUG*..... 85.00
- # 1503 CRYSTOLITE PUNCH CUPS*.....12 FOR. 58.00
- # 350 PINWHEEL & FAN PUNCH CUPS* (7).....EA.. 12.50
- # 1509 Q. ANN 7" COMB. DRSG. BOWL* ORCHID ETCH. 38.00
- # 1489 PURITAN 4" HORSEHEAD CIG. BOX..... 37.50
- # 393 NAR. FLUTE IND. SUG. CUBE TRAY, FTD.*... 28.00

BABS KENT
554 AMHERST DR.
WOODMERE, NY 11598

POSTAGE EXTRA
 516-374-4719

- # 133 SWAN CANDLESTICK, MOONGLEAM \$198.00
- # 11 CHERUB CANDLESTICKS FLAMINGO...PR.. 575.00
- # 379 URN PITCHER..... 128.00
- # 1445 GRAPE CLUSTER CANDELABRA W/PRISMS.. 175.00
- # 109 PETTICOAT DOLPHINS, @ COMPORTIER, FLAMINGO, 3 PC. SET..... 550.00
- # 1252 TWIST 2½ oz. CRUET, MOONGLEAM..... 90.00
- # 385 GRID AND SQUARE TANKARD.. 198.00
- # 417 ROUND HANDLED BASKET, HAWTHORNE.... 150.00
- # 1200 CUT BLOCK TOOTHPICK, RED STAIN..... 90.00

CRAFTS ENTERPRISES
3908 FAUQUIER AVE.
RICHMOND, VA 23227

PH 804-262-2257
 P & I EXTRA
 * MARKED

- # 5025 TYROLEAN 3 oz. WINES, ORCHID ETCH (9) EA \$65.00
- # 3404 SPANISH ICE TEAS, OLYMPIAD ETCH (3) EA 15.00
- # 3389 DUQUESNE SAUC/CHAMP, CHINTZ ETCH (12) EA 7.50
- # 406 COARSE RIB 8" NAPPY, MOONGLEAM*..... 40.00
- # 335 PRINCE OF WALES 10" PUNCH BOWL BASE.... 40.00
- # 350 PINWHEEL & FAN PUNCH BOWL BASE*..... 40.00
- # 3366 TROJAN 7" COMPOTE, FLAMINGO D.O..... 75.00
- # 3366 TROJAN SAUC/CHAMP. D/O, TROJAN ETCH..... 20.00
- #1425 VICTORIAN BARREL TUMBLER 10 oz. (2) ...EA 22:50

PATTON HOUSE ANTIQUES
P. O. BOX 547
LOUISA, VA 23093



PH 703-967-1181
 AFTER 6 PM
 * MARKED
 P & I EXTRA

- # 1483 STANHOPE ICE TUB, MAYTIME ETCH*..... \$60.00
- # 1519 WAVERLY 7" VASE (NOT FAN)*..... 18.50
- # 1252 TWIST, 10 7/8" PLATE, SAHARA*..... 52.50
- # 1428 WARWICK, 9" CORNUCOPIA*.....PR. 65.00
- # 1567 PLANTATION CLARET..... 20.00
- # 406 COARSE RIB ICE TUB, TAB HANDLES*..... 60.00
- # 1509 QUEEN ANN ICE BUCKET, SILVER OVERLAY 45.00
- # 1509 QUEEN ANN NUT CUP, SILVER OVERLAY*.. 30.00
- # 1252 TWIST ICE BUCKET, MOONGLEAM, WORN HANDLE*..... 60.00

SPARKLING ANTIQUES
5 WAYSIDE CIRCLE
PITTSFORD, NY 14534

PH 716-381-4134
 P & I EXTRA

- # 1404 ½ GAL. JUG & SIX TUMBLERS, SAHARA \$260.00
- # 4225 COCKTAIL SHAKER, ORCHID ETCH..... 110.00
- # 4225 COCKTAIL SHAKER W/ROOSTER STOPPER, ORCHID ETCH..... 125.00
- # 1513 BAROQUE 2 LT. CANDLE W/VASE, BOBCHES & PRISMS..... 60.00
- # 160 LOCKET ON CHAIN CAKE SALVER..... 140.00
- # 1519 WAVERLY TORTE PLATE, 13" W/CENTER DISH.. 125.00
- # 1404 OLD SANDWICH LRG. OVAL FRUIT BOWL, MNGLM. 80.00
- # 1184 YEOMAN PUNCH CUPS, MOONGLEAM (H) 8 EA.... 14.00
- # 1184 YEOMAN BOUILLON CUPS.....EA.... 8.00
- # 1567 PLANTATION 167 PC. SET. Send your wants.....

JOYCE DAWSON
2418 W. CRESTVIEW
ROSEBURG, OR 97470

503-672-4047
 UPS EXTRA

- # 602 COCA COLA GLASS..... \$ 25.00
- # 343 SUNBURST, 1 GOBLET, 1 EGG CUP, SUN COLORED, & 1 TUMBLER - ALL 3.....225.00
- # 353 STRAW HOLDER - SLIGHT DAMAGE ON 2 CORNERS, MEDIUM FLAT PANEL.....125.00
- # 353 2 QT. CRUSHED FRUIT, MED. FLAT PNL...100.00
- # 331 WATER BOTTLE, PLAIN PANEL 40.00
- # 500 ICE TUB, OCTAGON..... 40.00
- # 1555 & 1519 WAVERLY CORNUCOPIAS..BOTH..... 60.00

MARY MANETTA
5531 SW 8 ST.
MIAMI, FL 33134

PH 305-261-8641
 305-446-7151

- GAZELLE 11" * MINT.....\$750.00
- GAZELLE 11" * ONE SMALL SCRATCH AND GLASS FLECK.....\$500.00

(OR BEST OFFER)



HEISEY REFERENCE PUBLICATIONS



Please order by Item and Number.
 Make Checks payable to H.C.A., Inc.
 Add 10% for Shipping & Handling (\$1.50 Min.
 on Glass Items except Cup Plates) *See
 Page 4
 Ohio Residents add 6% Sales Tax
All Prices Payable in U.S. Funds.



DO YOUR HOLIDAY SHOPPING WITH US.

PLEASE KEEP THIS FOR FUTURE REFERENCE

1. THE HEISEY ANIMALS, by James McDermott.....\$ 3.00
 Pictures all 56 animals produced by Heisey. States size of each animal.
2. THE HEISEY ANIMALS, ETC. BOOK II, by Robert Coyle, Lynne Bloch, Art Hartman.....\$ 3.50
 Pictures items using the animal figure as stem, stopper, handle, flower frog, ash tray,
 etc.
3. COMBINATION PRICE GUIDE FOR ANIMAL BOOK I & II, by the authors.....\$ 1.50
4. HEISEY'S GLASSWARE OF DISTINCTION, by Mary Louise Burns. Condensed and updated!.....\$ 11.95
 Includes price guide - Contains all major tableware patterns with pictures for easy
 identification.
7. HEISEY GLASS IN COLOR, BOOK 2, by Loren & Virginia Yeakley. More than 750 items.....\$ 12.50
 pictured in color. Comprehensive discussion of each. Includes value and rarity guide,
 60 pages. Includes price guide.
- 8A. FORTY PAGE ADDENDUM TO ETCHINGS AND CARVINGS BOOK by Ream and Bredehoft.....\$ 3.50
15. HEISEY CATALOG AND FACTORY PRICE LIST, by Antiques Research Publications. Catalog.....\$ 8.50
 reprint #33, dated June 1, 1956. Last catalog published by the company. Complete
 listings of patterns offered by Heisey when they discontinued operations in 1957.
16. HEISEY'S LEAD BLOWN GLASSWARE - Some Pressed - Reprint of 1929 Catalog 14B by.....\$ 9.95
 L. W. Promotions - 80 Pages - Includes price guide.
22. HEISEY STEMS, by Bradley, Ryan and Ryan. Comprehensive book on more than 350 pressed....\$ 20.00
 and blown stems. A must for the stem collector - 240 pages.
26. CATALOG & PRICE LIST #32, Complete reprint of 1953 catalog. Added information and.....\$ 9.95
 price guide. The best book on late production.
55. HEISEY'S CUT HANDMADE GLASSWARE, by Harold E. Willey. Reprint of old catalogs.....\$ 5.95
 showing some of the many cuttings by Heisey, mostly on stemware. Good clear pictures.
68. HEISEY BY IMPERIAL, by Newark Heisey Collectors Club - Second Edition - Updated and.....\$ 6.95
 added pages. Soft Bound - Includes price trends and color plate. Every piece of every
 pattern made by Imperial is listed and priced in all colors used for the pattern. All
 items are dated. A must for the collector or dealer specializing in Heisey or Imperial
 glass. Many items are already collectible.
77. COLORED GLASSWARE OF THE DEPRESSION ERA 2, by Hazel Marie Weatherman - 1000 patterns....\$ 25.00
 from 43 glass companies which were operating during the depression era. Includes both
 Machine and hand made glass - 400 pages.
- 77A. SUPPLEMENT & PRICE TRENDS for above book, 304 pages - 100 pages of new information.....\$ 10.50
79. HEISEY GLASSWARE, by Heisey Collectors of America, Inc. - Reprint of Catalog 76, the.....\$ 6.95
 1915 supplement to Catalog 75 - Soft bound - Includes price trends - 58 pages. Many
 items never shown in books or catalogs. Includes all the kerosene lamps and many
 electric lamps - An interesting catalog.
88. HEISEY TOOTHPICK HOLDERS, by Nancy & David Jones, published by H.C.A. - Complete.....\$ 4.95
 information on all Heisey toothpick holders. Contains photographs of each - Section on
 confusing items and fakes - 8-1/2 X 5-1/2 - Soft Bound - Includes price trends.
92. HEISEY'S ORCHID ETCH by Neila Bredehoft, published by H.C.A. - 24 Page booklet with.....\$ 4.95
 price guide - Soft bound - A new booklet devoted entirely to Orchid Etching - Heisey's
 most popular etching - 230 pieces listed and dated individually - Well illustrated -
 Includes a history of the etching and many early ads.

93. ELEGANT GLASSWARE OF THE DEPRESSION ERA by Gene Florence - Fostoria, Cambridge, Heisey..\$ 17.95
and others - Illustrated in FULL COLOR with current values.
- 93A. BOOK TWO\$ 19.95
99. HEISEY ROSE by Neila Bredehoft, published by H.C.A. - 24 Page booklet with price guide..\$ 4.95
Soft bound - All known pieces listed and dated - Well illustrated - Includes history and
many copies of ads.
101. HEISEY CANDLESTICKS, CANDELABRA AND LAMPS by Tom Felt and Bob O'Grady assisted by Jack..\$ 24.95
Metcalf - A definitive survey of the history and manufacture of candlesticks and other
lighting devices made by A. H. Heisey & Co., from 1896 - 1957 with over 350 illustra-
tions of all known candlesticks, including 25 in full color. 436 Pages - Hardbound.
- 101A. COMPLETE PRICE TRENDS FOR HEISEY CANDLESTICKS.....\$ 2.50
106. COLLECTORS GUIDE TO HEISEY'S GLASSWARE by L. W. Promotions - Excerpts from Heisey.....\$ 17.95
Catalogs 75, 109, 212-17. 372 Pages of Illustrations - Includes Price Guide.
110. HEISEY NEWS REFERENCE CATALOG by Norma Schweighoefer - Complete 10 year index - January \$ 7.00-
1972 through Dec. 1981. Every item listed and cross indexed - A very valuable tool for
your research. SPECIAL \$ 5.00
111. WESTMORELAND SPECIALTY CO. - Reprint of 1912 Catalogue. Several patterns shown. Items \$ 6.95
easily confused with Heisey illustrated - Includes candlesticks, toy sets, etc.

ANIMALS AND MISCELLANEOUS ITEMS FOR SALE

31. BLACK AND WHITE POST CARDS OF THE FACTORY (outside) - Minimum Order 12.....\$ 1.50
33. SOUVENIR PENS, National Heisey Glass Museum.....3 for.....\$ 1.00
34. LEADED GLASS DIAMOND H WINDOW ORNAMENT with hanger.....\$ 7.50
36. HALF SIZE HORSEHEAD - Cobalt, satin only.....\$ 35.00
Souvenir of September dinner, 1985. Marked H.C.A. and 1985.
39. BACK ISSUES OF THE HEISEY NEWS - Each Volume Contains 12 issues - Each Volume.....\$ 9.00
Volume V, VIII, IX, X, XI, XII & XIII available - Reprints of issues of Heisey News in
their entirety - Much valuable information in each issue - A must for the beginner.
40. Reissue Madonna by Viking. Mkd. HCA - '85 Azure blue Plain\$ 21.50
Satin.....\$ 22.50
41. IMPERIAL ELEPHANT HANDLED FAIRY TALE MUG - Marked ALIG - Crystal.....\$ 13.00
Pink, Sunshine Yellow, Light blue.....\$ 16.00
Made by Imperial for HCA. Feb. 1984. Mkd ALIG.
45. HEN - Available in Milk Glass - Limited edition of 1999 - Made in original Heisey.....\$ 10.00
moulds by Imperial Glass Corp. exclusively for Heisey Collectors of America, Inc.,
4-1/4" High, Marked IG
46. CHICKS, Head Up and Head Down - Available in Milk Glass - Limited edition of 3292 Head..\$ 3.00
Down Chick and 2866 Head Up Chick - Made in original Heisey moulds by Imperial Glass
Corp. exclusively for Heisey Collectors of America, Inc. - 1" High - Price is for Both.
Marked IG
47. ROOSTER - Available in Milk Glass - Limited edition of 1457 - Made in original Heisey...\$ 15.00
moulds by Imperial Glass Corp. exclusively for Heisey Collectors of America, Inc.
5-5/8" High - Marked IG
48. #1560 VICTORIAN GIRL BELLE - Available in Milk Glass, Light Green. Plain.....\$ 8.00
Light Blue, Sunshine Yellow, and Light Green. Satin.....\$ 9.00
Marked IG - Made in original Heisey moulds by Imperial Glass Corp. exclusively for
Heisey Collectors of America, Inc. - 4-1/4" High.
- 48A. NO. 1560 VICTORIAN GIRL BELLE - Made in the original Heisey moulds by Viking Glass.....\$ 11.50
exclusively for Heisey Collectors of America, Inc. - 4-1/4" High - RUBY PLAIN
RUBY SATIN.....\$ 13.00
LILAC PLAIN.....\$ 9.50

48A.	NO. 1560 VICTORIAN GIRL BELLE CONT'D.	
	LILAC SATIN.....	\$ 11.00
	ORANGE PLAIN.....	\$ 11.50
	ORANGE SATIN.....	\$ 13.00
49.	SCOTTIE, Available in Milk Glass - Limited editon of 1617 - Made in original Heisey.....	\$ 12.50
	Moulds by Imperial Glass Corp. exclusively for Heisey Collectors of America, Inc. 3-1/2" High - Marked IG -	
50.	PLATE HANGERS for 8" plates to hang in a series from one nail - Ideal for Souvenir..each.	\$.85
	Plates - (6 for \$4.50)	
50B.	PLATE HANGERS for cup plates to hang in a series - 4" Brass...(6 for \$4.50)....each.....	\$.85
58B.	PAIRPOINT CUP PLATE, Fandango Pitcher - Crystal and also Vaseline - Limited to 1000.....	\$ 6.00
58C.	PAIRPOINT CUP PLATE, Fandango Pitcher, Crystal with a 3-size scallop (New Border).....	\$ 6.00
58D.	PAIRPOINT CUP PLATE, Horse and Rider, Amber with Double/Single scallop - Limited 595.....	\$ 6.00
58E.	PAIRPOINT CUP PLATE, Horse and Rider, Crystal with a 3-size scallop (New Border).....	\$ 6.00
58F.	PAIRPOINT CUP PLATE, Heisey Museum, Light Green, D/S scallop (New Border) Limited 520....	\$ 6.00
58H.	PAIRPOINT CUP PLATE, No. 1, Wood Ducks - Royal Hickman Series - Crystal...Limited 627....	\$ 6.50
60.	OLD WILLIAMSBURG SALT & PEPPER SET, Ultra Blue, Nut Brown, Verde, Rose Pink, Amber ...	\$ 10.00
65.	WINGS-JP MALLARD, Light Blue - Limited edition of 1466 - Made in the original Heisey Moulds by Imperial Glass Corp. exclusively for Heisey Collectors of America, Inc. 6-3/4" High - Marked IG	
	PLAIN.....	\$ 13.00
	SATIN, Limited edition of 345.....	\$ 14.00
66.	WINGS-HALF MALLARD, Light Blue - Limited edition of 1548 - Made in the original Heisey Moulds by Imperial Glass Corp. exclusively for Heisey Collectors of America, Inc. 5" High - Marked IG	
	PLAIN.....	\$ 13.00
	SATIN, Limited editon of 345.....	\$ 14.00
67.	PLAYING CARDS With picture of Museum - Red or Blue Border - Double decks have one of each - Prices include shipping (Shipped U.P.S.) - Single Deck.....	\$ 3.45
	Double Deck in Plastic Box.....	\$ 5.75
	With other orders \$2.20 & \$4.50.	
70.	WINGS-DOWN MALLARD, Light Blue - Limited edition of 971 - Made in original Heisey Moulds by Imperial Glass Corp. exclusively for Heisey Collectors of America, Inc. - Marked IG. 4-1/2" High.	
	PLAIN,- SOLD OUT - SATIN ONLY AVAILABLE.....	
	SATIN, Limited edition of 345.....	\$ 14.00
71.	CYGNET, Light Blue - Limited edition of 1040 - Made in original Heisey moulds by Imperial Glass Corp. exclusively for Heisey Collectors of America, Inc. - Marked IG.	
	PLAIN.....	\$ 13.25
	SATIN, Limited edition of 240.....	\$ 14.00
72.	STANDING DUCKLING, Sunshine Yellow - Limited edition of 1150 Plain and Satin - Made.....	\$ 14.00
	in the original Heisey moulds by Imperial Glass Corp. exclusively for Heisey Collectors of America, Inc. - Marked IG - 2-5/8" High.	
73.	FLOATING DUCKLING, Sunshine Yellow - Limited edition of 1035 - Plain and 340 Satin.....	\$ 14.00
	Made in the original Heisey moulds by Imperial Glass Corp. exclusively for Heisey Collectors of America, Inc. - Marked IG - 2-1/4" High.	
74.	MOTHER WOOD DUCK - Sunshine Yellow - Made in original Heisey moulds by Imperial Glass Corp. exclusively for Heisey Collectors of America, Inc. - Marked IG - 4-1/2" High.	
	PLAIN, Limited edition of 317.....	\$ 25.00
	SATIN, Limited edition of 375.....	\$ 29.95
75.	NO. 1435 HCA 10TH ANNIVERSARY ASH TRAY, Tallyho Etch - Crystal - <u>SPECIAL PRICE</u>	\$ 2.00

- 78. FISH MATCH HOLDER - Sunshine Yellow - Limited edition of 483 - Made in the original Heisey moulds by Imperial Glass Corp. exclusively for Heisey Collectors of America, Inc. - Marked IG.
 PLAIN.....\$ 12.50
 SATIN, Limited edition of 382.....\$ 14.00
- 89. FISH CANDLESTICK - Sunshine Yellow - Marked IG - Limited edition of 465 PLAIN.....\$ 15.95
 SATIN, Limited edition of 170.....\$ 16.50
- 90. NO. 4045 4" BALL VASE - Swirl Optic (Never made in optic by Heisey), Ultra Blue, Plum, \$ 10.00
 Emerald, Crystal & Sunshine Yellow. Made by Imperial 1982.
- 91. NO. 4220 4" VASE - Drape Optic (Made only in Spiral Optic by Heisey), Emerald...\$ 11.00
 Green. Made by Imperial 1982.
- 94. YEOMAN TRIANGLE ASH TRAY - Marked with Diamond H & HCA - This ash tray was made for us by Viking in HCA's original Heisey mould which was donated to us by Paul Fairall.
 COBALT Satin.....\$ 8.50
 RUBY Plain.....\$ 8.50
 RUBY Satin.....\$ 9.00
- 96. NOTE PAPER by Nassau L.I. Study Club - Rose or Orchid Etch - Blue on White - May be....\$ 3.00
 assorted if desired - Per Dozen P.P.
- 97. BLACK TIGER - Made by Imperial in Heisey mould - Marked ALIG.....\$ 35.00
- 98. HEAD FORWARD FILLY, Satin - Made by Imperial in Heisey mould - Marked ALIG.....\$ 45.00
- 100. COLTS, Standing, Kicking & Rearing - Sunshine Yellow - Made for H.C.A. - Set of Three..\$ 60.00
 (Sold only in sets) - Made in February, 1984.
- 102. NO. 33 TOY CANDLESTICK - Marked ALIG - Crystal.....\$ 10.00
 ULTRA BLUE, ROSE PINK, SUNSHINE YELLOW, LIGHT BLUE\$ 13.50
 made in 1984 by Imperial for HCA.
- 104. BOBECHÉ W/PRISM PINS, Gold or Silver Pins.....\$ 8.00
- 105. PRISM, With Gold or Silver Wire.....\$.85
- 107. SHORT FERRULE to hold bobèche.....\$ 4.00
- 108. PRISM PINS - One Dozen - Post Paid, Gold or Silver.....\$.75
- 109. #54 FERRULE for Candelabra Base.....\$ 6.00

10% Discount to Members Only, Orders over \$50.00

*Cup Plates are \$7.00 Post Paid except Wood Duck which is \$7.50. Orders for two \$13.50, Wood Duck \$14.00. Three or more, go back to the 10% of Total Order for Shipping and Handling. No. 58 Mould Destroyed.

MASTER CARD/VISA ACCEPTED. PLEASE INCLUDE YOUR CARD NUMBER AND EXPIRATION DATE WITH ORDER.

ALL SALES BENEFIT THE NATIONAL HEISEY GLASS MUSEUM

ORDER FROM: H.C.A. SALES
 P.O. BOX 27
 NEWARK, OH 43055

MASTER CARD VISA

CREDIT CARD NUMBER																
Expiration Date Required																
										Mo.						Year

Viking has made us an Empress Plate, 4-1/2", marked "HCA", from our own Heisey mould. The Victory Etching has been added to the center and it is inscribed "MOULDS 1985." The profits from this plate will be for \$12.50 each.. the Mould Fund.

DIAMOND H ADVERTISING PIECE
 MADE IN OUR OWN ORIGINAL MOULD

COBALT BLUE
 Made for the Mould Fund.

- PLAIN at \$22.50 each.
 SATIN at \$23.50 each..

<p>A.W. PARKER Heisey & Pattern Glass Shows or Appointment Magalia, CA 95954 PH: (916) 873-2326</p>	<p>"HAPPINESS IS" THE STULTZ'S Show and Mail - Elegant Glass Circa 1890-1960 3106 Warren Court Glen Allen, VA 23060 PH: (804) 262-1273 (Richmond Area)</p>	<p>Your Ad Could Be Here!</p>
<p>A DOOR ANTIQUES Heisey My Specialty 4241 Bayard Road South Euclid, OH 44121 PH: (216) 381-3008</p>	<p>GERT'S GLASS Heisey & Duncan Gertrude & Russell Swetnam 1926 Saratoga Dr., Adelphi, MD 20783 PH: (301) 434-5113</p>	<p>MOSTLY HEISEY Rhoda Curley 16 Clayton Place Albany, NY 12209 By Appointment, PH: (518) 482-6272</p>
<p>ALL HEISEY AUCTION Consignments Welcome Apple Tree Auction Center 1616 W. Church, Newark, OH 43055 PH: (614) 344-9449</p>	<p>GLASS 'N' GLASS Virginia & Odell Johnson 6909 10th Ave. West Bradenton, FL 33529 PH: (813) 792-0604</p>	<p>MOUND BUILDERS ANTIQUES Heisey & Animals, General Antiques Irene Rauck 1138 Moundview, Newark, OH 43055 PH: (614) 344-6043</p>
<p>ANN'S GIFTS & ANTIQUES 105 W. Main St., Hebron, OH 43025 Intersection of Rts. 40 & 79 Next door to Daisy Queen Daily 10:30 to 5:30</p>	<p>GLASS WITH CLASS Lenore A. Shelley, GGHC 1336 Lincoln Avenue San Jose, CA 95125 PH: (408) 286-8098</p>	<p>PATTON HOUSE Heisey & Duncan Miller Rocky's Mall, I-81 & US 11 Weyer's Cave, VA 24486 PH: (703) 967-1181</p>
<p>ANTIQUES - THE SHULTZES 206-208 East Main St. Newmanstown, PA 17073 15 Miles West of Reading, PA PH: (215) 589-2819</p>	<p>GREEN ACRES FARMS Antiques, Crystal Glass & Collectibles 2678 Hazelton-Etna Rd., SW (S.R. 310-N) Pataskala, OH 43062 Sat. or Sun. PM or call (614) 927-1882</p>	<p>R & L ANTIQUES - SAN FRANCISCO Shows only - always lots of Heisey Member of Golden Gate Heisey Club P.O. Box 3614, Daly City, CA 94015 PH: (415) 621-6693</p>
<p>AVERY'S QUALITY ANTIQUES Specializing in Heisey Shows or by Appointment 2112 First St., Jackson, MI 49203 PH: (517) 783-4075</p>	<p>H & R DIAMOND H Helen & Robert Rarey 1450 White Ash Dr. Columbus, OH 43204 PH: (614) 279-0390 after 5:30</p>	<p>RAMBLING LANE ANTIQUES Featuring Heisey & other fine glass Keith & Evelyn Hoover 1978 Rambling Lane, Rhinelander, WI 54501 PH: (715) 282-5019</p>
<p>B & B HEISEY & COLLECTIBLES B. Whaley 300 International Dr. Pataskala, OH, 43062 By Appointment: PH: (614) 927-1557</p>	<p>CHARLOTTE'S GLASS REFLECTIONS Quality Glassware Specializing in Fostoria 6816 14th St. W., Bradenton, FL 33507 PH: (813) 756-4143</p>	<p>RAY ZIEGLER Glass Repair 185 County Line Westerville, OH 43081 PH: (614) 891-9700</p>
<p>C.E. HIGGINS (S.F. Bay Area) Shows and Mail Order P.O. Box 2723 Menlo Park, CA 94025 PH: (415) 322-0192 Evenings</p>	<p>HARRALSON'S HAPPY HEISEY HUNTERS Ours & Others - Many Choice Items L SASE - New List - Jan. 1 - May 1 - Sept. 1 We accept consignments & buy collections. 1426 W. Highland, Springfield, MO 65807 PH: (417) 883-2449</p>	<p>SCHWAN'S ANTIQUES SHOPS & SHOWS 2980 John Tyler Hwy. Williamsburg, VA 23185 PH: (804) 229-7873</p>
<p>C & J ANTIQUES Cole & Jean Miesner Box 45, 72 Whig St. Newark Valley, NY 13811 PH: (607) 642-9905</p>	<p>HARRISON'S ANTIQUES Heisey, Cambridge, Duncan Shows, Mail, by Appointment 26 Johnston's Lane, Mercersburg, PA 17236 PH: (717) 328-2451</p>	<p>SUM OF LIFE Elaine & Frank Husted P.O. Box 102 Phoenixville, PA 19460 PH: (215) 935-2962</p>
<p>CHARLES & MILDRED FISHER Heisey, Degenhart, Imperial, Antiques, Collectibles, General Line 991 Idlewild, Newark, OH 43055 PH: (614) 522-5398</p>	<p>SPARKLING ANTIQUES Arlene I. Reynolds - owner Heisey & Custard Glass 5 Wayside Circle, Pittsford, NY PH: (716) 381-4134</p>	<p>ETTELMAN'S DISCONTINUED CHINA & CRYSTAL HEISEY a SPECIALTY P.O. Box 6491 HN Corpus Christi, TX 78411 PH: (512) 888-8391 Include SASE</p>
<p>DAVE'S ANTIQUES Specializing in Heisey Shows & Appointments Tampa, FL 33600 PH: (813) 876-0580</p>	<p>HEISEY PUBLICATIONS Heisey Books I-III-IV Newscaster Back Issues \$4.00 1977 thru 1984 Box 102, Plymouth, OH 44865</p>	<p>THE GLASS CONNECTION Specializing in Heisey Shows & Mail Order Box 526, Collegeville, PA 19426 PH: (215) 489-0139</p>
<p>DIAMOND H PLUS Mail Orders & Shows George & Eileen Schamel Rt. 3, Box 171, Boonsboro, MD 21713 PH: (301) 432-6285</p>	<p>J. & R. COLLECTIBLES Shows, SASE, Mail Order list June & Ray Lukasko P.O. Box 1030, Newark, OH 43055 PH: (614) 344-9719</p>	<p>THE GLASS LADY Week Ends Only Glass, Pottery, China Circle Shopping Center, Richmond, VA 23224 SHOP (804) 320-9239 HOME (804) 271-1555</p>
<p>ELIZABETH BASSETT CASON 401 32nd St., W. Bradenton, FL 33505 Mail Order - List PH: (813) 748-0851</p>	<p>THE PURPLE PLACE Featuring Heisey & Other Fine Glass Martha & Harold Earp 1940 Suwanee, Ft. Myers, FL 33901 PH: (813) 936-1572 Anytime</p>	<p>WILLEY'S ANTIQUES & MUSEUM Specializing in Heisey 11110 Cannon Rd., Frazeyburg, OH 43822 16 miles east of Newark, OH PH: (614) 828-2557</p>
<p>FOREVER HEISEY Shows and Mail Order Janice Thran 1663 Londondale Pkwy., Newark, OH 43055 PH: (614) 344-5955</p>	<p>JUDY'S DIAMOND H ANTIQUES Heisey Glass - Lake Isabella, CA HC 1, Box 3001 Weldon, CA, 93283 PH: (619) 378-2176 by Appt.</p>	<p>GOLDSBERRY'S ANTIQUES Heisey a Specialty Shows only - Buy & Sell Kalamazoo, MI 49000 PH: (616) 381-3013</p>
<p>DIE KUNST GALLERIE'S & ANTIQUES Specializing in Heisey Vel & Andy Andress Box 329, 725 Front Street Leavenworth, WA 98826 PH: (509) 548-7856</p>	<p>PEGGY'S ANTIQUES Ernie & Peggy Cox P.O. Box 367, Spavinaw, OK 74366 By Appointment or Chance PH: (918) 589-2859</p>	<p>THE WOODEN SHOE Antiques & Collectibles Jim & Sheri VanEs by Appt. 810 Elden, Herndon, VA 22070 PH: (703) 435-9045</p>

ANNUAL CHRISTMAS DINNER

December 6, 1985

GRANVILLE INN
314 EAST BROADWAY
GRANVILLE, OH 43023



Deadline for Reservation: 11/30/85
Cocktail Hour 6:00 - 7:00 - Open Cash Bar
Dinner Served 7:00

Send Reservations To:
HCA CHRISTMAS DINNER
P.O. BOX 27
NEWARK, OH 43055

\$14.50 Per Person - Includes Tax & Tip

Please Clip and Mail

NAME ADDRESS AMOUNT PER PERSON

List all names so that name tags may be made out properly.

TOTAL \$ _____

MENU: Roast Turkey with cranberry dressing; Baked Ham, pineapple glaze; Candied Yams; Mashed Potatoes with gravy; Peas with pimientos; Ten Seasonal Salads; Raisin Bread with honey. Coffee, tea or milk.



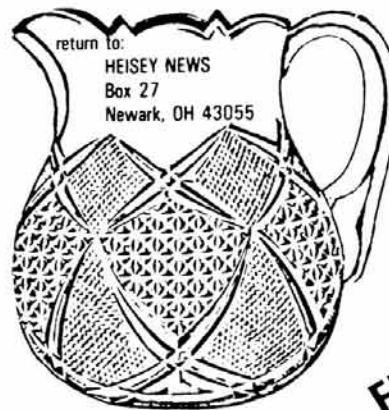
The GLASS REVIEW Magazine is for everyone who studies, collects or sells glass. Whether your glass interests lean toward the early 1900's - or the depression era - or with today's limited glass items, the GLASS REVIEW covers it all!

Articles - price reports - original catalog documentation - shop directory - research and reproduction news - trademark information - glass book releases - what's new on the market - a large variety of glass ads (on both old and new glass) - plus much more.

Enclose payment and mail to:
GLASS REVIEW,
P.O. BOX 542, MARIETTA, OH 45750

**NOW 12 ISSUES
PER YEAR!**

\$14.50 - one year



FIRST CLASS MAIL
U.S. POSTAGE
PAID
PERMIT 741
Mt. Vernon, OH 43050

FIRST-CLASS MAIL