

HEISEY *news*

OFFICIAL PUBLICATION HEISEY COLLECTORS OF AMERICA

©Heisey Collectors of America, Inc. 1985
All Rights Reserved

VOLUME XIV

NO. 1

JANUARY, 1985

ISSN 0731-8014



President	Tom Bredehoft	614-745-1014
Vice President	George Schamel, III	301-432-6285
Secretary	Ray Ziegler	614-471-6446
Treasurer	Dick Marsh	614-366-5608
Exec. Dir.	Louise Ream	614-345-2932



DESK OF THE DIRECTOR.....

Happy New Year!! to all of you from all of us even though it might be slightly belated. We hope everyone received that piece or pieces of Heisey which they coveted for Christmas.

We are starting on our 14th year of the Heisey News. It hardly seems possible that I have been doing this for thirteen years already. For the last four or five years, I have done the paste-up and layout myself. (Marcella Bethel did the typesetting at first until shortly before her death when I began doing the camera ready layouts. Harley continued the printing and after he became so ill, his son Gary, did it.) We are now going to use a Newark printer probably starting with the March issue. We still will be getting the paper camera-ready for the printer since it costs so much more and also takes more time for typesetting. The postal rate change will raise the postage to 43 or 44¢ instead of the present 37¢. Whether it arrives to you any earlier is unpredictable since we will have about the same lead time. When we changed our dating, we intended it to arrive late in the prior month or early in the date month so that the month would be current.

Tom didn't write anything this month because he was too busy getting ready for the Board Meeting, and his son George's wedding which was held in Costa Rica on December 15th. We congratulate George and Patricia and hope that they have a long and happy life together. They will be living in Newark after their honeymoon. Tom and Neila are very happy to have a "daughter."

The Christmas Dinner at Granville Inn was bountiful and delicious. Most everyone came to the museum afterward to visit, play cards, look at the decorations and buy from the gift shop.

Most of the Board Members were present, even those from far away.

Club Treasurer, Dick Marsh, had an emergency appendectomy a night or so before the meeting. Ray Ziegler's mother had had a serious operation. Dick Marshall, former secretary, underwent surgery a few weeks ago. His wife, Dorothy was also hospitalized for a few days, just after he got out. We are all falling apart, it seems. We hope everyone is doing fine now.

The Blue Oscars were a complete sellout on Thursday, December 13th, and all will be shipped by this afternoon, December 14. All checks will be returned to those who didn't get any. We received orders from all over the country, including all of the western states. We are not re-

Opinions expressed in articles are those of the authors and not necessarily those of HCA. Editorial Staff reserves the right to edit or refuse any material submitted for publication. Send all letters and articles to the EDITOR. Letters to columnists should be sent to the club address and will be forwarded.

HEISEY NEWS - P.O. BOX 27, NEWARK, OH 43055

Editor: Louise Ream
P.O. Box 27, Newark, OH 43055
PH: 614-345-2932

Assistant Editor: Neila Bredehoft
P.O. Box 27, Newark, OH 43055
PH: 614-345-2932

Published monthly and mailed from Reynoldsburg, Ohio 43068.

\$15.00 per year - \$1.25 per copy

Back Issues - Each Volume (12 issues) year - \$9.00
Volume V, VI, VIII, IX, X, XI & XII Available

Heisey Collectors of America, Inc. is a non-profit corporation with tax exempt status. Owners and operators of National Heisey Glass Museum, 6th and Church Streets, Newark, Ohio. Open Daily 1 - 4 p.m. except Mondays & Holidays. Other hours by appointment. Members admitted free.

Club membership (includes 12 issues of HEISEY NEWS and participation in all club activities) \$15.00 per year plus \$2.50 for each additional family member in same household who wishes a membership card. For VOTING MEMBERSHIP, add \$25.00 one time only fee.

When requesting information, please enclose a self-addressed, stamped envelope (SASE).

ADVERTISING - Send all ads to:
Advertising
c/o Janice Thrane
P.O. Box 27
Newark, OH 43055

RATES:

DEALERS' DIRECTORY - 5 lines - \$20.00

Extra Line - \$2.00 - Change during year \$2.00 per line.

CLASSIFIED - 12¢/Word - \$1.20 Minimum.

Abbreviations & initials count as words.

DISPLAY:	MEMBERS	NON-MEMBERS
1/8 pg (9 items)	\$15.00	\$25.00
1/4 pg (20 items)	24.00	35.00
1/2 pg (20 items)	40.00	50.00
1/2 pg (50 items) Vertical	50.00	60.00
1 pg (50 items)	65.00	80.00

Extra lines will be billed at \$1.00 per line.

We cannot double-column ads.

ALL ADS MUST BE PREPAID. Ad copy must be received by the 5th of the month to be included in that month's NEWS. Ads containing reproductions will not knowingly be accepted unless clearly stated (i.e. Heisey by Imperial, etc). HEISEY News assumes no responsibility for false advertising or misleading information. In the event of typographical error, the incorrect portion of the ad will be run in the following issue, but HEISEY NEWS assumes no further liability.

sponsible for some of your newsletters being late because all post offices seem to have different ways of handling the newsletter. A lady called from Oregon or Washington a couple of days ago and said she had just gotten her newsletter. Something was wrong there because we had orders from some of the west coast states as early as December 8th. The newsletters are all mailed at the same time by our printer in Reynoldsburg, Ohio, not Newark. All Newark mail goes to Columbus first and is then sent here so we often get our newsletters after we have heard from some of you. No Oscars were sold to anyone until the museum had received its newsletter through the mail.

Clarence Vogel, whom you all know, or know of, has been ill and in the hospital for a week or so. We do not know his current status but if I find out before this goes to the printer tomorrow, I'll add a note. We all wish him well.

See the form on Page 23 for making your reservation at Convention headquarters. Do this as soon as possible (no deposit required) as they will go fast. The Newark Terrace, across the street from us, is already full.

On the same page, see the order form for the "Glossy" black Oscar, which is the real 1985 souvenir. These are limited to 1500 which is much fewer than we usually have. These were made by Imperial while they were in bankruptcy. They told us they could get these made for us but it took them longer than they expected since they had such a small tank and so few workers at the time.

Tom, Ray and I went to the November 20 Bankruptcy hearing and Imperial was sold to Consolidated International and Lancaster Colony for \$600,000. There were no other bidders. The closing was on the 8th of December. They will be allowing people who are interested in bidding on the moulds to come until about the middle of January. We are still in there trying. If we are able to make a purchase we'll be asking you to fulfill your pledges and we may also be asking for more money. Many of you have said you would give money if you knew what we were getting. We'll let you know as soon as we know. Money which we have received, which we are allowed to keep for other purposes, will receive donation slips within the next week or so if you haven't already got them.

There is a new club in Eastern Massachusetts, and we hope to have one going in Florida soon. North Carolina is also trying to get one organized. If you're interested, send in your names and we will forward them.

We hope you have sent in your Auction glass. We have to have the list ready and typed by Jan. 15 to go in the February issue. That is the date the copy goes to press.

Hopefully, we will know something about the moulds by the next issue.

Happy Collecting!
Louise Ream



BLOWN OIL BOTTLES

All except #4048 were made from about 1914 to 1929. No. 4048 was shown only in early catalogs.

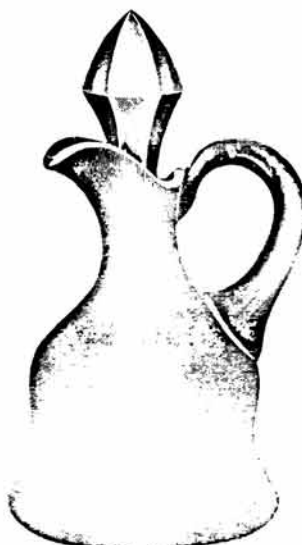
OIL BOTTLES
All Unmarked



#4048 - 6 OZ OIL
CUT NECK #67 STOPPER



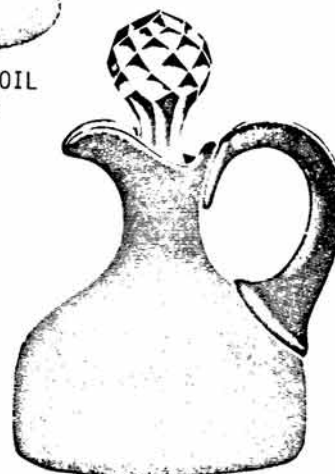
#4041 - 8 OZ OIL
NO. 4 STOPPER



#4056 - 8 OZ OIL
NO. 2 STOPPER



#4057 - 8 OZ OIL
NO. 4 STOPPER



#4042 - 6 OZ OIL
NO. 62 STOPPER

ADVERTISEMENTS



SALT AND PEPPER NO 29



INDIV DOMINO SUGAR NO 393



MARMALADE NO 353



OYSTER COCKTAIL AND PLATE NO 393



OVAL CREAM NO 353



CANDLESTICK NO 29



HORSES NECK NO 601

Every quality that makes table glass so beautiful, so appealing, is to be found in

Heisey's Glassware

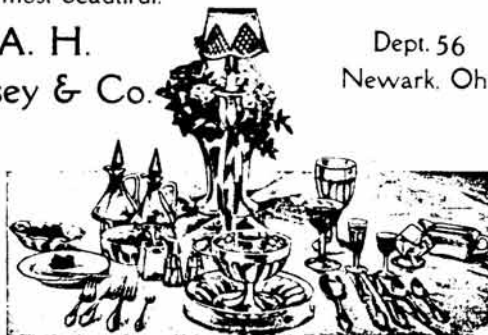
The graceful shapes and harmonious designs make it the glassware that has true distinction.



So good, you can use it for important formal occasions —so inexpensive, you can enjoy it every day. Sold by the best dealers everywhere. Write for "Table Glass and How to Use It." This book shows a great variety of styles and patterns, and gives suggestions to help you select the table glass that is most appropriate and most beautiful.

A. H.
Heisey & Co.

Dept. 56
Newark, Ohio



SALT AND PEPPER NO 23



HORSERADISH NO 355



INDIV CREAM NO 355



GOBLET NO 393



COCKTAIL NO 601



EGG GLASS NO 429



CREAM NO 452



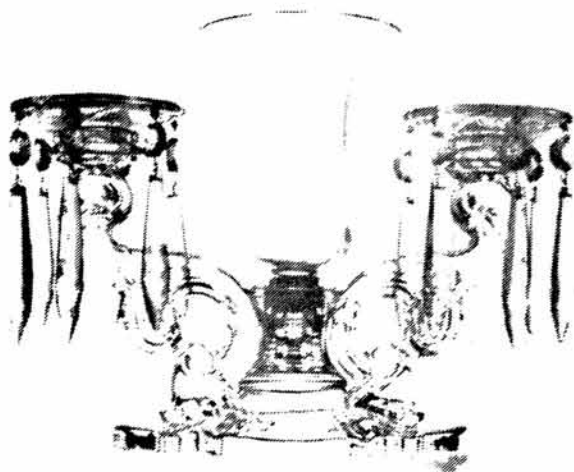
VASE NO 351

Buy advertised Goods — do not accept substitutes

HEISEY CANDLESTICKS

NO. 1513, BAROQUE*

By Bob O'Grady



The No. 1513 Baroque is a 3-light candelabra with epergne. Although other candlesticks were offered with various insert vases available as options, the no. 1513 was unique in that it was almost always sold with the no. 5013 5-inch vase. However, as advertising repeatedly stressed, this vase could be removed and a candle used in its place and, for this reason, the catalogs consistently listed this as a three-light candelabra. In an advertising brochure from the fall of 1948, it was pictured without the insert vase and with a pair of no. 341 epergnettes in the two outside candleholders. Other early advertisements also called it a candelabra centerpiece and, in later catalogs, it was identified as a three-light epergne and, finally, as a three-light candelabra epergne.

Samples of the no. 1513 were first made in May 1939 and shown at the annual meeting of Heisey's sales representatives the following month. According to the minutes of that meeting, "The new two light candlestick with vase was next discussed and everyone agreed that the vase should be made swirl optic to match the swirl effect of the bobèche." However, a note appended later to these minutes states, "It is impossible to make a spiral optic vase to go in the new 2-light stick, due to the plug on the vase." The earliest catalog pictures are unclear, but appear to show the vase without any optic at all. Whatever the difficulties were, however, they seem to have been surmounted and later catalogs do present this vase with a swirl optic. By the mid-to late fifties, however, this seems to have been replaced by a narrow optic, as shown in the accompanying photograph. Still later, when reissued by Imperial, the vase was sold plain.

The no. 1513 three-light seems to have been very popular right from the beginning and was made from 1939 until the factory closed, and then by Imperial until 1973 -- almost 34 years of continuous production. As a result, it is a rela-

tively easy candlestick to find today.

The design of this piece is very intricate and somewhat similar to the pieces which began to come out in the following year as part of the no. 1519 Oceanic, or Waverly pattern. The arms are wave-like, with tiny beads, or "bubbles," curving around and then upward to support the candleholder. The latter has vertical lines spaced regularly about its circumference, and a circular rim which supports the bobèche. The bobèche is about 3-1/4 inches in diameter and has swirls radiating out from the center on its underside. The arm-spread, with the bobèches on, is almost 10-1/2 inches, with a height of 6-1/4 inches. The base, which is irregular in shape, is ground smooth and polished on the bottom.

The bobèches hold 6 prisms each, usually either "A" or "H" prisms. ("H" prisms were the shorter version of the "A" prism, and were later called "B" in the catalogs.) During the war, however, this candelabra was also offered with "P," "R" or plastic "X" prisms.

Unlike some of the other candlesticks of this period, the no. 1513 three-light candelabra epergne was not part of a pattern and there were no other pieces with this pattern number.



Q

I've sure been wondering where all the glass comes from for the sales. Do people just sell their collections and contribute the money to the museum? Seems like such a lot - almost every thing Heisey made, and year after year. Enlighten me please.

Beatrice Barnes, WI

A

People sell their Heisey glassware for various reasons and some prefer to put it in an auction since they don't have to find buyers.

Especially in the Newark area, there is a lot of Heisey glass in estates and putting it in an All Heisey Auction is a good way to get rid of it if you are not a glass collector.

Some people buy glass just to put in auctions - for the purpose of making money, probably to buy something they want more.

It is a tribute to the popularity of Heisey glass that these auctions can be held year after year. I know of no other glass which could be successfully sold in this manner and continue to command good prices.

In our own auction every March, members can consign 10 lots of glass and HCA gets the 20% selling fee. A few people do donate glass to it. All other Heisey auctions advertised in Heisey news are done by Sam Schnaidt of Appletree Auction House. We get no money from them except the \$65 per page which they bring to us all ready for printing.

L.R.

Licking legends

Edward Everett was pioneer in glass, oil

FIRST PRINTED IN NEWARK LEADER FEBRUARY 22, 1934

REPRINTED IN NEWARK ADVOCATE DECEMBER 2, 1984

All men and women who love Newark are rejoicing in the renewal of activities in the Owens-Illinois plant. It is optimistic, at this time, to remember that the foundation of this great modern glass plant was laid in one of the prettier romances in the social history of Newark.

The history of the plant has raised a halo over the brow of the central figure of the romance, the late Edward H. Everett. The halo is justified by the fact that he learned to love Newark, and as success came to him he gave to this city monumental testimony of his love for the home city of his bride, Amy King Everett.

This love and loyalty to Newark and Licking County may be indicated by the park and playground located along the east bank of the North Fork of the Licking River, just north of Everett Avenue, a thoroughfare so named in honor of the city's benefactor. It is also indicated by the site of the Newark City hospital and by the Cherry Hill Fruit Farm east of the city.

The latter is one of the larger orchards in the middle country, the apple, peach, pear, plum and cherry trees flourish, thousands in number, each. In the fruit season, agreeable to the wish of the founder, a preference is given to local people.

Let us go back into time a bit: In the early eighties of the last century, this city was visited by a tall, bright young man, a bottle salesman for a large glass plant in Pittsburgh. He sold goods here, though local capital was operating a primitive glass factory with indifferent results. Among those pioneers of the industry were William Shields, John C. Hamilton, W. H. Hamilton, Edward Stevens, Oren G. King and others not now recalled. It was known as the Newark Star Glass Co., located on the site now occupied by the present Owens-Illinois plant.

Mr. Everett was a man of vision and had the other mental and physical endowments of an empire builder. He did not want to go on selling goods for other people. He wanted to make fame and fortune for himself. He guessed, wisely, that the Newark Star glass works was his star of destiny. "Did they want to sell or merge in with a plan of his?" It is not recorded that one of the owners hesitated. All took an interest in the plan of the young enthusiast.

The plant was enlarged with its newly invented "tank system" of melting glass, and it became one of the larger plants in the United States, and Mr. Everett rose to be titular head of the industry in this country. Well alive to the progress of the western world, Mr. Everett, with the heads of the Green Glass Bottle Blowers' union, was invited to Toledo, Ohio, to witness a demonstration of the then experimental Owens bottle-blowing machine. He was accompanied among others by the

late Dennis A. Hayes, then national secretary of the G.B.B.A., who is well remembered and who resided here.

They watched the performance and at its close each was handed a finished bottle which they had seen blown by the machine.

After leaving the demonstration, Mr. Everett and Mr. Hayes started for home. Both were impressed to silence but later, on the train, Mr. Everett broke the silence with:

Well, Denny, what do you think of the machine? "Machine?" said Hayes. "That is not a machine; that is a miracle."

Mr. Everett at once made a contract for the machine in his factory.

It was during the strenuous times of production transition just recalled, that Newark society was thrilled with the marriage of Edward H. Everett and Miss Amy King. It was solemnized in the family residence which stood where now stands the John J. Carroll store on North Third Street.

Mr. Everett encountered, during the building of this great business, a period of financial depression similar to the one we are now suffering. All of the large glass plants at Pittsburgh, with warehouses full and no business, had shut down. He loved the men with whom he was associated and did not want to close his plant.

He called together the capitalists interested in the plant, together with his large following of capable and efficient workmen. He laid before them a cooperative plan. It was one which would require patience on the part of those financially interested, and faith in him by the operatives. He stood with them to win or lose. He would put forth his best efforts to sell the finished product and at the end of the working year he would make an exact statement and with it share the results of the effort.

They had faith, to a man, in Mr. Everett and his plan. It was a complete success, and in 1927, in a conversation with Mr. Everett, he told the writer of the trials and difficulties encountered and the happy ending of it.

Mr. Everett was not yet a world character. With his financial friends he was just a safe, sane and successful business man. Viewed by his financially interested associates, he was known as a past master in business matters and their warm friend. Always kind and courteous with the individual operative, they returned it in kind and many of them just familiarly addressed him as "Ed."

We have said Mr. Everett was a man of high courage and one who had safe visions. In the early '80s he became impressed with the fact that the Licking River basin might be hiding vast wealth in gas and oil. He called a meeting of citizens and invited the then ranking state geologist to talk. The learned gentleman came and poured cold water on the guests. In his superior knowledge he could not think that the Licking basin would yield much of the well-driller.

Mr. Everett guessed differently and with a few small subscribers to a fund, the first well was started, just south of the present glass plant. When the well had reached down, perhaps a thousand feet, Mr. Everett at his own expense finished the well, and, doleful to tell, he got--a duster.

He was not discouraged, but went south of the city, leased the land of George W. Haven and start-

ted another well. Many said he was a dreamer. He went on drilling and one day the middle west was thrilled with the announcement that the well had come in--a good one. It was promptly piped to the factory, and it, with others, was soon giving entire fuel to the glass house.

All Newark people of mature years will remember the rush which followed. Development brought Licking County up to a world's record in producing gas and oil. The large oil refinery just outside Newark could be looked upon as a monument to the memory of Edward H. Everett, the first producer of oil in this county.

Mr. Everett was soon to become a world character. Among his large customers in this glass industry was Mrs. Adolphe Busch, the, even then, millionaire brewer. Mr. Everett interested him in the great project of developing the basins of the Ohio and Mississippi rivers. It was a success beyond the dreams of Aladdin.

As long ago as 1904, the traveler of the B&O railway from Cincinnati to St. Louis, Mo., in passing through Lawrenceburg, Ind., saw to the right of the coach window one of the larger oil distilling plants in the world. To the left and stretching away to the south was a forest of derricks which hid the lower sky line.

Long before the death of Mr. Everett, a few years since, he was a world character. Like all really great men, he was unchanged by wealth, honors and success.

He retained his love for Newark and the associates of younger years. He frequently visited here and talked with his early associates and employees with all the frankness and easy familiarity of old and tried comrades.

CONVENTION THEME

The Convention Committee met in November and the theme, "The Greatest Show on Earth," was chosen for the 1985 convention. After a lot of time and discussion, we decided on titles for each session. They are as follows:

Display	- "The Star Performers"
Show	- "The Midway"
Champagne*Preview	- "The Grand March"
Identification Panel	- "Three Ring Circus"
Former Employee Reception	- "The Ringmasters"
Banquet	- "The Main Event"
Seminars	- "The Side Show"
Swap Meet	- "The Fun House"
Annual Meeting	- "Strike The Tents"

I hope that the clubs and individuals who are doing a display are able to get ideas from these. Your display theme does not have to relate to the circus idea. It's not too early to start thinking.

The Sheraton Inn room reservation form is in this issue of the news so please mail it in early because rooms go fast.

Bob McClain

* * * * *

COPPERWHEEL ENGRAVERS AT A. H. HEISEY & CO

By Anton F. Krall

About the year 1930, A. H. Heisey & Company established a glass cutting and engraving department in their plant * and placed Emil Krall, Sr., an experienced glass craftsman in charge of its operation.

Krall brought with him his own son, his elder brother, and a nephew.** Subsequently, former fellow copperwheel engravers equally skilled in the "under the wheel" technique on stone cutting, followed him to the newly established glass cutting and engraving department.

Stone engraving is especially desirable for the production of commercial quality glasses. When dipped into a mixture of sulphuric and hydrochloric acid it leaves the cutting or engraving with a brilliant polish which enhances Heisey Glass and gives it a distinctive appearance. Also employed were a number of glass cutters skilled in the "top of the wheel" technique of cutting.

Many of the newly designed patterns were a combination of "over the wheel" and "under the wheel" technique and proved successful in production.

By the time the A. H. Heisey plant closed, most of the cutters and engravers were of retiring age and have since "passed on." Only one of the former Ohio copperwheel engravers is still among the living.**

Editor's Note:

*Heisey had a cutting shop previously but there is a gap from 1924 to about '31 or '32 in the dates for cuttings. Apparently the shop was reopened about this time with Emil J. Krall in charge. Many of the most beautiful cuttings and engravings were done in this second period.

**Anton is referring to himself in both instances. He is Emil J. Krall's nephew and also is the "only one of the former copperwheel engravers" still among the living. Emil Krall, Jr., and his brother Oscar Krall are still living but they were not copperwheel engravers. Anton Krall is 86 years old and still sharp as a tack. His beautiful handwriting is the envy of all of us here at the office. He spent an hour or two at our museum a few weeks ago and we found him to be delightful. We would like to have him attend the 1985 convention but it is a long way here from California.

L.R.

CLUB NEWS

HEISEY COLLECTORS OF TEXAS

By Erma Hulslander, Secretary

HCT has just closed its second year of quarterly meetings with interesting memories of beautiful Heisey, which was displayed at each meeting plus many informative programs and conversations.

Our officers were elected for a two year term: President - Roger Hulslander; Vice President - Weldon Harris; Secretary/Treasurer - Erma Hulslander; Historian - Madeline Sullivan.

It is hard to believe but - yes, in 1984 there are still sleepers around, even marked Diamond H sleepers - such as a crystal clear Madonna you could see half a block down the row as the morning sun was hitting it at the flea market here in October. And the price on it well, I thought they left the one zero off. Needless to say, it was her first flea market. What was so enjoyable was she was very pleased to make her first sale of the day - and so were we! Also, even after the local club went to a flea market, a certain "Know-It-All" member took a stroll thru the flea market the following day and found a few sleepers, believe me we all know what "Waldorf Astoria" looks like now!!!

We would like to welcome two new members this year, Ms. Sally Lancaster and Ms. J. S. King.

We are now meeting the second Saturday evening of the following months - Feb., May, Aug., & Nov. This makes it more convenient for some of us that at times have to drive 40 to 50 miles (such as the month the meeting is held in Weatherford and we live in Mesquite). Also, this may make it possible for others of you near Dallas to join, just give me a call and we will put you on the mailing list - 214-279-0018.

Editor's Note:

This club was founded in having monthly meetings. Apparently they changed to quarterly meetings two years ago.

BAY STATE HEISEY COLLECTORS CLUB

By George Gleason

The Bay State Club held its regular meeting at the Follen Church in Lexington, Mass., with President Caswell at the helm. With the business portion of our meeting over, we had our program.

The program for the evening was Auction, Auction. This is one of our activities to benefit the National Museum. The members bring pieces of glass to be auctioned off by George Fogg, and as always, George did a magnificent job. With all his levity and ad libs it really made for a fun evening. I speak for myself as well as the members. Thanks again George.

The refreshments provided by Jean Siek and Beverly Berberian were really good.

This will not go to print before Christmas so I would like to extend a belated Merry Christmas and a Happy New Year from all of us in the Bay State Club. We hope all your wishes came true Christmas morning.

We in the Bay State had a Christmas party at

the Harvard Club in December. I personally would like to extend a warm greeting for a belated Merry Christmas and a Happy New Year to all my cohorts.

Eileen & Ralph Wise are leaving for the Sun and Fun of Florida. We wish God speed and we will miss them. Ralph, I still love Zircon "vases," i.e. 1469.

George Gleason

NORTHWEST HEISEY COLLECTORS STUDY CLUB

By Luvonne Nelson, Secretary

The Northwest Heisey Study Club wishes to extend a belated Merry Christmas and a very Happy New Year to each one of you in Heiseyland from the beautiful state of Washington.

We have dedicated, loyal members of our Club who travel many miles each month to attend the meetings. The King's from Wapato in Eastern Washington can drive 400 - 500 miles and they are there just about every month. The Pedersons, Olsens, and Nelsons from Bellingham, which is 25 miles from the Canadian border, Nichols from Whidbey Island, Pedigos from Longview, Knights from Sequim on the Olympic Peninsula can all easily drive 250 - 300 miles each Heisey Saturday. We not only go to learn about Heisey but we enjoy getting together with the other members, visiting and becoming better friends.

The September meeting was held at the Nichols' on Whidbey Island. We had a delicious potluck dinner and a great time before, during, and after dinner and after the meeting looking at all of Betty's Heisey. The program was on baskets (Heisey) of which Betty has an outstanding collection. We always have Show and Tell for the pieces found during the past month. There were 21 members and 2 guests present.

On October 6, we were at Oliver and Mary Beatty's home in Olympia. Their home is built on a golf course but it was raining so no one tried out the course. The Club has bought books on glass which we are using as a traveling library and it is working out very well. The program today was on Heisey animals and some people brought other animals to show the difference. There were 15 members and 4 guests present.

November 2 found us at the home of Maurice & Orlena Seeber's in Spanaway with 22 members and 3 guests in attendance. The program was on mistakes, look alikes, errors that we have bought thinking they were Heisey. It was nice to know that others make mistakes too.

Ken and Wanda Heikes were the hosts on December 1 at their home in Tenino with 23 members and 6 guests. They are both truck drivers for Bekin's so they travel all over the U.S. and always bring home many pieces of Heisey. Wanda's collection is Crystalite and she had just bought many pieces with the original label that had never been out of the box. The program for the day was on "Twist" which is Ken's collection. There were ice buckets in Marigold, Flamingo, Moongleam; two-handled Bon Bon and individual Bon Bon in Moongleam; Mayonnaise in Moongleam and many other beautiful pieces in Moongleam, Flamingo, Marigold and Crystal in the china

closet, also a Flamingo Duck Flower Frog.

There was a contest on Christmas centerpieces and it was won by Frona Pedigo. She had a beautiful Emerald Winged Scroll cruet on a stand with Christmas flowers. It was outstanding!

For Show and Tell there was a rare Vaseline Locket on Chain nappy; 2 #5 coasters which were just shown in Vogel's Newscaster. There were so many beautiful pieces used for the centerpieces and brought for Show and Tell that it is easy to understand why it is so much fun and so challenging to collect Heisey.

We meet the first Saturday of the month. During the winter we have been meeting at 2 o'clock but in the Spring may change back to evening. If there is anyone who would like to come and see what our meetings are like please call our President - Nan Alderson - 824-7946 in Seattle or the Vice-President - Marilyn Pederson 734-3819 in Bellingham to find out where the next meeting will be held.

Luvonne Nelson, Secy.

Editor's Note:

We were happy to have a visit from Ken and Wanda Heikes earlier this fall. They thoroughly enjoyed the museum.

LETTERS, we get letters....

We look forward to the Heisey News each month, and thought the ruby Oscars were the prettiest so far. I have them all and they are all beautiful.

Also, thanks to everyone who make it possible for the excellent service.

I have found several new additions to my Heisey collection this year, all great, and hope 1985 will be as good for all collectors of this lovely glass. Thanks again.

Joyce Stougard, WA

Last Saturday morning I caught the last part of a program on our local Public Broadcasting station which was about Heisey crystal. I did catch the name of the museum and city.

When I was married in 1946, my parents gave me quite a few pieces of Heisey "Orchid Etching." Several types of stemware, dessert plates, console set, relish dishes and even two small ash trays. Several years ago I read of a "revival" in Heisey and I immediately packed mine away in the attic.

I would be interested in receiving a newsletter or whatever may be in print about prices, wants, etc.

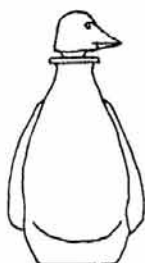
M. A. Bernhardt, NY



4036 1/2



1489



5058



6060

Heisey Collectors



of the
Rochester Area

By George J. Reynolds, Secretary/Treasurer

The meeting was held at the immaculate home of Lois and Marvin Jacob.

Our nominating committee suggested that our existing officers be nominated for one more term, after a long discussion (30 seconds) this was accepted by all. It is just unbelievable how many people wanted these jobs, as an example; Bill Heron offered to buy his position as Vice President, if necessary; of course the membership wouldn't hear of this but I told Bill I would see him after the meeting. His lovely wife, Marian, couldn't attend the meeting; she didn't feel well.

Sharon reported on her trip to Newark and the Heisey Auction. She seemed quite impressed with the restaurant with all the Trout, that our Newark friends took her to. She also reported that the mould situation seems to be becoming a quiet issue. Quiet issues make me nervous.

Bill Heron did his usual great job conducting a raffle for the Clubs benefit which netted \$50.00. Among the items raffled were: Lariat Bon-Bon dish, Octagon relish, Shiner tee shirt, two bottles of wine, peach and strawberry preserves (homemade), 1939 magazine, framed blank Heisey invoice, along with a recipe book.

Our "show and tell" was a good one this month, with the following items shown:

Arlene Reynolds - Orchid etch 1 qt. cocktail shaker with plain stopper & strainer; Sharon Orienter - Puritan decanter made by Imperial for 1977 souvenir with the Heisey emblem; Edith Boches - Flat Panel oil #352, (2) small individual decanters, #1469 Ridgeleigh french dressing bottle; Jerry Gillette - #1401 footed, 2-handled Empress candle in Sahara, #1540 Lariat blackout light; Betty Evans - Ivy leaf nut dish; Marvin Jacob - #116 Oakleaf candle with moon- gleam foot and crystal top, crystal top and flamingo foot, and a Liberty #128 candle in moon- gleam.

We had a lot of fun with a great bunch of people. Bill Heron has a great wealth of knowledge.

For our quotation of the month, we offer; "In glass collecting, as in love, we are astonished at what is chosen by others."

A HEALTHY AND HAPPY NEW YEAR TO ALL

George

AN OUTLINE OF THE HISTORY OF COPPERWHEEL GLASS ENGRAVING

By Anton F. Krall

The art and craft of copperwheel engraving on glass has a long and fascinating history. Examples of ancient wheel engravings have been found on glasses excavated in Egypt and Syria and are estimated by archeologists to have been engraved about 600 B.C. Examples of such early glass engravings have been preserved for posterity in Museums around the world.

From earliest times man impulsively expressed his emotions, desires and hopes in symbols and in figurations and found glass to be an ideal medium for his creations.

From its very beginning, glass making and engraving was a slow, laborious process of grinding and polishing. The time it took to create a piece of luxurious glass was given little consideration. Life moved at the most leisurely pace. Artistic quality was the main objective and prevailed beyond the beginning of the Christian era.

It is not known exactly when and how ancient Egyptians discovered and developed tools used to engrave on glass.

It is generally assumed it was the Egyptians who knew the qualities of copper from centuries of use and experiment who were the first to use copper and emery as an abrasive to engrave on glass. Emery is the hardest substance next to the diamond.

The basic tools of the copperwheel glass engraver have not changed since ancient times. However, every improvement in the technique of glass making offered new possibilities to the engraver in the better execution of his subjects.

Copperwheel engraving on glass is mentioned in Pliny's writings of the 1st Century A.D. Wall paintings on the ruins of Pompeii show engraving wheels driven by primitive foot power.

Glass as we know it today, clear and transparent, was first developed in Alexandria. There also the first school of glass engraving was established.

The Syrians are credited with discovering the method of shaping glass while still white hot by blowing air into the glass through an iron pipe. From that time on glass workers were known as "glass blowers."

Before that invention all glasses were shaped by pouring molten glass into molds of various shapes. Egypt exported glass to many nearby countries and eventually passed the knowledge of glass making and engraving on to the Phoenicians and the Romans.

During the Roman occupation of Egypt, glass making and engraving shifted to Rome and eventually to Venice which in later years became the new center of glassmaking in Europe. Roman engravers of rock crystal cameos and lapidary craftsmen turned to copperwheel glass engraving as rock crystal became scarce and engraved art glass increased in demand. Exceptional, fine pieces of copperwheel glass engravings were created during that period.

For some centuries copperwheel glass engraving

was an individual competitive craft. Engravers created their own designs and aimed at perfection. Royalty and the nobility were their sponsors and clients.

The history of modern glass begins with the Venetian glass of the early 16th Century. From Venice, the knowledge of glass blowing and engraving spread North into the Rhineland, Austria and Bohemia, where forests provided abundant fuel for glass furnaces. Wherever glass furnaces were established, glass craftsmen followed. As the Venetians were the masters of glass blowing, so, the Germans and Bohemians became the masters of glass engraving. Especially famous became the engravers of Nurnberg, Germany where a school for copperwheel engraving was established and only related apprentices were taught the craft.

Encouraged by Royal sponsors in the 16th Century, the development of glass engraving was individual and very competitive. The aim of the engravers was to explore and develop the ultimate possibilities of the copperwheel on glass. The result was specialization in figure work, in mythological subjects, portraits and heraldry.

The progress of glass engraving was due almost entirely to the sponsorship of the Royalty who contributed large sums for the support and creations of the arts. The Nobility and Aristocrats were the patrons of very fine engraved glasses which they proudly displayed and used at their social affairs. Consequently the glass engraving craft became rather exclusive and was protected by the Royal sponsors. In most provinces it became a closely guarded craft. It was declared illegal to possess and use copperwheel engraving tools. A special license was required to practice the craft. Expert engravers were permitted to pass on their skill to their sons and daughters.

Perhaps the greatest of the Royal sponsors of glass engraving was the Emperor Rudolph, II of Austria, who took under his wing and protection a glass engraver named Caspar Lehman who in 1588 came from Munich to Prague, the capital of Bohemia.

Here, on the outskirts of Prague, Emperor Rudolph set up shop and gave Lehman free reign to develop copperwheel glass engraving to its ultimate best. Lehman devoted the rest of his life to the engraving craft and received high honors from the Emperor, who took a keen interest in the arts and crafts of his country. Mention also is made of his very gifted apprentice Schwanhardt who made a name for himself in his own right and taught the craft to his sons and daughters. During the 17th Century, glass engraving spread over most of Europe.

After the death of Emperor Rudolph II in 1612, royal support of individual engravers declined, restrictions of practicing the craft relaxed. Glass engravers now began to travel freely and to their best advantage. Perhaps the most itinerant glass engravers were those who took their tools with them wherever they went. In England, during the 17th Century, engraving was done on clear and colored flat glass panels which served as borders for large, hanging mirrors. The panels were richly engraved and silvered. Examples of engraved mirrors of that period have been preserved in private collections and in Museums. Mirror engraving was also done in Germany during the late 18th

HISTORY OF COPPERWHEEL GLASS ENGRAVING CONT'D.

Century decades.

It may be noted at this point that in the U. S.A. in the period of about 1918-1933, engraving and cutting on mirrors was revived and was a phenomenal success commercially.

In Chicago, Illinois especially, innovations were created by covering the engraving and cutting designs with a gold solution on a silver background with striking effects.

In a few years, however, the mirror decorating business was taken over with mass production of less expensive acid and sand blasting processes.

COPPERWHEEL GLASS ENGRAVING IN AMERICA

Copperwheel engravers distinguished themselves from the earliest beginning of glass making in America.

The very first attempt at glass making in America is said to have been made in Jamestown, Virginia, in the year 1607 with the help of European glassworkers. This first venture was not a success. The first successful glass manufacture was established 1739 in New Jersey by a German, Casper Wistar. He brought with him sixty glass craftsmen from Europe. The concern prospered for some forty years.

About the same time, Henry Spiegel, another German, established a glass house in Manheim, Penna., and produced fine engraved and cut glass.

In 1784, J. F. Amelung, from Bremen, Germany, founded the "New Bremen" Glass Mfg. Co. in Frederickstown, Maryland, with some 68 glass craftsmen from Bohemia and Germany.

In 1818, the New England Glass Company was founded and incorporated in Cambridge, Mass., and later moved to Toledo, Ohio, and became the now famous Libbey Glass Company. From its very beginning, "The New England Glass Company" produced very fine quality glass, engraved and cut. One of its most skilled engravers was the Bohemian trained engraver, Louis Vaupel, who came to the company in 1856 and specialized in engraving cased glasses in several colors.

Henry Leighton, a grandson of the superintendent of the New England Glass Company, learned the craft and engraved beautiful glasses in great detail.

From 1830, onward, glass engraving and cutting spread out to the Midwest as new glass manufacturing concerns were established. During this period, overlay glass in colors gained in popularity and provided engravers to further explore the possibilities of the copperwheel on glass.

By carefully engraving through the outer layer of color, they obtained exquisite tones and shadings between the layers of color and clear glass. It was especially effective on glass lampshades.

The shapes, decorations and usefulness of glass changed through many periods. The period from 1880 to about 1915 is known in glass manufacture as "The Brilliant Period" when heavy cut glass and acid polishing came into its own and the glass industry prospered.

During this period, copperwheel engravers were much in demand. The Libbey Glass Company employed twelve engravers during most of this period.

In Corning, New York, the well known T. G. Hawkes and the original Steuben Glass's companies employed many expert engravers. In 1918, the Steuben Glass Company and its skilled glass workers became a subsidiary of "Corning Glass Company." After some years of experimentation and perfection of Steuben lead glass, attention was given to creating the best possible copperwheel engraving.

During the ensuing years, masterpieces were engraved from designs by American and world famous artists and by "Steuben's" own staff of designers. Unlike the European practice of engraving in detail over most of the surface of glass, the concept now was to leave considerable clear glass exposed to enhance the beauty of clear, colorless "Steuben" glass. Steuben engraved glasses are commissioned to clients who then hold a special designed glass exclusively.

From its very inception as a Division of Corning Glass Company, Steuben's goal has been to create masterpieces of glass blowing and copperwheel engraving. It is to the credit of Steuben Glass Company that the craft of glass blowing and copperwheel engraving is being kept alive and practiced in America. The years, however, have taken their toll and thinned the ranks of older craftsmen who have been replaced by engravers from Europe.

Anton Krall

Editor's Note:

Anton Krall left Heisey in 1938 and went to work at Corning, engraving Steuben glass.



GGHCC
PROUDLY  PRESENTS

**Its Fourth Annual
Antique and Collectable
ALL GLASS, CHINA and POTTERY
SHOW AND SALE
1985**

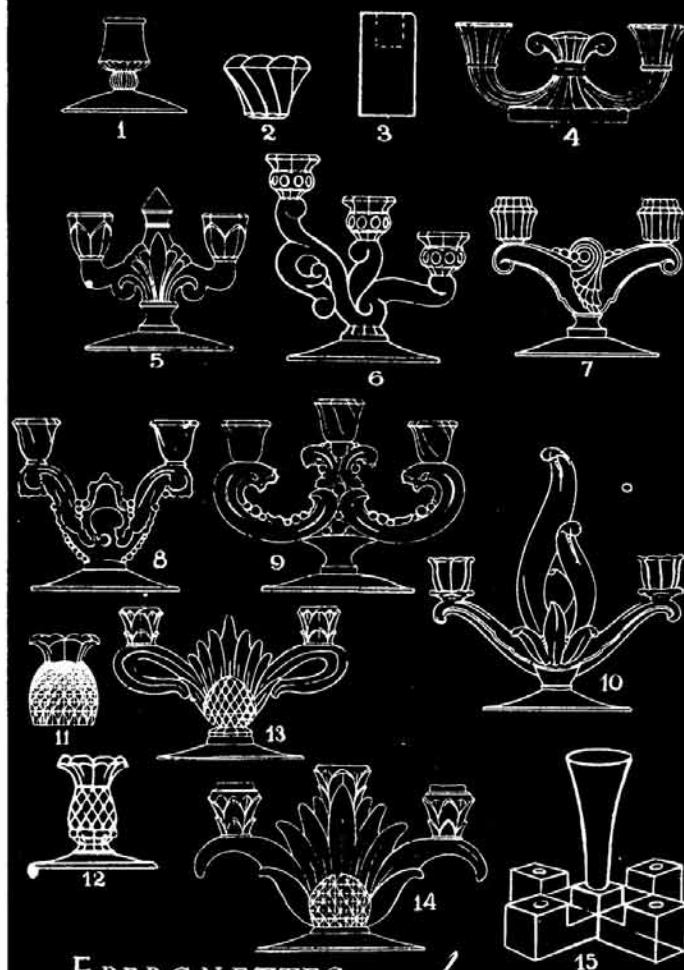
**March 2, Sat. 10 a.m. to 6 p.m.
March 3, Sun. 10 a.m. to 4 p.m.**

**San Mateo County Fairgrounds
Oak Hall • ADMISSION 2.50
with this ad 2.00**

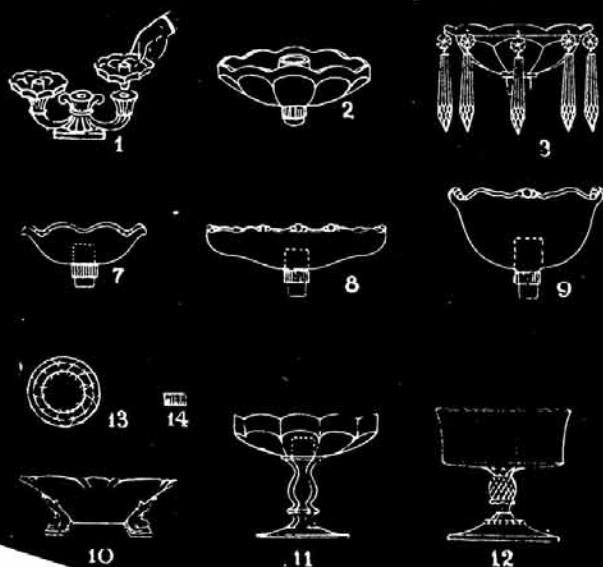
**FOR THE BENEFIT OF THE HEISEY MUSEUM
NEWARK, OHIO**

GGHCC: P.O. Box 3614, Daly City, Ca 94015
415-621-6693

Miscellaneous CANDLESTICKS



EPERGNETTES and EPERGNIONS



MISCELLANEOUS CANDLESTICKS

NO.	SIZE	ITEM WITHOUT PRISMS	PRICE	
			Doz. Crystal	Each
1-112	1 lt.	Candlestick (Pat. #70558)	\$ 18.00	1.50
2-1502	1 lt.	Swirl Candleblock	14.40	1.20
1503	1 lt.	Candleblock without Swirl	14.40	1.20
3-1621	1 lt.	Cylinder Candleblock (3 3/4 inches Tall)	42.00	3.50
1489	1 lt.	Square Candleblock (See Page 9)	42.00	3.50
4-1504	2 lt.	Candlestick	39.00	3.25
5-134	2 lt.	Candlestick	39.00	3.25
6-142	3 lt.	Candlestick	57.00	4.75
7-1495	2 lt.	Candlestick	39.00	3.25
8-1519	2 lt.	Candlestick	39.00	3.25
9-1519	3 lt.	Candlestick	57.00	4.75
10-1615	2 lt.	Candlestick	57.00	4.75
11-1567	1 lt.	Candleblock	19.20	1.60
12-1567	1 lt.	Footed Candlestick	19.20	1.60
13-1567	2 lt.	Candlestick	42.00	3.50
14-1567	3 lt.	Candlestick	57.00	4.75
15-1619	5 lt.	Candle Centerpiece with #4233 6 in. Vase and Fitter	143.40	11.95
1619	5 lt.	Candle Centerpiece with #5013 5 in. Vase and Fitter	143.40	11.95
1619	5 lt.	Candle Centerpiece without Vase	129.00	10.75

EPERGNETTES AND EPERGNIONS

NO.	SIZE	ITEM	PRICE	
			Doz. Crystal	Each
1-341	5 1/2 in.	Epergnette Candleholder adapted to Candlestick		
2-341	5 1/2 in.	Epergnette Candleholder	15.00	1.25
342	5 1/2 in.	Epergnion Bobeche without Prisms	24.00	2.00
3-342	5 1/2 in.	Epergnion Bobeche with 10 "A" Prisms	57.00	4.75
342	5 1/2 in.	Epergnion Bobeche with 10 "C" Prisms	108.00	9.00
7-1519	5 in.	Epergnette Candleholder	15.00	1.25
8-1519	6 1/2 in.	Epergnette Candleholder, Cupped	24.00	2.00
8-1519	6 in.	Epergnette Candleholder, Deep	30.00	2.50
10-1509	5 1/2 in.	3-Footed Epergne Candleholder	15.60	1.30
11-341	5 1/2 in.	Footed Epergne Candleholder	24.00	2.00
12-1567	5 in.	Footed Epergne Candleholder	28.80	2.20
13-1		Wire Flower Holder for Epergnettes and Epergnions	3.36	.28
14-		Rubber Fitter for Epergnettes and Epergnions	.60	.05

* Pat. No. 2478864 and Design Pat. No. 153506.

NOTE: All Epergnettes and Epergnions come equipped with rubber
fitters on stem to assure tight fit in candlesticks.



diamonds are forever.....

By Janet M. Caswell

Oh for the good old days in the Yachting Center when you could get four lovely mackerel for twenty-five (25¢); or the best hamburger for twenty-nine (29¢) cents a pound. Wouldn't it be great to have five cents or even a penny to buy some of those delicious bulls eyes at the local candy counter. A 13 foot skiff listed in local catalogues for \$28.00 or a room in our own town hospital cost the great sum of \$4.00 per day. What is the requisite of being a "Marbleheader"? Your background had to be intertwined in that circle woven by the first comers. A true marbleheader is fiercely proud of a family standing of over 300 years. He has an innate love for his town - its tradition and its people. The Mr. is one of them.

We might not be able to get Heisey for twenty-five cents but never-the-less my friend "the spirit" (PA) reports a good buy, the #3390 Carcassonne ice tea in cobalt with a crystal foot.

"Ms Lucky" (MA) also has several real good finds; #1519 Waverly candy dish with bow-knot handled cover, orchid etch; #310 Ring Band salt in Custard; #325 Pillows 7" Rose Bowl and in a "junque shoppe" a Ribbon Candy cruet, a little dandy to say the very least.

Also from the Bay State we had some tall tales of great things (none of which were sleepers) #1469 Ridgeleigh 11" center piece and a pair of 3" candlesticks; also in Ridgeleigh, six (6) 8 oz. goblets; #1405 Ipswich water jug in sahara; #4209 9" vase in crystal, D/O; two pair of candlesticks - the #118 3" D/F and the #120 3" in flamingo; #1184 Yeoman 5" round lemon dish and cover, sahara D/O; Fighting rooster; and a #354 Domino sugar, slight damage on the handle.

"My good English Buddy" has a #351 Priscilla toothpick; #352 Flat Panel Toothpick; a pair of #110 10" Dolphin candlesticks in flamingo and a #1252 Twist, flamingo 3-pint jug.

Speaking of flamingo, I heard from the "Felicitous Flamingo Hunter" the other day. She told me she had picked up a few serving pieces: #406 Coarse Rib 9" celery in crystal; #1401 Empress 2-handled jelly in flamingo; #473 Narrow Flute/plain rim 9" Nabisco tray; and a #1540 Lariat 12" divided celery.

The gal from "the point" (MA) acquired the #433 Greek Key footed almond dish along with six (6) individual almonds; #1183 individual salts in both moongleam and flamingo, alas no cobalt; other "little things" were the Narrow Flute individual creamer and sugar in moongleam and five

(5) #411 Rib & Panel bar glasses. These were in a pewter castor.

The Mr. found his first flower block, it is the one that goes into the #411 floral compotier; also the #3350 3-pint squat jug, wide optic in crystal. This is a beautiful piece of glass. He purchased a pair of #23 salt and peppers plus one; #1253 Three cornered mint in moongleam; and six (6) #3408 Jamestown 2 oz. wines, optic.

"The Tipper" has a #1776 Kalonyal punch bowl base and a #1295 Beaded Swag covered sugar in opal with painted roses.

As for myself, I have a 14" #1238 Beehive Plate in crystal; #480 8" fruit basket; #473 Narrow Flute with Rim 4 oz. oil bottle and a #1445 2-lite Grape Cluster candlestick, frosted. It is sure pretty. With the holidays here, I hope to use my Beehive plate. Wouldn't it be great to use for a big cheese cake.

It is cold today and I was thinking of the past and a memory comes to mind of walking home in the winter twilight through the crisp and clean snow and wishing on the evening star:

Star light, star bright
First Star I've seen tonight
I wish I may, I wish I might
Have the wish I wish tonight

Let's all wish for this coming year to be a peaceful one and a healthy one for us all.

Happy New Year from the Yachting Center, be good to each other.

Jan

Classified Ads

WANTED: Buying Caprice blue or Rosepoint by Cambridge, Rose or Orchid by Heisey, and American, June, Fairfax, Versailles, Trojan, etc by Fostoria. NADINE PANKOW, 207 S. Oakwood, Willow Springs, IL 60480 PH: 312-839-5231.

FOR SALE: Send SASE (Bus. Size) for Heisey mail list, over 200 items, or send needs plus SASE. J & R COLLECTIBLES, P.O. Box 1030, Newark, OH 43055

FOR SALE: Standing Ponies - \$75 each or \$140 pair, Ridgeleigh 14 inch oblong floral bowl, Swan handles - \$175.00. PHILIP HOLMES, 42071 Camino Santa Barbara, Fremont, CA 94539 PH: 415-657-5209.

FOR SALE: Heisey Sale: Ours & Others, many beautiful choice items. New list - Jan 1, May 1, Sept 1. Lg. SASE Please. We accept consignments. We buy collections. CLIFF HARRALSON, 1426 W. Highland, Springfield, MO 65807. PH: 417-883-2449.

FOR SALE: Heisey Custard collection for sale 124 pieces - all or partial. Write or call for list. JACK E. WYNNE, 123 - 19th Street, N. Palm Harbor, FL 33563 - PH: 813-785-6015 after 5 PM.

WANTED: #335 Prince of Wales Plumes Punch Bowl Base. Large size. C. NESBIT, Rt. #1, Box 308, Hubert, NC 28539.

LETTERS, we get letters...



As requested, enclosed is a sketch that Maureen made from a rubbing of the #5004 Scotch Carving that we found on a #4033 28 oz. Bar Bottle. Like other carvings (Rye, Gin, Etc.) in this series, it also has a 1/4" band carved (frosted) about 3" down from the top of the neck, and the top of the neck approximately 1-3/4 down is also carved (frosted). The actual carving is 4" wide and 5-1/4 high.

Ron & Maureen Kovacs, NY



#4033 Bar Bottle
With Rye Carving

THE NATIONAL CAPITAL HEISEY COLLECTORS CLUB
Presents the Twelfth Annual
"ALL-HEISEY GLASS SHOW AND SALE"

For the benefit of the Heisey Museum

SAT. MAR 16, 1985
11 AM to 8 PM

SUN, MAR 17, 1985
11 AM to 5 PM

ARMORY PLACE
Wayne & Fenton Silver Spring, MD
DOOR PRIZE

HEISEY GLASS IDENTIFICATION - 1 to 3 PM, each day - Certificate of authenticity from HCA - small fee for each item.

Admission \$2.00
With This Ad \$1.50

GLASS review

ESTABLISHED 1971

The GLASS REVIEW Magazine is for everyone who studies, collects or sells glass. Whether your glass interests lean toward the early 1900's -- or the depression era -- or with today's limited glass items, the GLASS REVIEW covers it all!

Articles -- price reports -- original catalog documentation -- shop directory -- research and reproduction news -- trademark information -- glass book releases -- what's new on the market -- a large variety of glass ads (on both old and new glass) -- plus much more.

Enclose payment and mail to:
GLASS REVIEW, P.O. BOX 542, MARIETTA,
OH 45750

10 'big' yearly issues

68 pages or more

\$12.50 -- one year

WENDELL AVERY
2112 FIRST STREET
JACKSON, MI 49203

PH: 517-783-4075
P & I EXTRA
* Marked

ROBERT H. DONOVAN
P.O. BOX 4103
ORMOND BEACH, FL 32075

PH: 904-677-1732
NIGHTS BEST
U.P.S. \$3.50

- # 433 GRECIAN BORDER 3-Pint Tankard*,
Very good condition.....\$275.00
- # 433 GRECIAN BORDER, Tall Straw, No Top*
Good Condition..... 100.00
- #1401 EMPRESS 8" Round Plate*, Sahara,
Some minor scratches (4) ea..... 12.00
- #1401 EMPRESS 2-Handled Hors d' oeuvres
Plate, 13", Sahara* - Very few
minor scratches..... 60.00

HEISEY GLASS DISPLAY

DURING THE MONTH OF JANUARY - PORT ST.
LUCIE BRANCH LIBRARY - 180 S. W. PRIMA
VISTA BLVD., PORT ST. LUCIE, FLORIDA
(BETWEEN FORT PIERCE AND STUART)
LIBRARY HOURS 9 - 6 DAILY, CLOSED SUNDAY

RON & MAUREEN KOVACS
475 KIME AVENUE
WEST ISLIP, N.Y. 11795

PH: 516-242-5496
UPS & INS. EXTRA
* Marked

- # 2 OLD WILLIAMSBURG Candlesticks*
11" Pr.....\$160.00
- # 5 PATRICIAN Candlesticks* 7"..Pr..... 70.00
- # 126 TROPHY Candlesticks...Pr..... 60.00
- #4069 RIDGELEIGH 1 oz. Cordial..... 60.00
- # 359 COLONIAL 3/4 oz. Cordial* (3) ea... 27.50
- #1469 RIDGELEIGH Mustard & Cover*..... 32.50
- #3390 CARCASSONE, 2 oz. Ftd. Bar (2) ea.. 25.00
- #3390 CARCASSONE, 3 oz. Cocktail (3) ea.. 13.50
- # 473 NARROW FLUTE 3-1/2" Salted Nut,
Moongleam* (2) ea..... 16.00
- # 150 BANDED FLUTE Custard* (10) ea..... 9.00
- #1235 BEADED PANEL & SUNBURST Custards*
(7) ea..... 15.00
- #4192 10" Vase - Wide Optic*..... 40.00
- # 417 DOUBLE PLEAT & PANEL Basket,
Moongleam*..... 125.00
- #4044 NEW ERA Goblets* (6) ea..... 17.50
- #1252 TWIST Goblets* (2) ea..... 17.50
- #1425 VICTORIAN 10 oz. Goblets* (4) ea... 16.50
- # 379 URN 5 oz. Egg Cup*..... 37.50
- #1401 EMPRESS Demitasse Cup & Saucer*,
(3) ea..... 25.00
- #1245 8" Plates, Moongleam* (6) ea..... 10.00
- #2351 14 oz. Soda, #417 Renaissance Etch
(3) ea..... 14.00

*MARKED

- # 150 BANDED FLUTE 4 oz. Cruet With
Stopper.....\$ 18.50
- #1235 BEADED PANEL & SUNBURST Punch Cup*
(4) ea..... 12.50
- #3366 TROJAN STEM & ETCH 8 oz. Goblets*,
(4) ea..... 22.00
Set..... 75.00
- #3390 CARCASSONE Short Stem 11 oz.
Goblets - Sahara (3) ea..... 14.00
- # 300 PEERLESS 4 oz. Low Ft. Sherbet*
(2) ea..... 6.00
- # 351 PRISCILLA 6" Oval Flared Vase*..... 28.00
- #1170 PLEAT & PANEL 8" Plates*, Moongleam
(3) Set..... 20.00
- #1252 TWIST 10" Oval Bowl*..... 20.00
- #1252 TWIST 9" Round Bowl*..... 19.50
- #1401 EMPRESS 6" D/F Bowl*, Flamingo..... 29.00
- #1590 ZODIAC 12 oz. Ice Tea* (2) ea..... 18.00
- # 393 NARROW FLUTE Ind. Almond*, Silver
Overlay (8) Set..... 79.50
- #4225 ROOSTER Cocktail Shaker, Sportsman
Etch..... 95.00
- #4083 STANHOPE Cocktails (6) Set..... 80.00
- #3389 DUQUESNE 5 oz. Sherbet, Tangerine,
(2) ea..... 145.00
- #1252 6" & 12" Specialty Plates in
Marigold..... WRITE
- #5038 ROOSTER STEM 3-1/2 oz. Cocktails
(6) ea..... 45.00
- #1567 PLANTATION ITEMS - Write for list - S.A.S.E.
- # 433 GREEK KEY - Too Many To List - WRITE WANTS
- #1401 EMPRESS D/F Covered Condiment Dish 29.50
- #3357 KING ARTHUR D/O Saucer Champagne,
Moongleam Foot (3) ea..... 25.00



DONALD P. BEAN
36 HARDING STREET
MILFORD, MA 01757

PH: 617-473-0561 *
P & I EXTRA *
* Marked *

#1428 WARWICK 2-Lite Candles*...Pr.....\$ 40.00 *
#1295 BEAD SWAG Custard Wine, Rose Bud
Decor - Souvenir - Good Gold..... 65.00 *
#1200 CUT BLOCK Ind. Sug.,Custard,,Souv. 23.00 *
#1404 OLD SANDWICH Ind. Ash Tray*,
Cobalt..... 25.00 *
= 335 PRINCE OF WALES PLUMES 4" Nappy*,
Excellent Gold..... 15.00 *
#1252 TWIST 13" 3-Comp. Relish*, Mglm... 22.50 *
NEXT 3 ITEMS ARE ALL ORCHID ETCHED *
#1509 QUEEN ANN 5-1/2" D/F Mint..... 25.00 *
#1519 WAVERLY Ftd. Sug/Crmr.*...Set..... 45.00 *
#1519 WAVERLY 6" L/F Comport..... 29.00 *

THE COLLECTOR'S STOP
12018 SUELLEN CIRCLE
WEST PALM BEACH, FL 33414

PH: 305-793-0986 *
After 4 PM -Items *
Exc. Cond. Other- *
wise Stated *
P & I EXTRA *
*Marked *

150 BANDED FLUTE Pt. Tankard & Cvr.*...\$115.00 *
#1567 PLANTATION Salt & Pepper (no tops) 55.00 *
355 DOUBLE DOMINO Sugar*..... 47.50 *
353 COLONIAL Cheese/Cracker*..... 50.00 *
150 BANDED FLUTE Sauc. Ft. Cdstick... 45.00 *
325 PILLOWS 7" Rose Bowl*..... 115.00 *
516 Flamingo 1 oz. Cologne D/O*..... 105.00 *
#1445 GRAPE CLUSTER 1-Lt. 10" Csticks*Pr 165.00 *
#1433 THUMBPRINT & PANEL Sticks, Mglm.W/
11" Floral Bowl, Mglm..... 260.00 *
SUBJECT TO PRIOR SALE *

The Collector's Stop formerly of Beverly, Mass.,
will now be located at above address in West
Palm Beach, Florida.

PATTON HOUSE ANTIQUES
P.O. BOX 547
LOUISA, VA 23093

PH: 703-967-1181 *
After 6 P.M. *
P & I EXTRA *
*Marked *

507 CONSOLE BOWL, Orchid Etch 12-1/2"..\$60.00 *
#1519 QUEEN ANN 11" Console Bowl..... 35.00 *
#1401 EMPRESS Saucer C. Sticks, Pair*.... 45.00 *
419 SUSSEX Finger Bowls, Moonbeam*
(2) ea..... 18.50 *
300 PEARLESS Punch Cups (4)* ea..... 11.50 *
#1503 CRYSTOLITE 3-Lite C. Sticks, Pair.. 30.00 *
497 ROSALIE Etch Wines (2) ea..... 30.00 *
503 MINUET Etch Creamer..... 30.00 *
#1184 YEGMAN Cups/Saucers, Flamingo*
(4) Ea. Set..... 10.00 *

HEISEY AUCTION PRICE LISTS:

We will again offer a subscription for all
of our Heisey Auction price lists for 1985.
To subscribe send \$5.00 to:

Apple Tree Auction Center
1616 W. Church St.
Newark, Ohio 43055

This does not include HCA's list for the
benefit auction, it will be printed in
the March Heisey News.

A NEW EXPERIENCE IN HEISEY -- LAMPS

ORIGINALS -- RECONDITIONED, FOR SALE AND
COMMISSIONED.

NEW CONCEPTS & DESIGNS -- FOR SALE

MADE FROM VARIOUS COMPONENTS COMBINED
WITH OTHERS TO MAKE A VERY INTEREST-
ING LAMP.

USE YOUR HEISEY -- BOWLS, COASTERS, ASH
TRAYS, SUGARS, PITCHERS, ETC. MAY
BE DESIGNED INTO A VERY INVITING LAMP.
THE POSSIBILITIES ARE HUGE!!

WE CAN DO IT ALL FOR YOU

JO & JIM EARNSHAW
133 LIND AVENUE
MANSFIELD, OHIO 44903

PHONE: (419) 526-2334 AFTER 6 PM

LET US MAKE YOUR HEISEY AND OTHERS INTO

ATTRACTIVE AND USEFUL LAMPS.

CYNTHIA YORKE

PH: 313-645-5173

31520 EVERGREEN
BIRMINGHAM, MI 48009

U.P.S. \$2.00 for
any size order

The following items are #515 Rose Etch:

#5072 ROSE Cordial (10) ea.....\$150.00
#5072 ROSE Goblet, 9 oz. (10) ea..... 40.00
#5072 ROSE Claret, 4 oz. (10) ea..... 80.00
#5072 ROSE Champagne, 6 oz. (10) ea..... 40.00
#5072 ROSE Juice, 5 oz. (10) ea..... 45.00
#5072 ROSE Cocktail, 4 oz. (10) ea..... 60.00
#5072 ROSE 6" Mint..... 45.00
#1519 ROSE 13" Gardenia Bowl..... 85.00
#1519 ROSE 7" Salad Plate (10) ea..... 25.00
#1519 ROSE 3 oz. Oil Bottle and Stopper. 160.00
#1519 ROSE 14" Torte Plate - Shows use.. 60.00

The following items are #507 Orchid Etch:

#5025 TYROLEAN Cocktails (4) ea..... 35.00
#5025 TYROLEAN Wines (4) ea..... 57.00
#5025 TYROLEAN Champagnes (6) ea..... 27.00
#1519 WAVERLY 5-1/2" Ftd. Mayo. 7"
Underplate, Ladle..... 65.00
#1519 WAVERLY 10-1/2" Svc. Plate, Shows
use..... 75.00
#1519 WAVERLY Cup & Saucer..... 32.00
#1519 WAVERLY 6" Ftd. Comport (2) ea.... 35.00
#1519 WAVERLY Sugar..... 20.00
#1519 WAVERLY 12" Cheese Plate, 5-1/2"
Ftd. Cheese - Shows use..... 90.00

IMPORTANT

ALL HEISEY AUCTION

FEB. 2, 1985

9:00 A. M.



APPLE TREE AUCTION CENTER

1616 W. CHURCH ST.

NEWARK, OHIO 43055

This auction contains many hard to find animals and animal related items including Frosted Flying Mare, Fillys, Gazelle, Tiger and Bull as well as Cobalt Standing Colt. Amber animals include TWO Small Elephants signed with H and Standing Colt and Oscar Spark Plug. Beautiful LARGE MADONNA BUST, Moongleam Cherubs, Flamingo Dolphins and Lion Trinket Box, just to name a few.

Lots of good color, Deep Plate Etchings, Good Cuttings, Etchings and small items.

This fast moving sale of over 700 lots, will start the year off right with lots of goodies for all Heisey collectors.

Many of the animal and animal related pieces in the sale come from the estates of Robert and Mary Baker, Newark, Ohio, as well as several other local estates and collections.

Please note the following condition codes to better aid in your mail bidding.

f F - Flake
c C - Crack

b B - Bruise
m M - Mold Flaw

r R - Repaired
x X - Major Damage

1. 1469 RIDGELEIGH SAUCER CHAMPAGNE H
2. 1469 RIDGELEIGH CR & SUGAR H
3. 1469 RIDGELEIGH 12 IN FLORAL BOWL H
4. 1469 RIDGELEIGH 2 IN CANDLESTICKS, PR.
5. 1469 RIDGELEIGH 8 IN FLORAL BOX, H, f
6. 1469 RIDGELEIGH 6 IN CANDELABASE H
7. 1469 RIDGELEIGH RD. 1 LITE CANDLEBLOCK, PR.
8. 1469 RIDGELEIGH 1 LIGHT CANDELABRA W/PRISMS & COBALT SOCKET
9. 1469 RIDGELEIGH 7 IN CANDELABRA W/PRISMS, HEXAGON BASE
10. 1469 RIDGELEIGH 9 IN SALAD BOWL H
11. 1469 RIDGELEIGH 8 1/2 IN BERRY BOWL, CUPPED, H
12. 1469 RIDGELEIGH 4 IN RD NAPPY, H 6 EA.
13. 1469 RIDGELEIGH 10 IN RELISH 5 COMP., STAR, H
14. 1469 RIDGELEIGH 6 IN 2 COMP. JELLY
15. 1469 RIDGELEIGH 5 IN PUFF BOX & COV. H
16. 1469 RIDGELEIGH LEMON DISH & COV. H, ROUGH EDGE
17. 1469 RIDGELEIGH 11 IN TORTE PLATE H
18. 1469 RIDGELEIGH 8 IN RD. PLATE H, 8 EA.
19. 1469 RIDGELEIGH 6 IN RD PLATE, H, 12 EA.
20. 1469 RIDGELEIGH 6 IN RD PLATE, 2 EA.
21. 1469 RIDGELEIGH 8 CUPS & 6 SAUCERS, H
22. 1469 RIDGELEIGH MARMALADE & COV. W/LADLE, H
23. 1469 RIDGELEIGH 7 IN 2 COMP. RELISH, H
24. 1469 RIDGELEIGH 4 IN CIG BOX & COV. W/SQ ASHTRAY f, H
25. 1469 RIDGELEIGH SALT & PEPPER, CLOUDY,
26. 1469 RIDGELEIGH OVAL CIG. HOLDER & ASHTRAY 2 COMP. H
27. 1469 RIDGELEIGH SQ ASHTRAY 4 EA. ALL f, H
28. 1469 RIDGELEIGH SQ ASHTRAY, 3 EA., H, 1f
29. 1469 RIDGELEIGH SQ ASHTRAY, 6 EA. H, all f
30. 1469 RIDGELEIGH IND. NUT 2 COMP. W/SM. GLASS SPOON, f
31. 1469 RIDGELEIGH IND SALT, 2 EA. H, m
32. 1469 RIDGELEIGH, 3 MISC. PCS., 2 LIDS & ASHTRAY, ALL F
33. 1469 RIDGELEIGH IND SALT DIPS, 8 EA. IN ORIG. BOX, SOME H
34. 355 QUATOR HOTEL CREAM & SUG. H, DTD., ROUGH EDGE
35. 1401 EMPRESS D F CREAM & SUG., CR. F ON FOOT
36. 1511 TOUJOURS IND CR & SUG. H
37. 7023 HALF CIRCLE FLAMINGO IND CR. & SUG. H
38. 150 OVAL IN DIA POINT COV SUGAR, EMERALD
39. 1540 LARIAT CR & SUG. MOONGLO CUT, H
40. 1632 LODESTAR DAWN SUG & HLD. CR H
41. 1255 PINEAPPLE & FAN EMERALD, HOTEL CR & SUG. SOME GOLD
42. 1255 PINEAPPLE & FAN EMERALD SPOON HOLDER, FAINT GOLD & ROUGH ON FANS
43. 1255 PINEAPPLE & FAN EMERALD COV. BUTTER, GOOD GOLD
44. 429 PLAIN PANEL COV. BUTTER, H
45. 1506 PROVINCIAL FTD. SHERRET, 5 EA.
46. 1506 PROVINCIAL 7 IN PLATE, 8 EA.
47. 1506 PROVINCIAL FTD. SHERRET, 6 EA., H
48. 1506 PROVINCIAL 7 IN PLATES, 4 EA.
49. 1506 PROVINCIAL PUNCH CUPS, 6 EA., H
50. 1506 PROVINCIAL 13 IN TORTE PLATE, H
51. 1506 PROVINCIAL 14 IN TORTE PLATE, FLAT, H
52. 1540 LARIAT 4 COMP ROUND RELISH
53. 1180 MOONGLEAM 2 COMP PICKLE & OLIVE TRAY
54. 1252 TWIST FLAMINGO 13 IN 3 COMP RELISH 1
55. 1183 REVERE 12 IN CELERY TRAY, H, WINDSOR CUT
56. 1185 FLAMINGO 12 IN CELERY TRAY H
57. 1185 FLAMINGO 12 IN CELERY TRAY H, f
58. 1483 STANHOPE 12 IN CELERY 2 HLD.
59. 341 PURITAN 10 IN OVAL DISH, H, SHOWS WEAR
60. 1191 3 COMP RELISH, PAIRPOINT CUTTING
61. 1519 WAVERLY 3 COMP RELISH, HEISEY ROSE ETCH H
62. 341 PURITAN 12 IN HOTEL CELERY TRAY
63. 1252 TWIST 13 IN CELERY TRAY H
64. 4044 NEW ERA 13 IN CELERY TRAY, NICELY CUT
65. 1189 13 IN CELERY TRAY, H, CLOISTER CUT
66. 1503 CRYSTOLITE 4 COMP. LEAF RELISH
67. 1503 CRYSTOLITE 10 IN RD RELISH, 5 COMP.
68. 1503 CRYSTOLITE 9 IN LEAF PICKLE H, 2 EA., 1 f
69. 1503 CRYSTOLITE 9 IN LEAF PICKLE H
70. 1503 CRYSTOLITE 8 IN 3 COMP RELISH
71. 300 2 LIGHT CANDELABRUM ON TALL BASE
72. 301 3 LIGHT CANDELABRUM, SHORT BASE, PR.
73. 300 ONE LIGHT CANDELABRUM, PR.
74. 1567 PLANTATION 3 LIGHT CANDELABRA
75. 1632 LODESTAR DAWN ONE LIGHT CENTERPIECE, 4 IN., H
76. 116 ONE LIGHT CANDLE, MOONGLEAM BASE
77. 1428 WARWICK COBALT TWO LIGHT CANDLEHOLDERS, PR., 1 X, H
78. 150 BANDED FLUTE HLD. CHAMBERSTICK, 2 EA., 1 H
79. 1428 WARWICK TWO LIGHT CANDLEHOLDER, PR.
80. 1428 WARWICK ONE LIGHT CANDLEHOLDER, PR., H
81. 1503 CRYSTOLITE 3 LIGHT CANDLESTICK
82. 1503 CRYSTOLITE ONE LIGHT CANDLESTICK, PR.
83. 1504 REGENCY TWO LIGHT CANDLESTICK W/341 EPERNETTES H
84. 134 TRIDENT TWO LIGHT CANDLEHOLDERS, CUT
85. 1509 QUEEN ANN DF FLORAL BOWL, CUT SAME AS #84
86. 1503 CRYSTOLITE ONE LIGHT CANDLEBLOCK, PR
87. 1540 LARIAT ONE LIGHT CANDLEHOLDERS, PR, 1 C
88. 1503 CRYSTOLITE ONE LIGHT HURRICANE BLOCK, PR., H
89. 1503 CRYSTOLITE ONE LIGHT MELLOW CANDLEBLOCK, PR
90. 1483 STANHOPE TWO LIGHT CANDLEABRUM, PR., FROSTY DAWN ETCH
91. 7000 SUNFLOWER ONE LIGHT CANDLEHOLDERS, PR
92. 99 FLAMINGO ONE LIGHT CANDLEBLOCK, PR.
93. 99 FLAMINGO ONE LIGHT CANDLEBLOCK, PR.
94. 99 ONE LIGHT CANDLEBLOCK, PR
95. 99 ONE LIGHT CANDLEBLOCK
96. 114 FLAMINGO ONE LIGHT CANDLEHOLDER
97. 114 FLAMINGO ONE LIGHT CANDLEHOLDER
98. 113 FLAMINGO ONE LIGHT CANDLEHOLDERS PR.
99. 4044 NEW ERA TWO LIGHT CANDLEHOLDERS, NO BOBECHES OR PRISMS
100. 21 7 IN CANDLESTICKS, H, PR.
101. 5024 OXFORD 11 OZ. GOBLET, 8 EA. H
102. 5044 OXFORD 11 OZ GOBLET, 6 EA. H
103. 5010 SYMPHONY 9 OZ GOBLET, MINUET ETCH, 3 EA., 2 f
104. 5010 SYMPHONY SAUCER CHAMPAGNE, MINUET ETCH, 3 EA., 2 f
105. 4085 KOHINOOR 9 OZ GOBLET, 3 EA., 1 f
106. 4091 KIMBERLY 10 OZ LOW FTD. GOBLET, 2 EA., H
107. 5072 HEISEY ROSE GOBLET, HEISEY ROSE ETCH H
108. 1483 STANHOPE GOBLET, 3 EA.

109.	3312 GAYOSO GOBLET, AUGUSTA ETCH, 5 EA., ALL f	206.	429 PLAIN PANEL RECESSED PUNCH BOWL, BASE (NOT HEISEY) XX
110.	3320 RITZ GOBLET, TREFOIL ETCH, 6 EA. 3 f	207.	1540 LARIAT PUNCH BOWL, 21 IN UNDERPLATE, 12 PUNCH CUPS
111.	1184 YEOMAN GOBLET, 2 EA. H	208.	1540 LARIAT CUPS, 8 EA., 3 F
112.	3312 GAYOSO GOBLET, 4 EA.	209.	1425 VICTORIAN PUNCH CUPS, 2 EA. H
113.	5040 LARIAT GOBLET, 2 EA. H	210.	1425 VICTORIAN PUNCH CUPS, 12 EA., H
114.	1485 SATURN GOBLET H	211.	343 SUNBURST PUNCH CUPS, 8 EA., H
115.	3357 KING ARTHUR GOBLET	212.	1567 PLANTATION PUNCH CUPS, 18 EA. H
116.	373 COLONIAL 9 OZ GOBLET H	213.	1200 5 1/2 OZ FLARED PUNCH CUP, H
117.	3335 LADY LEG GOBLET, W O, H	214.	3 MISC. CUPS, 1 QUEEN ANN H, 1 PLAIN H, 1 YEOMAN CUP H
118.	3333 OLD GLORY GOBLET, RENAISSANCE ETCH, 2 EA.	215.	1184 YEOMAN FLAMINGO, 4 SAUCERS & 1 CUP H
119.	5040 LARIAT GOBLET, MOONGLO CUT, 4 EA. H	216.	1184 YEOMAN 6 CUPS & SAUCERS, H
120.	1540 LARIAT GOBLET, MOONGLO CUT, 6 EA.	217.	1183 REVERE 9 CUPS & 5 SAUCERS, H
121.	1425 VICTORIAN 9 OZ GOBLET, 6 EA., SOME H	218.	1170 PLEAT & PANEL FLAMINGO CUP & SAUCER, H
122.	3312 GAYOSO FLAMINGO D O GOBLET	219.	353 COLONIAL HLD. MUG, MASONIC ETCH D. R., H
123.	3440 PORTSMOUTH FLAMINGO D O GOBLET, 2 EA.	220.	5025 TYROLEAN GOBLET, ORCHID ETCH, 12 EA., SOME H
124.	3359 PLATEAU FLAMINGO D O SAUCER CHAMP. 6 1/2 OZ.	221.	5025 TYROLEAN SAUCER CHAMPAGNE, ORCHID ETCH, 8 EA., 2 X, H
125.	3350 WABASH 3 PINT TANKARD, PIED PIPER ETCH, XX	222.	5025 TYROLEAN COCTAIL ORCHID ETCH, 2 EA., 1 X
126.	3350 WABASH GOBLET, PIED PIPER ETCH, 5 EA. H	223.	1519 WAVERLY 14 IN SAND. PLATE, ORCHID ETCH
127.	3350 WABASH SHERBET, PIED PIPER ETCH, 9 EA., H, 4f	224.	1519 WAVERLY 3 PT. OVAL RELISH, ORCHID ETCH, H
128.	3350 WABASH 7 IN PLATE, PIED PIPER ETCH, 4 EA.	225.	3408 JAMESTOWN BELL, MINUET ETCH, f
129.	3350 WABASH 7 IN PLATES, PIED PIPER ETCH, 3 EA.	226.	42 SALT & PEPPER, ORCHID ETCH
130.	3350 WABASH 6 1/2 IN PLATE, PIED PIPER ETCH, 6 EA.	227.	1435 3 IN ASH TRAY, ORCHID ETCH
131.	4163 TALL PITCHER & 5 3304 UNIVERSAL GOBLET, ALL CUT	228.	300 PEERLESS 10 IN FLARED TALL COMPOTE, BROKEN BUBBLE IN STEM, H
132.	407 COARSE RIB 3 PINT JUG H	229.	1235 BEADED PANEL & SUNBURST, 12 IN FTD. COMPOTE
133.	393 NARROW FLUTE QUART PITCHER H	230.	7000 SUNFLOWER 10 IN SALAD BOWL H
134.	385 GRID & SQUARE HALF GALLON JUG H	231.	EPERGNE FROM 2 PCS. WAVERLY, 1 X
135.	4054 CORONATION 30 OZ PITCHER, SHOWS WEAR	232.	1511 TOUJOURS 12 IN FLORAL BOWL, MINOR ROUGHNESS ON FT., H
136.	4054 CORONATION 30 OZ PITCHER & 7 3428 COCKTAILS	233.	1401 EMPRESS 11 IN FLORAL BOWL D F W/FLOWER FROG
137.	1632 SATELLITE 1 QT. COCKTAIL PITCHER, NOT FROSTED	234.	1509 QUEEN ANN FLORAL BOWL ROSALIE ETCH
138.	465 RECESSED PANEL 1# COV. CANDY JAR, IRRIDIZED H	235.	1201 FLAMINGO FLORAL BOWL, H
139.	465 RECESSED PANEL 1# COV. CANDY JAR, GOLD TRIM WORN, H	236.	1201 MOONGLEAM FLORAL BOWL, H
140.	1430 ARISTOCRAT TALL COV. CANDY, COBALIT, H, FINIAL X	237.	4225 COBEL 1 QT COCKTAIL SHAKER & 6 AQ. CAL. COCKTAILS, SPORTSMAN
141.	1519 WAVERLY ELKS COV. CANDY JAR W/ORCHID ETCH LID, H, X	238.	3405 ALIBI COCKTAIL FISHERMAN ETCH, 5 EA., 2 f
142.	1519 WAVERLY ELKS COV. CANDY JAR, H	239.	2401 12 OZ SODA, TALLY HO ETCH, 6 EA.
143.	1483 STANHOPE COV. CANDY, FROSTY DAWN ETCH, RED HANDLES, H	240.	4052 1 1/2 OZ BAR, TALLY HO ETCH
144.	1951 CABOCHON 6 1/4 IN COV. CANDY, CUT, H, f	241.	4052 1 1/2 OZ BAR, TALLY HO ETCH
145.	1503 CRYSTOLITE 7 IN RD. COV. CANDY DISH, METAL LID W/CANDLER	242.	2052 1 1/2 OZ BAR, TALLY HO ETCH, 6 EA.
146.	352 FLAT PANEL 2 QT CRUSHED FRUIT JAR H PAT. DTD.	243.	4002 AQUA CALIENTE COCKTAIL, SKIER ETCH
147.	1509 QUEEN ANN DE ICE BUCKET	244.	4002 AQUA CALIENTE COCKTAIL, TALLY HO ETCH
148.	1509 QUEEN ANN 10 1/2 IN PLATE	245.	4002 AQUA CALIENTE COCKTAIL, TALLY HO ETCH
149.	UNKNOWN PATTERN 14 IN TORTE PLATE H, RARE	246.	3405 ALIBI COCKTAIL, CLUB DRINKING SCENE ETCH
150.	1252 TWIST 12 IN NEWARK SESQUI. PLATTER	247.	4225 1 QT COBEL COCKTAIL SHAKER, ARCTIC ETCH, X SHAKER & STRAINER
151.	1252 TWIST 12 IN NEWARK SESQUI. PLATTER	248.	4225 COBEL 1 QT COCKTAIL SHAKER, X ON STRAINER
152.	1238 14 IN BEEHIVE PLATE	249.	4225 COBEL 2 QT COCKTAIL SHAKER
153.	1238 MOONGLEAM 14 IN BEEHIVE PLATE	250.	4054 CORONATION 1 QT COCKTAIL SHAKER
154.	1519 WAVERLY 14 IN SAND. PLATE	251.	4225 COBEL 1 PT COCKTAIL SHAKER, ETCHED US
155.	1519 WAVERLY 14 IN PARTY PLATE, ROSE ETCH (NOT HEISEY ROSE)	252.	4225 COBEL 1 PT COCKTAIL SHAKER, ROOSTER STOPPER
156.	1183 REVERE 10 1/2 IN BOTTOM PLATE FOR CHEESE & CRACKER H	253.	1425 VICTORIAN RYE BOTTLE, CLOUDY
157.	1183 REVERE 10 1/2 IN PARTY PLATE	254.	341 PURITAN 24 OZ DECANter, CUT STOPPER, X & CLOUDY
158.	1184 YEOMAN FLAMINGO DO 10 1/2 IN PLATE	255.	4027 32 OZ DECANter D O X
159.	1184 YEOMAN FLAMINGO D O 9 IN PLATE	256.	4027 FLAMINGO 32 OZ DECANter D O, CRYSTAL STOPPER
160.	1184 YEOMAN FLAMINGO D O 6 IN PLATE 2 EA.	257.	3357 KING ARTHUR COCKTAIL, FLAMINGO STEM & FT., 6 EA., 1 F
161.	1509 QUEEN ANN 6 IN SQ. PLATE, 5 EA.	258.	5011 YORKTOWN COCKTAIL HUGENOT CUT
162.	1238 FLAMINGO 8 IN BEEHIVE PLATE 3 EA.	259.	3408 JAMESTOWN COCKTAIL, NARCISSUS CUT, H
163.	1170 PLEAT & PANEL MOONGLEAM 8 IN PLATES, 2 EA., H	260.	5072 ROSE STEM COCKTAIL, HEISEY ROSE ETCH
164.	1225 9 IN PLATES, 5 EA., H	261.	5089 PRINCESS COCKTAIL ORCHID ETCH H
165.	416 7 IN PLATES, 6 EA., H	262.	4044 NEW ERA COCKTAIL
166.	1224 FLAMINGO D O 8 IN PLATES, 5 EA.	263.	3357 KING ARTHUR COCKTAIL FLAMINGO f
167.	1224 7 IN FLAMINGO PLATES, 4 EA.	264.	4049 OLD FITZ HOT WHISKEY 4 1/2 OZ
168.	4182 8 IN PLATE, DIANA ETCH, 4 EA.	265.	341 PURITAN 3 OZ COCKTAIL H
169.	4182 8 IN PLATE, PIED PIPER ETCH	266.	359 COLONIAL COCKTAIL H
170.	3360 6 IN. PLATE, DIANA ETCH, 9 EA.	267.	5079 PAN AMERICAN COCKTAIL H
171.	3389 DUQUESNE 12 OZ FTD. SODA, CHINTZ ETCH, 5 EA.	268.	3311 VELVEDFER 1 1/2 OZ SHERRY 9 EA.
172.	3389 DUQUESNE 12 OZ FTD. SODA, CHINTZ ETCH	269.	5003 CRYSTOLITE GOBLET, 2 EA.
173.	3389 DUQUESNE 10 OZ FTD. TUMBLER, 6 EA., CHINTZ ETCH, 4 F	270.	5003 CRYSTOLITE FTD. JC. 2 EA.
174.	2351 12 OZ ICE TEA, 5 EA. CHINTZ ETCH, 3 f	271.	5003 CRYSTOLITE FTD. JC.
175.	3389 DUQUESNE SHERBET, 4 EA., CHINTZ ETCH, ALL f	272.	5003 CRYSTOLITE SHERBET 2 EA., 2 f
176.	3389 DUQUESNE COCKTAIL, CHINTZ ETCH, 6 EA.	273.	1503 CRYSTOLITE CUPS & SAUCERS, 6 SETS, H
177.	3389 DUQUESNE WINE, CHINTZ ETCH, 6 EA., 1F	274.	1503 CRYSTOLITE 7 IN PLATE 3 EA.
178.	3389 DUQUESNE OYSTER COCKTAIL, CHINTZ ETCH, 2 EA.	275.	1503 CRYSTOLITE SHELL CANDY BOX W/COV., F ON LID
179.	1509 QUEEN ANN 6 IN SQ PLATE, CHINTZ ETCH, 3 EA.	276.	1503 CRYSTOLITE 5 IN BREAKFAST PRESERVE, 3 EA.
180.	1509 QUEEN ANN 7 1/2 IN RD. PLATE, CHINTZ ETCH	277.	1503 CRYSTOLITE 6 IN JELLY 2 HLD, 2 COMP., H
181.	4044 NEW ERA 2 PC., PARFAIT & FTD. ICE TEA	278.	1503 CRYSTOLITE HLD. JELLY, SPIDER WEB BOTTOM
182.	4044 NEW ERA PARFAIT, 12 EA.	279.	1503 CRYSTOLITE HLD. JELLY SPIDER WEB BOTTOM
183.	4044 NEW ERA COCKTAIL, 12 EA., H	280.	1503 CRYSTOLITE 7 IN SNACK PLATE, HLD.
184.	4044 NEW ERA CORDIAL, 13 EA. H	281.	1503 CRYSTOLITE FTD. COMFORT, SHALLOW, H
185.	1229 OCTAGON IND NUT DISH, 2 EA. H	282.	1503 CRYSTOLITE 5 1/2 IN FTD. CHEESE
186.	1229 OCTAGON IND NUT DISH, H	283.	1503 CRYSTOLITE 5 1/2 IN FTD. CHEESE
187.	473 NARROW FLUTE W/RIM IND. ALMOND, H	284.	1503 CRYSTOLITE 8 IN OVAL UNDERPLATE FOR MAYO, H SHOWS WEAR
188.	393 NARROW FLUTE HAWTHORNE IND ALMOND, H	285.	1503 CRYSTOLITE 10 IN FLORAL BOWL
189.	393 NARROW FLUTE MOONGLEAM IND ALMOND, H	286.	1503 CRYSTOLITE 3 OZ OIL BOTTLE
190.	393 NARROW FLUTE SAHARA IND ALMOND, SLIGHT ROUGHNESS	287.	1503 CRYSTOLITE 5 IN FTD. COMFORT DEEP
191.	393 NARROW FLUTE FLAMINGO IND ALMOND, 2 EA., H	288.	1503 CRYSTOLITE FTD CIG. HOLDER, H
192.	393 NARROW FLUTE IND ALMOND, 2 EA. H	289.	1503 CRYSTOLITE RD. CIG. HOLDER, H
193.	1503 CRYSTOLITE IND NUT DISH, HLD. 2 EA.	290.	LAMP MADE FROM CRYSTOLITE PARTS
194.	3316 BALTIMORE FTD. ALMOND, MOONGLEAM FT.	291.	1503 CRYSTOLITE 4 IN CIG. BOX BOTTOM ONLY & 3 SQ ASH TRAYS ALL F
195.	1401 EMPRESS MOONGLEAM D F NUT DISH, H	292.	1503 CRYSTOLITE CREAM 2 EA., H, SHOW WEAR
196.	433 GREEK KEY IND ALMOND DISH, H	293.	1503 CRYSTOLITE RD ASH TRAY 4 EA., H
197.	473 NARROW FLUTE W/RIM MOONGLEAM SALTED NUT DISH, PLAIN BOTTOM, I	294.	1503 CRYSTOLITE RD NAPPIE 4 IN H
198.	473 NARROW FLUTE W/RIM MOONGLEAM SALTED NUT DISH, STAR BOTTOM, H	295.	150 BANDED FLUTE HORSE RADISH JAR, WRONG STOPPER
199.	473 NARROW FLUTE W/RIM HAWTHORNE SALTED NUT DISH, H & DTD.	296.	1235 BEADED PANEL & SUNBURST SYRUP JUG
200.	473 NARROW FLUTE W/RIM FLAMINGO SALTED NUT DISH, H & DTD.	297.	300 PEERLESS CRUET NO STOPPER X & SYRUP JUG H XX
201.	473 NARROW FLUTE W/RIM IRRIDIZED SALTED NUT DISH, H DTD.	298.	341 PURITAN 3 OZ OIL, CUT STOPPER, H
202.	473 NARROW FLUTE W/RIM SALTED NUT DISH, PLAIN BOTTOM, H	299.	353 COLONIAL 6 OZ OIL, H
203.	394 NARROW FLUTE 3 1/2 IN SALTED NUT DISH, H & DTD.	300.	17 HLD DECANter M
204.	1454 DIA. POINT IND ASH TRAY & IND MARMALADE, H	301.	1404 OLD SANDWICH SAHARA 16 OZ MUG, H
205.	379 URN MASTER TABLE SALT, FULLY GROUND, SMALL FLAKE H		

302. FLYING MARE, FROSTED
 303. HORSEHEAD BOOKEND H
 304. HORSEHEAD BOOKEND, H
 305. SHOW HORSE m
 306. RABBIT PAPERWEIGHT, FROSTED
 307. SEALYHAM TERRIER
 308. FISH BOWL H
 309. TROPICAL FISH PIECE
 310. FISH BOOKENDS, PAIR, SELLING CHOICE
 311. FISH CANDLEHOLDER, PAIR, SELLING CHOICE, 1 m
 312. FISH MATCHHOLDER
 313. ROOSTER VASE
 314. ROOSTER VASE
 315. FIGHTING ROOSTER
 316. JOE HEAD BOOKEND
 317. DONKEY, H
 318. FILLY, HEAD FORWARD
 319. FILLY, HEAD BACK, m
 320. RINGNECK PHEASANT
 321. GOOSE, WINGS DOWN
 322. GOOSE, WINGS UP
 323. GOOSE, WINGS HALF
 324. GOOSE, WINGS HALF, H
 325. POUTER PIGEON, H
 326. POUTER PIGEON, H
 327. OSCAR PLUG HORSE, AMBER
 328. OSCAR PLUG HORSE
 329. COLT, KICKING
 330. COLT, STANDING, COBALT
 331. COLT, STANDING, AMBER
 332. COLT, STANDING
 333. AIREDALE TERRIER, H
 334. GAZELLE, H
 335. BULL, H
 336. ELEPHANT, LARGE, M
 337. ELEPHANT, MIDDLE, f
 338. ELEPHANT, SMALL
 339. ELEPHANT, SMALL, AMBER, H
 340. ELEPHANT, SMALL, AMBER, H
 341. TIGER PAPERWEIGHT, H
 342. REARING HORSE BOOKEND, BADLY DAMAGED
 343. RINGNECK PHEASANTS, PAIR, TAILS BROKEN OFF
 344. COLT, STANDING, 2 EA., NO TAILS
 345. CLYDESDALE HORSE, BADLY DAMAGED
 346. FIGHTING ROOSTER, BADLY DAMAGED
 347. IMPERIAL CARAMEL SLAG MALLARD DUCK, WINGS UP, 1 G
 348. IMPERIAL CARAMEL SLAG MALLARD, WINGS UP, 1 G
 349. IMPERIAL CARAMEL SLAG MALLARD, WINGS UP, 1 G
 350. IMPERIAL CARAMEL SLAG MALLARD, WINGS HALF, 1 G
 351. IMPERIAL CARAMEL SLAG MALLARD, WINGS HALF, 1 G
 352. IMPERIAL CARAMEL SLAG DONKEY, 1 G
 353. IMPERIAL CARAMEL SLAG STANDING COLT, 1 G
 354. IMPERIAL CARAMEL SLAG STANDING COLT, 1 G
 355. IMPERIAL CARAMEL SLAG OSCAR PLUG HORSE, 1 G
 356. IMPERIAL CARAMEL SLAG OSCAR PLUG HORSE, 1 G
 357. IMPERIAL SOUV. OSCAR, 1977 VERDE GREEN
 358. IMPERIAL SOUV. OSCAR, 1978 PINK
 359. IMPERIAL SOUV. OSCAR, 1979 SUNSHINE YELLOW
 360. IMPERIAL SOUV. OSCAR, 1980, HEATHER
 361. IMPERIAL SOUV. OSCAR, 1981 LT. BLUE
 362. IMPERIAL SOUV. OSCAR, 1982, DARK GREEN
 363. IMPERIAL SOUV. OSCAR, 1983, TANGALO
 364. IMPERIAL SOUV. OSCAR, 1984, RED
 365. IMPERIAL MILK GL. SEALYHAM TERRIER
 366. IMPERIAL MILK GLASS RABBIT PAPERWEIGHT
 367. IMPERIAL MILK GLASS MOTHER RABBIT
 368. IMPERIAL MILK GLASS MOTHER RABBIT
 369. IMPERIAL MILK GLASS BUNNY, HEAD UP
 370. IMPERIAL MILK GLASS BUNNY, HEAD UP
 371. IMPERIAL MILK GLASS BUNNY, HEAD DOWN
 372. IMPERIAL MILK GLASS BUNNY, HEAD DOWN
 373. IMPERIAL MILK GLASS ROOSTER
 374. IMPERIAL MILK GLASS ROOSTER
 375. IMPERIAL MILK GLASS HEN
 376. IMPERIAL MILK GLASS CHICKS, 2 EA.
 377. IMPERIAL FISH MATCHHOLDER, SUNSHINE YELLOW
 378. IMPERIAL ULTRA BLUE STANDING COLT
 379. IMPERIAL ULTRA BLUE KICKING COLT
 380. IMPERIAL ULTRA BLUE KICKING COLT
 381. IMPERIAL ULTRA BLUE MIDDLE ELEPHANT
 382. IMPERIAL ULTRA BLUE AIREDALE TERRIER
 383. IMPERIAL ULTRA BLUE MOTHER WOOD DUCK
 384. IMPERIAL ULTRA BLUE SEALYHAM TERRIER
 385. IMPERIAL ULTRA BLUE DONKEY
 386. IMPERIAL ULTRA BLUE SOW
 387. IMPERIAL ULTRA BLUE STANDING PIGLET, 2 EA.
 388. IMPERIAL ULTRA BLUE STANDING WOOD DUCKLING
 389. IMPERIAL ULTRA BLUE FLOATING DUCKLING
 390. IMPERIAL ULTRA BLUE WOOD CHUCK (NOT HEISEY WOOD)
 391. U8028 EMPRESS LILY GOBLET, 12 EA., H
 392. 5067 PLANTATION GOBLET, 6 EA.
 393. 3404 SPANISH GOBLET, SPECIAL CUT
 394. 3404 SPANISH GOBLET, SPECIAL CUT
 395. 3308 BOB WHITE GOBLET, #18 NEEDLE ETCH
 396. 3350 WABASH GOBLET, NEEDLE ETCH H
 397. 338 WAFER STEM GOBLET, RED STAIN ON BOWL
 398. 4055 PARK LANE GOBLET
 399. 3390 CARCASSONNE FTD. SODA, LOTUS ETCHING
 400. 5086 FTD ICE TEA, LILYVALE CUTTING
 401. 2 FTD. ICE TEAS, 1 GRACEFUL & 1 JAMESTOWN, 1 X
 402. 6003 OMEGA 10 OZ GOBLET, AURORA CUTTING H
 403. 5072 ROSE STEM FTD. ICE TEA, HEISEY ROSE ETCH, H, 2 EA.
 404. 3390 CARCASSONNE 12 OZ. FLAGON, 2 EA.
 405. 3390 CARCASSONNE SAHARA 10 1/2 OZ MORNING AFTER
 406. 4054 CORONATION 14 OZ SLIM JIM 2 EA.
 407. 4054 CORONATION MORNING AFTER, 2 EA.
 408. 3366 TROJAN 12 OZ SODA, MOONGLEAM FT, 5 EA., SOME X
 409. 3480 KOORS 29 12 OZ FTD. SODA, MOONGLEAM FT, 6 EA., ALL X
 410. 466 8 IN FRUIT BASKET H
 411. 417 DOUBLE RIB & PANEL FLAMINGO, 6 IN H
 412. 459 8 IN BASKET, H, F
 413. 1184 6 1/2 IN HDL BON BON FLAMINGO
 414. 1184 YEOMAN 8 1/2 IN CANDY DISH
 415. 1210 8 IN MARIGOLD 2 HDLD. BON BON
 416. 1483 STANHOPE 7 IN BALL VASE
 417. 1401 EMPRESS CENTER HDLD SAND. TRAY, H
 418. LAMP MADE FROM RIDGELEIGH NAPPIE
 419. VERLYS, COUVERCLE UNI (PLAIN TOP), MONO, CIG. BOX, DIR. BLUE, SIGN
 420. VERLYS BUTTERFLY ASHTRAY TOPAZ, BADLY DAMAGED
 421. 356 MATCH STAND ASHTRAY, H
 422. 1632 LODESTAR DAWN, ASHTRAY, H, f
 423. 1632 LODESTAR DAWN ASHTRAY, H
 424. 1489 PURITAN SQ ASHTRAY, ROUGHNESS ON CORNERS
 425. 1489 PURITAN SM. CIG BOX, CUTTING ON LID
 426. 1489 PURITAN 4 1/2 IN SQ ASHTRAY, CUT & MONO
 427. 1508 CARD CASE, CUT, PROF. REPAIR
 428. 361 MOONGLEAM ASHTRAY & CIG CONTAINER, H
 429. 361 SAHARA ASHTRAY & CIG. CONTAINER, H, M
 430. 1590 NEWARK SESQUI ASHTRAY 2 EA.
 431. 1590 OHIO SESQUI ASHTRAY
 432. 1533 WAMPUM ASHTRAY, 2 EA., 1X
 433. 1521 QUILT CIG. BOX BOTTOM, NO LID
 434. 1286 MOONGLEAM ASHTRAY, CUPID & PSYCHE, X
 435. 1386 FLAMINGO ASHTRAY, DOG ETCH
 436. 1536 MILITARY CAP ASH TRAY
 437. 1486 COLEPORT ASHTRAY, H
 438. 1179 ASHTRAY 2 EA.
 439. 3390 CARCASSONNE CIG. HOLDER, MONO
 440. 1488 KOHINOOR ASHTRAY, ZIRCON, H
 441. 1488 KOHINOOR BRIDGE ASHTRAY, ZIRCON, H
 442. 1404 OLD SANDWICH, COBALT, IND ASHTRAY H
 443. 1404 OLD SANDWICH MOONGLEAM IND ASHTRAY, H
 444. 1469 RIDGELEIGH LIMELIGHT COASTER
 445. 10 OAK LEAF COASTER, 2 EA.
 446. 351 COLONIAL IND BUTTER, 4 EA., 2 ROUGH, H.
 447. VERLYS PELICAN PIN TRAY
 448. VERLYS PINECONE BOWL
 449. 1509 QUEEN ANN RD SAUCERS OLD COLONY ETCH, 4 EA., H
 450. 3350 WABASH MOONGLEAM 6 1/2 IN PLATE, 6 EA.
 451. 1246 ACORN 7 IN PLATE, 6 EA.
 452. 1509 QUEEN ANN 7 1/2 IN RD PLATE, EVERGLADE CUT, 3 EA.
 453. 4182 8 IN PLATE SEA NYMPH ETCH, RARE
 454. 1401 EMPRESS TANGERINE SQ 6 IN PLATE, H
 455. 1485 SATURN 2 8 IN PLATE, 8 EA.
 456. 5 1/2 IN PLAIN PLATE, 6 EA., H
 457. 3350 WABASH MARIGOLD 7 1/2 IN PLATE, EMPRESS ETCH, SUGARY
 458. 4182 7 1/2 IN PLATE, RENAISSANCE ETCH, 3 EA.
 459. 7 1/2 IN AMBER PLATE D O
 460. 1405 IPSWICH SAHARA 8 IN SQ PLATE, 2 EA., H
 461. 1231 OCTAGON FLAMINGO 8 1/2 IN PLATES, 2 EA.
 462. RD 6IN FLAMINGO SAUCERS, H, 4 EA., NOT GROUND
 463. MISC. LOT 3 -7 IN & 1 -6 IN DO PLATES
 464. 1246 8 IN FLAMINGO OAKLEAF PLATE
 465. MISC. LOT, 1 WAVERLY 8 IN PLATE & 1 PLAIN 5 IN PLATE H
 466. MISC. LOT 3 -7IN & 1 -8IN, MOONGLO CUT
 467. IMPERIAL 1972 LAND OF LEGEND SOUV. PLATE
 468. IMPERIAL LOT LAND OF LEGEND PLATES, MISC. YEARS
 469. 393 NARROW FLUTE 8 1/2 IN NAPPY, H
 470. 393 NARROW FLUTE 9 IN NAPPY, H, M
 471. 1235 BEADED PANEL & SUNBURST 8 1/2 IN NAPPY
 472. 1235 BEADED PANEL & SUNBURST 4 IN NAPPY, 3 EA., SLIGHT ROUGHNESS
 473. 1229 8 IN OVAL DESSERT DISH MOONGLEAM
 474. 3397 GASCONY COBALT, 10 IN BOWL, MAJOR DAMAGE
 475. 1569 12 1/2 IN SHALLOW BOWL, FTD. H
 476. 134 SAHARA 14 IN OVAL FLORAL BOWL
 477. 1201 FANDANGO 8 IN CRIMPED NAPPY, F
 478. 1485 HOSTESS HELPER 11 IN ICE BOWL, SAUCE BOWL, 2 TOOTHPICKHOLDERS
 479. 1489 PURITAN 11 IN SQ GARDENIA BOWL
 480. 4220 SAHARA SPIRAL VASE 7 IN, f
 481. 16 1/2 IN COLONIAL VASE ?
 482. 2 CHRYSANTHEMUM 14 IN VASE, H
 483. 1255 PINEAPPLE & FAN EMERALD 8 IN VASE FAIR GOLD
 484. 1485 SATURN LIMELIGHT 8 1/2 IN FLARED VASE, H
 485. 4209 MOONGLEAM 9 IN VASE, D O
 486. 1428 WARWICK 9 IN HORN OF PLENTY VASE, H
 487. 343 SUNBURST PUNCH BOWL BASE ONLY H
 488. 2 MADONNA, LARGE, FROSTED
 489. 1 MADONNA, SMALL, FULL FIGURE, FROSTED
 490. 1 MADONNA, FULL FIGURE
 491. 4036 1 QT COCKTAIL SHAKER, ROOSTER STOPPER
 492. 5058 PENGUIN DECANTER, SMALL
 493. MIKE OWENS BUST, FROSTED

494. MIKE OWENS BUST, FROSTED
 495. LARGE HORSEHEAD COCKTAIL STOPPER IN WOODEN BASE
 496. LARGE HORSEHEAD COCKTAIL STOPPER
 497. 1489 1/2 PURITAN HORSEHEAD ASHTRAY, F
 498. PENDANT FROM MOONGLEAM DUCK STOPPER, STERLING SILVER CHAIN
 499. 1601 RECLINING FOX ASHTRAY
 500. 110 10 IN DOLPHIN CANDLESTICK, 2 EA., 2 SHADES OF PLAM., SELLING CHOICE
 501. 5074 SEAHORSE STEM COCKTAIL, SPIRAL OPTIC, H
 502. 5074 SEAHORSE STEM COCKTAIL, SPIRAL OPTIC, H
 503. 357 FLAMINGO DUCK ASHTRAY, H, SLIGHT ROUGHNESS ON BASE
 504. 357 DUCK ASHTRAY, H, SLIGHT ROUGHNESS
 505. 111 MOONGLEAM 11 IN CHERUB CANDLESTICK, PR., FROSTED, 1 - BROKEN BUBBLE
 506. 15 FLAMINGO DUCK FLOWER BLOCK
 507. 14 FLAMINGO KINGFISHER FLOWER BLOCK, H
 508. 1519 WAVERLY LION TRINKET BOX, H
 509. 1210 MOONGLEAM 6 IN CHEESE DISH, FROG HANDLED
 510. 7056 ELEPHANT HANDLED BEER MUG, H, M
 511. 109 MOONGLEAM 6 IN PETTICOAT DOLPHIN CANDLEHOLDERS, PR.
 512. 9 TOY HORSEHEAD, F
 513. 1485 SATURN TUMBLER, H
 514. 350 PINWHEEL & FAN TUMBLER, H
 515. 1417 ARCH 9 OZ TUMBLER
 516. 2 TUMBLERS, YEOMAN D O & CRYSTOLITE
 517. 2351 SM. SODA, PERCIVAL ETCH, 3 EA.
 518. 4054 CORONATION 8 OZ SODA, 2 EA.
 519. 4054 CORONATION 4 OZ SODA, 2 EA.
 520. 4054 CORONATION OLD FASHION, 2 EA., MONO, RAC
 521. 4054 CORONATION 2 1/2 OZ BAR, 2 EA.
 522. 4054 CORONATION FTD. OYSTER COCKTAIL, 3 EA., MONO RAC
 523. 1567 PLANTATION TUMBLER, 7 EA., H
 524. 1405 IPSWICH FTD. SODA, FTD JC. H & SHERBET H
 525. 417 DOUBLE RIB & PANEL TUMBLER, 2 EA. H
 526. 1404 OLD SANDWICH FTD. SODA, H
 527. 1252 TWIST SODA, H
 528. 2323 NAVY FTD SODA 2 EA.
 529. 4052 NATIONAL SODA, MOONGLO CUT
 530. 335 PRINCE OF WALES PLUMES TUMBLER, SOME GOLD, H
 531. 393 NARROW FLUTE 4 OZ TUMBLER, H
 532. 603 4 OZ BAR WATER GLASS, N O, H
 533. 1184 YEOMAN D O BAR WATER H
 534. 602 BAR GLASS, H, F
 535. 4052 NATIONAL SODA, CUT
 536. 4054 CORONATION DAWN OLD FASHION, SCREEN OPTIC, 4 EA., SELLING CHOICE
 537. 433 GREEK KEY TOOTHPICK HOLDER OR BAR GLASS, H, C
 538. 5060 WASHINGTON SQ. 2 OZ BAR
 539. 4054 CORONATION 1 OZ & 1 1/2 OZ BAR, BOTH CUT
 540. 1486 COLEPORT BAR GLASS, 3 EA., H
 541. 3481 GLENFORD FLAMINGO, 3 OZ COCKTAIL D O
 542. 1 OZ. BAR, CUT
 543. 1 OZ BAR, HEAVY SHAM
 544. 8070 TRIPLE BAND BAR, 2 EA.
 545. 1255 PINEAPPLE & FAN EMERALD TOOTHPICK HOLDER, GOOD GOLD
 546. 1220 PUNTY BAND TOY CREAMER, F
 547. 1225 PLAIN BAND CUSTARD, HANDLESS SHERBET, SOUV., H
 548. 1184 YEOMAN MOONGLEAM DEMITASSE CUP, H, C
 549. 4224 CIRCUS ROUND, SAHARA COCKTAIL
 550. 1205 FANCY LOOP SHERRY
 551. 352 FLAT PANEL ICE CREAM CONE HOLDER
 552. 517 MOONGLEAM 1/4 OZ COLOGNE, BROKEN DAUBER
 553. 516 FLAMINGO 1 OZ COLOGNE D O, H
 554. 3308 BOB WHITE CORDIAL
 555. HEISEY CAROCHON DISPLAY SIGN
 556. 1280 WING SCROLL CLAMBROTH TRINKET BOX, SOUV.
 557. 52 FLAMINGO IND SALT & PEPPER, 1 CLOUDY
 558. 52 IND SALT & PEPPER, 1 CLOUDY
 559. 1252 SAHARA SALT SHAKER, GLASS TOP, H
 560. 1404 OLD SANDWICH SALT & PEPPER
 561. 46 SALT & PEPPER, MOONGLEAM FT, 1 CLOUDY, H
 562. LOT OF 2 SALT SHAKERS, 1 CLOUDY, H
 563. 53 MOONGLEAM IND SALT, NO TOP
 564. 10 SALT & PEPPER
 565. 1506 PROVINCIAL SALT SHAKER
 566. LOT 2 ITEMS, 42 SALT SHAKER & TULIP SALT DIP
 567. 393 NARROW FLUTE SALT DIP H
 568. 1235 BEADED PANEL & SUNBURST SALT DIP
 569. 1205 FANCY LOOP SALT DIP
 570. 6 EA. TULIP SALT DIPS
 571. 1503 CRYSTOLITE IND SWAN NUT, 2 EA.
 572. 5077 LEGIONNAIRE 5 OZ FTD JC., ARCADIA CUTTING, 12 EA.
 573. 5040 LARIAT FTD JC., CUT, 6 EA. H
 574. 3408 JAMESTOWN FTD. JC., CUT, 3 EA.
 575. 1184 YEOMAN FLAMINGO PARFAIT, 3 EA., H
 576. 5072 STEM FTD. JC., HEISEY ROSE ETCH, H
 577. 3408 JAMESTOWN PARFAIT, 2 EA. H
 578. 4085 KOHINOR FTD. JC., DAISY CUT, 5 EA.
 579. WIDE OPTIC FTD JC. & CRYSTOLITE FTD. JC. X
 580. 3 MISC. SHERBETS & CHAMPAGNES
 581. 3350 WABASH SAUCER CHAMPAGNE, NEEDLE ETCH
 582. 3366 TROJAN SAUCER CHAMPAGNE, SEA NYMPH ETCH H
 583. 3368 ALBEMARLE SAUCER CHAMPAGNE, CHATEAU CUT, H
 584. 3333 OLD GLORY SAUCER CHAMPAGNE, RENAISSANCE ETCH, H f
 585. 5009 QUEEN ANN SAUCER CHAMPAGNE, BELLE-LE-ROSE ETCH, 8 EA
 586. 3314 GRANDEUR SAUCER CHAMPAGNE, SABRINA ETCH, 5 EA, 4-f
 587. 3389 DUQUESNE SAHARA SHERBET
 588. 3362 CHARTER OAK FLAMINGO SAUCER CHAMPAGNE, DO,
 589. 3380 OLD DOMINION FLAMINGO SHERBET, EMPRESS ETCH, H
 590. LOT OF 2 SHERBETS, OLD GLORY & SYMPHONY, BOTH ETCHED
 591. 3340 CARCASSONNE SAUCER CHAMPAGNE, OLD COLONY ETCH, H
 592. 3397 GASCONY SAHARA SAUCER CHAMPAGNE
 593. 3466 TROJAN SHERBET, TROJAN ETCH, 3 EA
 594. 419 SUSSEX FLAMINGO/CRYSTAL FOOT, SHERBET, 5 EA. H
 595. 3380 OLD DOMINION SHERBET, MOONGLEAM FT, DO, 4 EA, H
 596. 3312 GAYOSO FLAMINGO SAUCER CHAMPAGNE, DO, 3 EA
 597. 3312 GAYOSO FLAMINGO SHERBET, DO, 4 EA
 598. 16 PUFF BOX & COV. H, f
 599. PLAIN COV. POWDER JAR, H, UNFINISHED BOTTOM
 600. 350 PINWHEEL & FAN POWDER BOX, NO LID H
 601. 353 COLONIAL SPOON, H
 602. 394 NARROW FLUTE FLAMINGO DOMINO SUGAR TRAY, H & DTD
 603. 1252 TWIST MOONGLEAM 6 IN FTD COMFORT, SILVER OVERLAY,
 604. 1229 OCTAGON FLAMINGO FTD MAYONNAISE
 605. 1401 EMPRESS FLAMINGO DF MAYONNAISE
 606. 341 PURITAN HI FT JELLY COMPOTE, H
 607. 1519 WAVERLY 5 IN LOW FT COMPOTE
 608. 407 COARSE RIB MOONGLEAM 5 IN LOW FT JELLY
 609. 473 NARROW FLUTE WITH RIM 6 IN COMFORT, GOLD DECOR, H
 610. 1229 OCTAGON HAWTHORNE 5 1/2 IN HDL JELLY, DO
 611. 1565 DAWN 6 IN JELLY, H
 612. 1511 TOUJOURS APPLE MARMALADE W/SPOON, H
 613. 1509 QUEEN ANN DF 5 1/2 IN JELLY
 614. 1495 FEEN 2 COMPARTMENT JELLY, CUT
 615. 1229 OCTAGON FLAMINGO 6 IN HANDLED MINT
 616. 1509 QUEEN ANN 5 1/2 IN HDL FTD MINT, H
 617. 1951 CAROCHON HANDLED BON BON, H
 618. 1229 OCTAGON FLAMINGO 5 1/2 IN HANDLED JELLY, 2 EA
 619. 1229 OCTAGON FLAMINGO HANDLED JELLY
 620. 1229 OCTAGON MOONGLEAM HANDLED JELLY
 621. 1252 TWIST FLAMINGO 5 IN HANDLED JELLY
 622. 8 IN FLAMINGO (CRESCENT) SALAD PLATE, H
 623. 1229 OCTAGON FLAMINGO 6 IN HDL CHEESE PLATE
 624. MISC LOT OF 1 PC, 4 CRYSTAL NAPPIES & 1 SAHARA, X
 625. 3350 WABASH GRAPEFRUIT, H
 626. 310 RING BAND CUSTARD 4 1/2 IN NAPPY, H, M
 627. 1205 FANCY LOOP EMERALD BON BON, GOOD GOLD
 628. 343 SUNBURST 5 IN SHALLOW NAPPY, H
 629. 1255 PINEAPPLE & FAN 4 IN NAPPY, 4 EA, 1 CUPPED, f
 630. 1252 TWIST 4 1/2 NAPPY, H
 631. 1252 TWIST 4 1/2 IN NAPPY, 7 EA, H, 1-f
 632. 1252 TWIST FLAMINGO 4 1/2 IN NAPPY, H f
 633. 416 8 IN HAWTHORNE SHALLOW NAPPY, H
 634. 3312 GAYOSO PLAM. FINGER BOWLS, D O, 4 EA.
 635. 300 PEERLESS 5 IN NAPPY
 636. 365 OLD QUEEN ANN 5 IN NAPPY IN CHROME HOLDER W/SPOON, H
 637. 351 PRISCILLA HOTEL SUGAR & UNDER PLATE, H
 638. LOT OF 4 COLONIAL NAPPIES, 1 SMALL & 3 LARGE PRISCILLA H
 639. 1170 PLEAT & PANEL FLAMINGO 6 1/2 IN CRYSTAL BOWL, 2 EA H
 640. 341 PURITAN CLARET, 2 EA, H
 641. 341 PURITAN SHERBET, 2 EA H
 642. 1486 COLEPORT FTD COCKTAIL H
 643. 5082 MID CENTURY SHERRY, H
 644. 1183 REVERE COVERED LEMON DISH, CUT, H
 645. 300 PEERLESS WINE & 373 COLONIAL WINE, H
 646. 3408 JAMESTOWN OYSTER COCKTAIL, BELLE-LE-ROSE ETCH
 647. 5082 MID CENTURY SHERRY, H
 648. 359 COLONIAL 2 1/2 OZ BURGUNDY, H
 649. 3368 ALBEMARLE OYSTER COCKTAIL, CUT
 650. 3350 WABASH OYSTER COCKTAIL, MOONGLEAM FT, MAYFLOWER ETCH
 651. 3368 ALBEMARLE OYSTER COCKTAIL
 652. 1252 TWIST WINE, H
 653. FLAMINGO DOORSTOP PAPERWEIGHT
 654. 325 PILLOW SPOONER, H
 655. 353 COLONIAL ROUND HOTEL COVERED SUGAR, H
 656. 1415 TWENTIETH CENTURY SODA WITH STERLING TOP
 657. 4225 COBEL 1 QT COCKTAIL SHAKER, FOX CHASE ETCH, NO STR OR STOPPER
 658. 411 TUDOR SAUCER CHAMPAGNE, 10 EA, H
 659. 5040 LARIAT SHERBET, MOONGLO CUT, 3 EA, H
 660. 3380 OLD DOMINION SHERBET, DO
 661. 3390 CARCASSONNE SHERBET, WO
 662. 1425 VICTORIAN SHERBET, H
 663. 300 PEERLESS SHERBET, 3 SMALL & 1 MEDIUM, H
 664. 1485 SATURN SHERBET, 3 EA
 665. 1485 SATURN SHERBET, 8 EA, 1-f
 666. 1145 MUSTARD & COVER, H
 667. 1252 TWIST SAHARA SUGAR, H
 668. 1252 TWIST FLAMINGO FOOTED ALMOND, H
 669. 1404 OLD SANDWICH SAHARA SUGAR, H
 670. 1485 SATURN SUGAR, H f
 671. 1401 EMPRESS FLAMINGO DF SUGAR, OLD COLONY ETCH, H
 672. 407 COARSE RIB MOONGLEAM SUGAR, H
 673. 1951 CAROCHON SUGAR, H & 1483 STANHOPE SUGAR, H
 674. 393 NARROW FLUTE HOTEL SUGAR, & 1184 YEOMAN BOUILLON H
 675. 1509 QUEEN ANN DF CREAMER, BARCELONA CUT, H
 676. 1184 YEOMAN FLAMINGO HOTEL CREAMER, DO, H
 677. 341 OLD WILLIAMSBURG CREAMER, H
 678. 1180 CREAMER, H, X
 679. 429 HOTEL FLAMINGO CREAM, & 429 HOTEL CRYSTAL CREAM
 680. 7000 SUNFLOWER CREAM & 1632 SATELLITE CREAM
 681. 1541 ATHENA CREAM, 2 EA
 682. 3 SQUARE BOBBECHEES FOR NEW ERA & 2 BOBBECHE FOR CRYSTOLITE & PURPLE PR
 683. 2401 OLD FASHION, 7 EA, 2 f
 684. LOT OF 3 JUICE GLASSES, 2 DO & 1 NARROW FLUTE, ALL H
 685. 1486 COLEPORT TUMBLER, 2 EA, H
 686. 8 DO FTD OYSTER COCKTAILS

687. WHIMSEY ASH TRAY MADE FROM SAHARA GASCONY FT, H
 688. FLAMINGO CANDLE SOCKET TOOTHPICK HOLDER, F
 689. 3 STOPPERS FOR PURITAN COLOGNE BOTTLES, 1 FROSTED
 690. 9 IN COLONIAL CELERY TRAY, H
 691. 1184 YEOMAN SUGAR POURER, NO TOP
 692. 310 RING BAND CUSTARD SALT SHAKER, NO TOP, H, F
 693. LOT OF 3 SALT DIPS, ALL X
 694. CRYSTOLITE ASHTRAY, F & PEERLESS 6 IN SPOON TRAY, F
 695. SMALL HEISEY LID FOR MUSTARD, H
 696. 1567 PLANTATION STICK BUTTER BOTTOM ONLY, H
 697. LOT OF 4 MISC PIECES OF HEISEY, 2-F
 698. FLOWER FROG, COLONIAL PLATE, COLOGNE WITH NO STOPPERS

699. BROKEN COBALT HEISEY CANDLE
 700. LARGE SHARD OF LIMELIGHT GLASS
 701. 3 LIGHT CANDELABRA ARM, H, F
 702. LOT OF 4 MISC AUTO HEADLIGHT LENS
 703. BOX LOT OF APPROX 20 GRAPEFRUIT LINERS
 704. BOX LOT OF APPROX 20 GRAPEFRUIT LINERS
 705. 7 CRYSTOLITE CANDY DISH LIDS
 706. 7 CRYSTOLITE CANDY DISH LIDS
 707. BOX LOT OF CRYSTOLITE MARMALADE LIDS, APPROX 25
 708. BOX LOT OF CRYSTOLITE MARMALADE LIDS, APPROX 25
 709. GLASS GRINDING EQUIPMENT, WHEELS & MOTOR

MAIL BID INSTRUCTIONS

Mail bids accepted with checks for maximum amount. Mail bids are handled competitively and any difference refunded. Condition of items for mail bids handled at the discretion of auctioneer. In some cases where damage is found to be minimal, we may execute your bid up to 70% to 80% of maximum. Please add \$8.00 per carton for postage and handling, \$10.00 west of Rocky Mountains.

Checks should be made to:

APPLE TREE AUCTION CENTER
 1616 W. CHURCH ST.
 NEWARK, OH. 43055

LIST OF PRICES REALIZED AVAILABLE AFTER THE AUCTION FOR \$1.00.

NOTE: Due to early starting time we will offer a preview of this sale on Fri. evening Feb. 1 from 7 - 9 P. M.. Seats may be reserved during preview. Due to space limitations print size had to be reduced in Newsletter. If you would like listing in larger print send \$1.00 or you may purchase at auction.

DOORS OPEN 8:00 A. M.

TERMS: Cash or Personal Check if known to auctioneer.
 GOOD FOOD & Comfortable Seats in well heated building.
 FRANK FRYE, MANAGER
 SAM SCHNAIDT & TIM HUGHES, AUCTIONEERS
 PHONE (614) 344 - 9449



THE PURPOSE OF THE ASSOCIATION IS TO UNITE PEOPLE IN GOOD FELLOWSHIP THROUGH SPONSORED ACTIVITIES AND FORM A CENTRAL ORGANIZATION OF MEMBERS WHO ARE INTERESTED IN PROMOTING DEPRESSION GLASS THROUGH AN EXCHANGE OF IDEAS AND INFORMATION.

BENEFITS OF MEMBERSHIP INCLUDE RECEIPT OF THE NEWSLETTER 'NEWS & VIEWS', VOTING PRIVILEGES, AND NOTICE OF SPECIAL EVENTS SUCH AS THE ANNUAL CONVENTION SHOW, AND SALE.

APPLICATION FOR MEMBERSHIP

MEMBERSHIP DUES PER YEAR • SINGLE, \$8.00 _____ FAMILY, \$10.00 _____

☐ MR. ☐ MRS. ☐ MISS ☐ MS. _____

NAME

ADDRESS _____

CITY _____ STATE _____ ZIP _____

MAKE CHECKS PAYABLE TO NDGA, INC., AND MAIL TO • GEORGEANN HENRY, MEMBERSHIPS
 8337 SANTA FE LANE
 SHAWNEE MISSION, KS 66212

5 LINES / 12 MONTHS / \$20.00

DEALERS DIRECTORY

We assume no responsibility for errors in these ads after the first printing. Editor

For changes in ads during the year, please send \$2.00 per line.

THE COLLECTOR
Heisey, Fostoria, Cambridge, Linens,
Lace & Primitives
Mary Weaver, 209 Cortez Rd., E.
(44th Ave., E.), Bradenton, FL 33505
Mon., Wed., Fri., - 11-4
PH: (813) 729-2324 - Evenings

A DOOR ANTIQUES Heisey My Specialty 4241 Bayard Road South Euclid, Oh. 44121 PH: (216) 381-3008	GERT'S GLASS Heisey & Duncan Gertrude & Russell Swetnam 1926 Saratoga Dr., Adelphi, Md. 20783 PH: (301) 434-5113	MOSTLY HEISEY Rhoda Curley 16 Clayton Place Albany, NY 12209 By Appointment, PH: (518) 482-6272
ALL HEISEY AUCTION Consignments Welcome Apple Tree Auction Center 1616 W. Church, Newark, Oh. 43055 PH: (614) 344-9449	GLASS 'N' GLASS Virginia & Odell Johnson 6909 10th Ave. W Bradenton, FL 33529 PH: (813) 729 0804	MOUND BUILDERS ANTIQUES Heisey & Animals, General Antiques. Irene Rauck 1138 Moundview, Newark, Oh. 43055 PH: (614) 344-6043
ANN'S GIFTS & ANTIQUES 105 W. Main St., Hebron, Oh. 43025 Intersection of Rts. 40 & 79 Next door to Daisy Queen Daily 10-30 to 5-30	GLASS WITH GLASS Lenore A. Shelley, CGHCC 1336 Lincoln Avenue San Jose, Ca. 95125 PH: (408) 285 8098	PATTON HOUSE Heisey & Duncan Miller Rocky's Mall, I-81 & US 11 Weyer's Cave, Va. 24486 PH: (703) 967-1181
ANTIQUES - THE SHULTZES 206-208 East Main St. Newmanstown, Pa. 17073 15 Miles West of Reading, Pa. PH: (215) 589-2819	GREEN ACRES FARMS Antiques, Crystal Glass & Collectibles 2678 Hazelton-Etna Rd. SW (S.R. 310-N) Pataskala, Oh. 43062 Sat. or Sun. PM or call (614) 927-1882	R & L ANTIQUES - SAN FRANCISCO Shows only - Always lots of Heisey Member of Golden Gate Heisey Club P.O. Box 3614, Daly City, Ca. 94015 PH: (415) 621-6693
AVERY'S QUALITY ANTIQUES Specializing in Heisey Shows or by Appointment 2112 First St., Jackson, MI 49203 PH: (517) 783-4075	H & R DIAMOND H Helen & Robert Rarey 1450 White Ash Dr. Columbus, Oh. 43204 PH: (614) 279-0390 after 5:30	RAMBLING LANE ANTIQUES Featuring Heisey & Other fine glass Keith & Evelyn Hoover Rt. 4, Box 1005, Rhineclande, WI. 54501 - PH: (715) 282 5019
B & B HEISEY & COLLECTIBLES B. Whaley 300 International Dr. Pataskala, Oh. 43062 By Appointment, PH: (614) 927-1557	CHARLOTTE'S GLASS REFLECTIONS Glass, China, Crystal Including Heisey 6816 14th St. W., Bradenton, FL 33507 PH: (813) 756-4143	RAY ZIEGLER Glass repair 2265 Innis Rd. Columbus, Oh. 43224 PH: (614) 882-8446
C. E. HIGGINS (S. F. Bay Area) Shows and Mail Order P. O. Box 2723 Menlo Park, Ca. 94025 PH: (415) 322-0192 Evenings	HARRALSON'S HAPPY HEISEY HUNTERS Ours & Others - Many Choice Items L. SASE - New List - Jan. 1 - May 1 - Sept. 1 We accept consignments & buy collections. 1426 W. Highland, Springfield, MO. 65807 PH: (417) 883-2449	SCHWAN'S ANTIQUES SHOPS & SHOWS 2980 John Tyler Hwy Williamsburg, VA. 23185 PH: (804) 229-7873
C & J ANTIQUES Cole & Jean Miesner Box 45, 72 Whig St. Newark Valley, NY 13811 PH: (607) 642-9905	HARRISON'S ANTIQUES Heisey, Cambridge, Duncan Shows, Mail, by Appointment 26 Johnston's Lane, Mercersburg, Pa. 17236 PH: (717) 328-2451	SUM OF LIFE Elaine & Frank Husted P.O. Box 102 Phoenixville, Pa. 19460 PH: (215) 935-2962
CHARLES & MILDRED FISHER Heisey, Degenhart, Imperial, Antiques, Collectibles, General Line 991 Idlewild, Newark, Oh. 43055 PH: (614) 522-5398	HEISEY GLASS NEWSCASTER Sample copy 70¢, 32 pg. All-Heisey Quarterly \$6.00 (1984) Back Issues \$4.00 yr. 1977-1978-1979- 1980-1981-1982-1983 Box 102, Plymouth, Oh. 44865	T & S ANTIQUES Specializing in Heisey Tom Martin & Steve Rodenick New Rochelle, NY 10805 PH: (914) 235-9632
DAVE'S ANTIQUES Specializing in Heisey Shows & Appointments Tampa, FL 33600 PH: (813) 876-0580	HEISEY PUBLICATIONS All Heisey Books I-III-IV- Heisey Newscaster, 32 pg. Quarterly - \$6.00 Back Issues - \$4.00 Box 102, Plymouth, Oh. 44865	THE GLASS CONNECTION Specializing in Heisey Shows & Mail Order Box 526, Collegeville, Pa. 19426 PH: (215) 489-0139
DIAMOND H PLUS Appointment or Mail Order George & Eileen Schamel Rt. 3, Box 419, Boonsboro, Md. 21713 PH: (301) 432-6285	J & R COLLECTIBLES Shows, SASE, Mail Order list June & Ray Lukasko 1032 Fairlawn, Newark, Oh. 43055 PH: (614) 344-9719	TRUDY MILLER ANTIQUES China & Crystal Matching Heisey A Specialty P.O. Box 740548, Dallas, Tx. 75374 PH: (214) 783-9920
ELLIZABETH BASSETT CASON 401 32nd St., W. Bradenton, FL 33505 Mail Order - List PH: (813) 748-0851	THE PURPLE PLACE Featuring Heisey & Other Fine Glass Martha & Harold Earp 1940 Suwanee, Ft. Myers, FL 33901 PH: (813) 936-1572 Anytime	WILLEY'S ANTIQUES & MUSEUM Specializing in Heisey 11110 Cannon Rd., Trazevsburg, Oh. 45822 16 miles east of Newark, Oh. PH: (614) 828-2557
FOREVER HEISEY Shows and Mail Order Janice Thrane 1663 Londondale Pkwy., Newark, Oh. 43055 PH: (614) 344-5955	JUDY'S DIAMOND H ANTIQUES Specializing in Heisey - Buy & Sell Star Rt. 3, Box 2556 Lake Isabella, Ca. 93240 PH: (619) 378-2176 by Appointment	GOLDSBERRY'S ANTIQUES Heisey a Specialty Shows Only - Buy & Sell Kalamazoo, MI 49000 PH: (616) 381-3013
DIE KUNST GALLERIES & ANTIQUES Specializing in Heisey Vel & Andy Andress Box 329, 725 Front Street Leavenworth, Wa. 98826 PH: (509) 548-7856	PEGGY'S ANTIQUES 2000 pcs. of Heisey in stock Ernie & Peggy Cox P.O. Box 367, Spavinaw, Ok. 74366 By Appointment or by Chance PH: (918) 589-2859	THE WOODEN SHOE Antiques & Collectibles - Buy & Sell Glass, Furniture, Estates Jim & Sheri Van Es, By Appointment 810 Elden, Herndon, Va. 22070 PH: (703) 435-9045

MAKE YOUR RESERVATIONS NOW.....CONVENTION 1985.....JUNE 20-21-22-23, 1985

The rate given us is ONE PERSON - \$37.00 -
TWO PEOPLE - \$42.00, Queen Size ONE person - \$40.00
TWO PEOPLE - \$45.00. The King and Queen size rooms
have steam baths. NO ADDITIONAL CHARGE FOR CHILD-
REN UNDER 18 YEARS OF AGE AND NO ADVANCE DEPOSIT IS
NEEDED. There is a \$4.00 charge per night for a
rollaway bed.

The SHERATON INN will once again be our convention
headquarters for 1985, and they have given a spec-
ial room rate for all H.C.A. members. All activi-
ties will be held there with the exception of the
SHOW AND DISPLAY. Please make your reservation
early because last year they were all taken by the
first of March.

SHERATON INN RESERVATION REQUEST

NAME _____

ADDRESS _____

CITY _____ STATE _____ ZIP _____

PHONE _____ All rooms have two double beds.

ARRIVE _____ Single room requested (one person).....\$37.00

DEPART _____ Double room requested (two people).....\$42.00

Please make your reservation by clipping King or Queen size requested (one person)...\$40.00

the attached form. King or Queen size requested (two People)...\$45.00

MAIL TO: ROBERT McCLAIN Rollaway bed.....\$ 4.00
156 W. SHIELDS STREET

NEWARK, OHIO 43055
PH: (614) 345-8061

1985 SOUVENIR OSCAR FORM

PLEASE READ VERY CAREFULLY BEFORE FILLING OUT

Oscars are Black, marked "HCA '85" and "IG." A
limited edition of 1500 to be offered to members
at \$21.00 until June 1st. None will be sold be-
tween that date and the first day of the Conven-
tion, June 20th., when they will be sold for \$24.
if any are left. You may order ONE per member.
This means ANY member who has a membership card
regardless of class of membership. Please list
all names as they WILL be checked. Everyone liv-
ing in Ohio ordering for pick-up in Ohio, must

pay \$1.26 Sales Tax per Oscar. Shipping charges
will be \$1.50. The Oscars will be shipped as soon
as orders are received.

DO NOT SEND DUES, BOOK ORDERS, ETC. WITH YOUR
OSCAR ORDER.

Please keep this part for a reference and clip and
mail the form below the line. Be sure your dues
are currently paid.

This is the 9th of a series of souvenir Oscars.

Number of OSCARS at \$21.00

Only one per member

Sales Tax \$1.26 each

All Ohio Residents and Pick-Ups in Newark

Postage \$1.50 each

Check one: ☐ Please mail my Oscar(s)
☐ I will pick up my Oscar(s) at
Convention or Museum after the
Convention. Circle One.

TOTAL SENT WITH ORDER.....

MAY PICK UP AT THE MUSEUM ANYTIME.

NO PHONE ORDERS

NAME(s) _____

LIST ALL NAMES _____

ADDRESS _____ CITY _____ STATE _____ ZIP _____

Make check payable to HCA, INC.
and mail to:

HCA OSCAR SALES
P.O. BOX 27
NEWARK, OH 43055

MASTER CARD ☐

CREDIT CARD NUMBER

VISA ☐

EXPIRATION DATE REQUIRED

Mo.

Year

THIRTEENTH ANNUAL
STARLITE ANTIQUES FLEA MARKET

SUNDAY, MARCH 10, 1985

NEW LOCATION!
(FORMERLY HELD AT STARLIGHT SCHOOL)

NORTH ELEMENTARY SCHOOL
300 DEO DRIVE
NEWARK, OHIO

(Off North 21st Street)

9:00 A.M. - 4:00 P.M. (firm times)

FOR FURTHER INFORMATION WRITE:

Dick Smith
225 Upson Downs Road
Newark, Ohio 43055
PH: 614-366-5163 Evenings

ANTIQUES - HEISEY GLASS - POTTERY - CRAFTS
Something for Everyone

Managed by: Land of Legend Heisey Study Club

Benefit of The National Heisey Glass Museum

Plenty of free parking. Donation \$1.00



"HEISEY" PUBLIC AUCTION

ON

WEDNESDAY, JANUARY 16, 1985 AT 1 P.M.
(INDIANA TIME)

AT

INDIANA NATIONAL GUARD ARMORY

(OLD) SOUTH HIGHWAY #37, BLOOMINGTON, INDIANA

Approximately (250) pieces Heisey Glass including several animals, etc., to be sold to the highest bidder. An all day antique auction (other items begin selling at 10:00 A.M.) For information, contact auctioneer.

TERMS: CASH OR APPROVED CHECK - TRAVELERS
CHECKS WELCOME.

IVAN RHODEN - OWNER
KENNY BLAND AUCTIONS
COL. KENNY BLAND -AUCTIONEER
PHONE: 812-876-4486



HEISEY'S GLASSWARE
OF DISTINCTION

By Mary Louise Burns

1983 EDITION

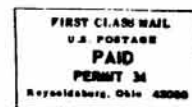
Condensed and updated! Contains all major
tableware patterns with pictures for easy identification.

Current Price List Included

Order direct from author
\$11.95 pp
MARY LOUISE BURNS
P.O. Box 1931
Grants Pass, OR 97527



Individual price lists available for Heisey's
Orchid Etch, Rose Etch., Animals & Verly's @
\$1.50 each plus large SASE.



FIRST-CLASS MAIL