

HEISEY NEWS

The Official Publication of Heisey Collectors of America, Inc.

Volume XXIV No. 12

November 1995

ISSN 0731-8014



How about Thanksgiving . . . 1995?

Do you think that any Thanksgiving—ever—will hold the bright but somewhat frightening promise shining in this war-ravaged Thanksgiving of 1915?

Time will tell us that, but one thing sure won't change: there will be a Thanksgiving in every year to come, for America is a land of long-lived traditions.

And no observing our Thanksgiving here in 1995, America will go about it in the old familiar way—with white meat for Grandma, a leg for Johnnie and giblet gravy for both—with polished silver, spiced loaves, and the lustrous gleam of lucet crystal. Heisey crystal—for that has long been tradition, too.

A. H. HEISEY & CO., NEWARK, OHIO

Heisey's

HAND-BROUGHT CRYSTAL

Too bad they didn't make it!

A. H. Heisey and Company placed this ad in trade publications in 1945. It's a shame that 12 years later they had to close their doors.

You can keep the Heisey tradition alive with your collection and participation in Heisey Collectors of America.

© Heisey Collectors of America, Inc.

All rights reserved 1995

In This 32-Page Issue...

1996 Convention and Centennial Details ♦ From the Archives—Till Death Do We Part
A.H. Heisey Chronology VII ♦ Answers—25 Heisey Favorite Stems ♦ Heisey Basket #456
How To Hints to Avoid ♦ 1995 Holiday Reservation Form ♦ Longaberger Plate Order Details
Lavender Ice Clydesdale order form ♦ 1996 Auction Consignor Form
Did You Know? ... ♦ News from the Museum Shop

HEISEY NEWS

Heisey Collectors of America, Inc.
169 West Church Street
Newark, Ohio 43055
Phone (614) 345-2932 Fax (614) 345-9638
All Rights Reserved 1995
ISSN 0731-8014

Editor
Kelly Thran

Curator
Karen D. Kneisley

Administrator
Mary Ourant

Museum Assistant
Molly Kaspar

HCA President
Tom Bischoff, (419) 533-7431

HCA Vice President
Bob Rarey, (614) 279-0390

HCA Secretary
Ginny Marsh, (614) 366-5608

HCA Treasurer
Charlie Wade, (614) 366-6636

HEISEY NEWS is published and printed monthly (twice in February), by Heisey Collectors of America, Inc. Second Class Postage Paid. Subscription is limited to HCA members. First class mailing is available for an extra \$13.00, due with payment of membership. If you are having difficulty receiving your newsletter, please contact Mary Holland membership secretary.

The opinions expressed in articles in HEISEY NEWS are those of the authors and not necessarily those of the organization. The Editorial staff reserves the right to edit, with or without the consent of the author, or to refuse any material submitted for publication.

Back Issues

The following volumes are available as complete sets: V, VII, VIII, IX, X, XI, XII, XIII, XIV, XV, XVI, XVII, XVIII, XX, XXI, XXIII, for \$9.00 each volume (12 issues, plus auction list if available).

Advertising

Send all ads to: HCA Advertising, 169 W. Church St., Newark, OH 43055 or fax ads to (614) 345-9638, include M.C. or Visa info. Ads are to be typed or printed on white paper with dark ink. Camera ready ads accepted, but must follow line specifications. Ads containing reproductions will not knowingly be accepted unless clearly stated (e.g. Heisey by Imperial, etc.) HEISEY NEWS accepts no further liability. See Advertising section for rates and deadlines.

Museum

Heisey Collectors of America, Inc., a non profit corporation (tax exempt status), owns and operates The National Heisey Glass Museum in Veteran's Park, 6th and Church Streets, Newark, Ohio. Open Tuesday-Saturday 10-4, Sunday 1-4, closed holidays. Other hours by appointment. Members admitted free.

Identification

HCA will attempt to identify unknown glass items. Please enclose a

photograph with your drawings or descriptions. Other arrangements should be made in advance with Karen D. Kneisley, curator.

Membership

To join Heisey Collectors of America or to renew your membership, contact Mary Holland, membership secretary. Associate dues are \$22.00 plus \$5.00 for each additional household member. Voting members pay an additional one-time fee of \$25.00. Please consider supporting the Endowment Fund by joining at one of the levels listed on the back page.

Museum Shop

There is always someone available in the shop to answer questions or take your order. When ordering by phone, please have a credit card ready. When ordering by mail, please be sure to include appropriate charges such as shipping and sales tax.

Shipping and Receiving

Delivery is made much easier when we have a complete street address, not a PO Box. We prefer to use UPS. If you have not received a package, please call Brad, shipping clerk, to confirm it was sent. He will assist you in tracing it. If your package arrives damaged, please contact your local UPS representative. We insure everything.

Donations and Loans to the Museum

If you have something you would like to share with the museum or have questions regarding items on loan, please contact Karen D. Kneisley, curator. HCA reserves the right to accept or refuse items based on current holdings.

Calendar

| | |
|------------------------------------------|-------------------|
| December Quarterly Meeting and Dinner | December 2, 1995 |
| April Benefit Auction | April 12-13, 1996 |
| June 1996 Convention | June 12-15, 1996 |

Features

| | |
|------------------------------------------------------------------------------------------------|-------------|
| How To Hints To Avoid Carl Sparacio eye spy | 6-7 |
| The #456 Basket Joe Lokay | 9-10 |
| Brain Teaser Answers—25 Stem Favorites Walter Ludwig | 10 |
| A.H. Heisey A Chronology VII Tom Felt | 11-13 |
| Convention 1996 Update Amy Jo Jones | 14 |
| Centennial Details Karen D. Kneisley | 15 |
| Membership Drive Did You Know.... Kelly Thran | 16-17 18 |
| Holiday Dinner Reservation & News From The Shop Clydesdale and Longaberger Plate Order Form | 21 22 |

Departments

| | |
|--------------------------------------------|-------|
| President's Discourse, Tom Bischoff | 3 |
| Curator's Report, Karen D. Kneisley | 4 |
| Focus on the Collection, Karen D. Kneisley | 4-5 |
| From the Archives, Don Valdes | 8 |
| Club Notes | 20 |
| Advertising | 23-31 |

The President's Discourse

Tom Bischoff

I had an opportunity to sit in on a meeting of the Industrial Institute Committee along with Karen and Molly this past week. Norm Thran and Sam Schnaidt who have been at this HCA business longer than I reminisced about previous large HCA projects and concluded the Institute participation by HCA is the fourth in a series of major projects; the first three being the moving of the King House, purchase of the Heisey molds and the museum expansion. I seem to remember a few years ago the theme for convention had to do with impossible dreams. It seems now nothing is impossible for HCA with the hard work of both volunteers and our fine staff. Once construction is complete at the Scheidler Machine Works Building, the participation by HCA will move rapidly with installation of the furnaces, kiln and glory hole. The fact this fourth major HCA project will be completed in the dual anniversary year of 1996 can only add to the excitement being felt in the museum.

I am also advised the staff is already preparing and planning for the holidays with great expectations for decorating and celebrating. Remember to come to the December quarterly meeting and dinner to celebrate properly with us! Look forward also to the issue of the Lavender Ice Clydesdale, the Ice Blue Rabbit Paperweight Convention Souvenir, and Ice Blue Tiger (first in a series of four being planned) and of course the Cobalt Flying Mare, proceeds of which will largely fund the IIT project.

If your club information was not in the October listing, check with your Secretary to see if current information was sent in. Clubs have always been intended to be an integral part of what makes HCA work. ♦

In memoriam...

HCA sends its deepest sympathy to the family and friends of Nancy Steel and her husband Archie. Both recently passed away. Nancy will be especially missed by the Northwest Heisey Club.

All-Heisey Benefit Auction—April 12 and 13, 1996

Bob Rarey, Co-Chairman

The annual All-Heisey Museum Benefit Auction will be held at Apple Tree Auction Center in conjunction with the quarterly meeting.

The same policy that has been in effect for several years will again apply: twelve (12) lots per family may be consigned, with no limit on the number of donations. Any consignments over twelve will be considered a donation. Group your consignment as you want it sold. Consignments will be sold in order received. The consignment fee remains at twenty percent with a \$5.00 minimum per lot. The consignment fee is for the benefit of HCA. **Please consign only Heisey or Verlys by Heisey. No Heisey by Imperial will be accepted.**

It is suggested that all consignors use the consignor packing list that appears in this issue of the *Heisey News* and that the auction contract on the same page is signed and submitted with the consignment. If shipping, address to: HCA April Auction, 169 W. Church Street, Newark, Ohio 43055. Careful, adequate packing is important.

Remember: All glass will be inspected when received. Any glass found not to be Heisey will be returned. **DEADLINE FOR CONSIGNING GLASS IS TUESDAY, JANUARY 2, 1996. ♦**

For more information or answers to your questions please contact Bob Rarey (614) 279-0390 or Norm Thran (614) 344-5955.

You will find your consignor contract on page 19.



It's time to celebrate!
Dates for holiday events are listed in this column.

The Holiday Dinner reservation form is on page 21.

Don't Forget ...
the annual All-Heisey Auction will be held April 12 and 13, 1996.

The Auction consignment form is on page 19.

Curator's Report

Karen D. Kneisley

The holiday season begins this month and, true-to-form, the National Heisey Glass Museum will dazzle visitors with a beautiful array of decorations. Our decorating committee is going to begin in mid November so that we're dressed up before Thanksgiving. Displays this year will focus on Heisey with an entertainment theme.

The season's events begin a little earlier, too. As you know our Holiday Dinner will be held on Saturday, December 2. Our month-long series of open houses also begins that day with free admission during regular hours. Refreshments will be served during all of our holiday events.

The fun continues on Sunday, December 3 with a Prism Angel workshop. From 12 noon to 4 p.m. visitors can come to the museum free of charge and make ornaments with "A" prisms, ribbons and lace for \$2 each angel. They make cute gifts and at such a reasonable price, you can afford to decorate your tree from top to bottom with crystal prisms. This is a great family project—bring your children and grandchildren.

On Saturday, December 9 the museum will be open for a dawn to dusk holiday marathon (well, almost). From 10 a.m. to 5 p.m. we'll be open free of charge and the Prism Angel workshop will be repeated. The holiday spirit continues throughout the evening with the annual Christmas in the Park open house, 5 to 8 p.m. Visitors will be treated to refreshments and holiday entertainment. During this event, all of the museums in Veterans Park will be open.

Also in the holiday spirit, I have another wish list for members and study clubs to consider. Last year I asked for some stems to add to the museum's collection and was duly blessed with two pieces in January. This year I'm requesting monetary donations that will help us add lustre to our glass displays.

All of you who have been able to visit the museum in the past two years have been treated to elegant tablesettings in the King House dining room. To make the presentation complete we purchased an inexpensive set of classic stainless steel flatware. The design is effective—its a colonial style—but we would like to purchase an additional set that is more elegant. Let's face it, Heisey's quality crystal ("made in America by hand," you know) deserves the finest presentation possible. Also, we would like to purchase additional decorating materials to be used this holiday season and those to come.

If you or your club would like to contribute to this cause, please send donations marked "holiday decorations" or "flatware." Any amount will help and your donation will be acknowledged in the same manner as glassware or endowment fund contributions.

Happy holidays. ♦

Focus on the Collection—Another Connection to the Railroad

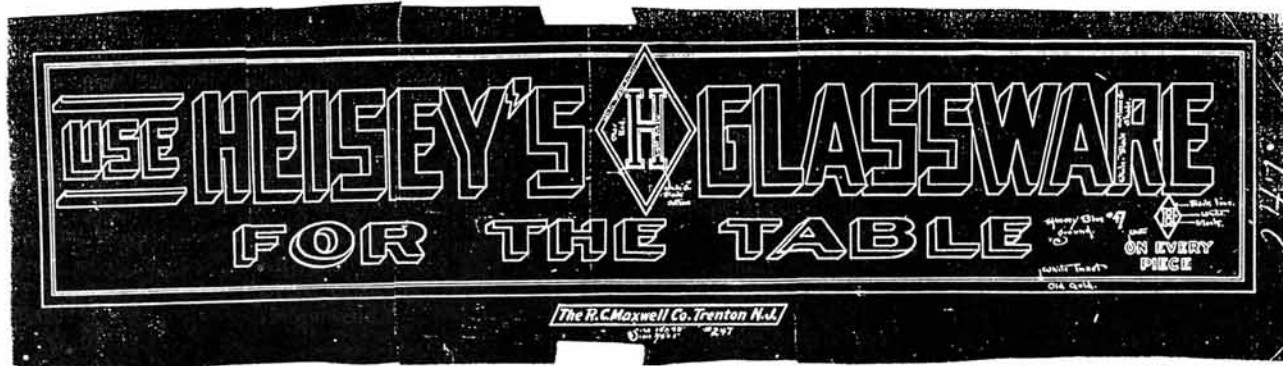
Karen D. Kneisley

This story actually began with an endeavor to answer a completely unrelated question that came in the mail. The HCA archives are still light years away from "user friendly" (Don Valdes refers to this as "job security") so when I want to look for specific details, the process is much like an archaeological dig. That's what makes it so fun.

I was pulling out files that I thought might reveal Heisey's experimentation secrets when I came across a ledger marked "contracts." The book is almost as old as the company itself and contains many interesting tidbits about parties of the first part and parties of the second part. There is information about clay pots, lumber, chemical analyses and personnel. Don and I chuckled when we found a 1919 contract between the company and Joseph Balda. Mr. Balda designed many of the company's etchings and this contract was made to initiate this process. In the third paragraph Mr. Balda just about signed his life away with the clause "In fact, he agrees to do anything to advance the interest of the party of the second part, in the way of designing plate etchings, cuttings, etc." Talk about a broad job description. Mr. Balda was granted \$25 a week for this service.

Back to the point. Heisey collectors have heard a lot about the company's connection to the Santa Fe Railroad through Harvey Amber and the Fred Harvey Crest etching. Items were also made for Union Pacific. Most of this glassware would have been used west of the Alleghenies. In the aforementioned contract book I found an earlier railroad connection that utilized the commuter lines along the East Coast.

Below: the blueprint for Heisey's billboards (greatly reduced).

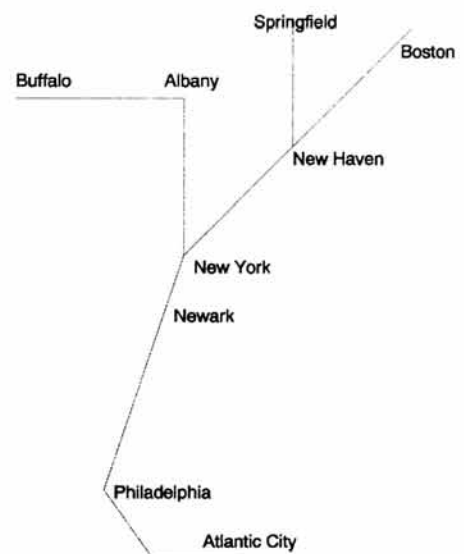


There were two contracts (a total of twenty-nine pages, including revisions) between A.H. Heisey and the R.C. Maxwell Company of Trenton, New Jersey. Each contract, one in 1921 and 1923, included sites for 100 billboards to be serviced for a year at \$81 each, a grand total of \$16,200 (1921 dollars!). Consider this in comparison to Joseph Balda's \$25-a-week salary. Attached were two blueprints for the advertisement and a hand-drawn map of the targeted railways. The blueprints specified a blue background with white lettering outlined in black. The logo's diamond was red with a yellow H. The entire 10- by 50-foot billboard was outlined in gold.

Below: a rendition of Heisey's hand-drawn map of the East Coast.

The map shows that the billboards spanned from Buffalo, New York on the west end and Boston on the east down through Philadelphia, Pennsylvania to Atlantic City, New Jersey. These heavily traveled railways served twenty-two major cities along the way. The instruction to "Use Heisey's Glassware for the Table" would have been read by traffic on the New York Central Railroad, Pennsylvania Railroad and many smaller lines in between.

I love railroad history. My husband is a modeler and railfan and we both lament the decline of this mode of public transportation. A.H. Heisey's major commitment to the billboard campaign demonstrates just how powerful the railroad used to be. Even at \$81 apiece, the exposure that his billboards gave the company cost probably less than a penny a person. ♦



How To Hints To Avoid

Carl Sparacio

"If something seems too good to be true—it usually is," is a homily repeated by my wife almost every time I come home flushed with success from a flea market. She has a knack for spotting nicks, chips, and imperfections in glass. "You didn't notice the check in the handle, did you?" is the most often heard squelch.

I see mold marks where she sees cracks. Glass-wise, we're not compatible.

How many times have you come across a great piece of Heisey, bought it, and discovered later it was not all you thought it was? It doesn't hurt much if you "stole" it but when you sacrifice a week's worth of lunches to buy it, losing weight is a small consolation. So it was with an imposing 18-inch high, #353, Wide Panel trumpet vase spotted sitting high up on a shelf near the ceiling of an antiques shop. "Would it be possible to see that vase?" I asked with a quivering voice. So much for nonchalance.

"Certainly, Sonny," the proprietor said, "I'll fetch the ladder." She was a limber old lady. She scampered up that ladder in a flash and, though I offered to hold it, she never let her cane get in the way.



Up close the vase was filthy, Lord knows how long it had been up there. I gave it the "Blind Test"—with eyes closed I felt every edge for chips and nicks. It passed. Next came the wet finger test. Tracing a squiggle inside the dirty vase with a tongue moistened digit, I tested to see if it was filthy or "sick." It was filthy. So far so good but I had yet to spot the Diamond H on a piece that is usually marked. Moistening my finger again and wishing, too late, that I had licked a different finger for this test, I scrubbed the saliva where the mark ought to be. It was faint, but it was there.

It had no price tag but the asking price indicated that the dealer believed it to be more than a dirty glass vase. She wouldn't bargain and I'm not good at poker face negotiating—I have all I can do to keep from jumping up and down when the prize is in sight. No matter, so glorious a specimen was surely worth the price. I paid the ransom and my "find" was wrapped in newspaper so tattered and torn it gave new meaning to the word *recycle*.

Back home I whipped up a pan of warm sudsy water and, with the help of a long bottle brush, returned Mr. Heisey's vase to its original pristine state. Set in the sun, it glistened. In fact it glistened beautifully except for a small spot inside near the base of the bowl. "Darn!" I exclaimed (or something similar) and reasoned that the bottle brush hadn't reached all the way to the bottom.

Back at the sink the brush was shoved up and down more vigorously than before. After rinsing, the vase was turned over on the drain to dry. The dark place was still there. "How could that be?" I asked myself as myself looked very closely at the offending dirty area. What to my wondering eyes did appear but a clear glass marble stuck near the bottom of the vase. Some dummy had used glass marbles to anchor a flower arrangement. OK, so that's not such a bad idea, but why would anyone want to put flowers in a pretty vase?

The top of the marble was clean and bright from the scrubbing it had endured. Around its center, where it met the vase, a thin dark line traced its circumference. Below that, from the marble to the pointed bottom of the bowl, the remaining half inch of vase was just plain dirty. Once you know the problem, there is no problem. Right? A solution is near. I held the vase upside down and hit its base sharply with the heel of my hand and listened to the sound of a glass marble bouncing off the floor.

Nothing.

I banged again and again and again until my hand began to discolor. Next I tried shaking—gently at first but eventually working up to a violent crescendo. The marble didn't budge.

Doubt began creeping into my "no problem" mentality. I left the piece standing on end for a few days to allow gravity to take its course and visited it every morning religiously. The marble never moved. Obviously marbles are not governed by the same gravity laws that apply to apples.

I won't name those I consulted for a solution because it wouldn't be nice to hold them up to ridicule. After all, they meant well. The first genius suggested I heat the vase.

"With a blow torch?" I asked.

"No, No!" said Mr. Brilliant, Run it under very hot water. The heat will shrink the vase and the marble, being cooler, will roll out."

This guy probably went to school with Isaac Newton. Why not heat the vase *and* the marble and shrink them both? No matter, I followed instructions and the only visible change after the hot water treatment was the color of my hands. Each looked like a lobster after boiling.

The next "expert" said I should tap the vase with a rubber mallet, a solution so simple it had to work. I tapped gently at first. Later my wife took the mallet away from me. She claims I was swinging wildly and was on the verge of hurting myself.

Another fellow suggested I suck it out. I told him I may have a big mouth but the open end of the vase was more than even I could handle. He said he meant for me to use a vacuum. This seemed sensible so I hooked up the hose attachment as recommended, jammed its free end snugly into the vase then turned the vacuum cleaner on. The marble remained in place. I forced the nozzle further in to insure proper suction. There was nothing to indicate that anything had been accomplished until I tried to remove the nozzle—it had sucked itself firmly in place.

A beautiful Heisey trumpet vase with a vacuum hose protruding out the top doesn't add much to a show and tell table. After fruitlessly tugging, pulling and yanking, I thought to reverse the vacuum cleaner into its balloon blowing cycle to break the vacuum that held the hose to the vase. That worked!....but only for the hose. I was out of options as far as the marble was concerned. Only a brick through the antiques shop's window could soothe my wounded ego.

I rummaged through our basement for something long enough and thin enough to poke at that marble. In my heart I knew it wouldn't do any good but I had this deep seated need to hit the damn thing. I didn't find a suitable "tool" but found, instead, an old can of *Liquid Wrench*, a penetrating oil. The instructions said this oil could soak through parts solidly rusted and frozen together and free them. *Just let it soak in and tap with a hammer to loosen*, that's what the label said. Heck, I was already an experienced tapper.

I poured penetrating oil into the vase and waited, reasoning that once I could see that the oil had seeped to the underside of the marble, it had done its job. After standing overnight, the oil was still in place above the marble. I don't recommend this method. It doesn't work. Besides, cleaning oil out of a tall, slender trumpet vase is not an easy task for anyone with hands bigger than a Munchkin's.

There you have it—every method tried to date to remove a marble stuck in a vase. I trust you've made notes to guide you should you run into a similar problem. Next month we'll reveal the method used to finally remove the marble from its prison—providing, of course, someone comes up with a workable solution by then.

Send your recommendations in care of the museum or fax directly to (201) 236-8934. Suggestions will be appreciated—as will encouragement. ♦

From the Archives—Till Death Do We Part

Don Valdes

Last month Karen wrote about glassware pattern names. I've been doing my own bit with names. I have finally gotten into the employee records and have been listing names—names on the back of pictures, names on insurance policy lists, and names on payroll deduction authorization cards. It has gotten a bit boring, generally, but with a little effort I have found some entertainment value and even an occasional challenge. For example, we have two of

those long photographs of the Heisey employees in front of the plant taken in 1925. But nothing is ever easy. The persons who numbered the two photos with their corresponding names started in different places on the photo. On one they are numbered from left to right starting at the top left, on the other numbering started at bottom left. That doesn't seem too bad until you realize that not all the individuals were known to both parties. It became a matter of match and fill in the blanks where possible. Fine, but in both cases numbers were skipped. Ray Cobel is quite a different person on photo 1 than on photo 2! Fortunately, we now have a list of 1925 employees, at least most of them who appeared in the picture.



Double vision? No, it's just Pete Rehbeck playing a joke on the photographer. The two pictures above are actually from the same one, the American Flint Glassworkers Union. Pete managed to get in the shot twice; he's the man on both ends.

Among others of those long pictures was one that brought back the past. Just as George (Gigi) Phillips of Roselle Park (New Jersey) Junior High School fame ran from the right side of our graduating class as we posed for the photographer (the left side as you look at it) to the left in order to appear in the picture twice, completely confusing some future archivist, so too did Pete Rehbeck, a Heisey mould maker. The occasion was a meeting of the American Flint Glassworkers' Union in 1939.

Next to be tackled was a huge stack of payroll deduction cards. In a search to find some means of becoming bored out of my skull I fortunately discovered some human interest stories hidden away among the forms supplied by the Equitable Life Assurance Society. Attached to five of them were blue cards with policy change information. (Names will be hereby changed to protect the innocent.) In two cases a young lady changed her last name, marriage being given as the reason. Interestingly enough, both of these were "in house" affairs, the name change corresponded to that of a male employee. Then came the case of a beneficiary change from wife to mother. Death? Divorce? Next, a young man changed his beneficiary from sister to someone with a feminine name and his last name. Relationship was left blank. I would assume marriage was the basis for this shift. No plant love interest here, however. We had no young lady of that name among the employees. The last blue card in the stack is the most complex. John Doe originally filed the form in August of 1949 with Elizebeth (sic) Doe stated as beneficiary. On November 1949 a change card was filed making Mary Smith (daughter) the insurance recipient should misfortune fall upon Mr. Doe. The following month, December, another change occurred. Once more Elizebeth is named. A separation and reconciliation? Perhaps I will come upon yet another box of employee related materials. If so, and the date is there, I will be sure to fill you in on the saga of John and Elizebeth Doe. ♦

Heisey Basket #456

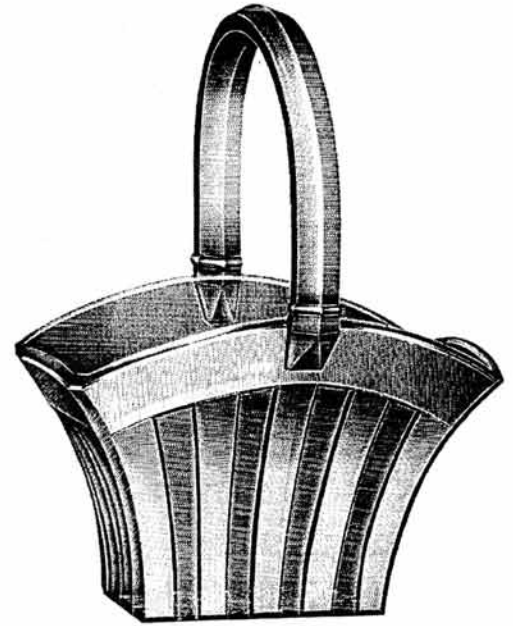
Joe Lokay

Basket #456 is a unique one in that it has two side handles rather than one handle over the top. Note the picture with this article. This basket is pictured in Heisey Catalog #76 which is an addendum to catalog #75. Underneath the catalog picture it says "#456 Basket Vase with Side Handles". The overall design of the basket is like pattern #456, Recessed Panel. The Recessed Panel pattern has baskets that came in three sizes: 7, 8 and 9 inches.

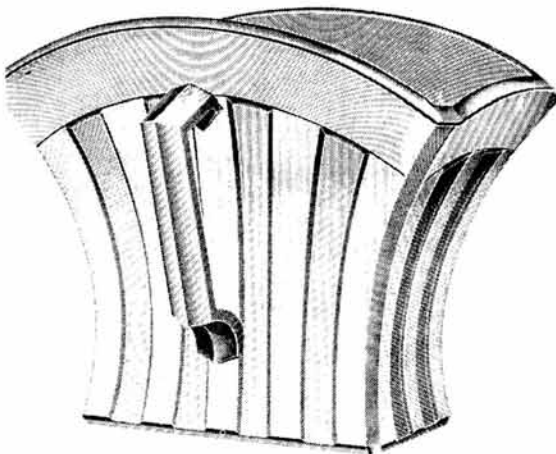
One's first reaction is that this basket is the 8-inch Recessed Panel basket without a handle applied to the top but with side handles applied. The side handles look like the handles used on various jugs. One can get the impression that jug handles were taken and applied to the sides of the basket. Upon study, I found that this is not the case, particularly, when you compare the #456 basket to the #465 basket.

First, the #456 side handles are not applied but are formed at the same time the basket proper is formed. There is a vertical mold seam along the center of the side handles. The mold, made in two halves, separated here so that the basket with handles could be removed from the mold. The #465 basket proper has no mold seams as it is formed by a plunger that presses out the entire basket shape. Perhaps the bottom plates are the same. Not so, as the polished bottom of the #456 basket is larger and contains a 28-point star. The #465 polished bottom is smaller and contains only a 20 point star. The #456 basket is about 3/4 inch taller than the #465 basket proper. The number of recessed panels is identical on both baskets.

The opening across the top of the #456 basket is essentially rectangular and measures 5½ by 8 inches. The height at the highest point is 6¾ inches. The basket is signed with a large diamond H in the center of the bottom on the inside.



#465 Basket



No. 456 Basket Vase with side handles, ground bottom

As previously mentioned, Basket #456 is pictured in Heisey Catalog #76, circa 1915. There is no other information available about this side handled basket in the HCA Library. For example: Catalog #75, circa 1914; the Heisey booklet "Table Glass & How To Use It", circa 1916; Heisey's Basket Catalog #81, circa 1916; and Price Lists, circa 1915 to 1917, all contain nothing about the #456 Side Handled Basket. To me, the lack of information about the basket indicates that it did not sell very well and thus, a short production period for the #456 basket which is estimated at about 2 to 3 years, or somewhere between 1915-1917. Because of this, it may not be easy to find this basket.

Based on the estimated production dates, the #456 basket was made in crystal only.

While small in width, the rim or collar at the top of the basket does provide a small flat surface for decorations. There are references that show Heisey etchings or cuttings on a similar narrow band on baskets #465 and #473. Therefore, it's possible that etchings or cuttings were put on the narrow band of the #456 basket.

A design pattern was applied for the #465 Recessed Panel basket (with the handle over the top). Patent #47736 was granted on August 17, 1915. Side handles applied to a basket of similar design seemed unique to me, yet no design patent was applied for. Again, perhaps because the concept was not accepted by the buying public.

Looking at its picture or the basket itself, one could easily say that the design of basket #456 is definitely Recessed Panel and thus, belongs in pattern #465. Since there are no other references, did the 5 and 6 get transposed in the printing of Catalog #76 and #456 should have been #465? Good question. I don't know the answer. ♦

Answers To 25 Heisey Favorites—Stems

Walter Ludwig

- | | | | |
|----------------|-------|---------------------|-------|
| 1. Spanish | #3404 | 14. Yorktown | #5011 |
| 2. Adam | #3376 | 15. Admiralty | #3424 |
| 3. Trojan | #3366 | 16. Mid-Century | #5080 |
| 4. Wabash | #3350 | 17. King Arthur | #3357 |
| 5. Rampul | #3325 | 18. Tyrolean | #5025 |
| 6. Park Lane | #4055 | 19. Park Avenue | #5078 |
| 7. Lady Leg | #3335 | 20. Portsmouth | #3440 |
| 8. National | #4052 | 21. Legionnaire | #5077 |
| 9. Graceful | #5022 | 22. Kenilworth | #4092 |
| 10. Ganada | #3454 | 23. Savoy Plaza | #3418 |
| 11. Carlsbad | #1000 | 24. Old Dominion | #3380 |
| 12. Dancer Leg | #5049 | 25. Reis-Ridgeleigh | #4069 |
| 13. Statuesque | #3331 | | |



Here's a corollary to this puzzle. Can you identify these stems? The names are listed above (hint, hint).

A. H. Heisey & Company—A Chronology, Part VII

Tom Felt

1940

- ♦February. The first of the animal figurines, the #2 Chanticleer (or Fighting Rooster) was reported as new. The first mention in the trade journals called this figurine a “game cock.”
- ♦September. #1519 Oceanic¹ and #1521 Quilt were shown as new in the trade journals.
- ♦The #510 Tavern silhouette etching was pictured in the *Crockery and Glass Journal*.
- ♦Also advertised for the first time this month was the #507 Orchid plate etching, which was to become the most popular etching the company ever produced.
- ♦New stemware lines for 1940 included #5022 Graceful and #5023 Continental.
- ♦New cuttings included: #935 Basque*, #936 Cathe*, #937 Donegal*, #938 Kilkenney*, #939 Festoon Wreath, #940 Westchester, #941 Barcelona, #942 Harvester, #943 Belfast, #944 Courtship, #945 Virginia, #946 Port Said, #947 Enchantress, #948 Boquet, #949 Evelyn, #950 Erin, #951 Holly Wreath, #952 Santo Domingo*, #953 Corsica*, #954 Bombay*, #955 Polished Punties* and #956 Everest*.

1941

- ♦March. The #5025 Tyrolean stemware line was advertised.
- ♦April 1. Price list 215-20 was issued.
- ♦Pieces in the #1504 Regency pattern were pictured in the trade journals this month.
- ♦July. #1533 Wampum was reported as new.²
- ♦Heisey announced the winners of a *Ladies Home Journal* “Orchid” sales campaign. The judges decided that the displays at three stores were equally outstanding and awarded three first prizes: to Marshall Fields, B. Altman & Company, and the Jordan Marsh Company.
- ♦August. The #965 Narcissus cutting was advertised, initially in the trade journals and then extensively in several popular magazines.
- ♦The #1489 horsehead cigarette box was also advertised as new this month.
- ♦September. #4004 Polka Dot was previewed.³ When it was originally shown at Heisey’s sales convention on June 29, it was described as a “spot optic” and unanimously approved by the sales force for addition to the line.
- ♦September 1. Price list 216-21 was issued.
- ♦October. Royal Hickman had begun designing for Heisey by this time⁴ and was responsible for the new animals advertised this month: the #1522 standing pony⁵, the #1527 kicking pony, the #1529 balking pony, the #1538 rabbit paperweight and the #1541 Scotty.⁶ The #1540 Oscar⁷ was also introduced at this time.
- ♦Other new patterns for 1941 included #1535 Pointed Oval Point*. The #1536 military cap ash tray was also made this year.



#2 Chanticleer
(or Fighting Rooster)



#5022 Graceful



#5025 Tyrolean

¹ This pattern was renamed Waverly in 1949. The earliest patent for this pattern was applied for on August 4, 1948.

² Most of the pieces in this small line were adapted from earlier pieces in the #1521 Quilt pattern of the previous year.

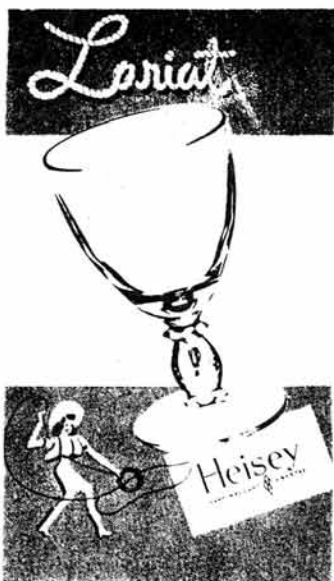
³ This pattern was in production only briefly, but was later reissued in 1952 as Impromptu. A patent was filed for this pattern on September 12, 1941 and approved November 18, 1941.

⁴ There were no announcements of his association with Heisey in the trade journals until July 1942. Hickman (1893-1969) was best known for his designs for Haeger Potteries, though he also worked for many other companies, including J. H. Venon, Kosta Glassworks and others. For further information see the *Heisey News*, September 1989, p. 5-10.

⁵ Some sources have dated the standing colt as early as 1940. The patent for it, however, was filed for on March 18, 1941 and approved May 27, 1941.

⁶ Called a Sealyham.

⁷ Also known as the Sparky or Plug Horse, based on a popular comic strip character.



#1540 Lariat
Brochure



#9012
Victory etch

- ◆New stemware patterns included #5024 Oxford.
- ◆One new plate etching was introduced, #508 Floral.
- ◆Other new cuttings included: #918 ½ Bay State*, #957 Oriental, #958 Ping Pong, #959 Lotus, #960 Atlantic City*, #961 Versailles*, #962 Punties*, #963 Commodore, #964 Maryland, #966 Picket, #967 Vivian, #968 Mary*, #969 Miriam* and #970 Limerick*.
- ◆Cobalt was discontinued sometime in 1940 and Heisey returned to the production of crystal only.

1942

◆January. #1540 Lariat (called Gordian Knot), designed by Carl Cobel, was introduced at the annual show in Pittsburgh.⁸ This marked a return to this show after an absence of twenty years. The #1 goose, wings down, the #2 goose, wings half, and the #3 goose, wings up, all designed by Royal Hickman, were also shown. The #975 Bow Knot cutting was also offered at this show, but was discontinued immediately, since it did not receive a favorable reaction. The #974 Star Waterford cutting was much more successful.

◆January 6. E. Wilson Heisey was admitted to the Newark Hospital for treatment prior to surgery.

◆January 17. E. Wilson Heisey was operated on.

◆January 21. Four days after his operation, E. Wilson Heisey died at 2:40 a.m.

◆T. Clarence Heisey assumed the presidency of the firm after his brother's death.

◆August. The #980 Moonglo cutting was advertised as new, with its "distinctive style which complements the lines of the looped border" of the #1540 Lariat pattern.

◆September. The #5042 Corinthian stemware pattern was shown. The #9012 Victory silhouette etching was also advertised as new this month.

◆October. Another new silhouette etching was advertised: #9013 You, Me, Us.

◆Other new animals designed by Royal Hickman in 1942 included the #1 giraffe, head straight, the #2 giraffe, head turned, the #1550 Dolphin pieces, the #1553 sparrows (#1, #2 and #3) and the #1554 Fish bookends. Royal Hickman also created the #1 Madonna in 1942. The #1 ringneck pheasant and the #2 Clydesdale were also introduced this year.

◆Other new stemware lines included #5038 Rooster and #5041 Athena.⁹

◆One new plate etching was introduced, #511 Gardenia.

◆Other new cuttings included: #971 Geneva*, #972 Berne*, #973 Ceylon*, #976 St. George Waterford, #977 Diamond Waterford, #978 Bedford*, #979 Tipperary*, #981 Moon Beam, #982 Moon Gleam, #983 Lady Astor, #984 Lancaster, #985 Sheffield, #986 Miami*, #987 Brittany*, #989 Laramie, #994 Athens* and #995 Castalia*.

◆Emil Krall, Sr., resigned at about this time and for a while had his own studio on Cedar Street in Newark, where he continued to offer engravings cut on Heisey blanks.

1943

◆March. #1559 Columbia was shown.

◆May. "Wartime Salesman" ordergrams¹⁰ were issued for Heisey's four major production lines during the War years: Crystolite, Lariat, Orchid and Gift Items (which included the animals).

⁸ A patent for this pattern was filed September 12, 1941, and approved November 11, 1941.

⁹ Made exclusively for Montgomery Ward and Company, initially under the pattern name, "Imperial."

¹⁰ Brochures that were meant to be combination catalogs and order forms.

♦September. Working with the Frankford Arsenal, it was announced that Heisey had developed a new form of glass gauge for measuring the accuracy of interior and exterior diameters of rods, gun barrels, etc. Formerly such gauges had to be made of high-quality steel, a critical war material that could thus be released for other uses by substituting the new glass gauges. Molds were produced for at least twenty-four different gauges.

♦Horace King began working as a designer for Heisey, spending only part of his time at the factory and continuing his teaching duties at Denison University.

♦New cuttings for 1943 included: #988 Serenade, #990 Mystic, #991 St. Regis, #992 Dominica*, #993 Laurel Grey, #996 Medina, #997 Maytime, #998 Alexander, #999 Carolina, #1000 Rosemary, #1001 Louis XVI, #1002 Mediterranean, #1003 Canterbury and #1004 Spray*.

♦As part of the War effort, a number of molds for older, discontinued patterns were destroyed to be used as scrap.

♦George Duncan Heisey, A. H. Heisey's eldest son, died this year. He had long before severed all but nominal connections with the glass business.

1944

♦January 1. Price list 217-22 was issued.

♦July. Local Union #30, composed of members employed in Heisey's hot metal department, collected money to furnish two sun-rooms in the new Fletcher General Hospital at Cambridge, Ohio. \$382 in all was donated on behalf of wounded members of the armed services who would be using the new institution.

♦Montgomery Ward began offering pressed pieces in the #1541 Athena pattern.¹¹

♦New animals by Royal Hickman in 1944 included the #1 donkey, the #1 large elephant, the #2 middle elephant and the #3 small elephant.

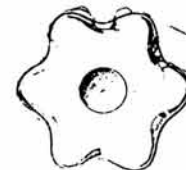
1945

♦January. The company gave a dinner at the Granville Inn for employees with 25 years of service or more.¹² This was planned to be an annual event that would also honor members of the Diamond H Club, made up of those employees who had a record of forty years continuous service or longer. Gold pins were presented by T. Clarence Heisey to the 25-year veterans. The Diamond H Club pins were set with a small diamond and were given to seven employees with forty-eight years of service and twelve with between forty and forty-seven years service. According to the *American Flint*, the tables at this banquet "were gay with roses and beautiful Heisey glass." In all, seventy-four employees were treated to a three-course dinner.

♦August 14. VJ Day was announced and, in celebration, the factory was closed for two days.

♦The #100 Asiatic pheasant, designed by Royal Hickman, was new this year.¹³ The #2 Madonna was also added to the line.

♦One of Heisey's most innovative offerings this year was the epergnette. Annie Lee Dillon,¹⁴ a society woman from Raleigh, North Carolina, invented this item as an inexpensive way to convert a candlestick or candelabra into an epergne for floral displays.♦



M. the Candle block
16-22-44
H. King

#1541 Athena
drawing by
Horace King



#2 Madonna

¹¹ Montgomery Ward catalogs for this period give no pattern name. "Athena" was not adopted as the pattern name until 1946.

¹² In later years, this group was known as the Quarter Century Club.

¹³ A mold for the Asiatic pheasant (called a "pheasant lamp base") was made as early as November 1943.

¹⁴ She was known to her friends as Gadget Dillon, since she invented and patented various other practical devices. Heisey eventually made epergnettes in three patterns, #341 Old Williamsburg, #1519 Waverly and #1619 Block Five. Other companies (notably Cambridge) also produced epergnettes in later years.

Convention 1996 Update

Amy Jo Jones, Convention Co-Chairperson



With just eight months to go before you all start arriving in Newark for Convention 1996, June 12-15, we thought you might enjoy a sneak peak at the full slate of activities already planned to keep you very busy. To begin the festivities Tuesday evening, June 11, a very special preview is scheduled for HCA's new glassmaking demonstration project located within the Institute of Industrial Technology now under construction. Later in the week, Ken Dalzell will conduct a seminar on the aspects of glassmaking utilizing the type of equipment in the project. Of course, the demonstration area of IIT will be operating for viewing during the week.

On Wednesday, June 12, the always eagerly awaited show preview and display opens at Adena Hall. Following the closing of the show, an ice cream social will be held on the museum grounds. HCA is hosting the event (aided by the Licking County Historical Society) and plans to invite the community to join us in celebrating the 100th anniversary of the opening of the A.H. Heisey factory. The Air Force Band from Wright Patterson Air Force Base has agreed to provide entertainment during the evening. There will be other activities in the park this year, too. Instead of Flea Market on the Square, the Buckeye Study Club plans to stage Antiques and Collectibles in the Park—still at dawn on Saturday until whenever!

For the centennial, HCA plans to publish Tom Felt's masterful history of the production of the A.H. Heisey & Company. What an honor this project pays not only to the Heisey Company but to HCA and the legacy it works so hard to perpetuate. Tom has been invited for a book signing session to be held in the Buckingham House.

The very popular ID session is scheduled for Thursday morning at Cherry Valley Lodge. On Friday evening, the annual meeting at Cherry Valley will highlight a tribute to the 25th anniversary of HCA. (Yes, we have two reasons to celebrate this year—the 100th anniversary of the factory opening and the 25th anniversary of HCA!) Rounding out the week is the banquet on Saturday evening, June 15. Jane Spillman, curator of American glass and head of the curatorial department at the Corning Museum, will be the guest speaker.

Next year's convention is very special since the two anniversaries coincide, so there is something for everyone planned from the traditional convention programs to the more ambitious undertaking of a community event. We hope you all will seek to become an active participant in the festivities by attending and by volunteering for many of the myriad of duties to be accomplished. Soon a letter will go out to the study clubs outlining the activities and how they can become partners in the undertaking of Convention 1996. Three clubs have already signed on—the Dayton Area Club will host the Swap and Silent Auction, Heisey Collectors of California will staff the club booth at the show and the Buckeye Heisey Study Club is bringing you Antiques and Collectibles in the Park. Even the Licking County Historical Society is excited by the festivities and plans to participate by hosting the wiener roast. However, individuals can still be very effective in participating especially in the area of hospitality and programs. If you can give some time please call me at (513) 426-1567. By continuing to work together this organization will still be going strong by the golden anniversary of HCA rolls around in 2021!♦

Celebrating A Legacy of American Craftsmanship—Centennial Programs

Karen D. Kneisley

It's almost here. The long-awaited, much-talked-about centennial year. Actually it began months ago at the 1995 convention, but if you didn't make it to Newark this year, you'll want to try harder in 1996. Convention co-chairpersons Amy Jo Jones and Sam Schnaidt have cooked up a great week in honor of A.H. Heisey and Company's 100th and HCA's 25th anniversaries.

There's more to do than convention, though. Our special programs will begin in January and continue throughout the year. Here's a shopping list of reasons to make the National Heisey Glass Museum your second home (please, no camping in the courtyard—ha, ha).

Lectures and Tours—Every first Sunday of the month there will be a museum program highlighting some aspect of Heisey. During months when there is a featured exhibition, there will be a guided tour. In between exhibitions there will be lectures. The series begins on January 7, 1996 with a Centennial Lecture to warm up the community and members to the rich history of A.H. Heisey and Company. In February the series continues with a staff-guided tour of the exhibition *Lasting Impressions: The Fine Art of Moldmaking*. Speaking of exhibitions ...

Exhibition Series—Remember the excitement created during the advertising exhibition last June? Well there's more! The mold exhibition opens February 3 and continues through April 14. Next in line, *A.H. Heisey: Portrait of a Glassmaker* will be on view May 18 through July 21. The last exhibition the centennial series will be *Business Among Gentlemen: The Nature of Competition in the Glass Industry*, on view September 7 through November 10.

The Anniversary—Heisey's factory opened in April 1896 so HCA, not missing a beat, will celebrate in style in April 1996. We've moved the annual All-Heisey Benefit Auction to April 12 and 13. On Saturday evening of the same weekend HCA members and the community at large will party the night away at a dinner celebrating the anniversary.

Once-in-a-lifetime Opportunities—To commemorate our centennial year HCA will issue several special editions in glass. To document the 100 years of Heisey history thus far, HCA will publish a 68-page historical book. Written by researcher and collector Tom Felt, the piece will discuss the origins of the factory, pattern history and biographical background of the people who made it happen. Black and white and color photographs, drawings and ads will illustrate the book, which will feature a handy index and timeline placing Heisey in the context of its peers and world events.

The Centennial Open House—During convention week the National Heisey Glass Museum has always opened its doors to the community. This year they'll be open wider than ever. Special tours and the ice cream social will entice greater participation from nonmembers. We are also inviting representatives from other glass clubs to participate in the week's activities. They will be encouraged to set up tables in the courtyard during Antiques and Collectibles in the Park so that they can pass out information or sell books and glass. A seminar will feature interclub experts using Tom Felt's timeline as a model for discussion on elegant glassware. In the interest of providing a broader community service, a second public ID session will utilize expertise from other clubs and will take place at the museum. ♦

Mark your calendar ... Centennial activities will take place all year.



Celebrate the centennial with your friends

During 1996 we encourage you to share the excitement. Your friends, family and business associates may have commented on your beautiful glassware collection. Extend them an invitation to join HCA. Tell them about the fun you have attending auctions, glass shows and (best of all) making the annual pilgrimage to Newark for the HCA convention. You'd be surprised how many people don't know about the wonderful resources available to HCA members. This is the time to take action!

Duplicate the following page, cut it in half and set the forms out in your show booth, office, library or shop. Carry a few with you in your car. Don't miss any important opportunities to recruit new members. Photocopying costs only pennies a page—can you afford not to share?

The National Heisey Glass Museum's Centennial Celebration will give people plenty of reasons to sign up. Special editions and an historic publication are among the surprises to come. Aren't you glad you're a member of the largest glass club of its kind in North America?◆



Congratulations!

You have recognized the most celebrated trademark in collectible American glassware—the Heisey Diamond H.

Did you know? ...

◆ The A.H. Heisey and Company made glassware in Newark, Ohio from 1896 to 1957 in hundreds of patterns and twelve production colors.

◆ There is a national organization for collectors of Heisey glass which publishes a 32+ page monthly magazine that is sent to more than 4,000 collectors nationwide. Filled with a variety of Heisey information, the educational *Heisey News* also contains regional club news as well as glass for sale.

Would you like to learn more?

Just fill out the coupon below to enter the fascinating world of Heisey glassware.

Mail to: Heisey Collectors of America, Inc., 169 W. Church St., Newark, OH 43055.

Call (614) 345-2932 for more information.



☐ Please send more information.

☐ Please enroll me as member of HCA.

Number of members _____

\$22.00 Associate annual dues _____

\$5.00 each additional household member _____ (subtotal)

\$25.00 Voting (one-time additional fee) _____

TOTAL _____

☐ I'd like to give the organization an extra boost and support the National Heisey Glass Museum through participation in the Endowment Fund. Fee includes regular Associate and additional household member dues.

\$30.00 Individual Contributing _____

\$40.00 Joint Contributing _____

\$50.00 Family Contributing _____

\$100.00 Patron _____

\$250.00 Sponsor _____

\$500.00 Benefactor _____

Name _____

Address _____

City/State/Zip _____

Daytime phone _____

Additional member(s)' name(s) _____

Method of payment:

☐ check (payable to HCA) ☐ MasterCard/VISA

card # _____ exp. date _____

rev 11/95



Congratulations!

You have recognized the most celebrated trademark in collectible American glassware—the Heisey Diamond H.

Did you know? ...

◆ The A.H. Heisey and Company made glassware in Newark, Ohio from 1896 to 1957 in hundreds of patterns and twelve production colors.

◆ There is a national organization for collectors of Heisey glass which publishes a 32+ page monthly magazine that is sent to more than 4,000 collectors nationwide. Filled with a variety of Heisey information, the educational *Heisey News* also contains regional club news as well as glass for sale.

Would you like to learn more?

Just fill out the coupon below to enter the fascinating world of Heisey glassware.

Mail to: Heisey Collectors of America, Inc., 169 W. Church St., Newark, OH 43055.

Call (614) 345-2932 for more information.



☐ Please send more information.

☐ Please enroll me as member of HCA.

Number of members _____

\$22.00 Associate annual dues _____

\$5.00 each additional household member _____ (subtotal)

\$25.00 Voting (one-time additional fee) _____

TOTAL _____

☐ I'd like to give the organization an extra boost and support the National Heisey Glass Museum through participation in the Endowment Fund. Fee includes regular Associate and additional household member dues.

\$30.00 Individual Contributing _____

\$40.00 Joint Contributing _____

\$50.00 Family Contributing _____

\$100.00 Patron _____

\$250.00 Sponsor _____

\$500.00 Benefactor _____

Name _____

Address _____

City/State/Zip _____

Daytime phone _____

Additional member(s)' name(s) _____

Method of payment:

☐ check (payable to HCA) ☐ MasterCard/VISA

card # _____ exp. date _____

Did You Know...

Kelly Thran

Did you know....



The Heisey diamond H was actually removed from a piece of glass!!! Eke!! Who would do such a thing? Unfortunately, back in the 1920's the Watson Company of Attleboro Massachusetts, did just this. The company purchased Heisey glass and had the now and then famous "diamond H" trademark ground off and then had new designs cut and engraved on the glass.

A former employee of the Watson Company, Carl Schweidenback reports that "at the age of 14 years I went to work for the Watson Company. I worked after school until dinner and during my summer vacations. My pay was 35 cents an hour. My job was to ground the "diamond H" trademark off the glass. I worked mostly on plates and candy jars. It only took ten minutes to remove the trademark which included smoothing and polishing the piece of glass. After I completed my job, a journeyman would then cut or engrave a design on the piece of glass. I have removed hundreds of trademarks over the years. ♦

Reprint from Heisey News Vol. VII, May 1978 by Leonard Padgett

*Hundreds! of Diamonds
ground off!!!*



#4085 Kohinoor

Did you know...

The A.H. Heisey and Company referred to salt saucers as individual salts or salt dips. The company which was in business from 1896 to 1957 manufactured salt dips from 1896 to 1944. The Heisey salt dips were only made in Crystal. Except for production item #1183 Revere; which was produced in Flamingo, Moongleam, and Cobalt. And the more difficult to find in color; production item #1255 Pineapple and Fan, which was produced both in Crystal and Emerald Green. The Pineapple and Fan salt dip was manufactured around 1896 through 1898. ♦



#1183 Revere



#1255 Pineapple and Fan pattern



#4091 Kimberly

Did you know...

Production item #1488 Kohinoor was copied from the famous diamond. On a more difficult note this line designed by Von Nessen, is known in Crystal, Sahara and Zircon. Some of the pieces were designed by Carl Cobel who at the time was working for Von Nessen. The blown stem line carries the number 4085. The stem pieces with straight sided bowls are known as Kohinoor but flared bowl items are in the #4091 Kimberly line. These two have the same stem but different bowls. The shape of the diamond is shown on both stems. ♦

**1996 HCA BENEFIT AUCTION
CONSIGNOR PACKING LIST**

Name _____
Address _____
City _____ State _____ Zip _____
Daytime phone (____) _____

Ship to: **HCA Auction, 169 W. Church St., Newark, OH 43055**

Deadline: **January 2, 1996**

A signed contract must accompany your auction glass

| Lot# | Qty. | Pattern #/Name | Description | Cut/Etch | Color | H | Damage |
|------|------|----------------|-------------|----------|-------|---|--------|
| 1 | | | | | | | |
| 2 | | | | | | | |
| 3 | | | | | | | |
| 4 | | | | | | | |
| 5 | | | | | | | |
| 6 | | | | | | | |
| 7 | | | | | | | |
| 8 | | | | | | | |
| 9 | | | | | | | |
| 10 | | | | | | | |
| 11 | | | | | | | |
| 12 | | | | | | | |

**Heisey Collectors of America, Inc. Benefit Auction
April 12 and 13, 1996
AUCTION CONTRACT**

This agreement is hereby entered into between *(Please Print)*

Owner/Consignor _____
Address _____
City _____ State _____ Zip _____

and Heisey Collectors of America, Inc. In consideration of 20% commission charged, HCA, in conjunction with auctioneers who are licensed by the Division of Licensing Dept. of Commerce and bonded in favor of the State of Ohio in the amount of \$10,000.00, hereby agrees to sell at absolute auction the above listed Heisey glass.

Commission percentage is subject to certain minimums or other extra expenses. Minimum commission is \$5.00 per lot. Usual expenses such as advertising, clerk and cashier fees, cataloging, labor and other expenses necessary to properly conduct an auction will be born by HCA.

HCA agrees to assume responsibility for goods to be sold at Benefit Auction. HCA responsibility begins when the goods are received and continues until the goods are sold. In the event of loss prior to sale, consignor will be compensated for item(s) lost or damaged based on the value determined by a qualified appraiser(s), less commission. HCA carries a blanket insurance policy to cover all items held for sale.

Owner/Consignor may not bid on his own goods at auction. Settlement for goods sold must be made in full within 72 hours after auction is completed. Collection of payment from buyers is the sole responsibility of HCA. All monies are held in HCA Trust Account. Consignors will be paid from Trust Account.

HCA rep: Signature Charlie Wade
Consignor: Signature _____ Date _____
Daytime phone (____) _____



CLUB NOTES



Gulf Coast Heisey Club #42

Fran Grenzebach

The Gulf Coast Heisey Collectors Club will meet on Thursday, November 16, 1996 at the home of Fran and Jack Grenzebach, 10534 Valencia Rd., Seminole, Florida. The meeting will convene at 11:00 a.m. The program will be on favor vases and ball vases. A light lunch will be served.

All Heisey club members who are visiting in the area are welcomed. For further information, map and directions you may call (813) 391-5184. ♦



Attention Members:

A few words from the editor

In last month's issue of the *Heisey News* we ran an updated list of Heisey study clubs. As we stated in the article the information was compiled from that which was received from the clubs who replied to our request. Only the clubs who were recruiting members were listed. If your club was not listed and you would like to be, please have your club secretary send the information to the museum to the attention of the editor. When an updated list is published again in the future we will be sure to include the information.

On another note, due to the necessity for updates, the HCA slides will no longer be available for use. We are planning to redesign the slide programs. If there are any members who may still have a set we would ask that you return them as soon as possible. ♦



Statement of Ownership, Management, and Circulation

(Required by 39 U.S.C. 3685)

| | | |
|-------------------------------------------------------------------------------------------------------------------|-------------------------------------|-------------------------------|
| 1. Publication Title | 2. Publication No. | 3. Filing Date |
| HEISEY NEWS | 000986 | |
| 4. Issue Frequency | 5. No. of Issues Published Annually | 6. Annual Subscription Price |
| Monthly except Feb. (2 times Feb.) | 13 | \$19.00 (includes membership) |
| 7. Complete Mailing Address of Known Office of Publication (Street, City, County, State, and ZIP+4) (Not Printer) | | |
| Heisey Collectors of America, Inc., 169 W. Church St. Newark, Ohio 43055-4945 | | |
| 8. Complete Mailing Address of Headquarters or General Business Office of Publisher (Not Printer) | | |
| Same | | |

9. Full Names and Complete Mailing Addresses of Publisher, Editor, and Managing Editor (Do Not Leave Blank)

Publisher (Name and Complete Mailing Address)

Same

Editor (Name and Complete Mailing Address)

Kelly Thran, same address

Signature and Title of Editor, Publisher, Business Manager, or Owner

Date

Kelly Thran, Editor, Mary R. Durant, Administrator *Oct. 4, 1995*

I certify that all information furnished on this form is true and complete. I understand that anyone who furnishes false or misleading information on this form or who omits material or information requested on the form may be subject to criminal sanctions (including fines and imprisonment) and/or civil sanctions (including multiple damages and civil penalties).

HCA Annual Holiday Dinner

Saturday, December 2 at The National Heisey Glass Museum

Join us in Newark for a festive holiday evening. Browse our museum and enjoy our Holiday Entertainment display along with thematic decorations. Jeffers Catering will be serving six different appetizers, prime rib and baked marinated chicken, baked potato, vegetable medley, tossed salad, assorted dinner rolls, and for dessert—cake, cheese cake and a variety of pies. Donation bar, coffee, tea, and soda. Bring your family and friends. Cost is only \$22.50 each person. Cocktails begin at 6:30 p.m., followed by dinner at 7:30 p.m. ♦



RESERVATION FORM for Holiday Dinner

Mail to HCA Holiday Dinner, Mary Ourant, 169 W. Church St., Newark, Ohio 43055

Name(s): _____

Address: _____

City/State/Zip: _____

Daytime phone: _____

Please enclose payment: check or MasterCard/Visa _____ exp. _____

Number of Dinner Reservations: _____ X \$22.50 each = _____

Holiday Events
are listed in the
Curator's Report
on page 4.

Holiday Happenings in the Museum Shop

If it's about Heisey—we've got it!

While you're in town for the December quarterly meeting, start your holiday shopping at the National Heisey Glass Museum. If you can't make it to Newark, give us a call. Our friendly shop clerks are ready and waiting to take your order and offer helpful suggestions.



Cobalt Cabochon Sign—These beautiful reproductions by Dalzell Viking are perfect for any collector on your gift list at \$25. Item 117C.

Books by Replacements, Ltd.—*Tiffin is Forever* (\$29.95, item 145), *The Seneca Glass Company* (\$24.95, item 144) and *A Collection of American Crystal* (\$24.95, item 143) are beautiful hardbound books that feature brief histories and page after page of stemware and cutting identifications. Shipping is \$4.00 for each book.

Ice Blue Madonna—If you liked the Ice Blue Fish Candlestick, you'll love the Madonna. Made by Dalzell Viking, Heisey's elegant #1 Madonna is featured plain (\$28.50, item 040F) and frosted (\$29.50, item SN). Tres chic!

Ruby and Emerald items—Add the Heisey touch to your decorating scheme with red (item 103A, \$30.00 each, \$55.00 pair) and green (item 103C, \$22.00 each, \$40.00 pair) Ipswich candlesticks. Tom and Jerry Mugs make great gifts for only \$15.00 (green, item 107B) and \$18.00 (red, item 107A).

When ordering by mail, please include shipping charges (\$5.00 first item, \$1.50 each additional) and sales tax for Ohio residents. To order by phone call (614) 345-2932. ♦

HELP!
We need more
authentic Heisey
glassware to sell in
the Museum Shop.
All proceeds
benefit the
operation of the
museum and the
contributions are
tax-deductible.

Send your extra
sherberts, plates,
nappies and cute
items valued at less
than \$50.00 to
"Museum Shop
Glass."

Lavender Ice Clydesdale Order Form

30-day order period ends November 16, 1995

Hey! Don't delay!!
More than 250
Clydesdales sold in
the first three days!
Keep those orders
coming!

Lavender Ice **collectors wake up!!** Only 450 Lavender Ice Clydesdales will be made or as many as sold in the 30-day period. Limited edition—5 per customer. Walk in, telephone or mail orders are accepted. Orders sent by U.S. mail do not guarantee a Clydesdale. Mail orders will be processed in lottery style with telephone and walk in orders!! If you have been collecting the Lavender Ice Series you will definitely want to add this beautiful piece to your collection. Hurry!! This one promises to be a sell out! ♦



ORDER FORM

MAIL to Lavender Ice Clydesdale, 169 W. Church St., Newark, Ohio 43055. Or CALL (614) 345-2932.

Name: _____
Address: _____
City/State/Zip: _____
Telephone: _____
Tax #: _____
Check or MasterCard/Visa _____ exp. date _____

| | | | |
|--------------------------|---|-----------------|-----------------------|
| Quantity _____ | X | \$75.00 = _____ | Please Circle: |
| Tax (OH res. ONLY) _____ | X | \$4.50 = _____ | I will pick up |
| Shipping _____ | X | \$5.00 = _____ | Ship |

How to Order Longaberger Basket Plates

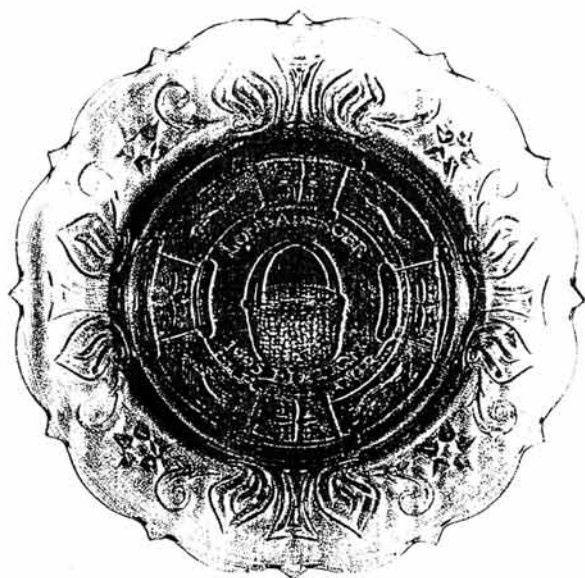
Sold only in Dresden, Ohio

The response to the plate made for the Longaberger Company has been overwhelming. Several shipments have gone to Dresden where they are sold in various shops. The plate is made by Dalzell Viking in Cranberry Mist using the Heisey Eagle plate mold. A specially made basket design is featured in the center of the plate with the inscription "Longaberger, 1995 Edition, Dresden Tour."

You can order your basket plate by contacting Longaberger directly. By mail, send your orders to:

The Longaberger Company
Captain's House
326 High St.
Dresden, OH 43821

You can order by phone, too. The number is (614) 754-6547. Each plate costs \$20.00 plus \$5.00 shipping and handling. Ohio residents must add 6 percent sales tax. ♦



→Advertising: Send all ads to HCA Advertising, 169 W. Church St., Newark, OH 43055 or fax ads to (614) 345-9638, include MasterCard or VISA information. Ads are to be typed or printed on white paper with dark ink. Please double space. All ads must be prepaid. Please do not abbreviate Heisey pattern names or colors. Ads which are entered in a vertical column format can contain a maximum of 67 characters per line, including spaces and punctuation.

Classified: 20 cents per word (members), 30 cents per word (non-members), \$1.50 minimum, 1/8 page limit. Personal ads 1/8 page limit. Abbreviations and initials count as words.

| Display Ads: | member | non |
|----------------------------------------------|----------|----------|
| 1/8 page (12 lines) | \$20.00 | \$30.00 |
| 1/4 page (25 lines) | \$40.00 | \$60.00 |
| 1/2 page (horizontal or vertical) (60 lines) | \$80.00 | \$120.00 |
| Full page | \$160.00 | \$240.00 |

Ad copy must be received by the first of the month prior to publication (e.g. April 1 for May issue). Camera ready ads must follow specification. Reproductions (i.e. Heisey by Imperial) must be clearly indicated. Heisey News accepts no further liability.

Classified Ads

FOR SALE: Heisey Collection with extensive listings in candlesticks, cream & sugar sets, Crystolite, Old Sandwich, Rib and Panel, Ridgeleigh, Twist. Also Baskets and Gem Series set w/wo Flying Mare. SASE to Bill Brakemeyer, 2214 Drummond St., Riverside, CA 92506. (909) 788-4406.

WANTED: Heisey Baskets! Top dollar paid by collector. Moongleam & Hawthorne #461 Banded Picket; Flamingo #500 Octagon; Coronation; #473 Narrow Flute with Rim. Carolyn Felger (818) 705-0854.

FOR SALE: Same number Gold set, \$750.00; Same number Lavender Ice animals, \$900.00. Frosted Flying Mare, \$450.00. Set of three Geese, Lavender Ice or set of three Mallards, \$200.00 each set. Set of three elephants, Lavender Ice, \$275.00. (941) 334-0288.

WANTED: Heisey "Fox Chase" #1509 8" sq. plate, #5012 7" ft'd. vase, #4163 16 oz. beer mug w/red, Mnglm., Amber, handle. Fred Ludwig, 300 Rt. 10 Randolph, New Jersey 07869. (201) 366-7279.

FOR SALE: #1252 Twist Moongleam cups (13), \$32.00 each, saucers (14), \$8.00 each, bon-bon dish, \$18.00; all \$520.00. #1469 Ridgeleigh Crystal 2½" ashtrays (4), \$4.00 each. M Schubert, 3100 N. Main St., Soquel, California 95073.

WANTED: Heisey baskets: etched, cut, colored, unusual decorations or whimsies. Send price and description to Kim Carlisle, 28220 Lamong Rd., Sheridan, Indiana 46069. (317) 758-5767.

WANTED: Stoppers For: Twist 2 oz. Marigold cruet, Ipswich Moongleam cruet, Carcassone Moongleam decanter. Call collect (717) 223-8759 or write Gary Shardell, R.D. 6, Box 6199, E. Stroudsburg, Pennsylvania 18301.

WANTED: #3408 Jamestown Stems, Rosalie etch: Oysters, ice teas, wines, juices, clarets, sherrys and cordials. Bill Ponseti (415) 892-2648, 749 Kendon Lane, Navato, California, 94947.

WANTED: Heisey in Carcassone #3390. Empress #1401 or Queen Ann #1509 blank with Old Colony plate etching #448 in Crystal, any pieces, especially interested in serving pieces, vase, ice bucket, Empress pitcher, decanter, etc., contact: Amy Drake, 927 Gabes Rd., Mosinee, WI. 54455. Or call (715) 693-3279.

Bob & Joanne McElheney's Heisey
3310 Gallatin
Toledo, Ohio 43606

(419) 537-6890
Shipping & Ins. Extra
H=Heisey

- #300 Peerless punch bowl and base, punch cups, more
- #341½ Colonial punch bowl and base, punch cups, more
- #343 Sunburst punch bowl and base, punch cups
- #1540 Lariat punch bowl, underplate, punch cups, more

Much Much More!

BRASWELL'S COLLECTIBLE GLASS
380 Lowell Jones Rd.
Piney Flats, TN 37686

(423) 538-5760
UPS & Ins. Extra
H=Marked

- #1229 Octagon fld. mayo, d.o., Moongleam, H \$35.00
- #1503 Crystolite 3-lite candlesticks, pr. \$72.00
- #1401 Empress salt & pepper, Sahara, H \$95.00
- #1401 Empress 3 toe candlestick, H \$105.00
- #1504 Regency 2-lite candlesticks, pr. \$80.00
- #1519 Waverly covered butter w/horsehead finial \$65.00
- #1540 Lariat 2-lite candlesticks, pr. \$52.00
- #1540 Lariat 3-lite candlesticks, pr. \$70.00
- #1567 Plantation cream & sugar, H \$60.00

GLASS 'N' GLASS
Virginia & Odell Johnson
6909-10th Ave. W.
Bradenton, FL 34209

(941) 792-0604
Shipping Extra
H=Marked

- #1567 Plantation 1 large candleblocks, pr. \$195.00
- #341 Colonial lg. tea caddy mushroom stopper, H \$110.00
- #1405 Ipswich 10 oz. goblet, (8) ea. \$25.00
- #1469 Ridgeleigh 8" plates, (6) ea. \$30.00
- #1469 Ridgeleigh 10" vase, H \$60.00
- #52 Salt & pepper, Flamingo, pr. H \$70.00
- #1503 Crystolite 4½" cig. box, cover, H \$40.00
- #325 Pillows high fld. rose bowl \$195.00
- #3404 Spanish stem 5½ oz. saucer champagne
Crystal stem, Cobalt bowl, H, (6) ea. \$85.00
- #1506 Whirlpool 8 oz. fld. tumbler, Zircon, H, (2) ea. \$95.00



Advertise with the Heisey News!

PLUNDER FROM THE PAST**(919) 937-6743****Thomas Smith****PO Box 7981****H=Marked****Rocky Mount, NC 27804****Heisey Animals in Crystal**

Colt, standing

Goose, wings half, H

Clydesdale

Swan

Tiger paperweight (frosted)

Dealers Special

\$1950.00 for all — Postpaid**Calvin & Dorothy Meyer****(904) 335-0664****8025 SW 47th Court****UPS & Ins. Extra****Gainesville, FL 32608****H=Marked**

| | | |
|--------------------------------|------------------------------------------------------|----------|
| #1503 | Crystolite cake salver | \$375.00 |
| Crystolite "Dawn" Color | | |
| #1503 | Crystolite 15" floral bowl, Dawn, H | \$250.00 |
| #5003 | Crystolite blown n.f. 12 oz. ice tea, (6) ea. | \$40.00 |
| #5003 | Crystolite blown n.f. 10 oz. tumbler, (11) ea. | \$36.00 |
| #5003 | Crystolite blown n.f. 5 oz. juice, (9) ea. | \$50.00 |
| #3335 | Lady Leg 8 oz. goblet, Adams cutting, (8) ea. | \$20.00 |
| #3335 | Lady Leg 6 oz. saucer champ., Adams cutting, (9) ea. | \$16.00 |
| #1183 | Revere 6" plate, H, (5) ea. | \$6.00 |
| #3350 | Wabash 10 oz. goblet, Pied Piper etch, H, (7) ea. | \$20.00 |
| #3350 | Wabash 6 oz. saucer champ., Pied Piper etch, (3)ea. | \$16.00 |
| #1184 | Yeoman 7" plate, Empress etch, d.o., (5) ea. | \$8.00 |

Send self-addressed stamped envelope for extensive Crystolite listing,
Plus Mahabar, Regency and Warwick sets and pieces!

HEISEY ET CETERA**(614) 397-4591****Bud Moreau****UPS Extra****407 E. Chestnut Street****H=Heisey****Mount Vernon, OH 43050**

| | | |
|-------|------------------------------------------------------|---------|
| #128 | Liberty candlesticks, 3", Flamingo, pr., H | \$60.00 |
| #355 | Quator sugar (Flower Cut), H | \$24.00 |
| #411 | Tudor 4 oz. cruet, #7 stopper, H | \$38.00 |
| #465 | Recessed Panel 1 lb. candy jar, no lid, H | \$18.00 |
| #1112 | Sparta cocktail, 3½ oz. optic, H, (2) ea. | \$6.50 |
| #1252 | Twist platter (Newark Cent) | \$28.00 |
| #1255 | Pineapple & Fan pitcher, 5 oz., Custard | \$48.00 |
| #1425 | Victorian 8½" plates, (8), H, (Imp. Amber), ea. | \$16.00 |
| #1425 | Victorian goblets, 2 ball, H, (8), (Imp. Amber), ea. | \$18.00 |
| #1552 | Four Leaf candleblock, pr. | \$80.00 |
| #1540 | Lariat 8" plates, H, (8) ea. | \$12.00 |
| #1540 | Lariat goblets, 3-blown, H, 1-pressed, ea. | \$18.00 |
| #1540 | Lariat 11" crimped bowl | \$35.00 |
| #1776 | Kalonyal 4 oz. cruet (No stopper) | \$58.00 |
| #2052 | Bar, 2 oz. Pied Piper etch, H, (2) ea. | \$30.00 |
| #3350 | Goblets 10 oz. Pied Piper etch, H, (2) ea. | \$26.00 |
| #4044 | New Era 2-lite candle only, pr. | \$49.00 |
| #4163 | Plates, 7", Pied Piper etch, H, (4) ea. | \$7.00 |
| #5024 | Oxford cordials, 1 oz., H, (2) ea. | \$22.00 |
| #5072 | Rose stem goblet, 10 oz., Rose etch, ea. | \$36.00 |

WANTED: 10" (Helmet) Basket—Call Collect**FOREVER HEISEY****(614) 344-5955****Norm & Jan Thran****UPS & Ins. Extra****1663 Londondale Pkwy.****H=Marked****Newark, OH 43055**

| | | |
|--------|---------------------------------------------------------------------------------------------------|----------|
| #25 | Federal, 9½" candlestick, H, pr. | \$225.00 |
| #28 | Elizabeth, 9¼" candlestick, H, pr. | \$240.00 |
| #339 | Continental water bottle, H | \$40.00 |
| #339 | Continental water bottle, Flamingo | \$295.00 |
| #333 | Waldorf Astoria toothpick | \$95.00 |
| #343 | Sunburst 5½" footed jelly compote, H | \$45.00 |
| #353 | Medium Flat Panel 18" ft'd. vase, scalloped base, HH | \$245.00 |
| #400 | Colonial three quart pitcher, H | \$145.00 |
| #411 | Tudor handled mayonnaise, Hawthorne, H | \$65.00 |
| #411 | Tudor handled jelly, Hawthorne, H | \$30.00 |
| #417 | Double Rib & Panel 6" handled basket, Crystal, H | \$225.00 |
| #417 | Double Rib & Panel 6" handled basket w/Floral cutting, H | \$250.00 |
| #417 | Double Rib & Panel 6" handled basket, Flamingo | \$150.00 |
| #458 | Pickett 8" handled basket w/Floral cutting, H | \$195.00 |
| #463 | Bonnet 9" handled basket w/Floral cutting, H | \$325.00 |
| #1184 | Yeoman demitasse cup & saucer, Flmg., H, (4) ea. | \$40.00 |
| #1201 | Fandango 4" Rose bowl (ball vase) | \$85.00 |
| #1252½ | Twist footed mayonnaise, Moongleam | \$40.00 |
| #1401 | Empress individual cream & sugar, Sahara, H, pr. | \$67.50 |
| #1401 | Empress tray for individual cream & sugar, Moongleam | \$65.00 |
| #1401 | Empress 7" square plate, Sahara, H, (4) ea. | \$11.00 |
| #1401 | Empress 6" round plate, Sahara, H, (5) ea. | \$8.00 |
| #1401 | Old Sandwich 18 oz. handled mug, Crystal with yellow and black enamel band around top, H, (3) ea. | \$65.00 |
| #1404 | Old Sandwich 18 oz. handled mug, Cobalt, H, (2) ea. | \$350.00 |
| #1404 | Old Sandwich 18 oz. handled mug, Moongleam, H, (2) ea. | \$375.00 |
| #1488 | Kohinor 2-lite candelabra complete with Heisey 2" (J prisms) (1 Bobeche craked) pr. | \$265.00 |
| #1489 | Puritan large cigarette box w/horsehead finial | \$75.00 |
| #1495 | Fern twin mayo with handle and Rosalie etch | \$40.00 |
| #1496 | Mahabar (Crystolite) covered cig. box, Sahara, H | \$240.00 |
| #1503 | Crystolite 5" footed oval nut, H | \$60.00 |
| #1503 | Crystolite 7" oval bon-bon, H | \$30.00 |
| #1503 | Crystolite 1-lite candlestick, pr. | \$35.00 |
| #1503 | Crystolite 3-lite candlestick, pr. | \$55.00 |
| #1503 | Crystolite electrified candleblock, Hurricane (no globe) | \$55.00 |
| #1503½ | Crystolite Melon candleblocks, pr. | \$65.00 |
| #1540 | Lariat 21" buffet plate/punch bowl underplate | \$95.00 |
| #1540 | Lariat 13" oval deviled egg plate | \$295.00 |
| #1540 | Lariat 7" handled round sweet meat basket | \$185.00 |
| #1540 | Lariat tall champagnes, (4) ea. | \$15.00 |
| #1540 | Lariat 9" footed handled basket | \$145.00 |
| #1540 | Lariat 7½" footed fan vase w/Orchid etch | \$125.00 |
| #1567 | Plantation 7½" plate (8) ea. | \$22.00 |
| #1567 | Plantation half gallon ice lip pitcher, faint H | \$350.00 |
| #2401 | Oakwood 8 oz. old fashion w/Sweet Adeline carving | \$195.00 |
| #2401 | Oakwood 8 oz. old fashion, Circus etch camel | \$250.00 |
| #2401 | Oakwood 8 oz. old fashion, w/Sweet Briar cutting | \$40.00 |
| #3390 | Carcassonne decanter, Sahara w/Crystal stopper and Lotus etch | \$275.00 |
| #3404 | Spanish goblet, Cobalt, H, (7) ea. | \$115.00 |
| #3404 | Spanish champagne, Cobalt, (12) ea. | \$85.00 |
| #3404 | Spanish cocktail, Cobalt, (8) ea. | \$110.00 |
| #3481 | Glenford 8½ oz. footed tumbler, d.o., Hawthorne, (4) ea. | \$50.00 |
| #4206 | Optic Tooth 8" footed vase, d.o., Flamingo | \$110.00 |
| #4163 | Whaley 16 oz. mug w/Club Drinking scene, H | \$165.00 |
| #4163 | Whaley 16 oz. mug w/Fisherman etch, H, (2) ea. | \$195.00 |
| #4044 | New Era 2-lite candelabra complete, pr. | \$195.00 |

Ron & Maureen Kovacs
9310 E. Windrose Drive
Scottsdale, AZ 85260

(602) 451-4995 Tues-Wed 9am-10pm
Thurs-Mon 7pm-10pm (MST)
UPS & Ins. Extra H=Marked

| | | |
|-----------|--------------------------------------------------------------|----------|
| #100 | Centennial 6" candlestick, H | \$50.00 |
| #112 | Mercury 3" candlestick, Sahara, pr. | \$62.00 |
| #300 | Peerless toothpick holder, H | \$50.00 |
| #300 | Peerless 1 oz. cordial, Sham, H | \$18.00 |
| #305 | Punty & Diamond Point #2 salt, sterling top | \$40.00 |
| #335 | Prince of Wales 5" ftd. jelly, shallow, H | \$69.00 |
| #335 | Prince of Wales custard, H | \$16.00 |
| #341 | Puritan 5" hi ftd. jelly, shallow, H | \$22.00 |
| #343 | Sunburst toothpick holder, dec. gold, H | \$120.00 |
| #343 | Sunburst 5 1/4" ftd. jelly, flared, H | \$50.00 |
| #343 | Sunburst 7 oz. goblet, H | \$215.00 |
| #353 | Medium Flat Panel measuring cup, H | \$270.00 |
| #393 | Narrow Flute domino sugar, ftd., H | \$59.00 |
| #411 | Tudor 5" hi ftd. jelly, Hawthorne, H | \$52.00 |
| #411 | Tudor 5" hi ftd. jelly, gold & flwr dec., Hawthorne, H | \$65.00 |
| #427 | Daisy & leaves 4" nappy, shallow, H | \$25.00 |
| #433 | Greek Key 9 oz. goblet | \$135.00 |
| #465 | Recessed Panel 1/2 lb. candy jar, sil, unk gray cut, H | \$85.00 |
| #805 | Hoffman House 3/4 oz. cordial | \$50.00 |
| #1183 | Revere 1/2 lb. cov. candy jar, ornate unk, cut, H | \$135.00 |
| #1183 | Revere divided mayo dish, unk, cut, sterling base, H | \$34.00 |
| #1184 | Yeoman 5 oz. sherbet, d.o., H, (4) ea. | \$7.00 |
| #1205 | Fancy Loop wine, straight | \$40.00 |
| #1220 | Punty Band 8 oz. tumbler, souv. red stain | \$28.00 |
| #1220 | Punty Band toothpick holder, souv., ruby stain beaded top, H | \$49.00 |
| #1225 | Ridge & Star 10" plate, H, (2) ea. | \$30.00 |
| #1252 | Twist mayonnaise, Marigold | \$54.00 |
| #1255 | Pineapple & Fan hotel sugar | \$23.00 |
| #1255 | Pineapple & Fan toothpick, hldr, gold dec, Emerald | \$160.00 |
| #1255 | Pineapple & Fan 4" rose bowl, engraving, Emerald | \$95.00 |
| #1255 | Pineapple & Fan tumber, souv., Emerald | \$36.00 |
| #1280 | Winged Scroll covered butter, gold dec., Emerald | \$130.00 |
| #1295 | Beaded Swag 8 oz. goblet, Custard | \$54.00 |
| #1401 | Empress 6" mint, ftd., Sahara, H | \$27.00 |
| #1401 | Empress 10" triplex relish, ornate unk, cut, H | \$45.00 |
| #1404 | Old Sandwich 10 oz. beer mug, Cobalt, H | \$370.00 |
| #1447 | Rococo 6" comport, H | \$80.00 |
| #1469 1/2 | Ridgeleigh 3 1/4" coaster, Sahara | \$30.00 |
| #1503 | Crystolite 3 1/4" ashtray, round, Zircon, H | \$70.00 |
| #1519 | Waverly indiv. cream & sugar, #507 Orchid etch | \$69.00 |
| #1519 | Waverly cream & sugar, ftd., #515 Rose etch, H, set | \$70.00 |
| #1567 | Plantation 3 1/2" coaster ashtray | \$32.00 |
| #3304 | Universal 6 oz. champagne, #980 Moonglo cut, (2)ea | \$25.00 |
| #3350 | Wabash 10 oz. goblet, w.o., ornate unk. gray cut | \$49.00 |
| #3350 | Wabash 10 oz. goblet d.o., Hawthorne, H | \$70.00 |
| #3365 | Ramshorn 9 oz. gob., Ramshorn optic, unknown cut | \$50.00 |
| #3404 | Spanish 10 oz. goblet, #749 Riviere cut, H | \$70.00 |
| #3416 | Barbara Fritchie 10 oz. goblet #850 Delmonte cut, H | \$54.00 |
| #3416 | Barbara Fritchie 3/4 oz. brandy, w.o., H | \$54.00 |
| #3416 | Barbara Fritchie 1 oz. cordial, w.o., H | \$63.00 |
| #4069 | Ridgeleigh 1 oz. cordial, blue stain bowl & base | \$90.00 |
| #4091 | Kimberly 10 oz. goblet, #944 Courtship cut, H | \$50.00 |
| | Tropical Fish, #125 Of 450, Lavender Ice, Dal-Vik | \$525.00 |

Chris Janes
13995 77th Pl. No.
West Palm Beach, FL 33412

(407) 753-9819
After 6:00 p.m.
UPS Extra
H=Marked

| | | |
|-------|-----------------------------------------------|---------|
| #2 | Old Williamsburg 7" 1-lite candlestick, H | \$35.00 |
| #5 | Patrician 6" candlestick, H | \$35.00 |
| #134 | Trident candlesticks, Rosalie etch, pr. | \$45.00 |
| #1193 | Inside scallop conserve, Flamingo, H | \$28.00 |
| #1425 | Victorian 2 oz. bar, (2) ea., H | \$22.00 |
| #1519 | Waverly 9" 4-part relish, Rose etch, H | \$65.00 |
| #1567 | Plantation 8 1/2" plate, (5) ea., H | \$25.00 |
| #1567 | Plantation cup (4) ea., H | \$25.00 |
| #4225 | Cobel 1-qt. cocktail shaker w/Rooster stopper | \$85.00 |

Jean & Don Parrett
4995 Maple Dale Rd.
Jackson, MI 49201

(517) 784-7319 Recorder
Post & Ins. Extra
Layaways Accepted
H=Marked

| | | |
|-------|------------------------------------------------------------------|----------|
| #1231 | Octagon creamer, Moongleam | \$30.00 |
| #433 | Greek Key hotel oblong sugar | \$75.00 |
| #1401 | Empress 4 oz. cruet & stopper, Flamingo | \$135.00 |
| #1425 | Victorian 6" 3 ball stem ftd. compote | \$155.00 |
| #1469 | Ridgeleigh 12 oz. ftd. ice tea, flared, (2) ea. | \$65.00 |
| #1469 | Ridgeleigh 5" puff box & cover | \$75.00 |
| #1469 | Ridgeleigh 9" sprink salad bowl | \$135.00 |
| #433 | Greek Key 2 qt. crushed fruit, #352 lid | \$250.00 |
| #1252 | Twist 8" nasturtium bowl 4ftd., Sahara | \$225.00 |
| #352 | Medium Flat lg. 24 oz. lavender jar & cover | \$175.00 |
| #402 | Gothic 2-lite candelabra 402, bobeches & "A" prisms, pr. | \$795.00 |
| #1543 | Satellite 1-lite candle holder, Crystal, pr. | \$295.00 |
| #1632 | Lode star 1-lite candle cups, Dawn, pr. | \$145.00 |
| #1445 | Grape 1-lite candle lg., bobeches & "A" prisms, pr. | \$295.00 |
| #20 | Sheffield 1-lite candle holder 7", pr. | \$145.00 |
| #1506 | Whirlpool 2-lite ball center, pr. | \$295.00 |
| #4044 | New Era 2-lite candle holder, #4044 bobeches and "A" prisms, pr. | \$155.00 |
| #1513 | Baroque 2-lite, 2 bobeches, candelabra, vase in center, 1 only | \$185.00 |
| #1567 | Plantation cake stand | \$195.00 |
| #300 | Peerless cake stand | \$110.00 |
| #1428 | Warwick lg. floral bowl, Sahara | \$195.00 |

Please check September & October for wants!!!

Advertise with the Heisey News!

Maurice & Jean Walter Antiques
6 Royal Crest Dr. #5
N. Andover, MA 01845

(508) 975-3541, after 5 pm
UPS & Ins. Extra
H=Marked

| | | |
|-----------|----------------------------------------------------------------------------------|----------|
| #150 | Banded Flute covered butter, H | \$132.00 |
| #310 | Ring Band toothpick holder, Custard, souvenir Jackson, NH | \$58.00 |
| #362 | 8 oz. syrup, w/Grey cut (unknown), HH | \$48.00 |
| #433 | Greek Key 3 pint jug, H | \$198.00 |
| #1222 | (Schwilke's) 1255 (Buxton Inn), 1226 (2) Colonial, all H, all 4 | \$20.00 |
| #1255 | Plain Band sherbet, 2 7/8" x 2 1/4" T | \$30.00 |
| #1255 | Plain Band, toy sugar w/o lid, 2 5/8" x 2 3/8" T | \$30.00 |
| #1229 | Octagon nut cup, Sahara, H, (3) ea. | \$20.00 |
| #1401 | Empress 7" hdl. Triplex relish, Sahara | \$38.00 |
| #1401 | Empress 2 part hdl. relish, Moongleam | \$45.00 |
| #1404 | Old Sandwich 1/2 gal. jug, Sahara | \$220.00 |
| #1404 | Old Sandwich individual ashtray, H, (12) ea. | \$10.00 |
| #1404 | Old Sandwich candlestick, H, pr. | \$110.00 |
| #1428 | Warwick 9" floral vase, Cobalt, some strawmarks | \$350.00 |
| #1469 | Ridgeleigh nut cup, H, (4) ea. | \$16.00 |
| #1472 | Parallel Quarter 3" candlestick, w/unknown etch, pr. | \$45.00 |
| #1503 | Crystalite hd., covered, 2-part candy, H | \$38.00 |
| #1503 | Crystalite round ashtray, H | \$10.00 |
| #1503 | Crystalite shell master nut w/2 indiv. shell nuts, all | \$44.00 |
| #1503 | Crystalite cover only for shell fld. candy | \$12.00 |
| #1503 | Crystalite 1-lite candlestick, (1) | \$18.00 |
| #1503 | Crystalite 3-lite candlestick, pr. | \$65.00 |
| #1519 | Waverly 10 1/4" plate w/Rose etch | \$48.00 |
| #1519 | Waverly 8" plate w/Rose etch, (2) ea. | \$35.00 |
| #1519 | Waverly 6" comport w/Rose etch | \$45.00 |
| #1519 | Waverly salt shaker w/silver top (clear), H | \$20.00 |
| #1519 | Waverly 9" gardenia bowl w/orchid etch | \$68.00 |
| #2323 | Navy 7 oz. soda, Crystal/Cobalt | \$55.00 |
| #3380 | Old Domino d.o. fld. 3 oz. oyster cocktail, Sahara (8) 1 w/nick, all | \$150.00 |
| #4057 | Cecelia 10 1/2" vase, w/Dorothy Thorpe "Bird of Paradise" carving, signed DTC | \$185.00 |
| #5024 | Oxford 3 oz. wine, H, (10) all | \$140.00 |
| #5038 | Rooster stem cocktail, (2) ea. | \$50.00 |
| #5072 | Rose stem sherbet, (1) | \$35.00 |
| #5072 | Rose stem champagne, 4 1/2" w/Rose etch, (6) ea. | \$40.00 |
| | Goose, wings half & wings up, 1 ea., ea. | \$95.00 |
| | Heisey by Imperial, Tiger Paperweight, Jade | \$80.00 |
| | Ringneck pheasant | \$150.00 |
| #337 | Touraine covered butter w/red dec. worn gold | \$75.00 |
| #1519 | Waverly cream & sugar, Rose etch, H, set | \$65.00 |
| #1506 | Whirlpool fld. candy w/cover, H | \$85.00 |
| #112 | Mercury candlestick, pr. | \$42.00 |
| #142 | Cascade 3-lite candlestick, Danish Princess cut, pr. | \$145.00 |
| #1023 | Covered sugar, H | \$24.00 |
| #1184 | Yeoman cream & sugar, d.o., no lid, Flmg., H, set | \$58.00 |
| #4037 | Oval Clarence sherry, silver coated top with Maryland cut | \$215.00 |
| #1201 | Fandango punch cups (4) very minor nick on pattern base, ea. | \$18.00 |
| #1519 | Waverly sugar only Orchid etch, H | \$30.00 |
| #118 | Miss Muffit candle holders, Moongleam, pr. | \$60.00 |
| #1504 | Regency 2-lite candlesticks, pr. | \$90.00 |
| #3390 | Carcassonne claret w.o. (4) all for | \$70.00 |
| #393 | Narrow Flute mustard w/cover, H | \$45.00 |
| #352 | Flat Panel mustard w/cover, H | \$40.00 |
| #1469 1/2 | Ridgeleigh 3" candle blocks, pr. | \$45.00 |
| #339 | Continental fld. sherbet, (5) all | \$80.00 |
| #1519 | Waverly covered butter horsehead finial, H | \$90.00 |



580-PCS. HEISEY GLASS

AUCTION

SUNDAY, DECEMBER 3, 1995 @ 10:00 AM

SELLERS: MR. & MRS. R. S. RAUP

LOCATION: LARNED, KS--CARR AUCTION GALLERY, 909
AUCTION AVE., WEST Hwy. 156

(242) Lots Of Heisey, Included In This Are (580) Total pieces, Including Old Sandwich Emerald Ketchup Bottle W/Stopper; Emerald Medium Flat Panel Syrup W/Lid; Empress 8" square plate, Tangerine In Color; Empress Flamingo Relish & Cleries; Empress Sahara Compote, Cake Plate & Celery; Empress Sahara Triangular Candy Dish W/Lid; Console Set, Hawthorne; Pleat & Panel Mayonaise; Moongleam Octagon Nut Dish; Emerald L'il Squatter Candle Blocks; Harvey Amber Salt & Pepper & Tumblers; Waldorf Astoria Decanter W/Cut Stopper.

Also Selling Greek Key, Colonial, Puritan, Sunburst, Tudor, Fandango, Priscilla, Simplicity, Yeoman, Ribbon Panel, Narrow Flute, Punty & Diamond Point, Empress, Peerless, Saturn, Warwick & Heisey Rose.
PARTIAL LISTING ONLY. CALL OR WRITE FOR BROCHURE.

CARR AUCTION & REAL ESTATE, INC.

PO Box 300, Larned, KS 67550

PHONE 316-285-3148

HEISEY COLLECTORS OF AMERICA, INC.

26th Annual

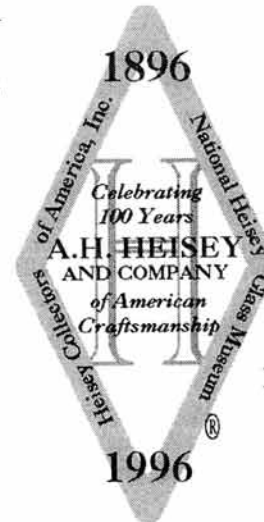
ELEGANT GLASS SHOW

Celebrate A.H. Heisey's Centennial Anniversary with
50 PROMINENT DEALERS FROM ACROSS THE US

—Preview—
**Wednesday,
June 12, 1996
5 to 8 p.m.**

—\$10—

Regular
Hours
**Thursday,
June 13, 1996
Friday,
June 14, 1996
12 noon
to 5 p.m.**
—\$4—



—Free—
**Featuring Free
All-Heisey
Glass Display**
—Free—

—Free—
**Saturday,
June 15, 1996
12 noon to 5 p.m.
FREE Admission**
—Free—

OSUN-COTC Campus, Country Club Dr., Newark, Ohio
30 miles east of Columbus off Ohio St. Rt. 16
For more information call (614) 345-2932
Proceeds benefit The National Heisey Glass Museum

D & B ANTIQUES
Bob Bartholomew
PO Box 637
Loganville, GA 30249

(770) 466-7879
6 am -9 pm EST
S.H. I. Extra
H=Marked

| | | |
|-------|--------------------------------------------------------------------------------------|-----------|
| #134 | Candles, Alexandrite, pr. | \$1100.00 |
| #4045 | Ball vase 9", Alexandrite | \$975.00 |
| #136 | Triplex candles, Cobalt, H, pr. | \$895.00 |
| #1433 | Thumbprint & Panel vase, Cobalt, (stem twisted), H | \$395.00 |
| #400 | Candelabra, "A" prisms, pr. | \$825.00 |
| | Colt cocktail | \$495.00 |
| | Sparrow, tail down or up, choice | \$90.00 |
| #473 | Narrow Flute with Rim pancake set, 4 pc., H | \$475.00 |
| #1469 | Ridgleigh cigarette jar, round, Sahara | \$195.00 |
| #1469 | Ridgleigh 2" sq. ashtray, Zircon, H | \$55.00 |
| #379 | Urn syrup 7 oz., H | \$125.00 |
| #372 | McGrady 7 oz. syrup, Flamingo | \$150.00 |
| #357 | Duck ashtray, Moongleam, H | \$250.00 |
| #4085 | Kohinoor 9 oz. l.f. goblet, s.o., Zircon bowl | \$175.00 |
| #419 | Sussex goblet, Cobalt bowl | \$210.00 |
| #3409 | Plymouth 10 oz. goblet, Sahara, H | \$195.00 |
| #3397 | Gascony tomato juice pitcher w/8-3 oz. cocktails, Ambassador etch, Sahara, 9 pc. set | \$425.00 |
| #1280 | Winged Scroll 1/2 gallon pitcher, Emerald, good gold | \$265.00 |
| #7026 | Heart & Drape 8 1/2" plate, Moongleam | \$85.00 |
| #7093 | Beaded Arrow 8" plate, H | \$58.00 |
| #1567 | Plantation 8 1/2" 2-pt. Dressing, H | \$78.00 |
| #1567 | Plantation 13" 5-pt. oval relish | \$165.00 |
| #1567 | Plantation 12 oz. ice tea 4 ea. | \$75.00 |
| #1567 | Plantation 10 oz. goblets 6 ea. | \$45.00 |
| #1567 | Plantation 6 1/2 oz. sherbet 3 ea. | \$30.00 |
| #5067 | 6 1/2 oz. sherbet 4 ea. | \$30.00 |
| #1405 | Ipswich cocktail shaker, Sahara, some damage | CALL |
| #4225 | Cobel 1 qt. cocktail shaker Club Dinking Scene | \$175.00 |
| #4225 | Cobel 2 qt. small horsehead stopper | \$275.00 |
| #4225 | Cobel 1 qt. cocktail shaker, Antarctic etch | \$125.00 |
| #1506 | Provincial wines, (8) ea. | \$13.00 |
| #1425 | Victorian sherbet, (4) ea. | \$12.50 |
| #5023 | Continental egg cup, H | \$15.00 |
| #393 | Narrow Flute egg cup, H | \$15.00 |
| #150 | Banded Flute egg cup, H | \$34.00 |
| #1503 | Crystolite ice tub w/handle, H | \$115.00 |
| #1503 | Crystolite 3-lite candles, pr. | \$65.00 |
| #1509 | Queen Ann individual candles, d.f., pr. | \$110.00 |
| #1405 | Ipswich 8 oz. ft. tumblers, H, (8) ea. | \$35.00 |
| #201 | Windsor lamp, #4060 shade, Neapolitan cut, (2) | \$400.00 |
| #1184 | Yeoman 10 1/2" plate, Empress etch | \$50.00 |
| #1513 | Baroque 3-lite candle, bobèche and A prisms, (1) | \$110.00 |
| #1519 | Waverly 2-lite candle, Orchid etch, (1) | \$65.00 |
| #1519 | Waverly seahorse covered candy with Orchid etch, H | \$265.00 |
| #1504 | Regency 2-lite candle, (1) | \$30.00 |
| #15 | Duck flower frog, Flamingo, 2 pc. | \$240.00 |
| #107 | Wellington candle 10", Early Moongleam, (1) | \$240.00 |
| #134 | Trident 2-lite candle, Moongleam, (1) | \$100.00 |
| #1511 | Toujours 2-lite candles, bobèche and A prisms, pr. | \$220.00 |
| #1433 | Thumbprint and Panel 2-lite candles, Sahara, pr. | \$150.00 |

"T & P" COLLECTIBLES
Tom & Pat Gibbons
1089 Wood Street
Swansea, MA 02777

(508) 674-7361
Packing & UPS Extra
H=Marked

SEND SASE FOR LATEST LIST

| | | |
|-------|-------------------------------------------------|----------|
| #353 | Medium Flat Panel toothbrush hldr., H | \$65.00 |
| #479 | Petal hotel creamer, Moongleam | \$45.00 |
| #1184 | Yeoman cruet & n stopper 4 oz. d.o., Moongleam | \$55.00 |
| #1404 | Old Sandwich ftd. sundae 6 oz., H | \$12.00 |
| #1405 | Ipswich candle vase insert 1 bruise, 1 pr. | \$65.00 |
| #1405 | Ipswich soda 8 oz. | \$18.00 |
| #1425 | Victorian celery 12", H | \$38.00 |
| #1425 | Victorian punch bowl and (12) cups, H | \$395.00 |
| #1425 | Victorian punch cup, H, (11) | \$85.00 |
| #1429 | Pristine oval floral bowl 12", Moongleam, H | \$160.00 |
| #1469 | Ridgeleigh vase, rnd, #1469 1/2 8", Zircon, H | \$360.00 |
| #1489 | Puritan bitters bottle cut flrs | \$78.00 |
| #1504 | Regency candlestick 2-lite | \$35.00 |
| #1567 | Plantation ftd. juice, blown 5 oz. | \$40.00 |
| #1E92 | Omega goblet, Melody cut, H | \$22.00 |
| #2401 | Oakwood bar old fashioned, Tally-Ho, (9) 1 chip | \$275.00 |
| #2401 | Oakwood bar soda, Tally-Ho 7 oz., (3) | \$95.00 |
| #3368 | Albemarle goblet d.o. 8 oz., H, (6) | \$120.00 |
| #4225 | Cobel cocktail shaker cut sw n 2 qt | \$85.00 |
| #5025 | Tyrolean ftd. juice, Orchid etch 5 oz. | \$35.00 |
| #5077 | Legionnaire goblet, Rosebud cut, H | \$22.00 |
| #5089 | Princess goblet Nonchalance cut, H | \$22.00 |
| #5098 | Louisa goblet Belair Cut | \$22.00 |

14th Annual ALL GLASS SHOW & SALE

Sponsored by the Connecticut Heisey Collectors Club Benefit Of The National Heisey Glass Museum

Sat. Nov. 4, 1995
10:00 a.m. - 5:00 p.m.

Sun. Nov. 5, 1995
11:00 a.m. - 4:00 p.m.

Southington High School
720 Pleasant Street
Southington, CT

Admission \$3.50
With This Ad \$3.00
Information: Dial 203-628-5389
203-426-6322

NEW LOCATION ONLY FOUR BLOCKS NORTH OF OLD LOCATION!

I-84 West, exit 32 (Rte. 10) turn right at ramp (south). Turn left at fourth light (Flanders St.). School will be on your right. I-84 East, exit 32 (Rte. 10) Turn left at ramp. (south) left at the third light (Flanders St.) School will be on your right.

THE TREASURE PEDLAR

Helene Guski
237 Peakham Rd.
Sudbury, MA 01776

(508) 443-0436
UPS & Ins. Extra
H=Marked

| | | |
|-------|--------------------------------------------------------|----------|
| #12 | Flat Rim floral bowl, Flamingo | \$35.00 |
| #341 | Puritan horseradish, H | \$62.00 |
| #352 | Flat Panel 2 qt. crushed fruit, H | \$275.00 |
| #354 | Wide Flat Panel Domino sugar, H | \$48.00 |
| #350 | Pinwheel and Fan puff jar, dec. metal top, H | \$65.00 |
| #359 | Colonial ¾ oz. cordial, H, (3) ea. | \$20.00 |
| #366 | Salem ashtray /matchstand, Moongleam, H | \$62.00 |
| #393 | Narrow Flute 2 oz. sherry, H, (6) ea. | \$20.00 |
| #393 | Narrow Flute ind. Domino sugar | \$30.00 |
| #393 | Narrow Flute 3 oz. cocktail, H, (4) ea. | \$20.00 |
| #433 | Greek Key water bottle | \$220.00 |
| #1252 | Twist 7" hi fld. compote, floral Cattail cut Moongleam | \$95.00 |
| #5025 | Tyrolean ice tea Orchid etch, (3) ea. | \$45.00 |
| #1255 | Pineapple and Fan 10" oval bowl | \$70.00 |
| #1425 | Victorian ind. cigarette/ashtray, initialed H, (2) ea. | \$20.00 |
| #1425 | Victorian 2½ oz. wine, (6) ea. | \$20.00 |
| #1503 | Crystolite 4-part relish, leaf shape, H | \$32.00 |
| #1503 | Crystolite 10" round 5-part relish, H | \$45.00 |
| #1540 | Lariat 5" candy/cover | \$65.00 |
| #1540 | Lariat 10½" plate, silver overlay ducks | \$45.00 |
| #1540 | Lariat hurrican lamp base, enamelled dec. | \$55.00 |
| #1567 | Plantation 1-lite candleblocks, pr. | \$150.00 |
| #3408 | Jamestown sherry, Barcelona cut, H, (4) ea. | \$20.00 |

H & R DIAMOND H
Helen & Bob Rarey
1450 White Ash Drive
Columbus, OH 43204

(614) 279-0390
After 5:30 p.m.
UPS & Ins. Extra
H=Marked

| | | |
|-------|-----------------------------------------------------|----------|
| #301 | Old Williamsburg 2-lite candelabra, A pisms | \$210.00 |
| #433 | Greek Key 9 oz. goblet, (2) ea. | \$145.00 |
| #1469 | Ridgeleigh 4 oz. cologne w/#105 stopper | \$125.00 |
| #1469 | Ridgeleigh 8" round vase, H | \$65.00 |
| #1469 | Ridgeleigh 6" candle vase, Zircon | \$225.00 |
| #1506 | Provincial mayo, Limelight, H | \$135.00 |
| #1632 | Lodestar 5" mayo, Dawn, H | \$65.00 |
| #3480 | Koors "29" 3 pint pitcher, d.o., Flamingo | \$150.00 |
| #3480 | Koors "29" 12 oz. fld. soda, d.o., Flamingo, (4)ea. | \$30.00 |
| #3481 | Glenford 1½ oz. fld. bar, d.o., Flamingo, (4)ea. | \$30.00 |
| #5009 | Queen Ann 10 oz. goblet, Everglade cut, (6) ea. | \$35.00 |
| #5009 | Queen Ann 6 oz. champagne, Everglade cut, (6)ea. | \$30.00 |
| #5089 | Princess 4 oz. claret, H | \$20.00 |

ANIMALS:

| | |
|-----------------------------------|-----------|
| Heisey Sow | \$1000.00 |
| Heisey Airedale, H | \$750.00 |
| Heisey Swan | \$1400.00 |
| Heisey Filly, head back, H | \$2250.00 |
| Heisey horsehead bookends, H, pr. | \$225.00 |
| Heisey stnding pony, (2) ea. | \$80.00 |
| Heisey Goose, wings up | \$95.00 |

J & R COLLECTIBLES

Ray & June Lukasko
Newark, OH 43058-1030

(614) 344-9719

UPS & Ins. Extra
H=Marked

| | | |
|-------|-----------------------------------------------------|----------|
| | Mallard, wings up | \$165.00 |
| | Ringneck pheasant | \$135.00 |
| #134 | Trident 2-lite candlestick, Minuet etch, pr. | \$225.00 |
| #341 | Old Williamsburg 13½" 5-comp. relish, H | \$85.00 |
| #353 | Colonial cheese & cracker plate, H | \$95.00 |
| #357 | Prison Stripe covered butter, H | \$175.00 |
| #1401 | Empress 4 oz. oil, Moongleam stopper & foot | \$235.00 |
| #1401 | Empress 7" 3-comp. relish, Minuet etch | \$175.00 |
| #1469 | Ridgeleigh 12" floral bowl, oval, H | \$95.00 |
| #1495 | Fern 6" mint, Zircon | \$125.00 |
| #1506 | Whirlpool 5½" 3 handled mayo, Limelight, H | \$155.00 |
| #1506 | Whirlpool 9 oz. fld. tumbler, Limelight, H, (2) ea. | \$85.00 |
| #1519 | Waverly 5" covered candy fld., Orchid etch, HH | \$250.00 |
| #1519 | Waverly Seahorse handled candy, Rose etch, H | \$275.00 |
| #1540 | Lariat 6" fld. #5 crimped vase, Orchid etch | \$145.00 |
| #2401 | Oakwood old fashion, Rube Circus etch | \$300.00 |
| #3381 | Creole 4 oz. cocktail, Alexandrite bowl, (2) ea. | \$195.00 |
| #3387 | Duquesne 3 oz. cocktail Tangerine bowl | \$225.00 |
| #5072 | Rose stem 9 oz. goblet, Rose etch, (4) ea. | \$47.50 |
| #5072 | Rose stem 6 oz. sherbet, Rose etch, (4) ea. | \$32.50 |

J & T ANTIQUES

Jim Houghton/Tim Rector
PO Box 933
Sturbridge, MA 01566

(508) 764-1597

Shipping & Ins. Extra
H=Marked

| | | |
|-------|-----------------------------------------------------------------------------------|----------|
| #460 | 7" Pinwheel & Fan variant basket, H | \$375.00 |
| #1403 | Half circle cream, Moongleam, H | \$80.00 |
| #352 | Flat Panel 8" oyster cocktail plates, H, (12) ea. | \$40.00 |
| #1205 | Fancy Loop footed punch glass | \$95.00 |
| #1567 | Plantation cream & sugar, H | \$70.00 |
| #4224 | Steeplechase cocktails, Sahara, (4) ea. | \$125.00 |
| #1252 | Twist 4 oz. cruet, H | \$110.00 |
| #1567 | Imperial Plantation marmalade, Milk glass | \$60.00 |
| #1489 | Puritan hurricane base only | \$175.00 |
| #300 | Peerless 5" Orchid vase | \$40.00 |
| #433 | 11" vase, H | \$65.00 |
| #1280 | Winged Scroll covd. butter, Custard, good gold | \$175.00 |
| #300 | Peerless covered butter | \$135.00 |
| #5024 | Oxford cocktails, H, (12) ea. | \$11.00 |
| #5060 | Washington Square cocktail shaker | \$100.00 |
| #1469 | Ridgeleigh luncheon set, service for 6 20 pcs., H | \$325.00 |
| #1506 | Provincial 2-lite candlesticks, pr., H | \$170.00 |
| #335 | Prince of Wales toothpick, H | \$275.00 |
| #3355 | Fairacre goblets, Moongleam stem, Cry. bowl (4)ea | \$19.00 |
| #3350 | Wabash 10 oz. ft. tumbler Mnglm. ft. & stem Crystal bowl, Frontenac etch, (6) ea. | \$35.00 |

Advertise with the Heisey News!

CLASSIC GLASS
Robert Henicksman
916 Q Street
Sacramento, CA 95814

(916) 448-0840
After 6:00 p.m. PST
Shipping & Ins. Extra
H=Marked

Items from prior ads may still be available, call for info!

| | | |
|-------|--------------------------------------------------------|----------|
| #2 | Old Williamsburg candlesticks, pr. | \$135.00 |
| #13 | Flat Rim floral plateau, Moongleam, H | \$75.00 |
| #343 | Sunburst punch cups, (4) ea. | \$20.00 |
| #412 | Rib & Panel/Tudor 5" high footed jelly, H | \$40.00 |
| #433 | Greek Key cruet, H | \$125.00 |
| #466 | Panel & Double Pleat 4" nappy bowls, H, (10) ea. | \$15.00 |
| #1194 | Pentagon 4" relish dish, Moongleam, H | \$45.00 |
| #1229 | Octagon diamond optic bonbon dish, Flamingo | \$35.00 |
| #1231 | Ribbed Octagon 12" handled sandwich tray, Moongleam, H | \$135.00 |
| #1401 | Empress Chintz etch 10" celery tray, H | \$38.00 |
| #1401 | Empress 14" oval platter, H | \$55.00 |
| #1405 | Ipswich 4 oz. sherbets, H, (9) ea. | \$28.00 |
| #1472 | Parallel quarter candlesticks, pr. | \$80.00 |
| #1435 | Orchid etch 3" ashtray, H | \$35.00 |
| #1503 | Crystolite 1-lite hurricane block with shade | \$165.00 |
| #1503 | Crystolite 10" relish dish, 3-compartment, H | \$45.00 |
| #1506 | Provincial/Whirlpool 12" gardenia bowl, H | \$68.00 |
| #1506 | Provincial/Whirlpool footed sugar bowl, H | \$22.00 |
| #1511 | Tourjours apple marmalade and cover, H | \$75.00 |
| #1519 | Waverly Orchid etch 7" salad plates, (5) ea. | \$40.00 |

WALRICK ANTIQUES
Rick Vaughan & Walter Sherman
1070 Hillcrest
Righton, MI 48116

(810) 229-5994
UPS Extra
H=Marked

| | | |
|----------|-----------------------------------------------------------------------------------------------|----------|
| #142 | Cascade 3-lite candles, pr. | \$110.00 |
| #341 1/2 | Puritan 1/2 gallon squat jug, H | \$135.00 |
| #355 | Quator hotel cream & sugar, H | \$68.00 |
| #393 | Narrow Flute 4 1/2 oz. low fld. sherbet, H, (4) ea. | \$14.00 |
| #393 | Narrow Flute 1/2 gallon jug, w/cutting on rim, H | \$130.00 |
| #401-1 | Old Williamsburg 13" 1-lite candles, #7 bobèche, #300 socket, 4" C prisms, sterling base, pr. | \$325.00 |
| #406 | Coarse Rib hotel cream & cov. sugar, Flamingo, H | \$85.00 |
| #411 | Tudor 6" handled cheese, Moongleam, H | \$27.00 |
| #411 | Tudor 6" handled mint, Moongleam, H | \$28.00 |
| #465 | Recessed Panel 1 lb. covered candy, gold dec, H | \$95.00 |
| #1170 | Pleat & Panel low fld. cov. compote, Flamingo, H | \$68.00 |
| #1401 | Empress cup & round saucer, H, (4) ea. | \$18.00 |
| #1433 | Thumbprint & Panel 11" floral bowl, #20 floral block pr., 2-lite candles, Sahara, set | \$235.00 |
| #1469 | Ridgeleigh 6" candle vase | \$38.00 |
| #1469 | Ridgeleigh 13" torte plate, H | \$65.00 |
| #1469 | Ridgeleigh cruet | \$58.00 |
| #1469 | Ridgeleigh individual cream & sugar | \$42.00 |
| #1503 | Crystolite 9" 4-pt. leaf relish | \$48.00 |
| #1503 | Crystolite 12" 3-pt. oval relish, H | \$42.00 |
| | Imperial Colt set, Amber, signed, paper labels, set | \$325.00 |

John Woytowicz
RFD I Boz 4047
N. Anson, ME 04955

(207) 696-3020
Ins. and Handling Extra
H=Marked

| | | |
|-------|---------------------------------------------------------|----------|
| #305 | Punty and Diamond Point cruet | \$75.00 |
| #341 | Old Williamsburg 9" candlestick, pr. | \$130.00 |
| #343 | Sunburst punch bowl and stand | \$290.00 |
| #343 | Sunburst cruet roughness on sunburst | \$50.00 |
| #365 | Queen Ann 8" nappy | \$60.00 |
| #449 | Thumbprint and Panel 2-lite candlestick, pr. | \$75.00 |
| #493 | Cologne 2 oz. with #65 stopper | \$45.00 |
| #1205 | Fancy Loop cruet, mild cloudiness | \$45.00 |
| #1255 | Pinwheel and Fan punch bowl and stand | \$260.00 |
| #1295 | Beaded Swag tumblers, opalescent, floral decl., (6) all | \$150.00 |
| #1405 | Ipswich candle vases, pr. (no inserts) | \$150.00 |
| #1405 | Ipswich 11" pedestal bowl | \$65.00 |
| #1469 | Ridgeleigh 10" vase | \$150.00 |
| #1469 | Ridgeleigh 1 qt. cocktail shaker, #1 strainer, #86 p/s | \$250.00 |
| #1469 | Ridgeleigh goblet | \$15.00 |
| #1485 | Saturn cruet | \$40.00 |
| #1506 | Whirlpool covered candy dish footed | \$85.00 |
| #1519 | Waverly 4" rose bowl, no etching | \$40.00 |
| #1519 | Waverly covered butter no etching | \$90.00 |
| #4164 | Gallagher pitcher 8 oz. sodas, Monticello etch, (6) all | \$150.00 |

Ervin & Lula Heise
40465 Johnston Ave.
Hemet, CA 92544

(909) 658-1904
Postage & Ins. Extra
H=Marked

| | | |
|-------|---------------------------------------------------|----------|
| | Elephants, medium, (2) ea. | \$275.00 |
| | Colts, set of 3 | \$400.00 |
| | Colt, kicking | \$110.00 |
| | Goose, wings up | \$85.00 |
| #1489 | Puritan cigarette box w/horsehead 4", chip on lid | \$20.00 |
| #500 | Octagon frozen dessert, Moongleam | \$18.00 |
| #325 | Pillows punch cup, H | \$12.50 |
| #350 | Pinwheel & Fan punch cup, Moongleam, H, (2) ea. | \$30.00 |
| #1235 | Beaded Panel & Sunburst punch cup | \$10.00 |
| #1469 | Ridgeleigh club ashtray, H | \$7.50 |
| #1469 | Ridgeleigh cigarette holder, round, H | \$12.00 |
| #1469 | Ridgeleigh coasters, (4) set | \$12.00 |
| #1503 | Crystolite sugar & cream, H | \$25.00 |
| #1503 | Crystolite individual sugar & cream, H | \$25.00 |
| #1503 | Crystolite salt & pepper, silver tops | \$25.00 |

Also Imperial Carmel Slag animals (9) CALL

JANE'S ANTIQUES
PO Box 897
308 Second St.
Phoenix, OR 97535

(503) 535-1315
Area code 541 after 12/95
Shipping & Ins. Extra
H=Marked

| | | |
|-------|--------------------------------------------------------|----------|
| #300 | Colonial 5 oz. schoppen, some cloudy, H, (6) set | \$50.00 |
| #373 | Old Williamsburg 5 oz. sherbet, H, (12) set | \$120.00 |
| #1405 | Ipswich oyster cocktail (7) ea. | \$20.00 |
| #1425 | Victorian 8" plate, H, (3) ea. | \$30.00 |
| #1425 | Victorian footed tumbler, H, (2) ea. | \$20.00 |
| #3357 | King Arthur cocktail, Moongleam stem, d.o., (3) ea. | \$25.00 |
| #3380 | Old Dominion sherbet Old Colony etch, Sahara, (7) ea. | \$32.50 |
| #3380 | Old Dominion finger bowls, rough rims, Sahara, (6) set | \$50.00 |
| #3380 | Old Dominion cordial, Sahara H, (2) ea. | \$135.00 |

DEAL'S DEALS
Phyllis Deal
305 Stockton Street
Highstown, NJ 08520

(609) 433-3043
Shipping & Ins. Extra
H=Marked

| | | |
|-------|-------------------------------------------------------------------------------|----------|
| #1632 | Lodestar cocktail, Dawn, H, (4) ea. | \$45.00 |
| #1469 | Ridgeleigh coaster, Zircon, (3) ea. | \$52.00 |
| #4225 | Cobel cocktail shaker & 8 glasses, silver overlay (glasses not Heisey) all | \$185.00 |

The following items are Marigold w/Empress etch

| | | |
|-------|--------------------------------------------------|---------|
| #1184 | Yeoman 6" d.o. plate (16) ea. | \$14.00 |
| #1184 | Yeoman 8" d.o. plate (14) ea. | \$16.00 |
| #1184 | Yeoman 9" d.o. plate (4) ea. | \$18.00 |
| #1184 | Yeoman cream soup w/underplate d.o. (2 sets) ea. | \$68.00 |
| #4075 | Finger bowl w/underplate d.o. (2 sets) ea. | \$68.00 |
| #3380 | Old Dominion tall champagne d.o., H, (6) ea. | \$45.00 |
| #3380 | Old Dominion 8 oz. med. fld. soda d.o., (7) ea. | \$36.00 |
| #3380 | Old Dominion 12 oz. tall footed soda d.o. | \$32.50 |



Spectacular Parade of Heisey

As the world's largest supplier of discontinued or obsolete china, crystal and flatware. Replacements, Ltd. buys and sells over 54,000 patterns and has 2.1 million pieces.

We have many of your favorite Heisey patterns, including Heisey Rose and Heisey Orchid.

Contact us if you need to pick up a piece to add to your collection, or if you would like to sell some unneeded extras. We can provide a complete printout of available pieces in your pattern. Or we'll let you know our prices for the pieces you wish to sell. Let us help you complete your collection... or maybe you'll help add to ours.

REPLACEMENTS, LTD.

1089 Knox Road • PO Box 26029
Greensboro, NC 27420 • Dept. HHS

Everyday 8am-10pm

Call 1-800-562-4462

WE CLEAN CLOUDY GLASS SATISFACTION GUARANTEED

Yes, it is true that we really can restore the interior of your cruet, vase, decanter and most other internally etched items back to near original condition!

We do not oil, wax or cover up the sickness in any way! We actually remove it.

No items are too sick to clean! If we cannot clean your item to meet your satisfaction, the cleaning is FREE!

We are so confident in our service that we ask that you send no money. When we return your item a bill will be enclosed for the postage and cleaning. If you are happy, please send payment; if not, return the bill marked "NOT SATISFIED."

Please allow 6-8 weeks for redelivery of most items. All glass is handled and cleaned at your risk. Some very cloudy items may take several additional weeks.

| | | | |
|----------------------|---------|----------------------|------------|
| Cruet | \$20.00 | Cocktail Shaker | \$30.00 |
| Cologne | \$20.00 | Salt Shaker (single) | \$15.00 |
| Water Bottle | \$30.00 | Salt Shaker (pair) | \$25.00 |
| Decanter | \$30.00 | Crushed Fruit Jar | \$30.00 |
| Vases (under 12 in.) | \$25.00 | Lavender Jar | \$20-30.00 |

All others write for quote

SHIP TO: Carlisle & Associates
28220 Lamong Rd., Dept. H
Sheridan, IN 46069
(317) 758-5767 AFTER 6:00 p.m.

Dealers Directory

Maximum 5 lines/12 months/\$35 MEMBERS ONLY

| | | |
|------------------------------------------------------------------------------------------------------------------------------------------------------------------------------------------------------------------|--------------------------------------------------------------------------------------------------------------------------------------------------------------------------------------------------------------------|-------------------------------------------------------------------------------------------------------------------------------------------------------------------------------------------------------------|
| MARJORIE GILLETTE Rochester, New York Glassware Specialty Heisey Mail Orders & Shows 716-225-4678 | SHIRLEY EUGENIA DUNBAR Heisey a Specialty Mail Order, Shows, Appraisals PO Box 7085, Port St. Lucie, FL 34985 Oct.-May 407-337-1558 PO Box 222, Naples, ME 04055 May-Oct. 207-647-5652 | COMPARISON LIST New Heisey Auction List for 1995 3 Year's Auction 92-93-94 Price: \$15.00 + \$3.00 Shipping Payable: B. Whaley 300 International Dr., Pataskala, OH 43062 1-614-927-1557 |
| ALL HEISEY AUCTION Consignments Welcome Apple Tree Auction Center 1616 W. Church, Newark, OH 43055 PH: (614) 344-9449 | GREEN ACRES FARM Antiques, Crystal Glass & Collectibles 2678 Hazelton-Etna Rd., SW (S.R.310-N) Pataskala, OH 43062 Sat. or Sun. PM or call (614) 927-1882 | MICHAEL KRUMME Cambridge • Heisey • Fostoria • Duncan-Miller • Paden City I search - send detailed want list - all are kept on file P.O. Box 5542 Santa Monica, CA 90409 |
| D & B ANTIQUES — ATLANTA Bob Bartholomew Members Dixieland Heisey Club P.O. Box 637, Loganville, GA 30249 Shows (404) 466-7879 Mail Order | H & R DIAMOND H Helen & Robert Rarey 1450 White Ash Dr. Columbus, OH 43204 PH: (614) 279-0390 after 5:30 | JEAN & DON PARRETT Beautiful Heisey 4995 Maple Dale Rd. Jackson, Michigan 49201 (517) 784-7319 — Recorder |
| ANTIQUES - THE SHULTZES 206-208 East Main St. Newmanstown, PA 17073 15 Miles West of Reading, PA PH: (610) 589-2819 | "HAPPINESS IS" - THE STULTZS 3106 Warren Court, Glen Allen, VA 23060 Shows and Mail Order PH: (804) 672-8102 | PATTON HOUSE Rocky's Mall, I-81 & US 11 Weyer's Cave, VA 24486 PH: (703) 967-1181 The Antique Gallery, Richmond, VA |
| C & J ANTIQUES Cole & Jean Miesner Box 45, 72 Whig St. Newark Valley, NY 13811 PH: (607) 642-9905 | MOUNDBUILDERS ANTIQUES 2ND GENERATION 3669 Route #360 Buckeye Lake, OH 43008-1905 (800) 366-4347 — (614) 928-1994 Minutes away from Heisey Museum | SCHWAN'S ANTIQUES SHOWS & MAILORDER 77 Lagos del Norte Ft. Pierce, FL 34951 PH: (407) 461-5940 |
| DOXTOIS Eva & Joe Hirsh Heisey & Pattern Glass 6 James St., Norwalk, CT 06850 PH: (203) 847-3315 | HOOKE ON HEISEY Jay C. Martin 97 Heritage Hill Rd., New Canaan, CT 06840 (203) 966-9359 24 hr. ans. mach. Mail Orders & Shows | R & L ANTIQUES-SAN FRANCISCO Members of the Golden Gate Heisey Club 3690 Bodega Ave. Petaluma, CA 94952 PH: Petaluma (707) 762-2494 PH: San Francisco (415) 621-6693 |
| CHARLES & MILDRED FISHER Heisey animals and Heisey By Imperial animals 991 Idlewilde, Newark, Ohio 43055 614-522-5398 | JJ MC KEE ANTIQUITIES Pottery - Glassware - Collectibles 222 West 75th St. Kansas City, MO 64114 Wed.-Sun. 10-5 PH: (816) 361-8719 | THE WOODEN SHOE Antiques & Collectibles 222 W. Washington St., Charles Town, WV 25414 PH: 304-725-1673 Fri-Mon 11:00 to 5:00 |
| CRYSTAL LADY Joann Hagerty Specializing in elegant depression glassware 1817 Vinton Street, Omaha, NE 68108 Shop Ph. (402) 341-0643 or Home Ph. (402) 391-6730 | DINNERWARE CLASSICS! 4125 Sperry St., Dallas, TX 75214-2743 (214) 821-6852 Selling Glassware & Dinnerware By Mail Heisey Glass | MY DAUGHTER'S INHERITANCE Heisey - Crystal - Porcelain Antique Village - 3750 Howard Avenue Kensington, MD 20895 (301) 933-4618 Maggi Smith |
| ELEGANT GLASSWARE NOW LOCATED IN FINDER'S ANTIQUE HOUSE 1169 Piney Forest Rd. Danville, VA 24540 Open Thursday—Sunday (804) 836-6782 Area's Largest Selection of Heisey & Other Elegant Glass | J. & R. COLLECTIBLES Shows, SASE, Mail Order list The Lukasko's PO Box 1030, Newark, Ohio 43058-1030 PH: (614) 344-9719 | RON & MAUREEN KOVACS Downsizing Twenty Year Heisey Collection Please Send \$1.00 for extensive list 9310 East Wind Rose Dr. Scottsdale, AZ 85260 (602) 451-4995 (PST) |
| FRAN'S FANCY FINDS Fran & Jack Grenzsbach 10534 Valencia Rd., Seminole, Florida 34642 PH: (813) 391-5184 SHOWS MAIL ORDERS | MOSTLY HEISEY Rhoda Curley 16 Clayton PL, Albany, NY 12209 Shop and Mail Order PH: 1-800-972-2775 | HEISEY HASBEENS Heisey glassware and estate books Toni and Parker Heisey 6678 Comstock Court, San Diego, CA 92111 PH: (619) 277-1210 |
| FOREVER HEISEY Jan & Norm Thran Mail Order, Shows, Appraisal Service 1663 Londondale Pkwy, Newark, OH 43055 PH: (614) 344-5955 | R & S ANTIQUES AND GLASSWARE Heisey-Specializing in Complete Heisey Tableservice call or write for patterns and colors 2560 Maguire Rd. Ocuée, FL 34761 (407) 841-1440 or (407) 298-5980 PM | WILLEY'S ANTIQUES & MUSEUM Specializing in Heisey 11110 Cannon Rd., Frazeyburg, OH 43822 16 miles east of Newark, OH PH: (614) 828-2557 |
| YOUR AD COULD BE HERE! | BOB & JOANNE MCELHENY'S HEISEY Booth 44-Pioneer Antique Mall Open 10-6, Sun. 1-5 Downtown Pioneer, Ohio-North of Exit 2 Ohio Turnpike Phones: Mall (419) 737-2341 Home (419) 537-6890 | JAMES S. HARRIS ANTIQUES/APPRAISALS Box 672 Richmond, KY 40475-0672 PH: (606) 623-9100 Buying and Selling by Mail |
| GLASS 'N' GLASS Virginia & Odell Johnson 6909 10th Ave. W. Bradenton, FL 34209 PH: (914) 792-0604 | JIM HOUGHTON & TIM RECTOR J & T Antiques Ltd. PO Box 933 Sturbridge, MA 01566 PH: (508) 764-1597 | TALL OAKS ANTIQUES Glassware-Specializing in Heisey Shows - Mail order (219) 864-1704 Mike & Barb Rosenberger 5115 W 78th Ln, Schererville, IN 46375 |

**Museum Volunteers for
October and November**

Marge Conner
Leota Friel
Mary Holmquist
Frances Law
Connie Makris
Bob & Phyllis McClain
Mary McWilliams
Mr. & Mrs. Norris
Bob Rarey
Norm Thran
Hugo Wenzel
Bob Wilson

When Renewing Your Membership...

Help us to reach our new goal of \$750,000 by the year 2004. When you renew your membership at one of the levels below, any amount beyond the regular Associate dues—\$22.00 plus \$5.00 for each additional household member—goes into the Endowment Fund.

| | |
|-----------------------------------------------------------|--------------|
| <i>Individual Contributing</i> | \$30 |
| <i>Joint Contributing, two people in one household</i> | \$40 |
| <i>Family Contributing, parents and children under 18</i> | \$50 |
| <i>Patron</i> | \$100 |
| <i>Sponsor</i> | \$250 |
| <i>Benefactor</i> | \$500 |

Contact Mary Holland, membership secretary, at (614) 345-2932 for more information. The Endowment Committee wishes to thank those who have become Endowment Members and all of the individuals and study clubs that have so generously supported the HCA Endowment Fund. Your support will make the museum self-sustaining in the years to come. Thank you all! ♦



**Visit The
National
Heisey
Glass
Museum**

Come at your leisure to enjoy more than 4,800 pieces of glassware produced by A.H. Heisey and Company from 1896-1957. Hundreds of patterns are featured in all production colors. Rare and experimental items are included as well.

Facilities are air-conditioned and handicapped accessible. Hours are 10:00 a.m. to 4:00 p.m. Tuesday through Saturday, 1:00 to 4:00 p.m. Sunday. Members are admitted free, regular admission is \$2. Office hours are 8:00 a.m. to 4:30 p.m. weekdays.

Membership Renewal Notice: Check the date above your name and address on the mailing label. This is your expiration date. If it reads 12-10-95 make sure your dues are paid soon in order to receive next month's issue of Heisey News. Dues are \$22.00 per year, plus \$5.00 for each additional household member.

POSTMASTER SEND FORM 3579 TO:

**HCA
169 W. Church St.
Newark, OH 43055**



SECOND CLASS Dated Material