

# HEISEY NEWS

The Official Publication of Heisey Collectors of America, Inc.

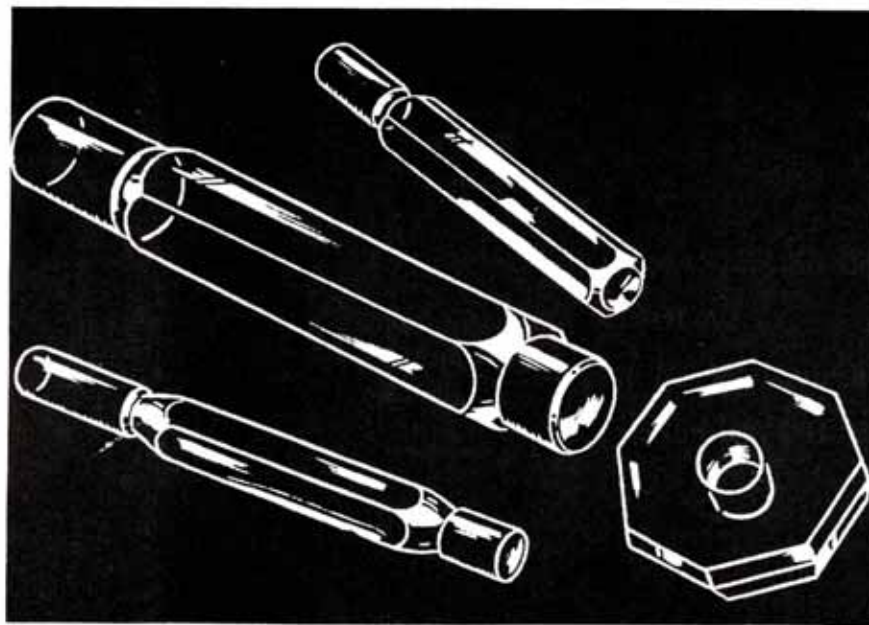
Volume XXIV No. 11

October 1995

ISSN 0731-8014



For Uncle Sam  
\*\*\*\*\* and his nieces, too!



Once again Archivist  
Don Valdes informs our  
readership about  
everything they ever  
wanted to know about  
gauges or gages

Read From the Archives  
pages 8-9 for more  
details!



© Heisey Collectors of America, Inc.

All rights reserved 1995

## In This 28-Page Issue...

North Carolina—A Story of Determination & Grits ♦ From the Archives—More than You Ever  
Wanted to Know About Gauges (Gages) ♦ A.H. Heisey Chronology VI ♦ Brain Teasers—25 Heisey  
Favorite Stems ♦ Liaison Relations—On the Verge of Construction ♦ Heisey Going Home ♦ Taking  
Apart the #300-5 Old Williamsburg Candelabra ♦ 1995 Holiday Reservation Form ♦ Lavender Ice  
Clydesdale order form and rules on the back page—Don't miss out on this one!! ♦

## HEISEY NEWS

Heisey Collectors of America, Inc.  
169 West Church Street  
Newark, Ohio 43055  
Phone (614) 345-2932 Fax (614) 345-9638  
All Rights Reserved 1995  
ISSN 0731-8014

**Editor**  
Kelly Thrane

**Curator**  
Karen D. Kneisley

**Administrator**  
Mary Ourant

**Museum Assistant**  
Molly Kaspar

**HCA President**  
Tom Bischoff, (419) 533-7431

**HCA Vice President**  
Bob Rarey, (614) 279-0390

**HCA Secretary**  
Ginny Marsh, (614) 366-5608

**HCA Treasurer**  
Charlie Wade, (614) 366-6636

HEISEY NEWS is published and printed monthly (twice in February), by Heisey Collectors of America, Inc. Second Class Postage Paid. Subscription is limited to HCA members. First class mailing is available for an extra \$13.00, due with payment of membership. If you are having difficulty receiving your newsletter, please contact Mary Holland membership secretary.

The opinions expressed in articles in HEISEY NEWS are those of the authors and not necessarily those of the organization. The Editorial staff reserves the right to edit, with or without the consent of the author, or to refuse any material submitted for publication.

### Back Issues

The following volumes are available as complete sets: V, VII, VIII, IX, X, XI, XII, XIII, XIV, XV, XVI, XVII, XVIII, XX, XXI, XXIII, for \$9.00 each volume (12 issues, plus auction list if available).

### Advertising

Send all ads to: HCA Advertising, 169 W. Church St., Newark, OH 43055 or fax ads to (614) 345-9638, include M.C. or Visa info. Ads are to be typed or printed on white paper with dark ink. Camera ready ads accepted, but must follow line specifications. Ads containing reproductions will not knowingly be accepted unless clearly stated (e.g. Heisey by Imperial, etc.) HEISEY NEWS accepts no further liability. See Advertising section for rates and deadlines.

### Museum

Heisey Collectors of America, Inc, a non profit corporation (tax exempt status), owns and operates The National Heisey Glass Museum in Veteran's Park, 6th and Church Streets, Newark, Ohio. Open Tuesday-Saturday 10-4, Sunday 1-4, closed holidays. Other hours by appointment. Members admitted free.

### Identification

HCA will attempt to identify unknown glass items. Please enclose a

photograph with your drawings or descriptions. Other arrangements should be made in advance with Karen D. Kneisley, curator.

### Membership

To join Heisey Collectors of America or to renew your membership, contact Mary Holland, membership secretary. Associate dues are \$22.00 plus \$5.00 for each additional household member. Voting members pay an additional one-time fee of \$25.00. Please consider supporting the Endowment Fund by joining at one of the levels listed on the back page.

### Museum Shop

There is always someone available in the shop to answer questions or take your order. When ordering by phone, please have a credit card ready. When ordering by mail, please be sure to include appropriate charges such as shipping and sales tax.

### Shipping and Receiving

Delivery is made much easier when we have a complete street address, not a PO Box. We prefer to use UPS. If you have not received a package, please call Brad, shipping clerk, to confirm it was sent. He will assist you in tracing it. If your package arrives damaged, please contact your local UPS representative. We insure everything.

### Donations and Loans to the Museum

If you have something you would like to share with the museum or have questions regarding items on loan, please contact Karen D. Kneisley, curator. HCA reserves the right to accept or refuse items based on current holdings.

### Calendar

December Quarterly Meeting and Dinner	<i>December 2, 1995</i>
June 1996 Convention	<i>June 12-16, 1995</i>

### Features

North Carolina—A Story of Determination & Grits <i>Carl Sparacio reports on North Carolina</i>	6-7
A.H. Heisey A Chronology VI <i>Tom Felt</i>	10-14
Brain Teaser—25 Stem Favorites <i>Walter Ludwig</i>	15
Liaison Relations—On the Verge of Construction <i>Molly Kaspar bridges the gaps</i>	16-17
Heisey Going Home <i>Beverly Morgan Eriksen</i>	18
Holiday Dinner Reservation	18
Taking Apart the #300-5 Old Williamsburg Candelabra <i>Fred Reesbeck</i>	19
Lavender Ice Clydesdale Order Form <i>Order Now—Limited Edition</i>	28

### Departments

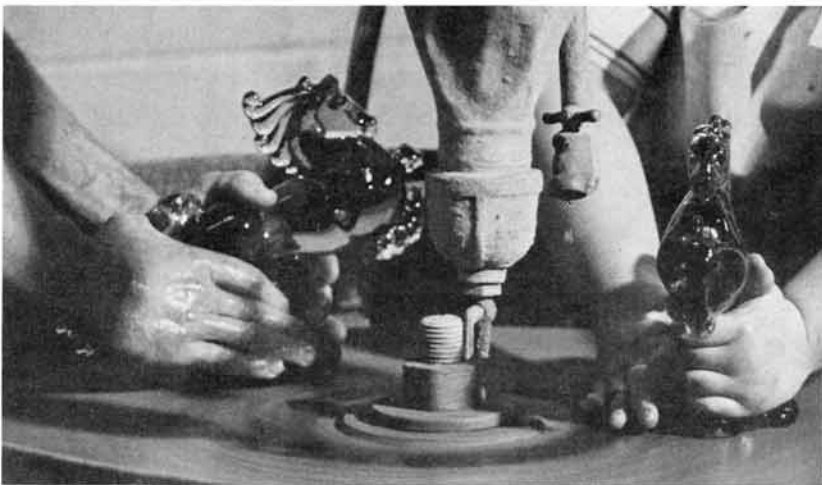
President's Discourse, <i>Tom Bischoff</i>	3
Curator's Report, <i>Karen D. Kneisley</i>	4
Focus on the Collection, <i>Karen D. Kneisley</i>	4-5
From the Archives, <i>Don Valdes</i>	8-9
Club Notes	20
Advertising	21-27

## The President's Discourse

Tom Bischoff

Frequently I do not know in what tense to write my monthly message because I am thinking about things presently which will be in the past by the time you read this. Editor Kelly extended my deadline so I could tell you about the Quarterly meeting and the Percy Moore Memorial Dinner. The North Carolina "11" did a remarkable job in organizing the weekend including the dinner, a benefit auction and the Quarterly meeting. Our thanks to the North Carolinians and to Robert Page, Dale Fredericksen and the staff of Replacements Ltd. for their invaluable assistance. Approximately \$4,800.00 was raised for HCA. The fish candlesticks as the souvenir pieces were a success too.

Just prior to our voyage to North Carolina I had the pleasure of joining Karen Kneisley, Molly Kaspar, Norm Thran and Sam Schnaidt with Ken Dalzell at The Institute of Industrial Technology in Newark. Sam and Karen drew with their chalk on the floor a proposed layout of the Heisey work and display area. Ken gave us valuable suggestions concerning our



Mares. The mold exhibit planned for the Spring of 1996 will eventually be moved to the Institute as an educational display.

While in North Carolina we of course did have a Board Meeting and Quarterly business meeting. We tried to follow the admonition of Carl Sparacio to "lighten up" and I think we succeeded. Every one stayed awake and discussion was lively.

I would request volunteers come forth to handle the Hospitality Room during convention. Virginia and O'dell Johnson have handled this with their club for years but have decided to retire from this labor of love. We thank them for their contributions over the past years and I am sure they remain happy to offer suggestions and answer questions. This would be a great project for a club during convention week.

The December Quarterly Meeting will be held December 2, 1995. Reservation form appears in this issue of the *Heisey News* on page 18. ♦



### **WANTED: HEISEY COLLECTOR**

*He goes by the name of President. Be on the look out for this man!*

*Calling all auction goers...*

*Don't forget to mark your calendars for the April 12-13, 1996 Benefit Auction! It has been moved from March to April to coincide with the centennial celebration.*

*Attention all Heisey Study Clubs—We need your help! As we enter our centennial and silver anniversary we wish to decorate the museum to the hilt this holiday season. This means revamping decorations. This would be a great project to raise funds for the museum. If your club is interested please send your donation Attention: Mary Ourant, Holiday Donation.*



East Coast members  
take note!

Board member  
Jay C. Martin will  
be speaking at the  
Corning Museum,  
Corning, New York,  
on yes you guessed:  
100 Years of Heisey  
History. The lecture  
is scheduled for Oct.  
20, Friday at 2:00 pm.  
Let's all try to give Jay  
some moral support!

The saga of HCA's  
Heisey mold  
acquisition is best  
told in past issues  
of Heisey News  
beginning with the  
July 1984 issue.  
The complete  
culmination of  
events is presented  
in an outline in the  
March and April  
issues of 1985.



#480 Normandie  
etch

Look on page 18 for  
a bit of history on  
Beverly Eriksen's  
and Brenda Coone's  
Normandie etch.

## Curator's Report

Karen D. Kneisley

The next exhibition in the museum's centennial series will be *Lasting Impressions: The Fine Art of Moldmaking*, on view February 3 through April 14, 1996. The exhibition will demonstrate the process of glassmaking through molds from our collection. Drawings, designs and models will be used to highlight the preliminary stages of Heisey production. The exhibition will also offer information about some of the designers that created the glassware lines, including Horace King, Andrew Sanford, Carl Cobel, Walter Von Nessen and Eva Zeisel.

*Lasting Impressions* offers visitors an opportunity to see the glassmaking process that happens before the mold goes to the press shop. Moldmaking is a precise art, every detail shows up in the unforgiving medium of glass. The moldmaker is a skilled craftsman relying on experience and artistic expertise to accomplish the task set forth by the designer. What begins as a drawing on paper goes through several stages before taking shape as a massive iron cast capable of producing a beautiful crystal creation. After this much effort and raw material has been expended, the resulting mold is undoubtedly as valuable a possession to the glass company as the crystal is to a Heisey collector.

Visitors will be able to compare the final product to the mold that gave it shape. In the exhibition there will be examples of the glassware alongside the molds. Heisey punch bowls are impressive chunks of glass themselves, but have you ever seen a punch bowl mold? It's an awesome structure, probably weighing as much as a prize fighter.

Tools will also be a focus in *Lasting Impressions*. The HCA warehouse holds snap tools and punty rods a plenty. There's even a "hokey pokey" machine to add to the conversation about stemware. Factory records from the archives will show which tools were used with each mold. The creation of innovative, labor-saving machinery was as important to the glass industry as the development of eye-catching designs. Heisey's patents support their participation in this aspect of the glassmaking process.

*Lasting Impressions: The Fine Art of Moldmaking* coincides with the April Benefit Auction and other centennial celebrations planned for Spring 1996. ♦

## Focus on the Collection—The Art Deco Connection between New and Old

Karen D. Kneisley

The King House dining room table has been set since mid September with the #480 Normandie etched glass donated by Beverly Eriksen and Brenda Coone in memory of their parents. We're fortunate to have the opportunity to showcase an entire tablesetting of one etch. Often a design varies slightly when it is applied to different shapes of glassware.

Created by Carl Cobel in 1935, Normandie etch was used on several existing patterns, including the classically elegant #3389 Duquesne stemware line. However, the etch also appeared on several stylistically modern lines that were introduced about the same time. The etching design combines the design trends of the past with the art deco trends that surfaced in the previous decade and were taking a firm hold of American manufactured items.

Art deco is an industrial design style that comes from an abbreviation of the title of a show, *Exposition Internationale des Arts Décoratifs et Industriels Modernes*, that occurred in Paris

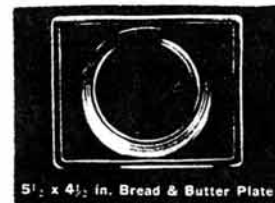
in 1925. The decorative art movement that followed the exposition created quite a stir in European design. Everything from architecture to perfume bottles to coffee cups emulated the simple yet rhythmic geometry of rectangular or triangular steps and arches. Jazz was the craze and new replaced old as the designers put an emphasis on modern materials, such as plastic.

Of course, sometimes it takes a few years for styles to traverse the Atlantic. In 1928 Heisey introduced #1252 Twist (not a Heisey name) which features swirled panels, stepped bases and "lightening" handles. Undoubtedly, this is their first design with a truly art deco flavor, but at the same time they were promoting their Sandwich models. Americans seemed to be in love with antiques in general (see *Heisey News*, September 1978, page 10 for a reprint of a March 1927 *Antiques* article on the models and *Heisey News*, December 1977, page 13 for a reprint of Heisey's January 1928 *Table Talk*). Heisey's #1404 Old Sandwich, #1405 Ipswich and #1425 Victorian demonstrate their use of nineteenth-century glass designs and their advertising of the time proclaimed their devotion to "early American designs" (even though the nineteenth century can hardly be called "early").

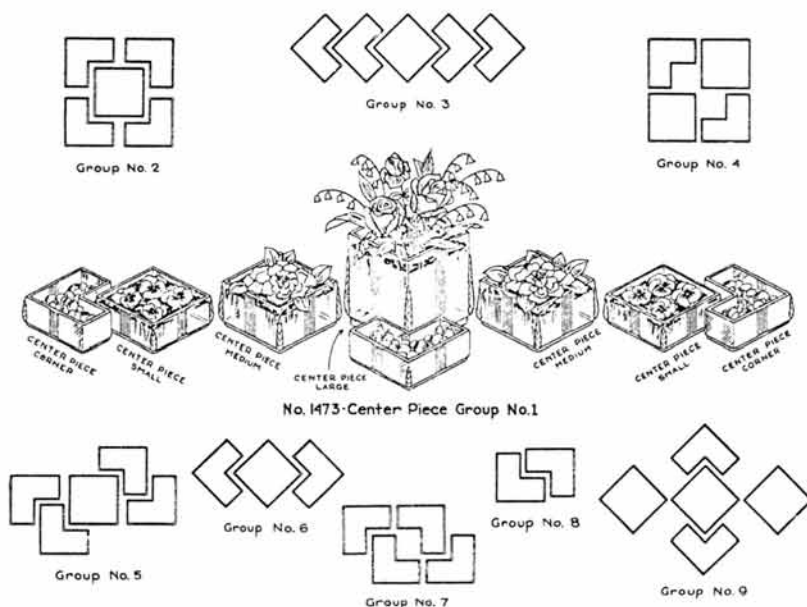
Then, almost ten years after the exposition, along comes Heisey's #4044, which they called Modern at the time of introduction, but ultimately named New Era. No surprise, the pattern's design follows that of a ceramic plate made by Jean Luce of Paris. The next year Heisey introduced the #1473 Buttress centerpiece group. Both patterns featured #480 Normandie etch.

Normandie etch demonstrates Heisey's borrowing capabilities through combination of a calm, conservative floral motif with a vibrant geometric divider. This provides a beautiful bridge between Heisey's old and new designs. Heisey also captures the art deco spirit through the innovative floral arrangement system offered by the Buttress pieces.

When decorated with Normandie etch, the New Era cup is paired with the older #1184 Yeoman saucer. However, on its own, the New Era line offers an excellent study in art deco. The plates are rectangular and have stepped bases. The overall design is simple and shows the beauty of Heisey's crystal. When decorated, New Era features geometric designs like the stripes of the #602 Simplex etching or #5010 Vanity Fair carving or the celestial motifs of the #826 Venus or #828 Stardust cuttings.



Above:  
#4044 New Era



Other art deco-inspired designs were developed in Heisey's lines during the 1930s. #1415 Twentieth Century had the look and feel of a streamlined locomotive (a favored art deco motif, speed was revered). #1483 Stanhope utilized the art deco designer's favorite medium—plastic handles—and was even offered in conjunction with a General Electric coffee pot. Talk about new! When you come to the museum, look through Gallery 2 at the colored glass and you'll see many examples of America's Jazz Era preserved in Heisey glassware. ♦

Left: Coffee Pot with  
#1483 Stanhope cups

## North Carolina—A Story of Determination & Grits

*Carl Sparacio*



*The North Carolina Heisey Study Club strikes a pose for the camera woman, Linda Bischoff.*

I spent much of my time at the HCA September Quarterly meeting in Greensboro, North Carolina searching for confirmation of the line, "Nothing Could be Finer than to be in Carolina in the Maw-aw-aw-ning." It's a sentiment I grew up with. It's a line from a popular song of my youth sung by that early rock and roller, Eddie Cantor (Eddie predates even Elvis). I researched even as I cringed at the prospect of the North Carolina Heisey Study Club singing the song ad nauseum throughout the weekend. I needn't have worried, those North Carolina folks are a classy bunch.

We registered for the HCA functions upon our arrival and I wondered if the North Carolina Heisey Study Club would be able to pull this off. After all, this is a small and scattered club. We were immediately greeted by Heisey friends, both native and foreign to the state.

Greensboro, North Carolina was a revelation. My previous contacts with North Carolina had been from 35,000 feet up. At that distance North Carolina doesn't make much of an impression—it's not as if the Grand Canyon was looking back up at you as you flew over. No, but at street level Greensboro is full of bustle. There's lots of action.

Two of the official functions on Friday were registration and a tour of the Replacements Ltd. facility. You may not know about Replacements, Ltd. It's principle business is replacing missing or broken pieces of discontinued china, glassware and silver patterns. It seemed to me this replacement operation could be a tidy little business to run from your garage, consequently, I ho-hummed my way to their location on the other side of Greensboro. What I found was not at all what was expected. I've seen smaller department stores. In fact, I've seen smaller steel mills.

I was among those given a tour of Replacements, Ltd. by Bob Page, founder and owner of the company. He was obviously very proud of what he'd built. Forty million a year in gross sales is impressive but not something I relate to. The size and efficiency of the operation impressed me more than the dollars. The business is open from 8 am to 9 pm seven days a week and closes only for Thanksgiving and Christmas. I suspect that under Mr. Page's pleasant exterior a Simon Legree lies hidden.

Phone calls from people needing replacements run to thousands every day. Operators can bring up a desired pattern on their computer screens in a wink and advise the caller what's available in that pattern and how much it will cost. If you visit in person, employees in the beautiful showroom will supply that same information just as quickly and give you a computer printout as well.



The display area in the showroom was filled for our visit with the glass Heisey collectors are interested in: showcases featured Heisey, Duncan, Cambridge and on and on—not the least of which was a North Carolina Study Club's member's collection of every known Heisey punch cup including the rarity that brought over \$1,000 at Apple Tree's July all Heisey auction.

The folks at Replacements, Ltd. did more than open their facilities to us. They supplied a lounge for HCA members, which the North Carolina Study Club kept stocked with refreshments, and they hosted a wine and cheese party for HCA members prior to Friday evening's catered Pig Pickin' dinner which, in turn, was also held in their building.

If you've never been to a Pig Pickin' it may be difficult to grasp the concept. The closest thing to Pig Pickin' I've experienced is a Hawaiian Luau. The best I can come up with to translate what the North Carolinians call, *Pig Pickin'* to standard English is: *Good eatin'.*



Tim Bischoff and Sam Schnaidt took turns at auctioning duties and kept everything lively as they squeezed more than \$14,000 out of the attendees.

After the auction everyone scurried back to the September meeting headquarters (Marriott's Courtyard Motel) to freshen up for a cocktail party hosted by our now good buddies from North Carolina. It was held in the lounge-restaurant of the motel. Time flies when you're having fun. In no time at all we had to leave for the Annual Percy Moore Dinner at Greensboro College which, like much of Greensboro's features, was on the other side of town.

To have one good dinner at a two day meeting is exceptional but two in a row is unheard of. If anyone asked what North Carolina is noted for, I'd have to say food. A delicious dinner was supplied once again. I'm loath to admit that mine was more special than anyone else's. Frank Scott, that well known man about North Carolina saw to it that my dinner included grits with butter. I was touched by this special treatment (and relieved that he didn't serve the grits on a pizza). Grits is an unusual food, it doesn't have a distinct flavor of it's own but adopts, instead, the taste of whatever is added to it. I enjoyed it. I will try it with spaghetti sauce real soon (there ain't nothing that can't be improved).

After dinner a business meeting had to be held to satisfy HCA by-laws (this wasn't all fun and games, you know). There were reports and a lot of other good stuff. The meeting adjourned and we heard from Sibyl Lavengood, President of the North Carolina Study Club, and Tom Bischoff, President of HCA. Both gave well deserved thanks to the folks who put it all together and worked so hard to make this meeting a success.

An impromptu auction was held after the speeches. It consisted of feasibility items produced by Imperial, Fenton and Dalzell and Heisey jewelry donated by the North Carolina Study Club. There were animals made from Heisey molds in many off the wall unusual colors.

I crawled into bed that night tired and happy. After saying our good-byes in that fine Carolina morning, we headed north towards the tippy top of New Jersey—a loooooong drive. We had intended to lay over for the night just north of Virginia but at the last minute, in a giddy fit of exhaustion, I decided to press on and head for home.

We arrived home late Sunday night. It was then I discovered the answer to what can be finer than to be in Carolina in the maw-aw-aw-ning. It was right under my nose all the time—the soothing comfort of my own bed after driving a zillion hours. ♦

Saturday morning I had to attend a Board Meeting while everyone else went touring and antiquing. I don't have much to report other than that Replacements, Ltd. was definitely more fun than the Board Meeting (except for when board member Norm Thran walked into a closet when he meant to leave the room).

On Saturday afternoon an all Heisey auction was scheduled and once again this function was also at Replacements, Ltd. and a fine auction it was. The auction committee must be commended. Lots of great glass handled with an efficiency that surely impressed even the super efficient Replacements, Ltd. people.

*Raffle prize winner  
Karen O'Hare and NC  
club member Sibyl  
Lavengood.*



*"Who'll give me a  
hundred?" Auctioneers  
Sam Schnaidt and Tom  
Bischoff were hard at  
work.*



## From the Archives—More than You Ever Wanted to Know About Gauges (Gages)

*Don Valdes*

Early in August we received a request from John Willoughby of Abita Springs, Louisiana for a copy of the ad "For Uncle Sam ...and his nieces, too!" John seems to have become interested in the gauges<sup>1</sup> made by Heisey. As long as I am answering John I thought I might as well do an article.

I mentioned gages in a January 1994 article, one in which I carelessly failed to give the reference to a former mention of gages. (See Tom Felt's chronology *Heisey News* April '87, p. 6.) The T.C. Heisey correspondence doesn't throw much light on the gauge situation. The first mention of gages appears in letters to Tim:



Yesterday I spent most of the day with Lieutenant Smith from the Ordinance Department, Franklin Arsenal, Philadelphia. They seem to be very much interested in glass gauges and left a number of blue prints with us after Ray (Cobel?) made them a big one from a huge #341 candleblock. They were amazed that we could get them out as quickly as we did because they couldn't get a steel gauge under sixty days. He said they would write us and let us know all about everything because he thought it might mean an awful lot of business but it would be slow to start. Colonel somebody is coming out next week to see about this also.

The man who was here was about 34 years old and a Purdue graduate. He seems to have had charge of gauges for the Delco-Remy people at Anderson, Indiana. I got rather well acquainted with him before he left. We took him to the Inn (Granville Inn) for lunch and last night I took him to the Lake (Buckeye) and put him on the late train.

In the files on gauges there are a couple of one page statements:

### OUR METHOD OF FINISHING GLASS GAGES

Finishing of glass blanks to precision sizes is accomplished just about the same as finishing steel gages. However, the quality of the wheels is different and glass gages are finished at very much lower speeds. We operate our grinding motors at 1750 r.p.m. and the work speed is from 50 to 100 r.p.m. For rough grinding we use Norton grade 120N, or other make of similar quality, and for the finish grinding Carborundum Aloxite F-I-D900, or other similar make. Our grinding is done wet with the coolant flowing at the point of contact of the wheel with the work. We use plain water. For the final polishing we use a fine grade of powdered pumice stone with a piece of hard cork as a buffer. This is also a wet operation.

### SOME OF THE ADVANTAGES OF GLASS GAGES

In addition to saving about 75% of the total machine tool time in production, the glass gages have the following definite advantages as compared to the metal:



1. Visibility in inspection, not always possible with steel, will tend to produce a superior product
2. Perspiration on the hands of inspectors has no corrosive effect on the glass gage as it has on steel.
3. The thermal conductivity of glass is less than that of steel, and therefore, heat transferred from the hands of inspectors to the gage will not affect gaging dimensions.
4. The glass gage will automatically eliminate the necessity for many greasings and degreasings, since no question of rust is involved.
5. Glass appears to have abrasive-resisting qualities equal to or better than steel in many gaging applications.
6. Where the component part of the machine is very near the size of the gage, there is less tendency for the component to seize or gall on the glass than on the steel gage.
7. Scratches on glass do not leave a burr and do not change the effective size of the gage.
8. Handling glass gages is easier than steel gages inasmuch as the glass gage is much lighter.

One of the questions we have had raised is, "Who were the users of gauges?" There is a list, again from the 1943 files, of "Gage Purchasers." This doesn't make very snappy reading, but to summarize:

There is a listing of 119 companies, from Acme Experimental & Technical Machine Company to Wolverine Brass Works, from the U.S. Naval Torpedo Station to Boeing Aircraft.

*She said what? He married her? Sounds like a soap opera! Only better!! Archivist Don Valdes has been hard at work filing employee work and insurance history. Read next months From the Archives. Don promises it will be better than Dynasty!*

-----  
<sup>1</sup> For the second time in a few weeks writing for the *Heisey News* has presented a spelling challenge. First, it was the word "mold," or is it "mould?" Now it is the word "gage," or is it "gauge?" As I am a poor speller but also an ex college professor I have to do a lot of looking up. Word Perfect's spell check doesn't really answer the question and, in typical college professor's style, nor will I. ♦

## A. H. Heisey & Company—A Chronology, Part VI

*Tom Felt*

1935

♦January. The #4055 Park Lane stemware line was advertised, with the #838 St. Moritz rock crystal cutting.

♦February. Marshall Field and Company in Chicago installed a permanent Heisey display in their store. This idea was not new in the case of certain better known lines of housewares, but was considered “somewhat novel with respect to glassware,” according to the House Furnishings Dealer.

♦The #3418 Savoy Plaza stemware line was advertised as new this month, with the #846 Neo-Classic cutting.

♦March. The #842 Singapore cutting was advertised.

♦April. Two new carvings were mentioned in the Crockery and Glass Journal: #5015 Stripes and #5016 Stars and Stripes.

♦May. The pieces from the Metropolitan Museum of Art’s American industries display were exhibited at Heisey’s showroom in Chicago.

♦#4054 Coronation was shown in Chicago at the Merchandise Mart, as one of “many new items,” none of which “attracted more attention from buyers than the soda line for beverages and liquors.”<sup>1</sup>

♦June. #1469 Ridgeleigh was advertised as new.<sup>2</sup>

♦July. In response to the National Recovery Act being abolished, T. Clarence Heisey was quoted in the Crockery and Glass Journal as saying, “We think that the Supreme Court’s decision in reference to killing the NRA is the greatest thing that has happened to this country since the Declaration of Independence. This means the end of the un-American policy of the present administration of nosing into everybody’s business. We are again free, white and twenty-one. We hope that industry as a whole will continue to show their employees the same equitable consideration of wages and hours as they did under the Blue Illegal<sup>3</sup> and I believe 90% of them well.”

♦The #480 Normandie plate etching was advertised as new this month.

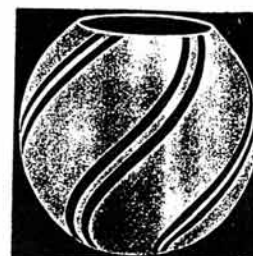
♦August. At the Merchandise Mart’s Glassware, China and Pottery Market in Chicago, nineteen model table settings by different companies were displayed and, after the show’s closing, photographs of each table were mailed with ballots to the glassware and pottery buyers of America. Some 500 buyers responded and first prize went to a cocktail table set by the Dunbar Glass Corporation. Second prize went to Heisey for a formal Christmas table, featuring square footed stemware and square plates,<sup>4</sup> with a centerpiece of poinsettias and holly. The table was set by Sara Durant, who was in charge of the Heisey display at Marshall Field and Company.

♦The first of the matte etchings<sup>5</sup> was presented, #602 Simplex.

#4055 Park Lane



#5015 Stripes



#5016 Stars & Stripes



#480 Normandie



<sup>1</sup>House Furnishings Dealer. A patent for this pattern was not filed until February 7, 1940.

<sup>2</sup>The earliest patent for this pattern was not filed until January 24, 1936.

<sup>3</sup>This refers to the Blue Eagle, symbol of the NRA.

<sup>4</sup>Probably #3424 Admiralty stemware with #1469 Ridgeleigh plates with the #602 Simplex matte etching.

<sup>5</sup>A process whereby entire pieces or portions of them were uniformly “frosted,” or given a satin finish.

#3424 Admiralty



#4069 Ridgeleigh



♦September. The Crockery and Glass Journal reported that Emil Krall, Sr. had become the foreman of Heisey's engraving department. During the Glassware, China and Pottery Market at the Merchandise Mart in Chicago, referred to above, he demonstrated his skills as an engraver.

♦October. The #859 Cohasset cutting was advertised.

♦Other new lines in 1935 included #1454 Diamond Point\* and #1463 Quaker.

♦Other new stemware lines included: #1437 Flint Ridge\*, #3421 Avignon\*, #3422 Loren\*, #3424 Admiralty and #3428 Brittany\*.

♦Other new plate etchings included #477 Japanese Scene.

♦Other matte etchings introduced in 1935 included #600 and 601 Satin Finish and #603 Bandolino.

♦Other new carvings included: #5010 Vanity Fair, #5011 Chevy Chase, #5012 Amfulala Tree, #5013 Nymph and Satyr and #5014 Swan Dive.

♦Other new cuttings included: #834 Moulin Rouge, #835 Larkspur, #836 Pretoria\*, #837 Cristobal, #839 Bonnie Briar, #840 Briar Cliff, #841 Wyandotte, #843 Tahiti, #844 Piccadilly, #844½ Cromwell, #845 Fontaine, #847 Streamline, #848 Botticelli, #849 Nomad, #850 Del Monte, #851 Kalarama, #852 Navarro, #853 Pinehurst, #854 Lombardy, #856 Marquette\*, #857 Catalina\*, #858 La Paloma\*, #860 Vienna\*, #861 Neapolitan\*, #862 Morocco\*, #863 Contessa\*, #864 Blue Willow\*, #865 Florentine, #866 Kent, #867 Chateau and #869 Capri\*.

♦A number of colors were discontinued about this time, including Flamingo, Moongleam, Alexandrite and Tangerine.

♦Heisey's mare, Goodness Gracious, won the open and grand championships at the Madison Square Garden's National Horse Show this year and the open and grand championships at Toronto, giving her recognition as one of the country's outstanding show horses. Including the prizes already mentioned, Goodness Gracious won a total of eight major awards between 1932 and 1935, including international champion this year.

### 1936

♦February. #4069 Ridgeleigh stemware<sup>6</sup> was advertised as new.

♦March 20-April 19. Heisey participated in an exhibition of American glass, conducted by the Industrial Arts Department of the Brooklyn Museum. More than sixty firms were represented in this exhibit, which also included demonstrations of glassblowing, cutting, etching, etc.

♦July. Heisey's mare, Goodness Gracious, won the open and Longport stake (which ranked as the highest honor, or first prize) at the Atlantic City Horse Show. Goodness Gracious, a 14-2 walk trot mare, was described by the judges at that show as having "the greatest trot of any living saddle horse."

♦July 19-25. Heisey's new pattern, #1483 Stanhope,<sup>7</sup> was introduced at the New York china and glassware show and, from August 3-15, was also on display at the Chicago show. Designed by Walter Von Nessen, this innovative pattern with its varicolored Plascon handles on many of the pieces was awarded a plaque in the Modern Plastic Competition for 1936.

♦October. Following a siege of serious illnesses, Heisey's New York representative, E. G. Nock, killed himself by jumping from his tenth story apartment.

<sup>6</sup>Also referred to as Reis Ridgeleigh in early sources.

<sup>7</sup>Patents were filed for this pattern in July 1936.

♦December. Joseph J. Lower became Heisey's representative in New York. He had originally traveled as a salesman in the Midwest for Heisey and more recently had New York State as his territory. He managed the New York office until Heisey went out of business and was then the only Heisey salesman to be retained by Imperial, representing them in New York until he retired in 1967.

♦The #885 Incognito cutting was advertised on the new #4083 Stanhope stemware line.

♦One new matte etching was added, #605 Frosted.

♦Other new cuttings included: #326 Trinidad, #855 Fuchsia, #868 Minaret, #870 St. Albans\*, #871 Sophisto, #872 Mariemont, #873 Edwardian, #874 Exotique, #875 Sylvia, #876 Honolulu\*, #877 Pueblo, #878 Sea Glade, #879 Da Vinci\*, #880 Salem, #881 Kashmir, #882 Yorkshire, #883 Royal York, #884 Vincent\* and #886 King's Ransom.

♦Price list 211-16 was issued in 1936.

♦E. Wilson Heisey was state manager in Ohio for Alf Landon and also served as delegate to the Republican National Convention. Emil Krall engraved a display case that included Landon's portrait. The company also produced a special carving for Landon's campaign.

#605 Frosted



#1488 Kohinoor



## 1937

♦February. #1485 Saturn and #1488 Kohinoor, two new patterns by Walter Von Nessen, were advertised. Blown stemware in Kohinoor (#4085) was also shown, with the #493 Coronation<sup>8</sup> plate etching.

♦March 15. Price list 212-17 was issued.

♦The first of the animal-related pieces was out by this time, the #1 Horse Head bookend, designed by Ray Cobel.<sup>9</sup>

♦April. Table Talk, Heisey's monthly "house organ" (which was primarily distributed to salesmen, but that was also available to customers) was reintroduced,<sup>10</sup> coinciding with a new advertising campaign in Life and the New Yorker. Leaflets describing the major patterns and two-color window display cards were also produced at this time. This was seen as a "return to the national advertising picture in which [Heisey] once occupied the position of 'first' of the domestic glass factories."<sup>11</sup>

♦This issue featured several "rock crystal cuttings and etchings," including the #888 Madeira and #890 Churchill cuttings and the #494 Swingtime plate etching.

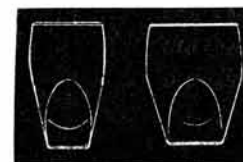
♦Four new engravings by Emil Krall were advertised: #2508 Water Lily, #2509 Bird & Rose, #2510 Robin in the Tree and #2511 Light House & Boat.

♦May 21-July 4. Walter Von Nessen sailed on the S.S. Bremen for Europe on what he described as a "general scouting trip" on Heisey's behalf. He attended the Paris Exposition and it was announced that he would return with plans for a new fall line.<sup>12</sup>

♦June. Emil Krall, Sr. exhibited his engraving skills at Bloomingdales in New York.

♦#1486 Coleport was introduced this month.<sup>13</sup>

#1486 Coleport



<sup>8</sup>Originally designed for the coronation of Edward VIII of Great Britain, but only in production very briefly, since Edward abdicated at about the time the etching was introduced.

<sup>9</sup>The design seems to have been copied from a bookend and lamp base made of a composition material that was featured in various issues of *House and Garden* in November and December 1934.

<sup>10</sup>*Table Talk* had initially been published in the 1920s, but had ceased publication after only a few years. The earliest issue in the HCA archives is dated January 1930. The last issue is February 1938, but there is a letter to an ad agency referring to a mock-up for the March 1938 issue, suggesting that the journal remained in production for only about a year in its second incarnation.

<sup>11</sup>*Crockery and Glass Journal*, April 1937.

<sup>12</sup>#1495 Fern.

<sup>13</sup>A patent was filed on June 21, 1937, and approved July 27, 1937.



#4090 Coventry



#491 Frosty Dawn



#1506 Whirlpool



♦July. The #4092 Kenilworth stemware line was featured in the July-August issue of Heisey's Table Talk. The #893 Carlton and #896 Sungate cuttings were also shown in this issue.

♦August. The #895 Waterford cutting was shown in the Crockery and Glass Journal. Two silhouette etchings were also shown: #495 Polo Player and #496 Skier.

♦September. Two more patterns came out for the fall trade, #1489 Puritan and #1495 Fern, the latter designed by Walter Von Nessen.<sup>14</sup> The #4090 Coventry stemware line was also new at this time.

♦Zircon, "Heisey's subtle new color," was introduced in September.

♦October. The #1496 Mahabar smoking set in Zircon and Sahara was advertised as new. (In 1938, this pattern was expanded to a full line and became #1503 Crystolite.)

♦December. The #497 Rosalie and #500 Belvidere plate etchings were advertised.

♦New stemware patterns also included: #4091 Kimberly.

♦Other new plate etchings included: #490 Maytime, #491 Frosty Dawn and #492 King House\*.

♦Other new silhouette etchings included: #1 Short Sailboat, #2 Tall Sailboat, #3 Motor Boat, #481 Lancaster,<sup>15</sup> #498 Modern Polo Player and #499 Good Morning.

♦One new carving was also introduced, #5017 Sailboat.

♦Other new cuttings included: #887 Southampton, #889 Sheffield, #891 Pembroke, #892 Berkeley Square, #894 Brambleberry, #897 Northwest\*, #898 Trafalgar\*, #899 Norfolk\*, #900 Saratoga\* and #901 Delft Diamond.

♦Two of Heisey's horses took prizes this year: Patsy Cronan won the five-gaited mare Championship of the Eastern States in Springfield, Massachusetts, and Top Hat won the reserve walk-trot championship at the same show.

## 1938

♦February. A full line of the new 1503 pattern, called Rajah, was advertised. By March, the name of the pattern was changed to Crystolite.<sup>16</sup>

♦April 1. Price list 213-18 was issued.

♦August. #1509 Queen Ann was advertised as a "completely new flatware shape."<sup>17</sup> A matching stemware shape (#5009) was also introduced at the same time, and both the pressed and blown pieces were shown with the new #501 Belle-le-Rose plate etching. The #912 Sabrina and #913 Everglade cuttings were also advertised this month.

♦September. It was reported that #1506 Whirlpool<sup>18</sup> had been introduced at the summer china and glassware show.

♦The #7000 Sunflower pattern was also shown for the first time around October or November.<sup>19</sup>

♦December. The #917 Sarasota\* cutting was advertised.

<sup>14</sup>This is the last pattern known to have been designed for Heisey by Walter Von Nessen. According to Joe Lower, Heisey's New York sales representative from 1936-1957, Von Nessen also created a line of pressed ware called Chevron that didn't go over.

<sup>15</sup>Lancaster was apparently named after Wm. Lancaster Smith, the trainer employed by Clarence Heisey in his High C Stables. The etching is based on a photograph of Mr. Smith on Cocobola, one of Heisey's show horses.

<sup>16</sup>The earliest patent for this pattern was not filed until February 8, 1939.

<sup>17</sup>Many of the pieces in this pattern were actually slightly modified versions of articles originally offered as part of Heisey's #1401 Empress line.

<sup>18</sup>Called Cameo in the early ads. Around 1950, the pattern name was changed once again, to Provincial. The earliest patent for this pattern was not filed until February 6, 1939.

<sup>19</sup>Referred to as Empress in *China, Glass and Lamps*. The was the only pattern number in the 7000's actually used by Heisey. All other pattern numbers in the 7000's or 8000's were assigned by researchers to pieces for which the original pattern numbers are unknown.

♦Other new stemware lines for 1938 included #5003 Crystolite.  
 ♦Other new cuttings included: #902 Orlando, #903 Zeuse, #904 Rialto, #904½ Trevi\*, #905 Rosemont, #906 Windermere\*, #907 Cheerio, #908 Rondo\*, #908½ Sonata\*, #909 Champlain, #910 Copperfield, #911 Lyric, #914 Royal Sensation, #915 Amarillo\*, #916 Arlington\* and #918 Winston\*.

## 1939

♦July. #1511 Tourjours and the #5010 Symphone stemware line were reported as new, both shown with the #503 Minuet double plate etching.  
 ♦September 15. Price list 214-19 was issued.  
 ♦The third furnace of the factory was lit for the first time since 1929. In a letter written by T. Clarence Heisey, he indicated that only twice in the factory's history had all three furnaces been lit at the same time.  
 ♦The #2355 Cloverleaf pattern was new in 1939.  
 ♦The other new stemware patterns included: #5011 Yorktown and #5013 Shasta.  
 ♦Other new plate etchings included: #502 Crinoline and #504 Tea Rose.  
 ♦One new carving came out, #5020 Lily.  
 ♦New cuttings included: #844½ Cromwell, #919 Laurel Wreath, #920 Grey Laurel Wreath, #921 Danish Princess, #922 Calgary\*, #923 Cheyenne\*, #924 Daisy, #925 Huguenot, #926 George IV,<sup>20</sup> #927 Powhattan, #928 Legionnaire, #929 Ticonderoga, #930 Narragansett, #931 Plantagenet, #932 Coreopsis\*, #933 Fan\* and #934 Olive.  
 ♦Zircon was discontinued, probably early in the year.

#5003 Crystolite



#5010 Symphone



<sup>20</sup>The correct name for this cutting is actually George VI, but got changed because of a typographical error.

## Brain Teasers—25 Heisey Favorite Stems

Walter Ludwig

	Pattern Name	Pattern No.
1. HAS SPIN	_____	_____
2. A.M. AD	_____	_____
3. NOT JAR	_____	_____
4. BAH, SAW	_____	_____
5. AL, RUMP	_____	_____
6. RANKLE PA	_____	_____
7. ALL EDGY	_____	_____
8. A LATIN "NO"	_____	_____
9. ECRU FLAG	_____	_____
10. AN AD RAG	_____	_____
11. BALD SCAR	_____	_____
12. LEND GRACE	_____	_____
13. QUEUE STATS	_____	_____
14. KNOW TROY	_____	_____
15. TRY MAIL AD	_____	_____
16. DICE! MY TURN.	_____	_____
17. UNGIRTH ARK	_____	_____
18. LONE TRAY	_____	_____
19. RAKE UP KNAVE	_____	_____
20. SHOOT TRUMP	_____	_____
21. LINE A REGION	_____	_____
22. OWL - THINKER	_____	_____
23. OZ, LAVA PAYS	_____	_____
24. DOMINO ON LID	_____	_____
25. GEE, GIRL HID SIRE	_____	_____

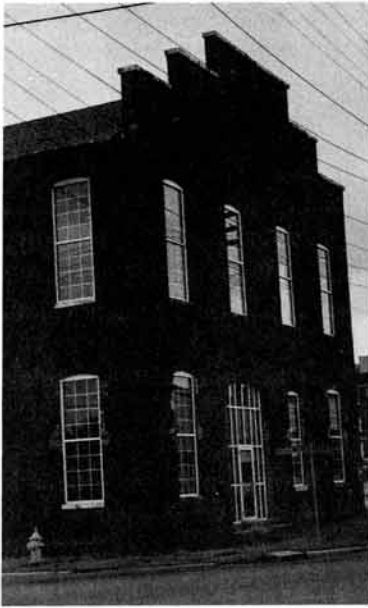


### Answers to Heisey's 25 Favorite Candlesticks

1. Edna #141
2. Cherub #111
3. Mars #113
4. World #1493
5. Bamboo #117
6. Flame #1615
7. Trident #134
8. Egyptian #7075
9. Crocus #140
10. Empire #1471
11. Block Five #1619
12. Sheraton #69
13. Heirloom #5026
14. Wellington #107
15. Jacobean #8
16. Georgian #1
17. Hepplewhite #68
18. Grape Cluster #1445
19. Miss Muffet #118
20. Parallel Quarter #1472
21. Patrician #5
22. Sheffield #20
23. Jack Be Nimble #31
24. Little Squatter #99
25. Petticoat Dolphin #109

## Liaison Relations—On the Verge of Construction

Molly Kaspar



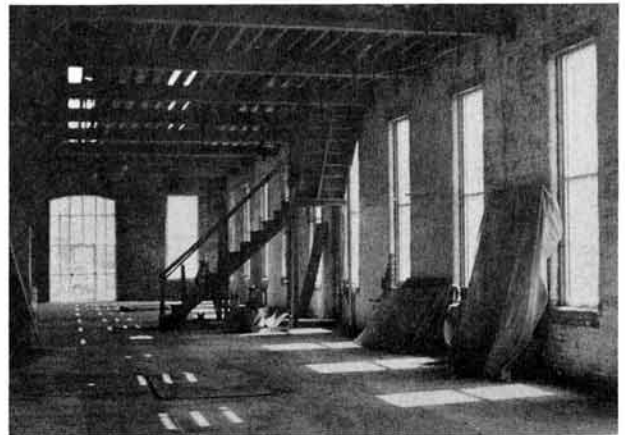
East end of Scheidler Machine Works, corner of Scheidler and South 1st Streets, downtown Newark.

I have been given strict instructions from *THE* Editor that I must not only introduce myself to you but also give this recurring column a catchy title! HCA welcomed me as the Museum Assistant in late March and it has since been a great learning experience for me. I graduated from the University of Toledo in 1994 with a B.A. in art history, and prior to moving to Newark I worked as a museum intern at Hopewell Furnace National Historic Site near Philadelphia. My duties at HCA have been quite diverse, as there is much that goes on behind the scenes. I work with Karen and Kelly to help accomplish their myriad of curatorial and editorial duties. Recently I have been appointed the Liaison between The National Heisey Glass Museum and The Institute of Industrial Technology.

This leads back to my first point, that of a catchy title. Can the "Presidents Discourse" really be topped? Due to the lack of reputable legal dictionaries in the museum library I had to rely on Mr. Webster. However, he wasn't much help. He states that a liaison is a communication for establishing and maintaining mutual understanding especially between parts of an armed force. Well, if that's the case I expect all of you to salute next time you pass my way!

Construction on the new Institute of Industrial Technology (IIT) will soon be underway, as will the plans for Heisey Collectors of America's latest endeavor. As many of you may already know, a new museum is being built at the Scheidler Machine Works in downtown Newark, to honor the heritage of Licking County through the interpretation, education, and preservation of its diverse industrial history<sup>1</sup>. In alliance with the LeFevre Foundation, Central Ohio Technical College and The Ohio Historical Society, Heisey Collectors of America has been granted nearly one third of the exhibit space of Phase I to provide glass making demonstrations and showcase Heisey glassware.

A committee was set up, chaired by Sam Schnaidt and Norm Thran, to secure our role in the new museum. Now, along with the help of Karen, our consultant Ken Dalzell, and myself, the ground work has been laid and plans are being finalized. The IIT is to be built in two phases with Phase I slated to be completed and ready for opening ceremonies during our 1996 Centennial Celebration. Phase I includes overall structural rehabilitation and construction, the formation of education programs and exhibits, as well as the Heisey exhibit and glass making demonstration area. However, our current space is only temporary. When Phase II is implemented we will be moved to a new location, an addition to the building.



Interior of empty Scheidler Building.

<sup>1</sup>From the *Interpretive Prospectus and Concept Design, The Institute of Industrial Technology*, prepared by Gerald Hilferty & Associates, Inc. in cooperation with The Ohio Historical Society.

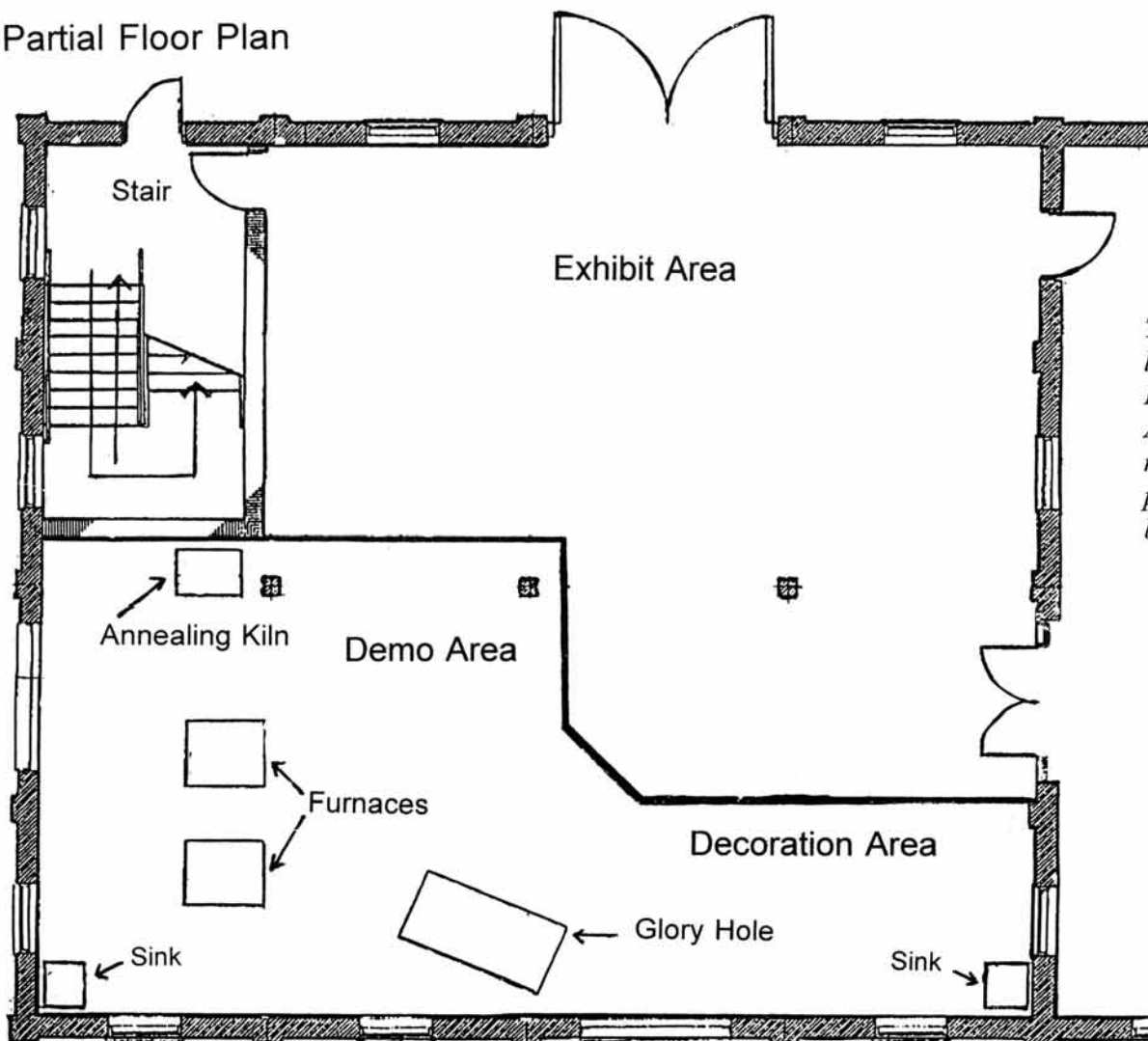


As you will see from the architectural drawings HCA will occupy the west end of the building, the space to be split nearly in half between demonstration and exhibition areas. Karen, Phil Payne (Director of The Institute of Industrial Technology), and I made several visits to other museums, including Oglebay Park in West Virginia, to develop some ideas for our space. Our demonstration area will consist of two electric furnaces, an annealer (lehr) and a natural gas glory hole. Space has been set aside for a lave to be used for cutting and decorating glass. A waist high partition will be used to separate visitors from demonstrators. Interest has already been shown by several craftsmen, offering to make themselves available to do demonstrations.

The remaining space is being designated exhibition space, to be filled with changing Heisey exhibitions. Our debut exhibit will be *Lasting Impressions: The Fine Art of Mold Making*. It's the second in our exhibition series and may be viewed at the National Heisey Glass Museum February 3 through April 14 before its relocation.

We hope you will share our enthusiasm about The Institute of Industrial Technology. This new addition to Heisey Collectors of America certainly adds to the excitement of our centennial anniversary. I'll made sure to keep all of you posted about the latest happenings at the new museum! Salute.....Dismissed! ♦

### Partial Floor Plan



*The drawing to the left is courtesy of IIT's architects, JBA Architects. This represents only our portion of the building.*

## Heisey Going Home

*Beverly Morgan Eriksen*



Pictured standing on ladder is Tommy Morgan, grandfather of Beverly Eriksen and Brenda Coone.

I felt proud and excited as I watched my collection of Heisey glass being carefully wrapped by Virginia Yeakley and packed into their motor home by her husband, Loren. My Heisey was going home!

I was born in Newark, Ohio into a family of Heisey workers. My great-grandfather, William Powell, my grandfather, Thomas Morgan, my aunt, Leona Morgan Wiley, and even my father, William Morgan, were all at one time employed by Heisey Glass Company. When my parents were married in December of 1935 their wedding gift from my grandparents was a dinnerware set of Heisey crystal in the Normandie etch. There were 12 place settings and several accessory pieces. Over the years my parents acquired a great deal of Heisey and used it often. My parents are both gone now and my sister and I find we no longer entertain and use the Heisey as my parents did. We live in smaller homes than we used to and our storage space is limited. My sister and I discussed at length what should be done with this lovely glass. We never considered selling it as we have always considered ourselves only custodians of the glass. After contacting the museum, the decision was made to donate the bulk of our collections to Heisey Collectors of America to be displayed in their museum, eventually to be included in traveling exhibits of Heisey and the remainder to be sold at an all Heisey auction with proceeds to go to the Endowment Fund. The Normandie dinnerware was featured at the Heisey Glass Display during the Heisey Convention and I hope many of you enjoyed seeing this lovely Heisey glassware.

I urge others of you who may have larger collections of Heisey than you are able to use and display to remember Heisey Collectors of America and consider making donations of your glass that will further educate the public about the beautiful glass that originated in Newark, Ohio. It is the aim of HCA to preserve this beauty for all the world to enjoy. ♦



### HCA Annual Holiday Dinner

*Saturday, December 2 at The National Heisey Glass Museum*

Join us in Newark for a festive holiday evening. Browse our museum and enjoy our Holiday Entertainment display along with thematic decorations. Jeffers Catering will be serving six different appetizers, prime rib and baked marinated chicken, baked potato, vegetable medley, tossed salad, assorted dinner rolls, and for dessert—cake, cheese cake and a variety of pies. Donation bar, coffee, tea, and soda. My mouth is already watering, so bring your family and friends, make your reservations now for HCA's annual Holiday Dinner. Cost is only \$22.50 each person. Cocktails begin at 6:30 p.m., followed by dinner at 7:30 p.m. ♦

#### RESERVATION FORM for Holiday Dinner

Mail to HCA Holiday Dinner, Mary Ourant, 169 W. Church St., Newark, Ohio 43055

Name: \_\_\_\_\_

Address: \_\_\_\_\_

City/State/Zip: \_\_\_\_\_

Daytime phone: \_\_\_\_\_

Please enclose payment: check or MasterCard/Visa \_\_\_\_\_ exp. \_\_\_\_\_

Number of Dinner Reservations: \_\_\_\_\_ X \$22.50 each = \_\_\_\_\_

Name of Attendees: \_\_\_\_\_

News From the Shop  
3 New Books on the  
Shelves!!!

#145 *Tiffin is Forever*  
*A Stemware Identification*  
*Guide, Bob Page & Dale*  
*Frederiksen-----\$29.95*

#143 *A Collection of Am.*  
*Crystal, A Stemware,*  
*Identification Guide for*  
*Glastonbury/Lotus/Libbey/*  
*Rock Sharpe & Hawkes,*  
*Bob Page & Dale*  
*Frederiksen-----\$24.95*

#144 *Seneca Glass*  
*Company, 1891-1983,*  
*A Stemware Identification,*  
*Bob Page & Dale*  
*Frederiksen-----\$24.95*  
Call the museum shop  
today at (614) 345-2932!

## Taking Apart the #300-5 Old Williamsburg Candelabra

Fred Reesbeck

Although not the tallest candelabra, the #300-5 was probably the largest candelabra ever made by Heisey, with an arm spread of 18-inches and a base that is 8-inches in diameter and a column that is almost 4-inches at its widest. Because of its thickness, the base is hollow all the way up to the top of the column; even so, the candelabra, when made up, weighs nearly 16 pounds. As usual, #54 ferrules are used for each of the five bobeche and candleholders and a total of 50 prisms. (Most often, "A" prisms were used, though "B" prisms were also available in the early years, and "H," "P," and plastic "X" prisms for a brief period during World War II. According to the price lists, this was the only one of the early colonial candelabra which was not offered with "C" prisms, presumably because they would tend to be rather overpowering; however, it has been seen with 3-inch "C" prisms, which would probably have been available at the special request of the customer.)

*Opening excerpt  
taken from Heisey  
Candlesticks  
Candelabra and  
Lamps, Tom Felt &  
Bob O'Grady  
page 178.*

1. Unscrew each candle cup and wrap it. Pack one item per wrap. Don't "double up" as it is a sure way to drop one piece when unwrapping.
2. Lift off each bobeche and wrap separately. I pack with the prisms on using multi folds of paper; some people take them off. Do what works best for you. The idea is not to damage any parts.
3. Take off the upper center post unscrewing to the left. Wrap it and set aside.
4. Lift off the top half of the hemisphere, wrap it and set aside.
5. Read all of #5 before proceeding...

Lift up the base, support the arms and base with your fingers under the lower hemisphere about 1/4" above a padded table top. With your free hand or a helper, unscrew the base portion down and out of the lead socket. Now set the base down and keeping your hand under the hemisphere, lift the lead socket and the 4 arms up and out. Place the socket and arms on the table. Wrap the hemisphere. Now unscrew the arms out of the lead socket. Wrap each one.

6. Do not unscrew the arms before unscrewing the base! Examine the arms and the hemispheres and you will see "NIBS and NOTCHES" to hold the arms in the vertical position. If you try to unscrew the arms first you will crack or chip something.
7. The lead hub or center socket is quite heavy. I pack it in the bottom of the box, well wrapped to protect other parts. Then wrap the base and pack it. Now you can pack all the other parts in the same box for storage. If I am shipping the #300-5 I pack the base in one box and all the rest in another box.
8. To put the #300-5 back together again just reverse the operation. Be most careful when you screw the arms back into the lead socket. Do not "button" the arms in too tight. There should be room for expansion. The bottom hemisphere has the large opening. Now hold the hemisphere under the socket and place it over the base and screw the base up into the lead socket. *It should not be screwed in tight.*
9. Place the top hemisphere on the lead socket. Next carefully screw in the center post. *Easy does it. Be sure the NIBS and NOTCHES" are in place.*
10. Replace all the bobeche and candle cups. Yes, the ferrules go on the arm first (lip down), if you removed them.

You now have the most beautiful 5-light crystal candelabra ever made! ♦



## CLUB NOTES

Due to growing HCA member interest, we have updated our list of Heisey study clubs. A request for information was made to the study clubs earlier this year and this is the compiled information. The following list provides: the state, name of club, time of meeting, place of meeting and a contact. Hopefully this will be of useful information to those of you who would like to become more involved. Many clubs noted they are very interested in recruiting new members! (\*Please contact HCA for further information).

### ♦CALIFORNIA♦

The Golden Gate Heisey Collectors Club  
Quarterly on varying weekends  
Member's homes  
Russ Nicholas 415-621-6693

Heisey Club of California  
4th Sunday of the month, 1:30-5:00 pm  
Member's homes, varies  
Eugene Moenning 714-240-3105  
Betty Wanser 714-776-0175

### ♦FLORIDA♦

Florida Heisey Collectors Club  
2nd Tuesday of the month, 1:00 pm  
Member's homes, varies  
Everett Dunbar\*

Gulf Coast Heisey Club  
3rd Thurs. of Nov, Jan, & March, 11:00 am  
Member's homes, varies  
Odell Johnson\*

### ♦GEORGIA♦

Dixieland Heisey Study Club  
2nd Fri. of odd numbered months, 6:30 pm  
Holiday Inn (Atlanta Airport North)  
Sid & Mary Edwards 404-928-3774

### ♦ILLINOIS♦

Central Illinois Heisey Collectors Club  
2nd Sun. of Aug, Nov, Feb, & May, 2:00 pm  
Heyworth Bank or member's homes  
Don & Joyce Deany 815-432-4310(after 6pm)

Southern Illinois Diamond "H" Seekers  
7:00 pm  
Member's homes  
Dick & Pat Spencer 618-632-9067

### ♦INDIANA♦

Hoosier Heisey Club  
4 Sat. a year: Aug 19, Nov 18, 2:00-4:00 pm  
Warren Library (Indianapolis, IN)  
Tom Taylor 812-546-4066

### ♦MARYLAND♦

National Capital Heisey Study Club  
2nd Mon. of June, Sept thru May, 7:30 pm  
Potomac Community Library (Potomac, MD)  
Butch Jones 301-423-4228

### ♦MASSACHUSETTS♦

Bay State Heisey Collectors Club  
2nd Tues. of the month except July-Aug, 7:30 pm  
Follen Community Church (Lexington, MA)  
Mary Emma Foster\*

### ♦NEW YORK♦

Heisey Collectors of the Rochester Area  
Member's homes  
Times to be announced  
George Reynolds 716-381-4134

Nassau Long Island Heisey Club  
8:00 pm  
Member's homes  
Babs Kent\*

### ♦NORTH CAROLINA♦

North Carolina Heisey Study Club  
Every 6 weeks  
Member's homes or restaurants  
Sibyl Lavengood 919-291-8742

### ♦NORTHWEST♦

Northwest Heisey Study Club  
1:00 pm  
Member's homes  
Dixie Fuller 206-263-4125

### ♦OHIO♦

Buckeye Heisey Club  
4th Monday of the month, 7:30 pm  
Member's homes  
Norman Thrane 614-344-5955

The Dayton Area Heisey Club  
3rd Tues. of the month, Sept thru May, 6:30  
Business (informal with program)  
Huber Heights, Ohio Library  
Ken & Judy Rhoades 513-275-5735

Far East Heisey Club  
4th Wednesday of the month, 12:00 pm  
Member's homes  
Virginia Speelman\*

Heisey Collectors of Columbus  
7:00 pm  
Member's homes  
Marie Rehbeck\*

Heisey Hunters

Last Tuesday of the month, 7:30 pm  
Member's homes or the museum  
Bill Bowling\*

Heisey 76'ers Study Club  
3rd Wednesday, September thru May, 7:30 pm  
Member's homes (NE Columbus & Franklin Co.)  
Hugo Wenzel 614-882-5246

Newark Heisey Collectors  
2nd Tuesday of the month  
Member's homes  
Loren Yeakley 614-522-5820  
Ann Holman 614-323-0759

Tri-State Heisey Study Club  
Quarterly meetings on Saturday, 12:00 pm  
Member's homes  
Terry Maxwell 419-485-8701

### ♦OREGON♦

Oregon Trail Heisey Collectors  
2nd Sunday of the month, 2:00 pm  
Member's homes on rotating basis  
Jim Cooke 503-645-3385

### ♦PENNSYLVANIA♦

Gateway Heisey Collectors Club  
Every other month on Sunday  
Member's homes  
Joe Lokay\*

### ♦TEXAS♦

Heisey Collectors of Texas  
Usually 2nd Saturday of the month, 12:30 pm  
Member's homes (bi-monthly)  
Jan Hiser 214-492-4827

### ♦VIRGINIA♦

Virginia Heisey Club  
2nd Saturday of the month, 7:00 pm  
Member's homes  
Jean Dougherty\*

### ♦WISCONSIN♦

Dairyland Heisey Club  
3rd Sun. of month, except June & Dec, 1:00 pm  
Member's homes, varies  
Don Friedemann 414-673-2671



**Advertising:** Send all ads to HCA Advertising, 169 W. Church St., Newark, OH 43055 or fax ads to (614) 345-9638, include MasterCard or VISA information. Ads are to be typed or printed on white paper with dark ink. Please double space. All ads must be prepaid. Please do not abbreviate Heisey pattern names or colors. Ads which are entered in a vertical column format can contain a maximum of 67 characters per line, including spaces and punctuation.

Classified: 20 cents per word (members), 30 cents per word (non-members), \$1.50 minimum, 1/8 page limit. Personal ads 1/8 page limit. Abbreviations and initials count as words.

#### Display Ads:

	member	non
1/8 page (9 lines)	\$20.00	\$30.00
1/4 page (20 lines)	\$40.00	\$60.00
1/2 page (horizontal or vertical)	\$80.00	\$120.00
Full page	\$160.00	\$240.00

Ad copy must be received by the first of the month prior to publication (e.g. April 1 for May issue). Camera ready ads must follow specification. Reproductions (i.e. Heisey by Imperial) must be clearly indicated. Heisey News accepts no further liability.

### Classified Ads

**WANTED:** Two 3" "B" prisms, Sahara; #300 candle cups and bobeches, and Ridgely candle cups and bobeches. Also one 6" plate H in Dawn, Limelight, Zircon, Emerald, Vaseline, Ivorina Verde and Opal. Shirley Reesbeck, 238 Rockland Ave., River Vale, NJ 07675. (201) 666-9320.

**FOR SALE:** Heisey Collection with extensive list for candlesticks, cream & sugar sets, Crystolite, Old Sandwich, Rib and Panel, Ridgely, Twist. Also Baskets and Gem Series set with Flying Mare. SASE to Bill Brakemyer, 2214 Drummond St., Riverside, CA 92506. (909) 788-4406.

**WANTED: Heisey Baskets!** Top dollar paid by collector. Moonglam & Hawthorne #461 Banded Picket; Flamingo #500 Octagon; Coronation; #473 Narrow Flute with Rim. Carolyn Felger (818) 705-0854

**WANTED:** 4" lid for Heisey #1205 Fancy Loop potpourri jar. Marilyn Sampson, 422 N. Alexander, Clay Center, NE 68933 (402) 762-3636.

**WANTED:** #3408 Jamestown stems, Rosalie etch: ice teas, juices, oysters, clarets, wines, sherrys and cordials. Your assistance is appreciated. Bill Ponseti, 749 Kendon Ln., Novato, CA 94947.

**WANTED:** One glass top, Sahara color, for #52 salt shaker. Fran Shields, (408) 842-5262.

**FOR SALE:** #3408 Jamestown stems, Rosalie etch: goblets, champagnes, cocktails: \$29.00 each. Perfect! Apologies to person who called. I accidentally erased your message. Please call back. Bill Ponseti, 749 Kendon Ln., Novato, CA 94947.

**FOR SALE:** (10) Bob White goblets, \$250.00 ALL. Miscellaneous Imperial Slag animals. Souvenir Oscars, one Peachalene. Set of Lavender Ice animals, \$1000.00. Williamsburg triple candelabra, \$400.00; Fish book ends, \$200.00. Plus shipping and handling. (614) 882-6039.

**WANTED:** Heisey "Fox Chase" #1509 8" sq. plate, #5012 7" ft'd. vase, #4163 16 oz. beer mug w/red, Mnglm., Amber, handle. Fred Ludwig, 300 Rt. 10 Randolph, New Jersey 07869. (201) 366-7279.

**FOR SALE:** #1401 Empress (6) dolphin footed 8 oz. tumblers, Flamingo, H, mint condition. Accepting Offers. Received by November 1, 1995. C. Faraci, 15 Summer St., Lexington, MA 02173, (617) 862-0532.

**WANTED:** Heisey baskets: etched, cut, colored, unusual decorations or whimsies. Send price and description to Kim Carlisle, 28220 Lamong Rd., Sheridan, Indiana 46069. (317) 758-5767.

**FOR SALE:** #4163 Whaley beer mug, Sahara handle, Chintz etch, H, \$300.00; #1401 Empress Sahara ashtray, H, \$100.00; #4220 Janice Sahara 4 1/2" vase, s.o., \$100.00; #413 Tudor covered cigarette holder, H, \$80.00; #3416 Barbara Fritchie cordials with Chateau etch, H, (4), \$100.00 ea.; #1252 Twist Moonglam individual bon bons, H, (4), \$30.00 ea.; #1503

Crystolite 3-lite candle holders, pr. \$70.00; #3390 Carcassonne Sahara 8 oz. footed sodas, w.o., (2) \$30.00 ea. (612) 689-3365.

**FOR SALE:** #300-4 Old Williamsburg 4-lite tall base candelabra signed H, \$900.00. Insurance and UPS extra. Shirley Reesbeck Antiques, 238 Rockland Ave., River Vale, NJ 07675, (201) 666-9320.

**FOR SALE:** Heisey Pinwheel & Fan pitcher, \$300.00. Marcia Mertens, PO Box 363, Story, WY, 82842, (307) 684-7318. During day time hours.

#### H & R DIAMOND H

Helen & Bob Rarey  
1450 White Ash Drive  
Columbus, OH 43204

(614) 279-0390

after 5:30 p.m.

UPS & Ins. Extra

H=Marked

#300	Peerless 10" ftd. shallow bowl, worn gold	\$45.00
#325	Pillows 5" jelly compote, gold decoration, H	\$65.00
#433	Greek Key 9" celery, H	\$39.50
#433	Greek Key 5" handled jelly, H	\$50.00
#433	Greek Key half gallon tankard, H	\$325.00
#1184	Yeoman cup & saucer, H, (12 sets) ea.	\$12.50
#1401	Empress d.f. mayo, Rosalie etch	\$22.50
#1469	Ridgely star relish, H	\$55.00
#1469	Ridgely 10" round fruit bowl, H	\$55.00
#1469	Ridgely 9 oz. goblet, (7) ea.	\$35.00
#1503	Crystolite punch cup, H, (10) ea.	\$15.00
#1519	Waverly 6 1/2" ftd. jelly, Rose etch	\$52.50
#1519	Waverly cream & sugar, Rose etch, H, pr.	\$75.00
#1540	Lariat cup & saucer, (4 sets) ea.	\$22.50
#1567	Plantation salt & pepper, H, pr.	\$45.00
#4164	Gallagher 73 oz. pitcher, Rose etch	\$675.00
#5019	Waverly 10 oz. goblet, (2) ea.	\$17.50
#5040	Lariat 9 oz. goblet, Moonglo cut, (7) ea.	\$25.00
#5072	Rose stem 12 oz. ice tea, Rose etch, (12) ea.	\$45.00
#5072	Rose stem 5 oz. juice or parfait, Rose etch, (5) ea.	\$47.50

#### OAK GROVE ANTIQUES

Marguerite & Philip Dynice  
49 Grove Street  
Ayer, MA 01432

(508) 772-2538

UPS & Ins. Extra

H=Marked

#3	Marlboro 9" candlesticks, pr.	\$225.00
#5	Patrician 9" candlesticks, pr., H	\$150.00
#5	Patrician 9" candlesticks, cut edge, pr., H	\$165.00
#31	Jack Be Nimble candlesticks, pr., H	\$45.00
#369	Hartman 4 oz. soda, H, (2) ea.,	\$12.00
#400	Salt shaker #57 top, H	\$12.00
#1469	Ridgely 2-lite candlesticks	\$125.00
#1473	Buttress 5 piece set, med, ctr, piece, H	\$250.00
#1503	Crystolite rd, ftd, cvd, candy dish, H	\$45.00

**ADVERTISE WITH THE HEISEY NEWS!**

**Don & Jean Parrett** (517) 784-7319  
**4995 Maple Dale Rd** Post. & Ins. Extra  
**Jackson, MI 49201** H=Marked

#473	Narrow Flute with rim, two compartment relish	\$55.00
#133	Swan, 2 handled swan bowl, great cutting	\$350.00
#133	Swan, candle 1 lite, great cutting, pr.	\$250.00
#101	Tropical fish	\$1595.00
#303	Punty & Diamond Point perfume, 1 oz w/silver cap	\$100.00
#473	Narrow Flute w/rim nut dishes, (6) ea.	\$18.00
#473	Narrow Flute w/rim 6" decanter tray	\$50.00
#1170	Pleat & Panel covered lemon dish, Moongleam	\$90.00
#407	Rib & Panel footed covered candy, Moongleam	\$95.00
#1466	Star 5 section star relish	\$60.00
#353	Wide Panel large 2 qt. tobacco jar & water lid	\$295.00
#352	Colonial 44 oz. crushed fruit & lid	\$225.00
#352	Colonial 26 oz. tobacco jar & water lid	\$195.00
#4163	Large pretzel, Fox Hunt etch	\$995.00
#4163	16 oz. Beer mug #462 Fox Hunt etching, (6) ea.	
	\$195.00 or for ALL	\$995.00
#2401	8 oz. soda high ball, #462 Fox Hunt etch, (6) ea.	\$45.00
#4037	32 oz. bar bottle & stopper, #462 Fox Hunt etch	\$350.00
#4163	Large pretzel jar no lid, #455 Sportsman etch	\$550.00
#1252	Twist 8½" rd. nasturtium fld. bowl, Sahara	\$235.00
#1280	Wing Scroll 8½" fruit nappy, Custard	\$75.00
#1401	Empress 6" candy 3 d.f. ft., Flamingo	\$35.00
#463	Bonnet 15½" high basket, #1042 Wood Lily cut	\$250.00
#459	Colonial 15½" high basket, no cutting	\$275.00
#465	Recessed Panel 5lb. covered candy, gold/flower dec	\$625.00
#1255	Pineapple & Fan 8½" nappy, Emerald & good gold	\$195.00
#1183	Revere 2½ qt. apple juice & 6 fld. juice glass & ladle	
	#1042 Wood Lily cut, 8 pc. set	\$295.00

**Bari Fauss** (703) 550-2218  
**8503 Shirley Woods Ct.** UPS & Ins. Extra  
**Lorton, VA 22079** H=Marked

#22	Windsor 7½" candlestick, HH	\$85.00
#150	Banded Flute handled candlestick, HH, (2) ea.	\$45.00
#1184	Yeoman 5½" handled bowtie, Mnglm., Flamingo, ea.	\$40.00
#1401	Empress 10½" sq. plate w/Lotus etch, Sahara	\$70.00
#1401	Empress d.f. mint, Sahara, H	\$44.00
#1404	Old Sandwich 18 oz. beer mug, H	\$70.00
#1469	Ridgeleigh 5 oz. juice glass, H, (12) ea.	\$35.00
#1472	Parallel Quarter candlestick, pr.	\$45.00
#1951	Cabachon comport w/Moonglo etch, H	\$35.00

**ADVERTISE WITH THE HEISEY NEWS!**

**THE COLLECTOR'S STOP** (407) 793-0986  
**Ralph & Eileen Wise** Shipping & Ins. Extra  
**12018 Suellen Circle** H=Marked  
**West Palm Beach, FL 33414**

#350	Pinwheel & Fan 8" bowl, Moongleam, H	\$495.00
#1401	Empress 5½" d.f. mint, Alexandrite	\$225.00
#353	Meduim Flat Panel soap dish with cover, H	\$150.00
	Large Swan, H	\$1,100.00
#16	Pair 7" candlesticks, H	\$115.00
#2401	7 oz. sodas Fox Chase etch, (6) ALL	\$125.00
#1519	Waverly 3 oz. oil Rose etch	\$150.00
#1255	Pineapple & Fan cream & sugar, Emerald ex. gold	\$175.00
#1401	Empress d.f. candlesticks, Flamingo, H, pr.	\$295.00
#1567	Plantation ¼ lb. butter & cover, H	\$125.00
#2	Salad fork & spoon, H	\$125.00
	Giraffe head back	\$195.00
	Small elephant	\$225.00
	Meduim elephant	\$350.00
	Large elephant	\$395.00
	Donkey	\$225.00
#1550	Dolphin Fish candlestick	\$195.00
	Fighting Rooster	\$125.00
#1184	Yeoman 11" cake server with great enamel	\$95.00

**FOREVER HEISEY** (614) 344-5955  
**Norm & Jan Thran** UPS & Ins. Extra  
**1663 Londondale Pkwy.** H=Marked  
**Newark, OH 43055**

#2	Salad fork & spoon, set	\$80.00
#112	Mercury 3" candlestick, Sahara, pr.	\$75.00
#305	Punty & Diamond Point, punch bowl & base, H	\$295.00
#305	Punty & Diamond Point, punch cup, H, (12) ea.	\$17.00
#350	Pinwheel & Fan 14" punch bowl & base, H	\$295.00
#357	Duck ashtray, Flamingo, H	\$195.00
#1170	Pleat & Panel 10½" plate, Flam, H, sl. wear, (2)ea.	\$30.00
#1201	11" Footed floral bowl, Flamingo, H	\$37.50
#1417	Arch tumbler, Sahara, (5) ea.	\$55.00
#1496	Mahabar (Crystolite) cig. box, base only, Sah, H	\$65.00
#1540	Lariat 7" handled bon bon basket, H	\$115.00
#2401	Oakwood old fashion w/Tally Ho etch, (6) ea.	\$30.00
#1519	Waverly 8" plate w/Orchid etch, (8) ea.	\$22.00
#1519	Waverly footed cream & sugar w/Orchid etch, H, pr.	\$55.00
#5025	Tyrolean tall goblet w/Orchid etch, (4) ea.	\$38.00
#5025	Tyrolean tall champagne w/Orchid etch, (6) ea.	\$29.00
#5003	Crystolite goblet, w.o., (12) ea.	\$20.00
#5003	Crystolite 12 oz. fld. ice tea, w.o., (5) ea.	\$28.00
#5003	Crystolite, cocktail, w.o., (12) ea.	\$18.00
#1503	Crystolite (12), #1425 Victorian (12) or #1469	
	Ridgeleigh punch cups (12). Total 36	
	All H, mix or matched, ea.	\$9.00

**J & R COLLECTIBLES** (614) 344-9719  
**Ray & June Lukasko** UPS & Ins. Extra  
**PO Box 1030** H=Marked  
**Newark, OH 43058-1030**

#1401	Empress 7" square plate, Tangerine, H, (20) ea.	\$160.00
#1485	Saturn cruet, Dawn, Crystal stopper	\$550.00
#1495	Fern 8" cheese plate Orchid etch	\$75.00
#1509	Queen Ann cups/round saucers, Orchid etch, H, (4) set	\$52.50
#1509	Queen Ann 2-compartment Dressing bowl, Minuet etch, H	\$85.00
#1509	Queen Ann 5½" footed Mayo, Minuet etch	\$165.00
#1509	Queen Ann 8" plates, Minuet etch, (4) ea.	\$25.00
#1519	Waverly 2-lite candlesticks, Rose etch, pr.	\$350.00
#1519	Waverly 8" salad plates, Orchid etch, (4) ea.	\$27.50
#1560	Victorian belle w/clapper	\$125.00
#3368	Albemarle 1 oz. cordial, Mnglm stem & foot, H	\$250.00
#3381	Creole 7 oz. short saucer champagne, Alex., (2) ea.	\$175.00
#3386	Trojan 1 oz. cordial d.o., Flamingo	\$225.00
#3390	Carcassone 4 oz. claret, Cobalt bowl, (4) ea.	\$75.00
#3481	Glenford 1½ oz. bar, d.o. Alexandrite, (2) ea.	\$235.00
#4163	Whaley 16 oz. mug, Fox chase etch, H	\$155.00
#4227	Favor vase d.o.	\$125.00
#4230	Favor vase d.o., Sahara	\$230.00
#5082	Mid Century 12 oz. soda, Limelight bowl	\$165.00
#5072	Rose stem 6 oz. saucer champagne, Rose etch, (4) ea.	\$45.00

**T & P COLLECTIBLES** (508) 674-7361  
**Tom & Pat Gibbons** Packing & UPS Extra  
**1089 Wood Street** H=Marked  
**Swansea, MA 02777**

Send SASE for latest list

#150	Banded Flute handled chamberstick 4", H	\$35.00
#339	Continental pitcher, c base ½ gal, H	\$95.00
#341	Puritan covered candy footed 3 lb., HH	\$550.00
#1401	Empress sandwich tray, sq 12" t handled, Sahara, H	\$75.00
#1404	Old Sandwich ashtray FSTO s.o. ind.	\$38.00
#1404	Old Sandwich soda straight, s. 10 oz., Mnglm, H	\$45.00
#1502	Swirl candleblock 3", 1 pr.	\$38.00
#1540	Lariat bowl, deep 12½"	\$28.00
#1632	Lodestar bowl, crimped 11", Dawn, H	\$125.00
#4036	Marshall shaker, Rooster 1 qt. silver overlay	\$65.00

**J & L TREASURES** (203) 673-4088  
**Jim & Linda Kilburn** Answering Machine  
**PO Box 1257** Shipping & Ins. Extra  
**Burlington, CT 06013** H=Marked

	Mallard, wing half, H	\$175.00
#16	Classic 5" candlestick	\$75.00
#47	Regal 7" candlestick	\$78.00
#126	Trophy candlestick, Moongleam, pr. 1 faint, H	\$125.00
#134	Trident candlestick w/Orchid etch, pr., H	\$95.00
#134	Trident candlesticks w/Rose etch, pr.	\$145.00
#433	Greek Key water bottle	\$185.00
#1205	Fancy Loop 4" Rose bowl	\$95.00
#1428	Warwick 9" Cornucopia, Coblat	\$220.00
#1428	Warwick 9" Cornucopia, Sahara	\$175.00
#1540	Lariat 4 oz. oil/colonge	\$65.00
#1567	Plantation footed mayo, H	\$55.00
#1567	Plantation 4-part relish, H	\$65.00
#3381	Creole cordial, Alexandrite	\$350.00
#3404	Spanish stem cocktail, Cobalt, (2) ea.	\$90.00
#3404	Spanish stem goblet, Cobalt, (2) ea.	\$135.00
#4044	New Era saucer champ. w/Venus cutting (2) for	\$55.00
#5003	Crystolite 3½ oz. cocktails, faint H, (3) ea.	\$15.00
#5003	Crystolite goblets, (6) ea.	\$22.50
#5003	Crystolite sherberts, (7) ea.	\$12.00

**Fred & Shirley Reesbeck** (201) 666-9320  
**238 Rockland Avenue** UPS & Ins. Extra  
**River Vale, NJ 07675** H=Marked

#1225	Sawtooth Bands 11" cake plateau	\$65.00
#465	Recessed Panel 1 lb. candy jar & lid, H	\$65.00
#1183	Revere etched 1 lb. candy jar & lid, H	\$65.00
#301	Old Williamsburg short base one light hurricane lamps #300 shades 12" hand decorated pink flowers, green leaves. Gold accenting, pr.	\$275.00
#300-5	Old Williamsburg 5-light candelabra, complete all good, single	\$975.00
#1540	Lariat stopper	\$25.00
#201	Windsor 9" electro portable base only, H	\$200.00
#21	Aristocrat 9" electro portable, H fitted with brass shade holder & glass (non H) shade	\$350.00
	Imperial Fish candleholder & fish match holder, both sunshine yellow, pr.	\$38.00
#1591	Elephant handled fairy tale cup, handle silvered, H	\$210.00
#21	Aristocrat electro portable 9" base H and glass shade holder, H	\$250.00
#4037	Oval sherry Orchid etched item 187 in Bredehoft's Orchid etching original stopper (sterling coated)	\$190.00

**ADVERTISE WITH THE HEISEY NEWS!**

<b>JB'S</b>		<b>(713) 379-4519</b>
<b>J.B. Gibson</b>		<b>Shipping Extra</b>
<b>12514 Hammersmith</b>		<b>H=Marked</b>
<b>Tomball, TX 77375</b>		
#300	Colonial 10" salver, (some use marks), H	\$125.00
#338	10" vase, H	\$135.00
#351	Priscilla 12 oz. ale w/floral cutting, H	\$60.00
#355	Quator individual cream & sugar, H, dated	\$60.00
#367	1 qt. decanter w/#48 stopper, Flamingo, H	\$250.00
#393	Handled lemonade w/cutting	\$15.00
#393	Hi-ftd. sherbet, H, (3) ea.	\$12.50
#1184	Yeoman marmalade w/cover all w/cutting, plus #7 spoon, H	\$60.00
#1184	Yeoman ftd. 6 oz. tumblers d.o., Mnglm., H, (6) ea.	\$30.00
#1252	Twist 13" relish 3-compartments, Moongleam, H	\$45.00
#1252	Twist 7" pickle, Marigold, (minor flake), H	\$45.00
#4091	Kimberly stem w/Dolly Madison cut, 5½ oz. sherbet, (4) ea., H	\$20.00
#4091	Kimberly stem w/Dolly Madison cut, 10 oz. gob., H	\$45.00
#4091	Kimberly stem w/Dolly Mad. cut, 5½ oz. champ, H	\$30.00
	8" plate w/Dolly Madison cut (2)	\$35.00
	Gold Series animals w/extra pieces, your choice	\$2500.00
	Gem Series animals or best offer	

**Complimentary shipping for animals sets!**

<b>CLASSIC GLASS</b>		<b>(916) 448-0840</b>
<b>Robert Henicksman</b>		<b>After 6:00 p.m. PST</b>
<b>916 Q Street</b>		<b>Shipping &amp; Ins. Extra</b>
<b>Sacramento, CA 95814</b>		<b>H=Marked</b>
#128	Liberty candlestick	\$45.00
#300	Colonial Peerless punch cups, H, (4) ea.	\$15.00
#393	Narrow Flute 12" relish, 3-compartment, Mnglm, H	\$100.00
#406	Coarse Rib 12" celery tray, metal stand, Mgl., H	\$75.00
#412	Rib & Panel/Tudor 4½" finger bowl, H, (7) ea.	\$10.00
#1212	Crim punch cups, H, (10) ea.	\$10.00
#1225	Ridge & Star 8½" plates, Mnglm., H, (12) ea.	\$22.00
#1225	Sawtooth Band toothpick holder	\$55.00
#1401	Empress 10" hors d'oeuvre, 7-compartment, H	\$68.00
#1401	Empress 6" round plates, H, (6) ea.	\$20.00
#1401	Empress 12" handled sandwich tray, Sahara, H	\$135.00
#1405	Ipswich 8 oz. footed soda, H, (5) ea.	\$40.00
#1425	Victorian 2½ oz. wine glasses, H, (3) ea.	\$28.00
#1483	Stanhope 5½ oz. saucer champagne, H	\$35.00
#1503	Crystolite 8" relish, 4-compartment, H	\$40.00
#1503	Crystolite 10" spring salad bowl, H	\$60.00
#1506	Provincial/Whirlpool nasturtium bowl, H	\$55.00
#1519	Waverly fan vase	\$50.00
#1540	Lariat covered candy dish	\$65.00
#3357	King Arthur 6 oz. sherbets, Flamingo, (2) ea.	\$35.00

<b>TOMKAT ANTIQUES</b>		<b>(816) 454-5078</b>
<b>Tom &amp; Kathy Files</b>		<b>Shipping &amp; Ins. Extra</b>
<b>6704 N. Olive</b>		<b>H=Marked</b>
<b>Gladstone, MO 64118</b>		
#135	Empress candlesticks, Sahara, H, pr.	\$135.00
#352	Flat Panel cream & sugar w/lid, indiv., H	\$45.00
#354	Wide Flat Panel cream & sugar, Oval Hotel, Flamingo., H	\$50.00
#394	Narrow Flute short Domino sugar tray, Pat. Date, H	\$60.00
#411	Tudor saucer champagnes, (4) 2, H, set	\$60.00
#479	Petal cream & sugar, Flamingo, H	\$50.00
#479	Petal cream & sugar, Moongleam	\$60.00
#1401	Empress cream & sugar, individual, Sahara, H	\$60.00
#1401	Empress cream & sugar, individual, flamingo, H	\$75.00
#1425	Victorian cream & sugar, H	\$50.00
#1485	Saturn cream & sugar, H	\$55.00
#1493	World candlesticks, pr.	\$550.00
#1506	Provincial cream & sugar, H	\$45.00
#1510	Square on Round 12" Gardenia bowl, H	\$75.00
#1519	Waverly cream & sugar, Orchid etch, std & ind, H, each set	\$55.00
#1519	Waverly low footed honey/cheese, Orchid etch, H	\$40.00
#1567	Plantation cream & sugar	\$55.00
#3381	Creole wines, d.o., Alexandrite bowl, (2) ea.	\$195.00
#5025	Tyrolean sherbets, Orchid etch, (8) set	\$200.00
#5025	Tyrolean footed juices, Orchid etch, (8) set	\$320.00

<b>Jim Kennon</b>		<b>(813) 869-7013</b>
<b>10131 Casey Drive</b>		<b>UPS Extra</b>
<b>New Port Richey, FL 34654-3537</b>		<b>H=Marked</b>
#7006	Roulette highball, Vogel IV p. 134	\$985.00
#1952	Elephant handled Dumbo mug, Amber, H	\$2250.00
#4049	Old Fitz hot whiskey, Amber, H	\$75.00
#1540	Lariat nut dish, H, (4) ea.	\$18.00
#357	Prison Strip toothpick, H	\$225.00
#5025	Cocktail Orchid etch, H, (3) ea.	\$40.00
#5025	Wine Orchid etch, H, (6) ea.	\$55.00
#5025	Champagne Orchid etch, H, (2)	\$24.00
#1519	12" crimped floral bowl, Orchid etch	\$70.00
#142	Cascade 3-lite Orchid etch, pr.	\$135.00
#3350	Wabash goblet Pied Piper etch, H, (5) ea.	\$22.50
#1565	Jelly, Dawn	\$40.00
#1951	Cabachon cruet, (2) ea.	\$50.00
	Giraffe, head back	\$175.00
	Rearing colt	\$165.00

**Also Available: Glass animals by Imperial, Duncan Miller, Paden City, New Martinsville, Baccarat, Daum, Val St. Lambert, and others. Send LSASE for list!**



**D & B ANTIQUES** (770) 466-7879  
**Bob Bartholomew** 6 am-9 pm EST  
**PO Box 637** S. H. I. Extra  
**Loganville, GA 30249** H=Marked

#5074	Seahorse cocktail	\$165.00
#5074	Seahorse cocktail, Amber stem	\$425.00
#5063	Bantam Rooster cocktail	\$975.00
#1280	Winged Scroll tray 3½ x 5¼, Emerald	\$165.00
#2	Salad fork & spoon, H	\$120.00
#1435	Ashtray 3" Orchid etch	\$30.00
#150	Banded Flute toothpick, H	\$95.00
#150	Banded Flute bar, sham, H	\$55.00
#150	Banded Flute 4" handled candlestick, H	\$65.00
#333	Waldorf Astoria toothpick, H	\$110.00
#1469	Ridgeleigh oval cigarette box & cover	\$85.00
#1469	Ridgeleigh 11" centerpiece bowl, H	\$250.00
#1503	Crystolite covered mustard, H	\$45.00
#1503	Crystolite individual cream & sugar & tray, HH	\$55.00
#1503	Crystolite cruet & stopper	\$45.00
#1503	Crystolite round candy, glass cover, H	\$65.00
#1485	Saturn mustard & cover, silver knob	\$35.00
#358	Solitaire ashtray, Flamingo	\$30.00
#412	Tudor 12 oz. handled ice tea, Flamingo	\$55.00
#3440	Portsmouth goblet d.o., Flamingo	\$32.00

**WALRICK ANTIQUES** (810) 229-5994  
**Rick Vaughan & Walter Sherman** UPS Extra  
**1070 Hillcrest** H=Marked  
**Brighton, MI 48116**

#16	Classic 5" candles, H, pr.	\$115.00
#350	Pinwheel & Fan 7 pc. berry set, H	\$110.00
#359	Colonial ¼ oz. pony brandy, H, (4), set	\$70.00
#362	12 oz. sanitary syrup, cutting, H	\$70.00
#393	Narrow Flute 2 oz. wine, H, (2), ea.	\$20.00
#411	Tudor 5" high fld. jelly, Hawthorne, H	\$78.00
#1184	Yeoman 10" floral bowl, d.o., Hawthorne, H	\$102.00
#1401	Empress 8½" fld. floral bowl, Sahara	\$55.00
#1401	Empress d.f. handled ice tub, H	\$75.00
#1404	Old Sandwich 8" sq. plate, Sahara, H, (4) ea.	\$34.00
#1425	Victorian cream & sugar, H	\$60.00
#1425	Victorian 3 oz. oil bottle, H	\$55.00
#1469½	Ridgeleigh 7" 2-part relish, H	\$34.00
#1469	Ridgeleigh saucer champagne, H, (2) ea.	\$25.00
#1469	Ridgeleigh 10" 5-part star relish, H	\$55.00
#1503	Crystolite 10" 5-part round relish	\$45.00
#1503	Crystolite oval cream & sugar, H	\$40.00
#1506	Provincial 3-lite candles, pr.	\$105.00
#1509	Queen Ann d.f. mint, Orchid etch	\$52.00
#6003	Tempo 3½ oz. cocktail, H, (4), ea.	\$15.00

**Michael Krumme** (213) 936-4214  
**PO Box 5542** 7 am-10 pm PST  
**Santa Monica, CA 90409** H=Marked

#49	Yorkshire shaker, Hawthorne	\$50.00
#133	Swan handled console bowl, Flamingo	
	minor repair to one handle	\$250.00
	Ringneck pheasant	\$120.00
#300	Old Williamsburg tall 3-lite candelabra, Sahara	
	with Crystal prisms and candle cups, pr.	\$1600.00
#339	Continental water bottle, Flamingo	\$200.00
#500	Octagon demitasse cups, Flamingo, (3) ea.	\$15.00
#1401	Empress punch bowl & 5 cups, floral cutting, Sahara	
	(3 more damaged cups free)	\$675.00
#1404	Old Sandwich oval footed floral bowl	\$95.00
#1519	Waverly mayonnaise, Rose etch	\$45.00
#1540	Lariat 7½" basket, Orchid etch	\$995.00
#1567	Plantation lid for marmalade	\$50.00

UPS shipping is INCLUDED in all prices. If I'm not in, please leave a message, ALL calls will be returned. "Do you still have?" calls are welcome any time. Much more Heisey—no lists, send your detailed want list. Michael Krumme PO Box 5542, Santa Monica, CA 90409-5542 (213) 936-4214 7 am-10 pm Pacific Standard Time.

#### WE CLEAN CLOUDY GLASS SATISFACTION GUARANTEED

Yes, it is true that we really can restore the interior of your cruet, vase, decanter and most other internally etched items back to near original condition!

We do not oil, wax or cover up the sickness in any way! We actually remove it.

No items are too sick to clean! If we cannot clean your item to meet your satisfaction, the cleaning is FREE!

We are so confident in our service that we ask that you send no money. When we return your item a bill will be enclosed for the postage and cleaning. If you are happy, please send payment; if not, return the bill marked "NOT SATISFIED."

Please allow 6-8 weeks for redelivery of most items. All glass is handled and cleaned at your risk. Some very cloudy items may take several additional weeks.

Cruet	\$20.00	Cocktail Shaker	\$30.00
Cologne	\$20.00	Salt Shaker (single)	\$15.00
Water Bottle	\$30.00	Salt Shaker (pair)	\$25.00
Decanter	\$30.00	Crushed Fruit Jar	\$30.00
Vases (under 12 in.)	\$25.00	Lavender Jar	\$20-30.00

All others write for quote

**SHIP TO:** Carlisle & Associates  
28220 Lamong Rd., Dept. H  
Sheridan, IN 46069  
(317) 758-5767 AFTER 6:00 p.m.

APPLE TREE AUCTION CENTER  
1616 W CHURCH STREET  
NEWARK, OHIO 43055

PRESENTS

## THE LARGEST ALL HEISEY AUCTION EVER HELD

ALSO HEISEY BY IMPERIAL & OTHER COMPANIES

2 DAY GLASS AUCTION

FRIDAY OCTOBER 20, 1995 3:00 P.M.

SATURDAY OCTOBER 21, 1995 8:00 A.M.

### 2,000 LOTS TO SELL

#### Friday

Approx (70) lots of indiv cream & sugars that need mates; (60) pcs Impromptu incl plates & stemware; (60) pcs Twist Marigold incl nice serving pcs; (60-70) pcs Custard incl Winged Scroll tall vase & many souv pcs; (70) pcs Red Stain, many souv & toothpick holders; lrg coll of punch cups incl hard-to-find such as Locket on Chain, Cut Block & Kalonyal; approx (40) lots single candlesticks, candelabras & parts for matching; many pickle trays & relishes incl Beaded Swag in Emerald & Opal; partial dinner set in Sahara Yeoman D.O.; nice selection nappies incl Locket on Chain, Raised Loop, Ribbon Candy, Criss Cross etc; some odd lids, stoppers etc. IMPERIAL ANIMALS: Crystal Fillys; Giraffe; Amber Giraffe; Rooster; Sow; Jade Tigers; Green Elephants & Donkey; Pink Satin Elephants & Rabbit; Lt Blue Mallards & Colts; set of Rosalene & others; Set of Lavender Ice plus Flying Mare & Rabbit family; assorted Milk Glass; some Red; great selection of H.C.A. Souv Sparkies & other items.

#### Saturday

Many nice cream & sugars (approx 100) incl Raised Loop, Stanhope, Plantation, Sunburst, Kalonyal & others with 4 pc table set in Ring Band Custard w/roses; lrg collection of single goblets, many patterns w/cuttings & etchings, some in color; sev syrups incl Beaded Swag in Opal; (60) oil bottles & cruets; (30) cov marmalades & mustards incl early patterns & colors; sev cov lavender jars. Pitchers & jugs incl Oriental Poppy, Ribbon Candy, Fancy Loop, Kalonyal, Sunburst, Daisy & Leaves, Raised Loop etc. Water set in Ring Band Custard w/roses. Approx (124) lots of Crystolite, blown & pressed incl water pitcher, Rye bottle, (3) dinner plates, many serving pcs, candle holders, Sahara Cig box & ash tray etc. ANIMALS & RELATED: Pr Flamingo Dolphin candles; lrg Madonna; Amber Elephant hdd mug; very nice 3 tier epergne, cut & etched. (45) lots candlesticks & candelabras incl (3) pr 11" Colonials; Ridgeleigh Candelabras; Old Sandwich in Crystal, Flamingo & Cobalt - many colors. Wines, clarets, cordials & bar glasses; toothpicks incl many patterns in Kalonyal, Urn, Cut Block, Bead Swag, Pillows, Winged Scroll, some in Opal, Custard, Red Stain, Crystal & Crystal w/gold. SMALLS: Nut cups, many patterns & colors incl D.F. Alexandrite; salt dips; Fandango butter pats; Favor Vases incl Sahara, Moongleam & Crystal. BASKETS: (17) incl Helmet, Bonnet, Pinwheel & Fan Variant etc some in color incl sm Octagon Flamingo basket. CANDY JARS: Recessed Panel incl 5#; sev Revere, Colonial & Ipswich. Many bon bon dishes, compotes etc. Also floral bowls, tumblers, Greek Key ice tubs, decanters etc.

A wonderful auction with something for everyone. The largest Heisey auction we have had.

If you are not a member, send \$2.00 for a catalog.

DOORS OPEN 1 HOUR BEFORE EACH SESSION

TERMS: Cash or check w/positive I.D.

Good Food and Comfortable Building

Auctioneers: Sam Schnaidt and Paul Robison

Apprentice Auctioneers: David Schnaidt and Debbie Johnson

Sale Manager: Frank Frye

**Special Note: New terms available. We will now accept Visa and Mastercard. 5% buyer's premium which WILL BE DELETED for cash or approved check payment. Call if you have any question.**

## Dealers Directory

Maximum 5 lines/12 months/\$35 MEMBERS ONLY

<b>MARJORIE GILLETTE</b> Rochester, New York Glassware Specialty Heisey Mail Orders & Shows 716-225-4678	<b>SHIRLEY EUGENIA DUNBAR</b> Heisey a Specialty Mail Order, Shows, Appraisals PO Box 7085, Port St. Lucie, FL 34985 Oct.-May 407-337-1558 PO Box 222, Naples, ME 04055 May-Oct. 207-647-5652	<b>COMPARISON LIST</b> New Heisey Auction List for 1995 3 Year's Auction 92-93-94 Price: \$15.00 + \$3.00 Shipping Payable: B. Whaley 300 International Dr., Pataskala, OH 43062 1-614-927-1557
<b>ALL HEISEY AUCTION</b> Consignments Welcome Apple Tree Auction Center 1616 W. Church, Newark, OH 43055 PH: (614) 344-9449	<b>GREEN ACRES FARM</b> Antiques, Crystal Glass & Collectibles 2678 Hazelton-Etna Rd., SW (S.R.310-N) Pataskala, OH 43062 Sat. or Sun. PM or call (614) 927-1882	<b>MICHAEL KRUMME</b> Cambridge • Heisey • Fostoria • Duncan-Miller • Paden City I search - send detailed want list - all are kept on file P.O. Box 5542 Santa Monica, CA 90409
<b>D &amp; B ANTIQUES — ATLANTA</b> Bob Bartholomew Members Dixieland Heisey Club P.O. Box 637, Loganville, GA 30249 Shows (404) 466-7879 Mail Order	<b>H &amp; R DIAMOND H</b> Helen & Robert Rarey 1450 White Ash Dr. Columbus, OH 43204 PH: (614) 279-0390 after 5:30	<b>JEAN &amp; DON PARRETT</b> Beautiful Heisey 4995 Maple Dale Rd. Jackson, Michigan 49201 (517) 784-7319 — Recorder
<b>ANTIQUES - THE SHULTZES</b> 206-208 East Main St. Newmanstown, PA 17073 15 Miles West of Reading, PA PH: (610) 589-2819	<b>"HAPPINESS IS" - THE STULTZS</b> 3106 Warren Court, Glen Allen, VA 23060 Shows and Mail Order PH: (804) 672-8102	<b>PATTON HOUSE</b> Rocky's Mall, I-81 & US 11 Weyer's Cave, VA 24486 PH: (703) 967-1181 The Antique Gallery, Richmond, VA
<b>C &amp; J ANTIQUES</b> Cole & Jean Miesner Box 45, 72 Whig St. Newark Valley, NY 13811 PH: (607) 642-9905	<b>MOUNDBUILDERS ANTIQUES 2ND GENERATION</b> 3669 Route #360 Buckeye Lake, OH 43008-1905 (800) 366-4347 — (614) 928-1994 Minutes away from Heisey Museum	<b>SCHWAN'S ANTIQUES</b> SHOWS & MAILORDER 77 Lagos del Norte Ft. Pierce, FL 34951 PH: (407) 461-5940
<b>DOXTOIS</b> Eva & Joe Hirsh Heisey & Pattern Glass 6 James St., Norwalk, CT 06850 PH: (203) 847-3315	<b>HOOKED ON HEISEY</b> Jay C. Martin 97 Heritage Hill Rd., New Canaan, CT 06840 (203) 966-9359 24 hr. ans. mach. Mail Orders & Shows	<b>R &amp; L ANTIQUES-SAN FRANCISCO</b> Members of the Golden Gate Heisey Club 3690 Bodega Ave. Petaluma, CA 94952 PH: Petaluma (707) 762-2494 PH: San Francisco (415) 621-6693
<b>CHARLES &amp; MILDRED FISHER</b> Heisey animals and Heisey By Imperial animals 991 Idlewilde, Newark, Ohio 43055 614-522-5398	<b>JJ MC KEE ANTIQUITIES</b> Pottery - Glassware - Collectibles 222 West 75th St. Kansas City, MO 64114 Wed.-Sun. 10-5 PH: (816) 361-8719	<b>THE WOODEN SHOE</b> Antiques & Collectibles 222 W. Washington St., Charles Town, WV 25414 PH: 304-725-1673 Fri-Mon 11:00 to 5:00
<b>CRYSTAL LADY</b> Joann Hagerty Specializing in elegant depression glassware 1817 Vinton Street, Omaha, NE 68108 Shop Ph. (402) 341-0643 or Home Ph. (402) 391-6730	<b>DINNERWARE CLASSICS!</b> 4125 Sperry St., Dallas, TX 75214-2743 (214) 821-6852 Selling Glassware & Dinnerware By Mail Heisey Glass	<b>MY DAUGHTER'S INHERITANCE</b> Heisey - Crystal - Porcelain Antique Village - 3750 Howard Avenue Kensington, MD 20895 (301) 933-4618 Maggi Smith
<b>ELEGANT GLASSWARE</b> <b>NOW LOCATED IN FINDER'S ANTIQUE HOUSE</b> 1169 Piney Forest Rd. Danville, VA 24540 Open Thursday—Sunday (804) 836-6782 Area's Largest Selection of Heisey & Other Elegant Glass	<b>J. &amp; R. COLLECTIBLES</b> Shows, SASE, Mail Order list The Lukasko's PO Box 1030, Newark, Ohio 43058-1030 PH: (614) 344-9719	<b>RON &amp; MAUREEN KOVACS</b> Downsizing Twenty Year Heisey Collection Please Send \$1.00 for extensive list 9310 East Wind Rose Dr. Scottsdale, AZ 85260 (602) 451-4995 (PST)
<b>FRAN'S FANCY FINDS</b> Fran & Jack Grenzebach 10534 Valencia Rd., Seminole, Florida 34642 PH: (813) 391-5184 SHOWS MAIL ORDERS	<b>MOSTLY HEISEY</b> Rhoda Curley 16 Clayton PL, Albany, NY 12209 Shop and Mail Order PH: 1-800-972-2775	<b>HEISEY HASBEENS</b> Heisey glassware and estate books Toni and Parker Heisey 6678 Comstock Court, San Diego, CA 92111 PH: (619) 277-1210
<b>FOREVER HEISEY</b> Jan & Norm Thran Mail Order, Shows, Appraisal Service 1663 Londondale Pkwy, Newark, OH 43055 PH: (614) 344-5955	<b>R &amp; S ANTIQUES AND GLASSWARE</b> Heisey-Specializing in Complete Heisey Tableservice call or write for patterns and colors 719 W. Winter Park St., Orlando, FL 32804 (407) 841-1440 or (407) 298-5980 PM	<b>WILLEY'S ANTIQUES &amp; MUSEUM</b> Specializing in Heisey 11110 Cannon Rd., Frazeyburg, OH 43822 16 miles east of Newark, OH PH: (614) 828-2557
<b>"OUR PLACE ANTIQUES"</b> <b>&amp; "The Barn"</b> 121 S. Prospect St., Granville, Ohio 43023 Open Daily 12-5 PH: (614) 587-4601	<b>BOB &amp; JOANNE MCELHENY'S HEISEY</b> Booth 44-Pioneer Antique Mall Open 10-6, Sun. 1-5 Downtown Pioneer, Ohio-North of Exit 2 Ohio Turnpike Phones: Mall (419) 737-2341 Home (419) 537-6890	<b>JAMES S. HARRIS ANTIQUES/APPRAISALS</b> Box 672 Richmond, KY 40475-0672 PH: (606) 623-9100 Buying and Selling by Mail
<b>GLASS 'N' GLASS</b> Virginia & Odell Johnson 6909 10th Ave. W. Bradenton, FL 34209 PH: (813) 792-0604	<b>JIM HOUGHTON &amp; TIM RECTOR</b> J & T Antiques Ltd. PO Box 933 Sturbridge, MA 01566 PH: (508) 764-1597	<b>TALL OAKS ANTIQUES</b> Glassware-Specializing in Heisey Shows - Mail order (219) 864-1704 Mike & Barb Rosenberger 5115 W 78th Ln, Schererville, IN 46375



## Lavender Ice Clydesdale Order Form

30 day period October 16 through November 16, 1995.

Lavender Ice collectors wake up!! Monday October 16, 1995 at 8:30 a.m. the Clydesdale in Lavender Ice will go on sale to members and non-members. Only 450 will be made or what ever sells in the 30 day period. Limited Edition—5 per customer. Walk in, telephone or mail orders are accepted. But remember, HCA will not process any orders until October 16, any order sent by U.S. mail before that date does not guarantee a Clydesdale. Mail orders will be processed in lottery style on October 16 with telephone and walk in orders!! If you have been collecting the Lavender Ice Series you will definitely want to add this beautiful piece to your collection. Hurry!! This one promises to be a sell out!♦



**ORDER FORM:** MAIL to Lavender Ice Clydesdale, 169 W. Church St., Newark, Ohio, 43055. OR CALL (614) 345-2932.

Name: \_\_\_\_\_

Address: \_\_\_\_\_

City/State/Zip: \_\_\_\_\_

Telephone: \_\_\_\_\_

Tax #: \_\_\_\_\_

Check or MasterCard/Visa \_\_\_\_\_ exp. date \_\_\_\_\_

Quantity \_\_\_\_\_ X \$75.00 = \_\_\_\_\_ Please Circle:

Tax (OH res. ONLY) \_\_\_\_\_ X \$4.50 = \_\_\_\_\_ I will pick up

Shipping \_\_\_\_\_ X \$5.00 = \_\_\_\_\_ Ship



### Spectacular Parade of Heisey

As the world's largest supplier of discontinued or obsolete china, crystal and flatware, Replacements, Ltd. buys and sells over 54,000 patterns and has 2.1 million pieces.

We have many of your favorite Heisey patterns, including Heisey Rose and Heisey Orchid.

Contact us if you need to pick up a piece to add to your collection, or if you would like to sell some unneeded extras. We can provide a complete printout of available pieces in your pattern. Or we'll let you know our prices for the pieces you wish to sell. Let us help you complete your collection... or maybe you'll help add to ours.

### REPLACEMENTS, LTD.

1089 Knox Road • PO Box 26029  
Greensboro, NC 27420 • Dept. HS

Everyday 8am-10pm

Call 1-800-562-4462

POSTMASTER SEND FORM 3579 TO:

HCA

169 W. Church St.

Newark, OH 43055



**SECOND CLASS Dated Material**

**Membership Renewal Notice:** Check the date above your name and address on the mailing label. This is your expiration date. If it reads 11-10-95, make sure your dues are paid soon in order to receive next month's issue of Heisey News. Dues are \$22.00 per year, plus \$5.00 for each additional household member.