

HEISEY NEWS

The Official Publication of Heisey Collectors of America, Inc.

Volume XXIV No. 10

September 1995

ISSN 0731-8014



**"Coleport barware is
easy to find, only
trouble is 99% of what
you find will be
Imperial"**

Carl Sparacio digs
through the past to
bring you an up to date
history on Coleport
stems, the poor man's
rarity.



© Heisey Collectors of America, Inc.

All rights reserved 1995

In This 28-Page Issue...

Behind the Scenes at the HCA Board of Directors ♦ The Small Colorful Candlesticks of the Twenties ♦
Coleport Stems—The poor Man's Rarity ♦ From the Archives—Old news is New news ♦ Heisey Card
Application ♦ Brain Teasers—25 Heisey Favorite Candlesticks ♦ A.H. Heisey Chronology V ♦ Percy Moore
Souvenir Order Form ♦ Heisey Cooking ware—Excerpts from the original catalog ♦

HEISEY NEWS

Heisey Collectors of America, Inc.
169 West Church Street
Newark, Ohio 43055
Phone (614) 345-2932 Fax (614) 345-9638
All Rights Reserved 1995
ISSN 0731-8014

Editor
Kelly Thrane

Curator
Karen D. Kneisley

Administrator
Mary Ourant

Museum Assistant
Molly Kaspar

HCA President
Tom Bischoff, (419) 533-7431

HCA Vice President
Bob Rarey, (614) 279-0390

HCA Secretary
Ginny Marsh, (614) 366-5608

HCA Treasurer
Charlie Wade, (614) 366-6636

HEISEY NEWS is published and printed monthly (twice in February), by Heisey Collectors of America, Inc. Second Class Postage Paid. Subscription is limited to HCA members. First class mailing is available for an extra \$13.00, due with payment of membership. If you are having difficulty receiving your newsletter, please contact Mary Holland membership secretary.

The opinions expressed in articles in HEISEY NEWS are those of the authors and not necessarily those of the organization. The Editorial staff reserves the right to edit, with or without the consent of the author, or to refuse any material submitted for publication.

Back Issues

The following volumes are available as complete sets: V, VII, VIII, IX, X, XI, XII, XIII, XIV, XV, XVI, XVII, XVIII, XX, XXI, XXIII, for \$9.00 each volume (12 issues, plus auction list if available).

Advertising

Send all ads to: HCA Advertising, 169 W. Church St., Newark, OH 43055 or fax ads to (614) 345-9638, include M.C. or Visa info. Ads are to be typed or printed on white paper with dark ink. Camera ready ads accepted, but must follow line specifications. Ads containing reproductions will not knowingly be accepted unless clearly stated (e.g. Heisey by Imperial, etc.) HEISEY NEWS accepts no further liability. See Advertising section for rates and deadlines.

Museum

Heisey Collectors of America, Inc. a non profit corporation (tax exempt status), owns and operates The National Heisey Glass Museum in Veteran's Park, 6th and Church Streets, Newark, Ohio. Open Tuesday-Saturday 10-4, Sunday 1-4, closed holidays. Other hours by appointment. Members admitted free.

Identification

HCA will attempt to identify unknown glass items. Please enclose a

photograph with your drawings or descriptions. Other arrangements should be made in advance with Karen D. Kneisley, curator.

Membership

To join Heisey Collectors of America or to renew your membership, contact Mary Holland, membership secretary. Associate dues are \$22.00 plus \$5.00 for each additional household member. Voting members pay an additional one-time fee of \$25.00. Please consider supporting the Endowment Fund by joining at one of the levels listed on the back page.

Museum Shop

There is always someone available in the shop to answer questions or take your order. When ordering by phone, please have a credit card ready. When ordering by mail, please be sure to include appropriate charges such as shipping and sales tax.

Shipping and Receiving

Delivery is made much easier when we have a complete street address, not a PO Box. We prefer to use UPS. If you have not received a package, please call Brad, shipping clerk, to confirm it was sent. He will assist you in tracing it. If your package arrives damaged, please contact your local UPS representative. We insure everything.

Donations and Loans to the Museum

If you have something you would like to share with the museum or have questions regarding items on loan, please contact Karen D. Kneisley, curator. HCA reserves the right to accept or refuse items based on current holdings.

Calendar

September Quarterly Meeting
and Percy Moore Dinner *September 8-9, 1995*
December Quarterly Meeting
and Dinner *December 2, 1995*

Features

Coleport Stems—A Poor Man's Rarity <i>Carl Sparacio keeps digging</i>	6-7
Small Colorful Candlesticks of the Twenties <i>Joe Lokay</i>	8
Behind the Scenes at the HCA Board of Directors <i>Carl Sparacio—blast from the past</i>	9
Brain Teaser—25 Candlestick Favorites <i>Walter Ludwig</i>	12
A.H. Heisey A Chronology V <i>Tom Felt</i>	13-16
Membership Drive	16
A.H. Heisey Cooking Ware	17-18
Visa Application—NOT TO LATE	19
Percy Moore Souvenir Item <i>Order your Ice Blue Candlestick</i>	20

Departments

President's Discourse, <i>Tom Bischoff</i>	3
Curator's Report, <i>Karen D. Kneisley</i>	4
Focus on the Collection, <i>Karen D. Kneisley</i>	4-5
From the Archives, <i>Jen Menke</i>	10-11
Club Notes	21
Advertising	22-27

The President's Discourse

Tom Bischoff

My second report to you contains more substance and less reflection as the new Board, Officers and Committees are hard at work. At the summer work session of the Board, the commitment of HCA to our participation in the Newark Institute of Industrial Technology was reaffirmed. The Board authorized, for purposes of funding our participation therein, the production of the Flying Mare in Cobalt Blue as a members only item. This project strengthens the future of HCA as an ongoing museum operator as it puts forth our educational message about Heisey glass and the glass industry, especially as to its' importance in the central Ohio area. Exciting ideas were discussed as we look forward to the dual anniversary year of 1996.

Under the watchful eyes of Don Valdes, Karen Kneisley and Walter Ludwig, archival material will be put into computer useable format with the cooperation of Denison University at no cost to HCA. The second of four displays in connection with the Centennial year involves the molds and items produced in them. It is I think going to be an exciting experience to be able to see a finished item and the mold from which it came.

The 1996 Benefit Auction will be in April to more closely coincide with the 100th anniversary of the opening of the doors of the Heisey factory. A gala kickoff event will also be a part of the weekend you will not want to miss. The Board also made easier the use of Museum Shop items for sale by clubs wishing to participate in such projects as displaying Heisey glass at antique shows with the Museum Shop items including books being for sale to the public; another good outreach program for HCA. Contact a Board member if you club is interested. Our goals remain to preserve and to educate. Suggestions for accomplishment of these goals are always welcome.♦

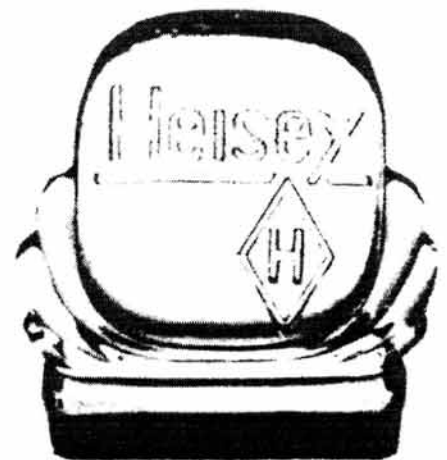
The Heisey Card—Deadline Extended!

Charlie Wade

At the June quarterly meeting, we were happy to introduce our very own Heisey Visa card, by Park National Bank of Newark, Ohio. This agreement will allow Park National Bank to issue a Heisey Collectors of America Visa card to those folks who qualify. In return, HCA's endowment fund will share in the proceeds from individual use of the card. Enrollment is open to everyone. For those who complete the application, along with the twenty-five dollar application fee before September 30, they will receive a special Cobalt Cabochon sign engraved "PNB/HCA VISA 1995".

This offer is only good through September 30. However, the Visa application can still be applied for after the September 30 deadline, so hurry and send for your application and Cobalt sign. I know you will want to be sure and get one before the deadline!

This board approved project is just another way you can help support Heisey's endowment fund. I would like to thank everyone who has supported project in the past and thank you in advance for your support with the Visa card. Remember, without you the accomplishments HCA has made would not have been possible.♦



The Visa card application can be found on page 19.

Curator's Report

Karen D. Kneisley

Since my return to the real world I've worked on many of the projects that I left behind last December. I finally feel as though I've accomplished the task of sorting out various paperwork congestions relating to the glass collection (with substantial help from other staff members, of course). We also started the tedious process of creating our new identification panels.

We began with the thematic arrangements, such as cruets and stemware. They are easier to label because they are displayed in numerical order by pattern number. There are some new features incorporated in the panels. Whenever possible, at least the initial year of a pattern's appearance is noted (inclusive dates will appear quite often too), as well as an indication if the item is marked. We've also given some attention to origin of pattern names—original Heisey company names are in uppercase letters. Of course, some of these devices will have to change as we move through the galleries. I hope to include historical information about larger patterns or decorations, as space allows. All of this information comes from previous research done for such HCA books as *The Collectors Encyclopedia of Heisey Glass, 1925-1938*, *Heisey Candlesticks*, *Heisey Stemware* and *Etchings and Carvings*, second edition.

I've also had the pleasure of working again with the board of the Industrial Institute of Technology. Their Director, Phil Payne, is very accommodating and I'm very anxious to see things take shape. Our Museum Assistant Molly Kaspar will be working closely with me on this project. We've been making plans to incorporate our upcoming exhibition *Lasting Impressions: the Fine Art of Mold-Making* into the industrial museum space after its run here. We have a large area to fill and our glassmaking demonstration will be even more educational when visitors see additional molds and tools like the ones used by the furnace worker, as well as drawings, designs and patent applications. We are working on some special program ideas and there will be some exciting surprises in store for our debut during the June 1996 convention and centennial celebration.

There's no doubt about it—this year is one you won't want to miss. ♦



#3304 Universal

Focus on the Collection—What's in a Name?

Karen D. Kneisley

During its first few decades, A.H. Heisey and Company, like their competitors, referred to their glassware by number, not by name. There are, of course, exceptions (I'll discuss those later). For the most part, however, Heisey's earliest productions were named by collectors for ease of communication or because the pattern number was not known. When Clarence Vogel began documenting Heisey glassware, he used 7--- numbers (except for the #7000 Sunflower bowl, which was Heisey's only pattern with a 7--- number). Through the years researchers have uncovered the actual Heisey pattern number (and sometimes name) for some of these items. HCA too has a system for unknowns using 8--- numbers. In addition to descriptive names used by collectors to talk about Heisey, items have been identified by the name of the person who uncovered the first example. The #181 P. Deal tumbler that surfaced during this year's ID Breakfast is such a case.

But what about the names that Heisey used? Many are obvious. A Heisey Rose is a rose is a rose (my apologies to Gertrude Stein). #1590 Zodiac refers to the astrological signs. #3304 Universal is a widely used shape for stemware. #1485 Saturn features rings like the planet.



#5003 Nimrod
carving on
#2401 old
fashion

Some are only obvious if you know your mythology. The #5003 Nimrod carving refers to the legendary hunter (i.e. someone who would run around with dogs). The #442 Diana etch shows the hunter goddess with her dogs and their target, a stag. Many names are descriptions used by the company like #433 Grecian Border or #394 Narrow Flute. Other names suggest nothing at first. #3390 Carcassonne always bothered me until I found it in the dictionary's list of geographic names—it's a city in southern France. I feel so much better now.

The company appealed to its first customers through trade publications and catalogues. It probably wasn't necessary to seduce their audience with glamorous names. At first it seems names were given randomly or for special occasions. #300 Peerless (not really a Heisey-given name) was adapted from an ad touting that the company's glassware had no peer in the industry. Tom Felt provided a plausible connection between pattern #335 and its name, Prince of Wales Plumes. The prince assumed the throne of Britain just days before the pattern debuted in an ad. Look through Heisey's early catalogues and you'll see "COLONIAL" used with some of the three-digit numbers. More of a distinction than a name, I think. I will venture a guess that #1183 Revere is named for the colonial patriot in relation to his profession. The pattern's notably simple style echoes that of a silversmith's wares. #1184 Yeoman may have been named to conjure up an elevated use for Heisey (a yeoman is, by definition, an attendant in a royal or noble household).



#1183 Revere

When the company began to market their glassware directly to the average household numbers didn't do much in the way of suggestive selling. Truly romantic pattern names appear about the same time as Heisey colors and glamorous advertising, like the Glass Secrets series. During this era the company came up with such gems (literally) as #1483 Stanhope, a design by Walter von Nessen named after Lady Stanhope's famous diamond. To take the analogy two steps further, #1488/4085 Kohinoor with its large, faceted knob is named after another famous diamond and #4091 Kimberly (same stem as Kohinoor) is named after the deBeers diamond mine in South Africa. In later years Horace King's #1951 Cabochon design was named after the convex gemstone shape with the same smooth finish and rounded corners.



#1488 Kohinoor

Heisey names also evoke the style of bygone eras. #1401 Empress was described in *The Pottery, Glass and Brass Salesman*: "Both at the bottom portion and just below the upper edge is a design that suggests an imperial lily of France and which gives is its name—'Fleur de Lis'." That wasn't what Heisey called the pattern, but their use of the imperial crest in the advertising recalls the grandeur and romance of Napoleon and Josephine at the height of the Empire (another Heisey name, by the way, for pattern #1471). #1447 Rococo features flamboyant swirls and medallions that were the trademark of the architectural style of eighteenth-century France.

Glass history is represented in Heisey names too. #1404 Old Sandwich credits the company from which Heisey "borrowed" the design. #1425 Victorian is similar in design to a George Duncan and Sons pattern, one that would have been popular in the American Victorian era.

My favorites are the names that represent some sort of error on Heisey's part. #1506 Whirlpool (a very good name for glassware featuring a reflecting pool design) had to be changed to Provincial after T.Clarence Heisey accidentally referred to it by his pet name "Cesspool" in correspondence. And how about the ad featuring the George IV cutting? We can assume it was supposed to be George the VI, the monarch contemporary to Heisey's ad.



#1447 Rococo

Next time you walk through the museum, give some thought to the names and corresponding dates. You too can play the name game with Heisey. ♦

Coleport Stems—The Poor Man's Rarity

Carl Sparacio

The editor's directive that this column shall be educational or else, has caused me to spend more time than I'd like in the archives. Not the HCA Archives (with a capital A) but my own archives an assemblage of cardboard boxes that long ago lost the strength to hold up their own sides. They are filled with the ephemera of Heisey collecting. Ephemera is a word that loosely translated means: *Stuff that should have been thrown out long ago.*

My archives contain a treasure trove of information. Letters from Clarence Vogel, Louise Ream, Neila and Tom Bredehoft, Kay Darling, Bob and Anne Johnson, and other early researchers as well as correspondence from a zillion collectors who graciously sent information. There's even an indignant letter from Lucille Kennedy who used to crack the whip at Imperial Glass but that's a long story and not likely to be made public while the principals (including me) are amongst the living. How she got a copy of *Diamond Dust* shall ever be a mystery.

Would you believe our files (ha ha ha) contain two copies each of most of the editions of the *Heisey News* as well as most of Clarence Vogel's *Newscaster* and all the issues of *Diamond Dust*, the newsletter of the Heisey Heritage Society, which I, among others, edited for a number of years? None of this collection is in any kind of order, it has not been cataloged or sorted. When accessing these records for serious study the researcher resorts to a labor intensive research method known as, "lotsa luck."

The point of all this verbiage is that I dug into the slush pile and came up with a piece I did for *Diamond Dust* way back in October of 1975 which I will share with you here. I make no apologies for the line drawings. If they appear lopsided and shaky, remember, this is handmade glass we're talking about, it's never perfect (besides, my brother, the family artist, wasn't available at the time).

I quote:

"A bar line that was made for twenty years by Heisey and continued on by Imperial had to have something going for it and (# 1486) Coleport had it—plain old good looks! Its heavy weight and simple design demands fine glass and even Imperial's "reissues" have little need to apologize.

"Coleport barware is easy to find, only trouble is 99% of what you find will be Imperial. The key to separating the good guys from the bad guys is the ground bottom on the Heisey pieces. Early Imperial was most likely signed also but whether or not the bases were ground is questionable. In any case, if you have a tumbler that is both signed and round, call it Heisey as no one will be able to prove otherwise.

"Stemware in Coleport was not as successful. The barware design simply did not translate well to stemware. Coleport is probably the only pattern in which the oyster cocktail is the best looking stem piece. Coleport stems are scarce and it is their scarcity that makes them desirable. The stems were signed and, joy of joys, were not reissued by Imperial."

There you have it. If I were to write that piece today I would note that Bradley, Ryan and Ryan give the production years as 1935 to 1949 in *Heisey Stemware* (Spencer Walker Press, 1976) but my ephemera pile says 1937 to 1956. They also note the color Dawn but I doubt that it was ever available in the stem line. The stems had a much shorter run than the barware and it's not likely they were even made when the Dawn color was introduced just before

Heisey closed shop.

My own personal observation has been that Heisey's Coleport tumblers and shot glasses are more barrel shaped than Imperial's and lack the "doeskin" prominent on many Imperial pieces.

A Coleport goblet is tough to find—the good news is that it won't be priced at the level of other scarce Heisey. It's a cheap rarity. ♦



The Small, Colorful Candlesticks of the Twenties

Joe Lokay

I gave this topic as a program at our last local Heisey Club meeting (The Gateway Heisey Club). There was enough interested that it lead me to write this article.

There were twenty-two small, colorful candlesticks issued in the short period of time between 1922 and 1929. By small, I only considered candlesticks that are two to five inches tall. Of the twenty-two candlesticks, six are two inches tall, nine are three inches tall, two are three and one half inches tall, one is four inches tall, and four are five inches tall.



The colors I considered in this study are Crystal, Flamingo, Moongleam, Hawthorne, Marigold and Sahara. Of the twenty-two candlesticks, twenty-two come in Crystal, twenty-one in Flamingo, seven in Hawthorne, seven in Marigold and three in Sahara. Only one, the #113 Mars, comes in all the six colors.

The accompanying table summarizes my findings for the twenty-two candlesticks. The table lists the candlesticks in numerical order. Note that the numbers are also in chronological order based on the year they were first issued. The names and other data were taken from the Candlestick book by Felt and O'Grady. There are many other small candlesticks that were issued before or after the Twenties which were not considered in this study.

After this study was over, I said to myself, "Wow! Heisey issued a lot of new, small, colorful candlesticks over the eight year period 1922-1929." Perhaps more than any other time period in the life of the Heisey factory. ♦

	<u>NO.</u>	<u>SIZE</u>	<u>NAME</u>	<u>PRODUCTION</u>	<u>COLORS</u>
Color Key: C=Crystal F=Flamingo M=Moongleam H=Hawthorne G=Marigold S=Sahara X=Color Mix A=Alexandrite T=Tangerine D=Dawn	103	3"	Cupped Saucer	1922-1929	C F
	104	5"	Bertha	1924-1929	C F M
	106	3"	Inverted Saucer	1925-1929	C F M
	112	3"	Mercury	1926-1957	C F M H S
	113	3.5"	Mars	1926-1933	C F M H G S
	114	3.5"	Pluto	1926-1931	C F M H G
	116	3"	Oak Leaf	1926-1929	C F H X
	118	3"	Miss Muffit	1926-1930	C F M
	119	3"	Jewel	1927	C
	120	3"	Overlapping Swirl	1927-1931	C F M H
	121	2"	Pinwheel	1927-1929	C F M H
	122	2"	Zig Zag	1927-1929	C F M H
	125	2"	Leaf Design	1928-1929	C F M
	127	5"	Twist Stem	1929	C F M
	128	3"	Liberty	1929-1936	C F M G
	129	5"	Tricorn	1929-1936	C F M G X
	130	4"	Acorn	1929	C F M
	132	2"	Sunburst	1929-1936	C F M G
	134	5"	Trident	1929-1957	C F M G S X A T D
	1205	2"	Raindrop	1929	C F M
	1231	3"	Ribbed Octagon	1929-1933	C F M
	1252	2"	Twist	1929-1933	C F M G

Behind The Scenes At The HCA Board Of Directors

Carl Sparacio

I attended my first meeting as a newly elected member of the HCA Board of Directors. I thought you might be interested in what happens on the inside at those sessions. I should explain that I served on the board some 20 years ago and I thought I knew what to expect.

I didn't.

If I had to use one word to describe an HCA board meeting, I would choose "intense." The Board of Directors is not what you'd call a fun group. Meetings are limited by distance so a lot must be resolved at each one. The things that used to concern the board when I was younger and thinner are still its concerns, but, because the HCA has grown over the years, its obligations and services to its members have also increased. Sure, the Board's headaches are basically the same but they're now of the Excedrin variety.

You need only look at the magnificent physical plant that is our museum to get an idea of the time, personnel, and money required for upkeep alone. Multiply the gas and electric needed for lighting, heating and air-conditioning your own home by a factor of GOLLY GEE! and you'll have an inkling of what's needed to keep the HCA museum and office complex habitable.

Members may not be aware that there's an extensive library available to all members—surely it's the largest library extant devoted to one glass maker. Waiting to be added to this library is a room full of cartons of Heisey records that need to be cataloged and microfished (or put on computer disk). Who knows what goodies are yet to be discovered.

Remember the molds? It took a lot of work and fund raising to purchase the molds for the benefit of HCA. So now we have a building loaded with Heisey molds that need to be inventoried and maintained, a chore requiring heavy equipment and a lot of time and elbow grease.

As you know, the HCA has a computer system for its everyday operation. What you may not know is that it's woefully inadequate and it needs upgrading badly. The goal is to eventually put the HCA computer on line so members can research to their hearts content. HCA education programs and the exhibits we sponsor must also be extended in order that The National Heisey Glass Museum becomes a museum of the class that would make it eligible for government funding—that's what the Board is working towards!

We're not close to that point and this is why the Board spends a lot of time on fund raising. I suggested we put on a show because that always worked for Judy Garland and Mickey Rooney when I was growing up. My suggestion was duly noted and I was thanked for my contribution.

Hey, no thanks necessary, that's what I'm there for.

At the next meeting I'm also going to suggest that the Board lighten up. ♦



*HCA Board Officers
June 1974
left to right:
Frank Frye
Loren Yeakley
Ann Holman
Dick Marsh
Carl Sparacio*

From the Archives—Old News Is New News

Jenny Menke

Before Don left to visit relatives in Alabama, he convinced me to write his article for the monthly newsletter. In case some of you don't know who I am, my name is Jenny Menke and I am finishing up my last week here as a summer intern. This last month, Don and I spent a large amount of our time cataloging new donations. Most recently, we took on the task of identifying and cataloging mold drawings. Once in awhile we take a break to read through newly discovered artifacts or Don will show me something he found particularly interesting. One such article we came across was a letter T.C. Heisey wrote to a J.W. Worrell (8/13/36).

The letter reads:

My boy has been riding Atlantic City ever since 1932 and has won the Grand Champion there several times. Consequently, the reporters knew him and snapped him when he was on the boardwalk. While we are on the subject, we might brag a little and say he won the Grand Champion at Madison Square and Toronto, Canada last Fall. He also won the Champion at the World's Fair in 1933. He has been going to preparatory school at Deerfield Academy, Deerfield, Massachusetts for the past three years and enters Amherst College this Fall—I happen to be an Amherst man.

One more brag. I might say we won the Five Gait Champion in 1932. I recall with considerable pride that the Sunday New York Times, after that occasion, printed in large 1/2" letters "Rexanna H. Peavine Won the Five Gait Grand Champion at Atlantic City" and in tine (sic) letters, "Babe Ruth Makes His First Home Run of the Year." So if I ever see the back on my neck again, I still will be happy over that.

Sorry to have missed you down there as I would like to have had a talk with you and hear about your family and possibly (sic) tell you something about ours. Of course you know father died in '22 and mother in '27; father at 80 and mother at 78.

Sister Alice, who lost her husband—in '26 I think—lives at the old home here together with my brother George who is a bachelor.

Sister Emma married a regular army officier (sic), Colonel O. H. Dockery, who is retired. She lives in New York. She has a son who is a lawyer and doing very well. He is a graduate of Yale and Harvard. She also has a daughter who is very much interested in painting.

Brother Wilson is here of course as President of our concern. He has two boys, one a graduate from Amherst and the other went to Choate Preparatory School and then into business.

Sister Mary, who of course is dead, has a daughter, Susan Walker, who lives in New York. Her name is Melcher. She has a daughter by her first husband—her first one didn't take.

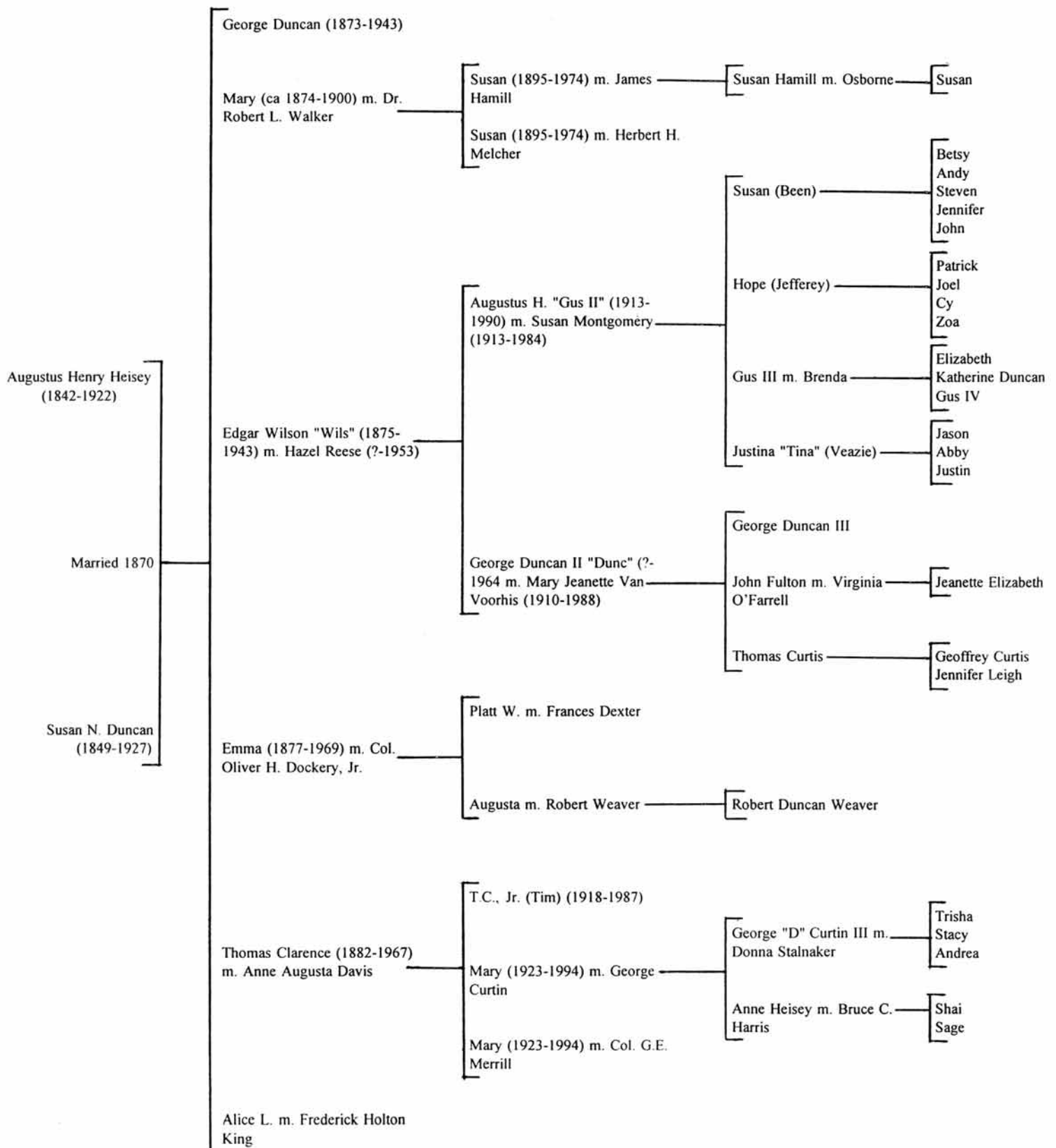
I have a son and a little girl 13 years old and we all live together in a little white house with blue shutters and we will be very glad to have you come and see us sometime.

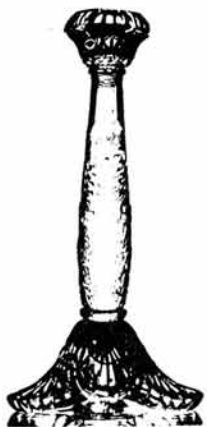
I guess that will about give you the lineup on the family."

This letter convinced me to create an up to date family tree. Although this information may be old for some of you, hopefully it will be helpful to some of you newer members. ♦

Editor's Note: The family tree was created with the help from previous editions of the Heisey News, Tom Felt's A.H. Heisey Chronology and information gathered from our archives. If you have any additional information to help update the Heisey family history please let us know.

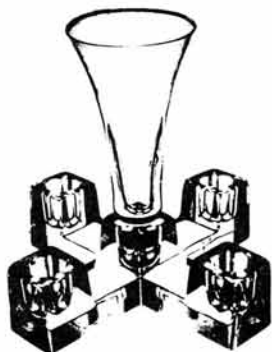
A.H. Heisey Family Tree





Brain Teasers—25 Heisey Favorite Candlesticks

Walter Ludwig



Pattern Name

Pattern Number

1. DANE
2. HER CUB
3. ARMS
4. LARD W.
5. O! A BOMB
6. LEAF "M"
7. RID TENT
8. TINY PAGE
9. SUCCOR
10. I'M PEER
11. I'VE CB FOLK
12. ON HEARTS
13. HILO - ROME
14. LET IN GLOW
15. JAB A CONE
16. ARE GOING
17. PEEL THE WHIP
18. GET SCRAP RULE
19. STUFFS MINE
20. TALL REAP QUARREL
21. PAIR IN ACT
22. ELF FISHED
23. BLAME NECH JIB
24. ALTER TEST QUILT
25. I TOPPLED THAT ICON

A. H. Heisey & Company—A Chronology, Part V

Tom Felt

1930

- ♦February. #1401 Empress was advertised as new.¹
- ♦Marigold was probably discontinued early this year, after little more than a year.
- ♦April. Sahara and Alexandrite were advertised as new colors.
- ♦The #3381 Creole stemware line was also advertised.²
- ♦July. The Hawley-Smoot Tariff Bill was passed and E. Wilson Heisey responded that it inadequately cared for glassware interests. "Yet taken as a whole, there is prevailing opinion that the recent tariff measure is the best tariff law ever passed and that business expansion will follow."³
- ♦August. #3390 Carcassonne was advertised as new.
- ♦The #448 Old Colony plate etching was also advertised this month.
- ♦November. #1404 Old Sandwich was also being shown as a new line of stemware.⁴
- ♦Other new stemware patterns in 1930 included #3386 Diamond Rose*, #3387 Genie* and #3389 Duquesne.
- ♦New plate etchings included #451 Lafayette.
- ♦E. Wilson Heisey became the treasurer of the State Executive Committee of the Republican Party.



#488 Old Colony

1931

- ♦March. Two new plate etchings were advertised: #449 Pompeii⁵ and #450 Chintz.⁶
- ♦June. A contest for the best Heisey display was held, with photographs submitted from many sections of the country. The first prize of \$50 went to The Mode, Ltd. of Boise, Idaho, for a window display of Sahara, which featured a backlit picture of a Mussulman at his evening prayers, with a camel standing beside him. In the front of the display, arranged against a black background, were pieces of #3390 Carcassonne stemware, #1401 Empress pressed ware, and both single and double candelabra, all in Sahara. The second prize of \$30 went to McMorran and Washbourne of Eugene, Oregon, and the third prize of \$20 to Ziesel Brothers Company of Elkhart, Indiana. It had originally been intended to present only these three prizes, but such difficulty was experienced in selecting the winners that a fourth prize of \$10 was also given to Gilmore Bros., Inc. of Kalamazoo, Michigan.
- ♦September. #1404 Old Sandwich, which had initially come out in 1930 as a stemware line, was advertised as "new," with "a variety of stemware and other pieces" available.⁷ #1405 Ipswich was also mentioned as new.
- ♦Other new patterns for 1931 included #1415 Twentieth Century.



Creole

1932

- ♦February. #3397 Gascony was reported as new.⁸
- ♦April 16. Rexanna H. Peavine, a bay mare owned by T. Clarence Heisey, won the \$1,000 five-gaited



Old Sandwich

¹ The earliest patent for this pattern was filed on March 29, 1930.

² Patent filed on May 16, 1930 and approved September 30, 1930.

³ *Crockery and Glass Journal*.

⁴ The full line of tableware was not advertised until the following year.

⁵ Called Pompeian in ads of the time.

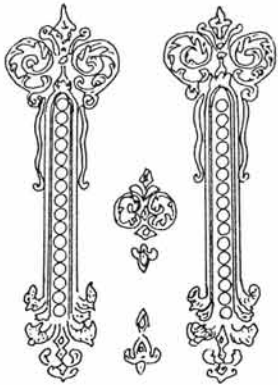
⁶ Called Colonial Chintz, "a name ideally suitable since it resembles a crystallized bit of etching with its all-over design of informally arranged decorations." (*China, Glass and Lamps*)

⁷ The pattern was called Thumb Print in this advertisement.

⁸ Patent filed on February 26, 1932 and approved August 16, 1932.



Sportsman



Inca

Grand Championship Traymore stake at Atlantic City Horse Show, unexpectedly defeating her rivals in the five-gaited saddle horse grouping in her first show.⁹

♦From May 2 to 7 was "Heisey week." Merchants throughout the country were urged to make this a "Glassware Event" in their stores, with window and table displays tied in with a special advertising campaign in the *Saturday Evening Post*. As an additional incentive, special prices were offered until June 15. B. Altman and Company in New York offered a table setting in Crystal with the #451 Lafayette plate etching. Stern Bros., also in New York, was reported as having shown three separate tables: one of stemware, one of "fancy pieces," and the third "a complete dinner set up."

♦August. Tangerine was introduced. Heisey was the first glass company to produce this color.

♦The first of the silhouette etchings¹⁰ was also advertised this month, #9009 Arctic.¹¹ Initial advertisements pictured it on the new #1413 Cathedral vase, among other items.

♦November. Emil Krall, Sr., formerly an engraver in the royal household of Franz Joseph, Emperor of Austria, went to work for Heisey. The cutting shop, which apparently had been closed down sometime around 1924, was reopened at this time.¹²

♦The #3394 Saxony stemware line was also new.

♦The #50 Dresden* needle etching and #452 Ambassador and #453 Inca plate etchings came out. Other silhouette etchings included: #454 Antarctic and #455 Sportsman.¹³

♦New cuttings included #781 St. Anne, #782 De Soto and #785 Coral Gables*.

♦Rodney C. Irwin became Heisey's advertising and general sales manager at about this time.

♦Carl C. Cobel began working with his father, Ray Cobel, in the mold department. He designed a number of silhouette etchings. (In later years, he worked for Walter Von Nessen and then as a free lance designer, creating a number of pieces for Heisey in the 1930s and 1940s.)

1933

♦January. Cobalt was introduced. Some original sources refer to this color as Stiegel blue.

♦February. #1428 Warwick and #3404 Spanish stemware were both among the new pieces being shown by Heisey in Crystal, Sahara and Cobalt.

♦April. Three new plate etchings were introduced: #456 Titania, #457 Springtime and #458 Olympiad.

♦May. The *Pottery, Glass and Brass Salesman* noted that Heisey's first silhouette etching (#455 Sportsman) had been such a hit that three new ones had just been brought out: #459 Fisherman, #460 Club Drinking Scene and #462 Fox Chase. Additional silhouette etchings introduced later in the year included: #463 Equestrian¹⁴ #465 Golf Scene, #467 Tally Ho and #469 Mermaids.

♦June. Price list 210-15 was issued.

♦August. The NRA symbol began appearing in Heisey's advertisements, with the statement: "Under the sign of the Blue Eagle, we are gladly giving our full cooperation to the national recovery program."¹⁵ A full page ad in September in *China, Glass and Lamps* stated, "More people have been put to work in our plant — proportionately more perhaps than in some industries — due to the great number of hand operations involved . . . You can offer Heisey glass to your customers with the complete assurance that it has kept faith — with you and with them — through superb quality at reasonable prices. Such quality now is at a premium as people buy to help speed national recovery."

♦September. The #3416 Barbara Fritchie stemware line was advertised for the first time with the #801

⁹ Another horse, Cocobola, won the five-gaited open gelding class in Louisville this same year.

¹⁰ A type of "deep plate" etching developed and patented by Ronald Wooles, head of Heisey's etching department, which involved immersing relatively large areas of the piece in a strong acid solution for long periods of time, thus resulting in a design which appears in silhouette and has an uneven surface. A patent was filed for this process on July 28, 1933 and approved June 2, 1936.

¹¹ Original pattern number unknown.

¹² In a reminiscence by Anton F. Krall, Emil Krall's nephew, who also worked for Heisey, the date was given as "about the year 1930" (*Heisey News, January 1985*). According to an item in the *Altoona Mirror* in 1935, however, it was not until 1932 that he joined the firm. There are no new cuttings known to have been introduced until this year, which offers additional confirmation for this date.

¹³ Called *The Bird Hunter* in the November 1932 issue of the *Crockery and Glass Journal*.

¹⁴ The horse in the Equestrian etching, designed by Carl Cobel, was modeled after Rexanna H. Peavine, one of Clarence Heisey's show horses.

¹⁵ For a more candid appraisal by T. Clarence Heisey of the National Recovery Act's attempt to regulate wages and thereby restore economic health to the nation, see the comments made by him in July 1935.

Wakiki rock crystal cutting. The #804 Biscayne cutting was also shown in the same ad. There were eight other rock crystal cuttings introduced at this time.

♦October 21-29. Horses from the “High C” stables, owned by T. Clarence Heisey and E. Wilson Heisey, placed in every event at the World’s Fair Horse Show. Tim Heisey, Jr., who was then a student at Dearfield Academy, won the reserve championship for ponies, riding Goodness Gracious. This same mare had also won the reserve championship in Atlantic City earlier this year.

♦November. T. Clarence Heisey participated in the cornerstone ceremonies for a new Ohio National Life Insurance Company building in Cincinnati. He was a member of the board of directors and of the executive finance committee for this company, which was one of the three largest insurance companies in Ohio.¹⁶

♦The #1430 Aristocrat* candy jar was introduced this year.

♦Additional stemware lines included: no. 3408 Jamestown, #3409 Plymouth, #3411 Monte Cristo, #3414 Marriette and #3420 Milwaukee*.

♦Other new plate etchings included: #461 Concord, #464 Harlequin and #468 Chateau.

♦Other new cuttings included: #789 Aberdeen*, #790 Flint*, #793 Monterrey*, #794 Riviere, #795 Will o’ the Wisp, #796 Suffolk*, #797 Killarney, #798 Malta*, #799 Manhattan, #800 Greystone*, #802 Manchester*, #803 Hialeah*, #805 Baton Rouge*, #806 Rochester*, #807 Lorain*, #808 Gateway*, #809 Calcutta, #810 Dotted Swiss*, #811 Swirl, #812 Sweet Briar, #813 Pyramids*, #814 Laredo*, #815 Japanese Boat Scene, and #816 Palmetto.

♦Max Seidel went to work as one of Heisey’s cutters at about this time.

1934

♦February. #1447 Rococo and #4044 New Era¹⁷ were being shown as new.

♦March. The wooden Sandwich models were displayed at R. H. Stearns Company in Boston, together with same of the modern pieces made by Heisey in the same patterns. *Crockery and Glass Journal* noted that both “original pieces of the Sandwich Glass and the reproductions have a special appeal to Bostonians.”¹⁸

♦April. #1433 Thumbprint and Panel (which was based on the earlier “Colonial” pattern, which had been made by the Boston and Sandwich Glass Company, among others) was also shown as new this year.

♦May. The #825 Sea Glade cutting was advertised on Heisey’s new ball vases.

♦July. Other new cuttings advertised included #830 California*, #831 Valencia, #832 Continental and #833 Bavaria*.

♦September. #1425 Victorian was advertised as new.¹⁹

♦The first of the carvings²⁰ were mentioned in the *Crockery and Glass Journal* in September as being among “the latest arrivals from Heisey”: #5000 Bacchus, #5003 Nimrod, #5004 Scotch, #5005 Bourbon, #5006 Gin, #5007 Rye and #5008 Castle Harbor.²¹

♦A series of new silhouette etchings were also introduced at the same time, all with circus motifs: #471 Rube, #472 Lion Tamer, #473 Camel, #474 Clowns, #475 Elephants and #476 Western Scene.

♦October 15. Macy’s department store in New York offered 301,578 pieces of Heisey glassware at prices ranging from five cents to \$1.99 a piece in a gigantic sale. Customers were provided with boxes, baskets, and all manner of other containers to carry off their purchases in. As the *Crockery and Glass Journal* reported, “Such sales, of course, are not examples of the best kind of merchandising, but as a ‘stunt’ it was unbeatable.” It was believed by some to have drawn the largest crowd ever seen in any one department in the store in fifteen years, with an estimated 25,000 persons buying 210,000 pieces



Monte Cristo



Camel



Clowns



Western Scene

¹⁶ A. H. Heisey had also been on the board of directors and had been a vice president of Ohio National prior to his death.

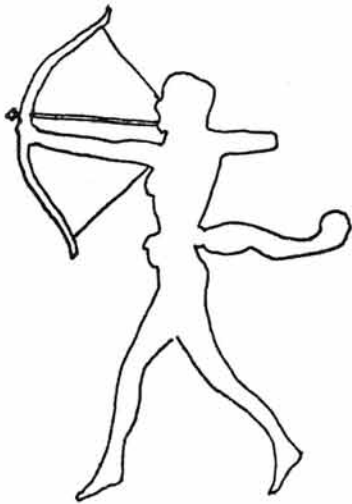
¹⁷ Patents applied for March 3, 1934 and approved May 15, 1934.

¹⁸ These models were lost while being returned from a display in Seattle early in the 1940s.

¹⁹ The first ad for this pattern, in the September issue of *Crockery and Glass Journal*, refers to it as the “Squares” pattern. Some pieces in the pattern seem to have come out as early as 1933.

²⁰ Carvings were created by sandblasting a design into the surface of the glass.

²¹ Called the “Ship of the Night” design.



during the first three days of the sale.

♦New stemware patterns introduced in 1934 included #4046 Gotham, #4047 Knickerbocker and #4048 Broadway*.

♦Other new cuttings included: #817 Long Island*, #818 Reynoldsburg*, #819 Columbus*, #821 Sky Scene, #824 Houston*, #826 Venus, #827 Star Scene, #828 Stardust* and #829 Roxy*.

²² VonNessen, 1889-1943, was internationally known for his designs in lighting, furniture and metal accessories. His Nessen Studio in New York not only continued to produce designs of its own throughout the 1930s, but also for other companies in addition to Heisey, including the Chase Brass and Copper Company in Waterbury, Connecticut. For further information see the *Heisey News*, June 1989, p. 4-5 and June 1990, p. 5-6.

²⁴ For further information on this display, see the article by Joe Lokay in the *Heisey News*, March 1980, p. 8-9.

◆MEMBERSHIP DRIVE 1995◆

In preparation for the **Gala Heisey Centennial in 1996**, our goal is to dramatically increase, perhaps even double the nationwide membership in HCA. Every successful organization must constantly build upon itself to sustain its existence. This is a goal we all share. Included in previous issues of the *Heisey News* is the handy membership pull out section with all the information and tools every member will need to help us reach our goal!

A. H. HEISEY & CO.

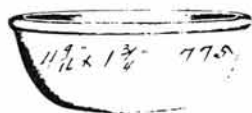
NEWARK, OHIO



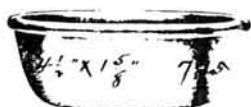
FOR OVEN USE ONLY

No metal, no rust, no tarnish; will not stain or discolor. Sanitary, and as easily cleaned as china. Its high polish makes it appropriate for serving on the dining table. Bakes food quickly and uniformly throughout. Should be removed from the oven with a dry cloth. Guaranteed against breakage in the oven. All covers have small hole in top of knob, to permit steam to escape. (Patent applied for)

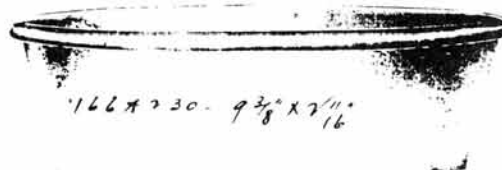
These pictures are from a small catalog on Visible Cooking Ware which was made for a short time in Heisey's earlier years. Heisey was sued by the makers of Pyrex (Corning) and discontinued this glass. It is usually vase-line, sometimes a greenish color and sometimes Crystal. It is marked.



No. 136--4 1/2" Individual Baker, Round
Capacity 8 ounces



No. 137--4 1/2" Individual Baker, Round
Capacity 7 ounces



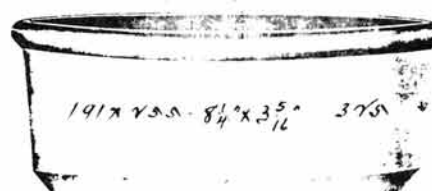
No. 166--9" Baking or Pudding Dish, Round
Capacity 2 quarts.



No. 138--5" Individual Baker, Round
Capacity 14 ounces
Also make No. 139--6" Individual Baker, Round



No. 312--5" Shirred Egg, Round



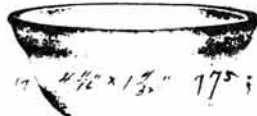
No. 191--8" Baking Dish, Deep Round
Capacity 2 quart



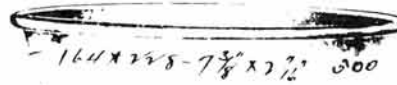
No. 279--6 x 4 3/4" Casserole, Oval
Capacity 21 ounces



No. 313--6" Shirred Egg, Round



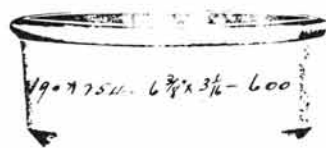
No. 124--4 1/2" Baked Apple, Round
Capacity 8 ounces



No. 164--7" Baking or Pudding Dish, Round
Capacity 1 quart



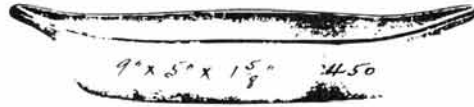
No. 254--6" Casserole, Round
Capacity 36 ounces



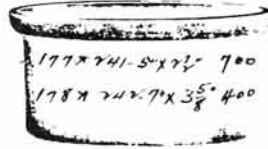
No. 190--6" Baking Dish, Deep, Round
Capacity 1 quart



No. 324--6" Au Gratin, Round



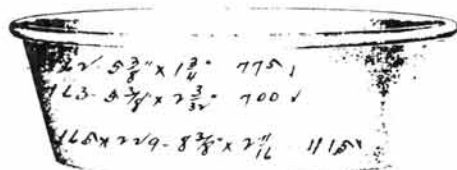
No. 335--9" Au Gratin, Oval



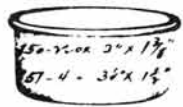
No. 177--5" Baking Dish, Round
Capacity 1 pint
Also make No. 178--7" size
Capacity 1 quart



No. 280--8x6 1/4" Casserole, Oval
Capacity 1 1/2 quarts



No. 165--8" Baking or Pudding Dish, Round
Capacity 1 1/2 quart.
Also makes 5" size-No. 162
6" size-No. 163



No. 150--2 1/2" Ramekin
Capacity 3 ounces
No. 151--3" Ramekin
Capacity 4 ounces



No. 398 Percolator Top
2 1/4"



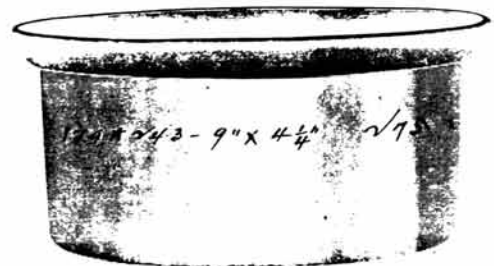
No. 381--9" Layer Cake Dish, Round



No. 243--9" Casserole,
Deep, Round
Capacity 2½ quarts
Also make No. 242--7"
Casserole, Deep



No. 300--Bean Pot
Capacity 20 ounces
Also make No. 301--
Bean Pot
Capacity 1 quart



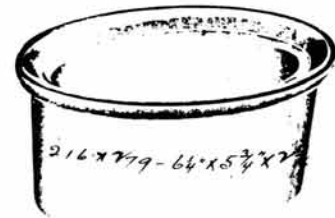
No. 179--9" Baking Dish,
Deep, Round
Capacity 2½ quarts



No. 255--8" Casserole,
Capacity 2 quarts



No. 217--8x6½" Baking
Dish, Deep, Oval
Capacity 1½ quarts



No. 216--6x4 ¾" Baking Dish,
Deep, Oval
Capacity 21 ounces



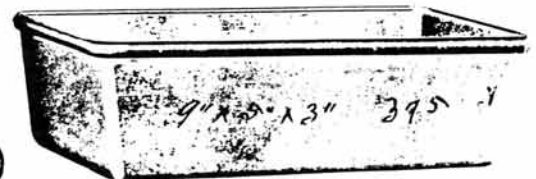
No. 357--12x7½x2" Roaster



No. 230--9" Casserole,
Shallow, Round
Capacity 2 quarts



No. 267--9½x6 ¾"
Beefsteak Casserole,
Shallow, Oval
Capacity 1½ quarts



No. 346--9x5x3" Bread Baker



No. 228--7" Casserole,
Shallow, Round
Capacity 1 quart
Also make No. 229--8"
Casserole
Shallow, Round
Capacity 1½ quarts



No. 392--6" Individual
Pie Plate, Round



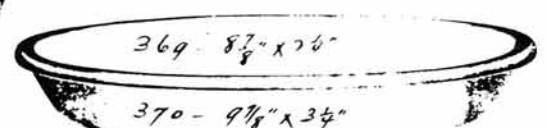
No. 368--8" Pie Plate, Round



No. 241--5" Casserole,
Deep, Round



No. 268--10½x7 ¾"
Beefsteak Casserole,
Shallow, Oval
Capacity 2 quarts



No. 370--10" Pie Plate,
Round
Also make No. 369--9" size

Card Application Please Indicate Account Desired:

- ☐ Individual Account
☐ Joint Account
☐ Individual Account with Authorized User

* FOR INTERNAL USE ONLY *

VISA _____ P _____ S _____
 Type _____ Designation Code _____
 CL _____ Reviewer _____ Date _____

PRIMARY APPLICANT

Applicant's Full Name Last First Initial

Date of Birth Social Security No. No. of Dependents

Present Street Address Apt. # City State Zip Code

Telephone No. How Long at Address? ☐ Own Monthly Payment _____ Estim. Prop. Current Balance _____
☐ Rent Monthly Payment _____

Previous Home Address (if less than 3 years at present address) How Long At This Address?

Present Occupation Present Employer How Long? Gross Income from Job

Employer's Address Street No. City State Zip Code Business Phone No.

Previous Employer (or School attended) Occupation How Long? Source of Other Income* Amount

Name & Address of Nearest Relative Not Living With You Relationship Phone No.

Mother's Maiden Name * NOTICE: Income from Alimony, Child Support or Separate Maintenance payments need not be revealed if you do not choose to have it considered as a basis for repaying this obligation.

JOINT APPLICANT

Co-Applicant's Full Name Last First Initial

Date of Birth Social Security No. Relationship to Applicant No. of Dependents

Present Street Address Apt. # City State Zip Code

Present Occupation Present Employer How Long? Gross Income from Job

Employer's Address Street No. City State Zip Code Business Phone No.

PARK NATIONAL BANK

VISA TRUTH IN LENDING DISCLOSURE

Annual Percentage rate for purchases	18.00%
Grace Period for repayment of balances for purchases	You have 25 days to repay your balance (for purchases) before a finance charge on purchases will be imposed
Method of computing the balance for purchase	Average daily balance including new purchases
One Time Membership fee	\$25.00
Minimum finance charge	None
Transaction fee for purchases	None
Transaction fee for cash advances and fees for paying late or exceeding the credit limit	Transaction fee for cash advance: None Late payment fee: \$10.00 Over-the-credit-limit fee: None

NOTICE: The Ohio laws against discrimination require that all creditors make credit equally available to all creditworthy customers, and that credit reporting agencies maintain separate credit histories on each individual upon request. The Ohio Civil Rights Commission administers compliance with this law.

Please mail form to:
 BANK CARD CENTER
 PARK NATIONAL BANK
 PO BOX 3500
 NEWARK OH 43058-9983

PLEASE SIGN HERE:

Please read the Truth in Lending Disclosure on the back of this application before signing.

☐ VISA # of cards desired: ☐ One ☐ Two ☐ Other _____

We make application to the Bank named in this application for a VISA credit card and/or any other credit(s) issued as a result of this application. If this application is accepted and a VISA credit card issued, the undersigned applicant and joint applicant, if any, by signing, using, or permitting another to use the VISA credit card(s) agree to the terms and conditions of the VISA Credit Card Agreement and all amendments thereto. By signing this card, I agree to the terms and conditions of the VISA Credit Card Agreement and all amendments thereto. I understand that you will retain this application whether or not it is approved. You are authorized to check my (our) credit and employment history and to answer questions about your credit experience with me (us). I am 18 years or older.

Applicant's Signature Date

Co-Applicant's Signature (if any) Date

Authorized User's Signature (if any) Date

Corrections—Apologies! Apologies!

Glass donations received January through June 1995

Omitted from list which appeared in Volume XXIV No. 09, August 1995, p. 18

♦Margaret Reed (in honor of Louise Ream)

#393 Narrow Flute water bottle

#1183 Revere Crescent salad, Flamingo

#1183 Revere Crescent salad, Moongleam

#1495 Fern 2-part Dressing w/Barcelona cut

Contributions to the Endowment Fund, Convention 1995

Omitted from list which appeared in Volume XXIV No. 09, August 1995, p. 19

READ: James and Kelly Kennon \$500.00

CORRECTION: James and Kelly Kennon
(in memory of James's mother Helen Kennon) \$500.00

Contributions to the Endowment Fund January through June 1995

Omitted from list which appeared in Volume XXIV No. 09, August 1995, p. 19

Mark and Janet Attix \$100.00



*Remember 1995 was
the last year for Oscar!*

*Still on the shelves are
1995 Goodness Gracious
Brown Oscars, plus many
more in a variety of colors!
Call today and fill in where
you're missing an Oscar.*

*Next year the Rabbit
Paperweight will make
her debut.*

Fourth Annual Percy Moore Memorial Souvenir

The deadline has been extended! Order Now! As previously stated the souvenir for the fourth annual Percy Moore Memorial was the fish match holder. However, due to an unexpected problem the 1995 Percy Moore Souvenir will be the Fish Candlestick in Ice Blue by Dalzell Viking. We promise you will not be disappointed. The cost still remains \$20. Shipping and applicable sales tax are included in the price. Order from below or call the Museum Shop, at (614) 345-2932. ♦

MAIL TO: HCA Souvenir, 169 W. Church St., Newark, OH 43055

name(s) _____

address _____

city/state/zip _____

daytime phone _____ tax exempt # _____

Please indicate quantity

dinner & souvenir _____ x \$40 = _____

souvenir, ONLY _____ x \$20 = _____

Total = _____

Please circle

ship

pick up

Method of payment: check or

MasterCard/VISA _____ exp. _____

CLUB NOTES

Dixieland Heisey Study Club #48

Bob Bartholomew

At our last meeting Lolita Hammontree shared her experience setting up her display of Minuet at the convention display and told about all the exciting things there were to do and see for those who were unable to attend.

We will not have our regular September meeting because of the Quarterly Meeting in Greensboro, North Carolina, which several of our members will attend.

Our next meeting will be Friday, October 13 and Friday, November 10. Phone Bob at 770-466-7879 or Sid at 404-928-3774 for the NEW LOCATIONS!♦

Heisey Collectors Club of Michigan #15

Sue Kilgore

The Heisey Collectors Club of Michigan, with a membership of only twelve people, has dedicated itself to donating each year no less than \$1000.00 to benefit HCA.

Again this year, we were able to achieve our goal by buying two chances for the March 1995 Caribbean Carnival, donating glass for the march benefit auction (with a minimum value of \$45.00) or giving money directly if we do not have appropriate glass and then making up the difference at convention time. This year our donated glass and money brought in the most we have ever been able to do for the museum.

The only way we raise this money is through annual dues and two silent auctions done by the membership. We challenge all other clubs to set a goal of support for the museum and then they will know how great it feels to be able to give to such a great organization.♦

Heisey Heritage Society #8

Frank Husted

HHS, the Pearl of HCA Study Clubs, held its bi-monthly meeting at the rhododendron shrouded chalet of the Brubakers of Reading, Pennsylvania. About eighteen members braved the 100 degree heat to be rewarded with warm greetings and the culinary artistry of Jane and Jake. Fearless leader, Joyce "Where's the Zircon?" Farnham, led us into knowing that about twenty HHS'ers represented the club at the HCA Convention and that only a few less would be at the NC quarterly meeting.

Our "study" section, called "Top Walter Ludwig," is really show and tell of the new Heisey finds and it was spirited despite the absence of WL. The next Heisey Heritage Society meeting will be on September 28. At this time we hold our annual auction at the Husted's when a "Disneyless" Bunny will be the host Auctioneer.♦

Tri-State Heisey Study Club #43

The Tri-State Heisey Study Club held their quarterly meeting at the home of Joanne and Bob McElheney in Toledo, Ohio on August 5, 1995. After a delicious meal prepared by the host Bob McElheney. He reviewed Heisey colors with a colorful display consisting of Amber, Marigold, Sahara, Flamingo, Hawthorne, Alexandrite, Milk Glass, Ivory, Dawn, Cobalt, Experimental Light Blue, Moongleam, Emerald, Vaseline, and Zircon. Also displayed were Imperial colors of glass made in Heisey molds in green, blue, yellow, and azalea. The production years and the lines or items of each color were discussed. After the "color show", the club bid high on donated Heisey in wrapped packages. Our auctioneer was the newly elected president of HCA Tom Bishop, who did an excellent job (Thanks Tom).♦

Heisey Collectors of Texas #16

Fostoria Glass Society of North Texas
presents

The Dallas/Fort Worth Metroplex -
Eighth Annual

"Elegant Glass Show and Sale"

Oct. 27, 28, & 29, 1995

Grapevine Convention Center
1209 South Main Street
Grapevine, TX 75220

The best show in the nation for finding handmade,
American glassware by Fostoria, Heisey, Cambridge,
Duncan & Miller, Imperial, Tiffin, Morgantown, etc.

Friday, Oct. 27, *"An Elegant Evening with Elegant Glass"*
Early Preview & Sale, 6-9 p.m.

\$10.00 per person. Reservations Limited to 400.

For Advance Resv's./Info. Contact: Tom or Aleeta Herr,
335 Hummingbird Lane, Duncanville, TX 75137
(214)780-0193 or Fax: (214)557-1797

Advertising: Send all ads to HCA Advertising, 169 W. Church St., Newark, OH 43055 or fax ads to (614) 345-9638, include MasterCard or VISA information. Ads are to be typed or printed on white paper with dark ink. Please double space. All ads must be prepaid. Please do not abbreviate Heisey pattern names or colors. Ads which are entered in a vertical column format can contain a maximum of 67 characters per line, including spaces and punctuation.

Classified: 20 cents per word (members), 30 cents per word (non-members), \$1.50 minimum, 1/8 page limit. Personal ads 1/8 page limit. Abbreviations and initials count as words.

Display Ads:

	member	non
1/8 page (9 lines)	\$20.00	\$30.00
1/4 page (20 lines)	\$40.00	\$60.00
1/2 page (horizontal or vertical)	\$80.00	\$120.00
Full page	\$160.00	\$240.00

Ad copy must be received by the first of the month prior to publication (e.g. April 1 for May issue). Camera ready ads must follow specification. Reproductions (i.e. Heisey by Imperial) must be clearly indicated. Heisey News accepts no further liability.

Classified Ads

FOR SALE: #1567 Plantation two light candlesticks pair \$145.00. #1567 Plantation 8" plates used (8) all \$75.00. #500 Octagon variety tray beautiful cutting \$45.00. #4054 Coronation cocktail shaker \$85.00. #1503 Crystolite Swan individual nut dish (6) each \$18.00. Chris Janes (407) 753-9819.

WANTED: Top dollar paid by collector. Moongleam & Hawthorne #461 Banded Picket; Flamingo #500 Octagon; Coronation #473 Narrow Flute with Rim. Carolyn Felger (818) 705-0854

WANTED: 4" lid for Heisey #1205 Fancy Loop potpourri jar. Marilyn Sampson, 422 N. Alexander, Clay Center, NE 68933 (402) 762-3636.

FOR SALE: Heisey Diamond Optic #3312 Gayoso Flamingo 2 oz. wines (11) \$10.00 each, low footed sherbets (12) \$5.00 each, finger bowls (12) \$8.00 each, Russian coffees (8) \$40.00 each. Purchase all, I pay S&H. Marybeth Will, Kansas City, KS. (913) 375-1848.

WANTED: #3408 Jamestown stems, Rosalie etch: ice teas, juices, oysters, clarets, wines, sherrys and cordials. Your assistance is appreciated. Bill Ponseti, 749 Kendon Ln., Novato, CA 94947.

FOR SALE: #3408 Jamestown stems, Rosalie etch: goblets, champagnes, cocktails: \$29.00 each. Perfect! Apologies to person who called. I accidentally erased your message. Please call back. Bill Ponseti, 749 Kendon Ln., Novato, CA 94947.

FOR SALE: Spanish #3404 cordials. Cobalt bowl, \$150.00 each. Bead Swag Milk Glass creamer, rose decoration excellent and gold very good, \$65.00. Glen Crissman, 177 Bonnie Lane, Reedsville, PA 17084, (717) 667-9895.

WANTED: Heisey 8", 9" and 10" plates #433 Greek Key. Pat Coleman (206) 868-4174 or write 20305 N.E. 40 Ct., Redmond, WA 98053.

FOR SALE: Gold Series and Gem Series. Complete numbered sets. Laevender Ice Flying Mare. Lavender Ice Frosted Bull. Oscar collection. Much more. Please call (616) 377-4125 evenings.

FOR SALE: Emerald green Fancy Loop tankard pitcher; applied handle, 9 1/2" tall, vestige of gold around top rim; 1 small chip and 3 tiny dings in the pattern-hard to see. \$1050.00 (505) 268-0819.

WANTED: Minuet etch on clarets; salt and pepper; Queen Ann individual cream & sugar with tray, candelabra. (615) 629-1274 after 6 p.m.

WANTED: Heisey "Fox Chase" #1509 8" sq. plate, #5012 7" ft'd. vase, #4163 16 oz. beer mug w/red, Mnglm., Amber, handle. Fred Ludwig, 300 Rt. 10 Randolph, New Jersey 07869. (201) 366-7279.

WANTED: Heisey baskets: etched, cut, colored, unusual decorations or whimsies. Send price and description to Kim Carlisle, 28220 Lamong Rd., Sheridan, Indiana 46069. (317) 758-5767.

FOR SALE: Eleven Heisey water goblets 6 oz. #359 Colonial pattern large hand cut brandy. Snifter cut by Max Seidel. Helen McGanghy (614) 366-6618.

FOR SALE: #1423 Sweet Adoline goblets, H, (11) \$300.00 each plus S & H and ins. Ginny Kalb (414) 724-3766 or write PO Box 127, Darien, WI 53114.

WANTED: Crystal Flying Mare, Mother Rabbit, Wood Ducks, Greek Key toothpick. (614) 928-7565.

FOR SALE: Greek Key collection, by piece. (614) 928-1994.

CLASSIC GLASS

Robert Henicksman

916 Q Street

Sacramento, CA 95814

(916) 448-0840

After 6:00 pm PST

Shipping & Ins. Extra

Items from prior ads may still be available, call for information!

	Plug Horse	\$160.00
#300	Colonial Peerless sherry glasses, H, (2) ea.	\$20.00
#339	Continental footed sherbets, H, (6) ea.	\$15.00
#341	Colonial Puritan 8" high footed bowl, H	\$80.00
#393	Narrow Flute individual cram & sugar set, H	\$35.00
#412	Rib & Panel/Tudor 7 1/2 oz. goblets, H, (4) ea.	\$26.00
#1184	Yeoman d.o. cup & saucer, Mnglm., set, H	\$40.00
#1235	Beaded Panel & Sunburst punch bowl stand, H	\$60.00
#1252	Twist bon bon dish, Moongleam, H	\$45.00
#1401	Empress footed mayonnaise, Flamingo, H	\$75.00
#1401	Empress Pompeii etch 10" triplex relish, H	\$48.00
#1405	Ipswich 4 oz. oyster cocktails, H, (4) ea.	\$15.00
#1497	Boat floral bowl	\$145.00
#1503	Crystolite 7" pickle dish, oval, H	\$38.00
#1506	Provincial/Whirlpool 6" sweet pea vase, H	\$45.00
#1519	Waverly 12" gardenia bowl, H	\$45.00
#1519	Waverly salt shaker	\$30.00
#1575	Tulip 11" floral bowl, H	\$48.00
#335	Wabash 10 oz. goblets, H, (2) ea.	\$24.00
#339	Carcassonne 12 oz. footed soda glasses, Sah, (6)ea.	\$45.00

MOUNDBUILDERS ANTIQUES

2ND GENERATION/ Barb Bartlett

3669 Route #360

Buckeye Lake, OH 43008

(800) 366-4347

(614) 928-1994

Shipping & Ins. Extra

H=Marked

#1776	Kalonyal cruet	\$395.00
#1469	Ridgeleigh cake plate, H	\$595.00
#1469	Ridgeleigh covered candy/compote, H	\$125.00
#1469	Ridgeleigh swan handled floral bowl	\$395.00
#1519	Waverly Rose etched Seahorse candy	\$250.00
#1519	Waverly Seahorse candy, Amber, H	\$695.00
#1540	Lariat 12" candy	\$295.00
#1540	Lariat basket Orchid etched	\$1295.00
#1413	Cathedral vase, Cobalt	\$695.00
#1420	Tulip vase, Cobalt	\$595.00
#1428	Hi-Lo vase, Cobalt	\$595.00
#1503	Crystolite basket	\$595.00
#1503	Crystolite dinner plates, 10 1/2", (ea)	\$145.00
#1503	Crystolite Rock n Rye decanter	\$595.00
#5058	Goose stem sherry	\$195.00
	Filly horsehead forward, H	\$1800.00

Set of 9 #465 Recessed Panel candy jars—1/4 lb. to 8 lb. sizes. All of them!

Great selection of Victorian, Ridgeleigh and Crystolite items! Greek Key—Huge collection now for sale! Call us. Free delivery to Greensboro, NC!

D & B ANTIQUES		(770) 466-7879
Bob Bartholomew		6 a.m.-9 p.m. EST
P.O. Box 637		S.H.I. Extra
Loganville, GA 30249		H=Marked
#433	Greek Key cheese & cracker, H	\$195.00
#433	Greek Key french bread, H	\$130.00
#1503	1/2Cristolite melon candles, pr.	\$85.00
#112	Mercury candle, 3" (1)	\$18.00
#112	Mercury candle, cut, 3" (1)	\$20.00
#112	Mercury candle, Flamingo 3" (1)	\$23.00
#128	Liberty candle 3" (1)	\$20.00
#1295	Bead Swag berry set, Opal, pink cornflower decoration, 5 piece set	\$185.00
#1295	Bead Swag covered butter, Opal, pink cornflower decoration	\$85.00
#1401	Empress 12" "T" handle tray, formal Chintz etch	\$65.00
#1225	Plain Band 6" compote and cover	\$95.00
#1170	Pleat & Panel marmalade, Moongleam, H	\$35.00
#1951	Cabachon cake plate	\$85.00
#1235	Chrysanthemum tall footed comport	\$95.00
#3408	Jamestown oyster cocktail, Rosalie etch, (3)	\$12.50
#1401	Empress 7" triplex relish "T" handle, Flamingo	\$95.00
#417	Double Rib & Panel basket, Flamingo, H	\$160.00
#500	Octagon basket, Flamingo, H	\$240.00
#1503	Cristolite basket, H	\$600.00
#460	Pinwheel & Fan variant 7" basket, pat. date, H	\$375.00

FOREVER HEISEY (614) 344-5955
Norm & Jan Thran UPS & Ins. Extra
1663 Londondale Pkwy. H=Marked
Newark, OH 43055

#20ld	Williamsburg 7¾" 1-lite candlestick, pr.	\$110.00
#21	Aristocrat 7½" 1-lite candlestick, pr.	\$110.00
#47	Regal 11¼" 1-lite candlestick w/Floral cutting, pr.	\$395.00
#1472	Parallel Quarter 3" candlestick, pr.	\$40.00
#1205	Fancy Loop toothpick w/gold band on top edges	\$65.00
#1401	Empress 7¼" square plate, Tangerine, H, (4) ea.	\$140.00
#1425	Victorian 2 ball champagne, (8) ea.	\$15.00
#1469	Ridgeleigh 6" square ashtray w/Huntingington National Bank, Coloumbus Ohio etch	\$40.00
#1567	Plantation champagne, (6) ea.	\$22.50
#3390	Carcassonne low goblet, Alexandrite bowl, (2) ea.	\$110.00
#3390	Carcassonne shebert, Alexandrite bowl, (2) ea.	\$75.00
#3404	Spanish champagne w/Cobalt bowl, (6) ea.	\$85.00
#3404	Spanish cocktail w/Cobalt bowl, (4) ea.	\$110.00
#5010	Symphone wine w/Minuet etch, (4) ea.	\$65.00
#5010	Symphone 5 oz. ftd juice/parfait Minuet etch, (4)ea.	\$40.00
#5010	Symphone champagne with Minuet etch, (4) ea.	\$27.50
#5010	Symphone 12 oz. ftd. ice tea w/Minuet etch, (4) ea.	\$45.00
#5010	Symphone tall water goblet w/Minuet etch, (4) ea.	\$35.00
#3404	Universal shrimp cocktail & ice, Minuet etch, (4)ea.	\$185.00

THERESA D. WERT		(215) 794-8667
1716 Creek Rd.		P & I Extra
Furlong, PA 18925		H=Marked
#3	Marlboro candlesticks 9" pr.	\$225.00
#113	Mars candlesticks, Hawthorne, pr.	\$100.00
#1519	Waverly 11" seahorse ftd. bowl, Orchid etch, H	\$125.00
#142	Cascade triple candlesticks, Orchid etch pr.	\$130.00
#1401	Empress 6" rnd. plates, Alexandrite, H, (10) ea.	\$45.00
#1401	Empress 7½" rnd. plates, Alexandrite, H, (12) ea.	\$60.00
#1401	Empress 12" 2 hnd. plate Alexandrite, H	\$220.00
#1401	Empress DF creamer, Alexandrite	\$325.00
#3381	Creole 11 oz. short stem goblet, all Alexandrite, (8) ea.	\$200.00
#3381	Creole 7 oz. short stem saucer champagne, all Alexandrite, (9) ea.	\$125.00
#1485	Saturn 6" plates, Zircon, (5) ea.	\$40.00
#1485	Saturn 8" plates, Zircon, (5) ea.	\$60.00
#4085	Kohinoor 9 oz. goblet, Zircon bowl, (4) ea.	\$155.00
#4085	Kohinoor 5½ oz. saucer champagne, Zircon bowl, (4) ea.	\$95.00
#1469	Ridgeleigh 9" salad bowl, Zircon, rare, H	\$1200.00
#1540	Lariat bon bon basket	\$95.00
#1509	Queen Ann DF sugar & creamer, pr.	\$35.00
#393	Narrow Flute 2 oz. sherry, H, (5) ea.	\$16.00
#393	Narrow Flute 2 oz. wines, H, (5) ea.	\$15.00
#393	Narrow Flute 4 oz. juice tumbler, H, (6) ea.	\$14.00

J & T ANTIQUES (508) 764-1597
P.O. Box 933 (508) 764-1014 Fax
Sturbridge, MA 01566 UPS & Ins. Extra
H=Marked

#1280	Winged Scroll cov. butter, Custard, good gold	\$175.00
#352	Ice cream cone holder	\$50.00
#379	Urn 7 oz. syrup, H	\$125.00
#343	Sunburst butter, top only, H	\$35.00
#3355	Fairacre 10 oz. goblets, Moongleam stem Crystal bowl, H, (5) ea.	\$19.00
#1401	Empress sq. dinner plate, Chintz etch, H	\$55.00
#3408	Jamestown 1 oz. cordial	\$45.00
#341	Colonial tall water bottle	\$50.00
#1485	2 oz. oil bottle	\$50.00
#393	Individual sugar cube holder	\$45.00
#1540	Lariat 12 oz. iced teas, H, (4) ea.	\$15.00
	Donkey, H	\$225.00
#29	Sanford 7½" candlesticks, pr., H	\$175.00

WANTED: 1 #6 bobèche 2 #4060 6" sades "D" prisms

GARY & CHRIS SHARDELL (717) 223-8759
R.D. 6, Box 6199 UPS & Ins. Extra
E. Stroudsburg, PA 18301 H=Marked

#1401	Empress salt & pepper, Alexandrite	\$865.00
#1404	Old Sandwich tub, ice lip, Moongleam, H	\$235.00
#1425	Victorian salt & pepper, barrel shape, H	\$75.00
#407	Coarse Rib 1 pint milk pitcher, H	\$65.00
#347	Colonial 2 oz. wine, H (2) each	\$14.00
#1020	Phyllis sugar, Moongleam, H	\$35.00
#4206	Optic Tooth vase, Hawthorne, 10 1/2"	\$355.00
#1401	Empress cream & sugar, individual, Sahara, H	\$65.00
#1401	Empress plate, 8", Cobalt, H	\$75.00
#406	Coarse Rib cream & covered sugar, Mnglm, H	\$65.00
#372	McGrady 5 oz. syrup, Flamingo, H	\$95.00
#372	McGrady 7 oz. syrup, Sahara, H	\$95.00
#1202	Octagon 11" floral bowl, Moongleam	\$20.00
#465	Recessed Panel 3 lb. candy jar & lid, H	\$175.00
#393	Narrow Flute Indiv. cream & sugar, Flamingo, H	\$95.00
#4157	Steele Rose bowl, 5 1/2", Hawthorne	\$120.00
#1433	Thumbprint & Panel candlesticks, pair	\$40.00
#1415	20th Century cereal bowl, Sahara, H	\$35.00
#1425	Victorian 5 oz. oyster cocktails, H, (5) each	\$9.00
#373	Old Williamsburg 2 oz. wines, H, (2) each	\$14.00

KEVIN SHEA (810) 634-6162
6585 Stratford Dr. UPS & Ins. Extra
Holly, MI 48442 H=Marked

#301	Old Williamsburg 2 lite candelabra, Alexandrite little damage	\$2800.00
#1252	Twist ice tub no handle, Alexandrite	\$450.00
#1413	Cathedral vase flared, Cobalt	\$795.00
#1401	Empress DF candy with cover, Cobalt	\$795.00
#1401	Empress DF floral bowl, Cobalt	\$495.00
#1428	Warwick 9" vases, 2 Cobalt, each	\$435.00
#1428	Warwick 5" vases, 2 Cobalt, each	\$235.00
#1428	Warwick 11" floral bowl, Cobalt	\$365.00
#1420	9" Tulip vase, Cobalt	\$475.00
#4225	Cocktail shaker pt. Orchid etch	\$245.00
#4225	Cocktail shaker qt. Orchid etch	\$245.00
#1540	Lariat fan vase, Orchid etch	\$125.00
#4164	Gallagher pitcher, Rose etch	\$450.00
#1519	Waverly 5" chocolate with cover	\$175.00
#1519	Waverly 3 oz. oil, Rose etch	\$165.00
#142	Cascade 3-lite, Rose etch	\$225.00
#1519	Waverly 11" 3 pt. relish, Rose etch	\$65.00
#1519	Waverly 9" 4 pt. round relish, Rose etch	\$80.00
#1519	Waverly 6 1/2" low ft. comport	\$55.00
#1519	Waverly sugar and creamer, indiv., Rose etch	\$75.00

T & P COLLECTABLES (508) 674-7361
Tom & Pat Gibbons Packing & UPS Extra
1089 Wood Street Send SASE for latest list
Swansea, MA 02777 H=Marked

#5	Patrician 9" candlesticks full cut 9", 1 pr.	\$235.00
#393	Narrow Flute jug, H, 1 pt	\$80.00
#1404	Old Sandwich oyster cocktail, H, 4 oz. Cobalt	\$110.00
#1405	Ipswich pitcher, sm chip, H, 1/2 gal	\$195.00
#1469	Ridgeleigh oblong tray, 3 pt., H, 10 1/2"	\$35.00
#3361	Charlotte goblet, mglm stm, H, D/O, Hawthorne	\$650.00
#3389	Duquesne parfait w/o, 5 oz. Tangerine	\$195.00
#3390	Carcassone decanter, mg-ftd n-stp, 1 pt.	\$85.00
#4036	Marshall cocktail shaker, mg/cut, 1 qt.	\$65.00

LIZ ENGEL (404) 289-4312
2314 Valleyside Drive UPS & Ins. Extra
Decatur, GA 30032-6852 Crystal unless noted otherwise

Heisey and Heisey by Imperial Animals and Figurals

Bull, Amber (chip underside of front feet)	\$525.00
Clydesdale, Salmon	\$350.00
Cygnets, Black	\$65.00
Doe Head Bookends (pair marked H) pr.	\$1500.00
Elephant large, Amber (marked H—damage call)	\$750.00
Fighting Rooster Pink	\$200.00
Filly Forward, Salmon	\$295.00
Filly Back, Verde	\$225.00
Scotty, Amber	\$395.00
Swan, Blue Satin (large mold mark on neck)	\$1250.00
Tiger, Amber (on font, small chip on font)	\$395.00
Tiger, Nut Brown	\$375.00
Tropical Fish, Amber (marked H)	\$2950.00
Wood Duckling Floating, Pink Satin (chipped tail)	\$95.00
Girl Head Stopper, Amber	\$495.00
Ram's Head Stopper	\$175.00
Minuet Girl, Amber, Crystal or Yellow, each	\$75.00
Sleeping Fox ashtray	\$295.00
Elephant handled mug, #7056 (marked H)	\$250.00

More, call or write for list

H & R DIAMOND H (614) 279-0390
Helen & Bob Rarey After 5:30 p.m.
1450 White Ash Drive UPS & Ins. Extra
Columbus, OH 43204 H=Marked

ALL #507 Orchid Etch		
#142	Cascade 3-lite candelholder, pr.	\$135.00
#1509	Queen Ann 5 1/2" DF mint	\$49.50
#1509	Queen Ann cup & saucer, H, (12) ea. set	\$39.50
#1509	Queen Ann 12" round cracker plate	\$45.00
#1519	Waverly 6 1/2" jelly compote, H	\$45.00
#1519	Waverly ind. cream & sugar, H, pair	\$85.00
#1519	Waverly 8" luncheon plate, (12) ea.	\$25.00
#1519	Waverly 7" salad or bread plate, (12) ea.	\$20.00
#1519	Waverly 12" crimped floral bowl	\$50.00
#1519	Waverly 11" oval 3 part relish, H	\$45.00
#1519	Waverly 2 part dressing bowl, H	\$37.50
#1519	Waverly 3 piece mayo, H	\$65.00
#1519	Waverly cream & sugar, H	\$55.00
#3484	Donna half gallon ice-lip pitcher	\$575.00
#4164	Gallagher 73 oz. ice-lip pitcher	\$695.00
#4225	Cobel 1 qt. cocktail shaker	\$195.00
#5022	Graceful 10 oz. tall goblet, (3) ea.	\$40.00
#5025	Tyrolean 10 oz. tall goblet, (12) ea.	\$35.00
#5025	Tyrolean 6 oz. champagne, (12) ea.	\$30.00
#5025	Tyrolean 4 oz. cocktail, (12) ea.	\$35.00

J & R COLLECTIBLES 614-344-9719
P.O. Box 1030 UPS & Ins. Extra
Newark, OH 43058-1030 H=Marked

#6	Mayo ladle, Hawthorne, H	\$75.00
#6	Mayo ladle, Moongleam, H	\$60.00
#25	Federal 8" candlestick, H pr.	\$150.00
#150	Pointed Oval in Diamond Point Jug, Emerald	\$225.00
#160	Locket on Chain 9" salver	\$165.00
#3001/2	8 oz. tumbler, Flamingo, H (6) ea.	\$95.00
#341	Old Williamsburg 13 1/2" 5 comp. relish, H	\$85.00
#353	Flat Panel, medium, 8x12" ice cream tray, H	\$125.00
#1020	Hotel cream & sugar, Flamingo, H pr.	\$120.00
#1255	Pineapple & Fan 6" vase, Emerald w/good gold	\$55.00
#1280	Winged Scroll pin tray, Emerald w/good gold	\$87.50
#1428	Warwick Indiv. vase, Cobalt, H	\$125.00
#1469	Ridgeleigh 5 oz. saucer champagne, H (4) ea.	\$32.50
#1488	Kohinoor ash tray, Zircon, H	\$95.00
#1509	Queen Ann 11" 3 compartment. relish, Minuet etch, H	\$185.00
#1509	Queen Ann 7 1/2" 3 fld. sauce bowl, Orchid etch, H	\$110.00
#2052	11/2 oz. bar, Tally Ho etch, (2) ea.	\$32.00
#2401	12 oz. soda, Tally Ho etch, (4) ea.	\$37.50
#4090	Coventry 10 oz. goblet, #500 Belvedere etch, (3) ea.	\$60.00
#4091	Kimberly 3 oz. cocktail, Polo Player etch, (2) ea.	\$85.00

BARI FAUSS (703) 550-2218
8503 Shirley Woods Ct. UPS & Ins. Extra
Lorton, VA 22079 H=Marked

#134	Trident 14" oval floral bowl, Sahara	\$120.00
#335	Prince of Wales Plumes spooner, H	\$70.00
#1401	Empress Triplex 7" relish w/Orchid etch	\$60.00
#1401	Empress Triplex 7" relish, Sahara	\$40.00
#1469	Ridgeleigh 10 1/2" oblong tray, H	\$50.00
#1469	Ridgeleigh 6" low ft comport w/cover, H	\$75.00
#1469	Ridgeleigh ice tub, H	\$85.00
#1469	Ridgeleigh mustard w/lid, H and paddle	\$65.00
#1519	Waverly 12" celery tray w/Orchid etch	\$55.00

HEISEY ET CETERA (614) 397-4591
Bud Moreau UPS Extra
407 E. Chestnut St. H=Heisey
Mount Vernon, OH 43050

#128	Liberty candlesticks, 3". Flamingo pr. H	\$60.00
#351	Col. 2 1/2 oz. bar, flared, plain bot. (2) H ea	\$8.00
#351	Priscilla cruet, 4 oz. stopper flat top H	\$35.00
#359	Colonial goblets, 7 oz. n/o (2) H ea.	\$18.00
#411	Tudor sherbet, (4) H ea.	\$8.00
#411	Tudor cruet, 4 oz. #7 stopper, H	\$42.00
#1112	Sparta oy. cocktail, 3 1/2 oz., optic (3) H ea.	\$6.50
#1252	Twist 11" plates, Flamingo (2) H ea.	\$58.00
#1255	Pineapple/Fan pitcher, 5 oz. custard	\$48.00
#1401	Empress veg. bowl, 8", Sahara H	\$46.00
#1404	Old Sandwich sundae, 6 oz., Sahara (2) H ea.	\$22.00
#1519	Waverly covered candy elks-50th etch H	\$60.00
#1567	Plantation pepper #57 top H	\$18.00
#2052	Bar, 2 oz. Pied Piper etch (2) H ea.	\$30.00
#3350	Goblets, 10 oz. Pied Piper etch (2) H ea.	\$26.00
#4163	Plates, 7" Pied Piper etch (4) H ea.	\$7.00
#5024	Oxford cordials, 1 oz. (2) H ea.	\$22.00
#5072	Rose stem goblet, 10 oz. rose etch ea.	\$36.00
#6091	Cabachon goblets, 10 oz. Cattail cut (3) H ea.	\$12.50

WANTED: #467 10 oz. fruit basket, call collect

LADY ROSE ANTIQUE GLASS (812) 944-2171
Donald & Betty Smith UPS & Ins. Extra
1814 Cliffwood Ct. H=Marked
New Albany, IN 47150

#357	4" Prison Stripe nappy, H, (2) ea.	\$20.00
#1540	Lariat two part relish	\$42.00
#1540	Lariat oval platter	\$48.00
#1540	Lariat celery	\$38.00
#1540	Lariat sugar, creamer, and underplate, H	\$65.00
#1567	Plantation punch cups, H, (4) ea.	\$22.00
#1567	Plantation 8" plates, (6) ea.	\$28.00
#1567	Plantation cheese comport, H	\$65.00
#1567	Plantation three part relish, H	\$48.00

JEAN & DON PARRETT
4995 Maple Dale Rd.
Jackson, MI 49201

(517) 784-7319, recorder
Post & Ins. Extra
Call any time

#6060	C. Club, #1032 cutting, 12 oz. old fashion	\$40.00
#2052	Bar, cut, 12 oz. old fashion	\$35.00
#4004	Impromptu, 12 oz. old fashion	\$40.00
#4004	Impromptu, 8 oz. old fashion	\$25.00
#6060	Country Club, 8 oz. old fashion	\$22.00
#1404	Old Sandwich, 16 oz. beer mug	\$75.00
#4002	Aqua Caliente, 3 oz. fld. cocktail, #960 Drinking	\$55.00
#4163	108 oz. tankard, #460 Club Drinking Scene	\$325.00
#4004	Impromptu, 3½ oz. cocktail (2) ea.	\$20.00
#5044	Constellation, 6 oz. old fashion	\$25.00
#3308	3 oz. cocktail, #980 Moonglo cut (4) ea.	\$20.00
#4052	National 6 oz. old fashion, #980 Moonglo (5)ea.	\$20.00
#4052	National 10 oz. soda (4) ea.	\$20.00
#3366	Trojan 3 oz. fld. oyster cocktail, #801½ cut (6) ea.	\$15.00
#1469	Ridgeleigh 3½ oz. tall cocktails (6) ea.	\$25.00
#1469	Ridgeleigh 5 oz. champagne (3) ea.	\$25.00
#1469	Ridgeleigh 4" ring tree	\$90.00
#1469	Ridgeleigh 24" high elect. table lamp, brass filigree	\$175.00
#5038	Rooster stem frosted crystal bowl & ft. 3 oz. cocktail (6) ea.	\$48.00
#3390	Caracassone fld 2½ oz. oyster cocktail, Sahara	\$32.00
#3380	Old Dominion d.o. fld. 3 oz. oyster cocktail, Sahara	\$25.00
#5087	Comet 1½ oz. bar (3) ea.	\$25.00
#1486	Coleport 1½ oz. bar (3) ea.	\$20.00
#373	Williamsburg 1 oz. cordial (5) ea.	\$25.00
#6060	Country Club 1 oz. bar (3) ea.	\$15.00
#2355	Clover Leaf 1 oz. bar	\$25.00
#2052	1 oz. bar	\$15.00
#4054	Coronation 1 oz. bar	\$20.00
#429	Plain Panel 3 pint pitcher, beautiful cut	\$175.00
#429	Plain Panel 9 oz. tumbler, beautiful cut, (4) ea.	\$25.00
#473	Narrow Flute & Rim 2½" butter pat (6) ea.	\$15.00
#1183	Revere individual salt tub, Flamingo, (3) ea.	\$14.00
#1567	Plantation cream & sugar	\$75.00
#1567	Plantation ivory handled syrup	\$155.00
#1567	Plantation 4 oz. cruet & stopper	\$100.00
#365	Old Queen Ann rare 6 oz. cruet & stopper	\$150.00
#429	Plain Panel 4 oz. cruet & stopper	\$65.00
#411	Rib & Panel 6 oz. cruet & stopper (2) ea.	\$55.00
#430	Colonial Scaloped 2 handled sugar	\$70.00
#1503	Crystolite 11" cake stand	\$325.00
#1	Horsehead bookends (2) pr.	\$325.00
#1	Horsehead bookend 25" high table lamp	\$185.00
#1489	Puritan 6" horsehead cigarette box & cover	\$60.00



THE PITTSBURGH CHAPTER
 NATIONAL EARLY AMERICAN GLASS CLUB
 SECOND ANNUAL



LOWELL INNES GLASS SHOW & SALE

OCTOBER 7 & 8, 1995

SATURDAY 11 AM-6 PM • SUNDAY 11 AM-5 PM

THE WINTERGARDEN AT PPG* PLACE

AN ALL GLASS SKYSCRAPER IN THE HEART OF DOWNTOWN PITTSBURGH
 4TH & STANWIX STS. • PARKING NEARBY

40 NATIONALLY PROMINENT DEALERS

THE BEST OF ALL GLASS - ANTIQUE TO CONTEMPORARY - AMERICAN & EUROPEAN

LECTURES BY NOTED GLASS HISTORIANS

SATURDAY & SUNDAY AFTERNOONS • IDENTIFICATION BOOTH

INFO (412) 846-6692



Spectacular Parade of Heisey

As the world's largest supplier of discontinued or obsolete china, crystal and flatware, Replacements, Ltd. buys and sells over 54,000 patterns and has 2.1 million pieces.

We have many of your favorite Heisey patterns, including Heisey Rose and Heisey Orchid.

Contact us if you need to pick up a piece to add to your collection, or if you would like to sell some unneeded extras. We can provide a complete printout of available pieces in your pattern. Or we'll let you know our prices for the pieces you wish to sell. Let us help you complete your collection... or maybe you'll help add to ours.

REPLACEMENTS, LTD.

1089 Knox Road • PO Box 26029
 Greensboro, NC 27420 • Dept HS

Everyday 8am-10pm

Call 1-800-562-4462

Dealers Directory

Maximum 5 lines/12 months/\$35 MEMBERS ONLY

MARJORIE GILLETTE Rochester, New York Glassware Specialty Heisey Mail Orders & Shows 716-225-4678	SHIRLEY EUGENIA DUNBAR Heisey a Specialty Mail Order, Shows, Appraisals PO Box 7085, Port St. Lucie, FL 34985 Oct.-May 407-337-1558 PO Box 222, Naples, ME 04055 May-Oct. 207-647-5652	COMPARISON LIST New Heisey Auction List for 1995 3 Year's Auction 92-93-94 Price: \$15.00 + \$3.00 Shipping Payable: B. Whaley 300 International Dr., Pataskala, OH 43062 1-614-927-1557
ALL HEISEY AUCTION Consignments Welcome Apple Tree Auction Center 1616 W. Church, Newark, OH 43055 PH: (614) 344-9449	GREEN ACRES FARM Antiques, Crystal Glass & Collectibles 2678 Hazelton-Etna Rd., SW (S.R.310-N) Pataskala, OH 43062 Sat. or Sun. PM or call (614) 927-1882	MICHAEL KRUMME Cambridge • Heisey • Fostoria • Duncan-Miller • Paden City I search - send detailed want list - all are kept on file P.O. Box 5542 Santa Monica, CA 90409
D & B ANTIQUES — ATLANTA Bob Bartholomew Members Dixieland Heisey Club P.O. Box 637, Loganville, GA 30249 Shows (404) 466-7879 Mail Order	H & R DIAMOND H Helen & Robert Rarey 1450 White Ash Dr. Columbus, OH 43204 PH: (614) 279-0390 after 5:30	JEAN & DON PARRETT Beautiful Heisey 4995 Maple Dale Rd. Jackson, Michigan 49201 (517) 784-7319 — Recorder
ANTIQUES - THE SHULTZES 206-208 East Main St. Newmanstown, PA 17073 15 Miles West of Reading, PA PH: (610) 589-2819	"HAPPINESS IS" - THE STULTZS 3106 Warren Court, Glen Allen, VA 23060 Shows and Mail Order PH: (804) 672-8102	PATTON HOUSE Rocky's Mall, I-81 & US 11 Weyer's Cave, VA 24486 PH: (703) 967-1181 The Antique Gallery, Richmond, VA
C & J ANTIQUES Cole & Jean Miesner Box 45, 72 Whig St. Newark Valley, NY 13811 PH: (607) 642-9905	MOUNDBUILDERS ANTIQUES 2ND GENERATION 3669 Route #360 Buckeye Lake, OH 43008-1905 (800) 366-4347 — (614) 928-1994 Minutes away from Heisey Museum	SCHWAN'S ANTIQUES SHOWS & MAILORDER 77 Lagos del Norte Ft. Pierce, FL 34951 PH: (407) 461-5940
DOXTOIS Eva & Joe Hirsh Heisey & Pattern Glass 6 James St., Norwalk, CT 06850 PH: (203) 847-3315	HOOKED ON HEISEY Jay C. Martin 97 Heritage Hill Rd., New Canaan, CT 06840 (203) 966-9359 24 hr. ans. mach. Mail Orders & Shows	R & L ANTIQUES-SAN FRANCISCO Members of the Golden Gate Heisey Club 3690 Bodega Ave. Petaluma, CA 94952 PH: Petaluma (707) 762-2494 PH: San Francisco (415) 621-6693
CHARLES & MILDRED FISHER Heisey animals and Heisey By Imperial animals 991 Idlewild, Newark, Ohio 43055 614-522-5398	JJ MC KEE ANTIQUITIES Pottery - Glassware - Collectibles 222 West 75th St. Kansas City, MO 64114 Wed.-Sun. 10-5 PH: (816) 361-8719	THE WOODEN SHOE Antiques & Collectibles 222 W. Washington St., Charles Town, WV 25414 PH: 304-725-1673 Fri-Mon 11:00 to 5:00
CRYSTAL LADY Joann Hagerty Specializing in elegant depression glassware 1817 Vinton Street, Omaha, NE 68108 Shop Ph. (402) 341-0643 or Home Ph. (402) 391-6730	DINNERWARE CLASSICS! 4125 Sperry St., Dallas, TX 75214-2743 (214) 821-6852 Selling Glassware & Dinnerware By Mail Heisey Glass	MY DAUGHTER'S INHERITANCE Heisey - Crystal - Porcelain Antique Village - 3750 Howard Avenue Kensington, MD 20895 (301) 933-4618 Maggi Smith
ELEGANT GLASSWARE NOW LOCATED IN FINDER'S ANTIQUE HOUSE 1169 Piney Forest Rd. Danville, VA 24540 Open Thursday—Sunday (804) 836-6782 Area's Largest Selection of Heisey & Other Elegant Glass	J. & R. COLLECTIBLES Shows, SASE, Mail Order list The Lukasko's PO Box 1030, Newark, Ohio 43058-1030 PH: (614) 344-9719	RON & MAUREEN KOVACS Downsizing Twenty Year Heisey Collection Please Send \$1.00 for extensive list 9310 East Wind Rose Dr. Scottsdale, AZ 85260 (602) 451-4995 (PST)
FRAN'S FANCY FINDS Fran & Jack Grenzebach 10534 Valencia Rd., Seminole, Florida 34642 PH: (813) 391-5184 SHOWS MAIL ORDERS	MOSTLY HEISEY Rhoda Curley 16 Clayton PL, Albany, NY 12209 Shop and Mail Order PH: 1-800-972-2775	HEISEY HASBEENS Heisey glassware and estate books Toni and Parker Heisey 6678 Comstock Court, San Diego, CA 92111 PH: (619) 277-1210
FOREVER HEISEY Jan & Norm Thran Mail Order, Shows, Appraisal Service 1663 Londondale Pkwy, Newark, OH 43055 PH: (614) 344-5955	R & S ANTIQUES AND GLASSWARE Heisey-Specializing in Complete Heisey Tableservice call or write for patterns and colors 719 W. Winter Park St., Orlando, FL 32804 (407) 841-1440 or (407) 298-5980 PM	WILLEY'S ANTIQUES & MUSEUM Specializing in Heisey 11110 Cannon Rd., Frazeyburg, OH 43822 16 miles east of Newark, OH PH: (614) 828-2557
"OUR PLACE ANTIQUES" & "The Barn" 121 S. Prospect St., Granville, Ohio 43023 Open Daily 12-5 PH: (614) 587-4601	BOB & JOANNE MCELHENY'S HEISEY Booth 44-Pioneer Antique Mall Open 10-6, Sun. 1-5 Downtown Pioneer, Ohio-North of Exit 2 Ohio Turnpike Phones: Mail (419) 737-2341 Home (419) 537-6890	JAMES S. HARRIS ANTIQUES/APPRAISALS Box 672 Richmond, KY 40475-0672 PH: (606) 623-9100 Buying and Selling by Mail
GLASS 'N' GLASS Virginia & Odell Johnson 6909 10th Ave. W. Bradenton, FL 34209 PH: (813) 792-0604	JIM HOUGHTON & TIM RECTOR J & T Antiques Ltd. PO Box 933 Sturbridge, MA 01566 PH: (508) 764-1597	TALL OAKS ANTIQUES Glassware-Specializing in Heisey Shows - Mail order (219) 864-1704 Mike & Barb Rosenberger 5115 W 78th Ln, Schererville, IN 46375

**Museum Volunteers for
July and August**

Marge Conner
Leota Friel
Mary Holmquist
Frances Law
Connie Makris
Bob & Phyllis McClain
Mary McWilliams
Mr. & Mrs. Norris
Bob Rarey
Norm Thran
Hugo Wenzel
Bob Wilson

When Renewing Your Membership...

Help us to reach our new goal of \$750,000 by the year 2004. When you renew your membership at one of the levels below, any amount beyond the regular Associate dues—\$22.00 plus \$5.00 for each additional household member—goes into the Endowment Fund.

<i>Individual Contributing</i>	\$30
<i>Joint Contributing, two people in one household</i>	\$40
<i>Family Contributing, parents and children under 18</i>	\$50
<i>Patron</i>	\$100
<i>Sponsor</i>	\$250
<i>Benefactor</i>	\$500

Contact Mary Holland, membership secretary, at (614) 345-2932 for more information. The Endowment Committee wishes to thank those who have become Endowment Members and all of the individuals and study clubs that have so generously supported the HCA Endowment Fund. Your support will make the museum self-sustaining in the years to come. Thank you all!♦



**Visit The
National
Heisey
Glass
Museum**

Come at your leisure to enjoy more than 4,800 pieces of glassware produced by A.H. Heisey and Company from 1896-1957. Hundreds of patterns are featured in all production colors. Rare and experimental items are included as well.

Facilities are air-conditioned and handicapped accessible. Hours are 10:00 a.m. to 4:00 p.m. Tuesday through Saturday, 1:00 to 4:00 p.m. Sunday. Members are admitted free, regular admission is \$2. Office hours are 8:00 a.m. to 4:30 p.m. weekdays.

Membership Renewal Notice: Check the date above your name and address on the mailing label. This is your expiration date. If it reads 10-10-95 make sure your dues are paid soon in order to receive next month's issue of Heisey News. Dues are \$22.00 per year, plus \$5.00 for each additional household member.

POSTMASTER SEND FORM 3579 TO:

HCA

169 W. Church St.

Newark, OH 43055



SECOND CLASS Dated Material