

HEISEY

NEWS

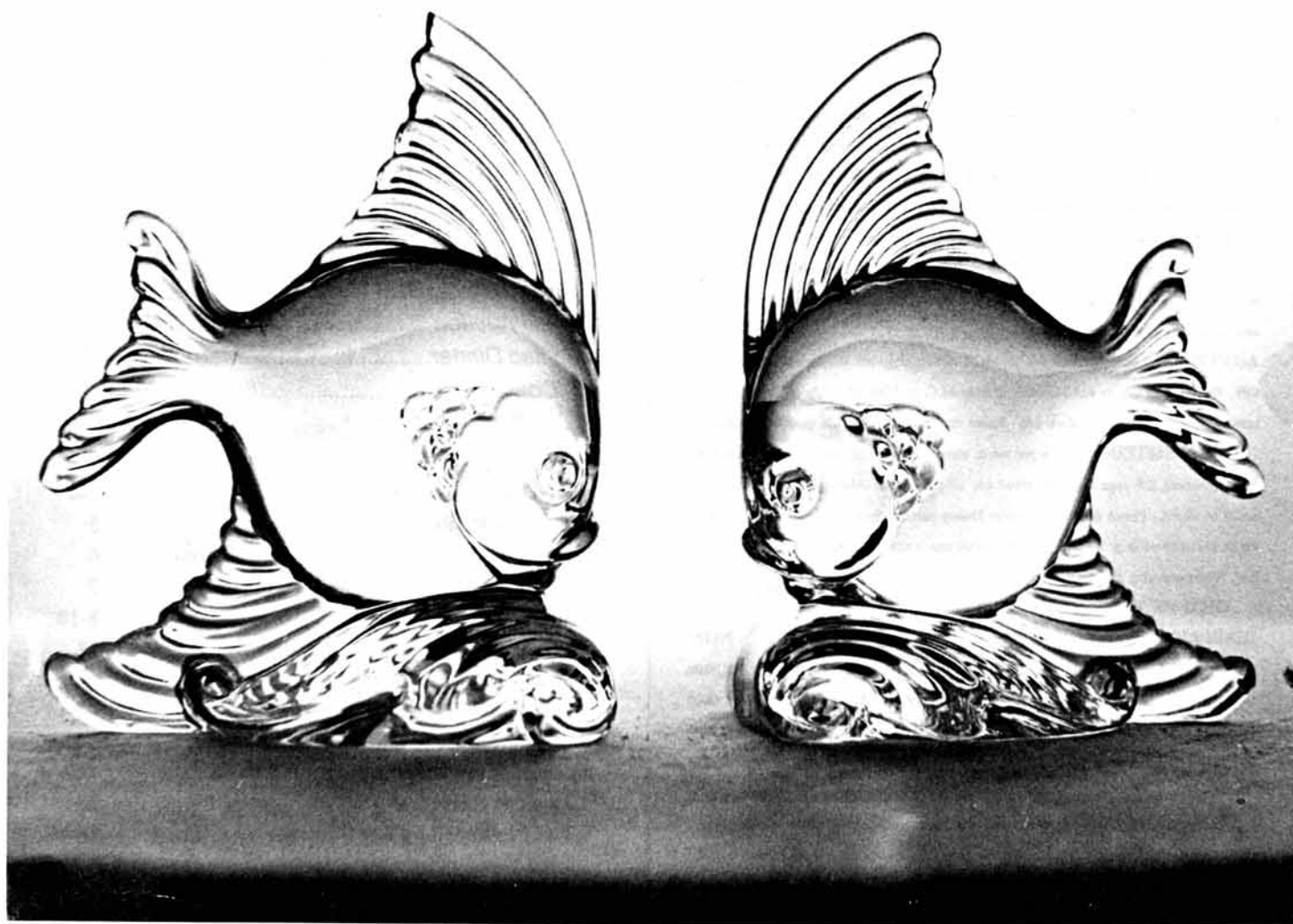
for your
knowledge

OFFICIAL PUBLICATION

of HEISEY COLLECTORS OF AMERICA

Volume XXI No. 11

October 1992 ISSN 0731-8014



HEISEY NEWS

Heisey Collectors of America, Inc.
169 W. Church St.
Newark, OH 43055



Editor, Susan Pennington

Phone (614)345-2932 - Fax (614)345-9638

All Rights Reserved 1992 ISSN 0731-8014

Published and printed in Newark, Ohio

HCA Club Officers

President	Sam Schnaidt	(614) 587-0052
Vice Pres.	Norm Thrane	(614) 344-5955
Secretary	Amy Jo Jones	(513) 426-1567
Treasurer	Larry Stickle	(614) 366-2000

Back Issues: Each volume (12 issues a year): \$9.00 The following volumes are available: V, VIII, IX, X, XI, XII, XIII, XIV, XV, XVI, XVII, XVIII, IX, D, XI, XII, XIII, XIV, XV, XVI, XVII, XVIII. Heisey Collectors of America, Inc., a not-for-profit corporation (tax exempt status), are owners and operators of The National Heisey Glass Museum, 6th and Church Streets, Newark, OH. Open daily 1-4 P.M. except holidays. Other hours by appointment. Members admitted free.

HEISEY NEWS Published monthly (twice in February), by Heisey Collectors of America, Inc., Newark, OH 43055. Second Class Postage Paid. Club Membership (includes 13 issues of Heisey News and participation in all club activities) \$18.50 per year, plus \$2.50 for each household family member desiring a membership card. Voting Membership, add \$25.00 as a one time only fee. **FIRST CLASS MAILING OPTION:** For an additional fee of \$1.00 per issue, \$13.00 per year, the **HEISEY NEWS** will be sent by First Class mail—Full subscription only, no single issue mailing. This optional service is offered to members, in an attempt to alleviate the problem of late delivery. The extra fee is due with your annual dues. Contact Mary Holland, membership secretary, for more information.

ADVERTISING: Send all ads to: HCA Advertising, 169 W. Church St., Newark, OH 43055 or fax ads to 614-345-9638, include M.C. or Visa info. Ads are to be typed or printed on white paper with dark ink. Please double space. All Ads must be prepaid.

CLASSIFIED: 20 cents per word, members, 30 cents per word, non-members, \$1.50 minimum, 1/8 page limit. Personal ads 1/8 page limit. Abbreviations and initials count as words. Please do not abbreviate Heisey pattern names or Heisey colors. Ads which are entered in a vertical column format can contain 67 characters (maximum) per line. When counting characters, remember to include spaces.

DEALER DIRECTORY: \$35.00 Per Year, members only.

DISPLAY AD Rates	MEMBER	NON
1/8 page - (9 lines)	\$ 20.00	\$ 30.00
1/4 page - (20 lines)	\$ 40.00	\$ 60.00
1/2 page - (horizontal or vertical)	\$ 80.00	\$120.00
Full page - (letter style or columns)	\$160.00	\$240.00

Ad copy must be received by the 1st of the month preceding the publication date. e.g. April 1st for May issue. Camera ready ads accepted, but must follow line specifications. Ads containing reproductions will not knowingly be accepted unless clearly stated (e.g. Heisey by Imperial, etc.) **HEISEY NEWS** accepts no further liability.

The opinions expressed in articles in **HEISEY NEWS** are those of the authors and not necessarily those of the organization. The Editor reserves the right to edit, with or without the consent of the author, or to refuse any material submitted for publication.

About the cover:

This month's cover photo features the Fish Bookends. Heisey produced these graceful fish in Crystal from 1942 to 1952. In 1984 Imperial produced the Fish Bookend in several colors.

This year HCA included the Fish Bookend in The Gold Animal Collector Series. The Rosalene Fish was widely admired by all who saw it and considered the favorite animal in the series by many.

At the end of September HCA will hold a lottery for a small quantity of the Fish Bookends which, when made for the Gold Series, turned a new and different color. The new color, *Plumstone*, is a dark pastel purple.

Royal Hickman, designer of the Fish Bookend, is the subject of this month's feature story written by Lee Garmon. Be sure to read her interesting account of the man behind many wonderful designs.

A Reminder From Mary: An Associate member may become a voting member at any time. Just send the one-time \$25.00 initiation fee and Mary will take care of the rest.

Calendar of Events



Connecticut HCC 11th Annual

All Glass Show & Sale Nov. 21 & 22, 1992
Holiday Dinner, Best Western.....Dec. 5, 1992
Benefit Auction..... March 12 & 13, 1993
Cadillac Dinner.....March 13, 1993
'93 Convention.....June 16-20, 1993

In This Issue

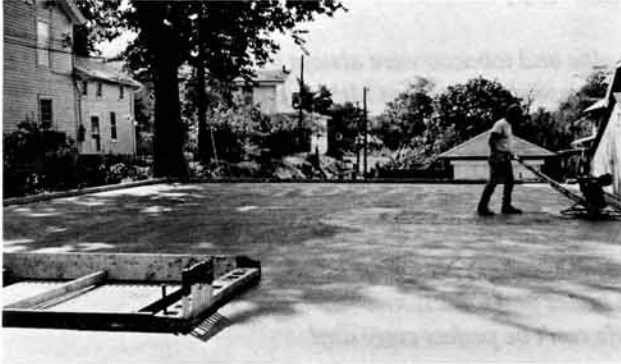
Sam's Scribbles Sam Schnaidt	3-4
Curator's Report Kathy McCracken	5
Views from the Fund Raiser Norm Thrane	6
Excavation photos	7
Club Notes	8-10
The Millersburg Glass Company	11
Susan Pennington	
The Life and Times of Royal Hickman	12-14
Lee Garmon	
diamonds are forever...Janet Caswell	14
A Look at Lariat	15
What I Learned on My Summer Vacation	16-17
Carl Sparacio	
Book Review George Reynolds	17
Advertising	18-24
Benefit Auction Form	23

Sam's Scribbles

Sam Schnaidt, President



During the last month construction on the new museum addition progressed well. The plumbing was roughed in, the concrete basement floor was poured and just last Friday the concrete was poured for the first floor (pictured below). The next step will be to start setting the steel beams. The weather has been very cooperative lately and we are hoping for more of the same.



At the Board of Directors Meeting on Saturday, Charlie Wade, Chairman of the Gold Series Committee, recommended that we pursue the possibilities of Fenton producing some "go with" animals in Rosalene e.g. Floating Duckling, Balking Colt, Rearing Colt, Piglets, etc. Keep in mind though, that at this point no commitment has been made by Fenton. Charlie's committee also recommended that a feasibility study be done at Dalzell/Viking to determine whether or not they could make a second series of animals. The color of a second series has not been determined.

The First Annual Percy Moore Memorial Dinner was a big success. One hundred guests enjoyed a tasty buffet style dinner. From the fresh fruit, to the cajun style chicken breasts, to chocolate mousse cheesecake it was delicious.

After dinner Kathy McCracken recognized the Museum volunteers for their faithful service. Each docent was presented with a gift of Goumas chocolates; Goumas Candy Company is located right here in Newark.



Vivian Moore accepts her gift for volunteer service.

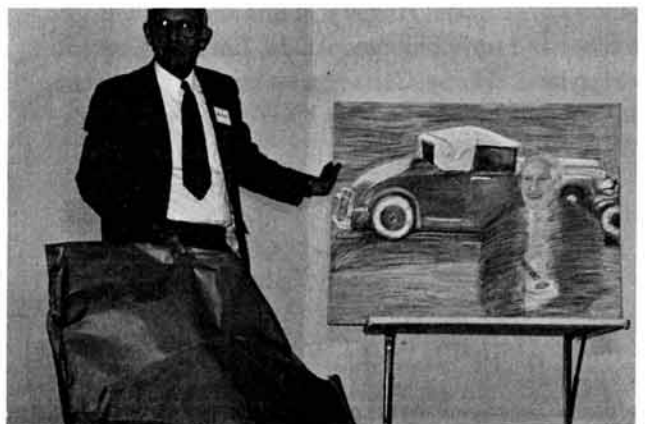


After Liz King read the poem she had written for the Percy Moore Dinner, Kathy presented her with a Blue Baby Elephant marked *Sample*, as a token of HCA's appreciation for her many years of dedicated service (above). Kathy also wrote a poem for Liz, which I know Liz appreciated very much.



We were pleased that Wanda Lybarger and her family (pictured above) accepted our invitation to join us at the dinner. I know that the entire HCA membership joins me in wishing her good health and much happiness in her retirement.

Stan Darling (pictured below) took the floor to honor Percy Moore. He spoke of Percy's wit, humor and of his



generosity. A sketch of Percy with one of his beloved antique cars was unveiled.

This year's souvenir, the Ruby Double Horsehead Finial Paperweight, is sold out! This is the first time anyone can remember that the souvenir for the September Dinner was a sell out.

We just received a new shipment of baskets in the Rococo pattern. They are available in Blue and in Sea Mist Green. We have a good selection in both colors. You can choose either clear: \$40.00, or Frosted: \$42.50. See the advertisement on page 18 for details on how to order. These would make great Christmas gifts and the proceeds go to the Museum, so order several.

Final arrangements are being made for the December Holiday Dinner. It will be held on Saturday, December 5th, at the Best Western. A reservation form will appear in the November issue of *Heisey News*. Remember to make your motel reservations early. By December the new addition should be under roof, so it would be worth the trip just to see the construction progress.

As you know, the Cadillac Dinner held last March was a big hit. Frank Frye did such a great job putting the event together, so we asked him to chair it again in 1993. Tickets will be available for sale beginning in December and you can request the same number that you had last year if you wish. The cost will be \$300 per ticket. One ticket allows two people to attend the dinner. Watch for details in future newsletters.

The 1993 Benefit Auction will be co-chaired by Jim Clark and Amy Jo Jones. Please read their article on page 23. Remember, all glass must be received by January 4, 1993, so start thinking about what glass you'd like to consign.

The theme for our 1993 Convention will be: HCA 93, OUR NEW LOOK! This will be a very special convention for HCA as we dedicate the new museum addition and celebrate the fine support we have experienced from our membership as well as our community.

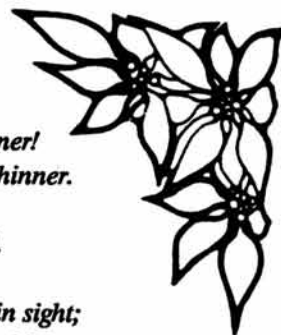
After travelling to Ohio from Maryland for the September 12th Board Meeting, Chris Maskaleris became ill - an apparent gall bladder attack. After spending a day in Licking Memorial Hospital, Chris and fellow Board Member and travelling companion, Jim Jones, returned to Maryland. I know Chris regrets missing the meeting, but hopefully he'll be back on his feet by December.
GET WELL CHRIS!

Happy Halloween!



PERCY'S MEMORIAL DINNER

by Liz King
September, 12 1992



Welcome to Percy's Memorial Dinner!
I'll guarantee you don't feel any thinner.
Percy Moore was one of a kind—
A nicer guy you never would find.

His pipe and tobacco were always in sight;
His sense of humor was high as a kite;
Generosity was his middle name.
In HCA world he will live in fame.

He'd be well pleased with things we've done—
Our expansion plans for one.
The bones and tombstones—well, Percy'd say
Life can't be perfect every day!

I hope you brought along some money,
At our events its very funny
But glass is always auctioned off.
So watch out if you sneeze or cough!!!

Results From The Mini Auction At The September 12th Percy Moore Memorial Dinner

Ameriflora tickets, (2)	\$ 22.50
Madonna, Rosalene	\$500.00
Sparrow, Green	\$ 65.00
Bunny, Blue	\$ 55.00
Fish Bookend on bust-off, Rosalene	\$190.00
Scottie, Black	\$200.00
Fish Bookend, Verde Green	\$150.00
Rococo mug, Sea Mist	\$100.00
Rooster, Pink	\$220.00
Rococo swung vase, Sea Mist	\$175.00
Tiger paperweight on bust-off, Rosalene	\$500.00
Double horsehead on bust-off, Rosalene	\$400.00
Horsehead Bookend, Rosalene	\$650.00

Note: Other miscellaneous items were sold as well as the special items listed above. Proceeds from the sale of these items will be divided equally between the Building Fund and the General Fund.

Curator's Report

Kathy McCracken

With the arrival of September, the number of visitors has declined slightly, but things are still busy around here. There has been a lot of activity regarding the Gold Animal Collectors Series because we finally received more of the animals from Fenton. By the time you read this, I hope that all of you will have complete sets. Thank you for your patience; this project has taken much longer than we anticipated.

I would like to welcome our new bookkeeper, George Marovich, to the staff of HCA. George fits in well with our small group and is willing to help in any way that he can. He will be working part-time--usually in the mornings.

A few new unusual items are now on loan to the museum. We recently received a beautiful #477 Hairpin pitcher and bowl set, a #1540 Lariat candy dish with three horsehead feet, a #1540 Lariat 7 1/2" bowl with the loops rolled under, and five gorgeous pieces of Experimental Blue: 3 #4085 Kohinoor 5 oz. sodas and 2 #3368 Albemarle sherbets.



#3368 Albemarle sherbet

The response to the First Annual Percy Moore Memorial Dinner has been terrific and we are looking forward to a good crowd. As well, we have received many applications for the lottery for the Plumstone fish that was advertised in the last issue of the newsletter. When you read this, we may still have a few frosted Rosalene seconds from the Gold Series available in the Gift Shop, but they have been extremely popular. Right now we have a few hens, cygnets and ducklings--contact the museum for more information. It appears that interest in and support for HCA is growing in all aspects!



Meet George Marovich

Ode To Liz

by Kathy McCracken

I must retire at the end of July
From being a docent, she said with a sigh.
Each Wednesday afternoon from one until four
We could count on Liz King to be at the door.

For eighteen years she has delighted each guest
With her charm and her humor; as a docent she's the best.
With her stories of Heisey, the King House and more
She has lots to tell, but she's never a bore.

She keeps us all on our toes; things must be just right
Brochures out, lights on, before the bus is in sight.
It was her years as a teacher that sharpened our Liz
But we all know she'd have been great in show biz!

The visitors are thrilled to meet this Miss King
They come back for more and their friends they do bring
To hear about Cut Block and Cobalt and the whole Heisey scene
There's only one thing she hates and that's Rosalene!

She'll still be here for tours, dinners, meetings and more
Retirement is not allowed with a new building next door.
We will all want to see you, if you possibly can,
In that new docent's lounge that is now in the plan.

Just remember that I'm the curator; I don't write much verse
And if I do this again it will only be worse!
I'll leave this job to the poet; to make the words sing
That person, of course, is our good friend, Liz King



Museum Volunteers for August

Jim Clark	Mary McWilliams
Phyllis & Bob McClain	Frances Law
Mollie Miller	Vivian Moore
Connie Makris	Bob & Helen Rarey
Stan Holmquist	Karen O'Hare
Stan & Kay Darling	Jim & Helen Kennon
Steve & Alicia Miller	

Get well wishes to Max Puderbaugh, member of the Columbus HCC.





Norm Thran briefs the members on the status of fund raising at the September 12th Quarterly Meeting. Photo by S. Pennington

Views From the Fund Raiser

Norm Thran

The construction continues at a rapid pace. Finally, we are out of the ground level and construction of the first and second floor is underway. Let's take a look at where we stand in fund raising as of September 14, 1992.

Building Fund

Total, August 10, 1992	\$250,475.00
Interest Received on Account	400.00
Member gifts/donations	725.00
Donated glass for Auction	500.00
Special Items Auction, September Dinner	\$1,900.00
Total Raised To Date	\$254,000.00

Remember you can help in many ways during the Expansion. Consider the following:

- Donate your time.
- Donate glass for auction.
- Donate a gift or pledge.
- Support the special projects, i.e. The Gold Animal Series.

Together we can and will reach our goal. Thanks go out to all the volunteers on this project, you know who they are and they certainly appreciate the way you, the membership, has supported their efforts.

In the past month the Expansion Committee met on three separate occasions to sort and pack animals from the Gold Series. We are now 99% complete on this project and animals are being shipped daily.

Let's all get behind this project during the next nine months and push ourselves forward as we build. It is my desire to reach \$400,000 by June 1993. Together we can *Build For The Future*. If we can raise \$254,000 in a little over a year, I believe we can raise the balance, \$146,000 in the next nine months. Send your glass gifts, pledges, etc. now to the attention of the HCA Building Fund.

Be sure to read Susanita Moore's response (*Right*) to Milner Carden's letter, which appeared in the September issue of the *Heisey News*.

Inclosed is my check for 100.00 for the Building fund Raiser.

I'm also one who lived in another state and have only been to the Museum once.

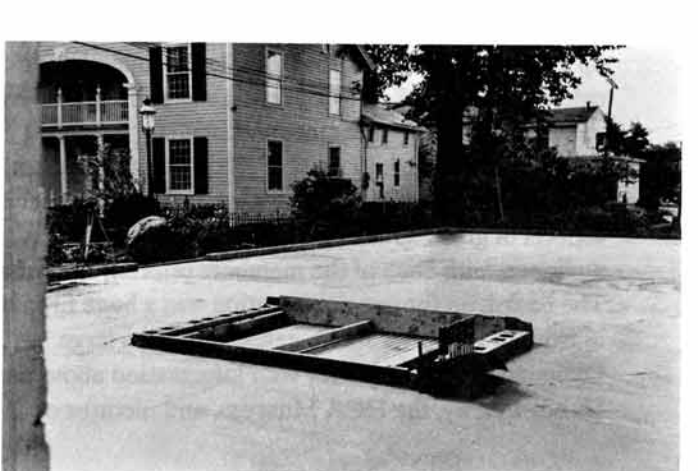
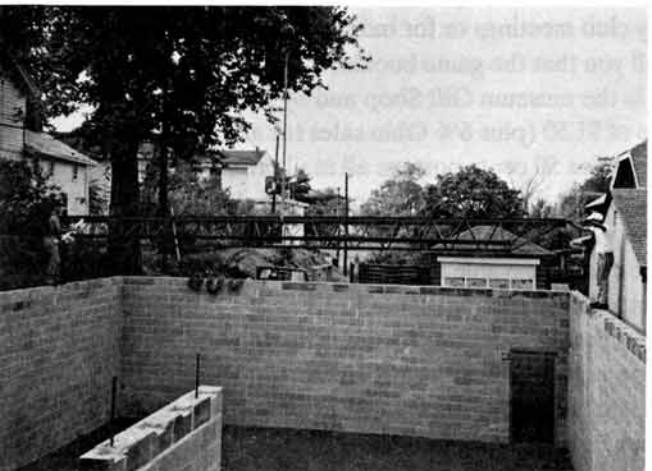
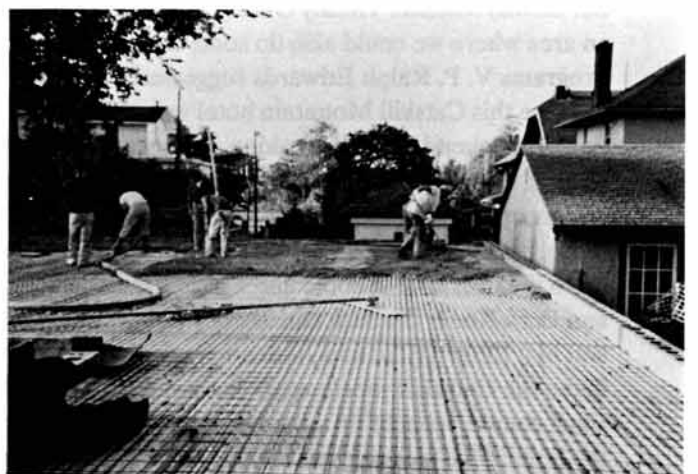
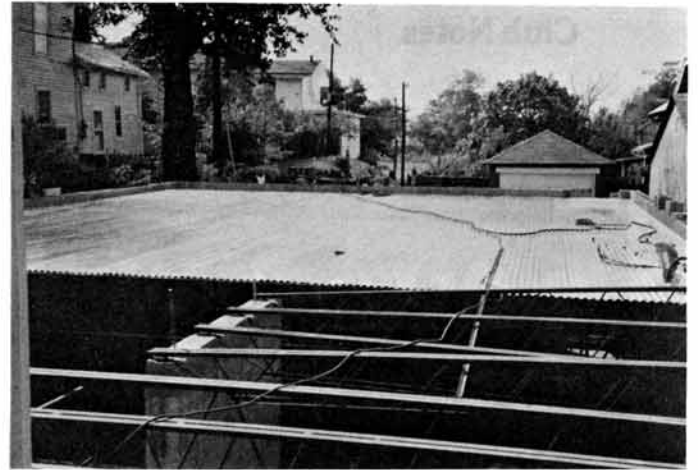
I'm president of the Redlands Historical Museum. It's the only Glass Museum on the West Coast. We need a paint job very badly so I know how hard it is to raise money.

I hope Mr. Carden's letter moves other to contribute.

Sincerely
Susanita S Moore

Editor's Note: The series of photographs beginning on this page and continuing on page 7, shows the progress made on the construction of the new addition over the last month. From the completion of the basement walls, to the pouring and finishing of the cement for the first floor, these photos tell the story. Photos by S. Pennington.





Club Notes



#6 Long Island HCC

Ralph Edwards & Bern Kovit

At our last meeting, club members decided to spend our annual Summer Heisey Outing at a vacation resort in an area where we could also do some antiques. Programs V. P. Ralph Edwards suggested the Fallsview because this Catskill Mountain hotel was offering an "antiquing weekend." While making arrangements, Ralph learned that the hotel manager was interested in having our group stage a presentation on collecting antiques.

So, on July 24th, the following club couples motored up to the Catskills: Bobbie and Ralph Edwards; Roz and Bern Kovit; Barbara and Shelley Lobel; and Babs and Hal Kent. (Ellie and Al Schnell missed the "Heisey in the the Catskills" weekend, being away in England). Each couple brought up a carton of Heisey to display at the hotel. The weather was ideal.

The hotel management provided a corner of the vast lobby for our presentation, which was listed in the Fallsview's Daily Events Bulletin as "An Introduction to Collecting Antiques". For the display, each couple had brought specific items so as to provide a broad sampling of the types of glass. The Kents and Edwards put out a varied selection of colored Heisey items. The Lobels set up a circular grouping from their large collection of celeries, and the Kovit Collection was represented by more than a dozen creamers and sugars.

Ralph Edwards did most of the presentations, but asked various members of the Club to speak on specific aspects of glass. Questions were invited from the audience, with each of the members offering responses. The backdrop for our presentation was a huge fireplace, in front of which we set up easels holding a large Diamond "H" and a poster with information about the Heisey factory, the HCA Museum, and pictures of

various products, including the famous Heisey animals. An estimated 75-100 guests attended.

The "Antiquing Weekend" itself did not turn out to be a major event for the Hotel, but the Club was able to interest a large number of people in American Pressed Glass and Heisey Glass in particular. Club members also were able to visit local antique shops.

The hotel management appeared satisfied by our efforts, spurring us to consider pursuing this format again.

In addition to our labor-of-love presentation, we had a great time enjoying all of the recreational opportunities at this beautiful resort. Most delightful, however, was the chance to be together throughout the weekend and to discuss our favorite topic, HEISEY GLASS.



Long Island HCC presents a Heisey program for the public at a hotel in the Catskills. Photo courtesy of club member Ralph Edwards.

#11 Heisey Hunters Study Club

Bill Bowling, President

Quite a few years ago, our study club compiled a Heisey Puzzle & Game Booklet. This booklet, containing twelve puzzles or games with answers, was designed to provide interesting educational games for use during study club meetings or for individual fun. We are pleased to tell you that the game booklet is again available for sale in the museum Gift Shop and by mail order at a price of \$1.50 (plus 6% Ohio sales tax all Ohio purchases/plus 50 cents postage all mail orders) Order several, give them away as door prizes! Write to: HCA 169 W. Church St., Newark, Ohio 43055 Attn: Shipping. Make checks payable to HCA. Proceeds benefit the National Heisey Glass Museum.

Our thanks to Sam Schnaidt, who donated the use of his copy machine for this project.

The game below is a sample of what you'll find in the Heisey Puzzle & Game Booklet. (answers on p.10)

PATTERNS IN COLOR

Instructions: Following each color is a list of 3 multiple choice answers. Choose the pattern which you would expect to find in that color. One correct answer for each.

- | | |
|----------------------------|--|
| 1. Emerald | a. Fandango
b. Pineapple & Fan
c. Lariat |
| 2. Custard (Ivorina Verde) | a. Winged Scroll
b. Fancy Loop
c. Old Sandwich |
| 3. Opal (Milk Glass) | a. Sunburst
b. Bead Swag
c. Crystolite |
| 4. Vaseline | a. Twist
b. Spanish
c. Winged Scroll |
| 5. Hawthorne | a. Penn Charter
b. Saturn
c. Lariat |
| 6. Marigold | a. Fancy Loop
b. Grecian Border
c. Twist |
| 7. Moongleam | a. Fancy Loop
b. Empress
c. Crystolite |
| 8. Flamingo | a. Twist
b. Punt Band
c. Creole |

#13 HCC of California

From the Pony Express, August 1992

Penny Thorup, President

Twenty members attended the July 26th regular meeting held at our home in Long Beach. Betty and Bud presented the program on Heisey Shot Glasses--amazing the variety Heisey produced in this one item, plain, etched, cut and in color. Our members who attended the HCA Convention in June had purchased fabulous pieces to share during our Show & Tell.

Betty and Herb Wanser graciously volunteered to host the August 23rd meeting at their home in Anaheim!! The members decided to have a salad and

dessert potluck. Betty will present the program on Heisey baskets.

I hope everyone enjoyed the summer and had successful Heisey Hunting. Mark your calendars and plan to attend the upcoming HCC meetings.

#22 Northwest Heisey Collectors

Mary Martin, Correspondent

Northwest Heisey Collectors met on September 5, at the summer home of Don & Glenna Wehmeyer. This lovely home is situated on the shores of Lake Chelan in Eastern Washington. All the members enjoyed the trip of over 200 miles through the mountains and seeing the orchards full of red and yellow *Delicious* apples. This year is a bumper crop for most of the fruit grown in the Wenatchee Valley.

President Mary Beatty opened the meeting and roll call accounted for thirteen members. This being a holiday weekend and the highways and mountain passes very congested, it was great to see how many could make the trip.

The program on cream and sugar sets was held on the patio overlooking Lake Chelan. Our hostess, Glenna Wehmeyer, displayed 32 pieces in crystal and color, giving a talk on each set and the number of colors made. Some were hotel, some individual and some sugars with lids. We were seeing many of these rare sets for the first time. Our hostess also had the greatest find for *Show & Tell*--a pair of Tricorn 5" triplex candleholders (pictured below) in Flamingo and in mint condition. Too many other wonderful pieces to mention.



Tricorn 5" Triplex candleholders

Everyone was now ready for a great potluck, eating out on the patio watching the speed boats and water skiers. Since this was a weekend trip, we packed the Heisey away and played Pinochle until sack time. After Sunday breakfast and clean up, our host Don Wehmeyer lowered his boat and members climbed aboard for a spin on the lake. It was now time to make plans to see more sights on the way back to Bellingham, St. Helens,

Oregon, Olympia, Seattle and points in between. One stop for sure was to visit Aplets & Cotlets factory at Liberty Orchards in Cashmere, Washington. A great weekend was had by all.

#25 Heisey 76'ers

Hugo Wenzel, Scribe

The Heisey 76'ers Study Club usually rests during July and August. However, an opportunity developed which is exciting and challenging. The American Ceramic Society recently moved into its new headquarters in Southwestern Westerville, virtually in the center of our membership area. As part of its new facility, the Society has a museum. While primarily concerned with ceramics, there are some beautiful glass exhibits, including work of Dominio Labino and Christopher Ries. The 76'ers Study Club has been given the opportunity to provide an exhibit of Heisey glass. A special club meeting was held in August; members interested in participating in the display brought representative pieces from their collections. From these pieces, the ACS curators selected twenty representative pieces to fill a display cabinet.

The American Ceramic Society is located at 735 Ceramic Way, Westerville, Ohio, which is off of Schrock Rd., just North of the Cleveland Ave. exit of I-270. The museum is open to the public during regular business hours.

#44 National Capital Heisey Collectors Club

From The Heisey Herald, September 1992

Butch Jones, President

I hope everyone enjoyed the summer and good vacations--and that you found some special Heisey to *Bring and Brag* at our September 14th meeting.

You will notice that after 17 years of meeting at the Oxon Hill, Md. Library, NCHC is moving to the Potomac Community Library. October 5th will be our first digression. A move has been contemplated for some time, and this seemed the proper time to accomplish it. Several factors led to the decision to move: reciprocity, security, and economics. Our members have always been considerate and understanding with changes.

Our September meeting will be the first meeting held at our new location. The featured topic-- "*Finds of the Summer*" and a review of the Heisey Convention in Newark.

Answers to Quiz:

1. b., 2. a, 3. b, 4. c, 5. a, 6. c, 7. b, 8. a

11TH ANNUAL ALL GLASS SHOW & SALE

Sponsored by the
Connecticut Heisey Collectors Club

BENEFIT OF THE NATIONAL
HEISEY MUSEUM

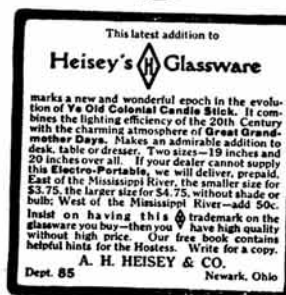
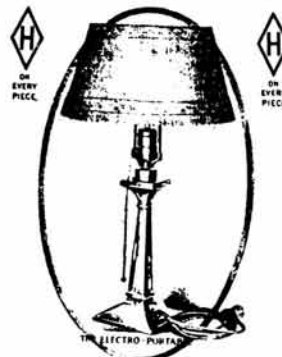
SATURDAY
NOV. 21, 1992
10:00 a.m. to 5:00 p.m.

SUNDAY
NOV. 22, 1992
11:00 a.m. to 4:00 p.m.

National Guard Armory
590 Woodruff Street
Southington, CT

ADMISSION - \$3.00
with this Ad - \$2.50
1-84 to Exit 32 South (Rt. 10)
To Hobart St. - Right on to Pleasant St. -
Left to Armory

Make your motel reservations for the **December Holiday Dinner Saturday, Dec. 5, Now!** The buffet style dinner will be held at The Best Western. Dinner Reservation form will appear in the November issue of Heisey News. See the June issue for the complete listing of area motels or call the HCA business office at (614) 345-2932 between 8 a.m. and 4:30 p.m. Monday - Friday



Ad From: *The Modern Priscilla*, February 1914

Editor's Note: *Holmes County is home to a large Amish community. Buggies can be seen on the streets of Millersburg, as well as on the back roads leading to the breathtaking Amish farms. Just an hour and a half drive from Newark, this lovely county is a perfect place to relax.*

On a recent family outing to the Holmes County Historical Society Victorian Mansion Museum, I happened to spot a booklet entitled The Millersburg Glass Story while browsing through their gift shop. This booklet was put together by the Holmes County Historical Society and is based on the research done by George D. Irving in 1971. It covers the history of the short lived Millersburg Glass Company which operated in Millersburg, Ohio from 1909 to 1911. The summary below reflects the information presented in that historical account of this little known glass works.

The Millersburg Glass Company

Susan Pennington

On July 18, 1908 a public meeting was held at the Millersburg Agricultural Hall. John W. Fenton, President of Fenton Art Glass Company, was present to explain his plan to construct a factory for the manufacturing of glassware and glass mantles, which he hoped would take the place of tile mantles. Mr. Fenton told the group that the rock and sand in the area was free of iron, which would ensure clear crystal glass. It was his feeling that there was enough rock on the Holmes County Coal and Clay Product property "to last a lifetime"; and that the location would be easily accessible when the railroad, which was under construction, was completed.

Fenton proposed the building of a factory which would include (1) one story brick, tile or concrete building 300 feet long and 80 feet wide, on not less than three acres located near a railroad. He estimated the cost of such a facility to be about \$50,000 and estimated the workforce needed would be around two hundred. The employees would consist of one hundred men, one hundred boys and girls--total 200. Mr. Fenton explained that wages would range from 80 cents per day to \$10 per day depending on the skill involved with the job.

A committee was appointed to secure the ground for the glass plant. The committee secured an option to buy 50 acres of land in the north port of Millersburg. On August 13, they began to sell lots in the Millersburg Glass Company allotment. The money raised from the sale of the lots was used to erect the factory.

Ground breaking took place in September and construction was rushed so that as soon as the factory was under roof, Mr. Fenton could assemble machinery and

equipment.. On November 1, the stack for the fourteen pot furnace was completed atop the fireproof concrete and steel building.

A smaller building was built to house the shipping room, the copper shop (for making barrels), and a combination engine room, pattern shop, machinery room, and blacksmith shop. An 80 horsepower gas engine made by Fairbanks-Morse Company was located in this building.

The castings for the molds were made by the Millersburg Foundry.

The factory got its supply of natural gas from K & M Gas Company and from two natural gas wells which Mr. Fenton drilled. While President of Millersburg Glass Co., Mr. Fenton drilled a total of 18 wells.

The Company was incorporated on May 10, 1909, with capital stock of \$125,000, divided into 1,250 shares. On May 20, 1909, the first pieces of white tableware were produced. Millersburg patterns include: the Ohio Star, Hobstar and Feather. Business was brisk--additional equipment, as well as workers, were added but production remained behind.

Early in 1910 Mr. Fenton achieved the iridescent satin finish he had worked towards. He named it *Radium Glass* and it was very popular with the public. In honor of the people who helped him direct gas lines to the factory, he produced the Holmes County Court House souvenir plate in Radiumware. He also gave away handled toothpick holders, Ohio Star punch bowl sets and other items to churches and local merchants. The Millersburg Peacock, considered one of the most beautiful of the carnival glass, was designed while workers looked at the live peacocks in the yard around the factory.

For 18 months, the Millersburg Glass Company enjoyed success, but in March of 1911 Stephen Hipkins, who had made the molds, sued the company for non-payment. Fairbanks-Morse, makers of the factory's machinery, filed suit. After a total of 28 suits were filed, the company was forced into bankruptcy. A public sale was held and on September 23, 1911 the plant was sold to Samuel Fair for \$14,203.

In November of 1911 the newly named *Radium Glass Company* sent its first order to Philadelphia, but was to close its doors after shipping an order to Woolworth in May 1912. The plant was sold to the Jefferson Glass Company of Steubenville, Ohio in October 1913.

The Jefferson Glass Company produced light fixtures from this plant for a few years, but was forced to close it down in 1916 because of a shortage of natural gas in the area. The machinery from the Millersburg plant was moved to other plants, thus ending the era of glass making in Millersburg.

The Life and Times of Royal Arden Hickman

Designer Extraordinaire (1893-1969)

by Lee Garmon

My "hero" worship of Royal Hickman and his design work began the moment I saw my first piece of Royal Haeger by Royal Hickman! Little did I know then that many of the beloved animals in my glass menagerie had in fact been designed by Mr. Hickman.

As I began my research into the life and times of Royal Hickman, I found his design influence to be everywhere, in every form: Kosta Crystal, Bruce Fox Aluminum Co., Vernon Kilns, Heisey Co., Three Crowns Silver, etc. One has only to study the field of collectibles to see the similarity of his design characteristics from one form of medium to the other. (His animals always appear to be smiling). Many of Mr. Hickman's molds consisted of four or five pieces, rendering the procedure of removal slow and difficult. Ruth Hickman, the 2nd Mrs. Hickman and his widow, said he was referred to as "Hick", signing his painting and art work the same.

The small town of Oregon City, Oregon was the birthplace of Royal Arden Hickman, in the year 1893. His parents, John and Mary Hickman were from Portland, Oregon--their ancestors having been settlers--coming from Missouri in covered wagons. Hick was one of four children and as the son of devout Methodists, his home life was strict and confining.

When Hick was 13 years old his dad suffered an accident. Being the eldest son, the financial burden was placed upon Hick's shoulders--he had to go to work! An upstairs bedroom was converted into a drawing room and Hick designed fancy place-cards and dance programs. The following year saw him employed by the Wilomette Paper Mill and, at 16, Hick drew plans for the warehouse at the Paper Mill.

When he was 19, Hick left Oregon for San Francisco to attend the Mark Hopkins Art Academy. From San Francisco, Hick went to the Hawaiian Islands to help plan a large sugar refinery. He loved the water and sailing--which would become evident in his designs. World War I broke out while Hick was living in Hawaii and he attempted to enlist in the Navy but was rejected due to poor eyesight.

Hick went to Tacoma to work in the drafting department of the Todd Shipyards. There, he met Adeline Hancock who would become his wife and mother of their two daughters, Hope and Rosemary.

Then, as in everyone's life, the depression years took their toll, and Hick moved his family to Mountain View, California to live with Adeline's parents. Only a year

had passed when tragedy hit; Hick suffered a severe sunstroke, leaving him partially paralyzed, and turning his hair snow-white. Royal Hickman returned to California for recuperation. It was during this period of rehabilitation that Hick began to work with clay. He sketched designs and scenes on greenware rabbit feeders for a ceramic plant in San Jose.

After a period of experimentation, Hick created a line, glazed in bright vivid colors. Before long, the showrooms of Chicago and New York received their first shipments of this new brightly-colored dinnerware from California. And, what a hit it was! As a result, Macys ordered this ware by the boxcar.



#643 17" Swans and matching #607 9" vase with the label:

"California Designed by Royal Hickman"

After this wave of success, Hick decided to try for the best--S&G Gump Co. of San Francisco. Stanley Corchran, Manager of Gumps, was so impressed with Hick's originality of design and glaze, that he arranged a showing to Mr. Gump. Although blind, Mr. Gump was recognized as one of the foremost art authorities of his time--judging strictly by the feel of the object. Mr. Gump purchased the entire line . . . giving birth to Hick's company: Ra-Art Pottery.

Since the prestigious Gumps had taken on the line, other department stores followed. The Ra-Art Pottery took over a floor of the California Art Pottery building to facilitate the handling of all orders. Ra-Art Company was "put to bed" when Hick accepted the challenge of designing in a new media--crystal. He travelled to Denmark, Czechoslovakia, and Italy. His first experience in designing glass was for Kosta Glassbruk in Sweden. Hicks words: "It was the finest manufacturing plant of lead crystal in the world; this was before Stuben. . ."

Many of his works were destroyed during the Nazi Occupation along with the factories. The pieces that did survive were breathtaking in their originality.

Upon his return from Europe in 1938, Hick accepted the post of Chief Designer for the Haeger Potteries in

Dundee, IL, launching it's famed Royal Haeger line. Initially he did most of his own modeling, although long periods of exposure to the clay caused an allergic reaction to his hands.

Hick and Adeline were divorced and Hick met his soulmate Ruth and she became his second wife. To quote Ruth: "We had a very gay life. He was a restless creature and after living in one place two or three years, he always saw greener pastures, or more exciting waters on the far side of the horizon . . ."

With the onset of World War II, not all materials could be secured by Haeger, and many of Hick's designs were shelved until such time as production could once again be in full swing. Royal Hickman left Haeger Potteries in 1944, buying a piece of property in Chattanooga, TN. Starting from scratch, Hick and his partners began Royal Hickman Industries. Hick's new company also did outside work for other firms, one was Phil-Mar Lamp Company of Cleveland, Ohio. Phil-Mar's needs were so great they made an offer to buy Hick's plant for their own use. Hick accepted their offer, and Royal Hickman Industries was re-named Ceramic Arts, Inc. (not to be confused with Ceramic Arts Studios of Madison, Wisc).

In addition to designing for Loza Fina in Guadalajara Mexico, Hick rejoined the Haeger Pottery Company on a freelance basis. Hick and Ruth made their home in Guadalajara, which would become Hick's final resting place on September 1, 1969.

It isn't hard to tell that the same designer made both the Royal Haeger animals and the Heisey animals listed below:

- Elephants- small, medium, large
- Geese - wings down, wings half, wings up
- Giraffe - head back, head turned
- Donkey
- Rooster
- Sow
- Pouter Pigeon
- Bull
- Filly, head forward, head turned
- Clydesdale
- Hen
- Chick
- Swan and Cygnet
- Mallards, wings down, wings half, wings up
- Wood Duck
- Duckling - floating, standing
- Asiatic Pheasant
- Tiger paperweight
- Gazelle
- Colts - standing, kicking, balking

Rabbit paperweight

Scottie

Sparrow 1,2, 3

Fish Bookend

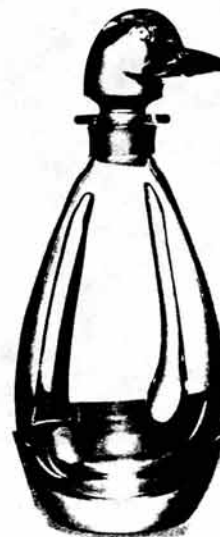
Chanticleer Rooster

Chanticleer Vase

Dolphin vase, cigarette box, candlestick

#1 Madonna

As well as the animals, Mr. Hickman designed other lines for Heisey.



Heisey Penguin decanter

An excerpt from a letter written by Mr. Hickman in July of 1969 tells us:

"I designed many pieces for Heisey and, of course, I cannot remember all of them . . . the Heisey horses are mine with the exception of the bookends . . . I think the prize pieces I made for Heisey (commercial value) are a pair of penguin decanters in two sizes, the chanticleer cocktail shaker, and a cocktail glass with a stem being the leg of a dancer, the leg frosted or acid etched. As to the number of animals I made for Heisey, I really cannot say, but there were many. In the movie "The Glass Menagerie" they showed all of my Heisey figurines."



Heisey Dancers Leg cocktail

In closing, I would like to show you the man himself, sketching at his desk. I hope you enjoyed a look at this gifted designers life . . . as I am out in the field collecting, pieces continue to surface bearing his name. Each is different and yet identifiable in their difference.



Hick's Comments: *"There's nothing new under the sun. We all use as design media the material we find at hand in our everyday life—from birds to animals, from fish to flowers, from a beautiful coiffure to caricatures of hillbillies. And, when once in a while, we really do make something worthwhile, we are complimented by the response . . . my designing of home luxuries has been so varied and so vast, that I have long ago stopped keeping records of any kind, it's impossible."*



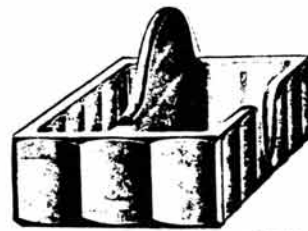
Heisey Clydesdale



diamonds are forever.....

Janet Caswell

It's been a couple months since I've written because I have been very busy moving to a new home--It is lovely. My Heisey candlesticks and my Mermaid Ball vase must be placed in just the right spot to show them at their very best. My Empress Sahara dishes are nestled snug in the cabinets and will grace our table at many meals. The tumblers and some serving pieces also will be used: Yeoman D/O oval vegetable dish in Marigold, Colonial ice cream dish, of course my celery boats in Flamingo, Crystal and Moongleam. It would also be fun to use the



DOMINO SUGAR AND SPOON TRAY
GROUND BOTTOM



DOMINO SUGAR, GROUND BOTTOM
SIDE VIEW
DESIGN PATENT NO. 4,311,09

Domino cube sugar tray. Of course Old Sandwich will have a special place in my antique china cabinet. Perhaps the popcorn bowl will sit on the kitchen table adorned by the Old Sandwich Flamingo candlesticks. The Grandchildren want me to put green microwave popcorn in it!

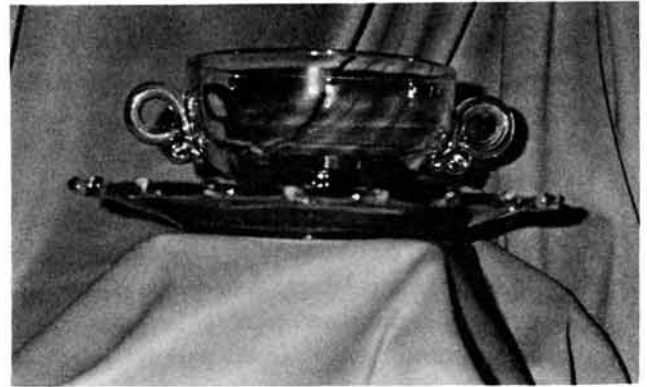
The other day I received a nice letter from *The Pottery Man*. My first Heisey letter at my new house, it was thrilling to see my new address printed on an envelope. Let me tell you a few things he found: #1401 Empress 6" double handled footed jelly and 8" nappy, both of these little beauties were in Sahara. *Tower Power* also had a bit of good fortune #1020 Phyllis cream and sugar in Moongleam, also a #3480 Koors 3-pint jug. The jug was purchased at an outside flea just before a thunderstorm and the dealer just wanted to sell, sell. *Mrs. Tower Power* is using the bottom of a Crystolite covered puff box for a soap dish and the bottom of a Revere pickle for a toothpaste holder. It is fun to utilize your Heisey in all sorts of different ways. I use my Locket on Chain spooner on my desk for a pencil holder. Two shaving mugs are being used to hold mascara and eyeliner.

Old Sandwich

Hopefully you have all found many nice things over the summer. Drop me a line and let me share them with all our friends. It can be lonely in our new home, without Heisey mail.

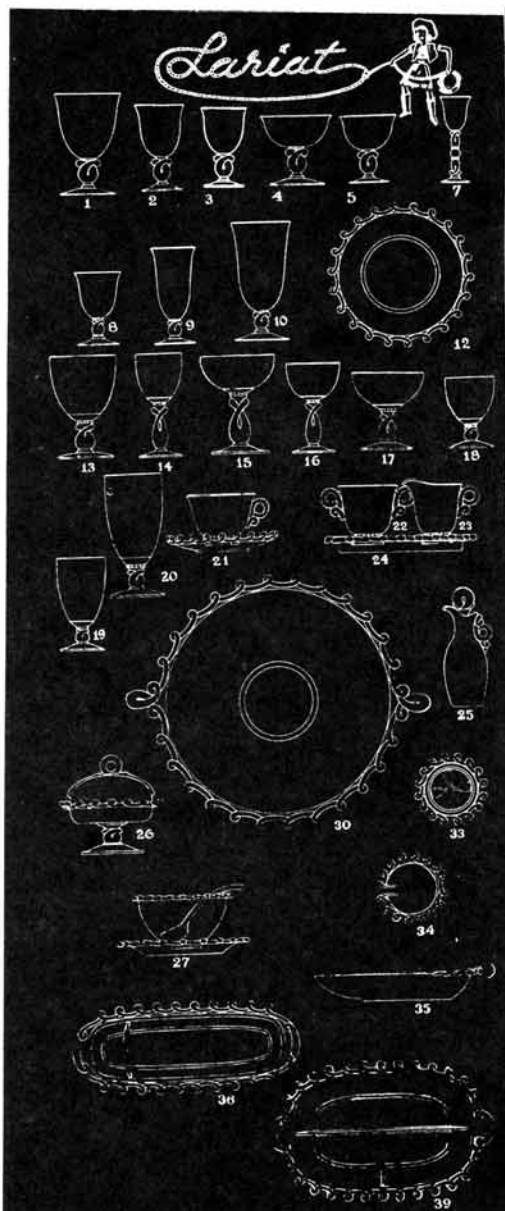
Janet Caswell
7 Birch Hill Rd.
Danvers, MA 01923





HCA member Tony Cefaratti brought a #1540 Lariat creamed soup bowl and underplate (pictured above) to the Museum to share. He found the pieces at a Flea Market on the way home from Convention in June. After finding out that neither Louise Ream, Norm Thran, nor Sam Schnaidt had ever seen these pieces, Tony decided to ask the members if you've seen them. If you have, please drop a line to HCA 169 W. Church St., Newark, Ohio 43055

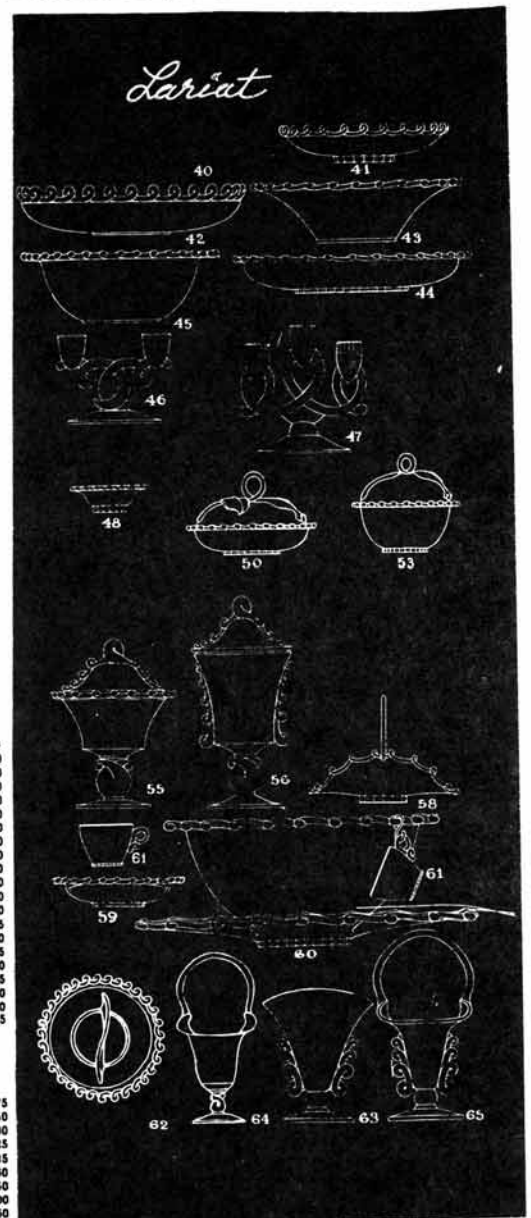
The Lising Below Was Taken From Heisey Catalog & Price List No. 32 Dated January 1953



LARIAT — Pattern No. 1540

NO.	SIZE	ITEM	Dos. Crystal	Each
1-5040	10 oz.	Goblet, Blown	\$ 18.60	1.55
2-5040	4 oz.	Claret, Blown	18.60	1.55
3-5040	2 1/4 oz.	Wine, Blown	18.60	1.55
4-5040	5 1/2 oz.	Sherbet (Saucer Champagne). Blown	18.60	1.55
5-5040	3 1/2 oz.	Cocktail, Blown	18.60	1.55
7-5040	1 oz.	Cordial, Tall Stem, Blown	18.60	1.55
8-5040	4 1/2 oz.	Oyster Cocktail, Blown	18.60	1.55
9-5040	5 oz.	Footed Juice, Blown	18.60	1.55
10-5040	12 oz.	Footed Ice Tea, Blown	18.60	1.55
11-5040	7 in.	Salad Plate	14.40	1.20
12-1540	8 in.	Salad Plate	18.00	1.50
13-1540	8 oz.	Goblet, Pressed	10.80	.90
14-1540	3 1/2 oz.	Wine, Pressed	10.80	.90
15-1540	6 oz.	Tall Sherbet (Saucer Champagne). Pressed	10.80	.90
16-1540	3 1/2 oz.	Cocktail, Pressed	10.80	.90
17-1540	6 oz.	Low Sherbet, Pressed	10.80	.90
18-1540	4 1/2 oz.	Oyster or Fruit Cocktail, Pressed	10.80	.90
19-1540	5 oz.	Footed Juice, Pressed	10.80	.90
20-1540	12 oz.	Footed Ice Tea, Pressed	10.80	.90
21-1540		Cup and Saucer	19.20	1.60
22-1540		Cup	9.60	.80
23-1540		Saucer	9.60	.80
24-1540		Sugar	13.20	1.10
25-1540		Cream	13.20	1.10
26-1540		Sugar and Cream Tray	39.60	3.30
27-1540	3 pc.	Sugar, Cream and Tray	24.00	2.00
28-1540	4 oz.	Handled Oil Bottle and #133 Stopper	15.00	1.25
29-1540	4 oz.	Handled Oil Bottle without Stopper	24.00	2.00
30-1540	5 in.	Footed Cheese and Cover	13.20	1.10
31-1540	5 in.	Footed Cheese without Cover	42.00	3.50
32-1540	3 pc.	Mayonnaise Set	19.80	1.65
33-1540	7 in.	Mayonnaise Plate	14.40	1.20
34-1540	7 in.	Mayonnaise Ladle	7.80	.65
35-1540	14 in.	Two Handled Sandwich Plate	45.00	3.75
36-1540	11 in.	Cookie Plate	30.00	2.50
37-1540	14 in.	Sandwich Plate	42.00	3.50
38-1540	14 in.	Sandwich Plate & Footed Cheese & Cover	66.00	5.50
39-1540	14 in.	Sandwich Plate & Footed Cheese without Cover	55.20	4.60
40-1540	4 in.	Coaster	5.40	.45
41-1540	4 in.	Ash Tray	5.40	.45
42-1540	10 in.	Handled Celery Heart	27.00	2.25
43-1540	13 in.	Celery and Olive	31.80	2.65
44-1540	11 in.	Oblong Relish	45.00	3.75

NO.	SIZE	ITEM	Dos. Crystal	Each
41-1540	8 1/2 in.	Camellia Bowl	\$ 30.00	2.50
42-1540	13 in.	Gardenia Bowl	42.00	3.50
43-1540	12 in.	Floral or Fruit Bowl	42.00	3.50
44-1540	13 in.	Oval Floral Bowl	42.00	3.50
45-1540	10 1/2 in.	Salad Bowl	42.00	3.50
46-1540	15 1/2 in.	2-Handled Party Salad Bowl	30.00	2.50
47-1540	2 ft.	Candlestick	54.00	4.50
48-1540	3 ft.	Candlestick	12.00	1.00
49-1540	7 in.	Carmel and Cover	42.00	3.50
50-1540	7 in.	Carmel without Cover	16.20	1.60
51-1540	5 in.	Small Candy Box and Cover	30.00	2.50
52-1540	5 in.	Small Candy Box without Cover	18.60	1.65
53-1540	10 in.	Compoite and Cover	54.00	4.50
54-1540	10 in.	Compoite without Cover	33.00	2.75
55-1540	12 in.	Urn Jar and Cover	54.00	4.50
56-1540	12 in.	Urn Jar without Cover	33.00	2.75
57-1540	7 1/2 in.	Handled Bonbon	30.00	2.50
58-1540	7 in.	Dessert or Sauce Dish (Nappy)	15.80	1.30
59-1540	27 pc.	Punch Set	315.00	26.25
Consists of: Punch Bowl (7 1/2 qt.); 21" Buffet Plate; #11 Ladle; 12 Punch Cups, and 12 Hooks, Red or Green.				
60-1540	27 pc.	Punch Set with #10 Plastic	297.00	24.75
61-1540	7 1/2 qt.	Punch Bowl	32.00	7.50
62-1540	21 in.	Buffet Plate	96.00	8.80
63-1540	11 in.	Glass Punch Ladle	27.00	2.25
64-1540	18 in.	Plastic Punch Ladle	10.20	.85
65-1540	7 in.	Punch Cup	7.20	.60
66-1540	7 in.	Two Compartment Jelly or Relish	18.00	1.50
67-1540	7 in.	Footed Fan Vase, #2	24.00	2.00
68-1540	8 1/2 in.	Footed Handled Basket	30.00	2.50
69-1540	10 in.	Footed Handled Basket	42.00	3.50



What I Learned On My Vacation

Carl Sparacio

Most years we use our vacation time to do shows and to attend the HCA Convention. This summer we took a few days for ourselves to do something we'd never done before: we went on an antiquing trip. Honest, that was it. With no other goal or purpose we set off to seek out distant antiques shops and centers.

This surprised even us. In the past our antiquing has been confined to local shops, shows and Flea Markets. For the many years we've been involved with glass, the only times we antiqued out of our immediate area was on our way to or from somewhere for something else. If we had a couple of days to squander, we spent them around the house fixing, painting, repairing, patching up, and wishing these days would pass quickly so we could get back to work and rest.

Once we decided on this treat, difficult decisions had to be made. For instance, where, specifically, to go? In which direction? My wife left it up to me though she knows I'm not a great decision maker--I get bogged down in options. No problem, there were a couple of weeks until departure. Plenty of time to mull it over and weigh all the possibilities.

The night before our holiday was to begin I still hadn't come up with an itinerary let alone a direction. I suggested we clean out the shed for the next few days but I hadn't counted on pent up frustration. Helen, my wife, announced, a little shrilly I thought, that, "Tomorrow morning we will get up early, throw clothes in a suitcase and get in the car and go."

"Where?" I asked.

"Where ever the road takes us. No matter, we're getting out of this house."

So it was that bright and early on a Saturday morning we set off with the wind in our faces and pointed ourselves toward New England.

Why New England? Well, for one thing it's closer than Old England and a considerably drier drive. For another, we've taken roads west out of New Jersey to Ohio a zillion times and roads south towards Washington D.C. enough times so that all two hundred and eighty three toll stops are committed to memory.

Besides, everyone we know except us has antiqued New England. The closest we ever come is quick zips in and out to do shows in Connecticut and Massachusetts--two states you'll find noted on most maps as "Mass" and "Conn" (cartographers are notoriously poor spellers).

We crossed the Hudson far above the congestion of New York City and followed its east band north. It was a learning experience. I discovered shops and centers less than two hours from home that I didn't know existed. I

also discovered that Alexandrite bar glasses sitting in an unlit wooden cabinet in a dirty, tacky, poorly lit shop look grey and unappealing. Besides, I was already thrilled at finding the Flamingo Koors bar glasses that hid them. The Mrs. whispered through her teeth, "I don't care that they are grey, take them!"

"They look sun-colored," I protested.

Over the years I've learned the nuances of her "glances" This one said, "Do it. . . Now!" If nothing else, my hesitancy bought us a decent deal. I also learned from my helpmate, once we were safely away, that if we turned around and headed home right then our trip could be considered a success.

There were yet other lessons ahead. One immediate one was that in the summer it's best to have advance reservations for the night. I learned, too, that some areas overdo roadside beautification when they remove unsightly billboards from highway intersections. Especially the signs that used to tell travelers where the motels are.

Daylight had already turned to dusk and dusk was flirting with night before we found a haven on a secondary road in what could have passed for the Bates Motel. It was worn and creepy but clean. In the next morning's light it looked a bit more appealing. Norman had left his window.

We were off and running again early. We found a diner about a dozen miles away and ate a hearty breakfast (we wanted more than the snack machine at the motel offered). We admired the view as we ate. Vermont is a beautiful state. At almost every turn you could "Oooh" then "Aaah" if your attention wasn't diverted by the antiques shops. I felt I'd died and gone to antiques heaven. I learned why the pros "do New England."

Soon after breakfast we pulled up to a gracious lady sunning herself on a rocker in front of an antiques center. She let us in at 9:30 in the morning, a half hour before the opening bell. I was gloating about having the place to ourselves when a troop of antiquers, who must have been hiding in wait across the road behind the trees in the wood, filed into the place.

The day soon became a routine of drive, stop, look, and stash. The stashing was for our purchases. They had to be packed safely for when I hit the brakes for the unseen shops hidden around the many road bends. There were so many shops that by afternoon we had become choosey. We avoided places that looked *furniture* or lacked the glisten of glass in a window. I learned, too, that sometimes the glisten of glass is old milk bottles.

Near the end of the day we reached a humongous antiques center. This had been a tentative goal. We avoided specific destinations so as not to dilute the free spirit intention of our trip (I did, however, make room reserva-

tions for the night to avoid meeting up with with Norman or one of his relatives again).

Being Sunday, this huge center was like a carnival. It was crowded with people and their gawdawful little kids whose sole purpose was to scream and run and block the exhibits (not necessarily in that order or even just one annoyance at a time). We saw very little. I was on the verge of committing bratricide when we gave it up. The Mrs. led me by the hand to a nearby Christmas shop.

By now antiquing has lost its appeal anyway. We stashed the Christmas ornaments and headed towards our motel about 80 miles south. On the interstate there was nothing but one beautiful landscape after another to enthrall us.

A good dinner, a good night and an early start the next day brought us into New Hampshire, another picture postcard state and a repeat of the day before: shops, centers and pretty scenery. We managed to find something to purchase at almost every place we visited. A cache of Hawthorne highlighted this day but my favorite find is the big bellied mandolin I tenderly transported home.

After we found and toured the mother of all antiques centers in New Hampshire, we had had enough. We zipped south through Mass. and Conn. without stopping. When we reached New Jersey its mountains, though short, looked beautiful.

I had learned yet one more lesson from this trip: Smoke stacks can be as pretty as steeples. Non-stop beautiful scenery gets to be a bore.



Thanks, From Wanda! Wanda Lybarger wishes to thank HCA for inviting her and her family to the September Dinner and for the retirement gift. She also thanks everyone for their kind words and good wishes.



New Museum display--How Etching is Done. Located in the lower level, it explains the step-by-step process. Contains examples of stemware at various stages of the etching process.

Book Review

George Reynolds

Jay L. Glickman--Yellow Green Vaseline: A Guide to "The Magic Glass". 112 pages, from Antique Publications, Box 553, Marietta, OH 45750

Soft cover \$ 19.95, hard cover \$27.95 plus \$2.50 postage and handling.

The author, who is an avid collector of what he calls "that magic glass", has done a commendable job of explaining why he loves this unique collectible. The publisher says, this is the first book ever written exclusively about vaseline glass. This may be true; however, many books have been published with Vaseline glass, described and pictured as a part of their subject matter.

The author uses several pages to describe the superstitions and the scientific data that portray this beautiful glass. He suggests that a portable black light be taken to shows and auctions to test the glass for fluorescence before buying what is marked Vaseline glass. There are many reproductions offered today as the real thing.

This work is done in a very easy to read manner and should be clear to both the casual reader and the dedicated Vaseline collector.

The book includes color photos of over 400 pieces of "Magic Glass". some of the photos show the glass with and without ultra violet illumination. The differences are obvious to the reader.

A value guide is included with the price of the book. In most cases, a date and the manufacturer of the pieces shown are mentioned and a value is shown for all items photographed.

The value guide is printed on rather flimsy paper and may not last long in the rough and tumble search for genuine "Magic Glass".



Classified Ads

For Sale: Mail Bid - #3404 Spanish 5-1/2 oz. saucer champagne w/Fanfare cut, (I.D. by HCA) Have (3), bid each. Bids close Nov. 1, 92. Reserve right to refuse all bids. L.A. Maness Rt. 1, Box 552 Ashland, VA 23005 (804) 798-1825

For Sale: #1469 Ridgeleigh cigarette box (1) and ashtrays (2), Zircon, \$230.00 plus \$2.50 hndl. 1-304-292-3790. Carol Sickles, 12 Bryant Ave., Morgantown, W.V. 26505

For Sale: Souvenir Oscars, including '90 Rosalene, '80 Heather. Phone (614) 882-6039.

For Sale: Over 30 pieces of Heisey Colonial, including three pitchers, plus misc. other patterns such as: #1503 Crystolite and #1469 Ridgeleigh (divided nut cups). A & P Collectables, 151 N. Glassell St., Orange, CA 92666. 1-(714) 997-1370

Wanted: One #3 14" saucer for #49 epergne. Also want bottom for #343 Sunburst butter, (Vogel bk 1, p. 26). Must be in mint condition. John Willoughby, 22019 7th St., Abita Springs, LA 70420

Wanted: Heisey etched old fashions with: Golfer, Fisherman, Motor Boat, Circus, Mermaid, Tavern, Chevy Chase etch. Jerry Glenn, 1637 Londondale Pkwy., Newark, OH 43055 (614) 344-8419.

Wanted: Heisey baskets: etched, cut, colored, or whimsey. Send price and description to Kim Carlisle, 28220 Lamong Rd., Sheridan, IN 46069 (317) 758-5767.

Donald P. Bean	Ship & Ins. Extra
36 Harding St.	(508) 473-0561
Milford, MA 01757	H = Marked
#1252 Twist covered mustard, Flamingo, H	\$ 50.00
#1540 Lariat 8-1/2" round 4-part relish, 4 handles	\$ 42.50
#22 Windsor candlesticks 7-5/8" tall, pr.	\$ 35.00
#1519 Waverly 9" 4-part round relish, fern handles, H	\$ 42.50
#393 Narrow Flute footed nut cups, H (6 for)	\$ 36.00
#372 McGrady 7 oz. syrup, metal lid, H	\$ 45.00
#407 Coarse Rib 3-pint tankard, H	\$ 75.00
#357 Duck ashtray, Moongleam, H	\$195.00
#1540 Lariat 3-lite candlesticks, pr. (minor scratch on one stick)	\$ 50.00

HEAR YE, HEAR YE !

Announcing the preview of a fabulous Heisey collection containing over 3000 pieces acquired from an East coast collector. Stop in soon to see a sample of this collection or send your wish list and a S.A.S.E. and we'll send you a list of the items we have available in your preferred category. For your convenience, call our new "Do you Have it? Can you get it?" toll free number: 1 - 800 - FON - HEISEY.

Moundbuilders Antiques
The Second Generation

1640 Columbus Rd. S.W., Granville, Ohio 43023

Open Daily, Except Saturday 614-587-2227

Charles Hemlock
17725 Manderson #102
Detroit, MI 48203

(313) 861-7149
UPS & Ins. Extra

#411 Tudor handled cheese, Moongleam, H	\$ 15.00
#1405 Ipswich 11" floral bowl, H	\$ 65.00
#1503 Crystolite footed cigarette holder, H	\$ 25.00
#1540 Lariat candleblocks, pr., H	\$ 25.00
#1540 Lariat vase, crimped top, mold flaw on base	\$ 27.00
#3481 Glenford 3 oz. cocktail, D/O, Flamingo, (10) ea.	\$ 15.00
#4054 Coronation cocktail shaker	\$ 35.00
#5057 Suez low goblet, H (8) ea.	\$ 9.00
Goose, wings half	\$ 60.00

L & L Uniques
4125 Sperry St.
Dallas, TX 75214

Larry & Linda Love
(214) 821-1688
UPS & Ins. Extra

#5022 Graceful 10 oz. goblet, Enchantress cut, (3) ea.	\$ 60.00
#5010 Symphone 10 oz. goblet, Danish Princess cut, (4) ea.	\$ 45.00
#1509 Queen Anne D/F cream/sugar, Danish Princess cut, set	\$ 98.00
#3404 Spanish 10 oz. goblet, Killarney cut, (4) ea.	\$ 50.00
#3404 Spanish 12 oz. footed soda, Killarney cut, (4) ea.	\$ 45.00
#3404 Spanish 5-1/2 oz. saucer champagne, Killarney cut, (3) ea.	\$45.00
#3404 Spanish 3-1/2 oz cocktail/wine, Killarney cut, (4) ea.	\$ 55.00
#1469 Ridgeleigh cup & saucer, (8 sets), each set	\$ 30.00
#1567 Plantation punch bowl, underplate, 8 cups, ladle	CALL

Maurine Murray
Box 546
Colby, KS 67701

UPS
H = Marked

#1295 Bead Swag covered butter, Milk Opaque, rose dec.	\$ 98.00
#1295 Bead Swag 4-1/2" nappy, rose dec, sou. Dennison, Minn, H	\$ 45.00
#1255 Pineapple & Fan souv. pitcher, Souv. Brunswick ME	\$ 45.00
#1101 4 -1/2 oz handled custard cup, souv. Gimms, Wisc., H	\$ 20.00
#1220 Puntty Band souv. toothpick, Custard, rose dec. ea	\$ 45.00
#1220 Puntty Band souvenir tumbler, H, (3) ea.	\$ 45.00
#1245 Ring Band souvenir custard cups, H, (2) ea	\$ 45.00
#1280 Winged Scroll tankard & (6) tumblers, Custard, set	\$525.00
#350 Pinwheel & Fan 8" berry bowl & (6) nappies, H, set	\$150.00

James S. Harris Antiques/Appraisal (606) 623-9100

Box 672
Richmond, KY 40475

Post & Ins. Extra
H = Marked

#310 Ring Band tumbler, custard/gold decor., H	\$ 50.00
#1200 Cut Block ind. creamer, souv. Stratford, Wis., Custard,	\$ 60.00
#1200 Cut Block ind. creamer, souv. Newell, IA, Custard,	\$ 70.00
#1255 Pineapple & Fan 5" pitcher, souv. Bruce, Wis., Custard	\$ 67.50
#1255 Pineapple & Fan 5" pitcher, souv. Iron Ridge, Wi., Custard	\$62.50
#1280 Winged Scroll tumbler, Custard, excel. gold dec.	\$100.00
#1295 Bead Swag goblet, souv. Omro, Wis, Custard	\$ 85.00
#1295 Bead Swag goblet, souv. Dow City, Iowa, Custard	\$ 85.00
#1295 Bead Swag goblet, souv. Woodland, Wis., Custard	\$ 85.00

Mary Williams 2205 Route 3A Marshfield, MA	(617) 837-0409 5 p.m. - 10 p.m. U.P.S.
#3404 Spanish wine, Cobalt	\$125.00
#3404 Spanish 10 oz. goblet	\$ 65.00
#5072 Rose goblet, Heisey rose etch	\$ 40.00
#3414 Marriette 10 oz. goblet, w/cutiing	\$ 25.00
#5079 Pan American cocktail	\$ 18.00
#1469 Ridgeleigh cocktail	\$ 25.00
#451 Cross Lined Flute 7 oz. goblet	\$ 22.00
#3411 Monte Cristo 9 oz. goblet	\$ 35.00
#1405 Ipswich saucer champagne	\$ 20.00
#2401 old fashion, frosted, w/ #5003 Nimrod carv.	\$ 42.00
#2401 old fashion, w/ #462 Fox Chase carv.	\$ 40.00
#1415 20th Century 8 oz. ftd. tumbler, Dawn	\$ 40.00
#1252 Twist 2-1/2 oz. wine, Moongleam	\$ 22.00
#1118 Indian Hill grapefruit	\$ 40.00
#4055 Park Lane 4 oz. cocktail	\$ 20.00
#1404 Old Sandwich 2-1/2 oz. wine, Moongleam	\$ 22.00
#3416 Barbara Fritchie goblet, W/O	\$ 35.00
#351 Colonial 6 oz sham	\$ 35.00
#3408 Jamestown 3 oz cocktail, Barcellona cut, (2) ea.	\$ 18.00
#433 Greek Key punch bowl & stand	\$295.00

L.A. Maness (804) 798-1825
Rt. 1, Box 552 UPS \$4.00 EACH CARTON
Ashland, VA 23005 H = Marked

Visa/Mastercard Welcome	
#3362 Charter Oak 6 oz. sherbet, Moongleam, H (2) ea.	\$ 25.00
#3362 Charter Oak cocktail, Flamingo, H (2) ea.	\$ 22.50
#3362 Charter Oak 6 oz. sherbet, Flamingo, H (3) ea.	\$ 22.50
#1150 Colonial Star 7-1/2" plate, H (4) ea.	\$ 10.00
#353 Colonial 2 oz cruet, H	\$ 42.50
#407 Coarse Rib 7-1/2" plate, Flamingo, H (4) ea.	\$ 12.00
#1503 Crystolite 3 oz. oil, H	\$ 47.50
#1503 Crystolite round footed cig. hldr., H	\$ 20.00
#1401 Empress 7-1/2" dolphin ftd nappy, H	\$ 27.50
#135 Empress 6" candlestick, pair	\$ 75.00
#1405 Ipswich oyster cocktail, H (6) ea.	\$ 17.50
#500 Octagon 6" handled tray, Flamingo	\$ 20.00
#1567 Plantation 6-1/2" handled jelly, H	\$ 50.00
#351 Priscilla 2 oz. wine, H (8) ea.	\$ 17.50
#341 Puritan 6" X 12" oval nappy, H	\$ 50.00
#341 Puritan 3-1/2 oz claret, H (3) ea.	\$ 25.00
#1252 Twist 7" pickle dish, Moongleam, H	\$ 27.50
#1252 Twist 8" plates, H (4) ea.	\$ 14.00
#3350 Wabash 10 oz. goblet, W/O, H (8) ea.	\$ 27.50
#3350 Wabash 6 oz saucer champagne, W/O, H (4) ea.	\$ 22.50

Forever Heisey Norm & Jan Thran 1663 Londondale Pkwy. Newark, OH 43055	(614) 344-5955 Ship & Ins. Extra H = Marked
#1503 Crystolite 10" leaf hdled pickle/relish, H	\$ 37.50
#1503 Crystolite 10-1/2" dinner plate, star base, H (8) ea.	\$ 95.00
#1503 Crystolite 7-1/2" coupe plate, (4) ea.	\$ 22.50
#5003 Crystolite 3-1/2 oz. claret, (some H) (6) ea.	\$ 30.00
#1485 Saturn 7" ftd. compote, Zircon, H	\$450.00
#1506 Provincial 1# covered butter, H	\$ 70.00
#1506 Provincial 13" celery, H	\$ 30.00
#1506 Provincial 4-part handled relish tray	\$ 30.00
#1506 Provincial 2-handled jelly, H	\$ 15.00
#3407 Overdorf 16 oz handled mug, (2) ea.	\$ 85.00
#1184 Yeoman 7" plate w/Empress etch, D/O Moongleam(5for)	\$50.00
#1404 Old Sanwich 12" oval floral bowl, Moongleam, H	\$145.00
#120 Overlapping Swirl 1-lite, H, pair	\$ 45.00
#3362 Charter Oak sherbet, Marigold, H (3) ea.	\$ 22.00
#1205 Fancy Loop toothpick	\$ 50.00
#3397 Gascony champagne, Tangerine bowl w/crystal base	\$295.00
#1401 Empress 10-1/2" sq. plate, Formal Chintz, Sahara, H, (4) ea.	\$100.00
#1401 Empress cup/rnd. saucer, Formal chintz, Sahara, H, (7) ea.	\$ 35.00
#1252 Twist 8" ftd. nut bowl, Marigold, H	\$ 85.00
#1252 Twist 8 oz. flat soda, Marigold, H, (4 for)	\$175.00

Nita's Glass & Linen Shoppe 591 Leonard Rd. Onalaska, WA 98570	(206) 978-4913 P & I Extra
#134 Trident 2-lite candlestick, cut, (one only)	\$15.00
#150 Banded Flute 4 oz. high sherbet, H	\$ 9.00
#150 Banded Flute 3 oz. low sherbet, H (2for)	\$ 18.00
#160 Locket on Chain 4" nappy (2 for)	\$ 40.00
#339 Continental sherbet, H	\$ 8.00
#1205 Fancy Loop wine, (2) ea.	\$ 40.00
#1205 Fancy Loop claret, cupped	\$ 40.00
#1205 Fancy Loop cocktail	\$ 32.00
#1205-1/2 salt bottles, cloudy (2 for)	\$ 10.00
#1401 Empress cupped punch cup	\$ 18.00
#1401 Empress ind. sugar, cut	\$ 12.00
#1405 Ipswich goblet, H	\$ 10.00
#1447 Rococo 4-1/2" nappy, chips on base, H	\$ 5.00
#1467 Ridgeleigh 6" plates, (2 for)	\$ 10.00
#1540 Lariat cream & sugar, H, pair	\$ 20.00
#3411 Monte Cristo tall champagne, cut, (2 for)	\$ 35.00
#5022 Graceful cordial, Orchid etch, nick on rim, H	\$ 30.00
#5025 Tyroleon wine, Orchid etch, H	\$ 75.00
Heisey by Imperial Plug Horse, "Sparky", Carmel Slag, IG	\$ 50.00
Heisey by Imperial colts, Ultra Blue, IG, (3 pc. set)	\$125.00

H & R Diamond H Helen & Bob Rarey 1450 White Ash Drive Columbus, OH 43204		(614) 279-0390 after 5:30 P.M. UPS & Ins. Extra H = Marked	Mr. & Mrs. Donald Parrett 4995 Mapledale Rd. Jackson, MI 49201		(517) 784-7319 & Recorder Post & Ins. Extra
#5 Patrician 12" 1-lite candelabra, C prisms, H pr.	\$375.00		#3404 Spanish 6oz. champagne, Cobalt, (2) ea.	\$ 98.00	
#10 salt & pepper shaker, H, pr.	\$ 37.50		#7089 Clover 8" clover leaf party tray, Flamingo	\$ 95.00	
#31 Jack Be Nimble toy 1-lite candleholder, H pr.	\$ 75.00		#300 Peerless 9" berry bowl & (6) 4-1/2" ind. bowls, gold (7 pcs)	\$175.00	
#352 Medium Flat Panel 2-qt. crushed fruit jar, H	\$215.00		#135 Empress large 2 hndl. fruit bowl, Moongleam, as is	\$ 95.00	
#365 Old Queen Ann 5 pc. berry set, H	\$125.00		#1255 Pineapple & Fan 11" oval fruit bowl	\$ 50.00	
#393 Narrow Flute ind. footed almond, H (3) ea.	\$ 15.00		#500 Octagon 14" 2 hndl. 4-part relish	\$ 50.00	
#393 Narrow Flute bar glass, H	\$ 21.50		#1489 Puritan 12" rectangle bowl	\$ 35.00	
#417 Tudor 2-1/2 oz. oyster cocktail, H	\$ 22.50		#1469 Ridgeleigh 7" 2-hndl. ice bucket	\$ 75.00	
#433 Greek Key jelly compote, H	\$ 52.50		#1469 Ridgeleigh 8 oz. old Fashion	\$ 45.00	
#459 Colonial 8" basket, Windsor cut, H	\$310.00		#1469 Ridgeleigh 11" round 3-part relish	\$ 48.00	
#1184 Yeoman 5" mint compote, Moongleam, H	\$ 45.00		#1469 Ridgeleigh 6" square ashtray, Huntington Nat'L Bank	\$ 45.00	
#1229 Octagon ind. handled nut, Moongleam, H (3) ea.	\$ 27.50		#1469 Ridgeleigh cone salt & pepper, set	\$ 35.00	
#1295 Bead Swag covered sugar, w/floral dec., Opal	\$ 95.00		#1469 Ridgeleigh 3" ashtrays & rack, (9 pc. set)	\$ 48.00	
#1401 Empress round saucer, Flamingo, H (3) ea.	\$ 12.00		#1469 Ridgeleigh 2-1/2" round cig. holder, covd.	\$ 98.00	
#1401 Empress ind. nut dish, D/F	\$ 16.00		#1469 Ridgeleigh 3-1/4" round coaster, (5) ea	\$ 7.00	
#1425 Victorian cream & sugar, H	\$ 47.50		#465 Recessed Panel 7"x 9-1/2" basket	\$155.00	
#1469 Ridgeleigh 3" coaster, Zircon, (2) ea.	\$ 49.50		#350 Pinwheel & fan 8"x 11-1/2" basket	\$215.00	
#1469 Ridgeleigh 3" coaster, Sahara	\$ 35.00		#1183 Revere 8"x11-1/2" basket, cut	\$245.00	
#1469 Ridgeleigh club ind. ashtray, H	\$ 14.50		#459 Colonial 7-1/2" round x 15", plain or cut, ea.	\$285.00	
#1469 Ridgeleigh 2" sq. ashtray, H, (2) ea.	\$ 9.50		#458 Pickett 8-1/2 x 11" basket	\$195.00	
#1469 Ridgeleigh ind. salt, H (2) ea.	\$ 6.50		#462 Hexagon 8-1/2" X 11" basket, w/gold dec.	\$245.00	
#1485 Fern mayo & underplate, beautiful cutting	\$ 60.00		#417 Double Rib & Panel 6" round x 8" basket, Moongleam	\$155.00	
#1503 Crystolite punch bowl, underplate, ladle, 12 cups	\$325.00		#417 Double Rib & Panel 6" round x 8" basket, Flamingo	\$145.00	
Heisey punch ladle, glass	\$ 67.50		#3368 Albemarle 7" compote, D/O, Moongleam ft. & stem	\$ 80.00	
#1503 Crystolite clover leaf relish	\$ 27.50		#1295 Bead Swag 8" berry bowl, w/gold dec., Emerald	\$ 75.00	
#1509 Queen Ann 1-lite candelabra, A prisms, pair	\$115.00		#1295 Bead Swag 4-1/2" berry bowl, gold dec., Emerald, (2) ea.	\$ 25.00	
#1509 Queen Ann 8" round center. handle 3-part relish	\$ 37.50		#300 Peerless 10" cake stand	\$ 75.00	
#1519 Waverly covered candy, Elks Crest, 50th anniversary	\$ 39.50		#1503 Crystolite 13" oval dresser tray	\$ 75.00	
#1519 Waverly 8" 4-part round relish	\$ 49.50		#1503 Crystolite 3" bridge ashtray & holder (5 pc. set)	\$ 48.00	
#1567 Plantation 11" oval 5-part relish	\$ 75.00		#1503 Crystolite 4" flared violet vase	\$ 75.00	
#1632 Satellite 8" bowl, H	\$ 77.50		#1503 Crystolite 4" coasters, (6) ea.	\$ 12.00	
#4036 Marshall 1 qt. cocktail shaker w/ Rooster stopper	\$ 97.50		#1951 Cabochon 7" lg. cvd. stick butter	\$ 55.00	
#5019 Waverly 10 oz goblet, (4) ea.	\$ 22.50		#1183 Revere 9" dinner plate, (6) ea.	\$ 18.00	
#5086 Plantation Ivy 3-1/2 oz. cocktail, Lily Vale cut (3) ea.	\$ 16.50		#353 Colonial 10-1/2" flat tray	\$ 45.00	
Heisey by Imperial: Colts, Ultra Blue, set of three IG	\$110.00		#1184 Yeoman 9-1/4" round dinner plate, D/O, Flamingo, (6) ea.	\$32.00	
Balking Pony on bust-off, Ultra Blue, IG	\$ 82.50		#4 Swan	\$595.00	
Colts, Light Blue, set of 3, IG	\$ 70.00		#1205 Fancy Loop lg. potporri covered jar	\$275.00	
Colts, Amber, set of 3	\$335.00		#1428 Warwick floral bowl, Cobalt	\$465.00	
Filly, head front, Amber	\$295.00		#1413 Cathedral 8" flared vase	\$575.00	
Filly, head rear, Amber	\$395.00		#3404 Spanish 8 oz. goblet, optic, (5) ea.	\$110.00	
Lion trinket box, Amber	\$125.00		#1626 Lodestar 4 oz. martini glass, Dawn, (4) ea.	\$ 42.00	
Donkey, Carmel Slag, IG	\$ 37.50		#1626 Lodestar 5" mayonnaise or master nut	\$ 55.00	
Medium Elephant, Carmel Slag, IG	\$ 37.50		#337 Touraine 3 oz. bar, N/O, Harvey, Amber, (4) ea.	\$ 48.00	
Small Elephant, Carmel Slag, IG	\$ 57.50		#3360 Penn Charter 9 oz. tumbler, C/O*, Hawthorne, (6) ea.	\$ 48.00	
Airedale, Carmel Slag, IG	\$ 97.50		#3360 Penn Charter 6 oz. sherbet, C/O*, Hawthorne, (6) ea.	\$ 38.00	
Balking Pony, Carmel Slag, IG	\$190.00		#3360 Penn Charter 6 oz. champagne C/O*, Hawthorne, (3) ea.	\$ 42.50	
Kicking Pony, Carmel Slag, IG	\$195.00		#3424 Admiralty w/cutting, very pretty (8) 6pc. place settings, Call		
Scottie Dog, Carmel Slag, IG	\$225.00		*Checker Optic		

RE: Antiques
1014 Foxwood Drive
Nashville, TN 37215

(615) 665-1824
H = Marked
Postage & Ins. Extra

Lay aways Welcome

Fighting Rooster, (2) ea.	\$ 80.00
#2 Old Williamsburg 1-lite 7" candlestick, pr.	\$ 95.00
#15 Duck flower frog and #1184 Yeoman 12" floral bowl-- all Moongleam, (3 pcs) all	\$300.00
#22 Windsor 7" candlestick, pr.	\$ 80.00
#500 Octagon 4-part 12" variety tray, Nimrod carv.	\$150.00
#1205 Fancy Loop 4" rose bowl	\$150.00
#1401 Empress 4 oz. oil & #83 stopper, Flamingo	\$115.00
#1401 Empress ash tray, Sahara, H	\$ 67.00
#1401 Empress 8" square plates, tangerine, H, (4) ea.	\$190.00
#1401 Empress cup & saucer round, Alexandrite, (3 sets)	\$125.00
#1404 Old Sandwich cruet & stopper	\$ 55.00
#1404 Old Sandwich 6" comport, Sahara, H	\$ 75.00
#1428 Warwick ind. candlestick, Sahara, H, pr.	\$ 60.00
#1469 Ridgeleigh 8" square plate, (4) ea.	\$ 20.00
#1469-1/2 Ridgeleigh 1-lite candelabra, A prisms, pr.	\$160.00
#1503 Crystolite cruet & stopper	\$ 47.00
#1519 Waverly 8" salad plate, Heisey Rose etch, (8) ea.	\$ 30.00
#1567 Plantation 5" epergne footed candleholders, pr.	\$150.00
#1567 Plantation cream & sugar	\$ 60.00
#3350 Wabash 10 oz. goblet D/O, Hawthorne	\$ 75.00
#3350 Wabash 10 oz. goblet, N/O, Pied Piper etch, (6) all	\$125.00
#3350 Wabash 3-prt. ftd tankard, pl neck, Pied Piper etch,	\$260.00
#3380 Old Dominion tall stem goblet, D/O, Alexandrite	\$160.00
#3416 Barbara Fritchie cordial, clear stem, choice of Alexandrite, Cobalt, or Sahara bowl, (3) ea.	\$400.00
#4206 Optic Tooth 8 oz. ftd. soda, Moongleam, (6) ea.	\$ 50.00
#5072 rose 12 oz ftd. ice tea, N/O, Heisey Rose etch, (8) ea.	\$ 70.00
#5079 Pan American wine 3 oz.	\$ 50.00

Laurel G. Caruthers
106 Hazel Street
Spooner, WI 54801

UPS & Ins. Extra

#1540 Lariat 10-1/2" plate, (12) ea.	\$ 85.00
#1540 Lariat 8" plate, (8) ea.	\$ 20.00
#1540 Lariat 6" plate, (16) ea.	\$ 12.00
#1540 Lariat cups & saucers (8 sets) ea.	\$ 20.00
(will sell eight each of above for \$1,000.00)	
#1540 Lariat 6 oz. high sherbets, (6) ea.	\$ 15.00
#5040 Lariat 10 oz. blown goblet (4) ea.	\$ 25.00
#5040 Lariat 5-1/4 oz. blown saucer champagne	\$ 15.00

Elaine Neal
2802 Irwin Rd.
Huntsville, AL 35801

(205) 539-4810
Ship & Ins. Extra

#5010 Symphone 5 oz. juice, Minuet etch, (4) ea.	\$ 36.00
#5010 Symphone ice tea, Minuet etch, (12) ea.	\$ 45.00
#5010 Symphone low sherbet, Minuet etch, (2) ea.	\$ 36.00
#5010 Symphone saucer champagne, Minuet etch, (11) ea.	\$ 40.00
#5010 Symphone goblet, Minuet etch (18) ea.	\$ 45.00
#5010 Symphone 2-1/2 oz wine, Minuet etch, (4) ea.	\$ 70.00
#5010 Symphone 3-1/2 oz cocktail, Minuet etch, (8) ea.	\$ 70.00
#70B Roseville Burmese candleholders/bookend, Black, pair,	\$225.00

DONKEY !

ELEPHANT !

Order Your Election Year Political Party Symbol

**LIMITED EDITION - MADE IN THE ORIGINAL
HEISEY MOLD BY FENTON - AVAILABLE IN SEA
MIST GREEN - CHOOSE EITHER FROSTED OR
CLEAR - MARKED "F" AND "HCA" - PRICE \$25.00**

PHONE : (614) 345-2932

MUSEUM GIFT SHOP HRS: 1 P.M. - 4 P.M. DAILY

*Mail Orders Must Add 10% Ship And \$3.00 Handling.
ALL Ohio Orders Must Pay 6% Sales Tax.*

More Baskets

Brad just returned from Fenton with a new shipment of baskets. The baskets were made in the original Heisey Rococo mold in Sea Mist Green and a dark Royal Blue. They are available in either clear at \$40.00 each, or frosted at \$42.50 each. We have a good selection in both colors. Each basket is unique--no two are alike!

Stop in at the Museum Gift Shop to pick out your favorite, or call (614) 345-2932 to place a mail order. Remember all Ohio sales, both mail orders and Museum purchases, must pay Ohio 6% sales tax. All mail orders must add 10% of the total order for shipping and \$3.00 for handling. To receive a complete listing of our Gift Gallery merchandise write to:

HCA
169 W. Church St.
Newark, Ohio 43055

MUSEUM HRS. 1 - 4 P.M. DAILY

BUSINESS OFFICE HRS. M-F 8 A.M. - 4:30P.M.

MARJORIE GILLETTE Rochester, New York Glassware Specialty Heisey Mail Orders & Shows 716-225-4678	DUNBAR ENTERPRISES Heisey a Specialty Mail Order, Shows, Appraisals PO Box 7085, Port St. Lucie, FL 34985-7085 Oct-May 407-337-1558 PO Box 222, Naples, ME 04055 June-Sept 207-647-5652	COMPARISON LIST New Heisey Auction List For 1992, 3 year auctions 89-90-91 Price \$13.00 + \$2.00 shipping. Payable: B. Whaley 300 International Dr., Pataskala, OH 43062-9209 614-927-1557
ALL HEISEY AUCTION Consignments Welcome Apple Tree Auction Center 1616 W. Church, Newark, OH 43055 PH: (614) 344-9449	GREEN ACRES FARMS Antiques, Crystal Glass & Collectibles 2678 Hazelton-Etna Rd., SW (S.R. 310-N) Pataskala, OH 43062 Sat. or Sun. PM or call (614) 927-1882	THE CURIOSITY SHOPPE Heisey, Pottery, Coins, Crafts & More In Holmes County Amish Country 55 W. Jackson, Millersburg, OH 44654 (216) 674-2999
ALFA I CARRIAGE HOUSE ANTIQUES Featuring Depression & Elegant Glassware Al & Faye Maness Rt. 1 Box 552, Ashland, VA 23005 PH: (804) 798-1825	H & R DIAMOND H Helen & Robert Rarey 1450 White Ash Dr. Columbus, OH 43204 PH: (614) 279-0390 after 5:30	PARRETT'S ANTIQUES Heisey 4995 Mapledale Rd. Jackson, MI 49201 517-784-7319 - Recorder
ANTIQUES - THE SHULTZES 206-208 East Main St. Newmantown, PA 17073 15 Miles West of Reading, PA PH: (215) 589-2819	"HAPPINESS IS" - THE STULTZS 3106 Warren Court, Glen Allen, VA 23060 Shows and Mail Order PH: (804) 672-8102	PATTON HOUSE Rocky's Mall, I-81 & US 11 Weyer's Cave, VA 24486 PH: (703) 967-1181 The Antique Gallery, Richmond, VA
C & J ANTIQUES Cole & Jean Miesner Box 45, 72 Whig St. Newark Valley, NY 13811 PH: (607) 642-9905	MOONBUILDERS ANTIQUES The Second Generation 1640 Columbus Rd., S.W., Granville, OH 43023 Closed Saturday 1-800-FON-HEISEY Lots of Heisey, minutes from the museum. (614) 587-2227	SCHWAN'S ANTIQUES SHOWS & MAILORDER 77 Lagos del Norte Ft. Pierce, FL 34951 PH: (407) 461-5940
DOXTOIS Eva & Joe Hirsh Heisey & Pattern Glass 6 James St., Norwalk, CT 06850 PH: (203) 847-3315	HELEN & JIM KENNON Heisey, Cambridge, Fostoria, Duncan, Imperial, Fenton, Tiffin P.O. Box 114 Brookville, OH 45309 PH: (513) 833-5406 SHOWS ONLY	R & L ANTIQUES-SAN FRANCISCO Members of the Golden Gate Heisey Club 3690 Bodega Ave. Petaluma, CA 94952 PH: Petaluma (707) 762-2494 PH: San Francisco (415) 621-6693
CHARLES & MILDRED FISHER Heisey, Degenhart, Imperial, Antiques, Collectibles, General Line 991 Idlewild, Newark, OH 43055 PH: (614) 522-5398	JJ MC KEE ANTIQUES Pottery - Glassware - Collectibles 222 West 75th St. Kansas City, MO 64114 Wed.-Sun. 10-5 PH: (816) 361-8719	THE WOODEN SHOE Antiques & Collectibles Jim & Sheri VanEs by Appt. 810 Elden, Herndon, VA 22070 PH: (703) 435-9045
CRYSTAL LADY Joann Hagerty Specializing in elegant depression glassware 1817 Vinton Street, Omaha, NE 68108 Shop Ph. (402) 341-0643 or Home Ph. (402) 391-6730	RAILROAD DINING CAR CHINA Wanted By Collector - Harold W. Ames 4574 Driftwood La., Canandaigua, NY 144424 1-716-394-1098 1-800-836-9619 Most Anything Railroad Related Wanted	CARLISLE AND ASSOCIATES We clean cloudy cruets, decanters, cocktail shakers, vases, salt & peppers, etc. Write for flyer 28220 Lamong Rd., Sheridan, IN 46069
DIAMOND H PLUS Mail Orders & Shows George & Eileen Schamel 6625 Gilardi Rd., Boonsboro, MD 21713 PH: (301) 432-6285	J. & R. COLLECTIBLES Shows, SASE, Mail Order list The Lukasko's P.O. Box 1030, Newark, Ohio 43058-1030 PH: (614) 344-9719	ARMORY ANTIQUES Specializing In Quality Glass & Furniture Heisey And Other Elegant Glass 168 W. Main St., Plain City, OH 43064 (614) 873-4890
ETTELMAN'S DISCONTINUED CHINA & CRYSTAL HEISEY a SPECIALTY P.O. Box 6491-HN Corpus Christi, TX 78411 PH: (512) 888-8391 Include SASE	MOSTLY HEISEY Rhoda Curley 16 Clayton PL, Albany, NY 12209 Shop and Mail Order PH: (518) 482-6272	HEISEY PUBLICATIONS Box 102, Plymouth, Ohio 44865 All Vogel Heisey Books I, II, III, IV And Quarterly Newscasters available
FOREVER HEISEY Jan & Norm Thran Mail Order, Shows, Appraisal Service 1663 Londondale Pkwy., Newark, OH 43055 PH: (614) 344-5955	GLASS PAPERWEIGHTS Handcrafted by W.E. Porter, former Heisey glassworker. Available for purchase at the Heisey Museum Gift shop. For information send large SASE to 6405 Chippindon Drive, Huber Heights, OH 45424. Wholesale/Retail (513) 233-8570.	WILLEY'S ANTIQUES & MUSEUM Specializing in Heisey 11110 Cannon Rd., Frazeyburg, OH 43822 16 miles east of Newark, OH PH: (614) 828-2557
"OUR PLACE ANTIQUES" & "The Barn" 121 S. Prospect St., Granville, Ohio 43023 Open Daily 12-5 PH: (614) 587-4601	THE MUTED SWAN ANTIQUES 5486 Peachtree Rd., Chamblee, GA 30341 Heart of Chamblee Antique Row Specializing in Heisey & Cambridge Bill & Pat Miller PH: (404) 451-7620	JAMES S. HARRIS ANTIQUES/APPRAISALS Box 672 Richmond, KY 40475-0672 PH:(606) 623-9100 Buying and Selling by Mail
GLASS 'N' GLASS Virginia & Odell Johnson 6909 10th Ave. West Brandenton, FL, 34209 (813) 792-0604	SHRADER ANTIQUES Dep. & Elegant Glass, Buffalo Pottery Railroad Dining Car China, Shelley China 2025 Highway 199, Crescent City, CA 95531 PH: (707) 458-3525	TALL OAKS ANTIQUES Glassware-Specializing in Heisey Shows - Mail order 219-696-0147 Mike & Barb Rosenberger 565 N Nichols, Lowell, IN 46356

1993 HCA BENEFIT AUCTION CONSIGNOR PACKING LIST FORM

NAME _____

STREET _____

CITY **STATE** **ZIP**

PHONE () _____

[illegible]

**1993 HCA BENEFIT AUCTION
APPLE TREE AUCTION CENTER
1616 W. CHURCH ST., NEWARK, OHIO 43055
MARCH 12 & 13, 1993**

HCA has been very fortunate in the last year to have so many new members join our ranks. Of all the membership benefits to be enjoyed, the opportunity to participate in the annual All Heisey Benefit Auction is one of the most exciting. Not only is it a great way to snare those pieces eluding your collection, but it is also very educational to attend. Most of all, we urge you to participate by consigning and making glass donations. Last year over 960 lots were consigned and 95 lots donated. Approximately \$15,000 profit went to the General Fund plus the \$3200 profit realized from the donated lots which benefitted the Building Fund. Hundreds of mail bids were handled and hundreds of pieces of glass were shipped all over the country to successful mail bidders. As a review for all members, here is how the auction works:

Each HCA FAMILY may consign 12 lots of Heisey glass. Each lot may contain as many items as you wish. 80% of the price realized goes to the consignor and 20%

to the General Fund. Any item which sells for \$5.00 or less will be considered a donation.

Glass given as donations are gratefully accepted. 100% of the profit goes to the General Fund and is tax deductible by you. You may donate as many lots of glass as you wish in addition to your twelve lots.

SHIP TO: HCA
169 W. Church St.
Newark, OH 43055

Please enclose a packing list with every box. If more space is needed, reproduce the form.

Remember to clean your glass - glass in good condition receives better prices.

All glass is inspected when received. Any glass found not to be Heisey will be returned, including Heisey by Imperial and commemorative pieces.

DEADLINE: Glass for the auction must be received by 4:30 p.m. on Monday January 4, 1993.

For more information contact:

**Jim Clark (513)845-9132 or
Amy Jo Jones (513)426-1567**

WE CLEAN CLOUDY GLASS ! ** SATISFACTION GUARANTEED **

WE DO NOT OIL, WAX OR COVER UP THE SICKNESS IN ANY WAY! WE ACTUALLY REMOVE IT.

NO ITEMS ARE TOO SICK TO CLEAN! IF WE CANNOT CLEAN THE INTERIOR OF AN ITEM TO MEET YOUR SATISFACTION THE CLEANING IS FREE!

WE ARE SO CONFIDENT IN OUR SERVICE THAT WE ASK THAT YOU SEND NO MONEY. WHEN WE RETURN YOUR ITEM A BILL WILL BE ENCLOSED FOR THE POSTAGE & CLEANING. IF YOU ARE HAPPY, PLEASE SEND PAYMENT, IF NOT, RETURN THE BILL MARKED "NOT SATISFIED".

PLEASE ALLOW 4-6 WEEKS FOR REDELIVERY OF MOST ITEMS. SOME VERY CLOUDY ITEMS MAY TAKE SEVERAL ADDITIONAL WEEKS. ALL GLASS IS HANDLED AND CLEANED AT YOUR RISK.

CRUET	\$20.00	COCKTAIL SHAKER	\$30.00
COLOGNE	\$20.00	SALT SHAKER (SINGLE)	\$15.00
WATER BOTTLE	\$30.00	SALT SHAKER (PAIR)	\$25.00
DECANTER	\$30.00	CRUSHED FRUIT JAR	\$30.00
VASES (UNDER 12 IN.)	\$25.00	LAVENDER JAR	\$20-30.00

ALL OTHER ITEMS WRITE FOR QUOTE

" YOU SEEK PERFECTION - AT CARLISLE & ASSOCIATES WE PROVIDE IT! "

--- WE CAN PICKUP/DELIVER ---
* ANY APPLE TREE HEISEY AUCTION
* HOOSIER ANTIQUES SUPER SHOW
OCT 22-25 IN. STATE FAIRGROUNDS

SHIP TO: CARLISLE & ASSOCIATES
20220 LAMONG ROAD DEPT. H
SHERIDAN IN 46069
(317) 758-5767 AFTER 6:00 P.M.

The National Heisey Glass Museum

Corner of W. Church St. & N. Sixth St.
Newark, OH 43055

(614) 345-2932

Open Daily

1 p.m. - 4 p.m.

Closed holidays

We have eight rooms, approximately 5,600 feet, of display space for the beautiful handmade glass produced in Newark, Ohio by the A. H. Heisey Co. from 1896 to 1957.



Membership Renewal Notice: Check the date above your name and address on the mailing label. This is your renewal date. If it reads 10 -10-92, make sure your dues have been paid in order to receive next month's issue of the *Heisey News*. Yearly dues are \$18.50 per year plus \$2.50 for each additional household member.

OHIO
the heart of it all!™

Heisey

HEISEY PUBLICATIONS

P.O. Box 102
Plymouth, Ohio 44865



Heisey
Books-
Glass

Ralph & Sandra McKelvey (419) 935-0338
VOGEL BOOKS ON HEISEY

BOOK I FIRST TEN YEARS \$14.00
BOOK II COLONIAL YEARS 14.00
BOOK III ART AND COLORED GLASS 15.00
BOOK IV EARLY AND LATE YEARS 15.00
Special Set Price - \$55.00

THE NEWSCASTER -- oldest all-Heisey publication. All issues from 1977 to 1986 inclusive (publication was discontinued end of 1986). Set for \$35.00. Issues for individual years is \$4.00 per year.

NEW ITEMS

HEISEY NEWSCASTER - 1971-1976 - in 3 ring binder. Price \$35.00

SHIPPING AND HANDLING

Add \$4.00 for all orders!!

POSTMASTER SEND FORM 3579 TO:



HCA
169 W CHURCH ST
NEWARK, OH 43055

SECOND CLASS
DATED MATERIAL 9 - 25 - 92