

# HEISEY

NEWS

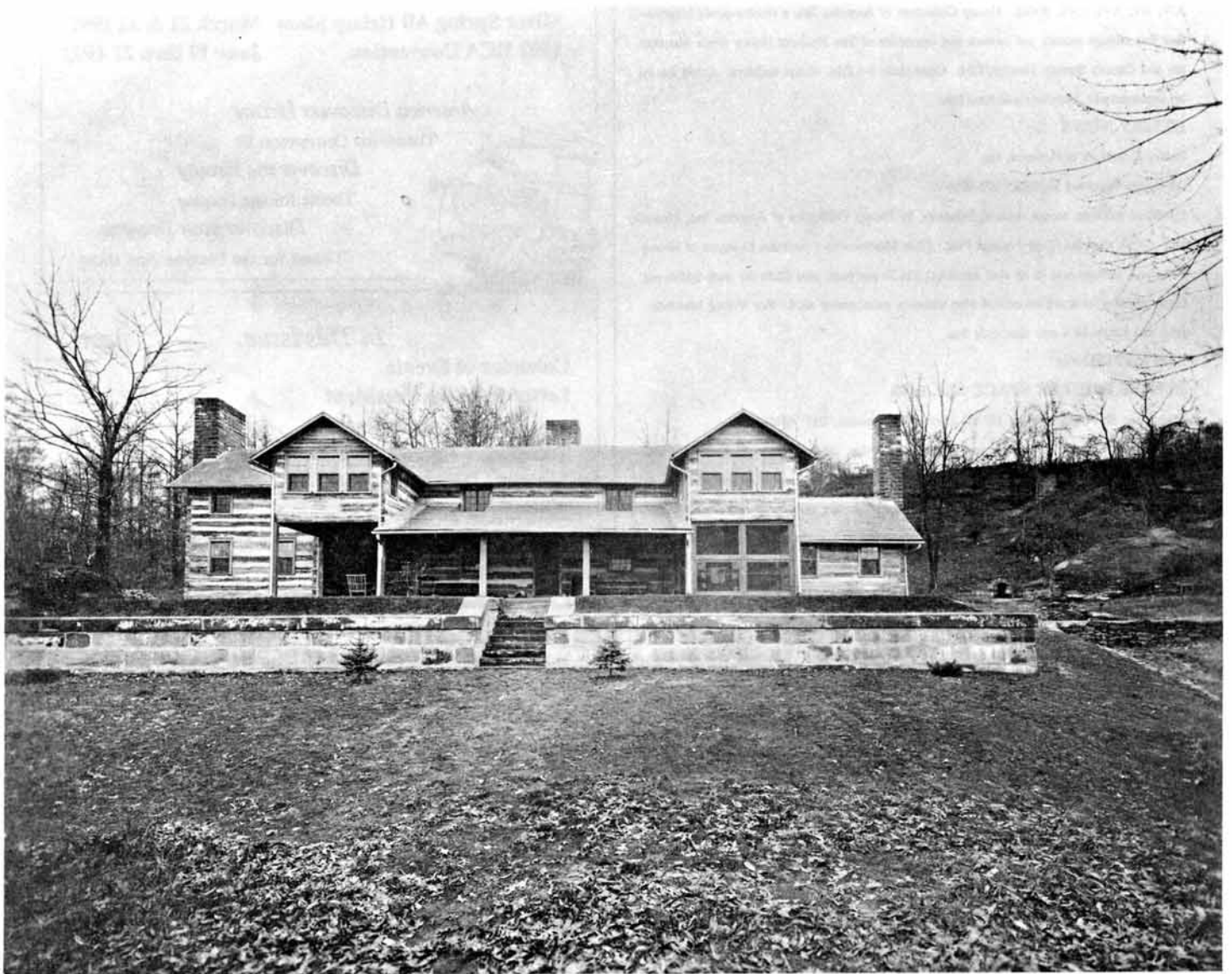


for your  
knowledge

OFFICIAL PUBLICATION of HEISEY COLLECTORS OF AMERICA

Volume XX No. 11

October 1991 ISSN 0731-8014



# HEISEY NEWS

**Editor Susan Pennington**  
 169 W. Church St.  
 Newark, OH 43055  
 (614)345-2932



Published and Printed in Newark, Ohio  
 \$18.50 per year, \$1.25 per copy

## Club Officers

**President** Richard P. (Dick) Smith (614) 366-5163  
**Vice Pres.** Sam Schnaidt (614) 587-0052  
**Secretary** Amy Jo Jones (513) 426-1567  
**Treasurer** Larry Stickle (614) 366-2000

**Back Issues:** Each volume (12 issues a year): \$9.00 The following volumes are available: V, VIII, IX, X, XI, XII, XIII, XIV, XV, XVI, XVII, XVIII, IX, D, XI, XII, XIII, XIV, XV, XVI, XVII, XVIII. Heisey Collectors of America, Inc, a not-for-profit corporation (tax exempt status), are owners and operators of The National Heisey Glass Museum, 6th and Church Streets, Newark, OH. Open daily 1-4 P.M. except holidays. Other hours by appointment. Members admitted free.

## HEISEY NEWS

Heisey Collectors of America, Inc.

All Rights Reserved 1991 ISSN 073-8014

Published monthly, except twice in February, by Heisey Collectors of America, Inc., Newark, OH 43055. Second Class Postage Paid. Club Membership ( includes 13 issues of Heisey News and participation in all club activities) \$18.50 per year, plus \$2.50 for each additional family member in same household who wishes a membership card. For Voting Membership, add \$25.00 as a one time only fee.

## ADVERTISING:

### PLEASE DOUBLE SPACE ALL ADS

Send to: HCA Advertising, 169 W. Church St., Newark, OH 43055

**Rates:** Classified: 15 cents per word. \$1.50 minimum, 1/8 page limit. Personal ads 1/8 page limit. Abbreviations and initials count as words. Please do not abbreviate Heisey pattern names. Ads which are entered in a vertical format can contain 64 characters (maximum) per line. When counting characters, remember to include spaces.

### DEALER DIRECTORY: \$25.00 Per Year

DISPLAY	MEMBER	NON
1/8 page (9 lines)	\$ 20.00	\$ 30.00
page (20 lines)	\$ 30.00	\$ 45.00
page (20 lines - horizontal)	\$ 45.00	\$ 67.00
1/2 page (48 lines - vertical)	\$ 60.00	\$ 90.00
page (48 lines)	\$ 75.00	\$112.00

**ALL ADS MUST BE PREPAID.** Ad copy must be received by the 5th of the month preceding the publication date, e.g. April 5th for May issue. Ads containing reproductions will not knowingly be accepted unless clearly stated (e.g. Heisey by Imperial, etc.) HEISEY NEWS accepts no further liability.

The opinions expressed in articles in HEISEY NEWS are those of the authors and not necessarily those of the organization. The Editor reserves the right to edit or refuse any material submitted for publication. When requesting information, please enclose a self-addressed stamped envelope.

## About the cover:

This months cover features the E. Wilson Heisey Cabin. The photograph, from the HCA archives, was taken when the cabin was built. The structure consists of seven log cabins which were joined together to create the lodge. In spite of its size, it was affectionately referred to as "the cabin". See pages 11, 12 & 13 for more interesting information on the cabin. A special thanks to Mr. & Mrs. McClintick, the present owners of the property, for providing us with the photograph on page 11.

## Calendar of Events

<b>December Holiday Dinner</b>	<b>December 7, 1991</b>
<b>1992 Benefit Auction</b>	<b>March 13 &amp; 14 1992</b>
<b>Starlight Antique Flea Market</b>	<b>March 15, 1992</b>
<b>Silver Spring All Heisey Show</b>	<b>March 21 &amp; 22 1992</b>
<b>1992 HCA Convention</b>	<b>June 17 thru 21 1992</b>

## America Discovers Heisey

Theme for Convention 92

*Discover the Beauty*

Theme for the Display

*Discover your Dreams*

Theme for the Preview And show



## In This Issue

	<i>page</i>
<b>Calendar of Events</b>	2
<b>Letter from the President</b>	3
<i>Dick Smith</i>	
<b>Treasurers Report</b>	3
<i>Larry Stickle</i>	
<b>Keeping in Touch</b>	4
<i>Louise Ream</i>	
<b>Club Notes</b>	5
<b>Christopher Ries, Glass Sculpturer</b>	6
<i>Virginia and Odell Johnson</i>	
<b>Recessed Panel Candy Jar Measurements</b>	6
<i>George Reynolds</i>	
<b>Dear Heisey News</b>	6
<b>diamonds are forever....</b>	7
<i>Janet Caswell</i>	
<b>Advertising Proofs</b>	8-9
<b>Oscar List Update</b>	10
<b>The Heisey Log Cabin</b>	11-13
<i>Susan Pennington</i>	
<b>Advertising Guidelines</b>	14
<b>Advertising</b>	15-24
<b>Dealer Directory</b>	22
<b>1992 Benefit Auction Form</b>	23



## Letter from the President

Dick Smith

I hope everyone has had a good summer. It sure seems to have gone fast!

A collective "thank you" to all of you who gave cash donations to the Building Expansion Fund when we passed the hat at the June meeting. Every contribution is appreciated.

Don't forget the museum gift shop for your holiday shopping. We have just received a shipment of sparrows in Biscayne Blue. They are really beautiful. We also have the remaining 1991 Sapphire Blue Opalescent frosted Oscars available for sale. They are now on sale to the public. Members who wish to purchase additional frosted Oscars may do so now. The complete Gift Gallery List will appear in the November issue of the Heisey News. It will include a mail order form for your convenience.

I am happy to report that the 1991 Clover Rope mugs were sold out one week before the September Dinner. They are the fourth in the series. This year's Clover Rope mug completes the set.

The Expansion Committee has been meeting weekly and all the studies are in. At this point we have several directions we can go. A presentation will be made at the September 14th Board meeting and at the general membership meeting. The November Heisey News will contain a detailed article on the outcome of the Board meeting and of the membership meeting, concerning the direction we will be taking. Keep your letters coming, or call one of the committee members with your suggestions. Your input and suggestions are very helpful.

The form for the All Heisey Benefit Auction appears on page 23. Use this form when you send in your glass for the 1992 March Benefit Auction. This event is a major fund raiser for the club. Commission rates are 20% to the Club and 80% to the consigner, with a \$5.00 minimum commission. Jim Clark is chairman of the event again this year.

We wish to thank all the volunteers who have helped at the museum this past year. Anyone who would like to volunteer should contact Susan Pennington. I am sure she would appreciate your help.

Til next month....



## Treasurers Quarterly Report

August 31, 1991

Cash Balance May 31, 1991 \$ 7,062.04

### CASH RECEIVED:

Initiation Fees	\$ 550.00
Membership Fees	10,828.50
Newsletter Ads	1,880.50
Cash Donations	151.50
Sales - Non Taxable	14,895.31
Sales - Taxable	17,782.58
Sales Tax Collected	1,067.89
Shipping & Handling	812.07
Museum Admissions	1,946.75
Royalty Color Book	580.00
Interest from Checking Account	154.06
Interest from Special Project Account	219.82
Film Rental	80.00
Vending Machine	93.00
Transferred from Special Project Account	1,973.87
Membership Endowment Fund	1,914.00
Donations to Endowment Fund	7,461.00
Donations for Acquisitions	600.00
Donations for Archives & Research	100.00
Donations for Education Fund	1,100.00
Donation for VCR, Monitor, Camcorder	1,200.00
Donation for General Fund	1,000.00
Donation for Internship	300.00
1991 Convention Income	19,207.00
1991 Souvenir Dinner	2,111.00

TOTAL CASH RECEIVED \$ 88,008.85

### EXPENSES:

Club Expenses	\$ 7,921.04
Club Utilities	1,262.55
Museum Expenses	2,528.64
Museum Utilities	1,584.09
Newsletter Printing & Postage	5,364.00
Merchandise for Resale	12,477.84
Cost of Sales	995.08
Sales Tax Paid	1,021.06
General Advertising	402.90
Salaries	13,914.88
Related cost of Salaries	5,915.40
Bank Charges	590.70
Warehouse Expenses	241.65
Library Expenses	19.00
Computer Expenses	1,129.00
Acquisitions	2,495.00
Donations to Endowment Fund	9,375.00
1991 Convention Expenses	24,163.31

TOTAL EXPENSES \$ 91,401.14

Cash Balance August 31, 1991 \$ 3,669.75

Building Fund Balance \$ 10,188.66

Balance in Endowment Fund \$ 80,366.47

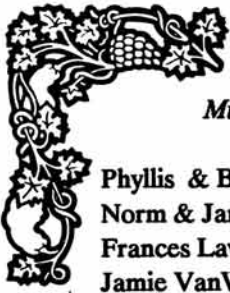
Bob Evans Stock - 7377 shares

@ \$19.00 per share = \$140,163.00

Respectfully submitted,

L. E. Stickle

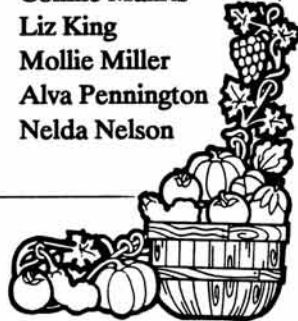
Treasurer



*Museum Volunteers for August*

Phyllis & Bob McClain  
Norm & Jan Thran  
Frances Law  
Jamie VanWinkle  
Keith Edwards  
Dick & Frances Stotler  
Mariam Balo  
Bob & Helen Rarey

Mary McWilliams  
Vivian Moore  
Karen & Jim Clark  
Connie Makris  
Liz King  
Mollie Miller  
Alva Pennington  
Nelda Nelson



**Keeping in Touch**  
*Louise Ream*

When I left my position as Museum Curator and Editor of Heisey News on June 29, 1990, I gave up a most important part of my life. I have missed the museum and all of my many friends there.

My life in the Westerville area has been much different than the years which I spent in Newark. The delightful part has been the great improvement in my husband, Russell, since he has been in Mann Nursing Home in Westerville. He has had excellent care and therapy which has made him much more mobile than he was during the three years he spent in the nursing home in Newark. Of course the best part is that his mind is very keen and at times I have to ask him about events that I can't remember.

The 13-1/2 months that I have lived here, only about two miles from the nursing home and the same distance from our daughters, have been happy too. We have three darling great grandchildren, who we see quite often. Those of you who attended the 1990 banquet saw these children and their parents.

When I first moved here, I was not really eager to return to the museum for a visit. I don't exactly know why, but that was the way I felt. When my sister and her husband came up from Florida for a visit last fall, one of the first things we did was to go to the museum. I have been there many times since. I had always known that the museum was very beautiful but I wasn't aware of how it would look when you entered the front door as a guest. I had always gone in through the side door. It is no wonder that visitors are thrilled to visit this utterly beautiful building and gorgeous display of glass. The new halogen lights helped to enhance the colors, but the glass can stand well on its own. If I, who was at the museum nearly everyday since it opened in 1974, was so im-

pressed with its beauty, what must it look like to you who have visited it over the years!

I had always known that our dear Rose Marx, who had kept the museum in a perfect state of cleanliness with her loving care for so many many years, was a "priceless gem". She came to us in the very early years and after the office building was opened she took the same care of it. She is still there and works as hard as ever.

It seems almost unbelievable that so much had been accomplished in the twenty-two years since the Newark Heisey Collectors Club was founded in 1969 and the HCA in October 1971. On September 10th many of the original club members met at my home. We are still as enthusiastic as we were earlier, though we do little studying of the glass anymore. We spend a lot of our time at meetings reminiscing about the past.

When I was asked to run for the Board of Directors this past spring, it took awhile for me to make the decision that I really wanted to do it. My husband encouraged me to accept the nomination as did many others. I thank all of you who voted for me and I hope to be a productive member.

For some time I have been thinking about writing some articles for Heisey News. However, what had seemed so easy for me before, for twenty years, suddenly seemed hard to do. I remember lying in bed composing articles and then getting up in the middle of the night many times to put the words on paper. That never happens anymore.

The museum and the newsletter have gone along very well without me. I think that the July and August issues edited by Susan Pennington have been two of the best so far. Like me, Susan loves doing this and she has learned so much about the glass and the museum. It is important that those of you who like to write will continue furnishing her with articles. She depends on you. It can be very difficult at times to fill up the space, especially for someone who is just learning about the glass.

The "old faithful" docents continue to come in, along with several new ones. The museum could not operate without them. Other volunteers clean the glass and arrange it beautifully. Some volunteers identify glass and evaluate it for our glass inventory. Glass which has been donated to be sold in the gift shop is also evaluated by volunteers.

I am still available to help you with questions about the glass. Address your letters to me and send them to the museum: Louise Ream C/O HCA 169 W. Church St. Newark, OH 43055. Mary Holland will forward them to me. My phone number is (614)431-2124. Happy Collecting!

## Club Notes

### #13 Heisey Club of California

*From the August '91 Pony Express  
Penny Thorup*



The beautiful remodeled patio at Leo and Anne's was the perfect setting for our July "Member Heisey Flea Market". Twenty-six members and guests enjoyed browsing and buying new "Heisey Treasures" to add to their collections. Leo and Anne have added many lovely antiques to their home furnishings and their Heisey Collection is really growing!!

Penny gave a report on the "Roarin Twenty" 20th annual HCA June convention activities, day by day, and Betty reported on the annual meeting agenda and the Board of Directors business transacted at the convention. Penny and Betty circulated their photographs.

The August 25th regular meeting of HCC will be held at the home of Homer and Ann Paulson in Arcadia. The meeting will be Co-hosted by Ruth Thompson. The program on Heisey cake salvers will be presented by Leo Bevon. Bring your cake salver to share and your summer Heisey finds for "Show and Tell".

### # 44 National Capital Heisey Study Club

*Jim Jones, Scribe*

The National Capital Heisey Study Club, meeting with the National Capital Heisey Collectors Club opened the 1991-92 club year with the traditional slide show of the Convention, display and show. Those of us who were able to come this year, relived the pleasure of the event and those who were unable to join the fun in Newark were given a sample of the tons and tons of beautiful glass on display.

We also had the traditional bring-and brag about finds of the summer. Among the early patterns were the individual salt in #1200 Cut Block, a water carafe in #1201 Fandango, the individual salt #1121 (marked) and the #1116 twin salt. Another "little thing" that adds class to any collection was the individual ashtray in Winged Scroll, Emerald. Without doubt, the most elegant bring-and-brag item was an 8" square plate, #1401 Empress in Alexandrite with a Krall cutting -- one of a set of 12 known to have been produced. Close behind was a 7" round plate in Empress, Alexandrite with a lovely cutting. Another eye catching piece was the 13-1/2" Wild Ducks bowl, Verlys by Heisey. A number of later patterns were represented also--a relish in #1495 Fern, a soda in #4004 Impromptu (T. Clarence Heisey, I believe, called it Belly Button Optic), and an 11" torte plate (with etch), and a square cigarette holder with two individual ashtrays in #1469 Ridgeleigh. Also displayed was a heart shaped ashtray in Tiffin's Twilight color (Heisey's Alexandrite) engraved with a pair of doves. It's

connected in a way with the Heisey plant -- the engraver worked for the Heisey company until it closed, then went to work with Tiffin.

The best bring-and brag story was told by our senior member, known hearabouts as The Heisey Man -- Manny Klawans. Seems that he and Emma were rummaging a flea market in Georgetown some years back when they spied a tumbler, nice yellow color, in a sink full of water and cigarette butts. Looked like a footed soda ( didn't catch the pattern name) in Sahara -- Emma recognized it as Heisey -- asked the price -- dealer pondered for about 10 seconds -- a nickel! Manny said they didn't quibble.

Our year got off to a good start with about 30 people present for our meeting. We're looking forward to October's program and Betty Heflin's discussion of Sunburst.

### # 38 North Carolina Study Club

*Margaret Howell*

The July meeting of the North Carolina Heisey Study Club was held in Burlington at the home of our President, Isabelle Gibbs. We enjoyed a delicious lunch and although only eight members were able to attend we gladly welcomed three guests.

Isabelle has donated a Sunflower platter and a Coarse Rib ice tub to the club to be sold or raffled with the proceeds going to the museum in memory of Bill Gibbs and Earl Howell. Our money making raffle was held and Ruth Somers was the winner of a Yeoman footed bon bon dish in Flamingo. Next meeting she will provide the prize. A report of our other money maker, sale of T shirts and sport shirts at the convention was given and a discussion was held as to a better way to market these shirts. The money from both these projects is given to the museum.

A report of the convention was given and of the feasibility study for the expansion of the museum. The club also hopes communication between the Board and the clubs will improve.

Isabelle presented an excellent program on Heisey by Imperial. Many of her pieces were passed around to show differences in quality and colors of the two companies.

### # 41 Yankee Heisey Club

*Betty Bean*

The Following officers were installed at our annual meeting on September 5, 1991

President	Edward M. Morin
Vice Pres.	Phyllis Zona
Secretary	Betty Bean
Treasurer	Patricia Gibbons

**Christopher Ries, Glass Sculpturer**  
*Virginia and Odell Johnson*

Some years ago Christopher Ries was the program speaker for the dinner at the June convention of the Heisey Collectors of America. He presented slides, some examples of his work, and gave us a most interesting talk about his creative work with glass. In Columbus, his hometown, his large-scale works are on permanent display at Riley Hawk Gallery in the Short North. (Address: 642 N. High St. Hours 11 A. M. to 5 P.M., Thursday through Saturday, and 1 P.M. to 4 P.M. on Sunday)

The following is from a recent article in the Columbus Dispatch. "Ries uses the purest crystal available, produced by the Schott Glass Technologies at the plant in Duryea, PA. He began his career blowing his own glass, started using discarded blocks of broken glass castings from Schott in the late '70's. The resulting sculptures were so brilliant and beautiful, he soon stopped blowing glass in favor of the discarded shards. Those glass shards or casting were of various sizes and with tiny flaws. Ries developed them and invented tools to work on them, eliminating the flaws in the process of carving. His sculptures are products of an imaginative mind that knows how to handle the complex synthesis of the elements peculiar to that material - transparency, reflection and refraction. Ries' two largest sculptures are part of this exhibit; MOONSTONE is 385 pounds and measures about 28" x 20" x 16". SAIL is even larger, 440 pounds, and 50" X 26" X 12".

The pull of these two works is irresistible. From certain angles, SAIL transports spectators from land to the deck of a boat swept by waves. MOONSTONE is quite different. Ries was intrigued by "the optics (involved) in the configuration of an egg-shaped volume. He said 'It's like talking in a different language. The optics of a crystal egg are really not known--how light is bounced and reflected and refracted in a curved surface. It inverts an external image, elongates it, distorts it, multiplies it in a very different manner than flat surfaces.' One of MOONSTONE'S greatest attractions is the little moon, seemingly floating close to the top. In fact the image is engraved in the base of the egg-shaped sculpture."

Ries had a major exhibition at the Cincinnati Art Museum in the spring of 1988. Anita Ellis, curator of the Ries show in Cincinnati, said his sculptures are "the largest glass casting of their quality produced anywhere in the world". His collections are at the Cincinnati Art Museum, Harvey K. Littleton Collection, Lannan Foun-

dation, Palm Beach, FL, Rutgers University, Smart Gallery, University of Chicago, IL and the Toledo Museum of Art.

We have maintained a friendship with this very talented young man and this June, after the Convention, reached him by telephone and were thrilled to find out about his exhibition in Columbus and to see it. Although his creativity is very different from Heisey Glass, all lovers of fine glass will enjoy and appreciate Christopher's talent and art.

**MEASUREMENTS FOR RECESSED PANEL  
 CANDY JARS**

*George Reynolds*

<u>POUNDS</u>	<u>WITH LID</u>	<u>WITHOUT LID</u>
QUARTER	7-3/4"	4 3/4"
HALF	9 1/4"	5 3/4"
ONE	10 1/4"	6 3/4"
THREE	13"	8 1/2"
FIVE	15 3/4"	10 1/4"
EIGHT	17 3/4"	12"

**DEAR HEISEY NEWS**



Dear Heisey News,

Pursuant to the February 1991 Newsletter and the article about Heisey Trademarks, we are most anxious to locate one of the stickers "Verly's by Heisey" if same is available.

J. & H. F.

Dear Heisey News,

In my search through previous HCA publications, I have found nothing on the origin of the #3416 Stem. If someone knows anything about the origin of the name. I would appreciate correspondence.

D.Y.

Dear Heisey News,

Re: Hair Receivers, Although hair was saved to make pictures and pins, the primary function of the saved hair was to be used in making "rats" or hair pieces to enhance the hair styles of the period.

P.D.

*Anyone wishing to respond may write to: the Heisey News at HCA, 169 W. Church St., Newark, OH 43055 Attention Editor*



*diamonds are forever....*

Janet Caswell

The Yachting Center is one of those unique New England towns that still carries on the tradition of hosting a "Firemans Muster". It has been twelve years since a Muster has been held here. A whole generation has grown up without experiencing this special event. What's a "Mustard" ?; do you spread it on hot dogs? No! It is an age-old sporting event that involves men who pump antique fire fighting equipment known as Handtubs in fierce competition to see who can spray water the farthest. In the old days, the jet of water from a hand-tub was used to put out fires. Today the jet of water wins trophies. It's the oldest sport in the U.S. The course for the hand-tub competition is eight feet wide and 300 feet long. It is layed out with paper to measure the distance. The largest drop of water, not spray, is measured. Teams come from all over New England bringing their own towns Hand-tubs. The tubs range from 100 to 170 years old. Each team has as many as 40 - 80 people. The team is allowed 15 minutes to hook-up the Hand-tub, get it pumping and to spray its jet over the papered course. The Hand-tubs will be competing for \$2,300.00 in prize money & trophies. A good time will be had by all.

A good time was had by the *Steadfast colleague* when he found the following items to stash away in his ever growing aggregation. There were two sets of #1184 Yeoman cups & saucers in Moongleam<sup>1</sup>. Also, a treasure was discovered and I mean a really true treasure! The #343 Sunburst Orchard Vase, squatty.<sup>2</sup>

Sunburst is a very desirable pattern to own and comes only in Crystal - it was produced from about 1903-1920.

*The Heisey Hounds from California* wrote to inform me of a terrific discovery. They are now the proud owners of a very rare #414 Rib & Panel covered sugar (no handle) in Flamingo. I have made a notation my Burns book<sup>3</sup> that indeed it also comes in Flamingo and Hawthorne. Could the hotel sugar have been produced in Flamingo? Could very well be so. *Heisey Hounds*, you have a rare find there; protect it with loving care.

Ah, *La-Pelican* - I am so glad that you enjoyed this past Heisey convention. We all try our utmost to make each and every convention one to remember. You know it to be true, when you see all those beautiful pieces in one place, you wish you could afford to purchase all or at least some of them - may-be one or two. Oh well, the interesting part is that on any given day, at some flea market or yard sale you just might find the elusive piece

of Heisey you agonized over just a few months ago. That is the fun!!

Did you know that the Imperial Hay Shed in Bellaire sports a Flea Market in the Old Imperial Plant. #1?

Now *La-Pelican* stopped there and was asked what they were looking for. Usually they never say what they're hunting for but this particular day, for some reason, they said, Heisey!! Well, there was a piece under the table, maybe they would be interested in that. They were completely stunned. After it was unwrapped, it was Pouter Pidgeon, Marked! Mint! A price was offered, a counter offer. Too high. They wandered about the rest of the Flea Market and went back to the lady. Another price, so *La-Pelican* said " Okay, We'll split our first offer and your last offer".... As they turned to leave the dealer said, okay. Now the Pouter Pigeon is on the piano with their other animals.

*The Amicable Stroller* wants you all to know that they are now owners of a #3362 Charter Oak 3 oz Moongleam cocktail, #3366 Trojan 3 oz cocktail with a Hawks cutting, the #3350 Wabash 3 oz cocktail Wide Optic with Moongleam stem , and a #3408 Jamestown 3 oz cocktail with a lovely cutting.

*Yours Truly* has a #1295 Bed Swag 6 oz handled mug with Ruby Stain. (B.D. Old Orchard 1903) also the #16 5" Classic candlestick.

*The Cardinal* sings about a golden arch tumbler and the Whirlpool 9oz goblet in Zircon!

One of my *Sharpeyed Friends* brags about a Pineapple and Fan toothpick, and a Whirlpool vase made from a footed soda.

Also reported from the *Bay State* was a Queen Ann 4 oz custard in Crystal, and the #300 Peerless bar glass.

Perhaps I sound like a broken record to many of you, but I really love writing this column. Over the years I have made many, many friends, some I have been priviledged to meet, others I have only heard from by mail or phone. All of you are very dear to me. We share a common interest and I love reporting all the wonderful things you find (or already own). My readers love to hear about what is out there, it gives them incentive to go out and search.

Without your input *Yours Truly* would have nothing to report. Take a few minutes from your busy day and make a humble reporter happy. Drop me a line.

Happy Hunting

"It takes a long time to grow an old friend"

John Leonard

<sup>1</sup>The Collectors Encyclopedia of Heisey Glass 1926-1938

by Neila Bredehoft, page 84

<sup>2</sup>Vogel Book I, page 31

<sup>3</sup>Heiseys Glassware of Distinction by Mary Louise Burns

The A. H. Heisey Company was innovative in many ways, one of which was in the field of advertising. They advertised in many magazines. The advertising proofs below and on the next page are copies of original proofs. These proofs were sent from the magazine to the company for approval, prior to publication. Notice the number of different publications who featured Heisey ads. Also notice the attention to artistic appeal. Even the wording in each ad proof is designed specifically to present a sophisticated image of the company. As early as 1920's, the Heisey Company was a leader in the advertising of glassware.

**PROOF FROM  
WOMAN'S HOME  
COMPANION**

381 Fourth Avenue, New York  
December, 1921

Answer queries (if any), otherwise advertisement will be published as per this proof.

**FORMS CLOSED**  
Corrections Not Guaranteed



FOR THE TABLE

THOSE of your friends who already use Heisey's Glassware, are sure to appreciate your addition to their valued possessions.

Those who do not, will long remember it was you who first introduced them to Heisey's Glassware.

The Heisey Trade Mark indicates that you are giving, and they are receiving, that which is best and most correct in table glassware.

At the Better Stores...or write  
A. H. HEISEY & CO.  
Dept. W-8 Newark, Ohio



On Every Piece

1163  
FRENCH DRESSING BOAT  
CUT 679

1163-7  
OVAL PLATE

**PROOF FROM  
WOMAN'S HOME  
COMPANION**

381 Fourth Avenue, New York  
June, 1924

Answer queries (if any), otherwise advertisement will be published as per this proof.

Cannot insure corrections reaching 381 Fourth Avenue, New York, after March 25th, 1924.



**Glassware  
with a Purpose**

*Heisey's Glassware adapts itself to any phase of home service because of its practicality. Its durability will save you money; its charm will satisfy your vanity.*

At the better stores  
or write

A. H. HEISEY & CO.  
Department W 1  
NEWARK, OHIO



FOR YOUR TABLE

Shirley (at table) - Fruit Cocktail  
No. 3114 - Etched 116

**FOR SPECIAL occasions or daily use Heisey's Glassware enhances the appearance of your table and the pleasure of the meal as no other glassware can.**

Your guarantee of quality and durability and evidence to your guests that you possess the correct thing in glassware, is this trade mark

On every piece

At the better stores or write  
A. H. HEISEY & CO.  
Dept. S 7 Newark, Ohio

FOR THE TABLE

**Proof of Advertisement**

From

**The Arthur M. Crumrine Company**

ADVERTISING AGENTS

Sixth and Seventh Floors - Crumrine Building  
43 West Long Street, Columbus, Ohio

**NOTICE TO PUBLISHER: Please note and follow carefully instructions on our order herewith.**



PROOF

For..... Issue

THE HOUSE BEAUTIFUL

Advertisements will be printed as shown, if corrections are not received by.....

Copy must be in hand by the 20th of 2nd preceding month if proofs are desired, general forms close definitely on the 25th of 2nd preceding month.

Return Proof to THE HOUSE BEAUTIFUL 8 Arlington Street Boston (17), Mass.

**HEISEY'S GLASSWARE**  
FOR YOUR TABLE

The next time you buy glassware for your home, don't just ask for glassware instead insist on Heisey's glassware. It is consistently better. The Diamond on every piece is your guarantee that it is genuine Heisey's Diamond H Glassware. At the better stores or write Dept. B4 A. H. HEISEY & CO. Newark, O.

"THE HOUSE BEAUTIFUL is the best magazine put to down in a year for the home."—L. B. Lawton.

PROOF FROM

Pictorial Review

ADVERTISING BUREAU 95 Madison Avenue New York



ORIGINALITY of design, flawless quality and beauty of form found in Heisey's Glassware are by no means its only recommendations to your preference.

The durability of Heisey's Glassware makes it the most economical table glassware you can own.

Heisey's Glassware is obtainable in thousands of useful attractive shapes identified by this trade mark.

On Every Piece

At the better stores or write  
A. H. HEISEY & CO.  
Dept. P. 21 Newark, Ohio

**HEISEY'S**  
TRADE MARK  
**GLASSWARE**  
FOR THE TABLE

Ad. No. 6-1 col.x90 lines Ladies Home Journal Delineator

**The Touch of a Master Craftsman**

Each in design—beautiful in finish—familiar with a thousand jillic lights—Heisey's Glassware adds the final touch to the exquisite appointments of the table.

On Every Piece  
At the better stores or write  
A. H. HEISEY & CO.  
Dept. B4 Newark, Ohio

**HEISEY'S**  
TRADE MARK  
**GLASSWARE**  
FOR THE TABLE

Proof of Advertisement From The Arthur M. Crumrine Company ADVERTISING AGENTS Sixth and Seventh Floors - Crumrine Building 43 West Long Street, Columbus, Ohio NOTICE TO PUBLISHER: Please note and follow carefully instructions on our order herewith.

## OSCAR LIST

<u>YEAR</u>	<u>COLOR</u>		<u>MADE BY</u>	<u>#MADE</u>	<u>PRICE</u>
1977	FERN	GREEN	IMPERIAL	2115	N/A
1978	ROSE	PINK	IMPERIAL	2838	\$ 70.00
1979	SUNSHINE	YELLOW	IMPERIAL	2663	N/A
1979*	HEATHER	MISDATED	IMPERIAL	1099	N/A
1980	HEATHER		IMPERIAL	2930	N/A
1980	HEATHER	FROSTED	IMPERIAL	441	N/A
1981	LIGHT BLUE		IMPERIAL	2642	N/A
1982	EMERALD	GREEN	IMPERIAL	2274	\$ 44.00
1983	TANGELO	ORANGE	VIKING	2262	\$ 42.00
1983***	TANGELO	FROSTED	VIKING	310	N/A
1983*	RUBY	MISDATED	VIKING	251	N/A
1984	RUBY		VIKING	2164	\$ 40.00
1984	RUBY	FROSTED	VIKING	208	N/A
1985**	ANTIQUÉ BLUE		IMPERIAL	446	N/A
1985	BLACK OPAQUE		IMPERIAL	1500	N/A
1986	CLEMATIS	ALEXANDRITE	VIKING	1548	N/A
1987	CRYSTAL	OPALESCENT	FENTON	1500	\$ 35.00
1988	OPAL	WHITE	FENTON	1461	\$ 33.00
1989	TEAL	BLUE/GREEN	FENTON	1200	\$ 31.00
1990	ROSALENE		FENTON	1267	N/A
1990	PEACH		FENTON	559	N/A
1991	SAPPHIRE BLUE OPALESCENT		FENTON	1154	\$ 27.00
1991	SAPPHIRE BLUE OPALESCENT FROSTED		FENTON	405	\$ 24.00

- \* When the company made the first turn of these, they had forgotten to change the date. Rather than let the lot be sold in the Imperial seconds shop, we bought the Oscars and sold them by special drawing.
- \*\* Imperial was having trouble in making the Antique Blue color. We took the 446 and sold them by special drawing. The regular Oscar was made in Opaque Black.
- \*\*\* Overruns were frosted and sold by drawing.

## Look Ahead!

1992 will be here before you know it. That means preparations for the HCA June convention, **America Discovers Heisey**, will be in full swing. Start planning now.



*In the November Issue:*

**\*Museum Expansion Report**

**\*More information on the March Benefit Auction**

**\*More Details on the December Holiday Dinner**

**\*The complete Book List and Gift Gallery List**



*Be sure to check it out!  
in the  
November Heisey News!*

## ***The Heisey Cabin***

***The huge log cabin lodge located on Black Run Rd. in Frazeytsburg, OH, once belonged to E. W. Heisey. He searched throughout the countryside for the seven log houses. Then he had them joined together to form the lodge. The view in the picture (right) is the front of the house. This picture is from the HCA archives. The inscription on the back of the photo says: Heisey Home built by Great Uncle John Sanford. Notice the size of the pine trees in the picture. Notice the folks standing on the roof. The retaining wall in the front of the cabin is made of stones from the old canal locks located near by. See Jan. 1981 issue of the Heisey News, page 14, for Gordon Kusters article taken from the Columbus Dispatch article "A Log Cabin with a Past and a Future".***



***Pictured (left) is a rear view of the Heisey Cabin. Notice the massive fireplace chimney. This photo was taken when the cabin was fairly new. The handwritten inscription says: Heisey Home built by Uncle John Sanford***

***Pictured (right) is a photo of the south view of the cabin as it appears today. Notice those same pine trees. My how time changes things! This photo was presented to us by the present owners of the property, Mark & Patricia McClintick.***



***The article appearing on the next two pages (12 & 13) was printed in the Columbus Dispatch over sixty years ago. The history of the man behind the cabin is even more interesting than the cabin itself. Mr. Heisey was way ahead of his time as a preservationist.***



Photo by Mueller Studio, Newark.  
Wilson Heisey

Wilson Heisey  
of Newark  
Collects Pioneer  
Objects  
So They May Not  
Be Lost

By Gordon Kuster

**E**VERYTHING in the realm of objects with age, from the old-time, home-fashioned meat block to the highly-polished and impressive highboys, have interested Wilson Heisey for the past 30 years. In that time he has acquired probably the most comprehensive collection in central Ohio.

Scarcely an object used in the past 100 years but that he has found its way into his possession. Even vehicles that have long since passed from existence or utility are among his souvenirs of the past.

And the motivation for collecting he has found in a desire to preserve these objects so that future generations might not lose sight of the fine old things which pioneer Americans used in fighting the frontier and conquering new lands for the present generation to enjoy.

That's what makes Mr. Heisey's collection so interesting. He is head of the Heisey Glass Co. at Newark, and one entire portion of the factory is devoted as storage space for his old vehicles and other antiques, which are not yet restored to their original utility. However, thousands of them have been restored.

To see the results of his untiring efforts to preserve America's past history in the form of these old vehicles, implements and household furnishings is a revelation even to one accustomed to visiting museums and the homes of antique collectors.

Among Mr. Heisey's acquisitions, the old vehicles are perhaps the most unusual, although the scores of various kinds of stirrups, saddles, oxen yoke and harness all appreciably to its value.

As a suitable setting for his antique furnishings, he also reverted to the past. He scoured the countryside and finally purchased seven log cabins, representing more than 700 years in age. These he dismantled and transported to a beautifully wooded site about 15 miles east of Newark and a mile north of Route No. 16, where huge bulldozers are jutting out of the grassy hillside to form a picturesque background for the "composite" cabin.

Taking the road to Baughman

# A Log Cabin With a Past And a Future

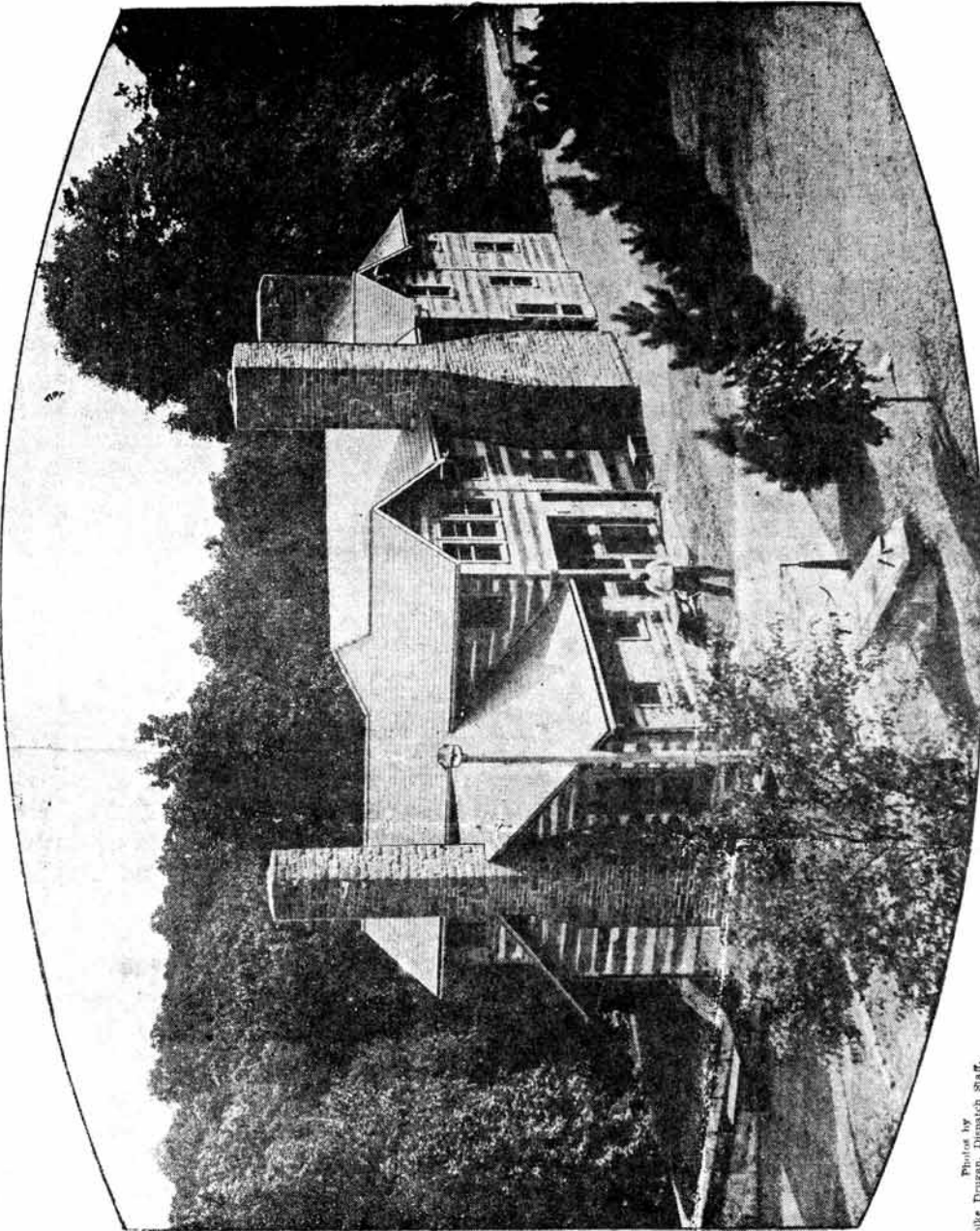


Photo by  
Ephie Drengen, Bhopach Staff.

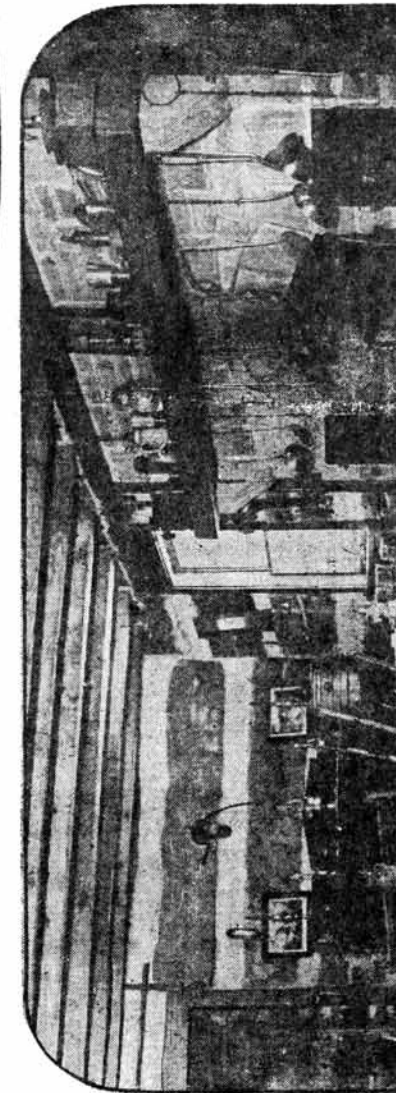
● Above is the Heisey cabin, east of Newark, overlooking the beautiful hills and valleys of that section. It was constructed of seven original log cabins and represents more than 700 years of age.

● The downstairs living room (left) breathes the atmosphere of the

In Mr. Heisey's possession is a solid iron sea chest which is in the upstairs hall. The lid remains open, revealing the intricate mechanism of 13 different locks, all of which are operated by a huge key fitting into the keyhole secluded by a false covering. Built about 1700, the chest was purchased by Mr. Heisey in Baltimore.

In this same hall is his collection of stirrups, numbering nearly 100. Doors from this hall way lead to bedrooms, one at the east, equipped with a fireplace and the master bedroom at the south. To the east is the upstairs living room and in the east wing a dormitory with a half-dozen four-poster double beds, each with its antique quilt.

THE upstairs living room is equipped with settle before



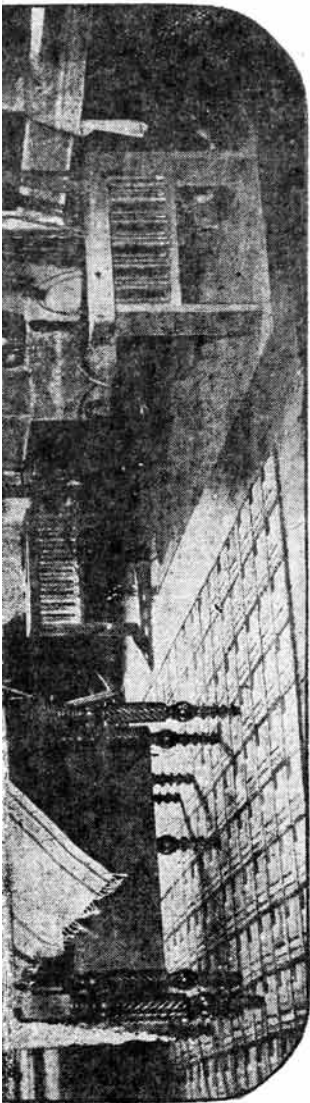
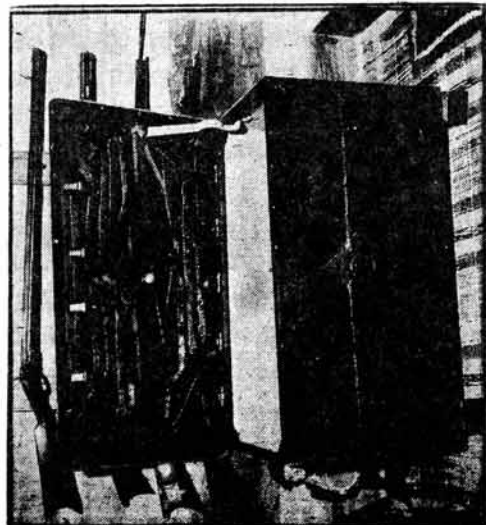


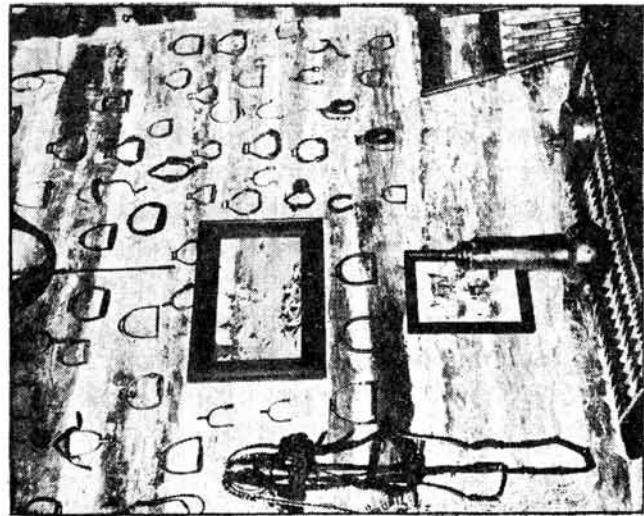
Fig. 15. The reporter climbs a steep hill and at the top finds the Baughman park road cutting back to the right. At the left is a lane which leads to the Heisey cabin. It is located on a level spot in the hillside, the front porch overlooking a magnificent view of the rolling countryside and the back, a spacious and well-kept yard with benches and jars and two dog-houses made from huge hollowed-out stumps set endwise and with the door scrolled out of the side. In the back also, and at the right of the lane entering from the natural rock. Here Mr. Heisey has built a protecting arch



• This sea chest, built about 1700, is constructed of solid iron. The huge key which fits into the top operates 13 separate locks, which make the lid infinitely secure.

for this spring and a rock wall and stepping stones leading to it. The main cabin required two years for building. Stones for the terraces were taken from the old canal locks at Trumway. There also is another cabin, a smaller one, located farther up the hillside. The larger one is used by Mr. Heisey for a country home and for entertaining guests and the smaller one for additional sleeping quarters and smaller parties. There are five large fireplaces in the main cabin, two upstairs and three down, the one in the

• Mr. Heisey's collection of stirrups (right) is large and novel.



## Old Vehicles

MR. HEISEY'S collection of old vehicles is large and comprehensive. Next week, The Dispatch will present the story of these old conveyances, suitably illustrated with pictures of them.

From all sections, he has purchased old sleighs, wagons and carriages which he is preserving for the future day when horse drawn vehicles will be a curiosity. They include everything from the lumbering old Contestoga wagon to a wooden-spoked bicycle.

Dutch ovens on either side of the fireplace.

• The spring to the rear of Mr. Heisey's cabin (below) is a picturesque spot, with its protecting arch and the setting of natural rock in the hillside.

ladder back chairs, old time rockers, spinning wheel and hooked rugs—a cozy place for an afternoon with your favorite book or magazine.

The beamed ceiling in the downstairs living room adds an intriguing touch to the general atmosphere. Besides the fireplace are two large candle moulds and on top of the mantle reposes an old coffee grinder, numerous pewter pieces and earthenware.

The dining room is located at the east end downstairs and at the west end is a den, or writing room, furnished with antique desks and an unusual type of bookkeeper's stool used a century ago.

The stairway to the second floor in the cabin made of solid hewn logs, while the stairway to the cool basement is made of stairs.

The cabin itself is a veritable museum, containing as it does, samples of early American life in such an array it dazzles the visitor. Antiques run the full gamut of types including Sherraton, Chippendale, Duncan-Phyfe, Hepplewhite, early American and others.

Pictures, also are abundant and give a touch of quaintness which has a distinct allure. Such is the cabin which is visited weekly by numerous persons who have heard of Mr. Heisey's collection and have come perhaps a thousand miles to see it.

At his factory in Newark, Mr. Heisey has a window taken from an old post office. It shows a pony express rider etched in the glass.

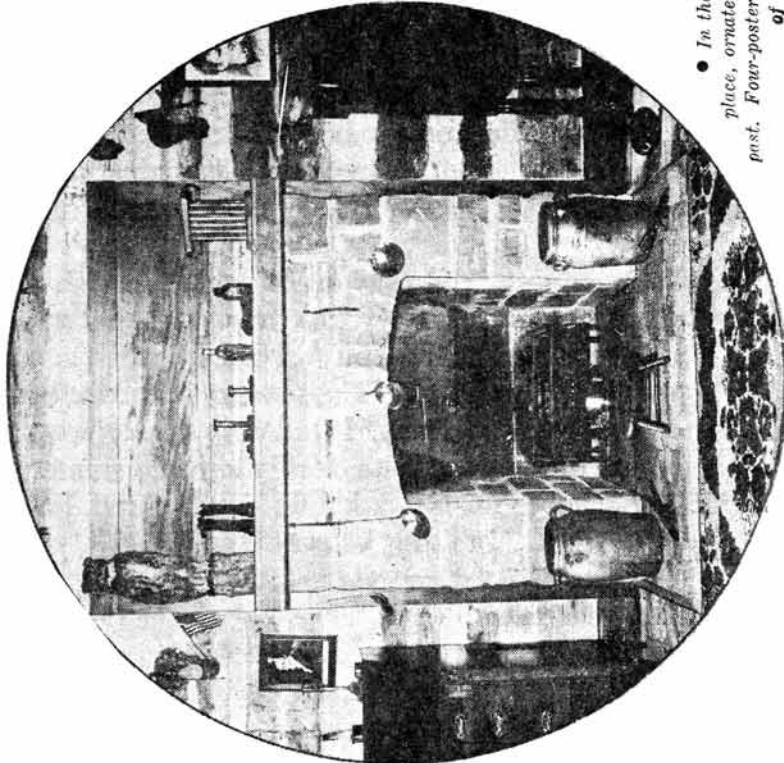
"I found it in Elizabethtown, Ky., in a saloon operated by a man known as 'Jake,'" Mr. Heisey told me. "They claim that Jake was the only man who ever socked Carrie Nation when she was crusading against saloons. She came into tear his up and he hit her squarely on the jaw."

Another piece in his collection is a stove from the old Marianna furnace east of Newark, one of the few remaining ones turned out by his establishment.

Everything with age and history behind it interests Mr. Heisey. He has traveled extensively and is always on the alert for objects of value. He explains his hobby with a convincing argument:

"There have to be so many people," he said, "who are jacksasses. If we didn't have them, then we wouldn't have any purebred horses, or cattle or any of the original strains preserved. It's the same with these things (pointing to his collection) if someone didn't save them, they'd be destroyed and no one in the future would have them."

Following this principle, his collection stands as a rare exemplification of one man's devotion to a purpose.



• In the north bedroom is a cozy fireplace, ornate with odd objects used in the past. Four-poster twin beds are on either side of the doorway.

**Advertising Guidelines**  
From Susan Pennington, Editor

Effective August 1991, some new advertising guidelines went into effect. Advertisers have been very cooperative in adopting these guidelines. However, for the benefit of those who missed the July issue, I am running the specifications a second time. I have added a few additional tips which should help us present standardized, accurate ads to our readers.

**Deadline:** Advertisements (with payment enclosed) must arrive by the 5th of the month prior to the month of publication. For example, your material must arrive on or before October 5th in order for it to be included in the November issue. If the advertisement and/or payment does not arrive by the 5th, the advertisement will be held for publication in the following issue.

**Format:** Please print or type ads double spaced. Make sure your ads are readable. If you print, please use dark ink. List items in the following order: pattern number, pattern name, item, decoration, color, H if marked, quantity, and price. If no color is indicated, the item is assumed to be Crystal. Consistency in format benefits everyone. Questions usually arise because of lack of clarity. If you wish to receive a sample format sheet and list of suggested abbreviations, please send a self addressed stamped envelope with your request to HCA 169 W. Church St., Newark, OH 43055 Attn: Editor. Or if you prefer, you may make your request when submitting your next ad.

**Things to Remember:**

If you wish to refer to your source of reference, please do so in your header.

Please DO NOT abbreviate Heisey pattern names or Heisey colors

Please use H to indicate Marked

Please use words like each, all, or set in reference to quantity.

Please do not use ditto marks, when listing similar items. Each line should be written out.

Please refrain from including personal opinion concerning items listed for sale.

Please avoid the use of personal inventory information in the ad.

**Camera Ready Ads:** If you would prefer, you can send in your ads camera-ready (typeset & ready for printing). You are responsible for any costs involved in the preparation of such an ad. When the ad is submitted, make sure that the ad meets the specifications listed in the chart. The type style we use is called Dutch.

**Corrections:** In the event of a typographical error, the corrected portion of the ad will run in the following issue. Notification of such an error must be made in writing by the advertiser to the Heisey News within thirty days of the postmark appearing on the newsletter. We will make every attempt to be consistent and fair to all advertisers.

**Specifications:** Allow three lines for your header. The header includes name, address, phone number and shipping charges. The amount of information in an ad is measured by lines, not by items. See chart below for number of characters per line per display space. Characters are: All punctuation, letters, numbers, symbols, and spaces between words.

1/8 page	=	9 lines	(one line = 67 characters)
1/4 page	=	20 lines	(one line = 67 characters)
1/2 page horizontal	=	20 lines	(one line = 126 characters)
1/2 page vertical	=	48 lines	(one line = 67 characters)

## Classified Ads

**For Sale:** #4090 Coventry w/#500 Belvedere etch 20 piece set: (8) 10 oz low goblets, (6) 6 oz sherbets, (6) 4-1/2 oz clarets, \$625.00. #3390 Carcassonne Flamingo (8) 8 oz short stem goblets \$290.00: (8) sherbets\* \$290.00. #3362 Charter Oak Flamingo sherbets\* (4) \$80.00. #129 Tricorn Flamingo candlesticks\* \$210.00 UPS extra. Eunice Theriault, 18181 Chin Rd., Klamath Falls, OR 97603 (503) 798-5037 (\* signed.)

**For Sale:** #1205 Fancy Loop water bottle \$75.00, #1428 Warwick 7" Cornucopia vase, H pr. \$55.00, #1220 Punty Band table cvr'd sugar, H \$45.00, #400 Colonial punch bowl & stand, H \$125.00 set, #429 Plain Panel Recess cvr'd sugar & cream, H \$45.00 set, #1184 Yeoman stack set w/butter pat, H set \$45.00, #1185 Yeoman cvr'd sugar & cream, H set \$30.00, #1425 Victorian cream & sugar, H \$40.00 pr., #1170 Pleat & Panel 3 pint ice pitcher, H \$59.00 - The following are all Heisey punch cups: #1201 Fandango (2) ea. \$20.00, #1205 Fancy Loop (3) ea. \$15.00, #341 Puritan, H (12) ea. \$6.50, #1425 Victorian, H (6) ea. \$10.00, #350 Pinwheel & Fan, H (6) ea. \$12.50, #1401 Empress, H (6) ea. \$10.00, #339 Continental, H (6) ea. \$10.00 #407 Coarse Rib, H (12) ea. \$8.00 #343 Sunburst, H (12) ea. \$25.00, Janice Thran 1663 Londondale Pkwy, Newark, OH 43055 (614)-344-5955 P&I extra

**For Sale:** Heisey Greek Key claret, 4-1/2 oz, 5 3/8" tall. \$150.00 (UPS & Ins. Included) Janet Adams (915) 584-5885 after 6 P.M. MST

**For Sale:** #1401 Empress 3-compart. relish, Moongleam \$75.00, #393 Narrow Flute 3-compart. relish Moongleam \$75.00, #433 Greek Key 6pt. pitcher \$115.00, #459 15" high basket, nice cutting \$245.00. Don Parrett 4995 Maple Dale Rd. Jackson, MI 49201 (517) 784-7319 & Recorder Post & Ins. Extra See August & September HCA ADS for remaining goodies.

**Wanted:** Heisey baskets - etched, cut, colored, or whimsey. Send price & description to Kim Carlisle, 28220 Lamong Rd., Sheridan, IN 46069 Phone (317) 758-5767.

**Wanted:** Pattern 1235 Beaded Panel and Sunburst marked crystal punch/custard cups. Sherry Barringer, 18 Glamis Garth, Baltimore, MD 21236 (301) 931-1710

**Wanted:** Butter top, #335 Prince of Wales Plumes w/gold; Lid for #352 Colonial jar (approx. 1-1/2 qt. liq.) measures 5" dia. X 6" high (crushed fruit? cracker? candy?); Lid for #465 Recessed panel candy, measures 8-2/8" high x 5-3/8" dia. If you can help us identify which jar we have in the #352, or which of the #465 candies we have, or if you have the item(s) we want, please drop us a note with price requested and/or information. Linda and Larry Love, 4125 Sperry St. Dallas, TX 75214



<b>Boston House</b> <b>P.O. Box 7085</b> <b>Port St. Lucie, FL 34952</b>	<b>P &amp; I Extra</b> <b>(407) 337-1558</b> <b>Shirley Dunbar</b>	paid ad
Call after October 5th		
#4225 Cobel cocktail shaker, large, w/fisherman etch		\$195.00
#1252 Twist leaf dish, Marigold, H, (2) each		\$ 35.00
#1252 Twist tumbler, Marigold, H		\$ 45.00
#1519 Waverly 8" plates w/Orchid etch, H, (12) each		\$ 22.00
#433 Greek Key sherry, H (6) each		\$125.00
#433 Greek Key 2 oz wines, H (6) each		\$125.00
#433 Greek Key small ice tub, H		\$135.00
#464 Basket, fruit holder, w/ enamel flowers/gold, H		\$225.00
#1469 Ridgeleigh one-lite candelabra, pair		\$175.00
#1405 Ipswich champagnes, (6) each		\$ 18.00
#150 Wedding Band punch bowl & base		\$225.00
#462 Fox Chase 8 oz soda, (6) each		\$ 45.00
#5 Patrician toy candlesticks, pair		\$110.00
#12 Plain Recess Panel open salt, (10) each		\$ 22.00
#343 Sunburst Punch bowl & base, H		\$325.00
#3380 Old Dominion footed tumblers, each		\$ 18.00
#300 Colonial 6" plates, H each		\$ 10.00
#300 Colonial cereal/underplate (5) set		\$ 20.00
#325 Pillows spooner, gold trim, H		\$ 55.00
#1205 Fancy Loop 7" rose bowl		\$ 90.00

<b>Wiley's Antiques</b> <b>11110 Cannon Road</b> <b>Frazeysburg, OH 43822</b>	<b>(614) 828-2557</b>	paid ad
Over 2,000 pieces of Heisey for sale. Stemware and dinnerware matching service. Lots of colors, etchings and cuttings. Send want list and SASE. All letters answered if a SASE is enclosed.		
Oct 25, 26, 27 Fairgrounds	Tulsa, OK	
Nov. 1, 2, 3 Will Rogers Co.	Ft. Worth, TX	
Nov. 8, 9, 10 Palmer Aud.	Austin, TX	
Nov. 16, 17 Bayfront Plaza Con.Cntr.	C.C. TX	
Nov. 23, 24 Adams Mark Hotel	Houston TX	

<b>Donald P. Bean</b> <b>36 Harding St.</b> <b>Milford, MA 07757</b>	<b>(508) 473-0561</b> <b>Shipping Extra</b> <b>* = Marked</b>	paid ad
Old Williamsburg 9" stand only		\$ 46.00
#300 Peerless 2 oz bar glass*		\$ 17.00
#333 Waldorf-Astoria toothpick*, w/silver overlay		\$ 70.00
#1469 Ridgeleigh ind. oval sug* & creamer*, set		\$ 25.00
#1469 Ridgeleigh oval sugar* & creamer*, set		\$ 30.00
#1405 Ipswich 5 oz footed sodas*, (6) each		\$ 15.00
#1252 Twist 7" pickle*, Moongleam		\$ 25.00
#305 Punty & Diamond Point paste pot & brush		\$ 85.00
#1401 Empress cup* & saucer*, Sahara, (2 sets) each		\$ 32.50

<b>Forever Heisey</b>	<b>(614) 344-5955</b>	<b>Paid Ad</b>
<b>Norm &amp; Jan Thran</b>	<b>Ship &amp; Ins. Extra</b>	
<b>1663 Londondale Pkwy</b>	<b>H = Marked</b>	
<b>Newark, OH 43055</b>		
Sparrow	\$ 75.00	
Piglet, sitting or walking (choice)	\$ 85.00	
Baby chick, heads up or down (choice)	\$ 65.00	
Toy horsehead, (2) each	\$ 75.00	
Giraffe, head turned to side	\$195.00	
Mallard, wings down	\$225.00	
Imperial Amber piglets, sitting or walking (choice)	\$ 35.00	
#1401 Empress ind. cream & sugar, H pair	\$ 35.00	
#1503 Crystalite rosette candleblocks, pair	\$ 20.00	
#1503 Crystalite 4" nappy, H	6 for \$ 65.00	
#1469 Ridgeleigh 2" square one-lite candles, pair	\$ 45.00	
#1469 Ridgeleigh 7" ball vase	\$100.00	
#1469 Ridgeleigh 5-part star relish, H	\$ 40.00	
#1245 Spiral 7" plate, Moongleam, H	6 for \$ 60.00	
#4206 Optic tooth 8" vase, Hawthorne, D/O	\$200.00	
#1413 Cathedral 9" vase, straight, H	\$ 65.00	
#1401 Empress cruet, Sahara	\$110.00	
#1170 Pleat & Panel 5" covered lemon, Flamingo, H	\$ 45.00	
#1205 Fancy Loop footed punch glass (2) each	\$ 45.00	
#150 Pointed Oval in Diamond Point pitcher	\$ 75.00	
#1540 Lariat 12" covered candy	\$125.00	
#393 Narrow Flute cracker & covered cheese, H	\$ 95.00	
#393 Narrow Flute table covered sugar, H	\$ 30.00	
#393 Narrow Flute table spooner, H	\$ 30.00	
#1503 Crystalite 3 footed 6" covered candy, H	\$ 45.00	
#1567 Plantation candleblocks, pair	\$125.00	
#1567 Plantation 5" covered candy/comport, H	\$125.00	
#5010 Symphone wine w/Danish Princess cut, (6) ea.	\$ 50.00	
#5010 Symphone oyster cocktail w/Danish Princess cut, (2) ea	\$ 20.00	
#3335 Lady Leg wine w/Zodiac etch, H (4) each	\$ 27.50	
#3308 Bob White wine w/ Peacock etch, (2) each	\$ 35.00	
#3380 Old Dominion wine w/ Old Colony etch, H (4) ea	\$25.00	
#3380 Old Dominion wine, Sahara, H (6) each	\$ 50.00	
#5010 Symphone goblet w/Minuet etch (2) etch	\$ 35.00	
#3359 Plateau 6" rose bowl, D.O., Flamingo	\$ 65.00	
#1509 Queen Ann 11" D/F floral bowl, w/Minuet etch	\$ 95.00	
#3366 Trojan goblet w/Trojan etch, D.O., Flamingo, H (8) ea	\$ 65.00	
#3366 Trojan cocktail w/Trojan etch, Flamingo, D.O., H (8) ea	\$ 40.00	
#3368 Albermarle parfait w/Trojan etch, Flamingo, D.O., H (8) ea	\$ 50.00	
#4044 New Era cocktail, (8) each	\$ 12.50	
#5024 Oxford goblet, H (6) each	\$ 17.50	
#3350 Wabash goblet w/Frontier etch, H (6) each	\$ 15.00	
#3362 Charter Oak goblet, Flamingo, D.O., H (5) each	\$ 25.00	
#3362 Charter Oak champagne, Flamingo, D.O., H (4) each	\$ 20.00	
#3362 Charter Oak parfait, Flamingo, D.O., H (2) each	\$ 30.00	
#3366 Trojan wine, Flamingo, D.O., H (6) each	\$ 40.00	
#3366 Trojan champagne, Flamingo, D.O., H (6) each	\$ 32.00	
#397 Inside Scallop covered butter, fair gold, H	\$ 55.00	

<b>Charles &amp; Mildred Fisher</b>	<b>(614) 522-5398</b>	<b>Paid Ad</b>
<b>991 Idlewilde Ave</b>	<b>UPS &amp; Handling Extra</b>	
<b>Newark, OH 43055</b>	<b>* = Marked</b>	
#322 2 quart fruit jar	\$195.00	
#1503 Crystalite cruet	\$ 35.00	
#341 Puritan oil	\$ 60.00	
#1205 Fancy Loop cracker jar (no lid)	\$ 50.00	
#393 Narrow Flute celery, oblong, Marigold	\$ 60.00	
#9225 Cobel decanter w/Victory etch	\$200.00	
#1503 Crystalite pitcher w/ice lip	\$200.00	
#1540 Lariat 2-lite candles w/ Moonglo cut, Pair	\$ 75.00	
#1469 Ridgeleigh bridge set, 4 pieces*	\$ 60.00	
#1632 14-1/2" platter, Dawn	\$ 60.00	
Victorian Doll Bell, Frosted	\$ 75.00	
Victorian Doll Bell, Clear	\$ 95.00	
#1540 Lariat perfume	\$ 95.00	
#1540 Lariat cups & saucers*, 4 sets, each	\$ 25.00	
#411 Rib and Panel compote, 6" high	\$ 35.00	
#1951 Cabochon compote 4-1/2" tall, w/Southwind cut	\$ 30.00	
#1951 Cabochon juice/wine w/Southwind cut (10) ea.	\$ 35.00	
#1951 Cabochon goblets, w/Southwind cut, (10) ea	\$ 35.00	
Toy candlesticks, (3) each	\$ 20.00	
#1567 Plantation 8" covered candy	\$175.00	
#142 Trident 2-lite candlestick, w/Orchid etch	\$ 95.00	
Heisey Animals:		
Swan*	\$800.00	
Bull*	\$1,000.00	
Gazelle*	\$2,000.00	
Filly, head back	\$2,000.00	
Pouter Pigeon*	\$ 750.00	
Flying Mare	\$3,000.00	
Fighting Rooster	\$125.00	
Rooster vase	\$ 95.00	
Ringneck Pheasant	\$120.00	
Heisey by Imperial/ On Bust off		
Tiger Paperweight, Amber	\$500.00	
Hen, Yellow	\$400.00	
Donkey, Ultra Blue	\$150.00	
Colt, kicking, Yellow	\$200.00	
Colt, standing, Yellow	\$200.00	
Sparky, Black HCA 85	\$125.00	
Show Horse, Amber	\$900.00	
Show Horse	\$700.00	
Heisey by Imperial:		
Bull, Verde Green	\$800.00	
Sow, Amber	\$350.00	
Sow, Red	\$350.00	
Hen, Amber	\$500.00	
Fish bookend, Light Blue	\$300.00	
Giraffe, head to side, Amber	\$350.00	
Show Horse, head to side, Amber	\$450.00	
Clydsdale, Amber	\$400.00	



**Harold Keller**  
**6244 S. Cook Drive**  
**Littleton, CO 80121**

**(303) 771-9432**  
**Visa/MC accepted**  
**H = Marked, UPS Extra**

#10 Muddler, (6) each	\$ 22.50
#113 Mars candlesticks, Flamingo, pair	\$ 49.50
#114 Pluto candlesticks, Moongleam, pair	\$ 49.50
#134 Trident candlesticks, pair	\$ 59.50
#134 Trident candlesticks, Moongleam, pair	\$175.00
#433 Greek Key individual footed almond, H, (7) each	\$ 29.50
#500 Octagonal ice tub, Colony etch, Sahara, H	\$150.00
#1170 Pleat & Panel 8" plate, Flamingo, H (10) each	\$ 12.50
#1404 Old Sandwich 6 oz. sundae, Sahara, (8) each	\$ 22.50
#1404 Old Sandwich 4 oz oyster cocktail, Sahara, H (6) each	\$ 27.50
#1425 Victorian 5 oz sherbet, H (10) each	\$ 12.50
#1425 Victorian 12 oz soda, H (9) each	\$ 20.00
#1425 Victorian 2-1/2 oz wine, H	\$ 20.00
#1469 Ridgeleigh one-lite candelabra and A prisms, H pair	\$185.00
#1483 Stanhope cup w/round black knob, (4) each	\$ 17.50
#1567 Plantation candleblock, one-lite, (1)	\$ 75.00
#1567 Plantation 5" candle, footed. epergne, H	\$ 85.00
#4044 New Era 12 oz soda, H (4) each	\$ 24.50
#4044 New Era 10 oz goblet, (5) each	\$ 27.50
#4044 New Era 4 oz claret, H (2) each	\$ 27.50

Paid Ad

**The Yesterday Shoppe**  
**Miami FL**

**(305) 667-9426**  
**Shipping Extra**  
**\* = Marked**

#5 9" Patrician candlesticks, signed Hobbs - Brockunier, pair	\$145.00
#300 Peerless, punch cup, Flamingo*	\$ 75.00
#325 Pillows, footed rose bowl*	\$175.00
#341 Puritan, 8-1/2" footed compote	\$ 48.00
#343 Sunburst, covered butter*	\$215.00
#468 Octagon w/rim 8" nappy, cut-star base, w/ urn & flower cutting*	\$ 75.00
#1404 Old Sandwich, shot glass, Cobalt*	\$115.00
#1509 Queen Ann, 11" floral bowl*	\$ 45.00
#1637 Town & Country salad bowl & underplate, Dawn, W/ original SP servers	\$235.00
Colonial variant, Old fashioned, vertical optic, Frosted, decorated with black enameled drinking figures, orange rim*	\$ 65.00

Buying: Punty & Diamond Point and Athena (also signed 20th century Italian and Scandinavian art glass)

Paid Ad

**Helen R. Hoffman**  
**HCR #1, Box 32A**  
**Diamond Point, NY 12824**

**(518) 668-3184** paid ad  
**Postage, & Hndl. Extra**  
**H = Marked**

#4036 Marshall 1 qt. cocktail shaker w/duck in marsh	\$ 90.00
#150 Banded Flute pitcher, 2 qt, H	\$ 90.00
#3355 Fairacre D/O 54 oz jug, Moongleam, H	\$105.00
#7056 Elephant handled mug, H	\$210.00
#1203 Flat Paneled Octagon floral bowl w/frog, Flamingo, paperH	\$ 80.00
#1404 Old Sandwich mug, Sahara, H	\$175.00
#300 Peerless sherry 1-1/2 oz, H (5) each	\$ 18.00
#5503 Optic iced tea/footed soda (8) all	\$120.00
#407 Coarse Rib one-lite 8" candelabra, A prisms, pair, H	\$200.00
#1485 Saturn 7" comport, Zircon, H	\$300.00
8 oz measuring cup, H	\$125.00
#417 Double Rib and Panel basket, Flamingo, Paper H	\$105.00
#417 Double Rib and Panel Basket, Moongleam, H	\$150.00
#417 Double Rib and Panel basket, H	\$185.00
#7032 Swan handled 6" candleholders, Moongleam, pair	\$325.00
#1255 Pineapple and Fan 6" vase, Emerald	\$ 50.00
#1252 Twist 8" floral bowl, Moongleam, H	\$125.00
#1401 Empress dolphin footed candy dish, Cobalt, H	\$425.00
#4224 Ivy vase, W.O., Tangerine	\$225.00
#150 Banded Flute #3 bedroom set, H	\$350.00

**L & L Uniques, LTD**  
**Larry and Linda Love**  
**4125 Sperry Street**  
**Dallas, TX 75214**

**(214) 821-1688** paid ad  
**H = Marked**  
**Shipping Extra**

#3404 Spanish goblets, Killarney cut, (2) each	\$ 50.00
#1510 Square on Round shallow 11-1/2" sq. floral bowl, H	\$ 75.00
#1519 Waverly 4-part bowl, heavy gold on rims	\$ 25.00
#1519 Waverly mayo, Orchid etch, H, glass ladle	\$ 50.00
#310 Ring Band small nappies, Custard w/gold & rose, H (5) ea	\$30.00
#1506 Whirlpool 4-part relish	\$ 45.00
#1487 Coleport old fashion, Dawn, H, (2) each	\$ 50.00
Square (7-6/8") covered cheese, w/cutting, gold trim, H	\$250.00
#100 Centennial 6" candlestick, w/gold & silver trim, H	\$ 25.00
#1170 Pleat & Panel 10" 5 part divd. spice, H, w/ slvpl tray	\$ 50.00
#300 Peerless 9" high footed bowl, H	\$ 75.00
#1183 Revere condiment set, seated tray, s/p, oil, all H	\$100.00
#1951 Cabochon cup/saucer H, creamer H, each	\$ 20.00
#3390 Carcassone 6oz champagne W.O., Lafayette etch, H(2) ea	\$10.00
#3390 Carcassone 4 oz claret, Lafayette etch, W/O (2) ea.	\$ 12.00
#1469 Ridgeleigh round cigarette, H	\$ 18.00
#1469 Ridgeleigh 6" square plate, H	\$ 15.00
#1469 Ridgeleigh 12" celery & olive	\$ 30.00
#1469 Ridgeleigh punch cups, H (2) each	\$ 15.00
Heisey by Imperial Whirlpool ruby sodas, H (3) each	\$ 25.00

<b>Tall Oaks Antiques</b>	<b>(219) 696-0147</b>
<b>Mike &amp; Barb Rosenberger</b>	<b>UPS &amp; Ins. Extra</b>
<b>565 N Nichols Lowell, IN 46356</b>	<b>H = Marked paid ad</b>
Goose wings half & wings up, pair	\$120.00
#33 Skirted Panel 3-1/2" toy candle , H pair	\$ 95.00
#113 Mars 3-1/2" candlesticks, Moongleam, pair	\$ 60.00
#116 Oak Leaf 3" candlesticks, Hawthorne, pair	\$180.00
#333 Waldorf Astoria 6 oz cruet w/stopper, H (2) each	\$ 40.00
#341-1/2 Puritan custard cup, H	\$ 18.75
#351 Priscilla 4 oz ale, (5) each	\$ 27.50
#352 Medium Flat Panel cone holder	\$ 75.00
#353 Trumpet 8" vase, H (2) each	\$ 65.00
#353 Trumpet 12" vase, H	\$ 95.00
#365 Queen Ann handled jelly, H	\$ 37.50
#393 Narrow Flute spooner, H	\$ 55.00
#393 Narrow Flute cheese & cracker, (2-pc.), H	\$ 57.50
#394 Narrow Flute w/rim, ftd. & hndl. ice tea, H (6) each	\$ 32.50
#411 Tudor 3-part tankard, H	\$125.00
#411 Tudor 10" vase, H	\$ 60.00
#411 Tudor 6" cheese, Hawthorne, H	\$ 45.00
#411 Tudor bon bon, H (2) each	\$ 25.00
#411 Tudor saucer champagne, H (3) each	\$ 16.00
#411 Tudor 8" low footed comport, H	\$ 65.00
#411 Tudor creamer & sugar no lid, H set	\$ 38.75
#411 Tudor 5" footed grapefruit, Flamingo, H	\$ 25.00
#412 Tudor parfait, H (5) each	\$ 18.50
#412 Tudor sherbet (8) each	\$ 13.00
#436 20" vase, H	\$125.00
#500 Octagon frozen dessert, cut, Flamingo, (5) each	\$ 22.50
#515 cologne 1/4 oz, D/O, Flamingo (dauber broken)	\$145.00
#1001 Caswell sug. shaker & cr., ftd & hndl., Moongleam, set	\$210.00
#1184 Yeoman cream & covered sugar., cut, H, set	\$ 68.50
#1404 Old Sandwich 12 oz mug, H (2) each	\$ 47.50
#1415 20th Century 12 oz footed soda, Dawn	\$ 55.00
#1433 Thumbprint & Panel round floral bowl & candlesticks, Sahara, (3-piece set)	\$295.00
#1447 Rococo 5-part relish & mayo w/lid, (sm flake on lid)	\$ 95.00
#1503 Crystolite 1/2 gallon pitcher, ice lip	\$105.00
#1506 Provincial goblet, (6) each	\$ 22.50
#1506 Provincial sherbet, (7) each	\$ 12.00
#1519 Waverly creamer & sugar, Orchid etch, (2-sets) each	\$ 75.00
#1540 Lariat 13" shallow oval bowl	\$ 49.50
#1567 Plantation 13" cake salver, H	\$165.00
#1567 Plantation 5" round covered butter, H	\$100.00
#2323 Navy 6 oz soda, (2) each	\$ 55.00
#2323 Navy 8 oz soda	\$ 60.00
#2516 Circle pair 12" floral blwl, Flamingo, D/O	\$ 47.50
#3359 Plateau 6" rose bowl, D/O	\$ 32.50
#3404 Spanish 12 oz footed soda, Cobalt bowl, (2) each	\$ 97.50
#4045 ball vase 6", Cobalt	\$450.00
#4224 Cobel cocktail w/Rooster stop. 'Us' and (2) #5038 3-1/2 oz Rooster stem cocktail 'YOU & Me', set	\$295.00

<b>J &amp; R Collectibles</b>	<b>(614) 344-9719 paid ad</b>
<b>P.O. Box 1030</b>	<b>UPS &amp; Ins. Extra</b>
<b>Newark, OH 43058-1030</b>	<b>* = marked</b>
#1567 Plantation round cov'd butter*	\$110.00
#1235 Beaded Panel & Sunburst 4-1/2 oz punch cup* (2) each	\$14.00
#1401 Empress rnd din. plates, Old Colony etch, Sahara, (6) ea*	\$90.00
#341 Old Williamsburg punch cups * (8) each	\$ 7.00
#3420 Milwaukee 8 oz pilsner, (4) each	\$ 50.00
#4231 Favor vase, D/O	\$135.00
#4230 Favor vase D/O, Cobalt	\$245.00
#4230 Favor vase D/O Sahara	\$230.00
#3386 Trojan 1 oz cordial D/O Flamingo	\$225.00
#4085 Kohinoor 1 oz cordial, Coronation etch	\$145.00
#4225 Cobel 1 quart cocktail shaker, Orchid etch	\$175.00
#5025 Tyrolean 1 oz cordial, Orchid etch*, (5) each	\$135.00
#3484 Donna 12 oz ice tea, Orchid etch, (8) each	\$ 60.00
#1519 Waverly 7" salad plate, Orchid etch (8) each	\$ 17.00
#1519 Waverly two-lite candlestick, Orchid etch, Pair	\$130.00
#1509 Queen Ann 7" Triplex relish, Orchid etch	\$ 55.00
#5025 Tyrolean 10 oz low ftd. goblet, Orchid etch, (8) each	\$ 35.00
#5031 8 oz oil & vinegar, Orchid etch	\$175.00
#1509 Queen Ann 7-1/2" D.F. sauce bowl, Orchid etch*	\$110.00
#1519 Waverly 9" salad bowl, Orchid etch	\$180.00

<b>L.A. Maness</b>	<b>(804)798-1825</b>
<b>Rt. 1 Box 552</b>	<b>UPS \$3.50/carton</b>
<b>Ashland, VA 23005</b>	<b>H = Marked</b>
Visa and Mastercard Welcome	
#407 Coarse Rib 9" plate, H (4) each	\$ 17.50
#1150 Colonial star 6" plate, H (6) each	\$ 10.00
#1503 Crystolite 4" covered cigarette box, H	\$ 35.00
#1503 Crystolite ice tub, H	\$ 92.50
#1503 Crystolite 2 handled 6" jelly, H	\$ 27.50
#1503-1/2 Crystolite creamer & sugar knob handle, H	\$ 42.50
#1401 Empress D.F. mayonnaise, H, Sahara	\$ 50.00
#433 Greek Key 5" nappy, H (3) each	\$ 30.00
#433 Greek Key 8" nappy, H	\$ 60.00
#1405 Ipswich 8 oz footed soda, H (4) each	\$20.00
#393 Narrow flute covered mustard, H	\$ 37.50
#393 Narrow Flute french dressing boat w/undrplt	\$ 65.00
#393 Narrow Flute open lemon dish, H	\$ 17.50
#479 Petal creamer & sugar, Flamingo	\$ 52.50
#1170 Pleat & Panel open sugar, Flamingo, H	\$ 25.00
#1506 Provincial mayonnaise, H	\$ 30.00
#341 Puritan saucer champagne, H (8) each	\$ 17.50
#465 Recessed Panel 1# covr'd candy, good gold w/floral dec,H	\$65.00
#1252 Twist 4-3/4" nappy, Flamingo	\$ 18.00
#1252 Twist 3 cornered mint, Flamingo, faint H	\$ 32.50
Paid Ad	

**A Touch of Glass**  
**9011 Mini - Ranch Rd.**  
**Waxhaw, NC 28173**

**(704) 843-3540**  
**H = Marked**  
**UPS \$3.50 / Carton**

#300 Peerless 6 oz champagne, one ball, H (8) each	\$ 20.00
#341 Puritan 5 oz high sherbet, H (8) each	\$ 20.00
#351 Priscilla 4 oz high champagne, H (9) each	\$ 20.00
#394 Narrow Flute 4 oz low sherbet, H (2) each	\$ 15.00
#1250 Hetrick's 4 oz low sherbet, H (2) each	\$ 25.00
#331 Colonial Panel 4 oz oil, H	\$ 55.00
#1540 Lariat three-lite candlesticks, pair	\$ 75.00
#1540 Lariat 8-1/2" footed, handled basket, H	\$110.00
#1506 Whirlpool (Provincial) 8 oz footed tumbler, H each	\$ 20.00
#400 punch cups, star base, H (2) each	\$ 10.00
#1503 Crystolite cream and sugar, H set	\$ 50.00
#1506 Whirlpool (Provincial) 14" torte plate, H	\$ 40.00
#300 Peerless 7 oz. goblet, H	\$ 20.00

paid ad

**John Woytowicz**  
**RFD 1 Box 4047**  
**North Anson, ME 04958**

**(207) 696-3020**  
**Shipping & Insurance**  
**Extra** paid ad

#341 Colonial covered butter	\$ 90.00
#350 Pinwheel and Fan pitcher	\$135.00
#359 Colonial 7 oz goblet, (4) each	\$ 25.00
#373 Colonial 1-1/2 oz wine, (4) each	\$ 20.00
#373 Colonial 3 oz cocktail, (7) each	\$ 15.00
#419 Sussex champagne, Moongleam bowl, (2) each	\$ 25.00
#1201 Fandango 5" nappy	\$ 28.00
#1201 Fandango 9" nappy	\$ 45.00
#1252 Twist 9" plate, Marigold (2)	\$ 22.00
#1252 Twist cup & saucer, Flamingo, (4) each	\$ 38.00
#1401 Empress creamer & sugar, Sahara, pair	\$ 70.00
#1401 Empress cup & saucer, (7 sets) each	\$ 36.00
#1401 Empress 5" footed preserve	\$ 30.00
#1401 Empress 11" floral bowl	\$ 55.00
#1503 Crystolite cup & saucer	\$ 15.00
#1503-1/2 Crystolite cup & saucer, (4 sets) each	\$ 18.00
#1419 Arch tumbler, Sahara, (2) each	\$ 60.00
#2323 Navy 8 oz soda, Cobalt sham, W.O., (8) each	\$ 40.00
#3408 Jamestown iced tea, Barcelona cut, (3) each	\$ 25.00
#3480 Koors pitcher, Moongleam handle and foot	\$200.00

**Oak Grove Antiques**  
**49 Grove St.**  
**Ayer, MA 01432**

**\* = Marked**  
**P & H Extra**  
**(508)772-2538 after 5 pm**

#22 7" candlesticks*, good gold	\$ 95.00
#150 Banded Flute creamer*	\$ 19.00
#300 Peerless hotel sugar*, (2) each	\$ 15.00
#341 Puritan 4 oz oil*, #2 stopper	\$ 35.00
#359 2-1/2 oz creme de menthe*, D.O., (2) both	\$ 25.00
#373 low footed sherbet*, (2)	\$ 65.00
#393 Narrow Flute 1 quart jug*	\$ 65.00
#449 Thumbprint and Panel double candlestick, etched, pair	\$110.00
#493 2 oz perfume*, (irridized) #65 stopper	\$ 85.00
#1184 cups* (9), saucers* (11), Empress etch	\$115.00
#1186 Yeoman oval hotel sugar*, etched	\$ 19.00
#1401 Empress cream and sugar*, Flamingo	\$ 55.00
#1401 Empress footed creamer*, Lafayette etch	\$ 19.00
#1495 Fern cream and sugar*, Belvedere cut	\$ 65.00
#1519 Waverly oval nut compote*, Orchid etch	\$ 75.00
#1519 Waverly honey dish*, Orchid etch	\$ 49.00
#1540 Lariat divided salad dressing bowl*	\$ 30.00
#3333 Old Glory 3 oz wine*, (5)	\$ 95.00
#5025 Tyrolean tall goblet*, Orchid etch, (8)	\$250.00
#5025 Tyrolean low goblet*, Orchid etch, (4)	\$110.00

paid ad

**Bob and Willi Fausnaugh**  
**231 N. Stanwood Rd.**  
**Columbus, OH 43209**

**(614) 235-2089**  
**UPS & Ins. Extra\***  
**H = Marked** paid ad

#3389 Duquesne goblet, Sahara, (2) each	\$ 27.50
#1229 Octagon nut dish, Moongleam, H (2) each	\$ 20.00
#5072 Low footed rose stem goblet	\$ 15.00
#3312 Gayso cocktail, Flamingo, (5) each	\$ 10.00
#1231 Octagon cup & saucer, Flamingo, H (6) each	\$ 22.50
#3390 Carcassonne goblet, Sahara, (2) each	\$ 12.50
#1485 Saturn sugar, H	\$ 20.00
#4055 Park Lane oyster cocktail, (2) each	\$ 15.00
#1229 Octagon floral bowl, Moongleam, (worn)	\$ 20.00

**Charles Hemlock**  
**17725 Manderson #102**  
**Detroit, MI 48203**

**(313) 861-7149**  
**UPS & Ins. Extra**

#1509 Queen Ann 9" bowl, Orchid etch, H	\$ 30.00
#7000 Sunflower candlesticks, pair	\$ 35.00
#116 Oak Leaf candlesticks, Moongleam base, H, pair	\$ 50.00
#1540 Lariat 3-lite candlesticks, pair	\$ 75.00
#1495 Fern 2-lite candlesticks, etched, pair	\$ 75.00
#343 Sunburst 5-1/2" footed jelly, shallow, H	\$ 45.00
#5024 Oxford saucer champagne, H (5) each	\$ 9.00
#1541 Athena (#7022 Reverse ess) cream & sugar	\$ 35.00

More items available - Send SASE for list

paid ad

**Jean & Don Parrett**  
**4995 Maple Dale Rd**  
**Jackson, MI 49201**

**(517) 784-7319 &**  
**Recorder**  
**Post & Ins. Extra**

paid ad

#353 Colonial 1/2 lb cheese or butter, rare	\$145.00
#1106 Touraine 3 oz N.O. bar cocktail, Amber, rare, (5) each	\$ 35.00
#1506 Whirlpool 5" 3 hndld covered chocolate box	\$ 95.00
#1506 Whirlpool 5" 2 handled & divided jelly	\$ 27.50
#1506 Whirlpool 2 handled sugar bowl	\$ 18.00
#1506 Whirlpool 12" flared floral bowl	\$ 45.00
#1469 Ridgeleigh 6" square ashtray	\$ 42.00
#1469 Ridgeleigh 3" bridge ashtray, in brass holder, (6pcs)	\$ 40.00
#1469 Ridgeleigh small sugar & creamer, set	\$ 25.00
#1469 Ridgeleigh cruet & stopper	\$ 38.00
#1469 Ridgeleigh 7" 2 handled ice bucket	\$ 75.00
#1469 Ridgeleigh 3-1/4" oval ind. jelly (6), each	\$ 12.00
#1469 Ridgeleigh cone salt & pepper, pair	\$ 30.00
#1469 Ridgeleigh ball salt & pepper	\$ 18.00
#1469 Ridgeleigh 10-1/2", 3 compartment relish	\$ 35.00
#1469 Ridgeleigh 2" high sq. candleholder, pair	\$ 35.00
#1469 Ridgeleigh 11" gardenia floral bowl	\$ 45.00
#1401 Empress 10-1/2" round dinner plate, (6) each	\$ 80.00
#1401 Empress 9" round dinner plate, Sahara, (4) each	\$ 48.00
#1401 Empress 8" round luncheon plate, Flamingo, (2) each	\$ 35.00
#1401 Empress 8-1/2" sq. luncheon plate, Sahara, (6) each	\$ 20.00
#1401 Empress 10 1/2" square dinner plate, (6) each	\$ 85.00
#1401 Empress 10-1/2" square dinner plate, Sahara, (3) each	\$105.00
#1404 Old Sandwich 8-1/2" square luncheon plate, (4) each	\$ 18.00
#1519 Waverly 8" round plate, Narcissus cut, (8) each	\$ 18.00
#1224 Hexagon 8-1/2" luncheon plate, Hawthorne, (7) each	\$ 28.00
#1231 Octagon 6-1/2" saucer, Hawthorne, (3) each	\$ 12.00
#1231 Octagon 6-1/2" 2 handled bon bon, Marigold	\$ 25.00
#341 Old Williamsburg 9-1/2" dinner plate	\$ 70.00
#341 Old Williamsburg 8" luncheon plate, (6) each	\$ 19.00
#353 colonial 5" straw holder	\$ 45.00
#1401 Empress 8-1/2" sq luncheon plate, Alexandrite, (7) each	\$ 85.00
#4220 Janice 6" spiral optic flared vase, Alexandrite	\$495.00
#300 Old Williamsburg 18" high #300 cut shade, (6) "C"prisms	\$325.00
#17 Classic 16" high one-lite, 7" C prisms, (3) each	\$295.00
#35 Aristocrat 16" high one-lite, 6-1/2" C prisms, (2) each	\$295.00
#300-3 Old Williamsburg 20-1/2" 3-lite, A prisms,Sahara, (2)ea.	\$675.00
#21 Aristocrat 11-1/2" one-lite & #51 24" Epergne, (3) set	\$450.00
#301 Old Williamsburg 15" high three-lite candelabra, (2) each	\$295.00
#301 Old Williamsburg 15" high Four-lite candelabra, (2) each	\$465.00
#301 Old Williamsburg 11" high two-lite candelabra, (2) each	\$ 90.00
#300 Old Williamsburg 12" hi 1-lite cndlhldr, A prisms, (2) ea	\$120.00
#300 Old Williamsburg 10" hi 1-lite cndlhldr, A prisms, (2) ea	\$ 80.00
#5 Patrician 16" hi 2-lite candelabra, A prisms, as is	\$225.00
#1445 Grape 11" hi one-lite candelabra, frosted	\$ 75.00
#1567 Plantation three-lite candelabra, (2) each	\$125.00
#1506 Whirlpool two-lite candelabra, center ball, (2) each	\$110.00
#150 Band Flute one-lite candleholder	\$ 45.00

**Ed & Arlene Crafts**  
**187 N. Pioneer Ave**  
**Shavertown, Pa 18708**

**(717) 675-8553**

**H = marked**

**P & I Extra**

paid ad

#1469 Ridgeleigh cup and saucer, H set	\$ 25.00
#1469 Ridgeleigh saucer, (2) each	\$ 10.00
#1469 Ridgeleigh 6" plate, (3) each	\$ 10.00
#1469 Ridgeleigh 7-1/2" plate (4) each	\$ 12.50
#1469 Ridgeleigh 8-1/2" plate	\$ 12.50
#1509 Queen Ann 3-part relish, Crinoline etch, H	\$ 50.00
#1509 Queen Ann D.F. mayo, underplate, Fan cut	\$ 50.00
#5010 Symphone 9 oz goblet, low foot, Minuet etch, (8) each	\$ 23.00
#3408 Jamestown goblet, Barcelona cut, H (6) each	\$ 20.00
#4055 Park Lane goblet, Nomad cut, (6) each	\$ 25.00
Goose, wings up, (2) each	\$ 65.00
Pony, standing (2) each	\$ 60.00
#150 Banded Flute 5" footed plate, H (3) each	\$ 15.00
#3408 Jamestown sherbet, Barcelona cut, (4) each	\$ 15.00
#3350 Wabash handled ice tea, Pied Piper etch, (4) each	\$ 35.00
#411 Tudor 12 oz soda, (4) each	\$ 15.00
#325 Pillows punch cup, H, (6) each	\$ 30.00
#3389 Duquesne goblet, Chintz etch, (6) each	\$ 20.00
#5079 Pan American parfait, (10) each	\$ 6.00
#3416 Barbara Fritchie goblet, Manhattan cut, (4) each	\$ 35.00

**Don & Jean Parrett**  
**4995 Maple Dale Rd**  
**Jackson, MI 49201**

**(517) 784-7319 &**  
**Recorder**  
**Post & Ins. Extra**

paid ad

#1540 Lariat 1-lite & globe chamberstick	\$150.00
#116 Oak Leaf 1-lite candleholder, Flamingo, (2) each	\$ 45.00
#1503 Crystolite 2-lite candelabra, A prisms, (2) each	\$ 75.00
#1566 Crystolite 1-lite candleholder, Rare, (2) each	\$ 45.00
#1488 Kohinoor 2-lite candelabra, D prisms, (2) each	\$120.00
#1488 Kohinoor 2-lite candelabra, J prisms, (2) each	\$120.00
#1509 Queen Ann 1-lite candelholder, A prisms, (2) each	\$ 80.00
#1509 Queen Ann 1-lite 14" hi lamp, A prisms,	\$140.00
#1540 Lariat 2-lite candleholder, (2) each	\$ 30.00
#1541 Athena 2-lite candleholder, (2) each	\$ 50.00
#1632 Lodestar 1-lite candleholder, Dawn (2) each	\$ 75.00
#1626 Lodestar 11" floral bowl, crimped, Dawn	\$150.00
#1626 Lodestar 3-1/2 oz cocktails, Dawn (5) each	\$ 40.00
#1626 Losestar 5" candy bowl, Dawn	\$ 75.00
#1509 Queen Ann 1-lite cndlhldr, A prisms, Orchid (2) each	\$190.00
#142 Cascade 3-lite candleholder, Orchid etch, (2) each	\$ 95.00
#134 Trident 2-lite candleholder, Orchid etch, (2) each	\$ 70.00
#142 Cascade 3-lite Rose candleholder, (2) each	\$ 95.00
#1519 Waverly 3-lite Rose candleholder, (2) each	\$155.00
#1540 Lariat center handle 14" sandwich tray	\$105.00

**Roger & Erma Hulslander** (501) 642-7511  
**140 Marcone Drive** UPS & Ins. Extra  
**DeQueen, AR 71832** \* = Marked paid ad

#417 Double Rib & Panel basket*	\$250.00
#1001 Caswell sugar shaker, D.O., Flamingo	\$ 65.00
#1001 Caswell creamer, D.O., Flamingo	\$ 65.00
#1401 Empress 13" Hors'D'oeuvre handled plate, cut	\$ 50.00
#1401 Empress 6" D.F. candlestick*, Sahara	\$100.00
#1405 Ipswich 2 oz footed oil	\$100.00
#1519 Waverly footed salt & pepper, Orchid etch	\$ 65.00
#1519 Waverly 4" footed violet vase, Orchid etch*	\$ 90.00
#1565 6-3/4" jelly*, Dawn	\$ 45.00
#5003 Crystalite 1 oz cordial*, (4) each	\$100.00
Asiatic Pheasant*	\$300.00
Colt, balking	\$170.00
Mallard*, wings down	\$285.00
Mallard*, wings half	\$225.00
Plug Horse / Oscar	\$100.00
Ringneck Pheasant	\$110.00
Rooster stem cocktail, (4) each	\$ 55.00
Rooster, fighting	\$110.00
Rooster vase	\$ 80.00
Rooster	\$375.00

**RE: Antiques** (615) 665-1824  
**1014 Foxwood Drive** H = Marked paid ad  
**Nashville, TN 37215** Postage & Ins. Extra

Layaway Welcome

Fighting Rooster (2) each	\$125.00
Fish bookends, pair	\$225.00
Rooster vase	\$110.00
Standing Colt	\$ 90.00
#21 Aristocrat 7" candlestick, candlestick, H, pr.	\$ 95.00
#134 Trident 5" 2-lite candlestick, #507 Orchid etch, pair	\$100.00
#352 Medium Flat Panel 4 oz lavender jar, H	\$ 75.00
#407 Coarse Rib 12" celery dish, Marigold stain, H	\$ 25.00
#407 Coarse Rib covered mustard, Marigold stain, H	\$ 60.00
#433 Greek Key 4-1/2" plate, H, (10) each	
#1001 Caswell cream Flamingo D.O.	\$ 65.00
#1401 Empress 6" candlestick, D.F., H, pair	\$190.00
#1503 Crystalite 1/2 gallon ice jug	\$135.00
#1503 Crystalite 10 oz tumbler, H (6) all	\$135.00
#1503 Crystalite round thousand island bowl, underplate, H	\$ 60.00
#1567 Plantation 4 oz oyster cocktail (7) each	\$ 30.00
#2323 Navy 5 oz soda, Cobalt base, W.O.	\$ 50.00
#3357 King Arthur 2-1/2 oz wine, Flamingo stem, ftd., D.O., H	\$ 45.00
#3394 Saxony 12 oz ftd soda, #50 Dresden etch, Sahara	\$ 80.00
#3404 Spanish 10 oz goblet, Sahara bowl, W.O., H	\$360.00

**Marilyn Huffman** (201) 670-8838 paid ad  
**41 Monroe St.** UPS/Ins. Extra  
**Waldwick, NJ 07463** \* = Marked

#160 Locket on chain 8-1/2" footed compote	\$150.00
#305 Punt & Diamond Point perfume, ster. top, (2) each	\$ 95.00
#305 Punt & Diamond Point individual sugar	\$ 40.00
#337 Touraine butter/lid*,	\$ 55.00
#337 Touraine sugar/lid*	\$ 40.00
#343 Sunburst 10" footed compote*	\$140.00
#343 Sunburst 10-1/2" cupped punch bowl*/base*, rim flake	\$145.00
#373 Old Williamsburg 2 oz wine*, (11) each	\$ 25.00
#1401 Empress 7" round plate*, Alexandrite, (7) each	\$ 35.00
#1401 Empress cup*/saucer*, Alexandrite, (3) each	\$150.00
#1401 Empress saucer*, Alexandrite, (4) each	\$ 30.00
#1401 Empress D.F. sugar*, Alexandrite, (2)	\$225.00
#1401 Empress D.F. 6" bowl, Moongleam	\$ 32.00
#1425 Victorian 11" 3-part relish	\$ 38.00
#1425 Victorian 5 oz sherbet*	\$ 12.00
#1469 Ridgeleigh individual salt*, (6) each	\$ 9.00
#1469 Ridgeleigh 3-1/2" round coaster, Sahara	\$ 25.00
#1469 Ridgeleigh cocktail coaster*, (12) each	\$ 9.00
#4225 Cobel 1 quart shaker, Tally Ho etch, sm flake/strainer	\$135.00
#4225 Cobel 2 quart shaker	\$ 45.00

*New arrivals in the Museum Gift Shop*  
*Visit our Gift shop any day between 1-4pm*



- \* Biscayne Blue Sparrows - \$16.00 each
- \* 1991 Frosted Sapphire Blue Opalescent Oscar- \$24.00

If you are an out of town member, call our shipping department at (614) 345-2932 Monday through Friday between 8:00 & 4:30 pm to place your order, or write to HCA Gifts 169 W. Church St. Newark, OH 43055. \*Remember that all orders must add 10% shipping and \$3.00 handling. All orders for Ohio must add 6% sales tax. The complete Gift Gallery List will appear in November issue of the Heisey News.

<p><b>MARJORIE GILLETTE</b> Rochester, New York Glassware Speciality Heisey Mail Orders &amp; Shows 716-225-4678</p>	<p><b>YOUR AD COULD BE HERE</b></p>	<p><b>COMPARISON LIST</b> New Heisey Auction List for 1990 3 Year Auctions 88-89-90 Price: \$13.00 + \$2.00 Shipping, Payable B. Whaley 300 International Dr., Pataskala, Oh 43062 614-927-1557</p>
<p><b>ALL HEISEY AUCTION</b> Consignments Welcome Apple Tree Auction Center 1616 W. Church, Newark, OH 43055 PH: (614) 344-9449</p>	<p><b>GREEN ACRES FARMS</b> Antiques, Crystal Glass &amp; Collectibles 2678 Hazelton-Etna Rd., SW (S.R. 310-N) Pataskala, OH 43062 Sat. or Sun. PM or call (614) 927-1882</p>	<p><b>THE CURIOSITY SHOPPE</b> Heisey, Pottery, Coins, Crafts &amp; More In Holmes County Amish Country 55 W. Jackson, Millersburg, OH 44654 (216) 674-2999</p>
<p><b>ALFA I CARRIAGE HOUSE ANTIQUES</b> Featuring Depression &amp; Elegant Glassware Al &amp; Faye Maness Rt. 1 Box 552, Ashland, VA 23005 PH: (804) 798-1825</p>	<p><b>H &amp; R DIAMOND H</b> Helen &amp; Robert Rarey 1450 White Ash Dr. Columbus, OH 43204 PH: (614) 279-0390 after 5:30</p>	<p><b>PARRETT'S ANTIQUES</b> Heisey 4994 Mapledale Rd. OR 1215 Greenwood Ave. Jackson, Mich. 49201 PH: (517) 784-7319 OR (517) 783-3289</p>
<p><b>ANTIQUES - THE SHULTZES</b> 206-208 East Main St. Newmanstown, PA 17073 15 Miles West of Reading, PA PH: (215) 589-2819</p>	<p><b>"HAPPINESS IS" - THE STULTZS</b> 3106 Warren Court, Glen Allen, VA 23060 Shows and Mail Order PH: (804) 672-8102 GLASS CIRCA 1890-1960</p>	<p><b>PATTON HOUSE</b> Rocky's Mail, I-81 &amp; US 11 Weyer's Cave, VA 24486 PH: (703) 967-1181 The Antique Gallery, Richmond, VA</p>
<p><b>C &amp; J ANTIQUES</b> Cole &amp; Jean Miesner Box 45, 72 Whig St. Newark Valley, NY 13811 PH: (607) 642-9905</p>	<p><b>HARRALSON'S HOBBIES</b> Heisey - Rose O'Neill Items - Doll Repair 1426 W. Highland, Springfield, MO 65807 PH: (417) 883-2449 Cliff &amp; Helen Harralson</p>	<p><b>YOUR AD COULD BE HERE</b></p>
<p><b>DOXTOIS</b> Eva &amp; Joe Hirsh Heisey &amp; Pattern Glass 6 James St., Norwalk, CT 06850 PH: (203) 847-3315</p>	<p><b>HELEN &amp; JIM KENNON</b> Heisey, Cambridge, Fostoria, Duncan, Imperial, Fenton, Tiffin P.O. Box 114 Brookville, OH 45309 PH: (513) 833-5406 SHOWS ONLY</p>	<p><b>R &amp; L ANTIQUES-SAN FRANCISCO</b> Members of the Golden Gate Heisey Club 3690 Bodega Ave. Petaluma, CA 94952 PH: Petaluma (707) 762-2494 PH: San Francisco (415) 621-6693</p>
<p><b>CHARLES &amp; MILDRED FISHER</b> Heisey, Degenhart, Imperial, Antiques, Collectibles, General Line 991 Idlewild, Newark, OH 43055 PH: (614) 522-5398</p>	<p><b>JJ MC KEE ANTIQUES</b> Pottery - Glassware - Collectibles 222 B West 75th St. Kansas City, MO 64114 Wed.-Sun. 10-5 PH: (816) 361-8719</p>	<p><b>THE WOODEN SHOE</b> Antiques &amp; Collectibles Jim &amp; Sheri VanEs by Appt. 810 Elden, Herndon, VA 22070 PH: (703) 435-9045</p>
<p><b>CRYSTAL LADY</b> Joann Hagerty Specializing in elegant depression glassware 1817 Vinton Street, Omaha, NE 68108 Shop Ph. (402) 341-0643 or Home Ph. (402) 391-6730</p>	<p><b>RAILROAD DINING CAR CHINA</b> Wanted By Collector - Harold W. Ames 4574 Driftwood La., Canandaigua, NY 144424 1-716-394-1098 1-800-836-9619 Most Anything Railroad Related Wanted</p>	<p><b>SCHWAN'S ANTIQUES</b> SHOWS &amp; MAILORDER 77 Lagos del Norte Ft. Pierce, FL 34951 PH: (407) 461-5940</p>
<p><b>DIAMOND H PLUS</b> Mail Orders &amp; Shows George &amp; Eileen Schamel 6625 Gilardi Rd., Boonsboro, MD 21713 PH: (301) 432-6285</p>	<p><b>J. &amp; R. COLLECTIBLES</b> Shows, SASE, Mail Order list The Lukasko's P.O. Box 1030, Newark, Ohio 43055 PH: (614) 344-9719</p>	<p><b>ARMORY ANTIQUES</b> Quality Glass &amp; Furniture 168 W. Main St. Plain City, OH 43064 (614) 873-4890</p>
<p><b>ETTELMAN'S DISCONTINUED</b> <b>CHINA &amp; CRYSTAL</b> HEISEY a SPECIALTY P.O. Box 6491-HN Corpus Christi, TX 78411 PH: (512) 888-8391 Include SASE</p>	<p><b>MOSTLY HEISEY</b> Rhoda Curley 16 Clayton PL, Albany, NY 12209 Shop and Mail Order PH: (518) 482-6272</p>	<p><b>HEISEY PUBLICATIONS</b> Box 102, Plymouth, Ohio 44865 All Vogel Heisey Books I, II, III, IV And Quarterly Newscasters available</p>
<p><b>FOREVER HEISEY</b> Jan &amp; Norm Thran Mail Order, Shows, Appraisal Service 1663 Londondale Pkwy., Newark, OH 43055 PH: (614) 344-5955</p>	<p><b>MOUNDBUILDERS ANTIQUES</b> Heisey &amp; Animals, General Antiques Irene Rauck 1138 Moundview, Newark, OH 43055 PH: (614) 344-6043</p>	<p><b>WILLEY'S ANTIQUES &amp; MUSEUM</b> Specializing in Heisey 11110 Cannon Rd., Frazeyburg, OH 43822 16 miles east of Newark, OH PH: (614) 828-2557</p>
<p><b>H &amp; R ANTIQUE CENTER</b> 1063 Pike St., Etna, Oh 43018 Off I-70 Exit 118 1/2 mile North Wed.—Sat. 10-5 Sun. 1-5 614-927-4053</p>	<p><b>THE MUTED SWAN ANTIQUES</b> 5486 Peachtree Rd., Chamblee, GA 30341 Heart of Chamblee Antique Row Specializing in Heisey &amp; Cambridge Bill &amp; Pat Miller PH: (404) 451-7620</p>	<p><b>JAMES S. HARRIS ANTIQUES/APPRISALS</b> Box 672 Richmond, KY 40475-0672 PH:(606) 623-9100 Buying and Selling by Mail</p>
<p><b>GLASS 'N' GLASS</b> Virginia &amp; Odell Johnson Rt. 1, Box 1324 Hayward, WI 54843 PH: (715) 462-3753</p>	<p><b>SHRADER ANTIQUES</b> Dep. &amp; Elegant Glass, Buffalo Pottery Railroad Dining Car China, Shelley China 2025 Highway 199, Crescent City, CA 95531 PH: (707) 458-3525</p>	<p><b>TALL OAKS ANTIQUES</b> Glassware-Specializing in Heisey Shows - Mail order 219-696-0147 Mike &amp; Barb Rosenberger 565 N Nichols, Lowell, IN 46356</p>




*Auction List Form  
Benefit Auction 1992*

Name \_\_\_\_\_

Street Address \_\_\_\_\_

City, State, Zip \_\_\_\_\_

Phone (\_\_\_\_) \_\_\_\_\_

LOT#	ITEM#	PAT#	PATTERN NAME	ITEM DESCRIPTION	CUT/ETCH	COLOR		DAMAGE

**MARCH BENEFIT AUCTION  
APPLE TREE AUCTION CENTER  
NEWARK, OHIO  
MARCH 13 & 14, 1992**

It's that time again to prepare for the 1992 HCA Benefit Auction! This is the largest fund raiser held for HCA. Proceeds from this auction will go towards the Endowment Fund. With your continued support, the 1992 auction will be a huge success.

We're really looking forward to this event. Start thinking about what you want to consign and don't forget to make your reservations for accommodations early! A list of area hotels will appear in the November issue of the Heisey News. It's always lots of fun so plan to attend..

**Terms:** This year each HCA FAMILY will be allowed to consign 12 lots of Heisey glass to be sold in the auction. Each lot can contain as many items as you wish. We will be using the 80%-20% format, 80% goes to the consigner and 20% goes to HCA. Any item which sells for \$5.00 or less will be considered a donation. We will accept glass as donations where all proceeds go to HCA

One hundred percent of any lots of donated glass goes to HCA. You may donate as many lots of glass as you wish but you can only consign up to 12 lots.

**Ship To: HCA  
169 W. Church St  
Newark, OH 43055**

Please enclose a packing list with every box. If more space is needed, xerox the form.

Remember to clean your glass--glass in good condition receives better prices.

All glass is inspected when received. Any glass found not to be Heisey will be returned, including Heisey by Imperial and commemorative pieces.

**Deadline:** Glass for the Auction must be received by January 1, 1992.

**Volunteers:** If you wish to volunteer your time in any way with the Auction, or if you have any questions, please call me:

**Jim Clark  
(513) 845-9132  
Benefit Auction Chairman**

## The Book You've been Asking For

The Handbook of paid ad  
**Heisey Production Cuttings**  
 by

Neila M. and Thomas H. Bredehoft

The first book featuring production cuttings done by Heisey between 1914 and 1957. Over 300 illustrations, over 175 photographs. 5 1/2 by 8 1/2 softbound, 156 pages, values included.

\$17.95 Postpaid

Order from: Cherry Hill Publications 10217 Stickle Rd., NE  
 St. Louisville, OH 43071

**Nitas Glass & Linen Shoppe** (206) 978-4913 paid ad  
**591 Leonard Rd.** \* = Marked  
**Onalaska, WA 98570** ALL MINT

#1776 Kalonyal 3 cornered handled jelly*	\$ 32.00
#1483 Stanhope 3-1/2 oz cocktail, Zircon bowl & foot	\$ 75.00
#1205 Fancy Loop wine, cupped	\$ 60.00
#419 Sussex goblet, Moongleam bowl*	\$ 65.00
#1235 Beaded Panel & Sunburst water bottle	\$110.00
#1205 Fancy Loop custard, Emerald	\$ 48.00
#1404 Old Sandwich ind. ashtray, Moongleam*	\$ 40.00
#1201 Fandango toothpick	\$ 40.00
#459 Basket 8**	\$185.00

### THE NATIONAL HEISEY GLASS MUSEUM

Corner of W. Church St. & N. Sixth St.

Newark, OH 43055

(614) 345-2932

Open daily

1 P.M. - 4 P.M.

Closed holidays



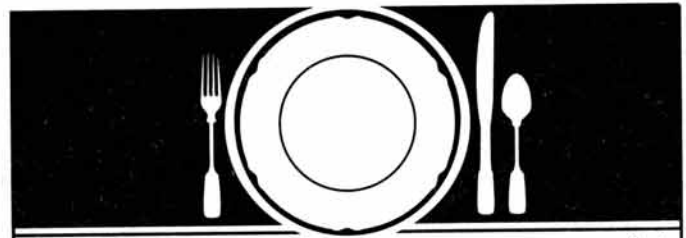
We have approximately 5,600 square feet of display space for the beautiful handmade glass produced in Newark, OH by the A.H. Heisey Co. from 1896 to 1957.

#### MEMBERSHIP RENEWAL NOTICE

THE DATE ABOVE YOUR NAME AND ADDRESS IS YOUR RENEWAL DATE. THIS IS YOUR LAST ISSUE IF IT READS: 10-10-91. REMEMBER THAT DUES ARE NOW \$18.50 PER YEAR, PLUS \$2.50 FOR EACH ADDITIONAL HOUSEHOLD MEMBER.

PLEASE DISREGARD THIS NOTICE IF YOU HAVE RECENTLY PAID YOUR DUES! THANKS

**OHIO**  
*the heart of it all!* SM



## How to Find Those Missing Pieces. paid ad

The world's largest source of discontinued and obsolete crystal -- as well as china and flatware -- Replacements, Ltd., buys and sells over 36,000 different patterns.

If you need a piece or several pieces to add to your collection ... or if you'd like to sell some unneeded extras ... call or write us. We can provide you with a complete printout of available pieces in your pattern. Or we'll let you know our prices for the pieces you wish to sell.

Replacements, Ltd.: a 100,000 square foot facility; 1.4 million pieces; over 600,000 satisfied customers. Contact us, or come see our showroom. Let us help you complete your collection ... or maybe you'll help add to ours.

## REPLACEMENTS, LTD.

Call (919) 697-3000, FAX (919) 697-3100, or write:  
 1089 Knox Road • P. O. Box 26029, Dept. H • Greensboro, NC 27420

OVER 3500 HEISEY PIECES

### POSTMASTER SEND FORM 3579 TO:



HCA

169 W CHURCH ST  
 NEWARK, OH 43055

SECOND CLASS

DATED MATERIAL 9-25-91