

# HEISEY

NEWS  for your knowledge

OFFICIAL PUBLICATION of HEISEY COLLECTORS OF AMERICA

Volume XX No. 5

April 1991 ISSN 0731-8014



# HEISEY NEWS

169 West Church Street, Newark, Ohio 43055  
(614) 345-2932

## CLUB OFFICERS:

President, Richard P. (Dick) Smith (614) 366-5163  
Vice-President, Sam Schnaidt (614) 587-0052  
Secretary, Amy Jo Jones (513) 426-8668  
Treasurer, Larry Stickle (614) 366-2000

Editor, Sally Ballog Staruch  
169 W. Church Street, Newark, Ohio 43055  
(614) 345-2932  
Published and Printed in Newark, Ohio  
\$18.50 per year, \$1.25 per copy

**Back Issues: Each Volume (12 issues a year): \$9.00 Volumes V, VII, IX, X, XI, XII, XIII, XIV, XV, XVI, XVII, XVIII are available.**

Heisey Collectors of America, Inc., a not-for-profit corporation (tax exempt status), are owners and operators of The National Heisey Glass Museum, 6th and Church Streets, Newark, Ohio. Open daily 1-4pm except holidays. Other hours by appointment. Members admitted free.

## HEISEY NEWS

Heisey Collectors of America, Inc.

All Rights Reserved 1990- ISSN 0731-8014

Published monthly, except twice in February, by Heisey Collectors of America, Inc., Newark, Ohio 43055. Second Class Postage Paid. Club Membership (includes 13 issues of Heisey News and participation in all club activities) \$18.50 per year, plus \$2.50 for each additional family member in same household who wishes a membership card. For Voting Membership add \$25.00 as a one time only fee.

POSTMASTER: Send address change to: HCA, 169 W. Church St., Newark, OH 43055

## ADVERTISING

Send all ads to: HCA Advertising, 169 W. Church St., Newark, OH 43055.

DOUBLE SPACE ALL ADS

## RATES:

CLASSIFIED: 15 cents per word. \$1.50 minimum.

ABBREVIATIONS AND INITIALS COUNT AS WORDS.

DEALER DIRECTORY: \$25.00 per year

DISPLAY	MEMBERS	NON-M
1/8 page (9 lines)	\$20.00	\$30.00
1/4 page (20 lines)	\$30.00	\$45.00
1/2 page (20 lines- hor.)	\$45.00	\$67.00
1/2 page (48 lines- vert.)	\$60.00	\$90.00
1 page (48 lines)	\$75.00	\$112.00

Personal ads are limited to 1/8 space.

ALL ADS MUST BE PREPAID. Ad copy must be received by the 5th of the month preceding the publication date, e.g. April 5th for May issue. Ads containing reproductions will not knowingly be accepted unless clearly stated (e.g. Heisey by Imperial, etc.)

HEISEY NEWS assumes no responsibility for false advertising or misleading information. In the event of a typographical error, the incorrect portion of the ad will run the following issue, but HEISEY NEWS assumes no further liability.

The opinions expressed in articles in HEISEY NEWS are those of the authors and not necessarily those of the organization. The Editor reserves the right to edit or refuse any material submitted for publication. When requesting information, please enclose a self-addressed stamped envelope.

## About the Cover:

*This month's issue is a tribute to Horace King, a designer with the Heisey Company from 1943 to 1957. In this photograph, he is shown at his work area in the Heisey Company in the 1940s. Born in Pittsfield, Ohio on April 27, 1906, Horace will celebrate his 85th birthday this month.*

## IN THIS ISSUE

	page
<b>Tribute to Horace King</b> by George Reynolds	4
<b>Heisey in the Trade Journals:</b> <b>No. 353 Medium Flat Panel</b> by Tom Felt	7
<b>HCA Benefit Auction Results</b>	10
<b>Club Notes</b>	12
<b>diamonds are forever</b> by Janet Caswell	14
<b>Convention '91 NEWS</b>	15
<b>Reprint: The Story of the Heisey</b> <b>Baby Mug</b> by Horace King	16
<b>More on Horace King</b>	17
<b>Dealer Directory</b>	18
<b>Classified Ads</b>	19
<b>Oscar order form</b>	23
<b>Accommodations in the Newark Area</b>	24

**FROM THE PRESIDENT, Dick Smith**

March has been a very busy month with the Benefit Auction, Starlight Flea Market, and the Silver Spring Show. I hope everyone was able to purchase some nice things.

I want to encourage you to stop by--or phone--to say hello and introduce yourself to Sally Staruch, the new curator. Sally is learning fast, but she needs our support.

Be sure to check the new things for sale in the gift shop. We are trying to get new items in regularly, about every month or two.

We have a very good slate of candidates for the Board of Directors. You'll see more about them all in the next newsletter.

I hope anyone who does not receive the newsletter or the auction list on time will go to their local post office and fill out Form #4314C. It is an absolute must if we are to correct slow deliveries. The problem is the U.S. Postal Service--usually the post office at the destination end of mail delivery.

1. PRINT FULLY      2. REMOVE TOP COPY FOR CUSTOMER RECORD (do not separate remaining copies)      3. FILL IN ADDRESS LABELS ON BACK OF LAST LABEL      4. MAIL (with postage)

**U.S. POSTAL SERVICE CUSTOMER SERVICE CARD**

Name \_\_\_\_\_ Date (Mo., Day, Yr.) \_\_\_\_\_ No. 7 865 105

Address (Appt./Floor No., Box and Street, City) \_\_\_\_\_ State \_\_\_\_\_ ZIP Code \_\_\_\_\_ Customer Phone (Area + 7 pm) \_\_\_\_\_

Is This  Information Request  Suggestion  Problem  Complaint

Did It Involve	If This Is A Problem With A Specific Mailpiece, Please Complete The Following		The Section Is For USPS Use Only	
Delay	Was It	Was Mailing	Date Customer Contacted	Customer Contacted By
Non-receipt	Letter	First Class		
Damage	Package	Special Delivery		
Undelivered	Registered/Magazine	Registered		
Improper Return	Advertisement	Insured		
Change of Address	Electronic Mail	Express Mail		
Missing Equipment	Transposition	Other		
Window Services				
Personnel				
Other				

Please Give Essential Facts (If you describe a range of address problems, please on back provide address.)

**SAMPLE**

PS Form 4314-C, July 1988      THANK YOU. You will be contacted soon by your Post Office.      CUSTOMER COPY 1

Don't forget the 200-Dinner, April 20, 1991. There will be an all-Heisey Auction that weekend. For more details call the museum and for inquiries about tickets too.

I urge you to make your plans for the June convention. Rooms are going fast, so check the motel list on the back of this newsletter and get in your reservations.

We are always open to receiving your comments and suggestions. Just write the HCA, attention President.

Until next month, I want to end, with a special thanks to all the volunteers--we appreciate your help very much. We can never thank you enough for the work you do at the museum, at the auction, and at all the HCA functions.

**FROM THE CURATOR, Sally Staruch**

As this newsletter goes to press, I see that I have been at the National Heisey Glass Museum for one month. The past four weeks have been hectic, but invigorating. I still have to catch up on correspondence and acknowledgements of donations to the museum and to the gift shop, so bear with me. You will hear from us soon.

My first month here has been made easier because of the help of the Executive Board, and the HCA staff--Wanda, Mary, Bill, Brad, and Susan. Kathy Johnson Bowles, not only introduced me to the job in an organized, professional way, but she has left me a solid base to work from. I have met many members of HCA here at the museum--working as volunteers, visiting the gift shop, and participating in the March Benefit Auction. The first day of the auction, Friday, was like a home-coming here as each of you came by and busily enjoyed meeting your friends who converged on Newark.

I also met many of you at the auction and got to know you during some of the committee meetings. We have many worthwhile projects to work on and you'll be hearing more about them in the coming months. I look forward to completing them with you. If you have any questions about the committees, please contact me.

Here at the museum, three of our volunteers were out this month because of illness or accidents and we wish them speedy recovery: Mary McWilliams, Marcia Booth, and Helen Pallagi. Mary and Marcia, I am glad to say, are back already.

Susan Pennington took the gift shop items to Silver Spring for the 19th Annual All-Heisey Glass Show and Sale, sponsored by the National Capital Heisey Study Club with the National Capital Heisey Collectors on March 16 and 17. I attended the Ohio Museum Association Conference in Cleveland in March.

We invite you to stop by the museum and see Ginny Hague's Easter Egg display.

On behalf of the HCA staff I would like to extend a thank you to all the February volunteers:

Marcia Booth, Paul Bowles, Myrtle and Warren Burgess, Jim and Karen Clark, Ginny Hague, Stan Holmquist, Jim and Helen Kennon, Liz King, Frances Law, Phyllis and Bob McClain, Mary McWilliams, Mollie Miller, Steve and Alicia Miller, Vivian Moore, Helen Pallagi, Alva Pennington, Bob and Helen Rarey, and Norm Thran.

## A Tribute to - HORACE KING by George Reynolds



Painting by: Norman Peeryman .  
(Mr King's son-in-law)

Horace King was employed by Clarence Heisey in the late spring of 1943 to design glass and anything else that struck Mr. Heisey's fancy. And so began a period of prolific output of sketches of glass designs, signs, letterheads, and numerous other items requested by Mr. Heisey. From 1943 to 1957, King produced approximately 10,000 drawings, which is quite a feat. Therefore, his nicknames "Ace" or "Kingie" appear to be appropriate. (Personally, I like "Kingie" the best.) Horace had been employed by Denison University as an art professor, serving also as chair of the Art Department for several years, throughout the time he worked for Heisey. This makes the volume of his work even more amazing.

The Plantation or "Hospitality" pattern was drawn entirely by King. The first Plantation drawings were made in 1946 and included glass items, advertising booklets, and signs--anything related to the production and promotion of the pattern. Additional glass pieces were added to the series as public demand for the pattern increased. In some cases a drawing had to be revised several times after consultation with the master mechanic of the mold making department--after all, the artist's vision had to be adjusted to the demands of the mold.

During 1946, King produced several hundred drawings. His versatility as an artist lead him to drawing Christmas cards, business cards, bookplates, "Hi-C" letterheads, factory signs, advertising folders for the Orchid etch, and plans and elevations for the new acid room. All the while he continued to design glassware: the elephant-handled children's cup, the Zodiac plate (also the revised issue), and Crystolite fluted bowls. Horace did paintings, such as: "Goodness Gracious" (depicting Heisey's horse) and "Tim" ( a likeness of Tim Heisey). (See pg. 17 for King's story about painting Heisey's horse.)

After World War II , consumer demand for quality glass increased and King produced even more drawings. King contributed several hundred more items during this period: Waverly candles (and revised issue), Child's cup Mother Goose, Narcissus cutting, Lariat punch set, Fox ashtray, Lariat oil bottles, the Horsehead stem, and additional Waverly , Saturn and Whirlpool pieces. He also worked on catalog and billboard layouts, Heisey family cards, and numerous other drawings.

From 1948 through 1950, King made thousands of drawings during this "golden" period for the Heisey Company. He designed new items for the Plantation, Zodiac, Waverly, Crystolite, Revere, and Old Sandwich patterns. Among his new designs were: Whirlpool sodas, Plantation two-light candles, jam jars, ashtrays, vases, coasters, an eight-item Mid Century pattern and on and on. He even contributed a giant Santa oil painting for an event, the time and place of which has been long forgotten



The Heisey firm presented many displays in the larger department stores around the country during this period each of which required advertising. King did many of the drawings for these displays, including the I.D. cards required for special admission. In 1949 he notes that he made drawings for a store display in Chicago and for the local Chamber of Commerce. Although King received recognition as a designer, he is a very fine artist as well. The original drawings of many of his display items are worth a fortune today (See page 6 , Horace King's original Waverly vase drawing)

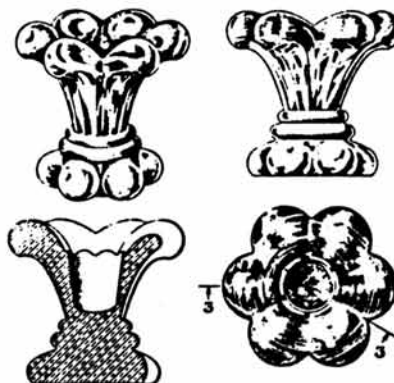
One of King's more important contributions was the Winchester 73 etching. This etching pattern was made to be marketed in conjunction with the new movie of the same name starring James Stewart. Today this etching is much sought after by collectors. It was introduced in 1950 and discontinued in 1952.



"Winchester"

Source: Heisey's Deep Plate Etching by Harold E. Willey (Newark,OH: 1973) pg. 5 [photography by Joe O'Brien].

152,804  
**DESIGN FOR A GLASS CANDLE HOLDER OR SIMILAR ARTICLE**  
 Horace King, Newark, Ohio, assignor to A. H. Heisey & Company, Newark, Ohio, a corporation of Ohio  
 Application June 14, 1947, Serial No. 139,682  
 Term of patent 14 years  
 (Cl. D48-2)



The ornamental design for a glass candle holder or similar article, substantially as shown.

Source: Heisey on Parade by Sandra Stout (Wallace-Homestead:Lombard, IL:1985). pg.98.

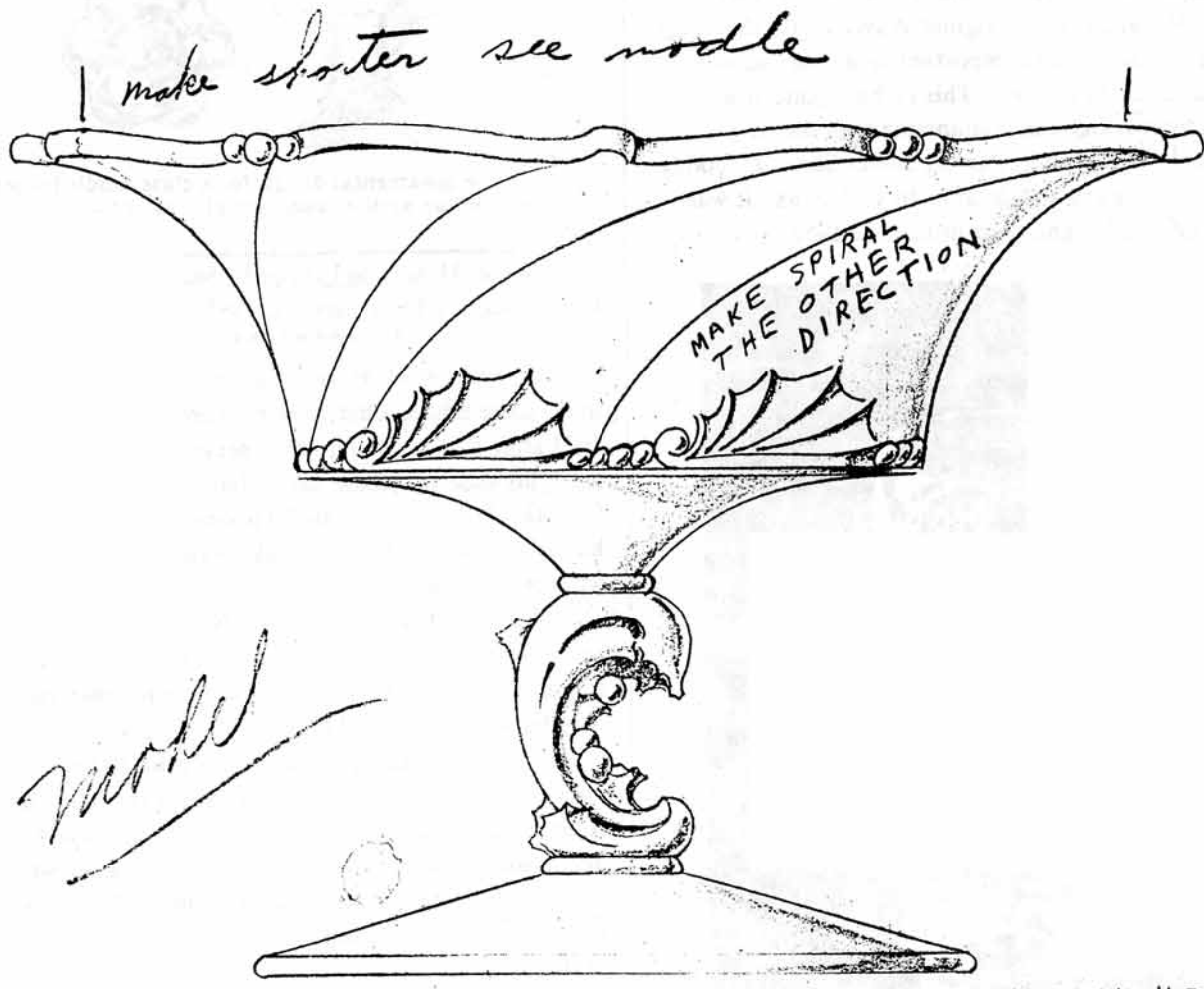
\*\*\*\*\*

After the A. H. Heisey Company closed, King tried to do some educational work concerning the glass. In 1973 after a power failure that prevented him from using his slide projector, he exclaimed, "Deliver me from the Tea Room circuit!" However this did not stop him from trying to educate folks about Heisey glass whenever possible.

This short tribute to Horace King would not be complete without the mention of his wife, Virginia (Ginny). Ginny, a very talented lady in her own right, was the strength behind Horace. She worked as an Art Director in Pittsburgh, Pennsylvania prior to her marriage and continued working in Ohio, at the Sentinel Advertising Company. Mrs. King is also an expert gardener and has kept the home premises beautiful while her husband labored on his work. King was lucky to have his wife behind him, as were most successful men of that era.

Horace King still lives in Granville, Ohio with Ginny. He was recently hospitalized, but is home now and doing "wonderfully." His contributions to the collection and study of Heisey glass are undeniable today. We all wish him and his wife the best in the coming years.

On April 27, 1991, King will celebrate his 85th birthday--I hope he forgives me for making this news public. At any rate, HCA wishes him all the best!! And Dave Curley and Rhoda send their best too.



WAVERLY VASE 2 1/2 HRS  
H King - 3-17-45

**HEISEY IN THE TRADE JOURNALS:**  
**No. 353 Medium Flat Panel**  
 By Tom Felt

Heisey's colonial patterns are often difficult to differentiate from one another and #353 Medium Flat Panel is no exception. Some of its pieces do have the distinctive flat panels which give it the name by which collectors know it today, while others are scalloped similarly to #352 Flat Panel. Clearly the two patterns are related. The thing that never ceases to amaze me is that the market for colonial glassware could support so many slight variations on a theme.

It is likely that #353 came out at about the same time as #352, namely sometime around 1908. However, I have found no advertisements for this pattern prior to 1909, so it is also possible that the two patterns were introduced a year or so apart.

The first advertisement to appear was for the #353 low-foot comport in *Confectioners Journal* (figure 1) in May 1909 (pg. 126). This was the earliest advertisement placed by Heisey in a journal devoted to the confectioners trade, a market of great importance to Heisey. Later ads called this same piece both a sherbet and a marmalade, referring to the smaller sizes. As the first advertisement points out, this comport was available in several dimensions ranging from 4" to 9". No. 353 was also one of the earliest patterns to be advertised in one of the hardware journals, with the 12" vase featured in the May 14, 1910 issue of *Iron Age-Hardware*.




Figure 1

In June 1910, the *Confectioners Journal* (figure 2) showed the 12" candy tray. (How many of you remember the candy trays that were still in use at the Sparta in Newark up until just a few years ago?) Other pieces in this same ad included the #300-1/2 6" bonbon and the #300 4-1/2 oz. low-foot sherbet with the #1150 5" underplate--once again demonstrating just how interchangeable all of these patterns were.

**Confectioners' Glassware**

**Should be of as High Grade  
as the Confections Displayed**



No. 300 1/2-in Bonbon



No. 300 4 1/2 oz Low-foot Sherbet with  
No. 1150 5-in Plate



No. 353 12-in Candy Tray  
Full Ground or Fine-Polished Bottom

**DIAMOND H GLASSWARE**

Is Unexcelled for Durability and Brilliancy

Write for Catalogue 54

**A. H. HEISEY & CO., Inc.**

Newark, Ohio

New York Office, 25 West Broadway  
Philadelphia Office, Denckla Bldg., 11th and Market Streets

Baltimore Office, 122 West Baltimore Street  
Boston Office, 144 Congress Street  
Chicago Office, 510 Heyworth Bldg., 42 Madison Street

Figure 2

In 1911 and 1912, various other advertisements appeared in magazines aimed at the hardware trade. Although we don't particularly think of hardware stores today as somewhere to go in search of fine glassware, this was obviously either already a significant market for Heisey or one they felt worth developing since they purchased considerable advertising space in these journals between 1910 and 1915. For example, an ad in the August 31, 1911 issue of *Iron Age-Hardware* (figure 3) featured the #353 mayonnaise dish and another in the February 9, 1912 issue of *The Hardware Reporter* (figure 4) showed the 6-oz oil with a #8 stopper. This was one of two styles of oil in the pattern, available in three sizes; the other style of oil was available in five sizes, making a total of eight oils in the pattern together.

Glassware Everywhere  
But None Like



HEISEY'S



GLASSWARE

Write for Catalogue No. 56

A. H. HEISEY & CO., Inc.,  
Newark, Ohio

Please mention IRON AGE—HARDWARE when writing to Advertisers.

Figure 3

Figure 5 is from the April 5, 1912 issue of *The Hardware Reporter* and pictures the hotel cream and sugar. Catalogues identify this set as the oval cream and sugar, to differentiate it from the two other sets available in the pattern. The second, slightly taller set is the one identified in the catalogues for hotel use, and there is a third pair, even taller, which was part of the original table set. Both of the latter have covered sugars. The oval sugar was the only piece from this pattern to be patented. It was filed for on March 22, 1912 and approved July 9, 1912 as D42, 751, indicating that this was a late addition to the line.

There were also a number of advertisements for #353 which appeared in popular magazines read by the American housewife, such as *House Beautiful* and the *Delineator*. The pattern seems to have been highly successful and was a sizeable one. In 1913, the catalogue shows close to one hundred pieces. By 1928 there were still more than three dozen items being offered. It is uncertain when the pattern was phased out entirely, but in the late 1930s when the Old Williamsburg line was created, it included several pieces which originally had been a part of the #353 pattern. These included the 10" round tray, the 4-1/2" low footed comport, the oval individual jelly, and the covered marmalade. Of these, only the comport and round tray were still in production in 1957 when Heisey went out of business. The tray was made by Imperial from 1958 to 1966, but in crystal only.

Considering the long life of some of the pieces in the #353 pattern, it is a little surprising that very few of the pieces were made in color. The match stand ash

tray is known in Flamingo; the 8" vase in Flamingo, Hawthorne, and Vaseline; the 12" candy tray in Flamingo; the toothbrush holder in Moongleam; the individual almond in Moongleam, Flamingo, Sahara, and Hawthorne; and the large almond in Moongleam, Flamingo, and Hawthorne. In addition, the 10" hall boy tray, 1 qt. jug, 4- 1/2 oz low-footed sherbet and the 10 oz. low footed tumbler were all made in Amber for the Fred Harvey chain of restaurants. The tray and jug were also made in crystal for Harvey.

February 9, 1912

THE HARDWARE REPORTER

29



ON EVERY PIECE

HEISEY



Glassware

THE GLASS FOR  
MI-LADY'S TABLE

Sparkling Brilliant

Graceful in Appearance  
Unapproached for Durability

WRITE FOR CATALOGUE NO. 56



344-4 oz. Oil Lamp



341-8 in. Candy Tray

A. H. HEISEY & CO., Inc.  
NEWARK, OHIO

HEISEY'S  GLASSWARE  
TRADE MARK

Figure 4

The syrup is known to have been decorated by Heisey with the #416 Vintage plate etching. Tumblers are also occasionally found with the crest of the Fort William Henry Hotel, probably also done by Heisey. As always, of course, there exists a likelihood that there were many other decorations by other companies placed on Medium Flat Panel blanks. For instance, it is known that the oval cream and sugar, marmalade, 6-oz oil, cologne, and 12" and 15" vases were all cut by



the Lewis and Neblett Company. (See the March and May 1976 issues of the *Heisey News* for catalogue reprints from this firm.) A beautifully executed but unknown cutting was shown by Vogel in the five-compartment spice tray in the winter/spring 1985 *Heisey Glass Newscaster*.

One of the most fascinating aspects of pattern #353 is the variety of unusual items available the line. It was the first pattern to include a sanitary syrup with a nickel plated, removable top. It was the only pattern to offer a measuring cup and the only one to feature a flat toothpick tray. There were three styles of straw jars and a straw tray, three sizes of mushroom covers, and a set of seven lavender jars. There were also some bedroom pieces, including a covered soap dish, a toothbrush tolder, and a handled mug.

Several of the molds are still in existence, including the match stand, 4" bowl, hotel cream and sugar, grapefruit, oval jelly, jug, marmalade jar, 2, 4, 6, and 8 oz. oils, footed soda and round tray.

April 8, 1972

THE HARDWARE REPORTER

15



ON EVERY PIECE

# HEISEY'S



## GLASSWARE

will look well on your table.



Hotel Cream

We offer a profusion of practical and attractive pieces in various patterns or shapes, which allow a vast lee-way for the most unusual whim for things beautiful.

Service Considered, the cheapest Glassware on the market.



Handled Mug

WRITE FOR CATALOGUE 56

MANUFACTURED BY

**A. H. HEISEY & CO., Inc.**

NEWARK, OHIO

**HEISEY'S**  **GLASSWARE**

TRADE MARK

Figure 5

**HEISEY COLLECTORS OF AMERICA, INC.  
BENEFIT DINNER AND RAFFLE**

SATURDAY, APRIL 20, 1991

First Prize .....	\$1000.00	Fourth Prize .....	\$200.00
Second Prize .....	\$400.00	Fifth Prize .....	\$100.00
Third Prize .....	\$300.00	Twenty Prizes of ...	\$50.00

Doors Open 6:00 P.M.—Dinner 6:30 P.M.  
Newark Maennerchor—195 W. Orchard St.

Need not be present to win.

Donation \$50.00

Only 200 Tickets To Be Sold  
Donation for Heisey Warehouse Fund

LEADER



*Report on the March Benefit Auction*

I would like to thank everyone who participated in the March Benefit Auction—those who submitted items and bids, those who helped set-up and pack items, and those who helped with the bidding. The auction was a tremendous success and its a great way to raise funds for the museum.

It was a lot of work for everyone, but I enjoyed working with you and I look forward to next year's auction.

On the next two pages, you will find a list of the bids. If you have any questions, just contact us.

Jim Clark

# HCA BENEFIT AUCTION RESULTS

March 8 and 9, 1991

1 . 45.00	59 . 70.00	115 . 80.00	171 . 45.00	229 . 130.00	287 . 95.00	345 . 55.00	403 . 100.00	461 . 380.00
2 . 70.00	60 . 210.00	116 . 40.00	172 . 275.00	230 . 45.00	288 . 20.00	346 . 130.00	404 . 115.00	462 . 50.00
3 . 30.00	61 . 215.00	117 . 35.00	173 . 375.00	231 . 160.00	289 . 25.00	347 . 170.00	405 . 65.00	463 . 80.00
4 . 40.00	62 . 75.00	118 . 55.00	174 . 45.00	232 . 100.00	290 . 12.50	348 . 55.00	406 . 85.00	464 . 60.00
5 . 50.00	63 ✕ 57.50	119 . 160.00	175 . 120.00	233 . 30.00	291 . 30.00	349 . 30.00	407 . 60.00	465 . 250.00
6 . 17.50	64 . 30.00	120 . 75.00	176 . 55.00	234 . 125.00	292 . 35.00	350 . 75.00	408 . 180.00	466 . 180.00
7 . 27.50	65 ✕ 40.00	121 . 50.00	177 . 55.00	235 . 55.00	293 . 7.50	351 . 30.00	409 . 60.00	467 . 60.00
8 . 10.00	66 . 37.50	122 . 50.00	178 . 80.00	236 . 110.00	294 . 10.00	352 . 100.00	410 . 220.00	468 . 20.00
9 . 7.50	67 . 170.00	123 . 50.00	179 . 40.00	237 . 500.00	295 . 45.00	353 . 80.00	411 . 100.00	469 . 25.00
10 . 25.00	68 . 15.00	124 . 50.00	180 . 17.50	238D . 30.00	296 . 10.00	354 . 25.00	412 . 295.00	470 . 65.00
11 . 40.00	69 . 210.00	125 . 1100.00	181 . 40.00	239 . 135.00	297 . 820.00	355 . 40.00	413 . 80.00	471 . 15.00
12 . 15.00	70 . 30.00	126 . 110.00	182 . 80.00	240 . 65.00	298 . 25.00	356 . 25.00	414 . 240.00	472 . 20.00
13 . 45.00	71 . 17.50	127 . 27.50	183 . 60.00	241 . 120.00	299 . 45.00	357 . 5.00	415 . 45.00	473 . 17.50
14 . 6.00	72 . 30.00	128 . 22.50	184 . 10.00	242 . 445.00	300 . 70.00	358 . 35.00	416 . 85.00	474 . 60.00
15 . 10.00	73 . 65.00	129 . 90.00	185 . 50.00	243 . 80.00	301 . 40.00	359 . 40.00	417 . 45.00	475 . 40.00
16 . 2.00	74 . 80.00	130 . 35.00	186 . 70.00	244 . 190.00	302 ✕ 17.50	360 . 50.00	418 . 15.00	476 . 30.00
17 . 12.50	75 . 15.00	131 . 360.00	187 . 22.50	245 . 100.00	303 . 37.50	361 . 40.00	419 . 75.00	477 . 15.00
18 . 2.00	76 . 30.00	132 . 20.00	188 . 220.00	246 . 80.00	304 . 2000.00	362 . 40.00	420 . 45.00	478 . 17.50
19 . 7.50	77 . 40.00	133 . 50.00	189 . 25.00	247 . 30.00	305 . 260.00	363 . 15.00	421 . 55.00	479 . 65.00
20 . 11.00	78 . 30.00	134 . 5.00	190 . 15.00	248 . 145.00	306 . 55.00	364 . 40.00	422 . 130.00	480 . 60.00
21 . 11.00	79 ✕ 37.50	134A . 10.00	191 . 25.00	249 . 60.00	307 . 100.00	365 ✕ 55.00	423 . 30.00	481 . 42.50
22 . 17.50	80 . 52.50	134B . 27.50	192 . 25.00	250 . 40.00	308 . 20.00	366 . 80.00	424 . 12.50	482 . 25.00
23 ✕ 20.00	81 . 200.00	135 . 40.00	193 . 22.50	251 . 32.50	309 . 15.00	367 . 65.00	425 . 30.00	483 . 45.00
24 . 20.00	82 . 175.00	136 . 5.00	194 . 22.50	252 . 12.50	310 . 55.00	368 . 65.00	426 . 7.50	484 . 17.50
25 . 6.00	83 . 50.00	137 . 65.00	195 . 55.00	253 . 70.00	311 . 115.00	369 . 10.00	427 . 17.50	485 . 40.00
26 . 5.00	84 . 85.00	138 . 90.00	196 . 15.00	254 . 55.00	312 . 70.00	370 . 135.00	428 . 30.00	486 . 80.00
27 . 3.00	85 . 95.00	139 . 90.00	197 . 50.00	255 . 65.00	313 . 115.00	371 . 45.00	429 . 30.00	487 . 350.00
28 . 15.00	86 . 50.00	140 . 30.00	198 . 22.50	256 . 15.00	314 . 60.00	372 . 85.00	430 . 17.50	488 . 22.50
29 . 7.50	87 . 45.00	141 . 10.00	199 . 17.50	257 . 120.00	315 . 130.00	373 . 52.50	431 . 30.00	489 . 130.00
30 . 85.00	88 . 17.50	142 . 25.00	200 . 20.00	258 . 27.50	316 . 80.00	374 . 105.00	432 . 25.00	490 . 85.00
31 . 85.00	89 . 15.00	143 . 55.00	201 . 15.00	259 . 90.00	317 . 185.00	375 . 15.00	433 . 35.00	491 . 32.50
32 . 25.00	90 . 45.00	144 . 100.00	202 . 85.00	260 . 155.00	318 . 120.00	376 . 50.00	434 . 20.00	492 . 100.00
33 . 20.00	91 . 22.50	145 . 65.00	203 . 105.00	261 . 60.00	319 . 170.00	377 . 90.00	435 . 95.00	493 ✕ 145.00
34 . 22.50	92 ✕ 20.00	146 . 35.00	204 . 85.00	262 . 17.50	320 . 150.00	378 . 110.00	436 . 110.00	494 . 15.00
35 . 15.00	93 . 75.00	147 . 120.00	205 . 135.00	263 . 40.00	321 . 65.00	379 . 110.00	437 . 70.00	495 . 20.00
36 . 115.00	94 . 290.00	148 . 120.00	206 . 100.00	264 . 12.50	322 . 52.50	380 . 65.00	438 . 90.00	496 . 30.00
37 ✕ 25.00	95 . 25.00	149 . 60.00	207 . 130.00	265 . 45.00	323D . 65.00	381 . 75.00	439 . 170.00	497 . 20.00
38 . 10.00	96 . 135.00	150 . 160.00	208 . 130.00	266 ✕ 55.00	324 . 50.00	382 . 90.00	440 . 80.00	498 ✕ 120.00
39 . 25.00	97 . 135.00	151 . 105.00	209 . 45.00	267 . 300.00	325 . 70.00	383 . 160.00	441 . 80.00	499 . 40.00
40 . 30.00	98 . 70.00	152 . 100.00	210 . 45.00	268 . 22.50	326 . 35.00	384 . 65.00	442 . 100.00	500 . 35.00
41 ✕ 1.00	99 . 155.00	153 . 80.00	211 . 5.00	269 . 30.00	327 ✕ 50.00	385 . 55.00	443 . 30.00	501 . 20.00
42 . 9.00	100 ✕ 0.00	154 . 10.00	212 . 90.00	270 . 30.00	328 . 50.00	386 . 20.00	444 . 55.00	502 . 25.00
43 . 32.50	101 . 380.00	155 . 90.00	213 . 2.00	271 . 40.00	329 . 30.00	387 . 30.00	445 . 525.00	503 . 20.00
44 . 30.00	102 . 140.00	156 . 190.00	214 . 140.00	272 . 20.00	330 . 35.00	388 . 50.00	446 . 80.00	504 . 210.00
45D . 3.00	103 . 160.00	157 . 300.00	215 . 155.00	273 . 40.00	331 . 110.00	389 . 20.00	447 . 375.00	505 . 190.00
46 . 50.00	104 . 85.00	158 . 725.00	216 . 12.50	274 . 550.00	332 . 55.00	390 . 60.00	448 . 225.00	506 . 265.00
47 . 22.50	105D . 5.00	159 . 15.00	217 . 70.00	275 . 55.00	333 . 25.00	391 . 50.00	449 . 65.00	507 . 60.00
48 . 5.00	106D . 5.00	160 . 22.50	218 . 50.00	276 . 40.00	334 . 75.00	392 . 60.00	450 . 22.50	508 . 27.50
49 . 6.00	107D . 25.00	161 . 12.50	219 . 30.00	277 . 40.00	335 . 32.50	393 . 80.00	451 . 85.00	509 . 450.00
50 . 12.50	108 . 45.00	162 . 37.50	220 . 50.00	278 . 105.00	336 ✕ 155.00	394 . 185.00	452 . 155.00	510 . 150.00
51 . 2.00	109 . 40.00	163 . 42.50	221 . 65.00	279 . 95.00	337 . 1125.00	395 . 400.00	453 . 180.00	511 ✕ 350.00
52 . 18.00	110 . 60.00	164 . 22.50	222 . 7.50	280 . 150.00	338 . 70.00	396 . 105.00	454 . 110.00	512 . 55.00
53 . 5.00	111 . 27.50	165 . 35.00	223 . 65.00	281 . 40.00	339 . 135.00	397 . 45.00	455 . 42.50	513 . 75.00
54 . 5.00	111 . 27.50	166 . 10.00	224 . 130.00	282 . 65.00	340 . 290.00	398 . 40.00	456 . 50.00	514 . 65.00
55D . 70.00	112 . 35.00	167 . 20.00	225 . 35.00	283 . 65.00	341 . 260.00	399 . 100.00	457 . 55.00	515 . 80.00
56D . 55.00	112 . 35.00	168 . 25.00	226 . 37.50	284 . 90.00	342 . 475.00	400 . 55.00	458 . 50.00	516 . 280.00
57 ✕ 160.00	113 . 1000.00	169 . 25.00	227 . 220.00	285 . 15.00	343 . 325.00	401 . 60.00	459 . 55.00	517 . 30.00
58 ✕ 0.00	114 . 180.00	170 . 40.00	228 . 200.00	286 . 40.00	344 . 70.00	402 . 110.00	460 . 60.00	518 . 25.00

**If an item is listed at less than you bid, it is because the item was described incorrectly or had damage of some sort that was not listed in the catalog. In this event the mail bidder does not bid on the item.**

519 . 45.00	577 . 45.00	635 . 17.50	693 . 7.50	751 . 80.00	810 . 10.00	868 . 40.00	926 . 230.00
520 . 25.00	578 . 450.00	636 . 5.00	694 . 7.50	752 . 3.00	811 . 55.00	869 . 30.00	927 . 65.00
521 . 30.00	579 . 95.00	637 . 5.00	695 . 50.00	753 . 42.50	812 . 110.00	870 . 105.00	928 . 10.00
522 . 45.00	580 . 190.00	638 . 10.00	696 . 10.00	754 . 40.00	813 . 40.00	871 . 80.00	929 . 10.00
523 . 42.50	581 . 25.00	639 . 17.50	697 . 15.00	755 . 35.00	814 . 60.00	872 . 50.00	930 . 35.00
524 . 35.00	582 . 155.00	640 . 12.50	698 . 105.00	756 . 25.00	815 . 65.00	873 . 7.50	931 . 55.00
525 . 32.50	583 . 175.00	641 . 25.00	699 . 55.00	757 . 5.00	816 . 85.00	874 . 315.00	932 . 35.00
526 . 45.00	584 . 200.00	642 . 200.00	700 . 40.00	758 . 5.00	817 . 90.00	875 . 55.00	933 . 5.00
527 . 220.00	585 . 55.00	643 . 65.00	701 . 117.50	759 . 5.00	818 . 75.00	876 . 125.00	934 . 5.00
528 . 30.00	586 . 160.00	644 . 45.00	702 . 5.00	760 . 5.00	819 . 40.00	877 . 85.00	935 . 5.00
529 . 10.00	587 . 100.00	645 . 22.50	703 . 30.00	761 . 250.00	820 . 80.00	878 . 180.00	936 . 15.00
530 . 75.00	588 . 70.00	646 . 15.00	704 . 22.50	762 . 70.00	821 . 10.00	879 . 70.00	937 . 30.00
531 . 27.50	589 . 115.00	647 . 32.50	705 . 27.50	763 . 260.00	822 . 12.50	880 . 150.00	938 . 25.00
532 . 47.50	590 . 75.00	648 . 15.00	706 . 45.00	764 . 20.00	823 . 10.00	881 . 20.00	939 . 42.50
533 . 27.50	591 . 32.50	649 . 30.00	707 . 70.00	765 . 250.00	824 . 7.50	882 . 40.00	940 . 50.00
534 . x 17.50	592 . 50.00	650 . 25.00	708 . 10.00	766 . 160.00	825 . 1.00	883 . 110.00	941 . 5.00
535 . 5.00	593 . 70.00	651D . 30.00	709 . 2.00	767 . 50.00	826 . 100.00	884 . 17.50	942 . 10.00
536 . 42.50	594 . 120.00	652 . 17.50	710 . 20.00	768 . 20.00	827 . x 55.00	885 . 12.50	943 . 7.00
537 . 20.00	595 . 40.00	653 . 5.00	711 . 12.50	769 . 32.50	828 . 65.00	886 . 25.00	944 . 20.00
538 . 25.00	596 . 95.00	654 . 25.00	712 . 50.00	770 . 15.00	829 . 10.00	887 . 12.50	945 . 85.00
539 . 45.00	597 . 75.00	655 . 2.00	713 . 40.00	771 . 70.00	830 . 15.00	888 . 5.00	946 . 27.50
540 . 80.00	598 . 140.00	656 . 60.00	714 . 110.00	772 . 57.50	831 . 15.00	889 . 15.00	947 . 40.00
541 . 40.00	599 . 85.00	657 . 55.00	715 . 185.00	773 . 55.00	832 . 45.00	890 . 85.00	948 . 22.50
542 . 275.00	600 . 30.00	658 . 2.00	716 . 85.00	774 . 25.00	833 . 85.00	891 . 90.00	949 . 55.00
543 . 60.00	601 . 75.00	659 . 25.00	717 . 45.00	775 . x 17.50	834 . 40.00	892 . 300.00	950 . 55.00
544 . 20.00	602 . 465.00	660 . 45.00	718 . 65.00	776 . 35.00	835 . 35.00	893 . 17.50	951 . 160.00
545 . x 65.00	603 . 20.00	661 . 4.00	719 . 130.00	777 . 60.00	836 . 90.00	894 . 35.00	952 . 100.00
546 . x 175.00	604 . 30.00	662 . 22.50	720 . 135.00	778 . 40.00	837 . 100.00	895 . 230.00	953 . 25.00
547 . 35.00	605 . 40.00	663 . 35.00	721 . 500.00	779 . 100.00	838 . 50.00	896 . 95.00	954 . 15.00
548 . 27.50	606 . 85.00	664 . 7.50	722 . 90.00	780 . 190.00	839 . 85.00	897 . 30.00	955 . 30.00
549 . x 35.00	607 . 40.00	665 . 15.00	723 . x 110.00	781 . 42.50	840 . 15.00	898 . 80.00	956 . 130.00
550 . 55.00	608 . 60.00	666 . 25.00	724 . 60.00	782 . 10.00	841 . 45.00	899 . 90.00	957 . 85.00
551 . 30.00	609 . 32.50	667 . 15.00	725 . 20.00	783 . 25.00	842 . 50.00	900 . 90.00	958 . 95.00
552 . 25.00	610 . 100.00	668 . 20.00	726 . 175.00	784 . 27.50	843 . 15.00	901 . 90.00	959 . x 52.50
553 . 30.00	611 . 95.00	669 . 7.00	727 . 115.00	785 . 25.00	844 . 20.00	902D . 17.50	960 . 150.00
554 . 110.00	612 . 160.00	670 . 50.00	728 . 160.00	786 . 35.00	845 . 27.50	903 . 30.00	961 . 25.00
555 . 100.00	613 . 95.00	671 . 30.00	729 . 100.00	787 . 20.00	846 . 10.00	904 . 60.00	962 . 15.00
556 . 45.00	614 . 50.00	672 . 10.00	730 . x 135.00	789 . 40.00	847 . 65.00	905 . 65.00	963 . 250.00
557 . 85.00	615 . 65.00	673 . 20.00	731 . 140.00	790 . 15.00	848 . 45.00	906 . 37.50	964 . 22.50
558 . 130.00	616 . 60.00	674 . 10.00	732 . 25.00	791 . 45.00	849 . 130.00	907 . 50.00	965 . 32.50
559 . 60.00	617 . 45.00	675 . 55.00	733 . 45.00	792 . 130.00	850D . 65.00	908 . 15.00	966 . 70.00
560 . 65.00	618 . 355.00	676 . 5.00	734 . 135.00	793 . 35.00	851D . 25.00	909 . 45.00	967 . 50.00
561 . 50.00	619 . 275.00	677 . 25.00	735 . 85.00	794 . 35.00	852D . 42.50	910 . x 25.00	968 . 240.00
562 . 100.00	620 . 260.00	678 . 55.00	736 . 12.50	795 . 30.00	853D . 22.50	911 . 45.00	969 . 260.00
563 . 45.00	621 . 350.00	679 . 25.00	737 . 145.00	796 . 5.00	854D . 12.50	912 . 30.00	970 . 65.00
564 . 65.00	622 . 625.00	680 . 15.00	738 . 100.00	797 . 15.00	855D . 20.00	913 . 40.00	971 . 315.00
565 . 190.00	623 . 110.00	681 . 50.00	739 . 100.00	798 . 17.50	856D . 37.50	914 . 47.50	972 . 95.00
566 . 275.00	624 . 45.00	682 . 160.00	740 . 80.00	799 . 5.00	857D . 10.00	915 . 85.00	973 . 150.00
567 . 50.00	625 . x 125.00	683 . 160.00	741 . 20.00	800 . 17.50	858D . 60.00	916 . 85.00	974 . 15.00
568 . 15.00	626 . 210.00	684 . 80.00	742 . 25.00	801 . 7.50	859 . 230.00	917 . 17.50	975 . 310.00
569 . 210.00	627 . x 120.00	685 . 160.00	743 . 40.00	802 . 60.00	860 . 40.00	918 . 15.00	976 . 67.50
570 . 50.00	628 . 20.00	686 . 85.00	744 . 85.00	803 . 150.00	861 . 170.00	919 . 20.00	977 . 45.00
571 . 25.00	629 . 25.00	687 . 190.00	745 . 17.50	804 . 30.00	862 . 70.00	920 . 45.00	978 . 55.00
572 . 85.00	630 . 10.00	688 . 140.00	746 . 5.00	805 . 45.00	863 . 25.00	921 . 50.00	979 . 22.50
573 . 22.50	631 . 17.50	689 . 65.00	747 . 17.50	806 . 40.00	864 . 20.00	922 . 50.00	980 . 109.50
574 . 250.00	632 . 12.50	690 . 10.00	748 . 35.00	807 . 60.00	865 . 130.00	923 . 35.00	
575 . 70.00	633 . 7.50	691 . 140.00	749 . x 20.00	808 . 20.00	866 . 135.00	924 . 25.00	
576 . 65.00	634 . 5.00	692 . 125.00	750 . 50.00	809 . 15.00	867 . 45.00	925 . 50.00	

Items added: 977. Diamond H Sweater; 978. Heisey Security, Gun;  
979. Diamond H Cake; 980. Heisey Delivery Truck

## CLUB NOTES

### #5 Bay State Heisey Club

The February meeting of the Bay State Heisey Club was held on Tuesday, February 12, 1991 at the Sir Speedy Printing Center in Woburn, Massachusetts.

The business portion of the meeting consisted largely of discussions about the Club's theme for our display table at Hopewell Hall in June. It seems that this year our members will be able to provide an embarrassment of Heisey riches to put the display together!

The Club was also very pleased to welcome three new members: Louis Lopilato of Boston, and Janet Etcovitz and Barbara Strauss of Newton.

Show-and-tell immediately followed with some super stuff, much of which came from an always vigilant member who seemed to have been unusually busy recently, even for him: a pair of #107 Wellington candlesticks in Moongleam (absolutely beautiful, and in a Moongleam so early as to be almost Emerald), a stunning Fancy Loop tankard in Emerald and trimmed in gold; an Empress dolphin-footed covered candy in Sahara, a #352 5-part divided oval platter; a Yeoman DO Flamingto torte plate found at the Salvation Army Store of all places, and a very interesting art glass piece, possibly a powder jar, thought to be French, but possibly American and even Tiffany.

Our secretary, Mary Emma Foster, provided a great selection of wonderful food, including deli platters, Valentine candy and heart-shaped cookies, as well as homemade scones (which were not at all dry), all displayed with a Valentine motif and a centerpiece of red roses.

In the final segment of the meeting Susan Pescatore offered a presentation entitled, "Not Whatzit-- But Whatzit For? Susan explored the question of why Heisey's earlier patterns, especially circa 1896 to 1920, had so many different kinds of pieces, which functioned in ways we are no longer knowledgeable. The highly specialized tableware reflected a formality and elegance of lifestyle, even for the middle class, that no longer exists in our paper-plate society. For example: what is a compote, anyway? Why is an orchid vase different from a carnation vase? And why were four-piece table sets-- sugar, creamer, covered butter and spooner, unheard of today, a standard offering in every early pattern? Something to think about.

Susan Pescatore

A. H. HEISEY & CO.  NEWARK, OHIO

### #13 Heisey Club of California From their publication *Pony Express*

Gene and Joyce Moenning's beautiful home in beautiful Capistrano Beach was the setting of the HCC New Year with 19 members present. Their Heisey collection is a glittering sight to view and their rare and colored collection is a real treat to see. Gene presented an informative program on "Heisey spoons, paddles, muddlers, and knife rests." Thanks to the participation of our members, there were many examples of all in crystal and assorted colors. Gene reviewed his program on "Frogs" and pass many examples, so that hopefully we will be able to identify, purchase, and expand our frog collection this year.

The members unanimously voted at the January meeting to donate the proceeds of \$403 from the December Collectible Live Auction plus \$97 from the treasury to the HCA Endowment Fund (\$500 donation).

The HCC Annual Heisey Silent Auction, which is our main fund raising event of the year to benefit HCA, will be held at the home of Betty and Herb Wanser on April 28, 1991. It is time to review your Heisey collection and set aside those "SPECIAL" pieces to donate to this worthwhile event. We will publish the list of donations in the March and April *Pony Express* newsletter to allow our out-of-state members to submit bids. **SAVE THE DATE!!**

Bud and I will be celebrating our 31 Wedding Anniversary in San Francisco the weekend of the Heisey meeting this month. Gene Moenning will preside at the meeting in my absence. Debbie and David White, our newest members will share their home and collection and host the February 24th regular meeting of HCC. Leo Bevon will present the Program on "Heisey Smoking Items." Please plan to attend, and support our enthusiastic club and bring your smoking items to share.

Penny Thorup, President

### *Treasures and Trivia*

In September 1940, Heisey introduced a covered candy dish, a covered cigarette box, and an individual ashtray set, which was described as Heisey's new "quilted" design (No. 1521). A candlestick was also made, but never went into production. This pattern was short lived and in 1941 it was changed to pattern No. 1533, Wampum. In the original 1521 pattern, the bead placed at the angles where each diamond met.

When the pattern was redesigned, later pieces had additional beads in graduated sizes added along side the larger bead at the intersection of the diamond.

Additional pieces in the Wampum pattern were, a salad bowl, various floral bowls, a gardenia bowl, and a candlestick. The candlestick was originally designed with a large octagon top which was later changed to a smaller octagon top. The gardenia bowl was designed to have a candlestick placed inside and sold with an additional pair of candlesticks to make a "epergne set." There may be other pieces that I am not aware of.

The early pieces are not often seen and are a real find. Imperial reproduced the candy box, cigarette box, and individual ashtry in blue and green satin glass.

Leo Bevon



*Wampum #1533*

*source: Vogel Book 4, p. 154*

### Cruet of the Month

Whirlpool (No. 1506) was produced from 1938 to 1953 with the name changed to Provincial in 1952. It was made in Crystal only. The cruet was made in a 4 oz. size, and marked on the neck. The glass is thick and clear with many circular indentations in varying sizes. The cruet sparkles in light and is quite attractive. The spout is 4" from the bottom and it was made in a four-part mold. The handle is square and the stopper is special, similar to the #6.

The vinegar & oil bottle is 5-1/4" from the spout to the bottom. It has the double spout and holds 6 ounces. It was also made in a four-part mold. There are eight short panels on the neck above and many circular indentations. The vinegar & oil is molded into the glass and it came in crystal only. It was issued with the #1 stopper.

Homer Paulson

### #19 HCC Rochester

The February meeting was held at the home of Donna and Bruce Schwendy on the 17th. The attendance was good with 19 members present.

After Betty Evans called the meeting to order, the Convention display was discussed. Our members decided not to participate this year. The resignation of the HCA curator was discussed; we wish her replacement all the best.

Susan Schwendy then gave a beautiful solo performance with her "Silver Flute," with her mother as accompanist on the piano. She played "Morceau De Concours" written by Gabriel Faure, a French composer, in 1898. The Schwendy's have three daughters, all have a good eye for Heisey. It's great to see younger people gaining an interest in our glass.

The subject for the month was "Vases." The following were presented: Victorian violet vase, Empress DF 9" vase, Janice spiral vase, Waverly Rose Etch fan vase, Hilo vase, Provincial violet vase, #4157 Flamingo rose bowl, 515-2 vase, this was made during 1927-1933 in Moongleam, Flamingo, & Hawthorne. The #4191 10" vase was shown along with a Puntly & Diamond Point 8" vase. Of course, this pattern is among the most popular of all Heisey's glass in crystal.

Our "show-and-tell" followed. Marie & Jeff Frew found a nice Triplex Sahara candle and Donna located a beautiful set of Empress champagnes. The flower petal effect of the stem really sets off an unusual piece. Nice going gang.

The quote for the month: "To be positive: to be mistaken at the top of one's voice" (S.S.).

George Reynolds



*Susan Schwendy performing at the HCC Rochester February meeting*



### diamonds are forever....

by Janet M. Caswell

Sitting here at my kitchen table, I will try to come up with some good news, but first let me tell you the reason why my column will be shorter this month. I managed to fall and break the big bone in my wrist so badly that they had to insert steel rods to hold it in place. Seems like I'll be in a cast for at least five more weeks, which is not very comfortable. Things are so much more complicated using only one hand!

In January I requested input from my readers and I received a lovely letter from Canada--a fairly new member of HCA, and hopefully, a regular contributor to "diamonds are forever." My new *Canadian Friend* picked up his first piece of Heisey about twenty years ago--it was my #433 Greek Key, 7" tall covered candy. At the time of the purchase, he didn't know its history or value, but made good use of the candy jar over the years. Little did he know that down the road a few years later he would start collecting this heavy, but beautiful pattern. Now days my *Canadian Friend* has about 24 pieces of Greek Key, which includes: banana split dishes, sherry goblets, punch bowl base and punch cups. He says the base makes a handsome vase if up-turned. He also has a 8" plate with a 1" silver rim, four goblets (bought one at a time and each one very dear). As Heisey is scarce in Canada, most of these pieces were found by friends who gave them to him for birthday and Christmas gifts.

The *Tudor Nuts* have just added another piece of #411 Tudor to their very nice collection--the lemon dish with cover (and cut). They also came away with the *Toujours* #1511 marmalade with cover and spoon; the #1540 Lariat 13" Gardenia Bowl, Moonglo cut, plus the 13" torte plate also in Moonglow cut.

*The Jersey Devil* while vacationing in Vermont, bought four berry bowls in the Whirlpool pattern. From her description, I would say they were made by Imperial Glass in the Verde Green Color. In Heisey, she acquired the most gracious playing card box and a #1776 Kalonyal bowl, most likely the 8".

Haven't heard from the *Two Guys* for awhile, but here is what they wrote a little while back--Get Ready: #1511 *Toujours* candlevases with the Minuet etch. The next day or so they were able to match them up with a pair of inserts, also Minuet etch, that they already owned. What a magnificent sight these make together<sup>1</sup>. They were produced between 1939 and 1941 and seem to be a redesigned version of the #1183 Revere vase candlestick. The #1511 candlevase is very rare as only two turns were made. The candlevase had 12 "A" prisms when first introduced. Also at the same show the *Two Guys* stole the #114 Pluto candlesticks in Hawthorne<sup>2</sup>. They are 3-1/2" tall and were produced from 1926 to 1931 in Moongleam, Flamingo, Hawthorne, and Marigold.

Now *The Tradin' Fools* are still out there tradin' away and loving every minute of it. Let's see what he acquired in Fancy Loop-- a beautiful water bottle, straight; a #3 salt; a Finger Bowl; two celery trays, 10"; two 8" cheese plates, one straight and another a rolled edge; two celery dips; the Hotel sugar and creamer with good gold, and three small champagnes. Now that is only a partial list, and there's more to come.

To whom it may concern, would you believe that I had popcorn in my Old Sandwich Popcorn Bowl? *Yours Truly* says, um, um good!!

*The Gator Guy and Gal* have six Stepped Octagon plates in Moongleam and a pair of #1469 Ridgeleigh candlevases in Sahara (see Figure on page 15). They are 6" high and come in Crystal, Sahara, and Zircon. This was made from a 6" vase and flaring its sides--therefore it is actually about 4-1/2" high.

It has been a very long time since I've had input from my readers--please let me hear from you!

From the Yachting Center comes my best wishes:

"There's a town in Essex County,

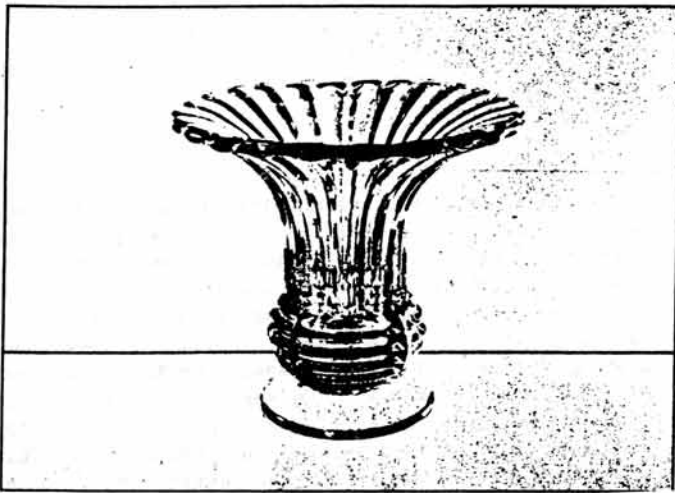
Rare recipient of Nature's Bounty.

Sailboats spangle vast horizon's blue

as wandering winds whip up salty brew."

1. Heisey Candlesticks, Candelabra and Lamps by Tom Felt and Bob O'Grady, HCA: Newark, OH, 1984, pg. 270.

2. *Ibid*, pg. 129.



**Figure 1**  
**#1469 Ridgeleigh candlevase**

## Convention '91 NEWS



As reported previously, the theme for Convention '91 is "The Roarin' 20" to pay tribute to the twenty founding members, who twenty years ago were beginning to build the foundation for what today has become a very strong and respected national organization. They were the motivation and inspiration for an equally dedicated group of recruits who followed and continued to work to achieve the ultimate goal of establishing a museum for the preservation and display of the Heisey glass heritage. Can we all keep this dream alive? Make plans now to come to the convention to help celebrate twenty years of achievement!

One of the most eagerly awaited events, the show preview, starts off with a "New Twist" Thursday evening. The preview will open at 4 p.m. and close at 7 p.m. Following will be a catered cocktail buffet (starting at 7 p.m.). The Board has approved this as a members only preview to benefit the Endowment Fund. For those of you who did not enjoy the light show and accompanying shower last year under the tent, take heart! The social will be held in the dry shelter of Appletree Auction Center.

Plan also to attend the identification breakfast (The Rib & Panel), Friday morning and the annual meeting, Sunday morning at the Granville Inn. Make time for

the "Old Sandwich" (wiener roast), the "Ip-switch & Swap," and the display (Diamonds are Forever) at Hopewell Hall, which will have a new look this year. Come to see for yourself what surprises Janet Caswell's committee has in store for you. The banquet program will feature the recognition of the founding members. Again the banquet will be held at Denison University which provides a delicious bountiful buffet and is also the only place large enough in the area to hold our large group.

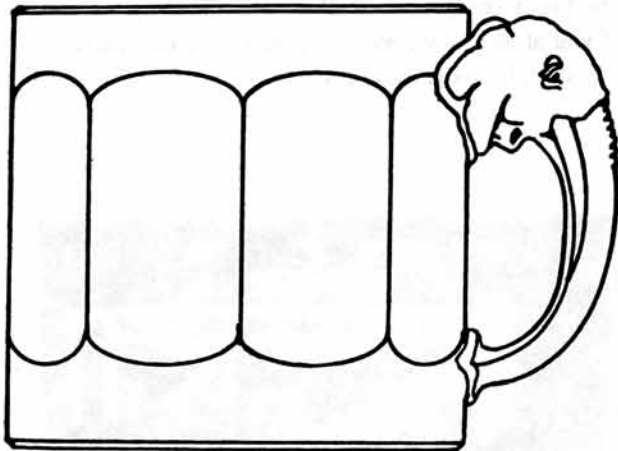
When the convention registration form comes out in next month's newsletter, be sure to check the listing for the times and places of all events. We hope to see all of you at as many events as possible--come early, stay late! Help Convention '91.



-----  
 Kathy Johnson-Bowles, Former HCA  
 Curator and Elaine Cobel at the Pataskala  
 Library exhibit honoring Carl Cobel in  
 February 1991

" THE STORY OF THE HEISEY BABY MUG "  
by Horace King, Designer

The original Child's Cup, now affectionately known as the "Baby Mug", started out in March, 1946 as an office joke. Late one day we gathered in Clarence Heisey's office to go over some items I had drawn for production. After serious



CHILD'S CUP - HKING 4-6-46

discussion had ended, talk turned to lighter subjects and there was light-hearted banter. At one point Rod Irwin, who was always slender, suggested that some of the portly officials cut down on their beer. This was a typical office tease and after some laughter it was soon forgotten. Several nights later I was working at home on some things for Rod. I recalled the joke, so I sketched a tiny beer mug and gave it to Rod the next morning. He posed it in the office, with a few pertinent comments and it became a standing joke for a while.

Some time later when I was working with Clarence, he suddenly asked if I thought the beer mug would make a good child's cup. I suggested that the proportions were not suitable for a small child, and the handle ought to be changed to something that would be more attractive to a child. I asked him to give me more time to think about it. I changed the shape to a square profile and then made a dozen attempts to design a handle. These were not satisfactory and I was

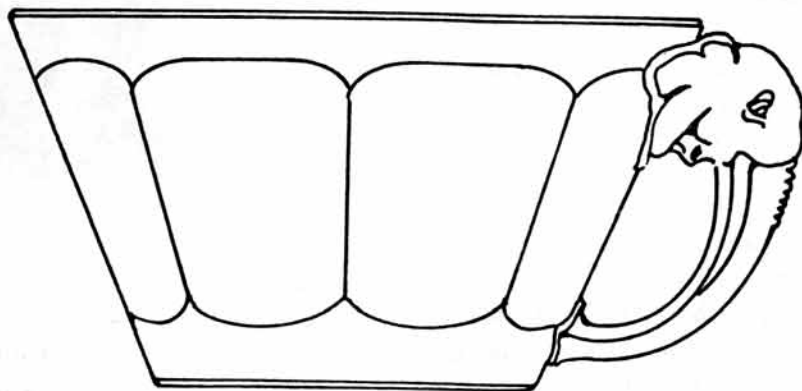
about to give up the project. A few days later I was going over animal books with my three young daughters. On one page was a standing elephant in profile with his trunk turned in, and I thought instantly of the child's cup - this was my handle at last. This is one of those numerous happenings which designers call "pop-skull" when an idea pops out of thin air, and in a completely irrelevant situation.

I made a hasty sketch of the elephant handle which charmed my daughters and appealed to Clarence, so I finished the working drawings April 6th and it went into production. It had eight plain panels which intrigued Clarence and he withdrew it after a short turn. He hit upon the idea of nursery rhymes and Mother Goose tales for the panels. I made some sketches I thought would be etched on but Clarence decided on relief work in the mold.

At the time I was very busy on seven major lines and eight or nine

special novelty items. I had spent 12 or 14 hours on the plain cup, and the illustrations promised to take as much more so the cup was put to bed for nearly a year. There was a break in February, 1947, and I started again on the illustrations. On March 25, after some 16 hours of work, I presented the final drawings for production. This was exactly one year after I had made the first sketches for the cup. I do not know how many illustrated cups reached the market, but I do recall that there were no more than 400 plain cups, and I took about fifty, six for my own family and the rest for my many parent friends. I now know of only a few of these still around because babies do throw their cups about and glass does break! This is beautiful music to the glass house, but heart-break for today's collector. I no longer have the drawings for the cups except for a rough sketch of the illustrations, but I still have working drawings of a child's bowl to go with the cup. This drawing is dated September 5, 1948, but I do not believe that it went into production.

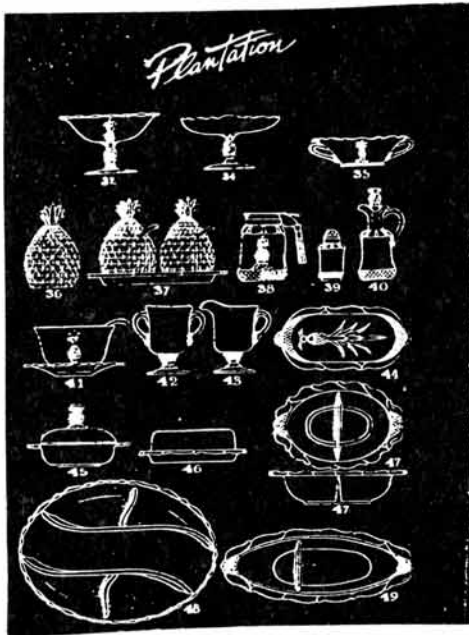
(Vogel's BOOK IV calls the cup "BED TIME STORY mug, child's, baby cup" and he shows a picture of it on page 61).



8 PANEL CHILD'S BOWL TO GO WITH  
CHILD'S CUP OF 4-6-46  
-HKING 9-5-48



More on Horace King.....



Excerpts from: "My Glass-House Days with T. Clarence Heisey," by Horace King, Designer printed in the February 1974 issue (Vol. III No. 2, pp. 3 & 9) of the *Heisey News* .

How did King come to work for Heisey?

"We first met in the last week of May in 1943 when he called me to ask if I had a talented art student who would want to go into glass design. I did have a very talented Denison girl and I took her for an interview... Clarence...gave us a tour of the entire factory, gave us an incomprehensible account of the processes of glass making, (but) not one word about the job, so we drove back to the campus in a daze. My student graduated the next week and I dismissed Heisey as an incident of "ships that pass in the night."

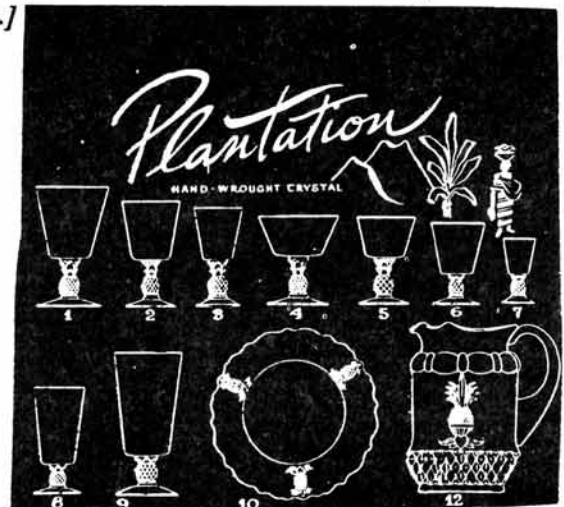
"Clarence called again in early September of 1943 to ask if I might be interested in designing glassware for him. I met him at the factory and .....he showed me the hundreds of items in the sample room, took me through the mold shop and hot metal room, and then we began to talk about the conditions of the job. He knew that Denison University was my first loyalty, and that I would have to limit Heisey work to evenings, weekends and vacation periods. Clarence agreed to this, then asked me what I would expect in terms of pay. I had been a successful professional artist for 15 years so I

stated a substantial hourly rate which he promptly cut in half. Then he explained, very kindly, that designing glassware was the toughest in the business, and that I might work for weeks, even months, before I came up with something for production. He was so right, and I was a dismal failure for almost three months. I had to spend weeks in the mold shop and hot metal room to learn the limitations in producing glassware. Clarence was very patient and he took me off my attempts at original designs to try my hand at revisions of old designs.

"This was a good break for me because in early 1944 I revised an old German goblet with a brutal diamond point stem into the present Plantation goblet with a pineapple stem (and) with diamond points. Clarence was pleased with this, and he decided to expand it into a full line. We huddled over the development for five years and expanded my early goblet into a line of 82 items, the largest of Heisey lines at this time."

What's the story about the painting of *Goodness Gracious*? "Clarence knew I was a portrait painter and one day in 1945 he asked if I would paint a picture of his beautiful show horse, Goodness Gracious. I knew only farm horses and the dispirited nags that hauled junk wagons when I was a boy, but I accepted the commission hoping to learn as I went along. Clarence was a frequent visitor in my campus studio and his first calls were laced with sharp criticism, always relieved by side-splitting similies. There was near chaos one day when Clarence saw that I had put a Roman nose on Goodness. I got a long lecture on the fine points of high bred horseflesh...."

[Editor's note: Next month we will print King's article entitled, "Plantation: How It All Began....," in which King talks about how he worked with other Heisey employees.]



<p><b>MARJORIE GILLETTE</b> Rochester, New York Glassware Speciality Heisey Mail Orders &amp; Shows 716-225-4678</p>	<p><b>GLASS WITH CLASS</b> Lenore A. Shelley, GGHCC 216 DANVILLE DRIVE LOS GATOS, CA 95032 408-356-4036 "By Appointment Only"</p>	<p><b>COMPARISON LIST</b> New Heisey Auction List for 1990 3 Year Auctions 88-89-90 Price: \$13.00 + \$2.00 Shipping, Payable B. Whaley 300 International Dr., Pataskala, Oh 43062 614-927-1557</p>
<p><b>ALL HEISEY AUCTION</b> Consignments Welcome Apple Tree Auction Center 1616 W. Church, Newark, OH 43055 PH: (614) 344-9449</p>	<p><b>GREEN ACRES FARMS</b> Antiques, Crystal Glass &amp; Collectibles 2678 Hazelton-Etna Rd., SW (S.R. 310-N) Pataskala, OH 43062 Sat. or Sun. PM or call (614) 927-1882</p>	<p><b>THE CURIOSITY SHOPPE</b> Heisey, Pottery, Coins, Crafts &amp; More NEW SHOP in Holmes County Amish Country 13 W. Jackson, Millersburg, Oh 44654 (216) 674-2999</p>
<p><b>ALFA I CARRIAGE HOUSE ANTIQUES</b> Featuring Depression &amp; Elegant Glassware Al &amp; Faye Maness Rt. 1 Box 552, Ashland, VA 23005 PH: (804) 798-1825</p>	<p><b>H &amp; R DIAMOND H</b> Helen &amp; Robert Rarey 1450 White Ash Dr. Columbus, OH 43204 PH: (614) 279-0390 after 5:30</p>	<p><b>PARRETT'S ANTIQUES</b> Heisey 4994 Mapledale Rd. OR 1215 Greenwood Ave. Jackson, Mich. 49201 PH: (517) 784-7319 OR (517) 783-3289</p>
<p><b>ANTIQUES - THE SHULTZES</b> 206-208 East Main St. Newmanstown, PA 17073 15 Miles West of Reading, PA PH: (215) 589-2819</p>	<p><b>"HAPPINESS IS" - THE STULTZS</b> 3106 Warren Court, Glen Allen, VA 23060 Shows and Mail Order PH: (804) 672-8102 GLASS CIRCA 1890-1960</p>	<p><b>PATTON HOUSE</b> Rocky's Mall, I-81 &amp; US 11 Weyer's Cave, VA 24486 PH: (703) 967-1181 The Antique Gallery, Richmond, VA</p>
<p><b>C &amp; J ANTIQUES</b> Cole &amp; Jean Miesner Box 45, 72 Whig St. Newark Valley, NY 13811 PH: (607) 642-9905</p>	<p><b>HARRALSON'S HOBBIES</b> Heisey - Rose O'Neill Items - Doll Repair 1426 W. Highland, Springfield, MO 65807 PH: (417) 883-2449 Cliff &amp; Helen Harralson</p>	<p><b>YOUR AD COULD BE HERE</b></p>
<p><b>DOXTOIS</b> Eva &amp; Joe Hirsh Heisey &amp; Pattern Glass 6 James St., Norwalk, CT 06850 PH: (203) 847-3315</p>	<p><b>HELEN &amp; JIM KENNON</b> Heisey, Cambridge, Fostoria, Duncan, Imperial, Fenton, Tiffin P.O. Box 114 Brookville, OH 45309 PH: (513) 833-5406 SHOWS ONLY</p>	<p><b>R &amp; L ANTIQUES-SAN FRANCISCO</b> Members of the Golden Gate Heisey Club 3690 Bodega Ave. Petaluma, CA 94952 PH: Petaluma (707) 762-2494 PH: San Francisco (415) 621-6693</p>
<p><b>CHARLES &amp; MILDRED FISHER</b> Heisey, Degenhart, Imperial, Antiques, Collectibles, General Line 991 Idlewild, Newark, OH 43055 PH: (614) 522-5398</p>	<p><b>JJ MC KEE ANTIQUES</b> Pottery - Glassware - Collectibles 222 B West 75th St. Kansas City, MO 64114 Wed.-Sun. 10-5 PH: (816) 361-8719</p>	<p><b>THE WOODEN SHOE</b> Antiques &amp; Collectibles Jim &amp; Sheri VanEs by Appt. 810 Elden, Herndon, VA 22070 PH: (703) 435-9045</p>
<p><b>CRYSTAL LADY</b> Joann Hagerty Specializing in elegant depression glassware 1817 Vinton Street, Omaha, NE 68108 Shop Ph. (402) 341-0643 or Home Ph. (402) 391-6730</p>	<p><b>RAILROAD DINING CAR CHINA</b> Wanted By Collector - Harold W. Ames 4574 Driftwood La., Canandaigua, NY 14424 1-716-394-1098 1-800-836-9619 Most Anything Railroad Related Wanted</p>	<p><b>SCHWAN'S ANTIQUES SHOWS &amp; MAILORDER</b> 77 Lagos del Norte Ft. Pierce, FL 34951 PH: (407) 461-5940</p>
<p><b>DIAMOND H PLUS</b> Mail Orders &amp; Shows George &amp; Eileen Schamel 6625 Gillard Rd., Boonsboro, MD 21713 PH: (301) 432-6285</p>	<p><b>J. &amp; R. COLLECTIBLES</b> Shows, SASE, Mail Order list The Lukasko's P.O. Box 1030, Newark, Ohio 43055 PH: (614) 344-9719</p>	<p><b>YOUR AD COULD BE HERE</b></p>
<p><b>ETTELMAN'S DISCONTINUED CHINA &amp; CRYSTAL HEISEY a SPECIALTY</b> P.O. Box 6491-HN Corpus Christi, TX 78411 PH: (512) 888-8391 Include SASE</p>	<p><b>MOSTLY HEISEY</b> Rhoda Curley 16 Clayton PL, Albany, NY 12209 Shop and Mail Order PH: (518) 482-6272</p>	<p><b>HEISEY PUBLICATIONS</b> Box 102, Plymouth, Ohio 44865 All Vogel Heisey Books I, II, III, IV And Quarterly Newscasters available</p>
<p><b>FOREVER HEISEY</b> Jan &amp; Norm Thran Mail Order, Shows, Appraisal Service 1663 Londondale Pkwy., Newark, OH 43055 PH: (614) 344-5955</p>	<p><b>MOUND BUILDERS ANTIQUES</b> Heisey &amp; Animals, General Antiques Irene Rauck 1138 Moundview, Newark, OH 43055 PH: (614) 344-6043</p>	<p><b>WILLEY'S ANTIQUES &amp; MUSEUM</b> Specializing in Heisey 11110 Cannon Rd., Frazeyburg, OH 43822 16 miles east of Newark, OH PH: (614) 828-2557</p>
<p><b>H &amp; R ANTIQUE CENTER</b> 1063 Pike St., Etna, Oh 43018 Off I-70 Exit 118 ½ mile North April-Sept. 10-5 Daily/Oct.-March Wed.-Sun. 614-927-4053</p>	<p><b>THE MUTED SWAN ANTIQUES</b> 5486 Peachtree Rd., Chamblee, GA 30341 Heart of Chamblee Antique Row Specializing in Heisey &amp; Cambridge Bill &amp; Pat Miller PH: (404) 451-7620</p>	<p><b>JAMES S. HARRIS ANTIQUES/APPRAISALS</b> Box 672 Richmond, KY 40475-0672 PH:(606) 623-9100 Buying and Selling by Mail</p>
<p><b>GLASS 'N' GLASS</b> Virginia &amp; Odell Johnson 6909 10th Ave. West Bradenton, FL 34209 PH: (813) 792-0604</p>	<p><b>SHRADER ANTIQUES</b> Dep. &amp; Elegant Glass, Buffalo Pottery Railroad Dining Car China, Shelley China 2025 Highway 199, Crescent City, CA 95531 PH: (707) 458-3525</p>	<p><b>TALL OAKS ANTIQUES</b> 565 N. Nichols St., Lowell, IN 46356 Elegant &amp; Dep Glass Specializing in Heisey. Shows - Mail Order - Shop - PH 219-696-0147 Mike &amp; Barb Rosenberger</p>

**John Woytowicz**  
**RFD #1 Box 4047**  
**N. Anson, ME 04958**

**207-696-3020**  
**UPS & INS. EXT**  
**\* MARKED**

#341 Puritan 6oz. egg cup (2) \* \$ 22.00  
 #341 Puritan footed sugar and cover, 10-1/2" tall  
 with beautiful fuschia cutting \* \$ 90.00  
 #350 Pinwheel and Fan 3pt. jug \* \$125.00  
 #1404 Old Sandwich 4oz. oyster cocktail (6) \* \$ 15.00  
 #1415 Twentieth Century sherbets, Sahara (3) \* \$ 20.00  
 #1425-1/2 Victorian condiment tray, complete \* \$ 80.00  
 #1417 Arch tumbler, Sahara, will swap for same in Flamingo or  
 Moongleam.

**Classified Ads:**

**For Sale :** Heisey glass Granville, OH Phone 614-587-3330  
**For Sale :** 25 Heisey animals for sale. With prices getting higher--  
 send for price list today. S.A.S.E. requested. R. Donovan 55  
 Vining Ct., Apt. 114, Ormond Beach, FL 32176  
**For Sale :** 28 pieces Heisey stemware, #5077 Legionnaire, #1025  
 Arcadia cutting. Matching dessert plates possible. S. Yungmeyer  
 37 Woodmere, Jackson, TN 38301 (901) 668-7502  
**Wanted:** Bankers Inkwell #1117 Harold Hodges 3739 Plaza Dr.,  
 Topeka, KS. 66609

**Museum Benefit Drawing**

**Sponsored by The Buckeye Heisey Collectors Club**

1st prize : #160 Locket on Chain, wine w/Ruby stain & gold  
 decoration

2nd prize : #310 Ring Band, Custard, oblong dresser tray

3rd prize : #4220 Janice 6" , Sahara, swirl optic vase

4th prize : Two Imperial Amber Piglets

Donation : 50 cents per ticket

or five tickets for \$2.00

Drawing : Quarterly Meeting, June 22, 1991

Tickets will be on sale all week of convention: June 19 - 22, 1991.

Look for our sale, reps at OSU and Granville and pick up your  
 lucky tickets for these fabulous prizes. For those of you unable to  
 attend the convention, you may order by mail as follows;

Send check or money order payable to:

Buckeye Heisey Collectors Club

659 Canterbury Ct.

Newark, OH 43055

Your ticket stubs will be entered for you and prizes will be mailed  
 (shipped UPS) if you are a winner.

Remember - you need not be present to win, checks must be  
 received before June 22, 1991

All proceeds benefit the National Heisey Glass Museum  
 (This offer is invalid in states where prohibited by law.)



**\*NEW LOCATION\***  
**Westchester Glass Club**

Fifteenth Annual  
 1991

**Collectors Glass Show  
 and Sale**

Saturday at Sunday  
**APRIL 27** GREENWICH CIVIC CENTER **APRIL 28**  
 10 - 5 12 - 5

Harding Road  
 Old Greenwich, CT  
 (Exit 5 off I-95)

Right at the light. Follow signs to  
 Civic Center)

Early admission with Continental Breakfast  
 Saturday 9:00 - 10 a.m. \$10.00

**GUEST LECTURERS**

Raymond E. Barlow — Author - Sandwich Glass  
 Dorothy-Lee Jones — Founder The Jones Museum,  
 Douglas Hill, Maine

FINE GLASS INCLUDING IDENTIFICATION BOOTH  
 ANTIQUE, ANCIENT, ART, GLASS REPAIR  
 BRILLIANT CUT, DEPRESSION, ENGRAVING  
 CARNIVAL, PATTERN, DEMONSTRATION  
 BOTTLES, CONTEMPORARY FREE PARKING  
 AVAILABLE FOR PURCHASE LUNCHEON  
 FROM NATIONALLY PROMINENT GLASS DEALERS

Admission \$4.50

With this ad \$4.00

Part of your admission benefits  
 The Byram College Scholarship Fund

INFORMATION  
 (203) 531-7004

**\*NEW LOCATION\***

**H&R Diamond H**  
**Helen & Bob Rarey**  
**1450 White Ash Dr.**  
**Columbus, OH 43204**

**PH 614-279-0390**  
**After 5:30 P.M.**  
**UPS & INS. Extra**  
**H = Marked**

**PUNCH CUPS**

#300 Peerless, H (8) ea. \$ 9.50  
 #305 Punt & Diamond Point, H \$ 16.50  
 #325 Pillows, H \$ 42.50  
 #337 Touraine, H (8) ea. \$ 8.00  
 #350 Pinwheel & Fan, H (6) ea. \$ 17.50  
 #350 Pinwheel & Fan, H Moongleam \$ 52.50  
 #357 Prison Stripe, H \$ 25.00  
 #411 Tudor (Rib & Panel), H 5ea. \$ 13.50  
 #433 Greek, Key, H (9) ea. \$ 17.50  
 #1159 H Custard, Rose dec. Corpus Christi, TX \$ 35.00  
 #1160 H (Flared) (4) ea. \$ 7.50  
 #1201 Fandango, good gold decoration \$ 25.00  
 #1205 Fancy Loop (7) ea. \$ 14.00  
 #1205 Fancy Loop, good gold decoration \$ 17.50  
 #1212, H (Plain) \$ 7.50  
 #1235 Beaded Panel & Sunburst \$ 12.50  
 #1401 Empress, H (8) ea. \$ 17.50  
 #1425 Victorian H (8) ea. \$ 7.50  
 #1469 Ridgeleigh H (Cone) (2) ea. \$ 16.50  
 #1506 Whirlpool (Provincial) H (4) ea. \$ 12.50

Don & Jean Parrett 4995 Maple Dale Rd. Jackson, MI 49201	Post. & Ins. Extra 517-784-7319 Recorder
#1559 Columbia 11' salad bowl, Rare	\$125.00
#1559 Columbia 14" buffet plate	\$ 95.00
#2323 Navy 13-1/2 buffet plate, cobalt outer ring, Rare	\$195.00
#5048 Rooster head 3-1/2oz cocktail (6) ea.	\$ 45.00
#1170 Pleat & Panel 9oz. goblet	\$ 25.00
#3362 Charter Oak 7" compote, Flamingo, silver dec.	\$ 75.00
#1220 Punt Band souv. toothpick, Red Flash	\$ 38.00
#1235 Beaded Panel & Sunburst toothpick, gold dec.	\$ 85.00
#1201 Fandango toothpick	\$ 85.00
#433 Greek Key Med. nut tub	\$ 49.00
#393 Narrow Flute ftd. sugar cube	\$ 40.00
#1566 Banded Crystolite 3" candle block, Rare, pr.	\$110.00
#393 Narrow Flute 1 qt. 9" beer pitcher Rare	\$125.00
#1183 Revere 11-1/2" dinner plates, (4) ea. beautiful	\$ 35.00
#1519 Zodiac 11" ftd. bowl & pr. 2lite cndlhldrs, Amber, 3pc	\$185.00
#1504 Regency floral brass covered 7" divd candy dish	\$ 85.00
#341 Williamsburg 1qt. decantor, (4) 2-1/2oz. bar, tray (6pc.)	\$225.00
#417 Double Rib & Panel basket, Hawthorne	\$250.00
#3335 Lady Leg 9oz. goblet, cut, ea.	\$ 25.00
#70 Octagon 7-1/2 " candlestick, etch on foot, pr.	\$ 98.00
#1220 Punt Band 9" tall pitcher, good red flash	\$110.00
#5012 Urn, Orchid, 7" bud vase	\$145.00
#1183 Revere covered horseradish, nice cutting	\$ 38.00
#1503 Crystolite book match ashtray	\$ 30.00
#4206 Optic tooth 8-1/2" Flared D/O vase, Moongleam foot	\$125.00
#356 Octagon 16oz. Lavender jar, beautiful decor. Rare	\$130.00
#353 Wide Panel 8oz. Lavender jar	\$ 80.00
#1225 Plain Band - toy, covered sugar Horsehead bookend	\$ 65.00 \$145.00
Scottie (Sealyham)	\$ 95.00
#5012 Urn 7" bud vase, Orchid Etch	\$150.00
#1401 Empress 7"high oval compote, Sahara, cut	\$ 60.00
#1566 Banded Crystolite 3" candle block, pr. Rare	\$110.00
#1776 Kaylonial punch bowl & stand	\$230.00
#335 Prince of Wales punch bowl & stand, gold decoration	\$200.00
#341 Williamsburg ftd. sugar	\$ 15.00
#1503 Crystolite lg. swan nut	\$ 30.00
#633 Prismatic 4oz. cruet stopper, repair Rare	\$ 48.00
#4036 1/2 1pt. decanter, beautiful cut, pr.	\$225.00
#3368 Albermarle Champagne, #468 Chateau cut, (3)ea.	\$ 30.00
#1425 Victorian 3oz. cruet	\$ 95.00
#1425 Victorian 8oz. vinegar & oil	\$ 95.00
#1225 Twist 8oz. vinegar & oil, Flamingo	\$175.00
#1506 Whirlpool 8oz. ketchup	\$110.00
#1401 Empress 4oz. cruet, Sahara,	\$140.00

### Newsletter Binding

As a service to members, every two years you are given the opportunity to get your Heisey News bound. This year (1991) it will be the years 1989 and 1990 to be bound. The cost for binding has been raised one dollar to \$20.00 per volume. As in the past, the binding is of library quality, stitched with a royal blue hard cover and gold lettering.

The Bindery will also bind back issues for the same price. If you lack back issues, contact Sally Staruch at the museum about availability. You must remove all staples, as the issues are sewn together before the cover is installed.

You may bring or send your Heisey News to me at the museum or to my home address, listed in the Dealer Directory. Include your check for \$20.00 each volume plus \$3.00 each volume for return by UPS, unless you are going to pick-up at the museum.

The cut-off date for binding will be the close of the Heisey Convention on June 23, 1991. If you have any questions, write or call me.

**Bob Rarey**  
C/O HCA  
169 W. Church St  
Newark, OH 43055.

**L. A. Maness** Phone: (804) 798-1825  
Rt. 1 Box 552 UPS \$3.50/ carton  
Ashland, VA 23005 H = Marked

#1150 Colonial star 6" plate H (6) ea.	\$ 10.00
#1503 Crystolite 6" 2 Handle Jelly H	\$ 27.00
#1503 Crystolite 14" torte plate H	\$ 35.00
#1503 Crystolite 7" round covered candy H	\$ 65.00
#1503 Crystolite ice tub H	\$ 92.50
#1401 Empress 7" 3 part relish, Sahara, H	\$ 62.50
#433 Greek Key 4-1/2 oz flared sherbet H (4) ea.	\$ 18.00
#433 Greek Key ind. Ftd. almond H (2) ea.	\$ 25.00
#1540 Lariat 7-1/2" Bon Bon H	\$ 42.50
#1540 Lariat Cup & saucer H (4) set	\$ 22.50
#393 Narrow Flute french dress. boat/underplnt H	\$ 65.00
#393 Narrow Flute covered mustard H	\$ 42.50
#479 Petal Hotel cream/sugar, Flamingo, H,	\$ 26.25
#1567 Plantation 11" 3part relish H	\$ 52.50
#5067 Plantation saucer champagne (8) ea.	\$ 25.00
#5067 Plantation goblet (4) ea.	\$ 35.00
#341 Puritan covered round butter H	\$ 67.50
#341 Puritan 2oz. oil H	\$ 45.00
#1252 Twist 4oz. cruet, bolt handle, Flamingo H	\$ 97.00
#1252 Twist 7" pickle tray, Moongleam, H	\$ 25.00

<b>Donald Bean</b>	<b>(508) 473-0561</b>
<b>36 Harding St.</b>	<b>shipping Extra</b>
<b>Millford, MA 01757</b>	<b>* = Marked</b>
#1503 Crystolite 12-1/2 oval 3 part relish*	\$ 25.00
#1503 Crystolite 4" 1 light candleholder, pr.	\$ 35.00
#1503-1/4 Crystolite square candle block	\$ 37.00
#5022 Gracefull 1oz cordial, Orchid etch *, (2) ea.	\$125.00
#1405 Ipswich 8" sq. plate*, finger bowl* & liner 3 pc	\$ 33.00
#1469 Ridgeleigh star relish*	\$ 35.00
#1469 ridgeleigh oval ind. jelly (4) all	\$ 48.00
#417 Double Rib & Panel basket w/ leaf garland etch, cut	\$95.00

**Wanted:** Heisey #1235 Beaded Panel & Sunburst punch cups (10). Send Price & description to

Susan Hermerding  
50 Rocky River Dr.  
APT. 205  
Berea, OH 44017  
(216)-243-4725

<b>Glass 'N' Glass</b>	<b>PH 813-792-0604</b>
<b>Virginia &amp; Odell Johnson</b>	<b>UPS &amp; INS. Extra</b>
<b>6909 - 10th Ave. W.</b>	<b>* Marked</b>
<b>Bradenton, FL 34209</b>	
#4052 National bar, Moonglow cutting	\$ 27.00
#1503 Crystolite 11" party or torte plate	\$ 18.00
#1503 Crystolite 13" torte plate*	\$ 22.50
#1503 Crystolite shell candy w/feet	\$ 20.00
#1503 Crystolite cruet	\$ 35.00
#1503 Crystolite sherbet (2) ea.	\$ 12.00
Swan nut set, large & 3 small	\$100.00
#1401 Empress sugar & creamer, Flamingo*	\$ 55.00
#358 individual ashtray, Flamingo	\$ 20.00
#1184 Yeoman 8-1/2" handled candy dish, Flamingo	\$ 65.00
#1184 Yeoman 4" bow tie handled ashtray, Flamingo	\$ 35.00
#3404 Spanish stem wine, Riviere cutting, (2) ea.	\$ 35.00
#3404 Spanish stem champagne, Cobalt bowl, (8) ea.	\$ 85.00
#3404 Spanish stem 3-1/2 oz. cocktail, Cobalt bowl	\$100.00
#1404 Old Sandwich ashtray, Cobalt*, (3) ea.	\$ 35.00
#4055 Park Lane stem, 10oz. goblet, Nomad cut, (4) ea.	\$ 35.00
Frosted Madonna*	\$120.00
Scottie	\$110.00
Ringneck Pheasant	\$135.00
Imperial Candlewick #400/139 - 11piece cocktail set	\$ 29.00

<b>Forever Heisey</b>	<b>Ph: (614) 344-5955</b>
<b>Norm &amp; Jan Thran</b>	<b>Ship &amp; Ins. Extra</b>
<b>1663 Londondale Pkwy.</b>	<b>H = Marked</b>
<b>Newark, OH 43055</b>	
#49 30" 3 tier Epergne ( tallest one) H	\$1,150.00
#300-1/2 Peerless, tumbler, Flamingo H (4) ea.	\$ 60.00
#352 Flat Panel sugar sifter, sanitary glass top	\$ 45.00
#393 Narrow Flute 14" Japanese Garden tray H	\$195.00
#393 Narrow Flute, ind. ftd. nut/almond Mnglm H(4)ea.	\$ 22.50
#1170 Pleat & Panel 3 pint ice jug, H	\$ 59.00
#1404 Old Sandwich ice lip pitcher, Flamingo H	\$240.00
#1425 Victorian cream & sugar H pr.	\$ 40.00
#1485 Saturn parfait/5oz ftd. juice, H (4) ea.	\$ 15.00
#2401 12oz. soda, Circus etch, "Rube" (2) ea.	\$ 95.00
#3362 Charter Oak, 1/2 gallon pitcher, DO, Flamingo	\$ 95.00
#3366 Trojan cocktail w/ Trojan etch, Flamingo, H (8) ea	\$ 35.00
#3368 Albemarle 4-1/2 Parfait, w/Trojan etch, DO, H 8 ea.	\$45.00
#3379 Pyramid 5oz. ftd. soda DO Flamingo (4) ea (scarce)	\$ 45.00
#3390 Carcassonne Flagon Moongleam base (2) ea.	\$195.00
#4002 Aqua Caliente cocktail w/ club drinking scene (2)ea.	\$65.00
#4036-1/2 1 pt. decanter w/Orchid etch	\$295.00
#6060 Country Club 14oz soda w/Winchester etch, (2) ea.	\$125.00
See you at the following show	
April 19-21	Eastern National Show Harrisburg, PA

<b>Classique Glass Co.</b>	<b>(918) 744-5409</b>
<b>PO Box 52572</b>	<b>UPS/Ins Extra</b>
<b>Tulsa, OK 74152</b>	<b>Most Marked</b>
#160 Locket on Chain 4" Nappy	\$ 29.00
#411 Rib & Panel 6oz. oil #7 stopper	\$ 65.00
#1184 Yeoman 12oz soda, straight, DO Moongleam (3)	\$ 22.00
#1252 Twist #78 stopper for oil bottle, Moongleam	\$ 25.00
#1401 Empress D.F. std. creamer, Minuet etch	\$ 37.50
#1401 Empress 11" DF bowl, Pompeii etch, Sahara	\$ 75.00
#1404-1/2 Empress variant cup/saucer, Sahara (3)	\$ 29.00
#1404 Old Sandwich 6oz. sherbet, Sahara, (4)	\$ 20.00
#1404 Old Sandwich ind. ashtrays, crystal (12)	\$ 6.50
#1404 Old Sandwich 8" sq. plate, Sahara, some wear (4)	\$ 12.50
#1425 Victorian punch cup (5)	\$ 9.50
#1485 Saturn oil w/orig stopper Vogel IV p.8 #22	\$ 55.00
#1503 Crystolite 2oz. oil bottle with stopper	\$ 32.00
#1519 Waverly ind. sug/crmr, Rose Etch	\$ 55.00
#1590 Zodiac sherbet (2)	\$ 33.00
#3362 Charter Oak sherbet, Moongleam, (2)	\$ 19.50
#5025 Tyrolean/Orchid Etch champ(9) sherbets (6) All	\$450.00
Oak Leaf coaster, Moongleam (6)	\$ 27.50
Rooster Stem cocktail (9)	\$ 57.00
Scotty \$110.00,	Sparrow \$70.00,
	Madonna \$65.00

**Robert H Donovan**  
**55 Vining Court Apt 114**  
**Ormond Beach, FL 32176**

**Ref : Vogel's Books &**  
**Yeakley's "Heisey Glass in Color"**  
**Phone:1-904-677-1732**

**My Inventory# - (not Heisey pattern #)**

371. Empress ftd. 11" Floral bowl, Moongleam, V. III, pg.96	\$ 95.00
443. Fandango ftd. floral bowl, Flamingo - Yeakley's plate 5 No. 126	\$ 45.00
482. Grape Cluster - oval floral bowl H - V .III, pg. 93	\$ 85.00
491. Hair receiver & powder puff set, nice cutting, Lilly of the Valley(?) H 1910 V.II pg.118	\$198.00
470. Course Rib 12" celery, Amber, H	\$ 48.00
484. Portsmouth 9oz. D/O goblet, Flamingo, very thin glass, (3) set	\$ 99.00
JR1. Donkey \$265.00, JR2. Cygnet \$220.00, JR3. Fighting Rooster	\$210.00
455. Empress D.F. creamer & sugar, Sahara, set	\$ 72.00
457. Waverly ftd. cream & sugar, Orchid etch, H, set	\$ 70.00
500A. Ribbed Octagon Hotel size creamer & sugar, H, set, V.III pg.15	\$ 88.00
503. Victorian 2-1/4oz. bar, H (5) ea. VIII pg. 93&100	\$ 23.00
404. Empress individual creamer & sugar ,H, set	\$ 40.00
51. Peerless low ftd. sherbet , pr. VI pg.221	\$ 15.00
172. Colonial 4oz. sherbet, H, pr. VI pg. 221	\$ 14.00
169. Colonial 4oz. sherbet (3) ea. VI pg. 87 or Pg. 20	\$ 8.00
495. Empress 13" celery, Moongleam, H, V. III pg. 97	\$ 32.00
481. Lariat bowl, bowl only, V IV pg.5 no.27	\$ 12.00
79. Colonial No.1 violet vase, H, pr. V.I pg.20	\$ 58.00
347. Empress 6" high ftd. compote, Sahara, - Yeakley Pl. 10 in Moongleam #278	\$ 68.00
419. Twist, compartment relish, Moongleam, H - Yeakley pl. 8 #220 - unusual	\$ 58.00

**RE:Antiques:** (615)665-1824  
**1014 Foxwood Dr.** H = Marked  
**Nashville, TN 37215** Post. & Ins. Extra

Giraffe, head to side	\$225.00
Candlestick 9" Pr.	\$145.00
#351 Priscilla 1/2 gal jug H	\$ 80.00
#352 Flat Panel Horseradish jar & stopper H	\$ 45.00
#394 Narrow Flute domino sugar Sahara, H	\$125.00
#419 Sussex 10oz. Goblet , Cobalt bowl, crystal ft.	\$145.00
#1184 Yeoman egg cup D/O Moongleam, H	\$ 35.00
#1184 Yeoman egg cup D/O Marigold, H	\$ 55.00
#1280 Winged Scroll 1/2 gal jug, Emerald	\$125.00
#1404 Old Sandwich ind. ashtray, cobalt	\$ 55.00
#1404 Old Sandwich 6" candlestick, pr., H	\$ 85.00
#1445 Grape Cluster 1 lite candlestick pr.	\$190.00
#1489 Puritan 4" covered Horsehead cigarette box	\$ 67.00
#1519 Waverly Fan vase, Orchid etch	\$ 85.00
#1554 Fish bookends, pr.	\$225.00
#3366 Trojan 2-1/2 oz. wine crystal body - Moongleam stem & foot	\$ 60.00
#3390 Carcassone cigarette holder, Cobalt,w/crystal ft.	\$ 90.00
#3404 Spanish 4oz. claret, Barcelona cut, (5) ea.	\$ 45.00
#4052 National goblet 10oz. low ft. Victory etch (4) ea.	\$ 50.00
#4206 Optic tooth 3 pt. pitcher,crystal w/mnglm ft. & hndl	\$165.00



**Presents**

**Outstanding Heisey Auction**  
**Saturday April 20, 1991**  
**9:00 A. M**

This will feature the largest and finest collection of Imperial animals and animal related items ever offered. This is the personal collection of Frank Hahn of Lima, Ohio, who is publishing a new book "Heisey by Imperial Glass Animals" by Frank Hahn and Paul Kikeli.

**Doors open at 8:00 A.M.**

Terms: Cash or good check w/auctioneers approval. Good food & comfortable building

Sam Schnaidt & Paul Robison - Auctioneers  
Mike Davis - Apprentice Auctioneer  
(614) 344-4282

# Twentieth Annual Antique Show and Sale Heisey Glass Display



OSUN-COTC Newark Campus  
Country Club Drive, Newark, Ohio



Sponsored by

*Heisey Collectors of America, Inc.*

Friday, June 21st	12:00 Noon to 6 P.M.
Saturday, June 22nd	12:00 Noon to 5 P.M.
Sunday, June 23rd	12:00 Noon to 5 P.M.
Benefit National Heisey Museum	Over Fifty (50) Quality Dealers
Donations \$2.50	50¢ Off with Ad

## 15th ANNUAL SOUVENIR OSCAR FORM PLEASE READ VERY CAREFULLY BEFORE FILLING OUT

*The Oscar's are Fenton's Sapphire Blue Opalescent, a beautiful blue glowing with highlights of fiery opalescence. They will be marked Fenton and HCA 1991. They will be offered to members only for \$24 prior to Convention. If any are left by June 20, 1991, they will be offered to members and the general public for \$27 each.*

*You may order ONE per member. This means ANY member who has a membership card regardless of the class of membership. Please list all names as they WILL be checked. Everyone living in Ohio ordering for pick up in Ohio, must pay \$1.44 sales tax per Oscar. Shipping charges will be \$2.50. The Oscars should reach us by early February and will be shipped out as soon as they are received.*

**DO NOT SEND DUES, BOOK ORDERS, ETC. WITH YOUR OSCAR ORDER.**

*Please keep this part for a reference and clip and mail the form below. Be sure your dues are currently paid. This is the 15th of a series of souvenir Oscars.*

_____ NUMBER OF OSCARS AT \$24	\$ _____ ONLY ONE PER MEMBER
SALES TAX \$1.44 EACH	\$ _____ ALL OHIO RESIDENTS & PICK UPS IN NEWARK
POSTAGE \$2.50 EACH	\$ _____ CHECK ONE: _____ PLEASE MAIL MY OSCAR TO ME
	_____ PLEASE HOLD MY OSCAR AT THE
	MUSEUM AND I WILL PICK IT UP
	DURING OR AFTER THE CONVENTION
TOTAL	\$ _____

NAME(S): \_\_\_\_\_

ADDRESS: \_\_\_\_\_ CITY: \_\_\_\_\_ STATE: \_\_\_\_\_ ZIP: \_\_\_\_\_

MASTERCARD: \_\_\_\_\_

VISA: \_\_\_\_\_

EXPIRATION DATE: MO: \_\_\_\_\_ YEAR: \_\_\_\_\_

MAIL TO: HCA OSCAR SALES  
169 W. CHURCH STREET  
NEWARK, OHIO 43055

**Don't Forget to Make Your Reservations  
for Accommodations for the Convention  
June 20-23, 1991!**

**MOTELS, HOTELS, INNS, and BED &  
BREAKFASTS IN THE NEWARK AREA**

- Best Western (Newark Inn), 50 North Second St.,  
Newark, Ohio 43055 (614) 349-8411.  
Holiday Inn of America, 733 Hebron Road, Heath,  
Ohio 43056 (614) 522-1165.  
Duke's Inn Motel, I-70 at St. Rt. 79, P.O. Box 1206  
Buckeye Lake, Ohio 43008 (614) 929-1015.  
Howard Johnson's Motor Lodge, 755 Hebron  
Road, Heath, Ohio 43056 (614) 522-3191.  
Arborgate Inn, 1266 Hebron Road, Heath, Ohio  
43056 (614) 522-6112.  
University Inn, 1225 West Church Street, Newark,  
Ohio 43055 (614) 344-2136.  
Motel 76, 10772 Lancaster Road SW RT. 37 & I-  
70, Hebron, Ohio 43025 (614) 467-2311.  
Granville Inn, 314 E. Broadway, Granville, Ohio  
43023 (614) 587-3333.

**National Heisey  
Glass Museum  
Corner of West Church &  
North Sixth Streets  
Newark, Ohio 43055  
Phone (614) 345-2932**

**Hours for museum and gift shop:**  
Daily 1pm-4pm Closed Holidays  
*Approximately 5,600 square feet of space for  
complete displaying of the beautiful hand  
made glass produced in Newark by the A.H.  
Heisey Co. from 1896 to 1957.*

**MEMBERSHIP RENEWAL NOTICE**

The date above your name and address is your  
renewal date. This is your last issue if it reads:  
3-10-91. Remember that dues are now \$18.50 per year  
plus \$2.50 for each additional household member.  
**PLEASE DISREGARD THIS NOTICE IF YOU  
HAVE RECENTLY PAID YOUR DUES. THANKS!**

**OHIO**  
*the heart of it all!*™

- Kellers I-70 Motel, 4756 Keller's Road, Hebron  
Ohio 43023 (614) 927-8011.  
Star Lite Motel, Rt. 79, 1342 Hebron Road, Heath,  
Ohio 43056 (614) 522-3207.

- Maples Motel, 13611 National Road SW, Rt. 40,  
Reynoldsburg, Ohio 43068 (614) 927-2103.  
Shamrock Motel, Box 87, Rt. 40, Etna, Ohio 43018  
(614) 927-7946.  
Welcome Inn Motel, 706 Main St., Rt. 40, Hebron,  
Ohio 43025 (614) 928-7861.  
The Buxton Inn 1812, 313 E. Broadway, Granville,  
Ohio 43023 (614) 587-0001.  
Wagram Motel, 13255 National Road SE, Rt. 40  
Reynoldsburg, Ohio 43068 (614) 927-2470.

**Bed & Breakfast:**

- Cream Station Antiques, 1444 Newark Granville  
Road, Newark, Ohio 43055 (614) 587-4814.  
The Pitzer Cooper House, 6019 White Chapel  
Road SE, Newark, Ohio 43055 (614) 323-2680.  
Wehrle Mansion, 444 Hudson Ave., Newark, Ohio  
43055 (614) 345-4550.

**POSTMASTER SEND FORM 3579 TO:**

**HCA  
169 W. Church St.  
Newark, OH  
43055**

**SECOND CLASS  
DATED MATERIAL 3-27-91**