

HEISEY *news*

OFFICIAL PUBLICATION HEISEY COLLECTORS OF AMERICA

Heisey Collectors of America, Inc.

All Rights Reserved 1986

VOLUME XV NO. 10

OCTOBER 1986 ISSN 0731-8014



SEE PAGE 2

NOTES FROM YOUR PRESIDENT,...

HEISEY NEWS

P.O. BOX 27, NEWARK, OH 43055

CLUB OFFICERS:

President	— Charles Wade, Jr.	—(614) 366-6636
Vice President	— Bob Rarey	—(614) 279-0390
Secretary	— Liz Stickle	—(614) 323-2250
Treasurer	— Betty Ann Barnard	—(614) 366-7002
Exec. Dir.	— Louise Ream	—(614) 345-2932

Editor: Louise Ream
P.O. Box 27, Newark, Ohio 43055
PH: (614) 345-2932

Assistant Editor: Neila Bredehoft
P.O. Box 27, Newark, OH 43055
PH: 614-345-2932

Published monthly and printed in Mt. Vernon, Ohio
\$15.00 per year - \$1.25 per copy
Back Issues - Each Volume (12 issues) year - \$9.00.
Volume V, VIII, IX, X, XI, XII, XIII & XIV

Heisey Collectors of America, Inc. is a non-profit corporation with tax exempt status. Owners and operators of National Heisey Glass Museum, 6th and Church Streets, Newark, Ohio.

Open daily 1-4 p.m. except holidays. Other hours by appointment. Members admitted free.

Club membership (includes 12 issues of HEISEY NEWS and participation in all club activities) \$15.00 per year plus \$2.50 for each additional family member in same household who wishes a membership card. For VOTING MEMBERSHIP, add \$25.00 one time only fee.

When requesting information, please enclose a self-addressed, stamped envelope (SASE).

ADVERTISING - Send all ads to:
HCA - Advertising
P.O. Box 27
Newark, Ohio 43055

DOUBLE SPACE ALL ADS.

RATES:

CLASSIFIED: 15¢ per word. \$1.50 minimum.
ABBREVIATIONS AND INITIALS COUNT AS WORDS
DEALER DIRECTORY: \$25 per year.

DISPLAY:	MEMBERS:	NON-MEMBERS:
1/8 Page (9 items)	\$20.00	\$25.00
1/4 Page (20 items)	30.00	37.00
1/2 Page (20 items) Hor.	45.00	55.00
1/2 Page (50 items) Vert.	60.00	65.00
1 Page (50 items)	75.00	85.00

Extra lines will be billed at \$1.00 per line. Personal ads limited to 1/8 space.

ALL ADS MUST BE PREPAID. Ad copy must be received by the 5th of the month preceding the publication date - i.e. April 5th for May issue. Ads containing reproductions will not knowingly be accepted unless clearly stated (i.e. Heisey by Imperial, etc.). HEISEY NEWS assumes no responsibility for false advertising or misleading information. In the event of typographical error, the incorrect portion of the ad will be run in the following issue, but HEISEY NEWS assumes no further liability.

The opinions expressed in articles in HEISEY NEWS are those of the authors and not necessarily those of the organization. The Editorial Staff reserves the right to edit or refuse any material submitted for publication. When requesting information, please enclose a self addressed stamped envelope. (SASE).

The September quarterly meeting and dinner is now past history, but I am sure it will be remembered for a long time by those who attended. Everyone really seemed to have a good time and the food, well, all I can say is if you weren't there you missed a very good meal. As usual, Eleanor Jackson did a great job in preparing the food. The auction was a success as Larry Stickle auctioned off some great pieces. Betty and Burl Whaley donated the proceeds (\$251.00) from their silent auction of two gold coins. Their money will be used for the keeping and maintenance of the moulds.

The Mini Show had a lot of nice glass available. Buyers were out early in anticipation for finding that one piece or pieces needed to fill out their collections. There were a lot of people who helped make the entire day's activities very enjoyable. To all of you - a big job well done and thanks!

* * * * *

The Board of Directors gave approval for the installation of a smoke and heat detection system for the museum and office building. The total cost of this system will be approximately \$5,500.00. One generous individual has already promised a \$1,000.00 donation for this purpose. Since this is an unbudgeted project for 1986 and should be started as soon as possible, I would ask if a club or other individuals might be willing to donate funds to be used expressly for the fire alarm system. If so, please send your tax deductible donation to H.C.A. Fire System, P. O. Box 27, Newark, Ohio 43055. In case more money would be collected than needed, please indicate on your check if you would like the excess to go for the new museum paint job or returned to you.

Thank you,



ABOUT THE COVER

Souvenir Dinner

Top: Registration table and Horsehead Pickup.

Bottom: In line for the Hors D'oeuvres.

A. H. HEISEY & COMPANY - A CHRONOLOGY
Part 6, 1918-1921
By Tom Felt

1918 - January 17th. A. H. Heisey was elected president of the American Protective Tariff League. As a protectionist, he contended that he could not make and market the grade and quantity of ware that he had been able to sell without a protective tariff.

February 16. The company was re-incorporated in the state of Ohio, with A. H. Heisey, E. Wilson Heisey, T. Clarence Heisey, Carl Norpell and George E. Graeser as chief stockholders.

October. In order to aid the efforts underway necessitated by the United States' involvement in World War I, the table glass manufacturers agreed to reduce their present lines and to refrain from making any new moulds or marketing new items for the duration of the war. At a conference held in conjunction with the War Industries Board, committees were established for each branch of the trade, with A. H. Heisey named to the committee for "Pressed and Blown Glassware for Table Use." This committee was appointed to take up the matter of adopting hard-and-fast schedules for meeting the government's request that current lines be cut back as a war conservation measure, a request which the manufacturers felt could be met by voluntarily decreasing production from 50 to 75%.

December 11. The new corporation was dissolved and thereafter the Heisey Company adopted the structure of doing business variously as a joint stock company, a joint trust, or a Massachusetts business trust, up until its closing in 1957.

The company began offering pantograph etchings¹ in 1918, including no. 152 Apollo, no. 160 Osage, no. 161 Somerset and no. 162 Raleigh.

New plate etchings for 1918 were no. 410 Sabrina, no. 411 Lansdowne, no. 412 Hermitage and no. 413 Renaissance.²

Catalog 82 (of pieces for soda fountain service) probably came out earlier this year.

1919 - January. A. H. Heisey was reelected president of the American Protective Tariff League. A resolution offered by him was passed, calling for a strong protective tariff with import duties set at a rate which would make American wages the basis for competition in the American glassware market, preventing less expensive foreign glass from undercutting domestic manufacturers.

March. Construction was begun on a new 5-ton day tank. This tank was completed in May and was intended for use in making cookware.

April 1. Price list 11B was issued.

May. In reply to a circular letter from Federal authorities urging employees to rehire the men being mustered out of the service, A. H. Heisey wrote: "All of our former employees who went to the war are being taken care of by us as rapidly as they return, and we will continue to do so. I am a little surprised at the position that the Administration assumes in this matter. On the one hand they are crying to make room for the soldiers and give them employment. On the other hand, they will permit the importation of foreign products that displace our American labor...I am surprised that the Administration is not broad enough to accept the changed conditions that the war has created, and admit by their action that the tariff is a necessity...."

Later this same month, Heisey also sent a letter to the American Economist, arguing against the formation of the League of Nations. "I am strictly opposed to an alliance...where we turn over the control of our Government exclusively to the allies, where they would outvote us under any condition that would be favorable to them...(throwing) the control of the Government into the hands of these people." He went on to state that he was a member of the League for the Preservation of American Independence, headed by Henry Watterson.

June 16. Price list 205 was issued.

July. Heisey also sent a letter to the annual glassworkers' convention, urging them to support a tariff to protect the industry. This appeal was "made in the interests of both manufacturers and workers,"³ and was referred to a special committee for action.

October. A. H. Heisey became chairman of the 17th Ohio District for the Roosevelt memorial campaign. The committee hoped to present every schoolroom in Licking, Knox, Richland and Ashland Counties with a framed, enlarged photograph of Theodore Roosevelt by October 20th, by which time the effort to raise \$500,000 for the national campaign would be in full swing in Ohio. Over 1,000 photos were to be printed, as Heisey's gift to the campaign.

With the War over, a number of new stemware lines were introduced: no. 3302 Warden*, no. 3303 Ponchartrain*, no. 3330 Hanover*, no. 3333 Old Glory, no. 3334 Sexton*⁴, no. 3335-3336 Lady Leg*, no. 3351 Mon Ami*, no. 3430 Brau Haus*, no. 3431 Loraine*, no. 3432 Conesque*, no. 3433 Basque*, no. 3434 Esther*, no. 3435 Le Caron*, no. 3436 Pigalle*, no. 3455 Lady Macbeth*, no. 3456 Granville* and no. 3476, Temple*.

New needle etchings included: no. 27 Crochet*, no. 31 Roman Key*, no. 33 Tatting*, no. 35 Lacy Band*, no. 36 Ric Rac*, no. 41 Braided Loop*, and no. 46 Weaver's Stripe*.⁵

New pantograph etchings included: no. 163 Monticello, no. 164 Salem and no. 165 Dundee.

New plate etchings for 1919 included: no. 414 Oxford, no. 415 Classic, no. 416 Vintage, no. 418 Accropolis (sic), no. 421 Rose, no. 422 Cumberland, no. 423 Violets, no. 424 Cherries, no. 425 Dogwood, no. 426 Mt Vernon, no. 428 Simplex, no. 429 Zodiac, no. 430 Highlander, no. 431 Victory,⁶ no. 432 Londonderry and no. 433 Dutchess (sic).

New cuttings included: no. 657 Liberty, no. 662 Constellation, no. 666 Surrey*, no. 667 Sir George*, no. 671 Entente,⁷ no. 674 Adams,⁸ no. 675 Loch Ness*, no. 676 Caledonia*, no. 677 Kingston*, no. 678 Tuscany*, no. 679 Windsor, no. 680 Crusader,⁹ no. 682 Greenbriar, no. 688 Cassaba, no. 689 Cardiff, no. 693 Cloister, no. 694 Balboa, no. 695 Tara, no. 696 Largo, no. 697 Trellis and no. 698 Hyde Park.

Emmett Olson joined the company in 1919, initially with the job of fitting stoppers. After completing his 6 month apprenticeship, he was moved into the batch room, where the ingredients were mixed. He later became Heisey's chemist and was involved in the creation of most of the company's colors.

1920 - January. Even though he was unable to attend the annual meeting, Heisey was once again reelected president of the American Protective Tariff League. His reelection was not unexpected and it was said that, having been one of the most active members of the League for so many years, he could have the office for as long as he was willing to hold it.

One new pantograph etching was introduced, no. 166 Mayflower.

1921 - January 1. Price list 12B was issued.

Heisey was once again reelected president of the American Protective Tariff League at their annual meeting.

May. Heisey wrote a letter to Chairman Fordney of the Ways and Means Committee of the House of Representatives, strongly favoring the plan of American valuation of imports, "because it places all importations on the same basis and eliminates the difference in the cost of foreign production, so that cheap production of China, Japan, Indian and all Oriental nations would take the same relative duty as the production of France, England, Belgium, Germany, etc....whose production cost is higher than that of the Orient." He pointed out once again that inexpensive imports displaced American labor; American valuation of imports, on the other hand, would ensure full operation of the manufacturing industries, with the benefits spreading throughout the economy, since the fully employed wage earner would have the means to afford the best produced by American agriculture and thus would share with the farmers as well.

July. In an interview held in Atlantic City, Heisey discussed the wage question: "One feature of considerable importance, which both the workers and manufacturers will have to give earnest consideration, is where there is a possibility of any article of glassware being substituted by another commodity that will serve the purpose just as well at a cheaper price, such an article or articles must be produced at a figure that will preclude the possibility of such competition." He went on to emphasize that the manufacturers and suppliers of raw materials must also do their share to make this sort of economy possible.

New stemware included: no. 3319 Holman*, no. 3321 Brighton*, no. 3322 Gamin*, no. 3339 Wilson*, no. 3340 Tri-Knob*, no. 3342 Alabama*, no. 3343 Georgia*, no. 3344 Carolina*, no. 3345 Mary n Virg *,¹⁰ no. 3379, Pyramid*, no. 3404 Pink Lady* and no. 3438 Iron-ton*.

New cuttings included: no. 704 Magnolia, no. 706 Warrick, no. 711 Dante, no. 717 Ulysses, no. 720 Christabel, no. 723 Azalea, no. 724 Daffodil, no. 725 El Dorado, no. 729 Fairfield, no. 730 Cornflower, no. 731 Algiers and no. 732 Palisade.

* Original pattern name unknown; named by researchers.

Note: I have attempted to gather information from as many sources as possible, to verify that information from multiple sources when available, and to include the most likely "guesses" based on our current knowledge, when the sources disagree or reliable information is not available. I would appreciate very much hearing from anyone who has additional information, or who can confirm or correct any information given above. Please contact me C/O The Heisey News, P.O. Box 27, Newark, Ohio 43055.

1. Pantograph etching was done by machine, with a worker tracing an oversize design which would then be automatically reduced to the size of the piece being etched, with a needle cutting the design into the beeswax (or acid resist) with which it had been covered.
2. Patent applied for April 5, 1919 and approved October 25, 1921.
3. Crockery and Glass Journal, July 17, 1919.
4. Patent filed for on January 10, 1918 and approved September 2, 1924.
5. Patent applied for May 8, 1920 and approved February 13, 1923.
6. Patent applied for April 5, 1919 and approved October 25, 1921.
7. Patent filed for on May 8, 1920 and approved January 20, 1925.
8. Patent filed for on May 6, 1920 and approved February 17, 1925.
9. Patent applied for on May 8, 1920 and approved November 24, 1925.
10. Patent applied for March 19, 1921 and approved November 15, 1924.



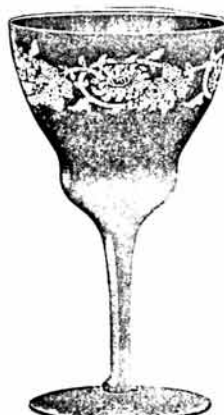
413 RENAISSANCE
Double Plate Etching



161 SOMERSET
Pantograph Etching



152 APOLLO
Pantograph Etching



410 SABRINA
Plate Etching



162 RALEIGH
Pantograph Etching



160 OSAGE
Pantograph Etching

DID YOU KNOW?

Neila Bredehoft

...A few answers to questions - asked or unasked...information which has been confusing to people...corrections to published material...either ours or others...

- Emerald was the first color to be made by Heisey.
- Ivorina verde is the NAME of the color (custard) not the name of pattern #1280 (better known to Heisey collectors as Winged Scroll).
- Ipswich was NOT made in hawthorne although you sometimes see sun-colored pieces in this pattern.
- Victorian was not made in hawthorne either. Purple items are either sun-colored or Imperial's Heather.
- Only a few pieces of Twist are found in alexandrite and about two dozen in sahara.
- The jug and cream and sugar in Empress are occasionally found without dolphin feet.
- A floral bowl in Kohinoor is known in sahara.
- Sussex was probably inspired by a Steuben pattern.
- Many of the names in the new color book were given for you collectors. Have you checked for your name yet?
- Even though we say Queen Ann was never made in color, a handwritten list says the triplex relish was made in amber for Fred Harvey.
- Plymouth and Monte Cristo stemware are listed as available in sahara in price lists.
- The #4035 decanter had a handle added and a lip tooled in the top and became #4037.
- Jamestown goblets were listed in price lists in flamingo, moongleam and sahara.
- Long-time Newark Heisey dealer, Bob Coyle, won second prize in a national contest sponsored by Crisco and Family Circle at the Ohio State Fair for his cherry pie!

IN MEMORIAM

We were very sorry to hear of the death of Emma Klawans, Chevy Chase, MD. She and her husband, Manny, have been long time members of HCA. They have attended nearly every convention though Manny came alone this year.

Emma was also a member of the National Capital Heisey Collectors Club and they always did their show in the Washington area. Many of you have no doubt met her there. She was a lovely lady who always had a pleasant smile for everyone.

We are sure that members of HCA, as well as those of the National Capital HCC will really miss her.

We offer our sincerest sympathy to Manny and his family.

MORE ABOUT THE COLOR BOOK...

Neila Bredehoft

Since the color book was published, I've had a few questions about just what was included and what was not. Some questions seem to come from not understanding the purpose of the book.

First, only patterns made between 1925 and 1938 are included. If the pattern came in the colors of flamingo, moongleam, sahara, cobalt, tangerine and zircon, it is included in the book. The only pattern which was introduced before 1938 and not included is #1489 Puritan. It was just beginning, is not often found in color, and had most pieces added after 1938. If a pattern began before 1925 and continued later, only the pieces made during the 1925-1938 period are shown.

Because we used many catalogs, some duplication occurred because we do not want to cut up original catalogs. Sometimes unimportant or minor pieces were eliminated because the rest of the catalog page was repeated elsewhere. Sometimes catalog pages were too poor to reproduce and we did not have a photograph to use and the piece was not shown, as the #1300 compote. In other cases, I included pertinent information about an item if I had enough information - such as the Cactus plate and others.

All sizes of plates, vases and other items are not listed in the price guide. Usually only the size pictured in the book is priced in the guide. If we had listed all sizes, we might have a guide with 15,000 entries instead of about 10,000! Believe me, it was bad enough as it was!

Patterns like #411 Tudor were introduced before 1925 and so are not complete and patterns like #1503 Crystolite were introduced after or in 1938 and are not included. They will wait for another book. Hopefully....

Remember to write with new information about pieces in colors not listed and if you find pieces marked (and where) if they are listed as unmarked in the book. Thanks.

CONVENTION 1987

HCA Convention 1987 is now in the planning stages. Fresh new ideas always add to the betterment of this event and we would like to hear from anyone with suggestions. June 1987 sounds like a long time away but lots of planning and work is already underway so send us your suggestions and comments soon.

Thanks,

Larry Stickle, C/O HCA, Box 27, Newark, Oh 43055.

HALF SIZE HORSEHEADS

If you have not bought the little Horsehead paperweights in the past we still have them available in frosted.* The cobalt, crystal and red look great together, especially in a window. Cost for each \$35. There is no discount on this item. We know you'll love these. See item 36 on page 23.
* All clear ones are frosted after the date of the dinner to keep the number limited.

diamonds are forever.....

by Janet Caswell

Over the past many months your humble columnist has told you many things about the Yachting Center that happened a hundred years or more ago; now let me tell you something that happened a mere twenty years ago in 1966. The Massachusetts Audubon Society initiated an experiment in which Seagulls (and we have thousands) living on the islands near us were dyed pink. This was to discover the location of the nesting and feeding grounds of these birds. Birds from other locations were dyed different colors than ours. As the different colors indicated various locations, it was very easy to spot the birds and their "native" homes. Would you believe that for a while the air was gay with psychedelic wings! True.

For some reason pink seagulls make me think about Petticoat Dolphin #109 Candlesticks; perhaps because we found a pair in Crystal and a few weeks later came across another pair in Flamingo, but the Flamingo pair were priced way above book price and we left them. Needless to say the dealer still has them but we have the crystal ones.

The other evening I received a call from "the Long Island Artiste" with news of a pair (2) of #160 Locket on Chain handled custard cups, yours truly thought that was worth a mention!

As for the "Color Lady" she reports, not color but even so, a #1201 Fandango handled custard and also the #1201 8 oz Oil; let's see what else she acquired - #300 3 quart jug, a #3390 Carcassone 12 oz Ice Tea in Alexandrite and a "little thing" the #3397 Gascony Sahara 2½ oz Wine. Good going!

The "Felicitious Flamingo Hunter" just celebrated her first anniversary (time does fly) with a trip to the Carolinas. It was a combination of work and pleasure; the pleasure consisted of a few goodies, #1186 crystal compote, etched; #1540 10" Lariat plate, the #354 6" Domino sugar and a basket. She really likes this one because it is completely clear crystal, no decorations at all; it is the #465 8".

I hadn't heard from "Eagle Eye" from Heisey Land in a long time, but the wait was worth it. Three things were found, I will tell you about one only, the others will be in next months column. That way you will all be anxiously waiting for next months news. O.K. here goes, #351 Priscilla Finger Bowl - Oh, almost forgot - the color - Unknown - possibly somewhere between Vaseline and Sahara. Most likely something in the experimental line! Now that was worth waiting for, if you all think that find was terrific, wait for next month!!

"My good English Buddy" (FL) has the #515 Flamingo 2 oz d/o Cologne with #69 stopper and the #1405 Ipswich Cologne with a #1 stopper.

Now for the West Coast and "Mountain Gal" (CA); #1567 Plantation 10 oz flared tumbler; a pair of Dolphin Footed #1509 Individual Candleholders; #300 Peerless 2 oz cocktails, two of these; #356 Match Stand ashtray; #393 Narrow Flute individual salt; #150 Banded Flute saucer footed round Candlestick and the #32 Skirted panel/handled stick. That last find makes a pair for "mountain gal".

Staying in Cal the "Cal Kid" reports his elegant find; two #5065 Colt Stem Cocktails. Now, that was elegant, very, very.

A real exciting piece of Heisey was discovered by the lady who used to live at "the Point", it

was in the back room of a shop in her new area (MA). The #1485 Saturn 7" Compote in Zircon! Very difficult color to come by.

"Mr. H" (MA) came up with a #1220 Puntty Band handled jug in Custard and "the Busy Bee" has a #1201 Fandango covered sugar.

"Shy Gal" found the Heisey crystal Cabachon sign and "the Double Steppin Couple" have a beautiful #3397 Gascony Decanter with the Sportsman etch.

"The Midnight Riders" are on the loose again; they have galloped away with all sorts of things; #1503 Crystal Ashtray, in fact two of them; and an Old Dominion #3380 10 oz tall Goblet in Sahara.

"My Sharp-eyed friends" have the #353 Cheese and Cracker; #1404 Old Sandwich Cobalt Mug and a #1184 Yeoman tumbler cover.

"The Pilgrims" always have lots of room in their "RV" for glass. This month it was the following; #433 Greek Key Cruet with #6 stopper; #1252 Twist two compartment relish in moongleam; #1184 Yeoman Egg Cup also moongleam; the #352 1½ oz Lavendar jar and a #1503 Crystolite Candy dish with flower block finial.

"The Wiz" reports a #354 2½ oz stem and the #1023 Cream and Sugar in Marigold, d/o.

Several weeks ago, on a dreary Sunday morning when the Mr. and I stopped at an outdoor "flea" - about three-fourths of the field was occupied, but we didn't see anything that we couldn't live without until the Mr. spied this water pitcher. He wondered how many people passed it by, if any. The Mr. picked it up and started to look it all over - feeling all the edges - top and bottom - inside and out - was the handle OK? The dealer got the idea (why I really couldn't say) that the Mr. was interested, so he said: "That is a Ridgeleigh Water Jug, and very rare." The Mr. replied, "Ho, is that really so, how come?" The dealer, "because the Ridgeleigh pattern always goes up and down but on this jug the ridges go round and round making it very rare." The Mr. haggled a bit and the price was reduced a bit, quite a bit and the Mr. took it home with him. Oh, I almost forgot to tell you what he purchased, it wasn't Ridgeleigh - it was the #357 Prison Stripe ½ gallon Jug. Another goodie the Mr. came up with was #1469 Ridgeleigh Cologne plus a 6" bon-bon; a #1295 Beaded Swag Butter lid with Pansy Decoration in Opal; eleven (11) #411 Tudor 8 oz Goblets and a beautiful Horsehead Book-end. That is quite a hunk of glass. Right at this moment it is sitting very regally on the piano. Of course now all he can talk about is the chance that perhaps he will stumble across the mate. Well, that would be nice, you never know.

"The Keystone Cops" (PA) told me about a #1170 Pleat and Panel Cruet in moongleam which they quickly placed under arrest. Now was that very nice? Shame on you..

The "Two Guys" (CT) walked away with the #341 Puritan ½ Gallon Jug and in color a Yeoman #1184 10½" Center handled server, diamond optic in Moongleam and it was signed.

It's time to give this old typewriter a rest, I really need some more input, readers. Please sit down and take a few minutes and drop your faithful columnist a little list. I do love to get mail.

From the Yachting Center, best wishes for Happy Hunting!

NORTH CAROLINA HEISEY STUDY GROUP

By Jerry Lecky

The North Carolina Heisey Study Group held its summer meeting August 16th in the beautiful home of President Charlie and Patsy Nesbit on White Oak Creek, near Willis Landing, Hubert, North Carolina. 16 members and 3 guests were present, not including HURRICANE CHARLIE, (no relation to our President), who was working his way up the coast. "CHARLIE" did not dim our meeting, our Heisey interest, nor our appetites one bit. The scenery was beautiful, the conversation was interesting and informational, and the lunch as prepared by the Nesbits, Jim and Frances Sutton and Marion Lindfelt was delicious. Punch was served in a beautiful Heisey Bowl and matching cups, except ONE - which was fake and caught us all by surprise, even Jim Sutton who had it. This brought us to the theme for our STUDY for the meeting - FAKES AND MISLEADING ITEMS. Charlie and Patsy Nesbit showed the HCA Slide show #5 Fakes and Misleading Items. Discussion throughout indicated that all of us had met with similar pieces and that our knowledge of them, while not lacking, required more education and information. If anyone has knowledge of such a program-HELP!!! After the slide show and discussion, we shared the fake and misleading pieces that we brought, had bought, borrowed or acquired for this meeting. It was the consensus of those present, that while HEISEY may be imitated its QUALITY cannot be imitated. That's a big clue!

During a short but informative business meeting, the 12 members who had attended the HCA 1986 Convention gave an interesting report. First a detailed description of our Charter presentation at the Convention, and the appreciation of our first LOVE GIFT of \$265.00 to the MUSEUM. This started us preparing for next years Convention, and also the possibility of a display.

OUR NEXT MEETING - Fall Meeting of the N.C. Heisey Study Group, will be held in the Western part of the state in the home of Phil and Sally ABRAMS, 1011 Shady Bluff Drive, Charlotte, NC 28211. Phone (704) 364-4561. October 4, 1986 at 1:00 p.m. If you are interested in attending, please contact them. The program will be on "HEISEY ANIMALS", by Earl Howell.

HEISEY COLLECTORS OF THE ROCHESTER AREA

By Jerry Gillette

NOTES OF THE AUGUST MEETING

The Rochester Club is evolving into a partying group. Its 10th Anniversary party last month has been followed this month with the Annual Giant Picnic, Eating and Drinking Bash. Our hosts were Norene and Don Walzer who offered the use of their estate for the day.

Showers finally moved the party indoors, but not until "Colonel Wild Bill" Heron had conducted an impressive display of auctioneering with very lucrative results for the club's treasury. Our members seem to have many hidden talents. The day was concluded with a bountiful table of picnic goodies including a chocolate cake that was almost sinful.

The club was happy to have as its guests Luc-

ille and Harlan Harvey of Albion, NY and Jean and Cole Meisner of Spring Valley, NY and we hope to see them again soon.

HEISEY COLLECTORS OF TEXAS

By Amy Jo Jones

The Heisey Collectors of Texas met August 9, 1986 in Commerce at A. C. and Madeline Sullivan's ranch. Located in the gentle rolling hills of Northeast Texas, the home is the quintessence of a Texas country house. Prominently on display is a superb collection of Crystolite in lighted oak cabinets.

A business meeting was held with fourteen members present. Topics of discussion included a report by Charlie Baird on the Heisey warehouse plus the mould and endowment funds. A reminder was made of the Collectors' Encyclopedia of Heisey Glass 1925-1938 by Neila Bredehoft, available through HCA for \$24.95.

Following the meetings, a Texas-sized potluck dinner was enjoyed "to the fullest" by all. Forgoing a nap for Show and Tell, we were all rewarded by exquisite examples of ever beautiful Heisey glass gleaned from Canton and the HCA Convention by Roger Hulslander and Charlie Baird. The highlight of Show and Tell was presented by Madeline Sullivan - the HCT scrapbook. With a cover fashioned after the Heisey sticker, it chronicles the history of our club. It was noted that this year marks the tenth anniversary of HCT being granted a charter by HCA. The scrapbook is a true work of art by our club historian, Madeline Sullivan. All HCT members are very proud of this achievement and it can serve as an inspiration to other clubs to try to match!

The next meeting will be held November 8 at 2:00 p.m. at Carswell AFB in Fort Worth. Chuck and Amy Jo Jones will host. For more information call Weldon Harris in Dallas 214-368-5533 or Amy Jo Jones 817-732-4652. This is the last meeting of 1986 - our 10th anniversary year. Ya'll come help us celebrate!!

MOUNDBUILDERS HEISEY COLLECTORS CLUB

By Jeannine Cullison

A lovely yard and patio, an abundance of food and friends and members of the Moundbuilders HCC were the ingredients of an enjoyable club meeting September 2 at the home of Margaret Weber.

After dinner the business meeting was conducted by President Fred Gartner. A few reminders were: docents are still needed in the Museum and volunteers are needed in the gift shop; the Expo will be at Newark OSU, September 11-13 and the Souvenir dinner will be September 6. All members are encouraged to help or attend all events.

There were 12 members and 5 guests attending. The guests were Frances Tipton, Lawrence Weber, Faith Felumlee, Danielle and Jackie Weber.

An informative program was given on identifying all the colors of Heisey glass and some of the patterns. Mary McWilliams furnished the glass and Louise Ream explained helpful ways to identify color and patterns.

TUMBLERS, 203 to 215

In the past, I've occasionally written about a series of tumblers which began somewhere near 200, found listed in a 1923 turn book, and rarely, if ever cataloged. With the purchase of the Heisey moulds from Imperial and access to the moulds and the mould drawings, we have been able to identify many of them. And then again there are a few which may never be identified.

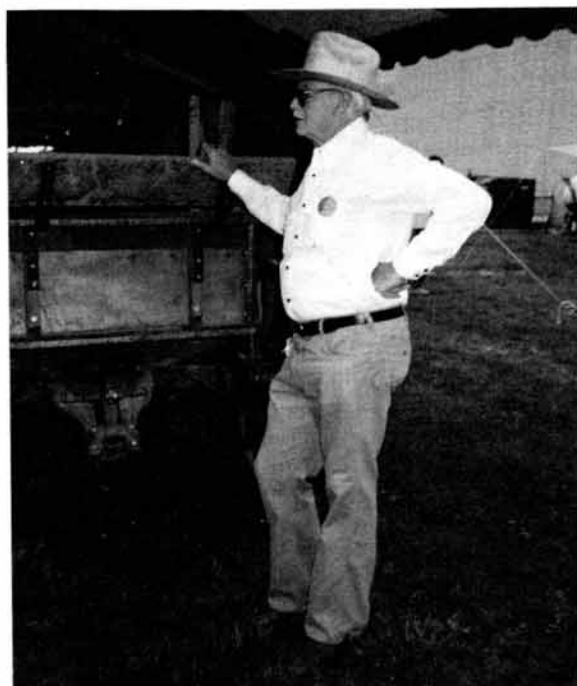
In this series are the Golden State Arches tumbler and the Barber Pole tumbler I have written about.

The drawing accompanying this article is a reproduction of the 207 tumbler drawing, one which does not show enough detail to identify the tumbler. The original drawing was made by the foreman in the mould shop for any of the mouldmakers to execute. It may appear to you to be incomplete because it is full size, (no dimensions) and all the workers knew what was meant. As you can see, the piece of glass is incidental to the mould. In addition to the tumbler, the drawing shows the two pieces of the hinge (the drawing says elsewhere that the mould is a three piece mould,) the ring, the valve and the bottom plate. The profile of the plunger is indicated by the interior of the tumbler, the upper portion is standard. The notation, "3/64 edge," indicates that the valve will have no design, star, etc., on it. Most of the drawings indicate how many 'spaces' the design will have, the fact that this is a three part mould indicates that it may have three, six, nine or perhaps as many as 18 or more 'spaces' or ribs or panels around the side.

I hope next month to have several of the other drawings to show you and a chart of the entire series.

None of the tumblers in this series have star bottoms, the drawings all say 'plain' near the valve.

I'm including the drawing for No. 207 to illustrate the difficulty of identifying the glass from the drawing.



Cowboy, Lloyd Caswell 6/18/86
Board Member and Display Chairman

CORRECTIONS TO DONATION LIST IN SEPTEMBER
HEISEY NEWS

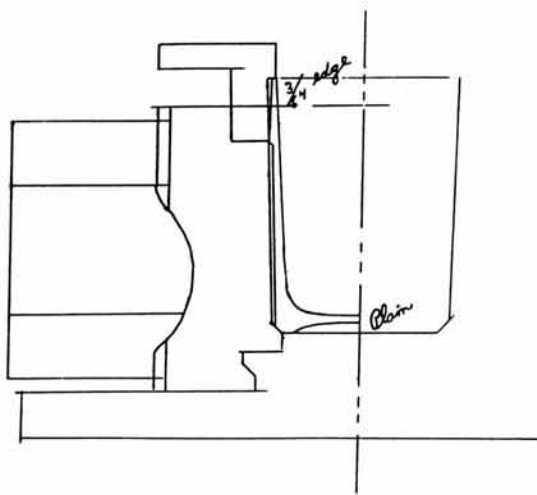
20. BUCKEYE HEISEY COLLECTORS CLUB. 3404 Spanish sherbet, Experimental Blue.
21. NEWARK DIAMOND H CLUB is the full name of this club.
36. HEISEY CLUB OF SOUTHEASTERN MASSACHUSETTS - \$500 for acquisitions of glass. (Name was not complete in the September issue.)

DONATIONS FROM INDIVIDUALS

12. 137 Concave Circle Candlesticks, Sahara. Donated by Hazel LaBroad in memory of her husband, Fred.
 13. 127 Twist Stem Candlesticks, Flamingo. Donated by Friends of Fred LaBroad, in his memory.
- (The above two were reversed)

ADDITIONAL ITEMS DONATED SINCE JUNE

1. 433 Grecian Border punch bowl with base. Donated by Jim and Jean Priaux.
2. 1420 Tulip Vase, Cobalt. Donated by Tom Bourdon in memory of his wife, Mildred.
3. 1534 Handled Jelly (we have this mould). Donated by Liz Newcomer.
4. 1183 Revere 2 handled candy jar with enamel decor. Donated by Marge and Jerry Gillette.
5. Sandwich Glass plate (copy of Sandwich Glass). Donated by Emmogene Gwynn.
6. 5013 Shasta Champagne - Unknown cutting. Donated By Bob and Ginny Marotto
7. 1519 Waverly (Cresting Wave) Candlesticks. Donated by Evelyn Lanners.



JEAN & DON PARRETT
4995 Mapledale Rd.
Jackson, MI 49201

PH: 517-784-7319
P. & I. EXTRA

CRYSTAL - CANDLE HOLDERS

# 2	Old Williamsburg 1 Lite-Prisms....Pr...	\$ 97.00
1509	Queen Ann 8 1/4" - Prisms.....Pr...	110.00
134	Trident - Rose - 2-Lite.....Pr...	125.00
134	Trident - Orchid - 2-Lite.....One..	50.00
21	Aristocrat 9" 1-Lite.....Pr...	100.00
1590	Zodiac 11" Ft'd Bowl-Imperial.....	50.00
300	Peerless 9 1/2" Pitcher.....	95.00
300	Peerless 9 1/2" Water bottle.....	75.00
1503	Crystolite Ice Bucket W/Handle.....	95.00
352	Flat Panel Cv'd. Crushed Fruit.....	165.00
1489	Puritan Horsehead Large Cig. Box.....	65.00
1533	Wampum - Cv'd Cig. Box-4 ashtrays 5 pc.	75.00
6010	Finesse Goblet - Rare.....6 ea.	25.00
6010	Finesse Champagne - Rare.....6 ea.	20.00
5074	Sea Horse Cocktail.....	145.00
4002	Aqua Caliente Cocktail.....4 ea.	30.00
1425	Victorian 1 oz Bar.....6 ea.	22.00
1	Donkey.....	165.00
3	Small Elephant.....	175.00
2	Clydesdale Horse.....	250.00
100	Asiatic Pheasant.....	200.00
	Fighting Rooster.....	135.00
1-2-3	Wings up-middle-down Mallards 3 pc. Set	475.00
1519	Waverly Salt & Pepper.....Pr.	35.00
3304	Universal Cordial Beautiful Cut.....ea.	30.00
341	Williamsburg Cordial.....2 ea.	40.00
3382	Duequesne Cordial.....	25.00
5077	Legionnaire Cordial #1072 Cut.....	40.00
1183	Revere Cvd Marmalade/Plate-Gold Trim Set	65.00
1519	Waverly 6 1/2" Ft'd Jelly-Orchid.....	40.00
COBALT		
3390	Carcassone 2 1/2 oz Ft'd Cocktail....4 ea.	45.00
3390	Carcassone Ft'd Cigarette Holder.....	75.00
4231	Favor Vase.....	175.00
1404	Old Sandwich 2 1/2" Square Ash tray..4 ea.	32.50
MOONGLEAM		
1252	Twist 7" Compote.....	70.00
1252	Twist Ft'd Master Almond.....	45.00
1401	Empress Low d/Ft'd 8 1/2" Candy.....	50.00
1286	Bee & Etc. Cut - Ash Tray.....	40.00
10	Hawthorne 10" D.O. Bowl & Frog.....	75.00
1191	Flamingo Pickle & Olive Tray.....	30.00
112	Mercury 1-Lite Candle Holder.....Pr.	50.00
114	Pluto 1-Lite Candle Holder.....Pr.	50.00
1401	Empress Cv'd Mustard.....	55.00
46	Salt & Pepper.....Pr.	50.00
1540	Lariat Creamer, Moonglo Cut.....	20.00
1485	Saturn Cov Sugar Moonglo Cut.....	37.50
1184	Yeoman Bowtie 4" Candy.....	17.50
1552	4 Leaf 1-Lite Candleblock.....Pr.	60.00
5063	Bantam Rooster Stem Cocktail.....	325.00
1567	Plantation 1/2 # Covered Butter.....	65.00
1205	Fancy Loop Large Cov Sugar - Gold.....	35.00
1469	Ridgeleigh 10 1/2" Square Dinner Plate-Rare	110.00



NANCY'S ANTIQUES
906 44th Street NW
Canton, Ohio 44709

PH: 216-492-2595
Shipping Extra
* Marked

1519	Waverly 12" Orchid Etch Celery*.....	\$ 45.00
5072	Rose Stem Rose Etch Sauc Champ* 7 ea	45.00
1238	Beehive Flam 5" Plates.....6 ea	15.00
1238	Beehive Flam 14" Sandwich Plate.....	225.00
1509	Queen Anne Mustard and Lid.....	25.00
1519	Wav 13" Orch etch Floral Bowl W/Sal*	310.00
1519	Wav Orchid 7" Plates.....8 ea	20.00
5025	Tyrolean Orchid Sherbets.....6 ea	35.00
5072	Rose Stem Rose Etch Goblets*....7 ea	45.00
1519	Wav Orchid Etch 8" Plates.....8 ea	25.00
1519	Wav Narcissus Cut 8" Plates.....8 ea	25.00
3408	Jamestown Narcissus Goblets*....4 ea	35.00
3366	Trojan Etch 3 oz Cocktails Moongleam Stem*.....4 ea	40.00
3315	Polonaise Oyster Cktl/Needle Etch 6 ea	25.00
1509	Empress, Sahara Cups/Sau's-3 Sets* ea	40.00
341	Puritan Cruet*.....	28.00
1540	Lariat Fan Vase, Cranberry Stain*...	95.00
1509	Empress Alexandrite Saucers*....6 ea	30.00
3380	Old Dominion Sahara Wines*.....2 ea	40.00
1184	Yeoman Marigold 8" Plates.....8 ea	25.00

Jim Gartner
444 Girard St. #103
Gaithersburg, MD 20877

PH: 301-869-5306
P. & I. EXTRA
* SIGNED

350	Pinwheel & Fan *" Nappy*.....	\$ 45.00
341	Colonial 2 qt. Tankard*.....	58.00
300	Colonial Peerless Hotel Sugar*..2 ea.	24.00
1506	Whirlpool Cruet*.....	47.00
461	7" Basket, Flamingo*.....	175.00
417	7" Double Rib & Panel Basket, MGLM...	115.00
1404	Old Sandwich 1/2 Gal. Jug, Flamingo*...	175.00
1404	Old Sandwich Catsup Bottle-#3 Stopper, Flamingo.....	145.00
1404	Old Sandwich Cream/Sug, Sahara*-Oval.	65.00
1404	Old Sandwich Cig hldr W/ 4 indiv. Ash Trays*.....	115.00
1404	Old Sandwich 1 pt Decanter/98 Stopper*	90.00
1404	Old Sandwich 8" Sq Plates MGLM* 6 ea.	20.00
1401	Empress 6" Rd Compote, MGLM*.....	75.00
1401	Empress 7" Rd Triplex Relish MGLM*...	32.00
1401	Empress Sq. Grapefruits, MGLM*..2 ea.	24.00
1401	Empress Cup & Saucer MGLM*.....1 Set	40.00
1401	Empress 9" D.F. Vase, MGLM*.....	140.00
1401	Empress 9" D.F. Vase, Sahara*.....	115.00
1401	Empress Cup & rd. saucer, Sahara* 1 Set	35.00
1252	Twist Cup & rd. saucer, MGLM*....1 Set	35.00



PLEASE DOUBLE SPACE ALL ADS

WE NEED ROOM FOR EDITING!!!

NADINE PANKOW
207 S. Oakwood
Willow Springs, IL 60480

PH: 312-839-5231

All mint except where
noted. UPS extra.
Min. \$3.00. Return
within 5 days with
sticker intact.

HEISEY HEISEY
1243 Stepped Octagon 8" plate, Flam...ea. \$ 35.00
134 Floral bowl, 7½" x 14", Flam..... 45.00

STOPPERS AND PARTS
4225 Cobel Cocktail shakes.....2 ea. 15.00
4225 Cobel Cktl. shaker w/ strainer..... 35.00
133 Plume Stopper for Cruet.....2 ea. 40.00
1540 Lariat Cruet Stopper..... 25.00
1519 Waverly Epergnettes H.....2 ea. 20.00

ANIMALS AND FIGURINES
Madonna..... 99.00
Large elephant..... 295.00
Medium elephant..... 245.00
Small elephant..... 175.00
Horsehead Bookend..... 150.00
Plug horse..... 75.00
Scottie..... 90.00
Rearing Pony..... 140.00
Goose, Wings Up..... 80.00
Goose, Wings Half..... 85.00
Goose, Wings Down..... 275.00
Fighting Rooster..... 145.00
Oscars - Pink, green, Heather.....ea 25.00

ANIMAL STEMS
5065 Pony Cocktail.....4 ea 250.00
5074 Seahorse Cocktail.....5 ea 140.00
5038 Rooster Stem Cocktail.....6 ea 45.00
5058 Goose Stem sherry..... 160.00

8 oz tumbler, Ambassador etch...6 ea 15.00
3390 Carassone 11 oz goblet..... 14.75
3390 Carassone Cig. hdlr.Cobalt, crys.
stem.....2.ea 45.00
3300 Carassone Cig. holder, Crystal..... 15.00

1503 CRYSTOLITE
Swirl Candleblock..... 8.00
Square Candleblocks.....Pr 16.00
Baby swan nuts.....3 ea 18.00

921 DANISH PRINCESS CUTTING ON 5010 SYMPHONY STEMS
Goblet.....4 ea 15.00
Ice Teas.....3 ea 17.50
Champagnes.....3 ea 15.00
Wines.....7 ea 20.00

1405 Ipswich 10 oz goblet.....4 ea 9.75

1540 LARIAT
Punch cups.....22 ea 4.75
Sherbets, low..... 2 ea 7.00
Goblet, 9 oz..... 12.00
Cream & Sugar..... 18.50

Goblets, Mayflower etch.....6 ea 12.00

503 MINUET ETCH ON 5010 SYMPHONY STEM
Goblet.....7 ea 29.50
Wine.....6 ea 65.00

1511 Toujours covered apple marmalade.... 150.00

Oyster Cocktail, 980 Moonglo cut 3 ea 15.00

(Continued next column)

* 3390 Carassone 2 oz ftd. bar Sahara..... \$ 15.75

* PLANTATION IVY
* Goblet.....12 ea 22.50
* Sherbet.....12 ea 18.00

* 1469 Ridgeleigh Coaster, Zircon.....6 ea 9.00
* 1469 Ridgeleigh 2 3/4" x 5" Cov'd Cig. Box 15.75

* 497 ROSALIE ETCH
* 3408 Jamestown 13 oz Ftd. soda.....3 ea 25.75
* 4092 Kenilworth 3 oz Cocktail.....7 ea 18.00
* 1495 Fern 10½" 3 part relish..... 25.00

* 515 ROSE ETCH
* Goblet.....5 ea 32.50
* Ice Tea.....8 ea 38.00
* Claret.....3 ea 75.00
* Champagne..... 32.50
* Cruet, Ftd w/stopper..... 150.00
* Ftd Crute w/stopper - Handle cracked.. 75.00
* Pitcher (Fat)..... 550.00
* Lid only for ¼ lb butter..... 85.00
* Flat round cov'd. candy 5 ½"..... 150.00
* 4 ftd. Oval handled bowl, 11"..... 85.00

* 3404 SPANISH, COBALT
* Ft'd. soda 10 oz.....2 ea 55.00
* Goblet.....3 ea 60.00
* Champagne.....7 ea 55.00
* Low sherbet..... 45.00
* Ft'd. juice 5 oz.....6 ea 40.00

* HAPPY COLLECTING !!

* * * * *

* JIM & JO EARNSHAW PH: 419-526-2334
* 133 Lind Avenue After 6:00 p.m.
* Mansfield, Ohio 44903 We will return call

* Many thanks to those who bought our HEISEY lamps
* and commissioned us to make a lamp for them during
* the HEISEY Convention in June.

* We apologize to those who tried to get to the Gran-
* ville Show but couldn't find it because of the de-
* tour.

* The excellent response to our lamps and sales made
* us proud and pleased. Again thanks to those who
* purchased lamps. We have just about completed our
* commissions and sent those lamps out. Again a fine
* response!

* We still have a few custom Heisey lamps in various
* patterns for sale. Please send for a complete list
* and if you ask for a particular Heisey pattern, we
* will try to send you a photo.

* Remember your Heisey friends with a custom Heisey
* lamp for Christmas. We're sure they will be pleas-
* ed and welcome.

WRITE TO US TODAY

H & R DIAMOND H
Helen & Bob Rarey
1450 White Ash Dr.
Columbus, Ohio 43204

PH: 614-279-0390
After 5:30 P.M.
* Marked
UPS & INS EXTRA

341½ Puritan Finger Bowl*..... 2 ea. \$ 15.00
341 Puritan 5" Ftd. Jelly*..... 25.00
433 Greek Key 2 qt. Crushed Fruit*..... 225.00
1186 Yeoman 6" Ftd. Jelly* W/Cut..... 32.50
1280 Winged Scroll Spooner, Custard W/gold 55.00
1401 Empress D.F. Nasturtium Bowl*, Flam.Cut 97.50
1469 Ridgeleigh 6" Vase* 2 ea. \$22.50..Pr. 40.00
1469 Ridgeleigh Bridge Set-Ind. Ash Tray*
(4) ea. \$15.00.....Set 48.00
1503 Crystolite 3 Corner Jelly, Web Bottom 15.00
1509 Queen Ann 6" DF Saucer 1 Lite..... 45.00
1569 Floral Bowl*..... 27.50
1540 Lariat Coaster (6) ea. \$10.00/Set of 6 50.00
1632 Lodestar 1 qt. Pitcher* & 4-6 oz Juice*295.00
1951 Cabachon 5" Ftd Jelly, Bel-Air Cut... 35.00
4035 Decanter, Tally Ho Etch..... 145.00
4037 Oval Sherry, 1 pt., Maryland Cut.... 135.00
4163 Beer Mug 12 oz*, Golfer Etch..... 350.00
1503 Crystolite Ftd. Cigarette Holder*.... 22.50

Heisey by Imperial "Aurora Jewels" Childs Mug 25.00
4225 Cobel 1 qt. Cocktail Shaker..... 42.50

CARR'S ANTIQUES
P. O. Box 318
Chambersburg, PA 17201

PH: 717-264-2149
Preferably after
6:00 p.m.
Postage Extra

Ringneck Pheasant (decorated)..... \$110.00
Goose, (Wings Down), (Wings half Way),
(Wings Up).....Set of 3... 500.00
500 Octagon Ice Tub, Silver plated Handle
and Tongs, Flamingo..... 90.00
417 Double Rib & Panel Basket, Flamingo,
bottom has been ground..... 75.00
1485 Saturn Parfaits.....6 ea. 15.00
1485 Saturn juice glasses.....4 ea. 6.00
Lariat Stem Sherbets, Moonglo Cut 4 ea. 12.00
1404 Ftd. Soda, Old Sandwich.....5 ea. 15.00
Saucer Champagne, Pied Piper Etch 6 ea. 25.00

DONALD P. BEAN
36 Harding St.
Milford, MA 01757

PH: 617-473-0561
P. & I. EXTRA
* MARKED

1540 Lariat 2 Lite Sticks.....Pr. \$ 35.00
1540 Lariat 1 Lite Candleblock.....Pr. 24.00
1540 Lariat 4" Ash Tray or Nut Cup..... 15.00
5 Patrician 7½" Candlestick*.....(1). 37.00
393 N. Flute Sml Comb Relish/Cov**
See Cat #76, Page 23..... 35.00
1425 Victorian 4" Vase*..... 27.00
433 Greek Key 4½ oz L/F Sherb* Flared 3 ea. 15.00
419 Sussex Tall Sherb* MGLM Bowl.....2 ea. 20.00
341 Puritan 22 oz TAnkard* 6½" Tall..... 40.00
WANTED-Cover for large Fancy Loop Pot Pourri Jar.

BABS KENT
554 Amherst Dr.
Woodmere, NY 11598

PH: 516-374-4719

1503 Swan handled pitcher..... \$350.00
325 Pillows tankard - good gold trim and
four (4) tumblers..... 325.00
1445 Grape Cluster 1-Lite Candelabra
bobeche & prisms..... 175.00
1469½ Ridgeleigh 1-Lite Candelabra
bobeche & prisms..... 105.00
133 Swan handled 6" Candles..... 250.00
133 Swan handled 6" Candle, Moongleam (1) 150.00
20 7" 1-Lite Candles/silver overlay.... 130.00
310 Ring Band, rosebud trim, Custard Crmr. 75.00
1252 7" Twist Footed Comport, Moongleam.... 85.00

GILBERT CLINTON
RR.2, Box 532
Sikeston, MO 63801

PH: 314-471-4738
P. & I. EXTRA
Satisfaction Guaranteed

4225 Cobel Cocktail Shaker W/Rooster Head
Stopper & 9 Rooster Head Ckts....All \$595.00
Fighting Rooster..... 125.00
Fish Book End..... 125.00
1540 Lariat 7 qt Punch Bowl, 12 cups, ladle 195.00
359 High footed sherbet.....10 ea.... 15.00
1513 2-Lite Candelabra, Vase, A Prisms, bob.175.00
500 Octagon Frozen dessert, Moongleam 6 ea 10.00
1540 Lariat Nut Dish.....5 ea 10.00
1540 Lariat 9 oz stems.....2 ea 15.00

FOREVER HEISEY
Jan Thran
1663 Londondale Pkwy.
Newark, Ohio 43055

PH: 614-344-5955
Shipping & Ins Extra
H - Marked

1469 Ridgeleigh 7" 1-Lite Candelabra,
A Prisms. H.....Pr.. \$110.00
Rearing Colt..... 135.00
Sparrow..... 60.00
1183 Revere ½ # Candy, Floral Cutting.H... 42.50
3335 Lady Leg, 2½ oz Wine, #429 Zodiac et. H,
4 each..... 27.50
3390 Carcassone Tall Gob/Old Colony et.3 ea. 18.00
1632 Lodestar 1-Lite Candle Nappy, Dawn H Pr 90.00
1632 Lodestar Cr & Sug Dawn.H.....Pr. 120.00
1519 Waverly Cov Butter, Orchid etch..... 140.00
1401 Empress Must/Cov & 4" underplate H Set 40.00
1401 Empress 10" Cel, 13" cel & 12" 2-pt rel.
all Old Colony etch. Set \$90 or (3) ea..35.00

MOSTLY HEISEY
Rhoda Curley
16 Clayton Place
Albany, NY 12209

SASE PLEASE
UPS EXTRA
PH: 518-482-6272

300 Peerless Tall Cel/1 w/gold Trim...ea. \$ 44.00
4204 Vase Flamingo 9½" high. Very dainty.. 44.00
354 Wide Flat Panel Lavendar Jar 5" high. 74.00
1205 Fancy Loop Covered Butter..... 124.00
1503 Crystolite 5 Comp Relish 10"..... 34.00
114 Mars Candlesticks Hawthorne..... 94.00
1401 Empress Cream & Sugar Sahara..... 74.00
1404 Old Sandwich Oval Flower Bowl/Oval Frog 84.00

IF YOU BUY ANY ONE OF THESE PIECES WE WILL SEND YOU
FREE A ONE QUARTER POUND HEISEY BUTTER TRAY IN CRYSTAL
IN THE ORIGINAL TISSUE PAPER. RETAIL VALUE \$15.

Classified Ads

WANTED TO BUY: Buying Caprice blue or Rosepoint by Cambridge. Rose or Orchid by Heisey....American, June, Fairfax, Versailles, Trojan by Fostoria. Also Depression Glass and all crystal or colored of that era. Nadine Pankow, 207 S. Oakwood, Willow Springs IL 60480. PH: 312-839-5231.

WANTED: Items in #160 Locket on Chain, crystal or colors. JIM KENNON, PO Box 251, Amherst, OH 44001.

Our Fall List is now available. Hundreds of beautiful Heisey pieces at reasonable prices. If you are not on our mailing list please send a large SASE. J. & R. COLLECTIBLES, P. O. Box 1030, Newark, Ohio 43055. Phone 614-344-9719.

WANTED: #150 Banded Flute pattern, punch cups. ANGIE MAURY, 41 Beaver Dam Court, Columbia, SC 29223.

FOR SALE: #400 Colonial, 8½" Nappy, \$40; #1519 Waverly Cream & Sug, Orchid, \$50; #1519 Waverly 9" Salad Bowl, Orchid, \$125; #4220 Sahara 4½" Vase S.O., \$40; #5025 Tyrolean Ice Tea, Orchid (6) ea., \$30; #112 Mercury 1-Lite Candlestick, Orchid etch, \$30; #15 Flam. Flower Block, \$25; #5024 Oxford Ftd Juice w/ #1055 Westminster Cut* (7) ea, \$10; #3359 Plateau Flam. Rose Bowl D/O, \$40; #4036½ 1 Pt Decanter, \$40; CRAFTS ENTERPRISES, 187 N. Pioneer Ave., Shavertown, PA 18708. PH: 717-675-8553. P. & I. EXTRA.

FOR SALE: Tally Ho #4225 Cocktail Shaker, plain stopper & six #4002 short-stemmed (Aqua Caliente) glasses \$250.00. MRS. D. B. PENNY, 1225-202 Vienna Dr., Sunnyvale, CA 94089. PH: 408-734-5258.

FOR SALE: #427 Daisy & Leaves Pitcher, \$200, Tumblers, 4 ea, \$45; #1404 Old Sandwich salt shakers, not orig. tops, Flamingo, Pr. \$100; #1405 Ipswich Candle Vase, Flam., \$75; #1401 Empress Tumbler, Mglm \$50; #1252 Twist, Platter 8½" x 13" Flam, \$50; Salt shakers, Flat Orig. tops, Flam., \$75; Bowl, Bakers, Oval 6 7/8" x 8 7/8" Mglm., \$55; Lid, Marmalade, Notched Mglm, #30. Many more pattern - Write wants - Lots of lids and bases. I pay shipping UPS. Satisfaction Guaranteed. ALFORDS ANTIQUES, 5546 Judalon, Houston, TX 77056. PH: 713-622--8027.

FOR SALE: Heisey sugar w/silver rim, \$20; #503 Minuet 12 oz tumbler, 5 ea, \$35; Iced seafood, 11 ea, \$75; 9 oz goblet, 11 ea, \$45; 12 oz soda, 2 ea, \$45; 6 oz Sherbet, 2 ea, \$35; 1 oz Cordial, 2 ea, \$95. ELAINE NEAL, 2802 Irwin Rd., Huntsville, AL 35801. PH: 205-539-4810.

FOR SALE: #429 Plain Panel Punch Bowl, Base, 12 cups, \$200; Ridgeleigh Coaster, Sahara, \$17.50; (2) Small Bow Ties, Flamingo, \$14; (4) Flam. Oak Leaf Coasters ea. \$8; 3-Lite Orchid Etch Stix, Pr, \$100; #341 Old Wmsburg Juices, Ftd (2) ea, \$13; #1210 Flam. Duplex Collection Tray, \$20. UPS EXTRA. PATTON HOUSE, Box 547, Louisa, VA 23093. PH: 703-967-1181.

WANTED: 1971 "Land of Legend" Plate. IRENE AYRES, 3321 Shakespeare Lane, Toledo, OH 43615. Phone: 419-841-3254.

FOR SALE: McGrady Sah 5 oz syrup, \$52/7 oz \$58; Twist Flmgo 7" pickle tray, \$23; Hdld mint bowl, \$18; Hdld cheese plate, \$15; Mnglm hdld mint bowl, \$18; Hdld jelly bowl, \$18; 5 oz tumbler, \$15; 4½" plate, \$15; #341 Cruet, #6 stopper, \$25; Flr'd 2 oz sherry 2/\$21; #354 Cologne, #63 stopper, Cut, \$70; #338 Vase, 6¼" high, \$38. SASE for list. PIX. B. WHITNEY, Rte.2, Box 205A, Braham, MN 55006. PH: 612-396-2583

WANTED: HEISEY STEEPLE STOPPERS #48 MARION CHARBONNEAU, 848 So. Barnett Anaheim, CA 92805, PH: 714-535-2049

APPLE COMPUTER OWNERS TAKE NOTE

By Tom Bredehoft

For our members who have Apple computers, or access to Apple Computers, I am making available, at absolutely no charge* my own index of numbers used by the Heisey Company, the names Heisey used with the numbers, and the names which have been given to Heisey patterns and pieces by the HCA and other researchers. Many lines and pieces are also dated. There are two sections to the index, numerical and alphabetical.

There are a couple of restrictions, you must have at least an Apple //e with 128 K of ram, or an Apple //c, and AppleWorks program to be able to use the index. Or perhaps some other computer which can use Appleworks, (Franklin, IBM, Epsom, etc.) The index, both numerical and alphabetical, comprises 10 files, each between 16 and 39 K long, and takes quite a bit of disc space. Printed, it takes about 175 pages. Once you have the discs, you can print your own, but be advised, at 100 characters per second, it takes about two and a half hours to print.

There is another restriction, too. Since this was prepared with and from HCA owned information, it would not be right for you or anyone else to capitalize upon this. If you care to send donations to the HCA for this they will be greatly appreciated, but I just want to make information available to those who are interested in research.

Don't bother the ladies in the office with this, send your requests to me directly:

Tom Bredehoft
10217 Stickle Rd.
Saint Louisville, OH 43071

For those of you with CompuServe, my user ID is 72247,1046, I try to answer my EMail.

* No cost, send me two double sided discs, or three single sided discs.

Apple and AppleWorks are registered trade marks of Apple Computer, Inc.

IBM and Epsom are registered trade marks of their respective owners.



Cowboy, Al Miller (Board Member)
June 18th Barbecue



1616 W. CHURCH STREET
NEWARK, OHIO 43055

ALL HEISEY AUCTION

APPLE TREE AUCTION CENTER
1616 W. CHURCH ST.
NEWARK, OHIO 43055

FRIDAY OCTOBER 17 5:00 P.M.
SATURDAY OCTOBER 18 9:00 A.M.

Beginning of 10/17/86 session

Bidding instructions on page 21.

DOORS OPEN 1 HOUR BEFORE EACH SESSION

This super auction will feature a signed AMBER Flying Mare, 2 Amber Sparkies (Oscars) and about 60 other animals. Lots of good color, several hundred "Little Items" incl Cordials, Shot Glasses, Toothpicks, Salts and Almond and Nut dishes. A nice selection of Orchid, Heisey Rose and Minuet etchings. Many nice Cruets, Candlesticks and good early patterns. Interesting Imperial items incl some rare animals and trial items.

1. 1541 ATHENA CR, SUG & TRAY
2. 479 HOTEL MNGLM CR & SUG, H CR
3. 429 PLAIN PANEL RECESS HOTEL COV SUR & CR H
4. 1541 ATHENA CR & SUG
5. 1503 CRYSTOLITE CR & SUG H
6. 1509 QUEEN ANNE D F CR & SUG, CUT, H, X
7. 1401 EMPRESS SAHARA IND CR & SUG H
8. 1503 CRYSTOLITE CR, SUG, TRAY H, f
9. 393 NARROW FLUTE IND CR & SUG H
10. 1401 EMPRESS FLAM IND CR & SUG H
11. 1469 RIDGELEIGH IND CR & SUG H
12. 1401 EMPRESS SAHARA IND SUG H
13. 406 COARSE RIB FLAM HOTEL CR & LID-FOR SUG H
14. 1225 PLAIN BAND SPOON HOLDER, REP
15. 1225 PLAIN BAND TOY SUG, NO LID H SOUV
16. 1201 FANDANGO IND SUG, WORN DECORATION
17. 1200 CUT BLOCK CUSTARD CR & SUG
18. 1220 PUNTY BAND CUSTARD IND CR SOUV H
19. 1485 SATURN COV MUSTARD H
20. 1469 RIDGELEIGH COV MUSTARD
21. 1503 CRYSTOLITE COV MUSTARD H m
22. 1184 YEOMAN 2 OZ CRUET, WRONG STOPPER H
23. 351 PRISCILLA 2 OZ CRUET H
24. 1401 EMPRESS CRUET
25. 352 FLAT PAN.VIN & OIL BOTTLE, MNGLM STOPPER
26. 325 PILLOWS COLOGNE BOTTLE, STOPPER X
27. 341 PURITAN 13 OZ SYRUP
28. 1485 SATURN BITTERS BOTTLE
29. 300 PEERLESS BITTERS BOTTLE, SPOUT X
30. 353 MED FLAT PANEL 4 OZ CRUET, NO STOPPER H
31. 353 MED FLAT PANEL 4 OZ CRUET, NO STOPPER H X
32. 433 GREEK KEY 4 OZ CRUET, NO STOPPER
33. 1252 TWIST MNGLM 4 OZ CRUET H, NO STOPPER
34. 1184 YEOMAN SAHARA D O 2 OZ CRUET H
35. 1184 YEOMAN SAHARA D O 4 OZ CRUET
36. 1225 PLAIN BAND CRUET, WRONG STOPPER
37. 1469 RIDGELEIGH CRUET
38. 343 SUNBURST WATER BOTTLE M
39. 305 PUNTY & DIA POINT WATER BOTTLE
40. 1776 KALONYAL WATER BOTTLE
41. 1205 FANCY LOOP WATER BOTTLE
42. 1205 FANCY LOOP CRACKER JAR, BOTTOM ONLY
43. 1502 CRYSTOLITE SWIRL CANDLE BLOCKS, 4, 1X
44. 99 1 LT FLAM CANDLE BLOCK, PR
45. 114 1 LT MNGLM CANDLEHOLDERS PR
46. 1503 CRYSTOLITE 2 LT CANDELABRA PR, COMP
47. 126 FLAM 6 IN CANDLESTICKS PR
48. 126 MNGLM 6 IN CANDLESTICKS PR H
49. 126 CRYST 6 IN CANDLESTICKS PR
50. 16 5 IN CANDLESTICKS PR
51. 100 9 IN CANDLESTICKS PR H
52. 5 11 IN CANDLESTICK CUT
53. 3 9 IN CANDLESTICK
54. 1615 COBEL 2 LT CANDLESTICKS PR H
55. 29 9 IN CANDLE CUT
56. 300 1 LT CANDELABRUM X
57. 1404 OLD SANDWICH COBALT 1 LT CANDLE X
58. 1401 EMPRESS FLAM D F CANDLE H
59. 1428 WARWICK 2 LT CANDLESTICK H
60. 7000 SUNFLOWER 1 LT CANDLESTICK
61. 1504 REGENCY 2 LT CANDLESTICK
62. 1503 CRYSTOLITE SQ HURR CANDLE, BASE ONLY H
63. 1503 CRYSTOLITE SQ HURR CANDLE, CUT GLOBE H
64. 2 11 IN CANDLE
65. 107 10 IN MNGLM CANDLESTICK H

66. 1503 CRYSTOLITE SINGLE CANDLESTICK
67. 300 1 LT CANDLEABRUM
68. 1405 IPSWICH CANDLE VASE, COMP H
69. 301 3 LT CANDLEABRA, SHORT BASE
70. LEAF 1 LT CANDLESTICK
71. 1540 LARIAT 1 LT CANDLESTICK
72. 1495 FERN 2 LT CANDLESTICK
73. 1495 FERN 2 LT CANDLESTICK
74. 134 SAHARA 2 LT CANDLE, OLD COLONY ETCH
75. 1469 8 IN CTR PC W/FROGS, 1 LT CANDLES H, 5 PC
76. 1401 EMP SAHARA DF FL BOWL W/135 CANDLES CUT
77. 10 DEC FLORAL BOWL H W/9 IN CANDLES NOT H
78. 13 FLAM FL BOWL H W/FROG W/13 CANDLES
79. 5025 TYROLEAN CHAMPAGNE, 6, 2f
80. 3408 JAMESTOWN CHAMPAGNE, 6, CUT
81. 3411 MONTE CRISTO CHAMP, KOLORAMA CUT 7,1 REP
82. 3408 JAMESTOWN CHAMPAGNE, SHEFFIELD CUT, 2
83. 347 COLONIAL CHAMPAGNE, 3 H
84. 5040 LARIAT CHAMPAGNE, 2 H
85. 341 OLD WILLIAMSBURG SHERBET, 2 H
86. 1184 YEOMAN MNGLM D O SHERBET, 4 H
87. 150 BANDED FLUTE CHAMPAGNE 4, 1f
88. 3389 DUQUESNE CHAMPAGNE, CHINTZ ETCH
89. 1425 VICTORIAN CHAMPAGNE, 5 H
90. 3390 CARCASSONNE COBALT CHAMPAGNE
91. 393 NARROW FLUTE SHERBET, 4 H
92. 4091 KIMBERLY CHAMPAGNE, UNKNOWN CUT H
93. 4091 KIMBERLY CHAMPAGNE, SUNGATE CUT H
94. 4091 KIMBERLY CHAMPAGNE, COURTSHIP CUT
95. 3359 PLATEAU FLAM SHERBET 3, 2X
96. 451 CROSS LINED FLUTE CHAMPAGNE, 6 H
97. 1401 EMPRESS MNGLM CELERY H
98. 1503 CRYSTOLITE CELERY AND OLIVE H
99. 1184 YEOMAN 10 IN MARIGOLD DO RELISH
100. 468 MNGLM 12 IN RELISH TRAY H
101. 1469 RIDGELEIGH 12 IN PICKLE & OLIVE TRAY H x
102. 411 TUDOR 12 IN CELERY TRAY H
103. 1185 YEOMAN 6 IN COV FTD BOWL H
104. 1469 RIDGELEIGH LOW FL BOWL W/FANCY METAL COV
105. 1519 WAV TALL COV CANDY W/ELKS CREST H, LID X
106. 4225 1 QT COCKTAIL SHAKER - NO STOPPER
107. 4036 1/2 1 PT DECANTER
108. 4035 DECANTER CUT, X
109. 1489 PURITAN SOUV DECANTER 1977
110. 1469 RIDGELEIGH RYE BOTTLE & STOPPER X
111. 4225 COBEL 1 QT COCKTAIL SHAKER CUT
112. 4225 COBEL 1 QT COCKTAIL SHAKER
113. 2323 NAVY 10 OZ SODA
114. 602 12 OZ SODA H, M
115. 6060 COUNTRY CLUB 14 OZ SODA, 12
116. 4054 CORONATION 12 OZ SODA, 5
117. 4054 CORONATION 8 OZ SODA, 4
118. 4054 CORONATION 8 OZ SODA, 4

PAID ADVERTISEMENT

119.	4054 CORONATION 12 OZ SODA, 2	197.	1183 REVERE FLAMINGO DEMITASSE CUP/SAUCER H
120.	1404 OLD SANDWICH 12 OZ FTD SODA, 8, 1X	198.	1186 YEOMAN MNGLM CUP/SAUCER, 3 H
121.	433 GREEK KEY 5 OZ JUICE	199.	1509 QUEEN ANN CUP/SAUCER H, & 1401 CUP
122.	2351 FLAM DO 5 OZ SODA, 3	200.	1184 YEOMAN SAHARA CUP, 2 H
123.	150 BANDED FLUTE 5 OZ WATER BAR, 3 H	201.	1401 EMPRESS SAHARA CUP, CHINTZ ETCH H, f
124.	433 GREEK KEY TUMBLER H, f	202.	350 PINWHEEL & FAN PUNCH CUP, 13 H
125.	1280 WINGED SCROLL CUSTARD TUMBLER, GOLD DEC	203.	1503 CRYSTOLITE PUNCH CUP, 4 H
126.	1205 FANCY LOOP EMERALD TUMBLER GOOD GOLD, f	204.	343 SUNBURST PUNCH CUP, 7 H
127.	310 RING BAND CUST TUMBLER, SOUV 1901, H m	205.	1205 FANCY LOOP PUNCH CUP, 12
128.	1401 EMPRESS SAHARA DF NUT	206.	1205 FANCY LOOP EMERALD PUNCH CUP
129.	1401 EMPRESS SAHARA DF NUT	207.	325 PILLOWS PUNCH CUP H
130.	1401 EMPRESS SAHARA DF NUT	208.	433 GREEK KEY PUNCH CUP, 2 H
131.	1229 OCTAGON MNGLM IND NUT H	209.	393 NARROW FLUTE PUNCH CUP, H f
132.	1229 OCTAGON FLAM IND NUT, CUT	210.	357 PRISON STRIPE PUNCH CUP, 3 H
133.	1469 RIDGELEIGH IND NUT	211.	300 1/2 PEERLESS PUNCH CUP, 5 H
134.	1229 OCTAGON FLAM IND NUT, 3 H	212.	1507 5 OZ SUNDAE H
135.	1229 OCTAGON MNGLM IND NUT, 5 H	213.	1205 FANCY LOOP PUNCH GLASS
136.	393 NARROW FLUTE FLAM FTD ALMOND, 2 H	214.	1205 FANCY LOOP PUNCH GLASS
137.	393 NARROW FLUTE MNGLM FTD ALMOND	215.	1220 PUNTY BAND HDLD SOUV MUG, RED STAIN H
138.	393 NARROW FLUTE FTD ALMOND H	216.	1401 EMPRESS ALEXANDRITE 8 IN RND PLATE H
139.	433 GREEK KEY FTD ALMOND H	217.	353 MED FLAT PANEL 5 1/2 IN PLATE, 5 H
140.	3316 MNGLM IND FTD ALMOND	218.	1225 HAWTHORNE 7 IN PLATE, 8 H
141.	1183 REVERE IND SALT DIP, CUT	219.	4182 6 IN PLATE, EMPRESS ETCH, 3
142.	393 NARROW FLUTE IND SALT DIP, 2 H	220.	1401 EMPRESS SAHARA 7 IN PLATE, OLD COL, 4 H
143.	3359 PLATEAU FLAM 8 1/2 OZ GOBLET	221.	8 IN PLATE, FESTOON WREATH, CUT, 8
144.	2516 CIRCLE PAIR MNGLM 8 1/2 OZ GOBLET	222.	7 IN PLATE, 2, & 6 IN PLATE, ALL CUT
145.	3368 ALBERMARLE FLAMINGO 8 OZ GOBLET H	223.	1225 7 IN PLATE, 3, & 411 8 IN PLATE, 2, ALL H
146.	3366 TROJAN FLAM D O 8 OZ GOBLET H	224.	407 COARSE RIB 9 IN PLATE, 3 H
147.	3368 ALBERMARLE DO GOB MNGLM STEM TROJ ETCH	225.	7 IN PLATE, SHEFFIELD CUT, 5
148.	3368 ALBERMARLE DO GOBLET, YEL & BL IRRID, H	226.	1401 EMPRESS SAHARA 7 IN SQ PLATE, 7 H
150.	3366 TROJAN HAWTHORNE D O 8 OZ GOBLET H	227.	4044 NEW ERA GOBS 4 & ICE TEA MONO 4f
151.	3350 WABASH 10 OZ GOB MNGLM STEM MAYFL ETCH H	228.	3357 KING ARTHUR GOBLET, 3, 1f
152.	3359 PAN AMERICAN GOBLET H	229.	5011 YORKTOWN GOBLET, 4 H
153.	3350 WABASH 10 OZ GOB GOLD ETCH H	230.	3312 GAYOSO FLAM D O GOBLET, 5
154.	3333 OLD GLORY GOBLET, CUT H, X	231.	3357 KING ARTHUR MNGLM STEM GOBLET, 2 H
155.	3380 OLD DOMINION SAHARA 10 OZ D O GOBLET	232.	3389 DUQUESNE SAHARA GOBLET, CHINTZ ETCH, 5
156.	3357 KING ARTHUR FLAM 10 OZ GOB, DIANA ETCH H	233.	3357 KING ARTHUR GOBLET, DIANA ETCH, 5 H, 1f
157.	3381 CREOLE 11 OZ GOBLET SAHARA BOWL	234.	3411 MONTE CRISTO GOBLET, KALARAMA CUT, 4
158.	3376 ADAM FLAM D O GOBLET, BILTMORE ETCH	235.	5010 SYMPHONY GOBLET, DANISH PRINCESS, 3
159.	3312 GAYOSO GOBLET, CHERRY ETCH	236.	3408 JAMESTOWN GOBLET, LARKSPUR CUT, 6 H
160.	3312 GAYOSO FLAM D O GOBLET	237.	3408 JAMESTOWN GOBLET, BARCELONA CUT, 11
161.	3365 RAMSHORN OPTIC FLAM GOBLET H	238.	3411 MONTE CRISTO GOBLET, KALARAMA CUT, 3
162.	4091 KIMBERLY GOBLET, LAUREL CUT, 3 H	239.	3380 OLD DOMINION GOBLET, EMPRESS ETCH, 4
163.	1540 LARIAT GOBLET, CUT H	240.	3408 JAMESTOWN GOBLET, BARCELONA CUT, 3 H
164.	3350 WABASH 10 OZ GOBLET, 4 H, 1X	241.	U8023 RAMPUL FLAM D O GOBLET, 3
165.	5040 LARIAT GOBLET, CUT, 2	242.	3359 PLATEAU FLAM D O GOBLET, 2
166.	3317 DRAKE GOBLET, TATTING NEEDLE ETCH	243.	3312 GAYOSO GOBLET, MONTICELLO CUT, 4
167.	3345 MARY N VIRG GOBLET, ADAM ETCH H	244.	3359 PLATEAU FLAM D O GOBLET, 3, 3f
168.	3308 PEACOCK IRRID GOBLET, NOT H	245.	1184 YEOMAN FLAM D O GOBLET, 6 H
169.	438 SPIRAL OPTIC GOBLET H	246.	1184 YEOMAN FLAM D O COCKTAIL, 6 H
170.	1503 CRYSTOLITE 2 PART DRESSING BOWL	247.	1184 YEOMAN FLAM D O CHAMPAGNE, 6
171.	1503 CRYSTOLITE COV SHELL CANDY DISH	248.	1184 YEOMAN FLAM D O SHERBET, 6
172.	1503 CRYSTOLITE 4 IN CIG BOX & COVER X	249.	434 COLONIAL 4 1/2 IN RND ASH TRAY H, XX
173.	1503 CRYSTOLITE 12 IN OVAL SHALLOW BOWL H	250.	1626 LODESTAR DAWN ASH TRAY H
174.	1503 CRYSTOLITE 5 1/2 IN FTD CHEESE	251.	361 MOONGLEAM CIG BOX & ASH TRAY H, X
175.	1503 CRYSTOLITE 12 IN RND SHALLOW FLARED BOWL	252.	1489 PURITAN 4 1/2 IN HORSEHEAD CIG BOX
176.	1503 CRYSTOLITE 12 IN TORTE PLATE	253.	1469 RIDGELEIGH 4 IN COV CIG BOX, H F
177.	1503 CRYSTOLITE 7 IN 2 HDLD BON BON H	254.	1503 CRYSTOLITE 4 IN COV CIG BOX, m H
178.	1503 CRYSTOLITE 2 HDLD OVAL CHEESE PLATE H	255.	1536 MILITARY HAT ASH TRAY
179.	1428 WARWICK 9 IN VASE, 2, H	256.	1286 CUPID & PSYCHE IND ASH TRAY, 2, 1f
180.	1428 WARWICK 7 IN VASE	257.	1286 CUPID & PSYCHE FLAM IND ASH TRAY
181.	1503 CRYSTOLITE 13 IN OVAL FLORAL BOWL H	258.	1469 RIDGELEIGH RND CIG HOLDER H
182.	1503 CRYSTOLITE 6 IN VASE H, & VASE, NOT H	259.	1469 RIDGELEIGH OVAL CIG HOLDER, 3 IN COAST H
183.	1519 WAVERLY SEAHRS HDLD FL BOWL, ORCH CARV H	260.	1469 RIDGELEIGH 2 1/2 IN SQ ASH TRAY H
184.	1503 CRYSTOLITE 3 IN SHORT STEM FLOWER VASE H	261.	1469 RIDGELEIGH BRIDGE SET H
185.	1558 10 1/2 IN FLORAL VASE, OVAL H	262.	1503 CRYSTOLITE CIGARETTE LIGHTER
186.	1558 10 1/2 IN ROLLED END BOWL	263.	NEWARK SESQUI ASH TRAY
187.	1401 EMPRESS SAHARA FLORAL BOWL H	264.	1404 OLD SANDWICH IND ASH TRAY, 4 H
188.	YEOMAN FLAM 12 IN FLAT FL BOWL, ROLLED EDGE H	265.	439 IND ASH TRAY
189.	1184 YEOMAN HAWTHORNE 12 IN DO FL BOWL W/FROG	266.	1404 OLD SANDWICH COBALT IND ASH TRAY H
190.	RIDGELEIGH TYPE 10 IN BOWL, 5 IN TALL	267.	1404 OLD SANDWICH COBALT IND ASH TRAY H
191.	1184 YEOMAN 9 IN COMPOTE, CUT HH	268.	1540 LARIAT ASH TRAY
192.	1495 FERN 10 IN BOWL	269.	VERLYS SWALLOWS ASH TRAY - SIGNED
193.	1540 LARIAT 14 IN SANDWICH TRAY, CUT	270.	VERLYS GREEK HORSE COV CIG BOX, F - SIGNED
194.	133 SAHARA SWAN HDLD FLORAL BOWL X, W/FROG H	271.	VERLYS GREEK HORSE ASH TRAY - SIGNED
195.	1201 FLAMINGO FTD FLORAL BOWL H	272.	VERLYS BLUE SWALLOWS ASH TRAY
196.	1401 EMPRESS ALEXANDRITE 6 CUPS 7 SAUC, RND H	273.	VERLYS LOVEBIRD VASE - SIGNED
		274.	VERLYS LOVEBIRD VASE

275. VERLYS 12 IN BIRDS & BEES BOWL - SIGNED
276. VERLYS PINECONE BOWL, NOT FROSTED, 2
277. VERLYS MANDRIAN VASE, FRENCH OPAL - FENTON
278. 300 PEERLESS WINE, BRITISH REG H
279. 820 MITCHELL WINE, f
280. 341 PURITAN CORDIAL, 2 H
281. 300 PEERLESS CORDIAL H
282. 348 COLONIAL CUP CORDIAL H
283. 5078 PARK AVENUE CORDIAL H
284. 3389 DUQUESNE CORDIAL
285. 601 ELIZABETHAN CREME DE MENTHE H
286. 3304 UNIVERSAL CORDIALS, 6
287. 5011 YORKTOWN CORDIALS, 2, H
288. 331 COLONIAL IND SALT, SQ, 9, 1f
289. 1183 REVERE FLAM IND SALT 11
290. 1183 REVERE IND SALT CUT 4 H
291. 1183 REVERE IND SALT 2 H
292. 1201 FANDANGO IND SALT 2
293. 352 FLAT PANEL IND SALT 2
294. 1469 RIDGELEIGH IND SALT 3
295. FLAMINGO COLORED FTD BAR ?
296. FLAMINGO COLORED BAR ?
297. 150 BANDED FLUTE 3 1/2 OZ WATER BAR 3 H
298. 6060 COUNTRY CLUB 1 OZ BAR
299. 1586 COLEPORT 1 OZ BAR 2 H
300. 1 OZ BAR BLOWN
301. 5087 COMET 1 1/2 OZ BAR
302. 4054 CORONATION 1 OZ BAR
303. 2052 1 OZ BAR
304. 1280 WINGED SCROLL CLAMBROTH TRINKET BOX x
305. SMALL ELEPHANT f
306. LARGE ELEPHANT, REP TO BASE
307. ROOSTER VASE M
308. FIGHTING ROOSTER
309. RINGNECK PHEASANT H
310. RINGNECK PHEASANT H
311. STANDING COLT
312. STANDING COLT REP TO MANE
313. STANDING COLT H
314. CLYDESDALE REP TO REAR HOOF
315. GIRAFF, HEAD BACK
316. GOOSE, WINGS HALF H
317. GOOSE, WINGS HALF
318. GOOSE, WINGS UP, BUBBLE
319. SCOTTY, DECORATED f
320. OSCAR, REP BASE
321. OSCAR, REP BASE
322. FISH BOOKEND, LEANS H
323. CYGNET, REP f h
324. SMALL HORSEHEAD STOPPER
325. ROOSTERHEAD STOPPER
326. GOOSE STOPPER
327. 1 MADONNA, FROSTED
328. 1503 CRYSTOLITE IND SWAN NUT
329. 1503 CRYSTOLITE IND SWAN NUT 4
330. 4225 COBEL PINT COCKTAIL SHAKER, ROOSTER TOP
331. 5083 ROOSTER STEM COCKTAIL 2
332. 5010 SYMPHONY CHAMP DANISH PRINCESS CUT
333. 6010 FINESSE CHAMPAGNE 2
334. 4091 KIMBERLY CHAMP LAUREL CUT 2
335. 3366 TROJAN FLAM CHAMP 7 H
336. 351 PRISCILLA SHERBET H
337. 6091 CABOCHON SHERBET ARCADIA CUT 2
338. 373 COLONIAL CHAMP 4 H 1f
339. 3416 BARBARA FRITCHIE CHAMP CUT 3 H
340. 3411 MONTE CRISTO CHAMP CUT
341. 3404 SPANISH CHAMP RIVIERE CUT
342. 3404 SPANISH COBALT BOWL CHAMP
343. 4091 KIMBERLY CHAMP CROMWELL CUT
344. 3330 HANOVER CHAMP HERMITAGE ETCH H
345. 6004 CLASSIC CHAMP SPRING CUT H
346. 5057 SUEZ CHAMP MIDWEST CUT H
347. 1401 EMPRESS SAHARA CHAMP H
348. 1401 EMPRESS SAHARA SHERBET H
349. 5077 LEGIONNAIRE CHAMP
350. 1240 SHAWNEE CHAMP H
351. 3390 CARCASSONNE SAHARA SHERB OLD COL ETCH
352. 3362 CHARTER OAK MNGLM SHERBET 2 H
353. 433 GREEK KEY SHERBET 4 IN HH
354. 433 GREEK KEY CHAMPAGNE H
355. 4091 KIMBERLY CHAMP COURTSHIP CUT 4
356. 300 PEERLESS 5 OZ SHERBET 4 H
357. HOLLOW STEM CHAMP & CUT SEAFOOD COCKTAIL
358. 150 BANDED FLUTE CHAMPAGNE 4 H, 1f
359. 150 BANDED FLUTE 5 1/2 OZ EGG CUP 4 H
360. 5082 MID CENTURY 4 1/2 OZ COCKTAIL H
361. 3389 DUQUESNE CHAMPAGNE CUT 2
362. 6091 CABOCHON SHERBET ARCADIA CUT
363. 5072 ROSE STEM CHAMPAGNE H f
364. 3333 OLD GLORY CHAMPAGNE CUT 10 H
365. 602 8 OZ TUMBLER H
366. 1205 FANCY LOOP TUMBLER 2, 1 GOOD GOLD
367. 3390 CARCASSONNE FLAGON OLD COLONY ETCH 3
368. 3368 DIAMOND ROSE PILSNER H
369. 393 NARROW FLUTE 5 IN NAPPY 2 H
370. 393 NARROW FLUTE 4 IN NAPPY H
371. 393 NARROW FLUTE TRI CORNER HDL JELLY H
372. 1280 WINGED SCROLL CUSTARD 4 IN NAPPY 2
373. 1295 BEAD SWAG OPAL 4 IN NAPPY 4
374. 516-1 MOONGLEAM 7 IN VASE D O
375. 5040 LARIAT FAN VASE
376. 1540 LARIAT 7 IN VASE SQ TOP H
377. 1540 LARIAT 7 IN VASE ROUND CRIMP TOP H
378. 1401 EMPRESS SAHARA 9 IN D F VASE H
379. 338 9 IN VASE H
380. 1469 RIDGELEIGH 6 IN VASE FAINT H
381. 1255 PINEAPPLE & FAN 6 IN VASE
382. 1567 PLANTATION 6 IN VASE
383. 1567 PLANTATION DIV MAYO BOWL, OVAL H
384. 5067 PLANTATION GOBLET H
385. 5067 PLANTATION CHAMPAGNE 8 H
386. 1567 PLANTATION COCKTAIL 8, 2 H
387. 5067 PLANTATION WINE 7 H
388. 411 TUDOR MNGLM HDL CHEESE PLATE CUT H
389. 1229 OCTAGON HAWTHORNE HDL BON BON H
390. 1469 RIDGELEIGH 6 IN BON BON H
391. 1401 EMPRESS SAHARA 6 IN HDL FTD MINT
392. 411 HDL CHEESE & 1229 FLAM HDL CHEESE
393. 1469 RIDGELEIGH 6 IN DIV MINT DISH
394. 1495 FERN 6 IN TID BIT
395. 1183 REVERE COV LEMON DISH CUT H, F
396. 1541 ATHENA BON BON
397. 1503 CRYSTOLITE 7 IN HDL PLATE OVAL H
398. 1469 RIDGELEIGH 6 IN HDL MINT H
399. 1401 EMPRESS FLAM D F 8 IN MINT H
400. 1295 BEAD SWAG OPAL CREAM DAISY DECOR WORN
401. 335 PRINCE OF WALES COV SUGAR, WORN GOLD H
402. 3404 SPANISH 8 OZ SODA CUT
403. 3373 MORNING GLORY FLAMINGO GOBLET H
404. 5082 MID CENTURY FTD SODA H
405. 3389 DUQUESNE FTD SODA POMPEII ETCH
406. 3404 SPANISH SODA TITANIA ETCH 2
407. 3380 OLD DOMIN SAHARA DO TUMB & ICE TEA
408. 5022 GRACEFUL GOBLET ENCHANTRESS CUT
409. 3355 1 & 3357 3 FLAMINGO FTD SODAS, ALL H
410. 5025 TYROLEAN FTD ICE TEA H
411. 3362 CHARTER OAK LUNCHEON GOBLET 2
412. 3381 CREOLE SAHARA FTD SODA D O 5
413. 3350 WABASH ICE TEA MAYFLOWER ETCH 3 H
414. 4206 OPTIC TOOTH MNGLM SODA 6
415. 3408 JAMESTOWN PARFAIT CUT 2 x
416. 3408 JAMESTOWN PARFAIT 2 H
417. 5024 OXFORD FTD JUICE 4 H
418. 4091 KIMBERLY 5 OZ SODA COURTSHIP CUT
419. 5019 WAVERLY 5 OZ PARFAIT H
420. 3350 WABASH HAWTHORNE 5 OZ PARFAIT CUT H
421. 5082 MID CENTURY PARFAIT H
422. 5082 MID CENTURY PARFAIT H
423. 3350 WABASH 5 OZ SODA D O H
424. 3360 PENN CHART HAWTHORNE PARFAIT CHK OP H
425. 5019 WAVERLY 5 OZ PARFAIT 2 H, REP
426. 3350 WABASH OYS COCKTAIL PIED PIPER ETCH 6 H
427. 1540 LARIAT GOB MOONGLO CUT 8
428. 5011 YORKTOWN GOB HUGUENOT CUT 3
429. 5024 OXFORD GOB MARYLAND CUT 12 H ORIG PACKG
430. 5079 PAN AMERICAN COCKTAIL H m

431. 4044 NEW ERA COCKTAIL 8, 1f
432. 5082 MID CENTURY SHERRY H
433. 5082 MID CENTURY COCKTAIL H
434. 5072 ROSE STEM GOB W O 2
435. 5024 OXFORD GOB IVY ETCH
436. 5019 WAVERLY 3 OZ WINE IVY ETCH 4 H
437. 5024 OXFORD 3 OZ WINE IVY ETCH 4 H
438. 3315 POLONAISE GOB CASSANDRA ETCH 6 2X
439. 5091 CABOCHON GOBLET SOUTHWIND CUT 4
440. 1184 PEACH MELBA N O 4 H
441. 6010 FINESSE GOBLET 5, 1X
442. 3397 GASCONY SAHARA GOBLET
443. 1404 OLD SANDWICH FLAMINGO GOBLET
444. 3440 PORTSMOUTH FLAMINGO D O GOBLET 2, X
445. 3359 PLATEAU FLAMINGO D O CHAMPAGNE
446. 3311 VELVEDERE FLAMINGO D O GOBLET
447. 3324 DELAWARE FLAMINGO D O GOBLET
448. U8005 GALAXY FLAMINGO GOBLET H
449. 1170 PLEAT & PANEL MNGLM LUNCHEON GOBLET
450. 1184 YEOMAN SAHARA GOBLET H X
451. LOT 7 MUSTARD LIDS
452. LOT 2 WAVERLY CIG JAR LIDS, 1 ORCHID ETCH
453. LOT 15 FERRULES
454. LOT 20 FERRULES
455. LOT 6 MOLASSES CAN TOPS, METAL
456. LOT 7 SANITARY TOPS FOR SUGAR SIFTERS
457. SAHARA BOBECHES W/10 PRISMS x
458. LID FOR PLANTATION MARMALADE
459. 4 STOPPERS, 1567, 1540, 1405, FACETED
460. RIDGELEIGH BOBECHES W/PRISMS
461. LOT 4 - #300 BOBECHES, CUT
462. LOT 2 - #300 BOBECHES
463. PLUG FOR #1471 CANDLESTICK, SM f
464. LID FOR #10 INKWEIL H
465. #5 CANDLE SOCKET
466. 2 COLONIAL LIDS - 1 SUGAR, 1 WATER JUG
467. LID FOR NARROW FLUTE MUSTARD
468. TOY HORSEHEAD FROM CIG BOX
469. LOT - 2 TUMBLERS, LID FOR 1567 STICK BUTTER
470. FROSTED LIGHT SHADE 8 IN, NOT HEISEY
471. LOT 5 DECANTER STOPPERS
472. LOT 3 POINTED DECANTER STOPPERS, SOME X
473. LOT 10 MISC CRUET STOPPERS
474. LOT 3 DECANTER STOPPERS, INCL 2 - 1425
475. LOT 7 MISC CRUET STOPPERS
476. LOT 10 MISC CRUET STOPPERS
477. LOT 10 MISC CRUET STOPPERS
478. LOT 10 MISC CRUET STOPPERS
479. BOX LOT 11 STOPPER/DAUBERS, 2 DUCK, 3 COLORED
480. BOX LOT 12 COLOGNE STOPPER/DAUBERS
481. LOT MISC SANITARY S & P INSERTS, SOME X
482. LOT 3 SETS SANITARY TOPS FOR S & P
483. LOT 3 SETS SANITARY TOPS FOR S & P
484. LOT 3 SETS SANITARY TOPS FOR S & P
485. LOT 3 SETS SANITARY TOPS FOR S & P
486. LOT 3 SETS SANITARY TOPS FOR S & P
487. LOT 3 SETS SANITARY TOPS FOR S & P
488. LOT 3 SETS SANITARY TOPS FOR S & P
489. LOT 3 SETS SANITARY TOPS FOR S & P
490. LOT 3 SETS SANITARY TOPS FOR S & P
491. LOT MISC METAL S & P TOPS, 9 PCS
492. LOT 25 A PRISMS
493. LOT 25 A PRISMS
494. LOT 22 A PRISMS
495. LOT 40 A PRISMS
496. LOT OF OVER 40 A PRISMS
497. LOT HEISEY 1 PIECE PRISMS, 2 & 3 IN
498. LOT 20 HEISEY 1 PIECE PRISMS
499. LOT 30 HEISEY 1 PIECE PRISMS
500. LOT APPROX 30 HEISEY 1 PIECE PRISMS
501. LOT 30 HEISEY 1 PIECE PRISMS
502. 2 CRYSTOLITE BOBECHES W/PRISMS
503. 2 CRYSTOLITE BOBECHES W/PRISMS
504. LOT 22, 4 IN C PRISMS, FEW BEADS
505. LOT 6, 5 IN C PRISMS, FEW BEADS
506. LOT 10, 6 IN C PRISMS, NO BEADS
507. LOT 2 WAVERLY LIDS
508. LOT 4 PCS, INCLS COCKTAIL SHAKER STRAINER
509. BOTTOM FOR 1295 COV BUTTER, ROUGH BASE
510. 1519 WAVERLY CANDY JAR BOTTOM ELKS CREST
511. 160 LOCKET ON CHAIN LID FOR COV BUTTER
512. 379 URN COV SUG X, FINIAL REP
513. 1469 RIDGELEIGH COLOGNE BOTTLE, NO TOP
514. COLONIAL CANDLE EPERNETTE H, X
515. 300 PEERLESS BOTTOM FOR COV BUTTER WORN
516. IMPERIAL LAND OF LEGEND SOUV PLATES, 1972, 4
517. LOT 10 MISC CRUET STOPPERS
518. LOT 10 MISC CRUET STOPPERS
519. LOT 4 - #300 CANDLE SOCKETS
520. LOT 10 - #300 CANDLE SOCKETS
521. LOT 10 MISC CRUET STOPPERS
522. LOT 10 MISC CRUET STOPPERS
523. LOT 10 MISC CRUET STOPPERS
524. LOT 5 MISC STOPPERS
525. LOT 20 A PRISMS
526. LOT 14 1 1/2 IN PRISMS
527. LOT 19 2 IN PRISMS
528. LOT 24 A PRISMS
529. LOT 14 C PRISMS, 4 IN W/BEADS
530. LOT MISC GIRONDAL BEADS
531. LOT 15 A PRISMS
532. PARTIAL STRING OF BEADING
533. LOT 20 C PRISMS W/BEADS
534. MOONGLEAM FLOWER FROG FOR #134 BOWL
535. CRYSTAL LADLE
536. CANDELABRA EXTENTION & #1 SPOOL
537. 2 SMALL MUSTARD SPOONS
538. MUDDLER
539. SAHARA & MNGLM STOPPERS FOR 1252 CRUETS
540. MNGLM & FLAM STOPPERS FOR 1170 CRUETS
541. FLAMINGO CANDLE SOCKET TOOTHPICK
542. LOT OF 5 STOPPERS
543. LOT OF 4 MISC PIECES
544. ARM FOR 3 LT CANDELABRA
545. 3 BOBECHES W/PRISMS, 1 EPERNETTE
546. 1504 REGENCY CANDY DISH DIV BOTTOM ONLY
547. MUSEUM DEDICATION PAPERWEIGHT
548. HEISEY AD & ORDER BLANKS
549. 1980 ISSUES OF VOGELS NEWSCASTERS
550. BOX LOT OF ODDS & ENDS, MOSTLY X

End of 10/17/86 session

Beginning of 10/18/86 session

551. 500 OCTAGON FLAMINGO CR & SUG H
552. 1541 ATHENA CR, SUG & TRAY
553. 479 MOONGLEAM HOTEL CR & SUG
554. 1540 LARIAT CR & SUG H
555. 1401 EMP SAHARA IND CR & SUG OLD COL ETCH H
556. 1951 CABOCHON CR, COV SUG, TRAY H
557. 1506 PROVINCIAL IND CR f & SUG H
558. 1201 FANDANGO IND CR & SUG, WORN GOLD
559. 1503 CRYSTOLITE IND CR & SUG H
560. 1401 EMPRESS SAHARA IND CR & SUG H
561. 1503 CRYSTOLITE CR & SUG H
562. 479 FLAMINGO HOTEL CR & SUG
563. 1201 FANDANGO CR & SUG X
564. 411 TUDOR CREAM ? & SUG H
565. 1469 RIDGELEIGH SUGAR H
566. 433 GREEK KEY HOTEL SUG H, WORN
567. 379 URN HOTEL COV SUG H, F
568. 1540 LARIAT SUG CUT H
569. 379 URN 7 OZ SYRUP H, NO TOP
570. 1255 PINE/& FAN CUSTARD PITCHER H SOUV, X HDL
571. 372 FLAMINGO 5 OZ SYRUP H
572. 1205 FANCY LOOP CRUET
573. 1184 YEOMAN SAHARA 4 OZ CRUET D O
574. 1170 PLEAT & PANEL FLAM CRUET, WRONG STOPPER
575. 1184 YEOMAN 2 OZ CRUET, FAINT H
576. 1469 RIDGELEIGH CRUET, WRONG STOPPER
577. 1425 VICTORIAN CRUET H
578. 1235 BEADED PANEL & SUNBURST 4 OZ CRUET X
579. 412 TUDOR 6 OZ CRUET H
580. 433 GREEK KEY 4 OZ CRUET m

581. 1255 PINEAPPLE & FAN CRUET
 582. 1200 CUT BLOCK CRUET, NO STOPPER
 583. 1170 PLEAT & PANEL FLAMINGO CRUET
 584. 305 PUNTY & DIAMOND POINT SYRUP, NO TOP
 585. 4044 NEW ERA 2 LITE CANDELABRA COMPLETE PR
 586. 134 2 LITE CANDLESTICK ENCHANTRESS CUT
 587. 135 SAHARA CANDLESTICKS PR
 588. 300 1 LITE CANDELABRA COMPLETE PR
 589. TALL LAMPS W/CRYSTOLITE CANDLEBLOCKS PR
 590. 21 9 IN CANDLESTICKS PR H
 591. 142 3 LITE CANDLESTICKS BARCELONA CUT PR
 592. 1509 QUEEN ANNE CANDELABRA COMPLETE PR
 593. 21 7 IN CANDLESTICKS H PR, F
 594. 150 BANDED FLUTE HDL CANDLESTICKS PR
 595. 1503 CRYSTOLITE 2 LITE CANDLESTICKS PR
 596. 114 MOONGLEAM CANDLESTICKS PR
 597. 4 9 IN CANDLESTICKS H PR
 598. 4044 NEW ERA 2 LITE CANDLESTICKS PR
 599. 135 MOONGLEAM CANDLESTICKS, PR H
 600. 1503 CRYSTOLITE RND HURRICANES CUT GLOBES X
 601. 1540 LARIAT 2 LITE CANDLESTICKS PR
 602. 112 MERCURY FLAMINGO CANDLES PR W/BOBS X
 603. 21 19 IN BASE
 604. 301 2 LT CANDELABRA SHORT BASE PR COMPLETE
 605. 433 GREEK KEY GOBLET H
 606. 433 GREEK KEY GOBLET H
 607. 451 CROSS LINE FLUTE GOBLET H
 608. 1485 SATURN ZIRCON GOBLET
 609. 4083 STANHOPE ZIRCON GOBLET
 610. 7043 PANEL & DIAMOND POINT GOBLET H
 611. 1170 PLEAT & PANEL FLAMINGO GOBLET
 612. 1506 PROVINCIAL GOBLET
 613. 359 COLONIAL 7 OZ GOBLET H
 614. 351 PRISCILLA GOBLET H
 615. 3404 SPANISH COBALT GOBLET 2
 616. 1405 IPSWICH GOBLET H
 617. 1405 IPSWICH GOBLET H
 618. 1184 YEOMAN GOBLET D O 2
 619. 1590 ZODIAC ICE TEA
 620. U8005 GALAXY FLAMINGO GOBLET H
 621. 1295 BEAD SWAG CUSTARD GOBLET ROSE DECOR
 622. 407 COARSE RIB MOONGLEAM GOBLET H
 623. 337 TOURAINNE AMBER GOBLET H
 624. 5040 LARIAT GOBLET 3 H

ITEMS 625 THRU 637 ARE HEISEY ROSE ETCHED.

625. 5072 ROSE GOBLET 8 H
 626. 5072 ROSE GOBLET H
 627. 5072 ROSE 12 OZ FTD ICE TEA 4 H
 628. 5072 ROSE 12 OZ FTD ICE TEA 6 H, 1 F
 629. 5072 ROSE COCKTAIL 2 H
 630. 5072 ROSE WINE H
 631. 5072 ROSE 5 OZ FTD JUICE H
 632. 5072 ROSE CHAMPAGNES 7 H
 633. 1519 WAVERLY 8 IN PLATE 12
 634. 1519 WAVERLY 8 IN PLATE
 635. 1519 WAVERLY IND CR & SUG
 636. 1519 WAVERLY 8 OZ FTD OIL
 637. 1435 3 IN ASHTRAY
 638. 1495 FERN RELISH FTD HDL 3 COMP CUT
 639. 1503 CRYSTOLITE 13 IN RELISH 3 COMP OVAL M
 640. 1401 EMPRESS MOONGLEAM 7 IN TRIPLEX RELISH
 641. 1185 YEOMAN MARIGOLD 12 IN CELERY TRAY D O
 642. 1401 EMP SAHARA 13IN PICKLE & OLIVE EMP ETCH
 643. 500 OCTAGON 12 IN VARIETY TRAY NIMROD CARV H
 644. 451 CROSS LINE FLUTE 12 CELERY H, F
 645. 1401 EMPRESS SAHARA 10 IN CELERY H
 646. 1184 YEOMAN MARIGOLD 9 IN CELERY EMP ETCH DO
 647. 1540 LARIAT 10 IN 3 COMP RND RELISH H
 648. 394 NARROW FLUTE 12 IN CELERY H
 649. 1191 MNGLM 9 IN HDL SPICE DISH SILVER/CUT
 650. 1252 TWIST MNGLM 13 IN RELISH 3 COMP H
 651. 1252 TWIST FLAMINGO 7 IN PICKLE H
 652. 1220 PUNTY BAND 6 IN PICKLE RED STAIN SOUV H
 653. 150 BANDED FLUTE 17IN SHALLOW P BOWL W/BASE H
 654. 433 GREEK KEY FRENCH ROLL TRAY H
 655. 433 GREEK KEY SM ICE TUB H
 656. 433 GREEK KEY TALL STRAW JAR, NO LID H

657. 333 WALDORF ASTORIA TOOTHPICK FAINT H
 658. 1220 T PICK RED STAIN SOUV 2 1/2 IN SCAL TOP H
 659. 1220 T PICK RED STAIN SCAL TOP 2 IN SOUV
 660. 1220 T PICK RED STAIN SOUV BEAD TOP H
 661. 1235 BEADED PANEL & SUNBURST T PICK, WORN GOLD
 662. 351 PRISCILLA TOOTHPICK H
 663. 352 FLAT PANEL TOOTHPICK
 664. 300 PEERLESS TOOTHPICK H
 665. 315 PANELLED CANE TOOTHPICK
 666. 1295 BEAD SWAG TOOTHPICK RED STAIN SOUV
 667. 310 RINGBAND CUSTARD TOOTHPICK SOUV
 668. 335 PRINCE OF WALES TOOTHPICK RED STAIN H
 669. 300 PEERLESS TOOTHPICK GOOD GOLD
 670. 310 RINGBAND CUSTARD TOOTHPICK SOUV
 671. 351 PRISCILLA TOOTHPICK H
 672. 351 PRISCILLA TOOTHPICK H
 673. 1201 FANDANGO TOOTHPICK
 674. 353 MED FALT PANEL TOOTHPICK TRAY H
 675. 353 MED FLAT PANEL TOOTHPICK TRAY H
 676. 300 PEERLESS TOOTHPICK H
 677. 1295 BEAD SWAG TOOTHPICK RED STAIN SOUV
 678. 310 RINGBAND CUSTARD TOOTHPICK SOUV
 679. 351 PRISCILLA TOOTHPICK
 680. 351 PRISCILLA TOOTHPICK H
 681. 1205 FANCY LOOP EMERALD TOOTHPICK WORN GOLD
 682. 393 NARROW FLUTE DOMINO SUGAR
 683. 4227 FAVOR VASE D O
 684. 4231 COBALT FAVOR VASE D O
 685. 2401 12 OZ SODA TALLY HO ETCH 6
 686. 4036 1 QT COCKTAIL SHAKER TALLY HO ETCH
 687. 2401 12 OZ SODA TALLY HO ETCH 5
 688. 2052 1 1/2 OZ BAR FOX CHASE ETCH
 689. 4002 AQUA CALIENTE COCKTAIL FOX CHASE ETCH
 690. 2401 8 OZ OLD FASHION FOX CHASE ETCH
 691. 2401 12 OZ SODA FOX CHASE ETCH
 692. 2052 BAR TALLY HO ETCH
 693. 2401 7 OZ SODA TALLY HO ETCH
 694. 4052 10 OZ SODA TALLY HO ETCH
 695. 2401 12 OZ SODA TALLY HO ETCH
 696. 3405 ALIBI 3 OZ COCKTAIL CLUB DRINK SCENE
 697. 2401 7 OZ SODA SKIER ETCH
 698. 2401 OLD FASHION NIMROD CARVING
 699. 2401 7 OZ SODA NIMROD CARVING
 700. 2401 12 OZ SODA NIMROD CARVING
 701. 4001 AQUA CALIENTE LANCASTER ETCH
 702. 1401 OLD FASHION POLO PLAYER ETCH
 703. 4002 AQUA CALIENTE ANTARCTIC ETCH
 704. 2401 OLD FASHION, CIRCUS CAMEL ETCH
 705. 2401 OLD FASHION CIRCUS ELEPHANT ETCH
 706. 2401 OLD FASHION CIRCUS WESTERN SCENE ETCH
 707. 2351 TODDY FISHERMAN ETCH
 708. 3397 GASCONY WINE SPORTSMAN ETCH
 709. 4163 12 OZ BEER MUG SPORTSMAN ETCH H
 710. 1184 YEOMAN 8 IN PLATE SAILBOAT CARVING
 711. 5024 OXFORD COCKTAIL WEST POINT CREST ETCH
 712. 5024 OXFORD COCKTAIL WEST POINT CREST ETCH 2
 713. 5024 OXFORD GOBLET WEST POINT CREST ETCH
 714. 1295 BEAD SWAG CUSTARD WINE SOUV
 715. 3397 GASCONY SAHARA WINE
 716. 1205 FANCY LOOP WINE
 717. 5011 YORKTOWN WINE HUGUENOT CUT 3
 718. 1540 LARIAT WINE 3 H
 719. 3304 UNIVERSAL WINES 11
 720. 3333 OLD GLORY WINE DEL MONTE CUT H
 721. 3304 UNIVERSAL CLARETS 4
 722. 1590 ZODIAC WINE H
 723. 1425 VICTORIAN WINE H
 724. 3365 RAMSHORN COCKTAIL UKN CUT
 725. 3389 DUQUESNE SAHARA WINE CHINTZ ETCH
 726. 3312 GAYOSO FLAMINGO WINE D O 2
 727. 373 COLONIAL WINE H
 728. 3330 HANOVER WINE DOUBLE LOOP NEEDLE ETCH
 729. 1055 ASTOR WINE H
 730. 5079 PAN AMERICAN CLARET H
 731. 5086 PLANTATION IVY WINE PLANTATION IVY ETCH H
 732. 1425 VICTORIAN LONG STEM WINE H
 733. 1026 RAMSEY 4 1/2 OZ WHISKEY
 734. 339 CONTINENTAL WINE GOLD DEC H

735. 5024 OXFORD MUSEUM SOUV CLARET 1973
 736. 3411 MONTE CRISTO CLARET KALARAMA CUT
 737. 5011 YORKTOWN CLARET H
 738. 1205 FANCY LOOP WINE
 739. 7009 HYDRANGIA WINE, NOT FROSTED
 740. 300 PEERLESS 1 1/2 OZ WINE 3 H, BRIT REG
 741. 3381 CREOLE WINE SAHARA D O BOWL 3
 742. 3380 OLD DOMINION WINE MNGLM STEM EMP ETCH H
 743. 3304 JAMESTOWN WINE ROSALIE ETCH H
 744. 3380 OLD DOMINION SAHARA WINE EMPRESS ETCH
 745. 3389 DUQUESNE WINE NORMANDY ETCH
 746. 21 9IN ELEC PORT LAMP GL SPIDER H/#1 CUT SHADE
 747. 4262 WATER LAMP MNGLM D O 10 IN BASE ONLY
 748. 1430 ARISTOCRAT HI FT COV CANDY H
 749. 1430 ARISTOCRAT LO FT CANDY H NO LID
 750. 1430 ARISTOCRAT COBALT LO FT CANDY H NO LID
 751. 1205 FANCY LOOP COV CRACKER JAR
 752. 461 7 IN BASKET, CUT H
 753. 417 DOUBLE RIB & PANEL FLAMINGO 6 IN BASKET
 754. 465 RECESSED PANEL 8 IN BASKET H SHOWS WEAR
 755. 459 7 IN BASKET BUTTERFLY CUT H
 756. 459 7 IN BASKET H, M
 757. 459 8 IN BASKET H, m
 758. 1401 EMPRESS D F IND NUT DISH 3
 759. 1401 EMPRESS D F FLAMINGO IND NUT DISH 4
 760. 1401 EMPRESS D F FLAM IND NUT DISH H
 761. 1401 EMP SHARA D F IND NUT DISH 3, 1 H
 762. 1252 TWIST FLAM IND NUT 4 H
 763. 1252 TWIST MNGLM IND NUT 4 H
 764. 1252 TWIST MARIGOLD IND NUT H
 765. 1252 TWIST IND NUT H
 766. 1229 OCTAGON FLAM IND HDL NUT 4 H
 767. 1229 OCTAGON MNGLM IND HDL NUT 2 H
 768. 1229 OCTAGON MNGLM D O IND HDL NUT H
 769. 1469 RIDGELEIGH IND HDL NUT H
 770. 473 NARROW FLUTE W/RIM IND NUT DISH 3 H
 771. 473 NARROW FLUTE W/RIM FLAM IND NUT DISH H
 772. 473 NARROW FLUTE W/RIM MNGLM IND NUT DISH H
 773. 473 NARROW FLUTE W/RIM HAWTHORNE IND NUT H
 774. 473 NARROW FLUTE W/RIM FLAM IND NUT DISH 2 H
 775. 1506 PROVINCIAL IND NUT H
 776. 1540 LARIAT IND NUT 2 H
 777. 473 NARROW FLUTE W/RIM FTD ALMOND 2 H
 778. 3316 BILTMORE D O NUT DISH MNGLM FT
 779. 473 NARROW FLUTE W/RIM FTD ALMOND H
 780. 393 NARROW FLUTE FLAM FTD ALMOND H
 781. 393 NARROW FLUTE FLAM FTD ALMOND 2 H
 782. 393 NARROW FLUTE IND ALMOND H
 783. 393 NARROW FLUTE IND ALMOND H
 784. 393 NARROW FLUTE MNGLM FTD ALMOND 2
 785. 393 NARROW FLUTE MNGLM FTD ALMOND
 786. 433 GREEK KEY FTD ALMOND 2 H
 787. 1454 IND ASH TRAY & JELLY 7 SETS H
 788. 1454 IND ASH TRAY & JELLY 3 SETS
 789. 1454 IND ASH TRAY & JELLY 2 SETS H
 790. 1535 OVAL DIA PT IND ASHTRAY & JELLY H
 791. 1205 FANCY LOOP BUTTER PAT f
 792. 1184 YEOMAN FLAMINGO D O EGG CUP H
 793. 7070 PINE/HEART HAIR RECEIVER H STERL TOP
 794. 7070 PINE/HEART HAIR RECEIVER H STERL TOP
 795. 16 PUFF BOX & COVER H
 796. 350 PINWHEEL & FAN LRG COV POWD, MET TOP
 797. 16 HAIR RECEIVER H M x
 798. 1280 WING SCROLL CLAMBROTH COV TRINKET BOX
 799. 1280 WING SCROLL EMERALD W/GOLD COV TRINKET f
 800. 354 WIDE FLAT PAN 4 1/2 OZ FTD LAV JAR DEC H
 801. 1469 RIDGELEIGH COLOGNE BOTTLE
 802. 1405 IPSWICH WHIMSEY MINI ROSE BOWL H
 803. 1405 IPSWICH CANDLEVASE INSERT H
 804. 1489 PURITAN 2 IN CANDLEBLOCKS PR FULL CUT
 805. 515 FLAMINGO 1/4 OZ COLOGNE D O STOPPER X, H
 806. 485 1 OZ COLOGNE CUT H
 807. 489 2 OZ COLOGNE W/BROKEN DAUBER H
 808. 4224 IVY VASE TANGERINE W O
 809. 1433 THUMBPRINT & PANEL VASE f
 810. 1401 EMPRESS SAHARA D F VASE 2 H, 1 M
 811. 333 WALFORD ASTOR BITTERS BOTTLES W/LABELS 4

812. 4036 1/2 PT DECANTER & 4 1 OZ BARS MOONGLO CUT
 813. 4036 FTD PINT DECANTER CUT
 814. 4225 PT COCKTAIL SHAKER
 815. 4225 QT COCKTAIL SHAKER, CARLTON CUT
 816. 4225 QT COCKTAIL SHAKER CUT W/ROOSTER STOPPER
 817. 4225 QT COCKTAIL SHAKER SILVER DEC CUT
 818. 1404 OLD SANDWICH SAHARA SODAS 5 H
 819. 1404 OLD SANDWICH SAHARA GOB 8
 820. 3404 SPANISH COBALT 10 OZ SODA 2
 821. 1469 RIDGELEIGH 6 1/2 IN FTD SODA H, LEANS
 822. 1404 OLD SANDWICH COBALT FTD SODA H
 823. 1404 OLD SANDWICH SAHARA LO FTD TUMBLER H
 824. 3380 OLD DOM SAHARA D O 5 OZ SODA/OLD COL ET 4

ITEMS 825 THRU 861 ARE ALL ORCHID ETCHED

825. 5025 TYROLEAN LO GOB 4 H, 1 F
 826. 5025 TYROLEAN LO GOB 2
 827. 5025 TYROLEAN CHAMP 4, 1 H
 828. 5025 TYROLEAN SHERBET
 829. 5025 TYROLEAN COCKTAIL
 830. 5025 TYROLEAN COCKTAIL 2, 1 H
 831. 5025 TYROLEAN 5 OZ FTD JUICE 8
 832. 5025 TYROLEAN 5 OZ FTD JUICE 3
 833. 3484 DONNA 12 SODA
 834. 4035 CIGARETTE HOLDER
 835. 1509 QUEEN ANNE CUPS 4 H
 836. 1519 WAVERLY 10 1/2 IN DINNER PLATES 8
 837. 1509 QUEEN ANNE D F ICE BUCKET METAL HDL/TONGS
 838. 4036 QT COCKTAIL SHAKER
 839. 134 2 LITE CANDLESTICKS PR
 840. 142 3 LITE CANDLESTICKS PR
 841. 1519 WAVERLY 12 IN CRIMPED FLORAL BOWL
 842. 1519 WAVERLY 12 IN CRIMPED FLORAL BOWL
 843. 1519 WAVERLY 12 IN CRIMPED FLORAL BOWL
 844. 1540 LARIAT 7 IN CRIMPED VASE
 845. 1519 WAVERLY 7 IN OVAL COMFORT FTD
 846. 1519 WAVERLY CR & SUG H
 847. 1519 WAVERLY 8 OZ OIL FTD
 848. 1519 WAVERLY 8 OZ OIL FTD
 849. 1509 QUEEN ANNE D F MINT DISH
 850. 1519 WAVERLY 7 IN FTD HONEY DISH
 851. 1519 WAVERLY 7 IN RELISH 3 COMPT RND H
 852. 1519 WAVERLY 11 IN 3 COMPT RELISH OBLONG
 853. 1519 WAVERLY 11 IN 3 COMPT RELISH OBLONG
 854. 1509 QUEEN ANNE 10 IN TORTE PLATE
 855. 1519 WAVERLY 10 IN GARDENIA BOWL
 856. 1519 WAVERLY 13 IN GARDENIA BOWL
 857. 1519 WAVERLY 13 IN GARDENIA BOWL
 858. 1519 WAVERLY 14 IN TORTE PLATE, ROLLED EDGE
 859. 1509 QUEEN ANNE 16 IN SNACK RACK PLATE
 860. 1519 WAVERLY 14 IN CENTER HDLD SANDWICH PLATE
 861. 4198 14 1/2 IN BLOWN VASE W O
 862. 3376 ADAM FLAM D O GOB W/ADAM ETCH
 863. 3370 AFRICAN MNGLM STEM & FT D O GOBLET
 864. 3368 ALBEMARLE MARIGOLD GOBLET D O H
 865. 3368 ALBEMARLE AMBER IRID GOBLET D O
 866. 3368 ALBEMARLE BLUE IRID GOBLET D O
 867. 3316 BILTMORE GOBLET UNK CREST
 868. 5067 PLANTATION GOBLET IVY ETCH
 869. 3390 CARSSONNE GOBLET LAFAYETTE ETCH H
 870. 3331 STATUESQUE GOBLET GRECIAN URN ETCH
 871. 3365 RAMSHORN GOBLET SEA NYMPH ETCH H
 872. 4085 KOHINOOR GOBLET CORONATION ETCH
 873. 3389 DUQUESNE GOBLET NORMANDIE ETCH
 874. 5040 LARIAT GOBLET MOONGLO CUT H
 875. 3350 WABASH GOBLET ROYAL YORK CUT
 876. 4069 RIDGELEIGH GOBLET MONO B W M
 877. 3333 OLD GLORY GOBLET CUT
 878. 3333 OLD GLORY GOBLET CUT
 879. 4091 KIMBERLY GOBLET VIRGINIA CUT
 880. 3368 ALBEMARLE GOBLET COURTSHIP CUT
 881. 5077 LEGIONNAIRE GOBLET UNK CUT H
 882. UNK GOBLET 2 H
 883. 839 CONTINENTAL GOBLET
 884. 3335 LADY LEG GOBLET H
 885. 8046 QUEEN GUINEVERE GOBLET H
 886. 3424 ADMIRALTY GOBLET H
 887. 3397 GASCONY GOBLET

888.	5086 PLANTATION IVY GOBLET PLAIN CUT FLUTES H	965.	1295 BEAD SWAG PUNCH CUP RED STAIN SOUV
889.	1184 YEOMAN MNGLM GOBLET D O	966.	1295 BEAD SWAG HDL MUG RED STAIN SOUV
890.	3362 CHARTER OAK MNGLM GOBLET H	967.	1220 PUNTY BAND HDL MUG RED STAIN SOUV
891.	419 SUSSEX COBALT GOBLET H	968.	1255 PINE & FAN 5 IN PITCHER RED STAIN SOUV
892.	4044 NEW ERA COBALT GOBLET	969.	4225 PT COCKTAIL SHAKER ROOSTER STOPPER, US
893.	3440 PORTSMOUTH MNGLM FTD GOBLET	970.	5038 ROOSTER STEM COCKTAIL 2
894.	3440 PORTSMOUTH MNGLM FTD GOBLET	971.	5048 ROOSTER HEAD COCKTAIL 3
895.	3440 PORTSMOUTH FLAM FTD GOBLET	972.	5048 AMBER ROSTER HEAD COCKTAIL
896.	2516 CIRCLE PAIR FLAM GOBLET	973.	MNGLM DUCK STOPPER 2
897.	STANDING COLT	974.	DUCK STOPPER
898.	STANDING COLT f base	975.	MNGLM DUCK STOPPER
899.	STANDING COLT	976.	PENGUIN STOPPER
900.	STANDING COLT	977.	GOOSE STOPPER
901.	STANDING COLT	978.	ROOSTER HEAD STOPPER
902.	KICKING COLT	979.	SMALL HORSEHEAD STOPPER
903.	KICKING COLT, TAIL REPAIR	980.	1519 WAVERLY LION TRINKET BOX H
904.	DONKEY	981.	110 MNGLM DOLPHIN LAMP
905.	DONKEY	982.	1503 CRYSTOLITE MASTER SWAN NUT
906.	OSCAR	983.	1503 CRYSTOLITE IND SWAN NUT 14
907.	OSCAR	984.	1489 PURITAN SM HORSEHEAD COV CIG BOX
908.	AMBER OSCAR	985.	1489 PURITAN SM HORSEHEAD COV CIG BOX
909.	AMBER OSCAR		ITEMS 986 THRU 1048 ARE HEISEY BY IMPERIAL
910.	AMBER FLYING MARE H m	986.	SM FROSTED PINK ELEPHANT
911.	SCOTTY	987.	SM IRID PINK ELEPHANT
912.	SCOTTY	988.	DARK BLUR MOTHER RABBIT
913.	SMALL ELEPHANT	989.	CARAMEL SLAG BUNNIE HEAD DOWN
914.	LARGE ELEPHANT	990.	BLACK TIGER PAPERWEIGHT
915.	LARGE ELEPHANT, C ON TRUNK	991.	DARK BLUE WOOD DUCK
916.	POUTER PIGEON	992.	CARAMEL SLAG WOOD DUCK
917.	POUTER PIGEON	993.	PINK SATIN FLOATING WOOD DUCKLING
918.	CLYDESDALE	994.	CARAMEL SLAG CYGNET
919.	GOOSE WINGS HALF	995.	DARK BLUE SCOTTY
920.	GOOSE WINGS HALF	996.	MILK GLASS SCOTTY
921.	GOOSE WINGS HALF	997.	MILK GLASS RABBIT PAPERWEIGHT
922.	GOOSE WINGS UP	998.	MILK GLASS STANDING PONY
923.	GOOSE WINGS UP	999.	DARK BLUE STANDING WOOD DUCKLING
924.	MALLARD WINGS UP	1000.	DARK BLUE DONKEY
925.	ROOSTER VASE	1001.	DARK BLUE CLYDESDALE ON BUST OFF
926.	FIGHTING ROOSTER BEAK REPAIR	1002.	DARK BLUE GAZELLE
927.	SITTING PIGLET 2	1003.	YELLOW BULL ON BUST OFF X
928.	STANDING PIGLET	1004.	CRYSTAL FILLY HEAD BACK
929.	SPARROW	1005.	CRYSTAL FILLY HEAD FORWARD
930.	CYGNET	1006.	CARAMEL SLAG STANDING PONY
931.	CYGNET	1007.	CARAMEL SLAG STANDING PONY
932.	FISH BOOKEND 2	1008.	H C A SOUV OSCAR GREEN 1977
933.	FISH BOWL H	1009.	H C A SOUV OSCAR YELLOW 1979
934.	ASIATIC PHEASANT, RT JAW MISSING X, H	1010.	H C A SOUV OSCAR PURPLE FROSTED 1979
935.	ASIATIC PHEASANT, H	1011.	H C A SOUV OSCAR PURPLE FROSTED 1979
936.	RINGNECK PHEASANT FROSTED m BASE	1012.	H C A SOUV OSCAR LT BLUE 1981
937.	RINGNECK PHEASANT FROSTED	1013.	H C A SOUV OSCAR DARK GREEN 1982
938.	GIRAFFE HEAD BACK m	1014.	YELLOW HEN
939.	GIRAFFE HEAD TURNED	1015.	PINK FROSTED HEN
940.	3390 CARCASSONNE SAHARA LO FTD GOB W O 6, 1F	1016.	CARNIVAL RINGNECK PHEASANT
941.	3390 CARCASSONNE SAHARA CHAMP W O 6	1017.	AMBER STANDING PIGLET
942.	3390 CARCASSONNE SAHARA SHERBET W O 6, 1X	1018.	AMBER SITTING PIGLET
943.	3390 CARCASSONNE SAHARA CHAMP W O XXX	1019.	DARK GREEN SWAN HANDLED PITCHER
944.	1401 EMPRESS SAHARA D F MAYO W/LADLE H	1020.	AMBER LION TRINKET BOX
945.	1401 EMPRESS SAHARA 7 IN TRIPLEX RELISH	1021.	DARK AMETHYST ELEPHANT HDL MUG, NIXON - FORD
946.	1401 EMPRESS SAHARA DOLPH FIN COV LEMON CUT H	1022.	AURORA JEWELS ELEPHANT HDL CHILDS MUG 2
947.	1401 EMPRESS SAHARA D F CR, SUG & TRAY H	1023.	MILK GLASS ELEPHANT HDL CHILDS MUG
948.	1401 EMPRESS SAHARA IND CR, SUG & TRAY H	1024.	LT GREEN IRID ELEPHANT HDL CHILDS MUG
949.	1401 EMPRESS SAHARA 13 IN CELERY 2	1025.	VERDE GREEN ELEPHANT HDL CHILDS MUG
950.	1401 EMPRESS SAHARA D F ICE BUCKET METAL HDL H	1026.	LRG GREEN FROSTED BALL VASE
951.	1401 EMPRESS SAHARA D F PITCHER H	1027.	VERDE GREEN IPSWICH COV CANDY
952.	1401 EMPRESS SAHARA 10 IN HDL SALAD BOWL H	1028.	AMETHYST IPSWICH FLORAL BOWL
953.	1401 EMPRESS SAHARA 4 1/2 IN NAPPY 7 H	1029.	PINK FLARED CATHEDRAL VASE
954.	SAHARA COLD LINER 3 H	1030.	BROWNISH AMETHYST SPIRAL OPTIC VASE
955.	1401 EMPRESS SAHARA D F 6 IN MINT 2 H	1031.	VERDE GREEN ZODIAC SODAS 6
956.	1401 EMPRESS SAHARA 7 1/2 RND PLATES 6 H	1032.	VERDE GREEN OLD WMSBURG SODA
957.	1401 EMPRESS SAHARA 8 IN SQ PLATE 10 H	1033.	NUT BROWN OLD WMSBURG GOBLET
958.	1401 EMPRESS SAHARA 7 IN SQ PLATE 9 H	1034.	AMBERINA OLD WMSBURG GOBLET
959.	1401 EMPRESS SAHARA 8 IN RND PLATE 8 H	1035.	LT GREEN OLD WMSBURG GOBLET
960.	1401 EMPRESS SAHARA C/RND SAUCERS, 7 SETS H	1036.	SMOKE OLD WMSBURG GOBLET
961.	1401 EMPRESS SAHARA 6 IN RND SAUCERS 2 H	1037.	PLANTATION COCKTAIL AMBER STEM
962.	1401 1/2 EMPRESS SAHARA C/RND SAUCERS 4 SETS H	1038.	PLANTATION COCKTAIL AMBER STEM 4
963.	1401 EMPRESS SAHARA DEMITASSE C/S 6 SETS H	1039.	VERDE GREEN PROVINCIAL TUBLERS 4
963A.	1401 EMPRESS SAHARA D F IND NUT DISH 6	1040.	DARK GREEN TOY CANDLESTICKS PR
964.	1200 CUT BLOCK CREAMER RED STAIN SOUV		

PAID ADVERTISEMENT

1041.	AMBER LODESTAR ASH TRAY	1117.	3390 CARCASSONNE SAHARA LOW GOB OLD COL ETCH
1042.	AMBER COLONIAL COV CANDY	1118.	1483 STANHOPE GOBLET FROSTED MATTE ETCH
1043.	AZALEA VICTORIAN COMPOTE	1119.	339 CONTINENTAL GOBLET H
1044.	BLACK PURITAN BRIDGE SET ASH TRAYS, 4 PCS	1120.	3350 WABASH GOBLET FRONTENAC ETCH H
1045.	AURORA JEWELS TOP HAT TOOTHPICK 3	1121.	U8029 PRINCESS LILY GOBLET H
1046.	2 VERDE GREEN WAVERLY LIDS FOR CANDY	1122.	411 TUDOR GOBLET H
1047.	2 BLUE LIDS 1 WAVERLY CANDY, 1 ZODIAC	1123.	1235 BEADED PANEL S/BURST IND SALT 4, ROUGH
1048.	AMBER PEERLESS COV SUGAR	1124.	1469 RIDGELEIGH IND SALT 4 H
1049.	H C A VASELINE CUP PLATE HORSE & RIDER	1125.	1183 REVERE FLAM SALT TUB
1050.	H C A VASELINE CUP PLATE FANDANGO PITCHER	1126.	1183 REVERE MNGLM SALT TUB
1051.	H C A CRYSTAL CUP PLATE FANDANGO PITCHER	1127.	1183 REVERE FLAM SLAT TUB 3
1052.	3366 TROJAN CORDIAL CUT	1128.	1201 FANDANGO IND SALT 2
1053.	3390 CARCASSONNE CORDIAL OLD COLONY ETCH	1129.	331 COLONIAL IND SALT f
1054.	3304 UNIVERSAL CORDIAL	1130.	1225 PLAIN BAND IND SALT
1055.	3304 UNIVERSAL 1 OZ POUSSE CAFE	1131.	1183 REVERE SALT TUB CUT H
1056.	4044 NEW ERA CORDIAL H	1132.	1183 REVERE SALT TUB CUT H
1057.	6003 TEMPO CORDIAL H	1133.	1183 REVERE SALT TUB CUT H
1058.	300 PEERLESS CORDIAL 2 H, BRIT REG MARK	1134.	429 PLAIN PANEL RECESS IND SALT 3
1059.	300 PEERLESS CORDIAL 5 H	1135.	429 PLAIN PANEL RECESS IND SALT 4, 2 H
1060.	5078 PARK AVENUE CORDIAL H	1136.	393 NARROW FLUTE IND SALT H
1061.	5019 WAVERLY CORDIAL 3 H, REP TO BOTTOM	1137.	1235 BEADED PANEL S/BURST IND SALT f
1062.	5024 OXFORD CORDIAL IVY ETCH H	1138.	379 URN IND SALT
1063.	373 OLD WMSBRG CORDIAL H	1139.	1183 REVERE IND SALT
1064.	393 NARROW FLUTE CORDIAL H	1140.	393 NARROW FLUTE IND SALT H
1065.	5013 SHASTA CORDIAL COURTSHIP CUT	1141.	1183 REVERE IND SALT
1066.	3366 TROJAN CORDIAL TROJAN ETCH MNGLM STEM H	1142.	1205 FANCY LOOP IND SALT 4
1067.	412 TUDOR 2 OZ BAR FLARED H	1143.	12000 CUT BLOCK IND SALT f
1068.	3481 GLENFORD MNGLM FT 3 OZ COCKTAIL	1144.	1225 PLAIN BAND IND SALT H f
1069.	1404 OLD SANDWICH SAHARA 1 OZ BAR H	1145.	1469 RIDGELEIGH IND SALT 8 IN ORIG BOX FEW H
1070.	1404 OLD SANDWICH SAHARA 1 OZ BAR H	1146.	31 TOY HDLD CANDLESTICKS PR 1 H
1071.	6060 COUNTRY CLUB 2 OZ BAR TORPEDO SHAM	1147.	31 TOY HDLD CANDLESTICKS PR 1 H
1072.	6060 COUNTRY CLUB 2 OZ BAR TORPEDO SHAM 5	1148.	31 TOY HDLD CANDLESTICKS PR H
1073.	412 TUDOR 2 OZ BAR FLARED H	1149.	5 5 IN TOY CANDLESTICKS PR H
1074.	150 BANDED FLUTE BAR OR TOOTHPICK H	1150.	30 TOY CANDLESTICK H
1075.	1469 RIDGELEIGH 1 OZ BAR H	1151.	33 TOY CANDLESTICK H
1076.	1486 COLEPORT BAR H f	1152.	33 TOY CANDLE H
1077.	2401 1 OZ BAR PIED PIPER ETCH	1153.	33 TOY CANDLE H
1078.	1425 VICTORIAN 2 OZ BAR H	1154.	305 PUNTY & DIA POINT COLOGNE NO LID
1079.	4054 CORONATION 2 OZ BAR 2	1155.	352 KNIFE REST H
1080.	2323 NAVY BAR PLAIN	1156.	1220 PUNTY BAND CUSTARD SALT & PEPPER SOUV 1C
1081.	3481 GLENFORD D O FLAM 1 1/2 OZ BAR	1157.	433 GREEK KEY SHAKER H
1082.	3480 KOORS 29 FLAM D O FTD BAR	1158.	433 GREEK KEY SHAKER H
1083.	4159 21 OZ ICE LIP JUG	1159.	1567 PLANTATION SALT & PEPPER H
1084.	335 PRINCE OF WALES WATER JUG H WORN GOLD X	1160.	3480 PLATEAU FLAM D O SALT & PEPPER
1085.	1205 FANCY LOOP TANKARD, GOOD GOLD X HDL	1161.	COLONIAL SALT & PEPPER CLOUDY H
1086.	1225 PLAIN BAND TANKARD	1162.	1485 SATURN SALT & PEPPER, STERLING TOPS
1087.	1205 FANCY LOOP TANKARD NO GOLD	1163.	1519 WAVERLY SALT & PEPPER, STERLING TOPS H
1088.	300 PEERLESS CLARET JUG	1164.	1401 EMP S & P GL TOPS CHINTZ ETCH 1 CLOUDY
1089.	379 URN JUG, ROUGH ON EDGES X	1165.	1489 PURITAN ? SALT & PEPPER
1090.	2516 CIRCLE PAIR FLAM D O 2 QT PITCHER X HDL	1166.	46 FLAMINGO SALT SHAKER
1091.	150 BANDED FLUTE 3 PT JUG H	1167.	1519 WAVERLY SALT SHAKER, SILVER ROSE DEC
1092.	4206 OPTIC TOOTH FLAM D O 3 PT JUG	1168.	1205 FANCY LOOP SALT SHAKER FAIR GOLD
1093.	517 QT JUG W/TUMBLER CUT H	1169.	1404 OLD SANDWICH FLAM SALT SHAKER
1094.	1404 OLD SANDWICH SAHARA ICE LIP PITCHER H	1170.	352 COLONIAL FLARED ICE CREAM CONE HOLDER
1095.	1404 OLD SANDWICH FLAM PITCHER H	1171.	1425 VICTORIAN CONDIMENT SET H, NO PADDLE
1096.	1401 EMPRESS SAHARA D F PITCHER	1172.	394 NARROW FLUTE COV MUSTARD & PADDLE H
1097.	4164 73 OZ JUG, 6 GOBLET'S ALL WINDSOR CUT	1173.	393 NARROW FLUTE COV MUSTARD H c
1098.	1567 PLANTATION SODA 8 & NON HEISEY JUG CUT	1174.	1252 TWIST MNGLM COV MUSTARD H
1098A.	341 1/2 PURITAN 3 PT PITCHER H, X HDL, WORN	1175.	351 COLONIAL COV MUSTARD H
1099.	4004 IMPROMPTU 10 OZ GOBLET	1176.	351 COLONIAL COV MUSTARD & PADDLE H
1100.	804 BRUNSWICK GOBLET	1177.	1401 EMPRESS FLAM COV MUSTARD H
1101.	3325 RAMPUL HAWTHORNE D O GOBLET	1178.	1469 RIDGELEIGH COV MUSTARD H
1102.	U8032 CAPITAL GOBLET	1179.	5010 SYMPHONY GOBLET MINUET ETCH 9
1103.	3324 DELAWARE FLAM D O GOBLET	1180.	5010 SYMPHONY SHORT GOBLET MINUET ETCH 8
1104.	3390 CARCASSONNE GOBLET OLYMPIAD ETCH	1181.	5010 SYMPHONY COCKTAIL MINUET ETCH 9
1105.	3312 GAYOSO GOBLET ACROPOLIS ETCH	1182.	5010 SYMPHONY COCKTAIL MINUET ETCH
1106.	341 PURITAN 9 OZ GOBLET H	1183.	5010 SYMPHONY SHERBET MINUET ETCH 12, 3 f
1107.	3380 OLD DOMINION GOBLET MNGLM BOWL	1184.	5010 SYMPHONY SHERBET MINUET ETCH 7, 1 f
1108.	5067 PLANTATION GOBLET IVY ETCH H	1184A.	1509 QUEEN ANNE 8 IN PLATES MINUET ETCH 8
1109.	3320 ELEGANCE GOBLET ROSE ETCH	1185.	1509 QUEEN ANNE FTD HDL MINT, MINUET ETCH H
1110.	3404 SPANISH COBALT GOBLET W O	1186.	1509 QUEEN ANNE D F 6 IN MINT MINUET ETCH
1111.	818 FIFTH AVENUE GOBLET N O H	1187.	1509 QUEEN ANNE D F CR & SUG MINUET ETCH x
1112.	5092 EMPRESS LILY GOBLET	1188.	3390 CARCASSONNE COBALT CIG HOLDER
1113.	3355 FAIRACRE GOBLET D O H	1189.	3390 CARCASSONNE SAHARA CIG HOLDER
1114.	5010 SYMPHONY GOBLET MINUET ETCH MINUET LABEL	1190.	3390 CARCASSONNE CIG HOLDER MONOGRAM
1115.	3390 CARCASSONNE COBALT GOBLET	1191.	3390 CARCASSONNE CIG HOLDER
1116.	3331 STATUESQUE GOBLET GRECIAN URN ETCH H	1192.	1469 RIDGELEIGH 2 1/2 IN COASTER 5, H
		1193.	1184 YEOMAN FLAM 4 IN HDLD ASHTRAY

1194. 1503 CRYSTOLITE IND LEAF NUT 4, 2 H
 1195. 1404 OLD SANDWICH IND ASHTRAY 5 H
 1196. 1404 OLD SANDWICH COBALT IND ASHTRAY H
 1197. 1404 OLD SANDWICH COBALT IND ASHTRAY H
 1198. 1404 OLD SANDWICH COBALT IND ASHTRAY H
 1199. 1404 OLD SANDWICH SAHARA IND ASHTRAY H
 1200. 1404 OLD SANDWICH IND ASHTRAY 4 H
 1201. 1401 EMPRESS COBALT DIAMOND ASHTRAY H, f
 1202. 1401 EMPRESS DIAMOND ASHTRAY H
 1203. 441 GRAPE LEAF SQUARE FLAMINGO ASHTRAY
 1204. 1489 PURITAN 6 IN ASHTRAY CUT
 1205. 1469 RIDGELEIGH 3 1/2 IN COASTER 2, 1f
 1206. 1469 RIDGELEIGH LIMELIGHT 3 1/2 IN COASTER 2
 1207. 1540 LARIAT 4 IN COASTER 4
 1208. 1469 RIDGELEIGH SAHARA 3 1/2 IN COASTER 4
 1209. 9 3 IN COASTER, 6 H, 1f
 1210. 351 PRISCILLA IND BUTTER 5 H
 1211. 1540 LARIAT WINE
 1212. 3366 TROJAN SAHARA D O OYSTER COCKTAIL
 1213. 3381 CREOLE SAHARA D O OYSTER COCKTAIL
 1214. 3380 OLD DOM SAHARA D O OYS COCK OLD COL ET 7
 1215. 365 OLD QUEEN ANNE EGG CUP 2 H
 1216. 4091 KIMBERLY COCKTAIL COURTSHIP CUT 2, 1REP
 1217. 3381 CREOLE COCKTAIL ALEXANDRITE BOWL ONLY
 1218. 3381 CREOLE COCKTAIL ALEXANDRITE
 1219. 3368 ALBEMARLE WINE FLASHED GOLD
 1220. 419 SUSSEX MNGLM COCKTAIL 2 H
 1221. 1483 STANHOPE COCKTAIL
 1222. 3304 UNIVERSAL COCKTAIL W O
 1223. 3362 CHARTER OAK FLAMINGO D O WINE 2 H
 1224. 6010 FINESSE COCKTAIL ULTRONIC CUT
 1225. 1540 LARIAT COCKTAIL
 1226. 5019 WAVERLY COCKTAIL
 1227. 373 COLONIAL COCKTAIL 3 H
 1228. 5011 YORKTOWN COCKTAIL HUGUENOT CUT 8
 1229. 5079 LEGIONNAIRE COCKTAIL ARCADIA CUT 5 H
 1230. 3408 JAMESTOWN COCKTAIL BARCELONA CUT 3 H
 1231. 5019 WAVERLY COCKTAIL 3
 1232. 359 COLONIAL 3 OZ COCKTAIL 4 H
 1233. 350 PINWHEEL & FAN 8 IN NAPPY H
 1234. 4056 11 SALAD BOWL COHASSETT CUT
 1235. 433 GREEK KEY 7 1/2 IN NAPPY H
 1236. 1509 QUEEN ANNE HDLD DTD 8 IN BOWL H
 1237. 1231 OCTAGON SAHARA CENT HDLD SANDWICH TRAY H
 1238. 343 SUNBURST 11 IN SHALLOW NAPPY H, F
 1239. 1503 CRYSTOLITE SHELL COV CANDY
 1240. 1503 CRYSTOLITE SHELL COV CANDY
 1241. 1503 CRYSTOLITE SHELL COV CANDY M
 1242. 1401 EMPRESS SAHARA D F 6 IN COV CANDY H
 1243. 1540 LARIAT 5 1/2 IN COV CANDY
 1244. 341 PURITAN MEDIUM COV MARMALADE JAR H, F
 1245. 1495 FERN MAYO BOWL/PLATE BELVEDERE ETCH
 1246. 1252 TWIST MAYO
 1247. 1183 REVERE COMFORT SWIRL OPTIC MNGLM STEM H
 1248. 1252 TWIST MNGLM 7 IN HI FTD COMFORT
 1249. 1540 LARIAT ROLLED EDGE VASE 4 IN HIGH
 1250. 1509 QUEEN ANNE MAYO ROSALIE ETCH
 1251. 1229 OCTAGON MNGLM D O FTD MAYO
 1252. 1229 OCTAGON HAWTHORNE FTD MAYO
 1253. 341 PURITAN HIGH FTD JELLY H
 1254. 1519 WAVERLY OVAL NUT FTD COMFORT
 1255. 3380 OLD DOM FTD GRAPEFRUIT D O MNGLM STEM H
 1256. 1565 DAWN 6 1/2 IN OVAL JELLY H
 1257. 412 TUDOR HAWTHORNE HDL MAYO W/PLATE H
 1258. 1125 8 IN PLATE WORN H
 1259. DEEP PLATES 8 IN, 2 H CUT
 1260. 1184 LOW FTD SALVER MNGLM BASE H
 1261. 352 FLAT PANEL CANDY TRAY 8 IN H
 1262. 1252 TWIST MARIGOLD 4 IN PLATE H
 1263. 8 IN PLATE W/DOLLY MADISON ROSE CUT
 1264. 8 IN DEEP PLATE CUT H
 1265. 411 TUDOR 11 IN PLATE CUT H
 1266. 9 1/2 IN DEEP PLATE CUT
 1267. 12 IN PLATE CUT
 1268. 1127 FINE TOOTH 7 IN PLATE SILVER DECOR H
 1269. 1232 MOONGLEAM 8 IN PLATE H
 1270. 1238 BEEHIVE FLAMINGO 8 IN PLATE f
 1271. 1401 EMPRESS FLAMINGO SAUCERS 7 H
 1272. 407 COARSE RIB 7 IN PLATES 11 H
 1273. 393 NAR FLUTE 7 IN PLATES 4 H, 1 COL PLT H
 1274. 1225 8 IN PLATES 6 FAINT H
 1275. RIDGELEIGH TYPE 8 IN PLATE
 1276. 393 NARROW FLUTE 5 IN PLATES 5 H
 1277. 4 1/2 IN PLATE H
 1278. 1540 LARIAT SAUCER
 1279. 393 (2) & 407 (1) 6 IN PLATES H
 1280. 1509 QUEEN ANNE 7 1/2 IN PLATE
 1281. 1252 TWIST NEWARK SESQUI PLATTERS 12 IN (2)

MAIL BIDS ACCEPTED WITH CHECKS FOR MAXIMUM AMOUNT. MAIL BIDS ARE HANDLED COMPETITIVELY AND ANY DIFFERENCE REFUNDED. CONDITION OF ITEMS FOR MAIL BIDS HANDLED AT THE DISCRETION OF AUCTIONEER. ITEMS HAVE BEEN CHECKED AT THE TIME OF CATALOGING TO THE THE BEST OF OUR ABILITY. THEY WILL BE CHECKED AGAIN CLOSELY PRIOR TO SELLING. IN SOME CASES WHERE DAMAGE IS FOUND TO BE MINIMAL, WE MAY EXECUTE YOUR BID UP TO 70% TO 80% OF MAXIMUM. MARK YOUR LIST MINT ONLY IF YOU DO NOT WANT US TO USE OUR DISCRETION IN EXECUTING YOUR BIDS. MOLD FLAWS ARE NOT CONSIDERED DAMAGE. PLEASE BID IN INCREMENTS OF AT LEAST \$2.50. EXAMPLE - DO NOT BID 11.00 OR 26.00, AS BIDDING IS GOING LIKE 25.00 - 27.50 - 30.00. IT IS NO LONGER POSSIBLE TO ACCEPT BIDS LIKE "IF I DON'T GET ONE ITEM ADD IT ON TO ANOTHER". WE ARE NOW HANDLING IN EXCESS OF 600 MAIL BIDS PER AUCTION. WHEN COMPLICATIONS ARE THROWN IN SOMETIMES WE MISS A BID. ANY BID OF 5.00 OR LESS WILL BE USED AS AN OPENING BID. IN CASE OF IDENTICAL BIDS, EARLIEST POSTMARK WILL BE USED. YOU CAN HELP US TO HELP YOU. WE ENJOY HANDLING YOUR MAIL BIDS. IF YOU HAVE ANY QUESTIONS - DON'T HESITATE TO CALL US. PLEASE ADD 9.00 PER CARTON FOR POSTAGE AND HANDLING, 11.00 WEST OF ROCKY MOUNTAINS.

CHECKS SHOULD BE MADE TO: APPLE TREE AUCTION CENTER
 1616 WEST CHURCH STREET
 NEWARK, OHIO 43055

LIST OF PRICES REALIZED AVAILABLE AFTER AUCTION FOR \$1.00.

PLEASE NOTE THE FOLLOWING CONDITION CODES TO HELP IN BIDDING:

F f FLAKE B b BRUISE R r REPAIRED
 C c CRACK M m MOLD FLAW X x MAJOR DAMAGE

SAM SCHNAIDT & TIM HUGHES, AUCTIONEERS (614) 344 - 4282
 FRANK FRYE, MANAGER (614) 345 - 4001

A.W. PARKER Heisey & Pattern Glass Shows or Appointment Magalia, CA 95954 PH: (916) 873-2326	"HAPPINESS IS" THE STULTZ'S Show and Mail - Elegant Glass Circa 1890-1960 3106 Warren Court Glen Allen, VA 23060 PH: (804) 262-1273 (Richmond Area)	EAGLES REST ANTIQUES China Heisey Antiques Mary Evans 62 Fieldpoint Rd. Heath, Oh. 43056 PH: (614) 522-2035	SYD'S A&J at THATCHERS FORGE Heisey, Collectible, & Antique Glass 338 Bank St., Harwich Center Cape Cod, Mass 02645 Chance or Appointment PH: (617) 432-3007
A DOOR ANTIQUES Heisey My Specialty 4241 Bayard Road South Euclid, OH 44121 PH: (216) 381-3008	GERT'S GLASS Heisey & Duncan Gertrude & Russell Svetnam 1926 Saratoga Dr., Adelphi, MD 20783 PH: (301) 434-5113	MOSTLY HEISEY Rhoda Curley 16 Clayton Place Albany, NY 12209 By Appointment, PH: (518) 482-6272	J.J. & BOB MC KEE Pottery Glassware Collectibles 334 W. 75th St. Kansas City, MO. 64114 wed-sun 10-5 (816) 361-2544
ALL HEISEY AUCTION Consignments Welcome Apple Tree Auction Center 1616 W. Church, Newark, OH 43055 PH: (614) 344-9449	VIRGINIA AND ODELL JOHNSON Rt. 1, Box 1324 Hayward, WI. 54845 PH: (715) 462-3753	MOUND BUILDERS ANTIQUES Heisey & Animals, General Antiques Irene Rauck 1138 Moundview, Newark, OH 43055 PH: (614) 344-6043	SINGLETREE ANTIQUES Cut, Pattern & Heisey Glass 10717 Staples Mill Rd, Glen Allen, Va. 23060 Chance or appointment (804) 266-3795
ANN'S GIFTS & ANTIQUES 105 W. Main St., Hebron, OH 43025 Intersection of Rts. 40 & 79 Next door to Daisy Queen Daily 10:30 to 5:30	GLASS WITH CLASS Lenore A Shelley, GGHC 1336 Lincoln Avenue San Jose, CA 95125 PH: (408) 286-8098	HELEN & JIM KENNON Heisey, Cambridge, Fostoria, Duncan, Imperial, Fenton, Tiffin P.O. Box 414 Brookville, OH 45309 PH: (513) 833-5406 SHOWS ONLY	THE PURPLE PLACE Featuring Heisey & Other Fine Glass Martha & Harold Earp 1940 Suwanee, Ft. Myers, FL 33901 PH: (813) 936-1572 Anytime
ANTIQUES - THE SHULTZES 206-208 East Main St. Newmanstown, PA 17073 15 Miles West of Reading, PA PH: (215) 589-2819	GREEN ACRES FARMS Antiques, Crystal Glass & Collectibles 2678 Hazelton-Etna Rd., SW (S.R. 310-N) Pataskala, OH 43062 Sat. or Sun. PM or call (614) 927-1882	R & L ANTIQUES - SAN FRANCISCO Shows only - always lots of Heisey Member of Golden Gate Heisey Club P.O. Box 3614 Daly City, CA 94015 PH: (415) 621-6693	TACOMA ANTIQUE GALLERY A Collectors' Mall 745 Broadway Downtown Tacoma, WA 98402 (Stop on the way to Expo 86)
AVERY'S QUALITY ANTIQUES Specializing in Heisey Shows or by Appointment 2112 First St., Jackson, MI 49203 PH: (517) 783-4075	H & R DIAMOND H Helen & Robert Rarey 1450 White Ash Dr. Columbus, OH 43204 PH: (614) 279-0390 after 5:30	RAMBLING LANE ANTIQUES Featuring Heisey & other fine glass Keith & Evelyn Hoover 1978 Rambling Lane, Rhinelander, WI 54501 PH: (715) 282-5019	ALFA I CARRIAGE HOUSE ANTIQUES Featuring Depression & Elegant Glassware Al & Faye Maness 508 E Cary Street Richmond, VA 23219 PH (804) 788-1630
B & B HEISEY & COLLECTIBLES B. Whaley 300 International Dr. Pataskala, OH. 43062 By Appointment: PH: (614) 927-1557	CHARLOTTE'S GLASS REFLECTIONS Quality Glassware Specializing in Fostoria 6816 14th St. W., Bradenton, FL 33507 PH: (813) 756-4143	RAY ZIEGLER Glass Repair 185 County Line Westerville, OH 43081 PH: (614) 891-9700	
C.E. HIGGINS (S.F. Bay Area) Shows and Mail Order P.O. Box 2723 Menlo Park, CA 94025 PH: (415) 322-0192 Evenings	HARRALSON'S HAPPY HEISEY HUNTERS Sponsdr SPFD. MO's Super Antique Show 77 Quality Dealers From 10 States 1986 Dates: May 31-June 1 Nov. 15-16 Info: 1426 W. Highland, Springfield, MO. 65807	SCHWAN'S ANTIQUES SHOWS & MAILORDER 77 Lagos del Norte Ft. Pierce, FL 33451 PH: (305) 461-5940	
C & J ANTIQUES Cole & Jean Miesner Box 45, 72 Whig St. Newark Valley, NY 13811 PH: (607) 642-9905	HARRISON'S ANTIQUES Heisey, Cambridge, Duncan Shows, Mail, by Appointment 26 Johnston's Lane, Mercersburg, PA 17236 PH: (717) 328-2451	SUM OF LIFE Elaine & Frank Husted P.O. Box 102 Phoenixville, PA 19460 PH: (215) 935-2962	
CHARLES & MILDRED FISHER Heisey, Degenhart, Imperial, Antiques, Collectibles, General Line 991 Idlewild, Newark, OH 43055 PH: (614) 522-5398	NANCY'S ANTIQUES Heisey, Cambridge, Fostoria, Fenton Elegant Glassware of the Depression Era 906 44th NW Canton, OH 44709 shows only PH (216) 492-2595 After 6:00 PM	ETTELMAN'S DISCONTINUED CHINA & CRYSTAL HEISEY a SPECIALTY P.O. Box 6491-HN Corpus Christi, TX 78411 PH: (512) 888-8391 Include SASE	One of these spaces could be yours.
DAVE'S ANTIQUES Specializing in Heisey Shows & Appointments Tampa, FL 33600 PH: (813) 876-0580		THE GLASS CONNECTION Specializing in Heisey Shows & Mail Order Box 526, Collegeville, PA 19426 PH: (215) 489-0139	
DIAMOND H PLUS Mail Orders & Shows George & Eileen Schamel Rt. 3, Box 171, Boonsboro, MD 21713 PH: (301) 432-6285	J. & R. COLLECTIBLES Shows, SASE, Mail Order list June & Ray Lukasko P.O. Box 1030, Newark, OH 43055 PH: (614) 344-9719	THE GLASS LADY Week-Ends Only Glass, Pottery, China Circle Shopping Center, Richmond, VA 23224 SHOP (804) 230-9239 HOME (804) 271-1555	
ELLIZABETH BASSETT CASON 401 32nd St., W. Bradenton, FL 33505 Mail Order - List PH: (813) 748-0851	PATTON HOUSE Heisey & Duncan Miller Rocky's Mall, I-81 & US 11 Weyer's Cave, VA 24486 PH: (703) 967-1181	WILLEY'S ANTIQUES & MUSEUM Specializing in Heisey 11110 Cannon Rd., Frazeyburg, OH 43822 16 miles east of Newark, OH PH: (614) 828-2557	
FOREVER HEISEY Shows and Mail Order Janice Thran 1663 Londondale Pkwy., Newark, OH 43055 PH: (614) 344-5955	GRETA * GARBO Antiques and Collectibles Heisey, Crystal, Silver, Jewelry Unicorn Mall, 310 Fifth Ave., San Diego, Ca. 92101 Greta Jennings - Home (619) 562-5745	GOLDSBERRY'S ANTIQUES Heisey a Specialty Shows only - Buy & Sell Kalamazoo, MI 49000 PH: (616) 381-3013	
DIE KUNST GALLERIES & ANTIQUES Specializing in Heisey Vel & Andy Andress Box 329, 725 Front Street Leavenworth, WA 98826 PH: (509) 548-7856	PEGGY'S ANTIQUES Ernie & Peggy Cox P.O. Box 367, Spavinaw, OK 74366 By Appointment or Chance PH: (918) 589-2859	THE WOODEN SHOE Antiques & Collectibles Jim & Sheri VanEs by Appt. 810 Elden, Herndon, VA 22070 PH: (703) 435-9045	
HOMETOWN TREASURES P.O. Box 1859, Jackson, MI 49204 Phone: 517-782-8955 Cal and Dot Meyer "Heisey's the Thing"	CRAFTS ENTERPRISES Arlene & Ed Crafts 187 N Pioneer Ave. Shavertown, PA 18708 PH: (717) 675-8553	BETTY'S ICE HOUSE ANTIQUES Betty & Elmer Puestow 517 Fulton Street, Wausau, Wis. 54401 Heisey & Quality Glass PH (715) 848-7145	

HEISEY REFERENCE PUBLICATIONS

68. HEISEY BY IMPERIAL, by Newark Heisey Collectors Club - Second Edition - Updated and.....\$ 6.95 added pages. Soft bound - Includes price trends and color plate. Every piece of every pattern made by Imperial is listed and priced in all colors used for the pattern. All items are dated. A must for the collector or dealer specializing in Heisey or Imperial glass.
4. HEISEY'S GLASSWARE OF DISTINCTION, by Mary Louise Burns. Condensed and updated!.....\$ 11.95 Includes price guide - Contains all major tableware patterns with pictures for easy identification.
79. HEISEY GLASSWARE, by Heisey Collectors of America, Inc. - Reprint of Catalog 76, the.....\$ 6.95 1915 supplement to Catalog 75 - Soft bound - Includes price trends - 58 pages. Many items never shown in books or catalogs. Includes all the kerosene lamps and many electric lamps - An interesting catalog.
88. HEISEY TOOTHPICK HOLDERS, by Nancy & David Jones, published by H.C.A. - Complete.....\$ 4.95 Information on all Heisey toothpick holders. Contains photographs of each - Section on confusing items and fakes - 8-1/2 x 5-1/2 - Soft bound - Includes price trends.
92. HEISEY'S ORCHID ETCH by Nella Bredehoff, published by H.C.A. - 24 Page booklet with.....\$ 4.95 price guide - Soft bound - A new booklet devoted entirely to Orchid Etching - Heisey's most popular etching - 230 pieces listed and dated individually - Well illustrated - Includes a history of the etching and many early ads.
99. HEISEY ROSE by Nella Bredehoff, published by H.C.A. - 24 Page booklet with price guide...\$ 4.95 Soft bound - All known pieces listed and dated - Well illustrated - Includes history and many copies of ads.
101. HEISEY CANDLESTICKS, CANDELABRA AND LAMPS by Tom Felt and Bob O'Grady assisted by Jack...\$ 24.95 Metcalf - A definitive survey of the history and manufacture of candlesticks and other lighting devices made by A. H. Heisey & Co., from 1896 - 1957 with over 350 illustrations of all known candlesticks, including 25 in full color. 436 Pages - Hardbound.
- 101A. COMPLETE PRICE TRENDS FOR HEISEY CANDLESTICKS.....\$ 2.50
106. COLLECTORS GUIDE TO HEISEY'S GLASSWARE by L. W. Promotions - Excerpts from Heisey.....\$ 17.95 Catalogs 75, 109, 212-17. 372 Pages of Illustrations - Includes Price Guide.
110. HEISEY NEWS REFERENCE CATALOG by Norma Schweighofer - Complete 10 year index - January 1972 through Dec. 1981. Every item listed and cross indexed - A very valuable tool for your research.....\$ 5.00
111. WESTMORELAND SPECIALTY CO. - Reprint of 1912 Catalogue. Several patterns shown. Items \$ 6.95 easily confused with Heisey illustrated - Includes candlesticks, toy sets, etc.
112. Collectors Encyclopedia of Heisey Glass - 1925-1938. (The Color Years) Written by Nella Bredehoff for Heisey Collectors of America. 408 pages, hardbound. Complete value guide. 32 pages of color, over 1000 pieces illustrated.....\$ 24.95
115. Heisey on Parade by Sandra Stout. Ads from magazines from 1896-1957. All of the Heisey Patents. Items identified from all of these. Perfect Bound. 264 pages.....\$ 17.95
116. Heisey's Lariat and Athena Patterns, by Tom Felt. In depth research for this book makes it a complete source of information for these two patterns. 52 pages, well illustrated. Softbound, includes Price Trends.....\$ 5.95
36. MISCELLANEOUS
36. HALF SIZE HORSEHEAD PAPERWEIGHT Souvenir Item Crystal (1984), Cobalt (1985) and Ruby (1986). Frosted only.....ea..\$ 35.00
40. Reissue Madonna by Viking. Mkd. HCA - '85 Azure blue Plain.....\$ 21.50 Satin.....\$ 22.50
48. #1560 VICTORIAN GIRL BELL - Available in MILK GLASS, LIGHT GREEN, ORANGE, RUBY, AZURE BLUE, CLEMATIS (ALEXANDRITE) and LILAC. Plain.....\$ 11.00
- 48A. #1560 VICTORIAN GIRL BELL - Available in YELLOW, LIGHT GREEN, LIGHT BLUE, ORANGE, RUBY, AZURE BLUE, CLEMATIS (ALEXANDRITE) and LILAC. Satin.....\$ 12.00
114. Diamond H Advertising piece, Cobalt glossy. For Mould Fund - No Discount.....\$ 22.50 Cobalt satin. For Mould Fund - No Discount.....\$ 23.50
117. Cabochon Advertising piece. NEW ITEM. Made by Viking in their Tight Amber. Bottom polished. Marked HCA '86. Limited to 1500 - For Mould Fund - No Discount.....\$ 22.50
118. Ruby Tiger. NEW ITEM made by Viking.....\$ 25.00

ORDER FROM: H.C.A. SALES
P.O. BOX 27
NEWARK, OH 43055

10% Discount to Members Only, Orders over \$50.00

CREDIT CARD NUMBER

Master Card	Visa	Expiration Date Required	No.	Year
-------------	------	--------------------------	-----	------

MOVIES AND SLIDES

The following is a list of slides, movies, video tapes and audio tapes available for your use. Most of these slides were prepared by individual members who spent a lot of time and money in doing so. These are excellent material for your club meetings, showing to outside groups and for your personal viewing.

Rental fee is \$10.00 for each slide set. This includes the shipping cost to send them to you. You pay the return cost.

Set	Number of 35mm Slides
1. Heisey Animals	75
2. Heisey Toothpicks	72
3. Heisey by Imperial	120
4. Heisey Syrups	95
5. Fakes and Misleading Items	58
6. Heisey Handled Jellies	83
7. Heisey Cuttings #1	72
8. Heisey Cuttings #2	73
9. Heisey Candlesticks #1 - 60 Years of Heisey Candlesticks	121
10. Heisey's Later Candlesticks #2 - 1937-1957	88
11. A. H. Heisey & Company - An Overview	80
12. Heisey Cognines	69
13. Heisey Cruets	96
14. Heisey Advertising	90
15. Museum Owned Glass	81
16. 150 Banded Flute Pattern	61
17. How well do you know your Heisey? Slides show a portion of a pattern for you to identify. Fun for club meetings.	78
18. Acquisition of Heisey Moulds	98
19. "This is Your Life HCA." A documentary slide show of HCA's first 10 years. Requires two slide projectors, a dissolver and sound equipment to show this. Write.	

MOVIES AND TAPES

- 1A. The Heisey Glass Story - A fine professionally made 28 min., 16mm sound movie covering the Heisey history, aspects of glass making, the glass, the Museum and HCA. You'll love it. These require a \$25.00 deposit; upon return, the cost of shipping to you is subtracted and the rest will be refunded. Also available on VHS Video tape on same terms.
- 2A. Audio Tape - Robert Mandan's talk to the 1985 HCA Convention. Rental \$5.00.

When ordering any of the above, order by name and number and specify an alternate date or slide set if possible. Your order will be confirmed.

PLEASE RETURN THE RENTED MATERIAL IMMEDIATELY AFTER SHOWING SO THAT OTHERS MAY HAVE THE OPPORTUNITY TO USE IT.

Make checks payable to HCA, Inc. Direct all inquiries, reservations and orders to:

HCA SLIDES & FILMS
P. O. BOX 27
NEWARK, OH 43055

PH: (614) 345-2932

All of the above are also available for purchase. VISA AND MASTER CARDS ACCEPTED. Slides available for sale @ .90 each.

• Homer Laughlin • Lancaster • McKee •

GLASS FANTASIES

"A Rainbow of Color"

Depression Era

GLASS, CHINA & POTTERY SHOW & SALE

October 18th
10 a.m. to 4 p.m.

For Information Call 561-0209

Admission: \$1.75 With Flyer: \$1.50

Craftsmen Hall,
3909 Centre St., San Diego
(near corner of University & Park Blvd.)

Presented by The Greater
San Diego Depression Glass Club

Something for Everyone!

Collector Search Service
10 a.m. - 2 p.m. Glass Identification
Table - By Club Members

Discount Collector Books
Door Prizes Every Hour



HEISEY GLASSWARE DISPLAY
BY SAN DIEGO COUNTY HEISEY
COLLECTORS STUDY CLUB



ESTABLISHED 1971

The GLASS REVIEW Magazine is for everyone who studies, collects or sells glass. Whether your glass interests lean toward the early 1900's--or the depression era--or with today's limited glass items, the GLASS REVIEW covers it all!

Articles--price reports--original catalog documentation--shop directory--research and reproduction news--trademark information--glass book releases--what's new on the market--a large variety of glass ads (on both old and new glass)--plus much more.

Enclose payment and mail to:
GLASS REVIEW, P.O. Box 542, MARIETTA,
OH 45750

**NOW 12 ISSUES
PER YEAR!**

- ☐ 1 Year — 12 issues — \$15.95
☐ 2 Years — 24 issues — \$29.95

WESTMORELAND, DEPRESSION GLASS, ETC., ETC., HEISEY, DUNCAN,

5TH ANNUAL ALL GLASS SHOW & SALE

Sponsored by the
Connecticut Heisey Collectors Club

BENEFIT OF THE NATIONAL
HEISEY MUSEUM

**SATURDAY
NOV. 1, 1986**

10:00 a.m. to 5:00 p.m.

**SUNDAY
NOV. 2, 1986**

10:00 a.m. to 4:00 p.m.

National Guard Armory
590 Woodruff Street
Southington, CT

ADMISSION — \$2.00
with this Ad — \$1.50
I-84 to Exit 32 South (Rt. 10)
To Hobart Street — Right on to Pleasant St. —
Left to Armory



return to:
HEISEY NEWS
Box 27
Newark, OH 43055

FIRST CLASS MAIL
U.S. POSTAGE
PAID
PERMIT 741
Mt. Vernon, OH 43050

FIRST-CLASS MAIL

CARNIVAL GLASS, CAMBRIDGE, IMPERIAL, FENTON, FOSTORIA, NEW MARTINSVILLE