



VOLUME XV NO. 8

AUGUST 1986 ISSN 0731-8014

## ***MAJOR FUND RAISER SCHEDULED***

**Your are cordially invited to attend HCA's 14th Annual Souvenir Dinner  
on September 6, 1986**

This will be the third consecutive year that we have returned to the Museum grounds under the big tent - and, based on the response to the Project Committee Questionnaire the vast majority of the membership would like to see this format continued in the future. The tent this year will be even bigger and at a cost significantly less than previous rentals.

We have engaged our caterer, Eleanor Jackson, and she will be serving her usual great beef tenderloin dinner with an abundance of good food and plenty of hors d' oeuvres. We hope that many of you will attend this affair as this is the one time of the year that "fun" is the main theme. The cocktail hour will start at 6:30 with dinner to follow at 7:30.

Decorations will follow the "western" theme of the 1986 Convention.

Starting at 8:30 in the morning and running until 2:30 P.M., there will be a Mini-Show in the tent. Most of the dealers will be HCA members and there will be great Heisey for sale. As usual, the Museum, will be open throughout the day until the cocktail hour.

The souvenir this year will be the half size Horsehead Bookend in Ruby. Because of it's size of 3" wide and 3½" tall we have been calling it a paperweight instead of a bookend. The paperweight will be marked "HCA" and dated 1986 and is very pretty in the ruby color. We hope that you can come or at least order a souvenir as many of you have done in the past. From the outset, this dinner was designed to be a major fund raiser for the Museum. Please support it if you can.

Fill out the form on the back page. The deadline is August 29, 1986. Please get your reservations in as soon as possible. Visa and Master Charge accepted.

We are looking forward to seeing many of you on September 6 at this informal fun affair. This is a great time to get better acquainted.

Chauncey Delaney, Dinner Chairman • Bill Barnard, Mini-Show Chairman  
Jim Jones, Project Chairman • Charles Wade, President

## OFFICERS 1986-87

CHARLIE WADE - PRESIDENT  
ROBERT RAREY - VICE PRESIDENT  
LIZ STICKLE - SECRETARY  
BETTY BARNARD - TREASURER  
MEMBER-AT-LARGE - GEORGE SCHAMEL

## HEISEY NEWS

P.O. BOX 27, NEWARK, OH 43055

### CLUB OFFICERS:

President - Charles Wade, Jr. - (614) 366-6636  
Vice President - Bob Rarey - (614) 279-0390  
Secretary - Liz Stickle - (614) 323-2250  
Treasurer - Betty Ann Barnard - (614) 366-7002  
Exec. Dir. - Louise Ream - (614) 345-2932

Editor: Louise Ream  
P.O. Box 27, Newark, Ohio 43055  
PH: (614) 345-2932

Assistant Editor: Neila Bredehoft  
P.O. Box 27, Newark, OH 43055  
PH: 614-345-2932

Published monthly and printed in Mt. Vernon, Ohio  
\$15.00 per year - \$1.25 per copy

Back Issues - Each Volume (12 issues) year - \$9.00.  
Volume V, VIII, IX, X, XI, XII, XIII & XIV

Heisey Collectors of America, Inc. is a non-profit corporation with tax exempt status. Owners and operators of National Heisey Glass Museum, 6th and Church Streets, Newark, Ohio.

Open daily 1-4 p.m. except holidays. Other hours by appointment. Members admitted free.

Club membership (includes 12 issues of HEISEY NEWS and participation in all club activities) \$15.00 per year plus \$2.50 for each additional family member in same household who wishes a membership card. For VOTING MEMBERSHIP, add \$25.00 one time only fee.

When requesting information, please enclose a self-addressed, stamped envelope (SASE).

ADVERTISING - Send all ads to:  
HCA - Advertising  
P.O. Box 27  
Newark, Ohio 43055

DOUBLE SPACE ALL ADS.

### RATES:

CLASSIFIED: 15¢ per word. \$1.50 minimum.  
ABBREVIATIONS AND INITIALS COUNT AS WORDS  
DEALER DIRECTORY: \$25 per year.

DISPLAY:	MEMBERS:	NON-MEMBERS:
1/8 Page ( 9 items)	\$20.00	\$25.00
1/4 Page (20 items)	30.00	37.00
1/2 Page (20 items) Hor.	45.00	55.00
1/2 Page (50 items) Vert.	60.00	65.00
1 Page (50 items)	75.00	85.00

Extra lines will be billed at \$1.00 per line. Personal ads limited to 1/8 space.

ALL ADS MUST BE PREPAID. Ad copy must be received by the 5th of the month preceding the publication date - i.e. April 5th for May issue. Ads containing reproductions will not knowingly be accepted unless clearly stated (i.e. Heisey by Imperial, etc.). HEISEY NEWS assumes no responsibility for false advertising or misleading information. In the event of typographical error, the incorrect portion of the ad will be run in the following issue, but HEISEY NEWS assumes no further liability.

The opinions expressed in articles in HEISEY NEWS are those of the authors and not necessarily those of the organization. The Editorial Staff reserves the right to edit or refuse any material submitted for publication. When requesting information, please enclose a self addressed stamped envelope. (SASE).

## NEW DIRECTORS ELECTED

THE FOLLOWING WERE ELECTED, ON JUNE 22 AT THE ANNUAL MEETING, TO FOUR YEAR TERMS ON THE BOARD OF DIRECTORS.

4. Robert Ryan, Centerville, Ohio
5. Larry Stickle, Newark, Ohio
2. Jim Kennon, Brookville, Ohio
1. Neila Bredehoft, St. Louisville, Ohio
3. Christos Maskaleris, Camp Springs, MD



Bob, Jim, Neila, Chris, Larry

## DATES TO REMEMBER

Sept. 6 Souvenir Dinner and Mini-Show  
Dec. 5 Dinner - The Mansion at Bryn Du  
June 18-21 Convention

## NOTES FROM YOUR PRESIDENT,.....



Charlie Wade, Jr.,

I was still in a state of shock on Monday after being elected president of H.C.A., when reality set in. A little voice said to me, "Charlie, you have to write a monthly column in the Newsletter!" EGADS! Me? Write an article? He whose works can only be compared to that of the great author of the book "See Jack Run." Well folks, here it is. I will certainly understand if, after a couple of my masterpieces, you wish to have them replaced with reruns of the Heisey News Index (Ha!). Seriously, I am honored to serve as the president of this great organization. With your help we can continue to grow and prosper. If you have any questions please do not hesitate to write. If I don't know all the answers, (and I won't), I will at least try to get one for you.

Our 15th Convention is now past history, and I would just like to take this opportunity to thank everyone who helped in any way to make it a great success! They just keep getting better and better every year.

For those of you who have not heard, it is with great pride I announce to you that the mould fund has topped its goal of \$229,000.00. You all are to be congratulated! Many of you dug deep into your pockets several times, some of you donated many hours of your time, and others helped in those ways which you could. To all of you, a great big thanks!

In any successful campaign to raise money, there has to be a "driving force." This person will spend most of his or her time planning fund raisers and following every detail, setting goals, scrutinizing the financial records, and asking for more money whenever the opportunity presents itself. To Norm Thran, the "mould fund driving force," and to all who made the decision to purchase the moulds...

Congratulations & Thanks!



### IN MEMORIAM

Robert Lee, longtime Heisey collector, HCA member and member of the Central Illinois HCC died suddenly just prior to the Convention. He and his wife, Mildred had already registered. They had attended many Conventions over the years and were well known here. Our heartfelt sympathy goes to Mildred and the family and to their Heisey Club as well.

## FROM THE PAST PRESIDENT

As the immediate past President of H.C.A. I would like to express my sincere thanks to all of the members who, in any way, helped make the 1985-86 year interesting and unforgettable. As I contemplated a second term I took into consideration many factors. The primary one was my health. As some of you know I have arthritis. The medications for the arthritis are not compatible with my stomach, as a result I get caught in the middle--stomach troubles or arthritis. I did not feel that I would be able to devote the time and energy necessary to continue as President of H.C.A. without further aggravating both conditions.

Congratulations are in order for the five new Board members, the new President and Vice President.

Those of you who attended the annual meeting at the Sheraton on Sunday June 22, 1986, already know that enough money was raised to pay for the moulds. Many thanks to all who contributed, in any way, to this purpose. A SPECIAL THANKS TO NORM THRAN and his committee for all of their efforts toward the successful completion of this project. Purchasing the moulds was a bold and wise decision. Paying for them in two years was a fantastic feat. The profits from the Cabochon sign, Diamond H sign and Victory plate will now be used for Storage and Mould Maintenance.

Since the founding of the H.C.A. there have been many changes and I'm sure many more will come, with time. Change, in any organization, is necessary for it to survive. Part of my personal philosophy of life is to "make haste slowly". This could also apply to an organization.

Thanks again for an interesting year!



## BOARD NOTES FROM JUNE 21ST MEETING

The 1984-1985 Audit done by Floyd Mason, CPA, was unanimously approved. The balance sheets are to be printed in the newsletter. (See this issue, L.R.)

Project Committee: Souvenir dinner to be held on September 6 in a tent on the museum grounds. The souvenir will be the 1/2 size bookend in ruby. The Mini-Show will be held in the tent. Chauncey Delaney is dinner chairman and Bill Barnard Mini-Show Chairman.

Research and Archives Committee recommended that the Verly's Book be reprinted. Costs to be checked further, before printing.

Museum - New plantings have been done. Paint will be removed from the Museum and it will be re-painted. A telephone system will be donated by Alltel. An in-depth study will be done on a fire alarm system and security system.

The Constitution will be updated to include past changes and proposed new changes if adopted.

A cabinet for miniatures in Room 3 is to be built.



# MOULD FUND GOES OVER THE TOP



NORMAN N. THRAN

On Sunday June 22, 1986, during the Annual Meeting we went over the top and reached the goal of raising the money to finalize the payment of the moulds. Congratulations to all H.C.A. members, clubs etc. for a TERRIFIC accomplishment. You all made it happen and have many reasons to be proud of this monumental task!!!

	<u>June 12, 1986</u>	<u>June 22, 1986</u>
Received	\$220,330	\$229,450
Pledged	3,000	2,100
	<u>\$223,330</u>	<u>\$231,550</u>

As you can see in the breakdown above, we still have some outstanding monies pledged. It would be helpful if this money was received and applied to the associated costs of the mould purchase. For example, temporary storage, moving of moulds and the costs associated with the mailings during the campaign.

To recap for those not present at the Annual Meeting, we began that morning with a countdown of \$7,465 to reach the original purchase price for the moulds of \$229,150. The goal was reached by the generous gifts from Study Clubs, members and the auctioning of articles. One was a crocheted afghan just like the last Heisey Advertising piece in red, white and blue and two autographed shirts which were first sold last year and donated back for resale. Finally, when the last Study Club had persented their donations to HCA we were still short of the goal by \$1,700.

A call to those present to offer \$100 each was made to put us over. It was amazing to watch the hands go up. We immediately started recording their names and, yes, received the cash on the spot. In total over twenty donations of \$100 each were made which finalized the Mould Fund Drive at \$229,450. I finally heard more than one sigh of relief, including my own.

I would like to say thanks to so many of you in person but that is impossible. I firmly believe that what has been accomplished during the purchase of the moulds, identification, moving, storage and finalizing the raising of the money to satisfy the loan, will only be truly appreciated with time.

This accomplishment truly speaks for what a dedicated club (members) is all about. I would strongly recommend that the energies of H.C.A. membership now be applied to building a great Endowment Fund. The future really looks bright for H.C.A. and you all should not stop because the Mould Fund is over but look to the future and further secure the great assets you already own in your Museum and Moulds.



From the Desk of the Director....

The 1987 Convention is now but a memory but what a pleasant memory it is! Everyone always says that the Convention they are attending is the best ever and how can it improve the next year? So far it always seems to do just that.

As usual, people started arriving the latter part of the previous week. By Tuesday they were arriving by the dozens. Everyone wanted to help and duties were assigned. On Wednesday Liz Stickle recruited several men and women to help peel potatoes and cut up onions for the German potato salad for the barbecue. LaVerne Lokay would have been a shoo-in winner for a potato peeling contest. I believe she could peel three to anyone else's one. The pictures on page 12 show some of these "peelers". The pictures are rather dark so we hope they turn out well.

The hit of the Convention was the barbecue under the big tent. Two large pigs and a beef were roasted to perfection and everything else was just as good. Over 600 people attended and most of them hope it is held again next year. The only complaints were about the gnats. Hopefully they will come up with a solution before next June on getting rid of these pests.

The show was beautiful as always. It seemed that there was more Heisey there than ever before. Our show tends to be a market for Cambridge, Duncan, Fenton etc. for all the shows which follow.

The display, of course, was again outstanding. No matter what the theme, people come up with great ideas for their booths. The color tables looked as beautiful as ever and always highlight the display. Names such as "Custards' Last Stand" was very clever for a booth full of custard glass. "Here Come those Redskins" fit perfectly for a display of ruby stained glass. "Mavericks" were those pieces which were unusual and rare and those rarities which just didn't fit in anyplace. "Heisey Rustlers" was a display of items picked up as "steals", which is hard to do nowadays. And so - on and on!!

Western dress was the order of the day with cowboy hats and boots being very popular. Mary Little and Burl Whaley should have prizes for wearing their outfits every day including their hats, from the beginning to the end.

You read the schedule of events in the May and June newsletters so you know everyone was kept busy. Every event was well attended.

The banquet was sold out and Jack Hanna, as expected brought some animals, including a baby tiger, a wallaby, a snake and a giant cockroach.

Continued on page 11.

## IMPORTANT DUES NOTICE

Please get your membership money in by the 15th of the month in which it expires. This way you will be sure to receive your next newsletter on time. If your due date is August 31, this will be your 12th and last issue of Heisey News until your dues are paid for another year. Be prompt - Help us to help you.

## REFLECTIONS ON RESEARCH

By Tom Bredehoft

Several years ago, a friend, speaking of glass he had purchased, thinking it might be Heisey, said, "I've got a closet full of 'I thoughts'". Well, I just added another one to my closet.

In the 1985 Convention Display there was a 1517 Oyster Plate, or rather the plastic impression from the mould for the oyster plate, the plate had never been seen. Two weeks ago, Neila came home from a local antique mall with what she thought might be one of Heisey's oyster plates. She wasn't sure. We took it to the warehouse, found the plastic impression, and compared the two. Sure enough, there was the center well, formed of a snail shell, the three little feet, also small shells, and around the outer edge, simulated chased silver scrolling. Wow, the first ever Heisey Oyster Plate. Wouldn't do, but we had to tell several friends about Neila's find. Two weeks later, I was idly looking at the plate, wondering why others hadn't turned up, and noticed a little roughness on the inside. Examination showed that the roughness turned into the word "DEPOSE" and suddenly, 180 degrees across the plate appeared the word "PORTIEUX". These words are in capital letters, at least 1/8 inch tall, but not easy to see due to the slight irregularity of the inner surface of the 'shell' and the strong pattern on the outside.

I'm sure one of our more educated members will correct me, but I'm going to guess that 'DEPOSE' means something like 'registered' and that 'PORTIEUX' is a glass manufacturer in France. Now, to speculate how two manufacturers could make something so similar.

Another guess. Sometime, some firm made a oyster plate from six oyster shells and a silver framework. Time passed, and someone in the design department of a couple of major glass manufacturers saw the plate and decided to duplicate it in glass. We know that there was a plate similar to this made by George Duncan and Sons, in about 1881, (part of what is now known as 'Shell and Tassel'), we know that the A. H. Heisey, Co., made one about 1941, and we know that another one was made, somewhere, sometime.

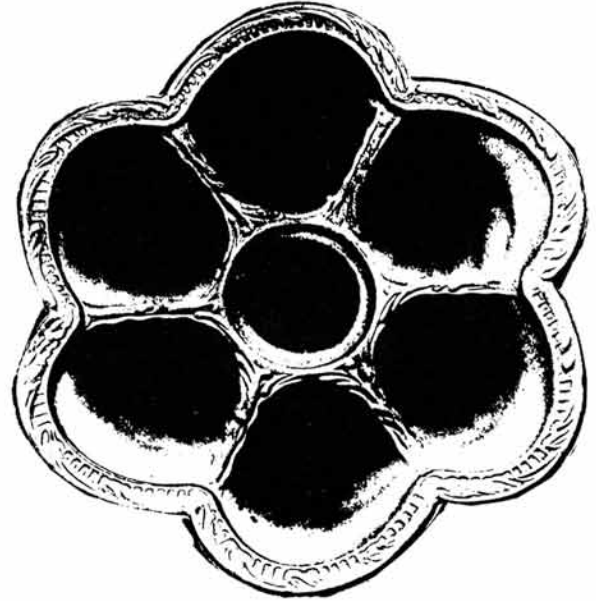
In addition to the words Depose and Portieux, there is an easier way to distinguish between the Heisey plate and the other. Both of the plates have a well in the center, possibly for hot sauce. The Heisey plate measures 2 1/8 inches across this well, the other measures 1 3/4 inches. The Heisey plate has a circular shelf inside the well, perhaps to hold a small cover, the other does not have this circular shelf.

An update on the 1633 Jelly I wrote about a few months ago. One of the blown variety is now in the museum, and a correspondent has advised me that they have found a number of the actual Heisey jellies, all in one stack and couldn't believe their luck, having to wait til they got home to check against the article in the Heisey News, and sure enough....

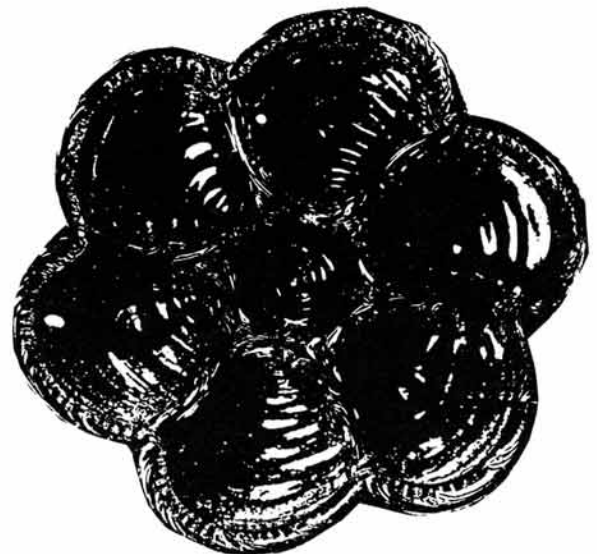
A couple of words of advice. 1) If Heisey made a mould for it, they made at least one turn, just to see if the mould worked, perhaps as few as a couple hundred, perhaps a thousand in a turn, perhaps several turns. Even though we haven't documented something, doesn't mean it's rare, and 2) even if it is rare, that doesn't guarantee that

there is a demand for it, and therefore valuable. There may be a great disparity between rarity and desirability.

Ed. Note: At Imperial they used a small monkey pot for feasibility items and small quantities - 20 more or less, were often made. They also did this at Heisey.



These pictures were Xeroxed from the items. Above is a plastic model made from the Heisey mould. Below is the oyster plate in glass. Marked Depose and Portieux.



# HEISEY

COLLECTORS OF AMERICA, INC.

## TREASURER'S REPORT

MAY 31, 1986

Cash Balance February 28, 1986	\$ 9,244.23
Cash Received:	
Initiation Fees	\$ 100.00
Membership Fees	9,542.00
Charter Fees	75.00
Newsletter Income	1,416.37
Donations & Misc. Income	267.09
Sales Taxable & Non Taxable	31,986.10
Sales Tax Collected	1,758.22
Shipping & Handling	1,086.40
Museum Admissions	830.00
Insurance Income	553.92
Donations For Moulds	6,293.00
April Mould Fund Dinner	8,300.00
1986 Auction Income	56,835.28
1986 Convention Income	12,933.00
Total Cash Received	\$131,976.38

### Cash Paid Out:

*Club Expenses	\$ 6,651.76
Club Utilities	1,116.34
**Museum Expenses	1,109.99
Museum Utilities	929.25
Newsletter Expense	7,791.72
Merchandise for resale	14,531.28
Cost of sales	2,466.87
Sales Tax Paid	1,776.80
General Advertising	554.14
Salaries & Cost of Salaries	12,279.20
Membership refunds	47.50
Acquisitions	325.00
Archives & Research	442.65
Warehouse Expense	108.82
Educational Program	165.79
Payments on Notes	14,810.00
Interest paid on Notes	1,996.50
Payment to Endowment Fund	1,050.00
April Mould Fund Dinner Expenses	3,941.56
1986 Auction Expenses	45,151.19
1986 Convention Expenses	1,198.54
1986 Souvenir Dinner Expense	100.00
Total Cash Paid Out	\$118,544.90
Cash Balance May 31, 1986	\$ 22,675.71

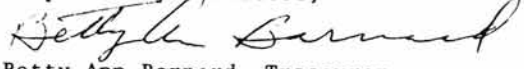
### \*Club Expenses:

Cleaning	\$ 422.50
Postage	536.20
Deposit Slips	4.58
Attorney Fees	124.33
Membership Brochures	357.50
Tables	294.00
Service Contract on Typewriters	236.00
Office Supplies	707.16
Blue Cross	553.92
Alarm System	75.00
Repair Air Conditioner	92.66
Phone Calls-Nominating Committee	20.04
Copier Expense	555.33
Slides & Film	248.37
Travel Expense	252.35
Newark Chamber Of Commerce-Dues	100.00
Vogel - Newsletter	7.00
Trash removal	45.00
OAHSM - Dues	20.00
Funeral flowers	25.32
Audit	1,785.00
A. H. Heisey Civil War Memorabilia	130.00
Coca - Cola	59.50
Total Club Expenses	\$6,651.76

### \*\*Museum Expenses

Cleaning	\$ 422.50
Cleaning Supplies	32.04
Lawn Care	115.95
Air Conditioner repair & Service Contract	539.50
Total Museum Expenses	\$1,109.99

Respectfully Submitted,

  
Betty Ann Barnard, Treasurer

Submitted at Annual June meeting.  
Approved by the Board of Directors.

Note: Convention and Flea Market bills are paid as of July 1st and we have a balance on hand of \$21,869.93. B. A. B

## 14TH ANNUAL MINI-SHOW

The 14th Annual Heisey Mini-show will be held on September 6, 1986 under the "chuck wagon" tent on the Museum grounds. As usual it will be held in conjunction with HCA's quarterly meeting and souvenir dinner. Show hours will be 8:30 a.m. to 2:30 p.m. We are hoping for better weather this year as we cannot air condition the tent. Hope to see you there.

Bill Barnard, Chairman

FLOYD MASON

CERTIFIED PUBLIC ACCOUNTANT

1515 WEST LANE AVENUE, COLUMBUS, OHIO 43221

HEISEY COLLECTORS OF AMERICA, INC.  
BALANCE SHEET  
December 31, 1985 and 1984  
(Continued)

HEISEY COLLECTORS OF AMERICA, INC.  
BALANCE SHEET  
December 31, 1985 and 1984

	December 31		LIABILITIES AND FUND BALANCES	
ASSETS	1985	1984		
<b>CURRENT ASSETS</b>			<b>CURRENT LIABILITIES</b>	
Cash	\$ 5,646	\$ 61,750	Accounts payable	2,517
Inventories - merchandise	113,778	126,469	Accounts payable - endowment fund	1,655
Prepayments	5,017	3,061	Accrued sales tax payable	174
Total Current Assets	124,441	191,280	Accrued withholdings payable	257
			Accrued expenses payable	1,105
<b>INVESTMENTS</b>			Notes payable - bank	53,850
Corporate stock (m.v. \$80,992; \$61,945)	102,613	101,521	Notes payable - other	20,000
<b>NON-DEPRECIABLE ASSETS</b>			Total Current Liabilities	79,558
Heisey glass - donated	124,496	117,513		
Heisey glass - purchased	106,614	106,614	<b>LONG-TERM INDEBTEDNESS</b>	
Research and glass archives	3,343	3,343	Notes payable - other	35,000
Total Non-Depreciable Assets	234,453	227,470	Less: due within one year	0
<b>PROPERTY ASSETS</b>			Total Liabilities	114,558
Land	17,600	5,000		
Museum building	131,571	131,571	<b>FUND BALANCES</b>	
Office building	84,123	84,123	General fund	243,751
Warehouse building	22,400		Investment fund	102,613
Furniture and office equipment	14,245	13,088	Heisey glass - donated fund	124,496
Tables	13,638		Heisey glass - purchased fund	106,614
Motor vehicles - trailer	1,400		Research and glass archives fund	3,343
Moulds	233,397		Property assets fund	189,839
Total Property Assets (Cost)	518,374	233,782	Mould fund	0
Less: accumulated depreciation	52,829	49,943	Total Fund Balances	812,579
Net Property Assets	465,545	189,839		
			<b>OTHER ASSETS</b>	
Deposits - utilities and other	85	10		
			<b>TOTAL LIABILITIES AND FUND BALANCES</b>	\$ 927,137
<b>TOTAL ASSETS</b>	\$ 927,137	\$ 710,120		



diamonds are forever.....

by Janet Caswell

Well here we are back in the Yachting Center after a week in Sunny Florida. We visited my "adopted daughter" and took in Disney World, Epcot and Sea World. We just had to see "Baby Shamoo".

A great time, but the sea air sure does smell nice and we're home just in time for the "Festival in the street" and the Yacht races. We didn't purchase any Heisey in the sunny south.

The "Cal Kid" found a Fish Bookend and three (3) small #1503 Crystolite swans. Keeping in the animal line "Cal Kid" was really excited about a Giraffe he purchased for a good price only to find upon close examination at home that the head had been broken and re-glued, and very well. The dealer being quite reputable took it back, but even so he was very disappointed!

"The Wiz" (MA) pulled some things out of his hat this past month: #1469 Ridgeleigh two compartment oval relish; a pair of #1509 Queen Ann 2 handled Candleholders; #335 Prince of Wales Plumes Toothpick and the #1255 Pineapple and Fan ½ pint creamer. "Mr Crystolite" reports the #1170 Pleat and Panel Covered Compote, high footed. Not Crystolite, but even so he did O.K.

I understand (thru the grapevine) that "the Little Old Lamplighter" (OH) has a pair of #1 Georgian 7" Candlesticks and two #1226 Sherbets. "How Sweet it is!"

Shall we see if "Mountain Gal" (CA) is up to her old tricks; she is - #1567 Plantation Mayo Plate; #352 Flat Panel 4 oz oil (this one had part of a Heisey sticker on it); three (3) #1404 Old Sandwich individual ash trays in sahara; #1509 Queen Ann covered Lemon Dish with Dolphin Finial and a floral cutting; also in Queen Ann the Dolphin Footed Candleholders - a pair - and her second pair at that.. #112 Mercury Candlesticks in Flamingo; #475 Narrow Flute/Rim individual nut on the Emerald side; #1200 Cut Block Individual Cream in Custard, souvenir and the #310 Ring Band Custard cup, Ivorina Verde, Rose decoration, also souvenir.

Speaking of souvenir pieces I saw one the other day that just delighted me no end.. Perhaps you will enjoy the inscription as much as I did. It was a #1295 Beaded Swag Wine in custard - "Thief River Fall, Minn" was the inscription. Cute! This was picked up by "the Pilgrims" (NH); also a #1469 Ridgeleigh footed Compote; #1205 Fancy Loop Wine; the #1509 Queen Ann Cruet with #913 Everglade cut; #393 Narrow Flute punch cup; #1401 Empress nut in Sahara; #411 5" two (2) handled jelly and a #493 Cologne/#65 stopper.

My "good English Buddy" reports a #325 Pillows Toothpick and two (2) #1567 Plantation Cruets.

A while back "Our Rebel Cousins" (KY) dropped us a line regarding a little item they sent for via mail - here it is: A Heisey condiment set in Saturn Optic, Crystal - consisting of two (2) Cruets/stoppers, a chrome top salt and pepper, and a covered mustard with spoon. They sit upon a black wooden tray with each piece seated in it's own black metal holder. It has a black metal handle and three metal v-shaped feet of gold color metal. The cruets have original labels while the other pieces have the Diamond H. Different !!! \*

"My Sharp Eyed Friends" (MA) found a #1255 Pineapple and Fan salt and pepper and also the #1255 7 oz Mug; plus a pair of Fish Book-ends. The Mr and I saw a pair of Fish Book-ends but one of them had had a "Fin-cut". We passed.

From the Keystone State (PA) there is news of a #411 Tudor (Rib and Panel) 8" Vase in crystal; #9 4" Flamingo Frog. The "keystone cops" are so captivated with their 4" frog (floral block) that they want to collect all sizes and colors.

My "Evergreen Friends (ME) have the #335 Prince of Wales Plumes Toothpick with good gold and two (2) #339 Continental 4 oz Sherbets.

"The Hanging Judge" was merciful this past month, he saved the day for a couple pieces of Heisey; #393 Narrow Flute 4½ oz Parfait and the #1503 Crystolite three piece Hollandaise sauce set.

"The Two Guys from Conn" have the Base for the #365 Queen Ann Punch Bowl and a #1229 Octagon Cheese Plate in Marigold.

The "Big Apple" can't be left out in the cold; #1503 Crystolite Oval Candy or Nut Compote - with a double spout, plus the #1205 Fancy Loop Toothpick with good gold.

A "friend in deed" (MA) came up with a #350 Pinwheel and Fan Water Jug and a #1590 Zodiac 13" Plate in crystal and marked.

While "The Hilltoppers" bragged loudly (and as they should) about a #3380 Old Dominion 10 oz Tall Goblet in Alexandrite!!

"The Midnight Riders" told me that they were really not collecting Peerless. Needless to say that is what they found in the last couple weeks; #300 Comport and five (5) Punch Cups.

Are you ready for what "Shy Gal" came up with? Yours Truly was lucky enough to see this piece. Would you believe the Amber Standing Pony? Believe!!!!

Down at Crocker Park, overlooking our pretty Harbor, there is a Concert this evening, so the Mr and I are going down and listen to the music and watch the reflection of the stars dance on the water. There also should be a cool sea breeze.

Happy Hunting from the Yachting Center.

\* This set is shown in the 1953 Catalog. See next page for Domesti-Cater line.



We Couldn't Get This Guy To Join H C A  
WHAT A DUMMY!!!!!!!!!!



# DOMESTI-CATER Line of Serving Pieces

Unit #1	"ON THE ROCKS" TRAY—Consists of six #6060 9 oz. Old Fashions and Wooden Tray	\$107.40	8.95
Unit #2	DOUBLE MAYONNAISE SET—Consists of two #1951 5 in. Mayonnaise Bowls (Nappy) with ladles and wooden holder	59.40	4.95
Unit #3	RELISH TRAY—Consists of #1567 1/2-13 inch 5 Compartment Relish (PLAIN BOTTOM) and Wooden Tray	107.40	8.95
Unit #4	SALAD SET—Consists of #1485-10 inch Salad Bowl, Wooden Fork and Spoon, and wooden Base	95.40	7.95
Unit #5	OIL AND VINEGAR SET—Consists of Two #1485 Oil Bottles with Stoppers and Wooden Holder	83.45	6.95
Unit #6	HURRICANE LAMP—Consists of #1951 Globe and Wooden Base	119.40	9.95
Unit #7	MARMALADE SET—Consists of Two #1485 Marmalade Jars with Covers, Spoons and Wooden Base	83.45	6.95
Unit #8	CONDIMENT SET—Consists of Two #1485 Oil Bottles with Stoppers, #1485 Salt and Pepper (with #55 Tops) #1485 Mustard with Cover, Spoon and Wooden Base	131.40	10.95

ORDERING INSTRUCTIONS: Please order by Unit Number and Description, and specify natural finish (with black wire) or black finish (with polished wire).

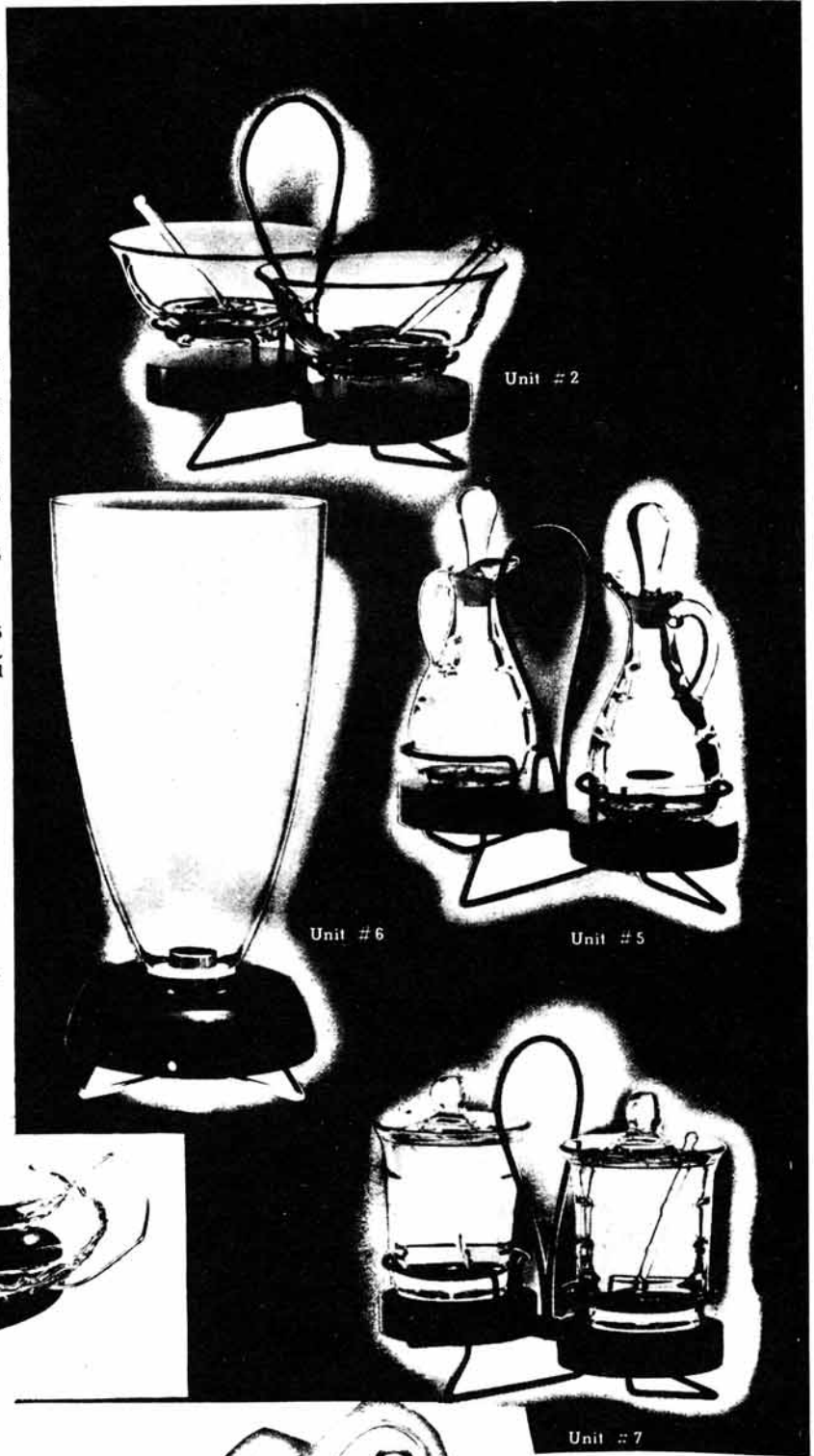
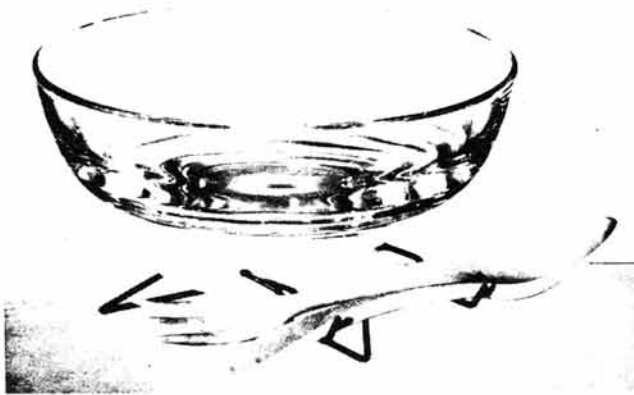


Unit #1



Unit #3

Unit #4



Unit #2

Unit #6

Unit #5

Unit #7



Unit #8

## HEISEY COLLECTORS OF TEXAS

By Amy Jo Jones

The second quarterly meeting for 1986 of the Heisey Collectors of Texas was held June 7, 1986 in Weatherford. The home of Jan and Charlie Baird provided a Show and Tell extraordinaire! Each room of the Victorian mansion was delightfully decorated along with Heisey treasures artfully displayed. The tour was the highlight of the day with Jan giving commentary on the renovation and interior design and Charlie's commentary of the Heisey displayed in each room. We all invited ourselves to return another day - it was just too much to take in only in one afternoon!

After a scrumptious potluck dinner a business meeting was held with Weldon Harris presiding. Election of officers was first on the agenda. All present officers agreed to serve another one year term with the exception of Roger Hulslander who was absent; however, being aware of his great dedication to the club and in light of the fine job he has done we elected him by acclamation. June 1986 through June 1987 officers are Weldon Harris, President; Charlie Baird, Vice President; Amy Jo Jones, Secretary; Roger Hulslander, Treasurer; Madeline Sullivan, Historian.

The National HCA Convention discussion included the appointment of Amy Jo Jones as the voting delegate with Charlie Baird as alternate. Of special interest to the HCT members will be an effort to get ideas from other clubs for obtaining new members along with methods of fund raising.

The next meeting will be held August 9, 1986 in Commerce at the home of A. C. and Madeline Sullivan at 2:00 P.M. Please bring a covered dish and an item for Show and Tell. For more information contact Weldon Harris in Dallas 214-368-5533 or Amy Jo Jones in Fort Worth 817-732-4652.

Following the adjournment the annual HCT blind auction was held. Auctioneer Charlie Baird was successful in obtaining #130. It was agreed to present the proceeds to the mould fund during the club report at the convention.

Mini convention report to HCT members - You should have been there! It was truly a convention fit for a Heisey collectin' Texan. There was everything any respectin' Texan has to have for a good time. Aside from all the spectacular Heisey you've ever dreamed of - and some you haven't - there was a real down home outdoor barbecue with country western music, all the real important Heisey people, a TV personality, wild animals, and the kind of mighty fine hospitality we're all used to. As a matter of fact Frank Frye insisted on flying the Texas flag from our banquet table centerpiece in his office until we all return. What a guy! So - Next year in Newark! Ya'll come!!

### VIRGINIA HEISEY CLUB

By Jessie C. Hopkins

Our group met in June at the home of Jim and Bobbie James in Williamsburg, Virginia. There were 13 members present. Frances and Harry Thiede had been elected delegate and alternate to Convention at the May meeting. They were presented with their voting card at this meeting.

A motion was made that we donate \$100.00 to the Mould Fund. This motion was seconded and vot-

ed upon favorably. We are also proud of the decrease in the amount of this fund. (Congratulations to all the members of Heisey Collectors of America, Inc. for reaching the goal!)

By this time Harry and Frances are back from Convention. We are looking forward to hearing a report from them at our August meeting which will be held at the home of Bob and Dot Denton in Virginia Beach. At the August meeting we will have a covered dish dinner, which I am sure will be enjoyed by all.

George Fallows gave us a very interesting program on Sandwich Glass.

Of course, we always eat at our meetings. Jim and Bobbie furnished the punch and we all brought delicious goodies to share.

## THE GATEWAY HEISEY CLUB

By JoAnne Autenreith

After gathering for dinner at a Chinese Restaurant, the Gateway Heisey Club met at the home of LaVerne and Joe Lokay on June 7th. In the absence of Phyllis Freier, our president, Joe Lokay conducted the business meeting. Plans for our display at the upcoming Convention were discussed, as well as our donation to the Museum for this year.

The program, presented by Joe Lokay, was on Athena, and was informative and interesting, as his programs always are.

Our show-and-tell part of the evening was full of exciting finds gleaned from auctions and flea markets in the area. It always amazes me to see the real gems some of our members come up with!

Our next meeting will be a picnic in August.

### Letter of Appreciation to HCA Members

By now all of you have received a questionnaire from the HCA Project Committee along with your annual membership renewal notice.

Thanks to all of you who responded, stating your preference for Convention and September Dinner souvenir items, and for the location and format for the September dinner. Your responses will be a major influence on the Project Committee's recommendations to the Board of Directors. Other factors will influence the recommendation for souvenir items -- availability and condition of moulds, availability of special skills within the glass making industry needed to produce an item, and the cost of production to name a few -- but the starting point in developing the recommendation will be your stated preference.

Thanks again for your suggestions and preferences. If you haven't responded yet and have a preference, it's not too late to send it along.

Sincerely,

HCA Project Committee  
Jim Jones, Chairman

## Letters, We Get Letters.....

We always look forward to each new issue of the Heisey News and read it immediately upon it's arrival in the mail.

It was nice to see in the July issue, three of my "treasures", namely, the 1591 Baby Cup by Imperial on the cover, the #352 Flat Panel Cigar Jar held by Elsie Burden on Page 10 and the \$4044 New Era Bowl in the picture on Page 15.

It's always nice to read about and to see pictures of pieces we have in our collection.

It was interesting, but sad, to read about Fostoria's closing also. We're sorry to see another quality glassware become history.

We appreciate all the "glass news" and most especially that about our favorite, "Heisey"!

Mr. and Mrs. John H. Nath, Iowa

Had a great time at Convention. Loved the theme and the BBQ. Don't know anything that I would want changed. Keep up the good work!

Bob & Norma Sanders, Michigan

May I take this opportunity to tell you, and all the Convention Committee members, just how great I thought the "Yearly Bash" was this year. I have been a member of our local club for 6 years and have attended 5 Conventions. One was missed due to illness.

The fact that we made our goal of retiring the Mould Fund Debt was very exciting to me - what an "Impossible Dream" just two years ago.

One thing I'd like to suggest is this: Most of us who live some distance from Newark really take note and admire the work done by local clubs re the volunteering at the Museum and projects such as the whole mould moving etc. Instead of saying, "We donate time to the Museum" at our annual meeting, as most of them do, perhaps they should keep track of the "hours" donated by their members and present them as a gift to HCA. Many charitable organizations do this and it really emphasizes the "time is money" concept without which many non-profit organizations could not function.

The theme was great, the Museum was beautiful, the Seminars were educational, the Display unique and the prices were high - but the only thing I'd change, if I could, would be to spray for the gnats that shared the Bar-B-Q with us.

Again, my thanks and appreciation to all-

Fran Brock, California

Your show was the best ever! You can't possibly top it next year - but I know you will!

Melva Mach, Nebraska

While I'm paying my annual dues I thought it would be a good time to tell you about our new Heisey acquisition.

No, the pattern is not Colonial, or Lariat - not Crystolite or even Waverly but possibly is a variation of Amber and Tangerine. By now you know that the new Heisey in our house cannot be displayed in a cabinet or on a shelf - it must be able to run around at will and chew on bones and shoes, etc.

Our Heisey is a 40 lb. Brittany Spaniel. She loves her name and we love using it - a reminder of our collection of Heisey glassware. It seemed an appropriate name for a lovely, graceful, serene dog.

Just thought you might like to know that the fame of Heisey glassware has now extended into the canine world!  
Ruth E. Schmit, Illinois

Desk of Director - Con't from page 4.

These caused quite a stir! Adam Metcalf, Jack's son, had a ball holding the wallaby. Marge Gillette wore the cockroach on her shoulder for a time and the snake was carried around so people could touch it.

Jack is a very good speaker and everyone enjoyed him - and his friends. He skillfully tied in the "collection and preservation of glass" with the collection of animals which are becoming extinct!

Handmade glass may be "extinct" by the year 2000 in this country if things continue as they have in the past few years. Lucile Kennedy pointed this out in her talk at the former employees reception.

Overall Convention Chairman Larry Stickle and his committees did a wonderful job with the 1986 Convention. I guess that is why he'll be serving in the same position in 1987.

The Show Committee with Jerry Robinson as Chairman made things run very smoothly at the beautiful show.

Display Chairman Lloyd Caswell and his wife, Jan and Dick Smith Co-chairman along with Mary McWilliams and their large committees did outstanding jobs at the display.

Miriam Balo, Hospitality Chairman and the Northern Illinois and Dairyland Clubs manned the Museum lounge every afternoon. They were serving delicious cookies, cheese and crackers and beverages to any and all who visited. The 50 pounds of Wisconsin cheese was furnished by the Dairyland Club and cookies came from the host clubs and many other clubs and individuals.

Hugo Wenzel and his decorating committee deserve high praise for all of the interesting decorations. Everything was in keeping with the theme.

Saddles, Barbed Wire displays, Remington Prints, cow skulls, bales of straw, cactus plants, bandannas and anything western you can think of was used.

Three new clubs were chartered at the Annual Meeting. These include the Moundbuilders HCC, Newark; North Carolina HSG and the Florida HCC. Congratulations to all of them!

Many wonderful gifts were received including money for the mould fund, endowment fund, acquisitions and the general fund. These lists were not yet ready for printing so they will be in the next issue.

There is so much more to tell space does not permit it. We hope that we have some more pictures for the next issue.

*Louise*

---

Convention Chairman	Larry Stickle
Convention Secretary	Phyllis McClain
Convention Publicity Chairman	Louise Ream
Display Co-Chairmen	Lloyd Caswell, Dick Smith
Show Chairman	Jerry Robinson
Decorating Chairman	Hugo Wenzel
Museum Hospitality Chairman	Miriam Balo
Tickets and Event Hospitality Chairman	Burl Whaley
Preview Chairman	John Eshelman
Program & Tickets Chairman	Dick Marshall
"THE PIONEERS" Chairman	Helen Pallagi
Seminars	Joe Lokay
Flea Market on Square Co-Chairmen	Jan Thran, Liz Stickle
Liaison Work Chairman	Dick Smith



## Getting Ready For The Barbecue



Convention visitors peeling potatoes for the barbecue dinner



The Wood Pile



Pigs On The Spit

Preparing The Tent



Um, Um, Good





1616 W. CHURCH STREET  
NEWARK, OHIO 43055

# ALL HEISEY AUCTION

FRI. AUG. 15 5:30 P.M.

SAT. AUG. 16 9:30 A.M.

Interesting items included in this sale will be - over 40 animals incl AMBER standing colt, head forward Filly, Pouter Pigeon, Asiatic Pheasants, Clydesdale, sets of Geese & Mallards; over 100 different stems; 50 pcs. Rose Etch incl pitcher, ice teas, sherbets, cov. butter; Orchid Etch incl wines, sherry, 18 dinner plates, oyster cocktails, cov. butter, lemon dish; Good Little Items; Verlys Amber Gems vase; nice Cuttings; Tangerine ivy vase; about 100 pcs. of Imperial, many rare and feasibility items; good Reference books.

DOORS OPEN 1 HOUR BEFORE EACH SESSION

PLEASE NOTE THE FOLLOWING CONDITION CODES TO HELP IN BIDDING:

F f FLAKE B b BRUISE R r REPAIRED  
C c CRACK M m MOLD FLAW X x MAJOR DAMAGE

SAM SCHNAIDT & TIM HUGHES, AUCTIONEERS (614) 344 - 4282  
FRANK FRYE, MANAGER (614) 345 - 4001

Beginning of 08/15/86 session

- |   |  |
|---|--|
| 1. 1255 PINE & FAN CR, SPOON, OPEN SUG, GOOD GOLD | 44. 6091 CABOCHON FTD ICE TEA, DEBUTANTE CUT       |
| 2. 352 FLAT PANEL IND CR & COV SUG H              | 45. 3390 CARCASSONNE FTD ICE TEA, HOUSTON POST ET  |
| 3. 1469 RIDGELEIGH IND CR & SUG H                 | 46. 1252 TWIST MGLM 9 OZ LUNCHEON GOBLET f         |
| 4. 1469 RIDGELEIGH IND CR & SUG H                 | 47. 1624 PATIO AMBER ICE TEA H                     |
| 5. 354 WIDE FLAT PANEL STACK CR & SUG H           | 48. 6060 COUNTRY CLUB SODA, ARCADIA CUT            |
| 6. 1519 WAVERLY CR & SUG, HEISEY ROSE ETCH        | 49. 5024 OXFORD FTD ICE TEA, INSPIRATION CUT 11    |
| 7. 1184 YEOMAN FLAM CR, H                         | 50. 6060 COUNTRY CLUB 14 OZ SODA, 3                |
| 8. 354 WIDE FLAT PANEL FLAM HOTEL CR H            | 51. 5024 OXFORD FTD JUICE, INSPIRATION CUT, 2      |
| 9. 433 GREEK KEY HOTEL CR H XX                    | 52. 5024 OXFORD GOBLET, INSPIRATION CUT, 2         |
| 10. 1235 BEAD PAN & SUNBURST HOTEL SUG, GOLD      | 53. 6060 COUNTRY CLUB 18 OZ SODA, 3                |
| 11. 1519 WAVERLY IND CR H                         | 54. 5087 COMET 18 OZ SODA, 5                       |
| 12. 1295 BEAD SWAG COV SUG, GOLD BANDS            | 55. 1425 VICTORIAN CHAMP, 7, H                     |
| 13. 393 NARROW FLUTE 2 OZ CRUET                   | 56. BLOCK PATTERN TUMBLERS, 4, NOT HEISEY          |
| 14. 1540 LARIAT CRUET H                           | 57. 1425 VICTORIAN GOBLET, 5, H                    |
| 15. 1540 LARIAT CRUET H                           | 58. 1425 VICTORIAN 8 IN PLATE, 3, H                |
| 16. 1252 TWIST FLAM 2 OZ CRUET                    | 59. 4163 TANKARD, CORNFLOWER CUT                   |
| 17. 1485 SATURN 3 OZ CRUET                        | 60. 3316 BILTMORE GOBLET, CORNFLOWER CUT, 5        |
| 18. 1567 PLANTATION SYRUP                         | 60A. CUT GOBLETS, POSS. NOT HEISEY, 8, 1X          |
| 19. 1489 PURITAN VINEGAR & OIL, WRONG STOPPER     | 61. 4054 CORONATION 1/2 GAL ICE JUG, HEISEY CUT    |
| 20. 1489 PURITAN VINEGAR & OIL CUT                | 62. 341 1/2 OLD WMSBG 1 QT PITCHER, H              |
| 21. 1404 OLD SANDWICH CATSUP BOTTLE               | 63. 3397 GASCONY SAHARA PITCHER, H                 |
| 22. 1567 PLANTATION CRUET WRONG STOPPER           | 64. 4163 TANKARD, DUTCHESS ETCH                    |
| 23. 1503 CRYSTOLITE CRUET                         | 65. 2516 CIRCLE PAIR JUG, MGLM HDL                 |
| 24. 1503 CRYSTOLITE CRUET                         | 66. 3350 WABASH TANKARD, MAYFLOWER ETCH            |
| 25. 1401 EMPRESS MGLM DF MAYO H                   | 67. 160 LOCKET ON CHAIN GAS SHADES, 2, X           |
| 26. 1401 EMPRESS DF MAYO, HIALEAH CUT H           | 67A. 1401 EMPRESS DF FLORAL BOWL, SILVER DEC       |
| 27. 1401 EMPRESS DF MAYO, OLYMPIAD ET, 2, 1 LADLE | 67B. 451 CROSS LINED FLUTE 9 1/2 IN BOWL, DTD H    |
| 28. 1229 OCTAGON FLAM MAYO & LADLE H              | 68. 341 OLD WMSBG 14 PC PUNCH SET W/PLATE H        |
| 29. 1506 PROVINCIAL LIMELIGHT TUMBLER, 8, H       | 69. 4004 IMPROMPTU 11 IN SALAD BOWL                |
| 30. 1506 PROVINCIAL TUMBLER, H                    | 70. 4056 11 IN SALAD BOWL, S/O                     |
| 31. 3389 DUQUESNE FTD TUMBLER, CHINTZ ETCH        | 71. 4056 11 IN SALAD BOWL S/O                      |
| 32. 3420 MILWAUKEE PILSNER, 2                     | 72. 1401 EMPRESS SAHARA 8 1/2 IN FTD FL BOWL HDLD  |
| 33. 1590 ZODIAC FTD ICE TEA                       | 73. 335 PRINCE OF WALES 10 IN DEEP BOWL H f        |
| 34. 4083 STANHOPE FTD ICE TEA, MAYTIME ETCH       | 74. 1183 REVERE 11 IN GARDENIA BOWL, BARCELONA CUT |
| 35. 3404 SPANISH SODA, OLYMPIAD ETCH, 6           | 75. 341 OLD WMSBG 13 IN PLATE, H                   |
| 36. 1401 EMPRESS FLAM TUMBLER H                   | 76. 1951 CABOCHON 14 IN PLATE, MOONGLO CUT         |
| 37. 315 PANELED CANE TUMBLER H, WORN GOLD         | 77. 1951 CABOCHON 14 IN PLATE                      |
| 38. 1200 CUT BLOCK TUMBLER, RUBY ST, SOUV.        | 78. 1485 SATURN 14 IN PLATE                        |
| 39. 2351 10 OZ SODA, WINDSOR CUT                  | 79. SPECIAL 14 IN HEISEY PLATE WITH FRUIT CARV     |
| 40. 3397 GASCONY SODA, AMBASSADOR ETCH            | 80. 1184 YEOMAN 14 IN PLATE, BARCELONA CUT         |
| 41. 603 11 OZ SODA, NO, H                         | 81. 4069 RIDGELEIGH SAU CHAMP, MARIEMONT CUT, 7    |
| 42. 300 PEERLESS FLAM SCHOPPEN H                  | 82. 3411 MONTE CRISTO SAU CHAMP, UNK CUT, 3        |
| 43. BLOWN TUMBLER, ETCHED, NOT HEISEY             | 83. 3355 FAIRACRE CHAMP, CLEOPATRA ETCH, H, 3      |
|   | 83A. 4044 NEW ERA SAU CHAMP, 2                     |
|   | 83B. 3416 BARBARA FRITCHIE CHAMP, UNK CUT, 2 H     |

84. 3408 JAMESTOWN CHAMP, BARCELONA CUT, 5, H  
85. 1485 SATURN CHAMP, 12  
86. 3389 DUQUESNE CHAMP, BOTTICELLI CUT, 5  
87. 3416 BARBARA FRITCHIE CHAMP, CHATEAU ETCH 6 H  
88. 3416 BARBARA FRITCHIE COCKTAIL, CHATEAU ET 6 H  
89. 3408 JAMESTOWN CHAMP, SWEET BRIAR CUT 3  
90. 5019 WAVERLY CHAMPAGNE, 2  
91. 3333 OLD GLORY CHAMP, RENAISSANCE ET H  
92. 451 CROSS LINED FLUTE CHAMPAGNE H  
93. 3324 DELAWARE FLAM CHAMP D/O 2  
94. 5041 ATHENA CHAMP, 3  
95. 4091 KIMBERLY SAU CHAMP, REP  
96. 5010 SYMPHONIE CHAMP, DANISH PRINCESS CUT, 2  
97. 3365 RAMSHORN FLAM CHAMP, 2 H  
98. 3366 TROJAN CHAMP, CUT, H, REP  
99. 1401 EMPRESS SAHARA CHAMP, 3, H  
100. 1401 EMPRESS CHAMP, 2, H  
101. 3360 PENN CHARTER FLAM CHAMP, H  
102. 407 COARSE RIB CHAMP, 4, H  
103. 1193 INSIDE SCALLOP FLAM 7 IN CONSERVE H  
104. 1229 OCTAGON FLAM 6 IN MINT, 2  
105. 1229 OCTAGON FLAM 5 IN JELLY  
106. 433 GREEK KEY 4 1/2 IN NAPPY H  
107. 411 TUDOR HAWTHORNE HDLD MINT H  
108. 1229 OCTAGON SAHARA 5 1/2 IN JELLY 2  
109. 411 TUDOR HAWTHORNE 6 IN HDLD JELLY H  
110. 1252 TWIST FLAM 4 1/2 IN NAPPY, 4, H  
111. 341 1/2 FINGER BOWL, FLARED, 2 H  
112. 1205 FANCY LOOP 5 IN SHALLOW NAPPY 3, 1X  
113. 1205 FANCY LOOP 4 1/2 IN SQ NAPPY 3  
114. 310 RING BAND CUSTARD 4 1/2 IN NAPPY, ROSE DEC  
115. 1404 OLD SANDWICH 4 IN FINGER BOWL, 4, H  
116. 1205 FANCY LOOP 4 1/2 IN SQ DISH  
117. 1295 BEAD SWAG OPAL 5 IN NAPPY DEC  
118. 3362 CHARTER OAK FLAM FINGER BOWLS, 6  
119. 451 CROSS LINED FLUTE 4 IN NAPPY H  
120. 379 URN 4 IN NAPPY H F  
121. 341 1/2 4 IN NAPPY H  
122. 5003 CRYSTOLITE GOBLETS, 10 H  
123. 5077 LEGIONNAIRE GOBLET H  
124. 5003 CRYSTOLITE SHERBETS, 8, 1F  
125. 5003 CRYSTOLITE FTD JUICE, 8, H  
126. 1503 CRYSTOLITE CANDLEBLOCK, 3  
127. 5003 CRYSTOLITE GOBLET H  
128. 1503 CRYSTOLITE 11 IN FLARED BOWL H  
129. 1503 CRYSTOLITE 12 1/2 IN FLARED BOWL  
130. 1503 CRYSTOLITE 6 IN COV CANDY, 3 FTD H  
131. 1503 CRYSTOLITE 7 IN OVAL BOWL, H  
132. 1503 CRYSTOLITE 3 IN RND & 3 IN SQ ASHTRAYS H  
133. 1503 CRYSTOLITE CIG LIGHTER FROM CANDLE X  
134. 1503 CRYSTOLITE FTD CIG HOLDER H  
135. 1503 CRYSTOLITE SM COV CIGARETTE BOX H  
136. 1503 CRYSTOLITE LEAF NUT DISHES, 3  
137. 1503 CRYSTOLITE 5 PC LEAF NUT SET, 1 LG, 4 SM  
138. 1503 CRYSTOLITE CRUET, NO STOPPER  
139. 1503 CRYSTOLITE 3 CORNER JELLY, WEB BOTTOM  
140. 1503 CRYSTOLITE 12 IN OVAL 3 PART RELISH  
141. 1503 CRYSTOLITE 12 IN CELERY TRAY H  
142. 1503 CRYSTOLITE 2 LT CANDELABRA, COMPLETE, PR  
143. 1229 OCTAGON MGLM & FLAM IND NUT, 2, H  
144. 1229 OCTAGON FLAM IND NUT H  
145. 1229 MGLM & CRYD D/O IND NUT, 2, H  
146. 1229 OCTAGON MGLM IND NUT, 2  
147. 473 FLAM & CRYD SALTED NUTS DTD H  
148. 1229 OCTAGON IND NUT CUT H  
149. 1229 OCTAGON IND NUT D/O EMPRESS ETCH H  
150. 353 FLAM IND ALMONDS, 4  
151. 1506 PROVINCIAL IND NUT, 4, H  
152. 3 2 OZ BARS, 1 COMET  
153. 1184 YEOMAN FLAM 4 OZ FRUIT COCKTAIL  
154. 417 DOUBLE RIB & PANEL FLAM MUSTARD BOTTOM H  
155. 1469 RIDGELEIGH 3 IN STACKING COASTER 6 1X  
156. 3481 GLENFORD FLAM 2 OZ BAR  
157. 3481 GLENFORD FLAM 1 OZ BAR  
158. 300 1/2 PEERLESS 2 OZ FLARED BAR H  
159. 393 NARROW FLUTE 2 OZ BAR H  
160. 4054 CORONATION 1 OZ BAR  
161. 2052 FLAM D/O BAR, 3 1X  
162. COV CIGARETTE BOX, WINDSOR CUT  
163. 1469 RIDGELEIGH COV CIG BOX, METAL HOLDER H  
164. 3390 CARCASSONNE CIG HOLDER  
165. 1469 RIDGELEIGH 2 IN ASH TRAYS 2 XX H  
166. 1469 RIDGELEIGH SQ CIG HOLDER, 4 SQ ASH TRAYS  
167. 1425 VICTORIAN ASH TRAY & MATCH HOLDER H  
168. 341 4 1/2 OZ SHALLOW PUNCH CUPS 2 H  
169. 1173 4 OZ PUNCH CUP H  
170. 411 TUDOR PUNCH CUP H  
171. 1506 PROVINCIAL PUNCH CUP H  
172. 367 PRISON STRIPE PUNCH CUP H  
173. 433 GREEK KEY PUNCH BOWL BASE H  
174. 350 PINWHEEL & FAN PUNCH CUP H  
175. 305 PUNCY & DIAMOND POINT PUNCH CUP H  
176. 1101 FLAM D/O PUNCH CUP H  
177. 1483 STANHOPE CUP, CUT  
178. 1401 EMPRESS PUNCH CUP H  
179. 1235 BEADED PANEL & SUNBURST PUNCH CUP H  
180. 433 GREEK KEY FLAM PUNCH CUP 2 H  
181. 350 PINWHEEL & FAN MGLM PUNCH CUP 6 H  
182. 1567 PLANTATION PUNCH CUP 12 H  
183. 1231 RIBBED OCTAGON MGLM CUP & SAUCER H  
184. 1401 EMPRESS FLAM CUP H  
185. 1233 PRESSED DIAMOND FLAM BAKED APPLE 2 H  
186. 1401 PLATE, CUP, SAUCER MGLM H  
187. 1485 SATURN LIMELIGHT 7 IN PLATE  
188. 1238 BEEHIVE 8 IN PLATE  
189. 1404 OLD SANDWICH SAHARA 8 IN SQ PLATE H  
190. 1469 RIDGELEIGH 6 1/2 IN RND PLATE H  
191. 1184 YEOMAN SAHARA 8 IN PLATE EMPRESS ETCH  
192. 1404 OLD SANDWICH 8 IN PLATES 2 H  
193. 1609 8 IN PLATES, VARIOUS CUTTINGS, 7  
194. 1405 IPSWICH 7 IN PLATE 9 H  
195. 393 NARROW FLUTE 4 1/2 IN PLATES 6 H  
196. 1405 IPSWICH SHERBET 5 H  
197. 3311 VELVEDERE SHERBETS, WINDSOR CUT 11 4X  
198. 6060 COUNTRY CLUB SHERBETS, IRIS CUT 7  
199. 1401 EMPRESS SAHARA SHERBET  
200. 6091 CABOCHON SHERBET SOUTHWIND CUT  
201. 3389 DUQUESNE SHERBET CHINTZ ETCH  
202. 3390 CARCASSONNE SAHARA SHERBET  
203. 5010 SYMPHONIE SHERBET, CRINOLINE ETCH  
204. 3397 GASCONY CHAMP, INCA ETCH H  
205. 1503 CRYSTOLITE SWAN MASTER NUT  
206. 1503 CRYSTOLITE SWAN IND NUT 6  
207. GIRAFFE  
208. GIRAFFE  
209. RINGNECK PHEASANT  
210. RINGNECK PHEASANT  
211. GOOSE, WINGS UP  
212. GOOSE, WINGS HALF  
213. GOOSE, WINGS HALF  
214. STANDING COLT  
215. OSCAR  
216. SEALYHAM TERRIER  
217. WHIMSEY FROM ROSE STEM  
218. TOY HORSEHEAD  
219. TOY HORSEHEAD  
220. SPARROW  
221. ROOSTER HEAD COCKTAIL STOPPER  
222. SMALL HORSEHEAD COCKTAIL STOPPER  
223. LARGE HORSEHEAD COCKTAIL STOPPER  
224. 4225 COBEL 1 QT COCKTAIL SHAKER COMPLETE  
225. 5060 WASH SQ COCKTAIL SHAKER, FACT SAMPLE

226. 4036 DECANTER, CRISTOBAL CUT  
227. 1489 PURITAN BAR BOTTLE  
228. 4054 CORONATION 30 OZ MARTINI MIXER  
229. 4054 CORONATION OLD FASHION 2  
230. 341 PURITAN 1 OZ CORDIAL 2 H  
231. 373 COLONIAL 1 OZ CORDIAL  
232. 300 PEERLESS 1 OZ CORDIAL, 3 H  
233. 300 PEERLESS 1 1/2 OZ WINE 10 H  
234. 1235 BEADED PANEL & SUNBURST WINE H  
235. 3389 DUQUESNE GOBLET, CHINTZ ETCH 4  
236. 5057 SUEZ AMBER STEM ICE TEA H  
237. 3350 WABASH GOBLET FRONTENAC ETCH 2  
238. 3335 LADY LEG GOBLET, CRUSADER CUT  
239. 3335 LADY LEG GOBLET, CRUSADER CUT  
240. 4055 PARK LANE ICE TEA BRIAR CLIFF CUT 10 1F  
241. 341 5 IN LOW FTD JELLY 5 H  
242. 3304 UNIVERSAL 6 ICERS & 7 LINERS  
243. 1186 YEOMAN 6 IN 2 HDLD JELLY, CUT H  
244. 1253 TRICORNER SAHARA MINT H  
245. 1229 OCTAGON MGLM MAYO  
246. 1540 LARIAT FTD SHRIMP COCKTAIL  
247. 1183 REVERE 2 PC MAYO SET, CUT  
248. 1483 STANHOPE MAYO, FROSTED, RED KNOBS H  
249. 1183 REVERE 5 IN COV LEMON, ROSE CUT H  
250. 351 PRISCILLA 6 IN JELLY 2 HDLD H  
251. 473 FLAM 5 IN 2 HDLD JELLY, DTD H  
252. 1183 REVERE MGLM STEM 7 IN LOW COMFORT HH  
253. 1184 FLAM 6 1/2 IN HDLD BON BON  
254. 1191 FLAM PICKLE AND OLIVE  
255. 1205 FANCY LOOP #3 BON TON  
256. 325 PILLOWS SPOON TRAY H  
257. 1205 FANCY LOOP 6 IN PICKLE  
258. 1183 REVERE MARMALADE & COV, CUT H  
259. 353 MED FLAT PANEL COV MARMALADE, CUT H  
260. 433 GREEK KEY FTD BANANA SPLIT H  
261. 473 6 1/2 COV FTD CANDY, CUT SILVER DEC HH  
262. 3802 TEXAS PINK TALL GRAPEFRUIT H  
263. 1540 LARIAT 6 IN FTD CHEESE & COVER  
264. 393 NARROW FLUTE TUMBLER 6 H  
265. 393 NARROW FLUTE TUMBLER H  
266. 3376 ADAM FLAM D/O FTD TUMBLER  
267. 197 TUMBLER FOR TUMBLE UP CUT, H  
268. 1220 PUNTY BAND RUBY ST SOUV MUG, 1903 H  
269. 1506 PROVINCIAL 5 OZ JUICE 3 H  
270. 3355 FAIRACRE MGLM HDL/FT ICE TEA H  
271. CUT FOOTED JUICE, NOT HEISEY  
272. 393 NARROW FLUTE HOLLOW STEM CHAMP H  
273. 3386 DIAMOND ROSE PILSNER  
274. AMBER STAINED CHAMPAGNE, NOT HEISEY  
275. 3304 UNIVERSAL HOLLOW STEM CHAMP, MOONGLO CUT  
276. 3365 RAMSHORN CHAMP, SEA NYMPH ETCH H  
277. 355 BORDEAU SM COMFORT H  
278. 3350 WABASH HAWTHORNE CHAMP H  
279. 3368 ALBEMARLE CHAMP, CHATEAU CUT  
280. 5077 LEGIONNAIRE COCKTAIL, ROSEBUD CUT  
281. 3335 LADY LEG CHAMP, VICTORY ETCH H  
282. 3312 GAYOSO CHAMP, DOUBLE LOOP ETCH, 5  
283. 5024 OXFORD FTD JUICE, WESTMINSTER CUT 7  
284. 394 NARROW FLUTE DOMINO SUGAR TRAY, CUT H DTD  
285. 1540 LARIAT CONDIMENT TRAY, MOONGLO CUT  
286. 355 QUATOR FLAM CR & SUG H  
287. 354 WIDE FL PAN HOTEL CR & SUG H  
288. 1170 FLAM CREAM AND MARMALADE H  
289. 1184 YEOMAN SAH CR & OPEN SUG H  
290. 1951 CABOCHON CREAM, BARCELONA CUT H  
291. 4044 NEW ERA CREAM  
292. 393 NARROW FLUTE FRENCH DSG BOAT H  
293. 341 OLD WMSBG 4 OZ CRUET WRONG STOPPER H  
294. 411 TUDOR 6 OZ CRUET H  
295. 393 NARROW FLUTE 4 OZ CRUET H  
296. 341 OLD WMSBG 4 OZ CRUET  
297. 354 5 PART COND. SET, TRAY, S/P, 2 OILS H  
298. 5 PART CONDIMENT SET, NOT MATCHING  
299. 472 FLAM 7 IN PICKLE TRAY H  
300. 1229 OCTAGON HAWTHORNE MAYO GOLD DECOR  
301. 451 CROSS LINED FLUTE 6 IN JELLY COMFORT H  
302. 3357 KING ARTHUR MGLM STEM & FT OYST COCKTAIL  
303. 1228 RINGLING EGG CUP HH  
304. 352 FLAT PANEL ICE CREAM CONE HOLDER H  
305. 352 FLAT PANEL ICE CR CONE HOLDER, SILVER  
306. 1469 RIDGELEIGH 3 IN COASTER & 3 SM ASHTRAYS H  
307. 1469 RIDGELEIGH ROLY POLY COCKTAIL REST H  
308. 1 STAR BOTTOM COASTER 4 H  
309. 4 STAR BOTTOM COASTER 2 H  
310. 7 MAYO LADLE 2  
311. 2 SALAD FORK & SPOON H  
312. 29 SALT & PEPPER BRASS TOPS H  
313. 46 FLAM SALT & PEPPER  
314. 12 SALT & PEPPER, 3 PR  
315. 24 SALT & PEPPER  
316. 1503 PROVINCIAL SALT & PEPPER  
317. 1404 OLD SANDWICH FLAM SALT & PEPPER  
318. 515 FLAM 1 OZ COLOGNE, NO STOPPER H  
319. 76 FLAM COLOGNE STOPPERS, 2  
320. 10 4 IN C PRISMS  
321. 10 4 IN C PRISMS  
322. 10 4 IN C PRISMS  
323. 10 4 IN C PRISMS  
324. 10 4 IN C PRISMS  
325. 10 4 IN C PRISMS  
326. 10 5 IN C PRISMS  
327. 5 5 IN C PRISMS  
328. 20 A PRISMS  
329. 23 F PLUG PRISMS  
330. 1183 REVERE CHEESE PLATE 6 IN CUT H  
331. 352 FLAT PANEL 6 1/2 IN GRAPEFR PLATE CUT H  
332. 1229 CHEESE & 393 10 IN OVAL TRAY H  
333. 3 MISC FLAM PLATES  
334. 1425 VICTORIAN 2 SETS FINGER BOWL & PLATES H  
335. 417 DOUBLE RIB & PANEL FING BOWL & PLATE H  
336. 1540 LARIAT NUT CUPS 2  
337. 411 TUDOR HAWTHORNE 2 HDLD BON BON H  
338. 1509 QUEEN ANN DF JELLY DANISH PRINCESS CUT H  
339. 1495 FERN 4 IN NAPPY & 6 IN JELLY  
340. 1495 FERN 6 IN & 7 IN PLATES  
341. 1495 FERN MAYO, PLATE & LADLE BELVEDERE ETCH  
342. 1495 FERN 6 IN TIDBIT CUT  
343. 2 1 OZ BAR GLASSES, CUT, NOT HEISEY  
344. 1183 REVERE UNDERPLATE FOR MAYO  
345. 15 FLAM FLOWER BLOCK ONLY  
346. 112 FLAM CANDLEHOLDER XX  
347. 4060 6 IN SHADE NEOPOLITAN CUT  
348. 301 9 IN HURRICANE GLOBE  
349. BOX LOT 5 HEISEY LIDS  
350. BOX LOT MISC 6 PARTS  
351. BOX LOT 3 STOPPERS & 1 LID  
352. BOX LOT 4 LIDS  
353. LODESTAR DAWN CANDY JAR LID  
354. IMPERIAL ZODIAC ASH TRAYS 2  
355. 1519 WAVERLY DEEP EPERGNETTES CUT PR H  
356. MUSEUM SOUV DEDICATION PAPERWEIGHT  
357. 1519 WAVERLY 6 IN DEEP EPERGNETTES PR H  
358. 1519 WAVERLY 5 IN EPERGNETTE PR H  
359. 6 UNKNOWN 3 OZ BARS, BAR SCENE CUTTINGS  
360. 393 NARROW FLUTE MAYO SET X  
361. 3 PIECES, CRYSTOLITE BOTTOMS XX  
362. IMPERIAL SET OF 3 ULTRA BLUE COLTS  
363. IMPERIAL ULTRA BLUE AIREDALE  
364. IMPERIAL ULTRA BLUE ELEPHANT  
365. IMPERIAL FROSTED ULTRA BLUE AIREDALE



366. IMPERIAL ULTRA BLUE SEALYHAM  
 367. IMPERIAL ULTRA BLUE MOTHER PIG  
 368. IMPERIAL VERDE FILLY  
 369. IMPERIAL PINK ELEPHANT  
 370. IMPERIAL PINK ELEPHANT, FROSTED  
 371. IMPERIAL CARAMEL SLAG MINUET GIRL  
 372. IMPERIAL CARAMEL SLAG OSCAR  
 373. IMPERIAL CARAMEL SLAG WOOD DUCK  
 374. IMPERIAL CARAMEL SLAG AIREDALE  
 375. IMPERIAL CARAMEL SLAG MALLARD WINGS HALF  
 376. IMPERIAL CARAMEL SLAG STANDING PONY  
 377. IMPERIAL CARAMEL SLAG MEDIUM ELEPHANT  
 378. IMPERIAL CARAMEL SLAG BABY ELEPHANT  
 379. IMPERIAL WAVERLY LION COV TRINKET BOX  
 380. IMPERIAL MINUET GIRL  
 381. IMPERIAL BLUE FROSTED VICTORIAN BELL  
 382. IMPERIAL LIGHT BLUE KICKING COLT  
 383. IMPERIAL LIGHT BLUE STANDING COLT  
 384. IMPERIAL GREEN 1977 SOUVENIR OSCAR  
 385. IMPERIAL GREEN 1977 SOUVENIR OSCAR  
 386. IMPERIAL GREEN 1977 SOUVENIR OSCAR  
 387. IMPERIAL PINK 1978 SOUVENIR OSCAR  
 388. IMPERIAL LIGHT BLUE 1981 SOUVENIR OSCAR  
 389. IMPERIAL WAVERLY CARAMEL SLAG COV CANDY H  
 390. IMPERIAL ZODIAC COV CANDY ANTIQUE BLUE  
 391. IMPERIAL WAVERLY C SLAG SFAHORSE CANDY BASE H  
 392. IMPERIAL HCA LAND OF LEGEND PLATE AMBER 1971  
 393. IMPERIAL SET OF 6 LAND OF LEGEND PLATES  
 394. IMPERIAL LAND OF LEGEND PLATE LIGHT BLUE 1972  
 395. IMPERIAL LAND OF LEGEND PLATE GREEN 1973 5  
 396. IMPERIAL LAND OF LEGEND PLATES BROWN 1974 6  
 397. IMPERIAL L OF L PLATES BLUE AND CRYSTAL 2  
 398. HCA SOUVENIR 1976 CLARET A. H. HEISEY  
 399. HCA SOUVENIR 1976 CLARET A. H. HEISEY  
 400. HCA PURITAN SOUVENIR 1977 DECANTER

End of 08/15/86 session

Beginning of 08/16/86 session

401. 3350 WABASH GOBLET, PIED PIPER ETCH 13 H  
 402. 3350 WABASH CHAMP PIED PIPER ETCH 12 5x  
 403. 4182 6 & 8 IN PLATES PIED PIPER 6 EA SIZE  
 404. 3311 VELVEDERE SHERRY 13  
 405. 3389 DUQUESNE COCKTAIL, CHINTZ ETCH 6  
 406. 3389 DUQUESNE FTD JUICE POMPEII ETCH 3  
 407. 3304 UNIVERSAL WINE 3  
 408. 1401 EMPRESS DF FL BOWL CUT  
 409. 1401 EMPRESS DF FL BOWL OLYMPIAD ETCH  
 410. 1401 EMPRESS DF FL BOWL ROSALIE ETCH  
 411. 1401 EMPRESS 13 IN CELERY OLYMPIAD ETCH H  
 412. 1401 EMPRESS TRIPLEX RELISH OLYMPIAD ETCH  
 413. 1509 QUEEN ANN DF 7 IN BOWL OLYMPIAD ET H  
 414. 1184 YEOMAN FLAM 6 IN COMFORT D/O H  
 415. 3366 TROJAN MGLM STEM COMFORT D/O H  
 416. 3362 CHARTER OAK HAWTHORNE COMFORT D/O  
 417. 3362 CHARTER OAK FLAM COMFORT CUT  
 418. 1401 EMPRESS OVAL COMFORT ELAB HEISEY CUT H  
 419. 1401 EMPRESS OVAL COMFORT OLYMPIAD ET H  
 420. 1509 QUEEN ANN OVAL COMFORT CUT H LEANS  
 421. 1401 EMPRESS MGLM OVAL COMFORT H  
 422. 1401 EMPRESS SAHARA OVAL COMFORT H  
 423. 1229 OCTAGON HAWTHORNE MAYO CUT H  
 424. 1184 YEOMAN MGLM SMALL COMFORT H  
 425. 1184 YEOMAN FLAM SM COMFORT  
 426. 1567 PLANTATION 9 IN SALAD BOWL IVY ETCH  
 427. 1567 PLANTATION FTD CHEESE IVY ETCH H  
 428. 1567 PLANTATION 7 IN BOWL IVY ETCH H  
 429. 1567 PLANTATION 4 PT ROUND RELISH IVY ET H  
 430. 4085 6 IN S/O BALL VASE

431. 4085 7 IN S/O BALL VASE  
 432. 4157 5 1/2 IN ROSE BOWL ARCTIC ETCH  
 433. 3359 PLATEAU FLAM ROSE BOWL D/O  
 434. 3359 PLATEAU ROSE BOWL D/O  
 435. 3480 MGLM 9 IN FLORAL BOWL D/O  
 436. 4211 FLAM 8 1/2 IN VASE D/O  
 437. 4220 SAHARA 7 IN VASE SWIRL OPTIC  
 438. 4220 SAHARA 5 IN VASE SWIRL OPTIC  
 439. 4220 FLAMINGO 5 IN VASE SWIRL OPTIC  
 440. 4224 TANGERINE IVY VASE  
 441. 1428 WARWICK 9 IN VASE NO. 801 CUT H  
 442. 1428 WARWICK 9 IN VASE CALCUTTA CUT  
 443. 1428 WARWICK FLORAL BOWL CALCUTTA CUT H  
 444. 4206 OPTIC TOOTH MGLM BASE 8 IN VASE D/O  
 445. 4192 1/2 9 IN VASE ENCHANTRESS CUT  
 446. 4004 IMPROMPTU 10 1/2 IN VASE  
 447. 1255 PINEAPPLE & FAN EMER 6 IN VASE POOR GOLD  
 448. 1469 RIDGELEIGH 6 IN VASE 2 H  
 449. 1469 1/2 RIDGELEIGH 8 IN VASE H  
 450. 1189 YEOMAN 13 IN CELERY CUT H  
 451. 1252 TWIST FLAM 10 IN PICKLE H  
 452. 1401 EMPRESS SAHARA TRIPLEX RELISH  
 453. 500 VARIETY TRAY STARLIGHT CUT  
 454. 1469 RIDGELEIGH 7 IN RELISH 2 COMP HH  
 455. 365 OLD OUEEN ANNE SPOON TRAY H X  
 456. 1503 CRYSTOLITE LEAF PICKLE H  
 457. 1509 QUEEN ANN 3 COMPT RELISH H  
 458. INTAGLIO CUT 8 IN RELISH NOT HEISEY  
 459. 393 NARROW FLUTE 12 IN CELERY H  
 460. 1184 YEOMAN FLAM 8 IN PICKLE & OLIVE  
 461. 1776 KALONYAL 12 IN CELERY H  
 462. 1401 EMPRESS SAHARA 10 IN PICKLE  
 463. 1509 QUEEN ANN TRIPLEX RELISH ROSALIE ETCH  
 464. 4091 KIMBERLY GOBLET DOLLY MADISON ROSE H  
 465. 3389 DUQUESNE GOBLET CUT  
 466. 3411 MONTE CRISTO GOBLET KALARAMA CUT  
 467. 5022 GRACEFUL GOBLET ENCHANTRESS CUT  
 468. 3365 RAMSHORN GOBLET, CUT  
 469. 3365 RAMSHORN GOBLET CUT  
 470. 3365 RAMSHORN FLAMINGO GOBLET  
 471. 3362 CHARTER OAK MGLM GOBLET H  
 472. 4055 PARK LANE GOBLET CUT  
 473. 4090 COVENTRY GOBLET ZEUSE CUT  
 474. 3389 DUQUESNE GOBLET, CUT BY HUNT  
 475. 3362 CHARTER OAK MARGOLD GOBLET  
 476. 3360 PENN CHARTER HAWTHORNE GOBLET CKR OP H  
 477. 3357 KING ARTHUR FLAM GOBLET D/O H  
 478. 3380 OLD DOMINION MGLM BOWL GOBLET  
 479. 3389 DUQUESNE SAHARA GOBLET  
 480. ETCHED GOBLET, PROBABLY NOT HEISEY  
 481. 3308 BOB WHITE GOBLET PEACOCK ETCH  
 482. 5009 QUEEN ANN GOBLET BELLE LE ROSE ETCH  
 483. 3380 OLD DOMINION GOBLET EMPRESS ETCH H  
 484. 4092 KENILWORTH GOBLET ROSALIE ETCH  
 485. 3411 MONTE CRISTO GOBLET OLYMPIAD ETCH  
 486. 3357 KING ARTHUR GOBLET DIANA ETCH H  
 487. 5042 CORINTHIAN GOBLET  
 488. 3424 ADMIRALTY GOBLET H  
 489. 5041 ATHENA GOBLET, ORIG STICKER  
 490. 3418 SAVOY PLAZA GOBLET FROSTED H X  
 491. 4088 KOHINOOR GOBLET  
 492. 5013 SHASTA GOBLET  
 493. 5078 PARK AVENUE GOBLET H  
 494. VERLYS BY HEISEY ROSE BOWL  
 495. VERLYS LOVEBIRDS VASE X  
 496. VERLYS AMBER GEMS VASE WITH INSERT SIGNED X  
 497. VERLYS MANDARIN VASE NOT FINISHED  
 498. VERLYS MANDARIN VASE  
 499. VERLYS WATERLILY CANDLEHOLDERS NOT FIN PR  
 500. 1489 PURITAN 11 IN GARDENIA BOWL GRD T & B



501. 1489 PURITAN 11 IN GARDENIA BOWL GRD T & B  
502. 1489 PURITAN CAMELIA BOWL CUT T & B X  
503. 1489 PURITAN CAMELIA BOWL GRD T & B  
504. 1488 KOHINCOOR OVAL FLORAL BOWL H  
505. 1497 BOAT 8 IN SANTO DOMINGO CUT  
506. 1497 BOAT 13 IN SANTO DOMINGO CUT  
507. 1202 11 IN FLORAL BOWL ELABORATE CUT  
508. 411 TUDOR MGLM 12 IN DEEP BOWL H  
509. UNKNOWN 7 1/2 IN SQUARE DISH H  
510. 1637A TOWN & COUNTRY 11 IN SALAD BOWL  
511. 1252 TWIST MGLM 12 IN FLORAL BOWL, ROUND H  
512. 1951 CABOCHON 13 IN BOWL  
513. 1637A TOWN & COUNTRY DAWN 8 IN DISH  
514. 1541 ATHENA CONSOLE SET, 3 PIECE  
515. 4044 NEW ERA 2 LT CANDELABRA, COMPLETE PR  
516. 300 18 IN CANDLELAMPS CUT SHADES COMP PR  
516A. 300 18 IN CANDLELAMP CUT SHADE COMPLETE  
517. 113 MARS FLAM CANDLESTICKS, PR  
518. 1405 IPSWICH CANDLEVASES NO INSERTS PR H  
519. 4044 2 LT CANDLES, NO BOBECHE OR PRISMS PR  
520. 4044 2 LT CANDLE, COMPLETE, SUNGATE CUT  
521. 4044 2 LT CANDLE, NO BOBECHE OR PRISMS  
522. 135 SAHARA CANDLESTICK, OLD COLONY ETCH  
523. 135 SAHARA CANDLESTICK, FORMAL CHINTZ ETCH  
524. 116 OAK LEAF FLAM CANDLESTICKS, PR  
525. 1472 PARALLEL QUARTER CANDLES, PR  
526. 1469 RIDGELEIGH 1 LT CANDLE  
527. 1469 RIDGELEIGH 3 IN ROUND CANDLEBLOCK  
528. 1428 WARWICK 2 LT CANDLE, PR  
529. 1469 RIDGELEIGH CANDLEVASES, PR  
530. 300 1 LT CANDELABRUM, COMPLETE  
531. 1540 LARIAT 1 LT CANDLEHOLDERS, PR  
532. 21 LAMP BASE, NO HOLDER OR SHADE H  
533. 1483 STANHOPE GOBLET, FROSTED  
534. 3390 CARCASSONNE SAHARA GOBLET, CLASSIC ET H  
535. 3408 JAMESTOWN GOBLET  
536. 3312 GAYOSO FLAM GOBLET D/O  
537. 3314 GRANDEUR GOBLET, SABRINA ETCH  
538. 3355 FAIRACRE MGLM STEM GOBLET H  
539. 6091 CABOCHON GOBLET, CATTAIL CUT  
540. 359 COLONIAL GOBLET N/O H  
541. 150 BANDED FLUTE GOBLET H  
542. 1183 REVERE GOBLET N/O  
543. 6004 CLASSIC GOBLET H  
544. 5057 SUEZ GOBLET H  
545. 4052 NATIONAL GOBLET ULC CREST  
546. 8029 PRINCESS LILY GOBLET H  
547. 3394 SAXONY SAHARA LUNCHEON GOBLET, N ETCH  
548. 3344 CAROLINA GOBLET, OSAGE ETCH H  
549. 3344 CAROLINA GOBLET GOLD BAND H  
550. 411 TUDOR GOBLET H  
551. 1485 SATURN HOSTESS HELPER COMPLETE CUT  
552. 1469 RIDGELEIGH 13 IN TRAY H  
553. 1509 QUEEN ANN 15 IN RND CUT TRAY, HUNT LABEL  
554. 1519 WAVERLY 14 IN ROUND TRAY NARCISSUS CUT  
555. 1637A TOWN & COUNTRY 14 IN TRAY  
556. 1229 OCTAGON 10 IN HDLD TRAY CUT  
557. 1184 YEOMAN 14 IN PLATE, MOONGLO CUT  
558. 1184 YEOMAN 14 IN PLATE  
559. 1184 YEOMAN 18 IN BUFFET PLATE LILY CARVING  
560. 1184 YEOMAN 16 IN BUFFET PLATE LILY CARVING  
561. 1183 REVERE 16 IN PLATE DANISH PRINCESS CUT  
562. 1184 YEOMAN 16 IN BUFFET PLATE MARYLAND CUT  
563. 1183 REVERE 16 IN BUFFET PLATE  
564. 4159 8 OZ ICE LIP PITCHER  
565. 1951 CABOCHON 12 OZ CEREAL CREAMER H  
566. 4159 14 OZ ICE LIP PITCHER  
567. 4004 IMPROMPTU 1 PT PITCHER  
568. 6060 COUNTRY CLUB MARTINI MIXER HEIRLOOM CUT  
569. 6060 40 OZ ICE JUG ARCADIA CUT  
570. 6060 COUNTRY CLUB 1/2 GAL JUG JUNGLE FLOWER CUT  
571. 6060 COCKTAIL SHAKER HEIRLOOM CUT  
572. 4036 FTD DECANTER VIRGINIA CUT  
573. 4036 SHERRY BOTTLE, UNK CUTTING  
574. 1469 RIDGELEIGH ICICLE DECANTER, CLOUDY  
575. 1489 PURITAN RYE BOTTLE FULLY CUT  
576. US 1 PT DECANTER, YOU VELVEDERE COCKTAIL  
577. 4225 COBEL 1 QT SHAKER DEBUTANTE CUTTING  
578. 4225 COBEL 1 QT SHAKER SWEET BRIAR CUTTING  
579. 7148 ZIPPER HUMIDOR W/METAL LID H  
580. 1519 WAVERLY ICE TUB H  
581. 1401 EMPRESS DF ICE BUCKET W/TONGS H  
582. 341 1/2 1 QT JUG H C HDL  
583. 341 1/2 3 PT JUG, CUT H  
584. 393 NARROW FLUTE 3 PT JUG, H  
585. 393 NARROW FLUTE 2 QT. JUG H  
586. 1205 FANCY LOOP WATER BOTTLE  
587. 1776 KALONYAL TALL COMFORT H M  
588. 1220 PUNTY BAND 9 IN NAPPY H  
589. 1225 PLAIN BAND CAKE SALVER  
590. 1280 EMER COV BUTTER, SPOON, CR, SUG LID  
591. 1205 FANCY LOOP EMERALD GOBLET, GOLD  
592. 1295 BEAD SWAG RUBY ST SOUV GOBLET  
593. 1295 BEAD SWAG CUSTARD GOB WAS SOUV x  
594. 1295 BEAD SWAG CUSTARD GOBLET, SOUV ROSE DEC  
595. 1001 MGLM FT & HDL CREAM X  
595A. 1001 MGLM FT SUGAR SHAKER  
596. 1201 FANDANGO SUGAR SHAKER WORN TOP  
597. 1255 PINEAPPLE & FAN SALT & PEPPER  
598. 1200 CUT BLOCK 6 IN COMFORT  
599. 1255 PINEAPPLE & FAN 4 IN NAPPIES 6  
600. 1255 PINEAPPLE & FAN 8 IN VASE  
601. 1280 WINGED SCROLL IVORY 4 1/2 IN NAPPY  
602. 1295 BEAD SWAG CUSTARD WINE SOUV  
603. 1220 PUNTY BAND CUSTARD IND CREAM SOUV H  
604. 1200 CUT BLOCK CUSTARD IND SUGAR SOUV  
605. 1295 BEAD SWAG OPAL SALT & PEPPER X DEC  
606. 1295 BEAD SWAG OPAL TUMBLER SOUV  
607. 1205 FANCY LOOP 5 IN ROSE BOWL  
608. 7013 POWDER BOX W/METAL LID H  
609. 1000 COV MARMALADE H  
610. 433 GREEK KEY SM CHERRY JAR H  
611. 433 GREEK KEY 2 HDLD LOW FTD JELLY H  
612. 1205 FANCY LOOP 4 IN SQ DISH 3  
612A. 341 BUTTER PAT H  
613. 1229 OCTAGON MGLM IND NUT 4  
614. 1229 OCTAGON FLAM IND NUT 4 H  
615. 473 MGLM SALTED NUT H 6  
616. 1401 EMPRESS SAHARA DF NUT H 2  
617. 353 FLAM IND ALMOND  
618. 353 MGLM IND ALMOND  
619. 433 GREEK KEY IND ALMOND H 2  
620. 433 GREEK KEY IND ALMOND H  
621. 300 PEERLESS TOOTHPICK H WORN GOLD  
622. 1205 FANCY LOOP TOOTHPICK WORN GOLD  
623. 1425 VICTORIAN 1 OZ BAR H  
624. 300 PEERLESS 2 1/2 OZ BAR H  
625. 300 1/2 PEERLESS 2 OZ BAR H  
626. 1486 COLEPORT CIGARETTE HOLDER H  
627. 31 TOY CANDLES, PR FAINT H  
628. 33 TOY CANDLES, PR H  
629. 1503 CRYSTOLITE AMBER COASTER  
630. 1503 CRYSTOLITE AMBER COASTER  
631. 10 OAK LEAF MGLM COASTER  
632. 10 OAK LEAF FLAM COASTER 6  
633. TOY CANDY CONTAINER LIKE CRYSTOLITE X  
634. 417 FLAM COVERED MUSTARD WITH SPOON H  
635. 394 NARROW FLUTE COV MUSTARD H  
636. 393 NARROW FLUTE COV MUSTARD H  
637. 411 TUDOR MUST BASE H, SPOON H, WRONG LID  
638. 1567 PLANTATION COV MARMALADE H  
639. 5025 TYROLEAN GOBLET 2 H ORCHID ETCH

ITEMS 639 THRU 691 ARE ORCHID ETCH:

640. 5025 TYROLEAN GOBLET  
641. 5025 TYROLEAN GOBLET 8 H 2f  
642. 5025 TYROLEAN LUNCHEON GOBLET 6 1X  
643. 5025 TYROLEAN ICE TEA 4 1X 2f  
644. 5025 TYROLEAN ICE TEA 4 2 REP  
645. 5025 TYROLEAN ICE TEA 13 2F 4X  
646. 5025 TYROLEAN COCKTAIL 6 H 3F  
647. 5025 TYROLEAN SEAFOOD COCKTAIL 8 1F  
648. 5025 TYROLEAN SHERRY  
649. 5025 TYROLEAN CLARET  
650. 5025 TYROLEAN WINE H  
651. 5025 TYROLEAN WINE 4 1F 1m  
652. 5025 TYROLEAN WINE 3  
652A. 5025 TYROLEAN WINE, XX MAKE INTO BELL  
653. 5025 TYROLEAN FTD JUICE 8 1XX  
654. 5025 TYROLEAN SHERBET 14 H 6F 1X  
655. 1509 QUEEN ANN CUP H  
656. 1509 QUEEN ANN CUP 2 H  
657. 1509 QUEEN ANN 8 SETS CUP/SAUCER H  
658. 1509 QUEEN ANN 6 SETS CUP/SAUCER H  
659. 1519 WAVERLY SAUCER 11 H  
660. 1509 QUEEN ANN 10 1/2 IN PLATES 12  
661. 1519 WAVERLY 10 1/2 IN PLATES 9 2F  
662. 1519 WAVERLY 8 IN PLATE 6 1F  
663. 1519 WAVERLY 8 IN PLATE 10 1F  
664. 1519 WAVERLY 7 IN PLATE 12  
665. 1519 WAVERLY 7 IN PLATE 8  
666. 1519 WAVERLY 7 IN PLATE 4  
667. 1519 WAVERLY 7 IN PLATE 6 1F  
668. 142 3 LT CANDLESTICK, PR  
669. 1540 LARIAT SQ TOP VASE H  
670. 134 2 LT CANDLESTICK H  
671. 134 2 LT CANDLESTICK  
672. 1519 WAVERLY VIOLET VASE H  
673. 5022 GRACEFUL BELL  
674. 1540 LARIAT CRIMPED TOP VASE H  
675. 1519 WAVERLY MAYO H  
676. 1519 WAVERLY 2 LT CANDLESTICK PR  
677. 1519 WAVERLY MAYO & UNDERPLATE H  
678. 1509 QUEEN ANN 4 FTD MINT XX  
679. 1509 QUEEN ANN COV LEMON H  
680. 1509 QUEEN ANN 7 IN DF BOWL H  
681. 1519 WAVERLY 12 IN CRIMPED FL BOWL  
682. 1519 WAVERLY 12 IN FLARED FLORAL BOWL  
683. 1509 QUEEN ANN FTD HDLD MINT H  
684. 1509 QUEEN ANN FTD 2 HDLD MINT H  
685. 1509 QUEEN ANN DF 8 IN BOWL H  
686. 1519 WAVERLY SQ BUTTER & COV  
687. 1519 WAVERLY 6 1/2 IN FTD JELLY  
688. 1519 WAVERLY 6 1/2 IN LOW FTD COMPORT 2  
689. 1519 WAVERLY 6 1/2 IN LOW FTD COMPORT  
690. 1509 QUEEN ANN 2 PC 12 IN CHEESE & CRACKER H  
691. 113 1 LT CANDLESTICK F  
692. 1540 LARIAT COLOGNE  
693. 1540 LARIAT COLOGNE  
694. 515 FLAM SMALL COLOGNE D/O H FLAM LABEL  
695. 516 FLAM COLOGNE D/O H  
696. 516 FLAM D/O COLOGNE H FLAMINGO LABEL  
697. 487 1 OZ COLOGNE H DECORATED  
697A. 4035 FTD CIGARETTE HOLDER  
697B. 4035 FTD CIG HOLDER DOLLY MADISON ROSE CUT  
698. 1536 MILITARY CAP ASH TRAY  
699. 1401 EMPRESS ASH TRAY, GOLD DECOR H  
700. 1401 EMPRESS ASH TRAY MONO P H m  
701. 1401 EMPRESS SAHARA ASH TRAY H  
702. 1401 EMPRESS MGLM ASH TRAY H  
703. 1489 3 2 IN ASH TRAYS, 1435 ASH TRAY  
704. 1489 6 IN ASH TRAY DOLLY MADISON ROSE CUT f  
705. 1489 6 IN ASH TRAY  
706. 1489 PURITAN 4 IN DEEP ASH TRAY  
707. 1489 PURITAN 4 IN DEEP ASH TRAY LATTICE CUT f  
708. 1510 SQ ON ROUND 4 IN ASH TRAY H  
709. 1489 PURITAN 2 IN DEEP ASH TRAY  
710. 1489 PURITAN 2 IN DEEP ASH TRAY 2 GRD T & B  
711. 1612 BOTANICAL COV CIG BOX & ASH TRAY H  
712. 1489 PURITAN 4 IN ASH TRAY GRD T & B  
713. 600 ASH TRAY & MATCH STAND H  
714. 1488 KOHINOOR BRIDGE ASH TRAY  
715. 1425 VICTORIAN ASH TRAY & MATCH HOLDER f  
716. 358 FLAM IND ASH TRAY  
717. 358 FLAM ASH TRAY  
718. 1540 LARIAT ASH TRAY  
719. 1404 OLD SANDWICH COBALT IND ASH TRAY 2 H  
720. 1404 OLD SANDWICH SAHARA IND ASH TRAY 2 H  
721. 354 COLONIAL BUTTER PATS 2 H  
722. 1469 RIDGELEIGH 6 IN COV BOX METAL HOLDER H  
723. 1469 RIDGELEIGH 4 IN COV CIGARETTE BOX H  
724. 1469 RIDGELEIGH 2 IN ASH TRAYS 2 f  
725. 1469 1/2 RIDGELEIGH COV CIGARETTE HOLDER H  
726. 1469 RIDGELEIGH 2 IN SQ ASH TRAY H  
727. 1469 RIDGELEIGH HEART & SPADE ASH TRAYS H  
728. 3404 SPANISH GOBLET CONCORD ETCH H  
729. 3404 SPANISH SAU CHAMP CONCORD ETCH  
730. 1506 PROVINCIAL GOBLET H  
731. 5057 SUEZ AMBER STEM FTD ICE TEA H  
732. 373 COLONIAL GOBLET  
733. 347 COLONIAL GOBLET H  
734. 451 CROSS LINED FLUTE GOBLET H  
735. 4004 IMPROMPTU GOBLET  
736. 4052 NATIONAL GOBLET FRED HARVEY CREST  
737. 5098 LOUISA GOBLET BEL AIR CUTTING H  
738. 5082 MID CENTURY GOBLET H  
739. 818 FIFTH AVENUE GOBLET  
740. 395 COLONIAL HUBER GOBLET H  
741. 1776 KALONYAL GOBLET H  
742. 339 CONTINENTAL GOBLET H  
743. 379 1/2 URN GOBLET H  
744. 341 PURITAN GOBLET H  
745. 5024 OXFORD GOBLET MARYLAND CUT H  
746. 1567 PLANTATION GOBLET H  
747. 4052 NATIONAL SODA MOONGLO CUT  
748. 5098 LOUISA GOBLET CUT FLUTES H  
749. 1306 COMET LEAF GOBLET H  
750. 419 SUSSEX MGLM BOWL GOBLET H  
751. 337 TOURAINE AMBER GOBLET H  
752. 4052 NATIONAL SODA MOONGLO CUT  
753. 393 NARROW FLUTE GOBLET H  
754. 3408 JAMESTOWN GOBLET PALMETTO CUT 5  
755. 1540 LARIAT SHERBET MOONGLO CUT 6  
756. 1540 LARIAT GOBLET MOONGLO CUT 6  
757. 3318 WALDORF WINE TATTING ETCH  
758. FILLY, HEAD FORWARD  
759. CLYDESDALE HORSE  
760. LARGE ELEPHANT  
761. MEDIUM ELEPHANT  
762. POUTER PIGEON H  
763. FISH BOOKENDS, PR, 1 LEANS  
764. FISHBOWL H  
765. BALKING COLT  
766. BALKING COLT  
767. KICKING COLT  
768. STANDING COLT  
769. STANDING COLT  
770. STANDING COLT H, POOR DETAIL  
771. AMBER STANDING COLT  
772. SPARKIE  
773. SPARKIE F  
774. SCOTTY WHIMSEY, LONG NECK  
775. FLOATING DUCKLING H, ROUGH EDGE  
776. STANDING DUCKLING H  
777. CYGNET

778. SPARROW  
779. SPARROW  
780. CHICK  
781. STANDING PIGLET H  
782. SITTING PIGLET H  
783. MALLARD WINGS HALF H  
784. MALLARD WINGS UP  
785. MALLARD WINGS DOWN  
786. ASIATIC PHEASANT  
787. ASIATIC PHEASANT  
788. GOOSE WINGS DOWN  
789. GOOSE WINGS HALF  
790. GOOSE WINGS HALF  
791. GOOSE WINGS UP  
792. GOOSE WINGS UP  
793. GOOSE WINGS UP, M  
794. RINGNECK PHEASANT  
795. RINGNECK PHEASANT H  
796. FIGHTING ROOSTER  
797. GIRAFFE, HEAD TURNED  
798. GIRAFFE, HEAD TURNED  
799. 1503 CRYSTOLITE MASTER SWAN NUT  
800. 1503 CRYSTOLITE MASTER SWAN NUT  
801. 1489 PURITAN HORSEHEAD ASHTRAY  
802. 1489 PURITAN SM HORSEHEAD CIG BOX  
803. 1489 PURITAN LRG HORSEHEAD CIG BOX  
804. 1601 FOX ASHTRAY  
805. LRG HORSEHEAD STOPPER  
806. SM HORSEHEAD STOPPER  
807. SM HORSEHEAD STOPPER  
808. ROSTERHEAD STOPPER  
809. PENGUIN STOPPER  
810. GOOSE STOPPER  
811. MOONGLEAM KINGFISHER H  
812. MIKE OWENS BUST, FROSTED  
813. MIKE OWENS BUST, FROSTED  
814. 1 MADONNA, FROSTED  
815. ROOSTER TAIL COCKTAIL  
816. ROOSTER TAIL COCKTAIL  
817. ROOSTER TAIL COCKTAIL  
818. 5048 ROOSTER HEAD COCKTAIL TALLY HO ETCH 3  
819. 4002 AQUA CALIENTE TALLY HO ETCH  
820. 5048 ROOSTER HEAD COCKTAIL 4  
821. IMP CARAMEL SLAG CYGNET  
822. IMP CARAMEL SLAG BUNNIE HEAD DOWN  
823. IMP CARAMEL SLAG SCOTTIE  
824. IMP CARAMEL SLAG TIGER PAPERWEIGHT  
825. IMP CARAMEL SLAG SM ELEPHANT  
826. IMP CARAMEL SLAG MEDIUM ELEPHANT  
827. IMP CARAMEL SLAG MEDIUM ELEPHANT  
828. IMP CARAM EL SLAG DONKEY  
829. IMP CARAMEL SLAG DONKEY  
830. IMP CARAMEL SLAG AIREDALE  
831. IMP CARAMEL SLAG SPARKIE  
832. IMP CARAMEL SLAG BALKING COLT  
833. IMP CARAMEL SLAG STANDING COLT  
834. IMP CARAMEL SLAG STANDING COLT  
835. IMP CARAMEL SLAG MALLARD WINGS HALF  
836. IMP CARAMEL SLAG MALLARD WINGS HALF  
837. IMP CARAMEL SLAG MALLARD WINGS UP  
838. IMP CARAMEL SLAG MALLARD WINGS UP  
839. IMP CARAMEL SLAG WOOD DUCK  
840. IMP CARAMEL SLAG WOOD DUCK  
841. IMP CARAMEL SLAG MINUET GIRL (DINKY DOO)  
842. IMP CARAMEL SLAG WAVERLY TALL COV CANDY, m  
843. IMP AURORA JEWELS ELEPH HDL MUGS 10  
844. 5072 ROSE STEM GOBLET HEISEY ROSE ETCH  
845. 5072 ROSE STEM ICE TEAS H ROSE ETCH 11 H  
846. 5072 ROSE STEM SHERBETS H ROSE ETCH 9 H  
847. 5072 ROSE STLM CHAMPAGNE H ROSE ETCH H  
848. 5072 ROSE STEM COCKTAIL H ROSE ETCH H  
849. 5072 ROSE STEM CLARET H ROSE ETCH H  
850. 4164 73 OZ ICE PITCHER H ROSE ETCH  
851. 1519 WAVERLY 8 IN PLATES H ROSE ETCH 12, 3f  
852. 1519 WAVERLY CR & SUG H ROSE ETCH H  
853. 1519 WAVERLY CR & SUG H ROSE ETCH  
854. 1519 WAVERLY 14 IN RD TRAY H ROSE ETCH  
855. 1519 WAVERLY 3 PRT RELISH H ROSE ETCH H  
856. 1519 WAV 6 1/2 IN FTD JELLY H ROSE ETCH H  
857. 1509 Q A 6 IN DF MINT H ROSE ETCH H  
858. 1519 WAV 6 1/2 IN FTD JELLY H ROSE ETCH H X  
859. 1509 Q A 6 IN FTD HDL JELLY H ROSE ETCH H X  
860. 1509 Q A 6 IN FTD HDL JELLY H ROSE ETCH H  
861. 1519 WAV 6 IN COV BUTTER H ROSE ETCH  
862. 142 3 LT CANDLESTICK PR H ROSE ETCH  
863. 352 FLAT PANEL 1 QT CR FRUIT H ROUGH  
864. 352 FLAT PANEL 2 QT CR FRUIT H, SUN COLORED  
865. 1235 BEADED PAN/SNBRST PUNCH BOWL ONLY, 15 IN  
866. 1235 BEADED PAN/SNBRST PUNCH CUPS 9  
867. 300 PEERLESS PUNCH CUPS 2 H  
868. 8 PUNCH LADLE  
869. 1184 YEOMAN SAHARA 6 IN COV CANDY EMP ETCH X  
870. 1184 YEOMAN 6 IN COV CANDY CUT H  
871. 1519 WAV BOW TIE COV CANDY H GOLD DEC f FINIAL  
872. 1184 YEOMAN D O 5 IN COV LEMON H GOLD DEC  
873. 1170 PLEAT & PAN FLAM COV COMPOTIER  
874. 393 NARROW FLUTE 5 1/2 IN COV CANDY H GOLD  
875. 465 RECESSED PANEL 1/4# COV CANDY H CUT  
876. 465 RECESSED PANEL 1# COV CANDY H CUT  
877. 465 RECESSED PANEL 1# COV CANDY H CUT  
878. 3333 PARFAITS RENAISSANCE ETCH H 9 1F  
879. 3350 WABASH PARFAITS NEEDLE ETCH H 4  
880. 3408 JAMESTOWN CLARET 3  
881. 3368 ALBEMARLE CLARET CHATEAU CUT UNFIN  
882. 3416 BARBARA FRITCHIE COCKTAIL H  
883. 3397 GASCONY SAHARA JUICE H 3  
884. 4044 NEW ERA JUICES H 6  
885. 3350 WABASH JUICE H 2, 1 W O, 1 D O  
886. 3390 CARCASSONNE 8 OZ SODAS 6 W O  
887. 3411 MONTE CRISTO CLARETS 4 KALARAMA CUT  
888. 3404 SPANISH JUICE PAIRPOINT CUT  
889. 5010 SYMPHONY FRT COCKTAIL CRINOLINE ETCH  
890. 6060 COUNTRY CLUB CLARET SILVER IRIS CUT  
891. 4055 PARKLANE FRT COCKTAIL BRIARCLIFF CUT  
892. 3404 SPANISH CLARETS 3 SPEC CUT  
893. 3404 SPANISH JUICE PAIRPOINT CUT  
894. 3366 TROJAN WINE PAIRPOINT CUT  
895. 3408 JAMESTOWN COCKTAIL PALMETTO CUT  
896. 4055 PARKLANE COCKTAIL CUT  
897. 3355 FAIRACRE COCKTAIL MNGLM STEM/FT 2  
898. 4055 PARKLANE COCKTAILS BRIARCLIFF CUT 4  
899. 3366 TROJAN COCKTAIL D O H  
900. 3368 ALBEMARLE COCKTAIL CHATEAU CUT  
901. COCTAIL CUT  
902. 1483 STANHOPE COCKTAIL  
903. 1056 WINE H  
904. JUICE ETCHED, NOT HEISEY  
905. 4049 OLD FITZ AMBER CLARET H  
906. 5040 LARIAT COCKTAIL H 4  
907. 3481 GLENFORD TUMBLERS MGLM FT D/O 6  
908. 1114 ARCADE FTD JUICE HH  
909. 369 HARTMAN JUICE N/O H f  
910. 3408 JAMESTOWN WINES ROSALIE ETCH 4 H  
911. 5011 YORKTOWN WINE H F  
912. 5079 PAN AMERICAN COCKTAILS H 7  
913. 5098 LOUISA COCKTAIL H  
914. 3350 OYST' COCKTAIL MGLM FT MAYFLOWER ET 2  
915. 3368 ALBEMARLE OYSTER COCKTAIL D/O  
916. 1486 COLEPORT OYSTER COCKTAIL H  
917. 393 NARROW FLUTE JUICE H  
918. 417 DBL RIB & PANEL OYSTER COCKTAIL H  
919. 300 1/2 PEERLESS 2 OZ BAR H



920. 337 TOURAINE AMBER JUICE H  
 920A. 1637A TOWN & COUNTRY DAWN JUICE H  
 920B. 419 SUSSEX MGLM JUICE H  
 921. 1401 EMPRESS ALEXAND 10 1/2 IN SQ PLATE H  
 922. 1184 MARIGOLD 10 1/2 IN RD PLATE EMPRESS ET  
 923. 1519 WAVERLY 10 1/2 IN PLATE 2  
 924. 1485 SATURN ZIRCON 7 IN PLATES 4  
 925. 1401 SAHARA 8 IN SQ PLATE CLASSIC ET H 6  
 926. 1401 TANGERINE 8 IN SQ PLATE H GOOD COLOR  
 927. 1184 YEOMAN 8 IN PLATES MARYLAND CUT 3  
 928. 1401 EMPRESS ALEXANDRITE RND SAUCERS 6 H  
 929. 1506 PROVINCIAL LIMELIGHT 8 IN PLATES 8  
 930. 1509 QUEEN ANN 10 IN RND TRAY CUT  
 931. 433 GREEK KEY 5 IN PLATES 4 H  
 932. 1401 SAHARA 6 IN RND PLATES OLD COL ET 3 H  
 933. 1184 FLAM 11 IN CTR HDL TRAY 3 COMP H  
 934. 1185 YEOMAN CTR HDLD TRAY CUT H  
 935. 1205 SW & RAINDROP FLAM FLORAL BOWL H  
 936. 1184 YEOMAN MGLM 14 IN FLORAL BOWL D/O  
 937. 1184 YEOMAN FLAM 14 IN FLORAL BOWL D/O  
 938. 1637A TOWN & COUNTRY DAWN SALAD BOWL & PLATE  
 939. 1229 OCTAGON MGLM 12 IN HDLD MUFFIN TRAY H  
 940. 1229 OCTAGON FLAM 10 IN HDLD MUFFIN TRAY  
 941. 1626 LODESTAR DAWN 8 IN LOW BOWL H  
 942. IMPERIAL CRYSTAL MINUET GIRL  
 943. IMPERIAL CHARCOAL BABY ELEPHANT  
 944. IMPERIAL AMBER CLYDESDALE  
 945. IMPERIAL BLACK TIGER PAPERWEIGHT  
 946. IMPERIAL CRYSTAL FROSTED FILLY  
 947. IMPERIAL 1977 SOUVENIR OSCAR  
 948. IMPERIAL 1978 SOUVENIR OSCAR  
 949. IMPERIAL 1979 SOUVENIR OSCAR
950. IMPERIAL 1980 SOUVENIR OSCAR  
 951. IMPERIAL 1981 SOUVENIR OSCAR  
 952. IMPERIAL 1982 SOUVENIR OSCAR  
 953. IMPERIAL 1979 DATE ERROR HEATHER OSCAR  
 954. IMPERIAL 1980 DOUBLE DATE HEATHER OSCAR  
 955. IMPERIAL MEADOW GREEN MED ELEPHANT IRIDIZED  
 956. IMPERIAL MILK GLASS RABBIT PAPERWEIGHT  
 957. IMPERIAL MILK GLASS STANDING PONY  
 958. IMPERIAL SET OF 3 LIGHT BLUE COLTS  
 959. IMPERIAL AURORA JEWELS CARNIVAL TOP HAT  
 960. IMPERIAL AURORA JEWELS CARNIVAL TOP HAT  
 961. IMPERIAL COMPLETE SET LAND OF LEGEND PLATES  
 962. HCA MUSEUM DEDICATION PAPERWEIGHT  
 963. IMPERIAL RUBY OLD WMSBG HDLD CANDLESTICKS PR  
 964. IMPERIAL AZALEA ELEPHANT MUG S. AGNEW 1970  
 965. IMPERIAL BLUE HAZE ELEPHANT MUG NIXON FORD 1978  
 966. IMPERIAL BLACK ELEPHANT MUG NIXON FORD 1973  
 967. IMPERIAL VERDE ELEPHANT MUG FORD ROCKF. 1974  
 968. IMPERIAL ANT. BLUE ELEPHANT MUG NIXON AGNEW 1969  
 969. IMPERIAL PLANTATION WINE AMBER STEM  
 970. 2 BOOKS, YEAKLEY I & ETCHING BOOK, WORN  
 971. 4 BOOKS, WILLEYS ETCH, ORCHID, ROSE, TOOTHPICK  
 972. ORIGINAL HEISEY CATALOG OCTOBER 1948  
 973. 2 BOOKS, CAT 109 AND CAT 14B GOOD COND  
 974. HEISEY STEMWARE BOOK  
 975. 5 BOOKS, CAT 76, WILLEY ETCH, ANIMAL 1&2, S & P  
 976. 4 VOGEL BOOKS, WORN  
 977. HEISEY CANDLESTICK BOOK  
 978. VERLYS BOOK, WORN  
 979. 3 BOOKS, MCCLEAN, WILLEYS ETCH, ANIMAL II  
 980. HEISEY INDEX & MISC PAPER ITEMS  
 981. 3 HEISEY CARTONS

MAIL BIDS ACCEPTED WITH CHECKS FOR MAXIMUM AMOUNT. MAIL BIDS ARE HANDLED COMPETITIVELY AND ANY DIFFERENCE REFUNDED. CONDITION OF ITEMS FOR MAIL BIDS HANDLED AT THE DISCRETION OF AUCTIONEER. ITEMS HAVE BEEN CHECKED AT THE TIME OF CATALOGING TO THE THE BEST OF OUR ABILITY. THEY WILL BE CHECKED AGAIN CLOSELY PRIOR TO SELLING. IN SOME CASES WHERE DAMAGE IS FOUND TO BE MINIMAL, WE MAY EXECUTE YOUR BID UP TO 70% TO 80% OF MAXIMUM. MARK YOUR LIST MINT ONLY IF YOU DO NOT WANT US TO USE OUR DISCRETION IN EXECUTING YOUR BIDS. MOLD FLAWS ARE NOT CONSIDERED DAMAGE. PLEASE BID IN INCREMENTS OF AT LEAST \$2.50. EXAMPLE - DO NOT BID 11.00 OR 26.00, AS BIDDING IS GOING LIKE 25.00 - 27.50 - 30.00. IT IS NO LONGER POSSIBLE TO ACCEPT BIDS LIKE "IF I DON'T GET ONE ITEM ADD IT ON TO ANOTHER". WE ARE NOW HANDLING IN EXCESS OF 600 MAIL BIDS PER AUCTION. WHEN COMPLICATIONS ARE THROWN IN SOMETIMES WE MISS A BID. ANY BID OF 5.00 OR LESS WILL BE USED AS AN OPENING BID. IN CASE OF IDENTICAL BIDS, EARLIEST POSTMARK WILL BE USED. YOU CAN HELP US TO HELP YOU. WE ENJOY HANDLING YOUR MAIL BIDS. IF YOU HAVE ANY QUESTIONS - DON'T HESITATE TO CALL US. PLEASE ADD 9.00 PER CARTON FOR POSTAGE AND HANDLING, 11.00 WEST OF ROCKY MOUNTAINS.

CHECKS SHOULD BE MADE TO: APPLE TREE AUCTION CENTER  
 1616 WEST CHURCH STREET  
 NEWARK, OHIO 43055

LIST OF PRICES REALIZED AVAILABLE AFTER AUCTION FOR \$1.00.  
 1 YR. SUBSCRIPTION FOR PRICE LISTS OF 1986 HEISEY AUCTIONS \$5.00.

## CORRECTIONS TO THE JULY NEWSLETTER

Last month I wrote about Heisey names and numbers. In reading the list over I found that the #1 spool for a lamp was listed twice. Also I listed 1548 as the number for the Blair stem. This is a pressed glass number and Blair is blown. I do not remember now where I even found this number. Please strike that one from your list.

Also on page 16, there were items reprinted from an old newsletter. Item 7 is the 402 Gothic Candelabra and item 8 is the 4057 Cecelia vase. All of our proofreaders were apparently asleep last month - there were several typos. However, it is hard to put a newsletter together in a room full of volunteers getting ready for a convention. Try it sometime!



# New Heisey Book Is A Gem

By MR. GLASS

**R**IGHT ON the heels of "Heisey Candlesticks, Candelabra and Lamps" (reviewed earlier in *Antique Quarterly*) comes another important reference book on Heisey, "The Collector's Encyclopedia of Heisey Glass, 1925-1938," by Neila Bredehoft.

"Encyclopedia" zeroes in on the "color years," that explosive epoch, spanning the Great Depression, when American glass companies satisfied newly-emerging tastes for bright and brilliant color, largely dormant since World War I. Despite the immense interest in colored Heisey, no one book until this one attempted to completely chronicle just this single era. The Yeakley's books on colored Heisey had filled some of this void, but they are virtually textless and make no pretense of including every pattern in every color.



The indefatigable Clarence Vogel has over the years, in his 4-volume classic (known to collectors simply as "Vogel's four volumes") and in his pioneering "Newscaster" magazines, discussed most of the items in Bredehoft's "Encyclopedia," but only in the latter are they concentrated and priced—more about the price guide later.

"Encyclopedia" is much more than a collection of photographed glass and original catalog reprints. Bredehoft's concise, easy-to-read, always beautifully researched format includes chapters on company history; profiles of individual Heisey designers and workers; evolution of glass colors, including experimental and short-run trials; the little-known project to re-create Sandwich Glass Company products of the nineteenth century; technical details of actual glass production, formulae, marketing—including a good sampling of market newsletters and promos of the era.

**T**HE MOST common comment I've heard about the book so far is "There's so much glass in it I've never seen or heard of." Even serious Heisey collectors and dealers are bound to be surprised by the number of items in the book they've never encountered before. And this is in addition to the spectacular (some are one-of-a-kind) experimental or "feasibility" items in such colors as pale blue, opaque orange, red, etc.

What makes these rare colors in Heisey so much more desirable is that Heisey, unlike many of its competitors, stayed for the most part with just three basic colors for the mass market: green, pink, and yellow. Its "secondary" colors—marigold, amber, cobalt, etc., were generally produced in limited amount for a short time.

Had Heisey produced dozens of colors in great quantity there somehow wouldn't be quite the allure and glamor attached to them as there is to these precious few.

"Encyclopedia" is 415 pages of large-format, glossy, fact-and-photo packed fantasy-fulfillment for the full-fledged Heisey freak and for the merely coffee-table curious. A classic that no glass lover should be without.

The 48-page price guide, free with the book, will undoubtedly irritate most everyone (and indeed, it comes with a disclaimer that the prices given are merely an averaging out of prices submitted by 11 different Heisey clubs across the country, and do not reflect the author's own opinion).

Prices given are bound to be either "way too high" or "way too low" depending upon who you are, where you live, and what your aims are (buying or selling). Yet, price guides seem to be a necessary evil these days. If it's an evil you can do without, you will still find the price guide valuable simply as a tool which lists the actual items available in any given line.

For example, there are more than three full pages listing the ever-popular "Ridgeleigh" line, a pattern that grabs beginners and old-time Heisey holders alike.

Reprinted from *Antique Quarterly*, Snohomish, WA



9008 SEA NYMPH\*  
Double Plate Etching  
Introduced circa 1927

The various elements of the design.  
All 3 "Cameos" have the lacy edge.

## Classified Ads

**WANTED TO BUY:** Buying Caprice blue or Rosepoint by Cambridge. Rose or Orchid by Heisey...American, June, Fairfax, Versailles, Trojan by Fostoria. Also Depression Glass and all crystal or colored of that era. Nadine Pankow, 207 S. Oakwood, Willow Springs IL 60480. PH: 312-839-5231.

**WANTED:** Items in #160 Locket on Chain, crystal or colors. JIM KENNON, PO Box 251, Amherst, OH 44001.

**WANTED TO BUY:** 1 to 5 Heisey Plates 7 1/4" diameter Pattern #393. Leslie M. Ward, 4811 N.E. 12th St., Ocala, FL 32761.

**FOR SALE:** CABOCHON Compote \$36.50; Continental Punch Cups \$11.00 ea.; 3-part Orchid Relish \$55.00; Opal Beaded Swag Spooner \$48.50; Frosted Victorian Belle (marked) \$100.00; (4) Symphone Cordials \$35.00 ea; Empress Sahara Relish \$17.50. PATTON HOUSE, Box 547, Loving St., Louisa, VA 23093. 703-967-1181.

**FOR SALE:** #1519 ORCHID ETCH min. sug/crmr. \$50.00; PROVINCIAL salt/pepper \$28.00; PLANTATION 14" sandwich plate \$65.00; #5072 HEISEY ROSE sherbet (4) \$32.00 ea; TWIST MOONGLEAM 14" sand. plate \$40.00; OLD SANDWICH SAHARA candleholders, floral bowl \$250.00; FANDANGO compote 7 1/2" high \$95.00; DOUBLE RIB & PANEL MOONGLEAM basket \$145.00; ATHENA candleholders pr. \$60.00; EMPRESS FLAMINGO min. sug/crmr \$50.00; EMPRESS ALEXANDRITE ind. nut dish \$85.00; COARSE RIB 3 pt. pitcher \$65.00; PILLOWS 4" Rose bowl \$125.00; CARCASSONNE COBALT bowl, cig holder \$75.00; LARIAT sug/crmr, tray, \$50.00. V.& O. JOHNSON, GLASS'N'GLASS, Rt. 1, Box 1324, Hayward, WI 54843. PH: 715-462-3753.

**WANTED:** #3381 Creole stemware, Sahara - 1 oz. cordials, 7 oz. saucer champagnes-tall stem, 2 1/2 oz. wines, 4 oz. cocktails, 11 oz. goblets - tall stem, 10 oz. footed tumblers. ALICE K. PATAKY, 402 N. Lovell Ave., Chattanooga, TN 37411. 615-899-0769.

**WANTED:** 1503 CRYSTOLITE Rosette Candlelocks by Imperial. Ruby. TERRY H. CRANSTON, 7055 Round Hill Dr. A 4, Union Lake, MI 48085.

SHIRLEY REESBECK PH: 201-666-9320  
238 Rockland Ave. S & I EXTRA  
River Vale, NJ 07675 \* MARKED

#1567 PLANTATION Syrup, Ivy etched.....	\$ 60.00
# 451 CROSS LINED FLUTE, 8 oz Tumb.* 3 ea.	50.00
# 160 LOCKET ON CHAIN Cake Salver.....	90.00
#1485 SATURN Mustard & lid*.....	30.00
# 1 GEORGIAN Candlestick 11", Single....	90.00
#1233 PRESSED DIAMOND 6 1/8" Bowl, Hawthorn*	25.00
#1225 PLAIN BAND (Sawtooth) Syrup (top missing).....	30.00
#1404 OLD SANDWICH salts (Ind. ash tray) COBALT* 3.....	ea. 30.00
# 300 PEERLESS, ind. drink decanters 12 ea.	10.00



<p><b>A.W. PARKER</b> Heisey &amp; Pattern Glass Shows or Appointment Magalia, CA 95954 PH: (916) 873 2326</p>	<p><b>"HAPPINESS IS" THE STULTZ'S</b> Show and Mail - Elegant Glass Circa 1890-1960 3106 Warren Court Glen Allen, VA 23060 PH: (804) 262-1273 (Richmond Area)</p>	<p><b>EAGLES REST ANTIQUES</b> China Heisey Antiques Mary Evans 62 Fieldpoint Rd. Heath, Oh. 43056 PH: (614) 522-2035</p>	<p><b>SYD'S A&amp;J at THATCHERS FORGE</b> Heisey, Collectible, &amp; Antique Glass 338 Bank St., Harwich Center Cape Cod, Mass 02645 Chance or Appointment PH: (617) 432-3007</p>
<p><b>A DOOR ANTIQUES</b> Heisey My Specialty 4241 Bayard Road South Euclid, OH 44121 PH: (216) 381-3008</p>	<p><b>GERT'S GLASS</b> Heisey &amp; Duncan Gertrude &amp; Russell Swetnam 1926 Saratoga Dr., Adelphi, MD 20783 PH: (301) 434-5113</p>	<p><b>MOSTLY HEISEY</b> Rhoda Curley 16 Clayton Place Albany, NY 12209 By Appointment, PH: (518) 482 6272</p>	<p><b>J.J. &amp; BOB MC KEE</b> Pottery Glassware Collectibles 334 W. 75th St. Kansas City, MO. 64114 wed sun 10.5 (816) 361-2544</p>
<p><b>ALL HEISEY AUCTION</b> Consignments Welcome Apple Tree Auction Center 1616 W. Church, Newark, OH 43055 PH: (614) 344-9449</p>	<p><b>VIRGINIA AND ODELL JOHNSON</b> Rt. 1, Box 1324 Hayward, WI. 54845 PH: (715) 462-3753</p>	<p><b>MOUND BUILDERS ANTIQUES</b> Heisey &amp; Animals, General Antiques Irene Rauck 1138 Moundview, Newark, OH 43055 PH: (614) 344-6043</p>	<p><b>SINGLETREE ANTIQUES</b> Cut, Pattern &amp; Heisey Glass 10717 Staples Mill Rd, Glen Allen, Va. 23060 Chance or appointment (804) 266-3795</p>
<p><b>ANN'S GIFTS &amp; ANTIQUES</b> 105 W. Main St., Hebron, OH 43025 Intersection of Rts. 40 &amp; 79 Next door to Daisy Queen Daily 10:30 to 5:30</p>	<p><b>GLASS WITH CLASS</b> Lenore A Shelley, GGHCC 1336 Lincoln Avenue San Jose, CA 95125 PH: (408) 286-8098</p>	<p><b>HELEN &amp; JIM KENNON</b> Heisey, Cambridge, Fostoria, Duncan, Imperial, Fenton, Tiffin P.O. Box 114 Brookville, OH 45309 PH: (513) 833 5406 SHOWS ONLY</p>	<p><b>THE PURPLE PLACE</b> Featuring Heisey &amp; Other Fine Glass Martha &amp; Harold Earp 1940 Suwanee, Ft. Myers, FL 33901 PH: (813) 936-1572 Anytime</p>
<p><b>ANTIQUES - THE SHULTZES</b> 206-208 East Main St. Newmanstown, PA 17073 15 Miles West of Reading, PA PH: (215) 589-2819</p>	<p><b>GREEN ACRES FARMS</b> Antiques, Crystal Glass &amp; Collectibles 2678 Hazelton Etna Rd., SW (S.R. 310 N) Pataskala, OH 43062 Sat. or Sun. PM or call (614) 927 1882</p>	<p><b>R &amp; L ANTIQUES - SAN FRANCISCO</b> Shows only always lots of Heisey Member of Golden Gate Heisey Club P.O. Box 3614 Daly City, CA 94015 PH: (415) 621 6693</p>	<p><b>TACOMA ANTIQUE GALLERY</b> A Collectors' Mall 745 Broadway Downtown Tacoma, WA 98402 (Stop on the way to Expo 86)</p>
<p><b>AVERY'S QUALITY ANTIQUES</b> Specializing in Heisey Shows or by Appointment 2112 First St., Jackson, MI 49203 PH: (517) 783-4075</p>	<p><b>H &amp; R DIAMOND H</b> Helen &amp; Robert Rarey 1450 White Ash Dr. Columbus, OH 43204 PH: (614) 279-0390 after 5:30</p>	<p><b>RAMBLING LANE ANTIQUES</b> Featuring Heisey &amp; other fine glass Keith &amp; Evelyn Hoover 1978 Rambling Lane, Rhineland, WI 54501 PH: (715) 282 5019</p>	<p><b>ALFA I CARRIAGE HOUSE ANTIQUES</b> Featuring Depression &amp; Elegant Glassware Al &amp; Faye Maness 508 E Cary Street Richmond, VA 23219 PH (804) 788-1630</p>
<p><b>B &amp; B HEISEY &amp; COLLECTIBLES</b> B. Whaley 300 International Dr. Pataskala, OH. 43062 By Appointment: PH: (614) 927 1557</p>	<p><b>CHARLOTTE'S GLASS REFLECTIONS</b> Quality Glassware Specializing in Fostoria 6816 14th St. W., Bradenton, FL 33507 PH: (813) 756-4143</p>	<p><b>RAY ZIEGLER</b> Glass Repair 185 County Line Westerville, OH 43081 PH: (614) 891 9700</p>	
<p><b>C.E. HIGGINS (S.F. Bay Area)</b> Shows and Mail Order P.O. Box 2723 Menlo Park, CA 94025 PH: (415) 322 0192 Evenings</p>	<p><b>HARRALSON'S HAPPY HEISEY HUNTERS</b> Sponsor SPFD. MO's Super Antique Show 77 Quality Dealers From 10 States 1986 Dates: May 31-June 1 Nov. 15-16 Info: 1426 W. Highland, Springfield, MO. 65807</p>	<p><b>SCHWAN'S ANTIQUES</b> SHOWS &amp; MAILORDER 77 Lagos del Norte Ft. Pierce, FL 33451 PH: (305) 461-5940</p>	
<p><b>C &amp; J ANTIQUES</b> Cole &amp; Jean Miesner Box 45, 72 Whig St. Newark Valley, NY 13811 PH: (607) 642 9905</p>	<p><b>HARRISON'S ANTIQUES</b> Heisey, Cambridge, Duncan Shows, Mail, by Appointment 26 Johnston's Lane, Mercersburg, PA 17236 PH: (717) 328-2451</p>	<p><b>SUM OF LIFE</b> Elaine &amp; Frank Husted P.O. Box 102 Phoenixville, PA 19460 PH: (215) 935 2962</p>	
<p><b>CHARLES &amp; MILDRED FISHER</b> Heisey, Degenhart, Imperial, Antiques, Collectibles, General Line 991 Idlewilde, Newark, OH 43055 PH: (614) 522 5398</p>	<p><b>NANCY'S ANTIQUES</b> Heisey, Cambridge, Fostoria, Fenton Elegant Glassware of the Depression Era 906 44th NW Canton, OH 44709 shows only PH (216) 492-2595 After 6:00 PM</p>	<p><b>ETTELMAN'S DISCONTINUED</b> CHINA &amp; CRYSTAL HEISEY a SPECIALTY P.O. Box 6491 HN Corpus Christi, TX 78411 PH: (512) 888 8391 Include SASE</p>	
<p><b>DAVE'S ANTIQUES</b> Specializing in Heisey Shows &amp; Appointments Tampa, FL 33600 PH: (813) 876 0580</p>		<p><b>THE GLASS CONNECTION</b> Specializing in Heisey Shows &amp; Mail Order Box 526, Collegeville, PA 19426 PH: (215) 489 0139</p>	
<p><b>DIAMOND H PLUS</b> Mail Orders &amp; Shows George &amp; Eileen Schamel Rt. 3, Box 171, Boonsboro, MD 21713 PH: (301) 432 6285</p>	<p><b>J. &amp; R. COLLECTIBLES</b> Shows, SASE, Mail Order list June &amp; Ray Lukasko P.O. Box 1030, Newark, OH 43055 PH: (614) 344 9719</p>	<p><b>THE GLASS LADY</b> Week-Ends Only Glass, Pottery, China Circle Shopping Center, Richmond, VA 23224 SHOP (804) 320 9239 HOME (804) 271 1555</p>	
<p><b>ELLIZABETH BASSETT CASON</b> 401 32nd St., W. Bradenton, FL 33505 Mail Order - List PH: (813) 748-0851</p>	<p><b>PATTON HOUSE</b> Heisey &amp; Duncan Miller Rocky's Mall, I-81 &amp; US 11 Weyer's Cave, VA 24486 PH: (703) 967-1181</p>	<p><b>WILLEY'S ANTIQUES &amp; MUSEUM</b> Specializing in Heisey 11110 Cannon Rd., Frazeyburg, OH 43822 16 miles east of Newark, OH PH: (614) 828-2557</p>	
<p><b>FOREVER HEISEY</b> Shows and Mail Order Janice Thran 1663 Londondale Pkwy., Newark, OH 43055 PH: (614) 344 5955</p>	<p><b>GRETA * GARBO</b> Antiques and Collectibles Heisey, Crystal, Silver, Jewelry Unicorn Mall, 310 Fifth Ave., San Diego, Ca. 92101 Greta Jennings - Home (619) 562-5745</p>	<p><b>GOLDSBERRY'S ANTIQUES</b> Heisey a Specialty Shows only - Buy &amp; Sell Kalamazoo, MI 49000 PH: (616) 381 3013</p>	
<p><b>DIE KUNST GALLERIES &amp; ANTIQUES</b> Specializing in Heisey Vel &amp; Andy Andress Box 329, 725 Front Street Leavenworth, WA 98826 PH: (509) 548 7856</p>	<p><b>PEGGY'S ANTIQUES</b> Ernie &amp; Peggy Cox P.O. Box 367, Spavinaw, OK 74366 By Appointment or Chance PH: (918) 589 2859</p>	<p><b>THE WOODEN SHOE</b> Antiques &amp; Collectibles Jim &amp; Sheri VanEs by Appt. 810 Elden, Herndon, VA 22070 PH: (703) 435 9045</p>	
<p><b>TREASURE HOUSE ANTIQUES</b> Heisey, Cambridge Etc. 148 W. Johnstown Rd. Gahanna, Ohio 43230 Closed SUN. PH: (614) 471-2317 Daily 12-5</p>	<p><b>CRAFTS ENTERPRISES</b> Arlene &amp; Ed Crafts 187 N Pioneer Ave. Shavertown, PA 18708 PH: (717) 675-8553</p>	<p><b>BETTY'S ICE HOUSE ANTIQUES</b> Betty &amp; Elmer Puestow 517 Fulton Street, Wausau, Wis. 54401 Heisey &amp; Quality Glass PH (715) 848-7145</p>	

**ATTENTION: We added a fourth column to this page last month to accommodate more dealers. Some people thought we had lost a lot of ads, but in fact we now have more. ANY OF THESE SPACES COULD BE YOURS.**



SOUVENIR DINNER  
MUSEUM LAWN  
SEPTEMBER 6, 1986



ORDER FORM

Please complete this form and mail with check payable to H.C.A., Inc. to: HCA SOUVENIR DINNER  
P.O. BOX 27  
NEWARK, OH 43055

DEADLINE - AUGUST 29, 1986

Half Size Horsehead Bookend (Paperweight) Ruby	<u>Amount Enclosed</u>
<u>        </u> Number of Horsehead Bookends without dinner, \$35.00 each.....	<u>        </u>
<u>        </u> Number of Bookends WITH dinner, \$40.00 each.....	<u>        </u>
<u>        </u> Extra dinner, no Bookend, \$20.00 each.....	<u>        </u>
<b>TOTAL AMOUNT ENCLOSED</b>	<u>        </u>

Name \_\_\_\_\_ Street \_\_\_\_\_

City \_\_\_\_\_ State \_\_\_\_\_ Zip \_\_\_\_\_

Extra Names \_\_\_\_\_

- I will pick up my bookend(s) at the dinner.  
 I will pick up my bookend(s) at the Museum AFTER SEPTEMBER 6, 1986  
 Please Mail my bookend(s). - Postage Included

CREDIT CARD NUMBER

Expiration Date Required	Mo.	Year

MASTER CARD  VISA

\*\*\*\*\*

DAN FORTNEY #713  
823 N. 2nd St.  
Milwaukee, WI 53203

PH: 414-224-1089  
P. & I. EXTRA  
\* MARKED

NANCY'S ANTIQUES PH: 216-492-2595  
906 44th Street NW SHIPPING EXTRA  
Canton, Ohio 44709 \* MARKED

- GIRAFFE 11" Head Left..... \$145.00
- # 353 Indv. Ftd. Almond (9).....ea. 6.00
- # 300 PEERLESS Cordial\*..... 12.00
- # 300 PEERLESS Wine 3 oz. \*..... 8.00
- #1567 PLANTATION 3 Branch Candelabra  
w/pr bobeches & epergnette..... 95.00
- #5072 HEISEY ROSE Goblets\* (5) label...ea. 34.00
- HEISEY ROSE Champagne\*..... 26.00
- HEISEY ROSE Mayonnaise Ftd\*..... 45.00
- #1483 STANHOPE Indv. Ash tray (7).....ea. 15.00
- #5010 SYMPHONIE Cordials (6).....ea. 35.00
- #1184 Plates 7½" w/Wakiki cutting (8)...ea. 12.00
- # 507 HEISEY ORCHID Mint Dish DF\*..... 25.00
- #1519 HEISEY ORCHID 2 lite Candelholder w/  
few scratches on bottom of base..... 45.00
- #5024 OXFORD w/Maryland cutting Cordials\*  
with orig label (11).....ea. 42.00
- #4036½ 1 Pt Decanter 10½" Maryland cutting\* 45.00
- # 433 GRECIAN BORDER Punch Bowl 15" &  
High Ftd. Base\*..... 275.00
- # 433 GRECIAN BORDER Punch Cups (6)\*...ea. 14.00
- # 433 GRECIAN BORDER Banana Split Ftd 9"\*.. 25.00
- #4092 KENILWORTH Brandy 3/4 oz \*..... 55.00

- #1170 FLAM Tumblers, Gold trim\* 5 ...ea....\$ 25.00
- #3408 JAMESTOWN Ftd Teas Barcelona cut 6 ea 35.00
- # 112 MERCURY 1 Lt candle Orchid Etch..... 50.00
- 6 ½" ROOSTER Vase..... 110.00
- #1540 LARIAT Fan Vase, Cranberry Stain\*.... 95.00
- #1503 CRYSTOLITE Cr/Sug & Tray\*..... 50.00
- #1519 WAVERLY Cr/Sug Orchid Etch..... 55.00
- #1503 9" Oval CRYSTOLITE Handled Tray\*.... 23.00
- #1503 7" CRYSTOLITE Preserve Bowl\*..... 15.00

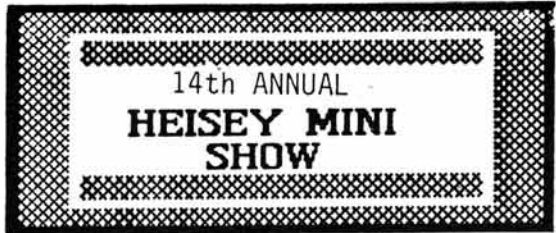
\*\*\*\*\*

J. & R. COLLECTIBLES PH: 614-344-9719  
P. O. Box 1030 P & I EXTRA  
Newark, Ohio 43055 \* MARKED

- #1511 TOUJOURS 8" Plate-Minuet (5).....ea. \$ 15.00
  - #5010 SYMPHONIE Low Goblet-Minuet (4 )...ea. 32.00
  - #1540 LARIAT 5" covered Candy..... 32.00
  - #3390 CARCASSONE Short Goblet  
Alexandrite (2).....ea. 80.00
  - #5025 TYROLEAN Tall Gob. Orchid (4)...ea. 34.00
  - #5025 TYROLEAN Saucer Cham. Orchid (4).ea. 28.00
  - #1509 QUEEN ANN Dol/Ft Cr & Sug Minuet Pr 85.00
  - #3390 CARCASSONE Tall Goblet  
Alexandrite\* (3).....ea. 80.00
  - # 433 GREEK KEY 4 oz. Oil..... 85.00
- Send SASE for extensive list or needs.



HEISEY COLLECTORS OF AMERICA



UNDER THE  
 "CHUCK WAGON TENT"  
 ON THE MUSEUM GROUNDS  
 SIXTH AND CHURCH STREETS  
 NEWARK, OHIO

**September 6, 1986**  
**8:30 AM - 2:30 PM**

Food Available Heisey Glass  
 Antiques  
 Collectibles DONATION 50¢

Benefits- National Heisey Glass Museum  
 For information phone: 345-2932  
 366-7002

GLASS AND POTTERY - SHOW AND SALE - OVER 40 DEALERS

4TH ANNUAL DEPRESSION ERA GLASS AND POTTERY SHOW  
 St. Clair Fairgrounds (Air Conditioned Building)  
 Belleville, Illinois

SATURDAY - August 9 - 10 A.M. to 5 P.M.  
 SUNDAY - August 10 - 10 A.M. to 4 P.M.

SPECIAL GUESTS: GENE FLORENCE - Noted Author  
 NORA KOCH - Editor, "Depression Daze"

SPECIAL DISPLAYS: HEISEY, CAMBRIDGE, FOSTORIA, IMPERIAL, FENTON  
 GLASS REPAIR (GRINDING) AVAILABLE. DOOR PRIZES  
 ADMISSION: \$1.25 - GOOD FOR BOTH DAYS  
 SPONSORED BY: SOUTHERN ILLINOIS DIAMOND H SEEKERS

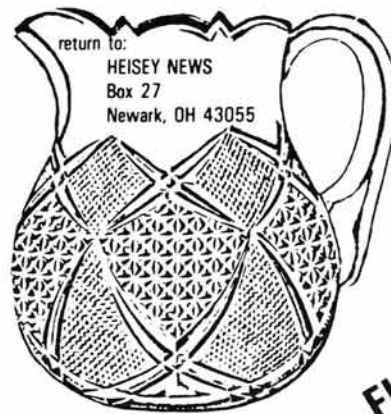
DO YOU HAVE ? ....

Neila Bredehoft

Do you have or can you get a used MICRO-FILM reader for the Museum? If you can, the library can certainly use one. Since sometimes companies have obsolete equipment that becomes available cheaply, I thought I would make this appeal known to the membership.

We need the reader because recently we have taken several of our original ledgers to the Corning Museum in New York for filming. Before, everything we have had filmed has been done on micro-fiche, for which we have a reader in the library. These ledgers were too large to be done on micro-fiche since they would have taken too many fiche. The reason our committee (Research & Archives) recommended to the Board that filming be done at all was that we have no copies of the ledgers and this was a way to have copies made cheaply (free!) and thus guarantee that our unique items would also be stored elsewhere in case of (heaven forbid) a disaster at the museum.

This is not a priority need at this time since researchers can use the original ledgers. But it would be very nice to have the film available for the general membership to use in the library. If any of you have any leads on a MICROFILM reader, please let us know.



return to:  
 HEISEY NEWS  
 Box 27  
 Newark, OH 43055

FIRST CLASS MAIL  
 U.S. POSTAGE  
 PAID  
 PERMIT 741  
 Mt. Vernon, OH 43050

FIRST-CLASS MAIL