

# HEISEY *news*

OFFICIAL PUBLICATION HEISEY COLLECTORS OF AMERICA

©Heisey Collectors of America, Inc.  
All Rights Reserved 1986

VOLUME XV NO. 4

APRIL 1986 ISSN 0731-8014

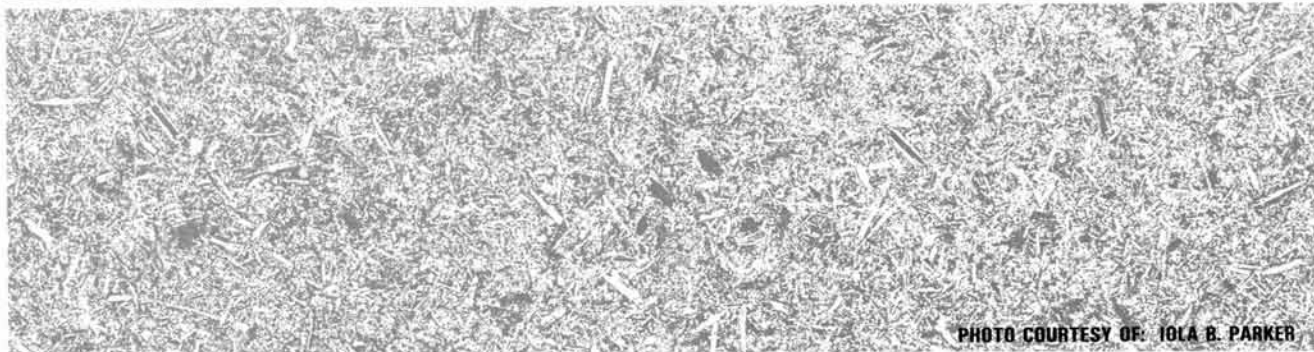
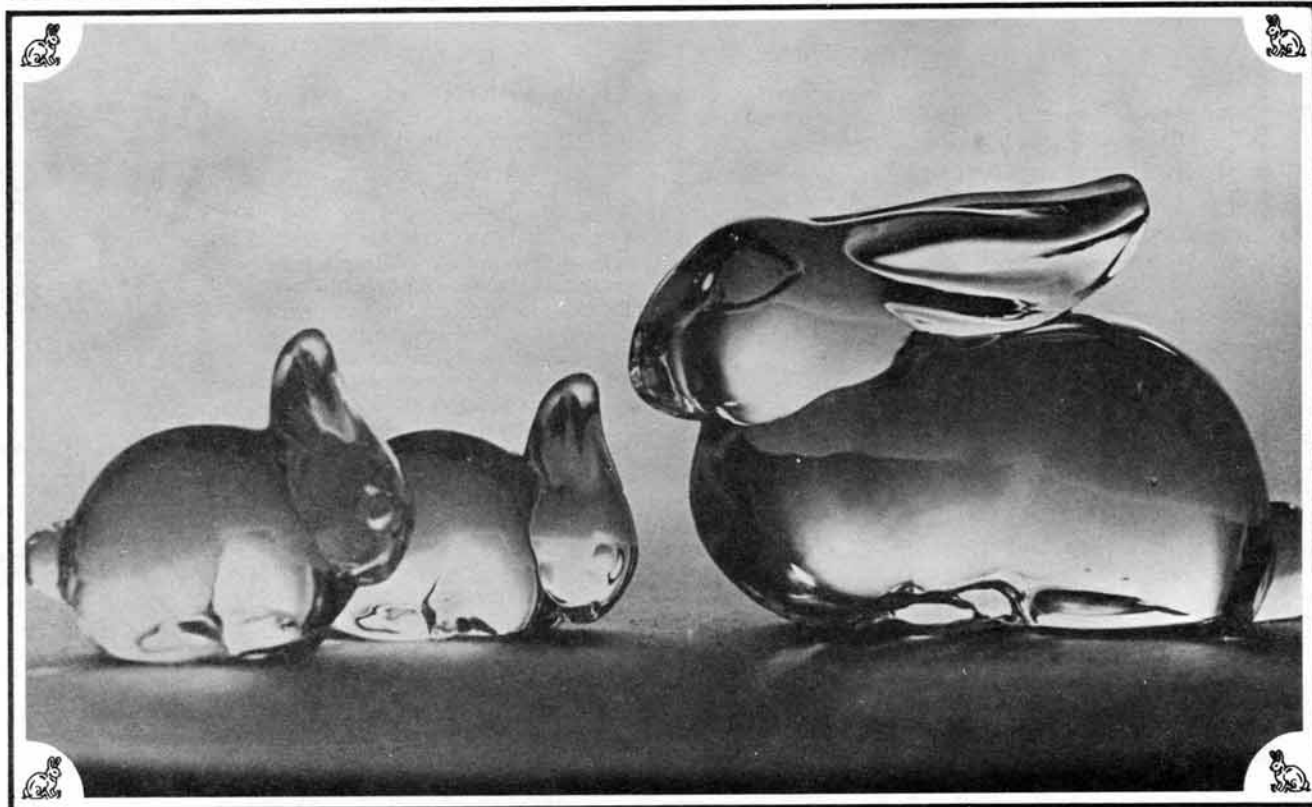
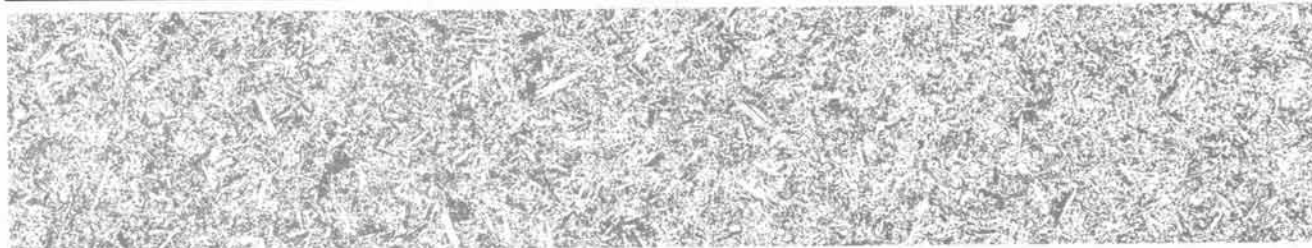


PHOTO COURTESY OF: IOLA B. PARKER

## HEISEY NEWS

P.O. BOX 27, NEWARK, OH 43055

### CLUB OFFICERS:

President	—	George Schamel	—	301-432-6285
Vice President	—	Bob McClain	—	614-345-8061
Secretary	—	Liz Stickle	—	614-323-2250
Treasurer	—	Betty Barnard	—	614-366-7002
Exec. Dir.	—	Louise Ream	—	614-345-2932

Editor: Louise Ream

P.O. Box 27, Newark, OH 43055

PH: 614-345-2932

Assistant Editor: Neila Bredehoft

P.O. Box 27, Newark, OH 43055

PH: 614-345-2932

Published monthly and printed in Mt. Vernon, Ohio

\$15.00 per year - \$1.25 per copy

Back Issues - Each Volume (12 issues) year - \$9.00.

Volume V, VIII, IX, X, XI, XII & XIII

Heisey Collectors of America, Inc. is a non-profit corporation with tax exempt status. Owners and operators of National Heisey Glass Museum, 6th and Church Streets, Newark, Ohio.

Open daily 1-4 p.m. except holidays. Other hours by appointment. Members admitted free.

Club membership (includes 12 issues of HEISEY NEWS and participation in all club activities) \$15.00 per year plus \$2.50 for each additional family member in same household who wishes a membership card. For VOTING MEMBERSHIP, add \$25.00 one time only fee.

When requesting information, please enclose a self-addressed, stamped envelope (SASE).

ADVERTISING - Send all ads to:

Advertising, c/o Janice Thran

P.O. Box 27, Newark, OH 43055

DOUBLE SPACE ALL ADS.

### RATES:

DEALER'S DIRECTORY - Maximum five (5) lines - \$20.00. Change during year \$2.00 per line. CLASSIFIED - 12-/word - \$1.20 minimum. Abbreviations and initials count as words.

DISPLAY:	MEMBERS	NON-MEMBERS
1/8 pg. (9 items)	\$15.00	\$25.00
1/4 pg. (20 items)	24.00	35.00
1/2 pg. (20 items)	40.00	50.00
1/2 pg. (50 items) Vertical	50.00	60.00
1 pg. (50 items)	65.00	80.00

Extra lines will be billed at \$1.00 per line. Personal ads limited to 1/8 space.

ALL ADS MUST BE PREPAID. Ad copy must be received by the 5th of the month preceding the publication date - i.e. April 5th for May issue. Ads containing reproductions will not knowingly be accepted unless clearly stated (i.e. Heisey by Imperial, etc.). HEISEY NEWS assumes no responsibility for false advertising or misleading information. In the event of typographical error, the incorrect portion of the ad will be run in the following issue, but HEISEY NEWS assumes no further liability. The opinions expressed in articles in HEISEY NEWS are those of the authors and not necessarily those of the organization. The Editorial Staff reserves the right to edit or refuse any material submitted for publication. When requesting information, please enclose a self addressed stamped envelope. (SASE).



#1205 1/2 Gallon Jug

### FANCY LOOP

## Bob Evans to build Heath restaurant

HEATH — Bob Evans Restaurant probably will close its deal for a new restaurant on 30th Street next week.

Mary Cusick, the restaurant's public relations director, would not disclose the exact location until an agreement has been finalized, but she did say construction would start as soon as possible and the restaurant should be ready to open in the fall.

The restaurant will be hiring 70 residents from this area for both part-time and full-time work.

In addition to the Bob Evans restaurant, two others will soon be opening in the 30th Street and Hebron Road area.

Construction began Monday for two fast-food restaurants in the out-lots of Park Plaza, according to plaza developer Ron Schenk. Zantigo mexican restaurant and Kentucky Fried Chicken both plan to open in late summer.



#1205 Claret Jug

HCA members will be pleased to know that we will soon be having a Bob Evans Farms restaurant in Heath, our neighboring city. HCA owns 3,870,048 shares of Bob Evans stock, which is the result of the growth of the original 250 shares donated to us by our member, Keith Bradbury, who is Treasurer and Vice president of the company. Bob Evans Farms is also donating all the pigs for both our Mould Fund dinner on April 26 and the barbecue at the show preview on June 19th.

## THIRTEENTH ALL HEISEY AUCTION

### RAISES MAJOR AMOUNTS FOR MUSEUM, MOULD FUND BY BILL HERON

Every March for thirteen years two things can be counted upon. The first is the annual all Heisey museum benefit auction. The second is that there will be snow on Interstate 90 around Erie, PA and Cleveland. Number thirteen was NOT unlucky for this year's event. More than \$50,000 dollars changed hands as did well more than a thousand lots of Heisey glass. The museum stands to net better than \$10,000 dollars and the Mould Fund scored well from a number of lovely donated pieces including the star of this year's show, a Carcassonne footed decanter in Alexandrite which sold for \$1,500, by far this year's highest valued item.

The first HCA auction I attended was about ten years ago and I've been to every one since. They fascinate me. My son Jonathan attended with me that first time and it was not only our first HCA auction, but our first auction of any kind at all. It was held in the Sheraton and Jonathan and I, green-horns that we were, started off maintaining very low profiles. I was afraid to scratch myself for fear I'd inadvertently raise the bid on something rare like a Flying Mare by a thousand or two.

After a couple of hours of non-action on the part of the Herons, suddenly Jon lifted his number card and made a bid. He didn't get that item, but the ice had been broken. A few lots later, I followed his lead and made a bid. Jon turned to me and spoke those significant words, "monkey see, monkey do". Over the years, there have been auctions at the lamentably departed Opera House in Granville, on the Newark OSU campus and at the Apple Tree auction house. And they've all been fun.

Mention of the Opera House brings back memories of the chili that was sold there at lunch time. My son Scott was particularly fond of it and may have been their best customer. It was also at the Opera House that an HCA auction happened to coincide with St. Patrick's Day. A Heisey martini pitcher filled with green beer was put on the block. At the urging of Jon and Scott, ours was the winning bid, and well worth it too!

This year, there was a long session on Friday night, made necessary by the large number of lots included in this year's auction. Things started out slowly as they usually do, but it wasn't long before Sam Schnaidt had us rolling. Among the most interesting things in the entire auction was a U8020 Apple stem cocktail offered during Friday night's first hour. It brought \$170, which is lower than I thought it would go for, but more than my own highly prioritized budget would allow.

Somebody got a very good buy on an Amber Medium Flat Panel 3 pint jug which sold for \$150. Another rarity Friday night was a U8042 8 oz. glass screw top jelly jar, which changed hands for \$27.50. Other well deserving items Friday night were: a 477 Hairpin basket for \$290, a 4163 Whaley 10 oz. beer mug with Golfer etch for \$200, a 4231 favor vase in Flamingo at \$280, a Minuet Girl (Dinky Do) at \$240 and a seldom-seen 1503 Crystalite footed cake salver which brought an even \$200.

It surely was cold in Newark on Friday night! Fortunately the sun came through the clouds on Saturday and things warmed up a bit. Things got hot at the auction too. Shortly after the Saturday session opened, a striking pair of 1567 Plantation

electric hurricane lamps went on the block. They had been donated for the benefit of the mould Fund and some happy person took them home for \$300. Another particularly desirable item was a 352 Flat Panel sugar sifter with sterling silver top. It was prime grade stuff and a good buy for someone at \$100.

Also filled with eye appeal was a pair of 1488 Kohinor two-lite candlesticks with bobeches and prisms and a highly attractive cutting. These sold for \$260, and deservedly so. A Crystalite six inch handled basket brought \$250 and a 4227 favor vase in Moongleam sold for \$240. Late in the day, a 4161 pitcher and four 5 oz. sodas, all bearing the very hard to find Good Morning etch caused quite a stir. I wish these had come home with me, but there were three hundred and fifty reasons (dollars) why they didn't.

The mould fund also benefited substantially from some attractive items with cuttings by Howard Evans. Mr. Evans demonstrated his cutting skills at the HCA antique show during the 1985 convention. Particularly outstanding was a 15" by 37" mirror, cut and signed by Mr. Evans. No picture could do justice to this piece, which featured a Galleon at the top and a floral pattern on the sides and bottom.

Some general impressions: Certain types of items seemed to be particularly sought after. These included baskets, jugs, favor vases and Heisey's Little Things (individual nut cups, mints etc.) As always certain colors seemed to guarantee premium prices. These were Zircon, Dawn, Cobalt and Tangerine. There seemed to be more Marigold offered this year than usually is the case and perhaps that contributed to the impression that prices realized for this color were a bit on the soft side.

They call this a "benefit" auction and it certainly does benefit the museum, and this year the mould fund too. But we who love Heisey glass ought to remind ourselves once in a while that the annual HCA auction offers substantial benefits to each of us personally. First it gives us a wonderful opportunity to "name our own price" for a wide variety of authenticated Heisey items. Second, it gives us a chance to turn duplicates or items that

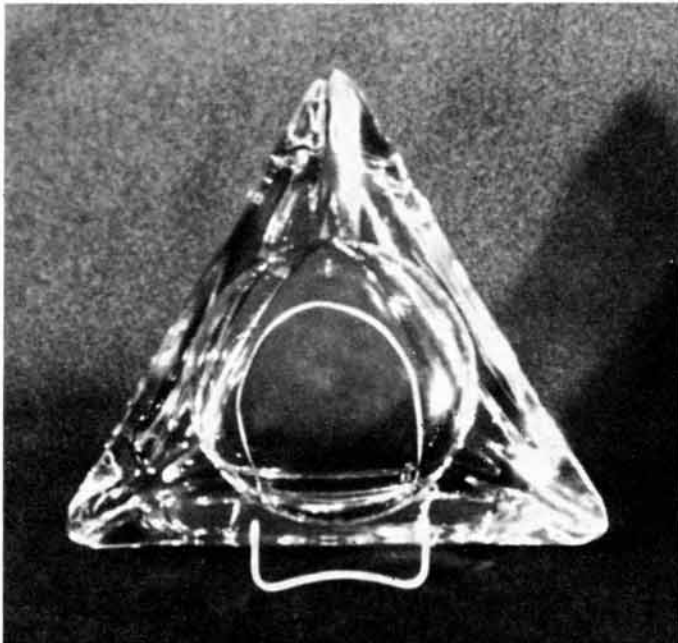
no longer fit our collecting objectives into cash. Third, the auction provides a factually-based reference point as to what's "hot" in Heisey and what isn't. The auction price list isn't opinion, it's what real people actually paid for real glass.

Last, but certainly not least, a big tip of the hat should go to those who put in all the time and effort that successfully pulling off an HCA benefit auction requires. In particular, I salute Sam Schnaidt and his auctioneering colleagues, Craig Connelly, Larry Stickle and Tim Hughes. They are uniformly genial, painstaking and efficient, and they donate their professional services for the good of the cause. Ray Ziegler has been the Auction chairman for the last five years; not many could fill his shoes.

And there is the "mailman", Loren Yeakley. Mail bidders are an important element in the success of the HCA auction and likewise, being able to bid by mail gives those unwilling to journey to Newark for a March weekend a chance to bid on items of Heisey they want. Loren seemed to handle his responsibilities superbly in spite of some remarks he had to endure regarding his physique.

Finally let's remember those who do all the work behind the scenes - opening boxes as the glass

Con'td. on page 4



## INSIGHT INTO RESEARCH

By Tom Bredehoft

When the executive committee was negotiating for the purchase of the Heisey Moulds, the sellers insisted on a downpayment, or "earnest Money" yet since they did not know the value of the individual moulds, they were not disposed to release to us any of the moulds until they were all paid for. In their words, "If we were dealing with 10,000 ashtrays, all alike, we would have no hesitation in releasing some of them as they were paid for, but since we don't know which ones are valuable.." To make a long story short, we talked them into releasing thirty moulds "of their choice" to us sort of a "earnest payment".

Their choice of "10,000 ashtrays" while not prophetic, is interesting.

Among the thirty moulds was one whose number was not familiar to me, a 362 ashtray. I finally located it among the others (covered in dust and rust) and opened it up. At first I thought it was another like the 1183 Revere ashtrays we had reproduced in red and blue a couple of years ago, then I realized that it's points were much longer than the 1183 and that it's center well was round rather than triangular.

Since it was something new in the lines Heisey had made, I had to drag Neila down (these thirty moulds were in the back corner of the lower level of the museum) and show it to her, along with the 6 inch 1489 Puritan plate (see last month's column) which was also new. She didn't appreciate it as much as I had hoped she would, but apparently it stuck because two weeks later she brought one home from an auction, sold as depression with another pink ashtray. I wasn't sure, but it does fit in the mould.

Obviously made between 1925 and 1936, neither the ashtray or the mould is signed, although the ashtray is ground and polished on the triangular base rim. It is one inch tall and 5 3/8 inches across the points. There are no records of production, in any color, but we know it was made in Flamingo.

## MOULD FUND REPORT

By Norm Thran

Please read carefully, we are now at \$18,000 and counting down. In the past five weeks the Mould Fund debt has been reduced about \$5,000, another tribute to our dedicated group of collectors. The Mould Fund Auction glass and related items realized \$3,883 and the balance came from individual donations, club donations and the sale of signs and plates. Please keep up the good work and let's wipe this debt out by the end of the June '86' Convention.

	February 13, 1986	March 19, 1986
Received	\$205,800	\$210,700
Pledged	3,300	3,200
	<u>\$209,100</u>	<u>\$213,900</u>

We are now at 92% of the original purchase price. When I think of H.C.A. raising \$210,700 and only 8% of the goal remaining I am literally amazed at what can be accomplished when we all work together. The lower the debt, the less interest and all of that adds up to another H.C.A. benefit. I am looking forward to the Benefit Dinner and Raffle to be held in Newark on April 26, 1986.

The dinner will be at the Newark Maennerchor at 6:00 P.M. with the raffle immediately following the dinner. There will be over 25 cash and gift prizes. Only 200 tickets will be sold and as of this writing 65 remain. You need not be present to win, however we in Newark would like to see you. Sam will be holding an All Heisey Auction on April 26. All proceeds from the Dinner/Raffle will be used to support the Mould Fund. For tickets or info call HCA 614-349-7672 or 614-345-2932.



## PREZ BECOMES A GRANDPA

George and Eileen Schamel proudly announce the birth of their first grandchild, Joseph Franklin Collinson IV. He was born on March 2 and weighed 9 lbs. and 2 oz.

The proud parents are Rolinda (Schamel) and her husband Joseph Franklin Collinson III. Mother and son are doing fine.

Grandpa and Grandma Schamel are very proud and are also doing fine.

George said that he didn't have time to do his column this month, what with a new grandson, the auction and quarterly meeting and the show in Silver Spring, MD.

## Auction Con'td.

comes in, identifying each item, and moving the glass from HCA headquarters to the auction center when auction day arrives. Out of about 1050 lots of glass, by my recollection there was only one lot for which the identification on the auction list may have been in error.

To all I say "well done, well done indeed".

# A. H. HEISEY & COMPANY - A CHRONOLOGY

## Part 2, 1879-1896

by Tom Felt

1879 - January 10. Heisey's first mechanical patent was filed, for "a machine for shaping tubular glassware." It was approved March 4th as no. 212,932.

May 6. Heisey and James Duncan became sole owners of Geo. Duncan and Sons, with Duncan as president and Heisey as secretary of the firm.<sup>1</sup>

1881 - June 18. Applications were filed, in Heisey's name, for two patents for the Shell and Tassel pattern, granted July 26 as nos. 12,371 and 12,372.

1882 - November 4. A third son, Thomas Clarence Heisey, was born, in Idlewood, PA.

September 21. A patent was filed for a method for staining glass (to make it resemble "flushed: glass) by Heisey, Daniel C. Ripley, and George D. Swift. The patent was approved December 8th as no. 331,824.

It was probably around this time that Heisey became one of the founders and a director of the Manufacturers Bank of Pittsburgh, a position he held for 40 years.

1891 - February 12. The United States Glass Company was incorporated, a combine consisting of 15 companies who hoped to increase profits and improve economy in the production and sale of glassware through sharing their resources and expanding their markets. The prospectus letter, announcing the formation of the new company, was signed by Heisey on behalf of Geo. Duncan and Sons. (Other signatories on the incorporation document were Daniel C. Ripley and William C. King.) Heisey was one of 11 initial stock subscribers, with one share each with a value of \$100. He was also on the first Board of Directors.<sup>2</sup> Heisey became General Manager of the Commercial Department of the new company, with complete charge of the sales end of the business. He was assisted by George Beatty, previously of A. J. Beatty and Company, who had also joined the combine.

July 20. The sale of Geo. Duncan and Sons to the U.S. Glass Company was completed.

1892-1893 - Heisey was listed at this time as treasurer of the Pittsburgh Clay Pot Company.

Heisey may have made a financial investment in the gas fields in the hills east of Newark around this time.

1894 - Heisey left the U. S. Glass Company. According to the obituary published in the Pottery, Glass and Brassware Salesman in February 1922, he then engaged in the mining business in Mexico and Arizona, but it seems likely that such a venture would have been prior to 1894, since he made a number of trips west in the late 1880's and again in 1893-1894.<sup>3</sup>

Heisey also became president of the Pittsburgh Clay Pot Company, a position he continued to hold until his death in 1922.

1895 - In looking for a location for a factory of his own, Heisey had approached the city of Newark. A committee was formed to consider his offer, and on at least two occasions he took them to task for moving so slowly. He is reported to have told them that "He was ready to carry out the proposition made by him to the city of Newark, but that he was not here as a beggar asking favors."<sup>4</sup> He mentioned at the same time the "liberality and enterprise"

of the people of Washington, PA, who had made him a proposition of their own. The plan in Newark involved selling a total of 325 lots at a subscription of \$250 each, with about \$70,000 of the money raised by this scheme going toward the new glass factory.

April 27. Again complaining about the lack of progress by the people of Newark in meeting their obligations under this scheme, Heisey wrote that he was in a position to lease the Thompson Glass Company in Uniontown, PA, "ready to make glass in 24 hours," and that he would do so unless he received a firm answer within the week. An extension of time was requested by the committee who continued to move forward with their efforts.

June 22. The site for the new factory, the Penney Farm, was purchased for \$25,000. The address was 301 Oakwood Ave.

June 28. All of the subscription lots had been sold and the money was turned over to Heisey in readiness for construction of the factory to begin.

August - Building was commenced by Ferguson and Son.

November 6. It was reported that glass would be made by the middle of December, with 250 hands being employed. 12 mold makers were already at work producing molds, with the mold shop temporarily located in one of the machine works of Newark.<sup>5</sup>

November 7. - It was reported that the walls were up and the roof was on.

The Newark Advocate reported that the plant had 125 men at this time. Eleven houses had been built on land belonging to Heisey, with many families ready to move in.

June 30. According to the Newark Advocate, another 38 houses had been built by this time, with 75 altogether expected by the fall. The article went on to say that "The Heisey Land Company offers free land to the right parties for factory sites with a bonus of \$150 for every man employed. The same concern will construct railroad sidings to all factories that locate here through their agency." As owner of his own natural gas plant, it was to Heisey's advantage to promote development in the area, through this land company.

November 13. The northwest corner of the factory, which was still being roofed, collapsed at 2 o'clock in the afternoon, burying four men under the debris. One of them, Samuel Cooper, was crushed to death by falling materials when a crane lifting an iron beam went down and fell on one side. Albert Boss and William Brookins were reported in serious condition while two other workmen, Thomas Hastings and Addison Siddon, were only slightly hurt. The accident reputedly was the result of heavy rains, with damage reported at less than \$2,000.

A full report of the new factory appeared in the November 6th issue of China, Glass and Lamps, where it was termed a model glassworks. It was constructed under the supervision of John Nicholson, Jr., of Pittsburgh, the originator of the Nicholson gas producing furnace. The factory building was 90 X 90 feet, with the working floor 12 feet above ground level. It had one 16-pot furnace, arranged with 48" arches, with four Nicholson gas producers connected. There were four glory holes of six layers each, with two additional producers. The chimney of the furnace was 112 feet high. There were six lehrs, 56 feet long, with 60" pans and a separate producer. The lehr and mold room was 55 X 90 feet, with four brick arches underneath to be used for storage. The warehouse was 60 X 152 feet and three stories high.

The mold shop, also three stories high, was 33 X 64 feet. The offices were located in a separate building. The roof of the factory itself and of the lehr and mold rooms was of iron, and the factory was built of brick and structural steel. As an additional precaution against fire, all of the lumber used was native hardwood, principally oak. The entire facility was heated by steam and lit by electricity from a plant installed in the works. There were switches from the panhandle Railroad on both sides of the factory, making the receipt of raw materials and fuel and the shipment of ware very convenient. Electric street cars also made the factory easy of access.

Sometime around 1895, Mary Heisey was married to Dr. R. L. Walker of Carnegie, PA.6

1896 - January 1. Heisey's first advertisement appeared in China, Glass and Lamps, showing table sets in the no. 1200, Cut Block\* and no. 1201, Fandango\* patterns. Both lines were on display at the Monongahela House in Pittsburgh. The samples had been made by the Robinson Glass Company in Zanesville, Ohio, since the Heisey factory had not been able to start up in December as originally anticipated.

January 22. China, Glass and Lamps reported that the new lines were "praised by most of the salesmen of the older firms as a very meritorious production."

April 9. The factory was started up and glassware was made for the first time.<sup>7</sup> The glassmaking departments were reported to be in the charge of Charles Zimmer and Adam Trautman.

April 23. A. H. Heisey and Company was formally incorporated in West Virginia, with A. H. Heisey, George Duncan Heisey, Edgar Wilson Heisey,<sup>8</sup> W. B. Lindsay and D. C. Snyder named as original stockholders.

It is possible that two additional patterns, no. 150, Pointed Oval in Diamond Point\* and no. 160 Locket on Chain\*, were also introduced this year.

Note: I have attempted to gather information from as many sources as possible, to verify that information from multiple sources when available, and to include the most likely "guesses" based on our current knowledge, when the sources disagree or reliable information is not available. I would appreciate very much hearing from anyone who has additional information, or who can confirm or correct any information given above. Please contact me C/O The Heisey News, P. O. Box 27, Newark, Ohio 43055.

1. Some works on American glassware indicate that the company was renamed Duncan and Heisey at some point after 1886 and before 1889. However, all advertisements and reports in the trade journals in the late 1880's and early 1890's indicate that Geo. Duncan and Sons remained the firm's name.

2. A much more detailed account of the formation of the U. S. Glass Company by Joe Lokay appears in the September 26, 1976 issue of the Heisey News.

3. Later trips west were also made in the 1899-1900 period in an attempt to cure the consumption from which Heisey's daughter, Mary, eventually died.

4. From a contemporary report in one of Newark's newspapers.

5. According to an obituary of a former employee which appeared in the American Flint in February 1948, the first mold maker to be employed by Heisey was Edward Strong, who had previously worked for Heisey at Geo. Duncan and Sons.

6. At her death in June 1900, it was reported that she had been married five years.

7. This starting date was reported in China, Glass and Lamps on April 15. A later report in the April 22nd issue of that same journal gave April 18th as the starting date. Still another date was given in the American Flint in June 1948, who recalled that the first piece of glassware was produced by Heisey on April 6th and carried in to the lehrs by a 16-year old Fred Chapman. (He later became chairman of the hot metal department and remained with the company for 52 years, retiring in 1948.) Finally, a fourth starting date was reported in the Newark Advocate on April 23rd: "The A. H. Heisey Company starts up this morning..."

8. E. W. Heisey, who had completed his academic course at Washington and Jefferson College in Washington, PA, was taken into the business as treasurer and general manager, according to a report in the American Flint in July 1946.

## DESK OF THE DIRECTOR

We are sorry to be late with "Heisey News" this month but the auction on the 7th and 8th and the Silver Spring Show on the 15th and 16th involved so many days that we couldn't get it to the printer any earlier. This way we were able to have the article about the auction as well as the prices realized.

The auction was wonderful and so was the All-Heisey Show in Maryland, sponsored by the National Capital HCC. All of that Heisey Glassware for sale in one room is overwhelming.

As you know, the Convention is June 19-22 here in Heiseyland. All of the information will be in the May Newsletter. The Flea Market on the Square will be held on two weekends - June 14 & 15 and June 21 & 22. HCA is the sponsor.

Please note that ad rates are changing as of the June newsletter. We have held the line as long as we could.

The form for ordering the new book by Neila Bredehoft is on page 23. The book is in and it is a very attractive and useful book. Neila is to be congratulated for her perseverance in writing this 408 page book. The text is very informative

*Loise*

## Display of Sanford Designs

Back in December Betty Barnard made a plea for the loan of glass designed by A. J. Sanford. The plea was accompanied by a list of his patents. She still needs many more items to fill the glass cabinets in the lobby of Hopewell Hall during the display.

Check the list on page 7 of the December '85 issue. Write Betty at 473 Meadowbrook Dr., Newark, Ohio 43055 or call (614)366-7002.

## NEW AD RATES

Effective with the July issue. Please use this chart for ads sent by June 5 for July issue.

DISPLAY:	MEMBERS:	NON-MEMBERS
1/8 Page ( 9 items)	\$20.00	\$25.00
1/4 Page (20 items)	30.00	37.00
1/2 Page (20 items) Hor.	45.00	55.00
1/2 Page (50 items) Vert.	60.00	65.00
1 Page (50 items)	75.00	85.00

CLASSIFIED: 15¢ per word. \$1.50 minimum.  
DEALER DIRECTORY: \$25 per year.

diamonds are forever.....

By Janet Caswell

Yes, diamonds are found on Heisey Glass, and believe it or not there was a Dimond found in the Yachting Center. His name was Edward Dimond or "the Wizard of Orne Hill". He lived around 1690 and possessed supernatural powers or ESP. Through these powers he supposedly saved many a locally based fishing vessel. By sending orders out over the water, through his supernatural powers, to the crews of these ships the men were able to muster up the courage to save not only their ships but their lives. The men aboard these vessels actually claim to have heard Dimond's voice speaking to them from the storms. One such ship was named the "Molly". Old Dimond's ESP was passed on to a niece known as Moll Pitcher (not the Moll Pitcher who took her dying husbands place at the cannon during a battle of the American Revolution). Seamen from all over the world sought the advice of Moll Dimond Pitcher. Her predictions of the future proved to be amazingly accurate as did most all her predictions regarding the outcome of the American Revolution.

Since we are talking about "Wizards" let's see just what our own "Wiz" has to report: Let's start with #1225 Plain Band, covered miniature sugar, ruby stain (souvenir "old Orchard 1900"); now the #1295 Beaded Swag wine, souvenir "Revere Beach 1906" ruby stain and a salt; next is the #325 Pillows 3 3/4" Rose Bowl, also ruby stain.

This past month I heard that "the Hilltoppers" (MA) came up with a #1295 Beaded Swag goblet, ruby stain, and the very regal #357 Prison Stripe comport, crystal.

"A friend in deed" (MA) found a real goodie - a #4036 1/2 Decanter with Victory Etch and the #5060 Washington Square Decanter. mmmmmmmmm

My "sharp eyed friends" have the #305 Puntly and Diamond Point 8" Bowl; the Sparrow and a Flamingo Oak Leaf Candlestick.

Both the "Mr" and I work every other Saturday and we try to have the same Saturdays off together. This past week I had to work and the "Mr" was idle. That is if you call running from here to there being idle. All sorts of errands were attended to but in the late afternoon he did all the local shops looking for Heisey or what-ever. Lately it has been "what-ever"! He visited one after another with nary a thing to show for all his efforts. (now I must tell you that the "Mr" was on foot - that is important to the story) He was at the last shop on his route and went all through each and every shelf, nothing. Saying good-bye to the gals who run the shop he left. Walking past the shop window, on the way to the car, he spied some stems. The brakes of his shoes, went on so hard he said he could smell burning rubber. Back inside the shop he went, of course they are Heisey, there was that little diamond H on each and every stem. He wondered, did the gals know these stems were Heisey or could he get them for a fair price? He was told that they thought the stems were Fostoria, so Yes a Fair Price!! Upon my arrival home from work that evening I found spread on the kitchen table fourteen (14) stems - eight (8) 8 oz goblets and six (6) 2 1/2 oz wines, all #3368 Albermarle, with the #445 Trojan double plate etch. How exciting, how regal, how wonderful! The "Mr" certainly had a very exquisite "idle" day!

Let's go to the "Pine Tree State" (ME) and see what the "Evergreens" have to say. Besides saying that the temperature was below 0° they did find some Heisey; 10" Flamingo #1225 Plate, in fact they found nine (9) of them; #473 Narrow Flute with Rim stack set; and #433 Greek-key individual cream & sugar plus a 6" bowl.

That "Little old Lamplighter" (OH) found a real goodie, the #300 Water Bottle to match the claret jug, and then another water bottle this time the #400. O.K. it's time to turn the light out until another day.

"Mr Crystolite" (MA) a pair of #114 Pluto moonbeam sticks plus a Mars stick in Flamingo; a pair of #1519 Epergnettes; plus the #70 Octagon 7" candlestick. Now the "Busy-Bee" has a #1469 Ridgeleigh round cigarette and "Shy Gal" has a #300 Low ftd sherbet. This one has the British reg #; also a #1486 Coleport shot glass.

"The Hanging Judge" has been silent for a while but finally came up with a #1567 Plantation sugar and #393 Narrow Flute low footed comport. While "Mr H" told me about a #1184 Yeoman d/o Finger Bowl in moonbeam and a #1238 Beehive plate, crystal.

Let's pack up and take a trip down the mountain with "Mountain-gal" (CA) in her Heisey Honda; #5003 Crystolite Blown 3 1/2 oz Oyster Cocktail; #1220 Puntly Band wine, ruby stain souvenir 1903; #351 Priscilla 4 oz oil; #353 Medium Flat Panel match stand ashtray, marked three times, pat dated 3-15-10; and a pair of #113 Mars 3 1/2" candlesticks, crystal with sterling overlay.

From the Pine Tree State (ME) "the Real Exciting man" came home with a cream and sugar in #150 Pointed Oval in Diamond Point and #1295 Beaded Swag spooner, opal with daisies. Oh, by the way there were two of the latter found. Good Show!

The "Pilgrims" (NH) are heading for the sunny south for a little while but before they left I was given the following; #3360 Penn Charter 6 oz flamingo sherbet, #1632 Lodestar nappy in dawn - uhmm nice - , #475 Narrow Flute with Rim nut, #3390 Carcassonne 2 oz wine, sahara with clear base, the #310 Ring Band toothpick in custard, #1503 Crystolite individual nut, #352 Lavender with gold and lastly again Ring Band #310 this time the 8 oz tumbler in custard - souvenir New Gloucester, ME.

The #459 Basket and a pair of #300 Candlesticks were found in "the Evergreen State" (WA) while the "Eager Beaver" (Buckeye State-OH) has a lovely cobalt #3397 Gascony decanter.

Our "Rebel Cousins" (KY) came up with a Penguin Decanter and a very intriguing #411 Rib and Panel Sugar Dispenser.

"Cruet Man" your #1252 Twist oil and vinegar in Marigold sounds real good to me!

Now it's my turn. The "Mr: isn't the only one in the family to find stems - "Yours truly" also came up with several nice stems; #3325 Ram-Pul sherbets in Hawthorne, eight (8) of them; #3366 Trojan 8 oz Goblets also in Hawthorne d/o eight (8) of these also and one (1) #3424 Admiralty 12 oz soda in crystal, marked. Enough about stems - I also found a Custard covered Butter that was coated with many years of dirt and grease. I was pretty certain that it was Heisey. First thing when I got home and even before I took off my coat

Cont'd. on page 8

## LETTERS, WE GET LETTERS.....

Dear Norm:

The Dairyland Heisey Club wishes to thank you for the very complete and detailed response (12/30/85) to our request for more information regarding the present and projected mould fund debt.

Your letter was reviewed and discussed at our February meeting and everyone accepted it without question as a very enlightening summary of the situation. Very well done!

At the time of the meeting our treasury was practically depleted. Fortunately, it was dues time so we decided to send all dues money for 1986 to help the mould fund as much as we could at this time. The enclosed check represents this amount. It isn't a great deal but it's all we have at the moment. At least it exceeds what we gave last year.

I did try to encourage our members to make personal donations as they see fit.

We agree with you that this is indeed a very distinctive and worthwhile project that will only be truly measured in the years to come. Not only as another HCA miracle project but as an enhancement and protection for our own collections.

"Hats Off" to you and your steering committee for the great success you have achieved. May your ambitious future plans bring the project to a conclusion on schedule.

Best regards,  
Francis Harper, Pres.

.....To miss a copy of the Heisey News would be like losing a close friend.

Mr. & Mrs. Gerard Shondell, OH  
.....We enjoy the Heisey News immensely. The information really inspires us and makes us want to hunt for that "elusive" item.

Our Northwest Heisey Study Club, here in the Northwestern most part of our country, continues to be an excellent and faithful group of people. We meet the first Saturday of every month and some of us have 3-4 hours of driving time each way to some of our meetings. But, it is worth it. Our programs are very educational and the fellowship with the various members is so good.

Several members, at last count about 12, are planning on attending convention this summer. That is a personal dream and hope of mine to someday attend the convention and tour "glass country".

Thank you for all you do for us members. And, I would like to thank the volunteers, also. Everyone says the museum is wonderful and no one has expressed boredom when they have toured it.

Marilyn Pederson, WA

.....Regarding the letter sent to our study club, concerning the April Benefit Dinner and Raffle, the club members voted Saturday evening to buy one ticket in the clubs name.

Enclosed find a \$50.00 check from the Southern Illinois Diamond "H" Seekers study club for one raffle ticket.

Cecelia Larson, IL

.....Enclosed is a check (\$143.00) for the Mould Fund, generated by Heisey Club of California at our Christmas Party. Sorry it isn't more, but additional fund raising projects are planned. Some members may also be sending donations on their own.

Very best wishes to you all.

Roy T. Boggs, CA

George has asked me to drop you a line about what we have been doing lately here in the New England area. Little did I know when I met you at the first convention that glass collecting would become such a large part of my life. But I wouldn't have it any other way.

First of all - we average one glass lecture a month. Because of the 1890 catalog reprint and the research we are doing on Duncan most requests have been for Duncan and Duncan & Miller.

This fall we again presented an all-day program on Duncan at the Jones Gallery of Glass and Ceramics in Maine. This month I lectured on Duncan and it's 4 related phases (George Duncan & Co., U.S. Glass Factory D, Duncan & Miller, & Tiffin) to The National Early American Glass Club, where I serve on the Identification Board.

Most exciting to me is the fact that interest in Heisey is again growing. (Perhaps due to the obtaining of the Moulds?) This past November we spoke to the Manchester (MA) Historical Society to a "SRO" audience. They seemed amazed by the large color spectrum and the intricate etchings, carvings and Krall cuttings. In the minds of so many staid Yankees - mostly colonial styles were made by Heisey with a smattering of recognizable patterns like Crystolite, Ridgeleigh and Empress. I think we opened their eyes.

On March 3, 1986 we will be telling the Heisey story to the Southern New England Antique Dealers Association in Providence, RI. I am really looking forward to this lecture. I hope we can lay to rest some of the misconceptions about Heisey that so many dealers seem to have.... and of course enroll some members into HCA.

Frank Maloney, MA



### Diamonds are Forever, cont'd.

I got out my soft toothbrush (nice for this purpose) and warm soapy water and low and behold there under all that grime was a beautiful #310 Ring Band covered Butter with real nice decoration. Incidentally I walked away with that one. Haven't been that lucky for a long time.

"The Windows, rattling in their frames,  
The Ocean, roaring up the beach,  
The gusty blast, the bickering flames,  
All mingled vaguely in our speech"

From the Yachting Center, be good to yourselves, and Happy Hunting!



## MOUNDBUILDERS HEISEY COLLECTORS CLUB

By Jeannine Cullison

Two organizational meetings for a new Heisey Collectors study club in the Newark area were held in February and March at the Museum.

On February 3, 1986, several interested persons met and watched the slide presentation, A. H. HEISEY & CO. - An Overview. Louise Ream informed us of the requirements for a charter club and answered questions. Jeannine Cullison served refreshments with a Valentine theme.

On March 4 there were eleven in attendance at the second meeting at the museum.

Russell Ream suggested the name, Moundbuilders Heisey Collectors Club, and it was voted on and unanimously approved.

Officers were elected as follows: Fred Gartner, President; Leonard Tipton, Vice President; Jeannine Cullison, Secretary; Randy Tipton, Treasurer; Louise Ream, Program Chairman; Cindy Gartner, Publicity Chairman; and Mary McWilliams Telephone Chairman. Other members present were Ellen Weber, Jim Murphy and Margaret Weber.

The club voted to apply for a charter with the initiation fee to be paid by dues. Fred Gartner will be the Voting delegate and Mary McWilliams, alternate.

A slide program, "Footed Jellies", was presented by Louise. Several members are new collectors and are very excited to have this opportunity to learn about Heisey.

Refreshments were served by Cindy and Fred Gartner during a "get acquainted" time following the meeting.

Mary McWilliams will be hostess at the next meeting which will be at 7:30, April 1, 1986.

Anyone interested in joining this new study club is urged to call the Museum at 345-2932 during the day or call "Jeanie" at 929-4852 after 6:00.

## NORTH CAROLINA HEISEY STUDY CLUB

By Jerry Lecky

No longer are we the North Carolina Heisey Collectors, but the NORTH CAROLINA HEISEY STUDY CLUB.. and guess what? We are organized!! Twenty (20) eager and avid collectors, not counting guests, met at the Burlington Home of Bill and Izabell GIBBS on 11 January 1896 for lunch, dessert, The Heisey Movie (Thanks to the Heisey Collectors of America), Show and Tell...and above all to get ORGANIZED. We had agreed to do this after we met for the first time in October 1985.

To be sure, it was not an easy task to work at getting organized in the wonderful home of Bill and Izabell Gibbs, surrounded as we were with their magnificent Heisey collection and all the Show and Tell items brought to the meeting. But we finally got down to business. We elected officers: Pres., Charlie NESBIT of Hubert, NC; V. Pres.(Program) Isabelle GIBBS of Burlington, NC; Sec. and Hospitality, Jerry and Janet LECKY of Durham, NC; and Treas., Ned LAVENGOOD of Wilson, NC. We agreed to our new name-NORTH CAROLINA HEISEY STUDY CLUB; to collect dues of \$5.00 a year per member; and to affiliate/associate with the HEISEY COLLECTORS OF AMERICA, INC. and request to use the Diamond "H" in our Logo, which will be a outline of the State of North Carolina with the Diamond "H" imposed upon the state outline.

We have agreed to meet quarterly. Our next meeting will be in the home of Ned and Sibly LAVENGOOD, 904 Nash Street, Wilson, NC 27893. DATE: 12 July 1986 and TIME: 12:00 Noon. Bring your sandwich for lunch. We have a roster of those in attendance at the last two meetings and some names of interested persons, but we would like to hear from others in North Carolina and surrounding areas, who might be interested in the Study Club.

President Nesbit concluded the meeting by urging all the members to remember the Convention in Newark 19-22 June 1986, and above all make contributions to the Mould Fund. Phil ABRAMS mentioned that some companies have MATCHING FUNDS, so if your making a contribution check with your companies.

We urge anyone interested in the Club to contact Charlie and Patsy NESBIT in Eastern North Carolina at 919-326-3415; or Earl HOWELL or Phil ABRAMS in Charlotte, NC at 704-364-4561 or Janet and Jerry LECKY in Central North Carolina at 919-688-3782.

Ed Note:

This was inadvertently filed away with the rest of the material sent in regard to this club's Charter application. It should have been in one of the last two month's issues but we only found it today. Better late than never!

I saw the Nesbits at the show in Silver Spring. They say they will be having an April meeting so contact any of the above for more information. L.R.

## HEISEY COLLECTORS OF TEXAS

By Amy Jo Jones

On the evening of February 15, 1986, 11 members and 2 guests gathered at the home of Weldon and Emma Harris in Dallas. Preceding the meeting refreshments were served on Colonial and Lariat plates from the Harris collection.

Minutes from the November meeting were read and approved. Announcement of the resignation of Sally Lancaster as secretary was made. Amy Jo Jones was elected to fill the remainder of the term until election of officers in June.

Under old business the renting of a booth at the October Metroplex Glass Show in Arlington for a display and sale of Heisey was discussed. Topic was tabled until the June meeting.

New business included the announcement by Charlie Baird of the traveling exhibit of Heisey glass to be established by the HCA Educational and Archives Committee. The committee members are asking for questions or suggestions.

The next meeting will be held June 7, 1986, at 2:00 P.M. at the Weatherford home of Jan and Charlie Baird. Preceding a potluck supper, a blind auction will be held with proceeds going to the Mould Fund.

Using candlesticks from their collection, Weldon Harris conducted the program using the new candlestick book by Tom Felt and Bob O'Grady as a guide.

Following the program all were humbled by trying to match randomly selected pattern names with numbers. All agreed this "game" would be conducted again! Show and Tell items were provided by Charlie Baird.

The Heisey Collectors of Texas are actively seeking new members. Currently the club meets quarterly, but all agree, with new members, meeting bimonthly would be more fun. For more information call Amy Jo Jones 817-732-4652. Come on DFW - we know you're out there!

## NORTHWEST HEISEY COLLECTORS' CLUB

By Luvonne Nelson

Hello from the Northwest Heisey Study Club. If anyone is intending to travel to Expo '86 in Vancouver, B.C. and would like to attend our meeting on the first Sat. of the month (except for the one on July 12) feel free to call our Pres. Nan at 824-7946 in Seattle or the Treasurer, Maxine in Seattle at 284-8472 and in Bellingham the V. Pres. Marilyn, at 734-3819 or the Sec. Luvonne at 733-1245. We would enjoy having YOU at our meeting.

At the Dec. 7, 1985 meeting we were in Tenino at the home of Ken and Wanda Heikes with 30 members and 3 guests attending. After a delicious potluck dinner we had a very short business meeting. Everyone voted on the 15 centerpieces for Christmas using Heisey pieces. Joe and Betty Preston won 1st prize, Don and Paula Beatty, 2nd prize and Oliver and Mary Beatty, 3rd prize.

Wanda presented the program on Empress and Twist and some of the finds on their travels. Ken and Wanda are truck drivers and go all over the U. S. buying "goodies".

On Jan. 4, 1986 we were in Seattle at the home of Marian Belt with Myra Harmon, co hostess. There were 14 members and 1 guest answering roll call. Maxine Johanson displayed a basket she had bought several years ago and didn't know for sure which company had made it until she received the latest copy of the Heisey NEWSCASTER and there it was.

We received an invitation to the 50th anniversary for Mary and Oliver Beatty, who are some of our most loyal members. Our sincerest congratulations to them! Mary was also lucky enough to win the raffle piece which was a Crystalite Spider dish.

Our program was on covered candy dishes with many beautiful examples in Crystal, colored, with cuttings, sterling silver, red flashing, cranberry flashing, iridized and sandblasted. There was also a Show & Tell with finds from garage sales and also Heisey Christmas gifts.

Our club had a display at the Green River Depression Show and Sale on Feb. 1 at the Jane Addams School in Seattle. After the show we met for dinner at Kings Table Buffet with 24 members and 1 guest attending. Gene Florence who had been a guest at the show was also our guest for dinner and spoke a few words.

After the cold and rain we've had this winter March 1 was a nice warm day to be going to a Heisey meeting. This month in Lacey at the home of Don and Paula Beatty. There were 21 members and 1 guest present.

During the business meeting it was decided to send \$100 to Nat'l HCA to be used in the Hospitality Lounge during the convention. At this time there are 14 members from our club who are planning on attending the 1986 convention.

Don Beatty presented the program on Verly's. Among the pieces displayed were: amber - Memorial Vase & Water Lily bowl; topaz - Thistle bowl; dusty rose - Orchid bowl; Peking Blue - Alpine Thistle vase, Water Lily Console set, Poissons Fish bowl & Shell plate rest, Swallow ashtray; clear - Flower bowl, Summer & Winter Seasons vase, Autumn & Spring Seasons vase, Girl, Lamb & Ewe bowl, Rose bowl, Mandarin vase, Cupidon bowl, Lovebird vase, Water Lily bowl & candlesticks; opalescent - Gems vase. Items brought by members were: frosted & clear Duck trays, Grasshopper vase. An

Empress vase in Peking Blue and a Chrysanthemum vase in milk glass, made by Fenton from the Verly's molds, were displayed.

Our April meeting will be on April 5 in Tacoma at Mary's house. Our program will be on Heisey's early glass.

## HEISEY COLLECTORS OF THE ROCHESTER AREA

By Jerry Gillette

Our January meeting was hosted by our 1985 President, Sharon Orienter at her home which features stained glass outside and Heisey glass inside. In a formal ceremony the officers for 1986 were installed: George Reynolds, President; Betty Evans, Vice President; Jerry Gillette, Secretary/Treasurer. (I am publicly stating that my ordering a new car had absolutely nothing to do with the club's treasury. sgn. JERRY)

The Heisey topic for the meeting was Stems 'n' Stems which brought out more shapes, patterns, colors, etc. to fill this column for two months. Show and Tell featured two "Lattice Band" nappies which are being presented to the Museum by the Heron's, Marion and Bill. (She's the pretty one!) Bobbi Zimmer displayed a Moongleam Tudor piece which, with a sterling top and bottom, became an elegant stringholder, VERY UNIQUE!

Our February meeting was held at the home of Bobbi Zimmer where candy jars are the specialty of the house. Naturally the topic of the day was "Candy Containers other than Footed Jars". It is always amazing how many items and variations were produced by the Heisey plant.

The club has scheduled its 10th birthday party on May 17th. All previous club members are being invited to share in the celebration. Under consideration for the party is a giant raffle to benefit the Mould Fund. First prize is reported to be the HCA Board of Directors, with P & I pre-paid to the winner within the Continental Limits of the U.S. Please send your ticket money direct to Norm Thran % H.C.A. ASAP \* See you all at the Convention.

P.S. If you miss the closing adage as previously presented by G. Reynolds, write directly to him!

\* Ed. Note. I think this part is an **APRIL**

**FOOL!** joke. L.R.

## BAY STATE HEISEY COLLECTORS CLUB By Janet Caswell

The Bay State Heisey Collectors Club got together on the eve of February 11th at the Follen Church in Lexington, MA. Because of a snow storm which lasted most of the day we had only sixteen brave members in attendance.

All the members voted on a name for our table at the Display and arrangements were started. Our Show and Sale for this year was discussed as were programs for the next few months.

The meeting was then adjourned for a nicely done program on Pillows and Prince of Wales Plumes by Jean Seik. Several examples of each were brought in by our members.

While discussing with each other all our exciting finds for the past month we enjoyed refreshments served by Jean and Maurice Walters.

## HCA BENEFIT

## Prices realized

AUCTION 3/7-8/86  
NEWARK, OHIO 43055

1 .	20.00	59 .	22.50	117 .	20.00	175 .	85.00	233 .	40.00	291 .	35.00
2 .	18.00	60 .	55.00	118 .	40.00	176 .	17.50	234 .	75.00	292 .	10.00
3 .	15.00	61 .	55.00	119 .	62.50	177 .	45.00	235 .	82.50	293 .	16.00
4 .	4.00	62 .	75.00	120 .	65.00	178 .	125.00	236 .	170.00	294 .	16.00
5 .	32.00	63 .	20.00	121 .	80.00	179 .	240.00	237 .	50.00	295 .	17.50
6 .	6.00	64 .	40.00	122 .	17.50	180 .	80.00	238 .	48.00	296 .	22.50
7 .	6.00	65 .	40.00	123 .	28.00	181 .	50.00	239 .	165.00	297 .	70.00
8 .	12.00	66 .	50.00	124 .	36.00	182 .	55.00	240 .	45.00	298 .	85.00
9 .	2.00	67 .	40.00	125 .	50.00	183 .	200.00	241 .	25.00	299 .	75.00
10 .	6.00	68 .	45.00	126 .	25.00	184 .	195.00	242 .	77.50	300 .	50.00
11 .	12.00	69 .	170.00	127 .	60.00	185 .	90.00	243 .	80.00	301 .	65.00
12 .	35.00	70 .	90.00	128 .	40.00	186 .	200.00	244 .	60.00	302 .	15.00
13 .	7.50	71 .	100.00	129 .	20.00	187 .	60.00	245 .	115.00	303 .	17.50
14 .	3.00	72 .	85.00	130 .	15.00	188 .	120.00	246 .	105.00	304 .	12.50
15 .	17.50	73 .	110.00	131 .	40.00	189 .	50.00	247 .	30.00	305 .	17.50
16 .	3.00	74 .	150.00	132 .	32.50	190 .	80.00	248 .	70.00	306 .	32.50
17 .	1.00	75 .	45.00	133 .	25.00	191 .	45.00	249 .	55.00	307 .	40.00
18 .	5.00	76 .	243.00	134 .	157.50	192 .	55.00	250 .	25.00	308 .	40.00
19 .	2.00	77 .	180.00	135 .	75.00	193 .	110.00	251 .	25.00	309 .	30.00
20 .	12.50	78 .	65.00	136 .	85.00	194 .	45.00	252 .	22.50	310 .	35.00
21 .	15.00	79 .	65.00	137 .	100.00	195 .	100.00	253 .	20.00	311 .	40.00
22 .	10.00	80 .	30.00	138 .	100.00	196 .	160.00	254 .	27.50	312 .	17.50
23 .	12.00	81 .	35.00	139 .	50.00	197 .	20.00	255 .	37.50	313 .	30.00
24 .	20.00	82 .	30.00	140 .	15.00	198 .	80.00	256 .	35.00	314 .	60.00
25 .	15.00	83 .	50.00	141 .	85.00	199 .	45.00	257 .	70.00	315 .	150.00
26 .	88.00	84 .	10.00	142 .	25.00	200 .	70.00	258 .	22.50	316 .	30.00
27 .	75.00	85 .	40.00	143 .	192.50	201 .	40.00	259 .	27.50	317 .	12.50
28 .	25.00	86 .	290.00	144 .	137.50	202 .	45.00	260 .	45.00	318 .	22.50
29 .	45.00	87 .	32.50	145 .	60.00	203 .	40.00	261 .	25.00	319 .	25.00
30 .	35.00	88 .	60.00	146 .	22.50	204 .	6.00	262 .	60.00	320 .	25.00
31 .	55.00	89 .	90.00	147 .	30.00	205 .	3.00	263 .	110.00	321 .	60.00
32 .	62.50	90 .	50.00	148 .	7.50	206 .	3.00	264 .	75.00	322 .	45.00
33 .	90.00	91 .	70.00	149 .	70.00	207 .	2.00	265 .	120.00	323 .	135.00
34 .	140.00	92 .	65.00	150 .	50.00	208 .	5.00	266 .	105.00	324 .	50.00
35 .	12.00	93 .	60.00	151 .	95.00	209 .	66.00	267 .	60.00	325 .	65.00
36 .	75.00	94 .	175.00	152 .	50.00	210 .	35.00	268 .	55.00	326 .	65.00
37 .	150.00	95 .	90.00	153 .	90.00	211 .	120.00	269 .	10.00	327 .	202.50
38 .	30.00	96 .	110.00	154 .	220.00	212 .	10.00	270 .	24.00	328 .	35.00
39 .	60.00	97 .	24.00	155 .	20.00	213 .	8.00	271 .	10.00	329 .	90.00
40 .	75.00	98 .	60.00	156 .	48.00	214 .	18.00	272 .	150.00	330 .	40.00
41 .	50.00	99 .	30.00	157 .	9.00	215 .	105.00	273 .	12.50	331 .	85.00
42 .	40.00	100 .	35.00	158 .	20.00	216 .	45.00	274 .	27.50	332 .	17.50
43 .	55.00	101 .	140.00	159 .	40.00	217 .	80.00	275 .	25.00	333 .	45.00
44 .	175.00	102 .	90.00	160 .	20.00	218 .	170.00	276 .	30.00	334 .	50.00
45 .	17.50	103 .	140.00	161 .	15.00	219 .	105.00	277 .	7.00	335 .	35.00
46 .	37.50	104 .	200.00	162 .	67.50	220 .	30.00	278 .	17.50	336 .	55.00
47 .	30.00	105 .	180.00	163 .	15.00	221 .	90.00	279 .	18.00	337 .	25.00
48 .	22.50	106 .	170.00	164 .	30.00	222 .	70.00	280 .	15.00	338 .	25.00
49 .	37.50	107 .	280.00	165 .	30.00	223 .	50.00	281 .	50.00	339 .	50.00
50 .	25.00	108 .	22.50	166 .	17.50	224 .	40.00	282 .	22.50	340 .	9.00
51 .	35.00	109 .	20.00	167 .	52.50	225 .	120.00	283 .	15.00	341 .	10.00
52 .	35.00	110 .	25.00	168 .	50.00	226 .	12.50	284 .	30.00	342 .	17.50
53 .	56.00	111 .	55.00	169 .	100.00	227 .	130.00	285 .	37.50	343 .	10.00
54 .	7.50	112 .	30.00	170 .	25.00	228 .	65.00	286 .	7.00	344 .	30.00
55 .	12.00	113 .	28.00	171 .	25.00	229 .	120.00	287 .	20.00	345 .	22.50
56 .	360.00	114 .	17.50	172 .	55.00	230 .	130.00	288 .	15.00	346 .	55.00
57 .	25.00	115 .	22.50	173 .	75.00	231 .	90.00	289 .	17.50	347 .	22.50
58 .	50.00	116 .	10.00	174 .	52.50	232 .	100.00	290 .	20.00	348 .	42.50

## HCA BENEFIT

## Prices realized

AUCTION 3/7-8/86  
NEWARK, OHIO 43055

349 .	35.00	407 .	130.00	465 .	60.00	523 .	32.50	580 .	6.00	638 .	20.00
350 .	12.50	408 .	85.00	466 .	70.00	524 .	17.50	581 .	17.50	639 .	60.00
351 .	72.00	409 .	10.00	467 .	20.00	525 .	20.00	582 .	15.00	640 .	40.00
352 .	25.00	410 .	25.00	468 .	37.50	526 .	22.50	583 .	17.50	641 .	45.00
353 .	28.00	411 .	55.00	469 .	17.50	527 .	25.00	584 .	12.50	642 .	110.00
354 .	35.00	412 .	80.00	470 .	4.00	528 .	100.00	585 .	150.00	643 .	60.00
355 .	12.00	413 .	16.00	471 .	7.50	529 .	20.00	586 .	35.00	644 .	85.00
356 .	40.00	414 .	72.00	472 .	16.00	530 .	70.00	587 .	30.00	645 .	15.00
357 .	32.50	415 .	30.00	473 .	5.00	531 .	40.00	588 .	100.00	646 .	17.50
358 .	7.50	416 .	24.00	474 .	12.50	532 .	22.50	589 .	15.00	647 .	57.50
359 .	10.00	417 .	30.00	475 .	12.50	533 .	18.00	590 .	65.00	648 .	30.00
360 .	35.00	418 .	70.00	476 .	36.00	534 .	25.00	591 .	80.00	649 .	5.00
361 .	10.00	419 .	20.00	477 .	7.50	535 .	20.00	592 .	150.00	650 .	10.00
362 .	35.00	420 .	22.50	478 .	2.00	536 .	25.00	593 .	32.50	651 .	15.00
363 .	10.00	421 .	12.50	479 .	25.00	537 .	40.00	594 .	27.50	652 .	30.00
364 .	17.50	422 .	52.50	480 .	9.00	538 .	45.00	595 .	55.00	653 .	17.50
365 .	20.00	423 .	20.00	481 .	300.00	539 .	16.00	596 .	25.00	654 .	15.00
366 .	20.00	424 .	7.50	482 .	65.00	540 .	20.00	597 .	110.00	655 .	70.00
367 .	20.00	425 .	8.00	483 .	150.00	541 .	50.00	598 .	50.00	656 .	9.00
368 .	5.00	426 .	12.50	484 .	47.50	542 .	10.00	599 .	27.50	657 .	10.00
369 .	15.00	427 .	10.00	485 .	25.00	543 .	22.50	600 .	85.00	658 .	12.50
370 .	15.00	428 .	25.00	486 .	125.00	544 .	12.00	601 .	45.00	659 .	10.00
371 .	7.50	429 .	17.50	487 .	65.00	545 .	30.00	602 .	180.00	660 .	18.00
372 .	9.00	430 .	25.00	488 .	20.00	546 .	80.00	603 .	95.00	661 .	15.00
373 .	12.00	431 .	10.00	489 .	80.00	547 .	40.00	604 .	70.00	662 .	20.00
374 .	12.00	432 .	27.50	490 .	25.00	548 .	10.00	605 .	95.00	663 .	70.00
375 .	5.00	433 .	125.00	491 .	85.00	549 .	50.00	606 .	20.00	664 .	7.50
376 .	8.00	434 .	45.00	492 .	85.00	550 .	65.00	607 .	40.00	665 .	50.00
377 .	1.00	435 .	75.00	493 .	15.00	551 .	100.00	608 .	40.00	666 .	25.00
378 .	2.00	436 .	35.00	494 .	35.00	552 .	60.00	609 .	15.00	667 .	25.00
379 .	10.00	437 .	45.00	495 .	35.00	553 .	3.00	610 .	10.00	668 .	20.00
380 .	4.00	438 .	60.00	496 .	32.50	554 .	32.50	611 .	2.00	669 .	100.00
381 .	45.00	439 .	25.00	497 .	90.00	555 .	20.00	612 .	2.00	670 .	22.50
382 .	60.00	440 .	150.00	498 .	35.00	556 .	27.50	613 .	25.00	671 .	24.00
383 .	5.00	441 .	4.00	499 .	40.00	557 .	15.00	614 .	2.00	672 .	30.00
384 .	15.00	442 .	10.00	500 .	60.00	558 .	30.00	615 .	25.00	672A.	1500.00
385 .	27.50	443 .	15.00	501 .	30.00	559 .	20.00	616 .	2.00	672B.	5.00
386 .	22.50	444 .	130.00	502 .	75.00	560 .	10.00	617 .	35.00	672C.	45.00
387 .	25.00	445 .	10.00	503 .	140.00	561 .	60.00	618 .	175.00	672D.	40.00
388 .	7.00	446 .	90.00	504 .	50.00	562 .	7.50	619 .	240.00	672E.	90.00
389 .	27.50	447 .	20.00	505 .	30.00	563 .	7.50	620 .	80.00	672F.	70.00
390 .	50.00	448 .	35.00	506 .	17.50	564 .	30.00	621 .	15.00	672G.	50.00
391 .	15.00	449 .	27.50	507 .	30.00	565 .	27.50	622 .	55.00	672H.	270.00
392 .	37.50	450 .	5.00	508 .	50.00	566 .	15.00	623 .	20.00	673 .	145.00
393 .	6.00	451 .	27.50	509 .	45.00	567 .	22.50	624 .	65.00	674 .	130.00
394 .	10.00	452 .	10.00	510 .	85.00	568 .	22.50	625 .	55.00	675 .	160.00
395 .	45.00	453 .	25.00	511 .	110.00	569 .	30.00	626 .	60.00	676 .	102.50
396 .	10.00	454 .	14.00	512 .	75.00	570 .	25.00	627 .	30.00	677 .	40.00
397 .	45.00	455 .	2.00	513 .	22.50	571 .	20.00	628 .	60.00	678 .	20.00
398 .	17.50	456 .	85.00	514 .	40.00	571A.	75.00	629 .	24.00	679 .	17.50
399 .	15.00	457 .	10.00	515 .	20.00	572 .	5.00	630 .	30.00	680 .	30.00
400 .	7.50	458 .	22.50	516 .	40.00	573 .	12.50	631 .	30.00	681 .	80.00
401 .	10.00	459 .	40.00	517 .	40.00	574 .	12.50	632 .	260.00	682 .	155.00
402 .	55.00	460 .	50.00	518 .	50.00	575 .	27.50	633 .	120.00	683 .	70.00
403 .	5.00	461 .	15.00	519 .	130.00	576 .	10.00	634 .	310.00	684 .	80.00
404 .	12.50	462 .	50.00	520 .	27.50	577 .	55.00	635 .	87.50	685 .	3.00
405 .	32.50	463 .	20.00	521 .	30.00	578 .	24.00	636 .	30.00	686 .	15.00
406 .	17.50	464 .	35.00	522 .	50.00	579 .	9.00	637 .	10.00	687 .	60.00

688 .	60.00	746 .	27.50	804 .	100.00	862 .	30.00	920 .	10.00	978 .	20.00
689 .	15.00	747 .	17.50	805 .	65.00	863 .	37.50	921 .	30.00	979 .	57.50
690 .	6.00	748 .	105.00	806 .	60.00	864 .	70.00	922 .	35.00	980 .	12.50
691 .	1.00	749 .	3.00	807 .	15.00	865 .	35.00	923 .	24.00	981 .	25.00
692 .	10.00	750 .	57.50	808 .	250.00	866 .	145.00	924 .	36.00	982 .	45.00
693 .	12.50	751 .	40.00	809 .	75.00	867 .	40.00	925 .	140.00	983 .	100.00
694 .	66.00	752 .	45.00	810 .	30.00	868 .	45.00	926 .	10.00	984 .	80.00
695 .	15.00	753 .	25.00	811 .	60.00	869 .	315.00	927 .	40.00	985 .	30.00
696 .	15.00	754 .	14.00	812 .	18.00	870 .	27.50	928 .	20.00	986 .	35.00
697 .	21.00	755 .	40.00	813 .	155.00	871 .	5.00	929 .	155.00	987 .	32.00
698 .	18.00	756 .	90.00	814 .	140.00	872 .	45.00	930 .	75.00	988 .	165.00
699 .	120.00	757 .	12.50	815 .	30.00	873 .	65.00	931 .	175.00	989 .	150.00
700 .	8.00	758 .	25.00	816 .	120.00	874 .	22.50	932 .	105.00	990 .	315.00
701 .	12.50	759 .	25.00	817 .	60.00	875 .	18.00	933 .	85.00	991 .	42.00
702 .	32.50	760 .	160.00	818 .	80.00	876 .	25.00	934 .	60.00	992 .	275.00
703 .	5.00	761 .	100.00	819 .	60.00	877 .	15.00	935 .	20.00	993 .	15.00
704 .	40.00	762 .	115.00	820 .	50.00	878 .	10.00	936 .	25.00	994 .	70.00
705 .	40.00	763 .	140.00	821 .	3.00	879 .	35.00	937 .	30.00	995 .	32.50
706 .	27.50	764 .	35.00	822 .	140.00	880 .	27.50	938 .	45.00	996 .	67.50
707 .	15.00	765 .	250.00	823 .	70.00	881 .	35.00	939 .	6.00	997 .	45.00
708 .	15.00	766 .	10.00	824 .	50.00	882 .	60.00	940 .	50.00	998 .	90.00
709 .	17.50	767 .	130.00	825 .	60.00	883 .	25.00	941 .	45.00	999 .	20.00
710 .	55.00	768 .	60.00	826 .	110.00	884 .	90.00	942 .	30.00	1000 .	45.00
711 .	22.50	769 .	95.00	827 .	35.00	885 .	20.00	943 .	25.00	1001 .	10.00
712 .	8.00	770 .	240.00	828 .	100.00	886 .	20.00	944 .	30.00	1002 .	15.00
713 .	25.00	771 .	210.00	829 .	75.00	887 .	125.00	945 .	35.00	1003 .	6.00
714 .	12.00	772 .	40.00	830 .	150.00	888 .	17.50	946 .	20.00	1004 .	12.50
715 .	25.00	773 .	65.00	831 .	35.00	889 .	12.50	947 .	25.00	1005 .	12.50
716 .	50.00	774 .	27.50	832 .	30.00	890 .	45.00	948 .	17.50	1006 .	20.00
717 .	27.50	775 .	15.00	833 .	5.00	891 .	60.00	949 .	30.00	1007 .	25.00
718 .	22.50	776 .	12.50	834 .	6.00	892 .	20.00	950 .	45.00	1008 .	40.00
719 .	10.00	777 .	22.50	835 .	22.50	893 .	65.00	951 .	50.00	1009 .	45.00
720 .	15.00	778 .	20.00	836 .	24.00	894 .	20.00	952 .	17.50	1010 .	18.00
721 .	17.50	779 .	15.00	837 .	18.00	895 .	17.50	953 .	95.00	1011 .	100.00
722 .	17.50	780 .	12.50	838 .	410.00	896 .	70.00	954 .	155.00	1012 .	120.00
723 .	17.50	781 .	35.00	839 .	20.00	897 .	20.00	955 .	30.00	1013 .	30.00
724 .	112.00	782 .	290.00	840 .	125.00	898 .	47.50	956 .	30.00	1014 .	45.00
725 .	14.00	783 .	15.00	841 .	30.00	899 .	25.00	957 .	24.00	1015 .	30.00
726 .	125.00	784 .	35.00	842 .	50.00	900 .	30.00	958 .	130.00	1016 .	24.00
727 .	15.00	785 .	40.00	843 .	10.00	901 .	30.00	959 .	100.00	1017 .	6.00
728 .	17.50	786 .	56.00	844 .	35.00	902 .	22.50	960 .	50.00	1018 .	12.00
729 .	80.00	787 .	110.00	845 .	35.00	903 .	18.00	961 .	350.00	1019 .	30.00
730 .	30.00	788 .	7.50	846 .	60.00	904 .	70.00	962 .	50.00	1020 .	12.50
731 .	20.00	789 .	105.00	847 .	65.00	905 .	10.00	963 .	60.00	1021 .	10.00
732 .	12.50	790 .	15.00	848 .	65.00	906 .	20.00	964 .	30.00	1022 .	55.00
733 .	45.00	791 .	25.00	849 .	50.00	907 .	32.50	965 .	15.00	1023 .	60.00
734 .	17.50	792 .	5.00	850 .	20.00	908 .	32.50	966 .	20.00	1024 .	20.00
735 .	21.00	793 .	65.00	851 .	90.00	909 .	17.00	967 .	25.00	1025 .	60.00
736 .	15.00	794 .	36.00	852 .	175.00	910 .	32.50	968 .	100.00	1026 .	50.00
737 .	15.00	795 .	80.00	853 .	32.00	911 .	40.00	969 .	400.00	1027 .	2.00
738 .	8.00	796 .	25.00	854 .	85.00	912 .	255.00	970 .	36.00	1028 .	20.00
739 .	14.00	797 .	20.00	855 .	4.00	913 .	70.00	971 .	30.00	1029 .	5.00
740 .	32.50	798 .	40.00	856 .	15.00	914 .	40.00	972 .	60.00	1030 .	12.00
741 .	32.50	799 .	15.00	857 .	35.00	915 .	40.00	973 .	11.00	1031 .	10.00
742 .	22.50	800 .	20.00	858 .	20.00	916 .	70.00	974 .	4.00	1032 .	17.50
743 .	25.00	801 .	20.00	859 .	20.00	917 .	10.00	975 .	10.00	1033 .	12.50
744 .	65.00	802 .	18.00	860 .	105.00	918 .	25.00	976 .	9.00	1034 .	5.00
745 .	80.00	803 .	25.00	861 .	50.00	919 .	17.50	977 .	6.00	1035 .	30.00

1036 .	17.50
1037 .	8.00
1038 .	1.00
1039 .	2.00
1040 .	22.50
1041 .	50.00
1042 .	22.50
1043 .	30.00
1044 .	27.50

ATTENTION: MAIL BIDDERS

Please note that items which had damage not noted in the original list are marked X in these pages.

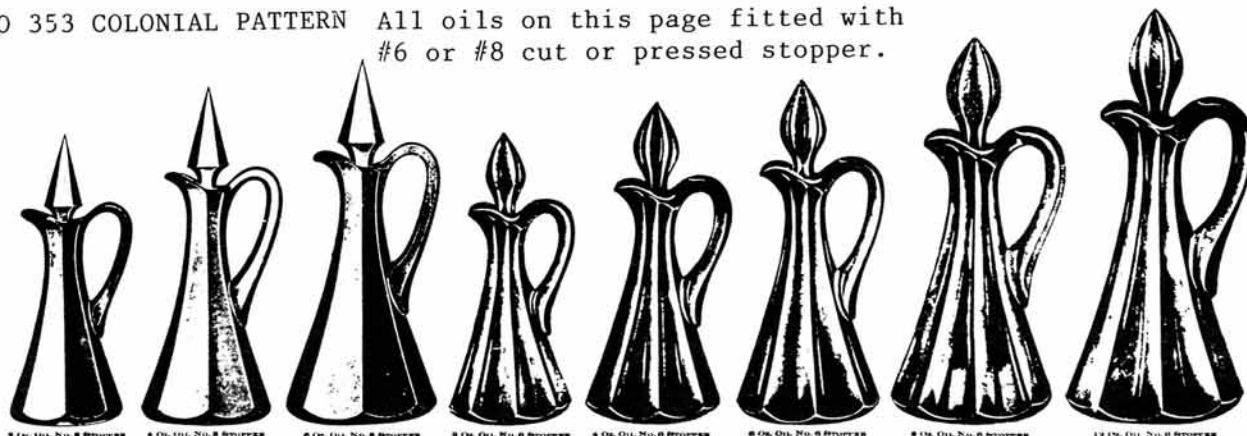
If your bid was higher than the price realized for the item, and you did not get it, it was because of the additional damage as listed above.

A Table of Glass at the March Auction



Photo by Lloyd Caswell.

NO 353 COLONIAL PATTERN All oils on this page fitted with #6 or #8 cut or pressed stopper.



CRAFTS ENTERPRISES  
187 N. Pioneer Ave.  
Shavertown, PA 18708

PH: 717-675-8553  
\* MARKED  
P & I EXTRA

- #1401 EMPRESS Ft. Sugar, Sahara\*..... \$20.00
- #4182 Diana Etch 8" Plate (6).....Ea. 17.50
- # 406 COARSE RIB 5" Low Ftd Jelly Mnglm... 20.00
- # 406 COARSE RIB 8" Nappy Mnglm\*..... 40.00
- #3390 CARCASSONNE Low Goblet Old Colony  
etch (8).....Ea. 10.00
- # 429 PLAIN PANEL 6 oz Cruet W/Unkn Cut\*.. 45.00
- #5025 TYROLEAN Saucer Champ. Orch Et. 10 Ea. 25.00
- WANTED: Crystal Stopper for #367 1 Qt Decanter  
#1401 Empress Cover for Moongleam Mustard  
# 361 Moongleam Cover for Ashtray

WANTED

- 8" or 9" Crystal Nappies  
To complete our collection of early nappies.
- #160 Locket on Chain
  - #381 Quilt
  - #439 Raised Loop
  - # 12 Double Row Slash and Panel

TOM AND MARIAN McCOLLOUGH  
Box 100, Glenford, OH 43739

PH: 614-659-2270 (Call COLLECT Weekends)

**Classified Ads**

WANTED TO BUY: Buying Caprice blue or Rosepoint by Cambridge. Rose or Orchid by Heisey...American, June, Fairfax, Versailles, Trojan by Fostoria. Also Depression Glass and all crystal or colored of that era. Nadine Pankow, 207 S. Oakwood, Willow Springs, IL 60480. PH: 312-839-5231.

WANTED: Items in #160 Locket on Chain, crystal or colors. JIM KENNON, PO Box 251, Amherst, OH 44001.

WANTED TO BUY: #150 Banded Flute punch cups. Angie Maury, 41 Beaver Dam Court, Columbus, SC 29223.

FOR SALE: Salad Fork\* \$16; Half Circle Ind. Crmr. SAHARA\* \$35; #21 Aristocrat 7" candlesticks\* pr. \$85; #357 Sanitary Syrup\* \$45; #1020 Hotel Sug/Cr MOONGLEAM\* \$75; Inside Scallop 7" Conserve FLAMINGO\* \$35; Frog Handled cheese plate FLAMINGO \$125; Stanhope cup, 7" plate \$15; Pleat & Panel 7" plates FLAMINGO\* (6) \$7 ea; Crystalite cup/saucer (7) \$15 ea. set; HEISEY ROSE cocktail \$50; HEISEY ROSE Waverly min. sug/crm, #1509 tray \$120 (paper labels); #353 10" Colonial tray\* \$25; PLANTATION cruet \$60; GLASS 'N' GLASS, Virginia and Odell Johnson, 6909 10th Ave. W., Bradenton, FL 33529, (813) 792-0604.

Green W/Exc. Gold Pineapple & Fan Tumbler. \$60. Same Lid (Fits 3 1/4" Opening) \$25, Green Fancy Loop #1205 Goblet \$75. Clear Locket on Chain 8" Ped. Bowl \$140. Empress Sahara: Dolphin Ft Creamer \$30, 2 6" Ft. Compotes \$45, Ft. Mayonnaise \$45, 6 7" Plates \$12, 6 6" Plates \$10, 2 Cups & saucers \$38. Empress Crystal: 8 8" Sq Plates \$9, 8 7" Sq Plates \$7, 2 Cups and Saucers \$12, 2 Saucers \$3. Salt Dips: 2 #1235 Beaded Panel & Sunburst \$20. Punch Cups: 1 #1235 Beaded Panel & Sunburst \$12, 2 Pil-Tows #325 \$12 Ea. LEROUX'S ANTIQUES, 622 Pawnee Circle Drive, Woodward, OK 73801. PH 405-256-6253 after 5. Shipping Extra.

FOR SALE: Heisey Stem Collection. Send SASE for detailed list. L. M. CALLAHAN, 10439 Brangus Ln., Dewey, AZ 86327.

**ATTENTION !!!**

Will the lady who purchased an Ultra Blue pitcher from the HCA booth at the Silver Spring show please contact us by letter or collect call. HCA, P. O. Box 27, Newark, Ohio 43055 or call 614-345-2932

W. C. DUNN PH: 512-657-3975  
8623 Starcrest W10 P & I EXTRA  
San Antonio, Texas 78217

ALEXANDRITE COLLECTION

- 12 8 1/2" EMPRESS Sq. Plates Yeakley #486....\$600.00
- 9 11 oz Goblets Carcassone Y#452..(2f).... 935.00
- 13 6 oz Sherbets Carcassone Y#453.....1105.00
- 13 3 oz Cocktails Carcassone Y#454..... 975.00
- 1 Empress Floral Bowl Y#459..... 400.00

LOT PRICE \$3800.00

**ALL GLASS SHOW AND SALE**

Sheraton-Sturbridge Inn, Rte 20, Sturbridge, Ma.

May 31, 1986

June 1, 1986

Sat. 10:00 A.M. - 5:00 P.M.

Sun. 10:00 A.M. - 4:00 P.M.

**GLASS OF ALL PERIODS**

SPONSOR

Heisey Club of Southeastern, Mass.

Donation \$2.50 - with Card \$2.00

Benefit - Heisey Glass Museum

DONALD P. BEAN  
36 Harding St.  
Milford, MA 01757

PH: 617-473-0561  
P & I EXTRA  
\* MARKED

- # 365 EARLY QUEEN ANN 11 1/2" Celery Dish\*... \$ 50.00
- # 365 EARLY QUEEN ANN 4 oz Ftd Sherbet\*... 30.00
- # 365 EARLY QUEEN ANN 3 oz Ftd Sherbet\*  
or Ftd egg cup\* (10).....Ea. 25.00
- # 353 MED. FLAT PANEL 5 oz Syrup\* Good cover 31.50
- # 113 MARS 3 1/2" Candles, Flamingo.....Pr. 38.00
- #1473 THUMPRINT & PANEL 2 lite sticks\*  
Sahara.....Pr. 60.00
- #1020 HOTEL Cr. & Sug. Nice floral Cut\* Set 38.00
- # 350 PINWHEEL & FAN 3 Pt Squat Jug\*..... 115.00
- # 1201 (NOT FANDANGO) 11" Ftd Bowl, Flam.\*.. 33.00
- WANTED: Cover for large Pot Pourri Jar.

SIMONS ANTIQUES  
57 Main St., P.O. Box 57  
Vincentown, NJ 08088

PH: 609-859-3360  
\* MARKED  
P & I EXTRA

JIM GARTNER  
444 Girard St. #013  
Gaithersburg, MD 20877

PH: 301-869-5306  
P & I EXTRA  
\* SIGNED

# 433 GREEK KEY Sherbets* (4).....Ea.	\$ 19.00
# 433 GREEK KEY Banana Split*.....	29.00
# 433 GREEK KEY Round Sugar*.....	34.00
#1540 LARIAT Wines (tall) (12).....Ea.	15.00
# 339 CONTINENTAL Sherbets*(10).....Ea.	12.50
# 335 PRINCE OF WALES Punch Cups*(8) Ea.	23.00
# 357 PRISON STRIPE Punch Cups* (2)..Ea.	35.00
# 350 PINWHEEL & FAN Pitcher*.....	175.00
# 350 PINWHEEL & FAN Tumblers* (4)..Ea.	25.00
#1567 PLANTATION Pitcher.....	240.00
#1567 PLANTATION Sugar & Creamer.....	58.00
#1567 PLANTATION ¼ lb. Butter Dish*.....	65.00
#1205 FANCY LOOP Salts - original box(12)	195.00
#1503 CRYSTOLITE Ice Bucket*.....	95.00
# 421 PRISM BLOCK Nappies*(6).....Ea.	20.00
#1425 VICTORIAN Goblets (2 ball stem)*4 Ea.	21.00
#1425 VICTORIAN Goblets (1 ball stem)*5 Ea.	18.00
#1425 VICTORIAN Tall Goblets* (7)....Ea.	25.00
#1425 VICTORIAN Tumblers (4).....Ea.	25.00



OLD SANDWICH

#1404 12 oz Creamer, Moongleam* (1) Ea...	\$175.00
#1404 10 oz Low Footed Goblet Mglm*(1)Ea.	45.00
#1404 8 oz Ice tea. Gr.Bot. Mglm* (1) Ea.	30.00
#1404 4 oz Oyster Cocktail Mglm* (1) Ea.	30.00
#1404 8" Plates Mglm * (6).....Ea.	20.00
#1404 Salt & Pepper #20 top Flamingo*1 Set	75.00
#1404 2½ oz Cruet & #85 P/S Flamingo*1 Ea.	175.00
#1404 3 pc Console Set Flamingo*.....	345.00
#1404 1 oz Shot, Gr. Bot. Cobalt* 1....Ea.	150.00
#1404 18 oz Beer Mug Amber*.....1.....Ea.	295.00
#1404 3 oz Cocktails Sahara*....6.....Ea.	30.00
#1404 3 pc Console Sahara*.....7.....Ea.	260.00
#1404 4 oz Oyster Cocktails Sahara* 7..Ea.	22.00
#1404 Oval Cr. & Sug. Sahara*.....1 Set	70.00
#1404 1 pt Wine Decanter #98 P/S....1..Ea.	95.00

OLD DOMINION

#3380 5 oz Footed Sodas, D/O Flamingo	
447 Empress etch (4).....Ea.	15.00
#3380 8 oz Footed Sodas D/O Flamingo	
447 Empress etch (6).....Ea.	18.00
#3380 10 oz Footed Sodas D/O Flamingo	
447 Empress etch (7).....Ea.	20.00
#3380 6 oz Sherbet Flamingo D/O	
447 Empress etch (2).....Ea.	20.00
#5025 TYROLEAN 6 oz Tall Sherbet, Orchid	
Etch, (4).....Ea.	30.00

RECOLLECTIONS  
T. D. WERT  
Box 144, R.R.2 Creek Rd.  
Furlong, PA 18925

PH: 215-794-8667  
P & I EXTRA  
Subject to prior sale  
\* MARKED

#4232 Favor Vase DO Tangerine.....	\$375.00
#1404 Old Sandwich 6½ oz Toddy* Heavy Silver Overlay .....Set (6)	170.00
#1020 Hotel Sugar, Vaseline*.....	125.00
#1200 Cut Block, Toothpick, Ruby Stain - "Wildwood 1904 - Mother".....	50.00
# 333 Waldorf Astoria, Toothpick*.....	60.00
# 342 Spooner*.....	45.00
#1567 Plantation 2-lite Cndls, Ivy etch Pr.	95.00
#1485 Saturn Mustard/Cov. Sterling Under- plate and spoon*.....	38.00
#1519 Waverly Plates 7" Orchid Etch (6).Ea.	13.00
#4036½ Decanter, Orchid Etch (Sl. Cldy)....	155.00
#5072 Rose Sherbet, Rose Etch (2).....Ea.	30.00
#1184 Yeoman French Dressing Boat, Mnglm*	35.00
#1201 Candlestick, Georgian 9".....	47.00
#1503 Crystalite ½ gal. Jug Icelip.....	58.00
#1503 Crystalite Cherry Jar & Cover*.....	37.00
#1425 Victorian 12 oz Ftd. Soda* (5)....Ea.	17.00
#1776 Kalonyl 6 oz Sherbet*.....	30.00
#1220 Puntty Band Wine Fld. Ruby stain.....	32.00
# 201 Windsor Lamps*, Frstd Base, #6 Bobeche Prisms, W/#4060 Cut Shds, Flk 1 Shade, Pair.....	400.00

MOSTLY HEISEY  
Rhoda Curley  
16 Clayton Place  
Albany, NY 12209

PH: 518-482-6272  
UPS Extra

# 300 Peerless Salt and Pepper .....	\$40.00
#1506 Whirlpool Salt and Pepper.....	30.00
# 310 Ring Band Custard Salt & Pep Gold worn	95.00
#1255 Pineapple & Fan Salt and Pepper....	49.00
#1255 Pineapple & Fan Toothpick EMERALD...	150.00
#1404 Old Sandwich Butter Pats - 8 .....	15.00
# 6 Muddler.....	14.00
#1252 Twist Moongleam 2 Handled Nuts 6..ea	20.00
#1252 Twist Flamingo 2 Handled Nuts 4..ea	18.00



THE COLLECTOR'S STOP  
RAPHAEL & EILEENE WISE  
We will be at the shows listed below



APRIL 11-12-13	MIAMI BEACH CONVENTION CENTER	Miami, Florida
MAY 23-24-25	CONVENTION CENTER OAK STREET	Myrtle Beach South Carolina
MAY 31 JUNE 1	SHERATON HOTEL HEISEY GLASS SHOW	Sturbridge Massachusetts
JUNE 19-20-21-22	HEISEY CONVENTION O.S.U. NEWARK	Newark, Ohio

12018 SUELLEN CIRCLE  
WEST PALM BEACH, FLORIDA 33414  
305-793-0986



PATTON HOUSE ANTIQUES PH: 703-967-1181  
 P. O. Box 547 After 6:00 P.M.  
 Louisa, VA 23093 P & I EXTRA

\* MARKED

- #6091 CABACHON Goblets-Southwind Cut(4) ea. \$ 15.00
- #5024 OXFORD Cocktails-Thistle Cut (2) ea. 20.00
- #3350 WABASH Champs. MNGLM Stem - Mayflower etch (2)..... 18.50
- #1253 Tri-corner Candy Lid-Marigold..... 15.00
- # 451 8" Cross Lined Flute Plates (Some wear) (5) ea..... 11.50
- # 400 COLONIAL Handled Jelly..... 35.00
- # 515 ROSE ETCH Oval Comport..... 87.50
- #1425 VICTORIAN Barrel Tumblers.....ea. 15.00
- # 507 ORCHID ETCH Covered Butter..... 125.00

GORDON C. ANDREWS PH: 716-832-1870  
 178 Werkley Rd.  
 Tonawanda, NY 14150 P & I EXTRA

FOR SALE

Heisey Land of Legend Commerative Plates by Imperial

- 2 1971 - Amber - @ \$50.00 ea.
- 6 1972 - Blue - @ \$45.00 ea.
- 9 1973 - Green - @ \$45.00 ea.

MICHAEL FRIESNER \* MARKED  
 1868 Beacon St. PH: 614-687-6425  
 Lancaster, OH 43130 S & I EXTRA

ALL ORCHID ETCH

- #5025 TYROLEAN 12 oz. ftd Soda (3) Ea..... \$30.00
- #5025 TYROLEAN 5 oz. ftd Soda (4) Ea..... 35.00
- #5025 TYROLEAN 3 oz. Wine.....(5) Ea..... 45.00
- #5025 TYROLEAN 6 oz. Saucer Champ (4) Ea.. 35.00
- #1519 WAVERLY 8" Salad Plate.....(9) Ea.. 20.00
- #1519 WAVERLY 7" Salad Plate.....(1)..... 20.00
- #1519 WAVERLY 10" Gardenia Bowl..... 55.00

WILL CONSIDER REASONABLE OFFER FOR ALL

- #1503 CRYSTOLITE Cigarette Box (Chip)..... 15.00
- #1503 CRYSTOLITE 7" Candy or Puff Box..... 50.00
- #1503 CRYSTOLITE Candlesticks-Rosette..Pr. 20.00
- #5057 SUEZ 4 oz Cocktail\* (8).....Ea. 20.00
- #1401 EMPRESS 7½" Dolphin Ftd Nappy, Sahara\* (some wear)..... 25.00

\*\*\*\*\*

#8027 RARE TEARDROP GOBLET BEST OFFER  
 Heisey Stemware P. # 183  
 Book lists 1 Known

CLASSIQUE GLASS CO. PH: 918-585-3203  
 P. O. BOX 52572 P & I EXTRA  
 Tulsa, OK 74152 \* MARKED

- # 142 CASCADE 3 lite candlestick Orch Etch \$ 57.50
- #1252 TWIST, Moongleam 2" Candlestick\* Pr. 55.00
- #1295 BEAD SWAG, Opal Crm/Sug Cornflower, Wear..... 165.00
- #1401 EMPRESS Mglm 11" D.F. Floral Bowl\*.. 98.50
- #1401 EMPRESS Sahara D.F. Sug/Crm\*..... 77.50
- #1404 OLD SANDWICH Mnglm. 12" Fl. Bowl\*... 165.00
- #1405 IPSWICH, Sahara 8½" Sq Plates (6)\*.. 29.50
- #1428 WARWICK, Cobalt 9" Cornucopia Vase\* .....Each \$235.00..Pr. 410.00
- #1486 COLEPORT Dawn 8 oz tumblers (4)\*..... 26.00

MAURICE & JEAN WALTER PHONE: 617-245-2532  
 c/o Sir Speedy AFTER 7 p.m. E.S.T.  
 431 Main Street, Woburn, MA 01801

P & I Extra SPRING SALE!! \*Marked

- 5 Puff Box\* - Metal Lid - min. flake near base..... \$ 16.50
- 15 Floral Block - Flamingo (sm. fleck inside glass).. 17.00
- 112 MERCURY Candlestix ..... pr. 19.50
- 112 MERCURY Candlestix - 1 Flamingo..... 10.00
- 128 LIBERTY Candlestix (1 lte)..... pr. 20.00
- 333 WALDORF ASTORIA - 8 oz. Cruet - no stopper minor rghness 1 pnl..... 26.25
- 333 WALDORF ASTORIA - 4 oz. Cruet - no stopper slightly cloudy ..... 25.00
- 343 SUNBURST Custard Cups (5)..... ea. 11.50
- 411 TUDOR - 5 oz. Sherbets\* (5) ..... ea. 6.00
- 1185 YEOMAN H'dl Sand. Tray\* - gd. gold decor..... 18.00
- 1205 FANCY LOOP 8" ov. celery (sm. flake on rim).... 8.00
- 1229 OCTAGON - 6" mint Hawthorne ..... 11.50
- 1229 OCTAGON - 6" mint Moongleam ..... 8.00
- 1229 OCTAGON - 6" Bon Bon Sahara ..... 10.00
- 1255 PINEAPPLE & FAN #2 Salts, no tops (2) ..... pr. 15.00
- 1255 PINEAPPLE & FAN - 10" Vase..... 24.00
- 1401 EMPRESS Floral Bowl w/Normandie etch..... 24.00
- 1425 VICTORIAN - 5 oz. Champagne (2) ..... ea. 8.00
- 1425 VICTORIAN - Punch cups (10)\* ..... ea. 8.00
- 1425 VICTORIAN - 5 oz. Sodas (3)\* ..... ea. 8.00
- 1428 WARWICK - single candle block..... 14.00
- 1428 WARWICK - 7" Vase min. rghness curl of horn .. 16.00
- 1469 RIDGELEIGH - Sm. ov. Cig. Box in met. basket w/glass fruits (2)..... ea. 12.00
- 1519 WAVERLY - Ind. Cr/Sug ..... 28.00
- 2401 10 oz. Soda - #471 Rube etch (2)..... ea. 55.00
- 2401 8 oz. Old Fashion - #462 Fox Chase etch (3)... ea. 35.00
- 3330 HANOVER, 6 oz. Champagne\*, Trefoll etch(4) ea. 14.00
- 3366 TROJAN - 8 oz. Sodas, Trojan etch (5)..... ea. 13.00

FOR COMPLETE LIST S.A.S.E.





# ALL HEISEY AUCTION

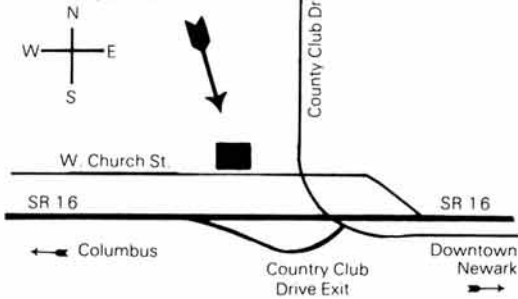
SAT. APR. 26, 1986

9:30 A.M.

This will be an outstanding sale of Heisey Glass with many scarce items.

The sale will feature a sherbet in TRIAL BLUE; 10 pcs. of Tangerine; a good selection of Limelight and Cobalt, several hard to find Dolphin ftd pieces in Flamingo; Emerald Wing Scroll cologne bottle, dresser trays & pin tray; about 40 animals including Gazelle; Bull; Show Horse; Clydesdale & others; complete set of Imperial Caramel Slag animals & other Imperial animals; Fox ash tray & other animal related pieces. One of the best collections of - little things - including 10 different cordials; 8 Favor Vases, all shapes, colors incl Cobalt, Sahara, Moongleam & Crystal; over 25 different nut & almond dishes; 3 RARE Orchid Etch vases; Amber Elephant handled mug, 2 Deep Plate mugs - one with Moongleam handle. Several outstanding cut pieces. Several scarce stems, nice Verlys pieces and lots more.

APPLETREE AUCTION CENTER  
1616 W. CHURCH ST.  
NEWARK, OHIO 43055



PLEASE READ COMPLETE LIST\*\*\*\*\*DOORS OPEN 1 HOUR BEFORE AUCTION

PLEASE NOTE THE FOLLOWING CONDITION CODES TO HELP IN BIDDING:

F f FLAKE B b BRUISE R r REPAIRED  
C c CRACK M m MOLD FLAW X x MAJOR DAMAGE

SAM SCHNAIDT & TIM HUGHES, AUCTIONEERS (614) 344 - 9449  
FRANK FRYE, MANAGER (614) 345 - 4001

- |  |  |
|--|--|
| 1. 1401 EMPRESS FLAM D F CR & SUG X                | 35A. 407 COARSE RIB MNGLM 7 IN PLATES H 12 EA        |
| 2. 1020 CR & SUG CUT f, H                          | 35B. 6 IN PLATES H 12 EA                             |
| 3. 1469 RIDGELEIGH CREAM & SUGAR H                 | 35C. 1184 YEOMAN HAWTHORNE 4 - 8 IN PLATES, 1 SAU DO |
| 4. 473 NARROW FLUTE WITH RIM 8 IN LOAF SUG/CR H X  | 36. 1401 EMPRESS OVAL HDLD TRAY OLD COLONY ETCH H    |
| 5. 353 MED FLAT PANEL OVAL HOTEL SUGAR H f         | 37. 1533 WAMPUM 14 IN TORTE PLATE                    |
| 6. 1231 RIBBED OCTAGON FLAM CREAM, H               | 38. 1252 TWIST NEWARK SESQUI PLATTER                 |
| 7. 1180 CREAM, CUT, X HDL H                        | 39. 1252 TWIST NEWARK SESQUI PLATTER                 |
| 8. 355 QUATOR INDIV CREAM, CUT, H DATED            | 40. 1503 CRYSTOLITE 5 PART RND RELISH C              |
| 9. 4085 KOHINOOR COCKTAIL, 7, 2f                   | 41. 1540 LARIAT 6 1/2 IN PLATES, 12, 1 SAUCER        |
| 10. 3390 CARCASSONNE SAH SHERBET, 3, ALL X         | 42. 1540 LARIAT 9 IN SHALLOW BOWL                    |
| 11. 1223 COLONIAL SHERBET H                        | 43. 1519 WAVERLY OVAL 3 PART RELISH                  |
| 12. 1226 COLONIAL SHERBET, FLARED X                | 44. 1519 WAVERLY OVAL 3 PART RELISH x                |
| 13. 1228 EGG CUP                                   | 45. 500 OCTAGON VARIETY TRAY H                       |
| 14. 1243, 337 SHERBETS H                           | 46. 1509 QUEEN ANN 7 IN DF BOWL                      |
| 15. 300 PEERLESS LOW FTD SHERBET f                 | 47. 1401 EMPRESS 10 IN DF BOWL                       |
| 16. 339 CONTINENTAL FTD SHERBET H                  | 48. 1401 EMPRESS 10 IN DF BOWL                       |
| 17. FOOTED TUMBLER, CUT FLUTES                     | 49. 1567 BUTTER BOTTOM H, MGLM BOWL X                |
| 18. EARLY PLAIN FLARED COCKTAIL H                  | 50. 1229 OCTAGON FLAM 8 IN OVAL DESSERT DISH         |
| 19. 3362 CHARTER OAK SHERBET X H                   | 51. 1229 OCTAGON FLAM 13 IN HORS DE OEUVRE TRAY      |
| 20. 5085 AFRICAN TEMPO CHAMPAGNE H                 | 52. 1511 TOUJOURS 13 IN SHAL BOWL, MINUET ETCH       |
| 21. 1590 ZODIAC FTD JUICE H                        | 53. 1540 LARIAT 3 COMPT RELISH, CUT                  |
| 22. 1485 SATURN ZIRCON MAYO H                      | 54. 1469 RIDGELEIGH 12 IN FRUIT BOWL H X             |
| 23. 1485 SATURN ZIRCON WHIPPED CREAM f H           | 55. 1519 WAVERLY 12 IN CRIMPED BOWL, CUT             |
| 24. 411 TUDOR 6 IN HDLD MINT H                     | 56. 1519 WAVERLY 12 IN GARDENIA BOWL, ETCH FLOWER    |
| 25. 1401 EMPRESS FLAM COV MARMALADE f H            | 57. 1401 EMPRESS MGLM DF ICE BUCKET H                |
| 26. 1489 PURITAN COV DEEP CANDY, ELABORATE CUTTING | 58. 1401 EMPRESS FLAM DF ICE BUCKET W/TONGS H        |
| 27. 1506 PROVINCIAL TALL COV CANDY H f on lid      | 59. 1252 ALEXANDRITE ICE TUB W/TONGS H               |
| 28. 465 REC PANEL 1/2 LB COV CANDY, DECOR, X LID H | 60. 4045 6 IN BALL VASE, W/O                         |
| 29. 465 REC PANEL 1 LB CANDY BASE ONLY ENAMEL H    | 61. 4085 6 IN ZIRCON BALL VASE, S/O                  |
| 30. 1540 LARIAT 6 IN COV CANDY BOX, CUT            | 62. 4085 ZIRCON 7 IN BALL VASE, S/O                  |
| 31. 1183 REVERE 1 LB CANDY BASE ONLY, CUT, H       | 63. 4085 6 IN BALL VASE, S/O                         |
| 32. 1503 CRYSTOLITE COV JAM JAR H                  | 63A. 4224 IVY VASE TANGERINE W O                     |
| 33. 1504 REGENCY DIV CANDY, METAL LID              | 64. 353 MED FLAT PANEL 18 IN VASE H                  |
| 34. 433 GREEK KEY FLAM PUNCH BOWL BASE M H         | 65. 338 EMERALD 11 IN VASE H                         |
| 35. 1238 BEEHIVE MGLM 8 IN PLATES 6 EA             | 66. 1413 CATHEDRAL STRAIGHT VASE H                   |

Paid Advertisement

67. 1413 CATHEDRAL STRAIGHT VASE  
68. 3397 GASCONY VASE, CRIMPED TOP  
69. 4182 7 IN PLATES, PIED PIPER ETCH 12 EA  
69A. 4182 7 IN PLATES, PIED PIPER ETCH 4 EA  
70. 4182 6 IN PLATES, PIED PIPER ETCH 14 EA  
71. 4182 6 IN PLATES, PIED PIPER ETCH 6 EA  
72. 3350 WABASH ICE TEA, PIED PIPER ETCH 10 EA, 4f  
73. 4163 TANKARD, PIED PIPER ETCH  
74. 3350 WABASH GOBLET, FRONTENAC ETCH 3 EA H  
75. 3334 SEXTON BELL FROM GOBLET, ETCHED H  
76. 1519 WAVERLY MAYO, HEISEY ROSE ETCH H  
77. 1506 PROVINCIAL LIMELIGHT 4 IN NAPPY, H  
77A. 1183 REVERE 3 1/2 IN NAPPIES H 6 EA ALL BASE f  
77B. COLONIAL TYPE COV HORSERADISH JAR 5 1/2 IN TALL  
78. HEISEY MIRROR ADVERTISING SIGN  
79. 1186 YEOMAN COV PUFF BOX H  
80. 1186 YEOMAN FLAM COV PUFF BOX H  
81. 516 FLAMINGO COLOGNE H  
82. 393 NARROW FLUTE COV MUSTARD & SPOON H  
83. 500 OCTAGON FLAM FROZ DESSERT, CUT, 2 EA  
84. 500 OCTAGON FROZ DESSERT, CUT  
85. 500 OCTAGON MGLM FROZ DESSERT  
86. 2052 FLAM 2 1/2 OZ BAR D/O  
87. 3481 GLENFORD MGLM FT 2 OZ BAR D/O, 4 EA  
88. 1404 OLD SANDWICH FLAM BAR H  
89. 337 TOURAINE AMBER 5 OZ JUICE, N/O H  
90. 1404 OLD SANDWICH SAHARA OYSTER COCKTAIL H  
91. 3404 SPANISH GOBLET  
92. 3334 SEXTON GOBLET, BRUNSWICK ETCH H  
93. 5077 LEGIONNAIRE GOBLET, ROSEBUD CUT H  
94. 5040 LARIAT GOBLET, MOONGLO CUT 2 EA H  
95. 4083 STANHOPE ZIRCON FT & BOWL GOBLET  
96. 1425 VICTORIAN SAHARA GOBLET  
97. 1184 YEOMAN DARK SAHARA GOBLET H  
98. 1485 SATURN ZIRCON GOBLET 2 EA H CHOICE  
99. 1425 VICTORIAN GOBLET 7 EA  
100. 337 TOURAINE AMBER GOBLET H  
101. 1485 SATURN GOBLET  
102. 8005 GALAXY FLAM GOBLET H  
103. 8043 JAY GOBLET H  
104. 3389 DUQUESNE TANGERINE GOBLET F  
105. 3411 MONTE CRISTO GOBLET WAKIKI CUT 2 EA  
106. 5057 SUEZ GOBLET NICELY CUT H  
107. 3350 WABASH MGLM STEM GOBLET H  
108. 419 SUSSEX COBALT BOWL GOBLET H  
109. 3404 SPANISH COBALT GOBLET  
110. 3404 SPANISH COBALT GOBLET  
111. 3350 WABASH SAHARA BOWL GOBLET D/O H  
112. 3335 LADY LEG GOBLET, ADAM CUT, 11 EA, 4x H  
113. 1503 CRYSTOLITE CRUET  
114. 352 FLAT PANEL CRUET H, WRONG STOPPER  
115. 429 CRUET, H x stopper  
116. 363 7 OZ SYRUP, CUT HH  
117. 357 7 OZ SYRUP, H DATED 4/5/1910  
118. 362 7 OZ SYRUP, CUT, HH  
119. 362 7 OZ SYRUP, CUT, H  
120. 1503 CRYSTOLITE 6 IN JFLLY, H  
121. 341 OLD WMSBG 5 IN HIGH FT JELLY, 2 EA, H  
122. 300 PEERLESS WATER BOTTLE  
123. 400 COLONIAL WATER BOTTLE, SHOWS WEAR  
124. 300 PEERLESS CLARET JUG, MOLD DIRT, WORN  
125. 1252 TWIST FLAMINGO CUPS, 4 EA, H  
126. 337 TOURAINE PUNCH CUPS, 3 EA, H  
127. BLOWN PUNCH CUPS, NEEDLE ETCHED, 3 EA ALL X  
128. BLOWN PUNCH CUPS, NEEDLE ETCHED, 2 EA, X  
129. 1541 ATHENA 6 IN NAPPY  
130. 352 FLAT PANEL HDLD JELLY H  
131. 1503 CRYSTOLITE LEAF JELLY  
132. 1503 CRYSTOLITE HDLD JELLY, WEB BOTTOM  
133. 393 NARROW FLUTE 3 CORNER HDLD JELLY H  
134. 411 TUDOR 7 IN FLARED NAPPY, CUT, H  
135. 1243 FLAM 7 IN NAPPY X H  
136. 1503 CRYSTOLITE 7 IN SNACK PLATE, 2 HDL H  
137. 2 SM PLATES, FLAM HDLD & RIDGELEIGH H  
138. 411 TUDOR HAWTHORNE 6 IN HDLD PLATE H  
139. 1184 YEOMAN MARIGOLD 8 IN PLATES, EMPRESS ET 2EA  
140. 473 NARROW FL W/RIM VASELINE 6 IN OVAL TRAY H  
141. 1509 QUEEN ANN 7 IN PLATE, DANISH PRINC CUT  
142. 1401 EMPRESS SAUCER, SQ, TITANIA ETCH H  
143. 1401 EMPRESS SAHARA 6 IN SQ PLATE, LAFAYETTE H  
144. 1401 EMPRESS SAHARA 6 IN SQ PLATE, H  
145. 1401 EMPRESS 6 IN SQ PLATE H  
146. 1401 EMPRESS TANGERINE 6 IN SQ PLATE  
147. 1469 RIDGELEIGH 2 IN CANDLESTICK, PR  
148. 1469 RIDGELEIGH 2 IN CANDLESTICKS, PR  
149. 1401 EMPRESS FLAMINGO DF CANDLESTICKS, PR H  
150. 1503 CRYSTOLITE CANDLEBLOCKS, PR  
151. 2 OLD WMSBRG 9 IN CANDLESTICKS, PR 1C  
152. 1428 WARWICK 2 LT CANDLESTICK  
153. 301 3 LT CANDELABRA, PR COMPLETE  
154. 16 16 IN 1 LT CANDELABRUM W/C PRISMS  
155. 300 PEERLESS 4 BOBECHEs AND A PRISMS  
156. 1503 CRYSTOLITE ELEC LAMP BASES, NEW SHADES PR  
157. NEW HURRICANE LAMP MADE FROM RIDGELEIGH NAPPY  
158. 301 HURRICANE LAMPS, PR, CUT 12 IN GLOBES/BASES  
159. CONSOLE SET, 134 CANDLES, WAVERLY GARDENIA, ETCH  
160. 134 TRIDENT 2 LT CANDLESTICK, PR 1X  
161. 134 TRIDENT CANDLESTICK, ORCHID ETCH, X  
162. HIGH FTD COLONIAL CAKE SALVER, H  
163. 1225 PLAIN BAND CAKE SALVER  
163A. 341 OLD WMSBRG. PUNCH BOWL & BASE H  
163B. 341 OLD WMSBRG PUNCH CUPS 16 EA & HOOKS  
164. 1565 LEAF 15 IN FLORAL BOWL, ELABORATE CUTTING  
165. 1565 LEAF 20 IN PLATE, ELABORATE CUTTING  
166. 1469 RIDGELEIGH 3 2 IN ASH TRAYS, H, X  
167. 1469 RIDGELEIGH 2 IN ASH TRAYS, 4 EA, SOME X H  
168. 1469 RIDGELEIGH CLUB ASH TRAY, H  
169. 1469 RIDGELEIGH BRIDGE SET ASH TRAYS, 4 EA, H X  
170. 1469 RIDGELEIGH 4 IN RD ASH TRAY, H  
170A. 1536 MILITARY CAP ASH TRAY f  
170B. 1425 VICTORIAN IND CIG HOLDER/ASH TRAY H, MONO  
170C. 1485 SATURN 3 IN ROUND ASH TRAY H  
171. NEWARK SESQUI ASH TRAY  
172. 411 TUDOR COV CIGARETTE HOLDER, H f  
173. 1404 OLD SANDWICH INDIV ASH TRAY, 2 EA, H  
174. 1454 DIAMOND POINT ASH, H  
175. 1488 KOHINOOR ZIRCON BRIDGE ASH TRAY, H  
176. 1496 MAHABAR ZIRCON 3 IN ASH TRAY, H  
177. 1503 CRYSTOLITE 3 IN ASH TRAY, 8 EA H  
178. 1503 CRYSTOLITE CIG LIGHTER FROM CANDLEBLOCK  
179. 1503 CRYSTOLITE 4 IN COV CIG BOX, H  
180. 1503 CRYSTOLITE RD CIGARETTE HOLDER, H  
181. 1503 CRYSTOLITE FTD CIG HOLDER, H  
182. 5012 URN CIG HOLDER, f  
183. 1179 BOW TIE ASH TRAY  
184. 10 MAPLE LEAF MGLM COASTER, 2 EA  
185. 1503 CRYSTOLITE COASTER  
186. 1454 DIA POINT MARMALADE & ASH TRAY, H  
187. 1454 DIA POINT MARMALADE, 2 EA H  
188. 411 TUDOR INDIV NUT H  
189. 393 NARROW FLUTE INDIV SALT H  
190. 1205 FANCY LOOP INDIV SALT  
191. 1205 FANCY LOOP INDIV SALT, 2 EA  
192. 1225 PLAIN BAND INDIV SALT, 2 EA BOTH X, H  
193. POSTCARD OF HEISEY FACTORY, 1913  
194. MAYO LADLE H  
194A. 4227 FAVOR VASE, COBALT D O  
194B. 4228 FAVOR VASE, CRYSTAL D O  
194C. 4229 FAVOR VASE, COBALT D O  
194D. 4230 FAVOR VASE, COBALT D O  
194E. 4231 FAVOR VASE, SAHARA D O  
194F. 4232 FAVOR VASE, MOONGLEAM D O  
194G. 4230 FAVOR VASE, SAHARA D O  
194H. 4230 FAVOR VASE, SAHARA D O

195. 1280 WINGED SCROLL EMERALD COLOGNE, SOME GOLD  
196. 1280 WINGED SCROLL EMERALD PIN TRAY, SOME GOLD  
197. 1280 WINGED SCROLL EMERALD TRINKET BOX BASE f  
198. 1280 WINGED SCROLL EMERALD DRESSER TRAY  
199. 1280 WINGED SCROLL EMERALD DRESSER TRAY F RIM  
200. GLASS WORKERS PARADE CANE, CRYSTAL  
200A. GAZELLE, H, m  
201. GOOSE, WINGS HALF, FROSTED  
202. GOOSE, WINGS HALF, FROSTED W/CLEAR WINGS  
203. GOOSE, WINGS UP, BUBBLE IN HEAD  
204. MALLARD, WINGS DOWN  
205. MALLARD, WINGS HALF  
206. MALLARD, WINGS UP  
207. ASIATIC PHEASANT H  
208. ASIATIC PHEASANT  
209. RINGNECK PHEASANT  
210. RINGNECK PHEASANT  
211. RINGNECK PHEASANT  
212. RINGNECK PHEASANT  
213. GIRAFFE, HEAD BACK  
214. GIRAFFE, HEAD BACK m  
215. DONKEY H  
216. RABBIT PAPERWEIGHT  
217. FISH BOOKEND, FROSTED CRYSTAL BODY  
218. BULL H ff ON BASE  
219. SEALYHAM TERRIER (SCOTTY)  
220. SEALYHAM TERRIER (SCOTTY)  
221. ROOSTER  
221A. ROOSTER VASE  
221B. ROOSTER VASE m  
222. STANDING COLT, AMBER  
223. STANDING COLT, H  
224. STANDING COLT  
225. REARING COLT H  
226. REARING COLT F BASE  
227. CLYDESDALE m  
228. SHOW HORSE H, m f  
229. SPARKY, AMBER  
230. SPARKY  
231. SPARKY H, M  
232. SPARROW  
233. STANDING PIGLET f  
233A. HORSEHEAD BOOK END  
233B. HORSEHEAD BOOK END  
234. TOY HORSEHEAD
- ITEMS 235 THRU 284 ARE IMPERIAL
235. CARAMEL SLAG AIREDALE  
236. CARAMEL SLAG AIREDALE  
236A. CARAMEL SLAG AIREDALE  
237. CARAMEL SLAG DONKEY  
238. CARAMEL SLAG DONKEY  
239. CARAMEL SLAG KICKING COLT  
239A. CARAMEL SLAG KICKING COLT  
240. CARAMEL SLAG BALKING COLT  
241. CARAMEL SLAG STANDING COLT  
241A. CARAMEL SLAG BALKING COLT  
241B. CARAMEL SLAG STANDING COLT  
241C. CARAMEL SLAG STANDING COLT  
242. CARAMEL SLAG SCOTTY  
243. CARAMEL SLAG SPARKY  
244. CARAMEL SLAG SPARKY  
245. CARAMEL SLAG MEDIUM ELEPHANT  
246. CARAMEL SLAG MEDIUM ELEPHANT  
247. CARAMEL SLAG WOOD DUCK  
248. CARAMEL SLAG WOOD DUCK  
249. CARAMEL SLAG MALLARD, WINGS HALF  
250. CARAMEL SLAG MALLARD, WINGS DOWN  
251. CARAMEL SLAG MALLARD, WINGS UP  
252. BLACK TIGER PAPERWEIGHT  
253. MILK GLASS RABBIT PAPERWEIGHT
- 253A. MILK GLASS BUNNIES, HEAD UP, HEAD DOWN  
254. MILK GLASS MOTHER RABBIT M  
254A. I.T. BLUE, SET OF COLTS, 3 EA.  
255. ULTRA BLUE KICKING COLT  
256. ULTRA BLUE STANDING COLT  
257. ULTRA BLUE BALKING COLT  
258. ULTRA BLUE SET OF COLTS, 3 EA  
259. GREEN HCA 1977 SPARKY, f EAR  
259A. GREEN HCA 1977 SPARKY  
260. PINK HCA 1978 SPARKY  
261. PINK HCA 1978 SPARKY  
261A. PINK HCA 1978 SPARKY  
262. YELLOW HCA 1979 SPARKY  
263. YELLOW HCA 1979 SPARKY  
263A. YELLOW HCA 1979 SPARKY  
264. HEATHER HCA 1980 SPARKY  
265. HEATHER HCA 1980 SPARKY  
266. ULTRA BLUE MEDIUM ELEPHANT M  
267. ULTRA BLUE MEDIUM ELEPHANT m  
268. ULTRA BLUE SEALYHAM TERRIER (SCOTTY)  
269. ULTRA BLUE SEALYHAM TERRIER (SCOTTY)  
270. ULTRA BLUE SEALYHAM TERRIER FROSTED  
271. ULTRA BLUE CLYDESDALE, FROSTED  
272. ULTRA BLUE CLYDESDALE, FROSTED  
273. ULTRA BLUE CLYDESDALE  
274. ULTRA BLUE DONKEY  
275. ULTRA BLUE DONKEY  
276. ULTRA BLUE DONKEY, FROSTED  
277. ULTRA BLUE AIREDALE  
278. ULTRA BLUE AIREDALE  
279. ULTRA BLUE MEDIUM ELEPHANT, FROSTED  
280. ULTRA BLUE CLYDESDALE  
281. ULTRA BLUE WOOD DUCK  
282. ULTRA BLUE WOOD DUCK  
283. ULTRA BLUE WOOD DUCK  
284. AMBER FILLY, HEAD FORWARD  
285. 1503 CRYSTOLITE MASTER SWAN  
286. 1503 CRYSTOLITE INDIV SWAN NUT, 2 EA  
286A. 1503 CRYSTOLITE IND. SWAN NUT  
287. 1560 VICTORIAN BELLE, CLEAR  
288. 1560 VICTORIAN BELLE, FROSTED  
289. 5048 ROOSTER HEAD COCKTAIL, CUT DOWN  
290. 1601 FOX ASH TRAY  
291. 5048 ROOSTER HEAD COCKTAIL, 7 EA, 1F  
292. 1952 AMBER ELEPHANT HANDLED BEER MUG, H  
293. 4163 BEER MUG, MGLM HDL, CLUB DRINK SCENE H  
294. 4163 BEER MUG, FOX CHASE ETCH, H  
295. 4220 TANGERINE VASE, SWIRL OP, WHIMSEY SHORT TOP  
296. 5011 YORKTOWN COCKTAIL, TALLY HO ETCH  
297. 3389 DUQUESNE TANGERINE COCKTAIL, f  
298. 3389 DUQUESNE TANGERINE COCKTAIL, f  
299. 3389 DUQUESNE TANGERINE COCKTAIL, f  
300. 1540 LARIAT COCKTAIL  
301. 4044 NEW ERA COCKTAIL, MONO G  
302. 1E92 OMEGA COCKTAIL, MELODY CUT, 2 EA H  
303. 337 TOURAIN 2 OZ CREME DE MINT, 2 EA H  
304. 1205 FANCY LOOP FTD PUNCH GLASS, CUPPED  
305. 3440 PORTSMOUTH MGLM FOOT COCKTAIL  
306. 1252 TWIST FLAMINGO WINE H  
307. 3380 OLD DOMINION MARGOLD BOWL WINE H  
308. 4091 KIMBERLY ZIRCEN BOWL WINE S/O  
309. 3404 SPANISH CLARET  
310. 300 PEERLESS CLARET, 4 EA 1F, H REG NO  
311. 4092 KENILWORTH COBALT BOWL CORDIAL H  
312. 5010 SYMPHONIE CORDIAL, MINUET ETCH  
313. 5023 CONTINENTAL CORDIAL  
314. 3408 JAMESTOWN CORDIAL, BARCELONA CUT H  
315. 6010 FINESSE CORDIAL, ULTRONIC CUT  
316. 3350 WABASH CORDIAL, PIED PIPER ETCH H  
317. 4091 KIMBERLY CORDIAL, DOLLY MADISON ROSE CUT H

318. 4044 NEW ERA CORDIAL, WATERFORD CUT  
319. 363 1 OZ CORDIAL H  
320. 4083 STANHOPE CORDIAL 5 EA, 2 X, CHOICE  
321. 1519 WAVERLY 9 IN SALAD BOWL, ORCHID ETCH  
322. 4057 10 IN FLIP VASE, ORCHID ETCH  
323. 4057 10 IN VASE, ORCHID ETCH  
324. 1495 FERN 8 IN MAYO PLATE, ORCHID ETCH  
325. 5025 TYROLEAN COCKTAIL, ORCHID ETCH  
326. 5025 TYROLEAN FTD ICE TEA, ORCHID ETCH  
327. 5025 TYROLEAN SAU CHAMP, ORCHID ETCH 2 EA 1r  
328. 1540 LARIAT 12 IN VASE, ORCHID ETCH  
329. 5022 GRACEFUL GOBLET, ORCHID ETCH, 4 EA  
330. 419 SUSSEX FLAM SAU CHAMP H  
331. 1401 EMPRESS FLAM SAU CHAMP H  
332. 3404 SPANISH COBALT SAU CHAMP  
333. 3389 DUQUESNE TANGERINE SAU CHAMP, X  
334. 3389 DUQUESNE TANGERINE SAU CHAMP, f  
335. 3389 DUQUESNE TANGERINE SAU CHAMP, f  
336. 353 MED FLAT PANEL LOW FT COMFORT, CUPPED H  
337. 3404 SPANISH EXP BLUE FOOT SHERBET, W/O  
338. 3390 CARCASSONNE COBALT SAU CHAMP  
339. 3390 CARCASSONNE COBALT SAU CHAMP, F  
340. 3390 CARCASSONNE COBALT FTD ICE TEA, 4 EA  
341. 4085 KOHINOOR ZIRCON BOWL, FTD ICE TEA  
342. 3408 JAMESTOWN FTD ICE TEA, BARCELONA CUT  
343. 5082 MID CENTURY LIMELIGHT BOWL FTD ICE TEA S/O  
344. 3397 GASCONY TANGERINE GOBLET  
345. 353 MED FLAT PANEL TOOTHPICK, H X  
346. 354 WIDE FLAT PANEL FLAM BUTTER PAT, H  
347. 354 WIDE FLAT PANEL BUTTER PAT, 2 EA, NOT GROUND  
348. 473 NARROW FL W/RIM FTD ALMOND, H  
349. 393 NARROW FLUTE FTD ALMOND, SILVER DEC H  
350. 393 NARROW FLUTE FLAM FTD ALMOND  
351. 1540 LARIAT IND NUT, 2 EA  
352. 394 NARROW FLUTE SALTED NUT, 3 EA, H PAT DATE  
353. 1180 FLAM IND NUT, 2 EA, H  
354. 1469 RIDGELEIGH IND DIV NUT, 2 EA, HH  
355. 1469 RIDGELEIGH IND NUT H  
356. 1469 RIDGELEIGH OVAL IND JELLY, 3 EA, H  
357. 1401 EMPRESS ALEXANDRITE DF IND NUT  
358. 1401 EMPRESS DF IND NUT, 2 EA  
359. 1509 QUEEN ANN DF IND NUT  
360. 1401 EMPRESS SAHARA DF IND NUT H  
361. 1401 EMPRESS MGLM DF IND NUT H  
362. 1401 EMPRESS FLAM DF IND NUT H  
363. 1229 OCTAGON IND NUT H  
364. 1229 OCTAGON FLAM IND NUT GOLD DEC H  
365. 1229 OCTAGON FLAM IND NUT H  
366. 1229 OCTAGON MGLM D/O IND NUT H  
367. 1229 OCTAGON FLAM D/O IND NUT H  
368. 1229 OCTAGON FLAM IND NUT, CUT  
369. 1252 TWIST MARIGOLD IND NUT H  
370. 1252 TWIST MGLM IND NUT 2 EA, H  
371. 1252 TWIST FLAM IND NUT H  
372. 1252 TWIST IND BON BON, OLD LABEL H  
373. 473 NARROW FL W/RIM MGLM SALTED NUT H  
374. 473 NF W/RIM MGLM SALT NUT STAR BOT H DATED  
375. 475 NF W/RIM FLAM SALT NUT, STAR BOT H DATED  
376. 473 NARROW FL W/RIM FLAM SALTED NUT H  
377. 31 TOY CANDLESTICK, MGLM H  
378. 31 TOY CANDLESTICK, FLAM, H  
379. 31 TOY CANDLESTICK, 3 EA, H  
380. 417 DOUBLE RIB & PANEL FLAM BASKET X H  
381. 480 DAISY & LEAVES FRUIT BASKET H  
382. 1401 EMPRESS FLAM DF PITCHER  
383. 1401 EMPRESS FLAM DF TUMBLER, 6 EA, 1X H CHOICE  
384. 5060 WASHINGTON SQUARE TALL SODA, MONO  
385. 1404 OLD SANDWICH SAH TALL SODA, CLOUDY H F  
386. 4085 KOHINOOR ZIRCON SODA  
387. 4085 KOHINOOR ZIRCON SM SODA  
388. 1506 PROVINCIAL LIMELIGHT 12 OZ FTD SODA  
389. 5044 CONSTELLATION 12 OZ ICE TEA  
390. 3481 GLENFORD FLAM W/MGLM FT TUMBLER  
391. 393 NARROW FLUTE 8 OZ TUMBLER F H  
392. 1503 CRYSTOLITE 8 OZ TUMBLER, 9 EA 1F, H  
393. 300 PEERLESS #4 HOTEL SALT, PR CLOUDY  
394. 52 FLAM IND SALT & PEPPER, H  
395. 1184 YEOMAN FTD OYST COCKTAIL, 2 EA 1x H  
396. 354 WIDE FLAT PANEL DOMINO SUGAR, f, H  
397. 1205 FANCY LOOP 6 IN PICKLE, GOLD  
398. 1252 TWIST MARIGOLD CREAM SOUP H  
399. 1229 OCTAGON HAWTHORNE 6 IN JELLY  
400. 1253 TRI CORNER MGLM HDLD MINT. H  
401. 1253 TRI CORNER MGLM HDLD MINT, H  
402. 1253 TRICORNER FLAM HDLD MINT  
403. 1201 FLAMINGO FLORAL BOWL, H  
404. 1401 EMPRESS SAHARA 12 IN CELERY f H  
405. 1485 SATURN LIMELIGHT 8 IN PLATE  
406. 1503 CRYSTOLITE 11 IN SANDWICH PLATE  
407. 1509 QUEEN ANN 12 IN CRACKER PLATE W/RING  
408. 1503 CRYSTOLITE 3 PART RELISH  
409. 1242 12 IN PLATE SHOWS WEAR F  
410. 341 OLD WMSBRG 12 IN RD SANDWICH PLATE H  
411. 393 NARROW FLUTE HOTEL CREAM H  
412. 3 FLOWER FROGS, IG CRYSTAL, FLAM, MGLM X  
413. 2 FLOWER FROGS, CRYSTAL & FLAM X  
414. LOT, FLAM PLATE, BOBECHÉ, STOPPER  
415. 2 METAL FERRULES  
416. VERLYS ST. THERESA PLAQUE, NO BASE  
417. VERLYS CHRYSANTHEMUM RECTANGULAR BOWL  
417A. VERLYS CHRYSANTHEMUM RECTANG. BOWL, SIGNED  
418. VERLYS HEXAGON FLOWER BOWL  
419. VERLYS CUPIDON BOWL, NOT ETCHED  
420. VERLYS SWALLOWS ASH TRAY, NOT FROSTED  
421. IMPERIAL 1506 AMBER GOBLET'S, 6 EA  
422. IMPERIAL 1506 AMBER SHERBET, 6 EA  
423. IMPERIAL 1506 AMBER TUMBLERS, 6 EA  
424. IMPERIAL 1506 AMBER 8 IN PLATES, 6 EA  
425. IMPERIAL 1506 AMBER 5 IN NAPPY, 6 EA  
426. IMPERIAL 1506 AMBER CREAM & SUGAR H  
427. IMPERIAL 1506 AMBER SALT & PEPPER  
428. IMPERIAL 1469 HEATHER CREAM & SUGAR  
429. IMPERIAL LAND OF LEG SOUV PLATES, COMPL 6  
430. IMPERIAL LAND OF LEG PLATES, COMPL SET 6  
431. HEISEY MUSEUM DEDICATION PAPERWEIGHT  
432. LOT, HEISEY NEWS, VARIOUS YEARS  
433. 1506 PROVINCIAL 12 OZ TUMBLER H, 3 EA  
434. 393 NARROW FLUTE SAUCER CHAMPAGNE H, f  
435. 393 NARROW FLUTE MUSTARD BOTTOM, NO TOP, H  
436. IMPERIAL 1519 YEL HI COV CANDY 2 EA f 1 lid  
437. IMPERIAL IPSWICH BROWN COMPOTE

MAIL BIDS ACCEPTED WITH CHECKS FOR MAXIMUM AMOUNT. MAIL BIDS ARE HANDLED COMPETITIVELY AND ANY DIFFERENCE REFUNDED. CONDITION OF ITEMS FOR MAIL BIDS HANDLED AT THE DISCRETION OF AUCTIONEER. ITEMS HAVE BEEN CHECKED AT THE TIME OF CATALOGING TO THE THE BEST OF OUR ABILITY. THEY WILL BE CHECKED AGAIN CLOSELY PRIOR TO SELLING. IN SOME CASES WHERE DAMAGE IS FOUND TO BE MINIMAL, WE MAY EXECUTE YOUR BID UP TO 70% TO 80% OF MAXIMUM. MARK YOUR LIST MINT ONLY IF YOU DO NOT WANT US TO USE OUR DISCRETION IN EXECUTING YOUR BIDS. MOLD FLAWS ARE NOT CONSIDERED DAMAGE. PLEASE BID IN INCREMENTS OF AT LEAST \$2.50. EXAMPLE - DO NOT BID 11.00 OR 26.00, AS BIDDING IS GOING LIKE 25.00 - 27.50 - 30.00. IT IS NO LONGER POSSIBLE TO ACCEPT BIDS LIKE "IF I DON'T GET ONE ITEM ADD IT ON TO ANOTHER". WE ARE NOW HANDLING IN EXCESS OF 600 MAIL BIDS PER AUCTION. WHEN COMPLICATIONS ARE THROWN IN SOMETIMES WE MISS A BID. ANY BID OF 5.00 OR LESS WILL BE USED AS AN OPENING BID. IN CASE OF IDENTICAL BIDS, EARLIEST POSTMARK WILL BE USED. YOU CAN HELP US TO HELP YOU. WE ENJOY HANDLING YOUR MAIL BIDS. IF YOU HAVE ANY QUESTIONS - DON'T HESITATE TO CALL US. PLEASE ADD 9.00 PER CARTON FOR POSTAGE AND HANDLING, 11.00 WEST OF ROCKY MOUNTAINS.

CHECKS SHOULD BE MADE TO: APPLE TREE AUCTION CENTER  
1616 WEST CHURCH STREET  
NEWARK, OHIO 43055

LIST OF PRICES REALIZED AVAILABLE AFTER AUCTION FOR \$1.00.  
1 YR. SUBSCRIPTION FOR PRICE LISTS OF 1986 HEISEY AUCTIONS \$5.00.

<p><b>A.W. PARKER</b> Heisey &amp; Pattern Glass Shows or Appointment Magalia, CA 95954 PH: (916) 873-2326</p>	<p><b>"HAPPINESS IS" THE STULTZ'S</b> Show and Mail - Elegant Glass Circa 1890-1960 3106 Warren Court Glen Allen, VA 23060 PH: (804) 262-1273 (Richmond Area)</p>	<p><b>EAGLES REST ANTIQUES</b> China Heisey Antiques Mary Evans 62 Fieldpoint Rd. Heath, Oh. 43056 PH: (614) 522-2035</p>	<p><b>SYD'S A&amp;J at THATCHERS FORGE</b> Heisey, Collectible, &amp; Antique Glass 338 Bank St., Harwich Center Cape Cod, Mass 02645 Chance or Appointment PH: (617) 432-3007</p>
<p><b>A DOOR ANTIQUES</b> Heisey My Specialty 4241 Bayard Road South Euclid, OH 44121 PH: (216) 381-3008</p>	<p><b>GERT'S GLASS</b> Heisey &amp; Duncan Gerrude &amp; Russell Swetnam 1926 Saratoga Dr., Adelphi, MD 20783 PH: (301) 434-5113</p>	<p><b>MOSTLY HEISEY</b> Rhoda Curley 16 Clayton Place Albany, NY 12209 By Appointment, PH: (518) 482-6272</p>	<p><b>J.J. &amp; BOB MC KEE</b> Pottery Glassware Collectibles 334 W. 75th St. Kansas City, MO. 64114 wed-sun 10-5 (816) 361-2544</p>
<p><b>ALL HEISEY AUCTION</b> Consignments Welcome Apple Tree Auction Center 1616 W. Church, Newark, OH 43055 PH: (614) 344-9449</p>	<p><b>GLASS 'N' GLASS</b> Virginia &amp; Odell Johnson 6909 10th Ave. West Bradenton, FL 33529 PH: (813) 792-0604</p>	<p><b>MOUND BUILDERS ANTIQUES</b> Heisey &amp; Animals, General Antiques Irene Rauck 1138 Moundview, Newark, OH 43055 PH: (614) 344-6043</p>	
<p><b>ANN'S GIFTS &amp; ANTIQUES</b> 105 W. Main St., Hebron, OH 43025 Intersection of Rts. 40 &amp; 79 Next door to Daisy Queen Daily 10:30 to 5:30</p>	<p><b>GLASS WITH CLASS</b> Lenore A Shelley, GGHC 1336 Lincoln Avenue San Jose, CA 95125 PH: (408) 286-8098</p>	<p><b>HELEN &amp; JIM KENNON</b> Heisey, Cambridge, Fostoria, Duncan, Imperial, Fenton, Tiffin P.O. Box 114 Brookville, OH 45309 PH: (513) 833-5406 SHOWS ONLY</p>	
<p><b>ANTIQUES - THE SHULTZES</b> 206 208 East Main St. Newmanstown, PA 17073 15 Miles West of Reading, PA PH: (215) 589-2819</p>	<p><b>GREEN ACRES FARMS</b> Antiques, Crystal Glass &amp; Collectibles 2678 Hazelton-Etna Rd., SW (S.R. 310-N) Pataskala, OH 43062 Sat. or Sun. PM or call (614) 927-1882</p>	<p><b>R &amp; L ANTIQUES - SAN FRANCISCO</b> Shows only - always lots of Heisey Member of Golden Gate Heisey Club P.O. Box 3614, Daly City, CA 94015 PH: (415) 621-6693</p>	
<p><b>AVERY'S QUALITY ANTIQUES</b> Specializing in Heisey Shows or by Appointment 2112 First St., Jackson, MI 49203 PH: (517) 783-4075</p>	<p><b>H &amp; R DIAMOND H</b> Helen &amp; Robert Rarey 1450 White Ash Dr. Columbus, OH 43204 PH: (614) 279-0390 after 5:30</p>	<p><b>RAMBLING LANE ANTIQUES</b> Featuring Heisey &amp; other fine glass Keith &amp; Evelyn Hoover 1978 Rambling Lane, Rhinelander, WI 54501 PH: (715) 282-5019</p>	
<p><b>B &amp; B HEISEY &amp; COLLECTIBLES</b> B. Whaley 300 International Dr. Pataskala, OH. 43062 By Appointment: PH: (614) 927-1557</p>	<p><b>CHARLOTTE'S GLASS REFLECTIONS</b> Quality Glassware Specializing in Fostoria 6816 14th St. W., Bradenton, FL 33507 PH: (813) 756-4143</p>	<p><b>RAY ZIEGLER</b> Glass Repair 185 County Line Westerville, OH 43081 PH: (614) 891-9700</p>	
<p><b>C.E. HIGGINS (S.F. Bay Area)</b> Shows and Mail Order P.O. Box 2723 Menlo Park, CA 94025 PH: (415) 322-0192 Evenings</p>	<p><b>HARRALSON'S HAPPY HEISEY HUNTERS</b> Sponsor SPFD. MO's Super Antique Show 77 Quality Dealers From 10 States 1986 Dates: May 31-June 1 Nov. 15-16 Info; 1426 W. Highland, Springfield, MO. 65807</p>	<p><b>SCHWAN'S ANTIQUES SHOPS &amp; SHOWS</b> 2980 John Tyler Hwy. Williamsburg, VA 23185 PH: (804) 229-7873</p>	
<p><b>C &amp; J ANTIQUES</b> Cole &amp; Jean Miesner Box 45, 72 Whig St. Newark Valley, NY 13811 PH: (607) 642-9905</p>	<p><b>HARRISON'S ANTIQUES</b> Heisey, Cambridge, Duncan Shows, Mail, by Appointment 26 Johnston's Lane, Mercersburg, PA 17236 PH: (717) 328-2451</p>	<p><b>SUM OF LIFE</b> Elaine &amp; Frank Husted P.O. Box 102 Phoenixville, PA 19460 PH: (215) 935-2962</p>	
<p><b>CHARLES &amp; MILDRED FISHER</b> Heisey, Degenhart, Imperial, Antiques, Collectibles, General Line 991 Idlewild, Newark, OH 43055 PH: (614) 522-5398</p>	<p><b>SPARKLING ANTIQUES</b> Arlene I. Reynolds - owner Heisey &amp; Custard Glass 5 Wayside Circle, Pittsford, NY PH: (716) 381-4134</p>	<p><b>ETTELMAN'S DISCONTINUED CHINA &amp; CRYSTAL HEISEY a SPECIALTY</b> P.O. Box 6491-HN Corpus Christi, TX 78411 PH: (512) 888-8391 Include SASE</p>	
<p><b>DAVE'S ANTIQUES</b> Specializing in Heisey Shows &amp; Appointments Tampa, FL 33600 PH: (813) 876-0580</p>	<p><b>JOYCE &amp; HERMAN FRANCIS</b> SPECIALIZING IN HEISEY 5289 E. Shore Dr. Conyers, GA. 30208 (404) 483-7506 Elco - Atlanta - 2nd Week End</p>	<p><b>THE GLASS CONNECTION</b> Specializing in Heisey Shows &amp; Mail Order Box 526, Collegeville, PA 19426 PH: (215) 489-0139</p>	
<p><b>DIAMOND H PLUS</b> Mail Orders &amp; Shows George &amp; Eileen Schamel Rt. 3, Box 171, Boonsboro, MD 21713 PH: (301) 432-6285</p>	<p><b>J. &amp; R. COLLECTIBLES</b> Shows, SASE, Mail Order list June &amp; Ray Lukasko P.O. Box 1030, Newark, OH 43055 PH: (614) 344-9719</p>	<p><b>THE GLASS LADY</b> Week-Ends Only Glass, Pottery, China Circle Shopping Center, Richmond, VA 23224 SHOP (804) 320-9239 HOME (804) 271-1555</p>	
<p><b>ELLIZABETH BASSETT CASON</b> 401 32nd St., W. Bradenton, FL 33505 Mail Order - List PH: (813) 748-0851</p>	<p><b>PATTON HOUSE</b> Heisey &amp; Duncan Miller Rocky's Mall, I-81 &amp; US 11 Weyer's Cave, VA 24486 PH: (703) 967-1181</p>	<p><b>WILLEY'S ANTIQUES &amp; MUSEUM</b> Specializing in Heisey 11110 Cannon Rd., Frazeyburg, OH 43822 16 miles east of Newark, OH PH: (614) 828-2557</p>	
<p><b>FOREVER HEISEY</b> Shows and Mail Order Janice Thran 1663 Londondale Pkwy., Newark, OH 43055 PH: (614) 344-5955</p>	<p><b>JUDY'S DIAMOND H ANTIQUES</b> Heisey Glass Lake Isabella, CA HC 1, Box 3001 Weldon, CA. 93283 PH: (619) 378-2176 by Appt.</p>	<p><b>GOLDSBERRY'S ANTIQUES</b> Heisey a Specialty Shows only - Buy &amp; Sell Kalamazoo, MI 49000 PH: (616) 381-3013</p>	
<p><b>DIE KUNST GALLERIES &amp; ANTIQUES</b> Specializing in Heisey Vel &amp; Andy Andress Box 329, 725 Front Street Leavenworth, WA 98826 PH: (509) 548-7856</p>	<p><b>PEGGY'S ANTIQUES</b> Ernie &amp; Peggy Cox P.O. Box 367, Spavinaw, OK 74366 By Appointment or Chance PH: (918) 589-2859</p>	<p><b>THE WOODEN SHOE</b> Antiques &amp; Collectibles Jim &amp; Sheri VanEs by Appt. 810 Elden, Herndon, VA 22070 PH: (703) 435-9045</p>	
<p><b>TREASURE HOUSE ANTIQUES</b> Heisey, Cambridge Etc. 148 W. Johnstown Rd. Gahanna, Ohio 43230 Closed SUN. PH: (614) 471-2317 Daily 12-5</p>	<p><b>CRAFTS ENTERPRISES</b> Arlene &amp; Ed Craft 187 N Pioneer Ave. Shavertown, PA 18708 PH: (717) 675-8553</p>	<p><b>BETTY'S ICE HOUSE ANTIQUES</b> Betty &amp; Elmer Pueston 517 Fulton Wausa, Wis. 54401 Heisey &amp; Quality Glass PH: (715) 848-7145</p>	

**ATTENTION: We added a fourth column to this page last month to accommodate more dealers. Some people thought we had lost a lot of ads, but in fact we now have more. ANY OF THESE SPACES COULD BE YOURS.**

# COLLECTOR'S ENCYCLOPEDIA OF HEISEY GLASS, 1925-1938

By Neila M. Bredehoft

Number of books @ \$24.95 \_\_\_\_\_  
 Ohio residents Sales Tax \$1.50 per book \_\_\_\_\_  
 10% Shipping and Handling \_\_\_\_\_  
 TOTAL \_\_\_\_\_

48 Page price guide included.  
 Prices all items in all colors  
 in which they were made.

NAME \_\_\_\_\_  
 ADDRESS \_\_\_\_\_ CITY \_\_\_\_\_ STATE \_\_\_\_\_ ZIP \_\_\_\_\_

Make check payable to: HCA, Inc.  
 and mail to:

CREDIT CARD NUMBER

HCA SALES  
 P. O. Box 27  
 Newark, OH 43055

MASTER \_\_\_\_\_  
 VISA \_\_\_\_\_

--	--	--	--	--	--	--	--	--	--	--	--	--	--	--	--	--	--	--	--	--

Heisey glass is one of the most popular glasses collected in the United States today. The years between 1925 and 1938 Heisey produced colored glass and it is this glass that has made Heisey so highly collectible. This is the reason that Neila Bredehoft has concentrated on this 14 year span. This huge 408 page, 8½" x 11", hard-bound book is probably the largest single book ever published on Heisey Glass. Included are Patterns, Stemware, Ashtrays, Barware, Baskets, Candlesticks, Colognes, Colonial Pieces, Creamers, Finger Bowls, Floral Bowls, Harvey Amber Items, Jugs, Plates, Salts & Peppers, Vases, plus a large history and much, much more! Over 1,000 pieces of glass illustrated plus 32 pages of full color. Also included at no extra charge is a separate value guide (a \$7.95 value). This will become THE book on Heisey Glass.  
 #1664, 8½ x 11, 408 Pgs., HB ..... \$24.95

**JUNE 19-22**  
**NEWARK, OH**  
 Heisey Collectors of America  
 Annual Convention  
 Antique Show and  
 Heisey Glass Display  
 • OSU-COTC Campus,  
 Country Club Drive  
**JUNE 14-15, 21-22**  
**NEWARK, OH**  
 Flea Market on the Square  
 Jan Thran and Liz Stickle, Mgrs.  
 For details on all Heisey events,  
 call: 614-345-2932

Plans for the Convention are coming along fine. See page 22 and 23 of the May issue for full details and registration form. The Sheraton Inn is full. See last month's issue for other motels in this area.

Cookies for the lounge in the lower level of the museum are still needed. Write to Miriam Balo C/O HCA, P.O. Box 27, Newark, OH 43055 if you plan to bring some.

It won't be long now and we hope to see many of you here in June!!

**10TH ANNUAL SOUVENIR OSCAR FORM**  
 PLEASE READ VERY CAREFULLY BEFORE FILLING OUT



The Oscars are "Clematis" (similar to Alexandrite), are made by Viking, marked HCA 86

They will be offered to members only for \$21 prior to Convention. If any are left by June 19 they will be offered to the general public for \$24 each.

You may order ONE per member. This means ANY member who has a membership card regardless of class of membership. Please list all names as they WILL be checked. Everyone living in Ohio ordering for pick-up in Ohio, must pay \$1.26 Sales Tax per Oscar. Shipping charge will be \$1.50. The Oscars will be shipped as soon as orders are received.

DO NOT SEND DUES, BOOK ORDERS, ETC. WITH YOUR OSCAR ORDER.

Please keep this part for a reference and clip and mail the form below the line. Be sure your dues are currently paid. This is the 10th of a series of souvenir Oscars.

Number of OSCARS at \$21.00 .....	Only one per member
Sales Tax \$1.26 each .....	All Ohio Residents and Pick-Ups in Newark
Postage \$1.50 each .....	Check one: <input type="checkbox"/> Please mail my Oscar(s)
TOTAL SENT WITH ORDER.....	<input type="checkbox"/> I will pick up my Oscar(s) at Convention or Museum after the Convention. <u>Circle One.</u>
	MAY PICK UP AT THE MUSEUM ANYTIME. <u>NO PHONE ORDERS</u>

NAME(S) \_\_\_\_\_

LIST ALL NAMES \_\_\_\_\_

ADDRESS \_\_\_\_\_ CITY \_\_\_\_\_ STATE \_\_\_\_\_ ZIP \_\_\_\_\_

Make check payable to HCA, INC.  
 and mail to:

HCA OSCAR SALES  
 P.O. BOX 27  
 NEWARK, OH 43055

CREDIT CARD NUMBER

--	--	--	--	--	--	--	--	--	--	--	--	--	--	--	--	--	--	--	--	--

MASTER CARD       VISA

EXPIRATION DATE REQUIRED Mo. \_\_\_\_\_ Year \_\_\_\_\_

**1986 OSCAR**

The 1986 Oscar in "clematis" is absolutely beautiful. It is probably the prettiest one ever made.

Oscars are now over ½ gone as of Mar 18 so be sure to order yours TODAY.

When you see them you will really be sorry if you haven't ordered yours.



**FLEA MARKET ON THE SQUARE  
NEWARK, OHIO  
TWO WEEKENDS**

**SAT. JUNE 14      SUN. JUNE 15  
SAT JUNE 21      SUN JUNE 22**

**Dealer Space Available  
For contract write:  
HCA FLEA MARKET  
PO. BOX 27  
NEWARK, OHIO 43055**

**PHONE (614)345-2932 OR 349-7672**

**JAN THRAN LIZ STICKLE Managers**



ESTABLISHED 1871

The GLASS REVIEW Magazine is for everyone who studies, collects or sells glass. Whether your glass interests lean toward the early 1900's — or the depression era — or with today's limited glass items, the GLASS REVIEW covers it all!

Articles — price reports — original catalog documentation — shop directory — research and reproduction news — trademark information — glass book releases — what's new on the market — a large variety of glass ads (on both old and new glass) — plus much more.

Enclose payment and mail to:  
GLASS REVIEW,  
P.O. BOX 542, MARIETTA, OH 45750

**NOW 12 ISSUES  
PER YEAR!**

**MUSEUM BENEFIT DRAWING**

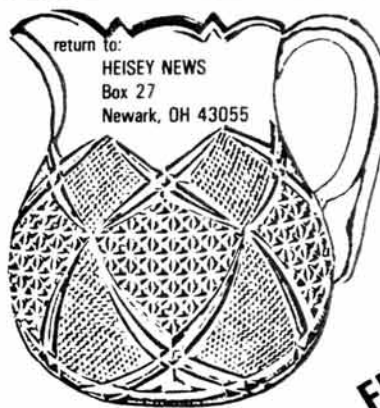
Sponsored by: BUCKEYE HEISEY COLLECTORS

- FIRST PRIZE: #3404 Spanish saucer champ TANGERINE
- SECOND PRIZE: # 465 Recessed Panel, 3 lb. covered candy, cut
- THIRD PRIZE: # 407 Coarse Rib, Cr & Sug. MOONGLEAM
- FOURTH PRIZE: #3481 Glenford, 3 oz. ft'd bar Moongleam
- FIFTH PRIZE: #1238 Beehive plate 5" FLAM.

DONATION: 50¢ per ticket or 5 tickets-\$2  
DRAWING: Quarterly Meeting, 22 JUNE '86

Tickets will be on sale all week of Convention, 19-22 June 1986 - Pick up your lucky ticket during one of these events. For those of you not able to attend either events, send your check payable to the Buckeye Collectors Club to:  
659 Canterbury Court  
Newark, Ohio 43055

We will enter your tickets for you, and mail your prize(s) if you are a winner. REMEMBER!! You need not be present to win, but your check must be received before 22 JUNE '86. ALL PROCEEDS BENEFIT THE HEISEY MUSEUM (This offer invalid in states where prohibited by law.)



return to:  
HEISEY NEWS  
Box 27  
Newark, OH 43055

FIRST CLASS MAIL  
U.S. POSTAGE  
PAID  
PERMIT 741  
Mt. Vernon, OH 43050

**FIRST-CLASS MAIL**