

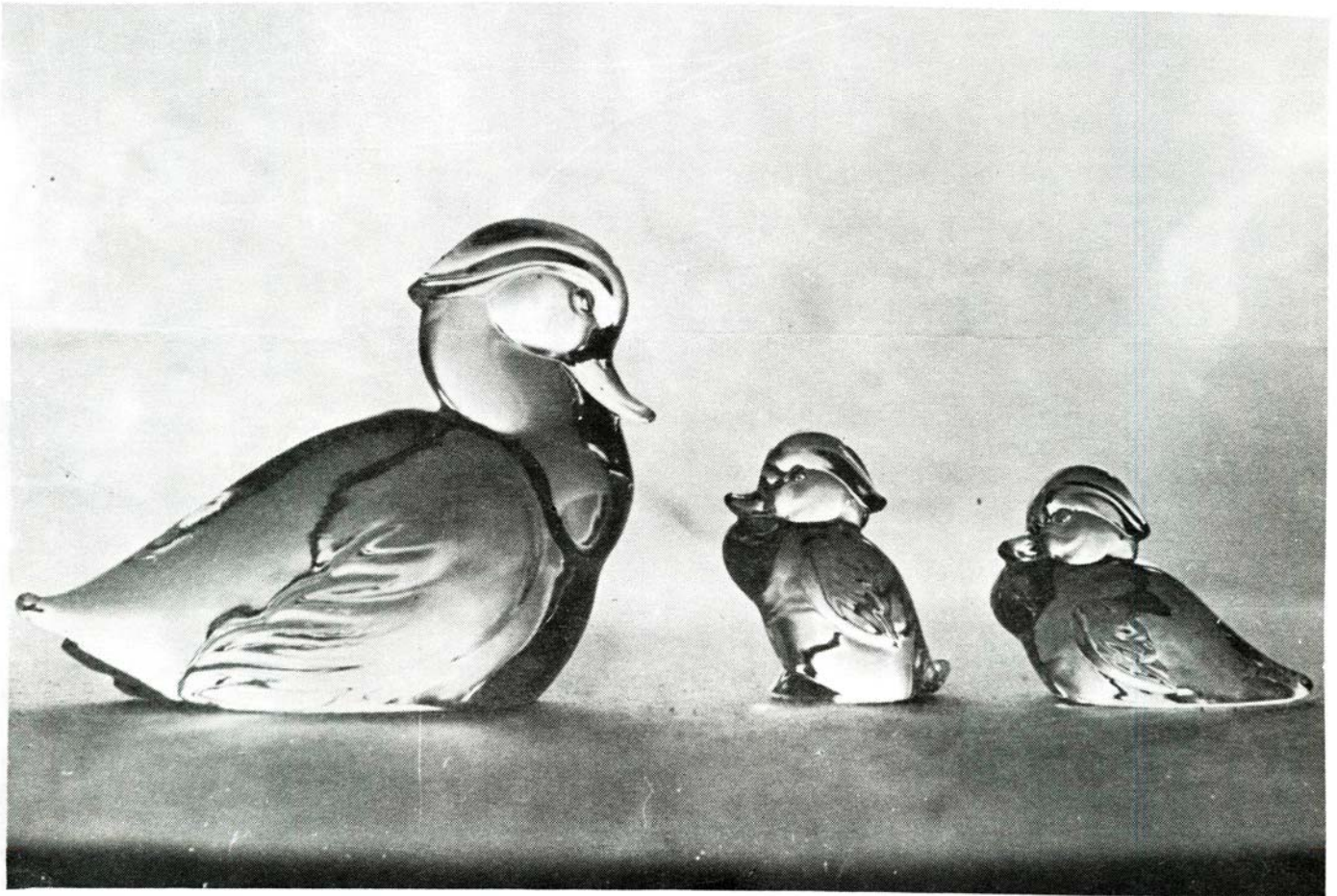
HEISEY
OFFICIAL PUBLICATION HEISEY COLLECTORS OF AMERICA
©Heisey Collectors of America, Inc. 1981
All Rights Reserved
news

VOLUME X

NO. 8

AUGUST, 1981

ONE DOLLAR



The Wood Duck Family

Photo Courtesy of Iola B. Parker

FROM THE DESK OF YOUR PRESIDENT.....

At this time I have been your President for about two weeks and it hasn't been as bad as I thought. I know that Louise Ream's shoes can never be filled, at least by me, but I'll try to do the best I can. With Louise by my side taking care of her duties at the Museum, I feel that everything will be fine.

I have devoted most of my time this past week appointing people to fill the many committees that it takes to run this organization for the next year. Louise said that this is the most difficult job for her of being president. We have excellent people for these jobs and I know that we'll have another great year.

Don't forget about the Souvenir Dinner on September 12th at Stoney Creek Country Club in Reynoldsburg, Ohio. I'm looking forward to seeing many of you there.



*Happy Hunting,
Bob McClain*

HEISEY NEWS---P.O. BOX 27---NEWARK, OHIO 43055

Editor LOUISE REAM

Box 27, Newark, Ohio 43055 (614) 345-2932

Ass't Editor NEILA BREDEHOFT

Box 27, Newark, Ohio 43055 (614) 345-2932

Published monthly and mailed from Reynoldsburg, Ohio 43068

\$12.00/per year - \$1.00/per copy.

Back issues 1972/1980 (except 1974) \$9.00 per year (12 issues).

CLUB OFFICERS

President	BOB McCLAIN	(614) 345-8061
Vice Pres.	JACK METCALF	(614) 892-2664
Secretary	MARY McWILLIAMS	(614) 345-4380
Treasurer	DICK MARSH	(614) 366-5608
Exec. Dir.	LOUISE REAM	(614) 344-2377

ADVERTISING- Send all ads to:

Neila Bredehoff, Advertising

Box 27

Newark, Ohio 43055

DEALERS' DIRECTORY-5 lines - \$18.00/year.

CLASSIFIED-10¢/word. \$1.00 minimum.

Abbreviations and initials count as words.

DISPLAY:

	MEMBER	NON-MEMBERS
1/8 pg (9 items)	\$12.00	\$20.00
1/4 pg (20 items)	20.00	30.00
1/2 pg (20 items)	35.00	45.00
1 pg (50 items)	60.00	75.00

We will not double-column ads. No VERTICAL 1/2 page ads. ALL ADS MUST BE PREPAID. Ad copy must be received by the 5th. of the month to be included in that month's NEWS. ads containing reproductions will not knowingly be accepted unless clearly stated (i.e. Heisey by Imperial, etc.) HEISEY NEWS assumes no responsibility for false advertising or misleading information. In the event of typographical error, the incorrect portion of the ad will be run in the following issue, but HEISEY NEWS assumes no further liability.

.....
The opinions expressed in articles in Heisey News are those of the authors and not necessarily those of the organization. The Editorial Staff reserves the right to edit or refuse any material submitted for publication. When requesting information, please enclose a self addressed stamped envelope(SASE).
.....

.....
Send all letters and articles to be published to the EDITOR. Letters to columnists should be sent to the club address and will be forwarded.
.....

THE EDITOR'S PAGE

As you probably have already noticed from reading Page 2, HCA has a new President. Most of you who have come to recent conventions already know Bob McClain and his wife, Phyllis. Bob is extremely friendly and very personable as well as capable and I am sure you will enjoy having him as your President. We wish him all the success in the world.

After ten years of being your president I want to thank all of you for being so supportive for all of these years. The ten years went quickly and so much was accomplished that I am proud to have been at the helm when so many exciting things happened. I tried always to think of HCA as a National Club and to make you all feel a part of it. I hope that I have succeeded.

I was offered the paid position of EXECUTIVE DIRECTOR and I have accepted it. I will be doing basically the same things that I did before and my position includes being curator of the Museum as well as most of the day-to-day business. I am also responsible for The Newsletter and for the present, at least, will continue as editor. This has been one job I really enjoy. There is no doubt that we have the largest and most informative of any of the glass club's newsletters. We share freely of the information from our extensive archives and our columnists spend MANY hours in our library researching for their articles.

You may continue to send your questions to us and they will be answered as always. I will continue to keep you informed of what's happening in the World of Heisey.

Neila will carry on as assistant editor and we expect all columnists to continue writing and to get their articles in by the fifth of each month. We are really trying to get some books out soon but so many things keep interfering. We finally are close to having all of the illustrations for the cutting book which include many drawings by Julie Chapman.

Don't forget to get your orders in for your cordials and your dinners. Plan to attend the Mini-Show whether you come to the dinner or not but you will be missing a lot of fun if you miss the dinner.

Louise Ream

NEW ITEM IN GIFT SHOP

ATTENTION ALL COLUMNISTS

Please send all of your Columns to the Attention of the Editor: Louise Ream, P.O. Box 27, Newark, OH 43055

ATTENTION ADVERTISERS

Send your Ads to the Attention of: Neila Bredehoff. Be sure to mark them as "Advertising" so that they can be opened if she is not here. Neila is contemplating having surgery on her fingers for her arthritic condition sometime soon and may be unable to type for a while.

GUEST COLUMNISTS AND QUESTIONS

If you have something you wish to write about please send an article to the editor, Louise Ream.

Send your questions about glass and we will answer them either personally, if you send a Stamped, Self-Addressed Envelope, or in the Heisey News.

MUSEUM TO APPEAR ON T.V.

"P.M. Magazine" recently visited the Heisey Museum and taped a segment which will appear on Channel 4, Columbus, OH on Sept. 2nd at 7:30 p. m. Valorie Callaway of the "Discovery" department of the show did the narration. We hope that our central Ohio members will all be watching.

We have received a limited number of the Museum cup plates in cobalt blue., and should receive more soon. This will be a limited edition of 500. So far all colors have been limited to 500 except the Fandango in vaseline. The price is \$7.00 or 2 for \$13.50 postpaid. For larger quantities they are \$6.00 each with 10% added for Shipping - Ohio Residents pay tax.

This is the edge of the new cup plate.

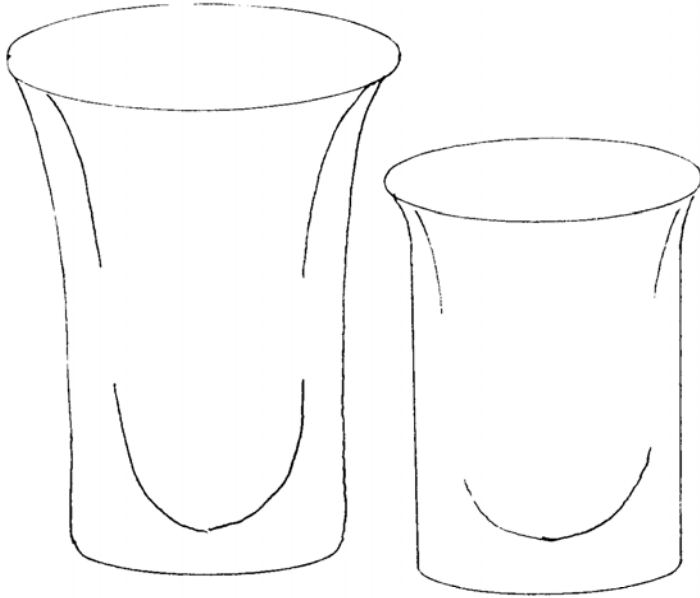


IMPERIAL ANIMAL UPDATE

Rabbit paper weight, Mother Rabbit, the two baby bunnies, all in milk glass and all three colts in light blue are now SOLD OUT.

We have plenty of all three mallards at \$13.00 each in light blue; cygnet in light blue at \$13.25, Standing duckling in yellow at \$14.00 with the other baby due in September. Mother Duck will be available soon in a limited quantity since it is a more expensive figurine.. An order form will appear in the next issue. Remember to send 10% Shipping and applicable tax for Ohio residents. The usual discounts apply. 10% over \$50.00 and 25% over \$250.00 purchases.

#1637A TOWN & COUNTRY



Tumbler

Juice

You can't believe how relieved I am to know that someone reads these columns, even if it is only the editor. Last month I made it into the ranks of those who have had editor's notes appended to their articles -- even though it only dealt with two obscure etchings. Maybe I ought to leave something out occasionally just to keep them on their toes.

I've deliberately chosen for this column a tumbler which was in production for a very short time, had no decorations and came only in one color. There shouldn't be too many problems with omissions.

1637A Town & Country was designed by Eva Zeisel in 1954 for what was supposed to be the growing leisure "Smart Set" market. While the market may have been there, apparently Heisey didn't have a great deal of success breaking into it, or if they did, it wasn't enough to pull them out of the de-

cline which led to the plant closing in the winter of 1957. Town & Country also won the "Good Design" award for 1955.

The line was introduced with three tumbler-type items - a 5 oz. juice (which holds 3½ oz.), an 8 oz. tumbler (holding 6¼ oz.) and a 12 oz. ice tea. I can't give the actual volume of the ice tea - I sold mine before I realized I was collecting tumblers. The actual dimensions are level full - none of this "they meant it to be full all but ½ inch" business.

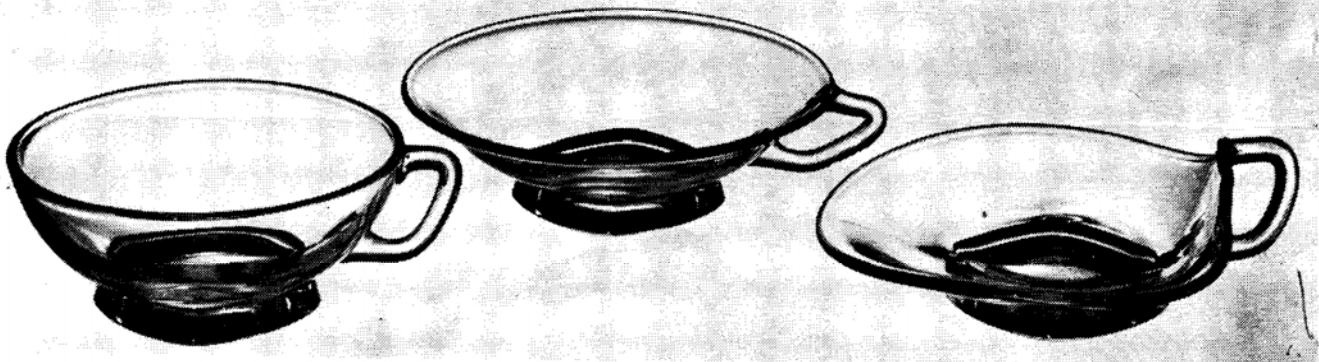
Before the editors get a hold of this, I must insert that while the line was made only in Dawn, the salad bowl & under plate and 8" plate were made in limelight and Imperial made the salad bowl and under plate in crystal. A tumbler and small plate exist in black and another tumbler has been seen with some sort of silver design. Recently in a local auction a whimsy was seen made from an ice tea with an extremely flared top which had a lid of approximately 5" diameter making an unusual covered dish.

Back to tumblers, by the time Catalog #33 (June 1956) came out, the juice had been dropped from the line. All three of the tumbler shapes are strange in that they have a sham which runs nearly all the way up the side of the glass. I've tried to show that in the illustrations. They are marked on the bottom outside and have a ground rim.



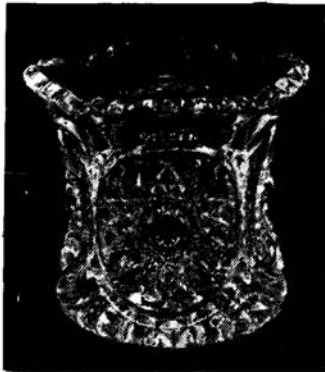
1951 CABOCHON

THREE TYPES OF HANDLED JELLIES

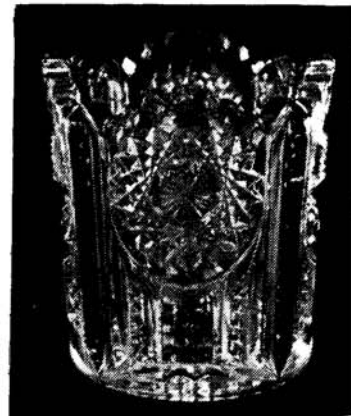


#1235 BEADED PANEL AND SUNBURST AND
#343 SUNBURST TOOTHPICK HOLDERS

BY: NANCY AND DAVID JONES



#343



#1235

During the bright sunny days of summer, it seems appropriate to talk about the only Heisey toothpick holders that include "sun" in their pattern names.

Produced from 1897 to 1908, #1235 Beaded Panel and Sunburst was produced in crystal only. This toothpick holder is seldom marked with the Diamond H, but if marked, it is INSIDE the toothpick holder on the upper surface of the base because the bottom of the base doesn't have the usual Heisey star bottom - it has another sunburst! This toothpick holder is not very common and factory decorations including gold, green, bronze, ruby, and several combinations of gold with the other trim colors are even harder to find. This pattern is very distinctive. The only confusion might arise with the 3 ounce bar tumbler in the same pattern. However, the bar tumbler has a smooth rim while the illustration shows that the serrated scallops on the rim of the toothpick holder indicates the design was intended for use with something other than liquids.

The other sun that is on the horizon for Heisey toothpick holder collectors is #343 Sunburst. This was produced from 1904 to 1908 and like the one above, was available only in crystal, had a sunburst on the bottom, and the Diamond H mark is found inside the bowl on the upper surface of the base. Dates of production and all available evidence indicate that this toothpick holder is always marked. However, the Diamond H is usually so very faint (and may be off center, as well) that without careful scrutiny, most observers would state unequivocally that they were unmarked. A truly unmarked piece has yet to surface. * However, in a few years our eyesight will probably have degenerated enough to prompt us to write an article on some "absolutely unmarked" Sunburst toothpick holders!!! This toothpick holder is not easy to find but often has gold trim. Other factory decorations are hard to find and include ruby

or amber over what Heisey called "chrysanthemum" and collectors now call the "sunburst". While both patterns do have sunburst in their names, the actual sunbursts are significantly different. The center of the #1235 Beaded Panel and Sunburst design looks like the radiating spokes of a wheel, while the center of #343 Sunburst looks like a button.

Now something to think about. The #335 Prince of Wales Plumes toothpick holder was produced from 1902 to 1908, always marked and had a sunburst bottom. Now two questions for you: (1) Where is it marked and (2) Which type of sunburst was used? A careful reading of this article provides one sure answer and a pretty good clue for the other. See you next month for the answers and more on Heisey toothpick holders!

*Editor's Note:

It is possible for ANY item usually marked to have been made without the mark at some time. As we have learned from former mold makers - vigorous cleaning of the molds, after every use, sometimes removed the mark and it was not stamped in again until someone Ordered it done. In other words it was not automatically put in just because it had been obliterated. L. R.



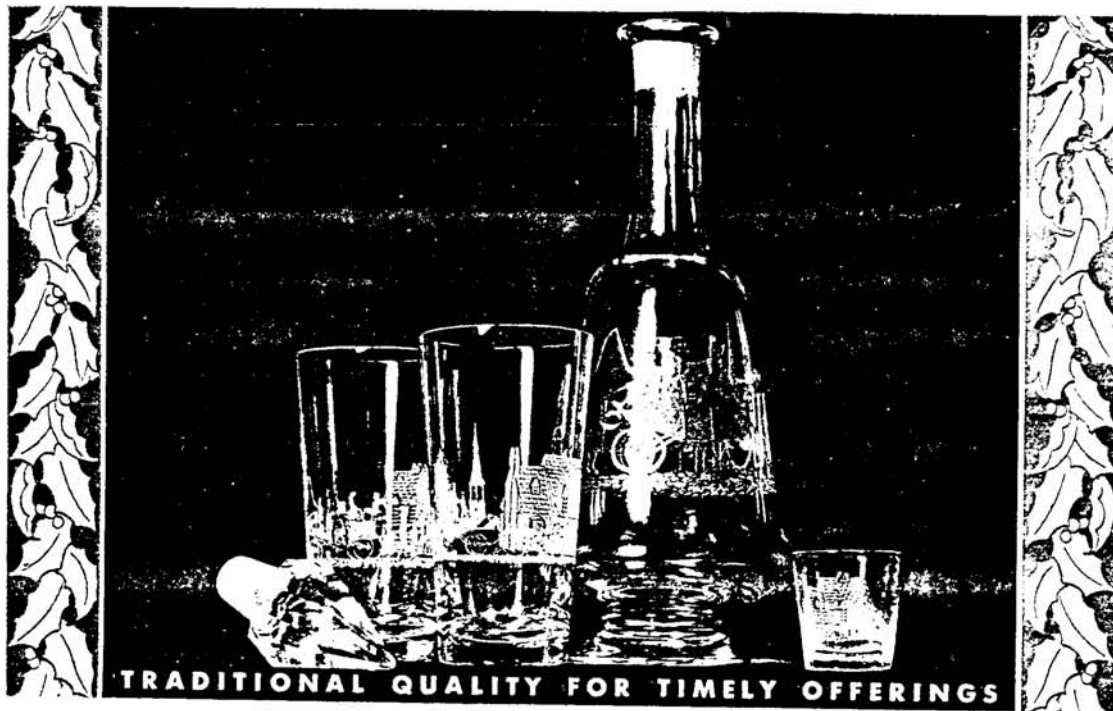
136 Triplex Candlesticks

3397 Gascony Bowl

From China, Glass and Lamps
April 1932

467 TALLY HO
SILHOUETTE ETCHING

DECEMBER, 1933 CHINA, GLASS & LAMPS

FORWARD *into '34!*

A rich 18th century etching of stage-coach and inn gives these numbers unusual appeal. No. 2401 Sodas, No. 4027 Decanter and No. 2052 Bar Glass, with Etching No. 467.

Tally Ho was Heisey's most popular silhouette etching and was designed by Carl Cobel. It was introduced in late 1933 and finally discontinued in 1952. However, production does not seem to have been continuous as it was not listed in price lists from 1946 to 1949. The etching was produced only on crystal. Most items will not be marked.

The etching is a very detailed vignette of an old English inn and stagecoach complete with passengers, driver and luggage. A couple have just alighted and are proceeding toward the inn while the coach approaches a waiting passenger. A church spire is visible in the background. The details are complete to the extent of including the scarves of the people, the shingles on the inn roof and the cobblestones in the street.

FOUND ON:

- | | |
|---|------------------------------------|
| 1115 Bitters bottle | 3318 WALDORF cocktail |
| 1401 EMPRESS 8" plate, 13" hors d'oeuvre, ice tub | 3386 DIAMOND ROSE pilsner |
| 1509 QUEEN ANN 8" plate, ice tub | 3397 GASCONY wine, soda & decanter |
| 2052 bars | 3404 SPANISH tumbler |
| 2351 8 oz toddy | 3405 ALIBI cocktail |
| 2401 various sodas & decanter | 4002 AQUA CALIENTE cocktail |
| 2405 14 oz soda | 4027 decanter |
| 3304* UNIVERSAL stem line | 4028 bitters bottle |
| 3311 VELVEDERE sherry | 4033 bar bottle |
| | 4034 bar bottle |
| | 4035 decanter |

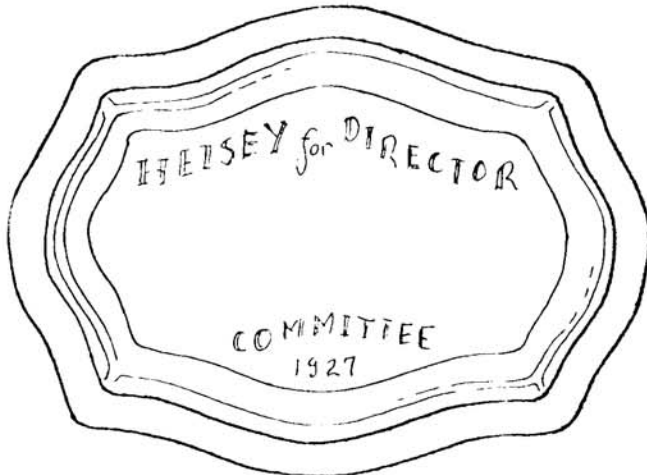
CONTINUED ON NEXT PAGE

TALLY HO, continued

4036 decanter & cocktail shaker
 4037 cocktail shaker & decanter
 4039 decanter, no foot for Abbey
 Ortner Sales Corp., a lamp
 company
 4052 NATIONAL full line of sodas

4054 CORONATION ½ gal. jug
 4163 12 & 16 oz beer mugs & tankard
 4225 COBEL 1 pt, 1 qt, 2 qt cocktail shakers &
 Rock & Rye
 5011 YORKTOWN 13 oz soda and cocktail
 5032 ice tankard
 5048 ROOSTER HEAD cocktail

Cocktail shakers were available with plain, Rooster Head or Horse Head stoppers.



The Newark, Ohio Chamber of Commerce, together with other member organizations of the Chamber of Commerce of the United States of America, is proposing Edwin Wilson Heisey, of Newark, Ohio, for nomination as a member of the Board of Directors of the Chamber of Commerce of the United States to represent the Department of Manufacture and solicits your cooperation and support.

Mr. Heisey's qualifications are briefly set forth in the following pages.

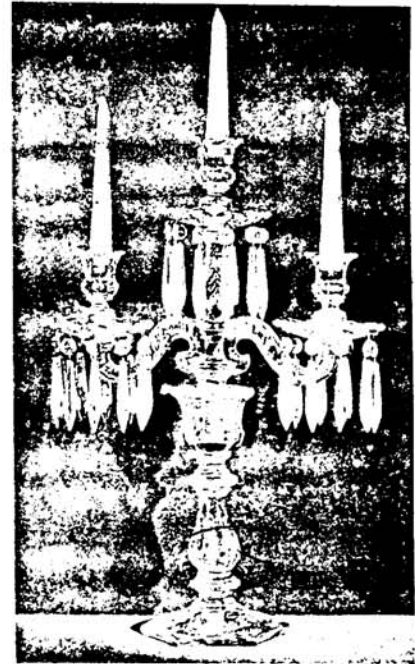
**THE NEWARK
 CHAMBER OF COMMERCE
 NEWARK, OHIO**

Mr. Heisey was NOT elected.

See June, 1978 HEISEY NEWS for more about this.

1184 YEOMAN ash tray
 See Above

This drawing was taken from "Diamond Dust" Newsletter of Heisey Heritage Society, an HCA Affiliate. The twin brothers-Sparacio are both good artists. The two drawings last month were from the same source. The ash tray with this inscription has been seen in Hawthorne and Crystal.



Hunt Cut Crystal Candelabra

China Glass & Lamps
 Nov. 1930

Hand Cut by: Hunt Glass Works

We believe this is the cutting on the pair in the Museum. Beautiful!



No. 3331 GOBLET, No. 662 CUTTING

THIS IS YOUR LIFE, HCA - PART II

Shortly after the 1973 Convention the newly appointed museum committee chairman, Sam Schnaidt, began looking for a building for a museum. Robbins Hunter, an antique dealer and history buff of Granville, called his attention to the King House on North Second Street which was to be torn down, with the whole block, for a Sheraton Inn. The house was large enough for a museum and had historical significance having been built in 1831 for a prominent trial lawyer, Samuel Dennis King. Sam looked at the house and set a date for the museum committee to see it. Despite the shabby appearance of the outside, the inside proved to be delightful with the lovely hanging staircase and the impressive expanse of rooms. Elizabeth King, granddaughter of the original owner and life-long resident of the house, desperately wanted her home to be saved. By a unanimous vote the committee voted to recommend to the Board that the house be accepted as a gift from the builders of the Sheraton Inn. Emergency meetings of the board on July 21, and of the voting members on July 22, resulted in the acceptance of the house. Miss King was moving the next day and HCA would take possession then. Bob Shomaker, a local contractor, had looked it over and was prepared to give preliminary estimates. The city had agreed that it could be moved to Sixth Street Park. Bob would board it up immediately after the chandeliers and the Florentine glass surrounding the doorway were removed to avoid possible vandalism of these treasures while the house stood empty.

1973

Projection for the cost of the moving and restoration was \$35 to \$50 thousand dollars, but probably everyone really knew it would take more than that. With \$18,000 in the museum fund from the sales of plates and some donations, everyone was optimistic that the money could be found. Robbins Hunter donated \$2000. The Evans Foundation later gave \$7500 at the urging of Thomas Evans' niece, Phyllis Freier of Pennsylvania and an HCA member. Loans were also obtained from HCA members Percy Moore and Miriam Balo.

The once "Impossible Dream" was much closer to becoming a reality.

Shortly after dawn on a dark, damp Sunday, September 9, 1973, HCA members gathered on North Second Street for the momentous occasion of the moving of their house and to walk along with it as it moved up Church to 6th. The house was ready to go. The top of it had been removed to allow it to pass under the high wires. It needed a new roof anyway so it was cheaper to remove it and rebuild it later than to pay the \$4500 it would take to move the wires.

Without the roof, and the back section and the front porch removed, it was quite a sight as it moved along. A flyswatter hung on the back, which had once been the kitchen wall and pans were still on the shelves of a built-in cabinet. People were heard asking why anyone

BY: Louise Ream

would want "that old thing" while those with more vision were saying how beautiful it would be when finished. It was scarcely welcomed by its new neighbors as it negotiated the turn into the park.

When the excavation was made for the basement, workmen discovered human bones. The park had formerly been a cemetery which was abandoned in 1850 and even though most of the bodies had been moved to other cemeteries, a few remained. All excavations in the area had unearthed bones. However to avoid controversy it was decided to give up plans for a nine foot basement and settle for seven feet. All of the bones were properly re-interred and the neighbors stopped complaining. At least HCA had finally made it big in the Newark Advocate and the town became aware that it existed. All this is the explanation of why Jack Metcalf and anyone else much over 6 ft. can't avoid bumping their heads in the lower level.

Sam literally gave up a year of his life overseeing the restoration. How Bob Shomaker ever worked with a 15 member committee no one will ever know. But everyone wanted to be a part of it and working together they came up with an end result which pleased nearly everyone.

In August, 1973, Project Chairman Frank Frye proposed that the club have a \$35 a plate souvenir dinner at the September meeting, an item made by Imperial with an etching of the Museum to be included in the price. There would also be a flea market in the park using a V.I.P. tent which would later be used for the dinner. That was the beginning of the real fun affair of the HCA year which became an annual event. The first six were held in tents either at the park or in Sam's front yard. Taxi service in antique cars from parking areas was fun for everyone. HCA's favorite caterer, Eleanor Jackson provided the food until 1979. The food was good, the hors-d'oeuvres delicious but no matter how many shrimp she ordered they soon disappeared like magic. With tents and table rentals going out of sight in 1980 the committee decided to take the dinner to the Stoney Creek Country Club in Reynoldsburg. The food there was the finest and most plentiful ever. No one complained about that meal.

Part of the fun of the dinners has always been a little auction and people have been more generous than usual in their bidding. Perhaps the free flowing wine has something to do with that. At least Frank Frye has discovered his real purpose in life as a mad glass smasher as he takes a hammer to every dinner and can't wait until he gets to break some unsold souvenir. Now and then he lets someone else break one and sometimes even lets them pay for the privilege. Anyone who has never attended one of these dinners has really missed something.

Souvenirs have included eight items made by Imperial and etched with appropriate patterns. The museum etching was designed by Carl Cobel, a former Heisey designer. Subsequent ones were done by John Williams, Carl Sparacio and Gary Chaconis. Gary is an engraver for the U.S. Mint

and has made three etching plates for HCA.

That September, Stephanie Moore resigned from the board and Sam was elected to fill her unexpired term.

At the December meeting, a dinner was held in the Buckingham house with Ann Heisey and her friend, and bridesmaid at her wedding, Adelaide Baker, as honored guests. Bob Ryan, speaking for the project committee, announced an All-Heisey museum benefit auction for the March meeting. Members would consign or donate the glass, Sam Schnaidt would auction it without charge and the club would get the 20% consignment fee. A member could consign only 10 lots in order to allow more people to participate. The Dayton Area Club handled the first auction which was a complete success. In the following years Carl Sparacio, Chauncey Delaney, Ray Ziegler and John Eshelman have acted as chairmen. Many local people have unpacked the glass, put it in lots and marked it in selling order, listed and repacked it. One year at the Opera House during a snow storm and gas shortage the temperature didn't get over 45° and those working had to wear their thermal underwear, sweaters, boots and Loren even wore his gloves. The location has moved from place to place - the YWCA, the Sheraton, the Opera House and finally Hopewell Hall at the Newark OSU Campus. This auction has become another annual tradition. Other auctioneers donating their services have been Larry Stickle, Craig Connely and Tim Hughes. Many other people volunteer to help unpack and work at the auction. Bob Johnson & Bob Rarey have each handled the mail bids in different years.

By Convention time in 1974, the Museum was far enough along that it was kept open for inspection. The show and display were as beautiful as ever and even more people came. Wayne McPeek was convention chairman, assisted by Bob & Phyllis McClain. Dick Marsh was show chairman and Emogene Shoemaker in charge of the display. Carl Sparacio of New Jersey was elected to the board and became the second out-of-state board member. Frank Frye was the only other new board member. Study clubs receiving charters were Land of Heisey Society, Newark; Heisey Club of California; Gateway HCC, Pittsburgh area; Diamond State; and Heisey Hunters of Newark, making a total of 13 clubs.

The banquet at the new Racquet Club was a fiasco. Boasting that they could seat 300, 259 packed the place like sardines. Once you sat down, you could never get up again unless the whole row did. Food had to be passed from person to person down the tables and the waitresses became unhappy because Loren Yeakley and Lynn Welker took over the serving of

the water and coffee. A few people couldn't even get upstairs at all, and since the food was gone were finally fed Famous Recipe Chicken. They probably didn't know what they were eating anyway but they were having a good time. It helped that they were near the bar. Most people took it as a joke and anyone who was there will never forget it. To top it all off the P.A. System failed when it was time to begin the program. If they hadn't been able to move the whole thing to the Opera House in Granville no one would ever have heard what Clarence Vogel, the guest speaker was saying. Fortunately, the Racquet Club refunded \$500 of the bill which was put in the museum fund.

The formal dedication of the museum was set for the convention in June of 1975. By July the club membership had reached 1994 with 93 voting members.

Since the museum was ready by early September it was decided to open it on the day of the souvenir dinner. It was filled from top to bottom with loaned glass and on September 23, at 12 noon, Anne Heisey, Elizabeth King and Louise Ream unlocked the door without fanfare. Everyone there was amazed at the beauty of everything and no one could believe that it could be so perfect. Liz King immediately became the tour director and also has spent every Wednesday and the second Sunday of every month as a docent since the beginning. She gave up being tour director two years ago after she had a heart attack. Everyone loves her as a guide because she tells such interesting stories about the house. Phyllis McClain is now Tour Director.

In November Russ and Louise Ream moved from Reynoldsburg to Newark to be closer to the museum. Russ' ill health prevented him from working so they no longer had ties to the Columbus area.

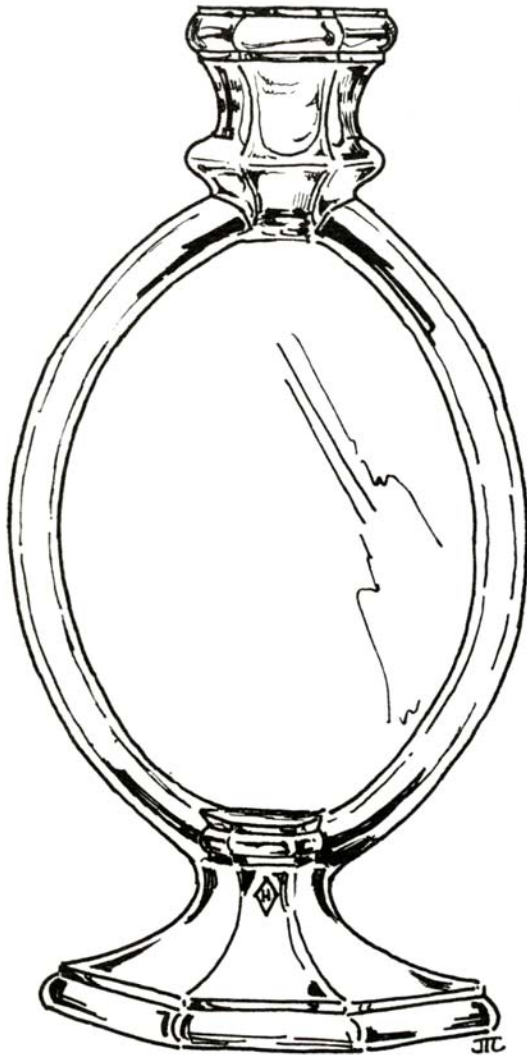
At the December meeting Mary Heisey Merrill, Augusta Dockery Weaver and Mary Jeannette Heisey were added to the list of honorary members which already included Anne, Tim, Gus and Susan Heisey, Paul Fairall and Lucile Kennedy.

TO BE CONTINUED NEXT MONTH



HEISEY CANDLESTICKS #201 PHOTO CANDLESTICK

BY: Jack Metcalf



Isn't this an interesting item? Interesting, not only because I don't have one and they are rather hard to come by, but interesting that Heisey would make such a one in the first place. The first indication that the item existed came to light when C. Vogel came across one. As there is no known picture in Heisey catalogs and no reference in the available price lists, Vogel assigned his number 7067 to it and called it Picture Frame Candlestick.

Now, however we have come up with the original Heisey number and name. As far as I know, this is the publication of the Heisey number for this candlestick. Thanks to the research committee (Neila this time) the following entry was found in a 1924 day book:

Shop of J. Maurer
Number 201 Photo Candlestick

Now a description like that can only apply to a picture like the one to the left.

A word of explanation may be in order. A day book is a ledger which tells what items were made each day at the factory. There were three entries in 1924 for the No. 210 candlestick. Unfortunately the museum has only few of the day books so there is no certainty as to how many other times it was pressed.

The picture on the left may give the impression of an empty oval framed by the glass ribs. That is not correct. Actually the center is a flat piece of glass molded as one piece with the ribs. The picture would be placed against the flat glass as in any picture frame then a cardboard put behind for stiffness and then held into place with some type of a three-pronged spring-metal clip. There are three cut notches in the rear of the ribs where the spring holder fits into place.

This must have been a rather weird looking bit of stuff in operation. Imagine, there is a picture of your loved one who for all appearances has a candle in the middle of the head. Rather reminds me of a Ripley's I read as a child; seems there was a guide who used to walk around with a candle stuck in his skull. Well, that may be all right for Ripley but it wouldn't do for my good old Aunt Minnie! Well, enough of that drivel and back to the candlestick at hand.

Not really at hand, since the museum doesn't have one either. There is word that one with the spring clip has been seen. And, of course if you all read your auction lists you will note a pair in the August auction advertised in your June HEISEY NEWS.

The overall size is about 11" high by 5" wide. The glass is very good quality and the candlestick has a punted base. That is a little unusual since Heisey had pretty much gone to non-punted bottoms by No. 99 candlestick. They did, however, flat grind a few after that and they continued to punt the ever-present No. 2 colonial candlestick.

Of course the thing is marked with a Diamond H. That is the only way anyone knew it was Heisey's in the first place.

CANDLESTICK NO. 201

Another name which has been used in the past is "Funeral Candlestick". A local source explained that the candlestick was used to hold the photo of the departed, for closed casket funerals.

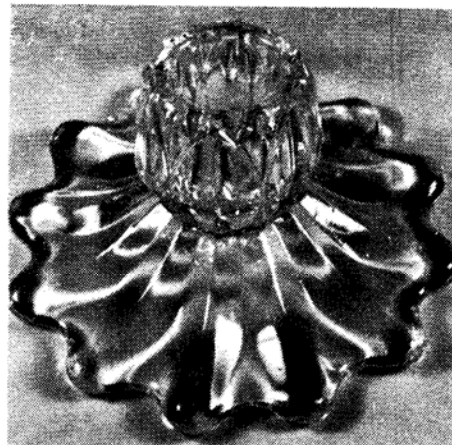
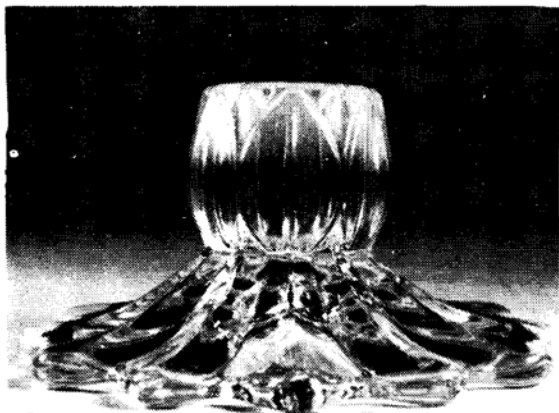
At present we have no written verification of this from any Heisey sources, but this provides an interesting sidelight.



Hand-drawn Illustrations by Julie Chapman

HEISEY CANDLESTICKS

BY: Bob O'Grady



This No. 1570, Lotus Leaf candleholder was one of the items designed for Heisey in the 1940's by Royal Hickman. Mr. Hickman was a well known designer who worked for a number of glass and pottery companies during his lifetime and is probably best known for having created several of Heisey's most popular animals. His association with the company began about 1940 or 1941 and continued until at least 1948, apparently on a free-lance basis, since he was also designing for Haeger Pottery* during this same period and had his own business for a while in Florida in 1944.

The Lotus Leaf candleholder, or "candleblock", to use the official Heisey terminology, first appeared in Catalog 28, which is dated September 1, 1947. It was also pictured in an ad in November of that year in the CROCKERY AND GLASS JOURNAL, where it was touted as an "artistic Royal Hickman creation". It was shown in the ad in a rather intriguing grouping which included a wood duck placed in the center of a No. 1575 gardenia bowl, with the candleblocks on either side and a row of ducklings in front (2 floating and 2 standing)--the whole "table setting", as it was called, to sell for \$11.50 for all 8 pieces. The wood ducks, of course, were also designed by Royal Hickman and this sort of grouping was typical of the kind of ensemble which Heisey was promoting at about this time--the candlesticks were meant to go in or around other pieces and often were entirely subordinated to the animals with which they appeared.

The Lotus Leaf candleblock was also listed in Catalog 29, which is dated October 1948, but does not appear in Catalog 30, which would indicate that production ceased sometime before July of the following year. In fact, we know from original factory records in the HCA library that these candleblocks were made for the last time during the week of April 9th, 1949, when a turn of 310 were produced (5 of

which were "bad", that is, had defects of some kind and therefore would have been broken up to become cullet). So we know that the Lotus Leaf candleblock was made for a little more than a year and a half. However, we also know that during this period at least four to five thousand of them were made, which makes it a little difficult to understand why they seem to be so relatively hard to find today. One reason may be that they do not generally seem to be marked and when they are (in the middle of the base on the underside) the Diamond H is very faint, perhaps due to the effects of the fire polishing which was given to these candleblocks. Nor are they particularly typical of Heisey and therefore they may simply often be overlooked.

The candleblock is listed in the catalogs as being 1-1/2" high, although the examples I have seen generally are closer to 2" in height, with a diameter at the base of about 4" from point to point. The Lotus Leaf motif occurs around the candleholder portion of the candleblock and appears to be adopted from the formal depiction of the Lotus Leaf which was so typical of ancient Egyptian art. The base is somewhat reminiscent of Crystalite, with the same sort of rippling undulations which typify that pattern.

The Lotus Leaf candleblock was made in crystal only by Heisey and it has not been re-issued by Imperial.

*Mr. Hickman was once part owner of "Royal Haeger" Pottery. He later retired to Mexico where his widow still lives.

HEISEY BY IMPERIAL - CANDLESTICK UPDATE

On a recent visit to Bellaire, we were surprised to learn that Imperial has re-issued two Heisey candlesticks in a new color: Emerald Green. The candlesticks are the No. 32 - 5" handled candlestick and the No. 33 - 3-1/2" toy candlestick (both of which had already previously been re-issued in crystal) and the color is a

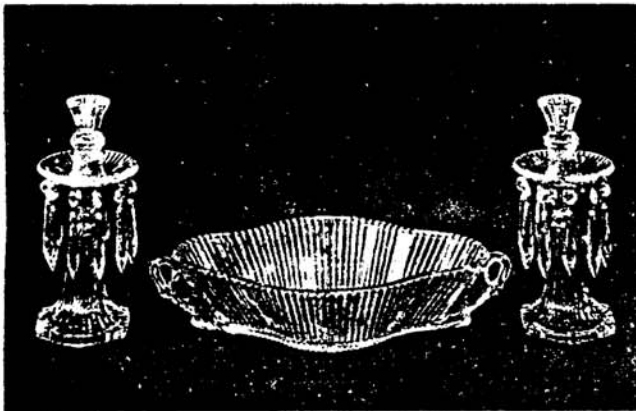
Continued on page 15

GLOSSARY OF GLASS TERMS - reprinted from VICTORIAN TIMES, Wheaton Village

- ANNEALING - gradual cooling of hot glassware in an oven or lehr
- BALUSTER - a stem or part of a stem having a pillar like form
- BATCH - mixture of raw ingredients ready for melting into glass
- BLANK - an annealed piece of glass ready to be marked for cutting
- BLOCK - wooden dipper-like device cut out on one side and used wet in shaping
- BLOWN MOLDED - glass blown into a hinged mold to give pattern or shape
- BLOWPIPE - hollow iron tube two-seven feet long, wider and thicker at one end, also called an iron
- CASED - multiple layers of different colors of glass, called overlay when cut to expose layers
- CHAIR - wooden bench with arms on which the gaffer rolls his iron while shaping a glass object
- CHARGE - to load the melting pot with batch for making glass
- CLAM BROTH - smoke-tinged pearly, semi-opaque glass, looking like clam juice
- CRIMP - metal or wooden device used in giving a crimped or pie-crust edge to an object
- CRUCIBLES - glass melting pots, also called monkey pots or skittles
- CRYSTAL - top quality clear glass, without defects
- CULLET - broken glass, or clean broken glass used as an ingredient in firing new batch
- CUP PLATE - small pressed glass dishes
- CUSTARD - opaque, milk and egg custard color
- CUT - a glass blank, marked and then cut with various wheels (iron, stone or wood) and abrasive agents
- CUT & SHUT - piece is pressed upside down through bottom with a collar of glass which is then warmed in and cut with shears, causing a swirled mark on base of finished piece
- DIP MOLD - one piece mold open at top for impressing a pattern
- ENAMELED - glass paint decoration applied to annealed piece and fired to fuse the enamel
- ENGRAVED - copper wheels and abrasive agent used to cut the surface of an annealed piece, areas engraved are not polished
- ETCHED - annealed piece is coated with acid-resisting wax in which a design is cut and then subjected to an acid bath
- FIRE POLISHING - reheating of a finished piece to remove tool or mold marks
- FLASHING - a coating of colored glass over a base glass which is usually opaque white
- FLINT - lead glass, made with oxide of lead which produces clarity and brilliance, often called lead glass or lead crystal
- FOLDED RIM OR FOOT - rim of bowl or edge of foot folded back forming an even edge
- FREE BLOWN - glass formed by blowing and shaping with hand tools without use of molds
- GADROON - molded deep rounded flutes or ribs impressed on a second partial layer of glass usually at the base of a piece
- GAFFER - master blower, head of a shop
- GATHER - a gob of molten glass secured on the end of a blowpipe, person who performs this task for the gaffer is called a gatherer
- GLASSMAKER'S SOAP - black oxide of manganese which when added to the batch neutralizes the natural color of the metal
- GLORY HOLE - small furnace used for the frequent reheating needed to keep wares from hardening during shaping, also used for fire polishing
- GREEN GLASS - common glass, glass in its natural color
- IRIDESCENT - a coating of metallic chloride sprayed on a still hot piece of glass causing a multi-color luster
- KNOP - a bulbous knob either solid or hollow in the stem of a glass object
- LAMPWORK - making of glassware by melting glass rods over a torch or burner
- LATTICINO - opaque white glass threads in a clear object in parallel, swirl, latticed or spiral arrangement
- LEAD GLASS - see FLINT
- LEHR - annealing oven for gradual cooling of hot glass objects
- LILY PAD - applied decoration formed by a superimposed layer of glass tooled into a lily pad form, first introduced by South Jersey glassworkers
- MARBLE - opaque bi-colored glassware with colors swirled
- MARVER - polished metal or stone slab on which the gather is rolled into a cylinder
- METAL - glass, either hardened or in its molten state
- MOLD MARK - line on glass object left by mold joint
- OBSIDIAN - natural glass formed by the rapid cooling of lava
- OVERLAY - see CASED
- PARISON - a slightly inflated gather of glass before shaping
- PATTERN MOLD - glass mold for pattern only, not for shape, using a part-size piece mold
- PONTIL - solid iron rod similar to a blowpipe, attached to base of object during finishing process. Also called a punt
- PONTIL MARK or SCAR - mark left on bottom of finished piece where it has been cracked off the pontil rod
- PRESSED - glass pressed manually or by machine into a mold to form the object, not blown at any stage
- PRUNT - a blob of glass or stamped seal applied to a glass object
- PUCELLAS - iron or spring steel shear-like tool used for shaping glass
- ROCK CRYSTAL - natural transparent quartz
- RUBY - gold oxide is added to the batch to make deep red glass
- SANDBLASTED - a jet of fine sand is blown against the surface of glass to cut a design

GLOSSARY OF GLASS TERMS, Continued

- SERVITOR - glassblower who is first assistant to the gaffer
SHEARS - scissors used to cut molten glass during shaping
SHOP - a gaffer and his assistants, a gatherer, a servitor and carry-in boy
SNAP CASE - a mechanical device to hold glassware for finishing by hand, thereby replacing the punty
SODA LIME GLASS - glass in which the principle flux is soda
STAINED - a colored wash is applied to an annealed piece of glass with a brush and then refired
THREADED - fine threads of glass wound around a vessel at the neck or in an all over design
WHIMSEY - novelty glassware made by glassblowers for their own amusement or to demonstrate their skill



1469 Ridgeleigh Pattern
C. G., & Lamps - Sept. 1935

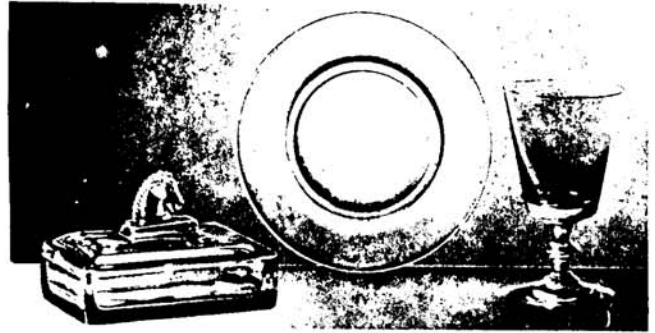
SANDWICH GLASS FORUM TEN . . .

The Sandwich Glass Museum, Sandwich, Mass. will be holding a forum on glass on September 17 through 19. The program will include seven lectures on glass including one on "The A. H. Heisey Glass Co., 1896-1957, An Overview" to be given by Neila Bredehoft. The lecture will be an hour slide presentation on the history and products of the Heisey Co. Other topics include Sandwich Glass, Blown Three Mold Glass, Glass of the Ohio Valley and others.

For more information, please contact:
The Sandwich Glass Forum
Sandwich Historical Society
P. O. Box 103
Sandwich, MA 92563

Deadline for reservations is Sept. 10.

Heisey helps to life-long happiness



"Beauty unadorned" best describes these three pieces.



"Gracious living" is accomplished with these items.



Heisey's Orchid Etching adorns whole sets of gleaming crystal.

AD FROM BRIDES MAGAZINE, Autumn 1943

NOTE THE #1489 Puritan plate and ash tray shown in picture 2. This plate is listed in catalogs but not pictured. Does anyone have it?

A. H. HEISEY & COMPANY, NEWARK, OHIO

Buy War Bonds, too!

HEISEY'S
HAND-WROUGHT CRYSTAL

#352 ICE CREAM CONE HOLDER

BY: Joseph D. Lokay

Let's make believe we just walked past an ice cream parlor. Not being able to resist, we went inside and ordered two ice cream cones, double scoops. Being observant, we watched the attendant as he made the first cone. Now, what should he do with the first completed cone so that he can go on to make the second one? There are two possible options that he could follow. Option One: After the attendant makes the first cone, he hands it to you, then makes the second one and hands it to me. Worked out okay. Now what do we do with the ice cream cone while we reach into our pockets for money to pay the bill? Option Two: Each cone is placed into a holder as it is made, and they are removed after the transaction is complete.

The Heisey Company produced a glass ice cream cone holder for occasions such as this. The holder was listed as part of the #352 Flat Panel Pattern line. The holder was first listed in Price List #175, Circa 2-1-13 and was pictured in Catalog #75, Circa 1913. The pictures shown with this article were taken from Catalog #75.

To give you an idea of size, the cone holder is 3-3/4" high and is 2" in diameter at the top. There are 6 panels around the outside surface. The panels flow out into the base to form a hexagon shape. The hexagon base measures 2-1/2" across the points. The base is larger than the top for stability against tipping over. The bottom surface cups up in the center so that the holder sits on a rim rather than a full flat surface and the bottom rim is not polished. The holder is marked with a Diamond H in the center of the bottom.

Price List #175 offered the cone straight or flared at the top. Note the two pictures with this article, one which is the straight holder and the other is the flared holder.

To protect the design, a patent application for the #352 Colonial Pattern was filed by Clyde S. Whipple on May 9, 1908. Design Patent #39,432 was granted on July 21, 1908. It was assigned to the A. H. Heisey & Co., Inc. A spooner was pictured with the patent as an example of the design. While the 352 pattern started around 1907, the cone holder was not added to the pattern line till about 1912.

The production period for the #352 ice cream cone holder was from about 1912 to about 1918 or seven years. Perhaps the idea of glass around an ice cream counter with the possibility of breakage limited its sales appeal. The holder was made in crystal only, no color.

An alternate use for the flared ice cream holder as a violet vase was offered by Heisey as part of the #352 pattern line. The violet vase was offered for only about 4 years, 1913 to 1916.

The #352 ice cream holders are not easy to find. One is on display at the HCA Museum.



Ice Cream Holder
Straight



Violet Vase

Also Make Flared
Design Patent No. 39432

PL # 175 2-1-13
A. H. HEISEY & CO. 161

NO. 352, PATTERN-CONTINUED
DESIGN PATENT NO. 39432

Size or Capacity	PRICE PER DOZEN		No. in Set	Wt. in OZ.	Pat. No.
	O.P.	L.P.			
1/4 lb. Candy Jar, Knob Cover { Grd. Bot.	1 50	1 75	7 1/2	165	184
1 lb. " or Cracker Jar { nob Cov Grd. Bot.	2 50	2 75	6	125	194
2 lb. " " " " " " " " " " " "	3 00	3 50	2	100	194
3 lb. " " " " " " " " " " " "	3 75	4 25	1 1/2	95	194
Ice Cream Cone Holder, Straight	50	00	28	115	194
" " " " " " " " " " " " Flared	55	05	25	110	
8 oz. Cologne, Pressed Stopper.....	3 00	3 50	15	140	195
8 oz. " Cut Stopper { Puncted Bottom	5 00	5 50	15	140	195
1 1/2 oz. Lavender Jar, Grd. Bot. { Grd. in Stopper, Cut Top	1 75	2 00	35	180	195
3 oz. " " " " " " " " " " " "	2 25	2 50	25	180	195
5 oz. " " " " " " " " " " " "	3 00	3 50	15	140	195
10 oz. " " " " " " " " " " " "	4 00	4 50	10	140	195
14 oz. " " " " " " " " " " " "	5 50	6 25	7	145	195
16 oz. " " " " " " " " " " " "	7 00	7 75	4 1/2	180	195
24 oz. " " " " " " " " " " " "	9 00	10 00	4	125	195
Cigar Jar, Ground Bottom.....	12 00	15 00	1 1/2	165	195
Ash Tray " " " " " " " " " " " "	3 00	3 50			195
Match Stand (Pat. No. 952160)	3 00	3 50			195
Knife Rest	80	95			195
No. 1 Bed Room Set.....	9 90	11 35	1 1/2	180	195
1. 352, 12 in. Tray Fire Pol. Bottom.					
1. 32, 5 in. Hdl. Candlestick.					
1. 800 Pint Decanter, no stopper.					
1. 352 4 oz. Tumbler.					
1. 15 Match Box and Cover.					
No. 1 Footed Vase { Perforated Cover, Cut Top	12 00	15 00	1	90	196
No. 1 " " " " " " " " " " " " No Cover	6 00	6 75	1	70	
No. 2 " " " " " " " " " " " " Medium, Flared.	5 00	5 50			
No. 3 " " " " " " " " " " " " Wide.	5 00	5 50			
No. 4 " " " " " " " " " " " " Drop Flange	5 00	5 50			196
No. 5 " " " " " " " " " " " " Tall	5 00	5 50			196
Low 2-Piece Vase { 351 9-in. Nappy, Grd. Bot. and 352 Perf. Cover, Cut Top	10 25	11 50			196
Perforated Cover, Cut Top.....	6 00	6 75			
Violet Vase	55	65	25	110	196

CLUB NOTES.....

HEISEY COLLECTORS OF ROCHESTER, NY
Marjorie Gillette, Secretary

On June 28th our club held its third annual picnic at the home of Marian and Bill Heron. In the afternoon we held a mini flea market. The men played several games of Bocce while the women chatted.

Later in the day we held our regular monthly meeting. Jerry Gillette was our club representative at the June Convention and he gave a report on the convention activities. Adele and John Pardee who also attended the Convention shared their thoughts about it. A "show and tell" session of newly acquired Heisey followed which included several pieces purchased during the Convention.

We then adjourned to the best part of a picnic, the food. It was a great day well spent with friends who share a common love "Heisey"

LETTERS WE GET LETTERS

Dear Louise,

Just a note to say that the Convention was a sheer delight and that my family and myself enjoyed every moment of it.

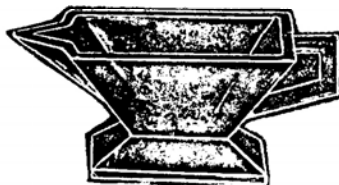
Babs Kent

We have both thoroughly enjoyed Heisey News, but I have become an avid, although not too knowledgeable, collector of Heisey Glass. Because my husband's father invented the needle etching machine, I have been collecting examples of needle etching for some time and my interest in Heisey has added more excitement to my glassware collecting.

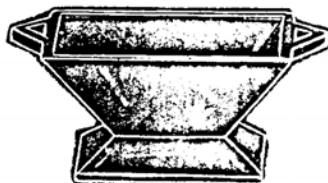
I am enclosing a picture of a creamer, marked, which I recently acquired. I have not been able to find an example of this pattern in any of my reference material. Can you help me? My attempts at photographing the creamer were not successful, so I hope the rough sketch will be enough. The color is Flamingo.

Now that I am becoming more familiar with Heisey, I am looking forward to making another trip to the Museum and spending many hours there.

Mrs. A. B. Knight-Washington



FOOTED CREAM



FOOTED SUGAR
OR BONBON

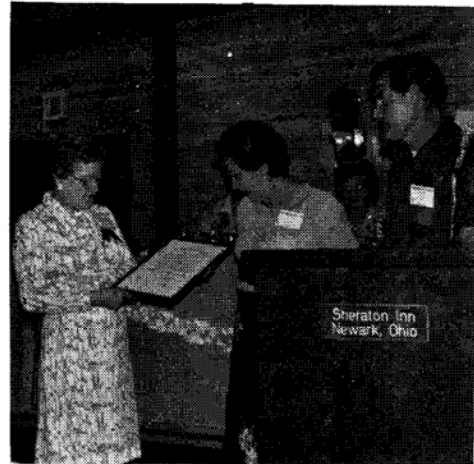
#355 QUATOR - CA. 1929

Known in Flamingo, Moongleam, Sahara
And Marigold

Sorry not to have written sooner to tell you what a wonderful 10th Anniversary Party you folks put on, and how much we enjoyed ourselves. We also wish to say thanks for our charter.

Kay Feher, our secretary, called last night to tell me that our picture was in the Newsletter, receiving the Charter, but no names, which are, Joe Feher and Clare Nelson.

Clare Nelson - CT



Clare Nelson and Joe Feher of Connecticut HCC accept Charter #34 from President, Louise Ream.

I recently saw a program on the "Antiques" T.V. Show that was dedicated to "Heisey Glass". It aroused my curiosity about Heisey. Please send me any information that might be of interest to me.

Nancy Hart, Maryland

Editors Note:

Nancy is referring to the show Dave Curley did with George Michaels for public T.V. If the show has not been shown in your area perhaps a request to your public T.V. station would result in its being shown.

HEISEY BY IMPERIAL - CANDLESTICK
UPDATE CONT'D. From page 11

a rich, beautiful green. Unfortunately, neither of the candlesticks is marked with Imperial's trademark and the color is very similar to Heisey's emerald, as well as to early moongleam. (Heisey did NOT make these candlesticks in either color.) The glass in both candlesticks is rather good quality, but they are not finished as well as the Heisey originals and the surface on both of them is noticeably wavy. They really are very attractive, but be warned if you see them on a flea market table; they are not Heisey's emerald or moongleam. (There are a few other items also being made in this color. Our visit to Imperial was rather hurried, but the only other pieces I remember seeing were the Old Williamsburg torte plate and pitcher.)

ABOUT IMPERIAL

IMPERIAL GLASS CORP. SOLD AGAIN

The Imperial Company owned by Lenox since 1973, has been recently sold to Arthur Lorch of New York who is a private investor. The LIG mark was discontinued as of June 26th. On the last day on which they could make glass with the old mark, over 400 Minuet Girls (Dinky-Do) were made in pink with the LIG mark. These were offered for sale at \$35.00 each and limited to two per person. A Certificate is to be issued with each telling how many were made and explaining that they were made on the last day the LIG was used. Imperial does not have an accurate count as yet (as this goes to press) because they have not yet been finished on the bottom. WE HAVE NOT SEEN these dolls.

WE DO NOT HAVE THE DOLLS HERE for sale and have nothing to do with them. We don't know if any are left but you could find out by contacting Imperial Glass Corp. in Bellaire, OH. They also made 346 Dresden Dolls from a Cambridge mold and Santa bells from an Imperial mold. A set of the three is \$115.00. DON'T CONTACT US on this.

Imperial has added a line to the LIG mark to form the initials of Arthur Lorch Imperial Glass. We have not yet seen this mark.

As long as Heisey continues to grow more popular every day it is unreasonable to expect that the company which owns the molds will not use them. As Collectors of Heisey Glass everyone must learn to study what Imperial has made and learn their marks.

Emerald is a new color for Imperial and several of the small candlesticks which they have been making are in this color. They are apparently not marked. At least a 341 Williamsburg pitcher and plate are also being made in this color. The Ridgeleigh ball vase is being made in a color called Plum. These are blown and are not marked, nor were the originals by Heisey. This vase is also made in crystal.

I understand that the USA now has only 15% of the hand made glass market. If prices continue to rise there may be, one day in the not too far distant future, no hand made glass being made at all. What a loss that will be to this Country!

#1632 SATELLITE (LODESTAR)

A NEW FIND - A 7½" crimped top vase in Imperial's heather. Marked with the Diamond H. Probably a feasibility item as it was not listed in Imperial's files.



ITEMS MADE FOR COLLECTORS GUILD

Collector's Guild of N.Y.C. has commissioned Imperial to make several items for them in Heisey molds. These will bear the mark CG for Collectors Guild. This company puts out a catalog and do a mail order business.

The Items are:

- 1401 Empress Pitcher in Emerald Green
- 1401 Empress Floral Bowl -Sunshine Yellow
- 1401 Empress - 3-toed Candlesticks-Sunshine Yellow
- 1519 Waverly- Lion Trinket Box - Amber
- 1413 Cathedral Vase - Pink
- 1503 Crystolite Master Swan Nut or Mint Dish in Ultra Blue

ERRORS - OMISSIONS & ADDITIONS TO JULY ISSUE

1. Jim Jordan is really still MARRIED to Evelyn; and JIM Kennon married Renee Rivera. Apologies to both and Congratulations to the Kennons.
2. The front cover last month was an Advertisement for the Etching Book Addendum. (40 Pages - \$3.50, 10% Shipping.) We had heard that you wanted this and hope you order it soon.
3. The Anniversary Ash Tray is 3" rather than 4" as the Catalogs say. We hope you buy one. We received only 1590 and we have over 5000 members.
4. We liked "Roderick" for the name of the Creamer since we bought it from Tom Martin and Steve Roderick.
5. The Nassau-Long Island Club furnished glass for the Auction which sold for \$105.00.
6. The Buckeye HCC also furnished cookies for the Museum lounge.
7. Golden Gate Club donated a #1401 Empress Compote to the Museum.



HEISEY CLUB OF CALIFORNIA

By: Fran Brock, Secretary

Our "Post-Convention" Meeting was held at the home of June & Don Godden. There were 22 members present, and since 6 of them had been to Convention, some very good reports were given...all very complimentary, as usual and pictures were passed around to show the "stay-at-homes" what the Display and Show were like this year. Our Delegate, Betty Losch, reported on presenting our check from our April Silent Auction (\$1030) and Bob Jilson's personal check (\$300.) to the Museum for Acquisition of glass.

The various Seminars were touched on lightly, with promises for further sharing and a detailed account was given on the "This is Your Life" slide show (great!) and also on the Preview...which was unanimously agreed on as a real "TOUCH OF CLASS" for a Convention that always has had a LOT of class. We all hope this will become a feature of future Conventions....(hint...hint!)

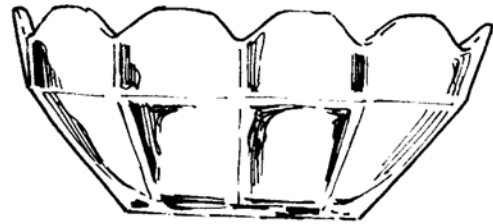
Our Program for this meeting was Rare & Limited Patterns...and many were brought out, with each person telling about the one(s) he or she brought. Some of the many patterns were Pillows, Wampum & Quilt, Pineapple & Heart, #7012 Squared Fan, #7013 Thumbprint & Angle, Impromptu, Athena, Grid & Square, Winged Scroll in Ivorina Verde w/Emerald trim, Locket on Chain in Emerald, #1518 Miter Vase and many others.

A special Feature was having Homer Paulson, our Cruet Man, show off many of his very nice and very rare cruets...he not only brought 11 of them to share with us but told us his "secret" method of cleaning them.

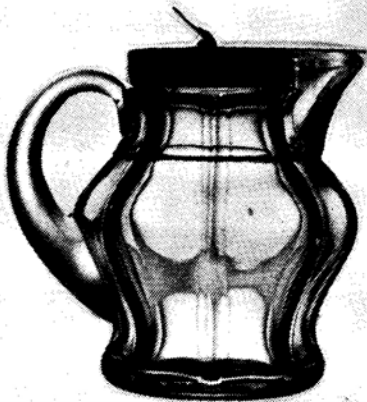
After a productive Show & Tell time, the meeting was adjourned so that we could feast on the lovely summer buffet prepared and served by our Host & Hostess.

#8039 ANGULAR PANEL

Recently this small nappy was found for which we have no known Heisey number. It is of beautiful crystal of the colonial era and marked with a Diamond H. The nappy has 10 flat panels around the base and then a sharp bevel near the top. The scallops on the top are not round but 3 sided. The bottom has a center star and is fully polished. One is on display at the Museum.



1255 Pineapple and Fan Cracker Jar
The lid was added by another company
Photo Courtesy of Dave Curley



#360 Sanitary Syrup

HHS	HCA
5 TH ANNUAL ANTIQUE SHOW	
FEATURING <u>GLASS</u> , CHINA AND COLLECTIBLES	
JUST NORTH OF PHILADELPHIA AT THE	
GEORGE WASHINGTON CONVENTION CENTER	
ROUTE 611 AND THE PENNSYLVANIA TURNPIKE (WILLOW GROVE, EXIT 27)	
SATURDAY, OCT 3 RD ~ SUNDAY, OCT 4 TH	
11:00 AM TO 6:00 PM	
DONATION \$ 1.75	WITH AD \$ 1.50

BARBARA LESAK

POSTAGE & INSURANCE
EXTRA

9795 BUCKHILL CT.
MENTOR, OHIO 44060

* SIGNED

1020 VASELINE hotel cream & sugar*.....	\$ 375.00	FANDANGO toothpick.....	\$ 55.00
MED. FL. PANEL Cruet*, #8 stopper.....	35.00	FANCY LOOP toothpick.....	70.00
RING BAND Custard Cov. Butter, (rim chip in base).....as is...	125.00	RING BAND toothpick, CUSTARD.....	60.00
Butter tub salt - Flamingo.....	12.00	4206 d/o 8" vase, flamingo.....	30.00
Butter tub salt - Moongleam.....	15.00	Whiskey Decanter/stopper.....	75.00
LARIAT candlesticks, pair 1 candle.....	20.00	10 Muddler.....	8.00
CRYSTOLITE goblet.....	18.00	PANELED CANE jelly compote*.....	30.00
OCTAGON MARIGOLD 2 handled dish.....	25.00	COARSE RIB jelly compote*.....	25.00
BEADED PANEL & SUNBURST salt.....	15.00	8" Moongleam BEEHIVE Plate.....	35.00
PRISON STRIPE Nappy*.....	18.00	PINEAPPLE & FAN ½ pt tankard (red stain)(Souv. Mary A Miller, Celoron	25.00
TWIST 2 handled ftd almond, flamingo...	18.00	URN salt dip.....	18.00
YEOMAN cruets/stopper (cloudy).....	18.00	SQUARE IN DIAMOND POINT salt dip....	18.00
OLD SANDWICH cruets/stopper*.....	45.00	BEAD SWAG sugar/cover.....	25.00
CRYSTOLITE leaf dish (5).....ea..	7.00	331 square indiv. salt (VII, p.14)...	10.00
300 COLONIAL Catsup jar/stopper.....	35.00	NARROW FLUTE water goblet*.....	15.00
Frozen Desserts: 2 Flam., 1 mglm....ea.	8.00	300 one ounce cordial*.....	20.00
WINGED SCROLL CLAMBROTH trinket box (souvenir of Detroit, Michigan)..	35.00	300 two ounce cordial* (2).....ea..	15.00
LARIAT cups (2).....ea.	8.00	PUNTY BAND OPAL small creamer (base chip)(Souv: Ft. Wayne, Ind.)....	45.00
LOCKET ON CHAIN nappy.....	35.00	FANCY LOOP EMERALD indiv. creamer....	50.00
BEAD SWAG Creamer.....	20.00	300 Water Goblet*.....	15.00

* * * * *

PLAIN CITY AUCTION

FRIDAY NIGHT
SEPTEMBER 25, 1981
SALE STARTS AT 5:00 PM

145 E. MAIN ST.
PLAIN CITY, OHIO 43064

AREA CODE 614
873-5622
876-5207

Included in this sale are over 100 pieces of HEISEY including rare "Early Queen Ann" #365 crystal w/ red flashing 1 quart jug w/ 5 matching tumblers; "Orchid Deep Plate Etch" pieces as 9" Seahorse handled candy jar, 14" plate, Lariat vase H, and 8" plate; Zircon Provincial four part relish #1506; "Equestrian" Deep Plate Etched 12 oz. Beer Mug H; Polo Player Deep Plate etched Cocktail; "Pied Piper" Double Plate Etched 2½ oz. wine; "Empress Plate Etched" 10 oz. tall stemmed goblets (8 pcs.) also matching 6 oz. saucer champagnes (7 pcs.); Moongleam ¼ oz. Cologne H, Moongleam Duck Stopper; "Plantation" including Ivy Cruet w/ Waverly Stopper, Celery Tray H, Ash Tray; "Dawn Lodestar" 8" Bowl H, Candlesticks including pair "New Era" 2 lites, pair of #1509 1 lites (no prisms), and Grape Cluster double light H; "Old Williamsburg" pieces include creamer H, Nappy w/ cutting H, 4½" Bowls H (2 pcs.), 9" Bowl H, shotglass H; "Narrow Flute" including cream & sugar H, 8 oz. Goblets H, Wine H, Mustard & Cover H, & Celery Tray H; Syrup w/ cutting H; 12 Punch cups H; other patterns as Ridgeleigh, Flat Panel, Diamond Point, Crystolite, and Empress. Rooster Cocktail Shaker; Rooster Cocktail Glass; Rooster Stopper; Animals including 2 Giraffes, Mother Rabbit x, Donkey, Oscar, Scotties, Standing Colt, Goose, Rearing Colt, etc. Also hard to find Crystal Advertising Display Emblem.

Plus Top Quality Antiques as marble top teakwood tables, Art Glass Lamps, Beautiful Grandfather Clock, and much, much more.

SIGNED *
 UPS & POSTAGE ADD 5%

CHARLES & MILDRED FISHER
 991 IDLEWILDE AVENUE
 NEWARK, OHIO 43055

PHONE
 614-522-5398

STOCK REDUCTION 20% OFF LISTED PRICE

1567 PLANTATION
 Wines, Claret(8)..ea. \$37.00
 Sugar Shaker..... 77.00
 Syrup..... 77.00
 Set, Marmalade on tray w/spoons,
 each *..... 300.00
 Pitcher..... 175.00
 Vases, 2-14"...175.00 ea..2-6"..ea. 50.00
 Punch bowl, complete w/underplate,
 8 cups, hangers, ladle..... 650.00
 1519 ORCHID relish, 3 pt divided oblong* 65.50
 Plates, 8" luncheon...(18)....ea... 27.50
 1170 PLEAT & PANEL cruet, flamingo..... 57.50
 153 TALLY HO juice.....(2).....ea.. 47.50
 tumbler.....(2).....ea.. 47.50
 1404 OLD SANDWICH decanter, crystal..... 135.00
 Candlesticks, d. f. Flamingo *.....pr. 325.00
 ANIMALS:
 Colt, standing..... 100.00
 Colt, kicking..... 195.00
 Elephant, baby..... 175.00
 Horsehead bookend..... 150.00
 Piglets, marked...95.00 unmarked... 85.00

HEISEY BY IMPERIAL:
 Animals, caramel slag
 MALLARD, Wings down..... \$300.00
 COLT, Kicking..... 275.00
 COLT, Balking..... 275.00
 MALLARD, wings half & up, STANDING
 COLT, ELEPHANT, SPARKY, DONKEY,
 WOODDUCK.....ea.. 30.00
 WAVERLY Covered candy*..... 60.00
 WAVERLY Oval comport..... 60.00
 WAVERLY ftd candy box..... 85.00
 COLTS, set, dark blue, Fortney..... 125.00
 DONKEY & ELEPHANT, meadow brook green
 iridized, numbered.....ea. 150.00
 HCA OSCARS: 1977 Green..... 75.00
 1978 Rose Pink..... 50.00
 1979 Sunshine Yellow... 40.00
 1980 Heather..... 35.00
 1981 Light Blue..... 25.00
 ELEPHANTS, GREEN satin, PINK satin,
 PINK unfrosted, PINK carnival.ea 22.00
 1567 PLANTATION milk glass marmalade
 w/spoon..... 50.00
 DUMBO MUGS: 1970 Heather, Sprio Agnew 55.00
 1973 Blue Nixon-Agnew..... 55.00
 1973 Black Nixon-Ford..... 55.00
 1974 Green, Ford-Rockefeller... 55.00

* * * * *
 ABC SHOP PH: 614-892-2664 *
 JACK & SHARON METCALF P & I *
 Box 624 EXTRA *
 UTICA, OH 43080 *
 AMBER SPARKY.....\$498.00 *
 100 6" candlestick.....pr.. 65.00 *
 118 Flamingo candlestick, no optic pr 34.00 *
 128 LIBERTY candlestick, 3".....pr.. 35.00 *
 134 TRIDENT candlestick, flamingo.pr. 105.00 *
 142 CASCADE 3 lt candlestick....pr.. 88.00 *
 4044 NEW ERA 2 lt candlestick....pr.. 68.00 *
 3440 PORTSMOUTH goblet, flamingo..... 22.00 *
 3440 PORTSMOUTH goblet, crys w/mg1m ft 15.00ea *
 3360 PENN CHARTER goblet, flamingo,
 checkerboard optic.....ea.. 27.00 *
 1519 WAVERLY mayonnaise, ORCHID etch.. 55.00 *
 HEISEY canceled checks.....ea.. 1.00 *
 Lot of 100 for \$50.00 *
 IMPERIAL SLAG elephant..... 40.00 *
 IMPERIAL SLAG wood duck..... 35.00 *
 IMPERIAL SLAG donkey..... 42.00 *
 IMPERIAL SLAG sparky..... 25.00 *
 IMPERIAL SLAG standing pony 2/\$32..ea 20.00 *
 IMPERIAL carnival green elephant..... 65.00 *
 IMPERIAL HCA Sparky 1977 green..... 55.00 *
 IMPERIAL HCA Sparky pink or yellow ea 25.00 *
 *
 *

FOURTH ANNUAL
All Glass Show

Sheraton - Sturbridge Inn
Rte. 20 - Sturbridge, Mass.

Sept. 26, 1981 Sept. 27, 1981
 Sat.—10:30 AM-6 PM Sun.—9 AM-4 PM

All Glass of All Periods

SPONSOR
 BAY STATE HEISEY COLLECTORS CLUB
DONATION \$1.75 — with card \$1.50
Benefit—Heisey Glass Museum

DONALD P. BEAN P & I 10% EXTRA *
 183 DUTCHER STREET EXCESS REFUNDED *
 HOPEDALE, MASS 01747 5 DAY RETURN PRIV. *
 617-473-0561 * = MARKED

- 1404 OLD SANDWICH 6" 1 lite candle* (1)..\$ 23.00
- 1404 OLD SANDWICH water pitcher*small
 outside scratch near base..... 45.00
- 1503 CRYSTOLITE 7" rd. 3 cpt dish*..... 15.00
- 1503 CRYSTOLITE 10" rd 5 cpt relish..... 12.00
- 1401 EMPRESS 7" oval comport* Moongleam
 with nice floral cutting..... 60.00
- 1401 EMPRESS 5" 2 hdl preserve* moongleam
 with nice floral cutting..... 26.00
- 20 9" Candlesticks*.....(pr).. 85.00
- 465 REC. PANEL Basket7" Pat Dt 8/17/15.. 65.00
- 1509 QUEEN ANN 6" ftd mint, ORCHID etch.. 22.50
- 1519 WAVERLY sugar* ORCHID etch..... 15.00
- 1519 WAVERLY 7" rd plate ORCHID (5)...ea. 9.00
- 1519 WAVERLY 8" rd plate ORCHID (7)...ea. 11.00
- 1519 WAVERLY saucer ORCHID etch..... 9.00
- 1509 QUEEN ANN cup*.. ORCHID etch..... 9.00
- 1469 RIDGELEIGH star relish*. 5 cpt..... 32.50
- 365 OLD QUEEN ANNE oblong candy* 8x3"
 not shown in Vogel..... 27.50
- 365 OLD QUEEN ANNE 4" rd nappy*..... 6.50
- 1519 WAVERLY 12" gardenia bowl #508 etch. 35.00
- 1503 CRYSTOLITE 3 lite candlestick....pr. 26.00

* * * * *
 H & R DIAMOND H (614) 279-0390 *
 HELEN-BOB RAREY AFTER 5:30 *
 1450 WHITE ASH DRIVE Shipping & Ins extra *
 COLUMBUS, OH 43204 * Signed *

- 22 7" Candlestick*.....pr.. \$125.00 *
- 310 RING BAND 5 pc water set* custard
 rose dec. (sm chip bottom rim of
 pitcher)..... 425.00 *
- 393 NARROW FLUTE mustard & cover*..... 27.50 *
- 394 NARROW FLUTE 4½" chow chow dish*... 17.50 *
- 1183 REVERE 5" 2 hld. jelly*..... 17.50 *
- 394 NARROW FLUTE ind almond* (2)...ea.. 10.00 *
- 1469 RIDGELEIGH star relish..... 40.00 *
- 1519 WAVERLY oval, ftd compote, silver dec 75.00 *
- 1540 LARIAT 8½" basket 125.00 *
- 1637A Salad set (11" bowl, 14" plate)
 limelight..... 75.00 *
- 3333 OLD GLORY wine w/413 etch (3)...ea.. 37.50 *
- 3389 DUQUESNE 9 oz goblet w/450 etch
 (7).....ea.. 20.00 *
- 3389 DUQUESNE 5 oz champ w/450 etch(7)ea 15.00 *
- 3389 DUQUESNE 12 oz soda w/450 etch(6)ea 17.50 *
- 3397 GASCONY 14 oz soda w/459 etch(8) ea 97.50 *
- 3408 JAMESTOWN 9 oz goblet w/Narcissus
 cut (3).....ea 37.50 *
- 3408 JAMESTOWN 5 oz champ w/Narcissus
 cut (7).....ea.. 30.00 *
- 1180 Hotel Cr & Sugar*(no lid) w/cutting 37.50 *
- 300 PEERLESS ind. decanter..... 22.50 *

CLASSIFIED ADS. . .

- MOST colors, most patterns 3000 to 4000 pieces of Heisey to choose from SASE Please PEGGY'S ANTIQUES, Box 367, Spavinaw, OK 74366 Ph: (918) 589-2859.
 - WANTED: Buying Depression Glass, Heisey Rose and Orchid, Cambridge Rosepoint and Fostoria etched dinnerware. Also glass figures and unusual glass pieces. NADINE PANKOW, 207 S. Oakwood, Willow Springs, ILL 60480. 312-839-5231.
 - WANTED TO BUY: 8-Heisey crystal cups- "Old Colony Etch", Pattern #1509 "Queen Ann" Round. 6-Heisey crystal 5½ inch saucers - "Old Colony Etch", Pattern #1509 Queen Ann Round. 1-Heisey crystal 8½ inch luncheon plate "Old Colony Etch", Pattern #1509 Queen Ann round. All items must be mint-no Heisey by Imperial. VIRGIL C. BOYD, River View East Apt. 102, R. R. 3, 801 East Dodge, Luverne, Minnesota 56156. Ph: 507-283-2806.
 - Complete set of 12 Imperial slag animals \$800.00. 614-366-4824.
 - WANTED: Any items in following patterns: Colonial #363, Fifth-Avenue Colonial #347, Colonial Cupped #348, Puritan #341. Especially interested in goblets. HAROLD HODGES, 3739 Plaza Drive, Topeka, KS 66609.
 - FOR SALE: #5040 Moonglo stemware, Cutting No. 980. handblown, mint and marked: 7 Goblets, 4 Ice Teas; 6 Wines; 10 Sherbets; 10 Cocktails; 11 Juice: 12-12" salad plates with Original Heisey sticker. \$20 each. Matching Table accessories Pattern 1540, Moonglo cutting: 3 part relish dish, \$40.00; 14" party plate \$50.00; 2-3 light candlesticks \$100.00; 1 creamer & sugar, \$40.00; 3 piece mayonnaise set, \$30.00. DOROTHY WELLS, 400 Monroe, Helena, MONT. 59601.

* * * * *
 BEVERLY SULLIVAN
 12 POND VIEW CIRCLE POSTAGE EXTRA
 HATCHVILLE, MASS. 02536

- Imperial & dolphin candlesticks, cobalt \$125.00 pr
- 1469 RIDGELEIGH tray, star 5 compartment 35.00
- 1469 RIDGELEIGH 6 cups/saucers....set... 120.00
- 150 BANDED FLUTE sherbet 12.....ea.. 10.00
- 331 Straw holder, no cover..... 20.00
- 331 Mustard..... 22.00
- 347 1 oz. Cordial....4.....ea.. 14.00
- 1252 TWIST 10" celery, flamingo..... 25.00

WANTED: strainer for cocktail shaker
 * * * * *



#419 Sussex Vase
 Made from 12oz. Soda
 On Loan To Museum

We assume no responsibility for errors in these ads after the first printing Editor
For changes in ads during the year, please send \$1.00 per line.

MOSTLY HEISEY
RHODA CURLEY
16 Clayton Place
Albany, New York 12209
By Appointment (518)482-6272

LAST CHANCE ANTIQUES
P.O. BOX 502, Dania, Fl. 33004
Mail Orders - Matching Service
Send us your want lists
(305) 467-6356 Day or Evening

GOLDSBERRY'S ANTIQUES
KALAMAZOO, Michigan
Shows Only -- Buy & Sell
HEISEY A Speciality
Phone: (616)381-3013

SCHWAN'S ANTIQUES

Route 1, Box 175B
John Tyler Highway
WILLIAMSBURG, VA. 23185
(804)229-7873 Shop and Shows

GREEN ACRES FARM
Antiques, Crystal Glass & Collectibles
2678 Hazelton Etna Road, S.W.
(S.R.310 N.) Pataskala, Oh. 43062
Sat. & Sun. P.M. or Call (614)927-1882

BERT'S BUDGET SHOP
General Line Antiques
403 W. Main St., Newark, Oh. 43055
Phone: (614)349-8045

THE WOODEN SHOE
Antiques & Collectables-Buy & Sell
Glass, Furniture, Estates
Jim & Sheri Vanes, By Appointment
Herndon, Va. 22070 Phone:435 9045

CURIOSITY NOOK
'Where Friends Meet To Antique'
3300 S. 8th. Ave. Westward Village
Yuma, Ar. 85364 (602)726-6730 or 726-8070
Barney & Jody Barnicle

CURIO CORNER
Accent Antiques of Kensington
3742 Howard Ave.
Kensington, Md. 20795
Phone: (301)933-3750

ANTIQUES BOUGHT
BOB SHULTZ SOLD
206-208 E. Main St., Route 419
Newmanstown, Pa. 17073
15 Mi. West of Reading, Pa.
Phone: (215)589-2819

T & S ANTIQUES
TOM MARTIN STEVE RODERICK
Specializing in Heisey
New Rochelle, N.Y.
(914) 235-9632

RAMBLING LANE ANTIQUES
KEITH & EVELYN HOOVER
Featuring HEISEY and Other Fine Glass
Rt.4 Box 1005 Rhinelander, Wi. 54501
Phone: (715)282-5019

OFF-BROADWAY ANTIQUES
HEISEY GLASS & GENERAL ANTIQUES
121 S. Prospect St., Granville, Oh. 43023
Open 7 Days A Week 12-5 P.M.
Shop:(614)587-2083 Sam 587-0052

LYNNE & ART'S GLASS HOUSE, INC.
'HEISEY OUR SPECIALTY'
Miami Beach, Fl. 33154
P.O. Box 54-6014
(305)861-7700 (305)895-5666

CRYSTAL PALACE ANTIQUITIES

Cut Glass, Heisey, China, etc.
116 S. Taylor St., Hemet, Ca.
Mon-Fri 10:00 a.m.-5:00 p.m.
Weekends by adv. appt. (714) 652-1307

PEGGY'S ANTIQUES
2000 pcs. Heisey in stock
Ernie and Peggy Cox
P.O. Box 367, Spavinaw, Ok. 74366
(918) 589-2859 By Appt. or by chance

DIAMOND H PLUS
George & EILEEN SCHAMEL
Rt. 3 Box 419 Boonsboro, Md. 21713
Appointment or Mail Order
Phone: (301)432-6285

HEIDI-HO ANTIQUES, INC.
HEISEY and GENERAL ANTIQUES
838 S. High St., Columbus, Oh. 43206
Phone: (614)444-5774
Hours: Wed.-Sat. 11-5, Sun. 1-5

RECOLLECTIONS

THERESA WERT
Lahaska Antique Center
Route 202 Lahaska, Pa.
Phone: (215)794-8667

ANN'S GIFTS & ANTIQUES
105 W. Main St., Hebron, Oh. 43025
Intersection Rt's 40 & 79
Next Door to Daisy Queen
Daily 11:30 A.M. to 5:30 P.M. Closed Thursday

SUM OF LIFE
ELAINE & FRANK HUSTED
P.O. Box 102
Phoenixville, Pa. 19460
Phone: (215)935-2962

THE "FINDERS" ANTIQUES
DAVID & SHIRLEY ROSE
513 E. Main Street
Newark, Oh. 43055
Phone: (614)349-7934

MOUNDBUILDERS ANTIQUES
IRENE RAUCK
1138 Moundview, Newark, Oh. 43055
Phone: (614)344-6043
Heisey & Animals General Antiques

HAPPY HAVEN ANTIQUES
MARY DUMKE
14319 Rattlesnake Road
Grass Valley, Ca. 95945
Phone: (916)273-9450

THE PURPLE PLACE
Specializing in Art Glass
HEISEY, CAMBRIDGE, PATTERN
3093 Cleveland (U. S. 41)
Fort Myers, Fl. 33901 813-936-1572

C&J ANTIQUES
COLE & JEAN MIESNER
BOX 45, 72 VHIGH ST.
NEWARK VALLEY, N.Y. 13811
(607) 642-9905

GEORGE HOFFMAN ANTIQUES
G.W. HOFFMAN - J.H. DENNIS
129 South 4th. Street
Newark, Oh. 43055
Phone: (614)345-8021

CHARLES & MILDRED FISHER
Antiques & Collectibles, General Line
HEISEY, DEGENHART, IMPERIAL
991 Idlewilde, Newark, Oh. 43055
Phone: (614)522-5398

HARRISON'S ANTIQUES
HEISEY, CAMBRIDGE, DUNCAN
26 Johnston's Lane
Mercersburg, Pa. 17236
Shows, Mail, By Appt. (717) 328-2451

RENETTAS RELICS
515 North St., Utica, Ohio
Antiques & Collectibles
Open Thurs-Sat 12-6 or by appt.
Phone (614) 892-2488

H and R DIAMOND H
HELEN & ROBERT RAREY
1450 WHITE ASH DRIVE
Columbus, Oh. 43204
(614) 279-0390 after 5:30

9TH ANNUAL MINI-SHOW
AND FLEA MARKET
SEPTEMBER 12, 1981

9-4 PM

75¢ ADMISSION

REYNOLDSBURG HIGH SCHOOL
6699 E. LIVINGSTON AVE.

(Very Close To Two Exits Off I-70)

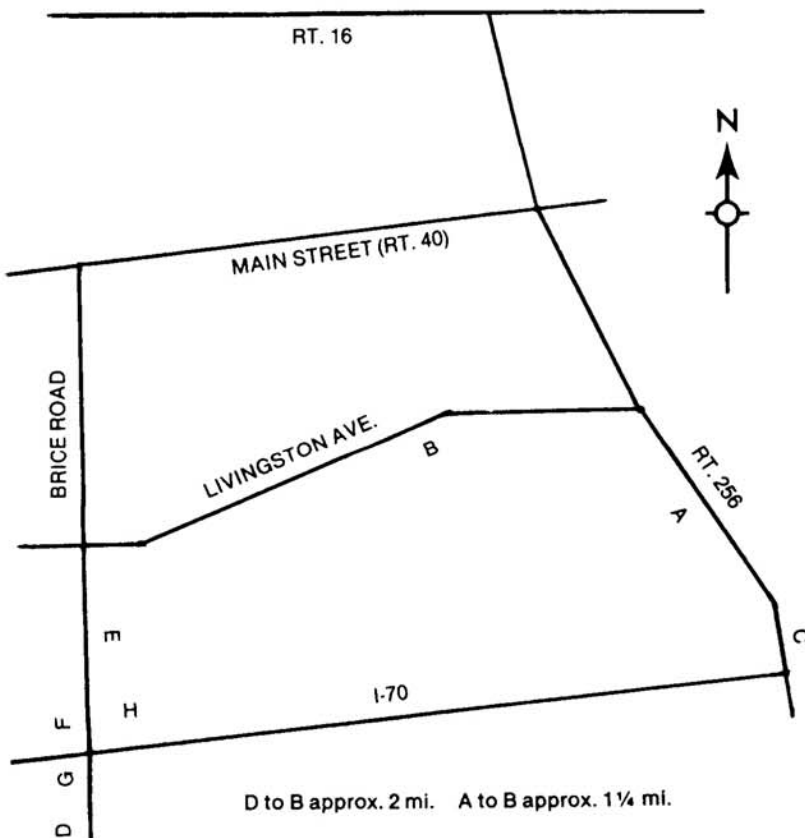
With ANNUAL SOUVENIR DINNER being held at STONEY CREEK COUNTRY CLUB

(Executive Caterers) Rte. #256, Reynoldsburg, the MINI-SHOW will be held in near-
by Reynoldsburg for your convenience.

FOR DEALER SPACE CONTACT: REYNOLDSBURG HCC
c/o SHIRLEY BAGFORD
1290 HILTON DRIVE
REYNOLDSBURG, OH 43068

(614) 866-4035

MAP OF AREA OF MINI-SHOW AND DINNER IN REYNOLDSBURG, OH.



- A EXECUTIVE CATERERS
- B REYNOLDSBURG HIGH SCHOOL

MOTELS:

- C HOLIDAY INN (614) 861-7800
I 70 and RT. 256
Single \$29.30 Double \$39.06 Triple \$43.40
No charge for children Tax included
- D KNIGHT'S INN (614) 864-4670
I 70 and Brice Road
Single \$20.61 Double \$27.67 Includes tax
No charge under 18 if with 2 adults
- E RAMADA INN (614) 864-1280
2100 Brice Road
Single \$40.15 Double \$46.66
No charge under 18 Includes tax
- F RED ROOF INN (614) 864-3680
I 70 and Brice Road
Single 1 person \$19.83 2 persons \$23.08
Double 1 person \$20.91 2 persons \$25.25
3 or more persons \$27.42 (limit 5 persons)
No charge under 12 Tax include
- G DAY'S INN (614) 868-9200
I 70 and Brice Road
1 person, \$22.65 2 persons \$26.99, 3 persons \$30.25
4 persons \$33.51. Extra adult \$3.00, Extra child \$1.00
Manimum 5 people Plus tax
- H BUDGETEL (614) 866-8000
I 70 and Brice Road
Single 1 person \$17.95, 2 persons \$21.95
Double 1 person \$18.95, 2 persons \$22.95
Family room (3 or 4) \$24.95
Does not include tax.

Elyse & Michael Bosniak
 502 Irving Place
 Baldwin, New York 11510

Phone: (516) 223-8969
 Postage & Insurance Extra
 * Marked

- 6 Moongleam Mayonnaise Ladle* \$ 10
- 10 Moongleam Floral Bowl* with Frog 35
- 300 Candlesticks 12" 1-Lite (no bobeches)* pair 45
- 300 Peerless 2½ oz bar glass* 10
- 335 Prince of Wales Plumes Sugar (no cover)* 15
- 350 Pinwheel & Fan Puff Jar (no cover)* 15
- 393 Narrow Flute Hotel Sugar* 10
- 407 Coarse Rib Flamingo 4½" Plates* 3 for 15
- 407 Coarse Rib 2-Hld Sugar & Cover* 15
- 473 Narrow Flute with Rim Loaf Sugar Amthyst Flash* 20
- 473 Narrow Flute with Rim Indiv Butter* 5
- 1024 Hotel Cream* 10
- 1180 Hotel Sugar Unkn Etch (no cover)* 5
- 1201 Fandango Indiv Salt (inside crack) 10
- 1205 Fancy Loop Indiv Salt 10
- 1205 Fancy Loop 4" Sq Nappy 10
- 1205 Fancy Loop Oval "A" Bowl 20
- 1252 Twist Flamingo Mayonnaise Round Foot 15
- 1252 Twist Flamingo Baker Bowl* 15
- 1252 Twist Flamingo 6" 2-Hld Mint* 10
- 1252 Twist Flamingo 8" Plates* 8 for 64
- 1401 Lionhead Bowl Moongleam (chipped foot) 195
- 1401 Empress Moongleam 2-Hld Ftd Jelly (chipped foot)* 5
- 1433 Thmbprnt/Panel 2-Lite Candlestks Unkn Etch pair 45
- 1454 Diamond Point Indiv Ash Tray & Indiv Jelly* 10
- 1469 Ridgeleigh Indiv Salt* 5
- 1503 Crystolite 5½" Ftd Cheese 10
- 1540 Lariat 2-Lite Candlesticks pair 30
- 1540 Lariat Orchid Etch Fan Vase 50
- 5025 Tyrolean Orchid Etch 6 oz Champagnes* 2 for 45

DATES TO REMEMBER


- Sept. 12-- Mini-Show, Reynoldsburg High School, Livingston Ave., Reynoldsburg, OH. Annual Souvenir Dinner- Stoneycreek Country Club, Rte. 256 Reynoldsburg
 - Sept. 26-27 All Glass Show, Sturbridge, MA. Bay State HCC (See AD this issue.)
 - Oct. 3- 4 Glass Show, Willow Grove, PA. Heisey Heritage Society
 - Dec. 12-- Annual Christmas Party, Moundbuilders Country Club, Newark, OH
- 1982
- March 12-13 All Heisey Auction - OSU Newark, OH
 - June 17 -20 11th Annual Convention
 - Sept. 11th Souvenir Dinner

1981-82 Officers

- President - Bob McClain
- Vice. Pres.- Jack Metcalf
- Treasurer - Dick Marsh
- Secretary - Mary McWilliams
- Member at Large - Tom Bredehoft

George Schamel of Maryland was elected to serve Louise Ream's unexpired term.

Our Bob Evans Farm Stock has split three (3) for two (2) so we now own 1800 shares.



return to:
HEISEY NEWS
Box 27
Newark, Oh 43055

FIRST CLASS MAIL
U.S. POSTAGE
PAID
PERMIT 34
Reynoldsburg, Ohio 43068

FIRST CLASS MAIL