

HEISEY

OFFICIAL PUBLICATION HEISEY COLLECTORS OF AMERICA

©Heisey Collectors of America, Inc. 1981
All Rights Reserved

NEWS

VOLUME X NO. 6 JUNE 1981

ONE DOLLAR



Colonial Glassware sparkling with the memories of Grandmother's days
 Better designs have never been created than the quaintly beautiful pieces of glassware your Grandmother was so proud of in the long ago Colonial days. The true beauty of this old time glassware with its odd shape and dignity of form, is now completely reproduced in

Heisey's Diamond "H" Glassware
Costs but little more than the ordinary kind

Dainty enough to lend a touch of refinement to the most resplendent board, yet sturdy enough for every day. Diamond H Glassware is clear and sparkling; the best that can be made: yet, quality and endurance considered, it is the cheapest you can buy.

Ask your dealer for the kind with the Diamond H trade mark on the underside of every piece.
 Manufactured exclusively by A. H. HEISEY & CO., Newark, Ohio, U. S. A.

FRONT COVER--MISCELLANEOUS ITEMS IN 1503 CRYSTOLITE PATTERN. ORIGINAL HEISEY PHOTO

HEISEY NEWS---P.O. BOX 27---NEWARK, OHIO 43055

EDITOR-LOUISE REAM, Box 27, Newark, Oh. 43055
 ASS'T EDITOR-NEILA BREDEHOFT, Box 27, Newark, Oh. 43055
 PUBLISHED MONTHLY-\$12.00/year-\$1.00/copy

BACK ISSUES OF HEISEY NEWS \$9.00 per set.

PRESIDENT	LOUISE REAM	(614) 344-2377
VICE PRESIDENT	JACK METCALF	(614) 892-2664
SECRETARY	MARY McWILLIAMS	(614) 345-4380
TREASURER	DICK MARSH	(614) 366-5608

Heisey Collectors of America, Inc. is a non-profit corporation with tax exempt status. Owners and operators of National Heisey Glass Museum, 6th. & Church Streets, Newark, Ohio. Open Daily 1-4p.m. March through December except Mondays and Holidays. January & February-Wednesday, Saturday, Sunday 1-4p.m. Other times by appointment. Members admitted free.

PHONE (614) 345-2932. Club membership (Includes 12 issues of Heisey News and participation in all club activities) \$12.00/year plus \$2.00 each for additional family members in same household who wish a membership card. For VOTING MEMBERSHIP add \$25.00, one time only fee, or write for information.

FOR MEMBERSHIP-HCA MEMBERSHIP, BOX 27
 NEWARK, OH 43055. Notify immediately of any change of address.

The opinions expressed in articles in Heisey News are those of the authors and not necessarily those of the organization. The Editorial Staff reserves the right to edit or refuse any material submitted for publication. When requesting information, please enclose a self addressed stamped envelope(SASE).

ADVERTISING- Send all ads to:

Neila Bredehoff, Advertising
 Box 27

Newark, Ohio 43055

DEALERS' DIRECTORY-5 lines - \$18.00/year.

CLASSIFIED-10¢/word. \$1.00 minimum.
 Abbreviations and initials count as words.

DISPLAY:	MEMBER	NON-MEMBERS
1/8 pg (9 items),	\$12.00	\$20.00
1/4 pg (20 items)	20.00	30.00
1/2 pg (20 items)	35.00	45.00
1 pg (50 items)	60.00	75.00

We will not double-column ads. No VERTICAL 1/2 page ads. ALL ADS MUST BE PREPAID. Ad copy must be received by the 5th. of the month to be included in that month's NEWS. ads containing reproductions will not knowingly be accepted unless clearly stated (i.e. Heisey by Imperial, etc.) HEISEY NEWS assumes no responsibility for false advertising or misleading information. In the event of typographical error, the incorrect portion of the ad will be run in the following issue, but HEISEY NEWS assumes no further liability.

Send all letters and articles to be published to the EDITOR. Letters to columnists should be sent to the club address and will be forwarded.

FASCINATING INSIGHTS INTO EARLY HEISEY HISTORY - TAKEN FROM EARLY TRADE JOURNAL REPRINTS

This is a continuation of early reports begun in the December, 1980 issue of HEISEY NEWS.

CHINA, GLASS & LAMPS, September 9, 1896

"The factory of A. H. Heisey & Co. has been having a good run since starting, and while the new patterns of imitation cut ware this firm started out with have by no means become slow sellers, another very fine set of tableware has been put upon the market for the fall run. No old molds are being worked, because the firm has no old or second hand molds, but proposes to put a new set on the market at least every six months, or as fast as new molds can be designed and executed in their shop. For years to come, therefore Mr. Heisey will be able to supply his patrons with new goods constantly, and the factory is large enough to enable the firm to ship orders promptly."

* * * *

CHINA, GLASS & LAMPS, September 26, 1896

"The factory of A. H. Heisey & Co., at Newark, Ohio, closed down on Saturday last, owing to dullness in trade in the lines of ware manufactured."

* * * *

NATIONAL GLASS BUDGET, October 3, 1896

"A. H. Heisey, of the glass firm bearing his name at Newark, O., is looking for the man who started the report that his plant had been closed down owing to dullness in trade, with a razor. Mr. Heisey states that a three day's stop was made for the purpose of making necessary repairs and that trade conditions had nothing to do with (the) matter."

* * * *

CHINA, GLASS & LAMPS January 13, 1897

"One of the best high class exhibits in pressed tableware in the house, or elsewhere, for that matter, is that made by A. H. Heisey & Co., of Newark, Ohio, in room 79. Their new pattern, No. 1205, is an imitation cut, the characteristics of which are the beaded or pillar line of light, supplemented with diamond pointed double incut parallel and cross lines, filled in with faceted hobnails, and quartered faceted squares, which, by their deep cutting and angular structure, show off the crystal to fine advantage. The bowls are made in 10, 11 and 14 inches, serving for orange, fruit or punch bowls, and are made with or without foot. The nappies and square dishes of the set are exceptionally fine, are without mold mark, and are made to deliver in a manner which has puzzled the oldest glass

makers. The pattern in the square dish has an exceptionally bright, pearly square line crossing pattern, which has been admitted by rivals to be among the choicest pieces of pressed ware ever made. The 1205 pattern is very strong in nappies, bowls, celeries, creams, vases and rose bowls, and the water and wine sets, tumblers and goblets, in which the handsome figure of the pattern is finely brought out, make it one of the best high class lines on the market. The exhibit contains a few advance pieces of the new No. 1220 pattern, a combination of plain and figured line, or for engraving and decoration. The new ware is finished so as to give it a blown shape, which lends it additional attractiveness."

(Ed. Note: #1205 is the Fancy Loop pattern and #1220 is the Puntty Band pattern.)

* * * *

CHINA, GLASS & LAMPS, February 3, 1897

" A. H. Heisey & Co.
Samples of modern pressed glassware

Among American manufacturers who are fully up to date in their lines of pressed glassware, prominence must be given by virtue of merit, to the A. H. Heisey & Co., of Newark, Ohio. Mr. Heisey was for many years identified with the old house of Geo. Duncan & Sons, for whom he sold goods on the road before becoming an active partner and officer of the company, and the experience thus gained as to the taste, requirements and demands of jobbers and consumers, has stood him in good stead ever since. The 16-pot factory built at Newark was started last spring, and one advantage of the new company consisted in the fact that there was an entire absence of old molds, patterns and designs to work off and sandwich between a few new patterns. Every pattern put on the market since last spring has been of original design, and while some old glass men thought it a mistake in the management to spring its third new tableware line on the market early in the fall, it has been found that the line is of sufficient merit to hold its place among the finest patterns shown this year, while new pieces have been constantly added to round out and keep the pattern No. 1205 fresh and brilliant as the best. A glance at the various samples herewith shown will disclose its strong light reflecting qualities, the design consisting of crossed parallel incut lines looped and returned, with a round raised pillar line, making a strong contrast between the deep cut lines and the filled in spaces of hobnail and faceted squares, which, with scalloped edges, make a very pretty and strong imitation cut pattern, showing off the excellent and clear metal to fine advantage."

* * * *



No. 10 Mustard Paddle



No. 1 Mustard Spoon



No. 2 Mustard Spoon



No. 5 Mustard Spoon

The purpose of this article is to acquaint you with the mustard spoons and paddles produced by the Heisey Company. However, before we do this, let's first take a brief look at the mustard jars themselves. Heisey produced mustard jars over the entire life of the Company. This does not mean that every pattern had a mustard jar, many did not. Two early patterns that had mustards were #1201 Fandango and #1205 Fancy Loop and two late patterns were #1469 Ridgeleigh and #1503 Crystalite. The mustard jar with the longest life was in the #341 pattern with its several pattern names.

Now, on to the spoons. Heisey produced three glass mustard spoons and one glass mustard paddle. The three spoons were given stock numbers 1, 2, and 5 and the paddle was given number 10. The first interesting thing to note is that the mustard spoons and paddle were not made over the life of the Company. The first document where I found a mustard spoon listed was price list #142, circa 1907. Price lists #120 (1906), #100 (1903) and #60 (1902) did not list a spoon. Apparently Heisey didn't offer a glass mustard spoon from 1896 to 1906. Perhaps small silver spoons were more popular for mustard jars during these early times.

The glass spoon in price list #142 was included as a separate item in the list of available mustard jars. There was no stock number shown for the spoon, so the Heisey salesman must have placed orders for the item by just calling it "the mustard spoon." Looking at the catalog pictures, the spoon appears to be the number 1 mustard spoon. The spoon was first identified as the #1 spoon in price list #175 (1913). This spoon is easy to identify. It is 4½ inches long, and has an enlargement in the handle about 1½ inches down from the top. It is signed with a Diamond H near the top of the handle.

Production of the #2 mustard spoon started in 1913. This was the same time that production of the #2 10" salad spoon and fork started. The #2 mustard spoon is about 4½ inches long and looks like a miniature version of the #2 10" salad spoon. There is a small diamond shape where the handle joins the spoon bowl, and the handle enlarges into a wider flat section at the top of the mustard spoon. It is signed with a Diamond H.

The #1 and #2 mustard spoons were produced in crystal only. Production of the #1 spoon was 30 years, 1907 to 1936, and for the #2 spoon was 24 years, 1913 to 1936.

The #5 mustard spoon first appeared in about 1916. In price list #179 (1917), the #1, #2 and #5 spoons were listed as glass mustard or relish spoons. The #5 looks similar to the #2 except that it does not have the small diamond shape at the end of the handle where it joins the bowl. The #5 is 4 inches long, about ½" shorter than the #2 spoon. The #5 is signed with a Diamond H near the top in the wider part of the handle.

The #5 mustard spoon was the only one offered in color. Besides crystal, it was made in flamingo, moongleam and sahara. The color spoons were produced to go with the color mustard jars in #1401 Empress, #1252 Twist and #417 Double Rib & Panel. Empress was the only pattern line that offered the mustard, cover and the #5 spoon as a set. In all the other cases, the spoons were offered as a separate item. Thus, it was up to the retailer to combine the mustard jars and spoons into sets, if desired.

The #5 spoon in crystal was produced until about 1942. Thus, its production life was 27 years, 1916 to 1942. The maximum production period for the colored #5 spoons would be the production life for the color in question.

The #10 mustard paddle was first offered in 1936. The paddle is 3 inches long, and is not signed. One end of the paddle flattens out to form the paddle rather than a spoon bowl. The other end of the paddle is in the form of a small ball. Note how the #10 paddle is shorter than the three mustard spoons. The #10 paddle was apparently designed to go with the shorter mustards like those in the Crystalite or Ridgeleigh patterns. For example, the #10 paddle is too short for use with the mustard in the #1506 Whirlpool pattern.

The #10 paddle was produced in crystal only, and its production life was only about 6 years, 1936 to 1941.

One other mustard paddle bears mentioning. It was an unique one. Specifically, the paddle was produced as an integral part of the cover for use with the mustard in the #1485 Saturn pattern.

The paddle sticks down for about 2 inches from the inside center of the cover. A picture of the Saturn mustard and paddle cover is shown in Vogel III, page 115. I have seen the paddle cover in crystal and zircon.

Happy hunting for mustard spoons. The hardest to find appears to be the number 2 spoon. Second is the #5 spoons in color.

Ed. Note: Though the catalog or price list may not list the mustard paddle in color, it was indeed made in color and was often used in the Empress mustards and is, in fact, pictured with them. Also, while the Fandango item looks like a mustard, it is labeled a horse radish in catalogs.



515 HEISEY ROSE ETCH ON 5057 SUEZ STEM. NEVER MADE FOR PRODUCTION.

- # 464 HARLEQUIN
- # 466 ATHLETIC SCENES IN BORDER
- #9026 WISSAHICKON CLUB
- #9027 AMHERST CREST
- #9028 AMHERST GERMAN CLUB

Several Heisey etchings are known only on or usually on beer mugs. It is believed that both Harlequin and Athletic Scenes in Border are silhouette etchings. Both were new in 1933 and are found on 4163 beer mugs - Harlequin on the 16 oz. and Athletic Scenes in Border on the 12 oz.

The Crockery & Glass Journal of June, 1933 had a small mention of the Harlequin etching along with several other etchings found on beer mugs.

"There are loads of new tricks down at Heisey's in the Arctic etch treatment which they've used to create a new line of mugs, jugs and shakers. On the whole they've gone very sporty in their choice of motifs...hunt scenes that are well arranged in a continuous design (Fox Chase) and a horse and rider excellently posed in perfect form. In addition they have a slick diamond checkerboard pattern (HARLEQUIN) and an English tavern scene. (Club Drinking Scene). Mugs will retail around \$10.50 a dozen; jugs at \$1.50 each and shakers for \$3.00...." I have added the Heisey names for the etchings to the above quote.

The Harlequin etch takes its name from the resemblance to the traditional costume of a court harlequin. The etching consists of alternating clear and etched diamonds about the beer mug. It must have had a very limited production as it is shown in a 1933 Table Talk, but is not listed in any price lists. This would indicate it had probably been dropped from sales before 1935. Found on 4163 beer mug, 16 oz., crystal.

#466 Athletic Scenes in Border is also a very scarce etching. There is a mug with this design on display at the Museum. The etching consists of 5 different sports designs--tennis, polo, baseball, diving, and golf--one silhouette of each set in a frame surrounding each sports figure. This series of figures completely surrounds the mug. This etching also was not listed in printed price lists, but a notation of the number and the name was found in a penned list in the back of one price list. It was introduced circa 1933 and was also probably discontinued before 1935. Found on 4163 beer mug, 16 oz., crystal.

#9026 Wissahickon Club is a specialty etching made for a card club probably as a prize. It is known on a #3408 Jamestown beer mug, 12 oz.

#9027 Amherst Crest is found on a #3408 Jamestown 12 oz. beer mug and on a #4052 National goblet. There may be other items available. I have heard of an ash tray, but I do not know which one it was. Several members of the Heisey family were Amherst graduates, consequently the close ties to the college. This particular etching is found in two variations: 1. The lettering and remainder of the crest is etched into the glass and 2. The background of the crest is etched into the glass leaving the lettering clear.

#9028 Amherst German Club is a fanciful etching also found on the #3408 Jamestown 12 oz. beer mug. The following is quoted from a letter from the college after inquiry was made as to the origin and significance of the etching:

"These steins were manufactured in 1936 for the German Department at Amherst and etched according to its design.

The design shows symbolic caricatures as follows: The upper one represents the head and three hairs of Chancellor Otto von Bismark, the two side ones represent the moustaches of Emperor Wilhelm, II, and the lower one represents the moustache of Adolf Hitler.

The motto "Eins und Alles" means "One and All." "

Any of these 5 etchings are rare and a collector would be indeed fortunate to find any one of them. A collection including one of each would be almost impossible to imagine.

Ed. Note: Mugs with Amherst and German Club etch are also found in the museum. Athletic Scenes in Border is definitely a silhouette etch.



9027 AMHERST CREST



9026 WISSAHICKON CLUB

Recently, while going through the original factory turn books in the HCA library, we came across the answer to a question which had been puzzling us. For some time now there has been a pair of No. 5 1-light candelabra as well as a No. 21 electroportable lamp on display in the museum in a color which seemed to be emerald and, not long ago, a 7" No. 2 candlestick in this same color was loaned to the museum. The question, of course, was whether these pieces really were in emerald and, if so, when they were made - or if, rather, they were in an early shade of moongleam instead.

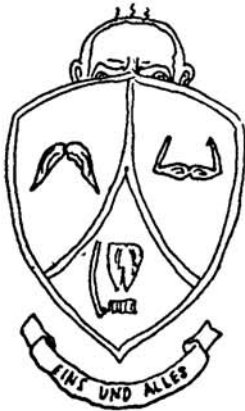
The answer, according to the turn books, is that they are, indeed, an early shade of moongleam. In September, 1925, (about 5 months after the first pieces of moongleam were made) one turn each of both the 7" No. 2's and the No. 5 1-light candelabra bases were made in green. Two weeks later, they were experimenting with the new color again, this time making a turn of 9" No. 20's, with the column portion of the candlesticks in crystal and the candleholder portion in moongleam. And in January 1926, they made half a turn each of the No. 21 9" electroportable bases, in both moongleam and flamingo. Unfortunately, we do not have any turn books for the years immediately following October 1926, so there is no way of knowing whether additional turns were ever made of any of these items, or if any other colonial candlesticks were also made in color. (The No. 1 candlestick has been seen in flamingo, so it certainly does seem likely that others may have been made in either of these two colors, or, for that matter, in any of the other colors that Heisey made. Does anyone have any colonial candlesticks in colors other than these?)

Whether these candlesticks in color can really be considered production items is somewhat of a moot point. According to the limited records we have, the turns ranged from 113 to 259 candlesticks each, but only one of these items ever appeared in a price list: the No. 5 1-light candelabra, which was offered in moongleam in supplement 3 to P. L. 208, circa 1927.

All of these moongleam colonial candlesticks, incidentally, are in a shade of green which appears to be identical to emerald, lending support to the theory that the early moongleam formula was the same as that used in earlier years for emerald. But, of course, in advertising as early as April 1925, Heisey was calling this "new" color moongleam. Maybe we should get in the habit of referring to it as early moongleam, to differentiate from the later, paler shades advertised under the same name?

+++++

CONTINUED FROM PAGE 6



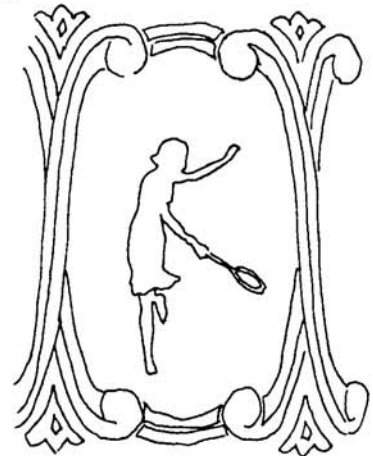
9028 AMHERST GERMAN CLUB



4163



464 HARLEQUIN



466 ATHLETIC SCENES IN BORDER
Silhouette Etching



No. 1590 ZODIAC

In January 1949, an ad in the Crockery and Glass Journal announced Heisey's newest pattern: "The Zodiac, ancient symbol of destiny ruled by the stars, provides the motif for Heisey's latest triumph in hand-wrought crystal." This, of course, is Heisey's No. 1590 line and, although the ad does not picture it, the line did include a 2 light candlestick.

Actually, Zodiac had its beginnings somewhat earlier, probably around 1945 or 1946, when Horace King designed first a sandwich plate and then a salad plate in this pattern. It was only after these pieces had already been put into production that it was decided to design a full line to go with them and Mr. King then spent three years doing so. (For more information about how Zodiac all began, see Mr. King's article in the August 1973 issue of the Heisey News.)

At any rate, by January 1949 a full line of 24 pieces was available, including the 2-light candlestick. Production for this line was quite brief and the candlestick was discontinued one year later, in January 1950. Because of the ornateness of the designs, Zodiac pieces were apparently very difficult to remove from the molds and this made them an expensive line to produce, which certainly must have been a contributing factor in deciding to discontinue the line so early. Mr. King also claims that, due to the popularity of so many other patterns around that time, such as Lariat, Whirlpool and Crystolite and the more recently introduced lines of Plantation, Waverly and Cabochon, that Zodiac was not really promoted by the salesmen.

At any rate, the result is that Zodiac pieces are not particularly easy to find and this is certainly true of the candlestick. The one pictured is actually an Imperial reissue, marked with the I over the G. Imperial made Zodiac somewhat longer than Heisey (from January 1969 to December 1970) but even the reissues are difficult to find.

The candlestick shares several recurring motifs with the rest of the line, although it does not have the 12-sided polygonal shape which made it possible for some of the more representative pieces to show all twelve signs of the zodiac. Instead, the candlestick has a large center medallion with an ornate border enclosing the figure of Jupiter Pluvius (Jupiter seated on a rain-cloud - not one of the figures of the zodiac, he was added to the center medallions of most of the pieces in the line in preference to leaving that area plain. According to Mr. King, his drawing of Jupiter Pluvius was originally meant to be a joke, but Clarence Heisey liked it and eventually, on some of the pieces - such as the coaster and the ash trays - it became the only design element to really link them to the rest of the line.) This figure is surrounded by stippling and the outer sides of both arms are stippled as well. It is only on the candleholder portions that figures of the zodiac actually appear: Capricorn and Sagittarius are on one candleholder and Taurus and Leo on the other. The base is plain and about 5½" in diameter.

The Zodiac candlestick was made only in crystal by Heisey and should be marked. (Many Zodiac pieces were marked just to the rear of the heel of Jupiter Pluvius, so that the mark is almost hidden in the stippling. Does anyone know if this is the case with the candlestick?) The Imperial reissues are also marked, but the IG appears on the top scroll of the border surrounding the center medallion. Imperial also made this candlestick in color, in Amberglo and Verde.



CLUB NEWS. . .

BAY STATE HCC

MAY

President Lloyd Caswell called the meeting to order with thirty members and one guest present.

We put the final touches on our display for the convention in Newark. Speaking of the convention, by the time this is printed and released the convention will be history. I want to wish a belated Happy Birthday to all who have made the museum and all that goes with it a huge success. By the way the author did not attend again this year, hopefully next.

With the meeting part dispensed with we had our program which was "Ash Trays & Smoking Materials". Herewith are some items brought:

1. A sleeping fox ash tray - a goodie
2. General MacArthur Hat
3. Duck ash tray in moongleam and sahara.
4. Horse Head ash tray
5. #1280 Winged Scroll cigarette holder in emerald.
6. Victorian cigarette box
7. 1469 cigarette box and ash tray in zircon.
8. Crystolite ash tray in sahara and zircon.

The program realized about 150 ash trays and related items. The program conducted by Mary Williams who did a superb job.

Show and tell was next done by our resident show and teller David Steer always a fine job.

Some items brought:

1. #351 violet vase
2. Kingfisher in hawthorne
3. Bead Swag toothpick in opal
4. Pineapple & Fan ruby stained mug
5. Victorian decanter
6. #5082 Mid Century 5 oz. cocktail
7. Comet Leaf champagne
8. #5079 Pan American 3 oz. Cocktail
9. Fancy Loop cracker jar
10. A pair #20 9" candlesticks

Meeting adjourned. We had coffee and goodies provided by Helen Mead and Betty Pease. The diets went out the window this nite.

Sincerely,
- George Gleason

P. S. Happy Birthday again!

+++++

HEISEY COLLECTORS OF TEXAS

March is the auction month, but since Dallas, Texas is over a thousand miles from "HCA Land" we had our own auction! This auction was held in Carrollton, Texas at the Buchanan's, and somewhat different. Our auction was a "Blind Auction" loads of fun

and a lot of beautiful pieces of Heisey. The proceeds will go to purchasing Heisey toothpick(s) to be presented to the HCA National Museum in June. Our auctioneer was Gerald Buchanan and what a great job he did!

Trudy Miller was our hostess of the April meeting and as usual we had a great time there. After making final plans for setting up our display at the Kiwanis Club Show to be held in April, we all enjoyed a big "Show and Tell" time, and then seeing Trudy's great collection of Heisey.

May meeting was held at the Hulslander's with election of officers being the highlight of the evening. Gerald Buchanan was elected as President, Roger Hulslander, Vice President and Erma Hulslander, Secy/Treas.

Our display at the Kiwanis Show was well accepted, met many Heisey collectors and dealers. A sum of money was made for HCA National Museum by selling Heisey Books and souvenir items.

+++++

BAY STATE HCC

JUNE

The regular monthly meeting of the BSHCC was held at the Hancock Church in Lexington, MA. President Lloyd Caswell called the meeting to order. There were twenty seven members and three guests present. Our membership is growing so it just goes to show that Heisey is still very desirable and that people want to preserve a piece of our past through collecting or selling.

With our gift display all set the business portion of our meeting was adjourned for our program.

The program for the evening was tumblers. The program realized about one hundred tumblers. The program was conducted by Fred and Betty Pease, who did a superb job. Herewith are some that were shown:

- #4054 Coronation, clear
- #7000 Sunflower, clear
- # 351 Priscilla, clear
- #350 Pinwheel and Fan, clear
- # 357 Prison Stripe, clear
- # 451 Cross Line Flute, clear
- # 310 Ring Band, custard
- #3389 Duquesne, tangerine
- #1776 Kalonyal, clear
- # 419 Sussex, clear
- #1255 Pineapple & Fan, emerald
- #1295 Bead Swag, opal
- #1417 Arch, cobalt
- #1201 Fandango, clear
- #1205 Fancy Loop, clear

Again Betty & Fred did a wonderful job. Show and Tell was no slouch either. We really had a good month this time. Herewith are some items brought:

- #1104 Yeoman comport
 - #1401 Empress ice bucket, yellow and clear
 - Empress sugar & cream with Lafayette etch
 - # 10 Flower block, moongleam
 - #1225 Plain Band salt
 - #3481 Glenford with #442 Diana etch.
- Show and Tell was conducted by David Steer

CONTINUED ON NEXT PAGE

CLUB NEWS, Continued.

who as always does a fine job.

Meeting adjourned for coffee and cake provided by Jarda Cragg and Barbara McTighe. They put on a good spread.

Hope everyone has a nice summer. Our next meeting will be in September so see you then. In the meantime, Happy Hunting!

-- George Gleason

P. S. Don't forget our All Glass Show in September at Sturbridge, Mass.

+++++

LETTERS, WE GET LETTERS. . .

...Last Oct., while in Newark, I asked about a study group in Phoenix and you put my name in the paper. There are now 10 of us in the group - and a nicer bunch couldn't be found. Heisey people are great! We have learned a lot and thoroughly enjoy our get-togethers. Two of our group are getting to Newark in June. The rest are green with envy.

Heisey is getting more & more scarce out here but occasionally do find some. When you are as hooked as we are, you keep right on searching.

- Ruth Berluti



CLASSIFIED ADS:

- WANTED: Buying Depression Glass, Heisey Rose and Orchid, Cambridge Rosepoint and Fostoria etched dinnerware. Also glass figures and unusual glass pieces. NADINE PANKOW, 207 S. Oakwood, Willow Springs, IL 60480. 321-839-5231.

- WANTED: Soda Fountain Items, especially straw holders. GEORGE HANEY, PO Box 538, Spencer, OK 73084.

- FOR SALE: Heisey Plantation 10 oz goblets, 5½ oz. champagne/sherbetts, 4 oz. clarets 3½ oz. sherry, footed cake plate. Write: V. MULHERIN, 55 Border St., Dedham, Mass. 02026 or (617) 326-5867.

- GREEK KEY 15" Punch Bowl with pedestal \$225.00. 4-4½ oz. #341 shallow punch cups, 2-3 oz. #341 Punch cups - \$8.00 each. GEORGE MALCOLM, JR., 2832 Chatham St., Philadelphia, PA 19134.

- WANTED TO BUY: Heisey Winged Scroll in custard: Cake salvers or salt & peppers or write what you have. PEGGY'S ANTIQUES, Box 367, Spavinaw, OK 74366. Phone (918) 589-2859.

- MOST colors, Most Patterns - 3000 to 4000 pieces of Heisey to choose from. SASE Please PEGGY'S ANTIQUES Phone (918) 589-2859.

- WANTED: One replacement Peachtree cut 5057 Suez stem tall 10 oz. goblet. MRS. A. HEITMANN, 1241 Howell Dr., Newark, OH 43055 Phone (614) 366-1711.



May 1912

Look for the 

On every piece When buying glassware— make sure that each piece has a  on it. Every piece of glassware so marked is guaranteed, when used under like conditions, to last twice as long as ordinary glassware.

HEISEY'S

GLASSWARE

quality and durability considered is lower in price than any other glassware made. The glass itself is crystal clear and of the finest finish. The workmanship will satisfy the most critical.

On request we will send you our book, "Table Glass and How to Use It."

A. H. Heisey & Co.
Dept. 22
NEWARK, OHIO

NO 353 15 IN. VASE  NO 1 CANDLE STICK

NO 336 NASTURTIUM BOWL

Y.W.C.A.
6th & W. Church Sts.,
Newark, Ohio

ALL HEISEY AUCTION

Saturday, August 1, 1981
Doors Open - - 8:30 A.M.
Sale Starts - 10:00 A.M.

THIS WILL BE ANOTHER OUTSTANDING AUCTION WITH GOOD VARIETY FROM SEVERAL PRIVATE COLLECTIONS. THERE ARE SEVERAL NICE ANIMALS IN THIS SALE ALONG WITH A LARGE AND VARIED AMOUNT OF ORCHID ETCHED ITEMS. LOTS OF DESIRABLE STEMWARE, COLORED ITEMS AND SEVERAL ITEMS IN EARLY PATTERNS. MARK YOUR CALENDAR NOW AND PLAN TO ATTEND THIS FAST MOVING SALE. WE ARE LOOKING FORWARD TO SEEING YOU.

We have tried to inspect the glass closely and will use the following code to better describe the condition. A small letter indicates the damage or flaw is minimal. It would be our opinion that the value would be affected 5-20%. A capital letter indicates more significant damage affecting 20-40%. Anything damaged more than this in our opinion will be marked with an X. We hope this will better aid in mail bidding:

		f F - Flake	b B - Bruise	r R - Repaired
		c C - Crack	m M - Mold Flaw	X - Major Damage
1	1540	LARIAT Cream & Sugar H	42	216 1 Lt Candle, Moongleam (M)
2	1483	STANHOPE Cream & Sugar, Frosty Dawn Etch, Red Inserts H	43	1433 THUMBPRINT & PANEL 2 Lt Candle, Pr 12" Candlestick Picture Frame, Very Rare, Pr H
3	1425	VICTORIAN Cream & Sugar H	44	134 TRIDENT Sahara 2 Lt Candle, Pr 1-c
4	1020	MOONGLEAM Hotel Cream & Sugar, Creamer X	45	1428 WARWICK 2 Lt Candle, Pr
5	150	BANDED FLUTE Cream & Sugar, No Lid H (m)	46A	1428 WARWICK 2 Lt Candle, Pr H
6	1469	RIDGELEIGH Indiv Cream & Sugar H	46B	1428 WARWICK 2 Lt Candle, Pr 1-(F)
7	1469	RIDGELEIGH Cream & Sugar H	46C	1469 RIDGELEIGH 1 Lt Candle, Pr
8	393	NARROW FLUTE Indiv Cream & Sugar H	47	7000 SUNFLOWER 1 Lt Candle
9	1503	CRYSTOLITE Indiv Cream, Sugar & Tray H (f)	48	112 1 Lt Candle, Pr
10A	1519	WAVERLY Indiv Cream & Sugar	49	50 1428 WARWICK 1 Lt Candle, Pr H
10B	1519	WAVERLY Indiv Cream & Sugar	50	51 1503 CRYSTOLITE 3 Lt Candle, Pr.
11	1519	WAVERLY Cream & Sugar, Heisey Rose Etch H	51	52 1540 LARIAT 1 Lt Candle, Pr (f)
12	1190	Cream & Sugar H	52	53 1513 3 Lt Candelabra Epergne, (M)
13	1951	CABOCHON Cream & Covered Sugar H (m)	53	54 1519 WAVERLY 1 Lt Candle
14	1540	LARIAT Cream, Sugar & Tray	54	55A 1503 CRYSTOLITE 1 Lt Candle Block, Pr.
15	337	TOURAINNE Covered Butter, Covered Sugar (f), Creamer (R) & Spooner, 3 Pc Acid Etched	55B	1503 CRYSTOLITE 1 Lt Candle Block, Pr.
16	1280	WINGED SCROLL Emerald Covered Butter(X) Sugar (no lid) & Spooner (f)	56	21 1 Lt Candle 9 1/2" H
17	1183	REVERE Creamer H (f)	57	20 1 Lt Candle 10" H
18	300	PEERLESS Indiv Creamer H	58	Colonial Base Made into Shoe Rack, 9" Hi H (F)
19	354	WIDE FLAT PANEL Sahara Oval Creamer H	59	1540 LARIAT Hurricane Base only H
20	379	URN Hotel Creamer H	60	1519 WAVERLY Epergne, 3 Ea H
21	1485	SATURN Sugar, No Lid H	61	1252 TWIST Marigold 1 Lt Candle
22	500	OCTAGON Creamer H (M)	62	99 1 Lt Candle Block
23	352	FLAT PANEL Indiv Sugar, No Lid H	63	5040 LARIAT 12oz Ftd Soda, Moonglo Cut H
24	1503	CRYSTOLITE Indiv Sugar & Tray H	64	5010 SYMPHONIE Ftd Iced Tea, Minuet Etch 5 Ea
25	433	GRECIAN BORDER Oval Hotel Sugar H	65	350 PINWHEEL & FAN Tumbler H
26	1020	Hotel Sugar, Irridized H (X)	66	1637ATOWN & COUNTRY Dawn Soda H Decorated
27	1401	EMPRESS Alexandrite Ftd Sugar H	67A	1417 ARCH Cobalt Tumbler H
28	393	NARROW FLUTE Oval Hotel Sugar, Gold Decor H	67B	1417 ARCH Cobalt Tumbler H
29	1951	CABOCHON Dawn Creamer, 2 Ea H	68	1252 TWIST Marigold 6oz Soda H
30	1632	LODESTAR Dawn Creamer, 2 Ea H	69	4054 CORONATION 8" Slim Jim, 4 Ea
31	341 1/2	PURITAN Covered Butter H	70	1184 YEOMAN Flamingo 12oz Soda, DO H (m)
32	353	MEDIUM FLAT PANEL Covered Butter H	71	1624 PATIO Amber 12 oz Soda
33	1225	SAWTOOTH BAND Covered Butter H (F)	72	1637ATOWN & COUNTRY Limelight 12oz Soda, Experimental Screen Optic
34	1506	PROVINCIAL Stick Butter	73	2401 5 oz Soda, Pied Piper Etch
35	1001	Flamingo Creamer & Sugar Sifter	74	1425 VICTORIAN 9oz High Ft Goblet, 8 Ea
36	1001	Creamer, Moongleam Foot & Handle	75	4052 5oz Soda, Moonglo Cut, 12 Ea (3-f)
37	8047	CANE & BAR Custard 1/2Pt Tankard, Souv Rose Decor H	76	341 PURITAN Flamingo 3oz Low Sherbet H
38	1255	PINEAPPLE & FAN 1/2Pt Tankard, Souv H	77	1405 IPSWICH Oyster Cocktail H
39	99	Flamingo 1 Lt Candle Block, Pr	78A	1220 PUNTY BAND Handled Mug, Red Stain, Souv Frank 1910 H
40	1615	2 Lt Candle, Pr H	78B	1220 PUNTY BAND Handled Mug, Red Stain, Souv Francis 1910 H
41	1433	THUMBPRINT & PANEL Sahara 2 Lt Candle, Pr (m)	79	1404 OLD SANDWICH 4 1/2" High Mug H
			80	352 FLAT PANEL Shaving Mug H
			81	353 FLAT PANEL 8 oz Cruet H Stopper (X)
			82	353 FLAT PANEL 6 oz Cruet H Wrong Stopper
			83	433 GRECIAN BORDER 6 oz Cruet (Stopper f)

PAID ADVERTISEMENT

PAID ADVERTISEMENT

84 150 BANDED FLUTE 4oz Oil, Wrong Stopper
 85 341 PURITAN 4oz Oil H
 86 341 PURITAN 4oz Oil, Wrong Stopper
 87 341 PURITAN 4oz Oil, Wrong Stopper
 88 1250 GROOVE & SLASH 4 oz Cruet
 89 1295 BEAD SWAG Cruet, Worn Gold Decor
 90 339 CONTINENTAL 6oz Cruet (Stopper f)
 91 1401 EMPRESS 4oz Cruet
 92 1506 PROVINCIAL 4oz Cruet H
 93 1469 RIDGELEIGH 2oz Cruet, No Stopper
 94 362 7oz Syrup Jug, Cut Daisy H (f)
 95 1184 YEOMAN 14" Plate, Empress Etch
 96 1229 OCTAGON Flamingo 13" Hors 'D Oeuvre,
 DO, Empress Etch
 97 1231 OCTAGON 14" Flamingo Plate
 98 1252 TWIST Newark Sesqui Platter
 99 1225 SAWTOOTH BAND 10" Plate, Silvered
 Bottom H
 100 4044 NEW ERA 7" Plate, Sea Glade Cut
 101 1236 Eagle Plate H
 102 1519 WAVERLY 11" 3 Compartment Relish,
 Narcissus Cut H
 103A1540 LARIAT 3 Compartment Relish
 103B1540 LARIAT 3 Compartment Relish (m)
 104 1469 RIDGELEIGH 11" 3 Compartment Relish H
 105 1401 EMPRESS 3 Compartment Relish on
 Silver Tray, Monog A h
 106 1951 CABOCHON 3 Compartment Relish, Jungle
 Flower Cut H
 107 353 COLONIAL 10" Spice Tray, Cut H (F)
 108 1184 YEOMAN Sahara 13" 3 Compartment
 Relish DO
 109 1469 RIDGELEIGH 12" Celery & Olive Tray
 110 1401 EMPRESS Moongleam 13" Pickle & Olive
 Tray H
 111 1401 EMPRESS Sahara 13" Celery Tray, Old
 Colony Etch H
 112 1401 EMPRESS Sahara 10" Celery Tray H
 113 1184 YEOMAN Flamingo 13" 3 Compartment
 Relish, Empress Etch DO
 114 1503 CRYSTOLITE 9" Leaf Pickle H (F)
 115 397 COLONIAL CUPPED SCALLOP 12" Celery
 Tray H
 116 393 NARROW FLUTE 9" Celery Tray H
 117 1205 FANCY LOOP Cracker Jar, Silver Lid
 118 352 FLAT PANEL 2 Qt Crushed Fruit H (f)
 119 353 COLONIAL 26oz Lavendar Jar H (F)
 120 1506 PROVINCIAL Low Candy & Cover (f)
 121 1506 PROVINCIAL Limelight Footed Candy
 and Cover H
 122 1637A Dawn Covered Whimsey Candy Jar
 123 365 RECESSED PANEL ½Pd Candy Jar
 124 365 RECESSED PANEL ½Pd Candy Jar,
 Gold Decor H
 125 365 RECESSED PANEL ½Pd Candy Jar,
 Vaseline, No Lid H
 126 479 Hotel Covered Marmalade H
 127 353 COLONIAL 7oz Marmalade, Wrong Lid
 128 353 COLONIAL 7oz Marmalade, Cut H
 129 1255 PINEAPPLE & FAN #3 Cracker Jar, No Lid
 130 1252 TWIST Flamingo Ice Bucket, No
 Handle H (M)
 131 1231 Rum Jug, No stopper
 132 433 GRECIAN BORDER Straw Jar, No Lid H
 133 351 COLONIAL Water Bottle
 134 300 PEERLESS Water Bottle
 135 1404 OLD SANDWICH Decanter H
 136 351 COLONIAL 1 Qt Decanter H (F)

PAID ADVERTISEMENT

137 RIDGELEIGH Decanter
 138 4225 1 Qt Cocktail Shaker, Rooster Stopper,
 Rattan Handle
 139 4225 2 Qt Cocktail Shaker, Rattan Handle
 140 1205 FANCY LOOP Cocktail
 141 1469 RIDGELEIGH Cocktail H
 142 6003 TEMPO Cocktail, Kraill Rose Cut H
 143 3344 CAROLINA Cocktail, Osage Etch H
 144 3333 OLD GLORY Cocktail, Renaissance Etch H
 145 3368 ALBEMARLE Cocktail, Chateau Cut H (r)
 146 3389 DUQUESNE Cocktail, Chintz Etch (m)
 147 5003 CRYSTOLITE Cocktail, 5 Ea H
 148 5078 PARK AVENUE Sherry, Monog SJS H
 149 1026 Hot Whiskey
 150 1540 LARIAT Wine, 5 Ea H
 151 3481 GLENFORD Flamingo 2½oz Ftd Bar, DO
 152 339 CONTINENTAL Sherbet H
 153 433 GRECIAN BORDER Sherbet, 6 Ea H
 154 433 GRECIAN BORDER 6oz Low Ft Sherbet H
 155 433 GRECIAN BORDER, Saucer Champagne
 156 5025 TYROLEAN Sherbet, Unknown Cut
 157 3314 GRANDEUR Sherbet, Sabrina Etch, 6 Ea
 158 5040 LARIAT Sherbet, 2 Ea H
 159A1540 LARIAT Saucer Champagne H
 159B5040 LARIAT Sherbet, 3 Ea H
 160AU8023 RAMPUL Hawthorne Champagne, 2 Ea
 160BU8023 RAMPUL Hawthorne Champagne, 2 Ea
 161 3360 PENN CHARTER Hawthorne Champagne H
 162 1183 YEOMAN Moongleam Sherbet, 5 Ea H
 163 1425 VICTORIAN 5oz Saucer Champagne, 6 Ea
 164 5042 CORINTHIAN Goblet
 165 300 PEERLESS 6" Orchid Vase
 166 4220 7" Vase, Sahara, Spiral Optic
 167 1428 WARWICK 5" Vase H
 168 1469 RIDGELEIGH Limelight Vase
 169 1469 RIDGELEIGH Vase, Pr H
 170 1428 WARWICK 7" Vase
 171 1540 LARIAT Fan Vase
 172 1401 EMPRESS Flamingo 8" 3 Hd1 Vase H
 173 1540 LARIAT Fan Vase, Cut H
 174 4205 Flamingo 8" Vase DO (f)
 175 1255 PINEAPPLE & FAN 8" Vase, Red Stain
 176 1420 Tulip Vase, Cobalt H
 177 1205 FANCY LOOP VASE #2, 10"
 178 459 7" Basket H
 179 463 7" Basket H (m)
 180 350 PINWHEEL & FAN 3Pt Jug H
 181 351 COLONIAL 3Pt Jug H
 182 341½ COLONIAL 3Pt Jug, Amber Stain H
 183 433 GRECIAN BORDER PUNCH BOWL & BASE H
 184 1401 EMPRESS 10½" Dinner Plates, 8 Ea H
 185 1401 EMPRESS Cup & Saucer, 8 Ea H
 186 1509 QUEEN ANN Ftd Cream & Sugar, (x-Cream)
 187 1509 QUEEN ANN 11" Ftd Floral Bowl
 188 1519 WAVERLY Salt & Pepper
 189 1509 QUEEN ANN 6" Ftd Nappy Candleholder Pr H
 190 Unk COLONIAL 4" Nappy (Rare) H
 190A 1509 QUEEN ANN 13" Relish
 191 1401 EMPRESS 5" Ftd Mayonnaise & Ladle (H)
 192 1509 QUEEN ANN 5½" Ftd. Nappy
 193 1509 QUEEN ANN 6" Covered Lemon Dish, (Lid
 Repaired) H
 194 1401 EMPRESS Covered Mustard H
 195 1401 EMPRESS Triplex Relish
 196 1401 EMPRESS Ind Cream, Sugar & Tray H

PAID ADVERTISEMENT

197	1519	WAVERLY	Cruet		245	1184	YEOMAN	7" Plate, Empress Etch, 8 Ea
198	1509	QUEEN ANN	3 Pt Ftd Jug		246	341	PURITAN	8" High Ftd Comport H
199	1509	QUEEN ANN	Indiv Cream & Sugar H		247	341	PURITAN	7" High Ftd Comport, Crimped H
200	1401	EMPRESS	Indiv Ftd Nut Dish, 6 Ea		248	1225-109	PETTICOAT DOLPHIN	Flamingo Footed Compotier (m)
201	1401	EMPRESS	6" High Ftd Jelly H		249	412	RIB & PANEL	Jelly Compote H
202A			Horsehead Bookend		250	1252	TWIST	Flamingo Mayonnaise
202B			Horsehead Bookend		251	341	PURITAN	5" High Ftd Jelly Compote H
203			Pouter Pigeon		252	355	Bon Boniere	Saucer Champagne H
204A			Fighting Rooster		253	341	PURITAN	5" High Ftd Jelly H
204B			Fighting Rooster		254	339	CONTINENTAL	Jelly Compote H
205			Ringneck Pheasant		255	1183	REVERE	6" Moongleam Comport, Swirl Optic, Crystal Bowl H
206			Rooster Vase		256	1951	CABOCHON	Jelly Compote, Bel-Air Cut
207A			Goose, Wings Half		257	1255	PINEAPPLE & FAN	Jelly Compote, Gold Dec
207B			Goose, Wings Half (Bubble in Head)		258	411	RIB & PANEL	Moongleam 5" High Ft Jelly
208A			Elephant, Large (M)		259	1425	VICTORIAN	Mint Compote
208B			Elephant, Large (M)		260	1184	YEOMAN	Moongleam Mint Compote
209			Elephant, Small (m)		261	1425	VICTORIAN	Ftd Grapefruit, 2 Ea H
210A			Giraffe, Head Turned		262	1519	WAVERLY	6½" Ftd Cheese Plate
210B			Giraffe, Head Straight		263	393	NARROW FLUTE	Flamingo 6" Almond
211A			Scotty (Sealyham Terrier)		264	1503	CRYSTOLITE	Jelly Compote
211B			Scotty (Sealyham Terrier)		265	1229	OCTAGON	Flamingo Mayonnaise, Etched
211C			Scotty (Sealyman Terrier)		266	1401	EMPRESS	Ftd Mayonnaise, Old Colony Etch
212			HCA Souvenir Sparky-Pink 1978		267	4225	1 Qt Cocktail	Shaker, Tally Ho Etch
213A1503			CRYSTOLITE Swan 6½"		268	4225	2 Qt Cocktail	Shaker, Tally Ho Etch, Strainer Cracked
213B1503			CRYSTOLITE Swan 6½"		269	4163	16oz Mug, Fox	Chase Etch H
214	1	MADONNA	Limelight, Frosted H		270	4163	16oz Mug, Sportsman	Etch H
215	1	MADONNA	Frosted, Clear Juice		271A4163		16oz Mug, Tally	Ho Etch H
216	357	Duck Ash	Tray, Moongleam H (X)		271B4163		16oz Mug, Tally	Ho Etch H
217	15	Flamingo	Duck Insert (f)		272	3408	JAMESTOWN	12oz Mug, Amherst Crest Etch
218	111	Flamingo	Cherub Candlestick, Frosted		273	3408	JAMESTOWN	12oz Mug, Amherst German Club Etch
219	1489	PURITAN	Large Horsehead Cigarette Box (m)		274	1184	YEOMAN	14" Buffet Plate, Sailboat Carving
220A5058			Goose Stem Sherry		275	4054	CORONATION	2½oz Bar, Tavern Etch (Rare)
220B5058			Goose Stem Sherry		276	2052	2oz Bar, Nimrod	Carving
221	5038	Rooster	Cocktail, 3½Oz		277	4052	1½oz Bar, Tally	Ho Etch
222	5038	Rooster	Cocktail, 3½Oz, Moonglo Cut		278	4002	AQUA CALIENTE,	Fisherman Etch, 3 Ea
223			Rooster Head Cocktail Stopper		279	4002	AQUA CALIENTE,	Golfer Etch
224A			Penguin Stopper (F)		280	4002	AQUA CALIENTE,	Club Drinking Scene Etch
224B			Penguin Stopper		281	4002	AQUA CALIENTE,	Sportsman Etch
225	1425	VICTORIAN	9oz High Ftd Goblet H		282	4002	AQUA CALIENTE,	Skier Etch
226	3440	PORTSMOUTH	Flamingo Goblet		283	4002	AQUA CALIENTE,	Fox Chase Etch
227	347	COLONIAL	10oz Goblet H (Cloudy)		284	4002	AQUA CALIENTE,	Tally Ho Etch
228	3404	SPANISH	Cobalt Goblet, 2 Ea H		285	4002	AQUA CALIENTE,	Antartic Etch
229	3312	GAYOSO	11oz Goblet, Cherry Etch, 2 Ea		286	4002	AQUA CALIENTE,	Flamingo
230	3380	OLD DOMINION	Sahara Goblet		287	4054	CORONATION	1 Qt Pitcher
231	373	COLONIAL	Goblet H		288	517	1 Qt Hospital	Jug & Tumbler H
232	3389	DUQUESNE	Goblet, Special Cut, 4 Ea		289	412	RIB & PANEL	Water Set, Water Jug & 8 Handled Soda, Irridized & Orange Decor H
233AU8023		RAMPUL	Hawthorne Goblet, DO, 2 Ea		290	3355	FAIRACRE	54oz Flamingo Jug
233BU8023		RAMPUL	Hawthorne Goblet, DO, 2 Ea		291	1184	YEOMAN	Flamingo 8 oz Goblet, DO, 8 Ea
234	3390	CARCASSONNE	Goblet, Old Colony Etch, 12 Ea		292	4036½	Pint Decanter,	Special Cut & 6 Ea 5040 LARIAT Wine, Special Cut H
235	3333	OLD GLORY	Saucer Champagne 2 Ea, & Sherbet 3 Ea H Renaissance Etch 2-X		293	1632	LODESTAR	1 Qt Pitcher, Special Cut & 7 Ea Oxford Oyster Cocktail, Special Cut H
236	4182	6" Plate,	Renaissance Etch, 6 Ea		294	1401	EMPRESS	Flamingo Ash Tray H
237	4182	7" Plate,	Renaissance Etch, 6 Ea		295	1401	EMPRESS	Alexandrite Ash Tray H
238	3366	TROJAN	Sherbet, Trojan Etch, 12 Ea 4=X		296	1401	EMPRESS	Cobalt Ash Tray H
239	3369	ALBEMARLE	Saucer Champagne, Trojan Etch, 7 Ea (6-f)		297A1401		EMPRESS	Ash Tray H
240	3366	TROJAN	4½ Oz Parfait, Trojan Etch, 6 Ea H		297B1401		EMPRESS	Ash Tray H
241	3368	ALBEMARLE	Goblet, Trojan Etch, 8 Ea H 1-X		298	1489	PURITAN	6" Square Ash Tray, Cut w/ Masonic Monogram
242	3380	OLD DOMINION	Oyster Cocktail, Empress Etch, 4 Ea		299	1180	Ashtray	
243	3380	OLD DOMINION	Saucer Champ, Empress Etch, 9 Ea H					
244	3380	OLD DOMINION	Goblet, Empress Etch, 7 Ea H					

300	411	RIB & PANEL Cover for Cigarette Jar H	354	1535	3" Ash Tray, Orchid Etch, 4 Ea
301	411	RIB & PANEL Flamingo Bottom for Cigarette Jar	355	1519	WAVERLY Cigarette Holder & Cover, Orchid Etch H
302	1469	RIDGELEIGH 6" Square Ash Tray	356	5025	TYROLEAN Dinner Bell, Orchid Etch
303	434	Ash Tray H	357	1447	ROCOCO Oval Floral Bowl H
304	1486	COLEPORT Ash Tray, 2 Ea H	358	1433	THUMBPRINT & PANEL 11" Sahara Floral Bowl
305	1486	COLEPORT Cigarette Holder H	359	1541	ATHENA 11½" Floral Bowl
306	1469	RIDGELEIGH 2½" Sahara Square Ash Tray H	360	1231	RIBBED OCTAGON Flamingo 12½" Salad Bowl
307	1183	REVERE Ash Tray H	361	1506	PROVINCIAL Oval Ftd Floral Bowl H
308	1469	RIDGELEIGH Heart, Club, Spade & Diamond Ash Tray H	362	10	Moongleam 10" Floral Bowl H
309	1469	RIDGELEIGH Heart Ash Tray H	363	1205	FANCY LOOP 8" Bowl
310	1503	CRYSTOLITE 3" Square Ash Tray, 5 Ea H, 2-X	364	1201	Moongleam Low Footed Floral Bowl H
311	361	Moongleam Ash Tray & Cigarette Container, No Lid H	365	343	SUNBURST 8" Nappy H
312		Verlys Greek Horse Cigarette Box	366	1252	TWIST Flamingo Berry Set, 8" Nappy & 6 Ea 4½" Nappies
313A		Verlys Greek Horse Ash Tray	367	350	PINWHEEL & FAN Berry Set, 8" Nappy & 4 Ea 4½" Nappies H
313B		Verlys Greek Horse Ash Tray	368	1225	SAWTOOTH BAND Oval 10" Nappy
314	1503	CRYSTOLITE Cigarette Box H	369	1404	OLD SANDWICH 1 oz Bar, 7 Ea H
315	10	Moongleam Oakleaf Coaster, 4 Ea	370	2351	2oz Bar, Maryland Cut
316	10	Flamingo Oakleaf Coaster, 4 Ea	371	2351	2oz Bar, Barcelona Cut
317	10	Oakleaf Coaster, 2 Ea	372	1486	COLEPORT 2 oz Bar, 3 Ea H
318	1503	CRYSTOLITE Nut Set, 1 Master and 6 Individual Nut	373	4054	CORONATION 2 oz Bar
319	25	Puff Box and Cover H (f)	374	5087	COMET 2 oz Bar
320	25	Hair Receiver and Cover H	375	1469	RIDGELEIGH 2 oz Bar H
321	1503	CRYSTOLITE Puff Box & Cover H (f)	376	242	1 oz Bar, Narrow Optic H
322	1184	YEOMAN Flamingo 6" Handled Bon Bon	377	300	PEERLESS Sherry H
323	1184	YEOMAN Moongleam 10½" Oval 2 Compartment Tray H	378	3355	FAIRACRE Wine, Moongleam Stem H
324	1295	BEAD SWAG Opal 5½" Plate and Punch Cup, Floral Decor	379	3344	CAROLINA Wine, Osage Etch H
325	433	GRECIAN BORDER Flamingo Punch Cup H	380	150	BANDED FLUTE Wine H
326	350	PINWHEEL & FAN Moongleam Punch Cup H	381	150	BANDED FLUTE Wine H
327	439	RAISED LOOP Punch Cup H	382	339	CONTINENTAL Wine H
328	1184	YEOMAN Flamingo Cup, 2 Ea DO H	383	3409	PLYMOUTH 2½ oz Sherry H
329	1503	CRYSTOLITE Cup & Saucer, 7 Ea H	384	3309	PETITE 2½ oz Sherry H
330	5025	TYROLEAN Tall Goblet, Orchid Etch 4 Ea	385	5010	SYMPHONY 1 oz Cordial, Minuet Etch
331	5025	TYROLEAN Cocktail, Orchid Etch, 6 Ea H	386	3408	JAMESTOWN Cordial, Barcelona Cut
332	1509	QUEEN ANN 11" Plate, Orchid Etch, 8 Ea	387	341	PURITAN Cordial, 2 Ea H
333	1519	WAVERLY 8" Plate, Orchid Etch, 12 Ea	388	6003	TEMPO Cordial H
334	1519	WAVERLY 7" Plate, Orchid Etch 6 Ea	389	3389	DUQUESNE Cordial
335	1509	QUEEN ANN 8" Nappy, Orchid Etch	390	5003	CRYSTOLITE Cordial H
336	1509	QUEEN ANN 4½" Nappy, Orchid Etch, 2 Ea	391	5077	LEGIONNAIRE Cordial H
337	1519	WAVERLY 11" Floral Bowl, Orchid Etch	392	3394	SAXONY Sahara Cordial, Needle Etch
338	1519	WAVERLY 12" Floral Bowl, Orchid Etch (f)	393	3368	ALBEMARLE Cordial, Trojan Etch H
339	1519	WAVERLY 13½" Footed Cake Plate, Orchid Etch	394	3366	TROJAN Flamingo Cordial, Trojan Etch H
340	1519	WAVERLY 9½" Floral Bowl, Orchid Etch	395	3380	OLD DOMINION Flamingo 2 oz Ftd Bar, Empress Etch
341	1509	QUEEN ANN 8½" Floral Bowl, 2 Hd1, Orchid Etch H	396	1220	PUNTY BAND Custard Salt & Pepper, Souv of Wisconsin H
342A	1519	WAVERLY 13" Gardenia Bowl, Orchid Etch	397	1590	ZODIAC Salt & Pepper H
342B	1519	WAVERLY 13" Gardenia Bowl, Orchid Etch	398	1295	BEAD SWAG Opal Salt & Pepper (m)
343	1509	QUEEN ANN 12" Cheese & Cracker Plate & 5" Footed Cheese, Orchid Etch	399	41	Salt & Pepper, Unknown Cut H
344	1519	WAVERLY 6" Comport, Orchid Etch	400	1235	BEADED PANEL & SUNBURST Salt Dip, 4 Ea
345	1540	LARIAT 7" Crimped Vase, Orchid Etch	401	1201	FANDANGO Salt Dip
346	142	CASCADE 3 Lt Candle, Orchid Etch, Pr	402	1469	RIDGELEIGH Salt Dip, 8 Ea H (1-x)
347	134	TRIDENT 2 Lt Candle, Orchid Etch, Pr	403	331	COLONIAL Salt Dip
348	112	1 Lt Candle, Orchid Etch, Pr	404	1225	SAWTOOTH BAND Salt Dip
349	112	1 Lt Candle, Orchid Etch, Pr	405	1183	REVERE Flamingo Salt Dip, 8 Ea
350	1519	WAVERLY 5½" Footed Mayonnaise, Orchid Etch H	406A	150	BANDED FLUTE Match Box & Cover H
351	5031	French Dressing Bottle, Orchid Etch	406B	150	BANDED FLUTE Match Box & Cover H
352A	1519	WAVERLY Cream & Sugar, Orchid Etch H	407	150	BANDED FLUTE Match Box Bottom Only H
352B	1519	WAVERLY Cream & Sugar, Orchid Etch H	408	4228	Cobalt Favor Vase, DO
353	1519	WAVERLY Square Covered Butter, Orchid Et	409A	1503	CRYSTOLITE Cigarette Holder H
			409B	1503	CRYSTOLITE Cigarette Holder H
			410	1469	RIDGELEIGH 3 Pc Round Cigarette Holder, Square Ash Tray & Round Coaster Ash Tray(f)
			411	1425	VICTORIAN Book Match Ash Tray H-Monog

412	1521	QUILT Ash Tray H	453	393	NARROW FLUTE 7" Pickle Tray H
413	5012	URN, Ftd Cigarette Holder (m)	454	1229	OCTAGON Moongleam 5" Jelly
414	1540	LARIAT Cologne Bottle	455	9	4" Electric Shade
415	486	Cologne, Blue Decor H	456	1184	YEOMAN Marigold Bouillon w/Underplate, Empress Etch H (R)
416A	517	Cologne, ½Oz Flamingo	457	1280	WINGED SCROLL Custard 4½" Nappy
416B	517	Cologne, ½Oz Flamingo	458	1238	5" Flamingo Beehive Plate, 5 Ea 1-X
417	1186	YEOMAN Flamingo Puff Box & Cover H	459	433	GRECIAN BORDER 6" Round Plate, 4 Ea H
418	500	OCTAGON Flamingo Frozen Dessert, 2 Ea	460	433	GRECIAN BORDER 5" Round Plate, 3 Ea H
419	1220	PUNTY BAND Custard Toothpick, Beaded Top, Souvenir H	461	433	GRECIAN BORDER 4¼" Round Plate, 6 Ea H
420	351	PRISCILLA Toothpick H	462	300	PEERLESS 4½" Nappy, 6 Ea H
421	1205	FANCY LOOP Toothpick	463	1404	OLD SANDWICH 6" Square Plate, 6 Ea H
422	333	HOTEL WALDORF ASTORIA Toothpick H	464	393	NARROW FLUTE 7" Round Plate, 4 Ea H
423	394	NARROW FLUTE Covered Mustard w/Spoon H	465		Lot of 4 Plates, Narrow Flute, Rib & Panel, Revere (2)
424	352	FLAT PANEL Knife Rest, 2 Ea H	466	1183	REVERE 7½" Plate, Unknown Cut, 6 Ea
425	31	Toy 1 Lt Candle, Sahara X	467	433	GRECIAN BORDER 5" Round Nappy H
426A	31	Toy 1 Lt Candle, Pr H	468		Lot of 5 Assorted Tumbler Plates H
426B	31	Toy 1 Lt Candle, Pr H	469	1503	CRYSTOLITE 8" Plate, 3 Ea H
427	1454	DIAMOND POINT Indiv Ash Tray & Ind Marmalade H	470A1503		CRYSTOLITE 7" Shell Plate
428	1205	FANCY LOOP Celery Dip, 2 Ea	470B1503		CRYSTOLITE 7" Shell Plate, 2 Ea
429	472	NARROW FLUTE W/RIM Flamingo Indiv Nut, 2 Ea H	471	1503	CRYSTOLITE 7½" Coupe Plate
430	1252	TWIST Marigold Indiv Nut H	472	1508	CARD CASE, 2 Pc
431	393	NARROW FLUTE Flamingo Ind Almond, 2 Ea	473	393	NARROW FLUTE Banana Split Dish H
432	393	NARROW FLUTE Indiv Almond, 2 Ea H	474	1776	KALONYAL Covered Sugar Bottom Only, Gold Decor H
433	393	NARROW FLUTE Indiv Almond, 6 Ea H	475	1170	PLEAT & PANEL Moongleam 4 3/4" Marmalade H
434		Muddler	476	10	Flamingo Flower Frog
435		Mirror Display Sign	477		2 Pc Ridgeleigh Cigarette Bottom & 6" Moongleam DO Plate
436	441	GRAPE LEAF SQUARE Ash Tray	478		2 Pc Ridgeleigh Mustard Bottom & Toy Candy Container
437	1401	EMPRESS Tangerine 6" Square Plate H	479	1469	RIDGELEIGH Condiment Tray & Square Mustard H
438	1252	TWIST Marigold 2 Hd Cheese Plate H	480	1252	TWIST Marigold Mustard Bottom Only H
439	411	RIB & PANEL Hawthorne 2 Hd Cheese Plate H	481		2 Salad Fork, Orange Enamel
440	1193	Hawthorne 7" Conserve H	482	393	NARROW FLUTE 7" Plate & Nappy made for lamp part
441	1194	Moongleam 5" Relish H	483		2 Epergnettes
442	1483	STANHOPE 6" 3 Compartment Jelly, Frosty Dawn Etch	484		Lot of 3 Stoppers (2 for Gascony Decan)
443	433	GRECIAN BORDER 5" Handled Jelly H	485		Land of Legend 1975 Ultra Blue Plate
444	1225	SAWTOOTH BAND 6" Handled Jelly (f)	486		Verlys Lovebirds Vase, Not Frosted
445	341	PURITAN 5" Handled Jelly, Tri Corner H	487		Verlys Water Lily Console Bowl (f)
446	341	PURITAN 5" Shallow Nappy, Silver Handle & Spoon H	488		Verlys Water Lily 1 Lt Candle, Pr
447	343	SUNBURST Club Snack Tray H (f)	489		Verlys Season Vase, Spring & Autumn, Not Frosted
448	7030	Ovenware Bowl 5" x 4", Vaseline H	490		Verlys Season Vase, Summer & Winter, Not Frosted
449	1184	YEOMAN Covered Compote, Gold Decor H			
450	1186	YEOMAN 4" x 7" Compote, Blue Decor H			
451	1776	KALONYAL 7" Tray H			
452	473	NARROW FLUTE W/RIM 8" Card Tray H			

PLEASE NOTE MAIL BID INSTRUCTIONS AS FOLLOWS:

MAIL BIDS ACCEPTED WITH CHECKS FOR MAXIMUM AMOUNT. MAIL BIDS ARE HANDLED COMPETITIVELY AND ANY DIFFERENCE REFUNDED. ONLY ITEMS IN MINT CONDITION WILL BE SUBJECTED TO MAIL BIDS. PLEASE ADD \$8.00 PER CARTON FOR POSTAGE & HANDLING, \$10.00 WEST OF ROCKY MOUNTAINS. WE REGRET WE HAVE HAD TO INCREASE POSTAGE AND HANDLING CHARGES BUT WE ARE ONLY ATTEMPTING TO COVER OUR EXPENSES ON THESE. CHECKS FOR MAIL BIDS SHOULD BE MADE TO: SAM SCHNAIDT, AUCTIONEER, AND MAILED TO:

SAM SCHNAIDT, AUCTIONEER
P. O. BOX 84
GRANVILLE, OHIO 43023

SAM SCHNAIDT, AUCTIONEER
(614) 587-0052

FRANK FRYE, MANAGER
(614) 344-9847

FOOD AVAILABLE

LIST OF PRICES REALIZED, AVAILABLE AFTER AUCTION FOR \$1.00

GAYLE L. KAISER ph. (406) 287-3733
 BOX 637
 WHITEHALL, MT. 59759

*SIGNED UPS & PSTG. XTRA
 FOR SALE

- 393 NARROW FLUTE 9 1/2" bowl *..... \$ 30.00
- 393 NARROW FLUTE 8" bowl *..... 22.50
- 400 Colonial mini sugar & creamer set 30.00
- 1540 LARIAT 7 1/2" mint(sides turn up)*.. 28.50
- 1469 RIDGELEIGH divided relish..... 28.50
- 1469 RIDGELEIGH lg. Sugar & Cream*.... 37.50
- 1469 RIDGELEIGH 3-comp. relish*..... 28.50
- 1503 CRYSTOLITE 3 comp. oval relish*.. 32.50
- 1503 CRYSTOLITE 10 oz tumblers (3 tiny
 bottom nicks) *.....5/ 75.00
- 1503 CRYSTOLITE double mint/center
 handle.*..... 27.50
- 1503 CRYSTOLITE oval indiv sugar, cream
 & tray*.....3 pc. 40.00
- 1404 OLD SANDWICH ftd sodas (4)*..all 100.00
- COARSE RIB moongleam div. relish* 55.00
- NARROW FLUTE flamingo oil & vinegar
 (no stopper)..... 27.50
- GREEK KEY cream(oval)*..... 22.50
- Moongleam 3 cornered mint (no lid)* 19.00
- FERN limelight mayonnaise..... 75.00
- Plain 13x8 1/2 flamingo oval plate*. 32.00
- DO moongleam 5 1/2" hi strait tumbler* 15.00
- EMPRESS sahara d ftd vase (un-
 signed)..... 87.50

VIRGINIA & ODELL JOHNSON P&I EXTRA
 GLASS 'N' GLASS *MARKED
 ROUTE 1, BOX 207
 HAYWARD, WI 54843 PHONE 715-462-3753

AT HOME AFTER JULY 2

- * SAHARA:
- * 1433 THUMBPRINT & PANEL candlesticks..pr...\$100.00
- * 134 TRIDENT candlesticks.....pr... 85.00
- * 3390 CARCASSONNE sherbets (2).....ea... 10.00
- * 1401 EMPRESS 11" floral bowl dol. ft Old
 Colony etch..... 60.00
- * 1252 TWIST oil & vinegar jar..... 75.00
- * 1401 EMPRESS 9" footed vase..... 85.00
- * FLAMINGO 354 Wide Flat Panel, stack set,
 sugar, cream, butter *..... 70.00
- * FLAMINGO 1170 PLEAT & PANEL sug/crm cut, no
 cover*..... 35.00
- * MOONGLEAM 112 candleholders.....pr... 40.00
- * MOONGLEAM 1252 TWIST cup/sau/8" pl* ea set. 35.00
- * 1295 OPAL BEAD SWAG 1/2 gal jug, rose dec.
 (minute crack on handle) & 3 match-
 ing tumblers.....all... 250.00
- * 466 DOUBLE PLEAT & PANEL 8" nappy, 10-4 1/2"
 nappies*..... 80.00
- * 4044 NEW ERA candlesticks.....pr... 45.00
- * 22 candlesticks, 11",*.....pr... 110.00
- * 1541 ATHENA footed cheese..... 30.00
- * 1205 FANCY LOOP compote..... 85.00
- * 1184 YEOMAN 2 oz. cruet..... 25.00
- * 393 NARROW FLUTE 2 oz. sherry (5)*...ea... 22.00
- * 1509 QUEEN ANN candles, dol ft no hand. pr* 40.00

* * * * *

H & R DIAMOND H (614) 279-0390
 HELEN-BOB RAREY after 5:30 pm
 1450 WHITE ASH DR. * Signed
 COLUMBUS, OH 43204 SASE Please
 SHIPPING & INSURANCE EXTRA

- 2- 116 OAKLEAF 3" cand. flam. ft. pr..\$ 40.00
- 1-1183 REVERE 11" oval platter/Windsor
 cut..... 25.00
- 1-1183 REVERE 6" comport*swirl op,,
 moongleam stem..... 22.50
- 1-1184 YEOMAN 4 oz oil*, d/o flamingo. 45.00
- 1-1229 OCTAGON 13" hors d'oeuvre,flam. 20.00
- 1-1229 OCTAGON muffin plate, 2hdld flam 20.00
- 6-1245 7" swirl plate*, flamingo...lot 42.50
- 2-1401 EMPRESS 6" sq. plate* flamingo 10.00ea
- 6-1469 RIDGELEIGH 3" coaster ea \$5.lot 25.00
- 1-1469 RIDGELEIGH 4" cig. box* no lid. 10.00
- 1-1472 PARALLEL QUARTER 12" fl. bowl*
 492 Etch..... 32.50
- 2-1482 WARWICK 2 lt candlesticks....pr 25.00
- 6-3314 GRANDEUR w/o finger bowl, #410
 Sabrina etch, all rim chipped
 ea. 7.50.....lot 35.00
- 5-3316 BILTMORE 10 oz. goblet w/ #52
 or #53 needle etch.....ea. 15.00
- 12-3380 OLD DOMINION 10 oz. tall goblet,
 moongleam stem & foot, w/447
 etch, 5 signed, 1 rim chip..ea 20.00
- 9-3380 OLD DOMINION 6 oz sherbet*, as
 above, 1 rim chip.....ea 15.00
- 6-4282 6" plate WO #503 Minuet etch lot 37.50
- 6-4282 6" plate, 19 Double Loop NE lot 30.00

HEISEY PUBLICATIONS

* P. O. BOX 102 PLYMOUTH, OHIO 44865

* Send in your order for the four books list-
 ed below and have at your fingertips all of the
 * information you need when buying and studying
 Heisey glass. Compiled by Clarence Vogel when he
 * lived in Heiseyland (Heath) from 1963 to 1970.
 * All of the material in the books is his original
 * research in Newark where Heisey glass was made.
 * Thousands of photographs and old Heisey catalog
 * reproductions. Some in color.

- * Book I HEISEY'S FIRST TEN YEARS, 1896-1905
- * Book II HEISEY'S COLONIAL YEARS, 1906-1922
- * Book III HEISEY'S ART & COLORED GLASS, 1923-1942
- * Book IV HEISEY'S EARLY & LATE GLASS. 1896-1957

* HEISEY GLASS NEWSCASTER, a quarterly mag-
 * azine, for 1981 is also available at \$5.30 for the
 * year. Past yearly issues going back to 1977 can
 * be had for \$4.00 for each year.

* Include postage of \$1.00 for one book and
 * 30¢ for each additional book. Ohio residents add
 * 5% Ohio sales tax.

- * Book I - \$11.00 Book II - \$12.00
- * Book III - \$13.00 Book IV - \$13.00

POSTAGE & INSURANCE EXTRA
S. A. S. E. PLEASE

ROBERT H. DONOVAN
P. O. BOX 321
BOLTON, MA 01740

PHONE ANYTIME
1-617-779-5008

WANTED: #433 GREEK KEY ITEMS

ALL #1252 TWIST:

10" Celery *, Moongleam.....	\$ 22.00
2 handled bon bon *, Flamingo.....	13.50
2 handled bon bon *, Moongleam.....	15.50
13" Celery *, Moongleam.....	22.00
13" Celery *, Sahara.....	24.50
Tumbler *, Flamingo.....(2).....ea.	11.00
5 oz. Ice tea *, Flamingo.....(7).....ea.	9.50
13" Celery *, Flamingo.....	22.00
7" Pickle tray *, Flamingo.....	15.00
3 Cups & Saucers, Flamingo with 3 8" Plates *.....set.	69.50
10" Oval bowl * Crystal.....	38.50
Covered mustard*, Crystal.....	22.00
8" Bowl*, Crystal.....	29.50
Individual bon bon*, Flamingo.....(6).....	82.50
4½" Nappy *, Flamingo.....(4).....ea.	12.00
2 handled, 6" Mint *, Marigold.....	38.50
12" Plate *, Marigold.....	72.50
Individual Nut *, Flamingo.....(10).....ea.	15.00
2 handled, 6" Jelly *, Flamingo.....	12.00
Mayonnaise, Round foot, Flamingo.....	10.00
Ice tub with handle, Cutting, Flamingo.....	98.50
6" 2 handled Cheese, Marigold.....(6).....	75.00
6" Plate, Marigold.....(8).....	75.00
12" Handled sandwich plate *, Marigold.....	75.00
9 oz. Goblet *, (Red Flash).....	29.50
9" High footed compote, Marigold.....	32.50
Footed Almond, Flamingo.....	24.00

ALL #1567 PLANTATION:

5½ oz. Saucer champagne.....(12).....ea.	15.00
8½" Plate.....(4).....ea.	20.00
8½" Plate, IVY Etch.....(6).....ea.	25.00
10 oz. Goblet. IVY Etch.....(14).....ea.	35.00
Marmalade Jar *.....	50.00
Syrup - Cover Rough.....	42.50
13" Footed Salver.....	127.50
Syrup.....	49.50
Gardenia bowl. footed.....	98.50
Salt & pepper.....	39.50
3½ oz. Cocktail, IVY Etch.....(6).....ea.	30.00
8" 4 Compartment round relish.....	38.00
6½" 2 handled Jelly*.....	28.00
5" Footed Candle.....	42.50
5" Round covered butter.....	48.50
10" Bowl.....	29.50
3 Lite Candlesticks.....pr.	125.00
Punch set - 8 cups - under plate - bowl.....	400.00
5 oz. Footed juice.....(2).....ea.	25.00
14" Plate.....	46.00
7" Footed compote.....	28.00
8 Punch cups*.....ea.	12.00
4 oz. Claret, Flared.....(2).....ea.	25.00
5" Footed vase, IVY etch.....	45.00

SPECIAL PIECES

Wood Duck.....	600.00
Pouter Pigeon.....	500.00
Duck Flower Frog, Flamingo.....	285.00
Kingfisher Flower Frog*, Moongleam.....	240.00
Plug Horse, Amber.....	750.00
Standing Colt, Amber.....	550.00

LAHASKA, PA
215-794-7800

LYNNE  ART'S
GLASS-HOUSE
INC.

P.O. BOX 54-6014
MIAMI BEACH, FL 33154
(305) 861-7700
(305) 895-5666

*Dear Heisey Collector and Dealer,
We're heading your way! Heisey animals,
lovely old patterns, and a rainbow of colors, will
be coming along with us.
We'll be at the following shows.*

COCOANUT GROVE, FL

DINNER KEY AUDITORIUM

JULY 4 & 5

AND

AUGUST 22 & 23

Lynne and Art

**HEISEY'S
GLASSWARE of DISTINCTION**

by Mary Louise Burns



COMPLETELY REVISED!

Now includes additional patterns, new illustrations, many new listings and is now perfect bound for sturdiness!

This comprehensive reference book is not a catalog reprint but a collection of all major patterns of tableware, stemware, cuttings, etchings, animals and Verlys produced through Heisey's 60 years of glassmaking.

Details of each pattern clearly shown by photo or illustrations for easy identification. Two indexes for easy reference: one by pattern name and one by pattern number.

All this for only **\$11.95** pp.

.....
ALSO NEW: Completely revised price guide supplement to the above, listing each item and **UPDATED** price trends. Patterns are listed alphabetically for easy reference. Only \$5.95 pp!
.....

"ORDER NOW" Send check or money order to:
MARY LOUISE BURNS
P.O. Box 1931

6 Books or more 40%

Grants Pass, Or 97526

HEISEY GLASS SALE

Over 2000 pcs. for sale. 500 pcs. cut glass-send Want list. Will answer all S. A. S. E. Poloroids \$1.00. Xerox copies \$1.00.

WILLEYS' HEISEY GLASS MUSEUM and shop open to public. No charge. No special hours. By chance or appointment.

WILLEYS' Books and Paper Items
Heisey Deep Plate Etching #1 \$4.00 p. p. Heisey Cut Glass Book #2 \$6.50 p. p. Old original magazine copy - Orchid, Rose, Crystolite and other \$1.00 ea. MRS. HAROLD E. WILLEY 1110 Cannon Rd., Frazeyburg, OH 43822. PH 614-828-2557.

COME CELEBRATE GLASS REVIEW'S 10TH ANNIVERSARY
AT THEIR THIRD ANNUAL

GLASS BASH SHOW AND SALE
featuring

SEMINARS * DISPLAYS * GLASS IDENTIFICATION
SPECIAL GUESTS:

10 Glass Book Authors
10 Glass Factory owners & manufacturers
*

JULY 24 - 25- 26

CLEVELAND, OHIO

HOLIDAY INN-STRONGSVILLE

1-71 at Rt. 82
exit 10 South off Turnpike

* * * * *

150 TABLES OF GLASS!!!
100 Old Glass, 50 New Glass
*

SELECTED GLASS DEALERS OFFERING
A VARIETY OF GLASS TREASURES FOR SALE
From *Antique Pressed, Cut, Art, Depression,
Heisey, Cambridge, Fostoria, Duncan, Carnival,
Fenton, Imperial, Westmoreland* to the collectible
Contemporary glass of *Boyd, St. Clair, Mosser,
Fairpoint, L.G. Wright, Degenhart, paperweights
and others.*
*

MORE THAN A SHOW - A LEARNING EXPERIENCE!
*

SHOW HOURS:

FRIDAY PREVIEW & BIRTHDAY PARTY - 7 p.m.-10 p.m.
Preview Admission - \$4 each (good all 3 days)
*

SATURDAY & SUNDAY - 11 a.m. to 5 p.m.
Admission \$2.50 each (or \$2 w/ad)
free return privileges

SEMINAR HOURS: Saturday and Sunday 10 a.m. to 11 a.m.
To be held in the Stearns Room - free with Glass Show admission

FREE GLASS I.D. HOSTED BY A PANEL OF GLASS EXPERTS
Saturday 1-4 p.m. and Sunday 1-3 p.m. (limit 2 items please)

COCKTAILS AND DINNER BUFFET JULY 25 - 6 p.m.
With afterdinner speaker
\$15 per person - Advance reservations needed

For information, motel discount reservation cards or dealer contracts
write: GLASS REVIEW MAGAZINE, P.O. Box 542, Marietta, OH 45750
or call Barbara Shaeffer, editor at (614) 374-2719.

HEISEY REFERENCE PUBLICATIONS

If your order totals \$50 - \$250 you may deduct 10%
 25% discount on orders \$250 and over.
 (No hand selection at this price.)
 Please add 10% for Shipping & Handling (\$1.50 Min.
 on Glass Items except Cup Plates)
 Ohio Residents add 4-1/2% Sales Tax.
 All prices payable in U.S. Funds

ORDER FROM: H.C.A. SALES
 Dept. F
 P.O. Box 27
 Newark, OH 43055



Please order by
 Item and Number: *
 Make checks payable to H.C.A., Inc.

PLEASE KEEP THIS FOR FUTURE REFERENCE

- | | | |
|-----|--|---------------------|
| 1. | THE HEISEY ANIMALS, by James McDermott.....
Pictures all 56 animals produced by Heisey. States size of each animal. | \$ 3.00 |
| 2. | THE HEISEY ANIMALS, ETC. BOOK II, by Robert Coyle, Lynn Block, Art Hartman.....
Pictures items using the animal figure as stem, stopper, handle, flower frog, ash tray, etc. | \$ 3.50 |
| 3. | COMBINATION PRICE GUIDE FOR ANIMAL BOOKS I & II, by the authors..... | \$ 1.50 |
| 4. | HEISEY'S GLASSWARE OF DISTINCTION, by Mary Louise Burns. Revised.....
Includes additional patterns, new illustrations, many new listings. "Perfect" bound.
Shows all major patterns, many stems, cuttings and etchings. | \$ 11.95 |
| 5. | PRICE GUIDE FOR BURNS BOOK, by Mary Louise Burns.....
Both books #4 & #5 for..... | \$ 5.95
\$ 16.50 |
| 6. | HEISEY GLASSWARE, by Viola Cudd, Hardback book published by the author.....
245 Pages including many late stemware items. | \$ 10.00 |
| 7. | HEISEY GLASS IN COLOR, BOOK 2, by Loren & Virginia Yeakley. More than 750 items.....
pictured in color. Comprehensive discussion of each. Includes value and rarity
guide. 60 pages. | \$ 12.50 |
| 8. | ENCYCLOPEDIA OF HEISEY GLASSWARE, VOL. I, ETCHINGS AND CARVINGS, by.....
Louise Ream, Tom and Neila Bredehoff...over 1500 pictures. Contains 228 pages
clearly illustrating all known etchings and carvings made by Heisey. Defines the process
used by Heisey for etching and carving and lists all items offered in the different etchings. | \$ 10.95 |
| 15. | HEISEY CATALOG AND FACTORY PRICE LIST, by Antiques Research Publications. Catalog reprint \$
#33 dated June 1, 1956. Last catalog published by the company. Complete listings of
patterns offered by Heisey when they discontinued operations in 1957. | \$ 6.95 |
| 19. | HEISEYITES FAVORITES, by The Northern Illinois Heisey Collectors Club. Contains 36.....
pages of favorite gourmet recipes compiled by Heisey Collectors from Northern
Illinois. Proceeds go to Heisey Museum. | \$ 1.50 |
| 22. | HEISEY STEMS, by Bradley, Ryan and Ryan. Comprehensive book on more than 350 pressed.....
and blown stems. A must for the stem collector. 240 pages. | \$ 20.00 |
| 23. | INDEX OF HEISEY GLASSWARE. Lists all known patterns, items and decorations in both.....
numerical and alphabetical order. Valuable as a cross reference. Compiled by
Dayton Area Heisey Collectors for H.C.A. | \$ 2.00 |
| 25. | VERLYS PRICE GUIDE, by Northwest Heisey Collectors Club..... | \$ 1.95 |
| 26. | CATALOG & PRICE LIST #32. Complete reprint of 1953 catalog. Added information.....
and price guide. The best book on late productions. | \$ 9.95 |
| 55. | HEISEY'S CUT HANDMADE GLASSWARE, by Harold E. Willey. Reprint of old catalogs.....
showing some of the many cuttings by Heisey, mostly on stemware. Good clear pictures. | \$ 5.95 |
| 61. | SALTS AND PEPPERS CATALOG, by Columbia Heisey Collectors. Reprint of 1910 catalog.....
30 pages. Includes comprehensive price guide by Research and Archives. | \$ 3.00 |
| 68. | HEISEY BY IMPERIAL AND LENOX IMPERIAL, by Newark Heisey Collectors Club.....
50 pages. Soft bound. Included price trends and color plate. Every piece of every
pattern made by Imperial is listed and priced in all colors used for the pattern. All items
are dated. A must for the collector or dealer specializing in Heisey glass. Many items are
already collectible. | \$ 5.95 |

ANIMALS AND MISCELLANEOUS ITEMS FOR SALE

27.	TIE TAC in shape of DIAMOND H.....	\$ 9.00
28.	CHARM in shape of DIAMOND H.....	\$ 8.00
29.	H.C.A. DECALS.....3 for.....	\$ 1.00
30.	COLOR POST CARDS OF THE HEISEY MUSEUM (outside), minimum order.....12.....	\$ 1.50
31.	BLACK AND WHITE POST CARDS OF THE FACTORY (outside), minimum order.12.....	\$ 1.50
33.	SOUVENIR PENS, National Heisey Glass Museum.....	\$.25
34.	LEADED GLASS DIAMOND H WINDOW ORNAMENTS.....with hanger.....	\$ 7.50
35.	WOODEN BOOKENDS TO HOLD PLATES (Land of Legend series).....set.....	\$ 10.50
36.	BUTTONS with sayings, "Ask Me About Heisey", "Heisey Collectors of America, Inc." "Buy..\$ Heisey", "I Belong to H.C.A.", "I Live in Heiseyland U.S.A.", "I Dig Heisey"...each....	.75
36A.	"Heisey Keeps Me Poor! But Happy!".....2 for \$1.50 or each.....	\$ 1.00
39.	BACK ISSUES OF THE HEISEY NEWS.....each Volume.....\$ 9.00 Volume I, II, IV, V, VI, VII, VIII & IX. Reprints of all issues of Heisey News in their entirety. Much valuable information in each issue.	
40.	IMPERIAL REISSUE OF #1 HEISEY MADONNA, Frosted. Marked LIG.....	\$ 19.00
41.	IMPERIAL ELEPHANT HANDLED FAIRY TALE MUG. Marked LIG Available in Crystal.....\$ 8.50 Meadow Green Carnival.....\$ 9.75	
44.	MOTHER RABBIT, available in milk glass. Limited edition of 1454...only seconds left...\$ 10.00 Made in original Heisey molds by Imperial Glass Corp. exclusively for Heisey Collectors of America, Inc. 4-5/8" high. Marked IG *NOTE: NO DISCOUNTS ON SECONDS	
45.	HEN, available in milk glass. Limited edition of 1999...made in original Heisey molds.\$ 18.00 by Imperial Glass Corp. exclusively for Heisey Collectors of America, Inc. 4-1/4" high.IG	
46.	CHICKS, head up and head down, available in milk glass. Limited edition of 3292...pair\$ 7.50 heads down chick...and 2866 heads up chick...made in original Heisey molds by Imperial Glass Corp. exclusively for Heisey Collectors of America, Inc. 1" high. Head Down Chick...Marked IG.....each ...\$ 3.75	
47.	ROOSTER, available in milk glass. Limited edition of 1457...made in original Heisey...\$ 35.00 molds by Imperial Glass Corp. exclusively for Heisey Collectors of America, Inc. 5-5/8" high. Marked IG	
48.	#1560 VICTORIAN GIRL BELLE, available in milk glass, rose pink, sunshine yellow, light.\$ 8.00 blue and light green (plain) Light blue, rose pink, sunshine yellow and light green (frosted).....\$ 9.00 Marked IG...made in original Heisey molds by Imperial Glass Corp. exclusively for Heisey Collectors of America, Inc. 4-1/4" high.	
49.	SCOTTIES, available in milk glass. Limited edition of 1617...made in original.... \$ 12.50 Heisey molds by Imperial Glass Corp. exclusively for Heisey Collectors of America, Inc. 3-1/2" high. Marked IG.	
50.	PLATE HANGERS for 8" plates to hang in a series from one nail. Ideal for H.C.A..each..\$.65 souvenir plates.	
50B.	PLATE HANGERS for cup plates to hang in a series..4" Brass.....each..\$.65	
52.	9" CERAMIC PLATE, showing Heisey Museum, fall decor. Marked Newark, Ohio 1978.....\$ 2.50	
52A.	9" CERAMIC PLATE, showing Heisey Factory. Marked Newark, Ohio 1979\$ 2.50	
56.	REARING COLT, available in light blue. Limited edition of 1563...made in original.....\$ 14.00 Heisey molds by Imperial Glass Corp. exclusively for Heisey Collectors of America, Inc. 3-3/4" high. Dated 1979. Marked IG.	

- 57. BABY ELEPHANT, rose and mint green satin. Marked LIG. NOT a limited edition 4-1/2"...\$ 22.00
- *58 PAIRPOINT CUP PLATE, Pressed copy of Lancaster Etching. Crystal and Vaseline..each.....\$ 6.00
- *58A. PAIRPOINT CUP PLATE, Pressed copy of National Heisey Museum, available soon in Teal.Ea.\$ 6.00
- *58B. PAIRPOINT CUP PLATE, Fandango Pitcher..Crystal and Vaseline.....each.....\$ 6.00
- 59. OLD WILLIAMSBURG BELL, crystal, amber, ultra blue, nut brown, verde, sunshine yellow...\$ 14.00
and rose pink. (Ruby \$16.00)
- 60. OLD WILLIAMSBURG SALT AND PEPPER SET, crystal, amber, ultra blue, nut brown, verde.....\$ 9.00
sunshine yellow and rose pink.
- 64. TIGER PAPERWEIGHT, opaque jade, Marked LIG. NOT a limited edition. 2-3/4" high.....\$ 15.00
- 65. WINGS-UP MALLARD, available in light blue. Limited edition of 1811..made in original..\$ 13.00
Heisey molds by Imperial Glass Corp. exclusively for Heisey Collectors of America, Inc.\$
6-3/4" high. Marked IG.
- 66. WINGS-HALF MALLARD, available in light blue.....Limited edition.....\$ 13.00
of 1893...made in original Heisey molds by Imperial Glass Corp. exclusively for
Heisey Collectors of America, Inc. 5" high. Marked IG.
- 67. PLAYING CARDS...Prices include shipping. (Shipped U.P.S.) Single Deck.....\$ 3.45
Double Deck.....In Plastic Box.....\$ 5.75
Red or blue border. Double decks have one of each. With other orders \$2.20 & \$4.50.
- 69. BABY ELEPHANT, pink carnival..NOT a limited edition. Marked LIG. 4-1/2" high.....\$ 20.00
- 70. WINGS-DOWN MALLARD, available in light blue. Limited edition of 1547...made in.....\$ 13.00
original Heisey molds by Imperial Glass Corp. exclusively for Heisey Collectors of
America, Inc. Marked IG. 4-1/2" high.
- 71. CYGNET, Light blue...Limited edition of 1280...made in original.....\$ 13.25
Heisey molds by Imperial Glass Corp. exclusively for Heisey Collectors of America, Inc.
Marked IG.
- 72. STANDING DUCKLING, available in sunshine yellow, Limited Edition of not more than 1500.\$ 14.00
Made in original Heisey molds by Imperial Glass Corp. exclusively for Heisey
Collectors of America, Inc...2-5/8" high. Marked IG.
- 73. No. 1435 INDIVIDUAL ASHTRAY..Anniversary Souvenir, Adapted from the Tally Ho Etching...\$ 7.50
Crystal, 4" Size. Marked H C A and Dated 1971 - 1981
- 74. CATALOG INDEX CARDS...for your collection100 Post Paid for.....\$ 4.00
- 75. ADDENDUM (40 Page) to Encyclopedia of Heisey Glassware, Vol. 1, Etchings and Carvings,by\$ 3.50
Louise Ream, Tom and Neila Bredehoft.

QUANTITY	STOCK NO. FROM LIST	ITEM	COLOR	UNIT PRICE	TOTAL

TOTAL	_____
DISCOUNT (IF ANY)	_____
SALES TAX (OHIO ONLY)	_____
POSTAGE AND HANDLING	_____
GRAND TOTAL	_____

PRINT CLEARLY

NAME: _____

ADDRESS: _____

CITY: _____

STATE: _____ ZIP: _____

PHONE: _____

SIGNATURE: _____

H. C. A. SALES
P.O. BOX 27 — DEPT. F.
NEWARK, OH 43055

- CHARGE MY
- BankAmericard/
 Visa
- MasterCharge

Credit Card No.

--	--	--	--	--	--	--	--	--	--	--	--	--	--	--	--	--

Expiration date required

MO.

Yr.

We assume no responsibility for errors in these ads after the first printing Editor
For changes in ads during the year, please send \$1.00 per line.

- MOSTLY HEISEY**
RHODA CURLEY
16 Clayton Place
Albany, New York 12209
By Appointment (518)482-6272
- LAST CHANCE ANTIQUES**
P.O. BOX 502, Dania, Fl. 33004
Mail Orders - Matching Service
Send us your want lists
(305) 467-6356 Day or Evening
- GOLDSBERRY'S ANTIQUES**
KALAMAZOO, Michigan
Shows Only -- Buy & Sell
HEISEY A Speciality
Phone (616)381-3013
- SCHWAN'S ANTIQUES**
Route 1, Box 175B
John Tyler Highway
WILLIAMSBURG, VA. 23185
(804)229-7873 Shop and Shows
- GREEN ACRES FARM**
Antiques, Crystal Glass & Collectibles
2678 Hazelton Etna Road, S.W.
(S.R. 310 N.) Pataskala, Oh. 43062
Sat. & Sun. P.M. or Call (614)927-1882
- BERT'S BUDGET SHOP**
General Line Antiques
403 W. Main St., Newark, Oh. 43055
Phone: (614)349-8045
- THE WOODEN SHOE**
Antiques & Collectables-Buy & Sell
Glass, Furniture, Estates
Jim & Sheri Vanes. By Appointment
Herndon, Va. 22070 Phone:435-9045
- CURIOSITY NOOK**
'Where Friends Meet To Antique'
3300 S. 8th. Ave. Westward Village
Yuma, Ar. 85364 (602)726-6730 or 726-8070
Barney & Jody Barnicle
- CURIO CORNER**
Accent Antiques of Kensington
3742 Howard Ave.
Kensington, Md. 20795
Phone: (301)933-3750
- ANTIQUES BOUGHT**
BOB SHULTZ SOLD
206-208 E. Main St., Route 419
Newmanstown, Pa. 17073
15 Mi. West of Reading, Pa.
Phone: (215)589-2819
- T & S ANTIQUES**
TOM MARTIN STEVE RODERICK
Specializing in Heisey
New Rochelle, N.Y.
(914) 235-9632
- OLDE LOVED THINGS**
ANTIQUES & COLLECTIBLES
Daris 'ed' Lacroix - Donald Mousseau
900 Ridgewood Avenue (Holly Hill)
Daytona Beach, Fl. 32017
HEISEY.CAMBRIDGE, Mail Order (904)252-7960
- OFF-BROADWAY ANTIQUES**
HEISEY GLASS & GENERAL ANTIQUES
121 S. Prospect St., Granville, Oh. 43023
Open 7 Days A Week 12-5 P.M.
Shop(614)587-2083 Sam 587-0052
- LYNNE & ART'S GLASS HOUSE, INC.**
'HEISEY OUR SPECIALTY'
Miami Beach, Fl. 33154
P.O. Box 54-6014
(305)861-7700 (305)895-5666
- CRYSTAL PALACE ANTIQUITIES**
Cut Glass, Heisey, China, etc.
116 S. Taylor St., Hemet, Ca.
Mon-Fri 10:00 a.m. -5:00 p.m.
Weekends by adv. appt (714) 652-1307
- PEGGY'S ANTIQUES**
2000 pcs. Heisey in stock
Ernie and Peggy Cox
P.O. Box 367, Spavinaw, Ok. 74366
(918) 589-2859 By Appt. or by chance
- DIAMOND H PLUS**
George & EILEEN SCHAMEL
Rt. 3 Box 419 Boonsboro, Md. 21713
Appointment or Mail Order
Phone (301)432-6285
- HEIDI-HO ANTIQUES, INC.**
HEISEY and GENERAL ANTIQUES
838 S. High St., Columbus, Oh. 43206
Phone: (614)444-5774
Hours: Wed.-Sat. 11-5, Sun. 1-5
- BOB & FRAN'S ANTIQUES**
CHINA - HEISEY - GLASSWARE
SILVER FLATWARE
2007 Broadway Vancouver, Wa. 98663
Phone: (206)693-7972
- ANN'S GIFTS & ANTIQUES**
105 W. Main St., Hebron, Oh. 43025
Intersection Rt's 40 & 79
Next Door to Daisy Queen
Daily 11:30 A.M. to 5:30 P.M. Closed Thursday
- SUM OF LIFE**
ELAINE & FRANK HUSTED
P.O. Box 102
Phoenixville, Pa. 19460
Phone: (215)935-2962
- RECOLLECTIONS**
THERESA WERT
Lahaska Antique Center
Route 202 Lahaska, Pa.
Phone: (215)794-8667
- DEBBIE DELANEY**
Spec. in HEISEY and HUMMELS
BUY - ANYTIME
SELL - SHOWS and MAIL ORDERS
Newark (614) 366-3741 evenings
- THE "FINDERS" ANTIQUES**
DAVID & SHIRLEY ROSE
513 E. Main Street
Newark, Oh. 43055
Phone: (614)349-7934
- MOUNDBUILDERS ANTIQUES**
IRENE RAUCK
1138 Moundview, Newark, Oh. 43055
Phone: (614)344-6043
Heisey & Animals General Antiques
- HAPPY HAVEN ANTIQUES**
MARY DUMKE
14319 Rattlesnake Road
Grass Valley, Ca. 95945
Phone: (916)273-9450
- THE PURPLE PLACE**
Specializing in Art Glass
HEISEY, CAMBRIDGE, PATTERN
3093 Cleveland (U. S. 41)
Fort Myers, Fl. 33901 813-936-1572
- C&J ANTIQUES**
COLE & JEAN MIESNER
BOX 45, 72WHIG ST.
NEWARK VALLEY, N.Y. 13811
(607) 642-9905
- GEORGE HOFFMAN ANTIQUES**
G.W. HOFFMAN - J.H. DENNIS
129 South 4th. Street
Newark, Oh. 43055
Phone: (614)345-8021
- CHARLES & MILDRED FISHER**
Antiques & Collectibles, General Line
HEISEY, DEGENHART, IMPERIAL
991 Idlewilde, Newark, Oh. 43055
Phone: (614)522-5398
- HARRISON'S ANTIQUES**
HEISEY, CAMBRIDGE, DUNCAN
26 Johnston's Lane
Mercersburg, Pa. 17236
Shows, Mail, By Appt. (717) 328-2451
- RENETTAS RELICS**
515 North St., Utica, Ohio
Antiques & Collectibles
Open Thurs-Sat 12-6 or by appt.
Phone (614) 892 2488
- H and R DIAMOND H**
HELEN & ROBERT RAREY
1450 WHITE ASH DRIVE
Columbus, Oh. 43204
(614) 279-0390 after 5:30
- RAMBLING LANE ANTIQUES**
KEITH & EVELYN HOOVER
Featuring HEISEY and Other Fine Glass
Rt.4 Box 1005 Rhinelander, Wi. 54501
Phone: (715)282-5019

FROM THE DESK OF YOUR PRESIDENT . . .

With all of the work that it takes to get ready for a successful convention such as we just had, there was little time to prepare my usual column. The news of the convention will be in the next issue. We had the largest registration ever and more people attended all events. Heisey was plentiful and sold very well.

Everyone who served on any committee deserves a great big thank-you from all HCA members and especially the six co-chairmen: Bob McClain, Wayne McPeck, Mary McWilliams, Harley Bethel, Charlie Wade and Jack Metcalf. It would take much too much space to list all of those who contributed.

We wish to thank Kay Darling and Bob Johnson for their four years of service on the board. We also wish to congratulate Tom Bredehoft, Bob O'Grady, Dick Spencer, Dick Marshall and Mary Mc Williams who were elected. Officers will be elected in July by and from the Board.

The amendment to allow absentee balloting by request was passed and the text hopefully will be in the next issue.

We hope you all had a wonderful time in Heiseyland.

Happy Collecting,

Louise Ryan

* * * * *

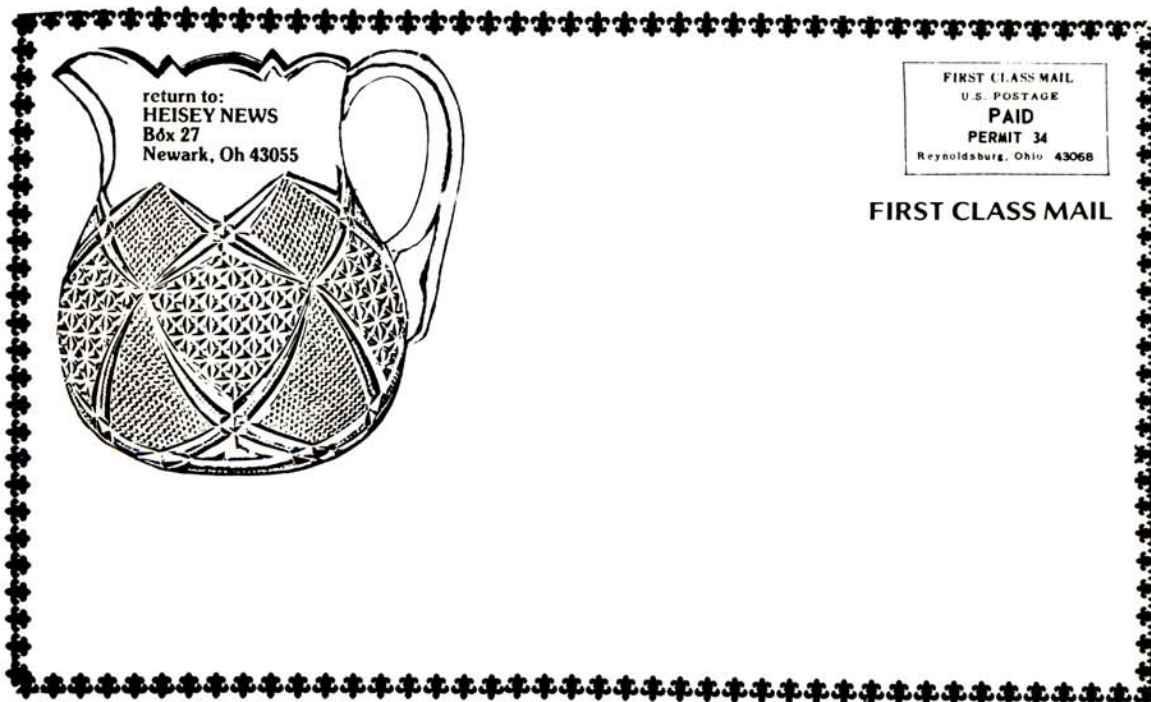
DATES TO REMEMBER . . .

SEPTEMBER 12 -- MINI-SHOW AT REYNOLDSBURG HIGH SCHOOL GYM

For Contracts Send To: Shirley Bagford, c/o HCA, Box 27, Newark, OH 43055

SEPTEMBER 12 -- SOUVENIR DINNER AT STONEY CREEK COUNTRY CLUB, ROUTE 256, REYNOLDSBURG, OHIO.

* * * * *



Heisey



COLLECTORS OF AMERICA, INC.

P. O. BOX 27 NEWARK, OHIO 43055

614 - 345-2932

Dear Member,



You are cordially invited to attend HCA's 9th Annual Souvenir Dinner on September 12, 1981. The dinner will be held at the beautiful Stoney Creek Country Club (Executive Caterers) on Rt. 256 just off I-70 in Reynoldsburg, Ohio - 25 miles from Newark. A map is shown in the newsletter as well as area motels. An extensive menu has been planned. Anyone who was there last year knows that the food was both bountiful and delicious and in seemingly endless supply. The cocktail hour begins at 6:30 pm with our own bar and plenty of hors d'oeuvres; dinner at 7:30 pm. A fun program is also being planned, including the auction of unusual items.

The last of a series of 4 cordials in the #5024 Oxford stem by Lenox-Imperial is being offered in the #456 TITANIA etching. These are dated and there will be no more than 300 etched. The 1978 was Orchid etch, 1979 Heisey Rose, 1980 Old Colony. The plate was again made by Gary Chaconis a master engraver for the U. S. Mint, the fourth he has made and donated to HCA. The price for the cordial is \$40 including one dinner, or \$35 without the dinner. Extra dinners will be \$20 each. This includes hors d'oeuvres, an excellent dinner, plenty of wine and the gratuity.

For new members this is the perfect place to become acquainted.

This is a major fund raising event for the Museum and we urge your support. Orders should be mailed no later than August 29 to insure a dinner reservation. In the event we have a sell out, the earliest postmarks will be honored.

There will also be a Mini-Show with many of the best Heisey dealers in the country present so it will be a good opportunity to buy. This will be held in the Reynoldsburg High School gymnasium just a short distance from the Country Club. There are several motels very close by and we have included rates for these with the map.

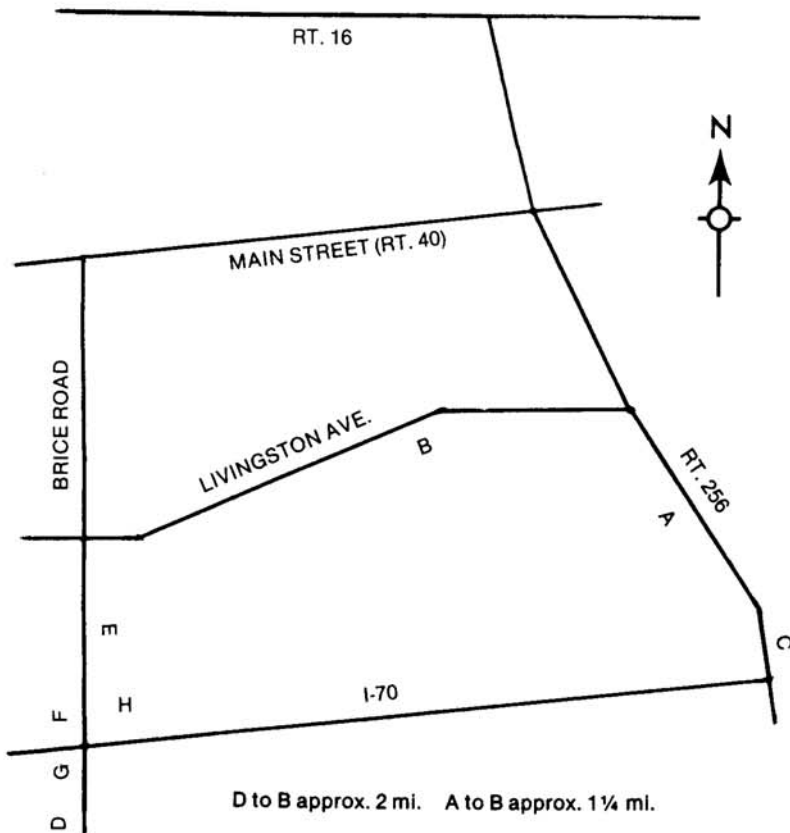
Though the dinner is in Reynoldsburg, your orders will be going to Pennsylvania for processing.

We hope to see you all on September 12.

Dan Glenn, Project Committee

Louise Ream, President

Mary McWilliams, Secretary



- A EXECUTIVE CATERERS
- B REYNOLDSBURG HIGH SCHOOL

MOTELS:

- C HOLIDAY INN (614) 861-7808
170 and RT. 256
Single \$29.30 Double \$39.06 Triple \$43.40
No charge for children Tax included
- D KNIGHT'S INN (614) 864-4670
170 and Brice Road
Single \$20.61 Double \$27.67 Includes tax
No charge under 18 if with 2 adults
- E RAMADA INN (614) 864-1280
2100 Brice Road
Single \$40.15 Double \$46.66
No charge under 18 Includes tax
- F RED ROOF INN (614) 864-3683
170 and Brice Road
Single 1 person \$19.83 2 persons \$23.08
Double 1 person \$20.91 2 persons \$25.25
3 or more persons \$27.42 (limit 5 persons)
No charge under 12 Tax included
- G DAY'S INN (614) 868-9290
170 and Brice Road
1 person, \$22.65 2 persons \$26.99, 3 persons \$30.25
4 persons \$33.51. Extra adult \$3.00, Extra child \$1.00
Manimum 5 people Plus tax
- H BUDGETEL (614) 866-8000
170 and Brice Road
Single 1 person \$17.95, 2 persons \$21.95
Double 1 person \$18.95, 2 persons \$22.95
Family room (3 or 4) \$24.95
Does not include tax.

Detach and Mail

CORDIAL ORDER FORM

Please complete form and mail with check payable to H.C.A., Inc. to:

Mail by August 29, 1981

HCA CORDIAL
JIM JORDAN
P. O. Box 583
Lansdale, PA. 19446
(amount enclosed)

_____ Number of Cordials without dinner, \$35.00 each

_____ Number of Cordials WITH dinner, \$40.00 each

_____ Extra dinner, no cordial, \$20.00 each

Total Amount Enclosed

Name _____ Address _____

City _____ State _____ Zip _____

Extra names _____

() I will pick up my cordial at the dinner or after Sept. 12 at the museum

() Please Mail my cordial No. _____
Exp. Date _____

CHARGE MY

BankAmericard/
Visa

Mastercharge

