

# HEISEY *news*

OFFICIAL PUBLICATION HEISEY COLLECTORS OF AMERICA

©Heisey Collectors of America, Inc. 1980  
All Rights Reserved

VOL. IX, #9, SEPTEMBER, 1980

ONE DOLLAR



1511



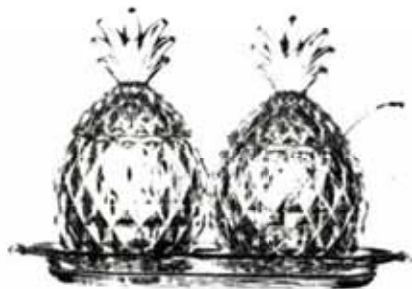
1567



1567



1567



1567



1503



1485



1567



1485



341

## INFLATION HITS HCA

Our last increase in dues was January, 1978. Since all costs have gone up since then the Board of Directors was forced to vote a dues increase. Current club dues barely cover the cost of the newsletter and mailing costs for it, let alone all of the other related expenses such as Debbie's salary, dues reminders, special mailings, etc.

The only alternative would have been to go to non-profit mailing which club members do not want since delivery is so erratic for that class of mail.

As of January 1, 1981, dues will be \$12.00 for one person and \$2.00 for each family member who wishes a membership card. Voting memberships will remain at the one-time fee of \$25.00.

ANYONE WHOSE MEMBERSHIP EXPIRES ON OR BEFORE MARCH 31, 1981 MAY RENEW AT THE OLD RATE IF THEY PAY BY DECEMBER 31, 1980.

\* \* \* \* \*

	SEPT, 27-28	ALL GLASS SHOW - STURBRIDGE SHERATON STURBRIDGE, MASS, BAY STATE HC.
DATES TO REMEMBER	OCT, 11-12	ALL GLASS SHOW- GEORGE WASHINGTON INN WILLOW GROVE, PA, HEISEY HERITAGE SOCIETY
	OCT, 19	ANTIQUA SHOW & FLEA MARKET - REYNOLDSBURG HIGH SCHOOL REYNOLDSBURG, OHIO - REYNOLDSBURG HC
	DEC. 12	HCA CHRISTMAS DINNER GRANVILLE INN - GRANVILLE, OHIO

### PHOTO ON FRONT COVER

TOP ROW: 1511 Toujours "apple" marmalade, 1567 Plantation marmalade and syrup on tray, 1567 Plantation syrup.  
 SECOND ROW: 1567 Plantation marmalade, 1567 Plantation marmalade set (2) on tray, 1503 Crystolite syrup.  
 THIRD ROW: 1485 Saturn marmalade with ladle, 1567 Plantation condiment set (2 oils, salt & pepper & tray), 1485 Saturn mustard, 341 Old Williamsburg mustard.

## HEISEY NEWS — — — P.O. BOX 27 — — — NEWARK, OHIO 43055

EDITOR — LOUISE REAM, 1115 W. Main St., Newark, OH 43055  
 ASS'T. EDITOR — NEILA BREDEHOFT, Box 27, Newark, OH 43055  
 PUBLISHED MONTHLY — \$10.00/year — \$1.00/copy  
 BACK ISSUES AVAILABLE AT \$8.00/year — \$1.00/copy

PRESIDENT	LOUISE REAM	(614) 344-2377
VICE PRESIDENT	JACK METCALF	(614) 892-2664
SECRETARY	MARY McWILLIAMS	(614) 345-4380
TREASURER	DICK MARSH	(614) 366-5608

Heisey Collectors of America, Inc. is a non-profit corporation with tax exempt status. Owners and operators of National Heisey Glass Museum, 6th and Church Streets, Newark, Ohio. Open Daily 1-4 p.m., April through October except Monday and Holidays, November through March, Wednesday, Saturday, Sunday 1-4 p.m. Members admitted free.

Phone: (614) 345-2332. Club membership (includes 12 issues of Heisey News and participation in all club activities) \$10.00/Year plus \$1.00 each for additional family members in same household who wish a membership card. For voting membership add \$25.00, one time only fee, or write for information.

For Membership - HCA Membership, Box 27, Newark, OH 43055. Notify immediately of any change of address.

The opinions expressed in articles in Heisey News are those of the authors and not necessarily those of the organization. The Editorial Staff reserves the right to edit or refuse any material submitted for publication. When requesting information, please enclose a self addressed stamped envelope (SASE).

ADVERTISING — Send all ads to:  
 Neila Bredehoft, Advertising  
 Box 27  
 Newark, OH 43055

DEALER DIRECTOR ADVERTISING RATES — 5 line - \$6.00/6 issues

CLASSIFIED ADVERTISING — 5¢/word — \$1.00 Minimum. We cannot mix type sizes in Classified Ads. Abbreviations and initials count as words.

DISPLAY ADVERTISING	RATES	MEMBER	NON-MEMBER
	1/8 Page	\$ 8.00	\$15.00
	1/4 Page	\$15.00	\$25.00
	1/2 Page	\$25.00	\$40.00
	Full Page	\$45.00	\$60.00

### PAYMENT IN FULL MUST ACCOMPANY ALL ADS.

Advertising copy reaching us by the 5th of the month will be in the next month's issue. Advertisements containing reproductions will not knowingly be accepted unless clearly stated (i.e. Heisey by Imperial, etc.) Heisey News assumes no responsibility for false advertising or misleading information. In the event of typographical error, the incorrect portion of the ad will be run in the following issue, but Heisey News assumes no further liability.

Send all letters and articles to be published to the Editor. Letters to columnists should be sent to the club address and will be forwarded.

## FROM THE DESK OF YOUR PRESIDENT

I can't believe that fall is here - where did the summer go? We have been very busy at the Museum with many visitors and lots of business in the gift shop and mail sales. The latter two keep the Museum operating since few museums could operate on their admissions only, even with a good attendance.

Dave Curley writes that the Public TV show on Heisey in which he participated will be shown by satellite the third week of November and will be available to all stations that week and the next week also. So be sure to contact your local public TV stations and request that they show it.

Our Bob Evans stock is now worth approximately \$39,000. The company has just approved an agreement, in principle, under which Bob Evans would join Beatrice Foods, the nation's largest diversified food company with sales of \$8.3 billion and net earnings of \$290 million for its fiscal year ended February 29, 1980. The transaction, which is subject to approval of the stockholders of Bob Evans, the board of directors of Beatrice Foods and the federal government, would involve a stock exchange of 1.636 shares of Beatrice for each share of Bob Evans common stock. Bob Evans will operate as a subsidiary of Beatrice Foods, retaining the same management as at present. The headquarters will remain in Columbus, OH. Keith Bradbury, the Heisey collector who has donated us our stock is Treasurer and a Vice-President of Bob Evans. Beatrice Foods is traded on the New York Stock Exchange under the stock symbol BRY.

If you wonder why your recent envelopes from us have bicycles on them, we aren't going into the bicycle business. It is just that the US Post Office is using these at present and we are buying pre-stamped envelopes.

Jerry Gallagher of Minnesota, the gentleman who originally found the cache of #3379 Pyramid sodas told us that he purchased them in 1978. He also says they are 7 oz. not 12 oz. He has generously donated one to the Museum and also donated a 3304 Universal sherbet with Santa Fe etc. Thanks, Jerry!

A recent acquisition was a pair of #134 candlesticks. You are saying "So what?" Well, these are beautiful experimental blue with fantastic color! We couldn't resist them.

If you like real Jade you will love the Tiger Paperweight, marked LIG since they are Imperial's own production-not ours. Very cheap at \$13.00. See your catalogue we sent out with your Cordial dinner invitation. Wings Half Mallards are in also.

Pat Smith of Texas who is a florist, sent us a folder advertising a ceramic Madonna to be used in floral arrangements. It was an exact copy of the Heisey Madonna and sold for something like \$2.50 each. It looked pretty in the picture.

The Imperial book is at the printers and we should have it the first week or so of October. This is a definite must for collectors and dealers and contains both a "Price Trends" and a color plate. The prices are based on the desirability of the item, length of time made and duration of production. The Newark Heisey Collectors Club compiled this book and donated it to HCA for publication. Neila and I, with help from Debbie, did the typing and layout and several people helped with the price guide. We hope you all order this book and that you find it helpful. It sells for only \$5.95. There is an order form on page 23. We suggest that you carefully read the text before using the book.

We have had many pictures taken recently for the cutting book and hope to get back on it next week. If you could see how busy we are here you'd know why it takes us so long to get it done-along with the new information all of the time.

We REALLY don't have an "Oscar" factory in the Museum but we are again offering some to you at a bargain price. We had 441 seconds, (included in the original 2930) which we held for a board decision. These have a double dating (!;§§) on them. We are having these frosted and will sell the

same as we did the other 1099 which Imperial made by mistake with the 1979 date. A form for these is also included on page 23. Those of you who were too late before should order at once this time. This was a strange year for Oscars.

By the time you receive this the Cordial dinner will be a thing of the past. Sales were down from previous years though HCA still should make a good bit of money on this major project.

We are planning an Etching Book update and would be pleased to hear from any of you who have found items not listed under the various etching numbers. Since we were able to obtain the very first blowware catalog and more importantly the first price list for it (which is where the real information is) we already know of many additional items. Also many of you have already notified us of what you have that we didn't list. We know when we published the book that other items could and would, show up. With your help we hope to be able to make the book more complete.

We have been very pleased with all of the nice things said about the book and hope that if you don't have it you'll order it soon. It is a nearly complete guide to etchings as well as to blown stemware. Send your information to: HCA Etching Book, Dept. N & L, PO Box 27, Newark, OH 43055.

HAPPY COLLECTING!

Louise Peam

DOWN THE HEISEY TRAIL

BY JIM JORDAN

Hi ya, Gang. The letters have been great. Thanks for all the compliments, but really, just because I'm writing this here column, that does not qualify me as an expert on Heisey glass. That doesn't mean you have to stop calling me an expert though. God only knows a positive stroke feels good now and then.

Received a letter from a little gal way out in Grand Junction, Colo. where the air is clean and the Heisey is hard to find, who found some real winners. She starts off with a Plain Band salver, a #1401 Empress 3 ftd. plate with Antarctic etch (hmm) a Fern nappy in zircon, 2 pair of Cross Lined Flute shakers (now that's nice) a Crystolite cologne, and - - - hold on to your socks - - 5 #300 sherbets in flamingo. You better stake a claim, Amy Jo, I'm heading your way.

Another little gal from Palm Beach, FL sends a picture of a recently found #4206 Optic Tooth footed soda, hawthorn and moongleam combination, and a pair of #114 candlesticks in - - I'm gonna be sick - - marigold. Super - super.

That couple from Shelbyville, KY wasn't letting the grass turn blue under their feet either. This auction going crowd got a pair of Plantation 3 light candelabra, plus a sugar and creamer. Another auction bagged a #1001 hotel sugar and cream in flamingo and 6 Greek Key nappies. Yet another auction brought a #4231 favor vase in flamingo PLUS a real "Ho - Ho", a Winged Scroll toothpick in - - vaseline. They didn't steal em, but they got em.

The Wicked Witch from Chester, PA recently found a Locket on Chain custard cup and a collector from Minnesota reports a #1280 (Winged Scroll) celery vase in - - vaseline. (Hey, whats goin on?), a #1295 wine in - - opal !!, and a #5 candlestick in moongleam. Now thats some huntin.

The cordial doktor called to tell about his #438 spiral optic 3 oz. port which he paid absolutely nothing for at a local auction. (It don't hurt to know the auctioneer). While the Recollections gal in Lahaska, PA grabbed a pair of favor vases (sahara and cobalt) off a flea table. She's gettin too good too fast - - - Little Blue Eyes charmed a dealer out of a pair of moongleam Triplex candleholders and a Swan master nut, a flamingo Twist cruet and a #300 individual decanter with stopper. Poor man just fell under the spell of those blue eyes.

Hey gang, just returned from the west coast of Florida, and you know what we found? Nothing, that's what. About the closest Lil Blue Eyes and I came to anything even resembling Heisey was a Nymph and Satyr scene, but that's another story. Remember, friends, I can't report em if you don't tell me about em - - See ya on the trail.

Write Jim about your finds c/o HCA, Box 27, Newark OH 43055 and they will be forwarded.

\* \* \* \* \*

Custard-Marked or Unmarked

#1235 BEADED PANEL & SUNBURST



Water Bottle-Unmarked



9" Cake Basket-Unmarked

## NO. 1235 BEADED PANEL AND SUNBURST

As with every stem that has been unknown or "unseen", when one turns up you can bet another will be close behind. This familiar pattern was repeated again with the No. 1235 Beaded Panel & Sunburst goblet. For years the wine was all you could hope for in this pattern. They were scarce but at least they were available. Suddenly the goblets have begun to surface. The first one we heard about was snatched at the Granville flea market in June (I must stress, apparently that others may have known of them but this is the first brought to my attention). Then in August another popped up in Pennsylvania and at the same time we learned of a third which has been resting in a Heisey dealer's collection for quite a spell. It appears that they are around; we just haven't been looking in the right places.

No. 1235 Beaded Panel and Sunburst dates from 1897. \* A good looking, no nonsense pattern which doesn't have the flair of the later pattern No. 343 Sunburst but is more classic in design. We can only get excited about a wine and goblet because nothing else was done in stemware.

If these stems were made in color it's a well kept secret. The best you can hope for in decoration is gold or Amberette which is a yellow stain and really quite attractive. A punch bowl exists in custard so a custard wine or goblet is within the realm of possibility as is Opal but then so are Emerald and Vaseline if for no other reason than that they fall into the same time frame. If you're going to dream you might as well dream big.

I'd like to be able to say that some other company other than Heisey made this pattern but I can't because I don't know for sure. I do know that some of the salts and nappies seen around are of such poor quality it is difficult to believe that Heisey was involved. The production of No. 1235 straddled the turn of the century which explains it's availability both signed and unsigned. When marked the stemware is signed underneath the foot.

\* Copies of original ads list #1235 as being a new line in September, 1897. The description states in part "...the most elegant design we have yet seen in pressed glassware. The pieces are ornamented with fluting supplemented by chrysanthemums, which are as perfect representations of those pretty flowers as it is possible to make in glass.... (There are) about 65 pieces in all."

Decorations sometimes seen on the pattern include at least 2 styles of Ruby Stain, one simply on the "chrysanthemum" or sunburst and the other on the plain top portion and down the grooves.

Also in an early trade journal excerpt dated January 8, 1896 it stated: "The samples of the new works of A. H. Heisey & Co., Newark, O., are now on exhibit in Pittsburgh, and of course no old goods will be expected from a new firm." The implication is that Heisey's patterns were just that, Heisey's. Later in September 9, 1896, the following was printed: "... No old molds are being worked, because the firm has no old or second hand molds, but proposes to put a new set on the market at least every six months, or as fast as new molds can be designed and executed in their shop. For years to come therefore Mr. Heisey will be able to supply his patrons with new goods constantly, and the factory is large enough to enable the firm to ship orders promptly." This seems ample proof that 1235 Beaded Panel & Sunburst was indeed exclusively Heisey's. The only proof that it wasn't would be a listing in another glass company's catalog - something which does not exist to my knowledge.

nb

\* \* \* \* \*



3454 GRANADA

Carl mentioned this goblet in his last column.



1235 BEADED PANEL &amp; SUNBURST



168 ADAM PANTOGRAPH ETCHING

429 ZODIAC PLATE ETCHING

Two etchings of similar design were produced by A. H. Heisey & Co, using different methods. 168 Adam is a pantograph etch (essentially a mechanical pattern) while 429 Zodiac is a plate etching. The designs are not the same but similar enough to cause confusion, especially since both occur on the 3335 Lady Leg stem line. Compare the illustrations closely to see how very similar these two are.

168 Adam was introduced in the 1924 catalog and was discontinued before 1930. It is an attractive design and was available on some very desirable stemware. It is occasionally seen and more should be found as collectors become more familiar with it. It is found mostly on crystal with a few items available in flamingo.

FOUND ON:



- 3335 LADY LEG stemware (marked)
- 3345 MARY N VIRG stemware (marked)
- 3357 KING ARTHUR stemware (marked)
- 3376 ADAM stemware in crystal and flamingo -  
Please add the 4 oz. oyster cocktail to your lists.
- 1184 YEOMAN plates in crystal and flamingo
- 2052 bar
- 2351, 2401 sodas
- 2930 PLAIN & FANCY tumbler
- 3476 TEMPLE ice tea
- 4164 jug in crystal and flamingo



429 Zodiac was produced from 1919 to circa 1928. It is relatively easy to find compared to some of the other early etchings. It is found only on crystal ware but items may be plain or optic. The optic I have seen is either a medium optic or wide optic. I can't see any relationship between the name of the etching and the design. The etching is a typical one of the period: a band around the tops of items, scrolls, swags of bell-flower type motifs and a central flower surmounted by an urn which interrupts the ornamental band.

FOUND ON:

- 3335 LADY LEG stemware
- 2351, 2401 sodas
- 2930 PLAIN & FANCY tumbler
- 3476 TEMPLE ice tea
- 3542 HAZELWOOD oyster cocktail
- 4163, 4164 jugs
- 4182 plate
- 4291 1 lb. candy jar



4182

Please add to your lists: 3335 Lady Leg stems: 7 oz. saucer champagne, 7 oz. sherbet, 7 oz. fruit cocktail, 7 oz. ice cream, footed.

In conclusion, the two etchings differ in the pattern in the band. Zodiac has a column of the "bell flowers" below the flower and again between the flowers - Adam has neither of these. Also the flowers differ - Adam has a flower composed of petal shapes while Zodiac's flower is composed of simple rays. The only stem causing confusion would be 3335 Lady Leg as both etchings appear on it, but none of the other stem lines are found with Zodiac. Adam is the more difficult etching to find.



continued

# BOW TIE BASKETS

BY JOSEPH D. LOKAY

There is a family of three items that has been given the nickname "bow tie baskets". The bodies of the three sizes of these items look like bow ties as can be seen in the picture with this article. There is a single handle like that associated with a basket connected to the bow tie across the narrow part of the design. Thus, the nickname "bow tie basket". The three pieces even have a polished bottom rim in the shape of a bow tie.

For convenience, I will first refer to the three sizes of bow tie baskets as small, medium, and large. I measured the actual length dimension of each size. The small bow tie basket is 4 inches, the medium is 5½ inches and the large is 8½ inches. None of the three sizes is signed with a Diamond H.

Two of the bow tie baskets are pictured in Heisey catalog #109, page 95. Vogel 3, page 11 is a copy of that catalog page. The Heisey catalog or price list did not refer to the three pieces as bow tie baskets. The nickname was given to them by others, not Heisey.

First, all three pieces are in the #1184 Yeoman pattern. The small one is called the 4" handled ash tray, the medium one is called the 5½" handled bon-bon and the large one is called the 8½" handled candy dish. Note that the actual length dimension I previously mentioned is included in the name of each piece assigned to them by Heisey.

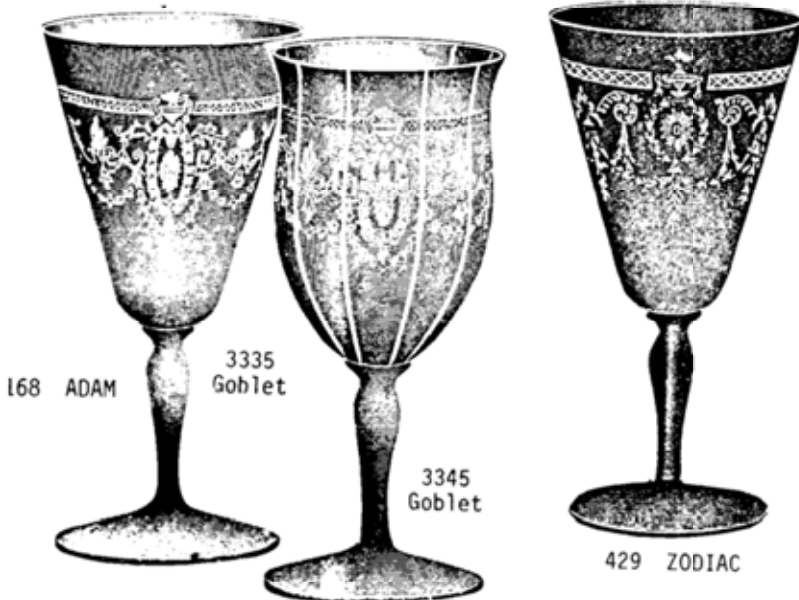
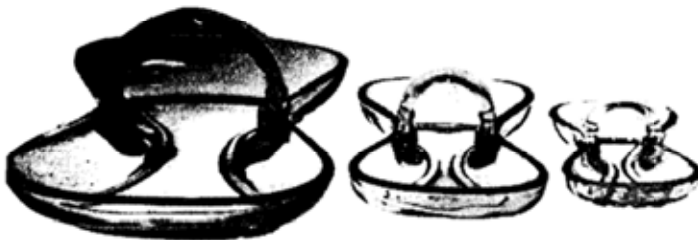
All three sizes of the bow tie baskets are made in crystal, flamingo and moongleam. The colored glassware section with price list #209 (circa Sept. 1, 1929) indicates that the bon-bon and the candy dish were also made in marigold.

The three items are mentioned only in catalog #109 (circa 1928), price list #209, and the colored glassware section. My estimate is that the bow tie baskets were made for about 4 years, 1928 to 1931. Bow tie baskets are not readily found. Flamingo appears to be the prevalent color found while marigold is rare.

There is a #1179 ash tray shown in catalog 109, page 115 or Vogel 3, page 26. This ash tray is the 4" bow tie ash tray without the handle, and was made in crystal, flamingo and moongleam.

There also is a #1210 8" two handle bon-bon shown in catalog 109, page 113 or Vogel 3, page 89. One might first think it is the 8½" candy dish bow tie with two side handles rather than the single basket type handle. Close examination shows there are significant differences that indicate that the #1210 8" two handled bon-bon was made in its own mold. The #1210 bon-bon was also made in crystal, flamingo, moongleam and marigold.

The bow tie baskets are still out there to be found. My wife just recently found the middle size one in crystal.





**Artistic Designs and Shapes**

in a great variety of styles to please the taste of every user of high grade glassware, will be found in the complete line of Old Central Quality blown ware.

Its clear crystal-white brilliancy excites the admiration of the most discriminating buyer and makes this line a quick seller.

Are you sharing in this business? Get our catalogue and investigate.

**CENTRAL GLASS WORKS**  
Wheeling, West Virginia

The above etching made by Central Glass Works is quite similar to #429 Zodiac. Note the differences between the two. The #3335 stem by Heisey is usually signed.

## #1295 BEAD SWAG AND RECENT REPRODUCTIONS

BY NANCY AND DAVID JONES

Heisey produced the #1295 Bead Swag toothpick holder from about 1897 to 1901. It was never marked and is currently known in only three colors: crystal, opal (milk glass) and emerald. Crystal with ruby stain is relatively common, while plain crystal and opal are more difficult to find, and emerald is rare. That has been the status for about 80 years, but now the Mosser Glass Company of Cambridge, Ohio has begun reproducing this toothpick holder. Even since our article on toothpick holders in just last month's HEISEY NEWS, Mosser has added to its line of reproductions. The count now stands at two colors and two decorations. While one can hope that is all, we will provide as much information as possible in case you are the first to encounter an unreported fake, reproduction, or reissue.

Mosser is reproducing the #1295 Bead Swag toothpick holder in an opaque milk glass that does not have the delicate opalescence of Heisey's opal. They have also introduced a custard version, but in the examples we have seen, the color was so poorly mixed that upon close examination, it almost looks like a milk glass and custard slag. Even if subsequent pieces were available in a uniform color, it would still lack the deep, rich hue of Heisey's ivorina verde and is greener than Heisey's ivory. In any event, Heisey is not known to have produced a #1295 Bead Swag toothpick holder in either ivorina verde or ivory although other items in the same pattern were available. A comparison of the Mosser reproduction with a Heisey original reveals that externally they are very similar with the same number of beads and swags on the body, as well as the same number of scallops and serrations on the rim. The top is just a little more tightly cupped on the reproduction than most of the originals. The real key to distinguishing between them lies inside the bowl. The Heisey toothpick holder is like a thin bubble on a base, while the Mosser reproduction has thick sides and nearly vertical inside walls. The base to bottom of bowl dimension is about three times as thick as Heisey's. This accounts for the fact that the reproduction is about 57% heavier than the original (5½ oz. versus 3½ oz.)!

The reproductions are being decorated by Sarah Hall of Columbus, Ohio and her initials "S. H." appear at the lower left of the flowers below the stem. The red or blue flower decoration is attractive and available with or without gold trim on the rim edge and beads. Retail price at the factory ranges from \$4 for the plain milk glass or custard to \$12 for the fully decorated. In fact the decoration may make you overlook the wavy and wrinkled surfaces of the reproduction which contrasts sharply with the smooth and polished appearance of the Heisey. If Mosser had pressed their trademark in the glass as they have on other pieces to identify it as their version of #1295 Bead Swag (like Sarah Hall signed her work), the toothpick holder could have been collectible in its own right. Now some pieces will inevitably wind up in the hands of unscrupulous individuals who will try to pass them off as Heisey. The end result will be that the toothpick will not be judged on its own merits because of the adverse publicity from individuals who bought one thing and thought they were getting something else. This could be avoided if Mosser would press their trademark in all their items. The accompanying photographs show a Mosser reproduction on the left with gold grin on the rim edge and beads. A Heisey original is on the right (with a non-factory floral decoration). The darker photograph is backlighted to show the contrast between the thick opacity of the Mosser glass which allows no light through and the fiery opalescence of the Heisey glass with its translucence that allows light to pass through the back rim. The lighter photograph is illuminated in the traditional manner to show the details of both toothpick holders.

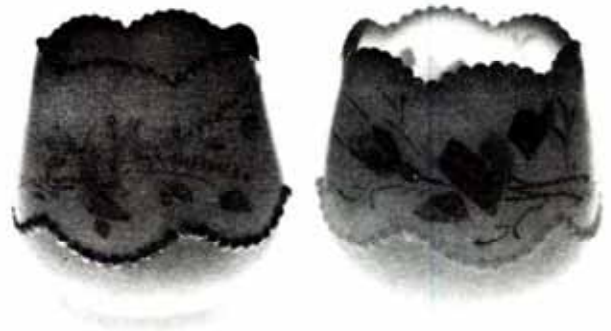
The care and craftsmanship in the production of Heisey glassware all the way from raw material selection through to manufacturing resulted in a finished product of such superior quality that it has been an effective deterrent to imitators. The same economic considerations that helped force Heisey out of business in 1957 make it extremely difficult for anyone (even Imperial Glass with access to the original molds) to exactly duplicate a piece of Heisey. The situation is analogous to U.S. currency - both can be counterfeited, but the copy is never exactly like the original. No one confuses real Tiffany lamps with the dime store imitations. Fakes (items that do not look like anything ever produced by Heisey but with the Diamond H trademark pressed into them to deceive the unwary), reproductions (copies of actual Heisey pieces like the toothpick holder by Mosser), and reissues (new glass made in the original molds, usually by Imperial) will always be around. Our best protection lies in the very quality of Heisey itself. But there are two additional rules to remember that will help minimize the chances of making a purchase you may later come to regret:

(1) Know Your Dealer - patronize dealers or collectors you know and trust. If you don't know any personally, those who advertise in the HEISEY NEWS could serve as a place to start. While there is nothing in the way of formal policy, we feel confident any misrepresentation of a fake, reproduction, or reissue as bona fide Heisey would leave the offender subject to strong sanctions by the HCA. And let's face it - none of them would risk the loss of reputation over a small sale like a toothpick holder. But as we all browse through flea markets and the like, it is strictly "buyer beware". Lack of information by the seller as well as the possibility of intentional deception make rule #2 the most important of all.

(2) Know Your Heisey - educate yourself since a knowledgeable collector (or dealer) seldom makes an unwise purchase. Keep up your membership in the HCA, read your HEISEY NEWS and if you see something suspicious submit it to the HEISEY NEWS for authentication and its publication will



help alert other collectors. Visit the Museum and spend some time in the basement studying the fakes, reproductions, and reissues in the cabinet to the right at the bottom of the stairs. Incidentally, the Mosser custard, milk glass, and decorated toothpick holder reproductions are on display there. If you don't know your dealer or know your Heisey, instead of buying a "sleep-er" you could be caught napping!



MOSSER

HEISEY

MOSSER

HEISEY



4500  
MAYONNAISE SET



465 RECESSED PANEL CANDY JAR

- ¼ pound - 7½"
- ½ pound - 9 1/8"
- 1 pound - 10 3/8"
- 3 pound - 13"
- 5 pound - 15½"
- 8 pound - 18¼"

Many people have asked how you know what size candy jar you have. The only way we know to tell is by measuring and we are giving the measurements here. The smart collector carries a tape measure when shopping.

- L. R.

1540-7" Cdy Box Cov.  
(new horse head)

(48)	HEAD OF SHOP	NO. MADE	NO. GOOD	NO. BAD
1/7	M. Stough	344	270	64
1/21	" "	275	223	12
3/29	" "	272	152	37
4/20	M. Daugherty	288	205	41

HORSE HEAD COVER FOR #1540 LARIAT CANDY BOX  
- Louise Ream

The above is taken from the actual production records for 1/7, 1/21, 3/29 and 4/20, 1948 and indicates that at least 1179 of these candy box covers were made with 285 being bad. Perhaps this large loss was the reason the lid wasn't made very long.

## LETTERS. WE GET LETTERS , . .

About a week ago I had in my hands the first piece I ever saw of "Heisey Glass", how beautiful and delicate it is! But sad to say I know very little of it or rather nothing. So I am writing to you, hoping that you can send me some information concerning it. I know that it was first manufactured in 1895, but I don't know if it should have any mark or label on it to identify the glass. I also heard that there is a museum known as the "National Heisey Glass Museum", where is it located? So that I can write to them for I would like to have or buy one of their catalogues.

One last thing, and please forgive me for asking for so much, I would also like to subscribe to your monthly newsletter, can you tell me how?

I thank you in advance for your kindness.

- Mrs. J. Gehagaucaro, Puerto Rico

+ + + + +  
My family and I would like you to know how very much we enjoyed our recent trip to Newark. Thoughts of the Museum and its fabulous glass still delight us and we have spent much time recently recalling pieces which were particularly outstanding. The fact that the house is also quite beautiful makes a trip to the Museum a "must" for any Heisey or glass collector.

The Convention was so well organized and the seminars and meetings interesting as well as informative. Not to be forgotten are the magnificent displays and shows!

I was thrilled to bring our charter back to those members of the Nassau-Long Island Heisey Club who could not attend the Convention. Perhaps next year our entire club can enjoy the delights of such an experience.

Certainly, all those involved in the preparation and carrying-out of such an event deserve our thanks and appreciation.

Here's to another wonderful year of Heisey collecting!

- Elyse Bosniak, Sec.-Nassau-Long Island HC

+ + + + +  
So sorry I am so late with this renewal-the worst thing I can think of is NOT getting my Heisey News. I have all of the back issues (except for year #3) & I browse through them constantly-finding something each time that I did not notice before. I have them bound in loose-leaf note book binders.

For the past 4 months I have been a member of the local Heisey Club-with Betty Wanser as President. We are all proud to have her on the HCA Board. I can't tell you how much I've learned from the 4 meetings I've attended-lots of info from all those serious collectors. While I have not been a serious collector, I have been buying Heisey since 1962.

Just this week, on invitation from our local Library, I put up a display of Heisey of 10 colors and 49 different patterns-about 100 pieces total. I divided the display into 5 categories as there are 5 compartments to the locked glass display case-and each category is accompanied by books and a typed card explaining the pieces shown and what year the pattern was introduced. It is meant to be an educational display. Categories are: Heisey Rarities, Patterns, Serving Pieces, Colors and even "Suncolored".

In 1977 I had the privilege to see the Museum and I am planning to be among those Californians at next year's Convention.

- Frances Brock, CA

+ + + + +  
Up until two months ago I was a very dedicated collector of Heisey glass but had no knowledge at all about the glass other than its beautiful lustre and design and the Diamond H. I had received some literature through the library but it was very limited. Then my sister knowing of your club through a friend and member of the club, signed me up as a member. Now through your literature and news letters plus a few books I have acquired I am at long last learning a little more, but it seems I am still wanting to know about my collections and a lot more....

I started in the field of glass collecting about 25 years ago, and at this time my main interest was in collecting old bottles, especially the sun colored amethyst. We spent all our spare time digging in old railroad camps, and mining towns, and were fortunate in starting at an early enough date to have acquired a very large collection. Then we started buying and gathering old glass dishes from swap meets etc. and "turning" them in the sun, this hot desert sun. I also had a very dear friend an elderly lady who had collected beautiful glass, crystal and china in her home all her life. She had a 12 room home that was a Museum in its own right. She had a large sun room and some of her glass was turning amethyst indoors. Then she started having me turn it for her and sharing parts of it with me. When she passed away at age 86 she left me a great amount of her china and glassware. Of course I turned them in the sun, those that would turn. Glass after the year 1915 does not turn. From her I received my beautiful Heisey.

I was still not aware of Heisey glass until several years later. My husband is the Director of Nevada's Lost City Museum. He furnished me several display cases to show my old bottles and glass, etc. One day a glass collector from Ohio visited the Museum and asked if he could open the

LETTERS, continued

case and see inside. He asked if we were aware of the large collection of Heisey glass we had on display and he pointed the pieces out to us and showed us the Diamond H. He also pointed out the especially fine qualities of the glassware.

I do not know if the sun coloring has destroyed the value to others of my Heisey Glass or not. However I am not interested in selling any of it and being a Collector of Sun Colored Amethyst glass it enhances it for me as it proves it's antiquity. Of course I am a devout Desert Person and love everything about it's beauty. But then my husband and I are collectors of many things, having acquired a large Museum of Indian Artifacts and beautiful cut and polished gems and mineral specimens. Whenever anyone asks what I collect I tell them dust, as I collect everything of beauty and it always collects dust on the desert.

- Iola P. Perkins, NV

+ + + + \*  
Just a short note to tell you what happened on Aug. 24, 1980. My husband called for me to hurry and come look - he wanted to show me something on TV. I came in and he showed me a pair of Heisey horse head book ends sitting on a desk. The movie he was watching at the time was "Never Give a Sucker an Even Break". The movie was made in 1941 featuring W. C. Fields. In our area we still see The Three Stooges and often wonder how much of the glassware broken was Heisey.  
- Mrs. James Wickham, NJ  
\* \* \* \* \*

Dear Editor,

I just received the August 1980 Heisey News. I have been a member since the club started. I have one complaint. You often show pictures of Heisey glass but fail to identify it. I feel ALL pieces SHOWN should be identified. Especially the COVER. What are they? I have a pair of marmalade jars on the cover but do not know the pattern, when they were made, and I feel you are being slack in just showing the picture with no information. I hope you will correct this in the future. Again, what are the jam jars?  
- G. A. J., Colorado  
- - - - -

Touche! We attempt to identify all illustrations, but occasionally some things slip through. The items on last month's cover are: TOP: 341 Old Williamsburg 5 part relish, 1511 Toujours marmalade, 1503 Crystolite oval jellies, 4 footed (3) (apparently used as a relish set). BOT-TOM: 1485 Saturn cruets, salts, & mustard; 1951 Cabochon hurricane shade; 1567 Plantation marmalades. The photo is from 1953 since these are items from the Domestic-Cater line. This line used items from various glass patterns combined with wire and wood.  
\* \* \* \* \*

Just noticed that our membership expires 8/31/80. Almost had chills!!! We could not do without the Heisey News. Please renew our memberships...Thanks again for the work and the job well done you all do. We appreciate you all.  
- Albert & Bessie Dorsett, KS

+ + + \*  
I wish to thank the 1980 Convention Committee for selecting my theme idea, "Elect Heisey your Collectible", and also the HCA Membership for the prize of the set of Horizon Blue colts.

On another topic, I am continually amused that in this day of "equality consciousness", HCA still permits members to "pass the buck" by re-membering their wives for just \$1.00 each year.

I believe we have a "World Class" organization, and \$10.00 membership fee for all is fair, and is very reasonable for the benefit and value received. (Perhaps \$5.00 fee for those under age 16). In fact if we paid an additional \$10.00 yearly for the Heisey News, the above prices would still be in the "sleeper" range. And, of course the increased fees would go a little further in paying HCA bills and supporting the Museum in these days of high inflation.

Thanks again to all.  
- Jim LaMoreaux, OH

\* \* \* \* \*

Just a note to all of the people who make the Heisey Club work. I was at the Convention and enjoyed every minute I spent in Newark. You people deserve a lot of credit for the unending research, support and planning that goes into the club 12 months a year.

But special, very special thanks to Vivian and Percy Moore who put themselves out to me with special kindness.

Many thanks "Club", you're great.  
- Beverly Sullivan  
\* \* \* \* \*

NEW STUDY CLUB -

Please contact:  
W. L. Hitchcock  
230 Greencrest Ct. N. E.  
Marietta, GA 30067

if you wish to help start a new study club in Georgia.

## CLUB NEWS . . .

### HEISEY CLUB OF CALIFORNIA

The Heisey Club of California's past three monthly meetings have been informative, well attended and a great deal of fun.

The April meeting was our Annual Silent Auction for HCA and Pot Luck Dinner. As in the past our auction was very successful, followed by a super gourmet Pot Luck. The highlight of the Auction was a beautiful blue serving tray, enclosing under it's glass top an exact replica in fine cross-stich of the Heisey Trade Mark. Again, this year member Mary Hawkins talent and generosity brought the highest bid of the auction. Last year her Diamond H Afghan took the honor for high bid. The April meeting and Auction took place at the home of President, Betty Wanser and husband Herb in Anaheim.

Betty and Bill Losch of Long Beach hosted our May HCC meeting. The study program for the month was Heisey Custard and Opal presented by our program chairman, Maxine Hertrich. Cooperatively we assembled an excellent assortment of both Custard and Opal for study.

A June meeting was cancelled because so many of our members were attending the HCA Convention.

July's meeting was held at the home of Lulu and Erve Heise in Santa Ana with loads of great Heisey finds brought by those who attended the 1980 Convention and two months of local finds for the rest of our members to show off. What a bonanza of fantastic Heisey. Several interesting items were found by members here in California. Our Moongleam Twist collectors the Hawkins purchased a pair of #1252 Salt & Peppers with square stacked bases like the stemware, which we don't find in any of our available books. A pair of #1184 Peach Melba stems with peach melba optic and marked at the top portion of the stem being listed as unseen in Ryans and Bradley, Heisey Stemware book. Found by Frances Brock in her own kitchen cupboard.

The July study program brought out all our handsome Ruby and Amber stained glass plus many items in Frosted Heisey. Program chairman, Maxine Hertrich educated us on the staining and frosting processes.

During the month of August member, Frances Brock will have a Heisey display at the San Dimas Public Library. With all the fine ideas for her display she shared with us, we're sure it will be magnificent.

- Betty Regan



Made by Mary Hawkins, HCC  
Pomona, CA. Heisey Colors.

\* \* \* \* \*

### CENTRAL ILLINOIS HCC

Regular meetings are held each month on the 3rd Sunday in Member's homes. August meeting was in the home of Ernie and Jean Mehnert at Champaign, Illinois.

We hold a business meeting, have a club auction (each member donates a piece of Heisey to be auctioned each month), a 50/50 pot (each person present contributes 25¢, names are drawn for the winner), and a study session.

The study session for September will be the Sunburst pattern. We also bring and display our new finds.

Our club project to benefit the HCA Museum in Newark was undertaken this year. It is a needlepoint kit in the form of the "Souvenir Oscar" in their yearly color. These were sold at Convention and can still be purchased from our club at a cost of \$5.50 each postage paid. Send orders to:

Ralph Geeseman  
P. O. Box 114  
St. Joseph, Illinois 61873

Our Club has room for four more members. If you desire to learn more about "THE MOST BEAUTIFUL GLASS MADE IN AMERICA" contact the above person and plan to visit our club.

- Joan Rhoden, Secretary

\* \* \* \* \*

### NEW CLUB FORMING IN CALIFORNIA

Lee Jones called to tell us that there will be an organizational meeting of the Golden Gate Heisey Club on October 26. Anyone in the area who would like to join should contact:

Russ Nichols  
630 45th St.  
San Francisco, CA 94121  
Phone: (415) 668-2208

The meeting will be held at the above address. All of you people in that area who have been wanting a club should attend this meeting. It should be a great club as there are many active collectors in that area.

# ALL HEISEY AUCTION

YWCA  
6th & W. Church Sts.  
Newark, Ohio  
Food available

Saturday, October 18, 1980  
Doors open -- 9:00 A.M.  
Sale Starts -- 10:30 A.M.

PRICE LIST AVAILABLE \$1.00

This will be another fine quality Heisey Auction and will feature some of the finest pieces in color offered for some time including a rare pair of amber dolphin candlesticks, trial blue, cobalt victorian, vaseline, tangerine and many other nice pieces in color. Several choice animal related items are offered including the amber elephant handled mug, amber seahorse cocktail and goose decanter. Several nice animals and a good selection of deep plate etchings are also offered. You won't be disappointed. Mark your calendar and plan to attend.

___1	7023 HALF CIRCLE Moongleam Indiv. Cream & Sugar H	___33	1509 QUEEN ANN 7 Compartment Relish H
___2	1519 WAVERLY Cream & Sugar, Orchid Etch H	___34	1401 EMPRESS Sahara 3 Part Relish
___3	1506 PROVINCIAL Limelight Cream & Sugar	___35	3389 DUQUESNE Goblet, Continental Cut
___4	1401 EMPRESS Sahara Footed Cream & Sugar, Old Colony Etch H	___36	3408 JAMESTOWN Goblet, Barcelona Cut X
___5	1184 YEOMAN Hawthorne Cream & Sugar, Empress Etch, No Lid H	___37	4055 PARK LANE Goblet, Walter Gray Cut
___6	1519 WAVERLY Indiv Creamer H	___38	3318 WALDORF Goblet, California Cut
___7	1235 BEADED PANEL & SUNBURST Individual Creamer, Red Stain	___39	3344 CAROLINA Goblet, Windsor Cut. H
___8	1220 PUNTY BAND Opal Individual Creamer, Souvenir H	___40	6003 TEMPO Goblet, Fern Cut H
___9	1951 CABOCHON Dawn Creamer H	___41	5057 SUEZ Goblet, Unknown Cut
___10	1632 LODESTAR Dawn Sugar H	___42	3389 DUQUESNE Goblet, Hunt Cutting
___11	4044 NEW ERA Cream, Normandie Etch	___43	5010 SYMPHONIE Goblet, Danish Princess Cut
___12	1280 WINGED SCROLL Custard Spooner, Gold Dec	___44	5057 SUEZ Goblet, Laurel Cut
___13	1425 VICTORIAN Sugar H	___45	5022 GRACEFUL Goblet, Enchantress Cut
___14	354 WIDE FLAT PANEL Individual Sugar H	___46	6004 Classic Goblet, American Beauty Rose Cut
___15	1519 WAVERLY Individual Sugar, Orchid Etch H	___47	3411 Monte Cristo Goblet, Waikiki Cut
___16	1280 WINGED SCROLL Emerald Spooner, Gold Dec	___48	5040 LARIAT Goblet, Moonglo Cut H
___17	393 NARROW FLUTE Hotel Sugar H	___49	3404 SPANISH Champagne, Cut
___18	433 GREEK KEY Sugar, 2 Ea, Round, 1 w/Gold Decor H	___50	5010 Symphone Cocktail, Danish Princess Cut
___19	1295 BEADED SWAG Opal Covered Sugar Pink & Blue Dec	___51	4057 10 1/2" Vase, Krall Cut
___20	1255 PINEAPPLE & FAN 1/2 Pt Pitcher, Custard, Souvenir	___52	1428 WARWICK 9" Horn of Plenty Vase, Cut H
___21	1255 PINEAPPLE & FAN Emerald Creamer	___53	1428 WARWICK Center Floral Bowl, Cut H
___22	1255 PINEAPPLE & FAN Emerald Cream & Covered Sugar, Gold Decor, As Is X	___54	1413 CATHEDRAL Vase, Calcutta Cut, w/ Dusty Rose Etch
___23	1255 PINEAPPLE & FAN Emerald Celery Vase & Covered Butter, Gold Dec. As Is XX	___55	11 12" Flower Vase H
___24	365 OLD QUEEN ANN Covered Butter, Red & Gold Stain H	___56	54-440 20" Flower Vase H
___25	357 PRISON STRIPE Covered Butter H	___57	20" Plaid Vase H
___26	310 RING BAND Custard Spooner, No GoldH	___58	4223 Sahara 12" Vase
___27	160 LOCKET ON CHAIN Emerald Celery Tray X	___59	1413 CATHEDRAL Vase, Antartic Etch H
___28	1401 EMPRESS Sahara Olive Tray H	___60	4218 9 1/2" Vase, DO
___29	468 OCTAGON 12" Celery Tray, Gold Dec & Irridized H	___61	9" Mitre Cut Vase
___30	1189 YEOMAN Flamingo Pickle & Olive Tray	___62	1401 EMPRESS 3 Hd1 Vase, Antartic Etch H
___31	1252 TWIST Flamingo 10" Celery Tray H	___63	1413 CATHEDRAL Flamingo Straight Vase H
___32	1252 TWIST Marigold 13" Celery Tray H	___64	1433 THUMBPRINT & PANEL Vase H
		___65	4217 6" Flamingo Vase DO
		___66	21 9" Flamingo Electric Lamp Base Only H
		___67	209 11" Electric Lamp Base w/7 1/2" Glass Spider H
		___68	21 Pair Electric Lamp Base H
		___69	1488 KOHINOOR 2 Lt Candelabra, Pr
		___70	1401 EMPRESS Sahara Footed Candle, Pr H
		___71	100 6" 1 Lt Candle, Cut & Signed Clarke, Pr H
		___72	5 4 1/2" Candle, Pr H
		___73	1567 PLANTATION 1 Lt Candle Block, Pr
		___74	1428 WARWICK 1 Lt Candle, Pr H
		___75	1503 CRYSTOLITE 1 Lt Candle Block, 3 Ea
		___76	402 GOTHIC 2 Light Candelabrum H
		___77	105 7" 1 Light Flamingo Candle/w prisms
		___78	5 9" 1 Light Candle
		___79	1 9" 1 Light Candle
		___80	134 TRIDENT Flamingo 2 Light Candle

81 1447 Rococo 2 Lt Candle, Japanese Scene Etch H  
 82 1447 Rococo 2 Lt Candle, H  
 83 129 Moongleam Triplex Candle, H  
 84 142 3 Lt Candle, Cut  
 85 5 6½" 1 Lt Candle H  
 86 116 1 Lt Candle, Oak Leaf, Hawthorne  
 87 128 1 Lt Candle, Flamingo  
 88 150 BANDED FLUTE 1 Lt Handled Chamberstick H  
 89 520 Candle Lamp H  
 90 134 TRIDENT 2 Lt Candle, Pair w/Moongleam Base & #1203 12" Moongleam Floral Bowl & Base H  
 91 135 Pr 1 Lt Candle and #135 13" Floral Bowl, Sahara H  
 92 135 Pr 1 Lt Candle and #135 13" Floral Bowl, Moongleam H  
 93 1401 EMPRESS Tangerine 6" Square Plate, 4 Ea H  
 94 407 COARSE RIB Moongleam 7" Plate, 2 Ea H  
 95 7098 CUT DAISY 8" Plate H  
 96 1401 EMPRESS Alexandrite 7" Round Plate H  
 97 1511 TOUJOURS 7" Round Plate, Minuet Etch 4 Ea  
 98 1233 7" Hawthorne Plate, 4 Ea H  
 99 1224 8" Moongleam Plate, 6 Ea H  
 100 7044 7" CACTUS Cobalt Plate H  
 101 1238 BEEHIVE 8" Plate  
 102 1229 OCTAGON Hawthorne 6" Cheese Plate, Etched  
 103 1401 EMPRESS Sahara 8" Round Plate, 4 Ea H  
 104 1401 EMPRESS Sahara Saucers, 5 Ea H  
 105 4225 1 Qt Cocktail Shaker & 6 Ea #4002 Aqua Caliente, Fox Chase Etch  
 106 4163 12oz Mug, Fox Chase Etch, 6 Ea H  
 107 4163 12oz Mug, Sportsman Etch H  
 108 3397 GASCONY 1 Pt Decanter & 6 Ea 2 oz Wine, Tally Ho Etch  
 109 4225 1 Qt Cocktail Shaker & 6 Ea #4002 Aqua Caliente, Tally Ho Etch  
 110 4027 32oz Decanter, Tally Ho Etch, Chip on Inside of Stopper  
 111 5011 YORKTOWN Cocktail, Tally Ho Etch, 4 Ea  
 112 3397 GASCONY 1 Pt Decanter, Tally Ho Etch  
 113 2052 1½oz Bar, Tally Ho Etch, 4 Ea  
 114 6060 COUNTRY CLUB 14 oz Soda, Winchester 73 Etch  
 115 6060 COUNTRY CLUB 9 oz Old Fashion, Winchester 73 Etch  
 116 2401 8 oz Old Fashion, Polo Player Etch  
 117 4225 2 Qt. Cocktail Shaker, Reed Handle  
 118 333 HOTEL WALDORF ASTORIA Decanter  
 119 4036 1 Pt Decanter, Cut  
 120 4036½ 27oz Decanter, Cut identical to the one made for Emperor Haille Selassie  
 120A4035 Decanter, Cut w/Acid Marked Sample  
 120B 351 COLONIAL Pint Decanter  
 121 1626 LODESTAR Dawn Jar & Cover H  
 122 4036½ 1/2 Pint Decanter, Monogram FEA  
 123 341 PURITAN 1 Qt Decanter, Moongleam H  
 124 341 PURITAN 1 Qt Decanter, Flamingo H  
 125 1231 RUM JUG, Sahara  
 126 1401 EMPRESS Sahara Footed Ice Bucket w/Tongs H  
 127 1401 EMPRESS Moongleam Footed Ice Bucket, w/Tongs, Artic Etch H  
 128 417 DOUBLE RIB & PANEL Flamingo 6" Basket H

PAID ADVERTISEMENT

129 417 DOUBLE RIB & PANEL Moongleam 6" Basket H  
 130 4164 73 oz Jug, Normandie Etch  
 131 3389 DUQUESNE 8 oz Soda, Normandie Etch, 6 Ea  
 132 3390 CARCASSONNE 72oz Pitcher, Sahara  
 133 3390 CARCASSONNE Sahara Low Goblet, 14 Ea  
 134 353 COLONIAL ½Gal Jug H X  
 135 150 POINTED OVAL & DIAMOND POINT Emerald Jug  
 136 341½ OLD WILLIAMSBURG ½Gal Jug H  
 136A1425 VICTORIAN Bowl, Cobalt H  
 136B1469 RIDGELEIGH Vase, Trial Blue H  
 136C1485 KOHINOOR Floral Bowl, Killarney Cut  
 137 3368 ALBEMARLE Goblet, 4 Ea H 2-X  
 138 3368 ALBEMARLE Champagne, 4 Ea 1-X  
 139 3368 ALBEMARLE Goblet, Moongleam Stem & Ft 2 Ea 1-X  
 140 4085 KOHINOOR Goblet, 2 Ea  
 141 3355 FAIRACRE Goblet, Moongleam Stem & Ft, 11 Ea 3-X  
 142 5086 PLANTATION Goblet, Ivy Etch, 2 Ea  
 143 5086 PLANTATION Ice Tea, Ivy Etch, 4 Ea X  
 144 5077 LEGIONNAIRE Soda, Amber Stem, 2 Ea H  
 145 3350 WABASH Goblet, Mayflower Etch, 2 Ea 1-X H  
 146 4090 COVENTRY Sherbet, Belvedere Etch, 6 Ea 3-X  
 147 1227 MAHARG Sherbet, 6 Ea H  
 148 300 PEERLESS Sherbet, 14 Ea H 1-X  
 149 3370 AFRICAN Moongleam Stem Champagne, 2 Ea  
 150 1252 TWIST Flamingo Goblet, 2 Ea H  
 151 451 CROSSED LINE FLUTE Goblet H  
 152 3362 CHARTER OAK Goblet, Moongleam H  
 153 1E92 OMEGA Goblet, Wheat Cut H  
 154 3370 AFRICAN Flamingo Goblet  
 155 393 NARROW FLUTE Goblet H  
 156 337 TOURAINE Amber Goblet H  
 157 3304 UNIVERSAL Goblet, Fred Harvey Etch  
 158 3304 UNIVERSAL Goblet, Fred Harvey Etch  
 159 300 PEERLESS Flamingo Low Goblet  
 160 3344 CAROLINA Goblet, Dundee Etch H  
 161 3331 STATUESQUE Goblet, Grecian Urn Etch H  
 162 3355 FAIRACRE Goblet, Flamingo Stem H  
 163 3418 SAVOY PLAZA Goblet, Frosted Stem & Ft H X  
 164 4004 POLKA DOT Ice Tea  
 165 338 WAFER STEM Goblet H  
 166 3394 SAXONY Sahara Ftd Soda, Needle Etch  
 167 419 SUSSEX Moongleam Goblet H  
 168 Blown Cologne Bottle, Beautiful Krall Cutting w/Cut Stopper  
 169 1540 LARIAT Cologne Bottle w/Stopper, 2 Ea  
 170 354 WIDE FLAT PANEL 2½oz Lavendar Jar  
 171 1184 YEOMAN Cologne Bottle, Gold Decor & Irridized  
 172 1184 YEOMAN Cologne Bottle, Irridized  
 173 1184 YEOMAN Cologne Bottle, Enamel Decor, Stopper X  
 174 487 Cologne Bottle, Gold Decor & Irridized H  
 175 487 Cologne Bottle, Cranberry Irridized  
 176 485 Cologne Bottle, Blue Enamel Decor.  
 177 516 Cologne Bottle, Flamingo, DO H  
 178 515 Cologne Bottle, Flamingo H, 2 Ea  
 179 4 Puff Box w/ Glass Cover  
 180 17 Hair Receiver, Silver Top H  
 180A 354 WIDE FLAT PANEL 4oz Lavendar Jar H

PAID ADVERTISEMENT

180B Horseradish Jar H  
 180C Horseradish Jar, Mushroom Stopper H  
 181 17 Puff Box, No Cover H  
 182 350 PINWHEEL & FAN Puff Box, Silver Lid H  
 183 1469 RIDGELEIGH Covered Puff Box  
 184 1280 WINGED SCROLL Emerald Trinket Box,  
 Souvenir  
 185 Moongleam Brooch, Sterling Silver  
 Mounting H  
 186 1567 PLANTATION Covered Marmalade & Spoon H  
 187 343 SUNBURST Pickle Jar H  
 188 412 RIB & PANEL Cruet, Wrong Stopper H  
 189 1567 PLANTATION Cruet H  
 190 341 WILLIAMSBURG Cruet, Wrong Stopper  
 191 150 BANDED FLUTE Cruet, Wrong Stopper H  
 192 341 OLD WILLIAMSBURG Cruet, Wrong StopperH  
 193 351 PRISCILLA Cruet, Wrong Stopper H  
 194 150 BANDED FLUTE 6 oz Cruet H  
 195 305 PUNTY & DIAMOND POINT Cruet, Wrong  
 Stopper  
 196 COLONIAL Syrup Jug  
 197 305 PUNTY & DIAMOND POINT Syrup Jug, NoTop  
 198 1295 BEADED SWAG Opal Syrup Jug, Floral Dec  
 199 Blown Vinegar & Oil, Silver Dec, Etched  
 200 HORSEHEAD BOOKEND, Pair  
 201 HORSEHEAD BOOKEND, Frosted  
 202 RABBIT PAPERWEIGHT  
 203 BULL H  
 204 GOOSE, Wings 1/2 Up  
 205 GOOSE, Wings 1/2 Up, Sun Purpled  
 206 GOOSE, Wings 1/2 Up, Frosted X  
 207 SEALYHAM TERRIER, (Scotty)  
 208 FISH CANDLE  
 209 HEN  
 210 ROOSTER  
 211 CHICK, Head Down, 3 Ea  
 212 FISH BOOKEND, Pair  
 213 COLT, Rearing X  
 214 COLT, Standing  
 215 WOOD DUCKLING, Standing  
 216 IMPERIAL 1977 Souvenir Oscar, Fern  
 Green  
 217 IMPERIAL 1978 Souvenir Oscar, Rose  
 Pink  
 218 IMPERIAL 1979 Souvenir Oscar, Sunshine  
 Yellow  
 219 Set of Three IMPERIAL Ultra Blue Colts  
 220 Set of Three IMPERIAL Ultra Blue Colts  
 221 110 10" Amber Dolphin 1 Lt Candle, Pair  
 222 111 11" Flamingo Cherub 1 Lt Candle,  
 Frosted  
 223 1489 PURITAN Large Horsehead Cigarette Box  
 224 5058 PENGUIN Decanter, 1 Pt  
 225 5058 GOOSE Decanter, 1 Pt, Frosted Tail &  
 Head  
 226 4225 1 Qt Cocktail Shaker, Rooster Stopper  
 Signed H  
 227 GIRL Head Cocktail Stopper  
 228 RAM Head Cocktail Stopper  
 229 HORSEHEAD Cocktail Stopper, Small  
 230 ROOSTER Head Cocktail Stopper  
 231 FOUR HORSEHEAD Ash Tray X  
 232 15 5" Moongleam Duck Flower Block  
 (Two Pieces)  
 233 357 DUCK Ashtray, Flamingo H  
 234 1591AELEPHANT Handled Mug, Amber H  
 235 5074 SEAHORSE Stem Cocktail, Amber,  
 Spiral Optic H  
 206A Goose, wings down

PAID ADVERTISEMENT

236 5048 ROOSTER Head Cocktail  
 237 1503 CRYSTOLITE Swan Nut, Red Stain  
 238 1503 CRYSTOLITE Swan Individ Nut  
 239 3408 JAMESTOWN Wine, 3 Ea  
 240 3408 JAMESTOWN Sherry, Rosalie Etch H  
 241 3411 MONTE CRISTO Wine, 2 Ea  
 242 1425 VICTORIAN WINE, 4 Ea  
 243 3366 TROJAN Wine, Hawthorne H  
 244 3408 JAMESTOWN Cocktail, Hawthorne,  
 Checker Optic H  
 245 1567 PLANTATION Wine X  
 246 3404 SPANISH Cocktail made from Goblet,  
 Cobalt  
 247 5077 LEGIONNAIRE 3 1/2oz Cocktail, Crystal  
 Bowl H  
 248 3324 DELAWARE Oyster Cocktail, Hawthorne  
 2 Ea  
 249 4002 AQUA CALIENTE, Sahara H  
 250 1519 WAVERLY 10 1/2" Dinner Plate, Heisey  
 Rose Etch, 7 Ea  
 251 1519 WAVERLY 8" Salad Plate, Heisey Rose  
 Etch, 8 Ea  
 252 1519 WAVERLY Cup & Saucer, Heisey Rose  
 Etch, 8 Cups & 10 Saucers H  
 253 1519 WAVERLY Footed Seahorse Floral Bowl,  
 Heisey Rose Etch H  
 254 1519 WAVERLY 14" Sandwich Plate, Heisey  
 Rose Etch  
 255 1519 WAVERLY 11" Sandwich Plate, Heisey  
 Rose Etch  
 256 1435 3" Ash Tray, Heisey Rose Etch, 4 Ea  
 257 1519 WAVERLY 3 oz Cruet, Heisey Rose Etch  
 258 1519 WAVERLY Salt & Pepper, Heisey Rose Etch  
 259 1238 BEEHIVE 14" Flamingo Plate  
 260 1238 BEEHIVE 14" Plate  
 261 1590 ZODIAC 13" Party Plate H  
 262 1535 OVAL DIAMOND POINT 14" Party Plate  
 263 1637ATOWN & COUNTRY Dawn 14" Party Plate  
 264 1637ATOWN & COUNTRY Limelight 14" Party  
 Plate  
 265 1503 CRYSTOLITE 13" Sandwich Plate,  
 Lightly Frosted H  
 266 1951 CABOCHON 14" Party Plate w/George  
 Washington Bust in Intaglio  
 267 1183 REVERE 12" Party Plate, Windsor Cut H  
 268 1519 WAVERLY 10 1/2" Dinner Plate  
 269 1485 SATURN Hostess Server  
 270 1485 SATURN Limelight Hostess Server w/  
 3 Toothpicks & Metal Holders  
 271 1229 OCTAGON 13" Sahara HdI Platter, DO  
 272 1401 EMPRESS Sahara 14" Oval Platter,  
 Old Colony Etch  
 273 1252 TWIST 12" Newark Sesquicentennial Tray  
 274 433 GREEK KEY 18" Low Punch Bowl H  
 275 1503 CRYSTOLITE Punch Set, Bowl, Underplate,  
 & 11 Punch Cups H  
 276 433 GREEK KEY Flamingo Punch Cup, 2 Ea H  
 277 343 SUNBURST Punch Cup, 3 Ea H  
 278 1255 PINEAPPLE & FAN Punch Cup  
 279 1255 PINEAPPLE & FAN Handled Mug, Gold Dec  
 280 1483 STANHOPE Cup, Black Knob  
 281 1184 YEOMAN Hawthorne Cup & Saucer, 2 Ea H  
 282 1252 TWIST Marigold Cup & Saucer H  
 283 3368 ALBEMARLE Trial Blue 5 oz Sherbet H  
 284 150 BANDED FLUTE 3oz Sherb H, Mono  
 285 1485 SATURN Limelight Sherbet  
 286 337 TQURAIN Sherbet, Experimental Tan-  
 gerine H  
 286A 3333 Sherbet, Renaissance Etch, 9 Ea H X

PAID ADVERTISEMENT

287	1252	TWIST Champagne, Experimental Gold H	342	1170	PLEAT & PANEL High Stem Candy & Cover, Flamingo
288	5057	SUEZ 6 oz Saucer Champagne, Amber Stem H	343	465	RECESSED PANEL 1/2Pd Candy Jar, Decor H
289	3424	ADMIRALTY Cocktail, Ultronic Cut	344	465	RECESSED PANEL 1/2Pd Candy Jar H
290		Hawthorne Color Saucer Champagne X	345	1183	REVERE 1/2Pd Candy Jar, Stippled H
291	3404	SPANISH Saucer Champagne X	346	1183	REVERE 6" Candy & Cover, Marigold Stain
292	300	PEERLESS Egg Cup H	347	1951	CABOCHON 6" Dawn Covered Candy H
293	1252	TWIST Marigold Juice H	348		VERLYS Directore Blue Butterfly Covered Bon Bon, Signed
294	341	OLD WILLIAMSBURG 12 oz Ftd Soda, 3 Ea H	349	V8636	83/4" Thistles Bowl
295	3389	DUQUESNE 12 oz Soda, Tangerine Bowl	350	V8636	83/4" Limelight Thistles Bowl
296	3397	GASCONY Sahara Goblet H	351	361	Moongleam Ash Tray & Cigarette Container H
297	4206	OPTIC TOOTH 12 oz Ftd Soda, Moongleam	352	1447	ROCOCO Cigarette Box, Cut H
298	341	OLD WILLIAMSBURG 6 oz Tumblers, 3 EaH	353	1469	RIDGELEIGH Cigarette Box H
299	335	PRINCE OF WALES Tumbler, Gold Dec H	354	1503	MAHABAR (Crystolite) Zircon Cigarette Box H
300	4054	CORONATION Dawn Old Fashion, Experimental Screen Optic	355	1503	MAHABAR (Crystolite) Zircon Square Ash Tray, 2 Ea H
301	117	8 1/2oz Tumbler H	356	1401	EMPRESS Alexandrite Ash Tray H
302	1205	FANCY LOOP Emerald Tumbler, Good Gold	356A	1401	EMPRESS Moongleam Ash Tray H
303	1205	Fancy Loop Tumbler, good gold souvenir	357	1401	EMPRESS Flamingo Ash Tray H X
304	310	RING BAND Opal Tumbler, Souvenir H	358	1401	EMPRESS Ash Tray, Sun Purpled H
305	1401	EMPRESS Dolphin Ft Tumbler H	359	1286	CUPID & PSYCHE Flamingo Ash Tray
306	385	GRID & SQUARE Tumbler H	359A	441	GRAPE LEAF SQUARE Moongleam Ash Tray Frosted
307	300	PEERLESS Tumbler H	359B	441	GRAPE LEAF SQUARE Flamingo Ash Tray, Frosted
308	1632	LODESTAR Dawn Cocktail H	360	150	BANDED FLUTE Covered Match Box, 2 Ea H
309		Diamond H Advertising Emblem	361	1280	WINGED SCROLL Emerald Cigar Holder, Gold Decor
310		Blue & Red Mirror Advertising Emblem	362	3390	CARCASSONNE Cigarette Holder, Mono
311	1252	TWIST Marigold Nut Cup, 4 Ea H	363	1401	EMPRESS Oval Compote, Old Colony EtchH
312	394	NARROW FLUTE Indiv Nut, Hawthorne, 2 Ea H	364	305	PUNTY & DIAMOND POINT Jelly Compote
313	1535	Oval Diamond Point Ind Marmalade, 6 Ea H	365	1184	YEOMAN 8" Low Ft Compote, Cut H
314	1454	Diamond Point Individual Marmalade, 4 Ea H	366	1401	EMPRESS Footed Candy & Cover
315	1454	Diamond Point Individual Ash Tray, 4 Ea H	367	1185	YEOMAN Mayonnaise, Ftd, Blue Decor w/ Silver Overlay H, & Signed Hawkes
316	341	PURITAN Salt Dip	368	1401	EMPRESS Lemon Dish, Cut H
317	352	FLAT PANEL Knife Rest H	369	1229	OCTAGON Ftd Mayonnaise, Cut
318	1401	EMPRESS Sahara Salt & Pepper, Sanitary Tops	370	1519	WAVERLY Divided Mayonnaise H
319		Souvenir Doorknob Paperweight dtd 6/14/73 #10	371*		6" Deep Bowl, Bakeware H
320		Cocktail Shaker Stopper	372	1401	EMPRESS Alexandrite Ftd Mayonnaise H
321		Doorknob	373	352	FLAT PANEL Pickle Jar & Underplate, Gold Decor H
322	300	PEERLESS Cordial H	374	1229	OCTAGON Hawthorne Ftd Mayonnaise
323	4231	FAVOR VASE Cobalt DO	375	411	RIB & PANEL Hawthorne 6" Handled Mint H
324	4232	FAVOR VASE Moongleam DO	376	473	NARROW FLUTE WITH RIM 6 1/2" Preserve Dish, Irridized H
325	4228	FAVOR VASE Sahara DO	377	411	RIB & PANEL Moongleam 2 Hd1 Bon Bon, Silver Overlay H
326	310	RING BAND Custard Toothpick, Souv.	378	500	QUATOR Marigold Sugar H
327	1255	PINEAPPLE & FAN Emerald Toothpick, Gold Decor	379	1229	OCTAGON 6" Handled Bon Bon, Marigold DO
328	1255	PINEAPPLE & FAN Toothpick	380	1447	ROCOCO 4" Handled Bon Bon H
329	1420	9" TULIP VASE Cobalt H	381	1447	ROCOCO 4" Handled Nappy H
330	353	MEDIUM FLAT PANEL 8" Vase H	382	411	RIB & PANEL Hawthorne 5" 2 Hd1 Jelly 2 Ea H
331	300	PEERLESS Emerald 9" Vase H	383	1183	YEOMAN 2 Hd1 Soup, Sahara, Orig Label
332	300	PEERLESS Orchid Vase	384	1184	YEOMAN Vaseline Bouillon Cup H
333	4157	5 1/2" Moongleam Rose Bowl DO	385	1252	TWIST Marigold Cream Soup & Underplate, 4 Sets H
334	4157	5 1/2" Rose Bowl, Arctic Etch DO	386	1184	YEOMAN Hawthorne Baked Apple, 6 Ea H
335	3359	6" Flamingo Rose Bowl DO	387	1184	YEOMAN Hawthorne Baked Apple H
336	4045	BALL VASE 6" WO	388	1223	6" Baked Apple, Marigold Stain H
337	4045	BALL VASE 4" Alexandrite WO			
338	325	PILLOWS 4" Ball Vase H			
339	4220	4 1/2" Sahara Vase, Spiral Optic			
340	1519	WAVERLY Amber Candy Jar, Seahorse Handles H			
341	1183	REVERE 1/2Pd Candy Jar, Decorated & Signed Pickard H			



389	1485	SATURN 5" Nappy, Limelight H	417	4478	HEISEY HAIRPIN 8" Nappy H
390	427	DAISY & LEAVES 4" Nappy H	418	361	CRISS CROSS 8" Nappy H
391	1220	PUNTY BAND 4½" Crimped Nappy	419	1401	EMPRESS Flamingo Ftd Floral Bowl
392	1220	PUNTY BAND 4½" Crimped Nappy, Red Stain, 2 Ea in Metal Holder	420	1401	EMPRESS Sahara 9" Bowl H
393	1295	BEAD SWAG 4½" Opal Nappy, Gold Dec H	421	3386	DIAMOND ROSE Pilsner
394	1280	WINGED SCROLL Custard 4½" Nappy	422	1503	CRYSTOLITE Horn of Plenty Vase
395	1295	BEAD SWAG Opal 5" Nappy in Metal Base	423	337	TOURAIN Amber Sherbet NO H
396	1637A	TOWN & COUNTRY 5½" Nappy, Dawn	424	393	NARROW FLUTE Mustard H, No Lid
397	393	NARROW FLUTE 4½" Nappy w/6" Underplate Enameled Decor H	425	300	PEERLESS 2½oz Bar Glass H
398	1233	6" Hawthorne Baked Apple & 6" Underplate H	426	407	COARSE RIB Mustard, Marigold Stain, No Lid H
399	1184	YEOMAN 6½" Flamingo Hdl Bon Bon Flamingo Nappy, 8 Ea H	427	407	COARSE RIB Mustard, Marigold Stain, No Lid H
400			428	1255	PINEAPPLE & FAN Emerald 5" Square Plate, Gold Dec
401	1201	Fandango 4½" 3 Corner Nappy	429	1205	FANCY LOOP Emerald 5" Plate
402	473	NARROW FLUTE W/RIM 6" Combination Relish, Irridized H	430	150	POINTED OVAL & DIAMOND POINT Spooner
403	1425	VICTORIAN Violet Vase H	431		Moongleam Mayonnaise Ladle H
404	1473	BUTTRESS 3 Pc Floral Arranger H	432		Flamingo Mayonnaise Ladle H
405	1637A	TOWN & COUNTRY 8½" Bowl, Dawn	433	1506	PROVINCIAL Amber Imperial 4" Nappy H
406		Flamingo Floral Block for Swan Handled Floral Bowl	434	1425	VICTORIAN Amber Imperial Juice H
407	1250	GROOVE & SLASH 5½" Tobacco Jar, No Lid	435		Amethyst Ridgeleigh type Indiv Cream
408	U8010	RIBBON CANDY 8½" Shallow Nappy H	436	1469	RIDGELEIGH Smoke Imperial Cigarette Holder
409	1184	YEOMAN 8" Floral Bowl, Irridized H	437		1971 Amberglo Land of Legend Souvenir Plate
410	1509	QUEEN ANN Ftd Plate, Antarctic Etch	438		1972 Blue Haze Land of Legend Souvenir Plate
411	1252	TWIST Marigold 10" Oval Floral Bowl H	439		1973 Verde Green Land of Legend Souvenir Plate
412	1559	COLUMBIA 12" Floral Bowl	440		1974 Nut Brown Land of Legend Souvenir Plate
413	1433	THUMBPRINT & PANEL Sahara 11" Round Floral Bowl & Block X			
414		Colonial Ink Blue 10½" Bowl			
415	456	11" Salad Bowl, Normandie Etch			
416	1401	EMPRESS Sahara 11" Ftd Floral Bowl			

MAIL BIDS ACCEPTED WITH CHECKS FOR MAXIMUM AMOUNT. MAIL BIDS WILL BE BID COMPETIVELY AND ANY DIFFERENCE REFUNDED. ONLY ITEMS IN MINT CONDITION WILL BE SUBJECTED TO MAIL BIDS. PLEASE ADD \$5.00 FOR POSTAGE AND HANDLING. EXCESS WILL BE REFUNDED. CHECKS SHOULD BE MADE OUT TO: SAM SCHNAIDT, AUCTIONEER AND MAILED TO:

SAM SCHNAIDT, AUCTIONEER

BOX 84

GRANVILLE, OHIO 43023

SAM SCHNAIDT, AUCTIONEER  
(614) 587-0052

FRANK FRYE, MANAGER  
(614) 344-9847

PRICE LISTS AVAILABLE FOR \$1.00

FOOD AVAILABLE

PAID ADVERTISEMENT

PAID ADVERTISEMENT

PAID ADVERTISEMENT

BAY STATE HEISEY COLLECTORS CLUB

DOT & WADE BANCK - SHOW MANAGERS

425 HINGHAM ST., ROCKLAND, MA, 02370

WE WISH TO THANK THE FOLLOWING EXHIBITORS WHO ARE DOING  
OUR ALL GLASS SHOW AT THE SHERATON INN IN STURBRIDGE, MASS,  
ON SEPTEMBER 27 AND 28,

CHARLES SHAW	NY
TOM MARTIN	NY
JOE & FLORENCE SOLITO	CT
EVERETT & SHIRLEY DUNBAR - BOSTON HOUSE ANTIQUES	MA
WILLIAM HERON & MARJORIE GILLETTE	NY
LYNNE BLOCH & ART HARTMAN - LYNNE & ART'S GLASS HOUSE (2 BOOTHS)	FL
VIRGINIA & BOB MAROTTO - GINNY & BOB'S ANTIQUES	CT
PATRICIA RAINKA	MA
DICK & LEE SCHWAN - SCHWAN'S ANTIQUES	VA
MARY WILLIAMS	MA
COLE & JEAN MEISNER - C & J ANTIQUES	NY
VALLI FELDMAN	NY
JAMES & EVELYN JORDAN - THE SLEEPING FOX	PA
BILL & IRENE WALTON - THE WALTONS	MA
BUD & ELSA PHILCRANTZ	MA
BABS KENT & HELENE BRODIE	NY-RI
MAY BURGESS - HOUSE OF BURGESS	MA
BUD & LILLIAN MARCHANT - LIL-BUD ANTIQUES	MA
CARL & HELEN SPARACIO	NJ
EDITH MERRITT & BETTY KENNEDY	MA
RON & BEV WOOD-GEORGE & DOT CLAUSON - WICKFORD ARCADE	RI
BETSY HEWLETT	MA
D. & ESTHER YOUNG	MA
DOROTHY DOUGLAS	NH
FRANK & ELAINE HUSTED - SUM OF LIFE	PA
HENRY & ROSERITA ZEIGLER	CT
LESLIE & ALMA LITOMY - 1820 HOUSE	NY
AL & JOYCE COLANGELO - JOYCE'S ANTIQUES	NY
GEORGE GLEASON & DAVID STEER - YANKEE HERO ANTIQUES	MA
KATHRYN FEHER & CLARE NELSON	CT
FRANK MALONEY & GEORGE FOGG - BERKELEY ANTIQUES	MA
MURPH & DOROTHY TARQUINIO	VT
OMER SWEENEY	RI
DONALD BEAN & DOTTIE MILANOSKI	MA
WILLIAM BARNARD	NY
DOT & WADE BANCK	MA
PAUL & MARJORIE SIMONS - SIMONS ANTIQUES	NJ

ROBERT H. DONOVAN

U. P. S. EXTRA  
S.A.S.E.  
PLEASE

P. O. BOX 321  
BOLTON, MA 01740

PH. 617-779-5008

AFTER 5 P. M.

1405 IPSWICH pair candle vases & floral bowl, complete set . . . . .	\$ 195.00
150 BANDED FLUTE 4 oz. cruet. . . . .	22.50
VERLYS PIGEON VASE, clear, not signed. . . . .	28.50
VERLYS DUCK ASH TRAY, clear, not signed, (flat chip on bill) . . . . .	14.50
VERLYS SUMMER & WINTER VASE, clear, not signed . . . . .	65.00
VERLYS WATER LILY 13 3/4" bowl, etched, script signed. . . . .	89.50
VERLYS WILD DUCK 13 1/2" bowl, etched, script signed. . . . .	89.50
357 PRISON STRIPE punch bowl & base with 8 cups * . . . . .	395.00
1503 CRYSTOLITE 4" covered cigarette box * . . . . .	18.00
351 PRISCILLA 9" celery * . . . . .	12.00
1428 WARWICK 7" Horn of Plenty * (2) . . . . . each. . . . .	22.00
354 FLAT PANEL WIDE cream & sugar, flamingo * . . . . .	36.50
142 Tumbler optic, 8 1/2 oz. plain bottom * . . . . .	12.00
1184 YEOMAN tumbler 8 oz. flamingo * . . . . .	14.00
1401 EMPRESS 7" square plates * (5). . . . .	35.00
300 PEERLESS 5 oz. ftd., egg or water * (12). . . . . each. . . . .	12.00
1233 PRESSED DIAMOND 6" nappy, rolled edge . . . . .	12.00
433 GREEK KEY 6 oz. low foot sherbet * . . . . .	14.00
433 GREEK KEY ftd., banana split * (2). . . . . each. . . . .	25.00
406 COARSE RIB 12" celery * . . . . .	16.00
466 DOUBLE PLEAT & PANEL 9" nappy * . . . . .	24.50
1519 WAVERLY 11" 3 part relish ORCHID etch * . . . . .	42.50
1245 RING BAND tumbler w/ ROSE decor., custard (#310). . . . .	52.50
1184 YEOMAN 9" celery * . . . . .	13.00
1489 PURITAN French Dressing bottle. . . . .	28.50
341 PURITAN cruet . . . . .	18.50
411 RIB & PANEL 10" floral bowl, rolled edge * . . . . .	24.50
1186 YEOMAN cream & sugar, nice cutting. . . . .	38.50
1205 FANCY LOOP 4" tumbler, emerald, gold worn . . . . .	60.00
1295 BEAD SWAG hd1., mug red flash, Pan-Am. Expo. Buffalo-1901 . . . . .	65.00
5072 ROSE stem cocktail. . . . .	12.00
299 Optic Toddy, sahara . . . . .	22.00
335 PRINCE OF WALES covered round butter * (2 sm. chips under pl) . . . . .	48.50
1401 EMPRESS D/F 9" vase * Grape etch. . . . .	85.00
1184 YEOMAN covered 5" lemon dish, cutting * . . . . .	16.00
1632 LOADSTAR 11" crimped bowl, dawn (professional repair) . . . . .	85.00
433 GREEK KEY 9" relish tray * . . . . .	19.00
1401 EMPRESS D/F console set, sahara * . . . . .	225.00
133 SWAN hd1. 16 1/2" bowl, cutting. . . . .	87.50
393 NARROW FLUTE ind, almond, flamingo. . . . .	12.00
352 FLAT PANEL cheese & cracker * gold trim . . . . .	70.00
109 DOLPHIN Petticoat 1 lite candlesticks, flamingo . . . . . pair. . . . .	285.00
331 COLONIAL PANEL 6 oz. cruet * . . . . .	24.50
473 NARROW FLUTE WITH RIM 5" dice sugar w/creamer* gold trim. . . . .	29.50
1519 WAVERLY console set, ORCHID etch (1 orchid missing on 1 stick). . . . .	37.50
335 PRINCE OF WALES punch cups * (2). . . . . each. . . . .	15.00
Set of MALLARDS, UP, HALF & DOWN. . . . .	600.00
Set of GEESE, UP, HALF & DOWN . . . . .	450.00
PLUG HORSE, Amber (Dark). . . . .	750.00
STANDING COLT, Amber . . . . .	550.00
Set of COLTS. . . . .	500.00

OTHER ANIMALS

WANTED: Various parts (covers-stoppers, etc.) Items in  
GREEK KEY- PLANTATION-ANIMALS

UPS IS EXTRA  
 SASE IS REQUIRED  
 ALL PRICED EACH UNLESS  
 OTHERWISE STATED

RONELLE LYNG

BOX 17

HAMILTON, MT 59840

\* MARKED  
 ALL DAMAGE NOTED

406-363-2152 AFTER 5 MDT & WEEKENDS

129	Flamingo candlestick, 5" triplex .....	\$ 25.00
1184	Hawthorne cup & saucer DO *	20.00
1184	7 Flamingo cup & saucers DO *	9.00
1184	6 Moongleam saucers *	3.50
1186	5 Moongleam cups DO *	6.00
1231	Moongleam hotel creamer *	11.00
1231	Flamingo octagon cup *	6.50
1252	Flamingo TWIST 2" candleholder .....	9.00
1401	Sahara EMPRESS individual cream & sugar *	27.50
1401	Sahara EMPRESS 13" pickle & olive, 2 compartment .....	25.00
1401½	Sahara cup & saucer, OLD COLONY etch *	25.00
1401½	Sahara cup, OLD COLONY etch *	17.50
1469	Crystal RIDGELEIGH cigarette holder, square .....	6.00
1469	Crystal RIDGELEIGH 5" lemon dish with top ground, rim chip cover *	23.00
1469½	Crystal RIDGELEIGH 6" jelly, 2 compartment .....	7.00
1488	Limelight KOHINOOR cigarette holder & 4 ashtrays, Yeakley II p124, #691 & 692 in original box .....	400.00
1503	CRYSTOLITE covered mustard .....	8.00
1503	CRYSTOLITE 5" vase .....	10.00
1503	CRYSTOLITE 7" round 2 handled snack plate * .....	8.00
	Looks like #1503 CRYSTOLITE 4 salts, 1 3/4" diameter x 1" high .....	6.00
1509	QUEEN ANN 5½" mayonnaise D F #913 EVERGLADE cut .....	27.00
1509	QUEEN ANN individual sugar *	7.50
1519	Crystal WAVERLY Orchid etch 7" plate .....	12.00
1519	Crystal WAVERLY Orchid etch 2" x 7" footed compote * (V 4 p. 3 #31).....	26.00
411	Moongleam 6" 2 handled cheese plate * .....	9.00
411	Crystal 3 oz. wine .....	7.00
339	Crystal CONTINENTAL egg cup* .....	10.00

**CLASSIFIED**

-WANTED: Base for #341 Puritan Punch bowl. Have #300 Peerless and Greek Key bases for sale. BENWAY, 707 South Washington, Fredericksburg, Texas, 78624 (512) 997-4992.

-WANTED: Buying Depression Glass, Heisey, Cambridge, Fostoria, Akro Agate, glass figurals & unusual glass "cuties". NADINE PANKOW, 207 S. Oakwood, Willow Springs, IL 60480 Phone 312-839-5231.

-FOR SALE: Six (6) colonial #1150 tumbler plates 4½" - 7.50 each. Some wear marks. MRS. CLAUDE MOORE, P. O. Box 1111, Paducah, KY 42001; 502-554-5089.

-Carcassone, Alexandrite: 5 only, 11 oz. goblets, signed, \$60.00 each. 6 only 6 oz. sherbets, 3 no harm chips \$45.00 ea. Or submit bid for all. GLADYS SHIELDS, 10730 Hwy 126, Mapleton, OR 97453. 268-4822.

-FOR SALE: Heisey by Imperial caramel slag animals: Standing Colt \$17.50; Wings Up and Wings Back Mallards 22.50 ea.; Sparkie \$25.00; etc. THOMAS TUTTLE, 1444 Bolenhill Ave., Columbus, OH 43229.

MARIAN & LARRY CLARK P & I EXTRA  
 \* 9500 S. E. 12TH ST. 206-254-5586  
 \* VANCOUVER, WA 98664

Crystal:

* 335	PRINCE OF WALES PLUMES 9" nappy.....	\$ 55.00
* 1776	KALONYAL 6 oz. cruet.....	65.00
* 1469½	RIDGELEIGH 8" vase.....	25.00
* 1540	LARIAT 15½" swing vase.....	55.00
* 1540	LARIAT 13" shallow bowl, MOONGLO cut	32.00
* 1509	QUEEN ANN 12½" fl. bowl EVERGLADE cut	55.00
* 1567	PLANTATION 13" 2 part relish.....	25.00
* 1184	YEOMAN 3½ oz. sherbets (8) ...each..	5.00
* 1489	PURITAN 4" cig. box.....	20.00
* 3397	GASCONY 2 comp. mayonnaise.....	25.00
* 343	SUNBURST punch bowl & base(sm chip)	135.00
* 5012	3½" urns (3).....each..	15.00
* 150	BANDED FLUTE water bottle (sun clrd)	32.50
* 305	PUNTY & DIA. PT. 8" vase.....	45.00
* 4004	IMPROMPTU 10½" vase.....	45.00
* 5025	TYROLEAN low goblet ORCHID (5).each.	28.00
* 5025	TYROLEAN low sherbet ORCHID (6)..ea.	22.50
* 5025	TYROLEAN 2 oz. wine ORCHID (2)...ea.	50.00
* 3370	AFRICAN gob & champ (4 of ea) some repaired, FLAMINGO, .....set..	250.00
* 1184	YEOMAN 6" plates FRONTENAC etch MARIAGOLD (4).....ea...	15.00

ANTIQUES 'N' COLLECTABLES  
"HEISEY OUR SPECIALTY"

LYNNE



ART'S

GLASS-HOUSE  
INC.

P.O. BOX 54-6014  
MIAMI BEACH, FL 33154

*Dear Heisey Collector and Dealer,  
We're heading your way! Heisey animals,  
lovely old patterns, and a rainbow of colors, will  
be coming along with us.*

*We'll be at the following shows.*

WILLOW GROVE, PA.	GEO. WASHINGTON MOTOR LODGE	Oct. 11-12
	ALL GLASS SHOW	
WASHINGTON, D.C.	ARMORY	Oct. 23-26
HOUSTON, TX.	ALBERT THOMAS CONV. CENTER	Oct. 30-Nov.2

ED HAS OUR SHOP IN LAHASKA OPEN BY APPOINTMENT ALL THE TIME. ARTIE AND I WILL BE THERE FROM AUGUST 2 TO OCTOBER 20. CALL 215-794-7800. COME SEE US.

*Lynne and Art*

Monthly Heisey column  
by Clarence Vogel!

*glass* REVIEW

80 PAGE ALL GLASS MAGAZINE  
since 1971

\$9.50 per year - 12 Issues  
Or, recent sample - \$1

The GLASS REVIEW is a handy 8½" x 5½" monthly magazine devoted to "Keeping Glass Collectors Informed" on both old & new glass. Printed on glossy stock and filled with large, clear photos, articles by nationally respected authors and writers, price reports, trends, research and reproduction information, previously unpublished catalog reprints, reviews of the latest glass books (and where to buy them), Questions & Answers, trademark info, large variety of glass ads on both old and new glass, up-to-date happenings in glass and MORE!

Enclose payment; send to: GLASS REVIEW,  
P.O. Box 2315, Costa Mesa, CA 92626.

## REYNOLDSBURG H.C. 6TH. ANNUAL

### ANTIQUE SHOW & FLEA MARKET

REYNOLDSBURG HIGH SCHOOL GYM  
6699 Livingston Ave.-Reynoldsburg, Ohio

Sunday, October 19, 1980

9:00a.m. to 5:00 p.m.

Accommodations for 58 Top Quality Dealers

**DEALERS WANTED**

**Glass Repaired**

Admission Price: 75¢

Refreshments Available All Day

For Contracts Contact:

Shirley Bagford

1290 Hilton Drive

Reynoldsburg, Oh. 43068

(614) 866-4035

For changes in ads during the year, please send \$1.00 per line.

### MOSTLY HEISEY

RHODA CURLEY  
16 Clayton Place  
Albany, New York 12209  
By Appointment (518)482-6272

### LAST CHANCE ANTIQUES

\*\* N. Federal Hwy., Dania, Fl. 33004  
(Between Miami & Ft. Lauderdale)  
Large HEISEY Inventory & other Glass  
Mail Orders (305)467-6356 (home)

### GOLDSBERRY'S ANTIQUES

KALAMAZOO, Michigan  
Shows Only -- Buy & Sell  
HEISEY A Specialty  
Phone: (616)381-3013

### SCHWAN'S ANTIQUES

DICK & LEE SCHWAN  
208 OXFORD ROAD  
WILLIAMSBURG, VA. 23185  
(804)229-7873 Shows & Appt.

### GREEN ACRES FARM

Antiques, Crystal Glass & Collectibles  
2678 Hazelton Etna Road, S.W.  
(S.R. 310 N.) Pataskala, Oh. 43062  
Sat. & Sun. P.M. or Call (614)927-1882

### BERT'S BUDGET SHOP

General Line Antiques  
403 W. Main St., Newark, Oh. 43055  
Phone: (614)349-8045

### THE WOODEN SHOE

Antiques & Collectables-Buy & Sell  
Glass, Furniture, Estates  
Jim & Sheri Vanes, By Appointment  
Herndon, Va. 22070 Phone:435-9045

### CURIOSITY NOOK

'Where Friends Meet To Antique'  
3300 S. 8th. Ave. Westward Village  
Yuma, Ar. 85364 (602)726-6730 or 726-8070  
Barney & Jody Barnicle

### CURIO CORNER

Accent Antiques of Kensington  
3742 Howard Ave.  
Kensington, Md. 20795  
Phone: (301)933-3750

### ANTIQUES BOUGHT

BOB SHULTZ SOLD  
206-208 E. Main St., Route 419  
Newmanstown, Pa. 17073  
15 Mi. West of Reading, Pa.  
Phone: (215)589-2819

### T & S ANTIQUES

TOM MARTIN STEVE RODERICK  
Specializing in Heisey  
New Rochelle, N.Y.  
(914) 235-9632

### OLDE LOVED THINGS

ANTIQUES & COLLECTIBLES  
Daris 'ed' Lacroix - Donald Mousseau  
900 Ridgewood Avenue (Holly Hill)  
Daytona Beach, Fl. 32017  
HEISEY.CAMBRIDGE, Mail Order (904)252-7960

### OFF-BROADWAY ANTIQUES

HEISEY GLASS & GENERAL ANTIQUES  
121 S. Prospect St., Granville, Oh. 43023  
Open 7 Days A Week 12-5 P.M.  
Shop(614)587-2083 Sam 587-0052

### LYNNE & ART'S GLASS HOUSE, INC.

'HEISEY OUR SPECIALTY'  
Miami Beach, Fl. 33154  
P.O. Box 54-6014  
(305)861-7700 (305)895-5666

### HEISEY HEAVEN & other collectables

Box 78 Rt. 1  
Mansfield, Il. 61854  
Ph: (217)489-4071  
Hours by appointment or chance, Closed Fridays.

### WICKFORD ANTIQUE ARCADE

RON & BEV WOOD Booths 6 & 7  
650 Ten Rod Rd., N. Kingstown, R.I. 02852  
Heisey, Primitives, Glass, Etc.  
Home Phone: (401)295-0823

### DIAMOND H PLUS

George & EILEEN SCHAMEL  
Rt. 3 Box 419 Boonsboro, Md. 21713  
Appointment or Mail Order  
Phone: (301)432-6285

### HEIDI-HO ANTIQUES, INC.

HEISEY and GENERAL ANTIQUES  
838 S. High St., Columbus, Oh. 43206  
Phone: (614)444-5774  
Hours: Wed.-Sat. 11-5, Sun. 1-5

### THE CONNECTICUT YANKEE

'HEISEY OUR SPECIALTY'  
707 S. Washington  
(512) 977-4992  
Fredericksburg, tx. 78624

### CHARLES & MILDRED FISHER

Antiques & Collectibles, General Line  
HEISEY, DEGENHART, IMPERIAL  
991 Idlewilde, Newark, Oh. 43055  
Phone: (614)522-5398

### EAGLES REST ANTIQUES

CHINA HEISEY GLASSWARE  
Bought and Sold  
62 Field Point Rd., Heath, Oh. 43055  
By Chance or Phone: (614)522-2035

### SUM OF LIFE

ELAINE & FRANK HUSTED  
P.O. Box 102  
Phoenixville, Pa. 19460  
Phone: (215)935-2962

### THE "FINDERS" ANTIQUES

DAVID & SHIRLEY ROSE  
513 E. Main Street  
Newark, Oh. 43055  
Phone: (614)349-7934

### MOUNDBUILDERS ANTIQUES

IRENE RAUCK  
1138 Moundview, Newark, Oh. 43055  
Phone: (614)344-6043  
Heisey & Animals General Antiques

### HAPPY HAVEN ANTIQUES

MARY DUMKE  
14319 Rattlesnake Road  
Grass Valley, Ca. 95945  
Phone: (916)273-9450

### CHARLES A. SHAW

Glenwood Gardens - Rip Van Winkle  
Yonkers, N.Y. 10701 Ph: (914)476-5175  
American Glass  
Shows and Mail Order

### THE SLEEPING FOX

EVELYN & JAMES JORDAN  
P.O. Box 583  
Lansdale, Pa. 19446  
Phone: (215)855-2480

### GEORGE HOFFMAN ANTIQUES

G.W. HOFFMAN - J.H. DENNIS  
129 South 4th. Street  
Newark, Oh. 43055  
Phone: (614)345-8021

### RAMBLING LANE ANTIQUES

KEITH & EVELYN HOOVER  
Featuring HEISEY and Other Fine Glass  
Rt. 4 Box 1005 Rineland, Wi. 54501  
Phone: (715)282-5019

### ANN'S GIFTS & ANTIQUES

105 W. Main St., Hebron, Oh. 43025  
Intersection Rt's 40 & 79  
Next Door to Daisy Queen  
Daily 11:30 A.M. to 5:30 P.M. Closed Thursday

### RECOLLECTIONS

THERESA WERT  
Lahaska Antique Center  
Route 202 Lahaska, Pa.  
Phone: (215)794-8667

### BOB & FRAN'S ANTIQUES

CHINA - HEISEY - GLASSWARE  
SILVER FLATWARE  
2007 Broadway Vancouver, Wa. 98663  
Phone: (206)693-7972

### H and R DIAMOND H

HELEN & ROBERT RAREY  
1450 WHITE ASH DRIVE  
Columbus, Oh. 43204  
(614) 279-0390 after 5:30

HEISEY COLLECTORS OF AMERICA, INC. PRESENTS , , ,

HEISEY BY IMPERIAL AND IMPERIAL-LENOX

Compiled by the Newark Heisey Collectors Club

A MUST for every collector and dealer! Researched from Imperial's files, original catalogs and price lists. Includes complete pattern lists, colors, animals and items made for HCA. Features an accompanying color card. 50 pages. Includes price trends. \$5.95 plus 60¢ postage

MASTER CHARGE AND VISA ACCEPTED - Please send number and expiration date.

\* \* \* \* \*

CLIP AND MAIL TO:

HCA SALES  
BOX 27  
NEWARK, OH 43055

NAME \_\_\_\_\_

# of Copies \_\_\_\_\_

STREET \_\_\_\_\_

CITY \_\_\_\_\_ STATE \_\_\_\_\_ ZIP \_\_\_\_\_

Amount \$ \_\_\_\_\_  
Postage \_\_\_\_\_  
Tax \_\_\_\_\_

Ohio Residents must add 27¢ tax per book.

Amt. Enclosed \$ \_\_\_\_\_

\*\*\*\*\*

"1980" HEATHER OSCAR ORDER FORM SEE "DESK OF" PG. 3

-PLEASE READ VERY CAREFULLY BEFORE FILLING OUT-

Oscars are Heather Satin (purple) marked HCA 180 and IG. (for Imperial).

This is a limited quantity of 441 to be offered to members only. Only one per member, which means anyone who has a paid-up membership (voting, associate or family). Names will be checked. Everyone living in Ohio must pay 45¢ sales tax, vendors included. Handling charge will be \$1.20 each, if shipped. No orders honored unless on this form. Make all checks payable to HCA and mail with your order to:

HCA OSCAR SALES  
P. O. BOX 27  
NEWARK, OHIO 43055

IF PAYING BY MASTERCHARGE OR  
VISA CARD PLEASE INCLUDE  
CARD NUMBER & EXPIRATION DATE.

CLIP AND MAIL THE ORDER FORM

Number of Oscars at \$10.00 each \_\_\_\_\_  
Sales Tax at 45¢ each \_\_\_\_\_  
Postage at \$1.20 each \_\_\_\_\_  
TOTAL with order \_\_\_\_\_

Only ONE per member  
All Ohio Residents and pick-ups in Newark  
CHECK ONE:  
Please mail my Oscar \_\_\_\_\_  
I will pick up my \_\_\_\_\_  
Oscar at the Musuem \_\_\_\_\_

NAME (list all names) \_\_\_\_\_

ADDRESS \_\_\_\_\_

CITY \_\_\_\_\_ STATE \_\_\_\_\_ ZIP \_\_\_\_\_

HHS

HCA

4<sup>TH</sup> ANNUAL ANTIQUE SHOW

FEATURING GLASS, CHINA, POTTERY + COLLECTIBLES

NEW LOCATION

JUST NORTH OF PHILADELPHIA AT THE

GEORGE WASHINGTON CONVENTION CENTER

ROUTE 611 AND THE PENNSYLVANIA TURNPIKE, (WILLOW GROVE, EXIT 27)

SATURDAY, OCT. 11<sup>TH</sup> = SUNDAY, OCT 12<sup>TH</sup>

11:00 AM to 9:00 PM

10:00 AM to 6:00 PM

DONATION

\$1.75

WITH AD

\$1.50

CLASSIFIED:

-FOR SALE: 1978 CORDIAL (Orchid) \$50;  
Horizon blue kicking colt, \$20. DEBBIE  
DELANEY, 642 Melanie Ct., Newark, OH  
43055 (614) 366-3741 after 5 p. m.

- FOR SALE: Large Elephant \$250.00,  
Rabbit Paperweight \$125.00, BETTY  
E. BRYNER, 30 S. W. 64th Court, Miami,  
FL 33144. 1-305-261-7029.



RETURN TO:  
HERSEY NEWS  
Box 27  
Newark, OH 43055

FIRST-CLASS MAIL

FIRST CLASS MAIL  
U.S. POSTAGE  
PAID  
PERMIT 34  
Reynoldsburg, Ohio 43068

MUSEUM HOURS ARE NOW open daily from 1-4 p.m. except Monday and holidays



# Heisey



**COLLECTORS OF AMERICA, INC.**

P. O. BOX 27 NEWARK, OHIO 43055



Dear Member,

You are cordially invited to attend HCA's Seventh Annual Souvenir Dinner on September 13, 1980. The dinner will be moved to a new location this year, The Stoney Creek Country Club branch of Executive Caterers on Route 256 just off I-70 in Reynoldsburg, Ohio - 25 miles from Newark. A map is included with this mailing. This is an excellent facility with a reputation for good food and service. An extensive menu has been planned. The Cocktail hour begins at 6:30, with HCA's own bar and plenty of hors d'oeuvres, dinner at 7:30 p.m. A fun program is also being planned.

The third of a series of four cordials in the #5024 Oxford stem by Lenox-Imperial is being offered with the Old Colony etching. These are dated and there will be no more than 350 etched. The 1978 was Orchid Etching and 1979 was Heisey Rose. The plate for this cordial was made by Gary Chaconas who has just become a master engraver for the U.S. Mint after ten years of apprenticeship. Gary is a Newark native and the president of the National Capital HCC. He graciously donated the etching plate as he did last year. The price for the Cordial is \$40.00 including one dinner, or \$35.00 without the dinner. Extra dinners will be \$20.00 each. This includes hors d'oeuvres, an excellent dinner, plenty of wine and the gratuity.

This is a major fund raising event for the Museum and we urge your support.

Orders should be mailed no later than August 29 to insure a dinner reservation. In the event that we have a sell out, the earliest postmarks will be honored.

There will also be a Mini-Show with many of the best Heisey dealers in the country present so it will be a good opportunity to buy. This will be held in the Reynoldsburg High School cafeteria just a short distance from the Country Club. There are several motels very close by and we have included rates for these with the map. There will be at least 37 dealers inside.

This is always a relaxed fun occasion and if you have never attended we are sure you will enjoy the show and the dinner.

We hope to see you all on September 13.

Darrell Bratt, Project Committee Chrm.

Louise Ream, President

Mary McWilliams, Secretary



## HEISEY REFERENCE PUBLICATIONS

If your order totals \$50-\$250 you may deduct 10%.  
 25% discount on orders \$250 and over.  
 (No hand selection at this price.)  
 Please add 10% to order to cover postage and handling.  
 Ohio residents add 4½% sales tax.

ORDER FROM --H.C.A. Sales  
 Dept. F  
 P. O. Box 27  
 Newark, Ohio 43055

Please order by  
 title and number: \*  
 Make checks payable to H.C.A., Inc.

PLEASE KEEP THIS FOR FUTURE REFERENCE

1. THE HEISEY ANIMALS, by James McDermott.....\$ 3.00  
 Pictures all 56 animals produced by Heisey. States size of each animal.
2. THE HEISEY ANIMALS, ETC. BOOK II, by Robert Coyle, Lynn Bloch, Art Hartman.....\$ 3.50  
 Pictures items using the animal figure as stem, stopper, handle, flower frog, ash tray, etc.
3. COMBINATION PRICE GUIDE FOR ANIMAL BOOKS I & II, by the authors. Revised 1978.....\$ 1.50
4. HEISEY'S GLASSWARE OF DISTINCTION, by Mary Louise Burns. Completely revised.....\$ 11.95  
 Includes additional patterns, new illustrations, many new listings. "Perfect" bound. Shows all major patterns, many stems, cuttings and etchings.
5. PRICE GUIDE FOR BURNS BOOK, by Mary Louise Burns. Revised 1978.....\$ 5.95  
 Both books #4 & #5 for.....\$ 16.50
6. HEISEY GLASSWARE, by Viola Cudd. Hardback book published by the author.....\$ 10.00  
 245 pages including many late stemware items.
7. HEISEY GLASS IN COLOR, BOOK 2, by Loren & Virginia Yeakley. More than 750 items.....\$ 12.50  
 pictured in color. Comprehensive discussion of each. Includes value and rarity guide. 60 pages.
8. ENCYCLOPEDIA OF HEISEY GLASSWARE, VOL. I, ETCHINGS AND CARVINGS, by.....\$ 10.95  
 Louise Ream, Tom and Neila Bredehoft...over 1500 pictures. Contains 228 pages clearly illustrating all known etchings and carvings made by Heisey. Defines the process used by Heisey for etching and carving and lists all items offered in the different etchings.
11. HEISEY'S LEAD BLOWN GLASSWARE - CATALOG 14B, by L-W Promotions, Ca. 1929.....\$ 7.95  
 The color era of stems and etchings, etc.
13. HEISEY'S GLASSWARE, by L-W Promotions. A reprint of original Heisey pressware.....\$ 7.95  
 catalog #212 and blown ware catalog #17 from the 1935 era, Contains 121 pages of clear patterns with large print of many items offered during the colored era.
15. HEISEY CATALOG AND FACTORY PRICE LIST, by Antiques Research Publications. Catalog reprint\$ 6.95  
 #33 dated June 1, 1956. Last catalog published by the company. Complete listings of patterns offered by Heisey when they discontinued operations in 1957.
19. HEISEYITES FAVORITES, by The Northern Illinois Heisey Collectors Club. Contains 36.....\$ 1.50  
 pages of favorite gourmet recipes compiled by Heisey Collectors from Northern Illinois. Proceeds go to Heisey Museum.
20. HEISEY GLASS 1913 CATALOG REPRINT, by L-W Promotions. Reprint of complete.....\$ 14.95  
 1913 catalog. 340 pages, showing most of the glass of the colonial period in good clear detail. Many pages never before reprinted.
22. HEISEY STEMS, by Bradley, Ryan and Ryan. Comprehensive book on more than 350.....\$ 20.00  
 pressed and blown stems. A must for the stem collector. 240 pages.
23. INDEX OF HEISEY GLASSWARE. Lists all known patterns, items and decorations in both.....\$ 2.00  
 numerical and alphabetical order. Valuable as a cross reference. Compiled by Dayton Area Heisey Collectors for H.C.A.

24. VERLYS OF AMERICA DECORATIVE GLASS, by Carole and Wayne McPeck.....\$ 7.50  
 Pictures all Verlys patterns made at the Holophane factory in Newark, many shown in beautiful color. Lists those items also made by Heisey. 66 pages.
25. PRICE GUIDE FOR ABOVE BOOK, by Northwest Heisey Collectors Club.....\$ 1.95
26. CATALOG & PRICE LIST #32. Complete reprint of 1953 catalog. Added information.....\$ 9.95  
 and price guide. The best book on late productions.
55. HEISEY'S CUT HANDMADE GLASSWARE, by Harold E. Willey. Reprint of old catalog.....\$ 5.95  
 showing some of the many cuttings by Heisey, mostly on stemware. Good clear pictures.
61. SALTS AND PEPPERS CATALOG, by Columbia Heisey Collectors. Reprint of 1910 catalog.....\$ 3.00  
 30 pages.

MISCELLANEOUS ITEMS FOR SALE

27. TIE TAC in shape of DIAMOND H.....\$ 9.00
28. CHARM in shape of DIAMOND H.....\$ 8.00
29. H.C.A. Decals.....3 for.....\$ 1.00
30. COLOR POST CARDS OF THE HEISEY MUSEUM (outside), minimum order.....12 for.....\$ 1.00
31. BLACK AND WHITE POST CARDS OF THE FACTORY (outside), minimum order...12 for.....\$ 1.00
33. SOUVENIR PENS.....\$ .25
34. LEADED GLASS DIAMOND H WINDOW ORNAMENTS.....with hanger.....\$ 6.00
35. WOODEN BOOKENDS TO HOLD PLATES (Land of Legend series).....set.....\$ 10.50
36. BUTTONS with sayings, "Ask Me About Heisey", "Heisey Collectors of America, Inc." "Buy Heisey", "I Belong To H.C.A.", "I Live In Heiseyland U.S.A.", "I Dig Heisey"...each....\$ .75  
 (Blue or Red print)  
 "Heisey Keeps Me Poor! But Happy!.....each.....\$ 1.00
39. BACK ISSUES OF THE HEISEY NEWS.....each set.....\$ 8.00  
 Volume I (xerox copy only), II, IV, V, VI, VII, & VIII. Reprints of all issues of Heisey News in their entirety. Much valuable information in each issue. Single copies if available.....\$ 1.00
40. IMPERIAL REISSUE OF #1 HEISEY MADONNA, frosted. Marked LIG.....\$ 18.00
50. PLATE HANGERS for 8" plates to hang in a series from one nail. Ideal for H.C.A. souvenir plates.....each.....\$ .50
51. #300 CANDLE HOLDER, by Imperial.....each.....\$ 5.00  
 Fits #300 and #400 candelabra
52. 9" CERAMIC PLATE, showing Heisey Museum, fall decor. Marked Newark, Ohio 1978.....\$ 2.50
63. 9" CERAMIC PLATE, showing Heisey Factory. Marked Newark, Ohio 1979.....\$ 2.50
58. PAIRPOINT CUP PLATE, Pressed copy of Lancaster Etch. Crystal and Teal Blue.....\$ 5.50
62. PAIRPOINT CUP PLATE, Pressed copy of National Heisey Museum. Amethyst.....\$ 5.50
59. OLD WILLIAMSBURG BELL, Crystal, amber, ultra blue, nut brown, verde, sunshine yellow....\$ 12.50  
 and rose pink.
60. OLD WILLIAMSBURG SALT AND PEPPER SET, Crystal, amber, ultra blue, nut brown, verde.....\$ 7.00  
 sunshine yellow and rose pink.

ANIMAL & ANIMAL RELATED ITEMS

41. IMPERIAL ELEPHANT HANDLED FAIRY TALE MUG. Marked LIG.  
 Available in crystal.....\$ 8.50  
 Meadow Green Carnival and horizon blue carnival.....\$ 9.50
43. BUNNIES, available in milk glass. Limited edition of 2500 heads up bunny.....pair.\$ 11.00  
 and 2200 heads down bunny...made in original Heisey molds by Imperial Glass Corp.  
 exclusively for Heisey Collectors of America, Inc. 2-3/8" high. Head Up Bunny...IG..\$ 5.50
44. MOTHER RABBIT, available in milk glass. Limited edition of 1454...only seconds left....\$ 10.00  
 made in original Heisey molds by Imperial Glass Corp. exclusively for Heisey Collectors  
 of America, Inc. 4-5/8" high. Marked IG. \*NOTE: NO DISCOUNTS ON SECONDS
45. HEN, available in milk glass. Limited edition of 1999...made in original Heisey molds...\$ 18.00  
 by Imperial Glass Corp. exclusively for Heisey Collectors of America, Inc. 4-1/4" high.IG
46. CHICKS, head up and head down, available in milk glass. Limited edition of 3292 ....pair.\$ 7.50  
 heads down....chick and 2866 heads up chick....made in original Heisey molds by  
 Imperial Glass Corp. exclusively for Heisey Collectors of America, Inc. 1" high.  
 Head Down Chick...Marked IG.....\$ 3.75
47. ROOSTER, available in milk glass. Limited edition of 1457....made in original Heisey.....\$ 35.00  
 molds by Imperial Glass Corp. exclusively for Heisey Collectors of America, Inc.  
 5-5/8" high. Marked IG.
48. #1560 VICTORIAN GIRL BELLE, available in milk glass, ultra blue, rose pink, sunshine,  
 light blue (plain).....\$ 7.00  
 light blue frosted, rose pink frosted, sunshine yellow frosted.....\$ 7.50  
 Marked IG....made in original Heisey molds by Imperial Glass Corp. exclusively for  
 Heisey Collectors of America, Inc. 4-1/4" high.
49. SCOTTIES, available in milk glass. Limited edition of 1617....made in original.....\$ 12.50  
 Heisey molds by Imperial Glass Corp. exclusively for Heisey Collectors of America, Inc.  
 3-1/2" high. Marked IG.
54. STANDING COLT, available in light blue. Limited edition of 1389....made in original.....\$ 14.00  
 Heisey molds by Imperial Glass Corp. exclusively for Heisey Collectors of America, Inc.  
 5" high. Very few left. Marked IG
56. REARING COLT, available in light blue. Limited edition of 1563....made in original.....\$ 14.00  
 Heisey molds by Imperial Glass Corp. exclusively for Heisey Collectors of America, Inc.  
 3-3/4" high. Dated 1979. Marked IG.
57. BABY ELEPHANT, rose pink satin (frosted). Marked LIG. Not a limited edition. 4-1/2"....\$ 18.50
64. TIGER PAPERWEIGHT, opaque jade. Marked LIG. Not a limited edition. 2-3/4" high.....\$ 13.00
65. WINGS-UP MALLARD, available in light blue. Limited edition of 1811....made in original...\$ 13.00  
 Heisey molds by Imperial Glass Corp. exclusively for Heisey Collectors of America, Inc.  
 6-3/4" high. Marked IG.
66. WINGS-HALF MALLARD, available in light blue in September 1980. Limited edition.....\$ 13.00  
 of approx. 1500....made in original Heisey molds by Imperial Glass Corp. exclusively  
 for Heisey Collectors of America, Inc. 5" high. Marked IG.
67. PLAYING CARDS. Prices include shipping. (Shipped U.P.S.) Single Deck.....\$ 3.45  
 Double Deck.....in plastic box.....\$ 5.75  
 Red or blue border. Double decks have one of each.
68. 12 COLOR PRINTS OF THE HEISEY MUSEUM (inside and outside).....\$ 5.00

\* We do not reuse numbers because someone might be ordering from an old list and numbers would be incorrect.

VISIT  
**National Heisey Glass Museum**  
6 TH & WEST CHURCH STREETS  
NEWARK, OHIO



**HOURS**

APRIL thru OCTOBER  
Tuesday thru Sunday -- 1 to 4 p.m.

NOVEMBER thru MARCH  
Wednesday, Saturday and Sunday -- 1 to 4 p.m.

Closed Mondays and Holidays

The museum is fully air conditioned for your  
summer comfort.

**ADMISSION**

Adults --- \$ 1.00

Children under 18 free if accompanied by parents

No charge for members of H.C.A.

Owned and operated by

HEISEY COLLECTORS of AMERICA, INC.

Box 27

Newark, Ohio 43055

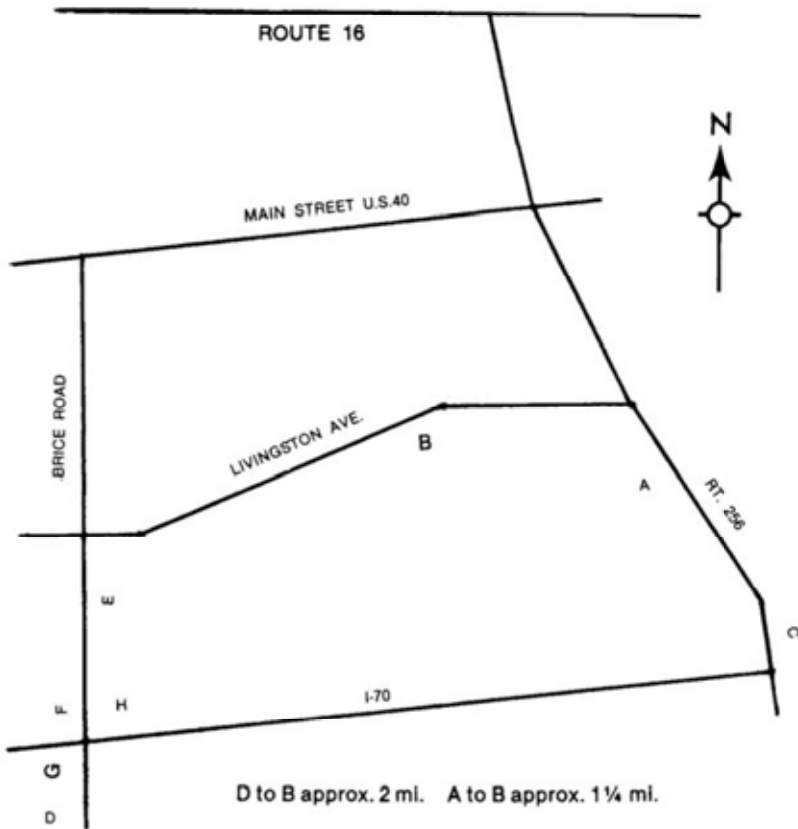
Museum phone: (614) 345 - 2932

HCA SALES  
BOX 27  
NEWARK, OH 43055









D to B approx. 2 mi. A to B approx. 1 1/4 mi.

A EXECUTIVE CATERERS  
B REYNOLDSBURG HIGH SCHOOL

**MOTELS**

- C HOLIDAY INN (614) 881-7800  
170 and RT. 256  
Single \$23.54, Double \$34.24, Triple \$38.52  
No charge for children
- D KNIGHT'S INN (614) 864-4670  
170 and Brice Road  
Single \$19.26, Double 25.14  
No charge under 18 if with 2 adults
- E RAMADA INN (614) 864-1280  
2100 Brice Road  
Single \$32.00, Double \$38.00  
No charge under 18
- F RED.ROOF INN (614) 864-3683  
I-70 and Brice Road  
Single 1 person \$18.49, 2 persons \$21.70  
Double 1 person \$19.56, 2 persons \$23.84  
3 or more persons \$25.98 (limit 5 persons)  
Under 12 no charge
- G DAY'S INN (614) 868-9290  
I-70 and Brice Road  
Single \$19.13, Double \$23.41 Each additional adult \$3.21, Each additional child \$1.07
- H BUDGETEL (614) 866-8000  
I-70 and Brice Road  
Single 1 person \$17.61, Single 2 persons \$20.82  
Double 1 person \$18.68, Double 2 persons \$21.89  
Family room (3 or more) \$24.03  
All prices include tax.

Detach and Mail

**CORDIAL ORDER FORM**

Please complete form and mail with check payable to H.C.A., Inc. to:

May by August 29, 1980

H.C.A. Cordial  
W. Alwyn Miller  
1728 Grandview Ave.  
Shelbyville, KY 40065  
(amount enclosed)

\_\_\_\_\_ Number of Cordials without dinner, \$35.00 each

\_\_\_\_\_ Number of Cordials WITH dinner, \$40.00 each

\_\_\_\_\_ Extra dinner, no cordial, \$20.00 each

Total Amount Enclosed \_\_\_\_\_

Name \_\_\_\_\_ Address \_\_\_\_\_

City \_\_\_\_\_ State \_\_\_\_\_ Zip \_\_\_\_\_

Extra names \_\_\_\_\_

( ) I will pick up my cordial at the dinner or after Sept. 13 at the museum

( ) Please mail my cordial

Send number and expiration date

8TH ANNUAL MINI-SHOW  
AND FLEA MARKET

SEPTEMBER 13, 1980

(FORMERLY HELD IN NEWARK, OHIO ON THE HEISEY MUSEUM GROUNDS)  
THIS YEAR AT A NEW LOCATION ! !

9-4 PM

75¢ ADMISSION

REYNOLDSBURG . HIGH SCHOOL  
6699 E. LIVINGSTON AVE.,  
(VERY CLOSE TO TWO EXITS OFF I70)

With ANNUAL SOUVENIR DINNER being held at STONEY CREEK COUNTRY CLUB  
(Executive Caterers) on BRICE ROAD, REYNOLDSBURG, the MINI-SHOW will be held  
nearby in Reynoldsburg for your convenience.

FOR DEALER SPACE, REYNOLDSBURG HCC  
OUTSIDE SPACES ONLY ARE LEFT c/o SHIRLEY BAGFORD  
1290 HILTON DRIVE  
REYNOLDSBURG, OH 43068

OVER 37 HEISEY DEALERS!

(614) 866-4035



FIRST-CLASS MAIL

FIRST CLASS MAIL  
U.S. POSTAGE  
PAID  
PERMIT 34  
Reynoldsburg, Ohio 43068

MUSEUM HOURS ARE NOW open daily from 1-4 p.m. except Monday and holidays