


HEISEY news

OFFICIAL PUBLICATION HEISEY COLLECTORS OF AMERICA


©Heisey Collectors of America, Inc. 1980
All Rights Reserved

Vol. IX, No. 3, MARCH, 1980 30

ONE DOLLAR




Glassware



Is a Very Important Item in

Soda Fountain Equipment




No. 350—8 in. Lemon or Egg Bowl.

Diamond Glassware

Is Unexcelled for

Durability and Brilliancy

See that your GLASSWARE bears our trade  mark

Write for Catalogue 54.

A. H. HEISEY & COMPANY

Incorporated

NEWARK, OHIO

New York Office, 25 W. Broadway
Philadelphia Office, 610 Denckla Bldg.
11th and Market Sts.

Baltimore Office, 122 W. Baltimore St.
Boston Office, 144 Congress St.
Chicago Office, 510 Heyworth Bldg.
42 Madison St.

FROM BULLETIN OF PHARMACY AUGUST 1910

By the time you read this the auction should be past history. We can only hope that it was successful and that consignors received good prices and bidders were able to buy what they wanted. We thank everyone who consigned glass and everyone who bid. The prices realized will be in the April issue of Heisey News as they'll be too late for this one.

We were saddened to learn of the sudden death of Charles Reed, husband of our former board member, Margaret Reed of Sewickley, Pa., on February 18. Charles and Margaret have attended nearly all of the quarterly meetings since the beginning and were among our very favorite people. We will really miss him. The Reeds were members of the Gateway HCC.

Robert Baker of Newark also died this past month. Bob was a good friend and voting member of HCA. After his retirement he took up glass repair as a hobby and the beautiful necklaces made from Heisey glass which used to be available in the gift shop were made by him. His wife, Mary, who survives him, was a faithful worker in the Museum before Bob became ill. She has our heartfelt sympathy. Rose Marx, our wonderful cleaning lady at the Museum, lost her husband, Frank, this past month also and she also has our sincere sympathy.

Keith Bradbury, a voting member from Columbus, Ohio has donated another one hundred shares of Bob Evans Farms stock to HCA. He has given us stock before and with this additional 100 shares we now have 1200, much of it acquired through stock splits. The current value is \$25,800. Keith hopes that we can hold this stock for future maintenance of the Museum. A big vote of thanks from all HCA'ers, Keith. Your loyal support is much appreciated.

Through an oversight we have neglected to mention that the odd milk glass animals (mallard and standing colt) listed in your club auction list were part of a lot of 850 items confiscated last year by the police in Bellaire, Ohio, as having been stolen from the Imperial factory. The person who was arrested was not the person who carried them out of the factory but was the receiver of them. The

HEISEY NEWS — — — P.O. BOX 27 — — — NEWARK, OHIO 43055

EDITOR — LOUISE REAM, 1115 W. Main St., Newark, OH 43055
 ASS'T. EDITOR — NEILA BREDEHOFT, Box 27, Newark, OH 43055
 PUBLISHED MONTHLY — \$10.00/year — \$1.00/copy
 BACK ISSUES AVAILABLE AT \$8.00/year — \$1.00/copy

PRESIDENT	LOUISE REAM	(614) 344-2377
VICE PRESIDENT	JACK METCALF	(614) 892-2664
SECRETARY	MARY Mc WILLIAMS	(614) 345-4380
TREASURER	LOREN YEAKLEY	(614) 522-5820

Heisey Collectors of America, Inc. is a non-profit corporation with tax exempt status. Owners and operators of National Heisey Glass Museum, 6th and Church Streets, Newark, Ohio. Open Daily 1-4 p.m., April through October except Monday and Holidays, November through March, Wednesday, Saturday, Sunday 1-4 p.m. Members admitted free.

Phone: (614) 345-2932. Club membership includes 12 issues of Heisey News and participation in all club activities) \$10.00/Year plus \$1.00 each for additional family members in same household who wish a membership car. For voting membership add \$25.00, one time only fee, or write for information.

For Membership - HCA Membership, Box 27, Newark, OH 43055. Notify immediately of any change of address.

The opinions expressed in articles in Heisey News are those of the authors and not necessarily those of the organization. The Editorial Staff reserves the right to edit or refuse any material submitted for publication. When requesting information, please enclose a self addressed stamped envelope (SASE).

ADVERTISING — Send all ads to:
 Neila Bredehoft, Advertising
 Box 27
 Newark, OH 43055

DEALER DIRECTOR ADVERTISING RATES — 5 line - \$6.00/6 issues

CLASSIFIED ADVERTISING — 5¢/word — \$1.00 Minimum. We cannot mix type sizes in Classified Ads. Abbreviations and initials count as words.

DISPLAY ADVERTISING	RATES	MEMBER	NON-MEMBER
	1/8 Page	\$ 8.00	\$15.00
	1/4 Page	\$15.00	\$25.00
	1/2 Page	\$25.00	\$40.00
	Full Page	\$45.00	\$60.00

PAYMENT IN FULL MUST ACCOMPANY ALL ADS.

Advertising copy reaching us by the 5th of the month will be in the next month's issue. Advertisements containing reproductions will not knowingly be accepted unless clearly stated (i.e. Heisey by Imperial, etc.) Heisey News assumes no responsibility for false advertising or misleading information. In the event of typographical error, the incorrect portion of the ad will be run in the following issue, but Heisey News assumes no further liability.

Send all letters and articles to be published to the Editor. Letters to columnists should be sent to the club address and will be forwarded.

milk glass colt and mallard were made by Imperial during feasibility studies before HCA had even ³ talked to them about making animals for us. In fact they were the animals that caused us to start with milk glass. Only a portion of the confiscated items were things that we have had made for us and Imperial sold these to us at a very good price. In response to questions from those who hoped we'd have the whole set made in milk glass, there are no current plans to do this but it can't be entirely ruled out either. In any event the ones made thus far will never be repeated in milk glass.

The project committee and the board had considered having something different made instead of the mallards but this has not worked out because of the high cost. We have re-ordered the series of mallards in horizon blue though we don't know just how soon we will have them, hopefully at least by June.

We also have ordered the small pink satin elephant, mentioned previously, for sale in the gift shop. These are plainly marked LTG (Lenox Imperial Glass.) The price is \$18.50 plus 10% for shipping and 4½% tax if you live in Ohio. We have also ordered the Storybook mug in Meadow Green Carnival, a new color this year. These will sell for \$9.50.

If you see a green carnival donkey or large elephant in a gift shop or department store, these were made by Imperial as a premium for those who purchase \$500 of this new green carnival glass. They were limited to 750 sets and if you were able to buy them at one of the stores carrying this line they would be \$35.00 each. These are also marked LTG.

I mentioned last time that Imperial's arrangement with us is that they will not make special orders of animals for anyone but us. At the original meeting with them it was clearly stated that if they ever wanted to make animals for themselves again they would be marked LIG. Those they make for us are marked IG.

Rather than complain about Imperial it would be well to purchase these items because some day they will be valuable in their own right as "Heisey by Imperial." Heisey copied Sandwich glass and the items are as collectible, or perhaps more so, than the original. In the past many companies have purchased old molds of defunct companies and have used them and it all eventually becomes collectible. No one can expect that as valuable an asset as molds can be scrapped to please a bunch of collectors. Imperial has gone out of its way to help us by marking their glass and particularly the animals.

It is the person who copies the item and does not mark them, such as the doe head and the horse-head stopper, that bothers the collector. If you read Mr. Vogel, that is what he was referring to as "animals coming out of Newark", not those by Imperial. Later this year, and hopefully not too long from now, the Newark HCC will be completing the "Heisey by Imperial" booklet which will include a color picture, to be published by HCA. This should clear up many of your questions concerning Imperial. Probably many of you who are fairly new at Heisey collecting will find that you do have some marked "Heisey by Imperial" in your collections. As I have stated before I firmly believe that this glass will be collectible in its own right as it should be. Imperial's colors are beautiful and particularly the ruby which they used to make. They are no longer making 1506 Provincial (which is the same as Whirlpool).

New members may not be aware that the Imperial Glass Corporation bought all of the existing molds in 1958 after Heisey went out of business. They had already been helping Heisey out since August of 1957 prior to Heisey's closing after Christmas of that year and they continued to fill orders for Heisey's open stock patterns. They also used the Diamond H at first, discontinuing its use entirely by January 1, 1968. They were not forced to stop using the mark as many people think but did so voluntarily when they learned that unscrupulous people were selling it as original Heisey.

The only item I can recall being made in a color similar to a Heisey color used for the same item was a small 1405 Ipswich candy jar in yellow. It was Cambridge's mandarin gold which is very similar to sahara and had a Cambridge lid. They also made this jar in Cambridge's moonlight blue. These jars are marked with the Diamond H. Imperial had also bought the defunct Cambridge Glass Co.'s molds so that Cambridge collectors have the same problem that we do. I may be wrong but I don't recall having seen a comprehensive list of Cambridge patterns by Imperial. We have attempted in writing about any glass pattern to indicate whether it had been reissued by Imperial.

Oscar orders continue to arrive at a rapid rate. We hope you will order yours soon. Please do not include money for anything except Oscars in your letters to Jerry and Judy Robinson. If you want to add members please send them directly to HCA membership, P. O. Box 27, Newark, Ohio 43055.

Tom & Neila Bredehoft, Bob and Anne Johnson, Sharon and Jack Metcalf and Louise Ream spent the entire weekend, Feb. 23, 24, and 25 researching catalogs for inclusion in a pattern book of the early years to be printed, hopefully, sometime this year. This will consist of reprints of portions of several old catalogs - plus inclusion of dating, marking and color information. This will be a hard bound book of high quality.

Our printer, Marcella Bethel, had her long awaited heart surgery on February 27th. Her husband, Harley, will be printing the "News" until she recovers completely.

Happy Collecting,

Louise Ream

4 HEISEY DECORATIONS

by NEILA BREDEHOFT

- 421 ROSE Double Plate Etch
- 423 VIOLETS Double Plate Etch
- 424 CHERRIES Double Plate Etch
- 425 DOGWOOD Double Plate Etch
- 426 MT. VERNON Double Plate Etch

In early 1919 (or perhaps slightly earlier) Heisey produced several double plate etchings. Some of these I have discussed in other columns - 413 Renaissance, 415 Classic and 422 Cumberland.

Several of the remaining double plates of this era have not been seen and little is known about them. We have stem lines listed, but it is also possible that they were used on pressed ware. Most do not list plates or jugs but these are reasonable and probable additions.

All of the names listed above are original Heisey names. When the etching book was published these were not known, so other names were applied. The applied names should not now be used since the original Heisey names are known.

All the etchings were produced from 1919 to about 1924 only on crystal.

421 ROSE we originally called Early Rose (probably more usable to distinguish from the later popular Heisey Rose.)

Found on:

3311 VELVEDERE stemware

Please add to your lists:

2351 - 8, 10, 12 oz. sodas

2930 PLAIN & FANCY 10 oz. tumbler

We came close naming 423 Violet* and 424 Cherry* - Heisey used the same names but the plurals instead of singulars.

423 VIOLETS Found On:

3311 VELVEDERE stemware

Please add to your lists:

2351 - 8, 10, 12 oz. sodas

2930 PLAIN & FANCY 10 oz. tumbler

424 CHERRIES Found On:

3312 GAYOSO stemware

Please add to your lists:

3312 GAYOSO -ousse cafe, finger bowl

2351 - 8, 10, 12 oz. sodas

2930 PLAIN & FANCY 10 oz. tumbler

DOGWOOD is the original name of 425. not Periwinkle*. I'm not too sure how a 5 petaled flower obtained the name Dogwood, whose blossom has 4 petals and looks nothing like the picture of the etching, but now we have it documented.

Found on:

3333 OLD GLORY stemware

Please add to your lists:

3333 OLD GLORY finger bowl

2351 - 8, 10, 12 oz. sodas

2930 PLAIN & FANCY 10 oz. tumbler

426 MT. VERNON is a beautiful etching. Much discussion was had while we were applying names as to whether the flower was a poppy or a rose. We solved the problem by naming the etching Emogene*. Now further information has laid to rest our problem since Mt. Vernon is the original name. (Maybe Heisey's couldn't decide what kind of flower it was either!)

Found on:

3320 RITZ stemware

4291 1 lb. candy jar & cover

Please add to your lists:

3320 RITZousse cafe, finger bowl

2351 - 8, 10, 12 oz. sodas

2930 PLAIN & FANCY 10 oz. tumbler

Have fun searching for these early double plates. The only one I can recall seeing so far is #426 Mt. Vernon.





421



423

3311 VELVEDERE

- 10 oz. Goblet
- 7 oz. Parfait
- 5½ oz. Saucer champagne
- 5½ oz. Sherbet, footed
- 4½ oz. Port
- 4 oz. Claret
- 4 oz. Grape juice
- 3½ oz. Cocktail
- 2 oz. Wine
- 1½ oz. Sherry
- 1 oz. Cordial
- ¾ oz. Pousse cafe
- 10 oz. Tumbler, footed
- Finger bowl



424

3312 GAYOSO

- 11 oz. Goblet
- 9 oz. Goblet
- 8 oz. Goblet
- 8 oz. Sundae, footed
- 5½ oz. Saucer champagne
- 5½ oz. Sherbet, footed
- 5 oz. Parfait
- 4½ oz. Claret
- 4½ oz. Grape juice
- 4½ oz. Hollow stem champagne
- 3½ oz. Cocktail
- 3 oz. Burgundy
- 2½ oz. Wine
- 2 oz. Sherry
- 1 oz. Cordial
- 5½ in. Comport, footed



425



426

3320 RITZ

- 11 oz. Goblet
- 7 oz. Goblet
- 6 oz. Saucer champagne
- 6 oz. Sundae, footed
- 5 oz. Claret
- 5 oz. Grape juice
- 3 oz. Burgundy
- 3 oz. Cocktail
- 2 oz. Wine
- 1 oz. Cordial

3333 OLD GLORY

- 9 oz. Goblet
- 8 oz. Goblet
- 6 oz. Grape juice
- 6 oz. Grapefruit
- 5½ oz. Saucer champagne
- 5½ oz. Sundae, footed
- 5 oz. Saucer champagne
- 4½ oz. Claret
- 4½ oz. Cocktail
- 4½ oz. Oyster cocktail
- 4½ oz. Parfait
- 4½ oz. Sherbet
- 3 oz. Burgundy
- 3 oz. Cocktail
- 2½ oz. Cocktail
- 2 oz. Sherry
- 2 oz. Wine
- 1 oz. Cordial
- ¾ oz. Pousse cafe
- Finger bowl (3309)
- Finger bowl (3333)
- Grapefruit & center

No. 427 Pattern *by LOUISE REAM*

DAISY and LEAVES - named by researchers. Ca. 1910, crystal only. Marked. Indented leaves and flowers often frosted with very satiny finish. 480 Basket has the same flowers and leaves. Lists from Price List 155. 8" vases, not shown, also made, cut top or plain top.

4 in. Nappy*	Ground Bottom
4½ in. "	"
8 in. "	"
4½ in. Shallow	"
5 in. "	"
9½ in. "	"
Half Gallon Jug.....	
12 oz. Ice Tea Ground Bottom.....	
Tumbler.....	
Hotel Sugar.....	
" Cream.....	
Half Gal. Jug—427½.....	
Finger Bowl.....	

NO. 427 PATTERN SATIN FINISH	
4 in. Nappy	Ground Bottom
4½ in. "	"
8 in. "	"
4½ in. Shallow	"
5 in. "	"
9½ in. "	"
Half Gallon Jug.....	
12 oz. Ice Tea Ground Bottom.....	
Tumbler.....	
Hotel Sugar.....	
" Cream.....	
Half Gal. Jug—427½.....	
Finger Bowl.....	



5-IN. NAPPY SHALLOW.
Ground Bottom.
(Also Make 4½ In. Nappy Shallow.)



4½ IN. NAPPY.
Ground Bottom.
(Also Make 4-In. Nappy.)



9½-IN. NAPPY SHALLOW.
Ground Bottom.



8-IN. NAPPY.
Ground Bottom.



12-OZ. ICE TEA.
Ground Bottom.

8-OZ. TUMBLER.
Ground Bottom.



HALF-GALLON JUG.



Ground Bottom.

Dear Sirs:

I had a talk with Mr. Richard Bach of the Metropolitan Museum regarding a display of Modern Art and Housefurnishing to be held there the first week in November. They have an attendance of 20,000 to 25,000 people a day at these exhibits. The only things allowed to be exhibited is new merchandise which has never been shown to the public before. Exhibitors are the blue book of our manufacturers from furniture, glass, china, wall paper, textiles, etc. The designers for the various manufacturers are working out these displays which are to have fixtures designed for each representative line. In glassware, Libbey, Steuben, Fostoria, and Bryce Brothers are entered. Bach said that Von Nessen told him that he was working up some ideas for us. This is the gentleman designer who I interviewed on my last trip here and is going to work us up some designs. Bach got Von Nessen on the phone and I met him. He told me that he had been called to Europe and did not have time to work up anything, but intended to do so at once, so he came to the sample room this afternoon and selected seven or eight items. We gave him several of these items to take back to the studio and he is starting some designs on these at once. The other samples will have to be sent from the factory. He is going to make some designs in sand blasting and cuttings which we will do at the factory. Our time is very limited and we will not have time to make any new moulds, therefore, he took out a bunch of items which can be revamped and we will put the designs on which will be entered in this exhibit as new designs by Von Nessen or Heisey.

This Mr. Von Nessen has some good ideas which will cost us very little to do. It means a world of publicity which money couldn't buy. I think we should go into this by all means, and as time is limited, I am taking it upon myself to have Mr. Von Nessen go ahead. These ideas, worked up by Mr. Von Nessen, will not cost us a thing for this exhibit, but if we think well enough of them to adopt them in our regular line, he wants a 5% royalty on all sales, which is safe enough for us as his royalty can be tacked on to our prices. If you want to cooperate and get into this exhibit, I wish you would do the following things at once:- At your earliest convenience, make the #4045-12" Ball Vase PLAIN, NO OPTIC. Do not finish these, as they will be cracked off as the designer designates:- Make #3397 Ft. Bowl, NO OPTIC and leave off the foot, do not crack base off until further instructions. He wants the #4206-12" Vase made perfectly plain, no optic leaving the claw foot off the base, just the plain base, and see that the bottom is level so that it does not rock. The same applies to #4207 Vase excepting that this vase does not have a foot. These four pieces should be made all good medium weight so that the sand blasting and cuttings can be adopted as designed. The other pieces he has selected, we have in our regular line, they are the #1184-15" Plate, #1184-16" Buffet Plate and #4036 Decanter. On this #4036 Decanter, we should have a new stopper for this beautiful bottle, as many sales are lost because of the present stopper. Mr. Von Nessen suggests a stopper like a tear drop to conform with the shape of the bottle. It would take very little to make such a stopper and we would sell a great many times more than we do at present. The stopper on the #1457 Decanter also should be enlarged and would improve the appearance and sale of this item materially. Mr. Von Nessen also wants the #4225-2 qt. Cocktail Shaker, to be used as a vase, this to be cracked off where the neck starts, cut off and finished just like the vase.

If you will see that these samples are made as soon as possible, you will have them ready when Mr. Von Nessen gets his designs to you next week. You will have until October 15th. to make about eight pieces for this exhibit. These things the ole boy has selected are strictly modern shapes, and with the proper designs, may be what the doctor orders for a new line for January 1st. This could be made at no additional mould cost and I believe we have other things which can be revamped to tie in with these particular items. I think this is a very good proposition for us, and when we come out with this line January 1st. with propaganda and advertising that they were selected and exhibited by the Metropolitan Museum, this will give us a lot of prestige and bally-ho for the boys to talk about. Today that is what puts sales across. Please send one each of the following samples to Mr. Walter Von Nessen, 211 E. 49th St., New York City, N. Y:

#1184-16" Buffet Plate
4036-Decanter

The other pieces are not needed, as he will make the designs from samples we have loaned him out of the office. If you can get these moulds ready, and I suggest making eighteen to twenty-four pieces of each of the four or five items we have to revamp, we will have to make samples for the other salesmen if these designs are saleable. If these samples are ready by the time the designs reach the factory, the Cutting and Etching Department will have plenty of time to finish these samples by the 20th. of October.

If we could have one good looking stemware line which would tie in with this line we are revamping, I believe we would have something as unusual and good as the #4044 line. I believe the stemware line should have a drawn stem with an extra heavy bowl, one which is simple and well designed. This we could use for some heavy flutes and mitres which seems to be the thing with the better trade today. Simplicity seems to be the key-note in home furnishings.

If there is any question on not being able to go through with this, please advise Mr. Nock so he can take it up with Mr. Von Nessen, as I expect to leave here Sunday for Boston. I believe we would be making a big mistake if we do not go into this exhibit. Sincerely, ROD IRWIN

In November 1934, the Metropolitan Museum of New York City held a display of Modern Art and Housefurnishings. The only things allowed to be exhibited were new merchandise which had never been shown to the public before. The A. H. Heisey Company had items on display designed by Mr. Von Nessen.

Rod Irwin handled the display arrangements for the Heisey Company. Rod's letter dated September 7, 1934 to the Heisey Newark Office concerning the display is reproduced with this article. The letter indicates that Mr. Von Nessen had just started to work with the Heisey Company. There was insufficient time for the making of any new moulds, so Mr. Von Nessen had to work up his new designs for the display from existing glassware pieces. Rod's letter indicates some of the kinds of glassware pieces given to Mr. Von Nessen. As you will note in the letter, the items sent to Mr. Von Nessen were variations of existing pieces where the optic features were left off, feet left off or left incomplete in some other way. As for example, two of the items described in the letter were the #4206 - 12" vase (Optic Tooth) or a form of the vase as it was made plain (no optic) and the claw foot base was left off and the #3397 - 10" floral bowl (Gascony) again made plain (no optic) and the foot left off. Apparently Von Nessen liked the contour of the vase and bowl bodies.

Mr. Von Nessen was to suggest designs for the glassware pieces which would then be cut, etched and/or sand blasted back at the Heisey factory.

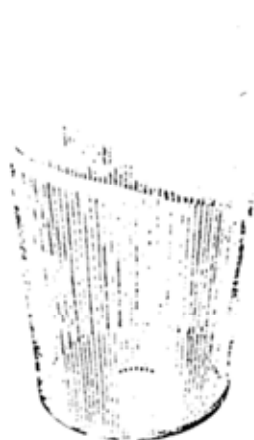
The Winter 1934-5 issue of "Creative Design in Homefurnishings" had an article about the exhibition at the Metropolitan Museum in New York. The two month long display was referred to as an exhibition of contemporary American industrial art. More than 200 manufacturers, designers and architects cooperated to show their work in objects for daily use. All entries were shown for the first time.

Four items designed by Walter Von Nessen for the Heisey Glass Company were pictured in the article. Two of the items were vases made from the previously mentioned 4206 vase blanks. One vase contains finely etched horizontal concentric lines to within about 2 inches of the bottom. The other vase contains vertical cut lines to within about 2 inches of the top. In other words, vase 1 is horizontal lines with a 2" clear band at the bottom and vase 2 is vertical lines with a 2" clear band at the top.

The other two items were bowls made from the previously mentioned 3397 bowl blanks. * One bowl contains deeply incised and frosted horizontal concentric lines somewhat like the first vase but farther apart. The second bowl contains four panels of vertical cut lines. The edge of the bowl indents for each of the four panels of cut lines.

Pictures of the two vases and two bowls are shown with this article. The pictures were copied from the Creative Design magazine. I have no evidence to be able to state or show that any of these four items designed by Walter Von Nessen ever went into commercial production.

*NOTE: The 2 bowls pictured are not made from the 3397 bowl as its shape is considerably different. It is much more likely that they are made from the 4045 Ball Vases which were cut off at the designer's designation to produce the notched rim. This particular bowl may be the forerunner of the often seen 4056 bowl, which appeared in the Heisey line about 1935 and was made in one size or another until the factory closed. The 4206 vase without foot became the often seen 4057 vase, also a very popular Heisey product. These "Museum Cuttings" were available, although possibly only on a special order basis, at least until 1942. The HCA archives have a few handwritten lists of these items - several of which we do not have illustrations.



"Darts widen with the vase; flutings carry a cross-tie design in the bowl. By Walter Von Nessen for Heisey Glass."

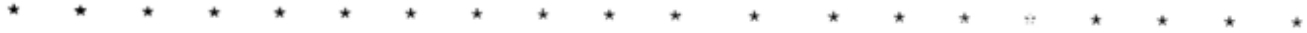


4045
Ball Vase

continued



"Concentric lines, deeply incised and frosted, mark the spreading pattern of the bowl designed by Walter Von Nessen for Heisey Glass. He repeats the design in a vase, with finely etched lines creating a fanciful wavering pattern within the glass."



1401 EMPRESS



After Dinner Cup and Saucer



#1401½ Cup and Saucer

1401 EMPRESS

See Heisey News for May, 1979 for listings of colors.
Pictures xeroxed from an addendum to catalog 109.



10" oval dessert, ground bottom



13" square sandwich plate, 2 handled



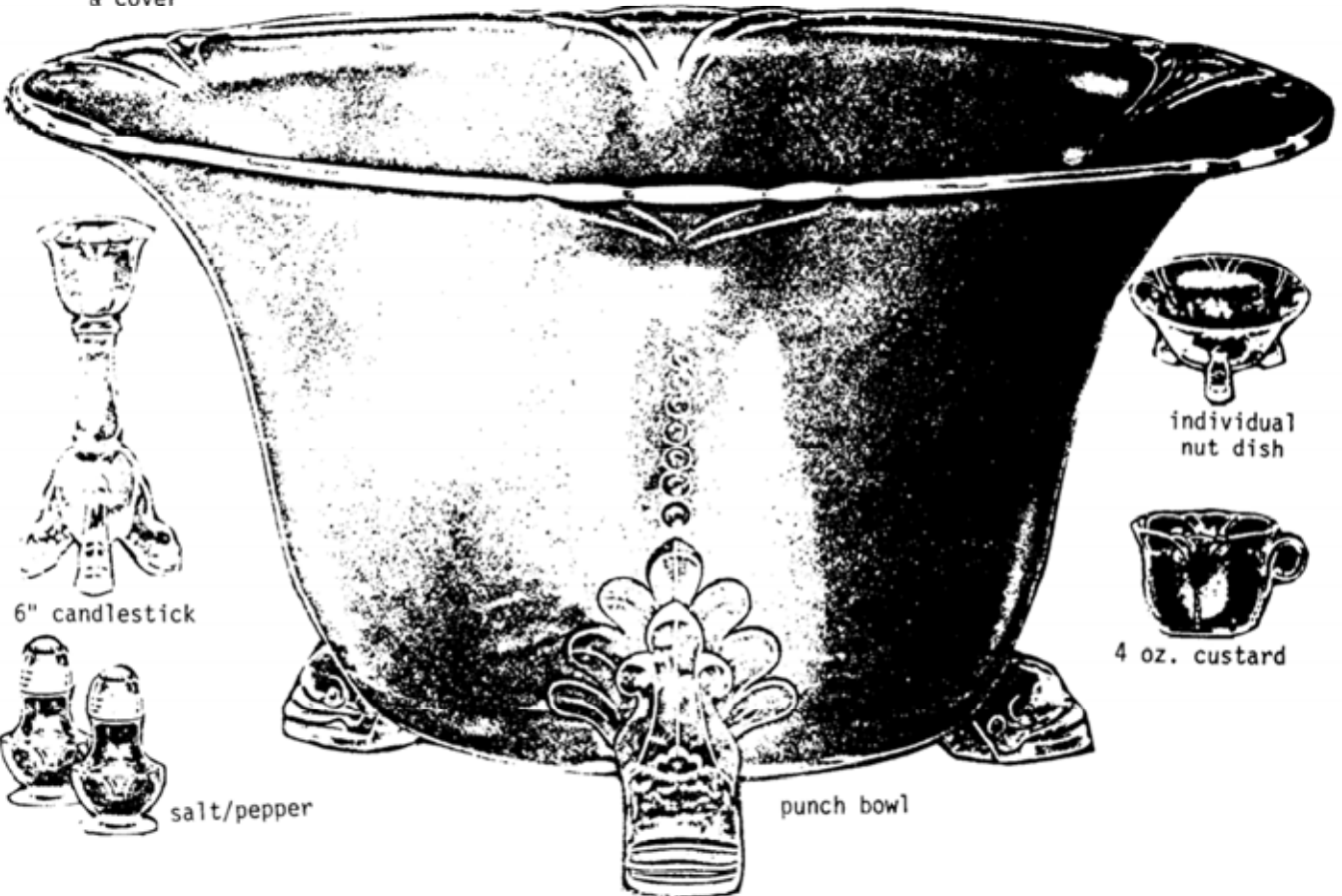
12" square sandwich tray
ground bottom



12" 2 handled muffin plate
ground bottom



mustard
& cover



punch bowl



6" candlestick



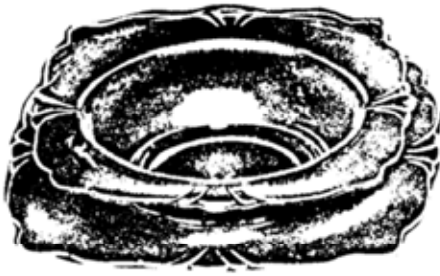
salt/pepper



individual
nut dish



4 oz. custard



grapefruit & square plate



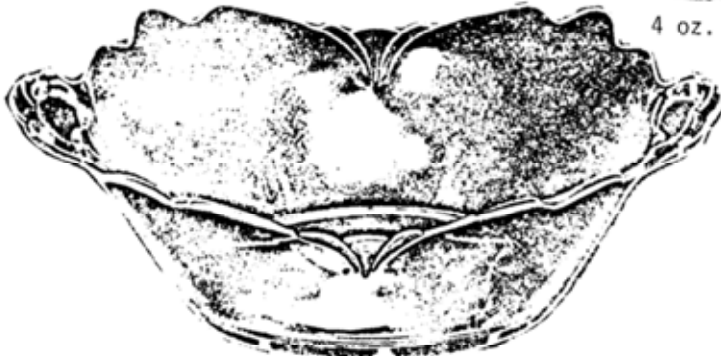
4 oz. sherbet



4 oz. saucer champagne



9 oz. goblet



10" square salad bowl



2½ oz. oyster cocktail



6" footed compot



6" square compot



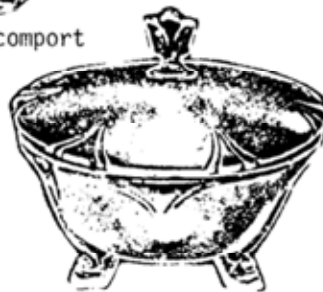
7" oval compot



2 handled candlestick



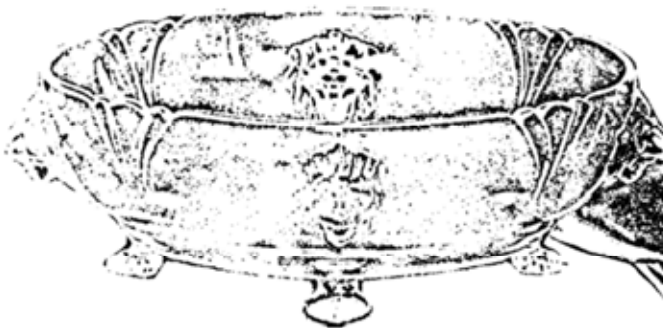
6" compotier



6" candy box & cover



marmalade & cover



10" floral bowl, shallow
Lion Head

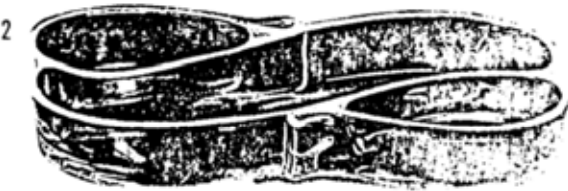


10" oval vegetable dish



4 oz. oil
83 stopper

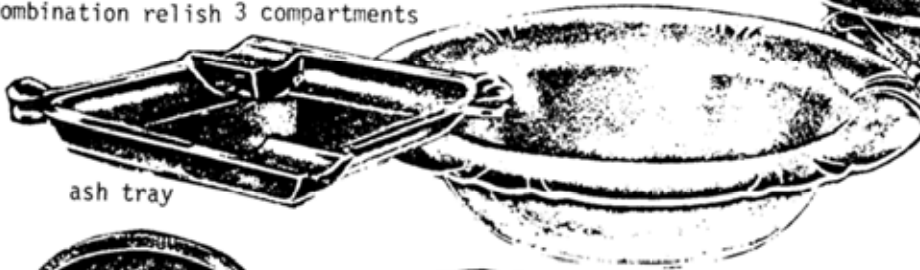
1401 EMPRESS



Combination relish 3 compartments



9" floral bowl, flared



ash tray



bouillon & plate

9" floral bowl
rolled edge



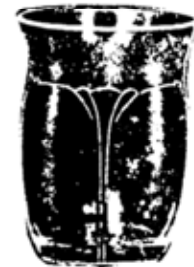
6½" oval lemon & cover



ice tub & handle



cream soup &
square plate



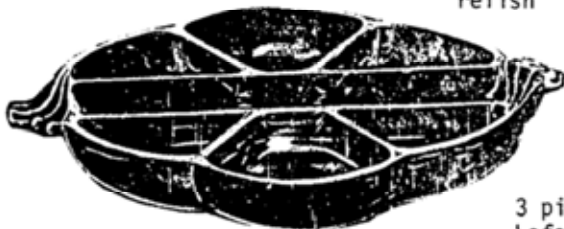
8 oz. tumbler
ground bottom



7" handled triplex
relish



3 pint footed jug
Lafayette etching



10" hors d'oeuvre
7 compartment



8 oz. footed
tumbler



frappe bowl
& center



16" buffet relish,
4 compartment

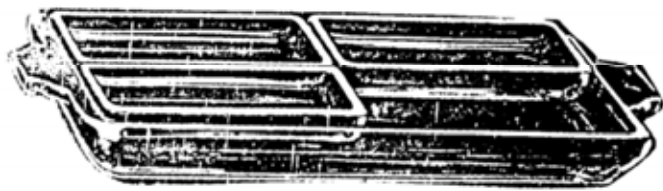
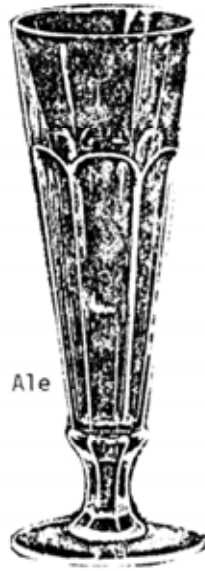


condiment tray

Miscellaneous items from an addendum to Catalog 109.
 Also shown in 211-16. All of these items were made in color.
 Most are marked.



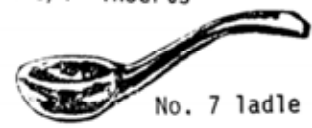
351 - 12 oz. Ale



1184 5 piece relish
 1-7x10" tray
 4-4 3/4" inserts



1184 - 4 3/4" insert

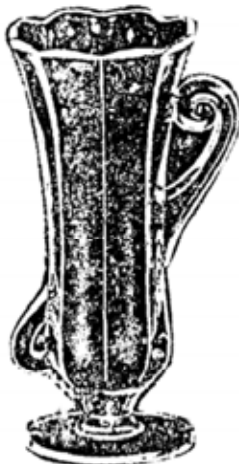


No. 7 ladle

140 2 light candlestick
 Made-crystal, moongleam
 flamingo, sahara, and
 Stiegel blue



811 3/4-17 oz.
 Goblet



1421 8" vase, ftd./handled
 made-crystal, moongleam
 flamingo, sahara and
 Stiegel blue



1420 9" vase, footed
 made-crystal, moongleam,
 flamingo, sahara and
 Stiegel blue



299 6 oz.
 optic toddy



1417 8 oz. ftd.
 tumbler



1184 cigarette box
 & ash tray cover



231 water jug, pressed handle
 (Rum Pot) Made-crystal,
 sahara, and Stiegel blue



1413 8" vase, straight or flared also straight
 2 handled Made-crystal, moongleam, flamingo,
 sahara, alexandrite and Stiegel blue



136 3 light candlestick
 made-crystal, moongleam
 flamingo, sahara, and
 Stiegel blue

This month, instead of doing an in-depth study of one or two tumblers, I'm going to do a sidelight on history of the A. H. Heisey & Co. Among the many documents which have come to light in the archives of HCA are two that bear on tumblers (not many do.) They are orders from A. H. Heisey & Co. to the Cambridge Glass Company in Cambridge, Ohio.

The "Bb1" obviously means quantity—a barrel. A check of old price lists shows that they could pack 22-24 dozen tumblers in a barrel. The numbered tumblers and illustrations remove any mystery there, the puzzle comes in when they begin talking about the mark. It is definitely a typed M inside a pencil drawn diamond. If it were an H I would not wonder about it at all, but since it is an M and since they want it on the invoice, I can't for the life of me figure out what they mean.

In any case these invoices prove beyond all shadow of a doubt that Heisey at least ordered glass from Cambridge. They must have had some production problems and had orders that must be filled. I know of at least one other instance of this nature, but it was much later in the Company's life and I don't think there were any tumblers involved, so I won't go into it now.

I don't imagine the Heisey purists will like this information, but it does all have a bearing on the glass we love to collect and it is interesting from an historical point of view.

The following list is taken from an early price list and the descriptions are Heisey's:

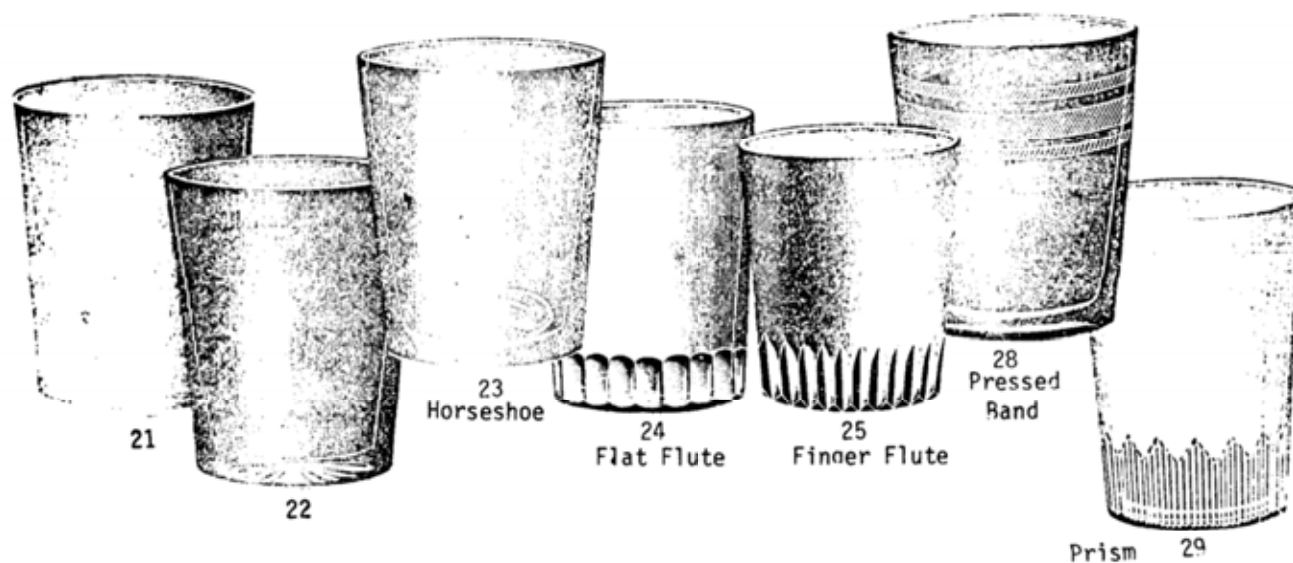
- 21 1/3 pt. plain, plain bottom
- 22 1/3 pt. plain, star bottom
- 23 1/3 pt. plain, horseshoe bottom
- 24 1/3 pt. flat flute
- 25 1/3 pt. finger flute
- 28 1/3 pt. pressed band
- 29 1/3 pt. prism

The above mentioned seven tumblers appear to have been introduced in 1896. The first mention of them is in an undated price list which is considered to be from 1897. They were still listed in price list #148 which is dated 1910. However, the copy of #148 we (the HCA) have was apparently used in the preparation of the succeeding price list, #150 (1912) and the listing for these seven tumblers was crossed off with a large "X" indicating that this line would no longer be offered. The line, as it were, started off in 1902 being offered for 19¢ per dozen and by 1910 they were up to 30¢ per dozen. That's two for a nickel, folks!

The sharp-eyed reader will note that numbers 26 and 27 are not included here. They were in the line when first introduced, but by the time that price list #100 came out they were offered separately from the other seven and given ounce capacities rather than fractional pint volumes. More on these two in another column.

The catalog page from catalog 50 which illustrates the seven states that "The above tumblers made with ground bottoms only." There should be no problem on that account, but there is no way to tell if any of them was ever marked with the Diamond H. If you find a shipment of them and the invoice carries a Diamond M, let me know and we'll discuss it.

A warning to collectors - these seven tumblers are of such plain and common designs that many, many glass companies made designs like them or extremely similar.



Cambridge Glass Co.,
 Cambridge, Ohio.
 Newark, Ohio, Dec. 5, 1906

Order No.
 When Shipped

Ship to A. H. Heisey & Co.,
 Newark, Ohio.
 Town and State
 Ship At Once Salesman

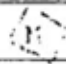
Shipper's Check	Bbl.	Doz.	ALL COMMON TUMBLERS
	7		421 Tumblers
	6		22 "
	4		23 "
	24		24 "
	5		25 "
	2		28 "
	1		29 "
Forgoing are our numbers, but we enclose illustrations and trust you will match and favor us with quick shipment.			
In case you are unable to make immediate shipment, be good enough to advise.			

Invoice #1

Cambridge Glass Co.,
 Cambridge, Ohio.
 Newark, Ohio, Dec. 6, 1906

Order No. 2109
 When Shipped

Ship to A. H. Heisey & Co.,
 Newark, Ohio.
 Town and State
 Ship Salesman

Shipper's Check	Bbl.	Doz.	ALL COMMON TUMBLERS.
			Mark 
	10		Asst. #25, 28 & 29 Tumblers
Invoice must show our Order No. & Mark.			
Kindly match our numbers from enclosed illustrations.			

Invoice #2

A LIST OF MAGAZINES WITH HEISEY ADSBy Bett **by Betty Regan**Ladies' Home Journal

1911-Apr, May, June, Sept, Oct, Dec.
 1912-Jan, June, Sept, Nov.
 1913-Jan, Feb, Mar, Apr, May, June,
 July, Aug, Sept, Oct, Nov, Dec.
 1914-Jan, Feb, Mar, Apr, May, June,
 Sept, Oct, Nov, Dec.
 1915-Feb- Mar, Apr, May, June, July,
 Aug, Sept, Oct, Nov, Dec.
 1916-March, May, July, Sept, Nov.
 1917-Jan, Mar, April, May, Oct, Nov.
 1919-Sept, Oct, Nov.
 1920-June, -October December
 1921-Feb, Apr, June, Aug, Oct, Dec.
 1922-Apr, June, Oct, May, Nov, Dec.
 1923 Apr, June, Oct, Dec.
 1939-October, December
 1940-Apr, May, June, November
 1941-Apr, June, Oct, Nov.
 1942-May, June, Oct, Nov.
 1943-Apr, May, June, Oct.
 1944-Apr, June, Oct, Dec.
 1945-Apr, June, Oct.
 1946-June, Nov.
 1947-June, Nov.
 1948-June, Dec.

National Geographic

1914-March

1/2 page ads:

1924-May, June, Sept, Dec
 1925-Feb, Apr, June, Sept.

1 page ads:

1926-Apr, May, Sept, Nov.
 1927-Mar, May, July, Sept, Nov.
 1930-Mar, May, Sept, Nov.

1/8 page ads:

1943-April
 1944-April, December
 1945-April

China, Glass & Lamps *

1928-November 12

Women's Home Companion

1911-April
 1912-September
 1913-December
 1914-February
 1915-December
 1916-July, November
 1923-April
 1924-June
 1928-October, December

Living for Young Homemakers

1950-September

Living Magazine

ca 1942

The House Beautiful

1913-December
 1914-February, April
 1916-May
 1926-May, November
 1927-October, November, December
 1937-October
 1940-April, Sept, Dec.
 1944-April
 1945-October, December
 1946-December
 1947-December
 1948-May, June, October
 1949-October
 1950-May
 1952-April, June, October
 1953-April, October
 1959-November-Heisey by Imperial

Cosmopolitan

1911-October
 1912-March
 1913-September

Delineator

1917-May-full page stems-color
 1918-May-full page stems-color
 1921-May
 1922-October

Ladies World Magazine

1913-August

Review of Reviews

1912-month unknown 1/2 page

The Saturday Evening Post

1931:

March 14
 April 11
 May 9
 June 6
 September 12
 October 10
 November 7

1932:

March 12
 April 9
 May 7
 June 4

McCall's Magazine

1911-September
 1919-September
Life Magazine

1914-Oct. 1; Nov. 5--Others in this era.

Reprinted from the Pony Express, newsletter of
 Heisey Collectors Club of California.

Cont.

Creative Design

1938-January, September

Better Homes & Gardens

1947-August

1948-May

House & Garden

1921-Apr, May

1923-July

1924-May, June

1925-Sept.

1926-Aug.

1927-July, Oct.

1928-June, Dec.

1929-Apr, June, Dec.

1930-Mar, May

1933-Apr

1937-Sept, Nov. (Table Setting)

1940-March

1941-May, June, Oct, Nov.

1942-Dec.

1943-Apr, June, Nov.

1944-May

1945-Dec

1946-May

1948-Oct, Nov.

1949-March

1950-Nov.

1951-Nov.

1952-June

Good Housekeeping

1911-Apr, May, June, Sept, Oct, Nov, Dec.

1912-Jan, Mar, May, June, Aug, Sept, Oct
Dec.1913-Jan, Feb, Mar, Apr, May, June,
July, Aug, Sept, Oct, Nov, Dec.1914-Jan, Feb, Mar, Apr, May, June,
July, Aug, Sept, Oct, Dec.1915-Feb, Mar, Apr, May, June, July,
Aug, Sept, Oct, Nov.

1916-Feb, Apr, June, Aug, Oct, Dec.

1917-Mar, Apr, May, Oct, Nov.

1918-Nov, Dec.

1919-Sept, Oct, Nov.

1920-Apr, Sept, Nov.

1921-Mar, June, Nov.

1922-Mar, June, Nov.

1923-May, June, Nov.

1924-June, Oct, Dec.

1925-Mar, Apr, May, Sept

1926-Apr, June, Oct, Dec.

1927-Apr, June, Aug, Oct, Dec.

1928-Mar, May, Sept, Nov.

1929-Mar, May, Oct, Dec.

1930-Feb, Apr, June, Oct, Dec.

American Cookery

1916-Oct.

1924-April

1925-April (many more)

Vogue

1926-March, full page

1928-November

The Golden Book Magazine

1926

The Craftsman

1912

The Boston Cooking School Mag.

1912-December

1914-March

Pictorial Review

1919-October

1937-June (other issues)

Brides Magazine

1949-50-Fall-Winter issue

1950-Spring Issue

1951 Summer Issue

Crockery & Glass Journal *

1941-June Also in other issues

I am sure there are many more ads & magazines which I have missed, but these are what I have found in my search and the lists available in the HCA newsletters. If you find more to add to this list, let us know. Collecting Heisey Ads can be great fun!

* * *

* Note: In these two trade journals, Heisey ads appeared in almost every issue. In it's early days, China, Glass, & Lamps was issued weekly then later changed to monthly. Crockery & Glass Journal was a monthly and many Heisey ads appeared month after month on the inside back cover.

nb

* * * * *

House and Garden

1927-Oct, Nov.

1930-November

1948-November

House Beautiful

1926-Sept.

1927-Nov.

McClures

1911

Delineator

1911-May

Hearsts' Magazine

no date

House Beautiful

1943-December

Harper's Magazine

1914-several

Western DruggistEbonyCountry Life in America

1912-April

Bulletin of Pharmacy

1910-August

LETTERS, we get letters . . .

* * * * *

Last October, my sister Mrs. Mary Margaret (Harvey B.) Smith of Fresno, California, asked me to secure for her direct from the museum a set of the standing, kicking, and rearing colts made in the original Heisey molds by Imperial Glass Corp. exclusively for Heisey Collectors of America, Inc., in Imperial's Horizon Blue. I was happy to do just that as I knew how they would be used.

On Christmas night, I received a call from an elated niece, Pegge Cook, the daughter of my sister Mary Margaret. Mrs. Cook resides at Tehachapi, California. She wanted to thank me for doing some of her parents Christmas shopping, because they had given her the above mentioned set of colts, the molds of which had been made by the late Victor Lukasko, a mold-maker with the Heisey Co. from 1910 until his death in 1941, and who was her grandfather. These were the 1522, 1527 and 1529 colts and were three of my father's favorite pieces as he felt that they looked so graceful. In fact I am told, that they were his last three complete molds. Within her Christmas package was a Xerox copy of the article PROFILES OF FORMER HEISEY EMPLOYEES - Victor Lukasko, taken from the July 1979 issue of HEISEY NEWS. Pegge commented that this Christmas gift was the most significant and nicest that she had ever received, and also noted that the rearing colt by Imperial carries the date 1979, her grandfather's 100th birth anniversary.

While at the museum recently, I was pleased to observe the pair of #5 Show Horses (1948-49) which was designed by Horace King of Granville, Ohio, who I believe was with Heisey from 1942 through 1957. The mold for this outstanding piece was made by my brother, Raymond P. Lukasko, residing here in Newark, and who learned the moldmaking trade in the Heisey shop and worked there for some time after finishing his apprenticeship.

I enjoy visiting the National Heisey Glass Museum - and do so frequently - because I always come upon some pieces that I have not seen before. You and your entire staff are to be complimented for placing here in Newark an attraction not to be found anywhere else.

- Leo J. Lukasko, Newark, Ohio

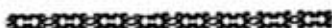
* * * * *

Enclosed is a picture of the "Tangerine Wines" our daughter gave us for Christmas - each year we've had on our lists "a piece of Heisey Tangerine", so this is what we got. They are even marked!

- Peg & Al Miller, Kentucky

* * * * *

A picture of four glasses (maybe they were plastic), with a real tangerine in each.



The Museum was much more than I had expected. Not only the beauty of the glass, but the education it provided, and the friendliness of the personnel.

- Glen G. Gall, Iowa

* * * * *

I bought a pair of Heisey Flamingo No. 114 3½" unmarked candlesticks. I am enclosing a copy of the etching on the base. It is similar to Shawl Dancer as shown on page 119 of ETCHINGS & CARVINGS but is certainly not the same. Can you shed any light on this pattern?

- Mary Griffin, Mississippi

Answer: The etching on the candlesticks is "Olympia" and was applied to Heisey glass & that of other companies. We do not know the name of the company which did it. Possibly it was Lotus Glass Co. L. R.

CLUB NOTES

WESTERN RESERVE HEISEY STUDY CLUB

The Western Reserve Heisey Study Club met at the home of Bob and Helen Marimon on January 17.

President Lynn Sellers presented the HCA Questionnaire to the club. A considerable amount of time was spent in filling it out.

Following the business meeting the club members had a great, but sometimes frustrating time trying to identify Heisey patterns of items carefully wrapped in plastic!

The hostess served a delightful lunch on Lariat Moonglo cut plates. The members had a most enjoyable time examining Helen's growing collection of Heisey animals and baskets.

- Thelma L. Morningstar

* * * * *

GATEWAY HEISEY CLUB

Phyllis Goldstein lured the Gateway Heiseyites of Pittsburgh, PA to her home on the clear crisp evening of February 2. She enticed us with her savory cuisine, and enlightened us with her excellent program on "Cut Glass" with elegant examples.

A Sunburst pitcher; an orchid etched ice bucket; and an ice cream holder were among the "finds" at show and tell.

The new officers for the year 1980 are: Carlene Masson-President; Bob Cook-Vice President; Darlene Sanders-Secretary; and our faithful Phyllis Goldstein-Treasurer.

The chairmen for the year 1980 are: Program-Joe Lokay; Social-Darlene Sanders; Ways & Means-Edie Van Dyke; and Publicity-Phyllis Freier.

Under the guidance of our new president, the business of the new year was transacted. A birthday calendar, the Heisey survey, the auction and the convention were among the subjects.

All too soon the evening we had waited for so long was over. Although the weather was nippy, our hearts were warm with the Heisey glow. Our minds were busy with thoughts of "The Auction" and our next meeting on April 12.

- Phyllis Freier

DONALD P. BEAN
183 Dutcher Street
Hopedale, Mass. 01747
 PHONE 617-473-0561

*MARKED & MINT
 5 DAY RETURN
 PRIVILEGE

Shipping & Insurance Extra

OLD SANDWICH 6" Candlesticks * COBALT.
 Pair . . . \$350.00
 10 #433 GREEK KEY custards * . . . all 125.00

WANTED: Base only for #1202 11" Bowl,
 HAWTHORNE

* * * * *

DEL'S DOING
 45 Burnett Ave., PO Box 15
 Lake Villa, Illinois 60046
 Phone (312) 356-2591

WILL BE FEATURING HEISEY & CAMBRIDGE
 GLASS AT THE FOLLOWING SHOWS:

MASONIC TEMPLE, Freeport, Illinois March 7-9
 CASTLETON (INDIANA) MALL March 13-16
 WASHINGTON SQUARE MALL, Indianapolis, Indiana
 April 17-20
 COLESIUM, Fort Wayne, Indiana April 25-27
 UNIVERSITY PARK MALL, Mishawaka, Indiana
 May 1-4

* * * * *

J. CRAGG
94 Elm Street
Georgetown, Mass 01833
(617) 352 - 2164

Insurance &
 Postage Extra

SUGARS-CREAMERS, ETC.

s/c 1509 EMPRESS ftd. (Crystal). . . \$35.00
 s/c 7023 HALF CIRCLE (Moongleam) . . . 50.00
 s/c 479 (Flamingo). 50.00
 s/c 1509 QUEEN ANN (sahara) 40.00
 s/c 500 OCTAGON (Moongleam handle) . . . 45.00
 s/c 7019 DIAMOND CRYSTAL 45.00
 s/c 1184 YEOMAN (Flamingo) 35.00
 s/c 1467 RIDGELEIGH (w/tray). 25.00
 Creamer 1184 (Flamingo) 15.00
 1184 (Hawthorne optic) 20.00
 Creamer 343 SUNBURST 20.00
 Sugar 1483 STANHOPE 15.00
 Sugar 500 OCTAGON (Flamingo). 17.00
 Sugar 1503 CRYSTOLITE 15.00
 Sugar 1489 PURITAN (Moongleam) 17.00
 Sugar 1170 PLEAT & PANEL (Moongleam) . 17.00

 350 PINWHEEL & FAN 8" Nappv. 35.00
 #10 10" Floral bowl (Hawthorne optic) . 30.00



CLASSIFIED

-FOR SALE: Heisey by Imperial animals in caramel slag. Buy all 12 or separately. Call (614) 888-5543 for information.
 * -WANTED 1401 Empress Moongleam punch cups plus 9 inch footed vases. (All marked and undecorated) Also most Minerva Pressed Pattern Glass items esp. covers (esp. seven inch) and bases. JERRY BAKER, P. O. Box 13081, St. Petersburg, Florida 33733.
 * -WANTED: Anything to do with Newark, OH History including old post cards, etc. Write: WAYNE DANKMER, 222 Newton Ave., Newark, OH 43055.
 * -WANTED in mint condition: 3404 Spanish stem Cobalt cocktails, two; 1401 Empress Cobalt 8" square plates, two; 1401 Empress Crystal cup & saucer, four each. ELEANOR BRUNNER, 10602 Spice-wood Club Drive, Austin TX 78750. Phone 512-258-1714.
 * -WANTED TO BUY: Heisey "Southwind" water & juice goblets. L. WHITE, R #7, Box 345, Muncie, Indiana 47302.
 * -WANTED: One Heisey 12 ounce footed ice tea 497 Rosalie etching, Vogel's Book III page 152, on 4092 Kenilworth stem, Vogel's Book III page 154. MRS. WILLIAM CAPPS, 1925 Chatham Avenue, Charlotte, North Carolina 28205. (704) 376-1256.



No. 111 - 11 1/2"



No. 109 - 6" Dolphin



No. 110 - 10" Dolphin

20
 TRUDY MILLER ANTIQUES
 12521 HORNBEAM
 DALLAS, TEXAS 75243
 (214) 783-9920

CRYSTOLITE: 8 footed ice teas.... each \$18.00
 12 footed goblets..... each 18.00
 4 footed sherbets.... each 15.00
 Pair candleblocks..... 25.00
 Seashell covered candy..... 35.00

ORCHID ETCH 1 goblet..... 22.00
 3 stemmed cocktails... each 30.00
 Pair shakers (1 cloudy).... 22.00

NEW ERA 4 goblets.....each 14.00

BARCELONA CUTTING:
 10 plates 8".....each 10.00
 Dolphin ftd. cream/sugar set 55.00

PEERLESS "300":
 6 ruffled top sundae dishes
 each 20.00
 2 goblets, 6".....each 18.00
 4 wines, 4½".....each 20.00
 4 cordials.....each 25.00
 Butter dish..... 65.00
 Decanter..... 55.00
 Jelly Compote..... 35.00

HEISEY"ROSE":
 12 goblets.....each 35.00
 1 ice tea..... 35.00
 5 sherbets.....each 30.00
 6 footed juice.....each 30.00
 4 shrimp icers (2 pc) each 55.00
 Compote 4"x6" diameter..... 35.00
 Single shaker 22.00

PUNTY & DIAMOND POINT:
 Butter dish..... 110.00
 Sugar shaker..... 60.00

PRINCE OF WALES PLUMES:
 14" Dia. punch bowl w/base..185.00

BEADED PANEL & SUNBURST:
 14" Punch bowl..... 95.00
 Compote 8" tall x 8" wide 70.00
 9" flared bowl w/gold trim 32.00

FANDANGO: Toothpick holder..... 60.00
 9½" crimped top bowl..... 38.00
 2-4" nappy.....each 14.00

SAWTOOTH BAND:
 Cruet..... 40.00
 Child's creamer (chids on
 base)..... 22.00

FANCY LOOP: Cruet..... 75.00
 Toothpick holder..... 60.00

WAVERLY: Cruet (original sticker).. 55.00

Postage Extra
 Reserve with deposit
 VISA, Master Charge, send number

PLEAT & PANEL: MOONGLEAM:
 5 part relish, 10½" diameter..... \$42.00
 Sugar with lid..... 35.00

FLAMINGO:
 5 plates, 7".....each 7.00
 6 plates, 6".....each 6.00
 Cruet..... 55.00
 14" Plate..... 35.00

PLANTATION:
 3 sherbets.....each 15.00
 Pair shakers..... 45.00
 14" round plate..... 45.00

TWIST: SAHARA ice bucket..... 75.00
 FLAMINGO 6 cups/saucers...each set 15.00
 MARI GOLD 3-8" plates.....each 18.00
 1 footed goblet, 5½"..... 30.00

QUEEN ANN:
 FLAMINGO compote 6" tall, 8½" oval bowl
 Bowl, Dolphin ftd. 5" dia., 3½" tall..... 35.00
 SAHARA: Goblet..... 45.00
 2 cups/saucers.....each set 25.00
 8" bowl..... 30.00
 6" sq. bowl Old Colony Etch.... 15.00
 14" oval platter..... 40.00
 6 plates, 4½".....each 14.00
 6 plates, square 7".....each 8.50

OLD SANDWICH: 4 MOONGLEAM 3½" bars. each 25.00
 8 COBALT shot glasses...each 75.00
 3 CLEAR butter pats.....each 8.50
 small FLAMINGO cruet..... 55.00

WINGED SCROLL Custard tankard pitcher, 6
 tumblers, good gold..... 600.00

RING BAND Custard w/Rose decor 7 piece
 berry set..... 400.00

CARCASSONE: SAHARA 3 sherbets...each 16.50
 3-11 oz. goblets, short stem
 w/Old Colony etch...each 20.00
 3-3oz. cocktail w/Old Colony
 etch.....each 18.00

YEOMAN: SAHARA 6 goblets.....each 19.00

ZIRCON: SATURN 2 sherbet & liner..each set 45.00
 Goblet..... 55.00
 2 oyster cocktails....each 35.00

KOHINOOR: Zircon saturn bowl, clear
 stem/foot 6-6½oz. sau. champ...ea. 65.00

WAMPUM Ruffled centerpiece bowl & pair 4"
 candlesticks.....set 115.00

Triplex Candlesticks FLAMINGO #129, Acorn
 stempair 150.00

ANTIQUES 'N' COLLECTABLES
"HEISEY OUR SPECIALTY"

LYNNE



ART'S

P.O. BOX 54-6014
MIAMI BEACH, FL 33154

GLASS-HOUSE
INC.

Dear Heisey Collector and Dealer,
Come see us at our new location, lovely
Miami Beach, Florida. Write or call for appoint-
ment. P.O. Box 54-6014, Miami Beach, Fl 33154.
We'll be at the following shows.

ALEXANDRIA, VIRGINIA, HOLIDAY INN, TELEGRAPH ROAD, MARCH 22 - 23
WAKEFIELD, MASSACHUSETTS, FIRST PARISH CONGREGATIONAL CHURCH, MARCH 28 - 29
FORT LAUDERDALE, FLORIDA, BROWARD COMMUNITY COLLEGE, MAY 3 - 4

While we are on the road, suggest a call to
305-861-7700 or 305-895-5666.

See you soon,
Lynne and Art

Monthly Heisey column
by Clarence Vogel!

glass REVIEW

80 PAGE ALL GLASS MAGAZINE
since 1971
\$9.50 per year - 12 Issues
Or, recent sample - \$1

The GLASS REVIEW is a handy 8½" x 5½" monthly magazine devoted to "Keeping Glass Collectors Informed" on both old & new glass. Printed on glossy stock and filled with large, clear photos, articles by nationally respected authors and writers, price reports, trends, research and reproduction information, previously unpublished catalog reprints, reviews of the latest glass books (and where to buy them), Questions & Answers, trademark info, large variety of glass ads on both old and new glass, up-to-date happenings in glass and MORE!

Enclose payment; send to: GLASS REVIEW,
P.O. Box 2315- , Costa Mesa, CA 92626.

**HEISEY'S
GLASSWARE of DISTINCTION**

by Mary Louise Burns



COMPLETELY REVISED!

Now includes additional patterns, new illustrations, many new listings and is now perfect bound for sturdiness!

This comprehensive reference book is not a catalog reprint but a collection of all major patterns of tableware, stemware, cuttings, etchings, animals and Verlys produced through Heisey's 60 years of glassmaking.

Details of each pattern clearly shown by photo or illustrations for easy identification. Two indexes for easy reference: one by pattern name and one by pattern number.

All this for only \$11.95 pp.

.....
ALSO NEW: Completely revised price guide supplement to the above, listing each item and UPDATED price trends. Patterns are listed alphabetically for easy reference. Only \$5.95 pp!
.....

"ORDER NOW" Send check or money order to:
MARY LOUISE BURNS
P.O. Box 1931
Grants Pass, Or 97526
6 Books or more 40%

Dealers Directory

5 Lines - \$6.00/6 issues

MOSTLY HEISEY

RHODA CURLEY
16 CLAYTON PLACE
ALBANY, NEW YORK 12209
By Appointment 518/482-6272

Goldsberry's Antiques
KALAMAZOO, MICHIGAN
SHOWS ONLY — BUY & SELL
HEISEY A SPECIALTY
PHONE: (616) 381 - 3013

Schwan's Antiques
DICK & LEE SCHWAN
208 OXFORD ROAD
WILLIAMSBURG, VA 23185
(804)229-7873 SHOWS & APPT.

LAST CHANCE ANTIQUES
62 N. FEDERAL Hwy, DANIA, FL 33004
(Between Miami & Ft. Lauderdale)
Large Heisey Inventory & other Glass
MAIL ORDERS (305)467-6356 (home)

Antiques
BOB SHULTZ BOUGHT SOLD
206-208 E. MAIN ST., ROUTE # 419
NEWMANSTOWN, PA. 17073
15 MI. WEST OF READING, PA.
PHONE 215 589 2819

GREEN ACRES FARM
ANTIQUES, CRYSTAL GLASS & COLLECTIBLES
Saturday & Sunday P.M. or Call (614)927-1882
2670 HAZELTON ETNA RD., S.W.
S.R. 310 N PATASKALA, OH 43062

Bert's Budget Shop
403 W. MAIN ST., NEWARK, OHIO 43055
PHONE: (614) 349-8045
General line Antiques

Curiosity Nook
"WHERE FRIENDS MEET TO ANTIQUE"
3300 S. 8th Ave. Westward Village
Yuma, Ar. 85364-(602)726-6730 or 726-8070
BARNEY & JODY BARNICLE

ACCENT ANTIQUES OF KENSINGTON
Curio Corner
3742 HOWARD AVE.
KENSINGTON, MD 20795
PH: (301)933-3750

ANTIQUES & COLLECTIBLES
 *Olde Loved Things*
Doris "Ed" Lacroix - Donald Mousseau
900 Ridgewood Avenue (Holly Hill)
DAYTONA BEACH, FL 32017
HEISEY, Cambridge, Mail order/(904)252-7960

OFF-BROADWAY ANTIQUES
121 S Prospect St., Granville, oh 43023
Open 7 days a week 12-5 PM
Shop(614)587-2083-Sam 587-0052
HEISEY GLASS & GENERAL ANTIQUES

Eggnne & Art's Glass House, Inc.
"HEISEY OUR SPECIALTY"
P.O. BOX 54-6014 - MIAMI BEACH, FL 33154
(305)861-7700 - (305)895-5666


Heisey Heaven & other collectables
Box 78 Rt. #1
MANSFIELD, IL 61854
(217) 489-4071
Hours: 1-5 Daily

WICKFORD ANTIQUE ARCADE
RON & BEV. WOOD Booths 6 & 7
650 TEN ROD RD., N. KINGSTOWN, R.I. 02852
Heisey - Primitives - Glass - Etc.
Home Phone: (401) 295-0823

 **GEORGE & EILEEN SCHAMEL**
Route 3, Box 419
Boonsboro, Md. 21713
Appointment or Mail Order
Phone 301-432-6285


Hoosier Heritage Antiques
Marcell and Tom Zehr
4005 SOUTH WAYNE AVENUE
FORT WAYNE, INDIANA 46807
(219) 745-4173

The "FINDERS" ANTIQUES
Antiques - Heisey Glass - Buy-Sell
DAVID & SHIRLEY ROSE - Owners
66 S. HAZELWOOD AVE., NEWARK, OH 43065
Phone: (614) 349-7934

The Connecticut Yankee
"HEISEY OUR SPECIALTY"
 707 S. Washington
Route 2, Box 315
Fredericksburg, TX 78624

Charles & Mildred Fisher
Antiques & Collectibles, General Line
HEISEY, DEGENHART, IMPERIAL
991 IDLEWILDE, NEWARK, OH 43055
PHONE: (614) 522 - 5398

Eagles Nest Antiques
CHINA HEISEY GLASSWARE
BOUGHT and SOLD
62 FIELD POINT RD., HEATH, OH 43055
By Chance or Phone: (614)522-2035

 *sum of life*
elaine and frank husted
p.o. box 101,
phoenixville, pa. 19460
(215) 935-2962

The Wooden Shoe
ANTIQUES & COLLECTABLES—BUY & SELL
GLASS, FURNITURE, ESTATES
JIM & SHERI VAN ES BY APP'T
HERNDON, VA 22070-PH: 436-9048

Moundbuilders Antiques
IRENE RAUCK
1138 MOUNDVIEW, NEWARK, OH 43055
PHONE: (614) 344 - 6043
HEISEY & ANIMALS/GEN. ANTIQUES

Happy Haven Antiques
MARY DUMKE
14319 Rattlesnake Road
Grass Valley, CA 95945
Phone: (916) 273-9450

Charles A. Shaw
Glenwood Gardens-Rip Van Winkle
Yonkers, NY 10701 - 914-476-5175

 Shows & Mail Order
American Glass 

The Sleeping Fox
EVELYN & JAMES JORDAN
P.O. BOX 583
LANSDALE, PA 19446
PHONE: (215) 855 - 2480

George Hoffman Antiques
G.W. HOFFMAN - J.H. DENNIS
129 SOUTH 4TH STREET
NEWARK, OH 43055
PH: (614) 345-8021

Make your reservations now....CONVENTION 1980—June 19-20-21-22, 1980

The SHERATON INN will once again be our convention headquarters for 1980, and they have given a special room rate for all H.C.A. members. All activities will be held there with the exception of the SHOW AND DISPLAY. Please make your reservation early because last year they were all taken by the first of March.

The rate given us is ONE PERSON - \$27.00 or TWO PEOPLE - \$32.00. Queen size ONE PERSON - \$30.00 or TWO PEOPLE - \$35.00. The queen size rooms all have steam baths. NO ADDITIONAL CHARGE FOR CHILDREN UNDER 18 YEARS OF AGE AND NO ADVANCE DEPOSIT IS NEEDED. There is a \$5.00 charge per night for a rollaway bed.

SHERATON INN RESERVATION REQUEST

Name _____
 Address _____
 City _____ state _____ Zip _____
 Phone _____
 Arrive _____
 Depart _____
 Please make your reservation by clipping the attached form
 Mail to: ROBERT McCLAIN
 156 W. SHIELDS ST.
 NEWARK, OHIO 43055
 Phone: (614)345-8061

All rooms have two double beds.
 Single room requested (one person) \$27.00 _____
 Double room requested (two people) \$32.00 _____
 Queen size requested (one person) \$30.00 _____
 Queen size requested (two people) \$35.00 _____
 Rollaway bed _____

**1980 SOUVENIR "OSCAR"
order form**

● PLEASE READ VERY CAREFULLY BEFORE FILLING OUT ●

Oscars are Heather and are marked HCA "80" and IG. This is a limited edition and is offered to members only, until May 22nd. None will be sold between then and the first day of convention when they will be \$19.00 if any are left. You may order ONLY ONE PER MEMBER. This means ANY member who has a membership card regardless of class of membership. Please list all names on form as they will be checked. Everyone ordering either for pick-up in Ohio or all living in Ohio or all living in Ohio MUST PAY sales tax. This includes vendors. The ONLY exception is for out-of-state orders to be mailed. Licking County tax is 4½% or 72 cents on each Oscar. Postage is \$ 1. 10 each if mailed. Make all checks to HCA, Inc. Mail to address on bottom of the form.

DO NOT SEND DUES, BOOK ORDERS Etc. TO THIS ADDRESS. IT IS FOR OSCARS ONLY. It may be several months before these are shipped. Your cancelled check is your receipt.

Please keep this part for reference and clip only the form below the line.
BE SURE YOUR DUES ARE CURRENTLY PAID

Number of OSCARS AT \$16.00 each _____ Only one per member
 Sales Tax 72¢ each _____ All Ohio Residents and Pick-ups in Newark
 Postage \$1.20 each _____ Check one: Please mail my Oscar(s)
 TOTAL sent with order _____ I will pick up my Oscar(s)
 at Convention or Museum



NAME(s) _____
 List all names _____
 ADDRESS _____
 CITY _____ STATE _____ ZIP _____

Make check payable to HCA, Inc.
 and mail to..... HEISEY COLLECTORS OF AMERICA, Inc.
 %Jerry & Judy Robinson
 1618 Genoa
 Lake Villa, IL 60046
 (312) 356-7108

CHARGE MY



Mastercharge

Credit Card No.

Expiration date required										Mo.	Yr.

NEW ITEMS and PRICE CHANGES

Please add to your catalogs.

- 40. Imperial Madonna.....\$18.00
- 41. Imperial Elephant Handled Fairy Tale Mug
Meadow Green carnival (new) & horizon blue carnival.....\$ 9.50
Crystal.....\$ 8.50
- 48. Victorian Belle
Horizon blue, rose pink and sunshine yellow satin (frosted).....\$ 7.50
Ultra blue, milk glass, sunshine yellow, rose pink, horizon blue.
Plain.....\$ 7.00
- 51. #300 Candle holder.....\$ 5.00
- 57. Baby Elephant. Rose pink satin (frosted). (Marked LIG). Not a
limited edition.....\$18.50
- 58. Pairpoint cup plate. Pressed copy of Lancaster etch.....\$ 5.50
- 59. Old Williamsburg Bell.
Crystal, amber, ultra blue, nut brown, verde, sunshine yellow,
rose pink.....\$12.50
- 60. Old Williamsburg Salt and Pepper set
Crystal, amber, ultra blue, nut brown, verde, sunshine yellow,
rose pink.....\$ 7.00
- 61. Salts and Peppers Catalog. Reprint of 1910 catalog. Reprinted by
Columbia Heisey Collectors. 30 pages.....\$ 3.00

BACK IN STOCK

- 26. Reprint of 1953 catalog by Windsong publications. Includes price
guide.....\$ 9.95

OUT OF STOCK 39. Volume IV of Heisey News



return to.....
HEISEY NEWS
P.O. Box 27
Newark, Ohio 43065

FIRST-CLASS MAIL

FIRST CLASS MAIL
U.S. POSTAGE
PAID
PERMIT 34
Newark, Ohio 43065

0000000000

Bring This List With You

H indicates marked

X indicates imperfection or damage

All items crystal unless color is indicated

- ___ 1 # 407 COARSE RIB Ind Cr & Sugar Pr. H
- ___ 2 #1483 STANHOPE Cr & Sugar, Black Knobs, Pr H
- ___ 3 479 HOTEL Cr & Sugar, Flamingo, Pr H
- ___ 4 #1401 EMPRESS Ind Cr, Sugar & Tray, Sahara, 3 Pcs H
- ___ 5 #1020 HOTEL Cr & Sugar, Moongleam, & Dtd, Pr H
- ___ 6 #1401 EMPRESS Cr & Sugar, DF Pr H
- ___ 7 #1401 EMPRESS Cr & Sugar, Sahara, DF, Pr H
- ___ 8 # 341 OLD HILLIAMSBURG, Cr & Sugar Pr H
- ___ 9 #1252 TWIST, Cr & Sugar, Marigold H
- ___ 10 #1252 TWIST, Cr & Sugar, Flamingo, H, Creamer X
- ___ 11 #1509 QUEEN ANN Ind Cr, Sugar & Tray, 3 Pc H
- ___ 12 #1540 LARIAT, Cr, Sugar & Tray, 3 Pc H
- ___ 13 # 393 HARROH FLUTE, Oval Hotel Cr & Sugar H
- ___ 14 # 355 QUATOR Cr & Sugar, Moongleam, H
- ___ 15 #7023 HALF CIRCLE Cr & Sugar, Sahara H
- ___ 16 #7023 HALF CIRCLE Cr & Sugar, Moongleam H
- ___ 17 #1503 CRYSTOLITE 2 Light Candle, Pr
- ___ 18 #1428 HARWICK 2 Light Candle, Pr
- ___ 19 # 112 1 Light Candle, Flamingo, Pr
- ___ 20 # 112 1 Light Candle, Flamingo, Pr
- ___ 21 # 112 1 Light Candle, Moongleam Pr
- ___ 22 #1503 CRYSTOLITE 3 Light Candle Pr
- ___ 23 #1540 LARIAT 2 Light Candle, Pr
- ___ 24 #1428 HARWICK 2 Light Candle, Pr
- ___ 25 #1533 HAMPUM 1 Light Candle, Pr
- ___ 26 #7000 SUNFLOWER 1 Light Candle, Pr
- ___ 27 #1495 FERN 2 Light Candle, Pr, Floral Etch
- ___ 28 # 134 TRIDENT 2 Light Candle, Minuet Etch
- ___ 29 # 134 TRIDENT 2 Light Candle, Sahara, Pr H, 1-X
- ___ 30 # 134 TRIDENT 2 Light Candle, Sahara
- ___ 31 #1433 THUMBPRINT & PANEL 2 Light Candle, Sahara, Pr H
- ___ 32 #1433 THUMBPRINT & PANEL 2 Light Candle, Cobalt, Pr H
- ___ 33 #1404 OLD SANDWICH 1 Light Candle, Pr Cobalt H
- ___ 34 # 134 TRIDENT 2 Light Candle, Orchid Etch Pr
- ___ 35 # 134 TRIDENT 2 Light Candle, Tea Rose Etch, Pr
- ___ 36 #1503 CRYSTOLITE Console Set, Floral Bowl & Pr 1 Light Candle X
- ___ 37 #1533 HAMPUM Floral Bowl & Pr 1 Light Candle
- ___ 38 #4044 NEH ERA 2 Light Candle, Pr w/Bobeche & Prisms
- ___ 39 #1401 EMPRESS 11" Floral Bowl, Unknown Cutting
- ___ 40 # 341 PURITAN 8½" Compote H

- ___ 41 # 339 CONTINENTAL 7" Compote H
- ___ 42 # 10 Floral Bowl & Flower Frog, Moongleam H
- ___ 43 #1433 THUMBPRINT & PANEL Floral Bowl, Cobalt H
- ___ 44 #1428 HARWICK Floral Bowl, Cobalt H
- ___ 45 # 10 Floral Bowl, Hawthorne, DO H
- ___ 46 # 352 FLAT PANEL Cheese & Cracker Plate H
- ___ 47 #1485 SATURN Hostess Helper, Complete
- ___ 48 # 315 PANELLED CANE 8" Nappy and 5 Ea 4½" Nappys H Gold Decor
- ___ 49 # 350 PINNHEEL & FAH 8" Nappy & 5 Ea 4½" Nappys H
- ___ 50 #1184 YEOMAN Covered Vegetable
- ___ 51 #3362 CHARTER OAK Compote, Flamingo
- ___ 52 #3362 CHARTER OAK Compote, Flamingo H
- ___ 53 #1401 EMPRESS 6" Oval Compote, Antarctic Etch H
- ___ 54 # 109 Petticoat Dolphin Compote, Crystal w/Moongleam Bowl X
- ___ 55 #1776 KALONYAL 6" Jelly Compote H
- ___ 56 #1401 EMPRESS 11" Floral Bowl, DF
- ___ 57 #1506 PROVINCIAL 12" Floral Bowl H
- ___ 58 #1497 BOAT Floral Bowl
- ___ 59 #1495 FERN 11" Oval Floral Bowl
- ___ 60 #1201 FANDANGO 8" Bowl X
- ___ 61 #1503 CRYSTOLITE 13" Low Floral Bowl H
- ___ 62 #1469 RIDGELEIGH 11½" Round Floral Bowl H
- ___ 63 # 341 PURITAN 8½" Tankard H 7 6 Ea Tumblers (not Heisey) Silver Dec
- ___ 64 #1404 OLD SANDWICH Water Jug & 6 Sodas H
- ___ 65 #2516 CIRCLE PAIR Water Jug, DO, Moongleam Handle
- ___ 66 #3481 GLENFORD 8 oz. Tumblers, Moongleam Foot, 8 ea.
- ___ 67 #1280 WINGED SCROLL Bulbous Jug, Custard
- ___ 68 #1200 WINGED SCROLL Tumblers, Custard, 4 Ea
- ___ 69 #3359 PLATEAU Water Jug, Moongleam DO
- ___ 70 #4156 3 Pt Jug, Peacock Etch
- ___ 71 # 362 7 oz Syrup, Gold Dec H
- ___ 72 # 362 7 oz Syrup, Cut H
- ___ 73 # 372 7 oz Syrup, Flamingo
- ___ 74 # 372 5 oz Syrup, Sahara H
- ___ 75 # 379 URN 7 oz Syrup H
- ___ 76 # 352 FLAT PANEL Horseradish Jar
- ___ 77 # 341 PURITAN Pickle Jar H
- ___ 78 #1184 YEOMAN Cologne Bottle, Gold & Floral Decor Screw Top Jelly Jar
- ___ 79 #1567 PLANTATION Cov Marmalade & Spoon H
- ___ 80 #1401 EMPRESS Ashtray H (Hold Dirt)
- ___ 81 #1401 EMPRESS Ashtray, Flamingo H
- ___ 82 #1401 EMPRESS Ashtray, Flamingo H
- ___ 83 #1401 EMPRESS Ashtray, Sahara H
- ___ 84 #1401 EMPRESS Ashtray, Alexandria H
- ___ 85 #1401 EMPRESS Ashtray, Cobalt H
- ___ 86 #1401 EMPRESS Ashtray, Cobalt H

87	# 361	Cigarette Box & Ashtray Combination, Sahara H	132	#4091	KIMBERLY Goblet, -1015 Dolly Madison Rose Cut H
88	#1511	TOUJOURS Footed Rose Bowl H	133	#3389	DUQUESNE Goblet
89	#1205	FAICY LOOP 3" Cylinder Vase	134	#3440	PORTSMOUTH Goblet, Moon- gleam Foot
90	# 391	COLONIAL 12" Vase H	135	#3304	UNIVERSAL Hollow Stem Cham- pagne, #919 Laurel Wreath Cut
91	#4223	Vase, Flamingo, DO	136	#5078	PARK AVENUE Champagne, SJS Monogram
92	#1540	LARIAT 17½" Swung Vase, Cut, (Cloudy)	137	#1404	OLD SANDWICH Champagne, Sahara H
93	#3359	PLATEAU 6" Vase, Moongleam DO	138	#4091	KIMBERLY Champagne, Unknown Cut
94	#1483	STANHOPE Ball Vase	139	# 393	NARROW FLUTE, Hollow Stem Champagne, 2 Ea H
95	#4209	9" Vase, Flamingo, DO	140	#3389	DUQUESNE Champagne, #048 Botticelli Cut
96	#4209	7" Vase, Flamingo, DO	141	# 413	RIB & PANEL Champagne, 6 Ea H
97	# 305	PUNTY & DIAMOND POINT 10" Vase	142	#3389	DUQUESNE Champagne, Tangerine Bowl X
98	#1170	PLEAT & PANEL 7½" Vase, Flamingo	143	#5041	ATHENA Champagne
99	#4206	OPTIC TOOTH 8" Vase, Moon- gleam Base & Hawthorne Bowl	144	#1485	SATURN Champagne, Zircon, 6 Ea
100	#4206	OPTIC TOOTH 8" Vase, Moon- gleam Base, Crystal Bowl	145	#4044	NEW ERA Champagne, Cobalt Bowl
101	# 449	NAIL 10" Vase	146	# 433	GREEK KEY 4½oz Sherbet, 7 Ea, H
102	#1428	WARWICK 9" Vase H	147	#438½	SPIRAL OPTIC 4½oz Low Sherbet, 3 Ea
103	#1428	WARWICK 9" Vase, Sahara	148	#1401	EMPRESS 7" Plate, Alexandrite, 4 ea H & #3390 CARCASSONNE Sherbet, Alexandrite Bowl 4 ea
104	#1423	WARWICK 9" Vase, Cobalt	149	#1227	MAHARG 7 oz. Sherbet H
105	#1423	WARWICK 9" Vase, Cobalt. Pr H	150	#1540	LARIAT Sherbet, 3 Ea
106	#3333	OLD GLORY Goblet, Hawthorne H	151	#3390	CARCASSONNE Sherbet, Cobalt Bowl X
107	#3366	TROJAN Goblet, Moongleam Foot & Stem H	152	#1506	PROVINCIAL Sherbet, 5 Ea H
108	#3370	AFRICAN Goblet, Flamingo	153	#1506	PROVINCIAL Sherbet
109	#3350	WABASH Goblet, Transitional Marigold Bowl H	154	#1225	BUXTON INN, 5 oz Sherbet, Silver Overlay H
110	#3355	FAIRACRE Goblet, Flamingo Stem & Foot	155	#1590	ZODIAC Champagne H
111	#3404	SPANISH Goblet, Tangerine Bowl, Red Side H	156	# 407	COARSE RIB Flashed Sherbet, 3 Ea H
112	#3404	SPANISH Goblet, Tangerine Bowl	157	# 300	PEERLESS Sherbet, 4 Ea H
113	#5072	ROSE STEM Goblet, Heisey Rose Etch, 2 Ea	158	#3366	TROJAN Sherbet, Unknown Cut
114	#5041	ATHENA Goblet, 3 Ea	159	#1425	VICTORIAN Champagne, 10 Ea
115	#3408	JANESTOWN Goblet #941 Barcelona Cut H	160	#1401	EMPRESS Ice Tub, DF, Unknown Etch, Red Enamel Edge
116	#3414	MARIETTE Goblet, Unknown Cut	161	#1509	QUEEN ANN Ice Tub, DF, #502 Crinoline Etch
117	#3389	DUQUESNE Goblet, #848 Botticello Cut	162	#4054	CORONATION Ice Tub
118	#3339	DUQUESNE Goblet, Unknown Cut	163	#6060	COUNTRY CLUB Ice Tub, #1033 Jungle Flower Cut
119	#3339	DUQUESNE Goblet, #450 Chintz Etch, 6 Ea	164	#1401	EMPRESS Ice Tub, DF, Sahara, w/Tongs H
120	#4059	RIDGELEIGH Goblet, Dill Mono- gram, 2 Ea 1 X	165	#1252	THIST Ice Tub, Sahara, Metal Handle H
121	#3411	MONTE CRISTO Goblet, #458 Olympaid Etch	166	#1541	ATHENA 5" Covered Candy, Cut
122	#3350	WABASH Goblet, Hawthorne, #440 Frontenac Etch, 2 Ea	167	#1183	REVERE 1 Lb Candy Jar, Cut H
123	#3390	CARCASSONNE Low Goblet, Sahara, 4 Ea	168	# 465	RECESSED PANEL 1 Lb Candy Jar, Enamel Decor H
124	#3390	CARCASSONNE Low Goblet, Sahara, 4 Ea	169	#1170	PLEAT & PANEL High Stem Cov Candy, Flamingo, Enamel Decor
125	#4055	PARK LANE Goblet, #840 Briarcliff Cut	170	#1519	HAVERLY Covered Candy, Amber H
126	#1295	BEAD SWAG Goblet, Custard, Souvenir Dodgeville, Misc.	171	#1519	HAVERLY Oil Bottle, Heisey Rose Etch
127	#5010	SYMPHONY Goblet, #502 Crinoline Etch, 6 Ea	172	#1201	FANDANGO Oil Bottle
128	#4055	PARK LANE Goblet, #842 Singapore Cut	173	# 352	FLAT PANEL Vinegar Oil, Wing Stopper
129	#3363	ALBEMARLE Goblet, #867 Chateau Cut	174	#1250	GROOVE & SLASH Oil Bottle
130	#4092	KENILMORTH Goblet, #913 Everglade Cut			
131	#5041	ATHENA Goblet			

175 #4043 Cologne, Special Cutting w/
 Special Cut Stopper, 2 Ea
 176 #1503 CRYSTOLITE Oil Bottle
 177 #1235 BEADED PANEL & SUNBURST Oil
 Bottle
 173 # 352 FLAT PANEL Vinegar &
 Oil Bottle
 179 #1170 Pleat & Panel Oil, No Stopper
 180 # 353 MEDIUM FLAT PANEL Oil Bottle H
 181 #1401 OLD SANDWICH Ketchup Bottle,
 Flamingo, No Stopper
 182 #1184 YEOMAN Oil Bottle, Wrong
 Stopper
 183 #1252 THIST Vinegar & Oil Bottle
 184 #1189 YEOMAN 11 1/2" Relish, Gold
 Decor
 185 #1184 YEOMAN 12" 3 Part Relish,
 Marigold, Empress Etch
 186 #1401 EMPRESS 12" Relish, Alex-
 andrite H
 187 #1519 WAVERLY 2 Part 6" Round
 Relish
 188 #1567 PLANTATION 3 Part Relish H
 189 #1528 OAK LEAF Relish
 190 #1184 YEOMAN Oval 2 Part Tray &
 Round 3 Part Bon Bon H
 191 #1519 WAVERLY 6" 2 Part Footed
 Relish, 2 Ea
 192 # 353 MEDIUM FLAT PANEL 5 Part
 Relish, Silver Handle, Gray Cut
 193 #1201 FANDANGO Relish 8" Oblong X
 194 #1632 LODESTAR 10" Celery, Dawn H
 195 #1401 EMPRESS 3 Part Round Relish,
 Sahara
 196 #1401 EMPRESS 3 Part Round Relish,
 Sahara H
 197 #1495 FERN 3 Part Relish
 198 #1100 Punch Cup, 2 Ea H
 199 #1205 Fancy Loop Punch Glass,
 Straight
 200 #1425 VICTORIAN Punch Cup, 9 Ea H
 201 # 411 TUDOR Punch Cup H
 202 #1105 Custard H
 203 #1295 BEAD SHAG Punch Cup
 204 # 350 PINNHEEL & FAN Punch Cup
 6 Ea H
 205 #1219 BROOKVILLE 3 1/2oz Ftd. Hd1
 Sherbet H
 206 #1100 Punch Cup, 11 Ea H
 207 # 300 PEERLESS Punch Cup, 10 Ea H
 208 #1503 CRYSTOLITE Punch Cup, 14 Ea H
 209 #3380 OLD DOMINION Goblet, Sahara,
 Unknown Cut, 10 Ea H
 210 #3312 GAYOSO Goblet, 10 Ea and
 Champagne, 11 Ea, Flamingo
 211 #3404 SPANISH Goblet, Special Cut
 212 #4094 LOREN Goblet, Special Krall
 Engraving, "SK" Monogram
 213 #3404 SPANISH Goblet, #461
 Concord Etch H
 214 #4083 STANHOPE Goblet, 4 Ea.
 215 #3390 CARCASSONNE Low Goblet, 4 Ea
 216 #5082 MID CENTURY Goblet, Zircon
 Bowl H
 217 # 411 RIB & PANEL Goblet, Unknown
 Cut, 4 Ea H
 218 #3360 PENN CHARTER, Goblet HO H
 219 #3312 GAYOSO Goblet, #9001 Trefoil
 Etch
 220 # 451 CROSS LINED FLUTE Goblet H
 221 # 407 COARSE RIB Goblet H

222 #3307 ALOOF Goblet, Unk Cut H X
 223 #5082 MID CENTURY Goblet H
 224 #6004 CLASSIC 12 Oz Goblet H
 225 # 300 PEERLESS Goblet H
 226 # 379 URN Flared Goblet H
 227 # 300 PEERLESS Goblet H & English
 Registry Mark
 228 #4044 NEW ERA Goblet, Floral
 Carving H
 229 #4083 STANHOPE Goblet, #490 Maytime
 Etch
 230 #5024 OXFORD Goblet, #964 Mary-
 land Cut
 231 #5025 TYROLEAN Goblet, #942
 Harvester Cut, 2 Ea
 232 #3390 CARCASSONNE Tall Goblet,
 Alexandrite Bowl, 4 ea H
 233 #3390 CARCASSONNE Sherbet,
 Alexandrite Bowl, 4 Ea
 234 #3390 CARCASSONNE Cocktail,
 Alexandrite Bowl, 4 Ea
 235 #3390 CARCASSONNE Tall Goblet,
 Flamingo, 6 Ea H
 236 #3350 WABASH, 4 Goblet, 2 Champagne
 5 Cocktail, #440 Frontenac
 Etch H
 237 #3390 CARCASSONNE 4 oz Claret, Sahara
 Unknown Cut, 11 Ea
 238 # 300 PEERLESS Wine, 6 Ea H
 239 # 341 PURITAN Wine, 2 Ea H
 240 #3368 ALBEMARLE Claret, 11 Ea H
 241 #1225 PLAIN BAND, Wine, Flared H
 242 #3380 OLD DOMINION Wine, Sahara,
 #447 Empress Etch
 243 #1225 PLAIN BAND Wine, Straight,
 English Registry Mark
 244 #1205 FANCY LOOP Claret, Emerald
 245 #3404 SPANISH Wine, #865
 Florentine Cut
 246 #1425 VICTORIAN Wine H
 247 #1776 KALONYAL Claret H
 248 #3408 JAMESTOWN 4 1/2oz Claret,
 Special Seidel Engraving
 249 #3368 ALBEMARLE Cocktail, #867
 Chateau Cut X
 250 #6060 COUNTRY CLUB 4 oz Cocktail
 251 #3414 MARIETTE Oyster Cocktail,
 #829 Roxy Cut
 252 #4044 NEW ERA Cocktail, Cobalt
 Bowl
 253 #5024 OXFORD Cocktail, Unk Cut H
 254 #3389 DUQUESNE Cocktail, Tangerine
 Bowl
 255 #4091 KIMBERLY Cocktail
 256 #3360 PENN CHARTER 3 oz Cocktail
 257 #3440 PORTSMOUTH Cocktail, Moon-
 gleam Foot
 258 #3404 SPANISH Champagne, #791
 Killarney Cut
 259 #3357 KING ARTHUR Cocktail, #442
 Diana Etch, Moongleam Stem
 & Foot
 260 #1637 ATONNI & COUNTRY 11" Salad
 Bowl, Limelight
 261 #1637 ATONNI & COUNTRY 11" Salad
 Bowl, Dawn
 262 #1252 THIST 12" Round Floral Bowl,
 Sahara H
 263 #1401 EMPRESS 11" Round Lion
 Floral Bowl

264	#1401	EMPRESS 8 1/2" Footed Floral Bowl, 2 Hd, Sahara	306	#1428	WARWICK 9" Vase H
265	#1201	FANDANGO 8" Bowl and 10" Fluted Bowl	307	#1428	WARWICK 9" Vase, Unk Cut II
266	#1401	EMPRESS 11" Floral Bowl DF	308	#1469	RIDGELEIGH Candle Vase, Zircon, 2 Ea.
267	#7000	SUNFLOWER Salad Bowl H	309	# 804	2 Lb Candy or Cracker Jar, Dated H
268	# 341	PURITAN 12" Oval Shallow Bowl H	310	# 352	FLAT PANEL 1 Qt Crushed Fruit Dated H
269	#1229	OCTAGON 8" Oval Dessert Dish, Moonglean	311	# 315	PANELLED CANE 1/2 Gal Jug H
270	#1469	RIDGELEIGH Oval Floral Bowl, Sahara, H	312	#1250	GROOVE & SLASH 1/2 Gal Jug
271	#1280	WINGED SCROLL 8" Round Bowl, Custard	313	# 310	RING BAND 1/2 Gal Jug, Custard H X
272	#1280	WINGED SCROLL 8" Round Bowl, Custard, 4 Ea	314	#1280	WINGED SCROLL 1/2 Gal Jug Custard
273	#1252	TWIST Bon Bon, Marigold, H	315	#1295	BEAD SHAG 1/2 Gal Tankard, Milk Glass, Floral Decor X
274	#1206	12" SWIRL IN RAINDROP Floral Bowl & #15 Frog w/ #122 Candle, Flamingo H	316	# 150	OVAL III DIAMOND POINT Jug, Emerald
275	#1252	TWIST 7" Handled Cheese Plate, Marigold H	317	#3397	GASCONY Tomato Juice Pitcher Sahara H
276	#1503	CRYSTOLITE 7" Shell Snack Plate	318	# 411	RIB & PANEL 1/2 Gal Jug H
277	#1184	YEOMAN Banana Split Dish, Sahara, DO H	319	#4054	CORONATION Cocktail Pitcher, & 6 Juice Glasses
278	#1229	OCTAGON Handled Mint, 1 Moonglean & 1 Sahara, DO	320	#4054	CORONATION Old Fashion, 5 Ea
279	#1229	OCTAGON Handled Mint, Flamingo	321	# 341	PURITAN Water Bottle
280	#1295	BEAD SHAG 5" Nappy, Milk Glass Decorated X	322	# 343	SUNBURST Water Bottle
281	#1295	BEAD SHAG 8" Nappy	323	# 300	PEERLESS Claret Jug for Mounting X
282	#1184	YEOMAN 8 1/2" 2 Handled Nappy, Unknown Cut H	324	#1567	PLANTATION 12" Relish Tray H
283	#1632	LODESTAR 4 1/2" Nappy, Dawn H	325	# 394	NARROW FLUTE 12" 3 Compart. Relish, Unknown Cut H
284	#1632	LODESTAR 11" Crimped Bowl, Dawn H	326	#1503	CRYSTOLITE 3 Part Relish
285	#1433	THUMBPRINT & PANEL 11" Floral Bowl, Cobalt	327	#1184	YEOMAN 13" 3 Compartment Relish, Marigold
286	#1567	PLANTATION 11 1/2" Footed Gardenia Bowl, Rolled Edge	328	#1469	RIDGELEIGH 12" Celery & Olive X
287	#1776	KALONYAL Punch Bowl & Base H	329	#1511	TOUJOURS Cream & Sugar H
288	#1401	EMPRESS 7" Ftd Oval Compote, Sahara, #448 Old Colony Etch H	330	#1405	IPSHICH Cream & Sugar H
289	#1252	THIST Footed Mayonnaise, Flamingo	331	#1632	LODESTAR Cream & Sugar, Dawn H
290	#1184	YEOMAN 8" Low Footed Compote, Unknown Cut H	332	# 360	HOTEL Cream & Covered Sugar H
291	#1401	EMPRESS 7" Oval Compote, Silver Overlay H	333	#1405	IPSHICH Cream & Sugar II
292	# 407	COARSE RIB 5" Jelly Compote & 7" Plate, Moonglean H	334	#1231	RIBBED OCTAGON Cream & Sugar, Moonglean II
293	# 433	GREEK KEY 5" Low Ft Jelly H	335	#1469	RIDGELEIGH Ind Cr, Sugar & Tray H
294	#1295	BEAD SHAG 5" Nappy	336	# 300	IMPERIAL Ind Cr & Sugar H
295	#1503	CRYSTOLITE 5 1/2" Footed Cheese, 4 Ea	337	# 479	HOTEL Cr & Sugar, Flamingo
296	#1503	Chip & Dip Set assembled by Olde Silver Classics H	338	# 393	NARROW FLUTE Ind Cream & Sugar, Flamingo, H
297	#4075	Finger Bowl, Alexandrite DO	339	# 352	FLAT PANEL Individual Cream & Sugar H
298	#1231	RIBBED OCTAGON 12 1/2" Salad Bowl, Flamingo	340	# 341	PURITAN Footed Hotel Cream & Sugar II
299	#1540	LARIAT 10" Compote & Cover	341	#1503	CRYSTOLITE Cream & Sugar, Red Stain H
300	#1255	PINEAPPLE & FAN 6" Vase	342	#1023	HOTEL Cream & Covered Sugar, Sahara
301	# 451	CROSS LINED FLUTE 6 1/2" Vase II	343	#1401	EMPRESS Ind Sugar, 2 Ea H
302	#1513	Cut Mitre Vase	344	# 500	OCTAGON Cr & Sugar, Flamingo II X
303	#1461	RIDGELEIGH 6" Vase	345	#1951	CABOCHON Cream & Covered Sugar H
304	# 300	PEERLESS Individual Vase	346	# 355	QUATOR Cream & Sugar, Unk Gray Cut, Dated II X
305	#1401	EMPRESS 3 Handled Vase, G"	347	#1503	CRYSTOLITE Ind Cr, Sugar & Tray II
			348	#341	PURITAN Footed Hotel Cream and Sugar X
			349	# 411	RIB & PANEL Footed Table Cream & Covered Sugar II
			350	#1170	Pleat & Panel Cream & Sugar, Flamingo, Unk Cut II

351 #1469 RIDGELEIGH Coaster, Zircon,
 3 Ea 1-X
 352 #1567 PLANTATION Coaster, 4 Ea 1-X
 353 #1200 CUT BLOCK Toothpick, Red
 Stain, 1901 Souvenir
 354 #1205 FANCY LOOP Toothpick, Gold
 Decoration
 355 # 325 PILLOWS Toothpick, Horn Gold H
 356 #1205 FANCY LOOP Toothpick
 357 # 310 RING BAND Toothpick, Custard
 Souvenir
 358 #1404 OLD SANDWICH Ind Ash Tray,
 Cobalt H
 359 #1404 OLD SANDWICH Ind. Ash Tray,
 Cobalt H
 360 #1401 OLD SANDWICH Ind Ash Tray,
 Moongleam H X
 361 #1571 Individual Leaf Nut Dish
 362 #1201 FANDANGO Butter Pat
 363 #1503 CRYSTOLITE Round Ash Tray,
 Zircon H (Mahabar)
 364 # 393 NARROW FLUTE Footed Nut Dish,
 Hawthorne H
 365 # 393 NARROW FLUTE Footed Nut Dish,
 2 Ea H
 366 #3316 BILTHORE Nut Cup, Moongleam
 Foot, DO, 2 Ea
 367 # Crystal Nut Cup, Ftd 6 Ea 1-X
 368 # 429 PLAIN PANEL RECESS Ftd
 Salt Dip, 4 Ea Cut
 369 #1235 BEADED PANEL & SUNBURST Salt
 Dip X
 370 #1454 DIAMOND POINT 4 Indiv Ash
 Tray & 4 Marmalade H
 371 #1404 OLD SANDWICH 1oz Bar Glass
 7 Ea H
 372 #1469 RIDGELEIGH 1.oz Bar, 5 Ea H
 373 #42305
 4231 Favor Vase, Sahara, DO 2
 374 #1405 SATURN Covered Mustard w/
 Paddle, Zircon H
 375 #1183 REVERE Salt Dip, Cobalt
 376 # 473 10" Brush & Comb Tray &
 #150 Covered Match Holder H
 377 # 439 Individual Ash Tray, Moongleam
 378 # 10 Muddler
 379 #1590 ZODIAC Salt & Pepper H,
 1 Cloudy
 380 # 49 Salt & Pepper, Flamingo,
 DO, Pr.
 381 #1401 EMPRESS Salt & Pepper,
 Sahara, Pr.
 382 # 53 Ind Salt & Pepper,
 Moongleam Pr
 383 # 52 Ind Salt & Pepper,
 Flamingo, Pr
 384 # 52 Ind Salt & Pepper,
 Flamingo, Pr.
 385 #1567 PLANTATION Salt & Pepper,
 Pr, H
 386 # 305 PUNTY & DIAMOND POINT Salt
 & Pepper, Pr.
 387 # 310 RING BAND Salt & Pepper,
 Pr. Custard H 1-X
 388 #1200 CUT BLOCK Cream & Sugar,
 Custard, Souvenir
 389 #1220 PUNTY BAND, Toothpick,
 Custard, Bead Top H Souv
 390 # 341 PURITAN Toothpick, Ftd H
 391 #5087 COMET 1 oz Bar, Topedo Sham
 392 # 3 oz Bar, DO

393 # 10 Ink Well & Cover H
 394 #1121 Salt Dip
 395 # Whimsey Alexandrite Miniature
 Candle, Pr.
 396 #4224 Ivy Vase, Tangerine, MO
 397 #1186 YEOMAN Covered Puff Box,
 Hawthorne H
 398 #5072 ROSE STEIN Bell
 399 #4091 KIMBERLY Bell
 400 Standing Colt X
 401 Sealyham Terrier (Scotty) X
 402 Sealyham Terrier (Scotty)
 403 Sparrow
 404 Goose, Wings Half H (Leans)
 405 Goose, Wings Half
 406 Goose, Wings Half X
 407 Goose, Wings Half
 408 Goose, Wings Up
 409 Goose, Wings Up
 410 Goose, Wings Up
 410A Swan
 411 Fighting Rooster
 412 Fighting Rooster, Frosted,
 Mold Dirt in Glass)
 413 Ringneck Pheasant
 414 Ringneck Pheasant
 415 Ringneck Pheasant X
 416 Giraffe, Head Turned
 417 Giraffe, Head Back
 418 Asiatic Pheasant X
 419 Asiatic Pheasant X
 420 Asiatic Pheasant X
 421 Fish Bookend
 422 Fish Bookend
 423 Fish Bookend, Frosted, Eyes
 Clear X
 424 Fish Bowl H (Painted Eyes)
 425 Fish Bowl H (Mold Dirt)
 426 Fish Candle, Pr, Decorated
 427 Sparrow X
 428 Plug Horse, Decorated
 429 Plug Horse, Amber
 430 Standing Colt, Amber
 431 #1489 PURITAN Large Horsehead
 Cigarette Box
 432 #1489 PURITAN Large Horsehead
 Cigarette Box x
 433 #1489 PURITAN Small Horsehead
 Cigarette Box, Frosted
 434 Mike Owens Bust X
 435 Mike Owens Bust (Mold Dirt)
 436 Mike Owens Bust (Mold Dirt)
 437 Penguin Stopper X
 438 # 1 Madonna
 439 # 1 Madonna, Frosted
 440 #5058 Goose Stem Wine
 441 #5043 Rooster Head Cocktail
 442 #5074 Seahorse Cocktail H
 443 #5038 Rooster Stem Cocktail, 2 Ea
 444 #5038 Rooster Stem Cocktail
 445 # 110 Dolphin 1 Lt Candle, Flam-
 ingo X
 446 # 109 Petticoat Dolphin 1 Lt.
 Candle, Moongleam, Pr. 1-X
 447 # 110 Dolphin 1 Lt Candle,
 Cobalt, Pair
 448 #5010 SYIPHONE Goblet, Minuet
 Etch, 4 Ea
 449 #5010 SYIPHONE Goblet, Minuet
 Etch, 4 Ea

450	#5010	SYMPHONY Goblet, Minuet Etch, 3 Ea	434	#5024	OXFORD Cocktail, Maryland Cut, 4 Ea H
451	#5010	SYMPHONY Champagne, Minuet Etch, 4 Ea	435	# 359	COLONIAL Champagne, 2 Ea H
452	#5010	SYMPHONY Champagne, Minuet Etch, 4 Ea	436	# 390	PEERLESS Claret H
453	#1511	TOURJOURS 7" Plate, Minuet Etch, 3 Ea	437	#4091	KIMBERLY Goblet, 7 Ea H
454	#1511	TOURJOURS Footed Mayonnaise, Minuet Etch H	438	#5024	OXFORD Ice Tea, Maryland Cut, 4 Ea H
455	#1519	HAVERLY 3½" Violet Vase, #507 Orchid Etch H	439	#3311	VELVEDERE Grapefruit, Apollo Etch, 3 Ea (4-X)
456	#1509	QUEEN ANN Ice Bucket, DF #507 Orchid Etch (No Handle)	490	#1567	PLANTATION Goblet, 7 Ea H
457	#4225	COBEL Cocktail Shaker, 1 Qt, #507 Orchid Etch, Sterling Base & Top	491	#3404	SPANISH Footed Soda, Cobalt, 5 Ea
458	#1519	HAVERLY 2 Lt Candle, Pr, #507 Orchid Etch	492	#3380	OLD DOMINION 8 oz Footed Soda, Sahara, Empress Etch 4 Ea
459	#1540	LARIAT Fan Vase, #507 Orchid Etch H	493	# 393	NARROW FLUTE Egg Cup, 5 Ea H
460	#1540	LARIAT Round Vase, #507 Orchid Etch H	494	#3362	CHARTER OAK Goblet, 5 Ea H
461	#4036	1 Qt Decanter, #507 Orchid Etch	495	# 459	COLONIAL 7" Basket H X
462	#1509	QUEEN ANN Mint Dish, DF #507 Orchid Etch	496	# 463	7" Basket H
463	#1519	HAVERLY 12½" Floral Bowl, #507 Orchid Etch	497	# 462	8" Basket H Cut
464	#1519	HAVERLY 12½" Floral Bowl, #507 Orchid Etch	498	# 459	COLONIAL 7" Basket H Cut
465	#1519	HAVERLY 12½" Bowl, 12" Relish, 2 TYROLEAN Champagnes, all #507 Orchid Etch	499	# 430	7" Round Fruit Basket H X
466	#1519	HAVERLY 8½" Crimped Bowl, #507 Orchid Etch	500	# 417	DOUBLE RIB & PANEL Basket, Flamingo
467	#5025	TYROLEAN Goblet, #507 Orchid Etch	501	# 417	DOUBLE RIB & PANEL Basket, Flamingo X
468	#5025	TYROLEAN Goblet, #507 Orchid Etch	502	# 463	7" Basket, Flamingo H X
469	#5025	TYROLEAN Claret, #507 Orchid Etch	503	#1540	LARIAT Basket
470	#5072	ROSE STEIN Cocktail, 2 Ea	504	# 463	9" Basket H X
471	#5025	TYROLEAN Low Goblet, Cocktail, #507 Orchid Etch 1-X	505	#4225	COBEL 2 Qt Cocktail Shaker, Fox Chase Etch
472	#5025	TYROLEAN Sherbet, #507 Orchid Etch, 2 Ea H	506	#4225	COBEL 1 Qt Cocktail Shaker, Hunter Etch
473	#5025	TYROLEAN Wine, #507 Orchid Etch, 2 Ea H	507	#4163	108 Oz Tankard, #460 Club Drinking Scene Etch
474	#5025	TYROLEAN Cordial #507 Orchid Etch	508	#4035	1 Qt Decanter, Cut Stopper, #469 Mermaid Etch (Cloudy)
475	#5025	TYROLEAN Cordial, #507 Orchid Etch H	509	#2351	10 oz. Soda, #469 Mermaid Etch
476	#5025	TYROLEAN Cordial, #507 Orchid Etch H	510	#2401	3 oz Soda, #2 Tall Sailboat Etch
477	#1540	LARIAT Champagne, 3 Ea H	511	#6060	COUNTRY CLUB Soda, #517 Winchester 73 Etch
478	# 300	PEERLESS Champagnes, 7 Ea H	512	#6060	COUNTRY CLUB Old Fashion, #517 Winchester 73 Etch
	# 351	PRISCILLA Champagne, 2 Ea H	513	#2401	Old Fashion #495 Polo Player Etch
	# 347	COLONIAL Champagne H	514	#1184	YEOMAN 3 oz Soda, #9041 Wigwam Etch H
479	# 300	PEERLESS Tall Sherbet, 5 Ea H	515	#3397	GASCONY Wine #460 Club Drinking Scene Etch
480	#3404	SPANISH Champagne, Killarney Cut, 2 Ea	516	#3397	GASCONY Wine #460 Club Drinking Scene Etch
481	#3404	SPANISH Wine, Florentine Cut, 6 Ea	517	#2052	1 oz Bar, Pied Piper Etch
482	#3404	SPANISH Cocktail, Florentine Cut, 6 Ea	518	#4036	1 Qt Cocktail Shaker, Cut
483	#3404	SPANISH Oyster Cocktail, Florentine Cut 5 Ea	519	#4036	1 Qt Cocktail Shaker, Rooster Stopper
			520	#4225	COBEL 1 Qt Cocktail Shaker, Rooster Stopper X
			521	#1469	RIDGELEIGH 1 Qt Cocktail Shaker
			522	#4036	Oval Sherry Bottle, Gold Decor
			523	#4225	COBEL 1 Qt Cocktail Shaker, Rooster Stopper, Monogram HCO
			524	#1401	EMPRESS 3 Crystal Saucers & 3 Alexandrite Cups H

525	#1401	EMPRESS 8" Square Plate, Alexandrite, 4 Ea H	561	#1184	YEOMAN After Dinner Cup & Saucer, Sahara, DO, 4 Sets H
526	#1401	EMPRESS 7" Square Plate, Alexandrite, 4 Ea H	562	#1231	OCTAGON After Dinner Cup & Saucer, Flamingo w/Silver Overlay H
527	#6060	COUNTRY CLUB 14 Oz Soda, Limelight Experimental Screen Optic	563	#1205	FANCY LOOP 2 Oz Bar, Emerald
528	# 369	HARTMAN 10 oz Soda, Straight, Narrow Optic H	564	#1205	FANCY LOOP Flared Footed Punch Cup
529	# 305	PUNTY & DIAMOND POINT 8 oz. Tumbler H	565	# 343	SUNBURST Spade Bon Bon H X
530	# 451	CROSS LINED FLUTE 8 oz Tumbler, H (Cloudy)	566	# 310	RING BAND Dresser Tray, Custard
531	# 113	Pressed Tumbler	567	# 28	Salt Shaker, Flamingo
532	#1417	ARCH Tumbler, Moongleam H	568	#4301	Blown Powder Box, Special Cutting
533	#6092	CABOCHON 8 oz Soda, Amber Foot, 2 Ea	569	# 5	Powder Box, Silver Top H
534	#4054	CORONATION Old Fashion, Dawn Experimental Screen Optic	570	# 10	Powder Box & Hair Receiver Silver Top H
535	# 397	COLONIAL CUPPED SCALLOP 8 oz Tumbler, Worn Gold Decor H	571	#1295	BEAD SHAG Covered Butter, Rose Decor w/Gold
536	#1417	ARCH 8 oz Tumbler, Cobalt	572	#1295	BEAD SHAG Covered Butter, Rose Decor X
537	#1205	FANCY LOOP 8 oz Tumbler, Emerald	573	# 335	PRINCE OF WALES Covered Butter H
538	# 140	COLONIAL CROSS OPTIC 9 oz Tumbler H	574	# 335	PRINCE OF WALES Covered Butter, Creamer, Spooner, Sugar (No Lid) H, 5 Pcs Good Gold
539	#3389	DUQUESNE 12 Oz Footed Soda, Tangerine Bowl	574A	#1567	PLANTATION Oblong Covered Butter H
540	#3309	DUQUESNE 8 oz Footed Soda, Tangerine Bowl	575	#1567	PLANTATION Syrup
541	#2323	NAVY Soda, Cobalt Base	576	# 341	PURITAN Covered Marmalade
542	#2351	Soda, #366 Peacock Etch, Irridized	577	#1225	PLAIN BAND 6 oz Oil X
543	#3481	GLENFORD 3 oz Cocktail, Flamingo DO, 6 Ea (3-X)	578	#1483	STANHOPE Oil, Red Knobs, Maytime Etch
544	# 325	PILLOWS 8 oz. Tumbler, Worn Gold Decor H	579	#1485	SATURN Oil (Stopper X)
545	# 335	PRINCE OF WALES 8 oz Tumbler H	580	#1951	CABOCHON Domesti-Cater (2 Cruets in Holder)
546	#1280	WINGED SCROLL 8 oz Tumbler Emerald	581	#1489	PURITAN Cologne, Cut & Polished Stopper
547	#1404	OLD SANDWICH 8 oz Soda, 2 Sahara, 2 Moongleam, 2 Flamingo & 1 10 Oz Soda, Sahara H	582	# 333	HOTEL WALDORF ASTORIA Bitters Bottle
548	#3380	OLD DOMINION 5 oz Footed Soda, Alexandrite 2 Ea	583	# 473	NARROW FLUTE w/RIM Marmalade H
549	#1404	OLD SANDWICH 12 Oz Footed Ice Tea, 4 Ea	584	#6060	COUNTRY CLUB Cocktail Pitcher
550	#1637	ATOM & COUNTRY 12 Oz Ice Tea, Dawn H	585	#1200	CUT BLOCK Pitcher
551	#3481	GLENFORD 5 oz. Footed Soda, Moongleam Foot	586	#1255	PINEAPPLE & FAN Small Souvenir Pitcher, Red Stain
552	#6060	COUNTRY CLUB 14 Oz Soda, 6 Ea	587	#1404	OLD SANDWICH 10 oz Pitcher, Moongleam H
553	#1220	PUNTY BAND Mug, Opal, Souvenir H	588	#1200	CUT BLOCK Celery Vase
554	#1220	PUNTY BAND Mug, Custard Souvenir H	589	# 379	URN Spooner H
555	#1220	PUNTY BAND Mug, Custard, Souvenir H	590	#1503	CRYSTOLITE Swan Nut Set, 1 Large Swan, 11 Small Swan
556	#1231	Rum Pot	591	#1503	CRYSTOLITE Small Swan Nut Dish, 8 Ea
557	#	12 Oz Beer Mug, Monogram MGA, 6 Ea (1-X)	592	# 353	MEDIUM FLAT PANEL Candy Jar, Cut H
558	#4163	12 Oz Beer Mug H	593	#1425	VICTORIAN Punch Bowl H
559	#3407	12 Oz Beer Mug, Cobalt w/Crystal Handle	594	#1425	VICTORIAN Punch Cup, 11 Ea H (1-X)
559A	#4163	12 Oz Beer Mug, 4 Ea H	595	#1170	PLEAT & PANEL High Footed Compotier, Flamingo H
559B	#1404	OLD SANDWICH 16 oz Beer Mug, Sahara H	596	#4091	KIMBERLY Goblet, #497 Rosalie Etch (Sample)
560	#1220	PUNTY BAND Mug, Red Stain, Souvenir H	597	#6091	CABOCHON Goblet, HO H
			598	# 438	SPIRAL OPTIC Goblet H
			599	# 300	PEERLESS Goblet H
			600	#5057	SUEZ Goblet H
			601	#5040	LARIAT Goblet

602	#3344	CAROLINA Goblet H	647	#1401	EMPRESS 11" Floral Bowl, DF,
603	#5098	LOUISA Goblet, Bel Air Cut H			#396 Sungate Cut
604	# 396	Coca Cola, 12 Oz H	648	#1252	THIST 7" High Foot Comport,
605	#5025	TYROLEAN Champagne II			Flamingo
606	#3400	JANESTONN Champagne, Unk	649	# 457	Vase, Flamingo, DO
		Cut II	650	# 353	MEDIUM FLAT PANEL Cheese
607	#3440	PORTSMOUTH Goblet, Moon-			& Cracker Plate, Silver
		gleam Foot			Overlay II
608	#3366	TROJAN Champagne, Unk	651	#1252	THIST Nasturtium Bowl,
		Cutting H			Flamingo II
609	#5070	PARK AVENUE Sherry H	652	#1236	EAGLE Plate, Moongleam
610	#5042	CORINTHIAN Sherry, #900	653	#1238	BEEHIVE 5" Plate, Zircon
		Serenade Cut	654	#1238	BEEHIVE 8" Plate, Zircon
611	#1220	PUNTY BAND 5 oz Claret,	655	#1238	BEEHIVE 8" Plate, Moonglm
		British Registry Mark	656	#1401	EMPRESS 8" Round Plate,
612	#1425	VICTORIAN Champagne H			Alexandrite H
613	# 325	PILLOWS Egg Cup H	657	#1401	EMPRESS 7" Round Plate,
614	# 397	COLONIAL RING 5 oz Ice Tea H			Alexandrite H
615	#5057	SUEZ Ice Tea, #1059 Midvest	658	#1401	EMPRESS 3" Round Plate,
		Cutting II			Alexandrite H
616	#4085	KOHINOOR Footed Ice Tea,	659	#1401	EMPRESS 7" Square Plate,
		#990 Churchill Cut			Alexandrite H
617	#3390	CARCASSONNE Ftd Ice Tea,	660	#1401	EMPRESS 7" Round Plate,
		Cobalt Bowl			Alexandrite, 6 Ea H
618	#3333	OLD GLORY Parfait,	661	#1103	REVERE 8" Plate, Amber,
		Hawthorne H			3 Ea H
619	#3366	TROJAN 8 oz Footed Soda,	662	#1401	EMPRESS 8" Square Plate,
		Flamingo			Sahara, 3 Ea H
620	#1252	THIST Oyster Cocktail H	663	# 407	COARSE RIB 10½" Round Plates,
621	#5002	MID CENTURY Sherry H			Silver Backing 4 Ea H
622	# 341	PURITAN 3 oz Low Ft Sherbet,	664	# 407	COARSE RIB 10½" Round Plate &
		Flamingo H			3 Ea 6" Round Plates. 6 Pcs,
623	#5077	LEGIONNAIRE Claret, Amber			Silver Backing, H
		Stem H	665	#1469	RIDGELEIGH 5" Square Plate,
624	#5078	PARK AVENUE Cordial II			4 Ea H
625	#5010	SYMPHONY Cordial, Minuet	666	#1495	FERN 3" Mayonnaise Plate
		Etch	667	#1150	Colonial 7" Plate, 3 Ea H
626	#5010	SYMPHONY Cordial, #921	668	#4044	NEW ERA 9x7½" Plates, 2 Ea,
		Danish Princess Cut			1 w/#600 Satin Finish Etch
627	#5011	YORKTOWN Cordial	669	#1170	PLEAT AND PANEL 8" Plate,
628	#5072	ROSE STEM Cordial H			Moongleam, 10 Ea H
629	#5072	ROSE STEM Cordial, #515	670	# 407	COARSE RIB 7" Plate, Moon-
		Heisey Rose Etch, 2 Ea H			gleam, 11 Ea H
		(1-X)	671	#1104	YEOMAN 7" Plates, 4 Ea
630	#4044	NEW ERA Cordial	672	# 135	1 Lt Candle, Sahara, Pr.
631	#5024	OXFORD Cordial H	673	# 129	TRICORN 3 Lt Candle, Flam-
632	#4091	KIMBERLY Cordial, Courtship			ingo, Pr H
		Cutting	674	# 129	TRICORN 3 Lt Candle, Unknown
633	#3366	TROJAN Cordial, Flamingo,			Cut, Pr H
		Trojan Etch	675	#4044	NEW ERA 2 Lt Candle, w/Bob
634	#3366	TROJAN Cordial, Flamingo,			& Prisms, Pr
		Trojan Etch	675A	# 300	2 Lt Candelabra, Tall Base
635	#3390	CARCASSONNE Cordial, Sahara	676	# 301	2 Lt Candelabrum, Pr
636	#3390	CARCASSONNE Cordial, La-	677	# 301	3 Lt Candelabrum, Pr
		fayette Etch	678	# 301	2 Lt Candelabrum, Pr
637	#3304	UNIVERSAL Pousse Cafe,	679	# 301	2 Lt Candelabrum, Pr, No
		Victory Etch			Prisms X
638	#4044	NEW ERA Cordial H	680	# 300	3 Lt Candelabrum, Sahara
639	# 373	OLD WILLIAMSBURG Cordial II			Tall Base Pr
640	#3380	OLD DOMINION Wine,	681	#1401	EMPRESS 1 Lt Candle, DF,
		Empress Etch, Moongleam Ft.			Flamingo II
641	# 160	LOCKET ON CHAIN Wine	682	#1401	EMPRESS 1 Lt Candle, DF,
642	#	1 oz Bar Glass, Pink DO			Alexandrite, H X
643	#	Mayonnaise Ladle, Alexandrite	683	# 99	1 Lt Candle, Moongleam, Pr
		H	684	#1428	MARSHICK 1 Lt Candle or Vase,
644	#1280	HINGED SCROLL ½ Gal Jug,			Sahara, Pr II
		Custard	685	# 113	1 Lt Candle, Flamingo, Pr
645	#1420	MARSHICK Floral Bowl, #600	686	# 114	1 Lt Candle, Moongleam
		Satin Finish Etch	686A	# 114	1 Lt Candle, Moongleam
646	#1433	THUMBPRINT & PANEL Floral	687	# 17	Base for 1 Lt Candle, w/
		Bowl, Cobalt			Dobeche, Socket & Prisms, Pr

608	# 113	1 Lt Candle, #447 Empress Etch, Pr.	720	#1541	ATHEHA 12" Sandwich Plate, Unknown Cut
609	#1433	THUMBPRINT & PANEL, 2 Lt Candle, Mirrored, Pr	729	# 470	INTERCEPTED FLUTE, 11" Plate H
690	# 113	1 Lt Candle, Flamingo, Pr	730	#1500	QUEEN ANN 14" Torte Plate, #501 Belle Le Rose Etch
691	# 112	1 Lt Candle, Pr	731	#1252	THIST 4" Plate, Maringold, 3 Ea H
692	# 32	1 Lt Handle Candle, Pr	732	#1103	REVERE 12" Plate, Sun Purple H
693	#1469	RIDGELEIGH 1 Lt Candle Vase, Sahara, Pr	733	# 433	GREEK KEY 10" Plate, Deep
694	#1469	RIDGELEIGH 1 Lt Candle Vase, Sahara, Pr	734	#1401	EMPRESS 15" Plate, Sahara H
695	#1513	3 Light Candelabrum, Pr	735	#1541	ATHEHA 12" Sandwich Plate, Unknown Cut
696	#1540	LARIAT Hurricane Candle Base, Floral Decor	736	#1401	EMPRESS 7" Square Plate, Sahara 11 Ea & 1 Round Saucer H
697	#1540	LARIAT Hurricane Candle Base	737	#1229	OCTAGON Handled Cheese Plate, Maringold DO
698	# 53	Kerosene Stand Lamp, 12" Base, font & chimney X	738	#1229	OCTAGON Handled Mint, 1 Sahara, 1 Flamingo, 1 Moonbeam, All DO
699	# 142	CASCADE 3 Lt Candle, Pr	739	#1503	CRYSTOLITE 5" Breakfast Preserve
700	#1503	CRYSTOLITE 1 Lt Candleblock, 8 Ea	740	# 393	NARROW FLUTE Grapefruit, Gold Decor H
701	#1503	CRYSTOLITE 1 Lt Candleblock, 2 Ea	741	#1170	PLEAT AND PANEL 4 3/4" Marmalade, Flamingo, H
702	#1503	CRYSTOLITE 1 Lt Candleblock	742	# 351	PRISCILLA 4 1/2" Happy, 6 Ea H
703	#1503	CRYSTOLITE 1 Lt Candleblock, 2 Ea & 1 Cigarette Holder	743	#1495	FERN Mayonnaise & Under-plate & 2 Handled Mint Dishes, (4 Pcs)
704	#1425	VICTORIAN 1 Lt Candle H	744	#1252	THIST 5 Saucers and 2 Cups, Flamingo H
705	# 132	1 Lt Candle, Moonbeam H	745	# 341	OLD WILLIAMSBURG 5 1/2" Shallow Mappys, 5 Ea H
706	# 122	1 Lt Candle, Flamingo H	746	#1503	CRYSTOLITE Shell Covered Candy
707	#1504	REGENCY 2 Lt Candle, w/ Pr Epernettes	747	# 351	PRISCILLA 6 oz Footed Ale, 5 Ea H
708	#	5 Metal tops for #4262 or #4366 Water Lamps	748	#3404	SPANISH Footed Juice, Unknown Cut, 5 Ea
709	# 46	Epergne 19", One Plate & Base	749	#1184	YEMIAN Oyster Cocktail, 5 Ea H
710	# 479	HOTEL Cream & Sugar, Moonbeam H	750	# 351	PRISCILLA 12 Oz Footed Ale H
711	# 479	HOTEL Cream & Sugar, Moonbeam H	751	# 359	COLONIAL 3 Oz Port H
712	# 479	HOTEL Cream & Sugar, Flamingo H	752	#3390	CARCASSONNE Oyster Cocktail, Monogram MID, 6 Ea
713	#1632	LODESTAR Cream & Sugar, Dawn H X	753	# 393	NARROW FLUTE Sherbet, 4 Ea H
714	# 150	POINTED OVAL IN DIAMOND POINT Cream & Covered Sugar	754	# 300	PEERLESS Sherbet, 3 Ea H
715	#	Creamer, Square Trellis Cut, 2 Ea H	755	#1184	YEMIAN Sherbet, 6 Ea H
716	#1136	YEMIAN Footed Sugar, Moonbeam	756	#8023	RAMPULL Champagne, Flamingo, 2 Ea
717	# 411	RIB & PANEL Hotel Creamer, Moonbeam Handle H	757	#3301	CREOLE Oyster Cocktail, Sahara Bowl, 2 Ea
718	#1405	SATURN Creamer, Zircon H	758	#1567	PLANTATION Oyster Cocktail, 10 Ea
719	# 433	GREEK KEY Round Hotel Sugar H	759	#3362	CHARTER OAK Sherbet, Flamingo, 3 Ea H 1-X
720	#1425	VICTORIAN Sugar H	760	#1540	LARIAT Sherbet, 6 Ea H
721	#1469	RIDGELEIGH Indiv. Sugar H	761	#1194	YEMIAN Goblet, Moonbeam, 6 Ea H
722	# 365	OLD QUEEN ANN Covered Sugar H	762	#3355	Fairacre, 9 Champagnes, 2 Sherbet, H X
723	#1220	PUNTY BAND Tumbler, Custard Souvenir Rose Decor H	763	#1405	IPSWICH Center Vase w/ Prisms, No Inserts H
724	# 310	RING BAND Tumbler, Custard, Souvenir H	764	#1510	HAVERLY Horn Vase
725	# 310	RING BAND Tumbler, Custard, Souvenir Rose Decor H	764A	#1510	HAVERLY Horn Vase
726	#1425	VICTORIAN Tumbler, #150 BANDED FLUTE Tumbler, & #197 Tumbler All H	765	#1519	HAVERLY Horn Vase, 2 Ea
727	#1401	EMPRESS 12" Round Plate, Sahara, #443 Old Colony Etch H	766	# 393	NARROW FLUTE Mustard, Bottom Only H

767	#1519	HAVE RLY Eperonion, 2 Ea	004	#	1972 & 73 Imperial Land of Legend Souvenir Plates
763	# 341	PURITAN 24 oz Decanter, Wrong Stopper & #352 Horseradish Jar X	005	#	1974 Imperial Land of Legend Souvenir Plate
769	#	Original Heisey Wrappers, 2 Ea	006	#	1972 Imperial Land of Legend Souvenir Plate
770	#	Book Owned by A. H. Heisey	007	#	Imperial Amber Peerless Ind Cream & Sugar H
771	#1469	RIDGELEIGH Oval Covered Cigarette Box	008	#	Imperial Heather Provincial Cream & Sugar H
771A	#1469	RIDGELEIGH Oval Cigarette Box, Bottom Only	009	#	Imperial Verde Green Provincial Cream & Sugar H
772	#1503	CRYSTOLITE Small Covered Cigarette Box & 4 Square Ash Trays H X	010	#	Imperial Amber Provincial Cream & Sugar H
773	#	Knife Rest, Cut	011	#	Imperial 1978 Souvenir Plug Horse-Rose Pink
774	# 10	Muddler	012	#	Imperial 1978 Souvenir Plug Horse-Rose Pink
775	#1183	REVERE Tumbler Cover & Tumbler Plate	013	#	Imperial 1978 Souvenir Plug Horse-Rose Pink
776	#1280	WINGED SCROLL Trinket Box, Clambroth, Souvenir	014	#	Imperial 1978 Souvenir Plug Horse-Rose Pink
777	#1280	WINGED SCROLL Trinket Box, Clambroth, Souvenir	015	#	Imperial 1977 Souvenir Plug Horse-Fern Green
778	#1280	WINGED SCROLL Trinket Box, Clambroth, Souvenir	016	#	Imperial 1977 Souvenir Plug Horse-Fern Green
779	#1469	RIDGELEIGH Round Cigarette Holder, 2 Ea	017	#	Imperial 1979 Souvenir Plug Horse-Sunshine Yellow
780	# 197	Tumbler, Cut Star, H	018	#	Imperial Ultra Blue, Set of Three Colts
781	# 400	COLONIAL Individual Drink	019	#	Imperial Ultra Blue, Set of Three Colts
782	# 350	PINHHEEL & FAN Powder Jar, No Lid H	020	#	Imperial Milk Glass Standing Colt
783	#1183	REVERE 5" Lemon Dish, Silver Decor H	021	#	Imperial Milk Glass Standing Colt
784	#1186	YEOMAN Ind Ashtray, Monogram FFH, 4 Ea	022	#	Imperial Milk Glass Standing Colt
785	#1567	PLANTATION 1/2Pd Covered Butter, Wrong Bottom H	023	#	Imperial Milk Glass Rabbit Paperweight
786	# 341	OLD WILLIAMSBURG 5 1/2" Epergnettes, Pr. H	024	#	Imperial Milk Glass Rabbit Paperweight
787	#	Heisey Shipping Box	025	#	Imperial Milkglass Mallard, Wings Up X
788	#1495	FERN Mayonnaise and Underplate #500 Belvedere Etch	026	#	Imperial Amber Dumbo Mug, 1963
789	#3001	FLEUR-DE-LIS' 8" Plate, Sahara H	027	#	Imperial Caramel Slag
790	# 300	PEERLESS Claret Jug	028	#	Maverly Candy Jar, Wrong Lid H
791	#3390	CARCASSONNE Sherbet, Sahara, & 2 Colonial Punch Cups X	029	#	Imperial HCA Souvenir Decanter Set, (Decanter & 4 Clarets)
792	# 411	RIB & PANEL Punch Cup, 9 Ea H	030	#	Imperial HCA Souvenir Decanter Set, (Decanter & 4 Clarets)
793	# 150	BANDED FLUTE Punch Cup, 2 Ea H	031	#	Imperial HCA Souvenir Decanter & 6 Non-Heisey Tumblers, Monogram H
794	#1201	FANDANGO Punch Cup, Gold Decor	032	#	Imperial 1975 Souvenir Claret
795	# 363	Flamingo Ash Tray & #1186 Crystal Ash Tray	033	#	Imperial 1975 Souvenir Claret
796	# 398	4 1/2" Nappy, #1503 4 1/2" Square Ash Tray & Verlys Swallows Ash Tray			Imperial 1976 Souvenir Claret
797	#1540	LARIAT 6" Lid			
798	#	2 Paperweights Made from 1975 & 1976 Souvenir Plates			
799	#	1973 Imperial HCA Orchid Cordial			
800	#	1978 Imperial HCA Orchid Cordial			
801	#	1979 Imperial HCA Rose Cordial, 2 Ea			
802	#	Set of 6 Imperial Land of Legend Souvenir Plates			
803	#	1973, 74, 75 & 76 Imperial Land of Legend Souvenir Plates			

DO--Diamond Optic
NO--Narrow Optic
HO--Hide Optic
DF--Dolphin Feet
H--Indicates Signed
X--Indicates Damage

National Heisey Glass Museum



*National Heisey Glass Museum
Museum Park, Newark, Ohio*

**6TH & WEST CHURCH STREETS
NEWARK, OHIO**

HOURS:

APRIL thru OCTOBER

Tuesday thru Sunday - 1 to 4 P.M.

NOVEMBER thru MARCH

Wednesday, Saturday and Sunday

1 to 4 P.M.

Closed Mondays and Holidays

The museum is fully air conditioned
for your summer comfort

ADMISSION

Adults -- \$1.00

Children under 18 free
if accompanied by parents

No charge for members of H.C.A.

Owned and operated by:

HEISEY COLLECTORS of AMERICA, Inc.

Box 27

Newark, Ohio 43055

Museum Phone: (614) 345-2932

PLEASE NOTE....

MARCH 15 ... QUARTERLY MEETING - 8:45 a.m. Same location as Auction

MARCH 16 ... BOARD MEETING - 10 a.m. Starlight School



FIRST-CLASS MAIL

FIRST CLASS MAIL
U.S. POSTAGE
PAID
PERMIT 34
Reynoldsburg, Ohio 43068

The NEWARK CAMPUS



COTC

OSUN

Two state institutions of higher education, Central Ohio Technical College and The Ohio State University - Newark, comprise THE NEWARK CAMPUS, which is located on 155 acres on the west side of Newark. The Newark Campus serves about 5000 students each year in technical, baccalaureate, graduate, and continuing education programs.

OSU NEWARK, an integral part of one of the nation's major universities, was founded in 1957 as one of the first regional campuses of Ohio State. OSU Newark offers a bachelor's degree in elementary education and provides the first two years in a wide variety of baccalaureate courses in business, art, science, humanities, and the pre-professional areas of dentistry, law, medicine, optometry, and veterinary medicine.

The three modern buildings - Founders Hall, Hopewell Hall, and Adena Hall serve the students at the Newark Campus. Founders Hall, completed in 1968, houses classrooms, general administrative and faculty offices, library, art gallery, auditorium, and some laboratories. Hopewell Hall, which opened in 1976, provides classrooms, faculty offices, modern laboratories, dining facilities, and a student lounge. Adena Hall, which opened its doors in the fall of 1978, contains a gymnasium, more classrooms, laboratories, faculty offices, and a child-care center.