

HEISEY
news

OFFICIAL PUBLICATION HEISEY COLLECTORS OF AMERICA
© Heisey Collectors of America, Inc. 1979
All Rights Reserved

Vol. VIII, #9 — SEPTEMBER, 1979

ONE DOLLAR



HEISEY COLLECTORS OF AMERICA, INC.
8th Annual Convention
June 14-17, 1979

Cover of 1979 Convention Program
designed by Michelle Wilson.
The color of this cover was cobalt
with black print.

September 8th Annual Mini-Show and Souvenir Dinner
on the Museum Grounds in Newark, Ohio.

FROM THE DESK OF ...

your President

Convention Story

I am sorry that I was unable to write my usual column last month. I had an attack of kidney stones on July 7th and ended up in the hospital, finally undergoing surgery for their removal. I am feeling fairly well as I write this on July 26 but am not back to work in full force as yet.

I thank all of you who remembered me in so many kind ways - the flowers, the visits, the cards, the delicious food and the phone calls, etc.

As explained in the July Heisey News I had intended to write about the convention since with our hectic mailing schedule recently I was not able to get it in the June issue.

I thought you might like to see the cover of the beautiful convention program though you can't realize that the color was "cobalt" with black lettering. The montage of pattern names, the little paragraph from the program and the cover were all done by Michele Wilson who is the daughter of Stan and Kay Darling. Marcella, our newsletter printer, printed the program. I have also included the convention committees since I don't believe they have been printed before

and all of them deserve much credit for a job well done.

Those who came to convention said it was the best yet. But don't they say that every year? It was by this time become a "family reunion" for those of you who come every year. Firm friendships have been formed among the collectors everywhere. We only regret that all of you can't be here.

It is possible that the gasoline shortage had some effect but you would never have known it by observing the parking lots everyday with their out-of-state tags and the dozens of motor homes, trailers and vans.

If you came looking for glass you were not disappointed. This particular week in Heiseyland has the effect of making Heisey look very plentiful. 60 dealers at the high school offered the common, the rare and the very seldom seen. People picked up bargains at garage sales and flea markets that were unbelievable, though most said that Heisey at the Granville flea market was higher than at our own show. Several auctions added to the flood of glass. Everyone in the

DATES TO REMEMBER

- SEPT. 8. Mini-Show and Souvenir Dinner. Museum grounds.
 OCT. 27-28 All Glass Show - Sturbridge, Mass-Bay State H.C.C.
 OCT. 28 Antique Flea Market - Reynoldsburg, Oh - Reynoldsburg HCC
 DEC. 8 Christmas Dinner - Moundbuilders Country Club
1980 CONVENTION — JUNE 19 - 22

area has jumped on the coat tails of H.C.A. to take advantage of all of you being here. It must be fun for all of you but some wonder how good it is for our own show and other events.

The French Market Swap meet on Thursday evening was fun as usual with the brave making the best deals. It takes a lot of doing because you may have to make several trades to get the right item to make the final trade to get what you really wanted in the first place. The Heisey Heritage Society capably manned this event.

The identification session on Friday morning was well attended as it always is and the panel capably identified most of the glass. Members of the panel were: Tom Bredehoft; Elaine Husted; Gail Krause; Dick Marsh; Joe Lokay; Jack Metcalf; Louise Ream; Carl Sparacio and Lynn
 con't on next page

HEISEY NEWS --- P.O. BOX 27 --- NEWARK, OHIO 43055

EDITOR — LOUISE REAM, 1115 W. Main St., Newark, Ohio 43055
 PUBLISHED 25th DAY OF EACH MONTH, \$10.00/Year - \$1.00/Copy
 BACK ISSUES AVAILABLE AT \$8.00/Year(12)— \$1.00/per copy if available

PRESIDENT	LOUISE REAM	(614) 344-2377
VICE PRESIDENT	JACK METCALF	(614) 892-2664
SECRETARY	MARY McWILLIAMS	(614) 345-4380
TREASURER	LOREN YEAKLEY	(614) 366-5101

Heisey Collectors of America, Inc. is a non-profit corporation with tax exempt status. Owners and operators of National Heisey Glass Museum, 6th and Church Streets, Newark, Ohio. Open Daily 1-4 p.m., April through October except Mondays and Holidays, November through March, Wed., Sat., Sun. 1-4 p.m. Members admitted free.

Phone: (614) 345-2932. Club membership (includes 12 issues of Heisey News and participation in all club activities) \$10.00/Year plus \$1.00 each for additional family members in same household who wish a membership card. For voting membership add \$25.00, one time only fee, or write for information. For Membership - Debbie Delaney, Box 27, Newark, Ohio 43055. Notify immediately of any change of address.

The opinions expressed in articles in Heisey News are those of the authors and not necessarily those of the organization. The Editorial Staff reserves the right to edit or refuse any material submitted for publication. When requesting information, please enclose a self addressed stamped envelope (SASE).

ADVERTISING — Send all ads to:
 VIRGINIA YEAKLEY, Advertising Manager
 640 Melanie Court
 Newark, Ohio 43055

DEALER DIRECTORY ADVERTISING RATES — 5 line — \$6.00/6 issues

CLASSIFIED ADVERTISING - 5¢/word - \$1.00 Minimum. We cannot mix type sizes in Classified Ads. Abbreviations and initials count as words.

DISPLAY ADVERTISING RATES	MEMBER	NON-MEMBER
1/8 Page	\$ 8.00	\$15.00
1/4 Page	\$15.00	\$25.00
1/2 Page	\$25.00	\$40.00
Full Page	\$45.00	\$60.00

PAYMENT IN FULL MUST ACCOMPANY ALL ADS.

Advertising copy must be in our hands by the 5th of the month to be in the next month's issue. (Ads received by August 5th, for example, will be in the September issue.) Advertisements containing reproductions will not knowingly be accepted unless clearly stated (i.e. Heisey by Imperial, etc.) Heisey News assumes no responsibility for false advertising or misleading information. In the event of typographical error, the incorrect portion of the ad will be run in the following issue, but Heisey News assumes no further liability.

Send all letters and articles to be published to the Editor. Letters to columnists should be sent to the club address and will be forwarded.

con't from former page

Welker. Kay Darling acted as moderator.

A pleasant session for former employees and H.C.A. members on Friday afternoon was well attended. Tim Heisey spoke a few words of welcome. His mother, Anne, was also present.

On Friday evening the annual banquet was attended by about 300 persons who enjoyed a prime rib dinner, witty remarks by Stan Darling and Carl Sparacio and a wonderful speech by Robert P. Fischer, P.H.D. Director of Personnel Research at Fenton Art Glass. His speech was humorous, informative and very interesting. Jan Mooney again played the jazz harp during dinner.

All during the convention the museum stayed open all day and evening and the museum lounge was again in the board room of the new office building. Delicious cookies baked by members of the National Capital H.C.C. and the Northern Illinois H.C.C. were enjoyed by all the visitors. This is really a fine place to get acquainted.

The display at the Y.W.C.A. was again very beautiful thanks to Harley Bethel and his committee. The ideas were clever and the glass beautiful. Tables were again set in most colors with complementary floral arrangements. Various clubs had clever ideas and we hope to have slide sets on this.

Visitors arrived as early as Saturday ahead of the convention and stayed until as late as Tuesday the next week. It is always a busy week for those here who are most involved in planning but it is very rewarding.

The seminars were popular and the best attended that we have ever had. The Bredehoft's and myself presented the first one on "The Fabulous Kralls." We were pleased to have the daughter and grandson of Emil Krall with us. With material gleaned from them and from Anton Krall, the 81 year old nephew of Emil Krall who was also a lifelong engraver himself, we had voluminous information on the family and some of the processes. We also had many lovely pieces done by the Krall family on display.

Dick Marsh next presented the animal slides - always of interest, and Virginia Marsh and Virginia Yeakley

concluded the evening with the seminar on Fakes and misleading items. Among other things they showed the fake piglets, doe head bookends and the various stoppers. A new marked fake item on the market is a twin salt. There is also a fake of the large horsehead stopper.

The annual breakfast was well attended. Elsewhere you have seen the results of the election. In this issue are lists of donations during the show as well as some given since the last list was published. Lists of 1978 acquisitions are also printed in this issue.

According to many of you a week in Heiseyland is a thrilling experience and we are glad you enjoy it. A visit to our all-spruced up museum was nearly worth the trip by itself.

Next years convention will be from June 19 - 22 and will be held at the OSU Newark Campus in air-conditioned buildings. This should help those of you who have had school problems in the past.

Try to attend the souvenir dinner and mini-show (almost all Heisey) on September 8 on the museum grounds. This is a REAL FUN occasion. The antique cars will be on hand to pick you up at your various motels. You'll receive more information soon as a special mailing is prepared.

I am pleased to be your president for another year. I promise I am not going to fun forever even though it may seem like it.

Our printer is going to have open heart surgery very soon and we may have continued problems for a few months. Her doctor thinks she will be able to come back and continue with her printing soon. We all wish her the very best and we hope you put up with whatever problems this causes in getting Heisey News out on time for the next months or so.

Our attorney Stan Darling has decided to give up this "unpaid" job. He has done a fine job for us over the years and we regret his leaving us. Thank you Stan!

In response to questions about Russ, he is doing O.K. since his spell the morning of the annual meeting.

Till next month,

HAPPY COLLECTING
LOUISE REAM

P.S. We hope the black and white photos from the convention have arrived by the time this goes to press. ■

1979 CONVENTION COMMITTEES

KAY DARLING

.....GENERAL CHAIRMAN

SHOW

Jack Metcalf*
Chris Maskaleris
Jerry Robinson

Dick Spencer
Charles Wade

DISPLAY

Harley Bethel*
Marcella Bethel
Valli Feldman
Jean Johnson
Bill Johnson

Phyllis Hess
Maureen Kovacs
Mary McWilliams
Virginia Yeakley
Jerry Bagford

HOSPITALITY

Helen & Bob Rarey*
Helen & Carl Sparacio
Vivian & Percy Moore
Gateway H.C.C.
National Capital H.C.C.
Northern Illinois H.C.C.

SOUVENIR "Oscars"

Reynoldsburg H.C.C.

RESERVATIONS & REGISTRATIONS

Phyllis McClain
Robert G. McClain

PUBLICITY

Jack Caughenbaugh*
Louise Ream
Debbie Delaney

PROGRAM AND TICKETS

Marcella Bethel*
Harley Bethel
Stan Darling
Michele Wilson

"THE FRENCH MARKET"

Heisey Heritage Society
of Pennsylvania

"AULD LANG SYNE"

Frances Law* John Eshelman
Vi Armentrout Helen Pallagi

* Indicates Chairman

TELLERS for JUNE ELECTION

Board members Darrell Bratt and Dick Spencer were the overseers for the election.

Ron Dunham
Gertrude Swetnam
Charlie Baird
June Revelle
William Pearce

Martin Siglock
Virginia Johnson
Ernest Mehnert
Betty Wanser
Butch Jones



HARLEY'S ANGELS

Harley Bethel presented "Angel Necklaces" to these women who helped with the display. Seated- l to r: Louise Ream and Marcella Bethel. Standing- l to r: Virginia Yeakley, Mary McWilliams, Valli Feldman and Kay Darling.



l to r: Louise Ream, Loren Yeakley and Mary Little of the Western Reserve H.C.C. presenting a Sahara #135 bowl and a #7013 powder box to the museum.



Francis Law accepts a Certificate of Participation in the display for the Newark Club from Jerry Bagford.



Dr. Robert P. Fischer, Ph.D., our dynamic banquet speaker conversing at dinner with our very own Elizabeth King who is also our poetess laureate.

CONVENTION

1979



Carl Sparacio and Louise Ream admire the beautiful All-Heisey mosaic made and donated by Phyllis Goldstein, right, in memory of her husband, Milton. The glass was furnished by you club members. The mosaic is much more beautiful when you see it in color. Can you spot the outline of the Fandango pitcher?

6- HEISEY DECORATIONS

"HEISEY'S GRAPE PATTERNS"

by NEILA BREDEHOFT

Most glassware companies which produce or produced glassware for table use, especially drinking vessels made an etching or light cutting which had a grape motif. Many of these designs were called Vintage as a perfect name for the design. Heisey was no exception. The first Heisey design using the grape as central motif was #416 Vintage plate etching. We were very fortunate when writing the etching book to name this etching Vintage. It is the one etching name which we applied which has been found to be the original Heisey name also. Vintage was produced approximately from 1919 until possibly as late as 1924. It was produced solely on crystal ware. Price lists owned by HCA only list Vintage on blown ware (which will be unmarked), but it has also been found on a #353 Medium Flat Panel syrup so it may be found on other pieces of pressed ware also. Vintage resembles the grape etchings done by other companies so great care should be used when buying it for Heisey. Either make sure to memorize the etching or be sure you have a piece of Heisey glass when you make your purchase. Fostoria's #204 Vintage and #227 New Vintage etchings resemble Vintage but do not cover the major portion of the bowls of stemware as does the Heisey Vintage. Fostoria's etchings form a narrow band about the tops of glass items. Only a few years ago, I thought I had found a set of #3476



#4163 JUG — #9043 GRAPES

Etching on pitcher owned by the National Heisey Museum. Done by Madelyn Land, an employee of the decorating department. Signed by her and dated 1918.



#416 VINTAGE*
Plate Etching
Goblet

Temple handled sodas with Vintage etch only to find out after comparing them with the Fostoria catalog reprint that I had purchased Fostoria, not Heisey.

Found on:

#3312 GAYOSO Stemware - please add to your lists: pousse cafe, finger bowl

353 MEDIUM FLAT PANEL syrup

Also please add to your etching book:

#2351 STRAIGHT 8, 10, 12 oz. sodas

#2930 PLAIN & FANCY 10 oz. tumbler

The second grape design produced by Heisey is #461 Concord plate etching. Even though this etching is not shown in any price lists or catalogs prior to 1935, it was shown in the patent application for the Silhouette etching process which was filed in 1933. Thus it must date as early as that. It is not a silhouette etching but was used as an example of the usual type of plate etchings produced at that time to show the difference between the plate etching and silhouette etching processes. Price lists state that it was available on crystal and sahara ware although I have never seen it in sahara. It is on a quite limited line and I do not believe it was very popular since not a lot of it has been seen up to this time. Using the 1933 date as it's introduction, it was listed in catalogs up until 1937. The grape design of Concord is almost a secondary motif since the most unusual and easily remembered portion of the design consists of two seahorses back to back with a fan-like ornament between them. The grape pattern alternates with the sea-

- # 416 VINTAGE Plate etching
- # 461 CONCORD Plate etching
- #5000 BACCHUS carving

horses about the top portions of stemware.

Found on:

#3404 SPANISH stemware - in crystal & sahara

#1401 EMPRESS 6, 7, & 8 inch plates, round & square - in crystal & sahara

The final production decoration by Heisey using the grape design is #5000 Bacchus Carving. This is the first listed carving and is indeed aptly named. The only items directly involved as drinking vessels with Bacchus design are the Waldorf wine and the #4036 decanter. Other than these, the carving seems to appear mainly on accessory pieces and decorative items. Somehow, when we were researching this carving I expected to find a full line of drinking items to tie in with the name. Bacchus was designed by Carl Cobel and was introduced in 1934. It was discontinued by 1938, not 1939 as indicated in your etching books. I have not seen a great many pieces of Bacchus, but it is quite beautiful. There has been a large Yeoman plate on display in the Museum which is indeed eye-catching. Bacchus is found only on crystal items.

Found on:

134 FLORAL bowl

500 OCTAGON variety tray

#1184 YEOMAN plates

#1401 EMPRESS relish & plate

#3318 WALDORF wine

#4036 decanter

#1445 GRAPE CLUSTER & #1447 ROCOCO candlesticks

The only other known Heisey product using grapes as a decoration is #9043 which we called simply "Grapes". This is a specially done item and probably is unique. It was an experiment in etching and was done by Madelyn Land in 1918. The etching was done on a #4163 jug. Do not expect to find this etching. Also at this time there are no known Heisey production cuttings using grapes as the central motif.



UPDATE:

I wrote last month's column without benefit of all my research materials (lost temporarily in our recent move) so I neglected to include the items which have been found in price lists since publication of the etching book. Please include the following in your lists:

For 15 SPIRAL BAND* add:

#3315 POLONAISE 5½" comport, low and high footed; 7" comport, low footed finger bowl

#2351 STRAIGHT 8, 10, 12 oz. sodas



#461 CONCORD Plate Etching

con't from former page

#2515 3 oz. bar; 8, 12 oz. sodas

#2930 PLAIN & FANCY 10 oz. tumbler

#4268 4½ oz. custard

For #370 NILE add:

#3301 10 oz. goblet, 8 oz. goblet, 6 oz. champagne, 5½ oz. saucer champagne, 5 oz. hot whiskey, 5 oz. sherbet, ftd,



#500 Octagon
#5000 BACCHUS Carving

4½ oz. oyster cocktail, 4 oz. claret, 3½ oz. cocktail, 2½ oz. cocktail, 2½ oz. Wine, 2 oz. sherry, 1 oz. cordial.

#3315 POLONAISE - 5½" comport, low and high footed, 7" comport, low footed; finger bowl.

#2351 STRAIGHT 8, 10, 12 oz. Sodas

#2930 PLAIN & FANCY 10 oz. tumbler

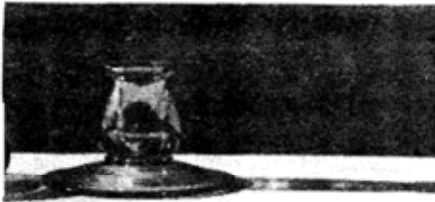
For #380 CASSANDRA add:

#3315 POLONAISE - 5½" comport, low & high footed; 7" comport, low footed; finger bowl.

#2351 STRAIGHT 8, 10, 12 oz. sodas

#2930 PLAIN & FANCY 10 oz. tumbler. ■

HEISEY CANDLESTICKS



- #118 "Plain and Fancy"
- #126 "Two Handled"
- #138 "Gascony"

by JACK METCALF

The name given above for all three of these are by the author, but for at least two of the three cases there is a relationship to Heisey nomenclature.

The first of the three, #118, (a squat 3" high) was introduced in the 1924 Price list 208 - it is shown in catalog 109 of 1929. There was no reference in the 1933 price list for Catalog 10. Production span was at least 5 years therefore, and this is not a particularly difficult candleholder to locate. The reason for the name is that every time #118 is mentioned, there is a note stating "also made diamond optic." Now, as far as I know, I've never seen one with the optic despite the more than 5 year production. I don't know if the optic was ugly and not many sold or so faint that I haven't noticed. "Plain and Fancy" was produced in crystal, flamingo and moongleam. The diamond H, when visible, is in the center of the bottom.

The second stick shown is the 6" tall #126. "Two-handed" candlestick. It is unusual in



the handles and Heisey referred to it thusly in their price list for catalog 209. #126 does not appear in either 208 or 210. The "Two Handled" was produced in crystal and the ever popular flamingo and moongleam. This is not an especially uncommon candlestick despite the relatively shorter production span. There did seem to be a problem with the handles, however, as about half of the examples which I have personally seen have a crack at the base of one of the handles. The handles are pressed as part of the mold.

For the third candlestick, #138, the production span is again not very long and interestingly #138 is not very common. Hopefully, no confusion will be generated by calling #138 "Gascony" which is the name associated with pattern #3397. #138 was introduced as a single item pattern, but it is shown in Catalog 210 with the Gascony pattern, but with #138 in parentheses. The name Gascony is therefore already in common usage for the candlestick.



The "No. 138" is 5 inches high, marked on the base, and is listed in colors crystal, flamingo, moongleam and sahara.

A couple of points which apply to all three, are, that I know of no etching or cutting on any, and they have not been reproduced by Imperial. Further, it is interesting that for all three, crystal is probably the least common color. ■

COLUMNISTS TAKE NOTE

by LOUISE REAM

Only one of you, Neila Bredehoft, submitted a column for this month. We can't print a newsletter without YOU. The deadline for your columns is the fifth of each month. We would even appreciate having them sooner and it wouldn't hurt if everyone would try to send two so we would always be sure of having one from you even if an emergency came up and you had to be late once.

Donations — Recent Acquisitions

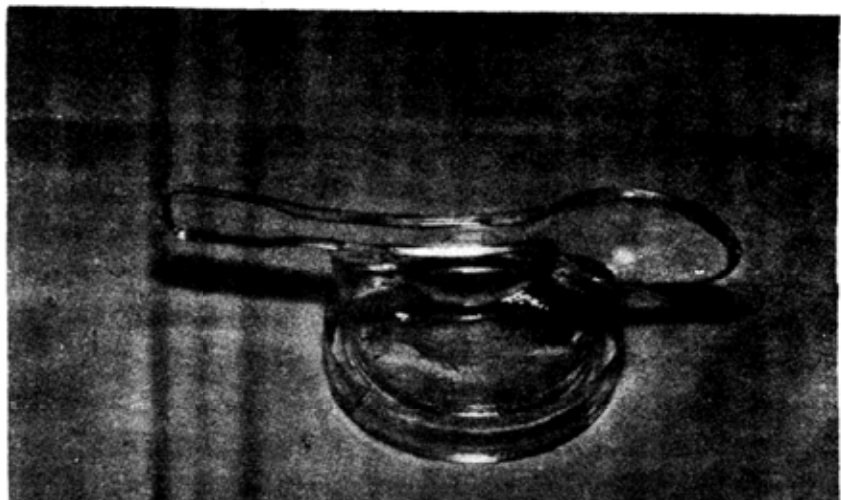
1. 22 x 28 Mosaic made w/broken Heisey glass - beautifully framed. Donated by Phyllis Goldstein in memory of her husband Milton. Made from broken glass donated by club members.
2. \$1,000.00 - Heisey Collectors of California-for acquisitions
3. \$1,000.00 - Heisey Heritage Society - for acquisitions
4. 2-#1401 Empress tall ftd. Vases, engraved by Emil Krall, one signed by him - by Bay State H.C.C.
5. #135 Floral bowl, Sahara, and #7013 Thumbprint and Angle powder box - Western Reserve Study Club.
6. #353 Medium Flat Panel Tobacco Jar, Zircon, signed Benson and Hedges, plus \$360.00 cash for acquisitions - by National Capital H.C.C.
7. \$100.00 - for glass acquisitions - by Central Illinois H.C.C.
8. \$165.00 - South Florida H.C.C.
9. \$100.00 and #1183 Revere Japanese Garden Tray - Houston H.C.C.
10. #3304 Universal Pousse Cafe - Velma Norman, Texas
11. #3381 Creole Champagne, Sahara bowl - Heisey Collectors of Rochester Area
12. #1238 8" Sahara Beehive Plate - Heisey Collectors of Columbus
13. \$100.00 - Southern Ill. Diamond H Seekers
14. #1401 Empress Lion Head bowl, moon- gleam - Land of Legand HCC, Newark
15. #1201 Fandango Pitcher and a Hydrangea goblet was donated to Chrysler museum at the suggestion of the HCC board of directors by the National Capital HCC
16. Box of Glass was donated to the Auction - Long Island H.C.C.
17. Box of Glass was donated to the Auction - Heisey Collectors of Michigan
18. Cookies for the Lounge - Northern Illinois H.C.C.
19. Cookies for the Lounge - National Capital H.C.C.
20. Posters and place cards for display - Maureen Kovacs
21. Reynoldsburg HCC - Handled Oscar sales
22. Bay State Club is going to donate a piece of glass to the Sandwich Glass Museum.
23. The two clubs who furnished the cookies plus the Gateway HCC and the Heisey Collectors of Columbus each staffed the lounge for one day.
24. 3 sets color prints and 3 sets slides of convention - Darwin Bass
25. Gulf Oil Company - \$445.80
26. Joe D. Lokay - \$227.90 research expenses (Gulf Oil Co. matches on a 2 to 1 basis contributions by company employees)
27. 1 pair crystal bookends, monogram GRH. Donated by Gerald R. Haslop. These were a gift to him by his aunt, Louise Adkins.
28. #1472 Parallel Quarter Candleblocks with King House etching - Mr. and Mrs. Bernard Feldman.
29. #1200 Cut Block water bottle and #1170 Pleat & Panel moon- gleam goblet - Norman Alford
30. #21 Hat Rack for store display - Herbert and Dorothy Leviton
31. #1401 Empress floral bowl & #134 Trident candlesticks w/#497 Rosalie etch #3344 Carolina champagne w/unknown cutting - Mr. & Mrs. R.G. Albright
32. #2517 Teardrop 12" floral bowl, shaped like a hat - Hawthorne, by Odell and Virginia Johnson
33. #122 Candle holder - Hawthorne - Tom Martin
34. #3404 Spanish goblet - red side - Lynne-Art's Glass House
35. Liner - pattern unknown, moon- gleam - Roy Burns and Joe Perry
36. Early Tobacco Jar - David and Rhoda Curley
37. #341 Epergnette, 3 #3408 goblets w/#941 Barcelona cutting; #1540 Lariat cocktail w/#980 moon- glo cutting; #1503 crystal- lite celery in silver plated tray; #150 relish; #365 Old Queen Ann nappy; #1503 crystalite oval floral bowl; #466 panel and double pleat nappy & a colonial marmalade - all given by Russ Thomas. To be used for museum or for auction, as the club desires.
38. 22x28 Mosaic made w/broken Heisey glass - beautifully framed - donated by Phyllis Goldstein in memory of her husband Milton. Made from broken glass
38. #3312 Gayoso goblets, flamingo - Donated by Phoebe Flory
39. The museum brochures handed out at the museum to all visitors - Diamond H Study Club
40. #4222 Horseshoe Vase w/#5009 Diana Carving donated by Earl & Mona Cupp
41. 1 Ovenware liner, #1549 apple ash tray, #2252 etched tumbler and #400 ale. Donated by Robert & Anne Johnson.
42. 300½ Bar Glass - flamingo, rare
43. Mustard Ladle on the "bust off" - very interesting!
44. Shards and Cullet from the Heisey dump.
45. #1417 Arch tumbler, amber, rare
46. #4057 7" Vase, amber, saturn optic, rare
47. #365 Old Queen Ann wine, rare
48. #1401½ Empress punch cup, cupped, unusual
49. #473 Narrow Flute w/rim sardine box - (This is an unusual piece. The lid is not ground, yet fits so tightly it is very hard to remove)
50. Blow mold for Vase from Heisey factory
51. Marker for scoring blown items to cut off the overflow from Heisey factory
52. #125 Leaf Candleblocks - seldom seen
53. 2 Experimental Cocktails w/twisted stems (2 styles) very rare
54. 15" plate, pattern unknown, #859 Cohasset cutting - beautiful & rare
55. #1238 8" Beehive plate, Hawthorne, rare
56. #1236 8" Eagle plate - Cobalt, rare
57. #6060 Country Club wine - #1040 Iris Stone engraving
58. Purchase of 12 rare items was not consummated. These were mostly in the "one known" category and a great loss to the museum.

Total 1979 Acquisitions to date:

\$2,783.50

All items have been listed in this and other newsletters for the year.

No. 1 thru 23 are Donations at Convention
24 thru 41 are other 1979 Donations,
42 thru 58 are Acquisitions since last listing.



Mustard Spoon still on the "bust off"

Barbara Fritchie



BARBARA FRITCHIE CORDIAL

FREDERICK, Md. — It was right and fitting that I should drop into Barbara Fritchie's house the first chance I got.

After all these years an apology was due for snickering at the feisty old dowager who alone in Frederick town waved her country's flag when Stonewall Jackson rode by with his rebel horde.

Looking back on that outrage now, from the vantage point of the very window where Dame Fritchie rescued the flag shot from its staff by the Confederate rifleman, the whole reaction of ridicule and irreverent laughter was probably Sister Miriam's fault.

Our eighth grade nun really identified with the Barbara Fritchie of the John Greenleaf Whittier poem. Her voice throbbled with emotion and the wattles in her throat over her wimple got red when she reached the line: "Shoot if you must this old gray head, but spare your country's flag."

We used to call her Barbara Fritchie behind her back.

The trouble began at the point in the poem when the nobler nature stirred within the general's soul and with a blush of shame he issued the order:

"Who touches a hair on yon gray head
Dies like a dog! March on!" he said.

Right there Charlie Schroder, the class

cutup, let out a blood curdling yelp, like a dog that had just been shot.

Stunned by his impudence and our volley of laughter, Sister Miriam ordered us to write out the entire poem three times for homework.

So, here in the old house, I make public amends to Whittier's hardy heroine.

Recent research shows that Gen. Jackson wasn't having a good week when he camped out on the Frederick fairgrounds. The day he crossed into Maryland, someone stole "Little Sorrel," his favorite steed. Admirers gave him a gigantic gray mare that reared up, tossed him in a ditch and rolled over on him as he tried to mount.

A staff officer named Sanders, who rode at Jackson's side, wrote years later that he never saw Barbara Fritchie or anyone else poke a head or a flag out any window. He recalled that the Confederate band played "Maryland, My Maryland" through the streets, hoping to rally some recruits to the Rebel cause but none came forward.

Oh well, history always has its debunkers.

Whittier, who never met Barbara Fritchie, heard the story in a letter from a neighbor. Emma Southworth, who wrote that "the city wore churchyard respect" when Jackson rode through, except for that one flag flying from that second-story window on Patrick Street.

Barbara's exact words when the shooting started, according to Emma, were: "Fire at this old head then, boys, for it is not more venerable than your flag." ■

HEISEY 1184 YEOMAN



CAMBRIDGE
#800 pattern



800-9 oz. Goblet

NOTE THE SIMILARITY BETWEEN THESE TWO. ANOTHER COMPANY IN INDIANA HAS ALSO MADE A SIMILAR PATTERN. THE

BALLS ON THE STEMS ARE DIFFERENT ON ALL THREE.

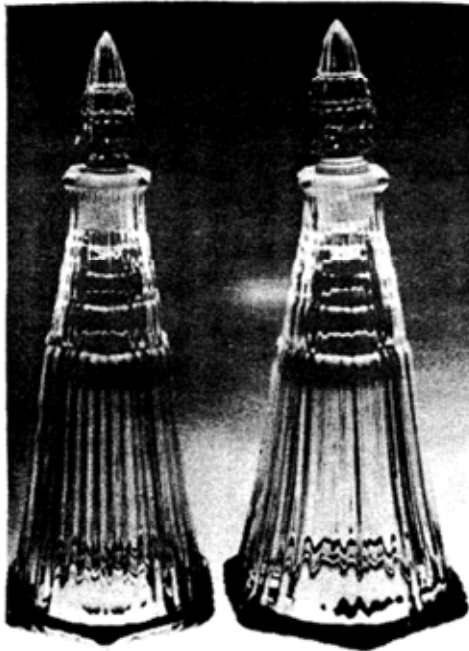
-10- This word game was sent by the
Southern Illinois Diamond H Seekers Club

PUZZLE	ERMSWETA	ETARPTN
	1. Srpghpsrao	1. Lrwslo Diecgn
	2. Afcti Meoe	2. Etnsmojwa
	3. Eollanringe	3. Ewbdæ Gdas
	4. Tintlaopna	4. Letsictryo
	5. Oacpf Olyn	5. Nhs Diwodcia
	6. Agdnonad	6. Rlvwyæa
	7. Eryek Gke	7. Rotnwi Reuae
	8. Alocinlo	8. Rslecb Ora
	9. Ubrsrtus	9. Bgdern Tcaolbo
10. Ntico Mersot	10. Apnyb Tdun	

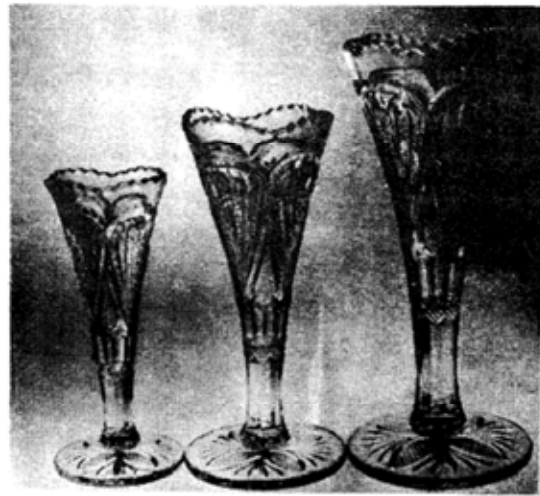
answers on page 12



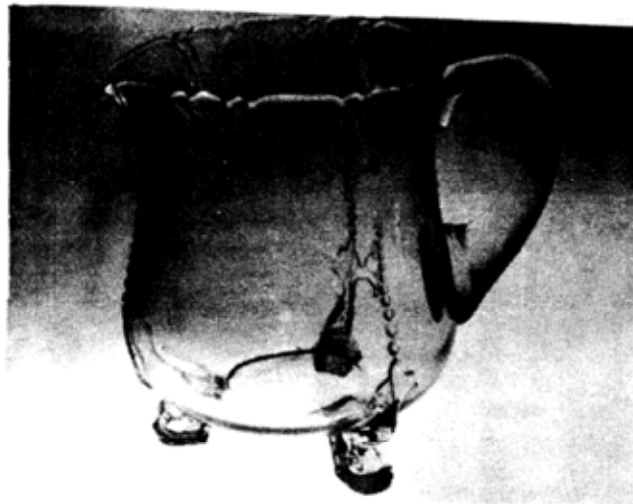
#1252 TWIST
Photo by David Curley



#1469 Ridgeleigh Decanters
Photo by Curley



#1255 Pineapple and Fan
Photo by David Curley



#1401 Empress Dolphin Footed Jub
Photo by Curley



Decorated #1183 Revere or #1511 Tourjours candle vase
(centerpiece) This item was first issued as Revere and
was made in color. The museum owns one in
Moongleam.

**TOWN & COUNTRY Pressed Pattern #1637A in "Dawn" Glass
Designed by Eva Zeisel
1954**

PATTERN NO.	SIZE	ITEM IN DAWN GLASS	LIST PRICE	LIST PRICE
			PER DOZEN	EACH
1637A	9 oz.	Tumbler.....	\$10.80	¥ .90
1637A	5 oz.	Juice.....	9.00	.75
1537A	12 oz.	Ice Tea.....	13.20	1.10
6009A	54 oz.	Ice Lip Pitcher, Optic.....	81.00	6.75
1637A	4½ oz.	Nappy, Flared.....	9.00	.75
1637A	6 in.	Nappy, Flared.....	18.00	1.50
1637A	8 in.	Nappy, Flared.....	33.00	2.75
1637A	6 in.	Plate.....	15.00	1.25
1637A	8 in.	Plate.....	21.00	1.75
1637A	10 in.	Service Plate.....	36.00	3.00
1637A	14 in.	Sandwich Plate.....	45.00	3.75
1637A	10 in.	Salad Bowl, Flared.....	42.00	3.50

See your books on Heisey for pictures of this pattern. This pattern was made in earlier days in Flamingo, Sahara and Moongleam. Tumblers are also known in Cobalt.

A . H . H E I S E Y & C O .

No. 1184 PATTERN—Continued

SIZE	ITEM	PRICE PER DOZEN						DOZ. IN CBL.
		CRY.	MG.	FLAM.	SAN.	ALEX.	TANG.	
2 oz.	Oil No. 1 p/s Grd. In, d/o.....	4.50	4.50	4.50	5.60	✓		25
4 "	Oil No. 1 p/s Grd. In, d/o.....	6.00	6.00	6.00	7.50	✓		16
	Tumbler Cover	2.50	✓					
6 in.	Candy Box Grd. Bot.	10.10	✓			24.00	✓	
6 "	" " Cover.....	5.60	✓			12.00	✓	
6 "	" " and Cover Grd. Bot.	14.50	✓			30.00	✓	31½
7 "	" " " " " " "	13.70	✓					
7 "	" " Cover	7.40	✓					
7 "	" " and Cover Grd. Bot.	19.20	✓					21½
8 "	" " " " " " "	20.00	✓					
8 "	" " Cover	10.80	✓					
8 "	" " and Cover Grd. Bot.	28.00	✓					2
8 "	" " " " with 3 Inserts	37.00	✓					2
8 "	" " Inserts	3.00	✓					
6 "	" " Deep d/o	6.80	6.80	6.80	8.50	✓		
6 "	" " Cover d/o	8.00	8.00	8.00	10.00	✓		
6 "	" " Deep, and Cover d/o.....	14.80	14.80	14.80	18.50	✓		
	Individual Salt Grd. Bot.	1.30	1.30	1.30				90
5 oz.	Soda Footed d/o	2.50	2.50	2.50	3.10	✓		
12 "	" " " " " " "	3.80	3.80	3.80	4.70	✓		
4 "	Fruit Cocktail Ftd. d/o.....	2.50	2.50	2.50	3.10	✓		
	Individual Cream d/o..... Grd. Bot.	4.00	4.00	4.00	5.00	✓		
	Mustard d/o	4.00	4.00	4.00	5.00	✓		
	" " Cover d/o..... Grd. Bot.	1.70	1.70	1.70	2.10	✓		
	" " and Cover d/o.....	5.50	5.50	5.50	6.90	✓		
	Cigarette Box	6.00	6.00	6.00	7.50	✓		
	" " Cover Ash Tray.....	3.20	3.20	3.20	4.00	✓		
	" " and Cover	8.30	8.30	8.30	10.40	✓		
7 by 10 in.	Relish Tray	14.00	14.00	14.00	17.50	✓		
3½ by 4¾ in.	5 Piece Relish Set.....	3.20	3.20	3.20	4.00	✓		
	1—7 by 10 in. Tray and 4—4¾ in. Inserts.....	24.10	24.10	24.10	30.10	✓		

#1184 YEOMAN

From a 1933 Price List. Note that there is a candy box which has three inserts. We have not seen one of these. Have you? The individual salt listed here was also made in cobalt. It is listed in a later catalog.

* CLUB NEWS

BAY STATE H.C.C.

by JARDA CRAGG, Reporter

The gas shortage put a big crimp on the July 8th meeting attendance, but those who made it to the Box Lunch Auction at Dot and Wade Banck's in Hanover, had a good time. One important order of business was the Club's decision to donate a piece of Heisey, preferably of a similar pattern, to the Sandwich Museum. That should make for an interesting "match-up".

David Steer conducted the Show and Tell portion of the meeting. Among the "goodies" was an Ipswich console bowl in moongleam; a crystal Saturn shrimp bowl; a donkey; a goose (wings down); chrysanthemum water bottle; a Petticoat Dolphin compote with moongleam stem; and an Ipswich insert.

Hopefully, the gas crunch will have been put in its place by the time the August meeting rolls around, and more of us will be able to attend.

DAYTON AREA H.C.C.

by MARY STICH, Secy

The August meeting of the DAHCC was held at the Cincinnati home of Mary and Bill Stich. Finds of the last month were displayed and discussed as the members arrived.

After the business meeting the Heisey Toothpick slides were shown. Patterns, production years, color and rarity were discussed. Slides of the table settings and display from the June Convention were also shown.

Refreshments were served.



Joyce Dawson accepts Charter #30 for Columbia Heisey Collectors Club Oregon.

NEW CLUB RECEIVES CHARTER

We were very pleased to welcome The Columbia Heisey Collectors of the state of Oregon, with possibly a few from Washington, to our growing family of clubs. Joyce Dawson was on hand to receive the charter. Good Luck to the new club!!

WESTERN RESERVE H.C.C.

by HELEN MARIMON, Publicity Chm.

The Western Reserve Study Club met on June 21st at the home of Maddle Little in Lorain, Ohio, with 8 members and one guest present.

Following the brief business meeting, members who had attended convention gave reports on its various aspects. One member who had attended the convention for her first time was asked her initial reaction to the Heisey Museum. She said, "I thought I'd died and gone to Heaven."

"Finds" were shared and dessert was served in Old Queen Anne berry bowls.

MISCELLANEOUS



DOLPHIN FOOTED CANDLESTICKS

"THE BEAUTY of HEISEY GLASS"

by E. GAIE ROBINSON

I was born and raised in Ohio, not too far west of Newark, in the county seat of Logan County. Many trips were made between that small city and Columbus and Newark, Ohio.

Since learning of Heisey glass and its beauty and because I was courting a Newark girl in my young days it occurred to me that the subject of glass had never been an issue.

I have collected during the past years, Meissen, Dresden, Baccarat, Steuben, Waterford and Lalique, all prior to my introduction to Heisey. Now as an avid collector of the latter it affords me a great deal of pleasure to place certain pieces side by side and not only compare their beauty, their weight and brilliance

but revel in the fact that I am now a collector of a product made years ago that can still afford pleasure and satisfaction to those who have been caught in the "Heisey trap."

Why didn't we all start collecting in 1956?

After spending three days at the Heisey Show in Newark this past June and talking to so many wonderful people from all over the United States that share my enthusiasm, discovering that they had something to sell you and me that is to all the collectors the most beautiful glass in the world. One look around the auditorium in that High School would have convinced anyone that such a statement had to be true. ■

PUZZLE

Answers to word game sent in by Southern Illinois Diamond H Seekers Club

STEMWARE

1. Grasshopper
2. Comet Leaf
3. Legionnaire
4. Plantation
5. Fancy Loop
6. Fandango
7. Greek Key
8. Colonial
9. Sunburst
10. Monte Cristo

PATTERN

1. Winged Scroll
2. Jamestown
3. Beaded Swag
4. Crystolite
5. Old Sandwich
6. Waverly
7. Narrow Flute
8. Coarse Rib
9. Ribbed Octagon
10. Puntly Band

ALL HEISEY AUCTION

OPERA HOUSE
GRANVILLE, OHIO
FOOD AVAILABLE

Price List Available for \$1.00

SATURDAY, OCTOBER 26, 1979
DOORS OPEN --- 12:00 NOON
SALE STARTS 4:00 P.M.

This will be one of the finest HEISEY auctions ever held with over 60 animals and animals related items, including 2 AMBER elephants, large medonna, bull, tiger, show horse, AMBER seahorse and rooster cocktalis, sahara lion bowl, complete set of Imperial stag animals, this auction will feature some of the best pieces in color that have been offered for a long time. You won't be disappointed. Mark your calendar and plan to attend. Many items in this sale come from a former Heisey Salesman.

1	#1469	Ridgeleigh Indiv Cream, Sugar & Tray H	23	#393	Narrow Flute 1/2 Gal Jug H
2	#1425	Victorian Cream & Sugar H	24	#517	Boudoir Jug w/#197 Tumbler H
3	#1230	Ribbed Octagon FLAMINGO Cream & Sugar H	25	#5032	1 Qt Martini Pitcher
4	#1519	Maverly Indiv Cream, Sugar & Tray H	26	#6060	Country Club 1 Qt Jug X
5	#352	Flat Panel Indiv Cream & Covered Sugar H	27	#1280	Winged Scroll CUSTARD, 1/2 Gal Jug
6	#1184	Yeoman MOONGLEAM Cream, and Covered Sugar H	28	#1295	Bead Swag EMERALD 1/2 Gal Jug, Decorated
7	#355	Quator Cream & Sugar, Cut H	29	#1401	Empress FLAMINGO Dolph Ft Jug H
8	#393	Narrow Flute Indiv Cream & Sugar H	30	#517	1 Qt Jug & 6 Ea #452 5 oz Soda, #499 Good Morning Etch
9	#500	Octagon SAHARA Cream & Sugar H	31	#1401	Empress MOONGLEAM Dolph Ft Ice Bucket, Lafayette Etch H
10	#1567	Plantation Cream & Sugar	32	#461	7" HANTHORRE Basket H
11	#1503	Crystalite Indiv Cream, Sugar & Tray H	33	#500	Octagon FLAMINGO 5" Basket H
12	#479	Hotel FLAMINGO Cream & Sugar X	34	#1405	Ipswich Floral Bowl & Pr
13	#1519	Maverly Indiv Cream & Sugar, Orchid Etch & Tray H	35	#1472	Parallel Quarter 9" Floral Bowl & Pr 1 Lt Candle H
14	#473	Narrow Flute w/Rim Indiv Cream & Sugar H	36	#1472	Parallel Quarter 9" Floral Bowl & Pr 1 Lt Candle H
15	#4222	Horseshoe FLAMINGO Cream & Sugar	37	#1433	Thumbprint & Panel MOONGLEAM Floral Bowl & Pr 2 Light Candles
16	#1503	Crystalite Cream & Sugar H	38	#1433	Thumbprint & Panel SAHARA Floral Bowl & Pr 2 Light Candles
17	#1469	Ridgeleigh Indiv Cream & Sugar H	39	#1401	Empress 11" Floral Bowl & Pr #134 Two Light Candles, Antarctic Etch
18	#1469	Ridgeleigh Indiv Cream & Sugar H	40	#1405	Ipswich Candle Vases w/Inserts, Pr
19	#1567	Plantation Cream & Sugar	41	#33	1 Lt Candle w/Bobeche & Prisms Pair
20	#1235	Beaded Panel & Sunburst Cream & Sugar, No Lid, Gold	42	#135	ALEXANDRITE 1 Lt Candle, Pair
21	#1235	Beaded Panel & Sunburst Spooner & Butter Top, Gold	43	#4044	New Era 2 Lt Candle, Pair
22	#325	Pillows FLAMINGO Water Bottle	44	#134	Trident 2 Lt Candle, Rosalie Etch, Pair
45	#100	VASELINE 1 Lt Candle, Pair H	45	#100	VASELINE 1 Lt Candle, Pair H
46	#5	8" 1 Lt Candle, Pair	46	#5	8" 1 Lt Candle, Pair
47	#1540	Lariat 2 Lt Candle, Pair	47	#1540	Lariat 2 Lt Candle, Pair
48	#1540	Lariat 2 Lt Candle, Pair	48	#1540	Lariat 2 Lt Candle, Pair
49	#1504	Regency 2 Lt Candle, Pair	49	#1504	Regency 2 Lt Candle, Pair
50	#1503	Crystalite Electric Hurricane Lamps w/Globe, Pair	50	#1503	Crystalite Electric Hurricane Lamps w/Globe, Pair
51	#7000	Sunflower 1 Lt Candle, Pair	51	#7000	Sunflower 1 Lt Candle, Pair
52	#1428	Warwick SAHARA 1 Lt Candle, Pair H	52	#1428	Warwick SAHARA 1 Lt Candle, Pair H
53	#1540	Lariat 1 Lt Candle, Pair	53	#1540	Lariat 1 Lt Candle, Pair
54	#1567	Plantation 1 Lt Candle Block, Pair	54	#1567	Plantation 1 Lt Candle Block, Pair
55	#1503	Crystalite 1 Lt Candle Block, Pair	55	#1503	Crystalite 1 Lt Candle Block, Pair
56	#5	Toy Candlestick, Pair H	56	#5	Toy Candlestick, Pair H
57	#5	Toy Candlestick, Pair H	57	#5	Toy Candlestick, Pair H
58	#31	Toy Candlestick, Pair H	58	#31	Toy Candlestick, Pair H
59	#130	Acorn FLAMINGO 1 Lt Candle, Pr	59	#130	Acorn FLAMINGO 1 Lt Candle, Pr
60	#1488	Kohinoor 2 Lt Candle, Pr	60	#1488	Kohinoor 2 Lt Candle, Pr
61	#1543	Lodestar DAMN 1 Lt Candle-block, Pair	61	#1543	Lodestar DAMN 1 Lt Candle-block, Pair
62	#301	1 Lt Candle w/ALEXANDRITE Bobeche & Candle Cup	62	#301	1 Lt Candle w/ALEXANDRITE Bobeche & Candle Cup
63	#1511	Toujours Candle Vase w/Insert, Krall Cut	63	#1511	Toujours Candle Vase w/Insert, Krall Cut
64	#1513	3 Lt Candelabra Epergne, Bobeche, Prisms & Flower Vase	64	#1513	3 Lt Candelabra Epergne, Bobeche, Prisms & Flower Vase
65	#1506	Provincial 3 Light Candle	65	#1506	Provincial 3 Light Candle
66	#1425	Victorian 2 Light Candle H	66	#1425	Victorian 2 Light Candle H
67	#134	Trident 2 Lt Candle, Cut	67	#134	Trident 2 Lt Candle, Cut
68	#134	Trident 2 Lt Candle, Etched	68	#134	Trident 2 Lt Candle, Etched
69	#142	3 Lt Candle, Orchid Etch	69	#142	3 Lt Candle, Orchid Etch
70	#1540	Lariat Hurricane Light Base, Enamel Decor	70	#1540	Lariat Hurricane Light Base, Enamel Decor
71	#1519	Maverly 1 Lt Candle	71	#1519	Maverly 1 Lt Candle
72	#1503	Crystalite Mellon Shaped 1 Lt Candle Block	72	#1503	Crystalite Mellon Shaped 1 Lt Candle Block
73	#1509	Queen Ann Dolph Ft Nappy Candle H	73	#1509	Queen Ann Dolph Ft Nappy Candle H
74	#1425	Victorian Cigarette Box H	74	#1425	Victorian Cigarette Box H
75	#1503	Crystalite Cigarette Box & 4 Ea 3" Square Ash Trays H	75	#1503	Crystalite Cigarette Box & 4 Ea 3" Square Ash Trays H
76	#1503	Crystalite Cigarette Box & 3 Ea 3" Round Ash Trays H	76	#1503	Crystalite Cigarette Box & 3 Ea 3" Round Ash Trays H
77	#1469	Ridgeleigh Cigarette Box & 4 Ea Square Ash Trays H	77	#1469	Ridgeleigh Cigarette Box & 4 Ea Square Ash Trays H
78	#1469	Ridgeleigh Cigarette Holder & 4 Ea Square Ash Trays H	78	#1469	Ridgeleigh Cigarette Holder & 4 Ea Square Ash Trays H
79	#	Verlys Swallows Cigarette Box	79	#	Verlys Swallows Cigarette Box
80	#	Verlys Swallows Ash Tray	80	#	Verlys Swallows Ash Tray

PAID ADVERTISEMENT



81	#1469	Ridgeleigh Ash Tray, 1 Ea. Spade, Club & Diamond H	114	#1503	Crystallite 3 Part 8" Relish Tray	152	#341	Old Williamsburg 18" Torte Plate H
82	#1401	Empress Ash Tray, Monogram, H	115	#341	Colonial 3 Part Relish	153	#1632	Lodestar DAWN 14" Party Plate H
83	#1612	Botanical Ash Tray H	116	#1401	Empress SAHARA Olive Tray	154	#1567	Plantation 14" Torte Plate H
84	#1503	Crystallite 3" Square Ash Tray, 2 Ea H	117	#1540	Lariat Tray for Artichoke Hearts H	155	#1401	Empress ALEXANDRITE 12" Handled Cake Plate H
85	#3390	Carcassonne Cigarette Holder, 3 Ea	118	#1189	Yeoman FLAMINGO 13" Celery Tray H	156	#1509	Queen Ann 15" Torte Plate, Minuet Etch
86	#1486	Coleport Cigarette Set, Holder & 2 Ash Trays H	119	#2351	Double Old Fashion, Maryland Cut	157	#1280	Winged Scroll EMERALD 13" Tray
87	#1186	Ashtray, Cut & Monogram FLG, 12 Ea	120	#5044	Constellation Old Fashion	158	#1506	Provincial 13" Torte Plate H
88	#1503	Crystallite ZIRCON 3" Round Ash Tray H	121	#4054	Coronation DAWN Old Fashion, Experimental Screen Optic	159	#1184	Yeoman 8" Plate, Moonglo Cut 12 Each
89	#1488	Kohinoor ZIRCON Ash Tray H	122	#5060	Washington Square Old Fashion	160	#407	Coarse Rib 6" Plate, 11 Ea H
90	#1488	Kohinoor ZIRCON Ash Tray H	123	#5087	Comet Old Fashion	161	#1401	Empress COBALT 8" Square Plate 4 Ea H X
91	#1404	Old Sandwich Indiv Ash Tray, 8 Ea H	124	#1425	Victorian Tumbler, 2 Ea H	162	#1401	Empress TANGERINE 8" Square Plate H
92	#1469	Ridgeleigh Coaster, 7 Ea	125	#1506	Provincial Tumbler, 3 Ea H	163	#3350	FLAMINGO DO Plate, Trojan Etch
93	#1469	Ridgeleigh Coaster, 8 Ea in Original Box	126	#1401	Empress Tumbler H	164	#1170	PLeat & Panel MOONGLEAM High Stem Covered Candy, Silver Overlay & Cut
94	#1540	Lariat Coaster, 4 Ea	127	#411	Rib & Panel Tumbler H	165	#1401	Empress SAHARA Dolph Ft Mar-malade & Cover w/Ladle H
95	#1540	Lariat Coaster, 2 Ea	128	#1637	ATown & Country DAWN, 12 Oz Tumbler, 2 Ea H	166	#1540	Lariat 5" Covered Candy, Krall Cut
96	#1951	Caboconh Cake Stand H	129	#341	Puritan 7 oz Tumbler, 2 Ea H	167	#1626	Lodestar DAWN Covered Jar H
97	#	Plain Compote H	130	#5040	Hi Ball, Grey Cut	168	#465	Recessed Panel 1/2 Pd Covered Candy, Cut H
98	#1401	Empress SAHARA Round Compote H	131	#1951	Caboconh 8 oz Soda, AMBER Base	169	#325	Pillows Stemmed Rose Bowl H
99	#305	Punty & Diamond Point Jelly Compote	132	#3359	Plateau MARI GOLD 5 oz Juice, 6 Each	170	#4085	Kohinoor ZIRCON 6" Ball Vase, Saturn Optic
100	#310	Ring Band CUSTARD Jelly Compote, Gold Decor H	133	#3397	Gascony TANGERINE 12 oz Soda, Red Side	171	#4085	Kohinoor ZIRCON 4" Ball Vase, Saturn Optic
101	#300	Peerless 4" Jelly Compote H	134	#310	Ring Band CUSTARD Tumbler H	172	#1255	Pineapple & Fan EMERALD 4" Rose Bowl
102	#1252	Twist MARI GOLD Ftd Mayonnaise	135	#310	Ring Band CUSTARD Tumbler H	173	#4220	ALEXANDRITE 7" Spiral Optic Vase
103	#1469	Ridgeleigh Mayonnaise & Under-plate H	136	#310	Ring Band CUSTARD Tumbler, Gold Decor H	174	#1252	Twist ALEXANDRITE 8" Round Nasturtium Bowl H
104	#1503	Crystallite Mayonnaise & Underplate H	137	#1280	Winged Scroll CUSTARD Tumbler, Gold Decor	175	#	Bull H
105	#1506	Provincial Divided Mayonnaise H	138	#4051	Soda, Cut	176	#	Tiger Paperweight H
106	#411	Rib & Panel Mayonnaise & Underplate H	139	#1567	Plantation Ivy Etch, H	177	#	Airedale
107	#1519	Haverly AMBER Footed Cheese	140	#1567	Plantation Cup & Saucer, H	178	#	Small Elephant
108	#1401	Empress 3 Part Relish, Orchid Etch	141	#1950	Plantation Cup & Saucer H	179	#	Middle Elephant
109	#1951	Caboconh DAWN 3 Part Divided Relish H	142	#1519	Caboconh Cup & 2 Saucers H	180	#	Large Elephant
110	#1503	Crystallite 13" Oval 3 Part Relish H	143	#1519	Waverly Cup H	181	#	Small Elephant, AMBER H
111	#1503	Crystallite 13" Oval 3 Part Relish H	144	#341	Old Williamsburg Cup & Saucer H	182	#	Middle Elephant, AMBER H
112	#1495	Fern ZIRCON 3 Part Divided Relish	145	#1519	Waverly Cup, Rose Etch H	183	#	Donkey H
113	#1503	Crystallite 10" Round 5 Part Relish.	146	#1100	CUSTARD Punch Cup, Rose Decor H	184	#	Standing Colt
			147	#1567	Plantation Punch Cup H	185	#	Standing Colt X
			148	#433	Grecian Border Punch Cup, 17 Ea H	186	#	Sealyham Terrier (Scotty)
			149	#	Provincial Punch Bowl, Under-plate & 20 Punch Cups H	187	#	Sparrow
			150	#	Blown Crystal Punch Bowl & Plastic Ladle			
			151	#341	Puritan 12" Footed Punch Bowl & Base H			

PAID ADVERTISEMENT

189	#	Sparrow	230	#6060	1 Qt Cocktail Shaker, Small	261	#5024	Oxford 3 oz Wine H
190	#	Chick, Head Down	231	#1503	Horsehead Stopper	262	#5040	Lariat 3 ox Wine, Grey Cut H
191	#	Check, Head Up	232	#1469	Crystalite SWAN HANDLED Pitcher H.	263	#1567	Plantation Cigarette Holder
192	#	Piglet, Standing, 2 Ea	233	#1401	Ridgeleigh SWAN HANDLED Floral Bowl H	264	#363	Colonial 4 oz Claret
193	#	Wood Duckling, Floating X	234	#7056	Empress SAHARA Ftd Lion Floral Bowl	265	#363	Colonial 3 oz Wine
194	#	Wood Duckling, Standing	235	#1503	Elephant Handled Mug, AMBER H	266	#4004	Impromptu 4 oz Cocktail
195	#	Wood Duckling, Standing	236	#1210	Crystalite Swan Master Nut Dish & 6 Indiv Swan Nut Dish	267	#5082	Mid Century 4 1/2 oz Cocktail H
196	#	Wood Duckling, Standing H	237	#4225	FLAMINGO Frog Handled Cheese Plate	268	#5067	Plantation 4oz Claret, Plantation Ivy Etch H
197	#	Bunny, Head Up	238	#1405	SAHARA 1 Qt Cocktail Shaker & 6 Ea #4002 SAHARA Aqua Calientes H	269	#5067	Plantation 4 oz Claret
198	#	Cygnets	239	#4225	Ipswich SAHARA 1 Qt Cock- tail Shaker	270	#3404	Spanish COBALT 3 1/2 oz Cocktail, Silver Overlay Floral Decor
199	#	Horsehead Bookend, Pair	240	#4225	Adelide Carving	271	#5067	Plantation 3 oz Wine
200	#	Goose, Wings 1/2 Up	241	#4224	Ho Etch	272	#5010	Symphone 3 oz Wine, Danish Princess Cut
201	#	Goose, Wings 1/2 Up	242	#4224	Steeplechase MOONGLEAM 9" Cocktail Mixer	273	#337	Tall Stem Sherry
202	#	Goose, Wings Down	243	#4002	Cocktail, 2 Ea	274	#5089	Princess 3 oz Cocktail, Orchid Etch X
203	#	Goose, Wings Up	244	#4052	Aqua Caliente, Tally Ho Etch	275	#3408	Jamestown 3 oz Cocktail, Cut, 6 Ea H
204	#	Ringneck Pheasant	245	#2401	National 5 oz Soda, Tally Ho Etch	276	#5019	Maverly 3 1/2 oz Cocktail
205	#	Show Horse	246	#5048	8 oz Old Fashion, Polo Player Etch	277	#5067	Plantation 3 oz Cocktail
206	#	Oscar (Sparky)	247	#6060	Rooster Head Cocktail, Tally Ho Etch	278	#	Plain Blown Champagne
207	#	Show Horse X	248	#6060	13 oz Old Fashion, Winchester 73 Etch	279	#5010	Symphone 3 oz Cocktail, Minuet Etch
208	#	Goose, Wings 1/2 Up X	249	#6060	3 oz Cocktail, Winchester 73 Etch	280	#5057	Suez 4 oz Claret, AMBER Stem H
209	#	Mallard, Wings Up X	250	#1404	10 oz Beverage, Winchester 73 Etch	281	#5040	Lariat Juice, Moongio Cut H
210	#	Set of 3 Imperial Ultra	251	#5057	Old Sandwich AMBER 12 Oz Handled Mug H	282	#5040	Lariat Juice, Grey Cut H
211	#	Blue Colts	252	#5040	Suez 12 oz Ftd Ice Tea, AMBER Stem H	283	#	Blown Saucer Champagne
212	#	Imperial Caramel Slag	253	#341	Lariat 12 oz Ftd Ice Tea, Moongio Cut, 5 Ea H	284	#	Blown Saucer Champagne
213	#	Sealyham Terrier (Scotty)	254	#341	Goblet, 11 Ea H	285	#3380	Old Dominion SAHARA Saucer Champagne
214	#	Imperial Caramel Slag	255	#1540	Goblet, 2 Ea H	286	#	Blown Hollow Stem Champagne
215	#	Imperial Caramel Slag	256	#3404	Lariat 10 oz Goblet	287	#3408	Jamestown Saucer Champagne, Krali Rose Cut
216	#	Imperial Caramel Slag	257	#4085	Spanish COBALT 10 Oz Goblet, 2 Ea	288	#3408	Jamestown Saucer Champagne, Crimoline Etch
217	#	Kicking Colt	258	#1425	Kohinoor 10 oz Goblet, EXPERIMENTAL BLUE Stem	289	#3404	Spanish COBALT 5 oz Saucer Champagne, 2 Each
218	#	Imperial Caramel Slag	259	#5019	Victorian SAHARA 12 oz Footed Soda H	290	#	Metal & Mirror Advertising Display Platform
219	#	Oscar (Sparky)	260	#5019	Maverly 3 oz Wine	291	#350	Pinwheel & Fan VASELINE 8"
220	#	Wood Duck	261	#5019	Maverly 4 oz Claret	292	#350	Pinwheel & Fan MOONGLEAM 8"
221	#	Imperial Caramel Slag	262	#5074	Seahorse Cocktail, AMBER Stem	293	#350	Pinwheel & Fan MARIGOLD 8"
222	#	Imperial Caramel Slag	263	#5048	Rooster Head Cocktail, AMBER	294	#350	Pinwheel & Fan FLAMINGO 8"
223	#	Imperial Caramel Slag	264	#5048	Rooster Head Cocktail, 3 Ea	295	#160	Locket on Chain EMERALD 8"
224	#	Imperial Caramel Slag	265	#4225	1 Pt Cocktail Shaker, & 2 Ea #5038 Rooster Stem Cocktail, Etched Me, You & Us	296	#1440	SAHARA Floral Bowl, Ftd H
225	#	Imperial Caramel Slag	266	#4225	1 Qt Cocktail Shaker, Rooster Head Stopper, Moongio Cut	297	#1567	Plantation 9" Salad Bowl
226	#	Imperial Caramel Slag	267	#5074	Seahorse Cocktail, AMBER Stem	298	#1567	Plantation 9" Low Crimped Bowl
227	#	Imperial Caramel Slag	268	#5048	Rooster Head Cocktail, 3 Ea			
228	#	Imperial Caramel Slag	269	#4225	1 Pt Cocktail Shaker, Rooster Head Stopper, Moongio Cut			
229	#	Imperial Caramel Slag	270	#5074	Seahorse Cocktail, AMBER Stem			

299	#4206 Optic Tooth HAMTHORNE 10 1/2" Base, DO	340	#1295 Bead Swag CUSTARD Wine, Souvenir
300	#4057 ZIRCON 10 1/2" Vase, Saturn Optic	341	#1511 Toujours Candle Vase Insert
301	#4004 Impromptu 10 1/2" Vase	342	#5040 Lariat Double Stem Cordial, Moonglo Cut H
302	#1469 Ridgeleigh SAHARA 8" Vase H	343	#5089 Princess Cordial, Orchid Etch H
303	#3355 Fairacre FLAMINGO 12" Vase H	344	#5040 Lariat Cordial H
304	#1626 Lodestar 8" Vase H	345	#3304 Universal Cordial
305	#1428 Marwick SAHARA 9" Vase	346	#3304 Universal Wine
306	#353 Colonial 10" Vase H	347	#4044 New Era Corral, 8 Ea, Monog
307	#1428 Marwick 9" Vase, Cut H	348	#1184 Yeoman Cut H Floral Bowl H
308	#1428 Marwick 9" Vase, Cut H	349	#1170 Pleat & Pencil FLAMINGO Bouillon Cut H
309	#1951 Cabochon 7" Nappy, Moonglo	350	#1184 Yeoman FLAMINGO 8" 3 Comp Hd1 Mint H
310	#V8621 Verlys by Heisey LIMELIGHT Pinecone Bowl	351	#1503 Crystolite 7" Shell Bonbon
311	#10 8" Floral Bowl, Cut H	352	#1401 Empress Small Condiment Tray
312	#1485 Saturn ZIRCON Tid Bit Bowl H	353	#473 Narrow Flute w/Rim FLAMINGO 6" Pickle Tray H
313	#1506 Provincial 6" Vase H	354	#394 Narrow Flute 7" Pickly Tray H
314	#393 Narrow Flute Creamer	355	#1503 Crystolite Handled Jelly
315	#1567 Plantation Syrup Jug	356	#429 Plain Panel 4" Nappy, 2 Ea H
316	#1485 Saturn Sugar Shaker	357	#341 1/2 Puritan 4" Nappy, 2 Ea H
317	#16oz Pitcher	358	#341 Old Williamsburg Sherbet, 2 Ea H
318	#4004 Impromptu 16 oz Pitcher X	359	#5040 Lariat Sherbet, Moonglo Cut 5 Ea H 1-X
319	#351 Priscilla 3 oz Oll H	360	#5067 Plantation Tall Sherbet, 3 Ea
320	#412 Double Rib & Panel 3 oz Oll H	361	#5003 Crystolite Sherbet H
321	#1503 Crystolite Crute, No Stopper	362	#5057 Suez Sherbet, Cut
322	#5031 Vinegar & Oil Bottle	363	#5072 Rose Stem Saucer Champagne, Rose Etch
323	#1401 Empress Ftd Nut Cups, 3 ea	364	#5057 Suez Sherbet, Cut, 2 Ea
324	Flamingo, Sahara & Crystal Ridgeleigh Divided Hd1 Nut, 3 Ea	365	#1227 Maharg 7 oz Sherbet, 4 Ea H
325	#1252 Twist FLAMINGO Hd1 Nut, 4 Ea H	366	#429 Plain Panel Sherbet H
326	#1469 Ridgeleigh Ind Salt, 4 Ea H	367	#300 Peerless 5 Oz Ftd Egg Cup H
327	#500 Octagon MOONGLEAM Frozen Dessert	368	#341 Puritan Champagne, 5 Ea H
328	#500 Octagon FLAMINGO Frozen Dessert, Cut 4 Ea	369	#393 Narrow Flute Indiv Sugar Cube Holder
329	#1225 Plain Band Toothpick H	370	#433 Grecian Border Oval Sugar H X
330	#1220 Punny Band Toothpick, Red tain	371	#411 Rib & Panel Creamer H
331	#300 Peerless Toothpick H	372	#341 Old Williamsburg Cream & Sugar H
332	#150 Banded Flute Toothpick H	373	#1509 Queen Ann Dolph Ft Cream, Cut H
333	#310 Ring Band CUSTARD Toothpick Souvenir	374	# Water Bottle, Maffle Design ?
334	#1220 Punny Band CUSTARD Toothpick Souvenir H X	375	#1503 Crystolite Handled Bonbon H
335	#1280 Winged Scroll CUSTARD Toothpick	376	#1469 Ridgeleigh Handled Bonbon H
336	#1200 Cut Block Toothpick, Red Stain	377	#1469 Ridgeleigh Handled Bonbon H
337	#1200 Cut Block CUSTARD Hotel Sugar, Souvenir		
338	#1200 Cut Block CUSTARD Hotel Sugar, Souvenir		
339	#1255 Pineapple and Fan CUSTARD, 1/2 Pt Tankard, Souvenir		
		378	#1540 Lariat Bonbon H
		379	#1252 Twist FLAMINGO Handled Bonbon H
		380	#1253 Twist SAHARA Tri Corner Mint H
		381	#1503 Crystolite 9 1/2" Footed Cheese
		382	#352 Flat Panel 5" Low Ftd Jelly, Gold Decor H
		383	#1401 Empress SAHARA 6" Dolph Ftd Mint H
		384	#472 Narrow Flute w/Rim Round Divided Hd1 Rel H
		385	#1469 Ridgeleigh Lemon Dish w/ Cover H
		386	#1184 Yeoman 6" Handled Jelly, Cut H
		387	#1503 Crystolite Shell Candy & Cover
		388	#1567 Plantation 5" Nappy
		389	#1567 Plantation Syrup, No Lid
		390	#1567 Plantation Marmalade, No Lid H
		391	#1485 Saturn Sugar Shaker, No Lid
		392	#1485 Saturn Fruit Cocktail
		393	#1519 Maverly Salt Shaker, Rose Etch
		394	#1469 Ridgeleigh 7" Square Plate H X
		395	#1503 Crystolite 7" Plate
		396	#1503 Crystolite 8" Plate
		397	#1567 Plantation 7" Round Plate, Plantation Ivy Etch
		398	#4 Plates, 3 Ea #1184 Yeoman 7" Salad Plate, Moonglo Cut & 1 Ea #1425 Victorian 8" Rd
		399	#1509 Queen Ann 8" Round Plate, Crinoline Etch
		400	#1485 Saturn Footed Mayonnaise H
		401	#1489 Puritan 7" Square Ash Tray X
		402	# Bar Glass (Cambridge)
		403	#1425 Victorian Mustard Bottom Only H
		404	#1950 Cabochon Lid for Candy Jar, Ivy Etch
		405	#1519 Maverly Lid for Cigarette Holder, Orchid Etch
		406	# Mayonnaise Ladle
		407	# Mustard Ladle
		408	#1519 Maverly 5" Epergnette Candleholder
		409	# Epergnette Candleholder w/ Prism pins
		410	# Square Bobeche

PAID ADVERTISEMENT

Mail bids accepted with checks for maximum amount. Mail bids will be bid competitively and any difference refunded. Only items in mint condition will be subjected to mail bids. Please add \$5.00 for postage and handling. Excess refunded. Checks should be made out to: Sam Schwaidt, Auctioneer, and mailed to: Heisey Auction Box 84

FRANK FRYE, Manager (814) 344-9947
 SAM SCHWAIDT, Auctl (814) 344-9947
 GRAEVILLE, Ohio 43023

REYNOLDSBURG H.C. 5TH. ANNUAL ANTIQUE SHOW & FLEA MARKET

REYNOLDSBURG HIGH SCHOOL GYMNASIUM
 6699 E. Livingston Avenue, Reynoldsburg, Ohio
 Accomodations for 58 Top Quality Dealers

Sunday, October 28, 1979
 9:00 A.M. to 5:00 P.M.

Refreshments available all day
ADMISSION - PRICE: 50¢



Ca. 1933
 Crystal, Cobalt,
 Flamingo and Moongleam

1401
 Flamingo Empress Comport
 Courtesy of Mildred Bourdon



No. 300 1/2 HALF-GALLON PITCHER, STUCK HANDLE


No. 300 1/2 COLONIAL PATTERN

A. H. HEISEY & CO. 159

The glass article contained
 in this wrapper is of the

celebrated  manufacture.

Our trade mark is a guarantee
 that under like conditions it will
 last twice as long as the ordinary

product. This  on each

piece; look for it. Made in U.S.A.

Copyright by A. H. Heisey & Co.

This is a copy of the logo on an original sheet
 of Heisey tissue paper wrapping

	PRICE PER DOZ.		No. DOZ. IN BTL.	WT. OF BTL.	POW. IN CAT.
	L. P.	O. P.			
Set, (2 Handled)	5 00	4 50	1 1/2	130	77
Spoon "	1 05	95	10	135	77
Cream	85	75	8	115	77
Sugar and Cover (2 Handled)	1 55	1 40	6 1/2	135	77
Butter and "	1 60	1 45	4	125	77
5 in. Nappy, Fruit	50	45	18	130	77
7 in. Berry	1 55	1 40	4	124	77
8 in. " Flared	1 75	1 55	4	124	77
9 in. " Shallow	2 00	1 75	3 1/2	115	77
8 in. "	2 00	1 75	3 1/2	140	77
9 in. " Flared	2 15	1 95	3 1/2	140	77
10 in. " Shallow	2 50	2 20	3	125	77

L. P. means Price Per Doz. in Less than Original Pkge.
 O. P. means Price Per Doz. in Original Pkge.

Ca. 1900 Not Marked.

HEISEY GLASS

Mrs. HAROLD E. WILLEY
Route #3, Box 180A
Frazeyburg, Ohio 43822

Phone: (614) 828-2557

Mail Orders Welcome

**HEISEY
SALE**

**HEISEY
SALE**

We have opened another 100 boxes

Call first if you are coming a great distance to be sure we are home. We are easy to find. Go East on State Rt. 16. When you leave the Expressway and enter Muskingum County, go 2 miles, turn left on Cannon Road. We are 1/4 mile on right up Cannon Rd. (Ask almost anyone at the HCA Museum).

Plates: Over 500 plates: 4 1/2" to 10 1/2" Vaseline, Tangerine, Moongleam, Flamingo, Marigold, Clear and Etched.

ETCHED: Titanic, Renaissance, Empress, Old Colony, Frontenac, Chintz, Pied Piper, Diana.

OTHER: Clear pleat and Panel, Waverly, Yeoman, #1223, Acorn, Beehive, Greek Key, #4182 cutting, Southwind cutting, Marigold Twist, Provincial, Moongleam old sandwich, Fern T.V. snack plates, Rib and Panel and more.

Stems: Over 500 stems: Cocktails, Goblets, Sherbets, Champagnes, and others. (no cordials). Sahara, Moongleam, Flamingo, Clear, Marigold and Etched.

ETCHED: Minuet, Bell-Le-Rose, Frontenac, Olympiad, Chintz, Renaissance, Old Colony on Clear and Sahara.

OTHER: King Arthur, Old Dominion, New Era, Whirlpool, Yeoman, Delaware, Kimberly, Victorian, #341 Puritan, Plantation, Creole, Penn Charter, Ipswich in Sahara only, Athena, Carcassonne, Twist in Marigold only, Rib and Panel, Egyptian in Flamingo, Rooster head, Southwind cutting, Midwest cutting and other.

Dinner Sets: 65 Pc. Dinner Set, Service for 8: Plates, Cups, Saucers and Stems, Flamingo D.O. Empress etched750.00

48 Pc. Dinner Set, Service for 6, Plates, Cups, Saucers and Stems. Flamingo D.O. Yeoman425.00

Electric Lamps: 2 - #1503 One light Electric lamp w/beautiful matched cut globeseach...200.00

Deep Plate Etching: Ref. to: Willey Deep plate etching book:

#4225 1 pint "Us" Cocktail shaker w/#118 Rooster head stopper - page 6	140.00
#2401 8 oz. Soda "Sailboat" Carving #5017 - page 24	75.00
#2401 8 oz. Old Fashion "Sailboat" Carving #5017 - page 24	75.00
#2401 12 oz. Soda "Lancaster" Deep Plate Etch #481 - page 9	40.00
#3405 3 oz. footed Cocktail "Tall Sail Boat" Etching #2 - page 11	100.00
#4161 5 oz. Soda or Juice "Good Morning" Deep plate Etching #489 - page 25	50.00
#2052 1 1/2 oz. Bar "Circus" Camel #473 Deep Plate Etch - page 16	50.00
#2052 1 1/2 oz. Bar "Circus" Lion Tamer #472 Deep Plate Etch - page 17	250.00
#2052 1 1/2 oz. Bar "Tallyho" Deep Plate Etch #467 - page 35	35.00
#2052 1 1/2 oz. Bar "Fox Chase" Deep Plate Etch #458 - page 38	45.00
#2401 8 oz. Soda "Tallyho" Deep Plate Etch #467 - page 35	35.00
#4002 4 oz. Cocktail "Fisherman" Deep Plate Etch #459 - page 39	60.00
#4044 2-light Candlestick w/Bobeche & Prisms "Vanity Fair Carving" #5010 - V.IV.pg41	Pr...150.00

ADMINISTRATOR'S PUBLIC AUCTION

HEISEY COLLECTION - ANTIQUES

Saturday, September 15, 1979 - 10:30 A.M.

YELLOW SPRINGS, OHIO

(100 Dayton St., Bryan Community Center. 1 block off U.S. 68, 9 mile s-o Springfield and I-70)

Anthony Brecht, Sr., formerly of Newark, Ohio, was a glass blower at the Heisey plant from the 1930's through the 1940's, accounting for this outstanding collection:

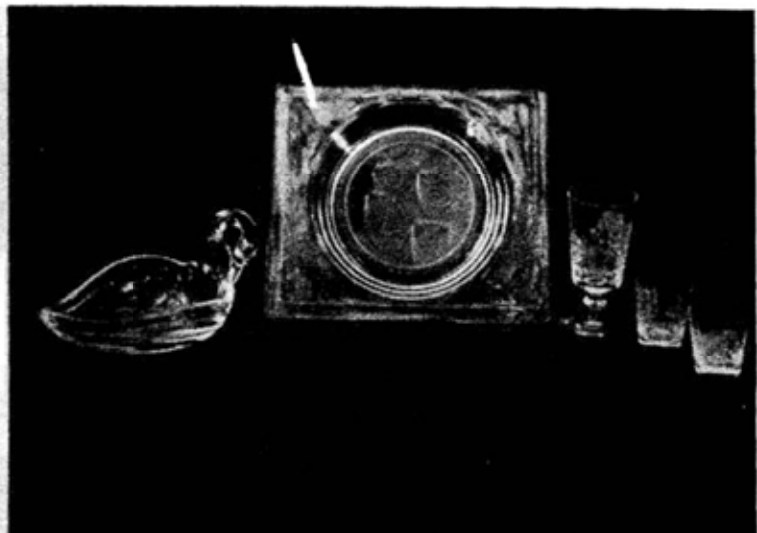
HEISEY

Pair cut & pair plain 2-light Candleholders w/prisms; large basket; footed decanter, rye bottle, cocktail shaker, all Tally Ho; Madonna; 8 Tally Ho stemmed cocktails & 6 Shot Glasses; 9 old Colony etched Queen Anne dinner plates, 13 coffee cup plates, 11 dessert plates, 5 luncheon plates, & handled dish; 8 New Era luncheon plates; etched sandwich tray; dolphin footed candy dish; 3 - 8 oz. Tally Ho tumblers; 6 crystalite pattern dinner plates; 6 formal goblets; 6 New Era wines; 10 short stem sherbets & 5 stemmed goblets, Old Colony etching; 8 Old Colony etched parfaits; 8 formal goblets, New Era cut; 7 saucer champagnes, New Era; 8 individual nuts, Lariat pattern; 3 small ladle spoons; 8 Tally Ho old fashion glasses; 6 Colony old fashion tumblers; 4 Flamingo individual salt & pepper; master Swan nut dish; Queen Anne covered dish w/etching; toujours apple, minuet etch; Colonial olive & pickle; cut ash trays, candy dishes.

OTHER GLASS: Cut & pressed glass fruit bowls; Flint glass compote; large covered compote; small carnival basket & footed candy dish; cranberry & silver pickle caster.

ANTIQUES

Beautiful Cherry corner cupboard w/glass; 8 matched ladder back chairs; outstanding Arrow back rocker; maple rope bed; 6 & 7 drawer Empire chests; maple blanket chest; walnut stand; Jenny Lind bed; ladder back rocker; 4 foot iron bench; tea cart; walnut chest; lift-top desk; needle point chair, foot stool & telephone stand; cedar chest; etc.



TERMS: Cash, Certified or Traveler's checks

ESTATE OF MARIE A. BRECHT
Sue M. Dillon and Anthony J. Brecht, Jr.
Co-Administrators with the will annexed.
Greene County Probate Court No. 18002



DON WELCH, CAI

*Certified Auctioneers Institute

Auctioneer

SPRINGFIELD, OHIO 45506-513/325-0750

WANTED:

1, 2 or 3

**# 37 SALT or PEPPER
SHAKERS
as pictured**




No. 37
SALT OR PEPPER, BLOWN
No. 57 TOP

**LOUISE REAM
1115 W. MAIN ST.
NEWARK, OHIO 43065
PH: (614)344-2377**

Classified Ads

- 1. FOR SALE: Heisey glass collection, 50 pieces held colored, plus Goose wings up. \$850.00 Firm. JOYCE DAWSON, 2418 W. CRESTVIEW, ROSEBURG, OR 97470, (503)672-4047, Prefer not to ship, but can.
- 2. FOR SALE: By private collector, odd pieces, send SASE for complete list with prices to: E. J. ELLEN, 12 CENTRAL AVE., PITTSBURGH, PA 15238.
- 3 FOR SALE: #6004 Classic 12 oz. goblets \$15.00 ea; for trade only; #5065 Colt Stem Cocktail, #1519 Lion Finial Trinket box, #1 Rooster, Med. Elephant, Sparrow for animals or Candelabra of equal value. CLAUDE HIGGINS, P.O. BOX 2723, MENLO PARK, CA 94025, PH: (415)322-8182.
- 4 WANTED: Old Newark, Ohio postcards. DICK SMITH, 88 MAUREEN DR. HEATH, OH 43055, Ph: (614)522-3075.
- 5 WANTED: One Trident candleholder in Sahara. SHELIA TOLLEFSON, 625 - 9th., SNOHOMISH, WA 98290.

LET US
FILL YOUR
WANTS
FOR
HEISEY GLASS

write
MOSTLY  HEISEY

RHODA CURLEY
16 CLAYTON PLACE
ALBANY, N.Y.
12209
518-482-6272

BLUE BINDERS

EACH ONE HOLDS
ALL 4
VOGEL BOOKS

**\$ 7.50 EACH
POSTPAID**

Pre - order price
until 11 / 15 / 79

Delivery First of Year

Include street address for
UPS Delivery

**BOB JOHNSON
P.O. BOX 42
DAYTON, OH 45420
(513) 288-4384**

**VANCE KIMBALL
1567 EDWARD DR.,
STEVENSVILLE, MI 49127
PH: (616) 429-5579 after 5 PM**

SASE POSTAGE & INSURANCE EXTRA

#1503 CRYSTOLITE 3-part Relish	10.00
#1503 CRYSTOLITE 6" Covered Preserve	15.00
#1503 CRYSTOLITE Cream & Sugar	Set...20.00
#1503 CRYSTOLITE 7" Snack Plate	10.00
#1503 CRYSTOLITE 5 1/2" Cheese footed	12.00
#1503 CRYSTOLITE Shell Mayonnaise & Ladle	18.00
#1503 CRYSTOLITE 11 1/2" Floral Bowl	22.00
#1503 CRYSTOLITE 7" Round Plate	7.00
#1503 CRYSTOLITE 11" Torte Plate	18.00
#1503 CRYSTOLITE Punch Cups - (7)	ea... 6.00
#1503 CRYSTOLITE Saucers - (9)	ea... 6.00
#1503 CRYSTOLITE Candy w/Flower Lid	22.00
#1504 Candlesticks	Pr...35.00
#5003 6 oz. Sherbert - (4)	ea...12.00
#5003 10 oz. Low footed Goblet - (8)	ea...20.00
#5003 5" Compote	20.00
#341 1/2 3 pint Jug (V1 pg 46)	30.00

FLAMINGO

#3390 CARCASSONNE 6 oz. Saucer Champagne - (2)	ea...20.00
#3390 CARCASSONNE 11 oz. Tall Stem Goblet - (4)	ea...20.00
#1404 OLD SANDWICH 6 oz. Sundae - (4)	ea...25.00
#1404 OLD SANDWICH 10 oz. Low Footed Goblet - (8)	ea...35.00

**ERIE'S FIRST ANNUAL
GLASS SHOW and SALE**
FEATURING
Cambridge, Duncan & Miller, Heisey
AND INCLUDING
GLASS OF ALL PERIODS

FOSTORIA



AUGUST 25 & 26, 1979
SAT. 1 p.m. to 9 p.m. - SUN. noon to 6 p.m.
HILTON HOTEL • ERIE, PA
10th & State Streets
(I-90 exit 6+6 miles north on Peach Street)
Admission - \$1.75 • 25% discount with this ad
CHILDREN UNDER 12 YEARS - FREE
Door Prize Each Day

PROMOTION BY
HANK PUGLIESE (814) 456 - 7131

ANTIQUES 'N' COLLECTABLES
"HEISEY OUR SPECIALTY"

LYNNE  ART'S
GLASS-HOUSE
INC.

P. O. BOX 242
LAHASKA, PA. 18931
215-794-7800

*Dear Heisey Collector and Dealer,
We're heading your way! Heisey animals,
lovely old patterns, and a rainbow of colors, will
be coming along with us.*

We'll be at the following shows.

ERIE, PENNA., HILTON HOTEL, AUGUST 25-26
COLUMBUS, OHIO, LAUSCHE BLDG. OHIO STATE FAIRGROUNDS, SEPT. 14-15-16
LYNCHBURG, VIRGINIA, LYNCHBURG COLLEGE FIELD HOUSE, SEPT. 20-21-22

*While we are on the road, suggest a call to
PA. 215-794-7800 or FL. 305-861-7700.*

*See you soon,
Lynne and Art*

Monthly Heisey column
by Clarence Vogel!

glass REVIEW

80 PAGE ALL GLASS MAGAZINE
since 1971
\$9.50 per year - 12 Issues
Or, recent sample - \$1

The GLASS REVIEW is a handy 8½" x 5½" monthly magazine devoted to "Keeping Glass Collectors Informed" on both old & new glass. Printed on glossy stock and filled with large, clear photos, articles by nationally respected authors and writers, price reports, trends, research and reproduction information, previously unpublished catalog reprints, reviews of the latest glass books (and where to buy them), Questions & Answers, trademark info, large variety of glass ads on both old and new glass, up-to-date happenings in glass and MORE!

Enclose payment; send to: GLASS REVIEW,
P.O. Box 2315- , Costa Mesa, CA 92626.

**HEISEY'S
GLASSWARE of DISTINCTION**

by Mary Louise Burns



COMPLETELY REVISED!

Now includes additional patterns, new illustrations, many new listings and is now perfect bound for sturdiness!

This comprehensive reference book is not a catalog reprint but a collection of all major patterns of tableware, stemware, cuttings, etchings, animals and Verlys produced through Heisey's 60 years of glassmaking.

Details of each pattern clearly shown by photo or illustrations for easy identification. Two indexes for easy reference: one by pattern name and one by pattern number.

All this for only **\$11.95** pp.

.....
ALSO NEW: Completely revised price guide supplement to the above, listing each item and UPDATED price trends. Patterns are listed alphabetically for easy reference. Only \$5.95 pp!
.....

"ORDER NOW"

Send check or money order to:
MARY LOUISE BURNS
P.O. Box 1931
Grants Pass, Or 97526

6 Books or more 40%

H.C.A. Annual Mini - Show and Flea Market

Day of Souvenir Dinner and Quarterly Meeting

Saturday, September 8, 1979

Dawn to 2:30 p.m.

Advertised to public from 8:30 am to 2:30 pm

- LOCATION:**
- **Museum Parking Lot**
 - **In the Tent and Outside**
 - **Outside dealers may stay set up later than 2:30.**

- **Easy access and parking**
- **Space \$10.00 for HCA members, other \$12.00**
- **Space 8 ft. x 13 ft. or near equivalent**
- **Tables available to rent at \$3.00 each**

**for further information contact: Ray Ziegler
86 Hiawatha
Westerville, OH 43081**

Free Admission

**ROBERT H. DONOVAN
P.O. BOX 321
BOLTON, MA 01740**

Phone: (617) 779-5008 after 5 P.M.

SASE Please Postage & Insurance extra

#1205 Fancy Loop Hdl. Custard, crystal & gold	14.50
#1295 Beaded Swag Custard, handled ; (5)	ea... 9.00
#1255 Pineapple & Fan Tumbler Crystal & gold	22.50
#1228 Misc. *Floral bowl, nice cutting 8" rolled edge	28.50
#1469 Ridgely Ribbed Champagne Tall Stem*	12.00
#1540 Lariat Punch Cup*	4.00
#1509 Queen Ann 3-pt round, Relish* Orchid etch	18.00
# 352 Flat Panel 6 1/2" Cantaloup* -(3)	ea... 12.00
# 429 Colonial Panel Punch Bowl Base*	24.50
# 357 Prison Stripe Punch Bowl & Stand* w/6 Cups	380.00
#3408 Jamestown Rosalie etch, Tall Goblet - (5)	ea... 18.00
#3390 Carcassonne Short Goblets SAHARA - (6)	ea... 17.00
#1503 4" Covered Cigarette Box, Crystalite*	17.00
# 351 Priscilla 9" Celery*	12.00
#1428 Warwick 7" Vase - (2)	ea 22.00
# 354 Flat Panel wide Cream & Sugar* FLAMINGO	36.50
# 142 Optic Tumbler* 8 1/2 oz. Plain bottom	12.00
#1184 Yeoman Tumbler* FLAMINGO 8 oz.	14.00
#3404 Spanish Stem Goblets COBALT Bowls - (8)	500.00
# 335 Prince of Wales Covered Butter* Cr & gold	62.50
& complete 4 pc. Table Set, excellent condition	225.00

**BAY STATE HEISEY COLLECTORS CLUB
SECOND ANNUAL**

All Glass Show

Sheraton - Sturbridge Inn Rte. 20 - Sturbridge, Mass.

October 27, 1979

October 28, 1979

Saturday - 10:30 AM - 8 PM

Sunday - 9 AM - 4 PM

All Glass of All Periods

**Benefit -
Heisey Glass Museum**



**Donation: \$1.75
- with card \$1.50**

From New York City and South: I-95 to I-91 to I-84 and I-86 to Exit 3 in Sturbridge. left on Haynes Street to Rte 131. left to U.S. 20
From Boston and Northeast: Massachusetts Turnpike to Sturbridge Exit, right onto U.S. 20
From Upper New York State and West: Massachusetts Turnpike to Sturbridge Exit, right onto U.S. 20.

Dealers Directory

5 LINES - \$6.00/6 ISSUES

MOSTLY HEISEY

RHODA CURLEY
16 CLAYTON PLACE
ALBANY, NEW YORK 12209
By Appointment 518/482-6272

Opera House Antiques
Main & Broadway, Granville, Oh 43023
Open 7 days a week 12 - 5 P.M.
Shop (614)587-2083 - Sam 587-0052
HEISEY GLASS & GENERAL ANTIQUES

The Shultzes Antiques BOUGHT
SOLD
206-208 E. MAIN ST., ROUTE # 419
NEWMANSTOWN, PA. 17073
15 MI. WEST OF READING, PA.
PHONE 215-589-2819

Lynne & Art's Glass House, Inc.
"HEISEY OUR SPECIALTY"
Route 202 Lahaska, Pa. 18931 Box 242
Phone: (215) 794-7800

Evelyn's Antiques
3301 - 140 N.E. Marysville, Wash. 98270
I S Exit 202 Phone: (206)659-6114
MON-WED-SAT-SUN & by Appt.
Shop full of glass - Heisey, etc.

The China Cupboard
105 A. 30. BROADWAY, ORCUTT, CA. 93454
Phone: (805) 937-6420
COLLECTIBLE & ANTIQUE GLASS & CHINA
HEISEY IN STOCK

Bert's Budget Shop
403 W. MAIN ST., NEWARK, OHIO 43055
PHONE: (614) 349-8045
General line Antiques

Schwan's Antiques
DICK & LEE SCHWAN
208 OXFORD ROAD
WILLIAMSBURG, VA 23185
(804)229-7873 SHOWS & APPT.


RAMBLING LANE ANTIQUES
Featuring HEISEY & Other Fine Glass
KEITH & EVELYN HOOVER
RR #4 - BOX 1005 - (715)282-5019
RHINELANDER, WI 54501

Charles A. Shaw

Glenwood Gardens-RipVan Winkle
Yonkers, New York 10701
Shows & Mail Order
American Glass 

Goldsberry's Antiques
KALAMAZOO, MICHIGAN
SHOWS ONLY -- BUY & SELL
HEISEY A SPECIALTY
PHONE: (616) 381 - 3013

ANTIQUES & COLLECTIBLES *Olde Loved Things*

 Daris "Ed" Lacroix - Donald Mousseau
900 Ridgewood Avenue (Holly Hill)
DAYTONA BEACH, FL. 32017
HEISEY, Cambridge, "Candlesticks q specialty"

Moundbuilders Antiques
IRENE RAUCK
1138 MOUNDVIEW, NEWARK, OH 43055
PHONE: (614) 344 - 6043
HEISEY & ANIMALS/GEN. ANTIQUES

Eagles Rest Antiques
CHINA HEISEY GLASSWARE
BOUGHT and SOLD
62 FIELD POINT RD., HEATH, OH 43055
By Chance or Phone: (614)522-2035

LAST CHANCE ANTIQUES
62 N. FEDERAL Hwy, DANIA, FL 33004
(Between Miami & Ft. Lauderdale)
Large Heisey Inventory & other Glass
MAIL ORDERS (305)467-6356 (home)

GREEN ACRES FARM
ANTIQUES, CRYSTAL GLASS & COLLECTIBLES
Saturday & Sunday P.M. or Call (614)827-1882
2678 HAZELTON ETNA RD., S.W.
(S.R. 310 N) PATASKALA, OH 43082

THE "FINDERS" ANTIQUES
Antiques - Heisey Glass - Buy-Sell
DAVID & SHIRLEY ROSE - Owners
66 S. HAZELWOOD AVE., NEWARK, OH 43055
Phone: (614) 349-7934

Ann's Gifts & Antiques
105 W. MAIN ST., HEBRON, OH 43025
Intersection Rt. 40 & 79
Next door to Daisy Queen
MON-SAT 10-5:30 SUN 12-5:30

Hoosier Heritage Antiques
Marcell and Tom Zehr
4005 SOUTH WAYNE AVENUE
FORT WAYNE, INDIANA 46807
(219) 745-4173

Happy Haven Antiques
CHARLES & MARY DUMKE
RT. #3, BOX 2044A, GRASS VALLEY, CA. 95945
Phone: (916) 273-9450

 **Diamond H Plus**
GEORGE & EILEEN SCHAMEL
Route 3, Box 419
Boonsboro, Md. 21713
Appointment or Mail Order
Phone 301-432-6285

WICKFORD ANTIQUE ARCADE

RON & BEV. WOOD Booths 6 & 7
650 TEN ROD RD., N. KINGSTOWN, R.I. 02852
Heisey - Primitives - Glass - Etc.
Home Phone: (401) 295-0823

Charles & Mildred Fisher
Antiques & Collectibles, General Line
HEISEY, DEGENHART, IMPERIAL
991 IDLEWILDE, NEWARK, OH 43055
PHONE: (614) 522 - 5398

The Wooden Shoe
ANTIQUES & COLLECTIBLES - BUY & SELL
GLASS, FURNITURE, ESTATES
JIM & SHERI VANES BY APPT
HERNDON, VA 22070-PH: 435-9045

Heisey Heaven & other collectables
NOW OPEN AT PEDDLER'S VILLAGE
SUNNY CREST MALL-URBANA, IL 61801
(CORNER FLORIDA AVE & PHILO RD.)
PHONE: (217) 384 - 9083



sum of life

elaine and frank husted
p.o. box 102,
phoenixville, pa. 19460
(215) 935-2962

Jim Kennan

Shows Only-PH:(216)934-4515
P.O. BOX 251 - AMHERST, OH 44001
Heisey - Cambridge - Pottery
Glass Animals - Duncan & Miller

Curiosity Nook

"WHERE FRIENDS MEET TO ANTIQUE"
3300 S. 8th Ave. Westward Village
Yuma, Ar. 85364-(602)726-6730 or 726-8070
BARNEY & JODY BARNICLE

The Connecticut Yankee



"HEISEY OUR SPECIALTY"
707 S. Washington
Route 2, Box 315
Fredericksburg, TX 78624

ACCENT ANTIQUES OF KENSINGTON

Curio Corner
3742 HOWARD AVE.
KENSINGTON, MD 20798
PH: (301)833-3780

The Sleeping Fox
EVELYN & JAMES JORDAN
P.O. BOX 583
LANSDALE, PA 19446
PHONE: (215) 855 - 2480

George Hoffman Antiques

G.W. HOFFMAN-J.H. DENNIS
129 SOUTH 4TH STREET
NEWARK, OH 43055
PH: (614) 345-8580

BLACK HAND GORGE FESTIVAL

FIFTH ANNUAL
NO ADMISSION CHARGE **AT TOBOSO SCHOOL** NO ADMISSION CHARGE

SAT. SEPT. 22, 1979 10:00 TO 8:00
LARGE FLEA MARKET & CRAFT SHOW

OVER 100 DEALERS
FOR DEALERS INFORMATION CALL
763-3116

ALL TYPES OF GLASS: CAMBRIDGE, HEISEY, IMPERIAL & OTHERS

COLLECTIBLES: AVON, HUMMEL & OTHERS

CRAFTS: DECOUPAGE, JEWELRY & OTHERS

POTTERY: HULL, ROSEVILLE, WELLER

COINS, GUNS, & MISC. ITEMS

TOURS OF
BLACK HAND GORGE
NATURE PRESERVE
PIONEER CONTESTS
LOTS OF GOOD FOOD

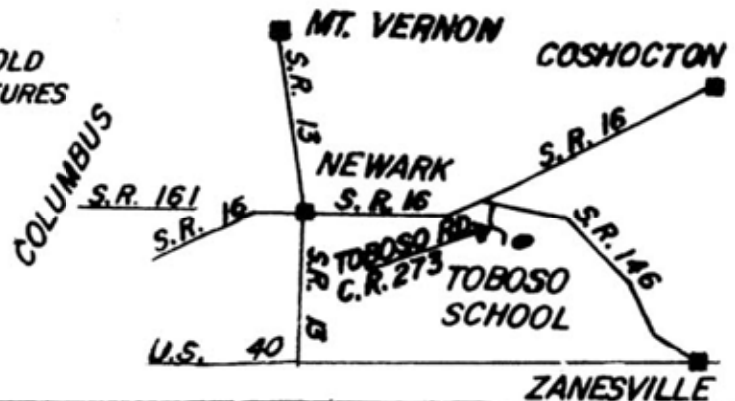
ANTIQUE EXHIBITS

FURNITURE, DISHES, QUILTS, COVERLETS OLD TOOLS, UNUSUAL ANTIQUE ITEMS, OLD PICTURES OF THE BLACK HAND GORGE & TOBOSO

PIONEER EXHIBITS

APPLEBUTTER MAKING

(FOLLOW SIGNS)



return to:
HEISEY NEWS
Box 27
Newark, OH 43065

FIRST-CLASS MAIL

FIRST CLASS MAIL
U.S. POSTAGE
PAID
PERMIT 34
Reynoldsburg, Ohio 43068

MUSEUM HOURS ARE NOW open daily from 1-4 p.m. except Monday and holidays