

HEISEY *news*

OFFICIAL PUBLICATION HEISEY COLLECTORS OF AMERICA
© Heisey Collectors of America, Inc. 1978
All Rights Reserved

April, 1979
Vol. VIII, #4

One Dollar



T. CLARENCE HEISEY 1882—1967

A son of A.H. Heisey and the last president of the company.

The photo was taken by Haas of New York City sometime in the late thirties. article on page 3

8th ANNUAL HEISEY CONVENTION-SHOW AND DISPLAY - JUNE 14-17, 1979 - NEWARK

FROM THE DESK OF...

your president, **LOUISE REAM**

Since the rest of Heisey News went to the printer the Heisey community has been saddened by the death of Paul Fairall. Paul was a 42 year employee of the company and for most of those years was the Director of Transportation. He was an Honorary member of HCA and had been helpful in many ways. He donated many good items for one of our benefit auctions, total around \$2000. Last year he donated some catalogs and other memorabilia. He will be missed in Newark. For more about Paul see Heisey News Volume 1, number 1 for he was profiled in our very first issue.

The auction was really great and grossed \$39,226 which will net a nice sum for the museum. Overall the quality was good, the prices high with old patterns recovering from a recent slump and color and better items still soaring.

Everyone who helped in any way deserves a note of thanks from every HCA members. Special mention should go to Chauncey Delaney and Bob Rarey as Co-Chairmen and Bob as the "mailman", Sam Schnaidt, Craig Connelly, Larry Stickle and Tim Hughes for volunteering as auctioneers, to Sam for letting us use the Opera House, to Loren Yeakley for

typing the list and speeding up the return of checks and payment for glass and to the Buckeye Heisey Collectors Club for so promptly packing the glass. All checks and glass had left here by Tuesday the 20th. May other people also helped and we thank all of you for a united effort for HCA. The museum did not buy any glass at the auction this time.

The convention forms are in the back of this issue. Please register as soon as possible.

Oscars are selling well but if you have delayed your order, do it today. The 1977 oscar went for \$75 and the 1978 for \$35 in the auction. Not bad interest!!! We hope for a sellout prior to the convention.

We still need clubs and individuals to do the display. The theme should be easy and may be carried out by the way the decorate your booth. The Newark club is doing "South of the Border". Another has chosen "Emerald Isle", other suggestions are "Sahara Desert" or a display of *Empress* could be "Lilies of France", etc. Please contact Harley Bethel at once if you can do a display. His address was in the January issue. We really need you.

Happy Collecting!!!

Louise Ream

DATES TO REMEMBER

MAY 15 - Last day to order "Oscar" at reduced rate.

JUNE 14-17 - Annual Convention and Antique Show - Newark

SEPT. 8 - Annual Souvenir Dinner

DEC. 8 - Annual Christmas Meeting

Light Blue Kicking Colts Are In

Send in your orders now for your light blue Kicking Colt. They are \$14.00 each plus shipping of ten percent. Please add sales tax if you live in Ohio. Immediate shipment.

Please refer to past newsletters or your catalog of items for sale which was sent last fall if you wish other items. Once in awhile an item is back ordered and will be shipped as it arrives.

We Have Passed 4500 & Climbing

On March 1, 1977, our membership stood at 2629. In April of 1978 it had risen to 3500. On March 12, 1979 we have 4533 members.

We don't know exactly where this club is going but it does seem that Heisey glass is THE handmade glass to collect today.

Aren't you glad that you collect or sell it?

HEISEY NEWS --- P.O. BOX 27 --- NEWARK, OHIO 43055

EDITOR — LOUISE REAM, 1115 W. Main St., Newark, Ohio 43055
PUBLISHED 25TH DAY OF EACH MONTH, \$10.00/Year-\$1.00/Copy
BACK ISSUES AVAILABLE AT \$8.00/YEAR - 80¢/COPY

PRESIDENT	LOUISE REAM	(614) 344 - 2377
VICE PRESIDENT	KAY DARLING	(614) 262 - 4360
SECRETARY	MARY McWILLIAMS	(614) 345 - 4380
TREASURER	LOREN YEAKLEY	(614) 366 - 5101

Heisey Collectors of America, Inc. is a non-profit corporation with tax exempt status. Owners and operators of National Heisey Glass Museum, 6th and Church Streets, Newark, Ohio. Open Daily 1-4 p.m., April through October except Mondays and Holidays, November through March, Wed., Sat., Sun. 1-4 p.m. Members admitted free.

Phone: (614) 345-2932. Club membership (includes 12 issues of Heisey News and participation in all club activities) \$10.00/Year plus \$1.00 each for additional family members in same household who wish a membership card. For voting membership add \$25.00, one time only fee, or write for information.

For Membership - Debbie Delaney, Box 27, Newark, Ohio 43055. Notify immediately of any change of address.

The opinions expressed in articles in Heisey News are those of the authors and not necessarily those of the organization. The Editorial Staff reserves the right to edit or refuse any material submitted for publication. When requesting information, please enclose a self addressed stamped envelope (SASE).

ADVERTISING - Send all ads to:
VIRGINIA YEAKLEY, Advertising Manager
640 Melanie Court
Newark, Ohio 43065

DEALER DIRECTORY ADVERTISING RATES-5 line-\$6.00/6 issues

CLASSIFIED ADVERTISING - 5¢/word - \$1.00 Minimum. We cannot mix type sizes in Classified Ads. Abbreviations and initials count as words.

DISPLAY ADVERTISING RATES	MEMBER	NON-MEMBER
1/8 Page	\$ 8.00	\$15.00
1/4 Page	\$15.00	\$25.00
1/2 Page	\$25.00	\$40.00
Full Page	\$45.00	\$60.00

PAYMENT IN FULL MUST ACCOMPANY ALL ADS.

Advertising copy must be in our hands by the 5th of the month to be in the next issue. Advertisements containing reproductions will not knowingly be accepted unless clearly stated (i.e. Heisey by Imperial, etc) Heisey News assumes no responsibility for false advertising or misleading information. In the event of typographical error, the incorrect portion of the ad will be run in the following issue, but Heisey News assumes no further liability.

Send all letters and articles to be published to the Editor. Letters to columnists should be sent to the club address and will be forwarded.

T. Clarence Heisey 1882-1967

-3-

Picture on Cover

by JOSEPH D. LOKAY

Clarence Heisey was born on November 4, 1882 in Idlewood, Pa., just outside of Pittsburgh. He was the youngest of six children and the third son of Susan and Augustus H. Heisey. At the time of his birth, his father was co-owner of the George Duncan & Sons Glass Company in Pittsburgh. His initial name was only Clarence Heisey and Thomas was added to his name sometime in the early 1900's.

Clarence completed his high school education at the Mt. Pleasant Military Academy in Ossining, New York. He received a Bachelor of Science degree in Chemistry from Amherst College, Amherst, Mass. in 1908 at the age of 25. While at Amherst, he was active in the Psi Upsilon Fraternity, the Cotillion Club, the Archangels Luncheon Club, and was a member of the football squad. He had a strong interest in his college and attended many of his class reunions. He was active on the corporate board of his fraternity for many years.

The Heisey family moved to Newark, Ohio around 1898 when Clarence was at the age of 16. His mother, Susan, and his sister, Mary, were in Arizona for about two years (1899 and 1900) because Mary had TB. Indications are that he may have been with his mother in Arizona for the approximate 2 year period, thus delaying his educational plans for the 2 years. Clarence had his own horse while in Arizona which led to his later interest in horses.

He was a first lieutenant in the Ohio National Guard and served as Battalion Adjutant from 1902 till 1908.

Clarence began working at the A.H. Heisey Glass Company in 1908 after his graduation. The four Heiseys; Augustus-his father, George Duncan-his older brother and Edgar Wilson-his next brother, were all with the firm at this time. George was President of the Heisey Company till 1918 when he left the Company. Augustus passed away in 1922 and his son, Edgar Wilson Heisey was President until his death in 1942. T. Clarence then took over and was President till the plant closed in late 1957. He spent his total career with the A.H. Heisey Company.

T. Clarence met Anne Augusta Davis in Newark, Ohio and they were married on October 9, 1912. They had two children Thomas C., Jr. (Tim) and Mary. Tim was born on June 6, 1918 and Mary was born on May 17, 1923; both in Newark, Ohio. They purchased their residence on Granville Road in 1916 and Anne and Tim still reside there.

Tim went to the same college as his father, T. Clarence, where he also majored in Chemistry and was also a member of the Psi Upsilon fraternity.

During the period when Edgar Wilson and T. Clarence were running the Heisey Company (circa 1920 to 1942), Edgar was mainly interested in glass technology and T. Clarence was mainly interested in glassware design and pattern line makeup. Clarence liked to get out in the sales field to see how things were going. On occasion he would visit the purchasing agents of several of Heisey's large accounts in the larger cities to get their comments on current pattern lines, items within a pattern line and ideas of future interest.

Clarence was responsible for the filing of over 80 US design patents.* His first patent was #42,665 granted on May 1, 1912 for the #393 Narrow Flute pitcher and his last design patent was #169,314 granted September 13, 1953 for a bowl similar to the #1632 Lodestar design. He held 8 design patents for various items in the #411 Rib & Panel pattern granted in 1923, 8 for various items in Crystolite #1503 granted in 1939, 7 for various items in Whirlpool #1506 granted in 1939 and 12 for various items in Waverly granted in 1948 to 1950.

He was also responsible for the design of the first few Heisey animals in the late 1930's and early 1940's. Because of his interest in horses, he was responsible for the production of the horse head bookends and some of the horse related animals. He filed and was granted a design patent for the standing pony on May 27, 1941.

The A.H. Heisey Company was well known for its fine glassware and for its quality patterns. Clarence was personally invited by the Czechoslovakian Chamber of Commerce to represent the American Glassware Association at its Annual Fair in 1955. I'm told that he had some difficulty getting his passport for this trip as they could not find a record of his birth in 1992 in the Pittsburgh, Pa. records. He flew over to Europe and came back via the Queen Mary. This was T.C.'s first time to fly in an airplane.

James Duncan, II of the Duncan/Miller Glass Company in Washington, Pa. was a cousin to T.C., and I understand that he stopped by in Newark and visited several times. The late Carl Gutski, a past President of the Imperial Glass Co., was also a good friend.

As a civic leader, Clarence had been

Director, President, Vice President, Delegate and member of various organizations and clubs. These affiliations include the Newark Board of Trade, Ohio Chamber of Commerce, American Protective Tariff League, Restoration Committee of the first American Glass Plant at Jamestown, Virginia, the Symposiarch Club, Queen City Club, Moundbuilders Country Club, Buckeye Lake Yacht Club and the Columbus Club.

Clarence was active on the Board of Directors of the Ohio National Life Insurance Co. of Cincinnati, Ohio from 1922. Besides serving on the Board for 45 years, he was also a member of their Executive Finance Committee from 1930.

Another of Clarence's interests was horses. He was the Director of the American Horse Shows Association for thirty-five years. He was a recognized Senior Saddle Horse Show Judge and was registered with the A.H.S.A. He did most of his show horse judging in the 1930's and 1940's. He was also a member of the American Saddle Horse Breeders Association.

As well as Clarence, Edgar Wilson had several horses. These were originally stabled in a barn behind the Heisey plant. Clarence's interest was in show horses, and he had show horses with names like Shadow, Ghost, Sandy and Marigold. His best show horse was named Rexanna H. Peavine. This particular show horse won some big stakes for T.C. at the Atlantic City Horse Show of 1932. Another fine show horse of T.C.'s that he bought for his son Tim was named Goodness Gracious.** This mare also won a first place at one of the Atlantic City horse shows in the mid 1930's. Tim is shown sitting on Goodness Gracious on the cover of the Heisey News for February 1978 and on page 13 of the May 1978 issue.

T.C. died of a heart attack on October 16, 1967 in Newark, Ohio at the age of 85. He and his wife had just celebrated their 55th wedding anniversary. He is buried at the Cedar Hill Cemetery in Newark. Anne will be 92 this year, and is an honorary member of the Heisey Collectors of America, Inc. His son and daughter, Tim and Mary Heisey Merrill are also honorary members.

*Ed. note - Many of these were designs of others which were assigned to the Company which is very often done, even today.

** This horse was the model for the famous crystal show horse.

4 HEISEY DECORATIONS

by NEILA BREDEHOFT

Early Heisey etchings are somewhat poorly documented and every new tidbit of information is eagerly added to information now known. This column may be somewhat disorganized and cover a wider variety of etchings than usual, but I will attempt to acquaint you with some small odd bits of information which have come to light about some of the earliest Heisey etchings.

A rather tantalizing letter dated June 1, 1915, was found which lists several items to be etched but does not elaborate on pattern or number. To quote:

"Mr. Balda

Etching Department

Dear Sir:

We have elected to have you make first, the plates for the following articles:

- Baskets
- Plain pitchers - Plain Blown
- Candlesticks
- Lavender Jars, #'s 352, 5, 10, 14 oz
- Lavender Jars, #'s 352, 7, 11, 16 oz
- #'s 354, 355, 1185 Hotel Sugars & Creams
- Portable shades plain and etched
- Sandwich plates
- #'s 1125 & 1150, 6 1/2", 7", 8" plates

This will keep you busy for some time.

Respectfully yours,
A. H. Heisey "

While I can't be positive that the etchings referred to are Heisey's first, they must certainly be some of the earliest. The letter indicates that Heisey at least produced etching designs (probably a modest selection) for each of these items. Probably all these items had at least one etching design or more approved for production. These etchings are probably included in the large number gaps we have from 300 to 349 for early plate etchings.

As to what most of the etchings look like except for those on baskets remains a mystery. Only a few etchings on candlesticks and sugars and creamers are now known. As for the blown pitchers, these may be the etchings we already know which have these pitchers as part of their line, or they may be entirely different ones. I do not know of any etchings on the portable shades excepting the all-over frosted, which of course did not require a design plate. Some of these etchings may forever remain a mystery but we can always hope more information may come to light in the future.

The known etchings referred to must certainly include #9004 IRIS* on the #354 WIDE FLAT PLANEL Cream and sugar; the ROSETTE BAND* on the #47 candlestick and the #9006 CAIRO* on the #21 candlestick.

The basket etchings referred to must include:

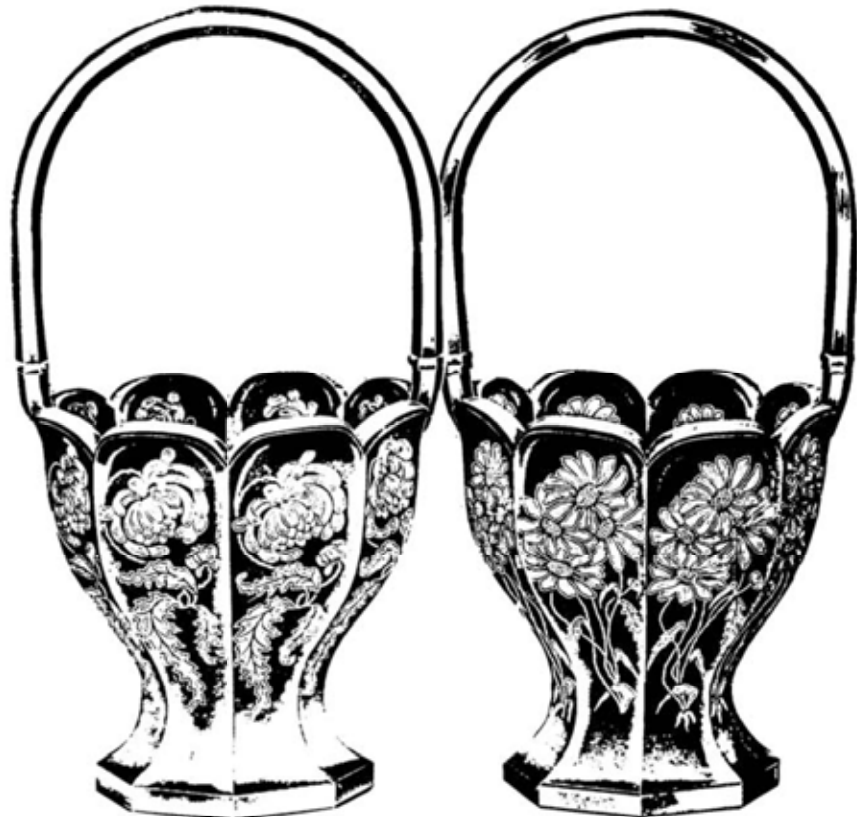
- #336 ROSETTE BAND* on #465 Recessed Panel 7, 8, 9" Baskets
- #349 MARGARET* on #465 Recessed Panel 7, 8, 9" baskets. This is a water lily motif.
- #350 7 350/1 MUMS* on the #458 basket. The difference between these two etchings is not in design, but which portions of the basket were etched. #350 was etched on the sides and end panels while the #350/1 was etched only on the sides (the broad portions to which the handle is secured).
- #351 MUMS* on the 459 7 & 8" baskets
- #352 ANNE* on the 459 7 & 8" baskets
- #353 SUSAN* on the 459 7 & 8" basket
- #350/1 & 351 MUMS* were also etched on the #4198 8,10,12, and 14" vases.
- #353 SUSAN* was also etched on the #4191 8,10 and 12" vases.

- #9004 IRIS* Plate etching
- #9005 ROSETTE BAND* Plate etching
- #9006 CAIRO* Plate etching
- # 336 ROSETTE BAND* Plate etching
- # 349 MARGARET* Plate etching
- # 350, 350/1, 351 MUMS* Plate etching
- # 352 ANNE* Plate etching
- # 353 SUSAN* Plate etching

As an addition to a past column, please add a #1252 TWIST 6" 2 handled bonbon to your list of #9009 ARCTIC* One was reported to me sometime ago, but I think I forgot to mention it in my article.



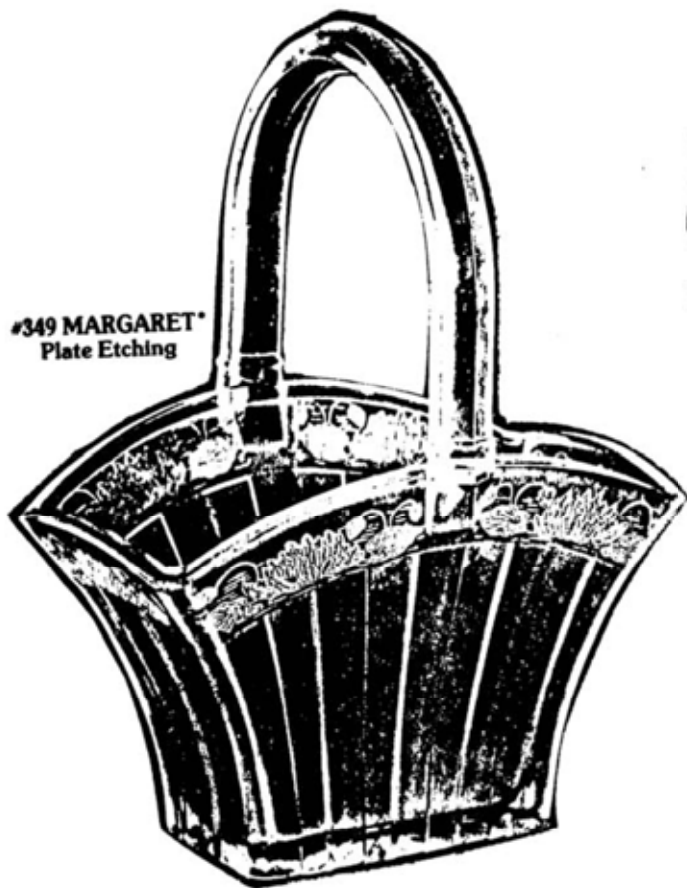
#458
#350/1
#351 MUMS*



#459 - Patent #47739
7" Basket
8" Basket

#459
#353 SUSAN*
Plate Etching

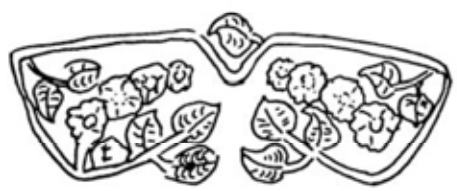
#349 MARGARET*
Plate Etching



#9004 IRIS*
Plate Etching



#352 ANNE Etching
from #459 Basket



Rubbing from #465 Basket
#336 Rosette Band



Rubbing from #393 Goblet
#9005 Rosette Band



Rubbing from #47 Candlestick
#9005 ROSETTE BAND*
Plate Etching
Triangular portion
extends onto base
of candlestick



#9006 CAIRO*
Plate Etching



#4191

HEISEY CANDLESTICKS

#520 Candle Lamp

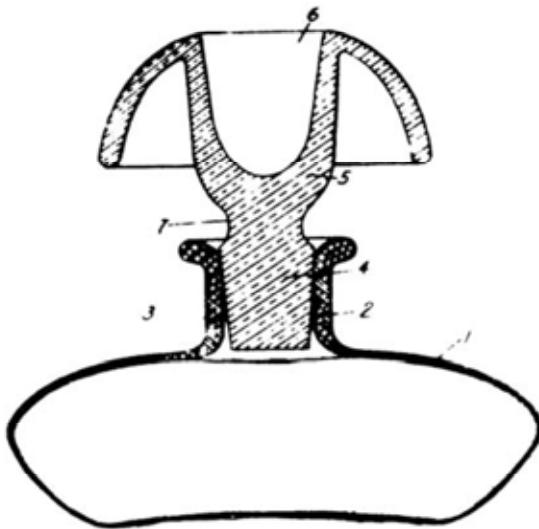


Fig. 2

by TOM FELT

One of the most charming and unusual candleholders offered by Heisey was the #520 candle lamp. It's pictured in Heisey News, Vol. III #9 page 11 and in the reprint of catalog 109, ca. 1928 as well as in Vogel IV on the last page of the revised edition -- look it up sometime, because I'll bet you've overlooked it many times. The accompanying drawing is from the patent application, submitted by E.W. Heisey on January 30, 1928 and approved June 3, 1930 (patent no. 1,761,299).

As can be seen in the drawing, the candle lamp consists of 2 pieces -- a bottle-like container, or well, and a stopper which is also a candleholder. According to the

.....

Dolphin Candlesticks

Imperial has NEVER made any candlesticks in Heisey's dolphin candlestick molds. The dolphins which they make for the Metropolitan Museum of Art, all types, are made from molds made by copying the original Sandwich sticks owned by the Metropolitan Museum. This is also true of the other items in their museum catalog, most of which are made by Imperial.

This suggests another point. If the Metropolitan Museum of Art helps finance the museum with the sale of reproductions, what is wrong with the National Heisey Museum having glass made in ORIGINAL HEISEY MOLDS by the company which OWNS them? Especially so, since the items are all signed by Imperial and are not made in Heisey colors. The items sold by the museum are the best way of financing an operation that could never continue if it depended on club membership alone. Membership dues have not been raised for two years and do not bring in enough money to finance the club, let alone the museum.

L.R.



Fig. 1

patent application, the unique features of this design include the shape of the stopper which has an apron to protect the fingers from dropping wax when the candle lamp is being transported, and the fact that the candleholder portion of the lamp can either be carried by itself without the well or, being ground for a water-tight fit, can be transported safely and securely as a unit comprising both pieces.

The most interesting feature of the candle lamp is the well, "which may be filled or partially filled with colored material of any type." Most frequently, this "colored material" would have been water or colored sand, and I can imagine the attractive effect this must have made. (Though, unfortunately, in many cases the colored water has left a sick appearance in the glass, leaving us to wish that some previous owners had not been quite so quick to follow up on this suggestion.)

The few candle lamps I have seen have all been marked in the waist just above the ground and frosted portion of the stopper (no. 7 in figure 2 of the accompanying drawing) and it is possible that some may have been cut or etched by Heisey,* since the patent application emphasizes the fact that the shape of this candleholder readily lends itself to additional ornamentation. (That at least one decorating company agreed with this is evidenced by the pair in the author's collection, which have a gold enamel decoration on the apron of the stopper and a floral cutting on the wall.)

At any rate -- with or without decoration -- the #520 candle lamp is a most unusual and delightful addition to anyone's collection of Heisey candleholders.

* Editor's note: We have found no record in our research for cuttings or etchings on this item. Anything is possible, however, as we have said before. Several have been seen with gold or silver on them. L.R.

Newark, Ohio - Land of Legend



Home of Heisey Glass 1895 - 1957

HEISEY HUNTER Happenings.....

by BOB RYAN

Well, the sun was shining brightly today and it was in the sixties; a sure harbinger of spring, right? It is a sure sign to put your galoshes and overcoats in the car when you head for Newark and the H.C.A. auction on St. Patty's Day, March 17. You all are coming? If I can make it through another two weeks I will be there with money I had stashed away for last year's auction when all those bargains went to someone else while I had to watch T.V. Be on your toes because I have been rehearsing and preparing for some good fun. (When this reaches you the auction will be history and we will know what happened).

You know when I write about the finds people tell me about I always omit those items I am requested to keep to myself, and if the locale isn't to be published I omit that too so I really don't know why this Kentucky Colonel and his wifemate got so riled and wrote me this letter. Here it is----

"The Kentucky Colonels got out their Kentucky long rifles, oiled them up, filed the sights and took off for the Cane Brakes last fall. The first game which crossed their sights was a #5 candelabrum in the green color called Emerald. It was easy pickins -- standing so straight and tall with its earrings a-dangling just about as easy was a #1 Crysanthemum vase (before being swung). Their shooting prowess really showed up, when with one shot they bagged two #100 candlesticks camouflaged with black and gold paint. The bullet ricocheted and netted two #1503 Crystolite 2-light candleholders. It took a real fine bead to bring in a #379 Urn salt and sanitary can in the same pattern which was hiding amongst ordinary critters.

After a spell at home during which they cleaned their rifles they set off for the Pennyriles. The land is flatter there but the game not too plentiful. A real good shot brought down a #1503 cigarette box in sahara. (originally called #1496 Mahabar but later changed to #1503 Crystolite). Its vivid color was an easy target for their long rifles. A set of #479 cream and sugar in moongleam was a lesser bag. A complete miss was registered on a pair of #1615 candleholders when another hunter got in their line of fire and before they could make a move he had bagged them in his hunting jacket. Like ducks on a pond was the taking of a half dozen #3389 Duquesne cocktails with tangerine bowls. Blasts from both barrels took care of them and nary a chip to show for it. Adjusting their coon skin caps over one eye they ventured into a crowd where an auction was being held. Being deadeye shooters, they shot right through the crowd and got a covey of #124 Wigwam tumblers. However, a previous hunter had nicked a couple but not seriously. It was un-

necessary to use their rifles to pick up a #197 tumbler -- it had lost its jug and wanted a place to live. The Lady Colonel ventured out by herself and went for small game. She brought home a #1401 Empress individual cream and sugar in Moongleam which she was quite proud of. Came the snow and ice, so, they put their long rifles back in the corner to wait for "greenup" time.

The Colonels read in your column about those Cincinnati Reds and the Brookville Kids and a word of warning is hereby tendered to them.....STAY ON YOUR SIDE OF THE RIVER, UNLESS YOU WANT TO GET SOME OF THOSE GREEN PIECES BLASTED TO KINGDOM COME!!!!'

Now I ask you, is that neighborly? a new collecting couple from the Keystone state sent me a list of their more memorable captures.....#417 DOUBLE RIB N' PANEL moongleam basket....these are getting tougher to find, as is most good color...#451 CROSSLINED FLUTE salt and pepper.... now those are goodies.....#7023 HALF CIRCLE cream and sugar in flamingo, #1252 TWIST two part relish in moongleam.... #1404 OLD SANDWICH cream and sugar in flamingo....nice....#5041 ATHENA candy jar with cover with a grape cutting....now that's in my league....wanta trade....#305 PUNTY AND DIAMOND POINT punch bowl and base....beatcha to it Jack....6 #1228 baked apples and plates in Moongleam....now you can have a party....4 #1252 TWIST footed almonds....are there a lot of these around? help ed.* #1425 Victorian butter and cover....I know a couple of people who have been looking for this one for a long time....these new collectors just look harder and longer, right gang?....#394 Narrow Flute w/Rim individual Domino sugar in crystal....a nice item....#353 7" vase with a light blue stain**...I cannot give the information as to rarity of the blue stained pieces as I do not know....can anyone help....finally a #1509 QUEEN ANN Triplex relish with silver overlay marked Hawkes.... nice item.

A wolverine lady wrote that she now has a #1423 SWEET ADELIN goblet in crystal....I've known about some cobalt ones, too, but that's all....also know where there is a crystal goblet being used as a planter in a kitchen window....that's sad.... This same lady also rescued a CYGNET, a PENQUIN STOPPER, a #10 muddler and one each of the crystal and flamingo duck ash trays....Moongleam beware....Thanks for the compliment on The Stem Book. Many people have been converted to the stems....good luck on the PILLOWS egg cup in the auction....that's a very rare item, indeed....

Well, The Jolly Green Giant has emerged with some winners....a passel of Nimrod etched drink ware....these are always nice....you deep plate collectors get ready....deep plate etched pieces are a real interesting and very arty....how about a

#1295 BEADED SWAG toothpick in Opal.... a #433 GREEK KEY Cruet and a ver-ry large DAISY AND LEAVES vase....beautiful glass and huge....#1206 FANCY LOOP wine and a very scarce item, a #1486 COLE-PORT goblet....that will make some stem collector happy....and last, a real beauty and a bit rare too, a #469 HARTMAN 1/2 lb. candy jar and cover with a very beautiful rose cutting with stars....beautiful.....

Those Cincinnati Reds were scared off by that nasty letter from Kentucky so they just pointed their car in the direction of Nap-town and headed for Indianapolis to plunder and plunder they did....they did....how about two very rare #325 PILLOWS egg cups with gold trim....they will look nice on Mama's stem shelves....

Remember I gave you all fair warning about the Brookville Kid being tired, I mean retired, and with all that time on his hands and all that retirement money to spend, well he erupted between snow storms and sped around finding good glass everywhere he went....just read and if you will send an SASE and radar, a CB and a helicopter for surveillance I'll tell you where he is headed....#1430 RISTOCRAT cobalt short stemmed candy jar for openers....2 #423: Sahara BUD VASES....now these are powerfully pretty, super color....stole a #1295 BEADED SWAG custard goblet....A #433 small GREEK KEY Cruet....#325 PILLOWS 5" rose bowl....this pattern is always a nice find regardless of the item....#1469 RIDGE-LEIGH oval cigarette box, mint....this critter is usually chipped or missing his lid but, then, you wouldn't want The Kid to tarnish his rep by only bringing back part of an item would you? #433 GREEK KEY individual creamer....naturally he wants the sugar.... give ya 2 - 1 odds he has it by next month.... #1503 Handled CRYSTOLITE relish....and #1473 Centerpiece with two side pieces, one with frosted decor....2 #1206 FANCY LOOP PUNCH GLASSES, 1 cupped and the other straight sided....change your Stem Books on that one....now for the piece de resistance one of the most beautiful pieces of Heisey I have ever seen, magnificent....A small rose bowl in Moongleam with the ARTIC etching*** It is a real sight to see.... a great find Kid....

Now I must race to the Post Office or I will miss the deadline for this column. Hope to see you all at the auction. God willing and remember to stay well and save some Heisey for the ole hunter....Peace....

* A good many of these have been seen in the past. Being often unmarked they can be a sleeper. Ed.

** There are a good many items found with blue stain - NOT done by Heisey.

*** If you want to see Artic etching on moongleam, visit Room 3 at the museum. The museum acquired a Cathedral vase in 1977 and the #4224 Ivy Vase in 1978. Very nice!! See page 127 in your etching book, (Ream, Bredehoft) for other items made in moongleam with this etching.

-8- **PAIRPOINT CUP PLATES**

by **CHAUNCEY R. DELANEY**
Project Committee Chairman

For some time now there has been a need for an inexpensive souvenir item to sell in the gift shop of the National Heisey Glass Museum. Many visitors to the Museum are not avid Heisey collectors but they still desire a low-priced souvenir to remember their visit.

The project committee, with approval from the Board of Directors, has commissioned the Pairpoint Glass Company of Sagamore, Massachusetts, to press cup plates for HCA to fill this growing need. Interest in cup plates, as a contemporary collectible, seems to be on the increase. Pairpoint cup plates measure three and one-quarter inches in diameter, are made of good quality lead crystal and can be made in a variety of designs and colors.

The design, color and quantity of cup plates to be sold in the Museum will vary from time to time depending on market demands. However, to stimulate interest in cup plates by both Heisey and non-Heisey collectors alike, the project committee has decided to have the first addition cup plate pressed in clear crystal and feature the National Heisey Glass Museum. This first edition cup plate will be limited in quantity to 750 and will be offered on a first come basis until quantities are exhausted. No additional quantities of the Museum design will be made in CLEAR CRYSTAL. Follow-on cup plates of the Museum will be in color. Also, if there appears to be sufficient interest, other designs will be made in clear crystal and colors at some future time. These follow-on cup plate series will be less expensive than the limited first edition.

The first edition cup plate is expected to be available in May 1979. Price of this cup plate is \$8.00 postpaid. To order, complete the order form attached to this issue of Heisey News and mail with check to: CUP PLATES, HCA., Box 27, Newark, OH 43055. There are no restrictions on the number of first edition cup plates that may be purchased nor is purchase restricted to HCA membership. So, get your order in early as quantities are limited to 750.



Clip and mail

PAIRPOINT CUP PLATE ORDER FORM

The first edition cup plate is being made for HCA by the Pairpoint Glass Company in CLEAR CRYSTAL and will be limited in quantity to 750. When these 750 cup plates are sold, no additional ones featuring the National Heisey Glass Museum will be made in CLEAR CRYSTAL.

There are no restrictions on the number of cup plates that may be purchased; HCA membership not necessary.

Delivery is expected in May 1979. Your cancelled check is your receipt. No discounts on this item.

Number of Cup Plates at \$8.00 ea (pp) _____

Name _____

Address _____

City _____ State _____ Zip _____

- Please Mail
- I will pick up at Museum

Make check payable to HCA, Inc.
and mail to: **CUP PLATES**
Heisey Collectors of America, Inc.
P.O. Box 27
Newark, Ohio, 43055

CHARGE MY

BankAmericard/Visa



Mastercharge

Credit Card No.

--	--	--	--	--	--	--	--	--	--	--	--	--	--	--	--	--	--	--	--	--

Expiration date required

Mo. _____ Yr. _____

Expiration date _____

In MEMORIAM

ROBBINS HUNTER 1905-1979

Licking County, Granville and Heisey Collectors of America all lost a good friend and benefactor with the death of Robbins Hunter on March 5. From the time he was a teenager until the day of his death his main interest was antiques and historic sites. He operated an antique shop in part of his home "Avery House" in Granville.

Hunter was instrumental in encouraging people to save and restore old homes rather than to tear them down, and it was he who brought the King house to the attention of our museum

committee back in 1973. He donated \$2000 to the museum fund and gave back two beautiful brass chandeliers and the red glass around the front door which he had already purchased from Miss King.

Any of you who have attended Heisey auctions have certainly noticed his home not far east of the Opera House. Buying the home was the fulfillment of a dream when he bought it back in the thirties. It was built by Benjamin Moore who was one of the architects of the Ohio State Capital building in Columbus. The house is of great historical significance and it is hoped that it will play a part in Granville's future. A feature of the property is

the large street size clock in the front yard which had come from a store in Columbus. He had also had constructed a domed replica of a summer house he had once seen in a book, in his back yard. It is said to have been built from carvings, panels, stone and things he had saved and it creates a good deal of interest.

Hunter once said that he would like to be remembered as a man who loved Licking county and we are sure that he will be.

We offer sympathy to Elizabeth King who was a lifelong friend of Robbins Hunter. He was very kind to her in many ways. Mr. Hunter left no close relatives.

CLUB NEWS



Bay State Heisey Collectors Club

by MAURICE WALTER

Twenty nine members and one guest met at the Hancock United Church of Christ in Lexington, Mass. on Feb. 13, 1979 for the Bay State Heisey Collectors Club annual auction. Originally scheduled for the month of November, the auction is now held in February as the previous date would be too close the club sponsored all glass show. Each member attending this meeting donates one or more pieces from his/her Heisey collection. Proceeds of the auction go to the club treasury. This auction was the most successful in club history.

The monthly Show and Tell session was deleted in order to concentrate on the auction. After a short business session, the club adjourned for refreshments served by the Walters and the Nigrellis, Esther Young and Dottie Bancks.

LAND OF HEISEY SOCIETY

by VERA BAGENT, Secy.

The Land of Heisey Society (Newark area) met on March 7 at the home of Beth Lanning. Discussion of a display for the June display brought out ideas and more ideas.

The program for the evening was a history of the many Heisey auctions held at the Opera House in Granville over the years. Beth Lanning displayed her early years auction list books and told of the rise of the Heisey animals in dollars and cents at the auctions over the years.

Bernard Kreim, president of our club, asked all members to be on the lookout for new members. We all send our best wishes to Glen and Donna Cunningham and wish Glen a speedy recovery from his recent operation.

Ed. note—All members everywhere join in wishing Glen a quick recovery. Glen is a young detective here in Newark who has had more than his share of health problems.

NEWARK DIAMOND "H" CLUB

by PHYLLIS BRYAN, Secy

Mr. and Mrs. Harold Crim of Granville hosted the January meeting in their home. Seven members were present. Club officers will remain the same for the coming year. Deep plate etchings were studied.

The February meeting was not held due to the snow and ice.

After refreshments the auction was turned over to your correspondent, who acted as auctioneer, assisted by Ann Montague and Donald Macomber. Some of the pieces that were auctioned off were a #339 egg cup, a #300 1/2 2 1/2 oz. bar glass, a #3307 Aloof goblet with unknown cutting, a Saturn 10 oz. goblet, a #3416 Barbara Fritchie goblet, a pair of #1506 Whirlpool 3-lite candlesticks, a #411 Rib and Panel blue irridized footed bowl, a 10" #449 thumbprint and panel console bowl, a pair of #113 Mars moonbeam candlesticks, a pair of 2 8 oz. #351 ale glasses, a #917 jug with matching tumbler, a red irridized Twist champagne, a Fandango butter pat, a Heisey Company blank invoice, and a #1567 Plantation cruet.

WESTERN RESERVE HEISEY CLUB

by HELEN MARIMON, Publicity Chairman

Eleven members met at the home of Fred Hopkins on February 15. President Lynn Sellers conducted the business meeting after which she presented a program on the Heisey color "Dawn". This study was a continuing effort to educate our members on the various colors and the patterns in which they were produced. Delicious refreshments were served on the host's Knife and Fork dishes of pink and green depression glass. The table centerpiece featured the Heisey swan and cygnet on a "mirror" pond. Members always anxiously await the "show and tell" session of our meeting.

NEW CLUB?

How about a study club in the area of St. Paul, Minnesota. If you are interested contact:

Linda Hemberger
764 Fairmount
St. Paul, MN 55105

New Members for Club?

UTICA, OHIO

Anyone wishing to beong to a club in the Utica, Ohio area should contact Frances Law at 892-2142. This could include all the surrounding area such as St. Louisville, and as far north as Mt. Ver-

COLUMBIA HEISEY COLLECTORS

HEISEY COLORS ARE SUBJECT OF SECOND MEETING

by DENNIS HEADRICK

The Columbia Heisey Collectors gathered for their second meeting at the home of Tom and Sue Fish in Vancouver, Washington. Several who were unable to attend lat months organizational meeting were in attendance. At the meeting's end, the membership totaled thirty-seven with members in attendance from Washington, Oregon, and California.

The study subject of the evening was Heisey colors. The members were surprised with a "test" -- being given a sheet of paper and asked to list all of the production and experimental colors and their approximate dates. To avoid embarrassment, each was allowed to grade their own paper and scores were not announced. It was a good exercrise for the mind and you should try it at your next meeting.

Members provided the colored pieces for display. Almost all of the production colors and a few of the experimental colors were represented. Some of the items that made you stop and take another look were: Emerald - #7 Chrysanthemum Vase (Vogel 1,108); Moonbeam - #350 Pinwheel and Fan bowl (There was discussion about whether this item was Moonbeam or Emerald.*); Sahara - #300 Three-lite and matching One-lite Candelabrum, #1191 Pickle and Olive (V3,25); Hawthorne-#1193 Inside Scallop Conserve (Vogel 3, 25).

One of the joys of the evening was watching Marigold and Gold being placed under the black light and seeing the Gold fluoresce a bright red-orange.

Regular meetings were set for the third Saturday evening of the month. Call (503)538-9352 for meeting places and dates.

* Even though we'd LIKE to call it Emerald, the catalog plainly lists it as moonbeam. It also comes in vaseline, flamingo and two are known in marigold. All of these items except the #7 Chrysanthemum Vase are shown in catalog reprint 109.

L.R.

#433 and #433 1/2

by LOUISE REAM

Imagine my surprise when reviewing the patterns which have been written up in Heisey News in the past seven years to find that #433 was not among them. Since this has always been one of the more popular Heisey patterns I am going to remedy that at once.

Mr. Vogel has said that "Grecian Border" was the factory name for #433 and I have no quarrel with that. However, in all catalogs it is listed as only #433 and 433 1/2. Most dealers and collectors refer to it as Greek Key but either name will do. Many other companies had used a Greek Key motif and probably called it that so perhaps Heisey preferred to call theirs by another name. Whichever you call it is certainly the most popular of Heisey's pressed patterns of the colonial period.

Approximately 170 items were made, all in heavy, beautiful crystal, very well finished with full ground bottoms as we have come to expect of glass of the period. Items are plainly marked for the most part with the possible exception of cruets and water bottles. Men in particular are very fond of the massive style of #433 and the Greek Key design inspired by Grecian architecture. Nearly everything which could be made in a line of glassware WAS and a few of the early items were patented.

The beginning date was Circa 1911. By the time of catalog 109 (1928) only four types of sherbets, 2 and 3 quart crushed fruit jars, footed banana split dish, hotel ice tub and cover, punch bowl and base, punch cups and 21" buffet plate remained in the line. By the time of the 212-17 catalog in 1937 only the last three items were offered.

Note that the "keys", of the design go to the right and are indented, not raised from the surface. Another company made sherbets, at least, which are almost identical in shape but the key go the opposite way. Possibly there are other pieces as well. The U.S. Glass Co. made a greek key design but the band is quite narrow and does not really resemble Heisey. The glass is very good, though, and it could fool the new collector. Fortunately many pieces of this are marked USG. Heisey did not make the kerosene lamp which you frequently see with the Greek Key border. (In fact they did not make any one piece lamps). We do not know whether these might be US Glass.

There should be no need to worry about re-issues since the moulds were inadvertently given (or sold) for scrap iron during World War II, along with many of

the old moulds. This is probably one reason the demand is high for the pattern.

As an interesting sidelight, there is no discernible difference between the small bar glass and the toothpick holder (see illustration pages), which means THERE JUST AREN'T ANY BAR GLASSES FOR SALE — ONLY TOOTH-PICKS. A bar glass collector will probably pay dearly to add one of these of his collection. Also many people do not realize that there are four sizes of candy jars, 1/2 lb, 1 lb, 2 lb, and 4 lb. I imagine that they are usually thought to be lavender or crushed fruit jars. These should be highly prized by the candy jar collector.

Collecting a complete set of #433 presents quite a challenge. There are at least twenty different pieces of stemware alone, not counting the footed banana split dish. Four sizes of squat jugs, four sizes of tankards and four sizes of #433 1/2 squat jugs were made. Two styles of cruets were made in three sizes each. An interesting table set has a two-handled butter dish which doubles as a covered jelly. A large Hotel ice tub and cover, small, medium and large ice tubs and a very small individual one with cover are listed. The latter is a goodie for a miniature collector along with the individual oval cream and sugar, the butter pat and the individual almond. The 10" cheese and cracker plate is quite handsome and just perfect for that Holiday cheese ball.

Other interesting pieces include the three puff boxes, hair receiver, pickle and crushed fruit jars and the covered straw

jar. Four different creams and sugars were offered. High or low jellies came with or without lids. Compotes in different shapes came in several sizes, as did plates and nappies. Salts and peppers came with a variety of tops and at least 17 different tumblers and sodas are pictured in catalogs.

You will probably not find #433 at bargain prices though some pieces are worth more than others as in any pattern. The miscellaneous sherbets probably were made primarily for the soda fountain trade and seem quite plentiful while the goblet seems difficult to find, and commands a high price.

My own favorite pieces are the 1 oz. cordial, 2 oz. sherry, 2 oz. wine, the "toothpick", individual items, jars and puff boxes, and the cheese and cracker plate. Others would no doubt be more desirable for people collecting sets to use. The plates in many lines are the least valuable but I am sure a 10" plate in #433 is cherished. There is no cup and saucer unless one chooses to use the punch cup with a small underplate. Glass teacups were not popular in the colonial period, evidently.

Greek Key or Grecian Border, as you prefer, was certainly one of Heisey's major triumphs in the glass field of its day. Wouldn't a display of it fit well with this year's display theme of "Around the Heisey World in just four days"? Who has a table setting for four which could be used?

The Sheraton Inn is Full

As of our copy date the following motels had vacancies for June 14-17. We suggest that you call at once if you need reservations as some only had a few rooms left. If you can't get a local motel you could try most major chains at the east side of Columbus, also Worthington Reynoldsburg or Zanesville, all of which

are only 35 to 50 minutes away from Newark.

NEWARK AREA MOTELS and HOTELS

HOLIDAY INN (614)522-1165 735 Hebron Rd., Rt. #79, Heath, OH 43055 Gulf, Am. Ex., MC., Visa, Diner's Club)	S—\$27.00 D—\$31.50
HOWARD JOHNSON (614)522-3191 755 Hebron Rd., Rt. #79, Heath, Oh 43055 (Visa, MC, Am. Ex., Diner's, Carte Blanche)	S—\$25.00 D—\$28.00
LEGEND INN (614)344-2136 1225 W. Church, Newark, OH 43055 (Visa, MC, Am. Ex., Diner's club)	S—\$16.00 D—\$20.00
STAR LITE MOTEL (614)522-3208 Route #79, SO., Heath, OH 43055 (Visa, MC., AM. EX., Diner's Club)	S—\$12.00-\$17.00 D—\$17.00-\$20.00
DUKE'S INN (614)929-1015 I-70 & Route #79, 8 mi. south of Newark (Visa, MC.)	S—\$13.95 D—\$17.95

AREA CAMP SITES

WALNUT ACRES
3207 Brownsville, S.E. Newark, Ohio
(614)763-2383
CAMP & MOTEL FAIRVIEW
U.S. Rt. #4, Newark, Ohio 43055
(614)323-3983

HONDA HILLS
Rt. #2, Thornville, Ohio 43076

TOY'S CAMP SITES
2340 Dry Creek, N.E., Granville, OH 43023
(614)366-4385

BUCKEYE LAKE KOA
Box 972, Buckeye Lake, Ohio 43008
(614)928-0706



WATER BOTTLE



SMALL CERAMIC JAR WITH LID AND GREEK KEY PATTERN



SMALL CERAMIC JAR WITH LID AND GREEK KEY PATTERN



LARGE CERAMIC JAR WITH LID AND GREEK KEY PATTERN



SMALL CERAMIC JAR WITH LID AND GREEK KEY PATTERN



SMALL CERAMIC JAR WITH LID AND GREEK KEY PATTERN



CERAMIC JAR WITH LID AND GREEK KEY PATTERN



CERAMIC JAR WITH LID AND GREEK KEY PATTERN



CERAMIC JAR WITH LID AND GREEK KEY PATTERN



LARGE CERAMIC JAR WITH LID AND GREEK KEY PATTERN



SMALL CERAMIC JAR WITH LID AND GREEK KEY PATTERN

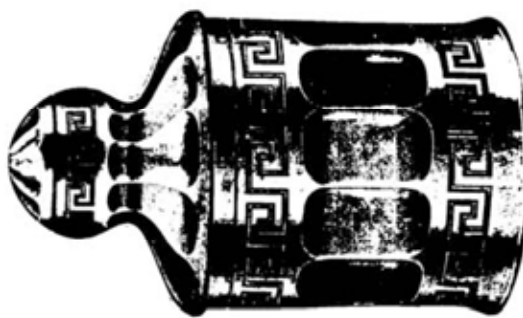


SMALL CERAMIC JAR WITH LID AND GREEK KEY PATTERN



CERAMIC JAR WITH LID AND GREEK KEY PATTERN

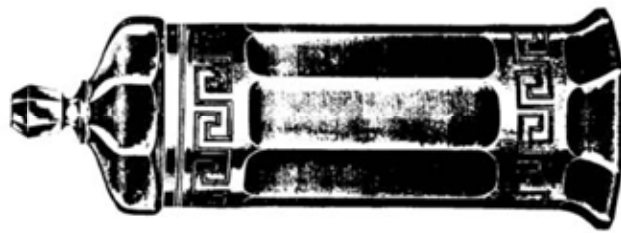
No. 433 PATTERN



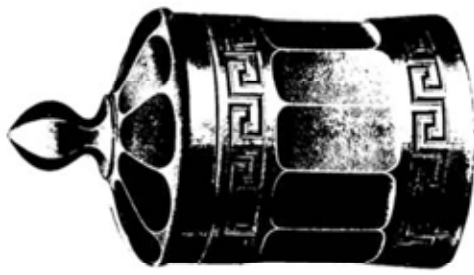
LARGE CERAMIC JAR WITH LID AND GREEK KEY PATTERN



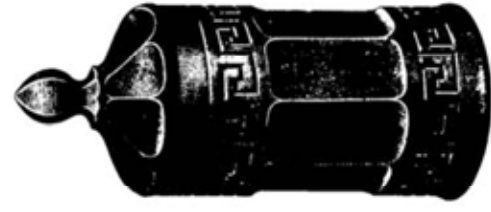
LARGE CERAMIC JAR WITH LID AND GREEK KEY PATTERN



LARGE CERAMIC JAR WITH LID AND GREEK KEY PATTERN



LARGE CERAMIC JAR WITH LID AND GREEK KEY PATTERN



LARGE CERAMIC JAR WITH LID AND GREEK KEY PATTERN

433

No. 433 PATTERN



Also 8, 9, 10"

7 1/2" Low Footed Bowl



Also 9 and 10"

8 1/2" Low Footed Bowl, Nickel



8 1/2" Low Footed Bowl and Cover



No. 1-Two Handles Low Footed Bowl and Cover



6 1/2" Handled Bowl and Cover



6 1/2" Low Footed Bowl and Cover



4 1/2" Small Nickel and Tin Dish No. 42110



6 1/2" Handled Bowl and Cover



8 1/2" Bowl and Cover



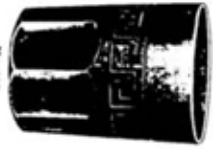
Cover



8 1/2" Bowl and Cover



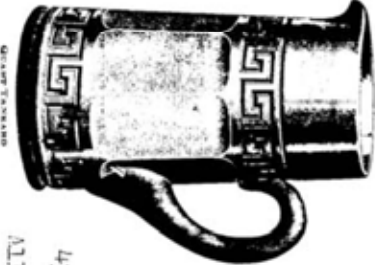
8 1/2" Bowl and Cover



No. 433 8 1/2" Bowl and Cover



8 1/2" Low Footed Bowl and Cover



Quart Tankard



4 1/2" Small Nickel and Tin Dish No. 42110

4332

All also made 1 pt., 3 pt., 2 gal.



Quart and Pint

ANTIQUES 'N' COLLECTABLES
"HEISEY OUR SPECIALTY"

LYNNE



ART'S

GLASS-HOUSE
INC.

ROUTE 202 — P. O. BOX 242
LAHASKA, PA. 18931
215-794-7800

*Dear Heisey Collector and Dealer,
We're Heading Your Way!! Heisey Animals,
Lovely Old Patterns, and a Rainbow of Colors, will
be coming along with us.*

We'll be at the following shows.

HARRISBURG, PA. FARM SHOW BUILDING, APRIL 12 - 14

WARRINGTON, PA., WARRINGTON COUNTRY CLUB, APRIL 24 - 26

*Our shop in Lahaska is usually open while we are
on the road, suggest a call 215-794-7800.*

*See you soon,
Lynne and Art*



— ESTABLISHED 1971 —
\$6.00 — 12 Issues

64 pages packed each month with articles by respected columnists, a variety of ads on both old and new glass, shows, new books on glass, trademarks, research information and more!

Printed magazine on glossy paper with large, clear photos. (recent sample \$1)

Enclose payment and send to:
GLASS REVIEW
P.O. Box 2315-H, Costa Mesa, CA 92626

—allow 30 days for first issue—

**HEISEY'S
GLASSWARE of DISTINCTION**
by Mary Louise Burns



COMPLETELY REVISED!

Now includes additional patterns, new illustrations, many new listings and is now perfect bound for sturdiness!

This comprehensive reference book is **not** a catalog reprint but a collection of all major patterns of tableware, stemware, cuttings, etchings, animals and Verlys produced through Heisey's 60 years of glassmaking.

Details of each pattern clearly shown by photo or illustrations for easy identification. Two indexes for easy reference: one by pattern-name and one by pattern number.

All this for only \$ 11.95 pp.

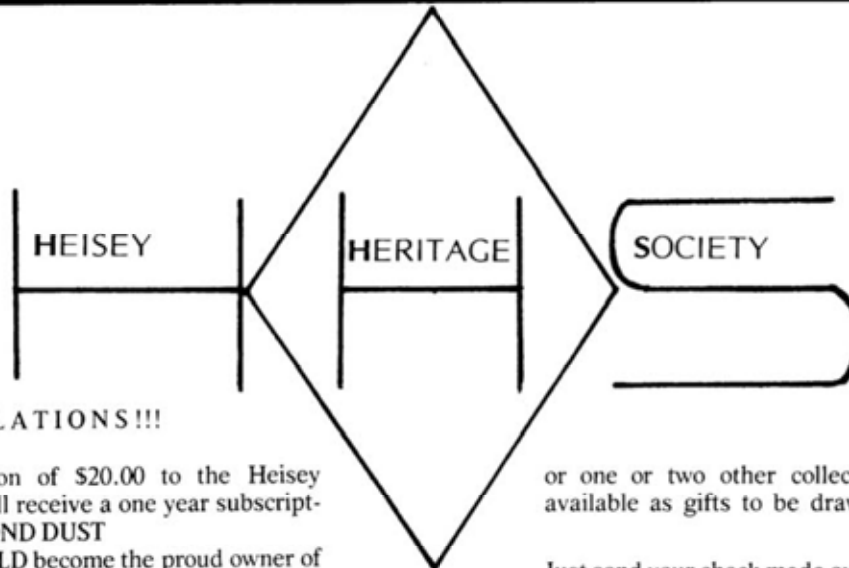
.....

ALSO NEW: Completely revised price guide supplement to the above, listing each item and UPDATED price trends. Patterns are listed alphabetically for easy reference. Only \$5.95 pp!

.....

"ORDER NOW" Send check or money order to:
MARY LOUISE BURNS
P.O. Box 1931
Grants Pass, Or 97526

6 Books or more 40%



CONGRATULATIONS!!!

For your donation of \$20.00 to the Heisey Museum YOU will receive a one year subscription to the DIAMOND DUST

...and...you COULD become the proud owner of a Portsmouth TANGERINE Goblet, A #1401 8" ALEXANDRITE Plate, A rare #1225 BUXTON INN Sherbet (only four known)

or one or two other collectables of the five available as gifts to be drawn for the donors.

Just send your check made out to: THE HEISEY HERITAGE SOCIETY to: F. L. Husted, P.O. Box 102, Phoenixville, PA 19460

We will send you FIFTY TICKETS for the drawing at the Heisey Collectors Sunday morning meeting in June, 1979. You will be notified by phone or mail if you are a lucky winner and yet unlucky enough to be absent!!! If you do not want to donate that much, tickets are 50¢ each or FIVE for \$2.00. Send the amount you wish to: F. Husted, or....you can pick up YOUR Lucky Number at the meeting....we ask for your support. All monies will be turned over to the Museum Fund!!!!

(This offer is invalid in states where raffles are prohibited)

JACK and PAM SCHRICKER
286 Shads Ford Blvd.
Fayetteville, NC 28304
Phone: (919)868-2977

PATTERN #1401 (EMPRESS) ALEXANDRITE
All Marked and Mint Condition

- SHERBET(7)...ea... 15.00
- G O B L E T(7)...ea... 30.00
- Round C U P and S A U C E R(6)...set... 25.00
- L U N C H P L A T E, Square 8 1/2"(14)...ea... 18.00
- S A L A D P L A T E, Square, 7"(8)...ea... 12.00
- C U P, Round(8)...ea... 10.00
- S A U C E R, Square(8)...ea... 10.00

SHIPPING and INSURANCE EXTRA

LETTERS, we get letters....

We missed the convention last year and have since vowed never to miss another!!! The year didn't seem complete!

Caroll & Elaine Woolfolk, IL

The news is one of the most rewarding references - I am constantly amazed at the information that you uncover. Just wish I lived closer to really participate - Good Luck for continued future success.

Bernice Berman, NY

Please send me back issues for 1972 to 1977 inclusive. I am enclosing my check for \$48.00 for same.

Enjoy the "News" so much. My interest in Heisey has been so sharpened since I joined, that I must have all the back issues.

Helen D. Simons, NY

Classified Ads

FOR SALE: Puritan Vinger & Oil \$18, Ridgeleigh Vinger & Oil H \$25, Vase #4330 Moongleam spiral optic \$35, Kalonyal footed Jelly (stem shows wear)H \$25, #373 Cordial H \$20; WANTED: Frosted goose decanter, top to opal bead swag sugar and Plantation pieces. Will trade. JOETTE SIGLOCK, Rt.#8, BOX 276, EDWARDSVILLE, IL 62025,(618) 656-3600. UPS extra.

WANTED: Pitchers, Punch cups, large #339 nappy, Greek Key punch bowl, all signed, mint BENWAY, Rt. #2-BOX 315, FREDRICKSBURG, TX 78624

NOTICE

All rooms at the Sheraton Inn have been reserved. The area motel list is included this month for your convenience.

LAND of LEGEND FESTIVAL'S
GIANT FLEA MARKET

TWO WEEKENDS

JUNE 9-10 & 16-17 8 A.M. to DARK

ON THE PUBLIC SQUARE
DOWNTOWN — NEWARK, OHIO

Limited Dealer Space Available
For Additional Information Contact:

robert miracle
145 FAIRVIEW AVE.
GRANVILLE, OHIO 43023

Phone: (614) 587-1532

Many Good HEISEY Dealers

"HEISEY STEMWARE"

by

Stephen Bradley, Constance Ryan
Robert Ryan

An outstanding book on Heisey Glassware devoted to Heisey's stemware. Well received by collectors and dealers. A limited edition, hardbound with beautiful full color cover, 240 pages, 337 photos, beautifully done sharp and clear, easy to use new format....rarities, signature, items, colors. Everything you wanted to know about Heisey's major product. Join the many Heisey collectors who write that the book has opened a new collecting area where you can still find some beautiful Heisey glass at great prices.

Mail your orders to:

HEISEY STEMWARE
88 Davis Rd.
Centerville, Oh 45459

HEISEY STEMWARE
or 9343 Alkire Rd.
Grove City, Oh 43123

BOOK PRICE: Plus \$1 for shipping & handling
Ohio Residents add \$.90 tax

\$ 2 0 . 0 0

This book is also available at
HCA Museum or Moundbuilder
Antiques, Newark, OH, Last
Chance Antiques, 60 N.Federal
Hywy., Dania, Florida 33004.

HEISEY GLASS

APRIL — MAY — JUNE — JULY
10 — 5 P.M.

Mrs. HAROLD E. WILLEY
Route #3, Box 180A
Frazeyburg, Ohio 43822

Phone: (614) 828-2557

HEISEY
SALE

By Appointment or by Chance

HEISEY
SALE

Over 2,000 Pieces

Pattern:

ATHENA	PINWHEEL and FAN
BEEHIVE	PRISON STRIPE
BEADED SWAG	PLEAT and PANEL
CREOLE	PEERLESS
CROSS LINED FLUTE	PINEAPPLE and FAN
CARCASSONE	PROVINCIAL
CRYSTOLITE	PLANTATION
EMPRESS	PLYMOUTH
FERN	QUEEN ANN
FAIRACRE	RIB and PANEL
FANCY LOOP	RECESSED PANEL
FLAT PANEL	REVERE
FANDANGO	RIDGELEIGH
GRECIAN BORDER	ROCOCO
IPSWICH	STANHOPE
KIMBERLY	SATURN
LARIAT	SUNBURST
NARROW FLUTE	STAR and ZIPPER
NEW ERA	TWIST
OLD SANDWICH	TULIP VASE
OLD DOMINION	PANELED CANE
OXFORD	VICTORIAN
PUNTY AND DIAMOND POINT	WARWICK
PILLOWS	WABASH
PRINCE OF WALES PLUMES	WAVERLY
PURITAN	YEOMAN

Colors:

SAHARA	MARIGOLD
HAWTHORNE	MOONGLEAM
COBALT	EMERALD GREEN
CRYSTAL	FLAMINGO

Etchings:

BELLE-le-ROSE	OLYMPIAD
CHINTZ	PIED PIPER
OLD COLONY	RENAISSANCE
DIANA	SHAWL DANCER
FISHERMAN	SAILBOAT
FRONTENAC	TALLY HO
HEISEY ROSE	CIRCUS
MINUET	GOOD MORNING

and much more



ALL HEISEY AUCTION



At the OPERA HOUSE
GRANVILLE, Ohio

SATURDAY, MAY 19, 1979
Doors Open at 9:00 A.M.
Sale Starts at 11:00 A.M.

- | | | | |
|-----------|--|-----------|--|
| 1. #1503 | Crystolite Cream & Sugar H | 48. #1252 | Twist MARIGOLD Hdd. Mint H |
| 2. #1252 | Twist MARIGOLD Cream & Sugar H | 49. #1229 | Octagon HAWTHORNE 6" Mint (2) |
| 3. #1401 | Empress Ftd. Cream & Sugar H | 50. #1229 | Octagon MOONGLEAM 6" Bon Bon Cut |
| 4. # 354 | Colonial MOONGLEAM Cream & Sugar H | 51. #1229 | Octagon MARIGOLD 6" Bon Bon |
| 5. #1401 | Empress Individual Cream & Sugar H | 52. # 300 | Peerless 6" Hdd. Jelly H |
| 6. # 354 | Colonial FLAMINGO Cream & Sugar H | 53. #1469 | Ridgeleigh 3-Hdd. Jelly H |
| 7. #1632 | Lodestar DAWN Cream & Sugar H | 54. #1253 | Twist FLAMINGO 3-Hdd. Mint H |
| 8. #1183 | Revere Cream & Sugar Windsor Cut H | 55. #1253 | Twist MOONGLEAM 3-Hdd. Mint H |
| 9. # 352 | Flat Panel Ind. Cream & Sugar Silver Dec. H | 56. #1229 | Octagon MOONGLEAM 5 1/2" Ftd. Mayo |
| 10. # 341 | Puritan Oval Hotel Cream & Sugar H | 57. #1567 | Plantation 6 1/2" 2-hdd. Jelly, Silver Dec. H |
| 11. # 353 | Colonial Hotel Sugar (no lid) H | 58. #1229 | Octagon MOONGLEAM 5 1/2" Ftd. Mayo DO |
| 12. #1295 | Beaded Swag Opal Cov. Butter, Cov. Sugar,
Spoon, Rose Dec (Hairline in Spoon) | 59. # 393 | Narrow Flute MOONGLEAM 5 1/2" Low Ftd. Jelly |
| 13. #1255 | Pineapple & Fan EMERALD Cov. Butter,
Gold Dec. x | 60. #1632 | Lodestar DAWN 5" Mayo Bowl H |
| 14. #1238 | 14" MOONGLEAM Beehive Plate x | 61. #1485 | Saturn ZIRCON Mayo H |
| 15. #1495 | Fern 14" Hdd. Torte Plate | 62. #1193 | FLAMINGO 7" Conserve H |
| 16. #1476 | 15" Torque Plate #859 Cohasset Cut | 63. # 475 | Narrow Flute w/rim 4 1/2" Chow Chow
Enamel Decorated H |
| 17. #1519 | Waverly 14" Ftd. Cake Plate | 64. #1184 | Revere MOONGLEAM 8" Crescent Tray H |
| 18. #1229 | Octagon HAWTHORNE 10" Hdd Sand. Plate | 65. #1506 | Provincial LIMELIGHT 4 1/2" Nappy H |
| 19. #1229 | Octagon MOONGLEAM 12" Muffin Plate | 66. # 300 | Peerless 4" Nappy, Gold Dec H x |
| 20. #1252 | Twist Newark Sesquicentennial Platter | 67. #1255 | Pineapple & Fan 4" Nappy Gold Dec. |
| 21. #1252 | Twist Newark Sesquicentennial Platter | 68. #1295 | Beaded Swag 4" Nappy Gold Dec. H |
| 22. #1401 | Empress 10" Comb Relish, 3 Comp. H | 69. # 300 | Peerless Spoon Tray H |
| 23. #1519 | Waverly 3 Pt. Oblong Relish Orchid Etch H | 70. #1235 | Beaded Panel & Sunburst Spoon Tray Gold Dec. |
| 24. # 407 | Coarse Rib 9" Celery MARIGOLD STAIN,
Metal Frame H | 71. #1506 | Provincial 5" Nappy H |
| 25. # 407 | Coarse Rib 12" Celery MARIGOLD STAIN,
Metal Frame H | 72. # 16 | 11" Candlesticks, Pair |
| 26. #1540 | Lariat (* 4-part Round Relish | 73. #1503 | Crystolite 1-Lite Candleblocks Sq. Pr. |
| 27. #1401 | Empress FLAMINGO 13" Celery Tray H | 74. # 300 | 12" 1-lite Candlabra, Pr. |
| 28. #1184 | Yeoman MARIFOLD 11" Celery Tray | 75. # 300 | 10" 1-Lite Candelabra, Pr. |
| 29. #1184 | Yeoman MOONGLEAM 10 1/2" Celery Tray | 76. # 4 | 9" Candlesticks, Pr. |
| 30. # 353 | Colonial 10" Divided Spice Tray, Cut X
MARIGOLD STAIN | 77. #1540 | Lariat 2-Lite Candlesticks Pr. |
| 31. #1170 | Pleat & Panel MOONGLEAM 10" Spice Tray H | 78. #1469 | Ridgeleigh 2" Candlesticks, Pr. |
| 32. #1170 | Pleat & Panel 10" Spice Tray H | 79. #1503 | Crystolite 1-Lite Candleblocks (4 ea.) |
| 33. #1447 | Rococo ZIRCON Comb. Mayo & Relish H | 80. #1428 | Warwick 1-Lite Candlesticks (4 ea.) H |
| 34. # 463 | 9" Basket Cut H | 81. #1428 | Warwick SAHARA 1-Lite Candlestick H |
| 35. # 417 | Double Rib & Panel FLAMINGO 6" Basket | 82. #1428 | Warwick COBALT 1-Lite Candlesticks Pr. |
| 36. # 417 | Double Rib & Panel MOONGLEAM 6" Basket x H | 83. #1252 | Twist MARIGOLD 1-Lite Candlestick H |
| 37. # 480 | 8" Fruit Basket Cut H | 84. # 112 | 3" FLAMINGO Candlesticks Pr. |
| 38. #1401 | Empress Ftd. Ice Bucket Tally Ho Etch (no ears) | 85. # 134 | Trident 2-Lite Candlesticks Pr. Orchid Etch |
| 39. #1401 | Empress Ftd. Ice Bucket, Artic Etch, H | 86. # 16 | 8" Candlestick H |
| 40. #1252 | Twist MOONGLEAM Ice Bucket H | 87. #1533 | Wampum Crimped Floral Bowl & Pair
1-Lite Candlesticks |
| 41. # 433 | Greek Key Small Ice Tub | 88. #1401 | Empress 11" Floral Bowl & Pair #134 2-Lite
Candlesticks, Rosalie Etch |
| 42. # 433 | Greek Key Large Ice Tub | 89. # 134 | SAHARA 14" Oval Floral Bowl & Pair 2-Lite
Candlesticks, Unknown Cut |
| 43. #1404 | Old Sandwich COBALT 12 oz. Mug H | 90. #4206 | 12" Optic Tooth FLAMINGO Water Lamp DO
Original Sticker |
| 44. #1404 | Old Sandwich 8 oz. Mugs (6 ea) H | 91. #1252 | Boudour Lamps made from Nappys |
| 45. #4163 | Beer Mug Fox Chase Etch H | 92. # 352 | Flat Panel 1 Qt. Crushed Fruit Jar
Decorated 3 lb. Candy Jar |
| 46. # 466 | Panel & Double Pleat 4" Nappy (2) H | 93. | Recessed Panel 1 lb. Candy Jar, Cut H |
| 47. # 466 | Panel & Double Pleat 8" Nappy | 94. # 465 | Narrow Flute w/rim 6 1/2" Ftd. Cov. Candy H |
| | | 95. # 473 | |

- _____ 96. #1519 Waverly Cov. Chocolate Dish, Cut H
- _____ 97. #1506 Provincial LIMELIGHT Cov. Candy H
- _____ 98. #1469 Ridgeleigh ½ Gal. Jug
- _____ 99. # 351 Priscilla ½ Gal. Jug H
- _____ 100. # 393 Narrow Flute ½ Gal. Jug H
- _____ 101. # 341 Williamsburg ½ Gal. Jug H x
- _____ 102. #4166 40 oz. Jug Monticello Etch
- _____ 103. # 339 Continental Water Bottle
- _____ 104. # 300 Peerless Pint Decanter Wrong Stopper
- _____ 105. #3397 Gascony COBALT 1 Pt. Decanter H
- _____ 106. # 300 Peerless Bitters Bottle x
- _____ 107. #4036 Oval Sherry Bottle, Cut
- _____ 108. # 351 Priscilla Pint Decanter, Cut Stopper
- _____ 109. #4225 Cobel 2 Qt. Cocktail Shaker
- _____ 110. #4225 Cobel 2 Qt. Cocktail Shaker Rooster Stopper
- _____ 111. #4036 1 Qt. Cocktail Shaker, Rooster Stopper
- _____ 112. #4225 Cobel 1 Pt. Cocktail Shaker, Rooster stp, Etch Us
- _____ 113. #4036 1 Qt. Decanter Barcelona Cut, Goose Stopper
- _____ 114. #1489 Puritan Large Cig. Box Frosted Horsehead
- _____ 115. #1509 Queen Ann Lemon Dish H
- _____ 116. # 109 FLAMINGO Dolphin Compote
- _____ 117. #5066 Horsehead Sherry
- _____ 118. #5048 Rooster Head Stem Cocktail (2 ea.)
- _____ 119. #5058 Goose Stem Sherry Barcelona Cut
- _____ 120. #5038 Rooster Stem Cocktail Star Cut
- _____ 121. Rooster Head Stopper
- _____ 122. Large Horse Head Stopper
- _____ 123. #1503 Crystolite Individual Swan Nut (2 ea.)
- _____ 124. #1210 MOONGLEAM 6" Frog Cheese Plate
- _____ 125. #1519 Waverly 11" Ftd. Seahorse Bowl Orchid
- _____ 126. Mike Owens Bust, Frosted
- _____ 127. # 110 FLAMINGO Dolphin Candlesticks, Pr.
- _____ 128. Goose Wings Up
- _____ 129. Goose Wings Half
- _____ 130. Goose Wings Down
- _____ 131. Ringneck Pheasant
- _____ 132. Fish Bookend H
- _____ 133. Fish Bookend H
- _____ 134. Plug Horse
- _____ 135. Plug Horse
- _____ 136. Piglet Standing
- _____ 137. Piglet Standing
- _____ 138. Standing Pony
- _____ 139. Standing Pony
- _____ 140. Sealyham Terrier
- _____ 141. Sealyham Terrier
- _____ 142. Small Elephant
- _____ 143. Rooster
- _____ 144. Rooster Vase
- _____ 145. Sparrow
- _____ 146. Fighting Rooster
- _____ 147. Fighting Rooster
- _____ 148. Horsehead Bookend Frosted
- _____ 149. #3966 Tall Stemmed Grapefruit Gray Cut (6 ea.) H
- _____ 150. #3304 Shrimp Cocktail Icer 5 Holders 6 Liners
- _____ 151. #3350 Wabash 6 oz. Sherbet Cut (5 ea.) H
- _____ 151A #1252 Twist FLAMINGO Sherbet (6 ea.) H
- _____ 152. #3350 Wabash 10 oz. Goblet Cut (5 ea.) H
- _____ 153. #1485 Saturn ZIRCON 10 oz. Goblets (10) H
- _____ 154. #5082 Mid Century ZIRCON Ftd. Soda H
- _____ 155. #3366 Trojan FLAMINGO 8 oz. Goblets Trojan Etch H
- _____ 156. #3333 Old Glory 4½ oz. Parfait (6 ea.) H
Renaissance Etch
- _____ 157. #3311 Veldedere 1½ oz. Sherry (3 ea.)
- _____ 158. #3351 Hollow Stem Champagne W O
- _____ 159. #3351 Hollow Stem Champagne Tatting Needle Etch
- _____ 160. #4085 Kohinoor Cocktail Churchill Cut (4 ea.)
- _____ 161. Experimental Sample Cocktail, Twisted Stem
- _____ 162. Experimental Sample Cocktail, Twisted Stem
- _____ 163. # 341 Puritan 3 oz. Cocktail (6 ea.) H
- _____ 164. # 433 Greek Key 4½ oz. Saucer Champagne H
- _____ 165. #1109 4 oz. Low Ftd. Sherbets (6) H
- _____ 166. #3370 African 6 oz. Saucer Champagnes
MOONGLEAM Stem (4)
- _____ 167. 5 Piece Juice Set Experimental Cut
- _____ 168. #4206 Optic Tooth 12 oz. Ftd. Sodas DO
MOONGLEAM Foot (4)
- _____ 169. #2401 8 oz. Soda Nimrod Carving
- _____ 169A #6060 Country Club Soda Winchester "73" Deep
Plate Etching
- _____ 169A #6060 Country Club Soda Winchester "73"
Deep Plate Etching
- _____ 169B #6060 Country Club Old Fashioned Winchester "73"
Deep Plate Etching
- _____ 169C #1184 Yeoman 10 oz. Soda Wigwam Deep Plate Etch
H Monogramed H P W
- _____ 170. #2351 12 oz. Sodas Renaissance Etch (4)
- _____ 171. #2930 10 oz. Tumbler Renaissance Etch (6)
- _____ 172. #1252 Twist FLAMINGO Nut Cup (6) H
- _____ 173. #1229 Octagon MOONGLEAM Nut Cup Cut (3)
- _____ 174. #1229 Octagon HAWTHORNE Nut Cup (4) H
- _____ 175. #1535 Oval Diamond Point Individual Ash Tray (6) H
- _____ 176. #1454 Dia Point Ind Ash Tray & Ind Marmalade
(4 sets) H
- _____ 177. #1401 Empress MOONGLEAM D F Nut Cup H
- _____ 178. # 393 Narrow Flute MOONGLEAM Nut Cup (4) H
- _____ 179. # 300 Peerless Individual Decanter
- _____ 180. #1255 Pineapple & Fan #1 Salt Shaker
- _____ 181. #4227 Favor Vase DO
- _____ 182. #1519 Waverly Salt Shaker
- _____ 183. # 412 Rib & Panel Bar Glass H
- _____ 184. # 300 Peerless Bar Glass H
- _____ 185. #4052 National 1½ oz. Bar Glass
- _____ 186. #5087 Comet 2 oz. Bar Torpedo Sham
- _____ 187. #2052 1½ oz. Bar Tally Ho Etch
- _____ 188. #1486 Coleport 1½ oz. Bar H
- _____ 189. #4054 1 oz. Bar
- _____ 190. Whimsey Paperweight made from SAHARA Stopper
- _____ 191. Whimsey Paperweight made from FLAMINGO Stopper
- _____ 192. Whimsey Paperweight made from MOONGLEAM Str.
- _____ 193. #1503 Crystolite Salt & Pepper 2 Sets
- _____ 194. # 341 Williamsburg Cruet
- _____ 195. # 353 Med. Flat Panel 4 oz. Oil Cut H
- _____ 196. #3304 Universal 1 oz. Cordial (5)
- _____ 197. #3304 Universal 2½ oz. Wine
- _____ 198. #1205 Fancy Loop EMERALD Claret
- _____ 198A #3381 Creole ALEXANDRITE Wine
- _____ 199. #4091 Kimberly 1 oz. Cordial
- _____ 200. #5013 Shasta 1 oz. Cordial George IV Cut
- _____ 201. #5024 Oxford 1 oz. Cordial Maryland Cut (2) H
- _____ 202. #4091 Kimberly 1 oz. Cordial Cut
- _____ 202A #3381 Creole ALEXANDRITE Cordial
- _____ 202B #3381 Creole ALEXANDRITE Champagne
- _____ 203. #3389 Duquesne TANGERINE 12 oz. Soda
- _____ 203A #4054 Coronation DAWN Old Fashion Screen Optic
- _____ 204. Experimental DAWN Ash Tray
- _____ 205. #1425 Victorian Ind. Cigarette Holder Ash Tray H
- _____ 206. # 361 FLAMINGO Ash Tray & Cigarette Container H
- _____ 207. #1536 Military Cap Ash Tray
- _____ 208. #1536 Military Cap Ash Tray

209. #1286 Set of 4 Ash Trays, 2 FLAMINGO,
1 MOONGLEAM, 1 Crystal
210. #1500 Round Ash Tray (3) H
211. #1404 Old Sandwich COBALT Ind. Ash Trays (3) H
212. #3390 Carcassonne COBALT Cigarette Holder
213. #3390 Carcassonne Cigarette Holder Cut Monogram
214. #1469 Ridgeleigh Sq. Cigarette Holder H
215. #1225 Plain Band CUSTARD Souvenir Toothpick H
216. #1220 Puntty Band CUSTARD Souvenir Toothpick Hx
217. # 310 Ring Band CUSTARD Toothpick H
218. #1280 Winged Scroll CLAMBROTH Trinket Box
219. #1280 Winged Scroll EMERALD Trinket Box
220. # 52 FLAMINGO Individual Salt & Pepper H
221. # 52 Individual Salt & Pepper
222. # 53 MOONGLEAM Ind. Salt & Pepper No tops 4
223. SAHARA Old Colony Etch 72 pc. Luncheon Set
See details at end of list
224. #1238 HAWTHORNE 8" Beehive Plate
225. #1238 LIMELIGHT 5" Beehive Plates (3)
226. #3001 SAHARA 8" Beestinger Plate H
227. #1236 COBALT 8" Eagle Plate
228. #4044 New Era Square Plate Seaglade Cut
229. #1401 Empress COBALT 7" Sq. Plate H
230. # 416 MOONGLEAM 9" Plate H
231. #1495 Fern 6" Hdd Cheese Plate Rosalie Etch
232. #1519 Waverly (2) 7" Mayo Underplates
7" Plate all Orchid Etch
233. #1252 Twist FLAMINGO 7" Plates (6) H
234. #1401 Empress MOONGLEAM 8" Rd. Plates (6) H
235. #1184 Yeoman HAWTHORNE 7" Plates DO (6)
236. #1184 Yeoman HAWTHORNE 6" Plates DO (7)
237. #1183 Revere COBALT 8" Rd. Plates (6)
238. #1404 Old Sandwich SAHARA 8" Sq. Plates (10) H
239. #1404 Old Sandwich SAHARA 7" Sq. Plates (4) H
240. # 407 Coarse Rib MOONGLEAM 7" Rd. Plates (6) H
241. # 407 Coarse Rib FLAMINGO 7" Rd. Plates (10) H
242. # 407 Coarse Rib CRYSTAL 7" Rd. Plates (10) H
243. #1951 Cabochon Southwind Cutting, 6 Goblets,
8 Sherbets, 4 Juice glasses, #1609 8" Rd. Plates (6)
244. # 352 Flat Panel Powder Jar Wavecrest Top H
245. #1183 Revere Syrup Pitcher & Underplate H
246. #1001 FLAMINGO Cream & Sugar Sifter DO
247. #1485 Saturn Sugar Pouter Silver Top
248. #1001 HAWTHORNE Sugar Sifter only DO
249. # 433 Greek Key Banana Split Dishes (2) H
250. #1184 Yeoman FLAMINGO Hdd Oval Tray Div. H
251. #1183 Revere MOONGLEAM Stem 6" Compote H
252. # 355 Quator 8" Compotier Peacock Etch H
253. #1186 MOONGLEAM Stem 7" Compote Shallow DO H
254. #3335 Finger Bowls (9) W O Waterford Cut
255. #3335 Finger Bowls (3) W O Diff Cuttings
256. #1519 Waverly AMBER 6" Low Ftd. Compot
257. # 341 Puritan 5 1/2" Ftd. Shallow Jelly H
258. # 411 Rib & Panel MOONGLEAM 6" Jelly H
259. #1186 Yeoman FLAMINGO 7" Compote DO H
260. #1184 Yeoman FLAMINGO 6" Hdd. Bon Bon (2)
261. #1255 Pineapple & Fan Spooner X
262. # 10 Muddler (3)
263. #1469 Ridgeleigh #1 Individual Vase H
264. # 433 Greek Key 4 1/2" Plates (2) H
265. # 10 FLAMINGO Oakleaf Coaster
266. #1503 Horn of Plenty Vase
267. #1469 Ridgeleigh Individual Cream H
268. #1519 Waverly Salt Shaker, no top
269. Small Salt Shaker H
270. #1445 12" Grape Floral Bowl Cut
271. #1506 Provincial 9" Bowl H
272. # 350 Pinwheel & Fan 8" Nappy H
273. #1483 Stanhope 11" Floral Bowl Hdd Frosty Dawn Etch
274. #1503 Crystalite 10" Bowl H
275. #1401 Empress SAHARA 7" DF Bowl H Old Colony etch
276. #1205 MOONGLEAM 12" Floral Bowl H
277. # 45 FLAMINGO 8" Floral Compotier
FLAMINGO Sticker DO
278. #1637A Town & Country DAWN 8" Rd. Serv. Dish
279. #1231 Octagon FLAMINGO 9" Vegatable Dish H
280. #1205 Fancy Loop Sq. 9" Nappy
281. #1201 MOONGLEAM 11" Floral Bowl H
282. #1428 Warwick SAHARA 5" Horn of Plenty Vase H
283. #1485 Saturn SAHARA 8 1/2" Vase Sat Optic
284. #1503 Crystalite 5" Vases (2)
285. 17 Blown Punch Cups Plain
286. #1205 Fancy Loop Punch Cup
287. #1255 Pineapple & Fan Punch Cup
288. # 339 Continental Punch Cups (4) H
289. # 433 Greek Key FLAMINGO Punch Cups (4) H
290. #1184 Yeoman FLAMINGO 7 Cups 8 Saucers H
291. #1184 Yeoman 4" Plain Nappies (6) H
292. # 393 Narrow Flute Applesauce Jar, no lid H
293. # 150 Pointed Oval & Diamond Point Spooner
294. # 433 Greek Key Oval Creamer H
295. # 433 Greek Key Round Sugar H
296. #1485 Saturn Sugar 2 ea. H
297. #1401 Empress DF Sugar Formal Chintz Etch
298. #1495 Fern Creamer Belvedere Etch H
299. #1540 Lariat 7" Shallow Nappy
300. # 393 Violet Vase
301. #5087 Comet 12 oz. Soda
302. Cocktail Strainer & Stopper
303. #1170 Pleat & Panel MOONGLEAM Hdd. Cr.
Soup & Underplate H
304. #3350 Wabash Saucer Champ needle etch (3) H Trefoil
305. #3350 Wabash Cocktails (2) H Trefoil Etch
306. #1540 Lariat Sherbets (3)
307. #1469 Ridgeleigh 11 1/2" Nappy H
308. #1184 Yeoman Hdd. Sandwich Plate H Dec.
309. #1401 Empress 10" Rd. Dinner Plates H (2)
310. #1252 Twist MARGOLD 11" Rd. Plate H
311. 5 1/2" Candle Epergnettes (2) H
312. #1489 Puritan 2 1/2" Square Ash Tray
313. # 338 9" Carnation Vase
314. #1469 Ridgeleigh Cig. Box Bottom only H
315. #1184 Yeoman MARGOLD 6" Rd. Candy Bottom
316. Verlys TOPAZ Rose Ash Tray Signed & Label
317. Verlys DIRECTORY BLUE Rose Ash Tray Signed
318. Verlys DIRECTORY BLUE Butterfly Ash Tray
319. Verlys Swallows Ash Tray
320. Verlys Greek Horse Cigarette Box Signed
321. Verlys 13" Wild Ducks Bowl Signed
322. Verlys 13" Water Lily Console set 3 pcs Signed
323. Verlys Orchid Bowl Signed
324. Misc. Imported Bobeches & Prisms
325. Verlys Gems Vase & Floral Insert Signed
326. Verlys Alpine Thistle Vase Signed
327. Verlys Cupidon Bowl Signed
328. Holophane Shade
329. Holophane Shades (4 ea.)

*223 - SAHARA Old Colony Etch Luncheon Set consists of the following: #1401 Empress - (8) 8" Plates, (8) 7" Plates, (8) 6" Plates, (8) cups & saucers, Master Nut dish, (8) Ind. nut dishes, Cr. & Sug., Mayonnaise, Sandwich Tray, & Salt & Pepper.
#3390 CARASSONNE - (8) Low Ftd. Goblets, & (8) Sherbets. 1 Mayo Ladle. The 72 piece Luncheon Set will be offered by the piece first. We will record this price and add all figures up and then offer it as a set for one money. It will then be sold which ever way it brings the most. This gives the collector who wants a whole set a chance but he must pay more than the individual item total.
IF YOU HAVE QUESTIONS CALL.

MAIL BIDS ACCEPTED WITH CHECKS FOR MAXIMUM AMOUNT. MAIL BIDS WILL BE BID COMPETITELY AND ANY DIFFERENCE REFUNDED. ONLY ITEMS IN MINT CONDITION WILL BE SUBJECTED TO MAIL BIDS. PLEASE ADD \$5.00 FOR POSTAGE AND HANDLING. EXCESS REFUNDED. CHECKS SHOULD BE MADE OUT TO: SAM SCHNAIDT, AUCTIONEER.

*AND MAILED TO: OPERA HOUSE
BOX 84
GRANVILLE, OH. 43023*

**SAM SCHNAIDT, Auctioneer
(614) 587-0052**

**FRANK FRYE, Manager
(614) 344-9847**

PRICE LISTS AVAILABLE FOR \$ 1.00

FOOD AVAILABLE

PAID ADVERTISEMENT

Dealers Directory

5 LINES - \$6.00/6 ISSUES

MOSTLY HEISEY

RHODA CURLEY
16 CLAYTON PLACE-
ALBANY, NEW YORK 12209
By Appointment 518/482-6272

Opera House Antiques
Main & Broadway, Granville, OH 43023
Open 7 days a week 12 - 5 P.M.
Shop (614)587-2083 - Sam 587-0052
HEISEY GLASS & GENERAL ANTIQUES

The Shultzes Antiques BOUGHT
SOLD
206-208 E. MAIN ST., ROUTE # 419
NEWMANSTOWN, PA. 17073
15 MI. WEST OF READING, PA.
PHONE 215-589-2819

Lynne & Art's Glass House, Inc.
"HEISEY OUR SPECIALTY"
Route 202 Lahaska, Pa. 18931 Box 242
Phone: (215) 794-7800


Evelyn's Antiques
3301 - 140 N.E. Marysville, Wash. 98270
I S Exit 202 Phone: (206)859-6114
MON-WED-SAT-SUN & by Appt.
Shop full of glass - Heisey, etc.

The China Cupboard
105 A. 50. BROADWAY, ORCUTT, CA. 93454
Phone: (805) 937-6420
COLLECTIBLE & ANTIQUE GLASS & CHINA
HEISEY IN STOCK

Bert's Budget Shop
403 W. MAIN ST., NEWARK, OHIO 43055
PHONE: (614) 349-8045
General line Antiques

Schwan's Antiques
DICK & LEE SCHWAN
208 OXFORD ROAD
WILLIAMSBURG, VA 23185
(804)229-7873 SHOWS & APPT.

Oldies But Goodies
222 N. WATER STREET
WILMINGTON, IL. 60481
(815) 476-7320
Heisey A Specialty

Charles A. Shaw
Glenwood Gardens-RipVan Winkle
Yonkers, New York 10701
Shows & Mail Order 
American Glass

Goldsberry's Antiques
KALAMAZOO, MICHIGAN
SHOWS ONLY -- BUY & SELL
HEISEY A SPECIALITY
PHONE: (616) 381 - 3013

ANTIQUE & COLLECTIBLES *Olde Loved Things*



Doris "Ed" Lacroix - Donald Mousseau
900 Ridgewood Avenue (Holly Hill)
DAYTONA BEACH, FL. 32017
HEISEY, Cambridge, "Candlesticks a specialty"

Moundbuilders Antiques
IRENE RAUCK
1138 MOUNDVIEW, NEWARK, OH 43055
PHONE: (614) 344 - 6043
HEISEY & ANIMALS/GEN. ANTIQUES

Eagles Nest Antiques
CHINA HEISEY GLASSWARE
BOUGHT and SOLD
62 FIELD POINT RD., HEATH, OH 43055
By Chance or Phone: (614)522-2035

LAST CHANCE ANTIQUES
62 N. FEDERAL Hwy, DANIA, FL 33004
(Between Miami & Ft. Lauderdale)
Large Heisey Inventory & other Glass
MAIL ORDERS (305)467-6356 (home)

Green Acres Farm
ANTIQUES, CRYSTAL, GLASS & COLLECTIBLES
SPECIALIZING IN HEISEY & CAMBRIDGE GLASS
BY CHANCE OR (614) 927-1882
2678 SR 310 N. - PATASKALA, OHIO 43062

THE "FINDERS" ANTIQUES
Antiques - Heisey Glass - Buy-Sell
DAVID & SHIRLEY ROSE -- Owners
66 S. HAZELWOOD AVE., NEWARK, OH 43055
Phone: (614) 349-7934

Hoosier Heritage Antiques
Marcell and Tom Zehr
4005 SOUTH WAYNE AVENUE
FORT WAYNE, INDIANA 46807
(219) 745-4173

Happy Haven Antiques
CHARLES & MARY DUMKE
RT. #3, BOX 2044A, GRASS VALLEY, CA. 95945
Phone: (916) 273-9450


GEORGE & EILEEN SCHAMEL
Route 3, Box 419
Boonsboro, Md. 21713
Appointment or Mail Order
Phone 301-432-6285

WICKFORD ANTIQUE ARCADE
RON & BEV. WOOD Booths 6 & 7
650 TEN ROD RD., N. KINGSTOWN, R.I. 02852
Heisey - Primitives - Glass - Etc.
Home Phone: (401) 295-0823

Charles & Mildred Fisher
Antiques & Collectibles, General Line
HEISEY, DENGENHART, IMPERIAL
991 IDLEWILDE, NEWARK, OH 43055
PHONE: (614) 522 - 5398

The Wooden Shoe
ANTIQUES & COLLECTIBLES - BUY & SELL
GLASS, FURNITURE, ESTATES
JIM & SHERI VANES BY APP'T
HERNDON, VA 22070-PH: 435-9045

Heisey Heaven & other collectables
NOW OPEN AT PEDDLER'S VILLAGE
SUNNY CREST MALL - URBANA, IL 61801
(CORNER FLORIDA AVE & PHILO RD.)
PHONE: (217) 384 - 9093



sum of life
elaine and frank husted
p.o. box 102,
phoenixville, pa. 19460
(215) 935-2962

Ann's Gifts & Antiques
105 W. MAIN ST., HEBRON, OH 43025
Intersection Rt. 40 & 79
Next door to Daisy Queen
MON-SAT 10-5:30 SUN 12-5:30

Curiosity Nook
"WHERE FRIENDS MEET TO ANTIQUE"
3300 S. 8th Ave. Westward Village
Yuma, Ar. 85364-(602)726-6730 or 726-8070
BARNEY & JODY BARNICLE

Jim Kennon
Shows Only-PH:(216)934-4515
P.O. BOX 251 - AMHERST, OH 44001
Heisey - Cambridge - Pottery
Glass Animals - Duncan & Miller

ACCENT ANTIQUES OF KENSINGTON
Curio Corner
3742 HOWARD AVE.
KENSINGTON, MD 20795
PH: (301)933-3750

The Sleeping Fox
EVELYN & JAMES JORDAN
P.O. BOX 583
LANSDALE, PA 19446
PHONE: (215) 855 - 2480

George Hoffman Antiques
G.W. HOFFMAN - J.H. DENNIS
129 SOUTH 4TH STREET
NEWARK, OH 43055
PH: (614) 345-8550

HEISEY COLLECTORS OF AMERICA, INC.



EIGHTH ANNUAL CONVENTION

JUNE 14-15-16-17-, 1979

NEWARK, OHIO

CALENDAR OF EVENTS

Thursday, June 14, 1979

1. **REGISTRATION: EVERYONE MUST REGISTER.** Packets can be picked up at 8:00 a.m. at THE NEWARK HIGH SCHOOL. The show and display will open simultaneously with attendants present to answer questions posed by viewers. Please remember that registration badges are required for all events; they permit unlimited admission to Show and Display and to all free activities. Children under 12 will be admitted free except where food is served.
ATTENTION: OSCARS will be available only at THE NEWARK HIGH SCHOOL starting at 8:00 a.m.
2. **REGISTRATION:** Newark High School from 8:00 a.m. to 9:00 p.m.
3. **ANTIQUÉ SHOW:** Open from 9:00 a.m. to 8:00 p.m. at The Newark High School Gym.
4. **DISPLAY:** Open from 9:00 a.m. to 8:00 p.m. at The YWCA.
5. **"THE FRENCH MARKET":** Sheraton Inn for HCA members only, 7:30 p.m. to 11:30 p.m. A veritable trading post for Heisey Glass will be set up. Bring your duplicates or other Heisey to trade for Heisey of your choice. Each family will be permitted to have a maximum of 12 items on the table at any one given time. These items will be **FOR TRADE ONLY.** Absolutely no money will be involved in the exchange. **YOU WILL NOT BE ADMITTED WITHOUT YOUR BADGE.**

Friday, June 15, 1979

1. **REGISTRATION:** Sheraton Inn from 8:00 a.m. to 11:00 a.m.
2. **"QU'EST-CE QUE C'EST"?:** Sheraton Inn from 8:30 a.m. to 11:00 a.m. Bring your latest "finds" and questionable Heisey to have identified. A panel of knowledgeable individuals will be on hand to assist. Continental breakfast will be served. Introduction of Candidates for Board of Directors.
3. **REGISTRATION:** Newark High School from 12:00 p.m. to 5:00 p.m.
4. **ANTIQUÉ SHOW:** Open from 12:00 p.m. to 5:00 p.m. at The Newark High School Gym.
5. **DISPLAY:** Open from 12:00 p.m. to 5:00 p.m. at The YWCA.
6. **"AULD LANG SYNE":** Sheraton Inn 2:00 p.m. to 4:00 p.m. Nostalgia is the mood for the day for HCA members and for former Heisey employees.
7. **"LA FIESTA":** Convention banquet at The Sheraton Inn will cocktail hour at 6:30 p.m. and dining at 7:30 p.m. to the music of Jan Mooney, Harpist. Robert P. Fischer, Ph.D., Director of Personnel Research at The Fenton Art Glass Company in Williamstown, West Virginia will be guest speaker; his topic will be **"THE PSYCHOLOGICAL ASPECTS OF COLLECTING"**. Dr. Fischer is a former Columbus resident and received his Ph.D. in psychology at The Ohio State University in 1942. He formerly taught at Clark State University in Massachusetts, The University of Illinois, The University of Florida and Marietta College. He is a Fellow of The American Psychological Association and is a licensed psychologist in West Virginia and Ohio.

Saturday, June 16, 1979

- 1. **HCA MOVIE:** The Heisey Glass Story, a documentary produced by Jeff Briggs will be shown by Christos Maskaleris at The Sheraton Inn at 10:30 a.m. and at 1:00 p.m. This is a must for every Heisey collector.
- 2. **REGISTRATION:** The Sheraton Inn from 8:00 a.m. to 11:00 a.m. and at The Newark High School from 12:00 p.m. to 5:00 p.m.
- 3. **ANTIQUÉ SHOW:** Open from 12:00 p.m. to 8:00 p.m. at The Newark High School Gym.
- 4. **DISPLAY:** Open from 12:00 p.m. to 8:00 p.m.
- 5. **STUDY CLUB OFFICERS' MEETING:** All officers of individual Heisey study clubs are cordially invited to convene at 2:00 p.m. at The Sheraton Inn with HCA officers, who will be present to answer questions on club management or any other related problems.

Seminars:

- 6. **THE FABULOUS KRALLS:** Descendants of this famous family will be guests at The Sheraton Inn at 7:00 p.m.
- 7. **THE HEISEY ANIMAL KINGDOM:** Slides and accompanied lecture on glass animals made by Heisey at The Sheraton Inn at 8:00 p.m.
- 8. **FAKES AND REPRODUCTIONS OF HEISEY AND OTHER MISLEADING GLASS:** Sheraton Inn at 9:00 p.m.

Sunday, June 17, 1979

- 1. **REGISTRATION:** Sheraton Inn at 8:00 a.m.
- 2. **BREAKFAST AND ANNUAL MEETING:** Sheraton Inn at 8:30 a.m. A delicious breakfast a la self-serve followed by The Annual HCA Meeting and election of The Board of Directors.
- 3. **ANTIQUÉ SHOW:** Open from 1:00 p.m. to 5:00 p.m. at The Newark High School Gym.
- 4. **DISPLAY:** Open from 1:00 p.m. to 4:00 p.m. at The YWCA. We are closing the display two hours prior to the closing of the show.
 THE MUSEUM WILL OPEN DAILY AT 9:00 a.m. THE LOUNGE WILL OPEN FOR REFRESHMENTS AT 1:00 p.m.
 THE MUSEUM AND ITS LOUNGE WILL CLOSE AT THE SAME TIME AS THE SHOW AND DISPLAY.

.....
REGISTRATION FORM

Please list all names for badges. Check all events you plan to attend.

NAME _____

ADDRESS _____

CITY _____ STATE _____ ZIP _____

Event	Cost	No. attending	Total per item
1. Registration..(everyone must)	\$ 4.00
2. Display Preview	N/C
3. "French Market"	N/C
4. "Qu'est-ce que c'est"?'	\$ 2.50
5. "Auld Lang Syne"	\$ 1.75
6. "La Fiesta"	\$ 12.00
7. "The Fabulous Kralls"	N/C
8. "The Heisey Animal Kingdom"	N/C
9. "Fakes and Reproductions"	N/C
10. Breakfast and Meeting	\$ 4.50
Total cost of all events	\$ 24.75
TOTAL REMITTANCE	Total

Make checks payable to Heisey Collectors of America, Inc. Mail to: Mrs. Robert McClain, Convention Secretary
155 w. Shields Street, Newark, Ohio 43055

1979 SOUVENIR "OSCAR"

ORDER FORM

PLEASE READ VERY CAREFULLY BEFORE FILLING OUT.

Oscars are Sunshine Yellow and are marked HCA '79 and I G. This is a limited edition and is being offered to members only, until May 15. None will be sold between then and the first day of convention when they will be \$17.00 if any are left. You may order **ONLY ONE PER MEMBER**. This means ANY member who has a membership card regardless of class of membership. Please list all names on form as they will be checked. Everyone ordering either for pick up in Ohio or all living in Ohio **MUST PAY** sales tax. This includes vendors. The **ONLY** exception is for out-of-state orders to be mailed. Licking County tax is 4 1/2 % or 63 cents on each Oscar. Postage is \$ 1.20 each if mailed. **Make all checks to HCA, Inc. Mail to address on bottom of the form.**

DO NOT SEND DUES, BOOK ORDERS ETC. TO THIS ADDRESS. IT IS FOR OSCARS ONLY. It will be several months before these are shipped. Your cancelled check is your receipt.

Please keep this part for reference and clip only the form below the line.

BE SURE YOUR DUES ARE CURRENTLY PAID

clip and mail



_____ Number of OSCARS at \$14.00 each _____ Only one per member
 Sales Tax 63 cents each _____ All Ohio residents and pick-ups in Newark.
 Postage \$1.20 each _____ Check one: Please mail my Oscar(s)
 TOTAL sent with order _____ I will pick up my Oscar(s)
 at Convention or Museum.

NAME(s) _____
List all names _____

ADDRESS _____

CITY _____ State _____ Zip _____

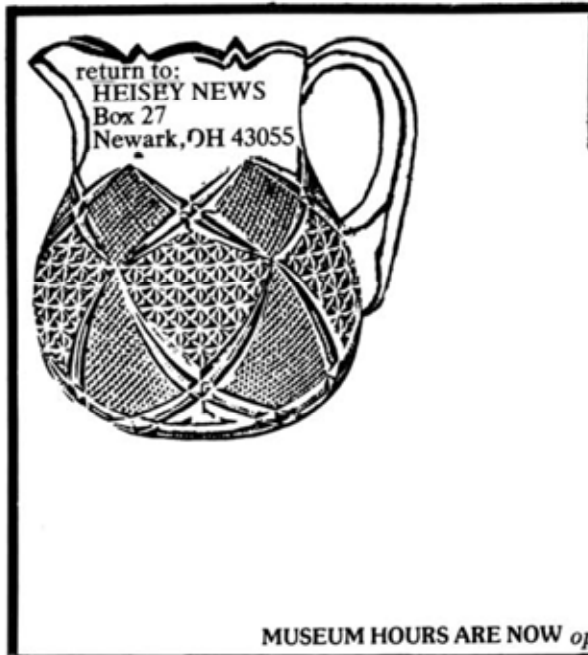
Make check payable to HCA, Inc.
and mail to

HEISEY COLLECTORS OF AMERICA, Inc.
c/o Reynoldsburg H.C.C.
P.O. Box 224
Reynoldsburg, Ohio 43068

CHARGE MY

- BankAmericard/Visa
-  Mastercharge
-  BankAmericard
- Mastercharge

Credit Card No. _____
 Expiration date required _____
 Mo. _____ Yr. _____
 Expiration date _____



FIRST CLASS MAIL
U.S. POSTAGE
PAID
PERMIT 34
Reynoldsburg, Ohio 43068

MUSEUM HOURS ARE NOW open daily from 1-4 p.m. except Monday and holidays