

HEISEY

news

OFFICIAL PUBLICATION HEISEY COLLECTORS OF AMERICA

Vol. VII, #9
SEPTEMBER, 1978

©Heisey Collectors of America, Inc. 1978
All Rights Reserved

One Dollar



#1025 CREAMER WITH A BEAUTIFUL SILVER OVERLAY DESIGN.

There is a sugar to match. We have no idea who did the silver but it had to be one of the better silver companies because of the quality of the work. Heisey sold glass to most of the leading silver companies for mounting or decorating. This photo is shared with us by Inez DeMuth, Ohio.

Columnists & Advertisers please take note

ANY ADS WHICH ARRIVED AFTER AUGUST 5TH SHOULD BE IN THIS ISSUE. ADS ARRIVING BY SEPTEMBER 5TH WILL BE IN THE OCTOBER ISSUE. WE HAVE MENTIONED SEVERAL TIMES THAT WE HAVE CHANGED THE DATING SO THAT YOU WILL ALWAYS GET YOUR NEWSLETTER FOR SEPTEMBER (to use an example) EITHER IN LATE AUGUST OR VERY EARLY SEPTEMBER. IN THE PAST YOU WOULD OFTEN GET ISSUES IN THE MONTH FOLLOWING THE DATE ON THE COVER.

THE AUGUST ISSUE WAS MUCH LATER THAN WE HAD PLANNED BECAUSE OF CIRCUMSTANCES BEYOND THE PRINTER'S AND OUR CONTROL BUT WE HOPE TO GET BACK ON SCHEDULE SOON.

WE HOPE THIS ISSUE IS MORE TIMELY AND APOLOGIZE FOR ANY INCONVENIENCE IN THE PAST. DEALERS, IF YOU HAVE A PROBLEM CONTACT VIRGINIA YEAKLEY. SEE MASTHEAD FOR HER ADDRESS. ALL COLUMNISTS ALSO TAKE NOTE OF COPY DATE.

THE ROOSTERS
HAVE NOW
ARRIVED.

THE PRICE
AS OF
SEPTEMBER 1st
IS

\$35.00 each

The whole family
together is adorable.
The count on the roosters
is 1457.

-2- *From the desk of...*

your President

Greetings from Heiseyland! We are busily preparing for another onslaught of Heisey collectors on September 16. Many people have reserved booth space for the Mini-Show-Flea Market but I am sure there is room for more, especially outside. This should be another great show if year's past are an indication. For HCA members the show will open at dawn and it will last until three p.m. when teardown begins in order to get ready for the dinner. Jack Metcalf will need a lot of help in tearing down on Saturday and for that matter for setting up on Friday evening. Please volunteer without having to be asked. You are part of this club.

See back page for the day's schedule. We will dedicate the administrative offices at 11 a.m. in front of the building. This time we are sure the mayor will really be there. There will be an open house after the dedication. We hope we will have some interesting material in the library by that time though it will be some time before we have it all ready for your study. We started with the easiest. The microfiche will also be available in the new library.

Speaking of offices, Debbie and I are very happy with ours. It makes our work so much easier by having

everything so handy. I haven't yet moved everything down, from home and am still working partly out of cardboard boxes but that will soon end. Actually we only have been in the offices a few weeks as it took longer than we expected to get everything ready (furnishings etc.).

Cordial orders have arrived at a fast rate but I do not have a current count. Sam tells me that the antique car taxi service will make pick-ups at the Gas Company parking lot on Church St., the Sheraton Inn and the city parking lot just north of the Sheraton. If you do need a pick-up try to contact someone during the day.

Our Bob Evans stock has split again 2 for 1. That has been a wonderful gift from Keith Bradbury. He has given us 250 shares and it has grown to 1100 through splits. Wish we would receive more gifts like that!

We just added a 1533 Wampum bowl in cobalt to our permanent collection. There are only two items presently known in Wampum in cobalt.

See you in a few weeks. Till then,

*Happy Collecting.
Louise*

NOTICE

Take note of the ads for the various club's annual shows and flea markets. These will be great places to buy.

William S. (Pete) Rehbeck

Mr. Rehbeck died on Saturday, August 12th. He was born in Newark in 1900. He was employed by the A.H. Heisey & Co. for 35 years and was a mouldmaker there. He also worked at the Holophane Co. which is across the street from the old Heisey plant. He was a member of Heisey Collectors of America and was very pleased with the club. Pete made the donkey and elephant candles which many of you have purchased when in the museum.

Pete was one of the nicest people anyone could hope to meet and we were very fond of him. We will miss him at the museum. He is survived by his three sons, Timothy of Newark, William of Columbus and Gary of Los Angeles, Calif. All of them are Heisey enthusiasts.

We extend our sincerest sympathy to all of them.

CORRECTION

See page 5, August Heisey News-- Picture at top left. Credit was given to the Land of Legend HCC for this clever display. In reality it was the Land of Heisey Society. My apologies to the club and in particular to Bernie Kreim who worked so hard on the frames. Incidentally we had a large quantity of those ads and there are some still available. These are original pre-prints, not copies.

HEISEY NEWS --- P.O. BOX 27 --- NEWARK, OHIO 43055

EDITOR - LOUISE REAM, 1115 W. Main St., Newark, Ohio 43055
PUBLISHED 25TH DAY OF EACH MONTH, \$10.00/Year-\$1.00/Copy
BACK ISSUES AVAILABLE AT \$8.00/YEAR - \$1.00/COPY

PRESIDENT	LOUISE REAM	(614) 344 - 2377
VICE PRESIDENT	KAY DARLING	(614) 262 - 4360
SECRETARY	MARY McWILLIAMS	(614) 345 - 4380
TREASURER	LOREN YEAKLEY	(614) 366 - 5101

Heisey Collectors of America, Inc. is a non-profit corporation with tax exempt status. Owners and operators of National Heisey Glass Museum, 6th and Church Streets, Newark, Ohio. Open Daily 1-4 p.m., April through October except Mondays and Holidays, November through March, Wed., Sat., Sun. 1-4 P.M. Members admitted free. Phone: (614) 345-2932. Club membership (includes 12 issues of Heisey News and participation in all club activities) \$10.00/Year plus \$1.00 each for additional family members in same household who wish a membership card. For voting membership add \$25.00, one time only fee, or write for information.

Membership Information - Address - HCA Membership, Box 27 Newark, Ohio 43055. Notify at once of any change of address.

The opinions expressed in articles in Heisey News are those of the authors and not necessarily those of the organization. The Editorial Staff reserves the right to edit or refuse any material submitted for publication. When requesting information, please enclose a self addressed stamped envelope (SASE).

ADVERTISING - Send all ads to:
VIRGINIA YEAKLEY, Advertising Manager
640 Melanie Court
Newark, Ohio 43055

DEALER DIRECTORY ADVERTISING RATES-5 line-\$6.00/6 issues

CLASSIFIED ADVERTISING - 5¢/word - \$1.00 Minimum. We cannot mix type sizes in Classified Ads. Abbreviations and initials count as words.

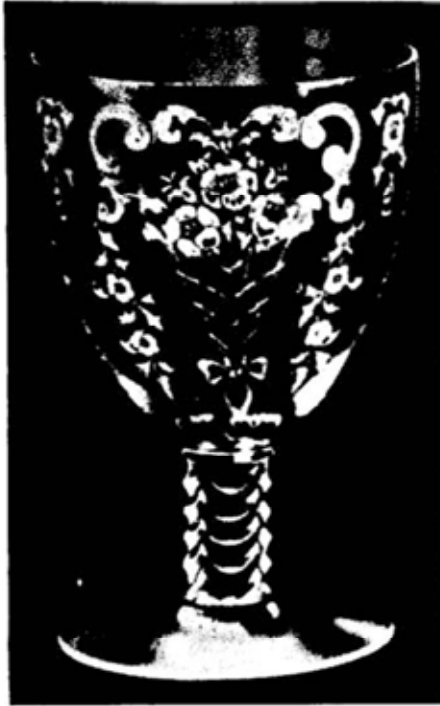
DISPLAY ADVERTISING RATES	MEMBER	NON-MEMBER
1/8 Page	\$ 8.00	\$15.00
1/4 Page	\$15.00	\$25.00
1/2 Page	\$25.00	\$40.00
Full Page	\$45.00	\$60.00

PAYMENT IN FULL MUST ACCOMPANY ALL ADS.

Advertising copy must be in our hands by the 5th of the month to assure publication in that month's issue. Advertisements containing reproductions will not knowingly be accepted unless clearly stated (i.e. Heisey by Imperial, etc) Heisey News assumes no responsibility for false advertising or misleading information. In the event of typographical error, the incorrect portion of the ad will be run in the following issue, but Heisey News assumes no further liability.

Send all letters and articles to be published to the editor. Letters to columnists should be sent to the club address and will be forwarded.

STEMS



1483 STANHOPE
494 SWINGTIME
Plate Etching

by **CARL SPARACIO**

I am becalmed in the sea of summer. So little has happened since convention. Other summers were filled with flea markets and antiques shows, weren't they? Probably not but that's the way I remember them. Maybe it's because I'm not chasing after the fleas and shows this year. If they're not on our doorstep they might as well be in China.

There were three reports out of Brimfield about some Fancy Loop COR—DIALS (!) being sold there. Trouble is every reporter was passing on a story they had heard. Not one of them had actually seen the cordials. Fancy Loop was not made in a cordial and though we've learned that nothing is impossible this seems highly unlikely. I suspect the story was initiated by someone who can't tell a wine from a sherry. Some Fancy Loop somethings changed hands at Brimfield and I'd like to hear from the caveat who should have emptied.

In the past we've made mention of #3408 Jamestown in cobalt. I was happy to be able to buy one at convention with a lot of help from Jim Jordan and absolutely no help from Jim Kennon Jr. Prior to this I had only seen one other goblet in this pattern in cobalt and that came out of Hawaii a half a world away. Both goblets could have come out of the same set because they both have lousy color and the glass in the bowls is really poor. Does

anyone know of a cobalt Jamestown having the quality we have come to expect in Heisey stemware? Perhaps this is why cobalt in Jamestown is so rare --- they couldn't get it to come out right. Maybe someone will come up with an answer for me.

This month we'll talk about #'s 1483 and 4083 Stanhope. #4083 is the blown version of 1483 which was a pressed line. These stems are difficult to find although other pieces in Stanhope seem to pop up with some degree of regularity. Neither the pressed nor the blown stemware will be found with the Diamond H which should give you a great chance at a bargain when and if you find them in your favorite consignment shop.

Manufactured only for a couple of years in the late thirties, The Stanhopes show the Art Deco influence of that period. If Art Deco is your thing then Stanhope is for you; particularly in the pressed version.

#1483 was made in a wine, cocktail, champagne, goblet and soda. What, no cordial? The wine and the goblet are the goodies. It will be found etched. #490 Maytime is the etching which seems to show up most frequently but it was also etched in #'s 491 Frosty Dawn, 494 Swingtime and 605 Frosted. I like the 605 Frosted best. The others are too frilly for the Stanhope design which really doesn't need decoration.

#1483 also was cut with 880 Salem, 881 Kashmin, 882 Yorkshire, 883 Royal York.

The blown line of Stanhope (4083) is much simpler in design and, of course, daintier than its pressed counterpart. Here we were offered a wine, cocktail, oyster cocktail, claret, saucer champagne and a goblet along with some footed sodas. What, no cordial again?

Etchings were confined to #'s 490 Maytime and 494 Swingtime while in cuttings there was a choice of #'s 885 Incognito and 886 Kings Ransom, 882



1483 Stanhope Goblet
491 FROSTY DAWN
Plate Etching

Yorkshire, 880 Salem, 883 Royal York.

Limelight is the only color offered in the Stanhope line. Perhaps we had better call it Zircon because this pattern dates back to the time when Limelight was Zircon.

The Stanhope stems are rather distinctive so you should have no trouble spotting them.

If you have not seen Virginia and Loren Yeakley's new color book you are in for a treat. Some rare colored stems are shown. You will find the price guide enlightening if you will remember that it is only a guide.

We'll see you at the cordial dinner next month. If you've found a fantastic stem over the summer --- I don't want to hear about it.

MISCELLANEOUS



#9 - Coaster
Star Bottom, Ground



#601 - 3/4 oz.
Cordial



#601 - 1 oz
Creme De Mint



#601 - 3 oz.
Cocktail

#601 Elizabethan

-4- HEISEY DECORATIONS

by NEILA BREDEHOFT

Heisey produced two plate etchings with thistle motifs -- #430 Highlander and #432 Londonderry. Both were new in 1919 and both were discontinued sometime before 1924.

For the past several years, there has been much confusion surrounding Heisey's thistle patterns. A thistle pattern which WAS NOT DONE by Heisey is frequently found. Both the quality of the etching and the glass itself are excellent. All pieces I have seen have been crystal, usually medium optic and the stemware had pulled stems. Some dealers and collectors have thought this etching to be Heisey, but it is not.

This etching was new in 1907 and was called "Thistle Design" No 10 Deep Plate Etch by Central Glass Works, Wheeling, West Virginia. As the accom-

panying ad shows, it was made as late as November, 1921, and possibly later. This accounts for its relative abundance and good quality. The most obvious difference between the two is that both Heisey's thistle motifs show closed buds with thin petals extending only from the tips, while Central Glass' thistle is in full bloom with a wide band of thin petals extending from the base of the flower. Also both Heisey designs are much more compact while the leaves and flowers on the Central Glass etching extend further down the bowls of the stems.

Both Highlander and Londonderry were produced on crystal only and on identical lines. This must have caused at least some confusion at the time of manufacture. None of the items will be found marked with the Diamond H.

#430 HIGHLANDER Plate Etching
#432 LONDONDERRY Plate Etching

Found on:

#3308 BOB WHITE stemware

Please add to your etching books:

#3308 Bob White-Pousse cafe,
finger bowl,
water bottle

#2351 - 8, 10, 12 oz. Sodas

#2401 - 5 oz. taper

#2930 PLAIN & FANCY 10oz. tumbler

Also please correct your books to indicate the original names.

TUMBLERS

by TOM BREDEHOFT

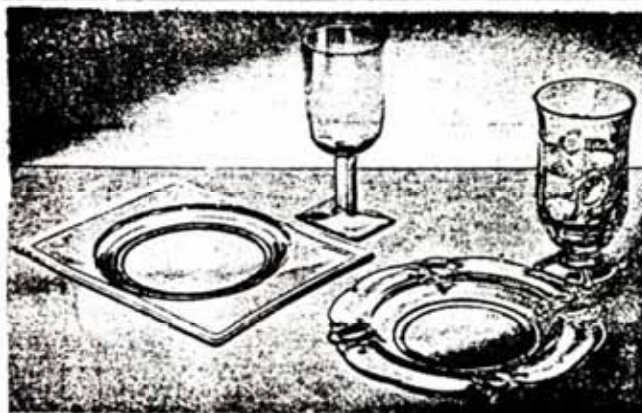
One item at the show which hadn't been seen before was a 6 oz. Old Sandwich Soda in Tangerine. This was the second piece of #1404 in tangerine to surface. Two pieces ago we didn't know it was made in Old Sandwich and now we have some. (HCA that is.)

The amber #602 which was mentioned last month is the one most people refer to as #393 Narrow Flute but it was not made in amber.

Another tumbler which this writer didn't know about was in the display and is still privately owned. This was the #1637A Town and Country 8 oz. tumbler in Black. A third previously unseen tumbler showed up at the "Stump the Dummy" session this year; this was similar to #400 except that it had an internal horizontal narrow optic effect, which we are going to call Prison Stripe Optic until the real name comes along. The correct number of this tumbler is unknown. This item was generously donated to the Museum by its owners.

There were two or three of the scarce Dawn and Limelight Ripple screen optic #6060 Country Club sodas in various sizes available. For as uncommon as they are, this was a lot to see for sale. There were a small number of the #6091 amber footed Cabochon tumblers and sodas around; there were six #1415 Twentieth Century

From the February, 1934 China, Glass and Lamps. The elusive #1447 Rococo tumbler is shown. Right #4044 New Era, at left was first called MODERN?



◆ The illustration on the center of the page shows two of the new and attractive creations of A. H. Heisey & Co. The Rococo pattern at the right has been designed from the Louis XV period and is distinctly feminine in feeling. The other glassware is the new Heisey Modern. This is certainly in keeping with the times and has been designed along plain and simple lines that will blend into any type of home or period of decoration.

sodas in flamingo in the show but they quickly disappointed, one going to the Museum. And lastly, another which went to the Museum was the very elusive #1447 Rococo tumbler or footed soda. It sure would have been a great convention if there hadn't been so many great tumblers there vying for my attention.

Next month we really will get back on the regular format of giving you information on Heisey's tumblers.

Editor's Note: The first known piece was an 8" plate which is also on loan to the museum. The acquisition committee purchased the tumbler.

Old Central Quality⁻⁵⁻

FROM CHINA, GLASS AND LAMPS
Nov. 28, 1921

HAVE you ever handled
this popular line?

It is a ready seller and a
repeater.



*The Old
Central
Quality*

CENTRAL GLASS WORKS
WHEELING, WEST VIRGINIA



Goblet

#430 HIGHLANDER



Goblet

#432 LONDONDERRY



Cocktail



Sundae



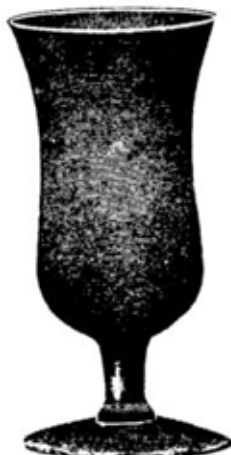
Sherbet



Wine



Burgundy



Parfait



Sherry



Saucer Champagne

#3308 BOB WHITE STEMS

#459 BASKET

by JOSEPH D. LOKAY

An application for a design patent for Heisey basket #459 was filed by Andrew J. Sanford on June 3, 1915. He was granted design patent 47,739 on August 17, 1915. The patent was assigned to the A.H. Heisey Company of Newark, Ohio. Similar to the other Heisey basket patents, this patent refers to the basket as a vase. A copy of the patent drawing is shown with this article.

The basket is composed of the basket body or sometimes referred to as the basket proper and the handle. The basket body design is 8 panels with each panel forming a scallop at the top of the basket body. The 8 panels concave downward to form an octagon base on which the basket sits. The octagon base is not solid but is hollow as the actual bottom of the basket body is about 1" above the bottom of the octagon base. The base, or some may prefer to call it a base rim because of the open space, is ground and polished.

The basket is signed with a large diamond H on the inside bottom of the basket body. Of the several #459 baskets I have seen, none of the marks had the patent date 8-17-15 around the diamond H like some of the other Heisey baskets patented in 1915. At this time, I don't know if I've only seen baskets without a patent date or if the patent date was

never included with the diamond H for the #459 baskets. The Heisey catalogs and price lists make reference to the patent number 47,739.

The #459 basket is mentioned in three of the Heisey catalogs and price lists on file at the HCA Museum library: price list 206, circa 1-1-22; catalog 102, circa 1923 and catalog 109, circa 1929. The Heisey booklet "Table Glass & How To Use It" circa 1916 shows a #459 basket. Heisey catalog 76, circa 1915 makes no reference to the #459 basket nor does catalog 14-B, circa 1930 or catalog 211-16, circa 1935 make reference to the #459 basket. As previously mentioned, the patent is dated 1915. Thus, the production period for the #459 basket is estimated at 16 years, 1915 to 1930.

The #459 basket came in two sizes: 7 inch and 8 inch. The size refers to the width of the basket from the outside of one handle to the outside of the other end of the handle measured at the point where the handle joins the basket body. The 7" basket is 13 1/2" in overall height. The basket body is 7" high, and the octagon base is 4 1/4" across two opposite flat surfaces. The 8" basket is 15" in overall height. The basket body is 8" high, and the octagon base is 5" across two opposite flat surfaces.

There were 3 Heisey etchings used on the #459 baskets: #351 Mums, #352 Anne and #353 Susan. Baskets with these deep plate etchings are shown in the Ream and Bredehoff book, "Etchings and Carvings", pages 77-79, in large size pictures. They are also shown in Vogel Book II, page 158. That page is a copy of page 149 of Heisey catalog 102, owned by the museum, which is reprinted here.

Five Heisey cuttings were used on the #459 baskets: #612 (no name yet), #613 (no name yet), #614 (no name yet), #679 Windsor and #693 Cloister. The #613 cutting is shown in the Table Glass booklet (see Heisey News April, 1974, page 11) and the #679 and #693 cuttings are mentioned in price list 206.

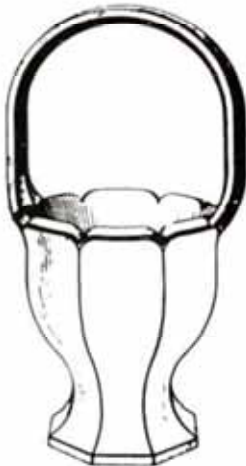
Heisey baskets were also cut by the Lewis & Neblett Company. Two #459 Baskets with Lewis & Neblett cuttings were shown in the May 1976 issue of the Heisey News, page 15. An interesting decorating concept for a #459 basket is on display at the HCA Museum. Every other panel or four of the eight panels were stained red. Flowers were then cut on all eight panels. The red was cut away when cutting the flowers on the four red panels. Thus, the flowers of clear glass stand out in the four panels where they were surrounded by red color.

DESIGN.

A. J. SANFORD.
VASE.

APPLICATION FILED JUNE 3, 1915.

Patented Aug. 17, 1915.



47,739.

WITNESSES

J. R. Keller
John F. Hill

HEISEY CANDLESTICKS

-7-



#1615 Flame



#1614 Plume

by JACK METCALF

This month we have two candlesticks from Heisey's late period-#1614 Plume and #1615 Flame. The term Flame seems to be a generally accepted name for 1615 while Plume for 1614 is strictly my own designation. There is no special reason to take them together except for the consecutive Heisey numbers which implies a near concurrent introduction. This is born out, in that neither is mentioned in the 1949 catalog and price list #30 and both are listed in the 1950 catalog and price list #31, issued in September, 1950.

The 1951 and 1952 supplements also list both candleholders. Starting with the 1953 catalog #32, only the 1615 Flame is mentioned, indicating that 1614 was discontinued within the year. This is unfortunate as Plume is a very graceful candlestick. The 1615 Flame, on the other hand, has a more dramatic impact and was apparently more popular. At least Heisey produced it until they went out of business in 1957. Flame is pictured in the reprint catalog 33 which has been available for some time, and both are

sketched in Vogel4. It is also shown in "Etchings & Carvings" by Ream & Bredehoft.

The popularity of Flame is attested to in that it was offered with several decorations. The Southwind and BelAir cuttings were both offered, as well as the Orchid and Rose etchings. At least one early listing indicated that the 516 Ivy etch was also available, but it was not offered again. In addition, on display at the museum is a single Flame candleholder bearing an unknown design with a gold filling in the etching.* This was most probably done by a decorating company, which would again increase its distribution. In one Heisey blurb, both 1614 and 1615 were suggested for use with epergnetts. One interesting point is that in a late catalog the 1615 Flame is included with the Waverly listing.

Their is no color listed for either and neither has shown up in any color to my knowledge, but if you happen to come across one in one of our "late colors" be sure and get it.

Neither of the two is what one would call common, but the longer produced Flame is more often seen than Plume. Both are marked at the constriction near the base and presumably Imperial has both molds but has never produced them. **Editors Note** - The #1615 was designed by Carl Cobal and we have seen his original drawing. Carl also designed many of the Silhouette etchings.

* The Candleholder in the museum with the gold came out of this factory when it closed.

September Flea Market

by JACK METCALF, Chm

Well, the time for the annual Fall Fling Flea is almost here, and both seller and buyer are gearing up their anticipation for the flea market. With the project committee having opted this year for a more informal setting in our parking lot, we're sure that a good time will be had by all, as in the past.

A story from last year comes to mind. We had to get a last minute stand in for the food concession, and they weren't ready when the dealers started setting up. Well, a certain dealer was running around ravenously asking "where's the food? When's the food coming?" When the food did arrive, he rushed up and demanded "gimme a hot dog, gimme a hot dog!" Upon being

told that nothing was ready yet, and the hot dogs were still ice cold, he replied "I don't care, just put it in a bun quick!" Well folks, he stood there and ate two of them like that. And not only did he survive, but went on to do yeoman service at our always great dinner.

The point is -- come prepared for anything, but mostly come prepared for fun. The dealers will be setting up as early as they can get up and get there; the public advertising is for an 8:30 A.M. start, but there are no fences and I hear that in the old days an occasional flashlight for setting up or early picking, was not unheard of.

SO—O—O—O, until September 16, happy hunting.

Check your carts for your renewal date

by DEBBIE DELANEY,
Memberships.

It is not too early to be thinking of your renewals for 1979. If you send them early it saves me a lot of time and it saves HCA money. With postage now being higher we really can't afford to send extra newsletters and one or two reminders to so many. We have been putting the reminder on the newsletters but it has not helped much. It also takes both me and the printer a lot of time to delete and then reinstate you, and we now have over 4000 members.

I will be glad to accept your renewals at the museum any day between 1 - 4 p.m. if you are local.

Your help will be appreciated.

-8- **HEISEY HUNTER Happenings.....**

by **BOB RYAN**

Do you remember the most beautiful piece of Heisey that you have ever seen? Can you recall all the exquisite details? The superb design? The craftsmanship? The warmth seemed to exude through the item right into your very being. The care that the workman lavished on this special piece of glass that brought it to its final brilliant fruition. How you cherished that memory and if you are lucky enough to own the beauty you can indulge frequently in savoring its beauty. Yet, no matter how breathtaking the item, how creative and unique it may be it can not compare to the treasure that has come to our clan. An exquisite masterpiece. Unique in design, yet similiar to another; all corners, the feet, the arms and the bottom polished to smooth finishes. After a good washing the entire outer surface

glows with a warm beauty. There was only one of these I can guarantee. There may be similar ones in the future but this one will always be unique. Though master painters and sculptors have long labored over duplication no one has had the creative genius to duplicate without the help of the Greatest of all Artists for you see Colleen Rose Ryan is our new treasure and is an Irish lass of magnificent beauty. She made her long awaited entry into this wonderful world July 29, 1978 in mid afternoon. The similarity is to her beautiful mother.

There are many thrills in life but some are more special than others. I am not saying that marriage and the birth of each child given to us by God isn't a very special thrill it is, but then a grandchild is something special also. I now know why

new grandparents can be so obnoxious at times with pictures etc., it is because, you see, a grandchild is something very special indeed. We are all just waiting for the time when we can take her in our arms and begin the ritual of loving her (some people refer to this as spoiling). Loving her is what is special for all the other amenities her parents can have that fun.

Please forgive the lack of glass in this month's column but I have no thoughts for it this month. For those of you I've bored run to a flea market and find yourself a piece of glass, I'll take my little lass.

Peace and may you all have a happy summer. Don't miss the September flea market or Mini-show whatever you call it, it is a special day each year. I'll come fortified with lots of pictures.

Study Club reports & gifts at Annual Meeting

Club

Charter # Club Name

1. Newark H.C.C.

Preparing a color print and booklet on "Heisey By Imperial". To be published by H.C.A. soon.

2. Reynoldsburg H.C.C.

Paying for carpet in lower level of the annex

3. Far East H.C.C.

\$100.00 for acquisition of glass.

4. Central Illinois H.C.C.

\$150.00

5. Bay State H.C.C.

39 pieces of Colonial Glass, value \$769.00

6. Long Island H.C.C.

Each member had donated glass for the March Auction.

7. Dayton Area H.C.C.

Members were in charge of the Swap Shop for Convention.

8. Heisey Heritage Society

\$850.00

13. Heisey Club of California

\$1,000.00

14. Northern Illinois H.C.C.

Furnished 240 dozen cookies for, and manned for two days the convention lounge in the annex. Furnished cook-books to sell at the museum.

15. H.C.C. of Michigan

#1201 Vaseline Floral Bowl

18. Houston Heisey Club

Velma Norman of this club donated a whimsey made by her father, Americus Vespuccius Stewart, a former Heisey employee. Individual donations throughout the year.

19. Heisey Collectors of the Rochester Area

Kodak Instamatic Camera with flash attachment, film, etc.

21. Newark Diamond H. Club

Continuing project is the museum booklet which is given out to visitors. An update will be printed soon.

22. Northwest Heisey C.C.

Printed Verlys Price Guide

23. Heisey Collectors of Columbus

\$300 for decorating exterior of annex.

25. 76'ers H.C.C.

Also manned the annex lounge for 2 days.

27. Land of Legend H.C.C.

Handled the Oscar sales this year.

#1593 Prism mustard and #353 medium flat panel candy tray. Donated in memory of Marg Dzierwa.



#1220 Puntty Band
Table salt and individual salt
Marked or unmarked

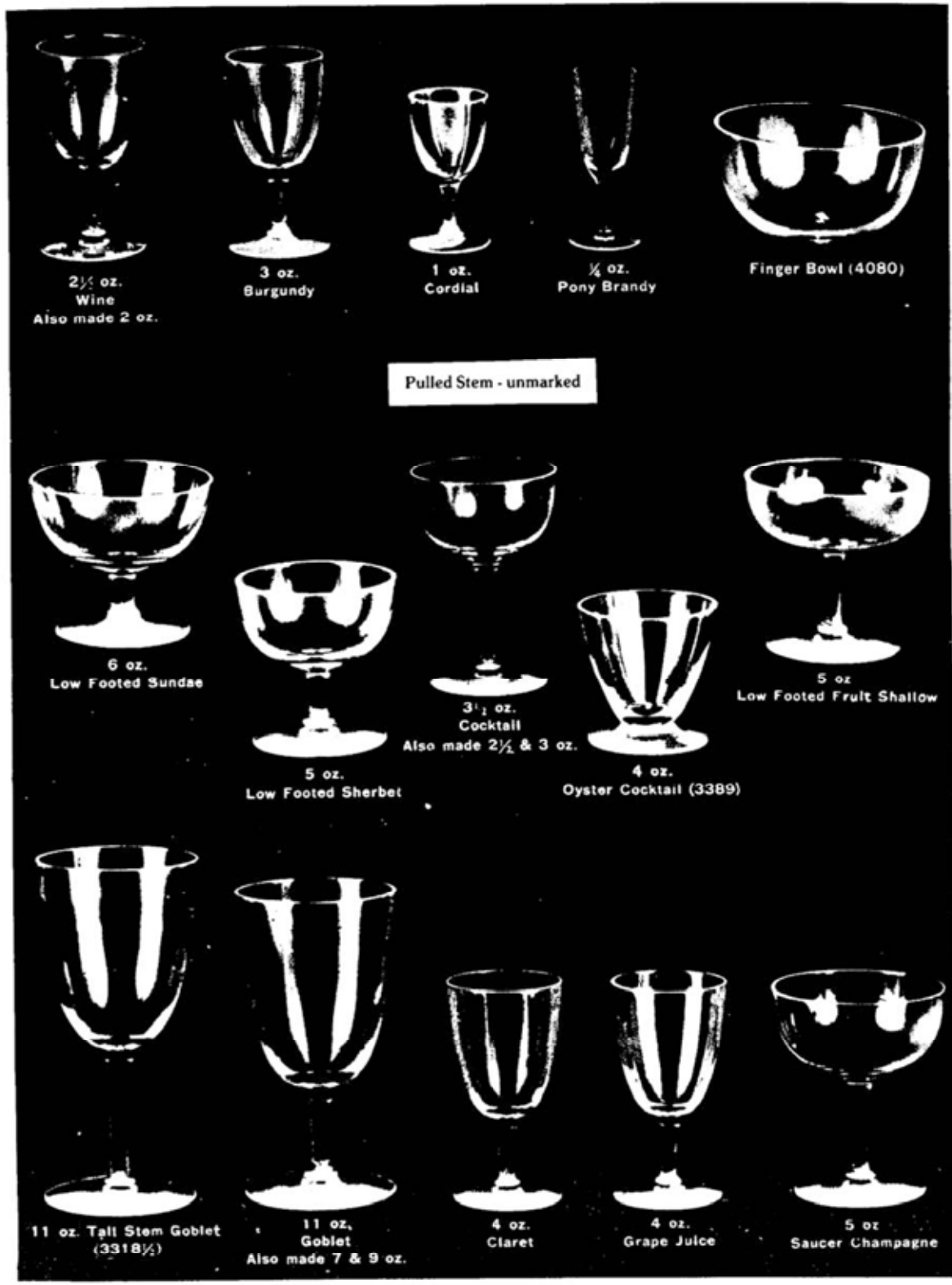


#1225 Plain Band
Table salt and individual salt
Marked or unmarked
Even though pictures show these
with beads at the top I
know of none which have them.
Any comments?

No. 3318 WALDORF PATTERN PULL STEM

PLAIN ONLY

APPROXIMATELY ONE-THIRD SIZE



A. H. HEISEY & CO.,



NEWARK, OHIO



Fig. 1—MODELS FOR SANDWICH GLASS

Comparison with dated examples of similar type from other factories indicates a date somewhere between 1850 and 1870 for these models. Some items may be earlier than others; but the dates indicated will probably cover the entire group here pictured, as well as those shown on the succeeding page. Owned by A. H. Heisey and Company.

Sandwich Models

By THE EDITOR

FROM all the land there has gone forth the prayer, "Give unto us a sign whereby we shall know Sandwich glass when we see it."

It is seldom that a universal appeal is aimed heavenward without receiving some measure of benign response. So, in the present instance, there comes, from a most unexpected quarter, a bit of remarkable evidence as to certain of the patterns which the Sandwich factory developed.

The making of pressed ware, it will be recalled, required the preparation of a metal mold in which had been cut the design which was to be transmitted to the soft glass forced against it. Obviously the cutting of such a mold involved the preliminary construction of some kind of model which should present an exact image of the finished object. Only by means of such a model could the maker be sure of the eventual aspect of the completed work. A model, too, would be convenient, if not absolutely essential, in providing a form from which might be taken casts whose intaglio pattern would give the mold maker an exact basis for his cutting.

And now to our story:

At some time in its history, the Sandwich glass factory had its models carved in mahogany. When the concern

ceased operation, although the greater part of its records of all kinds were destroyed, several barrels of wooden models were preserved by one of the company's staff. In due course, these models came into possession of the late James E. Johnston, of Sandwich, who turned them over to Colonel A. H. Heisey, founder of the firm of A. H. Heisey & Company, glass manufacturers, of Newark, Ohio. The extensive interest in old Sandwich patterns led recently to investigation of the entire cache. As a result, the contents of three of the original barrels were found intact. Through courtesy of T. C. Heisey, ANTIQUES is able to reproduce their more important items, some pictured from several different angles, so as to display their design to fullest advantage.

Even a brief study of these interesting mementos of glassmaking seems to suggest a plausible theory to explain their escape from destruction.

The Sandwich works, it will be recalled, suspended operations in 1888. The patterns here shown appear, for the most part, to belong to the late 1850's or to the earlier years of the subsequent decade. They had, therefore, been quite out of style for a full thirty years when the factory closed. Since no factories of any kind preserve indefinitely



Fig. 2—MODELS FOR SANDWICH GLASS (mid-nineteenth century).
Of mahogany. The dolphin candlestick and several familiar salts are here recognizable.

their models of discontinued lines, it is a fair guess that, long before trouble threatened the enterprise on Cape Cod, these mahogany carvings had been sold or given away by the Sandwich management. Whosoever was the recipient of the donation must have stowed it away in barn, attic, or cellar, quite apart from the factory. To some such circumstance the preservation of the group must be credited.

A number of designs familiar to collectors of Sandwich are recognizable among the examples pictured — notably the dolphin candlestick, various salts, and several goblets whose surfaces are elaborately faceted.

The Heisey Company are, in terms of years, at any rate, logical inheritors of these Sandwich heirlooms. Colonel

A. H. Heisey, founder of the concern, was in the glass business from the close of the Civil War. Before settling in Newark, Ohio, he was active in the Pittsburgh district, with his brother-in-law, James E. Duncan, son of George Duncan whose glass manufacturing experience reached back into the early sixties. Later the Duncan branch of the family undertook glassmaking in Washington, where the present firm operates under the name of Duncan and Miller; while the Heiseys moved to Newark, Ohio.

The Sandwich models in their possession are now being utilized by the Heisey Company as a basis for careful modern reproductions, some of which are not easily differentiated from original specimens.



Fig. 3—MODELS FOR SANDWICH GLASS

-12- **LETTERS, we get letters....**

Its always such a thrill to travel north in June -- like an extended Spring. Then you people make everything click off like clockwork to make all Heisey festivities so great for all of us. Enough can never be said for how nice you people handle our stay in Heiseyland.

Thanks for everything and I'm already looking forward to next year.

Norman Alford, Tx



On a recent visit to Newark we picked up a Newark Hi-Lites booklet and saw your notice about your museum and the hours it was open. We were just on our way home and in no particular hurry so we decided to go. I'm glad we did because I knew nothing of the Heisey Collectors organization until then. I am a former employee of Heisey Glass Co. I worked in the office under Madge Kennet typing salesmen's orders. I worked there during 1946-47 until I quit to have a baby. I even did some typing in my home after I had the baby, but not for long.

I am sending my application for membership in the club and am looking forward to receiving "Heisey News" as I found the one given to me on our visit to be very enjoyable.

I bought a number of glass items while I was an employee and really treasure them now. Many more were broken by the children but I feel lucky to have as many left as I do.

Thank you so much for your courtesy and information on our museum tour and am looking forward to many more visits.

Anne M. Carter, Ohio

Ed. Note - We welcome Anne as a member and another addition to our list of former employees. We hope she attends next years get-together of former employees during the convention in June.



No. 393
4 OZ. ORANGE JUICE GLASS
GROUND BOTTOM

Dear Mrs. Ream:

I recently came across something at a yard sale which I think might interest you. I bought seven goblets, two which were #3333 Old Glory with the #9001 Trefoil Etching and marked. The other five were unmarked, completely different looking, but had the identical etching. I bought those hoping they were also Heisey. After checking my books I find there is no doubt that they are #3315 Polonaise* (10 ounce size) which the "Heisey Stemware" book lists as UNSEEN. Also your "Encyclopedia of Heisey Glassware, Volume One" does not list this particular etching as appearing on this goblet. Have I found something that so far the club has not discovered?

Carole Lacey, R.I.

Ed. Note— We have added #3315 Polonaise to our list of items for #9001 Trefoil etching. The number of patterns used for this etching seem to pop up everywhere. We are looking forward to receiving the goblet offered to us by Carole. I have seen a piece or two of Polonaise. One thing about rarity, most people don't know they have the item until they see it pictured someplace so when it is shown in a book it soon is reported as "seen". It is difficult to recognize a pulled stem anyway.....



Addition to your list of items for sale

We have a limited number of ceramic plates which were made for the Land of Heisey Society as a club project. These will cost \$3.50 with postage included or \$2.50 each if picked up. The size of the box and the weight plus the low price

makes it impossible to send these for only 100/0 freight.

You seem to like our new order form and we hope you keep the list at hand since it will be several months before we send another one.

Harley's Angels

Harley Bethel, this year's display chairman who no one ever suspected was poetical, composed this little verse which he read at the annual meeting in June. The "little girls", (and he used the term loosely), were Mary McWilliams, Valli Feldman, Louise Ream and his wife, Marcella. Harley has just come home from another bout in the hospital. We hope he soon will be feeling fine again.

Once upon a time,
there were four little girls
From near and far
they came to the "Y"
So early on Wednesday last,
They started their tremendous task,
With their yellows,
pinks, blues & greens,
They embarked upon a devious scheme,
Would this look right here,
I don't know, give it a try,
No, that don't do much for the eye,

Move it a quarter inch to the left,
Now....a hair back to the right,
There, that does it,
I dare anyone to touch it,
Early the next morning,
the flowers arrived,
Their task had ended.
Now I'm not quite certain,
But I think if you tried,
you could detect a little tear
In many an eye,
These are Harley's Angels.

Dear H.C.A.

First thank you for the first Volume of the Heisey News. I know it took time to Xerox it. I have read and reread it and how I wish I had joined in '73 when I saw my first copy. I have missed so much. Am now trying to catch up. I sure appreciate the time you took to run it off for me. How I could be back in "Heisey Country." I am planning on it next year. I'm saving my pennies.

Have really enjoyed the Encyclopedia of Heisey, Vol. I. Without this book would never have found the blown pitcher with the Sabrina etching at a flea market. And a Puritan box and large ash tray with a sand blasted flower. These pieces really made my day. Does anyone have more information on the sand blasted pieces? Did anyone else do other designs on these blanks?

Everyone out here keeps saying how hard it is to find anything. Thanks to my reference material and study time, I have found over one hundred pieces, fair prices and mostly unsigned, and have been "Heisey Hunting" only every other Sunday. The books, news and catalogs are really paying off.

Willia Carty, Olympia, Wash.

* Dorothy Thorpe of California bought Heisey blanks for making sand blasted designs. We have several pieces on display in the museum. They are usually signed with an acid etched DTC.



CLUB NEWS

Bay State HCC

by MAURICE WALTER

Two guests and twenty six members met in the garden of the home of Pat and Peggy LaRoas in Waltham, Mass. for the July 11th meeting of the Bay State Heisey Collectors Club.

President Irene Walton announced that Mary Williams had accepted the office of Secretary of the club due to the resignation of George Gleason.

This was our first meeting since the national convention. In my last report I had indicated that up to fourteen members expected to attend the convention. Nineteen showed up. We ran into home club friends everywhere. The program, the displays, and the shows were excellent. Lloyd Caswell, our club photographer, and I brought the color prints of the photos we took in and around Newark during convention week. I also screened the color transparencies taken at the YWCA where the club's Glass Display was located. I should say many clubs.

Anne Montague conducted Show and Tell after the slide show. Some of the pieces shown were, a Nails pattern ash-tray, a Crisscross nappy, a marked Humidor with metal cover of unknown pattern, a 1½ pint flask with Maryland cutting, and a pair of pumpkin seed mellow Crystolite candle blocks.

The program for the evening was a lecture by George Fogg on animals manufactured by other glass companies. It was amply illustrated with many actual pieces. Some of the manufacturers represented were Cambridge, Padden City, New Martinsville, Degenhart, and Fostoria.

Refreshments were served by Peggy LaRosa.

Newark Diamond H Club

by PHYLLIS BRYAN, Secy

The July meeting was held at the Museum with Betsy Leibrand as the hostess. Two guests were present. The club will be printing an up-date on the free booklet given to visitors at the Museum. Virginia Yeakley will be serving as the general chairman. More information will be found in the August issue of Heisey News.

The various colors of Heisey glassware were reviewed for the study session.

Heisey toothpick holder & Heisey animals slides available

by DICK SPENCER

As promised some time ago two sets of slides have been prepared and turned over to HCA for rental to member clubs and/or members. A special thanks to Loren Yeakley for preparing and giving the toothpick holder slides to HCA and to Dick Marsh for the animal slides.

Heisey Toothpick Holder slides consists of 72 - 35mm slides. Accompanying printed material gives pattern number, pattern name and if the item is marked.

Heisey Animal Slides consists of 74 - 35mm slides of Heisey Animals. Accompanying printed material gives pattern number, proper name, years of production, location of mark and if reproduced.

The slides may be purchased at \$35.00 per set, which includes postage.

The slides may be rented by HCA members or Member-Clubs for \$7.00

Western Reserve Study Club

CLEVELAND—LORAIN AREA

by HELEN MARIMON

Twelve members and guests of the WRHCC met at the home of Wendell and Thelma Young in Lakewood on July 20th. A great deal of time was spent admiring the basket collection of Thelma and their extensive collection of Heisey glass beautifully displayed on floor to ceiling shelves in their family room. Our study topic centered around colored glass. The refreshments were appropriately served on the flamingo Pleat and Panel pattern of the hostess.

which includes postage one-way, and handling.

We have a limited number of sets available for renting, so it will be scheduled upon receipt of check or money order. First received is first scheduled.

The movie, "The Heisey Glass Story" has been a tremendous success. We have three copies of the film on loan at all times and presently we have bookings up into December.

To purchase or rent the slides, send check or money order, made payable to Southern Illinois Diamond H Seekers, to Dick Spencer, 1203 N. Yale, O'Fallon, IL, 62269.

Any and all proceeds from this project will be turned over to Heisey Collectors of America, Inc.

"Heisey Glass Story" to be shown on Long Island

The Long Island Heisey Collectors Club (New York) will show the sound film "The Heisey Glass Story", at the Levittown Library on Friday, October 6th, 8:30 p.m. Discussion and questions will follow the film.

Levittown Library is located at the corner of Hempstead Turnpike and Blue Grass Lane.

Admission is free. The public is invited.



#500
2 oz. Lavendar Jar
Ground-In Stopper



#501
5 oz. Lavendar Jar
Ground-In Stopper



#502
7 oz. Lavendar Jar
Ground-In Stopper

TWO NEW HEISEY ETCHINGS

From October, 1942 Crockery and Glass Journal. For more on this pattern see "Etchings and Carvings" by Ream and Bredehoft.



Meet two NEW Heisey winners—in tune with the season—in tune with the times.

You can expect a grand reception for the ME, YOU and US cocktail set as America turns to a winter of entertaining at home.

And, the New Victory Eagle motif is a complete Bar and Drinking Accessory line that will make a quick hit with Americans who want to combine patriotism with pleasure. Both are popularly priced. Both can be delivered in plenty of time for your holiday trade. Order them NOW! A. H. Heisey & Co., Newark, Ohio.



5038 Cocktail, etched ME, 5038 Cocktail, etched YOU and 4225 Cocktail Shaker, Rooster Stopper, etched US. The three-piece set retails for \$6.50 and can be packed individually, if desired, in a gift carton ready for delivery.

4038 8 oz. Old Fashioned, \$6.60 per dozen retail, 4032 12 oz. Soda, \$6.60 per dozen retail, 3318 Cocktail, \$10.20 per dozen retail.

4036 1/2 Qt. Decanter, \$5.00 each retail, 4036 Cocktail Shaker, \$5.00 each retail—all with "Victory" etching.

HEISEY'S
HAND · WROUGHT  CRYSTAL

★★ ALL HEISEY AUCTION ★★

**At the OPERA HOUSE
Granville, Ohio**

SAT., OCTOBER 14, 1978

DOORS OPEN AT 12:00 NOON

SALE STARTS AT 4 P.M.

FOOD AVAILABLE

Price lists available for **\$1.00**

- 1. #1506 Provincial LIMELIGHT Cr. & Sug H _____
- 2. #1183 Revere oval Cr. & Sug, Unk Cut H _____
- 3. #1951 Cabochon Cr. & Sug, Moonglo Cut H _____
- 4. # 355 Quator Hotel Cr. & Sug Dated H _____
- 5. #1401 Empress FLAMINGO Cr. & Sug H xx _____
- 6. # 429 Plain Panel Recess Cr, Cov Sug & Tray H _____
- 7. #1509 Queen Ann Cr & Sug Minuet Etch H _____
- 8. #1951 Cabochon Cr & Sug, Gold Trim H _____
- 9. # 355 Quator SAHARA Ftd Cr & Sug H _____
- 10. # 394 Narrow Flute FLAMINGO Domino Sug Dtd H _____
- 11. # 394 Narrow Flute Domino Sug Dtd H _____
- 12. #1519 Waverly Ind Sug Rose Etch _____
- 13. #1519 Waverly Ind Cr & Sug & Empress Tray
Orchid Etch H _____
- 14. # 355 Quator FLAMINGO Ftd BonBon H _____
- 15. #1425 Victorian Cr H _____
- 16. #1506 Provincial LIMELIGHT Hddld Mayonnaise H _____
- 17. #1637A Town & Country DAWN 8" Serving Dish _____
- 18. #1253 Twist MARIGOLD 3 Cor. Mint H _____
- 19. # 411 Rib & Panel MOONGLEAM 2 Hddld Jelly H _____
- 20. # 335 Prince of Wales Plumes 10" Celery Tray H _____
- 21. #1503 Crystolite Hddld Jelly Spider Web Bottom H _____
- 22. #1295 Beaded Swag Custard 4 1/4" Nappy
Souv. Rose H _____
- 23. # 343 Sunburst 6" oval Pickle Tray H _____
- 24. #1186 Yeoman 5" oval Lemon Dish, Cut Dtd H _____
- 25. # 472 Narrow Flute W/rim FLAMINGO
7" Pickle Tray H _____
- 26. #1401 Empress FLAMINGO 11" Floral Bowl _____
- 27. #1503 Crystolite 12" Oval Floral Bowl H _____
- 28. #1503 Crystolite Mayonnaise & Underplate H _____
- 29. #1503 Crystolite 8" 3 Part Relish _____
- 30. # 353 Colonial 7" Low Ftd Comport H _____
- 31. # 352 Flat Panel 8" Oval Relish Cut H _____
- 32. # 500 Octagon MOONGLEAM Variety Tray H _____
- 33. #3390 Carcassonne COBALT 11oz Short Stem Goblet
6 ea. _____
- 34. #3390 Carcassonne COBALT 8oz Ftd Soda, 5 ea. _____
- 35. #3390 Carcassonne COBALT 5oz Ftd Soda 5 ea. _____
- 36. #3390 Carcassonne COBALT 6oz Saucer Champ
6 ea H _____
- 37. #3304 Universal 6oz Hollow Stem Champ, Moonglo
Cut 6 ea. _____
- 38. #4044 New Era 6oz Sherbet 8 ea. _____
- 39. #3312 Gayoso 8 oz Goblet, Trefoil Needle Etch 5 ea _____
- 39A #1425 Victorian 9oz Hi Ftd Goblet 3 ea _____
- 40. #1425 Victorian 2 1/2oz Wine 2 ea _____
- #1425 Victorian 3 oz Cocktail 3 ea _____
- 41. #1425 Victorian 5 oz Saucer Champ 3 ea _____

- 42. #5024 Oxford 6 1/2oz Sherbet, 8 ea H _____
- 43. #1401 Empress Ftd Ice Bucket, Normandie Etch _____
- 44. # 433 Grecian Border Lg Ice Tub H _____
- 45. # 500 Octagon MOONGLEAM Ice Tub Silver Hdl H _____
- 46. # 500 Octagon FLAMINGO Ice Tub Silver Hdl
Cut H _____
- 47. #1252 Twist MARIGOLD Ice Tub Silver Hdl H x _____
- 48. #4035 32oz Decanter Normandie Etch _____
- 49. #4225 1 Pt Cocktail Shaker _____
- 50. #4044 New Era 2 Lt Candelabra Complete Pr. _____
- 51. # 150 Banded Flute Hddld Candlestick H _____
- 52. # 22 7" Candlestick Pr Cut _____
- 53. # 301 Hurricane Light Pr Cut Bases _____
- 54. # 25 7" Candlesticks, Pr H _____
- 55. # 100 6" Candlesticks Pr H _____
- 56. # 2 7" Candlesticks Pr _____
- 57. # 116 3" FLAMINGO Candlestick Crystal FT PR _____
- 58. # 16 7" Candlesticks Pr H _____
- 59. # 33 7" Candlestick _____
- 60. # 47 7" Candlestick H _____
- 61. #1535 Candlestick Pr _____
- 62. # 25 9" Candlestick Pr H _____
- 63. # 150 Banded Flute Punch Cup H _____
- 64. #1235 Beaded Panel & Sunburst Punch Cup H _____
- 65. #1295 Beaded Swag Punch Cup, Gold Decor _____
- 66. #1103 Colonial Punch Cup H _____
- 67. #341 1/2 Colonial 3 1/4 Punch Cup H _____
- 68. #1101 5 oz. Optic Punch Cup H _____
- 69. #1101 5 oz Punch Cup Ukn Cut _____
- 70. # 339 Continental Punch Cup H _____
- 71. #1401 Empress Punch Cup H SAHARA _____
- 72. #1401 Empress Punch Cup H MOONGLEAM _____
- 73A #1205 Fancy Loop Punch Cup _____
- 73B #1205 Fancy Loop Punch Cup _____
- 74. # 433 Grecian Border Punch Cup H _____
- 75. # 369 Hartman Punch Cup H _____
- 76. #1776 Kalonyal Punch Cup H _____
- 77. # 315 Panelled Cane Punch Cup H _____
- 78. # 325 Pillows Punch Cup H _____
- 79. #1255 Pineapple & Fan Punch Cup Souv. _____
- 80. # 350 Pinwheel & Fan Punch Cup H _____
- 81. # 429 Plain Panel Recess Punch Cup H _____
- 82. #1567 Plantation Punch Cup H _____
- 83. # 335 Prince of Wales Plumes Punch Cup H _____
- 84. # 357 Prison Stripe Punch Cup H _____
- 85. # 305 Punt & Diamond Point Punch Cup H _____
- 86. # 365 Queen Ann Punch Cup H _____
- 87. # 439 Raised Loop Punch Cup H _____
- 88. # 411 Rib & Panel Punch Cup H _____

PAID ADVERTISEMENT

- 89. # 393 Narrow Flute Punch Cup H _____
- 90. # 343 Sunburst Punch Cup 4 oz. H _____
- 91. # 343 Sunburst Punch Cup 5 oz. H _____
- 92. # 337 Touraine Punch Cup 5 oz. H _____
- 93. # 337 Touraine Punch Cup 4 oz. Ftd H _____
- 94. #1252 Twist Punch Cup H _____
- 95. # 379 Urn Punch Cup H _____
- 96A #1425 Victorian Punch Cup H _____
- 96B #1425 Victorian Punch Cup H 3 ea. _____
- 97. #1506 Provincial Punch Cup H _____
- 98. # 300½ Colonial Punch Cup H _____
- 99. #1218 Brookville Punch Cup H Ftd. _____
- 100. # 300 Peerless Punch Cup 3 ea H _____
- 101. #1404 Old Sandwich Cup, 15 ea H _____
- 102. #1401 Empress FLAMINGO 3 Pt Ftd Jug H _____
- 103. # 411 Rib & Panel 3 Pt Jug & Lid H _____
- 104. # 473 Narrow Flute w/rim ½Gal Jug H _____
- 105. #5060 Washington Square ½Gal Jug _____
- 106. #3350 Wabash 3 Pt Tankard Pied Piper Etch _____
- 107. # 462 8" Basket Cut H _____
- 108. # 417 Double Rib & Panel MOONGLEAM 6" Basket H _____
- 109. # 465 Recessed Panel 7" Basket Dec _____
- 110. #1632 Lodestar DAWN 7½" Crimped Vase H _____
- 111. #7030 Bakeware 8" VASELINE Ftd. Vase _____
- 112. # 451 Cross Lined Flute 5" Vase H _____
- 113. #5012 6" Urn Vase Mono "MH" H _____
- 114. #1413 Cathedral COBALT 9" Vase _____
- 115. #1255 Pineapple & Fan 10" Vase _____
- 116. #1567 Plantation 5" Vase _____
- 117. #1428 Warwick 9" Horn of Plenty Vase H _____
- 118. # 353 12" Vase H _____
- 119. #1225 Plain Band Salt Dip 2 ea. H _____
- 120. #1201 Fandango Salt Dip _____
- 121. #1205 Fancy Loop Salt Dip 8 ea. _____
- 122. #1469 Ridgeleigh Salt Dip H _____
- 123. #1183 Revere Salt Dip Cut H _____
- 124. #1183 Revere FLAMINGO Salt Dip 4 ea. _____
- 125. #1183 Revere MOONGLEAM Salt Dip _____
- 126. #1404 Old Sandwich Ind. Ash Tray H _____
- 127. #1454 Diamond Pt. Ind Ash Tray
-& Ind Marmalade H _____
- 128. #1469 Ridgeleigh Individual Nut H _____
- 129. #1229 Octagon FLAMINGO Ind Nut Dish H _____
- 130. #1252 Twist MOONGLEAM Ind Nut Dish H _____
- 131. # 393 Narrow Flute MOONGLEAM Ind Almond _____
- 132. # 393 Narrow Flute FLAMINGO Ind Almond H _____
- 133. #1401 Empress FLAMINGO Ind Ftd Nut H _____
- 134. #1401 Empress SAHARA Ind Ftd Nut _____
- 135. # 393 Narrow Flute Ind Almond 4 ea H _____
- 136. #1401 Empress 8" TANGERINE Sq. Plate H _____
- 137. #1401 Empress 8" COBALT Sq. Plate H _____
- 138. #1401 Empress 7" ALEXANDRITE Rd Plates 4 ea H _____
- 139. #1401 Empress 8" SAHARA Rd Plates 11 ea H _____
- 140. # 150 Banded Flute 7" Plate 4ea H _____
- 141. # 433 Grecian Border 10" Plate H _____
- 142. # 407 Coarse Rib 10" Plate Mercury Back H _____
- 143. #1252 Twist MOONGLEAM 8" Kraft Cheese Plate _____
- 144. Land of Legend Souvenir Plates Set of 6 _____
- 145. Land of Legend Souvenir Plates _____

2 - 1972, 1 - 1973

- 146. #7000 Sunflower 14" Buffet Plate H _____
- 147. # 341 Old Williamsburg 12" Buffet Plate H _____
- 148. #1519 Waverly 10" Plate _____
- 149. #1186 Yeoman 7" Oval Plate Dec. H _____
- 150. Ringneck Pheasant _____
- 151. Standing Colt _____
- 152. Rearing Colt _____
- 153. Kicking Colt _____
- 154. Sealyham Terrier _____
- 155. Fish Candlestick _____
- 156. Large Elephant _____
- 157. Middle Elephant x _____
- 158. Small Elephant _____
- 159. Fish Bookends Pr H _____
- 160. Oscar Horse _____
- 161. Oscar Horse _____
- 162. Rabbit Paperweight _____
- 163. Goose Wings Up _____
- 164. Goose Wings Half _____
- 165. Goose Wings Half _____
- 166. Floating Wood Duckling _____
- 167. Bunny Head Down _____
- 168. Cygnet H _____
- 169. Sparrow _____
- 170. Piglet Standing H _____
- 171. Piglet Standing H _____
- 172. Imperial Slag Middle Elephant _____
- 173. Imperial Slag Middle Elephant _____
- 174. Imperial Slag Mallard Wings Up _____
- 175. Imperial Slag Mallard Wings ½ Up _____
- 176. Imperial Slag Standing Colt _____
- 177. Imperial Slag Oscar Horse _____
- 178. Imperial Slag Oscar Horse _____
- 179. Imperial Slag Donkey _____
- 180. Imperial Slag Airedale Terrier _____
- 181. Imperial Slag Standing Colt _____
- 182. Imperial Slag Rearing Colt _____
- 183. Imperial Slag Kicking Colt _____
- 184. Imperial Slag Wood Duck _____
- 185. #3380 Old Dominion SAHARA Goblet H _____
- 186. # 373 Colonial 9 oz Goblet _____
- 187. #7047 Comet Leaf Goblet H _____
- 188. #3411 Monte Cristo Goblet Waikiki Cut 2 ea _____
- 189. #1295 Beaded Swag CUSTARD Goblet Souv. _____
- 190. #3390 Carassonne COBALT 12oz Ftd Soda _____
- 191. #1184 Yeoman FLAMINGO Parfait H _____
- 192. #1485 Saturn Parfait H _____
- 193. #5019 Waverly 5oz Ftd Soda H _____
- 194. #5077 Legionaire 5oz Ftd Juice Arcadia Cut H _____
- 195. #5010 Symphone 5oz Ftd Soda Crinoline Etch _____
- 196. #1590 Zodiac 5oz Ftd Juice H _____
- 197. #5003 Crystalite 5oz Ftd Soda _____
- 198. #3316 Biltmore 4½ oz Grape Juice AMBER _____
- 199. # 351 Colonial 4oz Grape Ftd _____
- 200. #5040 Lariat Juice Moonglo Cut H _____
- 201. # 466 6oz Oil Bottle Cut H _____
- 202. # 353 Colonial 4oz Oil H _____
- 203. #1170 Pleat & Panel FLAMINGO 3oz Oil _____
- 204. # 343 Old Williamsburg 6oz Oil H _____
- 205. # 411 Rib & Panel 6oz Oil H _____
- 206. #1503 Crystalite 3oz Oil _____

PAID ADVERTISEMENT

- 207. #1489 Puritan Oil & Vinegar Bottle _____
- 208. # 353 Colonial 2oz Oil _____
- 209. # 473 Narrow Flute w/rim 4oz Oil _____
- 210. #1205 Fancy Loop 6oz Oil _____
- 211. # 104 5" Candlestick Pr H _____
- 212. # 99 MOONGLEAM Candleblock Pr Cut H _____
- 213. #1533 Wampum 4" Candlestick Pr _____
- 214. #1503 Crystolite 1 Lt Candlesticks Pr _____
- 215. # 116 Leaf Etch 1 Lt Candlestick
MOONGLEAM Ftd Pr _____
- 216. #1401 Empress FLAMINGO 6" 1 Lt Ftd
Candlestick Pr H _____
- 217. # 112 SAHARA 1 Lt Candlestick _____
- 218. # 21 4" Desk 1 Lt Candlestick H _____
- 219. # 120 FLAMINGO 1 Lt Candlestick H _____
- 220. #1252 Twist MARIGOLD 2" 1 Lt Candlestick Pr H _____
- 221. #1503 Crystolite 1 Lt Candlestick _____
- 222. #1469 Ridgeleigh 1 Lt Candlestick Sq. _____
- 223. #1559 Columbia 1 Lt Candlestick Crimped _____
- 224. #1509 Queen Ann 1 Lt Ftd Candlestick _____
- 225. # 99 FLAMINGO Candleblock _____
- 226. #1951 Cabochon 1 Lt Candlestick _____
- 227. #1472 Parallel Quarter 1 Lt Candlestick _____
- 228. #7000 Sunflower 1 Lt Candlestick _____
- 229. #1540 Lariat 1 Lt Candlestick H _____
- 230. #1252 Twist MARIGOLD 2" 1 Lt Candlestick H xx _____
- 231. # 21 7" Candlestick Pr H _____
- 232. # 20 7" Candlestick _____
- 233. # 22 7" Candlestick H _____
- 234. # 70 7" Candlestick H _____
- 235. # 21 7" Candlestick H _____
- 236. #1503 Crystolite Hurricane Lamp Cut _____
- 237. #1417 Arch COBALT Tumbler _____
- 238. #1485 Saturn ZIRCON 8oz Tumbler _____
- 239. #1295 Beaded Swag 8oz Tumbler Red Stain _____
- 240. #1235 Beaded Panel & Sunburst 8oz Tumbler
Gold Dec _____
- 241. #1220 Puntly Band 8oz Tumbler Red Stain _____
- 242. #1460 Flame 8oz Tumbler _____
- 243. #1632 Lodestar DAWN 6oz Cocktail H _____
- 244. #4054 Coronation 5oz Juice _____
- 245. #1415 20th Century DAWN Ftd Juice _____
- 246. #1255 Pineapple & Fan 8oz Tumbler Gold Dec _____
- 247. #1404 Old Sandwich 6½oz Toddy 6ea H _____
- 248. #5074 Sea Horse Cocktail H _____
- 249. #5038 3½oz Rooster Stem Cocktail _____
- 250. #5058 Goose Stem Sherry _____
- 251. #4225 1 Pt Cocktail Shaker Rooster Stopper _____
- 252. #1519 Waverly Lion Trinket Box H _____
- 253. #1601 Fox Ash Tray _____
- 254. # 14 Kingfisher Variant Floral Block _____
- 255. #1503 Crystolite Swan Master Nut Dish _____
- 256. #5058 1 Pt Goose Decanter _____
- 257. # 1 Madonna Frosted H _____
- 258. # 77 Duck Cologne Stopper Whimsey _____
- 259. #1489 Puritan Small Horsehead Cig. Box _____
- 260. #1489 Puritan Large Horsehead Cig. Box _____
- 261. #4225 1 Qt Cocktail Shaker Rooster Stopper x _____
- 262. #3333 Old Glory 2oz Wine Renaissance Etch H _____
- 263. # 300 Peerless 2oz Wine H Eng. Reg Mark _____
- 264. # 363 Colonial 2oz Wine H _____
- 265. #1404 Old Sandwich 2½oz Wine H _____
- 266. #5025 Tyrolean 3oz Wine Orchid Etch H _____
- 267. #3350 Wabash 3oz Cocktail MOONGLEAM stem
Mayflower Etch H _____
- 268. #5079 Pan American 3oz Cocktail _____
- 269. #3359 Plateau FLAMINGO 3oz Cocktail _____
- 270. #4044 New Era 3oz Cocktail _____
- 271. #5040 Lariat 3½oz Cocktail Moonglo Cut H _____
- 272. #3390 Carcassonne SAHARA 4oz Claret _____
- 273. #4091 Kimberly 3oz Cocktail _____
- 274. #6003 Tempo 3oz Cocktail _____
- 275. #1404 Old Sandwich 3oz Cocktail H _____
- 276. #4224 Steeple Chase SAHARA 4oz Cocktail _____
- 277. #3362 Charter Oak FLAMINGO 3oz Cocktail _____
- 278. #1485 Saturn 3oz Cocktail _____
- 279. # 348 Colonial 3oz Cocktail _____
- 280. # 300 Peerless 2oz Wine 2 ea H _____
- 281. #4055 Parklane 2oz Sherry Mono SJS H _____
- 282. #4004 Impromptu 4oz Cocktail _____
- 283. # 433 Grecian Border 6oz Low Ftd Sherbet H _____
- 284. # 433 Grecian Border 4½oz Low Ftd Sherbet H _____
- 285. # 353 Colonial 4½oz Low Ftd Comport 6 ea H _____
- 286. #1220 Puntly Band CUSTARD Toothpick Beaded
Top Souv H _____
- 287. # 300 Peerless Bar Glass H _____
- 288. #1205 Fancy Loop Toothpick _____
- 289. #1220 Puntly Band Toothpick Red Stain x _____
- 290. #1255 Pineapple & Fan Emerald Toothpick
Gold Dec _____
- 291. # 351 Priscilla Toothpick H _____
- 292. # 300 Peerless Toothpick H x _____
- 293. #1220 Puntly Band Toothpick Red Stain H x _____
- 294. #1454 Diamond Point Mat Toothpick _____
- 295. #1469 Ridgeleigh SAHARA Cigarette Holder _____
- 296. #1503 Crystolite Cigarette Holder _____
- 297. #5012 Urn Cigarette Holder _____
- 298. #5012 Urn Cigarette Holder _____
- 299. #1401 Empress ALEXANDRITE Ash Tray _____
- 300. #1536 Military Cap Ash Tray _____
- 301. #1435 Ind Ash Tray Orchid Etch _____
- 302. #1567 Plantation Ash Tray 4 ea _____
- 303. #1435 Ind Ash Tray 4 ea _____
- 304. 2 Misc Bar Glasses _____
- 305. #4054 Coronation 2½oz Bar Glass _____
- 306. # 300 Peerless Bar Glass H _____
- 307. #4230 CRYSTAL Favor Vase _____
- 308. #4228 COBALT Favor Vase _____
- 309. #1184 Yeoman FLAMINGO 6" BonBon Hdd _____
- 310. Mirror Advertising Sign _____
- 311. Mirror Advertising Sign _____
- 312. # 10 MOONGLEAM Oakleaf Coaster _____
- 313. #1567 Plantation Coaster 7 ea _____
- 314. #2052 Bar Glass 1½oz Fox Chase Etch _____
- 315. #1184 Yeoman 8oz Soda Wigwam Deep Plate Etch _____
- 316. #1489 Puritan Bitters Bottle _____
- 317. # 1489 Puritan Bitters Bottle Mono P K T _____
- 318. #1489 Puritan Decanter West Point Etch _____
- 319. # 554 Imperial - 9oz Goblet West Point Etch _____
- 320. # 554 Imperial - 7½oz Red Wine Annapolis Etch _____
- 321. #5025 Tyrolean Dinner Bell Orchid Etch H _____

PAID ADVERTISEMENT

- 322. #1519 Waverly Candy Box Bottom Only
Rose Etch H _____
- 323. #1519 Waverly 6½" 2 part Oval Dressing
Rose Etch H _____
- 324. #1519 Waverly 3oz Oil Bottle Rose Etch _____
- 325. #1519 Waverly 6" Sq Butter Dish &
Cover Rose Etch _____
- 326. #5012 10" Sq Ftd Bud Vase Rose Etch x _____
- 327. #1519 Waverly 8" Round Plate Rose Etch 8 ea _____
- 328. #1519 Waverly 10½" Service Plate Rose Etch _____
- 329. # 354 Colonial Lavender Jar 27 oz H _____
- 330. # 433 Grecian Border Sm Cherry Jar H _____
- 331. # 465 Recessed Panel 1# Candy Jar Cut
Metal Lid H _____
- 332. # 465 Recessed Panel ½# Candy Jar Frosted H _____
- 333. # 465 Recessed Panel ½# Candy Jar Gold Dec H _____
- 334. #1170 Pleat & Panel FLAMINGO Tall Stem
Candy & Cover H _____
- 335. #5010 Symphone Cordial Minuet Etch _____
- 336. #5010 Symphone Cordial Danish Princess Cut _____
- 337. #3389 Duquesne Cordial _____
- 338. #1252 Twist MOONGLEAM Ind BonBon
Gold Dec H _____
- 339. # 417 Double Rib & Panel FLAMINGO
Mustard & Cov H _____
- 340. # 31 Toy Candlestick Pr _____
- 341. #1205 Fancy Loop Salt & Pepper _____
- 342. # 5034 Bar Glass Comet Torpedo Sham Souv Effie _____
- 343. #1255 Pineapple & Fan CUSTARD ½ Pt Tankard x _____
- 344. # 433 Greacian Border Banana Split H _____
- 345. #1401 Empress FLAMINGO 6" Ftd Mint Dish H x _____
- 346. #1485 Saturn ZIRCON Baked Applé H _____
- 347. #1183 Revere 4" Lemon Dish & Cov Cut H _____
- 348. #1183 Revere 4" Lemon Dish & Cov Cut H _____
- 349. # 411 Rib & Panel Lemon Dish & Cov H _____
- 350. #1401 Empress Ftd. Marmalade & Cov H _____
- 351. #1567 Plantation 4 Comp Relish H _____
- 352. #1567 Plantation 4 Comp Relish H _____
- 353. #1469 Ridgeleigh 5 Comp Star Relish H _____
- 354. # 341 Old Williamsburg 12" Celery Tray H _____
- 355. # 341 Old Williamsburg Hddld Jelly Cut H x _____
- 356. #1184 Yeoman 4" Hddld Jelly Cut H x _____
- 357. # 341 Old Williamsburg 9" Pickle Tray H _____
- 358. #1255 Pineapple & Fan EMERALD 4" Rose Bowl _____
- 359. #1255 Pineapple & Fan 4" Rose Bowl _____
- 360. #1558 10½" Rolled End Bowl H _____
- 361. V-#1284 Verlys By Heisey 6½" Love Birds Vase _____
- 362. V-#1284 Verlys By Heisey 6½" Love Birds Vase
Orig. Sticker _____
- 363. #3350 Finger Bowl Minuet Etch 5 ea _____
- 364. #1401 Empress FLAMINGO 11" Ftd Floral Bowl x _____

- 365. #1632 Lodestar DAWN 12" Floral Bowl H _____
- 366. Verlys Tassels Bowl x _____
- 367. #1485 8 pc Hostess Helper in Orig Box _____
- 368. #1519 Waverly 6" Sq Covered Butter _____
- 369. # 1519 Waverly 6" Sq Covered Butter Rose Etch _____
- 370. # 393 Narrow Flute Div Dish & Cov H _____
- 371. #1509 Queen Ann Lemon Dish in Silver Frame H _____
- 372. #1951 Cabochon 6" Cov Candy H _____
- 373. # 352 Flat Panel Hair Receiver Cut H _____
- 374. # 393 Narrow Flute 2-4" Nappies, 4-5" Plates H _____
- 375. # 411 Rib & Panel 5" Nappy H 4ea _____
- 376. #1295 Beaded Swag OPAL 5" Nappy in Silver Base _____
- 377. # 341 Puritan Hi Ftd Jelly H _____
- 378. # 341 Old Williamsburg Low Ftd Jelly H _____
- 379. # 341 Old Williamsburg Low Ftd Jelly H _____
- 380. # 341 Old Williamsburg Low Ftd Jelly H _____
- 381. # 393 Narrow Flute French Dressing Boat
& Plate H _____
- 382. #1469 Ridgeleigh 6" BonBon H _____
- 383. #1401 Empress 6" Oval Nappy H _____
- 384. #1401 Empress SAHARA Hddld Soup H _____
- 385. # 411 Rib & Panel MOONGLEAM 6"
Two Hddld Mint _____
- 386. #1184 Yeoman HAWTHORNE D O Soup &
Underplate H _____
- 387. Glass Doorknob _____
- 388. #1205 Fancy Loop D Celery Vase _____
- 389. #1183 Revere FLAMINGO 6" Comport Swirl
Optic H _____
- 390. Verlys Pinecone Bowl _____
- 391. #1183 Revere 7" Candy Box & Cov H Enameled Dec _____
- 392. # 1503 Crystolite 7" Candy Box Metal Cov H _____
- 393. #1469 Ridgeleigh 4" Nappy Metal Hddld H _____
- 394. #1183 Revere FLAMINGO 8" Ftd Cheese Plate _____
- 395. # 341 Puritan Cake Salver H _____
- 396. #1567 Plantation 13" Ftd Cake Plate Ivy Etch _____
- 397. Colonial 8" Nappy H _____
- 398. #1567 Plantation Ftd Mayonnaise Mono A K S _____
- 399. # 305 Punt & Diamond Point Ind Sugar _____
- 400. #1503 Crystolite Powder Jar Bottom &
1 Lot Bitters Tubes _____
- 401. #1401 Empress Mustard Bottom _____
- 402. #1469 Ridgeleigh Cig. Set, Holder & 4 Ash Trays x _____
- 403. V-#1259 Verlys By Heisey 14" Water Lily Bowl x _____
- 404. # 352 Flat Panel 2 Qt Crushed Fruit Bottom H _____
- 405. Lot of Misc. Paper Items _____
- 406. #1506 Lot of 4 Pieces of Heisey by Imperial
2 COBALT, 1 VERDE, 1 AMBER (H) _____
- 407. #1509 Queen Ann Ftd Hddld Mint Orchid Etch 2 ea x _____
- 408. # 150 Banded Flute 4oz Oil H No Stopper _____
- 409. # 353 4oz Oil H _____
- 410. Lot of 5 Misc. Items _____

MAIL BIDS ACCEPTED WITH CHECKS FOR MAXIMUM AMOUNT. MAIL BIDS WILL BE BID COMPETITELY AND ANY DIFFERENCE REFUNDED. ONLY ITEMS IN MINT CONDITION WILL BE SUBJECTED TO MAIL BIDS. PLEASE ADD \$5.00 FOR POSTAGE AND HANDLING. EXCESS REFUNDED. CHECKS SHOULD BE MADE OUT TO: F & S AUCTION SERVICE.

and mailed to: F & S Auction Service
Box 84
Granville, Ohio 43023

SAM SCHNAIDT, Auctioneer
(614) 587-0052

FRANK FRYE, Manager
(614) 344-9847

BLACK HAND GORGE FESTIVAL

**FOURTH ANNUAL
AT TOBOSO SCHOOL
SAT. SEPT. 23, 1978
10:00 TO 8:00**

ANTIQUE EXHIBITS

FURNITURE, DISHES, QUILTS, COVERLETS,
OLD TOOLS, UNUSUAL ANTIQUE ITEMS,
OLD PICTURES OF BLACK HAND GORGE
& TOBOSO AREA

PIONEER EXHIBITS

APPLEBUTTER MAKING, BLACKSMITHING

LARGE FLEA MARKET

OVER 100 DEALERS
FOR DEALERS INFORMATION CALL
763-3116

TOURS OF BLACK HAND GORGE

ALL TYPES OF GLASS: CAMBRIDGE, HEISEY,
IMPERIAL & OTHERS

COLLECTIBLES: AVON, HUMMEL & OTHERS

CRAFTS: DECOUPAGE, JEWELRY & OTHERS

POTTERY: HULL, ROSEVILLE, WELLER

COINS, GUNS & MISC. ITEMS

NO ADMISSION CHARGE

NATURE PRESERVE

PIONEER

CONTESTS

LOTS OF GOOD FOOD

Antique Glass Show

Sheraton - Sturbridge Inn
Rte. 20 - Sturbridge, Mass.

October 28, 1978
Saturday - 10 AM - 9 PM

October 29, 1978
Sunday - 10 AM - 6 PM

All Glass of All Periods

Sponsor - BAY STATE HEISEY COLLECTORS CLUB
Donation: \$1.50 - with card \$1.25

benefit:
NATIONAL HEISEY GLASS MUSEUM

Unusual Find:

#4085 Kohinoor Zircon Saturne Optic:

8 - 8" Plates, 7 - Saucer champagne (zircon Bowl, cl. stem),
5 - 12 oz. Soda (zircon base).
L - W Promotion Catalog reprint #17 - Bloomware, pg. 104.
Unmkd. will florescent.

20 pieces \$300.00
postage & insurance extra

CALICO ANTIQUES, KATHLEEN McCRADY
2205 PASADENA DR., AUSTIN, TX 78757 - (512)452-6947

CARR'S ANTIQUES
BOX 318 - CHAMBERSBURG, PA 17201
Phone: (717) 264-2149

Postage & Insurance extra
Certified check or money order preferred, Please

Marked*

- FERN Salad Bowl - 11" diam. V.III pg11930.00
- FERN Torte - 14½" diam. V.III pg11835.00
- #1252 TWIST Moongleam, 3-pint Jug* V.III pg2065.00
- # 299* Candlesticks, V.III pg83Pr...75.00
- # 433 GREEK KEY Cruet58.00
- # 116 3" Etched Candlesticks, V.II pg33Pr...28.00
- # 116 11" Florat bowl, etched V.III pg28.....45.00
both pieces #116 in flamingo
- #1469 Ridgeleigh Sug/Cr, V.III pg104
- # 479 Flamingo Sugar & CreamerSet...30.00
- Waverly floral bowl w/Orchid etch35.00



GARAGE SALE



Fantastic Garage Sale - No Junk

1000 pcs. of heisey

MARIGOLD, COBALT,
SAHARA, FLAMINGO,
ALEXANDRITE, EMERALD GREEN,
MOONGLEAM & CLEAR

ELECTRIC LAMPS, CANDELABRAS,
CHERUB DOLL CANDLESTICK

STAR & ZIPPER
in EMERALD GREEN

EMPRESS, VICTORIAN,
ROOSTER STEMS, PLEAT & PANEL,

TWIST
GREEK KEY,

SEPTEMBER 15-16-17th
- 9 AM to 5 PM or by appointment.

CUT
and ETCHED

STEMWARE, CIRCUS,
some ANIMALS AND
MUCH, MUCH MORE

SIGNS WILL BE POSTED ON ROUTE 16 EAST OF NEWARK,
AT THE 2 MILE MARKER IN MUSKINGUM COUNTY.

Mrs. HAROLD E. WILLEY
CANNON ROAD, BOX 180A RT #3
FRAZEYSBURG, OHIO 43822
PHONE: (614) 828-2557

IF YOU DON'T SEE IT, ASK FOR IT.
WE PROBABLY HAVE IT.

Willey's Museum will be open for your pleasure.

ROBERT H. DONOVAN
P.O. BOX 321 BOLTON, MASS.
Phone: (617) 779-5008

AFTER 5 P.M.

SASE POSTAGE & INSURANCE EXTRA

- # 433 GREEK KEY Ftd. Nut*(2)...ea...18.00
- #1205 FANCY LOOP Hddid. Custard17.50
- #1295 BEADED SWAG Hddid. Custard(5)...ea...12.00
- #1255 PINEAPPLE & FAN Tumbler, Crystal & Gold ...29.50
- #1235 BEADED PANEL & SUNBURST Custard*15.00
- # 300 Spooner*27.50
- #1469 Ribbed Champagne*, Tall Stem18.00
- # 331 COLONIAL Panel 6 oz. Cruet32.50
- #1509 QUEEN ANN 3-sec Rd. Relish, Orchid Etch26.00
- #3404 Spanish 10oz Goblet Cry stem/cobalt bowl,(8)..600.00
- #3404 5 1/2 oz. Champagne or Sherbet
Cry Stem/Cobalt Bowl...(6)...450.00
- #3404 12oz Soda cry foot/cobalt bowl(6)...450.00
- #1509 QUEEN ANN 8" Plates*(8)...300.00
- #1445 GRAPE CLUSTER 2-lite Candleabrum*....Pr...225.00
- #1560 Victorian Belle "Bell"100.00
- #3440 PORTSMOUTH 9oz Goblet,Flamingo very rare..49.50
- #1401 EMPRESS D/F Ind Nut*,Sahara(4)...ea...22.00
- # 355 QUATOR Hotel C/S, Cry & GoldPr...39.50
- # 353 Med. FLAT PANEL 10" Spice Tray*,
Etched, Amber Stain Irr'd....40.00
- #3381 CREOLE 11oz Goblet, Alexandrite(8)...1,000.00
- #3381 CREOLE 4oz Cocktail, Alexandrite(8)...650.00
- #3381 CREOLE 2 1/2 oz Wine(8)...750.00

Classified Ads

FOR SALE: 1977 Souvenir Wine Decanter, \$60; 1971-1976 Land of Legend Plates, \$130 set; 1977 Oscar, \$75. DEBBIE DELANEY, 642 melanie court, newark, oh 43055 Phone: 614-366-3741 (+ P & I)

FOR SALE: #5040 Lariat 10 oz Goblet, Moonglo cut (9) ea-\$14. #5040 Lariat 5 1/2 oz Sherbet, Moonglo cut (8) ea-\$8. #1469 Ridgeleigh Cup & Saucer (6) ea-\$20 #1401 Empress Sahara Cup & Saucer (10) ea-\$22. All signed. Postage & Ins. extra. YEAKLEY, 640 MELANIE COURT, NEWARK, OH 43055. Phone: 614-366-5101

WANTED: #21 Electro-Portable shade 7 1/2 in. THOMAS R. WOLFORD, 291 KIRBY RD., S.E., NEWARK, OH PHONE: 323-4289.

WANTED: #1E92 Omega stems with #1099 Festoon cutting - any stem or plate. JO BARAN, 1159 ALDINE DR., NEWARK, OH 43055. Pone: 614-522-2795.

ANTIQUES 'N' COLLECTABLES
"HEISEY OUR SPECIALTY"

LYNNE  ART'S
GLASS-HOUSE
INC.

ROUTE 202 — P. O. BOX 242
LAHASKA, PA. 18931
215-794-7800

*Dear Heisey Collector and Dealer,
We're Heading Your Way!! Heisey Animals,
Lovely Old Patterns, and a Rainbow of Colors, will
be coming along with us.
We'll be at the following shows.*

GAITHERSBURG, MARYLAND

FAIRGROUNDS, SEPTEMBER 22, 23, 24, 1978

*Our shop in Lahaska is usually open while we are
on the road, suggest a call 215-794-7800.*

*See you soon,
Lynne and Art*

Buy & Sell
MONDAY-SATURDAY 10:00 am to 6:00 pm

HEISEY Glass ~ China DUNCAN MILLER
Silver Flatware
Collectibles ~ Furniture

WE INVITE YOU TO COME IN AND BROWSE
FOSTORIA

Bob & Fran's ANTIQUES
Deke's Den GLASS ANIMALS
HOUR GLASS ANTIQUES
we love OLD things
CAMBRIDGE

2007 Broadway 693-7972

Vancouver, Washington 98663
Mail Us Your Wants

HEISEY'S
GLASSWARE of DISTINCTION
by Mary Louise Burns

COMpletely REVISED!

Now includes additional patterns, new illustrations, many new listings and is now perfect bound for sturdiness!

This comprehensive reference book is not a catalog reprint but a collection of all major patterns of tableware, stemware, cuttings, etchings, animals and Verlys produced through Heisey's 60 years of glassmaking.

Details of each pattern clearly shown by photo or illustrations for easy identification. Two indexes for easy reference: one by pattern name and one by pattern number.

All this for only \$ 11.95 pp.

.....

ALSO NEW: Completely revised price guide supplement to the above, listing each item and UPDATED price trends. Patterns are listed alphabetically for easy reference. Only \$5.95 pp!

.....

SPECIAL—Both books for only \$ 16.50 pp
6 Books or more 40%

Send check or money order to:
MARY LOUISE BURNS
P.O. Box 1931
Grants Pass, Or 97526

Dealers Directory

5 LINES - \$6.00/6 ISSUES

Charles & Mildred Fisher
Antiques & Collectibles, General Line
HEISEY, DENGENHART, IMPERIAL
991 IDLEWILDE, NEWARK, OH 43055
PHONE: (614) 522-5398

Opera House Antiques
Main & Broadway, Granville, Oh 43023
Open 7 days a week 12 - 5 P.M.
Frank (614) 344-9847 - Sam 587-0052
Shop (614) 587-2083
LOTS OF HEISEY GLASS & GENERAL ANTIQUES

The Shultzes Antiques BOUGHT SOLD
206-208 E. MAIN ST., ROUTE # 419
NEWMANSTOWN, PA. 17073
15 MI. WEST OF READING, PA.
PHONE 215 589-2819

Lynne & Art's Glass House, Inc.
"HEISEY OUR SPECIALTY"
Route 202 Lahosko, Pa. 18931 Box 242
Phone: (215) 794-7800

The China Cupboard
105 A. SO. BROADWAY, ORCUTT, CA. 93454
Phone: (805) 937-6420
COLLECTIBLE & ANTIQUE GLASS & CHINA
HEISEY IN STOCK

Rambling Lane Antiques
KEITH & EVELYN HOOVER-715-282-5019
ROUTE 4, RHINELANDER, WI 54501
Featuring HEISEY Glass -
Copper, brass, furniture

Green Acres Farm
ANTIQUES, CRYSTAL, GLASS & COLLECTIBLES
SPECIALIZING IN HEISEY & CAMBRIDGE GLASS
BY CHANCE OR (614) 927-1882
2678 SR 310 N. - PATASKALA, OHIO 43062

Oldies But Goodies
222 N. WATER STREET
WILMINGTON, IL. 60481
(815) 476-7320
Heisey A Specialty

Charles A. Shaw
Glenwood Gardens—RipVan Winkle
Yonkers, New York 10701
Shows & Mail Order
American Glass

DuWaine Hill
Posey Pot Gifts
56 E. COSHOCTON ST.
JOHNSTOWN, OH. 43031
(15 miles from Newark)
PHONE: (614) 967-7941 open 6 days a week

Goldsberry's Antiques
KALAMAZOO, MICHIGAN
SHOWS ONLY — BUY & SELL
HEISEY A SPECIALITY
PHONE: (616) 381-3013

ANTIQUES & COLLECTIBLES
Olde Loved Things
Daris "Ed" Lacroix - Donald Moisseau
900 Ridgewood Avenue (Holly Hill)
DAYTONA BEACH, FL. 32017
HEISEY, Cambridge, "Candlesticks a specialty"

Moundbuilders Antiques
IRENE RAUCK
1138 MOUNDVIEW, NEWARK, OH 43055
PHONE: (614) 344-6043
HEISEY & ANIMALS/GEN. ANTIQUES

Eagles Nest Antiques
CHINA HEISEY GLASSWARE
BOUGHT and SOLD
62 FIELD POINT RD., HEATH, OH 43055
By Chance or Phone: (614) 522-2035

Bert's Budget Shop
403 W. MAIN ST., NEWARK, OHIO 43055
PHONE: (614) 349-8045
General line Antiques

Hoosier Heritage Antiques
Marcel and Tom Zehr
4005 SOUTH WAYNE AVENUE
FORT WAYNE, INDIANA 46807
(219) 745-4173

Happy Haven Antiques
Charles & Mary Dumke
RT. 3, BOX 2044A, GRASS VALLEY, CA. 95945
Phone: (916) 273-9450

FLORIDA HEISEY HEDQUARTERS
Last Chance Antiques
60 N. FEDERAL HWY, DANIA, FL 33004
(BETWEEN MIAMI & FT. LAUDERDALE)
1,000 % PIECE INVENTORY — MAIL ORDERS

C. Young
12823 WENLOCK DR, ST. LOUIS, MO 63141
Heisey, Cambridge, Duncan, New Martinsville
Write for extensive list

Highland Manor Heisey
LEONARD & MAXINE ASHCRAFT, OWNERS
2152 HILLSIDE RD., PUEBLO, CO 81006
544-0225 — S.A.S.E. FOR WANTS — BY APPT

 GEORGE & EILEEN SCHAMEL
Route 3, Box 419
Boonsboro, Md. 21713
Appointment or Mail Order
Phone 301-432-6285

WICKFORD ANTIQUE ARCADE
Ron & Bev. Wood Booths 6 & 7
650 Ten Rod Rd., N. Kingstown, R.I. 02852
Heisey - Primitives - Glass - Etc.
Home Phone: (401) 295-0823

MOSTLY  HEISEY

RHODA CURLEY
18 CLAYTON PLACE - ALBANY, NEW YORK 12209
BY APPOINTMENT 518/482-6272

The Wooden Shoe
ANTIQUES & COLLECTABLES — BUY & SELL
GLASS, FURNITURE, ESTATES
JIM & SHERI VAN ES BY APPT
HERNDON, VA 22070-PH: 435-9045

Heisey Heaven & other collectables
NOW OPEN AT PEDDLER'S VILLAGE
SUNNY CREST MALL — URBANA, IL 61801
(CORNER FLORIDA AVE & PHILO RD.)
PHONE: (217) 384-9093



sum of life

elaine and frank husted
p.o. box 107,
phoenixville, pa. 19460
(215) 935-2962

Evelyn's Antiques
3301 - 140 N.E. Marysville, Wash. 98270
I S Exit 202 Phone: (206) 659-6114
MON - WED - SAT - SUN & by Appt.
Shop full of glass - Heisey, etc.

Bob & Fran's Antiques
BOB AND FRANCES BAKER
2007 BROADWAY-VANCOUVER, WA 98663
693-7972 RES: 573-1733

Ann's Gifts & Antiques
105 W. MAIN, BOX 206, HEBRON, OH 43025
ANN HOLMAN — PH: (614) 928-7711
RT #79 NORTH FROM INTERSTATE #70
ON RT. #40, 2ND SHOP WEST OF JCT RT. #79

ACCENT ANTIQUES OF KENSINGTON

Curio Corner
3742 HOWARD AVE.
KENSINGTON, MD 20795
PH: (301) 933-3750

The Glass Shack
VIE HENZE
1626 E. CHARLESTON BLVD.
WAS VEGAS, NV 89104
PH: (702) 382-3716

The Sleeping Fox
EVELYN & JAMES JORDAN
P.O. BOX 583
LANSDALE, PA 19446
PHONE: (215) 855-2480

George Hoffman Antiques
G.W. HOFFMAN — J.H. DENNIS
129 SOUTH 4TH STREET
NEWARK, OH 43085
PH: (614) 345-8550

#1404 OLD SANDWICH Cruet	35.00	Postage &
#1205 FANCY LOOP Tumbler, GOLD Trim	25.00	Insurance
#1205 FANCY LOOP Cracker Jar, no lid	40.00	extra
#1205 FANCY LOOP Cake Salver	70.00	* Marked
# 125 GROOVE & SLASH Humidor*, Quadrupled silver plated top dated 1907, decorated with flowers, initials T B, beautiful	100.00	
# 353 12" Vase*, V.II pg 39	25.00	
# 331 Straw Jar*, no cover, V.II pg 117	35.00	
# 128 WINGED SCROLL Tumbler, CUSTARD	55.00	
# 300 COLONIAL Custards*, HAWTHORNE	(2)...ea...18.00	
#1252 TWIST 8 oz. Tumbler & Underplate*, FLAMINGO	30.00	
#1252 TWIST Cup, Saucer, 8" Plate*, MOONGLEAM	(7 SETS)...Per Set...42.00	
# 325 PILLOWS 6" Pickle Dish*, V.I pg71	18.00	
# 353 MEDIUM FLAT PANEL Oval Hotel Sugar*	6.00	
# 37 Candlestick* 11"	40.00	
#5 Candlestick 11"	45.00	
#1433 THUMBPRINT & PANEL Candlesticks, SAHARA	Pr...110.00	
# 352 FLAT PANEL C O V E R for 1 qt. Crushed Fruit Jar* V.II pg26	15.00	
# 339 CONTINENTAL Punch Cup*	9.00	
#6 Mayonnaise Ladle*, ALEXANDRITE V.III pg23	30.00	
#1170 PLEAT & PANEL Bouillon Cups (6), Plates (5)	60.00	
# 236 2 1/2 oz. Bar*, flared D/O MOONGLEAM	(7)...ea...15.00	
# 470 INTERCEPTED FLUTE, Large Plate & Bowl*, Rare & Beautiful V.II pg173	70.00	
#5038 ROOSTER Stem 3 1/2 oz. Cocktails	(5)...ea...55.00	
#1503 CRYSTOLITE Sugar Bowl* (large)	10.00	
#1503 CRYSTOLITE Pitcher	50.00	
#5003 CRYSTOLITE Goblets*	(4)...ea...20.00	
#1469 RIDGELEIGH 6" Candle Vase	10.00	
#1469 RIDGELEIGH Oil & Vinegar	42.00	

GLASS 'N GLASS
 Virginia & Odell Johnson
 RT. #1, BOX 207-HAYWARD, WI 54843
 Phone: (715) 462-3753

WANTS: #1404 OLD SANDWICH SAHARA Decanter, cups, saucers, pilsners, parfaits, pretzel bowl, shot glass

ANNOUNCING
HEISEY GLASS
IN
COLOR - BOOK 2
 By
Virginia and Loren Yeakley

A must for both collector and dealer. The most comprehensive publication available today devoted entirely to Heisey's production of colored glassware manufactured in Newark, Ohio, from 1896 to 1957. More than ten years of collecting, research and study by the authors provides a comprehensive discussion of every production color including the availability of different patterns in each color.

- Contains 60 pages - 26 pages in complete color! -
- Over 750 items illustrated! -
- Shows every production and experimental color -

Only a few rare items are repeated from Book I which is out of print. A condensed color rarity scale with dates of production is included. The price also includes a value & rarity guide compiled by the authors.

\$12.50 Postpaid
 - includes price guide -
 Ohio residents add 56¢ sales tax please

ORDER FROM: Loren Yeakley, 640 Melanie Court, Newark, OH 43055.

3RD ANNUAL
ANTIQU
GLASS SHOW
 MOUNT LAUREL HILTON
 LOCATED AT EXIT 4 N. J. TURNPIKE
 ON ROUTE 73, MOUNT LAUREL, NEW JERSEY

OCTOBER 21st
 Saturday 10 am to 9 pm

OCTOBER 22nd
 Sunday Noon to 6 pm

GLASS, POTTERY and CHINA of ALL PERIODS
 HHS Sponsor, benefit HCA museum fund
 \$1.50 Donation, with this ad \$1.25

SUPPORT YOUR DEALERS

DATES TO REMEMBER

- Sept. 15-7 p.m. Board Meeting in Board Room
- Sept. 16-Dawn to 3 p.m. Mini-Show. Museum grounds
11 a.m. Dedication of Office annex in front of building.
6:30 p.m. Sixth Annual Souvenir Dinner. Museum grounds.
- Oct. 28-29 All Glass Show-Mt. Laurel, N.J. Heisey Heritage Society-See Ad this issue.
- Oct. 30- All-Glass Show-Sturbridge, MA, Bay State HCC, See Ad this issue.
- Oct. 30- Third Annual Antique Show & Flea Market-Reynoldsburg, Oh, Reynoldsburg HCC-See Ad this issue.
- Dec. 11- 4th Quarterly Meeting-Christmas Dinner Party-Moundbuilders Country Club, Newark



FIRST CLASS MAIL
U.S. POSTAGE
PAID
PERMIT 34
Reynoldsburg, Ohio 43068

FIRST CLASS
MAIL

IF THE EXPIRATION DATE ON YOUR MEMBERSHIP CARD IS 9/31/78
THIS IS YOUR LAST ISSUE OF HEISEY NEWS!!!