

HEISEY

NEWS

OFFICIAL PUBLICATION HEISEY COLLECTORS OF AMERICA

© Heisey Collectors of America, Inc. 1978
All Rights Reserved

Vol. VII, #3
March 25, 1978
One Dollar



#310 RING BAND HAND PAINTED IVORY WATER SET

From the desk of...

your President

We have finally gotten rid of the snow except for areas where there were large drifts. We think spring may be on its way which should be a welcome relief to everyone. We hope it has improved where all of you live as well. Due to the early deadline for Heisey News, the "prices realized" list from the auction will not be printed in this issue. In early April we will be sending you a 12 page newsletter with the list and also convention information and registration form.

For some time I have wanted to get the dating on the newsletter on a current basis (sometimes you get the issues into the month following the dating). This is confusing to some people and especially new members. From April on you should get each issue ahead of the dating rather than after. You will still get 12 issues in 1978 and your August issue (to be mailed in July) will contain souvenir dinner information and will be an oversize edition to make up for the smaller April issue. The auction list in this issue is a PAID ADVERTISE-
MENT and has nothing to do with Hca. We will not be printing the prices realized list for this sale but

you can send to the Opera House for it. I have not seen the ad as yet but assume the price for the list will be \$1.00.

We have seen the 1978 Rose Pink Oscar and he is adorable. Get your orders in soon. Unfortunately the usual has happened and some which were carried home from Imperial by the employees have turned up for sale. NONE have left the hands of the people handling the sales except ONE which is in the museum. The deadline for your orders is May 15. NONE will be shipped prior to that date and NOT ONE will be sold after that date until the first day of the convention when they will be on sale for \$15.00 if any are left. Hurry and send your order soon.

We had a great time at the show in Alexandria, Virginia. There is no more beautiful sight than a ballroom full of our favorite collectible. There was no scarcity of Heisey there. We believe most of the dealers sold well to the 600 visitors to the show. That is a lot of people to visit an all Heisey show that far from Newark. Our com-



THE AUCTION TOTAL
WAS
\$36,882
and
HCA WILL PROBABLY REALIZE
ABOUT
\$7,000
AFTER ALL EXPENSES ARE PAID
L.R.

pliments to all members of the National Capital Club which sponsored the show.

HCA's booth, manned by Charles Hartzell and myself, sold over \$2600.00 of books, bells and milk glass animals. All sold well and the bells have proved to be a very popular item. They are listed this month in the milk glass animals ad.

HCA was fortunate to be able to buy an amber Flying Mare at the show at a very good price. That makes one less rare item to hunt for. Several good pieces were purchased and we received some nice donations
con't to page 12

HEISEY NEWS --- P.O. BOX 27 --- NEWARK, OHIO 43055

EDITOR - LOUISE REAM, 1115 W. Main St., Newark, Ohio 43055
PUBLISHED 25TH DAY OF EACH MONTH, \$10.00/Year-\$1.00/Copy
BACK ISSUES AVAILABLE AT \$8.00/YEAR - 80¢/COPY

ADVERTISING - Send all ads to:
VIRGINIA YEAKLEY, Advertising Manager
640 Melanie Court
Newark, Ohio 43055

PRESIDENT LOUISE REAM (614) 344 - 2377
VICE PRESIDENT JACK METCALF (614) 349 - 7849
SECRETARY CHARLES WADE (614) 366 - 6636
TREASURER LOREN YEAKLEY (614) 366 - 5101

DEALER DIRECTORY ADVERTISING RATES-5 line-\$6.00/6 issues

CLASSIFIED ADVERTISING - 5¢/word - \$1.00 Minimum. We cannot mix type sizes in Classified Ads. Abbreviations and initials count as words.

DISPLAY ADVERTISING RATES	MEMBER	NON-MEMBER
1/8 Page	\$ 8.00	\$15.00
1/4 Page	\$15.00	\$25.00
1/2 Page	\$25.00	\$40.00
Full Page	\$45.00	\$60.00

Heisey Collectors of America, Inc. is a non-profit corporation with tax exempt status. Owners and operators of National Heisey Glass Museum, 6th and Church Streets, Newark, Ohio. Open Daily 1-4 p.m., April through October except Mondays and Holidays, November through March, Wed., Sat., Sun. 1-4 P.M. Members admitted free. Phone: (614) 345-2932. Club membership (includes 12 issues of Heisey News and participation in all club activities) \$10.00/Year plus \$1.00 each for additional family members in same household who wish a membership card. For voting membership add \$25.00, one time only fee, or write for information.

Membership Information - Address - HCA Membership, Box 27 Newark, Ohio 43055. Notify at once of any change of address.

PAYMENT IN FULL MUST ACCOMPANY ALL ADS. Advertising copy must be in our hands by the 10th of the month to assure publication in that month's issue. Advertisements containing reproductions will not knowingly be accepted unless clearly stated (i.e. Heisey by Imperial, etc) Heisey News assumes no responsibility for false advertising or misleading information. In the event of typographical error, the incorrect portion of the ad will be run in the following issue, but Heisey News assumes no further liability.

The opinions expressed in articles in Heisey News are those of the authors and not necessarily those of the organization. The Editorial Staff reserves the right to edit or refuse any material submitted for publication. When requesting information, please enclose a self addressed stamped envelope (SASE).

Send all letters and articles to be published to the editor. Letters to columnists should be sent to the club address and will be forwarded.

STEMS

by CARL SPARACIO

#3411 Monte Cristo and #3414 Marrietta or Marriette are two of Heisey's most unique stems. There is nothing else quite like them. They share the same stem and it is the shape of their bowls which distinguishes one from the other. These bowls shapes are not at all similar so there should be no difficulty telling them apart in other than the sherry which appears to be identical in both patterns. In this instance a cutting or etching will be the key to identification. If you still can't be certain which sherry you have just call it the one you would like it to be. These stems have blown bowls on intricate pressed stems but they are not marked with the Diamond H.

Monte Cristo will be easier to find which indicates that it was the more popular in its day. It was made in the standard stem pieces from cordial to goblet and offered with the following etchings: #458 Olympiad, #456 Titania and #457 Springtime. The cuttings made in this pattern are #801 Waikiki, #851 Kalarama, #839 Bonnie Briar and #913 Everglade.* If you find any color in Monte Cristo it will be Sahara but it is unlikely that you will see anything but crystal.

Of the two, I like Marrietta which once again proves the old adage: "Champagne taste and beer pocket". The simpler bowl of Marrietta enhances the stem. Unfortunately Marrietta is an extremely difficult stem to find so we settle Monte Cristo. Marrietta also came in the usual stemmed pieces and could be had with #456 Titania etching but no cuttings.* It seems strange that no cuttings were offered on a bowl that seems perfect for cuttings. Perhaps we'll find out otherwise when the new cutting book hits the stands later this year. The cutting shown on Marrietta in "Heisey Stemware" has been attributed to Seidel but there's no documentation on this.

Marrietta is a crystal only pattern and along with Monte Cristo was produced for about ten years from 1930 to 1940. In both these patterns the smaller pieces are the most sought after with the cordial taking the prize. So, what else is new?

It seems I'm getting more and more questions on cuttings which indicates that either this is becoming a major collecting category or that people just like to have names for things. The prices on some cut pieces are surprising. Perhaps all this



#3414



#3411 - 9 oz. Goblet

action is in anticipation of the forthcoming cutting book. At our Heisey Heritage Society's meeting I saw a lovely unidentified cutting on some Duquesne stems and the identical cutting on, of all things, a Trojan goblet. Now that's strange.

Since we're talking "Strange" -- how about the #910 Copperfield cutting on a Yorktown goblet? Boy, is that pretty! You may wonder how I know that the cutting was on Yorktown and not Oxford. I'll let you in on how I do serious research. The best bet, if you can't find the answer in books, is to take it to an authority. I went to the mirror and said, "Authority, what is this stem?" and the authority said, "I don't know, dummy". Nothing deters this dummy as he knows he can always resort to deductive reasoning though he does try to avoid it because it gives him a headache. Anyway, to shorten what could easily become a novel, I figured out that the cuttings used on Yorktown were lower numbered than those used on Oxford and since #910 is lower than any of the other cutting numbers used on these patterns --- Voila!!! --- it must be Yorktown. Not very scientific of course but it'll do until a Louise Ream or a Connie Ryan says, "Hey, dummy, you're wrong because.....". I hate smart alecks; especially when they're girls.

I was burned once when I reported something I was told which I did not bother to verify so now I look at things with a jaundiced eye and say, "show me". It was with this attitude I pooh poohed a report in the Heisey News out of the Long

Island club about a Diamond Band goblet. I was sure it would turn out to be the look-alike made by Brand X. With the help of Valli Feldman of the Long Island group I am happy to report that the goblet is indeed Heisey's and has a Diamond H to prove it. I try to be happy for you folks when you find something I wish I had found but when you find something in New Jersey and you don't belong here it becomes too much to take. Nobody can be that saintly.

So now that I told you about my rule of verifying all reports I will proceed to break it. This item comes second hand out of Florida. Would you believe a Spanish stem with a Flamingo bowl? Add to this a Heisey cutting or etching (my informant couldn't remember which). It sounds exciting and I'll look into it further and let you know if its true.

We're currently in the midst of preparing the wagon train for the trip west for the big H.C.A. auction. I'm not very optimistic about this whole thing as I know I can't afford the stems I want to bid on. As you read this it is all over and you might even have the results in your hot little hands. Next time we'll report on the auction action as related to stems. I'll try not to be a spoil sport.

Ed Note - Carl has no way of knowing since he is not researching cuttings, and Ryans and Steve didn't know it when they wrote their book because there was not that much information around then, but -- there are 17 cuttings on Monte Cristo and 2 on Marrietta. (The name Marrietta is nearly always used in Heisey catalogs.)

con't to page 12

-8- TUMBLERS

#427 Daisy & Leaves

by TOM BREDEHOFT

PERIOD: Circa 1910

COLOR: Crystal

DECORATIONS: May have portions frosted or satin finish.

VARIATIONS: 8 oz. tumbler and 12 oz. Ice Tea

COMMENTS: We are fortunate to have illustrations of both pieces of this elusive line, the ice tea and the tumbler. In the 1910 price list we find another interesting note below a line reading "No. 427 Pattern Satin Finish". The entire 13 piece line is repeated with price increases of almost double what they were before. For instance, the tumbler plain cost \$.60 per dozen and with satin finish, it cost \$1.20 per dozen -- that's right -- 10¢ each. This most surely indicates the high cost of etching only portions of a pressed design at this time at Heisey's. The work would have been almost entirely hand done. This accounts for the scarcity of the satin finish



12-oz Ice Tea
Ground Bottom

as compared to the difficult to find plain tumbler. The satin finish was applied to the flower portions of the pattern. The tumbler and ice tea both have ground bottoms and are marked.

By the time you read this, the March auction will be history, but right now it is a tantalizing two weeks off and there appear to be all sorts of goodies in it for the tumbler collector. The industrious (and rich) collector can purchase half of all the known colors of the #1417 Arch

tumbler, and one of those is rare. There are many variations of the #2401 soda, with many of the Silhouette etchings and there is even a #2355 Cloverleaf bar glass -- more about that next month. There are at least 60 dealing with tumblers, sodas, bars, etc. ranging all the way from a single 2 oz. bar glass to 12 5 oz. juices. There are at least 4 lots in amber, all different, a few lots in cobalt, sahara, and the rest of the colors. Tumblers listed in the auction range from those of interest to beginning collectors to those for the advanced collector.

Domesti-Cater Line

by NEILA BREDEHOFT

During your last trip to the local flea market or your last visit to a yard sale, did you see any pieces of Plantation, Cabochon, or Saturn perched on a wooden and wire frame? Did you wonder which company assembled these sets? The surprise answer: Heisey. The Domesti-Cater Line was one of the few times Heisey presented selected items in special sets with accessories. About the most the company had done along this line before was to provide wooden salad sets with salad bowls, bake servers with salvers, and various metal parts which were almost part of the glass item such as lids, etc.

In January, 1953, the Heisey Company first presented a new, modern line of serving items. The glass pieces were combined with wooden bases and wire handles, racks, & feet. This line was designed by Horace King.

The Domesti-Cater was advertised as a gift line of 8 items created for care-free entertaining. Items were furnished either with natural finish birch wood with black wire, or ebony finish wood with polished wire.

The following is a list of Domesti-Cater items:

- #1 "On the Rocks" Tray
6-6060 COUNTRY CLUB 9 oz. Old fashions & wooden tray
- #2 Double Mayonnaise Set
2-1951 CABOCHON 5" nappies with ladles & wooden tray
- #3 Relish Tray
1-1567 1/2 PLANTATION 5 compartment relish with plain bottom & wooden tray
- #4 Salad Set
1-1495 SATURN 10" salad bowl with wooden fork, spoon & base
- #5 Oil & Vinegar Set
2-1485 SATURN oils and wooden base

- #6 Hurricane Lamp
1-1951 CABOCHON globe & wooden base
- #7 Marmalade Set
2-1485 SATURN marmalades & spoons & wooden base
- #8 Condiment Set
2-1485 SATURN oils
2-1485 SATURN salt & pepper
1-1485 SATURN mustard & spoon wooden base

Domesti-Cater, even though made to appeal to modern tastes, apparently was not extremely successful. No ads featuring it were found after July, 1953, and it did not appear in the next price list dated October, 1953.

As can be seen any item from this line would be scarce and it would be impossible to prove the item to be from the Domesti-Cater line unless the wooden and wire bases and racks accompany the proper items.

DOMESTI-CATER

Line of Serving Pieces

*Temporarily
Withdrawn*

Unit #1	"ON THE ROCKS" TRAY—Consists of six #6060 9 oz. Old Fashions and Wooden Tray	\$107.40	8.95
Unit #2	DOUBLE MAYONNAISE SET—Consists of two #1951 5 in. Mayonnaise Bowls (Nappy) with ladles and wooden holder	59.40	4.95
Unit #3	RELISH TRAY—Consists of #1567 1/2-13 inch 3 Compartment Relish (PLAIN BOTTOM) and Wooden Tray	107.40	8.95
Unit #4	SALAD SET—Consists of #1485-10 inch Salad Bowl, Wooden Fork and Spoon, and wooden Base	95.40	7.95
Unit #5	OIL AND VINEGAR SET—Consists of Two #1485 Oil Bottles with Stoppers and Wooden Holder	83.45	6.95
Unit #6	HURRICANE LAMP—Consists of #1951 Globe and Wooden Base	119.40	9.95
Unit #7	MARMALADE SET—Consists of Two #1485 Marmalade Jars with Covers, Spoons and Wooden Base	83.45	6.95
Unit #8	CONDIMENT SET—Consists of Two #1485 Oil Bottles with Stoppers, #1485 Salt and Pepper (with #55 Tops) #1485 Mustard with Cover, Spoon and Wooden Base	131.40	10.95

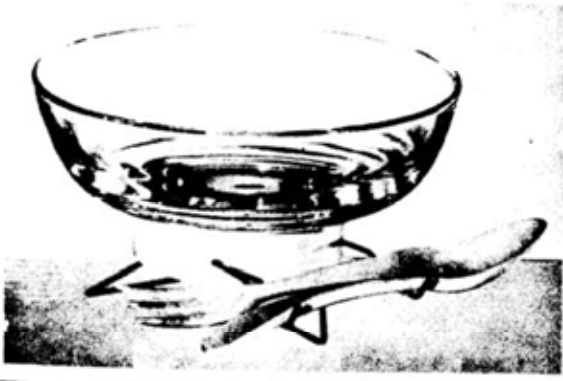
ORDERING INSTRUCTIONS: Please order by Unit Number and Description, and specify natural finish (with black wire) or black finish (with polished wire).



Unit #1



Unit #3



Unit #4



Unit #2

Unit #6

Unit #5

Unit #7

Unit #8

The Finest in Glassware . . . Made in America by Hand

HEISEY ADS

by JOSEPH D. LOKAY

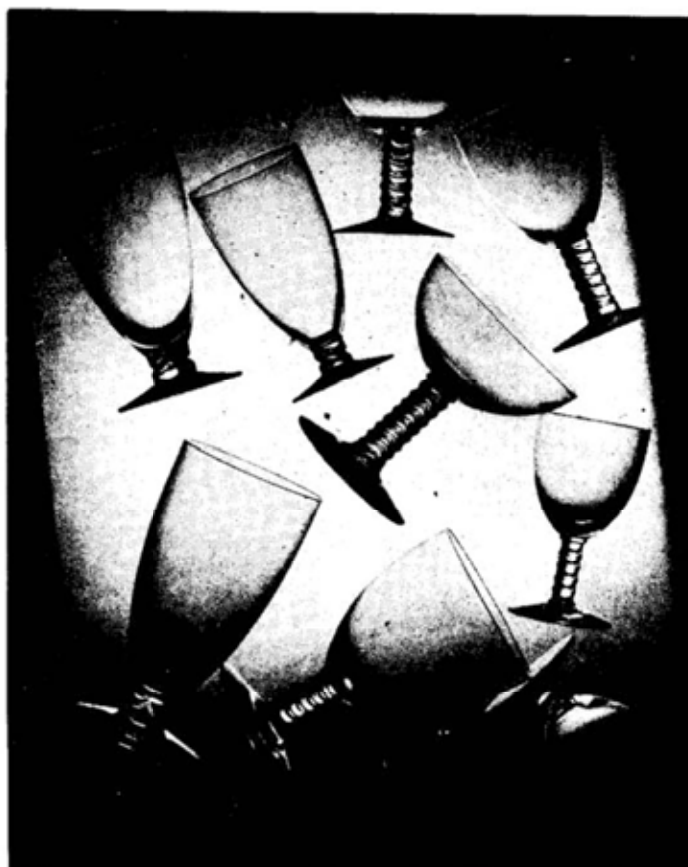
The Stanhope pattern 1483 was designed for the A.H. Heisey Company by Walter von Nessen, a leading designer and artist of New York City. Patent applications were filed by von Nessen on July 29, 1936 and US design patent #101,410 for the Stanhope plate was granted on September 29, 1936 and design patent #101,900 for the Stanhope sugar bowl was granted on November 10, 1936. Pictures of the design drawings that accompanied the patent applications are shown with this article. Both patents were in von Nessen's name; however, one of the patents, namely 101,410 was assigned to the A.H. Heisey Company.

The design feature for the Stanhope pattern consists of curved parallel lines in the glass that rise to form peaks every so often. Note in the pictures that the sugar bowl design has 2 peaks and the plate design has 8 peaks. There are some flat items in the pattern line that only have one peak. The 15" dia. plate and torte plate have only 4 peaks. Because of the large diameter, the curvature of the parallel lines is slight, thus causing the 4 peaks to form corners which gives the illusion of squares within squares on the large plates. The Stanhope design also includes an interesting innovation, namely, plastic inserts in the handles of the various pieces to add a cheery note of color to the clear crystal style. Because of the inserts, Stanhope was sometime referred to as the "Spot of Color" line. Stanhope is the only Heisey pattern line that incorporated plastic somewhere in the design*.

The Stanhope pattern was introduced by the Heisey Company in 1936 at the New York City and Chicago glassware shows. A complete line of tableware, stemware and decorative pieces were available in the pattern. The new line also came with a variety of etchings or cuttings.

There were six Heisey ads that appeared in the Creative Design in Home Furnishings magazine that showed the Stanhope pattern. The first ad was in the Fall 1936 issue and the sixth ad was in the July 1937 issue. Copies of the February 1937 and the March 1937 ads are shown with this article. There were 3 Heisey ads in the China, Glass & Lamps Journal that showed the Stanhope pattern. The first ad was in September 1936 and the third ad was in January 1937.

Items in the Stanhope pattern could be ordered with or without the plastic inserts. There were two styles of inserts; the round knob and the T knob. Both insert styles can be seen in the Stanhope items pictured in the February 1937 Hei-



Ornamentation is concentrated in the stem of the Stanhope shape, designed by Walter Von Nessen for Heisey's new line. The bowl is kept clear and unhampered.

HEISEY AD
February, 1937

STANHOPE PATTERN #1483

sey ad with this article. The round knobs or sometimes called the button type knobs came in the smaller handled pieces like the cream and sugar. The T knobs were used in the larger handled pieces like the 11" triple buffet relish. The plastic inserts were available in several colors, namely red, blue, yellow, ivory and black.

The A.H. Heisey Company received the 1936 Modern Plastic Competition Award from the Plastic Society for their clever use of plastic as a complement to their glassware design. A picture of the award plaque is shown in the February 1937 ad.

Etchings used on Stanhope items were: #490 - Maytime, #491 - Frosty Dawn, #494 - Swingtime and #605 - Frosted Matte. Except for #490 and #494 found on #1184 Yeoman 8" plates, the four etchings #490, #491, #494 and #605 are only found on Stanhope pattern items.

Thanks to the Bredehofts and Reams for their research on Heisey cuttings for their upcoming cutting book, Heisey cuttings placed on Stanhope items are listed below. You will note that the major production cuttings on the Stanhope items

were numbers 880, 881, 882, 883, 885 and 886.

- 840 BRIARCLIFF - cream & sugar only
- 867 CHATEAU - Candelabra only
- 868 MINARET - cream & sugar only
- 876 HONOLULU - torte plate only
- 880 SALEM - full line of #4083 and #1483 including flat ware. Also on #3333 Old Glory stems
- 881 KASHMIR - on full line of #4083, and #1483 stems and flat ware
- 882 YORKSHIRE - on full line of #4083 and #1483 stems plus flat ware. Also on #4069 Ridgeleigh stems
- 883 ROYAL YORK - on full line of #4083, #1483 stems and #1483 flat ware. Also on #3350 Wabash stem
- 885 INCOGNITO - on full line of #4083 stems and only 3 #1483 pressed pieces
- 886 KING'S RANSOM - full line of #4083 stems and #1483 7" plate
- 888 MADIERA - on candelabra only
- 889 SHEFFIELD - on celery and cream & sugar only

Stemware in the Stanhope pattern is either pressed or blown. When reference is made to pressed or blown, one is making reference specifically to the bowl of the stemware, as the stems, in

STANHOPE

Beautiful in its own right, as a distinguished pattern in crystal, Heisey's STANHOPE is made distinctly more alluring by the removable handle-inserts of various colors and white. Here for the first time is a creation with all the style and appeal of fine crystal, but with a gay note of color as a charming accent. STANHOPE is a noteworthy departure in design. Its creator, Walter Von Nessen, is one of the world's foremost designers. A. H. Heisey & Co., Newark, Ohio.



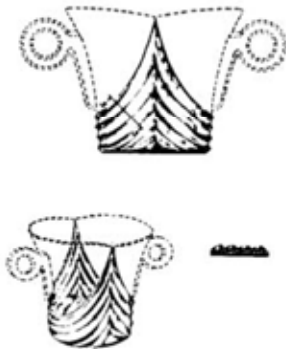
This superb new line comes in a choice of etchings or rock crystal cuttings offering a complete line of table ware.

At the left is the plaque which was awarded us in the Modern Plastic Competition . . . more evidence of the fact that in creating the STANHOPE Pattern Mr. Von Nessen achieved new heights of design.

Heisey's
GLASSWARE for your table

HEISEY AD
March, 1937

101,900
DESIGN FOR A GLASS SUGAR BOWL OR SIMILAR ARTICLE
Walter von Nessen, New York, N. Y.
Application July 29, 1936, Serial No. 64,119
Term of patent 14 years



The ornamental design for a glass sugar bowl or similar article substantially as shown and described.

STANHOPE SUGAR
US Design Patent 101,900

101,410
DESIGN FOR A GLASS PLATE OR SIMILAR ARTICLE
Walter von Nessen, New York, N. Y., assignor to A. H. Heisey & Company, Newark, Ohio, a corporation of Ohio
Application July 29, 1936, Serial No. 64,120
Term of patent 14 years



The ornamental design for a glass plate or similar article, substantially as shown and described.

STANHOPE PLATE
US Design Patent 101,410

both cases, are pressed. The pressed stemware bears the same pattern number, #1483, as the general pattern line. There were 5 items of pressed stemware: the wine, cocktail, champagne, goblet and footed soda. Blown stemware was placed in 4000 pattern numbers. The pattern number for the blown Stanhope stemware was #4083; the last two digits of 83 came from the general line pattern number. There were 9 blown stemware pieces in Stanhope. They are shown in the March 1937 Heisey ad with this article.

The Stanhope pressed and blown stemware are significantly different. The pressed stemware bowls contain the pattern design feature of the parallel lines and 4 peaks, while the blown bowls do not contain the design features, but are just plain or saturn optic. The stem of the pressed stemware is different then the stems of the blown ones. The stems on the #4083 blown pieces have the parallel, peaking lines over the complete length of the stem and the diameter of the stem is uniform over its length. The stems on the #1483 pressed pieces have the parallel, peaking lines on only about the bottom third of the stem length and the stem itself tapers to a slightly larger diameter at the bottom.

Stanhope was made in crystal and zircon. Stanhope in zircon is relatively rare as most of the Stanhope production was in crystal. The #4083 blown stemware can be found in crystal - zircon color combinations.

Most items in the Stanhope pattern are not signed with the diamond H. The stemware is never marked. I'm aware of a cup and saucer and a covered candy box that are signed. This is not to be taken as these 3 pieces are always signed. They may or may not be signed. No other glassmaker copied the Stanhope design so positive identification of the design identifies the piece as Heisey.

The Stanhope pattern apparently was not a very good seller as its commercial life was very short. The production period is estimated at about two years, 1936 - 1937. The Stanhope pattern is shown in only one Heisey catalog; the #211 supplement dated 6/1/37. Most of the Stanhope pieces with Heisey cuttings are listed in Heisey price list #212-17, circa 1937. Copies of the 211 supplement catalog pages showing Stanhope are shown in Vogel book III, pages 112, 113, 114 and 123.

* Ed. note: Plastic handles were used on Plantation syrups. Also Heisey used plastic tops on salt and peppers in late years, probably the mid-forties was the first. In our research we have also seen mention of plastic prisms but we have never seen any on a candelabra.

L.R.

HEISEY DECORATIONS

by NEILA BREDEHOFT

In August, 1935, a major trade journal announced the new etching by the A.H. Heisey & Co. and described it as follows: "a new etching called the 'Normandie', used on stemware and fancy pieces -- showing a swirl effect made up of infinitesimal squares, combined with floral." This is a very accurate description for this etching which is unusual and quite striking. The swirl effect is very attractive on the bowls of goblets, the #4056 salad bowl and large plates. In fact, it shows to best advantage on any piece of glass which is smaller at the base and flares out to the top -- this accentuates the pattern of the squares of the design.

Normandie was designed by Carl Cobel who designed many of the Silhouette etchings and carvings for Heisey. It was produced only on crystal but there is one plate which has a green enamel filling in the design. This most assuredly was experimental only. Normandie was produced from 1935 to about 1938 so it did not have a long life, but it is at least somewhat available.

Heisey chose to use a stemline which was not new at this time. The shape of the bowls on the stemware probably influenced this decision as the combination of the bowl shape and etching fits so well together. However, they did decide to use Normandie on some of their most recent patterns and pieces of glass and thus we have some very unusual items available with this etching. One of these patterns is the #1473 Buttress line. These were described, in the same trade journal article as Normandie, as "handsome crystal centerpiece made up of four geometrical units of various sizes which fit into each other in a myriad of different ways." This flower centerpiece set is very unusual being composed of 3 different height square centerpieces and a corner piece which could be used in multiples to provide varying effects for flower arranging.

Heisey also etched the #1476 Torque plate with this etching. This is a most unusual plate if for nothing but its size which is 18 inches. The center of the large plate has a figured bottom. A puzzle so far has been the name "torque" which has appeared in every handwritten reference we have seen to this plate and was used in some catalogs also. At first



#480 Duquesne Goblet

480 NORMANDIE PLATE ETCHING

con't from DESK OF page 6 as well. While at the show we were thrilled to see a pair of #110 Dolphin candlesticks in ZIRCON. I had heard of, but had not seen, this particular pair. While Vic Donahey was governor of Ohio, Clarence Heisey gave these to his wife and when the granddaughter who brought them in was married they were given to her. She may bring them for display during the convention. It was very interesting to see all of the dealers and collectors file up to the table, where we had set them, to see what all the excitement was about. One wonders how news travels through a show so fast! Naturally the first question was, "Are they for sale?" and the answer, of course was "no". Anyway HCA asked first. There has been, and may still be, a pair of these in the Newark area. Another pair was supposedly given to Minnie Watson Kamm at the same time these were

we thought it was merely a clerical error, but in listings which also contained torte plates from other patterns, these were spelled properly as "torte". Only the #1476 plate seems to be referred to as "torque". There seems to be definite indication that the Heisey Company meant to refer to it as "torque" although the reason seems unknown at this time. My only guess is that it could refer to some procedure of manufacture.

Normandie is found on:

- #3389 DUQUESNE stem line
- #1184 YEOMAN plates
- #1229 OCTAGON mint
- #1401 EMPRESS small serving pieces
- #1429 oval floral bowl
- #1466 STAR relish
- #1473 BUTTRESS centerpiece set
- #1476 torque plate
- #2052 bar
- #2401 sodas
- #3350 plate
- #4035 Decanter
- #4044 NEW ERA serving pieces
- #4056 salad bowl
- # 134 TRIDENT candlestick

See page 150 in "Etchings and Carvings" by Ream & Bredehoff for more information on this pattern.

presented according to the owner of the ones we saw.

I hope to get caught up soon with my mail since the busy times will soon be over for a little while. Thank you for being patient.

Work will soon begin in converting the house which we have purchased into offices. We plan an open house during convention if at all possible. Happy Collecting!!!

Louise Ream

con't from STEMS page 7

Hey, Dummy, you're wrong because the cutting you refer to is #1008 (which has been named Georgetown) and is found on #5024 Oxford stem, with a very heavy sham if Carl has seen the same ones I have. Why they changed the number just because they put it on a different stem is a mystery but it has happened in a few other cases. This is listed as being on
con't to page 14



Items pictured l. to r.: Front row -- #1184 plate, #1466 Star Relish, #4044 Relish, #4044 Cup and Saucer. Second row -- #1476 Torque plate (there is a press -- #4056 salad and #4044 creamer. On shelf at right #134 Trident candle. #480 NORMANDIE

CLUB NEWS

HCC of the Rochester area



DISPLAY BY HEISEY COLLECTORS OF ROCHESTER AREA

by **MARVIN JACOB**

Exciting experiences have recently happened in our chapter. Last December 4th and 5th we presented an all Heisey display at one of the largest antique shows in our area. Most visitors were greatly impressed by the beauty, quality and variety of Heisey Glass.

In January, we were fortunate to view the new sound movie, "The Heisey Glass Story." All members and guests present were thrilled at the films quality and information. An additional highlight of the meeting was the addition of 3 new members.

Our February meeting was also interesting and educational. Don Hall, a member of the Depression Glass Club of Rochester and director of the Strasenburg Planetarium presented a talk and slide show on Depression Glass. His talk was very interesting, very informative and very much appreciated by all.

Two visitors from Buffalo (70 miles away) attended our meeting and are interested in possibly starting a club in their area.

HEISEY HCC

by **RUSS REAM, Secretary**

The Newark HCC met on February 21st at the National Heisey Museum with Dick and Ginny Marsh as hosts. This was the first meeting of the club since November, partly because of the heavy snows which left most of us with no parking space for guests. Officers were elected as follows -- Frances Law, President, Russ Ream, Secretary/Treasurer. This club was founded in 1969.

In lieu of a program the club members and Charles Hartzell who was a guest, took inventory of all of the stock on hand in the gift shop. The March meeting will not be held so that the club members can help get the glass ready for the auction. The members decided to have a booth at the display in June.



con't from *STEMS* page 12

a goblet and Epergne post only and is not listed in any catalog. The information came from ledgers from the factory and credit goes to Tom and Neila for making the discovery while researching. We have also found that they made the heavy shams for the luxury trade. This cutting on this stem has to be very rare as it was not actually made for production according to our original source.

Gateway Heisey Club

by **PHYLLIS FREIER**

On the cold blustery 4th of February twelve members of the Gateway Heisey Club were greeted by a cheery fire in the fireplace at Hogners, for the first meeting of 1978.

Our new officers for the year are:

- President -- Harry Freier
- Vice President -- Darlene Sanders
- Secretary -- Laverne Lokay
- Treasurer -- Phyllis Goldstein

The following committee chairpersons were appointed by the President,

- Pierre Hogner -- Ways and Means
- Joseph Lokay -- Social Chairman
- Phyllis Freier -- Publicity
- Carlene Masson -- Program
- Bob Cook -- Display

Various proposals of themes for a display at the convention in June were discussed. Many suggestions and plans were made for the coming year. In the Show and Tell Hour the lovely Heisey glass of Pierre and Meredith Hogner certainly took the spotlight.

After the social hour, we braved the cold and snowy winter weather. We are looking forward to warmer weather for our next meeting at the sanders on April first. Let's hope that April first doesn't turn out to be A Fooler.

FAR EAST HCC

The meeting was held on February 22nd at the home of Russ and Louise Ream in Newark. It was the annual meeting and the Ben Bennett was elected president and Mollie Miller will continue to serve as secretary-treasurer with Ed Browning as V. President. The program was a slide show of museum owned glass.

Want to start a study club??

The following are interested in starting Study Clubs.

Joyce Dawson
2418 W. Crestview
Roseburg, Oregon 97470
Phone: (503) 672-4047

ALSO

To start a club in New Jersey
Ed & Emily Bonek
Rt. #2, Box 267E
Pleasantville, NJ 08232
Phone: (609) 927-9548



Table Talk
HEISEY'S GLASSWARE
For Your Table

No. 12

A. H. HEISEY & COMPANY, NEWARK, OHIO

May, 1927

Announcing Hawthorne

*New colors - designs, irresistible
in their fascination. New designs -
anticipating the trend of the times.
Old fashioned quality - Strict fidelity
to the time honored ideals.*

*These are the three cardinal principles
of Heisey's pre-eminence in the field
of glassware manufacture*

A. H. Heisey & Co.





Hawthorne — Heisey's New Color

THIS announces a new color in glassware by Heisey, a delicate amethyst tint, to which the distinctive name, "Hawthorne," has been given.

Side by side with the soft rose glow of Flamingo and the charming green of Moon Gleam, the new Hawthorne color will take its place in popular demand.

Heisey's Hawthorne Glassware appeals to people. This was ascertained before putting it into extensive production and before releasing it to the trade.

People are delighted with Hawthorne because it looks so exquisite on the table—the rare, elusive tint adds a new charm that is wonderfully delightful. And it is such beautiful glassware! The finest quality of blown and pressed items made by Heisey craftsmen.

You will want to add this new color to your stock, because people are going to buy it, and it will give you a splendid additional sales feature to bring them into your store.



IN the charming Hawthorne tint are perfume bottles and puff and powders for milady's dressing table. The bottles shown here are No. 515. The three piece puff and powder with cover is No. 1186. These items are in the beautiful diamond optic effect.

Annual Factory Shut-Down in July

As is our custom with our factory employees, the Heisey plant will close from July 1st to July 15th or thereabouts. In this period orders cannot immediately be handled and after re-opening, normal production cannot be reached for a time, due to natural conditions in the glassware business. We are asking our friends of the trade to bear this in mind and to anticipate summer requirements as nearly as possible by ordering in May. Orders received in June will get our best attention, but to avoid delays it is safer to order in May.



Everything for the Table

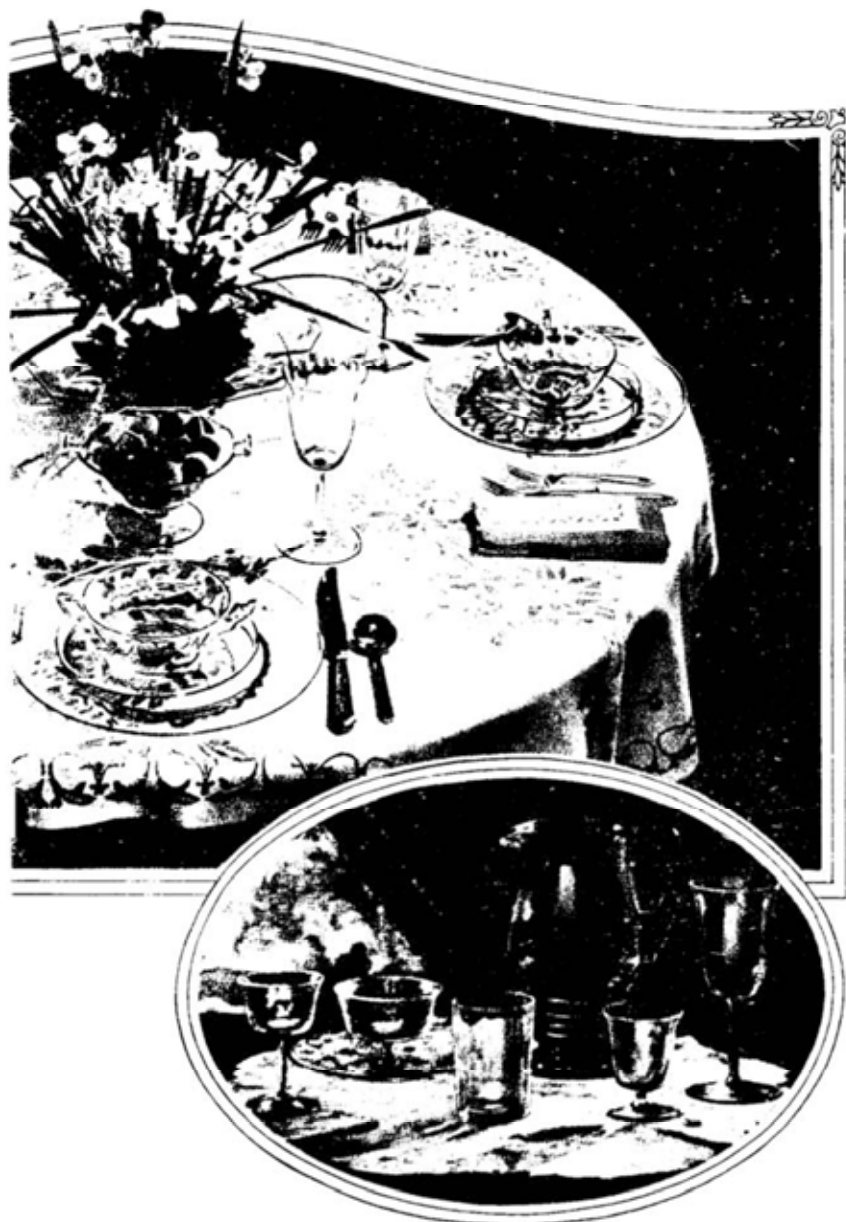
COMPLETE table services in several designs are offered in the Hawthorne color. From the illustration above a good idea can be obtained of the beauty this glassware gives the table, which is an attractive suggestion for a summer luncheon arrangement.

The Hawthorne glassware items on this table are as follows:

- No. 49 Salt and Pepper
- No. 3324 Goblets
- No. 1229 Two-handled Comportier
- No. 1182 Cream Soup and Saucers
- No. 1182 10½-in. Service Plates
- No. 1203 Floral Bowl with foot

A table set in a similar manner in your store will go a long way to make sales for you. It is certain to excite the admiration of your customers.





Wide Selection of Pieces in Hawthorne Tint

A wide variety of Heisey's fine glassware comes in the new Hawthorne color—the beautiful amethyst tint that is proving its popularity. Selections can be made for a complete table service in a number of patterns.

Meeting Popular Demand

Heisey's creative staff are quick to sense the trend of popular taste even in advance of a clearly defined movement. Their productions in crystal have met with a decided buying response. Then the dainty Moon Gleam and Flamingo table services have had a great deal to do with shaping the present large vogue of colored glassware. And now comes Heisey's new color—Hawthorne.

A New Line to Sell

The new Hawthorne color offers the trade an effective new line of beautiful glassware which they can sell with satisfaction to themselves and their customers. Hawthorne glassware appeals to discriminating people, because of its wonderful tint. By carrying it in stock and displaying it in your windows and store, you will be in a position to take advantage of the demand for Hawthorne.

Pieces for every occasion and purpose can be had in the Hawthorne tint. A few of them are bouillon cups and plates, service plates, salad plates, coffee cups and saucers, sandwich plates and dessert plates.

Variety of Items and Designs

A complete selection of glasses is offered, such as goblets, sherbets, saucer champagnes, fruit and oyster cocktails, parfaits, tumblers and soda and iced tea glasses. Jugs or pitchers of different designs are included. Then there are a variety of accessories, as, for instance, comports, flower bowls, candlesticks, salts and peppers, mayonnaise dishes, nut and bon bons, condiment dishes, and many more. The smoker may have cigarette jars and ash trays and for the dressing table there are perfume bottles and powder containers.

The superb attractiveness of the Hawthorne line will be an incentive to purchasers, especially during the spring and summer months, when colors are so seasonable. We suggest you place your order without delay for a representative stock in this new color.

HERE we have several enchanting pieces of Hawthorne blown ware. Following are the numbers: 3324 Cocktail, Oyster Cocktail, Goblet, Sherbet; 2930 Tumbler; 4182 7-in. Plate and 3480 Jug. The plate is diamond optic while the bowls of the other pieces reveal a unique and striking semi-corrugated effect.

Only a few pieces of the broad range of patterns and designs that come in the beautiful Hawthorne tint are illustrated in these pages. And the color is so elusive that it is difficult to catch it in a picture. But we believe that what is shown here will give you a reasonably close idea of what this fine new color is like.

From the comments already heard about this color, we feel that we have struck another happy interpretation of people's desires in glassware and we believe that it will be welcomed in general by the trade.





How would you bid these hands?



[YOU ARE THE DEALER]

Hand No. 7
 ♦ 8-6-3 ♥ AK-9-8 ♦ None ♠ AKJ10-6-2

Hand No. 8
 ♦ AKQJ ♥ A ♦ QJ10-8-7-5-3 ♠ A

Hand No. 9
 ♦ None ♥ AK-9-8-6-3 ♦ AKQ-4-3-2 ♠ K

Hand No. 10
 ♦ AKQJ10-9-5-2 ♥ 8 ♦ J3 ♦ AQ2

Hand No. 11
 ♦ 5 ♥ AKQJ10-9-5-2 ♦ AQ2 ♦ J3

Hand No. 12
 ♦ AKQ10-4-2 ♥ K10-9-7 ♦ AK10 ♠ None

This is the second set of six hands in a series of bidding problems arranged exclusively for us by the pre-eminent Bridge Authority, Milton C. Work.

Send in one bid for each hand before July 1st. Correct bids for all hands receive valuable prizes. Other problems will appear in later issues of this magazine. Winner of the entire series will be awarded grand prize.


Send bids to Bridge Contest Dept., A. H. Heisey & Company, Newark, Ohio. Further details and Mr. Work's answers and explanatory comment mailed to anyone on request.

There's Matchless Charm in Glassware

Enchanting pieces for every use—from bouillon to dessert and coffee—and for every occasion, from dinner or luncheon to bridge tea, are exquisitely wrought by Heisey. There are patterns and designs in infinite variety—and colors delightful to behold.

You may have the soft rose glow of Flamingo, or the delicate amethyst tint of Hawthorn, or the cool green of Moon Gleam, besides shimmering crystal.

Over the smartest tables this fine glassware casts its spell of charm. There are colors to gratify the most intimate whim of color arrangement. And always remember that glassware is in vogue today; *fashion demands fine glassware for the table.*

Ask your store to show you Heisey's Glassware. The  trade mark is the sign of the genuine. And if you wish to choose ideal gifts for any occasion, write for our new booklet, "Gifts of Glassware."

A. H. HEISEY & COMPANY
 Newark, Ohio

HEISEY'S

GLASSWARE  for your Table



THE second advertisement in Heisey's 1927 campaign is reproduced above. It is to appear in the following magazines: House Beautiful for April; National Geographic, Vogue, House & Garden and Junior League Bulletin for May; and in the June Number of Good Housekeeping. Another series of bridge bidding problems is given. The Bridge Contest is attracting wide attention. Are you and your salespeople participating and are you playing it up in your sales program? The table was set and photographed under the direction of New York authorities in table decoration.

Limited Edition Milk Glass

Made in original Heisey molds by Imperial Glass Corp. exclusively for Heisey Collectors of America, Inc. in limited editions.



RABBIT PAPERWEIGHT

\$ 9.00 2-3/4" HIGH
POSTPAID
Ohio residents add 34¢ sales tax

...



BUNNIES

\$ 12.50 POSTPAID
2-3/8" HIGH
SOLD ONLY BY PAIR
Ohio residents add 50¢ tax

MOTHER RABBIT

\$ 20.00 4-5/8" HIGH
POSTPAID
Ohio residents add 79¢ tax



HEN

\$ 20.00 4 1/4" HIGH
POSTPAID
Ohio residents add 79¢ tax

#1560 VICTORIAN GIRL BELL

by IMPERIAL
ULTRA BLUE, ROSE PINK,
SUNSHINE YELLOW,
MILK GLASS
Marked IG on back of bustle

POSTPAID **\$ 8.50**
Ohio residents add 32¢ tax



Write for Quantity Rates

ORDER FROM: HCA IMPERIAL ANIMALS
P.O. BOX 27
NEWARK, OHIO 43055

GLEN or SHAN PELL
(513)522-7300 Days
(513)742-2996 Evenings
Cincinnati, Ohio

HEISEY Orchid Etching #507

- | | | |
|--------|--|----------------|
| 12 | 6 oz. Saucer Champagne | #5025 Tyrolean |
| 12 | 10 oz. Tall Stem Goblet | #5025 Tyrolean |
| 1 | 6" Square Covered Butter Dish | #1519 Waverly |
| 1 | Cream and Sugar - 2 pc. mold | #1519 Waverly |
| 2 | Individual Cream and Sugar
4 piece mold | #1519 Waverly |
| 6 Sets | Cups and Saucers | #1519 Waverly |
| 1 | 6" Cruet w/Stopper | #1519 Waverly |
| 2 | 1-Lite Candlesticks | #112 |
| 2 | 2-Lite Candlesticks | #134 |
| 1 | 7" Footed Jelly | #1519 Waverly |
| 1 | 7" Footed Honey Dish | #1519 Waverly |
| 1 | Queen Ann 5 1/2" Dolphin Footed
Mint Dish | #1509 |
| 1 | 5 1/2" Mayonnaise Dish | #1519 Waverly |
| 1 | Queen Ann 6" Ftd Jelly, Handled | #1509 |
| 1 | 11" Relish Dish 3-compartments | #1519 Waverly |
| 2 | 13" Gardenia Bowls | #1519 Waverly |
| 2 | 12" Floral Bowl | #1519 Waverly |
| 1 | 9" Shallow Bowl | #1509 |
| 1 | 1 pint Cocktail Shaker | #4225 |
| 14 | 8" Plates | #1519 Waverly |
| 3 | 7" Plates | #1519 Waverly |
| 1 | Queen Ann 12" Center
Handled Snack Plate | #1509 |

WE ARE SELLING THIS AS ONE LOT -- Dealers Welcome.
Bids for this lot must start at \$ 1 2 0 0. 0 0. The highest bid
received before April 30, 1978 can take delivery of this
merchandise. We welcome all prospective customers to
inspect this merchandise any evening or week-end. Please

PLEASE CALL FIRST

OLDE LOVED THINGS
 Antiques & Collectibles
 900 RIDGEWOOD AVE
 HOLLY HILL, FL 32017
 Phone: (904) 252-7960 after 4:30 p.m.

Postage & Insurance extra (SASE)
 * Signed

- #1428 WARWICK 5* Cornucopias*Pr...36.00
- #1404 OLD SANDWICH 6* Candlesticks*Pr...65.00
- #1404 OLD SANDWICH Tumblers*, Sahara..(7)...ea...20.00
- #1425 VICTORIAN 1/4 Butter & Cover*27.50
- #1511 TOURJOURS Rosebowl*47.50
- #1509 EMPRESS 5 1/2* Footed Crystal Mayonnaise11.00
- #1509 EMPRESS Sahara Ind. C/S w/Tray*Set...65.00
- #1483 STANHOPE Cups w/Knobs*3 for 20.00
- #1469 RIDGELEIGH 10* Star Relish*35.00
- # 407 COARSE RIB Hotel Sugar & Cover*22.00
- # 353 (?) 5 oz. Syrup* w/Lid, Flamingo42.00
- # 354 WIDE FLAT PANEL Grapefruit w/att. plate (4)
 See Bradley, Ryan & Ryan, pg 17)ea...30.00
- # 116 3* Etched oak leaf Candlesticks, Flamingo Pr...28.00
- #1255 Pineapple & Fan 10* OVAL BERRY BOWL
 V1 pg9235.00
- #1252 TWIST 12* OVAL FLORAL BOWL*, Flamingo...36.00
- # 341 PURITAN 4 1/2* Ftd. Jelly Compote*...(2)...ea...24.00
- #1201 11* Floral Bowl*30.00
- #1170 PLEAT & PANEL Marmalade*, Flamingo22.00
- # 300 2 1/2 oz. Shot Glass*12.00

Virginia and Odell Johnson
GLASS 'N GLASS
 VILLAGE GREEN
 6909 - 10th AVE WEST
 BRADENTON, FL 33505
 Phone: (813) 792-0604

Postage & Insurance extra
 * Marked

- #1469 RIDGELEIGH Pressed Goblets(6)...ea...18.00
- #1469 Shot Glass *12.50
- #1469 Set of Card Ashtrays *40.00
- #1469 Square Ashtrays (4), Square Cigarette Holder* 40.00
- #1469 Place settings of: 8 1/2* Plate, 6 1/2* Plate, C/S*
 each set.....25.00
- #1469 Coasters (3 1/2*), ZIRCON(3)...ea...30.00
- #1428 WARWICK single candlesticks, SAHARA* Pr...65.00
- # 494 Cologne, Irr. Hawthorne flashing (V2-148)30.00
- #1252 TWIST Plates 8*, MOONGLEAM*(6)...ea... 5.00
- #5 Candlestick 11* tall *28.00
- #1503 CRYSTOLITE Candlestick block, (V3, 122)..pr...25.00
- # 411 RIB AND PANEL Cruet8, (V2, 94)25.00
- #1540 LARIAT Candleholders, saucer type bottom
 w/hurricane lamps, decorated w/gold &
 pattern of small roses, blue & green pr...80.00

**The ENCYCLOPEDIA of
 HEISEY GLASSWARE
 Volume I**

ETCHINGS and CARVINGS

by *Louise Ream
 Neila & Tom Bredehoft*

To: **H.C.A. ETCHING BOOK
 BOX 27
 NEWARK, OH 43055**

Send your check for: **\$10.95**

*plus 10% FOR
 HANDLING AND MAILING
 OHIO RESIDENTS PLEASE ADD TAX*

Classified Ads

BROKEN HEISEY: Have Necklace, ear rings, ring or bell made from your pattern-inexpensively. Write for folder. **RHODA CURLEY, MOSTLY HEISEY, 16 CLAYTON PLACE, ALBANY, NY 12209**

Heisey Orchid Etch Glassware by Don Gammon. Over 100 different items pictured with prices. Only \$2.00 plus 25¢ Postage. Order from: **DON GAMMON, 822 GOOD HOPE, CAPE GIRARDEAU, MO 63701**

**"HEISEY STEMWARE"
 by
 Stephen Bradley, Constance Ryan
 Robert Ryan**

An outstanding book on Heisey Glassware devoted to Heisey's stemware. Well received by collectors and dealers. A limited edition, hardbound with beautiful full color cover, 240 pages, 337 photos, beautifully done sharp and clear, easy to use new format....rarities, signature, items, colors. Everything you wanted to know about Heisey's major product....Join the many Heisey collectors who write that the book has opened a new collecting area where you can still find some beautiful Heisey glass at great prices.

Mail your orders to:

HEISEY STEMWARE *HEISEY STEMWARE*
 88 Davis Rd. or 9343 Alkire Rd.
 Centerville, Oh 45459 Grove City, Oh 43123

BOOK PRICE: Plus \$1.00 for shipping & handling
 Ohio Residents add \$.90 tax

\$ 2 0 . 0 0

This book is also available at HCA Museum or Moundbuilder's Antiques, Newark, Ohio, Last Chance Antiques, 60 N. Federal Hywy., Dania, Fl. 33004

Dealers Directory

5 LINES - \$6.00/6 ISSUES

MOSTLY HEISEY

RHODA CURLEY
16 CLAYTON PLACE, ALBANY, NEW YORK 12209
BY APPOINTMENT 518 482-6272

Opera House Antiques

1414 N. Broadway, Granville, Oh 43023
Open 7 days a week 12 - 5 P. M.
Frank (614)344-9847 - Sam 587-0052
Shop (614)587-2083
LOTS OF HEISEY GLASS & GENERAL ANTIQUES

The Shultzes Antiques

BOUGHT SOLD
206-208 E. MAIN ST., ROUTE # 419
NEWMANSTOWN, PA. 17073
15 MI. WEST OF READING, PA.
PHONE 215 589-2819

Lynne & Art's Glass House, Inc.

"HEISEY OUR SPECIALTY"
Route 202 Lahaska, Pa. 18931 Box 242
Phone: (215) 794-7800

The China Cupboard

185 A. SO. BROADWAY, ORCUTT, CA. 93454
Phone: (805) 937-6420
COLLECTIBLE & ANTIQUE GLASS & CHINA
HEISEY IN STOCK

Green Acres Farm

ANTIQUES, OR YSTAL, GLASS & COLLECTIBLES
SPECIALIZING IN HEISEY & CAMBRIDGE GLASS
BY CHANCE OR (614) 927-1882
2678 SR 310 N. - PATASKALA, OHIO 43062

Charles A. Shaw

P.O. Box 1063
New York, N.Y. 10008
Shows & Mail Order
American Glass (914) 476-5175

Collectibles of Vestergear

OPEN 10-5 SAT & SUN ONLY
YBOR SQ.—9TH AVE. & 14TH ST.,
TAMPA, FLA.
PHONE:(813)971-6487 OR 932-9965

DuWaine Hill

Rosey Pot Gifts

56 E. COSHOCTON ST.
JOHNSTOWN, OH. 43031
(15 miles from Newark)
PHONE:(614)967-7941 open 6 days a week

Goldsberry's Antiques

KALAMAZOO, MICHIGAN
SHOWS ONLY — BUY & SELL
HEISEY A SPECIALITY
PHONE: (616) 381 - 3013

Grandma's Garage

GENERAL LINE
213 SOUTH STATE
NEW ULM, MN 56073
PHONE: (507) 359 - 9187

ANTIQUES & COLLECTIBLES



Olde Loved Things

Daris "Ed" Lacroix - Donald Mousseau
900 Ridgewood Avenue (Holly Hill)
DAYTONA BEACH, FL. 32017
HEISEY, Cambridge, "Candlesticks a specialty"

Wickford Antique Arcade

Ron & Bev. Wood Booths 6 & 7;
650 Ten Rod Rd., N. Kingstown, R.I. 02852
Heisey - Primitives - Glass - Etc.
Home Phone: (401) 295-0823

Oldies But Goodies

222 N. WATER STREET
WILMINGTON, IL. 60481
(815) 476-7320
Heisey A Specialty

Heisey Heaven & other collectables

NOW OPEN AT PEDDLER'S VILLAGE
SUNNY CREST MALL—URBANA, IL 61801
(CORNER FLORIDA AVE & PHILO RD.)
PHONE: (217) 384 - 9093

FLORIDA HEISEY HEDQUARTERS

Last Chance Antiques

60 N. FEDERAL HWY, DANIA, FL 33004
(BETWEEN MIAMI & FT. LAUDERDALE)
1,000 % PIECE INVENTORY—MAIL ORDERS

Bert's Budget Shop

403 W. MAIN ST., NEWARK, OHIO 43055
PHONE: (614) 349-8045
General line Antiques

Highland Manor Heisey

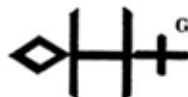
LEONARD & MAXINE ASHCRAFT, OWNERS
2152 HILLSIDE RD., PUEBLO, CO 81006
544-0225—S.A.S.E. FOR WANTS—BY APPT

Rambling Lane Antiques

KEITH & EVELYN HOOVER-715-282-5019
ROUTE 4, RHINELANDER, WI 54501
Featuring HEISEY Glass —
Copper, brass, furniture

C. Young

12823 WENLOCK DR, ST. LOUIS, MO 63141
Heisey, Cambridge, Duncan, New Martinsville
Write for extensive list



Diamond H Plus

GEORGE & EILEEN SCHAMEL
Route 3, Box 419
Boonsboro, Md. 21713
Appointment or Mail Order
Phone 301-432-8285

Pumphouse Antiques

111 E. MAIN ST. WEST BRANCH, IA 52358 BOX 433
PHONE: 319-643-2879, 337-5096 EVE.
Specializing in Glass, early and late
SASE for wants, list Heisey, Duncan, Children's

Hoosier Heritage Antiques

Marcel and Tom Zehr
4005 SOUTH WAYNE AVENUE
FORT WAYNE, INDIANA 46807
(219) 745-4173

The Wooden Shoe

ANTIQUES & COLLECTABLES—BUY & SELL
GLASS, FURNITURE, ESTATES
JIM & SHERI VAN ES BY APPT
HERNDON, VA 22070-PH: 435-9045



sum of life

elaine and frank husted
p.o. box 102,
phoenixville, pa. 19460
(215) 935-2962

Eagles Rest Antiques

CHINA HEISEY GLASSWARE
BOUGHT AND SOLD
62 FIELD POINT RD., HEATH, OH 43055
By Chance or Phone: (614)522-2035

Evelyn's Antiques

3301 - 140 N.E. Marysville, Wash. 98270
I S Exit 202 Phone: (206)659-6114
MON-WED-SAT-SUN & by Appt.
Shop full of glass - Heisey, etc.

Ann's Gifts & Antiques

105 W. MAIN, BOX 206, HEBRON, OH 43025
ANN HOLMAN — PH: (614) 928 - 7711
RT #79 NORTH FROM INTERSTATE #70
ON RT. #40, 2ND SHOP WEST OF JCT RT. #79

Charles & Mildred Fisher

Antiques & Collectibles, General Line
HEISEY, DENGENHART, IMPERIAL
991 IDLEWILDE, NEWARK, OH 43055
PHONE: (614) 522 - 5398

Happy Haven Antiques

Charles & Mary Dumke
RT. 3, BOX 2044A, GRASS VALLEY, CA. 95945
Phone: (916) 273-9450

ACCENT ANTIQUES OF KENSINGTON

Curio Corner

3742 HOWARD AVE.
KENSINGTON, MD 20795
PH: (301)933-3750

Moundbuilders Antiques

IRENE RAUCK
1138 MOUNDVIEW, NEWARK, OH 43055
PHONE: (614) 344 - 6043
HEISEY & ANIMALS/GEN. ANTIQUES

The Sleeping Fox

EVELYN & JAMES JORDAN
P.O. BOX 583
LANSDALE, PA 19446
PHONE: (215) 855 - 2480

ANTIQUES 'N' COLLECTABLES
"HEISEY OUR SPECIALTY"

LYNNE



ART'S

ROUTE 202 — LAHASKA, PA. 18931
P. O. BOX 242 215-794-7800

GLASS-HOUSE
INC.

*Dear Heisey Collector and Dealer,
We're Heading Your Way!! Heisey Animals,
Lovely Old Patterns, and a Rainbow of Colors, will
be coming along with us.*

We'll be at the following shows.

- | | | |
|---------------------|------------------------------------|--------------------|
| 1. WAKEFIELD, MASS. | First Parish Congregational Church | March 31 - April 1 |
| 2. HARRISBURG, PA., | Farm Show Building, | April 13 - 15 |
| 3. WARRINGTON, PA., | Warrington Country Club, | April 18 - 20 |

*Our shop in Lahaska is usually open while we are
on the road, suggest a call 215-794-7800.*

*See you soon,
Lynne and Art*

HEISEY'S GLASSWARE of DISTINCTION



by Mary Louise Burns

The FIRST Comprehensive reference book on Heisey Glassware! All major patterns of Heisey tableware, stemware, cuttings, etchings, Heisey animals and Verlys.

124 pages - over 240 patterns - more than 5600 items listed.

Several hundred photographs showing details of each pattern thus making identification easy.

Also, information on dates and colors of each pattern.

EVERYTHING IN ONE BOOK!

only \$9.95 plus 75¢ postage

AT LAST! 50 Page Price Book on Heisey Glassware!
Price Trends given on over 5600 items of Heisey Glassware listed alphabetically for easy reference.

only \$4.95 plus 75¢ postage
(if ordered separately)

ORDER FROM: MARY LOUISE BURNS
P.O. BOX 1931
GRANTS PASS, ORE 97526

NAME _____
STREET _____
City/State/Zip _____
6 books or more 40%



— ESTABLISHED 1971 —

\$6.00 — 12 Issues

64 pages packed each month with articles by respected columnists, a variety of ads on both old and new glass, shows, new books on glass, trademarks, research information and more!

Printed magazine on glossy paper with large, clear photos. (recent sample \$1)

Enclose payment and send to GLASS REVIEW,
P.O. Box 2315-H, Costa Mesa, CA 92626.

- allow 30 days for first issue -

Make your reservations now...

CONVENTION 1978 June 15-16-17-18

The SHERATON INN will once again be our convention headquarters for 1978. All activities will be held there with the exception of the SHOW AND DISPLAY. Many people told us last year how convenient it was to stay where all the action is. Please make your reservation right away because last year all motels in the Newark area were filled and many people had to stay 30 or 40 miles away.

A special rate has been given us again this year by the management. ONE PERSON IS \$22.25 or TWO PEOPLE IS \$27.30. NO ADDITIONAL CHARGE FOR CHILDREN UNDER 18 YEARS OF AGE AND NO ADVANCE DEPOSIT. All rooms have two double beds. There is a \$5.00 per night charge for a rollaway bed if needed.

Please make your reservation by clipping the attached form.

Mail it to ROBERT McCLAIN, 156 W. SHIELDS ST., NEWARK, OH 43055 or PHONE (614) 345 - 8061.

SHERATON INN RESERVATION REQUEST

Name _____

Address _____

Arrive _____ Depart _____ Phone _____

No of persons in party _____ No charge for children under 18 years of age.

Single room requested _____ \$22.25 (one person) Double room requested _____ \$27.30 (two double beds)

No advance deposit needed

1978 SOUVENIR "OSCAR"

Order form

PLEASE READ VERY CAREFULLY BEFORE FILLING OUT.

Oscars are Rose Pink and are marked HCA 78 and IG. This is a limited edition and is being offered to members only, until May 15. None will be sold between then and the first day of convention when they will be \$15.00 if any are left.

You may order only one per member. This means any member who has a membership card regardless of class of membership. Please list all names on form as they will be checked. Everyone ordering either for pick up in Ohio or all living in Ohio MUST PAY sales tax. This includes vendors. The only exception is for out-of-state orders to be mailed. Licking County tax is 4½% or 54 cents on each Oscar. Postage is \$1.20 each if mailed. Make all checks to HCA, INC. Mail to address on the form.

DO NOT SEND DUES, BOOK ORDERS ETC. TO THIS ADDRESS. It is for Oscars only. It will be several months before these are shipped. Your cancelled check is your receipt.

Please keep this part for reference and clip only the form below the line.

BE SURE YOUR DUES ARE CURRENTLY PAID

clip and mail

Amt.

Number of OSCARS at \$12.00 ea. _____ Only one per member

Sales Tax 54 cents ea. _____ All Ohio residents and pick-ups in Newark.

Postage \$1.20 ea. _____

Total sent with order _____

Check one Please mail my Oscar(s)
 I will pick up my Oscar(s) at convention

Name(s) _____
List all names

Address _____

City _____ State _____ Zip _____

Make check payable to HCA, INC. and mail to..... HEISEY COLLECTORS OF AMERICA, INC.

c/o 76'ers HCC
P.O. Box 391
Westerville, Ohio 43081

Perfect unless noted
 7 day return privilege
 Postage & Insurance extra

WADE BANCK
 425 HINGHAM STREET
 ROCKLAND, MASS 02370
 Phone: (617) 878 - 2760

- # 150 BANDED FLUTE, Punch Bowl & Foot*125.00
- # 150 BANDED FLUTE, Custards*(B2,p4)(12) ..ea...10.00
- # 300 PEERLESS, Punch Bowl & Foot*(B1 p91)175.00
- # 300 PEERLESS, Custards*, Star Bottom(B1 P91)(12) ..ea...17.00
- # 305 PUNTY & DIAMOND POINT, Punch Bowl & Foot*(B1 P76)175.00
- # 305 PUNTY & DIAMOND POINT, Custards*(B1 P76)(9) ..ea...17.00
- # 335 PRINCE OF WALES PLUMES, 14" Punch Bowl & Foot*(B1 P68)225.00
- # 335 PRINCE OF WALES PLUMES, 10" Punch Bowl & Foot*(B1 P68)175.00
- # 335 PRINCE OF WALES PLUMES, Custards*(B1P68)(32) ..ea...20.00
- # 343 SUNBURST, Punch Bowl & Foot*(B1P36)175.00
- # 343 SUNBURST, Custards*(B1P36)(17) ..ea...20.00
- # 365 OLD QUEEN ANN, 17" FLARED Punch Bowl & Foot*(B4P145)250.00
- # 365 OLD QUEEN ANN, Custards*(B4P145)(12) ..ea...25.00
- # 433 GRECIAN BORDER, Punch Bowl & Foot*(B2P73)200.00
- # 433 GRECIAN BORDER, Custards*(B2P73)(36) ..ea...20.00
- #1235 BEADED PANEL & SUNBURST, Punch Bowl & Foot*(B1P98)175.00
- #1235 BEADED PANEL & SUNBURST, Custards*(B1P98)(13) ..ea...17.00
- #1776 KALONYAL, Punch Bowl & Foot*(B1P25c)200.00
- #1776 KALONYAL, 3 1/2 oz. Custards*(5) ..ea...25.00
- #1506 WHIRLPOOL, Punch Bowl & PLATE*(B4P11)100.00
- #1506 WHIRLPOOL, Custards*(B4P11)(20) ..ea... 7.00
- #1205 FANCY LOOP, Punch Bowl - as pictured(B4P80)175.00
- #1205 FANCY LOOP, Custards(B4P80)(10) ..ea...25.00
- #1205 FANCY LOOP, Covered Butter(B4P76)80.00
- #1205 FANCY LOOP, Covered Sugar(B4P76)60.00
- #1205 FANCY LOOP, Ice Tub(B4P84)55.00
- # 407 COARSE RIB, Custards* Straight(B2P90)(20) ..ea... 7.00
- #1295 BEAD SWAG, Custards(B4P128)(8) ..ea...20.00
- # 350 PINWHEEL & FAN, Custards*(B2P15)(14) ..ea...12.00
- #1425 VICTORIAN, Custards*(B3P100)(8) ..ea... 7.00
- # 325 PILLOWS, 7" Rose Bowl*(B1P73)85.00

- #1404 OLD SANDWICH, 18 oz. BEER MUGS, COBALT(B3P169)(2) ..ea...200.00
 - #1404 OLD SANDWICH, 7" Plates*, SAHARA(B3P98)(6) ..ea...12.00
 - #1404 OLD SANDWICH, 8" Plates*, SAHARA(B3P98)(6) ..ea...14.00
 - #1404 OLD SANDWICH, Pitcher*, SAHARA (not pictured)80.00
 - #1404 OLD SANDWICH, Individual Ash Trays, COBALT(B3P98)(2) ..ea...24.00
 - #3480 3 Pint DIAMOND OPTIC JUG, HAWTHORNE(B3P75)90.00
 - #3203 9" DIAMOND OPTIC BUD VASE, HAWTHORNE(B3P70)70.00
- Set of three ULTRA BLUE PONIES, Standing, Kicking & Balking

MADE BY IMPERIAL100.00

colored



return to:
HEISEY NEWS
 Box 27
 Newark, Oh 43055

FIRST CLASS MAIL
 U.S. POSTAGE
PAID
 PERMIT 34
 Reynoldsburg, Ohio 43068

**FIRST CLASS
 MAIL**

DATES TO REMEMBER

JUNE 15-18 HCA Convention

IF THE EXPIRATION DATE ON YOUR
 MEMBERSHIP CARD IS 3/31/78 THIS IS
 YOUR LAST ISSUE OF HEISEY NEWS!!!

ALL HEISEY AUCTION

Bring This List With You

AT THE OPERA HOUSE
Granville, Ohio

SATURDAY, APRIL 29, 1978
SALE STARTS AT 6:30 P.M.
DOORS OPEN AT 12:00 NOON

1	# 393 MOONGLEAM Narrow Flute Ind Cr & Sug	57	1193 MOONGLEAM Cucumber Dish
2	1506 Provincial Cr & Sug	58	150 Wedding Band 4½" Nappy (2)
3	1401 SAHARA Empress Dolp Ft Cr & Sug	59	411 Rib & Panel 4½" Nappy
4	406 MOONGLEAM Coarse Rib Cr & Sug Cut	60	353 Medium Flat Panel 6" Almond(4)
5	1201 Fandango Ind Sug-jelly Gold Dec	61	355 Quator 4" Nappy
6	1519 Waverly Cr & Sug w/Orchid Etch	62	1469 Ridgeleigh 4" Nappy
7	352 Flat Panel Cr & Sug w/lid	63	331 Finger Bowl (4)
8	1205 Fancy Loop Hotel Cr & Sug Gold Dec	64	1183 Revere 4" Lemon Dish
9	300 Colonial Cr & Sug & Spooner	65	500 FLAMINGO Octagon Frozen Dessert
10	356 Cr & Sug w/Cutting	66	1235 Beaded Panel & Sunburst 5" Nappy(3)
11	406 FLAMINGO Cr & Sug w/Lid	67	1205 Fancy Loop 4½" Nappy
12	1185 Cr & Sug w/Cutting	68	1205 Fancy Loop 4" Round Nappy
13	354 HAWTHORNE Creamer	69	1469 Ridgeleigh 4½" Nappy (8)
14	473 Narrow Flute 4 oz Plain Rim Cr	70	411 Rib & Panel 4½" Nappy
15	1509 Queen Ann Creamer	71	3390 SAHARA CarcassoneSoda Old Colony Etching
16	1401 SAHARA Empress Ind Creamer	72	Colonial Tumbler
17	1776 Kalonyal Hotel Creamer	73	Colonial Tumbler
18	1020 Sugar w/Cutting	74	1405 Ipswich Juice 5 oz.
19	1540 Lariat Sugar	75	1469 Ridgeleigh 5 oz Ftd. Soda
20	3397 Gascony Sugar	76	1486 Coleport Tumblers (4)
21	411 Hotel Sugar Rib & Panel	77	1486 Coleport 5 oz juice (6)
22	1255 Pineapple & Fan Cov Sug	78	1486 Coleport 10 oz Tumbler
23	433 Greek Key Round Hotel Sug	79	3350 Wabash 12 oz Ftd Soda w/439 Pied Piper Etching (2)
24	351 Hotel Sugar	80	2930 Plain & FancyTumbler Front Etch(6)
25	1180 Hotel Sugar w/Cutting	81	586 Plain Soda 8 oz
26	1401 Empress Sug w/Rosalie Etch X	82	1235 Beaded Panel & Sunburst Tumbler
27	1509 Queen Ann 3 Hdl'd Sug w/Lafayette	83	Tumbler w/Normandy Etch
28	393 Hotel Sug w/Dec flaked	84	6091 Cabachon Ftd Jc w/Debutante Cut
29	393 Hotel Sugar	85	5040 Lariat Ftd Juice
30	393 Spooner	86	1404 Old Sandwich 5 oz Juice (2)
31	1255 Pineapple & Fan Spooner w/Gold	87	1404 Old Sandwich 5 oz Ftd Cocktail
32	355 Domin o Sugar	88	1404 Old Sandwich 5 oz Tumbler
33	355 Domino Sug Dbl Side	89	1404 Old Sandwich 8 oz Tumbler
34	341½ Puritan ½ Gal Pitcher	90	1404 Old Sandwich 12 oz Ftd Soda
35	341½ Puritan 3 Pt Pitcher	91	1404 Old Sandwich 12 oz Soda (6)
36	393 Narrow Flute 1 Qt. Pitcher	92	1540 Lariat 6" Ftd Compote
37	393 Narrow Flute 3 Pt Pitcher	93	1231 Ribbed Octagon 6" Compote
38	433 Greek Key ½ Gal Jug chip on spout	94	335 Prince of Wales Plumes Compote
39	1235 Beaded Panel&Sunburst Water Bottle	95	353 Colonial Low Ftd Cupped Compote
40	1205 Fancy Loop Water Bottle	96	160 Locket On Chain Compote 8"
41	480 Daisy & Leaves 8" Fruit Basket	97	353 Medium Flat Panel 4½" Low Ftd Comport (3)
42	458 7" Basket with Cutting	98	1184 Yeoman 6" Cov Candy
43	1540 Lariat Basket	99	7025 Ribbed 12" Comport
44	1252 SAHARA Twist Ice Bucket	100	1404 Old Sandwich Compote
45	1469 Ridgeleigh Ice Tub	101	1184 Yeoman 8" Ftd Compote w/Enameled Decoration
46	1220 Punt Band 4" Nappy w/Red Stain	102	1401 Empress Ftd 6" Compote
47	355 Quator 4½" Nappy	103	1186 MOONGLEAM D O Compote Gold Trim
48	1252 Twist 2 Comp Dish	104	473 5" Ftd Compote w/Cutting
49	357 Prison Stripe Hdl'd Nappy	105	1503 7" Crystolite Candy Dish Plated Cover with Glass Knob
50	411 HAWTHORNE 6" 2 Hdl'd Mint	106	1253 MOONGLEAM Tricorner Candy
51	354 Colonial Grapefruit w/plate atch	107	465 Recessed Panel Candy Jar 1#
52	1401 SAHARA Empress Dressing Bowl	108	465 Recessed Panel Candy Jar 1#
53	1401 Empress Dressing Bowl	109	1401 COBALT 6" Empress Covered Candy with Lid Dolp Footed
54	411 HAWTHORNE Rib & Panel 2 Hdl'd Nappy	110	3404 Spanish Stem Goblets (3) COBALT bowls
55	160 Locket on Chain 4" Nappy Gold Dec	111	359 7 oz Goblet
56	411 Rib & Panel Nappy (2)		

PAID ADVERTISEMENT

112	300 Peerless 7 oz Goblets(3)	181	1469 Ridgeleigh Cig Holder
113	3350 Wabash Stem Pied Piper Etch(6)	182	1469 Ridgeleigh Ash Tray
114	1405 Ipswich 10 oz Goblets (2)	183	1503 Crystalite Ash Trays in Metal Stand (5)
115	1405 Ipswich 10 oz Ftd Soda (3)	184	1469 Ridgeleigh 4" Cig Box & Cov
116	3390 SAHARA Carassone Goblets (5)	185	351 Priscilla 4 oz Saucer CHampagne(7)
117	393 8 oz Goblet	186	Saucer Champagnes w/Shawl Dancer(2)
118	3389 Duquesne Goblet w/Normandy Etch	187	5019 Waverly Saucer Champagne
119	300 Peerless 10 oz Goblet	188	3390 SAHARACarcassone Saucer Champ (7)
120	3350 Wabash 10 oz Goblets Pied Piper(2)	189	3380 SAHARA Old Dominion Saucer Champ w/Old Colony Etch
121	3335 Ladyleg 8 oz Goblet 429 Etch	190	3367 FLAMINGO Charter Oak Champagne
122	3381 ALEXANDRITE Creole Goblet D O	191	3333 Old Glory Champagne
123	3362 FLAMINGO Egyptian Goblets (2)	192	3350 Wabash Champagne
124	407 FLAMINGO Corse Rib 5" low Ftd Jelly	193	3350 Wabash Champagne w/Pied Piper X
125	1229 Octagon 5½" Hdld Jelly D0	194	5019 Waverly Saucer Champagne
126	343 Sunburst 5½" Ftd Jelly	195	1519 Waverly Champagnes (2)
127	1201 Fandango 5½" Hdld Jelly	196	4044 New Era 6 oz Saucer Champagne
128	1252 FLAMINGO Twist 2 Hdld Jelly	197	5010 Symphone 6 oz Champagne Minuet
129	1401 MOONGLEAM Empress 6" 2 Hdld Jelly	198	1488 Coleport 5½ oz Saucer Champagne
130	1186 5" Hdld Jelly w/Cutting	199	3381 ALEXANDRITE Creole D O Champ
131	1469 Ridgeleigh 6" Hdld Jelly	200	3368 SAHARA Albemarle Champ (3)
132	1469 Ridgeleigh 6" Bon Bon	201	3368 SAHARA Albemarle Champ D O
133	1252 MARI GOLD Twist 2 Hdld Bon Bon	202	3355 MOONGLEAM Fairacre Stem 6½ oz Saucer Champ Crystal D O Bowl
134	1401 ALEXANDRITE Empress 13" Celery	203	1405 Ipswich 4 oz Saucer Champ (2)
135	351 Priscilla Hotel Celery 9" X	204	5040 Lariat 5½ oz Sherbet
136	351 Priscilla Hotel Celery 9"	205	3367 Charter Oak bow Ftd Sherbet
137	451 Crossline Flute 3 Pt Jug	206	3333 Old Glory Sherbet
138	473 8" Celery	207	341 Puritan Sundae Crimped Top
139	1401 Empress 10" Celery	208	433 Greek Key 6 oz Cupped Sherbets(10)
140	1401 Empress 10" Celery	209	3355 MOONGLEAM & CRYSTAL Fairacre Sherbets (6)
141	468 7" Pickle	210	339 Continental Ftd Sherbets (6)
142	343 Sunburst 12" Celery	211	341 Puritan Low Ftd Sherbets (8)
143	433 Greek Key 9" Celery Tray X	212	1469 Ridgeleigh Low Sherbet
144	1469 Ridgeleigh Star Relish 5 Comp	213	433 Greek Key Low Ftd Sherbet (3)
145	1776 Kalonyal Relish	214	1405 Ipswich 4 oz Sherbet (2)
146	150 Wedding Band Relish	215	341 Puritan 3 oz Low Ftd Sherbet
147	1469 Ridgeleigh 12" Celery	216	433 Greek Key Low Ftd Flared Sherbet (6)
148	Frosted Horsehead Bookends (2)	217	359 3½ oz Ftd Sherbet
149	Goose Wings Up	218	433 Greek Key Banana Split
150	Imperial H C A 77 Fern Green Oscar	219	352 Flat Panel 6½ oz Grapefruit (4)
151	Imperial Set of 3 Ultra Blue Colts	220	10 FLAMINGO Oak Leaf Coaster (2)
152	Imperial Caramel Slag Elephant	221	1454 Dia Point Ind Jellies
153	Imperial Caramel Slag Standing Colts (2)	222	1469 Ridgeleigh Salt Dips (2)
154	1540 Lariat Punch Bowl, Ladle, Underplate & 6 Cups	223	1205 Fancy Loop Salt Dip
155	325 Pillows Covered Butter	224	394 Mustard w/Cover
156	150 Wedding Band Pickle Jar No Lid	225	351 3 oz Sham
157	1567 Plantation 8½" 2 Part Mayonnaise	226	351 3 oz Sham Colonial
158	1469 Ridgeleigh Mayonnaise	227	3481 Glenford 1½ oz Ftd Bar D O FLAM
159	1519 Waverly Mayonnaise	228	3389 Duquesne 1 oz Cordial (2)
160	393 Butter	229	941 Bar Glasses Barcelona Cutting (2)
161	1485 SatuPn 12" Hostess Helper 2Pc	230	1503 Crystalite Cruet 4 oz w/Wrong Stopper
162	1509 Queen Ann 7" Comp Mayo Minuet E	231	1540 Lariat Perfume Bottle w/Stopper
163	353 Toothbrush Holder	232	5040 Lariat Cocktails (3)
164	1205 Fancy Loop 8" Vase	233	359 Colonial Narrow Optic 3 oz Cock
165	1255 Pineapple & Fan 8" Vase	234	4044 New Era 3½ oz Cocktail
166	1428 Warwick Ind. Vase	235	359 Colonial Narrow Optic 3 oz Cock
167	465 Recessed Panel 7" Vase	236	3408 Jamestown 3 oz Cocktail Barcelona Cutting (6)
168	1255 Pineapple & Fan 10" Vase	237	341 Puritan 3 oz Cocktail
169	1428 Warwick 5" Vase	238	1506 Provincial 5 oz Oyster Cocktail
170	379 Urn Vase	239	1405 Ipswich 4 oz Oyster Cocktail
171	1506 Provincial Vase	240	1295 Bead Swag Punch Cups (4)
172	391 12" Large Vase	241	150 Wedding Band Punch Cup
173	4206 FLAMINGO 10" Optic Tooth Vase	242	305 Punt & Dia Point Punch Cup
174	1469 6" Ridgeleigh Vases (2)	243	339 Continental Punch Cup
175	1428 Warwick 6" Vases (2)	244	433 Greek Key Punch Cups (5)
176	1540 Lariat 7" Vase w/Cutting		
177	1428 Warwick 7" Vases (2)		
178	1489 Puritan 6" Ash Tray		
179	1503 Crystalite Ash Tray		
180	1503 Crystalite Cov Cig Box		

PAID ADVERTISEMENT

245	351 Priscilla Punch Cups	286	341 Puritan 9" Nappy
246	1401 Empress Cup w/Lafayette Etch	287	341 Puritan 7" Nappy
247	1469 Ridgeleigh Cups & Saucers (6)	288	350 Pinwheel & Fan 8" Nappy
248	339 Continental Egg Cup	289	355 7" Nappy
249	1220 CUSTARDPunty Band Mug	290	1184 Yeoman 9" Oval Bowl
250	1220 CUSTARD Punty Band Mug	291	300 Peerless Oval Dish X
251	112 FLAMINGO One light Candleholder	292	1469 Ridgeleigh 10" Hdld Bowl
252	1405 Ipswich Ftd Centerpiece with Vase and Prisms	293	1569 12½" Shallow Ftd Floral Bowl
253	113 FLAMINGO One light Cahdleholder	294	1238 8" Beehive Plate
254	25 Pr. Candlesticks 7"	295	433 Greek Key 4½" Plate
255	1-300 Pr. 11" Candlesticks	296	300 Peerless 6" Plate
256	1503 Crystolite 2 light Candleholders	297	1469 Ridgeleigh 8" Sq Plate
257	1540 Lariat Pr. 2 light Candleholders	298	1229 FLAMINGO Octagon 12" Hdld Sandwich Plate
258	1540 Lariat Pr. 2 light Candleholders	299	1540 Lariat 8" Salad Plate
259	1567 Plantation Pr. 2 light Candles	300	1184 FLAMINGO Yeoman Torte Plate
260	4044 New Era Pr. 2 light Candles w/Prisms	301	1540 Lariat 16" Plate
261	5 Pr of 2 light Candleabra	302	1401 SAHARA Empress Plates w/Old Colony Etching (8)
262	1469 Ridgeleigh Candlestick w/Prisms	303	1225 FLAMINGO 8½" Plate
263	1503 Crystolite 1 light Candleblock Pr	304	1150 6" Colonial Plate
264	1503 Crystolite 3 light CandleholderPR	305	1150 6" Colonial Plate
265	1469 6" Ridgeleigh Candlevases (2)	306	4187 8" Plates Frontenac Etch(5)
266	112 One light Candleholder Pr	307	FLAMINGO Luncheon Plates (6)
267	362 7" Syrup w/Etching	308	1405 Ipswich Plates (4)
268	394 Narrow Flute Oil & Vinegar	309	407 Coarse Rib Plates 7" (8)
269	1509 Queen Ann Comb Salad Dress 7"	310	1469 Ridgeleigh 6" Sq Plates(3)
270	406 Coarse Rib Nappy (3)	311	1405 Ipswich 8" Plates (7)
271	473 Preserve Dish w/Cutting	312	8" Plates w/Barcelona Cutting (3)
272	451 Crossline Flute 7" Nappy	313	1404 Old Sandwich 7" Plates
273	1184 Yeoman 7" Oval Fruit Dish w/Cut	314	1252 MARIGOLD Twist 11" Plates (2)
274	393 8" Banana Boat	315	Imperial Heisey Land Of Legend Plates Complete Set 1971 - 1976 Hdld Cake Plate w/Cutting
275	325 Pillows 9" Bowl	316	300 Peerless Spoon Tray
276	7000 Sunflower 9½" Bowl	317	352 Flat Panel Candy Tray
277	411 Rib & Panel 8" Bowl	318	1540 Lariat Ftd Candy No Lid
278	393½ Narrow Flute Nappy	319	416 8" Soup Plates
279	1569 Ridgeleigh Shallow Ftd 12½" Bowl	320	433 12½" French Roll Tray
280	1510 Square on Round 11½" Floral Bowl	321	341 Puritan Mayonnaise & Plate X
281	1401 SAHARA Empress 7" Bowl	322	473 Honey Cover Flake On Lid
282	1195 FLAMINGO 15" Bowl w/Gold Dec	323	4 Powder Jar No Lid
283	343½ Sunburst 8" Bowl	324	1506 Provincial 7½"
284	1469 Ridgeleigh 12" Fruit Bowl	325	457 Crossline Flute Saucer
285	1229 Octagon Bowl w/Silver Decor	326	Champagne (2)

MAIL BIDS ACCEPTED WITH CHECKS FOR MAXIMUM AMOUNT. MAIL BIDS WILL BE BID COMPETITELY AND ANY DIFFERENCE REFUNDED. CHECKS SHOULD BE MADE OUT TO: *F & SAUCTION SERVICE*

AND MAILED TO: *F & SAUCTION SERVICE*
BOX 84
GRANVILLE, OHIO 43023

PRICE LISTS AVAILABLE FOR \$1.00

Food Available

SAM SCHNAIDT
Auctioneer
(614) 587-0052

FRANK FRYE
Manager
(614) 344-9847

PAID ADVERTISEMENT