

HEISEY NEWS

Vol. V, No. 9
September 25, 1976

OFFICIAL PUBLICATION HEISEY COLLECTORS OF AMERICA

© Heisey Collectors of America, Inc. 1976
All Rights Reserved

Eighty cents

COMING EVENTS

- OCT. 23-24 -- All Glass Show, Mount Laurel, N.J.
Sponsored by Heisey Heritage Society for benefit of Heisey Museum
- OCT. 31 - Second Annual Antiques Flea Market, Reynoldsburg, Ohio
Sponsored by Reynoldsburg HCC for benefit of Heisey Museum



#1776 Kalonyal Exhibit at the June Display.

From the desk of...

your President

By the time you receive this the claret dinner will be just a memory. The clarets are in the mail and we pray for their safe arrival because we had a sellout and there are no replacements.

This year's claret is very fascinating since it presents an optical illusion. You don't get the full effect of the etching until you tip it properly to a light or use a light background, then A.H. pops out in all his bearded glory. Some people predict that because of this the 1976 claret will be the most valuable of them all.

We have nearly 250 dinner reservations as of this date and we will be as jam-packed as we were at the Racquet Club if this keeps up. We hated to have to return any claret checks but when they are gone there is no way to get more since they were a discontinued when we bought all the clarets, several years ago.

Ann wants me to remind everyone, and especially new members, that the club policy is to not give out any names and addresses of members, without their permission. This is to protect your collections and was a decision of the board. However, if you wish to start a club you may send a letter to us which we will reproduce and send to members in your area.

Last month I neglected to say that the List of Imperial included everything currently being made in a Heisey mold. Since it was copied from their order blank I was afraid that someone might try to order some from us but fortunately nobody did. Naturally all of these items are either unsigned or marked with Imperial's I.G.

In my "desk of" last month (on page 15, right hand column, second paragraph) I was referring to a very beautiful engraved plate being displayed in the museum. It is a wonderful copy of the old Licking County Courthouse as it was in 1870 before it burned. It is a magnificent example of the fabulous work of Emil Krall.

Be sure to attend the Heisey Heritage Society's All Glass Show at the Mount Laurel Hilton in Mount Laurel, N.J. on October 23 and 24 (article and ad this issue); and the second annual flea market sponsored by the Reynoldsburg HCC at the high school in Reynoldsburg, Ohio on Oct. 31. Both events are being held for the benefit of the National Glass Museum.

So that you do not become confused, the auction list in this issue is paid advertising and has nothing whatever to do with the HCA. For a "prices realized" list please do not contact us and it will not be printed in Heisey News. HCA will have the annual benefit auction on March 19 at the Sheraton Inn. Mark that date on your calendar.

Don't forget to save December 11 for the swap meet, and annual Christmas dinner, to be held this year at Moundbuilders Country Club.

I just received a phone call from Lucile Kennedy to inform me that Imperial had never produced the Doe Head. She said that black light is not proof of who made a particular glass because there are so many variables. At the moment she does not even know if they have the mold.

My personal opinion of black-light is that it is fascinating to play with and to see what different colors will do under it. It is true that most Heisey crystal turns yellow (if it is pressed) but so does the glass of many companies. It is also true that most Imperial pressed glass in Heisey molds does not turn yellow. But it is not always true, so one must be careful in making a blanket statement either way. The ingredients in a given pot of glass are what gives that particular glass its characteristics. Does anyone out there have anything to offer on this?

Lots of new goodies are on display in the museum. The acquisition Committee has been busy. Till next time.....Happy Collecting...

Louise Ream

HEISEY NEWS --- P.O. BOX 27 --- NEWARK, OHIO 43055

EDITOR - LOUISE REAM, 1115 W. Main St., Newark, Ohio 43055
PUBLISHED 25TH DAY OF EACH MONTH, \$8.00/YEAR-80¢/COPY
BACK ISSUES AVAILABLE AT \$8.00/YEAR - 80¢/COPY

ADVERTISING - Send all ads to:
VIRGINIA YEAKLEY, Advertising Manager
640 Melanie Court
Newark, Ohio 43055

PRESIDENT	LOUISE REAM	(614) 344 - 2377
VICE PRESIDENT	CHARLES WADE	(614) 366 - 6636
SECRETARY	ANN HOLMAN	(614) 323 - 0759
TREASURER	LOREN YEAKLEY	(614) 366 - 5101

DEALER DIRECTORY ADVERTISING RATES-5 line-\$6.00/6 issues

CLASSIFIED ADVERTISING - 5¢/word - \$1.00 Minimum. We cannot mix type sizes in Classified Ads. Abbreviations and initials count as words.

DISPLAY ADVERTISING RATES	MEMBER	NON-MEMBER
1/8 Page	\$ 8.00	\$15.00
1/4 Page	\$15.00	\$25.00
1/2 Page	\$25.00	\$40.00
Full Page	\$45.00	\$60.00

PAYMENT IN FULL MUST ACCOMPANY ALL ADS.
Advertising copy must be in our hands by the 10th of the month to assure publication in that month's issue. Advertisements containing reproductions will not knowingly be accepted unless clearly stated (i.e. Heisey by Imperial, etc) Heisey News assumes no responsibility for false advertising or misleading information. In the event of typographical error, the incorrect portion of the ad will be run in the following issue, but Heisey News assumes no further liability.

Heisey Collectors of America, Inc. is a non-profit corporation with tax exempt status. Owners and operators of National Heisey Glass Museum, 6th and Church Streets, Newark, Ohio. Open Daily 1-4 p.m., April through October except Mondays and Holidays, November through March, Wed., Sat., Sun. 1-4 P.M. Members admitted free. Phone: (614) 345-2932. Club membership (includes 12 issues of Heisey News and participation in all club activities) \$8.00/Year plus \$1.00 each for additional family members in same household who wish a membership card. For voting membership add \$25.00, one time only fee, or write for information.
Membership Chairman - Ann Holman, Box 27, Newark, Ohio 43055. Notify immediately of any change of address.

The opinions expressed in articles in Heisey News are those of the authors and not necessarily those of the organization. The Editorial Staff reserves the right to edit or refuse any material submitted for publication. When requesting information, please enclose a self addressed stamped envelope (SASE).

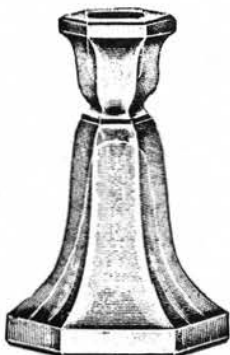
Send all letters and articles to be published to the editor. Letters to columnists should be sent to the club address and will be forwarded.

HEISEY CANDLESTICKS

TOYS



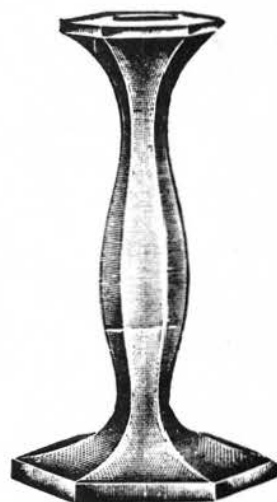
No. 30—Toy



No. 33—3/4 IN. Toy



No. 31—Toy
OUT FULL SIZE



No. 5—Toy

by JACK METCALF

Everybody likes to play with toys, and it seems we don't outgrow the urge. Heisey produced four toy candlesticks, but we won't let our kids play with them. Two have been mentioned in previous articles, but are shown here for completeness. These are No. 5 and No. 33. The other two are No. 30 and No. 31. The reason, you recall, that the former two were discussed before is that they were part of a series of different sizes. On the other hand, No. 30 and No. 31 toy were each the only item in their respective pattern number.

As one might expect, the number 5 was the first of the four toys produced, appearing in the 1906 price list 120. (The price was 85¢ per dozen.) No. 5 toy was produced until shortly after 1931. In a 1931 price list the item appears but is pencilled out, indicating that it was discontinued before the catalog was replaced. As you recall, the No. 5 is marked on the bottom.

The No. 33 toy was introduced in the ca 1908 catalogue No. 56 and continued in production until at least 1922. The museum is missing some price lists and catalogs for the late 20's, and the candlestick does not appear in the 1930's. The No. 33 toy, sometimes called No. 33, 3 1/2", is marked on the side near the neck constriction. This is the same position as the larger size. This one was even less expensive than the No. 5. Here we have 40¢ the dozen. That figures to about a 50,000 percent increase!

The No. 33 toy, about 2 inches tall, is fashioned like a miniature tall one-light. The production period seems to be identical with the No. 33, but for some reason, No. 30 is the most difficult of the four to find. The marking here is unusual as I have seen two types, the first marked on the bottom only and the second one marked both on the bottom and the side. The difference is not that the mold mark

was either added or subtracted from the side, because the orientation of the bottom mark is different on the two types. The candlesticks themselves appear to be identical otherwise.

No. 31, the only one of the four toys listed or known in color, is also marked on the bottom. Of course, some are known on which the mark is so faint as not to be seen, causing confusion. There is a non-Heisey toy which is very similar to No. 31. The confusing item is the same height (about 1 1/2" high), and has the same hexagonal base with the overall configuration being about the same. The major difference is in the handle. Note the Heisey handle is a circle attached only to the base.

The handle goes close to the holder but does not touch it. On the confusing item, the handle connects the holder and the base. Consideration of this will avoid error. No. 31 was produced from about 1908 to 1937 with a listing of sahana in about 1935. Although I have not located the listing for other colors yet, No. 30 is known in both moonbeam and flamingo.

In general, the miniature are not super difficult to locate, but the miniature collectors like and grab onto them, as well as candlestick collectors.

ADDITIONS & CORRECTIONS TO INDEX OF HEISEY GLASSWARE

Alphabetical:

Baroqoco vase - not Heisey	#7110
BIRD AND ROSE engraving	#2509
BLUEBIRD cutting	_____
ENCIRCLED CHAIN cutting	_____
GOLDEN STATE ARCHES tumbler	#U8036
HORSEHEAD, TOY, no base (change)	#1
Lariat & Rib (blackout lamp base)(7095)	#1540
LIGHT HOUSE & BOAT engraving	#2511
NAIL (round nappy)	#462 1/2
ORANGE TREE cutting	_____
OVERLOOK stem	#901
Pineapple cutting - see PINE	
PENGUIN decanter	#4039, 5058
ROBIN IN TREE engraving	#2510
ROMAN stem (not just punch)	#1216
ROSE OF PEACE etch	_____
SUNFISH cutting	_____
WATER LILY engraving	#2508

Numerical:

- 1. toy horsehead, no base
- 9. (remove toy horsehead)
- 17. gas & electric shades
- 18. gas & electric shades
- 150. tumbler
- 178. tumbler
- 369. PENNY stem

- 462. (add comma between the word NAIL & basket)
- 462 1/2. NAIL, round
- 901. OVERLOOK stem
- 1184. custard
- 1216. ROMAN stem (not punch)
- 1502. swirl candle
- 2508. WATER LILY engraving
- 2509. BIRD & ROSE engraving
- 2510. ROBIN IN TREE engraving
- 2511. LIGHT HOUSE & BOAT engraving
- 3345. MARY 'N VIRGE stem
- 4039. PENGUIN decanter
- 4055. cocktail shaker = #4054 shaker + #118 Rooster head stopper
- 4226. cocktail shaker = #4225 shaker + #118 Rooster head stopper
- 5042. CORINTHIAN stem
- 7095. is blackout lamp base (1540)
- 7110. not Heisey
- 7111. Colonial puff or hair receiver
- 7112. TOM & JERRY mug (1434)
- 8036. GOLDEN STATE ARCHES tumbler

If you do not yet have an INDEX for these corrections, they are still available at the Museum and are also available by mail. See your new book list which came with your "Claret" letter. Bob & Anne Johnson

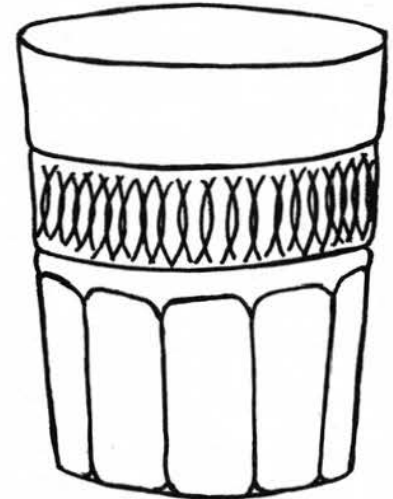
TUMBLERS



#1417 Arch



#1417 Arch - Variant



#8010 Ribbon Candy

by TOM BREDEHOFT

Good News for Heisey tumbler collectors! The National Heisey Museum has recently made a purchase of a collection of Heisey tumblers which will soon be on display. These are mostly early colonial types in crystal, many of them with original Heisey factory labels in place. Someone is going to have a great deal of fun identifying them all properly. Many are of the group where the size of the tumbler determines the pattern number. It will be a quite enlightening display when it is finished.

#1417 ARCH

PERIOD: circa 1935, with a short production life
COLORS: crystal, sahara, cobalt, flamingo, moongleam
DECORATION: none known
VARIATIONS: cupped or straight
There is also a variant which does not have the bottom rim

but instead has 4 "toes" spaced about the base.
COMMENTS: The tumbler is listed as coming with straight sides, although I have never seen it this way. It is a one item pattern as there is no corresponding jug to match it. It is a fine example of Heisey's Art Deco styling. The base of the tumbler is plain and not ground. Marked. I have seen more sahara and cobalt tumblers than crystal.

The Arch Variant without the base rings, but with the 4 "toes", has only been seen in crystal and in a very small quantity. I feel that the variant was the original design, but it proved unsatisfactory due to easy breakage of the "toes". The mould was changed and the tumbler first appeared in

catalogs with the rings about the base.

#8010 RIBBON CANDY

PERIOD: Uncertain, but probably around 1915
COLORS: crystal
DECORATION: none known
COMMENTS: This tumbler has straight sides and is of beautiful, clear crystal. Little solid information is known about the entire pattern, but it must have been a fairly complete line as several sizes of nappies, a jug, a cruet and tumblers have been seen. The entire pattern is scarce and the tumblers especially so. It has a star bottom, is fully ground on the base, and marked.

#8010 is an HCA number for an unknown pattern as are all the 8000 numbers.

WATCH OUT NEWARK, HERE COMES MOUNT LAUREL, NEW JERSEY! or East Coast Affiliate Sponsors Museum Benefit Show.

The Heisey Heritage Society's first Antique Glass Show, on behalf of the Heisey Museum, will be held on October 23rd and 24th 1976 at the Mount Laurel Hilton, Mount Laurel, New Jersey, (see ad in this issue for hours). The Hilton is located just off exit 4 of the New Jersey Turnpike. Exit 4, at Mount Laurel, is just 80 swift miles down the pike from New York City, a breezy 100 miles up from Baltimore, a snappy 8 miles from downtown Philadelphia and a cool and casual 465 miles east of Newark, Ohio. It's right smack in the middle of the world's biggest megatropolis which stretches from Boston, Mass. to Washington D.C., and if that weren't enough, Mount Laurel sits astride the transportation corridor that connects all

points of said megatropolis. The club tried to find a location that would be easy for all comers to find, it looks like they've succeeded.

The Hilton's Grand Ballroom holds a generous 33 dealers. Space was sold out early and the Show Committee regrets it could not accommodate all those who expressed an interest in participating. Though Heisey dealers are in the majority, a determined effort was made to attract dealers whose glass specialties were less limited. The intent being to appeal to a broader range of glass interests. Art glass, Depression glass, Cambridge, Duncan Miller, etc. will all be represented along with limited amounts of collectible china and pottery.

Many of Heiseydon's finest dealers will be showing their wares. And, barring unforeseen circumstances, HCA President Louise Ream will man a special booth to dispense information and have available for sale all those publications currently being offered at the Museum itself. Many other HCA Board members, (complete with name tags), will be in attendance. We urge any East Coast member who has been unable to travel to Newark, Ohio and meet Louise and other HCA officers to take this opportunity to do so. Come on down and mix in, chat a little and start to think "National".

con't on next page

STEMS



by CARL SPARACIO

Among Heisey's best stemware we must include #3368 Albemarle and #3380 Old Dominion. A beautiful stem topped with either a flared (Albemarle) or a cupped (Old Dominion) bowl. Both are beautiful and neither will put a crimp in your budget if you'll be satisfied with a representative example. With color the prices will escalate according to desirability and you can expect to pay a premium for particularly fancy cutting in Albemarle.

Both patterns were put in production in the mid-twenties and Old Dominion ran for ten years to the mid-thirties while Albemarle continued on for many years being discontinued in the 1951 price list. However it could be purchased on special order until 1956 with the Chateau cutting. Albemarle should be easier to come by but Old Dominion is not difficult. While Albemarle is hard to find in color you'll find crystal more elusive in Old Dominion. This is probably because Old Dominion's shorter production period coincided with Heisey's strongest color era. Both lines were made in Flamingo, Moon-pleam, Sahara, Marigold and Alexandrite and you can add Trial Blue to Albemarle and Cobalt and Zircon to Old Dominion. They may be found with either the stems or the bowls in color or completely colored. Albemarle is also found irridized in one or a combination of colors.

Both patterns were offered in full stem lines from cordial to goblet with Old Dominion offering both a short and tall goblet. Actually there is only about 3/4" difference between them.

As for decoration, Albemarle came with only one etching (Trojan) and at least three different cuttings* (Chateau, Rialto and Champlain). I know of two other cuttings which were either put on by outside cutters or they could be as yet undocumented Heisey designs. Old Dominion, on the other hand, was offered in an assortment of etchings (Old Colony, Empress and Titania)** but no cuttings at all. Bowls in both these stems are diamond optic and both will be signed under the wafer at the top of the stem. If yours is unsigned, don't fret, you don't need a Diamond H for identification with these beauties.

The latest additions to my collection are the Alexandrite Old Dominion I reported last month and a little crystal cordial in the same stem. I'm almost ashamed to tell you about this one -- a pair of Locket-on-Chain wines in crystal! A dream come true. When I find the goblet you'll really hear me crow.

Last month I had alot of reports of stem finds but this month everyone's been quiet. Perhaps it's the summer doldrums. Things will pick up in the fall when the antiques shows really get going again. I'll be showing at the Heisey Heritage Soc-

ety's show on Oct. 23rd and 24th in MOUNT Laurel, New Jersey along with some of the best Heisey dealers around. Drop by and say "hello". The only reason I dare mention it in this column is because its for the benefit of the National Heisey Museum and we want a good turnout. You can read about it elsewhere in this issue.

Tomorrow I'm heading for a big 300 dealer flea market and I am optimistically feeling that I'm going to come home with a winner. I'll continue writing this when I get home with the goodies. See you later.

Well, Sparacio bombed again. My big thrill for the day was a #1227 Maharg's sherbet. Oh, well, at least it was something I didn't have. The only other worthwhile items I saw which were at least distantly related to stems were a pair of Twentieth Century tumblers in Cobalt. The price was too much for my budget.

Well, friends, at long last, after months of planning, our daughter's wedding is now a happy memory. I wish you all could have been there as it was lovely. Of course as father of the bride I may be biased but everything went so smoothly as to be absolutely unreal. The bride wore a lovely Opal gown trimmed in lace and the groom wore a tuxedo of the same color. The bridesmaids also wore Opal but with an overall print of Flamingo and Hawthorne flowers while the ushers and I wore tuxedos which are best described as Alexandrite as seen under incandescant light (sounds revolting but they really weren't). The mother of the bride was resplendent in Trial Blue with a touch of silver overlay. The stemware used at the reception might best be described as "early jelly glass". There are limits, after all, to the sacrifices a father will make.

*The cutting shown in the stem book is more of those listed here.

**Catalogs list an Albemarle Compote #497 w/Rosalie etching.

.....
con't from former page

If you live far enough away so that a day's outing would be inconvenient, plan on staying an extra day or two. The area abounds with interesting places for sight-seeing and antiquing. Philadelphia's historic sights are only a few minutes away and New York's Madison Square Garden will be having their annual autumn antique show beginning that same weekend. The Wheaton Glass Museum is a short drive south of Mount Laurel while the incomparable New Jersey shoreline is a little more than a pleasant hour's drive away.

Those who wish can have the Heisey Heritage Society reserve a room for them at the Hilton or at any of the other nearby motels. For information contact the Show Chairman: C.Sparacio, 28 Refy Ave., Ramsey, N.J. 07446.

A.H. HEISEY & the U.S. GLASS CO.

by JOSEPH D. LOKAY

The United States Glass Company was incorporated in the State of Pennsylvania on February 11, 1891. The incorporation document was completed by Augustus H. Heisey, Daniel C. Ripley and William C. King. The initial eleven (11) stock subscribers with one share each of a par value of \$100 per share were:

SUBSCRIBER	PRIOR GLASS CO.
A.H. Heisey	Geo. Duncan & Sons
D.C. Ripley	Ripley & Co.
W.C. King	King Glass Co.
J.R. Lyon	O'Hara Glass Co.
A.A. Adams	Adams & Co.
A.H. Bryce	Bryce Bros.
H.E. Waddell	Hobbs Glass Co.
W.A. Gorby	Bellaire Goblet Co.
D.C. Jenkins	Columbias Glass Co.
A.J. Smith	Nickel Plate Glass Co.
J.D. Wilson	Richards & Hartley

Ten of the 11 subscribers were on the first board of directors. H.E. Waddell was the subscriber that was not a director. Note the absence of the name of James E. Duncan as a subscriber or as a director.

The combining of the tableware manufacturers into one corporation had been talked of by the tableware manufacturers since about 1886. An attempt to form a corporation was made in early 1890 but it fell through. Thus, it was no surprise when an official notice was given in January 1891 that a Corporation to be called the United States Glass Company was to be formed in early February 1891. It was to be a combination of interests by the manufacturers of tableware who would put their factories into the concern and take stock to the amount of their property's value. The product of the various houses would be disposed of through a main office, which would be located in Pittsburgh, Pa. on Bingham between 8th and 9th streets. The president and secretary would be located there, and the business would be under the control of an executive board. This office facility was formerly that of the Ripley & Co. which was located about 3 blocks from the George Duncan & Sons Glass Co., now known as Factory D.

The formal transfer of the various glass plants to ownership by the Corporation took place several months after incorporation. For example, the deeds transferring the glass works were dated July 20, 1891 for the George Duncan & Sons Co., July 1, 1891 for the Ripley & Co. and July 1, 1891 for the King Glass Co.

Mr. Daniel C. Ripley was elected the Company's first president, a position which he held for many years. William C. King was elected Vice President and later held the positions of Secretary and the

Treasurer. James B. Lyon was elected the first Treasurer. Indications are that A.H. Heisey was made the first production manager over all the operating factories.

When the merger took place each member company had its own set of officers and many, if not all, were given high positions. In 1893, Ralph Baggaley was hired for the sole purpose of weeding out executives in this top-heavy organization and one fell swoop he laid off something like twenty-two of these men at one time. This may have been why A.H. Heisey and J.E. Duncan left the U.S. Glass Co. But, for whatever reason, they both left at about this time and formed their own independent glass companies.

Based on the facts that Heisey,

Ripley & King completed the incorporation papers and acknowledged it as their act and deed and that these three men initially held key positions in the U.S. Glass Co., I believe it would be reasonable to state that Heisey, Ripley & King were very active, and perhaps the main instigators, in the formation of the U.S. Glass Co. Heisey and King had worked together before on the formation of the Pittsburgh Clay Pot Co. which was now operating successfully, so they had the know-how for organizing a new company. Heisey, Ripley and G.B. Swift of the King Glass Co. had some type of working relationship when they jointly applied for their patent No. 331,824 for the manufacture of an ornamental glassware in December 1885.

The Standing Pony Patent

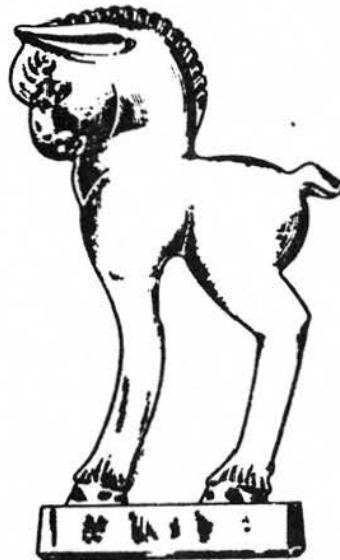


Fig. 1



Fig. 2



Fig. 3

May 27, 1941

T. C. Heisey
GLASS STATUETTE OR ARTICLE OF SIMILAR NATURE

Des. 127,473

Filed on March 18, 1941

BY

Corbett, Mahony & Milburn

Inventor
T. Clarence Heisey

by JOSEPH D. LOKAY

On March 18, 1941, T. Clarence Heisey filed a patent application for a glass statuette. Approximately two months later, on May 27, 1941, he was granted U.S. design patent #127,473 for that glass statuette which today we call the Standing Pony. Three views of the Pony were in-

cluded with the patent. They are pictured with this article.

Based on the patent date, I would estimate that commercial production of the Standing Pony started in 1941. A write-up on the Standing Pony by Dick Marsh can be found in the February 1972 issue of the Heisey News.

There were no other animals patented by the Heisey Glass Company.

#150 BANDED FLUTE



1. 14 oz. footed schoeppen Lemonade or ice tea
2. Horseradish jar
3. Toothpick
4. 4½" Flared sundae
5. 3 pint jug
6. 5" plate
7. 7 oz. goblet
8. 6 oz. oil
9. 7 oz. syrup

by LOUISE REAM

#150 Banded Flute, or Wedding Band as it is sometimes called, is a large pattern group of nearly a hundred items. This is Heisey's second use of the 150 number. Since #150 Pointed Oval In Diamond Point was no longer in production they apparently reassigned the number. It seems out of sequence in the numbering system since #300 Peerless was a much older pattern starting in 1897 yet comes after Banded Flute in catalogs.

Banded Flute was introduced about 1908, this being the first catalog which we have on the microfiche which shows it. It continued on for many years, however.

Nearly all of the pattern is marked and is found in clear crystal. However trays are known in both flamingo and moonbeam. The price lists which we have

do not indicate any color for the pattern, but one can't rule out more than just the trays.

The glass is of medium thickness and the pattern consists of fairly narrow vertical flutes on every piece. These are encircled by a narrow recessed band consisting of narrow raised lines as shown in the pictures. There are usually four or more of these lines in the band, depending on the item. Pieces were made with or without a ground bottom. It is a very collectible pattern and many people have large sets which they like to use as it is quite serviceable.

There is a full line of stemware down to the tiny cordial. The bar glass does double duty as a toothpick and is so identified in the catalog. Jugs (pitchers) range in size from ½ pint size to 3 quart, making a total of eight in all. These have stuck (applied) handles. A pint tankard

with a stuck handle came with or without a lid and was used on a tray with the bedroom set. See Heisey News Vol. IV #3, Page 6.

There are many tumblers both with star or plain bottom, bar glasses with or without the sham, nappies in regular, flared or shallow shapes in many sizes, punch bowl and custards (cups), salt and pepper, molasses, cruets, plates and even an egg cup. Some interesting pieces of 150 are the 4½" flared sundae with handle, the horseradish jar, 14 oz. footed schoeppen, root beer mug, and the saucer footed sherbet. The little match box and two candlesticks shown in the aforementioned Heisey News are nice also. Strangely enough there is but one compote in this line and usually most patterns had a great abundance of large and small ones.

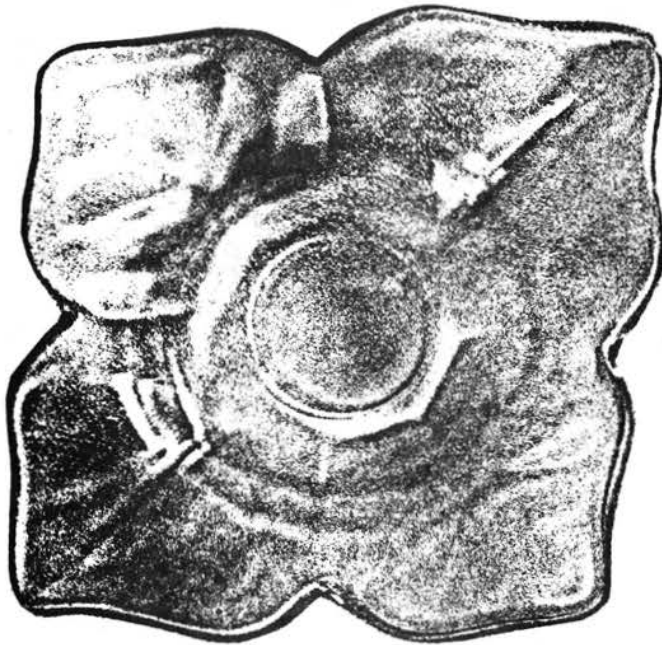
This pattern has never been made by Imperial.



#1469 RIDGELEIGH CANDELABRUM
Two Branch
A pair of these is a very recent Museum acquisition



1-#1469 1/2 -- 1 Lt.

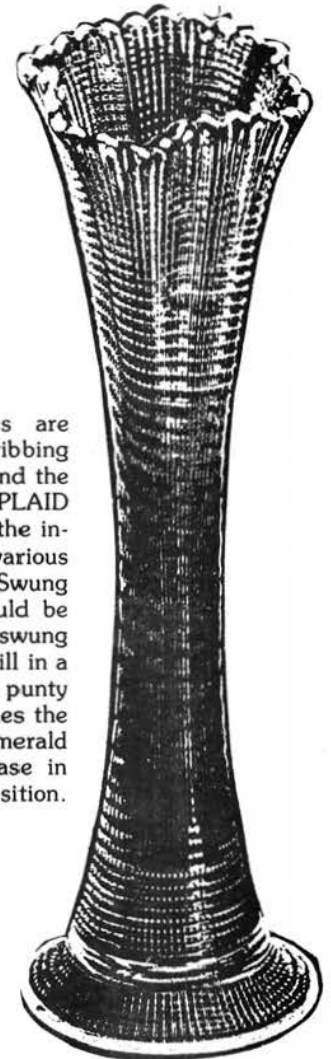


#1552 FOUR LEAF CANDLESTICK

As I am sure everyone is aware the pictures of this candle holder did not show up well in last month's Heisey News. A letter from David Curley of New York suggested that we try Xeroxing a piece of glass. The accompanying picture is the result of such a try. This is the top of the stick in the exact size. Hopefully you can see the oval base through the glass. This should help you to better identify it since it is an unsigned item. It is about two inches tall overall. L.R.

CHRYSANTHEMUM VASE
Five-inch Base

The chrysanthemum vases are known as "PLAID" because of the ribbing which runs one way on the inside and the other on the outside, and gives the PLAID effect. These vases are signed on the inside bottom. They were made in various heights up to 60 inches. They are "Swung vases" and the different sizes could be made from the same basic mold. A swung vase is made by swinging it while still in a semi-molten state and attached to a punty rod. It can be swung until it reaches the desired height. Made crystal and emerald and possibly vaseline. Such a vase in emerald was a recent museum acquisition.



Questions & Answers

- Q. 1. When did Emil Krall work for Heisey?
 2. You have stated that #1433 candlesticks are marked sometimes. Where?

A. 1. Emil Krall came to the United States in 1906 to work for Libbey in Toledo, Ohio. He remained there until 1924 when he went to a mirror factory in Cleveland. He came to work for Heisey in 1931 remained until 1942 when he started his own cutting shop in Newark.

His brother, Willibald, and his sons, Oscar and Emil, Jr. also worked at Heisey and were excellent cutters and engravers.

Krall's years at Heisey, when he was cutting the samples, were the days of the finest cuttings and engravings made at the factory. Today his work is avidly sought and is bringing good prices. We have some fine examples in Room 7 of the museum. L.R.

- Q. Heisey apparently made some toy beer mugs. They are #616 and 617. At flea markets many unmarked mugs can be seen. How does one identify the Heisey one? J.L., Pa.

A. We are picturing the mugs in question. These are from one of our original catalogs in the museum. Many toy mugs can be found and some can instantly be ruled out. Some have the "F" in the shield which is the mark of Federal Glass. Others are in colors not ever made by Heisey or not made at the time of these mugs. These were early and the colors of the time would have been emerald, vaseline, opal and custard.



#617, 1 oz.
Toy Beer Mug



#616, ¼ oz.
Toy Beer Mug

Others in #617 can be ruled out because the fluted portion extends nearly halfway up the mug while these pictured are only about third way up. Some of the handles are different. I feel that the glass should be of good to excellent glass which we always

associate with Heisey. I have such a mug in the #617 pattern which is ruby stained and dated 1904. This is the correct period. While I can't say positively that it is Heisey, I feel that it is. It has the good quality and the clarity of Heisey glass. If you have one like this it is a good possibility it is Heisey. You will have to use your own judgement. Many of these mugs were sold to decorating companies which made souvenir items such as Oriental Glass Co. in Pittsburgh.

Does anyone have further information on this?

L.R.



#6 Toy Mug



#91 Toy Mug

These two mugs were made by McKee Glass



No. 41 Cocktail Carafe



No. 4038
Cordial Bottle & No. 73 P/S
Plain Only
crystal only



No. 3485 - 3 pt. Jug
Wide Optic Only

We have just purchased this jug in sahara for the museum. It was listed in the 1935 catalog in crystal and sahara only. It is beautiful. Unmarked.



1 pt. Decanter & No. 98 P/S

#1404 OLD SANDWICH

Cobalt, sahara, flamingo, moongleam and crystal. Mug known in amber. Usually marked.

by LOUISE REAM

OWENS BUST

While it is not the policy of Heisey News to enter into controversies we would like to comment on recent statements concerning the Mike Owens bust.

It has long been our opinion that the bust was made at Heisey and especially that mold work was done there. We had based that opinion on information given us by former moldmakers who had worked at Heisey for many years including the time the bust was made. In the September issue of "Rainbow Review" there is an article by Carl Fauster concerning this. Mr. Fauster is the Director of the Antique and Historic Glass Foundation of Toledo, Ohio and was formerly an employee of the Owen-Illinois Co. for 40 years.

In the March 1974 issue of Heisey News there was an article written by Dorothy Leviton, an HCA member from Illinois who had been researching the history of the bust. At that time she contacted Mr. Fauster and others who gave the information which she used in her article.

In the May issue of Heisey News for the same year (page 5) Dick Marsh had an article on the same subject. He repeated the information he had received from former Heisey employees who remembered the bust very well, and from one had worked on etching it. Another knew that Ollie McGuire, who did the mold

for the Cherub candlesticks, had also worked on this mold. For most Heisey collectors this seemed to be the clincher but some people were still dubious.

In Fauster's article in Rainbow Review he reveals that the glassmaker has been identified. Who does he say it is? Heisey, of course!

He says that researchers have been trying for many years to find out who actually made it. He further says that an intra-office memo has come to light which proves where it was made. The memo, dated August 26, 1959, was from R.C. Schwyn, Factory Manager of Owens-Illinois Libbey Division. The data had come from John Moll, retired head of the Libbey mold shops. The information follows:
We quote.....

"1. The idea was started at the Clarksburg, West Virginia plant of the Owens bottle company as evidenced by an order for a mold to be made by the Toledo Mold Co., dated 12/28/26.

2. In March 1927 the first mold was sent to the Heisey plant in Newark, Ohio for experimental work.

3. In November, 1927, the second (revised) mold was sent to Heisey and it is believed that actual production was made during November and December of 1927 using the second mold."

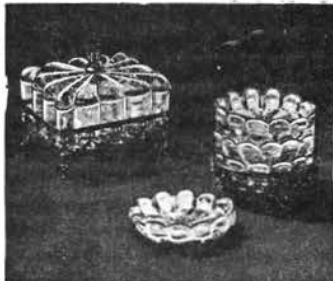
Fauster estimates that perhaps 700 to 1000 were made. We feel that all the above statements are very much in line with the information Dick Marsh gave in his article in 1974.

In the September issue of Vogel's "Heisey Newscaster" he states and we quote-----

"It is my personal opinion that the bust was not made in the Heisey plant. Ask anyone in Toledo, Ohio. I will eat my non-existent (sic) hat if anyone can prove me wrong."

We have no reason to doubt the authenticity of Mr. Fauster's information and it does coincide very well with our own.

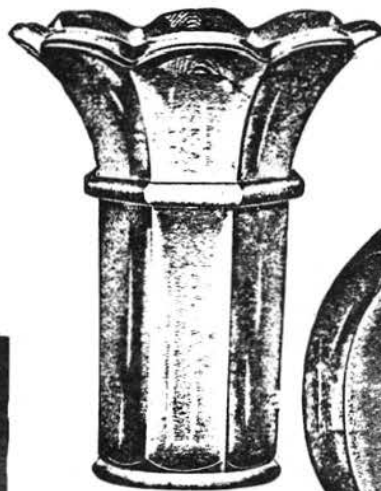
This controversy has really hurt the market value of the bust. Perhaps that at last the story is known it will again take a proper place in your figurine collection.



Smoking ensemble in clear crystal with non-tarnishable gold bronze stands. Box \$6.50. Nest of 4 ashtrays \$6.00.

NOVELTY SMOKING SET

Cigarette set made up of #1503 Crystolite ash trays and cigarette box. This would have been assembled by someone other than Heisey. It was offered by Ovington's, Fifth Avenue and 39th Sts. N.Y.C. Exact date of ad is not known.



THIS
#355 VASE



PLUS THIS
#351 ROSE BOWL



EQUALS THIS
TWO PIECE FRENCH
Combination Vase

#351 ROSE BOWL
Cut top

This was offered in the 1913 catalog. It seems to be a very impractical and useless waste of two vases. All are marked

YEOMAN PATTERN FROM CATALOG #211 -- Circa 1935

by LOUISE REAM

Four of the 3½" relish tray inserts fit into the 7 x 10" relish tray to make a 4-part relish.

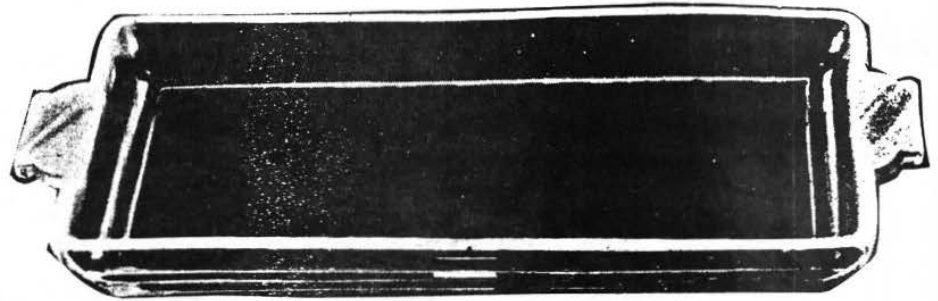
The individual salt is known in crystal (marked), cobalt, moongleam and flamingo (the last three unmarked).

The diamond optic items are known in flamingo, moongleam and possibly sahara.

The diamond optic items are known in flamingo, moongleam and possibly sahara and hawthorne. The sugar (and cream, not pictured) originally bore the #1023 but were used with the Yeoman line.

Yeoman is a catch-all pattern and many one-of-a-kind items are included with it which makes them hard to identify.

These are all pressed items.



7 x 10 in. Relish Tray



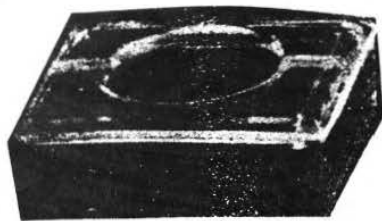
3½ x 4½ in. Relish Tray Inserts



Finger Bowl



Individual Salt
Ground Bottom



Cigarette Box & Ash Tray Cover



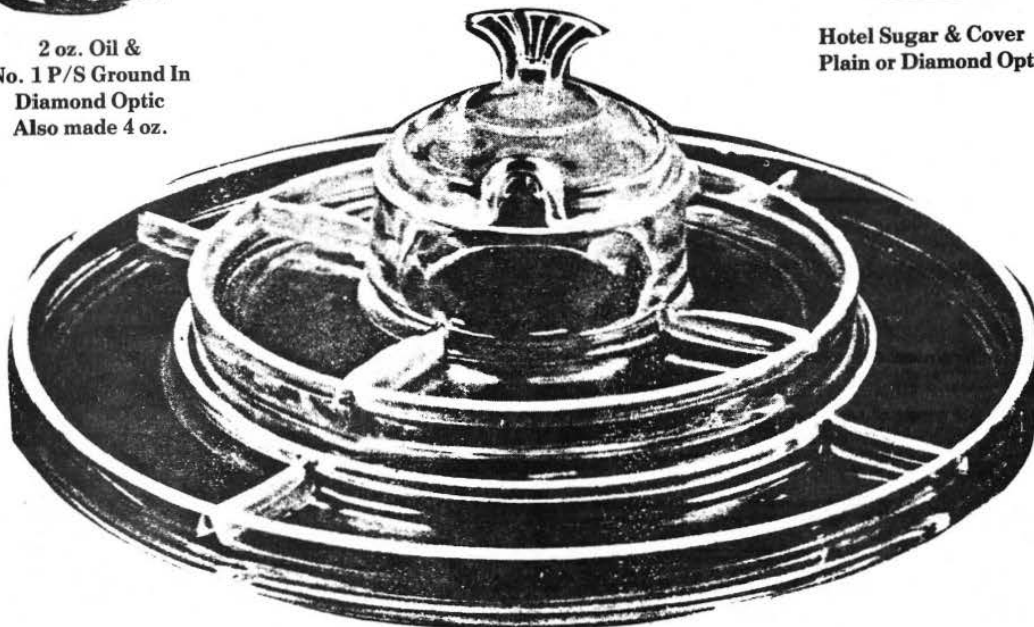
Hotel Sugar & Cover
Plain or Diamond Optic



4 oz. Fruit Cocktail
Diamond Optic



2 oz. Oil &
No. 1 P/S Ground In
Diamond Optic
Also made 4 oz.



13 in. Hors'D'Oeuvre Base
Center & Cover



12 oz. Footed Soda
Diamond Optic
Also made 5 oz.

HEISEY HUNTER HAPPENINGS

by BOBRYAN

Well ole "Samantha Summer" has passed and with her has gone all the whirl of the many lawnmowers, unkept promises to yourself for just one round of golf or perhaps a day at a favorite fishing hole....but it was a good summer....the hottest days were spent in Newark in early June at the H.C.A. convention....there were some nice local-auctions nearby, some buys some sighs....Since son number 2 has become engaged our summer auctions were the ones advertising furniture.....we did make some very nice buys here.....it is such fun to go with the young and watch them accustom themselves to the pace of auctions....how they become wise to the call of the auctioneers and even learn to skip bid and freeze out some of the shier folks....but, for me, I can't wait to hear the cry of Sam calling us to bid on that sparkling crystal made by Heisey....there is just something about the camaraderie at these auctions that make them great big reunions; very competitive, friendly contests....for all you new collectors these are musts....it is here in the arena where one really learns what the real price is on Heisey glass....there are always good buys at the auctions and a newcomer can have as good a chance as one of the old pros for I've seen a veteran auctioneer goer gloating over a piece that he had just purchased and then left the very next piece go without bidding at under-the-money price....gotta be prepared, going to the bank and bringing lots of green is not the only reparation that is needed....you must study the list and ascertain what the market prices are and what you are willing to pay for a certain item.....

Many people have written and told me of great finds that they have made after buying a copy of the Heisey Stemware book....some of them have called late at night gloating that they have an item that is marked unseen....in fact they have an even dozen of them....what makes these so rare?well, the fact that he has the only known set and hasn't shared them, or put them into circulation or never invites anyone to his house where they might see them also adds to their not being seen....there is no connection with the above but, ahem, I did get to see #3420 MILWAUKEE pilsner at a friend's house....now there is more to this story.... seems that my son, number 1, was visiting in Northern Illinois and ole Lightnin' Fingers says to him, "I hear that your Dad has been drinking pretty heavily"....well, this shocks son #1 because his father up to this point in life has been a teetotaler....he wondered how his father succumbed to the "Irish Disease"....after allowing the poor kid's ulcer to activate he told him the story behind the "heavy drinkin'"....seems that his host said, "if you drink the beer in this pilsner the glass is yours." Well, it did not take him long to decide that if that is all he had to do to add to his collection, well "ole Milwaukee" you're mine

....it did take some time to down the beer though....moral of the story....wait till I get my chance, you see, I have my operatives gathering evidence for revenge already.....

Had a phone call last week from a relatively new collector who had to tell someone that she had purchased 3 #433 Grecian Border (Greek Key) wines at an auction for a paltry sum....at the same auction she came home with a pair of Pouter Pigeons....now, John, you wouldn't have had to rescue me from any balcony for what she paid for the pair....ridiculous....

A pair of "Okies" traipsed across the western states this summer plundering all the way....they captured a magnificent pair of candlesticks, #5, in EMERALD with candle cups complete with crystal babeches....eat your heart out, Jack....a #411 beer mug, RIB N Panel....that isn't exactly common....a crystal #160 LOCKET ON CHAIN spooner....and a toothpick in the same pattern....#1280, WINGED SCROLL custard pin tray with good gold....that's a keeper....a FISH MATCH HOLDER....they should have been arrested right here but they escaped to plunder another day....#343 SUNBURST water bottle... handsome item....#1485 SATURN crystal mustard with lid and paddle....mustard are not easy to find....#1295 BEADED SWAG opal berry dish....opal is always a keeper....also a red flashed mug in this pattern....a Sea Horse cocktail managed to cross their path and was ensnared in their nets....now to close on a super note, in my opinion Heisey's most superb candle blocks, the very large #1567 PLANTATION with beautiful cut hurricane shades....I envy you....

A New Yorker reports finding a Carolina stem with a flamingo bowl and a green stem....gotta see that one....another easterner from Mass. reports these items.... #1255 PINEAPPLE AND FAN 10" vase in crystal....also in the same pattern a Ruby stained creamer and an emerald 4 piece table setting....now that's something to write about....love that set....all sleeping, sir....a pair of #2, 11" candlesticks with gold irridizing....#1220 PUNTY BAND ruby stained salt#10, #1469 RIDGELEIGH cocktail glasses... now she is buying in lots....#5003 CRYSTOLITE cocktail glasses....#1405 IPSWICH tumblers....they are very nice, so heavy and beautiful....and lastly a #411 RIB N Panel compotier with floral block....that ain't bad hunting....

Now folks, I want you to pay close attention to what you can do when you retire and nothing on your mind but Heisey Hunting....for some of us the Utopia will never come, some of you other retirees will feel like pikers, but just sit back and imagine yourself picking up all these goodies....#1280 WINGED SCROLL emerald cruet with gold decor....#4225 Cocktail shaker in sahara.... and that's a real rarity....and to keep all you deep-platers hungry the same pattern shaker

with the LANCASTER deep plate etching.... wow....#1238 14" Flaming BEEHIVE plate.... that'll hold a lot of sandwiches....#1428 WARWICK two-lite candlestick in sahara.... #300 threelite candlebrum in sahara....a #103 saucer footed decorated candlestick.... are you reading, Jack?....#433 tall footed compotes....#1201 FANDANGO 4" rose bowlnice....also a miniature cream and sugar and salt shaker in this first of Heisey patterns#459 7" basket heavily cut....#1184 YEOMAN stacked cream and sugar....heavily cut, too....#433 GREEK KEY punch bowl and seven cups....#2 #1404 OLD SANDWICH moonbeam wines....there is something really beautiful....and 8" #369 HARTMAN nappy....that's a rare pattern....also some assorted small nut cups, FANDANGO butter pat etc. seems the real steal of all was a #4085 KOHINOOR three oz. cocktail with limelight bowl on a junk table at a flea market....(you gotta look at everything....if you don't you're gonna be the guy who leaves these treasures for these people with the patience and scrutinizing eyes)....now for a fellow easterner, how about one each in sahara and lime-light....the #1469 RIDGELEIGH floral bowlnice, huh?....the coup-de-gras of the whole letter, some of you saw at the June convention, a #160 LOCKET ON CHAIN red flashed water set....yes, a water set....and it was absolutely gorgeous....and they almost forget to mention a #305 PUNTY AND DIAMOND POINT salt and pepper shaker set.... Now see what you can do with your retirement....Well, my boss won't let me retire and neither will my family, so I guess I'll just have to remain tired and hope to retire in 25 or 30 years....

The Pottery man found a #601 ELIZABETHAN, 1 oz. creme de mint frosted foot and frosted around the top, nice, nice.... The Bellbrook Kids found several #179 tumblers and a #339 finger bowl, seen any of those around lately....The Cincinnati Times found a #310 RING BAND custard pepper shaker and a humidor with a silver top, sorry didn't get the number on that one....Another couple who had never had a red flashed piece of Heisey were so proud of their #1295 and #1159 punch cups, and #1220 toothpick that they are celebrating by taking a trip to HawaiiLittle Red and Big Red came across a #466 PANEL AND DOUBLE PLEAT large nappy....a #100 candlestick yellow-green that glows under the black light like a Christmas tree, not a bad gift for August....

Man, Just two weeks 'til the claret dinner....I know the food will be great and that there will be all kinds of great Heisey at the Flea Market (MiniShow, if you insist) but what really has me in suspense is what kind of band Frank will come up with this year.... stay in shape George, we may need you againsee you all at the dinner September 18th, drive carefully and peace.....

DAYTON AREA HEISEY CLUB

The Dayton Area Heisey Club held its monthly meeting Saturday, September 4. Jim Kennon's exhibit at the Montgomery County Fair might be interesting to readers of The Heisey News.

1ST PLACE IN PATTERN GLASS

Clear cruet - Fancy Loop
Colored cruet - Revere (moongleam)
Colored vase - Ridgeleigh (Limelite)
Clear - Beer mug with drinking club scene
etch
Pattern glass collection - 6 pcs Heisey covered sugars

CRYSTAL PATTERN AND CRYSTAL CAMBRIDGE

SECOND PLACE

Colored pattern - Star and Zipper
Colored Cambridge

DECORATIVE GLASS

FIRST PLACE

Opal Beaded Swag butter dish
6 pcs. Heisey candlesticks

POTTERY

FIRST PLACE

Weller, Rookwood, Roseville

Gale Seyler, Sec/Treas

HEISEY COLLECTORS OF COLUMBUS (Ohio)

The Heisey Collectaors of Columbus met for the first time on September 7, 1976 at the home of Stan and Kay Darling. The members are as follows: Aly and Steve Bradley, Dolores Bruny, Jean Newland, Carolyn Puderbaugh, Bette Simmons, Joanne Williams, Yvonne Winthrop, Helen and Bob Rarey, Kay and Stan Darling and Bill McGough.

Officers are: President, Kay Darling; Secretary/Treasurer, Delores Bruny. The next meeting will be held on October

The next meeting will be held on October 5 at the home of Bill McGough in Reynoldsburg.

ED. NOTE: The club has paid the charter fee and will become affiliate #23.

CENTRAL ILLINOIS H.C.C.

After a small note in a past Heisey News we gained one more couple for our club that came to Newark convention and saw our display, found information and contacted us. So it pays to advertise.....

Central Illinois HCC has room for more people interested in joining our club. Contact.....Mildred Lee, Sec/Treas.

115 Phillips Dr.

Decatur,

Illinois

62521

MEMBERSHIP REPORT

by ANN HOLMAN

As of September 7, 1976 our total membership is 2372. We are mailing 1573 newsletters monthly.

This month I will list the cities and members from Michigan Minnesota, Mississippi, Missouri and Montana.

MICHIGAN - 79: Adrian 1, Battle Creek 6, Birmingham 2, Canton 2, Cass City 2, Cheboygan 1, Dearborn 3, Dearborn Heights 1, Detroit 2, DeWitt 1, Elk Rapids 1, Farmington 2, Flint 2, Grand Rapids 3, Gregory 2, Grosse Pointe Woods 1, Jackson 4, Jeddo 2, Kalamazoo 3, Lansing 4, Livonia 2, Northville 4, Onsted 2, Petoskey 1, Pinckney 2, Saginaw 2, Shelby 2, South Haven 2, Spring Arbor 1, Sterling Heights 2, Stevensville 2, Union Lake 2, Warren 4, Westland 1, Whitehall 1, Wurtsmith Air Force Base 2, Wyandotte 1.

MINNESOTA - 16: Coon Rapids 2, Crosby1, Duluth 1, Eagan 1, Hutchinson 1, Minneapolis 1, Plainview 1, Rochester 2, Spring Valley 2, St. Louis Park 1, Wayzata 2, Winona 1.

MISSISSIPPI - 8: Jackson 2, Ocean Springs 1, Oxford 2, Tupelo 2, Verona 1.

MISSOURI - 26: Ballwin 1, Branson 1, Bridgeton 1, Cape Girardeau 1, Carthage 1, Florissant 1, Kansas City 2, Kirksville 1, Kirkwood 2, Louisiana 1, Marshall 2, Mexico 2, Ozark 1, Pacific 1, St. Louis 2, St. Peters 1, Sikeston 1, Springfield 1, Vandalia 1, Warrenton 2.

MONTANA - 3: Fort Shaw 1, Fromberg 1, Great Falls 1.

Don't forget your 1976 dues. Eight (8) dollars plus \$1.00 for each household membership desiring membership. Dues will be \$10.00 per year after December 31.

REYNOLDSBURG HEISEY COLLECTORS CLUB

The second annual flea market will be held on October 31 at the Reynoldsburg High School gym. The school is on the south ide of Livingston Ave. between Brice Road and Route 256. This is just north of I-70 and only a few blocks south of

Main St. If on Main st. take Rosehill Road south. All profits from the flea market will benefit the National Heisey Museum.

The gym is to the rear of the school complex.

Contact: Harley Bethel, 8154 Durham Dr., Reynoldsburg, Ohio 43068 for space.

Antique Sofa in Parlor of National Heisey Glass Museum



Given by ORVA HEISSEN BUTTEL, our national publicity chairman for the museum and her daughter Iris and son-in-law Carey Howlett. Upholstered in pale yellow antique satin

- 1. #1509 Queen Ann Sahara (round) Service for 8.
Plates (10 1/2" dinner, 7 1/2" luncheon, 6" salad), cups/saucers, sugar and creamer. * Mint.....Set \$400.00
- 2. #341 Puritan Sherbet * (10)ea. 4.50
- 3. #359 Colonial High Footed Sherbet * (6)ea. 8.00
- 4. #353 Colonial Individual Almond, Flamingo (6)ea. 8.00
- 5. #347 Colonial High Footed Sherbet * (2)ea. 10.00
- 6. #480 Fruit Basket 8" * 65.00
- 7. #1184 Yeoman 8" Handled Mint 3-compartment, Cut Unknown * 22.00
- 8. #361 Ash Tray & Cigarette Container, Flamingo * 30.00
- 9. #3366 Trojan Saucer Champagne * (7)ea. 6.00
- 10. #1401 Empress Relish 7-compartment * 15.00
- 11. #1425 Victorian Footed Soda (6)ea. 8.00
- 12. #1425 Victorian Footed Sherbet * 7.00
- 13. #1425 Victorian Footed Champagne (6)ea. 7.00
- 14. #1469 Ridgeleigh Sugar/Creamer * 15.00
- 15. #1469 Ridgeleigh Individual Sugar/Creamer/Tray * 20.00
- 16. Giraffe Head Turned * 80.00
- 17. #1509 Queen Ann 6" Plates * (8)ea. 2.00
- 18. #1295 Beaded Swag Spooner Ruby Flashed 20.00
- 19. #1225 Sawtooth Bands 7 1/2" Bowl * 25.00
- 20. #353 Colonial Sanitary Syrup 7 oz. * (no top) (2)ea. 10.00
- 21. #1506 Whirlpool Service for 8.
Goblets, Champagnes, Juices, 8" Plates, 4 1/2" Nappies, 18" Torte Plate *Set. 300.00
- 22. #433 Greek Key 2 oz. Wine * (3)ea. 75.00
- 23. #1519 Waverly 12" Relish Orchid Etch * 30.00
- 24. #1428 Horn of Plenty Individual Candlestick *pr. 22.00
- 25. Goose Wings Up (2)ea. 60.00

M & M ANTIQUES

11 SURREY LANE
EAST PEORIA, ILL. 61611
Phone: (309) 694-2450

Postage & Insurance extra
* Signed

HAVE MANY PIECES OF RIDGELEIGH & CRYSTOLITE - Write

LAST CHANCE ANTIQUES

60 N. Federal Highway
Dania, Florida 33004
Phone (305) 462-7306

* Signed Heisey
Mint unless otherwise noted
Postage & Insurance extra

- #433 Greek Key punch bowl 15", base, & 7 cups * -set \$325.00
 - #433 Greek Key 3 oz. cocktails (6) *ea. 19.00
 - #1205 Fancy Loop custard cups (10).....ea. 16.00
 - #1205 Fancy Loop Ind. salt dips (2).....ea. 15.00
 - #4091 Kimberly 5 oz. champagnes w/Courtship
cutting (10) *ea. 21.00
 - #1485 Saturn limelight 8 1/2" straight
vase-heavy sham *100.00
 - #1231 Octagon hawthorne cream soups
w/underplates - bottom roughness (6) ea. 25.00
 - #1401 Empress sahara 12" sq. sandwich
plate-ctr. handle *50.00
 - #1401 Empress sahara toed ice bucket w/hdle *67.00
 - #129 Acorn moongleam 5" triplex candlestick *48.00
 - #1252 Twist moongleam mustard w/underplate *33.00
 - #1401 Empress flamingo 6" toed candlestick *pr. 95.00
 - #507 Orchid etch creamer/sugar *pr. 45.00
 - #507 Orchid etch cocktail shaker
wsterling base, top & strainer.....120.00
 - #1425 Victorian 10 oz. goblets (14).....ea. 15.00
- Much more available

YESTERYEAR ANTIQUES

% Mrs. R.E. Neal
2802 Irwin Rd.
Huntsville, Ala. 35801
Phone: (205) 539-4810

SASE - Postage & Insurance extra

ALL HEISEY #503 MINUET DOUBLE ETCHED

- 1. #5010 Tall Goblets.....(20) ea. \$25.00
- 2. #5010 Iced Teas.....(19) ea. 25.00
- 3. #5010 Saucer Champagnes.....(14) ea. 25.00
- 4. #5010 Footed Juice glasses.....(15) ea. 25.00
- 5. #5010 Low Sherbet.....(1) ea. 25.00
- 6. #1511 Universal Seafoods & Liners(8) ea. 30.00
- 7. #1401 Sugar (3-hdle) & Creamer.....pr. 65.00
- 8. #1509 Queen Ann 8" Plates.....(20) ea. 25.00
- 9. #3304 Covered Jam Jar, Apple shaped sign..... 25.00
- 10. 5" Tumbler Heavy sham base.....(6) ea, 25.00

OTHER GLASSWARE

- 11. Cambridge Laurel Wreath Water goblets (8) ea. 12.50
- 12. Cambridge Laurel Wreath Ice Teas.....(8) ea. 12.50
- 13. Cambridge Laurel Wreath Champagnes..(8) ea. 12.50
- 14. Cambridge Laurel Wreath Salad Plates...(4) ea. 10.00

A H COLLECTABLES & ANTIQUES

Ann Holman

Mailing address:
Route #2, Box 362
Licking Trails Road
Thornville, Ohio 43076

Phone: (614) 323-0759

Postage &
Insurance extra

ALL CRYSTOLITE #1503

- 6" Preserve & Cover, 2 hld. (M).....\$25.00
- Cream & Sugar, regular (M).....pr. 17.25
- 8" Relish, 3 compartment.....17.00
- 5" Breakfast Preserve.....10.00
- 4¾" Puff Box & Cover (M).....17.50
- Punch Cup (M).....8.00
- 9" Clover Leaf Relish, 4 compartment.....20.00
- 13½" Sandwich Plate (M).....23.00
- 10" Relish, 5 compartment.....23.00
- 3" Ash Tray, round or Hi-Ball Coaster (M).....7.00
- 4" Cigarette Box & Cover (M).....15.75
- 9" Leaf Pickle (M).....15.00
- 2" Ind. Swan Nut Dish.....(4)- ea. 11.75
- Syrup & Top.....20.00
- 10 oz. Tumbler (M).....8.00
- Cigarette Holder, footed (M).....12.00
- Mustard & Cover (M).....12.00
- 3" Ind. Nut Dish, hld.....(3) - ea. 6.00
- 14" Torte Plate.....23.00
- 4½" Nappies (M).....(7) - ea. 6.00

NEW BOOK HEISEY ORCHID ETCH GLASSWARE by Don Gammon



The first reference book on
Heisey Orchid Etch
Over 100 different items
pictured. A must for Heisey
Orchid Etch Collectors.

Featuring prices, and items Heisey
applied the Orchid Etching to not
found in other reference books.

only \$ 2.95 plus .25¢ postage

Order from: **Don Gammon**
2674 Hopper Road
Cape Girardeau, Mo 63701

"HEISEY STEMWARE"

by

Stephen Bradley, Constance Ryan
Robert Ryan

A book that no glass collector or dealer
can afford to be without!

\$20.00 plus \$2.00 Hdlg. Chg.

Available from the following:

National Heisey Museum,
Box 27, Newark, Oh 43055

Moundbuilders Antiques
1138 Moundview Ave.,
Newark, Oh 43055

Frank Maloney & Geo. Fogg,
40 Gray St.,
Boston, Mass 02116

Mary Pool,
10629 Main St.,
Fairfax, Va 22030

Heisey Stemware
Centerville, Ohio

REYNOLDSBURG HEISEY COLLECTORS CLUB

**2ND ANNUAL
ANTIQUES FLEA MARKET**

Sunday, October 31, 1976 - 9:00 a.m. to 5:00 p.m.

REYNOLDSBURG HIGH SCHOOL GYMNASIUM
6699 E. Livingston Avenue, Reynoldsburg, Ohio

Admission Price: 50¢

BENEFIT: THE NATIONAL HEISEY MUSEUM, NEWARK, OHIO

Accommodations for 58 Top Quality Dealers

for contracts: **HARLEY BETHEL** **REFRESHMENTS**
8154 Durham Drive
Reynoldsburg, Oh 43068 **DOUGHNUTS AVAILABLE**
Phone: (614) 861-4831 **FOR EARLY SETTING UP.**

ANTIQUES 'N' COLLECTABLES
 "HEISEY OUR SPECIALTY"

LYNNE



ART'S

ROUTE 202 — LAHASKA, PA. 18931
 P. O. BOX 242 215-794-7800

**GLASS-HOUSE
 INC.**

*Dear Heisey Collector and Dealer,
 We're Heading Your Way!! Heisey Animals,
 Lovely Old Patterns, and a Rainbow of Colors, will
 be coming along with us.
 We'll be at the following shows.*

1. WALTHAM, MASS. BENTLEY COLLEGE OCT. 9 - 10
2. WARRINGTON, PA. WARRINGTON COUNTRY CLUB OCT. 12 - 14
3. MT. LAUREL, N.J. MT. LAUREL HILTON OCT. 23 - 24

*Our shop in Lahaska will remain open while we are
 on the road.*

*See you soon,
 Lynne and Art*

1. #1401 EMPRESS dolphin footed cream & sugar * FLAMINGO.....	\$25.00
2. #1401 EMPRESS 6" Jelly, footed, 2 handled * FLAMINGO.....	12.00
3. #1401 EMPRESS Individual cream, sugar, tray * FLAMINGO.....	28.50
4. #1252 TWIST 13" Celery tray*, minor rim chip, FLAMINGO.....	12.00
5. #1503 CRYSTOLITE Individual cream, sugar, tray 8.....	18.50
6. #1503 CRYSTOLITE Master swan nut dish.....	22.50
7. #1503 CRYSTOLITE candlesticks, 4" 1-lite.....	pr. 15.00
8. #1503 CRYSTOLITE medium size creamer & sugar *.....	15.00
9. #1503 CRYSTOLITE cup & saucer * (12).....	pr 12.00
10. #1503 CRYSTOLITE plates 7" * (8).....	ea. 5.00
11. #1503 CRYSTOLITE plates 8 1/2" (12).....	ea. 6.00
12. #5003 CRYSTOLITE oyster cocktail 3 1/2 oz. * (8).....	ea. 8.00
13. #5003 CRYSTOLITE footed soda 5 oz. * (3).....	ea. 8.00
14. #1469 RIDGELEIGH Individual creamer & sugar *.....	15.00
15. #1469 RIDGELEIGH Medium creamer & SUGAR *.....	15.00
16. #1495 FERN divided mayonnaise, Handled.....	20.00
17. #1495 FERN 6" Bon Bon (purpled).....	15.00
18. #1404 OLD SANDWICH 1/2 gallon Ice Jub *.....	30.00
19. #1228 WARWICK 7" Cornucopia.....	pr. 25.00
20. #500 OCTAGON sugar, crystal with moongleam handled * (2).....	ea. 15.00
21. #1184 YEOMAN 11" Handled tray 3-compartments * MOONGLEAM.....	20.00
22. #1184 YEOMAN 6" Footed comport D.O. double signed FLAMINGO.....	20.00
23. #1238 BEEHIVE 4" Plate Crystal (3).....	ea. 15.00
24. #369 HARTMAN 2 oz. Bar *, Optic (2).....	ea. 45.00
25. #1425 VICTORIAN French Dressing bottle, no stopper *.....	18.50
26. #1425 VICTORIAN Cream & sugar *.....	25.00
27. 31447 ROCOCO Cream & sugar *.....	40.00
28. #341 PURITAN Punch cups * (15).....	ea. 4.50
29. #479 Cream & sugar * FLAMINGO.....	22.50
30. #5019 WAVERLY Orchid etched creamer & sugar *.....	35.00

JOYCE ROHDE
 RT. #2, BOX 18
 ECHO, OREGON
 Phone: (503) 276-3402

MARKED *
 Postage & Insurance extra

Rainbow Review GLASS journal

"KEEPING GLASS COLLECTORS INFORMED"

RAINBOW REVIEW GLASS JOURNAL - ESTABLISHED 1971 -

64 pages printed magazine style on glossy paper with large, clear photographs. Subscribers in every state, Canada, Australia, Greece and the West Indies!

Our writers are all respected in their field of glass with published books on their subjects: Clarence Vogel (Heisey); Vicki Gross (McKee); William Heacock (Victorian Colored Glass); Gene Florence (Depression and Akro Agate); Mary Van Pelt (Figurines and Animals in Glass); Glenita Stearns (Depression) and others.

Two of our writers are syndicated columnists: Jabe Tarter of Ohio and Orva Heissenbuttel of Washington, D.C.

Dedicated to "Keeping Glass Collectors Informed" on every facet of the glass field: news, books, shows, reviews, clubs, shops, questions & answers, interviews and a variety of ads: classified, display, wants, trades, bids and even a section for the "new" collectibles (such as Degenhart, Tiara, St. Clair, Fenton, etc.).

\$6 - one year \$11 - two years
\$15 - three years

**IF YOU COLLECT "ANY" GLASS YOU'LL WANT
THE RAINBOW REVIEW GLASS JOURNAL!**

Send name, address, city, state and zip code, enclose payment, mail to RAINBOW REVIEW, P.O. Box 2315, Costa Mesa, CA 92626 (Allow 30 days) NOTE: Foreign subscribers add \$2 per year.



1901 - IMPERIAL - 1976

This Limited Edition Nurser
Rhyme Mug Commemorates the 75th
Anniversary of IMPERIAL GLASS
Hand made of beautiful ultra blue
glass. Using the original HEISEY
moulds.

SIGNED - DATED

\$8.95 Postpaid
Phone (301) 384-9242

THE GLASS HOUSE

P. O. Box 4012

Silver Spring, Md. 20904

HEISEY'S GLASSWARE of DISTINCTION

by Mary Louise Burns



The FIRST Comprehensive reference book on Heisey Glassware! All major patterns of Heisey tableware, stemware, cuttings, etchings, Heisey animals and Verlys.

124 pages - over 240 patterns - more than 5600 items listed.

Several hundred photographs showing details of each pattern thus making identification easy.

Also, information on dates and colors of each pattern.

EVERYTHING IN ONE BOOK!

only **\$9.95** plus 50¢ postage

AT LAST! 50 Page Price Book on Heisey Glassware!
Price Trends given on over 5600 items of Heisey Glassware listed alphabetically for easy reference.

only **\$4.95** plus 50¢ postage

ORDER FROM: TRIANGLE BOOKS
P.O. BOX 1406,
Mesa, Arizona 85201

NAME _____
STREET _____
City/State/Zip _____
6 books or more 40%

THE HEISEY HERITAGE SOCIETY'S FIRST

ANTIQUE GLASS SHOW

FOR THE BENEFIT OF THE NATIONAL HEISEY GLASS MUSEUM

ART GLASS · DEPRESSION GLASS
CUT GLASS · HEISEY · CAMBRIDGE · FOSTORIA
ALL THAT'S COLLECTIBLE IN GLASS, POTTERY, CHINA

MOUNT LAUREL HILTON
LOCATED AT EXIT 4, NEW JERSEY TURNPIKE
ON ROUTE 73, MT. LAUREL, N.J.

SATURDAY OCT. 23RD SUNDAY OCT. 24TH
10 AM TO 9 PM 10 AM TO 6 PM
DONATION \$1.50, WITH THIS AD, \$1.25

Dealers Directory

5 LINES - \$6.00/6 ISSUES

MOSTLY  HEISEY

RHODA CURLEY
16 CLAYTON PLACE - ALBANY, NEW YORK 12209
BY APPOINTMENT 518/482-6272

Opera House Antiques

Main & Broadway, Granville, Oh 43023
Open 7 days a week 12 - 5 P. M.
Frank (614)344-9847 - Sam 587-0052
Shop (614)587-2083

LOTS OF HEISEY GLASS & GENERAL ANTIQUES

BERT'S BUDGET SHOP

403 W. MAIN ST., NEWARK, OHIO 43055
PHONE: (614) 349-8045
General line Antiques

ARMENTROUT ANTIQUES

GENERAL LINE - FURNITURE SPECIALTY
PERIOD FURNITURE REPRODUCED TO ORDER
40 N. 39TH STREET PHONE 344-6389
NEWARK, OHIO 43055 ESTABLISHED 1932

THE CHINA CUPBOARD

105 A. SO. BROADWAY, ORCUTT, CA. 93454
Phone: (805) 937-6420
COLLECTIBLE & ANTIQUE GLASS & CHINA
HEISEY IN STOCK

The Shultzes Antiques

BOUGHT SOLD
206-208 E. MAIN ST., ROUTE # 419
NEWMANSTOWN, PA. 17073
15 MI. WEST OF READING, PA.
PHONE 215-589-2819

THE "FINDERS" ANTIQUES

Antiques -- Heisey Glass -- Buy-Sell

David and Shirley Rose -- owners
66 S HAZELWOOD AVE. NEWARK, OH 43055
PHONE: (614) 349-7934



sum of life

elaine and frank husted
p.o. box 102,
phoenixville, pa. 19460
(215) 935-2962

A H COLLECTABLES & ANTIQUES
ANN HOLMAN

RT. 2, BOX 362, THORNVILLE, OHIO 43076
PHONE: (614) 323-0759
7 miles south of Newark, 3 miles north of U.S. 70
Just off State Route 13, Directly west of Dawes
Arboretum on Licking Trails Road #303

Moundbuilders Antiques

"Specializing in old Heisey & Animals"
IRENE RAUCK
1138 MOUNDVIEW AVENUE NEWARK, OHIO 43055
TELEPHONE
AREA 614 344-6043

ALAS & ALACK ANTIQUES

EMMA & MANNY KLAWANS
SHOWS ONLY
Heisey & Duncan-Miller
(301) 588-2755 CH. CH. Md.



GEORGE & EILEEN SCHAMEL

Route 3, Box 419
Boonsboro, Md. 21713

Appointment or Mail Order

DIAMOND H PLUS Phone 301-432-6285

GREEN ACRES FARM

ANTIQUES, CR YSTAL, GLASS & COLLECTIBLES
SPECIALIZING IN HEISEY & CAMBRIDGE GLASS
BY CHANCE OR (614) 927-1882
2678 SR 310 N. - PATASKALA, OHIO 43067



CHARLES A. SHAW

GLENWOOD GARDENS
RIP VAN WINKLE
YONKERS, NEW YORK 10701
PHONE 914 GR 6-5175

SPECIALIZING IN
HEISEY AND
CAMBRIDGE
GLASSWARE

BUY - SELL

LYNNE & ART'S GLASS HOUSE, INC.

"HEISEY OUR SPECIALTY"
Route 202 Lahaska, Pa. 18931 Box 242
Phone: (215) 794-7800

Jack & Sharon Metcalf

379 N. BUENA VISTA
NEWARK, OHIO 43055
HEISEY - POTTERY - GENERAL
CHANCE OR APPOINTMENT (614) 349-7849

MARG & RAY'S ANTIQUES

FURNITURE - OLD BANKS - TOYS
GLASSWARE - LAMPS
BOUGHT & SOLD
487 MAPLE AVENUE NEWARK, OHIO 43055
PH. 345-1316

FLORIDA HEISEY HEADQUARTERS

LAST CHANCE ANTIQUES
60 FEDERAL HIGHWAY, DANIA
(Between Miami & Ft. Lauderdale)
Appts: (305) 462 - 7306 Member HCA

DuWaine Hill

(POSEY POT GIFTS)
56 E. COSHOCTON ST.
JOHNSTOWN, OH. 43031
(15 miles from Newark)
PHONE: (614) 967-7941 open 6 days a week

EVELYN'S ANTIQUES

3301 - 140 N.E. Marysville, Wash. 98270
I S Exit 202 Phone: (206) 659-6114
MON-WED-SAT-SUN & by Appt.
Shop full of glass - Heisey, etc.

EAGLES REST ANTIQUES

CHINA HEISEY GLASSWARE
BOUGHT and SOLD
62 FIELD POINT RD., HEATH, OH 43055
By appointment only PH: (614) 522-2035

Oldies But Goodies

222 N. WATER STREET
WILMINGTON, IL. 60481
(815) 476-7320
Heisey A Specialty

HAPPY HAVEN ANTIQUES

Charles & Mary Dumke
RT. 3, BOX 2044A, GRASS VALLEY, CA. 95945
Phone: (916) 273-9450

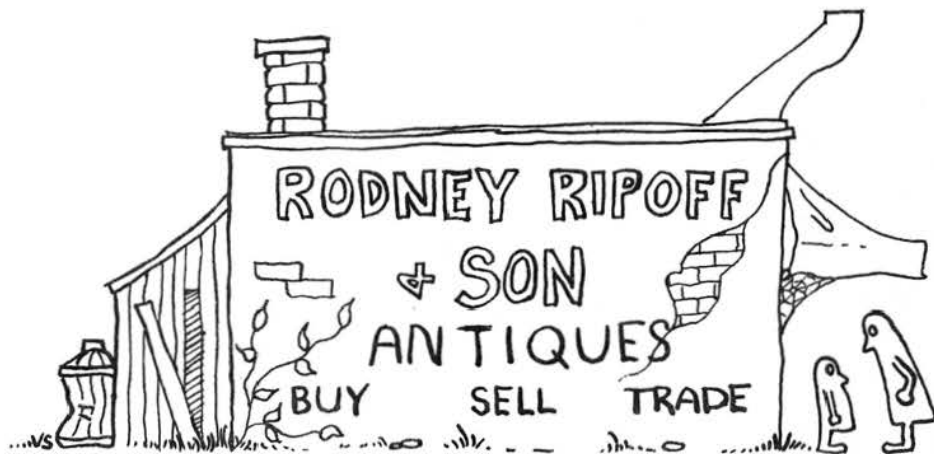
HAN - MAR'S ODD SHOP

Antiques-Collectibles-Specializing in good glass &
Am. Furniture. Buy-Sell-Trade. 1400 pcs. Heisey in
stock. Open by chance or Apt. Write or call (314)
581-5056 Box 291, Mexico, Mo 65265

Classified
Ads

FOR SALE: 4 - "Circus" Deep Plate
etched shot glasses. 1 Elephant -
1 Camel - 2 Lion Tamer. Write:
Harold E. Willey, Route #3,
Frazeyburg, Ohio 43822.

WANTED: From anyone: Your list
including prices of all Orchid Etch
Heisey that you want to sell. I am not
a dealer. J.E. Stringer, 5127 Heather-
crest, Houston, Tx 77045 Ph: (713)
433-1174.



OK, Junior.....Tell them the stem is so rare that Bradley, Ryan and Ryan haven't
even listed it as "unseen" yet.

ALL HEISEY AUCTION

AT THE OPERA HOUSE
Granville, Ohio

SATURDAY, OCTOBER 16, 1976
Sale starts at 6:00 p.m.

- _____ 1. Flamingo #1231 Ribbed Octagon Hotel Cream & Sugar (H)
- _____ 2. Crystal #1404 Old Sandwich Oval Cream & Sugar (H)
- _____ 3. Crystal #1425 Victorian Cream & Sugar (H)
- _____ 4. Flamingo #1020 Hotel Cream & Sugar (H) Pat. 8/30/21
- _____ 5. Crystal #1235 Beaded Panel & Sunburst Cream & Spooner
- _____ 6. Flamingo # 393 Narrow Flute Ind. Sugar & Cream X (H)
- _____ 7. Crystal #1295 Beaded Swag 4-pc. Table Set - Covered Butter & Sugar, Creamer & Spooner
- _____ 8. Crystal #1509 Queen Ann D.F. Sugar & Cream Minuet Etch
- _____ 9. Crystal # 160 Locket on Chain Cov. Sugar X
- _____ 10. Custard #1280 Winged Scroll Spooner Flower Dec.
- _____ 11. Crystal # 411 Rib & Panel Footed Table Cream (H)
- _____ 12. Crystal #1776 Kalonyal Tall Celery (H)
- _____ 13. Crystal #1205 Fancy Loop Cruet
- _____ 14. Crystal # 300 Peerless Cruet 6 oz.
- _____ 15. Crystal # 411 Rib & Panel Cruet 6 oz. (H)
- _____ 16.A Crystal #1503 Crystolite Cruet
- _____ 16.B Crystal #1503 Crystolite Cruet
- _____ 17. Crystal #1519 Waverly Cruet Orchid Etch
- _____ 18. Cobalt #3390 Carcassone Tall Stem Goblet
- _____ 19. Crystal #3336 Lady Leg Goblet Etching #415 (H)
- _____ 20. Moongleam Stem & Foot #3357 King Arthur Goblet (H) Crystal Bowl
- _____ 21. Crystal #5010 Symphone Goblet Minuet Etch Original Sticker
- _____ 22. Sahara #1401 Empress Goblet (H)
- _____ 23. Crystal #3350 Wabash Goblet Mayflower Etch (H)
- _____ 24. Flamingo #1401 Empress Goblet (H)
- _____ 25. Crystal #4055 Parklane Goblet Nomad Cutting
- _____ 26. Crystal #4055 Parklane Goblet Briarcliff Cutting
- _____ 27. Crystal #3350 Wabash Goblet Frontenac Etch (H)
- _____ 28. Amber # 337 Touraine Goblet (H)
- _____ 29. Crystal #3368 Albermarle Goblets (2) Trojan Etch (H)
- _____ 30. Moongleam #3262 Charter Oak Goblet Early Sticker
- _____ 31. Crystal #3333 Old Glory Goblet Renaissance Etch (H)
- _____ 32. Crystal #3418 Savoy Plaza Frosted Stem & Foot (H) X
- _____ 33. Crystal # 300 Peerless Goblet
- _____ 34. Cobalt #1401 Empress 8" Square Plate (H)
- _____ 35. Crystal #1183 Revere 8" Plate Sail Boat Carving
- _____ 36. Marigold #1252 Twist 7" Plate (H)
- _____ 37. Milk Glass #1295 Beaded Swag 6" Plates (2)
- _____ 38. Hawthorne # 406 Coarse Rib 8" Plates (4) (H)
- _____ 39. Hawthorne # 406 Coarse Rib 6" Plates (4) (H)
- _____ 40. Tangerine #1401 6" Square Plate (H)
- _____ 41. Crystal #4004 Impromptu 7" Plate
- _____ 42. Alexandrite #1401 Empress 6" Plate (H)

- _____ 43. Marigold #1229 Octagon 6" Hdd. Plate Empress Etch
- _____ 44. Flamingo #1184 Yeoman Oval Platter Cut
- _____ 45. Crystal # 335 Prince of Wales 6" Ftd. Jelly (H)
- _____ 46. Crystal # 325 Pillows 6" Ftd. Jelly (H)
- _____ 47. Crystal # 341 Puritan 6" Ftd. Jelly (H) (H) (H)
- _____ 48. Flamingo # 417 Double Rib & Panel 6" Basket (H)
- _____ 49. Crystal # 480 Basket (H)
- _____ 50. Crystal #1255 Pineapple & Fan #3 Cracker Jar
- _____ 51. Emerald # 150 Pointed Oval in Dia. Point 1/2 gal. Pitcher
- _____ 52. Crystal # 341 Puritan Decanter (H) no stopper
- _____ 53. Zircon #1469 Ridgeleigh Vase 8" (H)
- _____ 54. Crystal #1469 Ridgeleigh Vase 8" (H)
- _____ 55. Emerald #1255 Pineapple & Fan 10" Vase
- _____ 56. Crystal # 469 Hartman Candy Jar w/cutting (H)
- _____ 57. Sahara #1469 Ridgeleigh Candle Vase
- _____ 58. Flamingo # 412 Rib & Panel Covered Candy
- _____ 59. Limelight #1506 Whirlpool 3-hdd. Mayonnaise (H)
- _____ 60. Hawthorne #1229 Octagon Footed Mayonnaise (H)
- _____ 61. Amber # 337 Touraine Soda Narrow Optic (H)
- _____ 62. Crystal # 150 Banded Flute Tumbler (H)
- _____ 63. Crystal #1250 Groove & Slash Tumbler
- _____ 64. Crystal # 379 1/2 Urn Tumbler (H)
- _____ 65. Crystal # 357 Prison Stripe Tumbler (H)
- _____ 66. Limelight #1506 Whirlpool Soda
- _____ 67. Alexandrite #3381 Creole Soda Footed
- _____ 68. Crystal # 469 Hartman Soda Narrow Optic (H)
- _____ 69. Crystal (2) Colonial Footed Tumblers
- _____ 70. Amber # 353 Medium Flat Panel Sodas (2)
- _____ 71. Crystal #2351 Tumbler Cleopatra Etch
- _____ 72. Crystal Soda Tally-Ho Deep Plate Etch
- _____ 73. Crystal Soda Renaissance Etch
- _____ 74. Crystal #5087 Soda Comet, Mono. SJS - 5087 Comet
- _____ 75. Crystal #4164 Pitcher Pied Piper Etch & #2351 Sodas (6) Pied Piper Etch
- _____ 76. Flamingo #3480 Koors "29" Pitcher & 4 glasses

Crystal -- All Orchid Etch 76A - 76N

- _____ 76.A #1519 Waverly (8) 10 1/2" Dinner Plates
- _____ B #1519 Waverly (9) 7 1/2" Luncheon Plates
- _____ C #1509 Queen Ann (8) Cups & Saucers (H)
- _____ D #1509 Queen Ann (1) Cup (H)
- _____ E #5025 Tyrolean Stem Tall Goblets (20) (H)
- _____ F #5025 Tyrolean Stem Saucer Champagnes (8) (H)
- _____ G #1519 Waverly Cream & Sugar (H)
- _____ H #1519 Waverly Stemmed Low Comport
- _____ I #1519 Waverly Mayonnaise (H)
- _____ J #1509 Queen Ann Triplex Relish
- _____ K #1509 Queen Ann 6" Ftd. Hdd. Jelly (H)
- _____ L #1509 Queen Ann D.F. 7" Bowl

PAID ADVERTISEMENT

- _____ M #1519 Waverly 10" Floral Bowl
 _____ N #4036 Qt. Cocktail Shaker
 _____ 77. Crystal #1405 Ipswich Console Bowl & Candle Vases
 with Inserts
 _____ 78. Crystal #1566 Pr. Candleholders
 _____ 79. Moongleam # 112 Pr. Candleholders
 _____ 80. Crystal # 112 Pr. Candleholders
 _____ 81. Crystal # 112 Pr. Candleholders Orchid Etch
 _____ 82. Crystal #1540 Lariat Pr. Candleholders (H)
 _____ 83. Crystal w/Moongleam Foot #116 Pr. Candle-
 holders (1X)
 _____ 84. Crystal #1428 Warwick Pr. 2-light Candleholders (H)
 _____ 85. Crystal # 300 3-light Candelabrum
 _____ 86. Cobalt #1404 Old Sandwich 16 oz. Mug (H)
 _____ 87. Amber #1404 Old Sandwich 8 oz. Mug (H)
 _____ 88. Amber #1404 Old Sandwich 16 oz. Mug (H) X
 _____ 89. Crystal #1405 Ipswich Cocktail Shaker (Rare)
 _____ 90. Vaseline # 350 Pinwheel & Fan 8" Bowl (H) (Rare)
 _____ 91. Crystal # 350 Pinwheel & Fan 8" Bowl (H)
 _____ 92. Crystal #1485 Saturn 10" Vase
 _____ 93. Dawn #1632 Lodestar Ash Tray (H)
 _____ 94. Crystal #1509 Queen Ann D.F. Ice Bucket
 Minuet Etch
 _____ 95. Dawn #1632 Lodestar Divided Relish (H)
 _____ 96. Crystal #398 7" Low Bowl Green, Pink & Gold
 Decorated (H)
 _____ 97. Crystal #1401 Empress 10" D.F. Floral Bowl
 _____ 98. Crystal #1255 Pineapple & Fan 9" Bowl
 _____ 99. Crystal #1440 9" Floral Bowl (Rare) (H)
 _____ 100. Crystal # 343 Sunburst 9" Low Bowl (H)
 _____ 101. AMBER Plug Horse (Sparky)
 _____ 102. Crystal Plug Horse (Sparky)
 _____ 103. Crystal Plug Horse (Sparky)
 _____ 104. Crystal Plug Horse (Sparky)
 _____ 105. Crystal Pig
 _____ 106. Crystal Mallard Wing Half (H)
 _____ 107. Crystal Mallard Wing Half (H)
 _____ 108. Crystal Mallard Wing UP (H)
 _____ 109. Crystal Mallard Wing UP (H)
 _____ 110. Crystal Goose Wing Half
 _____ 111. Crystal Frosted Goose Wing Half
 _____ 112. Crystal Goose Wing Up
 _____ 113. Crystal Fish Book End
 _____ 114. Crystal Fish Candle Holder
 _____ 114.A Crystal Fish Matchholder
 _____ 115 Crystal Rooster Vase
 _____ 116. Crystal Show Horse
 _____ 117. Crystal Ringneck Pheasant
 _____ 118. Crystal Ringneck Pheasant
 _____ 119. Crystal Ringneck Pheasant
 _____ 120. Crystal Scotty Dog
 _____ 121. Crystal Scotty Dog
 _____ 122. Crystal Giraffe on Base, Head Forward (H)
 _____ 123. Crystal Giraffe on Base, Head Forward (H)
 _____ 124. Crystal Colt Kicking (H)
 _____ 125. Crystal Colt Balking (H)
 _____ 126. Crystal Colt Standing
 _____ 127. Crystal Colt Standing (H)
 _____ 128. Crystal Colt Standing
 _____ 129. Crystal Elephant Small (H)
 _____ 130. Crystal Elephant Medium
 _____ 131. Crystal Elephant Large X
 _____ 132. Crystal Bunny Head Up
 _____ 133. Crystal Bunny Head Down
 _____ 134. Crystal Bunny Head Down
 _____ 135. Crystal Duckling Floating
 _____ 136. Crystal Madonna
 _____ 137. Crystal Madonna
 _____ 138. Flamingo # 110 Pr. Dolphin Candlesticks 10"
 _____ 139. Flamingo # 109 Pr. Petticoat Dolphin Candle-
 sticks 6"
 _____ 140. Crystal Girl Head Cocktail Stopper, Mounted in
 Wood Frame
 _____ 141. Crystal Penguin Stopper
 _____ 142. Moongleam (2)
 _____ Flamingo (1) Duck Perfume Stoppers
 _____ Crystal (1)
 _____ 143. Crystal (2) Toy Horsehead
 _____ 143.A Crystal #4225 Qt. Cocktail Shaker Rooster Stopper
 _____ 143.B Crystal #1519 Waverly Sea Horse Ftd. Floral Bowl
 _____ 144. Sahara #1401 Empress Lion Bowl, one foot repaired
 _____ 145. Sahara #1401 Empress D.F. Nut Dishes (2)
 _____ 146. Crystal # 473 Narrow Flute w/rim Nut Dishes (2) (H)
 _____ 147. Crystal #1205 Fancy Loop Celery Dip (2)
 _____ 148. Crystal #1454 Diamond Point Ind. Ash Tray & Jelly
 (3 sets) (H)
 _____ 149. Crystal #1404 Old Sandwich Ind. Ash Tray
 (Butter Pat) (7) (H)
 _____ 150. Flamingo #1183 Revere Salt Dip (3)
 _____ 151. Crystal #393 Narrow Flute Salt Dip (2) (H)
 _____ 152. Crystal #1201 Fandango Salt Dip (2)
 _____ 153. Crystal # 341 Puritan Salt Dip (8)
 _____ 154. Crystal #30 Toy Candle Stick (H)
 _____ 155. Crystal Diamond Advertising Sign
 _____ 156. Crystal Cabachon Advertising Sign
 _____ 157. Blue, Red & Silver Advertising Sign
 _____ 158. Crystal Bowl #3380 Old Dominion Saucer Champ.
 Moongleam Stem & Foot, Empress Etch (H)
 _____ 159. Crystal #3368 Albemarle Saucer Champagne
 _____ 160. Sahara #3380 Old Dominion Saucer Champagne
 _____ 161. Crystal #4091 Kimberly Saucer Champagne,
 Sungate Cutting
 _____ 162. Flamingo #3365 Ramshorn Saucer Champagne,
 Ramshorn Optic (H)
 _____ 163. Crystal # 365 Old Queen Ann 4 oz. Ftd. Sherbet (H)
 _____ 164. Zircon Bowl #4085 Kohinoor Sherbet, Crystal Foot
 _____ 165. Crystal #4085 Kohinoor Sherbet
 _____ 166. Crystal Bowl #3355 Fairacre (2) Saucer Champagne,
 Moongleam Stem & Foot
 _____ 167. Sahara #1401 Empress Sherbet (H)
 _____ 168. Amber #3312 Gayoso D.O. Sherbet
 _____ 169. Marigold #1252 Twist (12 pcs.)
 4 Cups & Saucers (H)
 4 8" Plates
 _____ 170. Marigold #1184 Yeoman Divided Relish
 _____ 170.A Marigold Tall Goblet Empress Etch
 _____ 170.B Marigold Saucer Champagne
 _____ 170.C Marigold 5 oz. Parfait

PAID ADVERTISEMENT

171. Flamingo #1186 Yeoman Diamond Optic Cups & Saucers (5 sets) (H)
172. Flamingo #1186 Yeoman Diamond Optic 8" Plates (6)
173. Flamingo #1186 Yeoman Oval Platter
174. Flamingo #1184 Yeoman Hdd. Soup
175. Flamingo # 500 Octagon 6" Oblong Tray (4)
176. Flamingo #1184 Yeoman After Dinner Cup & Saucer (3 sets) (H)
177. Flamingo #1229 Octagon Footed Mayonnaise (H)
178. Flamingo #1229 Octagon 6" Mint
179. Flamingo #1184 Yeoman 6 1/2" Hdd. Bon Bon
180. Flamingo Club Snack Tray (H)
181. Crystal # 352 Flat Panel Oil & Vinegar Bottle
182. Crystal #5031 Oil & Vinegar Bottle Orchid Etch
183. Flamingo # 517 Cologne Diamond Optic (2)
184. Crystal # 485 Cologne Windsor Cutting (H) Stopper Perfect
185. Flamingo # 515 Cologne Diamond Optic (2) (H)
186. Flamingo Powder Box (H)
187. Crystal #1184 Yeoman Powder Box (H)
188. Crystal Frosted 16 Powder Box & Hair Receiver (H)
189. Crystal, Sesquicentennial Ash Tray Dated 1802-1952
190. Crystal #1435 Individual Ash Tray, Rose Etch
191. Crystal #1503 Crystolite Ind. Ash Tray, Nut or Mint (2) (H)
192. Crystal #1180 Ash Tray Decorated Black Rim (H)
193. Crystal #1469 Ridgeleigh Cigarette Box (H)
194. Gold Iridescent #3368 Albemarle Cocktail
195. Crystal #3366 Trojan Cocktail Trojan Etch (H)
196. Crystal #5013 Shasta Cocktail (H)
197. Crystal #6003 Tempo Cocktail Garland Cutting (H)
198. Crystal #5067 Plantation Wine (H)
199. Crystal #5024 Oxford Claret (2) Moonglo Cutting (H)
200. Crystal #6003 Tempo Wine Wildflower Cutting (H)
201. Crystal # 369 Hartman Wine (H)
202. Crystal Bowl #3357 King Arthur Wine (2) (H) Moongleam Stem & Foot
203. Crystal #1225 Plain Band Wine Reg. #310924
204. Crystal #160 Locket-on-Chain Wine
205. Crystal Red Stain #1225 Plain Band Wine "Lucy"
206. Custard #1295 Beaded Swag Wine Souvenir
207. Crystal # 300 Peerless Cordial (H)
208. Crystal #3408 Jamestown Cordial Sheffield Cutting (H)
209. Crystal #5010 Symphonic Cordial Minuet Etch (H)
210. Crystal #3416 Barbara Fritchie Cordial, Chateau Etch (H)
211. Crystal # 300 Peerless Toothpick Holder
212. Custard #1280 Wing Scroll Toothpick Holder
213. Crystal Red Stain #1200 Cut Block Toothpick Holder
214. Custard Rose Dec. 310 (1245) Ring Band
215. Crystal # 343 Sunburst Toothpick Holder (H)
216. Crystal Red Stain #1295 Beaded Swag Toothpick Holder "Winnie 1904"
217. Milk Glass Rose Dec. 1295 Beaded Swag Toothpick Holder
218. Crystal Gold Stain #315 Panelled Cane Toothpick Holder (H)
219. Crystal Red Stain 1220 Puntty Band Toothpick Holder (H) Souv. "Hot Springs, Ark. 1902"
220. Custard # 310 (1245) Ring Band Toothpick Holder Souvenir "New Philadelphia"
221. Crystal #1205 Fancy Loop Toothpick Holder
222. Crystal Gold Dec. #1201 Fandango Toothpick Holder
223. Custard Rose Dec. #1220 Puntty Band Toothpick Holder (H) Souvenir "Conneaut Lake"
224. Crystal # 305 Puntty & Dia. Point Toothpick Holder
225. Crystal # 341 Old Williamsburg Shot Glass (H)
226. #1469 Ridgeleigh Shot Glass (H)
227. Crystal #4004 Impromptu Shot Glass (2)
228. Crystal # 369 Hartman Shot Glass (H)
229. Crystal Colonial Shot Glass (H)
230. Crystal # 411 Rib & Panel Shot Glass (H)
231. Milk Glass Rose Dec. #1295 Beaded Swag Cov. Sugar
232. Milk Glass Rose Dec. #1295 Beaded Swag Creamer
233. Milk Glass #1295 Beaded Swag Tumbler Souvenir "Rock Springs"
234. Milk Glass #1295 Beaded Swag Sauce Dish
235. Milk Glass #1280 Wing Scroll Trinket Box, Souvenir Abilene, Kansas
236. Cobalt #1428 Warwick Floral Bowl (H)
237. Cobalt #1428 Warwick 9" Cornicopia Vase (2) (H)
238. Cobalt #4045 4" Ball Vase Wide Optic
239. Cobalt #3390 Carcassone Claret
240. Cobalt 6" Bud Vase
241. Custard Rose Dec. #1295 Beaded Swag Goblet Liginier, Ind.
242. Custard Rose Dec. #310 (1245) Ring Band Tumbler (H) Dotted Ring Around Middle
243. Custard Rose Dec. #1220 Puntty Band Tumbler (H) Fillmore, Wis.
244. Custard Rose Dec. 310(1245) Ring Band Tumbler (H)
245. Custard Gold Dec. Worn #1280 Wing Scroll Tumbler
246. Custard Rose Dec. #1220 Puntty Band Mug (H) Welcome, Wis.
247. Custard Rose Dec. #1255 Pineapple & Fan 5" Creamer (H)
248. Custard #1220 Puntty Band Toy Cream (H) Petrosky 1901
249. Custard #1200 Cut Block 3" Creamer Ohio Pyle, Pa.
250. Custard #1200 Cut Block 3" Creamer Souvenir Clymer, Pa.
251. Custard #1225 Plain Band 2 1/4" Custard (H) Souvenir Put-in-Bay 1901
252. Custard #1225 Plain Band 2 1/4" Custard (H) Alpena, Mich. 1901
253. Custard #1200 Cut Block 2 1/2" Open Sugar, Urichsville, Ohio
254. Custard #1295 Beaded Swag 4 1/2" Sauce Dish
255. Crystal Ukn. 9" Footed Fruit Dish (H) (H)
256. Crystal #1205 Fancy Loop Vase 10"
257. Crystal # 300 Peerless Vase 10"
258. Crystal #1205 Fancy Loop 9" Plate
259. Crystal # 160 Locket-on-Chain Relish
260. Crystal #1255 Pineapple & Fan Mug Gold Decorated
261. Crystal #1205 Fancy Loop Open Sugar & Cream Gold Decorated
262. Crystal #1201 Fandango Open Sugar & Cream
263. Crystal # 451 Cross-lined Flute Hdd. Jelly Dish (H)
264. Crystal # 343 Sunburst Flat 5" Sauce (H)

PAID ADVERTISEMENT

- _____ 265. Crystal #1235 Beaded Panel & Sunburst 4" Sauce
- _____ 266. Crystal #1205 Fancy Loop 4" Sauce (4)
- _____ 267. EMERALD #1205 Fancy Loop Toy Cream
- _____ 268. Crystal Gold Dec. #1201 Fandango Horseradish Jar (no lid)
- _____ 268. Crystal Gold Dec. #1201 Fandango Horseradish Jar (no lid)
- _____ 269. Crystal #1485 Saturn Covered Mustard (H)
- _____ 270. Flamingo #1401 Empress Cov. Mustard & Spoon (H)
- _____ 271. Crystal # 353 Medium Flat Panel Small Syrup (H)
- _____ 272. Crystal Red Stain #1220 Punty Band 4" Creamer "Street Fair 1899"
- _____ 273. Crystal Red Stain #1200 Cut Block 3" Creamer "E. Wright"
- _____ 274. Crystal Red Stain #1295 Beaded Swag Cup & Saucer "Mother - Atlantic City 1902"
- _____ 275. Sahara #1401 Empress Min. Cream & Sugar (H)
- _____ 276. Crystal # 352 Flat Panel Knife Rest (H)(H)
- _____ 277. Crystal Door Knobs (2)
- _____ 278. Crystal #46 Salt & Pepper (H) Moongleam Foot
- _____ 279. Moongleam #56 Ind. Salt & Pepper (H) (no tops)
- _____ 280. Crystal #1590 Zodiac Champagne (4) (H)
- _____ 281. Crystal #1590 Zodiac Footed Juice (4) (H)
- _____ 282. Crystal #1228 Egg Cup (H)(H)
- _____ 283. Crystal #5013 Shasta 4 oz. Oyster Cocktail (4) (H)
- _____ 284. Crystal #5024 Oxford Fingerbowls, Huguenot Cutting (8)
- _____ 285. Crystal # 300 Peerless Punch Cups (5) (H)
- _____ 286. Flamingo # 433 Grecian Border Punch Cup (H)
- _____ 287. Sahara #1401 Empress D.F. Mayonnaise (H)
- _____ 288. Crystal #1483 Stanhope Jelly, Maytime Etch

- _____ 289. Zircon #1485 Saturn Baked Apple (H)
- _____ 290. Crystal #1185 Yeoman Center Hdd. Sandwich Tray (H)
- _____ 291. Crystal # 394 Narrow Flute Domino Sugar Tray(H)
- _____ 292. Crystal #1183 Revere 8" Plate Dolly Madison Rose Cutting
- _____ 293. Sahara #1401 Empress 7" Round Plate (7) (H)
- _____ 294. Flamingo # 135 Empress Line Candlestick (H)
- _____ 295. Sahara #1401 Empress D.F. Candlestick (H)
- _____ 296. Sahara # 135 Empress Line Candlestick, Old Colony Etch
- _____ 297. Crystal #1513 2-light Candelabra, no vase
- _____ 298. Crystal #1503 Crystolite Candle Holder
- _____ 299. Crystal #1503 Crystolite 7" Candy Dish Metal lid (H)
- _____ 300. Crystal #1503 Crystolite Cigarette Holder (H)
- _____ 301. Crystal #4202 6" Vase
- _____ 302. Crystal Pr. Round Bobeche w/(10) 2" prisms
- _____ 303. Metal Ice Tongs
- _____ 304. Crystal # 305 Punty & Dia. Point Butter Dish Lid
- _____ 305. Crystal #1519 Waverly Stopper
- _____ 306. Crystal 17 Misc. Stoppers
- _____ 307. Flamingo Pendant (H)
- _____ 308. Moongleam Pendant (H) & Pat. Date 6/20/16
- _____ 308.B Crystal Tall Stemmed Colonial Comport (H)
- _____ 309. Crystal Cut Rose Bowl Cut & Signed by Max Seidel
- _____ 310. Caramel Slag Kicking Colt Imperial
- _____ 311. Land Of Legend Souvenir Plate 1971 Amber
- _____ 312. Land Of Legend Souvenir Plate 1972 Blue Haze
- _____ 313. Land Of Legend Souvenir Plate 1973 Verda Green
- _____ 314. Land Of Legend Souvenir Plate 1974 Nut Brown
- _____ 315. Land Of Legend Souvenir Plate 1975 Ultra Blue

DOORS OPEN AT 12:00 NOON

Food Available

Mail bids accepted with checks for maximum amount. Mail bids will be bid competitively and any difference refunded. Checks should be made out to:

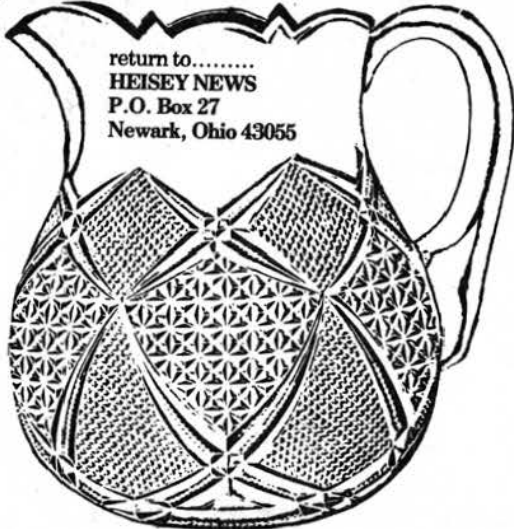
F & S Auction Service

and mailed to: **F & S AUCTION SERVICE**
BOX 84
GRANVILLE, OHIO 43023

PRICE LISTS AVAILABLE FOR \$1.00


SAM SCHNAIDT, **FRANK FRYE,**
Auctioneer **Manager**
(614) 587-0052 (614) 344-9847

PAID ADVERTISEMENT



return to.....
HEISEY NEWS
P.O. Box 27
Newark, Ohio 43055

FIRST CLASS MAIL
U.S. POSTAGE
PAID
PERMIT 34
Reynoldsburg, Ohio 43068



Member
National Bicentennial
Service Alliance