

# HEISEY NEWS

VOL. V, NO. 3  
MARCH 25, 1976

OFFICIAL PUBLICATION HEISEY COLLECTORS OF AMERICA

EIGHTY CENTS

*From the desk of...*

*your President,*

It was a busy weekend, but very rewarding. Friday night was spent unpacking and arranging the auction glass at the Sheraton Inn, with a lot of members pitching in to help. It was quite an array of colorful glass which included the rare, the not-no-rare and the fairly common, if that category fits any Heisey anymore. Candleholders and stemware were there in abundance which indicates the increasing popularity of these items. The rarest item was an amber Clydesdale which had not been removed from the "bust-off" and the mane was not completely filled out. This item arrived too late for the list. However, since only two of these are presently known it still brought a price of \$2000. A rare amber stem goose cocktail glass (one of seven known to date) sold for \$500. The Gazelle brought \$600 even though it was also damaged.

We started the morning of March 13 with a board of directors breakfast meeting at the Sheraton, starting at 8 a.m. The long agenda was covered

con't on page 11

Let's take a walk through....

## **The National Heisey Glass Museum**



DINING ROOM

by Louise Ream

### **POSTAGE COSTS**

Here is where a lot of your \$8.00 goes. It cost 35¢ to mail your February issue. This, and all other issues, cost 24¢ postage. It would be much cheaper to mail second class on our non-profit status but the national members have voted to continue first class mailing to receive the newsletter sooner. HCA held the line on dues for 1976 and is absorbing the extra postage. This may not be possible for 1977. Your comments are invited.

It has occurred to us that while our National Heisey Glass Museum has been written up in many other publications we have never given all of you out there a complete tour via Heisey News.

As you approach Sixth Street (Museum) Park you will see three stately old homes in a wide expanse of lawn. Coming into the park from Main Street you will first see the "Buckingham House" with its huge white columns extending upward for two stories. This is a meeting house and is used for receptions, parties and other meetings and it belongs to the county historical society. The next house is the "Davidson House" and is the museum of the Licking County His-

torical Society. It, too, is a beautiful old home with many attractive architectural features.

The third house, just off Church Streets is the "King House", our very own glass museum, which was moved to the park in September 1973 to be restored. These three old houses at one time stood only a block apart in the downtown area. (See Heisey News, Vol. III, Page 3). Never in their earlier locations could they have looked as impressive as in the park setting where they are far back from the street and no longer closely surrounded by other houses.

con't on page 3

# HEISEY ANIMALS --- FIGURINES

## "#1591 CHILDS MUG"

by DICK MARSH



ELEPHANT HANDLED CHILD'S MUG

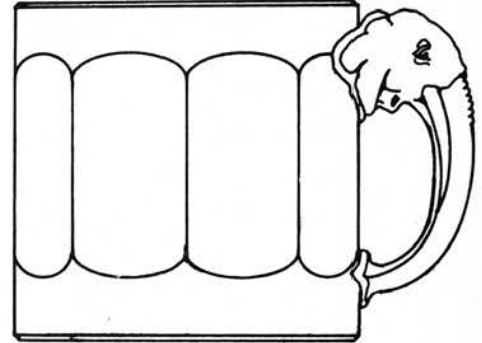
Anyone letting their children drink milk from one of these mugs is one of the following: believes in tempting fate, has more money than good sense, has money and good taste, doesn't know what he has or puts glue on the handle before letting the kid have the mug.

The first mugs made did not have the nursery rhyme characters, which left plain panels. There were very few of these made as Clarence Heisey didn't care for them, and it was sent

back to Mr. King for reworking. Horace King got the idea of nursery rhyme characters after reading poems to his children. The rhymes from the right of the handle around are: Little Miss Muffet, Little Boy Blue, Hey Diddle-Dee, Little Bo Peep, Jack-Be-Nimble, Cinderella, and Puss & Boots.

This item was designed by Horace King, head of the Art department at Denison University in Granville, It was made in crystal only. Generally, all clear are rarely with a frosted handle, they are known both marked and unmarked. The mug has a diameter of 2-7/8" O.D., is 3" tall, and has a ground and polished bottom. There are 8 colonial style panels around it's sides. The handle is an elephant's head & trunk. It's ears, neck and lower jaw start the top of the handle. The head is mostly plain with the eyes which are round dots in oval depressed areas and the open mouth with both jaws being the only detail. The trunk forms the rest of the handle. There are ten creases across the front of the trunk.

Imperial Corp. has reissued this mug



CHILD'S CUP' H King 4-6-46

in various forms but never in crystal (and never with the Heisey mark.) They can be found in several carnival colors with various lettering on the bottom and also with wording about "80th Anniversary of Heisey", also on the bottom. These were made for E. Ward Russell for his own distribution. Imperial issued it in their blue Imperial Jewels but it has been discontinued for some time. They now make the mug in red, green and caramel slag, these three colors con't on page 12

### HEISEY NEWS --- P.O. BOX 27 --- NEWARK, OHIO 43055

EDITOR - LOUISE REAM, 1115 W. MAIN ST., NEWARK, OH 43055  
PUBLISHED 25TH DAY OF EACH MONTH, \$8.00/YEAR - 80¢/COPY  
BACK ISSUES AVAILABLE AT \$8.00/YEAR - 80¢/COPY  
PRESIDENT.....LOUISE REAM.....(614) 344 - 2377  
VICE PRESIDENT...HILDA RYAN.....(513) 433 - 6289  
SECRETARY.....ANN HOLMAN.....(614) 323 - 0759  
TREASURER.....LOREN YEAKLEY.....(614) 366 - 5101

ADVERTISING - SEND ALL ADS TO:  
VIRGINIA YEAKLEY, ADVERTISING MANAGER  
640 MELANIE COURT  
NEWARK, OHIO 43055

DEALER DIRECTORY ADVERTISING RATES-5 LINE-\$6.00/6 ISSUES  
CLASSIFIED ADVERTISING-5¢/WORD-\$1.00 MINIMUM. WE CANNOT  
MIX TYPE SIZES IN CLASSIFIED ADS.  
ABBREVIATIONS AND INITIALS COUNT  
AS WORDS.

HEISEY COLLECTORS OF AMERICA, INC IS A NON-PROFIT CORPORATION WITH TAX EXEMPT STATUS. OWNERS AND OPERATORS OF NATIONAL HEISEY GLASS MUSEUM, 6TH AND CHURCH STREETS, NEWARK, OHIO. OPEN DAILY 1-4 P.M., APRIL THROUGH OCTOBER EXCEPT MONDAYS AND HOLIDAYS, NOVEMBER THROUGH MARCH, WED., SAT., SUN. 1-4 P.M. MEMBERS ADMITTED FREE. PH: (614) 345-2932. CLUB MEMBERSHIP (INCLUDES 12 ISSUES OF HEISEY NEWS AND PARTICIPATION IN ALL CLUB ACTIVITIES) \$8.00/YEAR PLUS \$1.00 EACH FOR ADDITIONAL FAMILY MEMBERS IN SAME HOUSEHOLD WHO WISHES A MEMBERSHIP CARD. FOR VOTING MEMBERSHIP ADD \$25.00, ONE TIME ONLY FEE, OR WRITE FOR INFORMATION. MEMBERSHIP CHAIRMAN - ANN HOLMAN, BOX 27, NEWARK, OHIO 43055. NOTIFY IMMEDIATELY OF ANY CHANGE OF ADDRESS.

DISPLAY ADVERTISING RATES	MEMBER	NON-MEMBER
1/8 PAGE .....	\$ 8.00 .....	\$ 15.00
1/4 PAGE .....	15.00 .....	25.00
1/2 PAGE .....	25.00 .....	40.00
FULL PAGE .....	45.00 .....	60.00

PAYMENT IN FULL MUST ACCOMPANY ALL ADS.  
ADVERTISING COPY MUST BE IN OUR HANDS BY THE 10TH OF THE MONTH TO ASSURE PUBLICATION IN THAT MONTH'S ISSUE. ADVERTISEMENTS CONTAINING REPRODUCTIONS WILL NOT KNOWINGLY BE ACCEPTED UNLESS CLEARLY STATED (i.e. HEISEY BY IMPERIAL, ETC) HEISEY NEWS ASSUMES NO RESPONSIBILITY FOR FALSE ADVERTISING OR MISLEADING INFORMATION. IN THE EVENT OF TYPOGRAPHICAL ERROR, THE INCORRECT PORTION OF THE AD WILL BE RUN IN THE FOLLOWING ISSUE, BUT HEISEY NEWS ASSUMES NO FURTHER LIABILITY.

THE OPINIONS EXPRESSED IN ARTICLES IN HEISEY NEWS ARE THOSE OF THE AUTHORS AND NOT NECESSARILY THOSE OF THE ORGANIZATION. THE EDITORIAL STAFF RESERVES THE RIGHT TO EDIT OR REFUSE ANY MATERIAL SUBMITTED FOR PUBLICATION. WHEN REQUESTING INFORMATION, PLEASE ENCLOSE A SELF ADDRESSED STAMPED ENVELOPE (SASE).

SEND ALL LETTERS AND ARTICLES TO BE PUBLISHED TO THE EDITOR. LETTERS TO COLUMNISTS SHOULD BE SENT TO THE CLUB ADDRESS AND WILL BE FORWARDED.



PARLOR

con't from page 1

The walk leading up to the Heisey museum is made from the large slabs of slate which formerly made the walk in front of this house and it's neighbors on Second Street. The same slate also was used for the walk around the house to the side door.

The period of the house is Greek Revival and before it was moved the Victorian porch, which had replaced the original Greek portico back in the 1890's, was torn off. From an old stereoscopic slide the contractor was able to build a nearly identical portico which added great dignity to the house.

To add a "Heisey" touch, huge grindstones once used at the Heisey factory for grinding glass were cut and used as semi-circular steps. Another one was used in the center of the porch floor and was surrounded by more of the slate. Four of these stones help form a wall by the Church Street entrance. The foundation is faced with the original blocks of sandstone from the former site.

The porch lantern is an antique reproduction but the name plate, knocker and other hardware on the door is original. The beautiful glass surrounding the door is Venetian. Stained red, a floral pattern was etched through the red to the clear glass.

Entering the foyer the first thing to catch your eye is the beautiful curving staircase, (sometimes referred to as a hanging staircase). The

rail is solid cherry. There is a beautiful plaster medallion in the ceiling, painted white with a red background as it was originally, and from the center is suspended an antique tin candle lantern which has been brass plated and electrified. The original lantern had been very similar, according to Elizabeth King the former owner, but had fallen and was broken many years ago. The 1830 Empire sideboard was donated by Dr. William Wells of Newark. A tall kerosene lamp made by Heisey, and recently electrified, stands on the sideboard.

Room 1 to the right is the front parlor. There is a fireplace with a white marble mantel in this room and over it hangs a beautiful oil portrait of Samuel Dennis King, a prominent trial lawyer, for whom the house was built in 1831. This portrait and the one of his wife, Mary Ann, both in matching gilt frames were a gift from Elizabeth King, great granddaughter of the original owner. Miss King was the last of a long line of family members who occupied the house for 142 years, she moved out on the day HCA took possession. She is an ardent supporter of the club and a voting member. If you are lucky you may have her for



THE FOYER

your guide when you visit since she often helps in that capacity.

The chandelier is original to the house, probably put in during the late 1800's when gas was discovered here. Formerly a gas light the solid brass fixture has been repaired and burnished. It is quite ornate and must be seen to be appreciated, a most elegant feature of the house.

New lighted cabinets were built on either side of the fireplace and are filled with the earliest patterns (1896-1905). Colors of this period were evory (custard), opal, (milk glass), emerald and canary (vaseline). Most of the glass in these cupboards is unmarked.

The Empire sofa from about 1830, was a gift from our national publicity chairwoman, Orva Heissenbittel, and her daughter and son-in-law, all from the Washington D.C. area. It is upholstered in a pale yellow brocaded satin.

The 8½' tall cherry inlaid bookcase dates from about 1820. The doors are on pivots rather than hinges and a center drawer front drops to make a small writing desk. Behind the glass

con't next page



BEAUTIFUL POST CARD PHOTO OF MUSEUM

doors at the top you will find a collection of cruets. This cabinet was purchased in Pennsylvania by the museum committee.

The present dining room was formerly the second parlor and also has a fireplace as do most of the rooms. This mantel is from the 1890's and is the only one ever replaced. Originally golden oak, it has been painted white. Italian tiles with several frogs in relief surround the fireplace opening. This hearth also had to be replaced. Mary Ann's portrait hangs above this mantel. An outstanding feature of the room are the huge cherry-stained double doors forming an archway. It is said that in the 1860's this arch was added to please a daughter who wished to be married in an archway. The ceiling light is not original but is an antique from about 1850. Font and shade are creamy satin glass with leaves and spider web decoration.

The dining room furniture was made at the Newark Furniture Co. about 1920. Mary Pickford once had dining furniture from this factory. It was donated to the museum by the Louis Jeffers family who also had the chair seats upholstered to match the decor. All of the downstairs, except the entry, is carpeted in Wilton carpet with a needlepoint design in a soft-green with light beige background and it always draws a lot of comment. The entry and upstairs are carpeted in plush in a matching shade.

On the dining table is the Hemisphere five branch candelabrum which is the largest type made by Heisey. On the wall over a server is a small cabinet made by Ollie Armentrout of Newark, which was donated by the Land of Heisey Society, a Newark-based study club. The cabinet holds the bulbous Fandango pitcher which is the symbol of HCA and was given to the museum last convention by Louise Ream.

The window treatment throughout is the same, floor length sheers with antique satin swags in a soft shade of green. Very attractive!!!

Room 3, the former dining room, houses most of the glass from the colonial period, 1905 through 1922. The cabinets are from an old jewelry store in Pennsylvania, ca 1850. They fit this room as though made for it. These were refinished during the restoration. The chandelier is not original but is a gas fixture which we had electrified.

Colors were not plentiful during this period but pieces are shown in vaseline, flamingo, emerald, moon- gleam and one piece in marigold. Apparently a few molds were brought out for using with these later colors. This is the period of outstanding crystal, beautifully ground and polished and of excellent quality glass. Most glass of this period is marked with the exception of some pieces made by blowing in a mold. A punch bowl on a low stand gives a excellent opportunity for the uninitiated

to observe the Heisey trademark. Behind this room there once was a kitchen which was not moved because of lack of space for it on the lot.

Following the period of the glass we now move on to the second floor. The light fixture in the hall is another restored gas and electric combination and the shades on the electric sides are Heisey's #12 from pre-1900. If we ever could find two gas shades alike (Heisey) the other two could also be Heisey. In the hall are two lovely walnut bookcases which are original to the house. These have been refinished with glass shelves and lights added.

To the left is a light and attractive room with a breathtaking display of colors from 1925-1940. The cabinets are new and all painted white and lighted. These are filled with flamingo, moon- gleam and cobalt in many different patterns. Of course all of these were also made in crystal. On this mantel is a portrait of A. H. Heisey, a gift from Mrs. Clarence Heisey. On loan here is a antique love seat.

Back of this room is what we call our educational room. It is filled with miscellaneous items, whimsys, the few known fakes, Imperial reissues, Verlys by Heisey etc. One cabinet is reserved for special displays belonging to an individual. Ash trays and candlesticks have been featured and the present display is over 100 different tumblers, out of  
con't next page

# MUSEUM REPORT

by Dick Marsh, Museum Chairman

the hundreds made by Heisey. There is a rocking chair which used to belong to Wilson Heisey, the second president. Over the mantel is a large picture of a blower using a blown mold.

A quaint room, a step down, is used for an office and library. One wall is lined with storage cabinets from the Heisey factory. Painted white to match the walls they look as though they had always been a part of this slant ceiling room. It is here that members may use the Microfiche reader to study our reference materials.

Across the hall is another room of colored glass from the same period. Hawthorne, sahara, alexandrite, amber and marigold are displayed in cabinets from an old drugstore in Mansfield, Ohio. These are dark cabinets and a contrast to those in the other upstairs rooms. This is the only room which has incandescent lighting in order to bring out the true beauty of alexandrite and sahara. Also here we have a display of two molds, one a press mold and the other a blow mold. Wilson Heisey's portrait is on this mantel.

Downstairs once more, we enter the room on the left which most people love. Over the mantel are portraits of A.H. Heisey and his wife, the former Susan Duncan. These are gifts of A. H. Heisey II. There is another chandelier in this room similar to the one in the parlor. The popular deep plate etchings are displayed here as well as the late colors, dawn and limelight and a cabinet full of rare cuttings and engravings. Still another cabinet contains rare items in tangerine, experimental blue and black, opalescent gold, and much more. These cabinets have been recently mirrored which adds greatly to the beauty of the display. A small cabinet contains a collection of miniature items.

The next room, again in beautifully lighted and mirrored cases, all of the Heisey animals and most of the related items can be seen. A small cabinet displays all of the tooth-picks and still another is filled with stemware in various cuttings and etchings as well as some in color.

Here, too, is a small gift shop and nearly all Heisey reference books are available. Also sold here are post cards of the house, slag animals by Imperial etc.

There is a small kitchen for washing

As of the 5th of this month, the special display of candlesticks was over and has been replaced with a special display of tumblers by Tom & Neila Bredehoft. They are both very active in HCA and Tom is a board member.

For your comfort while at the museum, the Museum Committee has ordered some padded chairs which will be for general use of guests and meetings. The Committee has purchased a fireplace fender made of solid brass which was a part of the King house prior to our acquisition. This fender will be used in Room #1 as it returns to it's original home and hearth. We also approved the laying of tile in the restrooms and kitchen of the lower level. The committee is looking into some lounge furniture for the lower level.

It was also decided to have mirrors put in the display cases in Rooms 4 & 5 and you should see them now. The effect is described as: Wow, Great, & Beautiful!!!

glassware (and making coffee for the volunteer help) and also a small office and two restrooms on this floor.

Not always on the tour but always open to members who visit is the Church Street level. This is a large meeting room and the problem here is the too-low ceiling caused by having to stop one block too soon with the excavation because of finding the bones. (See Heisey News, Vol. II, #10, page 1.) It is no problem for the average person and not many of our visitors are 6'2" and over.

Carpeted last spring by the Reynoldsburg HCC, this is a comfortable place to hold meetings. There are two rest rooms and a full kitchen. Storage cabinets with louvered doors are a recent addition on one whole wall. Show cases holding tools used in glassmaking, and other related items line another. Two more cabinets were purchased by the Board of Directors on the 13th and will be placed along another wall. This area will be used as a lounge convention in June as it was last year. The Licking County Geaneological Society meets here weekly and the new Former Employees Club is holding it's monthly meeting here. Any local club can meet here any time by paying the rental fee to defray expenses of the

On March 1st the Museum had a 15 minute spot on CBS's Columbus, Ohio station. Loren Yeakley was our host for this program. Two days were spent in video taping this show and Loren says his autograph has gone up in price. On March 14th the Columbus Dispatch, which has a state-wide distribution, is running a feature story in it's magazine section with photos.

## MENLO PARK LIBRARY HAS DISPLAY

Residents of the Menlo Park, California area can visit the library and see a display of fifty five different candleholders in five colors and crystal. These are from a member's collection. This display will be on through the month of March and will be followed by other displays in the months to come. The club member wishes to remain anonymous.

utilities and cleaning. Heisey Hunters Club of Newark has donated flatware and cups for use at meetings. There are tables and chairs for functions such as Mr. Anderson's birthday party and the area club's Christmas party. We wish you all lived close enough to use this facility.

The house is heated with two gas furnaces, is centrally air-conditioned and there is a complete burglar alarm system which goes into the police department.

All in all we believe all of you can be very proud of your museum. A tour through is worth a million words so we hope you can all visit someday. The atmosphere is friendly and quite informal. As the know everything is done by volunteers. Only recently have we even begun to have a paid cleaning woman.

We don't have time to call for help. We will start opening from 1 to 4 every day but Monday after April 1 so if you have any free time and live in this area please volunteer. If you are uneasy about your knowledge we will have training sessions for new docents. If you carefully read this article you will already know much of what we tell the visitors.

# HEISEY CANDLESTICKS

#150 and #600

by JACK METCALF



HANDLED CANDLESTICK



SAUCER FOOT CANDLESTICK

COMPOSITION OF SETS

**No. 1 BED ROOM SET**  
 18-IN. TRAY, GROUND BOTTOM  
 HDL. CANDLESTICK  
 1 1/2-QUART JUG  
 TUMBLER

**No. 2 BED ROOM SET**  
 10-IN. TRAY, FIRE POLISHED BOTTOM  
 FINE TANKARD AND COVER  
 TUMBLER  
 MATCH BOX AND COVER  
 SAUCER FOOT CANDLESTICK



No. 1 BED ROOM SET



No. 2 BED ROOM SET

The basic reason for grouping these candlesticks together is that the two sticks which look similar have different numbers, and the two with the same number look different. Got that!? As they say, "it's clear as mud, but it covers the ground."

First consider the two number 150 candlesticks. The "#150 saucer foot" is what I would call the real #150. This is the one with the characteristic #150 bands. Other names for the #150 pattern are "Banded Flute" and occasionally "Wedding Band". The other, which is called in the catalogue, "#150 handled candlestick" just has to be called a variant. Besides, the term handled candlestick is not all that descriptive; all three have handles. It's not clear to me how the 150 variant got into the 150 pattern. It's not a case of duplicate numbers since most catalogues show both on the same page. The #150 variant seems to be the only item in the Banded Flute pattern with no bands whatsoever. The #150 sticks are shown both in Vogel 2 and

in the Reprint #75. Each is pictured separately and with a bedroom set. Some specific information on the candlesticks which may not be apparent from the pictures is in order. The #150 handled candlestick is about 4 inches tall with a base about 4 1/2 inches across. It has a hexagonal top which flares into a round base with six flat panels. In addition there is an optic on the inside of the hollow base of 26 panels; which doesn't come out even. All of this gives the picture of the base a rather mottled appearance in the catalogue, but makes it sparkle in the light. What appears as a flat spot on the handles, is actually a flat spot on the handle, to rest the thumb apparently, or to make it easier to hold when skulking around the house at night.

The regular #150 saucer foot is about 2 inches high with a 5 inch saucer. There are bands around the saucer and around the top of the candle holder itself. The saucer is raised about a quarter of an inch on

a foot as shown in the picture. The optic on the foot is not necessarily as clear as the picture shows, however. Both of these #150 candlesticks are marked on the candle holder portion.

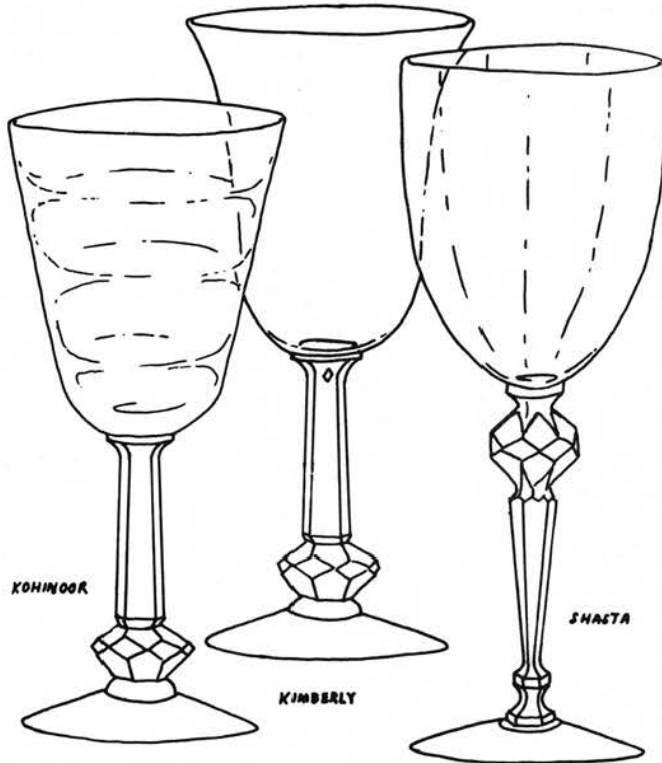
The number 600 candlestick is very similar to the #150 saucer foot. The overall size and configuration are about the same. The single most distinguishing feature is the handle. The #600 has a squarish handle attached to the candle holder and the #150 has a round handle attached to the saucer. Some less important differences are that the saucer for the #600 is not set up on a foot, nor is there a set of bands around the saucer. The bands around the top of the candle holder are included in the #600, though.

All three of the sticks are available in clear, high quality crystal. I do not know of any colors and I do not believe that there are any reproductions of these sticks.

# "STEMS, STEMS & MORE STEMS"

## THE HEISEY "DIAMONDS"

by CARL SPARACIO



In the depths of the depression (the BIG one, not the one we are currently enjoying), circa 1937 before the European war did its bit to bolster our economy Heisey did its bit to bolster our morale. The company brought out three stem lines which featured the king of gems - the diamond. To further enhance the image of wealth the lines were named after the most famous diamond mines of the day; Kimberly, Kohinoor and Shasta.

I have difficulty remembering which name goes with which stem even though the differences are quite apparent. But then I do not have a precise and details are a bore. Perhaps memorizing this little poem will be helpful. It's called "Where's the Diamond".

Hey diddle diddle,  
The cat and the fiddle.  
Shasta is up and Kimberly down  
But Kohinoor's not in the middle.  
Alright, so it doesn't help. You're forcing me to be more precise.

#4085 Kohinoor is the first and probably the best known. The bowl shape sets it apart from Kimberly. The Kohinoor bowls have slightly tapered straight sides and will always be found in either saturn or wide optic with saturn being the more common. The 4½ oz. cocktail and the Rhine

wine are exceptions as they both were offered with round bowls. The stemware offered was the goblet, low footed goblet champagne, cocktail (both straight and round bowls), wine, claret, Rhine wine, cordial, sherbet, oyster cocktail and sodas in three sizes.

As for cuttings and etchings it is known in the 485 Polo etching and the following cuttings: 888 Madeira, 889 Sheffield, 890 Churchill, 891 Pembroke, 892 Berkely Square. It is impossible to be specific about cuttings and etchings as buyers could special order an etching or cutting they liked on a line it wasn't normally issued on as a standard catalog item.

Crystal, as usual, is the easy color in Kohinoor followed by Limelight/Zircon. The only other color made in this pattern was Trial Blue and on the Sparacio scale of 1 to 10 for elusiveness we give it a 39.

One point we might mention which could lead to confusion is the numbering of Kohinoor. The pressed items in this pattern were numbered 1488 and it would normally follow that the blown pieces would be 4088.

For some unexplained reason blown

Kohinoor was numbered 4085. Saturn, which was 1485, was not offered in a blown line, thank goodness. I'm guessing but perhaps this was done purposely so that the blown 4085 could be offered with both 1485 and 1488. It's not unreasonable since Kohinoor with saturn optic blends well with saturn.

#4091 Kimberly is Kohinoor's kissin' cousin. The only difference being the tulip shaped bowl which was offered plain only -- no optic. The Kimberly design is not as pleasing as Kohinoor's. The bowl and stem just don't make it together. I know of Kimberly in crystal only but what it lacked in color it made up for in cuttings and etchings. Some of the etchings offered were: 497 Rosalie, 496 Skier and 495 Polo. In cuttings you will find: #844½, 893 Carlton, 895 Waterford, 896 Sungate, 919 Laurel Wreath, 941 Barcelona, 943 Belfast, 944 Courtship, 945 Virginia, 949 Evelyn, 1015 Dolly Madison Rose and others.

Kimberly was a stem line only and did not have related pressed pieces. The stems offered were a high and low footed goblet, champagne, claret, cocktail, wine, cordial, sherbet, and two sizes of sodas. An oyster cocktail was also offered but it really wasn't Kimberly. It was a stock piece which was carried in the Heisey line for years.

As an extra added attraction we'll discuss 5013 Shasta also. Shasta shares the "diamond" with Kohinoor and Kimberly but nothing else. Shasta's diamond sits between the bowl and the stem rather than at the base of the stem. At first glance it appears that the Shasta stem is no more than Kohinoor/Kimberly turned upside down but there are differences. Of the three Shasta is the most elegant in appearance and when seen with the George IV cutting it is absolutely magnificent. Its amazing what turning a stem upside down will do. The only set of Shasta goblets I've seen was unusual in that the size of the diamond varied so from piece to piece. The largest diamond looked the best.

Shasta sports a cupped shaped bowl in wide optic. I've not seen it signed but Kohinoor and Kimberly will be found signed and unsigned. No color

# TUMBLERS 'A Beginning'

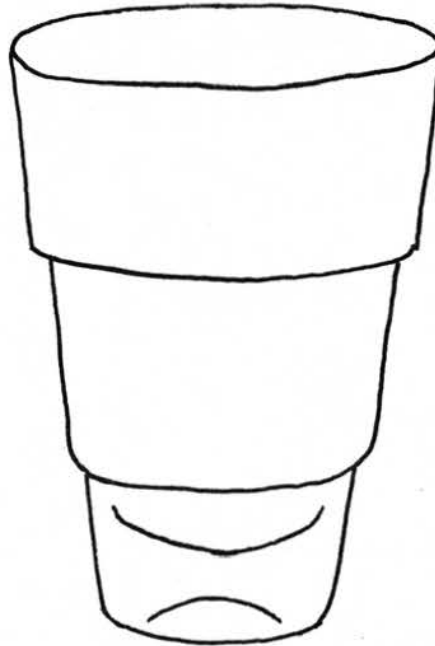
by TOM BREDEHOFT

This month we will deal with two quite dissimilar tumblers. They were made in different periods and have widely differing characteristics, but happily both are great additions to a tumbler collection. Neither is a commonly seen tumbler.

Number 113 will give you a chance to put your powers of observation and memory to the test, as it will probably be found with other pressed glass tumblers --- when it is found. Remember when trying to identify these oldies that Heisey ones usually had full ground bases or ground rims and usually a starred bottom. Most often, although not always, they were finely fire polished with few if any rough edges to the patterns. Mold seams are usually not visible. These criteria will eliminate many of the tumblers found on the market.

#1630 STACKING will not be a "sleeper" as it is signed, however, count yourself lucky to find one as they do not seem to be in great supply. It should be a relatively reasonable price since it is quite plain, but the shape makes it unusual.

See page 6 in the February issue of Heisey News, "Tumblers, A Beginning". The descriptions of the two tumblers were inadvertently reversed so that the information under 1200 Cut Block actually describes 1201 Fandango, and vice versa. Please mark this correction in your newsletter.



#1630 STACKING ABOVE  
PERIOD: late, circa 1950  
COLORS: crystal  
DECORATIONS: none known  
COMMENTS: "STACKING" really refers to the function of the tumbler, not its name; but for reference, STACKING will be used as its name. It is a one-item pattern number and is definitely a utilitarian tumbler. Since it is so narrow at the base (only 2 inches), it appears somewhat top heavy, but the 1/2" sham keeps it quite stable. The base is recessed approximately 1/4" leaving a rim which is ground. Marked.



#113 DIAMOND POINT AND FAN ABOVE  
PERIOD: very early, before 1900  
COLORS: crystal  
DECORATIONS: none known, but the possibility of gold or red stain on the plain portion should not be excluded  
COMMENTS: #113 is a fancy geometric pressed pattern. It is lighter in weight than one would expect for a Heisey tumbler. My example has not been well fire polished and retains prominent mold marks (in conflict with what I said above!) The sides have a slight taper. The base has a many-rayed star and is full ground. Unmarked.

## CONVENTION '76 - JUNE 10 - 13

Bob McClain, Convention Chairman

Plans for our 1976 Heisey Collectors of America Convention are well underway. All of the committees are working very hard to make this the nicest convention ever. We have several changes this year. The show will occupy both floors of the high school which will give us more booth space. The Display will be moved to the YWCA which will add much to the attractiveness of the display. There will be four seminars along with our usual sessions and these will be held at convention headquarters, the new Sheraton Inn.

Requests for room reservations have been coming in like mad and it looks

right now that we will have all one hundred rooms filled. As you know, the Spring National Drag Race Meet is the same weekend and attracts about 75,000 people, so if you want to be sure of a room, get your reservation in now.

A complete schedule of events, along with your convention registration form will appear in the April issue of Heisey News.

I'll see you at the convention.  
Note: See inside back cover of February issue of Heisey News for your motel registration form.

### Copies of Dispatch Magazine Article available

We were able to obtain 200 copies of the magazine section which contained the article about the museum which also has a color picture on the cover. These cost us 20¢. By mailing the pertinent pages only we can send them for 13¢. If you will send 20¢ in coin or stamps AND a (SASE) Self Addressed Stamped Envelope, we will send you a copy. Many people have called to see how they could get this. Address: HCA Magazine  
Box 27  
Newark, Oh 43055



# Heisey Cocktail Shaker #4225

by Joseph D. Lokay

Cocktails anyone? Look! He's going to use a Heisey #4225 cocktail shaker to mix them (Vogel IV, P.23).

The cocktail, which is of American origin, is an iced drink of distilled liquor well mixed with flavoring ingredients. The flavoring ingredient could be a cordial, a wine, a fruit juice, bitters, etc. Sometimes the recipe calls for adding eggs, sugar or cream.

A cocktail shaker is a machine or device used to mix cocktails by shaking. The all glass Heisey shaker was invented by Ray C. Cobel for which he was granted U. S. patent no. 1,966,611 on July 17, 1934. The patent was assigned to the A.H. Heisey Company of Newark, Ohio, a partnership.

It's interesting to note that the original application for this patent was filed on December 19, 1931. This was during the Prohibition Era so apparently, no action was taken on the shaker patent other than that the design was now on record. Congress passed a resolution proposing the repeal of Amendment 18 in February, 1933. By December 5, 1933, 36 states had ratified or approved the resolution. This represented a sufficient number of states that national prohibition was repealed. The Heisey Company renewed their patent application for the cocktail shaker on May 31, 1934 and the patent was granted about 1½ months later.

Prior to 1931, cocktail shakers were usually made entirely of metal. A few were made of glass with a metal or cork top. The undesirable features of these type of shakers were metal corrosion, deterioration of the cork and leakage because of a poor fit between the metal and glass parts.

One advantage of the Heisey cocktail shaker was that all parts were made of glass. Thus, there would be no corrosion or deterioration of any type. Ground glass joints were used to prevent leakage. A glass strainer was included to prevent the escape of large particles of fruit or other substances.

Figure 1 shows a perspective view of the shaker. Figure 2 is a section view of the upper part of the shaker and Figure 3 is a view showing the various parts before being assembled, the strainer part being partly cut away.

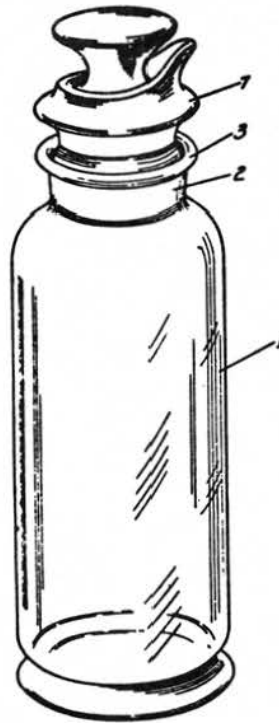


Fig 1

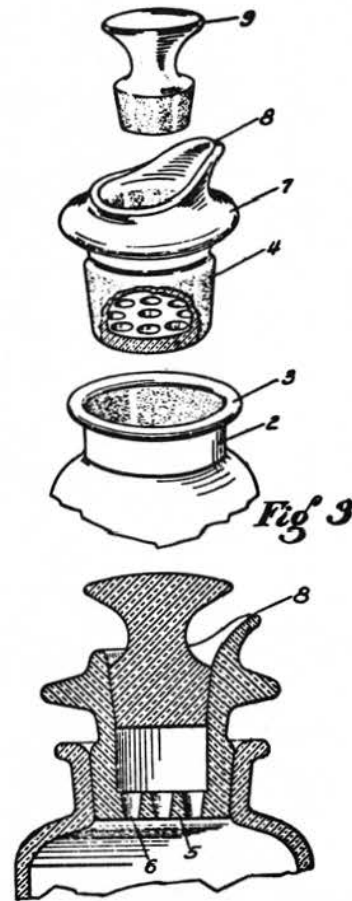


Fig 2

Fig 3

## HEISEY COCKTAIL SHAKER #4225

With reference to these drawings, the shaker is composed of three parts; a container (1), a strainer (4) and a stopper (9). The numbers refer to the numbers in the Figures. The container which could be of any suitable shape is shown in cylindrical form. A neck (2) exists at the upper end of the container. The neck is provided with an outwardly extending flange (3) formed on its upper end. This flange acts as a means for strengthening the neck and also provides a place where the container may be easily gripped by the hand and held therein. The inner wall of the neck is downwardly and inwardly inclined. This inner wall is ground for a glass to glass joint.

The strainer (4) is adapted to be mounted in the neck of the container. The lower portion of the strainer outer wall is ground to match the ground surface of the container neck so that there will be a tight fit between the strainer and the inner surface of the neck.

The strainer is hollow and its bottom (5) is provided with a series of openings (6) that extend therethrough. The strainer is further provided with an outwardly projecting flange (7) near the upper end. This flange is adapted to strengthen the upper end of the strainer and also serve as a means of holding the strainer in place during shaking and pouring. The upper end of the strainer is provided with a lip (8) for ease of pouring.

The stopper (9) is adapted to be mounted in the upper end of the strainer. The lower portion of the stopper is adapted to fit into a socket formed in the upper end of the strainer. The seat for the stopper within the strainer is slightly inclined and is ground. The lower portion of the stopper is ground to fit tightly into that seat.

When it is desired to mix a drink, the ingredients are placed in the  
con't on page 12

# SHOW REPORT

by Charlie Wade, Show Manager

The dust had no more settled from last years Show & Convention when the gears were set in motion for this years show. I happened upon the scene about this time, and to my dismay I came home one night arms loaded with placards, records and Show Manager title.

Many meetings and three or four empty pipe tobacco pouches later a lot of decisions were made.

By now most of you have heard we are adding twenty booths in the balcony at the High School this year.

All of the main floor booths have been filled. By the time you receive your newsletter we hope to have all the contracts returned for the balcony booths.

We believe we will have sixty of the best dealers in June with very fine selections of HEISEY & ANTIQUES for you to choose from

As this is my first year as Show Manager I would like to thank everyone for their help, also offers of help from the many dealers coming in June.

HOPE TO SEE YOU -- ALL THEN.

# Order Your Souvenir Plates Now

by CHAUNCEY DELANEY, Chairman

The 1976 "Heisey Glass In The Land of Legend" plates are available to HCA members only, one per member, until June 1. After that date they will be offered to the general public. At that time if any are left you may buy extras.

The plate is again in the #1447 Roco pattern, bearing both the original Heisey mark and Imperial's I.G. mark. The 1976 plate, which is the sixth and last of this series, is in clear crystal by popular request.

This is an HCA project with proceeds going to the museum fund. The project is being handled this year by the Buckeye HCC, a new study club in Newark, Ohio.

Only 1850 plates were made this year.

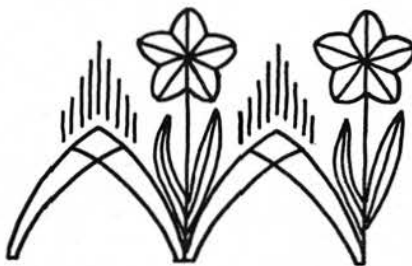
Based on a membership of over 2000, it is anticipated that very few plates, if any, will be available for sale after the June convention. So, reserve your plate by ordering now. You may request that it be held to be picked up at the convention.

Remember, HCA members are guaranteed one plate per member if the order is received prior to June 1. The price of the plate is \$13.50 if mailed out of Ohio or \$14.04 within the state. (Ohio residents must pay tax). If the plate is to be picked up it will be \$12.54 which includes local sales tax. Plates will be mailed in June.

Checks must accompany all orders and be made payable to: Heisey Museum Fund. Mail to: HCA PLATES  
Box 27  
Newark, Oh 43055

# Heisey Cutting #624

by Joseph Lokay



SKETCH OF HEISEY CUTTING #624

I have made a sketch of cutting #624 from the ad which is shown with this article. A description of this cut design could be "Arch and Flower". If we define a design unit as one arch with one flower, then two design units are shown in the sketch. Based on the pictures in the ad, it appears that eight design units were needed to go completely around the #1020 creamer and similarly, eight design units for around the #1020 sugar.

There is no mention in the ad of other Heisey pieces which might have this cutting. Thus, at this time, I don't know if this cutting appeared on any pieces other than the #1020 cream and sugar.

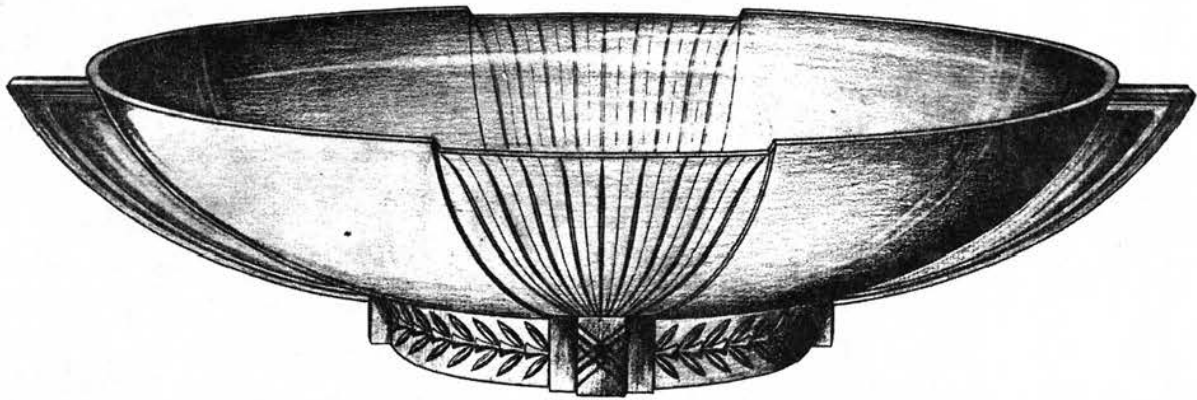
Ed. Note: We have over 200 numbers for cuttings and this is the first. The patent date in the #1020 Cream and sugar is 1921 and since Heisey supposedly started cutting in about 1916 this poses a question. Just another of those little mysteries. Perhaps the cutting was used on earlier patterns. A modification of this pattern was numbered #724 and also was shown on this cream and sugar.

When I was searching through the old magazines for Heisey ads, I came across an ad which mentioned cutting #624. It was on page 139 of the March 1921 issue of Good Housekeeping. Identical ads were also found on page 113 of the April 1921 of the Ladies Home Journal and on page 95 of the April 1921 issue of Woman's Home Companion.

The ad shows a picture of the #1020 hotel cream and sugar (Catalog #109, page 15) with a cut design on them. Under the picture are the words "No. 1020 Cream and Sugar, Cut No. 624".



#3404 SPANISH GOBLET, ENGRAVED BY EMIL KRALL - IN MUSEUM



1471 12" OVAL FLORAL BOWL

THIS ITEM IS SHOWN IN THE VOGEL BOOKS BUT IS NOT VERY PLAIN. IT IS NOT PICTURED IN ANY OF THE OTHER CATALOG REPRINTS.

con't from DESK OF page 1

as quickly as possible to hold the Quarterly meeting at 10 a.m. The Board authorized the purchase of an IBM typewriter for the office, two cabinets for the lower level, the rental of a copy machine on a trial basis, a portable public address system, the purchase of 100 yards of white material for use at the display and other minor items. The office equipment is much needed since what we have is quite inadequate. Some of the items we have rented in the past at high prices and it was felt that they would pay for themselves either in dollars saved or in convenience for the volunteer help.

A nominating committee was appointed composed of the following: Loren Yeakley, Elizabeth King, Darrell Bratt, Bob Johnson and Bob McClain. Five board members will be elected in June.

A former Heisey employee club was formed and will be meeting once a month at the museum. The Bob Evans Farms stock has had a split of 3 for 2. 10,000 new applications have been printed which tell much more about the club.

After a hurried quarterly meeting everyone rushed to the room where the auction was to be held. By 10:30 the room was almost full to overflowing and all day people had to stand. Many, many people stayed until the last item was sold.

HCA is very grateful to auctioneers Sam Schnaidt and Craig Connelly

whose voices were really put to a test during the ten hours of selling. Club members also helped with the sale, clerking, cashiering, acting as spotters, runners, etc.

Over \$32,000 was taken in but it is not known how much was made for HCA since all expenses have not been paid. Since much of the glass was on consignment we only received 20% of those, less expenses. We know it was a financial success and we thank everyone who participated in any way.

If you happened to be one of those who sent items adjudged not to be Heisey and which were not on the sale list, we are holding those items either until you are in Newark or until we hear from you as to their disposal.

One item we had was not on anyone's list so if you had a candlestick which you have not been paid for please contact us and we will send the check. Write Loren Yeakley at the club address.

Don't forget to get your plate orders in. All the work which can be done ahead helps the committee not to be so rushed at convention. Also make your motel reservations as soon as possible. See the form on the inside back sheet of this newsletter.

Our membership is growing and we have reached a new high even after removing the names of those who did not renew. Response has been tremendous to the High Road to Adventure program and also to the very nice

## NEW CLUB IS FORMED

by Dove McDonald

A meeting was held in the National Heisey Museum on February 16 with 32 former Heisey employees present. The purpose of the meeting was to form an F.H.E. Club.

Leroy Grubaugh served as chairman at this meeting. Louise Ream, Ann Holman and Dick Marsh were present to give some guidance which was appreciated.

It was decided to name the club, Former Employees of the A.H. Heisey Co. Social Club. The club will meet the third Monday of each month at 7:30 at the Heisey Museum.

article in the Sunday Columbus Dispatch. We were extremely pleased with that. We had so many visitors Sunday that it was hard for them to get near the cabinets at times.

The Reynoldsburg HCC has been given permission to sell clever badges with wordings such as "I DIG HEISEY", "I BELONG TO HCA", "I LIVE IN HEISEYLAND", "BUY HEISEY", "ASK ME ABOUT HEISEY", "HEISEY COLLECTORS OF AMERICA, INC" and one showing the museum. These sell here for 75¢ and will be on sale at the museum and the convention in June. We will also have them at the show in Alexandria, Va.

Happy Collecting,

*Louise Ream*

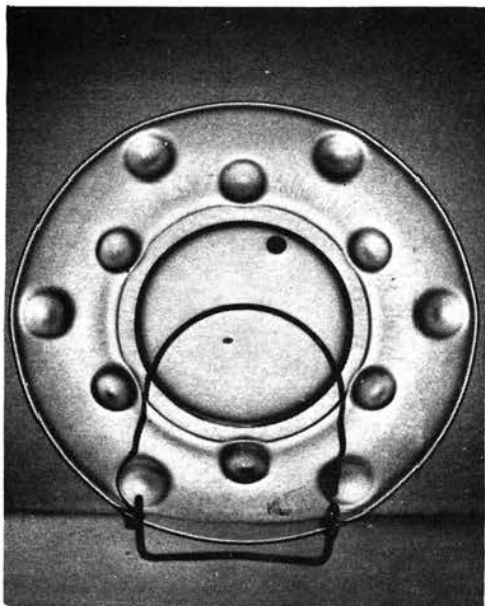
con't from STEMS page 7

was offered in Shasta and no etchings. The known cuttings are 924 Daisy and 926 George IV. The pieces available were goblet, champagne, claret, cocktail, oyster cocktail, cordial, wine, sherbet and two sizes of footed sodas. A small comport was also made.

Before someone writes to tell me that I forget to include 5057 Suez in this group I'll set the record straight. The Burns book "Heisey's Glassware of Distinction" incorrectly shows a picture of a Kimberly goblet for 5057 Suez. Make a note in your books as it might cause confusion when ordering stems through the mail.

As I write this the big Auction in Newark is about a week away and as you read this the auction is about two weeks past. I envy you. You already know how it went while I'm sitting here on pins and needles. There are many pieces of stemware in the auction and I'm particularly interested in which way the prices will go. If we can discern a trend we'll report on it next time. There are a couple of stems going up that I covet (to steal a word from Bob Ryan) but it's a choice between letting my daughter get married in her gym rompers (does that does me?) or a wedding gown and I've been out voted.

No mail to answer this time so I'll just close quietly because I promised Louise I would not say anymore about Tom Bredehoft being a nag. There, I kept my word!



#4004 7" IMPROMPTU PLATE, UNMARKED



#5012 URN VASE CUT BY EMIL KRALL UNMARKED IN MUSEUM



#1401 EMPRESS - DOLPHIN FOOTED TUMBLER, OLD COLONY ETCH.

con't from SHAKER page 9

container. Then the strainer is placed in the upper end of the container. The stopper is then inserted into the upper end of the strainer. The drink may then be shaken vigorously while the stopper and strainer are held in place by the hand. When the drink has been thoroughly mixed, the stopper is removed, and the drink is poured from the container. The pouring lip will aid in this pouring operation. As the liquid passes through the openings in the bottom of the strainer, the large particles of fruit, ice, or other ingredients are held back.



#4035 DECANTER AND #3408 JAMESTOWN WINE-CUT BY MAX SEIDEL IN MUSEUM



#4057 VASE ANGELFISH CARVING UNMARKED IN MUSEUM

con't from ANIMALS page 2

being available through HCA. While the mugs were being made for Russell, by Imperial, one turn was made in error with the regular bottom plate. There was no wording -- just the IG. Ed. Note: Since the Heisey mug is so expensive many collectors buy these in all the Colors.



FOR MANY YEARS WE HAVE BEEN SEEING OCCASIONAL 1509 QUEEN ANNE PIECES IN THIS PATTERN. IT IS SIMILAR TO HEISEY ROSE BUT THERE IS MUCH MORE TO THE PATTERN. WE THOUGHT IT MIGHT HAVE BEEN MADE BY ANOTHER COMPANY BECAUSE IT DID NOT APPEAR IN ANY CATALOG. SINCE THE MUSEUM OPENED SEVERAL ETCHING DRAWINGS WERE LOANED TO US, THIS AMONG THEM. IT HAS A NOTATION THAT THIS IS "ROSE OF PEACE". SO THE MYSTERY IS SOLVED. THE DATE ON THE DRAWING IS 12-10-47. THIS PARTICULAR DRAWING (WHICH HAS BEEN REDUCED IN SIZE) WAS MADE FOR THE 1509 TORTE PLATE. IT WAS ALSO PUT ON THE FLORAL BOWL IN QUEEN ANNE AND THE #134 CANDLESTICKS. DOES ANY ONE HAVE ANYTHING ELSE?



AN UNKNOWN ETCHING  
 THIS DRAWING IS ALSO ON LOAN TO THE MUSEUM AND SO FAR IT REMAINS UNIDENTIFIED AND UNSEEN. DOES ANYONE HAVE ANYTHING WITH THIS ETCHING?

## PICKING UP YOUR GLASS IN JUNE?

If any of you plan to pick up your glass on loan to the museum when you come to convention will you please notify us well in advance so that it can be removed from the cases? There will be little time to do this during the busy time at the convention, since cases would also have to be rearranged.

Address: HCA, DICK MARSH  
 Museum Chairman  
 Box 27  
 Newark, Oh 43055

## THOUGHT FOR THE MONTH

YOU ARE TODAY WHERE YOUR THOUGHTS HAVE BROUGHT YOU; YOU WILL BE TOMORROW WHERE YOUR THOUGHTS TAKE YOU. YOU CANNOT ESCAPE THE RESULT OF YOUR THOUGHTS.

from Stories and Anecdotes by  
 J. Braude

# CLUB NEWS

## BUCKEYE HEISEY COLLECTORS CLUB

Bill Matelan, President

The Buckeye Heisey Collectors, our recently-formed study club, met at the home of Gary and Martha McDonald on February 23rd. Members were pleased to hear that our club name had been officially approved. Betty Fulke had suggested the name at our January meeting, and we agreed to submit it for approval.

Our current project, the selling of the HCA's commemorative plates was discussed; and everything is coming along just fine. We can't emphasize enough that everyone get their orders in as soon as possible. This year's plate will be especially desirable as it is the last of the series, it is being issued during our country's Bicentennial, and there are only 1,850 plates available.

We have submitted the material necessary to obtain our charter and hope to receive it at the convention in June. Needless to say, we are all rather excited about becoming a chartered study club and to have the opportunity to really support the Heisey Collectors of America.

President's Note: Secretary/Treasurer of this club is Sue Matelin. They will receive Charter #20 in June. There are 18 members and Dick Marsh is the club's advisor.



l to r: Ronda Clapsaddle, Mollie Miller, Ed Browning.

## HEISEY CLUB of CALIFORNIA

Betty Wanser, Secretary

The Heisey Club of California, Charter 13 held their February Meeting in the home of Ann Smith of Long Beach. There were 23 members and visitors present.

We had a very fine program on salt dips, nut cups, individual ash trays, butter pats, and what have you. Our program chairman, Roy Boggs, did an excellent job of tracing the history of these small items throughout Heisey's production years. Our color of the month was Cobalt, and we saw the Warwick floral bowl and double lite

candlesticks, an Old Sandwich mug and a lovely cocktail shaker with silverplated cover, among other things.

This year our meetings will be in the homes of members and we will be moving around throughout the Southern California area to a different home each month. Our meetings are always the 4th. Sunday of each month. Anyone in our area wishing further information may contact our membership chairman: Gordon Clark, 15248 Dickens St., Sherman Oaks, Ca 91403.

## REYNOLDSBURG HEISEY COLLECTORS CLUB

### Charter #2

by Dorothy Marshall

At the March meeting of the Reynoldsburg Heisey Collectors Club, plans for the second annual antique show and flea market were discussed. This will be held on Sunday, October 31 in the gymnasium of the Reynoldsburg High School. Dealers interested should contact Harley Bethel, 8154 Durham Dr., Reynoldsburg, Ohio 43068 (614-861-4831). Some tables will be available on a rental basis if you do not wish to bring your own. However, they should be reserved. As all of the profits will go to the Museum, the Club hopes for good support from all HCA members.

In the meantime, Harley Bethel designed and made badges, which our Club will be selling at the auction, convention, etc., as another project. These are quite clever and real conversation items and there are seven from which to choose.

New officers were elected for the year are Harley Bethel, President, and Dorothy Marshall, secretary-treasurer.

After the meeting a discussion on etchings was led by Dick Marshall and a number of etched pieces were shown.

## FAR EAST HEISEY COLLECTORS CLUB, OHIO

### Charter #3

by Ronda Clapsaddle, President

The Far East Heisey Club was called to order at the home of Mollie Miller of Reynoldsburg with Kate Coveland as hostess.

Election of officers was held with the following elected; Ronda Clapsaddle, President; Ed Browning, Vice President; Mollie Miller, Secretary/Treasurer.

The membership voted to again display miniatures, "Heisey's Little Things"--at the National Convention. We will have our May meeting at Louise and Russ Ream's in Newark to

finalize last minute preparations.

Our catalog project is coming along rather well and hopefully we will have it ready before the convention. If not, then look for it at the September meeting.

We saw the new postcards on sale now at the museum. They are very well done and the picture of the museum on front is beautiful. Don't wait too long to purchase yours.

The next meeting will again be at Mollie Miller's home and this time she will also serve as hostess.

# HAND ENGRAVED GLASS

## (Heisey's Blanks)

Engraved Glass has become very popular in the last two years.

While there are an abundance of patterns cut on all kinds of blanks, we have found that tasty artistic engravings on good glass are the best and most profitable sellers.

**We use Heisey's Blanks exclusively and are only showing the most select engravings out this season.**

These goods are cut in our own factory here in Cincinnati, and since we have the advantage of low freight rates from Newark, which is only 150 miles from Cincinnati, we can sell these goods for less than eastern houses.

**We are using Heisey's Factory Numbers for our Engraved Glass.**

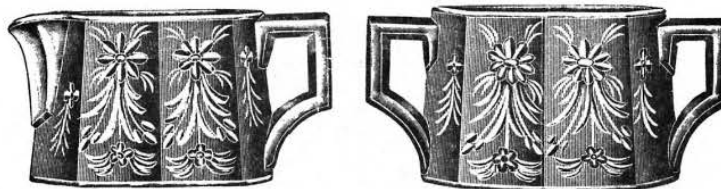
**Be sure to mention in your order which article is wanted as you will find several items bearing same number.**



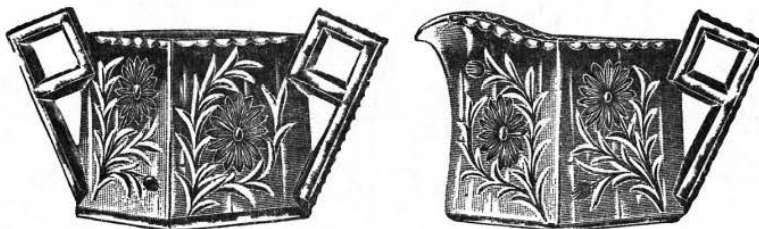
No. 106. Sugar and Cream Set.  
2½ inches high.  
Set, 85 cts. net.



No. 354. Sugar and Cream Set.  
Height, 4 inches.  
Set, \$1.00 net.



No. 353. Sugar and Cream Set.  
Height, 3 inches.  
Set, \$1.50 net.



No. 355. Sugar and Cream Set.  
Height, 3 inches.  
Set, \$1.75 net.

These pages are from a catalog of the Lewis & Neblett Co. which bought glass from Heisey for engraving. Please note that they used Heisey numbers for the patterns. The catalog is titled "AMERICAN CUT GLASS" Dated 1917 - 1918. There are to be continued pages in later Newsletters.

HAND ENGRAVED GLASS



No. 353. Marmalade.  
Height, 5¼ inches.  
75c net.



No. 465. 1-lb. Candy Jar.  
Height, 11 inches.  
\$1.00 net.



No. 1183. Marmalade on Tray.  
Has Silver-Plated Spoon.  
Height, 5 inches.  
75c net.



No. 363. 7-oz. Syrup.  
4½ inches high.  
\$1.00 net.



No. 400. Covered Butter.  
Height, 5½ inches.  
Plate, 7 inches diameter.  
50c net.



No. 362. 7-oz. Syrup.  
4½ inches high.  
\$1.00 net.



No. 1186. Fruit Nappy.  
4½ x 5½ inches.  
Height, 1½ inches.  
50c net.



No. 1186. 9-inch Fruit Bowl.  
8 x 9½ inches.  
Height, 2¼ inches.  
\$1.35 net.



No. 1186. 5-inch Handled  
Nappy.  
50c net.



### LETTERS, we get letters.....

We have traveled several hundred miles on this vacation thru Kansas, Okla., New Mexico and on down to Rio Grande Valley stopping in many shops. When we ask for Heisey they all shake their heads and say, "Well, we used to have some but just can't keep any on the shelves". However by study and constant looking we found and purchased 104 pieces, a majority of which are not marked.

The three items we were most thrilled with were a Heisey Orchid decanter with a sterling silver top, a gorgeous hunk of glass and not cheap, nor did the dealer know it was Heisey. Nor have I been able to find it in any of my books. The other item was a cheap pair of candle holders that were so beautiful I just couldn't pass them up. They were a beautiful blue green which I could not remember having seen before. But for \$18.00 even if they aren't Heisey, I argued with myself!!! They are #1495 (Fern) in Zircon. The last item was Ring Band bottom I've looked for two years. To make this a really successful vacation I'd like to find some orchid wines and Sahara Q. A. jug, maybe a cobalt and tangerine piece or just most anything in color.

Margaret Jennings, Mo

Ed. Note: Just give me those sticks in Zircon and I'd be satisfied. Have never seen the Fern sticks in color.

\*\*\*\*\*

We surely did enjoy our visit to the Heisey Museum last year. It is a gorgeous home (I loved the stairway and the warmth of the beautiful wood) and a perfect setting for the very attractive display of the brilliant Heisey glass. You Newark people have surely outdone yourselves. I wish I had could have gotten another box of Heisey over for the auction. I was certainly very pleased and happy with the results last year. I hope to see you all in June.

Bette Johnson, In.

\*\*\*\*\*

Enclosed please find payment for another 1/4 page ad for next month's news. I had excellent results from my ad and to also keep those members happy who say there haven't been enough ads. Keep up the great work.

Donald Mousseau, Fl

\*\*\*\*\*

Please pass on to the other officers of HCA my great pleasure in the "News". I am so far away it is doubtful I'll ever be able to visit the museum in person but I see it in my imagination everytime a new issue arrives. You hardworking people are certainly to be commended. I just wish it were possible to be there to take advantage of it.

Heisey has always been in short supply in this area. So far I have not been able to find out who retailed it here. But I keep looking and every now and then I come up with a real find.

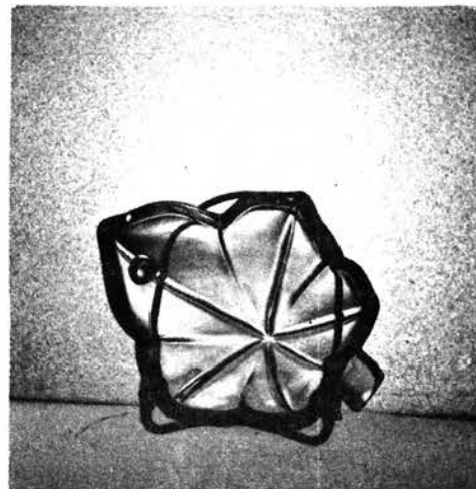
Happy Gypson, Tx

\*\*\*\*\*

I was interested in the picture of the #3970 Comport with #1245 plate as top. I, too, have the foot in moongleam with clear top. I also passed up one at a show sometime this past year. It was the same color as the one I had so there's another one out there somewhere. I didn't realize this is an unusual piece.

Mildred Lee, Il

Ed. Note: We also had a report from the California Heisey Club that members had two in flamingo and one in the crystal/moongleam combination. We pictured this item because it was not in published references nor in our original catalogs and because of the two patterns being combined to make it. It has been gratifying that several of you reported having it. It would be of great help if you would report on other pictured items such as the figural stems.



IVY LEAF NUT DISH, UNMARKED



#130 CANDLESTICK

## HEISEY COLLECTORS OF TEXAS

We enjoyed one of our later meetings with the Bairds. They are new collectors but do have a large collection of Heisey. Mr. Baird travels extensively and never fails to bring home more Heisey (to be deposited in drawers, under furniture, etc. due to lack of room). We especially en-

joyed the more unusual colors and a vast assortment of stems. It was a general consensus of opinion that Mr. Baird must buy every piece of Heisey he comes across!!

After a business meeting, refreshments were served to our seventeen members.

## LONG ISLAND HEISEY COLLECTORS CLUB

The Long Island Heisey Collectors Club is preparing a display of Heisey glass to be exhibited at the Nassau Coliseum on April 11, 1976. In honor of the Bicentennial Celebration, Heisey's pattern #1776 Kaylonyal will be featured, but more than 50 different patterns and 17 rare colors will be shown.

The LIHCC is chartered by the national organization, Heisey Collectors of America, which has a membership of over 2,000 and is headquartered in Newark, Ohio, the birthplace of this beautiful and highly collectible glass, and the site of the Heisey Museum.

**15th Annual  
Licking County Y W C A  
ANTIQUE SHOW & SALE**

**Y. W. C. A. 6th & Church Street Newark, Ohio**

**April 23, 24, 25**

THE FOLLOWING DEALERS WILL BE EXHIBITING FOR SALE, FURNITURE, LAMPS, POTTERY, CHINA, PRIMITIVES, CAMBRIDGE GLASS, AND OF COURSE A LARGE ASSORTMENT OF HEISEY FOR THE BEGINNER TO THE ADVANCED COLLECTOR.

ATTIC ANTIQUES - ENGLEWOOD, O.  
COLLECTORS HAVEN - HEATH, O.  
THE DARROW COLLECTION - NASHPORT, O.  
EAGLES REST - HEATH, O.  
EARLYS ANTIQUES - WESTERVILLE, O.  
BILL FEENY - RECTOR, PA.  
FINDERS KEEPERS - GALENA, O.  
GOLDBERRYS ANTIQUES - KALAMAZOO, MI.  
MARY & WILBUR HENDERSON - WOODSFIELD, O.

LYNNE ART'S GLASS HOUSE - LAHASKA, PA.  
MEMORY LANE ANTIQUES - GRANVILLE, O.  
JOANNE R. PAUL - NEWARK, O.  
MOUNDBUILDERS ANTIQUES - NEWARK, O.  
MARGE & RAY ANTIQUES - NEWARK, O.  
S. & J. ANTIQUES - GAHANNA, O.  
WILMA SAXTON - BERLIN, N.J.  
STEWARTS ANTIQUES - DAYTON, O.  
B. HENRY ANTIQUES - THORNVILLE, O.

LOREN & VIRGINIA YEAKLEY - NEWARK, O.

**HOURS: Friday 6:00 - 10:00**

**Saturday 12:00 - 10:00**

**Sunday 12:00 - 6:00**

**DONATION \$1.75**

GOOD FOOD

APPRAISAL BOOTH

( THIS AD OR A COPY OF IT WORTH 25¢ OFF ADMISSION )

ANTIQUES 'N' COLLECTABLES  
"HEISEY OUR SPECIALTY"

LYNNE  ART'S  
**GLASS-HOUSE**  
INC.

ROUTE 202 — LAHASKA, PA. 18931  
P. O. BOX 242 215-794-7800

*Dear Heisey Collector and Dealer,  
We're Heading Your Way !! Heisey Animals,  
Lovely Old Patterns, and a Rainbow of Colors, will  
be coming along with us.*

*We'll Be At The Following Shows.*

1. WAKEFIELD, MASS. FIRST PARISH CONGREGATIONAL CHURCH APR. 2-3
2. HARRISBURGH, PA. FARM SHOW BUILDING APRIL 15, 16, 17
3. WARRINGTON, PA. WARRINGTON COUNTRY CLUB APRIL 20, 21, 22
4. NEWARK, OHIO Y W C A APRIL 23, 24, 25

*Our shop in Lahaska will remain open while we are  
on the road.*

*See You Soon,  
Lynne and Art*

**CLYDE SMITH**

6941 LYDIA DR  
HUNTINGTON BEACH, CA 92647  
Phone: (714) 847-3867

(ALL A - 1 CONDITION)  
POSTAGE & INSURANCE EXTRA  
SATISFACTION GUARANTEED

# 487 CUT COLOGNE (SILVER ENAMELED #63 STOPPER (M).....	\$ 35.00
# 112 HAWTHORN CANDLESTICKS .....	Pr 40.00
# 150 BANDED FLUTE WINES 2 oz.(M).....(4) ea	12.00
# 150 BANDED FLUTE SHERBETS (M) .....	(6) ea 7.50
# 352 FLAT PANEL ROLL TRAY (M) .....	22.50
# 449 SAHARA THUMBPRINT & PANEL ( 2-Lite Candlesticks) .....	Pr 65.00
# 451 CROSS LINE FLUTE CHAMPAGNES (M) .....	(8)... 150.00
#1509 SAHARA EMPRESS 13" CELERY (M) .....	22.50
#1509 SAHARA EMPRESS 7" SQUARE PLATES w/OLD COLONY ETCH (M).....(4) ea	12.00
#1509 SAHARA EMPRESS 7" OVAL STEMMED COMPORT (M) .....	22.50
#1509 SAHARA EMPRESS DOLPHIN FOOTED MAYONAISE (M) .....	22.50
#1404 OLD SANDWICH (½ GAL. ICE JUG & 6 - 5oz. TUMBLERS) (M) .....	110.00
#1519 WAVERLY FLORAL BOWL w/IVY ETCHING .....	30.00
#1540 LARIAT GOBLETs w/MOONGLOW CUTTING .....	(4) ea 12.00
#1540 LARIAT #42-BOWL w/MOONGLOW CUTTING (V4pg6) .....	35.00
#2451 SHAWL DANCER STEMS (3 GOBLETs; 1 CHAMPAGNE; 1 WINE).....ea	15.00
# 357 PRISON STRIPE 7½" BOWL (M) .....	35.00

# Classified Ads

## FOR SALE

Heavy duty metal-ring binder to hold all four Vogel vooks together: \$5.00 each. Delivery at June Convention-no mailings. Send check by April 10, to: Bob Johnson, P.O. Box 42, Dayton, O. 45420.

## WANTED

#1503 Crystolite tray for Ind. Sugar & creamer. Any other Crystolite pieces. PENNY OLSON, STORY CITY, IOWA 50248.

## Heisey Club of California

### Charter #13

WE ARE NOW OFFERING SUBSCRIPTIONS TO OUR NEWSLETTER PUBLISHED MONTHLY.

**\$6.00** PER YEAR

MEMBERSHIP IN OUR CLUB ALSO AVAILABLE

**\$8.00** PER YEAR

Checks payable to: HEISEY CLUB OF CALIF.  
% GORDON CLARK  
15248 DICKENS ST.  
SHERMAN OAKS, CA 91403

## DONALD MOUSSEAU

1934 DUVAL PLACE  
DAYTONA BEACH, FLORIDA 32014  
Phone: (904) 761-1751

- |  |          |
|--|----------|
| 1. # 373 Colonial 5oz. ftd. Sherbets (M)(8)...   | \$ 56.00 |
| 2. #1469 Ridgeleigh 6" 2 hdld Bon Bon (M)....  | 9.00     |
| 3. #1425 Victorian 5oz. Saucer Champagne(2)ea  | 7.00     |
| 4. 5½" Sea Horse hdld Cigarette Jar (M)<br>w/2 matching trays-all orchid etched<br>Set | 45.00    |
| 5. #1201 Fandango 5" Nappy .....   | 11.00    |
| 6. #1519 Waverly 7" Dolphin ftd. oval comport<br>orchid etched (M).....                | 35.00    |
| 7. #1519 Waverly 5½" Dolphin ftd. mint,<br>Heisey Rose etched (M).....                 | 15.00    |
| 8. #1401 Empress 12" Square Sandwich tray,<br>crystal (M).....                         | 14.00    |
| 9. #1401 Empress 11" Crystal Lions Head<br>Floral Bowl, BEAUTIFUL.....                 | 125.00   |
| 10. #1509 Queen Ann 10" Celery Tray Sahara(M).   | 11.50    |
| 11. # 451 Cross Lined Flute 5½" crystal vase,<br>(M) V2CP1.....                        | 45.00    |

WANTED: Most pieces or Fandango or Fancy Loop or Prince of Wales; also 7" Ridgeleigh Candlebra & Stemmed pieces. Buy or Trade.

POSTAGE AND INSURANCE EXTRA

## HEISEY COLLECTORS OF AMERICA, INC.

Presents the Sixth Annual

### ANTIQUÉ SHOW and SALE

Newark High School Gym - Newark, Ohio

### HEISEY GLASS DISPLAY at YWCA

JUNE 10, 11, 12, 13, 1976

Thursday, June 10, 1 P.M. - 9 P.M.  
Saturday, June 12, 1 P.M. - 9 P.M.

Friday, June 11, 1 P.M. - 6 P.M.  
Sunday, June 13, 1 P.M. - 6 P.M.

60 Quality dealers from coast to coast featuring HEISEY, selected antiques.

AMPLE FREE PARKING

**BENEFIT: THE NATIONAL HEISEY MUSEUM, NEWARK, OHIO**

Donation: \$1.75  
Show Manager: Charlie Wade, 165 Rugg Ave., Newark, OH 43055  
Phone (614) 366-6636  
25c Discount With This Card

## 'FIGURINES IN CRYSTAL'

ANOTHER NEW BOOK ON FIGURINES EARLY LANCASTER, CO-OP, FIGURAL LAMPS OF U.S. GLASS. EARLY GILLENDEE EASTER NOVELTIES, MANY MORE.

CALIF. ADD TAX, ORDER FROM AUTHOR.

MARY VanPELT,  
8401 CONNER CIRCLE,  
WESTMINSTER, CALIF. 92683

**\$6.00 ppd**

RAINBOW REVIEW

**JUST FOR YOU!**

A special three month subscription to the RAINBOW REVIEW for only \$1.00 has been recommended for you by

**HEISEY COLLECTORS OF AMERICA, INC.**

GLASS JOURNAL

---

The RAINBOW REVIEW keeps collectors of all types of glass informed on every facet of their field - shows, shops, books, news stories, features, photos, research, reproductions, respected columnists, a variety of ads, and much more!

**IF YOU COLLECT GLASS YOU NEED THE RAINBOW REVIEW!**

Write your name, address, city, state and zip code on reverse side. Enclose \$1.00 and mail to: RAINBOW REVIEW, 864 W. 19th St., Costa Mesa, CA 92627

# NEWSLETTER INFORMATION

## No. 1245 Pattern

If your newsletter should arrive incomplete write at once to Ann Holman and she will send you another copy. Several people wrote to say they had not received the January issue. If you did not get yours please let us know. We have problems with the mail like everyone else but we want you to have your Heisey News.

### 1245 STAR AND ZIPPER

This pattern has been named "Star and Zipper" by Vogel. The picture is from an early catalog. We have seen another early catalog with many more pieces of the pattern but unfortunately that catalog is no longer available to us. The pieces we have observed are unsigned and usually in emerald green. We have a large nappy in the museum in emerald.



4 1/2 in. Nappy.

The list of new members is sent once a month to the printer and if you have joined after the tenth your first copy will come from Ann since you will not yet be on the Addressograph.



9 in. Nappy.

The newsletters are addressed and mailed by the printer and all go out at once, usually on the 25th of the month -- never before that date, so any difference in arrival dates is due to the speed of the mail in your particular area.

If you have problems write to:

HCA MEMBERSHIP  
Box 27  
Newark, Ohio 43055

REMEMBER THAT THE DEADLINE DATE FOR COPY IS THE TENTH OF EACH MONTH. WRITE US ABOUT YOUR COLLECTION.

## Make Your Reservations Now.....

### CONVENTION 1976 June 10-13, 1976

PLEASE MAKE YOUR RESERVATION BY CLIPPING THE ATTACHED FORM AND MAILING IT TO ROBERT McCLAIN, 156 W. SHIELDS ST., NEWARK, OHIO 43055 or PHONE (614)345-8061. HE WILL BE GLAD TO RESERVE YOUR ROOM.

### SHERATON INN RESERVATION REQUEST

NAME \_\_\_\_\_ ADDRESS \_\_\_\_\_

ARRIVE \_\_\_\_\_ DEPART \_\_\_\_\_ PHONE \_\_\_\_\_

NO. OF PERSONS IN PARTY \_\_\_\_\_

SINGLE ROOM REQUESTED \_\_\_\_\_ 17.50 (ONE PERSON)

DOUBLE ROOM REQUESTED \_\_\_\_\_ 21.50 (2 DOUBLE BEDS)

NO CHARGE FOR CHILDREN UNDER 18 YEARS OF AGE

NO ADVANCE DEPOSIT NEEDED

# Dealers Directory

5 LINES - \$6.00/6 ISSUES

## MOSTLY HEISEY

RHODA CURLEY  
16 CLAYTON PLACE - ALBANY, NEW YORK 12209  
BY APPOINTMENT 518/482-6272

## MARG & RAY'S ANTIQUES

FURNITURE - OLD BANKS - TOYS  
GLASSWARE - LAMPS  
BOUGHT & SOLD  
487 MAPLE AVENUE NEWARK, OHIO 43055  
PH. 345-1316

## BERT'S BUDGET SHOP

403 W. MAIN ST., NEWARK, OHIO 43055  
PHONE: (614) 349-8045  
General line Antiques

## Moundbuilders Antiques

"Specializing in old Heisey & Animals"  
IRENE RAUCK  
1138 MOUNDVIEW AVENUE NEWARK, OHIO 43055  
TELEPHONE  
AREA 614 344-6043

## THE CHINA CUPBOARD

105 A. SO. BROADWAY, ORCUTT, CA. 93454  
Phone: (805) 937-6420  
COLLECTIBLE & ANTIQUE GLASS & CHINA  
HEISEY IN STOCK

## GREEN ACRES FARM

ANTIQUES, CRYSTAL GLASS & COLLECTIBLES  
SPECIALIZING IN HEISEY & CAMBRIDGE GLASS  
BY CHANCE OR (614) 927-1882  
3303 SR 310 N. - PATASKALA, OHIO 43067

## THE "FINDERS" ANTIQUES

Antiques -- Heisey Glass -- Buy-Sell  
David and Shirley Rose -- owners  
66 S HAZELWOOD AVE. NEWARK, OH 43055  
PHONE: (614) 349-7934



*sum of life*

*elaine and frank husted  
p.o. box 102,  
phoenixville, pa. 19460  
(215) 935-2962*

YOUR AD COULD BE IN THIS SPACE  
6 ISSUES (6 MONTHS) \$6.00

## Hoosier Heritage Antiques

Marceil and Tom Zehr  
4005 SOUTH WAYNE AVENUE  
FORT WAYNE, INDIANA 46807  
(219) 745-4173

## ALAS & ALACK ANTIQUES

EMMA & MANNY KLAWANS  
SHOWS ONLY  
Heisey & Duncan-Miller  
(301) 588-2755 CH. CH. Md.

## LYNNE & ART'S GLASS HOUSE, INC.

"HEISEY OUR SPECIALTY"  
Route 202 Lahaska, Pa. 18931 Box 242  
Phone: (215) 794-7800

## Opera House Antiques

Main & Broadway, Granville, Oh 43023  
Open 7 days a week 12 - 5 P. M.  
Frank (614)344-9847 - Sam 587-0052  
Shop (614)587-2083  
LOTS OF HEISEY GLASS & GENERAL ANTIQUES



CHARLES A. SHAW  
GLENWOOD GARDENS  
RIP VAN WINKLE  
YONKERS, NEW YORK 10701  
PHONE 914 GR 6-5175

SPECIALIZING IN  
HEISEY AND  
CAMBRIDGE  
GLASSWARE



BUY - SELL

## A H COLLECTABLES & ANTIQUES ANN HOLMAN

RT. 2, BOX 362, THORNVILLE, OHIO 43076  
PHONE: (614) 323-0759  
7 miles south of Newark, 3 miles north of U.S. 70  
Just off State Route 13, Directly west of Dawes  
Arboretum on Licking Trails Road #303

## The Shultzes Antiques

BOUGHT  
SOLD  
206-208 E. MAIN ST., ROUTE # 419  
NEWMANSTOWN, PA. 17073  
15 MI. WEST OF READING, PA.  
PHONE 215-589-2819

## HAPPY HAVEN ANTIQUES

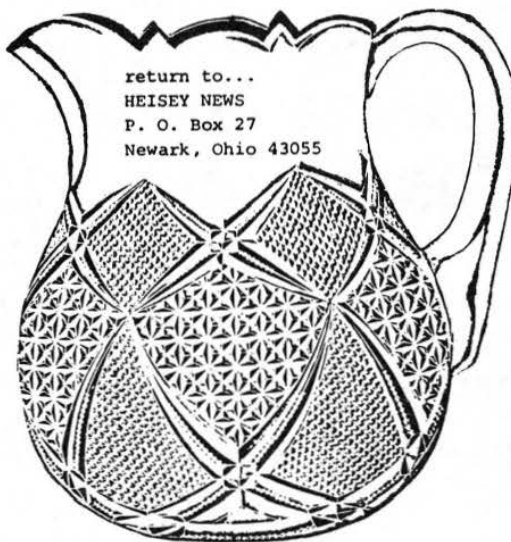
Charles & Mary Dumke  
RT. 3, BOX 2044A, GRASS VALLEY, CA. 95945  
Phone: (916) 273-9450

## DuWaine Hill (POSEY POT GIFTS)

56 E. COSHOCTON ST.  
JOHNSTOWN, OH. 43031  
(15 miles from Newark)  
PHONE:(614)967-7941 open 6 days a week

## ARMENTROUT ANTIQUES

GENERAL LINE - FURNITURE SPECIALTY  
PERIOD FURNITURE REPRODUCED TO ORDER  
40 N. 39TH STREET PHONE 344-6389  
NEWARK, OHIO 43055 ESTABLISHED 1932



return to...  
HEISEY NEWS  
P. O. Box 27  
Newark, Ohio 43055

FIRST CLASS MAIL

U.S. POSTAGE

PAID

PERMIT 34

Reynoldsburg, Ohio 43068

FIRST CLASS MAIL

