

HEISEY NEWS

VOL. 1 NO. 12

OFFICIAL PUBLICATION HEISEY COLLECTORS OF AMERICA

DECEMBER 25, 1972

SIXTY CENTS

Seasons Greetings

From the desk of . . .

President, Louise Ream

The officers and directors of the HCA join in wishing all of you the best holiday season ever, and may 1973 be filled with Heisey!!!!

Can you believe that this is our twelfth issue of Heisey News? I well remember the doubts we felt as we presented the first one. It has truly been a labor of love all the way and we hope you have enjoyed it as much as we have. Your many letters indicate that you have.

We are delighted to announce that we have finally been granted our long awaited tax exempt status by the Internal Revenue Service. From now on all gifts to the museum, either of cash, glass, catalogs or anything else will be tax-deductible. This should really give our proposed museum a big boost. Also we are now able to apply for non-profit mailing and hopefully can reduce the cost of mailing the newsletter.

The whole club owes a great big vote of thanks to Stanton Darling, a Columbus, Ohio, attorney who spent much time and gave a lot of free legal advice to achieve the tax-exempt status for us. Stan and his wife, Kay, are longtime Heisey collectors. (See their article in June issue of the News).

If we have neglected giving the information you wanted this year, write and tell us. We were urged to think beginner and this we attempt-

See Desk of, page 7

IMPORTANT!!

AN ORGANIZATIONAL MEETING FOR ALL MEMBERS IN THE NEWARK, OHIO AREA WISHING TO JOIN A STUDY GROUP WILL BE HELD IN THE WEST LOUNGE OF THE Y. W. C. A., FIFTH AND CHURCH STREETS ON MONDAY, JANUARY 15 TH, 7:30 P. M.

The following is a reprint of an article taken from National Glass Budget publication dated Saturday, February 10, 1906.

BASIS OF COLORED GLASS.

The basis of all colored glass is essentially the same, while the amount of the coloring materials used depends upon the class of ware to be made. For thin blown sheet, for heavy cast plate to be sold in the rough, or for thin rolled sheet glass, polished or unpolished, for bottles or tableware, the amount of coloring mater to be added to the batch must necessarily vary, since thick glass requires more coloring matter than thin glass of the very same color. Thick glass will always be darker than thin glass, unless allowance be made in proportioning the coloring oxides. The length of the melt, the presence or absence of an oxidizing or a reducing flame, or the possibility of wisely admixing these flames for the production of certain colors in open pots and tank glass, all enter into the mixing of the colors with the experienced metal maker. Some colors will burn out, others are not materially affected. Some are made more brilliant by the addition of lead; others, such as cadmium yellow, will not stand any lead, and will turn metal black if

lead is added to the batch. Some colors may be added to the batch others must be held back till the metal in the furnace is fined, because if added before they will burn out, being sensitive to fire and unable to stand high temperatures. Some colors cannot be added to cheap batches before the removal of the salt water, the presence of which has a neutralizing effect, while other colors may be safely made after the glass has been fined, by simply adding the coloring oxides to the top of the molten metal, depending entirely upon the permeability for saturation of the metal. A new pot, or tank, unless properly glazed with the desired color, will require more coloring matter for the first than for subsequent melts.

Another point it is well to remember in making colored glasses of all kinds is that clear and transparent metal, or a flint or crystal batch, is harder to color, or requires more coloring matter, than an opaque or semi-opaque metal. The batch can therefore be densified, or

See Colored Glass, page 8

HEISEY NEWS
P.O. Box 27
Newark, Ohio 43055

Official Publication of Heisey
COLLECTOR'S OF AMERICA, INC.
President - - - Louise Ream (614) 866-5911
Vice President- Dick Marsh (614) 366-5608
Secretary - - - Ann Holman (614) 345-8981
Treasurer - Virginia Yeakley (614) 366-5101

Classified Advertising Rates
5¢ per word, \$1.00 minimum
We cannot mix type sizes in Classified Ads.
Abbreviations and initials will count as words. Payment in full must accompany all ads.

Display Advertising Rates

	Members	Non-members
1/8 pg. - - -	\$ 4.00 - - -	\$ 6.00 - - -
1/4 pg. - - -	7.00 - - -	10.00 - - -
1/2 pg. - - -	12.00 - - -	18.00 - - -
3/4 pg. - - -	17.00 - - -	25.00 - - -
Full pg. - - -	22.00 - - -	33.00 - - -

Advertising copy must be in our hands by the 10th of the month to assure publication in that month's issue. Advertisements containing reproductions will not knowingly be accepted unless clearly stated (i.e. Heisey by Imperial, etc.) Heisey News assumes no responsibility for items advertised and will not be responsible for errors in price description or other information.

Ads should be sent to:
EVELYN M. ALLEN
135 CYNTHIA STREET
HEATH, OHIO 43055
(614) 522-1635

PLEASE!
WE CAN ONLY BE OF SERVICE TO YOU IF.....

YOU NOTIFY US IMMEDIATELY
OF ANY CHANGE OF ADDRESS.

ADDRESS ALL LETTERS CONCERNING MEMBERSHIP
TO THE ATTENTION OF: ANN HOLMAN.

SEND IN YOUR ADS FOR WANTED AND SWAP
COLUMNS.....5¢ per word

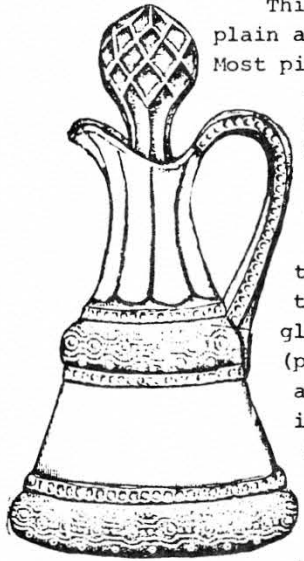
PLEASE USE -- SASE
When requesting information, please send a self addressed stamped envelope

BACK ISSUES AVAILABLE60¢ each



This pattern has eluded us thus far in establishing factual data on its history. As of this writing only a part of a catalog page for this pattern has been found. The Gaddis and Brahmer custard books both illustrate this pattern as Heisey and call it Ring Band. It is not illustrated in the Kamm or Metz pattern glass books and Vogel shows only photographs and has numbered it Pattern #1245.

Primarily found in custard glass, a few pieces are found in opal (milk glass) and in crystal which would be considered rare. Most pieces are marked with the large Heisey trademark which indicates it was probably introduced shortly after 1900. The pattern is relatively plain consisting of two narrow bands in relief surrounding a row of fine beading in relief around the body. Above and below the "ring band" is a row of inverted beading. The handles are molded rather than stuck or applied and on each side of the handle is a row of fine beading. Some items have only one row of the "ring band" such as the tumbler and toothpick and others have two rows such as the sugar, creamer, cruet, syrup jug and water pitcher. The top rims of the open pieces are scalloped.



This pattern without any decoration is very plain and not particularly pleasing to the eye. Most pieces found are usually decorated or souvenir items. There are many different decorations, usually gold or green and handpainted roses, which is especially striking. Items in this pattern in custard fluoresce brilliantly when exposed to the black light indicating a high content of uranium salts. We have examined two items in this pattern in opal (milk glass) under the black light. A custard (punch cup) fluoresces very brightly while a tumbler does not react at all. We have in our collection a crystal tumbler, double signed, with red flashing. This is the only known piece of this pattern in crystal at this time.

Due to lack of catalog or price list information we will report items which have been found in this pattern. The table set is very attractive, the creamer, sugar and spooner are all cylindrical, the covered butter has a row of the "ring band" on the cover and also on the base. The finial on the cover of the sugar and the butter dish also contain a row of "ring band". The water pitcher is also cylindrical and massive and with the hand painted rose decoration is a beautiful addition to any

See Ring Band, page 8



enlarged sketch of pattern

COLOR OF THE MONTH

" SAHARA "

by Frances Law

We like Virginia McClean's description of this color. "It is a true sunny yellow, not amber."

This light yellow was very popular, and it should be easy to find. There are varying shades of Sahara from dark yellow to light. This difference in shading is due, to either the thickness of the piece or the amount of time in the cooking pot. The longer the time in the pot, the paler the color. It was difficult under extremely high temperature to maintain the same exact color for any length of time.

It is believed that Marigold was a forerunner of Sahara. When it proved difficult to produce the marigold, the formula was changed, and presto! Sahara. This was a more stable color, and it was produced in quantity.

Production of Sahara was begun around 1924, according to all information we found. It was a great roaring twenties color and lasted till around 1936. It is difficult to put down exact dates, so we list approximate ones. This gives the reader some idea of period of manufacture.

We love the sunny yellow of Sahara. A statement of this fact was made to my husband once; the next Christmas under the Christmas tree was a large box filled with Sahara. It contained place settings for eight in all pieces, even little wines. So far, only four dinner plates have been found, but it is fun to look for them. Sahara sets a beautiful table, especially in a dining room with touches of gold or yellow. This set of lovely dishes is really cherished and used by yours truly.

It is debatable as to which color can be found easier, moon-gleam or sahara. Vogel ranks Sahara as number twenty on his rarity color chart, next to Flamingo, which is most available. Moongleam tops Sahara at nineteen, and possibly is a bit scarcer. Regardless of rank, it is a beautiful color and you should be able to find pieces to add to your color collection. The tulip vase and Warwick vases are

especially lovely in this color being a deeper yellow because of glass thickness.

In passing, let us add that the Yeakley book has two beautiful color plates, 9 and 10, of Sahara. If you study the plates the variation in color is shown very well.

The following list of patterns was made in Sahara. There are so many patterns it is possible to miss some, so let us hear if you have something we missed.

- # 1 Mustard spoon #6 & 7 Mayonnaise
- # 10 Coast (Oak Leaf)
- # 31 Candlesticks, toy
- # 42 Salt and pepper
- # 113 Candlestick
- # 118 Candlesticks
- # 133 Swan Handled Bowl and Candlesticks
- # 134 Candlestick
- # 135 12" Floral Bowl
- # 140 Candlestick
- # 299 Tumbler
- # 301 Candelabra
- # 351 Pilsner
- # 353 Individual almond
- # 354 Wide Flat Panel cream & sugar
- # 355 Quator
- # 361 Cigarette holder & ash tray
- # 372 Syrup
- # 479 Hotel cream and sugar
- # 500 Octagon
- #1184 Yeoman
- #1189 Cream and Sugar
- #1229 Octagon
- #1231 Ribbed Octagon
- #1238 Beehive Plate
- #1252 Twist
- #1401 Empress (Queen Anne)
- #1403 Cream and Sugar
- #1404 Old Sandwich
- #1405 Ipswich
- #1406 Plate
- #1407 Tray
- #1409 Plate
- #1410 Soup and Plate
- #1413 Cathedral
- #1415 Twentieth Century
- #1417 Tumbler V.3, pg. 95
- #1420 Tulip Vase
- #1421 Vase Hi-Lo
- #1425 Victorian

- #1428 Warwick
- #1430 Aristocrat
- #1433 Thumbprint and Panel
- #1440 Floral Bowl
- #1440 Bowl
- #1445 Grape Cluster
- #1447 Rococo
- #1469 Ridgeleigh
- #1488 Kohninoor
- #1503 Crystolite
- #3350 Wabash Stemware
- #3350 Plate
- #3368 Albemarle Stemware
- #3380 Old Dominion Stemware
- #3381 Creole Stemware
- #3389 Duquesne Stemware
- #3390 Carcassonne Stemware
- #3397 Gascony Stemware & Vase, De-canter, cream & sugar, bowl
- #4002 Aqua Caliente
- #4045 Ball Vase
- #4075 Finger Bowl
- #4182 Plate
- #4205 Bud Vase
- #4216 Vase
- #4220 Spiral Optic Vase
- #4222 Horseshoe
- #4223 Vase (7042 in Vogel 4)
- #4224 Cocktail Mixer & Cocktail
- #4225 Cocktail Shaker
- #4227-4232 Favor Vases
- #7023 Half Circle (V.3, c.p. 3)
- #7038 Plate
- #7047 Comet Leaf (V. 4)
- #8001 Clover Rope Mug
- #8002 Fleur de-lis plate

DEATH SADDENS HEISEY COLLECTORS

The Newark community was saddened in October by the death of Colonel E. J. Merrill, retired, who suffered a fatal heart attack. He was the husband of the former Mary Heisey, daughter of Mrs. T. Clarence Heisey and the late Mr. Heisey. Heisey Collectors of America express their heartfelt sympathy to the members of the Heisey family in their loss.

THE OPINIONS EXPRESSED IN ARTICLES IN HEISEY NEWS ARE THOSE OF THE AUTHORS AND NOT NECESSARILY THOSE OF THE ORGANIZATION. THE EDITORIAL STAFF RESERVES THE RIGHT TO EDIT ALL MATERIAL SUBMITTED FOR PUBLICATION.

PATTERN OF THE MONTH.....

" #1503 CRYSTOLITE "

by Louise Ream

This pattern must have been very popular and a good seller for the Heisey company as it was apparently first made in the mid-thirties and was still listed in the 1956 catalog in over 70 items. There are also several items in the 1503-1/2 line and in the closely related #1504 Regency line.



The glass is fairly heavy and is very brilliant and clear. All pieces are covered with raised ribs which are wider than those of Ridgeleigh and smoothly rounded instead of sharp. These ribs extend from top to bottom on vertical items and from the edge of the ground the polished bottom rim to the edge of some plates and bowls, gradually widening near the outer edge to form scallops. On other such pieces the ribs may even cover the bottom and ray out from the center to continue to the top edge. Perhaps no other Heisey pattern has the brilliance or captures and reflects the light as does Crystolite.

It is an unpredictable pattern as far as being signed since many pieces are but a great many are not, especially plates. Plates were made both with a plain bottom and with a star. A small jelly nappy with a handle has a pattern on the bottom resembling a cobweb and this is sometimes signed. Until Evelyn Allen showed me a signed piece I would have thought it was not really Heisey since the quality of the glass was poor. She said that most collectors thought the same way and were surprised to see the diamond H.

Crystolite is another of the patterns which came in a complete line of table and barware. Several types of candlesticks were made including a double set with a removable center vase. Single candleblocks were made round, square and

swirled. These are particularly brilliant and beautifully ground and polished on the bottom and are not marked.

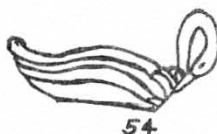
Most of the production was in clear crystal but cigarette boxes and ash trays were made in Zircon (Limelight) and Sahara. An unsigned bowl and plate have recently been seen in cobalt. This blue does not seem to have the deep beautiful hue of Heisey cobalt. It is one of the things to keep a person guessing. Could it have been made by Imperial though not on the list? In Frances Bones book "Collectibles of the Depression" she shows, on page 52, a pattern which looks very much like crystolite but which is really Duncan and Miller's Cascade pattern. A bowl and plate pictured resemble the bowl and plate seen in cobalt. Could it be possible that they might be from that factory? Many similarities in the two companies patterns have been observed.

Imperial made a bowl for Fisher Silversmith as a special order in their charcoal color which is very near like dawn, in 1960. It is believed that Heisey did not make Crystolite in dawn.

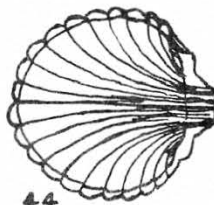


5003

There was a blown stemware line of at least eleven items including four tumblers. A water pitcher was also blown and is unmarked. The stemware is lovely and is seen in several cuttings. A pressed goblet has been seen in a collection but was probably not a production item.



54



44

A 1944 catalog lists 12 shell-shaped pieces. Many of these are unsigned but the few which are usually have the diamond H on the plain part of the shell which would be the hinge area of a real shell. These items range from 4 to 13" shell plates, candy box and cover, salad bowl and others and some of these were still available in 1956. A 5" swan nut or jelly and little individual swan nut dishes are never signed. A 6" basket is rare and when found, it is signed. A toothpick, as such, was not made but many people call the footed cigarette holder a toothpick and it does serve the purpose well. After king size cigarettes became popular a larger cigarette box was added to the line. Cocktail shakers, bar bottles, vases and colognes were among other items made.

Emogene Shomaker, member of HCA board, hospitality chairman and avid collector says that a table set with crystolite on a pink or other colored cloth is a thing of beauty. She is one of those collectors who loves to use her glass.

#1504, known as "Regency", is a variant of Crystolite and comes in only a few items. We have seen the colognes and puff box, single candleblocks and double candlesticks, and all of these have a double ring around the pinched-in middle. (See Vogel 4.) The single candlestick is seen in amber.

#1503-1/2 one half gallon jug, Swan handled, is listed in the 1944 price list. The body of the pitcher is the body of the swan with the handle being the neck and head. A former Heisey employee told us that this pitcher was not popular and few were made. It is marked.

For more on Crystolite see McLean reprint, Vogel 3 and 4 1956 catalog reprint and Yeakley book. (Check November "News" for books available from the club.)

Reissues by Imperial may be marked since they were made until 1962. If you have studied your glass you should be able to tell the difference. Items made are as follows:

See Pattern Month, page 8

HEISEY ANIMALS --- FIGURINES

" GEESE "

by Dick L. Marsh

With water fowl hunting season now in full swing let us join a nirod on his hunt for a goose, It is out of bed in the middle of the night and a car ride to the wetlands. After loading his equipment in a boat he must find his way across the water to his blind, which he has spent hours building. It is still pitch dark and there are no white lines to follow, as on the highway. In a fog its 10 to 1 you get lost. After finding his blind, he sets his decoys, then gets into his blind. He now has a smoke and drink (your choice, coffee, water, antifreeze) while he waits for legal shooting time. Would you believe legal shooting time is one half hour before sunrise? As the ducks and geese start to rise from the water all one can see is shadows, at best.

If you think anyone who would go thru all this needs his head examined, remember the flea markets and antique shows you got up in the middle of the night to attend.

The geese that we will see today will be in crystal and crystal frosted glass. They will be in three different flight positions; wings down, wings half way and wings up. The glass will be from good to excellent quality and free of mold marks.

The Imperial Glass Co. has reissued two of these items; the wings half way and the wings up goose. The wing-down was no longer offered by The Heisey Company in their #30 price list in 1940. This leads us to believe the mold was scrapped and Imperial does not have it.



GOOSE
(WINGS DOWN)

The wings-down goose was very easily broken due to its long neck and is much harder to find than the other two. The bottom is pear shaped being 3-7/8" by 2-3/4" at the widest points. The chest raises in a gentle curve to the neck. This

is a distance of about 1-1/4" depending on how much grinding was done while polishing the base. The underside of the neck runs to the end of the bill, a distance of 4-3/4". The neck narrows and then widens slightly to the head during the 4-3/4" distance. The bill is 1/8" thick. Across the bill it is 1/2" to a semi-circle over the bill that is 1/8th" high in the middle of this raised area, It is 1/16" deep.

The eyes are little round dots of glass that are located in the center of the head. The glass now raises 1/8" to the top of the head which gently drops to the neck. At a very slight angle the neck declines to the body. The line of the neck decline continues for about an inch then increases for three inches. Then it turns up slightly for 7/8" to the tip of the tail. At the base of the neck on either side of the body, the wings begin, the wings are in two tiers, the first being much smaller than the second. The first set starts with the smallest of a series of raised areas of glass each getting wider and longer to represent the fletching of these areas. The second set of fletching again starts with the smallest and each of the eight getting larger in width and length.

When marked, which is rarely, the diamond H appears near the base on the first feather that reaches the base on the left side.



GOOSE
(WINGS HALF WAY)

The wings half way up goose is also flat with a pear shaped bottom, which is three inches by a 1/8" at the widest points. The body and chest swells upward, then slightly back to the base of the neck a distance of 1-1/4". The neck swells outward for 1/2 inch, then curves

back becoming narrower for 1 and 1/2". The neck now turns forward and up some more to the end of the bill. The tip of the bill is again 1/8" thick. Back across the top of the bill it is 1/2" to the same semi circle that the wings down goose has. The eyes are also the same. It is 3/8" to the top of head in an up ward and back curve. A gradual downward drop of the neck is 1/2" long then the rate of drop increases one inch. After this it is 1-1/2" to the start of the wings. The wings rise upward slightly for 3/4" then drops back for three inches. Then the wings starts a raise of 1-1/2" to the tip of the tail. The tip of the tail is 1/8" thick. The glass now turns backward for one inch then in for 5/8", then another inward curve of 5/16", followed by 1/8". The next is also 1/8". The seventh is 3/8" and the last is 1/4", each of these inward curves representing the end of feathers. The body now drops for 3/4" then rises 1/2" to the tail. The fletching is the same as on the wings down goose.

The diamond H appears near the base midway back on the left side when marked.



GOOSE
(WINGS UP)

The wings up goose also has a pear shaped bottom, being 2-1/2" by 1-3/4" at the widest points. The body curves in a gentle art to the chest, a distance of 1-3/8". In the next 3/4" the chest and neck begin. The neck now gracefully curves forward to the head 2-1/4". The bill starts the head by dropping slightly, then back up to the front. The head and bill detail is the same as the other two geese. The top of the neck is a long graceful curve to

HEISEY HUNTER HAPPENINGS!!!

by Bob Ryan

MERRY CHRISTMAS everyone and health, happiness and peace in 1973the very nature of my business at this time of the year prevents me from getting to many shows or in-to many shops but my fellow collectors have been very busy this past month reporting finds to me, gracious...we've heard from both coasts, Florida and even Canada...Great! Keep those cards and letters coming ...Let's see how many different states we can hear from for the January issue of the NEWS...all of you have a find or two that you have seen and maybe even purchased so share it with all of us..Don't "let George do it"; send us a post card or an epistle but send it...

Our reporting collectors came up with real good buys this month...It is great fun to come across a sleeper once in awhile to kind of take the sting out of the item you just "had to have" at the time, even though it was beyond what you had cared to pay...It all evens out, I guess, in the long run, but you can't prove it by me....

There were some great guys advertised in last months NEWS by the dealers..Be sure to give these good dealers a call; don't depend on a letter as I found this too slow for the kind of buys advertised last month....How about that darn Lafayette etched bowl turning up in one of the ads.....if it keeps haunting me I'll have no alternative but to buy it and put a stem on it...

A West coast couple had a great buying trip recently, returning home with many finds in the old patterns.....the ones that intrigues me most were the #1776 KALONYAL Cruet. ...that's a real rarity and a snoozer, too...another rare one, a mint condition #7015 RIBBED QUATOR cream & sugar....an emerald toothpick in #1255 PINEAPPLE & FAN.....a crystal 1/2 pine cream pitcher in the same pattern. These are more often found in custard....

A Florida collector found a SAWTOOTH BAND #1225 mustard and cover and a small Hawthorne colored vase at a local flea market....she reports that the "Snow Birds" are back in force now, so the flea markets will be picking up..(a Snow

Bird is another way of saying Yankee)....same collector just came up with 42 pieces of #1425 Victorian including the hard to find sodas... she has her eye on a very rare pair of equine adornments but won't let me in on the full details....that's a good excuse for a Florida trip in January don't you agree? I can't stand suspense....

From New England comes word of a collector who just "had" to have an Opel BEADED SWAG tumbler with blue beads and pink the balance of the way down....paid dearly for it but reports it is alive with Opel fire and really enjoys the new piece....sounds familiar doesn't it? Dumb me, when I come across something I have been looking for a long time I usually grab it and that stupid grin spreads across my face and all my bargaining power spreads thinner with it...The dealer knows that I am going to buy it anyway so why do I bother asking for their best price....Hey, that's a good New Year's resolution. Next year when I come upon a great find I'll give it that old cool, suave approach; pick it up, examine it with a detached aloofness and replace it on the table and with an air of indifference turn my back on it, and then execute the fastest pivot this side of the basketball court and grab it before it gets away. Maybe in the meantime I'll get out my question about price, but don't bet on it, for you see I used to play a good bit of basketball and can make that pivot with some speed....

A #160 LOCKET ON CHAIN nappy fell to our gal collector from Trotwood, Ohio this past week, nice going.....you didn't happen to see a wine did you?.....from the snow country of Lake County, Ohio comes the report of several purchases of rare Opel, white as the area's surrounding snow covered fields..#1295 BEADED SWAG table set and in the same pattern in opel, an 8" nappy sound asleep took some of the sting out of the tag on the table set.... later that same day at a show in Piqua, Ohio this same collector came upon one of the rarest of Heisey's most coveted items, #1519

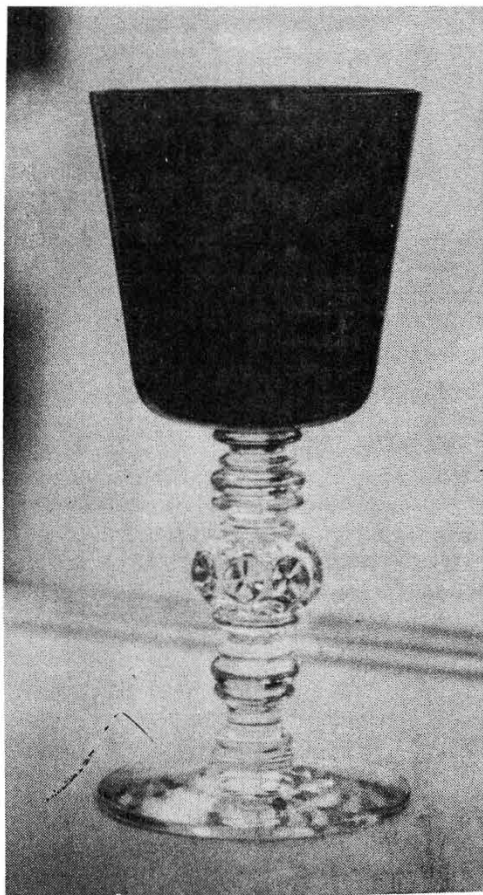
trinket box with the lion topped lid. It was beautifully cut, too..

Big show, little show, big shop, little shop, one never knows where they will uncover treasure... Two different Ohio collectors reported good buys on baby elephants.How about that ad in the NEWS, set of elephants \$200.00?...Newark's super sleuth caught all the other collectors sound asleep as he bought a pair of petticoat dolphins for less than the cost of my wife's visit to the Hair Salon....

Two different collectors reported finding #3350 WABASH stemware with crystal stems and Marigold bowls....A beautiful large decanter ORCHID etched with Sterling base and cap with British hallmarks. Anyone else ever see these type markings on a piece of Heisey decorated by another firm? Was it sent to England for the Sterling application?...A #1503 CRYSTOLITE triple candlestick was found at a small show in Fairborn, Ohio along with the decanter by our daughter. 'It was a super sleeper....

On a recent tour of Newark found the elusive #4004 IMPROMPTU goblet or, as a former Heisey employee affectionately refers to it, Belly Button Optic....A #6000 CELESTIAL cocktail glass was added to our collection....this was the last designed pattern of Heisey's and was designed by Eva Zeisel....similar to some Erickson pieces I've seen without the bubble....also saw some #3370 AFRICAN goblets with Moongleam stems...#4044 NEW ERA plates with Krall fish cutting, unusual....don't tell a soul but I also saw some #517 WINCHESTER "73" bar ware....a magnificent hollow champagne cut exquisitely including the stem...it is now commanding center stage in our stem collection... what a talented man who cut this beauty...a real work of art...a crystal FLYING MARE smiled invitingly to me but I called upon my reserves and repelled her flirtations...the same could be said about a #3389 DUQUESNE stem wine in tangerine....

A Newark collector culminated a long long search for a #353 MEASURING CUP at a recent auction, a
See Hunter Happenings, page 9



AN AMAZING FIND.....

Vincent Sparacio

The recent discovery of eight crystal Spanish stem goblets with red bowls is sure to cause more than a ripple among Heisey collectors. Red has been one of the scarcest of the Heisey colors and what is in collectors hands is considered to be from experimental batches.

Art Hartman and Lynne Block of the Glass House, Lahaska, Penna., picked up the scent and traveled far afield to track down these unique goblets. Art admits to being dubious and fully expected to find an off shade of tangerine. His surprise upon seeing the first glass unwrapped was great enough to leave him speechless.

The goblets were obtained from the original owner, a gentleman who had purchased them at a gift shop in the 1930's. Originally a set of twelve, four were broken and disposed of in the intervening years.

Lynne has wisely displayed the goblets with their collection of tangerine where the difference in the two colors is readily apparent. It is hoped the new owners can be persuaded to bring at least one to the HCA convention. Incidentally, all pieces are signed.

con't from Desk of, page 1
ed to do. We realized that every-
one in the country had not been
able to see all the glass which we
have here in "Heiseyland" where it
was made.

It is now less than six months
until we will be seeing some of you
again and many others for the first
time. From all reports it sounds
like a big attendance at the conven-
tion in '73. Remember the dates,
June 14-17 and plan your vacations
accordingly.

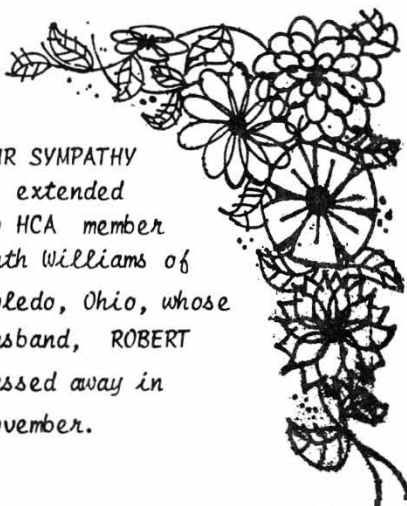
Ann Holman is eagerly awaiting
your renewals so if your membership
expires on 12/31/72 send your dues
right away and you will not miss
any issues of the News. It is still
\$6.00 per year plus the extra \$1.00
for each additional household mem-
ber wishing to join. Check your
membership cards for expiration
date.

Reports have reached us of an
all HEISEY SHOW to be presented in
the Washington, D. C. area by the
National Capital Heisey Collector's
Club. This will be a first so far
as is known and may start a trend.
If Depression Glass can do it, why
not Heisey? More details on this
show later when details are learned.

Dealers advertising in recent
issues have been very pleased with
the results. Many of you might be
able to dispose of extra pieces by
placing an ad. As the club grows
so does the market for glass adver-
tised. Glass priced realistically
does sell. We also urge all of you
to patronize our advertisers when-
ever possible.

Again, we wish you all a happy
and prosperous New Year!!!
HAPPY COLLECTING!!!

OUR SYMPATHY
is extended
to HCA member
Ruth Williams of
Toledo, Ohio, whose
husband, ROBERT
passed away in
November.



— DEALER'S DIRECTORY —

Guthrie's Rock & Gem Shop
Route 1, Hebron, Ohio 43025
(614) 928-4396
By chance or appointment

SIGN OF THE STEIN

113 N. Prospect Granville, Ohio
(614) 587 - 2503
Specializing in Steins & Heisey

BERT'S BUDGET SHOP

403 W. Main St
Newark, Ohio 43055
(614) 349-8045
General line Antiques
2000 pieces Heisey

LYNNE & ART'S GLASS HOUSE, INC

"HEISEY OUR SPECIALTY"
Route 202 Lahaska, Pa. 18931
(215) 794-7800 P.O. Box 242

Moundbuilders Antiques

"Specializing in old Heisey
and Animals"
IRENE RAUCK
1138 MOUNDVIEW AVENUE NEWARK, OHIO 43055
TELEPHONE
AREA 614 344-6043

HEISEY MUSEUM

Write for appointment
C.W. VOGEL 126 W. HIGH
PLYMOUTH, OHIO 44865

MARG & RAY'S ANTIQUES

FURNITURE - OLD BANKS - TOYS
GLASSWARE - LAMPS
BOUGHT & SOLD
487 MAPLE AVENUE NEWARK, OHIO 43055
PH. 345-1316

**REAM'S
"TREASURE HOUSE"
ANTIQUES**

7307 East Main Street
Reynoldsburg, Ohio 43068

COLLECTOR'S HAVEN

187 S. Williams St.
Newark, Ohio
HARRY AND EVELYN ALLEN
(614) 344-5187 or 522-1635

**THE CRYSTAL ZOO
CONNIE RYAN**

88 Davis Rd.
Centerville, Oh 45459
Phone: (513) 885-5401
Specializing in stems & cuttings

4024 Fairfield Ave
Fort Wayne, Ind. 46807



Q. I am a new member. May I please request any and all information on #3355 Diamond Optic pattern, clear

only?

Leidy Zern
Walkersville, Md

A. #3355 is a blown stemware line known as FAIRACRE and dates back to about 1922. The stem is exactly like #3357, known as KING ARTHUR. The only difference is that the bowl of Fairacre flares at the top while the bowl of King Arthur is cupped or slightly curved inward.

The glass is blown into one mold for the optic and then into a paste mold so that the outside will be smooth, the optic expanding as the bowl takes shape. The stem is applied and the foot cast, and finished.*

The stem of the pattern is rather elaborate (Heisey was noted for its pressed stems). Many raised ribs join the bowl in a flowerlike effect. If the item is marked it will appear in the area immediately below this in the crease above a ribbed ball. Below this ball the stem is six sided. Marks on stems are often very difficult to see as they are faint and may require a good magnifying glass.

Cleopatra pantograph etching (or needle etching) appears on both of these. It has a band of etching all around the body of the glass with a series of tassels hanging from it, 3 tassels in each group.

Diana, the Huntress, a cameo type double plate etching appears on #3357 in both clear and in color. The scenes are Diana, a dog, and a deer, one in each of the three cameos.

You asked about clear only but #3355 was made also in crystal bowl with flamingo or moongleam stem. #3357 was made in the same colors plus solid flamingo. Both were complete stemware lines including - 10 oz. tall goblet, 10 oz. short stem goblet, 2-1/2 oz. wine, 12 oz. footed soda, 12 oz. footed ice tea with handle, 6-1/2 oz. saucer champagne, 6-1/2 oz. sherbet, 3-1/4 oz. oyster cocktail, and 1 oz. cordial. There is also a 12" vase in color only or with colored foot. The pattern was no longer in catalogs of the late

MEMBERSHIP REPORT.....

by Ann Holman

As of December 7, 1972 our total membership is 885, with 60 Active members and 825 Associate. Thirty (30) states are represented and we are now mailing 606 newsletters monthly.

The following is a breakdown for Ohio cities with more than five (5) members and....

Akron 6, Cincinnati 6, Columbus 56, Dayton 7, Gahanna 7, Lodi 6, Mansfield 9, Reynoldsburg 15, Shelby 5, Springfield 5, Toledo 6, Westerville 7, and Licking County (Newark area) 147.

.....a further breakdown of Licking County....

Alexandria 1, Buckeye Lake 2, Croton 2, Granville 16, Heath 9, Hebron 10, Johnstown 2, Newark 95, Pataskala 5, Thornville 2, Utica 3.

DON'T FORGET YOUR JANUARY RENEWALS.

con't from Ring Band, page 2 collection. Tumblers and toothpicks are the most common pieces as many were made for souvenir items. We have seen the Celery vase, berry set, large and small nappies, cruet, salt shaker, syrup jug, jelly compartment, custard cup and 8" condiment tray.

We have no indication as to when this pattern was discontinued but probably circa 1905. To date no reproductions have been found and reissues are not likely due to the age of this pattern.

By the time this issue of the Newsletter reaches you Santa will have paid his annual visit. We hope he left some Heisey goodies in your Christmas stocking. As this year draws to a close we have much to be thankful for. The first year of operation of the HCA has been a tremendous success as evidenced by our membership report. This was made possible largely by the loyal support of fellow Heisey collectors. With your continued support we are looking forward to bigger things this coming year.

thirties.

* See October NEWS, page 3, Carsie Allen, for more about making stemware.

con't from Pattern of month, pg 4
Salt and pepper, 7" candy and cover, 14" party plate, 9" leaf pickle, candy box and cover, 3-1/2" Square ash tray, 3" Individual nut dish (leaf), 5-1/2" nappy, 8" desert nappy, 2 lite candlestick, 1 lite candleblock, punch bowl, cups, 20" buffet plate, 15 pc. punch set. All of these were made in the years from 9/1/57 to 1/1/62 with the square ash tray being made until 1965. A 4-1/2" nappy was made on special order for Woodward & Lothrop, Washington, D. C. on 5/2/60 and the 10" salad bowl for Fisher Silversmith on 3/3/60 --- the charcoal item.

con't from Animals, page 5
the wings, 3-3/4". The wings rise at about a 45° angle for one inch where it starts a more gentle incline that increases in angle for 3-1/4" here a rounded wing tip is formed. There are 8 feathers shown for the wings trailing edge, each curving in toward the body. They are in depth 3/4th, 5/8th, 1/2, 1/2, 3/4th, 5/8th and 3/4th". The body drops back at a 45° angle for 1-3/4" then tapers off for 1/2". After that it rises to the tip of the tail 1/4". There are nine areas that represent fletching in smaller size near the front of the wings. When marked, it is the left side of the body mid way near the base.

con't from Colored Glass, page 1
drenched, as some call it, with cheaper grades of coloring materials, before the costlier oxides are re-sorted to, to impart what may be rightly called the finishing color and brilliancy. Thus for chrome green, which is a strong color, a weaker or less decisive ground color may be laid on the batch; either a cheap amber, carbon, kaolin, feldspar, alumina, opalin, cryolite, pegmatite, arsenic, bone ash, or a combination of the above, according to the class of ware to be made. In this connection the primary or complimentary color and shades may be profitably studied, but results from a glassmakers' view point, depend far more upon the stability and coloring power of the oxides in the batch, at certain temperatures than upon any arbitrary color-scale in the books.

**HEISEY
COLLECTORS
OF
AMERICA
INC.**



This design was used for decals for car windows, shop windows or "Heisey News" binder. We also made it into a plastic laminate sign on a plexiglass stand. Nice in your shop window or in your booth with Heisey Collection. Decal and Sign beautiful white background with blue. Low price of 50¢ or *60¢ (if mailed), for decal; \$5.25 or *\$6.25, (if mailed), for sign. Write to:

Mrs. Dorothy Marshall
Secy-Treas, Reynoldsburg Heisey Club
1090 Roundelay Rd., East
Reynoldsburg, Ohio 43068

*tax included

con't from Hunting, page 6
gain in the midst of many other Heisey collectors...for the rarity of the item he bought it rather inexpensively....

Remember last column about a Long Islander finding some tangerine. This color conscious collector just came home with some cobalt #3404 SPANISH Stemware.....A deserving Columbus, Ohio collector finally scored big with a super duper sleeper at a local garage sale finding several pieces of cobalt #3390 CARCASSONE...hurrah!

A northern Ohio collector found an Opel RING BAND, #1245 tumbler, in Canada, reasonable priced.....also found in Canada by a Dayton, Ohio man a very rare #7 CHRYSANTHEMUM vase....His wife is now trying to find a safe place to display his trophy....

A late flash from the Steiner show in Columbus.... a local collector found some #427 DAISY AND LEAVES tumblers.....well, I won't have to make that show now, can save my money for that Lafayette bowl...sure hope someone bought it because I know the next time I see it for sale I'll not have the will power to say no again.... Everyone drive carefully now to and from the wintry shows, shop excursions and auctions and remember, take a second to drop me a line about what you've seen....
.....happy hunting..

LETTERS.....

.....thought you'd get a kick out of knowing that my partner's girlfriend found her first animal at the Cyclorama Show we did yesterday. She came back to our booth almost trembling with delight and after checking McDermott's Heisey animal book discovered that she had purchased a crystal baby elephant for the grand sum of \$3.50!!! How do you like that for beginner's luck!!!

Frank Maloney, Boston, Mass.

**BOOKS AND REPRINTS THAT THE CLUB
HAS ON HAND TO SELL...**

THE HEISEY ANIMALS - \$2.50

by James McDermott

This book pictures all of the animals produced by Heisey. It also states the size of each animal.

HEISEY'S GLASSWARE with a copyright date of 1935 - \$10.00

This is a reprint published by Virginia McLean.

HEISEY CATALOG & PRICE LIST #33

dated June 1, 1956 - \$6.95

This is a reprint published by Antiques Research Publications. This is the last known catalogue to be published by the A.H. Heisey Company.

HEISEY GLASSWARE - \$10.00

This is a hardback book written published by Viola Cudd.

HEISEY'S GLASSWARE - \$10.00

This is a pressed ware catalogue #109 published by Herb Long.

ORDER FROM:

Miss Donna Yeager
Loudon Street, Rt. #2
Granville, Ohio 43023

CLASSIFIED

WANTED: 1-Lid for #1189 individual sugar, Sahara. 2-Marmalade #1511. I have lid. 3-Silver plated handle and tongs for #500 Ice bucket. Joyce Rohde, Rt. 2, Echo, Ore. 97826. Phone: 503-276-3402.

WANTED: Greek Key crystal creamer & other "table set" pieces. Give price and size. Mint only. B. J. Mingus, P. O. Box 33, Pearblossom, Ca. 93553.

WANTED: Puritan sugar and creamer. Sugar is tulip-shaped. See Vogel 1. Also want Greek Key soda straw jar with lid. Write condition and price. Must be signed. Mrs. Paul Camp. R.D. 1, Baden, Pa. 15005.

WANTED: Heisey pattern #3355 Moon-gleam-optic-clear only-Request prices, mint only. Mrs. Nancy (Leidy) Zern. Rt. 1, Kenneth Dr., Walkersville, Maryland. 21793.

WANTED: Marigold stopper for 2 oz. marigold Yeoman cruet. A. J. Anderson, Jr., 17 Pine Needle Rd., Wayland, Maine 01701

Being members of HCA has been one of our greatest joys this year. We have learned a lot from "you learned ones" and have spent hours reading and studying about our favorite glass.

I presume Milt Goldstein has written to you about the gathering of Heisey enthusiasts at our home on Nov. 10. Our contribution in providing a meeting place was small compared to all the work Milt did in whipping up interest and making many many phone calls. We felt the get-together was very worthwhile and hope everyone enjoyed the evening as much as Chuck and I did. We did a special display of the unsigned pieces of Heisey we have been able to find and some of the guests brought some of their goodies to show. Margaret & Chuck Reed
Sewickley, Pa.

DID YOU KNOW..... that Mike Moran was the first glass cutter at the Heisey factory working on pressed ware? He sent his daughter, Polly Moran, to dramatic school and she later became a movie star in the twenties.

OUTSTANDING HEISEY AUCTION

OPERA HOUSE

CORNER MAIN AND BROAD
GRANVILLE, OHIO

SATURDAY, JANUARY 27, 1973

WE ARE PROUD TO PRESENT ANOTHER FINE ALL HEISEY AUCTION TO YOU.

THIS SALE WILL FEATURE A RARE FILLY WITH HEAD TURNED BACK AND AN AMBER ELEPHANT AS WELL AS SEVERAL UNUSUAL PIECES OF COBALT. WE HAVE PIECES IN NEARLY EVERY COLOR AND A GOOD SELECTION OF ANIMALS.

ILLUSTRATED CATALOGS OF THIS SALE ARE AVAILABLE NOW FOR \$2.00 IF YOU WISH TO SEND US AN EXTRA DOLLAR OR A TOTAL OF \$3.00 WE WILL SEND YOUR CATALOG NOW AND A PRICE LIST AFTER THE SALE.

ORDER YOUR CATALOG FROM:

Frank Frye
681 Meadow Drive
Newark, Ohio 43055

Come join us Saturday, January 27, 1973 at 8:00 a.m. for coffee and donuts.

Illustrated catalogs from last auction with prices, still available at \$3.00 each.

Sale conducted by:

F. and S. Auction Service

Frank Frye, Manager (614) 344-9847

Sam Schnaidt, Auctioneer (614) 582-8451



FRANK FRYE -- (614) 344-9847
SAM SCHNAIDT -- (614) 582-8451

OPERA HOUSE ANTIQUES

Corner MAIN and BROAD ST.
GRANVILLE, OHIO 43023

DEALERS WELCOME

OPEN: SATURDAY 10 - 5
SUNDAY 12 - 5

OTHER HOURS BY CHANCE OR APPOINTMENT

500 pieces of HEISEY



MOSTLY  HEISEY

16 CLAYTON PLACE
ALBANY, N. Y. 12209



FOR SALE

- #1255 Emerald Gold Decoration on Rim
Hotel Sugar - \$40.00
- # 397 Amber Footed Soda 12 oz. Mkd.
Set of 6 - - 95.00
- # 433 Greek Key Two Handled Jelly, Mkd 15.00
- #1506 Provincial 5 oz. Footed Juice
Mkd., Clear, Set of 12 - - 60.00

WANTED: Lid -- #1612 Botanical Cigaret Box.
Vogel IV, pg. 22.

MARY BEHLOW
P. O. BOX 18132
RALEIGH, N. C. 27609
Phone: (919) 787-1827



HEISEY to *Love*
and use.

1. #1252 Flamingo Twist floral bowl ftd. - - - \$22.00
2. #1252 Flamingo Twist 3 comp. relish dish,
13" - - 15.00
3. #1258 Moongleam baked apple plates (5)
page 89 - 32.00
4. # 393 Narrow Flute Butter & cover, clear - 22.00
5. # 393 Hotel Creamer & Sugar, clear - - - 16.00
6. #1503 Crystolite Flower top candy dish - - 16.00
7. #1469 Ridgeleigh 12" oval floral bowl,
clear - - 14.00
8. Waverly 3 comp. candy dish, clear - 15.00
9. Cambridge pink etched Candy bowl
with lid - - - 16.00
10. Cambridge Ice bucket, green etched - 10.00

ALL ITEMS SIGNED

POSTAGE EXTRA

MARY LOUISE BURNS
P. O. Box 414
GILBERT, ARIZONA 85234



POSTAGE & INSURANCE EXTRA

- | ALL MINT | ALL MARKED |
|--|------------|
| # 150 Banded Flute 6 pc Berry Set - - - - - | \$45.00 |
| # 150 Banded Bowl 10" - - - - - | 20.00 |
| # 407 Coarse Rib 8" plates, Moongleam - (6) ea | 4.00 |
| # 352 Flat Panel Cream & Sugar, cut design - - - | 20.00 |
| # 433 Greek Key 3 pint jug - - - - - | 32.50 |
| # 433 Greek Key Punch Cups - - - - - (3) ea | 8.00 |
| #1224 Hot & Cold Liners - - - - - (5) ea | 2.00 |
| #1503 Crystolite 10" Bowl - - - - - (4) ea | 8.00 |
| #1503 Crystolite Round Basket - - - - - | 20.00 |
| #1503 Crystolite Individual cream & sugar - - - | 10.00 |
| #1503 Crystolite tray for above, slightly purpled | 5.00 |
| #1503 Crystolite Honey compote or footed cheese | 10.00 |
| #1540 Lariat, 7-1/2" plate with basket glass
handle - - | 7.50 |
| #1540 Lariat Fan Vase - - - - - (3) ea | 10.00 |
| #1540 Lariat Salad plates - - - - - (3) ea | 3.50 |
| #1540 Lariat Sugar - - - - - | 6.00 |
| #1567 Plantation 2 lite candleholders - (2) ea | 10.00 |
| #1951 Cabachon, 4" Vase - - - - - | 6.00 |
| #1951 Cabachon, 6" mint dish - - - - - | 6.00 |
| #1951 Cabachon, creamer & open sugar, cut design | 15.00 |

WANTED: Base to Opal Glass Beaded Swag butter, or will
sell top.



WILMA SAXTON

P. O. BOX 9
BARRINGTON, N. J. 08007
Phone: (609) 547-5980



All HEISEY is crystal, signed, and mint unless noted, Postage & Insurance extra. We have BANK AMERICARD, or MASTER CHARGE. When using a charge please include name of charge, your name, card number, and expiration date.

1.	#5072 Rose stem bell, no itching, unsigned	- - - - -		\$ 28.00
2.	#1540 Lariat candlestick with chimney	- - - - - (2)	ea	12.00
3.	#1540 Lariat creamer and sugar	- - - - -	Set	15.00
4.	#1540 Lariat tall wines (b.4. pg 5, #14)	- - - - - (8)	ea	8.00
5.	#1540 Lariat oyster cocktail (b.4, pg.4. #8)	- - - - - (10)	ea	4.50
6.	Knife rest no cutting	- - - - - (2)	ea	12.50
7.	#6003 Tempo wines	- - - - - (12)	ea	4.50
8.	#1170 Pleat & Panel cruet Flamingo, unsigned	- - - - -		22.50
9.	#1506 Whirlpool cruet	- - - - -		22.50
10.	#1250 Cracker jar with silver plate lid, unsigned	- - - - -		47.50
11.	#1503 Crystolite 5 oz. footed soda	- - - - - (12)	ea	5.50
12.	#1503 Crystolite 3-1/2 oz. oyster cocktail	- - - - - (12)	ea	4.50
13.	#5083 El Rancho Ice tea (b.4, pg. 24. #8)	- - - - - (10)	ea	7.00
14.	#1485 Saturn wines	- - - - - (12)	ea	4.50
15.	#1485 Saturn creamer & sugar	- - - - -	Set	16.50
16.	# 479 Footed Hotel creamer & sugar, Flamingo	- - - - -	Set	25.00
17.	# 479 Footed Hotel sugar, Sahara, unsigned	- - - - -		12.00
18.	Triplex candleabra, Moongleam, (b.3, color plate 3)	- - - - -		37.00
19.	# 112 Candlesticks, Moongleam, (b.3, pg. 99.) unsigned	- - - - -	Set	25.00
20.	# 365 Queen Ann Hotel sugar, no lid	- - - - -		15.00
21.	# 365 Queen Ann punch bowl & base, one point on bowl has been ground, base mint	- - - - -		87.00
22.	# 365 Queen Ann 8" oblong tray	- - - - -		38.00
23.	# 365 Queen Ann 12" celery tray	- - - - -		45.00
24.	# 365 Queen Ann 5" crimped nappy	- - - - -		18.00
25.	#4225 1 qt. Cocktail shaker orchid etched, unsigned	- - - - -		45.00
26.	#5019 Waverly creamer & sugar, orchid etched	- - - - -		35.00
27.	#5019 Waverly mayonnaise, orchid etched	- - - - -		37.50
28.	#5019 Waverly tray, orchid etched, (b.4, pg. 1, #24) unsigned	- - - - -		15.00
29.	#5019 Waverly bowl, orchid etched, (b.4, pg. 2. #42) unsigned	- - - - -		13.50
30.	#5019 Waverly bowl, sea horse feet (b.4, pg. 2. #45 & #143) three light candlesticks, orchid etched	- - - - -	Set	125.00
31.	#5019 Cups	- - - - - (8)	ea	4.00
32.	#5019 Waverly mayonnaise, rose etched	- - - - -		37.50
33.	#5019 Waverly creamer & sugar, rose etched	- - - - -	Set	37.50
34.	#5019 Waverly tall wines (b.4, pg. 1. #2)	- - - - - (8)	ea	8.00
35.	#5019 Waverly oyster cocktail (b.4, pg. 1. #6)	- - - - - (11)	ea	5.00
36.	#5019 Waverly champagne (b.4, pg. 1. #5)	- - - - - (12)	ea	5.50
37.	Swan Head stopper (b.4, pg. 55.) unsigned	- - - - -		8.50
38.	Penquin stopper (b.4, pg. 55.) unsigned	- - - - -		10.00
39.	# 77 Duck stopper Moongleam, unsigned	- - - - - (2)	ea	5.50
40.	# 77 Duck stopper, unsigned	- - - - - (2)	ea	5.00
41.	#5067 Plantation Ivy wines	- - - - - (10)	ea	10.00
42.	#5024 Oxford stem Ivy etched wines	- - - - - (10)	ea	8.00
43.	#1405 Ipswich sugar	- - - - -		5.00
44.	#5019 Waverly creamer	- - - - -		5.00
45.	# 411 Salt & pepper with #43 top,	- - - - -	Set	14.00
46.	#1404 Old Sandwich salt & pepper no top, Flamingo	- - - - -	Set	10.00
47.	#4054 Coronation 3 oz. cocktail, unsigned	- - - - - (12)	ea	3.50
48.	#1489-1/2 Horse Head cover only unsigned	- - - - -		4.50
49.	# 393 Hollow stem champagne straight 4-1/2 oz.	- - - - - (3)	ea	12.00
50.	#1245 Ring Band Custard tumblers, roses, good paint	- - - - - (5)	ea	55.00



ROBERT GOYBLE

EXTENDS

" WARMEST WISHES FOR THE HOLIDAY SEASON "

AND INVITES YOU TO VISIT HIS BOOTH AT THE
STEINER WASHINGTON, D. C., ANTIQUES SHOW
(NATIONAL GUARD ARMORY)

JANUARY 4, 5, 6, & 7



APPLICATION FOR MEMBERSHIP

ACTIVE MEMBER with voting rights
\$25.00 Initiation Fee, plus \$6.00 yearly dues.

ASSOCIATE MEMBERSHIP \$6.00 per year, plus \$1.00 per person for each additional household member. All privileges of the club, except voting.

If additional information is desired, please include SASE (self addressed stamped envelope.)

NAME _____

STREET _____

CITY _____ STATE _____ ZIP _____

Make checks payable to:

HEISEY COLLECTORS OF AMERICA
P. O. BOX 27
NEWARK, OHIO 43055



LETTERS.....WE GET LETTERS.....

We feel like we've been the benefactors ever since we stepped into the beautiful new gymnasium as exhibitors in your lovely Heisey Collector's Display and Antique show. We have made many new friends, and have appreciated the fine follow-through from last year's show. We're looking forward to renewing acquaintances with many of you next June, and to meeting more new Heisey lovers at the next show.

Tom Zehr
Fort Wayne, Ind.

The Heisey News is a fountain of information for both collector and dealer all because of the superb effort put forth by the management. I am sure all the members join me in a dozen "Olays" for you.

Vernon Danison
Santa Monica, Calif.

Please renew our membership. I want to thank all of you who tend to all the matters that keep the club and news so vital, stimulating and growing.

We live directly above the section of Pittsburgh where all the old glass houses were. My father-in-law has a lovely basket made at Ripley's. We use Bryce jars, made when my father-in-law was a young man, to store our coffee, rice, etc. He knew the old houses and several men that worked there. Made for interesting reading here.

Mrs. Albert Miller
Pittsburgh

A very sincere "Thank You" to all concerned with the club. We read, and read again, the Newsletter, and file it beside the couch for easy reference --- which is almost every evening.....still have hopes of a club in Cincinnati, Ohio.

Betty and Jim Richmond

Needless to say, getting Heisey News is just about the highlight of my month and everything comes to a sudden stop while I pour over it. Keep up the good work.

I can hardly wait for the book (The Heisey Animals). I spotted a giraffe in an antique shop recently and didn't purchase it as I didn't know Heisey made giraffes. After reading the Heisey News today, I will waste no time getting back to that antique shop as they had a very low price on that giraffe. Hope it's still there.

Joyce Rohde
Echo, Ore.



FIRST CLASS MAIL

CORRECT ADDRESS REQUESTED