

# HEISEY NEWS

VOL. 1 NO. 11 OFFICIAL PUBLICATION HEISEY COLLECTORS OF AMERICA NOVEMBER 25, 1972 SIXTY CENTS

## From the desk of . .

President, Louise Ream  
We hope that you all had a pleasant Thanksgiving!!!

Last month I told about the copy disappearing from our mailbox and blamed someone for pilfering it. My apologies to all pilferers; it did not happen that way, and there is a sequel to the story. At least a week or more after this happened I received a frantic phone call from HCA member Eloise Lowenstein of Phila. She said she had just returned from a vacation and had found the copy for the News in her mailbox. It seems that the only address in the copy was on a letter of hers which was to go in the Letters---We Get Letters column.

The trouble actually lay with an early arriving mail carrier who took the copy---a bunch of papers rolled up with a rubber band around them, and headed it on it's way, sans address, sans postage to---who knows where? It does speak well for the efficiency of the postal department that the material did reach someone who knew what it was. Thanks, Eloise, for your call. It could have averted a minor tragedy. The moral still is---Don't put anything important in the mailbox, unless you mean it to be mailed!!!!!!

Please note that the dinner in Newark will be on Saturday Dec. 16, and not on the 15th, as yours truly stated last month. Local collectors have enjoyed meeting together for a dinner for the past two years so we are looking forward to this one. Details elsewhere is this issue.

Frank Maloney of Boston, Mass.  
See Desk Of, page 7

## CHRISTMAS BUFFET SET

The Christmas Buffet Dinner will be held at the YWCA, Fifth and Church Sts., Newark, Ohio on Saturday evening, December 16, at 7:00 P.M. The dinner will be preceded by a social hour from 6:30 to 7:00. Price is \$4.00 per person. Send reservations by December 5 to: EMOGENE SHOMAKER, CHAIRMAN: ROUTE 8, NEWARK, OHIO 43055.

Members wishing to attend the meeting and not the dinner should be at the YWCA by 9:00 P. M.

Associate membership in HCA is \$6.00 per year, plus \$1.00 each for additional household members wishing to join. This includes subscription to Heisey News. Active membership with voting rights requires a one time only initiation fee of \$25.00 plus the \$6.00 yearly dues.

1973 DUES REMAIN THE SAME.....

We are please to tell you that we will be able to continue through 1973 with our dues remaining at \$6.00 per year. The reason we are able to do this is because of your advertising and the fact that we get a very good rate from our printer. We hope you will renew as soon as possible to cut down on bookwork for Ann Holman who does such a terrific job with the membership records. We hope all of you will remain with us for another year.

IN NEXT MONTH'S ISSUE WE WILL ANOUNCE a meeting to be held for all people in the Newark area who are interested in joining study groups. Watch for the place and date, which will be in early January. We will be glad to announce meetings for this purpose in any other areas.....

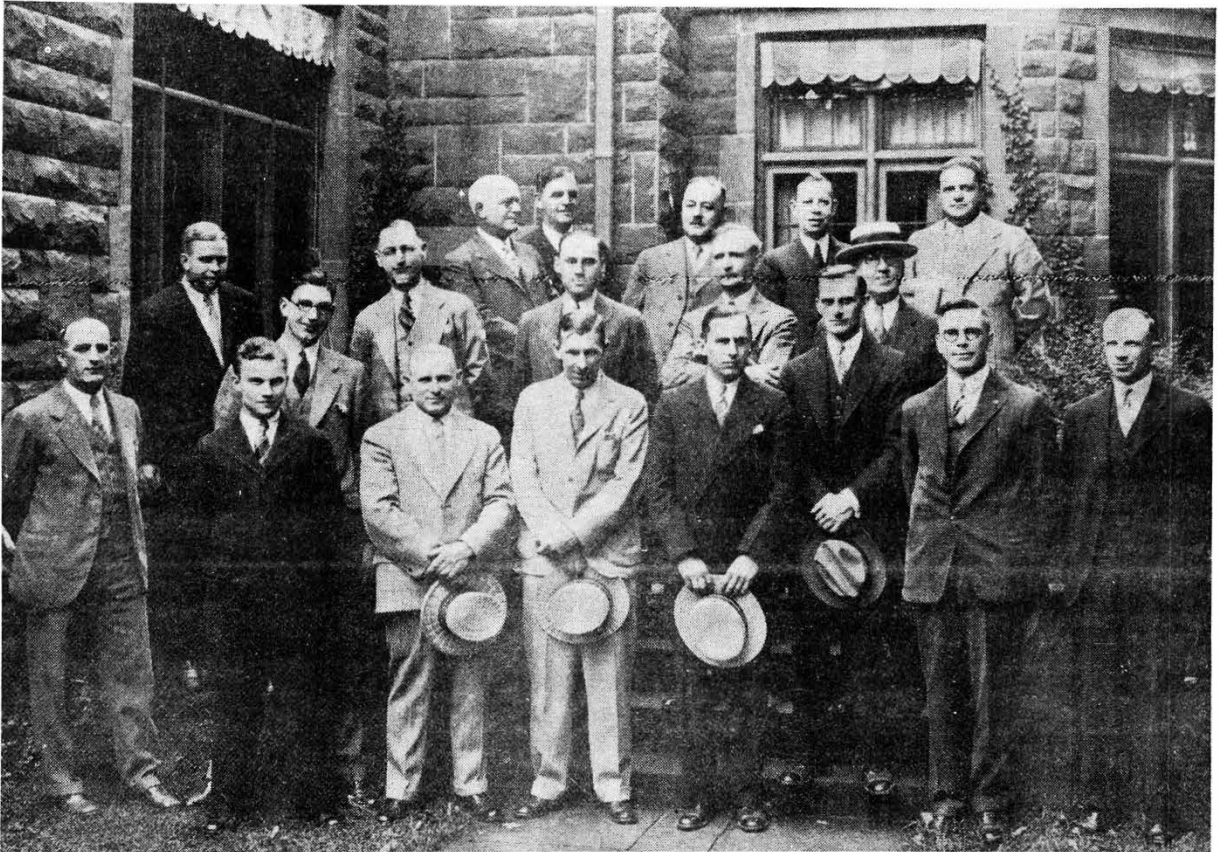
From VIETNAM TO HEISEY GLASS..... Dick & Pat Spencer, Scott AFB, Ill

Actually I guess our Heisey collecting was destined to start the day I met Don Garrett while stationed in Vietnam, during 1969. Don and I were again stationed together a year later near St. Louis. Upon arrival at our new station in the summer of '70, Pat and I met Don's wife Karen, daughter of Robert and Helen Rea of Westerville, Ohio. Of course Don & Karen collected Heisey, so soon we became interested and 18 months ago we bought our first piece of Heisey. I need not tell you that the incurable "Heisey Disease" had started and would of course get worse as time passed. After a year

the Garrets moved to Athens, Ohio and our only Heisey advice was to come from publications by Mr. Vogel, The Yeakleys and the Heisey News. We found that patterns were not always so difficult to identify but the colors had us completely baffled.

We received an invitation to spend a weekend at the Rea's home in Westerville and excitedly we accepted. I guess we must have been at their house for all of ten minutes before we were examing their beautiful Heisey collection. Immediately we found out that our con-  
See Fron VIETNAM, page 4





## OLD SALESMEN AND OLD PITTSBURGH, PA., GLASS PLANTS *by Paul C. Fairall*

Recently, looking at a 1928 photo of A. H. Heisey and Co. Sales Convention, brought back memories of these events. This particular one was held at the Granville Inn. Earlier ones were often held at the Warden Hotel. At such a one the "boys" get together and tried to remember all the old glass plants located in Pittsburgh. Mr. C. G. Cassell, our Pittsburgh representative at that time was present and made note of these plants. In the old days the "glass shows" were held in Pittsburgh, sometimes at the Fort Pitt Hotel or Wm. Penn Hotel. The list is as follows, in the handwriting, of, I believe, Mr. Cassell.

Glass Houses on the South side in the 80's....

Adams Glass Company, Head of Tenth Street, called the Old Crib.

George Duncan's Glass Company, Tenth Street, between Carson and Sarah Street.

Doyle Glass Company, corner of Tenth and Sarah Street.

McBeth Glass Company, corner of Tenth and Carson.

Chandler and Hogan Glass Company, corner of Eighth and Bingham Street called the "OldBush".

The Old Circus, 17th and River Front.

McKee Glass Company, 19th and River Front.

The King Glass Company, 18th and River Front.

Brice Company, "The Church", 21st and River Front.

Jones Glass Company, the "Old Shink", 20th and Jane Street.

Dale Evans Glass Company, "Chimney" corner 21st and Railroad St.

Tom Evans Glass Company "Chimney" corner 18th and Railroad St.

Agnew Optical Glass Company, 22nd and James Street.

J. N. Agnew Glass Company, Brownsville Road.

J. H. Fenney Glass Company, called the old "Dolly" chimney House, corner Railroad in Sohio.

The O'Hara Glass Company, 28th and Penn Ave., Pittsburgh side.

Dan Ripley Glass Company, corner Eighth and Sidney Street.

Atterbury Glass Company, the "Old Whitehouse" First and River Front.

Bakewell Glass Company, between Seventh and Eighth River Front.

The Crystal Glass Company, the "Old Roost" corner Seventeenth and Sarah St.

Mike Ward Chimney House, Four-

teenth Street.

Ginney Sim, Head of Twentieth St.

I have no dates on the operation of these plants. However, it is small wonder that Pittsburgh was called the center of glass manufacture and indeed shows what importance glass making had in the United States.

One of the salesmen whom I had known best was Mr. Clyde S. Whipple. "Whip" as he was affectionately known, was at the plant for weeks at a time. Always doing something, helping rearrange the stock bins, fixing up the sample room, marking the sample number on with white ink and generally making himself useful. In fact, I discovered all the first blown samples when selling off the Heisey inventory. They were marked just as "Whip" had done, about 1916. Whip later became the Heisey representative for California and lived at 622 Westlake St., Los Angeles. He had quite a following among the dealers and was loved by all.

Given to Evelyn Allen for publication in the "Heisey News" all other rights reserved.



## COLOR OF THE MONTH

" TANGERINE "  
by Frances Law

This color is as elusive as the gal by the same name, Tangerine, by the late Jimmy Dorsey. Probably you are too young to remember the song, but not so the Heisey color. Every collector with a piece of tangerine should consider himself lucky.

I well remember when I acquired my first piece of tangerine. I had gone to visit my parents in the South. They met me in Atlanta and my Dad let slip that Mother had purchased three amberine plates for Christmas. This was in the days when I first began collecting Heisey and I longed for a piece of marked tangerine. You can imagine that I was on needles and pins till I reached my home in Alabama. There they were, six marked plates in tangerine, not amberina. You can imagine the oh-ing and ah-ing and plain thrill of possessing three marked tangerine plates. We took three to my sister Carolyn Burson, who is also a Heisey collector. Needless to say her excited reaction was the same as mine. I might insert here that all my family collects Heisey, from Alabama to Georgia, to North Carolina, to Arkansas, to Ohio. It has made from great fun to some problems, especially when we go antiquing together.

What does tangerine look like?

Is it the same color as the fruit by this name? Well, yes and no, it is a red-orange color, which varies greatly, from red to orange. One lucky collector in Newark has a large ball vase, which looks orange-red, mostly red to us. Needless to say the owner hasn't been coaxed so far to bring this rare item out for display at the yearly show.

Tangerine is just plain orange in it's true color, to us. The heating process caused the tangerine to vary from a red-orange to a pale orange color. It was very difficult to maintain the true orange color, hence the variation in shade.

Very little tangerine was made by Heisey, therefore the scarcity and high prices are natural follow-ups. It has been rumored that tangerine was made for a Hotel Chain, but the unavailability almost vetoes this idea.

The variation in shades of this color are no doubt due to the heating process. Too much heat and the color became too dark; too little heat and the shade was lighter than desired. Mr. Vogel states the shop could seldom produce the color consistently for a full four hour production turn.

One either likes tangerine a great deal or can't stand the color. Needless to say this does not af-

fect the desirability of the color. However it is rather difficult to imagine a table set solely with tangerine. This would be a bit much.

It is believed by collectors that this color was made during the years 1930 to 1933. How much? Who knows? It does turn up, but ye collectors be prepared to pay big, and we do mean big prices.

Color plates are seen in the Yeakley book and the color variations show up very good in plate 11. Vogel also shows tangerine in Book III color plate 2, and in Book IV plate 1. He also lists tangerine as Number 6 on the color chart of 21 colors.

A list of tangerine follows, but the writer has not seen all of them. They were listed in a 1933 Heisey price list.

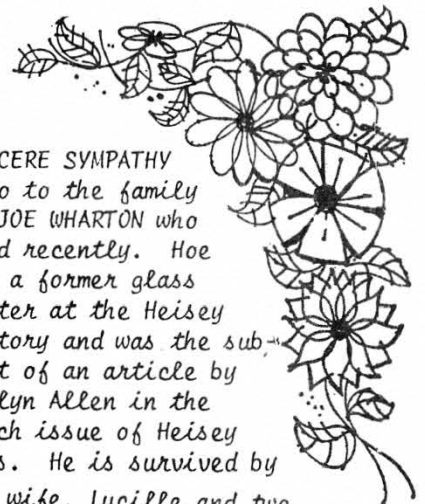
- # 134 candlestick 2 lite.
- # 337 Sherbet --- is a combination of marigold with tangerine rims. Vogel Book III plate 2 rop row.
- #1401 Empress, Many items
- #1404 Old Sandwich 8 in. plate(one only known)
- #3389 Duquesne stemware
- #3397 Gascony vase, stemware, Cocktail Shaker
- #3404 Spanish Stem
- #4045 Ball Vase
- #4227-4232 (6 styles) Favor Vases

Con't From VIETNAM, page 1  
cept of certain colors were incorrect. Later in the morning of our arrival we were invited to the Ream's to see their collection. WOW! what a collection!! We still can't believe everything we saw. The following day we drove to Plymouth and spent the morning visiting with Mr. Vogel and seeing his wonderful Heisey Museum. We are still amazed over the roulette high-ball bar glass and the fox ashtray. It is to our regret that we did not make this trip soon after we started collecting.

We came home "Heisey Charged" and ready to find those difficult

items, and believe it or not within the first week we found a table setting in Prison Stripe, and Ipswich cruet and a Winged Scroll trinket box in BLACK of all things. Although our collection is relatively small, it does include a few, what we consider hard to find items, such as, a glass advertising sign, the Lion trinket box in Waverly pattern, Locket-on-Chain in both clear and emerald, a table setting in ruby flashed Continental, several pieces of Beaded Swag in clear and custard and a set of frosted Rooster-stem Cocktail glasses. What's best about Heisey collecting? Why, of course, its the fine people we have met.

Our  
SINCERE SYMPATHY  
also to the family  
of JOE WHARTON who  
died recently. He  
was a former glass  
cutter at the Heisey  
factory and was the sub-  
ject of an article by  
Evelyn Allen in the  
March issue of Heisey  
News. He is survived by  
his wife, Lucille and two  
children.





PATTERN OF THE MONTH.....  
 EMPRESS AND QUEEN ANNE

by Louise Ream

We are writing about these two together because they are so similar and in some cases are identical. #1401 Empress was apparently introduced early in 1930. The March issue of National Geographic Magazine shows pieces of the pattern and calls it #1401, available in crystal, Flamingo Rose, Moongleam green and Sahara gold and also "Heisey's new Alexandrite."

I was inclined to call the decorative motif on the edges of this pattern a partially open fan but the September issue of the Geographic of the same year describes it thus---"Lilies of France inspired this lovely glass. Alluring is this new glass by Heisey, motivated by the lilies that the Knights of France bore into battle for ladies fair".



So the design apparently was meant to represent lilies and act-

ually they do resemble lilies as much as anything else. At any rate there is one of these designs on each side of a square item and usually six on a round piece. It is a fan-shaped design with a narrow raised area on either side of a larger raised area, usually extending an inch or more inward from the rim. (See drawing). The rest of the glass is plain.

Patent records show that T. Clarence Heisey designed at least part of the items. These include-- Dolphin footed floral bowl, pat. #81, 388, March 29, 1930. Square plate, pat. #82, 887, Oct. 27, 1930. Floral bowl with two side handles, Pat. #82, 888, also on Oct. 27.

This really must have been the Heisey pattern of the year 1930 with an extensive advertising campaign since nearly every issue if not all of the Geographic had ads for it. Another ad spoke of the "gleaming Sahara, the fascinating combination of crystal and moongleam". Another dwells on Alexandrite. "When you see this new Alexandrite by Heisey, you wonder at it's soft elusive radiance. It is tinted like some rare orchid petal. It flashes with the delicate glow of treasured gems...a dainty tantalizing purple, highly prized and

long sought, and now produced for exclusive tables by Heisey".

This appears to be a very large pattern group with items to serve anything from a simple luncheon to a sumptuous banquet complete from soup to nuts, including all accessory items such as floral bowls, candlesticks, vases, punch sets and ash trays. Mr. Vogel mentions 106 items in his Book 3. These are not all pictured in his books nor in catalogs available for study. However many of these unlisted items have been seen.

Some of the plates and saucers are round and some are square and these seem to be used interchangeably in sets. The dolphin foot is a special characteristic of the pattern and was used on many items, sometimes three feet and sometimes four. Some of these are on floral bowls, punch bowl, vases, cream and sugar, mayonnaise and mint dishes, ice bucket, pitcher, individual nut dishes and others. Perhaps one of the most unusual is the tumbler with the four tiny dolphin feet which is apparently quite rare. A dolphin also serves as a finial on the covered lemon dish. The single candlestick with three dolphin feet is highly prized also. Most of these pieces are signed on the inside of one of the feet which leads people to believe they are not signed.

Heisey seemed to delight in hiding the mark. The triplex relish is usually signed quite near the polished rim in one of the divisions between the sections, and is hard to find. A few pieces such as relishes and platters are signed on the side so near the polished base it is sometimes nearly polished off. This can be considered as a pattern which is usually signed.

An outstanding piece is the large floral bowl which has four lion's heads pressed around the sides and has four paws for feet. This bowl is an exception and is usually not signed so look out for it. Another especially valued collector's item, in this area at least, is a set of the diamond shaped ash trays in all of the beautiful colors. On these, as on some other similarly shaped pieces, the "lilies" extend outward from the corners to form handles. This is also true of the triplex relish and other items.

See Pattern, page 9

# HEISEY ANIMALS --- FIGURINES

## " GIRAFFES "

by Dick L. Marsh

This month not only are we getting off the farm for a change but to the jungle's edge in Africa. There our tall and gangly friend will be found eating tree tops. When walking or running this fellow looks like each step is his last. Awkwardness in his appearance and movement is his way of life. Standing he is graceful looking. The ones that we will study today are standing.

These fellows come in clear and frosted crystal glass. There is one catalogue listing for them in an Amber colored glass. At this time there are none known to exist. I personally know the glass worker who pressed animals at the Heisey plant, and upon asking him about this listing in amber, he said he had made hundreds in crystal but did not remember any in a color. He went on to say that the Heisey Company made many things in only one set for the glass shows and if they didn't sell there, they were one of a kind. He feels that the amber giraffes were such an item. This gentleman worked at Heisey for 31 years giving him a vast knowledge of Heisey Glass.

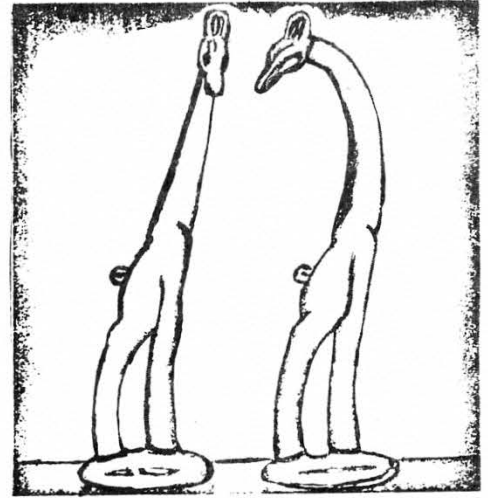
The quality of glass in the giraffes is generally excellent and free of mold marks. The Imperial Glass Company has not reissued this item. Both giraffes stand on an oval base that is 3 by 2-1/2 inches and are about 10-3/4th inches tall. The height will vary and this is due to the curve of the neck which was formed on by hand while still hot after removing from the mold. I have seen some that were removed from the mold too soon and the head nearly touches the ground because the glass was so hot it wouldn't hold the head up.

Where the front legs starts to rise from the base to the belly it is 2-3/4th inches. The leg is oval shaped being 5/8th inch by 1/2 inch. As it rises to the belly there is a slight arc back and out again. At this point the flanks meet the front legs which are larger across with a U shaped groove separating them.

This groove is curved out toward the front to a narrow point 3/8th inch and then back again. Directly across from where the legs meet is a slight bulge on the front of the front legs to represent a knee.

After the knee it is up for 1-3/4th inch. This area represents his chest and body. Now the width narrows at the front side to form the neck. The neck is a graceful curve to the head a distance of 5 1/8th. The back of the head starts with the ears. The ears start midway on each side of the neck rising 3/4th inch. There is a rounded crown of 3/16th inch high over the ears. The crown or top of the head is narrower across than the ears. The crown drops forward to the forehead. The forehead is 1/4 inch across; a 1/16th inch smaller across than the head. This part of the forehead is 3/8th inch long. There is a series of ridges the complete length of this section.

The forehead now slightly widens to the eyes which are small dots on either side of the head. The head narrows again with the area below representing the cheeks. The glass now drops to the nose. The nose is represented by an indentation on either side. The mouth is a groove that runs from under one nostril to the other. The chin rises upward to the jaws where the rise nearly stops. As it swells out on either side, the rise continues but it is a slight incline of about 30 degrees. The jaws round upward to the neck, and now it is down we go in a sweeping line to the tail. The tail extends 5/16th inch from the body curling down and back to the body 3/8th inch down the rump. From the base of the tail the rump curves out and back a distance of 3/4th inch. Here there is a dip on either side and coming out of this dip the glass swells out forming a knee. The leg now curves out and then back to the base. The front of the rear leg curves up and forward to the rear of the front leg. Both front legs run nearly



GIRAFFES

straight down to the base with a slight curve back.

One of the giraffes is looking over his back and the other is looking to his right side. Both of them were made in the same mold and the head turned while hot from the mold. When marked, the diamond H is located on the right side of the front leg near the base.

Author's note: Last month I stated that as best I knew the Clydesdale horse was not marked. Well, now I'm eating crow. Thanks to Mary Morris who informs us that the Clydesdale is sometimes marked on the left rear leg near the hoof.

---

### YOU CAN'T WIN THEM ALL.....

In September you read how Carl Sparacio of Ramsey, N.J., with the aid of some incredible luck found a three tier epergne. This month the gentleman's story has a different ending. Visiting a local antique show Carl spied a beautiful Three lite colonial candelabra in Sahara, complete with bobèche and crystals. Upon inquiring he found it was one of a pair and at a price that was ridiculously low. The only catch was a lady had just left, taking the other one home to check if the color went with her drapes. If it did she was buying the pair. Carl waited breathlessly and in vain for it was obviously a good color match. We understand he wasn't fit to talk to for days. Someone, somewhere is enjoying some fine pieces of classic American glass without realizing what she has.



# CLUB NEWS

- 7 -

The still unnamed club that had its beginnings back in June, (as reported in the July issue of the Heisey News), with an informal meeting at the home of Mr. and Mrs. C. Sparacio, has since had two more meetings. The second meeting on August 11th was at the home of Mr. and Mrs. S. Flashner of Old Bridge, N.J. At this meeting seventeen people met to discuss and formalize their intent to organize. Vince Sparacio was appointed chairman of the bylaws committee and further action was deferred until his group could complete its work. The balance of the evening was spent getting acquainted and discussing Heisey and more Heisey. The host and hostess graciously served refreshments out of their extensive collection of Banded Flute ware.

The 3rd meeting was held on October 14th at the home of Mr. and Mrs. V. Sparacio, Clifton, N.J. The bylaws were adopted and the following officers elected: Pres: Carl Sparacio; V.Pres: Lynne Bloch; Treas: Dick Buthy; Secy: Grace Sparacio; Dir: Libby Flashner. Future goals and plans were discussed. The selection of a name produced a lively exchange but finalization was held for the next meeting. Art Hartman chaired a discussion on Heisey's first pattern, "Fandango" and with the aid of pieces brought by members instructed the novices on identification. The meeting adjourned for refreshments and to view the Heisey items many members brought for display. As might be expected Carl Sparacio's epergne, (see Sept. issue of the Heisey News), stole the show.

The next meeting will be held January 13th, at the home of Lynne Bloch, Lahaska, Pa. Meetings thereafter will be bi-monthly. The club membership is drawn from the tri-state area of New Jersey, Pennsylvania and New York. Anyone interested in joining can contact the secretary at 21 Fairmount Ave., Clifton, New Jersey 07011.

---

A GIFT MEMBERSHIP IN THE HCA WOULD BE IDEAL FOR YOUR HEISEY COLLECTING FRIENDS OR RELATIVES. ONLY \$6.00 PER YEAR.

con't from Desk Of, page 1  
sent us a page from the Boston Sunday Globe, which he says is the largest newspaper in New England. An article by George Michaels, antique editor for the Globe and formerly editor of National Antiques Review, was about the Cyclorama Flea Market in Boston and he wrote a long paragraph about Heisey and illustrated it with a picture of Frank's booth which featured Heisey Glass. We appreciate the boost for the club and he also mentioned the collector's plate. Heisey is getting around!

Another letter from Russ Henderson of Elmira, New York, in which he renewed his membership and sent extra money for early issues of the News, revealed to us for the first time that he had been in the disastrous June 23rd, flood. He says that his Heisey collection survived the 56" of water in his living room. However, his newsletters did not and he wanted them replaced. We are happy that his collection is safe and that his zest for collecting was retained.

Back issues are available while they last at 60¢ each.

When questions are asked we would appreciate a self-addressed stamped envelope. We get many letters and postage is high.

We had a letter from a collector who stopped in Newark on vacation and was not able to find anyplace to see Heisey glass. The one shop they visited was closed. She suggested

---

## HOW I BECAME A COLLECTOR.....

by Ann Holman

For years my husband, Maurice (better known as Mouse) and I lived in a house trailer and you cannot be much of a collector in a house trailer. Trailers then were not the large mobile homes of today. What few nicknacks I had were mostly Heisey as I had always been an admirer of this glass having grown up with a lot of Heisey in the house. I have always appreciated its beauty.

After my husband and I built our new home in 1961 we purchased a corner cupboard and a hutch and I found that I did not have enough to put in them. My mother-in-law suggested that I attend some auction sales where I would be able to purchase nice items at reasonable prices.

that we give a list of places to go. Anyone traveling in this area may contact any of the officers of the club, whose phone numbers are listed in every issue of the NEWS, and they will be glad to tell you places to go. Also, if convenient, club members will be happy to have you visit our homes and see our personal collections. Check the Dealer Directory in the News. All of these dealers are club members and all specialize in Heisey glass. The Licking County Museum also has some Heisey on display.

Several people have asked that the left hand margin of the NEWS be moved over so that they can use a ring binder. Other collectors have said that they use a top binder which works well. Others use the type which has pockets for holding the pages. Our problem is moving the margin over, is the printing space which we lose. This would cause an increase in number of pages and the cost as well, or if enough people want the wider margin at the sacrifice of material, we will oblige you.

The phony toothpick is also made in clear glass. Recent evidence points strongly to it's being made in Ohio. Something is being done about it.

Hope to see a lot of you at the Christmas dinner and meeting. Until then.....

HAPPY COLLECTING !!!!!

---

After attending a few sales, I had the bug. Naturally you can not continue to go without buying. It was then, back in 1961, that I decided to buy mainly Heisey. It did not take long for Mouse to appreciate the beauty of it also - then I was really on my way.

Our first Heisey collection was water pitchers and we try to complete sets. We now have two complete sets, one with 5 sizes, the other with 4. We have other sets started but it is difficult to find all the needed sizes.

My present aim is to have a piece of every pattern made by Heisey. I am also working on stems and would like to have each one they produced. Naturally I would like an item in each color. We do not limit our buying to these items only but buy whatever strikes our fancy and our pocketbooks allow.

# HEISEY HUNTER HAPPENINGS!!!

by Bob Ryan

Thank you to the people who gave me their opinions on the first column.....we appreciate hearing both pros and cons and will do our best to please all, but having been around a good many years I realize the impossibility of doing this, but will give it a good try. Have had numerous rare finds and sightings reported and not too many sleepers....hope they weren't all found this summer while yours truly was otherwise occupied. From Peter Stuyvesant's old hiatus it has been reported that 29 pieces of tangerine have been sighted....the Long Islander did not say what pattern or pieces were involved and the dealer did know a little about Heisey Tangerine, but WOW, 29 pieces. An Illinoian made a rare find in a #357 Prison Stripe table set in Missouri...he also came up with a clam-broth trinket box and also a black one.

Incidentally, we think Kansas collectors are great!!!

A Newark collector on vacation in the West came home with a beautiful stemmed compote in emerald, Pattern, #1255 Pineapple and Fan.



8 IN. BOWL.

#365 Queen Anne goblets are finding their way into eastern hands....the collector reporting four of these and a large nappy in the same pattern...same person reports purchasing several pieces in #1776 Kalonyal, including a beautiful punch bowl...under a little dust a pair of fighting roosters were found and taken to a new home..including dust, these have to do in the super sleeper category.

At the Crutcher show in Indianapolis, a Dayton, Ohio, dealer found an emerald green #1205 Fancy Loop goblet...at this same show a frosted Tropical Fish and Show Horse were exhibited. The Wintermute show in Dayton, Ohio had several old pieces in Fancy Loop, including a squatty 4 oz. syrup another one I let get away. Also saw a four horse headed ash tray..a #433 Greek Key orange bowl...magnificent piece of glass almost as large as a punch bowl but beautifully flared...you Greek Key collectors surely picked a pattern with outstanding glass. A #7013 Thumbprint and Angle powder box with w/silver lid and a really intricate cut Revere bowl...a #1235 custard punch bowl with a rather large chip out, but what a hunk of custard....

One of the greatest collections of rare pieces of Heisey seen at a show outside of the one at Newark was on display and being sold at the Hilbert show in Springfield, Ohio. The collectors who made this show had to do just what my wife and I had to do, really fight the impulse to hock the diamond engagement ring and buy everything we saw, or sadly and unwillingly pass up another item we had never seen for sale before. I know I can't remember all the items I saw but here are enough to set you palpitating.. Would you believe #1776 Punch Bowl and cups, Fantastic! #1245 Ring Band custard tumblers and the most beautiful spooner in the same pattern in custard....a Victory deep plate etched cocktail glass;...a #1280 Winged Scroll custard toothpick, and one that wasn't Heisey also. Gotta watch this pattern.... #116 floral bowl with etched leaves. A Columbus collector found a Greek Key goblet...one of the really rare stemmed pieces....surprisingly so when there is so much of this magnificent pattern around...to quote from one of the Heisey authors, "a buy at any price." Another rare item was a #3424 wine, admiralty... it is gleaming from my cupboard tonight..a Fancy Loop mustard was also added to our collection. Nearly forgot the item I had the hardest time saying no to...It was an Em-

press bowl with Lafayette etching, very rare and beautiful but no matter how hard I tried I could not reduce its size and still keep it in one piece...it is a good thing it was not a stem piece because another stem collector and yours truly would probably have come away, one with the bowl and the other with the stem...just kidding, Steve. My wife had the same struggle with a #160 Locket-on-Chain sugar w/cover. Again we couldn't make it into a wine...still lamenting the one we let get away at the Heisey show in June.

Would you believe a cut mail box...it was there and beautifully done in a Max Seidel cutting...Not to bore you but there was Wampum, Columbia, Limelight Ridgeleigh vase, #480 fruit basket, #2517 jug in flamingo, berry bowls in #365, 1201, 350, 1255 and 1235..Also gold trimmed berry set in 1255. Gleaming majestically from a top shelf was a red-flashed #65 Queen Anne Pitcher.. if I can sell the kids bikes tomorrow after church I'm going back and buy that Lafayette bowl or Ring Band Spooner or Wampum candlesticks or...forget it, gotta rake leaves.. anyone want some cheap firewood? Keep hunting and you, too, may find a piece of tangerine for less than the price of a steak dinner...some people...Happy Hunting.

Ed. note....Bob is anxious to have more letters from other parts of the country so that, as he said last month, the column can be national in scope.

---

DON'T FORGET.....

MEMBERS, Plan your 1973 vacations around the annual convention, display and antique show in Newark, Ohio. Next year's dates are June 14-17. All events will be bigger and better than ever.

---

NOTICE!!!! NOTICE!!!!

Help collectors in your area find you, Get your name in the Dealer Directory.

6 issues -- \$6.00

Maximum of 4 lines at this price

Send your check to: Evelyn Allen

135 Cynthia St.  
Heath, Oh 43055



con't Pattern of month, page 5

There is a line of pressed stemware not shown in any of the published reference books. As on a few other items such as demi-tasse cups and tumblers, the lilies are below a plain band at the top. A line of blown stemware proves to be elusive. This is pattern #5009.

Cups in Empress sometimes have 6 lilies and others have only 4. The ones having 4 extend down further and have a row of graduated beading coming up from the base to meet them. The fans are also longer on those items having 4. This beading is also present on many dolphin footed items and starts at the top of the foot. Since pieces from these patterns carried over into the #1519 Waverly pattern in later years have only four of the lilies it might be assumed that these are later than those with 6.

#1401 Empress was also produced in cobalt and tangerine, the latter being the scarcest of all. How many items were made in these colors is not known as yet but sets were available in both. We have not seen cups and saucers in cobalt but floral bowls and plates are known. Cruets seen in a combination of clear and moongleam are beautiful. Judging from amount available largest production in color was in Sahara. In colors if etchings were used it us usually Chintz, Old Colony or Lafayette. These were also used on clear as well as many other etchings.

According to trade catalogs the earlier name for the pattern was #1401 Empress and it is generally believed that only Empress was made in color. For some reason at least part of the molds were redesigned and the name in a later catalog is #1509 Queen Anne.

The most notable difference in the two is the appearance of vertical ripples inside some pieces of the latter. These show clearly in the McClean catalog reprint. Note the floral bowls, 11 and 8-1/2" sizes, and it is also obvious on the cups and saucers on page 57. These same pieces are shown in Vogel 3 under #1509. At least some of the plates are thicker and have the ripples in the glass. Some might call these waves or undulations. Pieces etched with Crinoline, Belle-Rose and Orchid show the ripples as do creams and sugars and nut

MEMBERSHIP REPORT....

by Ann Holman

As of November 8, 1972 we have 59 Active Members, 781 Associate Members, and 3 voting clubs - Total Members 843. Thirty-eight (38) States are represented.

Active members are from Dallas, Tx; Bradenton, Fl; Lake Villa, Il; Wayland, Ma; Fort Wayne, In; Union Lake, Mi; Warren, Mi; Wyandotte, Mi; Lahaska, Pa; Narberth, Pa; Orange, Ca; Tonawanda, East Northport, El-mira, Wantagh, Levittown, Yonkers, New York City, all NY: Ramsey, NJ; Stanhope, NJ; Barrington, NJ: Granville, Reynoldsburg, Westerville, Worthington, Heath, Thornville, Utica, Columbus, Newark and Oak Harbor, all Ohio.

Does your membership expire 12/31/72? Check your membership card. Help us--send in your renewals if due - \$6.00 per year, plus \$1.00 for each additional household member who wishes to join.

cups. Orchid etching was first used on #1509 which pre-dates Waverly, which seems to be seen most often in orchid. A #1509 cup, saucer, cream, sugar, footed mint and a mayonnaise set were shown in the Waverly group as late as the 1956 catalog.

Perhaps, as many believe, there is no basic difference between Empress and Queen Ann. Suffice it to say, we have never seen pieces in color with the ripples in the glass. And, for whatever reason, Heisey did change the number and name of the pattern. Names had been changed before but the numbers remained the same.

Since both of these patterns came in so many colors and etchings, as well as some cuttings, they must have been very popular. For an elegant table setting any of the colors are ideal and in Alexandrite, Cobalt and Tangerine are breathtaking. You will see them all in June at the show.

The only reissue of this pattern by Imperial includes the #1509 1 lite candlestick with prisms. (Except for the prisms this is one piece as it was at Heisey), 5-1/2 footed mint and footed mayo set all in clear only.

**— DEALER'S DIRECTORY —**

Guthrie's Rock & Gem Shop  
Route 1, Hebron, Ohio 43025  
(614) 928-4396  
By chance or appointment

---

**SIGN OF THE STEIN**  
113 N. Prospect Granville, Ohio  
(614) 587 - 2503  
Specializing in Steins & Heisey

---

**BERT'S BUDGET SHOP**  
403 W. Main St  
Newark, Ohio 43055  
(614) 349-8045  
General line Antiques  
2000 pieces Heisey

---

**LYNNE & ART'S GLASS HOUSE, INC**  
"HEISEY OUR SPECIALTY"  
Route 202 Lahaska, Pa. 18931  
(215) 794-7800 P.O. Box 242

---

**Moundbuilders Antiques**  
"Specializing in old Heisey  
and Animals"  
IRENE RAUCK  
1138 MOUNDVIEW AVENUE NEWARK, OHIO 43055  
TELEPHONE  
AREA 614 344-6043

---

**HEISEY MUSEUM**  
Write for appointment  
C.W. VOGEL 126 W. HIGH  
PLYMOUTH, OHIO 44865

---

**MARG & RAY'S ANTIQUES**  
FURNITURE - OLD BANKS - TOYS  
GLASSWARE - LAMPS  
BOUGHT & SOLD  
487 MAPLE AVENUE NEWARK, OHIO 43055  
PH 345-1316

---

**REAM'S**  
"TREASURE HOUSE"  
ANTIQUES  
7307 East Main Street  
Reynoldsburg, Ohio 43068

---

**COLLECTOR'S HAVEN**  
187 S. Williams St.  
Newark, Ohio  
HARRY AND EVELYN ALLEN  
(614) 344-5187 or 522-1635

---

**THE CRYSTAL ZOO**  
CONNIE RYAN  
88 Davis Rd.  
Centerville, Oh 45459  
Phone: (513) 885-5401  
Specializing in stems & cuttings

---

YOUR AD COULD BE IN  
THIS SPACE

---

6 ISSUES (6 months) \$6.00

Salt and Pepper, Rose etching - - - - -	set -	\$ 32.00
Girl Bell, Frosted; B.4, Pg 56 - - - - -		45.00
Cigarette Box, Horse Head Cover, #1489 - B.e, Pg 7 #13 - - - - -		25.00
#1489, Cigarette Box with Dolly Madison Rose Top, mkd - - - - -		35.00
#1567 Syrup Jug, Plantation Pattern, B.4, Pg 15 - - - - -		27.00
Dawn Center Bowl, Lodestar Marked with unmarked underplate - - - - -		65.00
Pr 2 Lite Candle Holders in Dawn #1510, Marked B.4, Pg 31 - - - - -		125.00
4 Tumblers Nimrod Carving, #2052, B. 4, Pg 41 - - - - -	ea -	25.00
Ash tray, #1510, B.4, Pg 64 - - - - -		12.00
Pineapple & Fan #1255, 7 Pc Berry Set, Good Gold and Mint condition - - - - -		145.00
Winged Scroll "CUSTARD" Molasses can #1280, B.4, Pg 126 - - - - -		200.00
Hat Ash tray, #1536, B.4, Pg 134 - - - - -		10.00
Heisey Mail Box, #7033, B.4, Pg 165 - - - - -		165.00
Cocktail Shaker & 6 Stemmed Glasses with Tally ho Deep Plate etching - - - - -		220.00
Water Pitcher, 2 qt., #341-1/2, mkd, B.1, Pg 46 - - - - -		39.00
Water Pitcher, 3 pt., Sunburst, mkd, #343, B.1, Pg 3 - - - - -		62.00
Newark Sesquicentennial Plater - - - - -		42.00
8 large Water Tumblers, Saturn pattern, mkd. - - - - -	ea -	5.00
12 Waverly Orchid etched Dinner Plates - - - - -	ea -	16.00
	Big Pig, marked - - - - -	\$175.00
	Pr. Fish Bookends - - - - -	ea - 35.00
	Pr. Fish Candlesticks - - - - -	ea - 75.00
	Mallard Wings Halfway - - - - -	45.00
	Ringneck Pheasant - - - - -	52.00
	Baby Elephant - - - - -	60.00
	Set of Elephants, Lg, Med, Small; All 3 -	200.00



POSTAGE AND INSURANCE EXTRA

**ALL HEISEY AUCTION.....**

A new high was established for a single piece of Heisey at the recent all Heisey auction held here in Newark on Nov. 11th. The Amber Flying Mare brought \$1500.00 which, we believe, is the highest price ever paid at public auction for a single piece of HEISEY. The proud new owners have permanently stabled the mare in their already striking collection of Heisey animals. Some other animal prices include, Show Horse #275, Wood Duck #375, (an all time high), large Rabbit #250, Bunny \$70, Kicking Colt \$85. Some of the other prices are as follows: Pointed Oval & Diamond Point Cream and Sugar in Emerald, \$60. ea, Crystal #4036, 1 pint decanter Orchid Etch, \$65, Crystal #4039 Penguin decanter, \$55. Crystal #4164, 73 oz. Jug --- Minuet etch, \$75, Crystal #365 Queen Ann goblet, #40, Crystal #433 Greek Key goblet, \$40, and the Tangerine #3389 Duquesne 5 oz. sherry brought \$90.

The auctioneer announced that the next all Heisey auction is planned for January and they will be offering an amber Elephant and the

Filly Horse with the head back. Start saving your money, you animal collectors. In the meantime we're looking forward to visiting with you all at the banquet to be held in December. Get your reservations in right away if you haven't already done so.

Loren Yeakley

con't Heisey #1255, page 2 which leads us to believe that all items were offered in emerald as well as crystal. The emerald is a striking green, highly polished, and pieces in this color usually demand a high price. At a recent Heisey auction held here in Newark a hotel cream and sugar brought \$40. each. A small nappy in emerald with slight damage brought \$20.

No items in this pattern have been found bearing the Heisey trademark, with one exception. In later years, when Heisey was making many small souvenir items, the 1/2 pint tankard pitcher was issued in custard, usually a souvenir item. It is possible to find this same item in custard without the Heisey trade-

mark. Since no other items have been found signed we must assume this pattern was discontinued early in the 1900's. To date no reproductions have been found and reissues are not likely since the molds were probably scrapped long before the assets were sold to the Imperial Glass Corp. When looking for items in this pattern don't be fooled by Ohio Flint Glass Pattern #808, Ada. It is very similar except the quality in Heisey's Pineapple and Fan is much superior.

**HEISEY RECEPTION**

On Saturday, October 14th Miss Joyce Rauck, daughter of Irene Rauch, and the late Mr. Ed Rauck, HCA member and long time Heisey dealer, become the bride of Richard Pound at the Luthern Church here in Newark. The reception table was graced with a pair of 40" three branch Heisey Colonial Candelabras. Fall flowers were arranged around the base of each candelabra. Punch was served from two Heisey Greek Key Punch bowls. It was a beautiful Heisey reception and our best wishes go to Joyce and Dick.

C. TARQUINIO  
1744 Kaiser Dr.  
Reynoldsburg, Oh 43068  
Phone: (614) 866-4687

POSTAGE & INSURANCE EXTRA

# 365	Early Queen Anne Punch bowl, base & 15 cups, mkd. - - - - -	\$ 240.00
# 305	Punty & Diamond Point Punch bowl & base - - - - -	90.00
# 305	Punty & Diamond Point Water Bottle - - - - -	35.00
# 10	Flamingo Maple Leaf coasters- - - - - (have 8), ea -	3.00
# 134	Two-lite Candelabra, (orchid etched) paper label - - - - - Pr -	25.00
#1170	Pleat & Panel, Flamingo Cheese & Cracker Set (2 pc) mkd. - - - - -	17.50
#1201	Fandango Bowl - - - - -	25.00
#1483	<b>Stanhope Luncheon Set</b> (30 pieces) with red inserts, some pieces mkd 7 plates, 7 cups, 10 saucers, salt & pepper, 2 relish dishes & creamer & sugar - - - - -	75.00

TREASURE HOUSE ANTIQUES  
7307 E. Main Street  
Reynoldsburg, Ohio 43068  
Phone: (614) 864-1795  
RUSS AND LOUISE REAM

#1401	Empress 8" square plate, ALEXANDRITE - - - - -	\$ 50.00
#3381	Creole footed soda, ALEXANDRITE, no mark - - - - -	35.00
#1533	Wampum ash tray - - - - -	10.00
#1506	Provincial candle blocks, unmkd., round - - - - - pr -	15.00
#1632	Satellite star-shaped candle blocks, unmkd., lovely - - - - - pr -	18.00
# 411	Rib and Panel Cheese Plate, HAWTHORNE - - - - -	15.00
#1590	Zodiac Sherbet and Zodiac Juice or wine (1 each) - - - - - ea -	10.00
#1632	Lodestar Cream and Sugar, DAWN - - - - - set -	37.50
#1506	Provincial Sugar Bowl, LIMELIGHT - - - - -	24.00
	HEISEY ROSE FOOTED JUICE or PARFAIT, (have 5) - - - - - ea -	9.50
#1503	Crystolite Cigarette Box, ZIRCON - - - - -	37.50
#1405	Ipswich Cream and Sugar, FLAMINGO - - - - - set -	30.00
#1413	Cathedral vase, silver overlay, beautiful, unmkd. - - - - -	27.50
#1469	Ridgeleigh star relish - - - - -	15.00
#1503	Crystolite blown pitcher, unmkd. - - - - -	17.50
#1401	Empress, Queen Anne, demitasse cup and saucer, SAHARA - - - 2 pc -	17.50
#1401	Empress footed mint, FLAMINGO - - - - -	20.00
#1401	same as above, in clear - - - - -	12.50
#4206	Vase, Diamond Optic; magnificent piece, FLAMINGO (blown, no mark) - -	19.50
# 417	Double Rib and Panel Basket, MOONGLEAM - - - - -	40.00
# 325	Pillows small nappy w/gold - - - - -	15.00
#1205	Fancy Loop 4-1/2" nappy, not mkd. - - - - -	12.00
# 343	Sunburst 4-1/2" nappy - - - - - (have 2) ea -	10.00
#1252	Twist Cheese plate, MOONGLEAM - - - - -	7.50
#1469	Ridgeleigh footed Torte Plate, no mark - - - - -	12.50
	1971 Land of Legend souvenir plate - - - - -	27.50

Satisfaction guaranteed. All items marked except as noted. Postage and Insurance extra. SASE, please. BANKAMERICARD

HAVE WIDE VARIETY SALTS AND NUT DISHES. WRITE WANTS.



ROBERT H. COYLE  
" COLLECTIBLE ANTIQUES "  
441 MT. VERNON ROAD  
NEWARK, OH. 43055  
PHONE: (614) 349-7362

BUY NOW  
FOR BEAUTIFUL  
HEISEY CHRISTMAS  
GIFTS AT  
A SAVINGS..... (P, WHY NOT.....  
ADD TO YOUR OWN COLLECTION.

1.	#1401	Clear Diamond Ash tray, marked - - - - -	\$ 40.00
2.	#1401	SAHARA Diamond Ash tray, marked - - - - -	35.00
3.	#1401	ALEXANDRITE Diamond Ash tray, marked - - - - -	75.00
4.	#1506	Whirlpool ZIRCON 8" round plates (3) - - - - - ea -	18.00
5.	#1485	Saturn ZIRCON 7" Comport, marked - - - - -	70.00
6.	# 447	Empress etched MARIGOLD cup & saucer, marked - - - - -	28.00
7.	# 335	Prince of Whales Plume small Punch bowl, base, and 6 cups, all marked - - -	165.00
8.	#1495	Fern 6" Bon Bon, Waterford cutting - - - - -	12.00
9.	# 150	Banded Flute saucer foot candlestick, marked - - - - -	11.00
10.	#1295	Beaded Swag clear table set with blue band and gold decoration, butter dish, creamer, sugar, and spooner - - - - -	165.00
11.	#1201	Fandango 7" nappy - - - - -	20.00
12.	#1776	Rare Kalonyal oblong relish dish, marked - - - - -	30.00
13.	#1205	Fancy Loop 9" plate - - - - -	28.00
14.	#1205	Fancy Loop 13 oz. Molasses, glass lip, pewter top - - - - -	62.00
15.	#1205	4" Rose bowl - - - - -	30.00
16.		Deep Plate etched Nimrod Water glass - - - - -	18.00
17.		Deep Plate etched Pole Player Water glass - - - - -	25.00
18.	# 9	Single Slash and Panel large plate - - - - -	16.00
19.	#1238	FLAMINGO Beehive plate, 4" - - - - - ea -	9.50
20.	#1235	FLAMINGO Beehive plate, 8" - - - - -	15.00
21.	#1469	Ridgeleigh SAHARA 6" candle vase, flared - - - - -	20.00
22.	#4229	COBALT Favor Vase, diamond optic - - - - -	30.00
23.	# 433	Greek Key Oval individual creamer, marked - - - - -	20.00
24.	#1509	SAHARA Queen Anne 11" floral bowl, dolphin feet - - - - -	25.00
25.	#1509	CLEAR Queen Anne, La Fayette etched 11" floral bowl, dolphin feet - - - - -	25.00
26.		Colonial AMBER footed 12 oz. soda, Yeakley, Plate 5, row 3 - - - - -	18.00
27.	#1225	Plain Band Cruet, cut stopper, flowers etched on band - - - - -	20.00
28.	#1200	Cut Block individual salt - - - - -	12.00
29.		Heisey Fighting Rooster - - - - -	35.00

All items include Postage.....

SATISFACTION GUARANTEED

V. L. ROBERTS  
Spring Valley, Minn 55975  
Phone: (507) 346-2835

- 6 Heisey Rose etched cups and saucers mkd with stickers and also Diamond H set - \$ 12.00
- 10 Heisey Rose etched goblets 6-1/2" mkd with stickers only - - - - - ea - 9.50
- 7 Heisey Rose etched sherbets 3-3/4" mkd with stickers only - - - - - ea - 8.50
- 7 Heisey Rose etched 8-1/2" plates mkd with stickers only - - - - - ea - 9.50
- 1 Heisey Rose 11 oz short stemmed goblet mkd with sticker only - - - - - 9.50
- 10 Heisey Orchid etched sherbets 4" mkd with stickers only - - - - - ea - 9.00
- 1 6-1/2" x 9" 3-part relish with Barcelona cutting mkd diamond H and also sticker - 15.00
- 2 #134 5" Candlesticks with Barcelona cuttings mkd with stickers only - ea - 12.50
- 4 8" plates with Barcelona cuttings mkd with stickers only - - - - - ea - 8.00
- 8 #1509 Sahara Queen Anne nut cups, unmkd - - - - - ea - 8.50

The above crystal Heisey represents beautiful never used Heisey and money refunded if not satisfied. Shipping extra.

MRS. JUNE BAXTER  
1120 GALLOWAY STREET  
PACIFIC PALISADES, CA. 90272  
Phone: (213) 459-1722

HEISEY GLASSWARE

- CLYDESDALE, Sun colored with small flake on mane, so - - - - - \$ 40.00
- CUSTARD "Winged Scroll" triangular dish, mint gold decor - - - - - 50.00
- RUBY FLASHED, "Punty Band" Mug, souvenir 18.00
- SAHARA "Ipswich" 10oz footed Soda, square base - - - - - 12.00
- MOONGLEAM #3362, "Egyptian" Tumbler - - - 6.00
- MOONGLEAM Stem & Base with CRYSTAL Optic Bowls, STEWARE.....
- 4 x 10 oz Tall Stem #3357 Goblets,ea 10.00
- 4 x 10 oz Tall Stem #3355 Goblets,ea 10.00
- "PUNTY & DIAMOND POINT" Crystal Perfume bottle with Sterling silver repousse top - - - - - 18.00
- HEISEY by Imperial (signed)
- "Provincial" pattern:
- 1 Large Tumbler, Footed - - 8.00
- 4 Juice glasses, footed, ea - 7.00

Postage and Insurance extra, please  
Money back guarantee.

HEISEY FOR CHRISTMAS

All items mint. Postage & Insurance extra. SASE, please. Phone call will hold any item. Crystal unless otherwise stated.

- # 350 PINWHEEL & FAN, punchbowl foot, suncolored delicate lavender, large diamond H - - - - - \$ 47.50
- # 407 COARSE RIB, 12" celery, Flamingo, mkd 16.50
- # 468 OCTAGON/RIM, 12" celery, engraved flowers/leaves/bands, lg diamond H - 27.50
- #4225 ROOSTER HEAD Cocktail shaker/strainer, 2 quart - - - - - 37.50
- #V-8621 Verlys Pine Cones bowl, perfect for Christmas - - - - - 22.50

WANTED: Unusual pieces in Hawthorne. Also, two 9 oz. goblets, Peachtree cutting. Mint only. Will trade for.

MRS. ELOISE LOWENSTEIN  
138 WYNEVA STREET  
PHILADELPHIA, PA. 19144  
Phone: (215) 842-1065

BOOKS AND REPRINTS THAT THE CLUB HAS ON HAND TO SELL...

- THE HEISEY ANIMALS - \$2.50  
by James McDermott  
This book pictures all of the animals produced by Heisey. It also states the size of each animal.
- HEISEY'S GLASSWARE with a copyright date of 1935 - \$10.00  
This is a reprint published by Virginia McLean.
- HEISEY CATALOG & PRICE LIST #33 dated June 1, 1956 - \$6.95  
This is a reprint published by Antiques Research Publications. This is the last known catalogue to be published by the A.H. Heisey Company.
- HEISEY GLASSWARE - \$10.00  
This is a hardback book written published by Viola Cudd.
- HEISEY'S GLASSWARE - \$10.00  
This is a pressed ware catalogue #109 published by Herb Long.
- ORDER FROM:  
Miss Donna Yeager  
Loudon Street, Rt. #2  
Granville, Ohio 43023

WANTED

GREEK  
KEY  
Round Hotel  
Cream  
and  
Sugar  
also  
oval Individual  
Cream and Sugar  
with Pat.  
#41764  
on each

ROY R MANNING  
BOX 495  
SMYRNA, GA. 30080



LETTERS.....WE GET LETTERS.....

Thank you for making Hawthorne the October color-of-month. It's my favorite, and I'm doing my darnedest to make it the focal point of my collection much to the dismay of the household budget! Someday soon I'll write you a "Why Do I Collect Heisey" story; in the meantime my husband keeps asking me, "Why do you collect Heisey?" although he is slowly but surely becoming a Believer ( Don't tell him I said that or he'll hide the checkbook)\*....

We're planning on coming to

Ohio for the annual convention and show next Spring. It will be our 1973 vacation. Can't wait.

More from my antique typewriter at a later date. Meanwhile may Santa leave an alexandrite punch bowl under your Christmas tree! Or would you prefer cobalt?

Eloise Lowenstein  
Philadelphia, Pa

\*Ed. note: Eloise, we let it slip. Better hide this copy from your husband.

Words cannot express the appreciation my wife and I feel for the staff of the superb Heisey News. It is read from cover to cover by both of us, then proves to be an endless source of discussion material.

We just acquired a cobalt 4-1/2 oz. lavender jar, colonial pattern, Mr. Vogel's Book 2, page 41.

we can find no reference to any colonial in color. Any thoughts?\*

Your cover selection was excellent. Keep up the good job you are doing.

B. J. Montgomery  
Norfolk, Va.

\*Only colonial item known at present in cobalt is the pilsener shown in Vogel's color plates Book II. Is yours signed?

I found the Heisey News for September, most interesting. I also like the new heading and congratulate the winner.

Please be assured that all the hard work all of you put into the H.C.A. has not gone unappreciated by me. I'm sure all members are most grateful to all of you.

Paul Miller  
Akron, Ohio

NOTICE.. We have recently received several ads too late for publication. Ads must reach us by the tenth of the month to insure being in that months issue.



FIRST CLASS MAIL

CORRECT ADDRESS REQUESTED