

Heisey NEWS

VOL. 1 NO 4

OFFICIAL PUBLICATION HEISEY COLLECTORS OF AMERICA

APRIL 25, 1972

Sixty Cents

From the desk of . . .

President, Louise Ream

From now on until the June show, display and convention Newark will be a beehive of activity preparing for these events. Jim Korus reports registrations are coming in but is hoping for many more. Early registration helps us plan!! A form for this purpose is in this issue of the News for your convenience. If you have not yet made motel reservations refer to last month's issue for the motel list.

An error was made in the opening hour for the show so that times have had to be changed for some of the meetings. Check the registration form for the correct times.

Reports from many indicate that you are planning your vacations around the June events here. If you happen to live in an area where there is little Heisey glass and especially in the colors, be ready for a surprise as there will be plenty of it here, both on display and in dealer's booths. Most of the top Heisey dealers from all over the country will be here. There will also be dealers with general antiques.

The picture in this issue, of Virginia Yeakley, Evelyn Allen and your president is from an article in the Columbus (Ohio) Dispatch telling about the club and a re-

cent donation to the museum fund. The three of us, plus Frances Law, comprise the editorial staff of the Heisey News and the picture was taken on the day we were preparing the March issue for mailing. Regular contributing editors to the News are Loren Yeakley and Dick Marsh and, newly added, Robert Coule, which we are holding in the picture was a recent purchase of the Reams found for us by a fellow collector and dear friend, Thelma Minnick. Needless to say we are very grateful to her for allowing us to have it. You'll see it in June.

If any of you have unusual pieces of Heisey which you wish to display in June, and if you will be in Newark in time, please contact Loren Yeakley, 8 Heisey News, Box 27, Newark, Ohio 43055. That way a place will be saved for your glass.

The first quarterly meeting of the club on March 18 seemed to be a great success. There were 58 members present with four from Pennsylvania, one from New Jersey, two from Toledo and three from near Dayton with the rest being from closer to Newark. Gus Heisey and Paul Fairall and his sister Ruth Dunn, were among those present.

The business meeting was brief and was followed by a talk by Loren Yeakley on Imperial colors. He shaved all of their colors and several of the patterns made by them. This was followed by a demonstration of the use of black-light and the interesting effect on the various Heisey colors. See Desk, page 6

" HOW IT ALL BEGAN "

Our Heisey Collection!

My husband was named Coffredo by his parents but the nickname "Murphy" has stuck with him since he joined the U.S. Navy in his youth. Asked his name, he replied "Coffredo" and his superior officer said "From now on you're "Murphy" and so he has been.

My parents came from Scotland and both Murphy and I are natives of Barre, Vermont.

Four or five years ago we became "hooked" on auctions and went to most of those around locally, buying anything which appealed to us or seemed to be unusual. Since our home is Early American we bought and refinished many pieces of furniture.

We had known Russ and Louise Ream for sometime casually but about three years ago we became good friends and started going around to some auctions and flea markets together. Since we didn't collect Heisey this created no problems for either of us as we never wanted the same things.

But one day we went alone to a flea market and Murphy spotted some cocktail glasses with amber seahorse stems. On examination he found that they were marked with the Diamond H, and the price for all six was only \$5.00. At first he intended to sell them and the Reams had first chance, but, unfortunately for them, instead of selling, he started collecting Heisey himself. From that day on we have been "hooked" on Heisey.

Perhaps, because of my Scotch background, I love a bargain and much of our collection has been purchased as sleepers. To us the thrill is in the chase. We spend many weekends traveling from flea markets, to shows and antique shops and in less than three years have what we think is a nice collection.

My first loves are the old patterns and especially opal, custard and emerald. Murphy's toothpick collection is his pride and joy and he has several choice ones including Prison Stripe, Puntty and Diamond Point, Paneled Cane, Opal Beaded Swag and custard Winged Scroll. Other favorite pieces of his are the pitchers, water bottles

See How, page 6

REGISTER NOW FOR THE CONVENTION: JUNE 15-18

PROFILES OF FORMER HEISEY EMPLOYEES #4

by Evelyn M. Allen



Leon Randaxhe now lives at 18 Fairmont Avenue, Newark, Ohio, with his wife, the former Leota Clendenning. He was born in Seraing, Belgium, January 7, 1898. In 1906, at the age of nine years, he, his brother (4 months old) and parents came to the United States. They landed in New York City on Christmas morning. The Randaxhe family had several friends in the United States working in glass factories and feeling that working conditions were better here, decided to leave Belgium. Before coming to the United States his father had been given a medal from the Val St. Lambert Glass factory for Morality and Ability for expert workmanship. He had worked for this company for 40 years. The medal gave him the privilege to work in any glass company in Europe.

They left New York City enroute to Toledo, Ohio, but on the way Leon's father decided to stop in Rochester, Pa. where he went to work for the H. C. Fry Co. He later left there and moved to Moundsville, W. Va., and worked for the Fostoria plant. At 13 or 14 years of age Leon worked on Friday evenings to earn spending money, working 4 1/2 hours for 40¢. He worked there 11 months and then in 1913 moved to Byesville, Ohio, and went to work at a plant there, which was owned by Mr. Bennett of the Cambridge Glass Co. His starting salary here was \$15.00 per week.

During the World War I this plant closed and he and his father went to work for the Cambridge Glass Co. Leon got his union card at the age of 16.

February 12, 1918, they moved to Newark, Ohio, and both obtained jobs at the A. H. Heisey Co. His father decided, in 1920, to go back to Belgium. He wanted Leon to return also but at this time he decided to make Newark, Ohio, his home.

Leon was a blower and finisher of hand made tableware. At times he was borrowed by the press shop to put feet on goblets and candlesticks. While at Heisey he served for several years as an officer in the Union. He said that he got along extremely well with both the company and union. Leon had, and still has, great respect for the Heisey management staff and said that they treated their employees very well and the workers showed their appreciation by performing their various skills to the best of their ability.

Leon made all the tools he worked with. Like most glass workers, he prefers crystal to color. He said he just couldn't imagine drinking from a cobalt glass. His feeling on Heisey glassware is that no other company made any glass with more brilliance and lustre.

During the second World War, along with his job at Heisey, he worked for a Research Lab, repairing their glass equipment. At the time he was doing this it was top secret work and he didn't know what he was working on. Later on he did find out.

He left the Heisey Company in 1953 and went to work as a Building Inspector for the city of Newark. At this time "Pop Swank" was mayor. This he did until 1959. In 1960 he got a job in the chemistry department at Ohio State University in Columbus, Ohio. He, at 62 years old, had to learn the metric system.

Now, retired, he has two hobbies, playing the violin and making novelty glassware. He had earlier studied the violin for one year at Muskingum College, New Concord, Ohio. In making his glass novelties he uses a blast burner and turns pyrex tubes into glass figures, cologne bottles, animals, birds and fish. He also can fashion a glass bell and stemmed glassware. (I was amazed at his work and, of course, purchased a few of his animals. I don't believe anyone could go there without buying something he has made.)

He has one daughter who now lives in South Carolina. The rest of his family is in Belgium, where he returned in 1966 for a two week visit and he hopes he can make another trip there soon.

COLOR OF THE MONTH

- 4 -

" MOONGLEAM "

by Frances Law

This is the color Virginia McLean describes as a "cool, sparkling green." Concetta Emanuele says the first pattern advertised was the 3355 Fairacre stemware. She called it the "soft green of meadows". It is usually considered lighter in shading than emerald. However, very thickpieces of moongleam appear darker in color. It is quite easy to tell the difference in Heisey's Moongleam and Imperial's Verde. The Verde is an olive green, and some was made in Heisey molds. If you study a piece of each color, it should be a simple matter to tell the difference.

Moongleam was the third most popular color. It was also the first color made in the second color period. Many patterns were made from 1922 to 1935; these are probable dates for this color. It is somewhat higher in price than crystal, but still quite available.

Certain shades of green are made from oxide of chrome, which is secured from chromite ore. We assume varying amounts, along with other ingredients, produces the desired shade of green. As to the actual chemical composition of Moongleam, who knows? Suffice it to say, the chemists were successful in making this light, airy green. However, this color varies greatly in shade depending on either the chemical variations or the cooking time. The longer a color stays in the pot, the lighter it will be.

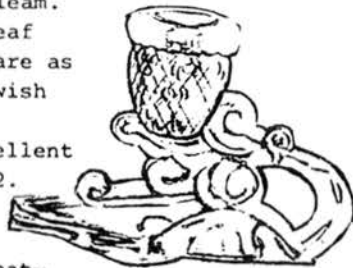
This color was used often in a combination of green and crystal such as a green stem or base of a vase with clear top or vice versa.

Don't turn up your nose at this lovely green just because it is more available. Some of the prettiest seen in collections are in Moongleam. We have a pair of acorn and oakleaf (patt. #130) candlesticks which are as beautiful as anything one would wish to display.

The Yeakley book has an excellent color page of Moongleam, plate 12. It shows the shade variations much better than words can tell.

In this partial listing of patterns, most will be found in Vogel's four books. Check the index in book four to locate the patterns. Reference is also made to patterns in Herrick's 14-B catalog. The theory has been advanced that most all of 14-B was made in Moongleam.

- #10 Maple leaf coaster
- #15 Block with duck
- #15 Five inch block with #123 candlestick
- #31 Toy candlestick
- #109 Dolphin candlestick
- #110 Dolphin candlestick (tall)
- #111 Cherub candlestick
- #112 Candlestick
- #113 Candlestick
- #116 Candlestick
- #117 Candlestick
- #122 Candlestick



- #128 Candlestick
- #129 Triplex candlestick
- #130 Candlestick
- #132 Candlestick
- #133 Goose Candlestick and floral bowl
- #133 Floral bowl
- #134 Candlestick
- #299 Narrow optic tumbler
- #350 Pinwheel and Fan
- #353 Colonial cigar jar
- #354 Colonial Cream/sugar
- #355 Quator
- #357 Dick ash tray
- #367 Decanter
- #393 Narrow flute (some items)
- #406-407 Coarse rib (some items)
- #411,412,413 Rib and panel
- #417 Basket
- #417 Double rib and panel
- #419 Sussex Stemware (pressed)
- #479 Hotel cream/sugar
- #500 Octagon ice bucket (also miscellaneous)
- #1020 Cream/sugar
- #1174 Basket ash tray (three other size baskets)
- #1170 Pleat and panel
- #1180 Individual nut dish
- #1183 Tub salt-variety tray
- #1184 Yeoman (plain and diamond optic)
- #1189 Cream/sugar
- #1191 Spice dish, pickle and olive dish
- #1193 7 inch conserve
- #1193 Conserve dish
- #1201 Floral bowl
- #1210 Cheese dish and bonbon
- #1223 Plate, nappy, grapefruit
- #1224 Salad bowl
- #1228 Baked apple and plate
- #1229 Octagon
- #1231 Ribbed Octagon
- #1236 Eagle plate
- #1238 Beehive plate
- #1246 Plate - acorn and leaves
- #1252 Twist (or oceanic)
- #1253 Twist variant
- #1401 Empress
- #1401 Old sandwich
- #1405 Ipswich
- #1420 Tulip vase
- #1425 Victorian (rare, sherbert only item seen)
- #1428 Warwick (middle size cornucopia)
- #1430 Aristocrat
- #1433 Thumbprint and panel
- #2516 Stemware and jug - Herrick 14-B, page 5
- #2517 Vase and jug, floral bowl
- #2930 14-B, page 5
- #3311 5 inch fruit salad; 14-B, page 10
- #3316 Individual almond
- #3340 14-B, page 24
- #3350 Crystal bowl, moongleam stem; 14-B, page 15
- #3355 Fairacre stem; 14-B, page 17
- #3357 King Arthur; 14-B, page 18
- #3359 14-B, page 5

See Moongleam, page 6

HEISEY FIGURINES -- ANIMALS

"THE MALLARDS"

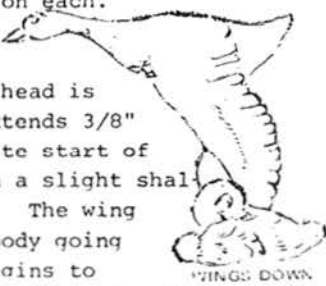
by Dick L. Marsh

The mallards originally started in production as two ducks that were used as inserts for a gardenia bowl. The bowl was later discontinued but the ducks were kept in production with a third being added giving the three flight positions.

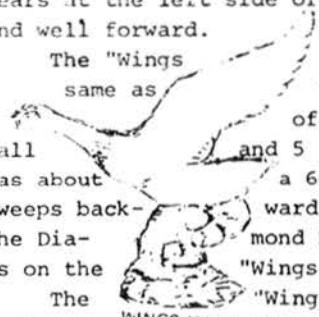
The Imperial Glass Corp. made large quantities of the mallards in crystal and have made all three in caramel slag. Currently they are making only the "Wings Up" and "Wings Half" having recently discontinued the "Wings Down". The ones in caramel slag now carry the Imperial trade mark. *

Our friends are known to come in crystal, clear and frosted, the quality of glass being good. As these figurines of mallard ducks show them in flight, the bodies are streamlined with only glass thickness to give detail. The head and bodies are the same on each.

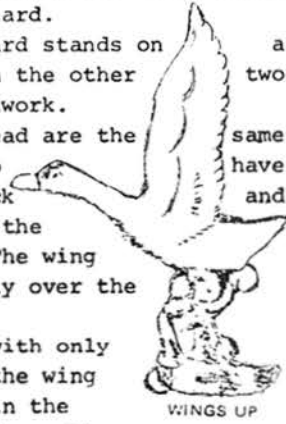
The "Wings Down" mallard stands 4 3/4" tall and is 4 3/4" long with a base of 2 1/4". His head is the highest point and the bill extends 3/8" from the head. There is a definite start of the bill and stop dot of glass in a slight shallow, is on each side of the head. The wing starts about midway back on the body going straight down for 1/2" when it begins to sweep back. There is no other detail on the front of the wing. The trailing edge is ruffled to the body and over the body for about 1/2". If marked, the Diamond H appears at the left side of the base opposite the wing tip and well forward.



The "Wings Half" mallard is the same as the first one with the exception of a higher base. He is 4 7/8" tall and 5 3/4" from bill to tail. The wing has about a 60° slant upward for 3/4" then sweeps backward and up at a greater incline. The Diamond H is located in the same place as on the "Wings Down" mallard.



The "Wings Up" mallard stands on a higher base than the other two. This base is very ornate with scrollwork. There, once again, body, neck and head are the same although this mallard does appear to have more of an upward slanting body, neck and head. This is due to the fact that the base is farther back on the body. The wing rises almost straight up and directly over the base.



The front edge is plain again with only slight undulation as it narrows to the wing tips. There is a contrasting line in the center of the wing to the leading edge. The trailing edge is ruffled to and over 1/2" of the body. He is 6 3/4" tall from base to wing tip and 4 1/2" from the tip of his bill to the end of the tail. When marked, the diamond H is on the left side slightly higher than the others and is most easily seen looking head on.

* Editors Note: No clear glass animals nor any marked with the Diamond H have been made by Imperial since Jan. 1, 1968.

1404 OLD SANDWICH

by Louise Ream

Many people call this pattern Thumbprint. It is of heavy glass and, especially in crystal, is sparkling clear and the glass has a little of the brilliance of crystalite. It is usually signed, the stemware signed on the stem.

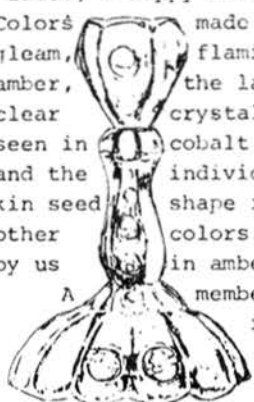
The beverage items all have a plain band around the top and vertical panels below. There is a plain rounded panel alternating with a panel with round indentations like a pumty or thumbprint. The number of these indentations depends on the size of the item.

The pitcher has a square base with rounded corners. The plates and individual ash trays, usually called butter pats, are also square. On the plates, pitcher, floral bowl and some other items there are two plain panels between each one with the thumbprints. The cruet has two rows of thumbprints and then the clear panels. In any case all pieces have some combinations of these panels.

Clarence Vogel dates the pattern from 1929-1959 and states that there were 45 items. Catalogs we have seen do not show all of these. A 1953 catalog lists 20 items, mostly beverage glasses, plus three sizes of plates, a nappy and an ice jug.



Colors made by Heisey were moon- gleam, flamingo, sahara, cobalt and amber, the largest production being clear crystal. Items most often seen in cobalt are the candlesticks, the handled mug and the individual ash tray. A decanter in the pumpkin seed shape is also seen in cobalt as well as the other colors. Only the handled mug has been seen by us in amber.



A member of the club has a plate in sangerine. Since this came from the home of a Heisey worker, it could possibly be one of very few made or over one of a kind. Needless to say, it is very beautiful.

Imperial reissued the 10 oz. goblet, 4 oz. saucer champagne, 4 oz. goblet, 6 oz. sherbert, 3 oz. cocktail, 2 1/2 oz. wine, 4 1/2 oz. parfait, 4 oz. oyster cocktail,



4 oz. footed sun-dae, 12 oz. footed ice tea, 2 oz. regular ice tea, 8 oz. footed tumbler, 5 oz. juice tumbler, 1/2 nappy or finger bowl. These items were made from January 1, 1959 to January 1, 1962. In clear only and are probably signed.

Old Sandwich may be found in Vogel III, pg. 95. The floral bowl is shown on page 94, and a 8 oz. pitcher on pg. 96; Catalog 109 (Long reprint) on pg. 11, 12, 13, 14, 15, 16, 17, 18, 19, 20, 21, 22, 23, 24, 25, 26, 27, 28, 29, 30, 31, 32, 33, 34, 35, 36, 37, 38, 39, 40, 41, 42, 43, 44, 45, 46, 47, 48, 49, 50, 51, 52, 53, 54, 55, 56, 57, 58, 59, 60, 61, 62, 63, 64, 65, 66, 67, 68, 69, 70, 71, 72, 73, 74, 75, 76, 77, 78, 79, 80, 81, 82, 83, 84, 85, 86, 87, 88, 89, 90, 91, 92, 93, 94, 95, 96, 97, 98, 99, 100. Color plates: 1, row 3; 7, rows 2 & 4, and 9, row 1.

GET YOUR RESERVATIONS IN BEFORE IT'S TOO LATE

con't from page 1, Desk

After the program refreshments were served by the committee which included Emogene Shomaker, Virginia Yeakley, Carole McPeek, Donna Yeager, Esther Culbertson and Frances Law.

Greeting and registering the guests were Ann Holman, Evelyn Allen, Marg Dzierwa, Dean Fisher, Ben Smith, Cleo Guthrie, Vivian Fisher and Joanne Turner.

The following committees were appointed:

Sergeant-at-arms - - - Wagne McPeek

Project - - - - George Francis, Art Hartman

Bob Adams

Program and Entertainment--Executive Committee and Stephen Bradley.

Budget and Finance - - - Virginia Yeakley, Irene Rauck
Harry Allen

Publicity - - - Evelyn Allen, Marg Dzierwa
Donna Yeager

Historian - - - Virginia Yeakley

Press Book - - - Virginia Marsh (everyone to save clippings for her)

Custodians of club property - - Evelyn and Harry Allen

Museum Committee - - - Percy Moore, Franklin Frye
Loren Yeakley, Dick Marsh
Richard Marshall, Glenn Roley
Thomas Bredehoft, Robert Coyle
Sam Schnaidt, James Korus

The duty of this committee will be to look into the costs and feasibility of establishing a museum at some time in the future. The committee will meet and elect it's own chairman and make a report at the June meeting.

Hospitality - - - Emogene Shomaker, Carole McPeek
Billie Waters, Frances Law
Lynne Block, Stephanie Moore
Ruth Perloff, Joyce Colangelo
Barbara DeNiro

Out of state members to help at convention.

The convention committee includes:

Jim Korus, Chairman
Stephen Bradley, Dorothy Tarquinio
Ben Smith, Hugo Wenzel
Dean and Vivian Fisher
Sam Schnaidt, Russell Ream

As you know, we are writing about a color each month. Research is being done to ascertain as nearly as possible the patterns for each color. None will be included unless listed in a catalog in that particular color or unless we have personally seen it. Even though these lists may seem long we feel that they will be excellent reference material. Anytime that any of you find something not listed will you please let us know so that we can add it to our own file of information and pass it on to the rest of the collectors.

So far no one has written to tell us of any items not mentioned. Bob Coyle tells us, however, that he has a piece of Locket-On-Chain that is red flashed.

We are looking forward to seeing you in June, Meanwhile, HAPPY COLLECTING!!

PLANNING TO ATTEND THE CONVENTION? PLEASE DO!

con't from page 1, How

and wine decanters. Our two most interesting recent finds have been a #381 Quilt bowl, shown in Vogel 4, page 152 and the Opal Puff Box, marked and numbered 57, Vogel 2, plate 2.

As it gets harder and harder to find sleepers, we are now paying good prices for the pieces we want, but our favorites are still many of those we found as bargains.

Dorothy Tarquinio, Ohio

con't from page 4, Color

- #3362 Egyptian stemware
- #3366 Trojan
- #3368 Albemarle
- #3370 African stem
- #3379 Stemware; 14-B, page 8
- #3380 Old Dominion
- #3384 Jug; 14-B, page 33
- #3386 Diamond rose stem
- #3479 14-B, page 9
- #3480 14-B, page 9
- #3481 14-B, page 9
- #3482 14-B, page 9
- #4002 Aqua caliente coffee
- #4026 Decanter
- #4026 Water lamp
- #4027 Decanter
- #4028 Decanter
- #4045 Ball vase
- #4057 Water jug
- #'s4202, 4203, 4204, 4205, 4206, 4207, 4209, 4157 all vases and jugs
- #4220 Spiral optic vase
- #4222 Horseshoe, vase, cream/sugar; 14-B, page 84
- #4224 Cocktail mixer and glasses; 14-B, page 84
- #4225 Cocktail shaker; 14-B, page 84
- #4227, 4232 Six favor vases
- #'s4214, 4215, 4211, 4216, 4217, 4218, 4219, 516/1, 516/2, 516/3, 257, 4160/1, 4209, 4159/1, 4160/1, 4196, 4162/2, 4162/2, 4162/3, 4162/4, all vases in 14-B, pages 40, 41, 42, 43.
- #4262 Water lamp
- #4366 Water lamp
- #7026 Plate
- #7023 Cream/sugar

Most plates on pages 5-150, 151, Vogel, Book IV

We are sure there are many others. Let us know what you have.

SOMETHING DIFFERENT

Glass workers have long been know to make things other than what they were being paid to make. Heisey employees were no exception.

In the Newark, Ohio, area where the plant was located, many whimsies (as these items are known) can be found. Whimsies come in many ways: free formed, ones that are production items but shaped differently than the plant planned, or made of parts of more than one pattern.

We were lucky last year to find an eight inch com-pote with a #1225 Plain Band top on a 1220# Puntty Band bottom. Both of these parts were cast in different three piece molds (as the mold marks show), and were joined while still hot.

1972 SOUVENIR PLATE

The "Heisey Glass in the Land of Legend" 1972 souvenir plate will again be in the #1447 Rococo pattern and the color will be Imperial's Blue Haze. This is the second plate made for us by Imperial Glass Corp., the first being in Amberglo in 1971.

There will be ONE plate made available to every member of the Heisey Collectors of America, either by mail or at the convention in June.

The price, if picked up at the convention, will be \$5.25 including tax. If we must mail it to you it will be \$6.00 to cover packaging and mailing costs. You can reserve yours by sending a check to:

NEWARK HEISEY COLLECTORS CLUB
% P.O. BOX 27
NEWARK, OHIO 43055

or they may be ordered in the convention package (see registration form in this issue.)

These checks must be in the mail by June 1, 1972. No plates will be mailed until after the convention in June. We have ordered a limited number so better get your order placed.

This is a project of the Newark Heisey Collectors to earn money to donate to the national club for the museum fund. There will be another plate in 1973 to add to this series. Stephanie Moore and George Abdalla will be handling the sale of the plates.

Evelyn Allen, President NHCC
Editor's note -- Whether you intend to pick up your plate at the convention or have it mailed, your check must be sent in advance to reserve it.

THE 1972 LAND OF LEGEND SOUVENIR MUG

The 1972 Land of Legend Festival Board is offering a 16 oz. ceramic Souvenir Mug with a Robert Crilly Print of the Licking County Museum (formally known as the Davidson House) located at the 6th Street Park. The 1972 Mug will be the start of a series featuring other landmarks of Licking County for the next six years.

Robert Crilly, a well known local artist was chosen to do the Land of Legend Prints because of his creative ability to draw etchings of architecture and landscaping. Many people in Licking County have a Crilly pen and ink drawing of their own home or a Crilly oil portrait of someone in their family.

There will be a limited number of 1972 Mugs and you may order one or more Mugs by sending a check to:

Frank Frye
681 Meadow Drive
Newark, Ohio 43055

We will mail a card to notify you where to pick up your Souvenir Mug during the 1972 Land of Legend Festival June 12-18. Please make checks payable to 1972 Land of Legend. Sorry we can't mail you a mug.



CLUB SYMBOL — Mrs. Russell Ream, left, of Reynoldsburg, president of the Heisey Collectors of America, Inc., and Mrs. Loren Yeakley of Newark, treasurer, hold a pitcher which was one of the first items made by the A. H. Heisey Co. and is now the symbol of the collectors. With them is Mrs. Harry Allen of Heath, publicity chairman and chairman of the Heisey glass show at the Land of Legend Festival in June. (Dispatch Photo)

MUSEUM FUND STARTED

The highlight of the first quarterly meeting was the presentation of a check for \$2500.00 from the Newark Heisey Collectors Club to the Heisey Collectors of America as the first gift toward establishing a Heisey glass museum in Newark. The check was deposited in the Park National Bank in a museum fund.

The officers of the club will serve as trustees for the account. Anyone wishing to make contributions to this fund may go directly to the bank and deposit it in the Heisey Collectors of America Museum Fund.

Glassware, catalogs of other items pertaining to Heisey Glass may be given to any of the officers of the club. Such items will be cared for by the custodians of club property until such time as there is a museum in Newark.

From the catalog of the Lewis and Neblett Co. 1917-1918

AMERICAN ART GLASS HAND ENGRAVED GLASS

"We use Heisey's blanks exclusively and are only showing the most selected engravings out this season.

We are using Heisey's Factory numbers on our Engraved Glass".

EDITOR'S NOTE: Is it any wonder we cannot identify all the cuttings on Heisey glass? Many companies used Heisey blanks.

SKETCHES OF NEWARK HISTORY.....

by Robert H. Coyle

REPORT ON MEMBERSHIP

by Ann Holman *

Newark, Ohio, the county-seat of Licking County was laid out in 1801, on the plans of Newark, New Jersey by General William C. Schenk, George W. Burnet Esq., and John M. Cummings.

In October of 1802, quite a little colony came from Washington County, Pennsylvania and settled in Newark. These were Abraham Johnson, Abraham Wright, William B. Baw, James Petticord, Edward Nash, Carlton Belt, Benedict Belt, Acquilla Belt, Little John Belt, Black John Belt, and later joined by Long John Belt.

The first sale of lands occurred May 20, 1802 when John Warden purchased two hundred and eighty five acres of land. On the same day, three hundred and fifteen acres of adjoining land was sold to Anthony Miller.

The first hewed-log houses were built in 1802, on the public square, by Samuel Elliott and Samuel Parr. Maurice Newman was one of the principle settlers in Newark in 1804. He was acting justice of the peace and also a tavern keeper. Archibald Wilson, Jr. was probably the first Merchant in Newark. His biography states that he kept store in Newark in 1804. One of the first celebrations of American independence was that of 1807. It was held on the north side of the public square. The dinner was a joint production between Maurice Newman and Abraham Johnson, two of Newarks tavern keepers. The menu consisted of a hog, sheep, and deer, well roasted. The occasion was brought to a close by a ball, given that night.

About the year 1808, a log building was erected on or near the site of the present court-house, which was used as a court-house and a church, common for all denominations.

The Presbyterians built the first regular church, about 1817, just west of the court-house on the public square.

From 1801 to 1810 Newark barely had an existence, containing only about forty or so log cabins erected in the midst of a great forest, but upon the ruins of an ancient city of the Mound Builders.

The Newark Earthworks are the most extensive and numerous of any within the State. These works consist of earth mounds, both large and small, in considerable numbers; of small circles, semi or open circles, all of low but well-marked embankments or walls. The largest circular enclosure was known as "The Old Fort". It is a representation of an immense bird "on the wing", and is called "Eagle Mound".

This is presently the site of Moundbuilders Park.

Ref. Hill's, History of Licking County

Howe's, Historical Collections of Ohio

Next issue...The Mound Builders.

AMBER ELEPHANT-AMBER ELEPHANT-WHO GOT THE AMBER ELEPHANT?

The Yeakleys of Newark were the "Lucky?" ones. The box arrived, with trembling hands we carefully opened and unwrapped ---- up popped "DUMBO" from Pilgrim Glass Company.*

*Pilgrim Glass Co., Huntington, West Virginia

We are very happy with our membership for no longer than we have been organized. It proves that there are many people all over the country aware of Heisey Glassware.

As of April 10th our total membership is 423. We have 51 active members, 370 Associate members and 2 Clubs with voting privilege.

There are 31 states represented. Since the Heisey factory was located in Ohio, it is only natural that Ohio should lead the list. Ohio has 229 members---Licking County has a total of 90 which includes 56 Newark addresses and 11 Granville addresses. Columbus is well represented with 36. Other areas around Columbus are Reynoldsburg with 12, Westerville, Worthington, and Gahanna. The state of California is in 2nd place with 29 members, Illinois 26, Pennsylvania 24, New York 20, Indiana 11, Florida 9, New Jersey 9, Maryland 8, Michigan 8, Virginia 5, and Kentucky 5. The other states have less than 5 members.

As of April 10th, we are mailing 302 monthly copies of the Heisey News.

An interesting item to note is that there are 60 more women than men members.

To the best of our knowledge our 3 youngest members are three young ladies from Ohio. Holly Kay Zimmerman age 11 is the daughter of Mrs. Barbara Zimmerman from Grove City. Connie Ryan turned 13 on March 13th. She is the daughter of Mr. & Mrs. Robert Ryan of Centerville. Cynthia Prior age 14, is the daughter of Mrs. William Prior and niece of Paul Fairall and Ruth Dunn, all of Newark.

More members mean more record keeping, but since I enjoy the work why don't you see if each of you can get at least one new member each month.

*Editors Note: Ann is our hard working Secretary and membership chairman. She has been of tremendous help in getting the HCA organized.

A few people thought that every member of their household had to join the club. It is only if other family members which to join and have membership cards that they must pay the \$1.00. One advantage might be that every member who has a card may order a souvenir plate.

POTPOURRI

The milk glass marmalade in the #1567 Plantation (Pineapple) pattern which was mentioned in the February issue was made by Imperial from January 1, 1959 to January 1, 1965. It is a desirable item, if signed, (and it should be) even though it was not made at the Heisey factory.



A tip of the hat to

The Officers of the HEISEY COLLECTORS CLUB OF AMERICA

- Louise Ream President
- Dick Marsh Vice-President
- Ann Holman Secretary
- Virginia Yeakley Treasurer

and all members of the Newark HEISEY CLUB for establishing the HEISEY COLLECTORS CLUB OF AMERICA



A tip of the hat to

CLARENCE VOGEL
Plymouth, Ohio

Author of four books and a Monthly NEWSLETTER on HEISEY GLASS for his contribution to the Education and Appreciation of BEAUTIFUL HEISEY GLASS.

We Buy and Sell MOSTLY HEISEY RHODA CURLEY 16 Clayton Place Albany, New York 12209

GUTHRIE'S ROCK AND GEM SHOP ROUTE 1. HEBRON, OHIO 43025

HEISEY FOR SALE POSTAGE INCLUDED	BANKAMERICARD	ALL MINT CONDITION MASTERCHARGE	
#4164 Heisey Rose etching 73 cr. juv			\$ 42.50
# 393 1/2 gal jug, signed			16.50
#1428 small Warwick candlesticks, signed, pr			18.00
# 473 nut dish, clear, signed & dated			6.50
# 473 nut dish, flamingo, signed & dated			7.50
#1404 Old Sandwich candlesticks, sahara, signed	pr		75.00
#1404 Old Sandwich pitcher, sahara, signed			58.00
#3380 goblet, Old Colony etching, sahara			15.00
#3390 juice, Old Colony etching, sahara			12.50
#3381 footed soda, Creole, alexandrite			55.00

INTERSTATE 70 - JUNCTION 79 SOUTH
FIRST ROAD TO LEFT - 200 YARDS
PHONE AREA 614-928-4396

# 407 6" plate, hawthorne, signed	\$ 15.00
#1252 6" saucer, marigold, signed	22.50
#3368 wine, flamingo, signed	12.00
#1469 ridgely shot glass, signed	6.00
#3366 ice tea, Trojan etching, green base	10.50
#1469 nut dish, oval, signed	7.50
#3399 juice Rose Trellis (Olympiad)	6.50
#4056 10 1/2 howl Saturn, limelight	39.50
# 467 Tally Ho shot glass	25.00

DEALER'S DIRECTORY

Guthrie's Rock & Gem Shop
Route 1, Hebron, Ohio 43025
(614) 525-1366
by chance or appointment


BERT'S BUDGET SHOP
403 W. Main St
Newark, Ohio 43055
(614) 349-8045
General line Antiques
2000 pieces Heisey

YOUR AD
COULD
BE
IN
THIS
SPACE

6 ISSUES (6 months) \$6.00

WANTED

#1401 Sahara miniature creamer, #1295 milkglass tumblers; #160 Locket-on-Chain; miniatures, toothpicks, wine glasses, advertising signs, catalogues, #1401 Sahara occasional items. Dick Marsh, 149 Fairfield Ave., Newark, Ohio 43055, Phone (614) 366-5608.



We were again saddened to learn of the sudden death of one of our members, **ELIZABETH BELL CLOTTS** 94 N. Ashburton Road Columbus, Ohio.

Our Heartfelt Sympathy is extended to Mr. Clotts and the family

ANNOUNCING NEW BOOK

VERLYS OF AMERICA DECORATIVE GLASS

First complete book available on Verlys glass. Illustrated in color and black and white. Showing every item and every color produced by Verlys of America during their entire production span 1935 through 1951.

Gives dimensions, colors, name, origin and production years for each item. Complete history on evolution of Verlys.

Includes all Verlys items made by the A.H. Heisey Co., The years (dates) Heisey produced Verlys and when the molds were returned to Verlys of America and their final disposition.

Contains pictures of Verlys in turquoise (limelight) by Heisey.

At some future date the authors will write an article for the Heisey News Letter telling in depth of the relationship between the two companies.

\$ 7.50 Postpaid
(less 10% to HCA members)
Available June 1 - Order today from

775 Saratoga Ave.

WAYNE McPECK

Newark, Ohio 43055

PLAN NOW TO ATTEND
THE GREATEST ALL



AUCTION

EVER HELD

SATURDAY, JUNE 17, 8:00 A.M.

Y. W. C. A. NEWARK, OHIO

ORDER YOUR ILLUSTRATED CATALOG NOW.

MANY PIECES NEVER OFFERED BEFORE AT AUCTION.

SALE CONDUCTED BY ' F. & S. AUCTION SERVICE '

SEND \$2.00 TO: FRANK FRYE
681 MEADOW DRIVE
NEWARK, OHIO 43055



I have seen a set of little glass dogs with ribbons around their necks. These are also shown in one book which I have seen on Heisey glass. What are they?

These are Imperial Glass Corp's own "Parlor Pups" and definitely not Heisey. They were made at the same time as the Heisey animals were being made and, like the Heisey animals, are now being made in Caramel slag.

Others in this series are a jay, owl, eagle, marmot, and an egret, all made at one time in crystal and now some of them are being made in caramel slag. Perhaps the fact that all of these were shown on one page in Imperial's catalog with the Heisey reissues has contributed to this error.

DEFINITIONS

NAPPY -- Webster's New International Dictionary defines a nappy as a round or oval dish with sloping sides, used as a baking dish. Most of the bowls in berry sets or other serving dishes are called nappies in old Heisey catalogs. The term was used less often in later years and today we usually call these sauce or dessert dishes.

TABLE SETS ---- Reference is often made to table a "table set". Most of the pressed glass pattern lines in the late 1950's to early 1900's had a covered butter dish, sugar, creamer, and spooner. These useful service pieces were generally known as a "table set" and are very popular with today's collectors. Those especially desirable in Heisey are in Opal, custard and emerald green.

HEISEY COLLECTORS OF AMERICA - FIRST ANNUAL CONVENTION - NEWARK, OHIO - JUNE 15 - 18, 1972

ATTENTION: James W. Korus - 2993 Minerva Lake Road - Columbus, Ohio 43229

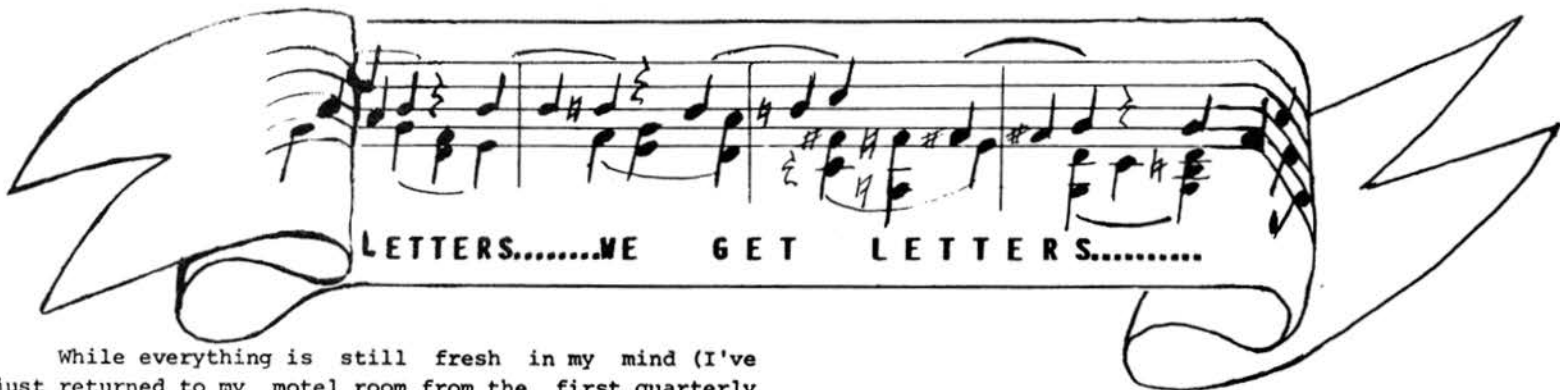
I want to learn more about Heisey Collecting and to share experiences with other collectors. Please enroll me in the following activities.

- "Show and Tell" - 8:30 A.M. Thursday, June 15, to be held at Y.W.C.A. You can bring your questionable items and your "finds". The experts will be there. Coffee and doughnuts included. _____ @ 1.00 _____
 - "Seminar" - 9 A. M. Friday, June 16, to be held at Y.W.C.A. Knowledgeable specialists will give talks on Heisey colors, stems, cuttings and etchings, with slides and Verlys glass. Coffee and doughnuts again. _____ @ 1.00 _____
 - Buffet Supper - Friday, June 16 at the Y.W.C.A. at 9:00 P. M. (After show closes). Mingle with members and collectors from all over the United States, and preview the pieces to be auctioned on Saturday morning. _____ @ 2.00 _____
 - All Heisey Auction - Saturday, June 17. Doors open at 7:00 A. M. Auction begins approximately 8:00 A. M. No charge when registered for Convention
 - Breakfast and Business Meeting at Y.W.C.A. - 9:00 A.M., Sunday, June 18. _____ @ 2.00 _____
 - Unlimited admission to show and display, open Thursday, Friday and Saturday 12 to 9 P. M. and Sunday 12 to 6 P. M. _____ @ 1.25 _____
 - Package Registration 1 @ 7.25 _____
 - If more than one person registers (ea.) _____ @ 7.00 _____
 - Convention Commemorative Plate (One per registrant.) _____ @ 5.25 _____
- Total (Make checks payable to Heisey Collectors of America) _____

I understand that tickets, I.D. and plates will be picked up at the convention and/or show.

Name _____

Address _____



While everything is still fresh in my mind (I've just returned to my motel room from the first quarterly meeting of the Heisey Collectors of America) I want to take a few minutes to express my appreciation to all concerned for extending a warm hand of friendship to me.

I must admit to an uneasy feeling upon entering a room as a stranger and being very relieved to see my friends Lynne Block and Art Hartman. I had under their wing for the short time it took for all you nice people to make me feel really welcome.

Please extend my thanks to all the club officers and the directors I met for all their kindness. The members I swapped stories with did so much to help make the evening a memorable one. I wish there was time to meet them all.

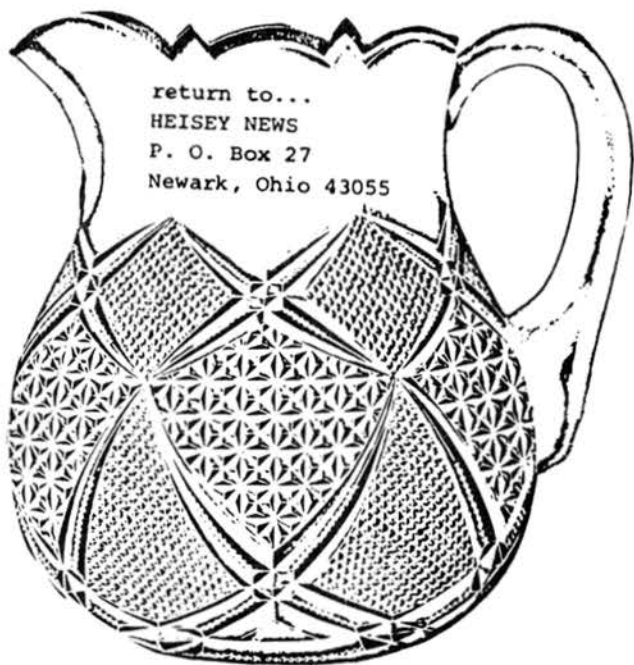
The business meeting and the reports were fascinating ---- not the usual monotony one comes to expect of

these things ---- and Loren Yeakley's program was just great. I'll no longer feel intimidated by Imperial's "Heisey".

The plans for the June meeting with all its events has started me scheming to find a way to attend. I really should have taken notes as there is so much to tell when I get home.

Of course the best part was the social after the meeting. From the beautiful cobalt pieces decorating the table to the delicious Diamond "H" decorated cookies, everything was perfect. You are all to be commended for all the hard work that went into making this first meeting the success that it was. Thanks again.

Carl F. Sparacio, New Jersey



FIRST CLASS MAIL

RETURN ADDRESS REQUESTED