

# HEISEY NEWS

The Official Publication of Heisey Collectors of America, Inc.

---

Volume XXXIX No. 9

September 2010

ISSN 0731-8014



1495 Fern – See Article Page 5

## HEISEY NEWS

Heisey Collectors of America, Inc.

169 West Church Street

Newark, Ohio 43055

Phone 740-345-2932 Fax 740-345-9638

Web Site: [www.heiseyMuseum.org](http://www.heiseyMuseum.org)

All Rights Reserved 2010

ISSN 0731-8014

### Staff and Phone Extensions

**Director, Charlie Wade, [director@HeiseyMuseum.org](mailto:director@HeiseyMuseum.org), Ext. 3**

Curator, Walter Ludwig, [curator@HeiseyMuseum.org](mailto:curator@HeiseyMuseum.org), Ext. 4

Clerks, Justin Church, Micki Wareham,

[membership@HeiseyMuseum.org](mailto:membership@HeiseyMuseum.org), Ext. 1

Gift Shop, Ext. 5

### HCA Board of Directors:

**President, Sue Kilgore** – Kalamazoo, MI, 269-345-3990 –

[hcapresident@HeiseyMuseum.org](mailto:hcapresident@HeiseyMuseum.org)

**Vice-President, Karen Taylo** – New Bern, NC, 252-637-9985

**Secretary, Charlene Bowman** – Clarksville, OH, 937-289-2114

**Treasurer, Sharon Orienter** – Rochester, NY, 585-288-8076

Member-at-Large, Will Kennard - Newark, OH, 740-344-1-69

Bryan Baker - Fairfax Station, VA, 703-250-6117

Mary Cameron – Ames, IA – 515-292-3743

Sid Edwards – Tallassee, AL, 334-283-4663

Tom Files – Kansas City, MO, 816-468-7087

Amy Jo Jones - Beavercreek, OH, 937-426-1567

Bob Kreimer – Ocala, FL, 352-873-8306

Robert Loch – Custer, WA, 360-366-3166

HEISEY NEWS is published and printed monthly, by Heisey Collectors of America, Inc. (HCA). Periodical postage paid at Newark. Subscription is limited to HCA members. First class mailing is available for an extra \$20.00, due with payment of membership. If you are having difficulty receiving your Newsletter, please contact the HCA Administrative Office Monday through Friday 8:30 a.m. - 4:30 p.m.

The opinions expressed in articles in HEISEY NEWS are those of the authors and not necessarily those of the organization. The Editorial Staff reserves the right to edit, with or without the consent of the author or to refuse any material submitted for publication.

### Back Issues

Back Issues available from files are \$3.00 per issue plus shipping and handling

### Advertising

Ads may be mailed to: HCA Advertising, 169 W. Church St., Newark, OH 43055; faxed to (740) 345-9638; or e-mailed to [curator@HeiseyMuseum.org](mailto:curator@HeiseyMuseum.org). Whenever possible, please e-mail your ad. Always include your MasterCard or Visa number and expiration date. When mailed or faxed, ads should be typed or printed on white paper with dark ink. Camera ready ads are accepted, but must follow line specifications outlined at the beginning of the advertising section. Ads containing reproductions will not knowingly be accepted unless clearly stated (e.g. Heisey by Imperial, etc.). HEISEY NEWS accepts no further liability. In the event of a typographical error, the incorrect portion of the ad will be run in the following issue, but HEISEY NEWS assumes no further liability. See advertising section for rates and deadlines.

### Museum

Heisey Collectors of America, Inc., a non-profit corporation (tax-exempt status), owns and operates The National Heisey Glass Museum in Veterans Park, 6th and Church Streets, Newark, Ohio. Open year round, Tuesday through Saturday 10:00 a.m. – 4:00 p.m., Sunday 1:00 – 4:00 p.m. (except Jan. and Feb.), closed holidays. Other hours by appointment. Members admitted free.

### Identification

HCA will attempt to identify unknown glass items. Send a color photograph, measurements, and a self-addressed, stamped envelope to the attention of the Curator. Other arrangements should be made in advance with the Museum staff. Please keep in mind that the Museum cannot appraise items. Identification is free to members, non-members \$5.00 per item.

### Membership

To join Heisey Collectors of America or to renew your membership, contact the HCA Administrative Office Monday through Friday 8:00 a.m. - 4:30 p.m. Eastern Time. Associate dues are \$30.00 plus \$5.00 for each additional household member. Voting members pay an additional one-time fee of \$25.00. Please consider supporting the Endowment Fund by joining at one of the levels listed on the back page.

### Museum Gift Shop

There is always someone in the Gift Shop during the Museum's hours of operation to help answer questions or take orders. When ordering by phone, please have a credit card ready. When ordering by mail, please be sure to include appropriate charges such as shipping and sales tax. Please note that the HCA member discount does not apply to original Heisey or special project items.

### Shipping and Receiving

We prefer to use USPS. If you have not received a package, please call the Administrative Office to confirm it was sent. We will assist you in tracing it. If your package arrives damaged, please contact your local USPS representative. We insure everything.

### Donations and Loans to the Museum

If you would like to make a donation to the Museum or have questions regarding items on loan, contact the Curator. HCA reserves the right to accept or refuse items based on current holdings.

## HEISEY CALENDAR OF EVENTS

### 2010

Heisey Select Auction, Newark, OH September 11  
Percy and Vivian Moore Memorial Weekend,  
Panama City Beach, FL October 8-9

### 2011

HCA Spring (Benefit) Auction April 8-9  
Heisey National Convention and Elegant Glass Show  
Newark, OH June 15-18

### Table of Contents

Heisey Calendar of Events	2
Message from the President, Sue Kilgore	3
Director's Notes, Charlie Wade	3-4
Curator's Report, Walter Ludwig	4
1495 Fern, Walter Ludwig	FC & 5-9
A Heisey Mystery – 486 Pattern	9-11
Heisey Cocktail Shaker Promotional Pamphlet, Walter Ludwig	11-12
Corrections to Museum Contributions January 2010 – June 2010, Walter Ludwig	13
Financial Report to the Membership, Sharon Orienter	13
Heisey Nut Dishes Walter Ludwig	13-20
Select Auction News, Dave Spahr	21
Percy and Vivian Moore Dinner at Panama City Beach – Update, Sid Edwards	21
HCA Welcomes New Members for July 2010	21
2010 Percy and Vivian Moore Weekend	22
2010 Percy and Vivian Moore Weekend Registration Forms	23
Heisey Glass Museum Playing Cards	24
Study Club Directory	25
Club Notes	26
Advertising Guidelines	26
Classified Ads	26
Real Heisey in the Gift Shop	26
Dealer Directory	27
Museum Volunteers for July 2010	BC

# MESSAGE FROM THE PRESIDENT

Sue Kilgore

Dear HCA members:

Can you believe that it is September all ready...I can't or is it "I don't want to!" What a great summer it has been for me, especially. I have spent some great days at the beach and have enjoyed reading and walking the shoreline in search of my second favorite thing. Can anyone guess what it is that I am searching for?

The Museum is running smoothly with Charlie Wade at the helm as our director. There are always repairs and updates to be made. The most important one right now is the sidewalks outside the main entrances and the employee entrance. These will be repaired or replaced before the snow flies. All three locations have had some "sinking" going on in one place or another and we can not have anyone, especially visitors, tripping at our entrances. With the age of the King House portion of the Museum as well as the addition, we can expect there to be more repairs and replacements in the next few years. As always, your help with these additional expenses for our Museum would be greatly appreciated. We can always use any and all help from our very generous membership.

Two very important up-coming events, where we hope to have your participation, are the Percy & Vivian Moore Weekend in Panama Beach, Florida, October 8-9 and the Select Auction in Newark on Saturday, September 11. Please look for more information about these special events in other parts of this issue. Both of these events have taken months (if not years) to plan and organize.

Your Board of Directors will be meeting at the Moore Weekend in Florida so it won't be all play and no work. We will have a planning session on Friday and a board meeting on Saturday. We are working toward the continued success of HCA and the Museum. If anyone has any questions or helpful suggestions for us, please send them to

me. We are always open to great ideas for our future.

Please plan to join the rest of the "HCA family" at either or both of the fall events. We know you will have a good time and your participation will help our organization.

Sue Kilgore ♦

## DIRECTOR'S NOTES

Charlie Wade

Greetings from your retired, some time, part time director. As you have read from previous columns, I am here trying to fill some big shoes left behind by Susan Dawson. She did a great job of promoting the Museum within the local community and around the state. Hopefully, I can do half as well. I also will be evaluating the director's job, looking for cost savings around the Museum and giving my input back to the Executive committee.

Most of you know I care very much about our Museum and its upkeep. I will be putting together a to do list of items that will need attention in the future in order to insure its survival as the premiere glass museum of American hand-made glass.

I have already started to look at maintenance schedules for our HVAC systems along with improving the walk ways to the Museum. The HVAC systems have been placed on a 6 month maintenance schedule. This is starting to pay dividends as some weak parts have been identified and just the normal cleaning of the air conditioning units should result in lower electric usage.

Sue has already alerted you to our need to replace the King House porch and some of the Museum walkways. I am busy gathering bids to accomplish these much needed improvements.

Next up will probably be some type of carpet redo especially in the hallways connecting the addition, King House, and the office building. The present carpeting is starting to come up in

places and that will lead to some one falling if not taken care of.

As you can see by reading this column I am not lacking for ideas only how to pay for them. We will have to take our time and do portions as the funds become available.

My thanks to Walter, Micki, and Justin as they are helping me to adjust to my some-times, part-time, temporary duties here at the Museum.

Late news flash! What is the old saying, "If it can go wrong, it will" - or something like that. Another air conditioning unit has died - this time in the office building. The old unit was approx.25 years old and finally rusted through on the pan that holds the A coil on top of the furnace allowing water to spill onto the basement carpet. So much for hoping we could get through this summer without something else breaking down!

Till next time!

Charlie

## CURATOR'S REPORT

Walter Ludwig

Summer will soon be over and maybe I can stop mowing my lawn. With the alternating hot sunny days and early evening thunderstorms, everything is green and lush this year. It is more than I can do to keep up with the mowing that is needed.

We have seen a lot of visitors here at the museum this summer. This year we have seen a lot more visitors from other countries than we have before. We have had visitors from Australia, Poland, Switzerland, France, and Canada. It is nice to get the Heisey story out to other parts of the world.

The Licking County Museum Alliance is sponsoring a Final Friday event on the Square here in Newark. The event is the final Friday of August so I do not expect most of you to make it. As part of the event each museum has

installed a storefront exhibit in one of the windows facing the square. The Heisey Museum paired up with John Edward Price Florists on the southeast corner of the square. I installed an array of Heisey vases and floral bowls and the owners did some lovely floral arrangements in some of them. It truly made for a striking window and we thank John Edward Price Florists for the space and the beautiful flower arrangements.

The Lokay Initiative is coming along nicely. Files are now getting back to the Museum for us to check in. Everyone is doing a great job. We now have eight individuals plus one club entering the articles from the early Newsletters. There are still plenty of Newsletters left to do, so other individuals and/or clubs can come forward and volunteer. I am hoping that with the end of summer, other clubs will be meeting and can discuss the possibility of volunteering for this worthwhile project. I have already used two articles that were submitted from 1974 issues to write an article for this Newsletter. Check it out on page 9.

There are plenty of activities coming up on our calendar for you to participate in. The Heisey Select Auction will be held on September 11 here at the Museum. It will be preceded by a glass flea market out in the parking lot of Veteran's Park. That gives you two opportunities in one day to get yourself a nice piece of Heisey. We also have the Percy and Vivian Moore Memorial Weekend being held this year in Panama City Beach, Florida. I know that Sid and Mary Edwards have put a lot into planning a spectacular weekend for all Heisey lovers who are able to get there On October 8 and 9.

I hope everyone has been setting some time aside to get to those great outdoor flea markets that are located across the country. You have an opportunity to get out in the open and look over all of the goods that are put out for sale. We know that there are some Heisey sleepers among the goods being offered for sale. As I always say, "Heisey will not find you; you have to get out there and find it." ♦

# 1495 FERN

Walter Ludwig

A.H. Heisey and Company introduced the 1495 Fern pattern in September of 1937. It would be the last of the patterns that were designed by Walter Van Nessen, noted American industrial designer. Van Nessen started his relationship with Heisey by designing some special items for a display of American craftsmanship put on by the New York Metropolitan Museum of Art. Because time was short and the items had to have never been put on the market before, Van Nessen modified several pieces from existing molds to keep the price down. Van Nessen went on to create 1483 Stanhope, 1485 Saturn, and 1488 Kohinoor for the company before designing 1496 Fern.

Fern was like Van Nessen's other patterns a very innovative design unlike anything that had been brought to the marketplace before. The pieces are very asymmetrical with most pieces having only a single handle. Opposite the handle there is a slight protrusion on the pieces. On the other two sides of each piece the edge is slightly indented in one spot. This gives the whole piece the look of a large leaf. The handles are embellished with the "fern" design which starts at one side and then curls over to the other side ending in some dots. The rest of the pieces are plain except for the area around the base. Here we have a series of alternating panels and dots, the panels rising to small flutes. This area is no more than ½" high.

Fern was initially made in both Zircon and crystal, but the production of Zircon stopped in 1938 so it was only made for a very short period of time in that color. Pieces in Zircon are extremely attractive and highly sought after. (The Bredehofts in "Heisey Glass: 1896-1957" mention dawn as a rare color for the pattern, but I have never seen a piece in Dawn.) But even in crystal the pattern as a whole was very short lived. There were 26 different items offered when it first came on the market, but the first price list from the 1940s shows only six items remaining in production (candlestick,

candelabrum, three compartment relish, the two mayonnaises, and the mayonnaise plate). Only the candlestick/candelabra were made into the 1950s. The oval floral bowl was redesigned by adding an optic as well as a few beads on the rim; it was added to the 1519 Waverly line.

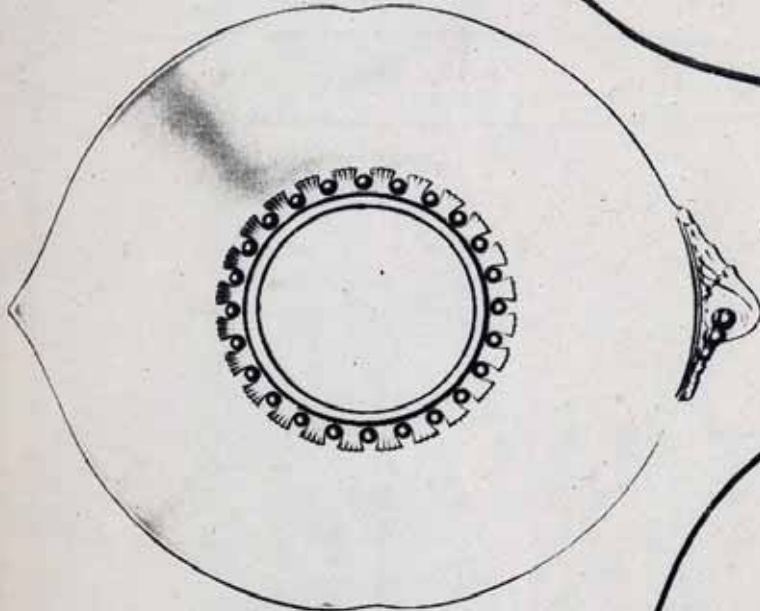
The pattern was obviously designed for entertaining; having several large plates and bowls, as well as a few occasional pieces. A few of the more interesting pieces are a Jello dish which was the three compartment relish without the dividers. This is one of the few times that Heisey incorporated a Brand name into the description of one of their production pieces – the 1252 Twist Kraft cheese plate, the 473 Narrow Flute with Rim Nabisco tray, and various Domino sugar trays being others. Another interesting piece is the 15" cheese and cracker plate that came with the addition of a blown cheese cover and a wooden board. This is probably the first time that Heisey offered a wooden accessory to their glass. The creams and sugars are also of rather different design with great big pouring spouts on the sides of the creams. The creams and sugars were the only items in the pattern that were marked.

The number of actual molds used to produce this pattern was very small. The bon bon, mint, jelly, tid bit, cheese plate, and sauce bowl were probably all produced from the same mold. Aside from the oval floral bowl, there were probably only two molds that produced all of the larger plates and bowls. The Jello and relish shared a single mold that was altered at production time with the addition of the dividers, similarly for the two mayonnaises. The 8" mayonnaise plate was probably made from the same mayonnaise mold. All told I believe there were only 10 molds involved and 4 of them were for the two sizes of creams and sugars.

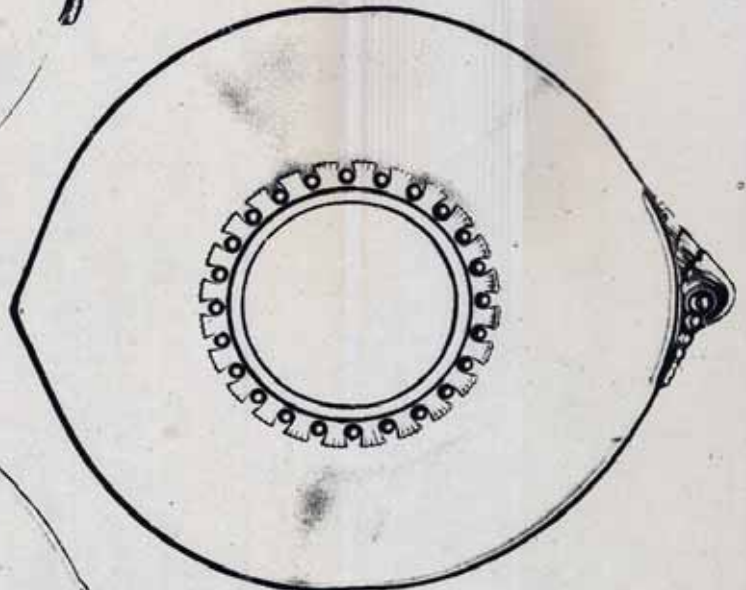
The 1485 Fern pattern was used for several etchings. Both 497 Rosalie and 500 Belvedere will be found on many pieces in the line. 507 Orchid is known on the candlesticks, redesigned oval floral, and the mayonnaise and underplate. A few pieces are known cut with 941 Barcelona.



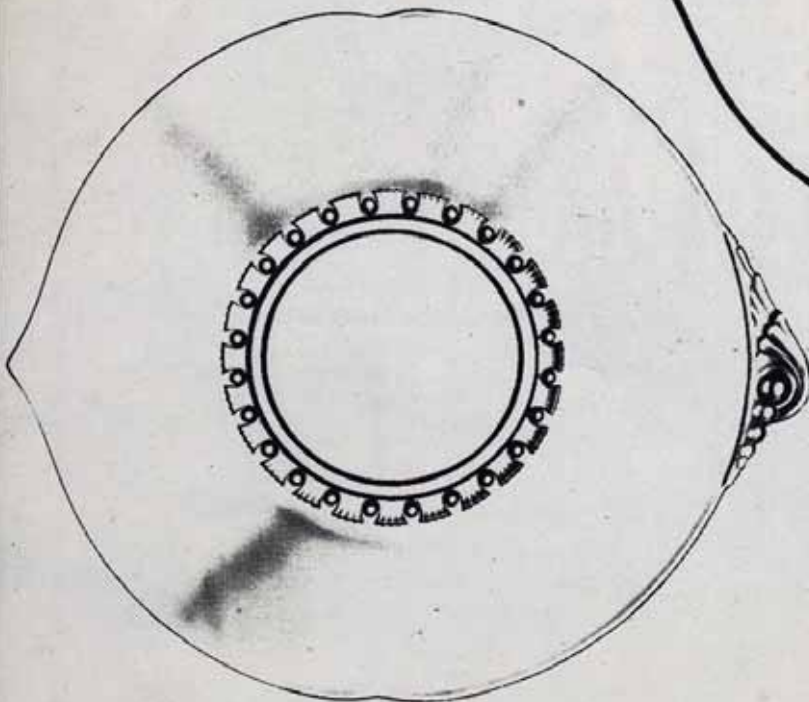
15 in. Cheese & Cracker Plate  
& Cover & Wooden Center Block



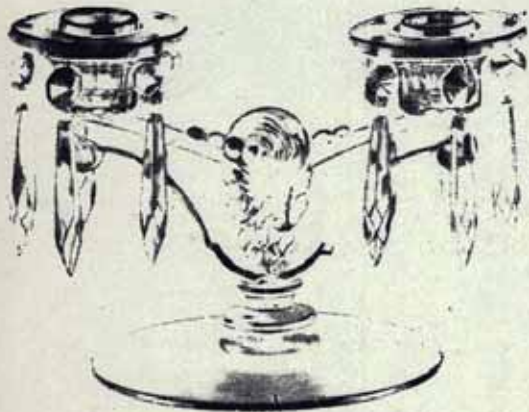
13 in. Sandwich Plate



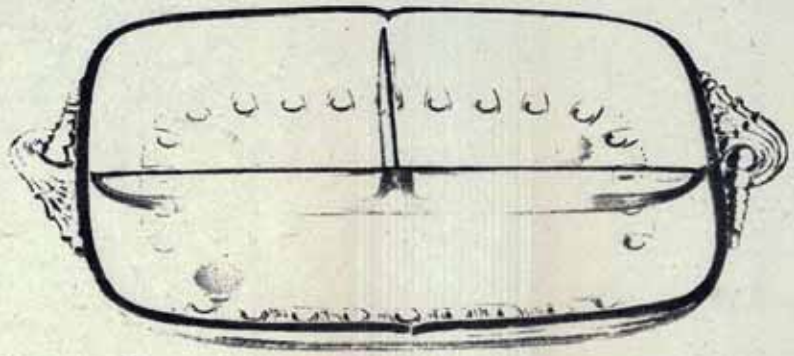
13 in. Torte Plate Hld.  
Also made 14 in.



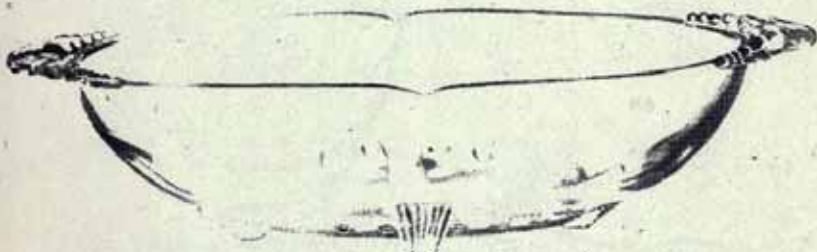
15 in. Plate Hld.



2 ft. Candlestick Bobeche &  
10—"F" Prisms



Relish—Frd. 2 Hld.  
3 Compt.



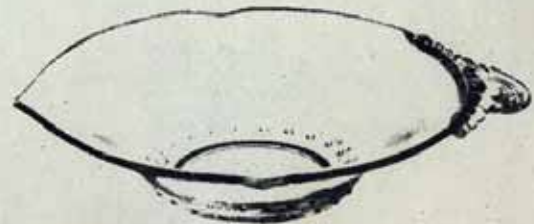
11 in. Oval Floral Bowl  
Hld.



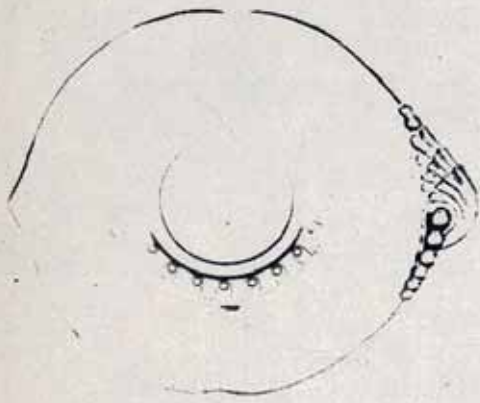
13 in. Fruit Bowl  
Hld.



11 in. Salad Bowl  
Hld.



Sauce Bowl



6 in. Cheese Hld.



6 in. Bon Bon Hld.



4 1/2 in. Nappy



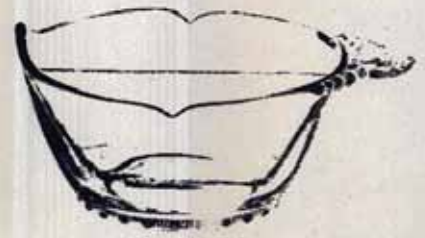
6 in. Tid Bit Hld.



6 in. Mint Hld.



6 in. Jelly Hld.



Twin Mayonnaise Hld.



Sugar



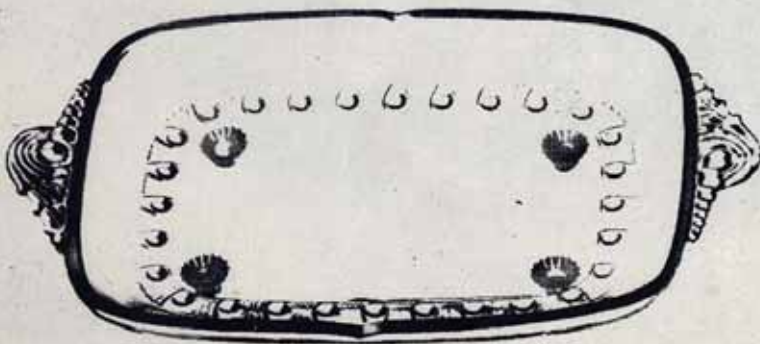
Cream



Ind. Sugar



Ind. Cream



Jello Dish  
2 Hld. & Ftd.



Whipped Cream or  
Mayonnaise Hld. &  
8 in. Plate



## PRODUCTION ITEMS 1495 FERN

1. nappy, 5 ½", handled
2. bon bon, 6", handled
3. tid bit, 6", handled
4. mint, 6", handled
5. jelly, 6", handled.
6. cheese, 6", handled
7. mayonnaise, twin, handled
8. mayonnaise or whipped cream, handled
9. mayonnaise plate, 8", handled
10. Sauce Bowl, handled
11. Jello dish, 2 handled, footed
12. relish, 3 compartment, 2 handled, footed
13. cheese & cracker plate, 15" and cover with wooden center block
14. sandwich plate, 13", handled
15. torte plate, 13", handled
16. torte plate, 14", handled
17. plate, 15", handled
18. floral bowl, oval, 11", 2 handled
19. salad bowl, 11", handled
20. fruit bowl, 13", handled
21. candlestick, 2 light
22. candelabra, 2 light with bobèche and 10 F, H, or J prisms
23. sugar, individual
24. cream, individual
25. sugar
26. cream

## Resources

1. Heisey Catalog 212
2. Heisey Price List 214-219, 7-15-37
3. Heisey Price List 215-220, 9-1-41
4. Heisey News, #1495 Fern, Louise Ream, September 1972, p. 5
5. Heisey News, Table Talk, Sept. 1938, June 1975, p. 8
6. Heisey News, 497 Rosalie Etch, April 1977, p. 8-9
7. Heisey News, 1495 Fern Candlestick, Tom Felt, May 1982, P. 7
8. Heisey News, 1485 Fern, Joe Lokay, December 2004, p. 5-9



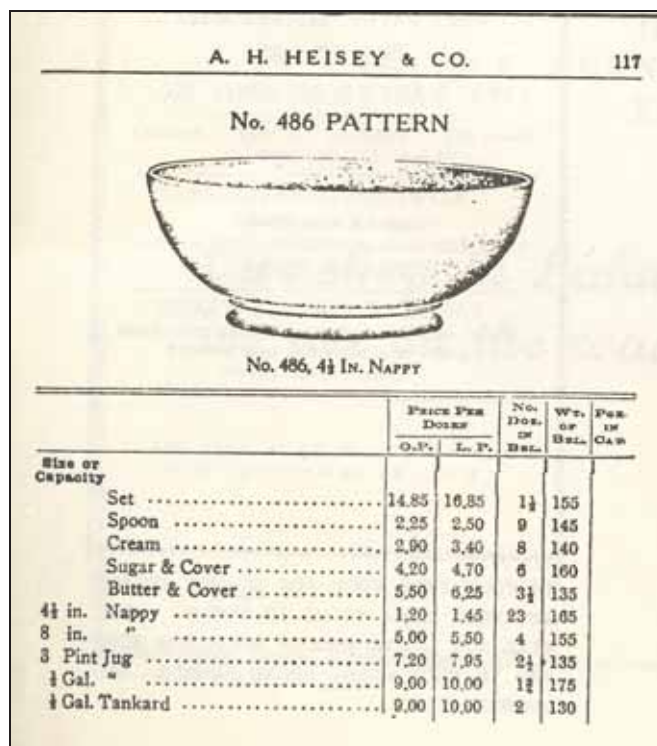
## A HEISEY MYSTERY – 486 PATTERN

Walter Ludwig

As part of the Lokay Initiative, Ellen Reck volunteered to enter the Newsletters from 1975 into word files. Ellen has been doing a great job and has already finished 1975 and has begun to do the 1976 Newsletters now. One of the first files that Ellen sent back to me was this one from the January 1975 issue.

### #486 - A Minor Pattern

By Louise Ream



As shown by the picture, this is an extremely plain pattern notable only for the raised base. The pattern has not heretofore appeared in published reference books and was found in an old price list belonging to a club officer.

Since it is shown only in a 4 ½" nappy, one wonders what the other pieces might look like. Being so plain it would be easy to have passed it up as nothing unusual.

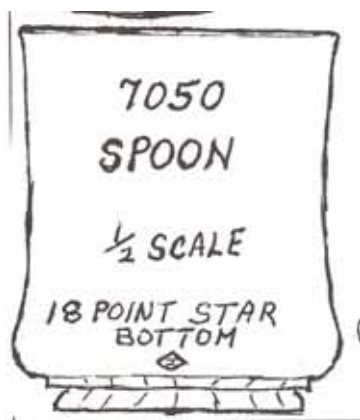
The 1183 to 1189 patterns known as Revere and Yeoman are both very plain also, with many Yeoman items being in diamond optic in the middle years. The base makes this different from either of those patterns.

Does anyone think they may have a piece of #486? Let us know. It would be particularly interesting to find the table set. Vogel lists a cologne in the same number but it is one in series of colognes numbered from 485 to 492 and would bear no relationship to this pattern.

This was followed in the May 1975 issue with this item.

## #486 Edwill By Louse Ream

In his Heisey Glass Newscaster for May 1975, Clarence Vogel reports having a spooner in the #486 pattern which we showed in the January Heisey News. He had assigned the number 7050 to the pattern and had named it Edwill. He will now be calling it #486. Just as we do, he names patterns and assigns numbers for the purpose of identification. When the true name and or numbers are learned we change them to the correct ones. We are very happy to learn the factory names and numbers. The spooner is shown in Vogel IV.



From Vogel IV

You folks are slow in answering our requests for reports on some of the rare and virtually

unknown patterns. Either you are not responding or the items are indeed very rare.

Since the writing of these articles there has been no further mention of the pattern in the Heisey Newsletters. Also no catalog has been found to show up what the other pieces of the 486 Edwill pattern might look like. Obviously these items are difficult to spot even though they should be marked. Given that they are so plain they probably do not raise much interest.



485 Dunham Spoon and Butter

Interestingly, the 485 Dunham pattern is another rather plain pattern that is rarely found. Given that the pattern number immediately precedes that of the 486 Edwill pattern, one could expect some similarities in the designs of the patterns. The Dunham pattern was probably produced for a longer period of time because it does appear in Heisey Catalog 100 from circa 1920. I wrote an extensive article on the pattern in the August 2007 issue of the Heisey News. In terms of items in the two patterns there are similarities. Dunham has a few more pieces including more sizes of nappies, two celeries, and a punch bowl with base. Edwill has a different array of jugs than Dunham which only has a three pint jug. Edwill has a pint and gallon jug as well as a gallon tankard. But as you can see in terms of table set, nappies, and jugs these are very similar patterns.

When I first came to the Museum over five years ago now, I found several things up in our storage area that I felt would be interesting to show in the Museum. Some of those things were integrated into the displays when we did the grand reshuffle in the Museum a few years back, but there were still some orphans that just

did not fit in. Most of these pieces were mounted in one of the display cases in the Multi-Purpose Room of the Museum – there is not much organization to this display – it is just a hodgepodge of things that just do not fit in any of our other displays. This display is also often removed when we do any special display. Currently it is packed up so that we can display the Heisey Select Auction items that will be auctioned off on September 11.

One of the items in this display is a covered butter dish that the Museum bought back in 1983. No one could figure out the pattern for the piece so it got assigned pattern number 8068 and was called Schamel.



8068 Schamel Butter and Cover

I would propose that the 8058 Schamel covered butter is actually the covered butter in the 486 pattern. It is very similar in style to the covered butter in 485 Dunham pattern with a difference in the finial. The Dunham also looks like it rests on more of a plate without the raised bottom. The Schamel has the same raised bottom as shown in the 486 nappy (although this is not definitive because other Heisey butters have a similar base). The bottom of the Vogel 7050 (486 Edwill) spoon has a similar bottom but the lines in the base of the Vogel illustration are confusing. Certainly the nappy does not have these lines and neither does the Schamel butter. There are two possible explanations: 1) the illustration is not true to the original piece or 2) Vogel was mistaken to think his spoon was part of the 486 pattern. Looking at the illustrations of the 7050 spoon and the 485 Dunham spoon

one can see similarities in the two pieces with the differences explainable by the distinctive pattern features of the 486 pattern. It is a little harder to look at the 7050 spoon and then the Schamel butter and see a real connection to the pieces, but you might be able to say the same thing about the 485 Dunham spoon and butter. The Schamel butter does have a more rounded finial and that is a feature of the 7050 spoon – it does not come straight down but has a rounded bottom going into the raised base.

Without documentation this may always be a problematic attribution. But given that we have a butter without a Heisey pattern number and a Heisey pattern number with a butter that we do not know what it looks like. I think that the butter can be attributed to the 486 pattern.

As a further note, the article in the January 1975 Newsletter would not have come to my attention without the on-going efforts of the Lokay Initiative. I hope you will consider volunteering for this effort. I know that Joe would be behind it 100% - there is a lot of great information in the old Newsletters and it is only through this effort that we will be able to make it accessible to all the membership. ♥

## HEISEY COCKTAIL SHAKER PROMOTIONAL PAMPHLET

Walter Ludwig

I am sure you all remember the series of Heisey News cover stories I did featuring various promotional pamphlets that the company put out from the 1920s into the 1950s. These were meant to allow the shopper to see in printed form the items that the company produced. Each featured a different pattern or type of item and the shopper could take the pamphlet home to think about whether she wanted to purchase items in the pattern.

During Convention this year Lynn Welker asked me if the Museum would be interested in a little pamphlet that he had run across in his travels.

When I saw what he was offering, I did not hesitate to say that the Museum absolutely wanted it.

What he had was a small 3" by 3 ½" single fold pamphlet extolling the usefulness of the Heisey cocktail shaker. It was done in three colors of teal, gray, and pink featuring drawings probably from the late 40s or early 50s.



Cocktail Pamphlet – Back and Front Covers



Cocktail Pamphlet – Inside

The front cover features the slogan, "They'll toast the thoughtful Host" in a black balloon on a diagonally striped pattern of grey, pink, grey, and teal. In the foreground is a close-up of a woman's hand toasting with a champagne glass, while in the background is the woman in an elegant gown mimicking the same gesture.

Inside there is a caricature of a host (or possibly barman) pouring cocktails from a Heisey cocktail shaker. The heading reads, "They'll vow eternal friendship..." The following text reads, "... to the host who can serve a cocktail that will always be a happy memory. A cocktail served from a Heisey glass cocktail shaker is a colorful, eye-filling experience. The shy blush

of a Pink Lady, the enchanting promise of a Side Car, excites your guests with anticipation. And whether you're the wildest madcap mixer or whether you pride yourself on being a perfectionist that measures accurately, chills correctly, shakes properly (shake hard and long; the stopper won't leak), you'll treasure our Heisey Cocktail. For..." The text is then continued in a larger black balloon, "No cocktail can surpass the flavor of one you make in GLASS."

On the right side of the inside of the brochure is a detailed illustration of the Heisey one pint 4225 Cobel cocktail shaker. I say that it is the one pint because of the tapered sides of the shaker which are indicative of the smaller size. The one and two quart sizes have straight sides. The illustration shows the separate stopper and strainer as well as giving a view of the underside of the strainer. The accompanying text reads, "All Heisey cocktail shakers have the exclusive, patented glass strainer and leakproof glass top ... your guarantee of the best in crystal shakers. There are various shapes of bottles and interesting stoppers with cock's heads, horses, etc. Cocktail glasses to match."

The back cover is rather unembellished with a single black oval saving, "The finest in glassware, made in America by hand." This is accompanied by a small Heisey label in red.

These pamphlets would have been used with either the 4225 Cobel shakers or the 4036 Marshall shakers both of which used the three piece construction mentioned in the pamphlet. These were big sellers for Heisey and Heisey featured them with many different etchings and cuttings throughout this period.

These were a winner and Heisey wanted to get the word out and sell even more. They fit in well with the postwar sophistication that was being shown in movies of the era. Marilyn Monroe in "Gentlemen Prefer Blondes" certainly can be pictured drinking her cocktail poured from a Heisey cocktail shaker into a Heisey cocktail glass. ♥

# CORRECTIONS TO MUSEUM CONTRIBUTIONS JANUARY 2010 – JUNE 2010

Walter Ludwig

There were a few corrections to the contribution lists that we published in the August 2010 Newsletter. We apologize for these errors and want to set the record straight.

**Northwoods Heisey Study Club of Minnesota:**  
4225 Cobel cocktail shaker with 1066 Debutante cut and silver fittings should have noted that it was given in memory of Odell Johnson

National Capital HCC \$100 was given in memory of George Schamel

## Bredehoft Book Reprint Fund

Great Plains Heisey Club contributed \$500 Contribution from Sharon & Frank Orienter of \$100 was donated by Heisey Collectors of Rochester ♥

## FINANCIAL REPORT TO THE MEMBERSHIP

Sharon Orienter, Treasurer

,From our form #990 filed with the IRS, for 2009:

We had total Revenue of \$166,356

And total expenses of \$207,102

(difference offset by income from endowment)

Average annual monthly cost of running the Museum/organization \$17,258.50

Our current net assets are \$3,458,805.69 (This includes, bank accounts, endowment fund, inventory, property & equipment, molds, collection, archives, library.)

Our endowment fund at the end of 2009 was \$2,171,354  
As of June 30, 2010 it was \$2,124,123

2010 Endowment income is still projected to be \$71,000 (actual income to date \$62,066)

Net income from the Benefit Auction \$12,849

Our net income from the Benefit auction was less than the budgeted amount of \$13,500. So we must make sure that the two major events yet to come, the Percy & Vivian Moore Weekend and the Fall Select Auction exceed our expectations.

Respectfully submitted,  
Sharon Orienter, Treasurer  
Heisey Collectors of America, Inc. ♥

## HEISEY NUT DISHES

Walter Ludwig

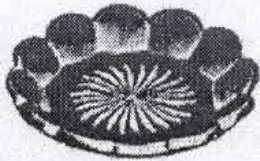
In the July 2010 issue of the Heisey News, I presented the Heisey open salt portion of the presentation of Ed Bowman to the Midwest Chapter of the Open Salt Collectors. Open salt collectors are not as picky as other collectors as to the purity of their collections. That means that they will include anything in their collections that is small, cute, and could hold salt. So, Ed also had as part of his PowerPoint presentation a section on Heisey nut dishes. He was again assisted by James Taylo in assembling the information for these slides.

The following pages present those slides. His presentation gave a good overview of the nut dishes that Heisey produced over the years. It would seem that just as open salts were going out of fashion, the nut dishes started to appear in patterns that Heisey was producing. Most of them were produced from the mid 1910s until the 1940s. They certainly make for an attractive collection of Heisey little things. ♥

REGISTERED  
TRADE MARK  
No. 50121

# Heisey Individual Nuts and Almonds

REGISTERED  
TRADE MARK  
No. 50121



351 Priscilla  
Ind. Almond, Flat  
or Butter Pat



351 Priscilla  
Ind. Almond, Cupped



353 Med. Flat Panel/  
393 Narrow Flute  
Ind. Almond



379 Um  
Ind. Nut (6 Sided)



394 Narrow Flute  
Ind. Salted Nut



411 Tudor  
Ind. Almond



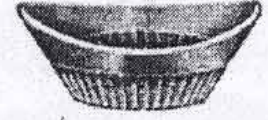
433 Greek Key  
Ind. Almond



473 Narrow Flute w/ Rim  
Ind. Almond



473  
Ind. Nut



473 Ind. Salad Nut  
475 Narrow Flute w/ Rim  
Ind. Salted Nut



1180 Brazil  
Ind. Nut



1194 Pentagon  
Ind. Nut



1229 Octagon  
Ind. Nut



1252 Twist  
Ind. Nut



1252 Twist  
Ind. Almond or Sugar



1401 Empress/  
1509 Queen Ann  
Ind. Nut



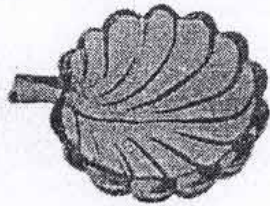
1469-1/2 Ridgeleigh  
Ind. Nut



1469-1/2 Ridgeleigh  
Ind. Nut, 2 Compt.



1483 Stanhope  
Ind. Nut



1503 Crystolite  
Ind. Nut, Leaf



1503 Crystolite  
Ind. Nut, Swan



1506 Provincial  
Ind. Nut or Jelly



1540 Lariat  
Ind. Nut



1571 Ivy Leaf  
Ind. Nut



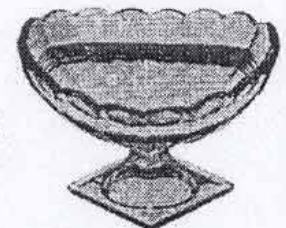
3316 Biltmore  
Ind. Almond



4044 New Era  
Ind. Nut or Ash Tray



7018 Oval Diamond Point  
Ind. Nut



8025 Banded Diamond  
Ind. Nut, Footed

# 394 Narrow Flute Individual Salted Nut



Picture is of Chow Chow which is 4 1/2"

Crystal Only. 3 1/2" Long. Distinctive groove around outside of Bowl  
Marked ?



394 Narrow Flute  
Ind. Salted Nut

Catalog Picture

16 Rib Base

3-1/2" Long  
????" Wide  
????" High

# 473 Individual Salad Nut 1915-1935

# 475 Narrow Flute w/Rim Individual Salted Nut



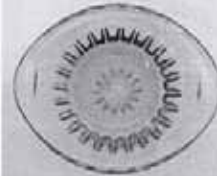
Side



Top



Bottom



473 Ind. Salad Nut  
475 Narrow Flute w/ Rim  
Ind. Salted Nut

Catalog Picture

24 Rib Base

3-3/8" Long  
2-3/4" Wide  
1 1/8" High

Crystal, Flamingo, Moongleam, #475 in Hawthorne  
Marked

# 433 Greek Key Individual Almond



Side



Top



Bottom

Crystal  
Marked



433 Greek Key  
Ind. Almond

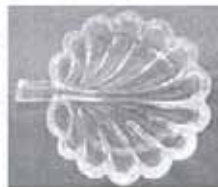
Catalog Picture

2-3/4" Dia Top  
2-1/8" Dia Base  
1-11/16" High

# 1503 Crystolite Individual Nut Leaf



Side



Top



Bottom

Crystal  
Unmarked



1503 Crystolite  
Ind. Nut, Leaf

Catalog Picture

3-3/8" Long  
3" Wide  
7/8" High

# 473/475 Narrow Flute w/Rim Individual Almond 1915-1935



Side



Top



Bottom



Side



Top



Bottom

Crystal, Flamingo, Moongleam  
Usually Marked



473 Narrow Flute w/ Rim  
Ind. Almond

Catalog Picture

2-13/16" Dia Top  
2" Dia Base  
1-9/16" High



473  
Ind. Nut

Catalog Picture

2-3/8" Dia Top  
1-5/8" Dia Base  
1-1/4" High

# 353 Medium Flat Panel



Side



Top



Bottom

Large Almond. Crystal, Moongleam, Flamingo, Hawthorne  
Marked

#393 Individual Almond. Crystal, Moongleam, Flamingo, Hawthorne,  
Sahare. Sometimes Marked

# 3316 Biltmore Individual Almond 1917-1929



353 Med. Flat Panel/  
393 Narrow Flute  
Ind. Almond

Catalog Picture

2-7/8" Dia Top  
2-1/8" Dia Base  
1-1/2" High



3316 Biltmore  
Ind. Almond

Catalog Picture

Crystal, Crystal with Moongleam Foot  
(Plain, Medium, Wide & Diamond Optic)  
Unmarked blown stemware

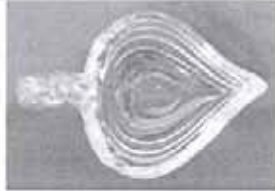
2-1/2" Dia Top  
2" Dia Base  
1-1/4" High



#1503 Crystolite Swan Individual Nut



Side



Top



1503 Crystolite  
Ind. Nut, Swan

Catalog Picture

Crystal, Sultan. Unmarked

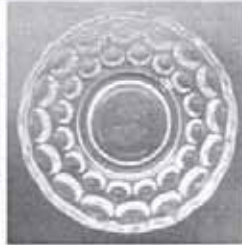
Has been reproduced in Colors by Boyd marked on base and Heisey Collectors marked on side.

2-7/8" Long  
2-1/8" Wide  
1-7/8" High

# 1506 Provincial Individual Nut or Jelly



Side



Top



Bottom



1506 Provincial  
Ind. Nut or Jelly

Catalog Picture

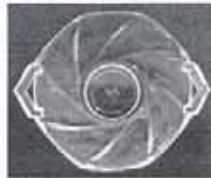
Crystal  
Marked

2-3/4" Dia  
1" High

# 1252 Twist Individual Nut 1928-1937



Side



Top



Bottom



1252 Twist  
Ind. Nut

Catalog Picture

Crystal, Moongleam, Flamingo, Marigold, Sahara, Some Cut  
Marked

4-1/4" At Handles  
3-3/16" Across  
1-1/8" High

# 1229 Octagon Individual Nut 1925-1937 Made Plain or Diamond Optic



Side



Top



Bottom



1229 Octagon  
Ind. Nut



Catalog Picture

Crystal, Moongleam, Flamingo, Hawthorne, Marigold,  
Sahara, Cut and Etched  
Marked

4-1/4" At Handles  
3-3/16" Across  
1-1/8" High

# 7018 Oval Diamond Point Individual Nut



Side



Top



Bottom

Crystal  
Marked

Often found with under  
plate which is a Jelly



7018 Oval Diamond Point  
Ind. Nut

Catalog Picture

2-5/8" Dia  
1-1/8" High

# 411 Tudor Individual Almond 1923-1939



Side



Top



Bottom

Crystal  
Marked



411 Tudor  
Ind. Almond

Catalog Picture

2-5/16" Dia  
1" High

The Proper Heisey Pattern Number for Oval Diamond Point is 1535

1469 1/2 Ridgeleigh Individual Nut 1935-1957



Side

Crystal  
Marked



Top



1469-1/2 Ridgeleigh  
Ind. Nut

Catalog Picture

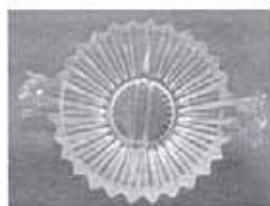
4-1/4" At Handles  
3-3/16" Across  
1-1/2" High

1469 1/2 Ridgeleigh Individual Nut. 2 Compartment 1935-1957

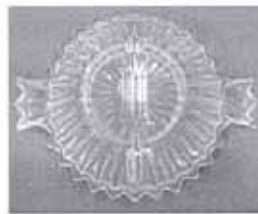


Side

Crystal  
Unmarked



Top



Bottom



1469-1/2 Ridgeleigh  
Ind. Nut, 2 Compt.

Catalog Picture

4-1/4" At Handles  
3-3/16" Across  
1-1/2" High

# 379 Urn Individual Nut (6 Sided)



379 Urn  
Ind. Nut (6 Sided)

Catalog Picture

2-7/8" Across Top  
1-3/4" Across Base  
1 7/8" High

Crystal  
?? Marked

# 1540 Lariat Individual Nut



Side



Top



Bottom

Crystal  
Marked and Unmarked



1540 Lariat  
Ind. Nut

Catalog Picture

4-1/8" Dia  
1-1/2" High

# 4044 New Era Individual Nut or Ash Tray 1934-1941



Crystal, Etched  
Unmarked

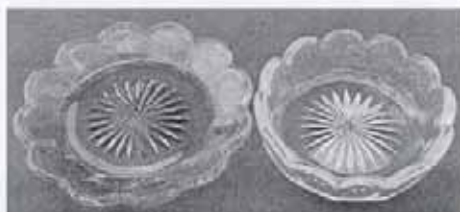


4044 New Era  
Ind. Nut or Ash Tray

Catalog Picture

3" Long  
2-1/4" Wide  
1" High

# 351 Priscilla Individual Almond Cupped and Flat



Crystal. Flat one known in Flamingo  
Marked



351 Priscilla  
Ind. Almond, Cupped



351 Priscilla  
Ind. Almond, Flat  
or Butter Pat

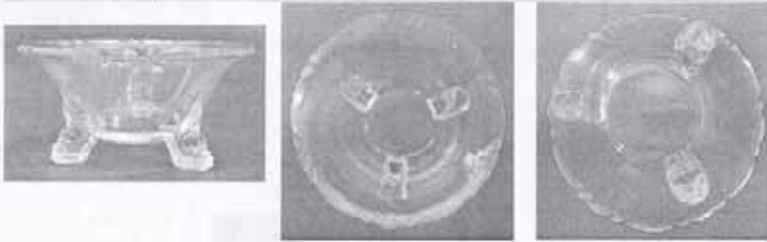
Catalog Picture

2-7/8" Dia  
7/8" High

Catalog Picture

3-1/2" Dia  
1/2" High

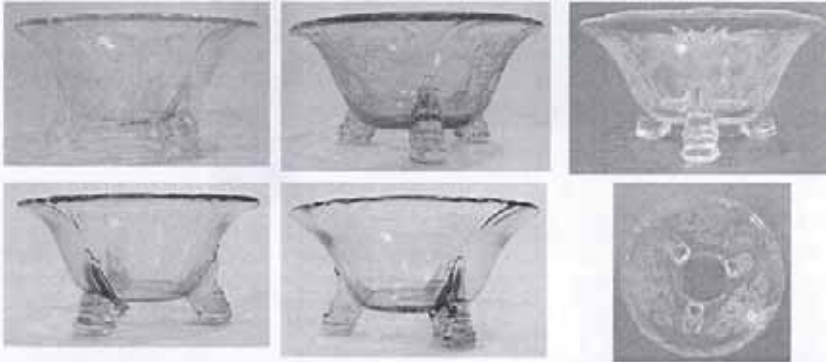
# 1401 Empress Individual Nut Dish 1930-1938



Side

Top

Bottom



1401 PATTERN



INDIVIDUAL  
NUT DISH

Catalog Picture



1401 Empress/  
1509 Queen Ann  
Ind. Nut

Catalog Picture

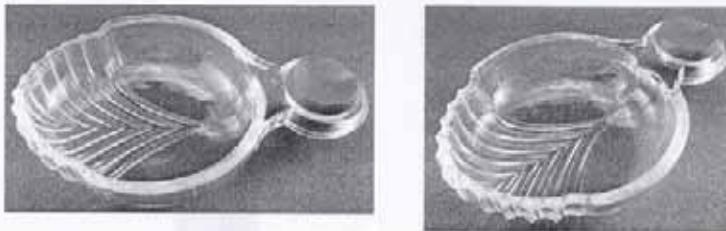
3-3/16" Dia  
1-1/2" High  
Average

Crystal, Moongleam, Flamingo, Sahara, Alexandrite. Found Etched and Cut Most Unmarked, but some can be found marked inside the foot.

# 1509 Queen Ann Individual Nut Dish After 1938

Crystal only. Queen Ann pieces have a vertical optic easier felt than seen

#1483 Stanhope Individual Nut 1934-1941



Crystal  
Unmarked



#1483 STANHOPE

Individual Nut  
With or without Rd Knob

Catalog Picture

4-1/4" Long  
2-3/4" Wide  
11/16" High

#8025 Banded Diamond Individual Nut Footed



Side

Top

Bottom

Crystal  
???marked



8025 Banded Diamond  
Ind. Nut, Footed

Catalog Picture

3-3/8" x 2-3/8"  
Top  
2-7/8" x 2" Base  
2-3/8" High

# SELECT AUCTION NEWS

Dave Spahr, Auction Chair

Something important is happening in Newark on September 11. Read on.

The **Sixth Annual Fall Select Auction is Saturday, September 11, 2010**, in Newark, OH, at the National Heisey Glass Museum, 6<sup>th</sup> and Church Street (located in Veterans' Park). The Preview will be from 12:30 p.m. to 1:30 p.m. with the **Auction beginning at 1:30 p.m.** Gary Babcock will again be our auctioneer - a good time will be had by all. Come and spend Saturday with us at the Museum!

We will be having a glass flea market in the Museum parking lot that will start at 10 a.m. and last until 1:00 p.m. If you would like to set up there, you have time to act if you do so quickly. There is no charge for setting up (bring your tables and covers) but donations to benefit the Museum will be solicited. Contact Michael Mayer at 740-763-4256.

For those of you who can't make it to the auction don't despair, you can use the absentee bid forms in the August Newsletter to put a bid in for that special piece of Heisey! Volunteer Charlie Wade will execute your bid for you. Please follow the instructions also published in that Newsletter. **Please note that absentee bids must be received in the Museum by Tuesday, Sept. 7, 2010, by 5:00 p.m. local time.** We are sorry but bids received after that date and time will not be executed.

Lastly, please note the catalog, absentee bid forms, absentee bid instructions, and terms and conditions for the auction are on our website ([www.heiseymuseum.org](http://www.heiseymuseum.org)) for you to download and use if you wish. All of these were also published in the August Newsletter.

Stop in at the Museum any time ahead of the auction to see all of the auction items on display in the Multi-Purpose Room of the Museum. There are items for all tastes and pocketbooks in this auction. Check it out.

That's all for now - hope to see you in Newark on September 11! ♦

## PERCY AND VIVIAN MOORE DINNER AT PANAMA CITY BEACH - UPDATE

Sid Edwards

Newsflash – the oil is gone – the beaches are beautiful - the sun is shining. Time is running out to join us for flip-flop fun in Panama City Beach, FL the second weekend in October. The deadline to reserve a condo is September 1; units will still be available after that date but availability is not guaranteed. The deadline to register for events is September 27. The schedule of events and registration form are on pages 22 and 23 in this Newsletter.

Why should you attend?

- 1) A chance to sit on a private balcony in your pjs high above the beach and enjoy the view of the Gulf of Mexico.
- 2) Getting to know other collectors in an informal, small group setting.
- 3) An auction with some expensive (we've already picked out our choices) and less expensive items. All proceeds benefit the National Heisey Museum.
- 4) An escape from your daily routine.

One final bonus of attending the PVM @ PCB is that you will always remember where you were on 10/10/10.

Pack your bags with beach togs and come join us. ♦

## HCA WELCOMES NEW MEMBERS FOR July 2010

Karen B. Taylor, TN  
Deidre Tolles, CA

# 2010 Percy and Vivian Moore Weekend (PVM@PCB)

WHEN?

October 8-9, 2010

WHERE?

Majestic Beach Resort  
Panama City Beach, Florida

WHAT?

Events will include:

Welcoming Picnic on the beach Friday evening  
Heisey Auction Saturday afternoon (donations of glass welcome)  
Casual Banquet following the auction  
Room Hopping Shopping – contact us if you wish to sell at this event  
All events will be held at the Majestic Resort  
Lots of time for visiting and walking on the beach

For hotel information and room layouts visit:

[www.majesticbeachresort.com](http://www.majesticbeachresort.com)

HCA rate is \$89/night for studio, \$119/night for 1 bedroom and \$145/night for 2 bedrooms

All units are ocean front with balcony overlooking the Gulf of Mexico and full kitchen

Rates are guaranteed for the length of your stay – not just the 2 days of the event

Reservations may be made thru the hotel website or by calling 1-866-494-3364.

Be sure to mention the Promo Code 343 to get the special HCA rate.

For local information visit:

[www.visitpanamacitybeach.com](http://www.visitpanamacitybeach.com)

There is also a new \$330 million dollar airport serviced by Southwest and Delta Airline

For beach information visit:

[www.edgewaterbeachresort.com](http://www.edgewaterbeachresort.com)

If you have questions, please contact us:

Mary and Sid Edwards

334-283-4663

[sidedwards@mindspring.com](mailto:sidedwards@mindspring.com)

2010 Percy and Vivian Moore Weekend

Registration Form

Majestic Beach Resort
Panama City Beach, Florida
October 8-9, 2010

All events will be held at the Majestic Beach Resort, a 22 story condominium complex directly on the Gulf of Mexico. All rooms have full kitchens and an ocean front balcony.

TO REGISTER: Complete this form and mail to:

Mary and Sid Edwards
852 Greenwood Road
Tallasse, AL 36078

Questions - Contact us at 334-283-4663

You must include a personal check, money order or certified check made payable to Heisey Collectors of America

The deadline to register for events is Monday, September 27, 2010

Deadline to register for rooms is Monday, September 1, 2010. After this date rooms are subject to availability.

The special HCA rate is available regardless of the length of your stay.

PLEASE PRINT

Name(s) \_\_\_\_\_

Address \_\_\_\_\_

City/State/Zip Code \_\_\_\_\_

Phone (\_\_\_\_\_) \_\_\_\_\_ E-mail \_\_\_\_\_

EVENTS

Friday, October 8:
6:00 PM Picnic on the Beach
(Hamburgers, hot dogs, salads and fixin's)
Cash Bar -- Silent Auction of Regional Goody Bags from Study Clubs and Individuals

Saturday, October 9:
Room Hopping Shopping during the afternoon
Please check here if you would like to sell at this event \_\_\_\_\_

5:00 PM Live Auction of Donated Heisey Glass
6:00 PM Casual Banquet
Please select entrée:
Chicken with Forrest Mushrooms \_\_\_\_\_ X \$40.00 = \_\_\_\_\_
Smoked Pork Chop with Thyme Essence \_\_\_\_\_ X \$40.00 = \_\_\_\_\_

All prices include Tax and Gratuity

During the events Friday and Saturday evening we will be honoring the Heroes of Heisey as we kickoff the celebration of the 40th Anniversary of HCA. If you would like to have a Hero honored, please list their name below:

\_\_\_\_\_

TO MAKE A ROOM RESERVATION:

Contact the Majestic Beach Resort at 1-866-494-3364 or on line at www.majesticbeachresort.com

Be sure to mention the Promo Code 343 to get the special HCA rate

FOR BEACH INFORMATION VISIT:

www.edgewaterbeachresort.com

Heisey News September 2010

# HEISEY GLASS MUSEUM PLAYING CARDS AND NEW RUBY CARD CASE

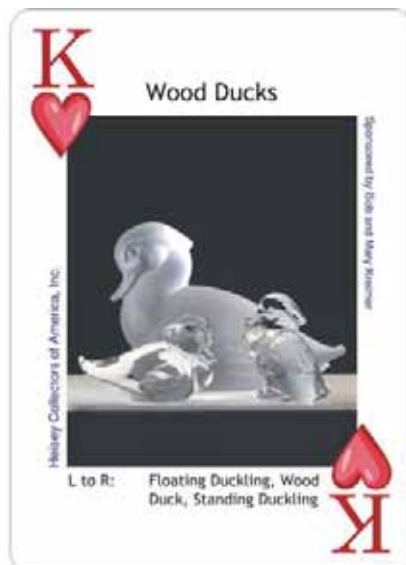
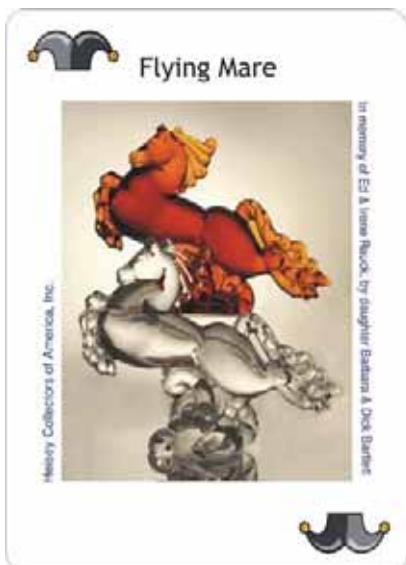


Edition 3 (green deck) of Heisey Glass Museum Playing Cards are now in. In addition, we have for sale a limited number of uncut sheets (21" x 25") which will be suitable for framing. This deck features the Heisey animals and animal related items. **We have the reproduction card cases in Ruby.** These look stunning and will make an attractive addition to your Heisey playing cards. Orders for red card decks and uncut sheets can also be placed now.

Name \_\_\_\_\_  
 Address \_\_\_\_\_  
 City \_\_\_\_\_ State \_\_\_\_\_ Zip \_\_\_\_\_  
 Phone and/or E-mail \_\_\_\_\_

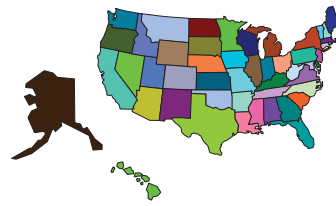
I wish to order:	Total
_____ (number) Heisey Glass Museum Playing Cards (Green) @ \$10 each	_____
_____ (number) Heisey Glass Museum Playing Cards (Red) @ \$10 each	_____
Shipping per deck \$ 1.50 (can be picked up at Gift Shop)	_____
_____ (number) Uncut sheets of Heisey Playing Cards (Green) @ \$25 each	_____
_____ (number) Uncut sheets of Heisey Playing Cards (Red) @ \$25 each	_____
Shipping per uncut sheet @ \$5.00 each (can be picked up at Gift Shop)	_____
_____ 1508 Card case in Ruby @ \$36 each	_____
Shipping per card case @ \$6.00 each (can be picked up at Gift Shop)	_____
<b>Grand Total</b> (tax will be added when appropriate)	_____

Check # \_\_\_\_\_ Visa \_\_\_\_\_ Master Card \_\_\_\_\_  
 Card Number \_\_\_\_\_ Exp \_\_\_\_\_



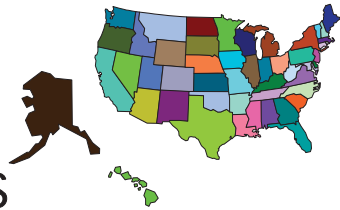


# Study Club Directory



Interested in joining a study club? You will have the opportunity to meet fellow collectors and HCA members and learn more about your favorite glassware. If your club is not listed or you need to make corrections to your listing, please contact the Museum.

STUDY CLUB	MEET WHEN?	WHERE?	Email/Web Site	CONTACT
#4 Central Illinois Helsey Collectors Club	Four times a year	Members' homes or restaurants		Joyce Deany (815) 432-4310
#5 Bay State Helsey Collectors Club	2 <sup>nd</sup> Tuesday of each month except July, Aug., and Dec.	Whole Foods Community Rm, Bedford, MA	spescatore@houghton.com	Stephen Pescatore (978) 256-5418
#7 Dayton Area Helsey Collectors Club	1st Tues. of the month Sept. to May, 6:30 p.m.	Huber Heights Library	LH937@aol.com	Joe Harner (937) 372-0852
#8 Helsey Heritage Society <i>NJ, Eastern PA and DE areas</i>	Four times per year	Members' homes	craigkratochvil@aol.com	Craig Kratochvil (973) 962-4004
#13 Helsey Club of California	4th Sunday every month, 12:30	Members' homes	herbet@sbcglobal.net www.helseyclubca.org	Richard Borino (949)-496-0676
#14 Northern Illinois Helsey Club	Four times a year	Members' homes	nihelsey@comcast.net	Jeff Morrow (630) 833-4644
#15 Helsey Collectors Club of Michigan	Every six weeks, August to May	Members' homes	kilgoredesigns@att.net	Sue E. Kilgore (269)-345-3990
#16 Helsey Collectors of Texas	2nd Sat. of every odd month except May 1st Sat., 1 p.m.	Members' homes	sanddollars97@tx.rr.com www.helseycollectorsoftexas.org	Greg Freeman (817)-545-5889
#19 Helsey Collectors of the Rochester Area	10 meetings per year: Sunday, 2:30 p.m.	Members' homes	seo2@aol.com	Sharon Orienter (585) 288-8076
#20 Buckeye Helsey Collectors Club <i>Newark, OH area</i>	September to May, 4th Monday	Members' homes or the Museum	Theflyingmaher@webtv.net	Michael Maher (740) 763-4256
#22 Northwest Helsey Collectors	First Saturday of the month	Members' homes	bahama50@hotmail.com	Deborah de Jong (425) 868-0457
#25 Helsey 76'ers <i>Columbus, OH area</i>	Once a month, September to May	Members' homes	ldburg48@aol.com	Colleen Burgess (614) 882-1884
#31 Nassau Long Island Helsey Club	Generally every other month	Members' homes		Babs Kent (516) 228-8274
#32 Dairyland Helsey Club	Once every two months	Members' homes		Ray K. Courtnage (414) 962-9747
#33 Golden Gate Helsey Collectors Club <i>Northern California</i>	Quarterly	Members' homes		Russ Nicholas (916) 515-8558
#36 Helsey Club of Southern MA	April, June, September, December			Maria Martell (508) 833-0633
#38 North Carolina Helsey Study Group	6 meetings per year: Jan.; March, May, July, Sept., Nov.	Replacements Ltd Greensboro, NC	Nchsg@yahoo.com www.northcarolinahelseystudygroup.org	Karen Taylo (252) 637-9985
#39 Florida Helsey Collectors Club	4 times per year: January – February-March-April	Westchester Country Club Boyton Beach, FL	Shirley400@aol.com	Everett Dunbar (772)-337-1558
#42 Gulf Coast Helsey Club of Florida	Nov., Jan. and March; 2 <sup>nd</sup> Thursday 11:00 am	Members' homes		Jack Grenzebach (727)-391-5784
#43 Tri-State Helsey Study Club <i>OH, IN, MI</i>	1st Sat. every 3rd month	Members' homes	Maxwellm@cktech.biz	Mike Maxwell (260) 925-3484
#45 Hoosier Helsey Club	Four times a year	Warren Library, Indianapolis, IN		J. David Litsey, (317) 872-7800
#48 Dixieland Helsey Study Club	Odd number months, 2 <sup>nd</sup> Saturday night	Members' homes	www.dixielandhelsey.org	Craig German (770) 967-8733
#49 Great Plains Helsey Club	March, May, July, September, and November	Members' homes	cameron_mg@mchsi.com www.greatplainshelseyclub.org	Mary Cameron (515) 292-3743
#50 Northwoods Helsey Club of Minnesota	Four times a year	Members' homes	neslocg@aol.com	Carole Olsen (715) 386-8273
#51 Helsey Club of Northeast Florida	Feb., May, Aug., and Nov. 2 <sup>nd</sup> Thursday	Avonlea Antique Mall, Jacksonville	Clasyglas2@aol.com	Barb Bartlett (904) 280-0450
#52 Northern Virginia Helsey Study Club	Monthly, Sept. – May	Members' homes	rreopell@verizon.net	Russ Reopell (703) 250-6117



## CLUB NOTES

### Great Plains Heisey Club *Cathy Files*

Editor's Note: I am sure that you were able to figure out that the club report run in last month's Newsletter was the report from the Great Plains Club and not from the Heisey Collectors Club of Michigan. Cathy did a great job on the report but I failed to change the header. My apologies.

We did not receive any club notes for this issue, but I did receive this nice picture from one of our Indiana members showing that Heisey is still a winner. This entry at the Indiana State Fair of the 301 Old Williamsburg candelabra in Sahara took home the blue ribbon. ♦



### Advertising Guidelines:

Advertising: Ads may be mailed to: HCA Advertising, 169 W. Church St., Newark, OH 43055; faxed to (740) 345-9638; or e-mailed to curator@HeiseyMuseum.org. Whenever possible, please e-mail your ad. Include your MasterCard or VISA number and expiration date for billing purposes, or send a check. All ads must be prepaid. When mailed or faxed, ads should be typed or printed on white paper with dark ink. Please double space. Ads that are entered in a vertical column format may contain a maximum of 65 characters per line, including spaces & punctuation.

Classified: 20 cents per word (members), 30 cents per word (non-members), \$1.50 min., 1/8 page limit. Personal ads 1/8 page limit. Abbreviations & initials count as words.

Display Ads:	member	nonmember
1/8 page (12 lines)	\$ 20	\$ 30
1/4 page (25 lines)	\$ 40	\$ 60
1/2 page (60 lines, horizontal or vertical)	\$ 80	\$120
Full page (120 lines)	\$160	\$240

A charge of \$1.60 will be added for each additional line.  
1/2 page: 4 1/2" high by 7 1/2" wide or 9" high by 3 1/2" wide  
Full page: 9" high by 7 1/2" wide

Ad copy must be received by the first of the month prior to publication. Reproductions (i.e., Heisey by Imperial) must be indicated. Heisey News accepts no further liability. In the event of a typographical error, the incorrect portion of the ad will be run in the following issue, but HEISEY NEWS assumes no further liability.

### Classified Ads

## REAL HEISEY IN THE GIFT SHOP

All crystal and all prices are each unless noted.

Supply changes daily. Please contact the Gift Shop before placing an order.

Item	Price
6 Mike Owens Bust, frosted	\$20
1184 Yeoman celery, 10", Sahara	12
1184 Yeoman oyster cocktail, H (4 each)	5
1201 Fandango punch cup (2 each)	12
1205 Fancy Loop punch cup	10
1252 Twist ftd ice tea, H (2 each)	15
1401 Empress pickle/olive, 13", Sahara, H	15
1401 Empress plates, sq, 7", Sahara, H (6 each)	10
1401 Empress plates, rd, 7", Sahara, H (2 each)	10
1401 Empress plates, sq, 8", Sahara, H w/448 Old Colony Etch (4 each)	15
1401 Empress plates, sq, 6", Sahara, H w/448 Old Colony Etch (4 each)	15
1425 Victorian goblet, low, one ball (2 each)	10
1425 Victorian champagne	12
1425 Victorian sherbet (8 each)	5
1425 Victorian wine	15
1503 Crystolite cup/saucer, H (8 sets each)	10
1503 Crystolite sugar, H	8
1503 Crystolite sugar, ind, H (2 each)	8

## NEW IN THE GIFT SHOP

1508 Card case in Ruby	\$36
Reprint of Catalog and Price List No. 31, September, 1950	12.95
Heisey Placemats (produced by Bay State Heisey Club)	\$14 each or 2 for \$25
Heisey Notecards, 12 cards each with a different Heisey etching plus envelopes	\$12

♦

# Dealer Directory

Maximum 6 lines/12 months/\$35 MEMBERS ONLY

Contact the Editor to place your ad!



<p><b>KIM &amp; PAM CARLISLE</b> SHOWS &amp; MAILORDERS ONLY 28220 Lamong Rd. Dept. H Sheridan, IN 46069 Glass Cleaning Services Available (317) 758- 5767 kcarlisl@att.net</p>	<p><b>SHIRLEY EUGENIA DUNBAR</b> Early Heisey a Specialty—Mail Order, Appraisals EMAIL: shirley400@aol.com 2002 Se Isabel Rd, Port St. Lucie, FL 34952 (772) 337-1558</p>	<p><b>SUM OF LIFE</b> Elaine Husted: 610-469-1243 Traveling through eastern PA Call, stop in, be a buyer or a browser!! E-mail: 1classycat@comcast.net</p>
<p><b>ALL HEISEY AUCTION</b> Consignments Welcome Apple Tree Auction Center 1625 W. Church, Newark, OH 43055 (740) 344-4282</p>	<p><b>MOUNDBUILDERS SECOND GENERATION</b> Barbara and Richard Bartlett Heisey Exclusively! 1-904-280-0450 PO Box 1931, Ponte Vedra Beach, FL 32082 Toll Free 1-888-434-7397(HEISEYS) EMAIL: CLASYGLAS2 @AOL.COM</p>	<p><b>EAGLES REST ANTIQUES</b> Buying Heisey, China &amp; Pottery Carl and Mary Evans 62 Fieldpoint Rd., Heath, OH 43056 (740) 522-2035</p>
<p><b>PAULA &amp; JEFF MORROW</b> Elegant Glassware and American Dinnerware 126 Clinton Avenue Elmhurst, IL 60126 (630) 833-4644 mor-fab@comcast.net</p>	<p><b>H &amp; R DIAMOND H</b> Helen &amp; Bob Rarey 1450 White Ash Dr. Columbus, OH 43204 (614) 279-0390 after 5:30</p>	<p><b>CRYSTAL LADY</b> Bill, Joann &amp; Marcie Hagerty Specializing in elegant depression glassware 1817 Vinton St., Omaha, NE 68108 Shop (402) 341-0643 or Home (402) 391-6730 Email: ejhagerty@aol.com website:www.crystalladyantiques.co</p>
<p><b>REALMS IN GLASS</b> Roy Eggert Heisey Custom Stained Glass 9423 Saddlebrook Ct, Frederick, MD 21701 301-260-0234 royegg54@comcast.net</p>	<p><b>GRECIAN BORDER (GREEK KEY)</b> By Petros Z. Mantarakis The definitive guide on Greek Key (#433) with photos and detailed descriptions of all pieces. Now available at Amazon.com Website: www.pzmworks@yahoo.com</p>	<p><b>PATTON HOUSE ANTIQUES</b> Specializing in Glass*Heisey*Cambridge*Fostoria*Duncan* Factory Antique Mall, Verona, VA off I-81 Exit 227 Antiquers Mall, Booth 81, Rt. 29 N., Charlottesville, VA The Daniels, Box 547, Louisa, VA 23093 (540) 967-1181</p>
<p><b>C&amp;J ANTIQUES</b> Cole &amp; Jean Miesner Box 45, 72 Whig St. Newark Valley, NY 13811 (607) 642-9905</p>	<p><b>SIBYLS OF WILMINGTON</b> Sibyl &amp; Ned Lavengood at Castle Corner Antiques 555 Castle St. Wilmington, NC (910) 264-9597 or Sibylsantiques@bellsouth.net</p>	<p><b>FRAN'S FANCY FINDS</b> Fran &amp; Jack Grenzebach 10534 Valencia Rd., Seminole, FL 33772-7511 (727) 391-5184 SHOWS MAIL ORDERS</p>
<p><b>The American Bell Association</b> 7210 Bellbrook Drive San Antonio, TX 78227-1002 www.americanbell.org</p>	<p><b>MOONGLEAM ANTIQUES</b> Heisey Glassware &amp; American Art Pottery John Woytowicz and Peter Rivard 70 Pleasant St., Gardiner, ME 04345 (207) 582-9048 E-mail: jmwppwr@aol.com</p>	<p><b>WILLEY'S ANTIQUES &amp; MUSEUM</b> Specializing in Heisey 11110 Cannon Rd., Frazeeburg, OH 43822 16 miles east of Newark, OH (740) 828-2557</p>
<p><b>CHARLES &amp; MILDRED FISHER</b> Heisey animals and Heisey By Imperial animals 1607 Dayton Rd, Newark, OH 43055 Cfisher08@roadrunner.com (740) 281-3104</p>	<p><b>MARSH'S ANTIQUES</b> Dick and Virginia Marsh 4532 Newton Road Newark, OH 43055 swamp@alink.com (740) 366-5608</p>	<p><b>Charlene Bowman</b> Shows Only Heisey – Cambridge – Fostoria - Morgantown P.O Box 287, Clarksville, OH 45113 937-289-2114 twoclbs@aol.com</p>
<p><b>ROBERT M. LOCH</b> Voting Member HCA and NWHC Pacific Interstate Glassware Co. PO BOX 469 Custer, WA 98240 360-366-3166</p>	<p><b>CRESTONE MANOR UNIQUES</b> Harold &amp; Loleta Hammontree 2405 Talking Leaves Drive, Ooltewah, TN 37363 423-629-1274 hammonlsh@gmail.com Heisey Only</p>	<p><b>J &amp; L TREASURES</b> Specializing in Heisey, Cambridge, Fostoria, Tiffin, Morgantown, etc Linda Kilburn, PO Box 1257, Burlington, CT 860-673-4088 jltreasures@comcast.net</p>
<p><b>William M. Riddle</b> Specializing in Heisey Antiques to Envy, Booth 32 Lynchburg, VA (Route 29 South) 434-579-3864 wsriddle@embarqmail.com</p>	<p><b>WM GLASS</b> Bill &amp; Mary Barker 400 Nantucket Ave., Pickerington, OH 43147 (740) 927-0918 wbarker2@insight.rr.com Heisey Only</p>	<p><b>WATERSEdge ANTIQUES</b> Norene &amp; Don Walzer Shows &amp; Mail Order 25089 Riverwalk Drive Leesburg, FL 34748 (352) 314-8975 dnnwalzer@embarqmail.com</p>
<p><b>JERRYS' ANTIQUES</b> Shows Only Glassware and Other Fine Collectables PO Box 4485, Davenport, IA 52808 563-340-1871 jerrysantiques@mchsi.com</p>	<p><b>ONCE AND FUTURE ANTIQUES</b> Susan &amp; Stephen Pescatore 9 Donna Rd. Chelmsford, MA 01824 (978) 256-5418 Heisey and Elegant Glass</p>	<p><b>BOB &amp; MARY KREIMER</b> Specializing in Heisey Glass 7044 SW 116<sup>th</sup> Loop, Ocala, FL 34476 (352) 873-8306 email: rkreimer@earthlink.net. Shows and Mail Orders Only</p>
<p><b>Diane's Antiques</b> Diane Noyes At Crystal Hill Antiques Mall North Little Rock, AR I-40 &amp; Exit 148 Heisey Sterling, Furniture and More!</p>	<p><b>Phil and Leo</b> Specializing in elegant glass @ Southport Antigue Mall booth #204 2028 E. Southpot Rd. Indianapolis, IN 46227 317-786-8246 mall 317-856-7004 home</p>	<p><b>YELLOW BRICK ROAD ANTIQUES</b> Jean Will Leavenworth, KS 66048 (913) 682-4831 Specializing in Heisey and Elegant Glassware Shows and Estate Sales</p>

## When Renewing Your Membership

Help ensure the future of your Museum. When you renew your membership at one of the levels below, any amount beyond the regular Associate dues goes into the Endowment Fund.

<i>Individual Contributing, one person in household</i>	<i>\$50</i>
<i>Joint Contributing, two people in one household</i>	<i>\$60</i>
<i>Family Contributing, parents and children under 18</i>	<i>\$75</i>
<i>Patron</i>	<i>\$125</i>
<i>Sponsor</i>	<i>\$250</i>
<i>Benefactor</i>	<i>\$500</i>

Visit The  
National  
Heisey  
Glass  
Museum



Come at your leisure to enjoy more than 4,800 pieces of glassware produced by A.H. Heisey and Company from 1896-1957. Hundreds of patterns are featured in all production colors. Rare and experimental items are included as well.

Facilities are air-conditioned and handicapped-accessible. Hours are 10:00 a.m. to 4:00 p.m. Tuesday through Saturday, 1:00 to 4:00 p.m. Sunday (except Jan. and Feb.). Members are admitted free, regular admission is \$4. Office hours are 8:00 a.m. to 4:30 p.m. weekdays.

**Membership Renewal Notice:** Check the date above your name and address on the mailing label. This is your expiration date. If it reads 9 -10 -10, make sure your dues are paid soon in order to receive next month's issue of *Heisey News*.

Contact the HCA Administrative Office at (740) 345-2932 for more information. The Endowment Committee wishes to thank those who have become Endowment Members and all of the individuals and study clubs that have so generously supported the HCA Endowment Fund. All members who have supported the fund are recognized each year in the February issue of the Newsletter. Your support will make the Museum self-sustaining in the years to come. Thank You all! ♦

### Shipping & Handling Fees for Outside US

Additional shipping charges are required for members living outside the U.S. Current rates are Canada, \$22; for other countries, contact the Museum. Rates are subject to change at any time due to rate changes made by the US Postal Service. To verify current rates, call (740) 345-2932 or E-mail [business@HeiseyMuseum.org](mailto:business@HeiseyMuseum.org)



### Periodical Postage

Paid at the Post Office  
In Newark, OH 43055  
Publication # 00986  
POSTMASTER SEND FORM 3579 TO:  
HCA  
169 W. Church St.  
Newark, OH 43055

To: \_\_\_\_\_

## Museum Volunteers for July 2010

Jim and Karen Clark  
Chuck and Amy Jo Jones  
Frank Kuhlmann  
Phyllis McClain  
Ginny Priest  
Dick & Marilyn Smith