

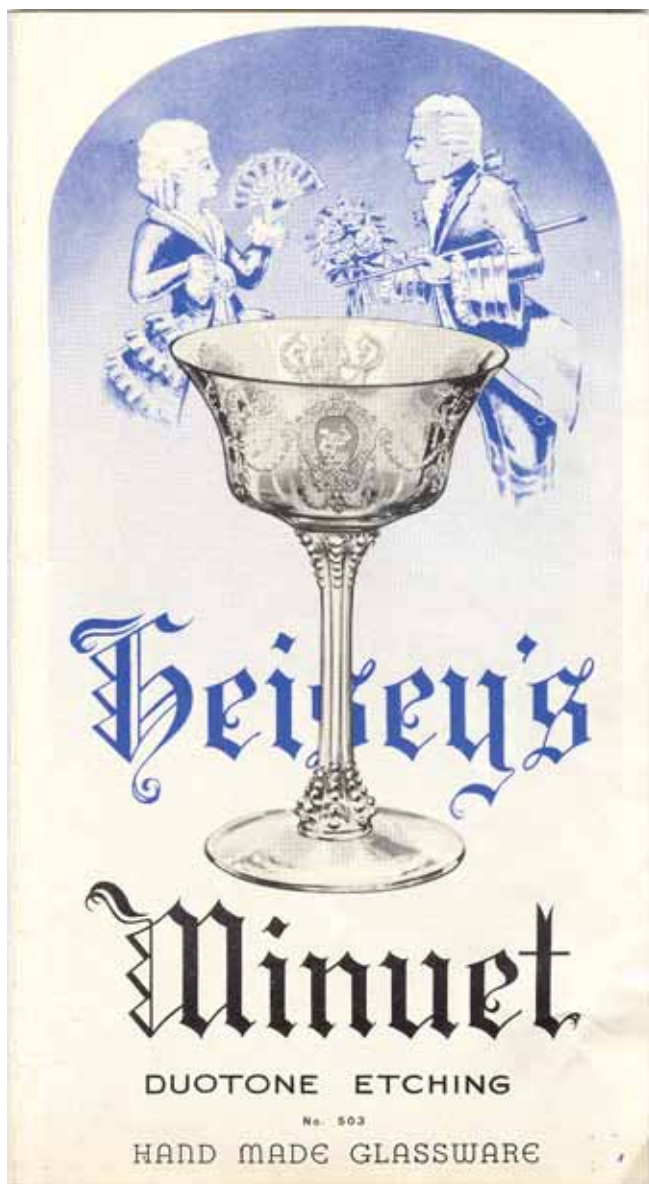
# HEISEY NEWS

The Official Publication of Heisey Collectors of America, Inc.

Volume XXXVII No. 3

March 2008

ISSN 0731-8014



Minuet Brochure – Cover

## 503 MINUET BROCHURE

Walter Ludwig

In January of 2007, I featured a cover article on a single panel brochure for the 503 Minuet pattern. All that was shown in that brochure were stemware pieces and a plate. This month I present what was probably the original Minuet brochure that was produced by the Company when the pattern was introduced in 1939.

This brochure is much more extensive, being a three-fold showing four panels on the front and back. The brochure is enhanced with one additional printing color. Blue is used on one side of the brochure extensively as background and border detail. On the other side, the blue color is only used for the Diamond H trademarks that appear between the panel presentations.

The cover of the brochure shows a 5010 Symphone champagne under a picture of what could be imagined as a court scene of a gentleman presenting a bouquet to a lady holding a fan. These two images (of the gentleman and the lady) are more elaborate versions of two of the motifs that appear in the frames used for the Minuet etching. The champagne stem splits the

Continued on Page 5

## HEISEY NEWS

Heisey Collectors of America, Inc.  
169 West Church Street  
Newark, Ohio 43055  
Phone 740-345-2932 Fax 740-345-9638  
Web Site: [www.heiseyMuseum.org](http://www.heiseyMuseum.org)  
All Rights Reserved 2008  
ISSN 0731-8014

### Staff and Phone Extensions

Curator, Walter Ludwig, [curator@heiseyMuseum.org](mailto:curator@heiseyMuseum.org), Ext. 4  
Business Manager, Shelly Hoberg, [business@heiseyMuseum.org](mailto:business@heiseyMuseum.org), Ext. 2  
Clerks, Alisha Tilley, Justin Church  
[membership@heiseyMuseum.org](mailto:membership@heiseyMuseum.org), Ext. 1  
Clerk, Mary Jo Kochendorfer, Ext. 5

### HCA Board of Directors:

**President**, Bryan Baker - Fairfax Station, VA, 703-250-6117 –  
[hcapresident@heiseyMuseum.org](mailto:hcapresident@heiseyMuseum.org)  
**Vice-President**, Charlie Wade – Newark, OH 740-587-2002  
**Secretary**, Amy Jo Jones - Beavercreek, OH, 937-426-1567  
**Treasurer**, Dave Spahr - Xenia, OH, 937-372-7166  
Member-at-Large, Sharon Orienter – Rochester, NY, 585-288-8076

Phil Abrams - Charlotte, NC, 704-364-4561  
Ron Keener – Heath, OH, 740-323-3747  
Sue Kilgore – Kalamazoo, MI, 269-345-3990  
Robert Loch – Custer, WA, 360-366-3166  
Jack Metcalf – Utica, OH, 740-892-2664  
Karen Taylo – New Bern, NC, 252-637-9985  
Jean Will – Leavenworth, KS, 913-682-4831

HEISEY NEWS is published and printed monthly (twice in March), by Heisey Collectors of America, Inc. (HCA). Periodical postage paid at Newark. Subscription is limited to HCA members. First class mailing is available for an extra \$20.00, due with payment of membership. If you are having difficulty receiving your Newsletter, please contact the HCA Administrative Office Monday through Friday 8:30 a.m. - 4:30 p.m.

The opinions expressed in articles in HEISEY NEWS are those of the authors and not necessarily those of the organization. The Editorial Staff reserves the right to edit, with or without the consent of the author or to refuse any material submitted for publication.

### Back Issues

Back Issues available from files are \$3.00 per issue plus shipping and handling

### Advertising

Ads may be mailed to: HCA Advertising, 169 W. Church St., Newark, OH 43055; faxed to (740) 345-9638; or e-mailed to [curator@HeiseyMuseum.org](mailto:curator@HeiseyMuseum.org). Whenever possible, please e-mail your ad. Always include your MasterCard or Visa number and expiration date. When mailed or faxed, ads should be typed or printed on white paper with dark ink. Camera ready ads are accepted, but must follow line specifications outlined at the beginning of the advertising section. Ads containing reproductions will not knowingly be accepted unless clearly stated (e.g. Heisey by Imperial, etc.). HEISEY NEWS accepts no further liability. In the event of a typographical error, the incorrect portion of the ad will be run in the following issue, but HEISEY NEWS assumes no further liability. See advertising section for rates and deadlines.

### Museum

Heisey Collectors of America, Inc., a non-profit corporation (tax-exempt status), owns and operates The National Heisey Glass Museum in Veterans Park, 6th and Church Streets, Newark, Ohio. Open year round, Tuesday through Saturday 10:00 a.m. – 4:00 p.m., Sunday 1:00 – 4:00 p.m., closed holidays. Other hours by appointment. Members admitted free.

### Identification

HCA will attempt to identify unknown glass items. Send a color photograph, measurements, and a self-addressed, stamped envelope to the attention of the Curator. Other arrangements should be made in advance with the Museum staff. Please keep in mind that the Museum cannot appraise items. Identification is free to members, non-members \$5.00 per item.

### Membership

To join Heisey Collectors of America or to renew your membership, contact the HCA Administrative Office Monday through Friday 8:00 a.m. - 4:30 p.m. Eastern Time. Associate dues are \$30.00 plus \$5.00 for each additional household member. Voting members pay an additional one-time fee of \$25.00. Please consider supporting the Endowment Fund by joining at one of the levels listed on the back page.

### Museum Gift Shop

There is always someone in the Gift Shop during the Museum's hours of operation to help answer questions or take orders. When ordering by phone, please have a credit card ready. When ordering by mail, please be sure to include appropriate charges such as shipping and sales tax. Please note that the HCA member discount does not apply to original Heisey or special project items.

### Shipping and Receiving

Delivery is made much easier when we have a complete street address, not a PO Box. We prefer to use UPS. If you have not received a package, please call the Administrative Office to confirm it was sent. We will assist you in tracing it. If your package arrives damaged, please contact your local UPS representative. We insure everything.

### Donations and Loans to the Museum

If you would like to make a donation to the Museum or have questions regarding items on loan, contact the Curator. HCA reserves the right to accept or refuse items based on current holdings.

## HEISEY CALENDAR OF EVENTS

### 2008

|  |                 |
|--|-----------------|
| All Heisey Glass Show, Gaithersburg, MD            | March 15-16     |
| HCA Benefit Auction, Newark, OH                    | April 4-5       |
| GMP Local #244 Union Hall, 350 Hudson Ave.         |                 |
| Heisey National Convention and Elegant Glass Show  |                 |
| Newark, OH   | June 18-21      |
| Percy & Vivian Moore Memorial Weekend, Jackson, MI |                 |
|  | September 26-27 |
| HCA Select Auction, Newark, OH                     | October 18      |
| December Holiday Open House                        | December 13     |

### Table of Contents

|  |          |
|--|----------|
| 503 Minuet Brochure, Walter Ludwig   | FC & 5-8 |
| Heisey Calendar of Events  | 2        |
| Message from the President, Bryan Baker  | 3        |
| Curator's Report, Walter Ludwig  | 4        |
| HCA Welcomes New Members for January 2008  | 25       |
| 4083 Stanhope Stemware, Joe Lokay  | 9        |
| Heisey's Tie-in Patterns with Vernon Kilns, Walter Ludwig                              | 10-12    |
| Early Stemware, Joe Lokay  | 13-14    |
| Plunger Cut Table Glassware, Walter Ludwig   | 15       |
| 37 <sup>th</sup> Annual HCA Convention "HCA Salutes Our Armed Forces," Sharon Orienter | 16       |
| Frankly Rhyming, Frank Husted  | 16       |
| 2008 Benefit Auction – A Preview   | 17-18    |
| Glass Needed for Convention Silent Auction, Steve Killebrew                            | 18       |
| 2008 Benefit Auction Update, Dave Spahr  | 19       |
| 2008 All-Heisey Benefit Auction Absentee Bid Form                                      | 20       |
| Vaseline Opalescent Candle Holder Order Form   | 21       |
| Heisey Glass Museum Playing Cards Order Form   | 22       |
| Study Club Directory   | 23       |
| Club Notes   | 24-25    |
| Advertising Guidelines   | 25       |
| Real Heisey in the Gift Shop   | 26       |
| Dealer Directory   | 27       |
| Museum Volunteers for January 2008   | BC       |

# MESSAGE FROM THE PRESIDENT

Bryan Baker

Well, it's been just about one year exactly, and we're still hearing positive feedback from our Museum reorganization effort. The collection certainly took on a new and improved look and feel. If you didn't have the opportunity in 2007 to visit us, please make plans to do so in 2008. First-time and repeat visitors alike will be impressed with this magnificent collection of Heisey history.

It seems that March is the month that kicks off the 2008 Heisey calendar of events. It is not too late to make plans to attend the March 15 and 16 All Heisey Glass Show and Sale sponsored by the National Capital Heisey Collector's Club (see show card in this Newsletter for details). I certainly will be there, in addition to many of your Heisey friends and family. Looking for something special? You'll probably find it here in addition to unexpected treasures! Remember, all proceeds from this event go directly to HCA.

Shortly afterwards, we will hold our annual HCA Benefit Auction on April 4 and 5 (details on page 19). I'm not sure if the April Newsletter will reach you before this event, so I'm putting out my last bit of encouragement for you to attend and support this very important fundraiser for HCA. Walter has displayed some select items up for auction in the display case right as you walk in the Museum - WOW! I don't think you'll be disappointed in the offerings of this auction. There truly is something for everyone.

The summer highlight is our Heisey Convention June 18 - 21. We have some great events planned, in addition to our annual Heisey Premier Glass Show. Read Sharon Orienter's article on page 16 for a sampler of the week's activities. This year, "HCA Salutes our Armed Services!"

September 26 and 27 will find us in Jackson, Michigan as we come together to enjoy and commemorate at the Percy and Vivian Moore Memorial Weekend and Dinner. This year's event is being sponsored by the Heisey Collectors Club of Michigan. This club has been hard at work putting together a full weekend of fun, friends and Heisey. I hope to see you there!

The 2008 season continues with our annual Select Auction on October 18. This event has shaped up to be another important yearly fundraiser for HCA. It is very early to give any details yet, but mark your calendars. The last item for the 2008 calendar is our December Holiday Open House on December 13.

Some of you may be wondering whatever happened to our Heisey Tumbler/Candle project. As they say, good things are worth waiting for! I picked up the tumblers from Mosser the other week, and they are outstanding! Both the 1460 Flame 10 oz. tumbler and the 1404 Old Sandwich 1 ½ oz. bar have been reproduced in Vaseline Opalescence. One hundred of each will be filled with scented soy wax (i.e. candles) with a handful sold without any candle filler (for those of you who want to enjoy your tumbler without waiting to burn your candle). Quantities are limited - see the order form on page 21. Should these sell well, both to members and non-members alike, we will continue to reproduce these and other tumblers in non-Heisey colors. The demand/interest appears to be very good.

In closing, I must again announce our Heisey community has lost several long-time members and friends: Hugo Wenzel (a former board member) and Firl Nicholson of the Columbus, Ohio area and Betty Morrison of Newark, Ohio. Our deepest sympathies go out to their friends and family.

Until Next Time,

Bryan Baker ♦



## CURATOR'S REPORT

Walter Ludwig

The cold has set in and there is a lot of shivering going on here in the Museum. With the beginning of spring just around the corner, it can not come too soon for any of us. But winter will not give up easily; we know we have several more weeks in the refrigerator they call Ohio.

It has been a busy month as we get ready for the upcoming Benefit Auction. There were three cataloging sessions in January and we had full crews in each day opening up the boxes of glass, inspecting it for damage, cataloging it, and then packing it away until the time of the Auction. Since then, Dave and Mary Ann Spahr and I have been diligently working to get the catalog in the absolute best shape possible before it is sent out to you. Those of you who get first class mail and requested a catalog will get it together with this issue of the Newsletter. Others who are getting the catalog should receive it before you receive your Newsletter since it is being sent out first class mail. As mentioned last month, I have put some of the best items in our new acquisition case by the entrance to the Museum. If you are able to come in, you will really enjoy looking at these special pieces. I have written an extensive article further previewing the auction for you that you will find on page 17 of this Newsletter. Just reading it should whet your appetite for this outstanding event.

I am looking forward to seeing many of you at the Gaithersburg Show put on by the National Capital Heisey Collectors' Club on March 15 and 16. It is a great chance to get back East and see many of my Heisey collecting friends there. If you are there, do say hello and we can talk about Heisey together.

It hardly seems like a year since we rearranged the Museum's collection last February. It has really given the Museum a new look and we get many compliments on the new display. I hope

all of you can get to Newark to see your Museum soon.

I recently attended the kickoff event of the Licking County Bicentennial. This was the unveiling of a quilt done by county needle workers that highlights many of the historic, cultural, and recreational aspects of the county. This was done by using a map representation of the county and using pictures to tell the story. Located right in the northeast part of Newark was the famous Diamond H trademark commemorating the role that A.H. Heisey & Company played in this county. It really made me proud.

I know you are all itching to escape out of the winter doldrums as I am. Get in the car and visit your favorite antique center. I bet there is a piece of Heisey just waiting for you there. ♦



Dave's Helpers Working on Cataloging Glass

## HCA WELCOMES NEW MEMBERS FOR January 2008

Carolyn Ayo, TX  
Kathy Street, OH  
Jon & Kim Trost, IL

**A**LTHOUGH the Minuet harks back a century or two, its rhythmic dignity scintillates with youthful gayety, and therefore, has a close kinship to our present age of rhythm. So Heisey has selected in producing this new note in the technique of lacy realm of etchings a quaint but youthful theme, The Minuet.

IT RECALLS the splendor, dignity and exclusive ecstasy of the old courts of Europe, but our talented designers have caught the spirit of hospitality and decorative elegance that is so dear to the American woman's heart. You will find this etching unfettered by traditional period style and therefore, a welcome note in

most any atmosphere for which it may be considered.

IN CONSEQUENCE, this lovely Minuet pattern by Heisey is bound to have a lasting vogue for those who have an appreciation for something ultra in the ornate and decorative. *It is elegant but not expensive.*



1511—15 in. Sandwich Plate  
1509—7 in. Combination Salad Dressing Bowl



1511—2 lt. Candelabra, Bobeche & 16 "A" Prisms  
1511—13 in. Floral Bowl



Minuet Brochure – Overfold Panels

## 503 MINUET BROCHURE

(Continued from front cover)

word "Heisey's" (actually hiding the middle "s") with the word "Minuet" appearing under the champagne. Both of these words are written in an Old German font. Under the word "Minuet" are the following lines "Duotone Etching, No. 503, Hand Made Glassware." It is interesting that this brochure uses the term duotone etching, where the later brochure uses the term double-etched crystal. We now are more likely to use the term double plate etching for the type of decoration that 503 Minuet encompasses.

When the brochure is opened to the double page presentation that actually is the two left panels on the same side as the cover panel, one sees two blue framed ovals presenting pieces of the pattern. These ovals are meant to evoke the frames used in the etching of the pattern and which surround the etched vignettes. In the left oval is pictured the 1511 Toujours 15" sandwich plate and the Toujours 7" combination salad dressing bowl. The right oval shows the 1511 Toujours 2 light candelabra with bobèche and 16 "A" prisms along side the Toujours 13" floral bowl.





Minuet Brochure – Inside - Left

Centered between the two pages is a cello (also printed in blue) which one will find in another of the Minuet vignettes where a court musician is playing the cello. Below the cello is a reproduction of the sticker that Heisey was using on its glassware at this time.

Above the two ovals appears the only advertising copy that was used in the brochure. It reads:

“Although the Minuet harks back a century or two, its rhythmic dignity scintillates with youthful gayety, and therefore, has a close

kinship to our present age of rhythm. So Heisey has selected in producing this new note in the technique of lacy realm of etchings a quaint but youthful theme, The Minuet.

“It recalls the splendor, dignity and exclusive ecstasy of the old courts of Europe, but our talented designers have caught the spirit of hospitality and decorative elegance that is so dear to the American woman’s heart. You will find this etching unfettered by traditional period style and therefore, a welcome note in most any atmosphere for which it may be considered.



Minuet Brochure – Inside Right

"In consequence, this *lovely* Minuet pattern by Heisey is bound to have a lasting vogue for those who have an appreciation for something ultra in the ornate and decorative.

*"It is elegant but not expensive."*

Upon further opening the brochure you are presented with the four panel spread of the other side of the brochure. To the left is a two panel presentation of nine different pieces in the pattern (1511 Toujours footed cream and sugar, 7" plate, 14" torte, 12" celery, 13" floral plateau, and marmalade and cover, in addition to the 5010 Symphone 5 ½" comport, 3408 Jamestown dinner bell and the 5012 Urn 7' footed vase). These pieces are superimposed on top of a piece of scrolled music which is entitled "Minuet."



Minuet Brochure - Back

The other two panels on the inside present the 5010 Symphone stemware decorated with 503 Minuet etching. Panel three presents only the 9 ounce goblet, while panel four presents the whole array of Symphone stemware (ten pieces plus the finger bowl).

The final panel is the back of the brochure when it is folded up. This again uses the blue oval framing technique (actually more elaborate frames) that was used before. Here we have the 1511 Toujours center piece, vase, and 12 "A" prisms presented within the oval.

When I found this brochure it had with it a single page insert that was printed front and back. This insert lists pieces that were available in the pattern along with price per dozen for the pieces. The list includes 11 pieces of 5010 Symphone stemware in addition to the fingerbowl and 5 ½" comport, 18 pieces of 1511 Toujours, two pieces in 1514 (a 12" low oval bowl and the bowl converted into a 3-part relish [this is a piece that I have never seen and would be very hard to identify as Heisey without a decoration on it]), the 3304 Universal cocktail icer, 3408 Jamestown dinner bell, 5012 Urn 7 ½" vase (also made in 6" and 9" sizes), 9 pieces



*Minuet Deep Plate  
Etching, Double No. 503*

| No.  | Size    | Item  | Price per Doz. |     |
|------|---------|---|----------------|-----|
|      |         |   | P              | M/O |
| 5010 | —9 oz.  | Goblet.....                                 | \$13.35        |     |
| 5010 | —9 oz.  | Goblet, Low Foot.....                       | 13.35          |     |
| 5010 | —6 oz.  | Saucer Champagne..                          | 13.35          |     |
| 5010 | —6 oz.  | Sherbet.....                                | 13.35          |     |
| 5010 | —4½ oz. | Oyster Cocktail....                         | 13.35          |     |
| 5010 | —4 oz.  | Claret.....                                 | 13.35          |     |
| 5010 | —3½ oz. | Cocktail.....                               | 13.35          |     |
| 5010 | —2½ oz. | Wine.....                                   | 13.35          |     |
| 5010 | —1 oz.  | Cordial.....                                | 13.35          |     |
| 5010 | —5 oz.  | Soda, Ftd.....                              | 13.35          |     |
| 5010 | —12 oz. | Soda, Ftd.....                              | 13.80          |     |
| 5010 |         | Finger Bowl (3309).....                     | 15.00          |     |
| 5010 | —5½ in. | Comport.....                                | 30.00          |     |
| 1511 | —7 in.  | Plate.....                                  | \$13.35        |     |
| 1511 | —8 in.  | Plate.....                                  | 15.00          |     |
| 1511 | —14 in. | Torte Plate.....                            | 48.00          |     |
| 1511 | —15 in. | Sandwich Plate.....                         | 48.00          |     |
| 1511 | —13 in. | Floral Plateau.....                         | 45.00          |     |
| 1511 | —13 in. | Floral Bowl.....                            | 48.00          |     |
| 1511 | —10 in. | Salad Bowl.....                             | 45.00          |     |
| 1511 | —2 ft.  | Candelabra, Bobeche &<br>16 "A" Prisms..... | 84.00          |     |
| 1511 |         | Center Piece, Vase &<br>12 "A" Prisms.....  | 72.00          |     |
| 1511 | —12 in. | Celery.....                                 | 30.00          |     |
| 1511 |         | Mayonnaise, Ftd.....                        | 21.00          |     |
| 1511 |         | Marmalade & Cover.....                      | 18.00          |     |

Minuet Price List Insert – Front

|      |  |       |
|------|--|-------|
| 1511 | —Sugar, Ftd.....                               | 18.00 |
| 1511 | —Cream, Ftd.....                               | 18.00 |
| 1511 | —Ind. Sugar.....                               | 12.00 |
| 1511 | —Ind. Cream.....                               | 12.00 |
| 1514 | —12 in. Oval Bowl.....                         | 48.00 |
| 1514 | —12 in. Oval Relish, 3 Comp.                   | 51.00 |
| 3304 | —Cocktail Icer & Liner.....                    | 18.00 |
| 3408 | —Dinner Bell.....                              | 18.00 |
| 5012 | —7½ in. Vase.....                              | 54.00 |
| 1511 | —5½ in. Vase, Ftd.....                         | 30.00 |
| 1511 | —7½ in. Comport.....                           | 30.00 |
| 1509 | —16 in. Snack Rack Plate<br>& Center, Ftd..... | 75.00 |
| 1509 | —7 in. Combination Salad<br>Dressing Bowl..... | 15.00 |
| 1509 | —7½ in. Sauce Bowl, Ftd....                    | 30.00 |
| 1509 | —6 in. Jelly, Ftd., 2 Hld.....                 | 15.00 |
| 1509 | —6 in. Mint, Ftd.....                          | 15.00 |
| 1509 | —11 in. 5 O'clock Relish,<br>3 Compt.....      | 42.00 |
| 1509 | —15 in. Social Hour Tray<br>(Torte Plate)..... | 48.00 |
| 1509 | —12 in. Sandwich Plate.....                    | 54.00 |
| 1509 | —Ice Cube Bucket &<br>Sil. Pl. Hld.....        | 42.00 |
| 2351 | —12 oz. Soda ½ sham.....                       | 9.00  |
| 4192 | —10 in. Vase s/o.....                          | 72.00 |
| 4196 | —8 in. Vase.....                               | 84.00 |

Minuet Price List Insert – Back

of 1509 Queen Ann, 2351 Newton 12 ounce soda with ½ sham, and the 4192 10" and 4196 Rhoda 8" vases. I assume that the prices were printed on this separate sheet so if the prices increased, just the insert would have to be reprinted while the brochure could be continued to be used.

This brochure really makes a grand presentation of one of Heisey's most elegant of etchings. Although the pattern is steeped in the past, it makes a beautiful table setting today. With its

many accessory pieces, the hostess is able to make a wonderful coordinated display. Although the pieces are not quite as available as Heisey's two other major etchings from the period (Orchid and Heisey Rose) the stemware is readily available with accessory pieces being harder to find. The pattern was made from 1939 until it was discontinued sometime before 1956. Today's bride would be as happy to have a piece of Minuet as the bride of 1939 was to receive it then. ♦



# 4083 STANHOPE STEMWARE

Joe Lokay

While looking through some of Heisey's price lists, I came across what I would describe as a unique set of stemware. It was in the Stanhope blown stemware line. I was looking at Price List 212 (1937) and Price List 213 (1938). Picture stemware in three parts: a bowl, a stem, and a foot. A set of ten items was offered by Heisey with a Zircon bowl, a crystal stem, and a Zircon foot. This combination is not new, but a whole set in this combination caught my eye. Just think, a complete set in this unique design could have been purchased in 1938. In the HCA 1994 Benefit Auction, a cordial with this color combination was offered. Wow, what a rare piece. It went for \$1,450. There are many articles on the Stanhope pattern which are listed below.

## 4083 Stanhope Blown Stemware

All ten items below were made with a Zircon bowl, a crystal stem, and a Zircon foot.

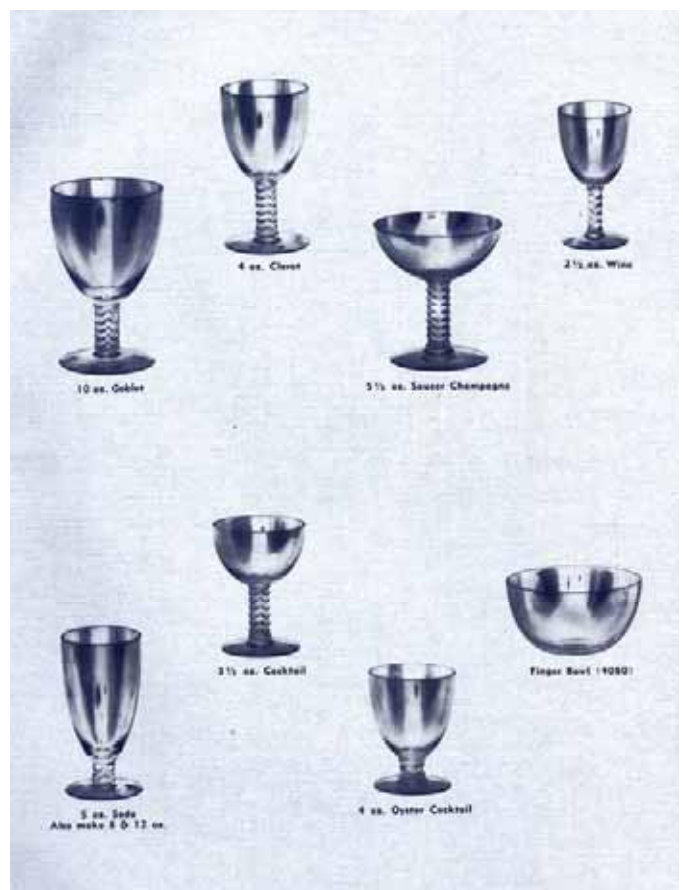
1. goblet, 10 oz.
2. saucer champagne, 5 ½ oz.
3. claret, 4 oz.
4. oyster cocktail, 4 oz.
5. cocktail, 3 ½ oz.
6. wine, 2 ½ oz.
7. cordial, 1 oz.
8. soda, ftd, 5 oz.
9. soda, ftd, 8 oz.
10. soda, ftd, 12 oz.

Other articles in the Heisey News on the Stanhope pattern:

1. March 1978, Heisey ads – Stanhope
2. September 1978, 1483 Stanhope stems
3. June 1980, pictures of 1483 Stanhope
4. January, 1983, Color in Stanhope
5. November 1993, Stanhope cordial at auction #999D
6. April 1994, 1483 and 4083 Stanhope
7. August 2007, Stanhope Brochure
8. October 2007, Stanhope in Price Lists ♦



4083 Stanhope Goblet



Catalog 16 (Supplement) – Page 35

# HEISEY'S TIE-IN PATTERNS WITH VERNON KILNS

Walter Ludwig

In 1950, Heisey embarked on a joint venture with Vernon Kilns, a California producer of pottery dinnerware, to introduce two new patterns to the public. These patterns were actually part of an even bigger effort to coordinate all kinds of manufactured products for the home with coordinated patterns. Interestingly, both of these patterns were marketed in conjunction with commercial ventures that you would not normally associate with china and glassware.

The first of these patterns (at least going by Heisey's assigned etching number) is 517 Winchester '73. This pattern was tied in with the Universal-International release of the motion picture of the same name, "Winchester '73." This was a major release starring James Stewart and Shelley Winters. Part of the promotion was to put displays in theater lobbies so that patrons of the movie could immediately purchase pieces with the tie-in decorations.

Heisey produced a whole line of barware on the 6060 Country Club blank enhanced with scenes and vignettes out of the old West. There were several different decorations involved and different pieces had different scenes and accompanying symbols of the West.

On Vernon Kilns' part, they produced a whole line of tableware with western themes. The accompanying Vernon Kilns ad states, "All the romance of the winning of the West is in this attractive new pattern ... designed with a particular eye to masculine tastes ... for casual dining any time, anywhere. WINCHESTER '73 has he-man appeal, with its bold western scenes ... cowboys ... covered wagons ... in dramatic colors on a soft green background.

"Winchester '73 will be introduced simultaneously with the great new Universal-International picture, "Winchester '73" starring James Stewart and Shelley Winters and will tie in with tremendous studio promotion of the new film!"

Neither company had a tremendous success with this pattern; it would seem that motion picture theater lobbies were not wholly conducive to the selling of china and glassware. Also, it was women who did the buying in the house and a strong masculine pattern would not hold the appeal to them. Now both the china and the glassware are avidly sought after by collectors and prices continue to escalate. It is a shame that grandma did not buy a set when she went to the movies in 1950.

The other pattern is Heisey's 518 Pan American Lei etching, which was produced on the entire 5079 Pan American line of stemware. This was matched by Vernon Kilns with a new dinnerware line featuring brightly colored Hawaiian flowers strung on the traditional Hawaiian lei. The commercial tie in, in this case, was with Pan American Airways and their major ad campaign targeting the Hawaiian travel market.

A Heisey ad of the time stated, "Lovely as the garlands worn by Hula maids on the beach at Waikiki - is available in a complete line of Heisey hand-blown stemware etched to match Vernon Kilns dinnerware in the Pan American Airways' outstanding promotion."

The copy on the accompanying Vernon Kilns ad reads, "The charm of Hawaii comes to the dinner table with this new lei pattern ... a warm rose-beige background with a gala floral pattern in tropical hues. You will sell the glamour of Hawaii, with all the ageless beauty and enchantment that it implies ... combined with modern, graceful shapes and a pattern of lasting beauty. Perfect in any home, a sure seller from coast to coast.



## California Heritage

Warm, vivid colors that spell the glamour of California, the state with the rich heritage of color and beauty.

**Redwood**—A rich-grained brown, with the timeless beauty of the giant redwood forests.

**Almond**—A golden vital hue... crisp, sun-browned almond shells.

**Vineyard**—The soft green of growing things... sunlight on a vineyard in springtime.

**Raisin**—The regal purple of rare, deep amethysts.

**CALIFORNIA HERITAGE** is backed by a complete advertising, merchandising and publicity campaign... promotion that sells!



## Pan-American Lei

The charm of Hawaii comes to the dinner table with this new lei pattern... a warm rose-beige background with a gala floral pattern in tropical hues. You will sell the glamour of Hawaii, with all the ageless beauty and enchantment that it implies... combined with modern, graceful shapes and a pattern of lasting beauty. Perfect in any home, a sure seller from coast to coast.

**PAN-AMERICAN LEI** is the central point in one of the greatest coordinated home furnishings promotions ever to hit the retail field... rugs, draperies, lamps, Venetian blinds, table linens... leading manufacturers in all home furnishings lines are tying in with lei patterns... to make the **PAN-AMERICAN LEI** promotion the greatest ever!



## Winchester '73

All the romance of the winning of the West is in this attractive new pattern... designed with a particular eye to masculine tastes... for casual dining any time, anywhere. **WINCHESTER '73** has be-man appeal, with its bold western scenes... cowboys... covered wagons... in dramatic colors on a soft green background.

**WINCHESTER '73** will be introduced simultaneously with the great new Universal-International picture, "Winchester '73" starring James Stewart and Shelley Winters and will tie in with tremendous studio promotion of the new film!

Be sure to see these new **VERNON** patterns...



"Pan-American Lei is the central point in one of the greatest coordinated home furnishings promotions ever to hit the retail field ... rugs, draperies, lamps, Venetian blinds, table linens ... leading manufacturers in all home furnishings lines are tying in with lei pattern ... to make the PAN-AMERICAN LEI promotion the greatest ever!"

With all the hype that the Pan American promotion got, it is a shame that again it was not a commercial success for either company. Winchester '73 pieces are scarce but they do turn up occasionally. To find either a piece of Heisey's Pan American Lei stemware or a piece of Vernon Kilns Pan American Lei dinnerware is a major feat.

Heisey did produce 517 Winchester '73 at least until 1952. The etching designs were designed by Horace King. The 518 Pan American Lei etch was probably discontinued soon after introduction. Except for a few short lived etches introduced in 1954 and designed by Eva Zeisel, these were the last of the etches that the company would introduce. Only Orchid, Heisey Rose, Minuet, and Plantation Ivy would be produced in the last years of the plant's existence. ♦



Illustration of 5079 Pan American Goblet with 518 Pan American Lei etching  
Taken from Etching Book

517 Winchester '73 Illustrations  
Taken from Etching Book



# EARLY STEMWARE

Joe Lokay

In the unnumbered circa 1892 Price List, A. H. Heisey & Company offered ten sets of stemware. Each set had a cordial, wine, claret, champagne, and goblet. There were also six stem categories offering individual items. The categories with the number of offerings in each were: goblets (25), champagnes (12), clarets (14), wines (21), cordials (11), and cocktails (20). There were obviously many different styles of stemware offered by Heisey in these early years.

The question is: What stemware was being offered in the early patterns that Heisey was marketing at the time? Listed below are the stemware made in each pattern up to, but not including, the 300 Peerless line.

1200 Cut Block  
Wine, 2 ounce

1201 Fandango  
Goblet, 8 ounce  
Wine, 2 ounce

1205 Fancy Loop  
Goblet, straight or cupped  
Wine, straight or cupped  
Claret, straight or cupped  
Cocktail, large or small  
Sherry, 1 ½ ounce  
Champagne, 8 ounce, straight or cupped  
Saucer champagne, regular or squat  
Punch glass, 5 ounce, straight or cupped

1220 Puntty Band  
Claret, 5 ounce  
Wine, 2 and 2 ½ ounce  
Cordial, 1 ounce

1235 Beaded Panel and Sunburst  
Goblet, 9 ounce  
Wine, 2 ounce

1295 Beaded Swag  
Goblet, 11 ounce  
Wine, 2 ounce

160 Locket on Chain  
Goblet, 9 ounce  
Wine, 2 ounce

Patterns 8 Vertical Bead and Slash, 9 Single Row Slash and Panel, 12 Double Row Slash and Panel, 150 Pointed Oval in Diamond Point, 310 Ring Band, 1250 Groove and Slash, 1255 Pineapple and Fan, and 1280 Winged Scroll did not have stemware as part of the pattern. ♦



1200 Wine

## 1200 Cut Block



NO. 1201-WINE 8 OZ.

## 1201 Fandango

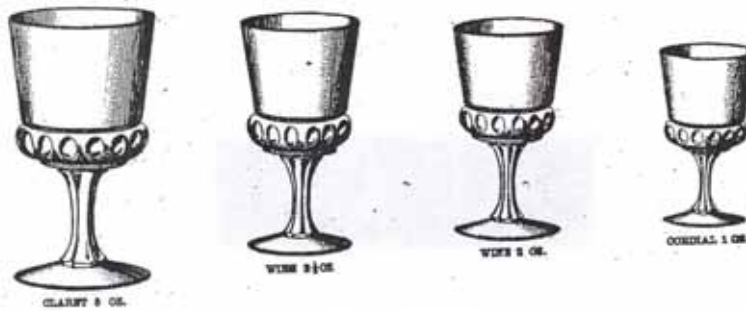


NO. 1235 WINE 2 OZ.

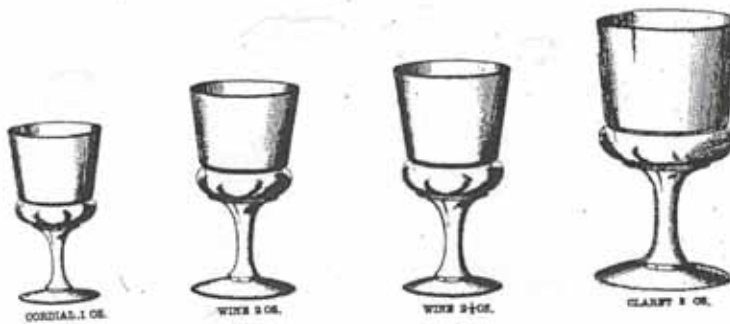
## 1235 Beaded Panel and Sunburst



## 1205 Fancy Loop



## 1220 Puntty Band



## 1225 Plain Band





## 1295 Beaded Swag


## 160 Locket on Chain



**A. H. HEISEY & CO.,**  
INCORPORATED.  
NEWARK, OHIO,  
— MANUFACTURERS OF THE —

Celebrated  
Diamond H  and  
Plunger Cut 

**Table  
Glassware.**



New York Salesroom: . . . . . 42 West Broadway.  
Philadelphia Salesroom: . . . . . 1038 Market Street.  
Baltimore Salesroom: . . . . . 122 West Baltimore Street.

From Crockery and Glass Journal, December 1906

## PLUNGER CUT TABLE GLASSWARE

Walter Ludwig

Continuing our look at various trademarks used by A. H. Heisey & Company, we come to a trademark that was registered by the Company on January 30, 1906 as trademark no. 49,335. The trademark consists of a circle with the term Plunger Cut Glass forming an outer circle around a Diamond H symbol in the middle. Curiously here we have the H more in a square on its corner point rather than the elongated Diamond that we are used to. The ad above in the December 1906 issue of the Crockery & Glass Journal clearly shows this mark.

What was Plunger Cut Glass? Well, it seems to be the pressed patterns that we were used to Heisey producing from its inception. The idea was that the "plunger" pushed the molten glass into the patterning in the mould and thereby "cut" the pattern into the glass without the use of a cutting wheel.

Why have this new designation for the Heisey production? It was probably a competitive measure because of the action of other glass companies. McKee-Jeannette Glass had their "Prescut" trademark since 1904. Cambridge came in with "Nearcut" in 1905. Heisey wanted to convey the same feeling about its patterns that the other companies had with their new designations.

Anyway, the use of the term was short lived. One does not find it after 1909. ♦

# 37<sup>th</sup> ANNUAL HCA CONVENTION "HCA SALUTES OUR ARMED FORCES"

Sharon Orienter

Imagine waiting a whole year to find that one piece that completes your collection. Then imagine walking into a room that sparkles with shelves full of gorgeous Heisey that display not only that piece but many others of equal beauty and rarity. This is an experience shared by all of us at the annual HCA Convention Premier Glass Show. Our dealers work hard all year to assure you the very best choice of the most beautiful glass available. And, be sure to stop by the HCA Booth at the show for a deck of our new edition of Heisey Museum Playing Cards, our new picture postcards, and other souvenirs of our Museum and your trip to Newark.

Our special Convention theme this year will be "HCA Salutes Our Armed Services," focusing on Heisey made during the years of WWI and WWII. I will be giving two seminars, one on Heisey made during WWII and the last years of Heisey's production; and one on the remarkable and talented Eva Zeisel, who designed for Heisey in the 1950s and is credited with some very elegant and simple patterns. She has had a truly amazing life and at the age of 101 continues to design furniture, glassware, and pottery, as well as supervise the re-release of some of her earlier designs. I love the things from these later periods and feel that Heisey's designs were decades before their time. From Contemporary to Classic Heisey's glassware is perfect in any home.



**6009 Roundelay**

Though it is still in the planning stages, this promises to be the best Convention ever with yummy food, interesting information, and lots of visiting with Heisey friends. Some treasured old events will remain, though perhaps at different times, and some exciting new ones are planned as well. I will simply whisper, "a night of espionage and mystery," and let your imagination take it from there.

As in the past, we will start with a cookout on the Museum grounds on Wednesday, June 18. On Thursday, the Show will open for a Convention-registrants-only preview and then to general admission an hour later. It has been rumored that all the best pieces and certainly the best bargains go in the first hour... come see for yourself! Then the Convention swings into motion with seminars, meetings, socials, food, and glass, glass, glass.

Come visit, come eat, come buy; but whatever you do, don't miss our 37<sup>th</sup> Annual Heisey Convention. ♦

## FRANKLY RHYMING

Frank Husted

As part of a fund-raising effort, Dr. Husted has agreed to create limericks, like the one below, for HCA members based on the pattern(s) of their choice. A donation to HCA would be appreciated for each limerick created. If you would like to learn more about this fund-raising project, you may contact Dr. Frank Husted by phone at (610) 469-1243 or via e-mail to [frankly.me@comcast.net](mailto:frankly.me@comcast.net).

### Bacchus

Bacchus, the Greek god of wine  
Thought it exceedingly fine  
To be carved on some Heisey  
In a spirit quite spicy,  
To be in the revelry line!

♦

# 2008 BENEFIT AUCTION – A PREVIEW

Walter Ludwig

Dave Spahr, our inveterate Benefit Auction chairman, has asked me to write an article for this Newsletter that would give you a preview of some of the items in the auction. I have just finished going through the catalog and, frankly, there are so many good items in this auction that it is going to be hard to include them all. I have included the lot number after each item to assist you in your bidding.

This is an auction that will please every collector, no matter what level of collecting the person is at. There are lots of lots for the beginning collector, many items that will allow you to fill out sets or add an item to your favorite topical collection, and there are many lots for the advanced collector who is looking for the super rare and unusual.

The basic patterns of Crystolite, Orchid, Heisey Rose, Ridgeleigh, Plantation, and Lariat are all well represented. Of special interest to the Crystolite collector will be the cologne with full dauber (247) and a swan-handled pitcher (817). The advanced Orchid collector will appreciate the 4164 Gallagher pitcher (457) and the 5012 Urn 8" bud vase (450). For collectors of Heisey Rose, there is a rarely seen 5024 Rose Stem oyster cocktail (902). Ridgeleigh collectors will find a complete roly-poly cocktail and rest set (889), the unusual 10" dessert (252), and a swan-handled bowl (85). Among the rarer pieces of Plantation are two water pitchers - one plain (273) and the other with Ivy etching (38), as well as the tall footed candy jar (816) and a great breakfast set of two syrups on the 8" condiment tray (43). In Lariat, there is the caramel with cover (346) and the basket with the side loops (30).

Among the rarer animals in this auction we have a 5 Showhorse (58), a 1 Bull (411), and an Amber 1522 Standing Colt (448). There are also several lots of the smaller animal family members including the 22 Standing and 21 Floating Wood Ducklings (413 – unfortunately there is minor damage on each piece), 2 Head Down and 3 Head Up Bunnies (412), 2 Standing and 3 Sitting Piglets (416), and some 3 Head Up Chicks (417). Animal-related items include a 5065 Colt Stem cocktail (231) and a pair of 5058 Goose Stem cocktails (170). There is also a 1601

Sleeping Fox ashtray (420) and a 1550 Fish bowl (745). Lot 793 is a 1951A Elephant-handled beer mug.

For those who specialize in a particular item, this is an excellent auction. The toothpick collector will not be disappointed with the good selection of some of the more seldom-seen toothpicks including 325 Pillows (249), 315 Paneled Cane (385), and 1235 Beaded Panel Sunburst (248). For the cordial collector, we have a 150 Banded Flute (6), 3408 Jamestown with 941 Barcelona (276), and a 5057 Suez with 1017 Peachtree cut (850). The molasses collector will appreciate the 335 Prince of Wales Plumes (241). Candlestick collectors will love the 1552 Four Leafs (63), a pair of 140 Crocus (224), 21 Sheffields (288), a single 111 Cherub in Flamingo (323), and a pair of 431 Cascade three-light with Cobalt tops (431 – unfortunately the middle candleholder had been broken on one and reglued, but where have you seen even one of these?). For basket collectors, we have a 467 Helmet in Flamingo (223), a 464 Lokay (242), and a 411 crystal Double Rib and Panel with unusual amber staining on handle, rim, and base and cutting on panels (547 – this is actually much more striking than the description allows it).

There are some outstanding pieces of stemware in this auction. An interesting etched piece is a 3330 Hanover goblet with 19 Double Loop needle etching. In the ultra rare category is a 3404 Spanish champagne all in a rich Amber. The rarely seen 8020 Apple Stem cocktail will be lot 422. In Cobalt, there is a 351 Priscilla footed pilsner (425). The beautiful 7008 Krall Rose goblet (444) that has been enhanced with frosting along the stem and bottom part of the bowl and then given a special cutting on the top of the bowl will make any collector weak in the knees. There are several pieces of 5077 Legionnaire (542) and Suez (791, 792) with Sultana stems. Two lots are comprised of a 4083 Stanhope goblet (799) with Zircon bowl and foot and champagne (800) with only the bowl in Zircon. Four lots in a row will drive the stem collectors crazy – all are extremely scarce and are seldom seen on the market. They will be a 341 Old Williamsburg goblet in Dawn (804), a 337 Touraine footed sherbet in an extremely unusual amberina color (805), a 300 Peerless low-footed goblet in Alexandrite (806), and a 1408 Panel and Diamond Point goblet in Moongleam (807).



For the collector of color, there are pieces in almost every Heisey production color. In Ivorina Verde is a beautiful seven-piece berry set in 310 Ring Band with amber bands (322). In Flamingo, there is a 1401 Empress 14" platter (69) and a 4231 favor vase (380). Limelight is represented by a 17" 1506 Provincial buffet plate (172 – minor scratching) and a 6060 County Club 16 ounce soda with screen optic and paper label (803). There are 1401 Empress 9 ½" dolphin footed vases in Alexandrite (337) and Sahara (338). In 1252 Twist, there is a nasturtium bowl in Marigold (367) and a round floral in Alexandrite (476). For the collector of Dawn, there is a 1951 Cabochon ¼ lb. butter dish. The 1000 marmalade in Alexandrite (543) and a 1485 Saturn one in Zircon (544 – crystal lid) will attract many bidders. There is a nice set of 1170 Pleat and Panel in Moongleam (636-639). There is a great 352 Flat Panel cigar jar in Moongleam (811). The Hawthorne 1001 Caswell creamer (801) is sure to attract attention.

You say you like the old patterns; well, this auction offers some outstanding choices. This is the auction for 1201 Fandango with many choice pieces in Heisey's first pattern available including a footed cake basket enhanced with gorgeous gold trim that is in great shape (134) and water bottle (181). There are 1776 Kalonyal 5" footed jelly (83) and a 4 ½" celery (306 – minor scratch on side panel). In 433 Greek Key, there is a cheese and cracker (93), medium ice tub (94), and a lot that contains two puff boxes (296). There is an interesting 1295 Beaded Swag spooner with gold and green bands. Lots 896 and 897 are 305 Puntty and Diamond Point cologne and mucilage bottles respectively, both with sterling tops.

Unusual items include a set of seven 341 Old Williamsburg coupe plates (673) and a 2401 Oakwood footed whiskey with 467 Tally Ho etch. The 1231 Ribbed Octagon crystal rum pot (813 – it does have a crack in the spout, but this was probably there at the time it was made) is seldom seen. There are two 352 Flat Panel knife rests (858, 893) in the auction as well as the unusual 1485 Saturn mustard with the paddle incorporated into the lid (864). Lot 894 is a set of the Heisey 2 salad fork and spoon.

Other great pieces that have not fallen into any of the previous categories include two gorgeous 4054 Coronation bars that have been decorated and signed by Dorothy Thorpe (189, 190). These are truly some of the best work to come out of the

Thorpe Studios in California. There is a 4225 Cobel cocktail shaker with 1036 Debutante cutting (236) that would be the envy of any shaker collector (you do not have to collect shakers or even drink to appreciate the beauty of this piece). If you do not have a Heisey 11 punch ladle (321), this is your opportunity to bid on one. There is an interesting water set composed of a 4162 Genie tankard and four 2390 Plain and Fancy tumblers all with the very early 706 Warwick cutting. (368). A 4163 Whaley tankard with 163 Monticello etch (845) is really great – the etching looks so good on a large piece like this. There are two 21 Aristocrat electroportable lamps in the auction: one has a 8" #1 cut satin shade (472) and the other has the unusual 11" base (503). Lot 504 offers something a little different; it is an original patent and design certificate for the 407 Coarse Rib high-footed jelly. There are two Heisey oval display mirrors in the auction (438, 485A).

One of the outstanding items in the auction will be lot 402. This is a 1519 Waverly footed candy with elaborate special cutting all over the piece. This had belonged to a friend of the Heisey family and was probably a special piece given by the family. Another of the great pieces is a 3408 Jamestown mug with a Red handle (432). This piece has 448 Old Colony etch as well as an incised inscription that reads "Carrie Grand Chief of Ohio 1932-1933."

As you can see, just going over the highlights of this auction produces quite a list. There is plenty of other good glass in the auction, too. So make your plans to come to this great auction or at the very least, place some absentee bids. This is an auction you do not want to miss. ♦

## GLASS NEEDED FOR CONVENTION SILENT AUCTION

Steve Killebrew

Rather than have the blind auction event that we usually have during Convention, this year we are planning a Silent Auction during the banquet. If you have a nice piece of glass (value \$50 and above) that you would like to donate for this event, please contact me at 740-281-7054 or by E-mail at [georgiacarriers@hotmail.com](mailto:georgiacarriers@hotmail.com). ♦

# 2008 BENEFIT AUCTION UPDATE

Dave Spahr

Last month we announced **April 4 & 5, 2008** as the dates for the 35<sup>th</sup> Annual Benefit Auction. We finished cataloging the glass after the last month's Newsletter deadline and have 916 lots. As mentioned last month, this year's All Heisey Benefit Auction will be held at the GMP Local #244 Union Hall at 350 Hudson Ave. in Newark, Ohio.

We have received some wonderful glass for the benefit auction. Our curator, Walter Ludwig, has given you a preview of some of the outstanding items that you will find in the catalog in an article elsewhere in this Newsletter. Also, do drop by the Museum, if you can, and see the special pieces that have been selected from the auction items and put into the case beside the front entrance of the Museum; this case is usually reserved for our new acquisitions. They are enough to whet anyone's appetite for this outstanding auction.

The auction catalog, preview hours, auction hours, absentee bid instructions, absentee bid form, bidding information, and most importantly the list of sale items are on our website, [www.HeiseyMuseum.org](http://www.HeiseyMuseum.org). (You will find the absentee bidding form on page 20 of this Newsletter for your convenience.) Also listed are names and addresses of area hotels/motels to assist you in making reservations. You will want to arrive in time to attend the two-hour preview on Friday, April 4, 2008, 2:00 p.m. to 4:00 p.m. with the auction beginning at 4:00 p.m. On Saturday, April 5, 2008, the doors will open at 8:30 a.m., the annual membership meeting will be held at 9:00 a.m. with the auction beginning at 9:30 a.m.

As mentioned in previous Newsletters, last year the Board decided not to have a full mailing of the auction catalog. We will do the same this year. We will be sending copies on or about March 1 to members who purchased glass or put

in absentee bids in 2006 and/or 2007. We will also provide a copy to any member who wishes one; all you need to do is call the Museum by March 10 to get your copy. If you were a buyer or absentee bidder, wait a few days before you call giving time for your copy to arrive in the mail.

As you know, the Benefit Auction is HCA's largest fund-raiser and 2008 will be another challenging year financially for the organization. This auction is larger than last year's auction and we have an abundance of nice damage-free glass this year. If you can't make it to Newark for the auction this year, I encourage you to look on-line at the great glass and put in an absentee bid. This is a way for **every member** to support your association. Forms and instructions are available on the website as well.

Finally, here is a special note for absentee bidders. We are continuing a successful change we instituted last year. We are having absentee bidders make their own arrangements to have their glass shipped. We have included in the absentee bid instructions in the auction catalog, area shippers and their telephone numbers who will pick up, package, and send your glass to you. The absentee glass will be available for pickup at the Museum on Tuesday, April 8, 2008. Absentee bidders will have to pay their shippers directly. We will cooperate with your shipper and assist where we can. HCA simply does not have the volunteers, materials on hand, and staffing capability to do this task.

As you read this Newsletter, I will be looking for help at the auction - for "Vannas" to hold up the glass, for folks to work holdback, for help moving glass during the auction, and for clean up after the auction. If you would like to help, please contact me. It is a great way to learn about the glass and meet some great volunteers.

If you have any questions or concerns about the auction, please contact me at [masdgs@aol.com](mailto:masdgs@aol.com) or give me a call at 937-372-7166. I'll see you at the auction! ♦

**2008 All-Heisey Benefit Auction  
ABSENTEE BID FORM**

**DEADLINE: 5:00 p.m., March 31, 2008 See Catalog page 3 for detailed instructions**

Send Absentee Bid to: HCA Auction  
169 W. Church St.  
Newark, OH 43055  
Telephone: 740-345-2932 Fax 740-345-9638

Pick up glass on 04/08/08 at: National Heisey Glass Museum  
169 W. Church St.  
Newark, OH 43055  
Telephone: 740-345-2932

You are responsible for making your own shipping arrangements

| <i>LOT<br/>NUMBER</i> | <i>FULL DESCRIPTION</i> | <i>NEAR MINT<br/>ONLY</i> | <i>TOTAL BID</i> |
|-----------------------|-------------------------|---------------------------|------------------|
|                       |                         |                           |                  |
|                       |                         |                           |                  |
|                       |                         |                           |                  |
|                       |                         |                           |                  |
|                       |                         |                           |                  |
|                       |                         |                           |                  |
|                       |                         |                           |                  |
|                       |                         |                           |                  |
|                       |                         |                           |                  |
|                       |                         |                           |                  |

\* *Minimum bid per lot is \$15*

|   |                               |                      |
|---|-------------------------------|----------------------|
|   | <b>Subtotal</b>               | <input type="text"/> |
|   | <b>7% Sales Tax (OH Only)</b> | <input type="text"/> |
| <b>5% buyer fee added (waived if not paid by credit card)</b> | <b>5% Buyer's Fee</b>         | <input type="text"/> |
|   | <b>TOTAL</b>                  | <input type="text"/> |

**BIDDER INFORMATION (Please Print):**

Name \_\_\_\_\_  
 Address \_\_\_\_\_  
 City/State/Zip \_\_\_\_\_ Daytime Telephone \_\_\_\_\_  
 Vendor's License # \_\_\_\_\_ (Copy **MUST** be attached to avoid taxes)  
 Payment method: \_\_\_ Check # \_\_\_\_\_ ; \_\_\_ Money Order # \_\_\_\_\_ ; \_\_\_ Credit Card (see below)  
 Credit Card: \_\_\_ Visa; \_\_\_ MasterCard; Card # \_\_\_\_\_ Exp. \_\_\_\_\_  
 Provide three-digit code on back of credit card \_\_\_\_\_

\*\*\*\*\* **IMPORTANT BIDDING INFORMATION** \*\*\*\*\*

You are responsible this year to make shipping arrangements We will make every effort to execute all absentee bids -- however ,due to the large volume of bids that we receive, bids are occasionally misplaced or misfiled. Thank you for your understanding.

We have endeavored to describe all items to the best of our ability – however, due to the age and unique nature of antiques, minor differences in descriptions and conditions are not the responsibility of HCA, Inc.

***SUBMITTING THIS FORM CONVEYS ACCEPTANCE OF THE ABSENTEE BID INSTRUCTIONS, TERMS AND CONDITIONS OF SALE, AND BIDDING INFORMATION.***





## VASELINE OPALESCENT CANDLE HOLDERS NOW AVAILABLE

The 1460 Flame tumbler and the 1404 Old Sandwich bar have been made in Vaseline Opalescent by Mosser. These may now be ordered either filled with scented soy wax in either of four different fragrances or plain from the Museum Gift shop. Quantities are very limited, although if successful, they will be made in other non-Heisey colors in the future. Put in your order now to get one of these unique Heisey Museum gift items.

Scents available are: **Vanilla (V)**, **Butter Cream (B)**, **Honeysuckle (H)**, and **Dusty Rose (D)** – indicate scent code with each candle ordered

Name \_\_\_\_\_  
 Address \_\_\_\_\_  
 City \_\_\_\_\_ State \_\_\_\_\_ Zip \_\_\_\_\_

Phone and/or E-mail \_\_\_\_\_

I wish to order:

| Description                              | Unit Price | Quantity | Scent Code | Total cost |
|--|------------|----------|------------|------------|
| 1460 Flame tumbler without wax           | \$12.50    |          |            |            |
| 1460 Flame tumbler with wax              | 17.50      |          |            |            |
| 1404 Old Sandwich bar glass without wax  | 6.50       |          |            |            |
| 1404 Old Sandwich bar glass with wax     | 8.50       |          |            |            |
| Shipping (\$6.00 per two items ordered)* |            |          |            |            |
| Grand Total (tax added when appropriate) |            |          |            |            |

Check # \_\_\_\_\_ Visa \_\_\_\_\_ Master Card \_\_\_\_\_  
 Card Number \_\_\_\_\_ Exp \_\_\_\_\_

\* Minimum shipping cost \$6.00.



# HEISEY GLASS MUSEUM PLAYING CARDS

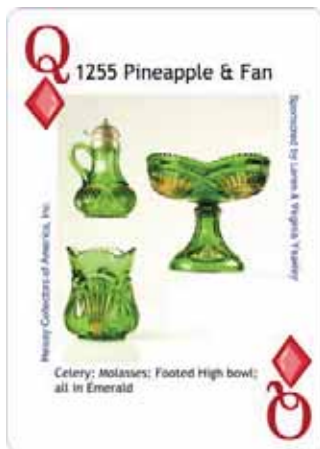
We are taking orders for the Heisey Glass Museum Playing Cards (Edition 2 - Red Deck). In addition, we have for sale a limited number of uncut sheets (29" x 19") which are suitable for framing. The full color pictures are stunning and make a good learning tool as well as a nice gift for all of your glass collecting friends. Orders for Card Cases (Cobalt) may also be placed on this form.

Name \_\_\_\_\_  
 Address \_\_\_\_\_  
 City \_\_\_\_\_ State \_\_\_\_\_ Zip \_\_\_\_\_

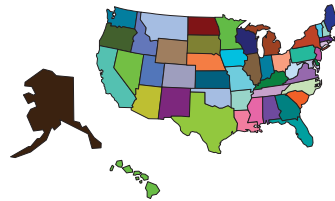
Phone and/or E-mail \_\_\_\_\_

|  |       |
|--|-------|
| I wish to order:   | Total |
| _____ (number) Heisey Glass Museum Playing Cards (Red) @ \$10 each     | _____ |
| Shipping per deck \$ 1.50 (can be picked up at Gift Shop)              | _____ |
| _____ (number) Uncut sheets of Heisey Playing Cards (Red) @ \$25 each  | _____ |
| Shipping per uncut sheet @ \$5.00 each (can be picked up at Gift Shop) | _____ |
| _____ (number) 1508 Card case in Cobalt @ \$24.95 each                 | _____ |
| Shipping per card case @ \$6.00 each (can be picked up at Gift Shop)   | _____ |
| <b>Grand Total</b> (tax will be added when appropriate)                | _____ |

Check # \_\_\_\_\_ Visa \_\_\_\_\_ Master Card \_\_\_\_\_  
 Card Number \_\_\_\_\_ Exp \_\_\_\_\_



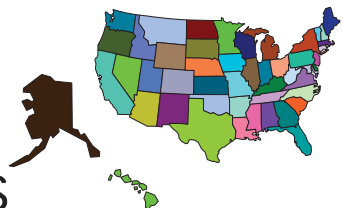
# Study Club Directory



**Interested in joining a study club?** You will have the opportunity to meet fellow collectors and HCA members and learn more about your favorite glassware. If your club is not listed or you need to make corrections to your listing, please contact the Museum.

| STUDY CLUB   | MEET WHEN?  | WHERE?                                    | Email/Web Site   | CONTACT                             |
|--|---|---|--|-------------------------------------|
| #4 Central Illinois Helsey Collectors Club                           | Four times a year   | Members' homes or restaurants             |  | Joyce Deany<br>(815) 432-4310       |
| #5 Bay State Helsey Collectors Club                                  | 2 <sup>nd</sup> Tuesday of each month except July, Aug., and Dec. | Follen Community Church                   | spescatore@houghton.com  | Stephen Pescatore<br>(978) 256-5418 |
| #7 Dayton Area Helsey Collectors Club                                | 3rd Tues. of the month Sept. to May, 6:30 p.m.                    | Huber Heights Library                     | LH937@aol.com  | Joe Harner<br>(937) 372-0852        |
| #8 Helsey Heritage Society<br><i>NJ, Eastern PA and DE areas</i>     | Bi-monthly  | Members' homes                            | Jpwelgan@att.net   | Virginia Welgan<br>(302) 736-6848   |
| #13 Helsey Club of California  | 4th Sunday every month, 12:30                                     | Members' homes                            | <a href="http://herbet@sbcglobal.net">herbet@sbcglobal.net</a><br><a href="http://www.helseyclubca.org">www.helseyclubca.org</a>                         | Norval Heisey<br>(818)-349-0945     |
| #14 Northern Illinois Helsey Club                                    | Four times a year   | Members' homes                            | nihelsey@comcast.net   | Jeff Morrow<br>(630) 833-4644       |
| #15 Helsey Collectors Club of Michigan                               | Every six weeks, August to May                                    | Members' homes                            | kilgoredesigns@att.net   | Sue E. Kilgore<br>(269)-345-3990    |
| #16 Helsey Collectors of Texas                                       | 2nd Sat. of every odd month, 1 p.m.                               | Members' homes                            | helseytoo@att.net  | Greg Freeman<br>(817)-545-5889      |
| #19 Helsey Collectors of the Rochester Area                          | 10 meetings per year: Sunday, 2:30 p.m.                           | Members' homes                            | seo2@aol.com   | Sharon Orienter<br>(585) 288-8076   |
| #20 Buckeye Helsey Collectors Club<br><i>Newark, OH area</i>         | September to May, 4th Monday                                      | Members' homes or the Museum              | Theflyingmaher@webtv.net   | Michael Maher<br>(740) 763-4256     |
| #22 Northwest Helsey Collectors                                      | First Saturday of the month                                       | Members' homes                            | bahama50@hotmail.com   | Deborah de Jong<br>(425) 868-0457   |
| #25 Helsey 76'ers<br><i>Columbus, OH area</i>                        | Once a month, September to May                                    | Members' homes                            | ldburg48@aol.com   | Colleen Burgess<br>(614) 882-1884   |
| #31 Nassau Long Island Helsey Club                                   | Generally every other month                                       | Members' homes                            |  | Babs Kent<br>(516) 228-8274         |
| #32 Dairyland Helsey Club  | Once every two months   | Members' homes                            |  | Ray K. Courtmage<br>(414) 962-9747  |
| #33 Golden Gate Helsey Collectors Club<br><i>Northern California</i> | Quarterly   | Members' homes                            |  | Russ Nicholas<br>(707) 762-2494     |
| #36 Helsey Club of Southern MA                                       | April, June, September, December                                  |   |  | Maria Martell<br>(508) 833-0633     |
| #38 North Carolina Helsey Study Group                                | 6 meetings per year: Jan.; March, May, July, Sept., Nov.          | Replacements Ltd Greensboro, NC           | <a href="mailto:Nchsg@yahoo.com">Nchsg@yahoo.com</a><br><a href="http://www.northcarolinahelseystudygroup.org">www.northcarolinahelseystudygroup.org</a> | Karen Taylo<br>(252) 637-9985       |
| #39 Florida Helsey Collectors Club                                   | 4 times per year: January – February-March-April                  | Westchester Country Club Boyton Beach, FL | Shirley400@aol.com   | Everett Dunbar<br>(772)-337-1558    |
| #42 Gulf Coast Helsey Club of Florida                                | Nov., Jan. and March; 2 <sup>nd</sup> Thursday 11:00 am           | Members' homes                            |  | Jack Grenzenach<br>(727)-391-5784   |
| #43 Tri-State Helsey Study Club<br><i>OH, IN, MI</i>                 | 1st Sat. every 3rd month  | Members' homes                            | Maxwellm@cktech.biz  | Mike Maxwell<br>(260) 925-3484      |
| #44 National Capital Helsey Study Club                               | Monthly: September - May  | MD and VA Libraries                       | pres@capitalhelseyclub.org<br><a href="http://www.capitalhelseyclub.org">www.capitalhelseyclub.org</a>   | Ted Sheets<br>(703)-346-5000        |
| #45 Hoosier Helsey Club  | Four times a year   | Warren Library, Indianapolis, IN          |  | J. David Litsey,<br>(317) 872-7800  |
| #47 Oregon Trail Helsey Collectors Club                              | Odd number months, 2 <sup>nd</sup> Saturday, 2 p.m.               | Members' homes                            | lariat_roundup@hotmail.com   | Dennis Headrick<br>(503) 538-9352   |
| #48 Dixieland Helsey Study Club                                      | Odd number months, 2 <sup>nd</sup> Saturday night                 | Members' homes                            | <a href="http://www.dixielandhelsey.org">www.dixielandhelsey.org</a>   | Craig German<br>(770) 967-8733      |
| #49 Great Plains Helsey Club   | March, May, July, September, and November                         | Members' homes                            | cameron_mg@mchsi.com<br><a href="http://www.greatplainshelseyclub.org">www.greatplainshelseyclub.org</a>   | Mary Cameron<br>(515) 292-3743      |
| #50 Northwoods Helsey Club of Minnesota                              | Four times a year   | Members' homes                            | wheise@comcast.net   | Bob Heise<br>(952)-831-9335         |
| #51 Helsey Club of Northeast Florida                                 | Feb., May, Aug., and Nov. 2 <sup>nd</sup> Thursday                | Avonlea Antique Mall, Jacksonville        | Clasyglas2@aol.com   | Barb Bartlett<br>(904) 280-0450     |





## CLUB NOTES

**Heisey Collectors Club of Michigan**  
*Sue Kilgore*

The Heisey Collectors Club of Michigan met at the historic train station turned restaurant, Clara's on the River, in Battle Creek for their January 26 meeting. The majority of the meeting centered on our plans for the Heisey display at the Ella Sharp Museum in Jackson, Michigan and the Moore weekend. The plans are coming along beautifully and we are all very excited about the many events that we are planning for our Heisey friends who will be attending. The display begins the week after our annual Convention and ends right after the Moore weekend. We know you will find the display very beautiful when you arrive for the beginning of our festivities.

Please look for other information and registration forms in future Newsletters or contact me directly with any questions you might have.

Remember that Michigan in the early fall is wonderful, so plan on spending some extra time to take a good look at our state. Who knows what you might find!

**Heisey Collectors of Texas**  
*Erma Hulslander*

We had a great turn out with 16 attending for the first meeting of the New Year on January 12. Starting with "Old Business," Rodger mentioned that later on, after the meeting, there was an "OLD" 1825, two-deck clock, with wooden gears that was running for all to enjoy. We did have some "New Business," it was mentioned to have the HCA Newsletter to change our meetings to read "every odd month" on the second Saturday. Also, Rodger encouraged our members to make a small donation each month to the HCA Operating Fund. We decided to change our club's HCA benefit auction from March to May, which will be at Charlie's house in Weatherford.

Sim had the program, "Know your Stems" and, as usual, he did a great job!! Sim brought a huge box full of stems to show. Several of the same stems had different etchings. That is the point, "know your stems." Next, "have an open mind" on decorations, cuttings, and etchings for this is an excellent way to identify a Heisey stem. Many of the stems most of us had never seen before, such as 5079 Pan American, 1112 Sparta, etc. The 6010 Finesse stem with 980 Moonglo cutting and 1094 Ultronic cutting, as well as the 5077 Legionnaire stem with many different cuttings, including 1029 Evening Star, were among the unusual stems Sim displayed.

We had many members who traveled a long way for this meeting, such as from Hamilton, TX, lola, TX, Buda, TX, Weatherford, TX and Fairview, TX! So, after a brief stop for some refreshments, we had to move right along and on to "Show & Tell."



**Sim Lucas Holding 1495 Fern Decorated Plates**

For the Show & Tell, I am mentioning only a few from the last two meetings, and not by rarity, just by my shorthand and memory! We saw a large 1503 Crystolite bowl which George is calling an "Orange Bowl". The unusual part was this bowl had a dome or convex bottom! Just when George thought he had everything that was made in Crystolite, well he does now!! Yes, it did have the Diamond H in the bottom! A fabulous solid cutting on a 1183 Revere candle vase, 2351 Newton soda with 429 Zodiac etch, footed rose bowl in the 343 Sunburst pattern, a 1469 Ridgeleigh roly poly cocktail with the holder, 1486 Coleport ashtray, 1489 Puritan ashtray, and a pair of Sahara 9" 1428 Warwick vases, and a Heisey crystal 1590 Zodiac candy jar along with an Amberglo Imperial

one. There were three plates with heavy gold trim in the 1495 Fern, each having numbers in the center of the plate. We believe these to be "master samples" showing a worker what the finished piece should look like.

Charlie Baird brought in an interesting piece of non-Heisey glass which was a real poser. We all tried to come up with what it might have been used for.



### Charlie's What's It

March 8 we hope to see everyone at Peggy's house in Dallas, TX. Peggy's home is on the east side of Dallas.

**Gulf Coast Heisey Club of Florida**  
*Mary Kreimer*

Fran and Jack Grenzebach hosted our first meeting of the year on January 17 at their home in Seminole. After a short business meeting, we held the usual Show & Tell session which included a 1404 Old Sandwich frosted decanter, a 8003 Heisey Thistle tumbler, a 1235 Beaded Panel and Sunburst table covered cream and sugar, a 1469 Ridgeleigh flared vase in zircon, and an Amber 1519 Waverly lion trinket box by Imperial marked CG (Collector's Guild).

The program this month was a silent auction to benefit HCA; in addition, there was a raffle of a mystery prize. Jack Grenzebach bought the winning ticket and claimed the prize – a 479 Petal cream and sugar in Sahara.

The program for the March meeting will be "Heisey Look-a-Likes" otherwise known as collecting mistakes. We will be meeting at the home of Ellen and Tom Rickles in Sarasota. Visitors are always welcome; please call Ellen at 941- 992-3174 for details.

### Advertising Guidelines:

Advertising: Ads may be mailed to: HCA Advertising, 169 W. Church St., Newark, OH 43055; faxed to (740) 345-9638; or e-mailed to [curator@HeiseyMuseum.org](mailto:curator@HeiseyMuseum.org). Whenever possible, please e-mail your ad. Include your MasterCard or VISA number and expiration date for billing purposes, or send a check. All ads must be prepaid. When mailed or faxed, ads should be typed or printed on white paper with dark ink. Please double space. Ads that are entered in a vertical column format may contain a maximum of 65 characters per line, including spaces & punctuation.

Classified: 20 cents per word (members), 30 cents per word (non-members), \$1.5 min., 1/8 page limit. Personal ads 1/8 page limit. Abbreviations & initials count as words.

|   |        |            |
|---|--------|------------|
| Display Ads:                                | member | non member |
| 1/8 page (12 lines)                         | \$ 20  | \$ 30      |
| 1/4 page (25 lines)                         | \$ 40  | \$ 60      |
| 1/2 page (60 lines, horizontal or vertical) | \$ 80  | \$ 120     |
| Full page (120 lines)                       | \$160  | \$240      |

A charge of \$1.60 will be added for each additional line. Camera ready ads must follow specifications. Ads that do not correspond to the following measurements will be sized.

### Camera Ready Ad Specifications:

- 1/8 page: 2 1/4" high by 3 1/2" wide
- 1/4 page: 4 1/2" high by 3 1/2" wide
- 1/2 page: 4 1/2" high by 7 1/2" wide or 9" high by 3 1/2" wide
- Full page: 9" high by 7 1/2" wide

Camera ready ads may be resized because of space concerns. Ad copy must be received by the first of the month prior to publication. Reproductions (i.e. Heisey by Imperial) must be indicated. Heisey News accepts no further liability. In the event of a typographical error, the incorrect portion of the ad will be run in the following issue, but HEISEY NEWS assumes no further liability. ♦

**Abbreviations:** DF=Dolphin Foot NO=Narrow Optic DO=Diamond Optic SO=Spiral & Saturn Optic MO=Medium Optic WO=Wide Optic

**THE 20-30-40 GLASS SOCIETY OF ILLINOIS**  
PRESENTS  
**CHICAGOLAND'S DEPRESSION ERA GLASS SHOW & SALE**

**MARCH 29th & 30th, 2008**  
Saturday 10 am - 5 pm + Sunday 11 am - 4 pm

**MIDWEST CONFERENCE CENTER Concord Place**  
401 West Lake St. Northlake, Illinois 60164

ADMISSION \$7.00 Per Person  
\$6.00 with this card - Limit 2  
Free Parking with shuttle bus to door

Featuring DEPRESSION ERA GLASS to CONTEMPORARY GLASS  
Dealers specializing in Glass Repair & Cloudy Glass Cleaning

GLASS IDENTIFICATION  
REFERENCE LIBRARY - DOOR PRIZES

20-30-40 Glass Society of Illinois  
P.O. Box 856, LaGrange, IL 60526  
For info: (847) 394-2491 web site: [www.20-30-40Society.org](http://www.20-30-40Society.org)  
For Map & Directions go to: [www.midwestconf.com/directions.htm](http://www.midwestconf.com/directions.htm)

### ♦ Reciprocal Ad



# Find the Best of Heisey Glass...

...with popular patterns like Orchid, Heisey Rose, Minuet, and hundreds more. We also carry other fine crystal and depression glass from Cambridge, Fostoria, Imperial, Duncan & Miller, and more. The world's largest supplier of old and new china, crystal, flatware and collectibles, Replacements, Ltd. carries over 11 million pieces in inventory in over 250,000 patterns.

If you're looking to add to your collection, or if you're looking to sell — call us toll-free. We're always looking for more.



**1-800-REPLACE (1-800-737-5223)**

◆ Paid Ad

The National Capital Heisey Study Club with  
The National Capital Heisey Collector's Club  
Present the *Thirtysixth Annual*  
**All-Heisey Glass Show**  
★★★★★★★★★★★★★★★★★★★★

**Bohrer Park Activity Center**  
506 S. Frederick Ave. Gaithersburg, MD  
Admission \$7.00 (With Ad \$6.00)  
All Proceeds to Benefit The Heisey Museum

Sat., March 15, 2008 10am to 5pm  
Sun., March 16, 2008 11am to 4pm  
Check us out at: [www.capitalheiseyclub.org](http://www.capitalheiseyclub.org)

From I-270 use Exit 9A  
Take 355 North Exit (Town Center)  
Turn Left at 3rd Stop Light (Education Blvd)

For More Information Call:  
(703) 346-5000

## REAL HEISEY IN THE GIFT SHOP

All crystal and all prices are each unless noted.

Supply changes daily. Please contact the Gift Shop before placing an order.

| Item   | Price |
|--|-------|
| 10 Oak Leaf coaster, Moongleam                             | \$ 25 |
| 10 muddler   | 20    |
| 99 Little Squatter candleblocks, H pr                      | 15    |
| 112 Mercury candlestick, 507 Orchid etch                   | 25    |
| 112 Mercury candlestick, pr                                | 30    |
| 112 Mercury candlestick, pr, Sahara                        | 45    |
| 150 Banded Flute cruet, 4 oz, H                            | 25    |
| 300 Peerless bar H (4 each)                                | 15    |
| 300 Peerless bitters, no tube (2 each)                     | 10    |
| 338 Wafer Stem goblet (3 each)                             | 15    |
| 343 Sunburst butter top only H                             | 25    |
| 343 Sunburst punch cup, H                                  | 15    |
| 350 Pinwheel and Fan punch cup, H (4 each)                 | 10    |
| 351 Priscilla butter pat, H (3 each)                       | 10    |
| 393 Narrow Flute oyster cocktail H (4 each)                | 5     |
| 411 Tudor high footed jelly, Moongleam, H                  | 45    |
| 433 Greek Key punch cup, H (3 each)                        | 10    |
| 1183 Revere individual salt (4 each)                       | 12    |
| 1183 Revere individual salt, Moongleam                     | 20    |
| 1184 Yeoman plate, 6", Flamingo (4 each)                   | 5     |
| 1217 Nashport handled sherbet, H                           | 10    |
| 1218 Brookville handled sherbet, H                         | 15    |
| 1229 Octagon mayonnaise, Moongleam, H                      | 25    |
| 1238 Eagle plate, Moongleam                                | 20    |
| 1252 Twist individual nut, Moongleam, H                    | 25    |
| 1252 Twist individual nut, Flamingo, H                     | 20    |
| 1280 Winged Scroll nappy, 4 1/2", Emerald                  | 35    |
| 1401 Empress individual nut, Moongleam                     | 30    |
| 1401 Empress individual nut, Sahara                        | 25    |
| 1401 Empress triplex relish, 7", Flamingo                  | 30    |
| 1405 Ipswich sherbet (3 each)                              | 5     |
| 1472 Parallel Quarter candlesticks, pr                     | 30    |
| 1469 Ridgeleigh ashtray, 2 1/2" sq, Zircon, H              | 55    |
| 1469 1/2 Ridgeleigh coaster, 3 1/2", Zircon                | 35    |
| 1469 1/2 Ridgeleigh coaster, 3 1/2", Sahara                | 25    |
| 1495 Fern divided mayo                                     | 15    |
| 1503 Crystolite shell mayonnaise                           | 20    |
| 1503 Crystolite shell celery tray, H                       | 10    |
| 1503 Crystolite coupe plate, 7" (2 each)                   | 10    |
| 1503 Crystolite master swan nut dish                       | 25    |
| 1503 Crystolite celery, 12 1/2"                            | 15    |
| 1519 Waverly 4-part relish with<br>515 Heisey Rose etch, H | 45    |
| 1540 Lariat champagne (2 each)                             | 10    |
| 1567 Plantation punch cup, H                               | 15    |
| 1590 Zodiac Newark sesquicentennial ashtray                | 10    |
| 3350 Wabash goblet with 439 Pied Piper etch, H             | 20    |
| 3440 Portsmouth goblet, Mglm ft (2 each)                   | 20    |
| 3481 Creole bar, 2 1/2 oz, Sahara bow                      | 50    |
| 5038 Rooster Stem cocktail (2 each)                        | 35    |

◆



# Dealer Directory

Maximum 6 lines/12 months/\$35 MEMBERS ONLY

Contact the Editor to place your ad!



|   |  |   |
|---|--|---|
| <p><b>KIM &amp; PAM CARLISLE</b><br/>SHOWS &amp; MAILORDERS ONLY<br/>28220 Lamong Rd. Dept. H<br/>Sheridan, IN 46069<br/><br/>(317) 758-5767 <a href="mailto:kcarlisl@worldnet.att.net">kcarlisl@worldnet.att.net</a></p>   | <p><b>SHIRLEY EUGENIA DUNBAR</b><br/>Heisey a Specialty—Mail Order, Shows, Appraisals<br/>EMAIL: <a href="mailto:shirley400@aol.com">shirley400@aol.com</a><br/>PO Box 8344, Port St. Lucie, FL 34952 Oct-May (772) 337-1558<br/>PO Box 222, Naples, ME 04055 May-Oct (207) 647-5652</p> | <p><b>SUM OF LIFE</b><br/>Elaine &amp; Frank Husted: 610-469-1243<br/>147 Barton Dr., Spring City, PA 19475<br/>Traveling through eastern PA<br/>Call, stop in, be a buyer or a browser!!<br/>E-mail: <a href="mailto:frankly.me@comcast.net">frankly.me@comcast.net</a></p>  |
| <p><b>ALL HEISEY AUCTION</b><br/>Consignments Welcome<br/>Apple Tree Auction Center<br/>1616 W. Church, Newark, OH 43055<br/>(740) 344-4282</p>   | <p><b>MOUNDBUILDERS SECOND GENERATION</b><br/>Barbara and Richard Bartlett<br/>Heisey Exclusively! 1-904-280-0450<br/>PO Box 1931, Ponte Vedra Beach, FL 32082<br/>Toll Free 1-888-434-7397(HEISEYS)<br/>EMAIL: CLASYGLAS2 @AOL.COM</p>  | <p><b>EAGLES REST ANTIQUES</b><br/>Buying Heisey, China &amp; Pottery<br/>Carl and Mary Evans<br/>62 Fieldpoint Rd., Heath, OH 43056<br/>(740) 522-2035</p>   |
| <p><b>PAULA &amp; JEFF MORROW</b><br/><br/>Elegant Glassware and American Dinnerware<br/>126 Clinton Avenue<br/>Elmhurst, IL 60126<br/>(630) 833-4644 <a href="mailto:mor-fab@comcast.net">mor-fab@comcast.net</a></p>  | <p><b>H &amp; R DIAMOND H</b><br/><br/>Helen &amp; Bob Rarey<br/>1450 White Ash Dr.<br/>Columbus, OH 43204<br/>(614) 279-0390 after 5:30</p>   | <p><b>The American Bell Association</b><br/><br/>P.O. Box 19443<br/>Indianapolis, IN 46219-0443<br/><a href="http://www.americanbell.org">www.americanbell.org</a></p>  |
| <p><b>REALMS IN GLASS</b><br/><br/>Roy Eggert<br/>Heisey Custom Stained Glass<br/>12009 Fingerboard Rd, Monrovia, MD 21770<br/>301-865-5196 <a href="mailto:roy54@hughes.net">roy54@hughes.net</a></p>  | <p><b>PIECE BY PIECE ANTIQUES</b><br/>Buy &amp; Sell<br/>Specializing in Heisey Glassware<br/>Bryan K. Baker<br/>Fairfax Station, VA 22039 Newark, OH 43055<br/>(703) 250-6117 <a href="mailto:piecebypiece@verizon.net">piecebypiece@verizon.net</a></p>                                | <p><b>PATTON HOUSE ANTIQUES</b><br/>Specializing in Glass*Heisey*Cambridge*Fostoria*Duncan*<br/>Factory Antique Mall, Verona, VA off I-81 Exit 227<br/>Antiquers Mall, Booth 81, Rt. 29 N., Charlottesville, VA<br/>The Daniels, Box 547, Louisa, VA 23093 (540) 967-1181</p> |
| <p><b>C&amp;J ANTIQUES</b><br/>Cole &amp; Jean Miesner<br/>Box 45, 72 Whig St.<br/>Newark Valley, NY 13811<br/>(607) 642-9905</p>   | <p><b>SIBYLS OF WILMINGTON</b><br/>Sibyl &amp; Ned Lavengood<br/>Newcastle Antique Center<br/>606 Castle St.<br/>Wilmington, NC<br/>(910) 763-7157 or <a href="mailto:Sibylsantiques@bellsouth.net">Sibylsantiques@bellsouth.net</a></p>   | <p><b>FRAN'S FANCY FINDS</b><br/>Fran &amp; Jack Grenzebach<br/>10534 Valencia Rd., Seminole, FL 33772-7511<br/>(727) 391-5184<br/>SHOWS MAIL ORDERS</p>  |
| <p><b>CRYSTAL LADY</b><br/>Bill, Joann &amp; Marcie Hagerty<br/>Specializing in elegant depression glassware<br/>1817 Vinton St., Omaha, NE 68108<br/>Shop (402) 341-0643 or Home (402) 391-6730<br/>Email: <a href="mailto:ejhagerty@aol.com">ejhagerty@aol.com</a> website:<a href="http://www.crystalladyantiques.com">www.crystalladyantiques.com</a></p> | <p><b>PASTICHE ANTIQUES</b><br/>at Preston's Antique Gaslight Village<br/>US 12, Allen, MI 49227<br/>Elegant Glass and Other Fine Antiques<br/><a href="mailto:pasticheantiques@gmail.com">pasticheantiques@gmail.com</a></p>  | <p><b>WILLEY'S ANTIQUES &amp; MUSEUM</b><br/>Specializing in Heisey<br/>11110 Cannon Rd., Frazeeburg, OH 43822<br/>16 miles east of Newark, OH<br/>(740) 828-2557</p>   |
| <p><b>CHARLES &amp; MILDRED FISHER</b><br/>Heisey animals and Heisey<br/>By Imperial animals<br/>991 Idlewild, Newark, OH 43055<br/><a href="mailto:cffisher@roadrunner.com">cffisher@roadrunner.com</a> (740) 522-5398</p>   | <p><b>MARSH'S ANTIQUES</b><br/>Dick and Virginia Marsh<br/>4532 Newton Road<br/>Newark, OH 43055<br/><a href="mailto:swamp@alink.com">swamp@alink.com</a> (740) 366-5608</p>   | <p><b>MOONGLEAM ANTIQUES</b><br/>Heisey Glassware &amp; American Art Pottery<br/>John Woytowicz and Peter Rivard<br/>70 Pleasant St., Gardiner, ME 04345<br/>(207) 582-9048<br/>E-mail: <a href="mailto:jmwpwr@aol.com">jmwpwr@aol.com</a></p>                                |
| <p><b>ROBERT M. LOCH</b><br/>Voting Member HCA and NWHC<br/>Pacific Interstate Glassware Co.<br/>PO BOX 469<br/>Custer, WA 98240<br/>360-366-3166</p>   | <p><b>CRESTONE MANOR UNIQUES</b><br/><br/>Harold &amp; Loleta Hammontree<br/>3317 Crestone Circle, Chattanooga, TN 37411<br/>423-629-1274 <a href="mailto:hammonl@bellsouth.net">hammonl@bellsouth.net</a><br/>Heisey Only</p>   | <p><b>APPLE VALLEY COLLECTIBLES</b><br/>Richard &amp; Marilyn Garnett – Owners<br/>Shows/ Mail Order (845) 691-6308<br/>Email: <a href="mailto:diamondH95@aol.com">diamondH95@aol.com</a></p>   |
| <p><b>DOWNSTAIRS AT FELTON ANTIQUES</b><br/><br/>100B Felton St, Waltham, MA 02453<br/>781-894-2223 <a href="mailto:info@feltonstreetantiques.com">info@feltonstreetantiques.com</a><br/>GLASSWARE, POTTERY, EPHEMERA,<br/>STERLING, FURNITURE FROM EVERY DECADE!</p>   | <p>Your Ad Could Be Here</p>   | <p><b>WATERSEdge ANTIQUES</b><br/>Norene &amp; Don Walzer<br/>Shows &amp; Mail Order<br/>25089 Riverwalk Drive<br/>Leesburg, FL 34748<br/>(352) 314-8975 <a href="mailto:dnnwalzer@embarqmail.com">dnnwalzer@embarqmail.com</a></p>   |
| <p><b>JERRYS' ANTIQUES</b><br/>Shows Only<br/>Glassware and Other Fine Collectables<br/>PO Box 4485, Davenport, IA 52808<br/>563-340-1871 <a href="mailto:jerrysantiques@mchsi.com">jerrysantiques@mchsi.com</a></p>  | <p><b>ONCE AND FUTURE ANTIQUES</b><br/><br/>Susan &amp; Stephen Pescatore<br/>9 Donna Rd. Chelmsford, MA 01824<br/>(978) 256-5418<br/>Heisey and Elegant Glass</p>   | <p><b>BOB &amp; MARY KREIMER</b><br/>Specializing in Heisey Glass<br/>7044 SW 116<sup>th</sup> Loop, Ocala, FL 34476<br/>(352) 873-8306 email: <a href="mailto:rkreimer@earthlink.net">rkreimer@earthlink.net</a>.<br/>Shows and Mail Orders Only</p>                         |
| <p><b>J &amp; L TREASURES</b><br/>Specializing in Heisey, Cambridge, Fostoria,<br/>Tiffin, Morgantown, etc<br/>Linda Kilburn, PO Box 1257, Burlington, CT<br/>860-673-4088 <a href="mailto:jltreasures@comcast.net">jltreasures@comcast.net</a></p>   | <p>Your Ad Could Be Here</p>   | <p><b>YELLOW BRICK ROAD ANTIQUES</b><br/>Jean Will<br/>Leavenworth, KS 66048<br/>(913) 682-4831<br/>Specializing in Heisey and Elegant Glassware<br/>Shows and Estate Sales</p>   |

## When Renewing Your Membership

Help ensure the future of your Museum. When you renew your membership at one of the levels below, any amount beyond the regular Associate dues goes into the Endowment Fund.

|   |              |
|---|--------------|
| <i>Individual Contributing, one person in household</i>   | <i>\$50</i>  |
| <i>Joint Contributing, two people in one household</i>    | <i>\$60</i>  |
| <i>Family Contributing, parents and children under 18</i> | <i>\$75</i>  |
| <i>Patron</i>   | <i>\$125</i> |
| <i>Sponsor</i>  | <i>\$250</i> |
| <i>Benefactor</i>   | <i>\$500</i> |

Visit The  
National  
Heisey  
Glass  
Museum



Come at your leisure to enjoy more than 4,800 pieces of glassware produced by A.H. Heisey and Company from 1896-1957. Hundreds of patterns are featured in all production colors. Rare and experimental items are included as well.

Facilities are air-conditioned and handicapped accessible. Hours are 10:00 a.m. to 4:00 p.m. Tuesday through Saturday, 1:00 to 4:00 p.m. Sunday. Members are admitted free, regular admission is \$4. Office hours are 8:00 a.m. to 4:30 p.m. weekdays.

**Membership Renewal Notice:** Check the date above your name and address on the mailing label. This is your expiration date. If it reads 3-10-08 make sure your dues are paid soon in order to receive next month's issue of *Heisey News*.

Contact the HCA Administrative Office at (740) 345-2932 for more information. The Endowment Committee wishes to thank those who have become Endowment Members and all of the individuals and study clubs that have so generously supported the HCA Endowment Fund. All members who have supported the fund are recognized each year in the February issue of the Newsletter. Your support will make the Museum self-sustaining in the years to come. Thank You all! ♦

### Shipping & Handling Fees for Outside US

Additional shipping charges are required for members living outside the U.S. Current rates are Canada \$22; for other countries contact the Museum. Rates are subject to change at any time due to rate changes made by the US Postal Service. To verify current rates, call (740) 345-2932 or E-mail [business@HeiseyMuseum.org](mailto:business@HeiseyMuseum.org)

## Museum Volunteers for January 2008

Bryan Baker  
Charlene Bowman  
Jim & Karen Clark  
Joe & Flo Harner  
Steve Killebrew  
Frank Kuhlmann  
Chuck and Amy Jo Jones  
Michael Maher  
Dick & Virginia Marsh  
Phyllis McClain  
Don & Pat Moore  
Sharon Orienter  
Mac Otten  
Ginny Priest  
Bob Rarey  
Russ Reopell  
Ken & Judy Rhoads  
Dick Ritter  
Dave & Mary Ann Spahr  
Kathy Smith  
Dick & Marilyn Smith



### Periodical Postage

Paid at the Post Office  
In Newark, OH 43055  
Publication # 00986  
POSTMASTER SEND FORM 3579 TO:  
HCA  
169 W. Church St.  
Newark, OH 43055

To: \_\_\_\_\_