

# 2024 HEISEY FALL AUCTIONS *Catalog*

\$5.00



## HEISEY HERITAGE AUCTION ONLINE ONLY

511 LOTS

**October 12, 2024**

Online Only at:  
[www.HeiseyMuseum.HiBid.com](http://www.HeiseyMuseum.HiBid.com)

**Catalog: Page 5 / Details: Page 2**

Online Preview: September 28

Online Pre-Bidding: October 5 at 8 a.m. ET

Online Live Bidding: October 12 at noon ET



Roy Eggert, HCA Auction Firm Manager  
Auction@HeiseyMuseum.org

## DAVE SPAHR FALL SELECT AUCTION ONLINE and IN-PERSON

340 LOTS

**October 19, 2024**

Online at:  
[www.HeiseyMuseum.HiBid.com](http://www.HeiseyMuseum.HiBid.com)

In-Person at:  
GMP Local #244 Union Hall  
350 Hudson Ave Newark, Ohio

**Catalog: Page 16 / Details: Page 2**

Online Preview: October 5

Online Pre-Bidding: October 12 at 8 a.m. ET

Online Live Bidding: October 19 at noon ET

In-Person Preview: October 19 at 11 a.m. ET

In-Person Live Bidding: October 19 at noon ET

**HEISEY HERITAGE  
AUCTION**  
511 Lots  
ONLINE ONLY

**Online Auctioneer:**

HiBid Online Auction

[www.HeiseyMuseum.HiBid.com](http://www.HeiseyMuseum.HiBid.com)

**Online Preview:** September 28  
**Online Pre-Bidding:** October 5 8 a.m. ET  
**Online Live-Bidding:** October 12 12 noon ET

This is a timed auction where a “lot” is available for a set period of time. You may place bids any time before the closing of a particular lot.

**To create your HiBid online account follow the instructions at the top of page 4.**

Online pre-bids may be placed during the pre-bidding period. Online live bids may be placed on the Live Auction day.

**Minimum Bid:**

Minimum starting bid per lot is \$5.00

**Shipping:**

No in-house shipping is available. All buyers are responsible to make their own pick-up and shipping arrangements, including shipping costs, directly with the shipper. See **page 3** for details.

**Glass pick-up:**

Glass pick-up begins at the museum:  
 169 W Church St, Newark OH *after* 10 am ET -  
**Thursday, October 17, 2024\***

**\*Un-claimed Lots:**

Items un-claimed as of **November 6, 2024** may be assessed a storage fee of \$5.00 per day going forward. Items remaining un-claimed as of **November 30, 2024** will be considered abandoned, become property of HCA, and any payment will be gratefully accepted as a charitable donation to HCA.

Review the General Auction Information on **page 3** and Auction Terms & Conditions of Sale on **page 4**.

**Need more info?**

Contact us at: [Auction@HeiseyMuseum.org](mailto:Auction@HeiseyMuseum.org)



**DAVE SPAHR FALL  
SELECT AUCTION**  
340 Selected Lots  
ONLINE and IN-PERSON

**Online Auctioneer:**

HiBid Online Auction

[www.HeiseyMuseum.HiBid.com](http://www.HeiseyMuseum.HiBid.com)

**Online Preview:** October 5  
**Online Pre-Bidding:** October 12 8 a.m. ET  
**Online Live-Bidding:** October 19 12 noon ET

**To create your HiBid online account follow the instructions at the top of page 4.**

**In-Person Auctioneer:** Craig Connelly

**In-Person Location:** **GMP Local**  
**#244 Union Hall**  
**350 Hudson Ave**  
**Newark, Ohio**

**In-Person Preview:** October 19 11 a.m. ET  
**In-Person Live-Bidding:** October 19 12 noon ET

**Minimum Bid:**

Minimum starting bid per lot is \$15.00

**Shipping:**

No in-house shipping is available. All buyers are responsible to make their own pick-up and shipping arrangements, including shipping costs, directly with the shipper. See **page 3** for details.

**Glass pick-up:**

Glass pick-up begins at the museum:  
 169 W Church St, Newark OH *after* 10 am ET -  
**Tuesday, October 22, 2024\*\***

**\*\*Un-claimed Lots:**

Items un-claimed as of **November 6, 2024** may be assessed a storage fee of \$5.00 per day going forward. Items remaining un-claimed as of **November 30, 2024** will be considered abandoned, become property of HCA, and any payment will be gratefully accepted as a charitable donation to HCA.

Review the General Auction Information on **page 3** and Auction Terms & Conditions of Sale on **page 4**.

**Need more info?**

Contact us at: [Auction@HeiseyMuseum.org](mailto:Auction@HeiseyMuseum.org)

### AUCTIONEERS

In-Person: Craig Connelly  
 Online: HiBid Online Auction Platform  
[www.HeiseyMuseum.HiBid.com](http://www.HeiseyMuseum.HiBid.com)

HCA Auction Firm Manager: Roy Eggert

### CODES & ABBREVIATIONS

|                        |                     |
|------------------------|---------------------|
| B = Bruise             | LB = pound          |
| CIG = cigarette        | LGE = large         |
| C'BLOCK = candleblock  | N.O.= narrow optic  |
| C'STICK = candlestick  | OZ = ounce          |
| CTR = center           | PC = piece          |
| (D) = item donated     | PR = pair           |
| D.F. = dolphin footed  | PRT = part          |
| D.O. = diamond optic   | QT = quart          |
| FTD = footed           | RND = round         |
| F or f = flake         | S.O. = Saturn optic |
| GAL = gallon           | SOUV = souvenir     |
| H = marked w/diamond H | SQ = square         |
| HDL = handle           | UNK = unknown       |
| INCL = including       | W.O. = wide optic   |
| INDV = individual      | X = major damage    |

### ABSENTEE BIDDING

Absentee bidding is not available. If bidding assistance is required, please contact us at:  
[Auction@HeiseyMuseum.org](mailto:Auction@HeiseyMuseum.org)



### SHIPPING & PICK-UP INFORMATION

Items may be claimed at:  
 The Heisey Glass Museum  
 169 W Church St Newark OH

**Heisey Heritage Auction Glass pick-up begins:**  
Thursday, October 17 after 10 a.m.

**Fall Select Auction Glass pick-up begins:**  
Tuesday, October 22 after 10 a.m.

No in-house shipping is available. All buyers are responsible to make their own pick-up and shipping arrangements, including shipping costs, directly with the shipper.

HCA is aware of the following area shippers:  
 Express Pack and Ship: (740) 366-1325, Pakmail: (740) 522-2564, and UPS Store 3910: (614) 939-5195.

HCA is not responsible for services provided by these vendors but will work with them to make sure your glass is available. The Museum will have copies of your receipt and will release your glass to your preferred shipper. Be sure to advise the Museum of your preferred shipper.

**Un-claimed Lots:** Items un-claimed as of **November 6, 2024** may be assessed a storage fee of \$5.00 per day going forward. Items remaining un-claimed as of **November 30, 2024** will be considered abandoned, become property of HCA, and any payment will be gratefully accepted as a charitable donation to HCA.

### ADDITIONAL GENERAL INFORMATION

Auction proceeds benefit the Heisey Glass Museum, Newark Ohio.

Photos of all auction lots are featured on the HCA auction page at [www.HeiseyMuseum.HiBid.com](http://www.HeiseyMuseum.HiBid.com).

HCA endeavors to describe all items to the best of our ability however, due to the age and unique nature of antiques, minor differences in descriptions and conditions may be found and are not the responsibility of HCA.

Auction results will be published in a future issue of the Heisey News and posted on the Museum website.

**QUESTIONS? CONTACT US AT:**  
[Auction@HeiseyMuseum.org](mailto:Auction@HeiseyMuseum.org)



## How to create your HiBid online auction account:

**A): Go to the HCA auction page at:**

[www.HeiseyMuseum.HiBid.com](http://www.HeiseyMuseum.HiBid.com)

**B): Click on LOGIN / NEW BIDDER:**

**Existing HiBid user?** - Enter Username, Password and log on

**New to HiBid?** - Click on "REGISTER HERE" then:

- a) Provide the requested information:  
e-mail, name, address, phone, etc.
- b) Create your user ID and PASSWORD

**C): Register for the AUCTION:**

- a) Click on "ACCEPT" Terms & Conditions
- b) Submit your Credit Card information
- c) Click on "SAVE" Account Information
- d) Click on "RETURN TO REGISTRATION"



### HEISEY HERITAGE ONLINE ONLY AUCTION

#### TERMS and CONDITIONS of SALE

- 1) All lots sold in numerical cataloged order.
- 2) All major credit cards accepted. A buyer's premium consisting of 8% of the winning bid amount shall be added to the winning bid amount and paid by the buyer. A statement of winnings will be sent after payment is processed.
- 3) HCA has endeavored to describe all items to the best of its ability; however, this is not a warranty.
- 4) All items are sold AS IS and WHERE IS. HCA has the right to make any corrections at the time of sale and to provide additional information.
- 5) HCA has the authority to set opening bids and reject any bid raise not in line with established bid increments. Items are sold without reserve, unless advertised otherwise. In the case of a disputed bid, HCA has the authority to settle disputes to the best of its ability and its decision is final.
- 6) Minimum starting bid per lot is \$5.00
- 7) **ALL SALES are FINAL** and all items must be paid for before glass is picked up. Glass must be claimed by **November 6, 2024**. Items un-claimed by this date may be assessed a storage fee of \$5.00 per day going forward. Items remaining un-claimed as of **November 30, 2024** will be considered abandoned, becomes property of HCA and any payment will be gratefully accepted as a charitable donation to HCA.
- 8) Buyer/Shipper must have receipt or bidder number in hand to pick up items.
- 9) **HCA (an auction firm) is licensed by the Ohio Department of Agriculture and bonded in favor of the state.**
- 10) Bidding on any item indicates acceptance of these ONLINE Terms and Conditions of Sale.

### DAVE SPAHR FALL SELECT ONLINE and IN-PERSON AUCTION

#### TERMS and CONDITIONS of SALE

- 1) All lots sold in numerical cataloged order.
- 2) All major credit cards accepted. Cash, certified check, personal check, or money order accepted. Cash only payment may be requested by HCA. A buyer's premium consisting of 8% of the winning bid amount shall be added to the winning bid amount and paid by the buyer on all payments except payments made by cash or check.
- 3) HCA has endeavored to describe all items to the best of its ability; however, this is not a warranty.
- 4) All items are sold AS IS and WHERE IS. HCA has the right to make any corrections at the time of sale and to provide additional information. Inspection is welcomed.
- 5) The Auctioneer / HCA has the authority to set opening bids and reject any raise not in line with established bid increments. Items are sold without reserve, unless advertised otherwise. In the case of a disputed bid, the auctioneer has the authority to settle disputes to the best of his/her ability and his/her decision is final.
- 6) Minimum starting bid per lot is \$15.00
- 7) **ALL SALES are FINAL**. Resales will be handled at Auctioneer's discretion. All items must be paid for and claimed the day of sale.
- 8) Buyer/Shipper must have paid receipt in hand to pick up items.
- 9) **HCA (an auction firm) and all auctioneers used by HCA are licensed by the Ohio Department of Agriculture and bonded in favor of the state.**
- 10) Bidding on any item indicates acceptance of these IN-PERSON Terms and Conditions of Sale.



# 2024 HEISEY HERITAGE AUCTION

511 Lots

Saturday October 12th

Online Only

| Lot | Pattern | Description   |
|-----|---------|---|
| 1   | 351     | PRISCILLA VASE 2 ½" FLARED H (1); VASE 3" H (1); VASE 4" H (1); VASE 4" FLARED H (1); VASE 5" STRAIGHT H (1) (5-PC TOTAL)   |
| 2   | 341     | PURITAN ICE TUB H (1); PLATE 8" H (1) (2-PC TOTAL)  |
| 3   | 352     | FLAT PANEL NAPPY 11" SHALLOW H (1); 341 PURITAN NAPPY 4 ½" H (1); 341 OLD WILLIAMSBURG NAPPY 8" H (1); NAPPY 4 ½" H (2) (5-PC TOTAL)  |
| 4   | 341     | PURITAN COMPORT 8 ½" H (1); COMPORT 8" H (1); JELLY 4 ½" FTD H (2); JELLY 5" FTD SHALLOW H (1) (5-PC TOTAL)   |
| 5   | 352     | FLAT PANEL TRAY 10" H (1); SHERBET H (10) (11-PC TOTAL)   |
| 6   | 341     | PURITAN PUNCH BOWL FLARED H (1); BASE SHORT H (1); PUNCH CUP (36) (38-PC TOTAL)   |
| 7   | 393     | NARROW FLUTE GOBLET H (11); CHAMPAGNE H (4); SHERRY H (6); SHERBET STRAIGHT H (7); SHERBET FLARED H (2); SHERBET FLARED W/ UNK CUT H (2) (32-PC TOTAL)  |
| 8   | 354     | WIDE FLAT PANEL BUTTER PAT H (4)  |
| 9   | 300     | PEERLESS SUNDAE FLUTED H (6)  |
| 10  | 150     | BANDED FLUTE PUNCH BOWL H (1); BASE H (1); PUNCH CUP H (15) (17-PC TOTAL)   |
| 11  | 1454    | DIAMOND POINT ASHTRAY H (20); JELLY H (21) (41-PC TOTAL)  |
| 12  | 373     | OLD WILLIAMSBURG CHAMPAGNE H (3); SHERBET H (3); COCKTAIL H (1); GOBLET H (8) (15-PC TOTAL)   |
| 13  | 1503    | CRYSTOLITE RELISH 9" 3-PRT H (1); RELISH LEAF 4-PRT (1); RELISH OVAL 3-PRT H (2) (4-PC TOTAL)   |
| 14  | 473     | NARROW FLUTE W/ RIM ALMOND MASTER H (1); DICE SUGAR H (1); CREAM INDV H (1); JELLY 6" 2-HDL H (1); JELLY 6" 2-HDL 2-PRT H (1) (5-PC TOTAL)  |
| 15  | 393     | NARROW FLUTE BANANA SPLIT FTD H (2); 407 COARSE RIB RELISH 9" H (1) (3-PC TOTAL)  |
| 16  | 393     | NARROW FLUTE PUNCH BOWL CUPPED H (1); BASE H (1); PUNCH CUP H (12) (14-PC TOTAL)  |
| 17  | 1469    | RIDGELEIGH CELERY/OLIVE 12" H (1); CELERY 12" H (1); SALT INDV H (14) (16-PC TOTAL)   |
| 18  | 1469    | RIDGELEIGH JELLY 2-HDL H (5); CHEESE 2-HDL H (4); MINT TRICORN H (1) (10-PC TOTAL)  |
| 19  | 1469    | RIDGELEIGH VASE INDV #1 H (1); VASE 6" (1); CREAM (1); SUGAR (1); CELERY/OLIVE 12" H (1); PLATE 6" RND H (12) (17-PC TOTAL)   |
| 20  | 341     | PURITAN TANKARD 3-PINT H (3)  |
| 21  | 341     | PURITAN PUNCH BOWL BASE LOW H (3); 341 ½ PURITAN PUNCH BOWL BASE SMALL H (1) (4-PC TOTAL)   |
| 22  | 393     | NARROW FLUTE ALMOND MASTER H (1); ALMOND INDV H (26) (27-PC TOTAL)  |
| 23  | 150     | BANDED FLUTE TRAY 13" H (1); NAPPY 10" H (1) (2-PC TOTAL)   |
| 24  | 433     | GREEK KEY COMPORT 5 ½" HI FTD H (1); PLATE 5" H (3); SHERBET H (1); PUNCH CUP H (14) (19-PC TOTAL)  |
| 25  | 485     | DUNHAM NAPPY 8 ½" W/ UNK CUT H  |
| 26  | 393     | NARROW FLUTE NAPPY 10" SHALLOW H (1); CRACKER PLATE H (1); JUG 1-QT H HDL C (1); JUG 10-OZ H (1); CREAM & SUGAR INDV (2-SETS) (8-PC TOTAL)  |
| 27  | 1150    | COLONIAL STAR PLATE 5 ½" H (11); PLATE 6" H (9); PLATE 6 ½" H (16); PLATE 7 ½" (4) (40-PC TOTAL)  |
| 28  | 353     | MEDIUM FLAT PANEL CANDY W/ LID W/ UNK CUT H (1); 465 RECESSED PANEL CANDY W/ LID W/ UNK CUT (2) (3-PC TOTAL)  |
| 29  | 5       | PATRICIAN C'STICK 9" H (PR)   |
| 30  | 353     | MEDIUM FLAT PANEL VASE 8" STAR BOTTOM H (2)   |
| 31  | 1469    | RIDGELEIGH CENTERPIECE 8" H (1); BON BON H (2); MAYO H (1); VASE 3 ½" H (1); VASE INDV #4 H (1) (6-PC TOTAL)  |
| 32  | 1776    | KALONYAL JELLY 5 ½" FTD H (2)   |
| 33  | 341     | PURITAN PUNCH BOWL H (1); BASE HIGH H (1); PUNCH CUP H (48) (50-PC TOTAL)   |
| 34  | 1469    | RIDGELEIGH CENTERPIECE 8" H (1); RELISH 10" OBLONG 3-PRT H (1); TRAY 10" OBLONG H (1); RELISH 10 ½" RND 3-PRT H (1); BON BON H (2); VASE INDV #4 H (1) (7-PC TOTAL)   |
| 35  | 341     | PURITAN COMPORT 7 ½" H (2); COMPORT 6 ½" H (1); JELLY 5 ½" FTD H (2); JELLY 5 ½" FTD SHALLOW H (1); JELLY 5 ½" FTD DEEP H (1); JELLY 5" LOW FTD H (2) (9-PC TOTAL)  |
| 36  | 341½    | PURITAN BUTTER W/ LID H (1); CREAM TABLE H (1); SPOONER 4" (1); SPOONER 4 ¼" H (1) (4-PC TOTAL)   |
| 37  | 1401    | EMPRESS C'STICK D.F. SAHARA H (PR)  |
| 38  | 29      | SANFORD C'STICK 9" (PR)   |
| 39  | 22      | WINDSOR C'STICK 7" H (PR)   |
| 40  | 47      | REGAL C'STICK 7 ½" H (PR)   |
| 41  | 1401    | EMPRESS RELISH 7" 3-PRT RND SAHARA (1); RELISH 7" 3-PRT RND FLAMINGO H (1); RELISH 7" 3-PRT RND MOONGLEAM (1); 1509 QUEEN ANN RELISH 7" TRIPLEX RND W/ 507 ORCHID ETCH (1) (4-PC TOTAL)                                 |
| 42  | 6010    | FINESSE CORDIAL (1); 5040 LARIAT CORDIAL 1-LOOP (1); 5023 CONTINENTAL CORDIAL PAPER LABEL (1); 5003 CRYSTOLITE CORDIAL H (1); 3404 SPANISH CORDIAL (1); 3390 CARCASSONNE CORDIAL (1) (6-PC TOTAL)                       |
| 43  | 359     | COLONIAL PONY BRANDY NO OPTIC H (1); 337 TOURAINE CORDIAL H (1); 347 FIFTH AVENUE CORDIAL H (1); 3304 UNIVERSAL CORDIAL (1); 3304 POUSSE CAFE (1) (5-PC TOTAL)  |
| 44  | 400     | COLONIAL WINE H (1); 805 HOFFMAN HOUSE WINE (1); 1183 REVERE COCKTAIL N.O. H (1); 3389 DUQUESNE CLARET W/ 450 CHINTZ ETCH (1); 3408 JAMESTOWN CORDIAL (1); 4091 KIMBERLY WINE W/ 919 LAUREL WREATH CUT (1) (6-PC TOTAL) |
| 45  | 459     | ROUND COLONIAL BASKET W/ UNK CUT H BOTTOM ROUGHNESS   |

| Lot | Pattern | Description  |
|-----|---------|--|
| 46  | 3350    | WABASH JUG W/ UNK CUT H  |
| 47  | 1404    | OLD SANDWICH JUG ICE LIP   |
| 48  | 480     | DAISY & LEAVES BASKET W/ UNK CUT H (1); 352 FLAT PANEL ICE TUB H (1); 355 QUATOR CREAM & SUGAR W/ UNK CUT H (1-SET) (4-PC TOTAL)   |
| 49  | 1205    | RAINDROP C'STICK H (PR)  |
| 50  | 1590    | ZODIAC CREAM & SUGAR H PAPER LABEL (1-SET)   |
| 51  | 1235    | BEADED PANEL & SUNBURST CELERY VASE (1); 17 STAR DECANTER (1)  |
| 52  | 1280    | WINGED SCROLL TUMBLER GOLD CUSTARD (1); 300 PEERLESS TUMBLER H (1); 339 CONTINENTAL TUMBLER H RIM f (1); 1235 BEADED PANEL & SUNBURST GOOD GOLD (1); 1220 PUNTY BAND TUMBLER RUBY SOUV "CELORON 1902" H (1) (5-PC TOTAL)   |
| 53  | 1506    | PROVINCIAL TUMBLER H (1); 1425 VICTORIAN TUMBLER H (1); 1184 YEOMAN TUMBLER H FLAMINGO (1); 1252 TWIST TUMBLER H (1); 1404 OLD SANDWICH TUMBLER SAHARA H (1); 1170 PLEAT & PANEL TUMBLER FLAMINGO H (1); TUMBLER MOONGLEAM H (1) (7-PC TOTAL)                                |
| 54  | 1401    | EMPRESS COMPORT OVAL SAHARA H (1); JUG D.F. SAHARA H (1)   |
| 55  | 5025    | TYROLEAN WINE W/ 507 ORCHID ETCH H (1); COCKTAIL W/ 507 ORCHID ETCH H (1); CORDIAL W/ 507 ORCHID ETCH (1) (3-PC TOTAL)   |
| 56  | 1184    | YEOMAN OYSTER COCKTAIL FLAMINGO H (1); 3380 OLD DOMINION CLARET FLAMINGO H (1); 3389 DUQUESNE CLARET SAHARA (1) (3-PC TOTAL)   |
| 57  | 3408    | JAMESTOWN WINE (1); 3416 BARBARA FRITCHIE COCKTAIL H (1); 5078 PARK AVENUE SHERRY MONO "SJS" (SALLY JONES SEXTON) H (1); 3304 UNIVERSAL COCKTAIL W/ 467 TALLY HO ETCH (1); 5048 ROOSTER HEAD COCKTAIL BASE f (1); 1483 STANHOPE COCKTAIL (1) (6-PC TOTAL)                    |
| 58  | 4054    | CORONATION OYSTER COCKTAIL FTD (1); 3397 GASCONY COCKTAIL (1); 2401 OAKWOOD SODA 10-OZ W/ 5003 NIMROD ETCH (1) (3-PC TOTAL)  |
| 59  | 373     | OLD WILLIAMSBURG CLARET H (1); 1205 FANCY LOOP PUNCH CUP FTD CUPPED (1); 400 COLONIAL SCALLOP TOP WINE H (2); 359 COLONIAL CORDIAL NO OPTIC H (1) (5-PC TOTAL)   |
| 60  | 5067    | PLANTATION CORDIAL W/ 516 PLANTATION IVY ETCH (1); 5072 ROSE STEM CORDIAL W/ 515 HEISEY ROSE ETCH (1); 5019 WAVERLY CORDIAL PAPER LABEL (1); 5024 OXFORD CORDIAL TALL (1); 4055 PARK LANE SHERRY (1); 3312 GAYOSO CORDIAL (1); 3389 DUQUESNE CORDIAL SAHARA (1) (7-PC TOTAL) |
| 61  | 1485    | SATURN CREAM & SUGAR EARLY DESIGN H (1-SET)  |
| 62  | 1486    | COLEPORT ASHTRAY INDV H (1); CIG HOLDER H (1)  |
| 63  | 1469    | RIDGELEIGH CREAM & SUGAR H (1-SET); CIG HOLDER SQ (1); CIG HOLDER RND (1); CIG BOX W/LID 6" H (1) (5-PC TOTAL)   |
| 64  | 1567    | PLANTATION C'STICK 2-LITE W/ 516 PLANTATION IVY ETCH (PR); VASE 6" SUN PURPLE (1)  |
| 65  | 1519    | WAVERLY CREAM & SUGAR W/ 507 ORCHID ETCH H (1-SET); CREAM & SUGAR INDV W/ 507 ORCHID ETCH H (1-SET); 1509 QUEEN ANN TRAY INDV W/ 507 ORCHID ETCH (1) (5-PC TOTAL)  |
| 66  | 1519    | WAVERLY CREAM & SUGAR W/ 515 HEISEY ROSE ETCH H (1-SET)  |
| 67  | 4044    | NEW ERA CREAM & SUGAR (1-SET)  |
| 68  | 1483    | STANHOPE CREAM & SUGAR BLACK KNOBS H (1-SET); 1425 VICTORIAN CREAM & SUGAR H (1-SET) (4-PC TOTAL)  |
| 69  | 1405    | IPSWICH CREAM & SUGAR H (1-SET); 7000 SUNFLOWER CREAM & SUGAR H (1-SET) (4-PC TOTAL)   |
| 70  | 1503    | CRYSTOLITE ICE TUB H (1); VIOLET VASE H (1); 1503 ½ CRYSTOLITE CREAM & SUGAR RND H (1-SET) (4-PC TOTAL)  |
| 71  | 350     | PINWHEEL & FAN CREAM & SUGAR H (1-SET)   |
| 72  | 353     | MEDIUM FLAT PANEL CREAM & SUGAR HOTEL OVAL H (1-SET); 1024 EILEEN CREAM & SUGAR NO LID W/ UNK CUT H (1-SET); 393 NARROW FLUTE CREAM & SUGAR INDV H (1-SET); 300 PEERLESS CREAM & SUGAR INDV H (1-SET) (8-PC TOTAL)   |
| 73  | 1503    | CRYSTOLITE CHOCOLATE COMPORT H (1); FLORAL BOWL 11 ½" OVAL H (1); CIG BOX W/ LID 4" H (1); MAYO FLUTED H (1); C'BLOCK (PR) (6-PC TOTAL)  |
| 74  | 429     | PLAIN PANEL RECESS TUMBLER H (5)   |
| 75  | 352     | FLAT PANEL LAVENDER JAR W/ LID 3-OZ H (1); LAVENDER JAR W/ LID 5-OZ H (1)  |
| 76  | 359     | COLONIAL WINE FLARED NO OPTIC H (7)  |
| 77  | 5       | PATRICIAN C'STICK 9" H (PR); C'STICK 7" H (PR)   |
| 78  | 1469    | RIDGELEIGH PLATE 8" SQ H (7); BON BON H (1); TRAY 10" OBLONG H (1); RELISH 10" 3-PRT OBLONG H (2); RELISH 4-PRT RND H (1) (12-PC TOTAL)  |
| 79  | 393     | NARROW FLUTE SHERBET W/ UNK CUT H (8)  |
| 80  | 300     | PEERLESS SUNDAE FLUTED H (2); CHAMPAGNE H (8); COCKTAIL H (2); CLARET H (1); SHERBET H (6) (19-PC TOTAL)   |
| 81  | 351     | PRISCILLA BURGUNDY H (6); WINE (1); SHERBET SCALLOP H (7) (14-PC TOTAL)  |
| 82  | 341     | PURITAN SHERBET 3-OZ H (17); SHERBET 4 ½-OZ H (14) (31-PC TOTAL)   |
| 83  | 373     | OLD WILLIAMSBURG ICE TEA FTD H (3)   |
| 84  | 1150    | COLONIAL STAR PLATE 8 ½" H (12); PLATE 4 ½" H (7) (19-PC TOTAL)  |
| 85  | 300     | PEERLESS CLARET H (7); GOBLET H (5); SHERRY H (2) (14-PC TOTAL)  |
| 86  | 1183    | REVERE SALT INDV H (4); 393 NARROW FLUTE SALT INDV H (7); SALT SPOON STERLING (5) (16-PC TOTAL)  |
| 87  | 341     | PURITAN NAPPY 5 ½" SHALLOW H (14); NAPPY 5" SHALLOW H (5); NAPPY 4 ½" H (11); PLATE 6" H (10) (40-PC TOTAL)  |
| 88  | 1469    | RIDGELEIGH TORTE PLATE 13" H (1); TORTE PLATE 11" H (1); PLATE 8" RND (7) (9-PC TOTAL)   |
| 89  | 1469    | RIDGELEIGH FLORAL BOWL 11 ½" FLARED H (3); FLORAL BOWL 9 ½" FLARED H (1); SALAD BOWL H (1) (5-PC TOTAL)  |
| 90  | 1469    | RIDGELEIGH DESSERT 10" 2-HDL H   |

| Lot | Pattern | Description  |
|-----|---------|--|
| 91  | 1469    | RIDGELEIGH PLATE 16" RND CLEAR RIM H   |
| 92  | 1428    | WARWICK VASE 9" H (1); VASE 7" H (3); VASE 5" H (1) (5-PC TOTAL)   |
| 93  | 407     | COARSE RIB PLATE 8 ½" H (3); PLATE 6 ½" H (2); PLATE 6" H (8); 1225 RIDGE & STAR PLATE 6" H (5) (18-PC TOTAL)  |
| 94  | 1503    | CRYSTOLITE TORTE PLATE 13 ½" H (1); GARDENIA BOWL 11 ½" H (1)  |
| 95  | 341     | PURITAN FINGER BOWL H (18); 1150 COLONIAL STAR PLATE 7" H (11) (29-PC TOTAL)   |
| 96  | 433     | GREEK KEY TANKARD 3-PINT H HDL C   |
| 97  | 341     | PURITAN COMPORT 9 ½" SHALLOW H (1); JELLY 5" LOW FTD SHALLOW H (1); JELLY LOW FTD H (1) (3-PC TOTAL)   |
| 98  | 1469    | RIDGELEIGH CREAM & SUGAR H (1-SET); CREAM & SUGAR SQ H (1-SET); CREAM & SUGAR INDV ON TRAY H (3-PC SET) (7-PC TOTAL)   |
| 99  | 1469    | RIDGELEIGH LEMON DISH W/ LID H (1); MUSTARD W/ LID H (1); MAYO H (1); JELLY HDL 2-PRT (1); JELLY INDV H (1); STAR RELISH H (1) (6-PC TOTAL)  |
| 100 | 1469    | RIDGELEIGH BRIDGE ASHTRAY H (4); IN METAL HOLDER (1); CIG HOLDER RND H (1) (6-PC TOTAL)  |
| 101 | 1469    | RIDGELEIGH STAR RELISH H (1); CREAM & SUGAR IND ON TRAY H (3-PC SET); C'STICK 1-LITE (PR); NUT INDV H (9); NUT INDV 2-PRT H (1); NAPPY 4 ½" SQ H (1); NAPPY 4 ½" FLARED H (1); SUGAR (1); TRAY INDV (1) (20-PC TOTAL)  |
| 102 | 1219    | SIMPLICITY W/ STAR PLATE 7 ½" H (25); PLATE 6" H (6); PLATE 5 ½" H (15); PLATE 4 ½" H (10); 1186 YEOMAN CUP & SAUCER (6-SETS) (68-PC TOTAL)  |
| 103 | 300     | PEERLESS WINE H (14); CORDIAL H (4); PLATE 5" H (6) (24-PC TOTAL)  |
| 104 | 1225    | RIDGE & STAR PLATE 8" FLAMINGO H (12); 407 COARSE RIB PLATE 8" FLAMINGO H (4); 1231 RIBBED OCTAGON CUP FLAMINGO H (6) (22-PC TOTAL)  |
| 105 | 351     | PRISCILLA BUTTER PAT H (19)  |
| 106 | 150     | BANDED FLUTE TRAY 13" H (1); 341 OLD WILLIAMSBURG SANDWICH TRAY 13" H (1)  |
| 107 | 3362    | CHARTER OAK GOBLET FLAMINGO H (11)   |
| 108 | 341     | PURITAN SHERRY H (8); PORT H (7); COCKTAIL H (8) (23-PC TOTAL)   |
| 109 | 3362    | CHARTER OAK ICE TEA 12 OZ FLAMINGO (10)  |
| 110 | 300     | PEERLESS TUMBLER H WORN GOLD (2); 120 TUMBLER H (6); 136 TUMBLER H (1); 331 COLONIAL PANEL TUMBLER H (2); 588 SODA 8-OZ H (1); UNK COLONIAL TUMBLER H (3) (15-PC TOTAL)  |
| 111 | 1223    | FLUTED BORDER PLATE 8" H (5); 351 PRISCILLA MUSTARD W/ LID H (1); 473 NARROW FLUTE W/ RIM ALMOND MASTER H (1); 398 HOPEWELL NAPPY 3 ½" H (1); 1183 REVERE WAFER TRAY 7 ½" X 4 ½" H (1); 351 PRISCILLA PLATE 7" H (1) (10-PC TOTAL)   |
| 112 | 300 ½   | PEERLESS BAR H (1); 300 PEERLESS CREAM & SUGAR INDV H (1-SET); SUGAR HOTEL H (1); 20 FLOWER FROG (1); #6 MAYO LADLE H (1); 347 FIFTH AVENUE SHERBET FLUTED H (1); 353 MEDIUM FLAT PANEL SPOONER H (1); 341 OLD WILLIAMSBURG EPERGNETTE H (6) (14-PC TOTAL)   |
| 113 | 300     | PEERLESS NAPPY 8" H (1); 1186 YEOMAN FRUIT BOWL 9 ½" OVAL W/ UNK CUT H (1)   |
| 114 | 341 ½   | PURITAN NAPPY 11" DEEP H (1); PUNCH CUP FTD H (4) (5-PC TOTAL)   |
| 115 |         | MIXED PATTERN PUNCH CUP (44)   |
| 116 | 1425    | VICTORIAN CONDIMENT SET H: MUSTARD W/ LID; SALT CLOUDY & PEPPER SQ GLASS TOPS; TRAY; #10 PADDLE (5-PC TOTAL)   |
| 117 | 372     | MCGRADY SYRUP 5-OZ SAHARA H (1); SYRUP 7-OZ SAHARA (1)   |
| 118 | 372     | MCGRADY SYRUP 7-OZ MOONGLEAM H   |
| 119 | 1001    | CASWELL CREAM & SUGAR C W/ METAL LID SILVER DECOR MOONGLEAM HDL & FT (1-SET)   |
| 120 | 393     | NARROW FLUTE MARMALADE W/ LID H (1); 394 NARROW FLUTE MARMALADE W/ LID H (1)   |
| 121 | 1509    | QUEEN ANN CREAM & SUGAR INDV ON TRAY H (3-PC SET)  |
| 122 | 1469    | RIDGELEIGH MARMALADE W/ LID H  |
| 123 | 353     | MEDIUM FLAT PANEL MARMALADE W/ LID W/ UNK CUT H (1); 1183 REVERE MARMALADE W/ LID W/ UNK CUT H (1)   |
| 124 | 1252    | TWIST MUSTARD W/ LID SAHARA H  |
| 125 | 1180    | DEBRA MARMALADE W/ LID W/ UNK CUT H  |
| 126 | 341     | PURITAN PICKLE W/ KNOB LID IRIDIZED H  |
| 127 | 352     | FLAT PANEL MUSTARD W/ LID W/ UNK CUT H   |
| 128 | 1184    | YEOMAN MUSTARD W/ LID H  |
| 129 | 1186    | YEOMAN PUFF BOX W/ LID NO INSERT NO OPTIC FLAMINGO H (1); PUFF BOX W/ LID NO INSERT NO OPTIC H (1)   |
| 130 | 1401    | EMPRESS OIL W/ STOPPER SAHARA  |
| 131 | 1401    | EMPRESS OIL W/ STOPPER C FLAMINGO  |
| 132 | 1506    | PROVINCIAL MUSTARD W/ LID H  |
| 133 | 1280    | WINGED SCROLL OIL W/ STOPPER CUSTARD   |
| 134 | 351     | PRISCILLA MUSTARD W/ LID H (1); 1503 CRYSTOLITE MUSTARD W/ LID H (1); 1469 RIDGELEIGH MUSTARD W/ LID H (1); 1485 SATURN MUSTARD W/ LID H (1); 393 NARROW FLUTE MUSTARD W/ LID H (1); 1252 TWIST MUSTARD W/ LID H (1); 417 DOUBLE RIB & PANEL MUSTARD W/ LID H (1); 411 TUDOR MUSTARD NO LID H (1) (8-PC TOTAL) |
| 135 | 7000    | SUNFLOWER C'STICK (PR); 1533 WAMPUM C'STICK (PR); 118 MISS MUFFET C'STICK NO OPTIC FLAMINGO H (PR) (6-PC TOTAL)  |
| 136 | 354     | WIDE FLAT PANEL LAVENDER JAR W/ LID 16-OZ GOLD H (1); LAVENDER JAR W/ LID 2 1/2-OZ H (1)   |
| 137 | 1503    | CRYSTOLITE PITCHER   |
| 138 | 1170    | PLEAT & PANEL PITCHER NON-ICE LIP W/UNK CUT  |
| 139 | 1280    | WINGED SCROLL PUFF BOX W/ LID CUSTARD WORN GOLD  |
| 140 | 438     | ASHTRAY H f (1); 365 RHOMBIC ASHTRAY MONO (1); 1401 EMPRESS ASHTRAY MONO H (1) (3-PC TOTAL)  |



| Lot | Pattern | Description   |
|-----|---------|---|
| 141 | 112     | MERCURY C'STICK MOONGLEAM (PR); C'STICK FLAMINGO (PR)   |
| 142 | 112     | MERCURY C'STICK HAWTHORNE (PR)  |
| 143 | 112     | MERCURY C'STICK SAHARA (PR)   |
| 144 | 1252    | TWIST C'STICK MOONGLEAM (PR); C'STICK FLAMINGO (1-ONLY)   |
| 145 | 1519    | WAVERLY ICE TUB H   |
| 146 | 1519    | WAVERLY C'STICK 1-LITE BASE f (PR)  |
| 147 | 4052    | NATIONAL OLD FASHION W/ 980 MOONGLO CUT (1); BAR W/ 980 MOONGLO CUT (1); 4054 CORONATION BAR 2-OZ W/ 980 MOONGLO CUT (1) (3-PC TOTAL)   |
| 148 | 2401    | OAKWOOD BAR W/ 439 PIED PIPER ETCH (1); 1404 OLD SANDWICH BAR H (1); 393 NARROW FLUTE BAR 3-OZ H (1); 150 BANDED FLUTE BAR 2-OZ SHAM H (1); BAR 2 ½-OZ SHAM H (1); BAR 3-OZ H (1); CORDIAL H (1) (7-PC TOTAL)   |
| 149 | 1404    | OLD SANDWICH TODDY H (1); 248 WATER BAR H (1); 602 MARSA WATER BAR H (1); 1425 VICTORIAN OLD FASHION H (1); 246 WATER BAR H (1) (5-PC TOTAL)  |
| 150 | 355     | QUATOR DOMINO SUGAR H (1); 354 WIDE FLAT PANEL DOMINO SUGAR H (1); 393 NARROW FLUTE DOMINO SUGAR H (1) (3-PC TOTAL)   |
| 151 | 136     | TRIPLEX C'STICK 3-LITE (PR)   |
| 152 | 100     | CENTENNIAL C'STICK 6" GOLD H (PR)   |
| 153 | 1       | GEORGIAN C'STICK (PR)   |
| 154 | 411     | TUDOR PRESERVE W/ LID FTD H (1); PRESERVE W/ LID FTD MOONGLEAM H (1); JUG 1-QT H WEAR (1) (3-PC TOTAL)  |
| 155 | 1509    | QUEEN ANN CREAM & SUGAR ON TRAY INDV W/ UNK CUT H (1) (3-PC SET)  |
| 156 | 1469 ¼  | RIDGELEIGH CIG HOLDER OVAL RIM f (1); ASHTRAY PLATE 6" SQ H RIM f (1) (2-PC-TOTAL)  |
| 157 | 1632    | LODESTAR CANDELETTE DAWN BASE f (PR)  |
| 158 | 1428    | WARWICK C'STICK 2-LITE SAHARA H MIS-MATCH COLOR (PR)  |
| 159 | 5       | PATRICIAN C'STICK 7 ½" H (PR); C'STICK 9" TOP f (3) (5-PC TOTAL)  |
| 160 | 1433    | THUMBPRINT & PANEL C'STICK 2-LITE SAHARA H (PR)   |
| 161 | 1495    | FERN C'STICK 2-LITE (PR)  |
| 162 | 362     | EARNSHAW SYRUP W/ UNK CUT H (1); SYRUP W/ UNK CUT H (1); 357 SYRUP 7-OZ H f (1); 379 URN SYRUP H (1); 363 LARKIN SYRUP W/ UNK CUT H (1); 300 PEERLESS MOLASSES 12-OZ CLOUDY (1) (6-PC TOTAL)  |
| 163 | 18      | PINWHEEL & FAN PUFF BOX NO LID SMALL H (1); 19 PINWHEEL & FAN PUFF BOX NO LID LGE H (1)   |
| 164 | 1541    | ATHENA C'STICK 2-LITE (PR)  |
| 165 | 142     | CASCADE C'STICK 3-LITE (PR)   |
| 166 | 1489    | PURITAN ASHTRAY INDV 2 ¾" SQ (4); ASHTRAY 2 ½" SQ DEEP (1); ASHTRAY 4 ¾" SQ PAPER LABEL (1); ASHTRAY BRIDGE HEART (1); ASHTRAY 7" OBLONG (1) (8-PC TOTAL)   |
| 167 | 1       | ELEPHANT LARGE (1); 2 ELEPHANT MEDIUM (1); 3 ELEPHANT SMALL (1) (3-PC TOTAL)  |
| 168 | 1       | HORSEHEAD BOOKEND BASE f (1-ONLY)   |
| 169 | 351     | PRISCILLA JUG 3-PINT H  |
| 170 | 150     | POINTED OVAL & DIAMOND POINT JUG  |
| 171 | 3390    | CARCASSONNE JUG W/ 9033 HOUSTON POST BRIDGE CLUB ETCH   |
| 172 | 433     | GREEK KEY JUG 1-PINT H HDL C  |
| 173 | 1252    | TWIST C'STICK 1-LITE H (PR)   |
| 174 | 1404    | OLD SANDWICH C'STICK 1-LITE W/ UNK CUT (PR)   |
| 175 | 1557    | CHANTICLEER VASE  |
| 176 | 305     | PUNTY & DIAMOND POINT TOOTHPICK   |
| 177 | 339     | CONTINENTAL TOOTHPICK H   |
| 178 | 315     | PANELED CANE TOOTHPICK H  |
| 179 | 325     | PILLOWS TOOTHPICK WORN GOLD   |
| 180 | 357     | PRISON STRIPE TOOTHPICK H   |
| 181 | 335     | PRINCE OF WALES PLUMES TOOTHPICK H  |
| 182 | 310     | RING BAND TOOTHPICK SOUV "MARION, IND" CUSTARD WORN GOLD (1); 1220 PUNTY BAND TOOTHPICK CUSTARD WORN GOLD (1); 1280 WINGED SCROLL TOOTHPICK CUSTARD WORN GOLD (1); 1295 BEAD SWAG TOOTHPICK (1); TOOTHPICK WORN GOLD SOUV "SULLIVAN, IND" OPAL (1); TOOTHPICK RUBY SOUV "CHARLEY WABASH FAIR 1901" (1) (6-PC TOTAL) |
| 183 | 351     | PRISCILLA TOOTHPICK H (1); 333 WALDORF ASTORIA TOOTHPICK H (1); 150 BANDED FLUTE TOOTHPICK H (1); 341 PURITAN TOOTHPICK H (1); 300 PEERLESS TOOTHPICK H (1); 352 FLAT PANEL TOOTHPICK W/ UNK CUT H (1) (6-PC TOTAL)   |
| 184 | 1205    | FANCY LOOP TOOTHPICK (1); 343 SUNBURST TOOTHPICK H (1); 1201 FANDANGO TOOTHPICK (1); 1235 BEADED PANEL & SUNBURST TOOTHPICK EXCELLENT GOLD (1) (4-PC TOTAL)   |
| 185 | 3390    | CARCASSONNE CIG HOLDER SAHARA H (1); CIG HOLDER (1); CIG HOLDER W/ 448 OLD COLONY ETCH (3-PC)   |
| 186 | 3390    | CARCASSONNE CIG HOLDER COBALT BOWL (2)  |
| 187 | 120     | OVERLAPPING SWIRL C'STICK 1-LITE FLAMINGO MIS-MATCH COLOR (PR)  |
| 188 | 1433    | THUMBPRINT & PANEL C'STICK 2-LITE FLAMINGO (PR)   |
| 189 | 433     | GREEK KEY JUG 3-PINT H WEAR   |
| 190 | 1401    | EMPRESS JUG   |

| Lot | Pattern | Description   |
|-----|---------|---|
| 191 | 1540    | PLUG HORSE (1); 1522 COLT STANDING (1); 1527 COLT KICKING f (1); 1529 COLT BALKING (1) (4-PC TOTAL)   |
| 192 | 2       | CLYDESDALE  |
| 193 | 1554    | FISH BOOKEND SUN PURPLE (PR)  |
| 194 | 1488    | KOHINOOR C'STICK 2-LITE BASE f (PR)   |
| 195 | 100     | ASIATIC PHEASANT  |
| 196 | 1205    | FANCY LOOP VASE 8" SUN PURPLE f (1); 335 PRINCE OF WALES PLUMES JELLY HDL H ROUGH (1) (2-PC TOTAL)  |
| 197 | 1540    | LARIAT BASKET STEM LOOP (1); CIG BOX W/ LID (1); ASHTRAY RND (1) (3-PC TOTAL)   |
| 198 | 1540    | LARIAT BLACK-OUT LAMP NO SHADES (PR)  |
| 199 | 1489 ½  | PURITAN CIG BOX W/ LID HORSEHEAD FINIAL 6" (1); ASHTRAY HORSEHEAD FINIAL (1)  |
| 200 | 1489    | PURITAN CIG BOX W/ LID 6" MONO "SJS" (SALLY JONES SEXTON)   |
| 201 | 30      | TOM THUMB C'STICK TOY H (2); 33 SKIRTED PANEL C'STICK TOY H (2) (4-PC TOTAL)  |
| 202 | 335     | PRINCE OF WALES PLUMES JUG H  |
| 203 | 433     | GREEK KEY TANKARD 1-QT H WEAR   |
| 204 | 412     | TUDOR JUG 3-PINT H  |
| 205 | 1252    | TWIST JUG FLAMINGO BASE F   |
| 206 | 300     | PEERLESS CLARET JUG BOTTOM STAIN  |
| 207 | 393     | NARROW FLUTE JUG 1-QT PRESSED HDL H (1); TANKARD 3-PINT H (1)   |
| 208 | 341     | PURITAN TANKARD 3-PINT H (1); TANKARD 1-QT H (1)  |
| 209 | 429     | PLAIN PANEL RECESS CREAM & SUGAR W/ LID H (1-SET)   |
| 210 | 1229    | OCTAGON MAYO FTD MARIGOLD (1); MAYO MOONGLEAM (1); MAYO SAHARA (1); MAYO FLAMINGO (1) (4-PC TOTAL)  |
| 211 | 1590    | ZODIAC ASHTRAY PAPER LABEL (1); ASHTRAY SOUV "OHIO SESQUICENTENNIAL 1803-1953" H (1); ASHTRAY SOUV "NEWARK OHIO SESQUICENTENNIAL 1802-1952" (1) (3-PC TOTAL)  |
| 212 | 1469 ¼  | RIDGELEIGH CIG HOLDER OVAL H f (1); ASHTRAY 2-PRT (1)   |
| 213 | 1469    | RIDGELEIGH CIG BOX W/ LID 4" H (1); ASHTRAY BRIDGE SET COMPLETE H (4-PC SET) (5-PC TOTAL)   |
| 214 | 366     | SALEM ASHTRAY /MATCHSTAND   |
| 215 | 358     | SOLITAIRE ASHTRAY W/ UNK CUT  |
| 216 | 1183    | REVERE ASHTRAY TRIANGLE SMALL H WEAR  |
| 217 | 1401    | EMPRESS MAYO SAHARA H (1); #6 MAYO LADLE SAHARA H (1); NUT SAHARA (1) (3-PC TOTAL)  |
| 218 | 1401    | EMPRESS C'STICK 4-FTD 2-HDL FLAMINGO H (PR)   |
| 219 | 1503 ¼  | CRYSTOLITE C'BLOCK SQ (PR); 1503 ½ CRYSTOLITE C'BLOCK MELON (PR); 1506 PROVINCIAL C'BLOCK (PR) (6-PC TOTAL)   |
| 220 | 122     | ZIG ZAG C'STICK FLAMINGO H (PR); C'STICK H (PR) (4-PC TOTAL)  |
| 221 | 1401    | EMPRESS MAYO MOONGLEAM H (1); #6 LADLE MOONGLEAM H (1)  |
| 222 | 1632    | LODESTAR MAYO DAWN H  |
| 223 | 1252    | TWIST MAYO (1); #6 LADLE W/ UNK CUT H (1)   |
| 224 | 1252 ½  | TWIST MAYO SAHARA H (1); #6 LADLE SAHARA H (1)  |
| 225 | 1401    | EMPRESS MAYO H (1); #6 LADLE H WORN GOLD (1); 1401 EMPRESS MUSTARD W/ LID H (1) (3-PC TOTAL)  |
| 226 | 118     | MISS MUFFET C'STICK NO OPTIC H (PR); 1228 WARWICK CIG HOLDER SUN PURPLE H (2) (4-PC TOTAL)  |
| 227 | 1401    | EMPRESS COMPORT RND MOONGLEAM H (1); COMPORT SQ MOONGLEAM H (1)   |
| 228 | 1401    | EMPRESS COMPORT SQ FLAMINGO H   |
| 229 | 1401    | EMPRESS COMPORT SQ SAHARA H   |
| 230 | 1404    | OLD SANDWICH COMPORT MOONGLEAM H  |
| 231 | 1495    | FERN MAYO (1); DRESSING 2-PRT (1); 1183 REVERE DRESSING 2-PRT H PAPER LABEL H (1) (3-PC TOTAL)  |
| 232 | 1469    | RIDGELEIGH FLOWER BOX H   |
| 233 | 1401    | EMPRESS ASHTRAY FLAMINGO H (1); ASHTRAY SAHARA H (1)  |
| 234 | 1184    | YEOMAN STACK SET: CREAM-SUGAR-BUTTER W/ UNK CUT H (3-PC SET)  |
| 235 | 419     | SUSSEX SODA 5-OZ FLAMINGO H (1); SODA 5-OZ H (1)  |
| 236 | 1184    | YEOMAN ASHTRAY HDL BOWTIE FLAMINGO (1); ASHTRAY HDL BOWTIE MOONGLEAM (1); ASHTRAY HDL BOWTIE (1) (3-PC TOTAL)   |
| 237 | 1413    | CATHEDRAL VASE W/ 913 EVERGLADE CUT   |
| 238 | 1503    | CRYSTOLITE CANDY W/ LID H (1); CIG BOX W/ LID 4" H (1); CIG BOX W/ LID 4 ½" H (1); CIG HOLDER RND H (1); CIG HOLDER OVAL (1); ASHTRAY 3" SQ H (2); ASHTRAY/MATCHBOOK HOLDER H (1); JAM JAR W/ LID H (1) C'STICK 1-LITE (PR) (11-PC TOTAL) |
| 239 | 134     | TRIDENT C'STICK 2-LITE MOONGLEAM H (PR)   |
| 240 | 1519    | WAVERLY C'STICK 2-LITE W/ 507 ORCHID ETCH (PR)  |
| 241 | 1519    | WAVERLY C'STICK 3-LITE W/ 515 HEISEY ROSE ETCH H (PR)   |
| 242 | 1540    | LARIAT C'STICK 2-LITE (PR); HURRICANE BASE HDL (1); C'STICK 1-LITE (PR) (5-PC TOTAL)  |
| 243 | 1205    | FANCY LOOP BAR SOUV "OMAHA EXPOSITION 1898" EMERALD WORN GOLD   |
| 244 | 411     | TUDOR SUGAR SHAKER TEAR DROP PAPER LABEL  |
| 245 | 1469    | RIDGELEIGH FRENCH DRESSING (1); 1506 PROVINCIAL FRENCH DRESSING STOPPER X (1)   |
| 246 | 352     | FLAT PANEL ASHTRAY H  |
| 247 | 1184    | YEOMAN OIL 2-OZ MOONGLEAM (1); OIL 4-OZ MOONGLEAM H (1)   |
| 248 | 1184    | YEOMAN OIL 2-OZ SAHARA H  |

| Lot | Pattern | Description   |
|-----|---------|---|
| 249 | 1184    | YEOMAN OIL 2-OZ W/ #6 STOPPER FLAMINGO H (1); OIL 2-OZ W/ #2 STOPPER H (1)  |
| 250 | 1404    | OLD SANDWICH CATSUP   |
| 251 | 1776    | KALONYAL OIL 6-OZ FACETED STOPPER   |
| 252 | 1404    | OLD SANDWICH OIL SAHARA H   |
| 253 | 1252    | TWIST OIL 2 ½-OZ FLAMINGO (1); OIL 4-OZ FLAMINGO H (1)  |
| 254 | 1255    | PINEAPPLE & FAN OIL EMERALD   |
| 255 | 1485    | SATURN SUGAR POURER H   |
| 256 | 1503    | CRYSTOLITE CIG LIGHTER MADE FROM C'BLOCK (1); CIG HOLDER FTD H (1)  |
| 257 | 1488    | KOHINOOR ASHTRAY ZIRCON H   |
| 258 | 360     | WINSTON ASHTRAY FLAMINGO H (1); ASHTRAY H (1)   |
| 259 | 1252    | TWIST OIL 2-OZ (1) MOONGLEAM; MUSTARD W/ LID MOONGLEAM H (1)  |
| 260 | 1216    | HORSERADISH H (1); 150 BANDED FLUTE HORSERADISH (1); 352 FLAT PANEL HORSERADISH (1) (3-PC TOTAL)  |
| 261 | 1170    | PLEAT & PANEL OIL (1); 473 NARROW FLUTE W/ RIM OIL 4-OZ H (1); 417 DOUBLE RIB & PANEL W/ #7 STOPPER H (1) (3-PC TOTAL)  |
| 262 | 351     | PRISCILLA CREAM & SUGAR HOTEL H (1-SET); 406 COARSE RIB CREAM & SUGAR W/ LID H (1-SET) (4-PC TOTAL)   |
| 263 | 417     | DOUBLE RIB & PANEL CREAM & SUGAR W/ LID W/ UNK CUT H (1-SET)  |
| 264 | 4191    | OLYMPIA VASE 6" H   |
| 265 | 150     | BANDED FLUTE WATER BOTTLE (1); TRAY 12" H (1); SHERBET H (2) (4-PC TOTAL)   |
| 266 | 1170    | PLEAT & PANEL OIL FLAMINGO (1); OIL MOONGLEAM (1)   |
| 267 | 451     | CROSS-LINED FLUTE OIL H (1); 466 FLUTED NECK OIL W/ UNK CUT H (1); 1506 PROVINCIAL OIL H (1); 1425 VICTORIAN OIL H (1); 1252 TWIST OIL 2 ½-OZ H (1); 354 WIDE FLAT PANEL OIL 2-OZ 1-NO STOPPER (2) (7-PC TOTAL) |
| 268 | 1200    | CUT BLOCK OIL (1); 1201 FANDANGO OIL 8-OZ (1); 1255 PINEAPPLE & FAN OIL (1); 305 PUNTY & DIAMOND POINT OIL (1) (4-PC TOTAL)   |
| 269 | 1519    | WAVERLY OIL W/ 515 HEISEY ROSE ETCH   |
| 270 | 1489    | PURITAN FRENCH DRESSING (1); 1252 TWIST FRENCH DRESSING (1)   |
| 271 | 1252    | TWIST FRENCH DRESSING SAHARA  |
| 272 | 1252    | TWIST FRENCH DRESSING FLAMINGO  |
| 273 | 1567    | PLANTATION TUMBLER H (1); ICE TEA FLARED H (1)  |
| 274 | 1626    | SATELLITE ASHTRAY NOT FROSTED H   |
| 275 | 1469    | RIDGELEIGH CANDY BOX W/ LID FTD H (1); PUFF BOX H (1); OIL (1); CREAM & SUGAR INDV ON TRAY H (3-PC SET); WINE (1) (7-PC TOTAL)  |
| 276 | 1469 ½  | RIDGELEIGH CIG HOLDER W/ LID H (1); 1469 RIDGELEIGH BRIDGE ASHTRAY RND H (4); ASHTRAY 2" SQ (1); ASHTRAY 6" SQ (1); ASHTRAY 4" RND H (1) (8-PC TOTAL)   |
| 277 | 1511    | TOUJOURS MARMALADE W/ LID H (1); COMPORT 7" (1)   |
| 278 | 1503    | CRYSTOLITE CANDY BOX W/ LID 3-FTD (1); CANDY BOX W/ LID SHELL (1)   |
| 279 | 353     | MEDIUM FLAT PANEL SOAP DISH W/ LID H (1); MUG H (1); TOOTHBRUSH HOLDER H (1) (3-PC TOTAL)   |
| 280 | 393     | NARROW FLUTE BUTTER W/ LID H (1); PRESERVE W/ LID FTD H (1); 352 FLAT PANEL BUTTER W/ LID H (1) (3-PC TOTAL)  |
| 281 | 1255    | PINEAPPLE & FAN JELLY FTD EMERALD WORN GOLD   |
| 282 | 1252    | TWIST MUSTARD W/ LID FLAMINGO H (1); #5 SPOON FLAMINGO H (1)  |
| 283 | 1401    | EMPRESS JUG D.F. FLAMINGO   |
| 284 | 1509    | QUEEN ANN JUG D.F.  |
| 285 | 4054    | CORONATION TANKARD 1-QT   |
| 286 | 433     | GREEK KEY TUMBLER H   |
| 287 | 325     | PILLOWS TUMBLER H   |
| 288 | 305     | PUNTY & DIAMOND POINT TUMBLER   |
| 289 | 350     | PINWHEEL & FAN TUMBLER H  |
| 290 | 335     | PRINCE OF WALES PLUMES TUMBLER H WORN GOLD  |
| 291 | 451     | CROSS-LINED FLUTE TUMBLER H   |
| 292 | 427     | DAISY & LEAVES TUMBLER H  |
| 293 | 299     | SCOTTY TUMBLER  |
| 294 | 310     | RING BAND TUMBLER VARIANT W/ MIDDLE BAND GREEN & GOLD CUSTARD H   |
| 295 | 310     | RING BAND TUMBLER ROSE BUD CUSTARD WORN GOLD  |
| 296 | 1205    | FANCY LOOP TUMBLER EMERALD WORN GOLD  |
| 297 | 1205    | FANCY LOOP TUMBLER  |
| 298 | 1252    | TWIST TUMBLER FLAMINGO  |
| 299 | 1405    | IPSWICH TUMBLER H   |
| 300 | 1401    | EMPRESS TUMBLER SAHARA H  |
| 301 | 369     | HARTMAN TUMBLER H   |
| 302 | 412     | TUDOR TUMBLER H   |
| 303 | 1225    | PLAIN BAND TUMBLER  |
| 304 | 1220    | PUNTY BAND TUMBLER SOUV "MERRILL" ROSE BUD CUSTARD H  |
| 305 | 1417    | ARCH TUMBLER MOONGLEAM H (1); TUMBLER SAHARA H (1)  |



| Lot | Pattern | Description  |
|-----|---------|--|
| 306 | 1417    | ARCH TUMBLER AMBER   |
| 307 | 2930    | PLAIN & FANCY TUMBLER W/ 422 CUMBERLAND ETCH   |
| 308 | 121     | FANCY SQUARE TUMBLER   |
| 309 | 174 ½   | TUMBLER H  |
| 310 | 352     | FLAT PANEL TUMBLER H (1); 393 NARROW FLUTE TUMBLER H (1); 1503 CRYSTOLITE TUMBLER H (1); 429 PLAIN PANEL RECESS TUMBLER H (1); 7000 SUNFLOWER TUMBLER H (1); 197 DANIEL TUMBLER BLACK BAND H (1) (6-PC TOTAL)  |
| 311 | 1255    | PINEAPPLE & FAN ROSE BOWL 4" (1); ROSE BOWL 5" (1); ROSE BOWL 6" (1) (3-PC TOTAL)  |
| 312 | 343     | SUNBURST CREAM & SUGAR HOTEL OVAL H (1-SET)  |
| 313 | 335     | PRINCE OF WALES PLUMES WATER BOTTLE  |
| 314 | 1506    | PROVINCIAL CANDY W/ LID FTD (1); CANDY W /LID 3-HDL (1)  |
| 315 | 1506    | PROVINCIAL BUTTER W/ LID ¼-LB H (1); JELLY TRICORN 1-HDL (1); CREAM & SUGAR INDV ON TRAY H (3-PC SET); SALT & PEPPER METAL TOPS (1-SET) (7-PC TOTAL)   |
| 316 | 1540    | LARIAT CANDY BOX W/ LID SMALL W/ 980 MOONGLO CUT H (1); OIL (1); CREAM & SUGAR ON TRAY H (3-PC SET) (5-PC TOTAL)   |
| 317 | 1503    | CRYSTOLITE SYRUP RED HDL   |
| 318 | 1567    | PLANTATION SYRUP AMBER HDL   |
| 319 | 354     | WIDE FLAT PANEL STACK SET: CREAM-SUGAR-BUTTER H (3-PC SET)   |
| 320 | 1404    | OLD SANDWICH COMFORT SAHARA H (1); COMFORT H (1)   |
| 321 | 1404    | OLD SANDWICH PITCHER NON ICE LIP SAHARA H  |
| 322 | 451     | CROSS-LINED FLUTE JUG 1-QT H   |
| 323 | 339     | CONTINENTAL PITCHER 3-PINT H   |
| 324 | 439     | RAISED LOOP JUG H  |
| 325 | 353     | MEDIUM FLAT PANEL MATCHSTAND H   |
| 326 | 434     | ASHTRAY H  |
| 327 | 437     | ASHTRAY 3" H (1); ASHTRAY 4 ½" H (1)   |
| 328 | 5012    | URN CIG HOLDER (1); 4035 BETHEL CIG HOLDER (1)   |
| 329 | 1180    | TREFOIL ASHTRAY H (1); ASHTRAY MOONGLEAM H (1)   |
| 330 | 1425    | VICTORIAN CIG BOX W/ LID 4 ½" H (1); ASHTRAY W/ CIG HOLDER W/ UNK CUT H (1)  |
| 331 | 440     | FACET ASHTRAY  |
| 332 | 1498    | TWELVE PANEL ARCH ASHTRAY  |
| 333 | 1500    | BULL'S EYE ASHTRAY H   |
| 334 | 1488    | KOHINOOR ASHTRAY H   |
| 335 | 1179    | BOW TIE ASHTRAY (1); ASHTRAY FLAMINGO (1)  |
| 336 | 1454    | DIAMOND POINT JELLY H (1); ASHTRAY H (1); 1535 DIAMOND ASHTRAY H (1); 1533 WAMPUM ASHTRAY (1); 1536 MILITARY CAP ASHTRAY (1); 1428 WARWICK CIG HOLDER (1); 1435 ASHTRAY W/ 507 ORCHID ETCH (1); ASHTRAY W/ 515 HEISEY ROSE ETCH (1); 1489 PURITAN CIG BOX W/ LID 4 ½" (1) (9-PC TOTAL) |
| 337 | 1567    | PLANTATION ASHTRAY (1); COASTER (1)  |
| 338 | 1567    | PLANTATION COMFORT W/ LID FTD DEEP W/ 516 PLANTATION IVY ETCH H (1); BUTTER ¼-LB W/ LID W/ 516 PLANTATION IVY ETCH WEAR (1)  |
| 339 | 1503    | CRYSTOLITE CANDY BOX W/ LID 3-PRT H (1); 1521 QUILT CANDY BOX W/ LID H (1)   |
| 340 | 1951    | CABOCHON CANDY W/ LID W/ 1025 ARCADIA CUT H (1); CANDELETTE H (PR); MINT FTD W/ 1072 SOUTHWIND CUT H (1) (4-PC TOTAL)  |
| 341 | 1519    | WAVERLY CHOCOLATE BOX W/ LID W/ 507 ORCHID ETCH H  |
| 342 | 1469    | RIDGELEIGH ICE TUB H   |
| 343 | 1170    | PLEAT & PANEL COMFORT W/ LID SHORT FTD FLAMINGO H (1); LEMON DISH W/ LID FLAMINGO H (1)  |
| 344 | 1509    | QUEEN ANN SAUCER CANDLEBASE 3" (PR); CANDLE HOLDER FTD 2-HDL (PR) (4-PC TOTAL)   |
| 345 | 1184    | YEOMAN LEMON DISH W/ LID SAHARA H (1); LEMON DISH W/ LID FLAMINGO H (1)  |
| 346 | 114     | PLUTO C'STICK HAWTHORNE (PR)   |
| 347 | 1508    | KREIMER CARD CASE  |
| 348 | 7013    | THUMBPRINT & ANGLE PUFF BOX NO LID H F (1); 5 CAITLIN ROSE PUFF BOX NO LID H (1)   |
| 349 | 1183    | REVERE PUFF BOX W/ GLASS LID W/ UNK CUT H  |
| 350 | 16      | SUSANNEH PUFF BOX W/ METAL LID H (1); HAIR RECEIVER LID ONLY W/ UNK CUT H (1); HAIR RECEIVER H (1); PUFF BOX NO LID H DATED (1) (4-PC TOTAL)   |
| 351 | 351     | PRISCILLA CATSUP   |
| 352 | 459     | ROUND COLONIAL BASKET W/ UNK CUT H   |
| 353 | 417     | DOUBLE RIB & PANEL JUG ½-GAL H   |
| 354 | 1220    | PUNTY BAND JUG 3-PINT WEAR   |
| 355 | 1615    | FLAME C'STICK 2-LITE H (PR)  |
| 356 | 1447    | ROCOCO C'STICK 2-LITE H (PR)   |
| 357 | 128     | LIBERTY C'STICK MOONGLEAM H (PR)   |
| 358 | 114     | PLUTO C'STICK MOONGLEAM (PR)   |
| 359 | 1425    | VICTORIAN C'STICK 2-LITE H (PR)  |

| Lot | Pattern | Description  |
|-----|---------|--|
| 360 | 118     | MISS MUFFET C'STICK NO OPTIC MOONGLEAM H (PR)  |
| 361 | 1       | HORSEHEAD TOY  |
| 362 | 1       | DONKEY (1); 1538 RABBIT PAPERWEIGHT (1)  |
| 363 | 10      | MALLARD WINGS DOWN H (1); 12 MALLARD WINGS UP H (1)  |
| 364 | 5       | CYGNET (1); 1550 DOLPHIN MATCHHOLDER (1)   |
| 365 | 2       | GIRAFFE HEAD TURNED  |
| 366 | 135     | EMPRESS C'STICK (PR)   |
| 367 | 1469    | RIDGELEIGH C'STICK 2-LITE W/ BOBECHE (PR)  |
| 368 | 25      | FEDERAL C'STICK 7" H (PR)  |
| 369 | 22      | WINDSOR C'STICK 9" (PR)  |
| 370 | 5       | PATRICIAN C'STICK 6" H (PR); 21 ARISTOCRAT C'STICK 7" (PR); 16 CLASSIC C'STICK 7" (PR) (6-PC TOTAL)  |
| 371 | 1504    | REGENCY C'BLOCK 2-LITE (PR); 32 SKIRTED PANEL HANDLED C'STICK H (PR); 31 JACK-BE-NIMBLE C'STICK TOY H (PR) (6-PC TOTAL)  |
| 372 | 128     | LIBERTY C'STICK (PR); 114 PLUTO C'STICK HAWKES CUT (PR) (4-PC TOTAL)   |
| 373 | 1469    | RIDGELEIGH COASTER ZIRCON  |
| 374 | 1503    | CRYSTOLITE PUFF BOX W /LID H (1); CREAM & SUGAR INDV ON TRAY H (3-PC SET) (4-PC TOTAL)   |
| 375 | 351     | PRISCILLA OIL 6-OZ H (2); 29 DOUBLE PANEL SALT & PEPPER SHORT METAL TOPS (1-SET); 393 NARROW FLUTE TRAY (1) (5-PC TOTAL)   |
| 376 | 129     | TRICORN C'STICK FLAMINGO H (1-ONLY); 136 TRIPLEX C'STICK SAHARA (1-ONLY)   |
| 377 | 341     | PURITAN TEA CADDY SMALL H (1); TEA CADDY LGE H (1)   |
| 378 | 473     | NARROW FLUTE W/ RIM DICE SUGAR W/ CREAM H (2-PC SET); 393 NARROW FLUTE DOMINO SUGAR H (1)  |
| 379 | 517     | DANIEL PITCHER 1-QT HDL C (1); 197 DANIEL TUMBLER H (1)  |
| 380 | 1433    | THUMBPRINT & PANEL C'STICK MOONGLEAM (PR)  |
| 381 | 3416    | BARBARA FRITCHIE BRANDY H  |
| 382 | 5040    | LARIAT CORDIAL 2-LOOP W/ 980 MOONGLO CUT   |
| 383 | 5013    | SHASTA CORDIAL W/ UNK LAUREL CUT (1); COCKTAIL (1)   |
| 384 | 6003    | TEMPO CORDIAL W/ UNK HEISEY CUT H  |
| 385 | 5078    | PARK AVENUE CORDIAL H  |
| 386 | 6091    | CABOCHON CORDIAL W/ 1072 SOUTHWIND CUT   |
| 387 | 3411    | MONTE CRISTO CORDIAL W/ 851 KALARAMA CUT   |
| 388 | 4044    | NEW ERA CORDIAL (1); 5022 GRACEFUL CORDIAL (1)   |
| 389 | 300     | PEERLESS CORDIAL (3); 341 PURITAN CORDIAL H (1) (4-PC TOTAL)   |
| 390 | 1180    | BRAZIL NUT FLAMINGO H (1); NUT MOONGLEAM WORN GOLD H (1)   |
| 391 | 1252    | TWIST NUT H (1); NUT MOONGLEAM H (1); FLAMINGO H (1) (3-PC TOTAL)  |
| 392 | 1252    | TWIST NUT MARIGOLD   |
| 393 | 1229    | OCTAGON NUT NO OPTIC H (1); NUT NO OPTIC MOONGLEAM H (1); NUT D.O. FLAMINGO H (1); NUT D.O. SAHARA H (1)(4-PC TOTAL)   |
| 394 | 1229    | OCTAGON NUT NO OPTIC MARIGOLD H  |
| 395 | 1229    | OCTAGON NUT NO OPTIC HAWTHORNE H   |
| 396 | 473     | NARROW FLUTE W/ RIM SALTED NUT H (1); SALTED NUT MOONGLEAM H (1)   |
| 397 | 1502    | CRYSTOLITE C'BLOCK SWIRL (PR); 1503 CRYSTOLITE C'BLOCK (PR) (4-PC TOTAL)   |
| 398 | 1509    | QUEEN ANN CANDELABRA 1-LITE (PR)   |
| 399 | 135     | EMPRESS C'STICK FLAMINGO (PR)  |
| 400 | 126     | TROPHY C'STICK FLAMINGO (PR)   |
| 401 | 120     | OVERLAPPING SWIRL C'STICK MOONGLEAM (PR)   |
| 402 | 1485    | SATURN C'STICK 1-LITE (PR)   |
| 403 | 132     | SUNBURST C'STICK FLAMINGO (PR)   |
| 404 | 1231    | RIBBED OCTAGON C'STICK MOONGLEAM (PR)  |
| 405 | 99      | LITTLE SQUATTER C'STICK FLAMINGO (PR); C'STICK MOONGLEAM (PR); C'STICK LITE H (PR) (6-PC TOTAL)  |
| 406 | 1445    | GRAPE CLUSTER C'STICK 1-LITE (PR)  |
| 407 | 1540    | LARIAT C'STICK 3-LITE (PR)   |
| 408 | 1401    | EMPRESS C'STICK D.F. H (PR)  |
| 409 | 1401    | EMPRESS C'STICK D.F. FLAMINGO H (PR)   |
| 410 | 1521    | QUILT CIG BOX BOTTOM ONLY (1); 1533 WAMPUM CIG BOX COVER ONLY PAPER LABEL (1)  |
| 411 | 1255    | PINEAPPLE & FAN BUTTER W/ LID  |
| 412 | 1220    | PUNTY BAND BUTTER W/ LID F   |
| 413 | 1567    | PLANTATION BUTTER W/ LID RND H   |
| 414 | 1280    | WINGED SCROLL BUTTER W/ LID GOLD EMERALD (1); CREAM GOLD EMERALD (1); SPOONER GOLD EMERALD (1) (3-PC TOTAL)  |
| 415 | 1519    | WAVERLY BUTTER W/ LID W 507 ORCHID ETCH (1); BUTTER W/ LID W/ UNK CUT (1)  |
| 416 | 1102    | CRAGG PUNCH CUP H (1); 1295 BEAD SWAG TANKARD GOLD (1); 1225 PLAIN BAND BUTTER BOTTOM ONLY TOY H (1); 1280 WINGED SCROLL CIG HOLDER CUSTARD (1); 1295 BEAD SWAG TUMBLER FLORAL & GOLD OPAL (1); 1255 PINEAPPLE & FAN MUSTARD NO LID WORN GOLD (1); TUMBLER GOLD EMERALD (1) (7-PC TOTAL) |
| 417 | 315     | PANELED CANE SPOONER H SUN PURPLE (1); JELLY 1-HDL H (1)   |

| Lot | Pattern | Description   |
|-----|---------|---|
| 418 | 337     | TOURAINÉ JELLY TRICORN H (1); 343 SUNBURST JELLY 1-HDL H RIM ROUGH (1)  |
| 419 | 393     | NARROW FLUTE JELLY 1-HDL H (1); 1183 REVERE JELLY 1-HDL H (1); 451 CROSS-LINED FLUTE JELLY 1-HDL H (1) (3-PC TOTAL)   |
| 420 | 433     | GREEK KEY BUTTER W/ LID H   |
| 421 | 433     | GREEK KEY JELLY 2-HDL LOW FTD NO LID H  |
| 422 | 433     | GREEK KEY JELLY 1-HDL H   |
| 423 | 1776    | KALONYAL JELLY 5" FTD CRIMPED H (1); JELLY 1-HDL CRIMPED H (1); JELLY 1-HDL TRICORN H (1) (3-PC TOTAL)  |
| 424 | 300     | PEERLESS JELLY 5" FTD SHALLOW H (1); 1201 FANDANGO JELLY 4 ½" FTD H (1)   |
| 425 | 341     | PURITAN JELLY 5" FTD H (1); JELLY 5" FTD CRIMPED H (1)  |
| 426 | 1541    | ATHENA MAYO (1); UNDERPLATE (1)   |
| 427 | 359     | SYRUP 12-OZ H   |
| 428 | 353     | MEDIUM FLAT PANEL SYRUP 5-OZ H (1); SYRUP 7-OZ H DATED (1); 371 DELANEY SYRUP 7-OZ HDL R (1) (3-PC TOTAL)   |
| 429 | 372     | MCGRADY SYRUP 5-OZ MOONGLEAM H (1); SYRUP 5-OZ FLAMINGO H (1); SYRUP 7-OZ FLAMINGO (1) (3-PC TOTAL)   |
| 430 | 305     | PUNTY & DIAMOND POINT SUGAR SIFTER (1); CREAM INDV (1); BITTERS BOTTLE NO-TUBE (1) (3-PC TOTAL)   |
| 431 | 433     | GREEK KEY ICE TUB SMALL H RIM ROUGH (1); ICE TUB INDV NO LID H (1); OIL 2-OZ W/ #2 STOPPER (1); OIL 2-OZ NO STOPPER (1) (4-PC TOTAL)  |
| 432 | 351     | PRISCILLA NUT H   |
| 433 | 4044    | NEW ERA NUT   |
| 434 | 1183    | REVERE BUTTER PAT W/ UNK CUT H  |
| 435 | 1506    | PROVINCIAL NUT H (1); 1509 QUEEN ANN NUT (1); 1503 CRYSTOLITE LEAF NUT (1); 1469 RIDGELEIGH NUT 2-PRT H (1) (4-PC TOTAL)  |
| 436 | 1183    | REVERE CANDY BOX W/ LID 6" H  |
| 437 | 1201    | FANDANGO SALT INDV (1); 1205 FANCY LOOP SALT INDV (1); 1220 PUNTY BAND SALT INDV (1) (3-PC TOTAL)   |
| 438 | 1184    | YEOMAN SALT INDV FLAMINGO (1); SALT INDV MOONGLEAM (1); 1183 REVERE SALT INDV H (1); 393 NARROW FLUTE SALT INDV H (1); 331 COLONIAL PANEL SALT INDV H (1) (5-PC TOTAL)  |
| 439 | 325     | PILLOWS SALT INDV H   |
| 440 | 1205    | FANCY LOOP TOOTHPICK EMERALD WORN GOLD (1); 1295 PINEAPPLE & FAN TOOTHPICK EMERALD H WORN GOLD (1)  |
| 441 | 379     | URN TOOTHPICK H   |
| 442 | 1184    | YEOMAN BAR H (1); BAR SAHARA H (1)  |
| 443 | 3397    | GASCONY WINE SAHARA PAPER LABEL   |
| 444 | 1404    | OLD SANDWICH BAR SAHARA H   |
| 445 | 2052    | GREAT SCOTT BAR W/ 462 FOX CHASE ETCH   |
| 446 | 2401    | OAKWOOD BAR FLAMINGO  |
| 447 | 2401    | OAKWOOD SODA 5-OZ W/ 448 OLD COLONY ETCH SAHARA H   |
| 448 | 242     | WATER BAR H (1); 1486 COLEPORT BAR H (1)  |
| 449 | 1428    | WARWICK CIG HOLDER SAHARA H MISMATCHED COLORS (2)   |
| 450 | 1252    | TWIST BON BON INDV FLAMINGO H   |
| 451 | 6       | MAYO LADLE W/ UNK CUT H (1); #6 MAYO LADLE FLAMINGO H (1); #6 MAYO LADLE MOONGLEAM H (1) (3-PC TOTAL)   |
| 452 | 6       | MAYO LADLE W/ UNK CUT H (1); #6 MAYO LADLE FLAMINGO H (1)   |
| 453 | 341     | PURITAN SPOONER FTD H   |
| 454 | 351     | PRISCILLA ALE 8-OZ H (1); 1519 WAVERLY MAYO H (1); 1185 YEOMAN CELERY 12" FLAMINGO H (1) (3-PC TOTAL)   |
| 455 | 1401    | EMPRESS SALT & PEPPER METAL TOPS FLAMINGO (1-SET)   |
| 456 | 1401    | EMPRESS SALT & PEPPER GLASS TOPS SAHARA (1-SET); SALT & PEPPER METAL TOPS SAHARA (1-SET) (4-PC TOTAL)   |
| 457 | 42      | ELEGANCE SALT & PEPPER METAL TOPS FLAMINGO (1-SET)  |
| 458 | 1401    | EMPRESS SALT & PEPPER GLASS TOPS 1-CLOUDY (1-SET)   |
| 459 | 42      | ELEGANCE SALT & PEPPER METAL TOPS W/ 447 EMPRESS ETCH (1-SET)   |
| 460 | 10      | SMALL SQUARE SALT & PEPPER METAL TOPS H (1-SET)   |
| 461 | 1590    | ZODIAC SALT & PEPPER PLASTIC TOPS H (1-SET)   |
| 462 | 1425    | VICTORIAN SALT & PEPPER BARREL SANITARY TOPS (1-SET)  |
| 463 | 1255    | PINEAPPLE & FAN SALT & PEPPER #3 SANITARY TOPS (1-SET); SALT & PEPPER #2 METAL TOPS (1-SET) (4-PC TOTAL)  |
| 464 | 1519    | WAVERLY SALT & PEPPER SHORT METAL TOPS H (1-SET); SALT & PEPPER TALL METAL TOPS W/ 515 HEISEY ROSE ETCH 1-CLOUDY (1-SET)  |
| 465 | 150     | BANDED FLUTE SALT & PEPPER SANITARY TOPS 1-SPLIT (1-SET)  |
| 466 | 305     | PUNTY & DIAMOND POINT SALT & PEPPER #3 METAL TOPS (1-SET)   |
| 467 | 1220    | PUNTY BAND SALT & PEPPER 1-METAL TOP SOUV "GETTYSBURG 1863" ROSEBUD CUSTARD   |
| 468 | 333     | WALDORF ASTORIA SALT & PEPPER METAL TOPS (1-SET)  |
| 469 | 393     | NARROW FLUTE OIL 4-OZ W/ #10 STOPPER (1); 354 WIDE FLAT PANEL OIL 2-OZ W/ #8 STOPPER (1); 300 PEERLESS OIL 4-OZ W/ #1 STOPPER B (1); 341 PURITAN OIL 2-OZ W/ #2 STOPPER H (1); OIL 6-OZ W/ #2 STOPPER W/ UNK CUT H (1) (5-PC TOTAL) |
| 470 | 461     | CONVEX CIRCLE OIL W/ #8 STOPPER H F (1); 150 BANDED FLUTE OIL 4-OZ W/ #1 STOPPER X (1); OIL 6-OZ W/ #1 STOPPER X (1) (3-PC TOTAL)   |
| 471 | 1951    | CABOCHON OIL (1); 1503 CRYSTOLITE OIL (1); 1567 PLANTATION OIL (1) (3-PC TOTAL)   |



| Lot     | Pattern | Description   |
|---------|---------|---|
| 472     | 1405    | IPSWICH OIL (1); 1404 OLD SANDWICH OIL (1); 1401 EMPRESS OIL SUN PURPLE (1); 352 FLAT PANEL OIL 2-OZ W/ #6 STOPPER X H (1) (4-PC TOTAL)   |
| 473     | 1235    | BEADED PANEL & SUNBURST OIL 4-OZ W/ #4 STOPPER (1); 1250 GROOVE & SLASH OIL 4-OZ W #8 STOPPER (1)   |
| 474     | 1220    | PUNTY BAND OIL (1); 1225 PLAIN BAND OIL 6-OZ (1); 1295 BEAD SWAG OIL WORN GOLD (1) (3-PC TOTAL)   |
| 475     | 1205    | FANCY LOOP OIL 4-OZ (1); CREAM & SUGAR INDV (1-SET) (3-PC TOTAL)  |
| 476     | 407     | COARSE RIB OIL (1); CREAM & SUGAR W/ LID (1-SET) (3-PC TOTAL)   |
| 477     | 1485    | SATURN OIL 3-OZ LATE DESIGN (1); CREAM & SUGAR W/ LID LATE DESIGN H (1-SET) (3-PC TOTAL)  |
| 478     | 1632    | LODESTAR CREAM NO HANDLE DAWN H (1); 1951 CABOCHON CREAM DAWN H (1)   |
| 479     | 1020    | PHYLLIS CREAM & SUGAR W.O. MOONGLEAM H MIS-MATCHED COLOR (1-SET)  |
| 480     | 1021    | CHRISTINE CREAM & SUGAR W/ UNK CUT H (1-SET)  |
| 481     | 341     | OLD WILLIAMSBURG CREAM & SUGAR (1-SET)  |
| 482     | 473     | NARROW FLUTE W/ RIM STACK SET: CREAM-SUGAR-BUTTER H (3-PC SET)  |
| 483     | 1183 ½  | REVERE CREAM & SUGAR W/ UNK CUT H SUN PURPLE (1-SET); 1145 REVERE MUSTARD WORN GOLD (1) (3-PC TOTAL)  |
| 484     | 393     | NARROW FLUTE CREAM & SUGAR INDV FLAMINGO (1-SET)  |
| 485     | 1567    | PLANTATION SALT & PEPPER METAL TOPS H (1-SET)   |
| 486     | 1404    | OLD SANDWICH SALT & PEPPER METAL TOPS (1-SET)   |
| 487     | 1205    | FANCY LOOP #3 SALT & PEPPER METAL TOPS (1-SET)  |
| 488     | 160     | LOCKET ON CHAIN #3 SALT SHAKER METAL TOP (1); 335 PRINCE OF WALES PLUMES #3 SALT SHAKER NON-GLASS SANITARY TOP (1)  |
| 489     | 1255    | PINEAPPLE & FAN #1 SALT SHAKER METAL TOP (1); 1201 FANDANGO #1 SALT SHAKER METAL TOP (1)  |
| 490     | 1235    | BEADED PANEL & SUNBURST #1 SALT SHAKER METAL TOP (1); 1225 PLAIN BAND #1 SALT SHAKER METAL TOP (1)  |
| 491     | 1485    | SATURN SALT & PEPPER METAL TOPS H (1-SET); 1469 RIDGELEIGH SALT & PEPPER CONE METAL TOPS H (1-SET); 1503 CRYSTOLITE SALT & PEPPER METAL TOPS H (1-SET) (6-PC TOTAL)                                     |
| 492     | 48      | KOORSALT & PEPPER METAL TOPS FLAMINGO (1-SET); 49 YORKSHIRE SALT & PEPPER 1-GLASS TOP 1-METAL TOP 1-CLOUDY FLAMINGO (1-SET); 52 SHORT INDIVIDUAL SALT & PEPPER GLASS TOPS FLAMINGO (1-SET) (6-PC TOTAL) |
| 493     | 46      | CHESHIRE SALT SHAKER METAL TOP MOONGLEAM FT (1); 53 TALL INDIVIDUAL SALT & PEPPER NO TOPS MOONGLEAM (1-SET) (3-PC TOTAL)  |
| 494     | 40      | MEDIUM CONE SALT & PEPPER METAL TOPS H W/ UNK CUT (1-SET)   |
| 495     | 341     | PURITAN #2 SALT & PEPPER METAL TOPS H (1-SET)   |
| 496     | 24      | MEDIUM PANEL SALT & PEPPER 1-GLASS TOP 1-NO TOP H (1-SET); 25 TALL PANEL SALT & PEPPER METAL TOPS (1-SET); SALT SHAKER NO TOP (1) (5-PC TOTAL)  |
| 497     | 23      | SHORT PANEL SALT & PEPPER METAL TOPS W/ UNK CUT (1-SET); 24 MEDIUM PANEL SALT & PEPPER PLASTIC TOPS W/ UNK CUT H (1-SET) (4-PC TOTAL)   |
| 498     | 52      | SHORT INDIVIDUAL SALT & PEPPER GLASS TOPS H (1-SET); 29 SHORT DOUBLE PANEL SALT SHAKER METAL TOP H (1) (3-PC TOTAL)   |
| 499     | 13      | MEDIUM EIGHT FLUTE SALT & PEPPER METAL TOPS (1-SET); SALT & PEPPER GLASS TOPS (1-SET) (4-PC TOTAL)  |
| 500     | 14      | REGAN SALT & PEPPER METAL TOPS H (1-SET)  |
| 501     | 34      | SALT & PEPPER METAL TOPS H (1-SET)  |
| (D) 502 | 301     | OLD WILLIAMSBURG HURRICANE BASE SHORT W/ 300 SHADE 12" W/ PAINTED DOGWOOD CHARLETON DECOR ON ALL (PR)   |
| (D) 503 | 365     | QUEEN ANNE PUNCH BOWL 17" SHALLOW NO BASE   |
| (D) 504 | 1401    | EMPRESS PLATE 7" SQ TANGERINE H (2)   |
| (D) 505 | 337     | TOURNAINE GOBLET AMBER H  |
| (D) 506 | 2       | FIGHTING ROOSTER 1-SUN PURPLE (2)   |
| (D) 507 | 335     | PRINCE OF WALES PLUMES SPOONER GOLD   |
| (D) 508 | 110     | SANDWICH DOLPHIN LAMP BASE W/ UNK IDEAL CO. CUT MOONGLEAM   |
| (D) 509 | 500     | OCTAGON BASKET MOONGLEAM H  |
| (D) 510 | 1951    | CABOCHON CANDY BOX NO LID LIMELIGHT H   |
| (D) 511 | 305     | PUNTY & DIAMOND POINT MOLASSES 12-OZ  |



FSA 272



FSA 8



FSA 33

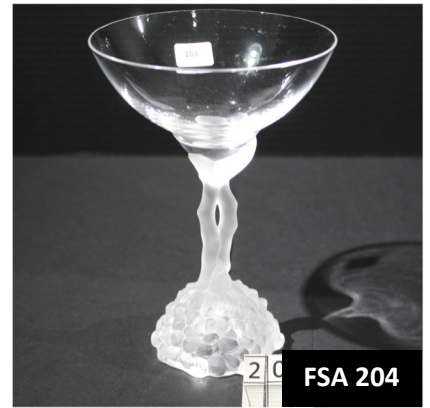




FSA 21



FSA 181



FSA 204



FSA 13



FSA 189



FSA 74



FSA 221



FSA 258



FSA 46



FSA 298



FSA 96-98

# 2024 DAVE SPAHR FALL SELECT AUCTION

340 Lots    Saturday October 19th    Online and In-Person

| Lot    | Pattern | Description   |
|--------|---------|---|
| 1      | 1951    | CABOCHON MILK PITCHER H   |
| 2      | 305     | PUNTY & DIAMOND POINT TANKARD   |
| 3      | 365     | QUEEN ANNE PITCHER 1-PINT H   |
| 4      | 407     | COARSE RIB TANKARD H  |
| 5      | 515     | JUG W/ LID H FAIR GOLD  |
| 6      | 1170    | PLEAT & PANEL PITCHER ICE LIP SAHARA H  |
| 7      | 3480    | KOORS PITCHER FLAMINGO  |
| 8      | 427     | DAISY & LEAVES PITCHER 3-PINT H   |
| 9      | 4164    | GALLAGHER JUG W/ 448 OLD COLONY ETCH SAHARA   |
| 10     | 427 ½   | ORIENTAL POPPY PITCHER ½-GAL H  |
| 11     | 1776    | KALONYAL PITCHER PRESSED HDL H  |
| 12     | 1401    | EMPRESS VASE 9" FLAMINGO H  |
| 13     | 300 ½   | PEERLESS VASE 9 ½" EMERALD  |
| 14     | 1280    | WINGED SCROLL SWUNG VASE 12" CUSTARD  |
| 15     | 4045    | HERON BALL VASE 4" MOONGLEAM  |
| 16     | 4220    | JANICE VASE 4" MOONGLEAM  |
| 17     | 4220    | JANICE VASE 4" SAHARA   |
| 18     | 1433    | THUMBPRINT & PANEL VASE 8 ½" STRAIGHT SAHARA H  |
| 19     | 1421    | HI-LO VASE SAHARA   |
| 20     | 1519    | WAVERLY SWUNG VASE 10"  |
| 21     | 1428    | WARWICK STRETCH VASE 10 ¾"  |
| 22     | 1420    | TULIP VASE  |
| 23     | 352     | FLAT PANEL PERFORATED LID FOR VASE  |
| 24     | 453     | PUSSY WILLOW VASE 8 ½" H  |
| (D) 25 | 391     | ROSE'S VASE 8" H  |
| 26     | 1567    | PLANTATION VASE 9"  |
| 27     | 4209    | OVAL VASE 9" MOONGLEAM  |
| 28     | 4214    | ELAINE VASE 7" D.O. FLAMINGO  |
| 29     | 1401    | EMPRESS VASE 8" 3-HDL W/ 454 ANTARCTIC ETCH H   |
| 30     | 4214    | ELAINE VASE 7" D.O.   |
| 31     | 1280    | WINGED SCROLL TANKARD EXCELLENT GOLD EMERALD  |
| 32     | 1201    | FANDANGO SUGAR SIFTER   |
| 33     | 1201    | FANDANGO CAKE BASKET f  |
| 34     | 1255    | PINEAPPLE & FAN ROSE BOWL 2" EMERALD  |
| 35     | 1255    | PINEAPPLE & FAN ROSE BOWL 4" EXCELLENT GOLD EMERALD   |
| 36     | 1255    | PINEAPPLE & FAN JUG ½-GAL EMERALD POOR GOLD   |
| 37     | 1205    | FANCY LOOP POTPOURRI JAR LGE  |
| 38     | 1205    | FANCY LOOP ROSE BOWL 7"   |
| 39     | 352     | FLAT PANEL ICE CREAM CONE HOLDER STRAIGHT   |
| 40     | 305     | PUNTY & DIAMOND POINT SUGAR SIFTER f STERLING TOP   |
| 41     | 305     | PUNTY & DIAMOND POINT CRACKER JAR W/ LID  |
| (D) 42 | 305     | PUNTY & DIAMOND POINT CREAM & SUGAR HOTEL (1-SET)   |
| 43     | 351     | PRISCILLA FOOTED BOWL EXTRA HIGH 11 ½" H  |
| 44     | 343     | SUNBURST ORCHID VASE  |
| 45     | 1776    | KALONYAL MOLASSES NO THUMB REST   |
| 46     | 339     | CONTINENTAL WATER BOTTLE FLAMINGO   |
| (D) 47 | 433     | GREEK KEY CHERRY JAR LGE H  |
| 48     | 433     | GREEK KEY SALT & PEPPER METAL TOPS (1-SET)  |
| 49     | 433     | GREEK KEY WATER BOTTLE  |
| 50     | 433     | GREEK KEY EGG CUP LGE STRAIGHT H  |
| 51     | 433     | GREEK KEY PUNCH BOWL H (1); BASE H (1); CUP H (11) ALL FLAMINGO (13-PC TOTAL)                                 |
| (D) 52 | 1295    | BEAD SWAG TABLE SET: CREAM HDL C-SUGAR W/ LID-BUTTER W/ LID- SPOONER ALL FLORAL ENGRAVED MONO "MR" (4-PC SET) |
| 53     | 315     | PANELED CANE OIL  |
| 54     | 357     | PRISON STRIPE JELLY FTD 2-HDL H   |
| 55     | 325     | PILLOWS MOLASSES  |
| 56     | 325     | PILLOWS SUGAR W/ LID HOTEL SQUAT H f  |



| Lot    | Pattern | Description  |
|--------|---------|--|
| 57     | 325     | PILLOWS ROSE BOWL FTD H  |
| 58     | 3416    | BARBARA FRITCHIE CORDIAL COBALT BOWL H   |
| 59     | 3416    | BARBARA FRITCHIE CORDIAL SAHARA BOWL H   |
| 60     | 3416    | BARBARA FRITCHIE BRANDY W/ 850 DEL MONTE CUT   |
| 61     | 3411    | MONTE CRISTO CORDIAL W/ 851 KALARAMA CUT   |
| 62     | 3404    | SPANISH CORDIAL COBALT BOWL  |
| 63     | 3380    | OLD DOMINION CORDIAL SAHARA  |
| 64     | 3389    | DUQUESNE CORDIAL W/ UNK CUT  |
| 65     | 3408    | JAMESTOWN CORDIAL W/ UNK CUT   |
| 66     | 3394    | SAXONY CORDIAL SAHARA  |
| 67     | 3368    | ALBEMARLE CORDIAL MOONGLEAM STEM & FT H  |
| 68     | 3390    | CARCASSONNE CORDIAL SAHARA   |
| 69     | 5082    | MID-CENTURY CORDIAL H  |
| 70     | 5077    | LEGIONNAIRE CORDIAL W/ 1025 ARCADIA CUT H  |
| 71     | 5024    | OXFORD CORDIAL TALL W/ 964 MARYLAND CUT H  |
| 72     | 5086    | PLANTATION IVY CORDIAL W/ 516 PLANTATION IVY ETCH H  |
| (D) 73 | 5058    | GOOSE STEM CORDIAL   |
| 74     | 983     | LA PAVILLON SHERRY   |
| 75     | 160     | LOCKET ON CHAIN WINE EMERALD   |
| 76     | 50      | CABOCHON DISPLAY SIGN FROSTED  |
| 77     | 417     | DOUBLE RIB & PANEL MUSTARD W/ LID FLAMINGO H (1); MUSTARD W/ LID MOONGLEAM H (1)   |
| 78     | 355     | QUATOR MUSTARD W/ LID W/ UNK CUT H   |
| 79     | 1184    | YEOMAN MUSTARD W/ LID SAHARA H   |
| 80     | 1184    | YEOMAN MUSTARD W/ LID MOONGLEAM H  |
| 81     | 1401    | EMPRESS MUSTARD W/ LID FLAMINGO H  |
| 82     | 1401    | EMPRESS MUSTARD W/ LID SAHARA H  |
| 83     | 1401    | EMPRESS MUSTARD W/ LID MOONGLEAM H   |
| 84     | 1485    | SATURN MUSTARD W/ LID ATTACHED PADDLE H  |
| 85     | 1591    | STORYBOOK MUG ELEPHANT HDL H   |
| 86     | 1280    | WINGED SCROLL CIG HOLDER EMERALD BOTTOM f  |
| 87     | 394     | NARROW FLUTE DOMINO SUGAR SAHARA H   |
| 88     | 1469    | RIDGELEIGH CIG HOLDER RND SAHARA   |
| 89     | 1404    | OLD SANDWICH CIG HOLDER  |
| 90     | 1485    | SATURN ASHTRAY H   |
| 91     | 442     | MALTESE CROSS ASHTRAY FLAMINGO H WEAR  |
| 92     | 6       | MAYO LADLE H (1); MAYO LADLE FLAMINGO H (1); MAYO LADLE MOONGLEAM H (1); MAYO LADLE HAWTHORNE H (1); MAYO LADLE SAHARA H (1) (5-PC TOTAL)) |
| 93     | 7       | MAYO LADLE H (1); MAYO LADLE SAHARA H (1)  |
| 94     | 6       | MAYO LADLE HAWTHORNE H   |
| 95     | 10      | CARTER INKWELL H   |
| 96     | 413     | TUDOR CIG JAR W/ LID FLAMINGO H  |
| 97     | 413     | TUDOR CIG JAR W/ LID MOONGLEAM H   |
| 98     | 411     | TUDOR CIG JAR W/ ASHTRAY TOP H   |
| 99     | 366     | SALEM ASHTRAY & MATCHHOLDER FLAMINGO H   |
| 100    | 359     | CHESTERFIELD ASHTRAY & MATCHHOLDER MOONGLEAM H   |
| 101    | 360     | WINSTON ASHTRAY & MATCHSTAND FLAMINGO H  |
| 102    | 1401    | EMPRESS ASHTRAY COBALT H   |
| 103    | 1401    | EMPRESS ASHTRAY MOONGLEAM H  |
| 104    | 1612    | BOTANICAL ASHTRAY FROSTED H  |
| 105    | 358     | SOLITAIRE ASHTRAY SAHARA (1); ASHTRAY W/ UNK CUT FLAMINGO (1)  |
| 106    | 1286    | CUPID & PSYCHE ASHTRAY FLAMINGO (1); ASHTRAY MOONGLEAM (1)   |
| 107    | 1186    | YEOMAN ASHTRAY H   |
| 108    | 1186    | YEOMAN ASHTRAY SAHARA  |
| 109    | 361     | IRWIN CIG HOLDER-ASHTRAY SAHARA H  |
| 110    | 361     | IRWIN CIG HOLDER-ASHTRAY FLAMINGO H  |
| 111    | 352     | FLAT PANEL FRENCH DRESSING W/ MOONGLEAM STOPPER H  |
| 112    | 104     | GAZELLE  |
| 113    | 1       | BULL H   |
| 114    | 1       | FILLY HEAD FORWARD   |
| 115    | 1519    | WAVERLY LION TRINKET BOX H   |
| 116    | 1550    | DOLPHIN C'STICK (PR)   |

| Lot     | Pattern | Description   |
|---------|---------|---|
| 117     | 1601    | SLEEPING FOX ASHTRAY  |
| 118     | 1550    | DOLPHIN VASE H BOTTOM NOT GROUND  |
| 119     | 20      | WOOD DUCK   |
| 120     | 1       | AIREDALE  |
| 121     | 300     | OLD WILLIAMSBURG CANDLE LAMP W/ "C" PRISMS & 300 SHADE 9" W/ UNK CUT                                    |
| 122     | 429     | PLAIN PANEL RECESS CRUSHED FRUIT W/ LID 1-QT H  |
| 123     | 355     | QUATOR CRUSHED FRUIT FTD W/ LID H   |
| 124     | 352     | FLAT PANEL CRUSHED FRUIT W/ LID 2-QT H  |
| 125     | 357     | CRUSHED FRUIT FTD W/ LID H  |
| 126     | 4228    | FAVOR VASE SAHARA   |
| 127     | 4232    | FAVOR VASE SAHARA   |
| 128     | 4228    | FAVOR VASE  |
| 129     | 4231    | FAVOR VASE  |
| 130     | 4227    | ABRAMS FAVOR VASE   |
| 131     | 2401    | OAKWOOD BAR 2-OZ W/ 462 FOX CHASE ETCH PAPER LABEL (2)  |
| 132     | 2401    | OAKWOOD BAR 1 ½-OZ W/ 467 TALLY HO ETCH   |
| 133     | 2401    | OAKWOOD BAR 1 ½-OZ W/ 496 SKIER ETCH  |
| 134     | 3481    | GLENFORD BAR CHECKER OPTIC FLAMINGO   |
| 135     | 300 ½   | PEERLESS BAR STRAIGHT MOONGLEAM H   |
| 136     | 300 ½   | PEERLESS BAR STRAIGHT FLAMINGO H  |
| 137     | 305     | PUNTY & DIAMOND POINT SCENT BOTTLE STERLING TOP   |
| 138     | 1503    | CRYSTOLITE COLOGNE FULL DAUBER  |
| 139     | 1225    | PLAIN BAND COLOGNE f  |
| 140     | 516     | FAIRACRE COLOGNE FLAMINGO H   |
| 141     | 489     | JEANIE COLOGNE W/ #64 STOPPER H (1); 490 KAREN COLOGNE W/ #66 STOPPER H (1)                             |
| 142     | 305     | PUNTY & DIAMOND POINT #2 SALT & PEPPER STERLING TOPS (1-SET)  |
| 143     | 439     | RAISED LOOP SALT & PEPPER METAL TOPS (1-SET)  |
| 144     | 32      | CORBY SALT SHAKER METAL TOP   |
| 145     | 52      | SHORT INDIVIDUAL SALT & PEPPER SAHARA W/ GLASS TOPS SAHARA H (1-SET)                                    |
| 146     | 1469    | RIDGELEIGH BITTERS BOTTLE W/ TUBE   |
| 147     | 1503    | CRYSTOLITE BITTERS BOTTLE W/ TUBE   |
| 148     | 5074    | DRINK DECANTER INDV PAPER LABEL   |
| 149     | 1425    | VICTORIAN BUTTER W/ LID ¼-LB H  |
| (D) 150 | 1404    | OLD SANDWICH OIL MOONGLEAM H  |
| 151     | 1404    | OLD SANDWICH OIL FLAMINGO H   |
| 152     | 1252    | TWIST OIL 4-OZ SAHARA H   |
| 153     | 8042    | JELLY JAR 10-OZ TALL W/ SCREW TOP f   |
| 154     | 350     | PINWHEEL & FAN NAPPY 4 ½" VASELINE H  |
| 155     | 1189    | YEOMAN CREAM & SUGAR W/ LID INDV FLAMINGO H (1-SET)   |
| 156     | 1189    | YEOMAN CREAM & SUGAR W/ LID INDV SAHARA H (1-SET)   |
| 157     | 1405    | IPSWICH OIL SAHARA  |
| 158     | 372     | MCGRADY SYRUP 5-OZ W/ UNK CUT SAHARA H  |
| 159     | 351     | PRISCILLA NUT H   |
| 160     | 1417    | ARCH TUMBLERS: CRYSTAL (1); SAHARA (1); FLAMINGO (1); COBALT (1); MOONGLEAM (1); AMBER (1) (6-PC TOTAL) |
| 161     | 1417    | ARCH TUMBLER TOED H   |
| 162     | 1417    | ARCH TUMBLER TOED TANGERINE H   |
| 163     | 412     | TUDOR ICE TEA HDL FLAMINGO H  |
| 164     | 1401    | EMPRESS TUMBLER D.F. SAHARA H   |
| 165     | 160     | TUMBLER 9-OZ HEAVY SHAM ROUNDED & PUNTIED BOTTOM H  |
| 166     | 173     | TUMBLER 8-OZ SQUAT PLAIN BOTTOM H   |
| 167     | 126     | CANE AND HOBSTAR TUMBLER  |
| 168     | 300     | PEERLESS SCHOEPPEN 12-OZ FLAMINGO H   |
| 169     | 8118    | TUMBLER 8-OZ SATURN OPTIC W/ ELABORATE UNK RUBY CUT-TO-CLEAR STAG SCENE H                               |
| 170     | 201     | HARVEY COLONIAL TUMBLER AMBER DIFFERENT SHADES (2)  |
| 171     | 1460    | FLAME TUMBLER H   |
| 172     | 1590    | ZODIAC TUMBLER H  |
| 173     | 299     | SCOTTY TODDY FLAMINGO H (1); TODDY MOONGLEAM H (1), TODDY SAHARA H (1) (3-PC TOTAL)                     |
| 174     | 1184    | YEOMAN CREAM BOTTOM NOT GROUND & SUGAR W/ LID HAWTHORNE H (1-SET)                                       |
| 175     | 1403    | HALF CIRCLE CREAM & SUGAR MOONGLEAM H (1-SET)   |
| 176     | 1403    | HALF CIRCLE CREAM & SUGAR FLAMINGO H (1-SET)  |
| 177     | 1401    | EMPRESS CREAM & SUGAR D.F. W/ 448 OLD COLONY ETCH SAHARA (1-SET)  |

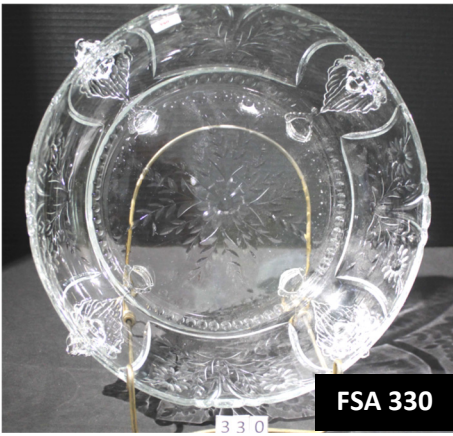
| Lot     | Pattern  | Description  |
|---------|----------|--|
| 178     | 1402     | EMPRESS CREAM & SUGAR RND FT FLAMINGO H (1-SET)                                |
| 179     | 1252     | TWIST CREAM & SUGAR INDV FLAMINGO (1-SET)                                      |
| 180     | 1401     | EMPRESS CREAM & SUGAR INDV ON TRAY FLAMINGO H (3-PC SET)                       |
| (D) 181 | 360      | CORBY CREAM & SUGAR W/ LID H (1-SET)   |
| (D) 182 | 3397     | GASCONY CREAM & SUGAR H (1-SET)  |
| (D) 183 | 417      | DOUBLE RIB & PANEL CREAM & SUGAR W/ LID H (1-SET)                              |
| 184     | 417      | DOUBLE RIB & PANEL BASKET HAWTHORNE H  |
| 185     | 461      | BANDED PICKET BASKET MOONGLEAM H   |
| 186     | 500      | OCTAGON BASKET H   |
| 187     | 463      | BONNET BASKET FLAMINGO   |
| 188     | 1405     | IPSWICH COCKTAIL SHAKER W/ STRAINER & STOPPER                                  |
| 189     | 4037     | CLARENCE OVAL SHERRY DECANTER W/ SAND BLAST CLASSICAL DECOR SIGNED FRANZ GROSZ |
| 190     | 1404     | OLD SANDWICH DECANTER COBALT W/ CRYSTAL STOPPER H                              |
| 191     | 1404     | OLD SANDWICH BAR COBALT H  |
| 192     | 4004     | IMPROMPTU COCKTAIL SHAKER W/ STRAINER & STOPPER                                |
| 193     | 5058     | PENGUIN DECANTER 1-QT  |
| 194     | 3397     | GASCONY DECANTER SAHARA W/ CRYSTAL FT & STOPPER                                |
| 195     | 3397     | GASCONY DECANTER W/ 455 SPORTSMAN ETCH COBALT W/ CRYSTAL FT & STOPPER          |
| 196     | 1401     | EMPRESS CANDY BOX W/ LID W/ 454 ANTARCTIC ETCH                                 |
| 197     | 1184     | YEOMAN CANDY BOX W/ LID DEEP 6" W/ 447 EMPRESS ETCH FLAMINGO                   |
| 198     | 465      | RECESSED PANEL CANDY JAR W/ LID ½-LB MOONGLEAM                                 |
| 199     | 1540     | LARIAT CANDY BOX W/ LID 8 ½" W/ PLUME FINIAL H                                 |
| 200     | 1504     | REGENCY CANDY BOX W/ LID   |
| 201     | 1533     | WAMPUM CANDY BOX W/ LID H  |
| 202     | 7000     | SUNFLOWER CANDY W/ LID H   |
| 203     | 3368     | ALBEMARLE GOBLET MARIGOLD  |
| (D) 204 | 5064     | HYDRANGEA CHAMPAGNE FROSTED STEM & BASE  |
| 205     | 3366     | TROJAN GOBLET W/ 445 TROJAN ETCH H   |
| 206     | 5077     | LEGIONNAIRE GOBLET SULTANA STEM H  |
| 207     | 3365     | RAMSHORN GOBLET W/ 9008 SEA NYMPH ETCH H                                       |
| 208     | 5058     | GOOSE STEM SHERRY  |
| 209     | 5063     | BANTAM ROOSTER COCKTAIL  |
| 210     | 5074     | SEAHORSE STEM COCKTAIL H   |
| 211     | 5065     | COLT STEM COCKTAIL   |
| 212     | 1252     | TWIST GOBLET LUNCHEON MOONGLEAM H  |
| 213     | 1252     | TWIST WINE MOONGLEAM H (2)   |
| (D) 214 | 1225/109 | PETTICOAT DOLPHIN COMPORT FLAMINGO   |
| 215     | 1401     | EMPRESS COMPOTIER D.F. FLAMINGO H  |
| 216     | 3362     | CHARTER OAK COMPORT HI-FTD FLAMINGO  |
| 217     | 5003     | CRYSTOLITE COMPORT BLOWN   |
| 218     | 1401     | EMPRESS COMPOTIER D.F. SAHARA H  |
| 219     | 1541     | ATHENA CHEESE COMPORT W/ LID FTD   |
| 220     | 3350     | WABASH CANDY W/ LID MOONGLEAM FT & FINIAL H PAPER LABEL                        |
| 221     | 1486     | COLEPORT ICE BUCKET H  |
| 222     | 411      | TUDOR MUG H PAPER LABEL (2)  |
| 223     | 1404     | OLD SANDWICH BEER MUG 12-OZ SAHARA H   |
| 224     | 352      | FLAT PANEL CANDY W/ LID 2-LB H   |
| 225     | 358      | CANDY FTD W/ LID 2-LB  |
| 226     | 1405     | IPSWICH JUG HDL C (1); TUMBLER BASE f's (4) (5-PC TOTAL)                       |
| 227     | 105      | PEMBROKE CANDELABRA 9" MOONGLEAM (PR)  |
| 228     | 1447     | ROCOCO C'STICK 2-LITE (PR)   |
| 229     | 105      | PEMBROKE CANDELABRA 6" FLAMINGO H (PR)   |
| 230     | 1405     | IPSWICH CANDLEVASE INSERT ONLY COBALT H  |
| 231     | 109      | PETTICOAT DOLPHIN C'STICK FLAMINGO H (PR)                                      |
| 232     | 110      | SANDWICH DOLPHIN C'STICK FLAMINGO (PR)   |
| 233     | 1252     | TWIST C'STICK MARIGOLD H (PR)  |
| 234     | 1405     | IPSWICH C'STICK 6" 1-LITE H (PR)   |
| 235     | 1469     | RIDGELEIGH C'STICK 1-LITE DARK ZIRCON (PR)                                     |
| 236     | 21       | ARISTOCRAT C'STICK DESK 5" H (PR)  |
| 237     | 121      | PINWHEEL C'STICK HAWTHORNE H (PR)  |
| 238     | 1493     | WORLD C'STICK (PR)   |

| Lot     | Pattern | Description  |
|---------|---------|--|
| 239     | 1404    | OLD SANDWICH C'STICK SAHARA H PR   |
| 240     | 1404    | OLD SANDWICH C'STICK COBALT H (1-ONLY)   |
| 241     | 1469    | RIDGELEIGH CANDLEVASE SAHARA (PR)  |
| 242     | 136     | TRIPLEX C'STICK 3-LITE SAHARA (PR)   |
| 243     | 114     | PLUTO C'STICK SILVER OVERLAY HAWTHORNE (PR)  |
| 244     | 1509    | QUEEN ANN CANDLEHOLDER INDV 3" (1-ONLY)  |
| 245     | 31      | JACK-BE-NIMBLE C'STICK TOY SAHARA (1-ONLY)   |
| 246     | 1567    | PLANTATION EPERGNE C'STICK FTD H (1-ONLY)  |
| 247     | 1619    | BLOCK FIVE C'BLOCK W/ INSERT VASE 5"   |
| 248     | 1231    | RIBBED OCTAGON C'STICK SMALL TOP H   |
| 249     | 1401    | EMPRESS C'STICK D.F. MOONGLEAM H (PR)  |
| 250     | 1401    | EMPRESS C'STICK D.F. ALEXANDRITE H (PR)  |
| 251     | 27      | DAISY C'STICK 5" (PR)  |
| 252     | 1252    | TWIST RELISH 2-PT MOONGLEAM H  |
| 253     | 411     | TUDOR PRESERVE W/ LID HAWTHORNE H  |
| 254     | 1184    | YEOMAN PLATE 11" 4-PRT FLAMINGO H  |
| 255     | 1401    | EMPRESS MARMALADE W/ LID FLAMINGO H (1); #6 LADLE FLAMINGO H (1)   |
| 256     | 1401    | EMPRESS RELISH 4-PRT 12" SAHARA  |
| 257     | 1184    | YEOMAN CUP & SAUCER D.O. W/ 447 EMPRESS ETCH SAHARA H (5-SETS) (10-PC TOTAL)                               |
| 258     | 4225    | COBEL COCKTAIL SHAKER 1-QT (1); 4002 AQUA CALIENTE COCKTAIL (4) ALL W/ #1 SHORT SAILBOAT ETCH (5-PC TOTAL) |
| 259     | 811 ¾   | HOFFMAN HOUSE GOBLET 17-OZ W/ 462 FOX CHASE ETCH H   |
| 260     | 4163    | WHALEY MUG W/ 462 FOX CHASE ETCH H   |
| 261     | 3304    | UNIVERSAL WINE W/ 462 FOX CHASE ETCH   |
| 262     | 3417    | ADKINS BITTERS BOTTLE W/ 472 CIRCUS-LION TAMER ETCH  |
| 263     | 2401    | OAKWOOD SODA 10-OZ W/ 471 CIRCUS-RUBE ETCH   |
| 264     | 2401    | OAKWOOD OLD FASHION W/ 476 CIRCUS-WESTERN SCENE ETCH   |
| 265     | 2401    | OAKWOOD SODA 10-OZ W/ #3 MOTORBOAT ETCH  |
| 266     | 4225    | COBEL COCKTAIL SHAKER 2-QT W/ 118 ROOSTER STOPPER W/ #3 MOTORBOAT ETCH                                     |
| 267     | 6060    | COUNTRY CLUB SODA 18-OZ W/ 517 WINCHESTER ETCH   |
| 268     | 6060    | COUNTRY CLUB OLD FASHION 13-OZ W/ 517 WINCHESTER ETCH  |
| 269     | 4163    | WHALEY MUG W/ 464 HARLEQUIN ETCH   |
| 270     | 1466    | STAR RELISH 5-PRT W/ 5011 CHEVY CHASE ETCH   |
| 271     | 3417    | ADKINS BITTERS BOTTLE W/ 5011 CHEVY CHASE ETCH   |
| 272     | 4056    | CAESAR SALAD BOWL 11" W/ 5003 NIMROD ETCH  |
| 273     | 1184    | YEOMAN PLATE 14" W/ 5003 NIMROD ETCH   |
| 274     | 4035    | BETHEL DECANTER W/ STOPPER B W/ 5003 NIMROD ETCH   |
| 275     | 4225    | COBEL COCKTAIL SHAKER W/ 118 ROOSTER HEAD STOPPER W/ 467 TALLY HO ETCH                                     |
| (D) 276 | 4163    | WHALEY BEER MUG 16-OZ W/ 467 TALLY HO ETCH H   |
| 277     | 3397    | GASCONY SODA 12-OZ W/ 459 FISHERMAN ETCH (2)   |
| 278     | 4163    | WHALEY MUG W/ 459 FISHERMAN ETCH   |
| 279     | 4225    | COBEL COCKTAIL SHAKER 1-QT W/ 459 FISHERMAN ETCH   |
| 280     | 2401    | OAKWOOD OLD FASHION W/ 495 POLO PLAYER ETCH (2)  |
| 281     | 2401    | OAKWOOD OLD FASHION W/ 463 EQUESTRIAN ETCH   |
| 282     | 2401    | OAKWOOD OLD FASHION W/ 465 GOLF SCENE ETCH   |
| (D) 283 | 4163    | WHALEY BEER MUG 16-OZ W/ 460 CLUB DRINKING SCENE ETCH H  |
| 284     | 4163    | WHALEY MUG W/ RED HDL W/ 460 CLUB DRINKING SCENE H   |
| 285     | 150     | BANDED FLUTE TRAY 13" FLAMINGO H   |
| (D) 286 | 1503 ½  | CRYSTOLITE PITCHER SWAN HDL H  |
| 287     | 150     | BANDED FLUTE TRAY 10" MOONGLEAM H  |
| 289     | 1401    | EMPRESS ICE TUB D.F. W/ 480 NORMANDIE ETCH   |
| 290     | 1519    | WAVERLY CREAM & SUGAR INDV ON TRAY W/ 515 HEISEY ROSE ETCH (3-PC SET)                                      |
| 291     | 1567    | PLANTATION MAYO ROLLED FTD W/ 516 PLANTATION IVY ETCH H  |
| 292     | 1401    | EMPRESS MAYO ALEXANDRITE H (1); #6 MAYO LADLE ALEXANDRITE H  |
| 293     | 3381    | CREOLE SODA FTD 12-OZ ALEXANDRITE  |
| (D) 294 | 1401    | EMPRESS CREAM & SUGAR D.F. ALEXANDRITE H (1-SET)   |
| 295     | 1401    | EMPRESS RELISH TRIPLEX 7" ALEXANDRITE H  |
| 296     | 1506    | PROVINCIAL MAYO 3-HDL LIMELIGHT H  |
| 297     | 1495    | FERN MAYO ZIRCON   |
| 298     | 1485    | SATURN CREAM & SUGAR ZIRCON H (1-SET)  |
| 299     | 1488    | KOHINOOR ASHTRAY BRIDGE ZIRCON   |
| 300     | 1488    | KOHINOOR ASHTRAY ZIRCON H  |

| Lot     | Pattern | Description  |
|---------|---------|--|
| 301     | 1503    | CRYSTOLITE ASHTRAY RND 3" ZIRCON H   |
| 302     | 4085    | KOHINOOR CLARET ZIRCON BOWL  |
| 303     | 4083    | STANHOPE COCKTAIL ZIRCON FT & BOWL   |
| 304     | 1238    | BEEHIVE PLATE 8" ZIRCON  |
| 305     | 1238    | BEEHIVE PLATE 5" ZIRCON  |
| 306     | 1238    | BEEHIVE PLATE 5" SAHARA  |
| 307     | 1951    | CABOCHON CANDY BOX W/ LID DAWN H   |
| 308     | 1632    | LODESTAR CANDY BOX W/ LID PLAIN FINIAL DAWN H  |
| 309     | 1632    | LODESTAR CANDY BOX LID ONLY STAR FINIAL DAWN   |
| 310     | 1632    | LODESTAR VASE STRAIGHT DAWN  |
| 311     | 1632    | LODESTAR ASHTRAY DAWN H  |
| 312     | 1183    | REVERE MAYO DAWN H   |
| 313     | 1485    | SATURN OIL DAWN CRYSTAL STOPPER  |
| 314     | 1487    | COLEPORT TUMBLER DAWN H  |
| 315     | 1415    | TWENTIETH CENTURY PITCHER DAWN H   |
| 316     | 1415    | TWENTIETH CENTURY SODA 5-OZ DAWN H PAPER LABEL (3)   |
| 317     | 3389    | DUQUESNE CHAMPAGNE TANGERINE BOWL  |
| 318     | 3389    | DUQUESNE WINE TANGERINE BOWL   |
| 319     | 3389    | DUQUESNE SODA FTD 12-OZ TANGERINE BOWL   |
| 320     | 3389    | DUQUESNE SODA 5-OZ TANGERINE BOWL 1-RED SIDE (2)   |
| 321     | 3397    | GASCONY WINE TANGERINE BOWL  |
| 322     | 1413    | CATHEDRAL VASE FLARED COBALT   |
| 323     | 3390    | CARCASSONNE SODA FTD 12-OZ COBALT BOWL   |
| 324     | 3397    | GASCONY WINE COBALT BOWL   |
| 325     | 3404    | SPANISH GOBLET COBALT BOWL (2)   |
| 326     | 3404    | SPANISH CHAMPAGNE COBALT BOWL (2)  |
| 327     | 1401    | EMPRESS FLORAL BOWL 12" D.F. COBALT  |
| 328     | 3333    | OLD GLORY GOBLET W/ 657 LIBERTY CUT (7) H; CHAMPAGNE W/ 657 LIBERTY CUT (6) H (13-PC TOTAL)  |
| 329     | 4163    | WHALEY TANKARD W/ 657 LIBERTY CUT & CUT FLUTES ON BOTTOM   |
| 330     | 1401    | EMPRESS BOWL LION HEAD W/ ELABORATE CUT  |
| 331     | 3366    | TROJAN COMPORT W/ ELABORATE CUT H  |
| 332     |         | EPHEMERA ORIGINAL PRICE LIST NO. 176 SUPPLEMENT TO PRICE LIST NO. 175 (1); BREDEHOFT COLLECTORS ENCYCLOPEDIA OF HEISEY GLASS 1925-1938 NEILA BREDEHOFT (1) |
| 333     | 134     | TRIDENT FLORAL BOWL (1); #18 FLORAL BLOCK (1) ALL SAHARA   |
| 334     | 1404    | OLD SANDWICH FLORAL BOWL OVAL FLAMINGO   |
| 335     | 134     | TRIDENT FLORAL BOWL (1); #18 FLORAL BLOCK (1) ALL MOONGLEAM  |
| 336     | 134     | TRIDENT CONSOLE SET: C'STICK 2-LITE H (PR); FLORAL BOWL (1); #18 FLORAL BLOCK (1) ALL FLAMINGO (4-PC SET)  |
| 337     | 1401    | EMPRESS FLORAL BOWL LION HEAD FLARED FLAMINGO  |
| 338     | 133     | SWAN-HANDLED FLORAL BOWL MOONGLEAM   |
| 339     | 133     | SWAN-HANDLED FLORAL BOWL W/ UNK CUT (1); #17 FLORAL BLOCK (1) ALL SAHARA   |
| (D) 340 | 1488    | KOHINOOR CONSOLE SET: FLORAL BOWL (1); CANDELABRA (PR) (3-PC SET)  |







FSA 330



FSA 113



FSA 227



FSA 85



FSA 20



FSA 27



FSA 41



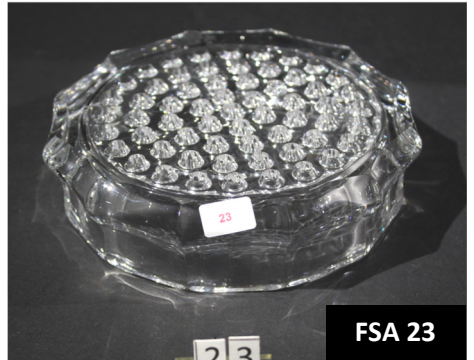
FSA 172



FSA 160



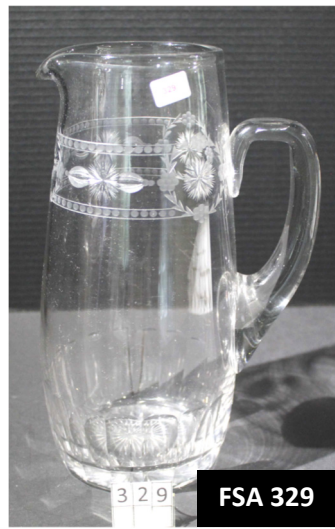
FSA 76



FSA 23



FSA 198



FSA 329



FSA 31



FSA 266





TO:

---

